

# 1 Genomic epidemiology and longitudinal sampling of ward 2 wastewater environments and patients reveals complexity 3 of the transmission dynamics of *bla*<sub>KPC</sub>-carbapenemase- 4 producing Enterobacterales in a hospital setting

5

## 6 1.1 Author names

7 Stoesser N<sup>a, b, #, \*</sup>, George R<sup>c, \*</sup>, Aiken Z<sup>c</sup>, Phan HTT<sup>d</sup>, Lipworth S<sup>a</sup>, Wyllie DH<sup>e</sup>, Quan TP<sup>a</sup>, Mathers AJ<sup>f</sup>,  
8 De Maio N<sup>g</sup>, Seale AC<sup>h</sup>, Eyre DW<sup>a, b</sup>, Vaughan A<sup>a</sup>, Swann J<sup>a</sup>, Peto TEA<sup>a, i</sup>, Crook DW<sup>a, b, i</sup>, Cawthorne J<sup>c</sup>,  
9 Dodgson A<sup>c</sup>, Walker AS<sup>a, b, i</sup>, and the TRACE Investigators' Group

10

11 \*Contributed equally; NS drafted/submitted the manuscript contributing to the author order.

12

## 13 1.2 Affiliation(s)

14 <sup>a</sup> Nuffield Department of Medicine, University of Oxford, Oxford, United Kingdom

15 <sup>b</sup> NIHR Health Protection Research Unit in Healthcare Associated Infections and Antimicrobial  
16 Resistance at University of Oxford in partnership with Public Health England, Oxford, United  
17 Kingdom

18 <sup>c</sup> Manchester University NHS Foundation Trust, Manchester, United Kingdom

19 <sup>d</sup> University of Southampton, Southampton, United Kingdom

20 <sup>e</sup> United Kingdom Health Security Agency, United Kingdom

21 <sup>f</sup> University of Virginia, Charlottesville, United States of America

22 <sup>g</sup> EMBL-European Bioinformatics Institute, Cambridge, United Kingdom

23 <sup>h</sup> University of Warwick, Coventry, United Kingdom

24 <sup>i</sup> NIHR Oxford Biomedical Research Centre, Oxford University Hospitals NHS Foundation Trust, John  
25 Radcliffe Hospital, Oxford, United Kingdom

26

## 27 1.3 Corresponding author and email address

28 Nicole Stoesser

29 e-mail: nicole.stoesser@ndm.ox.ac.uk

30

## 31 1.4 Keywords

32 Carbapenemase-producing Enterobacterales, genomic epidemiology, bla<sub>KPC</sub>, wastewater sites,  
33 healthcare-associated

## 34 1.5 Repositories:

35 Sequence data have been deposited in NCBI's GenBank (BioProject accessions: PRJNA768622 and  
36 PRJNA514245).

## 37 2. Abstract

38 Healthcare-associated wastewater reservoirs and asymptomatic gastrointestinal patient colonisation  
39 by carbapenemase-producing Enterobacterales (CPE) contribute to nosocomial CPE dissemination.  
40 We systematically sampled wastewater sites (n=4488 sampling events; 349 sites) and patients  
41 (n=1247) across six wards over 6-12 months in 2016 to better understand bla<sub>KPC</sub>-associated CPE  
42 (KPC-E) diversity within these niches and transmission potential in an endemic healthcare setting. Up  
43 to five isolates in KPC-E-positive samples were sequenced (Illumina). Recombination-adjusted  
44 phylogenies were used to define genetically related strains; assembly and mapping-based typing  
45 approaches were used to characterise antimicrobial resistance genes, insertion sequences, and  
46 Tn4401 types/target site sequences. The wider accessory genome was evaluated in a subset of the  
47 largest clusters, and those crossing niches.

48

49 Wastewater site KPC-E-positivity was substantial (101/349 sites [28.9%] positive); 228/5,601 (4.1%)  
50 patients cultured were CPE culture-positive over the same timeframe. At a genomic-level, 13 KPC-E  
51 species and 109 strains were identified, and 24% of wastewater and 26% of patient KPC-E-positive  
52 samples harboured ≥1 strain. Most diversity was explained by the individual niche, suggesting  
53 localised factors are important in selection and spread. Tn4401+target site sequence diversity was  
54 greater in wastewater sites (p<0.001), which might favour Tn4401-associated  
55 transposition/evolution. Shower/bath and sluice/mop-associated sites were more likely to be KPC-E-  
56 positive (Adjusted Odds Ratio [95% CI]: 2.69 [1.44-5.01], p=0.0019 and 2.60 [1.04-6.52], p=0.0410,  
57 respectively). Different strains had different transmission and bla<sub>KPC</sub> dissemination dynamics.

58

59 There may be substantial KPC-E colonisation of wastewater sites and patients in KPC-E-endemic  
60 healthcare settings. Niche-specific factors (e.g. microbial interactions, selection pressure) likely  
61 affect carbapenemase gene persistence and evolution, and different strains and mobile genetic  
62 elements with different transmission dynamics influence carbapenemase gene dissemination; these  
63 factors should be considered in surveillance and control strategies.

### 64 3. Impact statement

65 Antibiotic resistance is a major healthcare problem, and common infection-causing bacteria known  
66 as Enterobacterales have developed resistance to one of the “last-line” antibiotic classes used for  
67 treatment, namely carbapenems. Carbapenem resistance in Enterobacterales is largely caused by  
68 the presence of carbapenemase enzymes, such as “KPC” (*Klebsiella pneumoniae* carbapenemase),  
69 which has caused outbreaks of antibiotic-resistant healthcare-associated infection in the USA and  
70 UK. Many infection-associated Enterobacterales species can also live asymptotically in the human  
71 gut and environmental niches, such as hospital wastewater sites, which act as potential reservoirs  
72 for the exchange of the gene encoding for KPC (*bla*<sub>KPC</sub>). Diversity within and transmission between  
73 these reservoirs remains poorly characterised. We therefore systematically and densely sampled  
74 humans and wastewater sites (e.g. sink/shower drains, toilets etc.) on six wards in 2016-2017 and  
75 sequenced 1646 isolates in a prospective study in a hospital affected by outbreaks of KPC-  
76 Enterobacterales-associated infections. We found that 1 in 20 patients and nearly a third of all  
77 wastewater sites were colonised with KPC-Enterobacterales. Samples frequently contained multiple  
78 different KPC-positive species or strains at any given time, and different transmission patterns were  
79 evident. This study has major implications for surveillance of carbapenem-resistant Enterobacterales  
80 in hospitals, and for designing strategies to mitigate their spread.

### 81 4. Data summary

82 The authors confirm all sequencing data and available metadata has been provided in NCBI  
83 BioProjects PRJNA768622 and PRJNA514245 and in supplementary dataset 2.

84

### 85 5. Introduction

86 Carbapenemase-producing Enterobacterales (CPE) are a global health threat<sup>1</sup>, and commonly  
87 associated with multi-drug resistance, rendering treatment of CPE infections difficult. Major  
88 transmissible global carbapenemases include the metallo-beta-lactamases (*bla*<sub>NDM</sub>, *bla*<sub>VIM</sub>, *bla*<sub>IMP</sub>),  
89 some oxacillinases (*bla*<sub>OXA-48/48-like</sub> variants), and the *Klebsiella pneumoniae* carbapenemase (KPC,  
90 encoded by *bla*<sub>KPC</sub>)<sup>2</sup>. Intra- and inter-species horizontal transfer of these genes is facilitated by  
91 mobile genetic elements such as transposons and plasmids, resulting in rapid dissemination of  
92 carbapenem resistance<sup>3,4</sup>.

93

94 CPE have been isolated from human and animal gastrointestinal tracts, and from sewage, rivers and  
95 sink drains<sup>5-7</sup>. Recent studies have highlighted that hospital wastewater sites may act as a CPE  
96 reservoir<sup>5</sup>, but the diversity within these niches, genetic overlap with patient isolates and likely  
97 directionality and rates of transmission remain to be elucidated. Studies evaluating the contribution  
98 of patient-to-patient transmission as the sole explanatory factor explaining transmission have  
99 generally been unable to robustly explain the majority of transmission events, suggesting that  
100 patient, staff and/or environmental reservoirs remain insufficiently sampled to account for the

101 diversity observed<sup>8</sup>. Few studies have considered within-niche diversity of strains by sampling  
102 multiple isolates per individual and/or site<sup>9-11</sup>.

103

104 The Manchester University NHS Foundation Trust (MFT; Manchester, UK), has experienced on-going  
105 transmission and patient acquisition of multi-species CPE, predominantly bla<sub>KPC</sub>-positive  
106 Enterobacterales (KPC-E), since 2009. Following a bla<sub>KPC-2</sub>-ST216-*Escherichia coli* outbreak on two  
107 cardiac wards in the Manchester Royal Infirmary (MRI; part of MFT) and subsequent ward closure  
108 and plumbing infrastructure replacement, early environmental sampling after the ward reopened  
109 suggested rapid re-colonisation of wastewater sites with KPC-E, likely from transfers of colonised  
110 patients to the ward and ongoing evolution of new KPC-E strains in the environment<sup>12</sup>. We therefore  
111 undertook a prospective study systematically sampling all wastewater sites on six wards for 6-12  
112 months alongside patient rectal screening/clinical sampling, and used an anonymised electronic  
113 database to characterise patient admission, ward movement, sampling profiles and culture results.  
114 Multiple colonies were isolated from KPC-E-positive samples to define within-niche diversity, and  
115 whole genome sequencing (Illumina) of individual isolates was used to characterise this diversity and  
116 consider modes of evolution and transmission.

117

## 118 6. Methods

### 119 *Study setting and epidemiological data*

120 MFT is a large, regional referral centre in northwest England, UK, managing >10,000 patients/year. In  
121 response to the regional emergence of KPC-E<sup>13</sup>, the Trust implemented an extensive Infection  
122 Prevention and Control (IPC) programme, consistent with UK CPE guidelines (published in 2014)<sup>14</sup>.  
123 Despite this, in April 2015 there was a large bla<sub>KPC</sub>-*E. coli* outbreak in the cardiac unit<sup>12</sup>, leading to its  
124 closure (September 2015-January 2016) and complete refurbishment, including plumbing  
125 replacement. Subsequently systematic, prospective wastewater site sampling was undertaken  
126 (described further below).

127

128 To evaluate patient-level microbiological and admissions data, MFT electronic bacteriology records  
129 were linked, based on NHS numbers, to patient administration data, and anonymised. For this study,  
130 we analysed anonymised patient data from 1<sup>st</sup> January 2016-31<sup>st</sup> December 2016 inclusive, and  
131 included only those patients with exposure to any one of six wards within the three study units  
132 (acute medicine, cardiology, geratology) during that time.

133

### 134 *Environmental sampling and laboratory processing*

135 All sink/drain/wastewater sites on six wards in three units were sampled: the cardiac unit (wards 3  
136 [W3] and 4 [W4]); the geratology unit (wards 45 [W45] and 46 [W46]); and the acute medicine unit

137 (wards AM1 and AM2) (Table S1 shows sampling site designations). All wastewater sites on both W3  
138 and W4 were sampled fortnightly on rotation from 8<sup>th</sup> January 2016-28<sup>th</sup> December 2016. W45,  
139 W46, AM1, AM2 wastewater sites were similarly sampled fortnightly, but from 18<sup>th</sup> July 2016-31<sup>st</sup>  
140 December 2016. Wastewater site types are described in the Supplementary methods.

141

142 Environmental sampling was carried out by aspirating ~20mls of wastewater from sink P-traps,  
143 shower drains or toilets and performing enrichment-based culture (see Supplementary methods).  
144 Multiplex, real-time, quantitative PCR (for *bla*<sub>NDM</sub>, *bla*<sub>KPC</sub>, *bla*<sub>OXA-48</sub><sup>12</sup>) was performed on broths  
145 following incubation. 10µl of any *bla*<sub>KPC</sub>-positive-broth were streaked onto CPE-selective agar plates  
146 (Chromid CARBA) and re-incubated (aerobically, 37°C).

147

#### 148 *Patient sampling and laboratory processing*

149 Routinely collected patient clinical samples for the diagnosis of infection were processed using  
150 standard operating procedures in line with UK Standards<sup>15</sup>. In addition, a rectal CRE screening  
151 programme was in place from 2014 in line with national guidance: This included routine screening of  
152 high-risk patients (i.e. previously CRE-positive and/or a history of hospitalization abroad or in UK  
153 hospital with a known CRE problem in the last 12 months) on admission and weekly; screening of all  
154 patients on wards where CRE-positive patients were identified (either colonised or infected cases);  
155 ward closure and twice weekly screening if more than two cases were identified on a ward until no  
156 new cases were identified; isolation and/or cohorting of CRE-positive patients. Rectal swabs were  
157 screened for CPE using the Cepheid Xpert Carba-R assay or an in-house multiplex PCR (identifying  
158 *bla*<sub>KPC</sub>, *bla*<sub>NDM</sub>, and *bla*<sub>OXA-48</sub>). Species identification of isolates was performed by MALDI-ToF (Bruker  
159 Biotyper, Bruker MD); antimicrobial susceptibility testing was performed as per EUCAST guidelines<sup>16</sup>.  
160 Enterobacterales isolates that had resistant or intermediate susceptibility to any carbapenem were  
161 classified as a carbapenem-resistant Enterobacterales (CRE).

162

#### 163 *Analyses of within-niche diversity*

164 To evaluate within-niche diversity in the environment and patients, up to five different CRE colonies  
165 were individually sub-cultured; *bla*<sub>KPC</sub>-positivity in sub-cultures was re-confirmed by PCR and species  
166 identification performed by MALDI-ToF prior to storage in nutrient broth at -80°C.

167

#### 168 *DNA extraction and isolate sequencing*

169 DNA was extracted from frozen sub-culture stocks with the QuickGene kit, as per the manufacturer's  
170 instructions, with an additional mechanical lysis step post-chemical lysis (6m/s at 40secs x2 FastPrep,  
171 MPBio). Isolates were sequenced on the Illumina HiSeq 4000 generating 150bp paired-end reads.

172

173 *Sequence data processing and analysis*

174 Sequencing reads were initially processed using an in-house pipeline<sup>17</sup> (details in Supplementary  
175 methods); species identification was performed with Kraken2 (default settings)<sup>18</sup>. If at least 50  
176 sequenced isolates were of a single species, reads were mapped to species-specific references.  
177 Variant calling and filtering was performed, and consensus fasta sequences of variant calls with  
178 respect to the reference generated. Recombination-adjusted phylogenies by species were created  
179 from core chromosomal single nucleotide variants (SNVs; padded to the length of the reference  
180 genome prior to analysis) using IQtree<sup>19</sup> (flags: -m GTR+G -blmin 0.00000001 -t PARS) and then  
181 ClonalFrameML<sup>20</sup> (default parameters). A distance of  $\leq 400$  SNVs was used as a threshold to define  
182 clusters based on previous work (threshold used similar to<sup>21</sup>; distribution of SNV distances within  
183 clusters displayed in Fig.S2A-E for the most common species identified); indels were not considered  
184 in our evaluation of relatedness. For detailed sub-strain analysis for *K. pneumoniae* strain 9 (see  
185 Results), sub-strains were defined on the basis of accessory genome clusters characterised using  
186 Panaroo (default parameters including --clean-mode strict<sup>22</sup>) and clustered using the R heatmap  
187 package.

188

189 Isolates were assembled using SPAdes (v3.6; default parameters)<sup>23</sup>. Multi-locus sequence types were  
190 derived using BLASTn and species-specific databases (<https://pubmlst.org>; Achtman 7-gene MLST for  
191 *E. coli*). AMR genes were identified using ARIBA<sup>24</sup> with the CARD database<sup>25</sup> and insertion sequences  
192 using ISFinder (<https://isfinder.biotoul.fr>). *bla*<sub>KPC</sub> genes, Tn4401 transposon contexts and the 5-bp  
193 target site sequences (TSSs) on either side of the Tn4401 transposon reflecting Tn4401 transposition  
194 signatures were characterised using TETyper<sup>26</sup>, a Tn4401b reference sequence, a 5bp flank length  
195 and the default structural/SNV profiles. Arbitrary profile numbers were assigned based on the  
196 presence of unique profiles of AMR genes, plasmid replicons, IS sequences (see Supplementary  
197 dataset 1 for details of which AMR gene variants constitute a given AMR gene profile, and  
198 Supplementary dataset 2 for details on plasmid replicon and IS combinations identified).

199

200 For the analysis of *K. pneumoniae* strain 9 (see Results), putative transmission networks were  
201 inferred first using SCOTTI<sup>27</sup> (Supplementary methods), and then heuristically, linking isolates  
202 identified as clusters on the basis of accessory component profiles and geographic/temporal overlap  
203 (Supplementary methods).

204

205 *Statistical analyses and data visualisation*

206 Descriptive statistics were calculated in R v3.6.2 or STATA v16.1. To conduct permutational analyses  
207 of variance, we used the *adonis* function (vegan R package, v2.5-7)<sup>28</sup> on a matrix of pairwise Gower  
208 distances based on genetic features (i.e. composite of species-strain type, plasmid replicon profile,

209 AMR gene profile, IS profile, and Tn4401+flanking TSS profiles), which was calculated using the *daisy*  
210 function (R cluster package). To evaluate the impact of unit location or environmental site type on  
211 the odds of CPE positivity, we used logistic regression with robust standard errors clustered by  
212 environmental site sampled (R rms package, v6.2-0)<sup>29</sup>. Data visualisation was using the ggplot2<sup>30</sup> and  
213 scatterpie<sup>31</sup> (v.0.1.5) R packages, and BioRender ([www.biorender.com](http://www.biorender.com)).

214

#### 215 *Data availability*

216 Sequence data have been deposited in NCBI's GenBank (BioProject accession PRJNA768622 and  
217 PRJNA514245; accession numbers and metadata for successfully sequenced isolates are in  
218 Supplementary dataset 2). We are not able to share the complete database of patient tests, results  
219 and admissions episodes; dates for patient admission/sampling are given as month-year only. Of  
220 note, labels represented in the figures/supplementary data are anonymised study-specific labels  
221 that are not patient-identifiable.

222

## 223 **7. Results**

### 224 *Environmental sampling revealed high prevalence and clustering of wastewater site KPC-E* 225 *colonisation*

226 349 sites across the six study wards (i.e. three units) were sampled a total of 4,488 times (Fig.1):  
227 101/349 (28.9%) sites and 319/4,488 (7.1%) sampling events were KPC-E-positive, with no difference  
228 by unit (Fig.2,  $p=0.908$ ), or over time. Adjusting for environmental site type and unit location,  
229 shower/bath drain sites and sluices/sluice sinks/mop sinks were significantly more likely to be  
230 positive for KPC-E than others (Adjusted Odds Ratio [AOR] (95% CI): 2.69 (1.44-5.01),  $p=0.0019$  and  
231 2.60 (1.04-6.52),  $p=0.041$ , respectively), and toilet water sampling less likely to be positive (AOR  
232 (95% CI): 0.28 (0.10-0.78),  $p=0.015$ ); there was no evidence of a unit-dependent difference (Table 1).  
233 7/349 (2.0%) sites were persistently KPC-E positive ( $\geq 10$  consecutive KPC-E-positive sampling  
234 events); interestingly five of these were medicines/treatment room handwash basin drains (of eight  
235 medicines/treatment room sinks in total) likely only accessible to healthcare staff (Table S1, Fig.S3).

236

237 *Approximately one in twenty-five patients was affected by carbapenemase-producing*  
238 *Enterobacterales (CPE), with most cases reflecting rectal colonisation with KPC-producing K.*  
239 *pneumoniae, E. coli or E. cloacae*

240 Of 2,529 Enterobacterales positive-samples (2,622 Enterobacterales isolates, 1,247 patients),  
241 439/2,529 (17.4%) samples cultured at least one carbapenem-resistant Enterobacterales (CRE,  
242  $n=478$  isolates in total) (Figs.1, S4). For 344/439 (78.4%) CRE-positive samples on which  
243 carbapenemase PCR data were also available, all contained at least one known carbapenemase  
244 gene, of which 303/344 (88.0%) were bla<sub>KPC</sub> (Table S2, CRE therefore henceforth denoted as CPE for

245 simplification). CPEs were cultured from 228 patients (4.1% of all patients cultured, 18.2% of all  
246 patients with an Enterobacterales-positive culture) during the study period (median=1, IQR: 1-2,  
247 range: 1-17 CPE isolates/patient).

248

249 The majority of CPE-positive isolates came from rectal screens (n=387/478 [81.0%]); others came  
250 from non-screening clinical specimens (91/478 [19.0%]) (Table S3). Most CPE-positive patients  
251 (178/228 [78%]) were CPE-positive only on rectal screen, but 23/228 (10%) individuals were positive  
252 only on clinical culture, and 27 (12%) on both. By routine laboratory species identification methods,  
253 >20 species and eight genera were represented amongst CPEs, with *K. pneumoniae*, *E. coli* and *E.*  
254 *cloacae* complex predominating (434/478 [90.8%]). Notably, the proportions of carbapenem-  
255 resistant isolates within these top three carbapenem resistance-associated species varied  
256 (n=284/593 [48%] vs 106/1,404 [8%] vs 44/110 [40%] respectively; Fisher's exact test, p<0.001,  
257 Fig.S4).

258

259 The proportion of patient CPE-positive cultures was lower than that of environmental site samples,  
260 typically ~3% (Fig. 3, bottom panel). Occasional peaks in prevalence were observed, consistent with  
261 outbreaks (e.g. week 31, acute medicine unit). CPE prevalence amongst patient cultures on the  
262 refurbished cardiology unit was 0% (97.5% CI: 0-0.02) for the first 10 weeks post-reopening,  
263 although two utility room sink drains on were positive for KPC-E a day after W3 reopened to patient  
264 admissions (11<sup>th</sup> January 2016) following closure and complete plumbing replacement over three  
265 months; thereafter the unit was rapidly re-colonised (Fig.2).

266

267 *Structuring of diversity by patient and environmental niche, with most diversity explained by the*  
268 *individual niche*

269 1,646 CPE isolates were successfully sequenced (1,275 environmental, 371 patient isolates; Fig.1,  
270 Supplementary dataset 2), of which all contained bla<sub>KPC-2</sub> as the carbapenem resistance variant, and  
271 13 bla<sub>KPC-2</sub>-Enterobacterales species were identified across patients and environmental reservoirs.  
272 Amongst five species with ≥50 sequenced isolates which were evaluated at the strain-level, 109  
273 unique strains were represented. Of the 109 strains, 61 (56%) were found only in the environment,  
274 27 (24%) only in patients and 21 (19%) in both patients and the environment (Fig.4 for the major  
275 species); the median strain cluster size was 5 isolates (range: 1-122), and the median number of  
276 unique niches (i.e. unique patients or wastewater sites) affected by a strain was 2 (range: 1-23).

277

278 Amongst sequenced isolates, 100 plasmid replicon profiles, 754 IS profiles, 939 AMR gene profiles,  
279 and 70 Tn4401/TSS types were identified (Supplementary dataset 2). A much greater proportion of  
280 all identified Tn4401/TSS types was observed in the environment versus patients (66/70 [94%] of  
281 types versus 12/70 [17%] respectively; Fisher's exact test, p<0.001), and all the isolates with >1 set of



282 TSSs were seen in environmental sites, consistent with these representing a more favourable niche  
283 for Tn4401-associated transposition/evolution and dissemination.

284

285 For colonised niches (i.e. patient or environmental), using a metric of genomic diversity based on  
286 strain, plasmid replicon profile, AMR gene profile, IS profile, and Tn4401+5bp TSS profiles, most  
287 variance was explained by the specific individual site sampled ( $R^2=50.5\%$ ;  $p<0.001$ ), versus small but  
288 significant contributions made by niche type (i.e. patient vs environmental niche;  $R^2=5.6\%$ ;  $p<0.001$ )  
289 and unit location ( $R^2=2.8\%$ ;  $p<0.001$ ).

290

291 For the fifteen scenarios where exactly the same strain, AMR gene profile, IS profile, plasmid profile  
292 and Tn4401/TSS type were seen in patient and environmental niches (Fig.S5), and considering only  
293 the event-pairs where the chromosomal SNP distances were within 5 SNPs of each other and there  
294 was a change in sampling site, the temporal relationship of these supported: patient-to-environment  
295 transmission in 13/29 (45%) events, environment-to-patient transmission in 2/29 (7%) events,  
296 environment-to-environment transmission in 1/29 (3%) events, and patient-to-patient transmission  
297 in 13/29 (45%) events (test of equality of proportions,  $p<0.001$ ).

298

299 *Environmental and patient niches harbour diverse KPC-E within single samples and over time*

300 Environmental sites showed evidence of major strain-level diversity: from the 101/349 sites from  
301 which bla<sub>KPC-2</sub>-Enterobacterales isolates were successfully sequenced at any timepoint, 78/319  
302 (24.4%) KPC-E-positive samples had >1 bla<sub>KPC-2</sub>-Enterobacterales strain, namely 52/319 (16.3%) with  
303 two strains, 16/319 (5.0%) with three, 9/319 (2.8%) with four and 1/319 (0.3%) with five strains  
304 (Figs.5, S6). Over the study period, colonised environmental sites had a median of 3 (range: 1-17,  
305 IQR: 2-5) bla<sub>KPC-2</sub>-Enterobacterales strains. 49/101 sites (49%) were apparently colonised by a single  
306 bla<sub>KPC-2</sub>-Enterobacterales strain only, of which 38 were at single sampling-points, and 11 sites positive  
307 with the same strain at  $\geq 2$  timepoints.

308

309 For patient samples, based on routine laboratory microbiology, evidence of mixed-species KPC-E  
310 colonisation/infection was found in 35/439 (8%) samples from 26/228 (11%) patients; these were  
311 mostly *E. coli*/*K. pneumoniae* mixtures (n=17 samples; maximum two species identified). To evaluate  
312 within-patient diversity with genomic rather than species-level resolution, in a subset of 76 patients,  
313 strains were sequenced successfully from at least one CPE-positive sample during the study period;  
314 for 97 samples, multiple colonies were picked from single sample sub-cultures. In total 457  
315 sequenced colonies from 97 samples were available for evaluation of within-patient diversity; 25/97  
316 samples (25.7%) had more than one strain per sample, namely 17/97 samples (17.5%) with two  
317 bla<sub>KPC-2</sub>-Enterobacterales strains, 6/97 (6.2%) with three strains and 2/97 (2.0%) with four strains

318 (Figs.5, S6) - i.e. considerably more diversity identified than based on routine laboratory species  
319 identification data (26% vs 8% samples; Fisher's exact test,  $p < 0.001$ ).

320

321 For a subset of 14 patients and 53 wastewater sites where within-sample diversity was evaluated by  
322 sequencing multiple isolates from individual samples and  $\geq 2$  longitudinal samples were positive,  
323 longitudinal switches in  $bla_{KPC-2}$ -Enterobacterales species-strain composition was common, occurring  
324 in 7/14 (50%) of patients and 41/53 (77%) wastewater sites (Figs.5, S6).

325

### 326 *Genomic analysis reveals distinct population biology for different $bla_{KPC-2}$ -Enterobacterales strains*

327 To investigate different modes of  $bla_{KPC-2}$  dissemination, we characterised in detail several  
328 sequenced KPC-E strain clusters, including the largest environmental-only cluster (*E. cloacae* strain  
329 10 [n=122 isolates]), a large cluster involving patients and the environment (*K. pneumoniae* strain 9  
330 [n=106 isolates], and a cluster in which signatures of Tn4401 transposition appeared highly frequent  
331 (*K. pneumoniae* strain 11 [n=96 isolates]).

332

### 333 *Scenario 1: Dynamic changes in AMR gene, IS, plasmid replicon and Tn4401 profiles in E. cloacae* 334 *strain 10 in sink drain sites*

335 *E. cloacae* strain 10 (eclo10, ST32) appeared a site-restricted but persistent coloniser of three co-  
336 located sink drains on a geratology ward (in a drug room clinical handwash basin drain [F45], utility  
337 sink drain [F46], and a separate treatment room clinical handwash basin drain [F47]) over ~5 months  
338 (18/Jul/2016-20/Dec/2016). At the core chromosomal level, strains appeared largely structured by  
339 site, with 7 SNVs separating the majority of isolates in F45 from those in F47, and 14 SNVs those in  
340 F46 from F45. Three isolates in F47 and one isolate in F46 clustered with the F45-associated isolates;  
341 sampling dates suggest that these represented transmission events from F45 (Fig.6A). There was  
342 evidence of rapid churn in AMR gene and IS content (111 and 36 different profiles respectively;  
343 Fig.6Bi and 6Bii) in the relatively stable strain background, and almost all isolates in F47 had acquired  
344 an additional set of IncHI2/HI2A replicons on a background of FIB/FII, consistent with plasmid  
345 gain/loss (Fig.6C). Although the Tn4401 type and flanking sequences were largely identical (Tn4401a-  
346 ATTGA-ATTGA in 105/122 (86%) isolates across sinks), there was evidence of unique additional  
347 Tn4401 deletions occurring in multiple isolates at several distinct timepoints in the three sink sites  
348 (Fig.6).

349

### 350 *Scenario 2: Rapid clonal patient-patient transmission of K. pneumoniae strain 9*

351 *K. pneumoniae* strain 9 (kpne9, ST252) was highly related (Fig.S7; maximum 6 SNVs across strain, 68  
352 isolates with 0 SNVs between them), and spread amongst 21 patients across three wards on two  
353 units (acute medicine AM1 and AM2 and geratology W46), with a dense outbreak in Aug 2016, most

354 consistent, at least initially, with direct/indirect patient-patient transmission (Fig.7). *bla<sub>KPC</sub>* was  
355 consistently nested in Tn4401-ATTGA-ATTGA, except for one isolate which acquired a Tn4401-  
356 associated mutation (isolate: 2216698\_14, C4620T), and another in which the right target site  
357 sequence (TSS) could not be identified (isolate: 2035791\_11). Amongst the 106 isolates there was  
358 evidence of four transient plasmid replicon acquisitions on a background of the stable presence of a  
359 set of IncFIB/IncFII replicons (Fig.S7). Transmission probabilities inferred by SCOTTI were weak (see  
360 Supplementary material; Fig.S8), as seen in other studies<sup>8</sup>, but using accessory cluster profiling to  
361 further discriminate amongst strains suggested that there were several discrete transmission  
362 clusters (Fig.S9), with some individuals involved in several of these (i.e. harbouring multiple distinct  
363 sub-lineages simultaneously, Fig.7). A single shower drain site was involved (A13), which was likely a  
364 seeded bystander from affected patients, but may have contributed to transmission of sub-strain 3g  
365 (Fig.7).

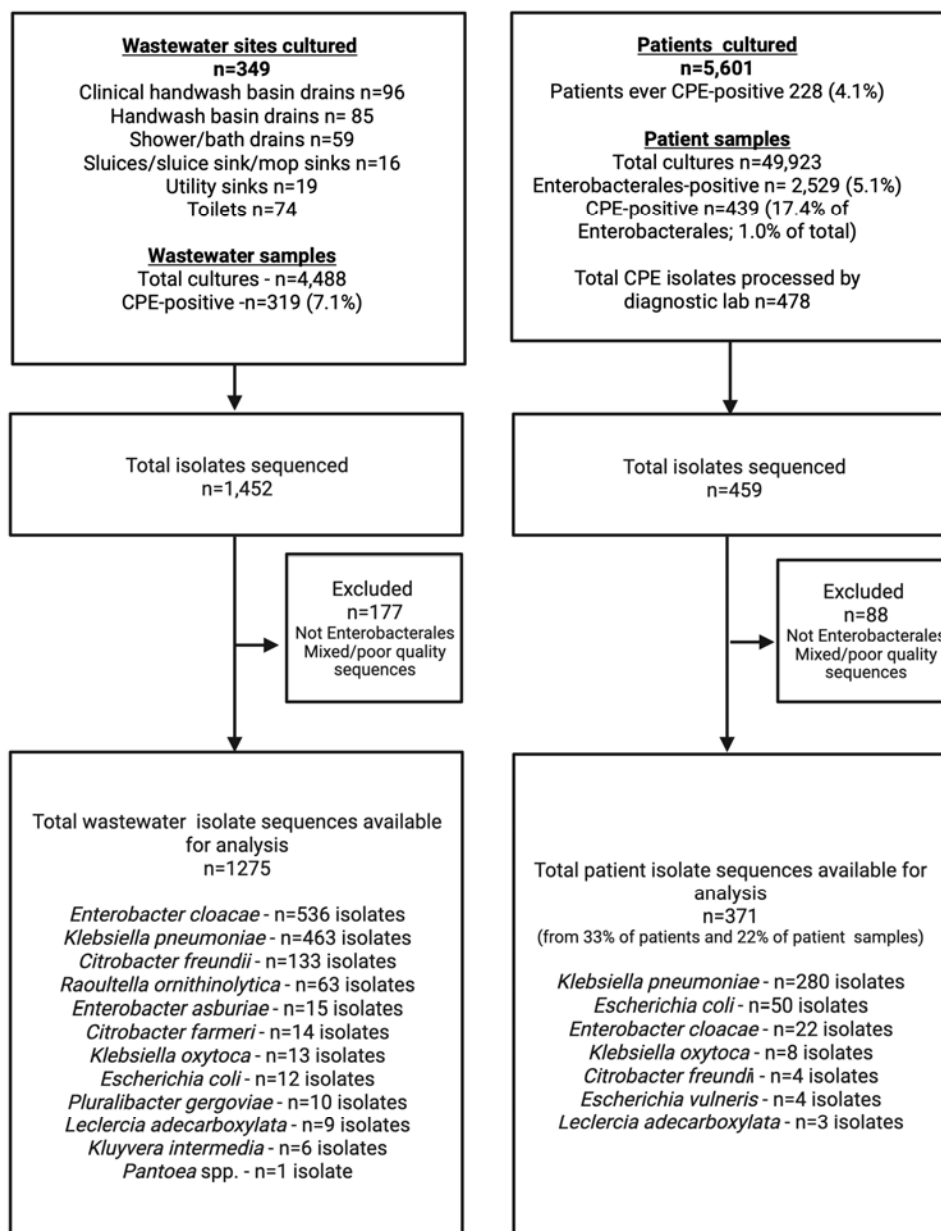
366

367 *Scenario 3: Cross-unit dissemination with evidence of significant Tn4401-associated bla<sub>KPC</sub>*  
368 *transposition in K. pneumoniae strain 11*

369 Given that Tn4401 transposition is associated with *bla<sub>KPC</sub>* dissemination<sup>21</sup>, we also evaluated whether  
370 the number of different Tn4401-TSS types was different across strains, noting that the observed  
371 frequency of different Tn4401-TSS combinations was higher in *K. pneumoniae* strain 11 (kpne11,  
372 ST11) than in other strains (Fig.S10). On further analysis, Kpne11 represented two sub-clusters,  
373 separated by ~40SNVs (Fig.8, designated “cluster 1” and “cluster 2”; Fig.S11), both of which were  
374 isolated from patients and wastewater sites across ward settings, including the cardiac unit after  
375 plumbing replacement. Within both clusters of isolates there were ten different Tn4401a flanking  
376 signatures observed, only one of which was seen in the other >1600 isolates sequenced in the study  
377 (Tn4401a-1\_ATTGA\_ATTGA, the most common flanking signature observed overall), and therefore  
378 most strongly consistent with the occurrence of an atypical and increased number of transposition  
379 events within this *K. pneumoniae* strain. Although all isolates contained IncFIB and IncFII plasmid  
380 replicons, evidence of plasmid gain/loss events as demonstrated by changes in plasmid replicon  
381 profiles also appeared common (Fig.8 for cluster 1).

382 **8. Figures and tables**

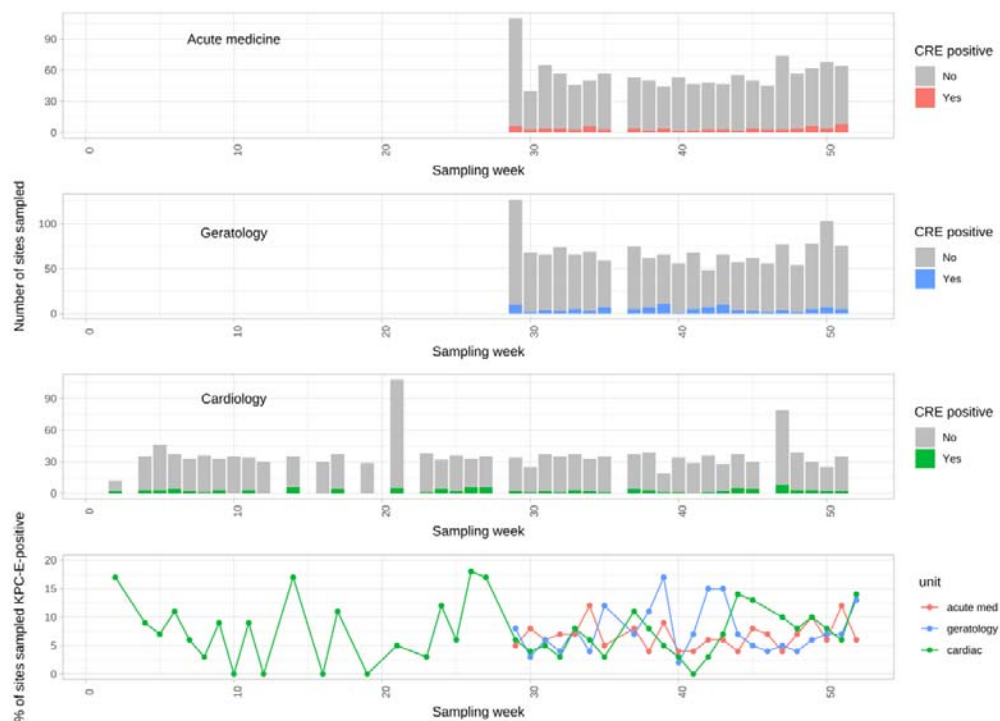
383 **Figure 1. Sampling and sequencing flowchart for the study.**



384

385 **Figure 2. bla<sub>KPC</sub>-Enterobacterales (KPC-E)-positive environmental sites by week in 2016 and**  
386 **hospital unit.** The number of environmental site samples performed and KPC-E-positive samples by  
387 week of sampling, stratified by unit (top three panels), and the proportion of KPC-E-positive sites by  
388 week of sampling, again stratified by unit (bottom panel).

389



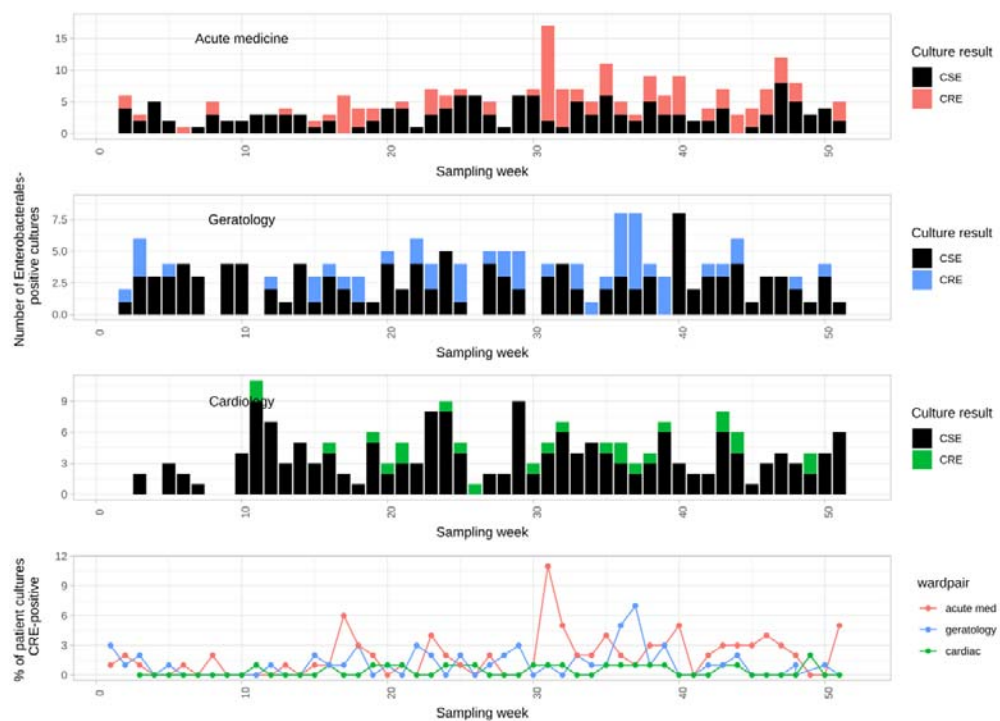
390

391

392 **Figure 3. Carbapenem-susceptible Enterobacterales (CSE) and carbapenem-resistant-**  
393 **Enterobacterales (CRE) patient cultures by week in 2016 and hospital unit.** Top three panels show  
394 counts of Enterobacterales culture-positive samples stratified by unit and carbapenem susceptibility;  
395 bottom panel shows the proportion of all cultures taken that were CRE, again stratified by unit.

396

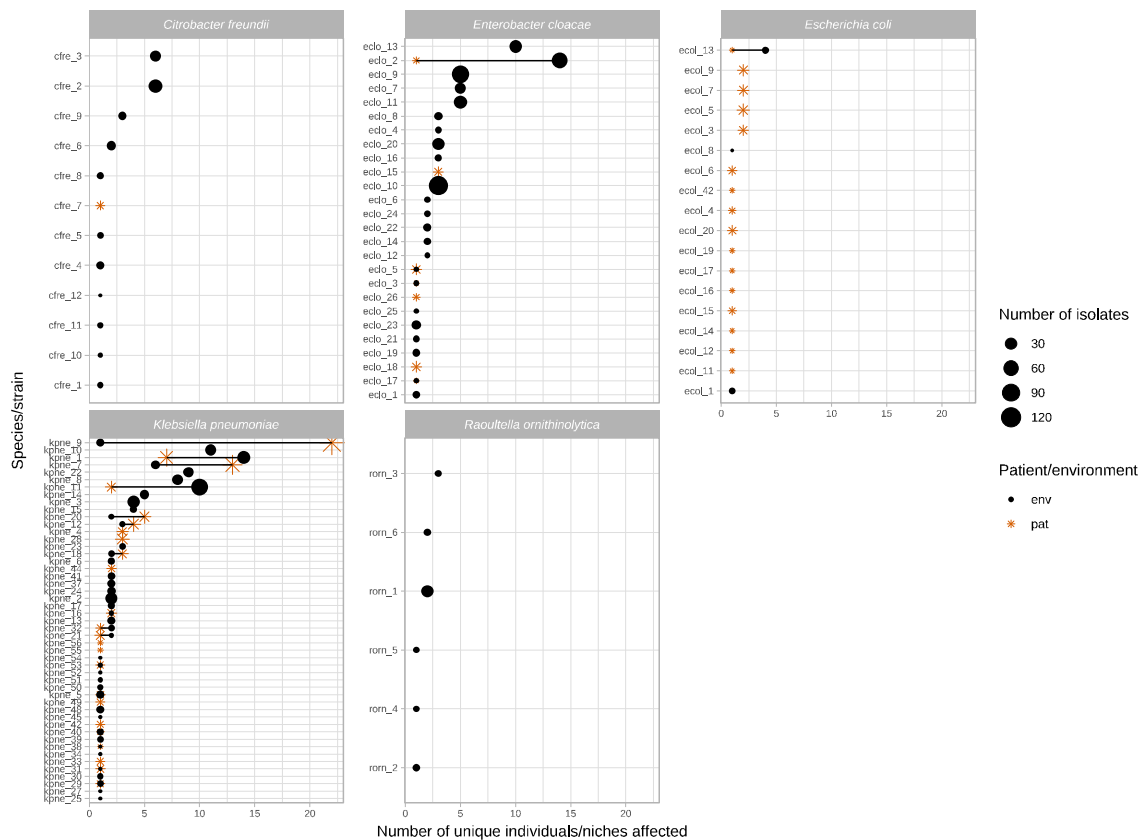
397



398

399 **Figure 4. Number of unique patient/environmental niches colonised by common *bla*<sub>KPC-2</sub>**  
 400 **Enterobacterales species/strains and the total number of isolates for each cluster.** Includes  
 401 species/strains if >50 isolates of a species were identified [see Methods]). Orange stars denote  
 402 patient niches, black circles wastewater niches; larger shape size denotes a larger number of isolates  
 403 sequenced. Strains observed in both niches are either overlapping shapes (same number of niches),  
 404 or joined by a line (different numbers of niches).

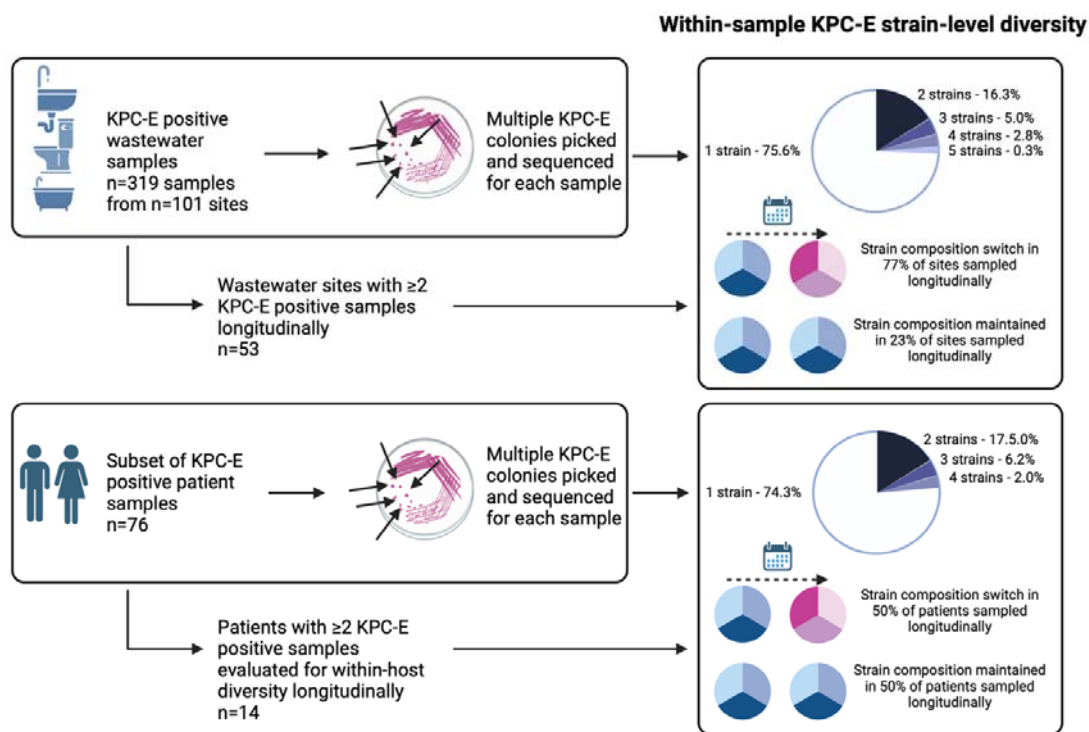
405



406

407 **Figure 5. Summary of within-niche and KPC-E sample diversity using genomics.**

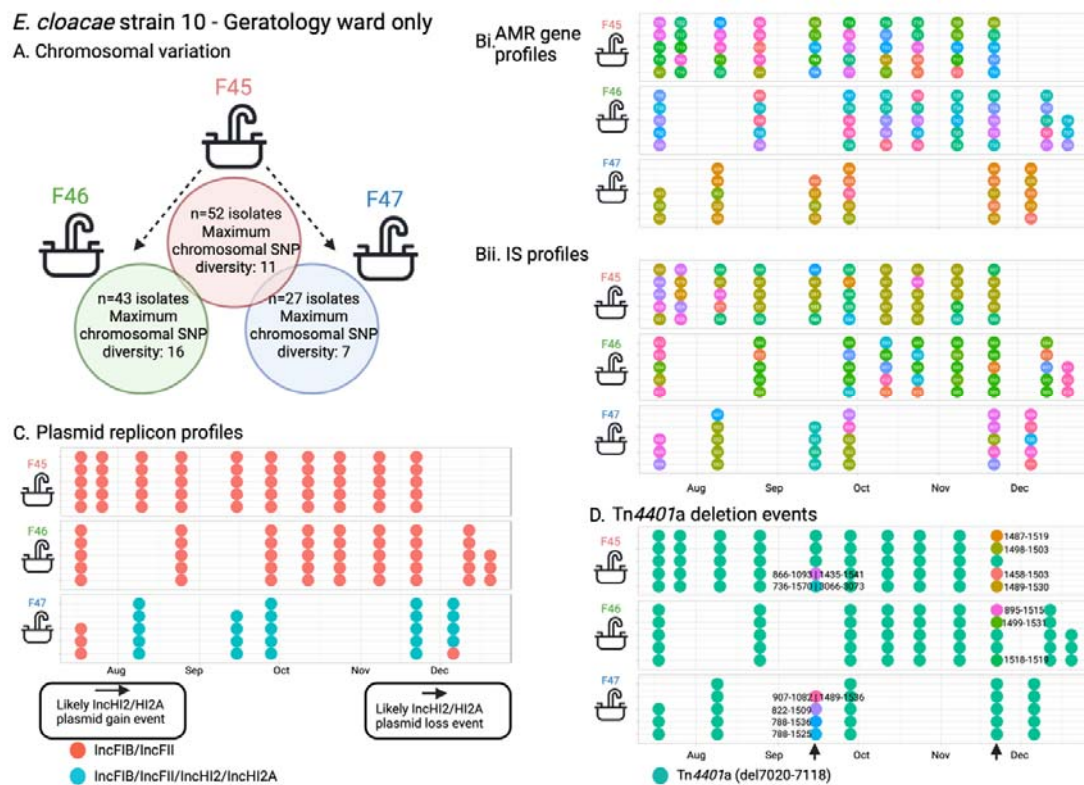
408



409



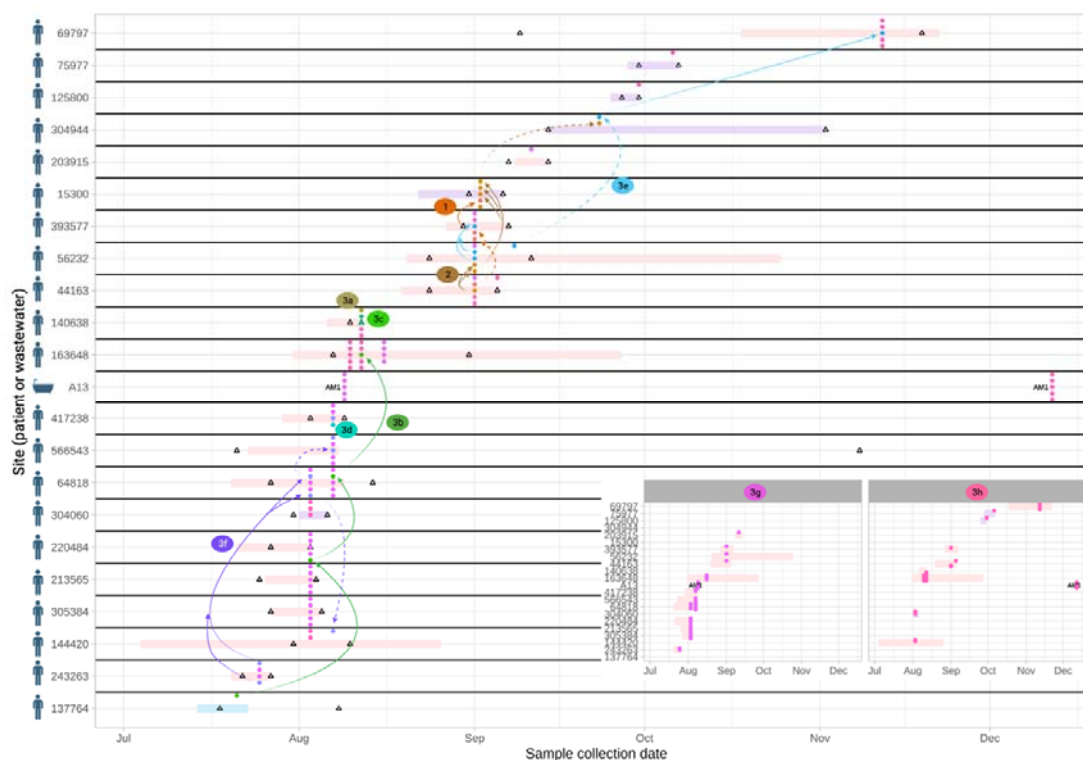
410 **Figure 6. *Enterobacter cloacae* strain 10 - features of population structure and transmission**  
 411 **dynamics - niche restriction, persistence and genetic turnover.** Summaries of A) Chromosomal SNP  
 412 distances for *E. cloacae* strain 10 across the three sites it colonised; Bi) AMR and Bii) IS profiles, C)  
 413 plasmid replicon profiles, and D) deletions in Tn4401a in isolates with each sequenced isolate  
 414 plotted as a dot reflecting within-sample diversity at given timepoints and longitudinally.  
 415



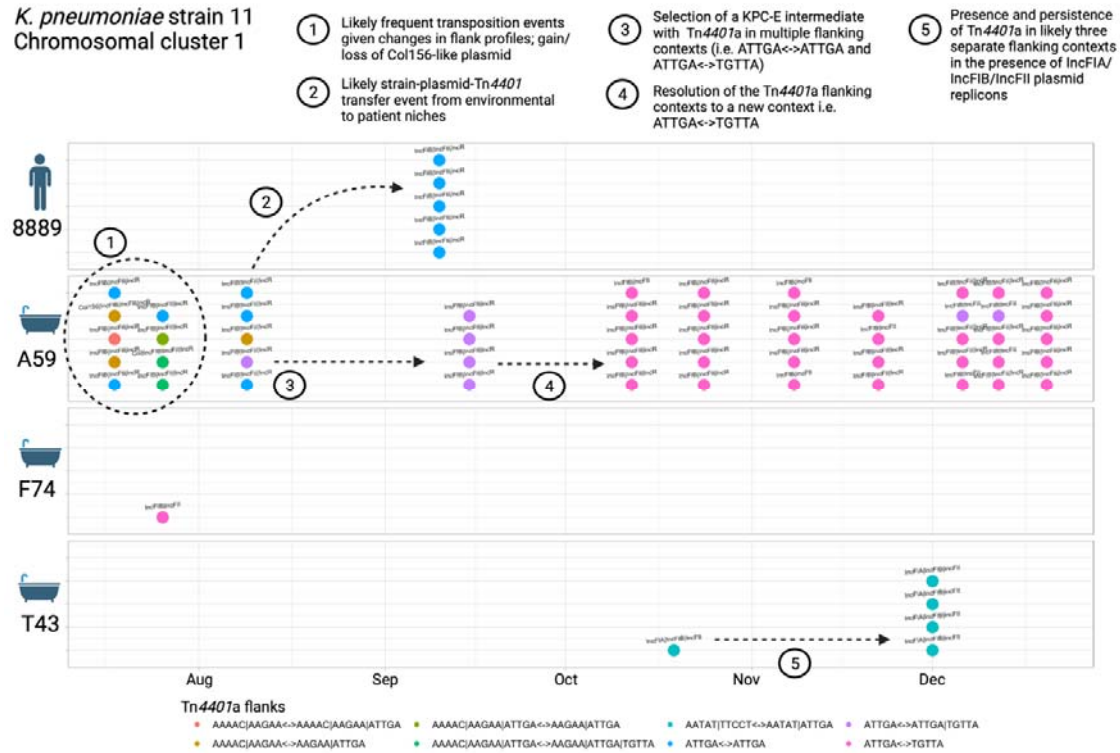
416

417 **Figure 7. *Klebsiella pneumoniae* strain 9 - features of population structure and transmission**  
418 **dynamics - rapid patient-patient transmission.** Putative transmission network for sub-lineages of *K.*  
419 *pneumoniae* strain 9, defined by accessory genome clustering (clusters 1, 2, 3a-h). Horizontal bars  
420 represent admission episodes to study wards for each patient (pale blue=W45, geratology; pale  
421 pink=AM1, acute medicine; pale purple=AM2, acute medicine; A13 represents the only  
422 environmental (shower) site involved). Empty black triangles denote CPE-negative rectal screens on  
423 patients. Arrows denote possible transmission links (dashed arrows denote events that have no  
424 geographic overlap or could be associated with two links based on negative screen, geographic  
425 location and timing). For clarity, arrows are not drawn for clusters 3g and 3h, which affected the  
426 most patients - these are shown in detail as an inset panel at the bottom right. In some cases  
427 patients were colonised by other species-strains contemporaneously (not shown here).

428



431 **Figure 8. *Klebsiella pneumoniae* strain 11 cluster - features of population structure and**  
 432 **transmission dynamics – multiple Tn4401 transposition events.** Examples of possible  
 433 transmission/genetic events are annotated on the figure. Each isolate sequenced is represented as a  
 434 dot, with colour denoting the TSS profiles observed. Plasmid replicon profiles are annotated as text.  
 435



436

437 **Table 1. Association of environmental site type and unit location with *bla*<sub>KPC</sub>-Enterobacterales**  
 438 **(KPC-E) positivity in environmental samples.** Outputs of a multivariable logistic regression model  
 439 with robust standard errors clustered by environmental site type and unit location; no other  
 440 variables were considered in the model. P-values <0.05 were considered significant and are  
 441 highlighted in bold. No interactions with an interaction Wald p <0.05 were observed.

442

| Environmental site                 | Number of sites | Number of sampling events KPC-E-positive (% of total sampling events) | Number of sampling events KPC-E-negative | OR (95% CI)      | p             |
|------------------------------------|-----------------|---|--|------------------|---------------|
| <b>Environmental site type</b>     |                 |   |  |                  |               |
| Clinical handwash basin drain      | 96              | 79 (5.9%)   | 1270                                     | Reference        |               |
| Handwash basin drain               | 85              | 52 (4.6%)   | 1077                                     | 0.99 (0.51-1.93) | 0.9735        |
| Shower/bath drain                  | 59              | 100 (19.2%)   | 421                                      | 2.69 (1.44-5.01) | <b>0.0019</b> |
| Sluice/sluice sink/mop sink        | 16              | 47 (17.9%)  | 215                                      | 2.60 (1.04-6.52) | <b>0.0410</b> |
| Toilet                             | 74              | 5 (0.5%)  | 931                                      | 0.28 (0.10-0.78) | <b>0.0152</b> |
| Utility sink                       | 19              | 36 (12.4%)  | 255                                      | 1.32 (0.47-3.68) | 0.5965        |
| <b>Environmental site location</b> |                 |   |  |                  |               |
| Acute medicine unit                | 129             | 86 (6.6%)   | 1223                                     | Reference        |               |
| Cardiac unit                       | 76              | 111 (7.0%)  | 1453                                     | 1.07 (0.57-2.00) | 0.8412        |
| Geratology unit                    | 144             | 122 (7.6%)  | 1493                                     | 0.88 (0.52-1.48) | 0.6243        |

## 443 9. Discussion

444 This work highlights the substantial KPC-E diversity and flux that can occur in both human and  
445 wastewater niches in healthcare settings over variable timeframes, in this case in relation to a large  
446  $bla_{KPC-2}$ -associated carbapenemase gene outbreak. KPC-E strains have features likely to make  
447 generalising results regarding modes of transmission, evolution and gene sharing of  $bla_{KPC}$  amongst  
448 these species very challenging. Although structuring at the strain-level was observed by niche and  
449 species (Fig.4), likely transmissions occurred in a non-negligible manner in all directions from  
450 patients to other patients and the environment, and from the environment to patients and other  
451 environmental sites. Environmental niches and certain lineage contexts appeared to amplify  $bla_{KPC-2}$   
452 transposition events.

453

454 Although some environmental sites were persistently colonised with individual strains over months,  
455 many appeared to be only transiently colonised. Sites particularly associated with KPC-E colonisation  
456 included sluices, sluice sinks, mop sinks and shower/bath drains, supported by other studies<sup>5</sup>, and  
457 consistent with these representing a major interface between human faeces and premise plumbing.  
458 Toilets were less likely to be KPC-E-positive, perhaps because of regular flushing or particular  
459 cleaning protocols; consistent with this, several studies have demonstrated that daily bleach  
460 application decontaminated wastewater sites<sup>32, 33</sup>.

461

462 Our study underscores the detailed and dense sampling effort required to understand within-sample  
463 diversity and longitudinal flux, and highlights the difficulty in accurately tracking the dissemination of  
464 AMR genes and strains across niches. This problem has also been demonstrated in other recent work  
465 investigating  $bla_{OXA-48}$ , where only patient-based sampling was undertaken and most  $bla_{OXA-48}$ -  
466 associated transmission events were non-delineated or only weakly supported by joint  
467 phylogenetic/epidemiological inference<sup>8</sup>. Our study clearly shows that different species and lineages  
468 represent different epidemiological risks and have their own behaviours, and a focus on single,  
469 clonal strains as mediators of AMR gene transmission is irrelevant in this and potentially many other  
470 settings where important AMR genes have become endemic.

471

472 The importance of evaluating asymptomatic carriage, characterising within-host diversity of strains,  
473 considering rapid acquisition/loss of strains over short timeframes, and including environmental  
474 sites in transmission networks has been partly demonstrated in previous studies investigating ESBL-  
475 *E. coli*<sup>10, 34</sup> and *Enterococcus* spp.<sup>35</sup>, but generally these features are not jointly investigated because  
476 doing so is highly resource-intensive, and there are no robust analysis methods for doing this to our  
477 knowledge. However, without this effort, such as in studies which consider only single or infrequent  
478 sampling timepoints, and do not investigate asymptomatic colonisation or consider within-site  
479 diversity<sup>36</sup>, our study highlights that relevant events may easily be missed.

480

481 There are several limitations to this work. CPE-sample capture for patients for this study was not  
482 continuous, and we therefore only evaluated a subset of CPE-positive patients and samples using  
483 genomics (33% and 22% respectively); we anticipate many transmission events were missed, but our  
484 sampling already reveals the high complexity of  $bla_{KPC}$  transmission. We were not resourced to  
485 perform long-read sequencing to enable plasmid sequence reconstruction, and plasmid replicon or  
486  $bla_{KPC}$ -contig profiling is relatively low-resolution and can be misleading<sup>21</sup>; we therefore avoided a  
487 detailed plasmid analysis which would be important in quantifying horizontal  $bla_{KPC}$  transmission.  
488 However, the diversity we observed in genetic contexts supporting  $bla_{KPC}$  was substantial, consistent  
489 with high rates of HGT. A further limitation is the absence of metadata capturing relevant selection  
490 pressures in each niche, including cleaning protocols for environmental reservoirs and drug  
491 prescription/antimicrobial stewardship data for patients. We only investigated one healthcare  
492 setting, but the same polyspecies, polyclonal phenomenon has been seen elsewhere and with other  
493 carbapenemase genes<sup>4,8</sup>. We focused only on Enterobacterales and may have missed wider HGT of  
494 carbapenemase genes to other bacteria. In line with this, at least 23 *Pseudomonas* spp., five  
495 *Stenotrophomonas maltophilia* and two *Acinetobacter* spp. that were PCR-positive for  $bla_{KPC}$  or  
496  $bla_{NDM}$  were inadvertently picked up on rectal screening. Our approaches to evaluating some of the  
497 putative genetic changes and transmission events observed were heuristic and manual, partly  
498 because the data were highly heterogeneous and complex. The study is now relatively historic, but  
499 these types of polyspecies, polyclonal carbapenemase gene outbreaks associated with hospital  
500 wastewater sites continue to be described and as such we believe the findings remain of interest.

501

502 Further optimisation of methods to evaluate multi-level genetic transmission and within-sample  
503 diversity without individual colony-level characterisation is needed. Holistic approaches using fully  
504 reconstructed chromosome/plasmid assemblies to quantify the diverse types of genomic  
505 transmission (including clonal transmission, horizontal transfer at the gene, transposon and plasmid-  
506 level) are also required to better understand what facilitates emergence, selection and persistence  
507 of different lineages and genetic vectors of  $bla_{KPC}$ . This information will improve our understanding  
508 of how to intervene to limit the transmission of drug-resistant Enterobacterales in healthcare  
509 settings, and avoid incorrect inference.

510

## 511 **10. Author statements**

### 512 **10.1 Conflicts of interest**

513 DWE has received lecture fees from Gilead, outside the submitted work. The other authors declare  
514 that there are no conflicts of interest.

515

### 516 **10.2 Funding information**

517 This study was funded by the National Institute for Health Research (NIHR) Health Protection  
518 Research Unit in Healthcare Associated Infections and Antimicrobial Resistance (NIHR200915), a

519 partnership between the UK Health Security Agency (UKHSA) and the University of Oxford, and was  
520 supported by the NIHR Oxford Biomedical Research Centre (BRC). The computational aspects of this  
521 research were funded from the NIHR Oxford BRC with additional support from the Wellcome Trust  
522 Core Award Grant Number 203141/Z/16/Z. The views expressed are those of the author(s) and not  
523 necessarily those of the NHS, NIHR, UKHSA or the Department of Health and Social Care. For the  
524 purpose of open access, the author has applied a Creative Commons Attribution (CC BY) licence to  
525 any Author Accepted Manuscript version arising.

526

527 DWE is a Robertson Foundation Fellow and an NIHR Oxford Biomedical Research Centre Senior  
528 Fellow. NS is an Oxford Martin Fellow. DWC, TEAP and ASW are NIHR Senior Investigators.

529

### 530 **10.3 Ethical approval**

531 This study was performed as part of a Trust board-approved and UK Health Security Agency  
532 (formerly Public Health England) long-term outbreak response, and ethics approval was not required  
533 under NHS governance arrangements; all analyses were undertaken using anonymised data. This  
534 was reviewed and agreed by the Joint Research Office of the Oxford University Hospitals NHS  
535 Foundation Trust and the University of Oxford (who oversee research governance, ethics and  
536 assurance for our institution), and who deemed that neither sponsorship nor research ethics review  
537 was required.

538

### 539 **10.4 Acknowledgements**

540 We are grateful to the microbiology staff and infection prevention and control teams at Manchester  
541 University NHS Foundation Trust.

542

543 The Transmission of Carbapenemase-producing Enterobacteriaceae (TRACE) Investigators' Group is  
544 made up of the following (listed alphabetically, includes several of the authors also listed by name in  
545 the main author list): Zoie Aiken, Oluwafemi Akinremi, Aiysha Ali, Julie Cawthorne, Paul Cleary,  
546 Derrick W. Crook, Valerie Decraene, Andrew Dodgson, Michel Doumith, Matthew J. Ellington, Ryan  
547 George, John Grimshaw, Malcolm Guiver, Robert Hill, Katie L. Hopkins, Rachel Jones, Cheryl Lenney,  
548 Amy J. Mathers, Ashley McEwan, Ginny Moore, Andrew Mumford, Mark Neilson, Sarah Neilson, Tim  
549 E.A. Peto, Hang T.T. Phan, Mark Regan, Anna C. Seale, Nicole Stoesser, Jay Turner-Gardner, Vicky  
550 Watts, A. Sarah Walker, Jimmy Walker, David H. Wyllie, William Welfare and Neil Woodford.

551

## 552 11. References

- 553 1. Munoz-Price LS, Poirel L, Bonomo RA et al. Clinical epidemiology of the global expansion of  
554 *Klebsiella pneumoniae* carbapenemases. *Lancet Infect Dis* 2013; **13**: 785-96.
- 555 2. Logan LK, Weinstein RA. The Epidemiology of Carbapenem-Resistant Enterobacteriaceae:  
556 The Impact and Evolution of a Global Menace. *J Infect Dis* 2017; **215**: S28-S36.
- 557 3. Nordmann P, Dortet L, Poirel L. Carbapenem resistance in Enterobacteriaceae: here is the  
558 storm! *Trends Mol Med* 2012; **18**: 263-72.
- 559 4. Mathers AJ, Cox HL, Kitchel B et al. Molecular dissection of an outbreak of carbapenem-  
560 resistant enterobacteriaceae reveals intergenus KPC carbapenemase transmission through a  
561 promiscuous plasmid. *MBio* 2011; **2**: e00204-11.
- 562 5. Kizny Gordon AE, Mathers AJ, Cheong EY et al. Is the hospital water environment a reservoir  
563 for carbapenem-resistant organisms causing hospital-acquired infections? A systematic review of the  
564 literature. *Clin Infect Dis* 2017.
- 565 6. Bleichenbacher S, Stevens MJA, Zurfluh K et al. Environmental dissemination of  
566 carbapenemase-producing Enterobacteriaceae in rivers in Switzerland. *Environ Pollut* 2020; **265**.
- 567 7. Cahill N, O'Connor L, Mahon B et al. Hospital effluent: A reservoir for carbapenemase-  
568 producing Enterobacteriales? *The Science of the total environment* 2019; **672**: 618-24.
- 569 8. León-Sampedro R, DelaFuente J, Díaz-Agero C et al. Pervasive transmission of a carbapenem  
570 resistance plasmid in the gut microbiota of hospitalized patients. *Nat Microbiol* 2021; **6**: 606-16.
- 571 9. Weingarten RA, Johnson RC, Conlan S et al. Genomic Analysis of Hospital Plumbing Reveals  
572 Diverse Reservoir of Bacterial Plasmids Conferring Carbapenem Resistance. *MBio* 2018; **9**.
- 573 10. Stoesser N, Sheppard AE, Moore CE et al. Extensive Within-Host Diversity in Fecally Carried  
574 Extended-Spectrum-Beta-Lactamase-Producing *Escherichia coli* Isolates: Implications for  
575 Transmission Analyses. *J Clin Microbiol* 2015; **53**: 2122-31.
- 576 11. Ludden C, Coll F, Gouliouris T et al. Defining nosocomial transmission of *Escherichia coli* and  
577 antimicrobial resistance genes: a genomic surveillance study. *The Lancet Microbe* 2021; **2**: e472-e80.
- 578 12. Decraene V, Phan HTT, George R et al. A Large, Refractory Nosocomial Outbreak of *Klebsiella*  
579 *pneumoniae* Carbapenemase-Producing *Escherichia coli* Demonstrates Carbapenemase Gene  
580 Outbreaks Involving Sink Sites Require Novel Approaches to Infection Control. *Antimicrob Agents*  
581 *Chemother* 2018; **62**.
- 582 13. England PH. Carbapenemase-producing Enterobacteriaceae: laboratory confirmed cases,  
583 2003 to 2015. London: Public Health England, 2016.
- 584 14. England PH. Carbapenemase-producing Enterobacteriaceae: early detection, management  
585 and control toolkit for acute trusts. 2014.



- 586 15. Investigations USfM.
- 587 16. Testing ECoAS. Breakpoint tables for interpretation of MICs and zone diameters. 2017.
- 588 17. Stoesser N, Sheppard AE, Peirano G et al. Genomic epidemiology of global *Klebsiella*  
589 *pneumoniae* carbapenemase (KPC)-producing *Escherichia coli*. *Sci Rep* 2017; **7**: 5917.
- 590 18. Wood DE, Salzberg SL. Kraken: ultrafast metagenomic sequence classification using exact  
591 alignments. *Genome Biol* 2014; **15**: R46.
- 592 19. Nguyen LT, Schmidt HA, von Haeseler A et al. IQ-TREE: a fast and effective stochastic  
593 algorithm for estimating maximum-likelihood phylogenies. *Mol Biol Evol* 2015; **32**: 268-74.
- 594 20. Didelot X, Wilson DJ. ClonalFrameML: efficient inference of recombination in whole bacterial  
595 genomes. *PLoS Comput Biol* 2015; **11**: e1004041.
- 596 21. Sheppard AE, Stoesser N, Wilson DJ et al. Nested Russian Doll-Like Genetic Mobility Drives  
597 Rapid Dissemination of the Carbapenem Resistance Gene blaKPC. *Antimicrob Agents Chemother*  
598 2016; **60**: 3767-78.
- 599 22. Tonkin-Hill G, MacAlasdair N, Ruis C et al. Producing polished prokaryotic pangenomes with  
600 the Panaroo pipeline. *Genome Biol* 2020; **21**: 180.
- 601 23. Bankevich A, Nurk S, Antipov D et al. SPAdes: a new genome assembly algorithm and its  
602 applications to single-cell sequencing. *J Comput Biol* 2012; **19**: 455-77.
- 603 24. Hunt M, Mather AE, Sánchez-Busó L et al. ARIBA: rapid antimicrobial resistance genotyping  
604 directly from sequencing reads. *Microb Genom* 2017; **3**: e000131.
- 605 25. Jia B, Raphenya AR, Alcock B et al. CARD 2017: expansion and model-centric curation of the  
606 comprehensive antibiotic resistance database. *Nucleic Acids Res* 2017; **45**: D566-D73.
- 607 26. Sheppard AE, Stoesser N, German-Mesner I et al. TETyper: a bioinformatic pipeline for  
608 classifying variation and genetic contexts of transposable elements from short-read whole-genome  
609 sequencing data. *Microb Genom* 2018; **4**.
- 610 27. De Maio N, Wu CH, Wilson DJ. SCOTTI: Efficient Reconstruction of Transmission within  
611 Outbreaks with the Structured Coalescent. *PLoS Comput Biol* 2016; **12**: e1005130.
- 612 28. Oksanen JB, F.G.; Friendly, M.; Kindt, R.; Legendre, P.;, McGlinn DM, P.R.; O'Hara, R.B.;  
613 Simpson, G.L.; Solymos, P.; Henry, M.; Stevens, H.,; Szoecs E.; Wagner H. *vegan: Community Ecology*  
614 *Package*. 2020.
- 615 29. Harrell Jr FE. *rms: Regression Modeling Strategies*. 2021.
- 616 30. Wickham H. *ggplot2: Elegant Graphics for Data Analysis*. 2016.
- 617 31. Yu G. *scatterpie: Scatter Pie Plot*. 2020.

- 618 32. Valentin AS, Santos SD, Goube F et al. A prospective multicentre surveillance study to  
619 investigate the risk associated with contaminated sinks in the intensive care unit. *Clin Microbiol*  
620 *Infect* 2021; **27**: 1347.e9-.e14.
- 621 33. Heireman L, Hamerlinck H, Vandendriessche S et al. Toilet drain water as a potential source  
622 of hospital room-to-room transmission of carbapenemase-producing *Klebsiella pneumoniae*. *The*  
623 *Journal of hospital infection* 2020; **106**: 232-9.
- 624 34. Kantele A, Kuenzli E, Dunn SJ et al. Dynamics of intestinal multidrug-resistant bacteria  
625 colonisation contracted by visitors to a high-endemic setting: a prospective, daily, real-time sampling  
626 study. *The Lancet Microbe* 2021; **2**: e151-e8.
- 627 35. Gouliouris T, Coll F, Ludden C et al. Quantifying acquisition and transmission of *Enterococcus*  
628 *faecium* using genomic surveillance. *Nat Microbiol* 2021; **6**: 103-11.
- 629 36. Qiao F, Wei L, Feng Y et al. Handwashing Sink Contamination and Carbapenem-resistant  
630 *Klebsiella* Infection in the Intensive Care Unit: A Prospective Multicenter Study. *Clin Infect Dis* 2020;  
631 **71**: S379-s85.
- 632