

1 **Large-scale seroepidemiology uncovers nephrological pathologies**
2 **in people with tau autoimmunity**

3
4
5 **Authors:**

6 Andreia D. Magalhães^{1†}, Marc Emmenegger^{1&}, Elena De Cecco¹, Manfredi Carta^{1‡}, Karl
7 Frontzek^{1§}, Andra Chincisan^{1||}, Jingjing Guo¹, Simone Hornemann^{1*}, Adriano Aguzzi^{1*}

8
9 **Affiliations:**

10 ¹Institute of Neuropathology, University of Zurich; CH-8091 Zurich, Switzerland

11 *Correspondence: simone.hornemann@usz.ch and adriano.aguzzi@usz.ch

12 †Present address: Department of Neurology, Inselspital, Bern University Hospital; CH-3010
13 Bern, Switzerland

14 &Present address: Division of Medical Immunology, Department of Laboratory Medicine, Uni-
15 versity Hospital Basel; CH-4031 Basel, Switzerland

16 ‡Present address: Institute of Neurology, University of Zurich; CH-8091 Zurich, Switzerland

17 §Present address: University College London, Institute of Neurology, Queen Square Brain Bank;
18 WC1N 1PJ London, United Kingdom

19 ||Present address: Credit Suisse; CH-8001 Zurich, Switzerland

23 **Abstract:**

24 **Importance:** Intraneuronal aggregates of the microtubule-associated protein tau play a pivotal role
25 in Alzheimer's disease and several other neurodegenerative syndromes. Anti-tau antibodies can
26 reduce pathology in mouse models of neurodegeneration and are currently being tested in humans.

27 **Objective:** To evaluate the seroprevalence of natural anti-tau autoantibodies and their potential
28 association with diseases.

29 **Design:** In a cross-sectional study, plasma samples from a randomized university hospital cohort
30 and healthy blood donors, collected from 2017 to 2020, were screened for anti-MTBD-tau plasma
31 IgG autoantibodies ($\alpha\tau$) in a miniaturized, high-throughput ELISA. Samples were included if basic
32 demographic data was available and age was ≥ 18 years. Data analysis was performed from De-
33 cember 2017 to August 2024. Titers were defined as $-\log_{10}(\text{EC}_{50})$ values. Titers of ≥ 1.8 were clas-
34 sified as $\alpha\tau^+$.

35 **Participants:** Blood was obtained during routine clinical care from 32,291 patients admitted as
36 inpatients or outpatients to any department of a university hospital, or from 8,206 healthy blood
37 donors.

38 **Results:** High-titer $\alpha\tau^+$ samples were surprisingly prevalent, with hospital patients being three
39 times more likely to be $\alpha\tau^+$ than healthy blood donors (4.8% vs 1.6%). $\alpha\tau$ autoantibodies ligated
40 selectively tau, inhibited tau aggregation in vitro, and interfered with tau detection in plasma sam-
41 ples. No association was found between $\alpha\tau$ autoantibodies and neurologic disorders. Instead, tau
42 autoreactivity showed a significant association with kidney and urinary disorders (adjusted risk
43 ratio (RR) 1.27, 95% CI 1.10-1.45, $P=0.001$ and 1.40, 95% CI 1.20-1.63, $P<0.001$ respectively).

44 **Conclusions and Relevance:** While $\alpha\tau$ autoimmunity was not associated with neurologic dis-
45 eases, its association with extraneural pathologies will require scrutiny in the context of anti-tau
46 therapies. Moreover, immunochemical plasma tau assays were confounded by $\alpha\tau$ antibodies,
47 whose high prevalence may limit their usefulness as biomarker.

48

49 **Main Text:**

50 **INTRODUCTION**

51 Tau is a microtubule binding protein involved in cytoskeletal dynamics and expressed in neurons^{1,2}
52 and in extraneural tissues, including kidney.²⁻⁵ It plays a pivotal role in Alzheimer's disease (AD),⁶
53 and various syndromes collectively referred to as tauopathies.⁷ The presence of brain neurofibril-
54 lary tau tangles correlates with cognitive decline,⁸ and plasma measurements of total and phos-
55 phosphorylated tau have emerged as promising biomarkers for monitoring of AD progression.⁹⁻¹² More-
56 over, active and passive immunization with antibodies against different tau epitopes are being
57 tested in clinical trials.¹³

58 Natural autoantibodies are generated against self-antigens in the absence of external antigen stim-
59 ulation.¹⁴ They are a normal part of the immunoglobulin repertoire and have physiological roles in
60 homeostasis and surveillance,¹⁵ but can also cause pathological autoimmunity. The study of natural
61 autoantibodies can inform about properties of their targets, e.g. unrecognized protective or con-
62 tributing roles in disease.¹⁶ Some natural autoantibodies can even cause neurological disor-
63 ders.^{17,18,19}

64 Anti-tau autoantibodies have been detected in plasma of patients with AD²⁰ and Parkinson's dis-
65 ease,²¹ but also in non-neurodegeneration controls.²² The effects, if any, of natural anti-tau auto-
66 antibodies in modulating the risk of developing neurodegenerative diseases are unknown. The
67 study of individuals with anti-tau autoantibodies could clarify their potential as modifiers or bi-
68 omarkers of disease. Here, we tested 40,497 plasma samples from healthy blood donors and from
69 patients admitted to a university hospital in a two-sites cross-sectional study for anti-tau immuno-
70 reactivity.

71

72 **METHODS**

73 **Study design**

74 From December 2017 until February 2020, residual heparin plasma samples were obtained from
75 the Department of Clinical Chemistry, University Hospital of Zurich, USZ, Switzerland. Samples
76 were collected during routine clinical care from patients admitted either as inpatients or outpatients
77 (age \geq 18 years) and were only included if basic demographic data was available, and an informed
78 consent for research had been provided. From March until July 2020, EDTA plasma samples from
79 blood donors were obtained from the Blood Donation Center of Zurich, Switzerland, according to

80 standard criteria of blood donation. Exclusion criteria were as reported.²³ Plasma samples were
81 biobanked locally and tested in an automated indirect microELISA (Enzyme-Linked Immuno-
82 sorbent Assay) for natural IgG autoantibodies against the microtubule-binding-domain of tau
83 (MTBD-tau, tauK18,²³⁻²⁵ and below). Demographic and clinical data for the hospital cohort was
84 obtained from clinical records of the USZ with follow-up until December 2021, while detailed
85 clinical data for the blood donor cohort were not available for this study. ICD-10 codes²⁶ were
86 used for clinical data assessment. AD patients were selected using ICD-10 code F00 or G30. Non-
87 neurodegeneration controls were defined by the lack of any Fxx or Gxx ICD-10 codes.

88

89 **Automated microELISA screen**

90 High-binding 1,536-well microplates (Perkin Elmer, SpectraPlate 1536 HB) were coated with 1
91 $\mu\text{g/mL}$ of recombinant MTBD-tau (37 °C, 60 min; see eMethods in Supplement 1 for MTBD-tau
92 production and purification). Plates were washed 3x with phosphate-buffered saline 0.1%
93 Tween@20 (PBST) using a Biotek El406 washer-dispenser and blocked with 5% milk (Migros)-
94 PBST (90 min). Plasma samples were diluted 1:20 in 1% milk-PBST and dispensed into the
95 MTBD-tau-coated plates using ultrasound dispensing with an ECHO 555 Liquid Handler
96 (Labcyte/Beckman Coulter). Each sample was tested at eight serial two-fold dilutions (1:50 to
97 1:6,000) using different volumes to a final volume of 3 $\mu\text{L/well}$. Human IgG-depleted serum
98 (MyBioSource) was used as negative and anti-tau RD4 (4-repeat isoform) mouse monoclonal an-
99 tibody²⁷ (05-804 clone 1E1/A6 Merck Millipore) as positive control. Plates were incubated (120
100 min, room temperature (RT)) and washed 5x with PBST. Secondary antibody peroxidase Affini-
101 Pure® goat anti-mouse IgG H+L (115-035-003, Jackson ImmunoResearch) at 1:2,000 dilution in
102 1% milk-PBST for the RD4 positive control, peroxidase AffiniPure® goat anti-human IgG Fc γ -
103 specific (109-035-098, Jackson ImmunoResearch) 1:4,000 dilution in 1% milk-PBST for the
104 plasma samples and the IgG-depleted serum negative control were dispensed into the plates using
105 a Biotek MultifloFX dispenser. Plates were incubated (60 min, RT) and washed 3x with PBST.
106 3,3',5,5'-Tetramethylbenzidine (TMB) Chromogen Solution for ELISA (Invitrogen) was added as
107 colorimetric horseradish peroxidase (HRP) substrate (3 min, RT). Finally, 0.5 M H₂SO₄ was added
108 to stop the reaction. Plates were briefly centrifuged after each dispensing step except after dispens-
109 ing of TMB. Plates were read at Optical Density (OD) = 450 nm in a plate reader (Perkin Elmer,
110 Envision).

111

112 **Competitive ELISA**

113 High-binding 384-well plates (Perkin Elmer, SpectraPlate 384 HB) were coated with 4 $\mu\text{g/mL}$
114 BT2 tau monoclonal antibody (#MN1010, Thermo Fisher) in PBS. Recombinant human tau⁴⁴¹
115 (rPeptide) was diluted to a final concentration of 0.015 ng/mL and incubated with purified anti-tau
116 autoantibodies (Supplement 1) four-fold serially diluted (1:1.66 to 1:106.6) in 1:2 plasma under
117 rotation (500 rpm, 120 min, 37°C). Samples were transferred to BT2-coated plates and incubated
118 (45 min, RT). After washing 4x with PBST, plates were incubated (0.125 $\mu\text{g/mL}$, 45 min, RT)
119 with ab64193 (polyclonal IgG antibody; Abcam). Plates were washed 4x with PBST and incubated
120 (1:2,000 dilution, 60 min, RT) with peroxidase AffiniPure® goat anti-Rabbit IgG (H+L) (111-
121 035-045, Jackson ImmunoResearch). Plates were washed 4x with PBST and 1-Step™ Ultra TMB-
122 ELISA solution (Thermo Fisher) was added (7 min, RT). After addition of 0.5 M H₂SO₄, plates
123 were read at OD = 450 nm in a plate reader (Perkin Elmer, Envision).

124

125 **Statistical analysis**

126 Antibody titers were defined as the negative logarithm half-maximal responses ($-\log_{10}(\text{EC}_{50})$) ob-
127 tained by fitting the OD = 450 nm of the eight dilution points of each sample tested in the micro-
128 ELISA to a logistic regression fitter. We classified as positives samples with a cut-off of $-\log_{10}(\text{EC}_{50}) \geq 1.8$.²³ Non-informative samples (fitting error >20% $-\log_{10}(\text{EC}_{50})$ or high background)
129 were excluded from the analysis.²³ In cases where more than one sample was available for the
130 same individual the most recent $\log_{10}(\text{EC}_{50})$ value was used.

132 Age is presented as median with interquartile range (IQR) and comparisons were performed using
133 non-parametric Mann-Whitney U test. Categorized age groups and sex of positives and negatives
134 are shown as percentages and compared using two-proportions Z-test or χ^2 test for trend in propor-
135 tions. Log-binomial regression models^{28,29} using MTBD-tau autoreactivity were employed to es-
136 timate age-and-sex adjusted RRs (aRR) and 95% confidence intervals (CIs), and to investigate the
137 association between the detection of anti-MTBD-tau IgG autoantibodies and different demo-
138 graphic features (Supplement 1).

139 Statistical significance was defined by 2-tailed P-value ≤ 0.05 . Statistical analyses and data visu-
140 alization were performed using R version 4.3.2 and RStudio version 1.4.1106.³⁰

141 **RESULTS**

142 **Prevalence of naturally occurring plasma anti-tau autoantibodies**

143 We designed a cross-sectional study to investigate naturally occurring plasma IgG autoantibodies
144 against MTBD-tau. Plasma samples from 32,291 university hospital patients (age \geq 18 years) and
145 8,206 healthy blood donors were screened by miniaturized ELISA (Figure 1A).²³⁻²⁵

146 After exclusion of non-informative samples, 4.80% (n=1,169) of the 24,339 of hospital samples,
147 but only 1.58% (n=104) of 6,590 healthy donors, were $\alpha\tau^+$ (Figure 1A-C). Hence, anti-tau immu-
148 noreactivity was more prevalent in unselected hospital patients than in healthy individuals
149 (P<0.001). Demographic data was available for 4,157 of the 6,590 blood donors. Median ages
150 were 42 (IQR 29-54) and 55 years (IQR: 40-69) for healthy donors and hospital patients, respec-
151 tively (P<0.001). Of the healthy blood donors, 40.9% (n=1,698) were women, whereas for the
152 hospital group, 47.7% (n=11,609) of the patients were women (P<0.001). Multivariate log-bino-
153 mial regression^{29,31} adjusted for age and sex showed that hospital patients had a 2.3x higher risk
154 than healthy donors to be $\alpha\tau^+$ (aRR 2.30, 95%CI 1.83-2.92, P<0.001, Figure 1D).

155 The replicability of the microELISA screen was found to be high ($R^2=0.84$, P<0.001, Figure 1E).
156 There was no cross-reactivity to two other proteins implicated in neurodegeneration, amyloid- β
157 pyroglutamate and the cellular prion protein (PrP^C).²⁴ Of 12,297 patient samples, 604 samples were
158 positive against MTBD-tau and 5 against amyloid- β pyroglutamate but none was cross-reactive
159 against both targets (P=1, χ^2 test) (Figure 1F). Moreover, of 13,099 patient samples, 694 were
160 reactive against MTBD-tau and 15 against PrP^C, but again none was cross-reactive against both
161 targets (P=0.734, χ^2 test) (Figure 1G)

163 **Specificity and biological activity of $\alpha\tau^+$ samples**

164 To investigate their specificity, we purified anti-tau autoantibodies by MTBD-tau affinity chroma-
165 tography from four individual $\alpha\tau^+$ patients (P1-P4) and from a pool of six $\alpha\tau^+$ sample (patient_IDs:
166 J909190817, J802220975, J909190382, J90806029, J908060881 and J805040458). Purified anti-
167 MTBD-tau autoantibody samples had EC₅₀ values of 0.042-14.45 μ g/ml whereas the mouse anti-
168 MTBD-tau antibody RD4²⁷ had EC₅₀=0.002 μ g/ml (eFigure 1A in Supplement 1). In a soluble-
169 competition immunoassay (eFigure 1B, Supplement 1), purified $\alpha\tau^+$ autoantibodies showed a con-
170 centration-dependent binding to recombinant MTBD-tau purified by cation exchange and size ex-
171 clusion chromatography and to a pool of 8 synthetic MTBD-tau peptides but not to albumin or an

172 unrelated synthetic peptide (eFigure 1C in Supplement 1). To probe for polyreactivity, purified $\alpha\tau^+$
173 autoantibodies were tested against several structurally unrelated autoantigens and bacterial pro-
174 teins, including MTBD-tau, albumin, cardiolipin, DNA, insulin, and lipopolysaccharides (LPS).
175 Anti-tau autoantibodies were reactive against MTBD-tau but not against any of the other antigens
176 or uncoated plates (eFigure 1D in Supplement 1).

177 In immunofluorescent stainings, purified $\alpha\tau$ autoantibodies co-localized to cytoplasmic EGFP-
178 0N4RTau in SH-SY5Y cells and showed similar binding patterns to an anti-tau mouse monoclonal
179 antibody H7, but not to non-transfected cells (eFigure 1E in Supplement 1). On western blots,
180 purified $\alpha\tau$ autoantibodies detected tau-specific bands in cell lysates of SH-SY5Y cells overex-
181 pressing tau^{P301L/S320F}, but not in parental (wt) SH-SY5Y cells (eFigures 1F and 2 in Supplement
182 1). Hence, the immunoreactivity of $\alpha\tau^+$ samples was highly specific for tau. All IgG subclasses
183 and both κ and λ light chains were present in $\alpha\tau^+$ patients' samples (eFigure 1G and H in Supple-
184 ment 1). Epitope mapping and light-chain typing revealed a polytypic response for 23% of the $\alpha\tau^+$
185 samples (eFigure 1H and I in Supplement 1).

186 To investigate whether purified $\alpha\tau^+$ autoantibodies interfere with the aggregation of MTBD-tau,
187 samples from patients P7 and P8 were tested in an *in vitro* tau aggregation assay.³² MTBD-tau
188 aggregation was induced by heparin and shaking and monitored using Thioflavin T (ThT; eFigure
189 3, Supplement 1). The presence of $\alpha\tau^+$ autoantibodies reduced the plateau of the ThT fluorescence
190 signal in the kinetic trace by about half, whereas antibodies purified by protein G affinity chroma-
191 tography from an $\alpha\tau^-$ patient had no effect (eFigure 3, Supplement 1). Hence, $\alpha\tau^+$ autoantibodies
192 inhibit MTBD-tau aggregation *in vitro*.

193 Plasma tau is a promising biomarker of progression for several neurological diseases.^{9-12,33} We
194 examined the effects of $\alpha\tau$ autoantibodies onto the performance of plasma tau immunoassays (Fig-
195 ure 2). Purified $\alpha\tau$ autoantibodies from 5 patients (P2-P6) were added to tau⁴⁴¹-spiked plasma.
196 After incubation, the amount of free tau⁴⁴¹ was analyzed by ELISA using commercial anti-tau
197 antibodies for capture (BT2, epitope on human tau⁴⁴¹: residues 194-198) and detection (ab64193,
198 epitope on non-phosphorylated and phosphorylated human tau⁴⁴¹ surrounding residue 262).³⁴ Pu-
199 rified $\alpha\tau$ autoantibodies P4-P6 induced a concentration-dependent impairment of detection of
200 tau⁴⁴¹ hampering the detection of plasma-spiked tau⁴⁴¹ by approximately tenfold at higher anti-
201 MTBD-tau autoantibody concentration (Figure 2B, D). In contrast, P2-P3 did not show any sig-
202 nificant impairment of the detection of plasma-spiked tau⁴⁴¹. This variability of interference is

203 explained by the binding epitopes on tau⁴⁴¹. P4-P6 occupy tau residues 244 to 282 including the
204 binding epitope of ab64193, whereas P2-P3 occupy residues 273 to 327 which are outside the
205 epitope of ab64193 (eFigure 4 in Supplement 1). Hence, the presence of $\alpha\tau^+$ autoantibodies can
206 interfere with the detection of plasma tau in immunoassays depending on the combination of
207 epitopes of the patient samples and of commercial antibodies used in immunoassays.

208

209 **Demographic characteristics of tau-immunoreactive patients**

210 The age of $\alpha\tau^+$ patients (median: 58 years; IQR: 43-71) was significantly higher than that of $\alpha\tau^-$
211 (median: 55; IQR: 40-68; $P < 0.001$, Figure 3A). Univariate logistic regression analyses of health
212 records for the 24,339 hospital patients showed that the prevalence of $\alpha\tau$ immunoreactivity in-
213 creased with age, from 3.9% in patients aged <29 years to 7.6% in patients aged >90 years
214 ($P < 0.001$, Figure 3B). A log-binomial regression model^{29,35} estimated that the RR for the presence
215 of anti-MTBD-tau autoantibodies was highest for patients aged 70-99 years (RR 1.26, 95% CI
216 1.11-1.43, $P < 0.001$, Figure 3C) and for women (RR 1.20, 95% CI 1.07-1.39, $P = 0.002$, Figure 3C).
217 Due to the association of anti-MTBD-tau autoantibodies with increased age and female sex, all
218 further RRs were calculated using a multivariate log-binomial regression model adjusted for age
219 and sex. To identify potential correlations between $\alpha\tau^+$ and specific diseases, we analyzed the ad-
220 mission to clinical departments. The highest RRs for $\alpha\tau^+$ were found for angiology (aRR 1.84,
221 95% CI 1.21-2.63, $P = 0.002$) and nephrology (aRR 1.50, 95% CI 1.16-1.89, $P = 0.001$, Figure 3D-
222 E), whereas no significant difference was found between the percentage of $\alpha\tau^+$ and $\alpha\tau^-$ patients
223 from the department of neurology (Figure 3D).

224

225 **Neurological disorders and anti-tau autoimmunity**

226 We next mined pseudonymized clinical diagnoses from the clinical records of the USZ pertaining
227 to the diagnoses of 23,375 patients as represented by ICD-10 codes (Figure 4A). Given the in-
228 volvement of tau in neurodegenerative diseases,⁶ we focused on evaluating the association between
229 anti-MTBD-tau autoantibodies and neurological diseases, which we categorized in 23 main groups
230 of disorders. No associations between $\alpha\tau^+$ and neurological diseases were identified (Figure 4A).
231 We further performed a targeted screen using plasma samples from 47 patients with AD and 68
232 similarly aged non-AD patients selected from our plasma biobank (eTable 1 in Supplement 1).

233 Samples were tested for anti-MTBD-tau IgG autoantibodies, as in the primary screen, and addi-
234 tionally for anti-MTBD-tau IgA autoantibodies and anti-full-length-tau IgG and IgA autoantibod-
235 ies. No significant difference in reactivity was observed between the plasma samples from AD
236 patients and non-AD controls (Figure 4B), supporting the hypothesis that the presence of autoan-
237 tibodies targeting MTBD-tau is unrelated to AD or other neurological disorders.

238

239 **Systemic disorders and anti-tau autoimmunity**

240 We next assessed possible associations between tau autoimmunity and extraneural diseases, which
241 we binned into 27 main groups of disorders (Figure 5A). After adjustment for multiple compari-
242 sons, $\alpha\tau$ immunoreactivity showed significant associations with vascular disorders (aRR 1.51, 95%
243 CI 1.28-1.77, $P<0.001$), nutritional disorders (aRR 1.31, 95% CI 1.14-1.50, $P<0.001$), anemia
244 (aRR 1.49, 95% CI 1.21-1.82, $P<0.001$), kidney disorders (aRR 1.27, 95% CI 1.10-1.45, $P=0.001$)
245 and urinary disorders (aRR 1.40, 95% CI 1.20-1.63, $P<0.001$) (Figure 5A), whereas no association
246 was observed among patients with autoimmune disorders (eFigure 5 in Supplement 1). There was
247 no difference in the coincidence of all comorbidities between $\alpha\tau^+$ samples (5, 0.46%) and $\alpha\tau^-$ sam-
248 ples (69, 0.33%) ($P=0.633$).

249 To address potential biases arising from grouping and selecting major categories, we explored the
250 association between $\alpha\tau^+$ and individual ICD-10 codes. Across 276 individual ICD-10 codes and
251 after correction for multiple comparisons, eight exhibited significant associations with $\alpha\tau^+$ (Figures
252 5B and C). These included “E61—deficiency of other nutrient elements” (aRR 2.22, 95% CI 1.54-
253 3.06, $P<0.001$), “I74—arterial embolism and thrombosis” (aRR 2.09, 95% CI 1.40-2.94, $P<0.001$),
254 “N30—cystitis” (aRR 1.84, 95% CI 1.32-2.47, $P<0.001$), “I70—atherosclerosis” (aRR 1.57, 95% CI
255 1.29-1.89, $P<0.001$), “D50—iron deficiency anemia” (aRR 1.50, 95% CI 1.21-1.82, $P<0.001$),
256 “N39—other urinary disorders” (aRR 1.40, 95% CI 1.19-1.64, $P<0.001$), “B96—other bacterial
257 agents as the cause of diseases” (aRR 1.40, 95% CI 1.17-1.66, $P<0.001$) and “N18—chronic kidney
258 disease” (aRR 1.38, 95% CI 1.18-1.60, $P<0.001$; Figure 5C). Conversely, we found no significant
259 negative association between tau autoreactivity and any ICD-10 codes that could suggest a de-
260 creased risk for a specific disease in $\alpha\tau^+$ patients (Figure 5C). To verify relevant associations, we
261 used Bayesian logistic regression using logit-transformed EC_{50} values ($-\text{logit}[EC_{50}]$) as a continu-
262 ous outcome. All the previously referred eight ICD-10 codes showed positive associations with -
263 $\text{logit}[EC_{50}]$ (eFigure 6).

264 To validate these conditions as significant associations with plasma MTBD-tau IgG autoantibod-
265 ies, we examined the association between $\alpha\tau^+$ and 106 commonly requested laboratory parameters
266 using data available for 24,177 patients, independently of any ICD-10 classifiers. After correction
267 for multiple comparisons, the laboratory markers “Leukocytes, urine”, “Potassium” and “Urea”
268 were positively associated with tau autoimmunity (Figure 5D). The association with increasing
269 levels of urea and potassium suggests a link to kidney failure, whereas leukocytes in urine are a
270 feature of urinary tract infections. These findings support the hypothesis that anti-tau autoimmun-
271 ity correlates with such disorders. Accordingly, the prevalence of chronic kidney disease was
272 12.4% in $\alpha\tau^-$ and 17.7% in $\alpha\tau^+$ patients, whereas that of other urinary disorders was 10.3% in $\alpha\tau^-$
273 and 15.1% in $\alpha\tau^+$ patients (Figure 5E).

274

275 **DISCUSSION**

276 This study was designed to discover novel associations between autoreactivity to tau and human
277 diseases. This approach of “reverse immunopathology” is hypothesis-free: it does not pose con-
278 straints on the type of diseases that might result from anti-tau immunity. While the approach is
279 generally applicable to any autoantigen, its predictive power relies on the analysis of large patient
280 collectives, which in turn requires the development of high-throughput methods at reasonable cost.
281 We therefore miniaturized antibody detection to 3 μ l/sample in 1,536-well microplates, allowing
282 to run 40,000 assays/24 hrs with minimal hands-on time. We performed >300,000 immunoassays
283 on >40,000 plasma samples for $\alpha\tau$ autoreactivity.²³⁻²⁵ Each sample was measured at eight dilution
284 points, enabling precise and unambiguous titer determinations.²³⁻²⁵

285 Plasma $\alpha\tau$ IgG were more prevalent in women and increased with age, reaching 7.6% in the cohort
286 of 90-99-year-olds. The specificity of $\alpha\tau^+$ plasma to MTBD-tau was high and was confirmed by
287 multiple assays including epitope mapping. The age- and sex-adjusted $\alpha\tau^+$ rate in hospital patients
288 was three-fold higher than in healthy blood donors and was 2.4 times higher than that of autoanti-
289 bodies targeting other intracellular neuronal targets, suggesting a correlation with disease states.³⁶
290 However, we did not find any association between $\alpha\tau^+$ and any neurological conditions including
291 neurodegenerative diseases, corroborating with reports of similar levels of plasma tau autoanti-
292 bodies in AD patients and non-demented controls.³⁷ Instead, we uncovered a robust, specific as-
293 sociation between $\alpha\tau^+$ positivity and kidney and urinary disorders. This was independently vali-
294 dated by associations with higher prevalence of positive samples from the department of Nephrol-
295 ogy, grouped kidney and urinary diseases, individual kidney and urinary diagnosis codes and re-
296 lated clinical laboratory biomarkers, such as high serum urea and potassium and high urine leuko-
297 cytes.

298 Seroepidemiological studies cannot establish causality: $\alpha\tau$ seropositivity could be a cause or a
299 consequence of the clinical syndromes associated with it.³⁸ However, tau is expressed in extraneu-
300 ral tissues, including kidney podocytes and urinary bladder,²⁻⁵ and its ablation causes glomerular
301 pathologies.³⁹ Besides raising the possibility that plasma $\alpha\tau$ autoantibodies might drive kidney
302 pathologies, these findings suggest that such autoantibodies represent useful biomarkers of these
303 diseases and that it will be important to monitor renal and urinary function in the current clinical
304 trials of tau immunotherapy.⁴⁰⁻⁴²

305 Recent studies have explored the use of tau measurements in plasma as biomarkers for AD diag-
306 nosis and for monitoring its progression.^{9-12,33,43-47} However, we found that anti-MTBD-tau auto-
307 antibodies could hinder tau detection in plasma by binding to epitopes recognized by commercial
308 biomarker immunoassays. This aligns with prior research indicating that both plasma anti-tau au-
309 toantibodies and administered anti-tau antibodies can influence the dynamics of tau levels in
310 plasma.⁴⁸ Additionally, a recent community cohort study using an immunoassay for AD screening
311 revealed associations between plasma tau levels and numerous comorbidities, with chronic kidney
312 disease showing one of the strongest associations.⁴⁹ These results imply that the presence of anti-
313 tau autoantibodies in plasma might impact the effectiveness of plasma tau as an AD biomarker,
314 particularly for patients with kidney or urinary diseases. This consideration may become crucial
315 as plasma tau levels move toward routine clinical use in AD diagnosis.

316

317 **Limitations**

318 Our large-scale assessment of plasma tau autoimmunity has certain limitations. Firstly, most sam-
319 ples analyzed in our study came from a university hospital cohort, implying a bias towards com-
320 plex pathologies and polymorbidities. To account for this, we included a vast collection of samples
321 from healthy blood donors. Secondly, our study is confined to two sites within a single region with
322 approximately 1,500,000 inhabitants whose ethnic composition was not thoroughly examined. Ad-
323 ditionally, a direct comparison of the prevalence of plasma anti-tau antibodies in these two cohorts
324 may potentially suffer from variations in materials, collection methods (e.g. addition of heparin
325 that may cause aggregation of MTBD-tau), and handling processes at the two different sites.
326 Thirdly, our study is restricted to the analysis of specific disease groups, the absence of a replica-
327 tion cohort and a longitudinal disease cohort that would allow for verification, examining a time
328 course, origin, and causal role of these autoantibodies. Finally, we used bacterially expressed
329 MTBD-tau as target, thereby excluding full-length or post-translationally modified tau epitopes.
330 As a result, plasma anti-tau autoantibodies associated with AD pathology might be missed, and
331 our methodology may underestimate the prevalence of total anti-tau autoantibodies.

332

333 **Conclusions**

334 Our study identified a high seroprevalence of anti-MTBD-tau IgG autoantibodies in both plasma
335 samples from university hospital patients and healthy blood donors. Tau autoimmunity is associ-
336 ated with female sex, older age and previously unrecognized extraneural diseases. These findings
337 point to unrecognized roles for tau and anti-tau autoantibodies in extraneural pathologies and call
338 for attentive clinical monitoring of such diseases in clinical trials of tau-targeting therapies and in
339 the use of plasma tau as a biomarker of disease.

340 **References**

- 341 1. Gu Y, Oyama F, Ihara Y. Tau is widely expressed in rat tissues. *J Neurochem*. Sep
342 1996;67(3):1235-44. doi:10.1046/j.1471-4159.1996.67031235.x
- 343 2. Uhlen M, Fagerberg L, Hallstrom BM, et al. Proteomics. Tissue-based map of the human
344 proteome. *Science*. Jan 23 2015;347(6220):1260419. doi:10.1126/science.1260419
- 345 3. Sotiropoulos I, Galas MC, Silva JM, et al. Atypical, non-standard functions of the
346 microtubule associated Tau protein. *Acta Neuropathol Commun*. Nov 2017;5(1):91.
347 doi:10.1186/s40478-017-0489-6
- 348 4. Rinschen MM, Gödel M, Grahammer F, et al. A Multi-layered Quantitative In Vivo
349 Expression Atlas of the Podocyte Unravels Kidney Disease Candidate Genes. *Cell Rep*. 05
350 2018;23(8):2495-2508. doi:10.1016/j.celrep.2018.04.059
- 351 5. Ho KH, Yang X, Osipovich AB, et al. Glucose Regulates Microtubule Disassembly and the
352 Dose of Insulin Secretion via Tau Phosphorylation. *Diabetes*. Sep 2020;69(9):1936-1947.
353 doi:10.2337/db19-1186
- 354 6. Kosik KS, Joachim CL, Selkoe DJ. Microtubule-associated protein tau (tau) is a major
355 antigenic component of paired helical filaments in Alzheimer disease. *Proc Natl Acad Sci U S A*.
356 Jun 1986;83(11):4044-8. doi:10.1073/pnas.83.11.4044
- 357 7. Joachim CL, Morris JH, Kosik KS, Selkoe DJ. Tau antisera recognize neurofibrillary tangles
358 in a range of neurodegenerative disorders. *Ann Neurol*. Oct 1987;22(4):514-20.
359 doi:10.1002/ana.410220411
- 360 8. Hanseeuw BJ, Betensky RA, Jacobs HIL, et al. Association of Amyloid and Tau With
361 Cognition in Preclinical Alzheimer Disease: A Longitudinal Study. *JAMA Neurol*. Aug 1
362 2019;76(8):915-924. doi:10.1001/jamaneurol.2019.1424
- 363 9. Mattsson N, Zetterberg H, Janelidze S, et al. Plasma tau in Alzheimer disease. *Neurology*.
364 Oct 25 2016;87(17):1827-1835. doi:10.1212/WNL.0000000000003246
- 365 10. Janelidze S, Mattsson N, Palmqvist S, et al. Plasma P-tau181 in Alzheimer's disease:
366 relationship to other biomarkers, differential diagnosis, neuropathology and longitudinal
367 progression to Alzheimer's dementia. *Nat Med*. 03 2020;26(3):379-386. doi:10.1038/s41591-
368 020-0755-1
- 369 11. Mielke MM, Hagen CE, Wennberg AMV, et al. Association of Plasma Total Tau Level With
370 Cognitive Decline and Risk of Mild Cognitive Impairment or Dementia in the Mayo Clinic Study on
371 Aging. *JAMA Neurol*. 09 01 2017;74(9):1073-1080. doi:10.1001/jamaneurol.2017.1359
- 372 12. Palmqvist S, Tideman P, Mattsson-Carlsson N, et al. Blood Biomarkers to Detect Alzheimer
373 Disease in Primary Care and Secondary Care. *JAMA*. Jul 28 2024;doi:10.1001/jama.2024.13855
- 374 13. Congdon EE, Sigurdsson EM. Tau-targeting therapies for Alzheimer disease. *Nat Rev*
375 *Neurol*. 07 2018;14(7):399-415. doi:10.1038/s41582-018-0013-z
- 376 14. Rothstein TL. Natural Antibodies as Rheostats for Susceptibility to Chronic Diseases in the
377 Aged. *Front Immunol*. 2016;7:127. doi:10.3389/fimmu.2016.00127
- 378 15. Lutz HU, Binder CJ, Kaveri S. Naturally occurring auto-antibodies in homeostasis and
379 disease. *Trends Immunol*. Jan 2009;30(1):43-51. doi:10.1016/j.it.2008.10.002
- 380 16. Jaycox JR, Dai Y, Ring AM. Decoding the autoantibody reactome. *Science*. Feb 16
381 2024;383(6684):705-707. doi:10.1126/science.abn1034

- 382 17. Florance NR, Davis RL, Lam C, et al. Anti-N-methyl-D-aspartate receptor (NMDAR)
383 encephalitis in children and adolescents. *Ann Neurol*. Jul 2009;66(1):11-8. doi:10.1002/ana.21756
- 384 18. Lennon VA, Wingerchuk DM, Kryzer TJ, et al. A serum autoantibody marker of
385 neuromyelitis optica: distinction from multiple sclerosis. *Lancet*. 2004 Dec 11-17
386 2004;364(9451):2106-12. doi:10.1016/S0140-6736(04)17551-X
- 387 19. Ferrero J, Williams L, Stella H, et al. First-in-human, double-blind, placebo-controlled,
388 single-dose escalation study of aducanumab (BIIB037) in mild-to-moderate Alzheimer's disease.
389 *Alzheimers Dement (N Y)*. Sep 2016;2(3):169-176. doi:10.1016/j.trci.2016.06.002
- 390 20. Bartos A, Fialová L, Švarcová J. Lower Serum Antibodies Against Tau Protein and Heavy
391 Neurofilament in Alzheimer's Disease. *J Alzheimers Dis*. 2018;64(3):751-760. doi:10.3233/JAD-
392 180039
- 393 21. Kronimus Y, Albus A, Balzer-Geldsetzer M, et al. Naturally Occurring Autoantibodies
394 against Tau Protein Are Reduced in Parkinson's Disease Dementia. *PLoS One*.
395 2016;11(11):e0164953. doi:10.1371/journal.pone.0164953
- 396 22. Bartos A, Fialova L, Svarcova J. Lower Serum Antibodies Against Tau Protein and Heavy
397 Neurofilament in Alzheimer's Disease. *J Alzheimers Dis*. 2018;64(3):751-760. doi:10.3233/JAD-
398 180039
- 399 23. Emmenegger M, De Cecco E, Lamparter D, et al. Continuous population-level monitoring
400 of SARS-CoV-2 seroprevalence in a large European metropolitan region. *iScience*. Feb 17
401 2023;26(2):105928. doi:10.1016/j.isci.2023.105928
- 402 24. Senatore A, Frontzek K, Emmenegger M, et al. Protective anti-prion antibodies in human
403 immunoglobulin repertoires. *EMBO Mol Med*. Sep 7 2020;12(9):e12739.
404 doi:10.15252/emmm.202012739
- 405 25. Emmenegger M, Zografou C, Yile D, et al. The Cystic Fibrosis Transmembrane Regulator
406 Controls Tolerogenic Responses to Food Allergens in Mice and Humans. *medRxiv*.
407 2024;doi:<https://doi.org/10.1101/2024.06.17.24309019>
- 408 26. Organization WH. ICD-10 : international statistical classification of diseases and related
409 health problems : tenth revision, 2nd ed. World Health Organization.
410 <https://iris.who.int/handle/10665/42980>. 2004.
- 411 27. de Silva R, Lashley T, Gibb G, et al. Pathological inclusion bodies in tauopathies contain
412 distinct complements of tau with three or four microtubule-binding repeat domains as
413 demonstrated by new specific monoclonal antibodies. *Neuropathol Appl Neurobiol*. Jun
414 2003;29(3):288-302. doi:10.1046/j.1365-2990.2003.00463.x
- 415 28. McNutt LA, Wu C, Xue X, Hafner JP. Estimating the relative risk in cohort studies and
416 clinical trials of common outcomes. *Am J Epidemiol*. May 2003;157(10):940-3.
417 doi:10.1093/aje/kwg074
- 418 29. Diaz-Quijano FA. A simple method for estimating relative risk using logistic regression.
419 *BMC Med Res Methodol*. Feb 2012;12:14. doi:10.1186/1471-2288-12-14
- 420 30. *RStudio: Integrated Development Environment for R*. RStudio, PBC; 2021.
- 421 31. Donoghoe MW, Marschner IC. Logbin: An R Package for Relative Risk Regression Using
422 the Log-Binomial Model. *Journal of Statistical Software* 2018;86(21)
- 423 32. Apetri A, Crespo R, Juraszek J, et al. A common antigenic motif recognized by naturally
424 occurring human V. *Acta Neuropathol Commun*. 05 2018;6(1):43. doi:10.1186/s40478-018-0543-
425 z

- 426 33. Pase MP, Beiser AS, Himali JJ, et al. Assessment of Plasma Total Tau Level as a Predictive
427 Biomarker for Dementia and Related Endophenotypes. *JAMA Neurol.* 05 2019;76(5):598-606.
428 doi:10.1001/jamaneurol.2018.4666
- 429 34. Barini E, Plotzky G, Mordashova Y, et al. Tau in the brain interstitial fluid is fragmented
430 and seeding-competent. *Neurobiol Aging.* Jan 2022;109:64-77.
431 doi:10.1016/j.neurobiolaging.2021.09.013
- 432 35. Donoghoe MW, Marschner IC. logbin: An R Package for Relative Risk Regression Using the
433 Log-Binomial Model. *Journal of Statistical Software.* Sep 4, 2018 2018;86(9):21.
434 doi:10.18637/jss.v086.i09
- 435 36. Dahm L, Ott C, Steiner J, et al. Seroprevalence of autoantibodies against brain antigens in
436 health and disease. *Ann Neurol.* Jul 2014;76(1):82-94. doi:10.1002/ana.24189
- 437 37. Yu G, Chen J, Xu Y, et al. Generation of goats lacking prion protein. *Mol Reprod Dev.* Jan
438 2009;76(1):3. doi:10.1002/mrd.20960
- 439 38. Tsuboi Y, Uitti RJ, Delisle MB, et al. Clinical features and disease haplotypes of individuals
440 with the N279K tau gene mutation: a comparison of the pallidopontonigral degeneration kindred
441 and a French family. *Arch Neurol.* Jun 2002;59(6):943-50. doi:10.1001/archneur.59.6.943
- 442 39. Vallés-Saiz L, Peinado-Cahuchola R, Ávila J, Hernández F. Microtubule-associated protein
443 tau in murine kidney: role in podocyte architecture. *Cell Mol Life Sci.* Jan 27 2022;79(2):97.
444 doi:10.1007/s00018-021-04106-z
- 445 40. Congdon EE, Ji C, Tetlow AM, Jiang Y, Sigurdsson EM. Tau-targeting therapies for
446 Alzheimer disease: current status and future directions. *Nat Rev Neurol.* Dec 2023;19(12):715-
447 736. doi:10.1038/s41582-023-00883-2
- 448 41. NCT05269394 ClinicalTrial.gov, NCT05269394, Dominantly Inherited Alzheimer Network
449 Trial: An Opportunity to Prevent Dementia. A Study of Potential Disease Modifying Treatments
450 in Individuals With a Type of Early Onset Alzheimer's Disease Caused by a Genetic Mutation
451 (DIAN-TU),
452 ([https://clinicaltrials.gov/study/NCT05269394?cond=Alzheimer%20Disease&term=E2814&rank](https://clinicaltrials.gov/study/NCT05269394?cond=Alzheimer%20Disease&term=E2814&rank=1)
453 [=1](https://clinicaltrials.gov/study/NCT05269394?cond=Alzheimer%20Disease&term=E2814&rank=1)) (2023).
- 454 42. Barton ME, Van Den Steen B, Van Tricht HLG, et al. Update on the TOGETHER study: a
455 patient- and investigator-blind, randomized, placebo-controlled study evaluating the efficacy,
456 safety and tolerability of bepranemab, UCB0107, in prodromal-to-mild Alzheimer's disease.
457 *Alzheimer's & Dementia.* 2022;18(S10):e068973.
- 458 43. Moscoso A, Grothe MJ, Ashton NJ, et al. Longitudinal Associations of Blood
459 Phosphorylated Tau181 and Neurofilament Light Chain With Neurodegeneration in Alzheimer
460 Disease. *JAMA Neurol.* Apr 01 2021;78(4):396-406. doi:10.1001/jamaneurol.2020.4986
- 461 44. Barthélemy NR, Li Y, Joseph-Mathurin N, et al. A soluble phosphorylated tau signature
462 links tau, amyloid and the evolution of stages of dominantly inherited Alzheimer's disease. *Nat*
463 *Med.* 03 2020;26(3):398-407. doi:10.1038/s41591-020-0781-z
- 464 45. Karikari TK, Pascoal TA, Ashton NJ, et al. Blood phosphorylated tau 181 as a biomarker for
465 Alzheimer's disease: a diagnostic performance and prediction modelling study using data from
466 four prospective cohorts. *Lancet Neurol.* 05 2020;19(5):422-433. doi:10.1016/S1474-
467 4422(20)30071-5

- 468 46. Park JC, Han SH, Yi D, et al. Plasma tau/amyloid- β 1-42 ratio predicts brain tau deposition
469 and neurodegeneration in Alzheimer's disease. *Brain*. 03 01 2019;142(3):771-786.
470 doi:10.1093/brain/awy347
- 471 47. Palmqvist S, Janelidze S, Quiroz YT, et al. Discriminative Accuracy of Plasma Phospho-
472 tau217 for Alzheimer Disease vs Other Neurodegenerative Disorders. *JAMA*. Aug 25
473 2020;324(8):772-781. doi:10.1001/jama.2020.12134
- 474 48. Yanamandra K, Patel TK, Jiang H, et al. Anti-tau antibody administration increases plasma
475 tau in transgenic mice and patients with tauopathy. *Sci Transl Med*. 04
476 2017;9(386)doi:10.1126/scitranslmed.aal2029
- 477 49. Mielke MM, Dage JL, Frank RD, et al. Performance of plasma phosphorylated tau 181 and
478 217 in the community. *Nat Med*. Jul 2022;28(7):1398-1405. doi:10.1038/s41591-022-01822-2

479

480 **Acknowledgments:**

481 The authors wish to thank the hospital patients and blood donors for their generous altruistic con-
482 tributions to this study. Imaging was performed with equipment maintained by the Center for Mi-
483 croscopy and Image Analysis, University of Zurich. We thank Prof. Rohan de Silva (UCL Queen
484 Square Institute of Neurology, London, UK) for providing the purified anti-MTBD-tau antibody
485 RD4. We thank Dr. Marco Losa, Magdalena Bialkowska, Lisa Caflisch, Berre Doğançay, Julie
486 Domange, Marigona Imeri, Lorène Mottier, Rea Müller, Antonella Rosati, Dezirae Schneider, and
487 Anne Wiedmer for help with the high-throughput assays. Insightful advice about programming in
488 R software was provided by Reto Guadagnini. Imaging was performed with equipment from the
489 Center for Microscopy and Image Analysis, University of Zurich.

490

491

492 **Funding:**

493 University of Zürich, Candoc grant FK-19-025 (ADM)
494 Swiss Personalised Health Network, SPHN, driver project grant 2017DRI17 (AA)
495 Swiss National Foundation SNF (SNSF grant ID 179040 and grant ID 207872, Sinergia grant ID
496 183563) (AA)
497 European Research Council ERC Prion2020, 670958 (AA)
498 Nomis Foundation (AA)
499 Innovation Fund of the University Hospital Zurich (INOV00096) (AA)
500 University Hospital Zurich Foundation grant USZF27101 (with contributions of the NOMIS Foun-
501 dation, the Schwyzer Winiker Stiftung, and the Baugarten Stiftung, AA, ME)

502 HMZ ImmunoTarget grant, Stiftung Neuropath and GELU Foundation (AA)
503 Michael J. Fox Foundation (grant ID MJFF-020710 and MJFF-021073) (SH).

504

505 **Author contributions:**

506 Conceived and designed the experiments: ADM, SH, AA. Supervised the study: SH, AA. Per-
507 formed tau protein purification: ADM, EDC, JG. Performed tau microELISA automated screen:
508 ADM, ME. Performed amyloid- β pyroglutamate and cellular prion protein microELISA auto-
509 mated screen: MC, KF, ME. Maintained microELISA automated platform: ME. Performed puri-
510 fication, validation and characterization of anti-tau autoantibodies: ADM, JG. Maintained the clin-
511 ical database: ME, AC. Performed data analysis and visualization: ADM. Wrote the first draft of
512 manuscript: ADM. Corrected and advised on subsequent versions of the manuscript: ADM, ME,
513 SH, AA. All authors reviewed and approved the final version of the manuscript and consented to
514 be accountable for the work.

515

516 **Competing interests:**

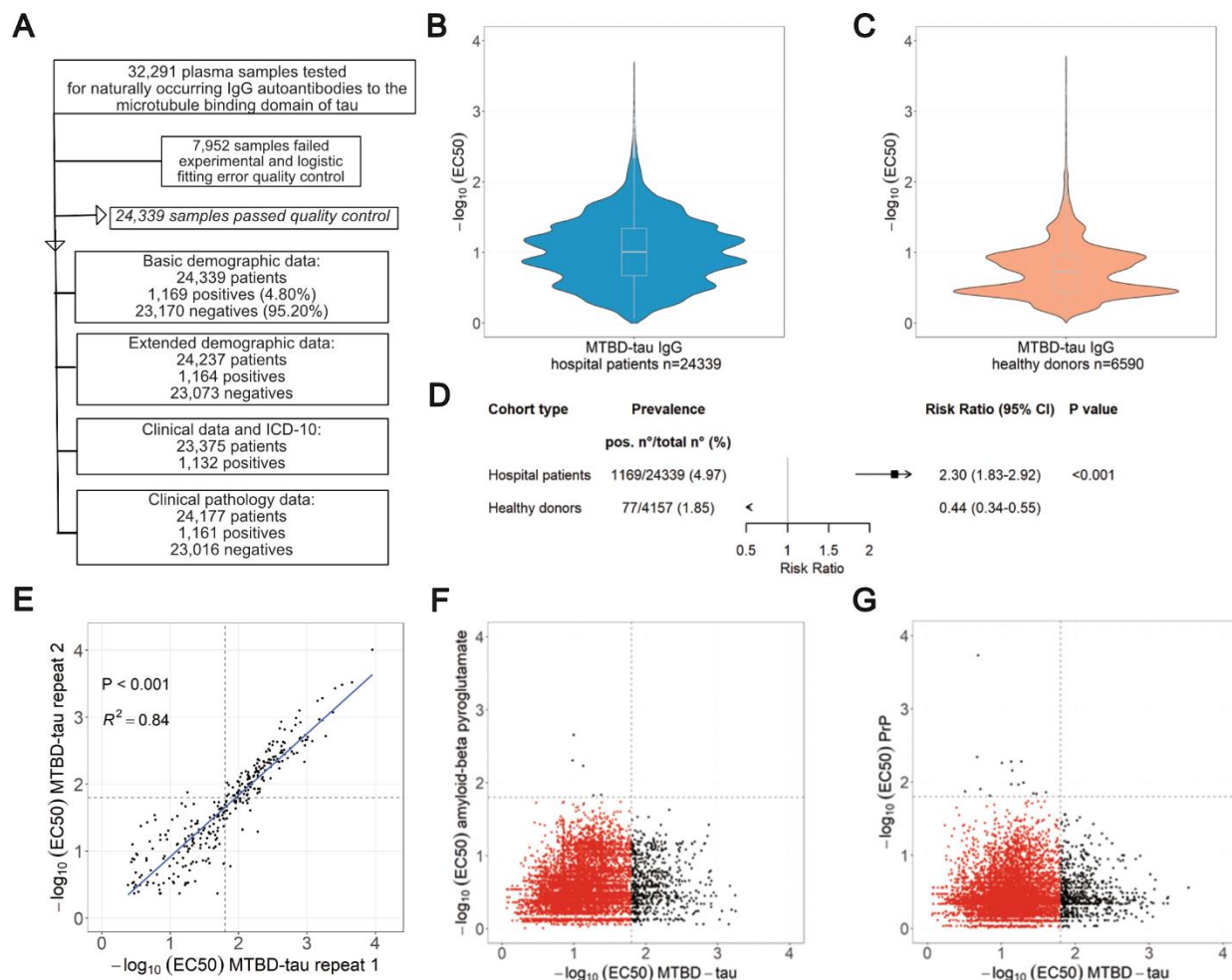
517 ADM has received a research grant from University of Zurich; KF has received research grants
518 from Ono Pharmaceuticals and Theodor Ida Herzog Egli Stiftung, consulting fees from Acumen
519 Collective and Ionis Pharmaceuticals, support for attending meetings/travel from Euro-CNS and
520 has participated on the Advisory Board of Mabylyon AG; AA has received research grants from the
521 Swiss Personalized Health Network, Swiss National Foundation, European Research Council and
522 Nomis Foundation and is a member of the Board of Directors of Mabylyon AG. Mabylyon AG pro-
523 duces therapeutic human antibodies. Mabylyon AG had no insight and no influence on the current
524 study. All authors report no other relationships or activities that could appear to have influenced
525 the submitted work.

526

527 **Data and materials availability:**

528 Data and materials will be shared upon approval by the Cantonal Ethics Committee where neces-
529 sary.

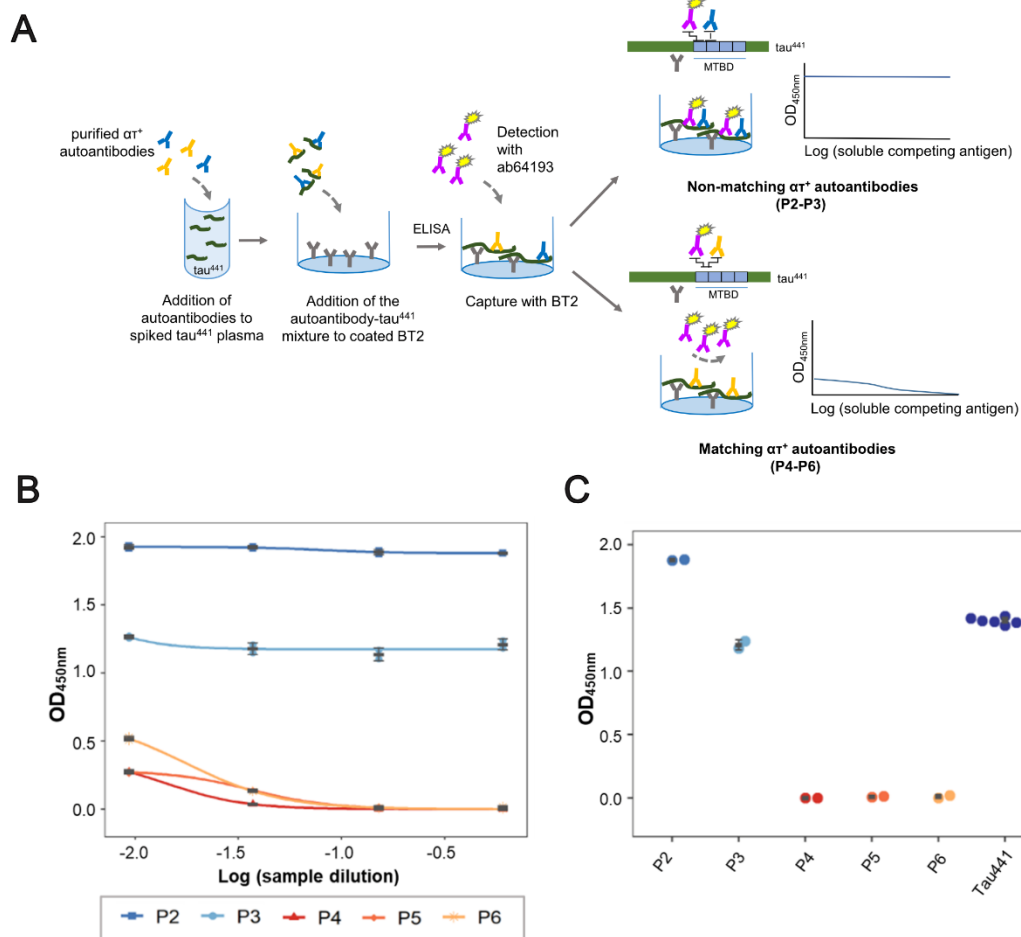
530 **Figures**



531
532 **Figure 1. Study overview and seroprevalence of anti-MTBD-tau IgG autoantibodies. A.**
533 Flowchart of the study design. **B.-C.** Distribution of $-\log_{10}(\text{EC}_{50})$ values obtained from the micro-
534 ELISA screen of hospital (B) and blood donor (C) plasma samples. **D.** aRR and 95% CI (I bars)
535 for the detection of anti-tau autoantibodies in hospital and blood-bank plasma samples. **E.** Repli-
536 cability of microELISA duplicates with independent estimation of the $-\log_{10}(\text{EC}_{50})$ values. Dashed
537 lines: cut-off value of $-\log_{10}(\text{EC}_{50}) = 1.8$. **F.** $-\log_{10}(\text{EC}_{50})$ values of samples tested by microELISA
538 against MTBD-tau and amyloid- β pyroglutamate. **G.** Same as shown in (F), but for samples tested
539 against MTBD-tau and PrP^C.

540

541

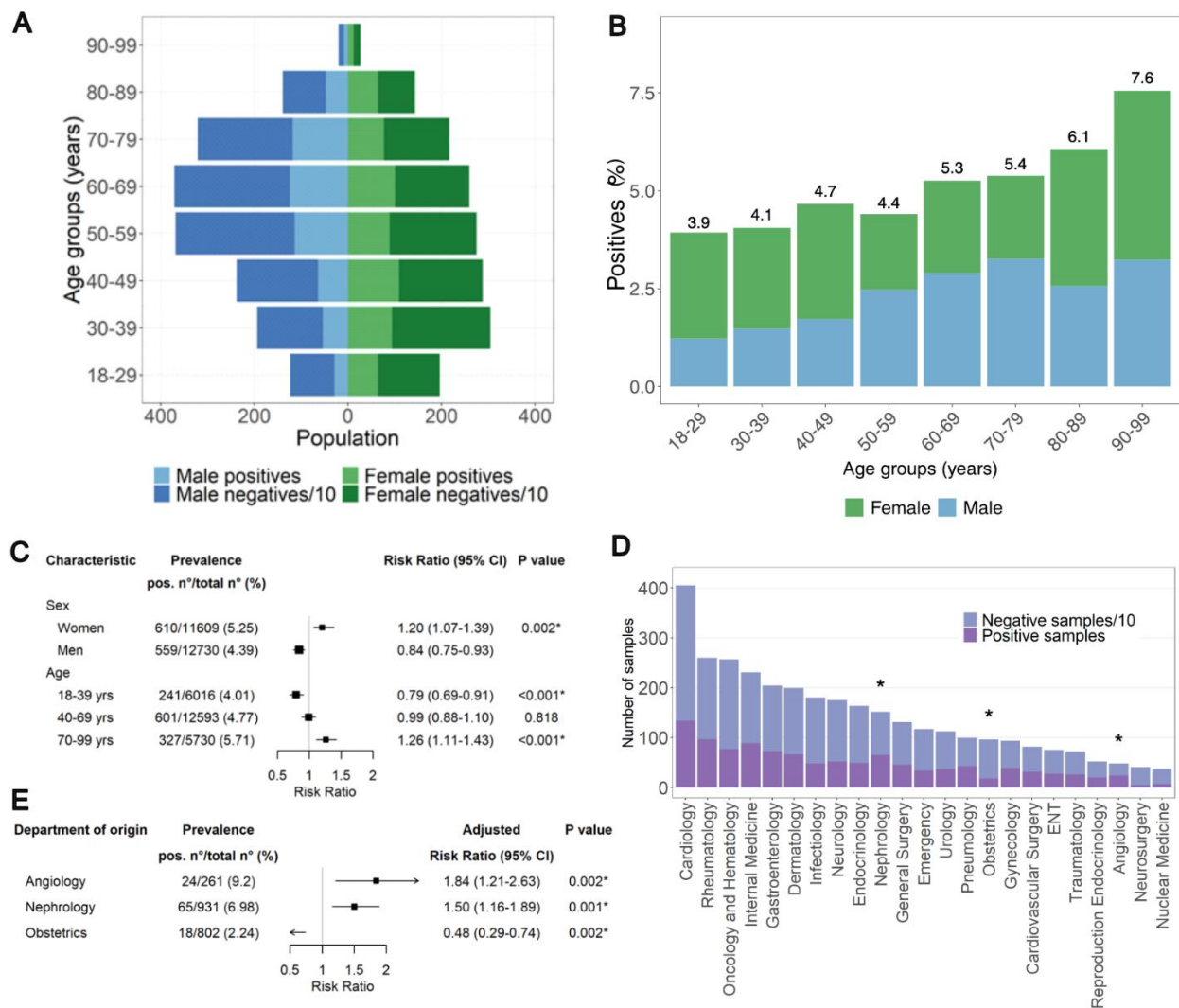


542
 543 **Figure 2. Natural $\alpha\tau$ autoantibodies impair tau detection.** **A.** Principle of the competition sandwich
 544 ELISA. **B-C.** Competitive sandwich ELISA to assess the ability of purified anti-tau autoan-
 545 tibodies with matching (P4-P6) and non-matching (P2 and P3) epitopes to the commercial detec-
 546 tion antibody, ab64193, to impair the detection of free tau⁴⁴¹ spiked in plasma (dark blue). Serial
 547 dilutions of purified anti-tau antibodies are shown in (B) and binding at highest anti-tau antibody
 548 concentrations in (C).

549

550

551



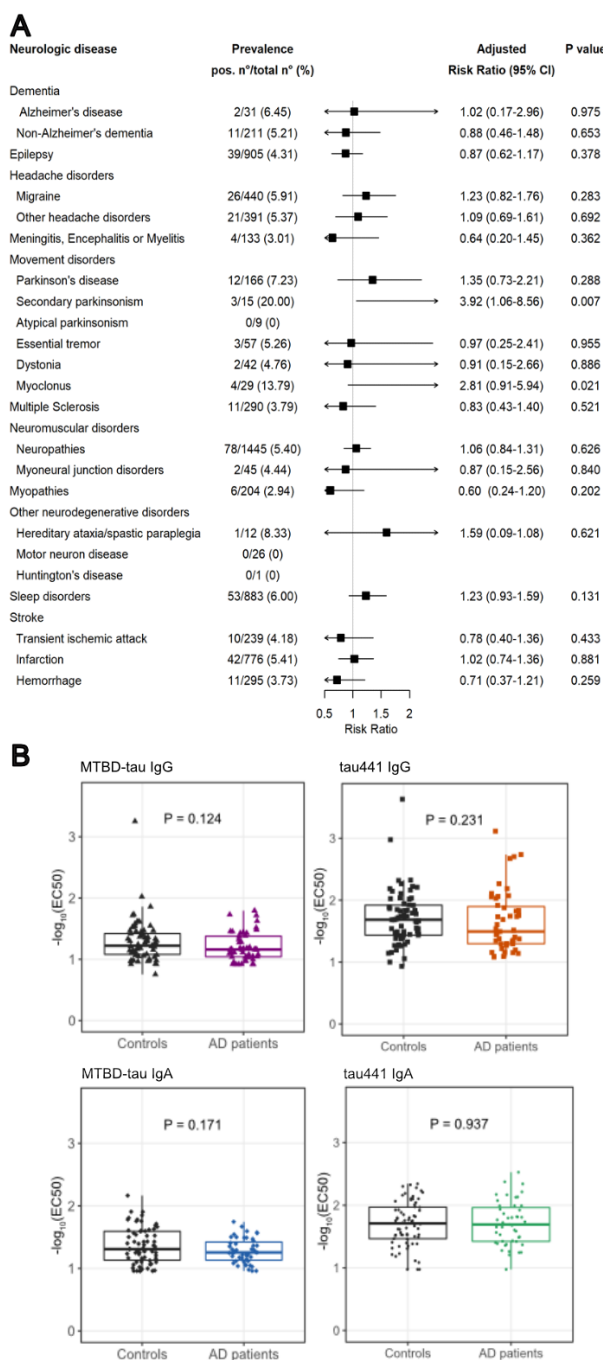
552

553 **Figure 3. Demographic characteristics of hospital patients' cohort.** **A.** Age and sex pyramid
 554 of positive and negative individuals. **B.** Percentage of positives among hospital patients across
 555 decadic age groups. The numbers on top of each bar correspond to the positivity rates. χ^2 test for
 556 trend in proportions. **C.** RR \pm 95% CI for α^+ autoantibodies according to sex and age groups.
 557 Asterisks: P < 0.05 after Bonferroni correction. **D.** Break-down of samples by clinical department.
 558 Asterisks: P < 0.05 (two-proportions z-test with Bonferroni correction). **E.** aRR \pm 95% CI for α^+
 559 samples by clinical department. Asterisks: P < 0.05 after Bonferroni correction.

560

561

562



563

564

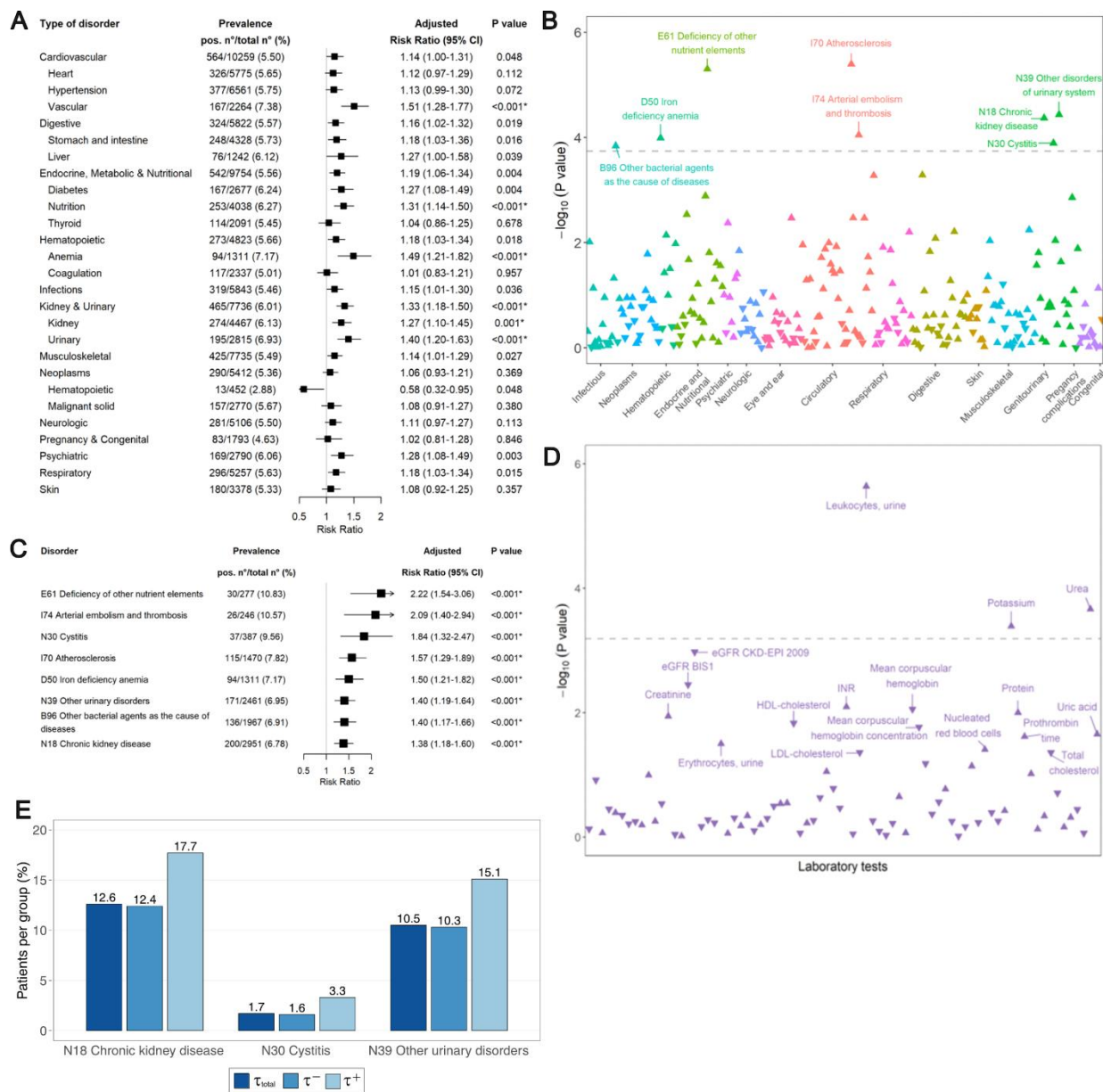
565

566

567

568

Figure 4. aRR of MTBD-tau-autoreactivity for major groups of neurological disorders and reactivity profiles for AD screen. A. aRR and 95% CI (I bars) for $\alpha\tau^+$ autoantibodies according to different groups of neurological disorders. No P values remained significant after Bonferroni correction. **B.** Boxplots showing the 25th, 50th (median) and 75th percentiles of the reactivity profiles for AD and control patients (Mann-Whitney U test).



569
 570 **Figure 5. Association of MTBD-tau IgG autoantibodies with systemic disorders and clinical**
 571 **laboratory data.** **A.** aRR \pm 95% CI (bars) for $\alpha\tau^{+}$ autoantibodies grouped 27 different main sys-
 572 temic clinical conditions. Asterisks: $P < 0.05$ after Bonferroni correction. **B.** $-\log_{10}(P$ value) of the
 573 log-binomial regression for the presence of plasma MTBD-tau IgG autoantibodies for 276 disor-
 574 ders according to ICD-10 codes and adjusted for age and sex. Triangles pointing upwards and
 575 downwards: positive and coefficients, respectively; gray dashed line: $P < 0.05$ after Bonferroni
 576 correction (here and henceforth). P values significant after Bonferroni adjustment are labelled
 577 with the ICD codes. **C.** Bayesian logistic regression adjusted for age and sex on ICD-10 codes signifi-
 578 cantly associated in B. and using $-\text{logit}_{10}(EC_{50})$ as continuous outcome (odds ratio \pm 95% credible

579 intervals). This analysis confirms the positive association of these ICD-10 codes with $\alpha\tau$ reactivity
580 (from B). **D.** $-\log_{10}(\text{P value})$ of the log-binomial regression for the presence of plasma MTBD-tau
581 IgG autoantibodies and clinical laboratory parameters. P values significant after Bonferroni ad-
582 justment are labelled with the ICD codes. The gray dashed line indicates the significance level
583 after Bonferroni correction ($<0.05/106=0.00047$). eGFR CKD-EPI 2009: estimated glomerular fil-
584 tration rate using the Chronic Kidney Disease Epidemiology Collaboration 2009 equation; eGFR
585 BIS1: estimated glomerular filtration rate using the older adults Berlin Initiative Study 1 equation.
586 INR: international normalized ratio. LDL: low-density lipoprotein. HDL: high-density lipoprotein.
587 **E.** Calculated prevalence of different ICD-10 codes in the total cohort (dark blue), $\alpha\tau^-$ (intermediate
588 blue) and $\alpha\tau^+$ samples (light blue).

589