

1 **Title:** Simulating the impact of vaccination rates on the initial stages of a COVID-19 outbreak in New
2 Zealand (Aotearoa) with a stochastic model

3
4 **Author:**

5 Leighton M. Watson

6 Postdoctoral Researcher

7 Department of Earth Sciences

8 University of Oregon

9 Eugene, OR, USA

10 lwatson2@uoregon.edu

11

12

13 **Abstract:**

14 *Aim:* The August 2021 COVID-19 outbreak in Auckland has caused the New Zealand government to
15 transition from an elimination strategy to suppression, which relies heavily on high vaccination rates in
16 the population. As restrictions are eased and as COVID-19 leaks through the Auckland boundary, there is
17 a need to understand how different levels of vaccination will impact the initial stages of COVID-19
18 outbreaks that are seeded around the country.

19

20 *Method:* A stochastic branching process model is used to simulate the initial spread of a COVID-19
21 outbreak for different vaccination rates.

22

23 *Results:* High vaccination rates are effective at minimizing the number of infections and hospitalizations.
24 Increasing vaccination rates from 20% (approximate value at the start of the August 2021 outbreak) to
25 80% (approximate proposed target) of the total population can reduce the median number of infections
26 that occur within the first four weeks of an outbreak from 1011 to 14 (25th and 75th quantiles of 545-1602
27 and 2-32 for $V=20\%$ and $V=80\%$, respectively). As the vaccination rate increases, the number of
28 breakthrough infections (infections in fully vaccinated individuals) and hospitalizations of vaccinated
29 individuals increases. Unvaccinated individuals, however, are 3.3x more likely to be infected with
30 COVID-19 and 25x more likely to be hospitalized.

31

32 *Conclusion:* This work demonstrates the importance of vaccination in protecting individuals from
33 COVID-19, preventing high caseloads, and minimizing the number of hospitalizations and hence limiting
34 the pressure on the healthcare system.

35 **Body of Text:**

36

37 **Introduction**

38

39 In response to the COVID-19 global pandemic, New Zealand initially followed an elimination strategy
40 that coupled tough lockdowns with strict border controls. The first COVID-19 case was reported on 28
41 February 2020 and on 19 March 2020 international borders were closed to all but New Zealand citizens
42 and permanent residents.¹ On 25 March 2020, New Zealand moved to Alert Level 4 (level 4 is the
43 toughest restrictions in the four-level alert system) with strict lockdown measures including the closure of
44 educational and public facilities along with all non-essential businesses, stay-at-home orders, limits on
45 travel, and no gatherings allowed. From 10 April 2020, anyone entering the country had to undergo two
46 weeks of managed isolation and quarantine (MIQ). These measures kept case numbers low with a total of
47 1504 cases before COVID-19 was declared eliminated in New Zealand on 8 June 2020.¹

48

49 Mandatory quarantine of overseas arrivals has been broadly effective at keeping COVID-19 out of New
50 Zealand. In the period up to 15 June 2021 there have been 10 border-related re-incursions,² although these
51 outbreaks were able to be quickly detected and successfully eliminated. On 17 August 2021, a COVID-19
52 case of the highly transmissible delta variant with no clear link to the border was detected in Auckland.
53 As a result, the entire country moved from Alert Level 1 (minimal restrictions) to Alert Level 4 (toughest
54 restrictions). The lockdown measures and the implementation of an internal boundary around Auckland
55 have been largely successful in containing the outbreak to Auckland. However, at the time of writing
56 cases have been detected in Northland and Waikato with a limited number of further cases detected
57 around the country, including in the South Island. After 35 days at Alert Level 4 in Auckland, the
58 government began to ease restrictions and transition from an elimination to suppression strategy.

59

60 On 22 October 2021, the government outlined the COVID-19 Protection Framework, which uses
61 vaccination certificates along with public health measures to manage COVID-19 in the community. This
62 system will replace the Alert Level framework when District Health Boards reach a vaccination target of
63 90% of the eligible population. As vaccination rates increase and restrictions are eased, it is expected that
64 COVID-19 will spread out of Auckland to other parts of the country (as has already been observed with
65 outbreaks in Waikato and Northland). It is important to understand the impact of different vaccination
66 rates on the growth of future outbreaks outside of Auckland along with the number of hospitalizations and
67 hence stress on the healthcare system.

68

69 In this work a stochastic branching process model³⁻⁵ is used to simulate the initial stages of a COVID-19
70 outbreak within a community. Stochastic models are useful because they incorporate the randomness
71 associated with the initial stages of an outbreak. For some simulations, COVID-19 will spread widely and
72 form an extensive outbreak (e.g., Auckland in August 2021 where a returnee from Australia sparked an
73 outbreak with >6000 cases at the time of writing) whereas for other simulations, despite the virus having
74 a reproduction number larger than one, random chance will mean that COVID-19 does not spread far
75 beyond the initial seed infection (e.g., Wellington in June 2021 when a COVID-19 infected traveller
76 visited from Australia but did not infect anyone else). The stochastic model tracks each individual case
77 and becomes computationally expensive for large case numbers. Therefore, while stochastic models are
78 useful for simulating the initial stages of an outbreak, deterministic SEIR (Susceptible, Exposed, Infected,
79 Recovered) models are frequently used for larger and longer-term population level studies of epidemics.^{5,6}

80

81 Here, I use a stochastic model to study the how the number of infections and hospitalizations depend on
82 the vaccination rate and population level controls. I calculate the likelihood that a new infected case or
83 hospitalized individual is vaccinated and determine the relative risk of getting infected or hospitalized
84 with COVID-19 between vaccinated and unvaccinated individuals.

85

86

87

88

89

90

91

92

93

94

95

96

97

98

99

100

101

102

103 **Methods**

104

105 The stochastic model presented here tracks the number of infections in the community and categorizes
106 individuals as symptomatic (clinical infections) or asymptomatic (subclinical infections). Each infected
107 individual infects a random number of other individuals, N , drawn from a Poisson distribution (Figure 1)³.
108 For a symptomatic individual, the Poisson distribution is defined by $\lambda = RC$ where R is the reproduction
109 number and C is the effectiveness of population level controls (e.g., Level 1, 2, 3, or 4 in the Alert Level
110 Framework or Green, Orange, or Red in the COVID-19 Protection Framework). For an asymptomatic
111 individual, the Poisson distribution is defined by $\lambda = RC/2$, which assumes that asymptomatic individuals
112 infect, on average, half as many people as symptomatic individuals.⁷

113

114 Population level controls include public health measures such as physical distancing, wearing of masks,
115 closure of schools and non-essential businesses, and restrictions on gatherings and social activities. The
116 effectiveness of population level controls are taken from Plank et al.³ as $C=1$ for Alert Level 1, $C=0.72$
117 for Alert Level 2, $C=0.52$ for Alert Level 3, and $C=0.32$ for Alert Level 4. These values were estimated
118 for the initial variant of COVID-19 and population level controls may be less effective against the more
119 transmissible delta variant.⁸ In addition, the model does not account for illegal gatherings or other non-
120 compliance with restrictions.

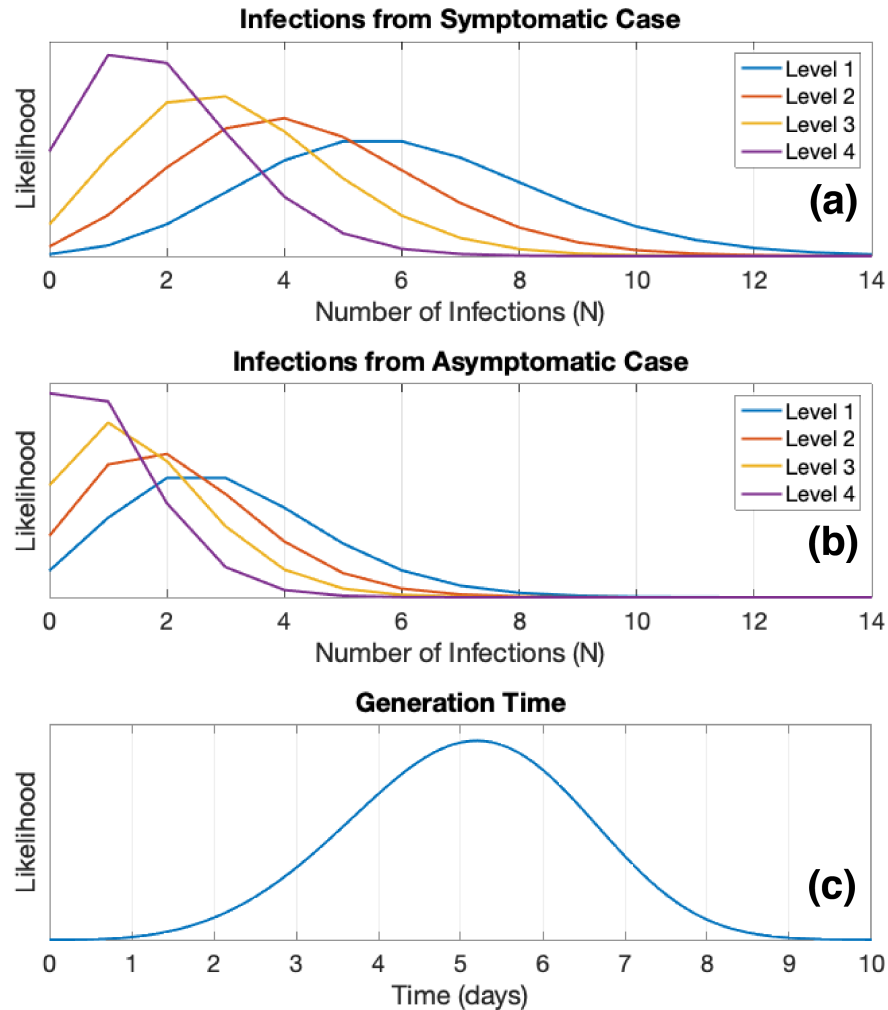
121

122 The generation times between an individual becoming infected and infecting N other individuals are
123 independently sampled from a Weibull distribution with $a=5.57$ and $b=4.08$ where a is the scale
124 parameter and b is the shape parameter (mean=5.05 days and variance=1.94 days)⁹ (Figure 1). The model
125 assumes that 33% of new infections are asymptomatic (subclinical) with the remainder symptomatic
126 (clinical).¹⁰⁻¹²

127

128 I consider a range of vaccination rates, V , from 0% to 90% of the total population (rather than the *eligible*
129 *population*, which at the time of writing is the over 12 years old population). Unlike previous work by
130 Steyn et al.^{5,13} age is not accounted for in the model, either in the vaccination rollout where older
131 individuals are more likely to be vaccinated, or in the susceptibility where older individuals are more
132 likely to experience severe disease or death. The vaccination rate V is assumed to be constant throughout
133 the simulated outbreak. Following Steyn et al.^{5,13} the Pfizer-BioNTech vaccine, which is the only
134 COVID-19 vaccine currently being widely administered in New Zealand, is assumed to be 70% effective
135 against infection and 50% effective against transmission for breakthrough infections.¹⁴ Throughout the
136 simulations, the model tracks the total number of vaccinated and unvaccinated infections along with the

137 number of symptomatic and asymptomatic cases. Infected individuals are assumed to be equally likely to
138 interact with vaccinated and unvaccinated individuals, with probabilities based solely on the vaccination
139 rate. This may lead to an underestimation of the spread of COVID-19 in unvaccinated communities as
140 unvaccinated individuals are more likely to have unvaccinated contacts.
141



142
143
144 **Figure 1:** Probability distributions used in the stochastic model. (a) Number of infections caused by a
145 symptomatic case and (b) by an asymptomatic case. The number of infections caused by a symptomatic or
146 asymptomatic case is governed by a Poisson distribution and can only take integer values. (c) The
147 generation time, which is the time between an individual getting infected and infecting others, is governed
148 by a Weibull distribution.

149
150 The likelihood of hospitalizations is also modeled. Clinical infections have a 7.8% probability of being
151 hospitalized.¹⁵ This agrees with the total number of cases hospitalized during the August 2021 Auckland

152 outbreak (7.6% hospitalization rate for all cases as of 30 October 2021).^{16,17} Based on Dagan et al.¹⁸ who
153 examined the effectiveness of the Pfizer-BioNTech vaccine against hospitalization in Israel, it is assumed
154 that the vaccine is 87% effective at preventing hospitalizations after two doses. The model only allows for
155 cases to be fully vaccinated (defined as more than two weeks after the second dose of the two-dose Pfizer-
156 BioNTech vaccine) or unvaccinated. The model does not include the additional complexity of individuals
157 who are partially vaccinated, either by only receiving one dose of the vaccine or by being within two
158 weeks after receiving the second dose. In addition, there is no lag time between becoming infection and
159 becoming hospitalized. The model is only run for a short duration (28 days) and hence I do not simulate
160 the likelihood of hospitalized individuals dying.

161
162 Note that the model presented here does not include any testing, contact tracing, or isolation of cases.
163 Instead, I focus on the impact of vaccination rates, particularly on the early stages of an outbreak when
164 cases may be circulating undetected. The reader is referred to Steyn et al.⁵ for a model that includes
165 testing and estimates the number of infections at the time of detection of the outbreak for various
166 vaccination rates and testing scenarios.

167
168
169
170
171
172
173
174
175
176
177
178
179
180
181
182
183
184
185

186 **Results**

187

188 The simulations are seeded with one unvaccinated symptomatic individual at $t=0$ where t is the time in
189 days. Simulations are run for 28 days with time steps of 1 day. The model tracks each infected individual,
190 distinguishes between symptomatic cases (clinical infections) and asymptomatic cases (subclinical
191 infections), tracks hospitalization rates, and distinguishes between vaccinated and unvaccinated
192 individuals. I consider vaccination rates between 0% and 90% of the total population in 5% increments
193 (the vaccination rate referred to here is the total population rather than the eligible population, which is
194 over 12 years old at the time of writing). The government's vaccination target of 90% of the eligible
195 population corresponds to 78.7% of the total population.^{16,17} For each vaccination rate, we consider four
196 different population level controls based on New Zealand's Alert Level system using the effectiveness
197 values from Plank et al.³ To get a representative sample of the possible outcomes for each scenario, we
198 run the model 100,000 times for each combination of vaccination rate and population level controls.

199

200 *Vaccination Rate and Population Level Controls*

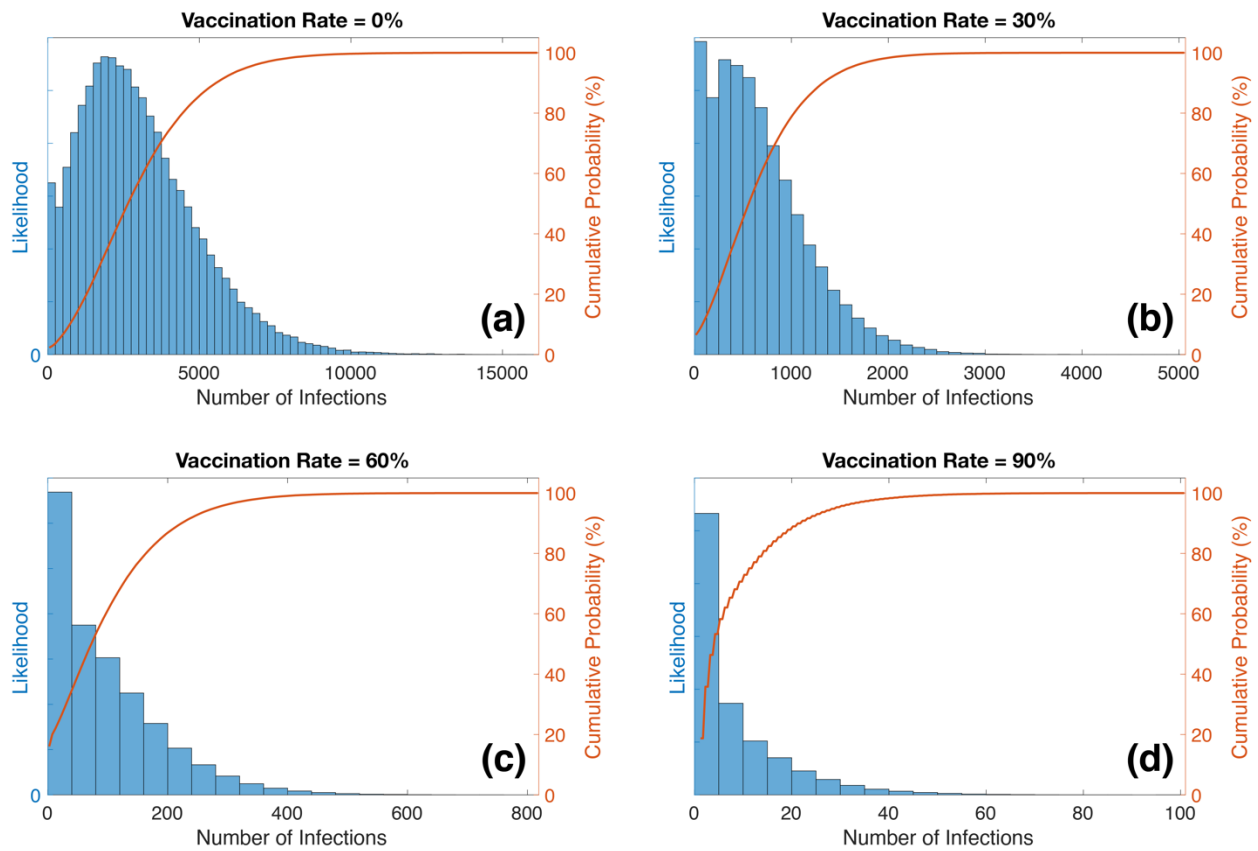
201

202 I consider the impact of the vaccination rate and population level controls on the total number of
203 infections and hospitalizations. Figure 2 shows likelihood of the number of infections 28 days into an
204 outbreak for $V=0\%$, 30%, 60%, and 90% and no population level controls ($C=I$). The histograms indicate
205 the likelihood of each number of infections and illustrate the randomness associated with the initial stages
206 of an outbreak. For some simulations, random chance causes the outbreak to infect a small number of
207 people whereas for other simulations the outbreak can rapidly grow due to super-spreader events. For
208 $V=30\%$, there is a 10% chance that an outbreak will cause less than 98 infections after 28 days. However,
209 there is also a 10% chance that an outbreak will cause more than 1340 infections. The potential spread of
210 an outbreak is strongly dependent on the vaccination rate. For $V=0\%$, there is a 50% chance than an
211 outbreak will cause less than 2691 infections after 28 days compared to less than 75 infections for
212 $V=60\%$.

213

214 The number of infections is strongly dependent on the vaccination rate with higher vaccination rates
215 decreasing the number of infections by several orders of magnitude. For $V=0\%$, the maximum number of
216 infections after 28 days is 16,198 compared to 819 for $V=60\%$ and 101 for $V=90\%$. The strong
217 dependence of the number of infections on the vaccination rate is further visualized in Figure 3, which
218 shows the median number of infections along with the 25% and 75% quartiles as a function of

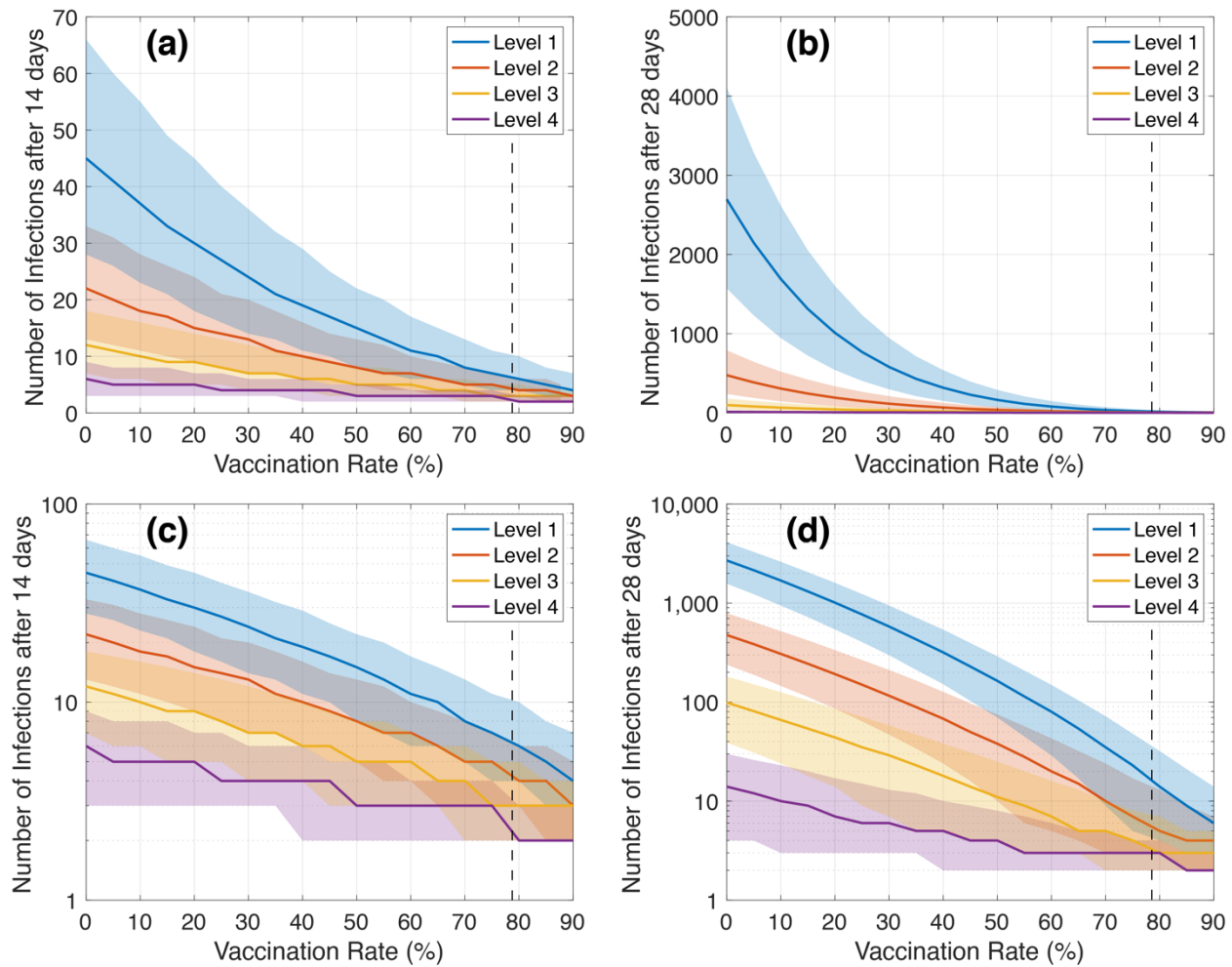
219 vaccination rate and population level controls. Increasing the vaccination rate can drastically decrease the
220 number of infections and hence minimize the size of an outbreak.
221



222
223
224 **Figure 2:** Histograms showing the likelihood for a given number of infections 28 days into an outbreak
225 for vaccination rates of (a) 0%, (b) 30%, (c) 60%, and (d) 90%. Red lines indicate the cumulative
226 probability.

227
228 Figure 3 also shows the importance of population level controls, especially at low levels of vaccination.
229 For $V=20\%$ (the approximate vaccination rate in New Zealand on 17 August 2021 when the delta
230 outbreak was first detected), the median number of infections after 28 days is 1,011 (542 and 1602 for
231 25% quantile and 75% quantile, respectively) at Level 1 but only 7 (3 and 17 and for 25% quantile and
232 75% quantile, respectively) at Level 4. This illustrates how, in the absence of high vaccination rates,
233 population level controls are extremely important in limiting the growth of an outbreak. It is noted that
234 New Zealand only shifted from Level 1 to Level 4 after a case was detected. At this point, the virus had
235 been circulating undetected for approximately a week prior to this and had already seeded 800 to 1000
236 cases in the community.¹⁹ Furthermore, the effectiveness values used here for the population level

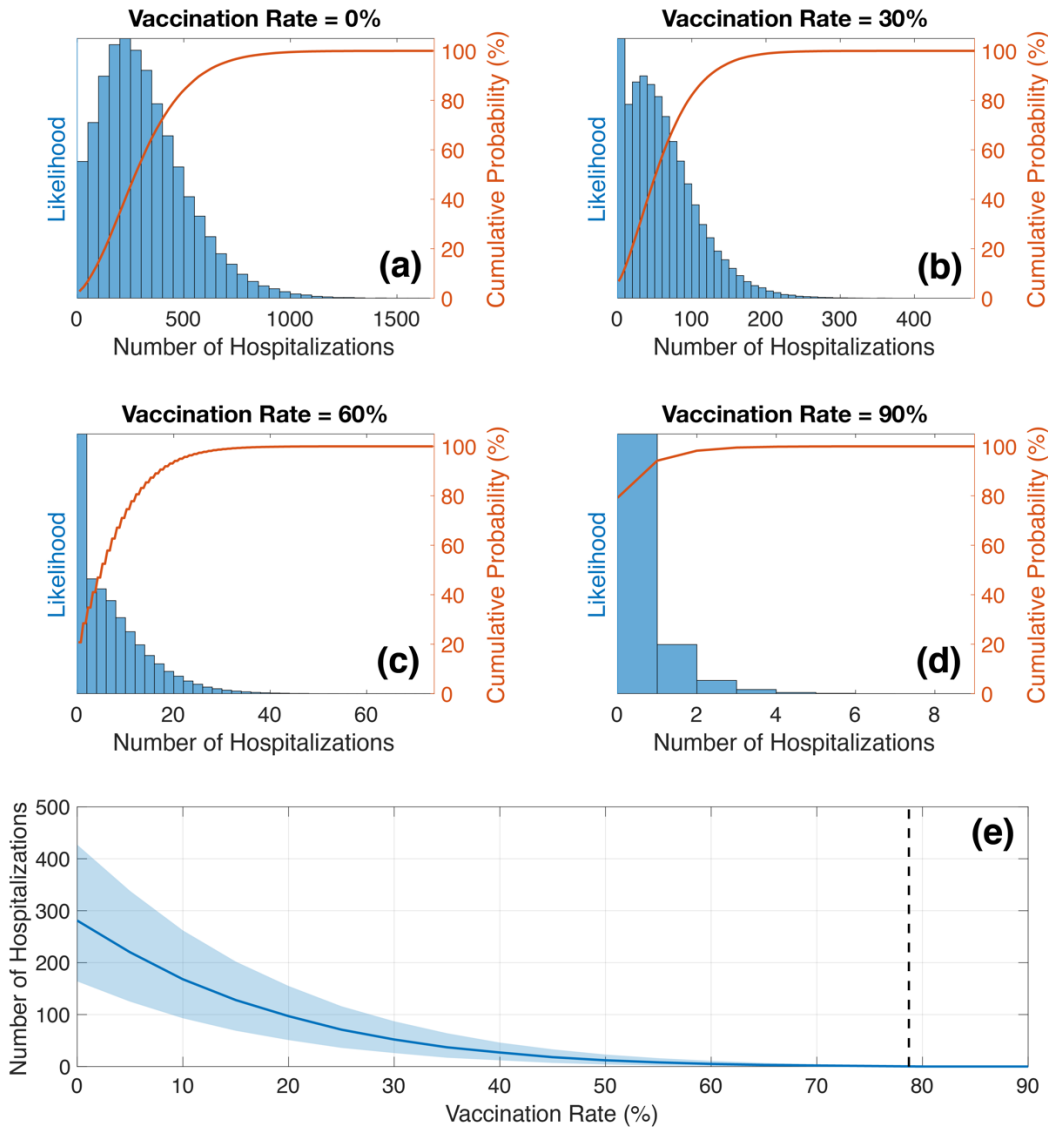
237 controls were estimated for the original strain of Covid-19.³ It is unclear if these values are appropriate for
238 the more transmissible delta variant^{8,20,21} or if population level controls are less effective against delta.
239



240
241 **Figure 3:** Number of infections as a function of vaccination rate and population level controls for (a,c)
242 14 days and (b,d) 28 days after an unvaccinated symptomatic individual is seeded into the community.
243 Solid lines show the median of the 100,000 realizations while the shaded area shows the range between
244 the 25% and 75% quantiles. Top plots (a,b) show the results on a linear scale while the bottom plots (c,d)
245 show the results on a logarithmic scale. The vertical black dashed lines indicate vaccination rate for the
246 total population that corresponds to the 90% target of the over 12 years old population (78.7%).

247
248 The results shown in Figures 2 and 3 illustrate how a vaccine can be extremely effective in preventing or
249 limiting an outbreak even if the vaccine does not provide individuals with 100% protection from
250 infection. Here, it is assumed that the Pfizer-BioNTech vaccine is 70% effective in preventing infection
251 and, for breakthrough infections, 50% effective at preventing onward transmission.¹⁴ Despite this

252 imperfect protection, at a population level the vaccine drastically reduces the spread of the virus. For
253 $V=60\%$, the mean number of infections 28 days into the outbreak is only 3% of the mean number of
254 infections for $V=0\%$. For $V=90\%$, the mean number of infections further decreases to only 0.3%
255 compared to the unvaccinated scenario.
256



257
258
259 **Figure 4:** Histograms showing the likelihood for a given number of hospitalizations 28 days into an
260 outbreak for $C=1$ and vaccination rates of (a) 0%, (b) 30%, (c) 60%, and (d) 90%. Red lines indicate the
261 cumulative probability. (e) Number of hospitalizations 28 days into an outbreak as a function of
262 vaccination rate showing the (solid line) median simulation result and (shaded area) 25th and 75th

263 *quantiles. Vertical black line indicates the vaccination rate of the total population that corresponds to*
264 *90% of the eligible (over 12 years old) population (78.7%).*

265

266 The number of hospitalizations is also strongly dependent on the vaccination rate (Figure 4). For $V=0\%$,
267 there is a 50% chance of over 282 hospitalizations 28 days into the outbreak compared to 50% chance of
268 less than 6 hospitalizations for $V=60\%$ and 1 hospitalization for $V=90\%$. The hospitalization results
269 presented in Figure 4 are calculated for $C=1$, which gives a worst-case scenario. Implementation of
270 population level controls (i.e., Alert Level restrictions or vaccination certificates) will reduce the total
271 number of hospitalizations at all vaccination rates but the general trend is unchanged; high vaccination
272 rates drastically reduce the number of hospitalizations.

273

274 *Risk factor for unvaccinated individuals*

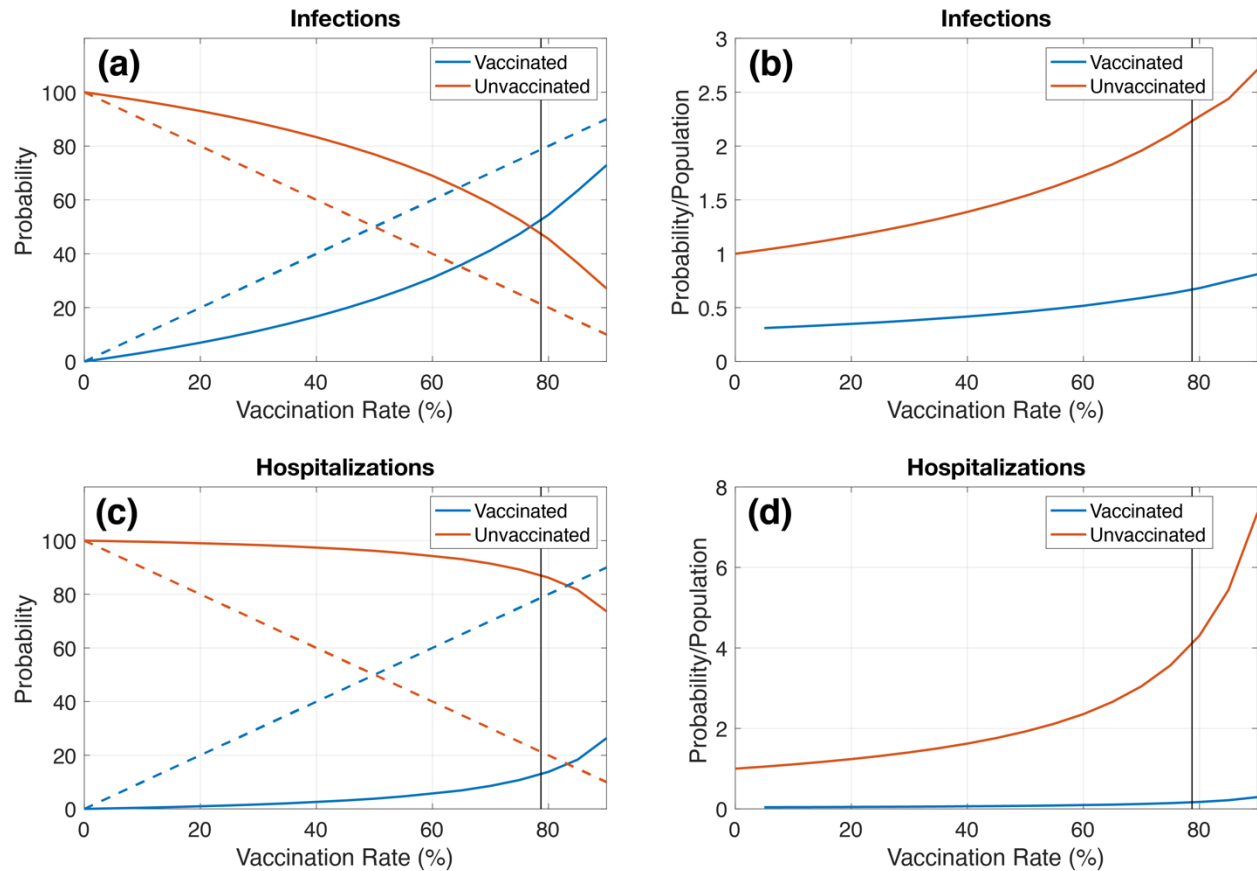
275

276 As the vaccination rate increases, there are more vaccinated individuals in the population, fewer
277 unvaccinated individuals, and hence more breakthrough infections will occur (infections in fully
278 vaccinated individuals). This is expected; the model assumes a 30% chance of breakthrough infections in
279 vaccinated individuals.¹⁴ As the number of vaccinated individuals increases, the number of cases in
280 vaccinated individuals will increase, as shown in Figure 5a. For $V=40\%$, there is an 83% chance that a
281 new case will be unvaccinated and a 17% chance that they will be vaccinated. For $V=80\%$, this switches
282 to 46% unvaccinated and 54% vaccinated. It is important to note that, even though the number of
283 infections in vaccinated individuals increases, it stays below the population proportion, which is shown
284 by the dashed lines in Figure 5a. This indicates that, per population, infections are still more likely to
285 occur in unvaccinated individuals. It should also be noted that infections in unvaccinated individuals are
286 more likely to lead to onward transmission and hospitalization than breakthrough infections.^{14,18}

287

288 Figure 5b shows the probability that an infection occurs in a vaccinated or unvaccinated individual
289 normalized by population. At all vaccination rates, an unvaccinated individual is more likely to be
290 infected than vaccinated individual. Dividing the unvaccinated probability normalized by population by
291 the vaccinated probability normalized by population gives the risk factor for unvaccinated individuals,
292 which quantifies the likelihood of an unvaccinated individual getting infected compared to a vaccinated
293 individual. This shows that, even though the number of breakthrough infections increases with increasing
294 vaccination rate, an unvaccinated individual is 3.3x more likely to be infected than a vaccinated
295 individual for all vaccination rates.

296



297
298 **Figure 5:** Probability that an infected or hospitalized individual is (blue) vaccinated or (red unvaccinated)
299 as a function of vaccination rate, as calculated from mean simulation result. (a) and (c) Probability that
300 an (a) infected or (c) hospitalized individual is vaccinated or unvaccinated. Dashed lines indicate
301 proportion of population that are vaccinated or unvaccinated as a function of vaccination rate. (b) and
302 (d) Probability normalized by population that an (b) infected or (d) hospitalized individual is vaccinated
303 or unvaccinated.

304
305 I then perform the same analysis for hospitalizations. Figure 5c shows that the probability that a
306 hospitalized case is vaccinated increases slower than the probability that an infected case is vaccinated.
307 This shows that while the vaccine provides substantial protection against infection, it provides even
308 greater protection against hospitalization. At all vaccination rates, hospitalizations are significantly more
309 likely to be unvaccinated than vaccinated (at $V=80\%$, there is an 86% chance that a hospitalized case will
310 be unvaccinated compared to 14% vaccinated). Figure 5d shows the probability of hospitalization
311 normalized by population. Unvaccinated individuals are 25x more at risk of hospitalization than
312 vaccinated individuals. This reinforces the need to vaccinate a large percent of the population to minimize
313 hospitalizations and prevent strain on the healthcare system.

314

315 The results shown here are in broad agreement with a CDC study of 43,127 COVID-19 cases in Los
316 Angeles County that showed that infection and hospitalization rates among unvaccinated individuals were
317 4.9x and 29.2x, respectively, higher than for fully vaccinated individuals.²² The risk factors calculated
318 here may be lower due to underestimating the protection that the vaccine provides against infection or
319 because I focus on the delta variant, which transitioned to becoming the dominant variant during the study
320 period of Griffin et al.²²

321

322

323 *Conclusions:*

324

325 The current COVID-19 outbreak in New Zealand, which began in August 2021, has resulted in the
326 highest case counts experienced in New Zealand during the pandemic. Cases are centered in Auckland but
327 have spread to Northland and Waikato, with isolated cases spread around the rest of the country,
328 including the South Island. The government's switch from an elimination to suppression strategy has
329 emphasized the importance of vaccination in preventing COVID-19 from overwhelming the healthcare
330 system. As restrictions ease, there is a need to understand how different vaccination rates will impact the
331 initial stages of COVID-19 outbreak as cases become seeded in communities around New Zealand.

332

333 Here, I use a stochastic branching process model to examine the impact of vaccination rates on the initial
334 spread of an outbreak. I show that increasing vaccination rates greatly decrease the number of infections
335 (1.4% median number of infections 28 days into the outbreak for $V=80\%$ compared to $V=20\%$), even if
336 the Pfizer-BioNTech vaccine only provides individuals with imperfect protection (assumed to be 70%
337 effective against breakthrough infection). This illustrates the effectiveness of the vaccine on a population
338 level.

339

340 As the vaccination rate increases, the number of breakthrough infections and hospitalizations among
341 vaccinated individuals will increase. This is expected and reflects the increased proportion of vaccinated
342 individuals in the population. Unvaccinated individuals are 3.3x more likely to be infected and 25x more
343 likely to be hospitalized than vaccinated individuals. The model results presented here agree with real-
344 world data²² and highlight how the Pfizer-BioNTech vaccine provides good protection against infection
345 and extremely good protection against hospitalization. This work illustrates the need for high vaccination
346 rates to reduce infections and prevent the healthcare system from being overrun with COVID-19 patients.

347

348 **References**

- 349 1. History of the COVID-19 Alert System. Unite Against COVID-19. [cited 2021 Nov 4]. Available
350 from <https://covid19.govt.nz/alert-levels-and-updates/history-of-the-covid-19-alert-system/>.
- 351 2. Grout L, Katar A, Ait Ouakrim D, et al. Failures of quarantine systems for preventing COVID-19
352 outbreaks in Australia and New Zealand. *Med J Aust*. 2021 Oct 4;215(7):320-324. doi:
353 10.5694/mja2.51240.
- 354 3. Plank MJ, Binny RN, Hendy SC, et al. A stochastic model for COVID-19 spread and the effects
355 of alert level 4 in Aotearoa New Zealand. medRxiv. 2020. doi: 10.1101/2020.04.08.20058743.
- 356 4. Plank MJ, Hendy SC, Binny RN, Maclaren O. Modeling the August 2021 COVID-19 outbreak in
357 New Zealand. Technical Report, Te Pūnaha Matatini. 2021.
- 358 5. Steyn N, Plank MJ, Binny RN, et al. A COVID-19 vaccination model for Aotearoa New Zealand,
359 Technical Report, Te Pūnaha Matatini. 2021.
- 360 6. James A, Hendy SC, Plank MJ, Steyn N. Suppression and mitigation strategies for control of
361 COVID-19 in New Zealand. medRxiv. 2020. doi: 10.1101/2020.03.26.20044677.
- 362 7. Davies NG, Klepac P, Liu Y, et al.; CMMID COVID-19 working group, Eggo RM. Age-
363 dependent effects in the transmission and control of COVID-19 epidemics. *Nat Med*. 2020
364 Aug;26(8):1205-1211. doi: 10.1038/s41591-020-0962-9.
- 365 8. Allen H, Vusirikala A, Flannagan J, et al.; COVID-19 Genomics UK (COG-UK Consortium).
366 Household transmission of COVID-19 cases associated with SARS-CoV-2 delta variant
367 (B.1.617.2): national case-control study. *Lancet Reg Health Eur*. 2021 Oct 28:100252. doi:
368 10.1016/j.lanepe.2021.100252.
- 369 9. Hendy SC, Steyn N, James A, et al. Mathematical modelling to inform New Zealand's COVID-
370 19 response. *J. R. Soc. N. Z.* 2021 51(S1), S86-S106, doi: 10.1080/03036758.2021.1876111.
- 371 10. Byambasuren O, Cardona M, Bell K, et al. Estimating the extent of asymptomatic COVID-19 and
372 its potential for community transmission: systematic review and meta-analysis. *JAMMI*. 2020
373 Dec;5(4):223-34. doi: 10.3138/jammi-2020-0030
- 374 11. Lavezzo E, Franchin E, Ciavarella C, et al.; Imperial College COVID-19 Response Team,
375 Brazzale AR, Toppo S, Trevisan M, Baldo V, Donnelly CA, Ferguson NM, Dorigatti I, Crisanti
376 A; Imperial College COVID-19 Response Team. Suppression of a SARS-CoV-2 outbreak in the
377 Italian municipality of Vo'. *Nature*. 2020 Aug;584(7821):425-429. doi: 10.1038/s41586-020-
378 2488-1.
- 379 12. Pollán M, Pérez-Gómez B, Pastor-Barriuso R, et al; ENE-COVID Study Group. Prevalence of
380 SARS-CoV-2 in Spain (ENE-COVID): a nationwide, population-based seroepidemiological
381 study. *Lancet*. 2020 Aug 22;396(10250):535-544. doi: 10.1016/S0140-6736(20)31483-5.

- 382 13. Steyn N, Plank MJ, Hendy SC. Modelling to support a future COVID-19 strategy for Aotearoa
383 New Zealand, Technical Report, Te Pūnaha Matatini. 2021.
- 384 14. Scientific Pandemic Influenza Group of Modeling, SPI-M-O. Summary of further modelling of
385 easing restrictions - Roadmap Step 4. Technical Report, Scientific Advisory Group for
386 Emergencies. 2021. Available from [https://www.gov.uk/government/publications/spi-m-o-](https://www.gov.uk/government/publications/spi-m-o-summary-of-further-modelling-of-easing-restrictions-roadmap-step-4-9-june-2021)
387 [summary-of-further-modelling-of-easing-restrictions-roadmap-step-4-9-june-2021](https://www.gov.uk/government/publications/spi-m-o-summary-of-further-modelling-of-easing-restrictions-roadmap-step-4-9-june-2021).
- 388 15. Verity R, Okell LC, Dorigatti I, et al. Estimates of the severity of coronavirus disease 2019: a
389 model-based analysis. *Lancet Infect Dis*. 2020 Jun;20(6):669-677. doi: 10.1016/S1473-
390 3099(20)30243-7.
- 391 16. COVID-19 Vaccine Data. Ministry of Health. [cited 2021 Nov 1]. Available from
392 [https://www.health.govt.nz/our-work/diseases-and-conditions/covid-19-novel-coronavirus/covid-](https://www.health.govt.nz/our-work/diseases-and-conditions/covid-19-novel-coronavirus/covid-19-data-and-statistics/covid-19-vaccine-data)
393 [19-data-and-statistics/covid-19-vaccine-data](https://www.health.govt.nz/our-work/diseases-and-conditions/covid-19-novel-coronavirus/covid-19-data-and-statistics/covid-19-vaccine-data).
- 394 17. Singh H. The Spinoff Covid-tracker: the live graphs that tell the story of delta in Aotearoa. 2021.
395 [cited 2021 Nov 1]. Available from [https://thespinoff.co.nz/society/30-10-2021/the-spinoff-covid-](https://thespinoff.co.nz/society/30-10-2021/the-spinoff-covid-tracker/)
396 [tracker/](https://thespinoff.co.nz/society/30-10-2021/the-spinoff-covid-tracker/).
- 397 18. Dagan N, Barda N, Kepten E, et al. BNT162b2 mRNA Covid-19 Vaccine in a Nationwide Mass
398 Vaccination Setting. *N Engl J Med*. 2021 Apr 15;384(15):1412-1423. doi:
399 10.1056/NEJMoa2101765.
- 400 19. Derek Cheng. Big Read: Tracking the Covid-19 delta outbreak – how it arrived, simmered
401 through lockdown, then spread beyond reach. *The New Zealand Herald*. 2021. [cited 2021 Nov
402 19]. Available from [https://www.nzherald.co.nz/nz/politics/big-read-tracking-the-covid-19-delta-](https://www.nzherald.co.nz/nz/politics/big-read-tracking-the-covid-19-delta-outbreak-how-it-arrived-simmered-through-lockdown-then-spread-beyond-reach/UM5CJTAGMBFGA5X2ZGJ3XWBTY4/)
403 [outbreak-how-it-arrived-simmered-through-lockdown-then-spread-beyond-](https://www.nzherald.co.nz/nz/politics/big-read-tracking-the-covid-19-delta-outbreak-how-it-arrived-simmered-through-lockdown-then-spread-beyond-reach/UM5CJTAGMBFGA5X2ZGJ3XWBTY4/)
404 [reach/UM5CJTAGMBFGA5X2ZGJ3XWBTY4/](https://www.nzherald.co.nz/nz/politics/big-read-tracking-the-covid-19-delta-outbreak-how-it-arrived-simmered-through-lockdown-then-spread-beyond-reach/UM5CJTAGMBFGA5X2ZGJ3XWBTY4/)
- 405 20. Liu Y, Rocklöv J. The reproductive number of the Delta variant of SARS-CoV-2 is far higher
406 compared to the ancestral SARS-CoV-2 virus. *J Travel Med*. 2021 Oct 11;28(7):taab124. doi:
407 10.1093/jtm/taab124.
- 408 21. Sonabend R, Whittles LK, Imai N, Perez-Guzman PN, Knock ES, Rawson T, Gaythorpe KA,
409 Djaafara BA, Hinsley W, FitzJohn RG, Lees JA. Non-pharmaceutical interventions, vaccination
410 and the Delta variant: epidemiological insights from modelling England's COVID-19 roadmap
411 out of lockdown. medRxiv. 2021. doi: <https://doi.org/10.1101/2021.08.17.21262164>
- 412 22. Griffin JB, Haddix M, Danza P, et al. SARS-CoV-2 Infections and Hospitalizations Among
413 Persons Aged ≥ 16 Years, by Vaccination Status - Los Angeles County, California, May 1-July
414 25, 2021. *MMWR Morb Mortal Wkly Rep*. 2021 Aug 27;70(34):1170-1176. doi:
415 10.15585/mmwr.mm7034e5.