

Impact of Exercise-induced Dehydration on Perceived Exertion During Endurance Exercise: A Systematic Review with Meta-analysis

Thomas A. Deshayes^{1,2}, Timothée Pancrate¹, Eric D.B. Goulet^{1,2*}

¹ Faculty of physical activity sciences, University of Sherbrooke, P.Q., J1K 2R1, Canada

² Research Center on Aging, University of Sherbrooke, P.Q., J1H 4C4, Canada

Running head: Impact of Exercise-induced Dehydration on Perceived Exertion

Authors ORCIDs

Deshayes: 0000-0002-7620-1939

Goulet: 0000-0001-5117-9977

Pancrate: 0000-0002-4161-5875

Correspondence: Eric D.B. Goulet, Ph.D.

Performance, Hydration and Thermoregulation Laboratory

University of Sherbrooke

2500 boul. de l'Université

Sherbrooke, Québec, Canada

J1K 2R1

E-mail: eric.goulet@usherbrooke.ca

Phone number: 1-819-821-8000 *62728

Fax number: 1-819-821-7970

31 Abstract

32 Understanding the impact of stressors on the rating of perceived exertion (RPE) is
 33 relevant from a performance and exercise adherence/participation standpoint. Athletes
 34 and recreationally active individuals dehydrate during exercise. No attempt has been
 35 made to systematically determine the impact of exercise-induced dehydration (EID) on
 36 RPE. The present meta-analysis aimed to determine the effect of EID on RPE during
 37 endurance exercise and examine the moderating effect of potential confounders using a
 38 meta-analytical approach. Data analyses were performed on raw RPE values using
 39 random-effects models weighted mean effect summaries and meta-regressions with
 40 robust standard errors, and with a practical meaningful effect set at 1 point difference
 41 between euhydration (EUH) and EID. Only controlled crossover studies measuring RPE
 42 with a Borg scale in healthy adults performing ≥ 30 min of continuous endurance
 43 exercise while dehydrating or drinking to maintain EUH were included. Sixteen studies
 44 were included, representing 147 individuals. Mean body mass loss with EUH was $0.5 \pm$
 45 0.4% , compared to $2.3 \pm 0.5\%$ with EID (range 1.7 to 3.1%). Within an EID of 0.5 to 3%
 46 body mass, a maximum difference in RPE of 0.81 points (95% CI: 0.36-1.27) was
 47 observed between conditions. A meta-regression revealed that RPE increases by 0.21
 48 points for each 1% increase in EID (95% CI: 0.12-0.31). Humidity, ambient temperature
 49 and aerobic capacity did not alter the relationship between EID and RPE. Therefore, the
 50 effect of EID on RPE is unlikely to be practically meaningful until a body mass loss of at
 51 least 3%.

52 **Keywords:** hydration, hypohydration, performance, rating of perceived exertion, RPE

53

54 INTRODUCTION

55 Rating of perceived exertion (RPE), a subjective estimation of the intensity or difficulty
56 of a physical task, is widely used by professionals in the field of exercise sciences,
57 coaching and sports medicine to monitor or prescribe exercise intensity (87). Developed
58 by Gunnar Borg (19, 20), the Borg RPE scale is a universally accessible, comprehensible,
59 useful, non-invasive, valid and inexpensive tool that can be used in diverse populations
60 such as in children, adolescents, young and older adults, and under different conditions,
61 including leisure and elite sports, clinical rehabilitation and scientific research. Although
62 the etiology of RPE is unclear, it is proposed that it is either centrally derived (64) or
63 generated by neuronal processes that integrate afferent signals from various peripheral
64 and central sources, as well as from psychological factors (20, 88).

65 The RPE is a pivotal component of aerobic exercise. Indeed, it acts as a regulator of
66 exercise intensity (1, 93) and exercise duration (26, 35, 77) and, thus, modulates exercise
67 capacity in competitive athletes and, as important, is at the core of the decision to engage
68 and adhere to the regular practice of physical activity among recreationally active
69 individuals (32, 33). Given that physiological and psychological signals can act
70 individually or in concert to disturb RPE, it follows that limiting the number of
71 physiological or emotional stressors to a minimum during exercise should ensure optimal
72 performance for the athlete and lead to a sense of fulfillment in recreationally active
73 individuals (1).

74 Depending on a host of factors, sweat losses typically reach 0.5 to 1.7 L/h during exercise
75 (13). Athletes as well as recreationally active individuals do not usually replace all their
76 fluid losses during exercise. Exercise-induced dehydration (EID), best represented by the

acute body mass loss accrued during exercise, alters thermoregulatory, metabolic and cardiovascular functions (24, 43, 62, 63, 71), more particularly in individuals with low aerobic fitness (69) and may predispose to the development of thirst, headaches, tiredness, mental fatigue (44) and impaired mood (6, 39), while its impact upon cognitive performance is still debated (45). These factors may contribute to increasing RPE during exercise, ultimately impeding exercise performance in athletes (55) and potentially decreasing exercise adherence and participation in recreationally active individuals (33, 82) which, from a societal and health perspective, is not suitable. Indeed, both the affective response and RPE are associated with long-term physical activity participation (97).

The relationship between EID and RPE has received much scientific attention, with some studies showing that EID can significantly increase RPE (2, 14, 16, 37, 38, 42, 43, 54, 56, 62, 63, 71, 72, 75, 95, 99), while others did not (8, 12, 17, 28, 30, 31, 34, 40, 51, 53, 59, 61, 68, 73, 74, 84, 89). At this time, no attempt has been made to systematically determine the impact of EID on RPE. Discrepancies between findings could potentially be related to methodological differences among studies, albeit this remains to be determined and confirmed with the aid of relevant analyses.

Efforts have yet to be deployed to determine, using a meta-analytic approach, the impact of EID on RPE. More specifically, there is a need to answer these questions: 1) does the change in RPE during exercise relate to EID?; 2) what is the magnitude of the effect of EID on RPE across different levels of EID; 3) is the magnitude of the effect of EID on RPE practically important?; 4) are there any identifiable factors among ambient temperature, humidity level, exercise intensity, exercise duration and aerobic capacity

that may moderate the relationship between EID and RPE and; 5) to which extent “cardiovascular strain” mediates the relationship between EID and RPE? The goal of this study, therefore, is to use a meta-analytic approach to provide answers to the above-mentioned questions. Findings will be valuable to scientists, physical trainers, sports nutritionists, physicians, exercise physiologists, sports psychologists and any individuals engaged in regular exercise. Also, such findings will be valuable to elucidate whether the changes in body water are part of an integrated signal.

METHODS

Experimental approach to the problem

Although the relationship between EID and RPE has received scientific attention, results are controversial. No attempt has been made to summarize and determine the magnitude of changes in RPE across different levels of EID. Such a gap indicates a need to use a systematic approach with meta-analysis to further our understanding of the relationship between these variables.

Figure 1 reports the search strategy used for study selection. The literature search, limited to original peer-reviewed articles published in French or English, was performed with the PubMed, MEDLINE, SPORTDiscus, AMED and CINAHL databases, combining a “title field” and an “abstract field” research using the following keywords alone or in combination: cycling, dehydration, drink, effort, endurance, euhydration, exercise, exertion, fluid, hydration, hypohydration, perceived effort, perceived exertion, perception, performance, rate of perceived exertion, rating of perceived exertion, RPE and running. The exact search strategy can be found in supplementary material 1. A first

selection based on the title was performed; afterward, the abstract and method sections of all potential articles were read. When hydration status was manipulated and RPE measured, the methodological section was carefully read to verify eligibility. Published abstracts, case studies, non-peer-review manuscripts and conference proceedings were not considered. Cross-referencing was performed on included studies and 6 narrative/systematic reviews (3, 23, 48, 55, 66, 79). When needed, authors of included studies were contacted and asked to share experimental raw data. The last search of the literature was done on December 17, 2020. The review and the protocol were not registered. The meta-analysis was conducted using the Preferred Reporting Items for Systematic Reviews and Meta-analysis (PRISMA) guidelines.

Figure 1 about here

Criteria for considering studies for inclusion in the meta-analysis

Inclusion criteria were: (1) controlled study using a randomized crossover design in healthy adults (≥ 18 years old); (2) ≥ 30 min of continuous running or cycling endurance exercise; (3) final EID in the experimental group $> 1\%$ of pre-exercise body mass and $\geq 0.5\%$ than the euhydrated (EUH) control condition; (4) dehydration progressively induced during, not before exercise (46); (5) body mass change with EUH was within -1 to $+0.5\%$ of the pre-exercise body mass (46); (6) fluid replacement was given orally; (7) if carbohydrates (CHO) or caffeine were provided during exercise, the amount was identical between conditions (9, 29) and; (8) data required to compute changes in EID and RPE included. Exclusion criteria were: (1) sports-specific and intermittent exercises;

(2) use of diuretics or sweatsuit to accelerate EID; (3) provision of fluid according to thirst sensation; (4) uncontrolled ambient conditions or experimentation timing; (5) collection of muscle biopsies and; (6) carrying of loads during exercise.

Assessment of trial quality

No specific and validated tool to assess the quality of exercise-related studies has been developed. Moreover, assessing trial quality in meta-analyses using a scale can influence the interpretation of results (57). Hence, trial quality assessment was not performed in the present meta-analysis.

Data extraction

Using double data entry, data regarding (1) study characteristics; (2) participants characteristics; (3) exercise protocol characteristics; (4) EID levels and; (5) RPE were extracted and coded in spreadsheets. When not provided by authors, data only available in figures were extracted using WebPlotDigitizer.

Exercise duration and intensity and participants' $\dot{V}O_{2max}$

Exercise duration was computed as the average exercise time completed during both the EID and EUH conditions. Exercise intensity was taken as the average of the mean % $\dot{V}O_{2max}$ at which both the EID and EUH conditions were performed. Mean exercise intensity was computed using a weighted average for those studies that used a combination of exercise intensities. When not measured by authors, exercise intensity was estimated and computed as explained by Goulet (46). Most studies (4, 8, 16, 25, 31,

38, 68, 74, 75, 84, 89, 94, 95, 98) reported participants' $\dot{V}O_{2\max}$; Barwood, Goodall and Bateman (15) and Dugas, Oosthuizen, Tucker, et al. (30) did not, and these values were calculated as in Goulet (46).

Fluid intake, exercise-induced dehydration and dehydration rate measurement

Hydration rate (mL/min) was computed as the total amount of fluid intake divided by exercise duration, with the relative hydration rate (mL/min/kg) corrected for pre-exercise body mass (kg). The percent change in body mass from the pre- to post-exercise period was used as an index of the level of dehydration incurred during exercise. While this index is an imperfect representation of EID (65) as it is impacted by both metabolic water production and gas exchange during exercise, measurement error is relatively low amounting to an overestimation of fluid loss of ~ 100 mL/h during moderate intensity exercise.

When not provided, pre-exercise body mass was taken as that provided in the sample description, whereas % body mass loss was computed using the following equation:

$$\frac{\text{Pre-exercise body mass (kg)} - \text{post-exercise body mass (kg)}}{\text{pre-exercise body mass (kg)}} \times 100 \quad (1)$$

Thus, any positive value represents a body mass loss while negative values indicate body mass gain.

Assuming a high repeatability of (11), and consistency in (60), sweating rate and thus body mass loss (22) during exercise at a given intensity, dehydration rate (% body mass loss/min) was computed as follows:

192 End of exercise body mass loss (%) / exercise duration (min)
193 (2)

194 Dehydration rate was used to calculate the % body mass loss associated with each
195 measurement of RPE within a single study. For example, if in a study RPE was measured
196 at 30, 60 and 90 min and the dehydration rate was 0.03%/min, therefore the
197 corresponding % body mass losses were respectively taken as 0.9 (ex., 30 min x
198 0.03%/min), 1.8 and 2.7%. In some studies, this iteration process had to be stopped when
199 body mass loss surpassed 1% in the EUH condition (8, 31, 38, 74, 94). This procedure
200 enabled us to pinpoint the behavior of RPE across a wide range of % body mass loss
201 changes, using research data available from all included studies. To provide a practical,
202 easy to understand and clear visual characterization of the effect of body mass loss on
203 RPE during exercise, Figures 2a and b present the relationship between % body mass loss
204 and RPE at fixed and anchored body mass loss levels, according to the classification
205 presented in Table 1.

206

207 *Table 1 about here*

208

209 ***Measurement of perceived exertion during exercise***

210 Perceived exertion data are presented according to the original 6-20 Borg scale. Dugas,
211 Oosthuizen, Tucker, et al. (30) and Walsh, Noakes, Hawley, et al. (95) used the Borg-
212 CR10 scale (range 0-10); for those studies, RPE was converted back to the 6-20 scale
213 according to Arney, Glover, Fusco, et al. (7). For Barwood, Goodall and Bateman (15)
214 (hot and cold drink conditions), Dugas, Oosthuizen, Tucker, et al. (30) (0, 33 and 66%

conditions) and Murray, Michael and McClellan (75) (5- and 10-min conditions) merging of experiments were performed to eliminate data dependency.

Moderating variables

The following variables were *a priori* identified as potential moderators for the relationship between RPE and EID: ambient temperature, relative humidity, exercise duration and intensity and participants' $\dot{V}O_{2\max}$. Ambient temperature and relative humidity are interdependent, as are exercise intensity and duration. To take this into account, absolute humidity and a composite score of exercise stress (product of exercise intensity (% $\dot{V}O_{2\max}$) and exercise duration (min)) were also considered as moderating variables.

Mediating variable

Heart rate was considered a potential mediating variable regarding the relationship between EID and RPE. Core temperature would have been another one to consider, but the paucity of data prevented us from evaluating its impact. For each study, mean exercise heart rate difference between the EUH and EID conditions was computed by averaging the sum of the heart rate difference computed at each measurement point.

Statistical analyses

Software

Data were analyzed in their original form using Microsoft Office Excel 2020 (version 1902, Redmond, WA, USA), MetaXL, Comprehensive Meta-Analysis (version 2.2.064,

Englewood, NJ, USA), STATA/MP (version 14, College Station, TX, USA), SPSS macros provided by Lipsey and Watson (46, 47) and IBM SPSS Statistics (version 21, Armonk, NY, USA) software.

Weighted mean effect summaries

Each of the studies included in the meta-analysis took measurements of RPE during exercise at more than one EID level. Therefore, a meta-analysis of repeated measures was performed in an effort to limit the violation of the assumption of data independence in the data structure (85). First, an all-points forest plot was constructed to determine the mean effect of EID on RPE at body mass loss levels fixed and anchored at 0.5, 1, 1.5, 2, 2.5 and 3%. This method allows us to illustrate the rate of increase in RPE across this range of body mass losses. Moreover, it allows for more precision in establishing the relationship between RPE and body mass loss as this strategy increases the n for any dehydration point. All RPE data within a given EID level were independent of each other; however, each study contributed in providing RPE-related data to more than one EID level. Nevertheless, the assumption of independence was protected for each of the EID levels. Post-hoc analyses were done using the False Discovery Rate procedure, with the number of *a priori* defined comparisons taken as 6, mirroring each of the EID levels compared. Second, to establish the mean effect of EID on RPE for each increase in 1% body mass loss, a forest plot was constructed from the slope estimates of the relationships between EID and RPE for each of the included studies, using non-weighted linear regression analyses with the intercepts forced through the origin (85). For this forest plot, n was taken as the number of EID levels included in the regression analysis. Initially, the

analyses were performed separately by subgroups. However, data from studies using time-trial type exercise protocols were combined with those using fixed-intensity exercise protocols given the low number of studies using time-trial type exercise and because variations in RPE within the different EID levels were similar and, in all instances, < 1 point. Nonetheless, on few occasions, analyses excluding time-trial type exercises will be presented when deemed interesting. Weighted mean effect summaries were determined using method of moment random-effects model. A more intuitive approach was used to verify whether it would change the outcomes in comparison to our approach. For that, we averaged, within a given hydration condition, all RPE measurements across time, and then observed the difference in RPE between conditions.

Practical significance of the weighted mean effect summaries and slope estimate

The qualitative interpretation of the practical significance of the effect of EID on RPE was performed as in Goulet & Hoffman (48). Previous studies observed reliability of the RPE scale to be < 1 point (41, 58). Because the minimal increment of the scale is 1 point, this threshold was taken and accepted as the smallest worthwhile practical difference in RPE.

Heterogeneity, publication bias and sensitivity analysis

Cochran's Q and I² statistic were both used to assess between-study heterogeneity and the degree of inconsistency among results of included studies. Cochran's Q test was considered significant at $p \leq 0.1$ (18). The following classification was used to interpret the I² statistic: low (< 40%), moderate (40-59%), substantial (> 60%) (52). Publication

bias was performed using visual assessment of funnel plots with Trim and Fill adjustments. A sensitivity analysis was performed on each of the forest plots by removing each study once from the models to determine whether this would change the magnitude of the outcome summaries.

Meta-regression analyses

The potential mediating effect of heart rate and moderating effect of the *a priori* defined confounders were determined by regressing the slope estimates upon the mean heart rate difference between conditions or each of the confounders, respectively. Confounder and mediator variables included at least 10 data points from 10 different studies. A multiple meta-regression combining all moderators (with the exception of absolute humidity and composite score of exercise stress) was performed to understand the strength of our proposed model. Meta-regression analyses were performed using method of moment random-effects model, with 95% robust (Huber-Eicher-White-sandwich) standard errors.

Statistical significance

Otherwise stated, in all instances, results were considered significant at $p < 0.05$ or when the 95% confidence interval did not include 0.

Variance computations

When raw data were obtained from the authors, variances were directly calculated from the Δ standard errors or standard deviations of the absolute changes in RPE between conditions. Otherwise, individual variances for changes in RPE were estimated as in

Goulet and Hoffman (48) using an imputed weighted correlation coefficient of 0.81 deriving from 40 correlation coefficients obtained from 5 different studies whose authors provided raw data.

RESULTS

Search results and characteristics of the included studies

After removing duplicates, 3652 titles were checked (Figure 1). In the remaining 130 articles assessed for eligibility, 16 were included in the meta-analysis (Table 2). The studies were published between 1994 and 2019 in 10 different peer-reviewed journals. Four studies were conducted in the USA (16, 74, 75, 98), 3 in the UK (8, 15, 38), Australia (25, 31, 68), and South-Africa (30, 89, 95) and 1 in Canada (84), France (94) and New-Zealand (4).

Participant's characteristics

A total of 147 endurance-trained individuals are represented among the 16 included studies, with women representing only 1% of the total sample. Mean sample size was 9 ± 3 individuals per study (range 6-15). None of the included studies reported information about ethnicity. The mean age, height, body mass, body mass index, $\dot{V}O_{2\max}$ and peak power output of the participants were respectively 27 ± 4 years, 179 ± 2 cm, 73 ± 3 kg, 23 ± 1 kg/m², 62 ± 6 mL/kg/min and 389 ± 39 W.

Characteristics of the exercise protocols

Among the selected studies, 81% (n = 13) used cycling as the mode of exercise while the remaining used running (n = 3). The mean ambient temperature and relative humidity were respectively $28 \pm 6^{\circ}\text{C}$ and $48 \pm 10\%$, with a mean wind speed of 10 ± 11 km/h. The mean exercise duration and intensity were respectively 79 ± 27 min (range 51-127 min) and $65 \pm 13\%$ of $\dot{V}\text{O}_{2\text{max}}$.

Fluid consumption and exercise-induced dehydration levels

Mean rates of fluid consumption in the EUH and EID conditions were respectively 18.9 ± 7.5 and 1.0 ± 2.0 mL/min, representing 0.26 ± 0.1 and 0.01 ± 0.03 mL/kg/min. The average fluid temperature was $17 \pm 13^{\circ}\text{C}$. The mean end-of-exercise body mass loss was $0.5 \pm 0.4\%$ (range 1 to -0.3%) when EUH was attempted to be maintained, compared to $2.3 \pm 0.5\%$ (range 3.1 to 1.7%) with EID, for a mean difference of $1.7 \pm 0.7\%$ (range 2.8 to 0.9%) between conditions. Mean dehydration rates of 0.007 ± 0.005 and $0.03 \pm 0.009\%$ /min were observed during the EUH and EID conditions, respectively.

Weighted mean effect summaries

Figure 2a depicts the changes in RPE that occurred during exercise between the EUH and EID conditions across levels of body mass losses of 0.5, 1, 1.5, 2, 2.5 and 3%, and for absolute values of RPE which fluctuated from ~ 12 (light) to 16.5 (hard) points. Figure 2b pinpoints the weighted mean difference in RPE between the EUH and EID conditions across each of these levels of body mass losses. Results of the forest plot illustrate that, compared with EUH, EID slowly increased RPE during exercise from 0.22 points (95% CI: -0.05-0.48) when body mass loss was trivial (0.5%) to 0.60 points (95% CI: 0.29-

0.92) when body mass loss was light (1.5%), up to 0.81 points (95% CI: 0.36-1.27) when body mass loss was moderate (3%). Only at 0.5 and 1% body mass losses were the differences in RPE between the EUH and EID conditions not significant. In none of the 6 weighted mean summary effects models did the removal of each study one at a time significantly and practically impacted the outcome that body mass loss has upon RPE. For each of the EID subgroups, the practical impact of body mass loss on RPE was likely or almost certainly trivial. Distribution of point estimates around each of the 6 weighted mean effect summaries was appropriate, which indicates no publication bias. Cluster analysis indicates that heterogeneity was substantial with an I^2 of 72% and a Cochran's Q of 204.9, $p < 0.01$. At the subgroup level, substantial inconsistencies were also observed at the 0.5, 1, 1.5 and 2, but not 2.5 and 3% body mass loss levels where heterogeneity was low. When the analyses were performed without the studies that used time-trials, results were similar, with the exception that the differences in RPE between the EUH and EID condition reached 1.2 points (95% CI: 0.61-1.80) when body mass loss was moderate (3%).

Cluster analysis indicates that EID, on average, increases RPE by 0.45 point (95% CI: 0.31-0.59, Figure 2b). Using the more intuitive approach, we observed an overall effect of 0.38 points (95% CI: 0.22-0.53, $Q = 125.3$, $p < 0.01$, $I^2 = 88\%$). When studies that used time-trials were removed, the results were, again, extremely similar: 0.50 points (95% CI: 0.33-0.67, $Q = 174.8$, $p < 0.01$, $I^2 = 77\%$) vs. 0.44 points (95% CI: 0.24-0.64, $Q = 114.2$, $p < 0.01$, $I^2 = 90\%$) with the more intuitive approach.

Figure 2 about here

375

376 Figure 3a illustrates the slope estimates for the regression of RPE on the % body mass
377 loss for each of the included studies. Figure 3b shows a forest plot combining the 16
378 slope estimates to derive a weighted mean summary effect. Results show that for each
379 1% body mass loss, RPE increased on average by 0.21 points (95% CI: 0.12-0.31),
380 thereby theoretically suggesting that it is not before reaching a body mass loss of ~ 5%
381 that EID may potentially affect RPE in a meaningful way. A sensitivity analysis revealed
382 that the removal of each study one at a time from the model did not significantly nor
383 practically alter the outcome of the weighted mean effect summary, with variations in the
384 slope estimate ranging from 0.13 (95% CI: 0.06-0.20) to 0.35 points (95% CI: 0.17-0.53).
385 Inconsistency among research observations was substantial with an I^2 of 75% and a
386 Cochran's Q of 58.99, $p < 0.01$. Point estimates were not equally distributed on each side
387 of the weighted mean summary effect, thereby suggesting publication bias. A trim and
388 fill analysis adjusting for missing studies at the left side of the mean changed the
389 weighted mean effect summary to 0.10 points (95% CI: 0.00-0.22). When the analyses
390 were performed without the studies that used time-trials, results showed that for each 1%
391 body mass loss, RPE increased on average by 0.38 points (95% CI: 0.17-0.59, $Q = 56.2$,
392 $p < 0.01$, $I^2 = 80\%$). Figure 3c depicts the relationship between RPE and % body mass
393 loss while including all 59 study-specific data points, which violates the assumption of
394 independence among data. Nevertheless, the weighted regression analysis provides a
395 slope estimate (0.26 points, 95% CI: 0.10-0.42) which is congruent to the one built from
396 combining all 16 slope estimates.

397

Figure 3 about here

Meta-regression analyses

Figure 4 shows the relationships between the changes in slope estimates and (a) temperature, (b) humidity level, (c) exercise duration, (d) exercise intensity, (e) aerobic capacity and (f) mean heart rate difference across the different studies. Individually, none of these variables significantly correlated to the extent of changes in RPE for each 1% in body mass loss. When all these variables were combined in a multiple meta-regression model (except heart rate), the goodness of fit reached 66%. The same picture was observed using the model derived from of all 59 study-specific data points. No significant relationships were also observed between the changes in slopes estimates and absolute humidity ($p = 0.26$) or the composite score of exercise stress ($p = 0.65$).

Figure 4 about here

DISCUSSION

Despite that exercisers have access to a large and diversified arsenal of tools to monitor exercise intensity, the ability to maintain a certain speed or power output is, ultimately, tributary to RPE (26, 35, 77). On the other hand, enjoyment of exercise is an important component of participation and adherence, and the more the exercise is perceived to be strenuous, the less likely the exercise behaviour is to be maintained (33). In a sense, therefore, RPE can be considered as the “mastermind” of exercise performance or adherence. Consequently, factors susceptible to negatively impact the sense of effort

during exercise should be given particular attention. Albeit the current results do show that EID increases RPE (response to question #1), the effect was shown to be below our identified threshold of 1 point, at least for the included studies where the greatest level of EID reached was 3% (response to questions #2 and #3), and not moderated by key confounders or associated with changes in heart rate (response to question #4 and #5). Therefore, our results highlight for the first time that EID has a spurious effect on RPE, contrarily to what is believed.

It has been suggested that RPE may act as a mediator of the effect of EID on endurance performance (24, 55). This is legitimate from a physiological perspective, as the documented impact of EID on thermoregulatory, cardiovascular and metabolic functions (24, 55) should result in a higher perceived strain and, hence, RPE. However, our results including observations from cycling and running exercises conducted at clamped and self-paced intensities and under different environmental conditions show that although the change in RPE statistically relates to EID, the magnitude of the effect is unlikely to be practically meaningful until a body mass of at least 3%. Of course, the design of the present meta-analysis precludes from inferencing about the repercussion of the EID-induced increase in RPE on endurance performance. Nevertheless, we are aware of no studies which have been able to establish a decisive relationship between RPE and endurance performance. That being said, if scientists agree upon the simplistic and imperfect model indirectly linking the EID-induced increase in RPE with the decline of endurance performance, the present findings clearly dispute this assertion.

It is proposed that EID may reduce exercise participation/adherence in recreationally active individuals because of its impact upon RPE (36, 82). Based on urinary indices,

studies have suggested that 40-50% of recreationally active individuals begin exercise in a light hypohydration state (82, 91) and lose ~ 0.6% of their body mass while drinking fluid *ad libitum* during freely chosen exercise sessions (82). Furthermore, untrained individuals have lower sweat rate (69, 70) and generally an easy access to water during exercise. Regarding women, they generally have a lower sweat rate than men and drink more (sometimes more than their sweat losses) during exercise (10, 80). Therefore, it is unlikely that those individuals will reach EID levels $\geq 3\%$ of body mass during typical physical activities and, hence, that the EID-associated increase in RPE should not be a cause for concern. Moreover, studies have reported worsened affective response when participants begin exercise in a low hypohydration state (82) or when dehydration occurs progressively during exercise (8). And it seems that the acute affective response to exercise more than the acute change in RPE relates to long-term adherence to exercise (86, 97).

Although it is agreed upon that the brain is the organ responsible for the regulation of RPE, whether it is centrally derived and largely independent of peripheral afferent signals (21, 64, 67, 90) or results from the integration and interpretation of afferent feedback from the peripheral machinery (5, 50, 78, 88) is debated (see (1, 49, 81, 83) for further details). If the first theory is favoured, then it follows that EID would likely not alter the ability of the brain to produce motor forward commands, termed efference copies or corollary discharges (92). It has been shown that acute EID and the associated hyperosmolality does not alter brain volume (96), potentially highlighting the fact that the cerebral cortex operates close to optimally under dehydrating conditions. On the other hand, interpreting the current results within the context of the second theory would imply

that EID provokes minimal homeostasis alterations, at least up to a body mass loss of 3%.

This claim is reasonable given that the EID-induced increase in heart rate (~ 4 beats/min, n = 14) and core temperature (~ 0.2°C, n = 9) (both results not shown) was marginal compared with EUH.

There was substantial heterogeneity among research findings, as illustrated in Figure 3b.

This is unremarkable given that studies used a variety of protocols within which factors known to influence RPE were present. Meta-regressions were conducted to examine the moderating effect of *a priori* selected confounders. They showed that, in isolation, neither humidity, exercise duration, exercise intensity, aerobic capacity nor ambient temperature significantly correlated to the extent of changes in RPE for each 1% of body mass loss. However, while aggregated into one model, those 5 variables explained 66% of the variance observed among the changes in RPE for each 1% of body mass loss. This figure is impressive and depicts the importance of the identified confounders in the overall moderation of the relationship between EID and RPE. Hence, it cannot be excluded that the significance of several influential variables within each of the included studies masked the ability to clearly identify the independent moderating effect of some or all of the confounders.

There was a trend for the change in heart rate to be associated with the change in RPE for each 1% of body mass loss. Such an observation was to be expected because EID is known to exacerbate heart rate (3) and the latter has been reported to be closely related to RPE (50). Indeed, the 6-20 Borg scale was initially developed in healthy individuals to correlate approximately with exercise heart rate. Roughly, our model indicates that for each increase in heart rate of 1 beat/min there should be an increase in RPE of 0.1 points

for each 1% of body mass loss. Providing that the mean change in heart rate during exercise was < 10 beats/min between EUH and EID, our observation of a lack of a meaningful effect of EID on RPE makes sense. Nevertheless, it is important to bear in mind that the relationship between heart rate and RPE is only correlational in nature, not causal (50). Indeed, research has shown that it is possible to dissociate the change in heart rate from the change in RPE (e.g., using pharmacological agents) (27, 76). Therefore, our observation of a close relationship between the changes in heart rate and RPE for a given body mass loss should not be taken as a possibility that heart rate could act as a mediator of the relationship between EID and RPE.

Results of this meta-analysis must be interpreted with the following considerations or limitations in mind. The literature search was limited to English and French citations; studies published in different languages may have been missed. Similarly, in the literature of concern, RPE is almost exclusively studied as a secondary outcome. This complicates study identification which may have led us to miss key studies. Validity of RPE measurement depends upon the proper instructions provided to participants (49); no studies reported on whether they dispensed such instructions. Little information is available regarding what represents a meaningful change in RPE; therefore, having used a different threshold may have modified our conclusions. While they would have provided insight into the possible mechanisms linking EID to RPE, data such as thirst sensation, changes in plasma osmolality and volume were not considered as they were reported by too few included studies. Finally, the present results apply to adults, primarily males, up to an EID level of 3% body mass and for exercise up to ~ 2 h in duration in thermoneutral to warm environments.

In conclusion, while from a statistical point of view, EID > 1% of body mass increases RPE, the present results suggest that its effect is unlikely to be practically meaningful under running or cycling exercise conditions until a body mass loss of at least 3% is reached.

PERSPECTIVES

Perceived exertion can be considered as the “mastermind” of exercise performance or adherence. Exercise-induced dehydration is generally thought to increase RPE. The greater RPE associated with EID may contribute to reducing (1) exercise performance in athletes and (2) exercise participation/adherence in recreationally active individuals. Findings of the present meta-analysis suggest that from a statistical point of view, EID > 1% of body mass increases RPE. However, the effect of EID on RPE is unlikely to be practically meaningful under running or cycling exercise conditions, even at 3% of body mass loss. Thus, our results suggest that concerns about the impact of EID upon RPE and, thus, by extension, the effect of the latter on endurance performance or exercise participation/adherence seem not warranted, at least not until a body mass loss of 3%.

ACKNOWLEDGMENTS

The authors wish to thank the researchers who shared experimental data and provided further information.

No funding was received for the conduct of the work or preparation of the manuscript.

TAD is financially supported by the Fonds de Recherche du Québec - Santé (FRQS).

The results of the present study do not constitute endorsement of the product by the authors or the NSCA. The authors have no conflicts of interest to declare.

TAD designed the research, performed the data extraction, performed the statistical analyses, designed the tables and the figures, interpreted data, drafted and revised the manuscript. TP performed the data extraction, interpreted data, drafted and revised the manuscript. EDBG designed the research, performed the data extraction, performed the statistical analyses, designed the tables and figures, interpreted data, drafted and revised the manuscript. All authors have read and approved the final version of the manuscript.

REFERENCES

1. Abbiss CR, Peiffer JJ, Meeusen R, et al. Role of ratings of perceived exertion during self-paced exercise: what are we actually measuring? *Sports medicine* 45: 1235-1243, 2015.
2. Adams EL, Casa DJ, Huggins RA, et al. Heat Exposure and Hypohydration Exacerbate Physiological Strain During Load Carrying. *J Strength Cond Res* 33: 727-735, 2019.
3. Adams WM, Ferraro EM, Huggins RA, et al. Influence of body mass loss on changes in heart rate during exercise in the heat: a systematic review. *The Journal of Strength & Conditioning Research* 28: 2380-2389, 2014.
4. Ali A, Moss C, Yoo MJY, et al. Effect of mouth rinsing and ingestion of carbohydrate solutions on mood and perceptual responses during exercise. *J Int Soc Sports Nutr* 14: 4, 2017.
5. Amann M, Venturelli M, Ives SJ, et al. Peripheral fatigue limits endurance exercise via a sensory feedback-mediated reduction in spinal motoneuronal output. *Journal of applied physiology* 115: 355-364, 2013.
6. Armstrong LE, Ganio MS, Casa DJ, et al. Mild Dehydration Affects Mood in Healthy Young Women. *Journal of Nutrition* 142: 382-388, 2012.
7. Arney BE, Glover R, Fusco A, et al. Comparison of rating of perceived exertion scales during incremental and interval exercise. *Kinesiology* 51: 150-157, 2019.
8. Backhouse SH, Biddle SJH and Williams C. The influence of water ingestion during prolonged exercise on affect. *Appetite* 48: 193-198, 2007.
9. Backhouse SH, Bishop NC, Biddle SJ, et al. Effect of carbohydrate and prolonged exercise on affect and perceived exertion. *Medicine and science in sports and exercise* 37: 1768, 2005.

- 569 10. Baker LB, Munce TA and Kenney WL. Sex differences in voluntary fluid intake
570 by older adults during exercise. *Medicine & Science in Sports & Exercise* 37:
571 789-796, 2005.
- 572 11. Baker LB, Ungaro CT, Sopeña BC, et al. Body map of regional vs. whole body
573 sweating rate and sweat electrolyte concentrations in men and women during
574 moderate exercise-heat stress. *Journal of Applied Physiology* 124: 1304-1318,
575 2018.
- 576 12. Bardis CN, Kavouras SA, Adams J, et al. Prescribed drinking leads to better
577 cycling performance than ad libitum drinking. *Medicine & Science in Sports &
578 Exercise* 49: 1244-1251, 2017.
- 579 13. Barnes KA, Anderson ML, Stofan JR, et al. Normative data for sweating rate,
580 sweat sodium concentration, and sweat sodium loss in athletes: An update and
581 analysis by sport. *Journal of Sports Sciences* 37: 2356-2366, 2019.
- 582 14. Barr SI, Costill DL and Fink WJ. Fluid replacement during prolonged exercise:
583 effects of water, saline, or no fluid. *Med Sci Sports Exerc* 23: 811-817, 1991.
- 584 15. Barwood MJ, Goodall S and Bateman J. The effect of hot and cold drinks on
585 thermoregulation, perception, and performance: the role of the gut in
586 thermoreception. *Eur J Appl Physiol* 118: 2643-2654, 2018.
- 587 16. Below PR, Mora-Rodriguez R, Gonzalez-Alonso J, et al. Fluid and carbohydrate
588 ingestion independently improve performance during 1 h of intense exercise. / L '
589 ingestion d ' hydrate de carbone et de boisson augmente independamment la
590 performance pendant 1h d'exercice physique intense. *Medicine & Science in
591 Sports & Exercise* 27: 200-210, 1995.
- 592 17. Berkulo MA, Bol S, Levels K, et al. Ad-libitum drinking and performance during
593 a 40-km cycling time trial in the heat. *Eur J Sport Sci* 16: 213-220, 2016.
- 594 18. Borenstein M, Hedges LV, Higgins JP, et al. Introduction to meta-analysis.
595 West Sussex, England: John Wiley & Sons Ltd, 2009.
- 596 19. Borg G. Perceived exertion as an indicator of somatic stress. *Scandinavian
597 journal of rehabilitation medicine*, 1970.
- 598 20. Borg GA. Psychophysical bases of perceived exertion. *Medicine & science in
599 sports & exercise*, 1982.
- 600 21. Cafarelli E. Peripheral contributions to the perception of effort. *Medicine and
601 science in sports and exercise* 14: 382-389, 1982.
- 602 22. Chapman CL, Johnson BD, Vargas NT, et al. Both hyperthermia and dehydration
603 during physical work in the heat contribute to the risk of acute kidney injury.
604 *Journal of Applied Physiology* 128: 715-728, 2020.
- 605 23. Cheuvront S and Kenefick R. Dehydration: physiology, assessment, and
606 performance effects. *Compr Physiol* 4: 257-285. 2014.
- 607 24. Cheuvront SN, Kenefick RW, Montain SJ, et al. Mechanisms of aerobic
608 performance impairment with heat stress and dehydration. *J Appl Physiol* (1985)
609 109: 1989-1995, 2010.
- 610 25. Costa RJ, Camões-Costa V, Snipe RM, et al. Impact of exercise-induced
611 hypohydration on gastrointestinal integrity, function, symptoms, and systemic
612 endotoxin and inflammatory profile. *Journal of Applied Physiology* 126: 1281-
613 1291, 2019.

- 614 26. Crewe H, Tucker R and Noakes TD. The rate of increase in rating of perceived
615 exertion predicts the duration of exercise to fatigue at a fixed power output in
616 different environmental conditions. *European journal of applied physiology* 103:
617 569, 2008.
- 618 27. Davies CT and Sargeant AJ. The effects of atropine and practolol on the
619 perception of exertion during treadmill exercise. *Ergonomics* 22: 1141-1146,
620 1979.
- 621 28. Dion T, Savoie FA, Asselin A, et al. Half-marathon running performance is not
622 improved by a rate of fluid intake above that dictated by thirst sensation in trained
623 distance runners. *European journal of applied physiology* 113: 3011-3020, 2013.
- 624 29. Doherty M and Smith P. Effects of caffeine ingestion on rating of perceived
625 exertion during and after exercise: a meta-analysis. *Scandinavian journal of*
626 *medicine & science in sports* 15: 69-78, 2005.
- 627 30. Dugas J, Oosthuizen U, Tucker R, et al. Rates of fluid ingestion alter pacing but
628 not thermoregulatory responses during prolonged exercise in hot and humid
629 conditions with appropriate convective cooling. *European journal of applied*
630 *physiology* 105: 69, 2009.
- 631 31. Ebert TR, Martin DT, Bullock N, et al. Influence of hydration status on
632 thermoregulation and cycling hill climbing. *Medicine & Science in Sports &*
633 *Exercise* 39: 323-329, 2007.
- 634 32. Ekkekakis P and Lind E. Exercise does not feel the same when you are
635 overweight: the impact of self-selected and imposed intensity on affect and
636 exertion. *International journal of obesity* 30: 652-660, 2006.
- 637 33. Emad M, Neumann DL and Abel L. Attentional focus strategies used by regular
638 exercisers and their relationship with perceived exertion, enjoyment, and
639 satisfaction. *2017* 12: 13, 2017.
- 640 34. Erkmen N, Taskin H, Kaplan T, et al. Balance performance and recovery after
641 exercise with water intake, sport drink intake and no fluid. *Journal of Exercise*
642 *Science & Fitness* 8: 105-112, 2010.
- 643 35. Eston R, Faulkner J, St Clair Gibson A, et al. The effect of antecedent fatiguing
644 activity on the relationship between perceived exertion and physiological activity
645 during a constant load exercise task. *Psychophysiology* 44: 779-786, 2007.
- 646 36. Evans G, Maughan R and Shirreffs S. Effects of an Active Lifestyle on Water
647 Balance and Water Requirements, in: *Lifestyle Medicine*. MR James, ed., 2019,
648 pp 135-143.
- 649 37. Fallowfield JL, Williams C, Booth J, et al. Effect of water ingestion on endurance
650 capacity during prolonged running. *Journal of sports sciences* 14: 497-502, 1996.
- 651 38. Funnell MP, Mears SA, Bergin-Taylor K, et al. Blinded and unblinded
652 hypohydration similarly impair cycling time trial performance in the heat in
653 trained cyclists. *J Appl Physiol (1985)* 126: 870-879, 2019.
- 654 39. Ganio MS, Armstrong LE, Casa DJ, et al. Mild dehydration impairs cognitive
655 performance and mood of men. *British Journal of Nutrition* 106: 1535-1543,
656 2011.
- 657 40. Ganio MS, Wingo JE, Carroll CE, et al. Fluid ingestion attenuates the decline in
658 VO₂peak associated with cardiovascular drift. *Med Sci Sports Exerc* 38: 901-909,
659 2006.

- 660 41. Garcin M, Wolff M and Bejma T. Reliability of rating scales of perceived exertion
661 and heart rate during progressive and maximal constant load exercises till
662 exhaustion in physical education students. *International journal of sports*
663 *medicine* 24: 285-290, 2003.
- 664 42. Gava Pompermayer M, Rodrigues R, Manfredini Baroni B, et al. Rehydration
665 during exercise in the heat reduces physiological strain index in healthy adults. /
666 Reidratação durante exercício no calor reduz o índice de esforço isiológico em
667 adultos saudáveis. *Brazilian Journal of Kineanthropometry & Human*
668 *Performance* 16: 629-637, 2014.
- 669 43. Gonzalez-Alonso J, Mora-Rodriguez R, Below P, et al. Dehydration reduces
670 cardiac output and increases systemic and cutaneous vascular resistance during
671 exercise. *Journal of Applied Physiology* 79: 1487-1496, 1995.
- 672 44. Goodman SP and Marino FE. Thirst perception exacerbates objective mental
673 fatigue. *Neuropsychologia* 150: 107686, 2021.
- 674 45. Goodman SP, Moreland AT and Marino FE. The effect of active hypohydration on
675 cognitive function: a systematic review and meta-analysis. *Physiology & behavior*
676 204: 297-308, 2019.
- 677 46. Goulet ED. Effect of exercise-induced dehydration on time-trial exercise
678 performance: a meta-analysis. *British journal of sports medicine* 45: 1149-1156,
679 2011.
- 680 47. Goulet ED. Effect of exercise-induced dehydration on endurance performance:
681 evaluating the impact of exercise protocols on outcomes using a meta-analytic
682 procedure. *British journal of sports medicine* 47: 679-686, 2013.
- 683 48. Goulet ED and Hoffman MD. Impact of ad libitum versus programmed drinking
684 on endurance performance: A systematic review with meta-analysis. *Sports*
685 *Medicine* 49: 221-232, 2019.
- 686 49. Halperin I and Emanuel A. Rating of perceived effort: Methodological concerns
687 and future directions. *Sports Medicine*: 1-9, 2020.
- 688 50. Hampson DB, St Clair Gibson A, Lambert MI, et al. The influence of sensory
689 cues on the perception of exertion during exercise and central regulation of
690 exercise performance. *Sports Med* 31: 935-952, 2001.
- 691 51. Hashimoto H, Ishijima T, Suzuki K, et al. The effect of the menstrual cycle and
692 water ingestion on physiological responses during prolonged exercise at moderate
693 intensity under hot conditions. *J Sports Med Phys Fitness*, 2016.
- 694 52. Higgins J, Altman D and Sterne A. Cochrane Handbook for Systematic Reviews
695 of Interventions. *Version 5*, 2011.
- 696 53. Hillman AR, Vince RV, Taylor L, et al. Exercise-induced dehydration with and
697 without environmental heat stress results in increased oxidative stress. *Applied*
698 *Physiology, Nutrition & Metabolism* 36: 698-706, 2011.
- 699 54. Ishijima T, Hashimoto H, Satou K, et al. The different effects of fluid with and
700 without carbohydrate ingestion on subjective responses of untrained men during
701 prolonged exercise in a hot environment. *J Nutr Sci Vitaminol (Tokyo)* 55: 506-
702 510, 2009.
- 703 55. James LJ, Funnell MP, James RM, et al. Does hypohydration really impair
704 endurance performance? Methodological considerations for interpreting hydration
705 research. *Sports Medicine*: 1-12, 2019.

- 706 56. James LJ, Moss J, Henry J, et al. Hypohydration impairs endurance performance:
707 a blinded study. *Physiol Rep* 5, 2017.
- 708 57. Jüni P, Witschi A, Bloch R, et al. The hazards of scoring the quality of clinical
709 trials for meta-analysis. *Jama* 282: 1054-1060, 1999.
- 710 58. Lamb KL, Eston RG and Corns D. Reliability of ratings of perceived exertion
711 during progressive treadmill exercise. *Br J Sports Med* 33: 336-339, 1999.
- 712 59. Lambert GP, Lang J, Bull A, et al. Fluid restriction during running increases GI
713 permeability. *International journal of sports medicine* 29: 194-198, 2008.
- 714 60. Larose J, Boulay P, Sigal RJ, et al. Age-related decrements in heat dissipation
715 during physical activity occur as early as the age of 40. *PLoS One* 8: e83148,
716 2013.
- 717 61. Lee M, Hammond K, Vasdev A, et al. Self-selecting fluid intake while
718 maintaining high carbohydrate availability does not impair half-marathon
719 performance. *International journal of sports medicine* 35: 1216-1222, 2014.
- 720 62. Logan-Sprenger HM, Heigenhauser GJF, Jones GL, et al. Increase in Skeletal-
721 Muscle Glycogenolysis and Perceived Exertion With Progressive Dehydration
722 During Cycling in Hydrated Men. *International Journal of Sport Nutrition &*
723 *Exercise Metabolism* 23: 220-229, 2013.
- 724 63. Logan-Sprenger HM, Heigenhauser GJF, Killian KJ, et al. Effects of dehydration
725 during cycling on skeletal muscle metabolism in females. *Medicine and science in*
726 *sports and exercise* 44: 1949-1957, 2012.
- 727 64. Marcora S. Perception of effort during exercise is independent of afferent
728 feedback from skeletal muscles, heart, and lungs. *J Appl Physiol (1985)* 106:
729 2060-2062, 2009.
- 730 65. Maughan RJ, Shirreffs SM and Leiper JB. Errors in the estimation of hydration
731 status from changes in body mass. *Journal of sports sciences* 25: 797-804, 2007.
- 732 66. Maughan RJ, Watson P and Shirreffs SM. Implications of active lifestyles and
733 environmental factors for water needs and consequences of failure to meet those
734 needs. *Nutr Rev* 73 Suppl 2: 130-140, 2015.
- 735 67. McCloskey D. Corollary discharge and motor commands and perception.
736 *Handbook of physiology*, 1981.
- 737 68. McConell GK, Stephens TJ and Canny BJ. Fluid ingestion does not influence
738 intense 1-h exercise performance in a mild environment. *Med Sci Sports Exerc*
739 31: 386-392, 1999.
- 740 69. Merry T, Ainslie P and Cotter J. Effects of aerobic fitness on
741 hypohydration-induced physiological strain and exercise impairment. *Acta*
742 *physiologica* 198: 179-190, 2010.
- 743 70. Merry TL, Ainslie PN, Walker R, et al. Fitness alters fluid regulatory but not
744 behavioural responses to hypohydrated exercise. *Physiol Behav* 95: 348-352,
745 2008.
- 746 71. Montain SJ and Coyle EF. Influence of graded dehydration on hyperthermia and
747 cardiovascular drift during exercise. *Journal of applied physiology* 73: 1340-
748 1350, 1992.
- 749 72. Mudambo KSMT, Leese GP and Rennie MJ. Dehydration in soldiers during
750 walking/running exercise in the heat and effects of fluid ingestion during and after

- exercise. *European Journal of Applied Physiology & Occupational Physiology* 76: 517-524, 1997.
73. Muhamed AMC, Yusof HA, Stannard SR, et al. The Efficacy of Ingesting Water on Thermoregulatory Responses and Running Performance in a Warm-Humid Condition. *Frontiers in physiology* 10, 2019.
74. Muñoz CX, Carney KR, Schick MK, et al. Effects of oral rehydration and external cooling on physiology, perception, and performance in hot, dry climates. *Scand J Med Sci Sports* 22: e115-124, 2012.
75. Murray SR, Michael TJ and McClellan PD. The influence of fluid replacement rate on heart rate and RPE during exercise in a hot, humid environment. *Journal of Strength & Conditioning Research (Allen Press Publishing Services Inc)* 9: 251-254, 1995.
76. Myers J, Atwood JE, Sullivan M, et al. Perceived exertion and gas exchange after calcium and beta-blockade in atrial fibrillation. *J Appl Physiol* (1985) 63: 97-104, 1987.
77. Noakes TD. Rating of perceived exertion as a predictor of the duration of exercise that remains until exhaustion. *British Journal of Sports Medicine* 42: 623-624, 2008.
78. Noble BJ. Perceived exertion. *Humankinetics, Champaign, IL*: 115-117, 1996.
79. Nuccio RP, Barnes KA, Carter JM, et al. Fluid Balance in Team Sport Athletes and the Effect of Hypohydration on Cognitive, Technical, and Physical Performance. *Sports Med* 47: 1951-1982, 2017.
80. O'Neal E, Poulos S and Bishop P. Hydration profile and influence of beverage contents on fluid intake by women during outdoor recreational walking. *European journal of applied physiology* 112: 3971-3982, 2012.
81. Pageaux B. Perception of effort in exercise science: definition, measurement and perspectives. *European Journal of Sport Science* 16: 885-894, 2016.
82. Peacock OJ, Stokes K and Thompson D. Initial hydration status, fluid balance, and psychological affect during recreational exercise in adults. *Journal of sports sciences* 29: 897-904, 2011.
83. Pereira G, Souza DMd, Reichert FF, et al. Evolution of perceived exertion concepts and mechanisms: a literature review. *Revista Brasileira de Cineantropometria & Desempenho Humano* 16: 579-587, 2014.
84. Perreault-Briere M, Beliveau J, Jeker D, et al. Effect of Thirst-Driven Fluid Intake on 1 H Cycling Time-Trial Performance in Trained Endurance Athletes. *Sports (Basel)* 7, 2019.
85. Peters JL and Mengersen KL. Meta-analysis of repeated measures study designs. *J Eval Clin Pract* 14: 941-950, 2008.
86. Rhodes RE and Kates A. Can the affective response to exercise predict future motives and physical activity behavior? A systematic review of published evidence. *Annals of Behavioral medicine* 49: 715-731, 2015.
87. Riebe D, Ehrman JK, Liguori G, et al. *ACSM's guidelines for exercise testing and prescription*. Wolters Kluwer, 2018.
88. Robertson RJ and Noble BJ. Perception of physical exertion: Methods, mediators, and applications. *Exercise and sport sciences reviews* 25: 407-452, 1997.

89. Robinson TA, Hawley JA, Palmer GS, et al. Water ingestion does not improve 1-h cycling performance in moderate ambient temperatures. *Eur J Appl Physiol Occup Physiol* 71: 153-160, 1995.
90. Smirmaul Bde P. Sense of effort and other unpleasant sensations during exercise: clarifying concepts and mechanisms. *Br J Sports Med* 46: 308-311, 2012.
91. Stover EA, Petrie HJ, Passe D, et al. Urine specific gravity in exercisers prior to physical training. *Applied Physiology, Nutrition & Metabolism* 31: 320-327, 2006.
92. Straka H, Simmers J and Chagnaud BP. A New Perspective on Predictive Motor Signaling. *Curr Biol* 28: R232-r243, 2018.
93. Thiel C, Pfeifer K and Sudeck G. Pacing and perceived exertion in endurance performance in exercise therapy and health sports. *German Journal of Exercise and Sport Research* 48: 136-144, 2018.
94. Vallier JM, Grego F, Basset F, et al. Effect of fluid ingestion on neuromuscular function during prolonged cycling exercise. *Br J Sports Med* 39: e17, 2005.
95. Walsh RM, Noakes TD, Hawley JA, et al. Impaired high-intensity cycling performance time at low levels of dehydration. *Int J Sports Med* 15: 392-398, 1994.
96. Watson P, Head K, Pitiot A, et al. Effect of exercise and heat-induced hypohydration on brain volume. *Med Sci Sports Exerc* 42: 2197-2204, 2010.
97. Williams DM, Dunsiger S, Ciccolo JT, et al. Acute affective response to a moderate-intensity exercise stimulus predicts physical activity participation 6 and 12 months later. *Psychology of sport and exercise* 9: 231-245, 2008.
98. Wingo J, Lafrenz A, Ganio M, et al. Cardiovascular drift is related to reduced maximal oxygen uptake during heat stress. *Medicine & Science in Sports & Exercise* 37: 248-255, 2005.
99. Wittbrodt MT, Millard-Stafford M, Sherman RA, et al. Fluid Replacement Attenuates Physiological Strain Resulting From Mild Hypohydration Without Impacting Cognitive Performance. *Int J Sport Nutr Exerc Metab* 25: 439-447, 2015.

834

835

836

837 **Tables**

838

Table 1. Classification of percent body mass losses.

Classification		
From	to	corresponds to
0.26	0.75%	0.5%
0.76	1.25%	1.0%
1.26	1.75%	1.5%
1.76	2.25%	2.0%
2.26	2.75%	2.5%
2.76	3.25%	3.0%

839

840

841

842

843 **Table 2.** Summary of characteristics of included studies.

References	Participants: n (women), age (years), $\dot{V}O_{2\max}$ (mL/kg/min)	Protocol: total duration (min), exercise mode, temperature (°C), relative humidity (%), wind speed (km/h), fluid temperature (°C)			Fluid intake (mL/kg/min)	Same time of the day, familiarisation, same diet before	Body mass loss (%) ^{\$} , dehydration rate (% body mass loss/min) ^{\$}	RPE measurement
Studies that evaluated perceived exertion during fixed intensity exercise								
Backhouse et al. (2007) (8)	15 (0) endurance-trained, 21, 65	90, running at 70% $\dot{V}O_{2\max}$, 20, 47, 0, 10	EUH: 0.14 EID: 0.0	Yes, no, yes	At the end of 90 min: EUH: 1.4, 0.016 EID: 2.7, 0.030	Borg 6-20 scale, reported every 20 min. No differences.		
		Only 60 min included in the						

		analysis because				
		body mass loss >1%			At 60 min [#] :	
		at 80 min in EUH [#] .			EUH: 0.9	
					DEH: 1.8	
Barwood et al. (2018) (15)	10 (0) non-heat acclimatised trained cyclists, 25, 60*	60+5, cycling at 55% P _{max} (59% $\dot{V}O_{2max}$) followed by 80% P _{max} (90% $\dot{V}O_{2max}$) time to exhaustion, 34, 34, 10.1, 27	EUH: 0.20 EID: 0.0	Yes, no, yes	At the end of the performance: EUH: 0.9, 0.014 EID: 2.1, 0.033	Borg 6-20 scale, reported every 15 min. No differences. Raw data provided by authors.
Below et al. (1995) (16)	8 (0) endurance trained, 23, 63	50+11, cycling at 80% of $\dot{V}O_{2max}$	EUH: 0.31 EID: 0.05	Yes, yes, yes	At the end of the	Borg 6-20 scale, reported every 10

		followed by a			performance:	min.
		performance test at			EUH: 0.5,	
		79% $\dot{V}O_{2max}$, 31, 54,			0.008	RPE only
		12.6, 38			EID: 1.9, 0.031	significantly higher in
		Same CHO intake				EID at 40 and 50 min.
Costa et al.	11 (0) competitive	120, running at 70%	EUH: 0.18	Yes, no, yes	EUH: 0.6,	Borg 6-20 scale,
(2019) (25)	endurance runners,	$\dot{V}O_{2max}$, 25, 46, 10.6,	EID: 0.0		0.005	reported every 30
	34, 59	24.7			EID: 3.1, 0.026	min.
						RPE only
						significantly higher in
						EID at 120 min.

Ebert et al. (2007) (31)	8 (0) well-trained cyclists, 28, 66	120+17, cycling at 53% P_{\max} (55% $\dot{V}O_{2\max}$) followed by cycling hill-climb time-to-exhaustion trial at 88% P_{\max} (85% $\dot{V}O_{2\max}$), 29, 37, 15, - Same CHO intake Only 120 min included in the analysis because body mass loss >1% at the end of the	EUH: 0.28 EID: 0.05	Yes, yes, yes	At the end of the 120 min: EUH: -0.3, - 0.0025 EID: 2.5, 0.021	Borg 6-20 scale, reported every 15 min No differences. Raw data provided by authors.
-----------------------------	--	--	------------------------	---------------	--	--

performance in EUH [#] .						
Funnell et al. (2019) (38) Only unblinded group	7 (0) trained, non- heat acclimated cyclists/triathletes, 26, 64	120+15, cycling at 50% P _{max} (51% V̇O _{2max}) followed by a time-trial (77% V̇O _{2max}), 31, 48, 21.2, 37 Only 120 min included in the analysis because body mass loss >1% at the end of the	EUH: 0.23 EID: 0.02	Yes, yes, yes	At the end of the 120 min: EUH: 0.5, 0.004 EID: 3.0, 0.025	Borg 6-20 scale, reported at 60 and 120 min. RPE only significantly higher in EID at 120 min. Raw data provided by authors.

		performance in EUH [#] .				
McConnell et al. (1999) (68)	8 (0) well-trained cyclists and triathletes, 26, 64	45+15, cycling at 80% of $\dot{V}O_{2max}$ followed by an "all- out" performance at 77% $\dot{V}O_{2max}$, 21, 41, wind but speed not reported, room temperature	EUH: 0.31 EID: 0.0	Yes, yes, yes	At the end of the performance: EUH: 0.0, 0.0 EID: 1.9, 0.032	Borg 6-20 scale, reported at 10, 30, 45 and 60 min. No differences.

Muñoz et al. (2012) (74)	10 (0) healthy runners, 25, 60	90+23, running at 30% $\dot{V}O_{2max}$ followed by a 5 km time-trial (72% $\dot{V}O_{2max}$), 33, 30, 0, 7 Only 90 min included in the analysis because body mass loss >1% at the end of the performance in EUH [#] .	EUH: 0.12 EID: 0.0	Yes, yes, yes	At the end of 90 min: EUH: 0.9, 0.010 EID: 1.8, 0.020	Borg 6-20 scale, reported every 5 min. No differences. Raw data provided by authors.
-----------------------------	-----------------------------------	---	-----------------------	---------------	---	--

Murray et al. (1995) (75)	15 (0) trained, 29, 50	60, cycling at 50% $\dot{V}O_{2\max}$, 32, 70, 0, 5	EUH: 0.35 EID: 0.0	Yes, no, -	EUH: 0.1, 0.002 EID: 1.7, 0.028	Borg 6-20 scale, reported every 5 min. RPE significantly higher in EID than EUH (5 min condition) from 30 to 60 min. No difference between EID and EUH (10 min condition).
Vallier et al. (2005) (94)	8 (0) competitive trained cyclists or triathletes, 31, 63	180, cycling at 60% $\dot{V}O_{2\max}$, 20.5, 50, 9, 18.5	EUH: 0.17 EID: 0.0	Yes, no, yes	At the end of the 180 min: EUH: 2.2,	Borg 6-20 scale, reported every 20 min.

					0.012	
		Only 80 min			EID: 4.1, 0.023	No differences.
		included in the				However, the increase
		analysis because			At 80 min [#] :	in RPE appears earlier
		body mass loss >1%			EUH: 1.0	in EID (100 min)
		at 80 min in EUH [#] .			DEH: 1.8	compared to EUH (120 min).
Walsh et al. (1994) (95)	6 (0) endurance trained competitive cyclists or triathletes, 26, 61	60+8, cycling at 70% $\dot{V}O_{2max}$ followed by a time to exhaustion at 90% $\dot{V}O_{2max}$, 30, 60, 3, 5	EUH: 0.23 EID: 0.0	Yes, no, yes	At the end of the 60 min: EUH: 0.2, 0.0033 EID: 1.8, 0.03	Borg CR10 scale, reported every 10 min. RPE higher in EID at 60 min only.

Wingo et al. (2005) (98)	9 (0) trained cyclists, 25, 55	45+7, cycling at 64% $\dot{V}O_{2max}$ followed by maximal test at 78% $\dot{V}O_{2max}$, 35, 40, 0, 35	EUH: 0.47 EID: 0.0	Yes, yes, -	At the end of the performance: EUH: 0.3, 0.006 EID: 2.5, 0.049	Borg 6-20 scale, reported at 15 and 45 min. No differences. Raw data provided by authors.
Studies that evaluated perceived exertion during self-paced intensity exercise						
Ali et al. (2017) (4)	9 (0) moderately trained cyclists, 33, 55	68.5, cycling time- trial at 78% $\dot{V}O_{2max}$, 19, 48, 0, 6	EUH: 0.11 EID: 0.0	Yes, yes, yes	EUH: 0.6, 0.009 EID: 1.9, 0.028	Borg 6-20 scale, reported every 25% of exercise completed (every 17.1 min) No differences. Raw data provided by

						authors.
Dugas et al. (2009) (30)	6 (0) highly trained cyclists, 23, 77*	127, 80 km cycling time-trial at 47% P_{\max} (50% $\dot{V}O_{2\max}$), 33, 50, 37.5, - Same CHO intake	EUH: 0.32 EID: 0.10	Yes, yes, yes	EUH: 0.5, 0.004 EID: 3.0, 0.024	Borg CR10 scale, reported at 40 and 80 km (at 63 and 127 min). No differences.
Perreault- Brière et al. (2019) (84)	9 (2) heat- or partially heat- acclimatized, healthy, endurance-trained competitive cyclists and	60, cycling time- trial at 80% $\dot{V}O_{2\max}$, 30, 49, 27.5, 5	EUH: 0.37 EID: 0.0	Yes, yes, yes	EUH: 0.6, 0.010 EID: 2.9, 0.048	Borg 6-20 scale, reported every 5 min. No differences. Raw data provided by authors.

triathletes, 30, 59

Women tested
during the
follicular phase.

Robinson et	8 (0) endurance-	60, cycling time-	EUH: 0.32	Yes, yes, yes	EUH: 0.9,	Borg 6-20 scale,
al. (1995)	trained cyclists,	trial at 79% $\dot{V}O_{2max}$,	EID: 0.0		0.016	reported every 10
(89)	25, 66	20, 60, 10.8, 5			EID: 2.3, 0.038	min.

No differences.

844 References are listed in alphabetical order for both sections. EID: exercise-induced dehydration (experimental condition), EUH:
845 euhydrated control condition, RPE: perceived exertion, -: missing data, *: estimated $\dot{V}O_{2max}$ using Hawley & Noakes (1992) equations.
846 Value of 0 was attributed when wind speed was not provided. #: indicates the % of body mass loss taken for analysis for those studies

847 in which body mass loss surpassed 1% in the EUH condition. \$: any positive value represents a body mass loss while negative values
848 indicate body mass gain.
849

Figure legends

Figure 1.

Flowchart showing the selection process used for the inclusion and exclusion of studies.

Figure 2.

(a) Changes in perceived exertion (means \pm SD) occurring during exercise between the control (EUH) and exercise-induced dehydration (EID) condition across levels of exercise-induced dehydration of 0.5, 1, 1.5, 2, 2.5 and 3% body mass. AU: arbitrary units. EID: exercise-induced dehydration. EUH: euhydration. (b) Forest plot showing the mean differences in perceived exertion across different levels of exercise-induced dehydration. Filled diamond symbol represents the weighted mean change in perceived exertion between conditions. Size of squares is proportional to the weight of each study. CI: confidence interval.

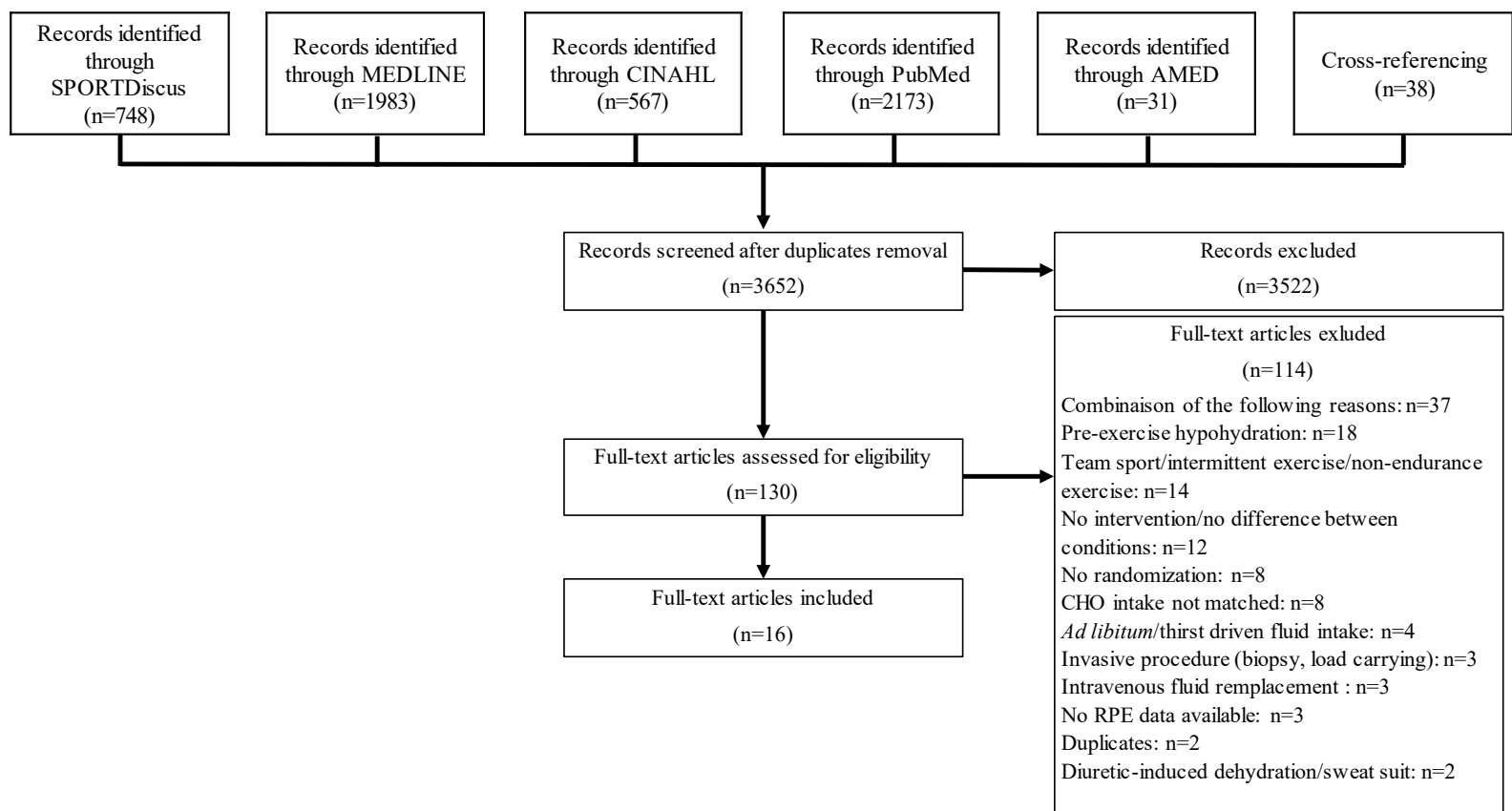
Figure 3

(a) Slope estimates for the regression of perceived exertion on the % body mass loss for each of the included studies; (b) Forest plot combining all slope estimates to derive a weighted mean summary effect; (c) Relationship between perceived exertion and % body mass loss while including all study-specific data points.

Figure 4

Relationships between the changes in slope estimates and (a) temperature, (b) humidity level, (c) exercise duration, (d) exercise intensity, (e) aerobic capacity ($\dot{V}O_{2max}$) and mean (f) heart rate difference across the different studies included in the meta-analysis.

Otherwise stated n = 16.



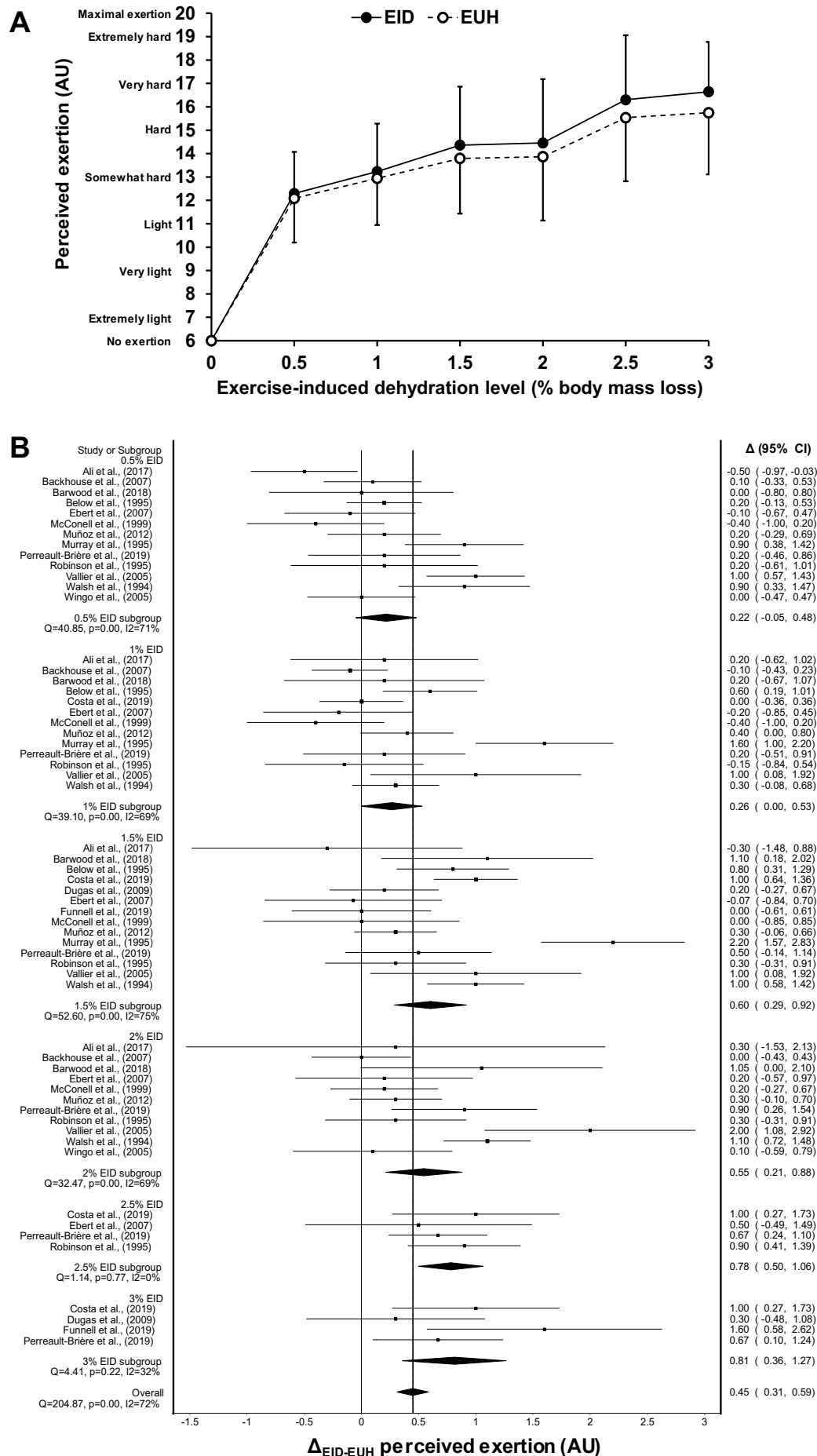
Impact of Exercise-induced Dehydration on Perceived Exertion During Endurance Exercise: A Systematic Review with Meta-analysis

Keywords and strategy used for the research of potential studies

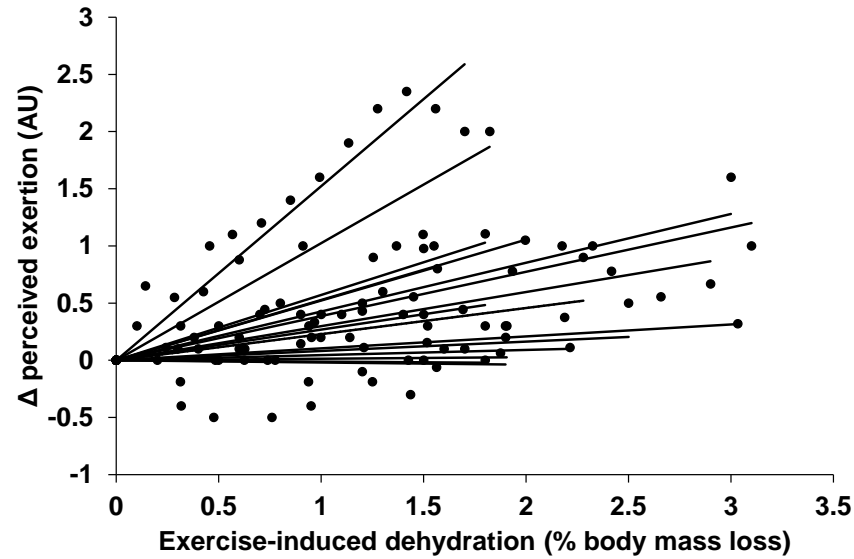
Hydration (S1)	Hydrat* or Dehydrat* or Hypohydrat* or Euhydrat* or fluid or drink*	Title or abstract
Perceived exertion (S2)	“Perceived exertion” or “Perceived effort” or “Rate of perceived exertion” or “Rating of perceived exertion” or “RPE” or percept* or exertion or effort	Title or abstract
Exercise (S3)	Exercise* or run* or cycl* or endurance or performance	Title or abstract
Overall research	S1 AND S2 AND S3	

Note: Research has been done on EBSCO with 4 different databases: SPORTDiscus, CINAHL, AMED and MEDLINE. The same research was also done using PubMed. Last search: December 17, 2020

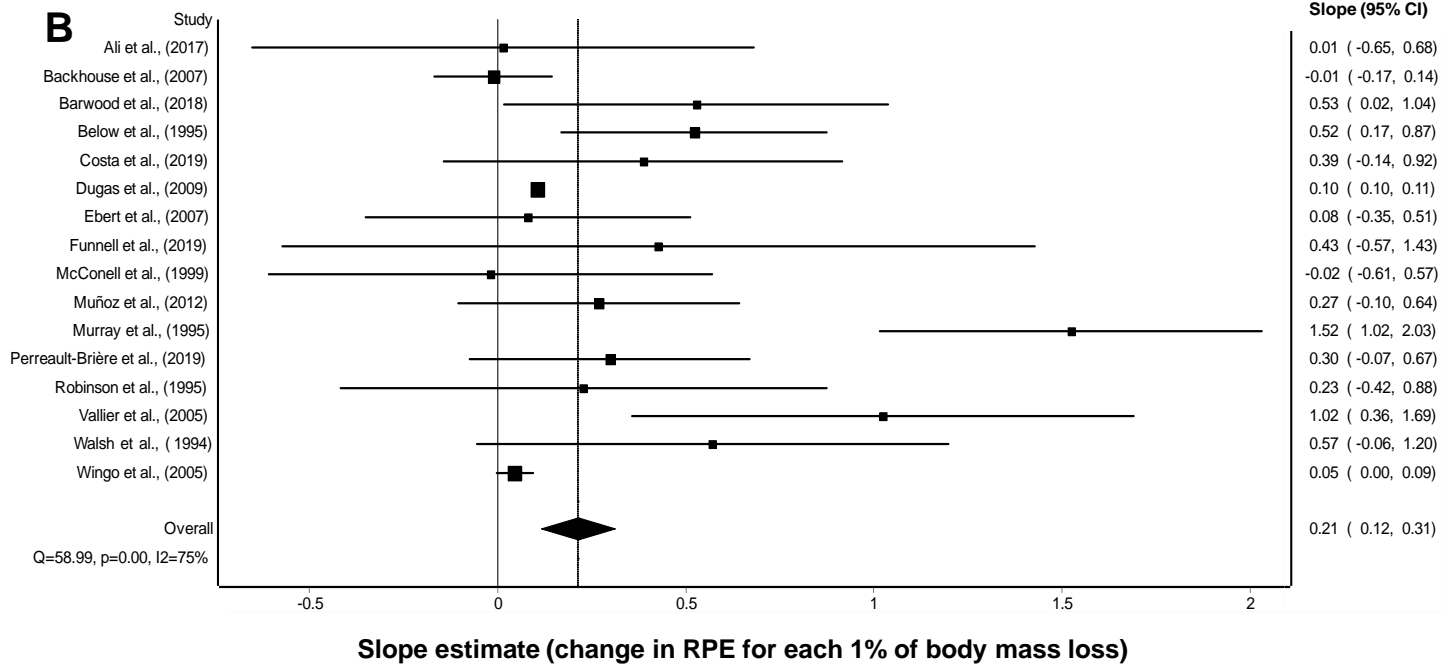
It is made available under a CC-BY-ND 4.0 International license.



A



B



C

