

Genome-wide association study of autopsy-confirmed Multiple System Atrophy identifies common variants near *ZIC1* and *ZIC4*

Franziska Hopfner*¹, Anja K. Tietz*², Viktoria Ruf*³, Owen A. Ross^{4,5}, Shunsuke Koga⁶, Dennis Dickson⁶, Adriano Aguzzi⁷, Johannes Attems⁸, Thomas Beach⁹, Allison Beller¹⁰, Vivianna van Deerlin¹¹, Paula Desplats^{12,13}, Günther Deuschl², Charles Duyckaerts^{14,15}, David Ellinghaus¹⁶, Valentin Evsyukov¹, Margaret Ellen Flanagan^{17,18}, Andre Franke¹⁶, Matthew P. Frosch^{19,20}, Marla Gearing²¹, Ellen Gelpi^{22,23}, Bernardino Ghetti²⁴, Jonathan D. Glass²⁵, Lea T. Grinberg²⁶⁻²⁸, Glenda Halliday²⁹, Ingo Helbig³⁰⁻³⁴, Matthias Höllerhage¹, Inge Huitinga³⁵, David John Irwin³⁶, Dirk C. Keene³⁷, Gabor G. Kovacs^{22,38,39}, Edward B. Lee⁴⁰, Johannes Levin⁴¹⁻⁴³, Maria J. Martí⁴⁴⁻⁴⁷, Ian Mackenzie⁴⁸, Ian McKeith⁴⁹, Catriona Mclean⁵⁰, Brit Mollenhauer^{51,52}, Manuela Neumann^{53,54}, Kathy L. Newell⁵⁵, Alex Pantelyat⁵⁶, Manuela Pendziwiat^{57,58}, Annette Peters⁵⁹, Laura Molina Porcel⁶⁰, Alberto Rabano⁶¹, Radoslav Matěj^{62,63}, Alex Rajput⁶⁴, Ali Rajput⁶⁵, Regina Reimann⁷, William K. Scott⁶⁶, William Seeley^{26,27}, Sashika Selvackadunco⁶⁷, Tanya Simuni⁶⁸, Christine Stadelmann⁶⁹, Per Svenningsson⁷⁰, Alan Thomas⁸, Claudia Trenkwalder^{51,71}, Claire Troakes⁶⁷, John Q. Trojanowski⁷², Charles L. White⁷³, Tao Xie⁷⁴, Teresa Ximelis⁷⁵, Justo Yebenes⁷⁶, the Alzheimer's Disease Genetics Consortium⁷⁷, Ulrich Müller⁷⁸, Gerard D. Schellenberg¹¹, Jochen Herms*^{3,41,42}, Gregor Kuhlenbäumer*², Günter Höglinger*^{1,41,79}

¹ Department of Neurology Hannover Medical School Hanover Germany.

² Department of Neurology, Kiel University, Kiel, Germany.

³ Center for Neuropathology and Prion Research, Ludwig-Maximilians-Universität, 81377 Munich, Germany.

⁴ Department of Neuroscience, Mayo Clinic, Jacksonville, Florida, USA.

⁵ Department of Clinical Genomics, Mayo Clinic, Jacksonville, Florida, USA.

⁶ Department of Neuroscience (Neuropathology), Mayo Clinic, Jacksonville, Florida, USA.

⁷ Institute of Neuropathology, University Hospital Zürich, Zürich, CH-8091, Switzerland.

⁸ Translational and Clinical Research Institute, Newcastle University, Newcastle upon Tyne, NE4 5PL UK

⁹ Banner Sun Health Research Institute, Sun City, Arizona, USA.

¹⁰ Department of Pathology, University of Washington, Seattle, WA, USA.

¹¹ Department of Pathology and Laboratory Medicine, Penn Neurodegeneration Genomics Center, Perelman School of Medicine, University of Pennsylvania, Philadelphia, PA, USA.

¹² Department of Neurosciences, School of Medicine University of California San Diego La Jolla California USA.

¹³ Department of Pathology, School of Medicine University of California San Diego La Jolla California USA.

¹⁴ Institut du Cerveau, UMR 7225, Sorbonne Université, Paris Brain Institute-ICM, CNRS, AP-HP, Hôpital de la Pitié Salpêtrière, Inserm U1127 DMU Neurosciences, Paris, France.

¹⁵ Brainbank NeuroCEB Neuropathology Network: Plateforme de Ressources Biologiques, Hôpital de La Pitié-Salpêtrière, Bâtiment Roger Baillet, 47-83 boulevard de l'Hôpital, 75651, Paris Cedex 13, France.

¹⁶ Institute of Clinical Molecular Biology, Christian-Albrechts-University of Kiel & University Hospital Schleswig-Holstein, Kiel, Germany.

¹⁷ Mesulam Center for Cognitive Neurology and Alzheimer's Disease Northwestern University Feinberg School of Medicine, Chicago, IL 60611, USA.

¹⁸ Department of Pathology, Northwestern University, Chicago, IL 60611, USA.

¹⁹ Department of Neurology, Massachusetts General Hospitalgrid.32224.35, Boston, Massachusetts, USA and Harvard Medical School, Boston, Massachusetts, USA.

²⁰ Department of Pathology, Massachusetts General Hospitalgrid.32224.35, Boston, Massachusetts, USA.

- ²¹ Departments of Pathology and Laboratory Medicine and Neurology, Emory University School of Medicine, Atlanta, Georgia, USA.
- ²² Division of Neuropathology and Neurochemistry, Department of Neurology, Medical University of Vienna, 1090 Vienna, Austria.
- ²³ Medical University of Vienna, Austrian Reference Center for Human Prion Diseases (OERPE), 1090 Vienna, Austria.
- ²⁴ Department of Pathology and Laboratory Medicine, Indiana University School of Medicine, Indianapolis, Indiana 46202, United States.
- ²⁵ Department of Neurology, Emory University, Atlanta, GA, USA.
- ²⁶ Memory and Aging Center, Weill Institute for Neurosciences, Dept. of Neurology, University of California San Francisco, CA, USA; Global Health Institute, University of California, San Francisco, CA, USA.
- ²⁷ Department of Pathology, University of California, San Francisco, CA, USA;
- ²⁸ Department of Pathology, University of Sao Paulo Medical School, Sao Paulo, Brazil.
- ²⁹ The University of Sydney, School of Medical Sciences, and Brain & Mind Centre, Sydney, NSW, Australia.
- ³⁰ Department of Biomedical Informatics, Columbia University Irving Medical Center, New York, NY 10032, USA.
- ³¹ Department of Biomedical and Health Informatics, Children's Hospital of Philadelphia, Philadelphia, PA 19104, USA.
- ³² Division of Neurology, Children's Hospital of Philadelphia, Philadelphia, PA 19104, USA.
- ³³ The Epilepsy NeuroGenetics Initiative (ENGIN), Children's Hospital of Philadelphia, Philadelphia, PA 19104, USA.
- ³⁴ Department of Neurology, Perelman School of Medicine, University of Pennsylvania, Philadelphia, PA 19104, USA.
- ³⁵ Department of Neuroimmunology, Netherlands Institute for Neuroscience, Amsterdam, The Netherlands; Brain Plasticity Group, Swammerdam Institute for Life Sciences, University of Amsterdam, Amsterdam, The Netherlands.
- ³⁶ Department of Neurology, University of Pennsylvania Perelman School of Medicine, Philadelphia, PA, USA.
- ³⁷ Department of Pathology, University of Washington, Seattle, WA, 98195, USA.
- ³⁸ Department of Laboratory Medicine and Pathobiology and Tanz Centre for Research in Neurodegenerative Diseases, University of Toronto, Toronto, Ontario, Canada.
- ³⁹ Laboratory Medicine Program and Krembil Brain Institute, University Health Network, Toronto, Ontario, Canada
- ⁴⁰ Translational Neuropathology Research Laboratory Perelman School of Medicine Department of Pathology and Laboratory Medicine Philadelphia Pennsylvania USA.
- ⁴¹ DZNE - German Center for Neurodegenerative Diseases, Munich, Germany.
- ⁴² Munich Cluster for Systems Neurology (SyNergy), Feodor-Lynen-Strasse 17, 81377 Munich, Germany
- ⁴³ Department of Neurology, Ludwig-Maximilians-Universität München, 80539 Munich, Germany.
- ⁴⁴ Parkinson's Disease and Movement Disorders Unit, Department of Neurology, Hospital Clinic of Barcelona, Spain.
- ⁴⁵ Institut de Neurociències, Maeztu Center, University of Barcelona, Spain.
- ⁴⁶ Institut d'Investigacions Biomèdiques August Pi i Sunyer (IDIBAPS), Spain.
- ⁴⁷ Centro de Investigación Biomédica en Red sobre Enfermedades Neurodegenerativas (CIBERNED: CB06/05/0018-ISCI) Barcelona, Spain.
- ⁴⁸ Department of Pathology, University of British Columbia, Vancouver, BC, Canada and Department of Pathology, Vancouver General Hospital, Vancouver, BC, Canada.
- ⁴⁹ Translational and Clinical Research Institute, Newcastle University, Newcastle upon Tyne, UK.
- ⁵⁰ Department of Anatomical Pathology, Alfred Health, Melbourne, Victoria, Australia.
- ⁵¹ Paracelsus-Elena-Klinik, Kassel, Germany.

- ⁵² Department of Neurology, University Medical Center Goettingen, Goettingen, Germany.
- ⁵³ Molecular Neuropathology of Neurodegenerative Diseases, German Center for Neurodegenerative Diseases, Tübingen, Germany.
- ⁵⁴ Department of Neuropathology, University Hospital of Tübingen, Tübingen, Germany.
- ⁵⁵ Department of Pathology and Laboratory Medicine, Indiana University School of Medicine, Indianapolis, IN, 46202, USA.
- ⁵⁶ Department of Neurology, School of Medicine, Johns Hopkins University, Baltimore, MD, United States.
- ⁵⁷ Department of Neuropediatrics, Children's Hospital, University Medical Center Schleswig-Holstein, University of Kiel, Kiel, Germany.
- ⁵⁸ Institute of Clinical Molecular Biology, Christian-Albrechts-University of Kiel, Kiel, Germany.
- ⁵⁹ Institute of Epidemiology, Helmholtz Zentrum München, German Research Center for Environmental Health, Neuherberg, Germany.
- ⁶⁰ Neurology Department, Hospital Clinic, IDIBAPS, Barcelona, Spain.
- ⁶¹ Neuropathology Department, CIEN Foundation, Alzheimer's Centre Queen Sofía Foundation, Madrid, Spain.
- ⁶² Department of Pathology, 3rd Faculty of Medicine, Charles University, University Hospital Kralovske Vinohrady, Ruská 87, 100 00, Praha 10, Prague, Czech Republic and Department of Pathology.
- ⁶³ Department of Pathology and Molecular Medicine, 3rd Faculty of Medicine, Charles University, Thomayer University Hospital, Prague, Czech Republic.
- ⁶⁴ Division of Neurology, Royal University Hospital, University of Saskatchewan, Saskatoon, SK, Canada.
- ⁶⁵ Saskatchewan Movement Disorders Program, Saskatchewan Health Authority/University of Saskatchewan, Canada
- ⁶⁶ John P. Hussman Institute for Human Genomics and Dr. John T. Macdonald Department of Human Genetics, University of Miami, Miller School of Medicine, Miami, FL.
- ⁶⁷ Basic and Clinical Neuroscience Department, Institute of Psychiatry, Psychology and Neuroscience, King's College London, Denmark Hill, SE5 8AF London U.K.
- ⁶⁸ Department of Neurology, Northwestern University Feinberg School of Medicine, Chicago, IL, United States.
- ⁶⁹ Institute for Neuropathology, University Medical Centre Göttingen, Göttingen, Germany.
- ⁷⁰ Section of Neurology, Department of Clinical Neuroscience, Karolinska Institutet, Stockholm, Sweden.
- ⁷¹ Department of Neurosurgery, University Medical Center Goettingen, Goettingen, Germany.
- ⁷² Center for Neurodegenerative Disease Research Perelman School of Medicine Department of Pathology and Laboratory Medicine Philadelphia Pennsylvania USA.
- ⁷³ Pathology, University of Texas Southwestern Medical Center, Dallas, United States.
- ⁷⁴ Department of Neurology, University of Chicago Medicine, Chicago, IL, United States.
- ⁷⁵ Alzheimer's Disease and Other Cognitive Disorders Unit, Neurology Service, Hospital Clínic, Institut d'Investigacions Biomèdiques August Pi i Sunyer (IDIBAPS), Universitat de Barcelona, Barcelona, Spain
- ⁷⁶ Neurological Tissue Bank, Biobanc-Hospital Clínic-IDIBAPS, Barcelona, Spain. Servicio de Neurología. Hospital Ramón y Cajal de Madrid. Spain.
- ⁷⁷ NIAGADS, The National Institute on Aging Genetics of Alzheimer's Disease Data Storage Site, Alzheimer's Disease Genetics Consortium (ADGC) NIA grant U01AG032984
- ⁷⁸ Institute of Human Genetics, JLU-Gießen, Schlangenzahl 14, 35392, Giessen, Germany.
- ⁷⁹ Zentrum für Systemische Neurowissenschaften, Hannover, Deutschland.

* these authors contributed equally to this work

Keywords: Multiple System Atrophy, Genome-wide association study, autopsy-confirmed, *ZIC1*, *ZIC4*

Abstract

Multiple System Atrophy is a rare neurodegenerative disease with alpha-synuclein aggregation in glial cytoplasmic inclusions and either predominant olivopontocerebellar atrophy or striatonigral degeneration, leading to dysautonomia, parkinsonism, and cerebellar ataxia. One prior genome-wide association study in mainly clinically diagnosed patients with Multiple System Atrophy failed to identify genetic variants predisposing for the disease. Since the clinical diagnosis of Multiple System Atrophy yields a high rate of misdiagnosis when compared to the neuropathological gold standard, we studied common genetic variation in only autopsy-confirmed cases (N = 731) and controls (N = 2,898).

The most strongly disease-associated markers were rs16859966 on chromosome 3 ($P = 8.6 \times 10^{-7}$, odds ratio (OR) = 1.58, [95% confidence interval (CI) = 1.32-1.89]), rs7013955 on chromosome 8 ($P = 3.7 \times 10^{-6}$, OR = 1.8 [1.40-2.31]), and rs116607983 on chromosome 4 ($P = 4.0 \times 10^{-6}$, OR = 2.93 [1.86-4.63]), all of which were supported by at least one additional genotyped and several imputed single nucleotide polymorphisms with P-values below 5×10^{-5} . The genes closest to the chromosome 3 locus are *ZIC1* and *ZIC4* encoding the zinc finger proteins of cerebellum 1 and 4 (*ZIC1* and *ZIC4*).

Since mutations of *ZIC1* and *ZIC4* and paraneoplastic autoantibodies directed against *ZIC4* are associated with severe cerebellar dysfunction, we conducted immunohistochemical analyses in brain tissue of the frontal cortex and the cerebellum from 24 Multiple System Atrophy patients. Strong immunohistochemical expression of *ZIC4* was detected in a subset of neurons of the dentate nucleus in all healthy controls and in patients with striatonigral degeneration, whereas *ZIC4* positive neurons were significantly reduced in patients with olivopontocerebellar atrophy.

These findings point to a potential *ZIC4*-mediated vulnerability of neurons in Multiple System Atrophy.

Introduction

Multiple System Atrophy (MSA) is a rapidly progressive rare neurodegenerative disease presenting with variable combinations of dysautonomia, parkinsonism and cerebellar ataxia[10]. Two forms of MSA can be clinically distinguished, characterized by either predominant parkinsonism (MSA-P) or predominant cerebellar symptoms (MSA-C)[12]. Its estimated prevalence is 3.4 to 4.9 cases per 100,000 individuals in the general population, and 7.8 cases per 100,000 in persons older than 40 years[32]. The mean survival time from disease onset is 6 to 10 years [16, 41]. Currently, only limited symptomatic treatments and no disease-modifying therapies are available[28].

The typical symptoms of MSA are caused by the progressive degeneration of neurons in different brain regions, particularly in the substantia nigra, striatum, inferior olivary nucleus, pons and cerebellum, but also other parts of the central nervous systems, emphasizing the multisystem character of MSA [12, 40]. The histological hallmarks in brains of MSA patients are glial cytoplasmic inclusions (GCIs, Papp-Lantos bodies) in oligodendrocytes containing aggregated and misfolded alpha-synuclein[14]. Neuropathologically, two subtypes can be distinguished, one with predominant olivopontocerebellar atrophy (OPCA), the other with mainly striatonigral degeneration (SND)[15, 26]. In addition, a mixed phenotype displaying features of both OPCA and SND is found in the brains of some patients[15, 26].

The pathogenesis of MSA is unclear. MSA is considered as a sporadic disease[11]. Epidemiological studies have investigated the influence of environmental factors in MSA, including exposure to farming-related factors (pesticides, solvents, mycotoxins, dust, fuels, oils, fertilizers, animals) and certain lifestyles (consumption of well water, rural living, diet and physical activity)[8, 23, 39]. Apart from a marginal effect of pesticides, no other environmental factors have been convincingly associated with an increased risk of developing MSA[8, 23, 39].

Hypothesis-driven candidate gene studies have been inconsistent with respect to variants that might be associated with MSA. Associations of MSA with the genes *COQ2*, *SNCA*, *MAPT*, and *PRNP* have been discussed[7, 20, 21, 29, 31, 33]. One prior genome-wide association study (GWAS) did not identify hits of statistical significance at a genome-wide level, despite the analysis of 918 cases and controls[30]. This GWAS had mainly included clinically diagnosed MSA cases. It needs to be stressed that clinical diagnosis is frequently not accurate in MSA. For example, a recent clinico-pathological study demonstrated a false positive diagnosis at autopsy in 38% of clinically diagnosed MSA patients[17].

In order to avoid inclusion of misdiagnosed patients in the GWAS described here, we only included autopsy-confirmed cases and appropriate ethnicity-matched controls.

Methods

Patient recruitment

Ethical approval had been obtained from all responsible ethics committees. All participants had given written consent.

Neuropathologists at each recruitment site (Supplementary material, Supplementary Table S1) based the definite neuropathological diagnosis of MSA on histopathological criteria taking into account GCIs immunoreactive for alpha-synuclein in characteristic anatomical distribution as defining feature of MSA[37]. Age, gender, disease history (including disease onset and duration) and neuropathological findings were recorded in standardized manner for all cases.

Controls were ethnically matched to cases and either derived from biobanks KORA-gen[42] or popGen[24] (Europe sites) or from North American site (Alzheimer's Disease Genetics Consortium)[19]. The Alzheimer's Disease Genetics Consortium assembled and genotyped DNA from subjects enrolled in the 29 NIA-Alzheimer's Disease Centers located across the USA. For this study, the ADGC provided a subset of mostly clinical, cognitively normal controls. Patients and controls were of North-Western European and African American ancestry.

DNA extraction

We isolated DNA from 30 mg frozen cerebellar cortex using QIAamp DNA Mini Kit (Qiagen, Venlo, Netherlands). DNA extraction was performed at German Center for Neurodegenerative Diseases (DZNE), Munich Germany. DNA was stored at -80 °C until use. DNA concentration was measured using a NanoDrop Spectrophotometer. DNA quality was determined by gel electrophoresis.

Genotyping

All samples were genotyped on Infinium Global Screening Arrays (GSA, Illumina, San Diego, USA). The cases were genotyped at the Institute of Clinical Molecular Biology, Kiel University, Germany. The samples were genotyped in one batch on array version 2.0 for cases and version 1.0 for controls. Genotypes were called using Illumina Genome studio according to the manufacturers instructions using in-house cluster-files.

Quality control and imputation

We used PLINK (v. 1.9) [1] and R (v. 3.6.3)[35] for all analyses. Only variants successfully genotyped in both the patient and the control populations were included in the subsequent analyses. Variants with multi-character allele codes, insertions, deletions, duplicated markers and all A/T and G/C variants were excluded. We excluded all samples discordant between reported and genotypic sex. Missing sex was imputed and samples with ambiguously imputed sex were discarded. After a first step of filtering out samples and variants with call rate of less than 85%, we excluded variants with an individual call rate of less than 98% in a second filtering step. Next, we removed variants with a minor allele frequency (MAF) below 0.01, significant deviation from Hardy-Weinberg equilibrium (HWE; $P < 1 \times 10^{-6}$) in controls or informative missingness ($P < 1 \times 10^{-5}$). Subsequently, we excluded individuals with a variant call rate of less than 98% or an outlying heterozygosity rate (mean \pm 3 standard deviations). We used a pruned dataset containing only markers in low linkage-disequilibrium (LD) regions (pairwise $r^2 < 0.2$) to test for duplicated individuals and cryptic relatedness ($P_{ihat} > 0.125$) using pairwise genome-wide estimates of the proportion of identity by descent. Of each detected sample pair we excluded the individual with a lower call rate. Ethnical outliers were identified by a principal

component analysis (PCA) together with the publically available 1000 Genomes data with known ethnicities.[2] Since the study population has genetically a mainly European ancestry, as ascertained by the PCA, we determined a European center and excluded samples more than 1.5 times the maximal European Euclidean distance away from this center. After a first association analysis of genotyped single nucleotide polymorphisms (SNPs) only, we inspected visually the cluster plots of all variants with a P-value below 1×10^{-5} and discarded variants without adequate cluster separation. Imputation was carried out on the quality assured dataset using the TOPMed Imputation Server, resulting in 271,284,138 available SNPs.[34] Variants were again filtered for MAF and deviation from HWE in controls with the same thresholds as before. Additionally, SNPs with an imputation quality score R^2 less than 0.7 were excluded, leaving 8,131,900 variants for analyses. As final step of the quality control procedure, we employed the R package PCAMatchR to ethnically match cases to controls with a 1:4 ratio to overcome possible difficulties with population stratification, leading to 3240 individuals for the analyses.[6]

Association analysis

We used logistic regression to test the additive genetic model of each marker for association with disease status. Following scree plot analysis, we incorporated the first two dimensions of the PCA and sex as covariates. We used a genome-wide significance threshold of $P < 5 \times 10^{-8}$ and the threshold of $P < 5 \times 10^{-6}$ for suggestive association. Conditional analyses including in turn each SNP with a suggestive association as additional covariate were conducted to identify adjacent independent signals. Furthermore, we tested for clumps of correlated SNPs, i.e. to assess how many independent loci had been associated and determined the number of variants supporting the lead SNPs at each locus, i.e. variants that have a P-value $< 5 \times 10^{-5}$, are in LD ($r^2 \geq 0.4$) and not further than 250 kilobases (kb) away from the respective SNP. Visualization of the results was carried out with R and LocusZoom [27] for regional plots. Variant positions in this manuscript are reported on human genome version 38 (GRCh38/hg38).

Immunohistochemistry on MSA patients' brain

Formalin-fixed and paraffin embedded (FFPE) tissue from MSA patients and controls without neurological or psychiatric diseases was obtained from the Neurobiobank Munich (NBM; Germany). All autopsy cases of the NBM were collected on the basis of an informed consent according to the guidelines of the ethics commission of the Ludwig-Maximilians-University Munich, Germany (# 345-13). MSA cases had been diagnosed according to established histopathological diagnostic criteria.[26, 37]

For ZIC4 immunohistochemistry, 5 μm thick sections of FFPE tissue of the frontal cortex and the cerebellar hemisphere including the dentate nucleus were prepared. After deparaffinization, heat-induced epitope retrieval was performed in Tris/EDTA, pH 9 at 95 °C for 30 minutes. For blocking of endogenous peroxidase and unspecific protein binding, the sections were incubated with 5% H_2O_2 in methanol for 20 minutes and I-Block reagent (Applied Biosystems, Waltham, MA, USA) for 15 minutes. Subsequently, ZIC4 primary antibody (rabbit, polyclonal, Merck/Sigma-Aldrich, Darmstadt, Germany) was applied over night at 4 °C at a dilution of 1:100. Signal detection was performed using the DCS ChromoLine DAB kit (DCS, Hamburg, Germany) according to the manufacturer's instructions. Sections were counterstained for 1 minute with Mayer's hemalum solution (Waldeck, Münster, Germany).

To determine the fractions of ZIC4 positive neurons of all neurons in the dentate nucleus, stained slides were scanned using a slide scanner (Axio Scan. Z1 , Zeiss, Oberkochen, Germany) and visualized using the free ZEN lite software (v 3.3; Zeiss, Oberkochen, Germany). For statistical evaluation of the data, Student's t-test was used, statistical significance was defined as $P < 0.05$.

Results

Patient sample

From the initial sample of 731 cases, 13 cases had to be excluded due to insufficient tissue quality. After thorough quality control and filtering, 648 cases and 2,592 controls covering 8,131,900 variants were included in the association analysis (Supplementary Fig. S1). The number of excluded samples and variants in each step of the quality control procedure is shown in Supplementary Tables S2 and S3.

Genotyping

We performed logistic regression incorporating sex and determined the first two dimensions of PCA as covariates using the scree plot method. The genomic inflation factor of $\lambda = 1.01$ (unimputed $\lambda = 1.01$, Supplementary Fig. S2) indicates that no significant population stratification was present (Fig. 1a). We did not identify any disease-associated variants with a P-value below the genome-wide significance threshold of $P < 5 \times 10^{-8}$, but suggestive associations with $P < 5 \times 10^{-6}$ at ten different loci (Fig. 1b) with the leading SNP at each locus shown in Table 1. Conditional analyses including in turn any SNP with $P < 5 \times 10^{-6}$ excluded the presence of multiple independent signals at each locus. All variants with suggestive associations are listed in Supplementary Table S4. The most noteworthy hits were rs16859966 on chromosome 3 ($P = 8.6 \times 10^{-7}$, odds ratio (OR) = 1.58, [95% confidence interval (CI) = 1.32-1.89]), rs7013955 on chromosome 8 ($P = 3.7 \times 10^{-6}$, OR = 1.8 [1.40-2.31]) and rs116607983 on chromosome 4 ($P = 4.0 \times 10^{-6}$, OR = 2.93 [1.86-4.63]), which were supported by at least one additional genotyped as well as several imputed SNPs with P-values below 5×10^{-5} as discovered in the clumping analysis (Table 1). The genes closest to the chromosome 3 locus are the Long Intergenic Non-Protein Coding RNA 2032 (*LINC02032*) approximately 100 kb downstream and the zinc finger proteins of cerebellum 1 and 4 genes (*ZIC1*, *ZIC4*), located roughly 600 kb upstream (Fig. 1c). The top SNP rs7013955 on chromosome 8 maps to the lysyl oxidase-like 2 gene (*LOXL2*; Fig. 1d). The association signal around SNP rs116607983 on chromosome 4 is located in a region devoid of protein-coding genes approximately 2000 kb to either side (Figure 1e). A fourth locus on chromosome 5 (rs2279135) was also supported by multiple clumped SNPs, but all SNPs including the lead SNP were imputed (Table 1). Several variants clumped at the chromosome 5 locus were located in the *ARHGEF37* gene, coding for Rho Guanine Nucleotide Exchange Factor 37 (Fig. 1f). None of the identified SNPs is an expression quantitative trait locus (eQTL) in brain tissues according the Genotype Tissue Expression (GTEx) project.[9] At four of the six remaining loci with variants exhibiting suggestive associations at most two supporting SNPs were present, which were all imputed; in the other two loci no supporting SNPs could be found in the clumping analysis (Table 1, Supplementary Fig. S3). We did not investigate these loci further, because it is unlikely that they represent valid associations. No suggestive associations were detected with previously reported Parkinson's disease associations from a meta-analysis of 17 datasets from Parkinson's disease GWAS (Supplementary Table S5).[22]

ZIC4 immunohistochemistry on MSA patients' brain

ZIC4 and *ZIC1* are known to play a critical role in the embryonal development of the cerebellum. Heterozygous deletions comprising the *ZIC1* and *ZIC4* locus have been associated with the Dandy-Walker malformation, a rare congenital condition characterized by a hypoplastic cerebellar vermis and an enlarged fourth ventricle.[5, 13] In mice, deletions of *ZIC1* and *ZIC4* lead to a striking phenotype similar to the Dandy-Walker malformation with cerebellar hypoplasia and foliation defects.[5, 13] In addition, paraneoplastic autoantibodies against *ZIC4* protein are linked to severe cerebellar dysfunction and degeneration.[3, 4]

Since cerebellar degeneration and corresponding symptoms are also a central hallmark of MSA, we decided to follow up on a potential role of *ZIC4* in MSA patient brains by performing immunohistochemical stainings. For *ZIC1* no primary antibody was appropriately sensitive and specific on human tissue in our hands. Thus, FFPE tissue of the frontal cortex and the cerebellum of MSA patients (N=10 SND, N=14 OPCA/mixed phenotype) and healthy controls (N=5) were stained with antibodies raised against *ZIC4*.

Nuclear and cytoplasmic staining of frontal cortex neurons was observed in all brains examined without differences between healthy controls and MSA patients (Fig. 2 a-c). In the cerebellar dentate nucleus, we found strong expression of *ZIC4* in a subset of neurons in healthy controls as well as MSA patients with predominant SND (Fig. 2 d,e,g,h). In contrast, MSA patients with mixed subtype or OPCA showed reduced numbers of *ZIC4*-positive neurons, which were furthermore only weakly stained (Fig. 2 f, i). Quantification of the proportions of *ZIC4*-positive neurons among all dentate nucleus neurons revealed relatively constant proportions in healthy controls and patients with MSA-SND ($33.2\% \pm 0.0$ vs. $32.6\% \pm 0.0$), whereas in patients with MSA-OPCA or MSA-mixed phenotype we found significantly lower percentages of *ZIC4*-positive neurons ($15.5\% \pm 0.1$) (Fig. 2 j).

Discussion

As part of the study, brain banks were contacted worldwide and all available caucasian MSA brains were included. As in the prior GWAS with 918 predominantly clinically diagnosed MSA patients, our current GWAS of 648 autopsy-confirmed MSA patients, did not identify disease-associated common variants below the genome-wide significance threshold.

Since our prior GWAS of 219 patients with autopsy-confirmed corticobasal degeneration did identify significant disease-associated common variants, our current findings strongly suggest that the genetic contribution to disease risk is smaller in MSA.[18]

Nevertheless, our study reveals several suggestive associations at different loci, which may provide relevant hypotheses for follow-up investigations into the pathogenesis of MSA.

Specifically, we identified a variant on chromosome 3 (rs16859966, $P = 8.6 \times 10^{-7}$, , OR = 1.58 [1.32-1.89]) located upstream *ZIC1* and *ZIC4*. *ZIC1* and *ZIC4* are located in close genomic proximity to each other and encode transcription factors highly expressed in different brain areas[1, 38].

Proper function of these proteins is critical for the development of the CNS, particularly the cerebellum.[5] Although no effect of rs16859966 on *ZIC1* or *ZIC4* expression is recorded in the GTEx

database, rare genetic variants or deletions in *ZIC1* or *ZIC4* result in congenital cerebellar defects.[5, 13, 25] A heterozygous deletion of *ZIC1* and *ZIC4* causes the Dandy-Walker malformation, a developmental disorder of the cerebellum.[13, 36] Moreover, paraneoplastic autoantibodies against *ZIC4* induce cerebellar degeneration.[4] Due to the pronounced cerebellar degeneration in MSA, we followed-up on a possible role of *ZIC4* in MSA.

While we could detect a relatively constant proportion of approximately one third *ZIC4*-positive neurons among all neurons in the cerebellar dentate nucleus in healthy controls and patients with MSA-SND, cases with MSA-OPCA or the mixed MSA phenotype showed significantly lower fractions of *ZIC4*-positive neurons. This finding suggests that *ZIC4* may be involved in the neurodegeneration in MSA. The involvement of *ZIC4* mutations in the Dandy-Walker cerebellar malformation and the paraneoplastic *ZIC4*-autoantibody-associated cerebellar degeneration could suggest a pathomechanism in MSA, by which altered *ZIC4* expression could increase neuronal vulnerability. Further analyses of a potential functional interaction of alpha-synuclein and *ZIC4* are currently ongoing.

We would like to strongly encourage independent replication studies to confirm or refute the hypotheses provided by our study.

Acknowledgements:

We would like to thank all those who contributed towards our research, particularly the patients and families who donated brain tissue - without their donation this study would not have been possible. We thank Vanessa Boll and Lena Jaschkowitz for excellent technical assistance.

The study received support from the Deutsche Parkinson Gesellschaft, the Else-Kröner-Fresenius-Stiftung, the CurePSP foundation, the Alzheimer's Disease Genetics Consortium (ADGC) NIA grant U01AG032984, the National Alzheimer's Coordinating Center (NACC) NIA grant U01 AG016976 and the Deutsche Forschungsgemeinschaft (DFG, German Research Foundation) under Germany's Excellence Strategy within the framework of the Munich Cluster for Systems Neurology (EXC 2145 SyNergy – ID 390857198), the Hannover Cluster RESIST (EXC 2155 – ID 390874280) and the Kiel Cluster (EXC2167, Precision Medicine in Chronic Inflammation (PMI)), the DFG grant (HO2402/18-1), the VolkswagenStiftung (Niedersächsisches Vorab), the Petermax-Müller Foundation (Etiology and Therapy of Synucleinopathies and Tauopathies), and ERARE18-124 (MSA-omics) under the frame of E-Rare-3, the ERA-Net for Research on Rare Diseases .

Data for this study were prepared, archived, and distributed by the National Institute on Aging Alzheimer's Disease Data Storage Site (NIAGADS) at the University of Pennsylvania (NIA grant U24-AG041689).

Samples from the National Cell Repository for Alzheimer's Disease (NCRAD), which receives government support under a cooperative agreement grant (U24 AG21886) awarded by the National Institute on Aging (NIA), were used in this study. We thank contributors who collected samples used in this study, as well as patients and their families, whose help and participation made this work possible;

A part of the samples was collected at the Mayo Clinic. The Mayo Clinic is an American Parkinson Disease Association (APDA) Mayo Clinic Information and Referral Center, an APDA Center for Advanced Research, and is supported by a Lewy Body Dementia Center Without Walls U54NS110435 (to D.W.D. & O.A.R.). The brain bank was supported, in part, by the Mangurian Foundation Lewy Body Dementia Program at Mayo Clinic.

The London Neurodegenerative Diseases Brain Bank, King's College London is supported by the MRC (Medical Research Council, UK) and the Brains for Dementia Research project (jointly funded by the Alzheimer's Society and Alzheimer's Research UK).

Data were contributed to this study by the Center on Alpha-synuclein Strains in Alzheimer Disease & Related Dementias at the University of Pennsylvania Perelman School of Medicine (U19 AG062418, Trojanowski JQ-PI) and the former Morris K. Udall Center at the University of Pennsylvania Perelman School of Medicine (P50 NS053488, Trojanowski JQ-PI), NIA P01-AG066597 and AG072979 (formerly AG010124).

CHR	dbSNP ID	BP	MAF		OR [95% CI]	P	IM/ GT	# SNPs in Clump		
			Cases	Controls				Total	GT	IM
10	rs4933352	85280795	0.42	0.52	0.71 [0.62-0.80]	9.7E-08	IM	2	0	2
16	rs79418449	80515374	0.04	0.02	2.54 [1.77-3.63]	3.7E-07	GT	1	1	0
3	rs16859966	147976678	0.17	0.12	1.58 [1.32-1.89]	8.6E-07	IM	45	24	21
5	rs114019803	159559041	0.02	0.01	3.36 [2.03-5.56]	2.3E-06	IM	3	0	3
4	rs933953	31356173	0.25	0.32	0.71 [0.62-0.82]	2.6E-06	IM	1	0	1
18	rs116914137	30589500	0.05	0.02	2.17 [1.57-3.00]	2.8E-06	IM	3	0	3
8	rs7013955	23343590	0.08	0.05	1.80 [1.40-2.31]	3.7E-06	IM	20	1	19
4	rs116607983	33372461	0.03	0.01	2.93 [1.86-4.63]	4.0E-06	IM	88	3	85
11	rs141819348	47698235	0.05	0.03	2.10 [1.53-2.88]	4.6E-06	IM	3	0	3
5	rs2279135	149637742	0.32	0.27	1.39 [1.21-1.60]	4.8E-06	IM	24	0	24

Table 1. Top SNPs at each locus with $P < 5 \times 10^{-6}$

Results from association analysis with logistic regression including sex and the first two dimensions of principal component analysis (PCA) as covariates in 648 cases with MSA and 2,898 controls. Only the leading single nucleotide polymorphism (SNP) at each locus with a suggestive association between the disease status and a variant is reported. Supplementary Table S3 lists all suggestive associations. BP = base-pair coordinates according to human reference genome GRCh38, CHR = chromosome, dbSNP = database of single nucleotide polymorphisms, GT = genotyped, IM = imputed, MAF = minor allele frequency.

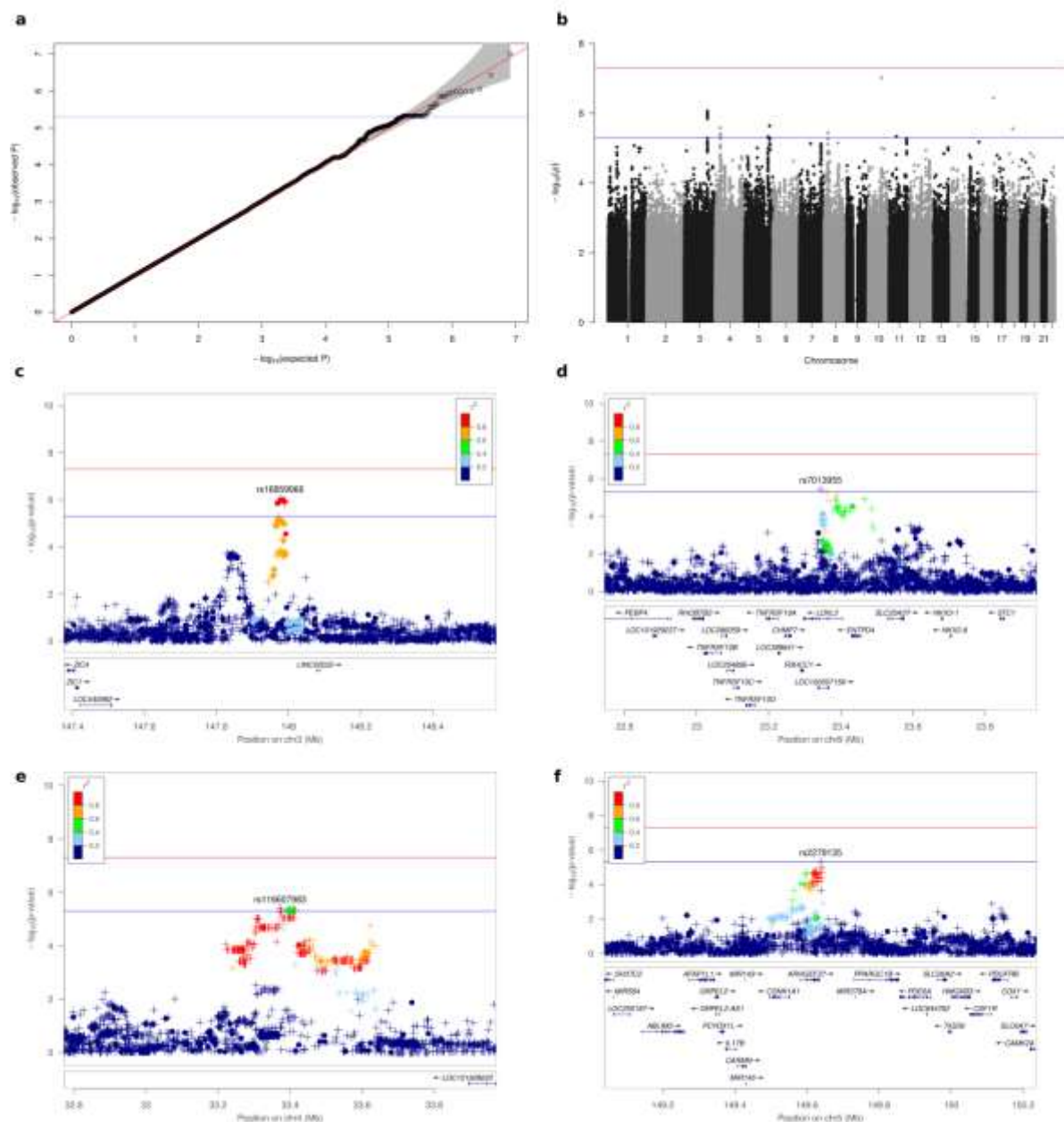


Fig. 1. Association plots for MSA

(a) QQ (quantile-quantile) plot of association analysis for 8,109,760 variants. **(b)** Manhattan plot showing $-\log_{10}$ marker-wise P-values of the association analysis against their genomic base-pair position. The red and blue lines indicate the genome-wide significance threshold of 5×10^{-8} and threshold for suggestive associations of 5×10^{-6} respectively. **(c)** Regional plot for the association between MSA and variants on chromosome 3 in the genomic region from 147.4 to 148.6 Mb. A circle represents a genotyped and a plus symbol an imputed variant. The r^2 metric displays the pairwise LD between the leading and the respective variant. The bottom part shows gene positions. **(d)** Regional plot for associations on chromosome 8 in the genomic region from 22.7 to 23.9 Mb. **(e)** Regional plot for associations on chromosome 4 in the genomic region from 32.8 to 34.0 Mb. **(f)** Regional plot for associations on chromosome 5 in the genomic region from 149.0 to 150.2 Mb.

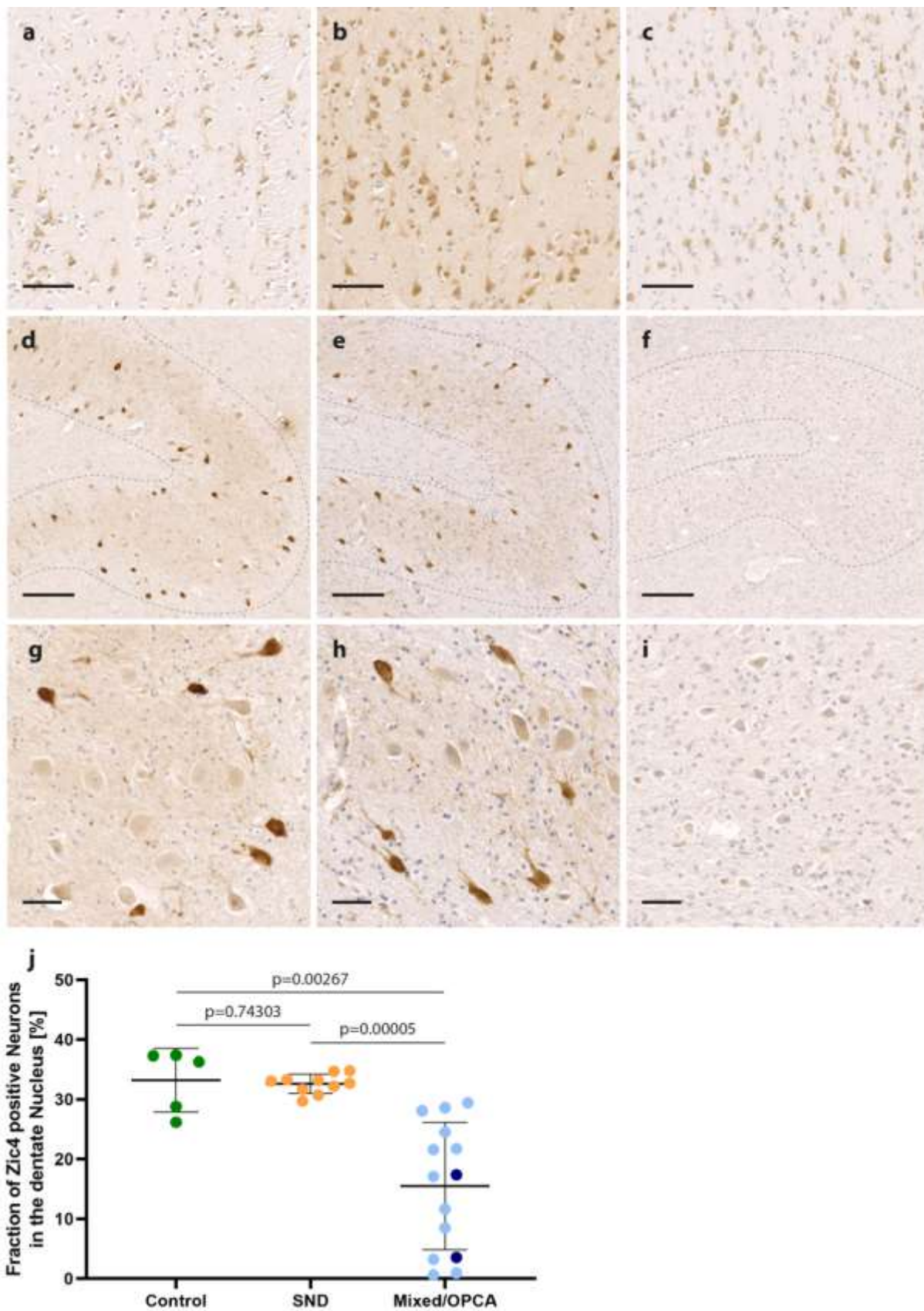


Fig. 2. ZIC4 immunohistochemical staining of MSA patients' and control brains

Representative ZIC4 immunohistochemical stainings of a control without neurodegenerative diseases **(a, d, g)** and two MSA patients with SND (striatonigral degeneration) **(b, e, h)** and a mixed subtype **(c, f, i)**, respectively. **(a-c)** Nuclear and cytoplasmic expression of ZIC4 was detected in a comparable manner in the frontal cortex of healthy controls and MSA patients **(d-i, higher magnification g-i)**. In the cerebellar dentate nucleus of healthy controls and patients with SND, a constant subset of neurons stained strongly positive for ZIC4, whereas in patients with OPCA (olivopontocerebellar atrophy) or mixed subtypes, only weak staining could be observed and the number of Zic4-positive neurons was clearly reduced. **(j)** Quantification of positive neurons in the dentate nucleus revealed a significant reduction of ZIC4-positive neurons in patients with either mixed subtype (light blue) or OPCA (dark blue) compared to SND or controls without neurodegenerative disease, while no difference was seen between patients with SND and healthy controls. Scale bars: a-c: 100 μm , d-f: 200 μm , g-i: 50 μm

References

- 1 Ali RG, Bellchambers HM, Arkell RM (2012) Zinc fingers of the cerebellum (Zic): transcription factors and co-factors. *Int J Biochem Cell Biol* 44: 2065-2068 Doi 10.1016/j.biocel.2012.08.012
- 2 Auton A, Abecasis GR, Altshuler DM, Durbin RM, Abecasis GR, Bentley DR, Chakravarti A, Clark AG, Donnelly P, Eichler EE et al (2015) A global reference for human genetic variation. *Nature* 526: 68-74 Doi 10.1038/nature15393
- 3 Bataller L, Wade DF, Fuller GN, Rosenfeld MR, Dalmau J (2002) Cerebellar degeneration and autoimmunity to zinc-finger proteins of the cerebellum. *Neurology* 59: 1985-1987 Doi 10.1212/01.wnl.0000038352.01415.ce
- 4 Bataller L, Wade DF, Graus F, Stacey HD, Rosenfeld MR, Dalmau J (2004) Antibodies to Zic4 in paraneoplastic neurologic disorders and small-cell lung cancer. *Neurology* 62: 778-782 Doi 10.1212/01.wnl.0000113749.77217.01
- 5 Blank MC, Grinberg I, Aryee E, Laliberte C, Chizhikov VV, Henkelman RM, Millen KJ (2011) Multiple developmental programs are altered by loss of Zic1 and Zic4 to cause Dandy-Walker malformation cerebellar pathogenesis. *Development* 138: 1207-1216 Doi 10.1242/dev.054114
- 6 Brown DW, Myers TA, Machiela MJ (2020) PCAmatchR: a flexible R package for optimal case-control matching using weighted principal components. *Bioinformatics* 37: 1178-1181 Doi 10.1093/bioinformatics/btaa784
- 7 Chen Y, Wei QQ, Ou R, Cao B, Chen X, Zhao B, Guo X, Yang Y, Chen K, Wu Y et al (2015) Genetic Variants of SNCA Are Associated with Susceptibility to Parkinson's Disease but Not Amyotrophic Lateral Sclerosis or Multiple System Atrophy in a Chinese Population. *PLoS One* 10: e0133776 Doi 10.1371/journal.pone.0133776
- 8 Chrysostome V, Tison F, Yekhelef F, Sourgen C, Baldi I, Dartigues JF (2004) Epidemiology of multiple system atrophy: a prevalence and pilot risk factor study in Aquitaine, France. *Neuroepidemiology* 23: 201-208 Doi 10.1159/000078506
- 9 Consortium GT, Laboratory DA, Coordinating Center -Analysis Working G, Statistical Methods groups-Analysis Working G, Enhancing Gg, Fund NIHC, Nih/Nci, Nih/Nhgri, Nih/Nimh, Nih/Nidaet al (2017) Genetic effects on gene expression across human tissues. *Nature* 550: 204-213 Doi 10.1038/nature24277
- 10 Fanciulli A, Stankovic I, Krismer F, Seppi K, Levin J, Wenning GK (2019) Multiple system atrophy. *Int Rev Neurobiol* 149: 137-192 Doi 10.1016/bs.irm.2019.10.004
- 11 Fanciulli A, Wenning GK (2015) Multiple-system atrophy. *N Engl J Med* 372: 249-263 Doi 10.1056/NEJMra1311488
- 12 Gilman S, Wenning GK, Low PA, Brooks DJ, Mathias CJ, Trojanowski JQ, Wood NW, Colosimo C, Durr A, Fowler C et al (2008) Second consensus statement on the diagnosis of multiple system atrophy. *Neurology* 71: 670-676 Doi 10.1212/01.wnl.0000324625.00404.15
- 13 Grinberg I, Northrup H, Ardinger H, Prasad C, Dobyns WB, Millen KJ (2004) Heterozygous deletion of the linked genes ZIC1 and ZIC4 is involved in Dandy-Walker malformation. *Nat Genet* 36: 1053-1055 Doi 10.1038/ng1420
- 14 Jellinger KA, Lantos PL (2010) Papp-Lantos inclusions and the pathogenesis of multiple system atrophy: an update. *Acta Neuropathol* 119: 657-667 Doi 10.1007/s00401-010-0672-3
- 15 Jellinger KA, Seppi K, Wenning GK (2005) Grading of neuropathology in multiple system atrophy: proposal for a novel scale. *Mov Disord* 20 Suppl 12: S29-36 Doi 10.1002/mds.20537
- 16 Klockgether T, Ludtke R, Kramer B, Abele M, Burk K, Schols L, Riess O, Laccone F, Boesch S, Lopes-Cendes I et al (1998) The natural history of degenerative ataxia: a retrospective study in 466 patients. *Brain* 121 (Pt 4): 589-600 Doi 10.1093/brain/121.4.589
- 17 Koga S, Aoki N, Uitti RJ, van Gerpen JA, Cheshire WP, Josephs KA, Wszolek ZK, Langston JW, Dickson DW (2015) When DLB, PD, and PSP masquerade as MSA: an

- autopsy study of 134 patients. *Neurology* 85: 404-412 Doi 10.1212/WNL.0000000000001807
- 18 Kouri N, Ross OA, Dombroski B, Younkin CS, Serie DJ, Soto-Ortolaza A, Baker M, Finch NCA, Yoon H, Kim J et al (2015) Genome-wide association study of corticobasal degeneration identifies risk variants shared with progressive supranuclear palsy. *Nat Commun* 6: 7247 Doi 10.1038/ncomms8247
- 19 Kunkle BW, Grenier-Boley B, Sims R, Bis JC, Damotte V, Naj AC, Boland A, Vronskaya M, van der Lee SJ, Amlie-Wolf A et al (2019) Genetic meta-analysis of diagnosed Alzheimer's disease identifies new risk loci and implicates Abeta, tau, immunity and lipid processing. *Nat Genet* 51: 414-430 Doi 10.1038/s41588-019-0358-2
- 20 Labbe C, Heckman MG, Lorenzo-Betancor O, Murray ME, Ogaki K, Soto-Ortolaza AI, Walton RL, Fujioka S, Koga S, Uitti R et al (2016) MAPT haplotype diversity in multiple system atrophy. *Parkinsonism Relat Disord* 30: 40-45 Doi 10.1016/j.parkreldis.2016.06.010
- 21 Labbe C, Ogaki K, Lorenzo-Betancor O, Soto-Ortolaza AI, Walton RL, Rayaprolu S, Fujioka S, Murray ME, Heckman MG, Puschmann A et al (2015) Role for the microtubule-associated protein tau variant p.A152T in risk of alpha-synucleinopathies. *Neurology* 85: 1680-1686 Doi 10.1212/WNL.0000000000001946
- 22 Nalls MA, Blauwendraat C, Vallerga CL, Heilbron K, Bandres-Ciga S, Chang D, Tan M, Kia DA, Noyce AJ, Xue A et al (2019) Identification of novel risk loci, causal insights, and heritable risk for Parkinson's disease: a meta-analysis of genome-wide association studies. *Lancet Neurol* 18: 1091-1102 Doi 10.1016/S1474-4422(19)30320-5
- 23 Nee LE, Gomez MR, Dambrosia J, Bale S, Eldridge R, Polinsky RJ (1991) Environmental-occupational risk factors and familial associations in multiple system atrophy: a preliminary investigation. *Clin Auton Res* 1: 9-13 Doi 10.1007/bf01826052
- 24 Nothlings U, Krawczak M (2012) [PopGen. A population-based biobank with prospective follow-up of a control group]. *Bundesgesundheitsblatt Gesundheitsforschung Gesundheitsschutz* 55: 831-835 Doi 10.1007/s00103-012-1487-2
- 25 Ogura H, Aruga J, Mikoshiba K (2001) Behavioral abnormalities of Zic1 and Zic2 mutant mice: implications as models for human neurological disorders. *Behav Genet* 31: 317-324 Doi 10.1023/a:1012235510600
- 26 Ozawa T, Paviour D, Quinn NP, Josephs KA, Sangha H, Kilford L, Healy DG, Wood NW, Lees AJ, Holton J et al (2004) The spectrum of pathological involvement of the striatonigral and olivopontocerebellar systems in multiple system atrophy: clinicopathological correlations. *Brain* 127: 2657-2671 Doi 10.1093/brain/awh303
- 27 Pruim RJ, Welch RP, Sanna S, Teslovich TM, Chines PS, Gliedt TP, Boehnke M, Abecasis GR, Willer CJ (2010) LocusZoom: regional visualization of genome-wide association scan results. *Bioinformatics* 26: 2336-2337 Doi 10.1093/bioinformatics/btq419
- 28 Rohrer G, Hoglinger GU, Levin J (2018) Symptomatic therapy of multiple system atrophy. *Auton Neurosci* 211: 26-30 Doi 10.1016/j.autneu.2017.10.006
- 29 Ronchi D, Di Biase E, Franco G, Melzi V, Del Sorbo F, Elia A, Barzaghi C, Garavaglia B, Bergamini C, Fato R et al (2016) Mutational analysis of COQ2 in patients with MSA in Italy. *Neurobiol Aging* 45: 213 e211-213 e212 Doi 10.1016/j.neurobiolaging.2016.05.022
- 30 Sailer A, Scholz SW, Nalls MA, Schulte C, Federoff M, Price TR, Lees A, Ross OA, Dickson DW, Mok K et al (2016) A genome-wide association study in multiple system atrophy. *Neurology* 87: 1591-1598 Doi 10.1212/WNL.0000000000003221
- 31 Schottlaender LV, Houlden H, Multiple-System Atrophy Brain Bank C (2014) Mutant COQ2 in multiple-system atrophy. *N Engl J Med* 371: 81 Doi 10.1056/NEJMc1311763
- 32 Schrag A, Wenning GK, Quinn N, Ben-Shlomo Y (2008) Survival in multiple system atrophy. *Mov Disord* 23: 294-296 Doi 10.1002/mds.21839

- 33 Simon-Sanchez J, Schulte C, Bras JM, Sharma M, Gibbs JR, Berg D, Paisan-Ruiz C, Lichtner P, Scholz SW, Hernandez DG et al (2009) Genome-wide association study reveals genetic risk underlying Parkinson's disease. *Nat Genet* 41: 1308-1312 Doi 10.1038/ng.487
- 34 Taliun D, Harris DN, Kessler MD, Carlson J, Szpiech ZA, Torres R, Taliun SAG, Corvelo A, Gogarten SM, Kang H Met al (2021) Sequencing of 53,831 diverse genomes from the NHLBI TOPMed Program. *Nature* 590: 290-299 Doi 10.1038/s41586-021-03205-y
- 35 Team RC (2019) R: A Language and Environment for Statistical Computing. R Foundation for Statistical Computing V, Austria.
- 36 Tohyama J, Kato M, Kawasaki S, Harada N, Kawara H, Matsui T, Akasaka N, Ohashi T, Kobayashi Y, Matsumoto N (2011) Dandy-Walker malformation associated with heterozygous ZIC1 and ZIC4 deletion: Report of a new patient. *Am J Med Genet A* 155A: 130-133 Doi 10.1002/ajmg.a.33652
- 37 Trojanowski JQ, Revesz T, Neuropathology Working Group on MSA (2007) Proposed neuropathological criteria for the post mortem diagnosis of multiple system atrophy. *Neuropathol Appl Neurobiol* 33: 615-620 Doi 10.1111/j.1365-2990.2007.00907.x
- 38 Uhlen M, Fagerberg L, Hallstrom BM, Lindskog C, Oksvold P, Mardinoglu A, Sivertsson A, Kampf C, Sjostedt E, Asplund A et al (2015) Proteomics. Tissue-based map of the human proteome. *Science* 347: 1260419 Doi 10.1126/science.1260419
- 39 Vanacore N, Bonifati V, Fabbrini G, Colosimo C, De Michele G, Marconi R, Stocchi F, Nicholl D, Bonuccelli U, De Mari Met al (2005) Case-control study of multiple system atrophy. *Mov Disord* 20: 158-163 Doi 10.1002/mds.20303
- 40 Walsh RR, Krismer F, Galpern WR, Wenning GK, Low PA, Halliday G, Koroshetz WJ, Holton J, Quinn NP, Rascol O et al (2018) Recommendations of the Global Multiple System Atrophy Research Roadmap Meeting. *Neurology* 90: 74-82 Doi 10.1212/WNL.0000000000004798
- 41 Wenning GK, Geser F, Krismer F, Seppi K, Duerr S, Boesch S, Kollensperger M, Goebel G, Pfeiffer KP, Barone P et al (2013) The natural history of multiple system atrophy: a prospective European cohort study. *Lancet Neurol* 12: 264-274 Doi 10.1016/S1474-4422(12)70327-7
- 42 Wichmann HE, Gieger C, Illig T, Group MKS (2005) KORA-gen--resource for population genetics, controls and a broad spectrum of disease phenotypes. *Gesundheitswesen* 67 Suppl 1: S26-30 Doi 10.1055/s-2005-858226

Supplementary Tables

Supplementary Table S1: Recruitment centers, brain bank sources

City, Country	Source	MSA cases
Zürich, Switzerland	Institute of Neuropathology, University Hospital of Zurich, Zurich, Switzerland.	1
Göttingen, Germany	University Medical Center Goettingen, Department of Neurology and Paracelsus-Elena-Klinik, 34128 Kassel, Germany	2
San Francisco, USA	University of California, San Francisco, CA, USA.	2
Vancouver, BC, Canada	University of British Columbia, Department of Pathology and Laboratory Medicine	2
New York, USA	Mount Sinai NBTR	3
Atlanta, USA	Emory University, Department of Neurology & Pathology	4
Los Angeles, USA	The Human Brain and Spinal Fluid Resource Center	4
Stockholm, Sweden	Department of Neurology, Karolinska University Hospital, Stockholm, Sweden.	4
Vienna, Austria	Institute of Neurology, Medical University of Vienna	6
Newcastle upon Tyne, UK	Newcastle Brain Tissue Resource, Newcastle University, Campus for Ageing and Vitality, Newcastle upon Tyne, NE4 5PL, UK	7
Chicago, USA	University of Chicago, Department of Neurology	8
Indiana, USA	Indiana University School of Medicine	8
San Diego, USA	San Diego Shiley-Marcos AD Research Center, University of California	8
Tübingen, Germany	Department of Neuropathology, University Hospital of Tübingen, Tübingen, Germany	8
Madrid, Spain	Centro de Biología Molecular "Severo Ochoa", c/Nicolás Cabrera, 1, Universidad Autónoma de Madrid, Cantoblanco, Madrid, Spain	10
Seattle, USA	Department of Pathology, University of Washington, Seattle, WA, USA	10
Prague, Czech Republic	Department of Pathology and Molecular Medicine, Thomayer University Hospital, Prague	12
Sidney, Australia	Brain and Mind Centre, Sydney Medical School, The University of Sydney, Sydney, NSW, Australia.	12
Arizona, USA	Banner Sun Health Research Institute,	13
Parkville, Victoria, Australia	Australian Brain Bank Network, Howard Florey Laboratories, The Florey Institute of Neuroscience and Mental Health	13
Dallas, Texas, USA	Alzheimer's Disease Center, University of Texas Southwestern Medical Center, Dallas, Texas, USA	15
Saskatchewan, Canada	Saskatoon Health Region/University of Saskatchewan, Rosthern; and Movement Disorders	17
Paris, France	Raymond Escourolle Neuropathology Department. Groupe Hospitalier Pitié-Salpêtrière, Paris, France	20

London, UK	Imperial College London	22
Baltimore, USA	Johns Hopkins Medical Institution Brain Resource Center, MD, USA	24
London, UK	MRC London Neurodegenerative Diseases Brain Bank, Institute of Psychiatry, Psychology and Neuroscience, King's College	26
Munich, Germany	Neurobiobank Munich, Center for Neuropathology and Prion Research, Ludwig-Maximilians University	29
Boston, USA	Massachusetts General Hospital	30
Barcelona, Spain	Neurological Tissue Bank of the Biobanc-Hospital Clinic-IDIBAPS	34
Amsterdam, Netherlands	Alzheimer Center	36
Ann Arbor, USA	University of Michigan, Department of Pathology, University of Michigan Medical School, Ann Arbor, MI, USA	37
Miami, USA	UM Brain Endowment Bank, an NIH NeuroBioBank	45
Pennsylvania, USA	The Penn FTD Center - University of Pennsylvania, USA	54
Jacksonville, Florida, USA	Department of Neuroscience, Mayo Clinic, Jacksonville	205
Total		731

Supplementary Table S2: Summary of per sample quality control. SD = standard deviation.

	Cases	Controls	Total
Samples started with	731	2,898	3,629
	Number of excluded samples		
Insufficient brain tissue quality	13	0	13
Duplicate Samples	2	0	2
Sample call rate < 85%	18	0	18
Sample Call rate < 98%	2	3	5
Heterozygosity Rate > Mean \pm 3xSD	25	20	45
Cryptic relatedness > third degree relatives	4	33	37
Missing or discrepant sex	2	9	11
Ethnical Outlier	17	0	17
Control Matching	-	241	241
Total samples excluded	68	306	374
Total samples analysed	648	2,592	3,240

Supplementary Table S3: Summary of per marker quality control. MAF = minor allele frequency, HWE = Hardy-Weinberg equilibrium.

A: Quality control on genotyped data

Markers started with	599,560
	Number of excluded markers
Reducing to autosomes	14,407
Marker Call rate < 85%	203
Marker Call rate < 98%	5,453
MAF < 0.01	99,500
HWE in controls with P < 10E-6	527
Informative missingness with P < 10E-5	2,169
No cluster separation	40
Total markers excluded	122,299
Markers used in analysis	477,261

B: Quality Control on imputed variants

Markers after Imputation	271,284,138
	Number of excluded markers
MAF < 0.01	263,056,018
HWE in controls with P < 10E-6	465
Informative missingness with P < 10E-5	117,895
Total markers excluded	263,174,378

Markers used in analysis	8,109,760
---------------------------------	------------------

CHR	dbSNP ID	BP	MAF			OR	L95	U95	P	IM/GT
			Cases	Controls	All					
10	rs4933352	85280795	0.42	0.52	0.50	0.71	0.62	0.80	9.7E-08	IM
16	rs79418449	80515374	0.04	0.02	0.03	2.54	1.77	3.63	3.7E-07	GT
3	rs16859966	147976678	0.17	0.12	0.13	1.58	1.32	1.89	8.6E-07	IM
3	rs80100284	147978148	0.16	0.12	0.13	1.57	1.31	1.89	1E-06	GT
3	rs17528799	147980674	0.16	0.12	0.13	1.57	1.31	1.89	1E-06	GT
3	rs79713750	147985042	0.16	0.12	0.13	1.57	1.31	1.89	1E-06	GT
3	rs17529042	147985655	0.16	0.12	0.13	1.57	1.31	1.89	1E-06	IM
3	rs6787937	147991156	0.16	0.12	0.13	1.57	1.31	1.89	1.1E-06	IM
3	rs17588473	147987565	0.16	0.12	0.13	1.57	1.31	1.88	1.2E-06	GT
3	rs149669221	147988874	0.16	0.12	0.13	1.57	1.31	1.88	1.3E-06	IM
3	rs62277129	147968720	0.16	0.12	0.12	1.57	1.31	1.88	1.4E-06	GT
3	rs62273877	147990478	0.16	0.12	0.13	1.57	1.31	1.88	1.4E-06	IM
3	rs115055496	147970642	0.16	0.12	0.13	1.57	1.31	1.88	1.4E-06	GT
5	rs114019803	159559041	0.02	0.01	0.01	3.36	2.03	5.56	2.3E-06	IM
5	rs148637949	159559783	0.02	0.01	0.01	3.36	2.03	5.56	2.3E-06	IM
4	rs933953	31356173	0.25	0.32	0.30	0.71	0.62	0.82	2.6E-06	IM
18	rs116914137	30589500	0.05	0.02	0.03	2.17	1.57	3.00	2.8E-06	IM
18	rs146733256	30553996	0.05	0.02	0.03	2.21	1.59	3.08	2.8E-06	IM
8	rs7013955	23343590	0.08	0.05	0.06	1.80	1.40	2.31	3.7E-06	IM
4	rs116607983	33372461	0.03	0.01	0.01	2.93	1.86	4.63	4E-06	IM
4	rs115369416	33373550	0.03	0.01	0.01	2.93	1.86	4.63	4E-06	IM
11	rs141819348	47698235	0.05	0.03	0.03	2.10	1.53	2.88	4.6E-06	IM
4	rs55681260	33390689	0.06	0.03	0.03	2.05	1.51	2.78	4.7E-06	IM
4	rs1506250	33391458	0.06	0.03	0.03	2.05	1.51	2.78	4.7E-06	IM
4	rs74927140	33392112	0.06	0.03	0.03	2.05	1.51	2.78	4.7E-06	IM
4	rs73823107	33396305	0.06	0.03	0.03	2.05	1.51	2.78	4.7E-06	IM
4	rs12647606	33396483	0.06	0.03	0.03	2.05	1.51	2.78	4.7E-06	GT
4	rs12643899	33396765	0.06	0.03	0.03	2.05	1.51	2.78	4.7E-06	GT
4	rs1911023	33397756	0.06	0.03	0.03	2.05	1.51	2.78	4.7E-06	IM
4	rs12649232	33398189	0.06	0.03	0.03	2.05	1.51	2.78	4.7E-06	IM
4	rs7658371	33399068	0.06	0.03	0.03	2.05	1.51	2.78	4.7E-06	IM
4	rs76588230	33399670	0.06	0.03	0.03	2.05	1.51	2.78	4.7E-06	IM
4	rs78164979	33402066	0.06	0.03	0.03	2.05	1.51	2.78	4.7E-06	IM
4	rs77400205	33402096	0.06	0.03	0.03	2.05	1.51	2.78	4.7E-06	IM
4	rs28758918	33402691	0.06	0.03	0.03	2.05	1.51	2.78	4.7E-06	IM
4	rs73823113	33403579	0.06	0.03	0.03	2.05	1.51	2.78	4.7E-06	IM
4	rs73823114	33403863	0.06	0.03	0.03	2.05	1.51	2.78	4.7E-06	IM
4	rs73823115	33403917	0.06	0.03	0.03	2.05	1.51	2.78	4.7E-06	IM
4	rs7657687	33404711	0.06	0.03	0.03	2.05	1.51	2.78	4.7E-06	IM
4	rs35894559	33405305	0.06	0.03	0.03	2.05	1.51	2.78	4.7E-06	IM
4	rs73823117	33408795	0.06	0.03	0.03	2.05	1.51	2.78	4.7E-06	IM
4	rs73823119	33411185	0.06	0.03	0.03	2.05	1.51	2.78	4.7E-06	IM
4	rs73823120	33411587	0.06	0.03	0.03	2.05	1.51	2.78	4.7E-06	IM
4	rs79060702	33412974	0.06	0.03	0.03	2.05	1.51	2.78	4.7E-06	IM

4	rs56365829	33413459	0.06	0.03	0.03	2.05	1.51	2.78	4.7E-06	IM
4	rs6822915	33414893	0.06	0.03	0.03	2.05	1.51	2.78	4.7E-06	IM
4	rs12641918	33415336	0.06	0.03	0.03	2.05	1.51	2.78	4.7E-06	IM
4	rs12642719	33415558	0.06	0.03	0.03	2.05	1.51	2.78	4.7E-06	IM
5	rs2279135	149637742	0.32	0.27	0.28	1.39	1.21	1.60	4.8E-06	IM

Supplementary Table S4: Identified associations with $P < 5 \times 10^{-6}$.

Results from association analysis with logistic regression including sex and the first two dimensions of PCA as covariates in 648 cases with MSA and 2,898 controls. BP = base-pair coordinates according to human reference genome GRCh38, CHR = Chromosome, dbSNP = database of single nucleotide polymorphisms, GT = genotyped, IM = imputed, L95 = Lower bound of 95% confidence interval for odds ratio, MAF = minor allele frequency, U95= Upper bound of 95% confidence interval for odds ratio.

CHR	dbSNP ID	BP	MAF			OR	L95	U95	P
			Cases	Controls	All				
1	rs114138760	154925709	0.01	0.01	0.01	1.06	0.58	1.94	0.8446
1	rs35749011	155162560	0.01	0.01	0.01	1.06	0.60	1.88	0.8480
1	rs6658353	161499264	0.49	0.47	0.48	1.00	0.88	1.13	0.9814
1	rs11578699	171750629	0.19	0.19	0.19	1.00	0.85	1.18	0.9792
1	rs823118	205754444	0.42	0.42	0.42	0.97	0.85	1.10	0.5969
1	rs11557080	205768611	0.15	0.14	0.14	1.11	0.93	1.33	0.2516
1	rs4653767	226728377	0.29	0.28	0.28	1.03	0.90	1.19	0.6553
1	rs10797576	232528865	0.14	0.14	0.14	0.94	0.79	1.13	0.5095
2	rs76116224	17966582	0.10	0.10	0.10	1.13	0.91	1.39	0.2654
2	rs2042477	95335195	0.24	0.25	0.25	0.91	0.78	1.06	0.2227
2	rs11683001	101780501	0.31	0.31	0.31	0.90	0.78	1.03	0.1206
2	rs57891859	134707046	0.29	0.28	0.28	1.06	0.92	1.21	0.4523
2	rs1474055	168253884	0.13	0.13	0.13	0.98	0.81	1.18	0.8519
3	rs73038319	18320267	0.04	0.05	0.05	1.02	0.74	1.41	0.9166
3	rs6808178	28664199	0.36	0.36	0.36	1.00	0.88	1.14	0.9947
3	rs12497850	48711556	0.36	0.37	0.37	0.97	0.85	1.11	0.6620
3	rs55961674	122478045	0.17	0.17	0.17	1.01	0.85	1.20	0.9324
3	rs11707416	151391177	0.37	0.38	0.38	0.94	0.82	1.08	0.3755
3	rs1450522	161359842	0.32	0.32	0.32	1.00	0.88	1.15	0.9714
3	rs10513789	183042285	0.20	0.21	0.21	0.95	0.82	1.12	0.5535
4	rs873786	931588	0.10	0.11	0.11	0.90	0.73	1.11	0.3307
4	rs34311866	958159	0.20	0.19	0.19	1.09	0.93	1.29	0.2965

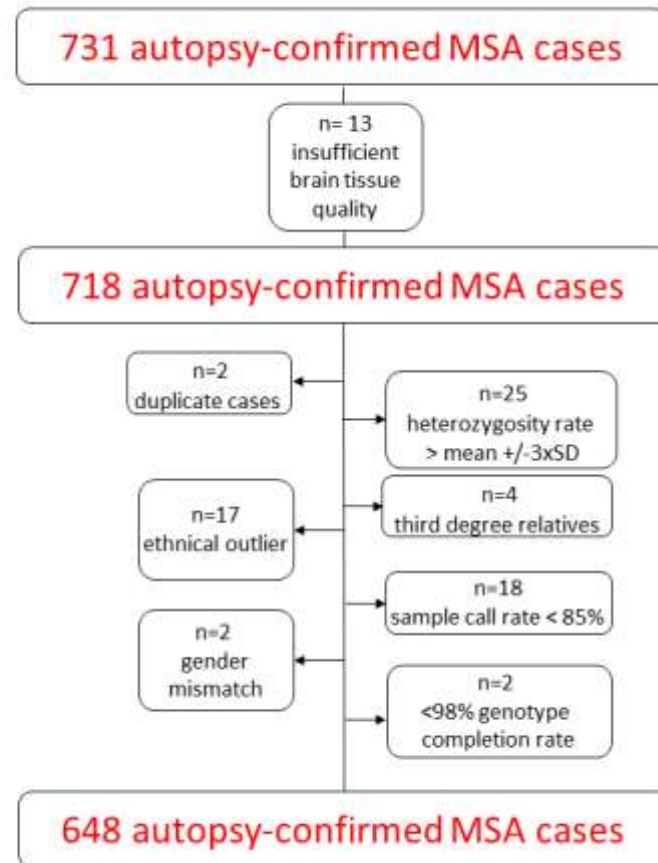
4	rs4698412	15735725	0.45	0.46	0.46	0.95	0.84	1.08	0.4439
4	rs34025766	17967188	0.16	0.15	0.15	0.95	0.80	1.14	0.5962
4	rs6825004	76189212	0.30	0.32	0.32	0.92	0.80	1.06	0.2461
4	rs4101061	76226816	0.28	0.29	0.29	0.96	0.84	1.11	0.6118
4	rs6854006	76276901	0.36	0.37	0.37	0.92	0.80	1.05	0.1909
4	rs356182	89704960	0.33	0.34	0.34	0.93	0.81	1.07	0.3020
4	rs5019538	89715479	0.30	0.30	0.30	0.98	0.85	1.12	0.7275
4	rs13117519	113447909	0.17	0.17	0.17	1.02	0.86	1.20	0.8481
4	rs62333164	169662006	0.33	0.34	0.34	0.96	0.84	1.10	0.5464
5	rs1867598	60842132	0.10	0.09	0.09	1.16	0.94	1.43	0.1691
5	rs26431	103030090	0.29	0.30	0.30	0.95	0.83	1.10	0.5002
5	rs11950533	134863415	0.11	0.11	0.11	1.02	0.83	1.25	0.8480
6	rs4140646	27771022	0.22	0.22	0.22	0.98	0.84	1.15	0.8445
6	rs9261484	30140906	0.24	0.26	0.25	0.95	0.82	1.10	0.4728
6	rs504594	32610995	0.17	0.16	0.16	1.02	0.86	1.21	0.8057
6	rs12528068	71778059	0.28	0.29	0.28	0.96	0.84	1.11	0.6098
6	rs997368	111922088	0.21	0.18	0.19	1.09	0.93	1.28	0.3007
6	rs75859381	132889222	0.02	0.03	0.03	0.92	0.61	1.39	0.6934
7	rs199351	23260430	0.44	0.40	0.41	1.24	1.09	1.42	0.0009
7	rs76949143	66544864	0.05	0.04	0.05	1.14	0.85	1.52	0.3754
8	rs1293298	11854934	0.26	0.27	0.27	0.96	0.83	1.11	0.5876
8	rs620513	16840084	0.29	0.28	0.28	1.02	0.88	1.17	0.8140
8	rs2280104	22668467	0.36	0.36	0.36	1.00	0.88	1.14	0.9926
8	rs2086641	129889663	0.29	0.27	0.27	1.09	0.94	1.26	0.2370
9	rs13294100	17579692	0.35	0.36	0.36	1.01	0.88	1.15	0.9203
9	rs10756907	17727067	0.22	0.22	0.22	0.97	0.83	1.13	0.6608
9	rs6476434	34046393	0.27	0.27	0.27	1.01	0.87	1.16	0.9169
10	rs896435	15515407	0.33	0.32	0.33	1.05	0.92	1.20	0.4620
10	rs10748818	102255522	0.15	0.15	0.15	1.04	0.88	1.24	0.6374
10	rs72840788	119656173	0.20	0.21	0.21	1.01	0.87	1.18	0.8767
10	rs117896735	119776815	0.01	0.02	0.02	0.69	0.40	1.21	0.1930
11	rs7938782	10537230	0.14	0.12	0.12	1.12	0.93	1.34	0.2509
11	rs12283611	83776234	0.44	0.42	0.42	1.08	0.95	1.23	0.2307
11	rs3802920	133917106	0.20	0.19	0.19	1.01	0.86	1.18	0.9229
12	rs76904798	40220632	0.15	0.14	0.14	1.13	0.95	1.35	0.1767
12	rs7134559	46025303	0.41	0.40	0.40	0.98	0.86	1.12	0.8099
12	rs10847864	122842051	0.34	0.34	0.34	0.97	0.85	1.11	0.6768

12	rs11610045	132487182	0.48	0.50	0.50	0.94	0.82	1.07	0.3192
13	rs9568188	49353596	0.26	0.27	0.27	1.01	0.87	1.16	0.9488
13	rs4771268	97212767	0.23	0.22	0.22	1.02	0.88	1.19	0.7802
14	rs12147950	37520065	0.44	0.44	0.44	0.95	0.83	1.08	0.4011
14	rs11158026	54882151	0.35	0.32	0.32	1.13	0.98	1.29	0.0841
14	rs3742785	74906331	0.22	0.21	0.21	1.06	0.91	1.24	0.4377
14	rs979812	87997920	0.47	0.43	0.43	1.17	1.03	1.33	0.0195
15	rs2251086	61705186	0.15	0.16	0.16	1.01	0.84	1.20	0.9557
16	rs6497339	19266171	0.44	0.46	0.46	0.93	0.82	1.05	0.2523
16	rs2904880	28933075	0.32	0.33	0.32	1.00	0.87	1.15	0.9944
16	rs11150601	30966478	0.38	0.36	0.37	1.09	0.95	1.24	0.2190
16	rs6500328	50702745	0.41	0.40	0.40	1.02	0.89	1.16	0.8151
16	rs3104783	52602330	0.44	0.42	0.42	1.07	0.94	1.21	0.3111
16	rs10221156	52935514	0.10	0.10	0.10	0.97	0.78	1.20	0.7499
17	rs12600861	7452302	0.36	0.35	0.35	1.02	0.89	1.17	0.7553
17	rs12951632	42588995	0.28	0.26	0.27	1.07	0.93	1.24	0.3285
17	rs2269906	44216969	0.35	0.33	0.33	1.10	0.96	1.25	0.1761
17	rs850738	44357262	0.39	0.42	0.41	0.90	0.79	1.03	0.1150
17	rs62053943	45666837	0.17	0.15	0.15	1.09	0.92	1.29	0.3456
17	rs117615688	45720942	0.07	0.06	0.06	0.99	0.78	1.27	0.9590
17	rs11658976	46789439	0.42	0.40	0.40	1.13	0.99	1.29	0.0635
17	rs61169879	61840005	0.18	0.16	0.17	1.18	1.00	1.40	0.0458
17	rs666463	78429399	0.14	0.17	0.16	0.76	0.63	0.91	0.0026
18	rs1941685	33724354	0.52	0.49	0.49	1.13	0.99	1.28	0.0610
18	rs12456492	43093415	0.32	0.32	0.32	1.02	0.89	1.17	0.7305
18	rs8087969	51157219	0.46	0.46	0.46	1.03	0.91	1.17	0.5991
19	rs55818311	2341049	0.32	0.32	0.32	0.99	0.87	1.14	0.9333
20	rs77351827	6025395	0.15	0.12	0.13	1.21	1.01	1.45	0.0397
21	rs2248244	37480059	0.26	0.27	0.27	0.97	0.84	1.12	0.7098

Supplementary Table S5: Top Parkinson's disease SNPs according to the Parkinson's disease meta-analysis of genome-wide association studies, Nalls et al. 2019.

The SNP selection is based on results from the meta-analysis of 17 datasets from Parkinson's disease GWAS available from European ancestry samples. BP = base-pair coordinates according to human reference genome GRCh38, CHR = Chromosome, dbSNP = database of single nucleotide polymorphisms, L95 = Lower bound of 95% confidence interval for odds ratio, MAF = minor allele frequency, U95= Upper bound of 95% confidence interval for odds ratio.

Supplementary Figures



Supplementary Fig. S1. Flowchart sample quality control. SD = standard deviation.

