

## **Differences in COVID-19 vaccination coverage by occupation in England: a national linked data study**

Vahé Nafilyan<sup>1,2</sup>, Ted Dolby<sup>1</sup>, Katie Finning<sup>1</sup>, Jasper Morgan<sup>1</sup>, Rhiannon Edge<sup>3</sup>, Myer Glickman<sup>1</sup>, Neil Pearce<sup>4,\*</sup>, Martie van Tongeren<sup>5,\*</sup>

<sup>1</sup> Office for National Statistics, Newport, UK

<sup>2</sup> Faculty of Public Health, Environment and Society, London School of Hygiene and Tropical Medicine, London, UK

<sup>3</sup> Lancaster Medical School, Lancaster University, Bailrigg, Lancaster, UK

<sup>4</sup> Faculty of Epidemiology and Population Health, London School of Hygiene and Tropical Medicine

<sup>5</sup> School of Health Sciences, University of Manchester

Corresponding author: Vahé Nafilyan [vahe.nafilyan@ons.gov.uk](mailto:vahe.nafilyan@ons.gov.uk)

\*These authors contributed equally to this paper and are joint senior authors

## Abstract

**Background:** Monitoring differences in COVID-19 vaccination uptake in different groups is crucial to help inform the policy response to the pandemic. A key gap is the absence of data on uptake by occupation.

**Methods:** Using nationwide population-level data, we calculated the proportion of people who had received two doses of a COVID-19 vaccine (assessed on 31 August 2021) by detailed occupational categories in adults aged 40-64 and estimated adjusted odds ratios to examine whether these differences were driven by occupation or other factors, such as education. We also examined whether vaccination rates differed by ability to work from home.

**Results:** Our study population included 14,298,147 adults 40-64. Vaccination rates differed markedly by occupation, being higher in administrative and secretarial occupations (90.8%); professional occupations (90.7%); and managers, directors and senior officials (90.6%); and lowest (83.1%) in people working in elementary occupations. We found substantial differences in vaccination rates looking at finer occupational groups even after adjusting for confounding factors, such as education. Vaccination rates were higher in occupations which can be done from home and lower in those which cannot. Many occupations with low vaccination rates also involved contact with the public or with vulnerable people

**Conclusions:** Increasing vaccination coverage in occupations with low vaccination rates is crucial to help protecting the public and control infection, especially in occupations that cannot be done from home and involve contacts with the public. Policies such as 'work from home if you can' may only have limited future impact on hospitalisations and deaths

*What is already known on this subject?*

Whilst several studies highlight differences in vaccination coverage by ethnicity, religion, socio-demographic factors and certain underlying health conditions, there is very little evidence on how vaccination coverage varies by occupation, in the UK and elsewhere. The few study looking at occupational differences in vaccine hesitancy focus on healthcare workers or only examined broad occupational groups. There is currently no large-scale study on occupational differences in COVID-19 vaccination coverage in the UK.

*What this study adds?*

Using population-level linked data combining the 2011 Census, primary care records, mortality and vaccination data, we found that the vaccination rates of adults aged 40 to 64 years in England differed markedly by occupation. Vaccination rates were high in administrative and secretarial occupations, professional occupations and managers, directors and senior officials and low in people working in elementary occupations. Adjusting for other factors likely to be linked to occupation and vaccination, such as education, did not substantially alter the results. Vaccination rates were also associated with the ability to work from home, with the vaccination rate being higher in occupations which can be done performed from home. Policies aiming to increase vaccination rates in occupations that cannot be done from home and involve contacts with the public should be priorities

## Introduction

The UK began an ambitious vaccination programme to combat the COVID-19 pandemic on 8 December 2020; by 31 August 2021, 78.9% of the UK adult population had received two doses [1].

Monitoring differences in vaccine uptake between population groups is crucial to inform the policy response. Evidence suggests that rates of COVID-19 vaccination in England differ by ethnicity, religion, socio-demographic factors and certain underlying health conditions [2, 3, 4]. However, a key evidence gap is the absence of data on uptake by occupation. Producing vaccination rates by detailed occupational categories is challenging as routinely collected data used for the analysis of vaccination uptake do not contain information on occupation. The use of surveys is limited as a large sample size is needed to precisely estimate vaccination rates in small groups.

As there is evidence that people working in occupations involving contact with patients or the public are at greater risk of COVID-19 infection and death [5, 6, 7], it is important to ensure that vaccination coverage is high in these occupations. Measuring vaccination uptake by occupation also has implications for the management of the pandemic, especially as governments are starting to open up the economy, by ending the furlough scheme and encouraging workers to go back to the office. If vaccination rates are high in people working in occupations in which working from home is an option, then having workers back to the office would be expected to have less impact on cases and hospitalisation than if the vaccination rates are low. Similarly, imposing working from home where possible would be less effective if vaccination coverage is high in people who can work from home but low in those who cannot.

This study investigates differences in vaccination rates by occupation in England, using nationwide population-level data. We calculated vaccination rates by detailed occupational categories in adults aged 40 to 64 and estimated adjusted odds ratios to examine whether these differences were driven by potential confounding factors. We also examined whether vaccination rates differed by the ability to work from home and by risk of exposure to infectious diseases.

## Methods

### *Data*

We linked vaccination data from NHS England's National Immunisation Management System (NIMS) to the Office for National Statistics (ONS) Public Health Data Asset (PHDA) based on NHS number. The ONS

PHDA is a linked dataset combining the 2011 Census, mortality records, the General Practice Extraction Service (GPES) data for pandemic planning and research, and the Hospital Episode Statistics (HES). To obtain NHS numbers for the 2011 Census, we linked the 2011 Census to the 2011-2013 NHS Patient Registers using deterministic and probabilistic matching, with an overall linkage rate of 94.6%. All subsequent linkages were performed based on NHS numbers.

The study population consisted of adults aged 40 to 64 years, alive on 31 August 2021, who were resident in England, registered with a general practitioner, enumerated and having reported an occupation at the 2011 Census. Of 15,959,777 adults aged 40 to 64 years who received two doses of a COVID-19 vaccine in NIMS, 13,029,828 (81.6%) were linked to the ONS PHDA. We restricted our sample to individuals who were aged 40-64 years because they were likely to be in stable employment both in 2011 and 2020 [7]. Of the 17,501,132 people enumerated at the 2011 Census in England and Wales, who would be aged 40-64 on 31 August 2020, we excluded 717,667 people (4.1%) who could not be linked deterministically or probabilistically to the NHS Patient register, and 362,050 individuals (2.2%) who had died between the Census and 31 August 2021. An additional 2,121,216 people (12.6%) were not linked to the English primary care records, either because they did not live in England in 2019 (the Census included people living in England and Wales), or because they were not registered with the NHS (see sample flow diagram in Supplementary Table S1). After excluding 2,052 individuals who had received their vaccine before the beginning of the vaccination campaign (8 December 2020), our sample consisted of 14,298,147 individuals.

### *Outcome*

The primary outcome was being fully vaccinated against COVID-19, that is having received two doses of a COVID-19 vaccine as recorded in the NIMS data by 31 August 2021. The vaccine roll-out started to include all aged 40 to 44 on 30<sup>th</sup> April. Therefore, by the end of August 2021, we would expect most people who wanted to be vaccinated to have received their second dose. To account for the delay in receiving the first dose, and therefore not having had time to receive the second dose by then end of the study period, we also examined having received no COVID-19 vaccine and having received only the first dose of the vaccine as secondary outcomes.

### *Exposure*

The main exposure was occupation at the time of the 2011 Census. Occupations are coded using a hierarchical classification, the Standard Occupation Classification (SOC) 2010 (7). The most detailed classification (Unit group, with 4-digit codes) includes 370 categories, whilst the most aggregated (Major

group, with 1-digit codes) has only nine groups. We used both SOC major groups and unit groups in this paper.

#### *Covariates*

In addition to crude vaccination rates, we estimated vaccination rates adjusted for a range of factors known to be associated with vaccination uptake and occupation [8], and therefore likely to confound the relationship between occupation and vaccination. We adjusted for sex (Male, Female), age (five-year age band), region, ethnicity (White British, Bangladeshi, Black African, Black Caribbean, Chinese, Indian, Mixed, Other, Pakistani, White other), disability status (non-disabled, disabled and limited a little, disabled and limited a lot), highest level of qualification (Level 4+ , Level 3, Apprenticeship, Level 2, Level 1, other, no qualification) and pre-existing conditions (1+) based on the QCovid risk model (See Table S2 for more detail).

#### *Occupation characteristics*

We also used occupation-level (Unit group) data on ability to work from home. These data were derived by the Office for National Statistics based on data from the Occupational Information Network (O\*NET), which contains information about the features and the nature of the work of the US [9]. Occupations were assigned a score of between one and five to reflect the frequency and importance of different tasks and characteristics to various jobs. Factors considered included whether the job has to be carried out in a specific location; the amount of face-to-face interaction with others; exposure to infections and other hazards; whether the job requires physical activity; and use of tools or protective equipment. An overall score was derived by summing the category scores, which were first rescaled to between zero and one. The final score was also rescaled to between zero and one, with one indicating a high ability to work from home.

#### *Statistical analyses*

First, we estimated the rate of people aged 40 to 64 who had received two doses of a COVID-19 vaccine by occupation. Second, we estimated age standardised vaccination rates for the different unit groups, whereby the age distribution within each group was standardized to the 2013 European Standardised Population.

Third, we examined whether differences were driven by other socio-demographic and clinical factors likely to be associated with vaccination uptake and occupation. We selected factors known to be associated with vaccination uptake in England [8] and to be linked to occupation. We used logistic

regression to estimate the odds of not being fully vaccinated (receiving two doses of the vaccine) by occupation, adjusting for sex, age, geographical and sociodemographic characteristics, disability status and pre-existing conditions. We estimated separate models for each occupation so that the odds ratios could be interpreted as the difference in the odds of not being vaccinated for people working in this occupation compared to all other occupations. We estimated unadjusted odds ratios, odds ratios adjusted for age and sex, and fully adjusted odds ratios.

Finally, we investigated the association between vaccination rate and the ability to work from home. We visualised the relationship using a scatter plot and estimated the strength of the association using univariate linear regression models. We also used logistic regression models to estimate the association between working from home and the odds of not being fully vaccinated, after adjusting for other characteristics. We used the same approach as for occupation and estimated standard error clustered at occupation level. Because the working from home score was standardised with a mean of 0 and a standard deviation of 1, the odds ratio for the score can be interpreted as the effect of an increase by one standard deviation. Analyses were conducted using R 3.5.

## Results

### *Characteristics of study population*

Our study population included 14,298,147 adults aged 40 to 64 years who lived in England at the beginning of the pandemic and reported being employed in 2011. 88.2% of people had received two doses of a vaccine against COVID-19 by 31 August 2021; 2.7% had only received one dose, whilst 9.1% had not received any. The average age was 52.8 years and 51.4% were female; 81.5% identified themselves as White British. 21.5% of people had at least one of the health conditions included in the QCovid risk model. Table 1 provides detailed characteristics of the sample.

[Table 1]

### *Vaccination rates by occupation*

As of 31 August 2021, vaccination rates in workers aged 40 to 64 differed by SOC Major Group. Vaccination rates were over 90% in administrative and secretarial occupations (90.8%); professional occupations (90.7%); and managers, directors and senior officials (90.6%). Those working in elementary occupations had the lowest rate of vaccination with 83.1% of people having received two doses of the vaccine (Table 2).

[Table 2]

Vaccination rates also differed markedly by occupation unit groups (Table 3 for selected occupation, Supplementary Table S3 for all occupations). Vaccination rates were highest in Senior police officers (95.5% [94.8 – 96.3]), school secretaries (94.8% [94.6 -95.1]), Senior officers in fire, ambulance and prison and related services (94.6 % [94.1 – 95.1]) and police officers (94.4% [94.3 – 94.5%]). The vaccination rate was over 92% in 50 out of 370 occupation unit groups, accounting 1,765,089 (12.3%) workers. High rates of vaccination were found in education workers (particularly primary and nursery education teaching professionals, teaching assistants, senior professional of educational establishments), national and local government administrative occupation, and solicitors.

[Table 3]

Vaccination rates were lower than 80% in just six occupations, accounting for 259,230 (1.8%) people in our dataset. These included packers, bottlers, canners and fillers (77.1% [76.8 – 77.4]), health associated professionals such as acupuncturists, Chiropractors and osteopaths (77.2% [76.6 – 77.8]), fitness instructors (77.8% [77.2 – 78.4]), vehicle valeters and cleaners (78.6% [77.9 – 79.2]), elementary construction occupations (78.7% [78.4 – 79.0]), and waiters and waitresses (78.9% [78.6 – 79.3]).

The vaccination rates were lower than 85% in 70 out of 370 occupations. 2,705,811 (18.9%) people worked in these occupations. The larger occupations (eg with more than 100,000 workers) with low vaccination rates included chefs (82.6% [82.3 – 82.8]), cleaners and domestics (82.7% [82.6 – 82.9]), people working in elementary storage occupations (82.8% [82.6 – 83.0]), taxi and cab drivers (83.3% [83.1 – 83.6]), van drivers (84.3% [84.1 – 84.5]), and carpenters and joiners (84.3% [84.1 – 84.6]). Low rates of vaccination were also found in kitchen and catering assistants (85.2% [85.0 – 85.4]), care workers and home carers (85.8% [85.6 – 85.9]) and sales and retail assistant (86.4% [86.3 – 86.5]), three large occupational groups (over 1 million of workers in our sample) which involve working with the public.

Amongst health care workers, there was some variation in vaccination rates. Most unit groups amongst health professionals had vaccination rates above average, with 91.7% of nurses and midwives being fully vaccinated and 89.4% of medical practioners. Vaccine coverage was low in health associated professionals not elsewhere classified group (e.g. acupuncturists, homeopaths and hypnotherapists) and therapy professionals not elsewhere classified (e.g. art therapists, chiropractor, Cognitive behavioural therapist and dance movement therapists). Vaccination rates were also low in care workers and home carers



Standardising for age or adjusting further for other factors likely to be linked to occupation and vaccination did not substantially alter the results (See Supplementary Table S3). Out of the 140 occupations which had an unadjusted OR for not being fully vaccinated significantly greater than one, only 7 changed to being significantly lower than one after adjusting for socio-demographic characteristics and pre-existing conditions. These included restaurant and catering managers, chefs, and taxi drivers. For another 23 occupations, the adjusted OR was not different from one. Adjusted OR for not being fully vaccinated were highest in health associated professionals not elsewhere classified (3.00 [2.90 – 3.10]), therapy professionals not elsewhere classified (2.37 [2.24 – 2.48]) and fitness instructors (2.29 [2.21 – 2.38]).

Out of the 189 occupations which had an unadjusted OR significantly lower than one, only 7 changed to being significantly greater than one after adjustment, including receptionists and metal workers. A further 27 became not different from one after adjustment. The lowest odds ratios for not being fully vaccinated were found in police officers (0.53 [0.51 – 0.54]), tow planning officers (0.57 [0.50 -0.63]), and solicitors (0.60 [0.58 – 0.62]).

Results were similar when looking at people who had not received any vaccine (See Supplementary Table S4), suggesting that the results are not driven by people working in some occupation being more likely not have been eligible to receive their second dose.

#### *Vaccination rates and job characteristics*

Vaccination rates were associated with the ability to work from home, as assessed based on O\*NET data. Figure 1 shows that vaccination rates tend to be higher in occupations in which working from home is more easily possible. The association was strong, with a R-squared of 0.208 and a F-statistics of 95.4. Results from a logistic regression model suggests that one standard deviation increase in the working from home score is associated with 0.46 [0.37 - 0.58] times lower odds of not being fully vaccinated. Adjusting for geographical factors, socio-demographic characteristics and health reduced the ORs did not substantially affect the results (adjusted ORs 0.59 [0.48 -0.69]), indicating that working from home is independently associated with a reduction in the odds of not being vaccinated.

[Figure 1]

## Discussion

### *Main findings of this study*

Using whole population level linked data in England, our analysis shows that the vaccination rates of adults aged 40 to 64 years and over differed markedly by occupation. Vaccination rates were high in administrative and secretarial occupations, professional occupations and managers, directors and senior officials and low in people working in elementary occupations. Vaccination rates were also associated with the ability to work from home, with vaccine uptake being higher in occupations which can be performed from home (this relationship remained when sociodemographic characteristics were adjusted for).

### *Comparison with other studies*

Few studies have investigated how COVID-19 vaccination coverage varies by occupation. Several studies investigated vaccine hesitancy and vaccine coverage in health care workers, highlighting some differences between different job roles, with doctors having slightly higher vaccination coverage and lower hesitancy than midwives and nurses [10, 11]. We found no substantial differences in vaccination rates between nurses and medical practitioners, but found much lower vaccination rates in health associated professionals such as acupuncturists, Chiropractors and osteopaths, and in care workers and home carers. The difference between our results and those from studies focused on health care workers may stem from the age range selected (40 to 64) and recent migrants being excluded from our dataset. Migrants make up about a fifth of the health and social care workforce [12] and people born outside of the UK tend to have lower vaccination coverage [13] .

Our findings that vaccination rates are higher among managers, directors and senior officials and in people working in professional occupations, compared with those working in elementary occupations, are in line with studies showing that vaccination rates in the UK and the US are higher in more wealthy areas and amongst people from higher socio-economic status [13, 3, 14, 4]. Our results are also consistent with a study from the US showing that vaccine hesitancy varied widely by occupation category, with hesitancy being low in people working in professional occupations, especially in the life, physical and social sciences and particularly high in people working in construction and extraction [15].

### *Strengths and limitations*

A major strength of this study is the use of nationwide linked population-level data from clinical records and the 2011 Census. This study is the first to examine how vaccination rates vary by occupation using population-level data. Because information on occupation is not collected in electronic health records, we used data from the Census to assess people's occupation. Some surveys collect data on both

occupations and vaccination but face the issue that non-response is likely correlated with the propensity to be vaccinated. Having population level data based on electronic health records and the Census, which is mandatory and has a high response rate, we were able to accurately estimate vaccination rates for detailed occupational groups.

The main limitation of our study is that the information on occupation is nine years out of date. Our exposure is therefore likely to be misclassified for a proportion of people, because they have left the labour force or changed occupation since 2011, especially during the pandemic. To mitigate measurement error, we restricted our analysis to people aged 40-64 years, who have a relatively high occupational stability, as shown in an analysis of a large longitudinal household survey [7]. Exposure misclassification is nonetheless likely result in underestimating the differences in vaccination rates between occupations, especially if the exposure misclassification is random. Turnout rate may be greater in some occupations than others, especially in elementary occupations where vaccination rates are lower, which could lead to underestimate the differences in vaccination rates. However, over two-third of people aged 40 to 64 in 2019 were in the same major group as in 2011 [7]. The bias is likely to be smaller in the estimated vaccination rates by major group than by unit group.

An additional limitation is that, because the Public Health Data Asset was based on the 2011 Census, it excluded people who were living in England in 2011 but who did not take part in the Census, as well as respondents who could not be linked to the 2011-2013 NHS patient register and recent migrants. As a result, we excluded 5.4% of vaccinated people who could not be linked to the PHDA.

### *Mechanisms*

Our analysis highlights substantial differences in vaccination coverage between occupations, with vaccination rates being higher in professional occupations and managers, directors and senior officials and lower in people working in elementary occupations. These differences are only partially explained by other factors, including education, suggesting that some occupations are independently associated with vaccination status. People working in elementary occupations may have little job control and therefore may find it more difficult to attend vaccination or may be put off by the potential side effects, which could prevent them from working. Existing evidence suggests that occupational characteristics, such as job strain, can affect health behaviours, such as compliance with treatment [16]. Vaccine hesitancy may also be driving differences in uptake. The drivers of vaccine hesitancy are complex, and occupation may play a part. Indeed, we find that vaccine coverage is low in health associated professionals such as acupuncturists and osteopaths, and therapy professionals such as art therapist,

chiropractor, cognitive behavioural therapists and dance movement therapists. They may be more likely to reject mainstream medicine than other groups. The rates were also low in fitness instructors, who may be more likely to believe they are very healthy and therefore may not need the vaccine.

## Conclusion

In our study population of older worker adults in England, 88.2% had received two doses of a vaccine against COVID-19 by 31 August 2021 – a public health triumph. However, many occupations with lower vaccination rates involved contact with the public (taxi and cab drivers, sales and retail assistant, waiters and waitresses) or with vulnerable people (care workers and home carers). Therefore, increasing vaccination coverage in these occupations would be crucial to help protect the public and control infection. Our results also show that vaccination rates are associated with the ability to work from home, with vaccination rates typically being higher in occupations which can be done from home. Therefore, policies such as ‘work from home if you can’ may only have limited impact on hospitalisations and deaths, as the vaccination rates are higher in the occupations that can be done from home and lower in those which cannot. Efforts should be made to increase vaccination rates in occupations that cannot be done from home. This includes many elementary occupations where it may be difficult to get time off work to be vaccinated, or where workers may not have the spare time or resources to access vaccination or are worried about missing work because of the side effects of the vaccines. As these are some of the more deprived groups in society, increasing vaccination rates in these groups would help reduce inequalities in vaccination coverage. Our results could also help inform future vaccination strategy and future models of COVID-19 transmission.

## References

[ UK Coronavirus Dashboard, “Coronavirus (COVID-19) in the UK - Vaccinations,” [Online]. Available: 1 <https://coronavirus.data.gov.uk/details/vaccinations>. [Accessed 27 04 2021]. ]

[ V. Nafilyan, T. Dolby, C. Razieh, C. H. Gaughan, J. Morgan, D. Ayoubkhani, S. Walker, K. Khunti, M. Glickman and T. Yates, 2 “Sociodemographic inequality in COVID-19 vaccination coverage among elderly adults in England: a national linked data ] study,” *BMJ Open*, vol. 11, no. 7, p. e053402, 2021.

- [ The OpenSAFELY Collaborative, H. J. Curtis, P. Inglesby, C. E. Morton, B. MacKenna, A. J. Walker, J. Morley, A. Mehrkar, S. Bacon, G. Hickman, C. Bates, R. Croker, D. Evans, T. Ward, J. Cockburn, S. Davy, K. Bhaskaran, A. Schultze, C. T. Rentsch, E. Williamson and et al., “Trends and clinical characteristics of COVID-19 vaccine recipients: a federated analysis of 57.9 million patients’ primary care records in situ using OpenSAFELY,” *medRxiv*, 2021.
- [ ONS, “Coronavirus and vaccination rates in people aged 50 years and over by socio-demographic characteristic, England: 8 December 2020 to 12 April 2021,” 2021. [Online]. Available: <https://www.ons.gov.uk/peoplepopulationandcommunity/healthandsocialcare/healthinequalities/bulletins/coronavirusandvaccinationratesinpeopleaged70yearsandoverbysociodemographiccharacteristicengland/8december2020to12april2021#disability>.
- [ M. Mutambudzi, C. Niedwiedz, E. B. Macdonald, A. Leyland, F. Mair, J. Anderson, C. Celis-Morales, J. Cleland, J. Forbes, J. Gill, C. Hastie, F. Ho, B. Jani, D. F. Mackay, B. Nicholl, C. O'Donnell, N. Sattar, P. Welsh, J. P. Pell, S. V. Katikireddi and E. Demou, “Occupation and risk of severe COVID-19: prospective cohort study of 120 075 UK Biobank participants,” *Occup Environ Med*, 2020.
- [ ONS, “Coronavirus (COVID-19) related deaths by occupation, England and Wales: deaths registered between 9 March and 28 December 2020,” 2021. [Online]. Available: <https://www.ons.gov.uk/peoplepopulationandcommunity/healthandsocialcare/causesofdeath/bulletins/coronaviruscovid19relateddeathsbyoccupationenglandandwales/deathsregisteredbetween9marchand28december2020>.
- [ V. Nafilyan, P. Pawelek, D. Ayoubkhani, S. Rhodes, L. Pembrey, M. Matz, M. P. Coleman, C. Allemani, B. Windsor-Shellard, M. van Tongeren and N. Pearce, “Occupation and COVID-19 mortality in England: a national linked data study of 14.3 million adults,” *medRxiv*, p. 2021.05.12.21257123, 1 2021.
- [ T. Dolby, F. Finning, A. Baker, L. Dowd, K. Khunti, C. Razieh, T. Yates and V. Nafilyan, “Monitoring sociodemographic inequality in COVID-19 vaccination coverage in England: a national linked data study,” *medRxiv*, 2021.
- [ ONS, “Which jobs can be done from home?,” 2020. [Online]. Available: <https://www.ons.gov.uk/employmentandlabourmarket/peopleinwork/employmentandemployeetypes/articles/whichjobsanbedonefromhome/2020-07-21>.
- [ K. Woolf, I. C. McManus, C. A. Martin, L. B. Nellums, A. L. Guyatt, C. Melbourne, L. Bryant, M. Gogoi, F. Wobi, A. Al-Oraibi, O. Hassan, A. Gupta, C. John, M. D. Tobin, S. Carr, S. Simpson, B. Gregory, A. Aujayeb, S. Zingwe, R. Reza, L. J. Gray, K. Khunti and M. Pareek, “Ethnic differences in SARS-CoV-2 vaccine hesitancy in United Kingdom healthcare workers: Results from the UK-REACH prospective nationwide cohort study,” *The Lancet Regional Health – Europe*, 9 2021.
- [ J. T. Lee, S. P. Althomsons, H. Wu, D. S. Budnitz, E. J. Kalayil, M. C. Lindley, C. Pingali, C. B. Bridges, A. I. Geller, A. P. Fiebelkorn, S. B. Graitcer, J. A. Singleton and S. A. Patel, “Disparities in COVID-19 Vaccination Coverage Among Health Care Personnel

1 Working in Long-Term Care Facilities, by Job Category, National Healthcare Safety Network — United States, March 2021,”  
] *MMWR Recommendations and Reports*, vol. 70, p. 1036–1039, 2021.

[ M. Dayan and B. Palmer, “Stopping the staff we need?,” *Nuffield Trust Election briefing* , vol. December 2019, 2019.

1  
2  
]

[ V. Nafilyan, T. Dolby, C. Razieh, C. H. Gaughan, J. Morgan, D. Ayoubkhani, S. Walker, K. Khunti, M. Glickman and T. Yates,  
1 “Sociodemographic inequality in COVID-19 vaccination coverage among elderly adults in England: a national linked data  
3 study,” *BMJ Open*, vol. 11, p. e053402, 7 2021.

]

[ C. C. Brown, S. G. Young and G. C. Pro, “COVID-19 vaccination rates vary by community vulnerability: A county-level analysis,”  
1 *Vaccine*, vol. 39, p. 4245–4249, 2021.

4  
]

[ W. C. King, M. Rubinstein, A. Reinhart and R. J. Mejia, “COVID-19 vaccine hesitancy January-March 2021 among 18-64 year  
1 old US adults by employment and occupation,” *medRxiv*, p. 2021.04.20.21255821, 1 2021.

5  
]

[ S. M. Kearney, A. P. Aldridge, N. G. Castle, J. Peterson and J. L. Pringle, “The Association of Job Strain With Medication  
1 Adherence: Is Your Job Affecting Your Compliance With a Prescribed Medication Regimen?,” *J Occup Environ Med*, vol. 58,  
6 no. 7, pp. 707-11, 2016.

]

[ “Who Doesn’t Want to be Vaccinated? Determinants of Vaccine Hesitancy During COVID-19,” *IMF Working Papers*, vol.  
1 WP/21/130, 2021.

7  
]

## Acknowledgements

## Funding

This work was funded by ONS and supported by funding through the National Core Study “PROTECT” programme, managed by the Health and Safety Executive on behalf of HM Government

### **Ethical Approval Statement**

Ethical approval was obtained from the National Statistician's Data Ethics Advisory Committee (NSDEC(20)12).

### **Authorship statement**

Study conceptualisation was led by VN and TD. VN, TD and DA contributed to the development of the research question, study design, with development of statistical aspects led by TD and VN. TD and VN were involved in data specification, curation and collection. TD and VN conducted and checked the statistical analyses. VN, TD, KF, RE, MG, NP, MvT, contributed to the interpretation of the results. VN wrote the first draft of the paper. TD, MG, KF, RE, NP, MvT contributed to the critical revision of the manuscript for important intellectual content and approved the final version of the manuscript. VN had full access to all data in the study and takes responsibility of the integrity of the data and the accuracy of the data analysis. VN affirms that the manuscript is an honest, accurate, and transparent account of the study being reported; that no important aspects of the study have been omitted; and that any discrepancies from the study as planned have been explained

### **Conflict of interest**

None

## [Tables and Figures](#)

### **Table 1 Characteristics of the study population**

It is made available under a [CC-BY-NC-ND 4.0 International license](https://creativecommons.org/licenses/by-nc-nd/4.0/) .

		Population (%)
Vaccination status	Received 2 doses	12,615,283 (88.23)
SOC Major Group	Managers, directors and senior officials	1,656,532 (11.59)
	Professional occupations	2,573,543 (18.00)
	Associate professional and technical occ.	1,787,024 (12.50)
	Administrative and secretarial occupations	1,694,285 (11.85)
	Skilled trades occupations	1,558,662 (10.90)
	Caring, leisure and other service occupation	1,388,057 (9.71)
	Sales and customer service occupations	988,243 (6.91)
	Process, plant and machine operatives	1,101,449 (7.70)
	Elementary occupations	1,550,352 (10.84)
Sex	Female	7,343,883 (51.36)
	Male	6,954,264 (48.64)
Age	Mean (SD)	52.8 (7.03)
Age groups	40-44	2,576,316 (18.02)
	45-49	2,686,755 (18.79)
	50-54	3,089,841 (21.61)
	55-59	3,155,529 (22.07)
	60-64	2,789,706 (19.51)
Level of highest qualification	No qualification	1,493,823 (10.45)
	Level 1	2,401,620 (16.80)
	Level 2	2,398,359 (16.77)
	Apprenticeship	388,272 (2.72)
	Level 3	1,859,503 (13.01)
	Level 4+	5,055,042 (35.35)
Ethnicity	Other	701,528 (4.91)
	Bangladeshi	82,573 (0.58)
	Black African	243,803 (1.71)
	Black Caribbean	178,341 (1.25)
	Chinese	84,460 (0.59)
	Indian	425,728 (2.98)
	Mixed	182,859 (1.28)
	Other	373,643 (2.61)
	Pakistani	225,155 (1.57)
	White British	11,646,751 (81.46)
White other	854,834 (5.98)	
Disability	Limited a little	890,737 (6.23)
	Limited a lot	576,117 (4.03)
	Not limited	12,831,293 (89.74)
Pre-existing condition	1+	3,078,307 (21.53)
Learning difficulty	Yes	51,777 (0.36)

**Table 2 Vaccination rates by SOC Major Group**

Occupation (SOC Major group)	Population	Vaccination rates		
		No vaccine	First dose only	Two doses
Managers, directors and senior officials	1,656,532	7.5 (7.4 - 7.5)	2.0 (2.0 - 2.0)	90.6 (90.5 - 90.6)
Professional occupations	2,573,543	7.6 (7.5 - 7.6)	1.8 (1.7 - 1.8)	90.7 (90.6 - 90.7)
Associate professional and technical occupations	1,787,024	8.6 (8.6 - 8.7)	2.1 (2.1 - 2.1)	89.3 (89.2 - 89.3)
Administrative and secretarial occupations	1,694,285	7.1 (7.1 - 7.1)	2.1 (2.1 - 2.1)	90.8 (90.8 - 90.9)



It is made available under a [CC-BY-NC-ND 4.0 International license](#) .

Skilled trades occupations	1,558,662	10.9 (10.9 - 11.0)	3.3 (3.2 - 3.3)	85.8 (85.7 - 85.8)
Caring, leisure and other service occupations	1,388,057	9.0 (9.0 - 9.1)	2.9 (2.9 - 2.9)	88.1 (88.0 - 88.1)
Sales and customer service occupations	988,243	9.6 (9.6 - 9.7)	3.3 (3.3 - 3.4)	87.0 (87.0 - 87.1)
Process, plant and machine operatives	1,101,449	11.4 (11.3 - 11.4)	3.3 (3.3 - 3.4)	85.3 (85.2 - 85.4)
Elementary occupations	1,550,352	13.0 (12.9 - 13.1)	3.9 (3.9 - 4.0)	83.1 (83.0 - 83.1)

Note: ONS Public Health Data Asset; Occupation as recorded in 2011 Census

**Table 3 Vaccination rates and odds ratios for not being fully vaccinated for SOC unit groups, top and bottom 20**

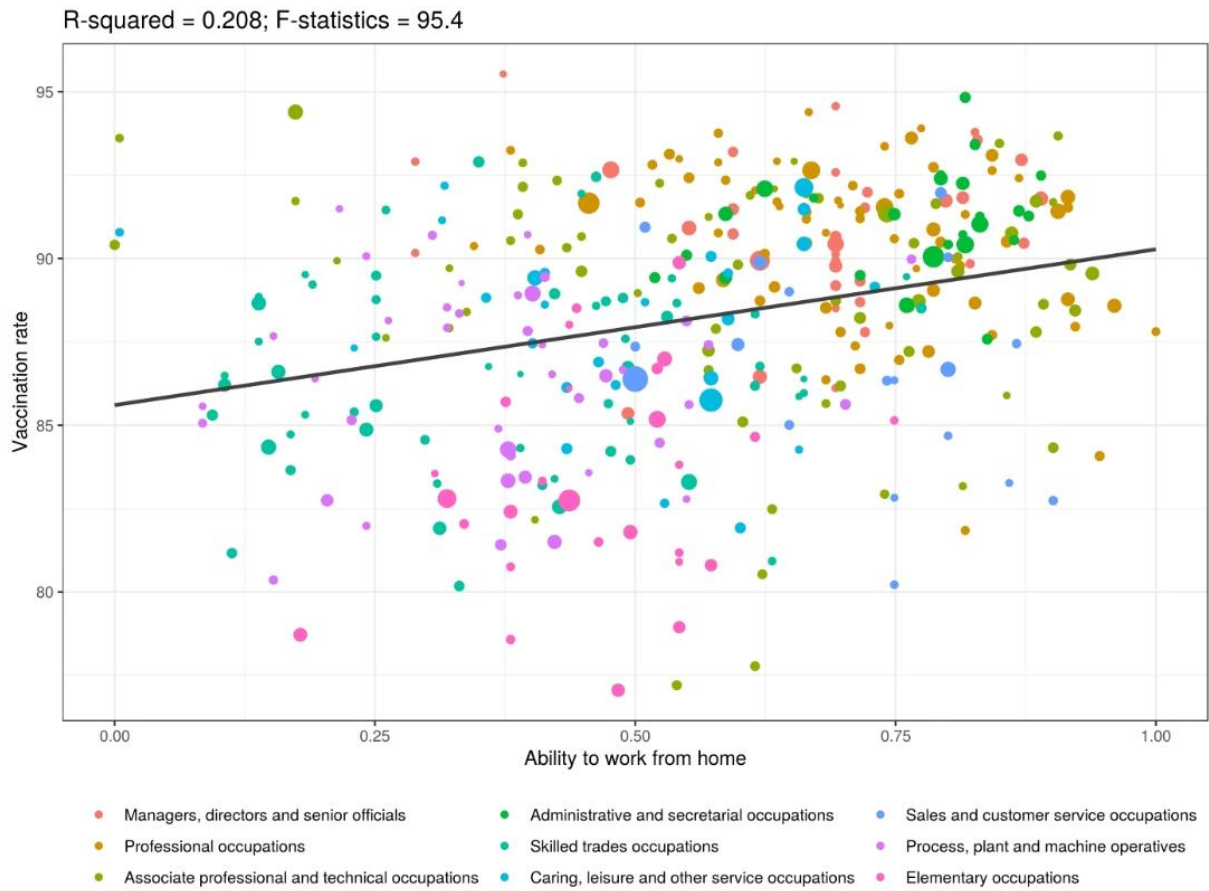
Occupation	Population	Number vaccinated	Vaccination rate	Age standardised rate	Unadjusted OR	Fully adjusted OR
Packers, bottlers, canners and fillers	72,464	55,838	77.1 (76.8 - 77.4)	76.5 (75.9 - 77.1)	2.24 (2.21 - 2.28)	1.43 (1.40 - 1.45)
Health associate professionals n.e.c.	21,136	16,318	77.2 (76.6 - 77.8)	76.7 (75.5 - 77.9)	2.22 (2.15 - 2.29)	3.00 (2.90 - 3.10)
Fitness instructors	18,657	14,511	77.8 (77.2 - 78.4)	78.6 (77.3 - 79.9)	2.14 (2.07 - 2.22)	2.29 (2.21 - 2.38)
Vehicle valeters and cleaners	14,511	11,402	78.6 (77.9 - 79.2)	79.2 (77.8 - 80.7)	2.05 (1.97 - 2.13)	1.28 (1.23 - 1.33)
Elementary construction occupations	80,244	63,166	78.7 (78.4 - 79.0)	77.7 (77.1 - 78.4)	2.04 (2.00 - 2.07)	1.52 (1.49 - 1.55)
Waiters and waitresses	52,218	41,224	78.9 (78.6 - 79.3)	81.0 (80.2 - 81.9)	2.01 (1.96 - 2.05)	1.18 (1.15 - 1.20)
Market and street traders and assistants	8,831	7,084	80.2 (79.4 - 81.0)	77.5 (75.6 - 79.4)	1.85 (1.76 - 1.95)	1.45 (1.37 - 1.53)
Plasterers	26,578	21,310	80.2 (79.7 - 80.7)	79.4 (78.3 - 80.5)	1.86 (1.80 - 1.91)	1.62 (1.57 - 1.67)
Scaffolders, staggers and riggers	14,606	11,737	80.4 (79.7 - 81.0)	80.8 (79.4 - 82.3)	1.83 (1.76 - 1.91)	1.61 (1.54 - 1.68)
Actors, entertainers and presenters	19,150	15,422	80.5 (80.0 - 81.1)	81.0 (79.7 - 82.3)	1.81 (1.75 - 1.88)	1.61 (1.55 - 1.68)
Industrial cleaning process occupations	10,974	8,862	80.8 (80.0 - 81.5)	78.6 (76.9 - 80.3)	1.79 (1.70 - 1.87)	1.40 (1.33 - 1.47)
Bar staff	55,784	45,076	80.8 (80.5 - 81.1)	82.5 (81.7 - 83.3)	1.79 (1.75 - 1.82)	1.51 (1.47 - 1.54)
Leisure and theme park attendants	4,797	3,881	80.9 (79.8 - 82.0)	81.9 (79.3 - 84.5)	1.77 (1.65 - 1.90)	1.39 (1.28 - 1.49)
Tailors and dressmakers	8,687	7,030	80.9 (80.1 - 81.8)	79.7 (77.8 - 81.6)	1.77 (1.68 - 1.86)	1.16 (1.09 - 1.22)
Elementary security occupations n.e.c.	9,977	8,099	81.2 (80.4 - 81.9)	80.6 (78.9 - 82.4)	1.74 (1.65 - 1.83)	1.40 (1.32 - 1.47)
Roofers, roof tilers and slaters	25,969	21,078	81.2 (80.7 - 81.6)	80.3 (79.2 - 81.4)	1.74 (1.69 - 1.80)	1.55 (1.50 - 1.60)
Fork-lift truck drivers	39,486	32,148	81.4 (81.0 - 81.8)	80.5 (79.7 - 81.4)	1.71 (1.67 - 1.76)	1.25 (1.22 - 1.29)
Window cleaners	16,746	13,648	81.5 (80.9 - 82.1)	80.0 (78.7 - 81.4)	1.70 (1.64 - 1.77)	1.53 (1.47 - 1.60)
Food, drink and tobacco process operatives	90,746	73,959	81.5 (81.2 - 81.8)	80.8 (80.3 - 81.4)	1.71 (1.68 - 1.74)	1.17 (1.15 - 1.19)
Therapy professionals n.e.c.	11,688	9,566	81.8 (81.1 - 82.5)	80.7 (79.0 - 82.4)	1.66 (1.59 - 1.74)	2.36 (2.24 - 2.48)
....	....	....	....	....	....	....

Human resource managers and directors	56,846	52,844	93.0 (92.7 - 93.2)	92.9 (92.1 - 93.7)	0.57 (0.55 - 0.59)	0.72 (0.70 - 0.74)
Solicitors	59,739	55,615	93.1 (92.9 - 93.3)	93.5 (92.7 - 94.3)	0.55 (0.54 - 0.57)	0.60 (0.58 - 0.62)
Chartered surveyors	33,252	30,967	93.1 (92.9 - 93.4)	92.8 (91.7 - 93.8)	0.55 (0.53 - 0.58)	0.72 (0.68 - 0.75)
Medical radiographers	11,307	10,543	93.2 (92.8 - 93.7)	93.1 (91.4 - 94.9)	0.54 (0.50 - 0.58)	0.69 (0.64 - 0.74)
Purchasing managers and directors	24,815	23,127	93.2 (92.9 - 93.5)	92.9 (91.7 - 94.1)	0.55 (0.52 - 0.57)	0.68 (0.65 - 0.71)
Librarians	9,870	9,215	93.4 (92.9 - 93.9)	92.6 (90.6 - 94.6)	0.53 (0.49 - 0.58)	0.74 (0.68 - 0.80)
Medical secretaries	33,188	31,002	93.4 (93.1 - 93.7)	92.4 (91.3 - 93.6)	0.53 (0.51 - 0.55)	0.74 (0.71 - 0.77)
Insurance underwriters	14,945	13,966	93.4 (93.1 - 93.8)	93.8 (92.3 - 95.4)	0.53 (0.49 - 0.56)	0.60 (0.56 - 0.64)
Paramedics	9,873	9,242	93.6 (93.1 - 94.1)	93.7 (91.8 - 95.6)	0.51 (0.47 - 0.55)	0.73 (0.67 - 0.79)
Health services and public health managers and directors	29,393	27,498	93.6 (93.3 - 93.8)	92.6 (91.4 - 93.8)	0.52 (0.49 - 0.54)	0.73 (0.70 - 0.77)
Senior professionals of educational establishments	65,028	60,875	93.6 (93.4 - 93.8)	92.8 (92.0 - 93.6)	0.51 (0.49 - 0.53)	0.76 (0.73 - 0.78)
Taxation experts	14,574	13,652	93.7 (93.3 - 94.1)	93.6 (92.0 - 95.2)	0.51 (0.47 - 0.54)	0.62 (0.58 - 0.66)
Health care practice managers	10,620	9,960	93.8 (93.3 - 94.2)	92.7 (90.8 - 94.7)	0.50 (0.46 - 0.54)	0.71 (0.65 - 0.77)
Occupational therapists	14,845	13,918	93.8 (93.4 - 94.1)	93.8 (92.3 - 95.4)	0.50 (0.47 - 0.53)	0.69 (0.65 - 0.74)
Town planning officers	5,313	4,989	93.9 (93.3 - 94.5)	94.3 (91.6 - 97.0)	0.49 (0.43 - 0.54)	0.57 (0.50 - 0.63)
Speech and language therapists	6,360	6,003	94.4 (93.8 - 95.0)	94.5 (92.1 - 97.0)	0.45 (0.40 - 0.50)	0.61 (0.54 - 0.68)
Police officers (sergeant and below)	108,003	101,946	94.4 (94.3 - 94.5)	94.4 (93.8 - 95.0)	0.44 (0.43 - 0.46)	0.53 (0.51 - 0.54)
Senior officers in fire, ambulance, prison and related services	8,157	7,714	94.6 (94.1 - 95.1)	93.4 (91.0 - 95.9)	0.43 (0.39 - 0.47)	0.64 (0.58 - 0.71)
School secretaries	34,524	32,739	94.8 (94.6 - 95.1)	92.8 (91.6 - 94.0)	0.41 (0.39 - 0.43)	0.62 (0.59 - 0.65)
Senior police officers	2,775	2,651	95.5 (94.8 - 96.3)	94.2 (88.6 - 99.8)	0.35 (0.29 - 0.42)	0.60 (0.50 - 0.72)

Note: ONS Public Health Data Asset; Results for all SOC unit groups are presented in Supplementary Table S3. Vaccination rate is the rate of people fully vaccinated. The outcome of the logistic regression models is not being fully vaccinated as of 31 August 2021. The reference category for the ORs is all other occupations. Fully adjusted models include sex, five-year age bands, ethnicity, region, education, disability, pre-existing condition.

It is made available under a [CC-BY-NC-ND 4.0 International license](https://creativecommons.org/licenses/by-nc-nd/4.0/) .

**Figure 1 Association between vaccination rates and ability to work from home at unit group level**



Supplementary material is made available under a [CC-BY-NC-ND 4.0 International license](https://creativecommons.org/licenses/by-nc-nd/4.0/).

## Supplementary material

**Table S1 Sample selection and number of participants**

Inclusion criteria	Cohort size
All enumerated at 2011 Census in England and Wales, aged 40-64 on 31 August 2021	17,501,132
Linked to the NHS 2011-2013 Patient Register	16,783,465
Alive on 31 August 2021	16,421,415
Living in England and linked to 2019 English primary care records	14,300,199
Not vaccinated before 8 December 2020	14,298,147

**Table S2 Variables used in the analyses**

Variable	Coding	Source
Vaccinated	Received a two dose of a COVID-19 vaccine by 15th March 2020	NIMS
Occupation	SOC Major groups; SOC unit groups	2011 Census
Age	5-year age bands	2011 Census
Sex	Female, Male	2011 Census
Ethnicity	White British, Bangladeshi, Black African, Black Caribbean, Chinese, Indian, Mixed, Other, Pakistani, White other	2011 Census
Region	Dummy variables representing region of residence	GPES
Disability	Non-disabled, disabled (limited a little), disabled (limited a lot)	2011 Census
Highest level of qualification	Level 4+ (Degree or equivalent), Level 3(A-level or equivalent), Apprenticeship, Level 2 (GCSE or equivalent), Level 1, other, No qualification	2011 Census

Pre-existing condition      It is made available under a [CC-BY-NC-ND 4.0 International license](#).  
At least one condition identified as a risk factor for GPES/HES  
COVID-19 in the QCovid risk model

---

**Table S3 Vaccination rates and odds ratios for SOC unit groups**

Occupation	Population	Number vaccinated	Vaccination rate	Age standardised rate	Unadjusted OR	Age-sex adjusted OR	Fully adjusted OR
Chief executives and senior officials	23,367	20,514	87.8 (87.4 - 88.2)	85.3 (84.0 - 86.6)	1.04 (1.00 - 1.08)	1.16 (1.12 - 1.21)	1.31 (1.26 - 1.36)
Elected officers and representatives	2,640	2,400	90.9 (89.8 - 92.0)	89.5 (85.6 - 93.5)	0.75 (0.66 - 0.86)	0.85 (0.75 - 0.97)	0.87 (0.76 - 0.99)
Production managers and directors in manufacturing	157,327	145,776	92.7 (92.5 - 92.8)	91.6 (91.1 - 92.1)	0.59 (0.58 - 0.60)	0.60 (0.59 - 0.61)	0.76 (0.75 - 0.78)
Production managers and directors in construction	98,624	89,664	90.9 (90.7 - 91.1)	89.3 (88.6 - 89.9)	0.75 (0.73 - 0.76)	0.75 (0.74 - 0.77)	0.89 (0.87 - 0.91)
Production managers and directors in mining and energy	9,115	8,439	92.6 (92.0 - 93.1)	92.1 (90.1 - 94.1)	0.60 (0.56 - 0.65)	0.59 (0.55 - 0.64)	0.81 (0.74 - 0.87)
Financial managers and directors	91,614	84,097	91.8 (91.6 - 92.0)	91.4 (90.8 - 92.0)	0.67 (0.65 - 0.68)	0.65 (0.64 - 0.67)	0.76 (0.74 - 0.78)
Marketing and sales directors	60,082	55,170	91.8 (91.6 - 92.0)	91.2 (90.4 - 91.9)	0.67 (0.65 - 0.69)	0.65 (0.63 - 0.67)	0.81 (0.79 - 0.84)
Purchasing managers and directors	24,815	23,127	93.2 (92.9 - 93.5)	92.9 (91.7 - 94.1)	0.55 (0.52 - 0.57)	0.53 (0.50 - 0.56)	0.68 (0.65 - 0.71)
Advertising and public relations directors	15,633	14,045	89.8 (89.4 - 90.3)	90.2 (88.7 - 91.7)	0.85 (0.80 - 0.89)	0.75 (0.72 - 0.79)	0.92 (0.87 - 0.97)
Human resource managers and directors	56,846	52,844	93.0 (92.7 - 93.2)	92.9 (92.1 - 93.7)	0.57 (0.55 - 0.59)	0.57 (0.55 - 0.59)	0.72 (0.70 - 0.74)
Information technology and telecommunications directors	36,476	32,995	90.5 (90.2 - 90.8)	89.7 (88.7 - 90.7)	0.79 (0.76 - 0.82)	0.75 (0.72 - 0.78)	0.96 (0.93 - 1.00)
Functional managers and directors n.e.c.	41,145	37,301	90.7 (90.4 - 90.9)	89.7 (88.7 - 90.6)	0.77 (0.75 - 0.80)	0.81 (0.78 - 0.84)	0.93 (0.90 - 0.96)
Financial institution managers and directors	82,989	76,129	91.7 (91.5 - 91.9)	91.4 (90.7 - 92.0)	0.67 (0.66 - 0.69)	0.65 (0.63 - 0.66)	0.72 (0.70 - 0.74)
Managers and directors in transport and distribution	47,884	43,803	91.5 (91.2 - 91.7)	90.4 (89.5 - 91.3)	0.70 (0.68 - 0.72)	0.70 (0.68 - 0.72)	0.79 (0.76 - 0.81)
Managers and directors in storage and warehousing	37,533	34,056	90.7 (90.4 - 91.0)	90.1 (89.1 - 91.0)	0.76 (0.74 - 0.79)	0.72 (0.69 - 0.74)	0.77 (0.74 - 0.80)
Officers in armed forces	4,829	4,293	88.9 (88.0 - 89.8)	87.7 (85.0 - 90.4)	0.94 (0.86 - 1.02)	0.92 (0.84 - 1.00)	1.24 (1.13 - 1.37)
Senior police officers	2,775	2,651	95.5 (94.8 - 96.3)	94.2 (88.6 - 99.8)	0.35 (0.29 - 0.42)	0.41 (0.34 - 0.49)	0.60 (0.50 - 0.72)
Senior officers in fire, ambulance, prison and related services	8,157	7,714	94.6 (94.1 - 95.1)	93.4 (91.0 - 95.9)	0.43 (0.39 - 0.47)	0.48 (0.43 - 0.53)	0.64 (0.58 - 0.71)

Health services and public health managers and directors	29,393	27,498	93.6 (93.3 - 93.8)	92.6 (91.4 - 93.8)	0.52 (0.49 - 0.54)	0.60 (0.58 - 0.63)	0.73 (0.70 - 0.77)
Social services managers and directors	25,084	22,957	91.5 (91.2 - 91.9)	90.8 (89.5 - 92.0)	0.69 (0.66 - 0.73)	0.81 (0.77 - 0.85)	0.95 (0.91 - 0.99)
Managers and directors in retail and wholesale	256,937	231,084	89.9 (89.8 - 90.1)	89.7 (89.3 - 90.0)	0.84 (0.83 - 0.85)	0.80 (0.79 - 0.81)	0.86 (0.85 - 0.87)
Managers and proprietors in agriculture and horticulture	8,429	7,831	92.9 (92.4 - 93.5)	91.5 (89.4 - 93.7)	0.57 (0.53 - 0.62)	0.60 (0.55 - 0.65)	0.77 (0.71 - 0.84)
Managers and proprietors in forestry, fishing and related services	7,189	6,482	90.2 (89.5 - 90.9)	89.1 (86.8 - 91.3)	0.82 (0.76 - 0.88)	0.87 (0.80 - 0.94)	1.10 (1.01 - 1.19)
Hotel and accommodation managers and proprietors	25,317	22,454	88.7 (88.3 - 89.1)	87.8 (86.6 - 89.0)	0.96 (0.92 - 0.99)	1.00 (0.96 - 1.04)	0.97 (0.93 - 1.01)
Restaurant and catering establishment managers and proprietors	59,946	51,167	85.4 (85.1 - 85.6)	85.5 (84.7 - 86.2)	1.29 (1.26 - 1.32)	1.20 (1.18 - 1.23)	0.91 (0.89 - 0.93)
Publicans and managers of licensed premises	32,977	29,456	89.3 (89.0 - 89.7)	88.6 (87.5 - 89.6)	0.90 (0.87 - 0.93)	0.93 (0.90 - 0.97)	1.02 (0.98 - 1.05)
Leisure and sports managers	31,507	28,100	89.2 (88.8 - 89.5)	89.4 (88.3 - 90.4)	0.91 (0.88 - 0.94)	0.82 (0.79 - 0.85)	0.97 (0.94 - 1.01)
Travel agency managers and proprietors	7,617	6,865	90.1 (89.5 - 90.8)	90.2 (88.1 - 92.3)	0.82 (0.76 - 0.89)	0.78 (0.72 - 0.84)	0.85 (0.79 - 0.92)
Health care practice managers	10,620	9,960	93.8 (93.3 - 94.2)	92.7 (90.8 - 94.7)	0.50 (0.46 - 0.54)	0.61 (0.56 - 0.66)	0.71 (0.65 - 0.77)
Residential, day and domiciliary care managers and proprietors	29,250	26,906	92.0 (91.7 - 92.3)	91.2 (90.1 - 92.4)	0.65 (0.63 - 0.68)	0.76 (0.73 - 0.80)	0.91 (0.87 - 0.95)
Property, housing and estate managers	69,897	62,749	89.8 (89.5 - 90.0)	88.7 (88.0 - 89.4)	0.85 (0.83 - 0.87)	0.91 (0.89 - 0.93)	0.99 (0.96 - 1.01)
Garage managers and proprietors	15,726	14,141	89.9 (89.5 - 90.4)	88.1 (86.6 - 89.7)	0.84 (0.80 - 0.88)	0.84 (0.80 - 0.88)	0.99 (0.94 - 1.04)
Hairdressing and beauty salon managers and proprietors	7,620	6,562	86.1 (85.3 - 86.9)	86.4 (84.2 - 88.5)	1.21 (1.13 - 1.29)	1.22 (1.14 - 1.30)	1.35 (1.27 - 1.45)
Shopkeepers and proprietors ? wholesale and retail	86,453	74,743	86.5 (86.2 - 86.7)	84.4 (83.7 - 85.0)	1.18 (1.15 - 1.20)	1.29 (1.26 - 1.31)	1.14 (1.12 - 1.17)
Waste disposal and environmental services managers	7,067	6,255	88.5 (87.8 - 89.3)	87.2 (84.9 - 89.4)	0.97 (0.90 - 1.05)	0.97 (0.90 - 1.04)	1.10 (1.02 - 1.18)
Managers and proprietors in other services n.e.c.	143,652	129,916	90.4 (90.3 - 90.6)	89.7 (89.2 - 90.2)	0.79 (0.78 - 0.80)	0.81 (0.79 - 0.82)	0.94 (0.93 - 0.96)
Chemical scientists	5,772	5,285	91.6 (90.8 - 92.3)	91.7 (89.2 - 94.2)	0.69 (0.63 - 0.76)	0.61 (0.56 - 0.68)	0.79 (0.72 - 0.87)
Biological scientists and biochemists	22,634	20,691	91.4 (91.1 - 91.8)	91.5 (90.3 - 92.8)	0.70 (0.67 - 0.74)	0.66 (0.63 - 0.70)	0.78 (0.75 - 0.82)
Physical scientists	4,712	4,146	88.0 (87.1 - 88.9)	88.3 (85.6 - 91.0)	1.02 (0.94 - 1.12)	0.89 (0.81 - 0.97)	1.11 (1.02 - 1.22)
Social and humanities scientists	3,611	3,239	89.7 (88.7 - 90.7)	89.8 (86.7 - 92.9)	0.86 (0.77 - 0.96)	0.79 (0.71 - 0.88)	0.97 (0.87 - 1.09)
Natural and social science professionals n.e.c.	30,728	26,639	86.7 (86.3 - 87.1)	88.1 (87.0 - 89.2)	1.15 (1.11 - 1.19)	0.94 (0.90 - 0.97)	1.00 (0.97 - 1.03)
Civil engineers	27,649	24,534	88.7 (88.4 - 89.1)	88.7 (87.6 - 89.8)	0.95 (0.92 - 0.99)	0.83 (0.80 - 0.86)	0.96 (0.92 - 1.00)



Mechanical engineers	40,123	35,769	89.1 (88.8 - 89.5)	88.7 (87.8 - 89.6)	0.91 (0.88 - 0.94)	0.82 (0.79 - 0.84)	1.11 (1.07 - 1.14)
Electrical engineers	12,649	11,459	90.6 (90.1 - 91.1)	89.7 (88.0 - 91.3)	0.78 (0.73 - 0.83)	0.72 (0.68 - 0.77)	0.98 (0.93 - 1.05)
Electronics engineers	14,470	12,992	89.8 (89.3 - 90.3)	88.9 (87.3 - 90.5)	0.85 (0.81 - 0.90)	0.81 (0.77 - 0.85)	1.04 (0.98 - 1.10)
Design and development engineers	24,802	22,667	91.4 (91.0 - 91.7)	91.3 (90.1 - 92.5)	0.71 (0.68 - 0.74)	0.61 (0.59 - 0.64)	0.85 (0.81 - 0.89)
Production and process engineers	14,734	13,437	91.2 (90.7 - 91.7)	90.8 (89.3 - 92.3)	0.72 (0.68 - 0.77)	0.66 (0.62 - 0.70)	0.83 (0.78 - 0.88)
Engineering professionals n.e.c.	45,537	41,191	90.5 (90.2 - 90.7)	90.2 (89.4 - 91.1)	0.79 (0.77 - 0.82)	0.71 (0.69 - 0.73)	0.94 (0.91 - 0.97)
IT specialist managers	96,216	88,367	91.8 (91.7 - 92.0)	91.7 (91.1 - 92.3)	0.66 (0.65 - 0.68)	0.60 (0.59 - 0.61)	0.74 (0.72 - 0.75)
IT project and programme managers	26,939	24,658	91.5 (91.2 - 91.9)	91.2 (90.1 - 92.4)	0.69 (0.66 - 0.72)	0.65 (0.62 - 0.67)	0.79 (0.76 - 0.83)
IT business analysts, architects and systems designers	48,073	43,509	90.5 (90.2 - 90.8)	90.6 (89.7 - 91.4)	0.79 (0.76 - 0.81)	0.68 (0.66 - 0.70)	0.82 (0.79 - 0.84)
Programmers and software development professionals	86,799	76,889	88.6 (88.4 - 88.8)	89.3 (88.6 - 89.9)	0.97 (0.95 - 0.99)	0.77 (0.76 - 0.79)	0.90 (0.88 - 0.92)
Web design and development professionals	21,445	18,030	84.1 (83.6 - 84.6)	85.4 (83.9 - 86.8)	1.42 (1.37 - 1.47)	1.05 (1.01 - 1.09)	1.20 (1.15 - 1.25)
Information technology and telecommunications professionals n.e.c.	80,010	71,030	88.8 (88.6 - 89.0)	89.0 (88.3 - 89.6)	0.95 (0.93 - 0.97)	0.81 (0.80 - 0.83)	0.92 (0.90 - 0.94)
Conservation professionals	4,264	3,962	92.9 (92.1 - 93.7)	93.1 (90.2 - 96.0)	0.57 (0.51 - 0.64)	0.52 (0.46 - 0.59)	0.79 (0.70 - 0.89)
Environment professionals	11,245	10,312	91.7 (91.2 - 92.2)	92.1 (90.3 - 93.9)	0.68 (0.63 - 0.73)	0.59 (0.55 - 0.63)	0.80 (0.74 - 0.85)
Research and development managers	18,001	16,594	92.2 (91.8 - 92.6)	92.3 (90.9 - 93.8)	0.64 (0.60 - 0.67)	0.58 (0.55 - 0.61)	0.73 (0.69 - 0.77)
Medical practitioners	97,801	87,393	89.4 (89.2 - 89.6)	89.5 (88.9 - 90.1)	0.89 (0.87 - 0.91)	0.82 (0.81 - 0.84)	0.87 (0.85 - 0.89)
Psychologists	11,497	10,499	91.3 (90.8 - 91.8)	91.6 (89.8 - 93.4)	0.71 (0.67 - 0.76)	0.66 (0.62 - 0.70)	0.78 (0.73 - 0.83)
Pharmacists	20,123	18,139	90.1 (89.7 - 90.6)	90.6 (89.3 - 91.9)	0.82 (0.78 - 0.86)	0.76 (0.72 - 0.79)	0.77 (0.73 - 0.81)
Ophthalmic opticians	6,369	5,862	92.0 (91.4 - 92.7)	92.4 (90.0 - 94.8)	0.65 (0.59 - 0.71)	0.59 (0.54 - 0.65)	0.71 (0.65 - 0.78)
Dental practitioners	17,182	15,510	90.3 (89.8 - 90.7)	90.3 (88.9 - 91.7)	0.81 (0.77 - 0.85)	0.77 (0.73 - 0.81)	0.75 (0.71 - 0.79)
Veterinarians	6,876	6,214	90.4 (89.7 - 91.1)	90.8 (88.5 - 93.1)	0.80 (0.74 - 0.87)	0.71 (0.66 - 0.77)	0.80 (0.74 - 0.87)
Medical radiographers	11,307	10,543	93.2 (92.8 - 93.7)	93.1 (91.4 - 94.9)	0.54 (0.50 - 0.58)	0.55 (0.51 - 0.59)	0.69 (0.64 - 0.74)
Podiatrists	6,281	5,834	92.9 (92.2 - 93.5)	92.7 (90.1 - 95.2)	0.57 (0.52 - 0.63)	0.68 (0.61 - 0.75)	1.00 (0.91 - 1.11)
Health professionals n.e.c.	12,302	11,166	90.8 (90.3 - 91.3)	90.7 (89.1 - 92.4)	0.76 (0.72 - 0.81)	0.78 (0.73 - 0.83)	0.93 (0.87 - 0.99)
Physiotherapists	18,805	17,453	92.8 (92.4 - 93.2)	93.1 (91.7 - 94.5)	0.58 (0.55 - 0.61)	0.54 (0.51 - 0.57)	0.73 (0.69 - 0.77)
Occupational therapists	14,845	13,918	93.8 (93.4 - 94.1)	93.8 (92.3 - 95.4)	0.50 (0.47 - 0.53)	0.51 (0.48 - 0.54)	0.69 (0.65 - 0.74)
Speech and language therapists	6,360	6,003	94.4 (93.8 - 95.0)	94.5 (92.1 - 97.0)	0.45 (0.40 - 0.50)	0.45 (0.40 - 0.50)	0.61 (0.54 - 0.68)
Therapy professionals n.e.c.	11,688	9,566	81.8 (81.1 - 82.5)	80.7 (79.0 - 82.4)	1.66 (1.59 - 1.74)	1.91 (1.82 - 2.00)	2.36 (2.24 - 2.48)

Nurses	317,899	291,384	91.7 (91.6 - 91.8)	91.3 (90.9 - 91.6)	0.68 (0.67 - 0.69)	0.77 (0.76 - 0.78)	0.86 (0.85 - 0.87)
Midwives	19,622	17,989	91.7 (91.3 - 92.1)	91.1 (89.7 - 92.5)	0.68 (0.65 - 0.72)	0.81 (0.77 - 0.86)	0.98 (0.93 - 1.03)
Higher education teaching professionals	62,012	54,982	88.7 (88.4 - 88.9)	87.8 (87.0 - 88.5)	0.96 (0.93 - 0.98)	1.01 (0.99 - 1.04)	1.06 (1.03 - 1.09)
Further education teaching professionals	45,292	40,361	89.1 (88.8 - 89.4)	88.4 (87.5 - 89.3)	0.92 (0.89 - 0.94)	1.00 (0.97 - 1.03)	1.23 (1.20 - 1.27)
Secondary education teaching professionals	184,359	168,764	91.5 (91.4 - 91.7)	91.7 (91.3 - 92.1)	0.69 (0.68 - 0.70)	0.65 (0.64 - 0.66)	0.84 (0.83 - 0.86)
Primary and nursery education teaching professionals	187,791	173,976	92.6 (92.5 - 92.8)	92.8 (92.4 - 93.2)	0.59 (0.58 - 0.60)	0.59 (0.58 - 0.60)	0.79 (0.77 - 0.80)
Special needs education teaching professionals	14,427	13,323	92.3 (91.9 - 92.8)	91.6 (90.0 - 93.2)	0.62 (0.58 - 0.66)	0.72 (0.67 - 0.76)	0.91 (0.86 - 0.97)
Senior professionals of educational establishments	65,028	60,875	93.6 (93.4 - 93.8)	92.8 (92.0 - 93.6)	0.51 (0.49 - 0.53)	0.59 (0.57 - 0.61)	0.76 (0.73 - 0.78)
Education advisers and school inspectors	7,470	6,903	92.4 (91.8 - 93.0)	91.4 (89.1 - 93.6)	0.62 (0.57 - 0.67)	0.71 (0.65 - 0.78)	0.89 (0.81 - 0.97)
Teaching and other educational professionals n.e.c.	57,925	50,517	87.2 (86.9 - 87.5)	86.8 (86.0 - 87.6)	1.10 (1.07 - 1.13)	1.18 (1.15 - 1.21)	1.34 (1.31 - 1.38)
Barristers and judges	11,748	10,883	92.6 (92.2 - 93.1)	92.5 (90.8 - 94.3)	0.60 (0.56 - 0.64)	0.58 (0.54 - 0.62)	0.66 (0.61 - 0.70)
Solicitors	59,739	55,615	93.1 (92.9 - 93.3)	93.5 (92.7 - 94.3)	0.55 (0.54 - 0.57)	0.49 (0.47 - 0.50)	0.60 (0.58 - 0.62)
Legal professionals n.e.c.	21,500	18,857	87.7 (87.3 - 88.1)	88.1 (86.8 - 89.3)	1.05 (1.01 - 1.09)	0.98 (0.94 - 1.02)	0.95 (0.91 - 0.99)
Chartered and certified accountants	116,527	106,523	91.4 (91.3 - 91.6)	91.8 (91.3 - 92.4)	0.70 (0.69 - 0.72)	0.63 (0.61 - 0.64)	0.75 (0.73 - 0.77)
Management consultants and business analysts	65,406	58,241	89.0 (88.8 - 89.3)	89.1 (88.4 - 89.8)	0.92 (0.90 - 0.94)	0.84 (0.82 - 0.86)	0.95 (0.92 - 0.97)
Business and financial project management professionals	87,039	79,094	90.9 (90.7 - 91.1)	90.8 (90.2 - 91.5)	0.75 (0.73 - 0.77)	0.70 (0.69 - 0.72)	0.82 (0.80 - 0.84)
Actuaries, economists and statisticians	10,244	8,995	87.8 (87.2 - 88.4)	88.9 (86.9 - 90.8)	1.04 (0.98 - 1.10)	0.81 (0.76 - 0.86)	0.85 (0.80 - 0.90)
Business and related research professionals	23,138	20,120	87.0 (86.5 - 87.4)	88.1 (86.8 - 89.4)	1.12 (1.08 - 1.17)	0.96 (0.92 - 1.00)	0.99 (0.95 - 1.03)
Business, research and administrative professionals n.e.c.	19,177	17,632	91.9 (91.6 - 92.3)	91.6 (90.2 - 92.9)	0.66 (0.62 - 0.69)	0.70 (0.66 - 0.74)	0.85 (0.81 - 0.90)
Architects	24,081	21,142	87.8 (87.4 - 88.2)	88.1 (86.9 - 89.3)	1.04 (1.00 - 1.08)	0.92 (0.88 - 0.95)	0.95 (0.91 - 0.99)
Town planning officers	5,313	4,989	93.9 (93.3 - 94.5)	94.3 (91.6 - 97.0)	0.49 (0.43 - 0.54)	0.41 (0.37 - 0.46)	0.57 (0.50 - 0.63)
Quantity surveyors	14,191	12,940	91.2 (90.7 - 91.7)	91.6 (90.0 - 93.2)	0.72 (0.68 - 0.77)	0.59 (0.56 - 0.63)	0.80 (0.75 - 0.85)
Chartered surveyors	33,252	30,967	93.1 (92.9 - 93.4)	92.8 (91.7 - 93.8)	0.55 (0.53 - 0.58)	0.51 (0.49 - 0.53)	0.72 (0.68 - 0.75)
Chartered architectural technologists	1,464	1,341	91.6 (90.2 - 93.0)	91.9 (86.9 - 96.8)	0.69 (0.57 - 0.83)	0.57 (0.47 - 0.68)	0.80 (0.66 - 0.97)
Construction project managers and related professionals	29,960	27,689	92.4 (92.1 - 92.7)	91.7 (90.6 - 92.8)	0.61 (0.59 - 0.64)	0.57 (0.55 - 0.60)	0.73 (0.70 - 0.76)

Social workers	42,730	37,826	88.5 (88.2 - 88.8)	88.1 (87.2 - 89.0)	0.97 (0.94 - 1.00)	1.09 (1.05 - 1.12)	1.06 (1.03 - 1.09)
Probation officers	5,601	5,084	90.8 (90.0 - 91.5)	90.7 (88.2 - 93.2)	0.76 (0.70 - 0.83)	0.75 (0.69 - 0.82)	0.86 (0.78 - 0.94)
Clergy	14,189	12,398	87.4 (86.8 - 87.9)	85.6 (84.0 - 87.3)	1.08 (1.03 - 1.14)	1.19 (1.13 - 1.25)	1.18 (1.12 - 1.24)
Welfare professionals n.e.c.	14,644	12,647	86.4 (85.8 - 86.9)	86.3 (84.7 - 87.8)	1.18 (1.13 - 1.24)	1.21 (1.16 - 1.27)	1.30 (1.24 - 1.37)
Librarians	9,870	9,215	93.4 (92.9 - 93.9)	92.6 (90.6 - 94.6)	0.53 (0.49 - 0.58)	0.64 (0.59 - 0.69)	0.74 (0.68 - 0.80)
Archivists and curators	5,412	4,965	91.7 (91.0 - 92.5)	91.8 (89.2 - 94.3)	0.67 (0.61 - 0.74)	0.66 (0.60 - 0.73)	0.77 (0.70 - 0.85)
Quality control and planning engineers	12,178	11,196	91.9 (91.5 - 92.4)	91.6 (89.9 - 93.3)	0.66 (0.62 - 0.70)	0.61 (0.57 - 0.65)	0.77 (0.72 - 0.82)
Quality assurance and regulatory professionals	26,766	24,822	92.7 (92.4 - 93.0)	92.3 (91.1 - 93.4)	0.59 (0.56 - 0.61)	0.58 (0.55 - 0.61)	0.71 (0.68 - 0.74)
Environmental health professionals	3,806	3,539	93.0 (92.2 - 93.8)	92.8 (89.7 - 95.9)	0.57 (0.50 - 0.64)	0.58 (0.51 - 0.65)	0.75 (0.66 - 0.86)
Journalists, newspaper and periodical editors	34,236	30,980	90.5 (90.2 - 90.8)	90.7 (89.7 - 91.7)	0.79 (0.76 - 0.82)	0.71 (0.69 - 0.74)	0.81 (0.78 - 0.84)
Public relations professionals	18,571	16,713	90.0 (89.6 - 90.4)	90.8 (89.4 - 92.3)	0.83 (0.79 - 0.87)	0.73 (0.69 - 0.76)	0.83 (0.79 - 0.87)
Advertising accounts managers and creative directors	19,087	16,788	88.0 (87.5 - 88.4)	89.1 (87.7 - 90.6)	1.03 (0.98 - 1.07)	0.84 (0.81 - 0.88)	0.96 (0.92 - 1.01)
Laboratory technicians	23,775	21,353	89.8 (89.4 - 90.2)	89.5 (88.2 - 90.7)	0.85 (0.82 - 0.89)	0.85 (0.82 - 0.89)	0.92 (0.88 - 0.96)
Electrical and electronics technicians	6,134	5,457	89.0 (88.2 - 89.7)	88.0 (85.6 - 90.3)	0.93 (0.86 - 1.01)	0.88 (0.81 - 0.96)	1.04 (0.96 - 1.13)
Engineering technicians	16,563	15,006	90.6 (90.2 - 91.0)	90.1 (88.6 - 91.5)	0.78 (0.74 - 0.82)	0.71 (0.67 - 0.75)	0.92 (0.87 - 0.97)
Building and civil engineering technicians	4,081	3,661	89.7 (88.8 - 90.6)	89.3 (86.4 - 92.2)	0.86 (0.78 - 0.95)	0.81 (0.73 - 0.89)	0.92 (0.83 - 1.03)
Quality assurance technicians	9,921	8,994	90.7 (90.1 - 91.2)	90.7 (88.8 - 92.5)	0.77 (0.72 - 0.83)	0.72 (0.67 - 0.77)	0.81 (0.76 - 0.87)
Planning, process and production technicians	10,955	10,067	91.9 (91.4 - 92.4)	91.5 (89.7 - 93.3)	0.66 (0.62 - 0.71)	0.62 (0.58 - 0.66)	0.74 (0.69 - 0.79)
Science, engineering and production technicians n.e.c.	40,041	35,883	89.6 (89.3 - 89.9)	88.7 (87.8 - 89.6)	0.87 (0.84 - 0.90)	0.85 (0.82 - 0.88)	0.96 (0.93 - 0.99)
Architectural and town planning technicians	6,338	5,572	87.9 (87.1 - 88.7)	89.6 (87.1 - 92.0)	1.03 (0.96 - 1.11)	0.81 (0.75 - 0.87)	0.88 (0.81 - 0.95)
Draughtspersons	14,241	12,824	90.0 (89.6 - 90.5)	89.8 (88.3 - 91.4)	0.83 (0.78 - 0.87)	0.75 (0.71 - 0.79)	0.92 (0.87 - 0.97)
IT operations technicians	46,473	40,997	88.2 (87.9 - 88.5)	88.7 (87.9 - 89.6)	1.00 (0.97 - 1.03)	0.85 (0.83 - 0.88)	0.93 (0.90 - 0.95)
IT user support technicians	40,089	35,500	88.6 (88.2 - 88.9)	89.5 (88.5 - 90.4)	0.97 (0.94 - 1.00)	0.78 (0.75 - 0.80)	0.85 (0.82 - 0.87)
Paramedics	9,873	9,242	93.6 (93.1 - 94.1)	93.7 (91.8 - 95.6)	0.51 (0.47 - 0.55)	0.46 (0.42 - 0.50)	0.73 (0.67 - 0.79)
Dispensing opticians	2,498	2,321	92.9 (91.9 - 93.9)	93.1 (89.3 - 96.9)	0.57 (0.49 - 0.67)	0.55 (0.47 - 0.64)	0.69 (0.59 - 0.81)
Pharmaceutical technicians	10,991	10,140	92.3 (91.8 - 92.8)	92.2 (90.4 - 94.0)	0.63 (0.59 - 0.67)	0.66 (0.61 - 0.71)	0.79 (0.74 - 0.85)
Medical and dental technicians	12,034	10,895	90.5 (90.0 - 91.1)	90.1 (88.4 - 91.8)	0.78 (0.74 - 0.83)	0.80 (0.75 - 0.85)	0.91 (0.85 - 0.97)

Health associate professionals n.e.c.	21,136	16,318	77.2 (76.6 - 77.8)	76.7 (75.5 - 77.9)	2.22 (2.15 - 2.29)	2.60 (2.51 - 2.68)	3.00 (2.90 - 3.10)
Youth and community workers	25,724	22,235	86.4 (86.0 - 86.9)	86.4 (85.2 - 87.5)	1.18 (1.14 - 1.22)	1.22 (1.17 - 1.26)	1.23 (1.18 - 1.28)
Child and early years officers	5,609	5,118	91.2 (90.5 - 92.0)	90.5 (87.9 - 93.0)	0.72 (0.66 - 0.79)	0.83 (0.76 - 0.91)	0.92 (0.84 - 1.02)
Housing officers	21,840	18,925	86.7 (86.2 - 87.1)	86.2 (85.0 - 87.5)	1.15 (1.11 - 1.20)	1.23 (1.19 - 1.28)	1.12 (1.07 - 1.16)
Counsellors	11,491	9,842	85.6 (85.0 - 86.3)	84.6 (82.9 - 86.4)	1.26 (1.19 - 1.32)	1.49 (1.41 - 1.57)	1.66 (1.57 - 1.75)
Welfare and housing associate professionals n.e.c.	57,200	49,903	87.2 (87.0 - 87.5)	86.7 (86.0 - 87.5)	1.10 (1.07 - 1.12)	1.20 (1.17 - 1.23)	1.21 (1.18 - 1.24)
NCOs and other ranks	13,981	11,860	84.8 (84.2 - 85.4)	84.9 (83.3 - 86.4)	1.34 (1.28 - 1.40)	1.16 (1.11 - 1.22)	1.26 (1.20 - 1.32)
Police officers (sergeant and below)	108,003	101,946	94.4 (94.3 - 94.5)	94.4 (93.8 - 95.0)	0.44 (0.43 - 0.46)	0.39 (0.38 - 0.40)	0.53 (0.51 - 0.54)
Fire service officers (watch manager and below)	24,700	22,331	90.4 (90.0 - 90.8)	90.1 (88.9 - 91.2)	0.79 (0.76 - 0.83)	0.71 (0.68 - 0.74)	0.93 (0.89 - 0.97)
Prison service officers (below principal officer)	22,562	20,605	91.3 (91.0 - 91.7)	90.5 (89.3 - 91.8)	0.71 (0.68 - 0.75)	0.72 (0.68 - 0.75)	0.81 (0.77 - 0.85)
Police community support officers	7,452	6,835	91.7 (91.1 - 92.3)	91.8 (89.7 - 94.0)	0.68 (0.62 - 0.73)	0.62 (0.57 - 0.67)	0.66 (0.61 - 0.72)
Protective service associate professionals n.e.c.	16,061	14,507	90.3 (89.9 - 90.8)	90.0 (88.6 - 91.5)	0.80 (0.76 - 0.85)	0.76 (0.72 - 0.80)	0.82 (0.78 - 0.87)
Artists	20,821	17,174	82.5 (82.0 - 83.0)	82.1 (80.9 - 83.4)	1.59 (1.54 - 1.65)	1.61 (1.55 - 1.67)	1.83 (1.77 - 1.90)
Authors, writers and translators	28,632	24,145	84.3 (83.9 - 84.7)	84.2 (83.1 - 85.3)	1.39 (1.35 - 1.44)	1.41 (1.36 - 1.45)	1.30 (1.25 - 1.34)
Actors, entertainers and presenters	19,150	15,422	80.5 (80.0 - 81.1)	81.0 (79.7 - 82.3)	1.81 (1.75 - 1.88)	1.66 (1.60 - 1.72)	1.61 (1.55 - 1.68)
Dancers and choreographers	6,342	5,275	83.2 (82.3 - 84.1)	84.2 (81.9 - 86.6)	1.52 (1.42 - 1.62)	1.46 (1.37 - 1.56)	1.60 (1.49 - 1.72)
Musicians	15,755	13,066	82.9 (82.3 - 83.5)	83.0 (81.5 - 84.4)	1.54 (1.48 - 1.61)	1.41 (1.35 - 1.47)	1.48 (1.42 - 1.55)
Arts officers, producers and directors	33,255	29,002	87.2 (86.9 - 87.6)	87.7 (86.7 - 88.8)	1.10 (1.06 - 1.14)	0.95 (0.92 - 0.99)	1.01 (0.98 - 1.04)
Photographers, audio-visual and broadcasting equipment operators	30,398	25,869	85.1 (84.7 - 85.5)	85.2 (84.2 - 86.2)	1.31 (1.27 - 1.36)	1.18 (1.14 - 1.22)	1.26 (1.22 - 1.31)
Graphic designers	38,700	33,977	87.8 (87.5 - 88.1)	88.6 (87.6 - 89.6)	1.04 (1.01 - 1.07)	0.86 (0.83 - 0.89)	1.02 (0.99 - 1.06)
Product, clothing and related designers	30,806	26,549	86.2 (85.8 - 86.6)	86.3 (85.3 - 87.4)	1.20 (1.16 - 1.24)	1.16 (1.12 - 1.20)	1.26 (1.22 - 1.30)
Sports players	4,217	3,465	82.2 (81.0 - 83.3)	84.4 (81.4 - 87.4)	1.63 (1.50 - 1.76)	1.22 (1.13 - 1.33)	1.41 (1.30 - 1.53)
Sports coaches, instructors and officials	21,203	18,384	86.7 (86.2 - 87.2)	86.9 (85.6 - 88.2)	1.15 (1.11 - 1.20)	1.08 (1.03 - 1.12)	1.30 (1.25 - 1.35)
Fitness instructors	18,657	14,511	77.8 (77.2 - 78.4)	78.6 (77.3 - 79.9)	2.14 (2.07 - 2.22)	2.06 (1.99 - 2.13)	2.29 (2.21 - 2.38)
Air traffic controllers	1,694	1,560	92.1 (90.8 - 93.4)	92.0 (87.5 - 96.6)	0.64 (0.54 - 0.77)	0.58 (0.48 - 0.69)	0.86 (0.72 - 1.03)
Aircraft pilots and flight engineers	8,024	7,093	88.4 (87.7 - 89.1)	87.8 (85.8 - 89.9)	0.98 (0.92 - 1.05)	0.92 (0.86 - 0.99)	1.37 (1.28 - 1.47)
Ship and hovercraft officers	3,756	3,291	87.6 (86.6 - 88.7)	85.8 (82.7 - 89.0)	1.06 (0.96 - 1.17)	1.05 (0.95 - 1.15)	1.42 (1.28 - 1.57)

Legal associate professionals	26,646	24,104	90.5 (90.1 - 90.8)	90.8 (89.6 - 91.9)	0.79 (0.76 - 0.82)	0.75 (0.72 - 0.78)	0.85 (0.81 - 0.89)
Estimators, valuers and assessors	26,441	24,275	91.8 (91.5 - 92.1)	91.5 (90.3 - 92.6)	0.67 (0.64 - 0.70)	0.64 (0.61 - 0.67)	0.81 (0.77 - 0.84)
Brokers	29,462	26,112	88.6 (88.3 - 89.0)	88.8 (87.7 - 89.9)	0.96 (0.93 - 1.00)	0.85 (0.82 - 0.88)	0.94 (0.91 - 0.98)
Insurance underwriters	14,945	13,966	93.4 (93.1 - 93.8)	93.8 (92.3 - 95.4)	0.53 (0.49 - 0.56)	0.47 (0.44 - 0.50)	0.60 (0.56 - 0.64)
Finance and investment analysts and advisers	80,758	72,319	89.6 (89.3 - 89.8)	90.1 (89.5 - 90.8)	0.87 (0.85 - 0.89)	0.76 (0.74 - 0.78)	0.85 (0.83 - 0.87)
Taxation experts	14,574	13,652	93.7 (93.3 - 94.1)	93.6 (92.0 - 95.2)	0.51 (0.47 - 0.54)	0.48 (0.45 - 0.52)	0.62 (0.58 - 0.66)
Importers and exporters	3,835	3,294	85.9 (84.8 - 87.0)	85.8 (82.9 - 88.7)	1.23 (1.12 - 1.35)	1.18 (1.08 - 1.29)	1.05 (0.96 - 1.16)
Financial and accounting technicians	7,926	7,267	91.7 (91.1 - 92.3)	91.8 (89.6 - 93.9)	0.68 (0.63 - 0.74)	0.66 (0.61 - 0.72)	0.72 (0.66 - 0.78)
Financial accounts managers	59,742	54,794	91.7 (91.5 - 91.9)	91.8 (91.1 - 92.6)	0.68 (0.66 - 0.70)	0.63 (0.61 - 0.65)	0.73 (0.71 - 0.76)
Business and related associate professionals n.e.c.	46,422	41,696	89.8 (89.5 - 90.1)	90.4 (89.5 - 91.3)	0.85 (0.82 - 0.88)	0.76 (0.74 - 0.78)	0.83 (0.80 - 0.86)
Buyers and procurement officers	29,858	27,363	91.6 (91.3 - 92.0)	91.9 (90.8 - 93.0)	0.68 (0.66 - 0.71)	0.63 (0.61 - 0.66)	0.75 (0.71 - 0.78)
Business sales executives	82,738	73,409	88.7 (88.5 - 88.9)	88.9 (88.3 - 89.6)	0.95 (0.93 - 0.97)	0.86 (0.84 - 0.88)	0.95 (0.93 - 0.97)
Marketing associate professionals	46,756	41,351	88.4 (88.2 - 88.7)	89.3 (88.4 - 90.2)	0.98 (0.95 - 1.01)	0.86 (0.84 - 0.88)	0.96 (0.93 - 0.98)
Estate agents and auctioneers	27,753	24,626	88.7 (88.4 - 89.1)	88.7 (87.6 - 89.8)	0.95 (0.92 - 0.99)	0.92 (0.88 - 0.95)	1.01 (0.98 - 1.05)
Sales accounts and business development managers	190,004	173,570	91.4 (91.2 - 91.5)	91.6 (91.2 - 92.1)	0.71 (0.70 - 0.72)	0.63 (0.62 - 0.64)	0.77 (0.76 - 0.78)
Conference and exhibition managers and organisers	22,076	19,403	87.9 (87.5 - 88.3)	88.9 (87.6 - 90.2)	1.03 (0.99 - 1.08)	0.92 (0.88 - 0.96)	0.94 (0.90 - 0.98)
Conservation and environmental associate professionals	3,277	2,947	89.9 (88.9 - 91.0)	89.6 (86.3 - 92.9)	0.84 (0.75 - 0.94)	0.79 (0.71 - 0.89)	1.01 (0.90 - 1.14)
Public services associate professionals	23,308	21,478	92.1 (91.8 - 92.5)	91.5 (90.3 - 92.8)	0.64 (0.61 - 0.67)	0.71 (0.67 - 0.74)	0.74 (0.71 - 0.78)
Human resources and industrial relations officers	69,794	62,547	89.6 (89.4 - 89.8)	90.6 (89.9 - 91.3)	0.87 (0.85 - 0.89)	0.77 (0.75 - 0.79)	0.88 (0.86 - 0.91)
Vocational and industrial trainers and instructors	71,845	65,206	90.8 (90.5 - 91.0)	90.2 (89.5 - 90.9)	0.76 (0.74 - 0.78)	0.80 (0.78 - 0.82)	0.97 (0.95 - 1.00)
Careers advisers and vocational guidance specialists	10,454	9,361	89.5 (89.0 - 90.1)	89.3 (87.5 - 91.1)	0.88 (0.82 - 0.93)	0.92 (0.86 - 0.98)	1.05 (0.99 - 1.12)
Inspectors of standards and regulations	9,981	9,269	92.9 (92.4 - 93.4)	92.2 (90.2 - 94.1)	0.58 (0.53 - 0.62)	0.59 (0.55 - 0.64)	0.74 (0.68 - 0.80)
Health and safety officers	17,253	15,931	92.3 (91.9 - 92.7)	91.5 (90.0 - 93.0)	0.62 (0.59 - 0.66)	0.64 (0.60 - 0.67)	0.81 (0.77 - 0.86)
National government administrative occupations	150,201	138,324	92.1 (92.0 - 92.2)	91.4 (90.9 - 91.9)	0.64 (0.63 - 0.65)	0.70 (0.69 - 0.71)	0.75 (0.74 - 0.76)
Local government administrative occupations	73,705	67,995	92.3 (92.1 - 92.4)	91.5 (90.8 - 92.2)	0.63 (0.61 - 0.65)	0.71 (0.69 - 0.72)	0.76 (0.74 - 0.78)

Officers of non-governmental organisations	12,062	10,942	90.7 (90.2 - 91.2)	90.1 (88.4 - 91.8)	0.77 (0.72 - 0.82)	0.85 (0.80 - 0.91)	0.88 (0.83 - 0.94)
Credit controllers	22,476	20,352	90.5 (90.2 - 90.9)	90.5 (89.2 - 91.7)	0.78 (0.75 - 0.82)	0.81 (0.77 - 0.84)	0.82 (0.78 - 0.85)
Book-keepers, payroll managers and wages clerks	159,886	145,547	91.0 (90.9 - 91.2)	90.6 (90.1 - 91.0)	0.74 (0.72 - 0.75)	0.80 (0.78 - 0.81)	0.83 (0.81 - 0.84)
Bank and post office clerks	94,616	86,420	91.3 (91.2 - 91.5)	90.7 (90.1 - 91.3)	0.71 (0.69 - 0.73)	0.76 (0.75 - 0.78)	0.77 (0.75 - 0.79)
Finance officers	15,058	13,743	91.3 (90.8 - 91.7)	90.3 (88.8 - 91.9)	0.72 (0.68 - 0.76)	0.80 (0.75 - 0.84)	0.83 (0.78 - 0.88)
Financial administrative occupations n.e.c.	64,172	57,389	89.4 (89.2 - 89.7)	89.3 (88.5 - 90.0)	0.89 (0.86 - 0.91)	0.92 (0.90 - 0.94)	0.88 (0.86 - 0.90)
Records clerks and assistants	56,035	51,176	91.3 (91.1 - 91.6)	90.8 (90.0 - 91.6)	0.71 (0.69 - 0.73)	0.77 (0.75 - 0.79)	0.80 (0.77 - 0.82)
Pensions and insurance clerks and assistants	41,863	38,273	91.4 (91.2 - 91.7)	91.7 (90.8 - 92.6)	0.70 (0.68 - 0.73)	0.67 (0.65 - 0.70)	0.77 (0.74 - 0.80)
Stock control clerks and assistants	34,036	30,437	89.4 (89.1 - 89.8)	89.1 (88.1 - 90.1)	0.89 (0.86 - 0.92)	0.85 (0.83 - 0.88)	0.86 (0.83 - 0.89)
Transport and distribution clerks and assistants	30,535	27,327	89.5 (89.2 - 89.8)	89.4 (88.3 - 90.4)	0.88 (0.85 - 0.91)	0.83 (0.80 - 0.86)	0.83 (0.80 - 0.87)
Library clerks and assistants	15,067	13,834	91.8 (91.4 - 92.3)	90.7 (89.1 - 92.3)	0.67 (0.63 - 0.71)	0.79 (0.74 - 0.84)	0.85 (0.80 - 0.90)
Human resources administrative occupations	18,961	17,144	90.4 (90.0 - 90.8)	90.7 (89.3 - 92.0)	0.79 (0.76 - 0.83)	0.81 (0.77 - 0.85)	0.85 (0.81 - 0.89)
Sales administrators	34,644	31,213	90.1 (89.8 - 90.4)	90.5 (89.5 - 91.5)	0.82 (0.80 - 0.85)	0.81 (0.78 - 0.84)	0.89 (0.86 - 0.92)
Other administrative occupations n.e.c.	320,894	288,971	90.1 (89.9 - 90.2)	89.5 (89.2 - 89.8)	0.82 (0.82 - 0.83)	0.91 (0.90 - 0.92)	0.92 (0.91 - 0.93)
Office managers	85,259	78,780	92.4 (92.2 - 92.6)	91.8 (91.2 - 92.5)	0.62 (0.60 - 0.63)	0.68 (0.66 - 0.69)	0.76 (0.74 - 0.78)
Office supervisors	17,917	16,574	92.5 (92.1 - 92.9)	92.4 (91.0 - 93.8)	0.61 (0.57 - 0.64)	0.61 (0.58 - 0.65)	0.66 (0.62 - 0.70)
Medical secretaries	33,188	31,002	93.4 (93.1 - 93.7)	92.4 (91.3 - 93.6)	0.53 (0.51 - 0.55)	0.67 (0.64 - 0.70)	0.74 (0.71 - 0.77)
Legal secretaries	30,679	28,001	91.3 (91.0 - 91.6)	90.9 (89.8 - 92.0)	0.72 (0.69 - 0.75)	0.82 (0.78 - 0.85)	0.85 (0.81 - 0.88)
School secretaries	34,524	32,739	94.8 (94.6 - 95.1)	92.8 (91.6 - 94.0)	0.41 (0.39 - 0.43)	0.54 (0.52 - 0.57)	0.62 (0.59 - 0.65)
Company secretaries	23,868	22,075	92.5 (92.2 - 92.8)	90.9 (89.5 - 92.3)	0.61 (0.58 - 0.64)	0.79 (0.76 - 0.83)	0.86 (0.82 - 0.91)
Personal assistants and other secretaries	175,722	158,881	90.4 (90.3 - 90.6)	89.6 (89.2 - 90.1)	0.79 (0.78 - 0.81)	0.93 (0.91 - 0.94)	0.94 (0.92 - 0.96)
Receptionists	118,749	105,211	88.6 (88.4 - 88.8)	87.5 (86.9 - 88.0)	0.96 (0.95 - 0.98)	1.12 (1.10 - 1.14)	1.06 (1.04 - 1.08)
Typists and related keyboard occupations	30,168	26,422	87.6 (87.2 - 88.0)	87.0 (85.9 - 88.0)	1.06 (1.03 - 1.10)	1.14 (1.10 - 1.18)	1.08 (1.05 - 1.12)
Farmers	38,490	35,756	92.9 (92.6 - 93.2)	91.2 (90.2 - 92.3)	0.57 (0.55 - 0.60)	0.61 (0.59 - 0.64)	0.76 (0.73 - 0.79)
Horticultural trades	8,101	7,101	87.7 (86.9 - 88.4)	86.5 (84.5 - 88.6)	1.06 (0.99 - 1.13)	1.14 (1.06 - 1.22)	1.15 (1.07 - 1.23)
Gardeners and landscape gardeners	66,824	57,193	85.6 (85.3 - 85.9)	83.8 (83.1 - 84.5)	1.26 (1.24 - 1.29)	1.26 (1.23 - 1.29)	1.33 (1.30 - 1.36)
Groundsmen and greenkeepers	12,292	10,911	88.8 (88.2 - 89.3)	88.0 (86.4 - 89.7)	0.95 (0.90 - 1.00)	0.86 (0.81 - 0.91)	0.97 (0.92 - 1.03)

Agricultural and fishing trades n.e.c.	7,923	6,596	83.3 (82.4 - 84.1)	83.2 (81.1 - 85.2)	1.51 (1.42 - 1.60)	1.31 (1.24 - 1.39)	1.58 (1.49 - 1.68)
Smiths and forge workers	2,432	2,110	86.8 (85.4 - 88.1)	85.5 (81.8 - 89.3)	1.14 (1.02 - 1.29)	1.08 (0.96 - 1.22)	1.31 (1.16 - 1.48)
Moulders, core makers and die casters	1,344	1,163	86.5 (84.7 - 88.4)	83.7 (78.5 - 88.9)	1.17 (1.00 - 1.36)	1.20 (1.02 - 1.40)	1.04 (0.89 - 1.23)
Sheet metal workers	8,282	7,389	89.2 (88.5 - 89.9)	87.3 (85.2 - 89.3)	0.91 (0.85 - 0.97)	0.89 (0.83 - 0.95)	0.97 (0.90 - 1.04)
Metal plate workers, and riveters	3,129	2,801	89.5 (88.4 - 90.6)	86.2 (82.6 - 89.8)	0.88 (0.78 - 0.98)	0.93 (0.83 - 1.05)	1.09 (0.97 - 1.22)
Welding trades	30,831	25,965	84.2 (83.8 - 84.6)	82.6 (81.6 - 83.6)	1.41 (1.36 - 1.45)	1.32 (1.28 - 1.37)	1.30 (1.26 - 1.35)
Pipe fitters	5,263	4,552	86.5 (85.6 - 87.4)	84.5 (82.0 - 87.1)	1.17 (1.08 - 1.27)	1.11 (1.02 - 1.20)	1.25 (1.15 - 1.35)
Metal machining setters and setter-operators	20,704	18,368	88.7 (88.3 - 89.1)	86.7 (85.4 - 88.0)	0.95 (0.91 - 1.00)	0.93 (0.89 - 0.97)	0.96 (0.92 - 1.00)
Tool makers, tool fitters and markers-out	5,733	5,271	91.9 (91.2 - 92.6)	89.7 (87.0 - 92.3)	0.66 (0.60 - 0.72)	0.68 (0.62 - 0.75)	0.82 (0.74 - 0.90)
Metal working production and maintenance fitters	96,624	85,667	88.7 (88.5 - 88.9)	86.9 (86.3 - 87.5)	0.96 (0.94 - 0.98)	0.93 (0.91 - 0.94)	1.02 (1.00 - 1.05)
Precision instrument makers and repairers	7,637	6,828	89.4 (88.7 - 90.1)	88.3 (86.1 - 90.4)	0.89 (0.83 - 0.96)	0.85 (0.79 - 0.92)	1.04 (0.97 - 1.13)
Air-conditioning and refrigeration engineers	6,128	5,192	84.7 (83.8 - 85.6)	85.4 (83.1 - 87.8)	1.35 (1.26 - 1.45)	1.10 (1.03 - 1.18)	1.24 (1.15 - 1.33)
Vehicle technicians, mechanics and electricians	83,650	70,993	84.9 (84.6 - 85.1)	84.4 (83.8 - 85.0)	1.34 (1.31 - 1.36)	1.18 (1.16 - 1.21)	1.25 (1.22 - 1.27)
Vehicle body builders and repairers	13,259	11,323	85.4 (84.8 - 86.0)	84.3 (82.8 - 85.9)	1.28 (1.22 - 1.35)	1.18 (1.12 - 1.24)	1.23 (1.17 - 1.29)
Vehicle paint technicians	7,785	6,564	84.3 (83.5 - 85.1)	84.1 (82.1 - 86.1)	1.39 (1.31 - 1.48)	1.21 (1.14 - 1.29)	1.22 (1.15 - 1.30)
Aircraft maintenance and related trades	10,096	9,233	91.5 (90.9 - 92.0)	90.1 (88.1 - 92.1)	0.70 (0.65 - 0.75)	0.70 (0.65 - 0.75)	0.92 (0.86 - 0.99)
Boat and ship builders and repairers	5,196	4,547	87.5 (86.6 - 88.4)	86.4 (83.8 - 89.0)	1.07 (0.99 - 1.16)	0.99 (0.92 - 1.08)	1.19 (1.10 - 1.30)
Rail and rolling stock builders and repairers	4,675	4,154	88.9 (88.0 - 89.8)	87.7 (85.0 - 90.4)	0.94 (0.86 - 1.03)	0.88 (0.81 - 0.97)	0.94 (0.86 - 1.03)
Electricians and electrical fitters	89,939	77,887	86.6 (86.4 - 86.8)	86.1 (85.5 - 86.7)	1.16 (1.14 - 1.18)	1.02 (1.00 - 1.04)	1.20 (1.17 - 1.22)
Telecommunications engineers	27,836	24,638	88.5 (88.1 - 88.9)	86.9 (85.8 - 88.0)	0.97 (0.94 - 1.01)	0.94 (0.90 - 0.97)	0.94 (0.91 - 0.98)
TV, video and audio engineers	4,739	3,952	83.4 (82.3 - 84.5)	83.4 (80.8 - 86.0)	1.49 (1.38 - 1.61)	1.29 (1.19 - 1.39)	1.25 (1.16 - 1.36)
IT engineers	17,936	15,167	84.6 (84.0 - 85.1)	85.2 (83.8 - 86.6)	1.37 (1.31 - 1.43)	1.11 (1.06 - 1.16)	1.11 (1.06 - 1.16)
Electrical and electronic trades n.e.c.	35,943	31,968	88.9 (88.6 - 89.3)	88.1 (87.1 - 89.1)	0.93 (0.90 - 0.96)	0.86 (0.83 - 0.89)	0.96 (0.93 - 0.99)
Skilled metal, electrical and electronic trades supervisors	26,298	24,312	92.4 (92.1 - 92.8)	91.3 (90.1 - 92.5)	0.61 (0.58 - 0.64)	0.59 (0.56 - 0.62)	0.72 (0.69 - 0.75)
Steel erectors	4,781	4,079	85.3 (84.3 - 86.3)	84.6 (82.0 - 87.2)	1.29 (1.19 - 1.40)	1.15 (1.06 - 1.25)	1.23 (1.13 - 1.34)
Bricklayers and masons	35,742	30,489	85.3 (84.9 - 85.7)	83.4 (82.5 - 84.4)	1.29 (1.26 - 1.33)	1.23 (1.19 - 1.26)	1.35 (1.31 - 1.39)
Roofers, roof tilers and slaters	25,969	21,078	81.2 (80.7 - 81.6)	80.3 (79.2 - 81.4)	1.74 (1.69 - 1.80)	1.56 (1.51 - 1.61)	1.55 (1.50 - 1.60)

Plumbers and heating and ventilating engineers	68,978	59,462	86.2 (85.9 - 86.5)	85.3 (84.6 - 86.0)	1.20 (1.18 - 1.23)	1.08 (1.06 - 1.11)	1.25 (1.22 - 1.28)
Carpenters and joiners	110,235	92,977	84.3 (84.1 - 84.6)	83.2 (82.7 - 83.7)	1.40 (1.37 - 1.42)	1.27 (1.25 - 1.30)	1.30 (1.28 - 1.32)
Glaziers, window fabricators and fitters	23,223	19,427	83.7 (83.2 - 84.1)	83.3 (82.1 - 84.5)	1.47 (1.42 - 1.52)	1.28 (1.23 - 1.32)	1.26 (1.22 - 1.31)
Construction and building trades n.e.c.	130,834	108,984	83.3 (83.1 - 83.5)	81.2 (80.7 - 81.7)	1.51 (1.49 - 1.53)	1.45 (1.42 - 1.47)	1.29 (1.27 - 1.31)
Plasterers	26,578	21,310	80.2 (79.7 - 80.7)	79.4 (78.3 - 80.5)	1.86 (1.80 - 1.91)	1.66 (1.61 - 1.71)	1.62 (1.57 - 1.67)
Floorers and wall tilers	20,565	17,111	83.2 (82.7 - 83.7)	82.5 (81.3 - 83.8)	1.51 (1.46 - 1.57)	1.35 (1.30 - 1.40)	1.38 (1.33 - 1.43)
Painters and decorators	71,662	58,697	81.9 (81.6 - 82.2)	78.6 (77.9 - 79.3)	1.66 (1.63 - 1.69)	1.69 (1.66 - 1.72)	1.43 (1.40 - 1.46)
Construction and building trades supervisors	21,478	19,220	89.5 (89.1 - 89.9)	87.5 (86.2 - 88.8)	0.88 (0.84 - 0.92)	0.86 (0.82 - 0.90)	0.90 (0.86 - 0.94)
Weavers and knitters	1,800	1,555	86.4 (84.8 - 88.0)	83.0 (78.2 - 87.7)	1.18 (1.03 - 1.35)	1.36 (1.19 - 1.56)	1.06 (0.92 - 1.21)
Upholsterers	8,962	7,850	87.6 (86.9 - 88.3)	85.1 (83.1 - 87.1)	1.06 (1.00 - 1.13)	1.14 (1.07 - 1.21)	1.08 (1.01 - 1.15)
Footwear and leather working trades	6,006	5,163	86.0 (85.1 - 86.8)	83.3 (80.8 - 85.8)	1.22 (1.14 - 1.32)	1.39 (1.29 - 1.49)	1.15 (1.06 - 1.24)
Tailors and dressmakers	8,687	7,030	80.9 (80.1 - 81.8)	79.7 (77.8 - 81.6)	1.77 (1.68 - 1.86)	1.98 (1.88 - 2.09)	1.16 (1.09 - 1.22)
Textiles, garments and related trades n.e.c.	2,943	2,527	85.9 (84.6 - 87.1)	84.2 (80.8 - 87.6)	1.23 (1.11 - 1.37)	1.38 (1.24 - 1.53)	1.16 (1.04 - 1.30)
Pre-press technicians	2,854	2,553	89.5 (88.3 - 90.6)	88.3 (84.8 - 91.8)	0.88 (0.78 - 1.00)	0.88 (0.78 - 0.99)	0.97 (0.86 - 1.10)
Printers	26,199	23,269	88.8 (88.4 - 89.2)	87.8 (86.6 - 88.9)	0.94 (0.91 - 0.98)	0.90 (0.86 - 0.93)	0.96 (0.92 - 1.00)
Print finishing and binding workers	10,495	9,305	88.7 (88.1 - 89.3)	87.3 (85.5 - 89.2)	0.96 (0.90 - 1.02)	0.98 (0.92 - 1.04)	0.99 (0.93 - 1.05)
Butchers	16,142	13,553	84.0 (83.4 - 84.5)	82.2 (80.8 - 83.6)	1.43 (1.37 - 1.49)	1.38 (1.32 - 1.44)	1.02 (0.98 - 1.07)
Bakers and flour confectioners	14,325	12,429	86.8 (86.2 - 87.3)	86.3 (84.8 - 87.9)	1.14 (1.09 - 1.20)	1.11 (1.06 - 1.17)	0.94 (0.89 - 0.99)
Fishmongers and poultry dressers	2,627	2,236	85.1 (83.8 - 86.5)	83.4 (79.8 - 86.9)	1.31 (1.18 - 1.46)	1.32 (1.18 - 1.47)	1.12 (1.00 - 1.25)
Chefs	105,199	86,849	82.6 (82.3 - 82.8)	83.2 (82.6 - 83.7)	1.59 (1.57 - 1.62)	1.37 (1.35 - 1.39)	0.91 (0.90 - 0.93)
Cooks	46,852	41,348	88.3 (88.0 - 88.5)	86.1 (85.2 - 87.0)	1.00 (0.97 - 1.03)	1.20 (1.17 - 1.23)	0.97 (0.94 - 1.00)
Catering and bar managers	62,157	53,912	86.7 (86.5 - 87.0)	85.6 (84.9 - 86.4)	1.15 (1.12 - 1.17)	1.23 (1.20 - 1.26)	1.02 (1.00 - 1.05)
Glass and ceramics makers, decorators and finishers	7,627	6,756	88.6 (87.9 - 89.3)	86.4 (84.2 - 88.6)	0.97 (0.90 - 1.04)	1.05 (0.98 - 1.13)	1.01 (0.94 - 1.08)
Furniture makers and other craft woodworkers	15,405	13,194	85.6 (85.1 - 86.2)	84.3 (82.8 - 85.7)	1.26 (1.20 - 1.31)	1.21 (1.15 - 1.26)	1.23 (1.17 - 1.29)
Florists	11,255	9,942	88.3 (87.7 - 88.9)	87.8 (86.0 - 89.5)	0.99 (0.93 - 1.05)	1.10 (1.04 - 1.16)	1.18 (1.11 - 1.25)
Other skilled trades n.e.c.	19,993	17,230	86.2 (85.7 - 86.7)	85.0 (83.7 - 86.3)	1.20 (1.16 - 1.25)	1.19 (1.14 - 1.24)	1.22 (1.17 - 1.27)
Nursery nurses and assistants	94,191	85,183	90.4 (90.2 - 90.6)	90.8 (90.2 - 91.4)	0.79 (0.77 - 0.81)	0.81 (0.79 - 0.83)	0.90 (0.88 - 0.92)



Childminders and related occupations	61,026	53,818	88.2 (87.9 - 88.4)	88.5 (87.7 - 89.3)	1.00 (0.98 - 1.03)	1.04 (1.01 - 1.06)	0.98 (0.95 - 1.00)
Playworkers	17,847	15,983	89.6 (89.1 - 90.0)	89.2 (87.8 - 90.6)	0.87 (0.83 - 0.92)	0.97 (0.92 - 1.01)	1.03 (0.98 - 1.09)
Teaching assistants	212,606	195,875	92.1 (92.0 - 92.2)	90.7 (90.3 - 91.1)	0.64 (0.63 - 0.65)	0.77 (0.76 - 0.79)	0.87 (0.86 - 0.88)
Educational support assistants	57,712	52,794	91.5 (91.3 - 91.7)	90.4 (89.6 - 91.2)	0.70 (0.68 - 0.72)	0.83 (0.80 - 0.85)	0.93 (0.90 - 0.95)
Veterinary nurses	5,557	5,065	91.1 (90.4 - 91.9)	92.5 (89.5 - 95.5)	0.73 (0.66 - 0.80)	0.61 (0.56 - 0.67)	0.91 (0.83 - 1.00)
Pest control officers	2,799	2,444	87.3 (86.1 - 88.5)	85.5 (82.0 - 89.1)	1.09 (0.97 - 1.22)	1.06 (0.95 - 1.19)	1.17 (1.04 - 1.31)
Animal care services occupations n.e.c.	21,249	18,318	86.2 (85.7 - 86.7)	86.3 (85.1 - 87.6)	1.20 (1.15 - 1.25)	1.21 (1.17 - 1.26)	1.38 (1.33 - 1.44)
Nursing auxiliaries and assistants	115,219	103,029	89.4 (89.2 - 89.6)	88.8 (88.3 - 89.4)	0.89 (0.87 - 0.90)	0.99 (0.97 - 1.01)	0.91 (0.89 - 0.93)
Ambulance staff (excluding paramedics)	10,417	9,457	90.8 (90.2 - 91.3)	90.6 (88.8 - 92.5)	0.76 (0.71 - 0.81)	0.76 (0.71 - 0.81)	0.91 (0.85 - 0.97)
Dental nurses	22,072	19,605	88.8 (88.4 - 89.2)	89.7 (88.4 - 91.0)	0.94 (0.90 - 0.98)	0.92 (0.88 - 0.96)	1.00 (0.96 - 1.05)
Houseparents and residential wardens	22,051	19,750	89.6 (89.2 - 90.0)	88.2 (86.9 - 89.6)	0.87 (0.84 - 0.91)	1.11 (1.06 - 1.16)	1.14 (1.09 - 1.19)
Care workers and home carers	395,569	339,216	85.8 (85.6 - 85.9)	85.2 (84.9 - 85.5)	1.25 (1.24 - 1.27)	1.40 (1.39 - 1.41)	1.21 (1.20 - 1.22)
Senior care workers	32,461	29,235	90.1 (89.7 - 90.4)	89.9 (88.8 - 90.9)	0.83 (0.80 - 0.86)	0.89 (0.86 - 0.92)	0.92 (0.89 - 0.96)
Care escorts	6,466	5,730	88.6 (87.8 - 89.4)	85.5 (82.9 - 88.2)	0.96 (0.89 - 1.04)	1.31 (1.21 - 1.42)	1.01 (0.93 - 1.09)
Undertakers, mortuary and crematorium assistants	7,034	6,484	92.2 (91.6 - 92.8)	91.3 (88.9 - 93.6)	0.64 (0.58 - 0.69)	0.69 (0.63 - 0.76)	0.80 (0.73 - 0.87)
Sports and leisure assistants	13,922	11,508	82.7 (82.0 - 83.3)	83.5 (81.9 - 85.0)	1.57 (1.51 - 1.64)	1.42 (1.36 - 1.49)	1.36 (1.30 - 1.42)
Travel agents	25,046	22,329	89.2 (88.8 - 89.5)	89.8 (88.6 - 91.0)	0.91 (0.88 - 0.95)	0.85 (0.82 - 0.89)	0.83 (0.80 - 0.87)
Air travel assistants	23,608	20,647	87.5 (87.0 - 87.9)	87.6 (86.4 - 88.8)	1.08 (1.03 - 1.12)	1.08 (1.03 - 1.12)	1.00 (0.96 - 1.04)
Rail travel assistants	8,276	7,340	88.7 (88.0 - 89.4)	88.0 (86.0 - 90.1)	0.96 (0.89 - 1.02)	0.93 (0.86 - 0.99)	0.80 (0.74 - 0.85)
Leisure and travel service occupations n.e.c.	6,249	5,266	84.3 (83.4 - 85.2)	83.0 (80.7 - 85.3)	1.40 (1.31 - 1.50)	1.47 (1.37 - 1.58)	1.30 (1.21 - 1.40)
Hairdressers and barbers	99,320	85,824	86.4 (86.2 - 86.6)	86.6 (86.0 - 87.1)	1.18 (1.16 - 1.20)	1.22 (1.20 - 1.25)	1.24 (1.22 - 1.27)
Beauticians and related occupations	33,683	27,593	81.9 (81.5 - 82.3)	83.3 (82.3 - 84.3)	1.66 (1.61 - 1.70)	1.59 (1.55 - 1.64)	1.58 (1.54 - 1.63)
Housekeepers and related occupations	32,014	27,574	86.1 (85.8 - 86.5)	83.8 (82.8 - 84.9)	1.21 (1.17 - 1.25)	1.51 (1.46 - 1.56)	1.03 (0.99 - 1.06)
Caretakers	28,282	24,576	86.9 (86.5 - 87.3)	83.0 (81.8 - 84.2)	1.13 (1.09 - 1.17)	1.28 (1.24 - 1.33)	1.04 (1.00 - 1.08)
Cleaning and housekeeping managers and supervisors	33,381	28,140	84.3 (83.9 - 84.7)	82.7 (81.7 - 83.7)	1.40 (1.36 - 1.44)	1.58 (1.53 - 1.63)	1.07 (1.04 - 1.10)
Sales and retail assistants	514,651	444,584	86.4 (86.3 - 86.5)	85.9 (85.7 - 86.2)	1.19 (1.18 - 1.20)	1.26 (1.25 - 1.27)	1.09 (1.08 - 1.10)
Retail cashiers and check-out operators	67,073	58,635	87.4 (87.2 - 87.7)	86.8 (86.1 - 87.5)	1.08 (1.05 - 1.10)	1.18 (1.16 - 1.21)	0.95 (0.92 - 0.97)
Telephone salespersons	15,754	13,035	82.7 (82.2 - 83.3)	84.0 (82.5 - 85.4)	1.56 (1.50 - 1.63)	1.47 (1.41 - 1.53)	1.45 (1.39 - 1.52)

Pharmacy and other dispensing assistants	33,177	30,170	90.9 (90.6 - 91.2)	90.2 (89.1 - 91.2)	0.75 (0.72 - 0.78)	0.85 (0.82 - 0.88)	0.88 (0.85 - 0.91)
Vehicle and parts salespersons and advisers	19,651	17,167	87.4 (86.9 - 87.8)	87.5 (86.2 - 88.8)	1.08 (1.04 - 1.13)	0.93 (0.89 - 0.97)	1.00 (0.96 - 1.05)
Collector salespersons and credit agents	5,095	4,220	82.8 (81.8 - 83.9)	83.2 (80.6 - 85.7)	1.55 (1.45 - 1.67)	1.47 (1.36 - 1.58)	1.53 (1.41 - 1.65)
Debt, rent and other cash collectors	14,444	12,631	87.4 (86.9 - 88.0)	86.7 (85.2 - 88.2)	1.08 (1.02 - 1.13)	1.10 (1.05 - 1.16)	1.06 (1.01 - 1.12)
Roundspersons and van salespersons	5,611	4,845	86.3 (85.4 - 87.2)	83.4 (80.8 - 85.9)	1.19 (1.10 - 1.28)	1.24 (1.15 - 1.34)	1.09 (1.00 - 1.18)
Market and street traders and assistants	8,831	7,084	80.2 (79.4 - 81.0)	77.5 (75.6 - 79.4)	1.85 (1.76 - 1.95)	2.03 (1.92 - 2.14)	1.45 (1.37 - 1.53)
Merchandisers and window dressers	15,814	14,075	89.0 (88.5 - 89.5)	89.2 (87.7 - 90.7)	0.93 (0.88 - 0.97)	0.91 (0.87 - 0.96)	0.96 (0.91 - 1.01)
Sales related occupations n.e.c.	17,556	14,924	85.0 (84.5 - 85.5)	85.1 (83.7 - 86.4)	1.32 (1.27 - 1.38)	1.26 (1.21 - 1.32)	1.27 (1.21 - 1.32)
Sales supervisors	63,831	57,378	89.9 (89.7 - 90.1)	89.9 (89.2 - 90.6)	0.84 (0.82 - 0.86)	0.82 (0.80 - 0.84)	0.83 (0.80 - 0.85)
Call and contact centre occupations	20,478	17,680	86.3 (85.9 - 86.8)	87.3 (86.0 - 88.6)	1.19 (1.14 - 1.23)	1.10 (1.05 - 1.14)	1.08 (1.04 - 1.13)
Telephonists	9,095	7,702	84.7 (83.9 - 85.4)	83.3 (81.4 - 85.2)	1.36 (1.28 - 1.44)	1.57 (1.48 - 1.67)	1.31 (1.23 - 1.39)
Communication operators	16,722	15,056	90.0 (89.6 - 90.5)	90.1 (88.7 - 91.5)	0.83 (0.79 - 0.87)	0.81 (0.77 - 0.85)	0.84 (0.80 - 0.89)
Market research interviewers	5,289	4,404	83.3 (82.3 - 84.3)	83.0 (80.5 - 85.4)	1.51 (1.40 - 1.62)	1.54 (1.43 - 1.66)	1.36 (1.26 - 1.47)
Customer service occupations n.e.c.	114,720	99,432	86.7 (86.5 - 86.9)	87.6 (87.0 - 88.1)	1.15 (1.13 - 1.17)	1.07 (1.06 - 1.09)	0.99 (0.97 - 1.00)
Customer service managers and supervisors	40,451	37,202	92.0 (91.7 - 92.2)	92.1 (91.2 - 93.1)	0.65 (0.63 - 0.68)	0.62 (0.60 - 0.65)	0.70 (0.67 - 0.72)
Food, drink and tobacco process operatives	90,746	73,959	81.5 (81.2 - 81.8)	80.8 (80.3 - 81.4)	1.71 (1.68 - 1.74)	1.67 (1.64 - 1.70)	1.17 (1.15 - 1.19)
Glass and ceramics process operatives	4,809	4,161	86.5 (85.6 - 87.5)	84.8 (82.1 - 87.4)	1.17 (1.07 - 1.27)	1.12 (1.03 - 1.22)	0.99 (0.91 - 1.08)
Textile process operatives	11,841	10,138	85.6 (85.0 - 86.2)	83.6 (81.9 - 85.3)	1.26 (1.20 - 1.33)	1.39 (1.32 - 1.47)	0.98 (0.93 - 1.03)
Chemical and related process operatives	20,422	18,267	89.4 (89.0 - 89.9)	87.6 (86.2 - 88.9)	0.88 (0.85 - 0.92)	0.90 (0.86 - 0.94)	0.92 (0.88 - 0.97)
Rubber process operatives	3,807	3,328	87.4 (86.4 - 88.5)	85.6 (82.5 - 88.6)	1.08 (0.98 - 1.19)	1.08 (0.98 - 1.19)	0.95 (0.86 - 1.05)
Plastics process operatives	21,083	18,092	85.8 (85.3 - 86.3)	84.6 (83.3 - 85.8)	1.24 (1.19 - 1.29)	1.19 (1.14 - 1.24)	1.04 (1.00 - 1.09)
Metal making and treating process operatives	6,564	5,835	88.9 (88.1 - 89.7)	86.4 (84.0 - 88.8)	0.94 (0.87 - 1.01)	0.96 (0.89 - 1.04)	0.93 (0.86 - 1.01)
Electroplaters	2,880	2,407	83.6 (82.2 - 84.9)	82.4 (79.1 - 85.8)	1.47 (1.33 - 1.63)	1.35 (1.22 - 1.50)	1.22 (1.10 - 1.35)
Process operatives n.e.c.	3,921	3,456	88.1 (87.1 - 89.2)	86.7 (83.7 - 89.7)	1.01 (0.92 - 1.11)	0.98 (0.89 - 1.08)	0.97 (0.88 - 1.07)
Paper and wood machine operatives	17,221	15,062	87.5 (87.0 - 88.0)	85.6 (84.2 - 87.1)	1.07 (1.03 - 1.12)	1.05 (1.01 - 1.10)	0.98 (0.93 - 1.03)
Coal mine operatives	3,431	3,139	91.5 (90.6 - 92.4)	86.0 (80.2 - 91.9)	0.70 (0.62 - 0.79)	0.92 (0.82 - 1.04)	0.75 (0.66 - 0.84)
Quarry workers and related operatives	4,941	4,332	87.7 (86.8 - 88.6)	86.2 (83.6 - 88.8)	1.05 (0.97 - 1.15)	0.99 (0.91 - 1.08)	1.08 (0.99 - 1.17)

Energy plant operatives	3,360	3,048	90.7 (89.7 - 91.7)	89.2 (85.9 - 92.6)	0.77 (0.68 - 0.86)	0.77 (0.68 - 0.86)	0.88 (0.79 - 1.00)
Metal working machine operatives	73,019	63,149	86.5 (86.2 - 86.7)	84.9 (84.2 - 85.6)	1.17 (1.15 - 1.20)	1.13 (1.11 - 1.15)	1.12 (1.09 - 1.14)
Water and sewerage plant operatives	6,252	5,631	90.1 (89.3 - 90.8)	89.1 (86.7 - 91.4)	0.83 (0.76 - 0.90)	0.78 (0.72 - 0.85)	0.91 (0.83 - 0.99)
Printing machine assistants	7,752	6,718	86.7 (85.9 - 87.4)	85.8 (83.7 - 87.8)	1.15 (1.08 - 1.23)	1.12 (1.05 - 1.20)	1.01 (0.94 - 1.08)
Plant and machine operatives n.e.c. Assemblers (electrical and electronic products)	25,214	21,205	84.1 (83.6 - 84.6)	82.6 (81.5 - 83.7)	1.42 (1.37 - 1.47)	1.39 (1.34 - 1.44)	1.09 (1.05 - 1.13)
Assemblers (vehicles and metal goods)	21,716	19,072	87.8 (87.4 - 88.3)	85.9 (84.7 - 87.2)	1.04 (1.00 - 1.08)	1.03 (0.99 - 1.08)	0.93 (0.89 - 0.97)
Routine inspectors and testers	29,716	26,188	88.1 (87.8 - 88.5)	86.6 (85.6 - 87.7)	1.01 (0.97 - 1.05)	1.03 (1.00 - 1.07)	1.01 (0.97 - 1.04)
Weighers, graders and sorters	4,002	3,313	82.8 (81.6 - 84.0)	81.3 (78.5 - 84.1)	1.56 (1.44 - 1.69)	1.64 (1.51 - 1.78)	1.27 (1.17 - 1.39)
Tyre, exhaust and windscreen fitters	6,943	5,692	82.0 (81.1 - 82.9)	82.9 (80.7 - 85.1)	1.65 (1.55 - 1.75)	1.35 (1.26 - 1.43)	1.32 (1.23 - 1.40)
Sewing machinists	31,825	27,250	85.6 (85.2 - 86.0)	83.3 (82.2 - 84.3)	1.26 (1.22 - 1.30)	1.58 (1.53 - 1.63)	1.02 (0.98 - 1.05)
Assemblers and routine operatives n.e.c.	23,201	19,599	84.5 (84.0 - 84.9)	83.1 (81.9 - 84.3)	1.38 (1.33 - 1.43)	1.40 (1.36 - 1.46)	1.16 (1.11 - 1.20)
Scaffolders, staggers and riggers	14,606	11,737	80.4 (79.7 - 81.0)	80.8 (79.4 - 82.3)	1.83 (1.76 - 1.91)	1.54 (1.48 - 1.61)	1.61 (1.54 - 1.68)
Road construction operatives Rail construction and maintenance operatives	12,119	10,309	85.1 (84.4 - 85.7)	83.6 (81.9 - 85.2)	1.32 (1.25 - 1.38)	1.22 (1.16 - 1.28)	1.21 (1.15 - 1.27)
Construction operatives n.e.c.	4,310	3,688	85.6 (84.5 - 86.6)	84.4 (81.6 - 87.1)	1.26 (1.16 - 1.38)	1.18 (1.08 - 1.28)	1.00 (0.92 - 1.10)
Construction operatives n.e.c.	54,885	45,416	82.7 (82.4 - 83.1)	81.0 (80.3 - 81.8)	1.57 (1.53 - 1.60)	1.48 (1.45 - 1.51)	1.33 (1.30 - 1.36)
Large goods vehicle drivers	133,780	118,999	89.0 (88.8 - 89.1)	86.1 (85.6 - 86.7)	0.93 (0.91 - 0.95)	0.96 (0.94 - 0.97)	0.95 (0.93 - 0.97)
Van drivers	141,151	118,952	84.3 (84.1 - 84.5)	82.3 (81.9 - 82.8)	1.40 (1.38 - 1.42)	1.38 (1.36 - 1.40)	1.13 (1.11 - 1.14)
Bus and coach drivers	67,863	56,628	83.4 (83.2 - 83.7)	81.0 (80.3 - 81.7)	1.49 (1.46 - 1.52)	1.52 (1.49 - 1.55)	1.07 (1.05 - 1.09)
Taxi and cab drivers and chauffeurs	100,645	83,874	83.3 (83.1 - 83.6)	81.5 (80.9 - 82.1)	1.50 (1.48 - 1.53)	1.46 (1.43 - 1.48)	0.88 (0.86 - 0.90)
Driving instructors	18,123	16,307	90.0 (89.5 - 90.4)	88.2 (86.7 - 89.6)	0.83 (0.80 - 0.88)	0.89 (0.85 - 0.93)	0.99 (0.94 - 1.04)
Crane drivers	5,343	4,536	84.9 (83.9 - 85.9)	83.1 (80.6 - 85.6)	1.33 (1.24 - 1.44)	1.28 (1.18 - 1.38)	1.21 (1.12 - 1.31)
Fork-lift truck drivers	39,486	32,148	81.4 (81.0 - 81.8)	80.5 (79.7 - 81.4)	1.71 (1.67 - 1.76)	1.54 (1.50 - 1.58)	1.25 (1.22 - 1.29)
Agricultural machinery drivers Mobile machine drivers and operatives n.e.c.	1,155	1,031	89.3 (87.5 - 91.0)	88.9 (83.3 - 94.4)	0.90 (0.75 - 1.09)	0.81 (0.67 - 0.98)	0.83 (0.68 - 1.00)
Train and tram drivers	24,011	20,447	85.2 (84.7 - 85.6)	83.1 (82.0 - 84.3)	1.31 (1.26 - 1.35)	1.26 (1.21 - 1.30)	1.14 (1.10 - 1.18)
Marine and waterways transport operatives	13,616	12,349	90.7 (90.2 - 91.2)	89.0 (87.2 - 90.7)	0.77 (0.73 - 0.81)	0.80 (0.76 - 0.85)	0.80 (0.75 - 0.85)
Air transport operatives	3,572	3,086	86.4 (85.3 - 87.5)	84.6 (81.5 - 87.8)	1.18 (1.07 - 1.30)	1.19 (1.08 - 1.31)	1.30 (1.18 - 1.44)
	6,823	5,999	87.9 (87.1 - 88.7)	86.7 (84.5 - 89.0)	1.03 (0.96 - 1.11)	0.99 (0.92 - 1.07)	0.82 (0.76 - 0.88)

Rail transport operatives	10,122	8,943	88.4 (87.7 - 89.0)	87.0 (85.1 - 88.9)	0.99 (0.93 - 1.05)	0.97 (0.91 - 1.03)	0.93 (0.87 - 0.99)
Other drivers and transport operatives n.e.c.	7,491	6,632	88.5 (87.8 - 89.3)	87.3 (85.2 - 89.5)	0.97 (0.90 - 1.04)	0.94 (0.87 - 1.01)	0.91 (0.84 - 0.98)
Farm workers	17,701	15,667	88.5 (88.0 - 89.0)	87.2 (85.8 - 88.6)	0.97 (0.93 - 1.02)	0.97 (0.92 - 1.01)	0.95 (0.90 - 0.99)
Forestry workers	3,885	3,246	83.6 (82.4 - 84.7)	83.2 (80.3 - 86.1)	1.48 (1.36 - 1.61)	1.31 (1.20 - 1.43)	1.59 (1.45 - 1.73)
Fishing and other elementary agriculture occupations n.e.c.	10,168	8,473	83.3 (82.6 - 84.1)	81.7 (79.9 - 83.5)	1.50 (1.42 - 1.58)	1.53 (1.45 - 1.61)	1.37 (1.30 - 1.45)
Elementary construction occupations	80,244	63,166	78.7 (78.4 - 79.0)	77.7 (77.1 - 78.4)	2.04 (2.00 - 2.07)	1.86 (1.83 - 1.89)	1.52 (1.49 - 1.55)
Industrial cleaning process occupations	10,974	8,862	80.8 (80.0 - 81.5)	78.6 (76.9 - 80.3)	1.79 (1.70 - 1.87)	1.81 (1.72 - 1.90)	1.40 (1.33 - 1.47)
Packers, bottlers, canners and fillers Elementary process plant occupations n.e.c.	72,464	55,838	77.1 (76.8 - 77.4)	76.5 (75.9 - 77.1)	2.24 (2.21 - 2.28)	2.33 (2.29 - 2.37)	1.43 (1.40 - 1.45)
Postal workers, mail sorters, messengers and couriers	82,130	67,682	82.4 (82.1 - 82.7)	81.2 (80.6 - 81.8)	1.61 (1.58 - 1.63)	1.59 (1.56 - 1.62)	1.21 (1.19 - 1.23)
Elementary administration occupations n.e.c.	105,441	91,721	87.0 (86.8 - 87.2)	85.4 (84.8 - 86.0)	1.12 (1.10 - 1.14)	1.13 (1.11 - 1.15)	1.00 (0.98 - 1.02)
Window cleaners	25,254	21,643	85.7 (85.3 - 86.1)	84.7 (83.6 - 85.9)	1.25 (1.21 - 1.30)	1.35 (1.30 - 1.40)	1.17 (1.13 - 1.21)
Street cleaners	16,746	13,648	81.5 (80.9 - 82.1)	80.0 (78.7 - 81.4)	1.70 (1.64 - 1.77)	1.60 (1.54 - 1.67)	1.53 (1.47 - 1.60)
Cleaners and domestics	5,861	4,848	82.7 (81.7 - 83.7)	79.3 (76.9 - 81.8)	1.57 (1.46 - 1.68)	1.65 (1.54 - 1.76)	1.21 (1.12 - 1.30)
Launderers, dry cleaners and pressers	330,820	273,741	82.7 (82.6 - 82.9)	81.0 (80.7 - 81.3)	1.58 (1.57 - 1.60)	1.87 (1.85 - 1.88)	1.23 (1.22 - 1.24)
Refuse and salvage occupations	22,458	19,011	84.7 (84.2 - 85.1)	82.8 (81.6 - 84.0)	1.36 (1.31 - 1.41)	1.56 (1.51 - 1.62)	1.06 (1.02 - 1.11)
Vehicle valeters and cleaners	19,589	16,071	82.0 (81.5 - 82.6)	80.8 (79.5 - 82.0)	1.64 (1.58 - 1.70)	1.53 (1.48 - 1.59)	1.31 (1.26 - 1.37)
Elementary cleaning occupations n.e.c.	14,511	11,402	78.6 (77.9 - 79.2)	79.2 (77.8 - 80.7)	2.05 (1.97 - 2.13)	1.76 (1.69 - 1.83)	1.28 (1.23 - 1.33)
Security guards and related occupations Parking and civil enforcement occupations	1,158	997	86.1 (84.1 - 88.1)	83.7 (78.2 - 89.2)	1.21 (1.02 - 1.43)	1.27 (1.07 - 1.50)	1.16 (0.98 - 1.38)
School midday and crossing patrol occupations	90,565	74,080	81.8 (81.5 - 82.0)	81.0 (80.4 - 81.6)	1.67 (1.65 - 1.70)	1.57 (1.54 - 1.59)	1.11 (1.09 - 1.13)
Elementary security occupations n.e.c.	7,600	6,370	83.8 (83.0 - 84.6)	82.6 (80.6 - 84.7)	1.45 (1.36 - 1.54)	1.41 (1.33 - 1.50)	1.05 (0.99 - 1.12)
Shelf fillers	72,304	64,982	89.9 (89.7 - 90.1)	88.6 (87.8 - 89.3)	0.84 (0.82 - 0.86)	1.02 (0.99 - 1.04)	0.90 (0.88 - 0.93)
Elementary sales occupations n.e.c.	9,977	8,099	81.2 (80.4 - 81.9)	80.6 (78.9 - 82.4)	1.74 (1.65 - 1.83)	1.66 (1.57 - 1.74)	1.40 (1.32 - 1.47)
Elementary storage occupations	37,846	32,812	86.7 (86.4 - 87.0)	85.8 (84.9 - 86.8)	1.15 (1.12 - 1.19)	1.20 (1.16 - 1.23)	1.04 (1.01 - 1.07)
Hospital porters	8,219	6,998	85.1 (84.4 - 85.9)	84.3 (82.4 - 86.3)	1.31 (1.23 - 1.39)	1.32 (1.25 - 1.41)	1.12 (1.05 - 1.19)
Kitchen and catering assistants	216,101	178,936	82.8 (82.6 - 83.0)	82.4 (82.1 - 82.8)	1.57 (1.55 - 1.59)	1.43 (1.41 - 1.44)	1.16 (1.14 - 1.17)
	6,275	5,523	88.0 (87.2 - 88.8)	86.2 (83.7 - 88.6)	1.02 (0.95 - 1.10)	1.04 (0.97 - 1.13)	0.81 (0.75 - 0.88)
	158,517	135,022	85.2 (85.0 - 85.4)	84.3 (83.8 - 84.7)	1.31 (1.29 - 1.33)	1.43 (1.41 - 1.45)	1.05 (1.04 - 1.07)

Waiters and waitresses	52,218	41,224	78.9 (78.6 - 79.3)	81.0 (80.2 - 81.9)	2.01 (1.96 - 2.05)	1.80 (1.76 - 1.84)	1.18 (1.15 - 1.20)
Bar staff	55,784	45,076	80.8 (80.5 - 81.1)	82.5 (81.7 - 83.3)	1.79 (1.75 - 1.82)	1.66 (1.62 - 1.69)	1.51 (1.47 - 1.54)
Leisure and theme park attendants	4,797	3,881	80.9 (79.8 - 82.0)	81.9 (79.3 - 84.5)	1.77 (1.65 - 1.90)	1.60 (1.49 - 1.72)	1.39 (1.28 - 1.49)
Other elementary services occupations n.e.c.	10,745	8,792	81.8 (81.1 - 82.6)	81.4 (79.7 - 83.1)	1.67 (1.59 - 1.75)	1.66 (1.58 - 1.75)	1.33 (1.27 - 1.40)

Note: ONS Public Health Data Asset; Vaccination rate is the rate of people fully vaccinated. The outcome of the logistic regression models is not being fully vaccinated as of 31 August 2021. The reference category for the ORs is all other occupations. Fully adjusted models include sex, five-year age bands, ethnicity, region, education, disability, pre-existing condition.

**Table S4: Vaccination status by SOC unit group**

Occupation	N	No vaccine	First dose only	Two doses
Chief executives and senior officials	23,367	10.9 (10.5 - 11.3)	1.3 (1.2 - 1.5)	87.8 (87.4 - 88.2)
Elected officers and representatives	2,640	7.2 (6.2 - 8.2)	1.9 (1.3 - 2.4)	90.9 (89.8 - 92.0)
Production managers and directors in manufacturing	157,327	5.9 (5.8 - 6.0)	1.4 (1.4 - 1.5)	92.7 (92.5 - 92.8)
Production managers and directors in construction	98,624	7.2 (7.0 - 7.3)	1.9 (1.8 - 2.0)	90.9 (90.7 - 91.1)
Production managers and directors in mining and energy	9,115	5.9 (5.4 - 6.4)	1.5 (1.3 - 1.8)	92.6 (92.0 - 93.1)
Financial managers and directors	91,614	6.9 (6.8 - 7.1)	1.3 (1.2 - 1.3)	91.8 (91.6 - 92.0)
Marketing and sales directors	60,082	6.9 (6.7 - 7.1)	1.3 (1.2 - 1.4)	91.8 (91.6 - 92.0)
Purchasing managers and directors	24,815	5.6 (5.3 - 5.9)	1.2 (1.0 - 1.3)	93.2 (92.9 - 93.5)
Advertising and public relations directors	15,633	8.7 (8.2 - 9.1)	1.5 (1.3 - 1.7)	89.8 (89.4 - 90.3)
Human resource managers and directors	56,846	5.6 (5.4 - 5.8)	1.5 (1.4 - 1.6)	93.0 (92.7 - 93.2)
Information technology and telecommunications directors	36,476	8.1 (7.8 - 8.3)	1.5 (1.4 - 1.6)	90.5 (90.2 - 90.8)
Functional managers and directors n.e.c.	41,145	7.7 (7.5 - 8.0)	1.6 (1.5 - 1.8)	90.7 (90.4 - 90.9)
Financial institution managers and directors	82,989	6.8 (6.6 - 7.0)	1.5 (1.4 - 1.5)	91.7 (91.5 - 91.9)
Managers and directors in transport and distribution	47,884	6.7 (6.5 - 6.9)	1.8 (1.7 - 1.9)	91.5 (91.2 - 91.7)
Managers and directors in storage and warehousing	37,533	7.0 (6.8 - 7.3)	2.2 (2.1 - 2.4)	90.7 (90.4 - 91.0)
Officers in armed forces	4,829	9.2 (8.4 - 10.0)	1.9 (1.5 - 2.3)	88.9 (88.0 - 89.8)
Senior police officers	2,775	3.7 (3.0 - 4.4)	0.8 (0.5 - 1.1)	95.5 (94.8 - 96.3)
Senior officers in fire, ambulance, prison and related services	8,157	4.2 (3.8 - 4.6)	1.2 (1.0 - 1.5)	94.6 (94.1 - 95.1)
Health services and public health managers and directors	29,393	5.0 (4.8 - 5.3)	1.4 (1.3 - 1.6)	93.6 (93.3 - 93.8)

Social services managers and directors	25,084	6.5 (6.2 - 6.9)	1.9 (1.8 - 2.1)	91.5 (91.2 - 91.9)
Managers and directors in retail and wholesale	256,937	7.6 (7.5 - 7.7)	2.5 (2.4 - 2.6)	89.9 (89.8 - 90.1)
Managers and proprietors in agriculture and horticulture	8,429	5.3 (4.9 - 5.8)	1.8 (1.5 - 2.0)	92.9 (92.4 - 93.5)
Managers and proprietors in forestry, fishing and related services	7,189	7.7 (7.0 - 8.3)	2.2 (1.8 - 2.5)	90.2 (89.5 - 90.9)
Hotel and accommodation managers and proprietors	25,317	9.1 (8.8 - 9.5)	2.2 (2.0 - 2.3)	88.7 (88.3 - 89.1)
Restaurant and catering establishment managers and proprietors	59,946	11.3 (11.1 - 11.6)	3.3 (3.2 - 3.5)	85.4 (85.1 - 85.6)
Publicans and managers of licensed premises	32,977	7.9 (7.6 - 8.2)	2.8 (2.6 - 3.0)	89.3 (89.0 - 89.7)
Leisure and sports managers	31,507	8.5 (8.2 - 8.8)	2.3 (2.1 - 2.5)	89.2 (88.8 - 89.5)
Travel agency managers and proprietors	7,617	8.1 (7.5 - 8.8)	1.7 (1.4 - 2.0)	90.1 (89.5 - 90.8)
Health care practice managers	10,620	4.8 (4.4 - 5.2)	1.4 (1.2 - 1.6)	93.8 (93.3 - 94.2)
Residential, day and domiciliary care managers and proprietors	29,250	5.7 (5.4 - 6.0)	2.3 (2.1 - 2.5)	92.0 (91.7 - 92.3)
Property, housing and estate managers	69,897	8.2 (8.0 - 8.4)	2.0 (1.9 - 2.1)	89.8 (89.5 - 90.0)
Garage managers and proprietors	15,726	7.5 (7.1 - 7.9)	2.6 (2.3 - 2.8)	89.9 (89.5 - 90.4)
Hairdressing and beauty salon managers and proprietors	7,620	11.1 (10.4 - 11.8)	2.8 (2.4 - 3.2)	86.1 (85.3 - 86.9)
Shopkeepers and proprietors ? wholesale and retail	86,453	10.3 (10.1 - 10.5)	3.3 (3.1 - 3.4)	86.5 (86.2 - 86.7)
Waste disposal and environmental services managers	7,067	8.8 (8.2 - 9.5)	2.6 (2.3 - 3.0)	88.5 (87.8 - 89.3)
Managers and proprietors in other services n.e.c.	143,652	7.7 (7.6 - 7.9)	1.8 (1.8 - 1.9)	90.4 (90.3 - 90.6)
Chemical scientists	5,772	6.8 (6.2 - 7.5)	1.6 (1.3 - 2.0)	91.6 (90.8 - 92.3)
Biological scientists and biochemists	22,634	6.9 (6.6 - 7.2)	1.7 (1.5 - 1.8)	91.4 (91.1 - 91.8)
Physical scientists	4,712	10.9 (10.0 - 11.8)	1.1 (0.8 - 1.4)	88.0 (87.1 - 88.9)
Social and humanities scientists	3,611	8.8 (7.9 - 9.7)	1.5 (1.1 - 1.9)	89.7 (88.7 - 90.7)

Natural and social science professionals n.e.c.	30,728	11.7 (11.4 - 12.1)	1.6 (1.4 - 1.7)	86.7 (86.3 - 87.1)
Civil engineers	27,649	9.3 (9.0 - 9.7)	1.9 (1.8 - 2.1)	88.7 (88.4 - 89.1)
Mechanical engineers	40,123	9.0 (8.8 - 9.3)	1.8 (1.7 - 1.9)	89.1 (88.8 - 89.5)
Electrical engineers	12,649	7.9 (7.4 - 8.4)	1.5 (1.3 - 1.7)	90.6 (90.1 - 91.1)
Electronics engineers	14,470	8.3 (7.8 - 8.7)	1.9 (1.7 - 2.2)	89.8 (89.3 - 90.3)
Design and development engineers	24,802	7.1 (6.8 - 7.5)	1.5 (1.3 - 1.6)	91.4 (91.0 - 91.7)
Production and process engineers	14,734	7.3 (6.9 - 7.8)	1.5 (1.3 - 1.7)	91.2 (90.7 - 91.7)
Engineering professionals n.e.c.	45,537	7.7 (7.5 - 8.0)	1.8 (1.7 - 1.9)	90.5 (90.2 - 90.7)
IT specialist managers	96,216	6.7 (6.6 - 6.9)	1.4 (1.4 - 1.5)	91.8 (91.7 - 92.0)
IT project and programme managers	26,939	7.1 (6.8 - 7.4)	1.4 (1.3 - 1.5)	91.5 (91.2 - 91.9)
IT business analysts, architects and systems designers	48,073	7.8 (7.6 - 8.1)	1.6 (1.5 - 1.8)	90.5 (90.2 - 90.8)
Programmers and software development professionals	86,799	9.6 (9.4 - 9.8)	1.9 (1.8 - 1.9)	88.6 (88.4 - 88.8)
Web design and development professionals	21,445	13.3 (12.8 - 13.7)	2.6 (2.4 - 2.9)	84.1 (83.6 - 84.6)
Information technology and telecommunications professionals n.e.c.	80,010	9.4 (9.2 - 9.6)	1.8 (1.7 - 1.9)	88.8 (88.6 - 89.0)
Conservation professionals	4,264	5.3 (4.6 - 6.0)	1.8 (1.4 - 2.2)	92.9 (92.1 - 93.7)
Environment professionals	11,245	6.7 (6.3 - 7.2)	1.6 (1.3 - 1.8)	91.7 (91.2 - 92.2)
Research and development managers	18,001	6.5 (6.2 - 6.9)	1.3 (1.1 - 1.5)	92.2 (91.8 - 92.6)
Medical practitioners	97,801	8.7 (8.5 - 8.9)	2.0 (1.9 - 2.0)	89.4 (89.2 - 89.6)
Psychologists	11,497	6.9 (6.5 - 7.4)	1.8 (1.5 - 2.0)	91.3 (90.8 - 91.8)
Pharmacists	20,123	7.8 (7.5 - 8.2)	2.0 (1.8 - 2.2)	90.1 (89.7 - 90.6)
Ophthalmic opticians	6,369	6.1 (5.5 - 6.7)	1.9 (1.6 - 2.2)	92.0 (91.4 - 92.7)
Dental practitioners	17,182	8.2 (7.8 - 8.6)	1.5 (1.4 - 1.7)	90.3 (89.8 - 90.7)
Veterinarians	6,876	8.0 (7.3 - 8.6)	1.7 (1.4 - 2.0)	90.4 (89.7 - 91.1)
Medical radiographers	11,307	5.6 (5.2 - 6.0)	1.1 (1.0 - 1.3)	93.2 (92.8 - 93.7)
Podiatrists	6,281	5.7 (5.1 - 6.3)	1.4 (1.1 - 1.7)	92.9 (92.2 - 93.5)
Health professionals n.e.c.	12,302	7.2 (6.7 - 7.6)	2.1 (1.8 - 2.3)	90.8 (90.3 - 91.3)
Physiotherapists	18,805	5.8 (5.4 - 6.1)	1.4 (1.3 - 1.6)	92.8 (92.4 - 93.2)
Occupational therapists	14,845	4.8 (4.5 - 5.2)	1.4 (1.2 - 1.6)	93.8 (93.4 - 94.1)
Speech and language therapists	6,360	4.5 (4.0 - 5.0)	1.1 (0.8 - 1.3)	94.4 (93.8 - 95.0)



Therapy professionals n.e.c.	11,688	15.7 (15.0 - 16.4)	2.4 (2.2 - 2.7)	81.8 (81.1 - 82.5)
Nurses	317,899	6.2 (6.2 - 6.3)	2.1 (2.0 - 2.1)	91.7 (91.6 - 91.8)
Midwives	19,622	6.5 (6.2 - 6.8)	1.8 (1.6 - 2.0)	91.7 (91.3 - 92.1)
Higher education teaching professionals	62,012	9.7 (9.5 - 9.9)	1.6 (1.5 - 1.7)	88.7 (88.4 - 88.9)
Further education teaching professionals	45,292	8.6 (8.4 - 8.9)	2.3 (2.1 - 2.4)	89.1 (88.8 - 89.4)
Secondary education teaching professionals	184,359	6.9 (6.7 - 7.0)	1.6 (1.5 - 1.7)	91.5 (91.4 - 91.7)
Primary and nursery education teaching professionals	187,791	5.7 (5.6 - 5.9)	1.6 (1.6 - 1.7)	92.6 (92.5 - 92.8)
Special needs education teaching professionals	14,427	6.1 (5.7 - 6.5)	1.5 (1.3 - 1.7)	92.3 (91.9 - 92.8)
Senior professionals of educational establishments	65,028	5.1 (5.0 - 5.3)	1.2 (1.2 - 1.3)	93.6 (93.4 - 93.8)
Education advisers and school inspectors	7,470	6.2 (5.7 - 6.8)	1.4 (1.1 - 1.6)	92.4 (91.8 - 93.0)
Teaching and other educational professionals n.e.c.	57,925	10.5 (10.2 - 10.7)	2.3 (2.2 - 2.5)	87.2 (86.9 - 87.5)
Barristers and judges	11,748	5.7 (5.3 - 6.1)	1.7 (1.4 - 1.9)	92.6 (92.2 - 93.1)
Solicitors	59,739	5.4 (5.2 - 5.5)	1.5 (1.4 - 1.6)	93.1 (92.9 - 93.3)
Legal professionals n.e.c.	21,500	10.3 (9.9 - 10.7)	2.0 (1.8 - 2.2)	87.7 (87.3 - 88.1)
Chartered and certified accountants	116,527	7.0 (6.8 - 7.1)	1.6 (1.5 - 1.7)	91.4 (91.3 - 91.6)
Management consultants and business analysts	65,406	9.4 (9.2 - 9.6)	1.6 (1.5 - 1.7)	89.0 (88.8 - 89.3)
Business and financial project management professionals	87,039	7.6 (7.4 - 7.8)	1.5 (1.5 - 1.6)	90.9 (90.7 - 91.1)
Actuaries, economists and statisticians	10,244	10.4 (9.8 - 11.0)	1.8 (1.5 - 2.1)	87.8 (87.2 - 88.4)
Business and related research professionals	23,138	11.0 (10.6 - 11.4)	2.1 (1.9 - 2.3)	87.0 (86.5 - 87.4)
Business, research and administrative professionals n.e.c.	19,177	6.5 (6.1 - 6.8)	1.6 (1.4 - 1.8)	91.9 (91.6 - 92.3)
Architects	24,081	10.3 (9.9 - 10.7)	1.9 (1.7 - 2.1)	87.8 (87.4 - 88.2)
Town planning officers	5,313	4.9 (4.3 - 5.4)	1.2 (0.9 - 1.5)	93.9 (93.3 - 94.5)
Quantity surveyors	14,191	7.2 (6.8 - 7.6)	1.6 (1.4 - 1.8)	91.2 (90.7 - 91.7)
Chartered surveyors	33,252	5.5 (5.2 - 5.7)	1.4 (1.3 - 1.5)	93.1 (92.9 - 93.4)

Chartered architectural technologists	1,464	6.9 (5.6 - 8.2)	1.5 (0.9 - 2.1)	91.6 (90.2 - 93.0)
Construction project managers and related professionals	29,960	6.0 (5.7 - 6.3)	1.6 (1.4 - 1.7)	92.4 (92.1 - 92.7)
Social workers	42,730	9.2 (8.9 - 9.5)	2.3 (2.2 - 2.4)	88.5 (88.2 - 88.8)
Probation officers	5,601	7.2 (6.5 - 7.9)	2.0 (1.6 - 2.4)	90.8 (90.0 - 91.5)
Clergy	14,189	10.4 (9.9 - 10.9)	2.2 (2.0 - 2.5)	87.4 (86.8 - 87.9)
Welfare professionals n.e.c.	14,644	10.9 (10.4 - 11.4)	2.7 (2.5 - 3.0)	86.4 (85.8 - 86.9)
Librarians	9,870	5.3 (4.9 - 5.7)	1.3 (1.1 - 1.6)	93.4 (92.9 - 93.9)
Archivists and curators	5,412	6.9 (6.2 - 7.5)	1.4 (1.1 - 1.7)	91.7 (91.0 - 92.5)
Quality control and planning engineers	12,178	6.2 (5.8 - 6.7)	1.8 (1.6 - 2.1)	91.9 (91.5 - 92.4)
Quality assurance and regulatory professionals	26,766	5.8 (5.5 - 6.1)	1.4 (1.3 - 1.6)	92.7 (92.4 - 93.0)
Environmental health professionals	3,806	5.6 (4.9 - 6.4)	1.4 (1.0 - 1.8)	93.0 (92.2 - 93.8)
Journalists, newspaper and periodical editors	34,236	7.9 (7.6 - 8.2)	1.6 (1.5 - 1.8)	90.5 (90.2 - 90.8)
Public relations professionals	18,571	8.3 (7.9 - 8.7)	1.7 (1.5 - 1.9)	90.0 (89.6 - 90.4)
Advertising accounts managers and creative directors	19,087	9.8 (9.4 - 10.2)	2.2 (2.0 - 2.5)	88.0 (87.5 - 88.4)
Laboratory technicians	23,775	8.2 (7.8 - 8.5)	2.0 (1.8 - 2.2)	89.8 (89.4 - 90.2)
Electrical and electronics technicians	6,134	8.9 (8.1 - 9.6)	2.2 (1.8 - 2.6)	89.0 (88.2 - 89.7)
Engineering technicians	16,563	7.3 (6.9 - 7.7)	2.1 (1.9 - 2.3)	90.6 (90.2 - 91.0)
Building and civil engineering technicians	4,081	8.0 (7.2 - 8.8)	2.3 (1.8 - 2.7)	89.7 (88.8 - 90.6)
Quality assurance technicians	9,921	7.4 (6.9 - 7.9)	1.9 (1.6 - 2.2)	90.7 (90.1 - 91.2)
Planning, process and production technicians	10,955	6.3 (5.8 - 6.8)	1.8 (1.6 - 2.1)	91.9 (91.4 - 92.4)
Science, engineering and production technicians n.e.c.	40,041	8.1 (7.9 - 8.4)	2.2 (2.1 - 2.4)	89.6 (89.3 - 89.9)
Architectural and town planning technicians	6,338	10.2 (9.5 - 11.0)	1.8 (1.5 - 2.2)	87.9 (87.1 - 88.7)
Draughtspersons	14,241	7.9 (7.5 - 8.4)	2.0 (1.8 - 2.2)	90.0 (89.6 - 90.5)
IT operations technicians	46,473	9.5 (9.3 - 9.8)	2.2 (2.1 - 2.4)	88.2 (87.9 - 88.5)
IT user support technicians	40,089	9.2 (8.9 - 9.4)	2.3 (2.1 - 2.4)	88.6 (88.2 - 88.9)
Paramedics	9,873	4.9 (4.4 - 5.3)	1.5 (1.3 - 1.8)	93.6 (93.1 - 94.1)

Dispensing opticians	2,498	5.4 (4.6 - 6.3)	1.6 (1.1 - 2.1)	92.9 (91.9 - 93.9)
Pharmaceutical technicians	10,991	5.9 (5.5 - 6.4)	1.8 (1.6 - 2.1)	92.3 (91.8 - 92.8)
Medical and dental technicians	12,034	7.7 (7.2 - 8.2)	1.8 (1.5 - 2.0)	90.5 (90.0 - 91.1)
Health associate professionals n.e.c.	21,136	19.8 (19.2 - 20.3)	3.0 (2.8 - 3.3)	77.2 (76.6 - 77.8)
Youth and community workers	25,724	10.8 (10.5 - 11.2)	2.7 (2.5 - 2.9)	86.4 (86.0 - 86.9)
Child and early years officers	5,609	7.0 (6.3 - 7.6)	1.8 (1.5 - 2.1)	91.2 (90.5 - 92.0)
Housing officers	21,840	10.6 (10.2 - 11.0)	2.7 (2.5 - 3.0)	86.7 (86.2 - 87.1)
Counsellors	11,491	11.8 (11.2 - 12.4)	2.6 (2.3 - 2.8)	85.6 (85.0 - 86.3)
Welfare and housing associate professionals n.e.c.	57,200	10.1 (9.9 - 10.4)	2.6 (2.5 - 2.8)	87.2 (87.0 - 87.5)
NCOs and other ranks	13,981	12.0 (11.4 - 12.5)	3.2 (2.9 - 3.5)	84.8 (84.2 - 85.4)
Police officers (sergeant and below)	108,003	4.2 (4.1 - 4.4)	1.4 (1.3 - 1.4)	94.4 (94.3 - 94.5)
Fire service officers (watch manager and below)	24,700	7.5 (7.2 - 7.8)	2.1 (1.9 - 2.3)	90.4 (90.0 - 90.8)
Prison service officers (below principal officer)	22,562	6.4 (6.1 - 6.7)	2.3 (2.1 - 2.5)	91.3 (91.0 - 91.7)
Police community support officers	7,452	6.1 (5.6 - 6.6)	2.2 (1.8 - 2.5)	91.7 (91.1 - 92.3)
Protective service associate professionals n.e.c.	16,061	7.4 (7.0 - 7.8)	2.3 (2.0 - 2.5)	90.3 (89.9 - 90.8)
Artists	20,821	14.6 (14.2 - 15.1)	2.9 (2.6 - 3.1)	82.5 (82.0 - 83.0)
Authors, writers and translators	28,632	13.3 (12.9 - 13.7)	2.4 (2.2 - 2.6)	84.3 (83.9 - 84.7)
Actors, entertainers and presenters	19,150	15.9 (15.4 - 16.4)	3.6 (3.3 - 3.8)	80.5 (80.0 - 81.1)
Dancers and choreographers	6,342	13.8 (13.0 - 14.7)	3.0 (2.6 - 3.4)	83.2 (82.3 - 84.1)
Musicians	15,755	14.3 (13.7 - 14.8)	2.8 (2.5 - 3.1)	82.9 (82.3 - 83.5)
Arts officers, producers and directors	33,255	10.4 (10.1 - 10.7)	2.4 (2.2 - 2.5)	87.2 (86.9 - 87.6)
Photographers, audio-visual and broadcasting equipment operators	30,398	12.1 (11.8 - 12.5)	2.8 (2.6 - 2.9)	85.1 (84.7 - 85.5)
Graphic designers	38,700	10.0 (9.7 - 10.3)	2.3 (2.1 - 2.4)	87.8 (87.5 - 88.1)
Product, clothing and related designers	30,806	11.3 (10.9 - 11.6)	2.6 (2.4 - 2.7)	86.2 (85.8 - 86.6)
Sports players	4,217	13.7 (12.6 - 14.7)	4.2 (3.6 - 4.8)	82.2 (81.0 - 83.3)
Sports coaches, instructors and officials	21,203	10.6 (10.2 - 11.0)	2.7 (2.5 - 2.9)	86.7 (86.2 - 87.2)
Fitness instructors	18,657	18.6 (18.0 - 19.1)	3.6 (3.4 - 3.9)	77.8 (77.2 - 78.4)
Air traffic controllers	1,694	7.1 (5.9 - 8.3)	0.8 (0.4 - 1.3)	92.1 (90.8 - 93.4)

Aircraft pilots and flight engineers	8,024	10.1 (9.4 - 10.7)	1.5 (1.3 - 1.8)	88.4 (87.7 - 89.1)
Ship and hovercraft officers	3,756	8.9 (8.0 - 9.8)	3.5 (2.9 - 4.0)	87.6 (86.6 - 88.7)
Legal associate professionals	26,646	7.4 (7.1 - 7.7)	2.2 (2.0 - 2.3)	90.5 (90.1 - 90.8)
Estimators, valuers and assessors	26,441	6.5 (6.2 - 6.8)	1.7 (1.5 - 1.8)	91.8 (91.5 - 92.1)
Brokers	29,462	9.5 (9.1 - 9.8)	1.9 (1.8 - 2.1)	88.6 (88.3 - 89.0)
Insurance underwriters	14,945	5.1 (4.8 - 5.5)	1.4 (1.2 - 1.6)	93.4 (93.1 - 93.8)
Finance and investment analysts and advisers	80,758	8.5 (8.3 - 8.7)	1.9 (1.8 - 2.0)	89.6 (89.3 - 89.8)
Taxation experts	14,574	5.1 (4.7 - 5.5)	1.2 (1.0 - 1.4)	93.7 (93.3 - 94.1)
Importers and exporters	3,835	11.7 (10.7 - 12.7)	2.4 (1.9 - 2.9)	85.9 (84.8 - 87.0)
Financial and accounting technicians	7,926	6.5 (6.0 - 7.1)	1.8 (1.5 - 2.1)	91.7 (91.1 - 92.3)
Financial accounts managers	59,742	6.6 (6.4 - 6.8)	1.6 (1.5 - 1.7)	91.7 (91.5 - 91.9)
Business and related associate professionals n.e.c.	46,422	8.3 (8.0 - 8.5)	1.9 (1.8 - 2.0)	89.8 (89.5 - 90.1)
Buyers and procurement officers	29,858	6.5 (6.3 - 6.8)	1.8 (1.7 - 2.0)	91.6 (91.3 - 92.0)
Business sales executives	82,738	8.8 (8.7 - 9.0)	2.4 (2.3 - 2.5)	88.7 (88.5 - 88.9)
Marketing associate professionals	46,756	9.4 (9.1 - 9.6)	2.2 (2.1 - 2.3)	88.4 (88.2 - 88.7)
Estate agents and auctioneers	27,753	8.8 (8.5 - 9.1)	2.5 (2.3 - 2.7)	88.7 (88.4 - 89.1)
Sales accounts and business development managers	190,004	6.9 (6.8 - 7.1)	1.7 (1.6 - 1.8)	91.4 (91.2 - 91.5)
Conference and exhibition managers and organisers	22,076	9.7 (9.3 - 10.1)	2.4 (2.2 - 2.6)	87.9 (87.5 - 88.3)
Conservation and environmental associate professionals	3,277	7.6 (6.7 - 8.5)	2.4 (1.9 - 3.0)	89.9 (88.9 - 91.0)
Public services associate professionals	23,308	6.2 (5.8 - 6.5)	1.7 (1.5 - 1.9)	92.1 (91.8 - 92.5)
Human resources and industrial relations officers	69,794	8.0 (7.8 - 8.2)	2.4 (2.2 - 2.5)	89.6 (89.4 - 89.8)
Vocational and industrial trainers and instructors	71,845	7.3 (7.1 - 7.5)	1.9 (1.8 - 2.0)	90.8 (90.5 - 91.0)
Careers advisers and vocational guidance specialists	10,454	8.3 (7.8 - 8.8)	2.2 (1.9 - 2.4)	89.5 (89.0 - 90.1)
Inspectors of standards and regulations	9,981	5.7 (5.3 - 6.2)	1.4 (1.2 - 1.6)	92.9 (92.4 - 93.4)
Health and safety officers	17,253	6.0 (5.7 - 6.4)	1.7 (1.5 - 1.8)	92.3 (91.9 - 92.7)

National government administrative occupations	150,201	6.0 (5.9 - 6.1)	1.9 (1.8 - 1.9)	92.1 (92.0 - 92.2)
Local government administrative occupations	73,705	6.0 (5.8 - 6.2)	1.7 (1.6 - 1.8)	92.3 (92.1 - 92.4)
Officers of non-governmental organisations	12,062	7.4 (7.0 - 7.9)	1.8 (1.6 - 2.1)	90.7 (90.2 - 91.2)
Credit controllers	22,476	7.1 (6.8 - 7.5)	2.3 (2.1 - 2.5)	90.5 (90.2 - 90.9)
Book-keepers, payroll managers and wages clerks	159,886	7.0 (6.9 - 7.1)	2.0 (1.9 - 2.0)	91.0 (90.9 - 91.2)
Bank and post office clerks	94,616	6.5 (6.4 - 6.7)	2.1 (2.0 - 2.2)	91.3 (91.2 - 91.5)
Finance officers	15,058	6.9 (6.5 - 7.3)	1.8 (1.6 - 2.0)	91.3 (90.8 - 91.7)
Financial administrative occupations n.e.c.	64,172	8.1 (7.9 - 8.3)	2.5 (2.4 - 2.6)	89.4 (89.2 - 89.7)
Records clerks and assistants	56,035	6.7 (6.5 - 6.9)	1.9 (1.8 - 2.1)	91.3 (91.1 - 91.6)
Pensions and insurance clerks and assistants	41,863	6.5 (6.3 - 6.7)	2.1 (1.9 - 2.2)	91.4 (91.2 - 91.7)
Stock control clerks and assistants	34,036	8.0 (7.8 - 8.3)	2.5 (2.4 - 2.7)	89.4 (89.1 - 89.8)
Transport and distribution clerks and assistants	30,535	8.1 (7.8 - 8.5)	2.4 (2.2 - 2.5)	89.5 (89.2 - 89.8)
Library clerks and assistants	15,067	6.4 (6.0 - 6.7)	1.8 (1.6 - 2.0)	91.8 (91.4 - 92.3)
Human resources administrative occupations	18,961	7.5 (7.1 - 7.9)	2.1 (1.9 - 2.3)	90.4 (90.0 - 90.8)
Sales administrators	34,644	7.6 (7.3 - 7.8)	2.4 (2.2 - 2.5)	90.1 (89.8 - 90.4)
Other administrative occupations n.e.c.	320,894	7.7 (7.6 - 7.8)	2.2 (2.2 - 2.3)	90.1 (89.9 - 90.2)
Office managers	85,259	6.0 (5.8 - 6.1)	1.6 (1.5 - 1.7)	92.4 (92.2 - 92.6)
Office supervisors	17,917	5.7 (5.4 - 6.1)	1.8 (1.6 - 2.0)	92.5 (92.1 - 92.9)
Medical secretaries	33,188	5.1 (4.9 - 5.3)	1.5 (1.4 - 1.6)	93.4 (93.1 - 93.7)
Legal secretaries	30,679	6.6 (6.4 - 6.9)	2.1 (1.9 - 2.2)	91.3 (91.0 - 91.6)
School secretaries	34,524	4.0 (3.8 - 4.2)	1.2 (1.1 - 1.3)	94.8 (94.6 - 95.1)
Company secretaries	23,868	5.8 (5.5 - 6.1)	1.7 (1.6 - 1.9)	92.5 (92.2 - 92.8)
Personal assistants and other secretaries	175,722	7.5 (7.4 - 7.6)	2.1 (2.0 - 2.1)	90.4 (90.3 - 90.6)
Receptionists	118,749	8.7 (8.6 - 8.9)	2.7 (2.6 - 2.8)	88.6 (88.4 - 88.8)
Typists and related keyboard occupations	30,168	9.8 (9.4 - 10.1)	2.6 (2.5 - 2.8)	87.6 (87.2 - 88.0)
Farmers	38,490	5.1 (4.9 - 5.3)	2.0 (1.8 - 2.1)	92.9 (92.6 - 93.2)

It is made available under a [CC-BY-NC-ND 4.0 International license](https://creativecommons.org/licenses/by-nc-nd/4.0/) .

Horticultural trades	8,101	9.4 (8.8 - 10.0)	2.9 (2.6 - 3.3)	87.7 (86.9 - 88.4)
Gardeners and landscape gardeners	66,824	11.2 (10.9 - 11.4)	3.2 (3.1 - 3.4)	85.6 (85.3 - 85.9)
Groundsmen and greenkeepers	12,292	8.4 (7.9 - 8.9)	2.8 (2.5 - 3.1)	88.8 (88.2 - 89.3)
Agricultural and fishing trades n.e.c.	7,923	12.3 (11.5 - 13.0)	4.5 (4.0 - 4.9)	83.3 (82.4 - 84.1)
Smiths and forge workers	2,432	10.2 (9.0 - 11.4)	3.0 (2.3 - 3.7)	86.8 (85.4 - 88.1)
Moulders, core makers and die casters	1,344	10.7 (9.1 - 12.4)	2.8 (1.9 - 3.6)	86.5 (84.7 - 88.4)
Sheet metal workers	8,282	8.2 (7.6 - 8.7)	2.6 (2.3 - 3.0)	89.2 (88.5 - 89.9)
Metal plate workers, and riveters	3,129	7.9 (6.9 - 8.8)	2.6 (2.0 - 3.1)	89.5 (88.4 - 90.6)
Welding trades	30,831	12.4 (12.0 - 12.8)	3.4 (3.2 - 3.6)	84.2 (83.8 - 84.6)
Pipe fitters	5,263	10.1 (9.3 - 10.9)	3.4 (2.9 - 3.9)	86.5 (85.6 - 87.4)
Metal machining setters and setter-operators	20,704	8.7 (8.4 - 9.1)	2.5 (2.3 - 2.7)	88.7 (88.3 - 89.1)
Tool makers, tool fitters and markers-out	5,733	5.9 (5.3 - 6.5)	2.2 (1.8 - 2.6)	91.9 (91.2 - 92.6)
Metal working production and maintenance fitters	96,624	8.7 (8.5 - 8.9)	2.6 (2.5 - 2.7)	88.7 (88.5 - 88.9)
Precision instrument makers and repairers	7,637	8.3 (7.7 - 8.9)	2.3 (1.9 - 2.6)	89.4 (88.7 - 90.1)
Air-conditioning and refrigeration engineers	6,128	11.7 (10.9 - 12.5)	3.6 (3.1 - 4.1)	84.7 (83.8 - 85.6)
Vehicle technicians, mechanics and electricians	83,650	11.7 (11.5 - 11.9)	3.4 (3.3 - 3.6)	84.9 (84.6 - 85.1)
Vehicle body builders and repairers	13,259	11.1 (10.6 - 11.6)	3.5 (3.2 - 3.8)	85.4 (84.8 - 86.0)
Vehicle paint technicians	7,785	12.0 (11.2 - 12.7)	3.7 (3.3 - 4.1)	84.3 (83.5 - 85.1)
Aircraft maintenance and related trades	10,096	6.9 (6.4 - 7.4)	1.6 (1.4 - 1.9)	91.5 (90.9 - 92.0)
Boat and ship builders and repairers	5,196	9.6 (8.8 - 10.4)	2.9 (2.4 - 3.4)	87.5 (86.6 - 88.4)
Rail and rolling stock builders and repairers	4,675	8.7 (7.9 - 9.5)	2.5 (2.0 - 2.9)	88.9 (88.0 - 89.8)
Electricians and electrical fitters	89,939	10.5 (10.3 - 10.7)	2.9 (2.8 - 3.0)	86.6 (86.4 - 86.8)
Telecommunications engineers	27,836	9.1 (8.7 - 9.4)	2.4 (2.3 - 2.6)	88.5 (88.1 - 88.9)
TV, video and audio engineers	4,739	13.1 (12.2 - 14.1)	3.5 (2.9 - 4.0)	83.4 (82.3 - 84.5)
IT engineers	17,936	12.7 (12.2 - 13.2)	2.7 (2.5 - 3.0)	84.6 (84.0 - 85.1)
Electrical and electronic trades n.e.c.	35,943	8.7 (8.4 - 9.0)	2.4 (2.2 - 2.5)	88.9 (88.6 - 89.3)

Skilled metal, electrical and electronic trades supervisors	26,298	5.7 (5.4 - 6.0)	1.8 (1.7 - 2.0)	92.4 (92.1 - 92.8)
Steel erectors	4,781	11.4 (10.5 - 12.3)	3.3 (2.8 - 3.8)	85.3 (84.3 - 86.3)
Bricklayers and masons	35,742	10.9 (10.6 - 11.3)	3.8 (3.6 - 4.0)	85.3 (84.9 - 85.7)
Roofers, roof tilers and slaters	25,969	14.2 (13.8 - 14.6)	4.6 (4.4 - 4.9)	81.2 (80.7 - 81.6)
Plumbers and heating and ventilating engineers	68,978	10.4 (10.2 - 10.7)	3.3 (3.2 - 3.5)	86.2 (85.9 - 86.5)
Carpenters and joiners	110,235	12.3 (12.1 - 12.5)	3.4 (3.2 - 3.5)	84.3 (84.1 - 84.6)
Glaziers, window fabricators and fitters	23,223	11.9 (11.5 - 12.4)	4.4 (4.1 - 4.7)	83.7 (83.2 - 84.1)
Construction and building trades n.e.c.	130,834	13.3 (13.1 - 13.5)	3.4 (3.3 - 3.5)	83.3 (83.1 - 83.5)
Plasterers	26,578	15.2 (14.7 - 15.6)	4.7 (4.4 - 4.9)	80.2 (79.7 - 80.7)
Floorers and wall tilers	20,565	12.4 (12.0 - 12.9)	4.4 (4.1 - 4.7)	83.2 (82.7 - 83.7)
Painters and decorators	71,662	14.5 (14.2 - 14.7)	3.6 (3.5 - 3.8)	81.9 (81.6 - 82.2)
Construction and building trades supervisors	21,478	8.1 (7.8 - 8.5)	2.4 (2.2 - 2.6)	89.5 (89.1 - 89.9)
Weavers and knitters	1,800	10.0 (8.6 - 11.4)	3.6 (2.7 - 4.5)	86.4 (84.8 - 88.0)
Upholsterers	8,962	9.8 (9.2 - 10.4)	2.6 (2.3 - 3.0)	87.6 (86.9 - 88.3)
Footwear and leather working trades	6,006	10.4 (9.6 - 11.2)	3.6 (3.2 - 4.1)	86.0 (85.1 - 86.8)
Tailors and dressmakers	8,687	15.3 (14.5 - 16.0)	3.8 (3.4 - 4.2)	80.9 (80.1 - 81.8)
Textiles, garments and related trades n.e.c.	2,943	10.8 (9.7 - 12.0)	3.3 (2.7 - 3.9)	85.9 (84.6 - 87.1)
Pre-press technicians	2,854	8.4 (7.4 - 9.5)	2.1 (1.6 - 2.6)	89.5 (88.3 - 90.6)
Printers	26,199	8.4 (8.1 - 8.8)	2.7 (2.5 - 2.9)	88.8 (88.4 - 89.2)
Print finishing and binding workers	10,495	8.7 (8.1 - 9.2)	2.7 (2.4 - 3.0)	88.7 (88.1 - 89.3)
Butchers	16,142	11.9 (11.4 - 12.4)	4.1 (3.8 - 4.4)	84.0 (83.4 - 84.5)
Bakers and flour confectioners	14,325	10.2 (9.7 - 10.7)	3.0 (2.7 - 3.3)	86.8 (86.2 - 87.3)
Fishmongers and poultry dressers	2,627	11.0 (9.8 - 12.2)	3.9 (3.1 - 4.6)	85.1 (83.8 - 86.5)
Chefs	105,199	12.9 (12.7 - 13.1)	4.5 (4.4 - 4.7)	82.6 (82.3 - 82.8)
Cooks	46,852	8.5 (8.3 - 8.8)	3.2 (3.0 - 3.4)	88.3 (88.0 - 88.5)
Catering and bar managers	62,157	9.9 (9.7 - 10.2)	3.3 (3.2 - 3.5)	86.7 (86.5 - 87.0)
Glass and ceramics makers, decorators and finishers	7,627	8.8 (8.2 - 9.4)	2.6 (2.3 - 3.0)	88.6 (87.9 - 89.3)
Furniture makers and other craft woodworkers	15,405	11.3 (10.8 - 11.8)	3.1 (2.8 - 3.4)	85.6 (85.1 - 86.2)



It is made available under a [CC-BY-NC-ND 4.0 International license](https://creativecommons.org/licenses/by-nc-nd/4.0/) .

Florists	11,255	8.8 (8.3 - 9.3)	2.8 (2.5 - 3.2)	88.3 (87.7 - 88.9)
Other skilled trades n.e.c.	19,993	10.9 (10.4 - 11.3)	3.0 (2.7 - 3.2)	86.2 (85.7 - 86.7)
Nursery nurses and assistants	94,191	7.0 (6.9 - 7.2)	2.5 (2.4 - 2.6)	90.4 (90.2 - 90.6)
Childminders and related occupations	61,026	9.3 (9.1 - 9.5)	2.5 (2.4 - 2.6)	88.2 (87.9 - 88.4)
Playworkers	17,847	8.2 (7.8 - 8.6)	2.3 (2.1 - 2.5)	89.6 (89.1 - 90.0)
Teaching assistants	212,606	6.0 (5.9 - 6.1)	1.9 (1.8 - 1.9)	92.1 (92.0 - 92.2)
Educational support assistants	57,712	6.5 (6.3 - 6.7)	2.0 (1.9 - 2.2)	91.5 (91.3 - 91.7)
Veterinary nurses	5,557	6.2 (5.6 - 6.9)	2.6 (2.2 - 3.0)	91.1 (90.4 - 91.9)
Pest control officers	2,799	9.6 (8.6 - 10.7)	3.0 (2.4 - 3.7)	87.3 (86.1 - 88.5)
Animal care services occupations n.e.c.	21,249	10.4 (10.0 - 10.9)	3.3 (3.1 - 3.6)	86.2 (85.7 - 86.7)
Nursing auxiliaries and assistants	115,219	8.0 (7.8 - 8.2)	2.6 (2.5 - 2.7)	89.4 (89.2 - 89.6)
Ambulance staff (excluding paramedics)	10,417	7.2 (6.7 - 7.7)	2.0 (1.7 - 2.3)	90.8 (90.2 - 91.3)
Dental nurses	22,072	8.4 (8.0 - 8.8)	2.8 (2.6 - 3.0)	88.8 (88.4 - 89.2)
Houseparents and residential wardens	22,051	8.0 (7.6 - 8.3)	2.5 (2.3 - 2.7)	89.6 (89.2 - 90.0)
Care workers and home carers	395,569	10.6 (10.5 - 10.7)	3.6 (3.6 - 3.7)	85.8 (85.6 - 85.9)
Senior care workers	32,461	7.1 (6.8 - 7.4)	2.9 (2.7 - 3.0)	90.1 (89.7 - 90.4)
Care escorts	6,466	8.9 (8.2 - 9.6)	2.5 (2.1 - 2.9)	88.6 (87.8 - 89.4)
Undertakers, mortuary and crematorium assistants	7,034	5.9 (5.4 - 6.5)	1.9 (1.6 - 2.2)	92.2 (91.6 - 92.8)
Sports and leisure assistants	13,922	13.5 (12.9 - 14.0)	3.9 (3.5 - 4.2)	82.7 (82.0 - 83.3)
Travel agents	25,046	8.5 (8.2 - 8.9)	2.3 (2.1 - 2.5)	89.2 (88.8 - 89.5)
Air travel assistants	23,608	10.1 (9.7 - 10.4)	2.5 (2.3 - 2.7)	87.5 (87.0 - 87.9)
Rail travel assistants	8,276	8.7 (8.0 - 9.3)	2.7 (2.3 - 3.0)	88.7 (88.0 - 89.4)
Leisure and travel service occupations n.e.c.	6,249	12.5 (11.7 - 13.3)	3.2 (2.8 - 3.7)	84.3 (83.4 - 85.2)
Hairdressers and barbers	99,320	10.2 (10.0 - 10.4)	3.4 (3.3 - 3.5)	86.4 (86.2 - 86.6)
Beauticians and related occupations	33,683	14.1 (13.7 - 14.5)	4.0 (3.8 - 4.2)	81.9 (81.5 - 82.3)
Housekeepers and related occupations	32,014	10.9 (10.5 - 11.2)	3.0 (2.8 - 3.2)	86.1 (85.8 - 86.5)
Caretakers	28,282	10.3 (10.0 - 10.7)	2.8 (2.6 - 3.0)	86.9 (86.5 - 87.3)
Cleaning and housekeeping managers and supervisors	33,381	12.4 (12.1 - 12.8)	3.3 (3.1 - 3.5)	84.3 (83.9 - 84.7)
Sales and retail assistants	514,651	10.0 (9.9 - 10.1)	3.6 (3.5 - 3.6)	86.4 (86.3 - 86.5)



Retail cashiers and check-out operators	67,073	9.0 (8.8 - 9.2)	3.6 (3.4 - 3.7)	87.4 (87.2 - 87.7)
Telephone salespersons	15,754	12.8 (12.3 - 13.3)	4.4 (4.1 - 4.8)	82.7 (82.2 - 83.3)
Pharmacy and other dispensing assistants	33,177	6.7 (6.5 - 7.0)	2.3 (2.2 - 2.5)	90.9 (90.6 - 91.2)
Vehicle and parts salespersons and advisers	19,651	9.3 (8.9 - 9.7)	3.4 (3.1 - 3.6)	87.4 (86.9 - 87.8)
Collector salespersons and credit agents	5,095	13.3 (12.4 - 14.2)	3.9 (3.4 - 4.4)	82.8 (81.8 - 83.9)
Debt, rent and other cash collectors	14,444	9.6 (9.2 - 10.1)	2.9 (2.6 - 3.2)	87.4 (86.9 - 88.0)
Roundspersons and van salespersons	5,611	10.2 (9.4 - 10.9)	3.5 (3.0 - 4.0)	86.3 (85.4 - 87.2)
Market and street traders and assistants	8,831	15.1 (14.4 - 15.9)	4.7 (4.2 - 5.1)	80.2 (79.4 - 81.0)
Merchandisers and window dressers	15,814	8.5 (8.1 - 8.9)	2.5 (2.2 - 2.7)	89.0 (88.5 - 89.5)
Sales related occupations n.e.c.	17,556	11.9 (11.4 - 12.3)	3.1 (2.9 - 3.4)	85.0 (84.5 - 85.5)
Sales supervisors	63,831	7.4 (7.2 - 7.6)	2.7 (2.6 - 2.8)	89.9 (89.7 - 90.1)
Call and contact centre occupations	20,478	10.4 (10.0 - 10.9)	3.2 (3.0 - 3.5)	86.3 (85.9 - 86.8)
Telephonists	9,095	11.6 (11.0 - 12.3)	3.7 (3.3 - 4.1)	84.7 (83.9 - 85.4)
Communication operators	16,722	7.5 (7.1 - 7.9)	2.4 (2.2 - 2.6)	90.0 (89.6 - 90.5)
Market research interviewers	5,289	13.6 (12.7 - 14.5)	3.2 (2.7 - 3.6)	83.3 (82.3 - 84.3)
Customer service occupations n.e.c.	114,720	10.1 (9.9 - 10.3)	3.2 (3.1 - 3.3)	86.7 (86.5 - 86.9)
Customer service managers and supervisors	40,451	6.1 (5.8 - 6.3)	2.0 (1.8 - 2.1)	92.0 (91.7 - 92.2)
Food, drink and tobacco process operatives	90,746	14.8 (14.6 - 15.0)	3.7 (3.6 - 3.8)	81.5 (81.2 - 81.8)
Glass and ceramics process operatives	4,809	10.4 (9.6 - 11.3)	3.1 (2.6 - 3.5)	86.5 (85.6 - 87.5)
Textile process operatives	11,841	10.9 (10.3 - 11.5)	3.5 (3.1 - 3.8)	85.6 (85.0 - 86.2)
Chemical and related process operatives	20,422	8.1 (7.8 - 8.5)	2.4 (2.2 - 2.6)	89.4 (89.0 - 89.9)
Rubber process operatives	3,807	9.6 (8.7 - 10.5)	3.0 (2.5 - 3.5)	87.4 (86.4 - 88.5)
Plastics process operatives	21,083	11.0 (10.5 - 11.4)	3.2 (3.0 - 3.5)	85.8 (85.3 - 86.3)
Metal making and treating process operatives	6,564	8.5 (7.8 - 9.1)	2.7 (2.3 - 3.0)	88.9 (88.1 - 89.7)
Electroplaters	2,880	12.4 (11.2 - 13.6)	4.0 (3.3 - 4.7)	83.6 (82.2 - 84.9)

Process operatives n.e.c.	3,921	9.3 (8.4 - 10.2)	2.5 (2.0 - 3.0)	88.1 (87.1 - 89.2)
Paper and wood machine operatives	17,221	9.5 (9.1 - 10.0)	3.0 (2.7 - 3.2)	87.5 (87.0 - 88.0)
Coal mine operatives	3,431	7.0 (6.1 - 7.8)	1.5 (1.1 - 2.0)	91.5 (90.6 - 92.4)
Quarry workers and related operatives	4,941	9.0 (8.2 - 9.8)	3.3 (2.8 - 3.8)	87.7 (86.8 - 88.6)
Energy plant operatives	3,360	7.0 (6.1 - 7.9)	2.3 (1.8 - 2.8)	90.7 (89.7 - 91.7)
Metal working machine operatives	73,019	10.5 (10.3 - 10.8)	3.0 (2.8 - 3.1)	86.5 (86.2 - 86.7)
Water and sewerage plant operatives	6,252	7.5 (6.8 - 8.1)	2.5 (2.1 - 2.9)	90.1 (89.3 - 90.8)
Printing machine assistants	7,752	10.5 (9.8 - 11.1)	2.9 (2.5 - 3.2)	86.7 (85.9 - 87.4)
Plant and machine operatives n.e.c.	25,214	12.2 (11.8 - 12.7)	3.7 (3.4 - 3.9)	84.1 (83.6 - 84.6)
Assemblers (electrical and electronic products)	17,682	9.7 (9.3 - 10.1)	2.9 (2.6 - 3.1)	87.4 (86.9 - 87.9)
Assemblers (vehicles and metal goods)	21,716	9.5 (9.1 - 9.9)	2.7 (2.5 - 2.9)	87.8 (87.4 - 88.3)
Routine inspectors and testers	29,716	9.3 (8.9 - 9.6)	2.6 (2.4 - 2.8)	88.1 (87.8 - 88.5)
Weighers, graders and sorters	4,002	14.0 (12.9 - 15.0)	3.2 (2.7 - 3.8)	82.8 (81.6 - 84.0)
Tyre, exhaust and windscreen fitters	6,943	13.5 (12.7 - 14.3)	4.5 (4.0 - 5.0)	82.0 (81.1 - 82.9)
Sewing machinists	31,825	10.5 (10.2 - 10.8)	3.9 (3.7 - 4.1)	85.6 (85.2 - 86.0)
Assemblers and routine operatives n.e.c.	23,201	12.2 (11.8 - 12.7)	3.3 (3.1 - 3.5)	84.5 (84.0 - 84.9)
Scaffolders, staggers and riggers	14,606	14.5 (14.0 - 15.1)	5.1 (4.7 - 5.5)	80.4 (79.7 - 81.0)
Road construction operatives	12,119	11.0 (10.5 - 11.6)	3.9 (3.6 - 4.3)	85.1 (84.4 - 85.7)
Rail construction and maintenance operatives	4,310	11.3 (10.3 - 12.2)	3.2 (2.7 - 3.7)	85.6 (84.5 - 86.6)
Construction operatives n.e.c.	54,885	13.4 (13.2 - 13.7)	3.8 (3.6 - 4.0)	82.7 (82.4 - 83.1)
Large goods vehicle drivers	133,780	8.7 (8.6 - 8.9)	2.3 (2.2 - 2.4)	89.0 (88.8 - 89.1)
Van drivers	141,151	12.3 (12.1 - 12.5)	3.4 (3.3 - 3.5)	84.3 (84.1 - 84.5)
Bus and coach drivers	67,863	13.3 (13.0 - 13.5)	3.3 (3.1 - 3.4)	83.4 (83.2 - 83.7)
Taxi and cab drivers and chauffeurs	100,645	11.9 (11.7 - 12.1)	4.8 (4.7 - 4.9)	83.3 (83.1 - 83.6)
Driving instructors	18,123	8.0 (7.6 - 8.4)	2.0 (1.8 - 2.2)	90.0 (89.5 - 90.4)
Crane drivers	5,343	11.8 (11.0 - 12.7)	3.3 (2.8 - 3.7)	84.9 (83.9 - 85.9)
Fork-lift truck drivers	39,486	14.6 (14.2 - 14.9)	4.0 (3.8 - 4.2)	81.4 (81.0 - 81.8)
Agricultural machinery drivers	1,155	8.1 (6.6 - 9.7)	2.6 (1.7 - 3.5)	89.3 (87.5 - 91.0)
Mobile machine drivers and operatives n.e.c.	24,011	11.5 (11.1 - 11.9)	3.4 (3.1 - 3.6)	85.2 (84.7 - 85.6)

Train and tram drivers	13,616	7.5 (7.0 - 7.9)	1.8 (1.6 - 2.0)	90.7 (90.2 - 91.2)
Marine and waterways transport operatives	3,572	10.1 (9.1 - 11.1)	3.5 (2.9 - 4.1)	86.4 (85.3 - 87.5)
Air transport operatives	6,823	9.4 (8.7 - 10.0)	2.7 (2.3 - 3.1)	87.9 (87.1 - 88.7)
Rail transport operatives	10,122	9.0 (8.4 - 9.5)	2.7 (2.4 - 3.0)	88.4 (87.7 - 89.0)
Other drivers and transport operatives n.e.c.	7,491	8.8 (8.2 - 9.5)	2.6 (2.3 - 3.0)	88.5 (87.8 - 89.3)
Farm workers	17,701	8.8 (8.4 - 9.2)	2.7 (2.5 - 2.9)	88.5 (88.0 - 89.0)
Forestry workers	3,885	12.3 (11.3 - 13.3)	4.1 (3.5 - 4.8)	83.6 (82.4 - 84.7)
Fishing and other elementary agriculture occupations n.e.c.	10,168	12.8 (12.1 - 13.4)	3.9 (3.5 - 4.3)	83.3 (82.6 - 84.1)
Elementary construction occupations	80,244	16.0 (15.7 - 16.2)	5.3 (5.1 - 5.5)	78.7 (78.4 - 79.0)
Industrial cleaning process occupations	10,974	14.6 (13.9 - 15.2)	4.7 (4.3 - 5.1)	80.8 (80.0 - 81.5)
Packers, bottlers, canners and fillers	72,464	18.2 (17.9 - 18.5)	4.7 (4.6 - 4.9)	77.1 (76.8 - 77.4)
Elementary process plant occupations n.e.c.	82,130	13.5 (13.3 - 13.7)	4.1 (4.0 - 4.2)	82.4 (82.1 - 82.7)
Postal workers, mail sorters, messengers and couriers	105,441	10.1 (9.9 - 10.3)	2.9 (2.8 - 3.0)	87.0 (86.8 - 87.2)
Elementary administration occupations n.e.c.	25,254	10.9 (10.5 - 11.3)	3.4 (3.2 - 3.6)	85.7 (85.3 - 86.1)
Window cleaners	16,746	14.2 (13.6 - 14.7)	4.3 (4.0 - 4.6)	81.5 (80.9 - 82.1)
Street cleaners	5,861	13.1 (12.2 - 13.9)	4.2 (3.7 - 4.7)	82.7 (81.7 - 83.7)
Cleaners and domestics	330,820	13.3 (13.2 - 13.4)	3.9 (3.9 - 4.0)	82.7 (82.6 - 82.9)
Launderers, dry cleaners and pressers	22,458	11.6 (11.2 - 12.1)	3.7 (3.5 - 4.0)	84.7 (84.2 - 85.1)
Refuse and salvage occupations	19,589	13.7 (13.3 - 14.2)	4.2 (3.9 - 4.5)	82.0 (81.5 - 82.6)
Vehicle valeters and cleaners	14,511	16.5 (15.9 - 17.1)	4.9 (4.6 - 5.3)	78.6 (77.9 - 79.2)
Elementary cleaning occupations n.e.c.	1,158	11.2 (9.4 - 13.0)	2.7 (1.7 - 3.6)	86.1 (84.1 - 88.1)
Security guards and related occupations	90,565	14.2 (13.9 - 14.4)	4.0 (3.9 - 4.2)	81.8 (81.5 - 82.0)
Parking and civil enforcement occupations	7,600	12.6 (11.9 - 13.4)	3.6 (3.1 - 4.0)	83.8 (83.0 - 84.6)
School midday and crossing patrol occupations	72,304	7.2 (7.0 - 7.4)	2.9 (2.8 - 3.0)	89.9 (89.7 - 90.1)

It is made available under a [CC-BY-NC-ND 4.0 International license](#) .

Elementary security occupations				
n.e.c.	9,977	15.0 (14.3 - 15.7)	3.8 (3.5 - 4.2)	81.2 (80.4 - 81.9)
Shelf fillers	37,846	9.8 (9.5 - 10.1)	3.5 (3.4 - 3.7)	86.7 (86.4 - 87.0)
Elementary sales occupations n.e.c.	8,219	11.8 (11.1 - 12.5)	3.1 (2.7 - 3.5)	85.1 (84.4 - 85.9)
Elementary storage occupations	216,101	13.5 (13.4 - 13.6)	3.7 (3.6 - 3.8)	82.8 (82.6 - 83.0)
Hospital porters	6,275	9.4 (8.7 - 10.1)	2.6 (2.2 - 3.0)	88.0 (87.2 - 88.8)
Kitchen and catering assistants	158,517	11.1 (11.0 - 11.3)	3.7 (3.6 - 3.8)	85.2 (85.0 - 85.4)
Waiters and waitresses	52,218	16.2 (15.9 - 16.6)	4.8 (4.6 - 5.0)	78.9 (78.6 - 79.3)
Bar staff	55,784	13.9 (13.6 - 14.1)	5.3 (5.2 - 5.5)	80.8 (80.5 - 81.1)
Leisure and theme park attendants	4,797	14.2 (13.2 - 15.2)	4.9 (4.2 - 5.5)	80.9 (79.8 - 82.0)
Other elementary services occupations n.e.c.	10,745	14.4 (13.8 - 15.1)	3.7 (3.4 - 4.1)	81.8 (81.1 - 82.6)

---

Note: ONS Public Health Data Asset; Occupation as recorded in 2011 Census