

Prevalence of and risk factors for burnout and occupational stress among couriers: A systematic review

Authors: Hua Wei¹, Shugang Li², Sheng Li⁴, Thomas O'Toole¹, Mengke Yu³, Christopher J. Armitage⁵, Tarani Chandola⁶, Pauline Whelan⁷, Yan Xu³, Martie van Tongeren¹

Affiliations:

1 Division of Population Health, Health Services Research & Primary Care, School of Health Sciences, University of Manchester, Manchester, UK;

2 Department of Maternal and Children Health, School of Public Health, Capital Medical University, Beijing, China;

3 Faculty of Psychology, Beijing Normal University, Beijing, China;

4 Department of Public Health, School of Medicine, Shihezi University, Shihezi, China;

5 Division of Psychology & Mental Health, School of Health Sciences, University of Manchester, Manchester, UK;

6 Department of Sociology, The University of Hong Kong, Hong Kong SAR China;

7 Division of Informatics, Imaging & Data Sciences, School of Health Sciences, University of Manchester, Manchester, UK;

Correspondence: Hua Wei, The University of Manchester, Ellen Wilkinson Building, Oxford Road, Manchester, M13 9PL, hua.wei@manchester.ac.uk

Abstract (250 maxi)

Objective: To estimate the prevalence of burnout and occupational stress (OS) among couriers and to identify the main risk factors.

Method: We followed PRISMA guidelines to search studies published in English and Chinese databases before February 2022.

Results: The search yielded 15 (7 English and 8 Chinese) papers, 12 of which studied Chinese couriers, and three studied French, Israeli and Malaysian couriers. Twelve studies reported OS using various validated measurement tools, and six reported burnout using adapted versions of Maslach Burnout Inventory. Only four included studies suggested cut-off points to define the condition, hence we used the midpoint of the scales to estimate the prevalence (the proportion of the cases that were above the midpoint). The estimated prevalence of burnout (or a dimension of burnout) among couriers ranged from 20% to 73% (median=33%). The prevalence of OS (or a dimension of OS) ranged from 7% to 90% (median=40%). Twelve studies reported risk factors for burnout or OS; the main ones were physical demands, customer behaviour and a range of working and employment conditions, such as employment precarity and financial insecurity. Job resources (i.e. social support and decision latitude) and organizational support had mitigating effects.

Conclusions: Burnout and OS are relatively high among couriers. Interventions to prevent or reduce burnout in this occupation are currently limited. The use of platform technology to shift risks, intensify work and tighten managerial controls could be a potential work-related stressor for app-based couriers but remains a knowledge gap.

Keywords: burnout, occupational stress, couriers, gig economy, China

BACKGROUND

The rise of the gig economy and the post-COVID preference for socially distanced working and living have continued to boost global e-commerce sales and the delivery sector. EMarketer, the digital market research company, estimated that retail e-commerce sales worldwide experienced a 25.7% surge in 2020, to \$4.213 trillion, and climbed a further 16.8% in 2021, to \$4.921 trillion.¹ This dramatic growth has led to increased demands and pressure for the logistics sector and delivery workers. Courier jobs are often characterised as high demand, fast-paced, low control with lack of support, indicating that work stress and job burnout could be high within this occupation (Bakker & Demerouti, 2017; Kristensen et al., 2005; Shoman et al., 2021). However, there is a paucity of knowledge about whether and how this population are stressed at work. The main aim of this review is to estimate the prevalence of couriers' burnout and occupational stress (OS). We will also qualitatively synthesise the main risk and mitigating factors that could inform the development of preventative measures in future research.

The burnout and OS issues among couriers have come to our attention not just because of the increased demand for home deliveries during the COVID-19 pandemic, but also because of the rapid expansion of e-commerce in developing countries (Tediosi et al., 2020). E-commerce markets in China, India, Brazil, Russia, and Argentina are all projected to achieve two digits growth in 2021, according to eMarketer.² Furthermore, parcel and food delivery is an essential part of the gig economy, where workers are categorised as self-employed and the platforms do not provide the traditional employer responsibilities, such as health, safety and other employee benefits. While this mode of working has the benefit of flexibility, analysis of large scale survey data in North America has shed light on the relationship between gig workers' socio-economic status and work stress, that is the dependency on platforms (ie as

¹ <https://www.emarketer.com/content/global-e-commerce-forecast-2021>

² <https://www.emarketer.com/content/global-e-commerce-forecast-2021>

the main job and only source of income) and financial strain exacerbate the mental health penalties associated with platform work (Glavin & Schieman, 2021).

Surging demand, relatively underdeveloped labour protection, employment insecurity and economic precarity could all add to the stressful work environment for the couriers (Karasek et al., 1998). China is the global leader of e-commerce and the fastest growing region. Its outsized role means that the Asia-Pacific region accounted for 60.8% of retail ecommerce sales worldwide in 2021, while North America had a 20.3% share, and Western Europe 12.6%.³ The phenomenon has subsequently triggered a large amount of research published in Chinese. Research about overwork among Chinese takeaway couriers found that 41.7% respondents (n=1,114) were at high risk of overworking, 35.9% were at very high risk of overworking and only 7.9% were considered risk free (Lin & Li, 2021). A recent road safety study from China revealed that 76.5% of interviewed couriers (n=480) had been involved in a traffic crash at least once, while the average length of staying in this occupation was only about 1.5 years (Z. Wang et al., 2021). These results are alarming and are suggestive of chronic and excessive work stress in this population. The Chinese language literature may therefore be a key area to search for relevant research on burnout in couriers and will go some way to extending the reach of previous systematic reviews of burnout, which to date have focused on English language databases, effectively ignoring vast sections of the global economy.

It is important to describe the prevalence of burnout and OS in this occupational group, prior to the development of interventions to prevent such detrimental effects on workers' mental and physical health in the long term. This review aims answer the questions by reviewing evidence from the Chinese and English language literatures. Our review questions are:

Q1 What is the prevalence of job burnout and occupational stress among couriers?

³ <https://www.emarketer.com/content/global-ecommerce-forecast-2021>

Q2 What are the main exacerbating and ameliorating factors of job burnout and occupational stress among couriers?

METHOD

Search strategy

The searches were completed in February 2022 to catch the latest publications.

We searched the following electronic databases for English literature:

- MEDLINE, EMBASE, PsycINFO and the Cochrane Library (from their respective inception dates to the current date) using OVID platform.
- Web of Science (Core Collection)
- Pre-print database: Open Science Framework
- Grey Literature database: Google Scholar

We also searched the following Chinese electronic databases for Chinese literature:

- CNKI (<http://new.oversea.cnki.net/index/>).
- WANFANG data
- Sino Med
- VIP (<http://www.cqvip.com/>)

For search terms on OVID, we started with Exp Burnout to catch as much as possible relevant terms, in addition, we used (burnout OR stress OR job strain OR fatigue OR exhaustion OR tired OR tiredness OR tiring OR weariness OR worn out) to include possibly related terms in social and health sciences. For the occupation, we used (courier* or deliverym*n or delivery worker* or delivery driver* or takeaway delivery) to catch all relevant population in focus. At the end, we used (work OR occupational OR job) to limit results to studies that are work-related. A full search strategy on all databases is available as supplementary material.

We also hand searched the reference lists of all the included studies, and of some excluded studies. We have reviewed peer-reviewed papers and postgraduate theses that are published in English or Chinese, with the full text available. No restriction on publication dates were applied.

Inclusion/Exclusion criteria

Reviews, RCT, CRT, observational and qualitative studies are all eligible.

Inclusion criteria: Studies reported level of burnout or OS, or relevant risk factors in a population of couriers/delivery workers.

Exclusion criteria: Studies not reporting work-related mental ill health or not in a sample of delivery workers or couriers; Conference abstracts; Commentaries; Studies not in English or Chinese language.

Couriers including parcel/goods couriers and takeaway food couriers who conduct the "last mile" deliveries will be the focus of the review. Hence, studies about postmen, public transport drivers and long-haul truck or lorry drivers were excluded.

Data extraction

We followed a review process adapted from the Preferred Reporting Items for Systematic Reviews and Meta-Analyses (Stevens et al., 2018) (see Figure 1 PRISMA diagram below). A review protocol was pre-published on PROSPERO (ID: CRD42021247644).

Five reviewers (HW, TO, SGL, SL, MKY) formed two teams to carry out systematic reviews in Chinese and English. Author SGL, SL and MKY were responsible for Chinese review and HW and TO English. Both teams went through the same steps, including searching the databases, screening the results, data extraction and quality assessment. The protocol was reviewed by and discussed among all the co-authors, with feedback actively taken into

account to ensure quality of the process. HW and SGL cross checked both languages at each step to maintain consistent standard. When both reviews were completed, HW translated data extracted from the Chinese review into English. The abstracts of all included Chinese studies were also translated into English by author HW to enable discussions among all co-authors. We used standardised forms for title/abstract screening, full-text review and data extraction. The forms were developed in English by all five reviewers. Each team conducted pilot exercises with the same 10 articles to calibrate. Any conflicts were discussed and if disagreement remained, we would refer to the review team for further discussion until consensus was reached. Two reviewers of each team then completed reviewing or extracting the rest of the literature independently with conflict resolution through discussion and referral to a third reviewer if necessary.

The same process was followed for risk of bias assessments. A version of the Newcastle Ottawa Scale (NOS) that was adapted for cross-sectional surveys and cohort longitudinal studies were used for quality assessment (Herzog et al., 2013). The Critical Appraisal Skills Programme (CASP) checklists were used for qualitative studies.

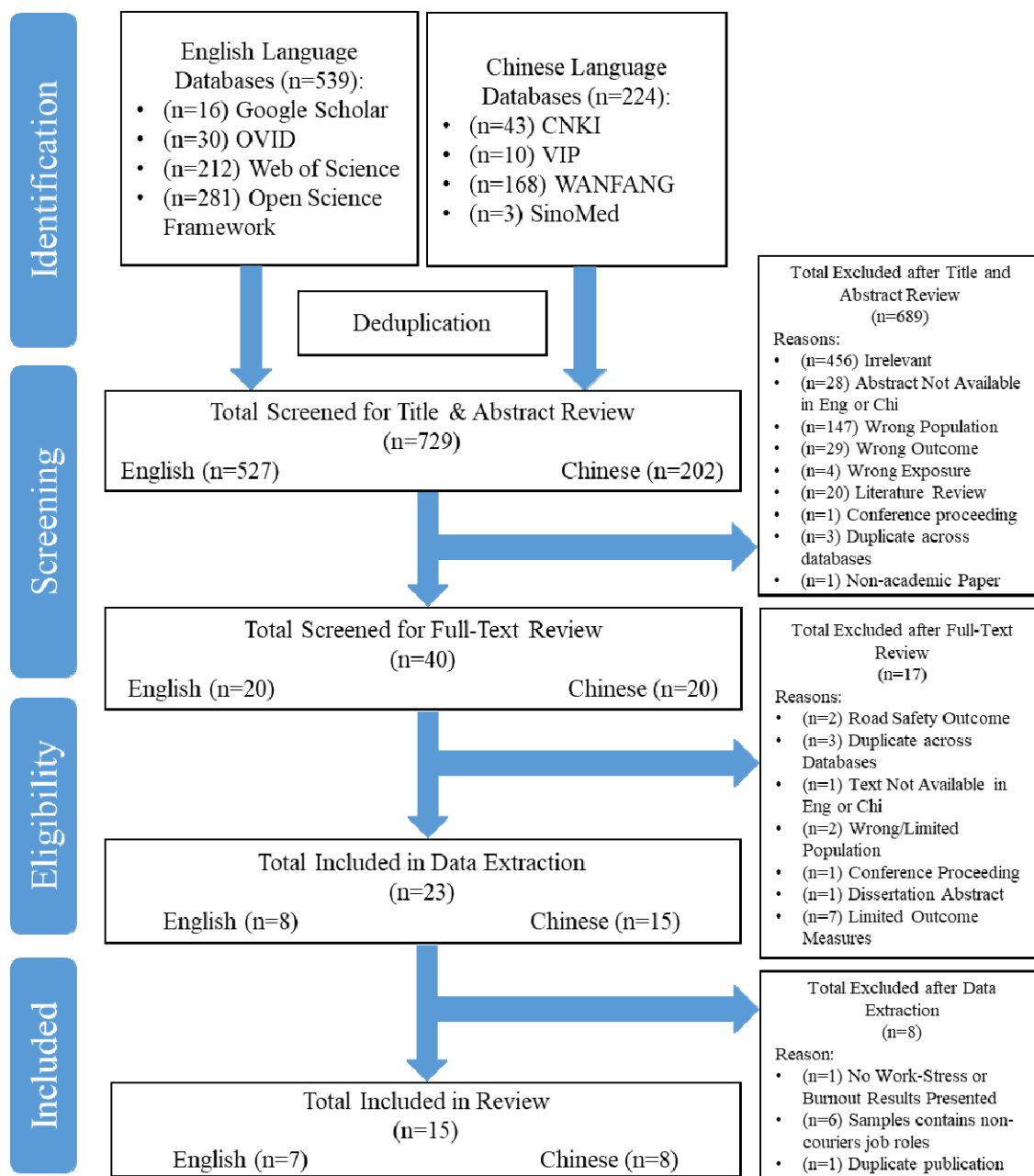


Figure 1 PRISMA diagram
Data synthesis and analysis

We planned to perform meta-analysis of the prevalence. However, due to the heterogeneity in burnout and OS ascertainment methods, definitions (or lack of), scoring scales, bias from low quality studies and limited number of eligible studies, the pooled quantitative results were judged to be unreliable. Qualitative synthesis was deemed the most appropriate method

and the included studies were summarized descriptively with outcomes of interest displayed in tables.

Cut-off points and definition of prevalence

None of the included studies on Burnout provided cut-off points to determine the outcome. The absence of or lack of agreement on cut-off scores appears to be a common problem in burnout research. Rotenstein et al. (2018) reviewed 182 studies on physicians' burnout and reported that about one third of the studies did not specify cut-off scores and the specified cut-off scores in the rest of the studies varied significantly. The most commonly used cut-off scores were similar to the original MBI manual suggestion: $EE \geq 27$ (total 54) and $DP \geq 10$ (total 30) and $PA \leq 33$ (total 48), but were only used by 11% of the 182 studies (Maslach et al., 1997; Rotenstein et al., 2018). In our searches, one study that was excluded at the stage of data extraction (due to a mixed courier and non-courier sample) specified the midpoint of the total scores as the a cut-off (Zhao, 2020). Four studies on OS specified cut-off points. Wang et al. (2015) used midpoint of the scoring scale 3 (Likert 1-5). Jiang (2017) used Standard T scores to determine moderate and high of three subscales. Lin and Li (2021) defined that when the ratio of work demand subscale to job autonomy subscale >1 , OS was high. Egozi et al. (2021) used a Likert 1-5 scoring scale and determined that mean score >4 indicated high stress.

Since only four included studies suggested cut-off points to define the condition, we used the midpoint of the scales to estimate the prevalence. The prevalence is defined as the estimated proportion of cases scored above midpoint. Standard Z score is calculated using equation $z = (x - \mu) / \sigma$, where x refers to midpoint, μ refers to mean and σ refers to standard deviation (SD). We then used Z score of the normal distribution principle to deduce the area corresponding to the midpoint (that is, the proportion of cases scored below midpoint) and

the prevalence was calculated as “1-area value” (the proportion of cases scored above midpoint).

RESULTS

Search results

Databases searches returned 763 results and 34 were removed after deduplication. In total 729 papers entered title/abstract screening, 527 of which were in English and 202 in Chinese. Following title and abstract screening, 40 papers were included for full-text review, after which 17 were further excluded, leaving 23 papers for data extraction. During data extraction, a further 8 papers were excluded, mostly because the sample contained non-courier job roles. At the end, 15 papers were included for reporting and quality assessment. More detailed reasons of exclusion at each stage are illustrated in Figure 1.

Study characteristics

Fifteen studies (thirteen cross-sectional, one longitudinal and one qualitative) were included, reporting findings from mainland China, Taiwan, France, Israel and Malaysia. Seven papers were published in English and eight in Chinese. The number of participants ranged from 32 to 2887, with an average of 832 per study. Samples were primarily male (~16% female on average), with the most frequent age band reported being ~20-40. One study did not report age or sex/gender statistics. Six papers studied burnout or a dimension of burnout, and twelve papers studied OS or a dimension of OS, with three papers researched both. Twelve papers reported risk or mitigating factors of burnout or OS. Table 1 describes the characteristics of studies included in this review.

Table 1 Study characteristics

Reference	Country, language	Study type	Job type	Sample size	Age (mean/band)**	% Female	Outcome of interest
Cheng & Chen (2020)	China, E	Cross-sectional	Parcel	220	30.9% (26-30)	14%	EE, risk factors
Yoon et al (2021)	Malaysia, E	Cross-sectional	Parcel	350	50% (21-40)	10%	Burnout, risk factors
Apouey et al (2020)	France, E	Cross-sectional	Mixed	52	Driver 50% (50+), Biker 67.7% (18-24)	Driver 0%, Biker 6.7%	OS, risk factors
Lin et al (2011)	Taiwan, E	Cross-sectional	Parcel	32	38.0 ± 8.8	0%	OS, risk factors
Xu & Zhu (2020)	China, C	Cross-sectional	Takeaway	160	75% (20-40)	25%	OS, EE, DP, LSA, risk factors
Wang et al (2015)	China, C	Cross-sectional	Parcel	686	NR	NR	OS, Burnout, risk factors
Jiang (2017)	China, C	Cross-sectional	Mixed	322	33.5% (30-40)	23%	ORQ, PSQ, PRQ
Xiao (2019)	China, C	Cross-sectional	Mixed	1425	92.2% <42	8%	Burnout, risk factors
Li et al (2021)	China, C	Longitudinal cohort	Takeaway	130	27.6±5.1	9%	PR, PsyR, BR, WP, risk factors
Lian & Zhou (2019)	China, C	Qualitative	Takeaway	1692	16-35	NR	OS, risk factors
Yang & Mo (2021)	China, E	Cross-sectional	Mixed	348	51.9% (18-33)	18%	OS
Lin & Li (2021)	China, C	Cross-sectional	Takeaway	1114	80.61% (20-34)	3%	OS
Egozi et al (2021)	Israel, E	Cross-sectional	Mixed	237	25.2	33%	OS, risk factors
Xie, Tian et al (2021)*	China, E	Cross-sectional	Parcel	2831	40.6% (31–40)	26%	OS, risk factors
Xie, Jiao et al (2021)	China, C	Cross-sectional	Parcel	2887	34.63±8.63	26%	OS, Burnout, risk factors

Abbreviations: NR = Not Reported, E: English, C: Chinese, EE: Emotional Exhaustion, DP: Depersonalisation, LSA: Low sense of accomplishment, OS: Occupational Stress, ORQ: Occupational Role Questionnaire, PSQ: Personal Strain Questionnaire, PRQ: Personal Resources Questionnaire, PR: Physical response, PsyR: Psychological response, BR: Behavioural response, WP: Work performance

*Sample partially overlaps with Xie, Jiao et al 2021. **When mean age was not reported, the biggest age band was used

Quality assessment

Table 2 shows the results of various quality assessments carried out on the included studies. Across the studies, quality ranged from 3/10 to 7/10. Most systematic reviews consider 6 or 7 and above as high quality (Daniels et al., 2021; Farsad-Naeimi et al., 2020; J. Wang et al., 2021). In Table 2, we found six papers (bold in the table) that can be described as good quality whilst the others were of low or medium quality.

Table 2 Quality assessment of the included studies

Reference	Quality assessment tool	Score
Cheng et al, 2020	NOS Cross-Sectional	4/10
Yoon et al, 2021	NOS Cross-Sectional	5/10
Apouey et al, 2020	NOS Cross-Sectional	3/10
Lin et al, 2011	NOS Cross-Sectional	5/10
Xu & Zhu, 2020	NOS Cross-Sectional	4/10
Wang et al, 2015	NOS Cross-Sectional	5/10
Jiang, 2017	NOS Cross-Sectional	7/10
Xiao, 2019	NOS Cross-Sectional	6/10
Li et al, 2021	NOS Longitudinal	4/9
Lian & Zhou, 2019	CASP	7/10
Yang & Mo, 2021	NOS Cross-Sectional	4/10
Lin & Li (2021)	NOS Cross-Sectional	6/10
Egozi et al (2021)	NOS Cross-Sectional	5/10
Xie, Tian et al (2021)*	NOS Cross-Sectional	7/10
Xie, Jiao et al (2021)	NOS Cross-Sectional	6/10

Abbreviations: NOS Cross-Sectional = Newcastle Ottawa Scale; NOS Longitudinal = Newcastle Ottawa Scale for Cohort longitudinal studies; CASP = Critical Appraisal Skills Programme

*Sample partially overlaps with Xie, Jiao et al 2021.

Measurements used to assess burnout and OS

All six included studies on burnout used a version of Maslach Burnout Inventory (MBI), or a subscale of MBI, or when the scale was unspecified, the dimensions appeared to be consistent with MBI. However, the measurement versions and scoring scales varied significantly (see table 3.1 and 3.2 for details). Twelve studies were included that researched OS among couriers. Ten of them reported OS scores using validated OS measurements. The only two papers that used the same scale were Xie, Tian et al (2021) and Xie, Jiao et al. (2021). These

two papers both used the Chinese work stress scale (CWSS) but their samples potentially overlapped with each other because the two studies appeared to be based on the same dataset with different inclusion criteria.

Prevalence of burnout and OS among couriers

The estimated prevalence of burnout (or a dimension of burnout) among couriers ranged from 20% to 73% (median=33%). The prevalence of OS (or a dimension of OS) ranged from 7% to 90% (median=40%). Most papers did not explicitly state whether their data was normally distributed. In which case, we assumed normality when mean and SD were used to describe the data. Table 3.1 and 3.2 present the prevalence of burnout and OS using the midpoint as cut-off. Two studies, Cheng and Chen (2020) and Wang et al. (2015) did not report burnout scores and were not included in table 3.1. Three papers were not included in table 3.2 for analysis, because Apouey et al. (2020) and Lian and Zhou (2019) did not report mean and SD of their results and Lin et al. (2010) had a sample size (n=32) that was too small to meet the normal distribution assumption.

Table 3.1 Measurements and prevalence of burnout or dimensions of burnout

Reference	Outcome	Sample size	Measurement tools	Scoring scale	Cut-off	Midpoint	Mean	SD	Normality	Z score	Area to the left	Prevalence*
Xu & Zhu, 2020	EE	160	12-item Chinese aMBI, 4-item EE	Likert 1-5	NR	12	10.775	2.5648	Assumed	0.48	0.68439	32%
	DP	160	12-item Chinese aMBI, 4-item DP	Likert 1-5	NR	12	10.5	2.3871	Assumed	0.63	0.73565	26%
	LSA	160	12-item Chinese aMBI, 4-item LSA	Likert 1-5	NR	12	10.975	2.4622	Assumed	0.42	0.66276	34%
Xiao, 2019	Burnout	1425	15-item Chinese aMBI-GS -Li	Likert 0-7	NR	3.5	4.02	0.85	Assumed	-0.61	0.27093	73%
Xie, Jiao et al 2021	EE	2887	5-item MBI-GS, EE dimension	Likert 0-6	NR	15	13.42	5.53	Assumed	0.29	0.61409	39%
Yoon et al, 2021	Burnout	350	16-item aMBI-GS, Bahasa Malaysia version	Four-point 1-4	NR	3	2.45	0.651	Univariate normality	0.84	0.79955	20%

Table 3.2 Measurements and prevalence of OS or dimensions of OS

Reference	Outcome	Sample size	Measurement tools	Scoring scale	Cut-off	Midpoint	Mean	SD	Normality	Z score	Area to the left	Prevalence*
Egozi et al, 2021	Stress	237	Five questions	Likert 1-5	High stress > 4	3	2.45	0.98	Assumed	0.56	0.71226	29%
Jiang, 2017	ORQ	322	140-item OSI-R, 60-item QRQ	Likert 1-5	Standard T score, 61-70 (moderate), >70 (high)	180	196.34	22.91	Assumed	-0.71	0.23885	76%
	PSQ	322	140-item OSI-R, 40-item PSQ	Likert 1-5	Standard T score, 61-70 (moderate), >70	120	110.53	16.26	Assumed	0.58	0.71904	28%

					(high)							
	PRQ	322	140-item OSI-R, 40-item PRQ	Likert 1-5	Standard T score, 31-40 (limited), ≤30 (highly limited)	120	112.86	19.79	Assumed	0.36	0.64058	36%
Li et al, 2021**	PR	130	23-item Chinese WSRS, 4-item PR	Likert 1-5	NR	3	3.66	0.88	Assumed	-0.75	0.22663	77%
	PsyR	130	23-item Chinese WSRS, 6-item PsyR	Likert 1-5	NR	3	4.14	0.87	Assumed	-1.31	0.09510	90%
	BR	130	23-item Chinese WSRS, 7-item BR	Likert 1-5	NR	3	3.93	0.81	Assumed	-1.15	0.12507	87%
	WP	130	23-item Chinese WSRS, 6-item WP	Likert 1-5	NR	3	3.82	0.84	Assumed	-0.98	0.16354	84%
Lin and Li, 2021	OS	1114	14-item Chinese JCQ22	Likert 1-5	Work Demand to Job Autonomy >1	3	3.001	0.98	Assumed	0.00	0.50000	50%
Wang et al, 2015	OS	686	20-item Chinese aOSI	Likert 1-5	≥3	3	3.263	1.103	Assumed	-0.24	0.40517	59%
Xie, Tian et al, 2021	OS	2831	24-item, CWSS-Dong	Likert 1-5	NR	3	2.49	0.76	Assessed	0.67	0.74857	25%
Xie, Jiao et al	OS	2887	24-item, CWSS-	Likert 1-5	NR	3	2.48	0.71	Assumed	0.73	0.76730	23%

2021			Dong									
Xu & Zhu, 2020	Workload	160	Chinese aOSI-Bai	Likert 1-5	NR	3	2.669	1.2823	Assumed	0.26	0.60257	40%
	JD	160	Chinese aOSI-Bai	Likert 1-5	NR	3	2.694	1.1763	Assumed	0.26	0.60257	40%
	JR	160	Chinese aOSI-Bai	Likert 1-5	NR	3	2.7	1.2224	Assumed	0.25	0.59871	40%
	IR	160	Chinese aOSI-Bai	Likert 1-5	NR	3	2.625	1.217	Assumed	0.31	0.62172	38%
	Promotion	160	Chinese aOSI-Bai	Likert 1-5	NR	3	2.625	1.1642	Assumed	0.32	0.62552	37%
	CP	160	Chinese aOSI-Bai	Likert 1-5	NR	3	2.606	1.2494	Assumed	0.32	0.62552	37%
	WFC	160	Chinese aOSI-Bai	Likert 1-5	NR	3	1.894	0.732	Assumed	1.51	0.93448	7%
Yang & Mo, 2021	OS	348	39-item CSWS-Shi	Likert 1-5	NR	78	93.849	22.062	Assumed	-0.72	0.23576	76%

*1- Area = Percentage above midpoint **Li et al is a longitudinal cohort study and in this table we used pre-intervention data.

Abbreviations: aMBI: adapted Maslach Burnout Inventory, EE: Emotional Exhaustion, DP: Depersonalisation, LSA: Low sense of accomplishment, aOSI: adapted Occupational Stress Indicator, OS: Occupational Stress, OSI-R: Occupational Stress Inventory-Revised, ORQ: Occupational Role Questionnaire, PSQ: Personal Strain Questionnaire, PRQ: Personal Resources Questionnaire, WSRS: Work Stress Response Scale, PR: Physical response, PsyR: Psychological response, BR: Behavioural response, WP: Work performance, JD: Job difficulty, JR: Job role, IR: Interpersonal relationship, CP: Career prospect, WFC: Work-family conflict, CSWS-Shi: Chinese Staff Work Stress Scale-Shi, CWSS-Dong: Chinese work stress scale-Dong

Figure 2.1 and 2.2 show the forest plots and pooled prevalence of overall burnout and OS. When the studies provided Mean and SD of the dimensions rather than that of the overall scale, the prevalence of dimensions were estimated (using the number of cases above midpoint) and then pooled to estimate the overall prevalence. As explained in the Measurement section, due to the high heterogeneity and the limited number of eligible studies, the results were judged to be unreliable.

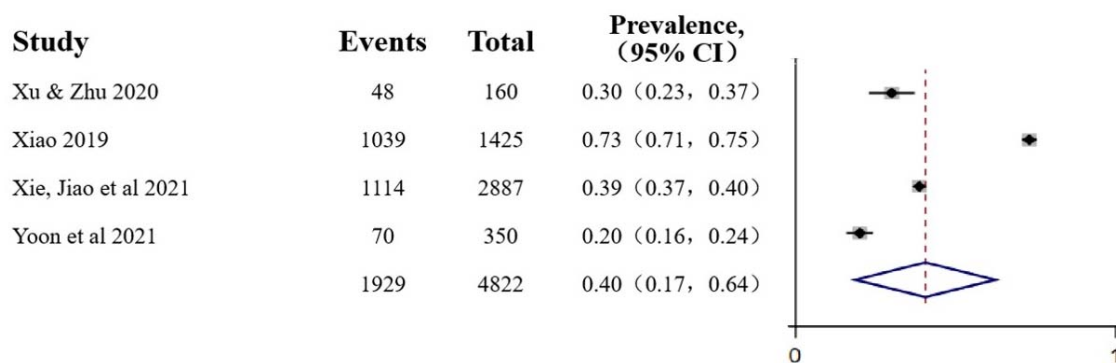


Figure 1 Pooled results of prevalence of overall burnout

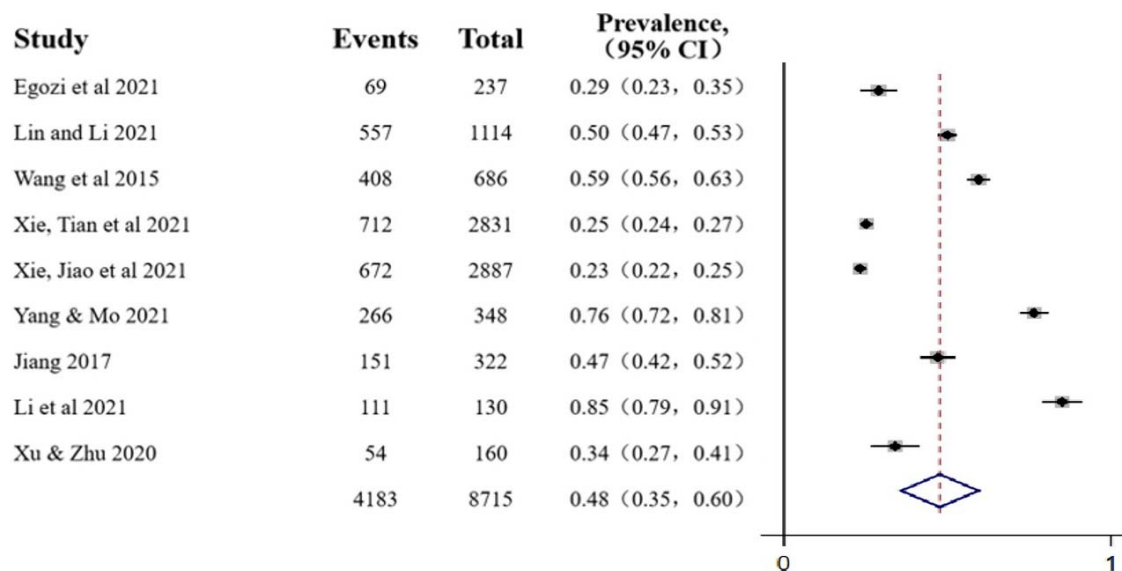


Figure 2 Pooled results of prevalence of overall OS

Main factors of burnout and OS

All included studies reported one or more risk or mitigating factors for job burnout among couriers (see details in Table 4), with five of them reported in both categories. The relationships between the factors and burnout were established using statistical methods such as Correlation Coefficient (CC), structural equation modelling (SEM), or standardized coefficient (SC). Customer behaviour, physical job demands and OS are found to have negative impact on job burnout. Psychological empowerment, job resources (including its social support and decision latitude dimensions), and perceived organizational support are found to have mitigating effects against burnout. Age, education, years of working, marital status, income are among the socio-demographic factors that differentiating burnout experiences. Table 4.1 summaries the relevant factors.

Table 4.1 Risk and mitigating factors for burnout

Category	Factors	Reference	Analysis methods	Results (rounded to two decimals)
Exacerbating factors	Customer behaviour	Cheng & Chen	SEM	Improper customer interaction has a significant positive effect on EE ($\beta=0.61$, T-value =9.38)
	Physical JD	Yoon et al	CC CB-SEM	Job demand is correlated with job burnout $r=0.53, p<0.01$; The result of the structural paths shows that higher job demands have increased burnout ($\beta = 0.52, p < 0.00$). However, only one of the job demands dimensions - physical demands - has created a positive effect on burnout ($\beta = 0.50, p<0.00$).
	OS	Xu & Zhu	NR	Association between work stress and job burnout among couriers were not significant (Effect not reported)
		Wang et al	Pearson CC	OS is significantly correlated with job burnout ($r=0.68, p<0.01$), and its three dimensions (EE 0.93, CD 0.85, LPE 0.90, $p<0.01$)
		Xie, Jiao et al	Pearson CC	Work Stress is significantly positively correlated with EE ($r=0.429, P<0.01$)
Ameliorating factors	PE	Xiao	CC	PE is negatively correlated with burnout $r=-0.39, p<0.01$
	JR	Yoon et al	CB-SEM, SPC	Job resources moderate the effect of job demands on burnout significantly ($\beta=-0.30$,

Category	Factors	Reference	Analysis methods	Results (rounded to two decimals)
				p<0.000)
	JR -- SoS	Yoon et al	CB-SEM, SPC	SoS moderates the effect of physical and psychological job demands on burnout ($\beta=-0.27$, $p<0.000$, $\beta=-0.33$, $p<0.000$)
	JR -- DL	Yoon et al	CB-SEM, SPC	DL moderate the effect of physical and psychological job demands on burnout ($\beta=-0.26$, $p<0.000$, $\beta=-0.28$, $p<0.000$)
	POS	Cheng & chen	SEM	POS has a negative regulating effect between improper customer interaction and EE: high POS group $\beta = 0.12$, compared to low POS group $\beta = 0.48$, $p<0.001$
		Wang et al	Pearson CC	OS is significantly negatively correlated with job burnout (Pearson CC=-0.518, $p=0.01$). Taking work stress factors as independent variables, burnout dimensions as dependent variables, OS significantly moderate the effect between work stressors and burnout dimensions.
Socio-demographic factors	Age	Xiao, 2019	T-test/ANOVA	MBI mean score: 26-33 vs 18-25 age group, 4.02 ± 0.85 vs 3.48 ± 1.12 , $p<0.05$;
		Xie, Jiao et al	T-test/ANOVA	EE: ≤ 30 13.58 ± 5.12 vs $31-40$ 13.62 ± 5.59 vs >40 12.76 ± 6.04 ($p<0.01$)
	Educational level	Xie, Jiao et al	T-test/ANOVA	EE: Lower middle school or below 12.39 ± 5.55 vs High school 13.72 ± 5.76 vs College 13.55 ± 5.42 vs Degree or above 14.41 ± 4.66 ($p<0.01$)
	Years of working	Xie, Jiao et al	T-test/ANOVA	EE: ≤ 4 13.18 ± 5.38 vs $5-10$ 13.54 ± 5.75 vs >11 14.12 ± 5.39 ($p<0.05$)
	Marital status	Xiao, 2019	T-test/ANOVA	MBI mean score: Married vs unmarried, 4.13 ± 0.79 vs 3.77 ± 0.93 , $p<0.05$
	Income level	Xiao, 2019	T-test/ANOVA	MBI mean score: Monthly income >5000 vs <3000 group, 4.23 ± 0.83 vs 3.22 ± 1.15 , $p<0.05$;

Abbreviations: NR: Not reported, EE: Emotional Exhaustion, CD: Cynicism/Depersonalisation, LSA: Low sense of accomplishment, LPE: Low professional efficacy, OS: Occupational stress, JD: Job demands, JR: Job resources, SoS: Social Support, DL: Decision Latitude, PE: Psychological Empowerment, POS: Perceived organizational support; CC: Correlation Coefficient, SEM: structural equation modelling, CB: covariance based, SPC: Standardized path coefficient, SC: Standardized coefficient

A broad range of risk and mitigating factors for couriers' work stress were identified by quantitative and qualitative research. Papers that tested the factors using statistical methods

found significant negative effects of workload such as shift duration and long daily working hours. Perceived organizational support and employer-led employee assistance program were found to have mitigating effects. Gender, age, education and marital status are the socio-demographic factors that differentiated work stress experiences. Qualitative research identified factors that could potentially contribute to OS including employment precarity, financial insecurity, customer behaviour, traffic and complex labour relationships. In addition, the use of platform technology to shift employer risks and responsibilities, intensify work and tighten managerial controls were identified. Table 4.2 summaries the relevant factors.

Table 4.2 Risk and mitigating factors for OS

Category	Factors	Reference	Analysis methods	Results (rounded to two decimals)
Exacerbating factors	EP and FI	Apouey et al	Qualitative	Interviews
	Platform features i.e. optimization and rating	Apouey et al	Qualitative	Interviews
	Urban traffic	Apouey et al	Qualitative	Interviews
	MSD caused by MMH	Lin et al	T-test	The scores of job stress scale for spine disc space narrowing group are greater than normal spine group, but the differences are not significant.
	Customer behaviour	Lian & Zhou	Qualitative	Survey and in-depth interviews
	High time pressure	Lian & Zhou	Qualitative	Survey and in-depth interviews
	Digitalised piece-rate	Lian & Zhou	Qualitative	Survey and in-depth interviews
	Platforms shift risks and responsibilities to couriers	Lian & Zhou	Qualitative	Survey and in-depth interviews
	Complex labour relationships	Lian & Zhou	Qualitative	Survey and in-depth interviews

Catego ry	Factors	Refere nce	Analysis methods	Results (rounded to two decimals)
	Workload- Shift duration	Egozi et al	Linear regressio n	Shift duration was significantly correlated to stress ($\beta = 0.19, p < 0.05$).
	Workload- Working hours	Xie, Tian et al	T- test/AN OVA	$\leq 8: 2.35\pm 0.79, 8-12: 2.52\pm 0.74, \geq 12:$ $2.67\pm 0.72 (p < 0.01)$
Amelio rating factors	POS	Li et al	Multiple regressio n models	POS change has a significant predictive effect on work performance, psychological performance and behavioural performance $\Delta R^2 = 0.21 (p < 0.001), 0.24 (p < 0.001), 0.21$ $(p < 0.001)$
	EAP intervention	Li et al	Multiple regressio n models	EAP participation can significantly lower stress in three dimensions: work performance, psychological performance and behavioral performance, and improve POS, $\Delta R^2 = 0.23 (p < 0.001), 0.13$ $(p < 0.001), 0.21 (p < 0.01)$ and 0.22 $(p < 0.001)$
Socio- demog raphic factors	Gender	Xie, Jiao et al	T- test/AN OVA	Male vs Female 2.50 ± 0.72 vs 2.40 ± 0.65 $(p < 0.01)$
		Jiang	Logistic regressio n	Sub-scale: PSQ, females are more likely to experience personal strain (OR=1.7, 95%CI 1.1-2.3 $p = 0.02$)
	Age	Xie, Jiao et al	T- test/AN OVA	$\leq 30 2.42\pm 0.66$ vs $31-40 2.50\pm 0.71$ vs > 40 $2.53\pm 0.78 (p < 0.01)$
	Education	Jiang, 2017	Logistic regressio n	Sub-scale PRQ: high school and above are less likely to experience personal resources deficiency (OR=0.4, 95%CI 0.2- 0.7, $p = 0.01$)
		Xie, Tian et al*	T- test/AN OVA	Education Junior high school or below $2.56\pm 0.84, High school 2.46\pm 0.73, Junior$ college or above $2.50\pm 0.65 (p < 0.05)$
	Marital status	Xie, Tian et al	T- test/AN OVA	Married vs single/divorced 2.51 ± 0.77 vs $2.45\pm 0.70 (p < 0.05)$

* Xie, Tian et al also reported significant differences in age and gender. As its sample largely overlaps with Xie, Jiao et al, results are not included in the table.

Abbreviations: EP: Employment precariousity, FI: Financial insecurity, MSD: Musculoskeletal disorder, MMH: Manual Materials Handling, POS: Perceived organizational support; EAP: Employee Assistance Program; Occupational Stress Inventory-Revised (OSI-R) has 3 sub-scales: Occupational Role Questionnaire (ORQ), Personal Strain Questionnaire (PSQ), Personal Resources Questionnaire (PRQ)

DISCUSSION

This review has provided an estimate of the prevalence of couriers' burnout and occupational stress (OS), as well as qualitatively synthesised the main risk and mitigating factors.

The six included studies on burnout reported prevalence of overall burnout or a dimension of burnout ranging from 20% to 73%. This is comparable to physicians' burnout where overall burnout prevalence ranged from 0% to 80.5% (Rotenstein et al., 2018). Similar to this review, Rotenstein et al. (2018) did not consider the pooled results reliable due to high heterogeneity. There is considerable research on burnout among physicians, whilst couriers' burnout is an emerging and understudied field. The six studies all used a translated or modified version of MBI to measure burnout, two of which did not report a mean score. Another two measured overall burnout whilst the last two measured one or three dimensions of burnout. These added to the heterogeneity of the results and prevented meaningful meta-analysis.

The prevalence of OS (or a dimension of OS) ranged from 7% to 90%, with a median 40%. This appeared to be relatively high compared to OS reported in other professions, for example 52.5% among health care professionals (Girma et al., 2021), 50% among medical residents (Joaquim et al., 2018), or 24.8% among university lecturers (Azizah et al., 2016). Similar to burnout, OS research in courier population is a relatively new field that needs greater attention from public health researchers. Similar to burnout research, the measurement tools used by the included studies varied significantly and the pooled result is not reliable.

Turnover intention (TI) is a psychological construct that is closely related to burnout and occupational stress (OS) and was measured in a number of studies. For example, Wen et al (Wen et al., 2020) used the Chinese version of Mobley TI scale and reported a mean score of 2.82 on a 1-5 scale. Xu et al (Xu & Zhu, 2020) used a Chinese TI scale consists of three questions, with the question -- "Looking for other job opportunities" received the highest

mean score at 2.775. Xiao (Xiao, 2019) defined scores between 12 and 18 as high level of TI and the mean score was 15.27.

One included study was a longitudinal cohort study that reported an one-year intervention program (Li et al., 2021). The intervention was an Employee Assistance Program (EAP) that included a range of organizational support, such as stress management training, 7X24 counselling, forums and mini saloons, and a mental health booklet. It significantly lowered TI and OS response in the intervention group.

We found that most of the risk factors reported in the included studies are consistent with the predictors of burnout identified from broader occupational background (Meier & Kim, 2022; Shoman et al., 2021). However, as the gig economy continues to shift courier jobs to becoming digital-platform based, we found that technology issues as work stressors are not sufficiently addressed by existing literature. Both qualitative research from France (Apouey et al., 2020) and China (Lian & Zhou, 2019) found that managerial controls realised through platform technologies, such as digitalised piece rate and pay linked to customer ratings, may be associated with increased work stress among couriers. In contrast, a large number of research from sociology, human resources management, information technology and labour protection have highlighted the potential mental health risk associated with platform technology features such as gamification, algorithmic management and behavioural control (Bérastégui, 2021; Todolí-Signes, 2021; Woodcock, 2020; Woodcock & Johnson, 2018; Zhou, 2020). This factor needs to be investigated by public health research using more robust methods. It highlights an important future research area that is to examine the relationships between platform technologies and work stress.

CONCLUSION

Based on the findings, we suggest further observational studies are needed to collect higher quality evidence. It is important to develop interventions that offer more organizational

support and provide more job resources to couriers. Eight of the fifteen included studies were published in Chinese, suggesting the importance of including Chinese databases when conducting reviews in relation to couriers. We hope this review will provide a useful base for the development of research that aims to reduce work stress and burnout, and improve work-related health and safety among couriers in both developing and developed countries.

Acknowledgments

The authors would like to thank professor Jiangmei Qin and Dr. Yanchun Zhang of China Health Economics Association for their advices that helped refine the aims and objectives of the project.

Contributors

MvT, HW, CA and TC conceived and designed the project. HW, SGL, TO, MKY and SL conducted reviews in English and Chinese languages and extracted the data. HW and SGL checked the data cross both languages at each steps to maintain consistent standard. SGL and SL conducted the statistical analysis to pool the prevalence. HW and TO drafted the manuscript, with SGL, CA, TC, PW and MvT contributed to the writing and editing. All remaining authors extensively reviewed and approved the final manuscript.

Funding The project is funded by the MRC Public Health Intervention Development Scheme (PHIND). Grant Ref: MR/T027215/1. CA is supported by NIHR Manchester Biomedical Research Centre and the NIHR Greater Manchester Patient Safety Translational Research Centre.

Competing interests PW is a director and shareholder of CareLoop Health Ltd, a for-profit company that develops and markets digital therapeutics for mental health conditions; and a director of Prism Life Ltd, a small research and consultancy company.

References

- Apouey, B., Roulet, A., Solal, I., & Stabile, M. (2020). Gig Workers during the COVID-19 Crisis in France: Financial Precarity and Mental Well-Being. *Journal of Urban Health*. <https://doi.org/10.1007/s11524-020-00480-4>
- Azizah, A., Rozainee, K., Nada, I., & Norhafizah, Z. (2016). The prevalence of occupational stress and its association with socio-demographic factors among lecturers in a private university in Malaysia. *International Journal of Public Health and Clinical Sciences*, 3(4).
- Bakker, A. B., & Demerouti, E. (2017). Job demands–resources theory: Taking stock and looking forward. *Journal of Occupational Health Psychology*, 22(3), 273-285. <https://doi.org/10.1037/ocp0000056>
- Bérestégui, P. (2021). Exposure to Psychosocial Risk Factors in the Gig Economy: A Systematic Review. *ETUI Research Paper-Report*.
- Cheng, Z.-f., & Chen, X. (2020). A Study on the Influence of Improper Interaction on Couriers' Job Engagement—The Moderating Influence of Organization Support. 2020 4th International Seminar on Education, Management and Social Sciences (ISEMSS 2020),
- Daniels, S., Wei, H., Han, Y., Catt, H., Denning, D. W., Hall, I., . . . van Tongeren, M. (2021). Risk factors associated with respiratory infectious disease-related presenteeism: a rapid review. *medRxiv*, 2021.2004.2012.21255302. <https://doi.org/10.1101/2021.04.12.21255302>
- Egozi, L., Reiss-Hevlin, N., Dallasheh, R., & Pardo, A. (2021). Couriers' safety and health risks before and during the COVID-19 pandemic. *International Archives of Occupational and Environmental Health*. <https://doi.org/10.1007/s00420-021-01795-8>
- Farsad-Naeimi, A., Asjodi, F., Omidian, M., Askari, M., Nouri, M., Pizarro, A. B., & Daneshzad, E. (2020). Sugar consumption, sugar sweetened beverages and Attention Deficit Hyperactivity Disorder: A systematic review and meta-analysis. *Complementary Therapies in Medicine*, 53, 102512. <https://doi.org/https://doi.org/10.1016/j.ctim.2020.102512>
- Girma, B., Nigussie, J., Molla, A., & Mareg, M. (2021). Occupational stress and associated factors among health care professionals in Ethiopia: a systematic review and meta-analysis. *BMC Public Health*, 21(1), 539. <https://doi.org/10.1186/s12889-021-10579-1>
- Glavin, P., & Schieman, S. (2021). *Dependency and Hardship in the Gig Economy: The Mental Health Consequences of Platform Work*.
- Herzog, R., Álvarez-Pasquin, M. J., Díaz, C., Del Barrio, J. L., Estrada, J. M., & Gil, Á. (2013). Are healthcare workers' intentions to vaccinate related to their knowledge, beliefs and attitudes? a systematic review. *BMC Public Health*, 13(1), 154. <https://doi.org/10.1186/1471-2458-13-154>
- Jiang, L. 蔣. (2017). 山西省某市快递从业人员职业紧张现状调查 (Cross-sectional study of couriers' occupational stress in a city of Shanxi province). *中国城乡企业卫生 (Chinese Journal of Urban and Rural Enterprise Hygiene)*, 183(1), 23-26.
- Joaquim, A., Custódio, S., Savva-Bordalo, J., Chacim, S., Carvalhais, I., Lombo, L., . . . Gomes, R. (2018). Burnout and occupational stress in the medical residents of Oncology, Haematology and Radiotherapy: a prevalence and predictors study in Portugal. *Psychology, health & medicine*, 23(3), 317-324. <https://doi.org/10.1080/13548506.2017.1344256>

- Karasek, R., Brisson, C., Kawakami, N., Houtman, I., Bongers, P., & Amick, B. (1998). The Job Content Questionnaire (JCQ): An instrument for internationally comparative assessments of psychosocial job characteristics. *Journal of Occupational Health Psychology*, 3(4), 322-355. <https://doi.org/10.1037/1076-8998.3.4.322>
- Kristensen, T. S., Borritz, M., Villadsen, E., & Christensen, K. B. (2005). The Copenhagen Burnout Inventory: A new tool for the assessment of burnout. *Work & Stress*, 19(3), 192-207. <https://doi.org/10.1080/02678370500297720>
- Li, K. 李., Tian, W. 田., & Zhao, R. 赵. (2021). 外卖骑手群体的 EAP 方案设计及其干预有效性 (EAP Design for Take-away Riders and Intervention Effectiveness). *心理技术与应用 (Psychology: Techniques and Applications)*, 9(04), 211-218.
- Lian, S. 廉., & Zhou, Y. 周. (2019). 城市快递小哥群体的风险压力及疏解对策研究—基于北京市的实证分析 (Risk Pressure of Urban Courier Group and Countermeasures—An Empirical Study in Beijing). *青年探索 (Youth Exploration)*, 224(6), 41-52.
- Lin, C.-L., Hung, Y.-T., Wang, M.-J., & Chen, J.-P. (2010). The investigation of low back problems among home delivery drivers. In *Advances in Human Factors, Ergonomics, and Safety in Manufacturing and Service Industries* (pp. 384-392).
- Lin, Y. 林., & Li, Y. 李. (2021). 心理资本、组织支持感在职业紧张与过度劳动关系中的作用—基于北京地区外卖骑手的调查 (The Role of Psychological Capital and Organizational Support in the Relationship between Occupational Stress and Overwork—Based on a Survey of Take-out Riders in Beijing). *中国流通经济 (China Business And Market)*, 35(4), 116-126. <https://doi.org/doi:10.14089/j.cnki.cn11-3664/f.2021.04.011>
- Maslach, C., Jackson, S. E., & Leiter, M. P. (1997). *Maslach burnout inventory* (Third ed.). Scarecrow Education.
- Meier, S. T., & Kim, S. (2022). Meta-regression analyses of relationships between burnout and depression with sampling and measurement methodological moderators. *Journal of Occupational Health Psychology*, 27(2), 195-206. <https://doi.org/10.1037/ocp0000273>
- Rotenstein, L. S., Torre, M., Ramos, M. A., Rosales, R. C., Guille, C., Sen, S., & Mata, D. A. (2018). Prevalence of Burnout Among Physicians: A Systematic Review. *JAMA*, 320(11), 1131-1150. <https://doi.org/10.1001/jama.2018.12777>
- Shoman, Y., El May, E., Marca, S. C., Wild, P., Bianchi, R., Bugge, M. D., . . . Canu, I. G. (2021). Predictors of Occupational Burnout: A Systematic Review. *International Journal of Environmental Research and Public Health*, 18(17), 9188. <https://www.mdpi.com/1660-4601/18/17/9188>
- Stevens, A., Garritty, C., Hersi, M., & Moher, D. (2018). Developing PRISMA-RR, a reporting guideline for rapid reviews of primary studies (Protocol). In: Oxford, UK: EQUATOR Network.
- Tediosi, F., Lönnroth, K., Pablos-Méndez, A., & Raviglione, M. (2020). Build back stronger universal health coverage systems after the COVID-19 pandemic: the need for better governance and linkage with universal social protection. *BMJ Global Health*, 5(10), e004020. <https://doi.org/10.1136/bmjgh-2020-004020>
- Todoí-Signes, A. (2021). Making algorithms safe for workers: occupational risks associated with work managed by artificial intelligence. *Transfer: European Review of Labour and Research*, 10242589211035040. <https://doi.org/10.1177/10242589211035040>

- Wang, F. 王., Duan, F. 段., & Kuai, X. 蒯. (2015). 快递员工作压力与工作倦怠的关系研究 (Research on work stress and job burnout of couriers). *人力资源管理 (Human Resource Management)*, 2015(5), 300-304.
- Wang, J., Zhu, C.-K., Yu, J.-Q., Tan, R., & Yang, P.-L. (2021). Hypoglycemia and mortality in sepsis patients: A systematic review and meta-analysis. *Heart & Lung*, 50(6), 933-940. <https://doi.org/10.1016/j.hrtlng.2021.07.017>
- Wang, Z., Neitzel, R. L., Zheng, W., Wang, D., Xue, X., & Jiang, G. (2021). Road safety situation of electric bike riders: A cross-sectional study in courier and take-out food delivery population. *Traffic Injury Prevention*, 22(7), 564-569. <https://doi.org/10.1080/15389588.2021.1895129>
- Wen, H., Yun, Q., Liu, D., Fan, X., & Su, W. (2020, 11-13 Feb. 2020). The Impact of Personality Traits, Group Identification on Courier Turnover Intention: Social Support as a Moderator. 2020 9th International Conference on Industrial Technology and Management (ICITM),
- Woodcock, J. (2020). The Algorithmic Panopticon at Deliveroo: Measurement, Precarity, and the Illusion of Control. *Ephemera: Theory & Politics in Organization*, 20(3), 67-95.
- Woodcock, J., & Johnson, M. R. (2018). Gamification: What it is, and how to fight it. *The Sociological Review*, 66(3), 542-558. <https://doi.org/10.1177/0038026117728620>
- Xiao, H. 肖. (2019). Analysis on the Correlation between the Psychological Authorization, Turnover Intention and Job Burnout of Couriers in Fujian Province (福建省快递员心理授权与职业倦怠、离职意愿的关联性研究). *医学与社会 (Medicine and Society)*, 32(12), 93-111.
- Xie, Y., Jiao, Y., Liu, Y., Gao, L., Tian, J., Tang, Z., & Yu, H. (2021). 北京市快递员工作压力对情绪耗竭和工作满意度的影响 (Influence of work stress on emotional exhaustion and job satisfaction of couriers in Beijing). *工业卫生与职业病 (Industrial Health and Occupational Diseases)*, 47(6), 463-469.
- Xie, Y., Tian, J., Jiao, Y., Liu, Y., Yu, H., & Shi, L. (2021). The Impact of Work Stress on Job Satisfaction and Sleep Quality for Couriers in China: The Role of Psychological Capital [Original Research]. *Frontiers in psychology*, 12. <https://doi.org/10.3389/fpsyg.2021.730147>
- Xu, X. 徐., & Zhu, Y. 朱. (2020). 外卖送餐员工作压力、职业倦怠与离职倾向的关系研究 (The relationship between work stress, job burnout and turnover intention among takeaway couriers). *全国流通经济 (China Circulation Economy)*, 2020(23), 82-84.
- Zhao, Y. 赵. (2020). A 快递公司一线员工工作倦怠因素分析及对策建议 (Factor analysis and policy advices of job burnout among frontline workers: study of express delivery company A) [Master, Yunan University of Finance and Economics]. Yunan.
- Zhou, I. (2020). *Digital Labour Platforms and Labour Protection in China*. I. Geneva.