

1 **CELL-FREE TUMOR DNA DOMINANT CLONE ALLELE FREQUENCY (DCAF) IS**  
2 **ASSOCIATED WITH POOR OUTCOMES IN ADVANCED BILIARY CANCERS TREATED**  
3 **WITH PLATINUM-BASED CHEMOTHERAPY**

4 **Running head: CELL-FREE TUMOR DNA IN ADVANCED BILIARY CANCERS**

5 Pedro Luiz Serrano Uson Junior<sup>1, 10</sup>, Umair Majeed<sup>2</sup>, Jun Yin<sup>9</sup>, Gehan Botrus<sup>1</sup>, Mohamad  
6 Bassam Sonbol<sup>1</sup>, Daniel H. Ahn<sup>1</sup>, Jason S. Starr<sup>2</sup>, Jeremy C Jones<sup>2</sup>, Hani Babiker<sup>2</sup>, Samantha  
7 R Inabinett<sup>2</sup>, Natasha Wylie<sup>2</sup>, Ashton WR Boyle<sup>2</sup>, Tanios S. Bekaii-Saab<sup>1</sup>, Gregory J Gores<sup>3</sup>,  
8 Rory Smoot<sup>4</sup>, Michael Barrett<sup>5</sup>, Bolni Nagalo<sup>1, 11</sup>, Nathalie Meurice<sup>1,5</sup>, Natalie Elliott<sup>1</sup>, Joachim  
9 Petit<sup>1</sup>, Yumei Zhou<sup>1</sup>, Mansi Arora<sup>1</sup>, Chelsae Dumbauld<sup>1</sup>, Oumar Barro<sup>1</sup>, Alexander Baker<sup>1</sup>,  
10 James Bogenberger<sup>1</sup>, Kenneth Buetow<sup>6</sup>, Aaron Mansfield<sup>4</sup>, Kabir Mody<sup>2\*</sup>, Mitesh J. Borad<sup>1, 5, 7, 8\*</sup>

11 1: Division of Hematology & Oncology, Department of Medicine, Mayo Clinic, Scottsdale, AZ,  
12 USA

13 2: Division of Hematology & Oncology, Department of Medicine, Mayo Clinic, Jacksonville, FL,  
14 USA

15 3: Division of Gastroenterology and Hepatology, Department of Internal Medicine, Rochester,  
16 MN, USA

17 4: Division of Medical Oncology, Mayo Clinic, Rochester, MN, USA

18 5: Center for Individualized Medicine, Mayo Clinic, Rochester, MN, USA

19 6: Arizona State University, Tempe, AZ, USA

20 7: Department of Molecular Medicine, Rochester, MN, USA

21 8: Mayo Clinic Cancer Center, Phoenix, AZ, USA

22 9: Division of Clinical Trials and Biostatistics, Mayo Clinic, Rochester, MN, USA

23 10: Hospital Israelita Albert Einstein, São Paulo, Brazil

24 11: Department of Pathology, University of Arkansas for Medical Sciences, Little Rock, AR, USA

25 \*Equal contribution

26  
27  
28  
29  
30  
31  
32  
33  
34  
35  
36  
37  
38  
39  
40  
41  
42  
43  
44  
45  
46  
47  
48  
49  
50  
51

Corresponding Author:

Mitesh J. Borad, M.D.

Email: [Borad.Mitesh@Mayo.edu](mailto: Borad.Mitesh@Mayo.edu)

Address: Mayo Clinic, 5777 E Mayo Blvd, Phoenix, AZ

## **ACKNOWLEDGEMENTS**

The Mayo Clinic Hepatobiliary SPORE (P50CA 210964) funded the statistical analysis for this project. This work was supported by the National Institute of Health (NIH) through a DP2 Award CA195764 (to MJB); National Cancer Institute (NCI) K12 award CA090628 (to MJB), K01 award CA234324 (to BN), SPORE Project Award 5P50CA210964-03 (to GJG and MJB), SPORE Supplement Award 3P50CA210964-02S1 (to OB), Mayo Clinic Center for Individualized Medicine (CIM) Precision Cancer Therapeutics Program; and Mayo Clinic Cancer Center. The funders had no role in study design, data collection and analysis, decision to publish or preparation of the manuscript. Its contents are solely the responsibility of the authors and do not necessarily represent the official views of the NIH.

52

53 **ABSTRACT**

54

55 **PURPOSE:** This investigation sought to evaluate the prognostic value of pre-treatment ctDNA in  
56 metastatic biliary tract cancers (BTC) treated with platinum based first-line chemotherapy  
57 treatment.

58

59 **METHODS:** We performed a retrospective analysis of 67 patients who underwent ctDNA testing  
60 before platinum-based chemotherapy for first-line treatment for metastatic BTC. For analysis we  
61 considered the detected gene with highest variant allele frequency (VAF) as the dominant clone  
62 allele frequency (DCAF). Results of ctDNA analysis were correlated with patients'  
63 demographics, progression-free survival (PFS) and overall survival (OS).

64

65 **RESULTS:** The median age of patients was 67 years (27-90). 54 (80.6%) of 67 patients  
66 evaluated had intrahepatic cholangiocarcinoma; seven had extrahepatic cholangiocarcinoma  
67 and six gallbladder cancers. 46 (68.6%) of the patients were treated with cisplatin plus  
68 gemcitabine, 16.4% of patients received gemcitabine and other platinum (carboplatin or  
69 oxaliplatin) combinations while 15% of patients were treated on a clinical trial with gemcitabine  
70 and cisplatin plus additional agents (CX4945, PEGPH20 or nab-paclitaxel). TP53, KRAS,  
71 FGFR2, ARID1A, STK11 and IDH1 were the genes with highest frequency as DCAF. Median  
72 DCAF was 3% (0-97%). DCAF >3% was associated with worse OS (median OS: 10.8 vs. 18.8  
73 months,  $p=0.032$ ). Stratifying DCAF in quartiles, DCAF>10% was significantly related to worse  
74 PFS (median PFS: 3 months,  $p=0.014$ ) and worse OS (median OS: 7.0 months,  $p=0.001$ ). Each  
75 1% increase in ctDNA was associated with a hazard ratio of 13.1 in OS when adjusting for  
76 subtypes, metastatic sites, size of largest tumor, age, sex, and CA19-9.

77

78 **CONCLUSION:** DCAF at diagnosis of advanced BTC can stratify patients who have worse  
79 outcomes when treated with upfront platinum-based chemotherapy. Each increase in %ctDNA  
80 decrease survival probabilities.

81

82 **KEYWORDS:** Biliary tract cancers, cell-free tumor DNA, liquid biopsy, cholangiocarcinoma

83

## 84 INTRODUCTION

85

86 Biliary tract cancers (BTCs) include intrahepatic cholangiocarcinoma (IHC), gallbladder cancer  
87 (GBC) and extrahepatic cholangiocarcinoma (EHC) and ampulla of Vater cancers (AVC) [1].  
88 BTC represents 3% of gastrointestinal malignancies with 11,980 cases expected to be  
89 diagnosed in 2021 [2, 3]. As BTC usually present at an advanced stage only 20% of these  
90 tumors are considered resectable [4]. In patients with unresectable disease the 5-year overall  
91 survival is about 4% [5].

92 The survival gain with first-line chemotherapy regimens in BTC is modest since most patients  
93 develop progressive disease with a median overall survival (OS) of less than a year [6]. This  
94 has generated interest in using next-generation tumor genomic profiling (NGS) and liquid tumor  
95 biopsy on peripheral blood to look for targetable genetic alterations [7, 8].

96 Circulating tumor DNA (ctDNA) has been shown to carry tumor-specific genetic or epigenetic  
97 alterations including point mutations, copy number variations, chromosomal rearrangements,  
98 and DNA methylation. This ctDNA is released into the circulation after tumor cells undergo  
99 apoptosis or necrosis [9]. Evaluation of ctDNA can identify patient specific tumoral genetic  
100 alterations while allowing for serial monitoring of tumor genomes in a non-invasive and accurate  
101 manner [8]. Therapeutically relevant alterations were seen in ctDNA in 55% of biliary tract  
102 cancer patients [8]. Due to these findings the strategy is being used in the setting of advanced  
103 disease for treatment selection [10]. Furthermore, it has also been used as an early marker of  
104 response to treatment and to track mechanisms of acquired resistance [11].

105 In colon and breast cancer ctDNA has been used to predict response to treatment and  
106 prognosis in the adjuvant and neoadjuvant setting respectively [12, 13]. One marker of interest  
107 is variant allele frequency (VAF), which is the number of mutant molecules over total number of  
108 wild-type molecules at a specific location on the genome. Pairawan et.al showed that VAF is a  
109 surrogate marker of tumor burden and maximum VAF (VAFmax) correlated negatively with  
110 prognosis and survival in metastatic cancer [14].

111 In this study we hypothesized that the dominant clone allele frequency (DCAF) on ctDNA in  
112 biliary tract cancer would be associated with overall survival (OS) and progression free survival

113 (PFS) and can serve as a surrogate of disease volume and severity. In addition, we looked at  
114 relationship of DCAF to treatment response with first-line platinum-based chemotherapy and  
115 clinical demographics.

## 116 **MATERIALS AND METHODS**

### 117 ***Patients***

118  
119 From July 2016 through June 2020, 67 patients with advanced BTC underwent ctDNA testing at  
120 diagnosis using an available assay [Guardant Health, Inc. (Redwood City, CA)]. All the patients  
121 received care at Mayo Clinic Cancer Center in Arizona and Florida. The analysis from this  
122 cohort was reviewed and approved by the Mayo Clinic institutional review board. Clinical and  
123 demographic information of all patients are included in **Table 1**.

124

### 125 ***Comprehensive genomic testing in plasma***

126

127 Circulating tumor DNA was extracted from whole blood. ctDNA fragments, both leukocyte- and  
128 tumor-derived, were simultaneously sequenced. The VAF was calculated as the proportion of  
129 ctDNA harboring the variant in a background of wild type ctDNA. Analytical information,  
130 bioinformatics analysis and Guardant360 database has been previously described [15, 16].

131

### 132 ***Outcomes***

133

134 Assessments regarding response to therapy (complete response [CR], partial response [PR],  
135 stable disease [SD], disease progression [PD]) were retrospectively collected by review of  
136 patient's charts. Positive response to therapy was considered PR and CR by Response  
137 Evaluation Criteria in Solid Tumors (RECIST). Disease control rate was determined based on  
138 CR, PR, and SD. Progression-free survival (PFS) was determined by the time during treatment  
139 with chemotherapy and after without disease progression. Overall survival (OS) was  
140 determined by the time of diagnosis of advanced disease till death or last day of follow up for  
141 patients on treatment and alive.

142

### 143 ***Statistical analysis***

144

145 We summarized categorical data as frequency counts and percentages, and continuous  
146 measures as means, standard deviations, medians, and ranges. Categorical variables were  
147 compared using the chi-square test or Fisher's exact test. Continuous variables were compared  
148 using the one-way ANOVA test or Kruskal–Wallis test. Multivariate logistic regressions were  
149 performed to assess the association of ctDNA with response rate and disease control rate with  
150 adjustment for disease subtype, age, sex, CA19-9, lesion size, and metastatic site. The  
151 distributions of time-to-event outcomes were estimated using the Kaplan-Meier methods and  
152 compared between low versus high ctDNA dichotomized by the median dominant clone allele  
153 frequency (i.e., low < 3% versus high  $\geq$  3% ctDNA) using the log-rank test. Hazard ratios (HRs)  
154 and 95% confidence intervals (CIs) were estimated using a multivariate Cox model adjusting for  
155 disease subtype, age, sex, CA19-9, lesion size, and metastatic site. Sensitivity analysis were  
156 conducted to explore either 3-quantiles ( $\leq$  33% percentile, 34-66% percentile,  $>$  66%  
157 percentile) or quartiles as the cutoffs in dominant clone allele frequency.

158

## 159 **RESULTS**

160

### 161 ***Patient demographics***

162

163 A total of 67 patients were included in the analysis. 80.6% (54) had intrahepatic  
164 cholangiocarcinoma, 10.4% (7) patients had extrahepatic cholangiocarcinoma and 9% (6) had  
165 gallbladder cancer. All patients included had ctDNA collected before the first-line chemotherapy  
166 regimen for advanced disease. Median age of all patients was 67 y/o (27-90) and the majority  
167 were female (62.6%). All patients were treated with platinum-based chemotherapy regimens as  
168 first-line treatment. Most patients (68.6%) were treated with cisplatin plus gemcitabine, eleven  
169 (16,4%) patients received gemcitabine plus other platinum (carboplatin or oxaliplatin)  
170 combinations while ten (15%) patients were treated on a clinical trial with gemcitabine and  
171 cisplatin plus additional agents (CX4945, PEGPH20 or nab-paclitaxel). The median size of  
172 largest lesion was 6 cm (2-19cm) and more than half (58.2%) had multiple metastatic sites  
173 including liver and extrahepatic sites. Lungs, bones, lymph nodes and peritoneum were the  
174 sites with most extrahepatic metastasis identified. Other clinical information can be found on

175 **Table 1.**

176 Several potential targetable genes were detected with ctDNA including FGFR2, HER2, IDH,  
177 MET, EGFR, BRAF and KRAS. A higher prevalence of TP53 were observed among the three  
178 subtypes. Homologous recombinant repair genes were identified in IHC and EHC including ATM  
179 and BRCA2. Prevalence of all genomic alterations accordingly to primary tumor can be found on  
180 **Figure 1**.

181 TP53, KRAS, FGFR2, ARID1A, STK11 and IDH1 were the genes with highest variant allele  
182 frequency as dominant clone (**Figure 2**). Most ERBB2 (HER-2) genomic alterations detected  
183 were amplifications, identified in 4 patients. Other genes with detected amplifications included  
184 KRAS, EGFR, BRAF, MET, CCNE1, CCND1, CCND2, MYC, FGFR1, FGFR2, CDK4, CDK6,  
185 PIK3CA, AR. For analysis we considered the detected genomic alteration with the highest  
186 variant allele frequency (VAF) as the dominant clone allele frequency (DCAF).

187

### 188 ***Dominant clone allele frequency and prognostic factors***

189

190 One patient with no tumor genomic alteration detected was excluded from this analysis. The  
191 median dominant clone allele frequency (DCAF) was 3% (0-97%). DCAF >3% was associated  
192 with inferior PFS (median PFS: 4.7 vs. 7.7 months,  $p=0.087$ . **Supplementary figure 1**) and  
193 significantly worse OS (median OS: 10.8 vs. 18.8 months,  $p=0.032$ . **Figure 3**).

194 We further analyzed DCAF using either 3-quantiles or quartiles as the cutoffs. DCAF divided by  
195 3 quantiles (Q1: ctDNA  $\leq 1\%$ , Q2: ctDNA 1-7%, Q3: ctDNA  $\geq 7\%$ ) was significantly associated  
196 with PFS ( $p=0.022$ ) (**Supplementary figure 2**) but not OS ( $p=0.065$ ) (**Supplementary figure**  
197 **3**). DCAF divided by quartiles (Q1: ctDNA  $\leq 0.6\%$ , ctDNA Q2: 0.6-3%, ctDNA Q3: 3-10%, ctDNA  
198 Q4:  $\geq 10\%$ ) was significantly associated with PFS ( $p=0.014$ ) (**Figure 4**) and OS ( $p=0.001$ )  
199 (**Figure 5**).

200 Each 1% increase in ctDNA is associated with a hazard ratio of 13.1 in OS when adjusting for  
201 primary tumor, size of the largest lesion, metastatic sites, sex, age, and CA19-9 (**Table 2**). No  
202 significant differences in response or disease control rate to chemotherapy was observed in  
203 patients with low or high ctDNA (**Supplementary figure 4 and 5**). No statistical significance  
204 was found between DCAF and the presence of potential actionable targets including FGFR2,  
205 IDH1/2, ERBB2 and KRAS (**Supplementary figure 6**).

206 The interaction between CA19-9 and DCAF were not statistically significant (OS:  $P_{\text{interaction}} =$   
207 0.12; PFS:  $P_{\text{interaction}} = 0.06$ ). Although CCA patients with high DCAF and high CA19-9 (DFCA  $\geq$   
208 3%, CA19-9  $\geq 100$ ) had worst OS, no statistical significance was found for PFS ( $p=0.19$ ) or OS  
209 ( $p=0.13$ ) (**Supplementary figures 7 and 8**).

## 210 DISCUSSION

211  
212 In this study, we assessed whether the highest variant allele frequency detected by ctDNA,  
213 namely DCAF, could be a prognostic factor in patients with advanced biliary tract cancer at  
214 diagnosis. Based on the findings, patients with DCAF $>3\%$  at diagnosis had worse overall  
215 survival when treated with upfront platinum-based chemotherapy. Furthermore, DCAF $>10\%$   
216 was significantly related to worse PFS and OS. However, no differences in response rate were  
217 observed among patients with DCAF high or low. Moreover, ctDNA proved to be an  
218 independent factor related to overall survival in multivariate analysis. Collectively, these data  
219 suggest a prognostic and not predictive role for DCAF in patients with advanced biliary tract  
220 cancer undergoing platinum-based therapy.

221 The landscape of ctDNA genomic alterations of biliary tract cancers has already been previously  
222 described [8, 17]. Similarly, to our findings, these studies included more patients with IHC, and  
223 the genes with the highest detection with ctDNA included principally KRAS, TP53, FGFR2, IDH1  
224 and ARID1A [8, 17]. In our cohort, we observed different patterns of prevalence, with ATM and  
225 MAP2K1 detected in extrahepatic cholangiocarcinoma and ERBB2, NF1 and PTEN in  
226 gallbladder cancer.

227 Variant allele frequency is related to outcomes, it is more prominent in metastatic disease and is  
228 associated with tumor volume [14, 16, 18]. In metastatic pancreatic cancer, detectable ctDNA  
229 and high VAF was associated with worse overall survival [18, 19, 20]. Prognostic significance  
230 was observed in other solid tumors including colorectal cancer, breast cancer and prostate  
231 cancer [21-23]. Little is known about VAF and prognosis in biliary tract cancers. Lower values of  
232 VAF were associated with prolonged progression-free survival in a cohort of 24 patients with  
233 cholangiocarcinoma [18]. Considering the highest VAF value, we showed that the DCAF $>3\%$  is  
234 related to numerically inferior PFS (but not statistically significant) and worse OS in patients with  
235 biliary tract cancers treated with standard upfront platinum-based chemotherapy for advanced  
236 disease. Interestingly, the DCAF was determined by multiple different genes among the cases,



237 including TP53, KRAS, FGFR2, ARID1A, STK11 and IDH1, suggesting as previously stated by  
238 other colleagues that the highest VAF would be a surrogate of disease burden not related  
239 specifically to the gene detected. In agreement with this, evaluating the presence of specific  
240 genes of interest in the ctDNA overall analysis we did not find any association with DCAF and  
241 possible targetable genes including FGFR2, ERBB2, IDH1 and KRAS.

242 Prognostic factors related to PFS and OS in advanced biliary tract cancers were evaluated from  
243 the ABC-02 trial and an international dataset [24]. In this analysis, the authors evaluated  
244 prognostic factors in a combined sample size of more than one thousand patients [24]. Although  
245 the results suggest multiple factors in multivariate analysis including hemoglobin, gender and  
246 neutrophils, receiver operator curve (ROC) analysis suggested that the model generated had a  
247 limited prognostic value [24]. Even the primary tumor site was not significant, in contrast to the  
248 findings of other groups [25]. After multiple efforts evaluating scores and factors to  
249 prognosticate advanced biliary tract cancers [26, 27, 28], the ability to predict prognosis  
250 need improvement. In our analysis, the overall survival impact of ctDNA was observed after  
251 stratifying with other possible prognostic factors including size of largest lesion, locally  
252 advanced/metastatic designation, primary tumor location, metastatic sites, gender, CA 19-9 and  
253 age. Evaluating ctDNA as a continuous variable, higher values are related to inferior survival  
254 probabilities. Based on the findings, ctDNA and DCAF could be a reliable easy to collect  
255 prognostic instrument in prospective trials.

256 Considering the investigative field of ctDNA in biliary tract cancers, larger, multi-centered  
257 prospective studies would be necessary to address the application of ctDNA in the multiple  
258 disease assessment junctures, considering early diagnosis, minimal residual disease  
259 assessment, monitoring in advanced stages during systemic treatment and assessment of  
260 mutations that associate with resistance during treatment with targeted therapies. Evaluation of  
261 ctDNA and DCAF in metastatic disease would be a tool for genomic profiling in prospective  
262 trials, can be a surrogate of disease volume and will assist in an adequate stratification of  
263 patients with advanced biliary tract cancer in randomized studies.

264 Some limitations of this study include the number of patients, limited institution aspect, inherent  
265 limitations associated with a targeted gene panel and the retrospective nature of data collection.  
266 Furthermore, most of the patients included had tumor arising from the intrahepatic duct. This  
267 limitation is shared with studies in biliary tract cancers and efforts should be made to include  
268 patients with extrahepatic and gallbladder carcinomas in initiatives of genomic profiling and

269 ctDNA. Even with the limited number of patients, strong association of ctDNA and OS were  
270 observed. This study only evaluated patients treated with upfront chemotherapy. Although this is  
271 the standard of care to date, multiple trials are evaluating targeted treatments including FGFR2  
272 inhibitors in the first-line therapy for advanced disease and it would be unclear if upfront tyrosine  
273 kinase inhibitors would alter the results. On the other hand, as stated before, the presence of  
274 targetable genes had no association with DCAF results and impact of ctDNA on overall survival.

## 275 **CONCLUSION**

276 ctDNA is a powerful prognostic tool in advanced biliary tract cancers. DCAF at diagnosis of  
277 advanced disease who would receive platinum based systemic therapy identifies patients with  
278 worse prognosis. ctDNA should be evaluated in prospective trials as a stratification factor for  
279 advanced disease.

280

## 281 **REFERENCES**

- 282 1. de Groen, P.C., et al., Biliary tract cancers. *N Engl J Med*, 1999. 341(18): p. 1368-78.
- 283 2. Charbel, H. and F.H. Al-Kawas, Cholangiocarcinoma: epidemiology, risk factors,  
284 pathogenesis, and diagnosis. *Curr Gastroenterol Rep*, 2011. 13(2): p. 182-7.
- 285 3. Siegel, R.L., et al., Cancer Statistics, 2021. *CA: A Cancer Journal for Clinicians*, 2021.  
286 71(1): p. 7-33.
- 287 4. Shroff, R.T., et al., Adjuvant Therapy for Resected Biliary Tract Cancer: ASCO Clinical  
288 Practice Guideline. *J Clin Oncol*, 2019. 37(12): p. 1015-1027.
- 289 5. Farley, D.R., A.L. Weaver, and D.M. Nagorney, "Natural history" of unresected  
290 cholangiocarcinoma: patient outcome after noncurative intervention. *Mayo Clin Proc*,  
291 1995. 70(5): p. 425-9.
- 292 6. Valle, J., et al., Cisplatin plus gemcitabine versus gemcitabine for biliary tract cancer. *N*  
293 *Engl J Med*, 2010. 362(14): p. 1273-81.
- 294 7. Valle, J.W., et al., New Horizons for Precision Medicine in Biliary Tract Cancers. *Cancer*  
295 *Discov*, 2017. 7(9): p. 943-962.
- 296 8. Mody, K., et al., Circulating Tumor DNA Profiling of Advanced Biliary Tract Cancers.  
297 *JCO Precision Oncology*, 2019(3): p. 1-9.
- 298 9. Lu, L., J. Bi, and L. Bao, Genetic profiling of cancer with circulating tumor DNA analysis.  
299 *J Genet Genomics*, 2018. 45(2): p. 79-85.

- 300 10. Hovelson, D.H., et al., Rapid, ultra low coverage copy number profiling of cell-free DNA  
301 as a precision oncology screening strategy. *Oncotarget*, 2017. 8(52): p. 89848-89866.
- 302 11. Goyal, L., et al., Polyclonal Secondary *FGFR2* Mutations Drive Acquired  
303 Resistance to FGFR Inhibition in Patients with *FGFR2* Fusion-Positive  
304 Cholangiocarcinoma. *Cancer Discovery*, 2017. 7(3): p. 252-263.
- 305 12. Reece, M., et al., The Use of Circulating Tumor DNA to Monitor and Predict Response to  
306 Treatment in Colorectal Cancer. *Frontiers in genetics*, 2019. 10: p. 1118-1118.
- 307 13. Li, S., et al., Circulating Tumor DNA Predicts the Response and Prognosis in Patients  
308 With Early Breast Cancer Receiving Neoadjuvant Chemotherapy. *JCO Precision  
309 Oncology*, 2020(4): p. 244-257.
- 310 14. Pairawan, S., et al., Cell-free Circulating Tumor DNA Variant Allele Frequency  
311 Associates with Survival in Metastatic Cancer. *Clin Cancer Res*, 2020. 26(8): p. 1924-  
312 1931.
- 313 15. Lanman, Richard B., et al. "Analytical and clinical validation of a digital sequencing panel  
314 for quantitative, highly accurate evaluation of cell-free circulating tumor DNA." *PLoS  
315 one* 10.10 (2015): e0140712.
- 316 16. Botrus, Gehan, et al. "Circulating Tumor DNA-Based Testing and Actionable Findings in  
317 Patients with Advanced and Metastatic Pancreatic Adenocarcinoma." *The  
318 Oncologist* (2021).
- 319 17. Okamura, Ryosuke, et al. "Comprehensive genomic landscape and precision therapeutic  
320 approach in biliary tract cancers." *International journal of cancer* 148.3 (2021): 702-712.
- 321 18. Strijker, Marin, et al. "Circulating tumor DNA quantity is related to tumor volume and both  
322 predict survival in metastatic pancreatic ductal adenocarcinoma." *International journal of  
323 cancer* 146.5 (2020): 1445-1456.
- 324 19. Bernard, Vincent, et al. "Circulating nucleic acids are associated with outcomes of  
325 patients with pancreatic cancer." *Gastroenterology* 156.1 (2019): 108-118.
- 326 20. Patel, Hitendra, et al. "Clinical correlates of blood-derived circulating tumor DNA in  
327 pancreatic cancer." *Journal of hematology & oncology* 12.1 (2019): 1-12.

- 328 21. Dasari, Arvind, et al. "ctDNA applications and integration in colorectal cancer: An NCI  
329 Colon and Rectal–Anal Task Forces whitepaper." *Nature Reviews Clinical*  
330 *Oncology* 17.12 (2020): 757-770.
- 331 22. Cullinane, Carolyn, et al. "Association of Circulating Tumor DNA With Disease-Free  
332 Survival in Breast Cancer: A Systematic Review and Meta-analysis." *JAMA network*  
333 *open* 3.11 (2020): e2026921-e2026921.
- 334 23. Goodall, Jane, et al. "Circulating tumor DNA (ctDNA) dynamics associate with treatment  
335 response and radiological progression-free survival (rPFS): Analyses from a randomized  
336 phase II trial in metastatic castration-resistant prostate cancer (mCRPC)." *JCO* (2020):  
337 5508-5508.
- 338 24. Bridgewater, John, et al. "Prognostic factors for progression-free and overall survival in  
339 advanced biliary tract cancer." *Annals of Oncology* 27.1 (2016): 134-140.
- 340 25. Peixoto RDA, Renouf D, Lim H. A population based analysis of prognostic factors in  
341 advanced biliary tract cancer. *J Gastrointest Oncol* 2014; 5: 428–432.
- 342 26. Park, Hyung Soon, et al. "Prognostic factors and scoring model for survival in metastatic  
343 biliary tract cancer." *Cancer research and treatment: official journal of Korean Cancer*  
344 *Association* 49.4 (2017): 1127.
- 345 27. Salati, Massimiliano, et al. "The prognostic nutritional index predicts survival and  
346 response to first-line chemotherapy in advanced biliary cancer." *Liver International* 40.3  
347 (2020): 704-711.
- 348 28. Kim, Bum Jun, et al. "Prognostic factors in patients with advanced biliary tract cancer  
349 treated with first-line gemcitabine plus cisplatin: retrospective analysis of 740  
350 patients." *Cancer chemotherapy and pharmacology* 80.1 (2017): 209-215.

351

352

353

354

355

356  
357  
358  
359  
360  
361  
362  
363  
364  
365  
366  
367  
368  
369  
370  
371  
372  
373  
374  
375  
376  
377  
378  
379  
380  
381

**Tables and figures**

**Table 1: Demographic characteristics**

**Table 2: Multivariate analysis for overall survival**

**Figure 1: Prevalence of genomic alterations accordingly to primary tumor**

**Figure 2: Variant allele frequency of detected genes**

**Figure 3: Overall survival Kaplan-Meier curve by DCAF>3%**

**Figure 4: Progression-free survival Kaplan-Meier curve by ctDNA**

**Figure 5: Overall survival Kaplan-Meier curve by ctDNA**

**Supplementary figure 1: Progression-free survival and DCAF>3%**

**Supplementary figure 2: Progression-free survival and DCAF quartiles**

**Supplementary figure 3: Overall survival and DCAF quartiles**

**Supplementary figure 4: ctDNA Response vs. Non-Response. p = 0.2678**

**Supplementary figure 5: ctDNA Disease Control vs. Disease progression. p = 0.0843**

**Supplementary figure 6: ctDNA by Group. p = 0.1373**

**Supplementary figure 7: CA19-9 and DCAF impact on PFS**

**Supplementary figure 8: CA19-9 and DCAF impact on OS**

382  
383  
384  
385  
386  
387  
388  
389  
390

**Table 1: Demographic characteristics**

	Overall (N=67)
<b>Age at diagnosis, years</b>	
Median (range)	67 (27, 90)
<b>Sex</b>	
Male	25 (37.4%)
Female	42 (62.6%)
<b>Diagnosis</b>	
Extrahepatic cholangiocarcinoma	7 (10.4%)
Gallbladder carcinoma	6 (9.0%)
Intrahepatic cholangiocarcinoma	54 (80.6%)
<b>Grouping by genomic alterations</b>	
FGFR2	9 (13.4%)
ERBB2	6 (9.0%)
IDH1	11 (16.4%)
KRAS	9 (13.4%)
Not detectable	1 (1.5%)
Other (TP53, CDKN2A, BRAF, STK11, APC, RET, ARID1A, EGFR, ATM)	31 (46.3%)
<b>Treatment</b>	
Gemcitabine + Cisplatin	46 (68.6%)
Gemcitabine + Cisplatin + CX-4945	6 (8.95%)
Gemcitabine + Oxaliplatin	6 (8.95%)
Gemcitabine + Carboplatin	5 (7.5%)
Gemcitabine + Cisplatin + Nab-paclitaxel	3 (4.5%)

Gemcitabine + Cisplatin + PEGPH20	1 (1.5%)
<b>Size of largest lesion (cm)</b>	
Median (range)	6 (2-19)
<b>Metastatic sites</b>	
Liver	24 (35.8%)
Extrahepatic only (ex. lung, bones, peritoneum, lymph nodes)	4 (6%)
Liver + extrahepatic	39 (58.2%)
<b>Pre-Treatment CA19-9 Level (U/mL)</b>	
Median (range)	103 (1-103198)
<b>Pre-Treatment Maximum Mutant Allele Frequency (%)</b>	
Mean CI	10 (6, 14)
Median (range)	3 (0 – 94)
Q1, Q3	1, 10
<b>Tumor response (partial response + complete response)</b>	
No	34 (57.6%)
Yes	25 (42.4%)
<b>Disease Control (partial response + complete response + stable disease)</b>	
No	21 (35.6%)
Yes	38 (64.4%)
<b>Progression-free survival events</b>	
No	31 (46.3%)
Yes	36 (53.7%)
<b>Overall survival events</b>	
No	28 (41.8%)
Yes	39 (58.2%)

391

392

393

394

395

396

397

398  
399  
400  
401  
402  
403  
404  
405  
406  
407  
408  
409  
410  
411  
412  
413  
414  
415  
416  
417  
418

**Table 2: Multivariate analysis for overall survival**

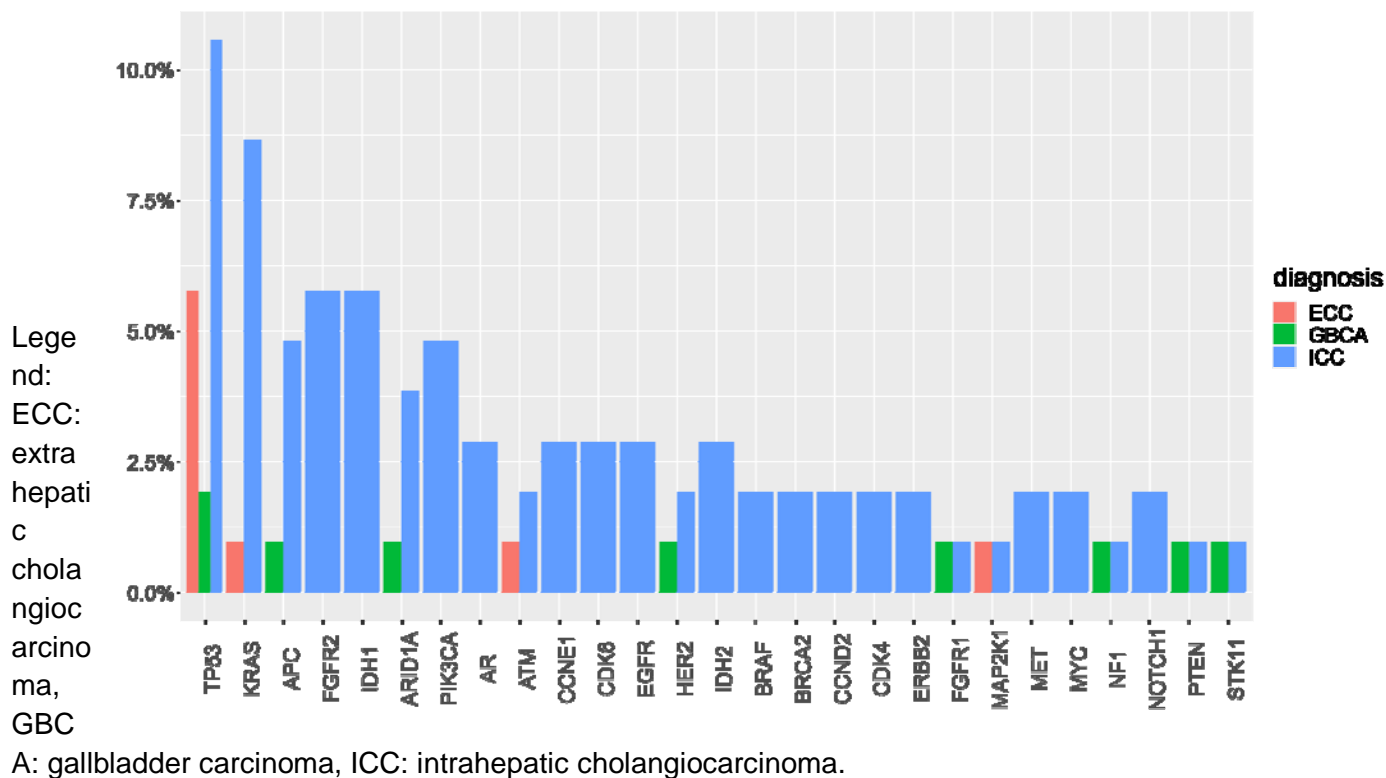
	Hazard Ratio	95%CI	P value
Location of primary: non-IHC vs. IHC	1.54	[ 0.46 , 5.21 ]	0.484825
Age at diagnosis, 10yrs	1.18	[ 0.83 , 1.67 ]	0.359703
Pre-Treatment CA19-9 Level ( $\geq 100$ U/mL)	2.08	[ 0.96 , 4.53 ]	0.063824
ctDNA (%)	13.07	[ 1.2 , 142.32 ]	0.034866
Sex	1.24	[ 0.57 , 2.72 ]	0.588142
Lesion Size	1.02	[ 0.92 , 1.13 ]	0.762273
Met Site: Extrahepatic (Ref: Liver)	0.66	[ 0.08 , 5.47 ]	0.700660
Met Site: Liver + Extrahepatic (Ref: Liver)	1.09	[ 0.49 , 2.43 ]	0.831125

Legend: IHC: intrahepatic cholangiocarcinoma



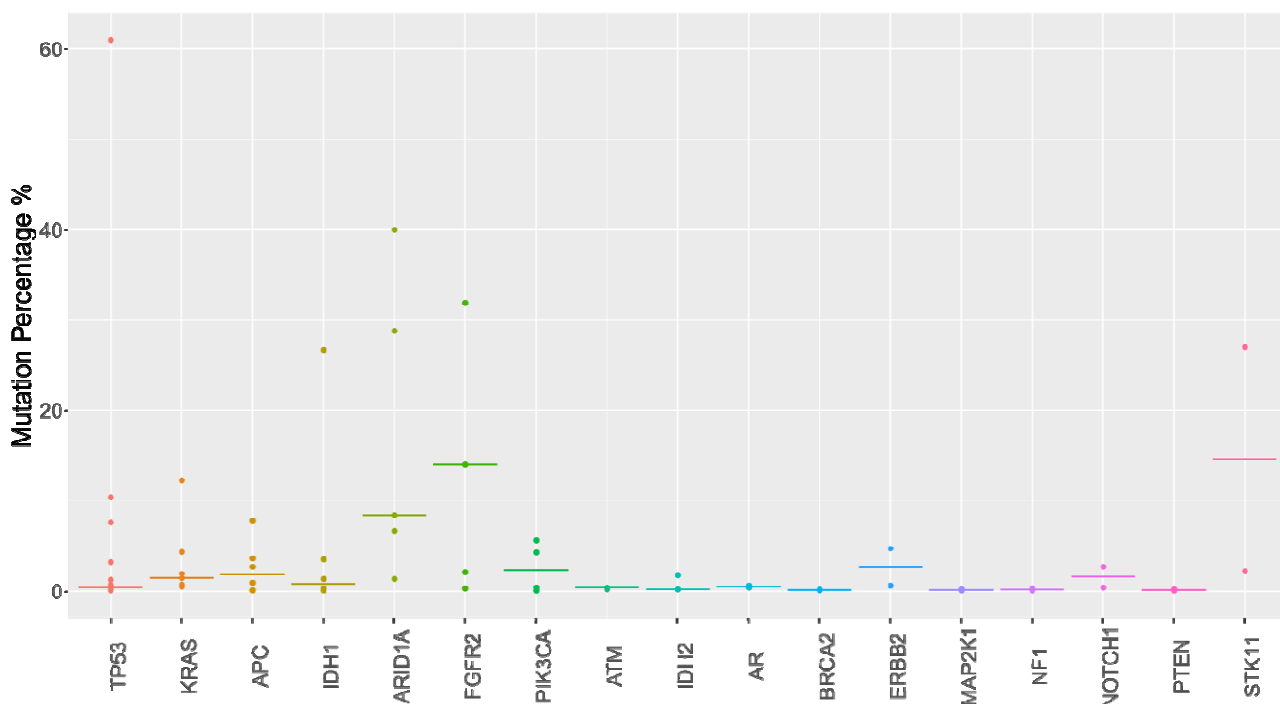
419  
420  
421  
422  
423  
424  
425  
426  
427  
428  
429  
430  
431  
432  
433  
434  
435  
436  
437  
438  
439  
440  
441  
442  
443  
444  
445  
446  
447  
448  
449

**Figure 1: Prevalence of genomic alterations corresponding to primary tumor.**



450  
451  
452  
453  
454  
455  
456  
457

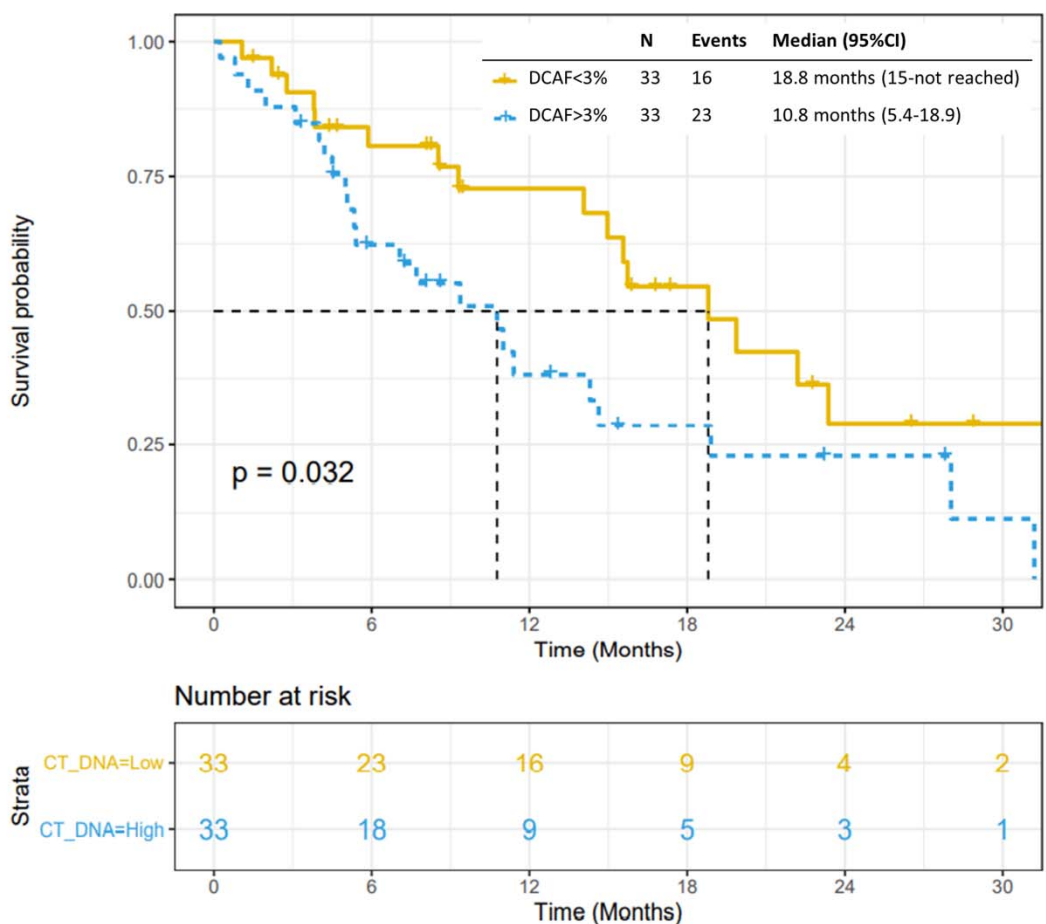
**Figure 2: Variant allele frequency of detected genes**



458  
459  
460  
461  
462  
463  
464  
465  
466

467  
468  
469  
470  
471  
472  
473  
474

**Figure 3: Overall survival Kaplan-Meier curve by DCAF>3%**



475  
476  
477  
478  
479

480

481

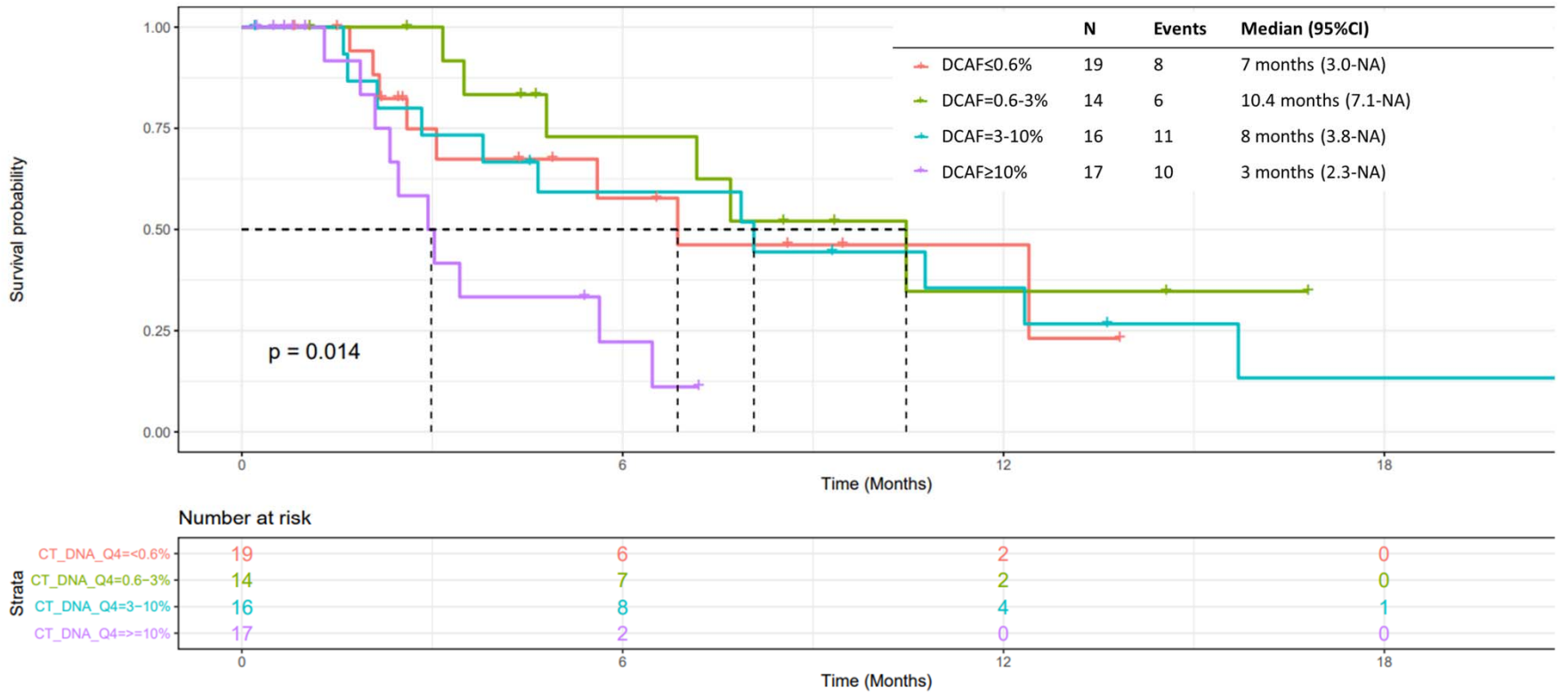
482

483

484

485

486 **Figure 4: Progression-free survival Kaplan-Meier curve by ctDNA**



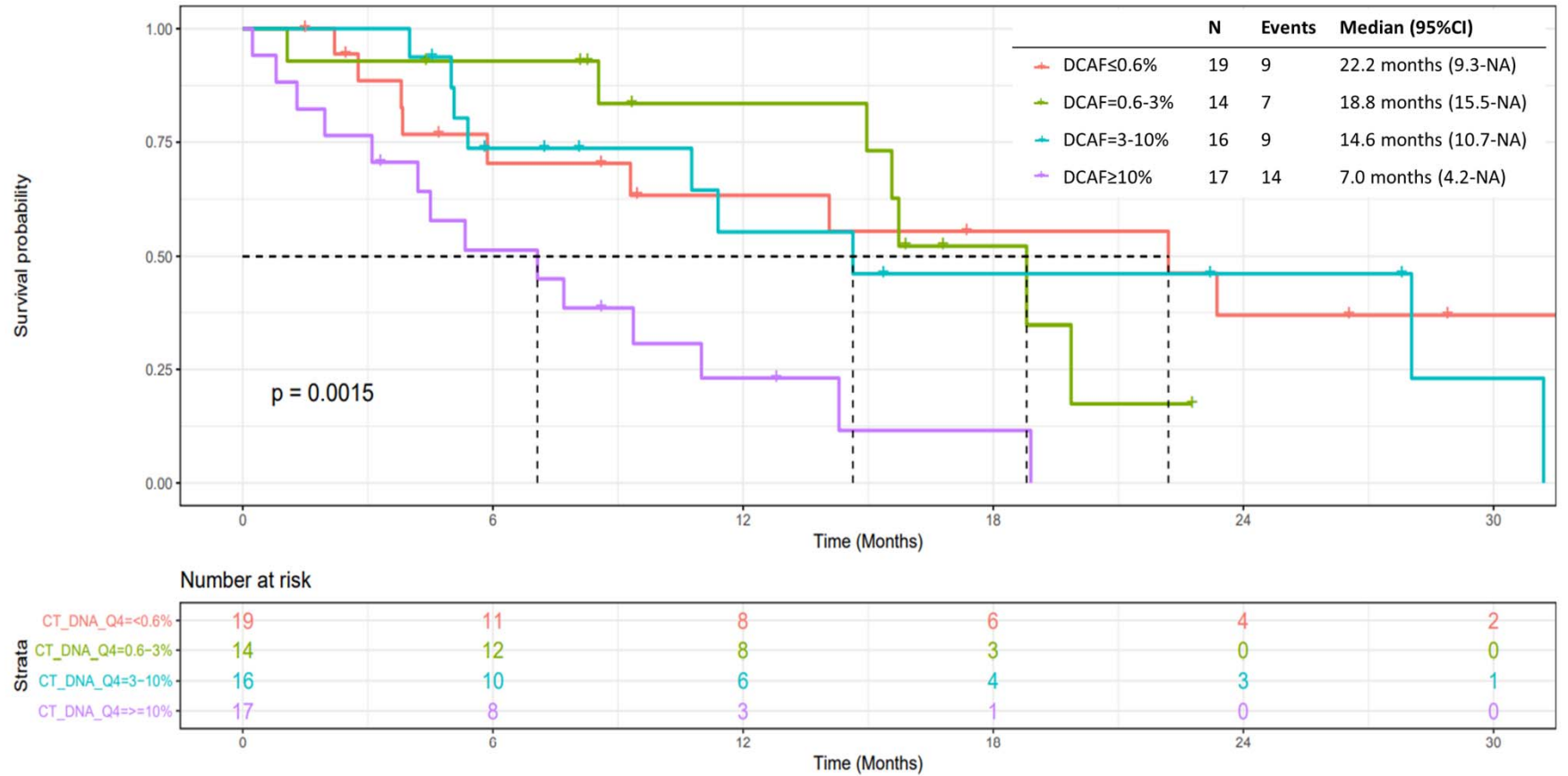
487

488

489

490 **Figure 5: Overall survival Kaplan-Meier curve by groups**

491



492