

1 **Quantitative insights into effects of intrapartum antibiotics and birth mode on**  
2 **infant gut microbiota in relation to well-being during the first year of life**

3  
4 **Birth interventions and infant gut microbiota**

5  
6 Katri Korpela<sup>a\*</sup>, Roosa Jokela<sup>a\*</sup>, Ching Jian<sup>a</sup>, Evgenia Dikareva<sup>a</sup>, Anne Nikkonen<sup>b</sup>,  
7 Terhi Saisto<sup>c</sup>, Kirsi Skogberg<sup>d</sup>, Willem M. de Vos<sup>a,e</sup>, \*Kaija-Leena Kolho<sup>b,f</sup> and Anne  
8 Salonen<sup>a#</sup>

9  
10 <sup>a</sup>Human Microbiome Research Program, Faculty of Medicine, University of Helsinki,  
11 Helsinki, Finland; <sup>b</sup>Children's Hospital, Pediatric Research Center, University of  
12 Helsinki, Helsinki, Finland; <sup>c</sup>Department of Obstetrics and Gynecology, University of  
13 Helsinki, and Helsinki University Hospital, Helsinki, Finland; <sup>d</sup>Clinic of Infectious  
14 Diseases, Jorvi and Helsinki University Hospital, Helsinki, Finland; <sup>e</sup>Laboratory of  
15 Microbiology, Wageningen University, Wageningen, the Netherlands; <sup>f</sup>Tampere  
16 University, Tampere, Finland

17 \*These authors contributed equally to this work

18  
19 This research was supported by grants from Tekes 329/31/2015 (Health and the Early  
20 Life Microbiome (WMdV), Academy of Finland 1297765 (KK) and 1325103 (AS),  
21 Pediatric Research Foundation, Finland and Helsinki University Hospital Grant (KLK),  
22 The Paulo and Sohlberg Foundations (AS) and the Doctoral Program in Microbiology  
23 and Biotechnology, University of Helsinki, Finland funding (RJ).

24  
25 Abbreviations:

26 AIC Akaike information criterion  
27 ANOVA Analysis of variance  
28 Cep Cephalosporin  
29 CRP C-reactive protein

30	CS	C-section, Caesarean section
31	GBS	Group B Streptococcus
32	GI	Gastrointestinal
33	HELMi	Finnish Health and Early Life Microbiota
34	HMO	Human milk oligosaccharide
35	IP	Intrapartum
36	NGS	Next generation sequencing
37	PCoA	Principal coordinate analysis
38	Pen	Penicillin
39	rRNA	Ribosomal ribonucleic acid
40	SCFA	Short-chain fatty acids
41	VAS	Visual analogue scale
42	VD	Vaginal delivery
43	qPCR	Quantitative polymerase chain reaction

44

45

46 #Corresponding author: [anne.salonen@helsinki.fi](mailto:anne.salonen@helsinki.fi), Haartmaninkatu 3, PO box 21, FI-  
47 00014, University of Helsinki, Helsinki, Finland

48

49 The authors have no conflicts to declare

50 Contributions:

51 Conceptualization: KS, KLK, AS, WMdV

52 Data curation: AN, RJ, ED

53 Formal Analysis: KK, RJ, CJ

54 Funding acquisition: WMdV, AS, KK, KLK

55 Investigation: ED, CJ, RJ, KK

56 Methodology: KK

57 Project administration: AS, TS, KLK, WMdV

58 Resources: AS, WMdV, TS, KLK

59 Software: KK, CJ, RJ

60 Supervision: AS, WMdV, KLK, KK

61 Validation: RJ, CJ, KK

62 Visualization: RJ, CJ, KK

63 Writing – original draft: RJ, KK, AS

64 Writing – review & editing: RJ, CJ, KK, KKK, WMdV, AS

65 The sequencing data will be deposited upon acceptance of the article to European  
66 nucleotide Archive.

67

68

69 **Abstract**

70

71 **Background and aims**

72 Caesarean section (CS)-birth and maternally administered intrapartum antibiotics (IP)  
73 affect colonization of the neonate. We compared the effects of CS delivery and IP  
74 antibiotics on infant gut microbiota development and wellbeing over the first year. To  
75 understand the developing community dynamics, we focused on absolute bacterial  
76 abundance estimates over relative abundances.

77 **Methods**

78 We studied 144 healthy infants born between gestational weeks 37-42 vaginally without  
79 antibiotics (N=58), with IP penicillin (N=25) or cephalosporin (N=13), or by CS with IP  
80 cephalosporin (N=34) or other antibiotics (N=14). Gut microbiota composition and  
81 temporal development was analysed at 5-7 time points during the first year of life using  
82 16S rRNA gene amplicon sequencing, complemented with qPCR to obtain absolute  
83 abundance estimates in 92 infants. A mediation analysis was carried out to identify taxa  
84 linked to gastrointestinal function and discomfort (crying, defecation frequency and  
85 signs of gastrointestinal symptoms) and birth interventions.

86 **Results**

87 Based on absolute abundance estimates, depletion of *Bacteroides* spp. was specific to  
88 CS birth while decreased bifidobacteria and increased Bacilli were common to CS birth  
89 and exposure to IP antibiotics in vaginal delivery. Abundance of numerous taxa differed  
90 between the birth modes among cephalosporin-exposed infants. Penicillin had a milder  
91 impact on the infant gut microbiota than cephalosporin. The effects of both CS birth and  
92 IP antibiotics on infant gut microbiota associated with increased gastrointestinal  
93 symptoms during the first months.

94

95 **Conclusion**

96 CS birth and maternal IP antibiotics have both specific and overlapping effects on infant  
97 gut microbiota development. The resulting microbiota deviations were found to  
98 associate with gastrointestinal symptoms in infancy.

99

100 Keywords: Early-life microbiota; antibiotics; caesarean section; birth route; 16S rRNA  
101 gene amplicon sequencing; quantitative microbiota profiling

102

103

104 **What You Need to Know:**

105 **Background and Context**

106 Birth mode and maternal intrapartum antibiotics affect infant's gut microbiota  
107 development but their relative contribution, and effects on absolute bacterial  
108 abundances and infant health remain unknown.

109

110

111 **New Findings**

112 Utilizing quantitative microbiota profiling, we identified shared and unique microbiota  
113 effects of birth mode and intrapartum antibiotics which explained up to 54% of  
114 variation in parent-reported gastrointestinal symptoms in infants.

115

116 **Limitations**

117 Due to the limited sample sizes, especially during the first weeks of life, stratified  
118 analyses according to antibiotic dosing could not be performed, and the results on  
119 gastrointestinal symptom-microbiota-associations are tentative.

120

121 **Impact**

122 Birth mode overrules the effects of maternal antibiotics on infant microbiota  
123 development, while both birth mode and maternal antibiotic use are associated to  
124 common functional gastrointestinal symptoms in infancy.

125

126 **Lay summary:** Caesarean-section birth and maternal antibiotics during vaginal birth  
127 affect infant's gut microbiota and may increase gastrointestinal discomfort.

128

## 129 **Introduction**

130

131 The human intestinal microbiota develops via successional stages during early life.<sup>1</sup> The  
132 infant's gut microbiota contributes to early immunological<sup>2</sup> and metabolic  
133 programming<sup>3</sup> that affects host health later in life.<sup>4</sup> Transmission of maternal microbes  
134 to the offspring during birth plays a major role in the initial colonization.<sup>1,5,6</sup> The mode  
135 of birth is a major determinant of the neonates' initial microbial exposure; the assembly  
136 and dynamics of intestinal microbiota in infants born via caesarean section (CS) versus  
137 vaginal delivery (VD) differ substantially,<sup>1,7</sup> which has been suggested to mediate the  
138 negative long-term health outcomes related to CS birth.<sup>8,9</sup>

139

140 CS birth is not the only intervention impacting the neonate's early colonisation.  
141 Intrapartum (IP) antibiotic prophylaxis is routinely administered to mothers undergoing  
142 CS to reduce the risk of post-caesarean maternal infection. In vaginal deliveries  
143 approximately 25% of the mothers receive antibiotics to prevent neonatal group B  
144 Streptococcus (GBS) infection.<sup>10</sup> Thus, antibiotics are used in a substantial number of  
145 deliveries in developed countries. Emerging evidence suggests that IP antibiotics  
146 influence the infant's microbiota development over a period of several months.<sup>11-13</sup>

147

148 Previous studies utilizing next generation sequencing (NGS) have characterised the  
149 infant gut microbiota using relative bacterial abundance. However, quantitative analyses  
150 indicate that early microbiota development entails major quantitative changes both for  
151 the total bacterial load as well as on individual taxa,<sup>14</sup> and the effects of birth  
152 interventions on absolute bacterial profiles are unknown.<sup>15</sup> In addition, current studies  
153 addressing the health effects of IP on newborns have largely focused on neonatal GBS  
154 infection,<sup>16,17</sup> with first reports investigating their potential long-term effects on child  
155 health.<sup>18</sup> We analysed the gut microbiota development in 144 healthy infants over the  
156 first year of life, focusing on 92 infants from whom qPCR- and NGS-based quantitative  
157 microbiota profiling<sup>19</sup> data for absolute abundance estimation was available. The  
158 bacterial abundances were further associated with parallelly collected gastrointestinal  
159 (GI) and general health data. This approach enabled us to bypass the compositionality  
160 problem arising from relative abundances,<sup>20</sup> which may mask true community  
161 dynamics<sup>21</sup> and lead to high false discovery rates.<sup>19,22</sup> We controlled for potential

162 confounding factors using a carefully selected cohort, aiming to disentangle the effect of  
163 CS birth and IP antibiotics from potentially collinear effects.

164

## 165 **Materials and Methods**

### 166 **Study design**

167 Infants specifically recruited for this study (Jorvi cohort, N=68) and additional 83  
168 infants recruited for the Finnish Health and Early Life Microbiota (HELMi) cohort<sup>23</sup>  
169 ([NCT03996304](https://clinicaltrials.gov/ct2/show/study/NCT03996304)) were included in the study. In both cases, pregnant women with  
170 singleton gestation were recruited from the general population in Southern Finland.  
171 Healthy babies, born on gestational weeks 37-42, without known congenital defects and  
172 exceeding the birth weight of 2.5 kg were included in the study (except one baby with  
173 birth weight of 2.4kg). At least one parent had to be Finnish speaking to be able to  
174 answer the questionnaires.

175

176 For the Jorvi cohort, 31 mothers delivered with (vaginal deliveries N=26/31) and 37  
177 without IP antibiotics (all vaginal deliveries). Infant faecal samples were collected on  
178 day 1, 2, and 7, and at 1, 3, 6 and 12 months. From the HELMi cohort, 83 infants were  
179 selected based on birth mode, IP antibiotics, and the availability of sequencing data  
180 from infant's faecal samples at the age of 3 (considered as 1 month sample), and 6  
181 weeks, and 3, 6, 9, and 12 months. From the combined cohort, five infants were  
182 excluded as they received post-natal antibiotics prior to the first sampling point, and two  
183 infants were excluded for low sequence quality, leaving a total of 144 infants.  
184 Additionally, all samples following a post-natal antibiotic treatment were excluded from  
185 the analysis as well as individual samples with low sequence quality (see Statistical  
186 analysis). We divided the remaining infants into five study groups based on birth mode  
187 and IP antibiotics: vaginally delivered (VD) reference group without IP antibiotics  
188 (N=58), and four exposure groups: cefuroxime or cephalixin (cep) in CS (N=34), or in  
189 VD (N=13), penicillin (pen) in VD (N=25), or in CS penicillin or any other antibiotics,  
190 a combination of antibiotics or the antibiotic class not reported (CS-other, N=14) (Table  
191 1). The CS groups comprised elective (N=23) and urgent (N=25) cases; all involved IP  
192 antibiotics. Based on sample sufficiency, birth mode and sampling point the samples  
193 from 92 infants were quantified for total bacteria by qPCR,<sup>19</sup> representing 26 infants in

194 the reference group VD, 7 in VD-cep, 13 in VD pen, 33 in CS-cep, and 13 in CS-other  
195 group.

196

197 Both cohort studies were approved by the ethical committee of The Hospital District of  
198 Helsinki and Uusimaa and performed in accordance with the principles of the Helsinki  
199 Declaration. Parents signed an informed consent at enrolment.

200

### 201 **Samples and data collection**

202 Parents collected faecal samples from the infants and stored them at -20°C. The samples  
203 were transported frozen to the study centre within 6 months for -80°C storage. Data on  
204 feeding regime, probiotic and antibiotic use, child health and growth were collected  
205 with questionnaires (HELMi) or via phone interviews from the parents at the times of  
206 stool sampling (Jorvi). Data on exposures *i.e.*, the mode of delivery and the usage, type  
207 and dosing of maternal IP antibiotics were collected from hospital records for both  
208 cohorts.

209

### 210 **Health outcomes**

211 Infant health and wellbeing were addressed using questionnaire data available for the  
212 HELMi cohort. We used data from weekly to monthly repeating questionnaires using  
213 the questionnaire closest to each faecal sampling. The variables included were related to  
214 crying (hours per day and intensity estimated by a 0-100 mm visual analogue scale  
215 (VAS), collected until six months, GI function (defecation rate, parent-perceived  
216 stomach pain intensity and flatulence) until 9 months, and frequency of infections  
217 estimated by the number of post-natal antibiotic courses by age of 12 months. Infant  
218 growth was measured in postnatal care visits and transformed to age-dependent WHO  
219 z-scores.<sup>24</sup>

220

### 221 **Microbiota profiling**

222 Bacterial DNA was extracted from the faecal samples using a previously described bead  
223 beating method<sup>25</sup> and KingFisher™ Flex automated purification system  
224 (ThermoFisher Scientific, USA) as detailed in Supplementary methods. 16S rRNA gene  
225 amplicon sequencing was performed using Illumina MiSeq and HiSeq platforms for  
226 V3-V4 or V3 region as previously described,<sup>19, 26</sup> respectively. In case of low DNA



227 yield or unsuccessful sequencing, the default library preparation protocol was modified  
228 as specified in Supplementary methods. The numeration of total bacteria was performed  
229 in triplicate as previously described.<sup>19</sup> Bacterial DNA was quantified by amplifying 0.5  
230 ng aliquots of each DNA extract with universal bacterial primers 331F/797R<sup>27</sup> targeting  
231 the 16S rRNA gene. The standard curves ranging from 10<sup>2</sup> to 10<sup>7</sup> copies were  
232 constructed using the full-length amplicons of 16S rRNA gene of *Bifidobacterium*  
233 *bifidum* to convert the threshold cycle (Ct) values into 16S rRNA gene copy numbers  
234 per g of faeces.

235

236 The sequencing reads were processed using R package *mare*,<sup>28</sup> which relies on  
237 USEARCH<sup>29</sup> for quality filtering, chimera detection, and taxonomic annotation. Only  
238 the forward reads (V3), truncated to 150 bases, were used.<sup>30</sup> Reads occurring <10-50  
239 times, depending on run size, were excluded as potentially erroneous. Taxonomic  
240 annotation was performed using USEARCH<sup>29</sup> by mapping the reads to the SILVA 16S  
241 rRNA reference database version 115,<sup>31</sup> restricted to gut-associated taxa. Further,  
242 potential contaminants in the low-DNA-yield samples were filtered by removing reads  
243 appearing in negative controls (PCR or extraction blanks) in corresponding numbers  
244 from all samples. The absolute abundances were estimated and 16S rRNA gene copy-  
245 number corrected as previously described.<sup>19</sup>

246

247

## 248 **Statistical analysis**

249 After processing, the median number of reads obtained was 26 384 (range 3 to 253  
250 458). Sufficient sequencing coverage was evaluated by comparing observed species  
251 richness to read count, and a cut-off of 2000 reads was chosen for HELMi samples, and  
252 120 for Jorvi samples (to accommodate low-biomass samples from the first week of  
253 life). Samples with insufficient coverage (N=138, largely samples from the first week of  
254 life) and 69 samples with extremely high read counts from a single HiSeq run with high  
255 proportions of probable contaminants (mostly *Alcaligenaceae*)<sup>32</sup> were excluded, leaving  
256 a total of 688 high-quality samples from 144 infants for downstream analyses, and 393  
257 high-quality qPCR quantified samples from 92 infants.

258

259 The statistical analysis was conducted in R version 3.6.3 with the package *mare*,<sup>28</sup> with  
260 tools from packages *vegan*,<sup>33</sup> *MASS*,<sup>34</sup> and *nlme*<sup>35</sup>, detailed in Supplementary methods.  
261 The association of antibiotic exposure (no antibiotic, penicillin, cephalosporin) and birth  
262 mode (vaginal or CS) with health outcomes was analysed at each faecal sampling until  
263 9 months using a negative binomial model adjusting for feeding type and probiotic use.  
264 To determine if the differences in health outcomes were mediated by changes in gut  
265 microbiota, the *PathModel* function in *mare*<sup>28</sup> was used to identify taxa predicting  
266 symptoms and the role of birth interventions related to the predictive taxa.

267

## 268 **Results**

### 269 **Study population**

270 An average of 4.9 samples (range 1-7) was collected per infant (Table 1) from the 144  
271 infants born by VD (N=96) or CS (N=48) during the first 12 months. The urgent and  
272 elective CSs were pooled for analysis (Supplementary results, Supplementary Figure 1).  
273 The IP antibiotics and doses varied among the delivery modes, with cefuroxime being  
274 the most common antibiotic used in CS and penicillin in VD (Table 2). Of all the VD  
275 antibiotics, 74% were solely prophylactic, of which 93% to prevent GBS transmission,  
276 and 7% due to premature rupture of membranes, while 69% of cephalosporins were  
277 therapeutic. Therapeutic IP antibiotics were administered due to fever or a rise in C-  
278 reactive protein (CRP) of the mother. Absolute bacterial profiles were calculated for a  
279 subset of 92 infants (VD: N=46, CS: N=46). Infant background statistics are  
280 summarised in Supplementary Table 1.

281

282

### 283 **The early development of the gut microbiota from birth to 12 months of age**

284

285 Birth mode or antibiotic exposure did not influence the total bacterial abundance  
286 quantified by qPCR at any given sampling time ( $P > 0.05$ ). Overall, the bacterial load  
287 increased with infant age in all groups, especially during the first weeks (Supplementary  
288 Figure 2).

289

290 To understand the temporal dynamics of the gut microbiota in infants, we analysed the  
291 average developmental trajectory of the 6 most abundant bacterial classes in infants

292 born by VD without antibiotics, comparing their relative (day 1 onwards) and absolute  
293 abundances (day 2 onwards) (Figure 1). Relative abundances show different community  
294 dynamics, such as a gradual decrease in the relative abundance of *Enterobacteriales*  
295 instead of the peak in absolute abundance around 20 weeks of age (Figure 1).

296

297 The overall developmental trajectories of the microbiota differed between the study  
298 groups categorized by delivery mode and antibiotic type (Table 1) in the ordination  
299 space using principal coordinate analysis (PCoA) (Figure 2). The temporal development  
300 of the gut microbiota followed a discernible pattern in the reference group (VD without  
301 antibiotics), and each exposure group showed a distinct developmental trajectory based  
302 on both absolute (Figure 2A) and relative data (Figure 2B). By 24 weeks, all but VD-  
303 cep converged with the reference group. The temporal trajectory of the gut microbiota  
304 in the VD-cep group markedly deviated from the reference group (Figure 2).

305

### 306 **Impact of birth mode and intrapartum antibiotic on the temporal development of** 307 **the gut microbiota using absolute data**

308 To better understand the developing community dynamics, from this onwards we  
309 focused on the absolute abundance data. We first compared abundances of bacterial  
310 families and genera of the exposure groups to the reference (VD without antibiotic),  
311 adjusting for breastfeeding, probiotics, and the introduction of solids when relevant. The  
312 results observed at family level (Figure 3) were largely consistent at the genus level  
313 (Supplementary Figure 3).

314

315 In the first 3 months, the absolute abundance of *Bacteroidaceae* was significantly  
316 reduced in the CS, but not in the antibiotic-VD groups (fold change range 0.010-0.11,  
317  $P<0.01$  Figure 3). The depletion of *Bacteroidaceae* became statistically significant later,  
318 at 6 months and 9 months, in VD-cep (fold change 0.014,  $P=0.0003$ ) and VD-pen (fold  
319 change 0.030,  $P=0.01$ ).

320

321 *Coriobacteriaceae* (Actinobacteria) followed a pattern similar to that of  
322 *Bacteroidaceae*, being mainly associated with birth mode. The absolute abundance of  
323 *Bifidobacteriaceae* was strongly and negatively affected by both CS birth and by both  
324 cephalosporin and penicillin at 1 month, (fold change range 0.0040-0.18,  $P<0.01$ ,

325 Figure 3) compared to VD without antibiotics. *Actinomycetaceae* and *Micrococcaceae*  
326 were enriched in all the exposure groups except the VD-pen group at one month (fold  
327 change range 6.2-13,  $P<0.001$ , Figure 3). Families in the Bacilli class,  
328 *Staphylococcaceae*, *Enterococcaceae*, *Lactobacillaceae*, and *Streptococcaceae*, were  
329 increased in absolute abundance in all exposure groups during the first 3 months (fold  
330 change range 1.0-240,  $P<0.05$ , Figure 3). The absolute abundances of several families  
331 in the classes Clostridia and Negativicutes were increased in all the exposure groups  
332 during the first month in comparison to the reference, with a few exceptions: reduced  
333 *Christensenellaceae* in the CS-other group at 1 month and in both CS groups at 6  
334 weeks, reduced *Ruminococcaceae* in all but the VD-pen group at 1 and 3 months, and  
335 reduced *Acidaminococcaceae* in the CS groups at 4-6 weeks (Figure 3). The absolute  
336 abundances of Proteobacterial families in the antibiotic-exposed groups significantly  
337 deviated from the reference at multiple time points (fold change range 0.00054-6100,  
338  $P<0.05$ , Figure 3).

339

#### 340 **Dissecting the effects of birth mode and intrapartum antibiotic on absolute levels** 341 **of infant microbiota**

342 We compared the birth modes while controlling for the IP antibiotic exposure, including  
343 only the cephalosporin-exposed CS and VD, to understand the effect of birth mode  
344 independently of antibiotic treatment, and *vice versa* (including only the vaginally born)  
345 (Supplementary Figures 4, 5). Several bacterial families differed in absolute abundance  
346 between the VD-cep and CS-cep groups, including enrichment of *Verrucomicrobiaceae*  
347 (3.8-fold difference,  $P<0.001$  at 6 weeks), *Bifidobacteriaceae* (18 and 12-fold  
348 differences,  $P<0.05$  at 1 and 3 months, respectively), *Streptomyetaceae* (7.0 and 62-  
349 fold differences,  $P<0.001$  at 1 month and 9 months), *Lactobacillaceae* (8.3 and 12 -fold  
350 differences,  $P<0.05$  at 3 and 9 months), *Bacillaceae* (3.8 and 8.5-fold differences,  
351  $P<0.001$  at 6 weeks and 6 months), *Peptostreptococcaceae* (fold change range 7.5-  
352 5900,  $P<0.01$  at 1, 3 and 6 months), *Lachnospiraceae* (20 and 99-fold differences,  
353  $P<0.01$  at 3 and 6 months), *Clostridiaceae* (23-fold difference,  $P<0.001$  at 1 month),  
354 and *Christensenellaceae* (210-fold difference,  $P<0.001$  at 6 months) in the CS-cep  
355 group. In contrast, *Bacteroidaceae* was reduced in CS-cep in comparison to VD-cep  
356 during months 1-3 (fold change 0.07,  $P<0.01$  at 6 weeks).

357

358 In terms of the effect of antibiotic types in the vaginally born infants, increased absolute  
359 abundances were found in *Verrucomicrobiaceae* and *Rikenellaceae* (22 and 79-fold  
360 differences,  $P<0.001$  at 6 weeks), *Bifidobacteriaceae* and *Lactobacillaceae* (25 and 5.2-  
361 fold differences,  $P<0.01$  at 3 months), *Coriobacteriaceae* (fold change range 6.0-910,  
362  $P<0.001$  at 1-3 months), *Peptostreptococcaceae* (94 and 72-fold differences,  $P<0.05$  at  
363 1 and 6 months), *Christensenellaceae* (8300-fold difference,  $P<0.001$  at 6 months),  
364 *Bacillaceae* (36 and 13-fold differences,  $P<0.001$  at 6 weeks and 6 months) in the VD-  
365 cep group compared to VD-pen. Members of *Clostridiaceae* were consistently reduced  
366 in VD-pen in comparison to VD-cep at 1 month (fold change 0.34,  $P<0.001$ ).

367

### 368 **Health outcomes**

369 To determine whether the mode of delivery and IP antibiotics were associated with the  
370 infants' health during the first year of life, we compared the study groups in terms of  
371 health variables from the HELMi questionnaires pertinent to parent-reported digestive  
372 and overall health (Figure 4). All exposure groups showed increased GI symptoms  
373 mainly during the first 3 months compared to the reference group VD. There were  
374 significant differences in defecation rate, crying intensity, duration of crying per day,  
375 parent-perceived stomach pain intensity, and flatulence between the study groups  
376 (Figure 4). Infants' overall health as reported by the parents did not differ between the  
377 study groups at any sampling age (ANOVA:  $P>0.1$ ), nor did the cumulative number of  
378 antibiotic courses by 12 months ( $P=0.81$ ) nor infant weights at birth or at 12 months  
379 (ANOVA,  $P\geq 0.25$ , Supplementary Table 1).

380

### 381 **Week 4**

382 We assessed the hypothesis that the differences in the gut microbiota mediate the GI  
383 symptoms by performing a mediation analysis on the symptoms at time points that  
384 showed significant differences between the study groups (Figure 4) in infants with  
385 absolute data available (Supplementary Table 2). We analysed the association between  
386 antibiotic exposure and birth mode as separate variables with the health outcomes,  
387 compared the study groups in terms of the health outcomes, and identified bacterial taxa  
388 associated with both the health outcomes and the antibiotic exposure or birth mode. At 4  
389 weeks, cephalosporin exposure (including both vaginal birth and CS) was significantly  
390 and positively associated with crying intensity ( $P=0.009$ ), and when comparing groups,

391 the VD-cep group had increased crying intensity in comparison to the reference group  
392 ( $P=0.009$ ). A model using absolute bacterial abundances explained 24% of the variation  
393 in crying intensity (Figure 5a). The association of cephalosporin exposure with crying  
394 intensity appeared to be mediated by the low abundance of *Bacteroides* associated with  
395 cephalosporin exposure. Defecation rate was positively associated with cephalosporin  
396 exposure ( $P<0.0001$ ) and CS ( $P<0.0001$ ), and the CS-cep group had elevated defecation  
397 rate ( $P<0.0001$ ) compared to the reference group. The bacterial composition explained  
398 28% of the variation in defecation rate. The increased defecation rate in the CS-born  
399 and cephalosporin-exposed infants compared to the controls appeared attributable to the  
400 decreased abundances of *Bacteroides* and uncultured *Veillonellaceae* (Figure 5a).

401

#### 402 **Week 6**

403 At 6 weeks, defecation rate was elevated in the CS-cep group ( $P=0.007$ ) compared to  
404 the reference, and both CS birth ( $P=0.006$ ) and cephalosporin exposure ( $P=0.01$ ) were  
405 independently associated with increased defecation rate. The gut microbiota  
406 composition was associated with defecation rate, explaining 51% of the variation. The  
407 effects of CS birth and cephalosporin appeared to be mediated by the decreased  
408 abundances of *Bifidobacterium* and *Fingoldia* (Figure 5b). Stomach pain intensity was  
409 significantly elevated in the CS-cep ( $P=0.009$ ) and VD-cep ( $P=0.01$ ) groups compared  
410 to the reference. Cephalosporin exposure was significantly associated with stomach pain  
411 ( $P=0.005$ ). The association was mediated by the reduced abundance of *Collinsella* and  
412 the increased abundances of *Escherichia* and *Streptococcus* in the CS-born and cep-  
413 exposed infants (Figure 5b). Gut microbiota composition explained 30% of the variation  
414 in stomach pain intensity.

415

#### 416 **Week 12**

417 At 12 weeks, stomach pain intensity was increased in the CS-cep group ( $P=0.04$ ) and  
418 VD-cep group ( $P=0.02$ ) compared to the reference. Cephalosporin exposure was  
419 significantly associated with the pain intensity ( $P=0.02$ ). The gut microbiota explained  
420 46% of the variation in stomach pain, the low absolute abundance of *Alistipes* and high  
421 abundance of *Roseburia* being linked with both CS birth and stomach pain (Figure 5c).  
422 Flatulence intensity was increased in the CS-cep group ( $P=0.02$ ) compared to the  
423 reference, and CS birth ( $P=0.05$ ) and cephalosporin exposure ( $P=0.02$ ) were associated

424 with increased flatulence intensity. The gut microbiota explained 23% of the variation  
425 in flatulence intensity at 12 weeks. The association of CS birth and cephalosporin and  
426 flatulence appeared mediated by the reduced abundance of *Bacteroides* and *Alistipes*  
427 (Figure 5c).

428

#### 429 **Week 24**

430 At 24 weeks, stomach pain intensity was associated with penicillin exposure ( $P=0.01$ )  
431 and increased in the VD-pen group ( $P=0.01$ ) compared to the reference. Gut microbiota  
432 composition explained 54% of the variation in stomach pain intensity, with  
433 *Paludibacter* mediating the association with penicillin exposure (Figure 5d).

434

#### 435 **Discussion**

436 We set out to study how the temporal quantitative and compositional gut microbiota  
437 development is influenced by the mode of delivery versus exposure to delivery  
438 antibiotics, and whether these early exposures and associated differences in early  
439 microbiota composition relate to common gastrointestinal symptoms in infants.  
440 Whereas CS delivery had profound effects on the gut microbiota, we observed that  
441 maternal IP antibiotics compromised the colonisation of the newborn's gut microbiota  
442 independent of the birth mode. Notably, the decreased absolute abundance of  
443 *Bifidobacterium* and increased abundance of Bacilli characterised both CS-deliveries  
444 and IP antibiotic exposed vaginally delivered infants, whereas reduction of *Bacteroides*  
445 was mainly seen after CS delivery. Moreover, we observed that the changes in gut  
446 microbiota taxa associated to CS birth and IP antibiotic exposure were further  
447 associated with increased GI symptoms.

448

449 This is one of the first studies using quantitative microbiota profiling<sup>19, 36</sup> for  
450 community-wide absolute abundance estimates of infants' indwelling gut bacteria and  
451 the first to address the associated GI health. The vast majority of existing NGS studies  
452 on human microbiota utilize only relative abundance. This has been recently shown to  
453 under- or overestimate temporal changes of the gut microbiota in preterm infants,<sup>21</sup>  
454 especially concerning Proteobacteria such as *Escherichia coli* and *Klebsiella*. Several  
455 members within Proteobacteria, such as *E. coli*, possess flexible metabolic capacity<sup>37</sup>  
456 and fast replication rate and therefore have high temporal variation in cell density. In the



457 present study, we documented a decreasing developmental trajectory of the most  
458 abundant Proteobacterial order *Enterobacteriales* in relative abundance data, in line  
459 with earlier relative abundance studies.<sup>38</sup> In contrast, the absolute abundance of  
460 *Enterobacteriales* increased over the first 6 months of life, peaking around the time of  
461 introducing complementary foods, in agreement with a previous study in term infants  
462 utilizing targeted qPCR.<sup>39</sup> The developmental patterns of other dominant bacteria are  
463 largely in concordance with the previous qPCR-based study, showing a general upward  
464 trend in the first few months of life.<sup>39</sup> Relative abundances also underestimate taxa with  
465 low 16S rRNA gene copy numbers, such as *Bifidobacteriales* (mean 3.5 copies<sup>40</sup>)  
466 compared to taxa with high copy numbers, such as *Clostridiales* (mean 5.5 copies<sup>40</sup>),  
467 observed also in this study.

468

469 CS birth has been suggested to cause microbial deprivation, a lack of microbial  
470 colonisation in early life. This was not the case in our study, as CS-born and antibiotic-  
471 exposed infants were colonised with comparable total bacterial loads per gram of faeces  
472 as the non-exposed vaginally born group. We observed a clear age-driven increase in  
473 the bacterial loads in all study groups using qPCR. Unfortunately, majority of the low  
474 bacterial biomass samples from the first week of life had insufficient amount of faecal  
475 sample to allow quantitative analyses. Previous studies have reported lower bacterial  
476 loads in CS born infants,<sup>41</sup> and a faster age-driven increase in bacterial quantities in the  
477 stools of CS born infants.<sup>42</sup> It is nevertheless possible that the transient difference in  
478 total microbial load occurring before 3 weeks of age was not detected in the present  
479 study.

480

481 Relative abundance studies have consistently documented an altered bacterial  
482 signature in gut microbiota of CS born infants,<sup>1</sup> recently shown to be restored by  
483 maternal FMT.<sup>43</sup> Most studies on infant microbiota in relation to birth mode have  
484 neglected the fact that practically all CS births involve IP antibiotics, making it  
485 impossible to isolate the effects of IP versus the birth route.<sup>44</sup> Our results comparing the  
486 effect of birth mode under the exposure to the same antibiotic, cephalosporin, confirm  
487 that birth mode *per se* influences the infant gut microbiota. CS birth usually involves  
488 the administration of cephalosporin, while in VD, the most commonly used IP antibiotic  
489 is penicillin.<sup>45</sup> It should be noted that the use of cephalosporin in VD typically indicates



490 therapeutic rather than prophylactic use, and in our cohort, every other cep-VD mother  
491 received multiple doses compared to the single prophylactic dose used in CS. Hence, in  
492 clinical settings, labours with different IP antibiotics may also differ for other factors  
493 than the antibiotic exposure. A recent randomized trial documented a lack of clear  
494 differences in the gut microbiota of CS-born infants exposed versus unexposed to IP  
495 antibiotic.<sup>45</sup> In conclusion, our study and earlier data indicate that the mode of birth is  
496 the major factor affecting neonatal colonisation, in line with CS eliminating the contact  
497 between the infant and maternal gut bacteria, preventing their transmission at birth.<sup>46</sup>  
498 Infants born by elective CS, in the absence of labour and rupture of membranes, are  
499 believed to be the most deprived from the vertically transmitted microbes. A recent  
500 study however contradicted this hypothesis,<sup>47</sup> which we corroborated by showing the  
501 negligible differences in the infant microbiota between the elective and urgent CS  
502 deliveries.

503

504 In contrast, in VD infants the IP antibiotic plays a major role. We showed that the  
505 impact of IP antibiotic exposure during vaginal birth on the gut microbiota was largely  
506 similar to the effect of CS delivery on the infant gut microbiota. However, we were able  
507 to identify several distinct effects of birth mode and antibiotic exposure. Namely, the  
508 early absolute abundances of *Bacteroidaceae*, *Coriobacteriaceae* and *Burkholderiaceae*  
509 were reduced by CS birth but not by IP antibiotics, while *Ruminococcaceae*,  
510 *Porphyromonadaceae*, *Rikenellaceae*, and *Pasteurellaceae* abundances were negatively  
511 affected by both CS birth and antibiotics. *Bifidobacteriaceae* was most strongly affected  
512 by the antibiotic exposure. These observations recapitulate and expand the results of a  
513 recent Japanese study<sup>48</sup> and Canadian studies.<sup>49</sup> With absolute data, we found the effect  
514 of IP antibiotics in VD infants to peak at 3 months with some differences persisting up  
515 to 12 months. Previous studies using relative microbiota data have reported the effect of  
516 birth-related antibiotics to resolve after 3 months,<sup>47</sup> however, most of the studies do not  
517 extend over this age.<sup>13</sup> A recent prospective study on 100 vaginally born infants  
518 reported the effect of IP antibiotics to overrule those of post-natal antibiotics on the  
519 infant microbiota, and persist until the at age of one year.<sup>50</sup>

520

521 Importantly, several bacterial taxa were increased in absolute abundance in the CS-born  
522 and in the antibiotic exposed infants. For example, IP antibiotic exposure in VD, and

523 CS birth both resulted in the overgrowth of streptococci as well as staphylococci and  
524 enterococci. This is likely due to reduced colonization resistance resulting from the  
525 depletion of bifidobacteria, which have anti-streptococcal activity.<sup>51</sup> In fact, the majority  
526 of bacterial taxa affected by IP antibiotics, except bifidobacteria, were increased in  
527 absolute abundance during the first month. This suggests that the major driver of  
528 microbial changes after exposure to IP antibiotic is not the antibiotic itself, but the  
529 antibiotic-induced reduction in bifidobacteria. Since the direct effects by the IP  
530 antibiotic on the infant are short (from hours to couple of days), the lasting effects likely  
531 reflect the consequences of the fundamental alteration in the ecosystem assembly.<sup>52</sup> The  
532 pattern is somewhat different after CS birth, where diverse members of the microbiota,  
533 including *Bacteroides*, bifidobacteria and members of Clostridiales and Negativicutes,  
534 were likely directly reduced due to lower mother-infant microbiota transmission rates in  
535 CS birth.<sup>7</sup>

536

537 To our knowledge, our study is the first to evaluate the influence of birth mode and  
538 associated maternal antibiotic administration in parallel with the infant gut microbiota  
539 and functional GI symptoms. Previously, CS birth and postnatal antibiotics have been  
540 identified as risk factors for functional GI disorders in pre- and full-term infants.<sup>53</sup> In  
541 our study, CS-born and VD IP antibiotic-exposed infants experienced more parent-  
542 reported abdominal discomfort and crying compared to VD infants with no antibiotics  
543 in the first month of life, while their general health and growth was comparable.  
544 According to the mediation analysis, the CS-associated reduction in the abundance of  
545 *Bacteroides* and its relatives was linked to increased defecation rates and crying  
546 intensity at 1 month, and increased flatulence and stomach pain at 3 months compared  
547 to the reference. The cephalosporin-associated decline in *Bifidobacterium* and  
548 *Collinsella* was associated with increased defecation rate and stomach pain at 6 weeks  
549 compared to the reference. Colic symptoms have previously been linked with the  
550 reduced relative abundance of bifidobacteria<sup>54, 55</sup> and to an altered balance between H<sub>2</sub>-  
551 producing and -utilising taxa.<sup>56</sup> Overall, the models based on absolute bacterial  
552 abundances explained 23-54% of the infants' GI symptom variation, which is  
553 remarkable considering that the origin and underlying reasons of functional GI  
554 symptoms in infants often remain unclear.<sup>57</sup> These results are preliminary and derived  
555 from a relatively small study, and hence need validation in future cohorts.

556

557 *Bacteroides* and bifidobacteria are the major human milk oligosaccharide (HMO) -  
558 degraders and thus keystone taxa in the breastfed infant gut,<sup>58-60</sup> so their depletion will  
559 have profound impact on the metabolic capacity and processes in the infant gut.<sup>61</sup>  
560 Reduced conversion of HMOs into short-chain fatty acids (SCFA) increases gut pH,<sup>62, 63</sup>  
561 and alters trophic interactions and metabolic outputs of the gut microbiota. Such  
562 changes likely affect gut physiology and function and may favour bacteria that normally  
563 are less abundant in the infant gut, such as members of Clostridia, which in the present  
564 study were associated with increased defecation rates, flatulence, and stomach pain.

565

566 There is some uncertainty as to how long the microbiota differences persist after CS  
567 birth or IP antibiotic exposure, and how the persistence affects host physiology. Studies  
568 based on relative abundance data have shown a convergence to vaginally born controls  
569 during 6-12 months.<sup>11, 64</sup> Long-term studies on the effects of IP antibiotic exposure have  
570 not been conducted. Our findings suggest that several birth-mode and IP antibiotic-  
571 related microbial signatures are still detectable at 12 months, although the major  
572 differences subside by 6 months. There may be individual differences regarding the  
573 normalisation of the gut microbiota after CS birth or antibiotic exposure, possibly  
574 related to diet, probiotic use, and other practices.<sup>65, 66</sup> A recent Danish study showed that  
575 increased asthma risk was found in children born by CS only if their gut microbiota  
576 composition at 1 year of age still retained a CS-birth-related microbial signature,<sup>9</sup> while  
577 animal experiments showcase that even a transient early microbiota disruption is  
578 sufficient to lead to persistent functional and even structural alterations in the immune  
579 system.<sup>67</sup>

580

581 Together, CS and antibiotic exposure at birth affect a substantial proportion of infants  
582 worldwide. Our data suggest that their effects on early colonisation of the gut  
583 microbiota may cause elevated levels of pain and discomfort in the infant during the  
584 first months of life, while a recent study found no association between IP antibiotics and  
585 childhood allergies.<sup>18</sup> These studies are important primers for filling the knowledge  
586 gaps that underlie the lack of consensus for the choice between universal or risk-based  
587 screening for IP antibiotic use,<sup>10</sup> and contribute to weighing the benefits and potential  
588 harms of antibiotic use in mothers and infants.



590 Acknowledgements

591

592 This research was supported by grants from Tekes 329/31/2015 (Health and the Early  
593 Life Microbiome (WMdV), Academy of Finland 1297765 (KK) and 1325103 (AS),  
594 Pediatric Research Foundation, Finland and Helsinki University Hospital Grant (KLK),  
595 The Paulo and Sohlberg Foundations (AS) and the Doctoral Program in Microbiology  
596 and Biotechnology, University of Helsinki, Finland funding (RJ). We thank Tinja  
597 Kanerva for processing the samples and Jessica Manngård for assistance with the  
598 questionnaire data analysis and Tytti Jaakkola, MD for recruiting some of the patients in  
599 the Jorvi cohort.

600

601 REFERENCES

- 602 1. Korpela K, de Vos WM. Early life colonization of the human gut: microbes  
603 matter everywhere. *Curr Opin Microbiol* 2018;44:70-78.
- 604 2. Tanaka M, Nakayama J. Development of the gut microbiota in infancy and its  
605 impact on health in later life. *Allergology International* 2017.
- 606 3. Cox LM, Yamanishi S, Sohn J, et al. Altering the intestinal microbiota during a  
607 critical developmental window has lasting metabolic consequences. *Cell*  
608 2014;158:705-721.
- 609 4. Cox LM, Yamanishi S, Sohn J, et al. Altering the intestinal microbiota during a  
610 critical developmental window has lasting metabolic consequences. *Cell*  
611 2014;158:705-721.
- 612 5. Bäckhed F, Roswall J, Peng Y, et al. Dynamics and Stabilization of the Human  
613 Gut Microbiome during the First Year of Life. *Cell Host Microbe* 2015;17:690-  
614 703.
- 615 6. Yassour M, Jason E, Hogstrom LJ, et al. Strain-Level Analysis of Mother-to-  
616 Child Bacterial Transmission during the First Few Months of Life. *Cell Host &*  
617 *Microbe* 2018;24:146-154.e4.
- 618 7. Shao Y, Forster SC, Tsaliki E, et al. Stunted microbiota and opportunistic  
619 pathogen colonization in caesarean-section birth. *Nature* 2019;574:117-121.
- 620 8. Stiemsma LT, Michels KB. The Role of the Microbiome in the Developmental  
621 Origins of Health and Disease. *Pediatrics* 2018;141:e20172437.
- 622 9. Stokholm J, Thorsen J, Blaser MJ, et al. Delivery mode and gut microbial  
623 changes correlate with an increased risk of childhood asthma. *Science*  
624 *Translational Medicine* 2020;12:eaax9929.
- 625 10. Le Doare K, Heath PT, Plumb J, et al. Uncertainties in Screening and Prevention  
626 of Group B Streptococcus Disease. *Clin Infect Dis* 2019;69:720-725.
- 627 11. Dierikx TH, Visser DH, Benninga MA, et al. The influence of prenatal and  
628 intrapartum antibiotics on intestinal microbiota colonisation in infants: A  
629 systematic review. *Journal of Infection* 2020.
- 630 12. Tapiainen T, Koivusaari P, Brinkac L, et al. Impact of intrapartum and postnatal  
631 antibiotics on the gut microbiome and emergence of antimicrobial resistance in  
632 infants. *Sci Rep* 2019;9:10635.
- 633 13. Zimmermann P, Curtis N. Effect of intrapartum antibiotics on the intestinal  
634 microbiota of infants: a systematic review. *Archives of Disease in Childhood -*  
635 *Fetal and Neonatal Edition* 2020;105:201.
- 636 14. Penders J, Thijs C, Vink C, et al. Factors Influencing the Composition of the  
637 Intestinal Microbiota in Early Infancy. *Pediatrics* 2006;118:511.
- 638 15. Jian C, Carpén N, Helve O, et al. Early-life gut microbiota and its connection to  
639 metabolic health in children: Perspective on ecological drivers and need for  
640 quantitative approach. *EBioMedicine* 2021;69.
- 641 16. McLaren RA, Atallah F, Minkoff H. Antibiotic Prophylaxis Trials in Obstetrics:  
642 A Call for Pediatric Collaboration. *AJP Rep* 2020;10:e155-e158.
- 643 17. Russell NJ, Seale AC, O'Sullivan C, et al. Risk of Early-Onset Neonatal Group  
644 B Streptococcal Disease With Maternal Colonization Worldwide: Systematic  
645 Review and Meta-analyses. *Clinical Infectious Diseases* 2017;65:S152-S159.

- 646 18. Dhudasia MB, Spergel JM, Puopolo KM, et al. Intrapartum Group B  
647 Streptococcal Prophylaxis and Childhood Allergic Disorders. *Pediatrics*  
648 2021;147.
- 649 19. Jian C, Luukkonen P, Yki-Järvinen H, et al. Quantitative PCR provides a simple  
650 and accessible method for quantitative microbiota profiling. *PLOS ONE*  
651 2020;15:e0227285.
- 652 20. Jackson DA. Compositional data in community ecology: The paradigm or peril  
653 of proportions? *Ecology* 1997;78:929-940.
- 654 21. Rao C, Coyte KZ, Bainter W, et al. Multi-kingdom ecological drivers of  
655 microbiota assembly in preterm infants. *Nature* 2021;591:633-638.
- 656 22. Gloor GB, Macklaim JM, Pawlowsky-Glahn V, et al. Microbiome Datasets Are  
657 Compositional: And This Is Not Optional. *Frontiers in Microbiology* 2017;8.
- 658 23. Korpela K, Dikareva E, Hanski E, et al. Cohort profile: Finnish Health and Early  
659 Life Microbiota (HELMi) longitudinal birth cohort. *BMJ Open* 2019;9:e028500.
- 660 24. Ebrahim GJ. WHO Child Growth Standards. Growth Velocity Based on Weight,  
661 Length and Head Circumference. *Methods and Development. Journal of Tropical*  
662 *Pediatrics* 2010;56:136-136.
- 663 25. Salonen A, Nikkilä J, Jalanka-Tuovinen J, et al. Comparative analysis of fecal  
664 DNA extraction methods with phylogenetic microarray: effective recovery of  
665 bacterial and archaeal DNA using mechanical cell lysis. *J Microbiol Methods*  
666 2010;81:127-34.
- 667 26. Milani C, Hevia A, Feroni E, et al. Assessing the Fecal Microbiota: An  
668 Optimized Ion Torrent 16S rRNA Gene-Based Analysis Protocol. *PLOS ONE*  
669 2013;8:e68739.
- 670 27. Nadkarni MA, Martin FE, Jacques NA, et al. Determination of bacterial load by  
671 real-time PCR using a broad-range (universal) probe and primers set.  
672 *Microbiology (Reading)* 2002;148:257-266.
- 673 28. Korpela K. *mare: Microbiota Analysis in R Easily*. R package version 1.0 ed,  
674 2016.
- 675 29. Edgar RC. Search and clustering orders of magnitude faster than BLAST.  
676 *Bioinformatics* 2010;26:2460-2461.
- 677 30. Korpela K, Blakstad EW, Moltu SJ, et al. Intestinal microbiota development and  
678 gestational age in preterm neonates. *Scientific Reports* 2018;8:2453.
- 679 31. Quast C, Pruesse E, Yilmaz P, et al. The SILVA ribosomal RNA gene database  
680 project: improved data processing and web-based tools. *Nucleic acids research*  
681 2013;41:D590-D596.
- 682 32. Salter SJ, Cox MJ, Turek EM, et al. Reagent and laboratory contamination can  
683 critically impact sequence-based microbiome analyses. *BMC Biology*  
684 2014;12:87.
- 685 33. Jari Oksanen FGB, Michael, Friendly, Roeland Kindt, Pierre Legendre, Dan,  
686 McGlenn, Peter R. Minchin, R. B. O'Hara, Gavin L., Simpson, Peter Solymos,  
687 M. Henry H. Stevens, Eduard, Szoecs, Helene Wagner. *vegan: Community*  
688 *Ecology Package*. R package version 2.5-6 ed, 2019.
- 689 34. Venables WNR, B. D. *Modern Applied Statistics with S*. Volume Fourth  
690 Edition. New York: Springer, 2002.
- 691 35. Pinheiro J BD, DebRoy S, Sarkar D, R Core Team,. *nlme: Linear and Nonlinear*  
692 *Mixed Effects Models*. R package version 3.1-144 ed, 2020.
- 693 36. Vandeputte D, Kathagen G, D'hoë K, et al. Quantitative microbiome profiling  
694 links gut community variation to microbial load. *Nature* 2017;551:507-511.



- 695 37. Bradley PH, Pollard KS. Proteobacteria explain significant functional variability  
696 in the human gut microbiome. *Microbiome* 2017;5:36-36.
- 697 38. Yassour M, Vatanen T, Siljander H, et al. Natural history of the infant gut  
698 microbiome and impact of antibiotic treatment on bacterial strain diversity and  
699 stability. *Sci Transl Med* 2016;8:343ra81.
- 700 39. Obermajer T, Grabnar I, Benedik E, et al. Microbes in Infant Gut Development:  
701 Placing Abundance Within Environmental, Clinical and Growth Parameters. *Sci*  
702 *Rep* 2017;7:11230.
- 703 40. Stoddard SF, Smith BJ, Hein R, et al. rrnDB: improved tools for interpreting  
704 rRNA gene abundance in bacteria and archaea and a new foundation for future  
705 development. *Nucleic Acids Res* 2015;43:D593-8.
- 706 41. Selma-Royo M, Calatayud Arroyo M, García-Mantrana I, et al. Perinatal  
707 environment shapes microbiota colonization and infant growth: impact on host  
708 response and intestinal function. *Microbiome* 2020;8:167.
- 709 42. Martin R, Makino H, Cetinyurek Yavuz A, et al. Early-Life Events, Including  
710 Mode of Delivery and Type of Feeding, Siblings and Gender, Shape the  
711 Developing Gut Microbiota. *PloS one* 2016;11:e0158498-e0158498.
- 712 43. Korpela K, Helve O, Kolho KL, et al. Maternal Fecal Microbiota  
713 Transplantation in Cesarean-Born Infants Rapidly Restores Normal Gut  
714 Microbial Development: A Proof-of-Concept Study. *Cell* 2020;183:324-334.e5.
- 715 44. Nogacka AM, Salazar N, Arboleya S, et al. Early microbiota, antibiotics and  
716 health. *Cell Mol Life Sci* 2018;75:83-91.
- 717 45. Kamal SS, Hyldig N, Krych Ł, et al. Impact of Early Exposure to Cefuroxime  
718 on the Composition of the Gut Microbiota in Infants Following Cesarean  
719 Delivery. *The Journal of Pediatrics* 2019;210:99-105.e2.
- 720 46. Korpela K, Costea P, Coelho LP, et al. Selective maternal seeding and  
721 environment shape the human gut microbiome. *Genome research* 2018;28:561-  
722 568.
- 723 47. Azad MB, Konya T, Persaud RR, et al. Impact of maternal intrapartum  
724 antibiotics, method of birth and breastfeeding on gut microbiota during the first  
725 year of life: a prospective cohort study. *Bjog* 2016;123:983-93.
- 726 48. Imoto N, Kano C, Aoyagi Y, et al. Administration of  $\beta$ -lactam antibiotics and  
727 delivery method correlate with intestinal abundances of Bifidobacteria and  
728 Bacteroides in early infancy, in Japan. *Scientific reports* 2021;11:6231-6231.
- 729 49. Chen YY, Zhao X, Moeder W, et al. Impact of Maternal Intrapartum  
730 Antibiotics, and Caesarean Section with and without Labour on Bifidobacterium  
731 and Other Infant Gut Microbiota. *Microorganisms* 2021;9:1847.
- 732 50. Ainonen S, Tejesvi MV, Mahmud MR, et al. Antibiotics at birth and later  
733 antibiotic courses: effects on gut microbiota. *Pediatric Research* 2021.
- 734 51. Aloisio I, Mazzola G, Corvaglia LT, et al. Influence of intrapartum antibiotic  
735 prophylaxis against group B Streptococcus on the early newborn gut  
736 composition and evaluation of the anti-Streptococcus activity of  
737 Bifidobacterium strains. *Appl Microbiol Biotechnol* 2014;98:6051-60.
- 738 52. Sprockett D, Fukami T, Relman DA. Role of priority effects in the early-life  
739 assembly of the gut microbiota. *Nat Rev Gastroenterol Hepatol* 2018;15:197-  
740 205.
- 741 53. Salvatore S, Baldassarre ME, Di Mauro A, et al. Neonatal Antibiotics and  
742 Prematurity Are Associated with an Increased Risk of Functional





787 Table 1 Faecal samples analysed per delivery group and age (relative data /absolute data).

	VD	VD-cep	VD-pen	CS-cep	CS-other
1 day	11/0	1/0	4/0	2/0	0/0
2 days	23/4	2/0	7/5	5/2	2/1
1 week	31/1	3/0	13/0	7/0	0/0
1 month	46/25	12/7	23/12	33/32	13/13
6 weeks	20/20	10/7	10/8	25/25	12/12
3 months	41/20	12/7	22/8	31/27	13/12
6 months	48/22	12/6	24/12	32/30	13/12
9 months	16/16	7/4	9/7	20/20	10/8
12 months	36/3	8/0	15/3	12/4	3/1

788 VD = vaginal delivery, cep = cephalosporin, pen = penicillin, CS = Caesarean section

789

790 Table 2 Intrapartum antibiotics and doses by delivery group among the 144 infants (relative data /  
791 absolute data).

Birth mode	antibiotic	1 dose	2 or more doses	Total count of infants
VD	penicillin	4/1	21/12	25/13
	cefuroxime	8/3	5/4	13/7
Elective CS	cefuroxime	13/12		13/12
	cephalexin	7/7		7/7
	clindamycin	1/1		1/1
	metronidazole	1/1		1/1
	not reported	1/1		1/1
Urgent CS	cefuroxime	10/10	1/1	11/11
	cephalexin	3/3		3/3
	clindamycin	2/2	2/2	4/4
	penicillin		2/1	2/1
	combination	1/1	4/4	5/5

792 VD = vaginal delivery, CS = Caesarean section.

793

794 Figure 1 Temporal development of six most abundant bacterial classes in absolute (A) and relative (B)  
795 abundance in vaginally born infants not exposed to antibiotics. The lines show means with 50%  
796 confidence interval.

797

798 Figure 2 Principal coordinates analysis of the species-level absolute (A) and relative (B) abundances.  
799 Distances calculated based on Pearson correlations. The samples are coloured by treatment group and the  
800 mean component scores of the groups by age (weeks) presented by large circles.

801

802 Figure 3 Fold changes calculated using absolute abundances of bacterial families with at least one group  
803 significantly differing from the reference group (VD) in the taxon-wise comparisons between all delivery  
804 groups. VD: vaginal delivery without antibiotic, VD-cep: vaginal delivery with cephalosporin, VD-pen:  
805 vaginal delivery with penicillin, CS-cep: C-section with cephalosporin, CS-other: C-section with any  
806 other antibiotic; FC: fold change (cut-off at 5 and 0.001 for clarity); \*:  $P < 0.05$ , \*\*:  $P < 0.01$ , \*\*\*:  $P < 0.001$ ,  
807 in all cases  $FDR < 0.1$ .

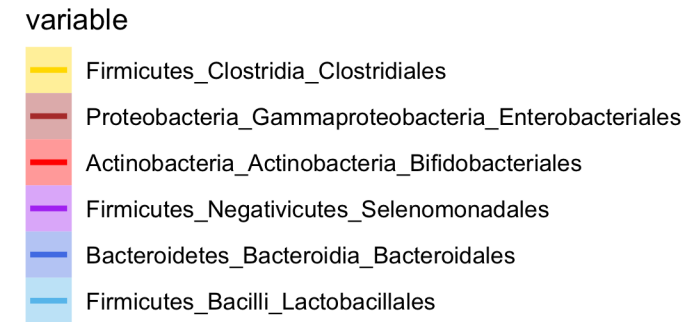
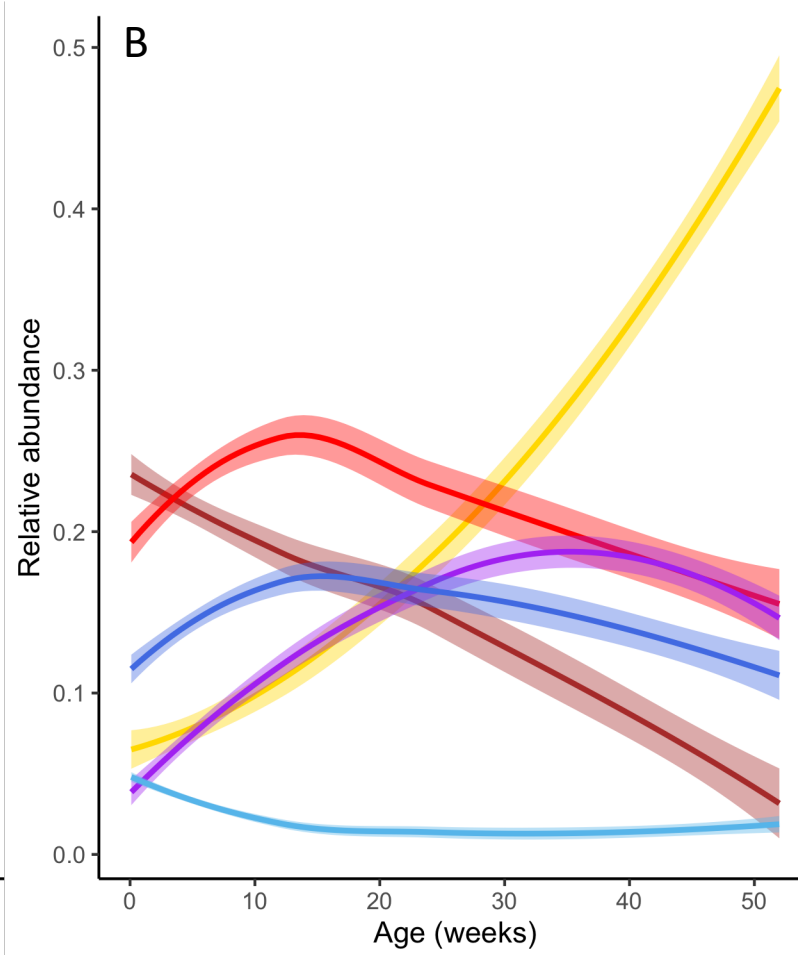
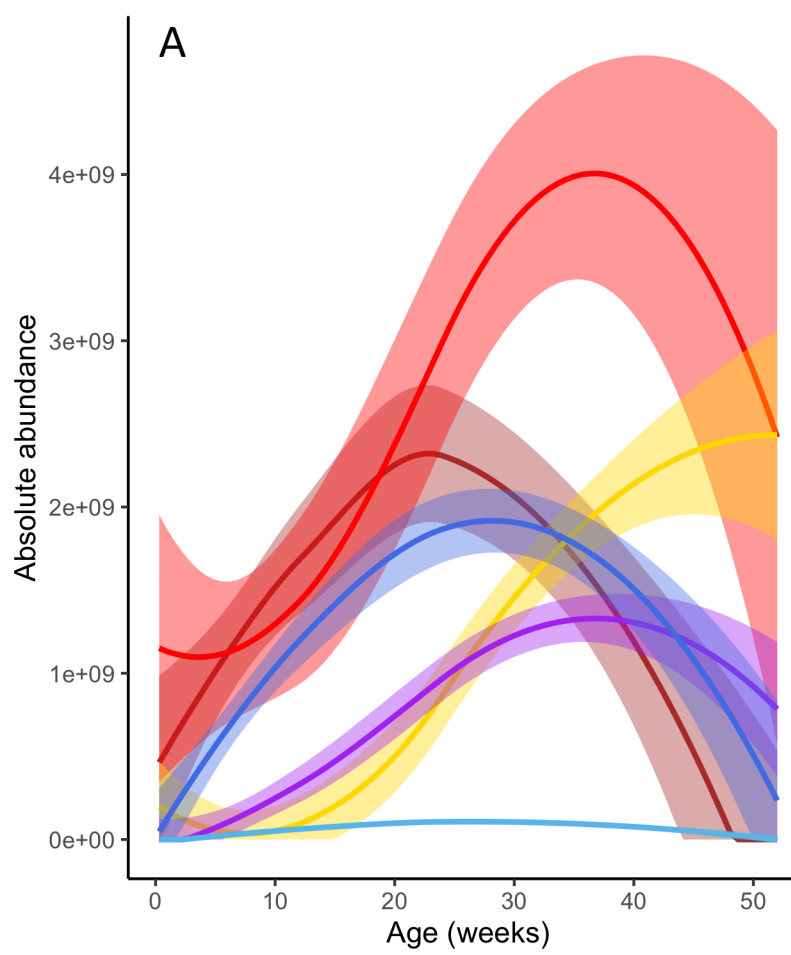
808

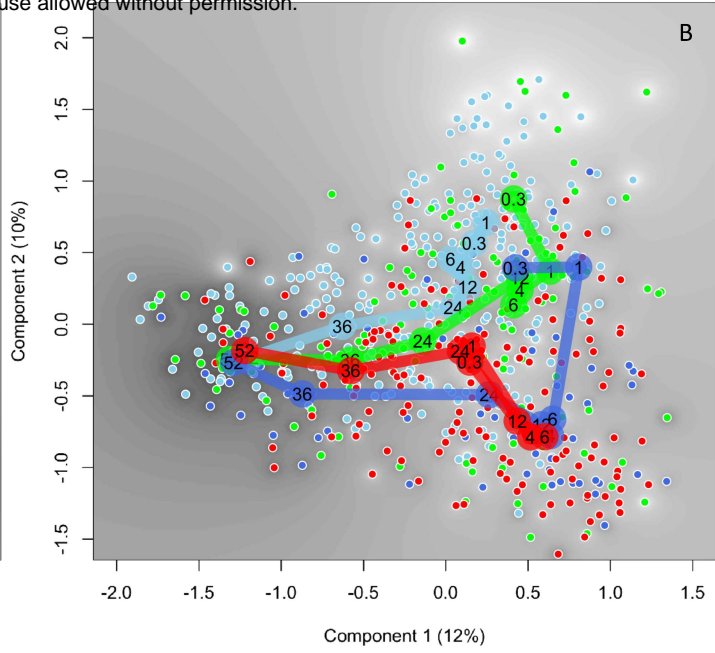
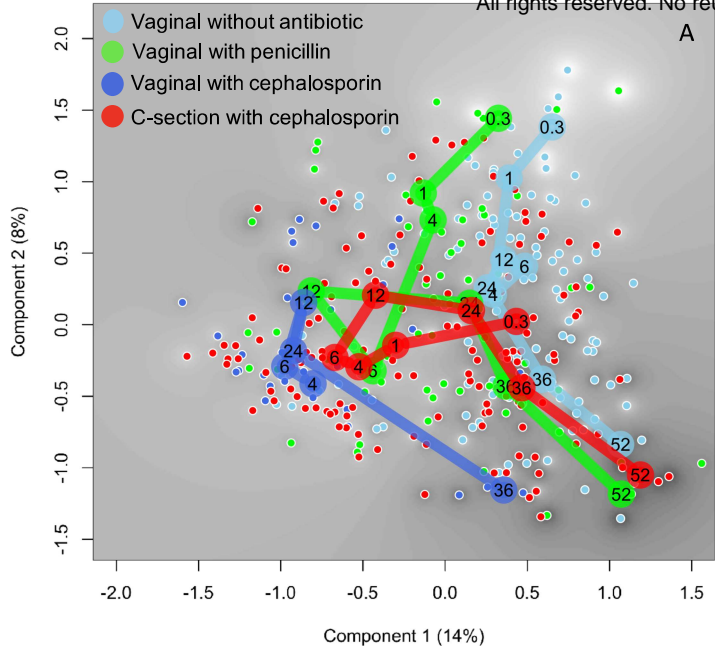
809 Figure 4 Parent-reported health outcomes at faecal sampling points from 1 to 6 by delivery group. \*:  $P < 0.05$ , \*\*:  $P < 0.01$ , \*\*\*:  $P < 0.001$   
810

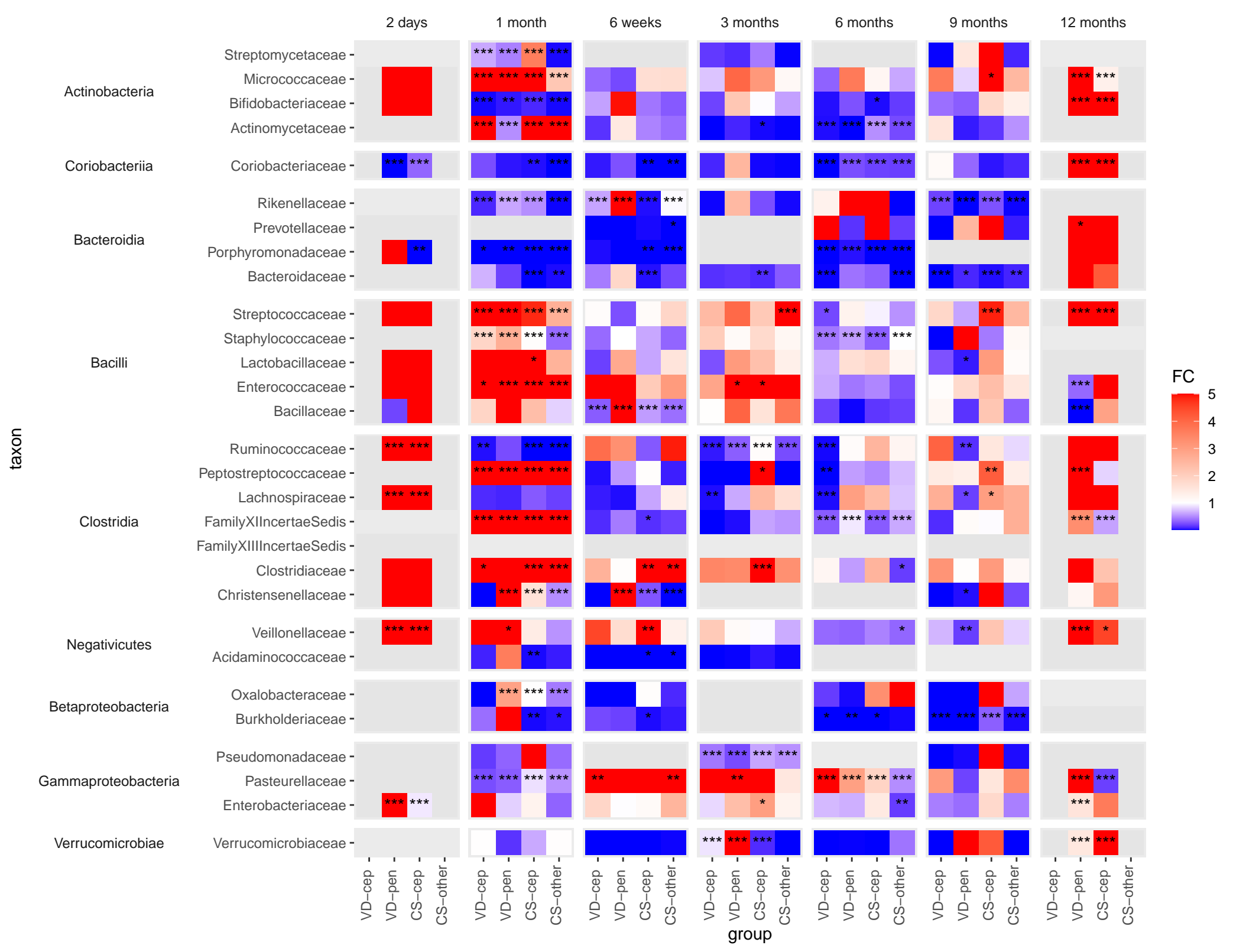
811

812 Figure 5. Associations between birth interventions, absolute abundances of bacteria, and GI symptoms at  
813 4 weeks (a), 6 weeks (b), 12 weeks (c) and 24 weeks (d). The amount of variation explained by the  
814 bacteria shown is given as percentage. The models were selected based on Akaike information criterion  
815 (AIC). In some cases, the final model retained variables that were not statistically significant but  
816 contributed significantly to the model.

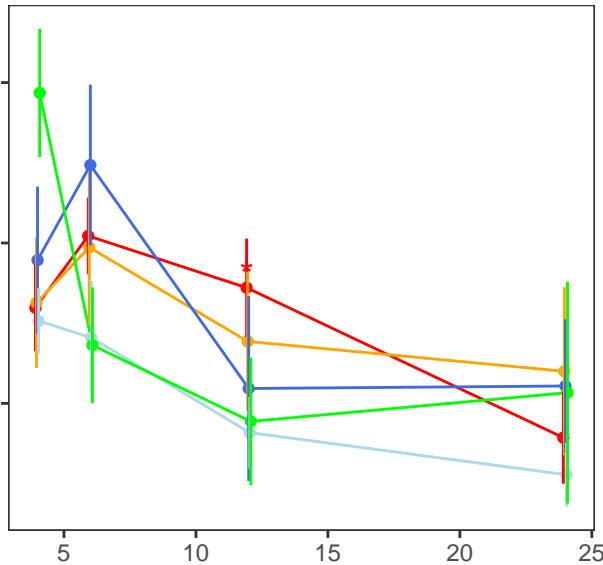
817



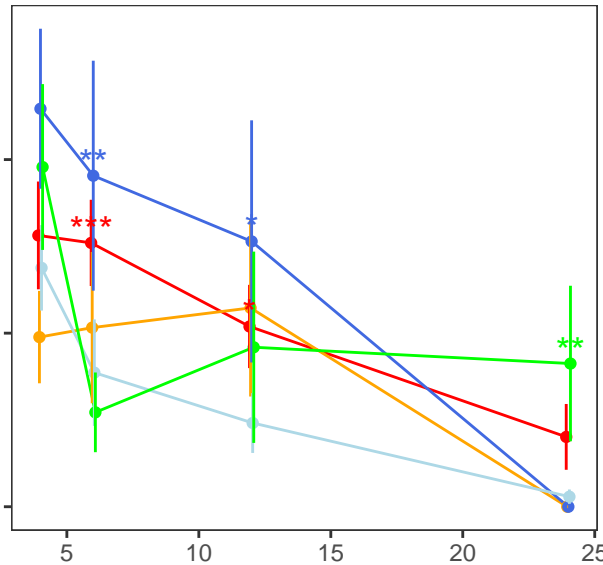




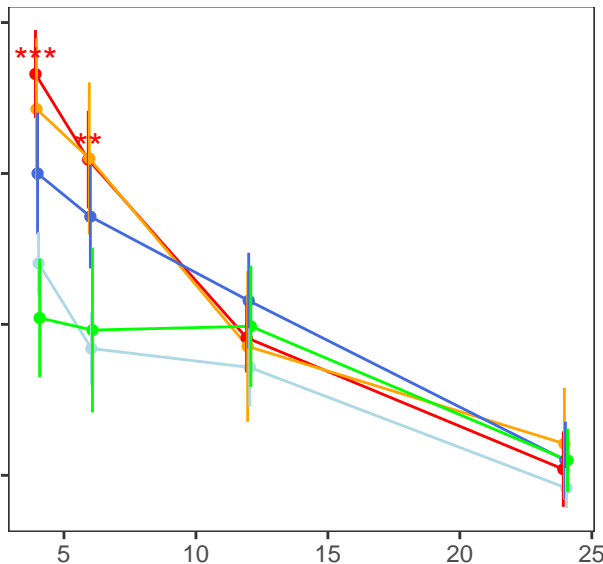
Flatulence intensity (0–100)



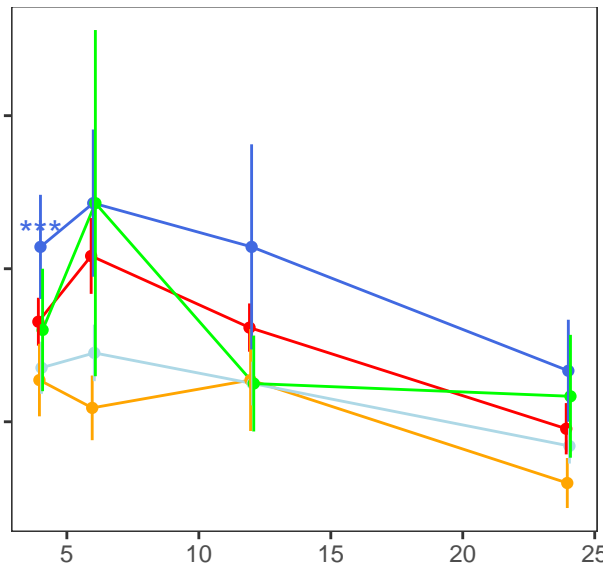
Stomach ache intensity (0–100)



Defecation rate per week



Hours of crying per day



Group

- ◆ Vaginal delivery no antibiotics
- ◆ Vaginal delivery with cephalosporin
- ◆ Vaginal delivery with penicillin
- ◆ C-section with cephalosporin
- ◆ C-section with other antibiotic

Age (weeks)

Value

