



24 <sup>8</sup> Division of Critical Care Medicine, Cincinnati Children's Hospital Medical Center, Cincinnati,  
25 Ohio

26 <sup>9</sup> SEICHE Center for Health and Justice, Section of General Internal Medicine, Yale School of  
27 Medicine, New Haven, Connecticut

28 <sup>10</sup> Equity Research and Innovation Center, Section of General Internal Medicine, Yale School of  
29 Medicine, New Haven, Connecticut

30 <sup>11</sup> Department of Radiology and Biomedical Imaging, Yale School of Medicine, New Haven,  
31 Connecticut

32 <sup>12</sup> Epidemiology Branch, National Institute of Environmental Health Sciences, National Institutes  
33 of Health, Department of Health and Human Services, Research Triangle Park, North Carolina

34 <sup>13</sup> Intramural Program, National Institute on Minority Health and Health Disparities, National  
35 Institutes of Health, Department of Health and Human Services, Bethesda, Maryland

36 <sup>14</sup> Department of Health Policy and Management, Yale School of Public Health, New Haven,  
37 Connecticut

38

39 **Corresponding author:**

40 Harlan M. Krumholz, MD, SM

41 195 Church Street, Fifth Floor, New Haven, CT, 06510

42 Phone: 203-497-1246

43 Email: [harlan.krumholz@yale.edu](mailto:harlan.krumholz@yale.edu)

44

45 **Date of revision:** February 11, 2022

46 **Word count:** 3479

47 **KEY POINTS**

48 **Question:** How have racial and ethnic differences in self-reported sleep duration among US  
49 adults changed between 2004 and 2018?

50 **Findings:** In this serial cross-sectional study that included 429,195 adults, the prevalence of both  
51 short and long sleep duration were persistently higher among Black individuals over the 15-year  
52 study period. The disparities in short sleep duration were highest for Black women, Black  
53 individuals with middle or high income, and young and middle-aged Black adults.

54 **Meaning:** There were marked racial and ethnic differences in sleep duration that persisted from  
55 2004 to 2018, which may be contributing to health disparities.

56 **ABSTRACT**

57 **Importance:** Minoritized racial and ethnic groups are generally more likely to experience sleep  
58 deficiencies. It is unclear how these sleep duration disparities have changed over recent years.

59 **Objective:** To determine 15-year trends in the racial and ethnic differences in self-reported sleep  
60 duration among adults in the US.

61 **Design:** Serial cross-sectional study of the National Health Interview Survey from years 2004–  
62 2018. Analyses were performed between July 26, 2021 and February 10, 2022.

63 **Setting:** US population-based.

64 **Participants:** 429,195 non-institutionalized adults.

65 **Exposures:** Self-reported race, ethnicity, household income, and sex/gender.

66 **Main Outcomes:** Temporal trends and racial/ethnic differences in short- and long-sleep duration  
67 (<7 and >9 hours in a 24-hour period, respectively), and racial/ethnic differences in the  
68 relationship between sleep duration and age.

69 **Results:** The study sample consisted of 429,195 individuals (mean age 46.5 [SE, 0.08] years;  
70 51.7% female) of which 5.1% identified as Asian, 11.8% as Black, 14.7% as Latino/Hispanic,  
71 and 68.5% as White. In 2004, the adjusted estimated prevalence of short-sleep duration and long-  
72 sleep duration, respectively, were 31.3% and 2.5% among Asian individuals, 35.3% and 6.4%  
73 among Black individuals, 27.0% and 4.6% among Latino/Hispanic individuals, and 27.8% and  
74 3.5% among White individuals. Over the study period, there was a significant increase in the  
75 short sleep prevalence among Black, Latino/Hispanic, and White individuals ( $P \leq 0.001$  for each),  
76 whereas prevalence of long sleep changed significantly only among Latino/Hispanic individuals  
77 (-1.4 points,  $P=0.01$ ). In 2018, compared with White individuals, short sleep prevalence among  
78 Black and Latino/Hispanic individuals was higher by 10.7 points and 2.4 points, respectively

79 (P≤0.03 each), and long sleep prevalence was higher only among Black people (+1.4 points;  
80 P=0.01). The short-sleep disparities were the greatest among women and among those with  
81 middle/high household income. In addition, across age groups, Black individuals had a higher  
82 short- and long-sleep duration prevalence compared with White individuals of their same age.  
83 **Conclusions:** In this serial cross-sectional study from 2004 to 2018, the prevalence of short and  
84 long sleep duration was persistently higher among Black individuals. The Black-White  
85 disparities in short-sleep were highest among women, individuals who had middle or high  
86 income, and among young or middle-aged adults.

## 87 **BACKGROUND**

88 In the US, minoritized racial and ethnic groups are generally more likely to report and experience  
89 sleep deficiencies that may be drivers of racial and ethnic disparities in physical health, mental  
90 health, and quality of life.<sup>1-9</sup> Both short and long-sleep duration are more prevalent among Black  
91 and Latino/Hispanic people compared with White people.<sup>10-14</sup> The proportion of people reporting  
92 short-sleep duration has increased across different racial and ethnic groups, widening the  
93 between Black and White individuals in recent years.<sup>12</sup> This occurred while a national health  
94 objective to increase the proportion of people with sufficient sleep was in place.<sup>15,16</sup>

95 In 2020, the National Institute on Minority Health and Health Disparities, the National  
96 Heart, Lung, and Blood Institute, and the Office of Behavioral and Social Sciences Research  
97 proposed a framework for sleep health disparities research that focused on the need for greater  
98 understanding of health consequences, and interventions that may eliminate them.<sup>8</sup> This report  
99 underscores the need for a more detailed evaluation of the population-level trends in sleep health  
100 disparities.

101 Several key gaps in knowledge persist. First, though there is information on short sleep,  
102 our understanding on trends in disparities in long sleep, also a risk factor for adverse health  
103 outcomes, remains poor. Moreover, there is little information on trends in the racial and ethnic  
104 disparities in sleep health stratified by age, sex/gender, or household income.<sup>17-19</sup> For instance, an  
105 understanding of how racial and ethnic differences in sleep duration vary with age may  
106 illuminate the periods of a lifetime in which these disparities emerge and peak. Furthermore,  
107 there are known differences in sleep duration by age and sex/gender,<sup>20</sup> and people with low  
108 income are more likely to report poorer sleep health.<sup>21</sup> How these differences vary by race and  
109 ethnicity remains unknown, and a deeper understanding of these variations is important to

110 identify at-risk groups and institute effective interventions. Finally, many studies have not  
111 included Asian people as a distinct, albeit heterogenous, race group.

112 Accordingly, we describe the temporal trends in racial and ethnic disparities in sleep  
113 duration over 15 years using nationally representative data from the National Health Interview  
114 Survey (NHIS). We estimated differences in the reported short or long sleep duration between  
115 racial and ethnic groups, also stratifying by sex/gender, household income, and health status. In  
116 addition, we evaluated the racial and ethnic differences in the relationship between sleep duration  
117 and age. The purpose of this study is to illuminate trends in racial/ethnic disparities in sleep  
118 duration to inform policies and practices designed to address these disparities.

119

## 120 **METHODS**

### 121 **Data Source**

122 We used data from the annual NHIS from 2004 to 2018. The NHIS has a complex multistage  
123 area probability design that accounts for non-response and oversampling of underrepresented  
124 groups, which allows for nationally representative estimates (details in **eMethods**).<sup>22</sup> We used  
125 data from the Sample Adult Core file, which includes responses from one randomly-selected  
126 adult from each family for a more in-depth questionnaire (mean conditional and final response  
127 rate between 2004-2018 of 80.3% and 62.1%, respectively; **eMethods**). We obtained the  
128 harmonized data from the Integrated Public Use Microdata Series Health Surveys  
129 (<https://nhis.ipums.org/>),<sup>23</sup> including the NHIS strata, primary sampling unit, and person weights.  
130 All NHIS respondents provided oral consent prior to participation. The Institutional Review  
131 Board at Yale University exempted the study from review as NHIS data are publicly available.  
132 The code used to analyze these data is publicly available at

133 <https://doi.org/10.5281/zenodo.6028375>. The study adheres to the STROBE checklist for  
134 reporting cross-sectional studies.

135

### 136 **Study Population**

137 We included individuals  $\geq 18$  years old from years 2004 to 2018 of the NHIS. We excluded  
138 respondents with missing sleep data. Due to small numbers, we also excluded those who  
139 identified as non-Hispanic Alaskan Native/American Indian and those who identified as non-  
140 Hispanic and did not select a primary race (details in Results section).

141

### 142 **Demographic Variables**

143 Participants were classified into 4 mutually exclusive subgroups: non-Hispanic Asian (Asian),  
144 non-Hispanic Black/African American (Black), Latino/Hispanic, and non-Hispanic White  
145 (White), based on their responses to the questions “What race do you consider yourself to be?”  
146 and “Do you consider yourself Latino/Hispanic?”. Other characteristics included were self-  
147 reported age, sex/gender, household income level, health status, and geographic region. Based on  
148 the family income level relative to the respective year’s federal poverty level from the US  
149 Census Bureau, income level was categorized as low income ( $< 200\%$ ) or middle/high income  
150 ( $\geq 200\%$ ).<sup>24-26</sup> Other clinical and sociodemographic characteristics were used only to describe the  
151 study population (**eMethods**).

152

### 153 **Sleep Duration**

154 In the NHIS, participants were asked “On average, how many hours of sleep do you get in a 24-  
155 hour period?” The responses were coded as integers, rounded to the nearest hour (**eMethods**). We



156 defined recommended sleep duration as 7 to 9 hours of sleep in a 24-hour period, short sleep as  
157 reporting sleeping fewer than 7 hours (<7), and long-sleep duration as reporting more than 9 (>9)  
158 hours, consistent with expert consensus recommendations.<sup>27</sup>

159

## 160 **Statistical Analysis**

161 We first described the general characteristics of the study population. For each year, we  
162 estimated the short and long sleep duration prevalence for each racial/ethnic group using  
163 multivariable multinomial logistic regression models, adjusting for age and region (details in  
164 **eMethods**). To measure the racial and ethnic differences in short and long sleep duration, we  
165 subtracted the annual prevalence among White people from the annual prevalence among Asian,  
166 Black, and Latino/Hispanic people for that year. Using these annual estimates and differences  
167 between estimates, we determined trends over the study period by fitting weighted linear  
168 regression models. In a separate analysis, we tested for an absolute difference in each sleep  
169 duration prevalence within each race and ethnic group, and the differences between groups,  
170 between 2004 and 2018 using a z-test.

171 To evaluate the association between race and ethnicity and each of these sleep duration  
172 outcomes by age, we used multinomial logistic regression models with categorical sleep duration  
173 as the dependent variable and age group as the independent variable (**eMethods**).

174 We then stratified the main analysis described above by sex/gender and household  
175 income, separately. Due to the high amount of missing income information from non-response,  
176 the NHIS data include multiply imputed income variables for respondents who do not report  
177 income. Thus, our income-stratified analysis was performed based on the National Center for  
178 Health Statistics recommendations for multiply imputed data analysis (**eMethods**).<sup>28</sup> As a

179 supplementary analysis, we also stratified the main temporal trends analysis by health status to  
180 explore the extent to which the sleep disparities were explained by racial and ethnic differences  
181 in self-perceived health. Finally, we performed a sensitivity analysis to assess if the observed  
182 disparities in short-sleep duration between Black and White individuals may be explained alone  
183 by differences in self-report bias of sleep duration (eMethods).<sup>29</sup>

184 For all analyses, a 2-sided P-value <0.05 was used to determine statistical significance.  
185 All analyses were performed between July 26, 2021, and February 10, 2022, using Stata SE  
186 version 17.0 (StataCorp) and incorporated the NHIS strata, primary sample unit, and sample  
187 adult weights to produce nationally representative estimates using the -svy- family of commands  
188 for structured survey data. All results are reported with 95% CIs. The NHIS strata, primary  
189 sampling unit, and person weights were obtained from IPUMS. All person weights were pooled  
190 and divided by the number of years studied, following guidance from the NHIS.<sup>30</sup>

191

## 192 **RESULTS**

### 193 **Population Characteristics**

194 From 444,743 adults interviewed from 2004 to 2018, we excluded 10,203 (2.3%) who had  
195 missing information on sleep duration. Because of small numbers, we also excluded 3440  
196 individuals who identified as non-Hispanic Alaskan Native/American Indian and 1905  
197 individuals who identified as non-Hispanic and did not select a primary race (**eFigure 1**). Thus,  
198 the study sample consisted of 429,195 individuals (mean age 46.5 [SE, 0.08] years; 51.7% [95%  
199 CI: 51.5, 51.9] female) of which 5.1% (95% CI: 4.9, 5.2) identified as Asian, 11.8% (95% CI:  
200 11.5, 12.2) identified as Black, 14.7% (95% CI: 14.2, 15.1) identified as Latino/Hispanic, and  
201 68.5% (95% CI: 67.9, 69.0) identified as White. Study population characteristics are shown in

202 **Table 1**, and the unadjusted sleep duration distribution by race and ethnicity is shown in **eFigure**  
203 **2**.

204

## 205 **Temporal Trends over the Study Period from 2004 to 2018**

### 206 *Short-Sleep Duration*

207 In 2004, the age- and region-adjusted estimated prevalence of short sleep (<7 hours) was  
208 31.4% among Asian individuals (95% CI: 28.1-34.8), 35.3% among Black individuals (95% CI:  
209 33.4-37.2), 27.0% among Latino/Hispanic individuals (95% CI: 25.4-28.6), and 27.8% among  
210 White individuals (95% CI: 27.1-28.6; **Figure 1**). From 2004 to 2018, the prevalence of short  
211 sleep significantly increased among Black, Latino/Hispanic, and White people regardless of  
212 sex/gender or household income stratum ( $P \leq 0.02$  for each; **Table 2 and eTable 1**). In the same  
213 period, the difference between White and Latino/Hispanic individuals increased significantly  
214 (+3.4% [95% CI: 0.6-6.2;  $P=0.02$ ]) but did not change significantly between the other subgroups.  
215 In 2018, compared with the estimated prevalence among White individuals (31.0% [95% CI:  
216 30.1-31.9]), short-sleep duration among Black and Latino/Hispanic individuals was higher by  
217 10.7 points (95% CI: 8.1-13.2;  $P < 0.001$ ) and 2.4 points (95% CI: 0.2-4.7;  $P=0.03$ ), respectively  
218 (**Table 2**). The observed Black-White disparities remained in our sensitivity analysis that  
219 accounted for differences in overestimation of sleep duration between the two groups (**eFigure**  
220 **3**).

221 Similarly, the prevalence difference between Black women and White women persisted  
222 during the study period and was +12.1 points (95% CI: 8.7-15.4;  $P < 0.001$ ) in 2018; among men  
223 in 2018, the Black-White gap was +9.1 points (95% CI: 5.4-12.8;  $P < 0.001$ ). The prevalence  
224 difference between Latino/Hispanic men and White men, absent in 2004, increased and reached

225 +3.7 points (95% CI: 0.3-7.1; P=0.03) in 2018, whereas there was no significant change in the  
226 difference between women (**Figure 1 and Table 2**).

227 When stratified by income, there were no significant changes in the differences between  
228 groups over the study period. In 2018, the difference between Black individuals and White  
229 individuals in 2018 was +12.3 percentage points (95% CI: 9.0–15.6; P<0.001) among those with  
230 middle/high income and +4.6 points (95% CI: 0.5–8.7; P=0.03) among those with low income.  
231 In the same year, the difference between Latino/Hispanic individuals and White individuals was  
232 +4.6 points (95% CI: 1.8–7.5; P=0.002) and -4.5 points (95% CI: -8.1 to -0.9; P=0.02) among  
233 those with middle/high income and low-income, respectively (**Table 2**). The differences in 2018  
234 between White and Asian individuals were not significant, regardless of income level.

235

### 236 *Long-Sleep Duration*

237 In 2004, the adjusted estimated prevalence of long sleep (>9 hours) was 2.5% among  
238 Asian individuals (95% CI: 1.4-4.3), 6.4% among Black individuals (95% CI: 5.4-7.5), 4.6%  
239 among Latino/Hispanic individuals (95% CI: 3.9-5.3), and 3.5% among White individuals (95%  
240 CI: 3.2-3.8; **Figure 2**). From 2004 to 2018, the prevalence of long sleep significantly changed  
241 only among Latino/Hispanic people (-1.4 percentage points [95% CI: -2.5 to -0.3; P=0.01];  
242 **Table 2**). In 2018, compared with the estimated long-sleep prevalence among White individuals  
243 (3.7% [95% CI: 3.4-4.1]), prevalence was higher by 1.4 points among Black individuals (95%  
244 CI: 0.4-2.5; P=0.007). Compared with White women, Black women had higher prevalence of  
245 long sleep during the study period (**Table 2 and Figure 2**). When stratified by income, the 2018  
246 difference between White and Black individuals was not significant (**Figure 2**).

247

248 *Supplementary Analysis: Stratification by Health Status*

249 When stratified by health status, the observed racial and ethnic disparities in short and long sleep  
250 duration persisted within each health status stratum over the study period (**eTables 2 and 3** and  
251 **eFigures 4 and 5**).

252

253 **Differences in the Relationship Between Sleep Duration and Age**

254 *Short-Sleep Duration*

255 When compared with White individuals of the same age, short sleep duration was more prevalent  
256 among Black people, with a difference starting at +6.9 points among those 18–24 years (95% CI:  
257 5.3-8.5), peaking at +10.7 points among those aged 50–59 years (95% CI: 8.9-12.6), and  
258 reaching at 2.9% among those older than 84 years old (95% CI: 0.7-5.1) (**Figure 3 and eFigure**  
259 **6**). Among those older than 65 years, the prevalence of short-sleep duration decreased for all  
260 subgroups as age increased. Similar patterns were observed by sex/gender and among those with  
261 middle/high income (**eFigure 7**).

262

263 *Long-Sleep Duration*

264 Across all race/ethnicity groups, prevalence of long sleep was lower among those between 30 to  
265 60 years old. Except for individuals aged 18–24 years, Black individuals had a higher prevalence  
266 than White individuals across all age groups, ranging from +1.7 points among those aged 30–35  
267 years (95% CI: 0.9-2.4) to +3.8 points among those aged  $\geq 80$  years (95% CI: 1.7-5.8; **Figure 3**).  
268 Similar patterns were observed by sex/gender and income strata (**eFigure 8**).

269

270 **DISCUSSION**

271 In this nationally representative sample from 2004 to 2018, there was increasing prevalence of  
272 short sleep duration with persistence of racial and ethnic differences. Black individuals  
273 consistently had the highest prevalence of short sleep duration, reaching a difference of 11  
274 percent points compared with White individuals in 2018. The disparities were larger for Black  
275 women and Black individuals with middle/high income. In addition, the proportion of  
276 Latino/Hispanic individuals who reported short sleep increased among men, widening their gap  
277 with White men to nearly 4 percentage points in 2018. Furthermore, Black individuals also had  
278 the highest prevalence of long sleep duration over the study period, although this disparity was  
279 narrower than that of short sleep. Prevalence among Asian individuals did not change  
280 significantly in the 15-year period and was not significantly different from that of White  
281 individuals. Notably, when analyzed by age, the racial and ethnic disparities were greatest among  
282 young and middle-aged Black adults and slightly narrowed among the elderly.

283 This study expands the literature in several ways. First, we used data from 2004 to 2018  
284 to describe trends in racial and ethnic disparities in sleep duration. Our findings regarding  
285 increasing prevalence of short sleep duration are consistent with previous NHIS studies,<sup>11,12,31-33</sup>  
286 expanding them by quantifying the magnitude and significance of change in these racial and  
287 ethnic differences over the past 15 years and by analyzing disparities in long sleep duration. Of  
288 note, a study used data from the American Time Use Survey (ATUS) and found a slight increase  
289 in sleep duration from 2003 to 2016.<sup>34</sup> Such a discrepancy may arise, in part, from how sleep  
290 duration is ascertained in each survey. In contrast with the holistic assessment of average sleep  
291 length in the NHIS, the ATUS is a phone-based survey that asks individuals to describe how they  
292 spent their day, starting at 4 a.m. the previous day and ending at 4 a.m. on the interview day.<sup>35</sup> In  
293 addition, in the ATUS, self-reported time lying in bed may be recorded as sleep even if awake.<sup>36</sup>

294 Further research is needed to better understand this discrepancy. Second, we assessed the racial  
295 and ethnic differences in the association between each of these sleep duration outcomes and age.  
296 To the best of our knowledge, this has not been described before. Third, we stratified our  
297 findings by sex/gender and income, providing further insight in the characterization of these  
298 disparities. Fourth, we stratified by health status and found persistence in the disparities. Finally,  
299 we included Asian people in our analyses, finding that their estimates remained stable, without  
300 substantial differences with White individuals in 2018.

301 To understand why short sleep duration may be more common among Black people, it is  
302 important to discuss the influence of psychosocial stressors, such as race-based discrimination,  
303 on sleep health. The stress from perceived race-based discrimination (and its anticipation or  
304 vigilance) contributes to shorter sleep duration,<sup>37</sup> and Black people in the US are more likely to  
305 experience this than other racial or ethnic groups. We showed that the disparity in short sleep  
306 duration remained stable over 15 years for Black people. Further, it has been reported that the  
307 effect of perceived discrimination on sleep duration is greater among Black women than among  
308 Black men,<sup>38</sup> which could partially explain our finding that the short sleep racial gaps were the  
309 widest among Black women. Additional studies are needed to understand how these stressors  
310 derived from racial discrimination have changed over the last decades. Future work should also  
311 explore the extent to which Latino/Hispanic men may be facing increasing racial/ethnic-based  
312 discrimination or other social stressors that could explain their widening gap with White men  
313 over the study period.

314 Long sleep was also persistently more prevalent among Black individuals, particularly  
315 among Black women. This finding may be explained by persistent racial differences in  
316 prevalence and type of underlying health conditions and socioeconomic stressors that could

317 potentially led to long sleep duration, including multimorbidity profiles (an indicator of multiple  
318 concurrent chronic conditions) and unemployment.<sup>39-41</sup> Disparities in multimorbidity prevalence  
319 and unemployment rates persisted over the study period for Black individuals,<sup>42,43</sup> which could  
320 support this explanation. However, further research is needed to understand these patterns and  
321 their causes.

322         The fact that the disparities were the widest among young and middle-aged adults may  
323 inform that factors related to working or employment conditions might be disproportionately  
324 preventing Black individuals from having adequate sleep.<sup>44</sup> Notably, when analyzed over years  
325 and by age, the gap between Black and White individuals with low income was substantially  
326 narrower compared with the gap among those with middle or high income. This suggests that a  
327 higher income may prevent White people from experiencing sleep duration alterations but does  
328 not have such a protective association among Black people. This differential effect of income on  
329 sleep health is consistent with observations that higher educational attainment and professional  
330 responsibility is associated with lower odds of short sleep among White adults, and with greater  
331 odds among Black and Latino/Hispanic adults.<sup>45-47</sup> It is possible that income in our study is an  
332 indicator of educational and professional attainment, and that Black individuals with higher  
333 income are more commonly exposed to stressors preventing adequate sleep, including higher  
334 racial discrimination.<sup>48</sup>

335         This study has several limitations. We relied on self-reported duration of sleep, which  
336 may be subject to recall and social desirability bias. Of note, across racial and ethnic groups,  
337 self-reported sleep has shown a low-to-moderate agreement with objective sleep duration  
338 measurement.<sup>29,49-51</sup> When compared with polysomnography, White individuals overestimate  
339 their sleep duration by an average of 73 minutes whereas Black individuals overestimated it by



340 54 minutes.<sup>29</sup> Such an overestimation may misclassify some participants' sleep duration.  
341 Nonetheless, the potential 20-minute difference in self-reported sleep duration accuracy between  
342 White and Black individuals would only minimally explain the disparity between them, as  
343 suggested by our sensitivity analysis. Furthermore, self-reported sleep duration has important  
344 health implications, including consistent association with mortality across different  
345 populations<sup>52-56</sup> and across racial/ethnic groups in the US.<sup>57</sup> Additionally, for the entire study  
346 period, we lacked other information that may have provided a more in-depth understanding of  
347 these disparities in sleep health, including subjective sleep quality, efficiency, and timing.<sup>58</sup>  
348 Lastly, it is possible that the declining NHIS response rates may have influenced our findings.  
349 Nonetheless, the NHIS design has several strategies to mitigate non-response bias (eMethods).

350 Our findings have important public health implications. These persistent disparities may  
351 contribute to other persistent racial and ethnic disparities in health. A study indicated that from  
352 1999 to 2018, Black people had the highest prevalence of poor or fair health.<sup>26</sup> Although the  
353 cross-sectional nature of these two studies prevents us from assessing causality, there is ample  
354 evidence that short or long sleep duration can cause detriments in health. Although the  
355 underlying cause of each sleep duration alteration may differ, both short and long sleep duration  
356 puts people at increased risk of depression, reduced quality of life, cardiovascular disease,  
357 diabetes, and death, among other conditions.<sup>7,55,59-62</sup> Such a persistent disparity in sleep duration  
358 among Black people may thus be a cause and exacerbator of other health disparities, and may  
359 serve as an imperfect indicator of overall disparities in health and well-being. For the national  
360 objective of achieving health equity, understood as the assurance of the condition of optimal  
361 health for all people,<sup>63</sup> it is thus instrumental to also strive for the elimination of socioeconomic  
362 and health conditions that prevent racial and ethnic minorities from achieving adequate sleep.

363           Our findings also have important implications for the design of public health  
364 interventions, suggesting that targeted efforts should be made to improve sleep health among  
365 Black and Latino/Hispanic individuals. The observed persistent—and growing—disparities in  
366 sleep duration serve as an additional indicator of the consequences of the artificial racial and  
367 ethnic hierarchy in which people of color encounter higher barriers to maintaining a healthy life,  
368 including income distribution inequality, racial segregation, restricted access to medical care, and  
369 exposure to social and environmental conditions that affect health and sleep such as light, noise,  
370 and air pollution. Thus, and as with other disparities, public policies may be ineffective in  
371 eliminating these racial and ethnic disparities in sleep without accounting for systemic racism as  
372 a fundamental cause.

373           In conclusion, from 2004 to 2018, there were significant differences in sleep duration by  
374 race and ethnicity, and the prevalence of unrecommended sleep duration was persistently higher  
375 among Black individuals. The disparities were highest for Black women, Black individuals who  
376 had middle or high income, and young and middle-aged Black adults. Given the importance of  
377 sleep to health, the prevalence of unrecommended sleep duration could be a contributor to health  
378 disparities.

379 **REFERENCES**

- 380 1. St-Onge MP, Grandner MA, Brown D, et al. Sleep Duration and Quality: Impact on  
381 Lifestyle Behaviors and Cardiometabolic Health: A Scientific Statement From the American  
382 Heart Association. *Circulation*. Nov 1 2016;134(18):e367-e386.  
383 doi:10.1161/cir.0000000000000444
- 384 2. Tobaldini E, Fiorelli EM, Solbiati M, Costantino G, Nobili L, Montano N. Short sleep  
385 duration and cardiometabolic risk: from pathophysiology to clinical evidence. *Nat Rev Cardiol*.  
386 Apr 2019;16(4):213-224. doi:10.1038/s41569-018-0109-6
- 387 3. Liu Y, Wheaton AG, Croft JB, Xu F, Cunningham TJ, Greenlund KJ. Relationship  
388 between sleep duration and self-reported health-related quality of life among US adults with or  
389 without major chronic diseases, 2014. *Sleep Health*. 2018/06/01/ 2018;4(3):265-272.  
390 doi:<https://doi.org/10.1016/j.sleh.2018.02.002>
- 391 4. Itani O, Jike M, Watanabe N, Kaneita Y. Short sleep duration and health outcomes: a  
392 systematic review, meta-analysis, and meta-regression. *Sleep Med*. 2017/04/01/ 2017;32:246-  
393 256. doi:<https://doi.org/10.1016/j.sleep.2016.08.006>
- 394 5. Goldstein SJ, Gaston SA, McGrath JA, Jackson CL. Sleep health and serious  
395 psychological distress: a nationally representative study of the United States among White,  
396 Black, and Hispanic/Latinx Adults. *Nat Sci Sleep*. 2020;12:1091-1104. doi:10.2147/nss.S268087
- 397 6. Buxton OM, Marcelli E. Short and long sleep are positively associated with obesity,  
398 diabetes, hypertension, and cardiovascular disease among adults in the United States. *Soc Sci*  
399 *Med*. Sep 2010;71(5):1027-36. doi:10.1016/j.socscimed.2010.05.041

- 400 7. Jike M, Itani O, Watanabe N, Buysse DJ, Kaneita Y. Long sleep duration and health  
401 outcomes: A systematic review, meta-analysis and meta-regression. *Sleep Med Rev.* Jun  
402 2018;39:25-36. doi:10.1016/j.smr.2017.06.011
- 403 8. Jackson CL, Walker JR, Brown MK, Das R, Jones NL. A workshop report on the causes  
404 and consequences of sleep health disparities. *Sleep.* Aug 12  
405 2020;43(8)doi:10.1093/sleep/zsaa037
- 406 9. Johnson DA, Jackson CL, Williams NJ, Alcántara C. Are sleep patterns influenced by  
407 race/ethnicity - a marker of relative advantage or disadvantage? Evidence to date. *Nat Sci Sleep.*  
408 2019;11:79-95. doi:10.2147/nss.S169312
- 409 10. Chen X, Wang R, Zee P, et al. Racial/ethnic differences in sleep disturbances: The Multi-  
410 Ethnic Study of Atherosclerosis (MESA). *Sleep.* Jun 1 2015;38(6):877-88.  
411 doi:10.5665/sleep.4732
- 412 11. Khubchandani J, Price JH. Short Sleep duration in working American adults, 2010-2018.  
413 *J Community Health.* Apr 2020;45(2):219-227. doi:10.1007/s10900-019-00731-9
- 414 12. Sheehan CM, Frochen SE, Walsemann KM, Ailshire JA. Are U.S. adults reporting less  
415 sleep?: Findings from sleep duration trends in the National Health Interview Survey, 2004-2017.  
416 *Sleep.* Feb 1 2019;42(2)doi:10.1093/sleep/zsy221
- 417 13. Krueger PM, Friedman EM. Sleep duration in the United States: a cross-sectional  
418 population-based study. *Am J Epidemiol.* May 1 2009;169(9):1052-63. doi:10.1093/aje/kwp023
- 419 14. Jean-Louis G, Grandner MA, Youngstedt SD, et al. Differential increase in prevalence  
420 estimates of inadequate sleep among black and white Americans. *BMC Public Health.* Nov 26  
421 2015;15:1185. doi:10.1186/s12889-015-2500-0

- 422 15. U.S. Department of Health and Human Services. Healthy People 2020. Accessed  
423 February 11, 2022. <https://www.healthypeople.gov/2020/topics-objectives/topic/sleep-health>
- 424 16. U.S. Department of Health and Human Services. Healthy People 2030. Accessed  
425 February 11, 2022. <https://health.gov/healthypeople/objectives-and-data/browse-objectives/sleep>
- 426 17. Jackson CL, Powell-Wiley TM, Gaston SA, Andrews MR, Tamura K, Ramos A.  
427 Racial/ethnic disparities in sleep health and potential interventions among women in the United  
428 States. *J Womens Health (Larchmt)*. Mar 2020;29(3):435-442. doi:10.1089/jwh.2020.8329
- 429 18. Stamatakis KA, Kaplan GA, Roberts RE. Short sleep duration across income, education,  
430 and race/ethnic groups: population prevalence and growing disparities during 34 years of follow-  
431 up. *Ann Epidemiol*. 2007/12/01/ 2007;17(12):948-955.  
432 doi:<https://doi.org/10.1016/j.annepidem.2007.07.096>
- 433 19. Whinnery J, Jackson N, Rattanaumpawan P, Grandner MA. Short and long sleep duration  
434 associated with race/ethnicity, sociodemographics, and socioeconomic position. *Sleep*.  
435 2014;37(3):601-611. doi:10.5665/sleep.3508
- 436 20. Kocevskaja D, Lysen TS, Dotinga A, et al. Sleep characteristics across the lifespan in  
437 1.1 million people from the Netherlands, United Kingdom and United States: a systematic  
438 review and meta-analysis. *Nat Hum Behav*. Jan 2021;5(1):113-122. doi:10.1038/s41562-020-  
439 00965-x
- 440 21. Carroll JE, Irwin MR, Stein Merkin S, Seeman TE. Sleep and multisystem biological  
441 risk: a population-based study. *PLoS One*. 2015;10(2):e0118467.  
442 doi:10.1371/journal.pone.0118467
- 443 22. Centers for Disease Control and Prevention. About the National Health Interview Survey.  
444 2019. . Accessed February 11, 2022. [https://www.cdc.gov/nchs/nhis/about\\_nhis.htm](https://www.cdc.gov/nchs/nhis/about_nhis.htm)

- 445 23. Blewett LA, Rivera Drew JA, King ML, and Williams KCW. IPUMS health surveys:  
446 National Health Interview Survey, version 6.4 [dataset]. Minneapolis, MN: IPUMS, 2019.  
447 Accessed March 16, 2021. <https://doi.org/10.18128/D070.V6.4>
- 448 24. Caraballo C, Valero-Elizondo J, Khera R, et al. Burden and consequences of financial  
449 hardship from medical bills among nonelderly adults with diabetes mellitus in the United States.  
450 *Circ Cardiovasc Qual Outcomes*. Feb 2020;13(2):e006139.  
451 doi:10.1161/circoutcomes.119.006139
- 452 25. Dubay LC, Lebrun LA. Health, behavior, and health care disparities: disentangling the  
453 effects of income and race in the United States. *Int J Health Serv*. 2012;42(4):607-25.  
454 doi:10.2190/HS.42.4.c
- 455 26. Mahajan S, Caraballo C, Lu Y, et al. Trends in differences in health status and health care  
456 access and affordability by race and ethnicity in the United States, 1999-2018. *JAMA*. Aug 17  
457 2021;326(7):637-648. doi:10.1001/jama.2021.9907
- 458 27. Recommended Amount of Sleep for a Healthy Adult: A Joint Consensus Statement of the  
459 American Academy of Sleep Medicine and Sleep Research Society. *Sleep*. 2015;38(6):843-844.  
460 doi:10.5665/sleep.4716
- 461 28. Division of Health Interview Statistics National Center for Health Statistics. Multiple  
462 imputation of family income and personal earnings in the National Health Interview Survey:  
463 methods and examples. August 2019. Accessed October 20, 2021.  
464 <https://nhis.ipums.org/nhis/resources/tecdoc18.pdf>
- 465 29. Jackson CL, Patel SR, Jackson WB, 2nd, Lutsey PL, Redline S. Agreement between self-  
466 reported and objectively measured sleep duration among white, black, Hispanic, and Chinese

- 467 adults in the United States: Multi-Ethnic Study of Atherosclerosis. *Sleep*. Jun 1  
468 2018;41(6)doi:10.1093/sleep/zsy057
- 469 30. Centers for Disease Control and Prevention. National Health Interview Survey, 1997-  
470 2018. Survey description document. Accessed October 20, 2021.  
471 <https://www.cdc.gov/nchs/nhis/1997-2018.htm>
- 472 31. Ford ES, Cunningham TJ, Croft JB. Trends in self-reported sleep duration among US  
473 adults from 1985 to 2012. *Sleep*. May 1 2015;38(5):829-32. doi:10.5665/sleep.4684
- 474 32. Hisler GC, Muranovic D, Krizan Z. Changes in sleep difficulties among the U.S.  
475 population from 2013 to 2017: results from the National Health Interview Survey. *Sleep Health*.  
476 Dec 2019;5(6):615-620. doi:10.1016/j.sleh.2019.08.008
- 477 33. Jokela M, García-Velázquez R, Gluschkoff K, Airaksinen J, Rosenström T. Health  
478 behaviors and psychological distress: changing associations between 1997 and 2016 in the  
479 United States. *Soc Psychiatry Psychiatr Epidemiol*. Mar 2020;55(3):385-391.  
480 doi:10.1007/s00127-019-01741-7
- 481 34. Basner M, Dinges DF. Sleep duration in the United States 2003-2016: first signs of  
482 success in the fight against sleep deficiency? *Sleep*. Apr 1 2018;41(4)doi:10.1093/sleep/zsy012
- 483 35. US Bureau of Labor Statistics. American Time Use Survey. Survey Documentation.  
484 Accessed February 11, 2022. <https://www.bls.gov/tus/documents.htm>
- 485 36. Ogilvie RP, Patel SR. Changing national trends in sleep duration: did we make America  
486 sleep again? *Sleep*. Apr 1 2018;41(4)doi:10.1093/sleep/zsy055
- 487 37. Gaston SA, Feinstein L, Slopen N, Sandler DP, Williams DR, Jackson CL. Everyday and  
488 major experiences of racial/ethnic discrimination and sleep health in a multiethnic population of

- 489 U.S. women: findings from the Sister Study. *Sleep Med.* 2020/07/01/ 2020;71:97-105.  
490 doi:<https://doi.org/10.1016/j.sleep.2020.03.010>
- 491 38. Sims M, Diez-Roux AV, Gebreab SY, et al. Perceived discrimination is associated with  
492 health behaviours among African-Americans in the Jackson Heart Study. *J Epidemiol*  
493 *Community Health.* Feb 2016;70(2):187-94. doi:10.1136/jech-2015-206390
- 494 39. Blanchflower DG, Bryson A. Unemployment and sleep: evidence from the United States  
495 and Europe. *Econ Hum Biol.* Dec 2021;43:101042. doi:10.1016/j.ehb.2021.101042
- 496 40. Irwin MR, Olmstead R, Carroll JE. Sleep disturbance, sleep duration, and inflammation:  
497 a systematic review and meta-analysis of cohort studies and experimental sleep deprivation. *Biol*  
498 *Psychiatry.* Jul 1 2016;80(1):40-52. doi:10.1016/j.biopsych.2015.05.014
- 499 41. Kalgotra P, Sharda R, Croff JM. Examining multimorbidity differences across racial  
500 groups: a network analysis of electronic medical records. *Sci Rep.* Aug 11 2020;10(1):13538.  
501 doi:10.1038/s41598-020-70470-8
- 502 42. Caraballo C, Mahajan S, Massey D, et al. Temporal trends in racial and ethnic disparities  
503 in multimorbidity prevalence in the United States, 1999–2018. *medRxiv.*  
504 2021:2021.08.25.21262641. doi:10.1101/2021.08.25.21262641
- 505 43. US Bureau of Labor Statistics. Labor force characteristics by race and ethnicity, 2018.  
506 Accessed January 27, 2022. <https://www.bls.gov/opub/reports/race-and-ethnicity/2018/home.htm>
- 507 44. Grandner MA, Williams NJ, Knutson KL, Roberts D, Jean-Louis G. Sleep disparity,  
508 race/ethnicity, and socioeconomic position. *Sleep Med.* Feb 2016;18:7-18.  
509 doi:10.1016/j.sleep.2015.01.020



- 510 45. Luo L, Buxton OM, Gamaldo AA, Almeida DM, Xiao Q. Opposite educational gradients  
511 in sleep duration between Black and White adults, 2004-2018. *Sleep Health*. Feb 2021;7(1):3-9.  
512 doi:10.1016/j.sleh.2020.10.003
- 513 46. Sheehan CM, Walsemann KM, Ailshire JA. Race/ethnic differences in educational  
514 gradients in sleep duration and quality among U.S. adults. *SSM Popul Health*. Dec  
515 2020;12:100685. doi:10.1016/j.ssmph.2020.100685
- 516 47. Jackson CL, Redline S, Kawachi I, Williams MA, Hu FB. Racial disparities in short sleep  
517 duration by occupation and industry. *Am J Epidemiol*. Nov 1 2013;178(9):1442-51.  
518 doi:10.1093/aje/kwt159
- 519 48. Mouzon DM, Taylor RJ, Nguyen AW, Ifatunji MA, Chatters LM. everyday  
520 discrimination typologies among older African Americans: gender and socioeconomic status.  
521 *J Gerontol B Psychol Sci Soc Sci*. 2019;75(9):1951-1960. doi:10.1093/geronb/gbz088
- 522 49. Cespedes EM, Hu FB, Redline S, et al. Comparison of self-reported sleep duration with  
523 actigraphy: results from the Hispanic Community Health Study/Study of Latinos Sueño  
524 Ancillary Study. *Am J Epidemiol*. Mar 15 2016;183(6):561-73. doi:10.1093/aje/kwv251
- 525 50. Lauderdale DS, Knutson KL, Yan LL, Liu K, Rathouz PJ. Self-reported and measured  
526 sleep duration: how similar are they? *Epidemiology*. Nov 2008;19(6):838-45.  
527 doi:10.1097/EDE.0b013e318187a7b0
- 528 51. Jackson CL, Ward JB, Johnson DA, Sims M, Wilson J, Redline S. Concordance between  
529 self-reported and actigraphy-assessed sleep duration among African-American adults: findings  
530 from the Jackson Heart Sleep Study. *Sleep*. Mar 12 2020;43(3)doi:10.1093/sleep/zsz246
- 531 52. Tamakoshi A, Ohno Y. Self-reported sleep duration as a predictor of all-cause mortality:  
532 results from the JACC study, Japan. *Sleep*. Feb 1 2004;27(1):51-4.

- 533 53. Kwok CS, Kontopantelis E, Kuligowski G, et al. Self-reported sleep duration and quality  
534 and cardiovascular disease and mortality: a dose-response meta-analysis. *J Am Heart Assoc.*  
535 2018;7(15):e008552. doi:[doi:10.1161/JAHA.118.008552](https://doi.org/10.1161/JAHA.118.008552)
- 536 54. Kronholm E, Laatikainen T, Peltonen M, Sippola R, Partonen T. Self-reported sleep  
537 duration, all-cause mortality, cardiovascular mortality and morbidity in Finland. *Sleep Med.*  
538 2011/03/01/ 2011;12(3):215-221. doi:<https://doi.org/10.1016/j.sleep.2010.07.021>
- 539 55. Svensson T, Saito E, Svensson AK, et al. Association of sleep duration with all- and  
540 major-cause mortality among adults in Japan, China, Singapore, and Korea. *JAMA Netw Open.*  
541 2021;4(9):e2122837-e2122837. doi:10.1001/jamanetworkopen.2021.22837
- 542 56. Gupta K, Nagalli S, Kalra R, et al. Sleep duration, baseline cardiovascular risk,  
543 inflammation and incident cardiovascular mortality in ambulatory U.S. Adults: National health  
544 and nutrition examination survey. *Am J Prev Cardiol.* Dec 2021;8:100246.  
545 doi:10.1016/j.ajpc.2021.100246
- 546 57. Yang L, Xi B, Zhao M, Magnussen CG. Association of sleep duration with all-cause and  
547 disease-specific mortality in US adults. *J Epidemiol Community Health.* Jan 13  
548 2021;doi:10.1136/jech-2020-215314
- 549 58. Buysse DJ. Sleep health: can we define it? Does it matter? *Sleep.* Jan 1 2014;37(1):9-17.  
550 doi:10.5665/sleep.3298
- 551 59. Liu T-Z, Xu C, Rota M, et al. Sleep duration and risk of all-cause mortality: A flexible,  
552 non-linear, meta-regression of 40 prospective cohort studies. *Sleep Med Rev.* 2017/04/01/  
553 2017;32:28-36. doi:<https://doi.org/10.1016/j.smrv.2016.02.005>
- 554 60. Gallicchio L, Kalesan B. Sleep duration and mortality: a systematic review and meta-  
555 analysis. *J Sleep Res.* 2009;18(2):148-158. doi:<https://doi.org/10.1111/j.1365-2869.2008.00732.x>

- 556 61. Medic G, Wille M, Hemels ME. Short- and long-term health consequences of sleep  
557 disruption. *Nat Sci Sleep*. 2017;9:151-161. doi:10.2147/nss.S134864
- 558 62. Cappuccio FP, D'Elia L, Strazzullo P, Miller MA. Sleep duration and all-cause mortality:  
559 a systematic review and meta-analysis of prospective studies. *Sleep*. May 2010;33(5):585-92.  
560 doi:10.1093/sleep/33.5.585
- 561 63. Keenan W, Sanchez CE, Kellogg E, et al. Achieving Behavioral Health Equity for  
562 Children, Families, and Communities: Proceedings of a Workshop. Washington (DC): National  
563 Academies Press (US); 2019 Feb 13. 2, Introduction to Health Equity and Social Determinants of  
564 Health. Available from: <https://www.ncbi.nlm.nih.gov/books/NBK540766/>.

565 **ACKNOWLEDGEMENTS**

566 **DATA AVAILABILITY STATEMENT:** Author César Caraballo had full access to all the data  
567 in the study and takes responsibility for the integrity of the data and the accuracy of the data  
568 analysis. All data is publicly available from the Integrated Public Use Microdata Series Health  
569 Surveys (<https://nhis.ipums.org/>). The code used to analyze these data is publicly available at  
570 <https://doi.org/10.5281/zenodo.6028375>.

571 **SOURCE OF FUNDING:** This research was funded, in part, by the Intramural Program at the  
572 National Institutes of Health, National Institute of Environmental Health Sciences  
573 (Z1AES103325-01).

574 **ROLE OF FUNDER/SPONSOR:** The above funding organization was not involved in the  
575 design and conduct of the study; collection, management, analysis, and interpretation of the data;  
576 preparation, review, or approval of the manuscript; or decision to submit the manuscript for  
577 publication.

578 **CONFLICTING INTERESTS DISCLOSURE:** In the past three years, Harlan Krumholz  
579 received expenses and/or personal fees from UnitedHealth, Element Science, Aetna, Reality  
580 Labs, Tesseract/4Catalyst, F-Prime, the Siegfried and Jensen Law Firm, Arnold and Porter Law  
581 Firm, and Martin/Baughman Law Firm. He is a co-founder of Refactor Health and HugoHealth,  
582 and is associated with contracts, through Yale New Haven Hospital, from the Centers for  
583 Medicare & Medicaid Services and through Yale University from Johnson & Johnson. Dr.  
584 Murugiah works under contract with the Centers for Medicare & Medicaid Services to support  
585 quality measurement programs. Dr. Lu is supported by the National Heart, Lung, and Blood  
586 Institute (K12HL138037) and the Yale Center for Implementation Science. Drs. Roy and Riley

587 are consultants for the Institute for Healthcare Improvement. The other co-authors report no  
588 potential competing interests.

589 **FIGURE LEGENDS**

590 **Figure 1.**

591 Title: Annual Estimated Prevalence of Short-Sleep Duration by Race and Ethnicity Among US  
592 Adults.

593 Legend: Data source is the National Health Interview Survey from years 2004 to 2018. Panel A  
594 displays overall estimates. Panel B displays estimates stratified by sex/gender. Panel C displays  
595 estimates stratified by household income level. Annual prevalence estimates were obtained using  
596 multinomial logistic regression adjusted by age and US region (details in Methods and  
597 eMethods). Brackets represent 95% confidence intervals. Short-sleep duration was defined as  
598 self-reported sleep duration of fewer than 7 (<7) hours in a 24-hour period.

599

600 **Figure 2.**

601 Title: Annual Estimated Prevalence of Long-Sleep Duration by Race and Ethnicity Among US  
602 Adults.

603 Legend: Data source is the National Health Interview Survey from years 2004 to 2018. Panel A  
604 displays overall estimates. Panel B displays estimates stratified by sex/gender. Panel C displays  
605 estimates stratified by household income level. Annual prevalence estimates were obtained using  
606 multinomial logistic regression adjusted by age and US region (details in Methods and  
607 eMethods). Brackets represent 95% confidence intervals. Long-sleep duration was defined as  
608 self-reported sleep duration of more than 9 hours (>9) in a 24-hour period.

609

610 **Figure 3.**

611 Title: Relationship Between Age and Short- and Long-Sleep Duration by Race/Ethnicity Among

612 US Adults.

613 Legend: Data source is the National Health Interview Survey from years 2004 to 2018. Brackets

614 represent 95% confidence intervals. Short-sleep duration was defined as self-reported sleep

615 duration of fewer than 7 (<7) hours in a 24-hour period. Long-sleep duration was defined as self-

616 reported sleep duration of more than 9 (>9) hours in a 24-hour period. Prevalence estimates for

617 each age group were obtained using multinomial logistic regression (details in Methods and

618 eMethods).

## TABLES

**Table 1. Study Population Characteristics.**

	Asian Individuals	Black Individuals	Latino/Hispanic Individuals	White Individuals	All
Sample size, n [N=429,195]	22,924	61,226	71,567	273,478	429,195
Age (years), median (IQR)	42 (31–55)	42 (29–56)	38 (28–51)	48 (33–62)	46 (31–60)
Age category, % (95% CI)					
18–39 years	44.6 (43.5–45.6)	44.8 (44.1–45.5)	53.7 (53.0–54.3)	34.5 (34.0–34.9)	39.0 (38.6–39.4)
40–64 years	42.1 (41.2–43.0)	42.2 (41.7–42.8)	37.2 (36.7–37.7)	44.7 (44.4–45.1)	43.2 (42.9,43.5)
≥65 years	13.4 (12.7–14.0)	12.9 (12.5–13.3)	9.1 (8.8–9.5)	20.8 (20.5–21.1)	17.8 (17.5–18.0)
Women, % (95% CI)	52.8 (52.0–53.6)	55.0 (54.5–55.6)	49.3 (48.8–49.8)	51.6 (51.4–51.8)	51.7 (51.5–51.9)
US Citizenship, % (95% CI) [n=428,343]	69.7 (68.5–70.8)	95.3 (94.9–95.6)	65.2 (64.3–66.1)	98.5 (98.4–98.5)	91.8 (91.5–92.0)
Education level, % (95% CI) [n=426,934]					
Less than high school	9.4 (8.8–10.1)	16.8 (16.3–17.3)	35.3 (34.5–36.0)	9.5 (9.3–9.7)	14.1 (13.8–14.4)
High school diploma /GED	26.8 (26.5–27.1)	30.3 (29.7–30.9)	26.5 (26.0–27.0)	26.8 (26.5–27.1)	26.6 (26.4–26.9)
Some college	22.3 (21.4–23.1)	33.3 (32.7–34.0)	25.0 (24.4–25.5)	31.4 (31.1–31.7)	30.2 (30.0–60.5)
≥Bachelor’s degree	32.3 (31.8–32.8)	19.6 (19.0–20.2)	13.3 (12.8–13.7)	32.3 (31.8–32.8)	29.1 (28.6–29.5)
Annual income <200% federal poverty level, <sup>a</sup> % (95% CI)	28.0 (24.9–31.3)	46.4 (44.1–48.7)	51.4 (49.4–48.7)	24.0 (23.0–25.0)	30.8 (29.9–31.7)
Uninsured at the time of interview, % (95% CI) [n=427,762]	12.0 (11.4–12.6)	18.1 (17.6–18.6)	33.4 (32.6–34.2)	10.3 (10.1–10.6)	14.7 (14.5–15.0)
US region, <sup>b</sup> % (95% CI)					
Northeast	19.7 (18.4–21.2)	15.9 (15.1–16.8)	13.7 (12.8–14.6)	18.9 (18.4–19.5)	17.8 (17.4–18.3)
Midwest	13.1 (12.0–14.2)	17.5 (16.6–18.5)	9.2 (8.3–10.0)	28.0 (27.3–28.7)	23.2 (22.7–23.8)
South	22.0 (20.6–23.5)	58.2 (56.8–59.6)	36.6 (35.1–38.1)	33.8 (33.0–34.5)	36.5 (35.8–37.1)
West	45.2 (43.3–47.1)	8.4 (7.9–8.9)	40.6 (39.0–42.2)	19.4 (18.8–20.0)	22.5 (22.0–23.1)
Married or living with partner, % (95% CI) [n=427,923]	64.5 (63.5–65.5)	34.5 (33.9–35.1)	53.0 (52.4–53.6)	57.8 (57.3–58.2)	54.7 (54.3–55.0)
Employment status, % (95% CI) [n=428,865]					



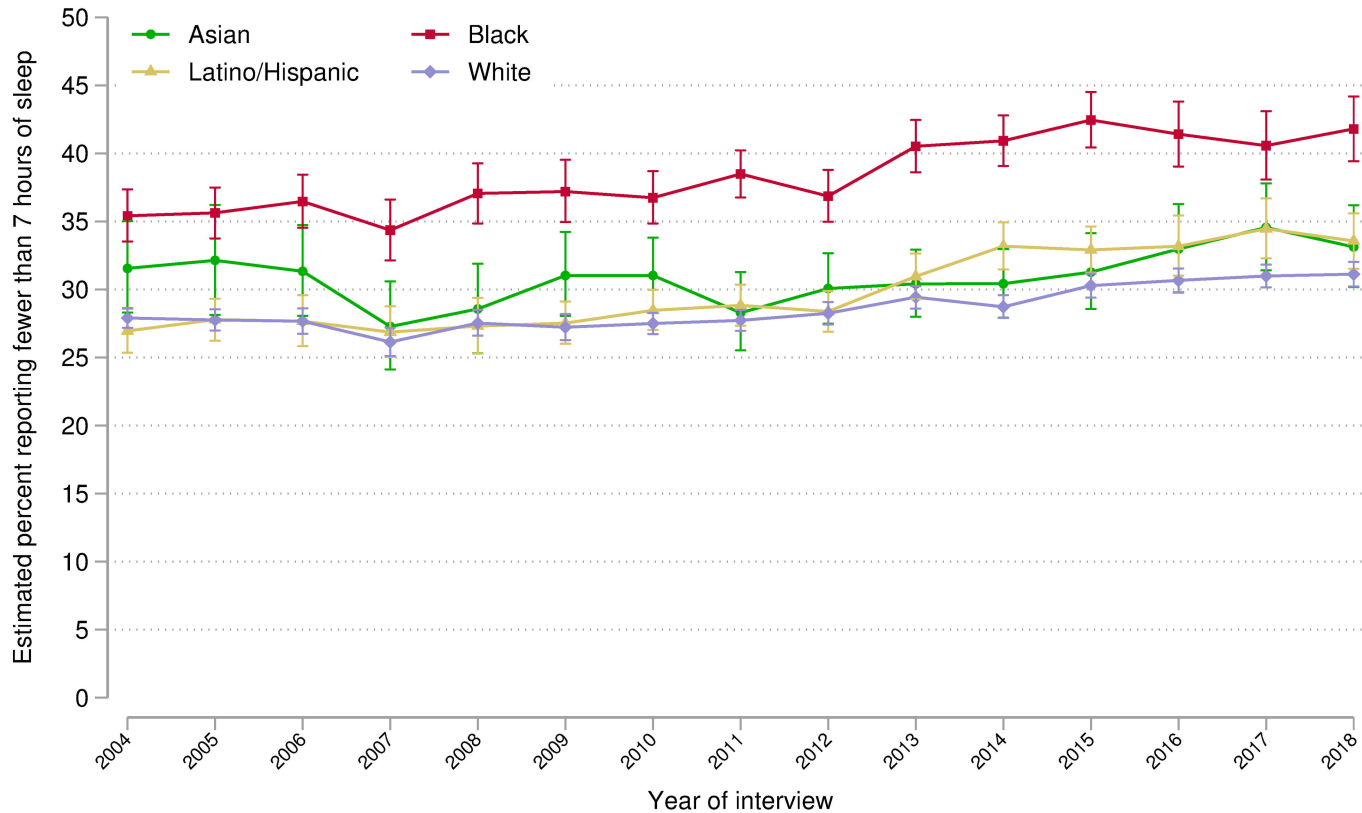
	<b>Asian Individuals</b>	<b>Black Individuals</b>	<b>Latino/Hispanic Individuals</b>	<b>White Individuals</b>	<b>All</b>
With a job/Working	65.1 (64.2-66.0)	59.9 (59.2-60.5)	65.3 (64.7-65.9)	62.3 (61.9-62.7)	62.6 (62.3-62.9)
Not in labor force	30.8 (29.9-31.7)	31.9 (31.2-32.5)	29.1 (28.5-29.7)	34.3 (33.9-34.6)	33.0 (32.7-33.4)
Unemployed	4.1 (3.8-4.4)	8.3 (8.0-8.6)	5.7 (5.4-5.9)	3.5 (3.4-3.6)	4.4 (4.3-4.5)
Poor or fair health, % (95% CI)	8.9 (8.4-9.4)	17.7 (17.3-18.2)	13.8 (13.4-14.2)	11.7 (11.5-12.0)	12.6 (12.4-12.8)
Comorbidities, % (95% CI)					
Hypertension	22.2 (21.4-23.0)	36.2 (35.6-36.9)	20.7 (20.3-21.2)	30.4 (30.1-30.7)	29.3 (29.0-29.5)
Diabetes	7.7 (7.3-8.2)	11.6 (11.2-11.9)	9.1 (8.8-9.4)	8.2 (8.1-8.4)	8.7 (8.6-8.8)
Prior stroke/MI	2.7 (2.4-3.3)	5.4 (5.2-5.7)	3.1 (2.9-3.3)	6.0 (5.9-6.1)	5.3 (5.2-5.4)
Cancer	3.1 (2.9-3.4)	4.2 (4.0-4.4)	2.9 (2.8-3.1)	10.6 (10.4-10.7)	8.3 (8.2-8.4)
Emphysema/Chronic bronchitis	1.8 (1.6-2.0)	4.6 (4.4-4.8)	2.8 (2.6-2.9)	5.8 (5.6-5.9)	5.0 (4.9-5.1)
Current smoker, % (95% CI)	9.6 (9.1-10.1)	18.8 (18.3-19.3)	12.5 (12.2-12.9)	19.6 (19.3-19.9)	18.0 (17.8-18.2)
Obese (BMI $\geq$ 30 kg/m <sup>2</sup> ), % (95% CI)	9.7 (9.2-10.3)	37.5 (36.9-38.1)	30.9 (30.-31.4)	27.0 (26.8-27.3)	28.0 (27.7-28.2)
Abbreviations: BMI, body mass index; CI, confidence interval; GED, general equivalency diploma; IQR, interquartile range; MI, myocardial infarction. Legend: All percentages presented here are weighted percentages. Footnotes: <sup>a</sup> Annual household income was categorized relative to the respective year's federal poverty level from the US Census Bureau into middle/high income ( $\geq$ 200%) and low income (<200%). The weighted proportion of individuals with annual income <200% of the federal poverty level was estimated using multiple imputation. <sup>b</sup> Based on where the housing unit of the survey participant was located. The 4 regions correspond to the regions recognized by the Census Bureau.					

**Table 2. Change in Short-Sleep Duration and Long-Sleep Duration Prevalence by Race and Ethnicity, 2004 to 2018.**

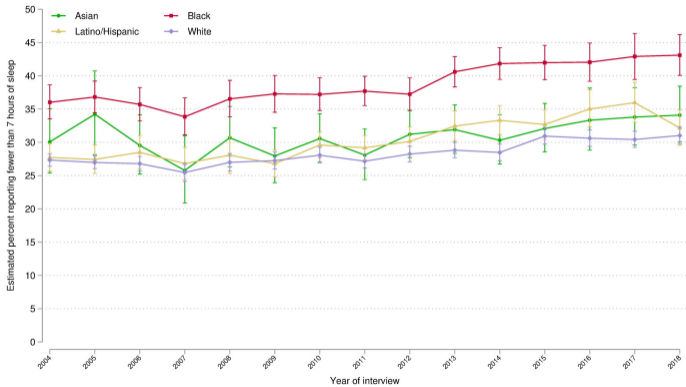
	<b>Asian individuals</b> Percentage points (95% CI)	<b>P value</b>	<b>Black individuals</b> Percentage points (95% CI)	<b>P value</b>	<b>Latino/Hispanic individuals</b> Percentage points (95% CI)	<b>P value</b>	<b>White individuals</b> Percentage points (95% CI)	<b>P value</b>
<b>Short Sleep (&lt;7 hours)</b>								
<i>Absolute change in prevalence, 2004–2018</i>								
All	+1.58 (-2.95 to 6.10)	0.50	+6.39 (3.32 to 9.46)	<0.001	+6.61 (4.03 to 9.20)	<0.001	+3.22 (2.06 to 4.38)	<0.001
Women	+4.02 (-2.35 to 10.40)	0.22	+7.07 (3.07 to 11.07)	<0.001	+4.44 (1.10 to 7.77)	0.009	+3.69 (2.13 to 5.26)	<0.001
Men	-0.84 (-7.40 to 5.72)	0.80	+5.67 (1.20 to 10.14)	0.01	+8.75 (4.84 to 12.66)	<0.001	+2.72 (1.12 to 4.31)	0.001
Low income	+3.24 (-6.94 to 13.41)	0.53	+8.14 (3.57 to 12.72)	<0.001	+6.57 (2.77 to 10.38)	<0.001	+5.02 (2.65 to 7.39)	<0.001
Mid/high income	+0.98 (-4.24 to 6.20)	0.71	+4.97 (0.77 to 9.18)	0.02	+6.04 (2.33 to 9.75)	0.001	+2.96 (1.63 to 4.28)	<0.001
<i>Difference with White, 2004</i>								
All	+3.65 (0.20 to 7.09)	0.04	+7.51 (5.45 to 9.57)	<0.001	-0.95 (-2.73 to 0.82)	0.29	-	-
Women	+2.73 (-2.16 to 7.62)	0.27	+8.69 (5.97 to 11.41)	<0.001	+0.40 (-1.84 to 2.63)	0.73	-	-
Men	+4.40 (-0.59 to 9.39)	0.08	+6.18 (3.21 to 9.16)	<0.001	-2.36 (-4.87 to 0.15)	0.07	-	-
Low income	+1.49 (-6.30 to 9.28)	0.71	+1.49 (-1.59 to 4.56)	0.34	-6.06 (-8.69 to -3.42)	<0.001	-	-
Mid/high income	+4.24 (0.33 to 8.16)	0.03	+10.23 (7.31 to 13.16)	<0.001	+1.54 (-1.16 to 4.25)	0.26	-	-
<i>Difference with White, 2018</i>								
All	+2.00 (-1.15 to 5.16)	0.21	+10.68 (8.12 to 13.24)	<0.001	+2.44 (0.23 to 4.65)	0.03	-	-
Women	+3.06 (-1.31 to 7.43)	0.17	+12.07 (8.74 to 15.39)	<0.001	+1.14 (-1.79 to 4.06)	0.45	-	-
Men	+0.84 (-3.71 to 5.39)	0.72	+9.14 (5.44 to 12.84)	<0.001	+3.68 (0.28 to 7.07)	0.03	-	-
Low income	-0.30 (-7.26 to 6.66)	0.93	+4.61 (0.47 to 8.74)	0.03	-4.51 (-8.14 to -0.88)	0.02	-	-
Mid/high income	+2.27 (-1.52 to 5.89)	0.23	+12.25 (8.95 to 15.55)	<0.001	+4.62 (1.76 to 7.49)	0.002	-	-

	<b>Asian individuals</b> Percentage points (95% CI)	<b>P value</b>	<b>Black individuals</b> Percentage points (95% CI)	<b>P value</b>	<b>Latino/Hispanic individuals</b> Percentage points (95% CI)	<b>P value</b>	<b>White individuals</b> Percentage points (95% CI)	<b>P value</b>
<i>Absolute change in difference with White, 2004–2018</i>								
All	-1.64 (-6.32 to 3.03)	0.49	+3.17 (-0.11 to 6.46)	0.06	+3.39 (0.56 to 6.23)	0.02	-	-
Women	+0.33 (-6.23 to 6.89)	0.92	+3.38 (-0.91 to 7.68)	0.12	+0.74 (-2.94 to 4.43)	0.69	-	-
Men	-3.56 (-10.31 to 3.20)	0.30	+2.95 (-1.79 to 7.70)	0.22	+6.04 (1.81 to 10.26)	0.005	-	-
Low income	-1.79 (-12.24 to 8.66)	0.74	+3.12 (-2.03 to 8.27)	0.24	+1.55 (-2.94 to 6.03)	0.50	-	-
Mid/high income	-1.97 (-7.36 to 3.41)	0.47	+2.02 (-2.39 to 6.43)	0.37	+3.08 (-0.86 to 7.02)	0.13	-	-
<b>Long Sleep (&gt;9 hours)</b>								
<i>Absolute change in prevalence, 2004–2018</i>								
All	-0.12 (-1.84 to 1.60)	0.89	-1.24 (-2.68 to 0.20)	0.09	-1.42 (-2.52 to -0.32)	0.01	+0.17 (-0.34 to 0.68)	0.51
Women	-0.81 (-3.42 to 1.80)	0.54	-0.51 (-2.32 to 1.30)	0.58	-2.05 (-3.46 to -0.64)	0.004	+0.15 (-0.43 to 0.74)	0.61
Men	+0.44 (-1.61 to 2.48)	0.68	-2.13 (-4.24 to -0.02)	0.05	-0.78 (-2.41 to 0.89)	0.36	+0.28 (-0.42 to 0.97)	0.44
Low income	-2.30 (-6.81 to 2.21)	0.32	-2.12 (-4.65 to 0.41)	0.10	-1.39 (-3.01 to 0.24)	0.09	+0.72 (-0.47 to 1.91)	0.24
Mid/high income	+0.78 (-0.80 to 2.36)	0.34	-0.51 (-2.17 to 1.16)	0.55	-1.28 (-2.88 to 0.32)	0.12	+0.18 (-0.34 to 0.69)	0.50
<i>Difference with White, 2004</i>								
All	-0.92 (-2.41 to 0.56)	0.22	+2.90 (1.81 to 3.99)	<0.001	+1.09 (0.33 to 1.85)	0.005	-	-
Women	-0.11 (-2.35 to 2.13)	0.92	+2.49 (1.17 to 3.80)	<0.001	+1.54 (0.46 to 2.61)	0.005	-	-
Men	-1.72 (-3.48 to 0.04)	0.06	+3.41 (1.69 to 5.12)	<0.001	+0.66 (-0.46 to 1.79)	0.25	-	-
Low income	-0.06 (-4.20 to 4.08)	0.98	+3.49 (1.52 to 5.45)	<0.001	-0.34 (-1.57 to 0.90)	0.59	-	-
Mid/high income	-1.40 (-2.61 to -0.18)	0.02	+1.47 (0.26 to 2.68)	0.02	+1.03 (-0.14 to 2.21)	0.09	-	-
<i>Difference with White, 2018</i>								
All	-1.27 (-2.25 to -0.29)	0.01	+1.44 (0.39 to 2.48)	0.007	-0.55 (-1.47 to 0.36)	0.24	-	-
Women	-1.07 (-2.55 to 0.40)	0.15	+1.83 (0.45 to 3.20)	0.009	-0.67 (-1.74, 0.41)	0.23	-	-

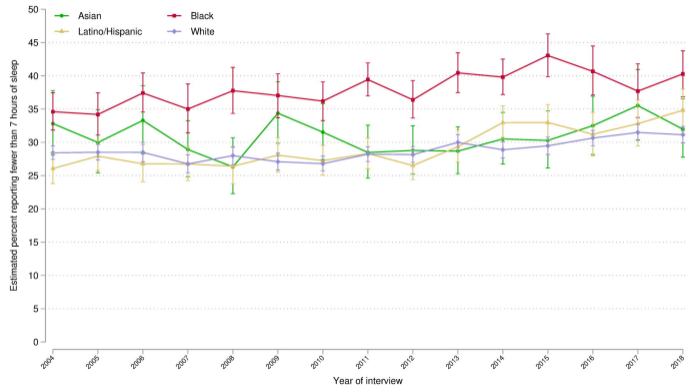
	<b>Asian individuals</b> Percentage points (95% CI)	<b>P value</b>	<b>Black individuals</b> Percentage points (95% CI)	<b>P value</b>	<b>Latino/Hispanic individuals</b> Percentage points (95% CI)	<b>P value</b>	<b>White individuals</b> Percentage points (95% CI)	<b>P value</b>
Men	-1.56 (-2.81 to -0.30)	0.02	+1.00 (-0.41 to 2.42)	0.16	-0.39 (-1.81 to 1.03)	0.59	-	-
Low income	-3.08 (-5.23 to -0.94)	0.005	+0.65 (-1.34 to 2.64)	0.52	-2.45 (-4.04 to -0.85)	0.003	-	-
Mid/high income	-0.79 (-1.93 to 0.35)	0.17	+0.79 (-0.46 to 2.05)	0.22	-0.42 (-1.62 to 0.78)	0.49	-	-
<i>Absolute change in difference with White, 2004–2018</i>								
All	-0.34 (-2.12 to 1.43)	0.70	-1.46 (-2.98 to 0.05)	0.06	-1.65 (-2.84 to -0.45)	0.007	-	-
Women	-0.96 (-3.64 to 1.71)	0.48	-0.66 (-2.56 to 1.24)	0.50	-2.20 (-3.72 to -0.68)	0.005	-	-
Men	+0.16 (-2.00 to 2.32)	0.88	-2.40 (-4.63 to -0.18)	0.03	-1.05 (-2.86 to 0.76)	0.25	-	-
Low income	-3.02 (-7.68 to 1.64)	0.20	-2.84 (-5.64 to -0.04)	0.05	-2.11 (-4.12 to -0.10)	0.04	-	-
Mid/high income	+0.61 (-1.06 to 2.27)	0.47	-0.68 (-2.42 to 1.07)	0.47	-1.45 (-3.13 to 0.23)	0.09	-	-
Data source is the National Health Interview Survey from years 2004 to 2018. Short-sleep duration was defined as fewer than 7 (<7) hours of sleep in a 24-hour period. Long-sleep duration was defined as more than 9 (>9) hours of sleep in a 24-hour period. For change in prevalence and change in difference: a positive sign (+) means the prevalence (or its difference with White individuals) increased and a negative sign (-) means it decreased. Prevalence estimates were adjusted by age and region.								
Abbreviations: CI, confidence interval								



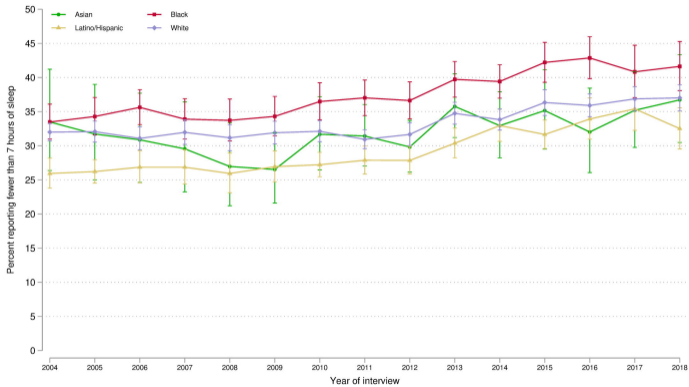
Women only



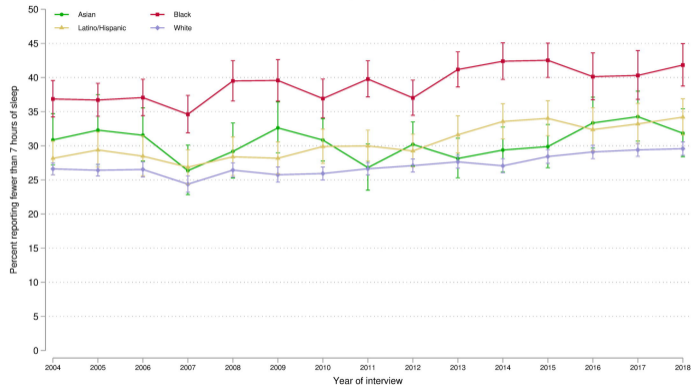
Men only

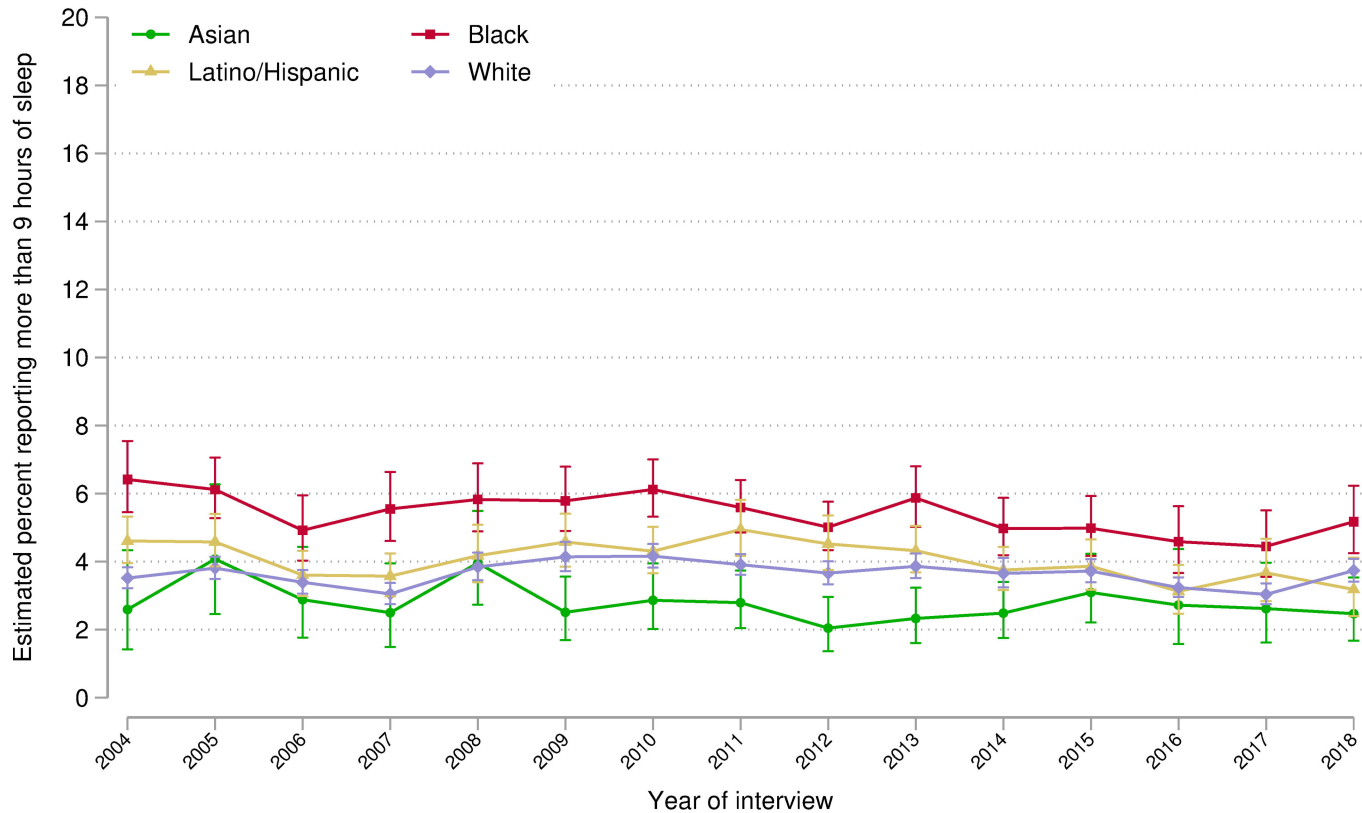


Low-income only



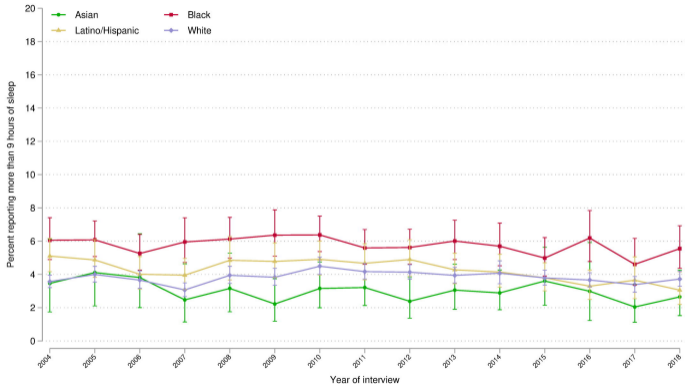
Middle/high-income only



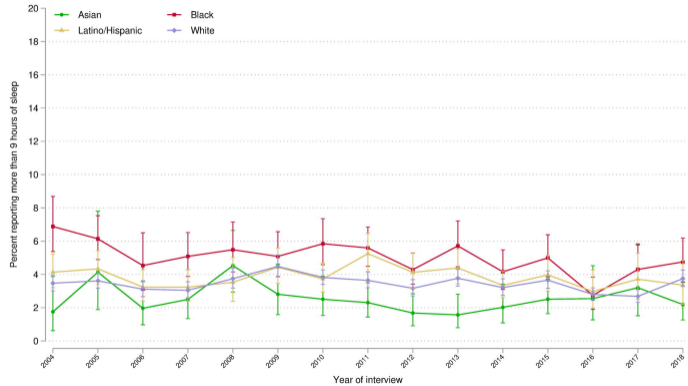




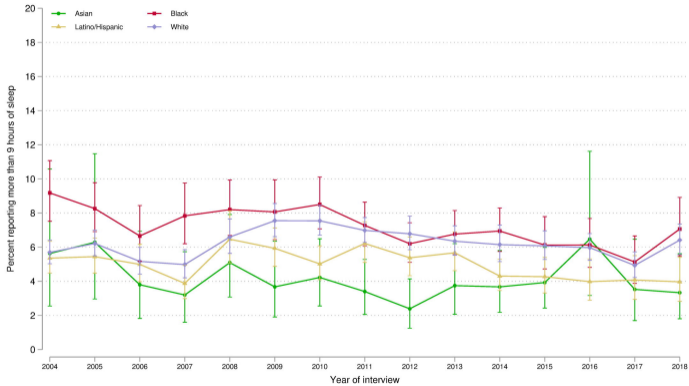
Women only



Men only



Low-income only



Middle/high-income only

