

1 **Anxiety-impulsivity subtypes in adolescent internalizing disorder**
2 **are characterized by distinguishable neurodevelopmental,**
3 **neurocognitive and clinical trajectory signatures**

4 Huaxin Fan^{1#}, Nanyu Kuang^{1#}, Xinran Wu^{1#}, Gechang Yu¹, Tianye Jia^{1,2}, Barbara J.
5 Sahakian^{3,4}, Trevor W. Robbins^{1,3,5}, Gunter Schumann^{1,6,7}, Jianfeng Feng^{1,2}, Benjamin
6 Becker^{8*}, Jie Zhang^{1,2*}

7

8 ¹ Institute of Science and Technology for Brain-Inspired Intelligence, Fudan
9 University, Shanghai 200433, PR China

10 ² Key Laboratory of Computational Neuroscience and Brain Inspired Intelligence,
11 Fudan University, Ministry of Education, PR China

12 ³ Behavioural and Clinical Neuroscience Institute, University of Cambridge,
13 Cambridge, United Kingdom

14 ⁴ Department of Psychiatry, University of Cambridge School of Clinical Medicine,
15 Cambridge, United Kingdom

16 ⁵ Department of Psychology, University of Cambridge, Cambridge, United Kingdom

17 ⁶ Centre for Population Neuroscience and Precision Medicine (PONS), Institute of
18 Psychiatry, Psychology & Neuroscience, SGDP Centre, King's College London,
19 United Kingdom

NOTE: This preprint reports new research that has not been certified by peer review and should not be used to guide clinical practice.

20 ⁷ PONS Research Group, Dept of Psychiatry and Psychotherapy, Campus Charite

21 Mitte, Humboldt University, Berlin and Leibniz Institute for Neurobiology,

22 Magdeburg, Germany

23 ⁸ The Clinical Hospital of Chengdu Brain Science Institute, School of Life Science

24 and Technology, University of Electronic Science and Technology of China,

25 Chengdu, China

26

27 # These authors contribute equally to this work

28 * **Correspondence should be addressed to:**

29 **Jie Zhang**, jzhang080@gmail.com, Institute of Science and Technology for Brain

30 Inspired Intelligence, Fudan University, Shanghai, PR China

31 **Benjamin Becker**, ben_becker@gmx.de, The Clinical Hospital of Chengdu Brain

32 Science Institute, School of Life Science and Technology, University of Electronic

33 Science and Technology of China, Chengdu, China

34

35 **Abstract**

36 **Background** Anxiety and impulsivity represent transdiagnostic pathology dimensions
37 yet their interaction and contribution to emotional disorders in adolescence and to
38 disease development remain controversial, and previous studies indicate heterogeneity
39 within the broad category of internalizing disorders.

40

41 **Methods** A combination of hierarchical and non-hierarchical clustering strategies was
42 employed to determine impulsivity-related subtypes (based on the facets of negative
43 urgency, lack of planning, lack of perseverance, sensation seeking and positive urgency
44 in UPPS-P scales) in a large cohort of adolescents with internalizing disorders (n=2437)
45 from Adolescent Brain Cognitive Development (ABCD) Study. Linear mixed-effect
46 models were employed to determine cortical thickness alterations of the subtypes.

47

48 **Results** Data-driven clustering identified two distinct subtypes of internalizing patients
49 (subtype 1/subtype 2) with comparable levels of increased anxiety yet distinguishable
50 levels of impulsivity, i.e., enhanced (subtype 1) or decreased (subtype 2) compared to
51 healthy controls. Subtype 1 was further characterized by thicker prefrontal and temporal
52 cortical regions involved in regulatory control and fear processing, while subtype 2 did
53 not demonstrate significant thickness alterations. The differential neuroanatomical
54 profiles remained stable over the two-year follow-up, while the two subtypes had
55 different neurodevelopmental trajectories. Subtype 1 additionally reported more

56 psychopathology and dysfunctionality including higher suicidal ideation, depressive
57 symptoms and transition rates to externalizing disorders during follow-up as well as
58 impaired neurocognitive and educational performance compared to subtype 2.
59 Moreover, for subtype 1, anxiety at baseline (9-10 years) was significantly positively
60 associated with impulsivity (lack of perseverance) at 2-year follow-up, while in subtype
61 2, baseline anxiety was significantly negatively associated with impulsivity (sensation
62 seeking) at 2-year follow-up.

63

64 **Conclusions** Our results demonstrate an impulsivity-dependent heterogeneity in
65 adolescent internalizing disorders, with high-impulsivity patients being characterized
66 by neurodevelopmental delay at the neural and cognitive levels. Individuals with
67 elevated impulsivity are at a greater risk to develop behavioral dysregulation over the
68 following two years and may thus require specific early interventions.

69 **Introduction**

70 The conceptualization of psychiatric disorders as distinct diagnostic entities has been
71 challenged by high comorbidity rates on the symptomatic level and increasing evidence
72 for broad transdiagnostic meta-dimensions of psychopathology, such as internalizing
73 and externalizing or impulsivity and compulsivity (Caspi et al 2020; Pasion and
74 Barbosa 2019; Kotov et al 2017; Lees et al 2021; Robbins et al 2012; Romer et al 2021).
75 This conceptualization offers advantages in terms of determining common etiological
76 processes and neurobiological dysregulations (American Psychiatric Association 2013;
77 Cuthbert and Insel 2013). Within the context of this dimensional conceptualization
78 disorders are regarded as extreme points on continua that span a range of emotional and
79 behavioral functions (Krueger 1999) [see e.g. also the Research Domain Criteria
80 (RDoC) (Cuthbert and Insel 2013)] rather than traditional discrete diagnostic entities
81 (Hudziak et al 2007).

82

83 Emotional or internalizing disorders represent the largest group of psychiatric disorders
84 - encompassing primarily affective and mood disorders - which are characterized by
85 exaggerated levels of anxious distress. In addition to anxiety, impulsivity - the tendency
86 to act inappropriately and prematurely despite adverse outcomes also represents a major
87 dimension of psychopathology (Cosi et al 2011; Cummings et al 2014; Whiteside and
88 Lynam 2001). Whereas both dimensions have been increasingly associated with robust
89 neurobiological dysregulations across diagnoses (Xu et al 2020; Linke et al 2021;

90 Newman et al 2016; Owens et al 2020), anxiety and impulsivity have usually been
91 examined separately in internalizing or externalizing disorders, respectively.
92 Accumulating evidence suggests that impulsivity may play a role in internalizing
93 disorders, while findings on the relationship between anxiety and impulsivity in
94 internalizing disorders remain inconsistent (Jakuszkowiak-Wojten et al 2015) such that
95 the traditionally reported inverse association (Apter et al 1993; Taylor et al 2008) has
96 been challenged by an accumulation number of recent studies reporting a positive
97 relationship (Cosi et al 2011; Favaloroa and Moustafa 2020; Moustafa et al 2017; Yu
98 et al 2020).

99

100 While exaggerated anxiety and impulsivity have been identified as key diagnostic
101 dimensions in adult samples, most psychiatric conditions, including internalizing
102 disorders, emerge already during adolescence (Castellanos-Ryan et al 2016; Rakesh et
103 al 2020), a period characterized by fundamental processes of brain development and
104 maturation (Shaw et al 2008), particularly synaptic pruning and myelination (Merz et
105 al 2018). The neuromaturational changes are mirrored in the macroscale architecture of
106 the brain particularly cortical thickness, which increases during childhood, decreases
107 during adolescence and stabilizes during early adulthood (Huttenlocher 1979; Natu et
108 al 2019; Shaw et al 2008). Dysregulation of neuromaturation of cortical thickness has
109 been closely linked with the development of psychiatric disorders (Whittle et al 2020)
110 and impaired cognitive performance (Shaw et al 2006). The developmental trajectories

111 of brain systems differ, such that the “dual systems” or “maturational mismatch”
112 theories hypothesize that regulatory prefrontal cortical regions undergo prolonged
113 maturational changes while subcortical regions involved in reward and emotion
114 processing mature earlier, leading to a developmental mismatch which in turn promotes
115 emotion regulation and behavioral problems during adolescence (Casey et al 2008;
116 Powers and Casey 2015; Steinberg 2008). Therefore, examining the interactions
117 between anxiety and impulsivity and associations with adolescent neuromaturational
118 trajectories may allow the determination of broad subtypes of neuropathological
119 dysregulations at the core of psychiatric disorders in later life.

120

121 We aimed at determining the relationship between anxiety and impulsivity in a large
122 sample of early adolescents with internalizing disorders. Specifically, we first clustered
123 adolescents with pure internalizing disorders according to their levels of impulsivity
124 using a data-driven approach. Next, we examined the differences between the groups
125 on the neurobiological level by determining distinct brain morphological profiles in the
126 subtypes. Subsequently, we explored the relationship between the dimensions of
127 anxiety and impulsivity within the identified subtypes. Finally, we examined the
128 differences of neurocognitive and educational performance between groups and
129 differences between the subtypes at the clinical predictive level in terms of pathological
130 trajectories during follow-up. Given that anxiety and impulsivity are major dimensions
131 for the development of adolescent psychopathology (Cosi et al 2011) and impulsivity

132 has been linked with brain morphological neurodevelopmental dysregulation (Owens
133 et al 2020; Newman et al 2016; Zhu et al 2020) we hypothesized that the interactions
134 at the symptomatic level should be reflected in terms of cortical thickness, specifically
135 impulsivity-associated dysregulations in prefrontal regions, and that these alterations
136 remain stable or increase over a development trajectory spanning the age between 10
137 to 12. Given the clinical challenge of predicting behavioral dysregulation in
138 adolescence and previous findings suggesting that impulsive-anxious adolescents show
139 a higher inclination to suicidality and depression (Askenazy et al 2003), we specifically
140 focused on the development of suicidality, depression and behavioral dysregulation in
141 terms of externalizing symptomatology.

142 **Methods and Materials**

143 **Participants**

144 A sample of 11878 children aged 9-10 years was obtained from Data Release 3.0 of the
145 Adolescent Brain Cognitive Development (ABCD) study
146 (<https://abcdstudy.org/scientists/data-sharing/>). The ABCD study is a large longitudinal
147 study that recruited children from 21 research sites across the USA (Casey et al 2018),
148 and currently incorporates clinical, behavioral, cognitive, and multimodal
149 neuroimaging data from baseline, 1-year and 2-year follow-up assessment
150 (<https://abcdstudy.org/scientists/protocols/>). The ABCD study group obtained written
151 and oral informed consent from parents and children, respectively (Auchter et al 2018).

152 Details on the protocols and assessments are provided in corresponding publications
153 from the ABCD study group (Barch et al 2018; Hagler Jr et al 2019; Casey et al 2018).

154

155 For the present study we excluded participants with missing data of corresponding
156 measures or covariates and with bipolar disorder, disruptive mood dysregulation
157 disorder, psychotic disorder, alcohol use or substance use disorder for the internalizing
158 patients, as well as data which did not pass quality control for neuroimaging data.

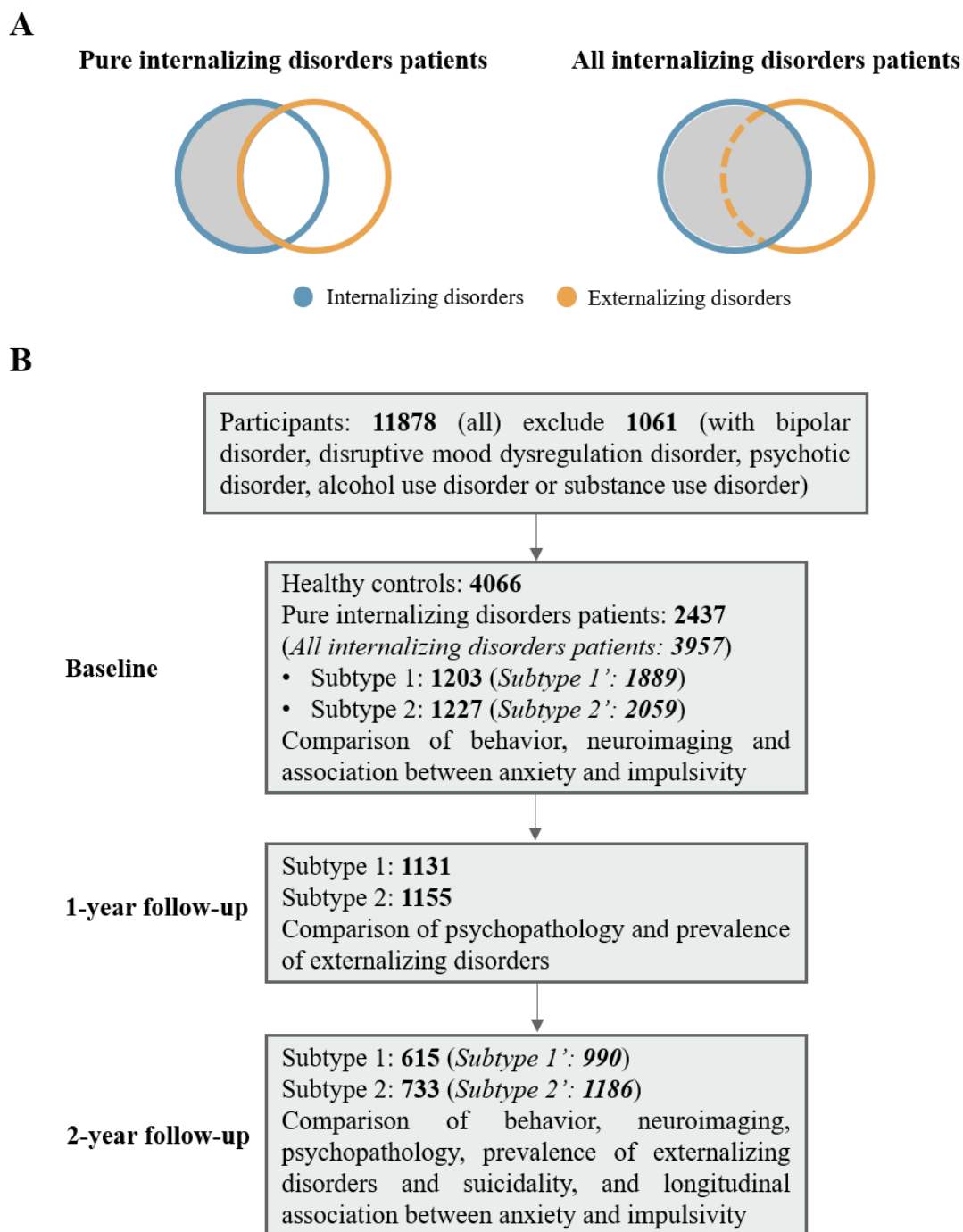
159 **Measures**

160 *Categorical psychiatric diagnosis*

161 Categorical psychiatric diagnoses were obtained via parent report using the structured
162 computerized Kiddie Schedule for Affective Disorders and Schizophrenia for DSM-5
163 (KSADS-5) (Barch et al 2018). For the present analysis lifetime diagnoses for the
164 respective specific or unspecific disorders were employed. Based on the definitions of
165 transdiagnostic dimensions of psychopathology in recent studies (Romer et al 2021;
166 Caspi et al 2020; Lees et al 2021; Pasion and Barbosa 2019), two broad diagnostic
167 families in our analyses were determined as internalizing disorders (depressive disorder,
168 agoraphobia, panic disorder, specific phobia, separation anxiety disorder, social anxiety
169 disorder, generalized anxiety disorder and post-traumatic stress disorder) and
170 externalizing disorders (attention-deficit/hyperactivity disorder, oppositional defiant
171 disorder and conduct disorder).

172

173 Our initial analyses focused on individuals with pure internalizing disorders while
174 excluding subjects with comorbid externalizing disorders to control for the potential
175 influence of comorbid externalizing conditions (Figure 1A). Individuals classified into
176 this group were required to (1) fulfill the criteria for at least one internalizing disorders,
177 while (2) comorbid externalizing disorders, bipolar disorder, disruptive mood
178 dysregulation disorder, psychotic disorder, alcohol use disorder or substance use
179 disorder led to exclusion. To test the robustness of our findings we repeated the analyses
180 in all internalizing disorders patients (including those with comorbid externalizing
181 conditions) (Figure 1A). Individuals without any lifetime diagnosis were classified as
182 healthy controls (HC) and served as a reference group. Numbers of subjects and section
183 procedures are shown in Figure 1B.



184

185 Figure 1 Selection of subjects. (A) Visualization of selection of pure internalizing disorders patients

186 and all internalizing disorders patients. (B) Flowchart showing selection of subjects and number of

187 participants in each subgroup analysis. Our initial analyses focused on individuals with pure

188 internalizing disorders while excluding subjects with comorbid externalizing disorders to control

189 for the potential influence of comorbid externalizing conditions. To test the robustness of our

190 findings we repeated the analyses in all internalizing disorders patients (italic in brackets) including
191 those with comorbid externalizing conditions.

192 *Trait impulsivity and sub-facets*

193 Trait impulsivity and its sub-facets were assessed by means of the validated UPPS
194 model of impulsivity (UPPS-P Impulsive Behavior Scale, Barch et al 2018)
195 encompassing the sub-facets Negative and Positive Urgency (nu and pu, behavioral
196 dysregulations in the context of negative or positive emotions, respectively), Lack of
197 Premeditation and Perseverance (lopl and lope, indexed by tendencies to act without
198 planning or quit difficult tasks, respectively), and Sensation Seeking (ss, seeking
199 arousing and stimulating activities).

200 *Anxiety, depression and behavioral problems scores*

201 Levels of anxiety were derived from the Child Behavior Checklist (CBCL) a widely
202 used parent-report of child and adolescent behavior (Barch et al 2018) by capitalizing
203 on raw scores of the Anxiety Problems scale which is aligned with DSM-anxiety
204 symptoms. We additionally included the Depressive Problems as an index of depressive
205 symptom load and other subscales (Externalizing Problems, Rule-Breaking Behavior,
206 Aggressive Behavior, ADHD Problems, Oppositional Defiant Problems, Conduct
207 Problems) to represent children's behavioral problems.

208 *Behavioral inhibition and activation*

209 Gray's Reinforcement Sensitivity Theory (Gray 1987) proposes two neurobiological
210 rooted motivational systems, the Behavioral Inhibition System (BIS) which determines
211 responses to punishment and generates anxious emotions, and the Behavioral
212 Activation System (BAS) which determines sensitivity to rewards and has been related
213 to impulsivity (Gray 1987). Four sub-facets are included in the validated BIS/BAS scale,
214 three for behavioral activation: Drive (basdr, intensity of goal directed behavior), Fun
215 seeking (basfs, enjoyment for its own sake, spontaneity), and Reward Responsiveness
216 (basrr, excitement over reinforcing outcomes) and one for behavioral inhibition (bis,
217 e.g., worry, fearfulness) (Barch et al 2018).

218 *Neurocognitive functioning*

219 Neurocognitive functioning in the domains of language vocabulary knowledge,
220 attention, cognitive control, executive function, episodic memory, working memory,
221 processing speed and flexible thinking as well as composite scores for crystallized
222 intelligence, fluid intelligence and total intelligence (Weintraub et al 2013) were
223 derived from the validated NIH toolbox.

224 *Structural image acquisition and preprocessing*

225 T1-weighted structural MRI (sMRI) data were collected on 3T MRI systems (Siemens
226 Prisma, General Electric MR 750, Philips). Detailed information of acquisition is

227 described in (Casey et al 2018). SMRI data preprocessing was completed by the ABCD
228 study according to standardized processing pipelines (Hagler Jr et al 2019). Cortical
229 surface reconstruction and subcortical segmentation were implemented via FreeSurfer,
230 version 5.3.0. The current study used post-processed structural data of cortical thickness
231 with the Desikan atlas-based classification (n=68) (Desikan et al 2006). Participants
232 who did not pass visual inspection of T1 images and FreeSurfer quality control
233 (`imgincl_t1w_include=1`) were excluded from the neuroimaging analysis.

234 **Statistical analyses**

235 *Clustering analysis*

236 We capitalized on data-driven clustering techniques to determine subtypes of patients
237 with internalizing disorders based on the five impulsivity dimensions of the UPPS-P
238 model. In line with established guidelines for cluster analyses (Hair 2009) a
239 combination of hierarchical and non-hierarchical procedures was employed. First, we
240 used average silhouette width to determine the optimal number of clusters (Rousseeuw
241 1987). Second, a hierarchical clustering analysis was conducted to initialize the
242 subsequent K-means clustering. All variables of UPPS-P were scaled, so that each
243 variable contributes equally to the cluster formation. The hierarchical cluster analysis
244 employed Ward's method and the squared Euclidian distance measure. Third, means of
245 every variable assigned to each cluster were calculated to initialize K-means clustering
246 and cluster assignment was finally fine-tuned by a non-hierarchical K-means cluster

247 analysis.

248 *Behavioral and neurobiological (morphological development) characterization*

249 We initially determined phenotypical differences in the domains of anxiety, impulsivity
250 and motivational systems between the identified groups while controlling for age, sex
251 and ethnicity. To characterize neurobiological basis of the phenotype differences linear
252 mixed-effects models (LMMs) were employed to determine differences in cortical
253 thickness between groups. LMMs were employed using *lme4* package ([https://cran.r-](https://cran.r-project.org/web/packages/lme4/index.html)
254 [project.org/web/packages/lme4/index.html](https://cran.r-project.org/web/packages/lme4/index.html)). LMMs included random-effects for
255 family ID and acquisition site ID and fixed-effects for dichotomous variable of subject
256 groups (subtype 1, subtype 2 or HC), age, sex, ethnicity, family income, parental years
257 of education, puberty score, body mass index and intracranial volume. False Discovery
258 Rate (FDR, $q=0.05$) was used for multiple comparisons correction.

259 *Neurodevelopmental variations related with anxiety and impulsivity*

260 In addition to the categorical approach, we employed a dimensional approach
261 examining associations between anxiety, impulsivity and cortical thickness in regions
262 exhibiting significant between group differences in the entire sample ($n=11878$)
263 (similar approach see Xu et al 2020; Xu et al 2021). LMMs were used to regress out
264 the following covariates for neuroimaging variables: family ID and acquisition site ID
265 for random-effects and age, sex, ethnicity, family income, parental years of education,
266 puberty score, body mass index and intracranial volume for fixed-effects. False

267 Discovery Rate (FDR, $q=0.05$) was used for multiple comparisons correction.

268 *Subtype-specific developmental interactions between anxiety and impulsivity*

269 We first used the Pearson correlation coefficient to examine associations between
270 anxiety and impulsivity at baseline. Next, we capitalized on the longitudinal
271 assessments of anxiety and impulsivity to determine whether levels of anxiety at
272 baseline associate with subtype-specific trajectories of impulsivity over the following
273 two years. To this end longitudinal associations between anxiety and impulsivity of the
274 two subtypes were examined using cross-lagged panel models (CLPM) implemented
275 by the *lavaan* package in R (<https://cran.r-project.org/web/packages/lavaan/index.html>).
276 Anxiety and impulsivity scores were assessed at baseline and 2-year follow-up. The
277 model was estimated by using maximum likelihood estimation. Standardized regression
278 coefficients and p-values are reported. Age, sex, and ethnicity were regressed out as
279 nuisance covariates.

280 *Developmental trajectories of psychopathology, suicidality and transition rate to*
281 *externalizing disorders between internalizing disorder subtypes*

282 Direct comparisons were implemented to compare depressive problems and
283 externalizing psychopathology (measured by the symptom scores on the CBCL)
284 between subtype 1 and 2 at baseline and follow-up. Age, sex, and ethnicity were
285 regressed out as nuisance covariates. False Discovery Rate (FDR, $q=0.05$) was used for
286 multiple comparisons correction. We also compared the transition rate to externalizing

287 disorders and the prevalence of suicidality (including suicidal ideation, suicide attempt
288 and non-suicidal self-injury) at follow-up of the two subtypes using chi-square test.

289 *Subtype-specific academic performance and cognition*

290 As an index of cognitive performance and functioning in daily life we examined
291 differences of academic performance (grades) and cognition between the identified
292 groups at baseline.

293 **Results**

294 **Sample characteristics**

295 A total n=4066 healthy controls and n=2437 pure internalizing patients at baseline were
296 included in all primary analyses. Demographic information is presented in Table 1.

Characteristic	Subjects with		Statistical analysis	P-value
	Healthy subjects, n = 4066	pure internalizing disorders, n = 2437		
Age, years, Mean (SD)	9.92 (0.62)	9.93 (0.63)	$t_{5107.4} = -0.637$.524
Education ^a , Mean (SD)	3.74 (1.18)	3.79 (1.17)	$t_{5159.1} = -1.810$.070
Income ^b , Mean (SD)	7.36 (2.39)	7.29 (2.34)	$t_{4825.2} = 1.034$.301
Gender, n (%)				
Male	1895 (46.61)	1114 (45.71)	$\chi_1^2 = 0.455$.500

Ethnicity, n (%)				
Caucasian	2553 (62.79)	1627 (66.76)		
African American	644 (15.84)	319 (13.09)		
Mixed	453 (11.14)	283 (11.61)		
Asian	122 (3.00)	51 (2.09)	$\chi^2_5 = 18.489$.002
AIAN/NHPI	35 (0.86)	15 (0.62)		
Other	200 (4.92)	108 (4.43)		

297 Table 1 Sample characteristics at baseline. AIAN, American Indian/Alaska Native; NHPI = Native
 298 Hawaiian and other Pacific Islander.
 299 a: Education of parents was measured by the years of education of the parent with the highest
 300 education, categorized as an ordinal variable across five bins (1: < HS Diploma; 2: HS
 301 Diploma/GED; 3: Some College; 4: Bachelor; 5: Post Graduate Degree).
 302 b: Income was the sum of the annual incomes of both parents, categorized as an ordinal variable
 303 across ten bins (1: <\$5,000; 2: \$5,000-11,999; 3: \$12,000-15,999; 4: \$16,000-24,999; 5: \$25,000-
 304 34,999; 6: \$35,000-49,999; 7: \$50,000-74,999; 8: \$75,000-99,999; 9: \$100,000-199,999;
 305 10: >\$200,000).

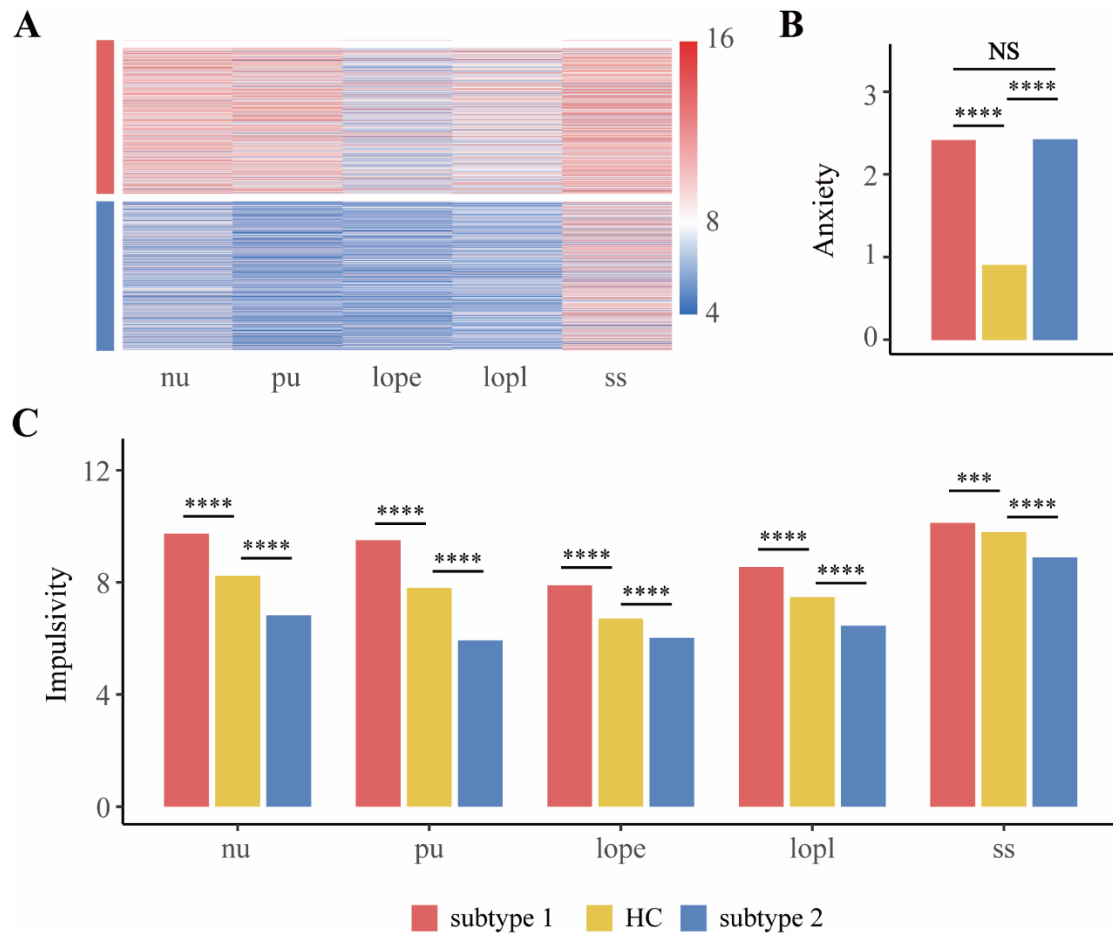
306 **Impulsivity determines distinct internalizing disorder subtypes**

307 Curve of average silhouette width for the clustering indicated a two-cluster solution
 308 (Figure S1). Data-driven clustering of the internalizing patients based on the five UPPS-
 309 P dimensions revealed two subtypes of pure internalizing patients with high and low
 310 impulsivity, respectively (Figure 2A). The subtypes did not differ in terms of the ethnic

311 distribution. However, subtype 2 included slightly more females and they were lower
312 in social economic status. Demographic information and diagnosis of two subtypes are
313 presented in Table S1 and S2, respectively.

314

315 We next compared levels of anxiety and impulsivity between subtype 1, subtype 2 and
316 healthy controls (HC) at baseline (Figure 2B, C). Whereas both internalizing groups
317 exhibited comparably exaggerated levels of anxiety relative to controls, subtype 1
318 exhibited increased while subtype 2 exhibited decreased impulsivity relative to the
319 healthy reference group, respectively. With respect to the motivational systems subtype
320 1 exhibited increased while subtype 2 exhibited decreased levels of BAS compared to
321 HC (Figure S2). A further longitudinal analysis capitalizing on the 2-year follow up
322 data (Figure S3) revealed that differences in the anxiety, impulsivity and motivational
323 systems remained stable over the follow-up period.



324

325 Figure 2 Behavioral differences between subtype 1, subtype 2 in pure internalizing patients and

326 healthy control. (A) Five dimensions of impulsivity (UPPS-P) in two subtypes of internalizing

327 patients (subtype 1 and subtype 2) determined by clustering analysis. (B) Comparisons of anxiety

328 (CBCL-Anxiety Problems). (C) Comparisons of UPPS-P among groups. nu, negative urgency; pu,

329 positive urgency; lope, lack of perseverance; lopl, lack of planning; ss, sensation seeking. HC,

330 healthy control. * $p < 0.05$; ** $p < 0.01$; *** $p < 0.001$; **** $p < 0.0001$; NS, not significant.

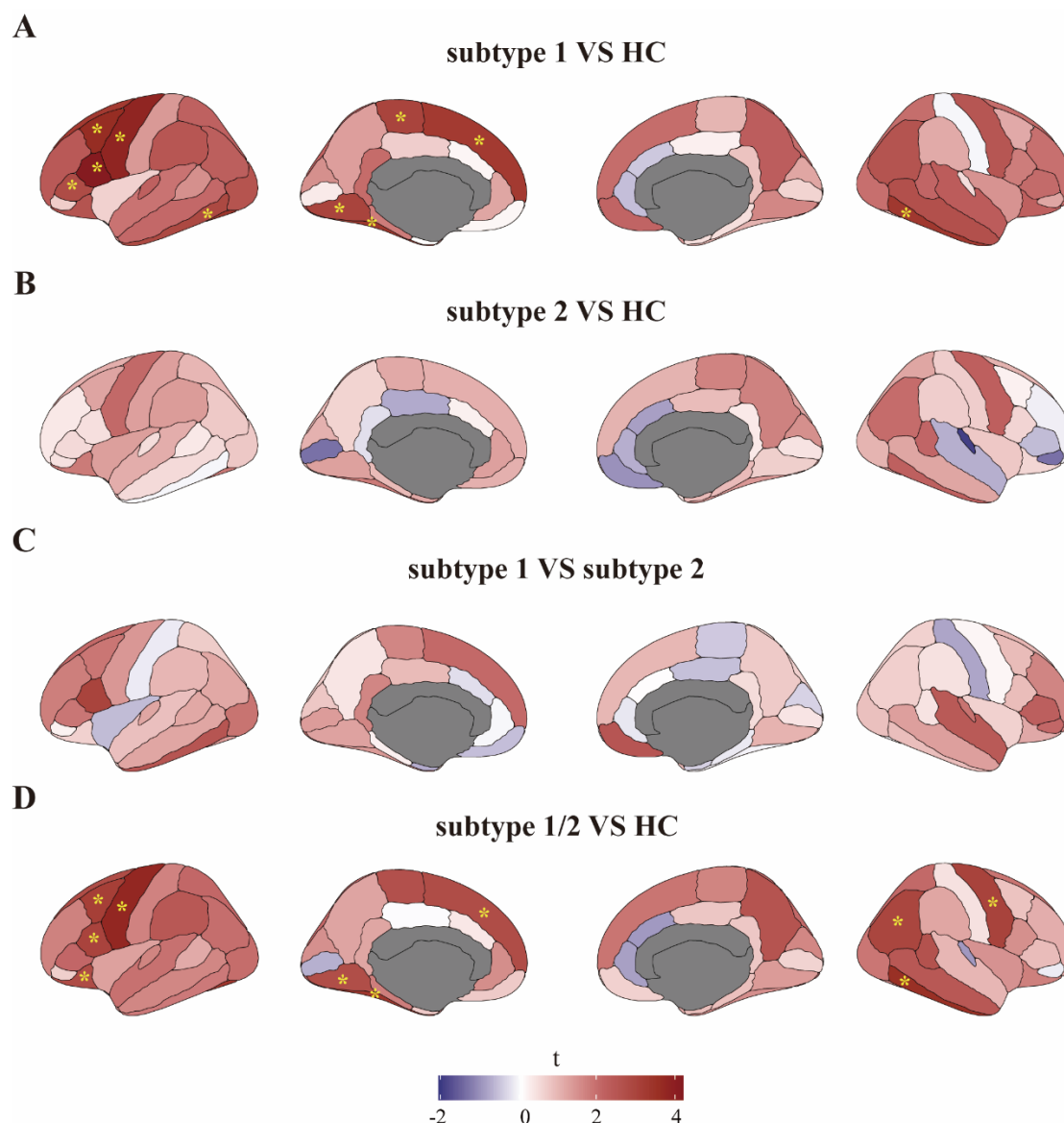
331 **Internalizing patients with high impulsivity exhibit increased cortical**
 332 **thickness**

333 To determine the neurodevelopmental basis of the phenotypic differences we compared

334 baseline cortical thickness between subtype 1, subtype 2 and HC, respectively. Subtype
335 1 had significantly thicker cortices than HC in left pars opercularis ($t=4.17$, $p=3.2 \times 10^{-5}$),
336 pars triangularis ($t=2.77$, $p=5.7 \times 10^{-3}$), caudal middle frontal gyrus ($t=3.61$,
337 $p=3.0 \times 10^{-4}$), superior frontal gyrus ($t=3.23$, $p=1.2 \times 10^{-3}$), precentral gyrus ($t=3.83$,
338 $p=1.31 \times 10^{-4}$), paracentral lobule ($t=2.99$, $p=2.8 \times 10^{-3}$), inferior temporal gyrus ($t=2.85$,
339 $p=4.3 \times 10^{-3}$), fusiform gyrus ($t=3.35$, $p=8.1 \times 10^{-4}$), lingual gyrus ($t=2.99$, $p=2.7 \times 10^{-3}$)
340 and right inferior temporal gyrus ($t=3.31$, $p=9.6 \times 10^{-4}$) (all significant after FDR
341 correction, Figure 3A), whereas subtype 2 did not display significant differences from
342 HC or subtype 1 (Figure 3B, C).

343

344 We additionally employed the conventional approach of pooling internalizing patients
345 (subtype 1 and subtype 2) and compared cortical thicknesses between all pure
346 internalizing patients and HC, which revealed similar significant differences compared
347 to the differences between subtype 1 and HC (Figure 3D). Together this suggests that
348 the conventional approach would have revealed cortical thickness alterations in
349 internalizing patients, while the subtype analysis indicated that the differences were
350 clearly and specifically driven by subtype 1, suggesting a neurodevelopmental subtype
351 differentiation on adolescent internalizing disorders.



352

353 Figure 3 Neurobiological characterization of the subtypes of pure internalizing patients at baseline.

354 (A) Thickness alterations in subtype 1 compared to HC (B) Thickness alterations in subtype 2

355 compared to HC (C) Thickness alterations in subtype 1 compared to subtype 2. (D) Thickness

356 alterations in all pure internalizing patients (subtype 1 and subtype 2) compared to HC. HC, healthy

357 control. * $q < 0.05$, FDR corrected.

358

359 To investigate the stability of neurodevelopmental alterations between groups, we

360 further compared 2-year follow-up cortical thickness between the subtypes and HC. We

361 found similar differences as those at baseline such that the left pars opercularis ($t=3.61$,
362 $p=3.5 \times 10^{-4}$, FDR corrected), paracentral lobule ($t=2.26$, $p=0.024$), fusiform gyrus
363 ($t=2.14$, $p=0.032$), precentral gyrus ($t=2.10$, $p=0.036$), pars triangularis ($t=2.01$,
364 $p=0.045$) and right inferior temporal gyrus ($t=2.91$, $p=0.004$) were still thicker in
365 subtype 1 compared to HC (Figure S4A) and subtype 2 did not exhibit any significant
366 differences from HC (Figure S4B). In contrast to the baseline data, the two subtypes
367 differed at follow-up, specifically subtype 1 exhibited thicker left pars opercularis
368 ($t=3.78$, $p=1.6 \times 10^{-4}$), right superior temporal gyrus ($t=3.58$, $p=3.6 \times 10^{-4}$) and middle
369 temporal gyrus ($t=3.51$, $p=4.6 \times 10^{-4}$) compared to subtype 2 (all significant after FDR
370 correction, see Figure S4C). Examination of the spatial similarity of the thickness
371 distribution by means of employing Pearson correlation analyses between t-maps
372 representing cortical thickness differences of the two subtypes and HC, revealed that
373 the similarity between the subtypes at baseline ($r=0.4$, $p=7 \times 10^{-4}$, Figure S5A) was
374 decreased at 2-year follow-up ($r=0.14$, $p=0.24$, Figure S5B) suggesting that the two
375 subtypes of internalizing disorders become more dissimilar during development
376 indicating divergent neurodevelopmental trajectories. Statistical t-value and p-value of
377 comparisons of cortical thickness are listed in Table S3, S4.

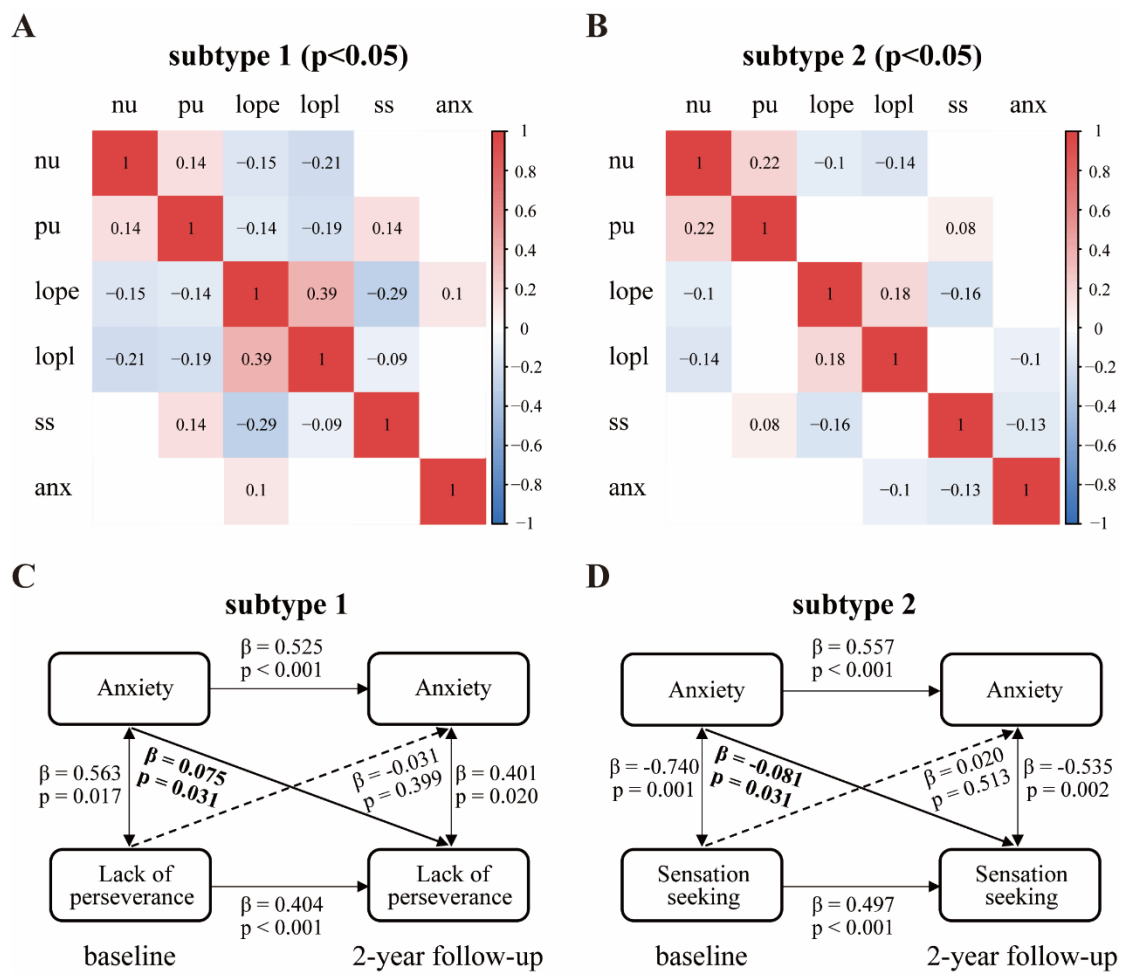
378 **Higher impulsivity associates with larger cortical thickness of**
379 **prefrontal cortex**

380 Employing dimensional analysis in the entire sample focusing on regions with

381 significant differences between subtype 1 and HC at baseline with both anxiety and
382 impulsivity scores revealed that larger thickness of left pars triangularis was associated
383 with increased sensation seeking ($t=2.49$, $p=0.013$) and larger thicknesses of left pars
384 opercularis and superior frontal gyrus were associated both with increased sensation
385 seeking ($t=2.46$, $p=0.014$ and $t=2.49$, $p=0.013$, respectively) and positive urgency
386 ($t=2.83$, $p=0.005$ and $t=2.97$, $p=0.003$, respectively), which all passed FDR correction
387 (Figure S6). Statistical t-value and p-value of the associations are presented in Table S5.
388 Together this analysis suggests that different sub-facets of impulsivity are associated
389 with morphological alterations in different frontal regions.

390 **Differential longitudinal associations between anxiety and impulsivity** 391 **in the internalizing subtypes**

392 We investigated the correlation between anxiety and impulsivity at baseline of the two
393 subtypes separately and found two opposing patterns of correlation between them.
394 Anxiety was related with increased lack of perseverance ($r=0.10$, $p=0.0165$) in subtype
395 1 (Figure 4A) but with decreased lack of planning ($r=-0.10$, $p=0.0102$) and sensation
396 seeking ($r=-0.13$, $p=0.0009$) in subtype 2 (Figure 4B).



397

398 Figure 4 Correlation between anxiety and impulsivity in pure internalizing patients. (A) Baseline

399 anxiety-impulsivity relationship in subtype 1. (B) Baseline anxiety-impulsivity relationship in

400 subtype 2. (C) Longitudinal associations between anxiety and lack of perseverance in subtype 1. (D)

401 Longitudinal associations between anxiety and sensation seeking in subtype 2. Anxiety was

402 measured by CBCL-Anxiety Problem. Impulsivity was measured by sub-facets of UPPS-P.

403 Threshold of significant p-value was 0.05. nu, negative urgency; pu, positive urgency; lope, lack of

404 perseverance; lopl, lack of planning; ss, sensation seeking; anx, anxiety.

405

406 We further performed longitudinal association analyses between anxiety and

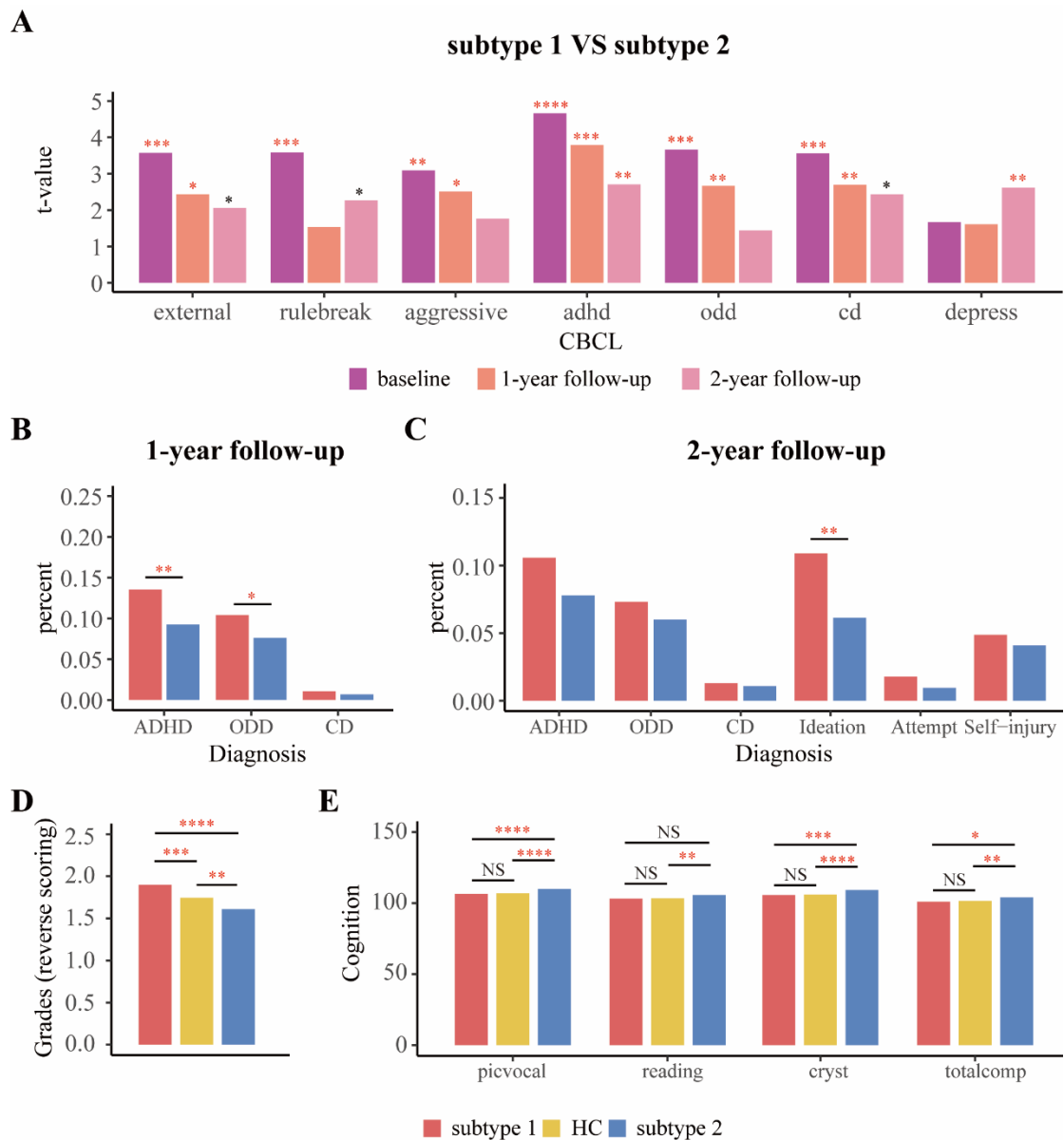
407 impulsivity over two time points (baseline and 2-year follow-up) of the two subtypes

408 separately by CLPM. In subtype 1 anxiety at baseline was significantly associated with
409 increased lack of perseverance ($\beta = 0.075$, $p = 0.031$) at 2-year follow-up (Figure 4C),
410 while in subtype 2 anxiety at baseline was significantly associated with decreased
411 sensation seeking ($\beta = -0.081$, $p = 0.031$) at 2-year follow-up (Figure 4D), suggesting
412 opposing and impulsivity sub-facet specific associations between baseline anxiety and
413 the trajectories of impulsivity in subtype 1 and subtype 2. Detailed longitudinal
414 associations between anxiety and impulsivity were listed in Table S6.

415 **Prediction of trajectories: Internalizing patients with high impulsivity**
416 **exhibit higher psychopathology, higher risk of suicide, higher**
417 **transition rate to externalizing disorders, poorer cognition and worse**
418 **academic performance**

419 To further determine distinct psychopathological and neurocognitive profiles between
420 the groups we compared the respective indices between subtype 1 and subtype 2. We
421 found that subtype 1 had higher scores of externalizing problems (e.g., scores of ADHD,
422 ODD and CD in CBCL) compared to subtype 2 at baseline and follow-up, and that
423 subtype 1 had higher depressive symptom load than subtype 2 at 2-year follow-up
424 (Figure 5A). With respect to the clinical predictive utility of the subtypes we found that
425 more patients in subtype 1 developed externalizing disorders (ADHD and ODD) during
426 the 1-year follow-up (Figure 5B) and reported higher prevalence of suicidality, which
427 is mainly driven by suicidal ideation, during the 2-year follow-up compared to subtype

428 2 (Figure 5C). With respect to functional performance in everyday life we found that
 429 subtype 1 had a poorer while subtype 2 had a better academic performance in terms of
 430 grades at baseline compared to HC (Figure 5D), and that subtype 2 had a better
 431 cognition performance, especially in crystallized intelligence (Figure 5E).



432
 433 Figure 5 Differences of (A) psychopathology, (B) transition rate to externalizing disorders at 1-year
 434 follow-up, (C) transition rate to externalizing disorders and prevalence of suicidality at 2-year
 435 follow-up between subgroups in pure internalizing patients, and differences of (D) grades^a and (E)

436 cognition at baseline between subgroups in pure internalizing patients and HC. external,
437 Externalizing Problems; rulebreak, Rule-Breaking Behavior; aggressive, Aggressive Behavior;
438 adhd, ADHD Problems; odd, Oppositional Defiant Problems; cd, Conduct Problems; depress,
439 depressive problems; ADHD, Attention-Deficit/Hyperactivity Disorder; ODD, Oppositional
440 Defiant Disorder; CD, Conduct Disorder; Ideation, Suicidal ideation; Attempt, Suicide attempt;
441 Self-injury, Nonsuicidal self-injury; picvoc, picture vocabulary; reading, oral reading recognition;
442 cryst, crystallized intelligence; totalcomp, total intelligence; HC, healthy control. * $p < 0.05$; **
443 $p < 0.01$; *** $p < 0.001$; **** $p < 0.0001$; NS, not significant. Red asterisks indicate p-values passed
444 FDR correction.

445 a: grades were scored reversely and 1 = excellent, 2= good, 3 = average, 4 = below average, 5 =
446 struggling a lot, and 6 = ungraded.

447 **Robustness of the clustering results across externalizing disorder** 448 **comorbidity**

449 Our initial analyses focused on individuals with pure internalizing disorders while
450 excluding subjects with comorbid externalizing disorders to control for a potential
451 influence of comorbid externalizing conditions. To test the robustness of our findings
452 we repeated the analyses including patients with comorbid externalizing conditions.
453 The results of the clustering analysis and between-group differences [including cortical
454 thickness, association between anxiety and impulsivity, level of anxiety and sub-facets
455 of impulsivity, which are shown in Figure S7-9 and Table S7, S8] remained stable,

456 suggesting impulsivity is a transdiagnostic factor, which cuts across all internalizing
457 disorder patients independent of externalizing comorbidity.

458 **Discussion**

459 Anxiety and impulsivity represent key transdiagnostic dimensions of psychopathology
460 yet their interaction and contribution to emotional disorders in adolescence remains
461 controversial (Jakuszkowiak-Wojten et al 2015) and previous findings of internalizing
462 disorders on the symptomatic and neurobiological level remained inconsistent (Sellnow
463 et al 2020; Kaczkurkin et al 2020; Shackman et al 2013). Combining a large adolescent
464 sample consisting of 2437 internalizing patients aged 9-10 years with a data-driven
465 clustering approach, we identified two distinct subtypes of internalizing patients with
466 comparably elevated levels of anxiety but different levels of impulsivity. Specifically,
467 subtype 1 exhibited elevated, while subtype 2 exhibited lower, levels of impulsivity
468 compared to healthy controls. Our results resonate with recent findings on nonclinical
469 undergraduates or patients with anxiety disorders (Binelli et al 2015; Kashdan and
470 Hofmann 2008; Lipton et al 2016), both characterized by subtypes with similar level of
471 anxiety but different level of impulsivity. The differentiation on the impulsivity
472 dimension was mirrored by different neuroanatomical profiles, opposite relationships
473 between anxiety and impulsivity, different neurocognitive and academic profiles, as
474 well as different clinical trajectories with respect to the conversion to externalizing
475 disorders, prevalence of suicidality, severity of externalizing and depressive problems.

476 Together our results indicate that impulsivity represents a key defining factor for
477 subtypes of young internalizing patients and that the corresponding heterogeneity of
478 internalizing patients may account for the inconsistent findings in the previous literature.
479
480 Higher impulsivity in subtype 1 is related to increased thickness in higher order
481 cognitive control networks involving left pars opercularis, pars triangularis and superior
482 frontal gyrus, consistent with previous research (Newman et al 2016; Zhu et al 2020;
483 Whelan et al 2012), and also broadly consistent with a previous study examining
484 impulsivity-brain structural associations in the ABCD study (Owens et al 2020). These
485 brain regions, i.e., ventrolateral and dorsolateral PFC (DLPFC), have been strongly
486 involved in response inhibition (Liddle et al 2001; Zhuang et al 2021). DLPFC has been
487 regarded as a critical region for cognitive control (Chen et al 2018; Miller and Cohen
488 2001), disruption of which increases choice of immediate rewards (Figner et al 2010).
489 Morphological alterations of PFC in subtype 1 and their lower academic performance
490 in everyday life (Figure 5D) may thus mirror poor cognitive control, maladaptive
491 behaviors under stressful situations and tendency to adopt dysfunctional coping
492 strategies which in the long run may give rise to increased levels of internalizing
493 problems (Lim et al 2021; Reising et al 2018). Furthermore, the intact brain morphology
494 in subtype 2 and the lack of significant correlations between anxiety and cortical
495 thickness in the entire sample suggest that the observed alterations in cortical thickness
496 exhibited subtype 1 are mainly driven by impulsivity rather than anxiety. It is worth

497 noting that impulsivity is not a unitary construct (Strickland and Johnson 2021) and that
498 different dimensions of impulsivity play different roles in disorders on the level of brain
499 structure (Owens et al 2020).

500

501 From a neurodevelopmental perspective the observed findings resonate with the dual-
502 system models hypothesizing that the PFC attains functional maturity later than the
503 limbic system and this developmental mismatch results in poor emotion regulation
504 during adolescence (Casey et al 2008; Powers and Casey 2015; Steinberg 2008). The
505 development of thickness of PFC consists of initial childhood increase, following
506 adolescent decrease and adult stabilization (Shaw et al 2008). Thicker PFC in subtype
507 1 may thus indicate their delayed development, which results in ineffective control over
508 behavioral impulses in response to reward and punishment mediated by the limbic
509 system which in turn may promote engagement in dysfunctional coping strategies under
510 anxiety. Different neurodevelopmental trajectories of the two subtypes are also
511 reflected by the increased thickness differences between them in 2-year follow-up, and
512 by the more dissimilar patterns of cortical thickness alteration compared to HC (t-maps
513 of the two subtypes being non-correlated) at 2-year follow-up compared to baseline.

514

515 In addition to alterations in frontal regions, subtype 1 additionally exhibited thicker
516 cortices in occipito- and inferior temporal (fusiform) regions which have been
517 associated with perceptual processes and emotional dysregulation (e.g. Spengler et al

518 2017; Fusar-Poli et al 2009; Gentili et al 2008) and play a central role in the network
519 related to the pathogenesis of anxiety disorders which also includes the insular cortex,
520 ventromedial prefrontal cortex and amygdala (Xu et al 2021; Strawn et al 2014). In line
521 with the functional characterization, greater thickness of these regions has been
522 previously observed in pediatric generalized anxiety disorder and has been associated
523 with fear learning, fear extinction, and deficits in the regulation of the amygdala
524 (Strawn et al 2014), suggesting that developmental delay within these regions may
525 promote a lack of adaptive responses during stressful and anxiogenic situations.

526

527 In subtype 1 higher anxiety at baseline preceded increasing impulsivity (lack of
528 planning) over the subsequent two years, while baseline anxiety in subtype 2 correlated
529 negatively with impulsivity (sensation seeking) at two-year follow-up. These two
530 distinct subtypes may harmonize the previous controversial findings. On the one hand,
531 anxiety might serve a critical defensive function for avoiding potential danger (Lee et
532 al 2006; Taylor et al 2008), which has been considered to be inversely related to
533 impulsivity (Apter et al 1993; Taylor et al 2008). This proposed pattern mirrors the
534 findings in subtype 2. On the other hand, recent studies found that patients with a
535 comorbid anxiety disorder had higher impulsivity than those without an anxiety
536 disorder (Del Carlo et al 2012; Ferreira-Garcia et al 2019; Perugi et al 2011;
537 Summerfeldt et al 2004; Taylor et al 2008), which indicates that anxiety can be
538 positively related with impulsivity (Cosi et al 2011; Favaloroa and Moustafab 2020;

539 Jakuszkowiak-Wojten et al 2015; Moustafa et al 2017; Yu et al 2020). This positive
540 relationship appears to be a consequence of the greater salience of immediacy,
541 overestimation of the value of immediate rewards and greater motivation to respond to
542 immediacy in anxious people (Xia et al 2017). This corresponds to the characteristics
543 that we identified in subtype 1.

544

545 The distinct anxiety-impulsivity relationship may suggest different strategies adopted
546 by the two subtypes of internalizing patients to cope with anxiety. Subtype 1 may adopt
547 dysfunctional coping like avoiding behaviors, which likely reduces anxiety temporarily
548 but will lead to a maintenance of anxiety in future similar situations (Thomasson and
549 Psouni 2010). Anxiety is believed to play a role in externalizing disorders characterized
550 by impulsive behavior, particularly internet addiction (Bargeron and Hormes 2017;
551 Peterka-Bonetta et al 2019), gambling (Devos et al 2020), alcohol and substance use
552 (Adams et al 2019; Davis et al 2020; Zhou et al 2019). These impulsive behaviors serve
553 to reduce the underlying emotional tension and provide immediate rewards (Tice et al
554 2001). Moreover, we also found that subtype 1 exhibits significantly higher BAS than
555 controls while subtype 2 has significantly lower BAS than controls. The BAS refers to
556 biologically based behavioral tendencies in response to rewarding stimuli and has been
557 linked with impulsivity (Vollrath and Torgersen 2000). The high BAS scores of subtype
558 1 may thus reflect sensitivity to rewards, which may impede coping with their anxiety,
559 while the lower impulsivity and BAS in subtype 2 suggest that they are less sensitive

560 to distractions by rewards and thus more likely to resolve problems that caused their
561 anxiety.

562

563 Psychopathological markers like suicidal ideation, depressive and externalizing
564 symptoms at baseline and follow-up were all increased in subtype 1, with suicidal
565 ideation and depression being important predictors of suicide in adolescents (Hubers et
566 al 2018; Hawton et al 2013). Previous studies (Lipton et al 2016; Askenazy et al 2003)
567 also reported an association between increased impulsivity and suicidality in
568 internalizing patients. Suicidality encompasses suicidal ideation (Tsypes et al 2019),
569 suicide attempt (Clark et al 2011; Dombrowski et al 2010) and nonsuicidal self-injury
570 (Lutz et al 2021; Wilkinson et al 2018), and in the present study particularly suicidal
571 ideation was found to contribute to the differences between subtypes which may reflect
572 a high clinical relevance given that suicidal ideation has been associated with actual
573 suicide attempts (Chapman et al 2015; Hubers et al 2018). Impulsivity, anxiety and
574 depression are often immediate suicide risk factors that are potentially modifiable if
575 recognized and treated urgently with effective medications and watchful support
576 (Fawcett 2001). In addition, subtype 1 exhibited further cognitive problems, possible
577 reflecting deficient or retarded neurocognitive and functional development, including
578 lower academic grades in daily life. Notably subtype 2 exhibited higher crystallized
579 intelligence and academic performance as compared to both other groups, potentially
580 reflecting a neurocognitive compensation allowing adaptation despite elevated levels

581 of anxiety. Together, subtype 1 may represent a group with a strongly increased
582 psychopathological risk and a risk group for future behavioral and neurodevelopmental
583 dysregulations. Therefore, early interventions for this subgroup, such as Cognitive
584 Behavioral Therapy (CBT), which has been shown to alleviate anxiety in internalizing
585 patients with high impulsivity (Subotic-Kerry et al 2016), are urgently needed.

586 **Strengths and Limitations**

587 One strength of the present study is the fully data-driven determination of different
588 subtypes in a large longitudinal cohort, which revealed subgroups of internalizing
589 patients with distinct neuroanatomical, neurocognitive and psychopathological profiles
590 at baseline and further diverging trajectories over the follow-up period. Moreover, the
591 data-driven clustering results, neurodevelopmental profiles and distinct anxiety-
592 impulsivity relationships in subtype 1 and subtype 2 remained stable using both pure
593 internalizing patients and internalizing patients comorbid with externalizing disorders,
594 indicating that anxiety-impulsivity relationships represent a transdiagnostic factor that
595 cuts across diagnostic categories and comorbidity externalizing conditions in
596 internalizing disorders. Although there were no differences in the gender distribution of
597 internalizing patients and healthy controls in general, subtype 2 had a higher ratio
598 females, suggesting the potential contribution of sex-differences which may be further
599 explored in future studies. The findings have to be considered in the context of
600 limitations, including the focus on brain morphological data while future studies should

601 examine alterations on the level of functional activity and networks which may allow
602 to characterized brain functional alterations underlying enhanced anxiety in subtype 2.

603 **Acknowledgments and Disclosures**

604 JZ was supported by Shanghai Municipal Science and Technology Major Project
605 (No.2018SHZDZX01) and ZJLab and NSFC 61973086. JF was supported by the 111
606 Project (No. B18015), the key project of Shanghai Science and Technology (No.
607 16JC1420402), National Key R&D Program of China (No. 2018YFC1312900),
608 National Natural Science Foundation of China (NSFC 91630314). BB is supported by
609 the National Key Research and Development Program of China (2018YFA0701400).

610

611 Data used in the preparation of this article were obtained from the Adolescent Brain
612 Cognitive Development (ABCD) study (<https://abcdstudy.org>), held in the National
613 Institute of Mental Health Data Archive. This is a multisite, longitudinal study designed
614 to recruit more than 11,000 children aged 9 to 10 and follow them over 10 years into
615 early adulthood. The ABCD study is supported by National Institutes of Health and
616 additional federal partners under Grant U01DA041089, U24DA041123,
617 U01DA041117, U01DA041022, U01DA041148, U01DA041106, U01DA041028,
618 U01DA041048, U24DA041147, U01DA041156, U01DA041134, U01DA041174,
619 U01DA041120, U01DA041093, U01DA041025, U01DA050989, U01DA051039,
620 U01DA051016, U01DA051037, U01DA050987, U01DA051018, U01DA051038 and

621 U01DA050988. A full list of supporters is available at <https://abcdstudy.org/federal->
622 [partners/](https://abcdstudy.org/federal-partners/). A listing of participating sites and a complete listing of the study investigators
623 can be found at <https://abcdstudy.org/scientists/workgroups/>. The ABCD Research
624 Consortium investigators designed and implemented the study and/or provided data but
625 did not necessarily participate in analysis or writing of this report. This manuscript
626 reflects the views of the authors and may not reflect the opinions or views of the
627 National Institutes of Health or ABCD Research Consortium investigators. The ABCD
628 study data repository grows and changes over time. The ABCD study data used in this
629 report came from Data Release 3.0 (<https://nda.nih.gov/study.html?id=901>).

630

631 BJS consults for Cambridge Cognition, Greenfield BioVentures, and Cassava Sciences.
632 TWR consults for Cambridge Cognition, Shionogi, Heptares, Takeda, Arcadia, and
633 Greenfield Bioventures; and receives royalties from Cambridge Cognition and research
634 grants from Shionogi and GlaxoSmithKline. All other authors report no biomedical
635 financial interests or potential conflicts of interest.

636

References:

637

638 Adams T, Rapinda KK, Frohlich JR, O'Connor RM, Keough MT (2019): Impulsivity moderates the

639 effect of social anxiety on in-lab alcohol craving. *ADDICT BEHAV* 97:70-76.

640 American Psychiatric Association A (2013): *Diagnostic and statistical manual of mental disorders:*

641 *DSM-5*: American Psychiatric Association.

642 Apter A, Plutchik R, Van Praag HM (1993): Anxiety, impulsivity and depressed mood in relation to

643 suicidal and violent behavior. *ACTA PSYCHIAT SCAND* 87:1-5.

644 Askenazy FL, Sorci K, Benoit M, Lestideau K, Myquel M, Lecrubier Y (2003): Anxiety and impulsivity

645 levels identify relevant subtypes in adolescents with at-risk behavior. *J AFFECT DISORDERS* 74:219-

646 227.

647 Aughter AM, Mejia MH, Heyser CJ, Shilling PD, Jernigan TL, Brown SA, et al (2018): A description of

648 the ABCD organizational structure and communication framework. *DEV COGN NEUROS-NETH* 32:8-

649 15.

650 Barch DM, Albaugh MD, Avenevoli S, Chang L, Clark DB, Glantz MD, et al (2018): Demographic,

651 physical and mental health assessments in the adolescent brain and cognitive development study:

652 Rationale and description. *DEV COGN NEUROS-NETH* 32:55-66.

653 Barger AH, Hormes JM (2017): Psychosocial correlates of internet gaming disorder: Psychopathology,

654 life satisfaction, and impulsivity. *COMPUT HUM BEHAV* 68:388-394.

655 Billieux J, Thorens G, Khazaal Y, Zullino D, Achab S, Van der Linden M (2015): Problematic

656 involvement in online games: A cluster analytic approach. *COMPUT HUM BEHAV* 43:242-250.

657 Binelli C, Muñiz A, Sanches S, Ortiz A, Navines R, Egmond E, et al (2015): New evidence of

658 heterogeneity in social anxiety disorder: Defining two qualitatively different personality profiles taking
659 into account clinical, environmental and genetic factors. *EUR PSYCHIAT* 30:160-165.

660 Blaszczyński A, Nower L (2002): A pathways model of problem and pathological gambling.
661 *ADDICTION* 97:487-499.

662 Casey BJ, Cannonier T, Conley MI, Cohen AO, Barch DM, Heitzeg MM, et al (2018): The Adolescent
663 Brain Cognitive Development (ABCD) study: Imaging acquisition across 21 sites. *DEV COGN*
664 *NEUROS-NETH* 32:43-54.

665 Casey BJ, Getz S, Galvan A (2008): The adolescent brain. *DEV REV* 28:62-77.

666 Caspi A, Houts RM, Ambler A, Danese A, Elliott ML, Hariri A, et al (2020): Longitudinal assessment
667 of mental health disorders and comorbidities across 4 decades among participants in the Dunedin birth
668 cohort study. *JAMA network open* 3:e203221.

669 Castellanos-Ryan N, Brière FN, O'Leary-Barrett M, Banaschewski T, Bokde A, Bromberg U, et al (2016):
670 The structure of psychopathology in adolescence and its common personality and cognitive correlates. *J*
671 *ABNORM PSYCHOL* 125:1039.

672 Chapman CL, Mullin K, Ryan CJ, Kuffel A, Nielssen O, Large MM (2015): Meta - analysis of the
673 association between suicidal ideation and later suicide among patients with either a schizophrenia
674 spectrum psychosis or a mood disorder. *ACTA PSYCHIAT SCAND* 131:162-173.

675 Chen T, Becker B, Camilleri J, Wang L, Yu S, Eickhoff SB, et al (2018): A domain-general brain network
676 underlying emotional and cognitive interference processing: evidence from coordinate-based and
677 functional connectivity meta-analyses. *Brain Structure and Function* 223:3813-3840.

678 Clark L, Dombrowski AY, Siegle GJ, Butters MA, Shollenberger CL, Sahakian BJ, et al (2011):

679 Impairment in risk-sensitive decision-making in older suicide attempters with depression. *PSYCHOL*
680 *AGING* 26:321.

681 Cosi S, Hernandez-Martinez C, Canals J, Vigil-Colet A (2011): Impulsivity and internalizing disorders
682 in childhood. *PSYCHIAT RES* 190:342-347.

683 Cummings CM, Caporino NE, Kendall PC (2014): Comorbidity of Anxiety and Depression in Children
684 and Adolescents: 20 Years After. *PSYCHOL BULL* 140:816-845.

685 Cuthbert BN, Insel TR (2013): Toward the future of psychiatric diagnosis: the seven pillars of RDoC.
686 *BMC MED* 11:1-8.

687 Davis JP, Christie NC, Pakdaman S, Hummer JF, DeLeon J, Clapp JD, et al (2020): Multifaceted
688 impulsivity as a moderator of social anxiety and cannabis use during pregaming. *J ANXIETY DISORD*
689 76:102320.

690 Del Carlo A, Benvenuti M, Fornaro M, Toni C, Rizzato S, Swann AC, et al (2012): Different measures
691 of impulsivity in patients with anxiety disorders: A case control study. *PSYCHIAT RES* 197:231-236.

692 Desikan RS, Ségonne F, Fischl B, Quinn BT, Dickerson BC, Blacker D, et al (2006): An automated
693 labeling system for subdividing the human cerebral cortex on MRI scans into gyral based regions of
694 interest. *NEUROIMAGE* 31:968-980.

695 Devos G, Clark L, Bowden-Jones H, Grall-Bronnec M, Challet-Bouju G, Khazaal Y, et al (2020): The
696 joint role of impulsivity and distorted cognitions in recreational and problem gambling: A cluster analytic
697 approach. *J AFFECT DISORDERS* 260:473-482.

698 Dombrovski AY, Clark L, Siegle GJ, Butters MA, Ichikawa N, Sahakian BJ, et al (2010):
699 Reward/punishment reversal learning in older suicide attempters. *AM J PSYCHIAT* 167:699-707.

- 700 Favaloroa B, Moustafab AA (2020): Intolerance of uncertainty and addiction. *Cognitive, Clinical, and*
701 *Neural Aspects of Drug Addiction*:205.
- 702 Fawcett J (2001): Treating impulsivity and anxiety in the suicidal patient. *ANN NY ACAD SCI* 932:94-
703 105.
- 704 Ferreira-Garcia R, Faria CGF, Nardi AE, Da Rocha Freire RC (2019): Negative affect mediates
705 impulsivity in generalized anxiety disorder. *PSYCHOPATHOLOGY* 52:327-333.
- 706 Figner B, Knoch D, Johnson EJ, Krosch AR, Lisanby SH, Fehr E, et al (2010): Lateral prefrontal cortex
707 and self-control in intertemporal choice. *NAT NEUROSCI* 13:538-539.
- 708 Fusar-Poli P, Placentino A, Carletti F, Landi P, Allen P, Surguladze S, et al (2009): Functional atlas of
709 emotional faces processing: a voxel-based meta-analysis of 105 functional magnetic resonance imaging
710 studies. *J PSYCHIATR NEUROSCI*.
- 711 Gentili C, Gobbini MI, Ricciardi E, Vanello N, Pietrini P, Haxby JV, et al (2008): Differential modulation
712 of neural activity throughout the distributed neural system for face perception in patients with Social
713 Phobia and healthy subjects. *BRAIN RES BULL* 77:286-292.
- 714 Gray JA (1987): Perspectives on anxiety and impulsivity - a commentary. *J RES PERS* 21:493-509.
- 715 Hagler Jr DJ, Hatton S, Cornejo MD, Makowski C, Fair DA, Dick AS, et al (2019): Image processing
716 and analysis methods for the Adolescent Brain Cognitive Development Study. *NEUROIMAGE*
717 202:116091.
- 718 Hair JF (2009): *Multivariate data analysis*. Upper Saddle River: Prentice Hall.
- 719 Hawton K, Casañas I Comabella C, Haw C, Saunders K (2013): Risk factors for suicide in individuals
720 with depression: A systematic review. *J AFFECT DISORDERS* 147:17-28.

- 721 Hubers A, Moaddine S, Peersmann S, Stijnen T, Van Duijn E, Van der Mast RC, et al (2018): Suicidal
722 ideation and subsequent completed suicide in both psychiatric and non-psychiatric populations: a meta-
723 analysis. *EPIDEMIOL PSYCH SCI* 27:186-198.
- 724 Hudziak JJ, Achenbach TM, Althoff RR, Pine DS (2007): A dimensional approach to developmental
725 psychopathology. *INT J METH PSYCH RES* 16:S16-S23.
- 726 Huttenlocher PR (1979): Synaptic density in human frontal cortex-developmental changes and effects of
727 aging. *BRAIN RES* 163:195-205.
- 728 Jakuszkowiak-Wojten K, Landowski J, Wiglusz MS, Cubala WJ (2015): Impulsivity in anxiety disorders.
729 A critical review. *PSYCHIAT DANUB* 27 Suppl 1:S452-S455.
- 730 Kaczurkin AN, Sotiras A, Baller EB, Barzilay R, Calkins ME, Chand GB, et al (2020): Neurostructural
731 heterogeneity in youths with internalizing symptoms. *BIOL PSYCHIAT* 87:473-482.
- 732 Kashdan TB, Hofmann SG (2008): The high - novelty - seeking, impulsive subtype of generalized
733 social anxiety disorder. *DEPRESS ANXIETY* 25:535-541.
- 734 Kotov R, Krueger RF, Watson D, Achenbach TM, Althoff RR, Bagby RM, et al (2017): The Hierarchical
735 Taxonomy of Psychopathology (HiTOP): A dimensional alternative to traditional nosologies. *J*
736 *ABNORM PSYCHOL* 126:454.
- 737 Krueger RF (1999): The structure of common mental disorders. *Archives of general psychiatry* 56:921-
738 926.
- 739 LEE WE, WADSWORTH MEJ, HOTOPF M (2006): The protective role of trait anxiety: a longitudinal
740 cohort study. *PSYCHOL MED* 36:345-351.
- 741 Lees B, Squeglia LM, McTeague LM, Forbes MK, Krueger RF, Sunderland M, et al (2021): Altered

- 742 Neurocognitive Functional Connectivity and Activation Patterns Underlie Psychopathology in
743 Preadolescence. *BIOLOGICAL PSYCHIATRY-COGNITIVE NEUROSCIENCE AND NEUROIMAGING*
744 6:387-398.
- 745 Liddle PF, Kiehl KA, Smith AM (2001): Event - related fMRI study of response inhibition. *HUM BRAIN*
746 *MAPP* 12:100-109.
- 747 Lim HJ, Moon E, Suh H, Yang SK, Park JM, Lee BD, et al (2021): Psychometric Properties of Behavioral
748 Checklist for Coping with Stress in Patients with Mood Disorders. *PSYCHIAT INVEST* 18:147.
- 749 Linke JO, Abend R, Kircanski K, Clayton M, Stavish C, Benson BE, et al (2021): Shared and Anxiety-
750 Specific Pediatric Psychopathology Dimensions Manifest Distributed Neural Correlates. *BIOL*
751 *PSYCHIAT* 89:579-587.
- 752 Lipton MF, Weeks JW, Daruwala SE, De Los Reyes A (2016): Profiles of social anxiety and impulsivity
753 among college students: A close examination of profile differences in externalizing behavior. *J*
754 *PSYCHOPATHOL BEHAV* 38:465-475.
- 755 Lutz NM, Chamberlain SR, Goodyer IM, Bhardwaj A, Sahakian BJ, Jones PB, et al (2021): Behavioral
756 measures of impulsivity and compulsivity in adolescents with nonsuicidal self-injury. *CNS*
757 *SPECTRUMS*:1-9.
- 758 Merz EC, He X, Noble KG (2018): Anxiety, depression, impulsivity, and brain structure in children and
759 adolescents. *NEUROIMAGE-CLIN* 20:243-251.
- 760 Miller EK, Cohen JD (2001): An integrative theory of prefrontal cortex function. *ANNU REV*
761 *NEUROSCI* 24:167-202.
- 762 Moustafa AA, Tindle R, Frydecka D, Misiak B (2017): Impulsivity and its relationship with anxiety,

- 763 depression and stress. *COMPR PSYCHIAT* 74:173-179.
- 764 Natu VS, Gomez J, Barnett M, Jeska B, Kirilina E, Jaeger C, et al (2019): Apparent thinning of human
765 visual cortex during childhood is associated with myelination. *Proceedings of the National Academy of*
766 *Sciences* 116:20750-20759.
- 767 Newman E, Jernigan TL, Lisdahl KM, Tamm L, Tapert SF, Potkin SG, et al (2016): Go/No Go task
768 performance predicts cortical thickness in the caudal inferior frontal gyrus in young adults with and
769 without ADHD. *BRAIN IMAGING BEHAV* 10:880-892.
- 770 Newman E, Thompson WK, Bartsch H, Hagler DJ, Chen C, Brown TT, et al (2016): Anxiety is related
771 to indices of cortical maturation in typically developing children and adolescents. *Brain Structure and*
772 *Function* 221:3013-3025.
- 773 Owens MM, Hyatt CS, Gray JC, Miller JD, Lynam DR, Hahn S, et al (2020): Neuroanatomical Correlates
774 of Impulsive Traits in Children Aged 9 to 10. *J ABNORM PSYCHOL* 129:831-844.
- 775 Pasion R, Barbosa F (2019): ERN as a transdiagnostic marker of the internalizing-externalizing spectrum:
776 A dissociable meta-analytic effect. *Neuroscience & Biobehavioral Reviews* 103:133-149.
- 777 Perugi G, Del Carlo A, Benvenuti M, Fornaro M, Toni C, Akiskal K, et al (2011): Impulsivity in anxiety
778 disorder patients: Is it related to comorbid cyclothymia? *J AFFECT DISORDERS* 133:600-606.
- 779 Peterka-Bonetta J, Sindermann C, Elhai JD, Montag C (2019): Personality associations with smartphone
780 and internet use disorder: A comparison study including links to impulsivity and social anxiety. *Frontiers*
781 *in public health* 7:127.
- 782 Powers A, Casey BJ (2015): The adolescent brain and the emergence and peak of psychopathology.
783 *Journal of Infant, Child, and Adolescent Psychotherapy* 14:3-15.

- 784 Rakesh D, Allen NB, Whittle S (2020): Balancing act: Neural correlates of affect dysregulation in youth
785 depression and substance use – A systematic review of functional neuroimaging studies. *DEV COGN*
786 *NEUROS-NETH* 42:100775.
- 787 Reising MM, Bettis AH, Dunbar JP, Watson KH, Gruhn M, Hoskinson KR, et al (2018): Stress, coping,
788 executive function, and brain activation in adolescent offspring of depressed and nondepressed mothers.
789 *CHILD NEUROPSYCHOL* 24:638-656.
- 790 Robbins TW, Gillan CM, Smith DG, de Wit S, Ersche KD (2012): Neurocognitive endophenotypes of
791 impulsivity and compulsivity: towards dimensional psychiatry. *TRENDS COGN SCI* 16:81-91.
- 792 Romer AL, Elliott ML, Knodt AR, Sison ML, Ireland D, Houts R, et al (2021): Pervasively thinner
793 neocortex as a transdiagnostic feature of general psychopathology. *AM J PSYCHIAT* 178:174-182.
- 794 Rousseeuw PJ (1987): Silhouettes: a graphical aid to the interpretation and validation of cluster analysis.
795 *J COMPUT APPL MATH* 20:53-65.
- 796 Sellnow K, Sartin-Tarm A, Ross MC, Weaver S, Cisler JM (2020): Biotypes of functional brain
797 engagement during emotion processing differentiate heterogeneity in internalizing symptoms and
798 interpersonal violence histories among adolescent girls. *J PSYCHIATR RES* 121:197-206.
- 799 Shackman AJ, Fox AS, Oler JA, Shelton SE, Davidson RJ, Kalin NH (2013): Neural mechanisms
800 underlying heterogeneity in the presentation of anxious temperament. *Proceedings of the National*
801 *Academy of Sciences* 110:6145-6150.
- 802 Shaw P, Greenstein D, Lerch J, Clasen L, Lenroot R, Gogtay N, et al (2006): Intellectual ability and
803 cortical development in children and adolescents. *NATURE* 440:676-679.
- 804 Shaw P, Kabani NJ, Lerch JP, Eckstrand K, Lenroot R, Gogtay N, et al (2008): Neurodevelopmental

- 805 trajectories of the human cerebral cortex. *J NEUROSCI* 28:3586-3594.
- 806 Spengler FB, Becker B, Kendrick KM, Conrad R, Hurlmann R, Schade G (2017): Emotional
807 dysregulation in psychogenic voice loss. *PSYCHOTHER PSYCHOSOM* 86:121-123.
- 808 Steinberg L (2008): A social neuroscience perspective on adolescent risk-taking. *DEV REV* 28:78-106.
- 809 Strawn JR, Wegman CJ, Dominick KC, Swartz MS, Wehry AM, Patino LR, et al (2014): Cortical surface
810 anatomy in pediatric patients with generalized anxiety disorder. *J ANXIETY DISORD* 28:717-723.
- 811 Strickland JC, Johnson MW (2021): Rejecting impulsivity as a psychological construct: A theoretical,
812 empirical, and sociocultural argument. *PSYCHOL REV* 128:336.
- 813 Subotic-Kerry M, Baillie AJ, Stapinski LA, Teesson M, Sannibale C, Haber P, et al (2016):
814 IMPULSIVITY AS A PREDICTOR OF TREATMENT OUTCOME IN INDIVIDUALS WITH
815 COMORBID SOCIAL ANXIETY AND ALCOHOL USE DISORDER. *ALCOHOL CLIN EXP RES*
816 401:108A.
- 817 Summerfeldt LJ, Hood K, Antony MM, Richter MA, Swinson RP (2004): Impulsivity in obsessive-
818 compulsive disorder: comparisons with other anxiety disorders and within tic-related subgroups. *PERS*
819 *INDIV DIFFER* 36:539-553.
- 820 Taylor CT, Hirshfeld-Becker DR, Ostacher MJ, Chow CW, LeBeau RT, Pollack MH, et al (2008):
821 Anxiety is associated with impulsivity in bipolar disorder. *J ANXIETY DISORD* 22:868-876.
- 822 Thomasson P, Psouni E (2010): Social anxiety and related social impairment are linked to self - efficacy
823 and dysfunctional coping. *SCAND J PSYCHOL* 51:171-178.
- 824 Tice DM, Bratslavsky E, Baumeister RF (2001): Emotional distress regulation takes precedence over
825 impulse control: If you feel bad, do it!. *J PERS SOC PSYCHOL* 80:53-67.

- 826 Tsypes A, Owens M, Gibb BE (2019): Blunted neural reward responsiveness in children with recent
827 suicidal ideation. *Clinical psychological science* 7:958-968.
- 828 Weintraub S, Dikmen SS, Heaton RK, Tulsky DS, Zelazo PD, Bauer PJ, et al (2013): Cognition
829 assessment using the NIH Toolbox. *NEUROLOGY* 80:S54-S64.
- 830 Whelan R, Conrod PJ, Poline J, Lourdasamy A, Banaschewski T, Barker GJ, et al (2012): Adolescent
831 impulsivity phenotypes characterized by distinct brain networks. *NAT NEUROSCI* 15:920-925.
- 832 Whiteside SP, Lynam DR (2001): The Five Factor Model and impulsivity: using a structural model of
833 personality to understand impulsivity. *PERS INDIV DIFFER* 30:669-689.
- 834 Whittle S, Vijayakumar N, Simmons JG, Allen NB (2020): Internalizing and externalizing symptoms
835 are associated with different trajectories of cortical development during late childhood. *Journal of the*
836 *American Academy of Child & Adolescent Psychiatry* 59:177-185.
- 837 Wilkinson PO, Qiu T, Neufeld S, Jones PB, Goodyer IM (2018): Sporadic and recurrent non-suicidal
838 self-injury before age 14 and incident onset of psychiatric disorders by 17 years: prospective cohort study.
839 *The British Journal of Psychiatry* 212:222-226.
- 840 Xia L, Gu R, Zhang D, Luo Y (2017): Anxious Individuals Are Impulsive Decision-Makers in the Delay
841 Discounting Task: An ERP Study. *FRONT BEHAV NEUROSCI* 11.
- 842 Xu X, Dai J, Chen Y, Liu C, Xin F, Zhou X, et al (2021): Intrinsic connectivity of the prefrontal cortex
843 and striato-limbic system respectively differentiate major depressive from generalized anxiety disorder.
844 *NEUROPSYCHOPHARMACOL* 46:791-798.
- 845 Xu X, Dai J, Liu C, Chen Y, Xin F, Zhou F, et al (2020): Common and disorder-specific neurofunctional
846 markers of dysregulated empathic reactivity in major depression and generalized anxiety disorder.

847 *PSYCHOTHER PSYCHOSOM* 89:114-116.

848 Yu Y, Yu Y, Lin Y (2020): Anxiety and depression aggravate impulsiveness: the mediating and
849 moderating role of cognitive flexibility. *Psychology, Health & Medicine* 25:25-36.

850 Zhou X, Zimmermann K, Xin F, Zhao W, Derckx RT, Sassmannshausen A, et al (2019): Cue reactivity
851 in the ventral striatum characterizes heavy cannabis use, whereas reactivity in the dorsal striatum
852 mediates dependent use. *Biological psychiatry: cognitive neuroscience and neuroimaging* 4:751-762.

853 Zhu X, Wang K, Cao A, Zhang Y, Qiu J (2020): Personality traits and negative affect mediate the
854 relationship between cortical thickness of superior frontal cortex and aggressive behavior. *NEUROSCI*
855 *LETT* 718:134728.

856 Zhuang Q, Xu L, Zhou F, Yao S, Zheng X, Zhou X, et al (2021): Segregating domain-general from
857 emotional context-specific inhibitory control systems-ventral striatum and orbitofrontal cortex serve as
858 emotion-cognition integration hubs. *NEUROIMAGE*:118269.

859

860