

1 **Integrated analysis of patient networks and plasmid genomes**
2 **reveals a regional, multi-species outbreak of carbapenemase-**
3 **producing Enterobacterales carrying both *bla*_{IMP} and *mcr-9* genes**

4 Yu Wan^{1*}, Ashleigh C. Myall^{1,3*}, Adhiratha Boonyasiri^{1,2*}, Frances Bolt^{1,4,5}, Alice Ledda^{6,7},
5 Siddharth Mookerjee⁴, Andrea Y. Weiße^{8,9}, Maria Getino¹, Jane F. Turton⁷, Hala Abbas^{1,10},
6 Ruta Prakapaite¹¹, Akshay Sabnis¹¹, Alireza Abdolrasoulia⁴, Kenny Malpartida-Cardenas^{1,12},
7 Luca Miglietta^{1,12}, Hugo Donaldson¹⁰, Mark Gilchrist^{1,4}, Katie L. Hopkins^{1,7}, Matthew J
8 Ellington^{1,13}, Jonathan A. Otter¹, Gerald Larrouy-Maumus^{1,14}, Andrew M. Edwards¹¹, Jesus
9 Rodriguez-Manzano^{1,5,12}, Xavier Didelot¹⁵, Mauricio Barahona³, Alison H. Holmes^{1,4,5}, Elita
10 Jauneikaite^{1,6#}, and Frances Davies^{1,4,10#}

11

- 12 1. NIHR Health Protection Research Unit in Healthcare Associated Infections and
13 Antimicrobial Resistance, Department of Infectious Disease, Imperial College London,
14 London, United Kingdom.
15 2. Faculty of Medicine Siriraj Hospital, Mahidol University, Bangkok, Thailand.
16 3. Department of Mathematics, Imperial College London, London, United Kingdom
17 4. Imperial College Healthcare NHS Trust, London, United Kingdom
18 5. Centre for Antimicrobial Optimisation, Hammersmith Hospital, Imperial College
19 London, Du Cane Road, London, United Kingdom
20 6. Department of Infectious Disease Epidemiology, School of Public Health, Imperial
21 College London, London, United Kingdom
22 7. HCAI, Fungal, AMR, AMU & Sepsis Division, UK Health Security Agency, London,
23 United Kingdom
24 8. School of Biological Sciences, University of Edinburgh, Scotland, United Kingdom
25 9. School of Informatics, University of Edinburgh, Scotland, United Kingdom
26 10. Department of Microbiology, North West London Pathology, London, United Kingdom
27 11. MRC Centre for Molecular Bacteriology and Infection, Department of Infectious
28 Disease, Faculty of Medicine, Imperial College London, London, United Kingdom
29 12. Centre for Bio-Inspired Technology, Department of Electrical and Electronic
30 Engineering, Faculty of Engineering, Imperial College London, United Kingdom
31 13. Reference Services Division, UK Health Security Agency, London, United Kingdom

32 14. MRC Centre for Molecular Bacteriology and Infection, Department of Life Sciences,
33 Faculty of Natural Sciences, Imperial College London, London, United Kingdom

34 15. School of Life Sciences and Department of Statistics, University of Warwick, United
35 Kingdom

36 * These authors contributed equally; # these senior authors contributed equally.

37 **Keywords:** Carbapenem-resistant Enterobacterales, IMP carbapenemase, horizontal gene
38 transfer, spatiotemporal network, patient pathways

39 **Running title:** Multispecies regional IMP Plasmid CPE outbreak

40 **Summary:** This study describes an investigation, using integrated pathway networks and
41 genomics methods, of the emergence of IMP-encoding CPE amongst diverse
42 Enterobacterales species between 2016 and 2019 in patients across a London regional
43 hospital network, which was missed on routine investigations.

44 **Corresponding author:**

45 Frances Davies, MD, PhD,

46 Email: Frances.Davies1@nhs.net, f.davies@imperial.ac.uk

47 Telephone: +44 7879 454954

48 **Alternative corresponding author:**

49 Elita Jauneikaite, PhD

50 Email: e.jauneikaite@imperial.ac.uk

51 Telephone: +44 7763 294900

52

53 **Abstract**

54 **Background**

55 Carbapenemase-producing Enterobacterales (CPE) are challenging in the healthcare setting,
56 with resistance to multiple classes of antibiotics and a high associated mortality. The
57 incidence of CPE is rising globally, despite enhanced awareness and control efforts. This
58 study describes an investigation of the emergence of IMP-encoding CPE amongst diverse
59 Enterobacterales species between 2016 and 2019 in patients across a London regional
60 hospital network.

61 **Methods**

62 We carried out a network analysis of patient pathways, using electronic health records, to
63 identify contacts between IMP-encoding CPE positive patients. Genomes of IMP-encoding
64 CPE isolates were analysed and overlaid with patient contacts to imply potential
65 transmission events.

66 **Results**

67 Genomic analysis of 84 Enterobacterales isolates revealed diverse species (predominantly
68 *Klebsiella* spp, *Enterobacter* spp, *E. coli*), of which 86% (72/84) harboured an IncHI2
69 plasmid, which carried both *bla*_{IMP} and the mobile colistin resistance gene *mcr-9* (68/72).
70 Phylogenetic analysis of IncHI2 plasmids identified three lineages which showed significant
71 association with patient contact and movements between four hospital sites and across
72 medical specialities, which had been missed on initial investigations.

73 **Conclusions**

74 Combined, our patient network and plasmid analyses demonstrate an interspecies, plasmid-
75 mediated outbreak of *bla*_{IMP}CPE, which remained unidentified during standard microbiology
76 and infection control investigations. With DNA sequencing technologies and multi-modal
77 data incorporation, the outbreak investigation approach proposed here provides a framework
78 for real-time identification of key factors causing pathogen spread. Analysing outbreaks at
79 the plasmid level reveals that resistance may be wider spread than suspected, allowing more
80 targeted interventions to stop the transmission of resistance within hospital networks.

81

82 **Introduction**

83 Infections by carbapenemase-producing Enterobacterales (CPE) pose a substantial clinical,
84 operational, and financial challenge [1]. These organisms are associated with high morbidity
85 and mortality, and therapeutic options are severely restricted [2]. Carbapenemase genes are
86 frequently carried on plasmids, which can easily transfer between bacterial species [3]. CPE
87 outbreaks involving different bacterial species are often unrecognised, as many plasmids are
88 variable in their gene content and have a broad host range [4]. Outbreaks of Enterobacterales
89 carrying Imipenemase (IMP) gene *bla*_{IMP-1} are mostly sporadic and often localised to specific
90 geographical locations [5, 6]. IMP genes are rarely isolated in the UK, however, the number
91 of IMP encoding Enterobacterales species isolates referred to UK Health Security Agency
92 has been increasing [7].

93

94 Colistin and polymyxin B remain the last-line therapeutic agents for CPE in most countries,
95 partly due to lack of access to newer agents; yet colistin resistance is increasing globally. Ten
96 mobile colistin resistance genes (*mcr-1 – mcr-10*) have been described to date, presenting a
97 substantial global healthcare challenge [8, 9]. Although *mcr* genes are typically associated
98 with phenotypic polymyxin resistance, *mcr-9* does not appear to confer direct colistin
99 resistance [10, 11] and is widespread in a wide range of bacterial species from human, animal
100 and environments [11-14].

101

102 Person-to-person contact is a route of transmission for many infectious diseases.
103 Consequently, understanding the patterns of these contacts, especially in healthcare settings,
104 can offer detailed insight for targeted interventions [15]. However, such patient contacts
105 become increasingly complex when incorporating multi-layers of data. Network models
106 provide flexible tool to capture complex interactions (contact patterns) and, offer robust and
107 reproducible methodology that has become widespread across disciplines [16, 17],
108 incorporating both person-to-person transmission through contact networks [18] and spatial
109 spread through networks representing physical locations [19]. So far, few studies utilised
110 network models of patient contacts in combination with detailed bacterial genomic analysis
111 and demonstrated such approach advantages through increasing the detail in outbreak
112 characterisation [20, 21].

113

114 Here, we combine plasmid phylogenomic analysis with patient-contact networks to discover
115 the spread of *bla*_{IMP} and *mcr-9* genes among bacterial species and patients in a large hospital
116 network in London, UK over three years, providing valuable insights for the management of
117 CPE in hospital settings.

118 **Materials and Methods**

119 **Clinical setting**

120 This study was carried out using data from a regional network of London hospitals,
121 comprising seven hospital sites with a total of 2000 inpatient beds, with managerial
122 responsibility assigned to two National Health Service Trusts, and frequent transfers between
123 Trusts and sites for specialist care. Cases were identified from one of these trusts (comprising
124 five hospitals), with microbiology and pathway data for those cases was identified through a
125 shared centralised microbiology laboratory and Electronic Health Records (EHR) system
126 (Cerner, UK). Since June 2015, an enhanced routine CPE screening programme has been
127 implemented in this trust [22]. When a new case of CPE was identified, the patient was
128 isolated in a single room with contact precautions, the bed space and bathroom were
129 terminally enhanced cleaned, and any contacts were re-screened for CPE.

130 **Isolate collection**

131 CPE isolates were collected from cases identified through rectal screens or clinical sampling
132 between June 2016 and November 2019. Bacterial species were determined using Biotyper
133 MALDI-TOF mass spectrometry (Bruker Daltonics, Germany). One isolate per species was
134 collected from each patient. Susceptibility to 21 antimicrobials was tested using EUCAST
135 disc-diffusion method, and colistin MICs were retrospectively determined using
136 MICRONAUT broth microdilution (BioConnections, UK) for all viable CPE isolates
137 carrying *bla*_{IMP} genes (hereafter, *bla*_{IMP}CPE) [23]. Further phenotypic and molecular
138 characterisation of CPE isolates were performed as described in Supplementary Methods.

139 **Whole-genome sequencing (WGS)**

140 Isolates of *bla*_{IMP}CPE were grown aerobically on Columbia Blood Agar (Oxoid Ltd, UK) at
141 37°C. Genomic DNA was extracted from overnight cultures using GenElute Bacterial
142 Genomic DNA Kits (Sigma-Aldrich, USA). Multiplexed DNA libraries were generated with

143 Nextera XT (Illumina, USA) and sequenced under a 150-bp paired-end layout for a minimum
144 of 100-fold coverage on Illumina HiSeq 4000 systems (Illumina, USA).

145 **Phylogenomic analysis**

146 Quality control of sequencing reads, *de novo* genome assembly, and genetic characterisation
147 of isolates are described in Supplementary Methods. A neighbouring-joining tree of CPE
148 genomes was generated from pairwise average nucleotide distances using FastANI v1.33
149 [24]. Plasmid sequences were reconstructed from genome assemblies using MOB-suite
150 v3.1.0 [25]. Reconstructed sequences of IncHI2 plasmids were aligned against IncHI2
151 plasmid pKA_P10 (GenBank accession: CP044215.1) using Snippy
152 (github.com/tseemann/snippy) to identify genetic variation. A recombination-corrected
153 maximum-likelihood (ML) tree of IncHI2 plasmids was reconstructed from the sequence
154 alignment using IQ-Tree v2.0.3 [26] as implemented in Gubbins v3.2.1 [27]. The date of the
155 most-recent common ancestor of IncHI2 plasmids was estimated using Bactdating v.1.1.1
156 [28].

157 **Network analysis**

158 To reveal potential transmission structure, a patient contact network was reconstructed from
159 patients' movement history (ward locations and time) extracted from EHR data of *bla*_{IMP}CPE
160 cases. A contact was defined as an event when two patients were present on the same ward on
161 the same day. Time-aggregated patient contacts were subsequently clustered to reveal groups
162 of patients linked together using the Walktrap community detection algorithm [29]. Contacts
163 were weighted by the time spent together, and a temporal analysis of patient interactions was
164 performed to assess patient roles and positions in transmission. A spatial network of
165 ward/hospital distributions was generated, allowing calculation of in-hospital infectious
166 periods — days spent on the ward prior to implementation of infection prevention and control
167 (IPC) measures, a network structure to determine ward/hospital spread, and a list of highly
168 visited wards according to plasmid genetic clusters.

169

170 To investigate if the identified lineages of IncHI2 plasmids represented the transmission of
171 *bla*_{IMP}CPE, a Kendall's rank correlation coefficient was calculated from pairwise
172 phylogenetic distances between IncHI2 plasmids (extracted from the plasmid ML tree) and
173 shortest-path distances between patients (from whom isolates carrying these plasmids were
174 collected) in the contact network (Supplementary Methods).

175 **Data availability**

176 Illumina reads and draft genome assemblies of 84 *bla*_{IMP}CPE isolates were deposited in
177 European Nucleotide Archive under BioProject PRJEB38818. See Supplementary Table 1 for
178 sample information.

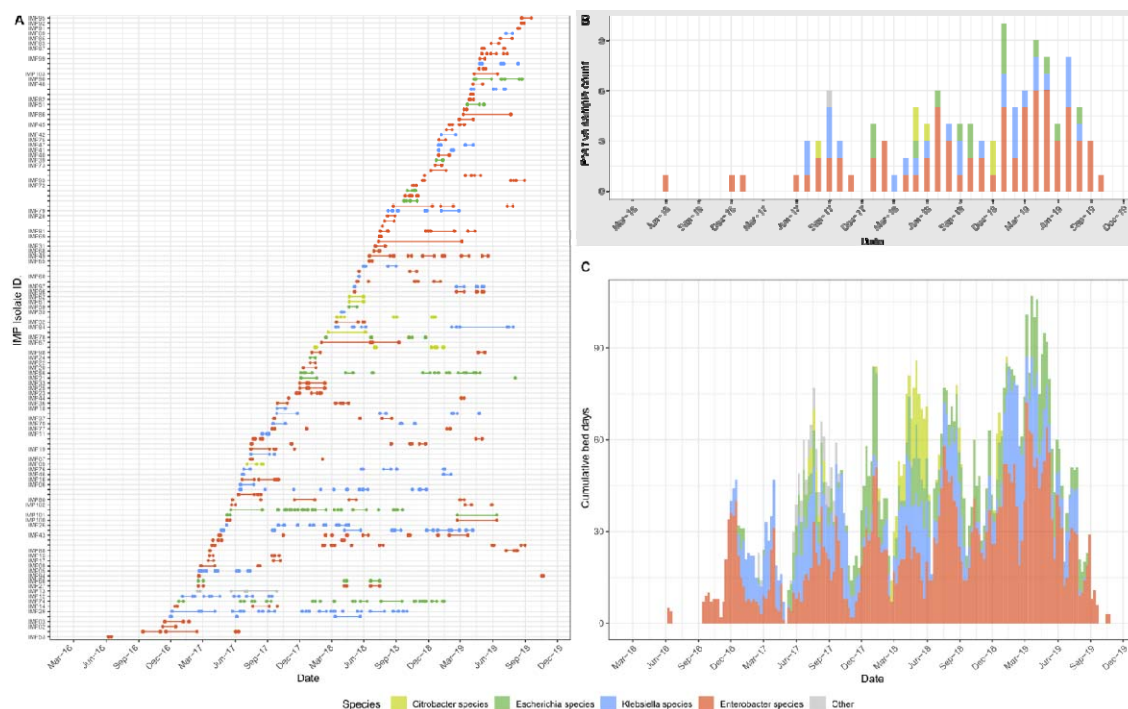
179 **Ethics**

180 This study was carried out in accordance with ethics reference 21/LO/0170 (279677),
181 protocol 21HH6538 Investigation of epidemiological and pathogenic factors associated with
182 infectious diseases.

183 **Results**

184 **Incidence of *bla*_{IMP}CPE**

185 Following the introduction of the enhanced CPE screening programme, *bla*_{IMP}CPE was first
186 observed in two Trusts' hospitals in June 2016 through routine rectal screening. From
187 November 2016, an increasing number of *bla*_{IMP}CPE isolates was identified across
188 Enterobacterales species (Figure 1A). The highest incidence of *bla*_{IMP}CPE cases occurred
189 between January and July 2019 (Figure 1B). Altogether, *bla*_{IMP}CPE isolates were recovered
190 from screening or clinical samples from 116 patients admitted to these five hospitals by the
191 end of November 2019, when new cases rapidly dropped, and subsequent cases were
192 sporadic and infrequent. No ward or service was identified as a potential focus for cross
193 transmission, and no enhanced IPC measures were taken. Only two clusters of cases (5/116
194 cases) fitted the conventional outbreak definition that ≥ 2 cases of the same bacterial species
195 with the same resistance mechanism overlapping in time and space. Pulsed-field gel
196 electrophoresis typing of CPE isolates showed similar profiles, suggesting within-hospital
197 transmission. Furthermore, the daily number of occupied beds revealed a continuous burden
198 of patients colonised with *bla*_{IMP}CPE (Figure 1C). This burden was particularly evident for
199 patients colonised by *Enterobacter*, with 424 total bed days in the peak month (March 2019)
200 across the hospital network.



201

202 **Figure 1. Characteristics of confirmed *bla*_{IMP}CPE cases and CPE species.** Colours in each panel
 203 indicate the genus of CPE. **(A)** Total number of bed days when inpatients (rows labelled by isolate
 204 identifier) were present in a hospital ward before confirmation of *bla*_{IMP}CPE colonisation/infection and
 205 related IPC measures (*in-hospital infectious period*). Additionally, patients with known carriage of
 206 *bla*_{IMP}CPE but without sequenced isolates are shown as unlabelled rows. Patients with two species of
 207 CPE isolates (IMP22/24, IMP25/33, IMP96/97, IMP100/101) are on adjacent rows. **(B)** Monthly total
 208 number of confirmed *bla*_{IMP}CPE isolates from patients during the study period 2016–2019. **(C)** Weekly
 209 cumulative number of occupied beds in-hospital during the infectious periods.

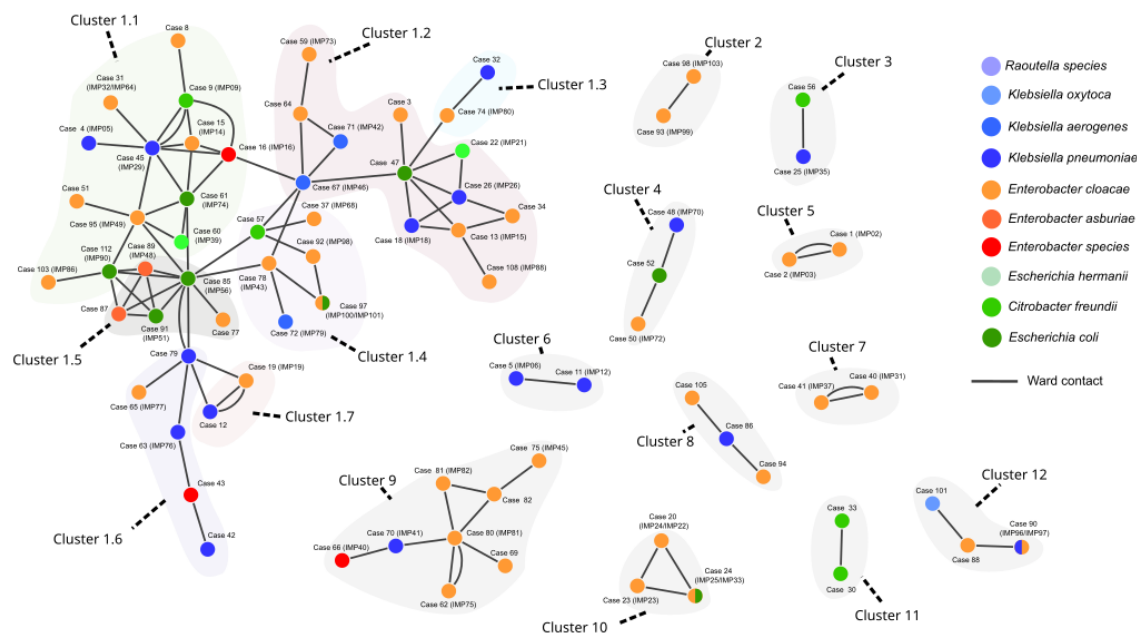
210 **Contact network of *bla*_{IMP}CPE-positive cases**

211 A detailed patient contact network for 116 *bla*_{IMP}CPE cases confirmed that 77/116 (66%)
 212 cases were in contact with at least one other *bla*_{IMP}CPE case (ranged from one to 10 with a
 213 median of two cases; Figure 2 and Supplementary Table 2), creating 96 patient-contact pairs
 214 (Supplementary Table 3).

215

216 Across all contact pairs of *bla*_{IMP}CPE cases, detected bacterial species differed in 59%
 217 (57/96) of patient pairs and therefore, were excluded from the conventional same-species
 218 definition of an outbreak when initially reviewed. The network of patient contacts split
 219 patients into 12 separate clusters, with interactions occurring across different hospitals, as
 220 patients were transferred between wards and hospital sites (Figure 2). The largest contact
 221 cluster (Cluster 1) contained 45 patients and was partitioned into a further seven sub-clusters

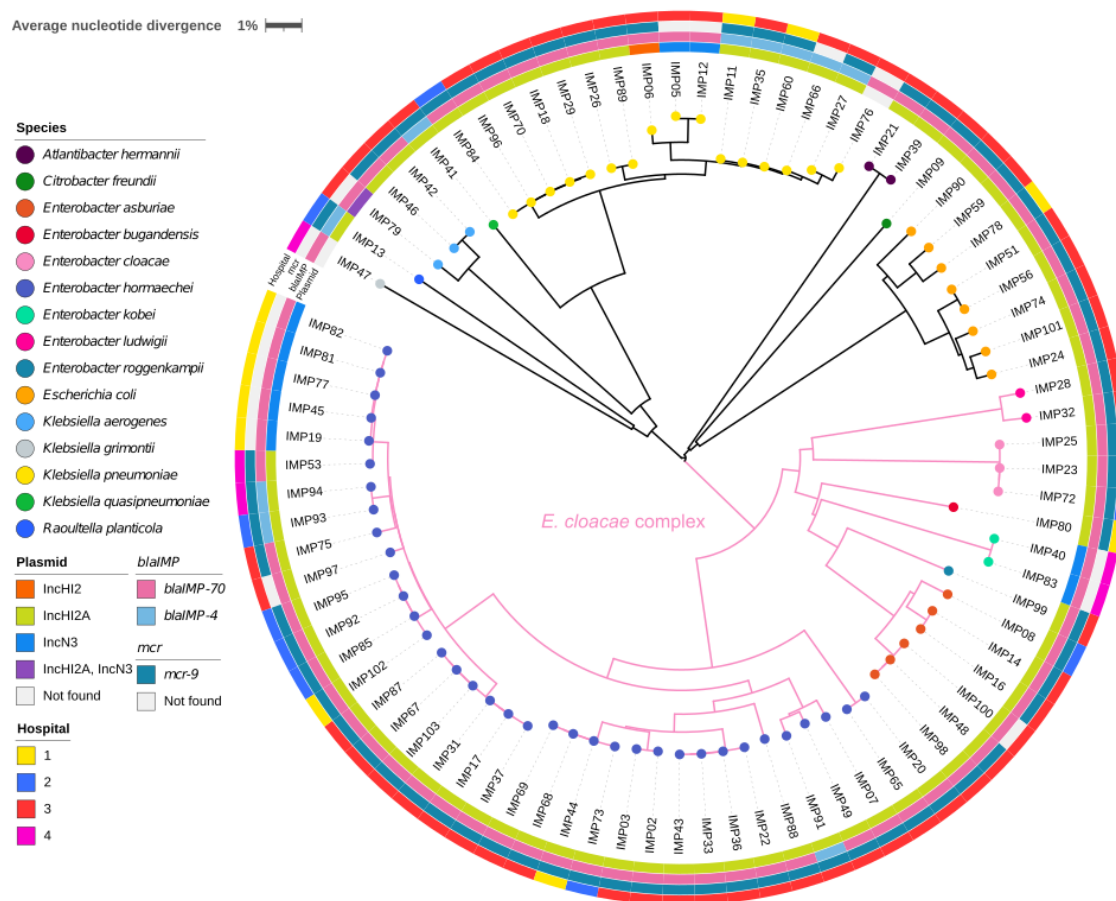
222 (labelled 1.1 to 1.7) that comprised 13, 12, 2, 6, 5, 5, and 2 patients, respectively (Figure 2).
223 The analysis of contacts at regional, hospital, and ward levels suggested involvement of
224 different *bla*_{IMP}CPE species in patient-to-patient transmission events and prompted
225 phylogenomic analysis of available *bla*_{IMP}CPE isolates.



226
227 **Figure 2. Contact network of *bla*_{IMP}CPE cases.** Each node of the network represents a case,
228 coloured according to CPE species (split colours indicates two species), and each edge represents a
229 contact between two patients, *i.e.*, patients present on the same ward on the same day based on their
230 electronic health records. This network contains 12 distinct major clusters (each shaded in light grey,
231 with sub-clusters 1.1-1.7 shaded in a different colour) based on disconnected components of
232 contacts. Cluster 1, the largest cluster consisting of 45 cases, was further partitioned into seven
233 subclusters using community detection, with edges weighted by the duration of contact
234 (Supplementary methods – Network community detection). Six patient contacts re-occurred over
235 different wards, indicated by additional edges connecting the same patients.

236 Genomic and phenotypic characterisation of *bla*_{IMP}CPE isolates

237 A total of 84 *bla*_{IMP}CPE isolates (collected from 82/116 cases) were available for whole-
238 genome sequencing (Supplementary Table 1). These isolates belonged to 15 species and were
239 dominated by those of the *Enterobacter cloacae* complex (n = 51), followed by *Klebsiella*
240 spp. (n = 21) and *E. coli* (n = 8) (Figure 3). Four cases (Cases 20, 24, 90, 97) were colonised
241 by two *bla*_{IMP}CPE species (Supplementary Table 2).



242
 243 **Figure 3. A neighbour-joining tree of 84 *bla*_{IMP}CPE isolates.** This tree was constructed from
 244 average nucleotide distances between genomic sequences and was midpoint rooted. The colour at
 245 the end of each branch indicates the bacterial species identity for that isolate. The rings are as
 246 follows: the innermost ring indicates the type of plasmid detected; the second ring indicates the allelic
 247 variant of the *bla*_{IMP} gene detected, the third ring indicates the presence or absence of gene *mcr*-9
 248 and the outermost ring indicates hospitals. The scale bar indicates the pairwise average nucleotide
 249 divergence (%).

250 Each of these 84 isolates carried either *bla*_{IMP-70} (n = 74) and *bla*_{IMP-4} (n = 10). IncHI2
 251 plasmids (targeted by both probes for IncHI2 and IncHI2A replicons in the PlasmidFinder
 252 database) were detected in 72 isolates from 72 cases, and IncN3 plasmids were detected in 10
 253 isolates from 10 cases (Figure 3). Only IMP79 harboured both IncHI2 (without any *bla*_{IMP}
 254 genes) and IncN3 (carried *bla*_{IMP-70}) plasmids. Seventy of the 72 IncHI2 plasmids carried
 255 either *bla*_{IMP-70} (n = 61) or *bla*_{IMP-4} (n = 9), and all IncN3 plasmids carried *bla*_{IMP-70}
 256 (Supplementary Tables 4 and 5). Four isolates carried *bla*_{IMP} genes that were not found in
 257 either IncHI2 or IncN3 plasmids: one *bla*_{IMP-4} was integrated into the chromosome of IMP66,
 258 and *bla*_{IMP-70} was carried by an IncFIB/FII plasmid in IMP83 and by IncHI1 plasmids in

259 IMP47 and IMP76. All *bla*_{IMP}CPE isolates carried multiple β -lactam resistance genes and
260 other antimicrobial resistance genes, yet only IMP89 had an additional carbapenem-
261 resistance gene *bla*_{OXA-48} (Supplementary Table 1).

262

263 Gene *mcr-9* was detected in 69/84 (82%) isolates, with *mcr-9* identified present on 68 IncHI2
264 plasmids, one outlier IncHI2 plasmid (32% coverage of the reference plasmid pKA_P10 by
265 sequencing reads), and none of the IncN3 plasmids (Supplementary Tables 4 and 5). The
266 *mcr-9* LAMP assay showed 100% concordance with the WGS results (Supplemental Table
267 1). MALDIxin did not detect any Lipid A modifications attributable to the *mcr-9* gene in this
268 study. Altogether, 12 isolates (all *Enterobacter*) were resistant to colistin (MICs ranged
269 between 4 and >64 $\mu\text{g/mL}$), including five isolates that demonstrated a skipped-well
270 phenomenon suggestive of colistin heteroresistance (Supplementary Table 1), a phenomenon
271 previously reported [30].

272 **Genetic relatedness between plasmids**

273 All 72 reconstructed IncHI2 plasmids belonged to the same plasmid taxonomic unit PTU-
274 HI2, and representative sequences are compared in Supplementary Figure 1. Altogether, 144
275 single-nucleotide polymorphic sites were identified in the alignment of these 72 plasmids
276 after correcting for recombination events, with pairwise phylogenetic distances (sums of
277 branch lengths in the plasmid tree) ranged from zero to 115 single-nucleotide polymorphisms
278 (SNPs). Specifically, of the 72 plasmids analysed in the tree, 43 (60%) differed by ≤ 3 SNPs,
279 and 55 (76%) differed by ≤ 5 SNPs. This high degree of similarity between IncHI2 plasmids
280 suggests potential horizontal gene transfer or transfer of full plasmids between different
281 bacterial species. In the case of IncHI2 plasmids present in the same species, a comparison
282 between the plasmid and *E. hormaechei* (the most common species in our data) phylogenetic
283 trees showed likely vertical transmission events as closely related isolates had highly similar
284 plasmids (Supplementary Figure 2). By contrast, reconstructed IncN3 plasmids showed large
285 structural variation in the plasmids (Supplementary Figure 3) and no reliable phylogenetic
286 tree could be reconstructed.

287

288 The phylogenetic tree of IncHI2 plasmids indicated three major lineages A, B, and C (Figure
289 4 and Supplementary Table 6). The estimated date of the most recent common ancestor of the
290 72 IncHI2 plasmids was 1765 with a large 95% confidence interval of 1536–1895 despite a

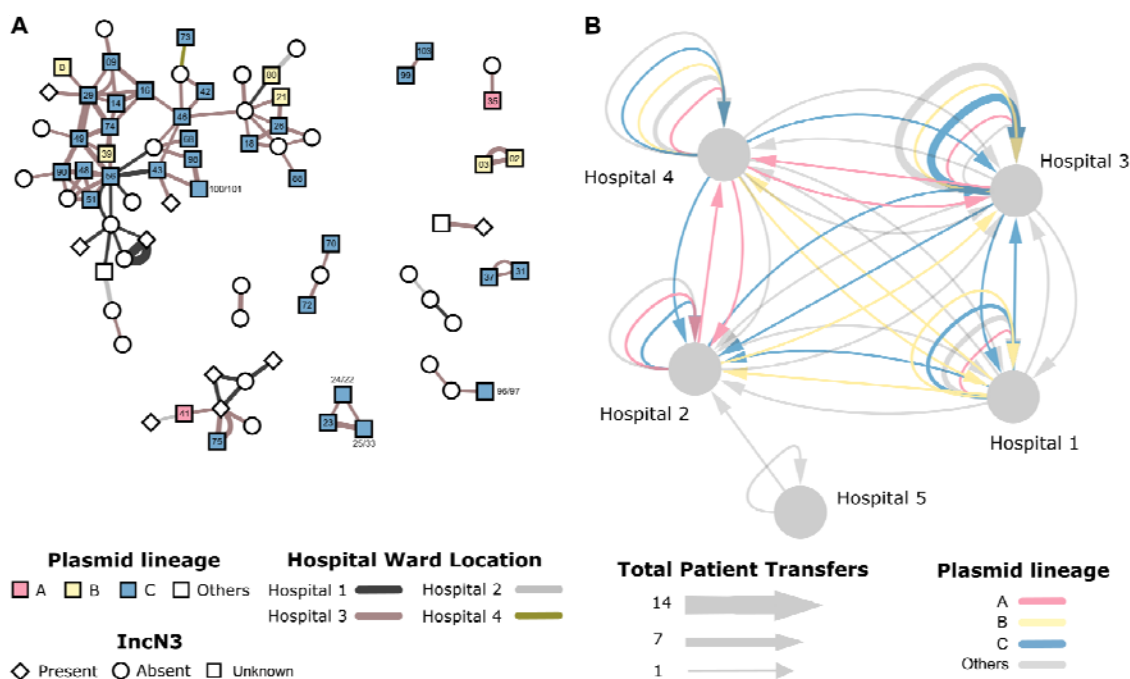
291 desirable convergence of the optimised molecular clock model (Supplementary Figure 4),
 292 suggesting a lack of temporal signals in reconstructed IncHI2 plasmids.
 293



294
 295 **Figure 4. Recombination-corrected maximum-likelihood tree of 72 reconstructed IncHI2**
 296 **plasmids from *bla*_{IMP}CPE isolates and the reference plasmid pKA_P10. Coloured branches and**
 297 **shades represent plasmid lineages A, B, and C, with bootstrap values of lineage roots noted. The**
 298 **heat map shows presence-absence of antimicrobial resistance genes identified in plasmids, and the**
 299 **bar plot shows relative lengths (%) of the reconstructed plasmids compared to that of the reference**
 300 **plasmid pKA_P10. This tree is rooted on the outgroup pIMP79, which was deemed an outgroup**
 301 **according to its phylogenetic distances to other IncHI2 plasmids and by the BactDating root-to-tip**
 302 **analysis (Supplementary Figure 4).**

303 Comparison between plasmid lineages and patient clusters

304 Pairwise phylogenetic distances between IncHI2 plasmids and shortest-path distances
 305 between patients showed a significant correlation (Kendall's correlation coefficient = 0.19, p-
 306 value = 3×10^{-7}) (Figure 5A), despite WGS data being unavailable for isolates from 24 cases.
 307 This correlation between plasmid population structure and patient contact network suggests
 308 that ward contacts mediated transmission of these plasmids between patients or from
 309 unidentified common sources. When case contacts were weighted by patients' time spent
 310 together, the *bla*_{IMP}CPE outbreak was heavily weighted towards Hospital 3, the specialist
 311 referral centre for cardiology, renal, haematology and hepatobiliary services, with 72.1% of
 312 contacts occurring there.



313
 314 **Figure 5. Epidemiology of *bla*_{IMP}CPE genetic clusters across patient interactions and**
 315 **movement. (A)** Patient contact network overlaid with plasmid lineages A, B, and C. Each node
 316 represents a patient, edges represent recorded ward contacts between confirmed *bla*_{IMP}CPE cases.
 317 The edges are coloured according to the hospital site and the width of the edge is proportional to the
 318 duration of the contact. Nodes are coloured according to the three lineages of IncHI2 plasmids, and
 319 patients with isolates that did not have any IncHI2 plasmids detected are coloured in white. Node
 320 labels indicate IncHI2 plasmid names in Supplementary Table 4 (e.g., '88' indicates plasmid pIMP88,
 321 and '100/101' indicates plasmids pIMP100 and pIMP101 from the same case). The presence/absence
 322 of IncN3 plasmids in *bla*_{IMP}CPE isolates is denoted by node shapes. **(B)** Hospital-level patient
 323 movements. The movement of patients carrying *bla*_{IMP}CPE are indicated by arrows between hospitals.
 324 Repeated transfers of patients between wards are aggregated into edges with proportionally greater

325 edge widths (grouped by sequenced and non-sequenced). Edges with sequencing data are coloured
326 according to IncHI2 plasmid lineages.

327 This was confirmed by the analysis of the spatial distribution and movement of cases
328 colonised with *bla*_{IMP}CPE carrying IncHI2 plasmids (Figure 5B). The largest lineage
329 (Lineage C) was found the most prevalent on wards within Hospital 3 (1919 patient bed-
330 days) and followed bidirectional transfer pathways to and from Hospitals 1, 2 and 4, which
331 all have large general medical and surgical admissions areas. Lineage A followed a similar
332 pattern of distribution, though with less transfers identified to Hospital 2, which may have
333 been due to unidentified or missing case data.

334

335 The association between plasmid lineage clusters and ward/specialties over the study period
336 showed the most common associations across critical care and renal services (Supplementary
337 Table 7). The only exception was general internal medicine and general surgery
338 predominated in plasmid Lineage A at Hospital 4, which has more general wards and less
339 specialist services than the other hospital sites in the network. Despite the predominance of
340 cases being identified in specialties with high risk for invasive disease, only four clinical
341 infections were identified during the study, and no blood stream infections.

342 **Discussion**

343 Following the detection of a new mechanism of resistance, investigation of its origin and
344 mode of transmission is challenging, especially in healthcare settings where investigations
345 usually focus on single species transmissions. With confounding factors such as multiple
346 bacterial species and spread over different hospital locations, new methods to investigate
347 potential outbreaks are much needed. The incorporation of plasmid genomics and patient
348 networks into our analysis changed the way the emergence of *bla*_{IMP}CPE was visualised and
349 produced a clearer understanding of the cumulative burden of cases, high-risk ward locations
350 and pathways for potential cross transmission in our regional healthcare system. As patients
351 were found to follow common routes, with regular re-encounters, this information can
352 provide dynamic risk assessments to be introduced along those pathways, to prevent future
353 cross transmission events of any healthcare-associated pathogen from occurring [31].
354 Detailed genomic analysis of plasmids enhanced our understanding of the relatedness of
355 different patient isolates to the network analysis, and similarity to those plasmids identified in

356 other hospitals in the UK [32]. It moreover revealed concerning information about
357 unsuspected resistance mechanisms, with potential for antibiotic treatment failures that were
358 missed on conventional laboratory susceptibility testing. In this study, we characterized
359 IncHI2 plasmids as the main vehicle in horizontal transfer of the metallo- β -lactamase gene
360 *bla*_{IMP}. IncHI2 plasmids are common, large plasmids with a wide host range, that have been
361 reported globally [14]. Although in our study we detected *mcr-9* in 81% of the isolates
362 tested, we did not find evidence of phenotypic expression of this gene, in line with previous
363 observations [11, 33]. We identified the predominant IncHI2 plasmid in multiple different
364 bacterial species across linked patients, highlighting the need for integration of genomics into
365 routine clinical practice. Although this study focussed on the emergence of the *bla*_{IMP}
366 carbapenemase gene in our hospital network, it supports the concept that plasmid analysis
367 across different resistance mechanisms as well as among different species should be the
368 standard for investigations in the future. Network analyses and cumulative burden analyses
369 can help identify targets for WGS, particularly where resources are not sufficient to support
370 WGS of all new CPE cases identified. The small number of clinical infections from this
371 outbreak in comparison to other CPE outbreaks from our hospital network [34] and other
372 reports of *bla*_{IMP} CPE [11, 14] is noteworthy, and poses questions about the wider importance
373 of this plasmid and the resistance mechanisms revealed in this study. This observation
374 reinforces the argument that screening for silent carriage of CPE in hospitals is key to
375 preventing spread [35-37], and cautious antimicrobial stewardship is essential to prevent
376 expression of hidden resistance mechanisms [38].

377

378 We acknowledge some limitations of our study. Firstly, we did not have long read sequences
379 for plasmids analysed as part of this study. As a result, our plasmid tree may omit some
380 similarities and differences between identified IncHI2 plasmids. Secondly, full pathway data
381 across the hospital during the three years of the outbreak was only available for identified
382 positive cases, not for all patients in the hospitals during the study period. It was therefore not
383 possible to fully establish potential missed cases flagging as close contacts but with potential
384 for missed screening or false negative results. Full pathway movement data for all positive
385 cases identified within our hospital network was available, yet neither pathway details nor
386 genomic data were available for other *bla*_{IMP}CPE-positive cases identified in the two other
387 regional hospitals who did not visit our institution, thus reducing the understanding in our
388 analysis. Interactions at other potential hospital locations such as interventional imaging or

389 endoscopy were not examined in this study, nor was environmental sampling performed,
390 which could inform future studies on modes of transmission.

391

392 Nevertheless, this study highlights a previously unidentified extent of transmission and thus
393 provides valuable new insights into the spread of an emerging resistance mechanism.
394 Moreover, our novel multi-layered methodology, incorporating plasmid phylogeny with
395 contact network analysis, provides invaluable tools for outbreak investigation that can be
396 generalised to a wide range of scenarios.

397

398 **Acknowledgements**

399 We thank the staff of the diagnostic microbiology laboratory of North West London
400 Pathology, for isolate collection and storage. We would also like to acknowledge the support
401 of the Imperial College Healthcare Trust NIHR Biomedical Research Centre (BRC). The
402 Imperial BRC Genomics Facility has provided resources and support that have contributed to
403 the research results reported within this paper. The Imperial BRC Genomics Facility is
404 supported by NIHR funding to the Imperial Biomedical Research Centre. This publication
405 made use of the PubMLST website (<https://pubmlst.org/>) developed by Keith Jolley (Jolley &
406 Maiden 2010, BMC Bioinformatics, 11:595) and sited at the University of Oxford. The
407 development of that website was funded by the Wellcome Trust.

408

409 **Funding**

410 This work was supported in part by the faculty of medicine, Siriraj hospital, Mahidol
411 university, Thailand (awarded to AB) and Medical Research Council Clinical Academic
412 Research Fellowship scheme (awarded to FD, grant number MR/T005254/1).

413

414 AM is funded in part by a scholarship from the Medical Research Foundation National PhD
415 Training Programme in Antimicrobial Resistance Research (MRF-145-0004-TPG-AVISO),
416 the EPSRC Centre for Mathematics of Precision Healthcare (EP/N014529/) and through
417 a National Institute for Health Research Senior Research Investigator Award. AM and MB
418 acknowledge funding from EPSRC grant EP/N014529/1 to MB, supporting the EPSRC
419 Centre for Mathematics of Precision Healthcare. AS is funded by a PhD studentship from the
420 Medical Research Council Doctoral Training Award to Imperial College London
421 (MR/N014103/1). AME acknowledges support from the National Institute for Health

422 Research (NIHR) Imperial Biomedical Research Centre (BRC). EJ is an Imperial College
423 Research Fellow, funded by Rosetrees Trust and the Stoneygate Trust (M683). YW is an
424 Institutional Strategic Support Fund Springboard Research Fellow, funded by the Wellcome
425 Trust and Imperial College London. HA was supported by the Imperial Health Charity. XD is
426 supported by the NIHR Health Protection Research Unit in Genomics and Enabling Data. AL
427 acknowledges funding from the National Institute for Health Research Health Protection
428 Research Unit (NIHR HPRU) in Modelling Methodology at Imperial College London (grant
429 HPRU-2012–10080) and the National Institute for Health Research (NIHR) Health Protection
430 Research Unit in Healthcare Associated Infections and Antimicrobial Resistance at
431 University of Oxford (NIHR200915) in partnership with UK Health Security Agency. AH is
432 a National Institute for Health Research (NIHR) Senior Investigator. AH, FD, EJ, AB, YW,
433 ME, MG are affiliated with the National Institute for Health Research Health Protection
434 Research Unit (NIHR HPRU) in Healthcare Associated Infections and Antimicrobial
435 Resistance at Imperial College London in partnership with the UK Health Security Agency
436 (previously PHE), in collaboration with, Imperial Healthcare Partners, University of
437 Cambridge and University of Warwick. This report is independent research funded by the
438 National Institute for Health Research. The views expressed in this publication are those of
439 the author(s) and not necessarily those of the NHS, the National Institute for Health Research,
440 the Department of Health and Social Care or the UK Health Security Agency.

441

442 **Declarations of Interest**

443 JT holds some shares in Oxford Nanopore Technologies. All other authors have nothing to
444 declare.

445

446 **Author contributions**

447 Conceptualization: FD, EJ, AH, MB, FB, XD, ME. Data curation: YW, BA, EJ, AM, FD,
448 SM, AW, ME. Formal analysis: AB, AM, YW, MG, FB, FD, EJ, AW, MB, AH, ME.
449 Funding acquisition: AB, FD, AH, ME. Investigation: AB, YW, AM, HA, RP, AL, AA, JT,
450 LM, KM-C, AS, GL-M, JR-M. Methodology: FD, AM, AW, SM, YW, EJ, BA, XD, MB, JO,
451 KH, ME, JT, MG. Project administration: FB, AH, FD, EJ. Resources: FD, AH, AE, HD,
452 KH, JT. Supervision: FD, EJ, AH, MB. Validation: KH, JT, ME, HD, AW, SM.
453 Visualization: AB, AM, YW, EJ, FD. Writing – original draft and further drafts: AB, AM,
454 YW, EJ, FD, FB. Writing – review & editing: All authors.

455 **References**

- 456 1. Otter JA, Burgess P, Davies F, et al. Counting the cost of an outbreak of carbapenemase-
457 producing Enterobacteriaceae: an economic evaluation from a hospital perspective.
458 *Clinical microbiology and infection : the official publication of the European Society of*
459 *Clinical Microbiology and Infectious Diseases* **2017**; 23(3): 188-96.
- 460 2. Pranita D. Tamma SLA, Robert A. Bonomo, Amy J. Mathers, David van Duin, Cornelius
461 J. Clancy. Infectious Diseases Society of America Antimicrobial Resistant Treatment
462 Guidance: Gram-Negative Bacterial Infections. Available at:
463 <https://www.idsociety.org/practice-guideline/amr-guidance/>. Accessed 17/09/2021.
- 464 3. Thomas CM. Paradigms of plasmid organization. *Mol Microbiol* **2000**; 37(3): 485-91.
- 465 4. Li X, Wang Y, Brown CJ, et al. Diversification of broad host range plasmids correlates
466 with the presence of antibiotic resistance genes. *FEMS microbiology ecology* **2016**;
467 92(1).
- 468 5. Matsumura Y, Peirano G, Motyl MR, et al. Global Molecular Epidemiology of IMP-
469 Producing Enterobacteriaceae. *Antimicrobial agents and chemotherapy* **2017**; 61(4).
- 470 6. Macesic N, Hawkey J, Vezina B, et al. Genomic dissection of endemic carbapenem
471 resistance reveals metallo-beta-lactamase dissemination through clonal, plasmid and
472 integron transfer. *Nature Communications* **2023**; 14(1): 4764.
- 473 7. England PH. Quarterly laboratory surveillance of acquired carbapenemase-producing
474 Gram-negative bacteria in England: April 2021 to June 2021 update. Vol. 15: Assets
475 publishing service UK government, **2021**:1-14.
- 476 8. Ling Z, Yin W, Shen Z, Wang Y, Shen J, Walsh TR. Epidemiology of mobile colistin
477 resistance genes *mcr-1* to *mcr-9*. *Journal of Antimicrobial Chemotherapy* **2020**; 75(11):
478 3087-95.
- 479 9. Hussein NH, Al-Kadmy IMS, Taha BM, Hussein JD. Mobilized colistin resistance (*mcr*)
480 genes from 1 to 10: a comprehensive review. *Mol Biol Rep* **2021**; 48(3): 2897-907.
- 481 10. Carroll LM, Gaballa A, Guldemann C, Sullivan G, Henderson LO, Wiedmann M.
482 Identification of Novel Mobilized Colistin Resistance Gene *mcr-9* in a Multidrug-
483 Resistant, Colistin-Susceptible *Salmonella enterica* Serotype Typhimurium Isolate. *mBio*
484 **2019**; 10(3).
- 485 11. Kananizadeh P, Oshiro S, Watanabe S, et al. Emergence of carbapenem-resistant and
486 colistin-susceptible *Enterobacter cloacae* complex co-harboring *blaIMP-1* and *mcr-9* in
487 Japan.

- 488 12. Li Y, Dai X, Zeng J, Gao Y, Zhang Z, Zhang L. Characterization of the global
489 distribution and diversified plasmid reservoirs of the colistin resistance gene *mcr-9*.
490 *Scientific reports* **2020**; 10(1): 8113.
- 491 13. Roberts LW, Catchpole E, Jennison AV, et al. Genomic analysis of carbapenemase-
492 producing Enterobacteriaceae in Queensland reveals widespread transmission of *bla*
493 (*IMP-4*) on an *IncHI2* plasmid. *Microbial genomics* **2020**; 6(1).
- 494 14. Macesic N, Blakeway LV, Stewart JD, et al. Silent spread of mobile colistin resistance
495 gene *mcr-9.1* on *IncHI2* ‘superplasmids’ in clinical carbapenem-resistant
496 Enterobacterales. *Clinical Microbiology and Infection* **2021**.
- 497 15. Meyers L. Contact network epidemiology: Bond percolation applied to infectious disease
498 prediction and control. *Bulletin of the American Mathematical Society* **2006**; 44: 63-86.
- 499 16. Newman MEJ. The Structure and Function of Complex Networks. *SIAM Review* **2003**;
500 45(2): 167-256.
- 501 17. Pastor-Satorras R, Castellano C, Van Mieghem P, Vespignani A. Epidemic processes in
502 complex networks. *Reviews of Modern Physics* **2015**; 87(3): 925-79.
- 503 18. Newman MEJ. Spread of epidemic disease on networks. *Physical Review E* **2002**; 66(1):
504 016128.
- 505 19. Brockmann D, Helbing D. The Hidden Geometry of Complex, Network-Driven
506 Contagion Phenomena. *Science* **2013**; 342(6164): 1337-42.
- 507 20. Kwong JC, Lane CR, Romanes F, et al. Translating genomics into practice for real-time
508 surveillance and response to carbapenemase-producing Enterobacteriaceae: evidence
509 from a complex multi-institutional KPC outbreak. *PeerJ* **2018**; 6: e4210-e.
- 510 21. Gouliouris T, Coll F, Ludden C, et al. Quantifying acquisition and transmission of
511 *Enterococcus faecium* using genomic surveillance. *Nature Microbiology* **2021**; 6(1): 103-
512 11.
- 513 22. Otter JA, Mookerjee S, Davies F, et al. Detecting carbapenemase-producing
514 Enterobacterales (CPE): an evaluation of an enhanced CPE infection control and
515 screening programme in acute care. *Journal of Antimicrobial Chemotherapy* **2020**; 75(9):
516 2670-6.
- 517 23. EUCAST. Breakpoint tables for interpretation of MICs and zone diameters. Version 7.1.
518 European Committee on Antimicrobial Susceptibility Testing **2017**.

- 519 24. Jain C, Rodriguez-R LM, Phillippy AM, Konstantinidis KT, Aluru S. High throughput
520 ANI analysis of 90K prokaryotic genomes reveals clear species boundaries. *Nature*
521 *Communications* **2018**; 9(1): 5114.
- 522 25. Robertson J, Nash JHE. MOB-suite: software tools for clustering, reconstruction and
523 typing of plasmids from draft assemblies. *Microbial genomics* **2018**; 4(8).
- 524 26. Minh BQ, Schmidt HA, Chernomor O, et al. IQ-TREE 2: New Models and Efficient
525 Methods for Phylogenetic Inference in the Genomic Era. *Mol Biol Evol* **2020**; 37(5):
526 1530-4.
- 527 27. Croucher NJ, Page AJ, Connor TR, et al. Rapid phylogenetic analysis of large samples of
528 recombinant bacterial whole genome sequences using Gubbins. *Nucleic Acids Res* **2015**;
529 43(3): e15.
- 530 28. Didelot X, Croucher NJ, Bentley SD, Harris SR, Wilson DJ. Bayesian inference of
531 ancestral dates on bacterial phylogenetic trees. *Nucleic Acids Research* **2018**; 46(22):
532 e134-e.
- 533 29. Pons P, Latapy M. *Computing Communities in Large Networks Using Random Walks*.
534 Berlin, Heidelberg: Springer Berlin Heidelberg, 2005:284-93.
- 535 30. Landman D, Salamera J, Quale J. Irreproducible and uninterpretable Polymyxin B MICs
536 for *Enterobacter cloacae* and *Enterobacter aerogenes*. *Journal of clinical microbiology*
537 **2013**; 51(12): 4106-11.
- 538 31. Fournier S, Desenfant L, Monteil C, et al. Efficiency of different control measures for
539 preventing carbapenemase-producing enterobacteria and glycopeptide-resistant
540 *Enterococcus faecium* outbreaks: a 6-year prospective study in a French multihospital
541 institution, January 2010 to December 2015. *Euro Surveill* **2018**; 23(8): 17-00078.
- 542 32. Turton J, Davies F, Taori S, Smith SL, Sajedi N, Wootton M. IncN3 and IncHI2
543 plasmids with an In1763 integron carrying bla IMP-1 in carbapenem-resistant
544 *Enterobacterales* clinical isolates from the UK. *Journal of medical microbiology* **2020**.
- 545 33. Kieffer N, Royer G, Decousser JW, et al. mcr-9, an Inducible Gene Encoding an
546 Acquired Phosphoethanolamine Transferase in *Escherichia coli*, and Its Origin.
547 *Antimicrobial agents and chemotherapy* **2019**; 63(9).
- 548 34. Otter JA, Doumith M, Davies F, et al. Emergence and clonal spread of colistin resistance
549 due to multiple mutational mechanisms in carbapenemase-producing *Klebsiella*
550 *pneumoniae* in London. *Scientific reports* **2017**; 7(1): 12711.

- 551 35. Otter JA, Muters NT, Tacconelli E, Gikas A, Holmes AH. Controversies in guidelines
552 for the control of multidrug-resistant Gram-negative bacteria in EU countries. *Clinical*
553 *microbiology and infection* : the official publication of the European Society of Clinical
554 *Microbiology and Infectious Diseases* **2015**; 21(12): 1057-66.
- 555 36. Jamal AJ, Garcia-Jeldes F, Baqi M, et al. Infection prevention and control practices
556 related to carbapenemase-producing Enterobacteriaceae (CPE) in acute-care hospitals in
557 Ontario, Canada. *Infection Control & Hospital Epidemiology* **2019**; 40(9): 1006-12.
- 558 37. Harris AD, McGregor JC, Furuno JP. What Infection Control Interventions Should Be
559 Undertaken to Control Multidrug-Resistant Gram-Negative Bacteria? *Clinical Infectious*
560 *Diseases* **2006**; 43(Supplement_2): S57-S61.
- 561 38. Doron S, Davidson LE. Antimicrobial stewardship. *Mayo Clin Proc* **2011**; 86(11): 1113-
562 23.
- 563