

## **The Effect of Bilingual Exposure on Language and Cognitive Development in Children**

### **Following Ischemic Stroke**

Kai Ian Leung, MSc<sup>1,2</sup>, Nomazulu Dlamini, MD<sup>3</sup>, Robyn Westmacott, PhD<sup>4</sup>,

& Monika Molnar, PhD<sup>1,2</sup>

<sup>1</sup>Department of Speech-Language Pathology, University of Toronto, Toronto, CANADA

<sup>2</sup>Rehabilitation Sciences Institute, University of Toronto, Toronto, CANADA

<sup>3</sup>Division of Neurology, The Hospital for Sick Children, Toronto, CANADA

<sup>4</sup>Department of Psychology, The Hospital for Sick Children, Toronto, CANADA

### **Author Note**

This research was funded by the Natural Sciences and Engineering Grant (RGPIN-2019-06523) to M.M and the Natural Sciences and Engineering Research Council - Alexander Graham Bell Canada Graduate Scholarship-Master's to K.I.L.

Correspondence to Kai Ian Leung (ORCID: 0000-0001-6331-5083) at Department of Speech-Language Pathology, University of Toronto, Room 1041-500 University Avenue, Toronto, ON, Canada M5G 1V7. E-mail: [kaiian.leung@mail.utoronto.ca](mailto:kaiian.leung@mail.utoronto.ca)

Word Count: 3102

## **Abstract**

### **AIM**

While many children who experience ischemic stroke come from bilingual backgrounds, it is unclear whether bilingual exposure affects post-stroke development. Our research evaluates the effects of bilingual vs. monolingual exposure on linguistic/cognitive development post-stroke.

### **METHOD**

An institutional stroke registry and medical charts were used to gather data on 237 children across 3 stroke-onset groups: neonatal - <28 days, first-year - 28 days to 12 months and childhood - 13 months to 18 years. The Pediatric Stroke Outcome Measure (PSOM) was administered at several times post-stroke, to evaluate cognition and linguistic development.

### **RESULTS**

Bilingual children had better post-stroke performance on the language subscales, compared to monolinguals. An interaction with stroke-onset group was also observed, with monolinguals in the first-year group having worse outcomes.

### **INTERPRETATION**

Overall, no detrimental effects of bilingualism were found on children's post-stroke cognition and linguistic development. Our study suggests that a bilingual environment may facilitate language development in children post-stroke.

*Keywords:* pediatric stroke, bilingualism, development, language, cognition

# **The Effect of Bilingual Exposure on Language and Cognitive Development in Children Following Ischemic Stroke**

## **Introduction**

Pediatric stroke is caused by a blockage or a rupture of the blood vessels of the brain and differs from adult stroke in clinical presentation, etiology, risk factors and outcomes<sup>1</sup>. More than half of all strokes in children are arterial ischemic stroke (AIS), making up 70% of all ischemic strokes in children<sup>1</sup>. AIS is due to an interruption of blood flow to the brain, in an arterial distribution secondary to occlusion of cerebral arteries<sup>2</sup>. AIS most often presents as a focal neurologic deficit occurring in 61% of cases<sup>3</sup>. There are important differences in etiology and outcome based on child's age at stroke onset, which is typically categorized into neonatal stroke (28 weeks' gestation to 28 postnatal days of life) or childhood stroke (infancy to 18 years of age)<sup>4</sup>.

Cognitive and language development is often negatively affected by AIS. When most domains of language are considered (including phonology, semantics, syntax, discourse, literacy), children with strokes during the neonatal period up to 1<sup>st</sup> year of life have worse language outcomes compared to childhood stroke<sup>5</sup>. Lesion laterality, or the affected hemisphere of the stroke, does not seem to affect language development after neonatal stroke<sup>6</sup>, while in childhood stroke, it has been found to lead to language impairments after left hemisphere damage similarly to adults<sup>7</sup>. Younger age at stroke (before 1st year) was also found to be a predictor of worse cognitive outcomes<sup>8,9</sup>, particularly when response inhibition, divided attention, switching, sustained attention and other executive function evaluations are considered<sup>10-12</sup>. Similar to language, the effect of lesion laterality on cognitive outcomes has proven inconsistent<sup>11</sup>; risk factors for worse cognitive outcome include larger lesion volume<sup>10</sup>,

infarcts affecting cortical and subcortical regions<sup>8</sup> and those involving both small and large vessel territories<sup>13</sup>.

Research concerning the effects of specific demographic and psychosocial factors on cognitive and behavioral outcomes in pediatric stroke are emerging<sup>14</sup>, however an unexplored area remains the socio-linguistic factor of bilingualism. Bilinguals, or those who are learning and using two or more languages, make up half of the world's population<sup>15</sup>. While a prior belief was that learning two languages would have a negative impact on development, recent research demonstrates that neurotypical monolingual and bilingual children reach the developmental milestones of language and cognitive development at the same pace<sup>16</sup>. Moreover, it has been proposed that the bilingual environment might afford certain benefits cognitively and linguistically<sup>17</sup>. According to the Bilingual Cognitive Advantage hypothesis, the mental exercise related to using two languages (e.g., activating the appropriate language, switching between languages, etc.) can positively affect non-linguistic *cognitive* functions<sup>18</sup>. Recent meta-analyses support the existence of a bilingual advantage in executive functions in neurotypical pediatric populations<sup>19</sup>. Childhood bilingualism is also associated with *linguistic* advantages. Specifically, considering metalinguistic abilities, bilinguals tend to consistently outperform their monolingual peers<sup>20</sup>. Bilingualism may also facilitate language production skills, such as novel word learning in bilingual school-aged children<sup>21</sup>. While there is an ongoing debate about the existence of bilingual advantage, the current work intends to move beyond the dichotomy of advantage vs. no advantage and focus on how bilingual exposure may interact with (cognitive and/or language) development in populations with neurologic deficits, such as ones caused by AIS.

## The Current Study

Here, we investigate whether bilingual vs. monolingual exposure affects *language* or *cognitive* development differently in children following ischemic stroke. This is important, as speaking two languages at home and having low English-proficiency parents are associated with adverse child health outcomes<sup>22</sup>; limited English-proficiency pediatric patients also experienced care-related disparities associated to their language use<sup>23</sup>. Research concerning bilingual exposure in pediatric stroke population and guidelines available to clinicians are scarce. Thus far, the only study that examined bilingual pediatric stroke populations did not include a control group of monolinguals<sup>24</sup>. Therefore, to date, we are not aware of any studies evaluating bilingual exposure on stroke recovery in children.

The specific objective of this study is to determine if bilingual exposure affects cognitive and linguistic development in children following stroke as measured by the Pediatric Stroke Outcome Measure (PSOM). Currently, the PSOM is the only available standardized neurological examination of outcome, specific to pediatric stroke recovery<sup>25</sup>. It is a reliable and valid composite outcome measure based on motor, language, and cognitive/behavioural dimensions, evaluated against standardized neuropsychological measures in each domain, and has been utilized in various research<sup>12,13,26</sup>. The PSOM scores analyzed in the current study were collected at hospital discharge and in the follow-up clinic, on average at 3-6 months and 12 months post-stroke, then at 1-2-year intervals after the first year up to 18 years of age. In our current sample, follow-up was at minimum 2 months post-stroke, up to a maximum 10.5-years post-stroke.

Given that bilingual exposure during childhood is not associated with any negative outcomes in terms of linguistic and cognitive development in neurotypical children, we hypothesized that bilingual exposure in pediatric stroke patients would not have any negative

consequences. Accordingly, we predicted that the PSOM follow-up scores of bilingual children would not be worse than the scores of their monolingual peers. Further, considering the cognitive and linguistic advantages observed in bilinguals, it is a possibility that bilingual patients would benefit from their bilingual experience and show an advantage in their development, reflected through differences in performance in certain PSOM subscales (e.g., language and cognitive/behavioural). Finally, we predicted no differences between monolinguals and bilinguals if they suffered stroke within the neonatal period. This is because post-stroke outcome measures show consistent decline across populations post neonatal stroke<sup>9</sup>.

## Methods

### Patients

Patients were enrolled in the Hospital for Sick Children (SickKids; Toronto, Canada) Stroke Registry between January 1, 2008 and December 1, 2019, and were considered for the study if they were first-ever arterial ischemic stroke (AIS) patients aged 0-17 years at stroke. Exclusion criteria included: 1) presumed perinatal AIS; 2) multiple diagnoses of stroke (e.g., stroke recurrence or cerebral sinovenous thrombosis followed by AIS); 3) congenital/developmental disease or premorbid learning/psychological diagnosis prior to stroke onset, associated with language or cognitive outcomes (i.e., trisomy 21; nonverbal autism); 4) fewer than two PSOM evaluation scores available post-stroke. This study was approved by the Research Ethics Board at SickKids (REB#1000067719) and consent was provided for all participants or their caregivers as part of their enrollment in the SickKids Stroke Registry.

Outcome measure data was retrieved from the SickKids Stroke Registry. First and second language (and other languages, if applicable) and any described use or exposure were abstracted from medical charts. The monolingual group comprised of children who were exposed to one

language only from birth. The bilingual group was defined by concurrent learning or exposure to at least two languages (e.g., one heritage/home language and one societal language). Children who began to learn a second language in school settings, a typical experience for sequential bilinguals, were subsumed into the bilingual group. Given that both simultaneous and sequential bilinguals have been associated with cognitive and linguistic advantages, both types of bilinguals were grouped together for analysis<sup>27,28</sup>.

Previous literature evaluating outcomes using the PSOM indicated that emerging deficits were more common in recovery patterns of children younger than 1 year at stroke onset<sup>13</sup>. Thus, patients were stratified into three ‘age at stroke’ groups as follows: neonates – <28 days; first-year – 28 days to 12 months; and childhood – 13 months to 18 years. Using Kruskal-Wallis test, our preliminary analyses evaluating this grouping also corroborated these differences using the Pediatric Stroke Outcome Measure,  $H(2)=12.15, p<.002$ , indicating a significant difference between the three groups.

### **Pediatric Stroke Outcome Measure (PSOM)**

The PSOM is a standardized, structured pediatric neurological examination comprised of 115 test items and is summarised into five subscales; Right Sensorimotor, Left Sensorimotor, Language Expression and Language Comprehension and Cognitive/Behavioural subscales<sup>25,29</sup>. Each PSOM subscale is scored on a range from 0 (no deficit), 0.5 (mild deficit), 1 (moderate deficit) to 2 (severe deficit), with a total PSOM out of 10 considering the sum of all 5 subscales. A greater score is indicative of worse outcome. The PSOM takes into consideration the administering neurologist’s observations (partially based on age appropriate language and cognitive tasks), parent’s report and medical chart information (e.g., clinic notes, neuropsychological assessment – including standardized language and cognition measures). The

PSOM's construct validity and reliability have been established against standardized neuropsychological measures, evaluating the content or domains matched to each subscale<sup>25</sup>.

### Statistical analysis

Anonymized data is available openly at <https://doi.org/10.5683/SP2/E3ECVD> and was analyzed in Jamovi (version 1.6.6, The jamovi project, 2020, <https://www.jamovi.org/>). Growth curve modelling, a mixed effects model including timepoint (month at test from stroke onset) as a predictor, was used to analyse the relationship between language group and outcome<sup>30,31</sup>. In our analyses, we focused on the Cognitive/Behavioural, Language Expression (i.e., language production) and Language Comprehension (i.e., language reception) PSOM subscales. A Combined Language subscale was calculated through sum of the scores from the language expression and comprehension subscales. We fit linear mixed models for each PSOM subscale as outcome variables, using timepoint (month at test from stroke onset), language group (monolingual, bilingual), age at stroke onset (neonate, first-year, childhood), sex (female, male), laterality (right, left, bilateral) and its interaction as fixed effects (see Supplementary Materials for full models and additional results related to sex and laterality, which are generally in line with findings reported in previous literature).

Here, we report models relevant to our hypothesis. These models include *timepoint* (month at test from stroke onset; each child was evaluated at multiple time points after stroke onset, up to 10 years), *language group* (monolingual vs. bilingual status), *age at stroke* (neonate, first-year, childhood) and its interactions. Timepoint variable was assigned a specified loading in the model, based on the month after stroke at test and was also used as random variable when fit improved. Maximum Likelihood method of estimation was used, and model fit was evaluated



using Akaike Information Criterion and Bayesian Information Criterion values. Statistical analyses and reporting have been done in consultation with an institutional statistician.

## Results

### Study Cohort

253 children with AIS met our inclusion and exclusion criteria. Of these patients, three additional patients were excluded due to chart unavailability; 13 deceased patients had residual data in the registry and were excluded. The final study sample totalled 237 children. The demographic and stroke characteristics of all children are available in Table 1. The sample consisted of monolingual (n=111) and bilingual patients (n=126). This distribution is in line with Statistics Canada's (2016) reports of 4 in 10 households speaking more than one language at home, with this proportion increasing for larger metropolitan areas<sup>32</sup>. While the language group distribution is fairly comparable in the neonate and first-year age at stroke groups, the childhood group had more monolinguals than bilinguals. Also, the first-year group had the least number of patients (only 14%) compared to the other groups. Socioeconomic status (SES) was available for a subset of the sample and was evaluated by calculating a combined SES score based on annual income and parents' highest level of education. A Mann-Whitney test found no difference between monolinguals and bilinguals in socioeconomic status (U=867.50, p=0.65).

**Table 1.** Patient demographics (sex, age at stroke group subdivided into 3 groups based on literature and preliminary analyses, socioeconomic status) and stroke characteristics (lesion laterality) for monolingual and bilingual participants

	All Children (n=237)	Monolingual (n=111)	Bilingual (n=126)
<i>Sex, n (%)</i>			
Male	153 (65%)	72 (47%)	81 (53%)
Female	84 (35%)	39 (46%)	45 (54%)
<i>Age at Stroke, n (%)</i>			
Neonatal (<28 days of life)	105 (44%)	48 (46%)	57 (54%)

First-Year (28 days – 12 months)	33 (14%)	16 (49%)	17 (51%)
Childhood (13 months – 18 years)	99 (42%)	47 (48%)	52 (52%)
<i>Stroke laterality, n (%)</i>			
Left-sided	89 (38%)	40 (45%)	49 (55%)
Right-sided	55 (23%)	26 (47%)	29 (53%)
Bilateral	68 (29%)	35 (52%)	33 (48%)
Unknown/NA	25 (10%)	10 (40%)	15 (60%)
<i>Composite Socioeconomic Status, M(SD)*</i>	3.40 (0.87)	3.45 (0.85)	3.33 (0.88)

\*Only available for a subset of patients with SES information available (n=81)

### **Cognitive/Behavioural PSOM**

We modelled cognitive development as predicted by language group, age at stroke group and its interaction, with timepoint variable added in as an additional fixed variable and random slope to increase model fit. While language group was nonsignificant, age at stroke was a significant predictor of cognitive/behavioural PSOM scores, such that PSOM was seen to increase incrementally with an older age at stroke indicating a worse outcome: the neonatal group had the lowest PSOMs, while the childhood group had highest PSOMs (Table 2).

#### *Equivalence Testing of Language Group*

As nonsignificant result is insufficient to conclude a lack of effect, further equivalence test analyses evaluating the effect of language group on the cognitive/behavioural PSOM performance were conducted. Two one-sided tests (TOST) independent samples t-test procedure was employed to investigate whether the effect size found is smaller than the smallest effect size of interest and aims to reject a null effect. Summary statistics are available in Table 2. For cognitive/behavioural PSOM, the equivalence test was significant,  $t(718) = 1.91$ ,  $p = 0.056$ , given equivalence bounds of 0.009 and 0.127, suggesting no difference between groups on cognitive/behavioural PSOM.

**Table 2.** Summary of results from two one-sided tests (TOST) with independent variable of language group, on cognitive/behavioural PSOM subscale.

		Equivalence Bounds: 90% CI	t	df	p
Cognitive	t-test		1.91	718	0.056
Behavioural	TOST Upper	0.127	-5.09	718	<.001
PSOM	TOST Lower	0.00957	8.92	718	<.001

### **Combined Language Subscales PSOM**

We modelled language development as predicted by language group, age at stroke group and its interaction, with timepoint variable as additional fixed effect as it did not increase fit as random effect. Language group was significant, with better outcomes favouring bilinguals over monolinguals ( $p=.04$ ; Table 3). Additionally, one of the interaction comparisons between the age at stroke group and language group, showed significance ( $p=.04$ ; Table 3), with better outcomes for bilinguals in the first-year group. Differing from the age at stroke group pattern apparent in the cognitive PSOM model, a U-shaped pattern with the highest scores observed for the first-year group.

#### ***Language Comprehension PSOM***

We modelled language comprehension as predicted by language group, age at stroke group and its interaction, with the timepoint variable as an fixed effect as model fit did not increase as a random effect. A trend for language group favoured better outcomes for bilinguals over monolinguals ( $p=.08$ ; Table 3). As for age at stroke group findings, an U-shaped pattern with the highest scores was observed for the first-year group.

### *Language Expression PSOM*

We modelled expressive language function as predicted by language group, age at stroke group and its interaction, with timepoint variable as additional fixed effect as it did not increase fit as random effect. As shown in Table 3, language group showed significantly better outcomes for bilinguals over monolinguals ( $p=.02$ ), while age at stroke group also has significant differences in a U-shape pattern. Once again, the first-year group showed a significant difference between language groups such that monolinguals had worse language expression outcomes than bilinguals at age 28 days to 1 year at stroke onset (Figure 1). Age at stroke group and its interaction with language group was a significant predictor of language expression PSOM ( $p=.01$ ; Table 3).

[Insert Figure 1.]

Using growth curve modelling (Figure 2A), we visualized trajectory differences for language expression PSOM scores over time by age at stroke onset groups. In Figure 2B, marked differences between the monolingual and bilingual trajectories particularly for the first-year group were evident. The monolingual group shows increases overtime if they had a stroke in their first-year, while the scores for bilingual group remained fairly steady over time.

[Insert Figure 2.]

**Table 3.** Summary of results from growth curve models predicting the fixed effects of timepoint, language group, age at stroke group and its interaction on various PSOM subscales, significant values are bolded.

Fixed Effects Estimates:

<b>Cognitive/Behavioural PSOM - Predictor</b>	<b>Estimate</b>	<b>SE</b>	<b>95% CI</b>	<b>p</b>
(Intercept)	0.2878	0.0261	0.2367-0.3390	<.001
Timepoint	0.0033	7.08e-4	0.0020-0.0047	<.001***
Language group				
Bilingual – Monolingual	-0.0705	0.0520	-0.1723-0.0313	0.176

Age at stroke group				
First-year – Neonate	0.1859	0.0694	0.0499-0.3219	0.008**
Childhood - Neonate	0.3332	0.0498	0.2245-0.4198	<.001***
Language group $\otimes$ Age at stroke group				
Bilingual – Monolingual $\otimes$	-0.1088	0.1388	-0.3808-0.1631	0.434
First-year – Neonate				
Bilingual – Monolingual $\otimes$	-0.0190	0.0997	-0.2144-0.1763	0.849
Childhood - Neonate				
<b>Combined Language PSOM - Predictor</b>	<b>Estimate</b>	<b>SE</b>	<b>95% CI</b>	<b>p</b>
(Intercept)	0.362	0.0435	0.2765-0.4469	<.001
Timepoint	3.43e-4	8.63e-4	-0.0013-0.0020	0.691
Language group				
Bilingual – Monolingual	-0.178	0.0869	-0.3479- -0.0073	0.042*
Age at stroke group				
First-year – Neonate	0.319	0.1161	0.0912-0.5461	0.007**
Childhood - Neonate	0.111	0.0829	-0.0519-0.2730	0.184
Language group $\otimes$ Age at stroke group				
Bilingual – Monolingual $\otimes$	-0.464	0.2321	-0.9186- -0.0088	0.047*
First-year – Neonate				
Bilingual – Monolingual $\otimes$	-0.108	0.1658	-0.4326-0.2174	0.517
Childhood - Neonate				
<b>Language Expression PSOM - Predictor</b>	<b>Estimate</b>	<b>SE</b>	<b>95% CI</b>	<b>p</b>
(Intercept)	0.2314	0.0260	0.1805-0.2822	<.001
Timepoint	1.83e-4	5.21e-4	-8.38e-4-0.0012	0.725
Language group				
Bilingual – Monolingual	-0.1170	0.0519	-0.2187- -0.0152	0.025*
Age at stroke group				
First-year – Neonate	0.1804	0.0694	0.0445-0.3163	0.010**
Childhood - Neonate	0.0431	0.0494	-0.0537-0.1399	0.383
Language group $\otimes$ Age at stroke group				
Bilingual – Monolingual $\otimes$	-0.3289	0.1387	-0.6008- -0.0570	0.019*
First-year – Neonate				
Bilingual – Monolingual $\otimes$	-0.0605	0.0988	-0.2541-0.1331	0.541
Childhood - Neonate				
<b>Language Comprehension PSOM - Predictor</b>	<b>Estimate</b>	<b>SE</b>	<b>95% CI</b>	<b>p</b>
(Intercept)	0.1364	0.0201	0.0970-0.1757	<.001
Timepoint	1.75e-4	4.30e-4	-6.67e-4-0.0010	0.684
Language group				
Bilingual – Monolingual	-0.0671	0.0402	-0.1459-0.0116	0.097†

Age at stroke group				
First-year – Neonate	0.1490	0.0537	0.0437-0.2543	0.006**
Childhood - Neonate	0.0646	0.0384	-0.0106-0.1398	0.094†
Language group × Age at stroke group				
Bilingual – Monolingual ×	-0.1578	0.1075	-0.3685-0.0528	0.144
First-year – Neonate				
Bilingual – Monolingual ×	-0.0534	0.0768	-0.2038-0.0970	0.488
Childhood - Neonate				

Note: † p < .10; \* p < .05; \*\* p < .01; \*\*\* p < .001

## Discussion

We evaluated the effects of bilingual exposure on the cognitive and linguistic development of children post-stroke, using the Pediatric Stroke Outcome Measure (PSOM) administered at several timepoints and up to 10.5 years post-stroke. First, we found no language group effect or interactions in the cognitive/behavioural PSOM model, suggesting that monolingual or bilingual status did not affect the cognitive/behavioural scores. Second, language group differences showed significantly better outcomes in the bilinguals in the case of language expression PSOM (p=.02) and combined language PSOM (p=.04). Third, better outcomes for bilinguals in the group that suffered stroke between 1 and 12 months of age was found in the language expression PSOM model (p=.01) and the combined (expression and comprehension) language PSOM (p=.04).

Age at stroke onset was a predictor of stroke outcome, such that the first-year group had the highest scores in all language PSOM subscales, consistent with previous findings<sup>13</sup>. Similarly, Trauner and colleagues found the trajectory of language development in monolingual children after perinatal stroke is significantly altered between the 1<sup>st</sup> and 2<sup>nd</sup> year of life compared to controls, such that by 2 years of age, their stroke group experienced delays in language production<sup>33</sup>. While this pertains to childhood stroke, it is possible that monolinguals of the first-year group showed similar outcomes for language expression, while the different outcome for

bilinguals was reflective of the aforementioned linguistic advantage for bilinguals. We might also expect differences to be apparent if the stroke occurred outside of the neonatal period (28 days of birth), as this time frame would allow for sufficient bilingual exposure pre- and post-stroke. Outperforming monolinguals, bilingual children at this age make strides in language learning and metalinguistic skills<sup>20</sup>. Alternatively, at follow-up PSOMs, the first-year group could also be showing evidence of their language development, as they transition from a primarily home environment to more societal exposure to the language of assessment (English). Therefore, the difference in the language PSOM scores could equally be evidence of growth in English-language skills at this time in bilinguals (as the PSOM is administered in English), or evidence for a general advantage in language learning and metalinguistic skills in bilinguals in general which functions as a protective factor for pediatric patients.

The lack of an effect in the cognitive/behavioural model may suggest no difference between the two groups; alternatively, it may stem from the sensitivity of the PSOM in detecting changes in cognition. First, at this age, it is problematic to sharply distinguish cognition and language in these stroke-onset groups. Second, the agreement between normal/abnormal PSOM subscale scores was the weakest for the cognitive/behavioural subscale, compared to other PSOM subscales<sup>25</sup>. Finally, previous studies using the cognitive/behavioural PSOM have typically recruited older children aged 6 and onwards at study<sup>10</sup>. In other atypically developing populations, evidence for a cognitive advantage in bilinguals has been mixed. There has been a documented bilingual cognitive advantage in inhibition and switching in pediatric traumatic brain injury<sup>34</sup> and in enhancing executive functioning on working memory tasks, but not mental flexibility and verbal fluency in children with epilepsy<sup>35</sup>. Given this, we cannot definitively

conclude lack of the effect of bilingual exposure cognitive abilities. Future studies using finer-grain or more detailed cognitive measures with these populations to address this question further.

The timing of pediatric stroke during development entails complex cognitive and linguistic challenges in recovery<sup>9</sup>. Vulnerability during “sensitive periods” of development leave children open to the risk of further disruption in development, building on previous milestones<sup>5</sup>. Recovery has been conceptualized as categorical change on the PSOM severity classification system over time<sup>13,26</sup>; as assessed in the Recurrence and Recovery Questionnaire (based on the PSOM)<sup>36</sup>; and more generally, through a restoration/restitution of function or an adaptative compensation through substitution<sup>37</sup>. *Recovery* as it relates to post-stroke outcomes is predominantly used in the literature, though *development* is an intrinsically related concept. As such, conflation of these terms further complicate the situation of atypically-developing populations<sup>37</sup>.

### **Conclusion**

This is the first study evaluating the effect of bilingualism on language and cognitive development post-stroke. Our overall results indicate that patients from monolingual and bilingual environments follow similar development post-stroke when their cognitive abilities are considered, however, bilinguals had better language outcomes compared to monolinguals. Considering the limitations of the current study, more data is needed to make a more definitive conclusion about the cognitive development of monolingual and bilingual patients. Importantly, the current study did not find any negative effects of bilingual exposure on development in children post-stroke.



## References

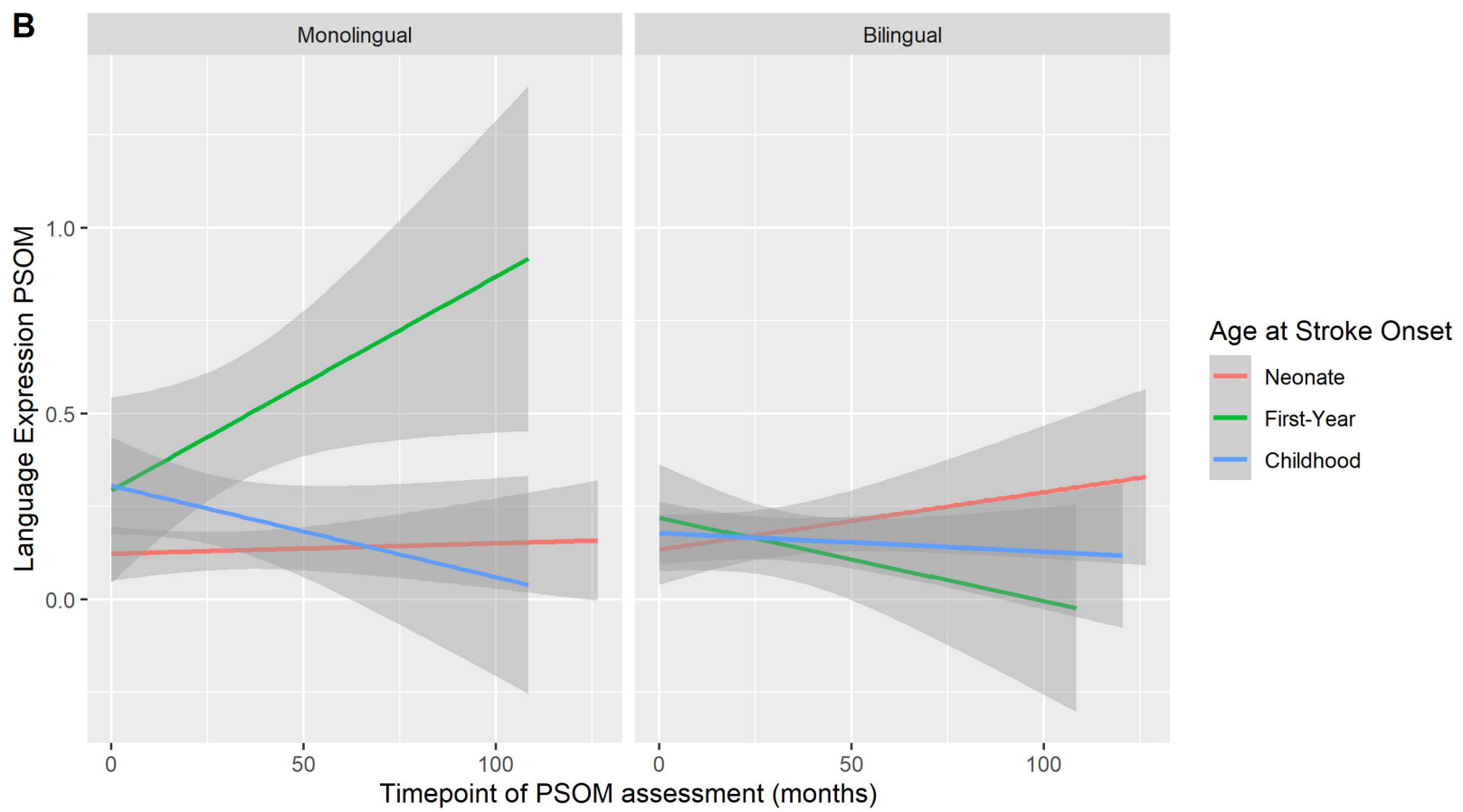
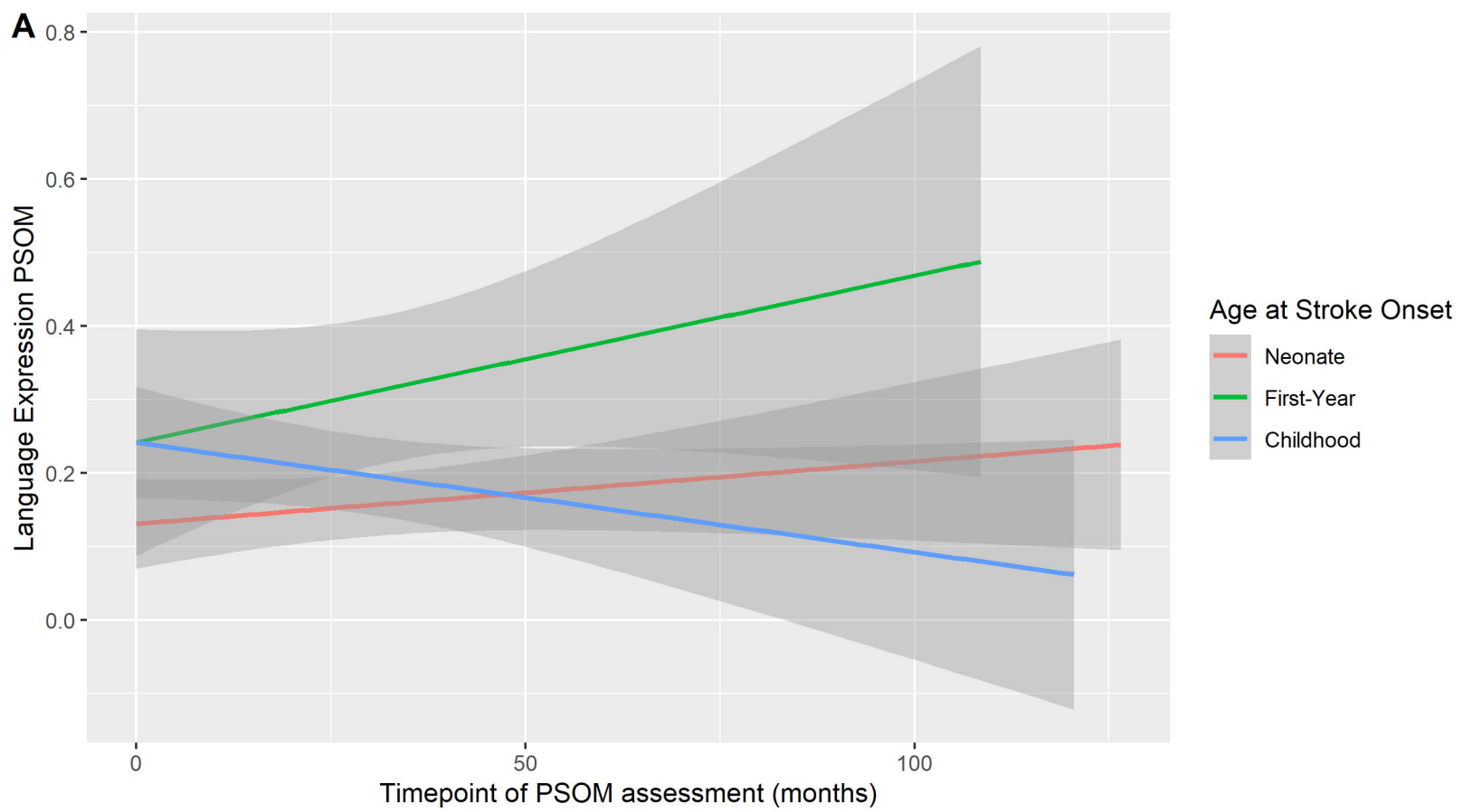
1. Tsze DS, Valente JH. Pediatric stroke: a review. *Emergency Medicine International*. 2011;2011.
2. Bernard TJ, Goldenberg NA. Pediatric arterial ischemic stroke. *Hematology/oncology clinics of North America*. 2010;24(1):167-180.
3. DeVeber GA, Kirton A, Booth FA, et al. Epidemiology and outcomes of arterial ischemic stroke in children: the Canadian Pediatric Ischemic Stroke Registry. *Pediatric neurology*. 2017;69:58-70.
4. Fuentes A, Deotto A, Desrocher M, deVeber G, Westmacott R. Determinants of cognitive outcomes of perinatal and childhood stroke: A review. *Child Neuropsychology*. 2016;22(1):1-38.
5. Max JE, Bruce M, Keatley E, Delis D. Pediatric stroke: plasticity, vulnerability, and age of lesion onset. *The Journal of neuropsychiatry and clinical neurosciences*. 2010;22(1):30-39.
6. Chabrier S, Peyric E, Drutel L, et al. Multimodal outcome at 7 years of age after neonatal arterial ischemic stroke. *The Journal of pediatrics*. 2016;172:156-161.
7. Gout A, Seibel N, Rouvière C, et al. Aphasia owing to subcortical brain infarcts in childhood. *Journal of child neurology*. 2005;20(12):1003-1008.
8. Studer M, Boltshauser E, Mori AC, et al. Factors affecting cognitive outcome in early pediatric stroke. *Neurology*. 2014;82(9):784-792.
9. Westmacott R, Askalan R, Macgregor D, Anderson P, Deveber G. Cognitive outcome following unilateral arterial ischaemic stroke in childhood: effects of age

- at stroke and lesion location. *Developmental Medicine & Child Neurology*. 2010;52(4):386-393.
10. Hajek CA, Yeates KO, Anderson V, et al. Cognitive outcomes following arterial ischemic stroke in infants and children. *Journal of Child Neurology*. 2014;29(7):887-894.
  11. O’Keeffe F, Liégeois F, Eve M, Ganesan V, King J, Murphy T. Neuropsychological and neurobehavioral outcome following childhood arterial ischemic stroke: attention deficits, emotional dysregulation, and executive dysfunction. *Child Neuropsychology*. 2014;20(5):557-582.
  12. Westmacott R, McDonald KP, Roberts SD, et al. Predictors of cognitive and academic outcome following childhood subcortical stroke. *Developmental neuropsychology*. 2018;43(8):708-728.
  13. Felling RJ, Rafay MF, Bernard TJ, et al. Predicting recovery and outcome after pediatric stroke: results from the International Pediatric Stroke Study. *Annals of neurology*. 2020;87(6):840-852.
  14. Durber CM, Yeates KO, Taylor HG, Walz NC, Stancin T, Wade SL. The family environment predicts long-term academic achievement and classroom behavior following traumatic brain injury in early childhood. *Neuropsychology*. 2017;31(5):499.
  15. Grosjean F. *Bilingual*. Harvard university press; 2010.
  16. Werker JF, Byers-Heinlein K, Fennell CT. Bilingual beginnings to learning words. *Philosophical Transactions of the Royal Society B: Biological Sciences*. 2009;364(1536). doi:10.1098/rstb.2009.0105

17. Bialystok E, Werker JF. The systematic effects of bilingualism on children's development. *Developmental science*. 2017;20(1).
18. Bialystok E, Craik F, Luk G. Cognitive control and lexical access in younger and older bilinguals. *Journal of Experimental Psychology: Learning, memory, and cognition*. 2008;34(4):859.
19. Gunnerud HL, ten Braak D, Reikerås EKL, Donolato E, Melby-Lervåg M. Is bilingualism related to a cognitive advantage in children? A systematic review and meta-analysis. *Psychological Bulletin*. 2020;146(12):1059.
20. Galambos SJ, Goldin-Meadow S. The effects of learning two languages on levels of metalinguistic awareness. *Cognition*. 1990;34(1):1-56.
21. Kaushanskaya M, Gross M, Buac M. Effects of classroom bilingualism on task-shifting, verbal memory, and word learning in children. *Developmental science*. 2014;17(4):564-583.
22. Eneriz-Wiemer M, Sanders LM, Barr DA, Mendoza FS. Parental limited English proficiency and health outcomes for children with special health care needs: a systematic review. *Academic pediatrics*. 2014;14(2):128-136.
23. Chan KS, Keeler E, Schonlau M, Rosen M, Mangione-Smith R. How do ethnicity and primary language spoken at home affect management practices and outcomes in children and adolescents with asthma? *Archives of pediatrics & adolescent medicine*. 2005;159(3):283-289.
24. François C, Ripollés P, Ferreri L, et al. Right structural and functional reorganization in four-year-old children with perinatal arterial ischemic stroke predict language production. *Eneuro*. 2019;6(4).

25. Kitchen L, Westmacott R, Friefeld S, et al. The pediatric stroke outcome measure: a validation and reliability study. *Stroke*. 2012;43(6):1602-1608.
26. Slim M, Fox CK, Friefeld S, et al. Validation of the pediatric stroke outcome measure for classifying overall neurological deficit. *Pediatric research*. 2020;88(2):234-242.
27. Sabourin L, Vinerte S. The bilingual advantage in the Stroop task: simultaneous vs. early bilinguals\*. *Bilingualism: Language and Cognition*. 2015;18(2):350-355.  
doi:10.1017/S1366728914000704
28. Struys E, Mohades G, Bosch P, van den Noort M. Cognitive Control in Bilingual Children. <http://dx.doi.org/10.1024/1421-0185/a000152>. 2015;74(2):65-73.  
doi:10.1024/1421-0185/A000152
29. deVeber GA, MacGregor D, Curtis R, Mayank S. Neurologic outcome in survivors of childhood arterial ischemic stroke and sinovenous thrombosis. *Journal of child neurology*. 2000;15(5):316-324.
30. Tilling K, Sterne JAC, Rudd AG, Glass TA, Wityk RJ, Wolfe CDA. A new method for predicting recovery after stroke. *Stroke*. 2001;32(12):2867-2873.
31. Wilson SM, Eriksson DK, Brandt TH, et al. Patterns of recovery from aphasia in the first 2 weeks after stroke. *Journal of Speech, Language, and Hearing Research*. 2019;62(3):723-732.
32. Statistics Canada. Language spoken most often at home by other language(s) spoken regularly at home and age. . Statistics Canada Catalogue no. 98-402-X2016005.

33. Trauner DA, Eshagh K, Ballantyne AO, Bates E. Early language development after peri-natal stroke. *Brain and language*. 2013;127(3):399-403.
34. Gonzalez I. *Executive Functioning Performance of Bilingual and Monolingual Children with a Traumatic Brain Injury*. Carlos Albizu University; 2018.
35. Veenstra AL, Riley JD, Barrett LE, et al. The impact of bilingualism on working memory in pediatric epilepsy. *Epilepsy & Behavior*. 2016;55:6-10.
36. Lo W, Gordon AL, Hajek C, et al. Pediatric stroke outcome measure: predictor of multiple impairments in childhood stroke. *Journal of child neurology*. 2014;29(11):1524-1530.
37. Malone LA, Felling RJ. Pediatric stroke: unique implications of the immature brain on injury and recovery. *Pediatric neurology*. 2020;102:3-9.



Language Expression PSOM by Age at Stroke Group and Language Group

