

Higher mortality associated with the SARS-CoV-2 Delta variant in the Western Cape, South Africa, using RdRp target delay as a proxy

Hannah Hussey^{1,2}, Mary-Ann Davies^{1,3}, Alexa Heekes^{1,2}, Carolyn Williamson⁴⁻⁶, Ziyaad Valley-Omar^{4,5}, Diana Hardie^{4,5}, Stephen Korsman^{4,5}, Deelan Doolabh^{4,5}, Wolfgang Preiser^{5,7}, Tongai Maponga^{5,7}, Arash Iranzadeh^{4,5}, Susan Engelbrecht^{5,7}, Sean Wasserman^{6,8}, Neshaad Schrueder¹⁰, Linda Boloko^{6,9}, Greg Symons⁹, Peter Raubenheimer⁹, Abraham Viljoen¹⁰, Arifa Parker¹⁰, Cheryl Cohen^{11,12}, Waasila Jassat¹¹, Richard Lessells¹³, Robert J Wilkinson^{6,14,15}, Andrew Boule^{1,3}, Nei-yuan Hsiao⁴⁻⁶.

1. Health Intelligence, Western Cape Government: Health, South Africa
2. Division of Public Health Medicine, School of Public Health and Family Medicine, University of Cape Town, South Africa
3. Centre for Infectious Disease Epidemiology and Research, School of Public Health and Family Medicine, University of Cape Town, South Africa
4. Division of Medical Virology, University of Cape Town, Cape Town, Western Cape, South Africa
5. National Health Laboratory Service, South Africa
6. Wellcome Centre for Infectious Diseases Research in Africa, Institute of Infectious Disease and Molecular Medicine, University of Cape Town, South Africa
7. Division of Medical Virology, University of Stellenbosch, South Africa
8. Division of Infectious Diseases and HIV Medicine, Department of Medicine, University of Cape Town, South Africa
9. Department of Medicine, Groote Schuur Hospital, University of Cape Town, South Africa
10. Department of Medicine, Tygerberg Hospital, Stellenbosch University, South Africa
11. National Institute for Communicable Diseases, Johannesburg, South Africa
12. School of Public Health, Faculty of Health Sciences, University of the Witwatersrand, Johannesburg, South Africa
13. KwaZulu-Natal Research, Innovation & Sequencing Platform, University of KwaZulu-Natal, Durban, South Africa
14. The Francis Crick Institute, Midland Road, London, NW1 1AT, UK
15. Department of Infectious Diseases, Imperial College London, W12 0NN, UK

Abstract

A novel proxy for the Delta variant, RNA-dependent RNA polymerase target delay in the Seegene Allplex™ 2019-nCoV PCR assay, was associated with higher mortality (adjusted Odds Ratio 1.45 [95%CI 1.13-1.86]), compared to presumptive Beta infection, in the Western Cape, South Africa (April-July 2021). Prior diagnosed infection and vaccination were protective.

Introduction

To date, the Western Cape Province of South Africa, has experienced three large waves of SARS-CoV-2 infections. The first wave caused by early ancestral clades of SARS-CoV-2 peaked in June 2020, the second wave with the Beta variant (B.1.351) peaked in December 2020 and the third most recent wave caused by the Delta variant (B.1.617.2) peaked in August 2021 (1).

Delta has become the dominant variant globally, and its increased clinical severity compared to other variants is suspected, although not fully documented or understood (2–6). Relatively high vaccination coverage, however, complicates the interpretation of these findings. Delta has also mostly been compared to the Alpha variant, and not within a sub-Saharan African setting.

The start of the third wave of COVID-19 in the Western Cape Province was characterized by a rapid transition from the previously dominant Beta variant to Delta (1). We used a novel proxy marker for Delta, namely RNA-dependent RNA polymerase (RdRp) target delay (RTD) in PCR positive samples, to assess mortality associated with Delta, compared to Beta, in our population which had relatively low levels of vaccine coverage as well as a high prevalence of comorbidities, including HIV and tuberculosis.

Methods

RdRP target delay

RTD, defined as a difference in cycle threshold value of >3.5 in the RdRp relative to E gene target in the Seegene Allplex™ 2019-nCoV PCR assay, has recently been described (7). This phenomenon is due to the G15451A mutation found in Delta, resulting in a RdRp primer mismatch. When evaluated against genomic data, this method had a sensitivity of 93.6% and specificity of 89.7% in detecting Delta (7).

Population and Statistical analysis

We included all COVID-19 cases diagnosed on the Seegene Allplex™ 2019-nCoV diagnostic PCR assay in the Western Cape public sector from 1 April to 31 July 2021, a period when both Beta and Delta were co-circulating (Appendix Figure 1). Alpha and non-variant of concern lineages accounted for a negligible number of infections at this time (1). Follow-up ended on 31 August 2021. Approximately 70% of the Western Cape population uses the public sector for health services and the Western Cape Provincial Health Data Centre

(PHDC) collates all available electronic health data on these patients. Use of this data in COVID-19 analyses has been previously described (8). COVID-19 deaths were defined as deaths within 28 days of diagnosis of COVID-19 or 14 days after discharge from hospital (where hospital admission occurred within 21 days of the COVID-19 diagnosis), without a non-COVID-19 cause of death recorded. Out-of-facility deaths were determined by civil identifier linkage of patients with COVID-19 diagnoses to the national population register.

We undertook logistic regression to determine the association between RTD and mortality, adjusted for age, sex, known comorbidities, prior diagnosed infection, vaccination status at time of diagnosis, sub-district of residence, month of diagnosis and hospital admission pressure (number of public sector admissions in the calendar week of diagnosis). Prior diagnosed infections were defined as a positive COVID-19 test more than 90 days prior to the current test and classified into those with their first infection in the first wave (1 March – 30 September 2020) or second wave (1 October 2020 – 31 March 2021). Vaccination status at time of COVID-19 diagnosis was determined by linking COVID-19 cases with the national Electronic Vaccination Data System through national identifiers in the PHDC. Complete vaccination was defined ≥ 28 days post-vaccination with Janssen/Johnson & Johnson (Ad26.COVS.2.S), or ≥ 14 days post second dose of Pfizer–BioNTech (BNT162b2). Patients were deemed partially vaccinated from the day after their (first) vaccine dose until meeting criteria for complete vaccination.

The study was approved by the University of Cape Town Research Ethics Committee (HREC 460/2020).

Results

We included 11 355 cases tested using the Seegene Allplex™ assay, which were 22% of all positive test results in the province in that time period (Appendix Table 1). The median age was 43 years (interquartile range [IQR] 32-55) and 44% were male. RTD was present in 9106 (80%) (Table 1). Patient characteristics were similar in those with and without RTD. There was, however, a difference in cycle threshold (Ct) values (average of the E and N gene targets); those with RTD had lower median Ct values (26.1, IQR 22.2-30.9, vs 32.7 IQR 25.6-37.6).

There were 700 deaths altogether, with a case fatality rate of 6.3% in those with RTD, compared to 5.8% in those without. After adjusting for all covariates RTD was significantly associated with death among cases

(adjusted odds ratio [aOR] 1.45 [95% confidence interval [CI] 1.13-1.86]) and among those admitted to hospital (aOR 1.39 [95% CI 1.03-1.88]) (Appendix Table 2).

Prior diagnosed infection with a first infection in the Beta dominated second wave (vs no prior diagnosed infection), was protective against death (aOR 0.32 [95% CI 0.11-0.92]), whereas prior diagnosed infection with a first infection in the first wave was not (aOR: 1.56 [95% CI 0.50-4.92]). Vaccination was protective against death. The aORs (95% CI) for partial and full vaccination were 0.59 (0.45-0.77) and 0.15 (0.03-0.62) respectively.

In a stratified analysis the association between RTD and death was similar in both those aged <50 and ≥50 years (aOR [95%CI] of 1.32 [0.77-2.26] and 1.44 [1.09-1.91] respectively) (Appendix Table 2).

Discussion

RTD, a proxy marker for the Delta variant, was associated with an increased risk for death compared to presumptive Beta variant infection, while prior diagnosed infection (with first infection in the second wave) and vaccination were strongly protective.

The increased transmissibility of Delta is well established, and may be due to its higher viral load (6). In our analysis, specimens with RTD had lower Ct values than those without, suggesting a higher viral load. This, along with immune evasion by Delta, could contribute to the increased disease severity seen (9). Nonetheless, our results need to be interpreted in the context of our setting where not all COVID-19 cases would have accessed testing. Delta often results in mild symptoms, and during wave surges, as was the case from 15 June 2021 until the end of the analysis period, in the public sector only those aged ≥45 years or with comorbidities or requiring hospital admission would be tested. The interpretation of our results is therefore that among those who access a PCR test, the Delta variant is associated with worse outcomes. While it is unclear if this finding can be extrapolated to all those with COVID-19 in our setting, similar findings from countries with more widespread testing support the increased clinical severity of Delta.

Hospital admission was more likely with Delta compared to Alpha in England (aHR 2.26 [95%CI 1.32-3.89]) (2) and Denmark (RR 2.83 [95%CI 2.02-3.98]) (3). In Singapore, infection with Delta and Beta vs. wild-type SARS-CoV-2 were both associated with a composite outcome of oxygen use, intensive care admission and death (aOR 4.9 [95%CI 1.43-30.78] and 1.69 [95%CI 0.19-14.69] respectively) (4). Delta (vs wild-type) was associated with mortality in Canada (aOR 2.32 [95% CI 1.47-3.30]) as were N501Y-positive variants (Alpha, Beta, Gamma)

(aOR 1.51 [95%CI 1.30-1.74]) (5). However, most of these countries had relatively high COVID-19 vaccination coverage rates by the time the Delta variant became dominant there (10). Since most severe COVID-19 cases would be in unvaccinated people, differences between the vaccinated and the unvaccinated population might confound associations with variant infection and disease severity. In contrast, in the Western Cape by 31 July 2021, only 5.0% of all adults, mostly in older age groups, were fully vaccinated (10). In addition, most of these studies compared the outcomes of Delta to Alpha. The Alpha variant has been shown to have worse clinical outcomes compared to wild-type, with an aHR for death of 1.73 (95%CI 1.41 - 2.13) (11).

This study has several limitations. First, we could only include cases tested on the Seegene Allplex™ 2019-nCoV assay, excluding cases diagnosed by other PCR methods or antigen testing. However, the included cases are mostly representative of all diagnosed PCR cases in the Western Cape (Appendix Table 1). Second, while RTD is a reliable proxy marker for Delta, it is not as accurate as whole genome sequencing, and misclassification may have diluted the effect of Delta. Third, we could only assess the effect of prior laboratory-confirmed COVID-19 infection and seroprevalence studies suggest considerably higher numbers were infected, even after the first wave, and that prior infection prevalence differed by sub-district of residence (12). While we did adjust for sub-district, the absence of a protective effect of prior infection in the first wave may be due to insufficient numbers of those infections being diagnosed. Finally, although we adjusted for COVID-19 hospital admissions to account for escalating service pressure during the wave surge, we could not adjust for non-COVID-19 admissions that might have added to pressure on facilities and contributed to mortality.

Conclusion

RTD, a useful proxy for infection with Delta, is associated with an increased risk of mortality amongst those who were tested for COVID-19 in our setting.

References

1. Network for Genomic Surveillance South Africa. Tracking SARS-CoV-2 variants - 15 October 2021 [Internet]. 2021. Available from: <https://www.nicd.ac.za/diseases-a-z-index/disease-index-covid-19/sars-cov-2-genomic-surveillance-update/>
2. Twohig KA, Nyberg T, Zaidi A, Thelwall S, Sinnathamby MA, Aliabadi S, et al. Hospital admission and emergency care attendance risk for SARS-CoV-2 delta (B.1.617.2) compared with alpha (B.1.1.7) variants of concern: a cohort study. *Lancet Infect Dis* [Internet]. 2021 Aug [cited 2021 Sep 16]; Available from: <https://linkinghub.elsevier.com/retrieve/pii/S1473309921004758>
3. Bager P, Wohlfahrt J, Rasmussen M, Albertsen M, Krause TG. Hospitalisation associated with SARS-CoV-2 delta variant in Denmark. *Lancet Infect Dis* [Internet]. 2021 Sep [cited 2021 Sep 16]; Available from: <https://linkinghub.elsevier.com/retrieve/pii/S1473309921005806>
4. Ong SWX, Chiew CJ, Ang LW, Mak T-M, Cui L, Toh MPHS, et al. Clinical and virological features of SARS-CoV-2 variants of concern: a retrospective cohort study comparing B.1.1.7 (Alpha), B.1.315 (Beta), and B.1.617.2 (Delta). *Clin Infect Dis*. 2021 Aug 23;
5. Fisman DN, Tuite AR. Progressive Increase in Virulence of Novel SARS-CoV-2 Variants in Ontario, Canada. *medRxiv*. 2021 Aug 4;2021.07.05.21260050.
6. Public Health England. 25 June 2021 Risk assessment for SARS-CoV-2 variant: Delta [Internet]. 2021. Available from: <https://www.gov.uk/government/publications/investigation-of-sars-cov-2-variants-of-concern-variant-risk-assessments>
7. Valley-Omar Z, Marais G, Iranzadeh A, Naidoo M, Korsman S, Maponga T, et al. Reduced amplification efficiency of the RNA-dependent-RNA-polymerase (RdRp) target enables tracking of the Delta SARS-CoV-2 variant using routine diagnostic tests. *medRxiv Prepr Serv Heal Sci* [Internet]. 2021;October 01. Available from: <https://doi.org/10.1101/2021.10.01.21264408>
8. Boulle A, Davies M-A, Hussey H, Ismail M, Morden E, Vundle Z, et al. Risk factors for COVID-19 death in a population cohort study from the Western Cape Province, South Africa. *Clin Infect Dis* [Internet]. 2020 Aug 29 [cited 2021 Feb 3]; Available from: <https://academic.oup.com/cid/advance-article/doi/10.1093/cid/ciaa1198/5899044>
9. Tao K, Tzou PL, Nouhin J, Gupta RK, de Oliveira T, Kosakovsky Pond SL, et al. The biological and clinical significance of emerging SARS-CoV-2 variants. *Nat Rev Genet* [Internet]. 2021 Sep 17 [cited 2021 Sep 20];1–17. Available from: <https://www.nature.com/articles/s41576-021-00408-x>
10. Mathieu E, Ritchie H, Ortiz-Ospina E, Roser M, Hasell J, Appel C, et al. A global database of COVID-19 vaccinations. *Nat Hum Behav*. 2021 Jul 1;5(7):947–53.
11. Grint DJ, Wing K, Williamson E, McDonald HI, Bhaskaran K, Evans D, et al. Case fatality risk of the SARS-CoV-2 variant of concern B.1.1.7 in England, 16 November to 5 February. *Euro Surveill* [Internet]. 2021 Mar [cited 2021 Mar 31];26(11). Available from: <http://www.ncbi.nlm.nih.gov/pubmed/33739254>
12. Hsiao M, Davies M-A, Kalk E, Hardie D, Naidoo M, Centner C, et al. SARS-CoV-2 seroprevalence in the Cape Town metropolitan sub-districts after the peak of infections. *Covid-19 Spec Public Heal Surveill Bull* [Internet]. 2020;18(Supplementary Issue 5):28 September 2020. Available from:

https://www.nicd.ac.za/wp-content/uploads/2020/09/COVID-19-Special-Public-Health-Surveillance-Bulletin_Issue-5.pdf

Tables

		All cases (n=11,355; 700 deaths)		RdRP Target Delay (n=9,106; 570 deaths)		No RdRP Target (n=2,249; 130 deaths)		Adjusted [§] OR (95%CI) for outcome of death
		n	%	n	%	n	%	
RTD	absent	2249	19.8					Ref
	present	9106	80.2					1.45 (1.13-1.86)
Sex	female	6411	56.5	5143	56.5	1268	56.4	Ref
	male	4944	43.5	3963	43.5	981	43.6	1.50 (1.25-1.80)
Age category	20-29yrs	2243	19.8	1810	19.9	433	19.3	Ref
	30-39yrs	2623	23.1	2149	23.6	474	21.1	2.75 (1.19-6.31)
	40-49yrs	2427	21.4	1956	21.5	471	20.9	6.89 (3.15-15.05)
	50-59yrs	2113	18.6	1701	18.7	412	18.3	11.49 (5.31 - 24.88)
	60-69yrs	1177	10.4	899	9.9	278	12.4	24.64 (11.36-53.42)
	≥70yrs	772	6.8	591	6.5	181	8.1	72.81 (33.54-158.06)
Comorbidities [†]	HIV positive	726	6.4	560	6.2	166	7.4	1.66 (1.11-2.47)
	Diabetes	1546	13.6	1218	13.4	328	14.6	2.60 (2.14-3.16)
	Current tuberculosis	94	0.8	66	0.7	28	1.2	3.62 (1.76-7.42)
	Hypertension	2475	21.8	1963	21.6	512	22.8	1.13 (0.93-1.38)
	Chronic Kidney Disease	374	3.3	299	3.3	75	3.3	2.17 (1.65-2.86)
	Chronic Obstructive Pulmonary Disease	876	7.7	685	7.5	191	8.5	1.27 (1.00-1.62)
Prior diagnosed infection	None	11107	97.8	8914	97.9	2193	97.5	Ref
	1st infection in 1st wave	64	0.6	46	0.5	18	0.8	1.56 (0.50-4.92)
	1st infection in 2nd wave	184	1.6	146	1.6	38	1.7	0.32 (0.11-0.92)
Vaccination status at time of diagnosis [¶]	Unvaccinated	10422	91.8	8358	91.8	2064	91.8	Ref
	Partially vaccinated	694	6.1	544	6.0	150	6.7	0.59 (0.45-0.77)
	Completely vaccinated	239	2.1	204	2.2	35	1.6	0.15 (0.03-0.62)

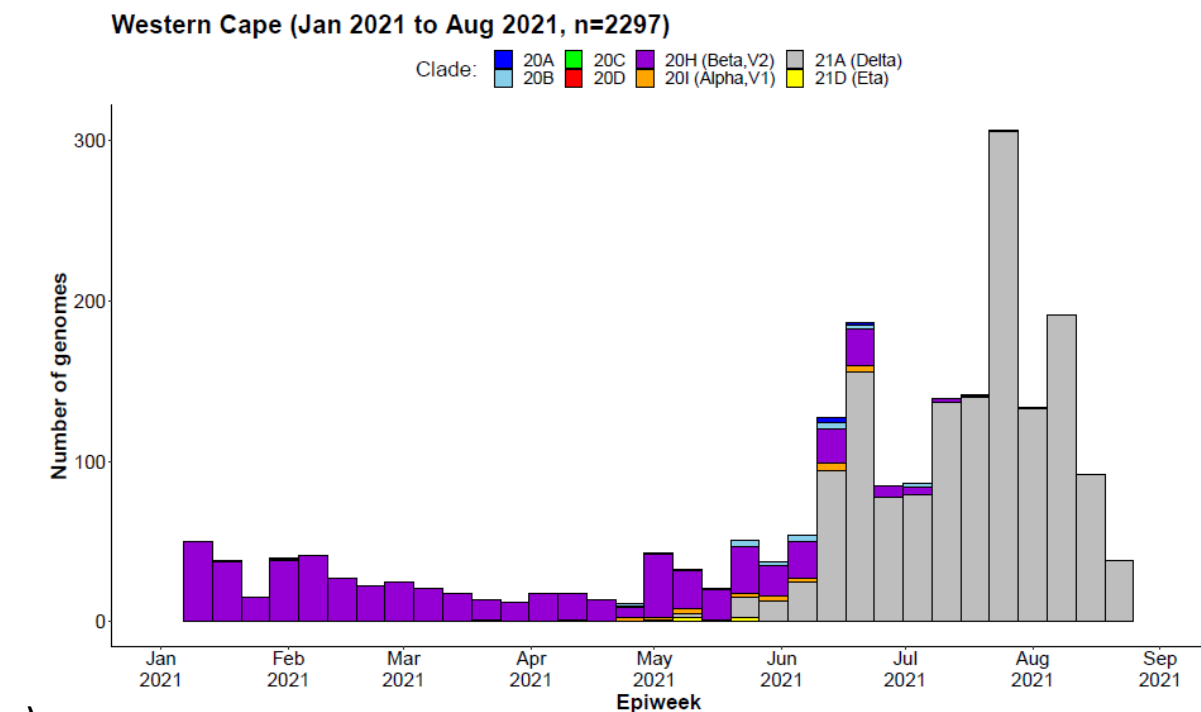
[§] Adjusted for all variables in the model, as well as month of diagnosis, sub-district of residence and number of COVID-19 admissions in week of diagnosis.

[†] The reference group here is the absence of that specific comorbidity.

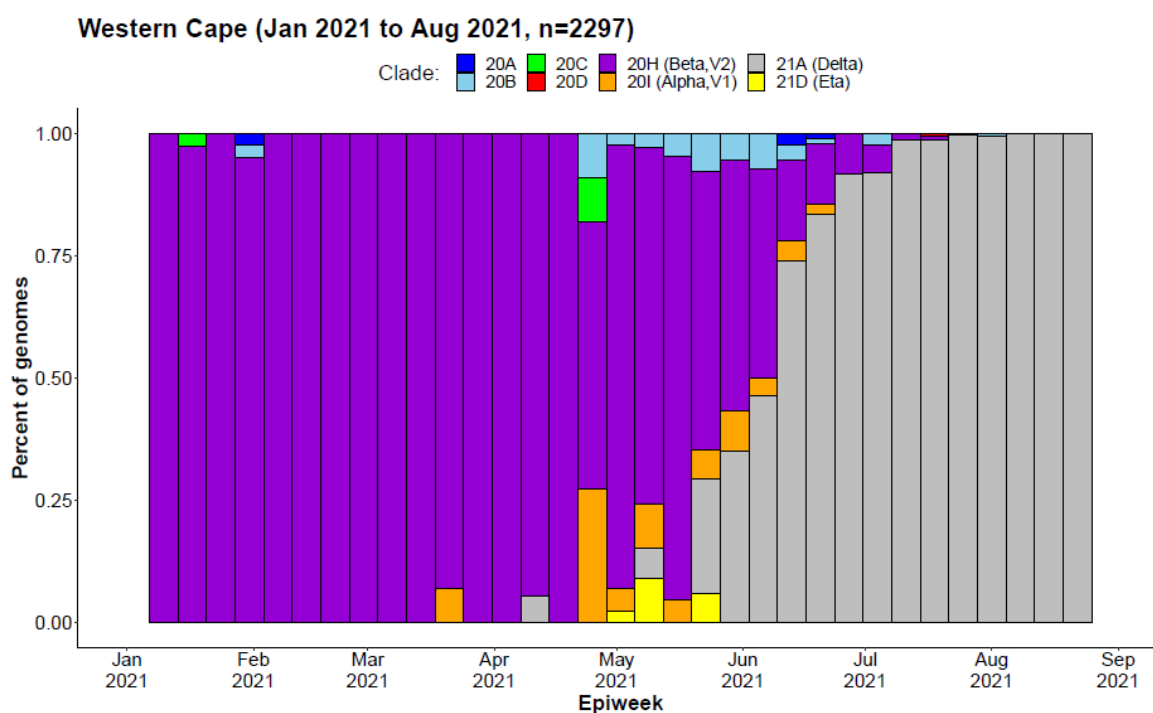
[¶] Fully vaccinated was defined as ≥28 days post-vaccination with Janssen/Johnson & Johnson or ≥14 days post second dose of Pfizer–BioNTech. Patients were deemed partially vaccinated from the day after their (first) vaccine dose until meeting criteria for complete vaccination.

Table 1: Characteristics of all COVID-19 cases (Seegene Allplex™ 2019-nCoV assay positive) in the Western Cape, April - July 2021, by presence of RdRp target delay (RTD), and results from logistic regression of associations with the outcome of death.

Appendix: Figure 1



a)



b)

Figure 1: Weekly frequency and distribution of SARS-CoV-2 variants circulating in the Western Cape Province, South Africa, 1 January to 31 August 2021: a) absolute count of genomes sequenced, b) proportion of genomes sequenced. (7).

Appendix: Table 1

		Total positive tests (n=50 768)		Seegene Allplex™ PCR (n=11,355; 22.4%)		Other PCR tests (n=25 042; 49.3%)		Antigen tests (n=14 371; 28%)	
		n	%	n	%	n	%	n	%
Month of diagnosis	April	165	1.5	900	3.6	106	0.7		
	May	302	2.7	1260	5.0	637	4.4		
	June	2161	19.0	5223	20.9	2836	19.7		
	July	8727	76.9	17659	70.5	10792	75.1		
District of residence	Cape Winelands	508	4.5	2449	9.8	3125	21.8		
	Central Karoo	246	2.2	431	1.7	302	2.1		
	City of Cape Town	4975	43.8	12039	48.1	8954	62.3		
	Garden Route	4642	40.9	4063	16.2	961	6.7		
	Overberg	426	3.8	2448	9.8	522	3.6		
	West Coast	557	4.9	3503	14.0	486	3.4		
	Unallocated	1	0.0	109	0.4	21	0.2		
Sex	Male	4944	43.5	10602	42.3	6427	44.7		
Age category	20-29yrs	2243	19.8	4805	19.2	2711	18.9		
	30-39yrs	2623	23.1	5497	22.0	3410	23.7		
	40-49yrs	2427	21.4	5200	20.8	3025	21.1		
	50-59yrs	2113	18.6	5104	20.4	3187	22.2		
	60-69yrs	1177	10.4	2660	10.6	1241	8.6		
	≥70yrs	772	6.8	1776	7.1	797	5.6		
Comorbidities	HIV positive	726	6.4	1586	6.3	405	2.8		
	Diabetes	1546	13.6	3433	13.7	1488	10.4		
	Current tuberculosis	94	0.8	284	1.1	60	0.4		
	Hypertension	2475	21.8	5357	21.4	2272	15.8		
	Chronic Kidney Disease	374	3.3	702	2.8	270	1.9		
	Chronic Obstructive Pulmonary Disease	876	7.7	2115	8.5	878	6.1		
Prior diagnosed infection	None	11107	97.8	24339	97.2	14245	99.1		
	1st infection in 1st wave	64	0.6	202	0.8	43	0.3		
	1st infection in 2nd wave	184	1.6	501	2.0	83	0.6		
Vaccination status at time of diagnosis*	Unvaccinated	10422	91.8	22930	91.6	13223	92.0		
	Partially vaccinated	694	6.1	1457	5.8	904	6.3		
	Completely vaccinated	239	2.1	655	2.6	244	1.7		
Admitted[§]	Case admitted to hospital	1856	16.4	4964	19.8	1649	11.5		

* Fully vaccinated was defined as ≥28 days post-vaccination with Janssen/Johnson & Johnson or ≥14 days post second dose of Pfizer–BioNTech. Patients were deemed partially vaccinated from the day after their (first) vaccine dose until meeting criteria for complete vaccination.

§ Admission with 21 days before or after COVID-19 diagnosis date

Table 1: Patient characteristics by test type, Western Cape public sector, April to July 2021

Patients tested on the Seegene Allplex™ PCR were similar in age, sex, known comorbidities, prior diagnosed infection and vaccination status to those who tested positive using other PCR assays. As different laboratories service different geographical regions there was a difference, however, in the district of residence. Patients who tested positive on antigen tests tended to be younger, have fewer comorbidities and fewer were admitted to hospital. This is in accordance to the Western Cape’s testing guidelines where PCR was preferred for hospital patients, while antigen testing was promoted at primary health care facilities.

Appendix: Table 2

		Adjusted [§] OR (95%CI) for outcome of death			
		All cases (n=11 355; 700 deaths)	Only admitted cases* (n=1 856; 612 deaths)	All cases < 50 years (n=7 293; 113 deaths)	All cases ≥ 50 years (n=4 062; 587 deaths)
RTD	absent	Ref	Ref	Ref	Ref
	present	1.45 (1.13-1.86)	1.39 (1.03-1.88)	1.32 (0.77-2.26)	1.44 (1.09-1.91)
Sex	female	Ref	Ref	Ref	Ref
	male	1.50 (1.25-1.80)	1.19 (0.95-1.47)	1.16 (0.78-1.72)	1.63 (1.33-2.00)
Age category	20-29yrs	Ref	Ref	Ref	
	30-39yrs	2.75 (1.19-6.31)	2.19 (0.81-5.93)	2.49 (1.07-5.78)	
	40-49yrs	6.89 (3.15-15.05)	5.91 (2.27-15.54)	6.48 (2.92-14.37)	
	50-59yrs	11.49 (5.31 - 24.88)	6.86 (2.66-17.67)		Ref
	60-69yrs	24.64 (11.36-53.42)	11.75 (4.56-30.28)		2.16 (1.68-2.79)
	≥70yrs	72.81 (33.54-158.06)	25.93 (10.03-67.01)		6.43 (4.96-8.33)
Comorbidities [†]	HIV positive	1.66 (1.11-2.47)	1.14 (0.69-1.88)	2.21 (1.27-3.85)	0.99 (0.53-1.85)
	Diabetes	2.60 (2.14-3.16)	1.19 (0.95-1.49)	2.58 (1.55-4.32)	2.61 (2.11-3.22)
	Current tuberculosis	3.62 (1.76-7.42)	1.57 (0.68-3.61)	4.90 (1.90-12.65)	2.38 (0.78-7.20)
	Hypertension	1.13 (0.93-1.38)	0.95 (0.76-1.20)	1.07 (0.63-1.82)	1.16 (0.93-1.43)
	Chronic Kidney Disease	2.17 (1.65-2.86)	1.76 (1.29-2.42)	9.33 (4.20-20.72)	1.87 (1.41-2.50)
	Chronic Obstructive Pulmonary Disease	1.27 (1.00-1.62)	0.91 (0.69-1.19)	1.95 (1.08-3.53)	1.17 (0.90-1.52)
Prior diagnosed infection	None	Ref	Ref	Ref	Ref
	1st infection in 1st wave	1.56 (0.50-4.92)	2.63 (0.51-13.64)	1.11 (0.14-78.87)	2.12 (0.49-9.17)
	1st infection in 2nd wave	0.32 (0.11-0.92)	0.34 (0.10-1.09)	0.68 (0.15-3.19)	0.14 (0.03-0.67)
Vaccination status at time of diagnosis [¶]	Unvaccinated	Ref	Ref	Ref	Ref
	Partially vaccinated	0.59 (0.45-0.77)	0.79 (0.57-1.09)	1.47 (0.32-6.66)	0.57 (0.44-0.75)
	Completely vaccinated	0.15 (0.03-0.62)	0.14 (0.02-1.20)	(omitted)	0.22 (0.05-0.96)

§ Adjusted for all variables in the model, as well as month of diagnosis, sub-district of residence and number of COVID-19 admissions in week of diagnosis.

* Date of hospital admission within 21 days of COVID-19 date of diagnosis.

† The reference group here is the absence of that specific comorbidity.

¶ Fully vaccinated was defined as ≥28 days post-vaccination with Janssen/Johnson & Johnson or ≥14 days post second dose of Pfizer–BioNTech. Patients were deemed partially vaccinated from the day after their (first) vaccine dose until meeting criteria for complete vaccination.

Table 2: Logistic regression for outcome of death in a) all positive Seegene Allplex™ cases, as per the original analysis; b) restricted only to those admitted to hospital; c) stratified by age into those aged under 50 and those aged 50 years.