

1 **Household contact tracing with intensified tuberculosis and HIV screening in South Africa: a**
2 **cluster randomised trial**

3

4 **Running title:** Intensive household TB/HIV screening in South Africa

5

6 Neil A Martinson^{1,2}, Limakatso Lebina¹, Emily L Webb³, Andrew Ratsela⁴, Ebrahim Varavia^{1,5},
7 Anthony Kinghorn¹, Sanjay G Lala^{1,6}, Jonathan E. Golub², Zama Bosch¹, Kegaugetswe P Motsomi¹,
8 Peter MacPherson^{7,8,9}.

9

10 **Affiliations**

- 11 1. Perinatal HIV Research Unit (PHRU), University of the Witwatersrand, Johannesburg, South
12 Africa
- 13 2. Johns Hopkins University Center for TB Research, Baltimore, MD.
- 14 3. MRC International Statistics and Epidemiology Group, London School of Hygiene and
15 Tropical Medicine, UK
- 16 4. Department of Internal Medicine, University of Limpopo, Polokwane, South Africa
- 17 5. Department of Internal Medicine. Klerksdorp Tshepong Hospital Complex, North West
18 Provincial Department of Health, and University of the Witwatersrand, South Africa.
- 19 6. Department of Paediatrics and Child Health, University of the Witwatersrand, South Africa
- 20 7. Department of Clinical Sciences, Liverpool School of Tropical Medicine, UK
- 21 8. Malawi-Liverpool-Wellcome Trust Clinical Research Programme, Malawi
- 22 9. Clinical Research Department, London School of Hygiene and Tropical Medicine

23 **Corresponding Author**

24 Dr Peter MacPherson
25 Liverpool School of Tropical Medicine
26 Pembroke Place
27 Liverpool
28 United Kingdom, L3 5QA
29 [44 151 705 3100](tel:441517053100)
30 peter.macpherson@lstmed.ac.uk

31

32 **Alternate Corresponding Author**

33 Prof Neil Martinson
34 Perinatal HIV Research Unit
35 Chris Baragwanath Hospital,
36 Soweto,
37 South Africa
38 [+27 11 989 9700](tel:+27119899700)
39 Martinson@phru.co.za

40

41 **Keywords**

42 Tuberculosis, HIV, screening, diagnosis, contract tracing, randomised controlled trials

43

44

45 **Author Summary**

46 In South Africa, household contacts of TB cases received referral letters or home-tracing with
47 intensified TB/HIV screening. At 15-months, the cumulative incidence of TB or death did not differ
48 between the intensive screening (93/3230, 2.9%) and SOC (80/2600, 3.1%) arms.

49

NOTE: This preprint reports new research that has not been certified by peer review and should not be used to guide clinical practice.

50 **Abstract**

51 **Background**

52 Household contact tracing for tuberculosis (TB) may facilitate TB diagnosis and identify individuals
53 who may benefit from TB preventive therapy (TPT). In this cluster-randomised trial, we investigated
54 whether household contact tracing and intensive TB/HIV screening would improve TB-free survival.

55

56 **Methods**

57 Household contacts of index TB patients in two Provinces of South Africa were randomised to home
58 tracing and intensive HIV/TB screening (sputum Xpert and culture; HIV testing with treatment
59 linkage; and TPT, if eligible), or standard of care (SOC, clinic referral letters). The primary outcome
60 was incident TB or death at 15-months. Secondary outcomes included tuberculin skin test (TST)
61 positivity in children ≤ 14 years and undiagnosed HIV. ([ISRCTN16006202](#)).

62

63 **Results**

64 From December 2016-March 2019, 1,032 index patients (4,459 contacts) and 1,030 (4,129 contacts)
65 were randomised to the intervention and SOC arms. 3.2% (69/2166) of intervention arm contacts had
66 prevalent microbiologically-confirmed TB. At 15-months, the cumulative incidence of TB or death
67 did not differ between the intensive screening (93/3230, 2.9%) and SOC (80/2600, 3.1%) arms
68 (hazard ratio: 0.90, 95% confidence interval (CI): 0.66-1.24). TST positivity was higher in the
69 intensive screening arm (38/845, 4.5%) compared to the SOC arm (15/800, 1.9%, odds ratio: 2.25,
70 95% CI: 1.07-4.72). Undiagnosed HIV was similar between arms (41/3185, 1.3% vs. 32/2543, 1.3%;
71 odds ratio: 1.02, 95% CI: 0.64-1.64).

72

73 **Conclusions**

74 Household contact tracing with intensive screening and referral did not reduce incident TB or death.
75 Providing referral letters to household contacts of index patients is an alternative strategy to home
76 visits in high TB/HIV-prevalence settings.

77 **Introduction**

78
79 Contact tracing of people with tuberculosis (TB) has been advocated as part of TB control for many
80 years [1–3] because it facilitates early diagnosis and treatment of infectious individuals and identifies
81 those who could benefit from TB preventive treatment (TPT) [4]. Although World Health
82 Organization (WHO) and numerous national guidelines recommend household TB contact tracing,
83 these have not been widely implemented in high TB burden countries because of limited effectiveness
84 data [5,6]. The COVID-19 pandemic has severely impacted TB care and prevention programmes in
85 sub-Saharan Africa [7], and may have reversed recent improvements in TB diagnosis and treatment
86 [8,9].

87
88 Previous randomised trials have investigated the effectiveness of TB household contact tracing
89 interventions on screening completion, community TB prevalence, and TB notification, showing
90 mixed results [10–13]. Evidence suggests more intensive TB screening approaches increase
91 diagnostic yield and could reduce transmission by identifying and treating people with subclinical
92 infectious TB earlier [5,14,15]. Moreover, universal HIV testing with immediate initiation of
93 antiretroviral therapy (ART) together with TPT, reduces morbidity, mortality, and incident TB disease
94 among people living with HIV [16–18].

95
96 We hypothesized that household contact tracing with intensive screening for TB and HIV with
97 supported linkage to treatment and home initiation of TPT could result in earlier TB and HIV
98 diagnosis and treatment, and reduce TB transmission.

99

100 **Methods**

101

102 *Study design and participants*

103 We conducted an open two-arm cluster randomised trial of household contact tracing and intensive
104 TB/HIV screening in South Africa ([ISRCTN16006202](#)). Methods have been described previously (SI
105 Protocol) [19]. In brief, we recruited index TB patients diagnosed at two South African sites with
106 large differences in annual TB incidence and HIV prevalence (Mangaung, Free State [20]; Capricorn,
107 Limpopo [21,22]). During the study period there were few programmatic attempts made to identify
108 and screen household contacts for TB.

109

110 Study teams identified consecutive eligible index TB patients at government clinics and hospitals
111 within boundaries of study sites. We included TB patients of any age, but required those ≥ 7 years to
112 have laboratory-confirmed pulmonary TB, whereas those < 7 years could have physician-diagnosed
113 TB of any organ, with or without laboratory confirmation. We additionally included TB patients who
114 died within eight weeks of TB diagnosis. We excluded institutionalized TB patients and withdrew
115 participants whose households we could not locate or from where no household member could be
116 recruited. A list of household contacts was obtained at enrollment.

117

118 *Randomisation, allocation and blinding*

119

120 Index cases and their households were block-randomised to either intervention or standard of care
121 (SOC) in a 1:1 ratio, stratified by district. Investigator blinding was maintained until after the final
122 participant household follow-up was completed.

123 *Procedures*

124 In the intervention group, research fieldworkers visited households within 14 days of index TB patient
125 enrollment (maximum three attempts), obtaining written individual or parental consent for adults and
126 children under 18 years, respectively, with assent from older children. A questionnaire was
127 administered to each household member (S2 Questionnaires), and sputum specimens obtained where
128 possible (but not required from children < 5 years) and were tested using Xpert and Mycobacterial

129 Growth Indicator Tube (MGIT) culture. Household contacts received TST (from a variety of sources
130 due to global shortages), administered and read within 72 hours [23]. Study nurses dispensed the first
131 month of TPT (six months of daily isoniazid) to: (i) HIV-positive participants who tested negative for
132 TB, (ii) HIV-negative participants with positive TST ($\geq 10\text{mm}$), and (iii) children under five years.
133 Subsequent TPT was obtained from local clinics.

134
135 For household members without a confirmed HIV diagnosis, rapid point-of-care HIV testing was
136 offered to participants ≥ 18 months, and PCR on dried blood spot for children < 18 months whose
137 maternal HIV status was unknown or positive. Participants with HIV had a CD4 count and were
138 referred to their nearest clinic for assessment and initiation of ART.

139
140 Intervention households were visited approximately three months after enrollment to support
141 treatment linkage.

142
143 In the SOC arm, index TB patients (or their representative, if deceased or a child) were given referral
144 letters for every household member by the recruiting team at the health facility, recommending that
145 each household contact should take their letter to their local clinic and be screened for TB and HIV.

146
147 *Outcomes*

148 At 15-months after randomisation, study teams visited all households, updated the household
149 membership list and recorded episodes of incident TB and death. We investigated household members
150 for HIV (if untested) and TB (if symptomatic). All children ≤ 14 years old had TST placed, read at 48-
151 72 hours.

152
153 The primary outcome was time to TB or death, measured among all household members included in
154 the household census at baseline, from one month after randomisation through the final 15-month
155 ascertainment visit. Primary analysis included all incident TB diagnoses, irrespective of diagnostic
156 method; sensitivity analyses included only bacteriologically-confirmed incident cases of TB.

157

158 Secondary outcomes were: prevalence of TB infection (TST induration ≥ 10 mm) at month-15 among
159 household children ≤ 14 years; time to initiation of TB treatment; and prevalence of undiagnosed or
160 untreated HIV at month-15. Primary analyses for all outcomes were restricted to household contacts
161 resident at baseline enumeration; supplementary analyses included all household contacts regardless
162 of baseline residency. In protocol-specified subgroup analysis, we compared outcomes by trial site,
163 and TST positivity by household contact age (< 5 years, ≥ 5 years).

164

165 Ethical approval was granted by the University of Witwatersrand Human Research Ethics Committee
166 (Medical), and the London School of Hygiene and Tropical Medicine.

167

168 *Statistical Methods*

169 Assuming mean household size 5.5, 1,200 index cases per site (total 2,400), provided 80% power to
170 detect a 30% overall difference in the primary outcome between groups with alpha 0.05 and
171 intracluster correlation coefficient 0.3. All statistical analysis used Stata v16 (StataCorp, College
172 Station, US). Analysis was done on an intention-to-treat basis.

173

174 This study is reported following CONSORT guidelines for cluster randomised trials (S3 Checklist).
175 We summarised baseline index and household characteristics by trial arm. For the primary outcome,
176 follow-up time began one month after randomisation (to avoid counting prevalent TB cases) and
177 ended at the month-15 visit, or the date of TB or death. Cox proportional hazards regression with
178 robust standard errors was used to assess the impact of the intervention on the primary outcome, with
179 a time-by-treatment interaction term fitted to assess the proportionality assumption. Logistic
180 regression with generalised estimating equations was used to assess the impact of the intervention on
181 binary outcomes. Interaction terms were fitted to assess effect modification in planned subgroup
182 analyses.

183 **Results**

184 Between December 2016 and March 2019, we approached 2,393 potentially eligible TB index
185 patients, of whom 2,062 were randomised (Figure 1). Characteristics of index cases were balanced
186 between arms (Table 1). There were 4,459 household contacts identified in the intervention arm and
187 4,192 in the SOC arm (Table 2).

188
189 A total of 974 (94%) and 977 (95%) of households randomised to the intervention and SOC arms,
190 respectively, took part in final outcome assessments, with vital status information available for 4,242
191 (95%) and 3,961 (96%) household contacts captured in baseline censuses. In households with
192 outcome assessments, an additional 119 (intervention) and 171 (SOC) individuals moved into the
193 household after the baseline census. Supplementary analysis was therefore based on a total of 4,361
194 household contacts in the intervention arm and 4,132 in the SOC arms, of whom 3,301 (76%), and
195 2,723 (66%) respectively were interviewed directly at the 15 month visit and had both TB and HIV
196 outcomes ascertained.

197
198 Of households randomised to the intervention arm, 923/1032 (89%) received the intervention, 516
199 (96%) in Mangaung and 407 (82%) in Capricorn. In the 923 households where the intervention was
200 provided, a total of 2,993 household contacts consented, and then received the intervention (median 3
201 per household, IQR: 2-4). The prevalence of microbiologically-confirmed TB among intervention arm
202 household contacts who provided sputum was 3% (69/2166). Overall, 13% (368/2752) had positive
203 TST results; 763 initiated TPT.

204
205 The primary outcome, incident TB or death among household contacts present at baseline
206 enumeration, was similar between the household intervention (93/3230, 3%) and SOC arms (80/2600,
207 3%, hazard ratio [HR]: 0.90, 95% CI: 0.66-1.24, p=0.54, Table 3). There was some evidence that the
208 proportional hazards assumption was violated, with cumulative hazard curves crossing at
209 approximately the target follow-up time of 15 months (Figure 2). Allowing the hazard ratio to vary,
210 there was no effect of the intervention either in the first 15 months of follow-up or had their outcome

211 visit beyond 15 months (HR 1.01, 95% CI: 0.72-1.42, p=0.95 and 0.45, 95% CI: 0.19-1.05, p=0.07,
212 respectively).

213

214 Protocol-specified sensitivity analyses for the primary outcome, including those who had entered the
215 household after the baseline census, and based on only bacteriologically-confirmed cases of TB,
216 showed similar results (S4 Table). In protocol-specified subgroup analysis (S5 Table), there was no
217 difference in the composite primary outcome of incident TB or death at either trial site (Mangaung,
218 HR 1.26, 95% CI: 0.81-1.97; Capricorn, HR: 0.63, 95% CI: 0.40-1.00), but death was lower among
219 household contacts in Capricorn in the intervention arm compared to the SOC arm (HR: 0.56, 95%
220 CI: 0.32-0.97).

221

222 In the intervention arm, a total of 51/3188 (2%) individuals without TB in the baseline census had an
223 episode of incident TB, compared to 31/2551 (1%) in the SOC arm. Approximately half of the
224 individuals diagnosed with incident TB had biological confirmation (45% in the intervention arm,
225 52% in the SOC arm) and 3 (4%) incident TB diagnoses were diagnosed at the final outcome visit (2
226 in intervention arm, 1 in SOC arm). Incidence of TB was 1.24 and 0.92 per 100 person-years among
227 intervention and SOC household contacts, respectively (HR: 1.33, 95% CI: 0.83-2.16, p=0.24).

228

229 Overall, 69 participants were diagnosed with TB through trial screening: 24 by Xpert alone, 22 by
230 culture alone, 9 by smear alone and 14 by more than one test. Of 69 diagnosed with TB, by the three
231 month visit 37 (54%) were successfully referred for, and initiated TB treatment. The median time
232 between date of sample being taken and patient initiating TB treatment was 3 days (IQR: 0-13), and
233 was somewhat higher in the intervention arm compared to the control arm (median: 4 days, IQR: 0-28
234 versus median 3 days, IQR: 0-4, p=0.04).

235

236 A total of 91 deaths were ascertained among household contacts in the baseline census population,
237 42/4,242 (1%) in the intervention group and 49/3,961 (1%) in the SOC group. Incidence of mortality

238 was 0.68 and 0.94 per 100 person-years among intervention arm and SOC household contacts,
239 respectively (HR: 0.72, 95% CI: 0.47-1.10, p=0.13).

240

241 New HIV diagnoses at month-15 occurred with similar frequency in both arms (intervention arm
242 11/3185, 0.4% versus standard arm 22/2543, 0.9%). At the month-15 visit 31 HIV-positive
243 participants in the intervention arm and 11 participants in the SoC arm were not taking ART. Thus,
244 the prevalence of undiagnosed or untreated HIV at the final visit was comparable between trial arms
245 (both 1%, OR 1.02, 95% CI: 0.64-1.64, p=0.92).

246

247 A total of 2,271 household contacts seen in person were aged 14 years or younger at the time of the
248 final visit. Of these, 1,664 (73%) had TST placed (857 in the intervention arm, 807 in the SOC arm),
249 and 1,645 had the result recorded with 38 (5%) in the intervention arm and 15 (2%) in the SOC arm
250 testing positive (odds ratio: 2.25, 95% CI: 1.07-4.72, p=0.03). In protocol-specified subgroup analysis
251 (S6 Table), TST positivity was higher in the intervention arm compared to the SoC arm among
252 participants aged ≥ 5 years, but not among participants aged < 5 years. At 15-months, of those
253 assessed, 73% of household contacts in the intervention arm reported having taken 6-months of TPT,
254 with 14% taking 1 month or less.

255

256 Discussion

257 In this trial, a strategy of household contact tracing and intensive screening for TB and HIV did not
258 affect the composite outcome of incident TB or death and was equivalent to providing clinic referral
259 letters to TB index patients. Moreover, we found no difference in prevalence of undiagnosed HIV
260 between arms. A greater proportion of children in the intensive arm had latent TB infection by TST
261 testing compared to the SOC arm. Overall household tracing and intensive investigation of household
262 contacts for TB and HIV does not offer sustained benefit beyond the initial screening episode, despite
263 relatively high rates of detection of prevalent undiagnosed HIV and TB.

264

265 Our trial differs from previous randomised trials of household contact tracing for TB. In the
266 ZAMSTAR Study, conducted in South Africa and Zambia, household contacts received TB symptom
267 screening, followed by sputum smear microscopy if symptomatic, and HIV testing and TPT [11].
268 There was weak evidence that household interventions reduced TB prevalence and childhood TB
269 transmission. In Uganda, intervention households received HIV testing and linkage to care, and TB
270 symptom screen followed by smear microscopy or Xpert, and with SMS-supported linkage to care
271 [12]. Completion of TB investigation and yield of TB diagnosis were not different between trial arms.
272 In contrast, in a cluster-randomised trial in Vietnam household contacts of TB patients were invited
273 for clinic-based screening, comprising symptom assessment and chest radiography, followed by
274 smear microscopy and culture if positive [10]. In that trial, there was a 2.5-fold increase in TB
275 treatment registrations in the household contact screening arm compared to the passive case detection
276 arm. In a cluster-randomised trial in Rio de Janeiro, Brazil, supplementing the WHO DOTS strategy
277 with more intensive interventions for household contacts (symptom screening, chest X-ray, TST)
278 resulted in reductions in TB case notification rates [13].

279

280 Whereas these previous trials limited microbiological investigation to household contacts with a
281 positive symptom screen or abnormal chest x-ray, we evaluated the provision of microbiological
282 testing on household contacts who could provide a sample, prompted by evidence that a substantial
283 fraction of community members with microbiologically-confirmed TB have minimal or no symptoms

284 [14,15]. We successfully obtained sputum samples from 92% of intervention arm adults ≥ 15 years.
285 Compared to previous studies, which mostly used smear microscopy, we used the more sensitive
286 Xpert platform with MGIT culture for sputum testing, and made a home visit to intervention arm
287 households to prompt linkage to care [24,25]. Despite this, a high percentage of household contacts
288 with microbiologically-confirmed TB did not initiate TB treatment, emphasising that new approaches
289 to improving linkage are needed. Our HIV testing strategy intended to identify the anticipated small
290 proportion of people with undiagnosed HIV, and link promptly to ART initiation and TPT, thereby
291 reducing the risk of incident TB disease and death.

292

293 Despite achieving high intervention coverage and follow-up, we saw no difference in TB-free survival
294 between arms. There are a number of possible explanations for this. We anticipated that a letter
295 prompting clinic-based screening for household contacts in the SOC arm would be insufficient to
296 achieve satisfactory levels of screening completion and treatment linkage [26]. However, the
297 percentage of household contacts initiating TB treatment was only slightly higher in the intervention
298 arm (1.6%) compared to the SOC arm (1.2%), perhaps reflecting high motivation for TB screening
299 among household contacts receiving letters. It is also possible that in intervention households, TB
300 transmission had already occurred at the time of the intervention. Finally, as the majority of TB
301 transmission is thought to occur outside households,[27] high forces of infection within South African
302 communities may overcome the benefits of interventions targeting households. Indeed, in Capricorn,
303 a relatively low annual TB incidence area (for South Africa), there was a suggestion that the
304 intervention was effective in reducing mortality.

305

306 Our findings suggest that household contact tracing with home visits and intensive screening for TB
307 and HIV is unlikely to be considered for implementation by National TB Programmes in low-
308 resourced, high TB burden settings. Although household contact tracing of index TB patients is
309 widely recommended, implementation is often poor due to the substantial resource requirements. Cost
310 studies will be reported separately, but we anticipate resource implications of household visits to be
311 substantial. Conversely, the strategy of providing referral letters for household contacts to take to their

312 local clinics to prompt facility attendance for TB/HIV screening and care is affordable and
313 implementable at scale, but requires further implementation research and evaluation.

314

315 We found that, in the intervention arm, prevalence of latent TB (defined by TST) was 13%,
316 comparable to previous household contact tracing studies from the region [26], and with strong age-
317 and site-specific dependency [28]. At 15-months, TST positivity in children was higher in the
318 intervention arm than the SOC arm. One possible explanation is differential rates of acceptance of
319 TST between the intervention and SOC arms by site: in the intervention arm in Mangaung,
320 completion of TST was 77% compared to 55% in Capricorn; in the SOC arm, completion was 84% at
321 both sites. We did not record data on reasons for refusal of the TST but it may be that those with a
322 strong response previously were reluctant to be retested: in Capricorn, children who had baseline TST
323 done were less likely to have the month-15 TST done (baseline TST done: 214/485, 44% vs. baseline
324 TST not done: 167/205, 81%).

325

326 The study had several limitations. The planned sample size was reduced due to budget constraints;
327 follow-up time in 14% of households was reduced in anticipation of South African COVID-19
328 pandemic-related lockdown (S7 Checklist) [29]. The study was at a time when South African
329 preventive treatment guidelines were in flux, initially requiring a positive TST to initiate TPT and
330 with restrictions on people who could receive TPT. This likely reduced the proportion of HIV-
331 negative individuals older than five years who continued TPT beyond the initial study-dispensed
332 month. Not all households allocated to the intervention arm received interventions, mainly due to
333 difficulties locating households.

334

335 In conclusion, an intensive household contact tracing and TB/HIV screening intervention did not
336 reduce incident TB or death when compared to a referral letter intervention. TB programme managers
337 and policy makers should carefully consider benefits and costs before implementing similar
338 household contact tracing and TB screening interventions. The provision of referral letters to index

339 patients at the time of their TB diagnosis should be the preferred strategy to link household contacts to
340 care in low-resourced high-TB burden settings.

341

342 **Funding**

343 This work was supported by the UK/South Africa Medical Research Council Newton Fund
344 (006Newton TB) and Wellcome (200901/Z/16/Z to PM). For the purpose of open access, the authors
345 have applied a CC-BY public copyright licence to any Author Accepted Manuscript version arising
346 from this submission.

347

348 **Acknowledgements**

349 We acknowledge the expert oversight and advice from the members of the Data and Safety
350 Monitoring Board (Derek Sloan, Yunus Moosa, and Locadiah Kuwanda).

351

352

353 **References**

354

355 1. Grzybowski S, Barnett GD, Styblo K. Contacts of cases of active pulmonary tuberculosis. Bull Int
356 Union Tuberc **1975**; 50:90–106.

357 2. Rieder HL. Contacts of tuberculosis patients in high-incidence countries. Int J Tuberc Lung Dis
358 **2003**; 7:S333-336.

359 3. World Health Organization. Systematic screening for active tuberculosis: principles and
360 recommendations. 2013. Available at: <https://www.who.int/tb/tbscreening/en/>. Accessed 6
361 December 2019.

362 4. Velen K, Shingde RV, Ho J, Fox GJ. The effectiveness of contact investigation among contacts of
363 tuberculosis patients: a systematic review and meta-analysis. Eur Respir J **2021**;

364 5. Little KM, Msandiwa R, Martinson N, Golub J, Chaisson R, Dowdy D. Yield of household contact
365 tracing for tuberculosis in rural South Africa. BMC Infectious Diseases **2018**; 18:299.

366 6. Claassens M, van Schalkwyk C, den Haan L, et al. High prevalence of tuberculosis and insufficient
367 case detection in two communities in the Western Cape, South Africa. PLoS One **2013**;
368 8:e58689.

369 7. World Health Organization. Global Tuberculosis Report 2021. Geneva: 2021. Available at:
370 <https://www.who.int/teams/global-tuberculosis-programme/tb-reports>. Accessed 20 October
371 2021.

372 8. Soko RN, Burke RM, Feasey HRA, et al. Effects of Coronavirus Disease Pandemic on
373 Tuberculosis Notifications, Malawi. Emerg Infect Dis **2021**; 27:1831–1839.

374 9. Inzaule SC, Ondoa P, Loembe MM, Tebeje YK, Ouma AEO, Nkengasong JN. COVID-19 and
375 indirect health implications in Africa: Impact, mitigation measures, and lessons learned for
376 improved disease control. PLOS Medicine **2021**; 18:e1003666. Available at:

377 <https://journals.plos.org/plosmedicine/article?id=10.1371/journal.pmed.1003666>. Accessed 29
378 August 2021.

379 10. Fox GJ, Nhung NV, Sy DN, et al. Household-Contact Investigation for Detection of
380 Tuberculosis in Vietnam. *New England Journal of Medicine* **2018**; 378:221–229.

381 11. Ayles H, Muyoyeta M, Du Toit E, et al. Effect of household and community interventions on
382 the burden of tuberculosis in southern Africa: the ZAMSTAR community-randomised trial.
383 *Lancet* **2013**; 382:1183–94.

384 12. Davis JL, Turimumahoro P, Meyer AJ, et al. Home-based tuberculosis contact investigation in
385 Uganda: a household randomised trial. *ERJ Open Res* **2019**; 5. Available at:
386 <https://www.ncbi.nlm.nih.gov/pmc/articles/PMC6661318/>. Accessed 4 January 2021.

387 13. Cavalcante SC, Durovni B, Barnes GL, et al. Community-randomized trial of enhanced DOTS
388 for tuberculosis control in Rio de Janeiro, Brazil. *Int J Tuberc Lung Dis* **2010**; 14:203–209.

389 14. Frascella B, Richards AS, Sossen B, et al. Subclinical tuberculosis disease - a review and
390 analysis of prevalence surveys to inform definitions, burden, associations and screening
391 methodology. *Clin Infect Dis* Available at: [https://academic.oup.com/cid/advance-](https://academic.oup.com/cid/advance-article/doi/10.1093/cid/ciaa1402/5906549)
392 [article/doi/10.1093/cid/ciaa1402/5906549](https://academic.oup.com/cid/advance-article/doi/10.1093/cid/ciaa1402/5906549). Accessed 29 September 2020.

393 15. Dowdy DW, Basu S, Andrews JR. Is passive diagnosis enough? The impact of subclinical
394 disease on diagnostic strategies for tuberculosis. *Am J Respir Crit Care Med* **2013**; 187:543–
395 551.

396 16. TEMPRANO ANRS 12136 Study Group, Danel C, Moh R, et al. A Trial of Early
397 Antiretrovirals and Isoniazid Preventive Therapy in Africa. *N Engl J Med* **2015**; 373:808–822.

398 17. The INSIGHT START Study Group. Initiation of Antiretroviral Therapy in Early
399 Asymptomatic HIV Infection. *New England Journal of Medicine* **2015**; 373:795–807.

- 400 18. Ross JM, Badje A, Rangaka MX, et al. Isoniazid preventive therapy plus antiretroviral therapy
401 for the prevention of tuberculosis: a systematic review and meta-analysis of individual
402 participant data. *Lancet HIV* **2021**; 8:e8–e15.
- 403 19. MacPherson P, Webb EL, Variava E, et al. Intensified household contact tracing, prevention and
404 treatment support versus enhanced standard of care for contacts of tuberculosis cases in South
405 Africa: study protocol for a household cluster-randomised trial. *BMC Infect Dis* **2019**; 19:839.
- 406 20. Massyn N, Barron P, Day C, Ndlovu N, Padarath A. District Health Barometer 2018/19.
407 Durban: Health Systems Trust, 2020.
- 408 21. National Department of Health, NICD. The 2017 National Antenatal Sentinel HIV Survey,
409 South Africa. 2017.
- 410 22. National Department of Health, NICD. The 2015 National Antenatal Sentinel HIV & Syphilis
411 Survey, South Africa. 2019.
- 412 23. Sokal JE. Editorial: Measurement of delayed skin-test responses. *N Engl J Med* **1975**; 293:501–
413 502.
- 414 24. Naidoo P, Theron G, Rangaka MX, et al. The South African Tuberculosis Care Cascade:
415 Estimated Losses and Methodological Challenges. *J Infect Dis* **2017**; 216:S702–S713.
- 416 25. Shapiro AE, Variava E, Rakgokong MH, et al. Community-based targeted case finding for
417 tuberculosis and HIV in household contacts of patients with tuberculosis in South Africa. *Am J*
418 *Respir Crit Care Med* **2012**; 185:1110–6.
- 419 26. Fox GJ, Barry SE, Britton WJ, Marks GB. Contact investigation for tuberculosis: a systematic
420 review and meta-analysis. *Eur Respir J* **2013**; 41:140–156.
- 421 27. Yates TA, Khan PY, Knight GM, et al. The transmission of *Mycobacterium tuberculosis* in high
422 burden settings. *Lancet Infect Dis* **2016**; 16:227–238.

423 28. MacPherson P, Lebina L, Motsomi K, et al. Prevalence and risk factors for latent tuberculosis
424 infection among household contacts of index cases in two South African provinces: Analysis of
425 baseline data from a cluster-randomised trial. PLoS ONE **2020**; 15:e0230376.

426 29. Orkin AM, Gill PJ, Ghersi D, et al. Guidelines for Reporting Trial Protocols and Completed
427 Trials Modified Due to the COVID-19 Pandemic and Other Extenuating Circumstances: The
428 CONSERVE 2021 Statement. JAMA **2021**; 326:257–265.

429

430

431 **Table 1: Characteristics of index patients randomised, by site and trial arm**

Characteristic	Study site		Trial arm	
	Mangaung (n=1074)	Capricorn (n=988)	Standard of care (n=1030)	Intervention (n=1032)
Age (years), median (IQR)	37 (28, 48)	38 (29, 48)	37 (28, 48)	37 (28, 48)
Age group (years)				
<8	19 (2%)	26 (3%)	25 (2%)	20 (2%)
8-14	9 (1%)	11 (1%)	14 (1%)	6 (1%)
15-19	55 (5%)	36 (4%)	48 (5%)	43 (4%)
20-29	249 (23%)	179 (18%)	211 (20%)	217 (21%)
30-39	323 (30%)	337 (34%)	325 (32%)	335 (32%)
40-49	191 (18%)	209 (21%)	200 (19%)	200 (19%)
50+	228 (21%)	190 (19%)	207 (20%)	211 (20%)
Sex, male	666 (62%)	573 (58%)	618 (60%)	621 (60%)
Employment				
Currently employed	254 (24%)	113 (11%)	179 (17%)	188 (18%)
Not employed	715 (67%)	679 (69%)	712 (69%)	682 (66%)
Student/child	81 (8%)	93 (9%)	86 (8%)	88 (9%)
Other	24 (2%)	103 (10%)	53 (5%)	74 (7%)
Income type				
Salary	216 (20%)	136 (14%)	162 (16%)	190 (18%)
Wage	70 (7%)	41 (4%)	50 (5%)	61 (6%)
Grant	235 (22%)	215 (22%)	226 (22%)	224 (22%)
No income	553 (51%)	596 (60%)	592 (57%)	557 (54%)
Sputum Xpert				
Positive	1053 (98%)	849 (86%)	952 (92%)	950 (92%)
Negative	3 (0.3%)	14 (1%)	6 (1%)	11 (1%)
Not done	18 (2%)	125 (13%)	72 (7%)	71 (7%)
Sputum smear				
Positive	11 (1%)	295 (30%)	148 (14%)	158 (15%)
Negative	8 (1%)	52 (5%)	32 (3%)	28 (3%)
Not done	1055 (98%)	641 (65%)	850 (83%)	846 (82%)
Sputum culture				
Positive	0 (0%)	59 (6%)	22 (2%)	37 (4%)
Negative	4 (0.4%)	6 (1%)	7 (1%)	3 (0.3%)
Not done	1070 (99.6%)	923 (93%)	1001 (97%)	992 (96%)
TB diagnosis				
Microbiologically confirmed	1054 (98%)	939 (95%)	990 (96%)	1003 (97%)
Not microbiologically confirmed	20 (2%)	49 (5%)	40 (4%)	29 (3%)
HIV status (self-reported)				
Positive	590 (55%)	521 (53%)	555 (54%)	556 (54%)
Negative	421 (39%)	442 (45%)	434 (42%)	429 (42%)
Unknown	63 (6%)	25 (3%)	41 (4%)	47 (5%)
On ART				
Yes	345 (58%)	381 (73%)	364 (66%)	362 (65%)
No	245 (42%)	140 (27%)	191 (34%)	194 (35%)
BMI (kg/m ²), mean (SD)	19 (5)	20 (5)	19 (5)	20 (5)
Karnofsky score, median (IQR)	80 (70, 90)	80 (70, 95)	80 (70, 90)	80 (70, 90)
Smoking (among 15+ years old)				
Current	254 (24%)	113 (12%)	176 (18%)	191 (19%)
Previous	268 (26%)	216 (23%)	238 (24%)	246 (24%)
Never	524 (50%)	622 (65%)	577 (58%)	569 (57%)
Alcohol use (among 15+ years old)	340 (33%)	223 (24%)	263 (27%)	300 (30%)

432 IQR: Interquartile range, TB: tuberculosis, HIV: human immunodeficiency virus, ART: antiretroviral therapy, BMI: body
433 mass index.

434 Karnofsky score is a measure of participants' ability to undertake activities of daily living, and ranges from 0 (dead), to 100

435 (normal; no complaints; no evidence of disease).

436

437 **Table 2: Characteristics of baseline household contacts of index patients, by site and**
438 **trial arm**

Characteristic	Site		Trial arm	
	Mangaung (n=4,202)	Capricorn (n=4,386)	Standard of care (n=4,129)	Intervention (n=4,459)
Age (years), median (IQR)	19 (9, 38)	19 (9, 36)	19 (9, 37)	19 (9, 37)
Sex, male	1,778 (42%)	1,913 (44%)	1,812 (44%)	1,879 (42%)
Relationship to index case				
Spouse	363 (9%)	258 (6%)	288 (7%)	333 (7%)
Child	1,129 (27%)	1,035 (24%)	1,066 (26%)	1,098 (25%)
Sibling	682 (16%)	919 (21%)	752 (18%)	849 (19%)
Parent/parent-in-law	439 (10%)	509 (12%)	475 (11%)	473 (11%)
Grandparent	165 (4%)	101 (2%)	140 (3%)	126 (3%)
Grandchild	390 (9%)	357 (8%)	363 (9%)	384 (9%)
Other	1,034 (25%)	1,207 (28%)	1,045 (25%)	1,196 (27%)
Joined household, past 15 months	398 (9%)	144 (3%)	279 (7%)	263 (6%)
Has TB symptoms	567 (14%)	406 (9%)	453 (11%)	520 (12%)
If TB symptoms, on treatment	31 (5%)	36 (9%)	40 (9%)	27 (5%)
On ART				
Yes	354 (8%)	142 (3%)	206 (5%)	290 (7%)
No	3,783 (90%)	4,194 (96%)	3,861 (94%)	4,116 (92%)
Don't know	60 (1%)	42 (1%)	53 (1%)	49 (1%)

439 ¹Missing values: age (n=30), entered household in past 15 months (n=17), TB symptoms (n=39), ART (n=13)

440

441

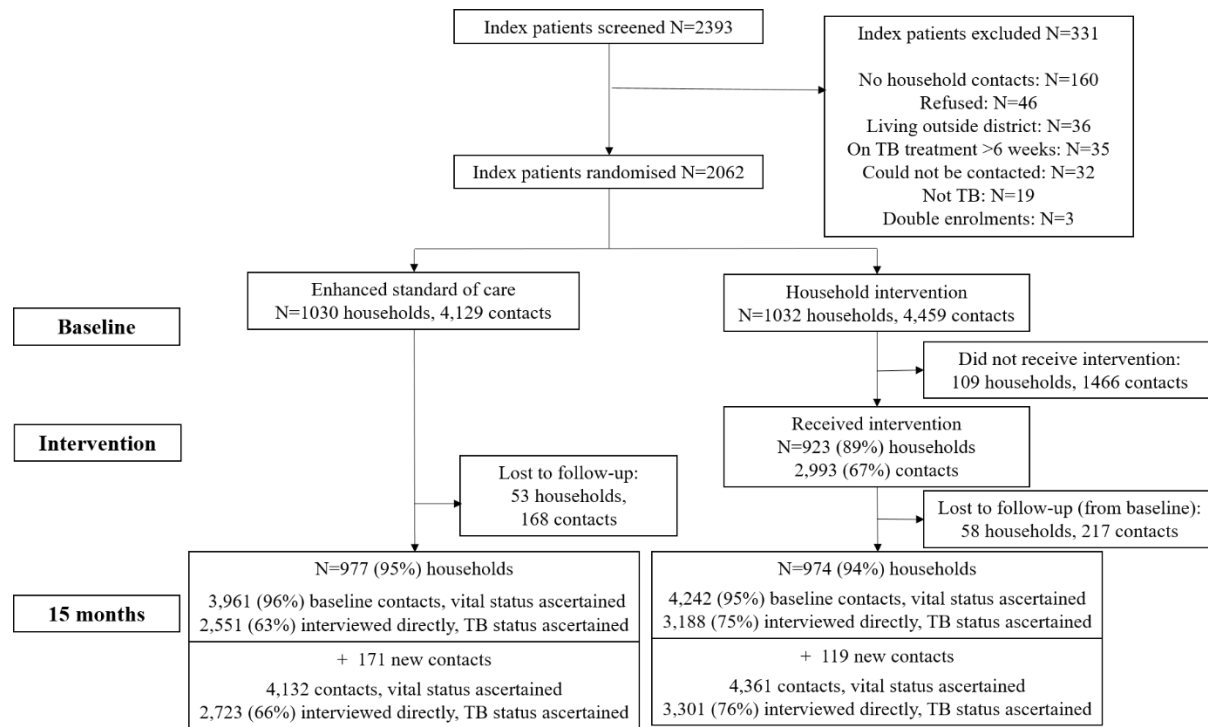
442 **Table 3: Effect of intervention versus standard of care on trial outcomes, among**
443 **household contacts who were present at baseline list of household contacts**

Outcome	Standard of care	Household Intervention	
Primary outcome			Hazard ratio (95% CI)
Contacts diagnosed with TB	31/2551 (1.2%)	51/3188 (1.6%)	1.33 (0.83, 2.16)
Contact deaths	49/3961 (1.2%)	42/4242 (1.0%)	0.72 (0.47, 1.10)
TB or death	80/2600 (3.1%)	93/3230 (2.9%)	0.90 (0.66, 1.24)
Secondary outcomes			Odds ratio (95% CI)
Prevalence of TST positivity (≥ 10 mm) among children ≤ 14 years	15/800 (1.9%)	38/845 (4.5%)	2.25 (1.07, 4.72)
Prevalence of undiagnosed or untreated HIV infection	32/2543 (1.3%)	41/3185 (1.3%)	1.02 (0.64, 1.64)

444 Hazard ratios and odds ratios were calculated with the standard of care arm as the reference group; intracluster
445 correlation coefficients (ICC) were TB (0.04), death (0.004), TB or death (0.02), TST positivity (0.86),
446 undiagnosed/untreated HIV (0.08)
447

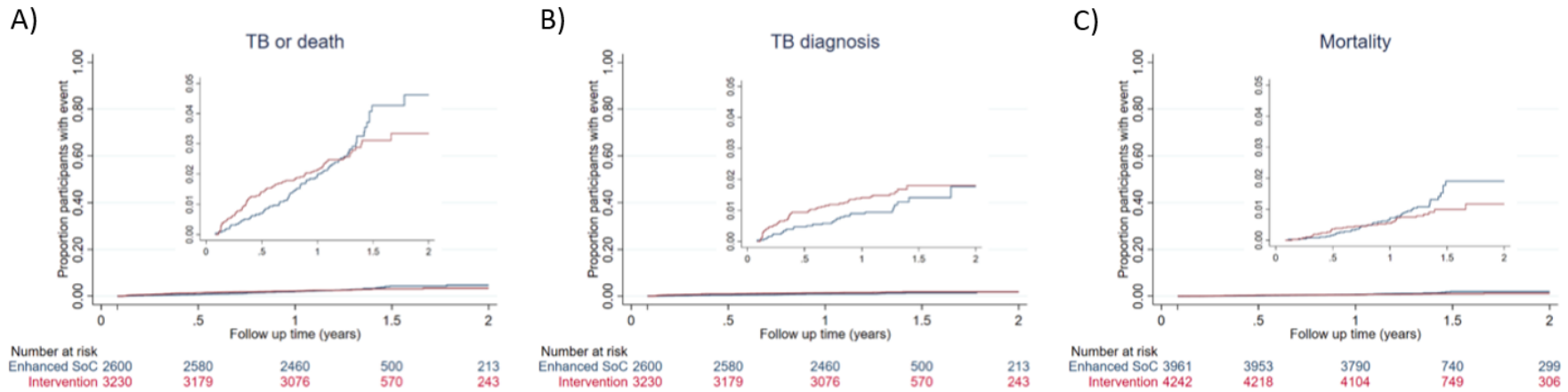
448 **Figure 1: Consort Diagram of Cluster Randomised Trial**

449
450



451
452

453 **Figure 2: Cumulative hazard of incident TB or death among household contacts of TB patients by trial arm**
 454
 455



456
 457
 458 A: Primary trial outcome of incident TB diagnosis or death between months 1 and 15. Inset: y-axis truncated to show range of data; B) Incident TB diagnosis
 459 between months 1 and 15. Inset: y-axis truncated to show range of data; C) Mortality between months 1 and 15. Inset: y-axis truncated to show range of data.
 460

Supplemental material

S1 Protocol: Study protocol (version 5)

S2 Questionnaires: Study questionnaires

S3 Checklist: CONSORT extension for cluster randomised trials checklist

S4 Table: Effect of intervention versus standard of care on primary trial outcome, sensitivity analyses

S5 Table: Subgroup analyses of primary and secondary outcomes by study site

S6 Table: Subgroup analyses of prevalence of TST positivity, by age of child

S7 Checklist: CONSERVE- CONSORT Checklist