

Dysregulation of circulating protease activity in Covid-19-associated superinfection

Fernando Dos Santos¹, Joyce B. Li², Nathalia Juocys^{1,3}, Rafi Mazor¹, Laura Beretta⁴,
Nicole G. Coufal⁵, Michael T.Y. Lam⁶, Mazen F. Odish⁶, Maria C. Irigoyen³,
Anthony J. O'Donoghue⁴, Federico Aletti^{7*}, Erik B. Kistler^{1,8*}

1

2 ¹Department of Anesthesiology, School of Medicine, University of California, San Diego, La Jolla, CA,
3 U.S.A.

4 ²Department of Bioengineering, University of California, San Diego, La Jolla, CA, U.S.A.

5 ³Instituto do Coração, Hospital das Clínicas, Faculdade de Medicina, Universidade de São Paulo
6 (InCor-FMUSP), São Paulo, Brazil

7 ⁴Skaggs School of Pharmacy and Pharmaceutical Sciences, University of California, San Diego, La
8 Jolla, CA, U.S.A.

9 ⁵Department of Pediatrics, School of Medicine, University of California, San Diego, La Jolla, CA,
10 U.S.A.

11 ⁶Department of Medicine, School of Medicine, University of California, San Diego, La Jolla, CA, U.S.A.

12 ⁷Instituto de Ciência e Tecnologia, Universidade Federal de São Paulo, São José dos Campos, Brazil

13 ⁸Department of Anesthesiology & Critical Care, VA San Diego Healthcare System, San Diego, CA,
14 U.S.A.

15

16 *** Correspondence:**

17 Federico Aletti – faletti@unifesp.br

18 Erik Kistler – ekistler@health.ucsd.edu

19

20 Keywords: Covid-19, Sepsis, Proteolysis, Enzymatic activity, Peptidomics, Proteomics

21

22 **Abstract**

23 Infection by SARS-CoV-2 and subsequent COVID-19 can cause viral sepsis and septic
24 shock. Several complications have been observed in patients admitted to the intensive care
25 unit (ICU) with COVID-19, one of those being bacterial superinfection. Based on prior
26 evidence that dysregulated systemwide proteolysis is associated with death in bacterial septic
27 shock, we investigated whether protease activity and proteolysis could be elevated in COVID-
28 19-induced sepsis with bacterial superinfection. In particular, we sought to assess the
29 possible implications on the regulation of protein systems, such as for instance the proteins
30 and enzymes involved in the clotting cascade.

31 Blood samples collected at multiple time points during the ICU stay of four COVID-19 patients
32 were analyzed to quantify: a) the circulating proteome and peptidome by mass spectrometry;
33 b) plasma enzymatic activity of trypsin-like substrates and five clotting factors (plasmin,
34 thrombin, factor VII, factor IX, factor X) by a fluorogenic assay.

35 Of the four patients, one was diagnosed with bacterial superinfection on day 7 after beginning
36 of the study and later died. The other three patients all survived (ICU length-of-stay
37 11.25 ± 6.55 days, hospital stay of 15.25 ± 7.18 days). Spikes in protease activity (factor VII,
38 trypsin-like activity) were detected on day 7 for the patient who died. Corresponding increases
39 in the total intensity of peptides derived by hydrolysis of plasma proteins, especially of
40 fibrinogen degradation products, and a general reduction of coagulation proteins, were
41 measured as well. A downregulation of endogenous enzymatic inhibitors, in particular trypsin
42 inhibitors, characterized the non-surviving patient throughout her ICU stay. Enzymatic activity
43 was stable in the patients who survived.

44 Our study highlights the potential of multiomics approaches, combined with quantitative
45 analysis of enzymatic activity, to i) shed light on proteolysis as a possible pathological
46 mechanism in sepsis and septic shock, including COVID-19-induced sepsis; ii) provide

47 additional insight into malfunctioning protease-mediated systems, such as the coagulation
48 cascade; and iii) describe the progression of COVID-19 with bacterial superinfection.

49

50 **1. Introduction**

51 The Coronavirus disease (COVID-19) pandemic is caused by viral infection with the
52 coronavirus SARS-CoV-2. Affecting every organ of the body following initial infection of the
53 respiratory system, this highly contagious virus has contributed to the deaths of almost 5
54 million people to date. Despite the emphasis on COVID-19 research, our understanding of
55 the disease remains incomplete and therapeutic options are limited (1-7). Frequent and fatal
56 complications arising from SARS-CoV-2-induced sepsis include cytokine storm and
57 coagulopathies (8,9). Less frequent (10), but not less dangerous, bacterial superinfections
58 make the clinical treatment of COVID-19 patients in the intensive care unit (ICU) even more
59 challenging, especially because of the lack of sound hypotheses as to the underlying
60 pathology and interplay between viral and bacterial infection and their clinical implications
61 (11).

62 We have previously shown, in both animal and human studies, that a possible pathological
63 mechanism triggered by acute illness, including bacterial sepsis and septic shock, is
64 dysregulated proteolysis (12-15). Major protease-mediated systems are known to be affected
65 in critical illness, including activation of the coagulation and complement cascades. To better
66 understand the possible relationship between systemic proteolysis occurring in shock,
67 including COVID-19-induced septic shock and the malfunction of these protease-mediated
68 systems, we have developed a complex, multimodal approach to assess protease activity
69 and proteolysis in plasma, consisting of quantitative enzymatic activity assays and mass
70 spectrometry-based multi-omics analyses of the circulating proteome and peptidome. The
71 utilization of these techniques has shown promising results in the ability to i) estimate in vivo
72 proteolysis in plasma as a marker of ongoing systemic proteolysis during shock (13,14) and
73 ii) detect circulating peptidase activity (16).

74 The hypothesis of this study was that a complex, dynamic description of plasma proteins and
75 the activity of some of their most important circulating enzymatic substrates can be leveraged
76 as a tool to shed light on the progression of COVID-19 and the risk for fatal complications,
77 especially in the presence of bacterial superinfection and diagnosis of sepsis and septic
78 shock. The specific goals that we aimed to investigate were to assess: 1) the patterns of
79 protease activity in the plasma of COVID-19 patients following admission to the ICU by means
80 of quantitative analysis of enzymatic activity; 2) the relationship between alterations in
81 protease activity over time during ICU stay and the development of bacterial superinfection;
82 3) the possible implications of dysregulated proteolysis on major protein systems (e.g.,
83 clotting proteins and enzymes) by analysis of plasma proteomics and peptidomics.

84

85

86 **2. Materials and Methods**

87 **2.1 Clinical measurements**

88 This was a prospective observational study. The University of California, San Diego
89 Institutional Review Board (IRB) provided approval of the study conduct (IRB# 190699,
90 Protocol #20-0006); informed consent was obtained for the collection of blood samples and
91 de-identified use of the data. A convenience sample of four adult critically ill patients with
92 confirmed positive test for COVID-19 by real-time reverse transcription polymerase chain
93 reaction (RT-PCR) admitted to the Intensive Care Units (ICUs) at the University of California,
94 San Diego Medical Center between April 01, 2020, and May 30, 2020, was enrolled in the
95 study. De-identified demographic and prior health history data were obtained. Three healthy
96 subjects were enrolled as a control group for enzymatic activity assays.

97 Standard laboratory measurements were obtained as necessary for optimal patient care by
98 the UC San Diego Medical Center for Advanced Laboratory Medicine (CALM) laboratories as
99 part of regular and usual care. No additional laboratory data were collected.

100 All non-standard laboratory assays, including protease activity assays and mass
101 spectrometry measurements were conducted off-site in academic research laboratories at
102 the University of California, San Diego. Patient blood samples (3-10mL) were collected in
103 sodium heparin (BD Vacutainer, REF: 366480) tubes. To prevent coagulation, the tubes were
104 inverted 10 times prior to transport at room temperature. Blood was processed within 4 hours
105 of collection and kept at room temperature throughout the protocol. Polymorphprep™ was
106 added to collected samples and centrifuged at 500g x 30 mins to separate plasma from white
107 blood cells per manufacturer's instructions (Progen) and transferred to new Eppendorf tubes
108 and centrifuged at 3731 x g for 5 minutes to remove any cellular debris. The supernatant was
109 transferred to new tubes and flash frozen in dry ice and 95% ethanol. Plasma was aliquoted
110 and stored at -80° C for further analysis.

111 The clinical data acquisition and blood sample collection started on the day following protocol
112 study consent (usually day of ICU admission) and was repeated on the following day and
113 every other day thereafter until patient discharge or death.

114

115 **2.2 Enzymatic activity**

116 To test the enzymatic activity in COVID-19 plasma samples, we selected a variety of
117 fluorogenic substrates, with a specific focus on enzymes with trypsin-like activity and clotting
118 factors. All plasma samples were processed and analyzed simultaneously for each substrate,
119 including healthy control plasma. The peptide sequences used in this assay were chosen as

120 substrates for coagulation factor enzymes, tryptic enzymes in general, as well as
121 endopeptidase activity (**Supplementary File 1**). Briefly, a 384-well plate was used to combine
122 15 μ L of plasma (1/50 final dilution in PBS, pH=7.4) with 15 μ L of each substrate (5 μ M in PBS)
123 in triplicate wells and immediately measured for activity with a spectrophotometer (FilterMax
124 F5 Multi-Mode, Molecular Devices) with excitation of 360 nm and emission of 460 nm. Wells
125 were read every 2 minutes and 45 seconds for 4 hours and 50 minutes thereby generating
126 fluorescent activity progress curves that each contain 100 data points. Fluorogenic activity
127 was reported as relative fluorescence units per second using the slope from the progress
128 curve where the r^2 value was higher than 0.98. The activity was corrected by the dilution
129 factor. Due to the large variance measured between patients, all results shown are plotted as
130 the percentage of enzymatic activity relative to average of healthy control plasma samples on
131 a \log_2 scale.

132

133 **2.3 Proteomics and Peptidomics Analysis of COVID-19 Plasma**

134 All plasma samples from the COVID-19 patients were subjected to a series of protein
135 extraction and pretreatment steps prior to mass spectrometry. The complete protocols for
136 plasma sample preparation, processing and data analysis steps can be found in
137 **Supplementary File 1**. Briefly, for proteomics measurements, proteins were precipitated
138 from the plasma samples, treated with denaturing, reducing, and alkylating reagents, and
139 enzymatically digested with trypsin. To quantify peptides in plasma, high molecular weight
140 proteins were first removed following addition of methanol and the remaining peptide
141 quantified by LC-MS/MS. PEAKS Studio 8.5 (Bioinformatics Solutions, Inc.) proteomics
142 software was used for protein identification and quantification.

143 For the purposes of our study, the analysis of the circulating proteome and peptidome focused
144 on three main groups of proteins, according to their function: 1) coagulation; 2) complement
145 system, immune response and inflammation; and 3) endogenous protease inhibitors. Each
146 of these systems is known to be affected by acute illness, and their clinical management
147 poses significant challenges in critically ill patients. The proteins most relevant to our analyses
148 included: a) coagulation factors and fibrinogen for coagulation analysis; b) complement
149 factors, vascular endothelial growth factor receptor 2 (VEGF2) and C-reactive protein for
150 immune response and inflammation; c) serpins such as trypsin and chymotrypsin inhibitors,
151 thrombin and plasmin inhibitors, C1 inhibitors and heparin cofactor II for endogenous enzyme
152 inhibitors.

153 For proteome analysis, we used the \log_2 ratio of each individual intensity measurement to the
154 average of all sample intensities for each protein. Heat maps for the three main protein
155 function groups considered for analysis were generated and analyzed using the web-based
156 visualization software Morpheus (<https://software.broadinstitute.org/morpheus>). Identified
157 proteins were hierarchically clustered with the one minus Pearson's correlation metric and
158 average linkage method for each protein group. Columns were sorted by patient and ordered
159 by day of sample collection.

160 For peptidomic analysis, the degree of overall proteolysis was estimated by the sum of all
161 fragment intensities in a sample. Similarly, the proteolysis of a single protein was estimated
162 by the sum of the intensities of the peptides generated by that protein. An online web tool,
163 Peptigram (@Bioware - © University College Dublin) (17) was used to build cleavage maps
164 representative of the number of peptides generated by a parent protein, abundance and
165 length of each amino acid sequence, and cleavage site on the parent protein of origin.

166

167 **3. Results**

168 Patient characteristics are described in **Table 1**. The four patients randomly selected for
169 analysis were comprised of three males and one female and ranged in age from 29-88 years.
170 Reflecting the overall demographics of the COVID-19 epidemic in San Diego, three of the
171 subjects were Hispanic. One patient, who will be referred to as “Patient 3” in the following,
172 was diagnosed with bacterial superinfection and subsequent sepsis on day 7 and died on day
173 16 of her ICU stay. The remainder (Patients 1, 2 and 4) were discharged from the ICU with a
174 mean ICU length-of-stay for all subjects of 11.25 ± 6.55 days and mean hospital stay of
175 15.25 ± 7.18 days. Body mass index (BMI) was 28.84 ± 3.65 kg/m² (range: 29.4-32.14 kg/m²)
176 and self-described baseline health was either “fit” or “well”.

177 All patients were initially treated with azithromycin. The three surviving subjects, who did not
178 present with a bacterial superinfection, were also treated with ceftriaxone. Patient 3 was
179 treated after positive culture identification (*Pseudomonas aeruginosa* in urine and
180 *Enterobacter aerogenes* pneumonia) with piperacillin/tazobactam and later, with meropenem
181 and vancomycin, after clinical failure to respond to infection. The three more critically ill
182 patients’ pulmonary function reflected a diagnosis of Acute Respiratory Distress Syndrome
183 (ARDS) and these patients were intubated and placed on mechanical ventilation for at least
184 some period of their ICU stay. These three patients also required the application of
185 vasopressor agents to maintain hemodynamic stability.

186 Pertinent laboratory data are reported in **Table 2** and reflect a relatively homogeneous
187 distribution of their hemogram as well as metabolic laboratory results (not shown) and
188 coagulation panel. It should be noted that the outlying results in Patient 3’s white blood count
189 (WBC) of $19.8\times 10^9/L$, hemoglobin of 6.4 g/dL, and platelet count of $461\times 10^3\ \mu L/ml$ are from
190 the final day of the patient’s hospital stay and represent her moribund condition.

191 Enzymatic activity data are reported in **Figure 1** (coagulation enzymes) and in **Figure 2**
192 (trypsin-like enzymes and exopeptidases). **Figure 1** shows that plasmin activity remained
193 stable over time and between patients, serving as internal control of enzymatic activity.
194 Thrombin and Factor IX activity showed an increasing trend over the first five days of ICU
195 admission followed by decrease. Factor X activity decreased over time in Patients 1 and 2
196 compared to day 2 and increased in Patients 3 and 4. The main finding was the marked
197 increase in Factor VII activity and tryptic-like activity, particularly at a terminal Val-Arg (**Figure**
198 **2**) in Patient 3 on day 7, when bacterial superinfection was diagnosed.

199 **Figure 2** also shows static amino- peptidase activity (Met-AP (Vivitide®, Gardner, MA)),
200 serving as a de facto negative control for the assay.

201

202 **Figure 1.**
203 Clotting enzyme activity during the ICU stay of the four patients enrolled in the study.

204

205 **Figure 2.**
206 Trypsin-like and amino-peptidase activity during the ICU stay of the four patients enrolled in
207 the study.

208

209 Patient 3 exhibited a reduction in several plasma coagulation proteins such as coagulation
210 factors V and XI on day 7 and thereafter, and a concomitant increase in the expression of
211 fibrinogen, plasma kallikrein and von Willebrand factor (**Figure 3A**). Overall, there were mild
212 changes over time in plasma from Patient 3 in the abundance of proteins involved in the
213 immune and inflammatory response (**Figure 3B**), as shown by diverging trends of increase
214 and decrease of the complement factors. Interestingly, starting on day 7 ficolin-1 and VEGF
215 2 were increased in Patient 3, while the trend was less apparent and characterized by some
216 variability in the other patients. C-reactive protein showed a progressively decreasing trend

217 in expression over time in all four patients. A general trend towards a reduction in the
218 expression of enzymatic inhibitors, in particular of endogenous trypsin inhibitors, was
219 observed in Patient 3, (**Figure 3C**). Thrombin inhibitors such as antithrombin-III and heparin
220 cofactor II were also characterized by lower abundance in Patient 3 compared to the survivors
221 at all time points.

222 The proteins characterized by the most evident trends (over time and between patients) are
223 highlighted in the heat maps in Figure 3 with a diamond sign next to the protein name. For
224 the complete proteome profile, please see **Supplementary File 2**.

225

226 **Figure 3.**

227 Heatmaps of the most significant proteins involved in coagulation (A), immune or
228 inflammatory response (B), and endogenous enzymatic inhibition (C) detected in COVID-19
229 patient plasma. Data are presented as Log₂ ratio of the averages. Rows of identified proteins
230 were hierarchically clustered with the one minus Pearson's correlation metric and average
231 linkage method for each protein group. Columns were sorted by patient and ordered by day
232 of sample collection. The heatmaps were obtained using the visualization software Morpheus
233 (<https://software.broadinstitute.org/morpheus/>).

234

235 The sum of the intensities of all the peptide fragments detected at each time point from a total
236 of 233 source proteins suggests marked proteolytic activity in Patient 3 on day 7 (**Figure 4A**).

237 This ongoing protein degradation was particularly evident in fibrinogen- α and fibrinogen- β
238 (**Figure 4B and 4C**). Of note, peptides derived from α 2-antiplasmin had a characteristic trend

239 in Patients 1, 3 and 4, with a progressive increase until day 5, followed by an abrupt reduction
240 and a progressive increase thereafter. **Figure 4E** shows the unique patterns of protein

241 cleavage for fibrinogen- α obtained by Peptigram analysis and the size and location of the
242 fragments that suggest that the enhanced proteolytic activity seen on day 7 in Patient 3

243 increases the amount of circulating fibrinopeptide A (FPA). The link to the complete
244 peptidome profile on Peptigram can be found in **Supplementary File 1**.

245

246

Figure 4.

247 Total intensity as the sum of the intensities of the peptides detected in COVID-19 patient
248 plasma: a) from the whole proteome (A); b) from fibrinogen- α (B); c) from fibrinogen- β (C); d)
249 from alpha-2-antiplasmin (D). Peptigram representation of the cleavage pattern of fibrinogen-
250 α in the four patients at each time point (E).

251

252

253 4. Discussion

254 Omics approaches (metabolomics, proteomics, peptidomics, transcriptomics, genomics) to
255 study disease, including acute illness, have become increasingly popular due to the unique
256 multiscale insights they provide that can result in better targeted treatments (12,14,18-23).
257 Several contributions have already been made to the field of COVID-19 by proteomics (24-
258 27).

259 We have previously leveraged -omics analyses to test the hypothesis that dysregulated
260 systemic proteolysis occurs in circulatory shock using a peptidomic-based assay, which
261 estimates proteolysis by assessing the abundance and count of circulating peptides (13,14).
262 Analysis of the plasma peptidome by this method showed an association between enhanced
263 proteolysis and death (14) in septic shock caused by bacterial infection. Therefore, we
264 investigated whether a similar association may also be found in viral sepsis caused by
265 COVID-19 infection with bacterial superinfection developing over the course of the ICU stay.
266 To better characterize and quantify the dynamic aspect of systemic intravascular proteolysis,

267 proteolytic activity generated by proteases that are known to be activated in acute illness,
268 such as clotting factors and other serine proteases were measured.

269 Protease activity patterns showed a marked increase of Factor VII and Factor IX activity on
270 day 7 in the patient who died of superinfection. In particular, the spike in Factor VII activity
271 was unique amongst our sample cohort and represents an 80-fold increase in activity relative
272 to that found in healthy control plasma. Further, the same trend in activity was also found in
273 two substrates identified by the C-terminus cleavage sites Val-Arg and Leu-Arg,
274 representative of tryptic-like proteolytic activity. Although the activity of all four substrates
275 (Factor VII, Factor IX, Val-Arg, Leu-Arg) tended to decrease after the initial increase, the peak
276 on day 7 in Patient 3 coincided with the diagnosis of bacterial superinfection, and with an
277 increase in peptide abundance, particularly from fibrinogen.

278 Most fibrinogen-derived peptides in Patient 3 on day 7 originated from the Fibrinopeptide A
279 (FPA) domain, located at the N-terminal region of the fibrinogen A α chain (A α 20-35), which
280 is normally generated by thrombin cleavage of fibrinogen upon activation of the clotting
281 cascade. FPA is a known biomarker of the activation of the coagulation system and was
282 shown to be related to elevated inflammation in sepsis, including COVID-19-induced sepsis
283 (28). Although thrombin was not shown to be overactivated, other serine proteases may
284 contribute to fibrinogen cleavage at typical thrombin cleaving sites. Further, the
285 underexpression of antithrombin-III and heparin cofactor II also hint at a decreased capacity
286 to regulate thrombin and other protease activity, regardless of thrombin expression and
287 activity levels. Consistent with our prior findings on enhanced proteolysis over time in patients
288 who died of septic shock (14), these findings may indicate a possible relationship between a
289 surge in proteolytic activity in concert with impairment of the coagulation cascade and
290 worsening overall clinical course after development of bacterial infection following the initial

291 progression of COVID-19 infection. This was apparent clinically in Patient 3 who had been on
292 either phenylephrine or norepinephrine (but not both) for hypotension from admission to the
293 ICU, and on day 7 necessitated the addition of two simultaneous pressor agents
294 (norepinephrine and vasopressin) to maintain adequate hemodynamics. This pressor
295 requirement subsequently increased the following day to three simultaneous pressor agents
296 (norepinephrine, phenylephrine, and vasopressin) before later subsiding.

297 As COVID-19 infection has a strong association with coagulopathy (29,30), we focused our
298 study on the activity of enzymes involved in the clotting cascade and other trypsin-like
299 proteases, which could be characterized by a similar array of target proteins, including but
300 not limited to coagulation enzymes and proteins such as fibrinogen. Thromboembolism and
301 reports of microvascular thrombi akin to a disseminated intravascular coagulation (DIC)
302 picture have been a common reported cause of death in patients admitted to the ICU with
303 severe COVID-19. Although the cause of death in Patient 3 was classified as septic shock,
304 the possible association between enhanced proteolytic activity, bacterial superinfection and
305 disease severity is nonetheless of interest and could point to i) the presence of additional
306 pathological mechanisms (i.e., proteolysis) that contribute to poor outcomes; ii) the
307 relationship between enzymatic activity patterns and bacterial superinfection that causes
308 further illness, in addition to that already seen with precedent viral infection.

309 The association between disease severity and -omics patterns is also supported by the
310 measurements of other proteins that play a role in immunity and inflammation. For instance,
311 the trends in expression of ficolin-1 and VEGFR2, and to some extent C-reactive protein
312 (which showed a decrease over time in all four patients, much milder in Patient 3 though)
313 correlate with the exacerbation of the inflammatory state of Patient 3 following diagnosis of
314 bacterial superinfection. Ficolin-1 is a known activator of the complement system and innate

315 immunity through recognition of pathogen-associated molecular patterns (PAMPs) (31,32),
316 while VEGFR2 has been related to COVID-19 progression (33) as also suggested by the
317 hypothesis that the VEGF receptor activator (PMC18457) may serve as a biomarker for
318 detecting the progression of COVID-19 (34). In fact, the patient with the least severe course
319 of disease (Patient 2) had the lowest VEGFR2 intensity and, importantly, was the only patient
320 who was not diagnosed with ARDS. Patient 4, on the other hand, had rheumatoid arthritis
321 and subsequently greater VEGFR2 intensity. These observations highlight that the complexity
322 of the interplay between baseline comorbidities, severity of the disease and variability of the
323 features of immune and inflammatory responses prevents from interpreting conclusively the
324 expression trends of complement factors and warrants further research in the future.

325 There are some limitations of this study that need to be acknowledged. First, regarding the
326 clinically (obtained from the patient record) derived data, the low sample size of the studied
327 patient population and non-uniformity in the timing of some laboratory results hinders the
328 ability to make stronger inferences than are made here; the robustness of the presented
329 results would doubtlessly have been strengthened with a larger sample size and fewer
330 missing data. However, even with this very limited sample size we were able to make some
331 cautious conclusions as to new hypotheses of molecular mechanisms that might otherwise
332 not be recognized with a larger patient population. Second, regarding data drop-out, this was
333 a real-world observational study, and the clinical laboratory measurements and values reflect
334 patient management of severely ill COVID+ patients in the ICU. Third, in our analytical
335 protocol, the mass spectrometry approach was necessarily untargeted; if specific protein
336 systems and products of their degradation were targeted, it is possible that the potential
337 dysfunction in these systems (e.g., coagulation, complement, etc.) could be highlighted in
338 greater detail. Finally, when comparing and integrating proteomics and peptidomics data, the

339 availability of transcriptomics data, which were not part of the experimental design of this
340 observational study, could add information on protein regulation, and help understand to a
341 greater depth the impact of abnormal proteolysis and protein synthesis, breakdown, and
342 turnover.

343 In conclusion, we demonstrate here that the analysis of the circulating proteome and
344 peptidome, coupled with quantitation of enzymatic activity in plasma of COVID-19 patients,
345 provides additional data about the progression of the disease. Our approach could prove
346 particularly useful for achieving a more comprehensive description of the impairment of the
347 activation and regulation of coagulation, a complex, protease-mediated system which plays
348 a critical role in the management of acute patients in the ICU. The association between
349 proteolytic activity and protease expression patterns achieved by mass spectrometry
350 investigation of plasma and bacterial superinfection in COVID-19 may also contribute to
351 anticipate the signs of possible superinfection and aid in the early diagnosis and delivery of a
352 timely therapy.

353

354

355 **Conflict of Interest**

356 The authors declare that the research was conducted in the absence of any commercial or
357 financial relationships that could be construed as a potential conflict of interest.

358

359 **Funding**

360 California Breast Cancer Research Program of the University of California, RGPO Grant
361 R01RG3766 (R00RG2541) (to E.B.K.); US ARMY MEDICAL RESEARCH ACQUISITION
362 ACTIVITY (USAMRAA) Award #W81XWH-17-2-0047 (to E.B.K.).

363

364

365 **References**

- 366 1. Wiersing WJ, Rhodes A, Cheng AC, Peacock SJ, Prescott HC. Pathophysiology,
367 Transmission, Diagnosis, and Treatment of Coronavirus Disease 2019 (COVID-19): A
368 Review. *JAMA* (2020) 324(8):782-93.
- 369 2. Osuchowski MF, Aletti F, Cavaillon JM, Flohé SB, Giamarellos-Bourboulis EJ, Huber-
370 Lang M, Relja B, Skirecki T, Szabó A, Maegele M. SARS-CoV-2/COVID-19: Evolving
371 Reality, Global Response, Knowledge Gaps, and Opportunities. *Shock* (2020)
372 54(4):416-37.
- 373 3. Osuchowski MF, Winkler MS, Skirecki T, Cajander S, Shankar-Hari M, Lachmann G,
374 Monneret G, Venet F, Bauer M, Brunkhorst FM, Weis S, Garcia-Salido A, Kox M,
375 Cavaillon JM, Uhle F, Weigand MA, Flohé SB, Wiersinga WJ, Almansa R, de la Fuente
376 A, Martin-Loeches I, Meisel C, Spinetti T, Schefold JC, Cilloniz C, Torres A, Giamarellos-
377 Bourboulis EJ, Ferrer R, Girardis M, Cossarizza A, Netea MG, van der Poll T, Bermejo-
378 Martín JF, Rubio I. The COVID-19 puzzle: deciphering pathophysiology and phenotypes
379 of a new disease entity. *Lancet Respir Med* (2021) 9(6):622-42.
- 380 4. Lopes-Pacheco M, Silva PL, Cruz FF, Battaglini D, Robba C, Pelosi P, Morales MM,
381 Caruso Neves C, Rocco PRM. Pathogenesis of Multiple Organ Injury in COVID-19 and
382 Potential Therapeutic Strategies. *Front Physiol* (2021);12:593223.
- 383 5. Welte T, Ambrose LJ, Sibbring GC, Sheikh S, Müllerová H, Sabir I. Current evidence for
384 COVID-19 therapies: a systematic literature review. *Eur Respir Rev* (2021)
385 30(159):200384.
- 386 6. Chalmers JD, Crichton ML, Goeminne PC, Cao B, Humbert M, Shteinberg M, Antoniou
387 KM, Ulrik CS, Parks H, Wang C, Vandendriessche T, Qu J, Stolz D, Brightling C, Welte
388 T, Aliberti S, Simonds AK, Tonia T, Roche N. Management of hospitalised adults with
389 coronavirus disease 2019 (COVID-19): a European Respiratory Society living guideline.
390 *Eur Respir J* (2021) 57(4):2100048.
- 391 7. Alhazzani W, Evans L, Alshamsi F, Møller MH, Ostermann M, Prescott HC, Arabi YM,
392 Loeb M, Ng Gong M, Fan E, Oczkowski S, Levy MM, Derde L, Dzierba A, Du B, Machado
393 F, Wunsch H, Crowther M, Cecconi M, Koh Y, Burry L, Chertow DS, Szczeklik W, Belle-
394 Cote E, Greco M, Bala M, Zarychanski R, Kesecioglu J, McGeer A, Mermel L, Mammen
395 MJ, Nainan Myatra S, Arrington A, Kleinpell R, Citerio G, Lewis K, Bridges E, Memish
396 ZA, Hammond N, Hayden FG, Alshahrani M, Al Duhailib Z, Martin GS, Kaplan LJ,
397 Coopersmith CM, Antonelli M, Rhodes A. Surviving Sepsis Campaign Guidelines on the
398 Management of Adults With Coronavirus Disease 2019 (COVID-19) in the ICU: First
399 Update. *Crit Care Med* (2021) 49(3):e219-e234.
- 400 8. Tang Y, Liu J, Zhang D, Xu Z, Ji J, Wen C. Cytokine Storm in COVID-19: The Current
401 Evidence and Treatment Strategies. *Front Immunol* (2020) 11:1708.
- 402 9. Iba T, Levy JH, Levi M, Thachil J. Coagulopathy in COVID-19. *J Thromb Haemost* (2020)
403 18(9):2103-9.
- 404 10. Garcia-Vidal C, Sanjuan G, Moreno-García E, Puerta-Alcalde P, Garcia-Pouton N,
405 Chumbita M, Fernandez-Pittol M, Pitart C, Inciarte A, Bodro M, Morata L, Ambrosioni J,
406 Grafia I, Meira F, Macaya I, Cardozo C, Casals C, Tellez A, Castro P, Marco F, Garcia
407 F, Mensa J, Martínez JA, Soriano A; COVID-19 Researchers Group. Incidence of co-
408 infections and superinfections in hospitalized patients with COVID-19: a retrospective
409 cohort study. *Clin Microbiol Infect* (2021) 27(1):83-8.
- 410 11. Lazzaroni MG, Piantoni S, Masneri S, Garrafa E, Martini G, Tincani A, Andreoli L,
411 Franceschini F. Coagulation dysfunction in COVID-19: The interplay between
412 inflammation, viral infection and the coagulation system. *Blood Rev* (2021) 46:100745.

- 413 12. Aletti F, Conti C, Ferrario M, Ribas V, Bollen Pinto B, Herpain A, Post E, Romay Medina
414 E, Barlassina C, de Oliveira E, Pastorelli R, Tedeschi G, Ristagno G, Taccone FS,
415 Schmid-Schönbein GW, Ferrer R, De Backer D, Bendjelid K, Baselli G. ShockOmics:
416 multiscale approach to the identification of molecular biomarkers in acute heart failure
417 induced by shock. *Scand J Trauma Resusc Emerg Med* (2016);24:9.
- 418 13. Aletti F, Maffioli E, Negri A, Santamaria MH, DeLano FA, Kistler EB, Schmid-Schönbein
419 GW, Tedeschi G. Peptidomic Analysis of Rat Plasma: Proteolysis in Hemorrhagic Shock.
420 *Shock* (2016) 45(5):540-54.
- 421 14. Bauzá-Martinez J, Aletti F, Pinto BB, Ribas V, Odena MA, Díaz R, Romay E, Ferrer R,
422 Kistler EB, Tedeschi G, Schmid-Schönbein GW, Herpain A, Bendjelid K, de Oliveira E.
423 Proteolysis in septic shock patients: plasma peptidomic patterns are associated with
424 mortality. *Br J Anaesth* (2018) 121(5):1065-74.
- 425 15. Aletti F, DeLano FA, Maffioli E, Mu H, Schmid-Schönbein GW, Tedeschi G, Kistler EB.
426 Continuous enteral protease inhibition as a novel treatment for experimental
427 trauma/hemorrhagic shock. *Eur J Trauma Emerg Surg* (2021). Online ahead of print.
- 428 16. Maffioli E, Jiang Z, Nonnis S, Negri A, Romeo V, Lietz CB, Hook V, Ristagno G, Baselli
429 G, Kistler EB, Aletti F, O'Donoghue AJ, Tedeschi G. High-Resolution Mass
430 Spectrometry-Based Approaches for the Detection and Quantification of Peptidase
431 Activity in Plasma. *Molecules* (2020) 25(18):4071.
- 432 17. Manguy J, Jehl P, Dillon ET, Davey NE, Shields DC, Holton TA. Peptigram: A Web-
433 Based Application for Peptidomics Data Visualization. *J Proteome Res* (2017) 16(2):712-
434 19
- 435 18. Cambiaghi A, Pinto BB, Brunelli L, Falcetta F, Aletti F, Bendjelid K, Pastorelli R, Ferrario
436 M. Characterization of a metabolomic profile associated with responsiveness to therapy
437 in the acute phase of septic shock. *Sci Rep* (2017) 7(1):9748.
- 438 19. Sharma NK, Tashima AK, Brunialti MKC, Ferreira ER, Torquato RJS, Mortara RA,
439 MacHado FR, Assuncao M, Rigato O, Salomao R. Proteomic study revealed cellular
440 assembly and lipid metabolism dysregulation in sepsis secondary to community-
441 acquired pneumonia (2017) *Sci Rep* 7:15606.
- 442 20. Cambiaghi A, Díaz R, Martinez JB, Odena A, Brunelli L, Caironi P, Masson S, Baselli G,
443 Ristagno G, Gattinoni L, de Oliveira E, Pastorelli R, Ferrario M. An Innovative Approach
444 for The Integration of Proteomics and Metabolomics Data In Severe Septic Shock
445 Patients Stratified for Mortality. *Sci Rep* (2018) 8(1):6681.
- 446 21. Braga D, Barcella M, Herpain A, Aletti F, Kistler EB, Bollen Pinto B, Bendjelid K,
447 Barlassina C. A longitudinal study highlights shared aspects of the transcriptomic
448 response to cardiogenic and septic shock. *Crit Care* (2019) 23(1):414.
- 449 22. Schuurman AR, Reijnders TDY, Kullberg RFJ, Butler JM, van der Poll T, Wiersinga WJ.
450 Sepsis: deriving biological meaning and clinical applications from high-dimensional data.
451 *Intensive Care Med Exp* (2021) 9(1):27.
- 452 23. Mangioni D, Peri AM, Rossolini GM, Viaggi B, Perno CF, Gori A, Bandera A. Toward
453 rapid sepsis diagnosis and patient stratification: What's new from microbiology and omics
454 Science. *J Infect Dis* (2020) 221(7):1039-47.
- 455 24. Messner CB et al. Ultra-High-Throughput Clinical Proteomics Reveals Classifiers of
456 COVID-19 Infection. *Cell Syst* (2020) 11(1):11-24.
- 457 25. Demichev V et al. A time-resolved proteomic and prognostic map of COVID-19. *Cell Syst*
458 (2021) 12(8):780-94.
- 459 26. Haas P, Muralidharan M, Krogan NJ, Kaake RM, Hüttenhain R. Proteomic Approaches
460 to Study SARS-CoV-2 Biology and COVID-19 Pathology. *J Proteome Res* (2021)
461 20(2):1133-52.

- 462 27. McArdle A, Washington KE, Chazarin Orgel B, Binek A, Manalo DM, Rivas A, Ayres M,
463 Pandey R, Phebus C, Raedschelders K, Fert-Bober J, Van Eyk JE. Discovery
464 Proteomics for COVID-19: Where We Are Now. *J Proteome Res* (2021) Online ahead of
465 print.
- 466 28. Ranucci M, Sitzia C, Baryshnikova E, Di Dedda U, Cardani R, Martelli F, Corsi Romanelli
467 M. Covid-19-Associated Coagulopathy: Biomarkers of Thrombin Generation and
468 Fibrinolysis Leading the Outcome. *J Clin Med* (2020) 9(11):3487.
- 469 29. Iba T, Levy JH, Levi M, Thachil J. Coagulopathy in COVID-19. *J Thromb Haemost* (2020)
470 18(9):2103-9.
- 471 30. Asakura H, Ogawa H. COVID-19-associated coagulopathy and disseminated
472 intravascular coagulation. *Int J Hematol* (2020) 7:1–13.
- 473 31. Bidula S, Sexton DW, Schelenz S. Ficolins and the Recognition of Pathogenic
474 Microorganisms: An Overview of the Innate Immune Response and Contribution of
475 Single Nucleotide Polymorphisms. *J Immunol Res* (2019) 2019:3205072
- 476 32. Polycarpou A, Howard M, Farrar CA, Greenlaw R, Fanelli G, Wallis R, Klavinskis LS,
477 Sacks S. Rationale for targeting complement in COVID-19. *EMBO Mol Med* (2020)
478 12(8):e12642.
- 479 33. Birnhuber A, Fließner E, Gorkiewicz G, Zacharias M, Seeliger B, David S, Welte T,
480 Schmidt J, Olschewski H, Wygrecka M, Kwapiszewska G. Between inflammation and
481 thrombosis: endothelial cells in COVID-19. *Eur Respir J* (2021) 58(3):2100377.
- 482 34. Kong Y, Han J, Wu X, Zeng H, Liu J, Zhang H. VEGF-D: a novel biomarker for detection
483 of COVID-19 progression. *Crit Care* (2020) 24(1):373.
- 484

Table 1. Characteristics of COVID+ patient cohort

Covariate	Patient 1	Patient 2	Patient 3	Patient 4
BMI	29.40	23.66	32.14	30.19
Sex (M: male; F: female)	M	M	F	M
Survived (Yes / No)	Y	Y	N	Y
Admit to ICU from ED or Ward	Ward	ED	Ward	ED
ICU Length of Stay	17	3	16	9
Hospital Length of Stay	24	8	18	11
Self-described fitness level upon admission	Fit	Fit	Well	Fit
Modified Rankin Score on admission	No symptoms	No symptoms	No symptoms	No significant disability
<i>Treatment in ICU</i>				
Required pressors	Y		Y	Y
(ARDS) diagnosis	Y		Y	Y
Presence of another infection			Y*	
<i>Antibiotics received: Azithromycin</i>	Y	Y	Y	Y
<i>Ceftriaxone</i>	Y	Y		Y
<i>Meropenem</i>			Y	
<i>Vancomycin</i>			Y	Y
<i>Piperacillin/Tazobactam</i>			Y	Y

485

486

Table 2. Main Laboratory Data

Covariate	Patient 1	Patient 2	Patient 3	Patient 4
White Blood Count ($10^9/l$)				
Average [SD]	10.2 [1.5]	8.4 [0.8]	11.6 [4]	7.7 [1.7]
(Range)	(7.6-12.3)	(7.4-9.6)	(8.1-19.8)	(5.7-10.3)
Hemoglobin (g/dl)				
Average [SD]	13.0 [1.3]	14.1 [1.2]	9.4 [1.6]	11.6 [1.6]
(Range)	(12-15.4)	(12.1-15.3)	(6.4-11)	(10.1-14.2)
Platelets ($\times 10^3 /\mu l$)				
Average [SD]	404.3 [85.9]	300.0 [124.3]	294.9 [157.2]	153.5 [28.9]
(Range)	(223-468)	(179-461)	(170-608)	(113-183)
International Normalized Ratio	1.3 [0.1]	1.2 [0.1]	1.4 [0.0]	NC
Admission D-Dimer (ng/mL)	354	NC	699	NC

487

488

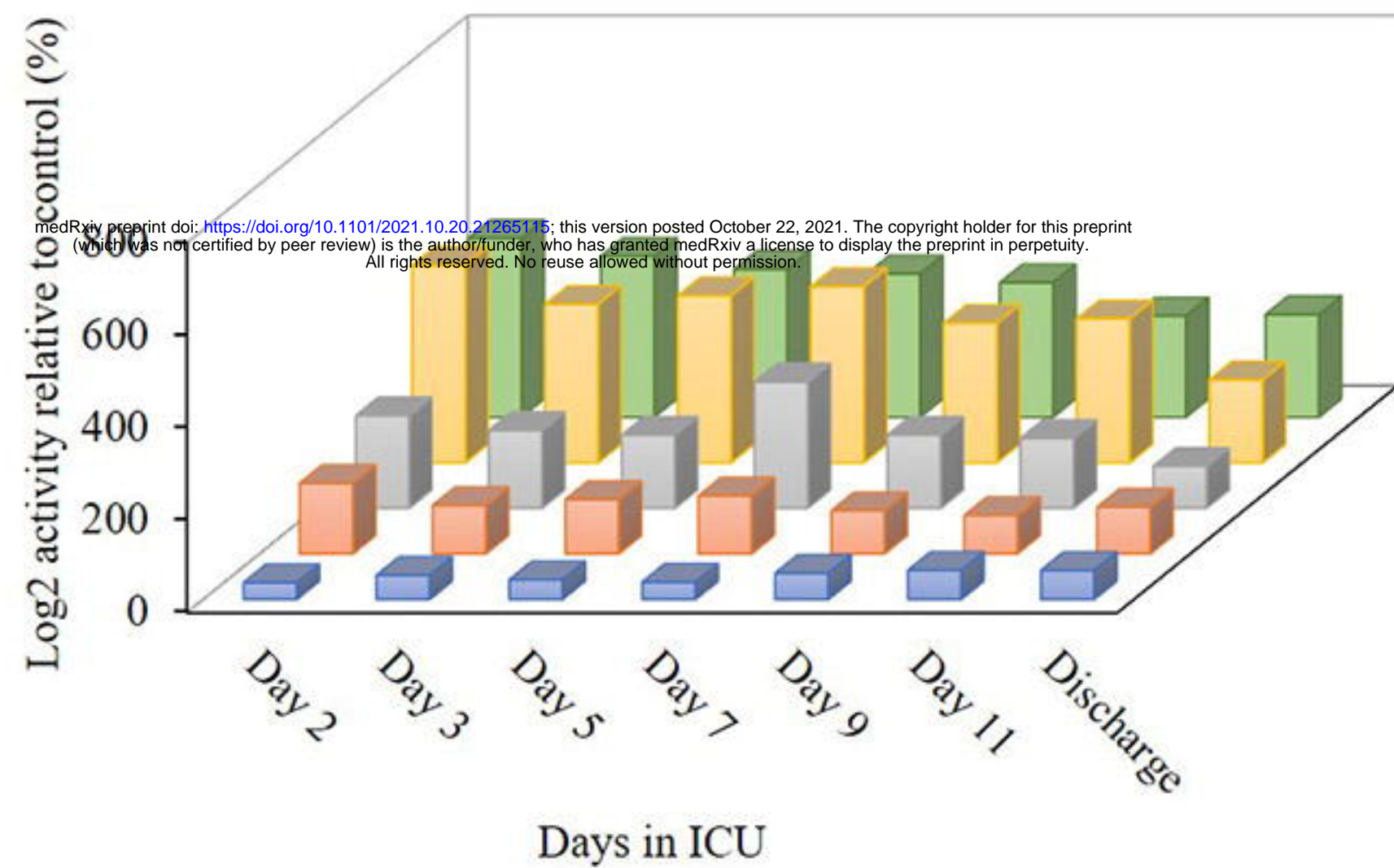
489

490

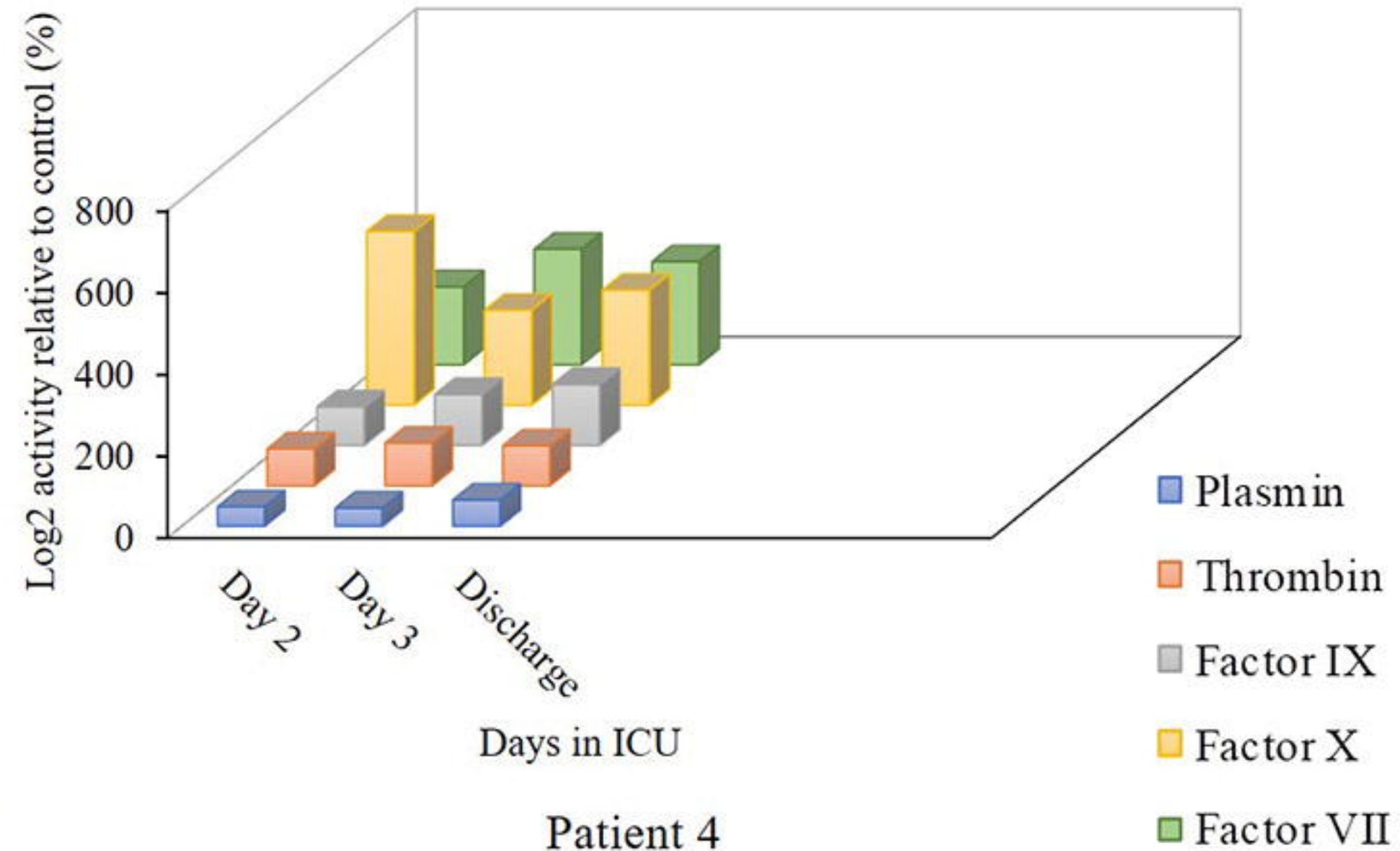
Average and range of laboratory blood tests from COVID-19 patients during their stay on ICU. Abbreviations: Standard Deviation (SD), Not collected (NC)

A

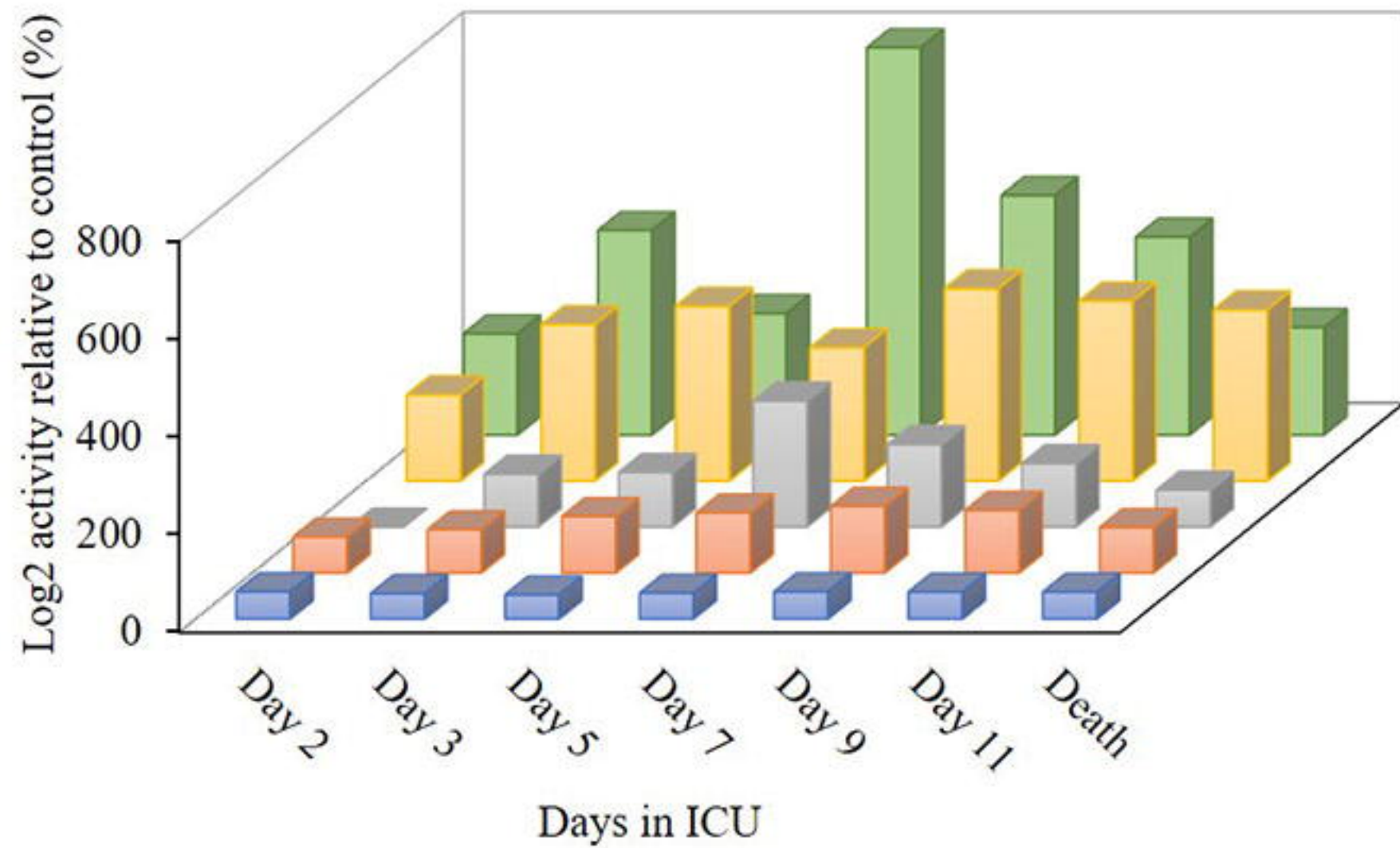
Patient 1

**B**

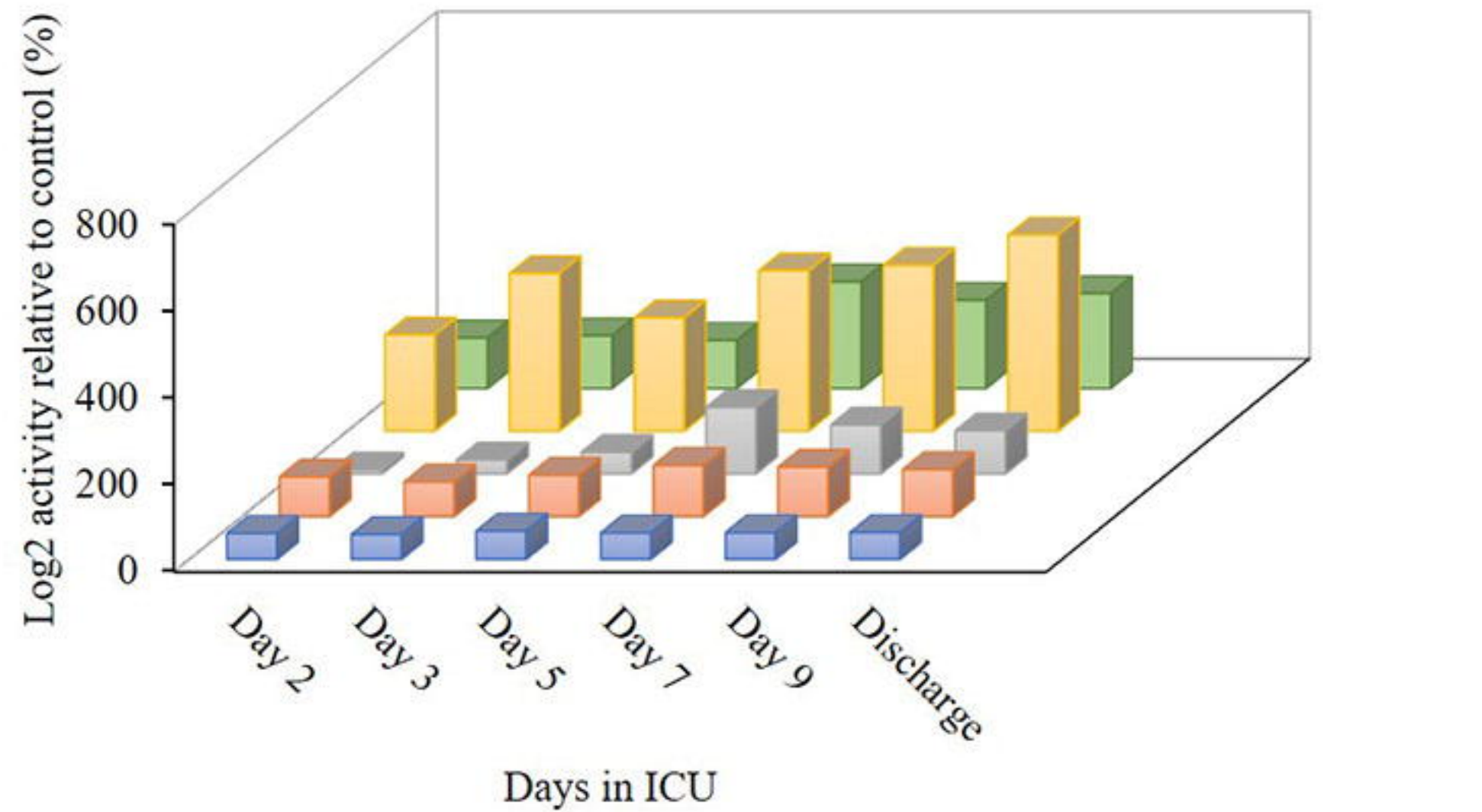
Patient 2

**C**

Patient 3

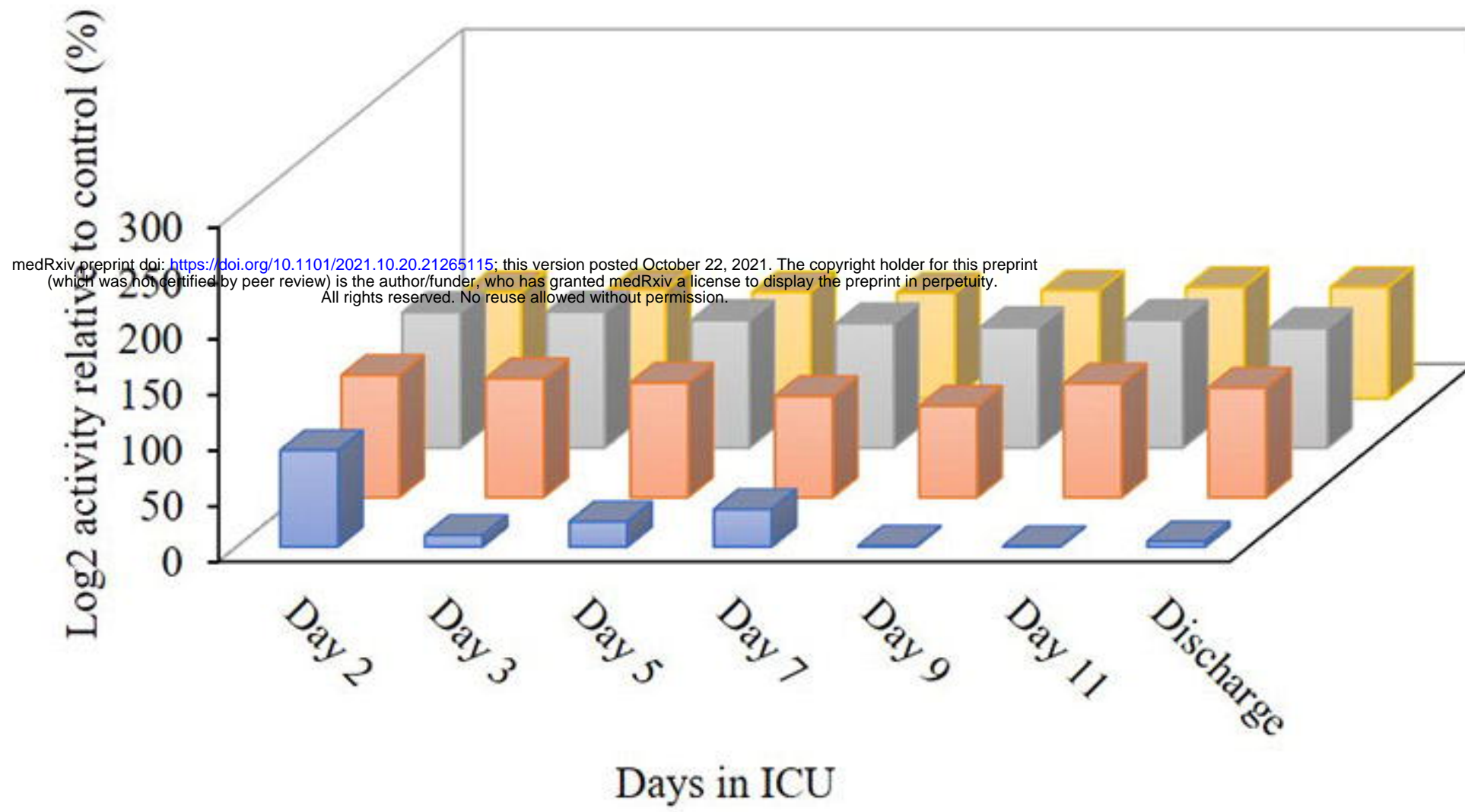
**D**

Patient 4

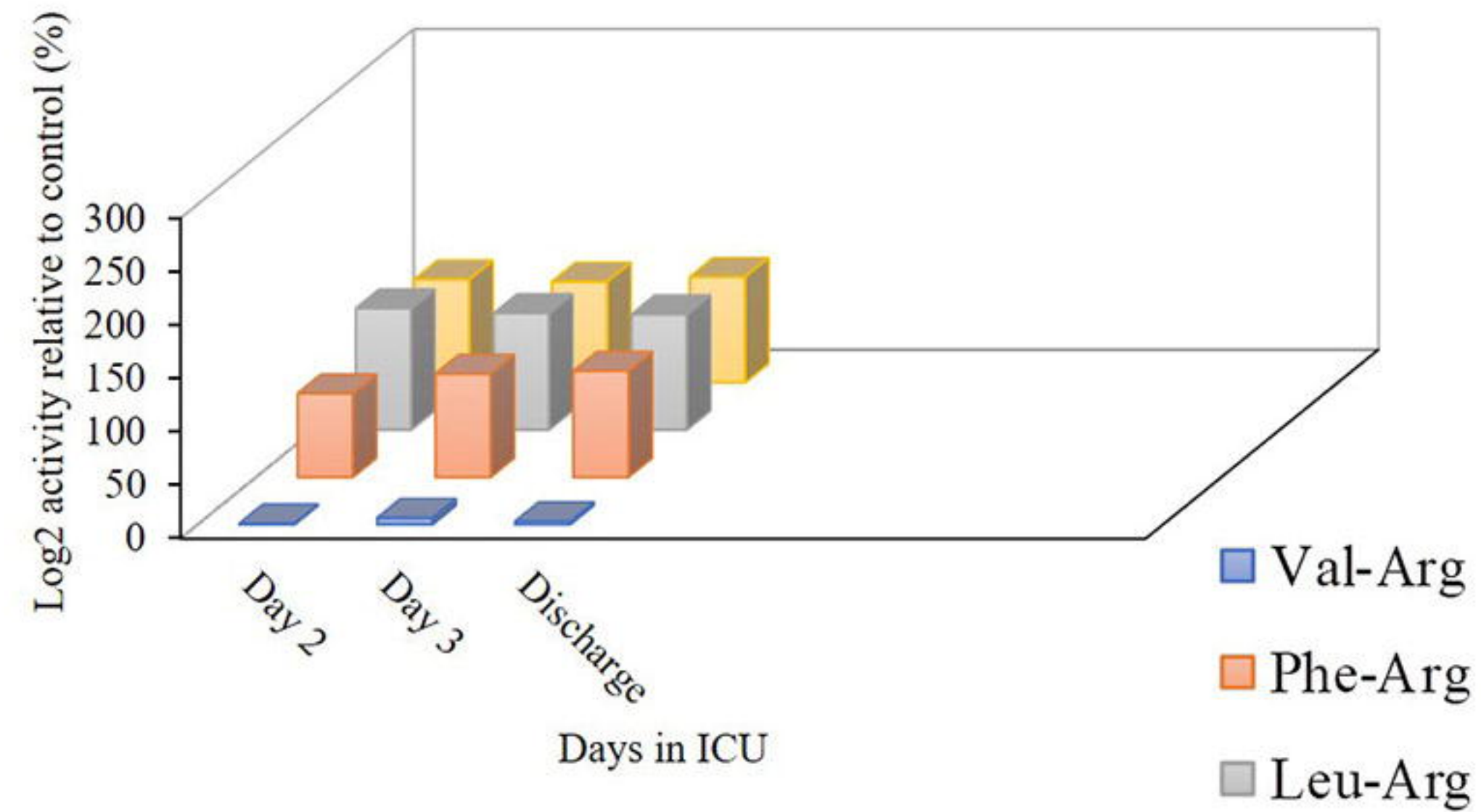


A

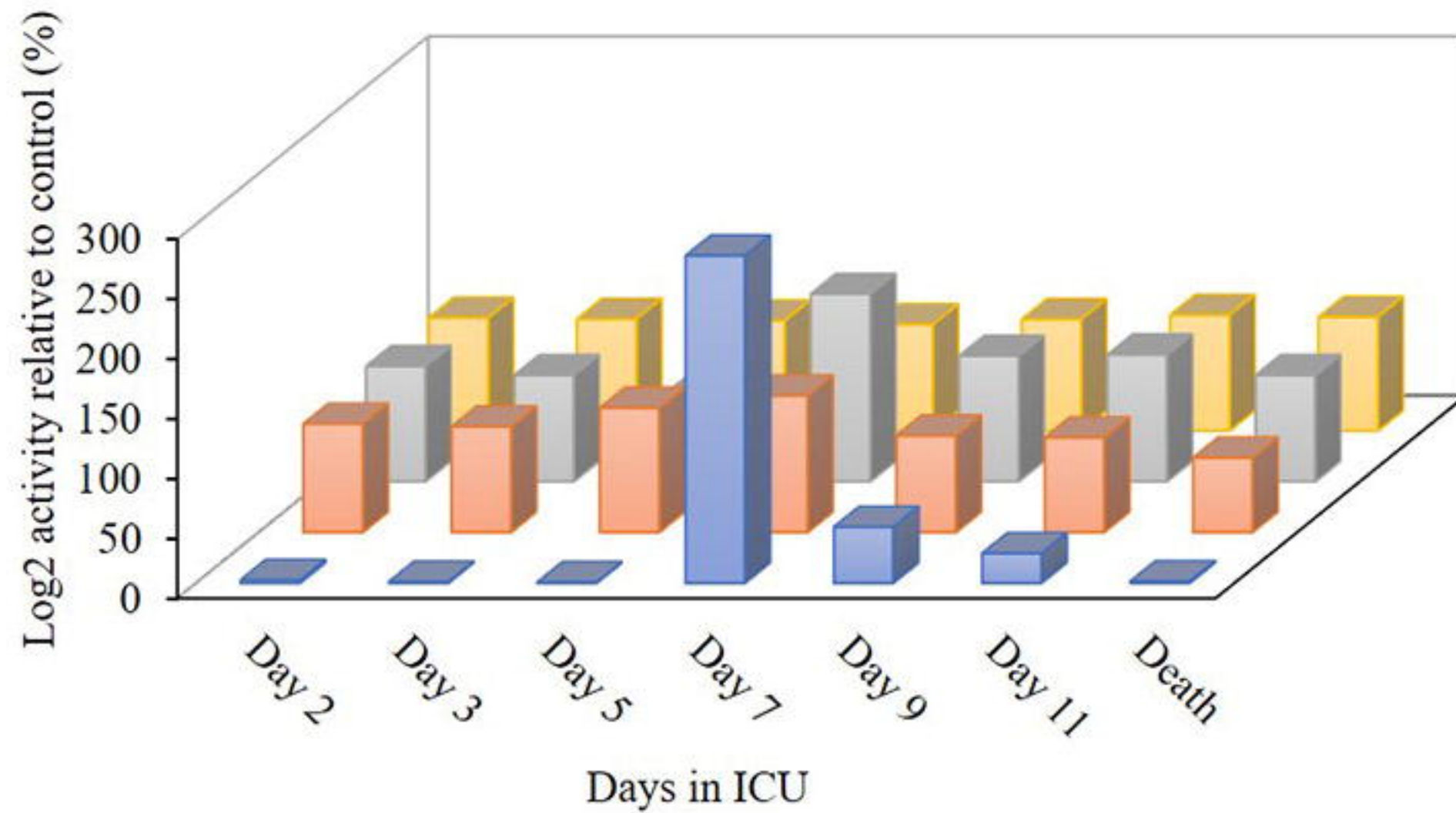
Patient 1

**B**

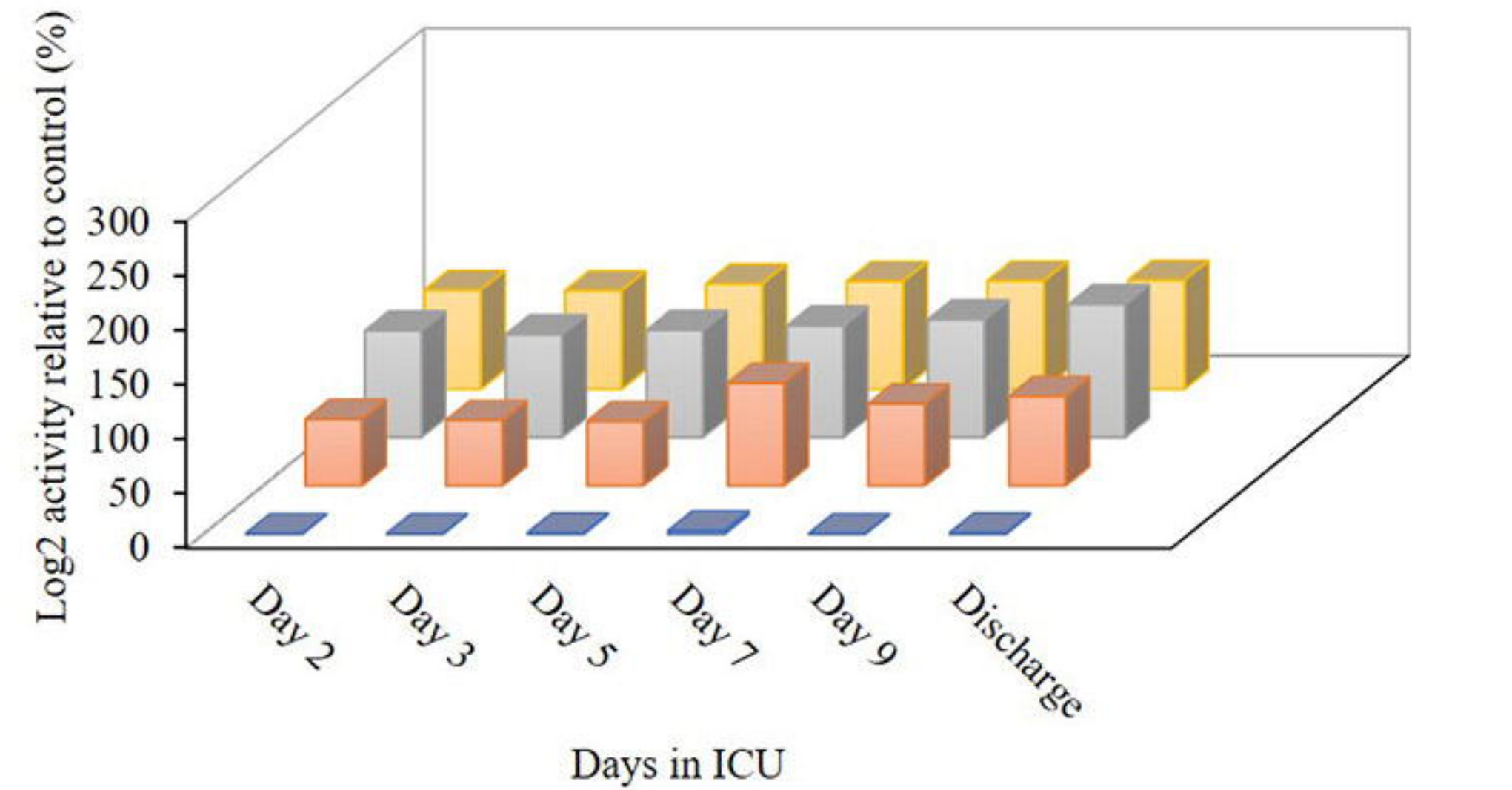
Patient 2

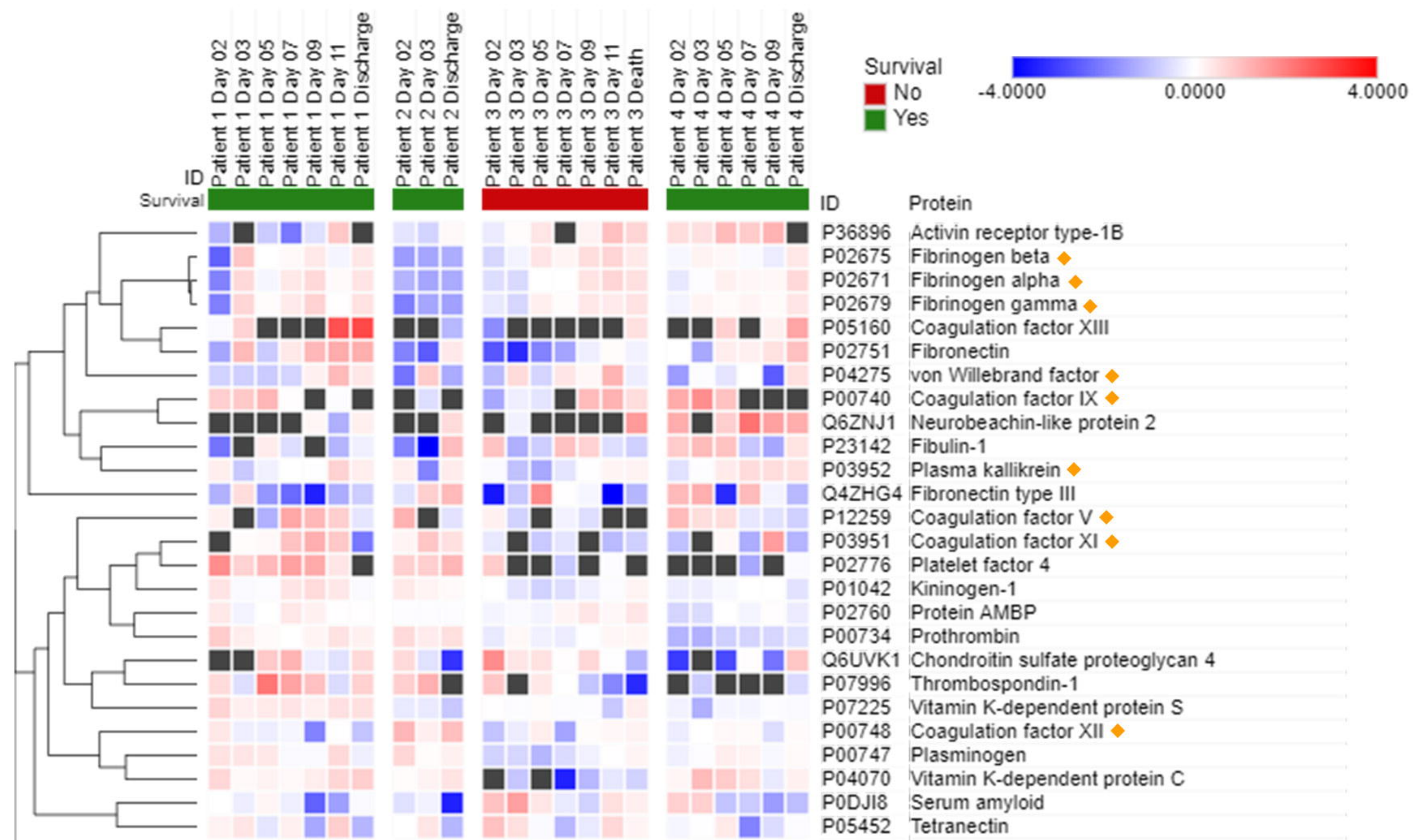
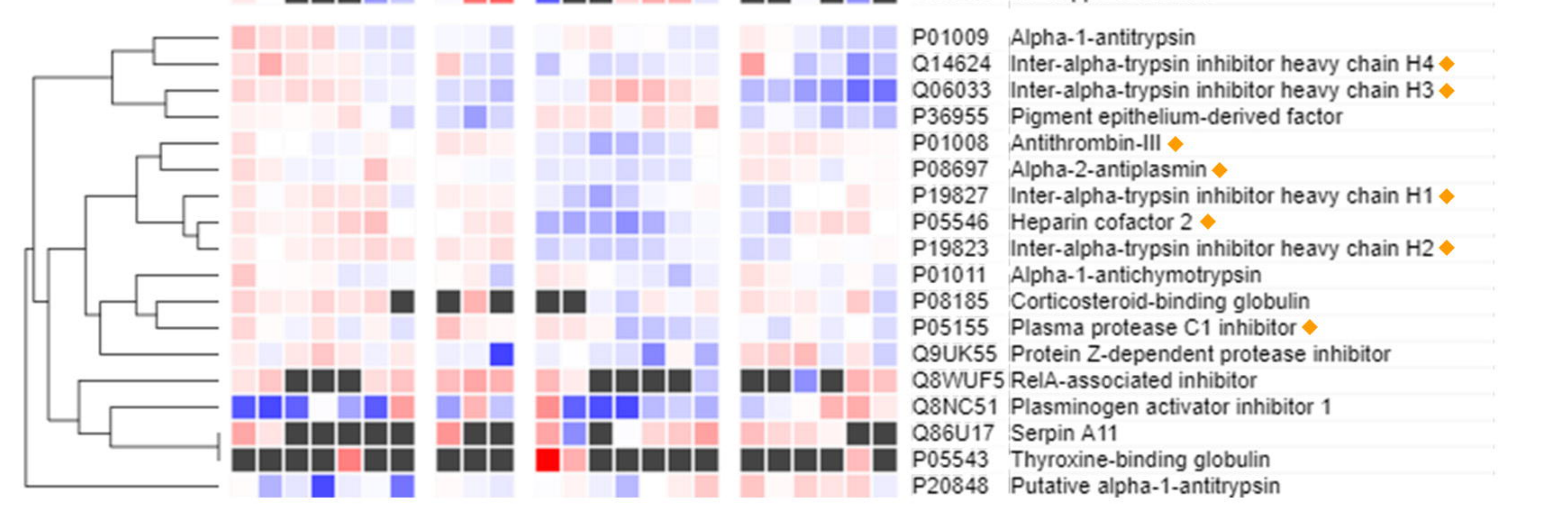
**C**

Patient 3

**D**

Patient 4



A**B****C**

medRxiv preprint doi: <https://doi.org/10.1101/2021.10.20.21265110>; this version posted October 22, 2021. The copyright holder for this preprint (which was not certified by peer review) is the author/funder, who has granted medRxiv a license to display the preprint in perpetuity. All rights reserved. No reuse allowed without permission.

