

1 **Environmental injustice - Neighborhood characteristics as confounders and effect**
2 **modifiers for the association between air pollution exposure and cognitive function**

3
4 Zhenjiang Li¹, Grace M. Christensen², James J. Lah³, Michele Marcus^{1,2}, Armistead G. Russell⁴,
5 Stefanie Ebel^{1,2}, Lance A. Waller^{1,5}, Anke Huels^{1,2,#}.

6
7 ¹ Gangarosa Department of Environmental Health, Rollins School of Public Health, Emory
8 University, Atlanta, Georgia, USA

9 ² Department of Epidemiology, Rollins School of Public Health, Emory University, Atlanta,
10 Georgia, USA

11 ³ Department of Neurology, School of Medicine, Emory University, Atlanta, Georgia, USA

12 ⁴ School of Civil and Environmental Engineering, Georgia Institute of Technology, Atlanta,
13 Georgia, USA

14 ⁵ Department of Biostatistics and Bioinformatics, Rollins School of Public Health, Emory
15 University, Atlanta, Georgia, USA

16
17 # Address correspondence to Anke Huels, PhD, MSc, Department of Epidemiology and
18 Gangarosa Department of Environmental Health, Rollins School of Public Health, Emory
19 University, 1518 Clifton Rd NE, Atlanta, GA 30322, USA. Email: anke.huels@emory.edu

20
21 **Sources of support:** This work was based on information from the Emory Healthy Aging study,
22 supported by HERCULES Pilot Project via National Institute of Environmental Health Sciences
23 (NIEHS) P30ES019776 (PI: Anke Huels) and National Institute on Aging (NIA) R01AG070937
24 (PI: James J. Lah).

25
26 **Conflicts of interest:** The authors declare they have nothing to disclose.

27 **ABSTRACT**

28 **Background:** Air pollution has been associated with cognitive decline among the elderly.

29 Previous studies have not evaluated the simultaneous effect of neighborhood-level
30 socioeconomic status (N-SES), which can be an essential source of bias.

31 **Objectives:** We explored N-SES as a confounder and effect modifier in a cross-sectional study
32 of air pollution and cognitive function among the elderly.

33 **Methods:** We included 12,058 participants age 50+ years from the Emory Healthy Aging Study
34 in Metro Atlanta using the Cognitive Function Instrument (CFI) score as our outcome, with
35 higher scores representing worse cognition. We estimated 9-year average ambient carbon
36 monoxide (CO), nitrogen oxides (NO_x), and fine particulate matter (PM_{2.5}) concentrations at
37 residential addresses using a fusion of dispersion and chemical transport models. We collected
38 census-tract level N-SES indicators and created two composite measures using principal
39 component analysis and k-means clustering. Associations between pollutants and CFI and
40 effect modification by N-SES were estimated via linear regression models adjusted for age,
41 education, race and N-SES.

42 **Results:** N-SES confounded the association between air pollution and CFI, independent of
43 individual characteristics. We found significant interactions between all air pollutants and N-SES
44 for CFI (p -values<0.001) suggesting that effects of air pollution differ depending on N-SES.
45 Participants living in areas with low N-SES were most vulnerable to air pollution. In the lowest
46 N-SES urban areas, interquartile range (IQR) increases in CO, NO_x, and PM_{2.5} were associated
47 with 5.4% (95%-confidence interval, -0.2,11.4), 4.9% (-0.4,10.4), and 9.8% (2.2,18.0) increases
48 in CFI, respectively. In lowest N-SES suburban areas, IQR increases in CO, NO_x, and PM_{2.5}
49 were associated with higher increases in CFI, namely 13.4% (1.3,26.9), 13.4% (0.3,28.2), and
50 17.6% (2.8,34.5), respectively.

51 **Discussion:** N-SES is an important confounder and effect modifier in our study. This finding
52 could have implications for studying health effects of air pollution in the context of environmental
53 injustice.

54

55 Words: 298/300

56

57 INTRODUCTION

58 During the past decade, multiple investigations explored the effects of long-term exposure to
59 air pollution on cognitive function in the older population after animal models had shown effects
60 of air pollution on the central nervous system via inflammation and oxidative stress (Block &
61 Calderon-Garciduenas, 2009). Delgado-Saborit et al. reviewed 69 relevant epidemiological
62 studies from 2006 to 2019 and found consistent associations of long-term exposure to air
63 pollution with reduced global cognition, cognitive decline, and dementia (Delgado-Saborit et al.,
64 2021).

65
66 Individuals living in disadvantaged neighborhoods are often exposed to the highest
67 concentrations of air pollution – a problem known as environmental injustice (Maantay, 2002).
68 Exposure to air pollution is considered to interact with vulnerability, producing a “triple jeopardy”
69 of low socioeconomic position, polluted environment, and impaired health (J. Ailshire, Karraker,
70 & Clarke, 2017; Hicken et al., 2016; Ou et al., 2008). Neighborhoods have emerged as a
71 common analysis unit to identify disadvantaged populations in studies of environmental
72 injustice. A variety of epidemiological studies conducted among different racial/ethnic groups
73 throughout the world have demonstrated associations between living in low N-SES
74 neighborhoods and cognitive decline in the elderly, associations independent of individual-level
75 characteristics (Basta, Matthews, Chatfield, Brayne, & Mrc, 2008; Espino, Lichtenstein, Palmer,
76 & Hazuda, 2001; Guo, Chan, Chang, Liu, & Yip, 2019; Lang et al., 2008; Sheffield & Peek,
77 2009; Shih et al., 2011; Wee et al., 2012; Wight et al., 2006). Therefore, there is a strong
78 likelihood that neighborhood characteristics may confound and/or modify the association
79 between air pollution and cognitive functioning. However, only a handful of previous studies on
80 air pollution and cognitive function controlled for neighborhood educational attainment, racial
81 composition, and socioeconomic context (J. A. Ailshire & Crimmins, 2014; Bowe, Xie, Yan, & Al-
82 Aly, 2019; Cullen et al., 2018), and only one study included neighborhood psychological
83 stressors as potential effect modifiers (J. Ailshire et al., 2017).

84
85 In the current study, we conducted a cross-sectional analysis to assess the confounding and
86 modifying effect of neighborhood-level socioeconomic status (N-SES) in exploring the
87 associations between long-term exposure to ambient air pollution [carbon monoxide (CO),
88 nitrogen oxides (NO_x), and fine particulate matter (PM_{2.5})] and cognitive function among
89 residents over 50 years of age living in Metro Atlanta (i.e., Atlanta metropolitan area, the ninth-
90 largest metropolitan statistical area in USA), GA, USA. For assessing N-SES, we used a

91 combination of N-SES composite measures at different geographic levels. Our specific
92 objectives were to determine whether (1) long-term exposure to ambient air pollution adversely
93 affects cognitive function in older population after adjusting for individual and neighborhood-
94 level confounders; (2) individuals living in disadvantaged neighborhoods are more susceptible to
95 the effect of air pollution on cognitive function.

96

97 **METHODS**

98 ***Participants and Study Design***

99 The present study used a cross-sectional assessment of baseline data from the Emory
100 Healthy Aging Study (EHAS), an on-going population-based cohort that was launched in 2015
101 (Goetz et al., 2019; Wingo et al., 2020). Briefly, the EHAS aims to better understand factors
102 contributing to healthy aging and identify markers that can predict common age-related
103 diseases. Participants are enrolled from the population who receive health services at Emory
104 Healthcare (headquartered in Atlanta, GA, USA), as well as their spouses, family members and
105 associated non-relatives. Information is collected through an online Health History
106 Questionnaire (HHQ), which contains items on demographics, general health, mental and
107 cognitive health, and participant contact information. In addition, all EHAS participants are
108 invited to complete remote cognitive assessments through the EHAS mobile application. All
109 participants complete an online consent process prior to enrollment, and the study was
110 approved by the Emory University Institutional Review Board.

111

112 ***Assessment of Cognitive Function***

113 The Cognitive Function Instrument (CFI) was used to assess cognitive status of participants
114 at baseline, with higher scores reflecting more perceived memory decline and cognitive decline
115 (Amariglio et al., 2015; C. Li et al., 2017). The CFI has 14 items that efficiently probe the full
116 realm of subjective cognitive concerns interfering with the daily activities of older adults.
117 Previous studies demonstrated that the CFI was a sensitive and reliable instrument in tracking
118 early decline in cognitive function in older adults. Total scores on the instrument range from 0 to
119 14, and response to each item was based on a 1-point scale (Yes = 1, No = 0, and Maybe =
120 0.5).

121

122 ***Assessment of Exposure***

123 A data fusion approach that combines Research Line (R-LINE) source model and
124 Community Multiscale Air Quality (CMAQ) model simulations, along with observations, was

125 used to estimate long-term exposure to ambient CO, NO_x, and PM_{2.5} at each participant's
126 geocoded residential address for a fixed 9-year period (2002-2010). The development of the
127 fusion model has been described elsewhere (Senthilkumar et al., 2019; Yu et al., 2018). Briefly,
128 R-LINE is a dispersion model for near surface emissions from line sources, such as roadways,
129 and was applied to produce a 250 m grid resolution field, and CMAQ is a chemical transport
130 model applied at a 12 km grid resolution to provide regional influences. The fusion model, which
131 takes advantage of both air quality models, generated daily concentration estimates from 2002
132 to 2010 of 1-hr CO, NO_x, and 24-hr average PM_{2.5} at a 250 m grid resolution across Metro
133 Atlanta. We spatially matched geocoded residential addresses to the closest centroid of grids,
134 and calculated the individual long-term exposure as the average concentration from 2002 to
135 2010 of the matched grids. We divided the averaged concentration by the corresponding
136 interquartile ranges (IQR) of air pollutants (CO, 328.4 ppb; NO_x, 28.0 ppb; PM_{2.5}, 1.3 µg/m³) to
137 enable comparison among pollutant-specific effect estimates from epidemiologic models.
138

139 ***Assessment of Neighborhood-level Socioeconomic Status***

140 We obtained estimates of census-tract-level SES from the American Community Survey
141 (ACS) 5-year summary via R package *tidycensus* 0.10.2 (Walker, Eberwein, & Herman, 2018).
142 Census tracts are fairly homogenous units and have acceptable data completeness, and area-
143 based socioeconomic measures at this geographic level were appropriate for U.S. public health
144 and research (Krieger et al., 2002). To achieve a good overall representation of neighborhood-
145 level SES, we generated composite measures based on 16 indicators corresponding to six
146 socioeconomic domains (poverty/income, racial composition, education, employment,
147 occupation, and housing properties), which have been widely used in previous studies of SES
148 and health (Messer et al., 2006). Poverty variables included percent households in poverty,
149 percent female headed households with dependent children, percent households earning under
150 \$35,000 per year, percent households on public assistance, and percent households with no
151 car. Racial composition was estimated using percent residents who were non-Hispanic blacks.
152 Education included percent males and females with less than a high school education.
153 Employment variables included unemployment rate and percent males no longer in work force.
154 Occupation variables included percent males and females not in management, business,
155 science, and arts occupations. Housing variables included percent rented, percent vacant,
156 percent crowded households, and median household value. We also defined an indicator for
157 residential stability by calculating the estimated percent of households moved in the current
158 residence before 2010 based on the ACS for sensitivity analysis. Geocoded residential

159 addresses were mapped to the census tract reference map published by U.S. Census Bureau.
160 As the enrollment year of participants ranged from 2015 to 2020 in our EHAS dataset, and the
161 most recent data release from the ACS is 2018, participants were matched to ACS datasets 2
162 years prior to their enrollment. We employed two dimension reduction approaches to leverage
163 the information captured by the 16 N-SES indicators: principal component analysis (PCA) and k-
164 means clustering analysis (KMCA). We used KMCA to generate clusters of census tracts with
165 similar characteristics, and used the Elbow method to determine the optimal number of clusters
166 (Figure S1B) (Kodinariya & Makwana, 2013). We used PCA to generate census-tract-level PCs
167 (Abdi & Williams, 2010), which captured an additional layer of differences in N-SES within these
168 clusters. We included principal components (PCs) that explained at least 80% of the total
169 variance in the models (Figure S1A). Briefly, we found that KMCA generated a larger
170 geographic unit of neighborhoods with relatively similar characteristics and the PCs captured an
171 additional layer of differences in N-SES within these clusters (Figure S2).

172

173 ***Assessment of Individual-level Characteristics***

174 We derived individual-level characteristics of participants from the EHAS online
175 questionnaire, and included age, sex, race, Hispanic ethnicity, household income, education
176 attainment, and disease history of mild cognitive impairment, Alzheimer's disease, or other
177 dementias. We classified racial identification into White, Black, and others that included
178 American Indian or Alaska Native, Asian, and Native Hawaiian or other Pacific Islander. We
179 note that the US Census includes a separate question on Hispanic ethnicity, participants who
180 self-reported as of Hispanic origin also select race from the categories above. We classified
181 continuous annual income into 3 categories: less than \$50,000, \$50,000-100,000, and more
182 than \$100,000. We defined individual education attainment as the highest degree participants
183 reported receiving and categorized values into the following categories: high school or less,
184 some college credit, associate degree, bachelor degree, master degree, and professional or
185 doctorate degree.

186

187 ***Statistical Analysis***

188 We summarized characteristics of the total study population and stratified by quartiles of CFI
189 to describe the potential patterns of covariates in dependence of CFI. We present the
190 distribution of long-term exposure concentrations of ambient air pollutants and the individual N-
191 SES characteristics for each N-SES cluster as defined by KMCA.

192

193 We tested the associations between air pollutants and CFI using multiple linear regression
194 models taking the natural log of CFI as the dependent variable due to the skewed distribution of
195 CFI values. Due to the potentially complex confounding structure (Figure S4), we used a
196 stepwise procedure to assess the association of air pollution and CFI, and then the impact of
197 confounding by N-SES on the association between air pollution and CFI. We added two
198 composite measures of N-SES into the models separately or together to assess the
199 confounding of N-SES at different geographic scales. The following single-pollutant models
200 were fitted using adjusted linear regression analyses:

201 Model 1: $\ln(CFI) = \beta_0 + \beta_1 pollutant + \beta_2 age + \beta_3 education + \epsilon$

202 Model 2: $\ln(CFI) = \beta_0 + \beta_1 pollutant + \beta_2 age + \beta_3 education + \beta_4 race$

203 Model 3: $\ln(CFI) = \beta_0 + \beta_1 pollutant + \beta_2 age + \beta_3 education + \beta_4 race + \sum_{j=5}^{11} \beta_j Cluster_{1-7} + \epsilon$

204 Model 4: $\ln(CFI) = \beta_0 + \beta_1 pollutant + \beta_2 age + \beta_3 education + \beta_4 race + \sum_{j=5}^7 \beta_j PC_{1-3} + \epsilon$

205 Model 5: $\ln(CFI) = \beta_0 + \beta_1 pollutant + \beta_2 age + \beta_3 education + \beta_4 race + \sum_{j=5}^7 \beta_j PC_{1-3} + \sum_{j=8}^{14} \beta_j Cluster_{1-7} + \epsilon$

206 where $\ln(CFI)$ refers to the natural log-transformed CFI [a constant (0.5) was added to handle
207 zero values prior to applying the log transformation] due to the skewed distribution of raw CFI
208 (Figure S3); *pollutant* and *age* were included as continuous variables; *education* was a
209 categorical variable with six levels (high school or less, some college credit, but no degree,
210 associate degree, bachelor's degree, master's degree, professional or doctorate degree);
211 $Cluster_{1-7}$ refers to the KMCA clusters derived from N-SES indicators; PC_{1-3} refers to the first
212 three principal components derived from N-SES, which explained at least 80% of the total
213 variance.

214
215 The model series (Model 1-5) evaluated variables anticipated to confound the association of air
216 pollution with cognitive function based on a conceptualized directed acyclic graph (DAG, Figure
217 S4). The minimal sufficient set of confounders identified by the DAG contained age, individual-
218 level SES, and N-SES. As many of our older study participants were likely retired, we used
219 educational attainment as a measure of individual-level SES instead of income. Individual race
220 was added in Models 2-5 to control for potential individual-SES confounding that may not be
221 captured by education alone (Figure S4). We further included N-SES PCs and clusters in
222 Models 3-5, to evaluate whether N-SES was a confounder for the association between air
223 pollutants and CFI in addition to individual-level SES. N-SES was represented by two composite
224 measures at different geographic levels in our study, and we assessed the existence of residual

225 confounding by N-SES by adding the two composite measures into the models individually
226 (Models 3 and 4) and simultaneously (Model 5).

227

228 To analyze potential effect modification by N-SES on the association between a single
229 pollutant and CFI, we added a product term of $Cluster_{1-7}$ and a *pollutant* to Model 5, as
230 showed below:

231 Model 6: $\ln(CFI) = \beta_0 + \beta_1 pollutant + \beta_2 age + \beta_3 education + \beta_4 race + \sum_{j=5}^7 \beta_j PC_{1-3} + \sum_{j=8}^{14} \beta_j Cluster_{1-7} +$
232 $\sum_{j=15}^{21} \beta_j pollutant \times Cluster_{1-7} + \epsilon$

233

234 We calculated the cluster-specific coefficients for air pollution by summing up the
235 coefficients of *pollutant* and the product term except for the referent cluster in which case we
236 used the coefficient of *pollutant* itself. To investigate the robustness of the results of the
237 interaction analysis to the length of time participants may have been living at their current
238 residence (unknown in our current cohort data), we performed a sensitivity analysis in which we
239 included a neighborhood-level indicator of residential stability as an additional covariate in the
240 model.

241

242 We performed the spatial join of geocoded residential address, 250 m grid cells of air
243 pollution data, and census tract SES data using ArcGIS Pro version 2.5.2 (Esri, Redlands, CA,
244 USA), and statistical analyses were performed using R version 4.0.3 (R Core Team). Statistical
245 significance was set at p -value < 0.05.

246

247 **RESULTS**

248 ***Study Characteristics***

249 Until the first quarter of 2020, the EHAS cohort had enrolled 20,523 participants from all
250 over the USA, with 14,404 participants living in Metro Atlanta at enrollment. The current study
251 included all participants over 50 years old at enrollment living in Metro Atlanta, resulting a final
252 sample size of 12,058 (Table 1). The average age of the study participants was 64 years. About
253 70% of the participants were female, and this proportion was similar in the original cohort
254 without any exclusion (Goetz et al., 2019). Only about 10% of participants were African
255 Americans (AA), and most of participants had relatively high socioeconomic status based on
256 their household income and educational attainment. For example, almost 50% of the study
257 population had an annual household income more than \$100,000, given the median household
258 income in Atlanta was \$59,948. Over 70% of the study population had a bachelor's degree or

259 higher, while about 50% for the general population. The majority of participants were free of mild
260 cognitive impairment (MCI), Alzheimer's disease (AD), or other dementias. The mean age was
261 marginally higher in the third ($Q_2 - Q_3$ CFI) and fourth quartiles of the CFI distribution ($Q_3 - \text{Max}$
262 CFI). The first quartile had the highest proportion of White, while the fourth quartile had the
263 highest proportion of racial minorities. In addition, participants with a higher CFI were more likely
264 to have a lower income and education (Figure S5).

265
266 Figure 1 summarizes the information on N-SES. Based on the 16 N-SES indicators, KMCA
267 identified seven clusters (Figure 1A). We determined the optimal number of clusters via total
268 intra-cluster variation calculated by the Elbow method (Figure S1B). Clusters 3, 4, 6, and 7 were
269 the most distinguishable based on extreme values in at least one socioeconomic characteristic
270 or a specific spatial pattern (Figure 1A & 1C). Cluster 6 comprised primarily central areas of
271 Atlanta with the highest proportion of non-Hispanic Black population. Cluster 7 covered a
272 smaller area mainly around Buford Highway northeast of the city which is home to a
273 concentration of Hispanic and immigrant communities. The Clusters 6 & 7 also represent some
274 of the lowest N-SES neighborhoods in Metro Atlanta as indicated by unemployment rate,
275 percent individuals in poverty, percent households on public assistance, percent individuals with
276 education less than the high school and percent crowded households. About half of the
277 residents in both clusters had an annual household income less than \$35,000, which is less
278 than 1.5 times of the 2021 federal poverty line for families of four (USDHHS, 2020). In contrast,
279 Cluster 4 represented the highest N-SES. Cluster 3 consisted of census tracts along major
280 highways in northern Atlanta. As for ambient air pollution, participants living in clusters with a
281 lower level of N-SES (C6 and C7) were generally exposed to higher concentrations of air
282 pollution at their residences; Clusters 6 and 7 had the second and third highest median air
283 pollution concentrations. For those living in Cluster 3, residential air pollution exposures were
284 also high due to the proximity to highways.

285

286 ***Air pollution, N-SES and cognitive functioning***

287 When assessing associations of air pollution and CFI, we observed that higher exposure to
288 ambient $\text{PM}_{2.5}$ was associated with better cognitive function when only adjusting for age,
289 individual-level education, and race [e.g., -2.2% (95% CI, -3.9, -0.4%) CFI per $1.3 \mu\text{g}/\text{m}^3$
290 increase in $\text{PM}_{2.5}$] (Figure 2A, Models 1 and 2). Adding the N-SES clusters and PCs as
291 confounding factors attenuated the association towards the null [Model 3: -1.5% (-3.5, 0.58%);
292 Model 4: 0.3% (-2.1, 2.6%); Model 5: 0.4% (-1.9, 2.8%)]. As such, ignoring N-SES as a

293 confounding factor resulted in biased effect estimates and an erroneous significantly inverse
294 association between PM_{2.5} and CFI.

295
296 In addition, we found effect modification by N-SES clusters for the association between air
297 pollution and cognitive functioning, with statistically significant interaction terms for all three air
298 pollutants (CO, $p = 0.0001$; NO_x, $p = 0.0001$; PM_{2.5}, $p < 0.0001$; Figure 2B and Table S2). The
299 strongest association between air pollution and cognitive functioning was found in participants
300 assigned to N-SES Cluster 7, the cluster characterized by a high proportion of Hispanic and
301 immigrant communities and high air pollution concentrations. Among participants living in
302 Cluster 7, IQR increases in CO, NO_x, and PM_{2.5} were associated with 13.4% (95% CI, 1.3,
303 26.9%), 13.4% (0.3, 28.2%), and 17.6% (2.8, 34.5%) increases of CFI, respectively. Among
304 participants living in Cluster 6, comprising primarily central areas of Atlanta with the highest
305 proportion of non-Hispanic Black population, IQR increases in CO, NO_x, and PM_{2.5} were
306 associated with 5.4% (95% CI, -0.2, 11.4%), 4.9% (-0.4, 10.4%), and 9.8% (2.2, 18.0%)
307 increases of CFI, respectively. Among participants living in Cluster 4, the cluster with the highest
308 N-SES, IQR increases in CO, NO_x, and PM_{2.5} were associated with 6.3% (95% CI, 2.1, 10.8%),
309 7.2% (95% CI, 2.9, 11.7%), and 7.3% (95% CI, 2.2, 12.6%) increases of CFI, respectively. We
310 did not observe significant associations of air pollution and CFI for Clusters 3 or 5. Cluster 2 was
311 the only cluster in which we found an inverse association between air pollution and cognitive
312 functioning. Neighborhoods assigned to Cluster 2 were characterized by the second highest
313 proportion of non-Hispanic Black population and intermediate N-SES.

314
315 As population mobility may impact the exposure assessment, we used the neighborhood-
316 level indicator of residential stability as a surrogate for the length of time participants may have
317 been living at their current residence (unknown in our current cohort data) and investigated the
318 robustness of the results of the interaction analysis to it. The results of sensitivity analyses are
319 summarized in Figure S6. All associations and effect modifications were robust to additional
320 adjustment for residential stability.

321 **DISCUSSION**

322 In the present study of 14,404 individuals 50 years and older from Metro Atlanta, we
323 observed a significant effect modification by N-SES for the association between air pollution and
324 cognitive function, and significant associations between air pollution exposure and cognitive
325 decline among participants living in the most socioeconomically disadvantaged neighborhoods.
326 In addition, our study demonstrates the importance of including N-SES as confounding variable

327 when analyzing associations between air pollution and cognitive function. Not adjusting for N-
328 SES resulted in a significant negative association between the long-term exposure to air
329 pollution and CFI scores, which indicated a likely “erroneous” protective effect of air pollution,
330 despite adjusting for individual age, education attainment, and race. These findings show the
331 importance of including neighborhood characteristics as confounders and effect modifiers when
332 analyzing associations between air pollution and cognitive function.

333
334 A wealth of epidemiological studies has shown an association of long-term exposure to
335 ambient PM_{2.5} with the risk of dementia (Fu, Guo, Cheung, & Yung, 2019). Although the use of
336 various cognitive assessment tools and exposure metrics have made it hard to compare the
337 effect estimates across different studies, a higher exposure to PM_{2.5} has been consistently
338 associated with worse global cognition independent of individual demographics in most previous
339 studies (J. Ailshire et al., 2017; J. A. Ailshire & Crimmins, 2014; Lin et al., 2017; Shin, Han, &
340 Choi, 2019; Tallon, Manjourides, Pun, Salhi, & Suh, 2017). In addition, including area-level
341 socioeconomic features, such as the Townsend score in the UK, often attenuated observed
342 associations towards the null (Cullen et al., 2018; Tallon et al., 2017). In the current study, we
343 observed a significant protective effect of PM_{2.5} on cognitive function when adjusting for
344 individual demographics only, whereas additionally adjusting for N-SES composite measures
345 attenuated the effect estimates towards the null. This suggests that the neighborhood
346 characteristics were potential confounders for the associations between air pollution and
347 cognitive functioning and might lie on the biasing path that could not be blocked by controlling
348 for only individual characteristics. The potential effect of neighborhood-level characteristics has
349 been well documented on cognitive function, which might be more consequential to the elderly,
350 as they spend longer time in neighborhoods due to the decreased mobility and rely more on
351 community resources than younger populations (Glass & Balfour, 2003). A number of potential
352 pathways by which lower N-SES neighborhoods impacts cognitive function have been
353 proposed, including access to community resources (e.g., health service and facilities for
354 physical activity) (Shih et al., 2011), social engagement and networking (Aneshensel, Ko,
355 Chodosh, & Wight, 2011), cultural perception of illness and mental health (Wee et al., 2012),
356 and exposure to environmental stressors.

357
358 Relatively fewer studies have investigated the potential effects of CO and NO_x on adult
359 cognitive function, and the existing evidence remains controversial. Cullen et al. reported a
360 significant association of residential exposure to ambient NO_x with better reaction time, a

361 subdomain of cognition, with adjustment for individual characteristics, Townsend score, and
362 population density, whereas the directions of associations with other subdomains, such as
363 reasoning and numeric memory, were opposite but insignificant (Cullen et al., 2018). A study
364 conducted in German women reported that NO_x was associated with lower cognitive
365 performance as indicated by CERAD (Consortium to Establish a Registry for Alzheimer's
366 Disease) testing but not the Mini Mental State Examination (MMSE) (Schikowski et al., 2015),
367 and another population-based study conducted in Germany found a significant association of
368 exposure to NO_x with worse global cognition (Tzivian et al., 2017). Shin et al. observed a
369 protective effect estimate of ambient CO on MMSE (Shin et al., 2019), and Li et al. did not
370 observe a significant association between CO and the risk of vascular dementia among the
371 Asian populations (C.-Y. Li, Li, Martini, & Hou, 2019). Although we observed a similar pattern for
372 CO and NO_x in our study, the modeled components of air pollution were themselves highly
373 correlated (PM_{2.5} vs. CO: Pearson's $r = 0.95$; PM_{2.5} vs. NO_x: $r = 0.94$). Therefore, we could not
374 disentangle which of the pollutants were driving the observed association. Future studies are
375 needed to disentangle the effects of highly correlated pollutants and understand their joint
376 effects on cognition.

377
378 Our study showed that the associations of ambient CO, NO_x, and PM_{2.5} with cognitive
379 function were significantly modified by N-SES. The strongest associations between air pollution
380 and cognitive function were found among participants assigned to three N-SES clusters
381 (Clusters 4, 6, and 7). Participants living in disadvantaged neighborhoods (i.e., Cluster 6 and 7)
382 were among the most vulnerable to the effects of air pollution on cognitive function, which is
383 consistent with a previous study (J. Ailshire et al., 2017). Ailshire et al. found that the effect
384 measure of PM_{2.5} associated with cognitive function was stronger among participants who were
385 exposed to stressful neighborhood physical conditions (J. Ailshire et al., 2017). Also, they still
386 observed a positive association between PM_{2.5} and cognitive function decline among
387 participants with low neighborhood stress, which was consistent with our finding for Cluster 4
388 that had the highest N-SES among all clusters. Moreover, as Cluster 4 had the fewest vacant or
389 rented households, the long-term exposure estimates might suffer less from exposure
390 misclassification bias for the participants living in this cluster. We observed a significant
391 protective effect of air pollution exposures on CFI for Cluster 2, which was opposite to our
392 hypothesis and previous literature. To the best of our knowledge, only one previous study on air
393 pollution and cognitive function has examined effect modification by N-SES. Wight et al.
394 proposed that late-life cognition was a result of the interaction between individual characteristics

395 and the environment given an interplay observed for individual and area-level education
396 attainment (Wight et al., 2006). In addition, Gee and Payne-Sturges asserted that the
397 community-level vulnerability resulting from low N-SES might translate to individual vulnerability
398 to air pollution (Gee & Payne-Sturges, 2004). Our findings provide additional evidence for the
399 interaction between N-SES and PM_{2.5} on cognitive function among older populations.

400
401 Our study has several limitations, which have to be considered when interpreting the results.
402 First, the study was conducted based on an ongoing cohort study but only used the baseline
403 data to perform a cross-sectional analysis because follow-up visits in this cohort are still on-
404 going. This prevented us from establishing the temporal relationship between air pollution and
405 cognitive function. Second, we assigned exposures as the 9-year average concentration for a
406 fixed time period prior to the launch of the cohort in order to focus our analyses only on the
407 variation in long-term spatial exposure; since participants were enrolled over time (between
408 2015-2019), the fixed exposure time period may contribute to some exposure measurement
409 error by ignoring temporal variation. Third, since the long-term exposure was estimated at
410 participants' residences, and the information on residential addresses was collected at
411 enrollment, information error for our exposure assessment might exist. To assess the potential
412 impact of residential mobility, we performed a sensitivity analysis adjusting for neighborhood-
413 level indicators of residence stability; this analysis demonstrated that our observed results were
414 robust. Fourth, urban neighborhoods might experience gentrification that can change N-SES
415 over time. While we matched the annual ACS data to participants based on their enrollment
416 time, the snapshot of N-SES assigned to participants might not have fully represented the
417 environment where participants lived. Finally, the study population might be not representative
418 of the general Atlanta population in terms of gender (much higher proportion of females, as
419 females are generally more likely to participate in scientific studies (Galea & Tracy, 2007)) and
420 race (percent AA participants was much lower than the general population in Atlanta, GA, USA
421 (U.S. Census Bureau, 2019)).

422
423 The most important strength of the current study is that, to our knowledge, it is the first study
424 using two N-SES composite measures to adjust for confounding and effect modification by N-
425 SES for the association between air pollution and cognitive function. Sixteen N-SES indicators
426 were employed to create the N-SES composite measures, which guaranteed a good
427 representation and identification of clusters of census tracts that shared a similar social,
428 economic, and cultural context.

429

430 **CONCLUSIONS**

431 This study emphasizes the necessity of considering N-SES as confounder and effect
432 modifier when investigating the effect of ambient air pollution on cognitive function among the
433 elderly. We demonstrated that N-SES and the long-term exposure to ambient air pollution could
434 have a joint impact on cognitive function, and participants living in disadvantaged
435 neighborhoods might be more susceptible to ambient air pollution than those living in other
436 areas. This study identifies potentially vulnerable populations, those exposed to both relative
437 higher concentrations of air pollution and disadvantaged social conditions, who may be at an
438 increased risk from air pollution exposure on cognitive aging. Disproportionate exposure to air
439 pollution and lower N-SES may play a critical role in leading to health disparities among
440 marginalized populations. The investigation on the interaction of neighborhood features and
441 environmental pollutants may offer important implications for the identification of health
442 disparities in the context of environmental injustice.

443

444 **References**

- 445 Abdi, H., & Williams, L. J. (2010). Principal component analysis. *Wiley interdisciplinary reviews:*
446 *computational statistics*, 2(4), 433-459.
- 447 Ailshire, J., Karraker, A., & Clarke, P. (2017). Neighborhood social stressors, fine particulate
448 matter air pollution, and cognitive function among older U.S. adults. *Soc Sci Med*, 172,
449 56-63. doi:10.1016/j.socscimed.2016.11.019
- 450 Ailshire, J. A., & Crimmins, E. M. (2014). Fine particulate matter air pollution and cognitive
451 function among older US adults. *American journal of epidemiology*, 180(4), 359-366.
- 452 Amariglio, R. E., Donohue, M. C., Marshall, G. A., Rentz, D. M., Salmon, D. P., Ferris, S. H., . . .
453 Sperling, R. A. (2015). Tracking early decline in cognitive function in older individuals at
454 risk for Alzheimer disease dementia: the Alzheimer's Disease Cooperative Study
455 Cognitive Function Instrument. *JAMA neurology*, 72(4), 446-454.
- 456 Aneshensel, C. S., Ko, M. J., Chodosh, J., & Wight, R. G. (2011). The urban neighborhood and
457 cognitive functioning in late middle age. *J Health Soc Behav*, 52(2), 163-179.
458 doi:10.1177/0022146510393974
- 459 Basta, N. E., Matthews, F. E., Chatfield, M. D., Brayne, C., & Mrc, C. (2008). Community-level
460 socio-economic status and cognitive and functional impairment in the older population.
461 *Eur J Public Health*, 18(1), 48-54. doi:10.1093/eurpub/ckm076
- 462 Block, M. L., & Calderon-Garciduenas, L. (2009). Air pollution: mechanisms of
463 neuroinflammation and CNS disease. *Trends Neurosci*, 32(9), 506-516.
464 doi:10.1016/j.tins.2009.05.009
- 465 Bowe, B., Xie, Y., Yan, Y., & Al-Aly, Z. (2019). Burden of Cause-Specific Mortality Associated
466 With PM2.5 Air Pollution in the United States. *JAMA Netw Open*, 2(11), e1915834.
467 doi:10.1001/jamanetworkopen.2019.15834
- 468 Cullen, B., Newby, D., Lee, D., Lyall, D. M., Nevado-Holgado, A. J., Evans, J. J., . . . Cavanagh,
469 J. (2018). Cross-sectional and longitudinal analyses of outdoor air pollution exposure
470 and cognitive function in UK Biobank. *Sci Rep*, 8(1), 12089. doi:10.1038/s41598-018-
471 30568-6
- 472 Delgado-Saborit, J. M., Guercio, V., Gowers, A. M., Shaddick, G., Fox, N. C., & Love, S. (2021).
473 A critical review of the epidemiological evidence of effects of air pollution on dementia,
474 cognitive function and cognitive decline in adult population. *Sci Total Environ*, 757,
475 143734. doi:10.1016/j.scitotenv.2020.143734
- 476 Espino, D. V., Lichtenstein, M. J., Palmer, R. F., & Hazuda, H. P. (2001). Ethnic differences in
477 mini-mental state examination (MMSE) scores: where you live makes a difference. *J Am*
478 *Geriatr Soc*, 49(5), 538-548. doi:10.1046/j.1532-5415.2001.49111.x
- 479 Fu, P., Guo, X., Cheung, F. M. H., & Yung, K. K. L. (2019). The association between PM2. 5
480 exposure and neurological disorders: a systematic review and meta-analysis. *Science of*
481 *the Total Environment*, 655, 1240-1248.
- 482 Galea, S., & Tracy, M. (2007). Participation rates in epidemiologic studies. *Ann Epidemiol*,
483 17(9), 643-653. doi:10.1016/j.annepidem.2007.03.013
- 484 Gee, G. C., & Payne-Sturges, D. C. (2004). Environmental health disparities: a framework
485 integrating psychosocial and environmental concepts. *Environ Health Perspect*, 112(17),
486 1645-1653. doi:10.1289/ehp.7074
- 487 Glass, T. A., & Balfour, J. L. (2003). Neighborhoods, aging, and functional limitations.
488 *Neighborhoods and health*, 1, 303-334.
- 489 Goetz, M. E., Hanfelt, J. J., John, S. E., Bergquist, S. H., Loring, D. W., Quyyumi, A., . . . Lah, J.
490 J. (2019). Rationale and Design of the Emory Healthy Aging and Emory Healthy Brain
491 Studies. *Neuroepidemiology*, 53(3-4), 187-200. doi:10.1159/000501856

- 492 Guo, Y., Chan, C. H., Chang, Q., Liu, T., & Yip, P. S. F. (2019). Neighborhood environment and
493 cognitive function in older adults: A multilevel analysis in Hong Kong. *Health Place*, *58*,
494 102146. doi:10.1016/j.healthplace.2019.102146
- 495 Hicken, M. T., Adar, S. D., Hajat, A., Kershaw, K. N., Do, D. P., Barr, R. G., . . . Diez Roux, A. V.
496 (2016). Air Pollution, Cardiovascular Outcomes, and Social Disadvantage: The Multi-
497 ethnic Study of Atherosclerosis. *Epidemiology*, *27*(1), 42-50.
498 doi:10.1097/EDE.0000000000000367
- 499 Kodinariya, T. M., & Makwana, P. R. (2013). Review on determining number of Cluster in K-
500 Means Clustering. *International Journal*, *1*(6), 90-95.
- 501 Krieger, N., Chen, J. T., Waterman, P. D., Soobader, M.-J., Subramanian, S., & Carson, R. J. A.
502 j. o. e. (2002). Geocoding and monitoring of US socioeconomic inequalities in mortality
503 and cancer incidence: does the choice of area-based measure and geographic level
504 matter? the Public Health Disparities Geocoding Project. *156*(5), 471-482.
- 505 Lang, I. A., Llewellyn, D. J., Langa, K. M., Wallace, R. B., Huppert, F. A., & Melzer, D. (2008).
506 Neighborhood deprivation, individual socioeconomic status, and cognitive function in
507 older people: analyses from the English Longitudinal Study of Ageing. *J Am Geriatr Soc*,
508 *56*(2), 191-198. doi:10.1111/j.1532-5415.2007.01557.x
- 509 Li, C.-Y., Li, C.-H., Martini, S., & Hou, W.-H. (2019). Association between air pollution and risk of
510 vascular dementia: A multipollutant analysis in Taiwan. *Environment international*, *133*,
511 105233.
- 512 Li, C., Neugroschl, J., Luo, X., Zhu, C., Aisen, P., Ferris, S., & Sano, M. (2017). The Utility of the
513 Cognitive Function Instrument (CFI) to Detect Cognitive Decline in Non-Demented Older
514 Adults. *J Alzheimers Dis*, *60*(2), 427-437. doi:10.3233/JAD-161294
- 515 Lin, H., Guo, Y., Zheng, Y., Zhao, X., Cao, Z., Rigdon, S. E., . . . Wu, F. (2017). Exposure to
516 ambient PM_{2.5} associated with overall and domain-specific disability among adults in six
517 low- and middle-income countries. *Environ Int*, *104*, 69-75.
518 doi:10.1016/j.envint.2017.04.004
- 519 Maantay, J. (2002). Mapping environmental injustices: pitfalls and potential of geographic
520 information systems in assessing environmental health and equity. *Environ Health*
521 *Perspect*, *110 Suppl 2*, 161-171. doi:10.1289/ehp.02110s2161
- 522 Messer, L. C., Laraia, B. A., Kaufman, J. S., Eyster, J., Holzman, C., Culhane, J., . . . O'Campo,
523 P. (2006). The development of a standardized neighborhood deprivation index. *J Urban*
524 *Health*, *83*(6), 1041-1062. doi:10.1007/s11524-006-9094-x
- 525 Ou, C. Q., Hedley, A. J., Chung, R. Y., Thach, T. Q., Chau, Y. K., Chan, K. P., . . . Lam, T. H.
526 (2008). Socioeconomic disparities in air pollution-associated mortality. *Environ Res*,
527 *107*(2), 237-244. doi:10.1016/j.envres.2008.02.002
- 528 Schikowski, T., Vossoughi, M., Vierkotter, A., Schulte, T., Teichert, T., Sugiri, D., . . . Luckhaus,
529 C. (2015). Association of air pollution with cognitive functions and its modification by
530 APOE gene variants in elderly women. *Environ Res*, *142*, 10-16.
531 doi:10.1016/j.envres.2015.06.009
- 532 Senthilkumar, N., Gilfether, M., Metcalf, F., Russell, A. G., Mulholland, J. A., & Chang, H. H.
533 (2019). Application of a Fusion Method for Gas and Particle Air Pollutants between
534 Observational Data and Chemical Transport Model Simulations Over the Contiguous
535 United States for 2005-2014. *Int J Environ Res Public Health*, *16*(18).
536 doi:10.3390/ijerph16183314
- 537 Sheffield, K. M., & Peek, M. K. (2009). Neighborhood context and cognitive decline in older
538 Mexican Americans: results from the Hispanic Established Populations for Epidemiologic
539 Studies of the Elderly. *Am J Epidemiol*, *169*(9), 1092-1101. doi:10.1093/aje/kwp005
- 540 Shih, R. A., Ghosh-Dastidar, B., Margolis, K. L., Slaughter, M. E., Jewell, A., Bird, C. E., . . .
541 Espeland, M. A. (2011). Neighborhood socioeconomic status and cognitive function in
542 women. *Am J Public Health*, *101*(9), 1721-1728. doi:10.2105/AJPH.2011.300169

- 543 Shin, J., Han, S. H., & Choi, J. (2019). Exposure to Ambient Air Pollution and Cognitive
544 Impairment in Community-Dwelling Older Adults: The Korean Frailty and Aging Cohort
545 Study. *Int J Environ Res Public Health*, 16(19). doi:10.3390/ijerph16193767
- 546 Tallon, L. A., Manjourides, J., Pun, V. C., Salhi, C., & Suh, H. (2017). Cognitive impacts of
547 ambient air pollution in the National Social Health and Aging Project (NSHAP) cohort.
548 *Environ Int*, 104, 102-109. doi:10.1016/j.envint.2017.03.019
- 549 Tzivian, L., Jokisch, M., Winkler, A., Weimar, C., Hennig, F., Sugiri, D., . . . Heinz Nixdorf Recall
550 Study, G. (2017). Associations of long-term exposure to air pollution and road traffic
551 noise with cognitive function-An analysis of effect measure modification. *Environ Int*,
552 103, 30-38. doi:10.1016/j.envint.2017.03.018
- 553 U.S. Census Bureau. (2019). 2019: ACS 1-Year Estimates Detailed Tables. Retrieved from
554 <https://data.census.gov/cedsci/table?q=atlanta%20race&tid=ACSDT1Y2019.B02001&hidePreview=false>
555
- 556 US Department of Health and Human Services. (2020). 2021 Poverty guidelines for the 48
557 contiguous States and the District of Columbia. Retrieved from
558 <https://dch.georgia.gov/federal-poverty-guidelines-0>
- 559 Walker, K., Eberwein, K., & Herman, M. J. (2018). Tidycensus: Load us census boundary and
560 attribute data as 'tidyverse' and 'sf'-ready data frames. *R package version 0.10.2*.
- 561 Wee, L. E., Yeo, W. X., Yang, G. R., Hannan, N., Lim, K., Chua, C., . . . Shen, H. M. (2012).
562 Individual and Area Level Socioeconomic Status and Its Association with Cognitive
563 Function and Cognitive Impairment (Low MMSE) among Community-Dwelling Elderly in
564 Singapore. *Dement Geriatr Cogn Dis Extra*, 2(1), 529-542. doi:10.1159/000345036
- 565 Wight, R. G., Aneshensel, C. S., Miller-Martinez, D., Botticello, A. L., Cummings, J. R.,
566 Karlamangla, A. S., & Seeman, T. E. (2006). Urban neighborhood context, educational
567 attainment, and cognitive function among older adults. *Am J Epidemiol*, 163(12), 1071-
568 1078. doi:10.1093/aje/kwj176
- 569 Wingo, A. P., Wingo, T. S., Fan, W., Bergquist, S., Alonso, A., Marcus, M., . . . Lah, J. J. (2020).
570 Purpose in life is a robust protective factor of reported cognitive decline among late
571 middle-aged adults: The Emory Healthy Aging Study. *J Affect Disord*, 263, 310-317.
572 doi:10.1016/j.jad.2019.11.124
- 573 Yu, H. F., Russell, A., Mulholland, J., Odman, T., Hu, Y. T., Chang, H. H., & Kumar, N. (2018).
574 Cross-comparison and evaluation of air pollution field estimation methods. *Atmospheric
575 Environment*, 179, 49-60. doi:10.1016/j.atmosenv.2018.01.045

576

577

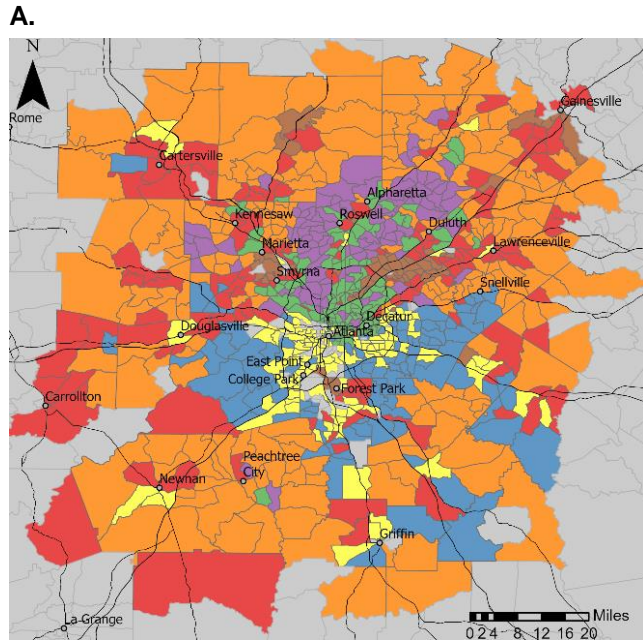
578 **Table 1.** Study characteristics stratified by quartiles (Q₁ to Q₃) of cognitive function (cognitive
579 function instrument, CFI).

Characteristics	Total (N = 12,058)	Min - Q ₁ CFI ^a (N = 3,280)	Q ₁ - Q ₂ CFI (N = 2,879)	Q ₂ - Q ₃ CFI (N = 3,089)	Q ₃ - Max CFI (N = 2,810)
Age					
Mean (SD)	65.0 (8.40)	64.4 (8.15)	64.8 (8.15)	65.6 (8.33)	65.0 (8.96)
Gender					
Female	8,490 (70.5%)	2201 (67.2%)	2055 (71.5%)	2219 (71.9%)	2015 (71.8%)
Male	3,553 (29.5%)	1072 (32.8%)	819 (28.5%)	869 (28.1%)	793 (28.2%)
Missing	15	7	5	1	2
Race					
White/Caucasian	9,778 (81.9%)	2741 (84.3%)	2372 (83.1%)	2534 (82.9%)	2131 (76.7%)
Black/African American	1,587 (13.3%)	382 (11.8%)	356 (12.5%)	394 (12.9%)	455 (16.4%)
Others ^b	573 (4.8%)	127 (3.9%)	126 (4.4%)	129 (4.2%)	191 (6.9%)
Missing	120	30	25	32	33
Hispanic					
No	11624 (96.6%)	3175 (96.9%)	2785 (96.9%)	2985 (96.8%)	2679 (95.5%)
Yes	414 (3.4%)	100 (3.1%)	89 (3.1%)	98 (3.2%)	127 (4.5%)
Missing	20	5	5	6	4
Household income (\$)					
USD < 50,000	2,075 (18.1%)	407 (13.1%)	414 (15.1%)	523 (17.7%)	731 (27.1%)
USD 50,000-100,000	3,859 (33.6%)	936 (30.2%)	885 (32.3%)	1056 (35.8%)	982 (36.4%)
USD >= 100,000	5,545 (48.3%)	1753 (56.6%)	1437 (52.5%)	1368 (46.4%)	987 (36.6%)
Missing	579	184	143	142	110
Highest education					
High school or less	482 (4.0%)	98 (3.0%)	103 (3.6%)	114 (3.7%)	167 (6.0%)
Some college credit, but no degree	1,885 (15.7%)	450 (13.7%)	419 (14.6%)	471 (15.3%)	545 (19.4%)
Associate degree	877 (7.3%)	198 (6.0%)	188 (6.5%)	204 (6.6%)	287 (10.2%)
Bachelor degree	4,087 (33.9%)	1081 (33.0%)	1003 (34.9%)	1061 (34.4%)	942 (33.6%)
Master degree	3,097 (25.7%)	895 (27.3%)	778 (27.1%)	822 (26.7%)	602 (21.5%)
Professional or doctorate degree	1,615 (13.4%)	556 (17.0%)	385 (13.4%)	411 (13.3%)	263 (9.4%)
Missing	15	2	3	6	4
CFI					
Median (IQR)	1.5 (2.5)	0 (0.5)	1 (0.5)	2.5 (1)	5 (2.5)
Mild cognitive impairment					
No	11,144 (97.1%)	3137 (99.3%)	2736 (99.1%)	2879 (98.0%)	2392 (91.4%)
Yes	333 (2.9%)	23 (0.7%)	26 (0.9%)	60 (2.0%)	224 (8.6%)
Missing	581	120	117	150	194
Alzheimer's disease					
No	11,431 (99.3%)	3145 (99.5%)	2755 (99.5%)	2941 (99.5%)	2590 (98.7%)
Yes	79 (0.7%)	17 (0.5%)	14 (0.5%)	15 (0.5%)	33 (1.3%)
Missing	548	118	110	133	187
Other dementia					
No	11,366 (99.3%)	3139 (99.6%)	2742 (99.5%)	2917 (99.6%)	2568 (98.5%)
Yes	77 (0.7%)	14 (0.4%)	13 (0.5%)	12 (0.4%)	38 (1.5%)
Missing	615	127	124	160	204

580 ^a The study population was stratified by the quartiles of CFI (Q₁, 0.5; Q₂, 1.5; Q₃, 3.0). Higher
581 values of CFI correspond to worse cognitive functioning.

582 ^b Others included Asian, American Indian, Alaska Native, Native Hawaiian and other pacific
583 islander, and multi-race.

584
585
586
587
588
589
590
591
592
593
594
595
596
597



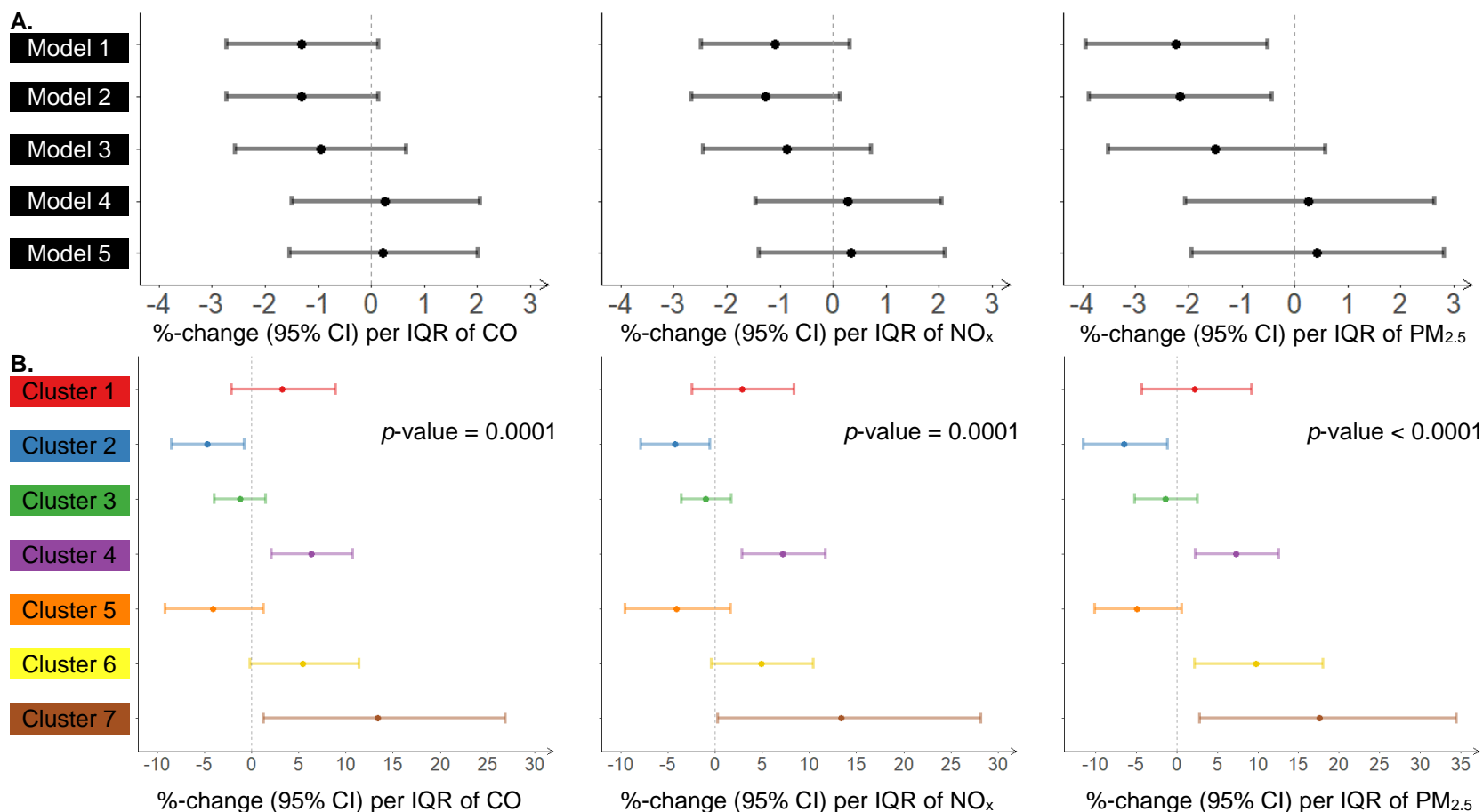
B.

		Total	C1	C2	C3	C4	C5	C6	C7
N		12058	1125	1201	2412	3562	2957	469	320
CO (ppb)	Min	253.2	272.6	266.8	320.8	294.6	253.2	338.0	283.7
	Median	668.8	643.7	576.2	875.8	675.5	495.4	696.5	806.2
	Max	4741.7	3332.0	4741.7	3683.9	2439.3	2544.1	3549.4	1933.0
	IQR	328.4	315.8	218.5	362.6	278.3	242.4	288.7	227.3
NO _x (ppb)	Min	7.2	7.2	11.9	15.8	14.8	9.8	9.1	14.1
	Median	47.0	45.6	43.5	65.7	47.0	33.2	59.6	57.0
	Max	422.3	23.8	20.3	27.2	24.0	19.5	28.1	17.1
	IQR	28.0	7.2	11.9	15.8	14.8	9.8	9.1	14.1
PM _{2.5} (µg/m ³)	Min	12.1	12.3	12.4	12.9	12.9	12.1	12.4	12.7
	Median	14.5	14.5	14.1	15.4	14.7	13.8	14.8	15.1
	Max	27.4	21.6	25.4	27.4	20.6	19.2	25.5	18.9
	IQR	1.3	1.2	0.7	1.0	1.0	0.8	1.0	0.9

C.

	Percentage (%)																
	0															100	
		% education < high school	Unemployment rate	% males not in labor force	% vacant HH	% rented HH	% crowded HH	% males not in management, etc*	% females not in management, etc*	% individuals in poverty	% female headed HH	% HH < \$35,000 annual income	% HH on public assistance	% HH without vehicles	% Non-Hispanic Black	% Hispanic	Median HH values (\$)
Cluster 1	14.3	8.39	23.4	9.08	49.6	3.76	70.7	60.8	13.7	9.72	34.1	1.7	8.6	25.4	18	159,000	
Cluster 2	9.03	12.1	29.9	11.3	29.6	1.26	70.9	58.3	11.7	11	30	1.6	6.5	75.5	3.96	129,000	
Cluster 3	3.47	5.01	21	11.2	49.2	0.934	37	34.1	5.6	3.99	25.3	0.7	15	14.4	5.05	312,000	
Cluster 4	2.24	4.1	23.7	5.19	11.2	0	34.5	35.1	2.4	2.79	12.1	0.4	2.6	5.74	3.97	382,000	
Cluster 5	7.06	6.58	25.7	5.89	16.8	0.748	59.2	53.2	5.7	5.57	19	1	2.3	15.4	7.48	196,000	
Cluster 6	15.7	16.8	32.9	17	60.7	2.79	78.5	68.4	27.6	14.2	52.3	3.6	32.8	80.1	4.01	94,600	
Cluster 7	31.8	7.63	17.3	11.4	62.7	8.44	82.4	72	25.3	8.73	42.9	1.5	13.5	17.8	45.5	138,000	

598 **Figure 1.** Statistics of Air pollution concentrations and neighborhood socioeconomic indicators for the clusters of census tracts. **A.**
599 Seven clusters generated by k-means cluster analysis in Metro Atlanta. Highways were denoted by solid black lines, and the gray
600 lines depicted the boundaries of census tracts. **B.** The distribution of individual exposures to ambient air pollution for each cluster. **C.**
601 Neighborhood socioeconomic status (N-SES) of each cluster described by the median of 16 N-SES indicators at census-tract level.
602 Abbreviations: N, number of participants; C1-7, Cluster 1-7; CO, carbon monoxide; NO_x, nitrogen oxides; PM_{2.5}, fine particulate
603 matters; IQR, interquartile range; HH, households; management, etc. included management, business, science, and arts
604 occupations.
605



606

607 **Figure 2.** Associations between 9-year averaged exposure to ambient air pollution and Cognitive Function Instrument (CFI). Percent
 608 change (%) of CFI associated with an interquartile range (IQR) increase (CO, IQR=328.4ppb; NO_x, IQR=28.0ppb; PM_{2.5},
 609 IQR=1.3μg/m³) in the exposure estimate and corresponding 95% confidence intervals are presented. **A.** Confounding by N-SES.
 610 Model 1: adjusted for age and individual educational attainment; Model 2: adjusted for age, individual educational attainment, and
 611 race; Model 3: adjusted for covariates in Model 2 and N-SES clusters; Model 4: adjusted for covariates in Model 2 and N-SES PCs;
 612 Model 5 (main model): adjusted for covariates in Model, N-SES clusters and PCs simultaneously. **B.** Effect modification by N-SES.

613 Associations between 9-year averaged exposure to ambient air pollution and Cognitive Function Instrument stratified by the N-SES
614 cluster the participants were assigned to (compare Figure 1A). Associations were adjusted for age, individual educational attainment,
615 race, and N-SES PCs at census-tract level. The significance of interaction was indicated by p -values in each plot. Note: CO, carbon
616 monoxide; NO_x, nitrogen oxides; PM_{2.5}, fine particulate matter.
617