

1 Metagenomic analysis of the abundance and composition of antibiotic resistance genes in hospital wastewater in
2 Benin, Burkina Faso, and Finland

3

4 Melina A. Markkanen^{a, b#}, Kaisa Haukka^{a, g}, Katariina M. M. Pärnänen^a, Victorien Tamegnon Dougnon^c, Isidore
5 Juste O. Bonkougou^d, Zakaria Garba^e, Halidou Tinto^e, Anniina Sarekoski^a, Antti Karkman^{a, b}, Anu Kantele^{b, f, g*},
6 Marko P. J. Virta^{a, b#*}

7

8 ^a Department of Microbiology, University of Helsinki, Finland

9 ^b Multidisciplinary Center of Excellence in Antimicrobial Resistance Research, Finland

10 ^c Research Unit in Applied Microbiology and Pharmacology of Natural Substances, Polytechnic School of
11 Abomey-Calavi, University of Abomey-Calavi, Benin

12 ^d Department of Biochemistry and Microbiology, University Joseph KI-ZERBO, Ouagadougou, Burkina Faso

13 ^e Clinical Research Unit Nanoro, Institute for Research in Health Sciences, National Center for Scientific and
14 Technological Research, Burkina Faso

15 ^f Meilahti Infectious Diseases and Vaccine Research Center, MeiVar, Department of Infectious Diseases,
16 University of Helsinki and Helsinki University Hospital, Helsinki, Finland

17 ^g Human Microbiome Research Program, Faculty of Medicine, University of Helsinki, Helsinki, Finland

18

19 Corresponding authors:

20 # Marko P. J. Virta, marko.virta@helsinki.fi

21 # Melina A. Markkanen, melina.markkanen@helsinki.fi

22 * Marko P. J. Virta and Anu Kantele contributed equally to this work.

23

24 Running title

25 HWW resistomes in Benin, Burkina Faso, and Finland

26

27 Abstract

28 Antibiotic resistance is one of the greatest global threats to human health, but substantial gaps in antibiotic
29 resistance data exist in West African countries. We explored the presence of antibiotic resistance genes (ARGs)
30 in the hospital wastewater (HWW) of nine hospitals in Benin and Burkina Faso and, for comparison, four hospitals
31 in Finland using shotgun metagenomic sequencing. The highest sum of the relative abundance of ARGs in the 68
32 HWW samples was detected in Benin and the lowest in Finland. HWW resistomes and mobilomes in Benin and
33 Burkina Faso resembled more of each other than those in Finland. Different carbapenemases were detected in
34 varying abundances, especially in HWW from Burkina Faso and Finland. The *bla*GES genes, the most widespread
35 carbapenemase genes in the Beninese HWW, were also found in water intended for hand-washing and in a puddle
36 at the hospital yard in Benin. *mcr* were detected in the HWW of all three countries, with *mcr-5* being the most
37 common *mcr* gene. These and other *mcr* genes were observed in very high relative abundances, even in treated
38 wastewater in Burkina Faso and in a street gutter in Benin. The results provide evidence for public health decision-
39 makers for the dire need to increase wastewater treatment capacity, with particular attention to HWW.

40

NOTE: This preprint reports new research that has not been certified by peer review and should not be used to guide clinical practice.

41 Importance

42 The global emergence and increased spread of antibiotic resistance threaten the effectiveness of antibiotics and,
43 thus, the health of the entire population. Therefore, understanding the resistomes in different geographical
44 locations is crucial in the global fight against the antibiotic crisis. However, this information is scarce in many
45 low- and middle-income countries (LMICs), such as those in West Africa. In this study, we describe the resistomes
46 of hospital wastewater in Benin and Burkina Faso and, as a comparison, in Finland. Our results help to understand
47 the hitherto unrevealed resistance in Beninese and Burkinabe hospitals. Furthermore, the results emphasize the
48 importance of wastewater management infrastructure design to minimize exposure events between humans,
49 HWW, and the environment, preventing the circulation of resistant bacteria and ARGs between humans (hospitals
50 and community) and the environment.

51

52 Keywords

53 antibiotic resistance

54 West Africa

55 hospital wastewater (HWW)

56 carbapenemase

57 colistin resistance

58 metagenomes

59

60 1. Introduction

61

62 The antibiotic resistance crisis is a global issue with multifaceted effects on human, animal, and environmental
63 health, and it comes with substantial economic losses ¹. Resistance to almost all antibiotics, including the last
64 resort regimen reserved to treat the most severe infections, has emerged only a couple of years after introducing
65 a new antibiotic to the global market ^{2,3}. Due to limitations in diagnostic testing in low-resource settings in low-
66 and middle-income countries (LMICs), broad-spectrum antibiotics are often prescribed empirically without
67 microbiological verification of the causative pathogen or its sensitivity to different antibiotics ⁴. In addition,
68 unregulated access to antibiotics allows their wide use for self-medication for humans and animals in these
69 countries ⁵⁻⁷.

70

71 Acquired, potentially mobile ARGs are considered to have a pronounced clinical relevance and impact on the
72 current AMR problem promoted by human activity ^{8,9}. Furthermore, the genetic context of the ARG (e.g., whether
73 under a strong promoter or not) influences its expression and the resulting resistance phenotype ¹⁰. Class 1
74 integrons are strongly linked to the dissemination of clinically relevant acquired ARGs ^{11,12}. Although integrons
75 are not mobile as such, multi-drug resistance gene cassettes carried in integrons can be transferred to new hosts,
76 for example, via plasmids ¹³. The *intI1* and *qacEΔ* genes encoding the integron integrase and quaternary
77 ammonium compound resistance, respectively, are typically used as markers for class 1 integrons ^{12,14}.

78

79 As a consequence of the increased prevalence of extended-spectrum beta-lactamase-producing
80 *Enterobacteriaceae* (ESBL-PE), the use of broad-spectrum antibiotics has increased in clinical practice ^{2,15,16}, and

81 attention has been directed to plasmid-mediated genes that encode carbapenemases. The carbapenemases *bla*GES,
82 *bla*IMP, *bla*KPC, *bla*NDM, *bla*OXA-48, *bla*OXA-58, and *bla*VIM carried by plasmids have emerged and spread
83 around the world during the past three decades^{17–20}. Colistin is a last-resort antibiotic used for treating infections
84 caused by multi-drug and extensively resistant bacteria²¹. The rapid emergence of colistin resistance mediated by
85 *mcr* genes threatens the efficacy of colistin in clinical use^{22,23}.

86

87 Although AMR is of global concern, the crisis affects LMICs most dramatically, such as those in West Africa
88^{3,4,24–26}. Lack of research data is a major factor hindering the development of solutions to tackle the AMR problem
89 in these countries^{4,24,27,28}. Despite gaps in resistance surveillance data, it is well known that the level of AMR is
90 highest in many LMICs, such as in many African countries^{15,25,29,30}. By contrast, in Northern European countries,
91 such as Finland, AMR occurrence is among the lowest globally, both in the community^{30,31} and in healthcare
92 settings³².

93

94 As hospital wastewater (HWW) from healthcare facilities is considered to be at the frontline of AMR emergence
95 and spread due to the heavy use of antibiotics and presence of immunocompromised patients³³, we set out to
96 investigate the AMR situation and the characteristics of the resistomes in nine hospitals in two West African
97 countries, Benin and Burkina Faso, where prior data was scarce¹⁵. For comparison, we analyzed samples from
98 four hospitals in Finland, where the level of AMR was expected to be low³². As the HWW resistomes in Benin
99 and Burkina Faso were largely unexplored targeted PCR-based methods³⁴, were not suitable for our study setting.
100 Instead, in this study, we applied shotgun metagenomic sequencing to obtain a holistic view of the resistomes and
101 mobilomes (a set of ARGs and MGEs, respectively) and the microbial communities present in the studied
102 environment.

103

104 2. Results

105

106 2.1. General features of resistomes, mobilomes, and taxonomical compositions in HWW and other water 107 samples from Benin, Burkina Faso, and Finland

108

109 We studied hospital wastewater (HWW) collected from Benin, Burkina Faso, and Finland (Figure S1, Table 1,
110 Table S1-S2). On average, 31 million sequence reads per sample were analyzed. HWW from Benin showed the
111 highest, and from Burkina Faso, the second-highest abundance of all detected ARGs normalized to bacterial 16S
112 rRNA genes (sum of the relative abundance of ARGs). The sum of the relative abundance was the lowest in HWW
113 from Finland (Figure 1A). Also the lowest diversity of ARGs was observed in HWW from Finland and the highest
114 in Burkina Faso (Figure S3A).

115

116 **Table 1.** Sample information. HWW samples from hospitals in Benin (n = 26), Burkina Faso (n = 34), and Finland
117 (n = 8) are denoted with a grey background, while the other samples are on white background.

Sample ID	Country	Category	no. Samples in the Category	Hospital/Area	Collection Date	HWW
BH01...BH09	Benin	BENN HWW A	7	A	27_11_19	YES
BH27...BH39	Benin	BENN HWW B	11	B	29_11_19	YES
BH44...BH50	Benin	BENN HWW C	5	C	09_12_19	YES
BH58...BH61	Benin	BENN HWW D	3	D	11_12_19	YES
BFH1...BFH4	Burkina Faso	BF HWW E	2	E	22_11_19	YES
BFH6...BFH12	Burkina Faso	BF HWW F	6	F	28_11_19	YES
BFH13...BFH15	Burkina Faso	BF HWW G	3	G	28_11_19	YES
BFH16...BFH28	Burkina Faso	BF HWW H	10	H	04_12_19	YES
BFH29...BFH41	Burkina Faso	BF HWW I	13	I	12_12_19	YES
FH1	Finland	FI HWW J	1	J	20_01_20	YES
FH2	Finland	FI HWW K	1	K	20_01_20	YES
FH3	Finland	FI HWW L	1	L	20_01_20	YES
FH4...FH6	Finland	FI HWW M	3	M	20_01_20	YES
FH7	Finland	FI HWW N	1	N	23_01_20	YES
FH9	Finland	FI HWW O	1	O	28_01_20	YES
BH11	Benin	BENN well water A (drinking)	1	A	27_11_19	NO
BH13	Benin	BENN street gutter B	1	B	27_11_19	NO
BH48	Benin	BENN puddle at yard C	1	C	09_12_19	NO
BH52	Benin	BENN hand-washing C	1	C	09_12_19	NO
BSE100	Benin	BENN river P (drinking)	1	P	04_12_19	NO
BSE74	Benin	BENN river Q (drinking)	1	Q	04_12_19	NO
BSE79	Benin	BENN river R (drinking)	1	R	04_12_19	NO
BSE93	Benin	BENN tap water S (drinking)	1	S	04_12_19	NO
BFH26	Burkina Faso	BF exit after biological treatment	1	H	04_12_19	NO
BFH27	Burkina Faso	BF wetland receiving treated HWW	1	H	04_12_19	NO
BFH42	Burkina Faso	BF receiving river after WWTP	1	T	12_12_19	NO

118

119

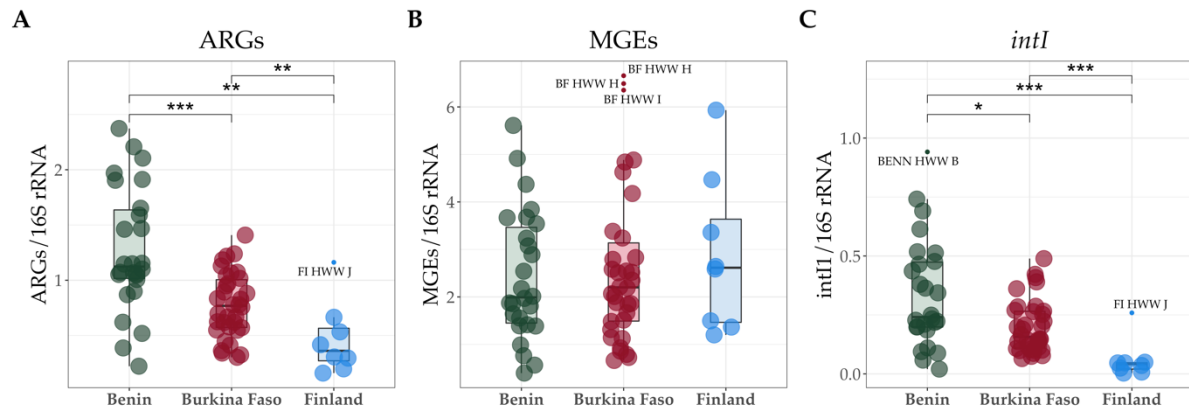
120 According to the Kruskal-Wallis test, there were significant (p -value < 0.005) country-wise differences in the
 121 sums of relative abundances of ARGs and *intI1*, but not when all MGEs were included (Figure 1B). The significant
 122 differences were investigated further using Wilcoxon rank sum tests adjusted by Benjamini-Hochberg. The
 123 differences in class 1 integron genes (*intI1*) followed a similar pattern in country-wise comparisons as ARGs
 124 (Figure 1C). In fact, the correlations between the counts of ARGs and class 1 integron genes, *intI1* and *qacEA*,
 125 were stronger for HWW samples from Benin compared to Burkina Faso and Finland (Figure S4A, S4B).
 126 Additionally, contigs with multiple ARGs, such as carbapenemase or ESBL variants of *bla*GES and quinolone
 127 resistance genes (*qnrVC*) located in proximity to each other, were identified (Figure S5). These contigs might
 128 indicate gene cassettes carried by class 1 integron elements as previously reported for these genes (*bla*GES and
 129 *qnrVC*) in various ARG combinations ^{10,35,36}. In contrast to *intI1*, no significant correlations were observed
 130 between ARGs and *int2* or *int3* with HWW from Benin (Figure S4C, S4D), unlike with HWW from Burkina Faso
 131 (Figure S4C, S4D).

132

133 Compositional data analysis (CoDa) methods were applied to investigate the ordination of the samples from the
 134 different countries by their resistome, taxonomical composition, and mobilome with respect to each other. HWW
 135 resistomes from Benin and Burkina Faso resembled each other and formed clusters clearly distinct from the
 136 resistomes from Finland. (Figure 2A). Country explained less of the variance between taxonomical compositions
 137 than between resistomes (Figure 2B), while similarly to resistomes, distinct country-wise clusters were seen with
 138 the mobilomes (Figure 2C). Eleven non-HWW water samples, such as those collected from rivers and near or
 139 within the hospital environment, were analyzed to obtain a more comprehensive understanding of the ARG
 140 prevalence in Benin and Burkina Faso. These samples were located within the clusters of their respective countries
 141 when ordinated together with the HWW (Figure S6). Since the HWW resistomes from Benin and Burkina Faso
 142 differed notably from the resistomes from Finland, the drivers for these differences were subsequently
 143 investigated.

144

Sum of the relative abundance



145

146

147

148

149

150

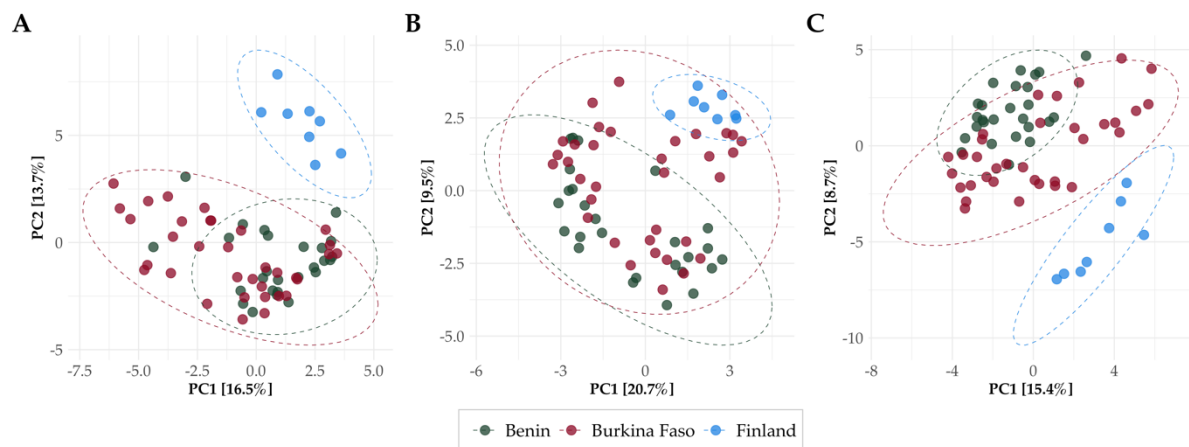
151

152

153

Figure 1. The sum of the relative abundance of A) ARGs, B) all MGEs, and C) class 1 integrons (*intI1*). The gene counts were normalized to 16S rRNA gene counts and gene lengths. Country medians are shown as vertical lines and the interquartile ranges (25th and 75th percentiles) as boxplot hinges. The horizontal lines represent the highest and lowest values. Outliers are defined as values higher or lower than 1.5 times the upper or lower percentiles, respectively, and denoted with a text label referring to the category represented by that sample. The comparisons between countries were computed using pair-wise Wilcoxon rank sum tests adjusted by Benjamini-Hochberg. The significance levels are ‘*’ = ≤ 0.05 ; ‘**’ = ≤ 0.01 ; ‘***’ = ≤ 0.001 .

PCA, clr-transformed



154

155

156

157

158

159

160

Figure 2. Principal Components Analysis (PCA) showing the significant dissimilarities of A) resistomes, B) taxonomical composition Metaphlan3, and C) mobilomes in HWW from Benin, Burkina Faso, and Finland. Count data were clr-transformed. Confidence ellipses represent 95 % confidence levels.

2.2. Significantly more abundant ARGs

161

162

163

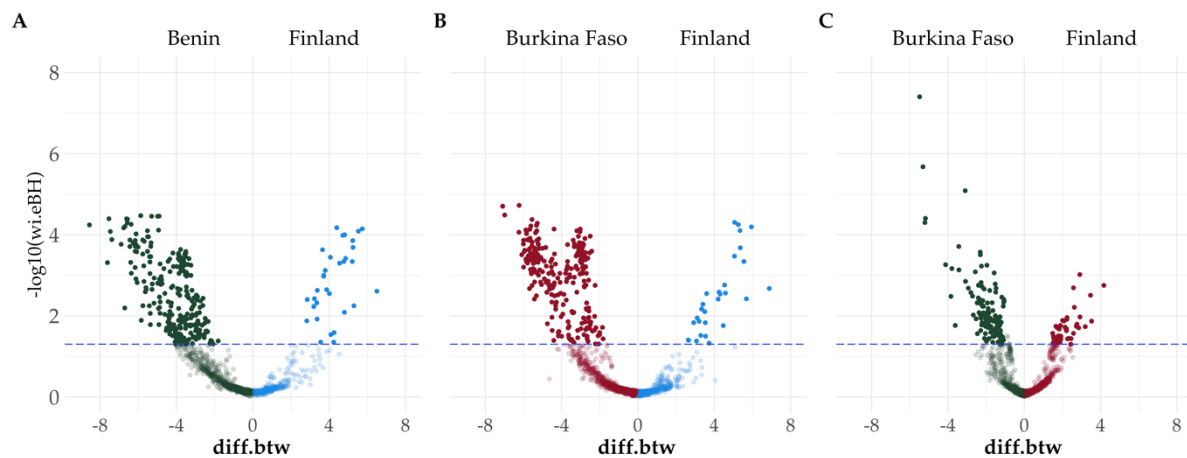
164

165

ARGs significantly more abundant in HWW from each country-wise comparison were investigated. These differentially abundant ARGs in the HWW resistomes from Benin, Burkina Faso, and Finland were revealed by applying compositional analysis by ANOVA-Like Differential Expression tool for high throughput sequencing data (ALDEx2)³⁷ tool. In this analysis, 16S rRNA gene counts were used as the denominator for the alr-transformation of the count data.

166

Differentially abundant ARGs (ALDEx2) in HWW from different countries



167

168 **Figure 3.** Significantly more abundant ARGs in HWW in pair-wise comparisons in Benin – Finland, Burkina
169 Faso – Finland, and Benin – Burkina Faso were defined using the ALDEx2 tool³⁸ with 16S rRNA as the reference
170 gene. For instance, in Figure 3A, significantly more abundant ARGs for Benin (green dots above the blue dotted
171 line) have negative ‘diff.btw’ values (x-axis), while ARGs significantly more abundant for Finland (blue dots
172 above the blue dotted line) have positive values. The dotted line represents a $p < 0.05$ of the expected Benjamini-
173 Hochberg corrected p -value of the Wilcoxon test (wi.eBH). These p -values are log10-transformed for the figure.

174

175 In comparisons Benin – Finland and Burkina Faso – Finland, ARGs significantly more abundant in HWW from
176 Finland were fewer in number than those from Benin or Burkina Faso (Figures 3A and 3B) (BENN ($n = 258$) –
177 FI ($n = 33$); BF ($n = 257$) – FI ($n = 29$)). In addition, the ARGs that were significantly more abundant in HWW
178 from Finland in both comparisons (Benin – Finland and Burkina Faso – Finland) were primarily the same (Tables
179 2, S3, and S4). *blaOXA-211*-like cluster genes and *erm(B)* macrolide resistance genes were ARGs significantly
180 more abundant in HWW from Finland, as seen in the list in Table 2 of the top 10 significantly more abundant
181 ARGs by their ‘diff.btw’ values, which represent the median difference in the alr-transformed count data between
182 the compared HWW (see Tables S3-S5 for all results). The ARGs characteristic for HWW from Benin included
183 quinolone resistance gene *qnrVC*, ESBL genes *blaVEB*, *blaCARB*, and *blaOXA-5*-like cluster genes (Tables 2
184 and S3). For Burkina Faso, significantly more abundant ARGs were *blaCMY* genes, trimethoprim resistance
185 genes of *dfrA15* and *dfrB* clusters, and genes of *blaOXA-10*- and *blaOXA-427*-like clusters (Tables 2 and S4).

186

187 The comparison between HWW from Benin and Burkina Faso revealed fewer differentially abundant ARGs
188 between these countries (BENN ($n = 49$) – BF ($n = 119$)) than in the comparisons with Finnish HWW. In addition,
189 the volcano in Figure 3C is more skewed towards the vertical blue dotted line, thus referring to less drastic
190 differences in the abundances of the ARGs in this comparison. These results support the previous notion that the
191 resistomes in HWW from Benin and Burkina Faso were more similar to each other than those from Finland (Table
192 2, Tables S3-S5). However, ESBL genes of *blaBEL*, and carbapenemases of the *blaOXA-58*-like cluster, were
193 significantly more abundant in HWW from Burkina Faso than from Benin (Tables 2 and S5). Instead, different
194 aminoglycoside resistance genes and lincosamide resistance genes *lnu(F)* and *lnu(C)* were characteristic for Benin
195 (Tables 2 and S5).

196

197 **Table 2.** Top 10 differentially abundant ARGs in HWW from Benin, Burkina Faso, and Finland. The ‘diff.btw’
198 values represent the median difference in the alr -transformed count data between the compared HWW. The
199 expected Benjamini-Hochberg corrected p -values of the Wilcoxon test are indicated in the table as ‘wi.eBH’. The
200 ARG clustering defined the cluster names using CD-HIT³⁹ based on 90 % of shared sequence identity.

Benin - Finland				
diff.btw	wi.eBH	gene	cluster name	country
-8.5066	5.78E-05	<i>lnu(F)_3</i>	lnu(F)	Benin
-7.7019	4.32E-04	<i>aac(6')-IIc_1_NC</i>	aac(6')-IIC	Benin
-7.4755	7.69E-05	<i>qnrVC5_1</i>	qnrVC4	Benin
-7.4752	3.74E-05	<i>qnrVC4_1</i>	qnrVC4	Benin
-7.2563	1.33E-04	<i>blaCARB-2_1</i>	blaCARB-50	Benin
-6.8960	1.74E-04	<i>ant(2'')-Ia_6</i>	ant(2'')-Ia_2	Benin
-6.7910	6.06E-03	<i>aph(2'')-Id_1</i>	aph(2'')-Id_1	Benin
-6.7897	7.05E-05	<i>blaVEB-5_1</i>	blaVEB-1	Benin
-6.6886	4.20E-05	<i>blaVEB-2_1</i>	blaVEB-1	Benin
-6.6295	4.69E-05	<i>blaVEB-1_1</i>	blaVEB-1	Benin
4.7351	1.13E-04	<i>blaOXA-309_1</i>	blaOXA-211-like	Finland
4.7739	4.40E-04	<i>blaOXA-427_1</i>	blaOXA-427-like	Finland
4.8342	8.51E-05	<i>erm(B)_21</i>	erm(B)_18	Finland
5.0383	5.46E-04	<i>blaOXA-280_1</i>	blaOXA-211-like	Finland
5.3202	1.18E-04	<i>erm(B)_10</i>	erm(B)_18	Finland
5.3388	2.25E-04	<i>blaOXA-334_1</i>	blaOXA-211-like	Finland
5.4158	6.85E-03	<i>blaOXA-333_1</i>	blaOXA-211-like	Finland
5.4932	7.92E-05	<i>blaOXA-212_1</i>	blaOXA-211-like	Finland
5.9308	6.52E-05	<i>blaOXA-373_1</i>	blaOXA-211-like	Finland
6.5027	2.08E-03	<i>blaOXA-211_1</i>	blaOXA-211-like	Finland

Burkina Faso - Finland				
diff.btw	wi.eBH	gene	cluster name	country
-7.1539	1.59E-05	<i>blaCMY-4_1</i>	blaCMY-150	Burkina Faso
-6.9233	3.12E-05	<i>blaOXA-101_1</i>	blaOXA-10	Burkina Faso
-6.1860	1.76E-05	<i>dfrA15_2</i>	dfrA15	Burkina Faso
-6.1384	3.10E-04	<i>dfrB5_1</i>	dfrB1	Burkina Faso
-5.9944	7.31E-05	<i>dfrA15_1</i>	dfrA15	Burkina Faso
-5.9796	3.12E-04	<i>blaCMY-22_1</i>	blaCMY-150	Burkina Faso
-5.9309	6.85E-05	<i>blaCMY-121_1</i>	blaCMY-150	Burkina Faso
-5.9133	1.02E-04	<i>blaCMY-32_1</i>	blaCMY-150	Burkina Faso
-5.8866	6.73E-04	<i>blaCMY-133_1</i>	blaCMY-150	Burkina Faso
-5.8772	1.40E-04	<i>blaCMY-69_1</i>	blaCMY-150	Burkina Faso
4.7242	2.79E-03	<i>erm(B)_21</i>	erm(B)_18	Finland
5.2610	5.69E-05	<i>blaOXA-309_1</i>	blaOXA-211-like	Finland
5.2630	4.30E-05	<i>blaOXA-334_1</i>	blaOXA-211-like	Finland
5.3117	2.68E-04	<i>blaOXA-281_1</i>	blaOXA-211-like	Finland
5.3789	2.29E-04	<i>blaOXA-373_1</i>	blaOXA-211-like	Finland
5.4740	5.13E-04	<i>blaOXA-280_1</i>	blaOXA-211-like	Finland
5.4817	5.47E-05	<i>blaOXA-299_1</i>	blaOXA-211-like	Finland
5.7319	3.83E-03	<i>blaOXA-333_1</i>	blaOXA-211-like	Finland
6.0623	7.13E-05	<i>blaOXA-212_1</i>	blaOXA-211-like	Finland
7.1596	1.58E-03	<i>blaOXA-211_1</i>	blaOXA-211-like	Finland

Benin - Burkina Faso				
diff.btw	wi.eBH	gene	cluster name	country
-5.5058	2.15E-08	<i>blaOXA-129_1</i>	blaOXA-5	Benin
-5.3352	1.65E-06	<i>aac(6')-IIc_1_NC</i>	aac(6')-IIC	Benin
-5.1830	3.49E-05	<i>aph(2'')-Ib_1</i>	aph(2'')-Ib_2	Benin
-5.1784	3.87E-05	<i>aac(6')-Im_1</i>	aac(6')-Im	Benin
-4.2138	4.40E-04	<i>aph(2'')-Ib_2</i>	aph(2'')-Ib_2	Benin
-3.8822	6.43E-04	<i>sul3_2</i>	sul3	Benin
-3.7533	2.56E-03	<i>aph(2'')-Ib_3</i>	aph(2'')-Ib_2	Benin
-3.5422	1.89E-02	<i>aph(2'')-Id_1</i>	aph(2'')-Id	Benin
-3.4469	1.63E-04	<i>lnu(C)_1</i>	lnu(C)	Benin
-3.3127	7.05E-04	<i>lnu(F)_3</i>	lnu(F)	Benin
2.6181	2.22E-02	<i>blaOXA-420_1</i>	blaOXA-58-like	Burkina Faso
2.7238	1.75E-02	<i>blaOXA-96_1</i>	blaOXA-58-like	Burkina Faso
2.8240	1.32E-02	<i>blaOXA-397_1</i>	blaOXA-58-like	Burkina Faso
2.8658	1.58E-02	<i>blaOXA-97_1</i>	blaOXA-58-like	Burkina Faso
2.8783	1.82E-02	<i>blaOXA-164_1</i>	blaOXA-58-like	Burkina Faso
2.9017	8.67E-04	<i>tet(39)_1</i>	tet(39)	Burkina Faso
3.1943	2.06E-02	<i>blaBEL-2_1</i>	blaBEL-1	Burkina Faso
3.4107	2.88E-03	<i>blaOXA-58_1</i>	blaOXA-58-like	Burkina Faso
3.5374	1.04E-02	<i>blaBEL-3_1</i>	blaBEL-1	Burkina Faso
4.0895	2.50E-03	<i>blaBEL-1_1</i>	blaBEL-1	Burkina Faso

201

202

203 As a further notion, those *blaOXA* variants that were significantly more abundant in HWW from Finland than the
204 ones in Benin and Burkina Faso were predominantly those that are intrinsically carried by some specific species

205 and encoding carbapenemases (e.g., *bla*OXA-211-like genes) (Table 3). Instead, the *bla*OXA variants
206 characteristic for HWW from Benin and Burkina Faso were those that are typically acquired and, further, do not
207 encode carbapenemase activity (e.g., *bla*OXA-5 and *bla*OXA-10) (Table 3). For example, *bla*OXA-5-like
208 clusters, significantly more abundant in Benin versus Burkina Faso or Finland, were those typically carried by
209 class 1 integrons ⁴⁰.

210

211 **Table 3.** The differentially abundant *bla*OXA variants in HWW from Benin, Burkina Faso, and Finland. The
212 ARGs significantly more abundant in each country are denoted with color encoding; Benin = green, Burkina Faso
213 = red, Finland = blue. The data concerning the origin of the *bla*OXA gene, whether it is intrinsic or acquired, was
214 retrieved from the data collected to Beta Lactamase DataBase (BLDB) ⁴¹, except that we used the expression
215 ‘intrinsic’ instead of the ‘natural in the original text, due to the misleading connotation of the word ‘natural’ in
216 the context of antibiotic resistance.

Comparison for ALDEx2	Cluster name in BLDB ⁴³	Acquired (A) / Intrinsic (I)	Host species if intrinsic	Carbapenemase activity
Benin VS. Finland	<i>bla</i> OXA-5-like	A	-	-
	<i>bla</i> OXA-10-like	A	-	-
	<i>bla</i> OXA-2-like	A	-	-
	<i>bla</i> OXA-347	A and I	<i>Bacteroides</i> spp.	-
	<i>bla</i> OXA-229	I	<i>Acinetobacter bereziniae</i>	-
	<i>bla</i> OXA-46-like	A	-	-
	<i>bla</i> OXA-1-like	A	-	-
	<i>bla</i> OXA-209-like	A	-	-
	<i>bla</i> OXA-296-like	I	<i>Acinetobacter bohemicus</i>	-
	<i>bla</i> OXA-58-like	I	<i>Acinetobacter baumannii</i>	YES
Burkina Faso VS. Finland	<i>bla</i> OXA-10-like	A	-	-
	<i>bla</i> OXA-46-like	A	-	-
	<i>bla</i> OXA-2-like	A	-	-
	<i>bla</i> OXA-296-like	I	<i>Acinetobacter bohemicus</i>	-
	<i>bla</i> OXA-211-like	I	<i>Acinetobacter johnsonii</i>	YES
Benin VS. Burkina Faso	<i>bla</i> OXA-299-like	I	<i>Acinetobacter bouvetii</i>	-
	<i>bla</i> OXA-427-like	A	-	YES
	<i>bla</i> OXA-5-like	A	-	-
	<i>bla</i> OXA-10-like	A	-	-
	<i>bla</i> OXA-347	A and I	<i>Bacteroides</i> spp.	-
	<i>bla</i> OXA-2-like	A	-	-
	<i>bla</i> OXA-209-like	A	-	-
	<i>bla</i> OXA-46-like	A	-	-
<i>bla</i> OXA-10-like	A	-	-	
<i>bla</i> OXA-58-like	I	<i>Acinetobacter baumannii</i>	YES	

217

218

219 2.3. Carbapenemases

220

221 The presence of seven acquired carbapenemases (*bla*GES, *bla*IMP, *bla*KPC, *bla*NDM, *bla*OXA-48, *bla*OXA-58,
222 and *bla*VIM) was analyzed in detail due to their ability to cause complex infections with minimal treatment options
223 especially in LMICs when in a relevant host. The highest relative abundance of these carbapenemases was
224 observed in the Finnish hospital J (Figure 4). On the other hand, hospital M in Finland was nearly free from these
225 carbapenemases (Figure 4). In HWW from Benin, the carbapenemase genes in the *bla*GES gene family seemed
226 to dominate over other carbapenemases in all four hospitals (Figure 4). *bla*GES genes were also detected in the
227 water puddle surrounding the surgery room septic tank at a Beninese hospital (hospital C) yard (Figure 4, Figure
228 S2E) as well as in the water intended for hand-washing in the same hospital (hospital C) (Figure 4, Figure S2F).
229 Also, the street gutter, located approximately 100 m away from another Beninese hospital, was contaminated by
230 *bla*GES carbapenemases (Figure 4).

231

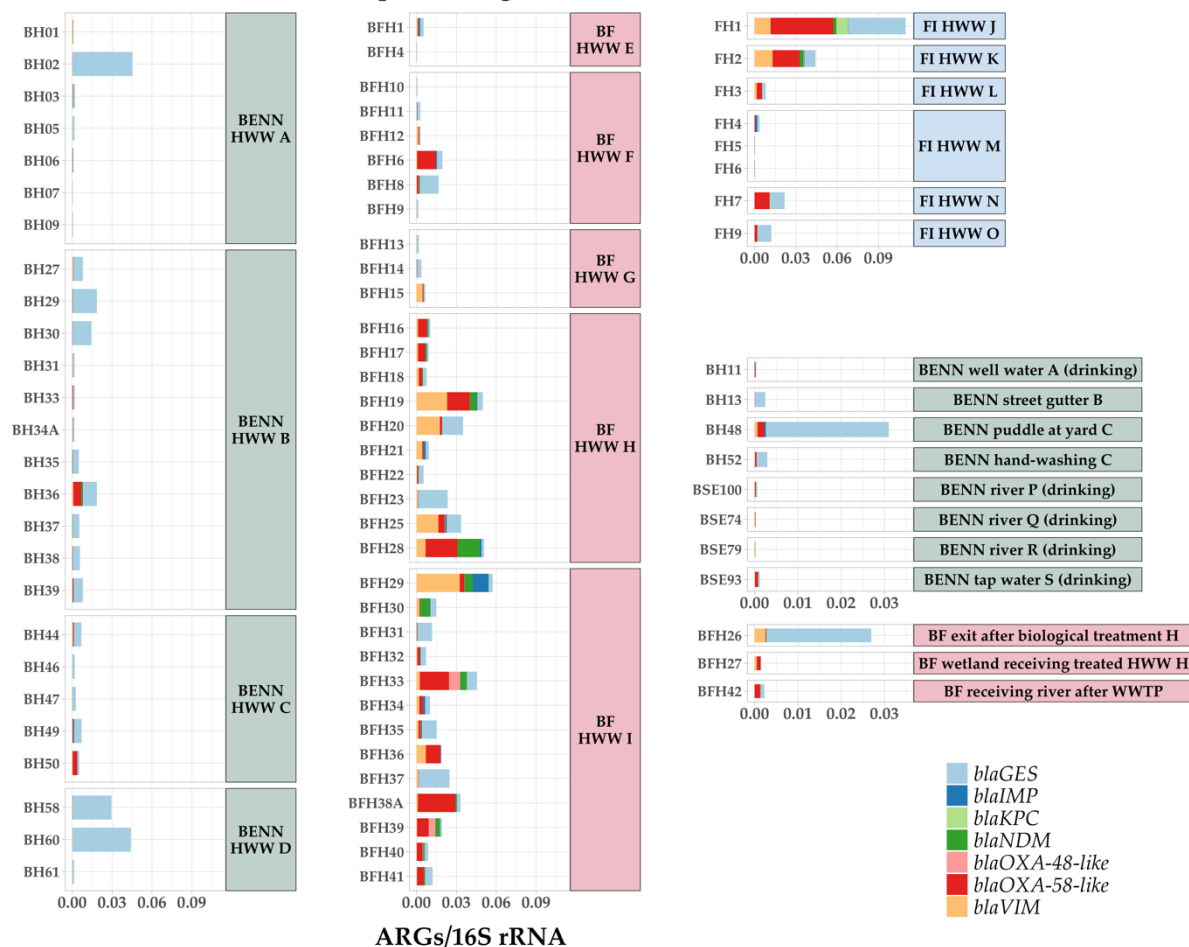
232 In contrast to the homogeneity of carbapenemases in HWW from Benin, most of the other carbapenemases were
233 present in HWW from Burkina Faso and Finland at various prevalence levels (Figure 4). *blaIMP*, *blaNDM*, and
234 *blaVIM* were mainly detected in Burkinabe and Finnish HWW samples, and the latter was significantly more
235 abundant in HWW from Burkina Faso (Figure 4, Table S4). *blaOXA-48* was detected in two HWW samples from
236 Burkina Faso and not at all or in very low relative abundances in samples from elsewhere (Figure 4). Instead,
237 *blaOXA-58*-like genes were present in the majority of Burkinabe and Finnish HWW samples but only in a few
238 Beninese samples (Figure 4). The detection of *blaKPC* genes was restricted to one Finnish HWW sample (Figure
239 4). The samples collected from natural waters and other drinking waters showed only low relative abundances of
240 these carbapenemases (Figure 4). However, some *blaOXA-58*-like were detected in tap water used for drinking
241 in Benin (Figure 4).

242

243 In Burkina Faso, *blaGES* carbapenemases were detected in HWW, which had gone through the biological
244 treatment in similar relative abundances as in some of the samples of untreated HWW from the same hospital
245 (hospital H) (Figure 4, note the differences in the plot scales). Also, *blaVIM* was found both in the untreated and
246 treated water of that hospital (Figure 4). Lower relative abundances of the studied carbapenemases were observed
247 in wetlands and rivers receiving treated HWW in Burkina Faso (Figure 4). However, the spectrum of these
248 carbapenemases, namely *blaOXA-58*-like, *blaVIM*, and *blaGES*, reflected the ones detected in the HWW in
249 Burkina Faso (Figure 4).

250

The relative abundance of carbapenemase genes



251
252 **Figure 4.** The relative abundance of carbapenemase genes in relation to 16S rRNA gene counts in HWW from
253 Benin (left, green label background), Burkina Faso (center, red label background), and Finland (up-right, blue
254 label background), and various other water sources in Benin (center-right, green label background) and Burkina
255 Faso (bottom-right, red label background). Note the differences in the y-axis scales between the figures for HWW
256 and non-HWW samples. Only variants known to encode carbapenemases were screened⁴¹ (Table S6).

257 2.4. Mobile colistin resistance (*mcr*) genes

258
259
260 *mcr* genes were detected in several HWW samples in Benin, Burkina Faso, and Finland (Table 4). *mcr-5* (variants
261 *mcr-5.1* and *mcr-5.2*, Table S7) was the most common of the *mcr* genes as they were found in HWW from all
262 except one hospital (hospital E) among the three countries. In the few samples selected for metagenomic assembly,
263 this gene was found to be located within a Tn3-like element (Figure S7).

264
265 In addition to the HWW samples, high relative abundances of *mcr-5* genes were also detected in the immediate
266 and more distant surroundings of the hospitals in Benin and Burkina Faso. A very high relative abundance (2.80
267 $\times 10^{-2}$) of *mcr-5* was observed in the biologically treated HWW from hospital H (Table 4). In the wetland receiving
268 treated HWW from the same hospital, the relative abundance was lower (4.30×10^{-4}) but still high, considering
269 that the sample represented a larger body of natural water. In Benin, *mcr-5* was detected in river water in a distant
270 village and a street gutter near a hospital (hospital B) (Table 4). Even the water intended for hand-washing in a

271 Beninese hospital (hospital C) was not free from *mcr-5*. Furthermore, for hospital C, the relative abundance of
272 *mcr-5* was greater in a puddle near the HWW containing septic tanks in the hospital yard (1.99×10^{-3} , Table 4)
273 than in the actual HWW of that hospital (5.24×10^{-4} , data not shown).

274
275 The next most prevalent *mcr* genes were *mcr-3*, *mcr-10*, and *mcr-7*, and similarly to *mcr-5*, they were present also
276 in non-HWW samples (Table 4). The gene *mcr-2* was not detected at all, and the lowest average relative
277 abundance was detected for the gene *mcr-1* (Table 4).

278
279 **Table 4.** The relative abundances of *mcr* genes. For the HWW samples, averages for relative abundances (average
280 RA) and the number of positive samples (n) are shown.

		BENN HWW	BF HWW	FI HWW	BENN well water A (drinking) (BH11)	BENN street gutter B (BH13)	BENN puddle at yard C (BH48)	BENN hand- washing C (BH52)
<i>mcr-1</i>	average RA	0	4.61E-07	1.97E-06	0	0	0	0
	n	0/26	1/34	1/8				
<i>mcr-2</i>	average RA	0	0	0	0	0	0	0
	n	0/26	0/34	0/8				
<i>mcr-3.1</i>	average RA	6.41E-05	4.18E-04	1.58E-04	4.24E-05	9.71E-03	1.96E-02	1.77E-03
	n	16/26	18/34	7/8				
<i>mcr-3.17</i>	average RA	2.26E-06	3.74E-06	1.32E-04	0	7.76E-05	1.23E-04	0
	n	2/26	9/34	5/8				
<i>mcr-4</i>	average RA	3.42E-06	2.63E-06	0	0	0	0	0
	n	1/26	3/34	0/8				
<i>mcr-5</i>	average RA	8.92E-04	1.02E-03	7.53E-04	4.19E-05	2.25E-03	1.99E-03	7.76E-05
	n	24/26	21/34	8/8				
<i>mcr-6</i>	average RA	0	0	0	0	0	0	0
	n	0/26	0/34	0/8				
<i>mcr-7</i>	average RA	5.06E-05	1.54E-04	1.94E-04	0	1.09E-04	7.07E-05	3.94E-05
	n	10/26	25/34	8/8				
<i>mcr-8</i>	average RA	0	0	1.68E-06	0	0	0	0
	n	0/26	0/34	1/8				
<i>mcr-9</i>	average RA	1.04E-06	2.14E-06	3.08E-04	0	3.11E-05	0	0
	n	1/26	7/34	4/8				
<i>mcr-10</i>	average RA	1.33E-04	1.03E-03	1.97E-05	4.25E-05	1.24E-04	1.77E-05	3.94E-05
	n	12/26	20/34	2/8				

		BENN tap water S (drinking) (BSE93)	BENN river P (drinking) (BSE100)	BENN river Q (drinking) (BSE74)	BENN river R (drinking) (BSE79)	BF exit after biological treatment H (BFH26)	BF wetland receiving treated HWW H (BFH27)	BF receiving river after WWTP (BFH42)
<i>mcr-1</i>	average RA	0	0	0	0	0	0	0
	n							
<i>mcr-2</i>	average RA	0	0	0	0	0	0	0
	n							
<i>mcr-3.1</i>	average RA	2.43E-05	0	0	0	4.19E-05	8.70E-05	2.65E-05
	n							
<i>mcr-3.17</i>	average RA	0	3.23E-05	0	0	0	0	0
	n							
<i>mcr-4</i>	average RA	0	0	0	0	0	0	0
	n							
<i>mcr-5</i>	average RA	0	0	0	1.10E-04	2.80E-02	4.30E-04	2.36E-04
	n							
<i>mcr-6</i>	average RA	0	0	0	0	0	0	0
	n							
<i>mcr-7</i>	average RA	9.74E-05	0	0	3.73E-05	8.40E-05	0	0
	n							
<i>mcr-8</i>	average RA	0	0	0	0	0	0	0
	n							
<i>mcr-9</i>	average RA	0	3.23E-05	0	0	0	0	0
	n							
<i>mcr-10</i>	average RA	4.87E-05	0	0	0	0	1.74E-04	7.97E-05
	n							

281

282

283 2.5. Taxonomical compositions

284

285 The taxonomical composition of bacteria present in septic tanks and sumps in Benin and Burkina Faso differed
286 from those found in hospital sewers in Finland. Genera belonging to the *Bacteroidales* family had a significantly
287 higher abundance in HWW from Benin and Burkina Faso compared to Finland (Figures S8 and S9). Other
288 significantly more abundant taxa in HWW from Benin compared to Finland included *Chloracidobacterium*,
289 *Geobacter*, *Aminomonas*, *Flexilinea*, *Desulfobivrio*, and genera of *Synergistetes* (Figure S8A, Table S8). The first
290 two mentioned were characteristic also for the HWW from Burkina Faso (Figure S8B, Table S9). In addition, in
291 many HWW samples from Burkina Faso, the relative abundances of *Pseudomonas* and *Acinetobacter* were high

292 (Figure S9), and the difference in their abundance in HWW from Burkina Faso versus Benin was significant
293 (Figure S8C, Table S10).

294

295 *Coprococcus*, *Enterococcus*, *Lactococcus*, *Streptococcus*, *Trichococcus*, *Tessaracoccus*, *Delftia*, *Raultella*, and
296 genera of the *Proteobacteria* family, were all significantly more abundant in HWW from Finland in comparison
297 to Benin and Burkina Faso (Figures S8A and S8B, Tables S8 and S9). Also, the genera that were significantly
298 more abundant for HWW in Finland and not Benin were more commonly from the phyla (*Pseudomonadota*,
299 synonym *Proteobacteria*), which are typically considered as the major contributors to the spread of ARGs carried
300 by plasmids, integrons, or other MGEs^{10,42} (Figure S8).

301

302 A great variation was seen in the top 11 taxa in the non-HWW samples (Figure S9). The biologically treated
303 HWW from Burkina Faso showed high relative abundances of *Aeromonas* and *Pseudomonas*. In contrast, high
304 relative abundances of *Bacteroides* and *Klebsiella* were detected in the street gutter water located near hospital B
305 (Figure S9). In some samples, the top 11 taxa were present only in low relative abundances, while in contrast, a
306 single genus of *Polynucleobacter* dominated over other genera in a few sampled natural waters receiving treated
307 wastewater, both in Benin and Burkina Faso (Figure S9). The relative abundance of *Acinetobacter* in tap water
308 used for drinking in Benin reached a similar level that in many HWW samples (Figure S9), which possibly
309 explained the finding of *bla*OXA-58-like genes in this sample mentioned earlier (Figure 3).

310

311 3. Discussion

312

313 We characterized the bacterial community composition, resistome, and mobilome of 60 HWW and 11 other water
314 samples from Benin and Burkina Faso and compared them to 8 HWW samples from Finland. Due to the lack of
315 systematic AMR surveillance in these West African countries, available data on bacterial resistance are patchy
316 and heterogeneous^{1,4,23,26,29}. Thus, the magnitude of the resistance problem and the specific ARG reservoirs are
317 yet to be unraveled. This is the first study investigating hospital wastewater in Benin and Burkina Faso using a
318 shotgun metagenomic approach. Both ‘traditional’ normalization methods, and compositional data analysis⁴³,
319 were applied in the analyses. For the latter, the ALDEx2 tool was chosen over Differential gene expression
320 analysis based on the negative binomial distribution (DESeq2)⁴⁴ as we discovered that the significantly
321 differentially abundant ARGs were reported less strictly with DESeq2 than ALDEx2, and we wanted to avoid
322 possible false positive results generated by DESeq2 (Figure S11C).

323

324 Interestingly, the ARGs observed in HWW from Benin were the highest in number but probably less clinically
325 important than those in the HWW from Burkina Faso and Finland. While carbapenemases *bla*GES, *bla*IMP,
326 *bla*NDM, *bla*OXA-48-like, *bla*OXA-58-like, and *bla*VIM were detected at various abundances in at least one
327 sample in HWW from Burkina Faso and Finland, *bla*GES was the predominant carbapenemase in HWW from
328 Benin. *bla*GES genes were also present in the water puddle at the Beninese hospital’s yard and in water intended
329 for visitors’ hand-washing in the hospital. Thus, one route of transmission of these ARGs within hospitals might
330 be via hands contaminated by hand-washing water, which might explain the high prevalence of these genes in the

331 hospitals. Jacobs and colleagues have also drawn attention to the potentially inferior microbiological water quality
332 in similar hand-washing water tanks, which are very common in West Africa ⁴.

333

334 Furthermore, we speculate that the dominance of *bla*GES carbapenemases might have been caused by a selection
335 pressure due to the presence of antibiotic residues in the HWW. However, as carbapenem antibiotics are used less
336 in West African countries than in North America and Southern and Central Europe, due to their high price ¹⁶, we
337 suggest that compounds from other antibiotic classes could have driven the selection. In fact, *bla*GES genes are
338 typically carried by class 1 integrons in which they may be coupled with multiple other ARGs ⁴⁵. Thus, we
339 speculate that class 1 integrons ¹⁴ and co-selection phenomenon ^{3,46} could have a role in the dominance of *bla*GES.
340 That is, in the example of metagenome-assembled contigs in which quinolone ARGs (*qnrVC*) and *bla*GES genes
341 seemed to be located near each other putatively encoded by the class 1 integron gene cassette, the selection
342 pressure targeted to the quinolone ARG would enrich both genes even in the absence of the target substrate for
343 *bla*GES. As a potential limitation of our study, we agree that there is a high sequence similarity among *bla*GES
344 variants, including those conferring ESBL and carbapenem resistance. Therefore, we acknowledge the possibility
345 that the putative lack of specificity related to the read mapping might have resulted in some misidentifications
346 among the different variants of this gene.

347

348 Despite the lowest sum of the relative abundance of ARGs detected in HWW from Finland, some of the seven
349 carbapenemase genes showed higher relative abundances in Finland than in HWW of the surveyed West African
350 hospitals. For the occurrence of *bla*OXA genes, the abundances of specific species present in the different HWW
351 collection systems might have played a role, as *bla*OXA variants that encode carbapenemases and are typically
352 intrinsically carried by certain *Acinetobacter* species ^{47,48} were significantly more abundant in Finnish HWW.
353 Instead, those *bla*OXA variants that are typically acquired and mainly encode more narrow spectrum beta-
354 lactamases were significantly more abundant in HWW from Benin and also Burkina Faso ⁴¹. Although, the
355 occurrence of the seven carbapenemases was not homogenous among the Finnish samples. For example, *bla*KPC
356 was restricted to a single HWW sample from Finland (hospital J) and none from Benin or Burkina Faso. This
357 finding aligns with local and global reports and systematic reviews ⁴⁹⁻⁵², indicating that *bla*KPC carbapenemases
358 are spreading more profusely in Europe and North America than in Africa. Moreover, the two hospitals, J and K,
359 both part of the University Central Hospital of the capital of Finland, showed the highest sum of relative abundance
360 of the seven carbapenemase genes among all HWW samples in this study. These results are somewhat surprising
361 as, to date, Finland is known as one of the countries with the lowest level of bacterial resistance in Europe and
362 globally ⁵³ and the carbapenemase-producing strains detected in Finnish hospitals are relatively rare and typically
363 associated with international travel or hospitalization ⁵⁴.

364

365 One factor likely explaining our findings of the distinctive features in the HWW resistomes in Benin and Burkina
366 Faso compared to Finland was the differences in the wastewater collection systems between the studied countries.
367 In Finland, the hospital toilet waters containing human fecal material are directed to HWW, while for the majority
368 of the Burkinabe and especially Beninese HWW studied here, this was not the case. Additionally, in septic tanks
369 (Benin and Burkina Faso), the water remains stagnant, possibly giving rise to the anaerobes, unlike the Finnish
370 HWW, which flows through the system. Significant prevalence of anaerobic genera such as *Geobacter*,

371 *Aminomonas*, *Flexilinea*, *Desulfovibrio*, and genera of *Synergistetes* and *Bacteroidales* observed in HWW from
372 Benin and Burkina Faso and not in Finland is in line with this speculation except for the last-mentioned taxa,
373 which is a typical human gut commensal⁵⁵. These findings also align with the previous reports on bacterial genera
374 typically found in soil and aquatic environments⁵⁶ and previously described to dominate HWW from Benin and
375 Burkina Faso⁵⁷. Facultatively anaerobic bacteria such as the genera of lactic acid bacteria, *Aeromonas*, and the
376 anaerobic *Bifidobacterium*⁵⁸ which are considered typical human gut microbes⁵⁵ were significantly more
377 abundant in the Finnish HWW than in Benin or Burkina Faso.

378

379 Compared to many high-income countries such as those in Northern Europe, antibiotic usage in agricultural^{6,7}
380 and clinical⁴ settings differ¹⁶ and is less controlled – or even unregulated – in many African countries. For
381 example, while banned in many other countries, the use of colistin as a feed additive is allowed in many LMICs
382⁵⁹, also in Africa⁷. *mcr-5* was the most commonly detected *mcr*-gene in the HWW in our study, contrary to
383 previous reports on the prevalence of *mcr* genes globally²² and in Africa^{23,60}. This may be due to the
384 methodologies used to screen for colistin resistance. Other than the best-known *mcr*-genes (*mcr-1*, -2, and -3) are
385 rarely targeted when screening for *mcr* genes using conventional PCR⁶¹. Therefore, our study shows that to obtain
386 a more realistic view of *mcr* genes in Africa, screening should be conducted for a broader set of different *mcr*
387 genes, as was recently done by Ngbede and colleagues⁶².

388

389 The *mcr-5* gene detected was embedded in a Tn3-like element similar to previous reports for *Salmonella enterica*
390^{63,64} and *Escherichia coli*⁶⁵ plasmids and the chromosome of *Cupriavidus gilardii*⁶³. These Tn3-like elements are
391 flanked by inverted repeats, which enable translocation and putatively a broad host range for the *mcr-5* harboring
392 element⁶³⁻⁶⁵. Based on our results, the occurrences of *mcr-5* and other *mcr* genes in Benin and Burkina Faso were
393 not restricted to HWW septic tanks. These genes were also detected in water intended for the hand-washing of
394 visitors to the hospital. The high prevalence of *mcr-5* among our various samples here raises questions about its
395 origin and ecology, whether it is of clinical origin or intrinsically carried by some environmental bacteria.
396 However, the highest relative abundances of *mcr-5* were observed in samples influenced by human activity, and
397 three of the four rivers in the remote village were free from this gene.

398

399 In Burkina Faso, the relative abundance of *mcr-5* in HWW, even after the biological treatment, was high. Although
400 we could not confirm the association between the *mcr-5* genes detected in the treated and the hospital-associated
401 wastewater in the Burkinabe hospital, our study suggests the inability of the currently used wastewater treatment
402 processes in Burkina Faso to remove the *mcr* genes. Wastewater treatment systems have indeed previously been
403 described as inadequate in Benin and Burkina Faso⁶⁶. The situation appears to be especially critical in Cotonou,
404 where the hospitals involved in the study did not use any kind of wastewater treatment. Groundwater in the city
405 is extracted from the shallow aquifer, which is polluted due to unauthorized waste deposits, inadequate toilets, pit
406 latrines, and septic tanks prone to leakage and hydraulic failure⁶⁷. This enables the continuous circling of *mcr*
407 genes and other ARGs as the inadequately treated water is released into natural waters and used for various
408 purposes by local people. Furthermore, in Africa, untreated wastewater is commonly used for irrigation in urban
409 agriculture, possibly enabling the dissemination of ARGs to fresh produce^{68,69}. Our study shows that untreated or

410 even treated hospital wastewater, which can leak into groundwater and the environment, may carry clinically
411 hazardous antibiotic-resistant bacteria or resistance genes.

412

413 Taken together, based on our results from nine hospitals, we can state that clinically important ARGs are
414 circulating in hospitals in Benin and Burkina Faso and their surroundings. There were differences in the HWW
415 collection systems in Benin and Burkina Faso in comparison to Finland, which, among other factors, seem to be
416 reflected to some extent in the taxonomical compositions and, therefore, resistomes found in these HWW.
417 However, taxonomy explained the variance in the resistomes from the different countries only partially at least
418 for genus level. Although there were fewer dissimilarities in the resistomes between HWW from Benin and
419 Burkina Faso than in the comparisons with Finland, it is important to consider the differences among West African
420 countries in AMR surveillance.

421

422 4. Material and Methods

423

424 4.1. Sample description

425

426 Hospital wastewater (HWW) samples were collected in Benin from four hospitals (hospitals A-D, n = 26) and in
427 Burkina Faso from five different hospitals (hospitals E-I, n = 34) in November and December 2019. In Finland,
428 HWW samples were collected from four different hospitals (hospitals J-O, n = 8) in January 2020. The various
429 wards, clinics, and other units typically had their own septic tanks or sumps in the Beninese and Burkinabe
430 hospitals. In Burkina Faso, the samples were mainly from septic tanks or sewers in the hospital area. In Benin,
431 none of the hospitals was connected to a sewer system, and the samples were from septic tanks or sumps
432 (unstructured wastewater wells), which were never emptied to our knowledge. In most cases, the toilet water was
433 not directed into these sumps. For comparison, 11 non-HWW water sources were sampled. These included
434 samples from the tap (n = 1; BENN tap water (drinking)) and river waters (n = 3; BENN river P, Q, R) used for
435 drinking in a remote countryside village in the community of Savalou in central Benin as well as drinking water
436 from a well located in 100 m distance from hospital A in Benin (n = 1; BENN well water A). Street gutter water
437 near hospital B (in a 100 m distance) (n = 1; BENN street gutter A) and a water puddle at hospital C yard next to
438 HWW septic tank (n = 1; BENN puddle at yard C) and a tank distributing water for hand-washing in hospital C
439 in Benin (n = 1; BENN hand-washing C) were also sampled. In Burkina Faso, samples from biologically treated
440 HWW from hospital H (n = 1; BF exit after biological treatment) and a wetland receiving this water (n = 1; BF
441 wetland receiving treated HWW) were collected. Additionally, one sample was collected from wastewater treated
442 in a local WWTP and destined for a river in Burkina Faso (n = 1; BF receiving river after WWTP) (Table 1).
443 Detailed sample descriptions are provided in the Supporting Information, Table S1, and S2. Illustrative pictures
444 and a map indicating sample collection regions are shown in Figures S1 and S2.

445

446 4.2. DNA extraction and metagenomic sequencing

447

448 Water samples were collected into 1-liter bottles and transported to a laboratory on ice. They were kept at +4 °C
449 until processed within 24 hours. A volume of 50–100 ml was filtered through a 0.2 µm polycarbonate filter

450 (Whatman™, GE Healthcare Life Sciences) using a portable vacuum pump (Millivac-Mini Vacuum Pump XF54,
451 Millipore, Merck). DNA was extracted from the filters using the Qiagen Dneasy PowerWater DNA Kit following
452 manufacturer instructions. The concentration and quality of the extracted DNA were determined with a NanoDrop
453 spectrophotometer. Altogether 93 samples were subjected to shotgun metagenomic sequencing using Illumina
454 Novaseq5000 with Nextera XT library preparation at the Institute of Biotechnology, University of Helsinki.

455

456 4.3. Bioinformatic analyses

457

458 All quality control and read mapping analyses were run using an in-house Snakemake ⁷⁰ (v 5.3.0) workflow.
459 Briefly, the quality control steps included in the workflow were performed using FastQC ⁷¹ (v0.11.8) and MultiQC
460 ⁷² (v1.9), with adapter and low-quality read removal using Cutadapt ⁷³ (v2.7) (parameters -O 10 -m 30 -q 20).
461 Nucleotide sequence reads were mapped using Bowtie2 ⁷⁴ (v 2.4.1) (parameters -D 20 -R 3 -N 1 -L 20 -I S,1,0.50)
462 against the ResFinder database ⁷⁵ (version 3.2, downloaded on 2020-06-28). The reads were sorted and filtered
463 using SAMtools ⁷⁶ (v1.9) such that the reads mapping as pair or alone were calculated as a single count. Mobile
464 genetic elements were identified by mapping the reads with Bowtie2 similarly as above against the
465 MobileGeneticElementDatabase ⁵⁸ (<https://github.com/KatariinaParnanen/MobileGeneticElementDatabase>,
466 downloaded on 2020-06-28) consisting of 2714 unique MGE sequences, including transposons; integrons of
467 classes 1, 2, and 3; the integron-associated disinfectant resistance gene *qacEA*; and IS and ISCR type insertion
468 sequences.

469

470 Taxonomic profiling was performed using both Metaphlan3 ⁷⁷ (v3.0.1) and Metaxa2 ⁷⁸ (v.2.2.1). Metaphlan3 was
471 run to achieve both relative abundances and ‘absolute abundances’ defined by the program developers using the
472 parameter ‘-t rel_ab_w_read_stats’. The outputs from the former were used for ordinations and the latter for
473 diversity analyses. In both cases, the merged abundance tables were modified so that only taxa which were
474 identified to species level were included in the downstream analyses. However, knowing the limitations of
475 species-level taxa identification using shotgun metagenomics ⁷⁹, the results were presented only at the genus level
476 after taxa agglomeration by the function ‘tax_glom’ from the ‘phyloseq’ package ⁸⁰ (v1.40.0) prior analyses.

477

478 The counts for bacterial 16S rRNA from Metaxa2 were used to normalize ARG and MGE counts to obtain relative
479 abundances. Gene lengths were taken into account in the normalization. Three HWW samples were collected in
480 duplicate (Table S2). These replicates were not included in the statistical analyses, but they were used to evaluate
481 the selected methods for detecting resistance. The sums of the relative abundances of ARGs in the replicated
482 sample pairs were highly similar to each other (Figure S10).

483

484 All resistance genes found in the ResFinder database ⁷⁵ were clustered based on 90 % similarity in their sequence
485 identity using CD-HIT ³⁹ (v4.8.1). This clustering was utilized to determine the groups of *bla*OXA-48- and
486 *bla*OXA-58-like variants for studying carbapenemase genes. Data available in Beta-Lactamase DataBase (BLDB)
487 ⁴¹ was used to confirm the carbapenemase activity of the variants of *bla*OXA-48 and *bla*OXA-58-like clusters as
488 well as other carbapenemases studied here (Table S6). For instance, only *bla*GES variants known to encode

489 carbapenemases were included in the visualization (Figure 3), while those encoding ESBL phenotypes were not.
490 Similarly, ARG clustering of 90 % shared nucleotide identity was applied to group *mcr* variants (Table S7).

491
492 To study the genetic environment of ARGs, a subset of samples was assembled into contigs with MEGAHIT⁸¹
493 (v1.2.8) with parameters --min-contig-len 1000 -m 32000000000. Anvi'o⁸² (v7) and Bandage⁸³ programs were
494 applied to visualize the genetic environments (Figures S5 and S7, see details in Supporting Information 1). For
495 *mcr-5* gene, one to two *mcr-5* positive samples from all studied countries were selected for the assembly and the
496 analysis of the genetic background. The same samples were used for the search of putative integron carried multi-
497 drug resistance gene cassettes. Those putative gene cassettes that had multiple ARGs encoded by the same
498 fragment were represented in the Figure S5.

499 500 4.4. Statistical analyses

501
502 All statistical analyses described below were performed for the 68 HWW samples (Table 1, Table S1). The sum
503 of the relative abundances for ARGs, MGEs, and *intI1* was obtained using 16S rRNA gene counts and gene lengths
504 to normalize the count data. As the data did not fulfill the assumptions of normality, a Kruskal-Wallis test from
505 the 'stats' package⁸⁴ (v 4.2.0) was applied to study whether the differences between countries were significant.
506 Pair-wise, Wilcoxon rank sum tests adjusted by Benjamini-Hochberg from the 'stats' package⁸⁴ (v 4.2.0) were
507 performed to determine which comparisons were significant for ARGs and *intI1*.

508 509 4.4.1. Compositional analyses

510
511 Next-generation sequencing (NGS) data is compositional as it only contains relative information⁴³. By ignoring
512 this compositional nature of NGS data, results conducted by traditional normalization methods may suffer from
513 technical artifacts due to sequencing depth limitations⁸⁵. ANOVA-Like Differential Expression tool for high
514 throughput sequencing data (ALDEx2)³⁸ (v1.28.0) was applied to study the divergent features of the resistomes
515 in HWW from each country Benin, Burkina Faso, and Finland. ALDEx2 handles the compositionality of the data
516 by applying suitable data transformations and expressing the results of feature abundance values relative to the
517 geometric mean abundance of other features in a sample or a selected reference gene. Here, for ARGs, the 16S
518 rRNA gene was used as the reference for additive alr-transformation. First, the ARG count data was split so that
519 pair-wise comparisons between countries were possible (e.g., Benin vs. Finland). The command 'aldex.clr(df,
520 conditions, denom = ref)' excludes the features with zero count in all samples and performs the alr-transformation
521 with the selected reference gene. The significance of the comparisons was tested using the Wilcoxon rank test
522 (command 'aldex.ttest(x, paired.test = FALSE, verbose = FALSE)'), in which Benjamini-Hochberg corrections
523 control false positive identifications. Finally, the effect sizes and the within and between condition values were
524 estimated with the command 'aldex.effect'. ALDEx2³⁸ was also applied to study the differentially abundant taxa
525 between the HWW from different countries. Metaphlan3 count data (generated using the parameter '-t
526 rel_ab_w_read_stats') was clr-transformed in the analysis, and the significance of the comparisons was tested
527 similarly as above.

528

529 For PCA ordinations, clr-transformed ARG, MGE and taxa counts (generated by Metaphlan3 with parameter ‘-t
530 rel_ab_w_read_stats’) were visualized using ‘microViz’⁸⁶ (v0.9.1) with the command ‘count_data %>%
531 tax_transform("clr") %>% ord_calc(method = "PCA") %>% ord_plot(color = "country")’. For PCA taxa were
532 fixed to genus level as described earlier.

533

534 All statistical analyses were performed in RStudio (v4.2.0), and the results were visualized using ‘ggplot2’⁸⁷
535 (v3.3.6), and ‘patchwork’⁸⁸ (v1.1.1). Vector maps were drawn using the package ‘rnatuarearth’⁸⁹ (v0.1.0),
536 ‘ggspatial’⁹⁰ (v1.1.6), and ‘maps’⁹¹ (v3.4.0).

537

538 Ethical permission

539 The ethical permissions for the project were received from ‘Comité National d’Ethique pour la Recherche en
540 Santé’ under the Health Ministry in Benin and ‘Comité d’Ethique pour la Recherche en Santé’ under the Health
541 Ministry in Burkina Faso.

542

543 Supporting Information

544 The supporting information referred to within the text as Figures S1-S11 and Tables S1-S10 can be found in the
545 ‘Supporting Information 1’ (Figures S1-S11) and ‘Supporting Information 2’ (Tables S1-S10).

546

547 Acknowledgments

548 We thank the staff in all the participating hospitals for their collaboration in sampling. We also thank the laboratory
549 personnel of the URMAPha at the University of Abomey-Calavi in Benin and the Clinical Research Unit of
550 Nanoro (CRUN) in Burkina Faso for sample processing. Finally, we acknowledge CSC, IT Center for Science,
551 Finland, for providing the computational resources for the study.

552

553 Funding Sources

554 This work was supported by the Academy of Finland (Grant Numbers 346125, 318643, and 316708) and the
555 University of Helsinki HiLife Grand Challenges funding.

556

557 Data availability

558 The data for this study have been deposited in the European Nucleotide Archive (ENA) at EMBL-EBI under the
559 accession number PRJEB47975 and will be public upon article publication in a peer-reviewed journal.

560

561 Code availability

562 All custom codes used for the analyses are available from <https://github.com/melinamarkkanen/AMRIWA> upon
563 article publication in a peer-reviewed journal. Analysis scripts are provided for the reviewers prior publication.

564

565 References

566

- 567 1. World Health Organization. Global Action Plan on Antimicrobial Resistance. Published online 2015.
568 doi:10.13140/RG.2.2.24460.77448
- 569 2. Ventola CL. The Antibiotic Resistance Crisis Part 1: Causes and Threats. *Physical Therapy*.
570 2015;40(4):277-283.

- 571 3. Laxminarayan R, Duse A, Wattal C, et al. Antibiotic resistance—the need for global solutions. *Lancet Infectious Diseases*. 2013;13(12):1057-1098. doi:10.1016/S1473-3099(13)70318-9
- 572
- 573 4. Jacobs J, Hardy L, Semret M, et al. Diagnostic Bacteriology in District Hospitals in Sub-Saharan Africa: At the Forefront of the Containment of Antimicrobial Resistance. *Front Med (Lausanne)*. 2019;6:205. doi:10.3389/fmed.2019.00205
- 574
- 575
- 576 5. Belachew SA, Hall L, Selvey LA. Non-prescription dispensing of antibiotic agents among community drug retail outlets in Sub-Saharan African countries: a systematic review and meta-analysis. *Antimicrob Resist Infect Control*. 2021;10(1). doi:10.1186/s13756-020-00880-w
- 577
- 578
- 579 6. Butcher A, Cañada JA, Sariola S. How to make noncoherent problems more productive: Towards an AMR management plan for low resource livestock sectors. *Humanit Soc Sci Commun*. 2021;8(1):287. doi:10.1057/s41599-021-00965-w
- 580
- 581
- 582 7. Van TTH, Yidana Z, Smooker PM, Coloe PJ. Antibiotic use in food animals worldwide, with a focus on Africa: Pluses and minuses. *J Glob Antimicrob Resist*. 2020;20:170-177. doi:10.1016/j.jgar.2019.07.031
- 583
- 584 8. Martínez JL, Coque TM, Baquero F. What is a resistance gene? Ranking risk in resistomes. *Nat Rev Microbiol*. 2014;13:116–123. doi:10.1038/nrmicro3399
- 585
- 586 9. Zhang AN, Gaston JM, Dai CL, et al. An omics-based framework for assessing the health risk of antimicrobial resistance genes. *Nat Commun*. 2021;4765. doi:10.1038/s41467-021-25096-3
- 587
- 588 10. Nielsen TK, Browne PD, Hansen LH. Antibiotic resistance genes are differentially mobilized according to resistance mechanism. *Gigascience*. 2022;11. doi:10.1093/gigascience/giac072
- 589
- 590 11. Karkman A, Berglund F, Flach CF, Kristiansson E, Larsson DGJ. Predicting clinical resistance prevalence using sewage metagenomic data. *Commun Biol*. 2020;3(1):711. doi:10.1038/s42003-020-01439-6
- 591
- 592
- 593 12. Gillings MR, Gaze WH, Pruden A, Smalla K, Tiedje JM, Zhu YG. Using the class 1 integron-integrase gene as a proxy for anthropogenic pollution. *ISME J*. 2015;9:1269-1279. doi:10.1038/ismej.2014.226
- 594
- 595 13. Li Y, Yang X, Zhang J, et al. Molecular characterisation of antimicrobial resistance determinants and class 1 integrons of *Salmonella enterica* subsp. *enterica* serotype Enteritidis strains from retail food in China. *Food Control*. 2021;128:108191. doi:10.1016/j.foodcont.2021.108191
- 596
- 597
- 598 14. Gillings MR. Integrons: Past, Present, and Future. *Microbiology and Molecular Biology Reviews*. 2014;78(2):257-277. doi:10.1128/MMBR.00056-13
- 599
- 600 15. World Health Organization. *Global Antimicrobial Resistance and Use Surveillance System (GLASS) Report 2021*. Geneva.; 2021.
- 601
- 602 16. World Health Organization. WHO report on surveillance of antibiotic consumption: 2016-2018 early implementation. Published 2018. https://www.who.int/medicines/areas/rational_use/oms-amr-amc-report-2016-2018/en/
- 603
- 604
- 605 17. Suay-García, Pérez-Gracia. Present and Future of Carbapenem-resistant *Enterobacteriaceae* (CRE) Infections. *Antibiotics*. 2019;8(3):122. doi:10.3390/antibiotics8030122
- 606
- 607 18. Poirel L, Marqué S, Héritier C, Segonds C, Chabanon G, Nordmann P. OXA-58, a novel class D β -lactamase involved in resistance to carbapenems in *Acinetobacter baumannii*. *Antimicrob Agents Chemother*. 2005;49(1):202-208. doi:10.1128/AAC.49.1.202-208.2005
- 608
- 609
- 610 19. Poirel L, Weldhagen GF, Naas T, de Champs C, Dove MG, Nordmann P. GES-2, a class A β -lactamase from *Pseudomonas aeruginosa* with increased hydrolysis of imipenem. *Antimicrob Agents Chemother*. 2001;45(9):2598-2603. doi:10.1128/AAC.45.9.2598-2603.2001
- 611
- 612
- 613 20. Nordmann P, Poirel L. The difficult-to-control spread of carbapenemase producers among *Enterobacteriaceae* worldwide. *Clinical Microbiology and Infection*. 2013;20:821-830. doi:10.1111/1469-0691.12719
- 614
- 615
- 616 21. Falagas ME, Kasiakou Sofia. K. Colistin: The Revival of Polymyxins for the Management of Multidrug-Resistant Gram-Negative Bacterial Infections. *Clinical Infectious Diseases*. 2005;40(9):1333-1341.
- 617
- 618
- 619 22. Ling Z, Yin W, Shen Z, Wang Y, Shen J, Walsh TR. Epidemiology of mobile colistin resistance genes *mcr-1* to *mcr-9*. *Journal of Antimicrobial Chemotherapy*. 2020;75(11):3087-3095. doi:10.1093/jac/dkaa205
- 620
- 621
- 622 23. Anyanwu MU, Odilichukwu C, Okpala R, Chah KF, Shoyinka VS. Prevalence and Traits of Mobile Colistin Resistance Gene Harbouring Isolates from Different Ecosystems in Africa. *Biomed Res Int*. 2021;22:6630379. doi:10.1155/2021/6630379
- 623
- 624
- 625 24. Collignon P, Beggs JJ, Walsh TR, Gandra S, Laxminarayan R. Anthropological and socioeconomic factors contributing to global antimicrobial resistance: a univariate and multivariable analysis. *Lancet Planet Health*. 2018;2(9):e398-405.
- 626
- 627
- 628 25. van Boeckel TP, Pires J, Silvester R, et al. Global trends in antimicrobial resistance in animals in low- and middle-income countries. *Science (1979)*. 2019;365(6459):eaaw1944. doi:10.1126/science.aaw1944
- 629

- 630 26. Iskandar K, Molinier L, Hallit S, et al. Surveillance of antimicrobial resistance in low- and middle-
631 income countries: a scattered picture. *Antimicrob Resist Infect Control*. 2020;10:63.
632 doi:10.1186/s13756-021-00931-w
- 633 27. Ambler RP. The structure of beta-lactamases. *Philos Trans R Soc Lond*. 1980;289(1036):321-331.
634 doi:10.1098/rstb.1980.0049
- 635 28. Bernabé KJ, Langendorf C, Ford N, Ronat JB, Murphy RA. Antimicrobial resistance in West Africa: a
636 systematic review and meta-analysis. *Int J Antimicrob Agents*. 2017;50(5):629-639.
637 doi:10.1016/j.ijantimicag.2017.07.002
- 638 29. Mahamat OO, Kempf M, Lounnas M, et al. Epidemiology and prevalence of extended-spectrum β -
639 lactamase-and carbapenemase-producing *Enterobacteriaceae* in humans, animals and the environment
640 in West and Central Africa. *Int J Antimicrob Agents*. 2021;57:106203.
641 doi:10.1016/j.ijantimicag.2020.106203
- 642 30. Hendriksen RS, Munk P, Njage P, et al. Global monitoring of antimicrobial resistance based on
643 metagenomics analyses of urban sewage. *Nat Commun*. 2019;10(1):1124. doi:10.1038/s41467-019-
644 08853-3
- 645 31. Pärnänen KMM, Narciso-da-Rocha C, Kneis D, et al. Antibiotic resistance in European wastewater
646 treatment plants mirrors the pattern of clinical antibiotic resistance prevalence. *Sci Adv*.
647 2019;5(3):eaau9124. doi:10.1126/sciadv.aau9124
- 648 32. European Centre for Disease Prevention and Control. *Antimicrobial Resistance in the EU/EEA (EARS-
649 Net) - Annual Epidemiological Report 2019.*; 2020. [https://www.ecdc.europa.eu/en/publications-
650 data/surveillance-antimicrobial-resistance-europe-2019](https://www.ecdc.europa.eu/en/publications-data/surveillance-antimicrobial-resistance-europe-2019)
- 651 33. Buelow E, Rico A, Gaschet M, et al. Hospital discharges in urban sanitation systems: Long-term
652 monitoring of wastewater resistome and microbiota in relationship to their eco-exposome. *Water Res X*.
653 2020;7:100045. doi:10.1016/j.wroa.2020.100045
- 654 34. Karkman A, Do TT, Walsh F, Virta MPJ. Antibiotic-Resistance Genes in Waste Water. *Trends
655 Microbiol*. 2018;26(3):220-228. doi:10.1016/J.TIM.2017.09.005
- 656 35. Luk-in S, Pulsrikarn C, Bangtrakulnonth A, Chatsuwat T, Kulwichit W. Occurrence of a novel class 1
657 integron harboring *qnrVC4* in *Salmonella* Rissen. *Diagn Microbiol Infect Dis*. 2017;88(3):282-286.
658 doi:10.1016/j.diagmicrobio.2017.03.016
- 659 36. Xia R, Guo X, Zhang Y, Xu H. *qnrVC*-like gene located in a novel complex class 1 integron harboring
660 the ISCR1 element in an *Aeromonas punctata* strain from an aquatic environment in Shandong
661 Province, China. *Antimicrob Agents Chemother*. 2010;54(8):3471-3474. doi:10.1128/AAC.01668-09
- 662 37. Fernandes AD, Reid JNS, Macklaim JM, McMurrough TA, Edgell DR, Gloor GB. Unifying the
663 analysis of high-throughput sequencing datasets: Characterizing RNA-seq, 16S rRNA gene sequencing
664 and selective growth experiments by compositional data analysis. *Microbiome*. 2014;2(1).
665 doi:10.1186/2049-2618-2-15
- 666 38. Fernandes AD, Reid JN, Macklaim JM, Mcmurrough TA, Edgell DR, Gloor GB. Unifying the analysis
667 of high-throughput sequencing datasets: characterizing RNA-seq, 16S rRNA gene sequencing and
668 selective growth experiments by compositional data analysis. *Microbiome*. 2014;2:15.
- 669 39. Fu L, Niu B, Zhu Z, Wu S, Li W. Sequence analysis CD-HIT: accelerated for clustering the next-
670 generation sequencing data. *Bioinformatics*. 2012;28(23):3150-3152. doi:10.1093/bioinformatics/bts565
- 671 40. Ma L, Li AD, Yin X le, Zhang T. The Prevalence of Integrons as the Carrier of Antibiotic Resistance
672 Genes in Natural and Man-Made Environments. *Environ Sci Technol*. 2017;51(10):5721-5728.
673 doi:10.1021/acs.est.6b05887
- 674 41. Naas T, Oueslati S, Bonnin RA, et al. Beta-lactamase database (BLDB)-structure and function. *J
675 Enzyme Inhib Med Chem*. 2017;32(1):917-919. doi:10.1080/14756366.2017.1344235
- 676 42. Rice EW, Wang P, Smith AL, Stadler LB. Determining Hosts of Antibiotic Resistance Genes: A
677 Review of Methodological Advances. *Environ Sci Technol Lett*. 2020;7(5):282-291.
678 doi:10.1021/acs.estlett.0c00202
- 679 43. Aitchison J. The Statistical Analysis of Compositional Data. *Journal of the Royal Statistical Society:
680 Series B (Methodological)*. 1982;44(2):139-160.
- 681 44. Love MI, Huber W, Anders S. Moderated estimation of fold change and dispersion for RNA-seq data
682 with DESeq2. *Genome Biol*. 2014;15:550. doi:10.1186/s13059-014-0550-8
- 683 45. Araújo S, Sousa M, Tacão M, et al. Carbapenem-resistant bacteria over a wastewater treatment process:
684 Carbapenem-resistant *Enterobacteriaceae* in untreated wastewater and intrinsically-resistant bacteria in
685 final effluent. *Science of the Total Environment*. 2021;782:146892. doi:10.1016/j.scitotenv.2021.146892
- 686 46. Zieliński W, Korzeniewska E, Harnisz M, Drzymala J, Felis E, Bajkacz S. Wastewater treatment plants
687 as a reservoir of integrase and antibiotic resistance genes – An epidemiological threat to workers and
688 environment. *Environ Int*. 2021;156:106641. doi:10.1016/j.envint.2021.106641

- 689 47. Figueiredo S, Bonnin RA, Poirel L, Duranteau J, Nordmann P. Identification of the naturally occurring
690 genes encoding carbapenem-hydrolysing oxacillinases from *Acinetobacter haemolyticus*, *Acinetobacter*
691 *johnsonii*, and *Acinetobacter calcoaceticus*. *Clinical Microbiology and Infection*. 2012;18:907-913.
692 doi:10.1111/j.1469-0691.2011.03708.x
- 693 48. Périchon B, Goussard S, Walewski V, et al. Identification of 50 class D β -lactamases and 65
694 *Acinetobacter*-derived cephalosporinases in *Acinetobacter* spp. *Antimicrob Agents Chemother*.
695 2014;58(2):936-949. doi:10.1128/AAC.01261-13
- 696 49. Olalekan A, Onwugamba F, Iwalokun B, Mellmann A, Becker K, Schaumburg F. High proportion of
697 carbapenemase-producing *Escherichia coli* and *Klebsiella pneumoniae* among extended-spectrum β -
698 lactamase-producers in Nigerian hospitals. *J Glob Antimicrob Resist*. 2020;21:8-12.
699 doi:10.1016/j.jgar.2019.09.007
- 700 50. Manenzhe RI, Zar HJ, Nicol MP, Kaba M. The spread of carbapenemase-producing bacteria in Africa: a
701 systematic review. *Journal of Antimicrobial Chemotherapy*. 2015;70:23-40. doi:10.1093/jac/dku356
- 702 51. van Duin D, Doi Y. The global epidemiology of carbapenemase-producing Enterobacteriaceae.
703 *Virulence*. 2017;8(4):460-469. doi:10.1080/21505594.2016.1222343
- 704 52. Mushi MF, Mshana SE, Imirzalioglu C, Bwanga F. Carbapenemase Genes among Multidrug Resistant
705 Gram Negative Clinical Isolates from a Tertiary Hospital in Mwanza, Tanzania. *Biomed Res Int*.
706 2014;2014(4):303104. doi:10.1155/2014/303104
- 707 53. WHO Regional Office for Europe and European Centre for Disease Prevention and Control.
708 *Surveillance of Antimicrobial Resistance in Europe, 2020. Executive Summary*. Copenhagen: WHO
709 Regional for Europe.; 2021.
- 710 54. Räisänen K, Lyytikäinen O, Kauranen J, et al. Molecular epidemiology of carbapenemase-producing
711 Enterobacterales in Finland, 2012–2018. *European Journal of Clinical Microbiology and Infectious*
712 *Diseases*. 2020;39(9):1651-1656. doi:10.1007/s10096-020-03885-w
- 713 55. Yatsunenko T, Rey FE, Manary MJ, et al. Human gut microbiome viewed across age and geography.
714 *Nature*. 2012;486:222–227. doi:10.1038/nature11053
- 715 56. Thompson L, Sanders JG, McDonald D, et al. A communal catalogue reveals Earth's multiscale
716 microbial diversity. *Nature*. 2017;551(18):457–463. doi:10.1038/nature24621
- 717 57. Oyem IM, Oyem HH, Atuanya. Molecular characterisation of bacteria strains of septic tank sewage
718 samples from related sites in Delta and Edo States of Nigeria using 16S rRNA denaturing gradient gel
719 electrophoresis (DGGE). *Afr J Environ Sci Tech*. 2020;14(6):132-138. doi:10.5897/AJEST2020.2851
- 720 58. Pärnänen K, Karkman A, Hultman J, et al. Maternal gut and breast milk microbiota affect infant gut
721 antibiotic resistome and mobile genetic elements. *Nat Commun*. 2018;9:389. doi:10.1038/s41467-018-
722 06393-w
- 723 59. Olumuyiwa Olaitan A, Dandachi I, Alexandra Baron S, Daoud Z, Morand S, Rolain JM. Banning
724 colistin in feed additives: a small step in the right direction. *Lancet Infect Dis*. 2021;21(1):29-30.
725 doi:10.1016/S1473
- 726 60. Olowo-Okere A, Yacouba A. Review Molecular mechanisms of colistin resistance in Africa: A
727 systematic review of literature. *Germes*. 2020;10(4):367-379.
- 728 61. Kneis D, Berendonk TU, Heß S. High prevalence of colistin resistance genes in German municipal
729 wastewater. *Science of the Total Environment*. 2019;694:133454. doi:10.1016/j.scitotenv.2019.07.260
- 730 62. Ngbede EO, Poudel A, Kalalah A, et al. Identification of mobile colistin resistance genes (*mcr-1.1*, *mcr-5*
731 and *mcr-8.1*) in *Enterobacteriaceae* and *Alcaligenes faecalis* of human and animal origin, Nigeria. *Int*
732 *J Antimicrob Agents*. 2020;56(3):106108. doi:10.1016/j.ijantimicag.2020.106108
- 733 63. Borowiak M, Fischer J, Hammerl JA, Hendriksen RS, Szabo I, Malorny B. Identification of a novel
734 transposon-associated phosphoethanolamine transferase gene, *mcr-5*, conferring colistin resistance in d-
735 tartrate fermenting *Salmonella enterica* subsp. *enterica* serovar Paratyphi B. *Journal of Antimicrobial*
736 *Chemotherapy*. 2017;72(12):3317-3324. doi:10.1093/jac/dkx327
- 737 64. Borowiak M, Hammerl JA, Deneke C, Fischer J, Szabo I, Malorny B. Characterization of *mcr-5*-
738 Harboring *Salmonella enterica* subsp. *enterica* Serovar Typhimurium Isolates from Animal and Food
739 Origin in Germany. *Antimicrob Agents Chemother*. 2019;63(6):e00063-19. doi:10.1128/AAC.00063-19
- 740 65. Guo S, Tay MYF, Thu AK, et al. Conjugative IncX1 plasmid harboring colistin resistance gene *mcr-5.1*
741 in *Escherichia coli* isolated from chicken rice retailed in Singapore. *Antimicrob Agents Chemother*.
742 2019;63(11):e01043-19. doi:10.1128/AAC.01043-19
- 743 66. Peace Hounkpe S, Codjo Adjovi E, Crapper M, Awuah E. Wastewater Management in Third World
744 Cities: Case Study of Cotonou. *Benin Journal of Environmental Protection*. 2014;5(05):387-399.
745 doi:10.4236/jep.2014.55042
- 746 67. Totin HS, Ernest A, Odoulami L, Edorh PA, Boukari M, Boko M. Groundwater pollution and the safe
747 water supply challenge in Cotonou town, Benin (West Africa). *IAHS-AISH Proceedings and Reports*.
748 2013;361:191-196. doi:10.13140/RG.2.1.2668.0168

- 749 68. Bougnom BP, Zongo C, McNally A, et al. Wastewater used for urban agriculture in West Africa as a
750 reservoir for antibacterial resistance dissemination. *Environ Res.* 2019;168:14-24.
751 doi:10.1016/j.envres.2018.09.022
- 752 69. Bougnom BP, Thiele-Bruhn S, Ricci V, Zongo C, Piddock LJV. Raw wastewater irrigation for urban
753 agriculture in three African cities increases the abundance of transferable antibiotic resistance genes in
754 soil, including those encoding extended spectrum β -lactamases (ESBLs). *Science of the Total*
755 *Environment.* 2020;698:134201. doi:10.1016/j.scitotenv.2019.134201
- 756 70. Mölder F, Jablonski KP, Letcher B, et al. Sustainable data analysis with Snakemake. *FI000Res.*
757 2021;10:33. doi:10.12688/fi000research.29032.1
- 758 71. Andrews S. FastQC A quality control tool for high throughput sequence data
759 <https://www.bioinformatics.babraham.ac.uk/projects/fastqc/>.
- 760 72. Ewels P, Ns Magnusson M, Lundin S, Aller MK. Data and text mining MultiQC: summarize analysis
761 results for multiple tools and samples in a single report. *Bioinformatics.* 32(19):3047–3048.
762 doi:10.1093/bioinformatics/btw354
- 763 73. Marcel M. Cutadapt removes adapter sequences from high-throughput sequencing reads. *EMBnet J.*
764 2011;17(1):10-12. doi:<http://dx.doi.org/10.14806/ej.17.1.200>
- 765 74. Langmead B, Salzberg SL. Fast gapped-read alignment with Bowtie 2. *Nat Methods.* 2012;9(4):357-
766 359. doi:10.1038/nmeth.1923
- 767 75. Bortolaia V, Kaas RS, Ruppe E, et al. ResFinder 4.0 for predictions of phenotypes from genotypes.
768 *Journal of Antimicrobial Chemotherapy.* 2020;75(12):3491-3500. doi:10.1093/jac/dkaa345
- 769 76. Li H, Handsaker B, Wysoker A, et al. The Sequence Alignment/Map format and SAMtools.
770 *Bioinformatics.* 2009;25(16):2078-2079. doi:10.1093/bioinformatics/btp352
- 771 77. Beghini F, Mciver LJ, Blanco-mi A, et al. Integrating taxonomic, functional, and strain-level profiling
772 of diverse microbial communities with bioBakery 3. *Elife.* 2021;4(10):1-42.
- 773 78. Bengtsson-Palme J, Hartmann M, Eriksson KM, et al. metaxa2: Improved identification and taxonomic
774 classification of small and large subunit rRNA in metagenomic data. *Mol Ecol Resour.*
775 2015;15(6):1403-1414. doi:10.1111/1755-0998.12399
- 776 79. Thomas AM, Segata N. Multiple levels of the unknown in microbiome research. *BMC Biol.*
777 2019;17(48). doi:10.1186/s12915-019-0667-z
- 778 80. McMurdie PJ, Holmes S. Phyloseq: An R Package for Reproducible Interactive Analysis and Graphics
779 of Microbiome Census Data. *PLoS One.* 2013;8(4). doi:10.1371/journal.pone.0061217
- 780 81. Li D, Liu CM, Luo R, Sadakane K, Lam TW. MEGAHIT: an ultra-fast single-node solution for large
781 and complex metagenomics assembly via succinct de Bruijn graph. *Bioinformatics.* 2015;31(10):1674-
782 1676. doi:10.1093/bioinformatics/btv033
- 783 82. Murat Eren A, Kiefl E, Shaiber A, et al. Community-led, integrated, reproducible multi-omics with
784 anvio. *Nat Microbiol.* 2021;6:3-6. doi:10.1038/s41564-020-00834-3
- 785 83. Wick RR, Schultz MB, Zobel J, Holt KE. Bandage: interactive visualization of de novo genome
786 assemblies. *Bioinformatics.* 2015;31(20):3350–3352. doi:10.1093/bioinformatics/btv383
- 787 84. R Foundation for Statistical Computing. Vienna, Austria. R: A language and environment for statistical
788 computing. R Foundation for Statistical Computing, Vienna, Austria. :<https://www.R-project.org/>.
789 <https://www.r-project.org/>.
- 790 85. Quinn TP, Erb I, Gloor G, Notredame C, Richardson MF, Crowley TM. A field guide for the
791 compositional analysis of any-omics data. *Gigascience.* 2019;8(9). doi:10.1093/gigascience/giz107
- 792 86. Barnett D, Arts I, Penders J. microViz: an R package for microbiome data visualization and statistics. *J*
793 *Open Source Softw.* 2021;6(63):3201. doi:10.21105/joss.03201
- 794 87. Wickham H. ggplot2: Elegant graphics for data analysis. <https://ggplot2.tidyverse.org>.
- 795 88. Pedersen TL. patchwork: The Composer of Plots. <https://cran.r-project.org/package=patchwork>.
- 796 89. South A. rnaturalearth: World Map Data from Natural Earth. [https://cran.r-](https://cran.r-project.org/package=rnaturalearth)
797 [project.org/package=rnaturalearth](https://cran.r-project.org/package=rnaturalearth).
- 798 90. Dunnington D. ggspatial: Spatial Data Framework for ggplot2. <https://paleolimbot.github.io/ggspatial/>.
- 799 91. Becker, Minka, Deckmyn. maps: Draw Geographical Maps. <https://cran.r-project.org/package=maps>.
- 800