

1 Metagenomic analysis of antimicrobial resistance genes in wastewaters in Benin and Burkina Faso indicates a
2 serious health risk from untreated hospital wastewaters in low-income countries

3

4

5 Melina A. Markkanen^{1*}, Kaisa Haukka^{1,6}, Katariina M. M. Pärnänen¹, Victorien Tamegnon Dougnon², Isidore
6 Juste O. Bonkougou³, Zakaria Garba⁴, Halidou Tinto⁴, Anniina Sarekoski¹, Antti Karkman¹, Anu Kantele^{5,6†},
7 Marko P. J. Virta^{1*†}

8

9 ¹Department of Microbiology, University of Helsinki, Finland

10 ²Research Unit in Applied Microbiology and Pharmacology of Natural Substances, Polytechnic School of
11 Abomey-Calavi, University of Abomey-Calavi, Benin

12 ³Department of Biochemistry and Microbiology, University Joseph KI-ZERBO, Ouagadougou, Burkina Faso

13 ⁴Clinical Research Unit Nanoro, Institute for Research in Health Sciences, National Center for Scientific and
14 Technological Research, Burkina Faso

15 ⁵Meilahti Infectious Diseases and Vaccine Research Center, MeiVac, Department of Infectious Diseases,
16 University of Helsinki and Helsinki University Hospital, Helsinki, Finland

17 ⁶Human Microbiome Research Program, Faculty of Medicine, University of Helsinki, Helsinki, Finland

18

19 *Marko P. J. Virta, marko.virta@helsinki.fi

20 *Melina A. Markkanen, melina.markkanen@helsinki.fi

21 † Equal contribution

22

23 *Abstract*

24 Antimicrobial resistance (AMR) is one of the greatest global threats to human health, but substantial gaps in AMR
25 data exist in West African countries. To obtain in-depth data, we explored the presence of antimicrobial resistance
26 genes (ARGs) in the hospital wastewaters (HWW) of nine hospitals in Benin and Burkina Faso and, for
27 comparison, of four hospitals in Finland. The highest total relative abundance of ARGs in HWWs was observed
28 in Benin and the lowest in Finland. HWW resistomes were more similar to each other in Benin and Burkina Faso
29 than in Finland. Different clinically relevant carbapenemases were detected in varying abundances, especially in
30 HWWs from Burkina Faso and Finland. The most widespread carbapenemase gene in the Beninese hospitals,
31 *bla*GES, was also found in water used for handwashing. *bla*NDM was present in the HWW of one Beninese
32 hospital and was also detected in the stools of a hospitalized patient. Mobile colistin ARGs were detected in the
33 HWWs of all the three studied countries, with *mcr-5* variants being the most common. These and other *mcr* genes
34 were observed in very high abundance in treated wastewater released into rivers in Burkina Faso. In Benin, only
35 little is done to treat wastewaters, including HWWs. The results provide evidence for public health decision-
36 makers in Benin and Burkina Faso for the dire need to increase wastewater treatment capacity, with particular
37 attention to HWWs.

38

39 *Keywords*

40 Antimicrobial resistance (AMR)

NOTE: This preprint reports new research that has not been certified by peer review and should not be used to guide clinical practice.

41 West Africa
42 hospital wastewater (HWW)
43 carbapenemase
44 colistin resistance
45 metagenomes

46 47 *Synopsis*

48 Metagenomic analysis of HWWs revealed high abundances of ARGs and their potential transmission to other
49 environments in Benin and Burkina Faso.

50 51 *1. Introduction*

52
53 The AMR crisis is a global issue with multifaceted effects on human, animal, and environmental health, and it
54 comes with substantial economic losses¹. Resistance to almost all antibiotics, including the last resort regimen
55 reserved to treat the most severe infections, has tended to emerge only a couple of years after introducing a new
56 antibiotic to the global market^{2,3}. Due to limitations in diagnostic testing in low-resource settings in low-income
57 countries (LICs), broad-spectrum antibiotics are often prescribed empirically without microbiological verification
58 of the causative pathogen or its sensitivity to different antibiotics⁴.

59
60 Bacterial resistance to antimicrobial compounds may be intrinsic, or acquired from other bacteria or the
61 surrounding environment via horizontal gene transfer of mobile genetic elements (MGE)⁵⁻⁷. While both intrinsic
62 and acquired resistance contribute to the total resistance burden, acquired resistance is considered to have a greater
63 impact on the current AMR problem induced by human activity⁷. Class 1 integrons are strongly linked to the
64 dissemination of clinically relevant acquired ARGs^{8,9}. Integron-carried gene cassettes, consisting of several
65 ARGs, are expressed by a single integron-associated promoter¹⁰ and the multidrug-resistance gene cassettes can
66 be transmitted to new hosts, for example, via plasmids¹¹. The gene encoding the integron integrase (*intI*) among
67 other associated genes, is involved in the recombination of incoming genetic material into the gene cassette, and
68 *intI1* is typically used as a marker for class 1 integrons^{9,12}. Over time, quaternary ammonium compound (QAC)
69 resistance genes, such as *qacEA*, have established their position in the structure of a typical class 1 integron gene
70 cassette whose spread is induced by human activity^{12,13}. It has been speculated that increasing the use of such
71 disinfectant compounds in hospitals and community environments, especially during the COVID-19 pandemic,
72 would further exacerbate the problem of multidrug resistance mediated by class 1 integrons¹⁴.

73
74 The high-risk ESKAPEEc bacteria⁶ (*Enterococcus faecium*, *Staphylococcus aureus*, *Klebsiella pneumoniae*,
75 *Acinetobacter baumannii*, *Pseudomonas aeruginosa*, *Enterobacter* spp. and *Escherichia coli*)¹⁵ are top priority
76 pathogens for AMR research and the development of new antibiotics^{6,16}. They can feature an impressive resistance
77 profile in terms of both intrinsic and acquired ARGs and often exhibit multidrug resistant phenotypes. However,
78 investigating only bacterial isolates may result in limited understanding of ARGs occurring in a particular hospital.
79 In contrast, shotgun metagenomic sequencing enables the analysis of resistomes and mobilomes (all ARGs or

80 MGEs, respectively) as well as the microbial communities present in the studied environment¹⁷. Hence, as
81 opposed to PCR based methods, there is no requirement for a priori knowledge of the resistome¹⁷.

82

83 As a consequence of the increased prevalence of extended-spectrum beta-lactamase-producing
84 *Enterobacteriaceae* (ESBL-PE), the use of broad-spectrum antibiotics has increased in clinical practise^{2,18,19}.
85 Tracking down the spread of ESBL genes is, in many situations, no longer feasible or relevant, and attention has
86 been directed to plasmid-mediated genes that encode carbapenemases. The carbapenemases *bla*GES, *bla*IMP,
87 *bla*KPC, *bla*NDM, *bla*OXA-48, *bla*OXA-58, and *bla*VIM carried by plasmids have emerged and spread around
88 the world during the past three decades²⁰⁻²³. However, only a subset of all the currently known *bla*GES genes
89 confer resistance to carbapenems, namely, *bla*GES-2, -4, -5, -6, -14, -16, and -20²³.

90

91 Metronidazole is an example of an empirically widely used first-line treatment in many African countries²⁴. This
92 antimicrobial drug is effective against various protozoan parasites and anaerobic bacteria²⁵. Although acquired
93 resistance towards metronidazole (mediated mainly by *nim* genes) is considered to be relatively rare, an increasing
94 trend in its emergence has been reported²⁵. Colistin is a last-resort antibiotic used for treating infections caused
95 by multidrug and extensively resistant bacteria²⁶. The rapid emergence of mobile colistin resistance mediated by
96 *mcr* genes threatens the efficacy of colistin in clinical use^{27,28}.

97

98 Although AMR is of global concern, the crisis affects most dramatically LICs, such as those in West Africa^{3,4,29-}
99 ³¹. Lack of research data is a major factor hindering the development of solutions to tackle the AMR problem in
100 these countries^{4,29,32,33}. Despite gaps in resistance surveillance data, it is well known that the level of AMR is
101 highest in many LICs, such as in many African countries^{18,30,34,35}. By contrast, in Northern European countries,
102 such as Finland, AMR occurrence is among the lowest globally, both in the community^{35,36} and healthcare-
103 settings³⁷.

104

105 As hospital wastewater (HWW) from healthcare facilities is considered to be at the frontline of AMR emergence
106 and spread³⁸, we set out to investigate the AMR situation and the characteristics of the resistomes in nine hospitals
107 in two West African countries, Benin and Burkina Faso, where prior data was scarce¹⁸. For comparison, we
108 analyzed samples from four hospitals in Finland, where the level of AMR was expected to be low³⁷. In this study,
109 we applied shotgun metagenomic sequencing as it allows the analysis of the total catalog of genes present in the
110 studied environment.

111

112 2. Material and Methods

113

114 2.1. Sample description

115

116 Hospital wastewater (HWW) samples were collected in Benin from four (hospitals A-D) and in Burkina Faso
117 from five different hospitals (hospitals F-J) in November and December of 2019. In Finland, HWW samples were
118 collected from four different hospitals (hospitals K-N) in January of 2020. In Burkina Faso, the samples were
119 mainly from septic tanks or sewers in the hospital area. In Benin, none of the hospitals was connected to a sewer

120 system, and the samples were from septic tanks or sumps (unstructured wastewater wells), which were never
121 emptied to our knowledge. In most cases the toilet water was not directed into these sumps. For comparison, some
122 other types of samples were included: samples from river waters used for drinking in a remote countryside village
123 in the community of Savalou in central Benin (n=3); river water receiving treated wastewater in Burkina Faso
124 (n=2); and fecal samples of in-patients in Benin (n=4). In addition, the following samples were analyzed; well
125 water, treated tap water, water for handwashing, water in a municipality channel receiving biologically treated
126 wastewater, water and sediment from a street gutter next to the hospital, an empty HWW septic tank, and the soil
127 between HWW septic tanks. The four fecal samples were obtained from patients staying at hospital B with
128 diagnoses mainly associated with musculoskeletal injuries. No clinical data concerning bacterial infections were
129 reported for these patients, and we have no information on their possible use of antibiotics. Patient age varied
130 from 24 to 50 years old, and at the time of sampling, patients had stayed in the hospital for one to two months.
131 All sample details are provided in the Supporting Information, Table S2A. Selected pictures and a map indicating
132 sample collection regions are shown in Figures S1 and S2. Letters A–N were used to denote the hospitals/sampling
133 locations.

134

135 *2.2. DNA extraction and metagenomic sequencing*

136

137 Water samples were collected into 1-liter bottles, which were transported to a laboratory on ice. They were kept
138 at +4 °C until processed within 24 hours. A volume of 50–100 ml was filtered through a 0.2 µm polycarbonate
139 filter (Whatman™, GE Healthcare Life Sciences) using a portable vacuum pump (Millivac-Mini Vacuum Pump
140 XF54, Millipore, Merck). DNA was extracted from the filters using the Qiagen DNeasy PowerWater DNA Kit
141 for the water samples and Qiagen DNeasy PowerSoil DNA Kit for the soil samples, following manufacturer
142 instructions. The concentration and quality of the extracted DNA were determined with a NanoDrop
143 spectrophotometer. Altogether 93 samples were subjected to shotgun metagenomic sequencing using Illumina
144 Novaseq5000 with Nextera XT library preparation at the Institute of Biotechnology, University of Helsinki.

145

146 *2.3. Bioinformatic and statistical analyses*

147

148 All samples were analyzed using an in-house Snakemake workflow³⁹. Briefly, in the workflow, metagenomic
149 reads were mapped against ResFinder⁴⁰ and MobileGeneticElementDatabase database⁴¹. Taxonomical
150 compositions were studied using Metaphlan3⁴² and Metaxa2⁴³. Detailed description for the bioinformatic and
151 statistical analyses can be viewed in the Supporting Information and on the project's GitHub page.

152

153 To model the total relative abundances of ARGs and MGEs in HWWs from Benin, Burkina Faso, and Finland, a
154 generalized linear model (GLM) with gamma distribution and logarithmic link was fitted to 16S rRNA normalized
155 count data. The effects of the country, hospital, and hospital section on the abundance of ARGs and MGEs were
156 studied with the function 'glm' in the package MASS (v7.3-53.1)⁴⁴.

157

158 The ‘ordinate’ function in the Phyloseq package (v1.30.0)⁴⁵ was used for principal coordinate analysis (PCoA) of
159 resistomes, mobilomes, and taxonomical compositions. Country-related differences in the prevalence of specific
160 resistance genes were examined using DESeq2 (v1.26.0)⁴⁶.

161

162 Pearson correlation coefficients and adjusted *p*-values for each ARG for class 1 integron and *qacEA* genes were
163 obtained with the function ‘corr.test’ in the package psych (v2.1.3)⁴⁷ and visualized using package ggcorrplot
164 (v0.1.3)⁴⁸. The correlation tests for different normalization methods (*rpoB* and 16S rRNA) were performed
165 similarly.

166

167 3. Results

168

169 3.1. Features of hospital wastewaters in Benin, Burkina Faso, and Finland

170

171 We analyzed hospital wastewater-associated resistomes from Benin, Burkina Faso, and Finland. On average, 31
172 million sequence reads per sample were analyzed. HWWs from Benin showed the highest and from Burkina Faso
173 the second-highest abundance of all detected ARGs normalized to bacterial 16S rRNA genes, here referred to as
174 the relative sum abundance of ARGs. The lowest relative sum abundance was detected in HWWs from Finland
175 (Figure 1A, Table S3A). No significant differences were observed in the relative ARG sums among the different
176 hospitals in each country or between the hospital sections or wards within the sampled hospitals (Table S3A).
177 Country-wise differences for the relative abundances of class 1 integron gene (*intI1*) (Figure 1C, Table S3C)
178 followed the trend observed for relative ARG abundances (Figure 1A). The observed high Pearson correlation of
179 0.80 ($p = 3.2 \times 10^{-16}$) between ARGs and *intI1* genes across all 67 HWW samples indicated an association between
180 the genes. For all MGEs, including also other than class 1 integron associated genes, similar trend was not
181 observed (Figure 1B, Table S3B).

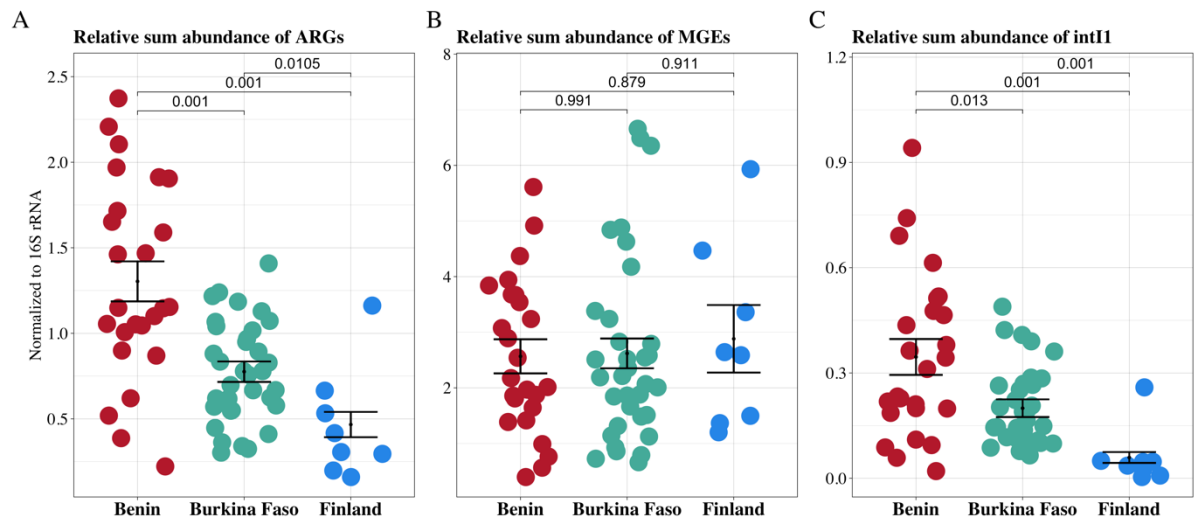
182

183 The resistomes of HWWs from Benin and Burkina Faso resembled each other more than those of the Finnish
184 HWWs (Figure 2A). The resistomes in Benin and Burkina Faso shared 384 ARGs, while Finland and Benin shared
185 only 15 ARGs and Finland and Burkina Faso shared 134 ARGs (Figure S4). The resistome compositions differed
186 the most between the Beninese and Finnish HWW samples (Figure 2A). The country explained the differences in
187 the resistomes by 29.5–33.7 % in the Benin-Finland comparison, and 24.5–25.6 % in the Burkina Faso-Finland
188 comparison (Table S1). In addition, while the ARGs found uniquely in HWWs from Burkina Faso made up
189 approximately 14 % of all the detected ARGs in this study, the corresponding percentage for HWWs from Benin
190 was only 2.5 % (Figure S4).

191

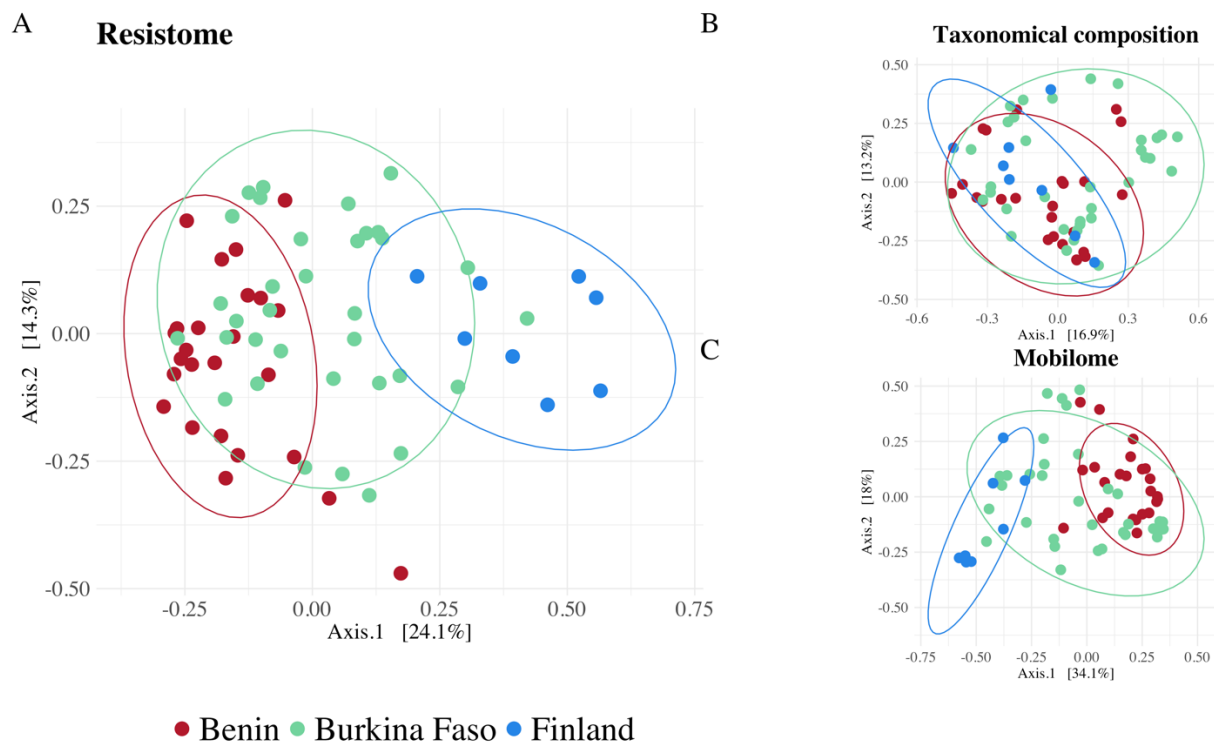
192 As the resistomes of West African countries and Finland were divergent, the drivers for the differences were
193 subsequently investigated. The country explained less of the variance between taxonomical compositions than
194 resistomes (Figure 2B, Table S1). A set of samples from a single hospital (Hospital I, Figure S3B) seemed to drive
195 the distinct clustering seen in the microbial community in HWWs from Burkina Faso.

196



197
198
199
200
201
202
203

Figure 1. Relative sum abundance of ARGs, MGEs, and class 1 integrons. A generalized linear model (GLM) was fitted to 16S rRNA, and gene length normalized A) ARG B) MGE, and C) *intI1* count data to model the differences in the levels of these genes in the three countries. The vertical line shows the median in boxplots, while the lower and higher hinges denote the 25 % and 75 % quantiles, respectively. In addition, Wilcoxon signed-rank test significances are shown for pair-wise comparisons.



204
205
206
207
208
209
210
211
212

Figure 2. PCoA plots describing the ordinations based on A) resistomes, B) taxonomical compositions, and C) mobilomes present in HWWs from Benin, Burkina Faso, and Finland. All 67 HWW samples were included in the plots. However, due to unequal group sizes, groups of random sample sets were applied for testing the significance of the clustering based on the country. The tests were performed in triplicate with different samples to account for variation caused by sample selection (Supporting Information, Table S1). Confidence ellipses represent 90 % confidence levels.

3.2. Clinically relevant taxa and associated ARGs

213 Taxonomical composition present in septic tanks and sumps in Benin and Burkina Faso differed from those found
214 in hospital sewers in Finland. In Benin and Burkina Faso, the 15 most abundant genera present in HWW included
215 *Desulfobulbus*, *Sulfurospirillum*, *Thauera*, and *Geobacter*, while in Finnish HWW, *Bifidobacterium* and
216 *Faecalibacterium* were among the most abundant genera (Table S4). Opportunistic pathogens such as *Escherichia*
217 and *Aeromonas* were detected among the 15 most abundant genera in the HWWs of all three countries (Table S4,
218 Figure S5). *Klebsiella pneumoniae* was among the 15 most abundant species in Benin and Burkina Faso in terms
219 of relative abundance (Table S4, Figure S5). In contrast, at the species level, *Escherichia coli*, *Enterococcus*
220 *faecium*, and species of *Enterobacter cloacae* and *Pseudomonas aeruginosa* complexes were present but rare in
221 all the countries. *Staphylococcus aureus* was detected exclusively in Burkinabe samples (Figure S5). Other species
222 in the genus *Staphylococcus* were more commonly detected in HWWs from Benin and Burkina Faso compared
223 to Finland (Tables S5A and S6A).

224
225 There was no significant difference (adjusted p -value < 0.05) in the abundance of the genus *Acinetobacter* between
226 the HWWs from the three countries, but the abundances of different species of *Acinetobacter* varied significantly.
227 *A. johnsonii* and carbapenemases in the *bla*OXA-211-like group (for example, *bla*OXA-211, -212, -280, and -281)
228 that are intrinsically carried by this species were significantly more abundant in HWWs from Finland compared
229 to either Benin or Burkina Faso (Figure 5, Figure S5 and Tables S5A, S6A, S7 and S8). Certain species of
230 *Acinetobacter* that are not intrinsically carbapenem-resistant, such as *A. townerii*, were detected at significantly
231 higher relative abundances in HWWs from Benin and Burkina Faso compared to Finland (Tables S5A, and S6A).

232 233 3.3. Carbapenem resistance

234
235 The presence of seven acquired carbapenemases (*bla*GES, *bla*IMP, *bla*KPC, *bla*NDM, *bla*OXA-48, *bla*OXA-58,
236 and *bla*VIM) was analyzed in detail due to their ability to cause complex infections with minimal treatment options
237 when in a relevant host. In HWWs from Benin, the carbapenemase genes in the *bla*GES family seemed to
238 dominate over other carbapenemases in all four hospitals (Figure 4A). Most of the other carbapenemases were
239 present at similar prevalence levels in HWWs from Burkina Faso and Finland (Figure 4A). This observation is in
240 line with the lower number of different ARGs in Benin versus Burkina Faso (Figure S4).

241
242 Among the studied acquired oxacillinases, *bla*OXA-48 was detected solely in two samples in Burkina Faso.
243 Instead, *bla*OXA-58 was present in the majority of Burkinabe and Finnish samples (Figure 4A). Most *bla*KPC
244 genes were exclusively detected in HWWs from Finland (Figure 4A, Table S11). *bla*VIM, *bla*IMP, and *bla*NDM
245 were detected in Burkinabe and Finnish HWW samples, but they were more abundant in HWWs from Burkina
246 Faso (Figure 4A).



247

248

249

250

251

252

253

254

255

256

257

258

259

260

261

262

263

264

265

266

3.4. Putative role of MGEs and class 1 integrons in shaping HWW resistomes

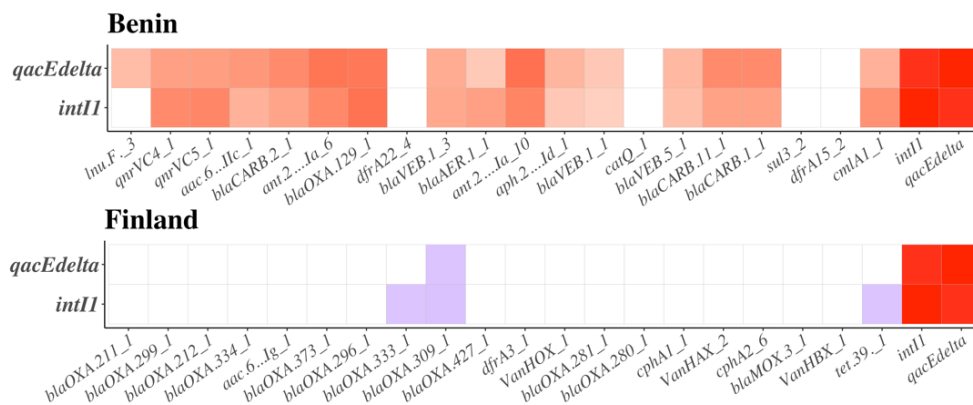
Three methods were used, each with its limitations, to study whether the abundance of class 1 integrons could explain the differences in the relative sum abundances of ARGs between the HWWs of the three countries (as shown in Figure 1A). First, correlations between the relative abundances of the detected ARGs and the two class 1 integron-associated genes, *intI1* and *qacEΔ*, were studied (Tables S12A and S12B). These correlations were visualized for those ARGs differentially abundant in HWWs from each country in pair-wise comparisons (Figure 5). Second, contigs carrying the *intI1* gene were studied for the putative co-localization of ARG sequences (Table S13). Third, fragments carrying multiple acquired ARGs were screened visually using assembly graphs (Figure S6).

The top 20 ARGs that were more abundant in the Beninese HWWs showed stronger positive correlations with class 1 integron genes compared to the ARGs that were more abundant in Burkina Faso and Finland (Figure 5). This suggests a stronger class I integron association of ARGs in Beninese HWWs than in the other two countries.

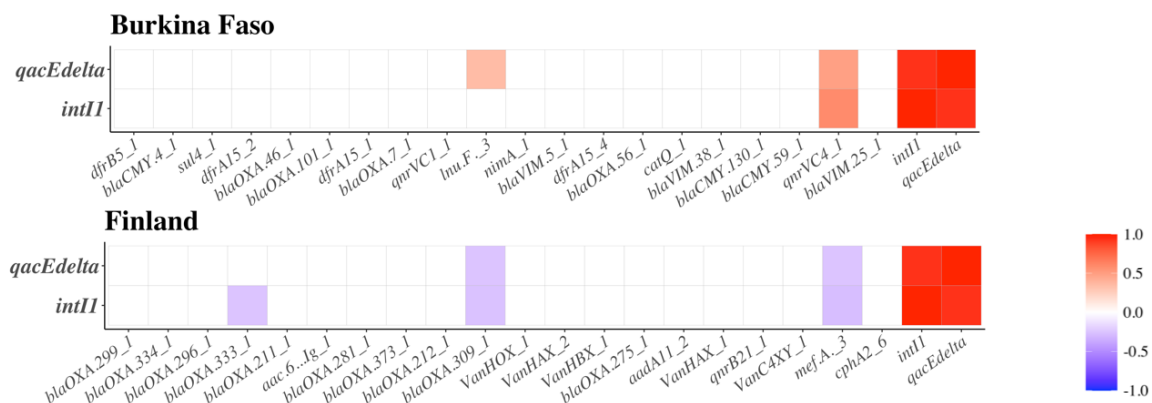
267 The detection of some of these ARGs in contigs carrying several other acquired ARGs (Figure S6) or class 1
 268 integron-associated genes (Table S13) suggests that the genes are linked to class 1 integrons. For example, the
 269 plasmid-mediated ARGs *qnrVC4* and *qnrVC5* were strongly positively correlated with *intI1* and *qacEA*. The genes
 270 were located on contigs with other ARGs such as aminoglycoside ARGs and either carbapenemase (Figure S6)
 271 or ESBL genes in the *bla*GES gene family (Figure S6B, Table S7). While *qnrVC4* and *qnrVC5* were more
 272 abundant in HWWs from Benin and Burkina Faso than in those from Finland, quinolone ARGs unassociated with
 273 integrons, such as *qnrB* variants, were instead more common in HWWs from Finland (Figure 5, and Tables S7,
 274 and S8).

275
 276 Oxacillinases constituted half of the top 20 most abundant ARGs in HWWs from Finland (Figure 5). Most of
 277 these oxacillinases (*bla*OXA-211, -212, -334, -373, -309, -280, and -281) belong to the group of *bla*OXA-211-
 278 like carbapenemases typically intrinsically carried by certain *Acinetobacter* species and showed no significant
 279 correlation with *intI1* or *qacEA* (Figure 5, Tables S12A and S12B). In contrast, certain genes of oxacillinases
 280 from other *bla*OXA gene families, which were significantly more abundant in HWWs from Benin or Burkina
 281 Faso, showed significant correlation with *intI1* and *qacEA* (Figure 5, Tables S12A and S12B) and were found in
 282 shared contigs with the *intI1* gene and other ARGs (Table S13, Figure S6C).

Differentially abundant ARGs in HWWs in Benin vs. Finland



Differentially abundant ARGs in HWWs in Burkina Faso vs. Finland



283

284

285 **Figure 5. Differently abundant ARGs in HWWs from Benin and Burkina Faso and their putative associations with class 1 integrons.**
286 20 significantly more abundant ARGs in HWWs of each country in pair-wise comparisons (Benin-Finland, Burkina Faso-Finland) are shown.
287 Pearson correlations between each ARG and the genes *intI1* and *qacEA* associated with class 1 integrons (Supporting Information, Tables
288 S12A, and S12B) are denoted with color coding. The red color indicates positive and blue negative correlation. Non-significant (adjusted $p >$
289 0.05) correlations are marked as blank (white) squares.

290

291 3.5. Plasmid-mediated colistin resistance genes

292

293 Mobile colistin resistance genes (*mcr* genes) were observed in several HWW samples in Benin, Burkina Faso,
294 and Finland (Table S16). Variants of *mcr-5* (*mcr-5.1* and *mcr-5.2*) were the most common as they were found in
295 HWWs from all except one hospital (hospital F) in the three countries. We were able to confirm the location of
296 *mcr-5* within a Tn3-like transposase element in the metagenome-assembled contigs (Figure S7, Table S14).

297

298 In addition to the HWW samples, high relative abundances of *mcr-5* genes were also detected in the immediate
299 and more distant surroundings of the hospitals, such as in the street gutter water 100 m away from hospital B and
300 in the soil between two HWW septic tanks in Benin (Table S15A). For hospital C, the relative abundance of *mcr-*
301 *5* in a puddle surrounding the surgery room HWW septic tank was greater than the average relative sum abundance
302 of *mcr-5* in the actual HWW septic tanks of that hospital (Figure S2D, Table S15A).

303

304 In Burkina Faso, very high relative sum abundances (2.8×10^{-2}) of *mcr-5* were observed in a municipality channel
305 leading out from hospital I after passing through a biological treatment process (Table S15B). Furthermore, the
306 presence of *mcr-5* was also detected in nearby wetland where the processed wastewater is released (Table S15B).
307 Similarly, in another Burkinabe city, *mcr-5* was found in a sample before wastewater treatment and in the river
308 receiving the water after treatment (Table S15B).

309

310 The next most prevalent *mcr* genes, namely *mcr-3*, *mcr-10*, and *mcr-7*, were detected in certain cases at very high
311 relative abundances in the HWW samples (Table S16). The gene *mcr-3* was also present in the water used for
312 handwashing at hospital C (Figure S2E, Table S15A). The gene *mcr-2* was not detected, and the lowest possible
313 average relative sum abundance was detected for the gene *mcr-1* (Table S16).

314

315 3.6. Other than hospital wastewater samples

316

317 Other sample types within and outside the studied hospitals were investigated to obtain a more comprehensive
318 understanding of ARG prevalence. Metronidazole resistance genes, such as *nimA* and *nimE*, were among the top
319 15 most abundant ARGs in the fecal samples of the four in-patients at a Beninese hospital B (Table S17). These
320 ARGs were also significantly more abundant in HWWs from Benin and Burkina Faso compared to Finland
321 (Figure 5, Tables S7 and S8). *bla*NDM was detected in one of the four fecal samples (Figure 4B) and was also
322 present in the HWWs of hospital B (Figure 4A). Other high abundance ARGs in the fecal samples included ESBL
323 and broad-spectrum beta-lactamase genes of the *cfxA* family (Table S17).

324

325 As in the HWWs from Benin (Figure 4A), *bla*GES carbapenemases were also prevalent in other sample types
326 from a hospital environment, such as in the water intended for handwashing (Figure S2E) for hospital C, soil
327 between HWW septic tanks in the yard of hospital B, and street gutter water 100 meters away from hospital B
328 (Figure 4B). *bla*GES carbapenemase genes were also found in various waters used for drinking, including river
329 waters in a remote countryside village (Figure 4B). However, the relative sum abundance of ARGs was low in
330 the three rivers in central Benin (Figure 4B). We also detected *bla*NDM in well water used for drinking in Benin
331 (Figure 4B). Albeit at low relative abundances, *bla*GES, *bla*VIM, and *bla*OXA-58-like carbapenemases were
332 detected in natural waters receiving treated HWWs from Burkina Faso (Figure 4B). Significantly higher
333 abundances of these ARGs were found in biologically treated wastewater before release into the river (Figure 4B).
334

335 4. Discussion

336
337 We characterized the bacterial community composition and resistome in 67 HWWs and 16 related samples from
338 Benin and Burkina Faso and compared them to HWWs from Finland. This is the first study investigating hospital
339 wastewaters in the two West African countries using a metagenomic approach. Due to the lack of systematic AMR
340 surveillance in these countries, available data on bacterial resistance are patchy and heterogenous^{1,4,28,31,34}. Thus,
341 the magnitude of the resistance problem and the specific reservoirs of ARGs in many African countries are yet to
342 be unraveled. The relative sum abundance of all ARGs detected in HWWs was the highest in Benin, yet the
343 number of different ARGs detected there was the lowest. The differences in resistomes between the countries
344 seemed to be only partially explained by variation in taxonomical composition, as the clustering of taxonomical
345 composition was not as strongly correlated by country compared to clustering of resistomes. This suggests that
346 despite differences in the HWW collection systems in the studied countries (HWW is relatively stagnant in septic
347 tanks or sumps in Benin and Burkina Faso and flowing in HWW drains in Finland), the microbial community
348 compositions present appear to be similar. However, among the most abundant taxa, we did find many strictly
349 environmental bacteria in HWWs from Benin and Burkina Faso but not in Finland. This may be due to the closer
350 contact of water with environmental surfaces in septic tanks and sumps compared to the more isolated wastewater
351 systems in Finland. Bacterial genera typically found in soil and aquatic environments⁵⁰ have also been previously
352 described to dominate HWWs from Benin and Burkina Faso⁵¹. In contrast, the 15 most abundant genera in Finnish
353 HWWs included less environmental bacteria and more bacteria typical for human gut communities, such as
354 *Bifidobacterium*⁴¹ and *Faecalibacterium*⁵². Another factor possibly explaining the differences in the dominant
355 taxa present in the HWWs from Benin and Burkina Faso in comparison to Finland could arise from the fact that
356 in Finland, the hospital toilet waters containing human fecal material are directed to HWWs, while for the majority
357 of the West African HWWs studied here, this was not the case.

358
359 The ARGs that were more abundant in HWWs from Benin compared to Finland appeared to be more commonly
360 carried by class 1 integrons. They were strongly correlated with class 1 integron-associated genes (*intI1* and
361 *qacEA12*) and, in certain cases, detected in shared contigs with these genes. Moreover, we could detect gene
362 cassettes consisting of several different acquired ARGs linked to each other, likely referring to gene cassettes
363 carried by class 1 integrons¹⁰. Furthermore, a higher abundance of ARGs intrinsically carried by specific species,
364 such as *bla*OXA-211 genes by *A. johnsonii*^{53,54}, was a distinctive feature of the HWW resistomes from Finland.

365 Intrinsic resistance is often chromosomally encoded and rarely mobile or related to horizontal gene transfer⁵⁵,
366 whereas acquired resistance is typically carried by MGEs, such as class 1 integrons. As expected, no significant
367 correlations between these intrinsic *blaOXA* genes and class 1 integron associated genes were found, supporting
368 the observation that ARGs putatively carried by class 1 integrons had a smaller impact on resistomes in HWWs
369 from Finland compared to Benin. Based on these results, we speculate that the high sum abundance of ARGs seen
370 in HWWs from Benin may, in part, be explained by the mobilome, more specifically, the prevalence of class 1
371 integrons. However, correlation does not necessarily indicate causation, and in this study, quantitative inferences
372 cannot be made for metagenome-assembled contigs and the putative co-localization of ARGs and class 1 integron-
373 associated genes. MGEs other than class 1 integron associated genes did not exhibit significant correlation with
374 ARGs. This is in line with the current understanding of the role of class 1 integrons, in particular, among all MGEs
375 in spreading acquired ARGs⁹.

376
377 Interestingly, the ARGs observed in HWWs from Benin were the highest in number but probably lower in clinical
378 importance compared to those in the HWWs from Burkina Faso and Finland. While the most significant
379 carbapenemase genes *blaKPC*, *blaNDM*, *blaVIM*, *blaIMP*, *blaOXA-48*, and *blaOXA-58* were found in several
380 HWW samples from Burkina Faso and Finland at varying abundances, the abundance of many of them was low,
381 or they were not detected at all in HWWs from Benin. The *blaGES* carbapenemase genes were an exception. They
382 were the most prevalent of the seven carbapenemases in Beninese HWWs and were also found in samples
383 unrelated to hospitals.

384
385 We suspect that as *blaGES* carbapenemases are typically carried by class 1 integrons, as confirmed by previous
386 studies⁵⁶, a co-selection phenomenon^{3,57} might play a role in increasing their spread also in here. In this scenario,
387 residues of antibiotics other than carbapenems would cause co-selection of *blaGES*. We also found a high relative
388 abundance of plasmid-mediated quinolone ARGs in the HWWs from Benin. These *qnrVC* genes showed strong
389 correlations to class 1 integron associated genes and were in some cases found to be located in the same contigs
390 with *blaGES-5* carbapenemase genes (Figure S6B). Hence, selection targeting quinolone ARGs could co-select
391 for carbapenem resistance encoded by the gene *blaGES-5*. Altogether our observations of ARGs putatively carried
392 by class 1 integrons are worrisome as new ARG combinations among integron gene cassettes enable their selection
393 by a broader set of antimicrobials or biocides such as quaternary ammonium compounds (QACs)^{12,58,59}.

394
395 Despite the lowest total relative abundance of ARGs detected in HWWs from Finland, some of the seven
396 carbapenemase genes of special interest seemed to have even higher abundances in Finland than in the surveyed
397 West African countries. However, the occurrence of these ARGs was not homogenous among the Finnish samples.
398 For instance, a high relative abundance *blaKPC* was observed in only one of the Finnish samples. Furthermore,
399 the overall occurrence of *blaKPC* across all HWWs from Benin, Burkina Faso and Finland studied here aligned
400 with many local and global reports and systematic reviews⁶⁰⁻⁶³, according to which *blaKPC* carbapenemases are
401 spreading more profusely in Europe and North America than in Africa. Similarly, the relative abundance of
402 *blaOXA-58* was higher among Finnish than Beninese or Burkinabe HWW samples.

403

404 Disconcertingly, *bla*NDM was found in the fecal sample of an in-patient staying at a Beninese hospital. *bla*NDM
405 was also detected in the wastewaters of the hospital, indicating the sensitivity of wastewater-based monitoring of
406 bacterial resistance carried by hospital in-patients. *bla*NDM carried by *A. baumannii* has recently, in 2021, been
407 reported in clinical settings in Benin⁶⁴.

408
409 Our observation of the high prevalence of metronidazole ARGs in Benin and Burkina Faso but not in Finland
410 most likely reflects differences in the consumption of this drug. In LICs, diarrheal infections caused by pathogens
411 such as *Clostridioides difficile* and other anaerobic bacteria, as well as protozoa, are common. The consumption
412 of metronidazole commonly used to treat these infections may be high in these countries as these drugs are being
413 prescribed, for example, both with and without a positive diagnostic test for *C. difficile*⁶⁵. However, multidrug-
414 resistant strains of *C. difficile* seem to already be prevalent in hospitals in certain parts of Africa as a consequence
415 of the heavy use of antimicrobials among in-patients⁶⁵.

416
417 Compared to many HMICs such as those in Northern Europe, the use of antimicrobials in agricultural⁶⁶ and
418 clinical⁴ settings is less controlled – or even entirely unregulated – in many African countries. For example, while
419 banned in many other countries, the use of colistin as a feed additive is allowed in many LICs⁶⁷, such as those in
420 Africa⁶⁶. In contrast to previous reports on the prevalence of mobile colistin resistance globally²⁷ and Africa^{28,68},
421 *mcr-5* was the most commonly detected gene in the HWWs from our study. Instead, our observations are in line
422 with the results obtained by using both metagenomics and qPCR⁶⁹. This discrepancy may be due to differences
423 between the methodologies used to screen for colistin resistance. Colistin ARGs other than the best known genes
424 *mcr-1*, *-2*, and *-3* are rarely targeted when screening for mobile colistin resistance with conventional PCR⁶⁹. Our
425 study shows that to obtain a more realistic view of the occurrence of plasmid mediated colistin ARGs in Africa,
426 screening should also be conducted for different *mcr* genes, as was recently done by Ngbede and colleagues⁷⁰.

427
428 The *mcr-5* gene detected here was embedded in a Tn3-like transposase similar to previous reports for *Salmonella*
429 *enterica*^{71,72} and *Escherichia coli*⁷³ plasmids and the chromosome of *Cupriavidus gilardii*⁷¹. These Tn3-like
430 elements are flanked by inverted repeats, which enable translocation and putatively a wide host range for the *mcr-*
431 *5.1* harboring element^{71–73}. Based on our results, the occurrences of *mcr-5* and other mobile colistin resistance
432 genes in Benin and Burkina Faso were not restricted to HWW septic tanks. For example, at a Beninese hospital,
433 a water puddle in the hospital yard had a higher relative abundance of *mcr* genes, compared to the actual HWW
434 septic tanks for that hospital. Furthermore, these genes were also detected in water intended for handwashing of
435 visitors to the hospital. Thus, the transmission of these clinically critical ARGs within hospitals could be enabled
436 via hands contaminated by this water. Similarly, Jacobs and colleagues have drawn attention to the potentially
437 inferior microbiological water quality in similar hand washing water tanks, which are very common in West
438 Africa⁴.

439
440 In Burkina Faso, the relative abundance of *mcr-5* released into natural waters after wastewater treatment was high
441 (2.36×10^{-4}). For comparison, a similar relative abundance of *mcr-5* genes (3.0×10^{-4}) was reported for untreated
442 municipal wastewater in Germany⁶⁹. Although we cannot confirm the association between the *mcr-5* genes
443 detected in the natural waters and the hospital-associated wastewater in the Burkinabe hospital, our study suggests

444 the inability of the currently used wastewater treatment processes in Burkina Faso to remove colistin resistance
445 genes. Wastewater treatment systems have also earlier been described to be inadequate in Benin and Burkina
446 Faso⁷⁴. This increases the risk of the further spread of colistin and other ARGs as inadequately treated water is
447 released into natural waters and used for various purposes by local people. Furthermore, in many African
448 countries, untreated wastewater is used for irrigation in urban agriculture, possibly enabling the dissemination of
449 ARGs to fresh produce^{75,76}. The situation appears to be especially critical in Cotonou, where the hospitals involved
450 in the study did not use any kind of wastewater treatment. Groundwater in the city is extracted from the shallow
451 aquifer, which is polluted due to unauthorized waste deposits, inadequate toilets, pit latrines, and septic tanks
452 prone to leakage and hydraulic failure⁷⁷. Our study shows that untreated hospital wastewaters, which can leak into
453 groundwater and the environment, carry clinically dangerous antimicrobial-resistant bacteria and resistance genes.
454

455 Taken together, based on our results from nine hospitals, we can state that clinically important ARGs are
456 circulating in West African hospitals and can spread to their surroundings. There was no significant difference in
457 ARG abundances based on the hospital section or different hospitals within these countries. Various carbapenem
458 ARGs were found in HWWs from Burkina Faso and Finland while among these *bla*GES seem to dominate in the
459 studied hospitals in Benin. Our results suggest that class 1 integron mediated co-selection could play an important
460 role in shaping the resistome in the Beninese samples. In addition to HWWs, carbapenemase genes and mobile
461 colistin resistance genes were detected in the vicinity as well as locations more distant from the hospitals. Finally,
462 there were differences between the HWW resistomes in Benin and Burkina Faso concerning the total relative sum
463 of ARGs and the prevalence of clinically relevant ARGs. Therefore, it is important to consider the differences
464 between African countries in AMR surveillance.
465

466 *Supporting Information*

467 The supporting information referred to within the text as Figures S1-S7 and Tables S1-S18 can be found in the
468 two separate files “Supporting_Information_1” (Figures S1-S7, Table S1) and “Supporting_Information_2”
469 (Tables S2-S18).
470

471 *Acknowledgments*

472 We thank the staff in all the participating hospitals for their collaboration in sampling. We also thank the laboratory
473 personnel of the URMAlpha at the University of Abomey-Calavi in Benin and at the Clinical Research Unit of
474 Nanoro (CRUN) in Burkina Faso for sample processing. Finally, we acknowledge CSC, IT Center for Science,
475 Finland for providing the computational resources for the study.
476

477 *Funding Sources*

478 This work was supported by the Academy of Finland (Grant Numbers 318643 and 316708) and University of
479 Helsinki HiLife Grand Challenges funding.
480

481 *Ethical permission*

482 The ethical permissions for the project were received from “Comité National d’Ethique pour la Recherche en
483 Santé” under the Health Ministry in Benin and “Comité d’Ethique pour la Recherche en Santé” under the Health
484 Ministry in Burkina Faso.

485
486 *Data availability*

487 The data for this study have been deposited in the European Nucleotide Archive (ENA) at EMBL-EBI under the
488 accession number PRJEB47975 and will be public upon article publication in a peer reviewed journal.

489
490 *Code availability*

491 All custom codes used for the analyses are available from <https://github.com/melinamarkkanen/AMRIWA> upon
492 article publication in a peer reviewed journal.

493
494 *References*

- 495 1. Global Action Plan On Antimicrobial Resistance WHO Library Cataloguing-in-Publication Data Global
496 Action Plan on Antimicrobial Resistance. (2015) doi:10.13140/RG.2.2.24460.77448.
- 497 2. Ventola, C. L. The Antibiotic Resistance Crisis Part 1: Causes and Threats. *Phys. Ther.* **40**, 277–83
498 (2015).
- 499 3. Laxminarayan, R. *et al.* Antibiotic resistance—the need for global solutions. *Lancet Infect. Dis.* **13**, 1057–
500 1098 (2013).
- 501 4. Jacobs, J. *et al.* Diagnostic Bacteriology in District Hospitals in Sub-Saharan Africa: At the Forefront of
502 the Containment of Antimicrobial Resistance. *Front. Med.* **6**, 205 (2019).
- 503 5. Hu, Y., Gao, G. F. & Zhu, B. The antibiotic resistome: gene flow in environments, animals and human
504 beings. *Front. Med.* **11**, 161–168 (2017).
- 505 6. Tacconelli, E., Carrara, E., Savoldi, A., Kattula, D. & Burkert, F. Global Priority List Of Antibiotic-
506 Resistant Bacteria To Guide Research, Discovery, And Development Of New Antibiotics.
507 <http://www.cdc.gov/drugresistance/threat-report-2013/> (2017).
- 508 7. Martínez, J. L., Coque, T. M. & Baquero, F. What is a resistance gene? Ranking risk in resistomes. *Nat.*
509 *Rev. Microbiol.* **13**, 116–123 (2014).
- 510 8. Karkman, A., Berglund, F., Flach, C. F., Kristiansson, E. & Larsson, D. G. J. Predicting clinical
511 resistance prevalence using sewage metagenomic data. *Commun. Biol.* **3**, 711 (2020).
- 512 9. Gillings, M. R. *et al.* Using the class 1 integron-integrase gene as a proxy for anthropogenic pollution.
513 *ISME J.* **9**, 1269–1279 (2015).
- 514 10. Collis, C. M. & Hall, R. M. Expression of antibiotic resistance genes in the integrated cassettes of
515 integrons. *Antimicrob. Agents Chemother.* **39**, 155–162 (1995).
- 516 11. Li, Y. *et al.* Molecular characterisation of antimicrobial resistance determinants and class 1 integrons of
517 *Salmonella enterica* subsp. *enterica* serotype Enteritidis strains from retail food in China. *Food Control*
518 **128**, 108191 (2021).
- 519 12. Gillings, M. R. Integrons: Past, Present, and Future. *Microbiol. Mol. Biol. Rev.* **78**, 257–77 (2014).
- 520 13. Gillings, M. *et al.* The Evolution of Class 1 Integrons and the Rise of Antibiotic Resistance. *J. Bacteriol.*
521 **190**, 5095–5100 (2008).
- 522 14. Chen, B., Han, J., Dai, H. & Jia, P. Biocide-tolerance and antibiotic-resistance in community
523 environments and risk of direct transfers to humans: Unintended consequences of community-wide
524 surface disinfecting during COVID-19? *Environ. Pollut.* **283**, 117074 (2021).
- 525 15. De Angelis, G. *et al.* Incidence and antimicrobial resistance trends in bloodstream infections caused by
526 ESKAPE and *Escherichia coli* at a large teaching hospital in Rome, a 9-year analysis (2007-2015). *Eur.*
527 *J. Clin. Microbiol. Infect. Dis.* **37**, 1627–1636 (2007).
- 528 16. Alemayehu, T. & Haillemariam, M. Prevalence of vancomycin-resistant enterococcus in Africa in one
529 health approach: a systematic review and meta-analysis. *Sci. Rep.* **10**, 20542 (2020).
- 530 17. Karkman, A., Do, T. T., Walsh, F. & Virta, M. P. J. Antibiotic-Resistance Genes in Waste Water.
531 *Trends Microbiol.* **26**, 220–228 (2018).
- 532 18. World Health Organization. *Global Antimicrobial Resistance and Use Surveillance System (GLASS)*
533 *Report 2021. Geneva.* (2021).
- 534 19. World Health Organization. WHO report on surveillance of antibiotic consumption: 2016-2018 early
535 implementation. https://www.who.int/medicines/areas/rational_use/oms-amr-amc-report-2016-2018/en/
536

- 537 (2018).
- 538 20. Suay-García & Pérez-Gracia. Present and Future of Carbapenem-resistant Enterobacteriaceae (CRE)
- 539 Infections. *Antibiotics* **8**, 122 (2019).
- 540 21. Poirel, L. *et al.* OXA-58, a novel class D β -lactamase involved in resistance to carbapenems in
- 541 *Acinetobacter baumannii*. *Antimicrob. Agents Chemother.* **49**, 202–208 (2005).
- 542 22. Poirel, L. *et al.* GES-2, a class A β -lactamase from *Pseudomonas aeruginosa* with increased hydrolysis
- 543 of imipenem. *Antimicrob. Agents Chemother.* **45**, 2598–2603 (2001).
- 544 23. Nordmann, P. & Poirel, L. The difficult-to-control spread of carbapenemase producers among
- 545 *Enterobacteriaceae* worldwide. *Clin. Microbiol. Infect.* **20**, 821–830 (2013).
- 546 24. Löfmark, S., Edlund, C. & Erik Nord, C. Metronidazole Is Still the Drug of Choice for Treatment of
- 547 Anaerobic Infections. *Clin. Infect. Dis.* **1**, S16–S23 (2010).
- 548 25. Alauzet, C., Lozniewski, A. & El Ene Marchandin, H. Metronidazole resistance and *nim* genes in
- 549 anaerobes: A review. *Anaerobe* **55**, 40–53 (2018).
- 550 26. Falagas, M. E. & Kasiakou Sofia. K. Colistin: The Revival of Polymyxins for the Management of
- 551 Multidrug-Resistant Gram-Negative Bacterial Infections. *Clin. Infect. Dis.* **40**, 1333–41 (2005).
- 552 27. Ling, Z. *et al.* Epidemiology of mobile colistin resistance genes *mcr-1* to *mcr-9*. *J. Antimicrob.*
- 553 *Chemother.* **75**, 3087–3095 (2020).
- 554 28. Anyanwu, M. U., Odilichukwu, C., Okpala, R., Chah, K. F. & Shoyinka, V. S. Prevalence and Traits of
- 555 Mobile Colistin Resistance Gene Harboursing Isolates from Different Ecosystems in Africa. *Biomed Res.*
- 556 *Int.* **22**, 6630379 (2021).
- 557 29. Collignon, P., Beggs, J. J., Walsh, T. R., Gandra, S. & Laxminarayan, R. Anthropological and
- 558 socioeconomic factors contributing to global antimicrobial resistance: a univariate and multivariable
- 559 analysis. *Lancet Planet Heal.* **2**, e398-405 (2018).
- 560 30. Van Boeckel, T. P. *et al.* Global trends in antimicrobial resistance in animals in low-and middle-income
- 561 countries. *Science (80-.)*. **365**, eaaw1944 (2019).
- 562 31. Iskandar, K. *et al.* Surveillance of antimicrobial resistance in low- and middle-income countries: a
- 563 scattered picture. *Antimicrob Resist Infect Control* **10**, 63 (2020).
- 564 32. Ambler, R. P. The structure of beta-lactamases. *Philos. Trans. R. Soc. Lond. B. Biol. Sci.* **289**, 321–331
- 565 (1980).
- 566 33. Bernabé, K. J., Langendorf, C., Ford, N., Ronat, J.-B. & Murphy, R. A. Antimicrobial resistance in
- 567 West Africa: a systematic review and meta-analysis. *Int. J. Antimicrob. Agents* **50**, 629–639 (2017).
- 568 34. Mahamat, O. O. *et al.* Epidemiology and prevalence of extended-spectrum β -lactamase-and
- 569 carbapenemase-producing Enterobacteriaceae in humans, animals and the environment in West and
- 570 Central Africa. *Int. J. Antimicrob. Agents* **57**, 106203 (2021).
- 571 35. Hendriksen, R. S. *et al.* Global monitoring of antimicrobial resistance based on metagenomics analyses
- 572 of urban sewage. *Nat. Commun.* **10**, 1124 (2019).
- 573 36. Pärnänen, K. M. M. *et al.* Antibiotic resistance in European wastewater treatment plants mirrors the
- 574 pattern of clinical antibiotic resistance prevalence. *Sci. Adv.* **5**, eaau9124 (2019).
- 575 37. European Centre for Disease Prevention and Control. *Antimicrobial resistance in the EU/EEA (EARS-*
- 576 *Net) - Annual Epidemiological Report 2019*. [https://www.ecdc.europa.eu/en/publications-](https://www.ecdc.europa.eu/en/publications-data/surveillance-antimicrobial-resistance-europe-2019)
- 577 [data/surveillance-antimicrobial-resistance-europe-2019](https://www.ecdc.europa.eu/en/publications-data/surveillance-antimicrobial-resistance-europe-2019) (2020).
- 578 38. Buelow, E. *et al.* Hospital discharges in urban sanitation systems: Long-term monitoring of wastewater
- 579 resistome and microbiota in relationship to their eco-exposome. *Water Res. X* **7**, 100045 (2020).
- 580 39. Mölder, F. *et al.* Sustainable data analysis with Snakemake. *F1000Research* **10**, 33 (2021).
- 581 40. Bortolaia, V. *et al.* ResFinder 4.0 for predictions of phenotypes from genotypes. *J. Antimicrob.*
- 582 *Chemother.* **75**, 3491–3500 (2020).
- 583 41. Pärnänen, K. *et al.* Maternal gut and breast milk microbiota affect infant gut antibiotic resistome and
- 584 mobile genetic elements. *Nat. Commun.* **9**, 389 (2018).
- 585 42. Beghini, F. *et al.* Integrating taxonomic, functional, and strain-level profiling of diverse microbial
- 586 communities with bioBakery 3. *Elife* **4**, 1–42 (2021).
- 587 43. Bengtsson-Palme, J. *et al.* metaxa2: Improved identification and taxonomic classification of small and
- 588 large subunit rRNA in metagenomic data. *Mol. Ecol. Resour.* **15**, 1403–1414 (2015).
- 589 44. Venables, W. N. & Ripley, B. Modern Applied Statistics with S.
- 590 <https://www.stats.ox.ac.uk/pub/MASS4> (2002).
- 591 45. McMurdie, P. J. & Holmes, S. Phyloseq: An R Package for Reproducible Interactive Analysis and
- 592 Graphics of Microbiome Census Data. *PLoS One* **8**, (2013).
- 593 46. Love, M. I., Huber, W. & Anders, S. Moderated estimation of fold change and dispersion for RNA-seq
- 594 data with DESeq2. *Genome Biol.* **15**, 550 (2014).
- 595 47. Revelle, W. psych: Procedures for Psychological, Psychometric, and Personality Research.
- 596 <https://cran.r-project.org/package=psych> (2021).

- 597 48. Kassambara, A. ggcorrplot: Visualization of a Correlation Matrix using ‘ggplot2’. [https://cran.r-](https://cran.r-project.org/package=ggcorrplot)
598 project.org/package=ggcorrplot (2019).
- 599 49. Naas, T. *et al.* Beta-lactamase database (BLDB)-structure and function. *J. Enzyme Inhib. Med. Chem.*
600 **32**, 917–919 (2017).
- 601 50. Thompson, L. *et al.* A communal catalogue reveals Earth’s multiscale microbial diversity. *Nature* **551**,
602 457–463 (2017).
- 603 51. Oyem, I. M., Oyem, H. H. & Atuanya. Molecular characterisation of bacteria strains of septic tank
604 sewage samples from related sites in Delta and Edo States of Nigeria using 16S rRNA denaturing
605 gradient gel electrophoresis (DGGE). **14**, 132–138 (2020).
- 606 52. Laursen, M. F. *et al.* Faecalibacterium Gut Colonization Is Accelerated by Presence of Older Siblings.
607 *mSphere* **2**, e00448-17 (2017).
- 608 53. Périchon, B. *et al.* Identification of 50 class D β -lactamases and 65 Acinetobacter-derived
609 cephalosporinases in Acinetobacter spp. *Antimicrob. Agents Chemother.* **58**, 936–949 (2014).
- 610 54. Figueiredo, S., Bonnin, R. A., Poirel, L., Duranteau, J. & Nordmann, P. Identification of the naturally
611 occurring genes encoding carbapenem-hydrolysing oxacillinases from *Acinetobacter haemolyticus*,
612 *Acinetobacter johnsonii*, and *Acinetobacter calcoaceticus*. *Clin Microbiol Infect* **18**, 907–913 (2012).
- 613 55. Cox, G. & Wright, G. D. Intrinsic antibiotic resistance: Mechanisms, origins, challenges and solutions.
614 *Int. J. Med. Microbiol.* **303**, 287–292 (2013).
- 615 56. Araújo, S. *et al.* Carbapenem-resistant bacteria over a wastewater treatment process: Carbapenem-
616 resistant *Enterobacteriaceae* in untreated wastewater and intrinsically-resistant bacteria in final effluent.
617 *Sci. Total Environ.* **782**, 146892 (2021).
- 618 57. Zieliński, W. *et al.* Wastewater treatment plants as a reservoir of integrase and antibiotic resistance
619 genes – An epidemiological threat to workers and environment. *Environ. Int.* **156**, 106641 (2021).
- 620 58. Pal, C., Bengtsson-Palme, J., Kristiansson, E. & Larsson, D. G. J. Co-occurrence of resistance genes to
621 antibiotics, biocides and metals reveals novel insights into their co-selection potential. *BMC Genomics*
622 **16**, (2015).
- 623 59. Gillings, M. R., Xuejun, D., Hardwick, S. A., Holley, M. P. & Stokes, H. W. Gene cassettes encoding
624 resistance to quaternary ammonium compounds: a role in the origin of clinical class 1 integrons? *ISME*
625 *J.* **3**, 209–215 (2009).
- 626 60. Olalekan, A. *et al.* High proportion of carbapenemase-producing *Escherichia coli* and *Klebsiella*
627 *pneumoniae* among extended-spectrum β -lactamase-producers in Nigerian hospitals. *J. Glob.*
628 *Antimicrob. Resist.* **21**, 8–12 (2020).
- 629 61. Manenzhe, R. I., Zar, H. J., Nicol, M. P. & Kaba, M. The spread of carbapenemase-producing bacteria
630 in Africa: a systematic review. *J. Antimicrob. Chemother.* **70**, 23–40 (2015).
- 631 62. van Duin, D. & Doi, Y. The global epidemiology of carbapenemase-producing Enterobacteriaceae.
632 *Virulence* **8**, 460–469 (2017).
- 633 63. Mushi, M. F., Mshana, S. E., Imirzalioglu, C. & Bwanga, F. Carbapenemase Genes among Multidrug
634 Resistant Gram Negative Clinical Isolates from a Tertiary Hospital in Mwanza, Tanzania. *Biomed Res.*
635 *Int.* **2014**, 303104 (2014).
- 636 64. Yehouenou, C. *et al.* First detection of a plasmid-encoded New-Delhi metallo-beta-lactamase-1 (NDM-
637 1) producing *Acinetobacter baumannii* using whole genome sequencing, isolated in a clinical setting in
638 Benin. *Ann. Clin. Microbiol. Antimicrob.* **20**, 5 (2021).
- 639 65. Mutai, W. C. *et al.* High Prevalence of Multidrug-Resistant *Clostridioides difficile* Following Extensive
640 Use of Antimicrobials in Hospitalized Patients in Kenya. *Front. Cell. Infect. Microbiol.* **10**, 897 (2021).
- 641 66. Van, T. T. H., Yidana, Z., Smooker, P. M. & Coloe, P. J. Antibiotic use in food animals worldwide,
642 with a focus on Africa: Pluses and minuses. *J. Glob. Antimicrob. Resist.* **20**, 170–177 (2020).
- 643 67. Olumuyiwa Olaitan, A. *et al.* Banning colistin in feed additives: a small step in the right direction.
644 *Lancet Infect. Dis.* **21**, 29–30 (2021).
- 645 68. Olowo-Okere, A. & Yacouba, A. Review Molecular mechanisms of colistin resistance in Africa: A
646 systematic review of literature. *Germs* **10**, 367–379 (2020).
- 647 69. Kneis, D., Berendonk, T. U. & Heß, S. High prevalence of colistin resistance genes in German
648 municipal wastewater. *Sci. Total Environ.* **694**, 133454 (2019).
- 649 70. Ngbede, E. O. *et al.* Identification of mobile colistin resistance genes (*mcr-1.1*, *mcr-5* and *mcr-8.1*) in
650 *Enterobacteriaceae* and *Alcaligenes faecalis* of human and animal origin, Nigeria. *Int. J. Antimicrob.*
651 *Agents* **56**, 106108 (2020).
- 652 71. Borowiak, M. *et al.* Identification of a novel transposon-associated phosphoethanolamine transferase
653 gene, *mcr-5*, conferring colistin resistance in d-tartrate fermenting *Salmonella enterica* subsp. *enterica*
654 serovar Paratyphi B. *J. Antimicrob. Chemother.* **72**, 3317–3324 (2017).
- 655 72. Borowiak, M. *et al.* Characterization of *mcr-5*-Harboring *Salmonella enterica* subsp. *enterica* Serovar
656 Typhimurium Isolates from Animal and Food Origin in Germany. *Antimicrob. Agents Chemother.* **63**,

- 657 e00063-19 (2019).
658 73. Guo, S. *et al.* Conjugative IncX1 plasmid harboring colistin resistance gene *mcr-5.1* in *Escherichia coli*
659 isolated from chicken rice retailed in Singapore. *Antimicrob. Agents Chemother.* **63**, e01043-19 (2019).
660 74. Peace Hounkpe, S., Codjo Adjovi, E., Crapper, M. & Awuah, E. Wastewater Management in Third
661 World Cities: Case Study of Cotonou. *Benin. J. Environ. Prot.* **5**, 387–399 (2014).
662 75. Bougnom, B. P. *et al.* Wastewater used for urban agriculture in West Africa as a reservoir for
663 antibacterial resistance dissemination. *Environ. Res.* **168**, 14–24 (2019).
664 76. Bougnom, B. P., Thiele-Bruhn, S., Ricci, V., Zongo, C. & Piddock, L. J. V. Raw wastewater irrigation
665 for urban agriculture in three African cities increases the abundance of transferable antibiotic resistance
666 genes in soil, including those encoding extended spectrum β -lactamases (ESBLs). *Sci. Total Environ.*
667 **698**, 134201 (2020).
668 77. Totin, H. S. *et al.* Groundwater pollution and the safe water supply challenge in Cotonou town, Benin
669 (West Africa). *IAHS-AISH Proc. Reports* **361**, 191–196 (2013).
670

671 *For Table of Contents Only*

