

1 **Mutations on non-structural proteins of SARS-CoV-2 are possibly responsible for**
2 **adverse clinical outcomes in a real-life practice**

3

4 Takaya Ichikawa¹, Shiho Torii², Hikoyu Suzuki³, Akio Takada⁴, Satoshi Suzuki¹, Masahide

5 Nakajima⁵, Akihito Tampono⁶, Yasutaka Kakinoki¹

6 1. Division of Internal Medicine, Asahikawa City Hospital, Asahikawa, Japan

7 2. Department of Molecular Virology, Research Institute for Microbial Diseases, Osaka University,

8 Suita, Japan

9 3. digzyme Inc., Tokyo, Japan

10 4. Department of Pathology, Asahikawa City Hospital, Asahikawa, Japan

11 5. Department of Pediatrics, Asahikawa City Hospital, Asahikawa, Japan

12 6. Department of Emergency Medicine, Asahikawa City Hospital, Asahikawa, Japan

13

14 **Corresponding author**

15 Takaya Ichikawa, D.V.M., M.D.

16 Asahikawa City Hospital, 1-1-65, Kinsei-cho, Asahikawa, Hokkaido, Japan

17 e-mail: ichikawa.honest2.go@gmail.com

18

19 Keywords: COVID-19, SARS-CoV-2, non-structural protein, mutation, clinical outcome

20

21 **Abstract**

22 Among a single COVID-19 cluster population from the end of March through April 2021 in
23 Asahikawa, we experienced the cases in which patients manifested severe clinical symptoms
24 compared to patients who were infected before that. A hundred three patients (age range: 65 to 89
25 years old) enrolled in this study were divided into two groups, group A: the patients infected from
26 November 2020 to March 2021, and group B: the patients in this cluster population. The mortality
27 rates were 6.1% in group A and 16.2% in group B (OR: 2.97, 95%CI: 0.65-15.38). For the severity of
28 disease, the patients in group B reached to the clinical state which requires higher oxygen flow rate
29 more quickly (mild; $p=0.892$, moderate; $p=0.117$, severe; $p=0.029$). Whole viral genome sequences
30 revealed five non-synonymous mutations by comparison of the isolates with each group. Of these,
31 four were on NSPs including nsp3, 6 and 15, and one was on S protein located near the C-terminus,
32 suggesting that mutations on NSPs could be responsible for adverse clinical outcomes in COVID-19
33 patients.

34

35 **Introduction**

36 The Coronavirus disease 2019 (COVID-19), which is caused by Severe acute respiratory syndrome
37 coronavirus 2 (SARS-CoV-2), initially broke out in Wuhan, China, on December 2019 and has
38 subsequently spread around the world [1]. SARS-CoV-2 is an enveloped virus with a positive-sense
39 single-stranded RNA genome of approximately 30 kb. Two-thirds of the viral genome at the 5'
40 terminus contains ORF1a and ORF1b, which encodes 16 non-structural proteins (NSPs). These NSPs
41 play crucial roles in viral replication and evasion of host immune systems [2]. The other one-third of
42 the 3' end contains structural genes such as spike glycoprotein (S protein), envelope protein, membrane
43 protein, nucleocapsid protein, and several accessory proteins [3]. Because replication of RNA viruses
44 typically has a low fidelity, the viral genome of SARS-CoV-2 has accumulated mutations at an average
45 of two nucleotides per month [4]. On 25th February 2021, World Health Organization (WHO) defined

46 a variant of interest (VOI) as an isolate detected in several countries that changes phenotype under
47 certain conditions, and a variant of concern (VOC) as an isolate in VOIs if it has been demonstrated
48 to be associated with increase in transmissibility or virulence
49 (<https://www.who.int/emergencies/diseases/novel-coronavirus-2019>). For example, VOC-202012/01
50 (pango lineage B.1.1.7), as it is called “alpha variant”, has higher transmissibility and mortality
51 compared to a reference isolate [5,6]. These variants, however, were not focused on mutations in NSPs,
52 but in structural proteins, especially S protein. It remains unclear whether mutations in NSPs are
53 responsible for the virulence of COVID-19.

54 As of October 2021, COVID-19 is responsible for 1.7 million cases and 18 thousand deaths
55 in Japan (<https://www.mhlw.go.jp/stf/covid-19/kokunainohasseijoukyou.html>). The most remarkable
56 clinical feature of this disease is its heterogeneity in clinical manifestations, ranging from no symptoms
57 to critical illness [7]. Several risk factors for symptom severity have been known, such as age (over
58 65 years old), male sex, obesity, history of smoking, and comorbidities (including hypertension,
59 diabetes mellitus, respiratory disease, cardiovascular disease, chronic kidney disease and cancer)
60 [8,9,10,11]. In Japan, the several treatment options are currently recommended based on the symptom
61 severity: Casirivimab and Imdevimab, remdesivir, dexamethasone and baricitinib
62 (<https://www.mhlw.go.jp/content/000815065.pdf>). In clinical practice, methylprednisolone is also
63 used for critically ill patients when they have a poor response for the dexamethasone therapy or when
64 baricitinib is not available [12].

65 In Asahikawa city, Hokkaido prefecture located in northern part of Japan, the cluster of
66 COVID-19 cases occurred in several bars where a group of customers enjoyed “karaoke” during
67 daytime from the end of March through April 2021 (referred to below as cluster K), and 66 cases were
68 involved into the infection according to the city’s survey
69 (<https://www.city.asahikawa.hokkaido.jp/kurashi/135/136/150/index.html>). We found that the
70 progression of disease among the patients in this particular cluster were faster compared to patients

71 who were infected before that. Therefore, in order to identify factors associating the progression of
72 disease, we examined the viral genome sequences along with the clinical characteristics and treatment
73 strategies, and then compared those with other cases.

74

75 **Material and Method**

76 *Participants*

77 All adult patients with COVID-19 who were admitted to Asahikawa City Hospital from November
78 2020 to April 2021 were enrolled in this retrospective study. All positive results were confirmed by
79 real-time RT-PCR for the presence of SARS-CoV-2 in saliva or nasopharyngeal swab samples. The
80 recovered patients were discharged from the hospital following the discharge criteria provided by
81 Japanese Ministry of Health, Labour and Welfare when two criteria have met: 10 days passed from the
82 symptom onset and 72 hours passed from the symptom resolution, or when two consecutive negative
83 PCR results are confirmed. Opt-out consent was obtained instead of written informed consent. We
84 provided the patients with information explaining the proposed research plan via the website of
85 Asahikawa City Hospital, and with the opportunity to opt out.

86

87 *Clinical data collection and definitions*

88 The epidemiological data, medical history, underlying comorbidities, symptoms and signs at
89 admission, oxygen flow rate, treatment and clinical outcomes were obtained from electronic medical
90 records. Because the date of onset was unclear for some patients who were asymptomatic, we
91 considered the date on which positive PCR result was obtained as day 0. Clinical outcomes were
92 followed up until discharge or death. The primary outcome was mortality rate, and the secondary
93 outcome was oxygen flow rate as a severity of the disease; mild: ≥ 1 L/min, moderate: ≥ 5 L/min and
94 severe: ≥ 10 L/min.

95

96 *Viral genome sequence*

97 The stored RNA extracts were used as clinical samples. First-strand cDNA was synthesized by using a
98 PrimeScript IV 1st strand cDNA Synthesis Mix (TaKaRa Bio) with random hexamer primers and
99 extracted RNA, according to the manufacture's protocols. The whole-genome sequencing of SARS-
100 CoV-2 was carried out as reported previously [13]. Briefly, a total of 10 gene fragments were amplified
101 with synthesized cDNA, specific primer sets for SARS-CoV-2 and PrimeSTAR GXL DNA
102 polymerase (TaKaRa Bio). Then, the amplified products were directly sequenced in both directions by
103 using the ABI PRISM 3130 Genetic Analyzer (Applied Biosystems) with specific primers. Our raw
104 sequence data were converted to FASTQ format by in-house Python script with BioPython module
105 [14], followed by trimming first 50 bps and the region after 900 bps by FASTX-Toolkit
106 (http://hannonlab.cshl.edu/fastx_toolkit/). Trimmed sequence reads were mapped to the SARS-CoV-2
107 reference genome (accession number MN908947.3).

108

109 *Phylogenetic analysis*

110 More than 1 million SARS-CoV-2 published genome sequences whose length were between 29,000 -
111 30,000 bps were downloaded from National Center for Biotechnology Information (NCBI) via
112 Application Programming Interface (API) for the Entrez Programming Utilities (E-utilities)
113 (<https://www.ncbi.nlm.nih.gov/books/NBK25497/>). Sequences including less than 29,000 definite
114 bases, neither 'N' nor other mixed bases, were discarded.

115 All SARS-CoV-2 genome sequence data, including our assemblies, were mapped to the
116 reference genome (accession number MN908947.3). Based on the SAM format mapping output, SNPs
117 and short INDELs were detected and categorized to synonymous, non-synonymous or intergenic
118 mutations by in-house Perl scripts, which simply picked up the differences from the reference
119 sequence for each genome. For the phylogenetic analysis, a typical genome sequence of each variant,
120 named alpha, beta, gamma, delta, epsilon, zeta, eta, theta, iota, kappa, and lambda by WHO, were

121 chosen from the published data based on the following criteria; neither ‘N ’nor other mixed bases
122 were included in open reading frames (ORFs), number of substitution sites in ORFs were less than
123 100, all non-synonymous mutations which characterize each variant were included, and all other
124 substitutes observed in more than 95% of the samples that satisfy the above conditions were also
125 included. The non-synonymous mutations which characterize each variant are shown in Table S1,
126 created based on the mutation prevalence information from outbreak.info (<https://outbreak.info/>).
127 ORF10 was excluded from the analyses because one of our assemblies did not completely cover that
128 region. Based on the alignment, suitable nucleotide substitution models for each partition were
129 selected by ModelTest-NG [15], followed by maximum likelihood phylogenetic analyses using the
130 selected substitution models by RAxML-NG [16]. The constructed phylogenetic tree was drawn and
131 edited by MEGA X [17].

132

133 *Statistical analysis*

134 We performed group comparisons using Fisher’s exact test for categorical variables, and independent
135 group t-test for continuous variables. The categorical variables were expressed as frequencies
136 (percentage), and the continuous variables as the median with interquartile range. Odds ratios (OR)
137 with 95% confidence interval were calculated for the rates of mortality and the required oxygen flow
138 rate. Cumulative probabilities of oxygen therapy were described with using the Kaplan-Meier analysis
139 and compared using log-rank test. P-values of 0.05 or less were considered statistically significant. All
140 statistical analyses were performed with EZR (Saitama Medical Center, Jichi Medical University,
141 Saitama, Japan, version 1.54) [18], which is a graphical user interface for R software (The R
142 Foundation for Statistical Computing, Vienna, Austria).

143

144 **Result**

145 A total of 191 patients diagnosed with COVID-19 were admitted to our hospital from November 2020

146 to April 2021. The patients were divided into two groups, group A: the patients infected from
147 November 2020 to March 2021, and group B: the patients whose infection was traced from the cluster
148 K. We included the patients whose ages range between 65 and 89 years old for the following reasons;
149 1) patients who are younger than 65 years old are not necessarily requested for hospitalization in our
150 health care system, 2) in group A, many patients over 90 years old were transferred from a
151 convalescent hospital where COVID-19 outbreak had occurred, thus the age profiles would be much
152 different from group B if the patients aged over 90 years old were included in this group. Finally, 66
153 patients were assigned to group A and 37 patients to group B (Figure 1).

154 The clinical characteristics and treatment strategies used during hospitalization are shown
155 in Table 1. Although there were no significant differences in clinical characteristics between the two
156 groups, obesity and lifestyle-related diseases such as hypertension, dyslipidemia and diabetes tended
157 to be more prevalent in group B. In treatment strategies, remdesivir tended to be used more frequently
158 in group A and methylprednisolone in group B.

159 Four patients of 66 patients (6.1%) in group A and six of 37 patients (16.2%) in group B
160 died from COVID-19 (OR: 2.97, 95%CI: 0.65-15.38) (Table 2). When limited to males, the differences
161 in number of deaths became larger (6.3% vs 29.4%, OR: 5.99, 95%CI: 0.84-71.2). The clinical
162 characteristics and the treatment of 10 deceased patients are shown in Table S2. Cumulative
163 probability of the patients who required minimal oxygen therapy (mild) were similar in both groups
164 (Table 2, Figure 2A). However, the patients in group B were likely to require more oxygen therapy in
165 earlier course of hospitalization (Figure 2B, 2C). There was no significant difference in the cumulative
166 probability between group A and B for moderate oxygen therapy ($p=0.117$), but for the severe oxygen
167 therapy, the significant difference was observed ($p=0.029$). As with mortality, males in group B
168 showed worse outcomes when required severe oxygen therapy (Table 2).

169 Assuming that these differences in clinical outcomes would be due to viral factors, we
170 examined the whole viral genome sequences representing two samples in each group, named

171 Asahikawa_0108 and Asahikawa_0122 isolated in January 2021 and Asahikawa_0404 and
172 Asahikawa_0417 isolated in April 2021. The mutation sites which differed in these four samples are
173 summarized in Table 3. Focusing on the non-synonymous mutations, five amino acid changes were
174 identified (represented in bold). Of these, four amino acid changes were located on NSPs and one was
175 on S protein, as illustrated in the viral genome scheme of SARS-CoV-2 (Figure 3). In order to assess
176 strain relatedness, the phylogenetic analysis was carried out. The isolates in this study were closely
177 related to the strain previously isolated in Japan (accession number BS000756.1; pango lineage
178 B.1.1.214), but not to any of the variants labeled by WHO (Figure 4).

179

180 **Discussion**

181 We hereby reported the single COVID-19 cluster population (cluster K) case in which the conventional
182 treatment was unsuccessful and the hospitalized patients became more severely ill, thus performed the
183 retrospective analysis to find out the causative factors. The patients in group B had a higher mortality
184 rate compared to group A, but no significant difference was indicated. For the severity of disease, the
185 patients in group B required higher oxygen flow rate in early course of admission. Furthermore, the
186 differences became larger when limited to males, with 41.2% of male severe patients in group B
187 against 6.3% in group A.

188 In terms of treatment strategies, we were likely to use methylprednisolone monotherapy for
189 severe cases in group B. This was because we had experienced that, in the winter of 2020, patients
190 who received methylprednisolone therapy appeared to have a better response than those who were
191 treated with remdesivir after poor response for dexamethasone, although the treatment guideline for
192 COVID-19 in Japan recommends the use of remdesivir for patients with pneumonia whose oxygen
193 saturation falls below 96% (<https://www.mhlw.go.jp/content/000815065.pdf>). In our study, there was
194 no significant difference of remdesivir usage between two groups, therefore the viral factors could
195 have an impact on the clinical outcomes.

196 Whole viral genome sequences revealed five non-synonymous mutations by comparison of
197 the isolates with each group. Interestingly, four of them were on NSPs. The sole structural mutation,
198 D1153G on S protein, was located near the C-terminus and outside the range of three-dimensional
199 structures obtained by crystallography, suggesting neither the head nor stalk of S protein. Therefore,
200 D1153G is not expected to involve in the virulence of the disease. Of the four mutation sites on NSPs,
201 two were found on nsp6 (T3598I and Y3722C), and the rest of them were on nsp3 (E2089D) and
202 nsp15 (A2143S). To our knowledge, none of these mutations are known to be the factors that determine
203 the severity of disease in clinical practice, and it is unclear whether the mutations affect the function
204 of these NSPs. However, all of them have been reported to play roles in suppression of type 1 interferon
205 in host cells [19,20,21], and also nsp6 involves in the formation of autophagosome in host cells [22].
206 The potential sites under positive selective pressure have been found on nsp6 near T3598I according
207 to an evolutionary analysis on SARS-CoV-2 genome sequences of 351 clinical samples [23]. Therefore,
208 the mutations on nsp3, 6 and 15 could be responsible for its function to interact with host immunity
209 and autophagy. Further investigations are required to reveal their functions and involvement in the
210 virulence.

211 The phylogenetic analysis revealed that the isolates in this study are derived from pango
212 lineage B.1.1.214 which was the dominant strain in so-called “the third wave”, the epidemic period
213 from October to December 2020 in Japan [24]. Considering the fact that any strains identical to the
214 viral sequence of group B cannot be found in more than 1,000,000 registered sequences in NCBI, it is
215 likely that the virus evolved locally from January to April 2021 in Hokkaido. Since May 2021, alpha
216 variant has been dominant throughout Japan including Hokkaido; 78% of the samples isolated from
217 April 26 to May 2 2021 in Hokkaido were already alpha variant
218 (<https://www.mhlw.go.jp/content/10900000/000779013.pdf>). As a consequence, B.1.1.214 strains in
219 Asahikawa seems to be eliminated. This is similar to the situation in influenza A virus, for example,
220 where pandemic influenza A (H1N1) pdm09 replaced Russian flu (H1N1) since 2009 [25,26].

221 There are some limitations to this retrospective study. First, the recommended therapy for
222 COVID-19 have been changing dynamically. Because the best treatment strategies are selected based
223 on the evidence at that time, it is difficult to compare clinical outcomes between different periods of
224 time in real-life practice. Second, this is a single institution study; not all cases in cluster K have been
225 assessed. The mortality and severity rate would be different when including cases admitted to other
226 hospitals. Third, we examined only two samples from each group in this study. Due to the limited
227 human and financial resources, we were unable to perform the viral genome analysis of much more
228 samples.

229 In conclusion, the present study demonstrated that some viral factors, four non-synonymous
230 mutations on nsp3, 6 and 15 but not on S protein, could be responsible for adverse clinical outcomes
231 in COVID-19 patients. Though scientists and physicians all over the world have focused on the S
232 protein mutations, in order to comprehensively understand the epidemiology of COVID-19, we should
233 have an insight into other type of mutations such as those on NSPs.

234

235 **Acknowledgment**

236 We thank Prof. Yoshiharu Matsuura, Osaka University, for funding the viral sequence analysis. We
237 also thank our medical team worked on COVID-19 and all of the staff at Asahikawa Health Center for
238 their support.

239

240 **Declaration of interests**

241 Authors have no conflicts of interests.

242

243 **Reference**

244 1. Gorbalenya AE, Baker SC, Baric RS, de Groot RJ, Drosten C, Gulyaeva AA, et al. The species
245 Severe acute respiratory syndrome-related coronavirus: classifying 2019-nCoV and naming it

- 246 SARS-CoV-2. *Nat Microbiol.* 2020;5: 536–544. doi:10.1038/s41564-020-0695-z
- 247 2. Maier HJ, Bickerton E, Britton P. Coronaviruses: Methods and protocols. *Coronaviruses Methods*
248 *Protoc.* 2015;1282: 1–282. doi:10.1007/978-1-4939-2438-7
- 249 3. Hagemeyer MC, Verheije MH, Ulasli M, Shaltiël IA, de Vries LA, Reggiori F, et al. Dynamics of
250 Coronavirus Replication-Transcription Complexes. *J Virol.* 2010;84: 2134–2149.
251 doi:10.1128/jvi.01716-09
- 252 4. Duchene S, Featherstone L, Haritopoulou-Sinanidou M, Rambaut A, Lemey P, Baele G. Temporal
253 signal and the phylodynamic threshold of SARS-CoV-2. *Virus Evol.* 2020;6: 1–8.
254 doi:10.1093/ve/veaa061
- 255 5. Davies NG, Abbott S, Barnard RC, Jarvis CI, Kucharski AJ, Munday JD, et al. Estimated
256 transmissibility and impact of SARS-CoV-2 lineage B.1.1.7 in England. *Science* (80-). 2021;372.
257 doi:10.1126/science.abg3055
- 258 6. Challen R, Brooks-Pollock E, Read JM, Dyson L, Tsaneva-Atanasova K, Danon L. Risk of
259 mortality in patients infected with SARS-CoV-2 variant of concern 202012/1: Matched cohort
260 study. *BMJ.* 2021;372: 1–10. doi:10.1136/bmj.n579
- 261 7. Grasselli G, Zangrillo A, Zanella A, Antonelli M, Cabrini L, Castelli A, et al. Baseline
262 Characteristics and Outcomes of 1591 Patients Infected with SARS-CoV-2 Admitted to ICUs of
263 the Lombardy Region, Italy. *JAMA - J Am Med Assoc.* 2020;323: 1574–1581.
264 doi:10.1001/jama.2020.5394
- 265 8. Zheng Z, Peng F, Xu B, Zhao J, Liu H, Peng J. Since January 2020 Elsevier has created a COVID-
266 19 resource centre with free information in English and Mandarin on the novel coronavirus
267 COVID- 19 . The COVID-19 resource centre is hosted on Elsevier Connect , the company ' s
268 public news and information . 2020.
- 269 9. Popkin BM, Du S, Green WD, Beck MA, Algaith T, Herbst CH, et al. Individuals with obesity
270 and COVID-19: A global perspective on the epidemiology and biological relationships. *Obes Rev.*

- 271 2020;21: 1–17. doi:10.1111/obr.13128
- 272 10. Gansevoort RT, Hilbrands LB. CKD is a key risk factor for COVID-19 mortality. *Nat Rev Nephrol.*
273 2020;16: 705–706. doi:10.1038/s41581-020-00349-4
- 274 11. Liang W, Guan W, Chen R, Wang W, Li J, Xu K, et al. Cancer patients in SARS-CoV-2 infection:
275 a nationwide analysis in China. *Lancet Oncol.* 2020;21: 335–337. doi:10.1016/S1470-
276 2045(20)30096-6
- 277 12. Pinzón MA, Ortiz S, Holguín H, Betancur JF, Arango DC, Laniado H, et al. Dexamethasone vs
278 methylprednisolone high dose for Covid-19 pneumonia. *PLoS One.* 2021;16: 1–13.
279 doi:10.1371/journal.pone.0252057
- 280 13. Torii S, Ono C, Suzuki R, Morioka Y, Anzai I, Fauzyah Y, et al. Establishment of a reverse genetics
281 system for SARS-CoV-2 using circular polymerase extension reaction. *Cell Rep.* 2021;35: 109014.
282 doi:10.1016/j.celrep.2021.109014
- 283 14. Cock PJA, Antao T, Chang JT, Chapman BA, Cox CJ, Dalke A, et al. Biopython: Freely available
284 Python tools for computational molecular biology and bioinformatics. *Bioinformatics.* 2009;25:
285 1422–1423. doi:10.1093/bioinformatics/btp163
- 286 15. Darriba Di, Posada D, Kozlov AM, Stamatakis A, Morel B, Flouri T. ModelTest-NG: A New and
287 Scalable Tool for the Selection of DNA and Protein Evolutionary Models. *Mol Biol Evol.* 2020;37:
288 291–294. doi:10.1093/molbev/msz189
- 289 16. Kozlov AM, Darriba D, Flouri T, Morel B, Stamatakis A. RAxML-NG: A fast, scalable and user-
290 friendly tool for maximum likelihood phylogenetic inference. *Bioinformatics.* 2019;35: 4453–
291 4455. doi:10.1093/bioinformatics/btz305
- 292 17. Kumar S, Stecher G, Li M, Knyaz C, Tamura K. MEGA X: Molecular evolutionary genetics
293 analysis across computing platforms. *Mol Biol Evol.* 2018;35: 1547–1549.
294 doi:10.1093/molbev/msy096
- 295 18. Kanda Y. Investigation of the freely available easy-to-use software “EZR” for medical statistics.

- 296 Bone Marrow Transplant. 2013;48: 452–458. doi:10.1038/bmt.2012.244
- 297 19. Shin D, Mukherjee R, Grewe D, Bojkova D, Baek K, Bhattacharya A, et al. Papain-like protease
298 regulates SARS-CoV-2 viral spread and innate immunity. *Nature*. 2020;587: 657–662.
299 doi:10.1038/s41586-020-2601-5
- 300 20. Xia H, Cao Z, Xie X, Zhang X, Chen JYC, Wang H, et al. Evasion of Type I Interferon
301 by SARS-CoV-2. *Cell Rep*. 2020;33: 108234. doi:10.1016/j.celrep.2020.108234
- 302 21. Yuen C-K, Lam J-Y, Wong W-M, Mak L-F, Wang X, Chu H, et al. SARS-CoV-2 nsp13, nsp14,
303 nsp15 and orf6 function as potent interferon antagonists. *Emerg Microbes Infect*. 2020;9: 1418–
304 1428. doi:10.1080/22221751.2020.1780953
- 305 22. Cottam EM, Whelband MC, Wileman T. Coronavirus NSP6 restricts autophagosome
306 expansion. *Autophagy*. 2014;10: 1426–1441. doi:10.4161/auto.29309
- 307 23. Benvenuto D, Angeletti S, Giovanetti M, Bianchi M, Pascarella S, Cauda R, et al.
308 Evolutionary analysis of SARS-CoV-2: how mutation of Non-Structural Protein 6
309 (NSP6) could affect viral autophagy. *J Infect*. 2020;81: e24–e27.
310 doi:10.1016/j.jinf.2020.03.058
- 311 24. National Institute of Infectious Diseases, Infectious Agents Surveillance Report. 2021;42: 61-64.
- 312 25. Blyth CC, Kelso A, McPhie KA, Ratnamohan VM, Catton M, Druce JD, et al. The impact of the
313 pandemic influenza a(H1N1) 2009 virus on seasonal influenza a viruses in the southern
314 hemisphere, 2009. *Eurosurveillance*. 2010;15: 1–5. doi:10.2807/ese.15.31.19631-en
- 315 26. Broor S, Krishnan A, Roy DS, Dhakad S, Kaushik S, Mir MA, et al. Dynamic patterns of
316 circulating seasonal and pandemic A(H1N1)pdm09 influenza viruses from 2007-2010 in and
317 around Delhi, India. *PLoS One*. 2012;7: 1–9. doi:10.1371/journal.pone.0029129
- 318

Table 1. Characteristics and treatment options of COVID-19 patients

Characteristic	Group A (N=66)	Group B (N=37)	P value
Age, median (IQR)	76 (71-85)	78 (74-82)	0.75
Male sex (%)	32 (48.5)	17 (45.9)	0.84
Duration of hospitalization, median (IQR)	12.5 (9-16)	11 (59-16)	0.85
Obesity, BMI \geq 30 (%)	4 (6.1)	6 (16.2)	0.16
Current or ex-smoker (%)	21 (31.8)	13 (35.1)	0.83
Comorbidities (%)			
Hypertention	38 (57.6)	28 (75.7)	0.09
Dyslipidemia	21 (31.8)	16 (43.2)	0.29
Diabetes mellitus	12 (18.2)	10 (27.0)	0.32
Chronic pulmonary disease	12 (18.2)	11 (29.7)	0.22
Cardiovascular disease	10 (15.2)	7 (18.9)	0.78
Chronic kidney disease	10 (15.2)	6 (16.2)	1.00
Cancer	9 (13.6)	2 (5.4)	0.32
Treatment options (%)			
Dexamethasone	39 (59.1)	19 (51.4)	0.54
Methylprednisolone	10 (15.2)	11 (29.7)	0.12
Remdesivir	8 (12.1)	2 (5.4)	0.32

IQR: interquartile range, BMI: body mass index

Table 2. Primary and secondary outcomes of COVID-19 patients

Outcome	Over all			Male		
	Group A (N=66)	Group B (N=37)	OR (95%CI)	Group A (N=32)	Group B (N=17)	OR (95%CI)
Death (%)	4 (6.1)	6 (16.2)	2.97 (0.65-15.38)	2 (6.3)	5 (29.4)	5.99 (0.84-71.2)
Severity* (%)						
Mild	27 (40.9)	15 (40.5)	0.98 (0.40-2.41)	15 (46.9)	9 (52.9)	1.27 (0.34-4.89)
Moderate	9 (13.6)	9 (24.3)	2.02 (0.63-6.47)	4 (12.5)	8 (47.1)	5.95 (1.25-33.9)
Severe	5 (7.6)	8 (21.6)	3.32 (0.87-14.11)	2 (6.3)	7 (41.2)	6.68 (1.24-47.8)

* Oxygen flow rate: Mild ≥ 1 L/min, Moderate ≥ 5 L/min, Severe ≥ 10 L/min

Table 3. Mutation sites that differed in the four samples

Nucleotide position	Gene	Group A		Group B		Amino acid change
		Asahikawa_0108	Asahikawa_0122	Asahikawa_0404	Asahikawa_0417	
4233	Orf1a	G	A	A	A	D1323G
6380		C	T	C	C	L2039F
6433		T	C	C	C	Syn
6532		G	G	T	T	E2089D
6997		T	C	C	C	Syn
8371		T	G	G	G	Q2702H
8917		C	T	T	T	Syn
9207		T	C	C	C	S2981F
10042		A	A	G	G	Syn
11058		C	C	T	T	T3598I
11430		A	A	G	G	T3722C
12049		C	T	T	T	Syn
13366		C	C	T	T	Syn
15240		T	C	C	C	Syn
15957		G	A	G	G	Syn
17502	C	T	C	C	Syn	
19894	G	G	T	T	A2143S	
20658	A	G	A	A	Syn	
22502	C	A	C	C	Q314K	
23191	C	C	T	T	Syn	
23587	S	G	T	T	T	Q675H
23720		G	A	A	A	I720V
24748	C	C	T	T	Syn	
25020	A	A	G	G	D1153G	
29353	N	C	T	T	T	Syn

Position number based on alignment to NCBI reference sequence: NC_045512 (Wuhan-Hu-1).

The different parts between the two samples in group A are shown in a gray area. Amino acid changes identified between two groups were represented in bold.

321

322

323 **Figure Legends**

324

325 **Figure 1.** Flow diagram indicating the recruitment process in this study.

326

327 **Figure 2.** Cumulative probability of the patients who required oxygen therapy with mild: ≥ 1 L/min,
328 moderate: ≥ 5 L/min and severe: ≥ 10 L/min. The log-rank test was used for statistical analysis.

329

330 **Figure 3.** Scheme of SARS-CoV-2 genome. The non-synonymous mutation sites are indicated by
331 arrows.

332

333 **Figure 4.** Maximum likelihood phylogenetic tree of SARS-CoV-2 variants. Black and red characters
334 indicate synonymous and non-synonymous mutations respectively. Red bold characters indicate
335 mutations of interest. Numbers on internal nodes are bootstrap values for each divergence.

Figure 1

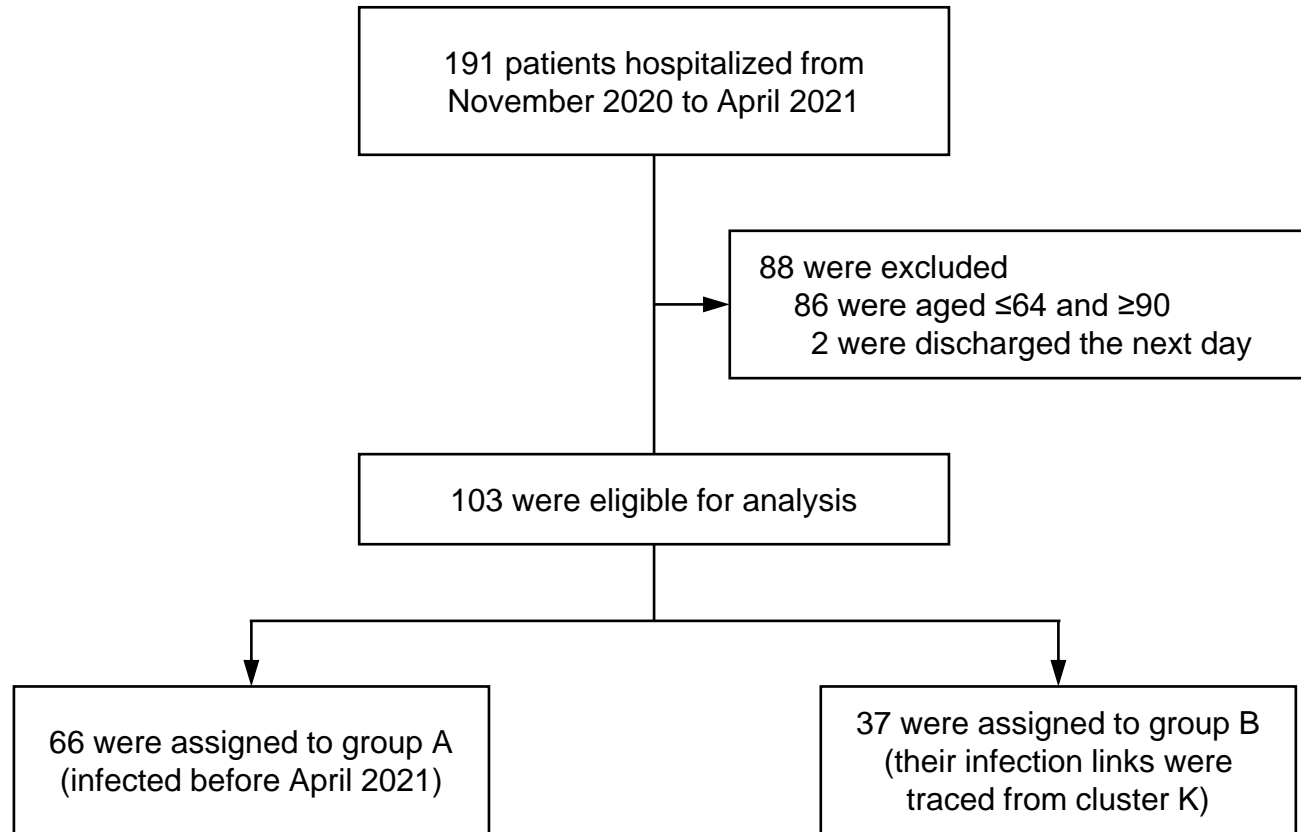


Figure 2

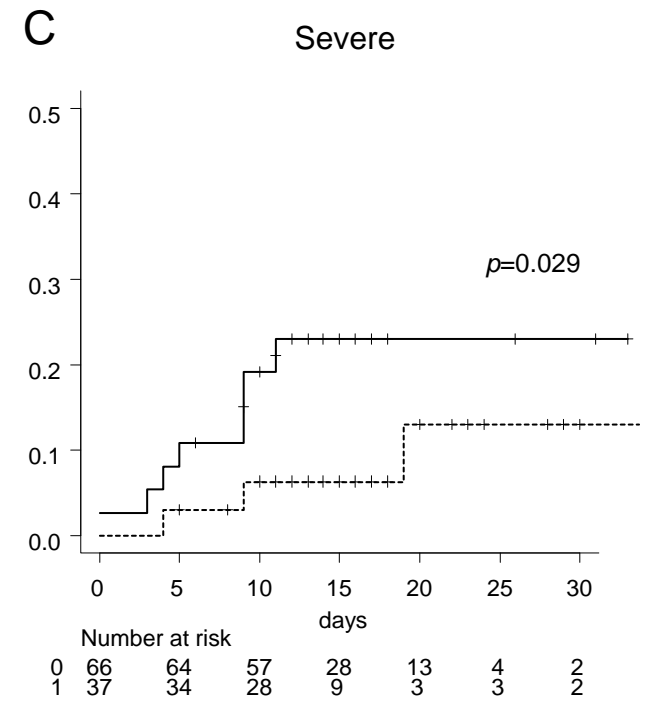
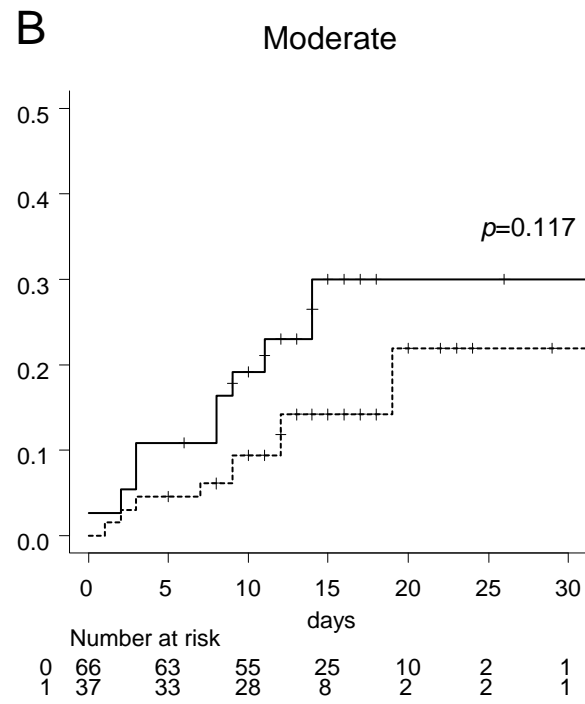
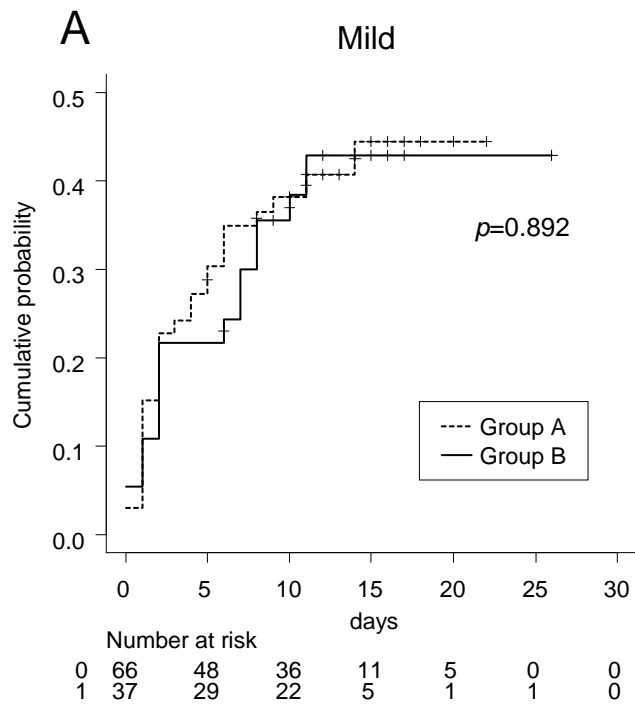


Figure 3

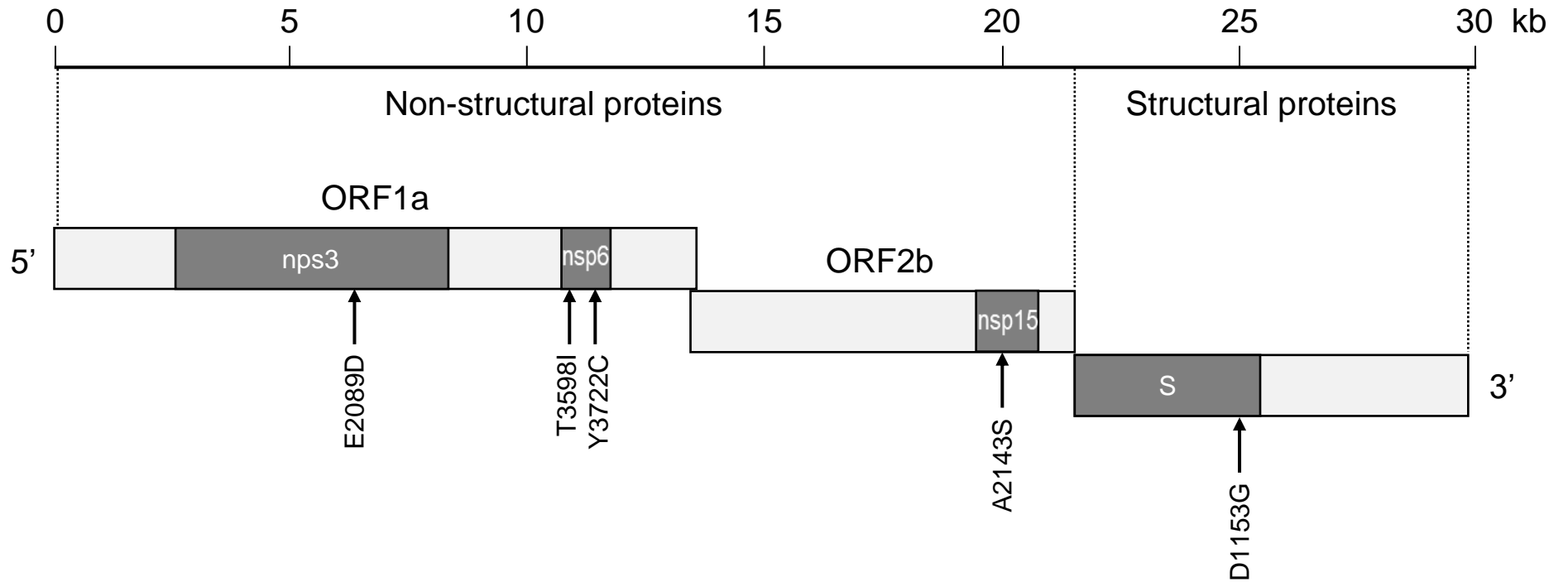


Figure 4

