

1 Title page

2 Small Airway Disease as long-term Sequela of COVID-19: Use of Expiratory
3 CT despite Improvement in Pulmonary Function test

4 **Authors**

5 Alpana Garg, MD¹, Prashant Nagpal^{2,3}, Sachin Goyal MD⁴, Alejandro P. Comellas MD⁵

6 Author affiliation

- 7 1. Department of Internal Medicine, University of Iowa Hospitals & clinics, Iowa city,
8 Iowa
9 2. Department of Radiology, University of Iowa Hospitals & clinics, Iowa City, Iowa
10 3. Cardiovascular and Thoracic Imaging, Department of Radiology, University of
11 Wisconsin School of Medicine and Public Health, Madison, Wisconsin
12 4. Department of Internal Medicine, Mercy Medical Center, Cedar Rapids, Iowa
13 5. Department of Internal Medicine-Pulmonary and Critical care, University of Iowa
14 Hospitals & Clinics, Iowa City, Iowa
15

16

17 **Key words:** COVID-19, SARS-CoV-2, Small airway disease, Air trapping, Lung fibrosis,
18 post-acute sequelae of SARS-CoV-2

19 **Running Head:** Air trapping in Expiratory CT: Evidence of Small Airway disease in
20 patients after SARS-CoV-2

21 **Word Count:** Abstract-250, Main text-2318, References-21

22 **Number of Tables:** 2

23 **Number of Figures:** 4

24 **Supplemental Material:** 1 Table

25 Address for Correspondence:

26 Alpana Garg

27 Department of Internal Medicine, University of Iowa

28 105 East 9th Street, 4631 IRL Coralville, Iowa, USA

29 Tel 319-467-2000 Fax 319-467-2505 Email: alpanagarg24@yahoo.com
30

31

32

1 **Highlights**

- 2 1. Long term pulmonary complication of SARS-CoV-2 infection include small airway
3 disease
- 4 2. There is role of inspiratory and expiratory Computed tomography (CT) scan to
5 identify air trapping in patients with persistent respiratory symptoms after SARS-
6 CoV-2 infection
- 7 3. Normal spirometry and normal routine CT may not be sufficient to characterize and
8 identify cause of persistent respiratory complains in patients after COVID-19
- 9 4. This study highlights persistent parenchymal and physiological airway
10 abnormalities more than six months after recovery from initial SARS-CoV-2
11 infection

12
13
14
15
16
17
18
19
20
21
22
23
24
25
26
27
28
29
30
31
32
33
34
35

1 **Abstract**

2

3 **Background:** It is important to understand the spectrum of pulmonary diseases that
4 patients are presenting after recovery from initial SARS-CoV-2 infection. We aim to study
5 small airway disease and changes in Computed Tomography (CT) and pulmonary
6 function tests (PFTs) with time.

7 **Methods:** This is retrospective observation study including adult patients with confirmed
8 SARS-CoV-2 infection with at-least two CT scans either during acute (defined as <1
9 month) or subacute (1-3 months) or chronic (>3months) phase after positive test.
10 Radiological features and follow up PFTs were obtained.

11 **Results:** 22 patients met the inclusion criteria with mean age 57.6 years (range 36-83).
12 Out of these, 18 (81.81%) were hospitalized. Mean duration of diagnosis to CT and PFT
13 was 192.68(112-385) days and 161.54(31-259) days respectively. On PFTs, restrictive
14 pulmonary physiology was predominant finding during subacute 56.25% (9/16) and
15 chronic phases 47% (7/15). PFTs improved significantly with time {FEV1((p=0.0361),
16 FVC (p=0.0341), FEF 25%-75% (p=0.0259) and DLCO (p=0.0019)}, but there was
17 persistent air trapping in the expiratory chronic phase CT. There was resolution of ground
18 glass opacity, consolidation, and bronchiectasis however air trapping increased with time
19 in 41.61% (10/21) of subacute CTs compared to 81.25% (13/16) in chronic CTs.

20 **Conclusion:** Our study shows evidence of airway as well as parenchymal disease as
21 relatively long-term sequel of SARS-CoV-2 infection. It also highlights the natural course
22 and spontaneous recovery of some radiological and pulmonary function test
23 abnormalities over time with evidence of persistent small airway disease (air trapping) on
24 expiratory CT imaging months after infection.

1 Introduction

2 Severe acute respiratory syndrome coronavirus 2 (SARS-CoV-2) has infected more than
3 196 million people and has resulted in more than 4 million deaths worldwide.¹ Patients
4 who have survived the acute illness are increasing and they are now presenting with
5 persistent respiratory complains like dyspnea and cough, months after acute illness.² Now
6 known as Post-Acute Sequelae of SARS-CoV-2 (PASC) or long COVID, it is important to
7 understand the spectrum of underlying respiratory diseases during this phase.³ Acute
8 pulmonary complications of this respiratory virus include viral pneumonia, acute
9 respiratory distress syndrome (ARDS), pulmonary embolism whereas long term
10 complications include but not limited to persistent interstitial abnormalities, bronchiectasis
11 and pulmonary fibrosis.⁴⁻⁸ Follow-up data from other studies report persistent
12 physiological and parenchymal abnormalities, especially in hospitalized patients with
13 severe initial SARS-CoV-2 infection.⁹⁻¹¹ However, there are only limited number of studies
14 reporting evidence of functional small airway disease (fSAD) after SARS-CoV-2
15 infection.^{12,13}

16 Small airways are non-cartilaginous (less than 2 mm in diameter), start from generation
17 8th of lung branching and are often defined as 'quiet zones' of the lungs.^{13,14} Being small
18 is diameter, they are susceptible to occlusion by small, inhaled toxins or pathogens (also
19 known as post infectious bronchiolitis) or by local or systemic inflammatory damage with
20 underlying conditions like connective tissue disease, post lung or bone marrow transplant
21 and environmental or inhalational exposure (e.g. smoking).^{13,15} The diagnosis is difficult
22 to establish as traditional lung function tests remain normal until late in disease course
23 and direct assessment of small airways is beyond resolution of routine Computed

1 Tomography (CT) scanners.¹⁴ However, small airways are indirectly evaluated on CT by
2 subjective and quantitative measures of air trapping (or gas trapping) and mosaic
3 attenuation especially in expiratory scans which suggests heterogenous distribution of
4 airway disease.^{13, 14, 16}

5 The aim of this study was to understand the natural course of radiological and pulmonary
6 function tests, in a cohort of patients who presented to post-Covid-19 clinic and underwent
7 longitudinal follow up with expiratory and inspiratory pulmonary imaging and pulmonary
8 function test (PFT). The greater aim was to find the proportion of patients who had
9 evidence of small airway disease based on imaging and pulmonary function tests.

10 **Materials and Methods**

11 **Study Design**

12 This study was a retrospective observational descriptive study conducted at University of
13 Iowa hospitals & clinics. The study was approved by Institutional board review (IRB#
14 2020055421). The study included patients from inception of post covid clinic from June
15 1,2020 to July 15th,2021. Written informed consent was obtained from all the patients
16 included in the study.

17 All adult patients who presented to outpatient post-COVID-19 clinic for follow up, had
18 either a positive SARS-CoV-2 reverse transcriptase polymerase chain reaction (RT-PCR)
19 or positive SARS-CoV-2 antibody test and had at least two temporal CT scans since the
20 diagnosis and a PFT were included in the study. CT imaging was classified as acute CT
21 (defined as CT < 1 month since COVID-19 diagnosis), subacute CT (1-3 months since
22 COVID-19 diagnosis) or a chronic CT (> 3 months since COVID-19 diagnosis). The CT
23 imaging protocol consisted of acquisition of lung imaging at inspiration (coached to total

1 lung capacity) and expiration (coached to residual volume). The details of the CT imaging
2 protocol used for the COVID-19 clinic patients is detailed elsewhere.¹⁶ All the patients
3 who had prior documented history of lung fibrosis or interstitial lung disease (ILD) were
4 excluded from the study.

5 **Data Collection**

6 We collected demographics (age, sex, race, ethnicity, BMI, smoking history), past medical
7 history, presenting complains, level of care received after the diagnosis [ambulatory or
8 hospitalized or Intensive care unit (ICU)], length of stay, and treatment received after
9 COVID-19 diagnosis. At presentation and follow-up in the post COVID-19 clinic we
10 obtained inspiratory and expiratory CT and PFT. All the CT images were reviewed by
11 experienced Cardiothoracic imaging fellowship trained radiologist. PFT done at clinic visit
12 were reviewed by an experienced pulmonologist and further characterized as subacute
13 (1-3 months after COVID-19 diagnosis) or chronic (>3 months after COVID-19 diagnosis).
14 CT images were interpreted using standardized imaging nomenclature (such as ground-
15 glass opacity [GGO], consolidation, air-trapping).¹⁷ All PFTs were obtained and
16 interpreted using Standardized American Thoracic Society criteria.¹⁸ The PFTs were
17 timed with either subacute or chronic CT scans. The following parameters were
18 measured: forced vital capacity (FVC), forced expiratory capacity at first second of
19 exhalation (FEV1), total lung capacity (TLC), residual volume (RV) and diffusion capacity
20 of the lung for carbon monoxide (DLCO), Forced Expiratory Flow (FEF_{25%-75%}). If
21 hemoglobin values were available, then DLCO values were corrected for hemoglobin.
22 PFT variables with values less than 80% were considered abnormal. Resting pulmonary
23 hyperinflation was defined as RV/TLC ratio of more than or equal to 40%.

1 **Clinical Data Analysis**

2 Primary outcomes were the clinical characteristics and abnormalities in the initial imaging
3 and the follow up pulmonary imaging. Results were expressed using proportions,
4 percentages, means and standard deviation or minimum and maximum values, as
5 appropriate. Paired t-test was used to measure changes in FEV1, FVC and DLCO. A p-
6 value less than 0.05 was considered statistically significant.

7 **Results**

8 **Demographic and clinical characteristics**

9 Out of twenty-two patients included in the study, most (18/22 i.e., 81.81%) were admitted
10 to either medical floor (5/18) or the intensive care unit (13/18) and 4/22(18.18%) were
11 managed outpatient during COVID-19 diagnosis. Majority of the patients were
12 Caucasians (81.81%) and males with mean age of 57.6 years (range 36-83). Eleven out
13 of 18 patients hospitalized, (61.11%) required oxygen at time of hospital discharge and
14 36.36% (8/22) underwent pulmonary rehabilitation. None of the patients were current
15 smokers but 31.8% of patient smoked in the past with 26.42 mean pack years smoking
16 history. The demographic and clinical characteristic of the patients is summarized in Table
17 1.

18 **Pulmonary function tests and spirometry**

19 The mean duration of follow up pulmonary function test from positive SARS-CoV-2 test
20 was 161.54 (range 31-259) days. Spirometry was obtained during the subacute phase in
21 72.72% (16/22) patients. From these patients, 56.25% (9/16) had restrictive lung
22 physiology and only 12.5% had obstructive lung physiology (2/16). In subacute phase,
23 DLCO was measured in 50% (11/22) of the patients, out of which 72.72% (8/11) had

1 reduced DLCO. Spirometry was obtained during the chronic phase in 68.18% (15/22) of
2 patients, with 47% (7/15) having normal spirometry, while 33% (5/15) remained
3 restrictive, and 20% (3/15) obstructive. DLCO was measured in 63.63% (14/22), with 50%
4 of patients with reduced DLCO. This DLCO reduction suggests alveolar capillary defect.
5 In addition, a group of 7 patients out of 22 patients had both spirometry measured during
6 the subacute and chronic phases. As shown in Figure 1, FEV1($p=0.0361$), FVC
7 ($p=0.0341$) and FEF 25%-75% ($p=0.0259$) improved significantly with time. Four patients
8 in this group had also DLCO measured during these time points, with significant
9 change($p=0.0019$). These results demonstrate improvement in lung function without any
10 therapeutic intervention (including steroids).

11 **Radiological characteristics**

12 The quality of all CT images was evaluated by Radiologist and only images with excellent
13 quality with no motion or good quality with mild motion were included in the study. The
14 details regarding the CT findings are depicted with individual clinical characteristics in
15 Table 2. Out of 17 CTs in the acute phase, 11 were CT angiogram (CTA), 2 were CT with
16 contrast and 4 were CT without contrast. With risk of thromboembolism during acute
17 illness, we expected CTs done with contrast to look for pulmonary embolism. The mean
18 duration of follow up for subacute CT was 55.75 days (31 to 90 days post-COVID 19)
19 whereas, chronic CT was 192.68 days (range 112-385). Most common finding in majority
20 of acute phase and subacute phase CT was GGO: either only GGO or GGO associated
21 with reticular interstitial thickening. All the (17/17) CTs done in acute phase and 95.23%
22 (20/21) of CTs done in subacute phase had ground glass opacities. In the chronic phase
23 CT, there was resolution of ground glass with persistent only in 43.75% (7/16).

1 In acute phase CT, other pertinent findings included nodules 35.29% (6/17), mediastinal
2 lymphadenopathy 35.29% (6/17) and pulmonary embolism in 17.64% (3/17).
3 In subacute phase, the most common CT modality was without contrast with inspiratory
4 and expiratory phase (17/21) and 4 were CTA. Majority of CT imaging in subacute and
5 chronic phases were done as per inspiratory/expiratory COVID-19 protocol for patients in
6 post COVID-19 clinic. In chronic phase, all the CTs were done without contrast with
7 inspiratory and expiratory phases. There was evidence of air trapping in 81.25% (13/16)
8 CTs in chronic phase. When compared to acute phase CT, air trapping was present in
9 23.52% (4/17) and subacute 47.61% (10/21). Besides air trapping, there was evidence of
10 bronchiectasis in 61.90% (13/21) of subacute phase CTs and 43.75% (7/16) in chronic
11 phase CT suggesting slight improvement with time. Interestingly, architectural distortion
12 and some parenchymal scarring was present in 47.61% (10/21) of subacute CTs and
13 37.5% of CTs in chronic phase. The individual patient characteristics and corresponding
14 CT findings in subacute and chronic CT are highlighted in Supplementary Table 3. Also
15 figure 2, 3 and 4 show representative examples of air trapping evident in expiratory CT
16 images.

17 **Discussion**

18 In this study we report that PFT changes including FEV1, FVC, FEF25-75%, DLCO, and
19 lung parenchymal changes, such as GGO, bronchiectasis, architectural distortion, and
20 even parenchymal scarring can improve over time. However, the proportion of patients
21 with air trapping increased from the acute phase (23.52%) to the chronic phase (81.25%).
22 The results of our study are in line with our previous study of 100 patients who presented
23 for follow up after SARS-CoV-2 infection, with air trapping and evidence of small airway

1 disease in 25.5% of patients in ambulatory group (not admitted to hospital), 34.5% in
2 hospitalized group and 27.2% in intensive care group regardless of severity of infection.¹³
3 Recently, Huang et al reported air trapping in early stages of SARS-CoV-2 infection
4 disease which persisted at two months follow up.¹² This was a multicenter study done in
5 China, included 108 patients, and found evidence of small airway disease in expiratory
6 and inspiratory high-resolution CT.

7 The overall contribution of small airways is minimum to airway resistance and previous
8 spirometry data suggests that spirometry abnormalities may not present until > 75% of
9 airways are obstructed.^{15, 19} In our cohort, the spirometry changes and some parenchymal
10 CT findings improved with time, but some parenchymal CT findings persist, and air
11 trapping progressed over time. Without having acquired expiratory chest CT scans, we
12 would have missed the high prevalence of air trapping despite improvement in pulmonary
13 functions and lung parenchymal changes. Furthermore, none of the patients received
14 long term systemic steroids, but there was spontaneous resolution of lung parenchymal
15 changes including bronchiectasis and scarring with time, even in the patients with severe
16 disease (Figure 4). The long-term clinical significance of these findings is yet unclear but
17 raises the possibility that patients with COVID-19 infection can develop features of
18 pulmonary obstructive lung disease due to damage to the small airways with potential to
19 develop long-term bronchiolitis obliterans. As large number of patients with post-acute
20 sequelae of SARS-CoV-2 (PASC) present with persistent respiratory complains, it will be
21 important to understand the different phenotypes and tailor therapies so that unnecessary
22 treatments with potential side-effects can be avoided. We would also emphasize that
23 follow-up with CT imaging should be done carefully as subjecting patients to repeated

1 radiological exposure and assessment of small airway is not feasible unless clinically
2 indicated.¹⁴ While the objective evaluation of air trapping on CT is possible, qualitative
3 assessment of air-trapping is highly subjective.^{13, 16} Moreover, single point interpretation
4 of air-trapping is difficult as it is a non-specific sign and can be seen with some other
5 physiological (e.g., obesity) and pathological conditions (e.g., pulmonary vascular
6 congestion).^{14, 20, 21} However, temporal changes after COVID-19 as highlighted in this
7 study can provide understanding of small airway disease change in terms of progression
8 or improvement.

9 Our study highlights the natural course of the SARS-CO-V2 infection and effects on lungs.
10 Our cohort was heterogeneous and included patients with variety of clinical
11 characteristics and disease severity describing the evolution of image characteristics and
12 spirometry with time. In this study, all the CT findings were evaluated by a single
13 experienced fellowship trained radiologist, hence excluding inter-observer variability. The
14 quality of expiratory and inspiratory films was assessed, and only studies with good or
15 excellent quality CT were included. We followed the patients with inspiratory and
16 expiratory CT scans and over more than six months follow-up (and one patient with 385
17 days follow up) and found the evidence of persistent (and even increasing) air trapping
18 despite resolution (or stability) of other changes.

19 Our study had certain limitations. It is a single center, observational study which included
20 relatively small number of symptomatic patients. However, since COVID-19 is a relatively
21 new disease our aim was to include patients with comparable follow-up. Due to
22 retrospective design, not all the patients were followed at the same regular intervals.
23 Hence, there are some missing data points (not all the patients had imaging or PFT in all

1 phases [acute, subacute, and chronic]). We cannot correlate the findings with underlying
2 co-morbidities and clinical course as the sample size is small. Due to heterogeneous
3 cohort, it will be difficult to determine which patients are more prone to developing small
4 airway disease based on their clinical characteristics and illness course during acute
5 infection. More longitudinal follow up studies including large number of patients can be
6 done in future to delineate the risk factors and prevalence of fSAD in patients after SARS-
7 CoV-2 infection. Also, studies are needed to understand the long-term consequences and
8 treatment modalities in patients presenting with differing clinical and radiological
9 phenotypes.

10 **Conclusion**

11 Our study shows evidence of airway as well as parenchymal disease months after initial
12 SARS-CoV-2 infection. It also highlights the natural course and spontaneous recovery of
13 acute radiological and pulmonary functions abnormalities over time but indirect evidence
14 of persistent (with temporal progression) small airway disease with air trapping months
15 after COVID-19. Therefore, it is important to appropriately follow up patients after
16 recovery from SARS-CoV-2 with respiratory complains by inspiratory and expiratory CT
17 imaging even if pulmonary function tests are normal.

18

19

20

21

22

23

- 1 Conflicts of interest: None
- 2 Acknowledgement: We would like to thank the patients who consented to participate in
- 3 the study and supported research related to COVID-19
- 4 Funding: None
- 5 Author Contributions:
- 6 AG was responsible for conceptualization, data curation, writing original draft
- 7 PN was responsible for reviewing the data, writing - review & editing.
- 8 SG was responsible for data collection, review and editing.
- 9 APC was responsible for conceptualization, formal analysis, methodology, supervision,
- 10 writing - review & editing.

References

Uncategorized References

1. Coronavirus Covid-19 Global cases by the Systems Science and Engineering (CSSE) at John Hopkins University(JHU), <https://coronavirus.jhu.edu/map.html> (2020, accessed July,29 2021).
2. Carfi A, Bernabei R, Landi F, et al. Persistent Symptoms in Patients After Acute COVID-19. *JAMA* 2020; 324: 603-605. 2020/07/10. DOI: 10.1001/jama.2020.12603.
3. <https://www.nih.gov/about-nih/who-we-are/nih-director/statements/nih-launches-new-initiative-study-long-covid> (2021).
4. Schwensen HF, Borreschmidt LK, Storgaard M, et al. Fatal pulmonary fibrosis: a post-COVID-19 autopsy case. *J Clin Pathol* 2020 2020/07/30. DOI: 10.1136/jclinpath-2020-206879.
5. Liu C, Ye L, Xia R, et al. Chest Computed Tomography and Clinical Follow-Up of Discharged Patients with COVID-19 in Wenzhou City, Zhejiang, China. *Ann Am Thorac Soc* 2020; 17: 1231-1237. 2020/07/22. DOI: 10.1513/AnnalsATS.202004-324OC.
6. Malik B, Abdelazeem B and Ghatol A. Pulmonary Fibrosis After COVID-19 Pneumonia. *Cureus* 2021; 13: e13923. 2021/04/20. DOI: 10.7759/cureus.13923.
7. Lago VC, Prudente RA, Luzia DA, et al. Persistent interstitial lung abnormalities in post-COVID-19 patients: a case series. *J Venom Anim Toxins Incl Trop Dis* 2021; 27: e20200157. 2021/04/29. DOI: 10.1590/1678-9199-JVATITD-2020-0157.
8. Ahmad Alhiyari M, Ata F, Islam Alghizzawi M, et al. Post COVID-19 fibrosis, an emerging complication of SARS-CoV-2 infection. *IDCases* 2021; 23: e01041. 2021/01/12. DOI: 10.1016/j.idcr.2020.e01041.
9. Zhao YM, Shang YM, Song WB, et al. Follow-up study of the pulmonary function and related physiological characteristics of COVID-19 survivors three months after recovery. *EClinicalMedicine* 2020; 25: 100463. 2020/08/25. DOI: 10.1016/j.eclinm.2020.100463.
10. Wu X, Liu X, Zhou Y, et al. 3-month, 6-month, 9-month, and 12-month respiratory outcomes in patients following COVID-19-related hospitalisation: a prospective study. *Lancet Respir Med* 2021; 9: 747-754. 2021/05/09. DOI: 10.1016/S2213-2600(21)00174-0.
11. Shah AS, Wong AW, Hague CJ, et al. A prospective study of 12-week respiratory outcomes in COVID-19-related hospitalisations. *Thorax* 2021; 76: 402-404. 2020/12/05. DOI: 10.1136/thoraxjnl-2020-216308.
12. Huang R, Zhu J, Zhou J, et al. Inspiratory and Expiratory Chest High-Resolution CT: Small-Airway Disease Evaluation in Patients with COVID-19. *Curr Med Imaging* 2021 2021/01/14. DOI: 10.2174/1573405617999210112194621.
13. Cho JL, Villacreses R, Nagpal P, et al. Small Airways Disease is a Post-Acute Sequelae of SARS-CoV-2 Infection. *medRxiv* 2021: 2021.2005.2027.21257944. DOI: 10.1101/2021.05.27.21257944.
14. McNulty W and Usmani OS. Techniques of assessing small airways dysfunction. *Eur Clin Respir J* 2014; 1 2014/01/01. DOI: 10.3402/ecrj.v1.25898.
15. Burgel PR, Bergeron A, de Blic J, et al. Small airways diseases, excluding asthma and COPD: an overview. *Eur Respir Rev* 2013; 22: 131-147. 2013/06/04. DOI: 10.1183/09059180.00001313.

16. Nagpal P, Guo J, Shin KM, et al. Quantitative CT imaging and advanced visualization methods: potential application in novel coronavirus disease 2019 (COVID-19) pneumonia. *BJR Open* 2021; 3: 20200043. 2021/03/16. DOI: 10.1259/bjro.20200043.
17. Hansell DM, Bankier AA, MacMahon H, et al. Fleischner Society: glossary of terms for thoracic imaging. *Radiology* 2008; 246: 697-722. 2008/01/16. DOI: 10.1148/radiol.2462070712.
18. Culver BH, Graham BL, Coates AL, et al. Recommendations for a Standardized Pulmonary Function Report. An Official American Thoracic Society Technical Statement. *Am J Respir Crit Care Med* 2017; 196: 1463-1472. 2017/12/02. DOI: 10.1164/rccm.201710-1981ST.
19. Cosio M, Ghezzi H, Hogg JC, et al. The relations between structural changes in small airways and pulmonary-function tests. *N Engl J Med* 1978; 298: 1277-1281. 1978/06/08. DOI: 10.1056/NEJM197806082982303.
20. Berger KI. Small Airway Disease Syndromes. Piercing the Quiet Zone. *Ann Am Thorac Soc* 2018; 15: S26-S29. 2018/02/21. DOI: 10.1513/AnnalsATS.201710-767KV.
21. Wijesuriya S, Chandratreya L and Medford AR. Chronic pulmonary emboli and radiologic mimics on CT pulmonary angiography: a diagnostic challenge. *Chest* 2013; 143: 1460-1471. 2013/05/08. DOI: 10.1378/chest.12-1384.

Table 1 Baseline characteristics of patients included in the study

Characteristic	Total (n = 22)
Age, years(range)	57.6 (36-83)
Gender	
Male, n (%)	18(81.81%)
Female, n (%)	8(36.36%)
Race	
Caucasian (%)	18(81.81%)
African American, n (%)	3(13.63%)
Native, n (%)	1(4.54%)
Height, mean, in centimeter(range)	172.69(157-190.5)
Weight, mean in Kilogram(range)	98.00(62-147.9)
Body Mass Index, mean, Kg/m2(range)	32.79(21.7-52.89)
Smoking	
Current smoker	0
Past smoker, n (%)	7(31.81%)
Past smoking (mean pack years)	26.42
Coexisting co-morbidities	
Hypertension, n (%)	14(63.63%)
Obesity, n (%)	10(45.45%)
Diabetes Mellites, n (%)	7(31.81%)
Asthma, n (%)	3(13.63%)
Chronic Obstructive Pulmonary disease, n (%)	3(13.63%)
Coronary artery disease, n (%)	1(4.54%)
Congestive heart failure, n (%)	3(13.63%)
Chronic kidney disease, n (%)	2(9.09%)
Immunocompromised (organ-transplant, immunodeficiency), n (%)	3(13.63%)
Connective tissue disease, n (%)	1(4.54%)
Level of care received during acute COVID-19	
Inpatient at time of initial infection, n (%)	18(81.81%)
Admitted to Medical ward, n (%)	5 (22.72%)
Admitted to Intensive Care, n (%)	13(59.09%)
Outpatient at time of initial infection, n (%)	4(18.18%)
Mean Length of hospital stay, days	27.5
Treatment Received during acute COVID-19	
Supplemental oxygen through nasal cannula, Non-Invasive Mechanical ventilation, n (%)	2(9.09%)
High Flow, n (%)	10(45.45%)
Mechanical ventilation, n (%)	9(40.9%)
Steroids, n (%)	7(31.81%)
Remdesivir, n (%)	17(77.27%)
Convalescent plasma, n (%)	9(40.9%)
Antibiotics, n (%)	5(22.72%)
Renal replacement therapy, n (%)	13(59.09%)
Oxygen after hospital discharge [out of 18 patients hospitalized], n (%)	3(13.63%)
Pulmonary rehabilitation, n (%)	11(61.11%)
	8(36.36%)

Table 2 Computed Tomography (CT) characteristics of Patients at Initial and follow up scans

Imaging Characteristics, n (%)	Lung imaging at less than 1 month of positive SARS-CoV-2 test Acute phase	Lung imaging at 1-3 months of positive SARS-CoV-2 test Subacute phase	Lung imaging at more than 3 months of positive SARS-CoV-2 test Chronic phase
Total CT scans	17	21	16
Mean duration of imaging from SARS-CoV-2 test, days (minimum- maximum)	19.76(1-30)	55.75(31-90)	192.68(112-385)
Lymphadenopathy	6(35.29%)	4(19.04%)	1(6%)
Pleural Effusion	1(5.88%)	4(19.04%)	1(6%)
Emphysema	3(17.64%)	3(14.28%)	3(19%)
Bronchial wall thickening	2(11.7%)	1(4.76%)	1(6.25%)
Ground glass opacity	17(100%)	20(95.23%)	7(43.75%)
Ground glass opacity reticular	14(82.35%)	17(80.9%)	8(50%)
Consolidation	12(70.5%)	3(14.2%)	0
Architectural distortion or scarring or Honeycombing	3(17.64%)	10(47.61%)	6(37.5%)
Bronchiectasis	4(23.52%)	13(61.90%)	7(43.75%)
Inspiration Quality (Good or excellent)	17(100%)	20(95.23%)	16(100%)
Expiration Quality (Good or excellent)	7(41.16%)	12(57.14%)	14/16
Air Trapping	4(23.52%)	10(47.61%)	13(81.25%)
Disease severity based on CT			
Mild	2(11.76%)	4(19.04%)	4(25%)
Moderate	4(23.52%)	9(42.85%)	1(6.25%)
Severe	11(64.70%)	6(28.57%)	2(12.5%)
No disease	0	2(9.52%)	8(50%)
Nodules			
-Nodules Present (%)	6(35.29%)	8(38.09%)	4/16(25%)
-Type			
Solid	3/7	3/8	2/4
Both solid and GGO	3/7	3/8	2/4
Ground glass	0/7	2/7	0/4

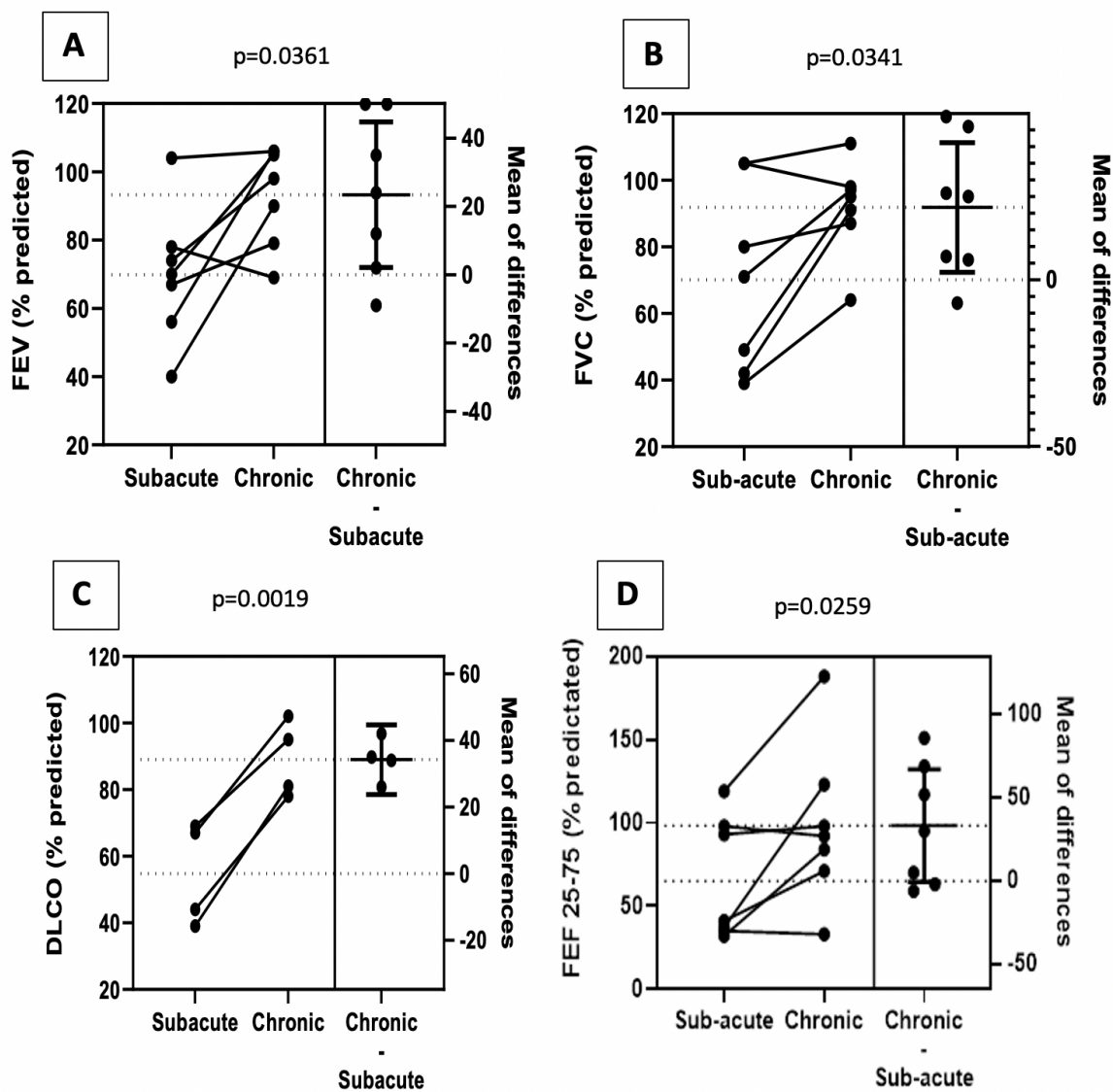


Figure 1. Improvement in FEV1 (A), FEV1 (B) and FEF 25-75% (D) in seven patients in subacute and chronic phase with T-test reaching statistical significance. C) Improvement in DLCO in 4 patients (out of 7 patients for which value was available)

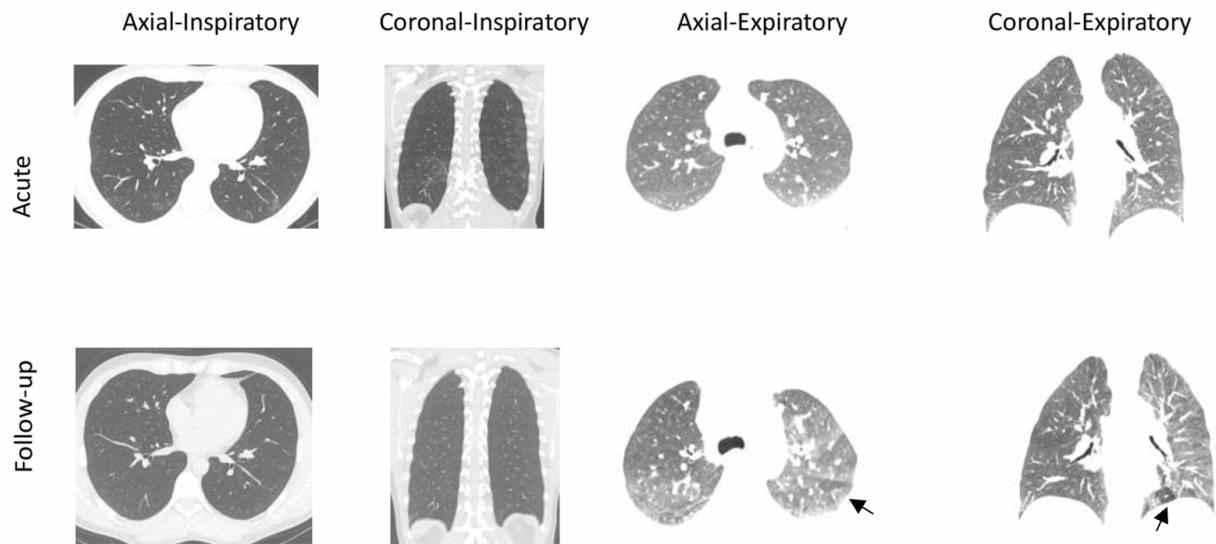


Figure 2. Middle aged man in age range 35-40 years (Case 5) previously healthy, non-smoker, mildly symptomatic with myalgias, chills and fever during initial infection with initial CT (top) at 30 days after positive SARS-CoV-2 test showing no significant air trapping. Follow up CT at 7 months showing mosaic attenuation and air trapping in expiratory films (arrows pointing towards air trapping)

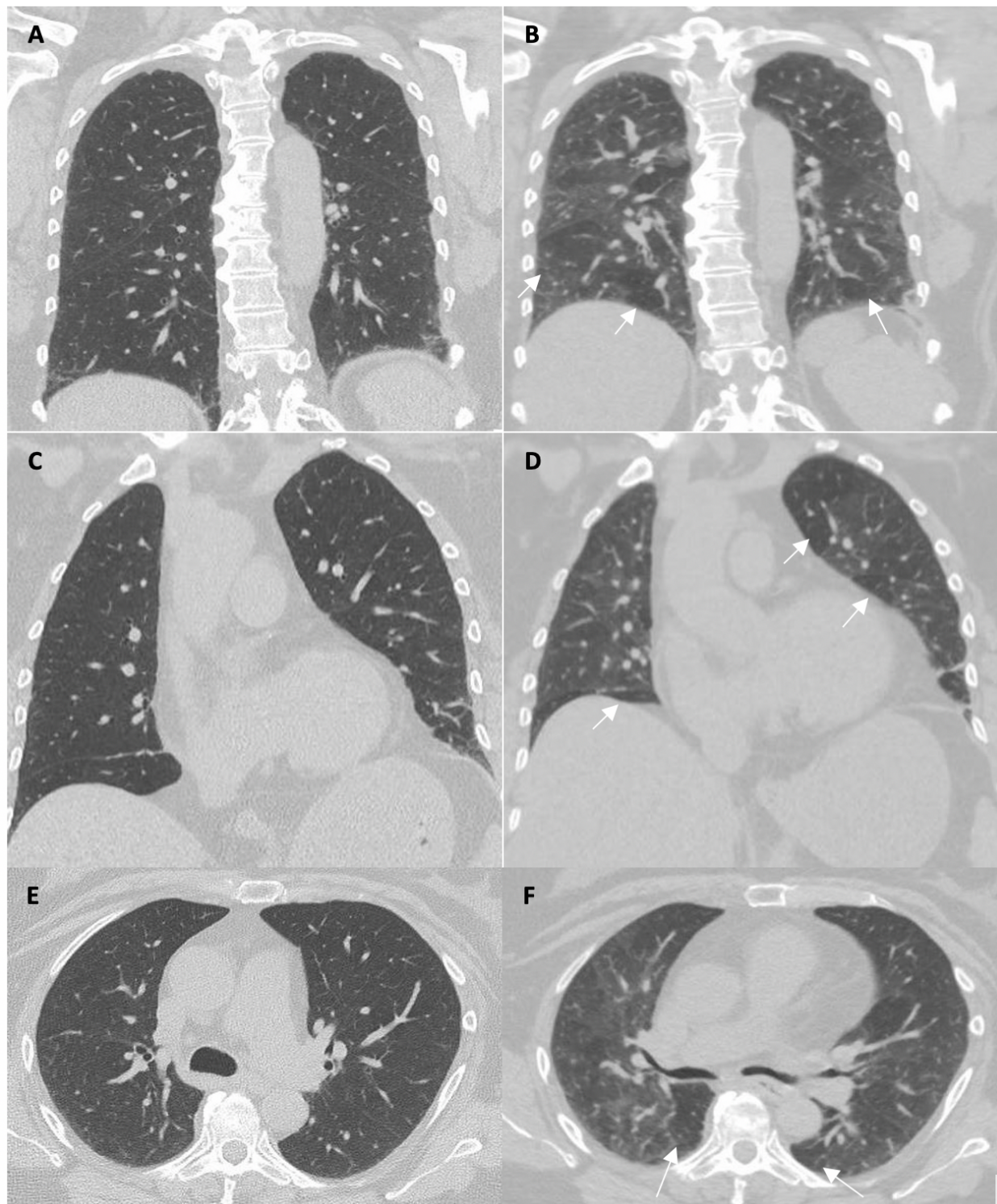


Figure 3. A woman in her 60s (Case 12) with history of hypertension and coronary artery disease admitted to medical floor with fever, cough, dyspnea for five days. She did not require oxygen during this time. She had persistent cough and dyspnea at follow up 230 days with CT inspiratory films (A, C, E) and expiratory films (B, C, D) showing bilateral air trapping at multiple areas (white arrows pointing to some areas) in expiratory films which was not present in the acute CT.

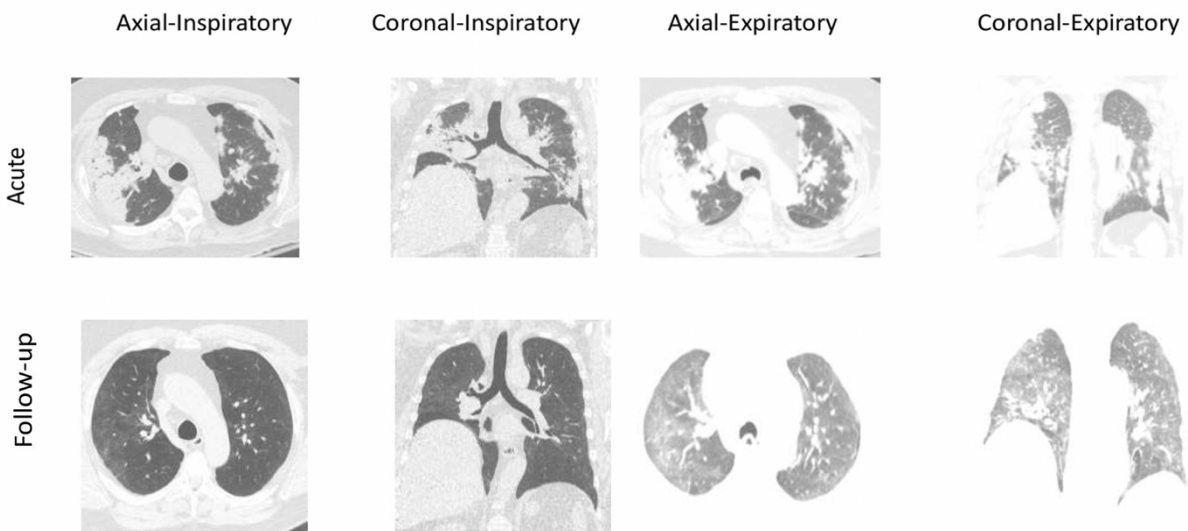


Figure 4. A man in his 60s (Case 8) presented with dyspnea admitted to critical care for respiratory failure requiring high flow oxygen due to severe COVID-19, hospitalized for 17 days, and discharged on oxygen. Acute CT (1 day after positive COVID-19) shows severe pneumonia with consolidation and ground glass opacities in all 5 lobes. Follow up CT at 207 days showing near complete resolution with bilateral air trapping (best seen in coronal section left lower lobe)