

1 **Association of Network Connectivity via Resting State Functional MRI with Consciousness, Mortality, and**  
2 **Outcomes in Neonatal Acute Brain Injury**

3  
4 Varina L. Boerwinkle, MD<sup>1</sup>, Bethany Sussman, PhD<sup>2</sup>, Iliana Manjón, MS<sup>5</sup>, Lucia Mirea, PhD<sup>3</sup>, Saher Suleman, MD<sup>1</sup>, Sarah N.  
5 Wyckoff, PhD<sup>2</sup>, Alexandra Bonnell, BS<sup>2</sup>, Andrew Orgill, BS<sup>3</sup>, Deborah Tom, MD<sup>4</sup>

- 6 1. Division of Pediatric Neurology, Barrow Neurological Institute at Phoenix Children's Hospital, 1919 E. Thomas Rd, Phoenix, AZ  
7 85016 USA; 602-933-0970  
8 2. Department of Neuroscience Research, Barrow Neurological Institute at Phoenix Children's Hospital, 1919 E. Thomas Rd,  
9 Phoenix, AZ 85016 USA; 602-933-0036  
10 3. Department of Clinical Research, Phoenix Children's Hospital, 1919 E. Thomas Rd, Phoenix, AZ 85016 USA; 602-933-0036  
11 4. Division of Neonatology, Phoenix Children's Hospital, 1919 E. Thomas Rd, Phoenix, AZ 85016 USA; 602-933-1454  
12 5. University of Arizona College of Medicine – Tucson, 1501 N. Campbell Ave, Tucson, AZ, 85724 USA

13  
14 Corresponding author:

15 Varina L. Boerwinkle, MD

16 Founding Director, Neurocritical Care

17 Director, Functional Neuroimaging and Neuroscience Laboratory

18 Barrow Neurological Institute at Phoenix Children's Hospital

19 Associate Professor, Neurology and Child Health

20 1919 E. Thomas Rd. Ambulatory Building

21 Phoenix, AZ, 85016

22 vboerwinkle@phoenixchildrens.com

23 602-933-0970 (phone)

24 602-933-4253 (fax)

25

26 Declarations of interest: none

**NOTE: This preprint reports new research that has not been certified by peer review and should not be used to guide clinical practice.**

## 27 **Abstract**

### 28 Background

29 An accurate and comprehensive test of integrated brain network function is needed for neonates during the acute brain injury period  
30 to inform on morbidity. This retrospective cohort study aimed to assess whether integrated brain network function by resting state  
31 functional MRI, acquired during the acute period in neonates with brain injury, is associated with acute exam, neonatal mortality, and  
32 5-month outcomes.

### 33 Methods

34 This study included 40 consecutive neonates with resting state functional MRI acquired 1-22 days after suspected brain insult from  
35 March 2018 to July 2019 at Phoenix Childrens Hospital. Acute period exam and test results were assigned ordinal scores based on  
36 severity as documented by respective treating specialists. Analyses (Fisher exact, Wilcoxon-rank sum test, ordinal/multinomial  
37 logistic regression) examined association of resting state networks with demographics, presentation, neurological exam,  
38 electroencephalogram, anatomical MRI, magnetic resonance spectroscopy, passive task functional MRI, and outcomes of discharge  
39 condition, outpatient development, motor tone, seizure, and mortality.

### 40 Results

41 Subjects had a mean (standard deviation) gestational age of 37.8 (2.6) weeks, a majority were male (63%), with diagnosis of hypoxic  
42 ischemic encephalopathy (68%). Other findings at birth included mild distress (48%), moderately abnormal neurological exam (33%),  
43 and consciousness characterized as awake but irritable (40%). Significant associations after multiple testing corrections were  
44 detected for resting state networks: basal ganglia with outpatient developmental delay (odds ratio [OR], 14.5; 99.4% confidence  
45 interval [CI], 2.00-105;  $P<.001$ ) and motor tone/weakness (OR, 9.98; 99.4% CI, 1.72-57.9;  $P<.001$ ); language/frontal-parietal network  
46 with discharge condition (OR, 5.13; 99.4% CI, 1.22-21.5;  $P=.002$ ) and outpatient developmental delay (OR, 4.77; 99.4% CI, 1.21-  
47 18.7;  $P=.002$ ); default mode network with discharge condition (OR, 3.72; 99.4% CI, 1.01-13.78;  $P=.006$ ) and neurological exam  
48 ( $P=.002$  (FE); OR, 11.8; 99.4% CI, 0.73-191;  $P=.01$  (OLR)); seizure onset zone with motor tone/weakness (OR, 3.31; 99.4% CI,  
49 1.08-10.1;  $P=.003$ ). Resting state networks were not detected in only three neonates, who died prior to discharge.

### 50 Conclusions

51 This study provides level 3 evidence (OCEBM Levels of Evidence Working Group) that the degree of abnormality of resting state  
52 networks in neonatal acute brain injury is associated with acute exam and outcomes. Total lack of brain network detection was only  
53 found in patients who did not survive.

## 54 **Abbreviations**

56 ABI, acute brain injury; IBNF, integrated brain network function; DoC, disorders of consciousness; WLST, withdrawal of life  
57 sustaining therapy determinations; EEG, electroencephalogram; fMRI, functional magnetic resonance imaging; RSN, resting state  
58 network(s); DMN, default mode network; FP, frontal-parietal network; Lang-FP, language/frontal-parietal network; HIE, hypoxic  
59 ischemic encephalopathy; a-MRI, anatomical MRI; BD, brain death; RS, resting state functional magnetic resonance imaging; MRS,  
60 magnetic resonance spectroscopy; cv-EEG, continuous video EEG; TR, repetition time ;TE, echo time; ICA, independent component  
61 analysis; BOLD, blood oxygenation level dependent signal; DRE, drug resistant epilepsy; FE, Fisher exact; odds ratio, OR; CI,  
62 confidence intervals; OLR, ordinal logistic regression analyses, MLR multinomial logistic regression models; CC, correlation  
63 coefficient; TBI, traumatic brain injury.

## 64 **Keywords**

66 Resting state functional MRI (rs-fMRI); neonatal acute brain injury (ABI), hypoxic ischemic encephalopathy (HIE); connectivity;  
67 consciousness

## 68 1. Introduction

69 In neonatal acute brain injury (ABI), exam and test markers of integrated brain network function (IBNF) are needed to  
70 characterize disorders of consciousness (DoC), recovery potential, and inform withdrawal of life sustaining therapy determinations  
71 (WLST), with profound consequences (Pant, 2021; Kondziella et al., 2020; Michel et al., 2019; Douglas-Escobar and Weiss, 2015;  
72 Downar et al., 2016; Demertzi et al., 2011; Turgeon et al., 2011). Confounds such as complex movements which may be intentional,  
73 seizure, reflexes, or automatisms, with varying treatments and outcomes, (Han et al., 2006; Saposnik et al., 2005) contribute to DoC  
74 misdiagnosis in 46% of adults (Schnakers et al., 2009). Higher missed-or-no DoC diagnosis in neonates due to less-informed DoC  
75 DoC definitions, validated exam markers, and diagnostics (Giacino et al., 2018; Nakagawa et al., 2012; Bruno et al., 2011;  
76 Schnakers et al., 2009; Machado, 2008) likely reduces precision in diagnosis-informed treatments, outcome predictions, and WLST  
77 determinations (Pant, 2021; Downar et al., 2016; Turgeon et al., 2011; Devictor et al., 2008) .

78 IBNF is pivotal in adult DoC diagnosis and recovery prediction (Hahn et al., 2021; Michel et al., 2019; Giacino et al., 2018;  
79 Sair et al., 2018; Kondziella et al., 2017; Falletta Caravasso et al., 2016; Rosazza et al., 2016; Silva et al., 2015). IBNF modalities  
80 include task (stimulation)-based and resting state electroencephalogram (EEG) and functional magnetic resonance imaging (fMRI),  
81 wherein the measure indicative of the highest capacity for consciousness **supplants** other modalities including exam in adults with  
82 subacute to chronic DoC (Kondziella et al., 2020). However, such diagnostic precision need is greater in acute than chronic brain  
83 injury given the higher mortality and rate of WLST in the acute period, which likely also effects pediatric and neonatal patients.

84 Of the DoC-guideline IBNF modalities available, much progress has been made in neonates with resting state functional MRI  
85 (RS). In *healthy* neonates, resting state networks (RSN) are detectable by the 3<sup>rd</sup> trimester (Doria et al., 2010). The default mode  
86 (DMN), attention, and frontal-parietal (FP) RSN are detectable by term (van den Heuvel et al., 2015; Fransson et al., 2009). In  
87 neonates with *mild to mild-moderate* ABI, RSN metrics are predictive of neurodevelopmental outcomes (Ferradal et al., 2018; He et  
88 al., 2018; Mak et al., 2018; Shi et al., 2018; Doria et al., 2010; Smith et al., 2009; Damoiseaux et al., 2006; Jenkinson et al., 2002).  
89 Prematurity affects long-range and frontal connectivity, (Della Rosa et al., 2021; Bouyssi-Kobar et al., 2019; Strahle et al., 2019; He  
90 et al., 2018; Linke et al., 2018; Wheelock et al., 2018; Rogers et al., 2017; Smyser et al., 2010) and hypoxic ischemic  
91 encephalopathy (HIE) (Li et al., 2019) affects the language, vision, and sensory-motor networks. In acute *mild to moderate* ABI, RS is  
92 also predictive of neurodevelopmental outcomes (Della Rosa et al., 2021; Bouyssi-Kobar et al., 2019; Li et al., 2019; Strahle et al.,  
93 2019; He et al., 2018; Linke et al., 2018; Wheelock et al., 2018; Rogers et al., 2017; Smyser et al., 2010). However, only one large  
94 neonatal-ABI-RS study performed on a 1.5 Tesla MRI, which has significantly lower fMRI signal detection capacity than higher Tesla  
95 MRI (Krasnow et al., 2003) included **severe** ABI: the population most likely to have WLST determinations in the acute period made,  
96 and anatomical MRI (a-MRI), exam, and brain-behavior evaluation. It showed RS-motor outcome association, **irrespective of**  
97 **pathological grouping**, with demographics, presentation, course severity clinical factors, and a-MRI severity, while relationships  
98 between RSN, mortality, acute exam, and a-MRI were not determined (Bhroin et al., 2021; Linke et al., 2018). Lastly, RSN alterations  
99 from perinatal brain injury are detectable years later and correspond to developmental outcomes, indicating the RS findings from  
100 neonatal ABI are durable and meaningful (Bhroin et al., 2021). Thus, the gap in utility of RS in the full spectrum of ABI severity  
101 against outcomes beyond motor is unknown, and validation of the original motor finding is needed.

102 Importantly, developing biomarkers of network pathology in heterogeneous cohorts of brain injury are of high priority,  
103 according to recent expert opinion consensus (Edlow et al., 2020; Kondziella et al., 2020; LaRovere and Tasker, 2020; Provencio et  
104 al., 2020). The expert consensus reasoning is such that the effect on IBNF on the brain insult, rather than the particular insult  
105 subtype, is thought to be the most likely determining factor in capacity for recovery. Thus, narrowed injury causation subtype  
106 designed trial is thought to be less favorable in demonstrating ultimate clinical utility.

107 Exploring connectivity relationship to the controversial consciousness exam in neonates is needed. Without supratentorial  
108 network activity confirmation, such as EEG sleep-wake brain state changes, neonatal consciousness behaviors have been proposed  
109 by some to be brainstem-driven, with no link to recovery potential (Ashwal et al., 1990). Alternatively, in non-anencephalic, stimulus-  
110 brainstem-driven neonatal behaviors may still predict future consciousness (Ishaque et al., 2017; Del Giudice et al., 2016).

111 Supportively, lack of arousal behavior is reliable enough, by current expert consensus, to be a key component of the brain death  
112 (BD) determination in neonates (Nakagawa et al., 2012; Nakagawa et al., 2011).

113 Thus, this study aims to evaluate RS in *mild to severe* neonatal ABI with acute period neurological/consciousness exam,  
114 mortality, other tests, and outcomes.

## 115 **2. Methods**

116 Study patients included consecutive ABI neonates during March 2018 to July 2019, with clinical RS and MRI evaluated as  
117 standard of care. The institutional review board approved this retrospective study with waived consent. Data were collected from the  
118 medical records including demographics (sex, gestational age), diagnosis, presentation (Sarnat-diagnosis/mental status (Mrelashvili  
119 et al., 2020)), and exams/tests (neurological exam, consciousness, anatomical MRI (a-MRI), task-fMRI, RS results, magnetic  
120 resonance spectroscopy (MRS), EEG) during the acute period, discharge condition, mortality, and outpatient outcomes  
121 (development, motor tone, strength, seizure). If the element's categorization exact wording was not specifically documented within  
122 the treating physician's acute period charted note, then two separately blinded study personnel made the determination based on the  
123 wording available, with plan for third research personnel if disagreement occurred; however, none occurred. The number of patients  
124 receiving each assessment is shown in **Table 1**. The acute-period HIE severity, diagnoses, presentation, and neurological and  
125 consciousness exams were documented prior to MRI with RS scan. Initial EEG reads occurred prior to MRI scan, and after HIE and  
126 presentation severity determination but before final diagnoses determinations.

127 The acute-period and outcome diagnosis and exam findings were categorized as ordinal scores based on factors  
128 documented by the respective treating pediatric specialists further described in the following sections 2.1 through 2.3.

### 129 *2.1 Acute-Period Diagnoses*

130 HIE was determined by Sarnat-criteria (Mrelashvili et al., 2020), as documented by the neonatologist. HIE Severity and non-  
131 HIE diagnoses were determined by the discharging neonatologists final report.

132 Presentation severity/distress categorization was determined by the treating neonatologist's determination for need of airway or  
133 ventilatory support, and cardiovascular intervention, and the respective interventions length of implementation, as detailed in **Table 1**.

### 134 *2.2 Neurological and Consciousness Exams*

135 Neurological and consciousness exams were determined by the initial consulting neurocritical care provider's exam, who are  
136 pediatric neurologists, on the day of consult, which is typically on the day of admission (or the following day if admitted overnight).  
137 Repeat exams were documented if new additional events occurred. These may include new weakness, worsened encephalopathy,  
138 movements concerning for seizure, or new abnormal findings on the EEG. Scales are lacking for neonatal acute period factors and  
139 outcomes that are validated in a mixed pathology and full spectrum severity peri-term gestation population, or any neonatal  
140 population related to consciousness, other than those denoted. Thus, these elements were categorized by ordinal scales designed to  
141 capture the severity range based on the neurologist's documentation of weakness, tone difference, abnormal movements, lack of  
142 normal movement, and length of time of ongoing difference from normal, as delineated in **Table 1**.

143 Repeat insult: To differentiate outcomes related to the acute period exams, differentiation between those with a second  
144 separate brain insult were recorded. Those who died prior to discharge were separately noted.

145 Death: Only those who died prior to discharge were recorded. No further deaths occurred at time of last available study  
146 follow-up (within 6 months).

### 147 *2.3 Outcome Diagnoses and Exams*

148 Discharge condition was determined by the discharging neonatologist according to their documentation of ongoing need for  
149 gavage feeding or supplemental oxygen being the mild category, and all other ongoing support or detectable abnormalities being  
150 categorized as "moderate deficit". The most severe category included those who did not survive.

151 Outpatient development, motor-tone, and seizure were determined by the pediatric neurologist through the last available follow-  
152 up (within 6 months) through authorized study collection end (**Table 1**). Developmental delays diagnosed in the medical record and  
153 any ongoing focal neurological deficits factored into the follow-up "outpatient development" categorization. Severe findings on exam

154 included ongoing need for gastrostomy tube feeds, airway clearance by deep suctioning, or ventilatory support. The “motor-tone”  
155 outcome is an abbreviated combination of motor abnormalities including both weakness and tone. The severity rating was based  
156 entirely on the documenting neurologist’s impression of degree of difference from normal (**Table 1**). The “seizure” outcome denotes  
157 an ongoing concern for either a possible seizure occurring after discharge, either by EEG-capture, neurologists’ exam, or caretaker  
158 witnessed event *or* treating neurologist’s impression of need for ongoing anti-seizure medication.

## 159 *2.4 Acute Period MRI and EEG*

### 160 *2.4.1 ICU MRI safety, anesthesia, and scan timing*

161 To receive a clinical MRI, all patients were determined to be safe and stable for transport to the scanner by the neonatologist and  
162 received continuous observation from the respective hospital care teams. Total scan time was approximately one hour. No safety  
163 event occurred during or related to scanning. As this is a retrospective study, no study care modifications occurred. Patients at the  
164 time of scan were not receiving anesthetic agents, as per their care plans. To minimize movement during imaging, infants were fed  
165 and swaddled, with multiple levels of ear protection, including earplugs, earmuffs, and standard headphones. Awake infants were  
166 rescheduled for later scan times as needed. As such, neonates with HIE, also diagnosed by their treating neonatologist (Jacobs et  
167 al., 2011; Azzopardi et al., 2009) received 48 hours of therapeutic hypothermia and medications for symptomatic relief of cold  
168 temperature. After the end of cooling, clinical MRI with RS was performed on day 3-5. Infants with non-HIE brain MRI indications,  
169 received MRI with RS at more variable times according to clinical indications within the first month of life. Image and EEG severity  
170 categorization were determined by the interpreting pediatric neuroradiology (a-MRI, DWI, MRS, and task-fMRI), pediatric neurologist  
171 (with expertise in over 2000 individual age 0-21-year-old’s clinical RS interpretation), and pediatric epileptologist (EEG).

172 EEG: XLTEK System EEG/Sleep Acquisition with Neuroworks and Sleepworks software version 8.5. The EEG/Sleep amplifier  
173 utilized is the Brain Monitor Amplifier, with the breakout box “Connex” box. Max sampling rate is 200Hz sampling rate for scalp EEG,  
174 and a 256-channel box. A standard array of 19 leads with continuous video EEG (cv-EEG) was interpreted via visual inspection by  
175 the pediatric epileptologist. Infants with suspected HIE receive cv-EEG starting on the first day of admission and removed on the day  
176 of MRI. The other patients cv-EEG also either occurred on the day of admission.

### 177 *2.4.2 a-MRI and MRS*

178 All MRI sequences were acquired on a 3T MR scanner (Ingenia, Philips Healthcare, Best, The Netherlands) with 32 channel  
179 head coil. T1-weighted turbo field echo whole-brain sequence were obtained with the following parameters: TR (repetition time) 9  
180 msec, TE (echo time) 4 msec, flip angle 8, slice thickness 0.9 mm, and in-plane resolution 0.9 × 0.9 mm. Diffusion weighted (DWI)  
181 sequences with corresponding apparent diffusion maps: 2D, 4 mm slice thickness, TR 4.9 msec, TE 0.071 msec, 5 mm space  
182 between slices, 124 phase encoding steps, percent phase field of view 96, flip angle 90, and FOV 250x250 mm. H-MRS<sup>1</sup> data were  
183 acquired using a single-voxel point resolved spectroscopy sequence (PRESS; TR = 2 s; TE = 144 ms; 128 signal averages;  
184 voxel size: ~1 cm<sup>3</sup>) localized to the white matter of the centrum semiovale, and grey matter of the basal ganglia region.

185 Concentrations were estimated using commercially available and fully automated LCModel software (V6.3-1 C). Results yielded the  
186 relative concentrations of *N*-acetyl-aspartate (NAA), choline, creatine, lipids, lactate and myoinositol. Interpretation of a-MRI, DWI,  
187 and MRS was performed by the pediatric neuroradiologist.

### 188 *2.4.3 Task-fMRI*

189 Passive movement of the right index finger by the MRI technician was performed with a goal to activate the left sensory motor  
190 cortex. SensaVue fMRI equipment (Invivo Corporation, Gainesville, FL, USA) delivered a 5-minute sequence with 8 blocks of activity,  
191 15 seconds of baseline scan discarded, 15s rest, 15s task; TR 3000 msec, TE 35, matrix size 128x128, flip angle 90, slice thickness  
192 4mm, 1.8 x 1.8 x 4 mm voxel, in-plane FOV 230 x 230mm, and ≥ 35 slices, as adjusted to patient head size. The tb-fMRI was visually  
193 inspected for expected specific recorded real-time network activation. Resultant SensaVue general linear model difference between  
194 activation and baseline images were interpreted by the pediatric neuroradiologist.

### 195 *2.4.4 RS*

196 T2- weighted images were acquired with a TR 2000 ms, TE 30 ms, matrix size 80 x 80, flip angle 80, number of slices to cover at  
197 least supratentorium, slice thickness such that voxel size is 3.4 x 3.4 x 3.4 mm<sup>3</sup>, no slice gap, and inter-leaved top-down acquisition.  
198 The number of total volumes was 600, split between two equally timed runs, each approximately 10 minutes. During preprocessing,  
199 the first five volumes were deleted to remove T1 saturation effects, high pass filter 100 sec, inter-leaved slice time correction, spatial  
200 smoothing 1mm, and motion corrected by MCFLIRT, (Jenkinson et al., 2002) with non-brain structures removed. All subjects had  
201 less than 0.5mm motion-induced displacement in any direction. Individual functional scans were registered to the patient's high-  
202 resolution anatomical scan by using linear registration (Jenkinson et al., 2002), with optimization using boundary-based registration  
203 (Greve and Fischl, 2009). RS independent component analysis (ICA), a data driven approach, was performed as in prior work  
204 (FMRIB MELODIC) ( Boerwinkle et al., 2017; Griffanti et al., 2017; Mongerson et al., 2017; Beckmann and Smith, 2004). The results  
205 were manually sorted into noise verses neuronal signal. Expert visual interpretation of RS ICA outcomes in patients age 0-21 years  
206 with mixed causative pathologies including brain injury have been reported (Boerwinkle et al., 2020; Boerwinkle et al., 2019a;  
207 Boerwinkle et al., 2019b; Boerwinkle et al., 2018; Desai et al., 2018; Boerwinkle et al., 2017). Noise components for example, were  
208 located outside of the brain, in the cerebral spinal spaces, over major arteries, whereas known RSN were located primarily over the  
209 grey matter with well published spatial patterns (Boerwinkle et al., 2017). Normal RSN were those detected with spatial consistency  
210 as previously described (e.g. motor, vision, default mode) and with blood oxygenation level dependent signal (BOLD) frequency less  
211 than 10 Hz/100 (defined as normal for neonate herein) (Boerwinkle et al., 2019a; Boerwinkle et al., 2017). This was supported by  
212 prior work wherein visual inspection of spatial consistency was high compared to co-registered volumetric adult comparison (Linke et  
213 al., 2018).

#### 214 *2.5 Resting State Networks, Abnormal and Seizure Onset Zone Networks*

215 Detection of RSN in the neonatal population include the major resting state networks, though known maturational changes  
216 still occur after this period, especially through the increasing of long-range connectivity. In the neonate's RS clinical reports, each  
217 non-noise RSN is shown with its corresponding BOLD signal time course and associated frequency power spectrum. However, due  
218 to need for a data reduction step for the study, with the exception of lack total RSN detection, only the RSN evaluated for study  
219 evaluation were: (1) the basal ganglia (BG), due its relationship with frequency of insult in neonates leading to motor disorders; (2)  
220 the language/frontal-parietal (Lang-FP), due to the relationship of these networks with cognitive and communication capacities.  
221 These were combined to reduce the total number of comparisons, since nuanced differences in language and cognitive outcomes  
222 were not evaluated specifically; (3) the default mode (DMN), due to its relationship with consciousness, and outcomes after brain  
223 injury. (4) atypical (non-RSN) networks, which were located over grey matter primarily, and did not have features consistent with  
224 published RSN or RS noise (Boerwinkle et al., 2019a; Boerwinkle et al., 2017). Atypical networks were further categorized as either  
225 consistent with RS-SOZ, low or indeterminate consistency with RS-SOZ, or not consistent with RS-SOZ, according to the spatial and  
226 temporal features developed in children with drug resistant epilepsy (DRE) (Boerwinkle et al., 2019a; Boerwinkle et al., 2017). Of  
227 note, the timing of actual clinical or electrographic seizures after brain injury is highest in the immediate period (1-3 days), whereas  
228 the RS was typically performed by day 5 or after. Also, actively seizing neonates are not transferred for elective MRI. Thus, ongoing  
229 clinical seizures did not occur during the scan and seizures electrographic seizures were not measured during or near the time of the  
230 scan. Those neonates who did have seizures were continued on anti-seizure medication during the time of scan. Similarly, in  
231 children with DRE, findings by RS seemingly consistent with a seizure onset zone are acquired almost entirely during the interictal  
232 period and are thus thought to indicate ongoing abnormal network activity that occurs at sub-clinical seizure threshold. Ultimately,  
233 these findings have shown to be reliable to direct neurosurgical intervention leading to improved surgical outcomes ( Chakraborty et  
234 al., 2020; Boerwinkle et al., 2019a; Boerwinkle et al., 2017). However, being that this population does not have the diagnosis of DRE,  
235 the meaning of RS SOZ after ABI in those with largely resolved seizures may have more to do with the neuroplastic changes of the  
236 injury, rather than correlation with a resolved seizure or prediction of epileptogenicity. Lastly, those subjects with a missing one of  
237 these RSN or no RSN detected were noted because the poorest RS connectivity is reported in the few cases after brain death  
238 (Kumar et al., 2016; Boly et al., 2009; Han et al., 2006; Jain and DeGeorgia, 2005; Saposnik et al., 2005; Marti-Fabregas et al., 2000;

239 James, 1998; Jorgensen and Malchow-Moller, 1981). Thus, the investigators expected lack of RSN detection to occur more often in  
 240 those with poorer outcomes, though that would likely be determined only on a descriptive level (though still interesting for informing  
 241 future prospective trial design) as survival after acute brain injury in neonates is fairly robust.

## 242 2.6 Statistical Analyses

243 The distribution of demographics, clinical factors and outcomes were summarized using descriptive statistics, and compared  
 244 between RSN categories using the Fisher exact (FE) or Kruskal-Wallis test, as appropriate for the data distribution. The magnitude of  
 245 association was between RSN category scores and factors/outcomes quantified using odds ratio (OR) estimates and corresponding  
 246 confidence intervals (CI) from ordinal logistic regression analyses (OLR) or multinomial logistic regression models (MLR) when the  
 247 proportional odds assumption was not valid. Similar analyses examined association of clinical factors and outcomes with findings  
 248 from EEG, a-MRI, task-fMRI, and MRS modalities. For OLR/MLR models, the predictor ordinal levels were fit as a continuous score.  
 249 Pairwise agreement between modalities were assessed using the Spearman rank correlation coefficient (CC). All statistical tests  
 250 were 2-sided, with statistical significance and CI adjusted using a Bonferroni correction to account for multiple test comparisons for  
 251 each modality (adjusted threshold  $P < .006$  for 8 or 9 comparisons per modality; adjusted threshold  $P < .002$  for 22 pairwise  
 252 comparisons among modalities).

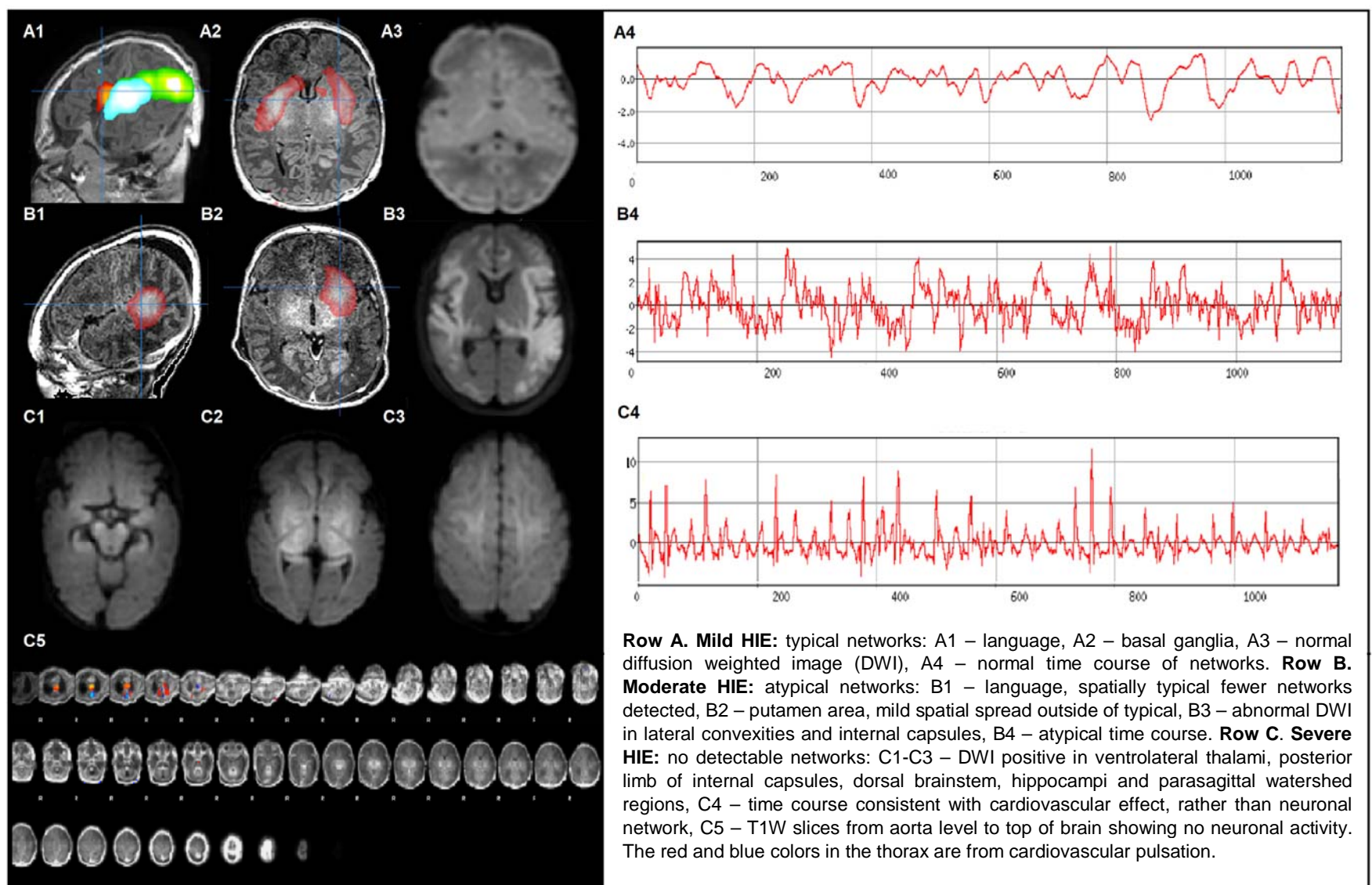
## 253 3. Results

254 **Table 1.** Demographics and Ordinal Scores of Acute Clinical Findings Tests and Outcomes

	Factor	Ordinal Score	N=40
Age, Sex	Age (wk), Mean (SD)		37.8 (2.6)
	Male, N (%)		25 (63)
	Age (wk) at RS, Mean (SD)		
	HIE Non-HIE		1.6 (2.0) 3.1 (3.1)
	Outpatient age (wk), Median (Q1, Q3)		31.6 (13.9, 37.6)
Diagnosis	HIE Severity (Sarnat criteria), N (% of 27)	1: Mild	14 (52)
		2: Moderate	7 (26)
		3: Severe	6 (22)
	Non-HIE, N (% of 13)	Genetic diagnosis or congenital malformation	4 (31)
		Neonatal epilepsy	3 (23)
		Traumatic brain injury	2 (15)
		Infection	1 (8)
	Hypoglycemia	1 (8)	
	Arterial or venous ischemic infarction	2 (15)	
Acute Condition	Presentation, N (%) <sup>a</sup>	0: Normal without distress	1 (2)
		1: Mild distress requiring airway support <48 hours	19 (48)
		2: Moderate distress requiring airway support >48 hours or cardiovascular intervention	9 (22)
		3: Severe distress with cardiovascular intervention and/or ventilatory support >5 days)	11 (28)
	Neurologic Exam, N (%) <sup>b</sup>	0: Normal	10 (25)
		1: Mildly abnormal (single extremity weakness or mild tone differences; <48 hours of any atypical movement)	12 (30)
		2: Moderately abnormal (≥2 weak extremities, hypotonic, moderately increased tone; 48 hours – 5 days of any atypical movements)	13 (33)
	Consciousness (Day 0-5), N (%) <sup>b</sup>	3: Severely abnormal (flaccid, marked spasticity or dystonia, > 5 days of atypical movements)	5 (12)
		0: Normal (open eyes and moves normally in response to nonpainful environmental stimuli including light, light touch, or soft voice)	9 (22)
		1: Irritable or sleeping more than typical but arouses easily and moves to touch normally)	16 (40)
		2: Wakes up only to painful stimulation (and less spontaneous movements than typical)	11 (28)
		3: Coma (Does not open eyes. No movement after environmental stimuli, painful stimulation, or only reflexive-appearing abnormal movements)	3 (8)
		4: Episodically arousable (alternating normal to unresponsive, suggestive of seizure)	1 (2)
Acute Tests	Anatomical MRI, N (%) <sup>c</sup>	0: Normal	15 (38)
		1: Mildly abnormal	11 (28)
		2: Moderately abnormal	5 (12)
		3: Severely abnormal	9 (22)
	Task fMRI, N (%) <sup>c</sup>	0: Normal	30 (75)
1: Mildly abnormal		0 (0)	
2: Moderately abnormal		3 (8)	
3: Severely abnormal		3 (8)	
	4: Not done	4 (10)	
MRS, N (%) <sup>c</sup>	0: Normal	12 (30)	
	1: Mildly abnormal	5 (12)	
	2: Moderately abnormal	1 (2)	
	3: Severely abnormal	3 (8)	
	4: Not done	19 (48)	
EEG, N (%) <sup>d</sup>	0: Normal	3 (8)	
	1: Mild (not flat) background abnormality only	22 (55)	
	2: Seizure	13 (33)	
	3: Flat amplitude	1 (2)	
	4: Not done	1 (2)	

RSN	<b>BG, N (%)</b>	0: Normal 1: Detected with atypical features 2: Not detected	10 (25) 24 (60) 6 (15)
	<b>Lang/FP, N (%)</b>	0: Normal 1: Detected with atypical features 2: Not detected	23 (58) 13 (32) 4 (10)
	<b>DMN, N (%)</b>	0: Normal 1: Detected with atypical features 2: Not detected	27 (68) 8 (20) 5 (12)
	<b>RS-SOZ, N (%)</b>	0: Normal 1: Low or indeterminate consistency with RS-SOZ 2: Highly consistent with RS-SOZ	24 (60) 7 (18) 9 (22)
Outcomes	<b>Discharge Condition, N (%)<sup>a</sup></b>	0: Normal 1: Mild support such as gavage or supplemental O <sub>2</sub> 2: Moderate deficits 3: Deceased <sup>d</sup>	19 (48) 16 (40) 2 (5) 3 (7)
	<b>Outpatient Developmental Delay, N (% of 36)<sup>b</sup></b>	0: Normal 1: Mild delay 2: Moderate delay or focal finding on exam 3: Severe findings on exam (severe findings on exam, requiring gastrostomy tube feeds, or hospitalization-style care) 4: Deceased	19 (49) 2 (5) 10 (26) 5 (13) 3 (8)
	<b>Outpatient Motor-tone, N (%)<sup>b</sup></b>	0: Normal 1: Mild increased tone or weakness 2: Moderate increased tone or weakness 3: Severely increased tone or weakness 4: Deceased	18 (46) 3 (8) 10 (26) 5 (13) 3 (8)
	<b>Seizure, N (% of 36)<sup>b</sup></b>	0: No 1: Yes (EEG, neurologist exam, or witnessed seizure; or neurologist determination of need for continued antiseizure medication)	23 (64) 13 (36)
	<b>Repeat Insult, N (%)<sup>b</sup></b>	0: No known insult 1: Yes (after RS) 2: Not applicable	36 (90) 1 (2) 3 (8)
	<b>Death, N (%)<sup>b, c</sup></b>	Yes	3 (8)

255 Categorization as documented by <sup>a</sup> neonatologist, <sup>b</sup> neurologist, <sup>c</sup> neuroradiologist, <sup>d</sup> epileptologist. Abbreviations: SD, standard deviation; HIE, hypoxic ischemic encephalopathy; EEG, electroencephalogram; MRI, magnetic resonance imaging, MRS, magnetic resonance spectroscopy; BG, basal ganglia network; Lang/FP, language and/or frontoparietal network; DMN, default mode network; RS-SOZ, resting-state seizure onset zone or abnormal findings concerning for seizure related pathology; FU, follow-up; RS, resting-state functional MRI; wk (weeks).  
256  
257  
258  
259  
260



261 **Figure 1.** Resting-State Networks (RSN) in Neonates with Mild to Severe Hypoxic Ischemic Encephalopathy (HIE).  
262  
263  
264  
265

266 Subjects (N=40) had a mean (standard deviation) gestational age of 37.8 (2.6) weeks, and included 25 (63%) males, 27 (68%) with HIE, and no RS-related safety events. Three (8%) subjects died prior to discharge and one subject was lost to follow-up.  
267 Among the 36 (90%) subjects followed, the median age (interquartile range) at outpatient follow-up visit was 31.6 (13.9, 37.6) weeks.  
268 Findings of presentation, neurological exam, consciousness, RS, a-MRI, task-fMRI, MRS, EEG, and outcomes during the acute  
269 period are shown in **Table 1** and an example of normal versus atypical RS is shown in **Figure 1**.



270

271 **Table 2:** Associations of RSN with Acute Factors and Outcomes in Neonates (N=40)

	Factor	Category	RS Categorizations, n (%)			P value <sup>a</sup>	Ordinal/Multinomial Logistic Regression	
			0: Normal	1: Atypical	2: Not detected		Odds Ratio (99.4% CI)	P value <sup>b</sup>
BASAL GANGLIA	<b>Outpatient Developmental Delay <sup>c</sup></b>	0: Normal 1: Mild delay 2: Moderate delay or focal findings 3: Severe findings 4: Deceased	9 (90) 0 (0) 1 (10) 0 (0) 0 (0)	9 (39) 2 (9) 9 (39) 2 (9) 1 (4)	1 (17) 0 (0) 0 (0) 3 (50) 2 (33)	0.002**	14.5 (2.00, 105)	0.0002**
	<b>Outpatient Motor-tone <sup>c</sup></b>	0: Normal 1: Mild increased tone or weakness 2: Moderate increased tone or weakness 3: Severely increased tone or weakness 4: Deceased	8 (80) 1 (10) 1 (10) 0 (0) 0 (0)	9 (39) 2 (9) 9 (39) 2 (9) 1 (4)	1 (17) 0 (0) 0 (0) 3 (50) 2 (33)	0.007*	9.98 (1.72, 57.9)	0.0003**
FRONTOPARIETA L	<b>Discharge Condition</b>	0: Normal 1: Mild support 2: Moderate deficits 3: Deceased	14 (61) 8 (35) 1 (4) 0 (0)	5 (38) 7 (54) 0 (0) 1 (8)	0 (0) 1 (25) 1 (25) 2 (50)	0.006**	5.13 (1.22, 21.5)	0.002**
	<b>Outpatient Developmental Delay <sup>c</sup></b>	0: Normal 1: Mild delay 2: Moderate delay or focal findings 3: Severe findings 4: Deceased	14 (64) 1 (5) 5 (23) 2 (9) 0 (0)	5 (38) 1 (8) 4 (31) 2 (15) 1 (8)	0 (0) 0 (0) 1 (25) 1 (25) 2 (50)	0.05*	4.77 (1.21, 18.7)	0.002**
DEFAULT MODE	<b>Neuro Exam</b>	0: Normal 1: Mildly abnormal 2: Moderately abnormal 3: Severely abnormal	8 (30) 10 (37) 8 (30) 1 (4)	1 (13) 2 (25) 5 (63) 0 (0)	1 (20) 0 (0) 0 (0) 4 (80)	0.002**	1.00 0.57 (0.05, 6.76) 1.28 (0.17, 9.50) 11.8 (0.73, 191)	0.53 0.73 0.01*
	<b>Discharge Condition</b>	0: Normal 1: Mild support 2: Moderate deficits 3: Deceased	16 (59) 10 (37) 1 (4) 0 (0)	2 (25) 4 (50) 1 (13) 1 (13)	1 (20) 2 (40) 0 (0) 2 (40)	0.04*	3.72 (1.01, 13.8)	0.006**
SEIZURE	<b>Outpatient motor-tone <sup>c</sup></b>	0: Normal 1: Mild increased tone or weakness 2: Moderate increased tone or weakness 3: Severely increased tone or weakness 4: Deceased	14 (61) 2 (9) 4 (17) 1 (4) 2 (9)	4 (57) 1 (14) 2 (29) 0 (0) 0 (0)	0 (0) 0 (0) 4 (44) 4 (44) 1 (11)	0.007*	3.31 (1.08, 10.1)	0.003**

272 \* P value significant at <.05; \*\* P value <.006 (adjusted using Bonferroni correction). <sup>a</sup> P value from Fisher exact test. <sup>b</sup> P value from ordinal/multinomial logistic  
273 regression. <sup>c</sup> One patient lost to follow-up (N=39). Abbreviations: HIE, hypoxic ischemic encephalopathy; EEG, electroencephalogram; MRI, magnetic resonance  
274 imaging, MRS, magnetic resonance spectroscopy; BG, basal ganglia; Lang/FP, language and/or frontoparietal network; DMN, default mode network; RS-SOZ,  
275 resting-state seizure onset zone or abnormal findings concerning for seizure related pathology; FU, follow-up; RS, resting state.  
276  
277

278 **Table 3:** Association of Baseline Factors with Acute Tests on Neonates (N=40)

	Factor	Category	RS Categorizations, n (%)				P value <sup>a</sup>	Ordinal/Multinomial Logistic Regression	
			0: Normal	1: Mildly abnormal	2: Moderately abnormal	3: Severely abnormal		Odds Ratio (99.4% CI)	P value <sup>b</sup>
Anatomical MRI	<b>HIE (N=27)</b>	1: Mild 2: Moderate 3: Severe	8 (73) 2 (18) 1 (9)	5 (63) 3 (38) 0 (0)	1 (100) 0 (0) 0 (0)	0 (0) 2 (29) 5 (71)	0.002**	3.54 (1.18, 10.7)	0.002**
	<b>Neuro Exam</b>	0: Normal 1: Mildly abnormal 2: Moderately abnormal 3: Severely abnormal	7 (47) 6 (40) 1 (7) 1 (7)	1 (9) 1 (9) 9 (82) 0 (0)	1 (20) 3 (60) 1 (20) 0 (0)	1 (11) 2 (22) 2 (22) 4 (44)	0.0002**	2.14 (1.01, 4.56)	0.006**
	<b>Outpatient Developmental Delay <sup>c</sup></b>	0: Normal 1: Mild delay 2: Moderate delay or focal findings 3: Severe findings 4: Deceased	10 (71) 1 (7) 1 (7) 2 (14) 0 (0)	7 (64) 0 (0) 2 (18) 1 (9) 1 (9)	0 (0) 1 (20) 3 (60) 1 (20) 0 (0)	2 (22) 0 (0) 4 (44) 1 (11) 2 (22)	0.02*	2.15 (0.99, 4.67)	0.007*
	<b>Seizure</b>	0: No 1: Yes (Deceased/Lost to follow-up, N=4)	12 (86) 2 (14)	7 (70) 3 (30)	3 (60) 2 (40)	1 (14) 6 (86)	0.02*	1.0 2.94 (1.02, 8.43)	0.005**
EEG			<b>0: Normal</b>	<b>1: Mild background</b>	<b>2: Seizure</b>	<b>3: Flat</b>			
	<b>Seizure</b>	0: No 1: Yes (Deceased/Lost to follow-up, N=4)	2 (100) 0 (0)	18 (86) 3 (14)	2 (17) 10 (83)	0 (0) 0 (0)	0.0001**	1.00 30.4 (2.02, 458)	0.0005**

279 \* P value <.05; \*\* P value <.006 (adjusted using Bonferroni correction); <sup>a</sup> P value from Fisher exact test; <sup>b</sup> P value from ordinal/multinomial logistic  
280 regression. <sup>c</sup> One patient lost to follow-up (N=39). Abbreviations: HIE, hypoxic ischemic encephalopathy; EEG, electroencephalogram; MRI,  
281 magnetic resonance imaging; fMRI, functional MRI; MRS, magnetic resonance spectroscopy.  
282

283 All association analyses between tests and clinical factors/outcomes are presented in the supplementary material (**eTables 1-**  
284 **8**), whilst **Tables 2 and 3** presents those associations showing significance after multiple testing correction.

285 After multiple testing correction, associations remaining significant for RSN were: BG with outpatient developmental delay  
286 (OR, 14.5; 99.4% CI, 2.00-105;  $P<.001$ ) and motor weakness/tone (OR, 9.98; 99.4% CI, 1.72-57.9;  $P<.001$ ); Lang/FP with discharge  
287 condition (OR, 5.13; 99.4% CI, 1.22-21.5;  $P=.002$ ) and outpatient developmental delay (OR, 4.77; 99.4% CI, 1.21-18.7;  $P=.002$ );  
288 DMN with discharge condition (OR, 3.72; 99.4% CI, 1.01-13.8;  $P=.006$ ) and neurological exam ( $P=.002$ (FE); OR, 11.8; 99.4% CI,  
289 0.73-191;  $P=.01$ (OLR)); and RS-SOZ with motor weakness/tone at follow-up (OR, 3.31; 99.4% CI, 1.08-10.1;  $P=.003$ ) (**Table 2**).

290 Findings across all test modalities are summarized in supplementary **eTable 9**. Among the non-RS diagnostics (**Table 3**),  
 291 only a-MRI was associated with neurological exam (OR, 2.14; 99.4% CI, 1.01-4.56;  $P < .001$ ), after multiple testing correction.  
 292 Outpatient seizure concern was associated with both a-MRI (OR, 2.94; 99.4% CI, 1.02-8.43;  $P = .005$ ) and more strongly with EEG  
 293 (OR, 30.4; 99.4% CI, 2.02-458;  $P < .001$ ).

294

295 **Table 4.** Spearman Correlation Coefficient and 99.8% Confidence Intervals (CI) between Resting-State Networks (RSN) and Other  
 296 Test Modalities

Other Test Modalities	Spearman Correlation Coefficient (99.8% CI) <i>P value</i>						
	RSN				Acute Test Modalities		
	BG	Lang/FP	DMN	RS-SOZ	EEG	Anatomical MRI	Task-fMRI
<b>EEG</b>	0.22 (-0.28, 0.63) $P = 0.17$	0.20 (-0.29, 0.62) $P = 0.21$	0.21 (-0.29, 0.62) $P = 0.19$	0.20 (-0.30, 0.62) $P = 0.21$	-	-	-
<b>Anatomical MRI</b>	0.18 (-0.32, 0.60) $P = 0.27$	0.27 (-0.34, 0.58) $P = 0.08$	0.15 (-0.34, 0.58) $P = 0.34$	0.44 (-0.04, 0.75) $P = 0.004$	0.52 (0.07, 0.80) $P = 0.0004^*$	-	-
<b>Task-fMRI</b>	0.31 (-0.22, 0.69) $P = 0.07$	0.46 (-0.32, 0.63) $P = 0.004$	0.20 (-0.32, 0.63) $P = 0.23$	-0.12 (-0.58, 0.39) $P = 0.47$	0.25 (-0.28, 0.67) $P = 0.14$	0.38 (-0.14, 0.73) $P = 0.02$	-
<b>MRS</b>	0.02 (-0.61, 0.64) $P = 0.93$	0.33 (-0.49, 0.72) $P = 0.14$	0.19 (-0.49, 0.72) $P = 0.41$	0.18 (-0.50, 0.72) $P = 0.43$	0.37 (-0.32, 0.81) $P = 0.09$	0.74 (0.22, 0.93) $P < 0.0001^*$	0.57 (-0.12, 0.89) $P = 0.008$

297 \*  $P$  at  $< .002$  meeting multiple testing criteria. Abbreviations: EEG, electroencephalogram; MRI, magnetic resonance imaging; fMRI, functional MRI;  
 298 MRS, magnetic resonance spectroscopy; BG, basal ganglia network; Lang/FP, language and/or frontoparietal network; DMN, default mode  
 299 network; RS-SOZ, resting-state seizure onset zone or abnormal findings concerning for seizure related pathology; RSN, resting-state networks.  
 300

301 Cross-modality correlations significant after multiple testing were detected for a-MRI with EEG (CC, 0.52; 99.8% CI, 0.07-  
 302 0.80;  $P < .001$ ) and MRS (CC, 0.74; 99.8% CI, 0.22-0.93;  $P < .001$ ) (**Table 4**). While not meeting multiple testing correction criteria,  
 303 RSN correlation with other diagnostic modalities were suggested only between Lang/FP with task-fMRI and RS-SOZ with a-MRI  
 304 (**Table 4**).

305 Among the three patients who died, BG, Lang/FP, and DMN were atypical in one and not detected in two patients (**Figure 1**).  
 306 The three that died while in the hospital had insults due to traumatic brain injury (TBI), severe HIE, and placental abruption. The first  
 307 two neonates (TBI and severe HIE) had no detectable RSNs. The first's exam progressed to findings consistent with brain death  
 308 (BD), (**Figure 1**) although apnea and cold caloric tests not performed. In all three, the medical condition was determined to be  
 309 terminal or futile after RS, and then families and team elected WLST. Associations with mortality were stronger for RS (though not  
 310 significant after correction for multiple testing) than for a-MRI, task-fMRI, MRS, and EEG (**eTables 1-8**). Associations with  
 311 consciousness were suggested and comparable for Lang/FP, MRS, DMN, a-MRI (**eTables 1-8**).

#### 312 4. Discussion

313 RSN detection indicated good signal quality was obtained safety in this tertiary neonatal intensive care unit ABI severity  
 314 environment, thus, worthy of consideration for care. In this study, RS was also consistent with prior findings of emerging before birth  
 315 (Doria et al., 2010) and increasing rapidly during this early developmental period (Gao et al., 2015; Gao et al., 2011).

316 In this cohort of neonates with common ABI etiologies, IBFN via RS was associated with neurological exam and outcomes,  
 317 suggesting the connectivity degradation was physiological and related to the injury, rather than causes such as theorized early  
 318 developmental RSN poor signal, ICU-related therapies, or artifact. These RS findings, pointing to ABI impacting the neural network  
 319 function and plasticity, are consistent with results from other modalities evaluating adults and children with ABI (Smyser and Neil,  
 320 2015).

##### 321 4.1 Incremental Outcomes

322 The *incremental* degradation of RSN connectivity was associated with worsened *outcomes, and findings specific to different*  
 323 *networks*. The most severe RSN finding, lack of either the Lang-FP or DMN, made it more likely that upon discharge, there would be  
 324 severely abnormal exam findings or death. Similarly, worse BG and RS-SOZ were related to marked outpatient developmental delay  
 325 or motor delay, respectively, or death. Incrementally worse a-MRI was associated with *worsening* acute factors, and *overall*

326 outpatient development at follow-up. This difference may be due to the lack of blinding with cross-informed sub-specialist  
327 interpretations in the acute period being greater with more substantiated tests. However, the association with outcomes from these  
328 prospectively documented clinical notes may be informative, as suggested by Linke et al (Linke et al., 2018).

#### 329 4.2 Developmental Outcomes

330 The BG and RS-SOZ were associated with motor outcome, suggesting specific insight into early motor skills and  
331 correspondence to subcortical-dominated HIE neonatal pathology (Douglas-Escobar and Weiss, 2015). Correspondingly, the  
332 spatially broader and cortical RSN, Lang-FP and DMN, had association with more generalized developmental outcomes.  
333 Supportively, FP is the earliest to stabilize in connectivity and has predictive capacity in individually unique cognitive capacities  
334 (Wang et al., 2021; Doria et al., 2010). This may help explain the cognitive and other cortically localized outcomes known to occur  
335 after HIE, though longer follow up is indicated (Pouppirt et al., 2021; Douglas-Escobar and Weiss, 2015; van Kooij et al., 2010).

#### 336 4.3 Acute EEG and Seizure Outcomes

337 Only the EEG and a-MRI were specifically related to seizure outcomes, whereas the RS-SOZ and seizure outcome  
338 association was weaker. And, the RS-SOZ was *not* associated with acute EEG. The reasons for this could be multifactorial. (1) The  
339 study design in determination of seizure outcome was weak, as it was based largely on parent description of repeat events which can  
340 be subtle and difficult to discern in neonates or practioners style of continued antiseizure at the time of follow up visit. (2) The seizure  
341 captured on EEG and often clinically resolved by the time of RS may reflect a true phenomenon of disparately timed tests capturing  
342 the actual evolution of the brain condition in ABI. Supportively, most ABI seizures occur 0-72 hours after insult, (Lynch et al., 2015)  
343 whereas RS capture was after 72 hours. (3) Conversely negative EEG could possibly still occur despite deep-source seizures,  
344 whereas RS-SOZ has no such spatial limitation. This may explain why the RS-SOZ unadjusted association was highest with a-MRI  
345 and subsequent developmental delay and motor assessment (supplementary material (**eTables 4**) (Lopes et al., 2012; Wurina et al.,  
346 2012).

#### 347 4.4 Acute Exam, Consciousness, and Mortality

348 We demonstrate consistency across exams and tests, which may affect WLST, and suggests potential for impact on acute  
349 period care. As such, the minimal IBNF for survival and meaningful brain recovery is a key factor. Unadjusted associations suggest  
350 that the minimum IBFN by RS for *survival* may be above complete lack of RSN detection, or lack of Lang-FP detection (75%  
351 mortality), and subtler findings may change due to neuroplasticity (Boerwinkle et al., 2019a; Boerwinkle, 2018). Also, re-emergence  
352 of RSN is unknown in ABI, though occurs in the anesthetized. This is unknown in neonates, and therefore, is a limitation of care with  
353 ethical implications. The Lang-FP connection to mortality could be reflective of this network combination covering a very broad spatial  
354 territory of parenchyma. This may mean a large portion of the brain is in the irreversible cell-death cascade, which can trigger a more  
355 systemic destabilization, and death. Otherwise, RSN and a-MRI associated outcomes included death, suggesting the linkage to  
356 systemic health and death. Thus, serial longitudinal RS after ABI is indicated for evaluation of re-emergence and increased minimal  
357 IBNF definition.

358 The DMN was the only network with statistically significant *overall* association with the acute neurologic exam, which included  
359 evaluation of consciousness, as best it could be determined by responsiveness and eye opening to environmental stimuli. This  
360 suggests that markers of consciousness in neonates with ABI across the full severity range may be related to ongoing supratentorial  
361 default mode network activity, rather than a mere brainstem mediated phenomenon. This network outcome association are  
362 supported by prior work: Lang-FP (Guo et al., 2016; Boly et al., 2009) and DMN (Threlkeld et al., 2018; Kondziella et al., 2017) in  
363 other ABI populations, which were associated with acute neurological findings. Comparatively, among the non-RSN tests, a-MRI was  
364 also associated with the neurological exam.

365 *HIE severity* was associated with a-MRI, but not RSNs. This could be due to the study design wherein the HIE severity was  
366 ultimately determined after all diagnostics and acute exams, at discharge, thus is not blinded, and may be largely based on the a-  
367 MRI findings. A blinded prospective study would solve the question.

#### 368 *4.5 Cross-modality Observations*

369 The cross-modality severity consistency has supportive and unique results in this real-world all-ABI-comer neonatal  
370 population. Namely, the BG, a-MRI, and MRS rates of being atypical were commensurately. Contrastingly, the cortical RSNs had  
371 similar but lower atypical rates. Thus, subcortical, more so than cortical, network abnormality is as expected in an HIE-rich cohort (de  
372 Vries and Groenendaal, 2010). Notably, non-RS tests had higher abnormality rates, yet the RSN had higher frequency of association  
373 with outcomes, suggesting unique information from RSNs with development.

374 Inter-modality disparities are expected and reflect different physiological signals. Thus, the higher rate of cortical RSN  
375 normality is in-line with task-fMRI, measuring cortical motor function. Similarly, MRS, measuring deep-brain location metabolism, was  
376 more often abnormal in this HIE-rich population. Hence the disparities are consistent and triangulate on different and localizing  
377 aspects of the ABI etiology.

#### 378 *4.6 Limitations and Further Study*

379 A prospective approach with standardized exams and outcomes measures are needed. Similarly, validated neonatal  
380 consciousness and other acute factor and outcome measures are necessary for mixed pathology/full range severity populations.

381 RSN requires interpretation, prompting the blinded study design. Further means of minimizing bias by developing automated  
382 RSN categorization may help (Chakraborty et al., 2020; Griffanti et al., 2017; Griffanti et al., 2014).

383 In neonates with ABI, network pathology localization is not well-characterized and data-driven approaches, such as ICA may  
384 best be suited for localization of network pathology. ICA has level 1 evidence for diagnostic testing (OCEBM Levels of Evidence  
385 Working Group) in children and adults for characterizing normal and pathological networks in drug resistant epilepsy and improving  
386 outcomes (Chakraborty et al., 2020), however, method comparison may be of value.

#### 387 **Conclusions**

388 This study provides level 3 evidence (OCEBM Levels of Evidence Working Group) that RSN are associated with outcomes in  
389 neonates with ABI. Specific networks' degradation was linked to different worsened outcomes. The basal ganglia and seizure onset  
390 zone networks were associated with motor outcomes. The broad language/cognitive region networks were associated with  
391 developmental delay. Discharge condition, which includes mortality, was associated with default mode and language/cognitive  
392 networks. Lack of all studied networks only occurred in those who did not survive.

#### 393 **Acknowledgements**

394 The authors are grateful for the patients included in this study. We would like to give a special thank you to their families and  
395 our colleagues involved in their care at Phoenix Children's Hospital. Institutional Review Board (IRB # 20-331) at Phoenix Children's  
396 Hospital approved this study. This research did not receive any specific grant from funding agencies in the public, commercial, or not-  
397 for-profit sectors.

## 398 References

- 399  
400 Ashwal, S., Peabody, J.L., Schneider, S., Tomasi, L.G., Emery, J.R., Peckham, N., 1990. Anencephaly: clinical determination of  
401 brain death and neuropathologic studies. *Pediatr Neurol* 6, 233-239.
- 402 Azzopardi, D.V., Strohm, B., Edwards, A.D., Dyet, L., Halliday, H.L., Juszczak, E., Kapellou, O., Levene, M., Marlow, N., Porter, E.,  
403 Thoresen, M., Whitelaw, A., Brocklehurst, P., Group, T.S., 2009. Moderate hypothermia to treat perinatal asphyxial encephalopathy.  
404 *N Engl J Med* 361, 1349-1358.
- 405 Beckmann, C.F., Smith, S.M., 2004. Probabilistic independent component analysis for functional magnetic resonance imaging. *IEEE*  
406 *Trans Med Imaging* 23, 137-152.
- 407 Boerwinkle, V.L., 2018. Connectivity changes after laser ablation: Resting-state fMRI. 142, 156-160.
- 408 Boerwinkle, V.L., Cediël, E.G., Mirea, L., Williams, K., Kerrigan, J.F., Lam, S., Raskin, J.S., Desai, V.R., Wilfong, A.A., Adelson, P.D.,  
409 Curry, D.J., 2019a. Network Targeted Approach and Postoperative Resting State Functional MRI are Associated with Seizure  
410 Outcome. *Ann Neurol*, 344-356.
- 411 Boerwinkle, V.L., Foldes, S.T., Torrisi, S.J., Temkit, H., Gaillard, W.D., Kerrigan, J.F., Desai, V.R., Raskin, J.S., Vedantam, A., Jarrar,  
412 R., Williams, K., Lam, S., Ranjan, M., Broderson, J.S., Adelson, D., Wilfong, A.A., Curry, D.J., 2018. Subcentimeter epilepsy surgery  
413 targets by resting state functional magnetic resonance imaging can improve outcomes in hypothalamic hamartoma. *Epilepsia* 59,  
414 2284-2295.
- 415 Boerwinkle, V.L., Mirea, L., Gaillard, W.D., Sussman, B.L., Larocque, D., Bonnell, A., Ronecker, J.S., Troester, M.M., Kerrigan, J.F.,  
416 Foldes, S.T., Appavu, B., Jarrar, R., Williams, K., Wilfong, A.A., Adelson, P.D., 2020. Resting-state functional MRI connectivity  
417 impact on epilepsy surgery plan and surgical candidacy: prospective clinical work. *J Neurosurg Pediatr*, 1-8.
- 418 Boerwinkle, V.L., Mohanty, D., Foldes, S.T., Guffey, D., Minard, C.G., Vedantam, A., Raskin, J.S., Lam, S., Bond, M., Mirea, L.,  
419 Adelson, P.D., Wilfong, A.A., Curry, D.J., 2017. Correlating Resting-State Functional Magnetic Resonance Imaging Connectivity by  
420 Independent Component Analysis-Based Epileptogenic Zones with Intracranial Electroencephalogram Localized Seizure Onset  
421 Zones and Surgical Outcomes in Prospective Pediatric Intractable Epilepsy Study. *Brain Connect* 7, 424-442.
- 422 Boerwinkle, V.L., Torrisi, S.J., Foldes, S.T., Marku, I., Ranjan, M., Wilfong, A.A., Adelson, P.D., 2019b. Resting-state fMRI in  
423 disorders of consciousness to facilitate early therapeutic intervention. *Neurology: Clinical Practice*, 10.1212/CPJ.0000000000000596.
- 424 Boly, M., Tshibanda, L., Vanhaudenhuyse, A., Noirhomme, Q., Schnakers, C., Ledoux, D., Boveroux, P., Garweg, C., Lambermont,  
425 B., Phillips, C., Luxen, A., Moonen, G., Basseti, C., Maquet, P., Laureys, S., 2009. Functional connectivity in the default network  
426 during resting state is preserved in a vegetative but not in a brain dead patient. *Hum Brain Mapp* 30, 2393-2400.
- 427 Bouyssi-Kobar, M., De Asis-Cruz, J., Murnick, J., Chang, T., Limperopoulos, C., 2019. Altered Functional Brain Network Integration,  
428 Segregation, and Modularity in Infants Born Very Preterm at Term-Equivalent Age. *J Pediatr* 213, 13-21.e11.
- 429 Bruno, M.A., Vanhaudenhuyse, A., Thibaut, A., Moonen, G., Laureys, S., 2011. From unresponsive wakefulness to minimally  
430 conscious PLUS and functional locked-in syndromes: recent advances in our understanding of disorders of consciousness. *J Neurol*  
431 258, 1373-1384.
- 432 Chakraborty, A.R., Almeida, N.C., Prather, K.Y., O'Neal, C.M., Wells, A.A., Chen, S., Conner, A.K., 2020. Resting-state functional  
433 magnetic resonance imaging with independent component analysis for presurgical seizure onset zone localization: A systematic  
434 review and meta-analysis. *Epilepsia*.
- 435 Damoiseaux, J.S., Rombouts, S.A., Barkhof, F., Scheltens, P., Stam, C.J., Smith, S.M., Beckmann, C.F., 2006. Consistent resting-  
436 state networks across healthy subjects. *Proc Natl Acad Sci U S A* 103, 13848-13853.
- 437 de Vries, L.S., Groenendaal, F., 2010. Patterns of neonatal hypoxic-ischaemic brain injury. *Neuroradiology* 52, 555-566.
- 438 Del Giudice, R., Blume, C., Wislowska, M., Lechinger, J., Heib, D.P.J., Pichler, G., Donis, J., Michitsch, G., Gnjezda, M.T., Chinchilla,  
439 M., Machado, C., Schabus, M., 2016. Can self-relevant stimuli help assessing patients with disorders of consciousness? *Conscious*  
440 *Cogn* 44, 51-60.
- 441 Della Rosa, P.A., Canini, M., Marchetta, E., Cirillo, S., Pontesilli, S., Scotti, R., Natali Sora, M.G., Poloniato, A., Barera, G., Falini, A.,  
442 Scifo, P., Baldoli, C., 2021. The effects of the functional interplay between the Default Mode and Executive Control Resting State  
443 Networks on cognitive outcome in preterm born infants at 6 months of age. *Brain Cogn* 147, 105669.
- 444 Demertzi, A., Ledoux, D., Bruno, M.A., Vanhaudenhuyse, A., Gosseries, O., Soddu, A., Schnakers, C., Moonen, G., Laureys, S.,  
445 2011. Attitudes towards end-of-life issues in disorders of consciousness: a European survey. *J Neurol* 258, 1058-1065.
- 446 Desai, V.R., Vedantam, A., Lam, S.K., Mirea, L., Foldes, S.T., Curry, D.J., Adelson, P.D., Wilfong, A.A., Boerwinkle, V.L., 2018.  
447 Language lateralization with resting-state and task-based functional MRI in pediatric epilepsy. *J Neurosurg Pediatr* 23, 171-177.
- 448 Devictor, D., Latour, J.M., Tissières, P., 2008. Forgoing life-sustaining or death-prolonging therapy in the pediatric ICU. *Pediatr Clin*  
449 *North Am* 55, 791-804, xiii.
- 450 Doria, V., Beckmann, C.F., Arichi, T., Merchant, N., Groppo, M., Turkheimer, F.E., Counsell, S.J., Murgasova, M., Aljabar, P., Nunes,  
451 R.G., Larkman, D.J., Rees, G., Edwards, A.D., 2010. Emergence of resting state networks in the preterm human brain. *Proc Natl*  
452 *Acad Sci U S A* 107, 20015-20020.
- 453 Douglas-Escobar, M., Weiss, M.D., 2015. Hypoxic-ischemic encephalopathy: a review for the clinician. *JAMA Pediatr* 169, 397-403.
- 454 Downar, J., Delaney, J.W., Hawryluck, L., Kenny, L., 2016. Guidelines for the withdrawal of life-sustaining measures. *Intensive Care*  
455 *Medicine* 42, 1003-1017.
- 456 Edlow, B.L., Barra, M.E., Zhou, D.W., Foulkes, A.S., Snider, S.B., Threlkeld, Z.D., Chakravarty, S., Kirsch, J.E., Chan, S.T., Meisler,  
457 S.L., Bleck, T.P., Fins, J.J., Giacino, J.T., Hochberg, L.R., Solt, K., Brown, E.N., Bodien, Y.G., 2020. Personalized Connectome  
458 Mapping to Guide Targeted Therapy and Promote Recovery of Consciousness in the Intensive Care Unit. *Neurocrit Care* 33, 364-  
459 375.
- 460 Falletta Caravasso, C., de Pasquale, F., Ciurli, P., Catani, S., Formisano, R., Sabatini, U., 2016. The Default Mode Network  
461 Connectivity Predicts Cognitive Recovery in Severe Acquired Brain Injured Patients: A Longitudinal Study. *J Neurotrauma* 33, 1247-  
462 1262.
- 463 Ferradal, S.L., Gagoski, B., Jaimes, C., Yi, F., Carruthers, C., Vu, C., Litt, J.S., Larsen, R., Sutton, B., Grant, P.E., Zollei, L., 2018.  
464 System-Specific Patterns of Thalamocortical Connectivity in Early Brain Development as Revealed by Structural and Functional MRI.  
465 *Cereb Cortex*.
- 466 Fransson, P., Skiöld, B., Engström, M., Hallberg, B., Mosskin, M., Aden, U., Lagercrantz, H., Blennow, M., 2009. Spontaneous brain  
467 activity in the newborn brain during natural sleep--an fMRI study in infants born at full term. *Pediatr Res* 66, 301-305.
- 468 Gao, W., Alcauter, S., Smith, J.K., Gilmore, J.H., Lin, W., 2015. Development of human brain cortical network architecture during  
469 infancy. *Brain Struct Funct* 220, 1173-1186.
- 470 Gao, W., Gilmore, J.H., Giovanello, K.S., Smith, J.K., Shen, D., Zhu, H., Lin, W., 2011. Temporal and spatial evolution of brain  
471 network topology during the first two years of life. *PLoS ONE* 6, e25278.
- 472 Giacino, J.T., Katz, D.I., Schiff, N.D., Whyte, J., Ashman, E.J., Ashwal, S., Barbano, R., Hammond, F.M., Laureys, S., Ling, G.S.F.,  
473 Nakase-Richardson, R., Seel, R.T., Yablon, S., Getchius, T.S.D., Gronseth, G.S., Armstrong, M.J., 2018. Practice guideline update  
474 recommendations summary: Disorders of consciousness: Report of the Guideline Development, Dissemination, and Implementation  
475 Subcommittee of the American Academy of Neurology; the American Congress of Rehabilitation Medicine; and the National Institute  
476 on Disability, Independent Living, and Rehabilitation Research. *Neurology*.
- 477 Greve, D.N., Fischl, B., 2009. Accurate and robust brain image alignment using boundary-based registration. *Neuroimage* 48, 63-72.
- 478 Griffanti, L., Douaud, G., Bijsterbosch, J., Evangelisti, S., Alfaro-Almagro, F., Glasser, M.F., Duff, E.P., Fitzgibbon, S., Westphal, R.,  
479 Carone, D., Beckmann, C.F., Smith, S.M., 2017. Hand classification of fMRI ICA noise components. *Neuroimage* 154, 188-205.
- 480 Griffanti, L., Salimi-Khorshidi, G., Beckmann, C.F., Auerbach, E.J., Douaud, G., Sexton, C.E., Zsoldos, E., Ebmeier, K.P., Filippini,  
481 N., Mackay, C.E., Moeller, S., Xu, J., Yacoub, E., Baselli, G., Ugurbil, K., Miller, K.L., Smith, S.M., 2014. ICA-based artefact removal  
482 and accelerated fMRI acquisition for improved resting state network imaging. *Neuroimage* 95, 232-247.

483 Guo, J.N., Kim, R., Chen, Y., Negishi, M., Jhun, S., Weiss, S., Ryu, J.H., Bai, X., Xiao, W., Feeney, E., Rodriguez-Fernandez, J.,  
484 Mistry, H., Crunelli, V., Crowley, M.J., Mayes, L.C., Constable, R.T., Blumenfeld, H., 2016. Impaired consciousness in patients with  
485 absence seizures investigated by functional MRI, EEG, and behavioural measures: a cross-sectional study. *Lancet Neurol* 15, 1336-  
486 1345.

487 Hahn, G., Zamora-Lopez, G., Uhrig, L., Tagliazucchi, E., Laufs, H., Mantini, D., Kringelbach, M.L., Jarraya, B., Deco, G., 2021.  
488 Signature of consciousness in brain-wide synchronization patterns of monkey and human fMRI signals. *Neuroimage* 226, 117470.

489 Han, S.G., Kim, G.M., Lee, K.H., Chung, C.S., Jung, K.Y., 2006. Reflex movements in patients with brain death: a prospective study  
490 in a tertiary medical center. *J Korean Med Sci* 21, 588-590.

491 He, L., Li, H., Holland, S.K., Yuan, W., Altaye, M., Parikh, N.A., 2018. Early prediction of cognitive deficits in very preterm infants  
492 using functional connectome data in an artificial neural network framework. *Neuroimage Clin* 18, 290-297.

493 Ishaque, M., Manning, J.H., Woolsey, M.D., Franklin, C.G., Tullis, E.W., Beckmann, C.F., Fox, P.T., 2017. Functional integrity in  
494 children with anoxic brain injury from drowning. *Hum Brain Mapp* 38, 4813-4831.

495 Jacobs, S.E., Morley, C.J., Inder, T.E., Stewart, M.J., Smith, K.R., McNamara, P.J., Wright, I.M., Kirpalani, H.M., Darlow, B.A., Doyle,  
496 L.W., Infant Cooling Evaluation, C., 2011. Whole-body hypothermia for term and near-term newborns with hypoxic-ischemic  
497 encephalopathy: a randomized controlled trial. *Arch Pediatr Adolesc Med* 165, 692-700.

498 Jain, S., DeGeorgia, M., 2005. Brain death-associated reflexes and automatisms. *Neurocrit Care* 3, 122-126.

499 James, S.J., 1998. Fetal brain death syndrome--a case report and literature review. *Aust N Z J Obstet Gynaecol* 38, 217-220.

500 Jenkinson, M., Bannister, P., Brady, M., Smith, S., 2002. Improved optimization for the robust and accurate linear registration and  
501 motion correction of brain images. *Neuroimage* 17, 825-841.

502 Jorgensen, E.O., Malchow-Moller, A., 1981. Natural history of global and critical brain ischaemia. Part II: EEG and neurological signs  
503 in patients remaining unconscious after cardiopulmonary resuscitation. *Resuscitation* 9, 155-174.

504 Kondziella, D., Bender, A., Diserens, K., van Erp, W., Estraneo, A., Formisano, R., Laureys, S., Naccache, L., Ozturk, S., Rohaut, B.,  
505 Sitt, J.D., Stender, J., Tiainen, M., Rossetti, A.O., Gosseries, O., Chatelle, C., Ean Panel on Coma, D.o.C., 2020. European Academy  
506 of Neurology guideline on the diagnosis of coma and other disorders of consciousness. *Eur J Neurol* 27, 741-756.

507 Kondziella, D., Fisher, P.M., Larsen, V.A., Hauerberg, J., Fabricius, M., Moller, K., Knudsen, G.M., 2017. Functional MRI for  
508 Assessment of the Default Mode Network in Acute Brain Injury. *Neurocrit Care* 27, 401-406.

509 Krasnow, B., Tamm, L., Greicius, M.D., Yang, T.T., Glover, G.H., Reiss, A.L., Menon, V., 2003. Comparison of fMRI activation at 3  
510 and 1.5 T during perceptual, cognitive, and affective processing. *Neuroimage* 18, 813-826.

511 Kumar, A., Tummala, P., Feen, E.S., Dhar, R., 2016. Spinal Decerebrate-Like Posturing After Brain Death: A Case Report and  
512 Review of the Literature. *J Intensive Care Med* 31, 622-624.

513 LaRovere, K.L., Tasker, R.C., 2020. Defining catastrophic brain injury in children leading to coma and disorders of consciousness  
514 and the scope of the problem. *Curr Opin Pediatr* 32, 750-758.

515 Li, H.X., Yu, M., Zheng, A.B., Zhang, Q.F., Hua, G.W., Tu, W.J., Zhang, L.C., 2019. Resting-state network complexity and magnitude  
516 changes in neonates with severe hypoxic ischemic encephalopathy. *Neural Regen Res* 14, 642-648.

517 Linke, A.C., Wild, C., Zubiaurre-Elorza, L., Herzmann, C., Duffy, H., Han, V.K., Lee, D.S.C., Cusack, R., 2018. Disruption to  
518 functional networks in neonates with perinatal brain injury predicts motor skills at 8months. *Neuroimage Clin* 18, 399-406.

519 Lopes, R., Lina, J.M., Fahoum, F., Gotman, J., 2012. Detection of epileptic activity in fMRI without recording the EEG. *Neuroimage*  
520 60, 1867-1879.

521 Lynch, N.E., Stevenson, N.J., Livingstone, V., Mathieson, S., Murphy, B.P., Rennie, J.M., Boylan, G.B., 2015. The temporal  
522 characteristics of seizures in neonatal hypoxic ischemic encephalopathy treated with hypothermia. *Seizure* 33, 60-65.

523 Bhroin, M.N., Molloy, E.J., Bokde, A.L.W., 2021. Relationship between resting-state fMRI functional connectivity with motor and  
524 language outcome after perinatal brain injury - A systematic review. *Eur J Paediatr Neurol* 33, 36-49.

525 Machado, C., 2008. Variability of brain death determination guidelines in leading US neurologic institutions. *Neurology* 71, 1125;  
526 author reply 1126.

527 Mak, L.E., Croy, B.A., Kay, V., Reynolds, J.N., Ratsep, M.T., Forkert, N.D., Smith, G.N., Paolozza, A., Stroman, P.W., Figueiro-Filho,  
528 E.A., 2018. Resting-state functional connectivity in children born from gestations complicated by preeclampsia: A pilot study cohort.  
529 *Pregnancy Hypertens* 12, 23-28.

530 Marti-Fabregas, J., Lopez-Navidad, A., Caballero, F., Otermin, P., 2000. Decerebrate-like posturing with mechanical ventilation in  
531 brain death. *Neurology* 54, 224-227.

532 Michel, M., Beck, D., Block, N., Blumenfeld, H., Brown, R., Carmel, D., Carrasco, M., Chirimuuta, M., Chun, M., Cleeremans, A.,  
533 Dehaene, S., Fleming, S.M., Friith, C., Haggard, P., He, B.J., Heyes, C., Goodale, M.A., Irvine, L., Kawato, M., Kentridge, R., King,  
534 J.R., Knight, R.T., Kouider, S., Lamme, V., Lamy, D., Lau, H., Laureys, S., LeDoux, J., Lin, Y.T., Liu, K., Macknik, S.L., Martinez-  
535 Conde, S., Mashour, G.A., Melloni, L., Miracchi, L., Mylopoulos, M., Naccache, L., Owen, A.M., Passingham, R.E., Pessoa, L.,  
536 Peters, M.A.K., Rahnev, D., Ro, T., Rosenthal, D., Sasaki, Y., Sergent, C., Solovey, G., Schiff, N.D., Seth, A., Tallon-Baudry, C.,  
537 Tamietto, M., Tong, F., van Gaal, S., Vlassova, A., Watanabe, T., Weisberg, J., Yan, K., Yoshida, M., 2019. Opportunities and  
538 challenges for a maturing science of consciousness. *Nat Hum Behav* 3, 104-107.

539 Mongerson, C.R.L., Jennings, R.W., Borsook, D., Becerra, L., Bajic, D., 2017. Resting-State Functional Connectivity in the Infant  
540 Brain: Methods, Pitfalls, and Potentiality. *Front Pediatr* 5, 159.

541 Mrelashvili, A., Russ, J.B., Ferriero, D.M., Wusthoff, C.J., 2020. The Sarnat score for neonatal encephalopathy: looking back and  
542 moving forward. *Pediatric Research* 88, 824-825.

543 Nakagawa, T.A., Ashwal, S., Mathur, M., Mysore, M., 2011. Clinical report—Guidelines for the determination of brain death in infants  
544 and children: an update of the 1987 task force recommendations. *Pediatrics* 128, e720-740.

545 Nakagawa, T.A., Ashwal, S., Mathur, M., Mysore, M., Committee For Determination Of Brain Death In Infants, C., 2012. Guidelines  
546 for the determination of brain death in infants and children: an update of the 1987 task force recommendations-executive summary.  
547 *Ann Neurol* 71, 573-585.

548 Pant, S., 2021. Ethical Issues around Death and Withdrawal of Life Support in Neonatal Intensive Care. *Indian J Pediatr*.

549 Poupirt, N.R., Martin, V., Pagnotto-Hammit, L., Spittle, A.J., Flibotte, J., DeMauro, S.B., 2021. The General Movements  
550 Assessment in Neonates With Hypoxic Ischemic Encephalopathy. *J Child Neurol*, 883073820981515.

551 Provencio, J.J., Hemphill, J.C., Claassen, J., Edlow, B.L., Helbok, R., Vespa, P.M., Diringier, M.N., Polizzotto, L., Shutter, L., Suarez,  
552 J.I., Stevens, R.D., Hanley, D.F., Akbari, Y., Bleck, T.P., Boly, M., Foreman, B., Giacino, J.T., Hartings, J.A., Human, T., Kondziella,  
553 D., Ling, G.S.F., Mayer, S.A., McNett, M., Menon, D.K., Meyfroidt, G., Monti, M.M., Park, S., Pouratian, N., Puybasset, L., Rohaut, B.,  
554 Rosenthal, E.S., Schiff, N.D., Sharshar, T., Wagner, A., Whyte, J., Olson, D.M., Neurocritical Care Society Curing Coma, C., 2020.  
555 The Curing Coma Campaign: Framing Initial Scientific Challenges-Proceedings of the First Curing Coma Campaign Scientific  
556 Advisory Council Meeting. *Neurocrit Care* 33, 1-12.

557 Rogers, C.E., Sylvester, C.M., Mintz, C., Kenley, J.K., Shimony, J.S., Barch, D.M., Smyser, C.D., 2017. Neonatal Amygdala  
558 Functional Connectivity at Rest in Healthy and Preterm Infants and Early Internalizing Symptoms. *J Am Acad Child Adolesc*  
559 *Psychiatry* 56, 157-166.

560 Rosazza, C., Andronache, A., Sattin, D., Bruzzone, M.G., Marotta, G., Nigri, A., Ferraro, S., Rossi Sebastiano, D., Porcu, L.,  
561 Bersano, A., Benti, R., Leonardi, M., D'Incerti, L., Minati, L., Coma Research Center, B.I., 2016. Multimodal study of default-mode  
562 network integrity in disorders of consciousness. *Ann Neurol* 79, 841-853.

563 Sair, H.I., Hannawi, Y., Li, S., Kornbluth, J., Demertzi, A., Di Perri, C., Chabanne, R., Jean, B., Benali, H., Perlberg, V., Pekar, J.,  
564 Luyt, C.E., Galanaud, D., Velly, L., Puybasset, L., Laureys, S., Caffo, B., Stevens, R.D., Neuroimaging for Coma, E., Recovery, C.,  
565 2018. Early Functional Connectome Integrity and 1-Year Recovery in Comatose Survivors of Cardiac Arrest. *Radiology* 287, 247-  
566 255.

567 Saposnik, G., Maurino, J., Saizar, R., Bueri, J.A., 2005. Spontaneous and reflex movements in 107 patients with brain death. *Am J*  
568 *Med* 118, 311-314.

569 Schnakers, C., Vanhaudenhuyse, A., Giacino, J., Ventura, M., Boly, M., Majerus, S., Moonen, G., Laureys, S., 2009. Diagnostic  
570 accuracy of the vegetative and minimally conscious state: clinical consensus versus standardized neurobehavioral assessment. *BMC*  
571 *Neurol* 9, 35.

572 Shi, F., Salzwedel, A.P., Lin, W., Gilmore, J.H., Gao, W., 2018. Functional Brain Parcellations of the Infant Brain and the Associated  
573 Developmental Trends. *Cereb Cortex* 28, 1358-1368.

574 Silva, S., de Pasquale, F., Vuillaume, C., Riu, B., Loubinoux, I., Geeraerts, T., Seguin, T., Bounes, V., Fourcade, O., Demonet, J.F.,  
575 Peran, P., 2015. Disruption of posteromedial large-scale neural communication predicts recovery from coma. *Neurology* 85, 2036-  
576 2044.

577 Smith, S.M., Fox, P.T., Miller, K.L., Glahn, D.C., Fox, P.M., Mackay, C.E., Filippini, N., Watkins, K.E., Toro, R., Laird, A.R.,  
578 Beckmann, C.F., 2009. Correspondence of the brain's functional architecture during activation and rest. *Proc Natl Acad Sci U S A*  
579 106, 13040-13045.

580 Smyser, C.D., Inder, T.E., Shimony, J.S., Hill, J.E., Degnan, A.J., Snyder, A.Z., Neil, J.J., 2010. Longitudinal analysis of neural  
581 network development in preterm infants. *Cerebral cortex (New York, N.Y. : 1991)* 20, 2852-2862.

582 Smyser, C.D., Neil, J.J., 2015. Use of resting-state functional MRI to study brain development and injury in neonates. *Semin*  
583 *Perinatol* 39, 130-140.

584 Strahle, J.M., Triplett, R.L., Alexopoulos, D., Smyser, T.A., Rogers, C.E., Limbrick, D.D., Jr., Smyser, C.D., 2019. Impaired  
585 hippocampal development and outcomes in very preterm infants with perinatal brain injury. *Neuroimage Clin* 22, 101787.

586 Threlkeld, Z.D., Bodien, Y.G., Rosenthal, E.S., Giacino, J.T., Nieto-Castanon, A., Wu, O., Whitfield-Gabrieli, S., Edlow, B.L., 2018.  
587 Functional networks reemerge during recovery of consciousness after acute severe traumatic brain injury. *Cortex* 106, 299-308.

588 Turgeon, A.F., Lauzier, F., Simard, J.F., Scales, D.C., Burns, K.E., Moore, L., Zygun, D.A., Bernard, F., Meade, M.O., Dung, T.C.,  
589 Ratnapalan, M., Todd, S., Harlock, J., Fergusson, D.A., 2011. Mortality associated with withdrawal of life-sustaining therapy for  
590 patients with severe traumatic brain injury: a Canadian multicentre cohort study. *CMAJ* 183, 1581-1588.

591 van den Heuvel, M.P., Kersbergen, K.J., de Reus, M.A., Keunen, K., Kahn, R.S., Groenendaal, F., de Vries, L.S., Benders, M.J.,  
592 2015. The Neonatal Connectome During Preterm Brain Development. *Cereb Cortex* 25, 3000-3013.

593 van Kooij, B.J., van Handel, M., Nievelstein, R.A., Groenendaal, F., Jongmans, M.J., de Vries, L.S., 2010. Serial MRI and  
594 neurodevelopmental outcome in 9- to 10-year-old children with neonatal encephalopathy. *J Pediatr* 157, 221-227.e222.

595 Wang, Q., Xu, Y., Zhao, T., Xu, Z., He, Y., Liao, X., 2021. Individual Uniqueness in the Neonatal Functional Connectome. *Cereb*  
596 *Cortex*.

597 Wheelock, M.D., Austin, N.C., Bora, S., Eggebrecht, A.T., Melzer, T.R., Woodward, L.J., Smyser, C.D., 2018. Altered functional  
598 network connectivity relates to motor development in children born very preterm. *Neuroimage* 183, 574-583.

599 Wurina, Zang, Y.F., Zhao, S.G., 2012. Resting-state fMRI studies in epilepsy. *Neurosci Bull* 28, 449-455.

600

