

1 **Waist circumference thresholds predicting incident dysglycemia and type 2**
2 **diabetes in Black African men and women**

3

4 **Running title:** Waist thresholds for type 2 diabetes in Africa

5

6 Julia H. Goedecke^{1,2}, Kim Nguyen¹, Clement Kufe², Maphoko Masemola², Tinashe
7 Chikowore², Amy E. Mendham^{2,3}, Shane A. Norris², Nigel J. Crowther⁴, Fredrik Karpe⁵,
8 Tommy Olsson⁶, Andre Pascal Kengne¹, Lisa K Micklesfield²

9

10 ¹Non-Communicable Diseases Research Unit, South African Medical Research
11 Council, Cape Town, South Africa

12 ²South African Medical Research Council/WITS Developmental Pathways for Health
13 Research Unit (DPHRU), Department of Paediatrics, Faculty of Health
14 Sciences, University of the Witwatersrand, Johannesburg, South Africa

15 ³Health through Physical Activity, Lifestyle and Sport Research Centre (HPALS),
16 FIMS International Collaborating Centre of Sports Medicine, Division of Physiological
17 Sciences, Department of Human Biology, Faculty of Health Sciences, University of
18 Cape Town

19 ⁴Department of Chemical Pathology, National Health Laboratory Service and School
20 of Pathology, Faculty of Health Sciences, University of the Witwatersrand,
21 Johannesburg, South Africa

22 ⁵Oxford Centre for Diabetes, Endocrinology and Metabolism (OCDEM), Nuffield
23 Department of Clinical Medicine, University of Oxford, Oxford, U.K.

24 ⁶Department of Public Health and Clinical Medicine, Medicine, Umeå University, Umeå,
25 Sweden

26

27 **Corresponding Author:**

28 Julia H. Goedecke

29 Non-Communicable Diseases Research Unit, South African Medical Research

30 Council, Francie van Zijl Drive, Parow Valley, 7505, Cape Town, South Africa

31 Tel: +27-219380862

32 Email: Julia.goedecke@mrc.ac.za

33

34 **Abstract count:** 249

35 **Word count:** 3787

36 **Tables/figures:** 4

37

38 **KEYWORDS**

39 Sub-Saharan African cohort, risk stratification, obesity, metabolic syndrome,

40

41 **ABSTRACT**

42 **Objective:** To determine the waist circumference (WC) thresholds for the prediction
43 of incident dysglycemia and type 2 diabetes in Black South African (SA) men and
44 women and compare these to advocated International Diabetes Federation (IDF)
45 Europid thresholds.

46 **Research design and methods:** In this prospective study, Black SA men (n=502)
47 and women (n=527) from the Middle Aged Sowetan Cohort (MASC) study who had
48 normal or impaired fasting glucose at baseline (2011-2015) were followed up through
49 2017-2018. Baseline measurements included anthropometry, blood pressure and
50 fasting glucose, HDL-cholesterol and triglyceride concentrations. At follow-up, glucose
51 tolerance was assessed using an oral glucose tolerance test. The Youden index was
52 used to determine the optimal threshold of WC to predict incident dysglycemia and
53 type 2 diabetes.

54 **Results:** In men, the optimal WC threshold was 96.8 cm for both dysglycemia and
55 type 2 diabetes (sensitivity 56 and 70%, specificity 74 and 70%, respectively), which
56 performed similarly to the IDF threshold of 94 cm. In women, the optimal WC threshold
57 for incident dysglycemia was 91.8 cm (sensitivity 86%, specificity 37%) and for type 2
58 diabetes was 95.8 cm (sensitivity 85%, specificity 45%). In comparison, the IDF
59 threshold of 80 cm in women had higher sensitivity (97 and 100%), but lower specificity
60 (12 and 11%) to predict incident dysglycemia and type 2 diabetes, respectively.

61 **Conclusions:** In this first prospective study of incident type 2 diabetes in Africa, we
62 show that African-specific WC thresholds perform better than the IDF WC thresholds
63 to predict incident dysglycemia and type 2 diabetes.

64

65 INTRODUCTION

66 The global prevalence of type 2 diabetes is increasing, with sub-Saharan Africa (SSA)
67 having the highest projected relative rates of increase (1). The burden of type 2
68 diabetes in SSA is reflected by the high estimated type 2 diabetes-associated deaths
69 (~312,000 deaths in 2017), with 73% of these being in people under the age of 60
70 years, a higher proportion than any other region in the world (1). Within SSA, South
71 Africa (SA) has the highest number of people with type 2 diabetes (1), and type 2
72 diabetes was the second leading cause of death in SA in 2016 (5.5% of deaths), and
73 the highest amongst women (7.2% of deaths) (2). Notably, SSA has the highest
74 proportion (59.7%) of people with undiagnosed type 2 diabetes (1). Accordingly, risk
75 stratification that is accessible and cost effective is essential for the early detection of
76 type 2 diabetes to prevent or delay the progression of the disease.

77

78 Obesity, in particular central obesity, are important risk factors for type 2 diabetes (3;
79 4). Although imaging techniques are more accurate measures of total and central
80 adiposity, they are not practical or affordable for routine practice and population-based
81 risk stratification. Accordingly, anthropometric measures are used as surrogate
82 markers for risk stratification for type 2 diabetes. Body mass index (BMI) is the most
83 commonly used proxy of total adiposity, while waist circumference (WC), waist-to-hip
84 ratio (WHR) and waist-to-height ratio (WHtR) are used as proxy measures of central
85 adiposity (5). Waist circumference requires only a single measure, is not reliant on a
86 ratio that is difficult to interpret and is the most accepted marker of central adiposity
87 and disease risk (4; 6).

88

89 Waist circumference represents the sum of abdominal visceral (VAT) and
90 subcutaneous adipose tissue (SAT), with VAT being the most significant determinant
91 of type 2 diabetes (7; 8). However, we and others have shown that for the same level
92 of WC, Black Africans have less VAT than their white European counterparts (9-11).
93 Accordingly, the WC threshold used for defining risk for type 2 diabetes may differ in
94 Black Africans. Indeed, both the World Health Organization (WHO) and the
95 International Diabetes Federation (IDF) acknowledge that optimal thresholds for
96 abdominal obesity vary across different ethnicities and population groups (6; 12).
97 Although, several studies in SSA have been undertaken to identify WC thresholds for
98 risk, these have all been cross-sectional and relied on metabolic syndrome (MetS)
99 (excluding WC) as the outcome (13-16). As there is no consensus on an appropriate
100 WC threshold for Black Africans, the IDF has recommended the use of Europid
101 thresholds (≥ 80 cm in women and ≥ 94 cm in men) for SSA (6). Prospective studies
102 are therefore required to identify the optimal WC thresholds that identifies incident type
103 2 diabetes in Black African men and women.

104

105 While WC is regarded as a useful primary screening tool for type 2 diabetes, it is also
106 a key feature of the MetS, which is also typically used in risk prediction for type 2
107 diabetes and cardiovascular diseases (6). The MetS is a cluster of risk factors that
108 occur together more often than by chance alone, and in addition to WC, include
109 elevated blood pressure, fasting glucose and triglycerides, and low fasting HDL-
110 cholesterol concentrations (6). However, it is not clear whether including these
111 additional MetS risk factors improves the discriminatory ability to predict type 2
112 diabetes in African men and women when compared to WC alone.

113

114 Therefore, the aim of the study was to determine the WC thresholds for the prediction
115 of incident dysglycemia (prediabetes and type 2 diabetes) and type 2 diabetes in Black
116 SA men and women, and to compare these to advocated Europid thresholds, as
117 defined by the IDF. A secondary aim was to determine if the derived WC thresholds
118 for the prediction of incident dysglycemia and type 2 diabetes performed similarly to
119 the MetS in Black SA men and women.

120

121

122 **METHODS**

123 **Design, study population and setting**

124 Baseline data collection was part of the African WITS-INDEPTH Partnerships for
125 Genomic Research (AWI-Gen) Collaborative Centre which is a Human Heredity and
126 Health in Africa (H3A) Consortium study (17; 18), and included 1027 men and 1004
127 women from which the Middle-aged Soweto Cohort (MASC) was randomly selected
128 (n=1112). The MASC cohort is a longitudinal study of Black SA men and women
129 residing in Soweto, SA on whom baseline data was collected between 2011 and 2015,
130 and again between January 2017 and August 2018 (Figure 1). Data in this study was
131 collected from a sample of 1029 participants (502 men and 527 women) who were
132 representative of the AWI-Gen sample and did not differ in terms of age, sex,
133 sociodemographic or lifestyle factors from the main cohort (data not shown). Only
134 participants with normal glucose tolerance or impaired fasting glucose, and
135 anthropometric measures at baseline, as well as measures of glycaemia from an oral
136 glucose tolerance test at follow-up, were included in this analysis (Figure 1). Complete
137 data was available for 890 participants (452 men and 438 women).

138

139 The study was conducted in accordance with the Declaration of Helsinki and was
140 approved by the Human Research Ethics Committee (HREC) (Medical) of the
141 University of the Witwatersrand (Clearance Certificate No. M160604 and M160975).
142 Prior to inclusion in the study, all the procedures and possible risks were explained to
143 the participants prior to providing signed consent.

144

145 **Socio–demographic and health questionnaires**

146 The same interviewer-administered questionnaire was completed at both time points
147 and included age, current employment (employed/not employed), and highest
148 educational level attained (no formal schooling/elementary school, secondary school,
149 tertiary education). In addition, participants were asked to bring all other current
150 medications, including diabetes medications, to the testing facility for recording and
151 verification. Participants were classified as current smokers/non-smokers and current
152 alcohol consumers/non-consumers.

153

154 **Anthropometry and blood pressure**

155 Weight was measured to the nearest 0.1 kg using a TANITA digital scale (model: TBF-
156 410, TANITA Corporation, US). Height was measured to the nearest 0.1 cm using a
157 wall–mounted stadiometer (Holtain, Crymych, UK). Waist circumference and hip
158 circumference were measured to the nearest 0.1 cm with a non–stretchable tape.
159 Waist circumference was measured in the mid–axillary line at the midpoint between
160 the lower margin of the last palpable rib and the top of the iliac crest at the end of
161 normal expiration, and hip circumference was measured as the greatest protrusion of
162 the buttocks (12). Waist-to-hip ratio (WHR), waist-height ratio (WHtR) and body mass
163 index (BMI) were calculated. Participants were categorized according to the WHO

164 criteria: underweight (BMI <18.5 kg/m²), normal weight (BMI: 18.5-24.9 kg/m²),
165 overweight (25-29.9 kg/ m²) and obese (BMI ≥ 30 kg/ m²).

166

167 Systolic and diastolic blood pressure were measured on the left arm using a digital
168 blood pressure monitor (Omron M6, Kyoto, Japan) and appropriate cuffs. After the
169 participant had been seated for at least five minutes, three blood pressure readings
170 were taken at two-minute intervals. For each participant, the average of the second
171 and third readings were used in the analyses.

172

173 **Blood sampling and biochemistry**

174 At both baseline and follow-up, blood samples were drawn after an overnight fast (10-
175 12 hours) for the measurement of plasma glucose and serum lipid (total cholesterol,
176 HDL-cholesterol, LDL-cholesterol and triglyceride) concentrations. In the follow-up
177 sample only, participants then completed a standard 2-hour oral glucose tolerance
178 test (OGTT). After ingestion of 75 g of anhydrous glucose in 250 ml water within 5
179 minutes, blood samples were drawn at 30 min intervals for 2 hours for the subsequent
180 determination of plasma glucose concentrations. Participants with known diabetes
181 and/or those with fasting blood glucose ≥11.1 mmol/l (ACCU-CHEK® point-of-care
182 glucose analyzer, MedNet GmbH, Munster, Germany) did not complete the OGTT.

183

184 Serum lipid concentrations at baseline and plasma glucose concentrations at baseline
185 and follow-up were measured on the Randox RX Daytona Chemistry Analyzer using
186 enzymatic methods (Randox Laboratories Ltd., Crumlin, Northern Ireland). The LDL-
187 cholesterol concentrations were calculated using the Friedewald equation (19).

188

189 **Glucose tolerance and metabolic syndrome (MetS) classification**

190 Glucose tolerance was defined based on the WHO criteria (20). At baseline, only
191 fasting glucose samples were available, and hence the participants were classified as
192 having normal glucose tolerance (NGT) if fasting glucose was <6.1 mmol/L; impaired
193 fasting glucose (IFG) if fasting glucose was 6.1-6.9 mmol/l; or type 2 diabetes if fasting
194 glucose was ≥ 7 mmol/l and/or taking type 2 diabetes medications. Only those with
195 NGT or IFG at baseline were included in this study. At follow-up, glucose tolerance
196 was defined based on both fasting and 2 hour OGTT results as follows: NGT if fasting
197 glucose was <6.1 mmol/l and 2-hour post glucose load was <7.8 mmol/L; IFG (as
198 defined above); impaired glucose tolerance (IGT) if 2-hour post glucose load was 7.8–
199 11.0 mmol/L; and type 2 diabetes if fasting glucose was >7.0 mmol/L and/or 2-hour
200 post glucose load ≥ 11.1 mmol/L. Participants who were taking diabetes medications
201 were classified with type 2 diabetes. At follow-up dysglycemia, which encompasses
202 both prediabetes and diabetes, was defined as IFG and/or IGT and/or type 2 diabetes.

203

204 The presence of the MetS was based on the 2009 harmonized criteria (6). Participants
205 with three or more of the following components were classified as having the MetS: i)
206 elevated waist circumference (≥ 94 cm in men or ≥ 80 cm in women); ii) elevated fasting
207 triglycerides (≥ 1.7 mmol/L); iii) reduced fasting HDL cholesterol (<1.0 mmol/L in men
208 or <1.3 mmol/L in women); iv) elevated blood pressure (≥ 130 mmHg for systolic and/or
209 ≥ 85 mmHg for diastolic and/or using blood pressure medication); v) elevated fasting
210 glucose (≥ 5.6 mmol/L and/or using diabetes medication).

211

212 **Statistics**

213 Data analysis was conducted in STATA SE Version 15 (StataCorp, College Station,
214 Tx, USA). Normality of the data was assessed using Shapiro Wilks test. As all the
215 descriptive variables were skewed, the continuous variables are presented as median
216 (25-75th percentiles) and the categorical variables are presented as frequencies and
217 percentages. Wilcoxon-Mann-Whitney tests and Chi-square tests were used to
218 compare continuous and categorical variables between men and women, respectively.
219 Receiver operating characteristic (ROC) area-under-the-curves (AUC) were used to
220 assess and compare the ability of the baseline WC and other anthropometric
221 measures to predict incident dysglycemia (prediabetes or type 2 diabetes) and type 2
222 diabetes at follow-up. For the prediction of incident dysglycemia, only those with NGT
223 at baseline were included in the analysis, whereas for the prediction of incident type 2
224 diabetes, those with NGT and IFG at baseline were included in the analysis. Optimal
225 WC thresholds to predict incident dysglycemia and type 2 diabetes were determined
226 using Youden's index in men and women separately (21). The prognostic performance
227 of the WC thresholds derived in this longitudinal study were assessed alongside the
228 IDF-defined threshold, as well as WC thresholds defined in other South African and
229 African cross-sectional studies that have been used to predict the presence of at least
230 two components of the MetS, excluding WC (22). These studies were used as
231 comparators as, to our knowledge, there are no other studies that have previously
232 defined WC thresholds for predicting incident type 2 diabetes in Africa. Finally, we
233 determined whether including additional MetS risk factors together with the derived
234 WC threshold improved the prediction of incident dysglycemia and type 2 diabetes
235 compared to the derived WC thresholds alone.

236 **RESULTS**

237 *Participant characteristics*

238 At baseline, the sample were middle-aged (~50 years) with men being slightly older
239 than women (Table 1). More men were employed (65.0% vs. 53.0%, $p<0.001$) and
240 had completed secondary (75.0 vs. 16.9%) and tertiary education (16.4% vs. 0%),
241 compared to women (both $p<0.001$). In addition, more men than women currently
242 smoked any form of tobacco (52.2% vs. 5.3%, $p<0.001$). In contrast, women had
243 significantly higher BMI and a greater proportion of women compared to men were
244 classified with overweight or obesity (88.6% vs. 47.4%, $p<0.001$, Table 1). Accordingly,
245 WC and WHtR were higher, but WHR was lower in women compared to men (Table
246 1). Fasting glucose concentrations were higher in men compared to women, but
247 women had higher triglyceride, total- and LDL-cholesterol concentrations compared to
248 men, while HDL-cholesterol concentrations did not differ (Table 1). Similarly, both
249 systolic and diastolic blood pressure did not differ by sex. In terms of the sex
250 differences in MetS criteria, a greater proportion of women had elevated WC, while a
251 greater proportion of men had elevated fasting glucose and reduced HDL-cholesterol
252 concentrations; however, the prevalence of MetS did not differ significantly between
253 men and women.

254

255 The median (25-75th percentile) follow-up times were 3.1 (2.9-3.5) years in men and
256 4.8 (4.0-5.5) years in women. Of the 430 men and 421 women with NGT at baseline,
257 73 men and 101 women developed dysglycemia at follow-up, resulting in a cumulative
258 incidence (95% confidence incidence (CI)) of 17.0 (13.4-28.1)% in men and 24.0
259 (19.9-41.1)% in women. Of the 452 men and 438 women with NGT or IFG at baseline,
260 20 men and 47 women developed type 2 diabetes at follow-up, resulting in a lower

261 cumulative incidence of type 2 diabetes (95% CI) in men (4.4 (2.5-5.9)%) compared
262 to women (10.7 (7.8-16.8)%).

263

264 *Comparative abilities of anthropometric measures to predict incident dysglycemia and*
265 *type 2 diabetes*

266 When comparing the discriminatory power of the anthropometric measures to predict
267 incident dysglycemia and type 2 diabetes in men and women (Supplementary Table
268 S1), we showed that there were no significant differences between any of the AUC's,
269 except where WHtR performed better than BMI in predicting dysglycemia in men
270 ($p=0.017$). As WC is a single simple measure that is most commonly used for risk
271 prediction (6) and recommended for clinical practice (4), we chose to use this measure
272 in all subsequent analyses.

273

274 *Performance of different WC thresholds to predict incident dysglycemia and type 2*
275 *diabetes*

276 The ROC analyses for WC to predict incident dysglycemia and type 2 diabetes in men
277 and women are presented in Figure 2. Waist circumference showed acceptable
278 discrimination to predict dysglycemia and type 2 diabetes in men and women, with the
279 AUCs being higher in men than women (Figure 2). Based on the Youden's index, the
280 optimal WC thresholds to predict incident dysglycemia in men and women were 96.8
281 cm and 91.8 cm, respectively (Table 2). In men, this threshold was similar to the IDF
282 threshold of 94 cm, and accordingly had similar sensitivity, specificity, and positive and
283 negative predictive values. However, the threshold of 96.8 cm was higher than those
284 derived from cross-sectional studies of other African populations to detect MetS (84-
285 90 cm), with a resultant lower sensitivity, but higher specificity.

286

287 In women, the threshold of 91.8 cm to predict incident dysglycemia was higher than
288 the IDF recommended threshold of 80 cm but was similar to most thresholds from
289 other African studies to detect MetS (Table 2). Although the sensitivity was lower than
290 the IDF threshold (0.86 vs. 0.97), the specificity (0.37 vs. 0.12) was higher using the
291 derived threshold of 91.8 cm.

292

293 The optimal WC threshold to predict incident type 2 diabetes in men (Table 3) was the
294 same as that for dysglycemia (96.8 cm) and consequently all the performance
295 variables are the same as those reported for dysglycemia in Table 2. In contrast, the
296 optimal WC threshold to predict incident type 2 diabetes in women was 95.8 cm (Table
297 3), which is similar to the threshold for dysglycemia and type 2 diabetes in men, but
298 higher than the threshold for dysglycemia (91.8 cm), and the IDF cut point (80 cm) and
299 most other thresholds derived to detect MetS in African women (81-94 cm). Although
300 the sensitivity of the optimal threshold of 95.8 cm was lower than IDF (0.85 vs. 1.00)
301 and other African studies (0.87-1.00), the specificity was higher (0.45 vs. 0.11 and
302 0.12-0.40).

303

304 *Comparative ability of derived WC thresholds vs. MetS to predict incident dysglycemia*
305 *and type 2 diabetes*

306 We then determined whether including additional MetS risk factors together with the
307 derived WC thresholds improved the prediction of incident dysglycemia and type 2
308 diabetes compared to the derived WC thresholds alone. In Tables 2 and 3, we showed
309 that the cut-point to predict incident dysglycemia and T2D in men, and T2D in women
310 were similar (~96 cm). Other African studies that have examined cut-points to detect

311 MetS have also suggested similar cut-points for men and women (13; 15; 16). Thus,
312 we used the WC cut-point of 96 cm in both men and women as the WC component of
313 MetS and compared this to the WC cut-points alone, to predict incident dysglycemia
314 and T2D in men and women (Tables 2 and 3). Despite including additional risk factors,
315 MetS had lower sensitivity, but similar specificity compared to the optimal WC
316 threshold of 96.8 cm to predict incident dysglycemia and type 2 diabetes in men
317 (Tables 2 and 3). In contrast, the sensitivity of MetS using a WC threshold of 96cm to
318 predict both incident dysglycemia and type 2 diabetes in women was lower than the
319 derived thresholds alone, while the specificity was higher (Tables 2 and 3).

320

321

322 **DISCUSSION**

323 This is the first prospective study to examine WC thresholds to predict incident
324 dysglycemia and type 2 diabetes in an African population and showed that the optimal
325 thresholds differed to those in European populations. The optimal thresholds to predict
326 incident dysglycemia and type 2 diabetes in Black SA men were 96.8 cm for both
327 outcomes and in women 91.8 and 95.8 cm, respectively. Importantly, these African-
328 specific WC thresholds had higher specificity than the IDF Europid thresholds.

329

330 The WC thresholds to predict incident dysglycemia and type 2 diabetes in women
331 were higher than the IDF threshold of 80 cm. This is consistent with the findings of
332 several cross-sectional studies in SA that detected MetS, defined as at least two
333 components of the MetS excluding WC, and reported optimal thresholds of 90-94 cm
334 (13; 14; 16; 23). We showed that in women the thresholds of 91.8 and 95.8 cm had
335 lower sensitivity and higher specificity than the IDF threshold to predict incident

336 dysglycemia and type 2 diabetes, respectively. The specificity of the IDF threshold
337 was as low as 0.11, suggesting 89% of Black SA women who will remain free of
338 dysglycemia or type 2 diabetes over time may be incorrectly classified among those
339 who will go on to develop the conditions if this threshold was used alone as a risk
340 screening tool.

341

342 Nonetheless, the devised African-specific threshold still had low specificity (0.37 and
343 0.45) for incident dysglycemia and type 2 diabetes in Black SA women. This was also
344 lower than that reported in Black SA men using the derived threshold of 96.8 cm
345 (specificity ~0.70). The poor discriminatory ability of the WC thresholds to predict
346 incident dysglycaemia and type 2 diabetes in women may be due to their high levels
347 of obesity (66.7% vs. 20.9%) and central obesity (90% WC >80 cm vs. 37.6% WC >94
348 cm) compared to the men in this sample. However, this is representative of men and
349 women of this age group in SA (24). Further, these discrepant findings may be
350 explained by the stronger association between total and central adiposity and type 2
351 diabetes risk in Black SA men compared to Black SA women (Kufe et al, in review).
352 Waist circumference incorporates both VAT and SAT; and it has been shown in Black
353 South Africans and African-born Black people living in America that for the same WC,
354 women have less VAT and more abdominal SAT than men (25) (Kufe et al., in review).
355 Higher SAT for every level of VAT explained the higher WC cut point required for
356 predicting insulin resistance in African-born black women living in America compared
357 to their male counterparts (96 cm vs. 91 cm) (25). Further, a prospective study in Black
358 SA women showed that only VAT, but not SAT, predicted the development of T2D (7).
359 Accordingly, high levels of SAT in Black SA women may mask the association with
360 VAT and lead to poor discriminatory power of WC to predict incident type 2 diabetes.

361

362 Previous studies from SSA have suggested that the WC of risk should be similar for
363 African men and women (13; 15; 16). The findings from this study support this
364 recommendation. Indeed, a WC of 96.8 cm predicted both incident dysglycemia and
365 type 2 diabetes in men, whilst a very similar WC of 95.8 cm predicted incident type 2
366 diabetes in women. However, larger longitudinal studies are required to confirm our
367 findings for the SA population. We do agree that WC thresholds are dependent on the
368 underlying obesity prevalence and should be region specific (15).

369

370 Another important finding of this study was that when including additional MetS risk
371 factors together with the derived WC threshold to predict incident dysglycemia and
372 type 2 diabetes in men, the predictive accuracy did not change. In contrast, in women,
373 the inclusion of the additional MetS risk factors resulted in a decrease in sensitivity
374 (0.85-0.86 to 0.38-0.49), but an increase in specificity (0.37-0.45 to 0.80-0.76). In both
375 men and women, the most common feature of MetS were reduced HDL-cholesterol
376 and elevated blood pressure. In African populations, reduced HDL-cholesterol levels
377 are not necessarily a marker of cardiometabolic risk, and the WHO sex-based cut-offs
378 are inappropriate (26-28); while blood pressure is a risk factor for cardiovascular
379 disease rather than type 2 diabetes. Further, it has been previously shown that MetS
380 and its components, in particular triglyceride and HDL-cholesterol levels, are not
381 associated with insulin resistance in Black African women (29-31) and that MetS may
382 not be a good indicator of cardiometabolic risk in Black African populations (32-34).
383 The time and cost associated with these additional measures is unlikely to offset the
384 reduction in false positives associated with WC measures alone in Black SA women.
385 Concomitantly, this highlights the need for future studies to establish accessible and

386 cost-effective risk biomarkers that have high sensitivity and specificity for the early
387 detection of type 2 diabetes in SSA.

388

389 The major strengths of this study are the prospective design and the diagnosis of
390 incident dysglycemia and type 2 diabetes using an OGTT. To date, all studies that
391 have explored thresholds for WC have been cross-sectional and were designed for
392 identifying the optimal WC cut point for detecting MetS (13; 14; 16; 23). We used an
393 OGTT to diagnose type 2 diabetes at follow-up, which is considered the gold standard,
394 particularly in African populations where fasting glucose and HbA1c may perform sub-
395 optimally (35-38). Another strength of this study is the inclusion of equal numbers of
396 men and women. Most studies in SA have either focused on women only or included
397 small samples of men (13-16; 23). Limitations of the study include the relatively small
398 sample size that precluded the validation of the threshold in a sub-sample of the
399 participants.

400

401 In conclusion, we show for the first time using prospective cohort data from SA that
402 African-specific thresholds derived for WC perform better than the IDF Europid WC
403 thresholds for predicting incident dysglycemia and type 2 diabetes in Black SA men
404 and women.

405

406

407 **ACKNOWLEDGEMENTS**

408

409 **Author contributions:** The authors confirm contribution to the paper as follows: study
410 conception and design: JHG and LKM; data collection: CK, MM, TC; data analysis:
411 JHG, KN, APK; interpretation of results: JHG, KN, APK, AEM, SAM, NJC, FK, TO,
412 LKM; draft manuscript preparation: JHG; All authors reviewed the results and
413 approved the final version of the manuscript.

414 Julia H. Goedecke is the guarantor and takes full responsibility for the contents of the
415 manuscript.

416

417 **Funding:** The study was jointly funded by the South African Medical Research
418 Council (MRC) from South African National Department of Health, MRC UK (via the
419 Newton Fund) and GSK Africa Non-Communicable Disease Open Lab (via a
420 supporting Grant project Number: ES/N013891/1) and South African National
421 Research Foundation (Grant no: UID:99108). TC is an International Training Fellow
422 supported by the Wellcome Trust grant (214205/Z/18/Z).

Acknowledgements: We are grateful to the participants as well as the following
DPHRU staff for their input during data collection and entry: Vukosi Mkansi, Sphume
Thango, Mosadiapula Nakedi, Bonisiwe Mlambo, Melikhanya Soboyisi, Tshifhiwa
Ratshikombo, and team.

423

424 **Conflict of interest:** The authors declare no conflicts of interest.

425

426 **Data availability:** Some or all datasets generated during and/or analyzed during the
427 current study are not publicly available but are available from the corresponding
428 author on reasonable request.

429

430 **References**

- 431 1. Saeedi P, Petersohn I, Salpea P, Malanda B, Karuranga S, Unwin N, Colagiuri S,
432 Guariguata L, Motala AA, Ogurtsova K, Shaw JE, Bright D, Williams R, Committee IDFDA.
433 Global and regional diabetes prevalence estimates for 2019 and projections for 2030 and
434 2045: Results from the International Diabetes Federation Diabetes Atlas, 9(th) edition.
435 *Diabetes Res Clin Pract* 2019;157:107843
- 436 2. STATS-SA. Mortality and causes of death in South Africa, 2016: Findings from death
437 notification. *Statistics South Africa*, 2018, p. 1-142
- 438 3. Okosun IS, Cooper RS, Rotimi CN, Osotimehin B, Forrester T. Association of waist
439 circumference with risk of hypertension and type 2 diabetes in Nigerians, Jamaicans, and
440 African-Americans. *Diabetes Care* 1998;21:1836-1842
- 441 4. Ross R, Neeland IJ, Yamashita S, Shai I, Seidell J, Magni P, Santos RD, Arsenault B,
442 Cuevas A, Hu FB, Griffin BA, Zambon A, Barter P, Fruchart JC, Eckel RH, Matsuzawa Y,
443 Despres JP. Waist circumference as a vital sign in clinical practice: a Consensus Statement
444 from the IAS and ICCR Working Group on Visceral Obesity. *Nat Rev Endocrinol*
445 2020;16:177-189
- 446 5. Pi-Sunyer FX. Obesity: criteria and classification. *Proc Nutr Soc* 2000;59:505-509
- 447 6. Alberti KG, Eckel RH, Grundy SM, Zimmet PZ, Cleeman JI, Donato KA, Fruchart JC,
448 James WP, Loria CM, Smith SC, Jr., International Diabetes Federation Task Force on E,
449 Prevention, National Heart L, Blood I, American Heart A, World Heart F, International
450 Atherosclerosis S, International Association for the Study of O. Harmonizing the metabolic
451 syndrome: a joint interim statement of the International Diabetes Federation Task Force on
452 Epidemiology and Prevention; National Heart, Lung, and Blood Institute; American Heart
453 Association; World Heart Federation; International Atherosclerosis Society; and International
454 Association for the Study of Obesity. *Circulation* 2009;120:1640-1645
- 455 7. Mtintsilana A, Micklesfield LK, Chorell E, Olsson T, Goedecke JH. Fat redistribution and
456 accumulation of visceral adipose tissue predicts type 2 diabetes risk in middle-aged black
457 South African women: a 13-year longitudinal study. *Nutr Diabetes* 2019;9:12
- 458 8. Chantler S, Dickie K, Micklesfield LK, Goedecke JH. Longitudinal Changes in Body Fat
459 and Its Distribution in Relation to Cardiometabolic Risk in Black South African Women.
460 *Metab Syndr Relat Disord* 2015;13:381-388
- 461 9. Goedecke JH, Levitt NS, Lambert EV, Utschneider KM, Faulenbach MV, Dave JA, West
462 S, Victor H, Evans J, Olsson T, Walker BR, Seckl JR, Kahn SE. Differential effects of
463 abdominal adipose tissue distribution on insulin sensitivity in black and white South African
464 women. *Obesity (Silver Spring)* 2009;17:1506-1512
- 465 10. Keswell D, Tootla M, Goedecke JH. Associations between body fat distribution, insulin
466 resistance and dyslipidaemia in black and white South African women. *Cardiovasc J Afr*
467 2016;27:177-183

- 468 11. Sumner AE, Micklesfield LK, Ricks M, Tambay AV, Avila NA, Thomas F, Lambert EV,
469 Levitt NS, Evans J, Rotimi CN, Tulloch-Reid MK, Goedecke JH. Waist circumference, BMI,
470 and visceral adipose tissue in white women and women of African descent. *Obesity* (Silver
471 Spring) 2011;19:671-674
- 472 12. World Health Organisation. Waist circumference and waist-hip ratio: report of a WHO
473 expert Consultation. Geneva, 2011
- 474 13. Matsha TE, Hassan MS, Hon GM, Soita DJ, Kengne AP, Erasmus RT. Derivation and
475 validation of a waist circumference optimal cutoff for diagnosing metabolic syndrome in a
476 South African mixed ancestry population. *Int J Cardiol* 2013;168:2954-2955
- 477 14. Crowther NJ, Norris SA. The current waist circumference cut point used for the diagnosis
478 of metabolic syndrome in sub-Saharan African women is not appropriate. *PLoS One*
479 2012;7:e48883
- 480 15. Ekoru K, Murphy GAV, Young EH, Delisle H, Jerome CS, Assah F, Longo-Mbenza B,
481 Nzambi JPD, On'Kin JBK, Buntix F, Muyer MC, Christensen DL, Wesseh CS, Sabir A,
482 Okafor C, Gezawa ID, Puepet F, Enang O, Raimi T, Ohwovoriole E, Oladapo OO, Bovet P,
483 Mollentze W, Unwin N, Gray WK, Walker R, Agoudavi K, Siziya S, Chifamba J, Njelekela M,
484 Fourie CM, Kruger S, Schutte AE, Walsh C, Gareta D, Kamali A, Seeley J, Norris SA,
485 Crowther NJ, Pillay D, Kaleebu P, Motala AA, Sandhu MS. Deriving an optimal threshold of
486 waist circumference for detecting cardiometabolic risk in sub-Saharan Africa. *Int J Obes*
487 (Lond) 2017;
- 488 16. Motala AA, Esterhuizen T, Pirie FJ, Omar MA. The prevalence of metabolic syndrome
489 and determination of the optimal waist circumference cutoff points in a rural South african
490 community. *Diabetes Care* 2011;34:1032-1037
- 491 17. Ali SA, Soo C, Agongo G, Alberts M, Amenga-Etego L, Boua RP, Choudhury A,
492 Crowther NJ, Depuur C, Gomez-Olive FX, Guiraud I, Haregu TN, Hazelhurst S, Kahn K,
493 Khayeka-Wandabwa C, Kyobutungi C, Lombard Z, Mashinya F, Micklesfield L, Mohamed
494 SF, Mukomana F, Nakanabo-Diallo S, Natama HM, Ngomi N, Nonterah EA, Norris SA,
495 Oduro AR, Some AM, Sorgho H, Tindana P, Tinto H, Tollman S, Twine R, Wade A, Sankoh
496 O, Ramsay M. Genomic and environmental risk factors for cardiometabolic diseases in
497 Africa: methods used for Phase 1 of the AWI-Gen population cross-sectional study. *Glob*
498 *Health Action* 2018;11:1507133
- 499 18. Ramsay M, Crowther N, Tambo E, Agongo G, Baloyi V, Dikotope S, Gomez-Olive X, Jaff
500 N, Sorgho H, Wagner R, Khayeka-Wandabwa C, Choudhury A, Hazelhurst S, Kahn K,
501 Lombard Z, Mukomana F, Soo C, Soodyall H, Wade A, Afolabi S, Agorinya I, Amenga-Etego
502 L, Ali SA, Bognini JD, Boua RP, Depuur C, Diallo S, Fato E, Kazienga A, Konkobo SZ,
503 Kouraogo PM, Mashinya F, Micklesfield L, Nakanabo-Diallo S, Njamwea B, Nonterah E,
504 Ouedraogo S, Pillay V, Somande AM, Tindana P, Twine R, Alberts M, Kyobutungi C, Norris
505 SA, Oduro AR, Tinto H, Tollman S, Sankoh O. H3Africa AWI-Gen Collaborative Centre: a
506 resource to study the interplay between genomic and environmental risk factors for
507 cardiometabolic diseases in four sub-Saharan African countries. *Glob Health Epidemiol*
508 *Genom* 2016;1:e20
- 509 19. Friedewald WT, Levy RI, Fredrickson DS. Estimation of the Concentration of Low-
510 Density Lipoprotein Cholesterol in Plasma, Without Use of the Preparative Ultracentrifuge.
511 *Clinical Chemistry* 1972;18:499-502
- 512 20. World Health Organization, International Diabetes F. Definition and diagnosis of diabetes
513 mellitus and intermediate hyperglycaemia : report of a WHO/IDF consultation. Geneva,
514 World Health Organization, 2006
- 515 21. Youden WJ. Index for rating diagnostic tests. *Cancer* 3:4

- 516 22. Bewick V, Cheek L, Ball J. Statistics review 13: receiver operating characteristic curves.
517 Crit Care 2004;8:508-512
- 518 23. Peer N, Steyn K, Levitt N. Differential obesity indices identify the metabolic syndrome in
519 Black men and women in Cape Town: the CRIBSA study. J Public Health (Oxf)
520 2016;38:175-182
- 521 24. National Department of Health, ICF. South Africa Demographic and Health Survey 2016.
522 Pretoria, National Department of Health - NDoH - ICF, 2019
- 523 25. Kabakambira JD, Baker RL, Jr., Briker SM, Courville AB, Mabundo LS, DuBose CW,
524 Chung ST, Eckel RH, Sumner AE. Do current guidelines for waist circumference apply to
525 black Africans? Prediction of insulin resistance by waist circumference among Africans living
526 in America. BMJ Glob Health 2018;3:e001057
- 527 26. Woudberg NJ, Goedecke JH, Blackhurst D, Frias M, James R, Opie LH, Lecour S.
528 Association between ethnicity and obesity with high-density lipoprotein (HDL) function and
529 subclass distribution. Lipids Health Dis 2016;15:92
- 530 27. Woudberg NJ, Lecour S, Goedecke JH. HDL Subclass Distribution Shifts with Increasing
531 Central Adiposity. Journal of Obesity 2019;2019:1-6
- 532 28. Greiner R, Nyrienda M, Rodgers L, Asiki G, Banda L, Shields B, Hattersley A, Crampin
533 A, Newton R, Jones A. Associations between low HDL, sex and cardiovascular risk markers
534 are substantially different in sub-Saharan Africa and the UK: analysis of four population
535 studies. BMJ Glob Health 2021;6
- 536 29. Knight MG, Goedecke JH, Ricks M, Evans J, Levitt NS, Tulloch-Reid MK, Sumner AE.
537 The TG/HDL-C ratio does not predict insulin resistance in overweight women of African
538 descent: a study of South African, African American and West African women. Ethn Dis
539 2011;21:490-494
- 540 30. Sumner AE, Cowie CC. Ethnic differences in the ability of triglyceride levels to identify
541 insulin resistance. Atherosclerosis 2008;196:696-703
- 542 31. Sumner AE, Zhou J, Doumatey A, Imoisili OE, Amoah A, Acheampong J, Oli J, Johnson
543 T, Adebamowo C, Rotimi CN. Low HDL-Cholesterol with Normal Triglyceride Levels is the
544 Most Common Lipid Pattern in West Africans and African Americans with Metabolic
545 Syndrome: Implications for Cardiovascular Disease Prevention. CVD Prev Control
546 2010;5:75-80
- 547 32. Sumner AE. Ethnic differences in triglyceride levels and high-density lipoprotein lead to
548 underdiagnosis of the metabolic syndrome in black children and adults. J Pediatr
549 2009;155:S7 e7-11
- 550 33. Yu SS, Ramsey NL, Castillo DC, Ricks M, Sumner AE. Triglyceride-based screening
551 tests fail to recognize cardiometabolic disease in African immigrant and African-American
552 men. Metab Syndr Relat Disord 2013;11:15-20
- 553 34. Evans J, Micklesfield L, Jennings C, Levitt NS, Lambert EV, Olsson T, Goedecke JH.
554 Diagnostic ability of obesity measures to identify metabolic risk factors in South African
555 women. Metab Syndr Relat Disord 2011;9:353-360
- 556 35. Kengne AP, Erasmus RT, Levitt NS, Matsha TE. Alternative indices of glucose
557 homeostasis as biochemical diagnostic tests for abnormal glucose tolerance in an African
558 setting. Prim Care Diabetes 2017;11:119-131
- 559 36. Wade AN, Crowther NJ, Abrahams-Gessel S, Berkman L, George JA, Gomez-Olive FX,
560 Manne-Goehler J, Salomon JA, Wagner RG, Gaziano TA, Tollman SM, Cappola AR.
561 Concordance between fasting plasma glucose and HbA1c in the diagnosis of diabetes in
562 black South African adults: a cross-sectional study. BMJ Open 2021;11:e046060

- 563 37. Peer N, Steyn K, Lombard C, Lambert EV, Vythilingum B, Levitt NS. Rising diabetes
564 prevalence among urban-dwelling black South Africans. PLoS One 2012;7:e43336
- 565 38. Motala AA, Esterhuizen T, Gouws E, Pirie FJ, Omar MA. Diabetes and other disorders of
566 glycemia in a rural South African community: prevalence and associated risk factors.
567 Diabetes Care 2008;31:1783-1788
- 568

569 **Table 1.** Characteristics of men and women at baseline
570

	Men (n=452)	Women (n=438)	P value
Age (years)	50 (45-55)	49 (45-54)	0.017
Anthropometry			
BMI (kg/m ²)	24.5 (20.8-29.1)	32.8 (28.5-37.3)	<0.001
Waist circumference (cm)	88.1 (78.0-100.0)	98.1 (89.5-107.0)	<0.001
Hip circumference (cm)	99.4 (91.2-106.1)	117.0 (108.5-126.0)	<0.001
WHR	0.90 (0.85-0.95)	0.84 (0.78-0.89)	<0.001
WHtR	0.52 (0.46-0.58)	0.62 (0.56-0.67)	<0.001
BMI categories			
Underweight (%(n))	10.0 (46)	0.5 (2)	<0.001
Normal weight (%(n))	42.6 (196)	11.0 (48)	
Overweight (%(n))	26.5 (122)	21.9 (96)	
Obese (%(n))	20.9 (96)	66.7 (292)	
Biochemistry			
Fasting glucose (mmol/l)	5.1 (4.7-5.4)	4.8 (4.5-5.2)	<0.001
Triglycerides (mmol/l)	0.9 (0.6-1.3)	1.0 (0.7-1.4)	<0.001
Total cholesterol (mmol/l)	4.1 (3.4-4.8)	4.5 (3.8-5.2)	<0.001
HDL-cholesterol (mmol/l)	1.2 (0.9-1.5)	1.2 (1.0-1.5)	0.063
LDL-cholesterol (mmol/l)	2.5 (1.8-3.1)	2.7 (2.2-3.3)	<0.001
Blood pressure			
Systolic (mmHg)	129.0 (117.0-144.0)	128.5 (117.0-141.5)	0.518
Diastolic (mmHg)	88.8 (79.5-96.5)	87.5 (79.0-96.0)	0.357
Metabolic syndrome (JIS)			
Elevated WC (%(n))	37.6 (170)	90.4 (396)	<0.001
Elevated fasting glucose (%(n))	15.9 (72)	10.5 (46)	0.017
Elevated triglycerides (%(n))	13.1 (59)	14.4 (63)	0.564
Reduced HDL-cholesterol (%(n))	69.3 (313)	46.1 (202)	<0.001
Elevated blood pressure (%(n))	61.3 (279)	59.6 (261)	0.514
MetS (%(n))	30.3 (137)	35.4 (155)	0.107

571
572 Values are median (25-75th percentile). WHR, waist-to-hip ratio; WHtR, waist-to-
573 height ratio; MetS, metabolic syndrome, defined using the Joint Interim Statement
574 (JIS) (6) and defined as meeting any three of the following criteria: elevated waist
575 circumference (≥ 80 cm in women; ≥ 94 cm in men); elevated blood glucose (≥ 5.6
576 mmol/l and/or using diabetes medication); elevated fasting triglycerides (≥ 1.7
577 mmol/L); reduced fasting HDL-cholesterol (< 1.0 mmol/L in men, < 1.3 mmol/L in
578 women); elevated blood pressure ($\geq 135/85$ mmHg and/or using antihypertension
579 medication).
580

581 **Table 2.** Performance measures of different waist circumference thresholds to
 582 predict incident dysglycemia in Black African men and women
 583

Reference	Cut-off (cm)	Sensitivity (95%CI)	Specificity (95%CI)	PPV (95%CI)	NPV (95%CI)	Youden index (95% CI)
Men						
Youden	96.8	0.56 (0.44-0.68)	0.74 (0.69-0.78)	0.30 (0.23-0.39)	0.89 (0.85-0.92)	0.30 (0.13-0.46)
IDF (6)	94	0.59 (0.47-0.70)	0.68 (0.63-0.73)	0.27 (0.21-0.35)	0.89 (0.85-0.92)	0.27 (0.10-0.43)
Matsha et al. (13)	90	0.66 (0.54-0.76)	0.59 (0.54-0.64)	0.25 (0.19-0.31)	0.89 (0.85-0.93)	0.25 (0.07-0.40)
Ekoru et al. (15)	81	0.82 (0.72-0.90)	0.35 (0.30-0.40)	0.20 (0.16-0.26)	0.91 (0.84-0.95)	0.17 (0.01-0.30)
Motala et al. (16)	86	0.68 (0.57-0.79)	0.48 (0.43-0.53)	0.21 (0.16-0.27)	0.88 (0.83-0.92)	0.17 (0.01-0.32)
Peer et al. (23)	83.9	0.74 (0.62-0.84)	0.45 (0.40- 0.50)	0.22 (0.17-0.27)	0.89 (0.84-0.94)	0.19 (0.02-0.34)
MetS	96	0.44 (0.32-0.56)	0.77 (0.72-0.81)	0.28 (0.20-0.37)	0.87 (0.83-0.90)	0.21 (0.04-0.37)
Women						
Youden	91.8	0.86 (0.78-0.92)	0.37 (0.32-0.42)	0.30 (0.25-0.36)	0.89 (0.83-0.94)	0.23 (0.09-0.35)
IDF (6)	80	0.97 (0.92-0.99)	0.12 (0.09-0.16)	0.26 (0.22-0.31)	0.93 (0.81-0.99)	0.09 (0.01-0.16)
Matsha et al. (13)	90	0.88 (0.80-0.94)	0.31 (0.26- 0.36)	0.29 (0.24-0.34)	0.89 (0.82-0.94)	0.19 (0.06-0.30)
Ekoru et al. (15)	81	0.97 (0.92-0.99)	0.14 (0.10- 0.18)	0.26 (0.22-0.31)	0.94 (0.83-0.99)	0.11 (0.02-0.18)
Motala et al. (16)	92	0.86 (0.78-0.92)	0.37 (0.32- 0.42)	0.30 (0.25-0.36)	0.89 (0.83-0.94)	0.23 (0.09-0.35)
Crowther et al. (14)	91.5	0.86 (0.78-0.92)	0.36 (0.30- 0.41)	0.30 (0.25-0.35)	0.89 (0.82-0.94)	0.22 (0.08-0.33)
Peer et al. (23)	94	0.76 (0.67-0.84)	0.43 (0.37-0.48)	0.30 (0.24-0.36)	0.85 (0.79-0.90)	0.19 (0.04-0.33)
MetS	96	0.38 (0.28-0.48)	0.80 (0.75-0.84)	0.37 (0.28-0.47)	0.80 (0.75-0.84)	0.17 (0.03-0.32)

584 Dysglycemia defined as impaired fasting glucose and/or impaired glucose tolerance
 585 or type 2 diabetes; IDF, International Diabetes Federation; Sensitivity = TP/(TP+FN);
 586 Specificity = TN/(TN+FP); PPV, positive predictive value = TP/(TP+FP); NPV,
 587 negative predictive value = sensitivity/1-specificity; Youden's index = (sensitivity +
 588 specificity)– 1, where TP, true positive; FP, false positive; TN, true negative; FN,
 589 false negative; MetS, metabolic syndrome using a waist circumference threshold of
 590 96 cm for men and women derived from this study.

591

592 **Table 3.** Performance measures of different waist circumference thresholds to
 593 predict incident type 2 diabetes in Black African men and women
 594

Reference	Cut-off (cm)	Sensitivity (95%CI)	Specificity (95%CI)	PPV (95%CI)	NPV (95%CI)	Youden index (95% CI)
Men						
Youden	96.8	0.70 (0.46-0.88)	0.70 (0.65-0.74)	0.10 (0.05-0.16)	0.98 (0.96- 0.99)	0.40 (0.11- 0.62)
IDF (6)	94	0.70 (0.46-0.88)	0.64 (0.59-0.68)	0.08 (0.05-0.13)	0.98 (0.95- 0.99)	0.34 (0.05-0.57)
Matsha et al. (13)	90	0.75 (0.51-0.91)	0.55 (0.50-0.59)	0.07 (0.04-0.11)	0.98 (0.95- 0.99)	0.30 (0.01-0.51)
Ekoru et al. (15)	81	0.90 (0.68-0.99)	0.32 (0.27-0.36)	0.06 (0.03-0.09)	0.99 (0.95- 1.00)	0.22 (-0.04-0.35)
Motala et al. (16)	86	0.85 (0.62-0.97)	0.45 (0.40-0.50)	0.07 (0.04-0.10)	0.98 (0.96- 1.00)	0.30 (0.02-0.46)
Peer et al. (23)	83.9	0.85 (0.62-0.87)	0.41 (0.37-0.46)	0.06 (0.04-0.10)	0.98 (0.95- 1.00)	0.26 (-0.01-0.43)
MetS	96	0.45 (0.23-0.68)	0.72 (0.68-0.77)	0.07 (0.03-0.13)	0.97 (0.94-0.98)	0.17 (-0.09-0.45)
Women						
Youden	95.8	0.85 (0.72-0.94)	0.45 (0.40-0.50)	0.16 (0.11-0.21)	0.96 (0.92 0.98)	0.30 (0.12- 0.44)
IDF (6)	80	1.00 (0.92-1.00)	0.11 (0.08-0.14)	0.12 (0.09-0.15)	1.00 (0.92- 1.00)	0.11 (0.01-0.14)
Matsha et al. (13)	90	0.91 (0.80-0.98)	0.28 (0.23-0.32)	0.13 (0.10-0.17)	0.96 (0.91- 0.99)	0.19 (0.03-0.30)
Ekoru et al. (15)	81	1.00 (0.92-1.00)	0.12 (0.09-0.16)	0.12 (0.09-0.16)	1.00 (0.93- 1.00)	0.12 (0.02-0.16)
Motala et al. (16)	92	0.91 (0.80-0.98)	0.33 (0.29-0.38)	0.14 (0.10-0.19)	0.97 (0.93- 0.99)	0.24 (0.08-0.36)
Crowther et al. (14)	91.5	0.91 (0.80-0.98)	0.32 (0.28-0.37)	0.14 (0.10-0.18)	0.97 (0.92- 0.99)	0.24 (0.07-0.35)
Peer et al. (23)	94	0.87 (0.74-0.95)	0.40 (0.36-0.45)	0.15 (0.11-0.20)	0.96 (0.92-0.99)	0.28 (0.10-0.41)
MetS	96	0.49 (0.34-0.64)	0.76 (0.72-0.80)	0.20 (0.13-0.28)	0.93 (0.89-0.95)	0.25 (0.06-0.44)

595 IDF, International Diabetes Federation; Sensitivity = TP/(TP+FN); Specificity =
 596 TN/(TN+FP); PPV, positive predictive value = TP/(TP+FP); NPV, negative predictive
 597 value = sensitivity/1-specificity; Youden's index = (sensitivity + specificity)– 1, where
 598 TP, true positive; FP, false positive; TN, true negative; FN, false negative; MetS,
 599 metabolic syndrome using a waist circumference threshold of 96 cm for men and
 600 women derived from this study.

601

602

603 **FIGURE LEGENDS**

604

605 **Figure 1.** Consort Diagram for the Middle Aged Sowetan Cohort (MASC) waist

606 circumference study

607

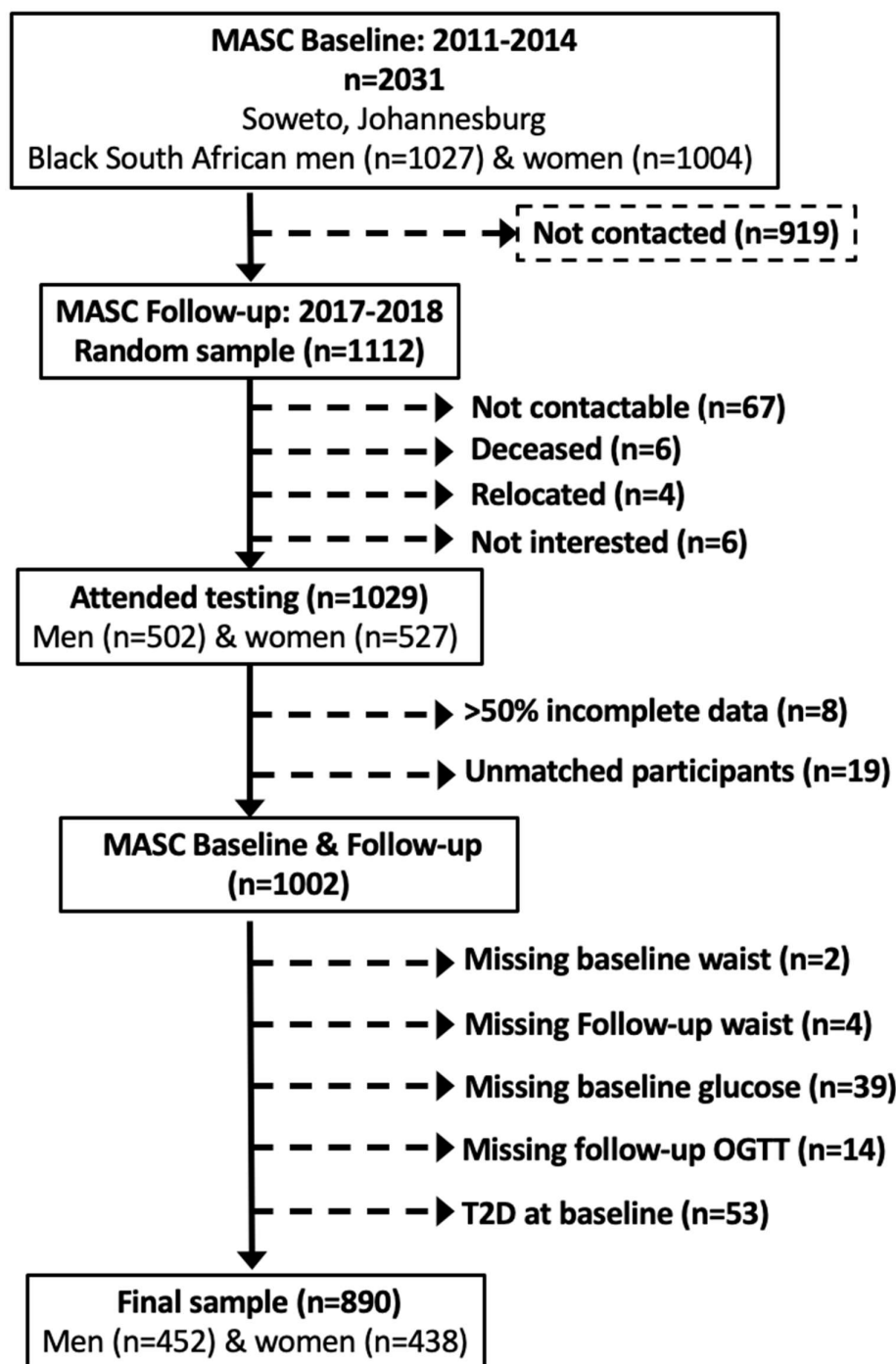
608 **Figure 2.** Receiver operating characteristics (ROC) curve of waist circumference to

609 predict incident dysglycemia (A) and type 2 diabetes (B) in Black African men and

610 women.

611

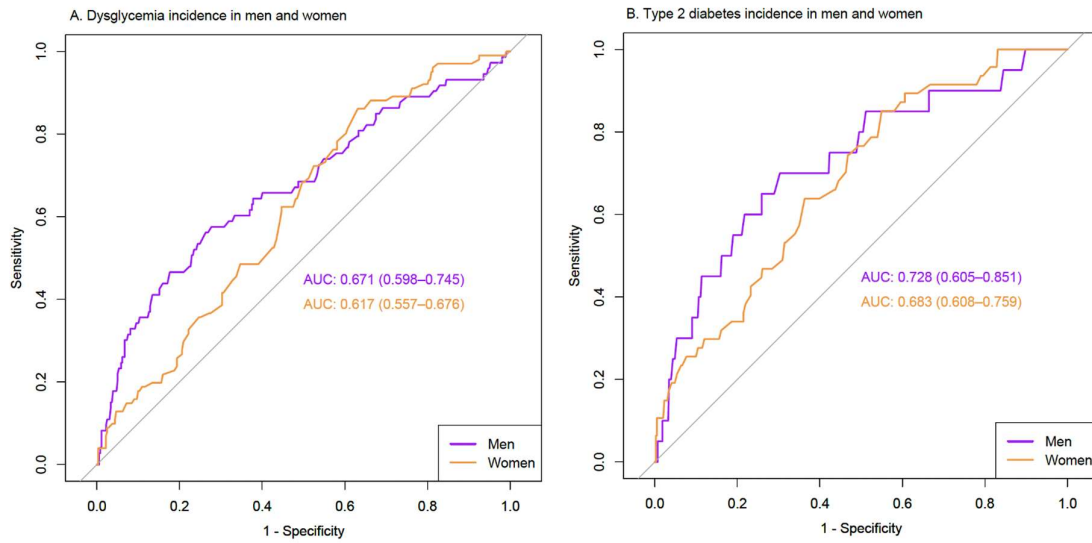
612 **Figure 1.**



613
614
615
616
617

618 **Figure 2.**

619



620

621

622 **Supplementary Table S1.** Comparative abilities of anthropometric measures at
 623 baseline to predict incident dysglycemia and type 2 diabetes at follow-up in Black
 624 African men and women
 625

	AUC (95%CI)	P value vs. WC	P value vs. WHR	P value vs. WHtR
Dysglycemia				
Men (n=429)				
Waist circumference	0.674 (0.600-0.748)	-		
Waist-to-hip ratio	0.655 (0.584-0.726)	0.591	-	
Waist-to-height ratio	0.681 (0.610-0.751)	0.425	0.395	-
Body mass index	0.653 (0.578-0.727)	0.073	0.938	0.017
Women (n=420)				
Waist circumference	0.620 (0.561-0.679)	-		
Waist-to-hip ratio	0.625 (0.561-0.688)	0.866	-	
Waist-to-height ratio	0.639 (0.579-0.699)	0.058	0.593	-
Body mass index	0.610 (0.550-0.670)	0.623	0.731	0.142
Type 2 diabetes				
Men (n=451)				
Waist circumference	0.728 (0.605-0.851)	-		
Waist-to-hip ratio	0.710 (0.604-0.816)	0.587	-	
Waist-to-height ratio	0.724 (0.603-0.845)	0.686	0.683	-
Body mass index	0.688 (0.556-0.821)	0.130	0.663	0.199
Women (n=437)				
Waist circumference	0.683 (0.607-0.758)	-		
Waist-to-hip ratio	0.652 (0.570-0.735)	0.429	-	
Waist-to-height ratio	0.693 (0.619-0.767)	0.351	0.289	-
Body mass index	0.691 (0.620-0.762)	0.721	0.473	0.944

626 Values are area under the Receiver Operating Curve (AUC) and 95% confidence
 627 interval (95%CI) and P-values for the difference in the AUC between adiposity
 628 markers. WC, waist circumference; WHR, waist-to-hip ratio; WHtR, waist-to-height
 629 ratio; BMI, body mass index.

630
 631