

41 **ABSTRACT**

42

43 **Objective:** To determine whether handheld widefield optical coherence tomography (OCT) can
44 be used to document retinopathy of prematurity (ROP) stage while using scleral depression to
45 improve peripheral views.

46

47 **Design:** Prospective observational study

48

49 **Participants:** Consecutive neonates admitted to the neonatal intensive care unit (NICU) in a
50 single academic medical center who also met criteria for ROP screening and consented for
51 research imaging.

52

53 **Methods:** Scleral depression was combined with widefield OCT using an investigational 400-
54 kHz, 55-degree field of view handheld OCT during ROP screening from October 28, 2020 to
55 March 03, 2021.

56

57 **Main Outcome Measures:** Acquisition of *en face* and B-scan imaging of the peripheral retina to
58 objectively assess early vitreoretinal pathology, including the demarcation between vascularized
59 and anterior avascular retina, the presence of early ridge formation, and small neovascular tufts.

60

61 **Results:** Various stages of ROP were detected using a rapid acquisition OCT system. In one
62 neonate, serial OCT imaging over a five-week period demonstrated accumulation of neovascular
63 tufts with progression to stage 3 ROP with extraretinal fibrovascular proliferation along the
64 ridge. Videography of this technique is included in this report for instructional purposes.

65

66 **Conclusions:** Serial examinations using widefield OCT and scleral depression may improve
67 detection and documentation of ROP disease progression. Earlier detection of ROP-related
68 proliferation may prevent vitreoretinal traction, retinal detachment, and blindness.

69

70

71

72

73

74

75

76

77

78

79

80

81 **INTRODUCTION**

82
83 The routine use of optical coherence tomography (OCT) in retinopathy of prematurity (ROP) has
84 been limited, despite the advantages OCT provides in the care of patients with retinal diseases. In
85 adults, the leading causes of blindness include age-related macular degeneration and diabetic
86 retinopathy; in both, OCT is more sensitive than the clinical exam for detection of severe
87 disease, and it has become standard of care and facilitated the transition towards quantitative and
88 objective disease screening, diagnosis, and monitoring. This has resulted in opportunities for
89 earlier treatment and improved visual outcomes.

90 In ROP, the standard of care remains the ophthalmoscopic exam, with subjective
91 assessment of zone, stage, and plus disease. Prior applications of OCT in ROP have been limited
92 by the field of view (FOV) of the commercially available and investigational OCT systems.
93 Thus, most early applications of OCT have focused on posterior manifestations of ROP, rather
94 than assessment of peripheral ROP stage.¹⁻⁷ Previous work has demonstrated that OCT may
95 provide added information about foveal architecture,² vitreous organization,⁶ three dimensional
96 manifestations of plus disease,⁷ and other clinical signs that we cannot appreciate using the
97 clinical exam. In addition, Mangalesh, *et al.* recently demonstrated the potential for reduced
98 neonatal stress using OCT rather than the clinical exam, which is a key potential benefit of
99 screening with OCT.¹

100 Unlike in most applications of OCT, the primary pathology in ROP is peripheral;
101 therefore, the most compelling case would be made if OCT could reliably diagnose the stage of
102 disease, potentially replacing the ophthalmoscopic examination. Several groups have
103 demonstrated investigational OCT devices can achieve wider fields of view, roughly equivalent
104 to the visualization provided by indirect ophthalmoscopy; however, these still cannot routinely

105 visualize the retinal periphery.^{3,8} Given that clinical assessment of peripheral ROP with
106 ophthalmoscopy often requires scleral depression, we tested in this study the hypothesis that
107 scleral depression, combined with the use of a widefield OCT system, could provide accurate,
108 objective, and rapid assessment of ROP stage.

109

110 **METHODS**

111 Handheld OCT retinal imaging was performed on fully awake neonates in the neonatal intensive
112 care unit (NICU) at Oregon Health & Science University (OHSU) during the period of October
113 28, 2020 to March 03, 2021. Infants were included in the study if they met eligibility criteria for
114 ROP screening (birth weight ≤ 1500 g and/or a gestational age ≤ 30 weeks), and if parent(s)
115 consented for research imaging. Any infant whose parent(s) declined participation in the study
116 were excluded and did not undergo research imaging; however, those infants still underwent
117 ROP screening using traditional methods, including indirect ophthalmoscopy. Thirteen infants
118 were included in this study, and the research OCT images were obtained at each visit during
119 usual ROP screening. Birthweight, gestational age, gender, race/ethnicity, ROP zone by clinical
120 assessment, and ROP stage by clinical assessment were recorded for all infants (Table 1). The
121 imaging for the non-sedated infants was conducted with pharmacological dilation with
122 cyclopentolate 0.2% and phenylephrine 1%. After installation of anesthetic eye drops, an infant
123 lid speculum was utilized, scleral depression was performed in a manner similar to the clinical
124 ROP examination. This study was approved by the Institutional Review Board/Ethics Committee
125 of OHSU in accordance with the Declaration of Helsinki.

126 An investigational 400-kHz, 55-degree FOV portable handheld OCT system was used in
127 this study.⁹ This portable handheld OCT extends views to the peripheral retina of pediatric

128 patients and displays cross-sectional (*i.e.*, B-scan) and *en face* views in real time.¹⁰ With a
129 single hand, the operator could hold the lens tube, allowing the operator to rest parts of their
130 palm gently on the infant's forehead and to manipulate the eye position using a depressor with
131 their other hand (Video 1). The acquisition time of each volume was 120 ms with 400 A-scan
132 per B-scan and 120 B-scans per volume, which provided real-time feedback in optimizing
133 images. Once the target area on the ocular fundus was located, autofocusing with
134 an electronically focus tunable lens could be performed in 1 second based on the brightness of
135 the *en face* view.

136 The OCT images were reviewed in real-time by the examiners (S.O., Y.J., and J.P.C.),
137 and additional images were taken, when needed, to obtain good quality images of the retinal
138 periphery for each infant, except when clinical needs of the baby superseded the value of
139 obtaining research imaging. OCT images were obtained of the temporal, posterior, and nasal
140 retina at every session, as well as the superior and inferior when relevant pathology was
141 suspected or noted. The ROP zone and stage associated with any OCT image were determined
142 by the examiner using traditional examination with indirect ophthalmoscopy. RetCam imaging
143 was performed in select cases to document clinical findings.

144

145 **RESULTS**

146 In this study, 13 awake neonates in the NICU were imaged during routine ROP screening with
147 serial imaging during the study period when possible. Imaging was obtained in nearly every
148 eligible patient, excepting those whose clinical instability prevented the acquisition of research
149 images (fewer than 3 babies during study period). In total, forty clinical visits were completed,
150 and OCT images were obtained at each session to view the retinal periphery of each infant.

151 Using the *en face* OCT view of the periphery with scleral depression, the extent of
152 vascularization (zone) and any vascular abnormalities (stage) could be determined, as shown in
153 Figure 1 and Video 2. In eyes that were fully vascularized, the scleral depressor could be
154 visualized with retinal vessels extending within one disc area of the ora serrata (Video 1). In
155 contrast, in eyes that demonstrated persistent avascular retina, or any degree of stage, the edge of
156 the vascularized retina could be viewed *en face* (Figure 1 & Video 2).

157 We observed a spectrum of vascular abnormalities ranging from avascular retina without
158 a clear demarcation line (sometimes referred to as stage 0; Fig 1A), to extraretinal
159 neovascularization (stage 3; Fig 1F). Even when comparing two neonates with clinical stage 1
160 ROP (Fig 1 B-C), there were meaningful differences in OCT appearance, including B-scan
161 images. Fig 1B shows a faint demarcation line separating the vascularized and anterior avascular
162 retina without dimension, whereas Fig. 1C shows a more distinct demarcation line. Similarly, the
163 images in Fig 1 D-E show early stage 2 ROP (Fig 1D) compared to the prominent, more
164 vascularized later stage 2 ROP (Fig 1E).

165 This technique can also be used to monitor the progression of ROP over time. Figure 2
166 and Video 3 show OCT *en face* images of the posterior pole and peripheral retina obtained with
167 B-scan images of the peripheral pathology in one neonate over a five-week period. This one
168 example demonstrates two important concepts. First, while the anterior ridge slowly progressed
169 into a typical stage 3 lesion by week 5, the serial OCT imaging demonstrated accumulation of
170 “popcorn” neovascular tufts (typically associated with stage 2 ROP) with clear and continuous
171 progression of extraretinal fibrovascular proliferation along the ridge in the weeks prior. Second,
172 the *en face* images centered on the posterior pole showed increased vascular dilation and
173 tortuosity over time, correlating with the increased severity of peripheral disease.

174

175 **DISCUSSION**

176 In this report, we demonstrate that the peripheral ROP stage can be documented with
177 OCT using scleral depression and that stage appears to represent a spectrum from avascular
178 retina to extraretinal neovascularization. Zone III is clearly visualized using technique, and these
179 far peripheral views provide objective documentation of the extent of vascularization and/or
180 avascular retina for preterm infants. This study also suggests that changes in the posterior pole in
181 the spectrum of pre-plus and plus disease correspond to the degree and progression of stage, as
182 has been seen with artificial intelligence-based assessment of vascular severity, but further work
183 is needed to establish the relationship via OCT.¹¹

184 Videography of this entire process has been provided to demonstrate the utility of this
185 imaging modality at bedside with minimal disruption to the neonate or ROP screening process.
186 We have found that incorporating OCT in our practice, especially when performed with scleral
187 depression, improves our ability to visualize peripheral ROP, to teach trainees, to communicate
188 findings with NICU staff and parents, and to visualize early vitreoretinal traction not visible with
189 ophthalmoscopy.

190 Using the *en face* real-time viewing, OCT can be used as an ophthalmoscope. In addition
191 to visualizing the vasculature, OCT can objectively assess the degree of vascular abnormalities.
192 Chen, *et al* previously demonstrated OCT examples at the vascular-avascular junction with
193 comparison to prior histology.³ In this report, we demonstrate that with scleral depression it may
194 be feasible to utilize OCT in ROP practice, overcoming one of the limitations to its use.
195 Although in this series we did not observe any retinal detachments, an added advantage of using
196 OCT to detect extraretinal fibrovascular tissue is that it may be more sensitive for detection of

197 “flat” extraretinal neovascularization associated with aggressive ROP (AROP) and earlier signs
198 of vitreoretinal traction, which can be very difficult to appreciate clinically.

199

200 **CONCLUSION**

201 In this study, the combination of widefield OCT and scleral depression allow detection and
202 documentation of ROP stage and progression of peripheral pathology. As the cost of this
203 technology comes down, we hope that reports like this demonstrating added clinical value may
204 lead to routine use of OCT as part of ROP screening, earlier detection of progressive stage and
205 extent of disease, fewer retinal detachments, and improved visual outcomes in ROP.

206 **REFERENCES:**

- 207 1. Mangalesh S, Sarin N, McGeehan B, et al. Preterm Infant Stress During Handheld
208 Optical Coherence Tomography vs Binocular Indirect Ophthalmoscopy Examination for
209 Retinopathy of Prematurity. *JAMA Ophthalmol.* Apr
210 2021;doi:10.1001/jamaophthalmol.2021.0377
- 211 2. Vinekar A, Mangalesh S, Jayadev C, Maldonado RS, Bauer N, Toth CA. Retinal Imaging
212 of Infants on Spectral Domain Optical Coherence Tomography. *Biomed Res Int.*
213 2015;2015:782420. doi:10.1155/2015/782420
- 214 3. Chen X, Mangalesh S, Dandridge A, et al. Spectral-Domain OCT Findings of Retinal
215 Vascular-Avascular Junction in Infants with Retinopathy of Prematurity. *Ophthalmol Retina.* Sep
216 2018;2(9):963-971. doi:10.1016/j.oret.2018.02.001
- 217 4. Mangalesh S, McGeehan B, Tai V, et al. Macular OCT Characteristics at 36 Weeks'
218 Postmenstrual Age in Infants Examined for Retinopathy of Prematurity. *Ophthalmol Retina.* Sep
219 2020;doi:10.1016/j.oret.2020.09.004
- 220 5. Rothman AL, Tran-Viet D, Gustafson KE, et al. Poorer neurodevelopmental outcomes
221 associated with cystoid macular edema identified in preterm infants in the intensive care
222 nursery. *Ophthalmology.* Mar 2015;122(3):610-9. doi:10.1016/j.ophtha.2014.09.022
- 223 6. Legocki AT, Zepeda EM, Gillette TB, et al. Vitreous Findings by Handheld Spectral-
224 Domain OCT Correlate with Retinopathy of Prematurity Severity. *Ophthalmol Retina.* 10
225 2020;4(10):1008-1015. doi:10.1016/j.oret.2020.03.027
- 226 7. Maldonado RS, Yuan E, Tran-Viet D, et al. Three-dimensional assessment of vascular
227 and perivascular characteristics in subjects with retinopathy of prematurity. *Ophthalmology.* Jun
228 2014;121(6):1289-96. doi:10.1016/j.ophtha.2013.12.004
- 229 8. Campbell JP, Nudleman E, Yang J, et al. Handheld Optical Coherence Tomography
230 Angiography and Ultra-Wide-Field Optical Coherence Tomography in Retinopathy of
231 Prematurity. *JAMA Ophthalmol.* 09 2017;135(9):977-981.
232 doi:10.1001/jamaophthalmol.2017.2481
- 233 9. Ni S, Wei X, Ng R, et al. High-speed and widefield handheld swept-source OCT
234 angiography with a VCSEL light source. *Biomed Opt Express.* Jun 01 2021;12(6):3553-3570.
235 doi:10.1364/BOE.425411
- 236 10. Jian Y, Wong K, Sarunic MV. Graphics processing unit accelerated optical coherence
237 tomography processing at megahertz axial scan rate and high resolution video rate volumetric
238 rendering. *J Biomed Opt.* Feb 2013;18(2):26002. doi:10.1117/1.JBO.18.2.026002
- 239 11. Campbell JP, Kim SJ, Brown JM, et al. Evaluation of a Deep Learning-Derived
240 Quantitative Retinopathy of Prematurity Severity Scale. *Ophthalmology.* Oct
241 2020;doi:10.1016/j.ophtha.2020.10.025

242
243

244 **Figure Legends:**

245 **Figure 1.** ROP peripheral pathology as seen with peripheral OCT *en face* and cross-sectional
246 imaging using scleral depression. A, Avascular retina without clear vascular-avascular border
247 (sometimes referred to as stage 0 ROP). B-C, Two examples of stage 1 ROP visible with faint
248 (B) and more pronounced (C) demarcation lines without ridge formation. The asterisk indicates
249 scleral depressor location. D-E, Two examples of stage 2 ROP with early (D) and later (E) ridge
250 formation without neovascularization. F, Stage 3 ROP with significant extraretinal fibrovascular
251 proliferation along the ridge. The yellow vertical lines correlate to the upper cross-sectional
252 images; yellow horizontal lines correlate to lower cross-sectional images.

253

254 **Figure 2.** Monitoring ROP disease progression in a preterm infant using OCT *en face* and cross-
255 sectional views. **Top row:** Posterior *en face* views over a five-week period demonstrate
256 increased vascular tortuosity. **Second row:** Serial peripheral *en face* views centered on the
257 patient's peripheral ridge show increased severity of ROP disease over time. The yellow
258 horizontal lines correlate to the respective cross-sectional images obtained posterior to the ridge
259 (**Third row, top image**). The yellow vertical lines correlate to the respective cross-sectional
260 images obtained across the ridge (**Third row, bottom image**).

261

262

263 **Video Legends:**

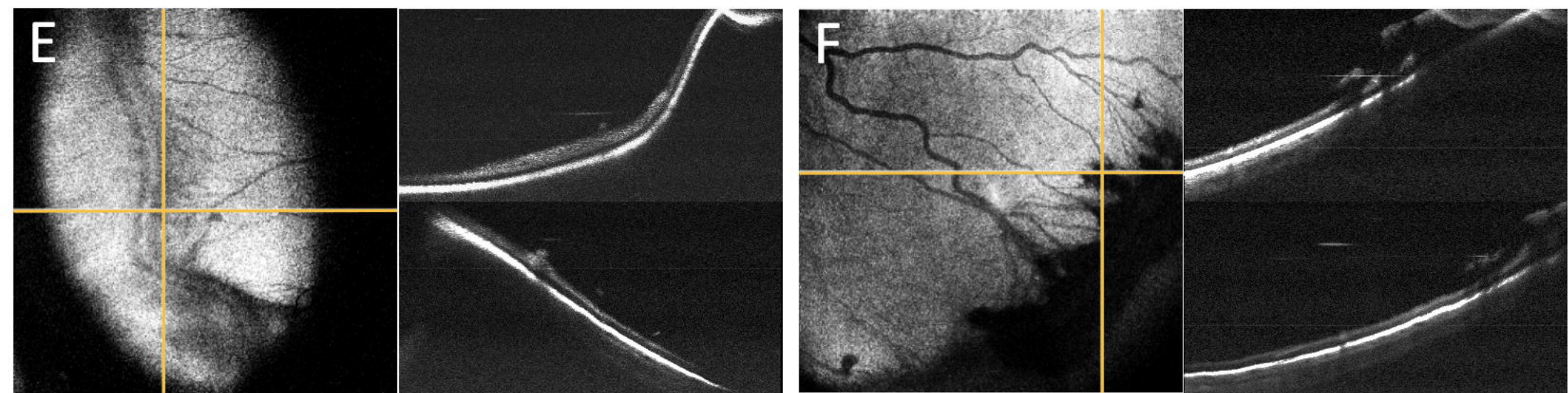
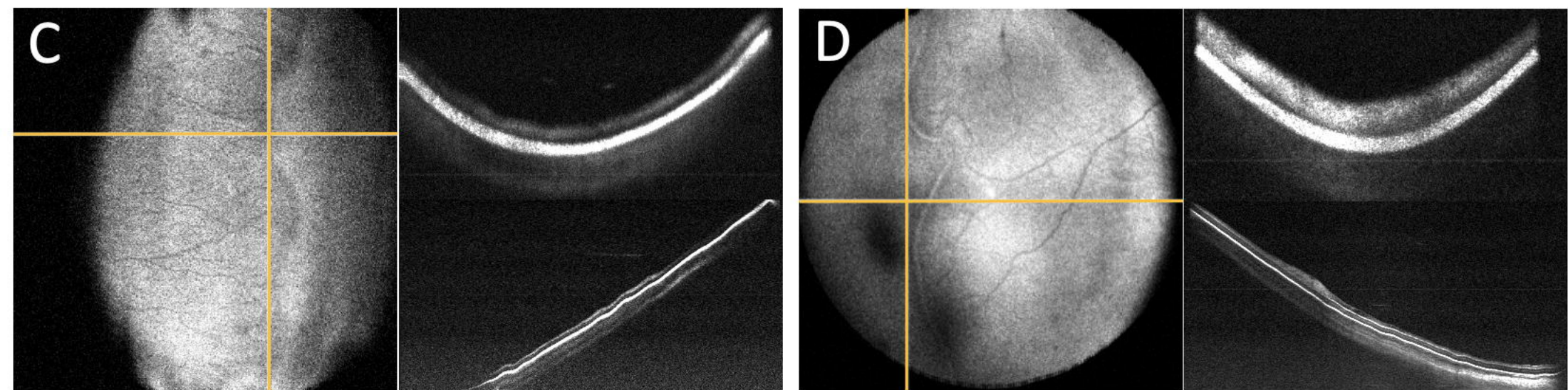
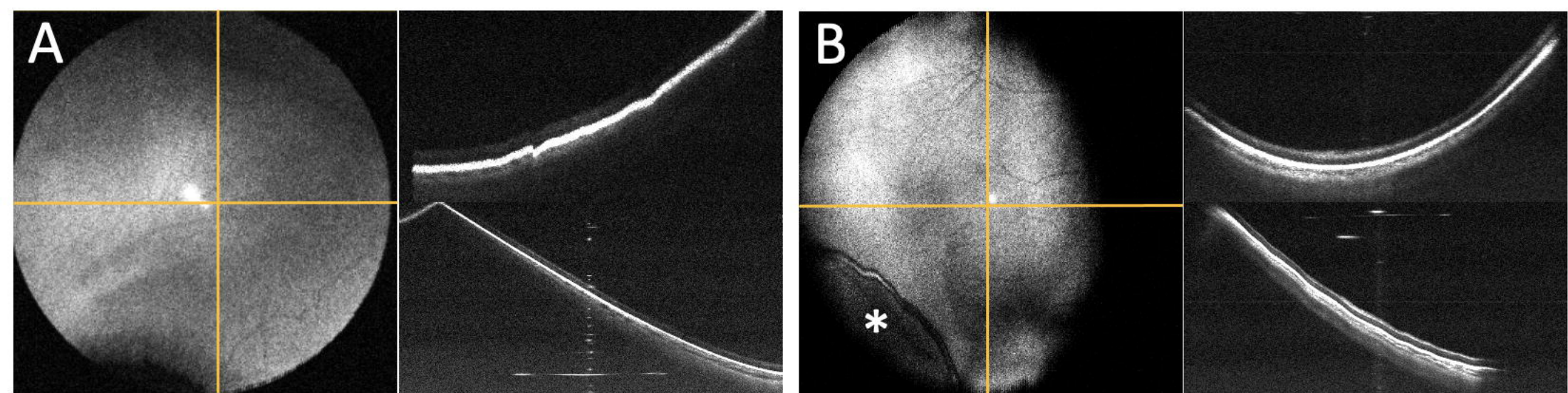
264 **Video 1.** Visualization of the peripheral retina during ROP screening using scleral depression
265 and OCT. *En face* views and cross-sectional scans are shown simultaneously in real time. The
266 scleral depressor, seen prior to image acquisition, provides indentation throughout this process
267 and facilitates view of peripheral vasculature. This video demonstrates the rapid acquisition time
268 of the investigational portable handheld OCT system.

269

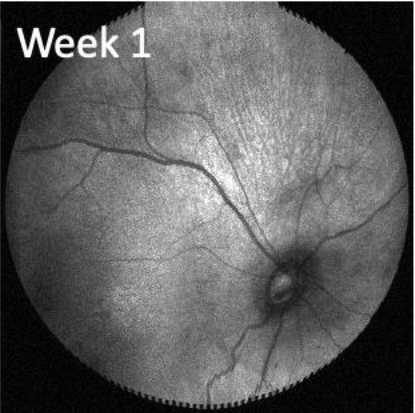
270 **Video 2.** Documentation of various ROP stages detected by OCT using scleral depression. This
271 video shows real time acquisition of OCT *en face* and cross-sectional scans of five preterm
272 infants. The images are shown in increasing severity of ROP peripheral pathology. The
273 videography clips of Patients 1-5 correspond with the images in Fig 1 B-F, respectively. Patients
274 1 and 2 demonstrate examples of stage 1 ROP, whereas patients 3 and 4 had clinical evidence of
275 stage 2 ROP. Patient 5 had extraretinal fibrovascular proliferation, consistent with stage 3 ROP.

276

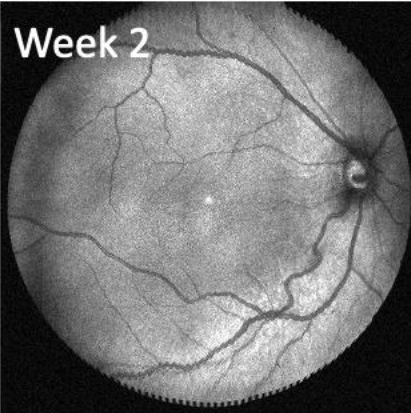
277 **Video 3.** OCT detection of peripheral ROP disease progression. OCT *en face* views centered on
278 a patient's peripheral ridge demonstrate increased severity of ROP disease over a five-week
279 period. The adjacent cross-sectional images demonstrate an increase in "popcorn"
280 neovascularization tufts and extraretinal fibrovascular tissue over this period. By week 5, the
281 patient had evidence of stage 3 ROP and underwent treatment.



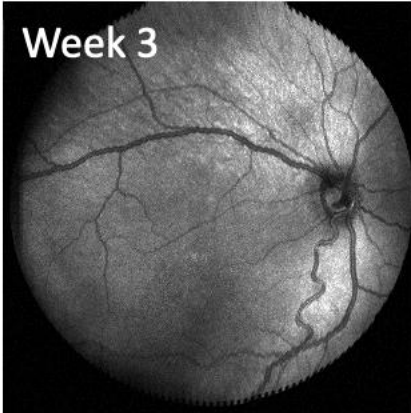
Week 1



Week 2



Week 3



Week 5

