

1 Cost-effectiveness analysis of patent foramen ovale closure versus
2 medical therapy alone after cryptogenic stroke.

3

4

5 Yoko Shijoh^{1*}, Shota Saito², Zhehao Dai^{3,4}, Sachiko Ohde¹

6

7

8 ¹Graduate School of Public Health St. Luke's International University, Chuo-city, Tokyo,

9 Japan

10 ²Center for Clinical Epidemiology and Health Technology Assessment, St. Luke's

11 International University, Chuo-city, Tokyo, Japan

12 ³Department of Cardiovascular Medicine, The University of Tokyo Hospital, Bunkyo-city,

13 Tokyo, Japan

14 ⁴Department of Cardiovascular Medicine, St. Luke's International Hospital, Chuo-city,

15 Tokyo, Japan

16

17 * Corresponding author

18 Email: 19mp214@slcn.ac.jp (YS)

19

20

21 **Abstract**

22 **Background**

23 Closure of a patent foramen ovale reduces the risk of recurrent stroke compared with
24 medical therapy alone in young patients with cryptogenic strokes revealed by randomized
25 control trials. Some cost-effectiveness analyses outside Japan have shown that patent foramen
26 ovale closure is cost-effective, but no studies have examined cost-effectiveness in Japan. The
27 objective of this study is to assess cost-effectiveness, from the perspective of a Japanese
28 healthcare payer, of patent foramen ovale closure versus medical therapy alone for the
29 patients with patent foramen ovale related cryptogenic strokes.

30

31 **Methods**

32 A cost-effectiveness study was conducted by developing a decision tree and a Markov
33 model. Probabilities and a 5.9-year time horizon followed the RESPECT study. Utilities and
34 costs were based upon published studies and assumptions. The model cycle was one month.
35 All assumptions were assessed by experts, including a cardiologist and a statistical expert.
36 The target population comprised patients with cryptogenic stroke and patent foramen ovale,
37 aged 60 years or younger. Incremental cost-effectiveness ratio was evaluated. Then one-way
38 sensitivity analyses and probabilistic sensitivity analyses were conducted to assess
39 robustness.

40

41 **Results**

42 Incremental cost-effectiveness ratio of patent foramen ovale closure compared with
43 medical therapy was estimated at ¥3,318,152 per quality-adjusted life years gained. One-way
44 sensitivity analysis showed that the stable state utility score difference between patent

45 foramen ovale closure and medical therapy had the largest impact on incremental cost-
46 effectiveness ratio. Patent foramen ovale closure is cost-effective at a stable state utility score
47 difference of >0.051 , compared with medical therapy. Probabilistic sensitivity analyses
48 demonstrated that patent foramen ovale closure was 50.3% cost-effective with a willingness-
49 to-pay threshold of ¥5,000,000 / quality-adjusted life years.

50

51 **Conclusions**

52 From a healthcare payer perspective, patent foramen ovale closure may be cost-
53 effective compared with medical therapy for Japanese patients with cryptogenic stroke who
54 were ≤ 60 years.

55 Introduction

56 Patent foramen ovale (PFO) is an opening in the septum between the right and left
57 atria that failed to close at birth. Relative to the total number of general autopsy findings, the
58 prevalence of PFO is reportedly 26% (1). Under certain hemodynamic conditions, such a
59 PFO can be forced open by a pressure gradient that favors right-to-left shunting, thereby
60 enabling blood and bloodborne substances to pass from the venous to the arterial circulation
61 (2). This is the mechanism whereby PFO is associated with paradoxical embolism, which is
62 the most common cause of cryptogenic stroke in young adults (3).

63 Approximately 25% of cerebral infarctions are of unknown cause, but some are
64 thought to be due to thrombi from the right heart system that entered the left heart system
65 through right-left shunts, such as a PFO. These are called paradoxical embolisms. However,
66 thrombi in the right heart system are often not detected in cases of cerebral infarction with
67 PFO, and no treatment showing clear effectiveness has been established for prevention of
68 recurrent stroke in cases in which aspirin is commonly used (4). Possible treatments to
69 prevent recurrent stroke in cryptogenic stroke patients with a PFO include medical treatment
70 with antiplatelet agents or anticoagulants, percutaneous PFO closure, and surgical PFO
71 closure.

72 Recently, several randomized controlled trials showed that percutaneous transcatheter
73 closure reduces the risk of recurrent stroke compared with medical therapy alone, among
74 relatively young patients with cryptogenic stroke complicated by a PFO (5–7). The Japanese
75 government approved a percutaneous transcatheter closure device, AMPLATZER PFO
76 Occluder, and its procedure in 2019 for secondary prevention of ischemic stroke in patients
77 ≤ 60 years who had a cryptogenic stroke that was probably attributable to a PFO. Until 2020,
78 AMPLATZER PFO Occluder was the only device approved in Japan for PFO closure. Soon
79 after the government approved the device and procedure, the Japan Stroke Society, the
80 Japanese Circulation Society, and the Japan Cardiovascular Intervention Treatment Society
81 released guidelines for percutaneous PFO closure for cryptogenic stroke (4). These
82 guidelines were based upon evidence from three randomized control trials (RCTs) in 2017:
83 RESPECT (5), REDUCE (6) and CLOSE (7), which focused on efficacy and safety with an
84 appropriate patient background. The guidelines raised the clinical issue of postoperative
85 atrial fibrillation rate, which was higher in the PFO closure group than in a non-closure

86 group in a meta-analysis that included the three aforementioned RCTs (8–10).

87 Reduction of the recurrent stroke rate is important, not only from a clinical
88 perspective, but also from a health economic perspective. Some cost-effectiveness analyses
89 outside Japan have compared PFO closure and medical therapy alone for cryptogenic stroke
90 patients and have shown that PFO closure is cost-effective for quality-adjusted life years
91 (QALYs) gained. (11–16). However, there have been no cost-effectiveness analyses in Japan
92 and such analyses, which include cost information, utility scores, and a lifetable would be
93 more convincing than cost-effectiveness analyses done outside Japan. Therefore, our
94 objective was to assess the cost-effectiveness, from a Japanese healthcare payer perspective,
95 of PFO closure with AMPLATZER PFO Occluder for risk reduction of recurrent stroke in
96 patients with cryptogenic stroke that was probably attributable to a PFO, compared to
97 medical therapy alone.

98

99

100 **Method**

101 **Model overview**

102 We developed a decision tree and Markov model to assess the cost-effectiveness of
103 PFO closure compared with medical therapy alone. (Fig 1) For the Markov model, we
104 proposed a model consisting of four health states: stable after cryptogenic stroke, post-minor
105 recurrent stroke, post-moderate recurrent stroke, and death. (Fig 1) We used a modified
106 Rankin Scale (mRS) to categorize post-minor stroke as mRS 0 to 2 and post-moderate
107 recurrent stroke as mRS 3 to 5. The time horizon was derived from the RESPECT study
108 median follow-up period, which was 5.9 years (5). The model cycle was one month. QOL
109 scores for each condition can be calculated, and to calculate an incremental cost-effectiveness
110 ratio (ICER), the incremental cost increase per PFO closure was divided by the QALYs
111 gained by the closure. Five million yen per QALY was determined as the cost-effectiveness
112 willingness-to-pay that the Japanese government sets as the ICER threshold in the cost-
113 effectiveness evaluation system. We conducted one-way sensitivity analyses with varied key
114 assumptions to assess robustness. The model was discounted at 2.0%, which is a basic
115 discount rate in the guidelines for preparing cost-effectiveness evaluations for the central
116 social insurance medical council in Japan. All analyses were performed using TreeAge Pro
117 software.

118

119 **Fig 1. The model structure.**

120 A decision tree (upper picture) shows that a patient who had a PFO enters this model after a
121 cryptogenic stroke and is assigned either a PFO closure or medical treatment. PFO closure
122 has three possible outcomes: complication, non-complication, or death. The Markov model
123 (lower picture) shows four health states: stable after cryptogenic stroke, post-minor recurrent

124 stroke, post-moderate recurrent stroke, and death. We used a modified Rankin Scale to
125 categorize strokes.

126 Abbreviations. PFO, patent foramen ovale; mRS, modified Rankin Scale.

127

128 **Patients**

129 The target population included cryptogenic stroke patients who had a PFO, aged ≤ 60
130 years, based on the indication for AMPLATZER™ PFO Occluder in Japan. The Japanese
131 government approved AMPLATZER™ PFO Occluder based on the RESPECT study results
132 of “rates of 0.58 events per 100 patient-years and 1.07 events per 100 patient-years,
133 respectively (hazard ratio with PFO closure vs. medical therapy, 0.55; 95% confidence
134 interval [CI], 0.31 to 0.999; $p=0.046$ by the log-rank test).” Thus, patients in the model
135 represent the RESPECT trial, a multi-center, randomized, open-label, controlled clinical trial
136 with blinded adjudication of end-point events (5).

137

138 **Probabilities and Utilities**

139 Probabilities for each outcome obtained from published literature are shown in Table
140 1. Probabilities for recurrent ischemic stroke were estimated on a monthly cycle based on the
141 RESPECT study primary endpoint. We assumed that the recurrent ischemic stroke rate
142 persists during the simulation. In the decision tree, we set atrial fibrillation and flutter as
143 procedural complications, because calculation of low-incidence, serious adverse events
144 (SAEs) is impractical and should only address clinically problematic SAEs. This conclusion
145 was based on guidance from the Japan Stroke Society, the Japanese Circulation Society, and
146 the Japan Cardiovascular Intervention Treatment Society for percutaneous patent foramen
147 ovale closure for latent cerebral infarction. This statement argued that meta-analysis clarified
148 the effectiveness of this treatment, despite the increased risk of postoperative atrial
149 fibrillation (8–10).

150 We assumed that the utility score of each health status remained unchanged until the
151 health status changed. The previous assumption of a stable utility score was used from the
152 cost-effectiveness analysis, which was 0.88 for closure-stable utility and 0.8 for medical

153 therapy-stable utility (15). This assumption was based on expert opinion and some previous
154 studies showing a positive impact of the closure procedure on quality of life. Mirzada N (17)
155 explained that the prospect of effective secondary prevention of ischemic recurrences could
156 certainly contribute to better physical, mental, and social functioning in patients who undergo
157 PFO closure. Results reported by Evola S (18) indicated a reasonable association with
158 improvement of migraines, due to a reduction in the frequency and severity of migraine
159 attacks. Lelakowska M (19) also reported that the utility score value of the SF-36 total score
160 was markedly higher 6 months after PFO closure compared with pre-PFO closure.

161 Based on previous mortality rate reports on cryptogenic stroke patients (20), we used
162 average values of mortality indices categorized into three spans: post-stroke mortality within
163 1 year, post-stroke mortality within 5 years, and post-stroke mortality within 10 years.
164 Recurrent clinical ischemic stroke was assumed to be 68% for post-minor strokes and 32%
165 for post-moderate strokes, assumptions supported by Grau AJ (21).

166 We set atrial fibrillation utility using a previous study (22), and minor stroke utility
167 and moderate utility using a Japanese study calculated with the modified Rankin Scale and
168 EQ-5D Japanese version (23).

169

170 **Cost and Lifetime table**

171 Our analysis was conducted from a healthcare payer perspective using direct medical
172 costs, including costs for PFO closure procedures, closure complications, medications,
173 follow-up, and stroke care. Procedure costs, medication costs, and follow-up costs were
174 derived from Japanese claim data (24). Treatment costs for acute clinical ischemic stroke and
175 post-clinical ischemic stroke were obtained from previous studies in Japan^{23,25}. We used the
176 2018 Japanese lifetime table to obtain the annual probability of natural death (26).

177

178 **Sensitivity analysis**

179 One-way sensitivity and probabilistic sensitivity analyses evaluated the impact of
180 assumptions shown by the sensitivity analysis range in Table 1. Lifetime horizon was set as

181 the upper value of time to follow-up, which was 38.3 years, calculated as 84.2 (average life
182 expectancy in Japan) minus 45.9 (mean age of patients in the RESPECT study (5)). We set
183 5.9 years as the lower value of the time horizon, which is the base case value derived from
184 the RESPECT study (5) median follow-up period. The PFO closure risk ratio of recurrent
185 stroke was obtained from the RESPECT study (5) and we used 95% confidence intervals of
186 the PFO closure risk ratio of recurrent stroke (0.31-0.999) as the lower and upper range. In
187 the RESPECT study (5), the rate of atrial fibrillation or flutter did not differ significantly
188 between the PFO closure and medical therapy groups. The risk ratio was 1.69 and 95%
189 confidence interval was 0.50 to 5.73. We use 1.69 for the base value and 0.50 for the lower
190 value. However, the meta-analysis found that “the rate of newly detected atrial fibrillation in
191 the PFO closure plus medical therapy group and the medical therapy alone group were 4.3%
192 and 0.7%, respectively, which shows that PFO closure plus medical therapy significantly
193 increased the risk of newly detected atrial fibrillation by more than 4 times compared with
194 medical therapy alone (RR 4.69, 95% CI 2.17 to 10.12)”(8). We thus used the upper 95%
195 confidence interval limits of newly detected atrial fibrillation in the meta-analysis as the
196 upper range of atrial fibrillation or flutter rate hazard ratio between closure and non-closure.
197 Other probability scores were set at $\pm 10\%$, based on expert opinion.

198 Previous cost-effectiveness studies have shown that stable state utility scores between
199 closure and medical therapy have the widest range for ICERs (11,13–15). No studies report a
200 difference in stable utility scores between closure and medical therapy, and stable utility
201 scores were thus all based on assumption. To clarify the threshold of a stable utility score
202 difference for cost-effectiveness, we set a lower stable utility score difference of 0 and an
203 upper stable utility score difference of 0.08, which was the baseline. Other utility scores and
204 costs were set at $\pm 10\%$ and $\pm 20\%$, respectively, based on expert opinion.

205 Cost-effectiveness acceptability curves were determined for the probabilistic
206 sensitivity analysis on the parameter uncertainty at a 5.9-year time horizon. Triangular or
207 gamma distributions were chosen for each parameter (Table 1) and the model was run 10000
208 times.
209

210 **Table 1. Probabilities of events, life years, and utility scores for base model inputs and**
 211 **sensitivity analyses.**

	Base value		Reference
	Closure	Medical therapy	
Procedural / Device deaths	0.00%	—	RESPECT study (5)
Recurrent clinical ischemic stroke	0.58%	1.07%	RESPECT study (5)
Atrial fibrillation or flutter	1.40%	0.83%	RESPECT study (5)
Stable state utility	0.88	0.8	Tirschwell et al. (15) MHLW life table 2018
Annual probability of natural death			(26)

	Base value	Range / Distribution			Reference
		lower	Upper	Distribution	
Time horizon	5.9	5.9	38.3	-	RESPECT study (5), WHO Life expectancy (27)
Closure risk ratio of recurrent stroke	0.54	0.31	0.999	Triangular	RESPECT study (5)
PFO closure atrial fibrillation or flutter HR	0.50	1.69	10.12	Triangular	REDUCE study (6)
Post-stroke mortality rate within 1 year	6.00%	5.40%	6.60%	-	Linxin Li et al. (20)
Post-stroke mortality rate within 5 years	24.9%	22.4%	27.4%	-	Linxin Li et al. (20)
Post-stroke mortality rate within 10 years	45.5%	41.0%	50.1%	-	Linxin Li et al. (20)
% of ischemic stroke mRS0-2	68.0%	61.2%	74.8%	-	Grau AJ et al. (21)
% of ischemic stroke mRS3-5	32.0%	28.8%	35.2%	-	Grau AJ et al. (21)
Medical therapy stable state utility	0.800	0.720	0.880	-	Tirschwell et al. (15)
Stable state utility difference	0.080	0.000	0.080	Triangular	expert opinion
Minor stroke utility	0.779	0.701	0.857	-	Hattori et al. (23)
Moderate stroke utility	0.338	0.304	0.372	-	Hattori et al. (23)
Atrial fibrillation utility	0.725	0.653	0.798	-	Reynolds MR et al. (22)
Medical device and procedural costs	¥1,830,000	¥1,464,000	¥2,196,000	gamma	expert opinion
Clinical moderate stroke	¥1,758,423	¥1,406,738	¥2,110,108	-	Kamae et al. (25)
Clinical minor stroke	¥1,024,306	¥819,445	¥1,229,167	-	Kamae et al. (25)
Aspirin	¥9,408	¥7,526	¥11,290	-	Claims data.
DOAC after atrial fibrillation	¥185,196	¥148,157	¥222,235	-	Claims data.
Follow-up cost first year in closure	¥56,556	¥45,245	¥67,867	-	Claims data.
Follow-up cost after 2-year in closure	¥39,960	¥31,968	¥47,952	-	Claims data.
Follow-up cost non-closure	¥31,164	¥24,931	¥37,397	-	Claims data.
Post-clinical moderate stroke cost	¥4,135,524	¥3,308,419	¥4,962,629	-	Hattori et al. (23)
Post-clinical minor stroke cost	¥1,940,172	¥1,552,138	¥2,328,206	-	Hattori et al. (23)

212

213 Notes. Probabilities, utility scores, and cost ranges were set at $\pm 10\%$, $\pm 10\%$ and $\pm 20\%$,

214 respectively, based on expert opinion.

215 Abbreviations. MHLW, ministry of health, labour and welfare; PFO, patent foramen ovale;
216 HR, hazard ratio; mRS, modified Rankin Scale; DOAC, novel direct oral anticoagulants.

217

218 **Results**

219 **Base case analysis**

220 According to the analysis results, PFO closure yielded 4.849 QALYs at a cost of
221 ¥2,377,004 and medical therapy yielded 4.385 QALYs at a cost of ¥836,280 over a 5.9-year
222 time horizon (Table. 2). ICER of PFO closure compared with medical therapy was estimated
223 at ¥3,318,152 per QALY gained; therefore, PFO closure is cost-effective compared with
224 medical therapy, based on the ICER threshold set by the Japanese government in the cost-
225 effectiveness evaluation system.

226

227 **Table 2. Base case cost-effectiveness analysis**

Treatment	Total cost	Incremental Cost	Total QALY	Incremental Effectiveness	ICER
Medical Therapy	¥ 836,280		4.385		
Closure	¥ 2,377,004	¥ 1,540,724	4.849	0.464	3318152

228

229 Abbreviations. QALY, quality-adjusted life-years; ICER, incremental cost-effectiveness
230 ratio.

231

232 **Sensitivity analysis**

233 Results of one-way sensitivity analysis indicated that the stable state utility score
234 difference between closure and medical therapy had the largest impact on the ICER (Fig 2).
235 With a lower value estimate of 0.00, ICER in the sensitivity analysis was ¥46,327,317 per

236 QALY gained, exceeding acceptable limits of cost-effectiveness. To be cost-effective,
237 thresholds of the stable state utility score difference between closure and medical therapy
238 should be 0.051 (Fig 3).

239 The second largest impact on ICER was the time horizon. PFO closure at the lifetime
240 horizon, which was 38.3 years setting as the upper value of time to follow-up, changed to a
241 dominant economic strategy, resulting in cost reduction and gain in QALY with a base case
242 value having a stable state utility score difference compared with medical therapy (Figure 4).

243 Probabilistic sensitivity analyses demonstrated that PFO closure was 50.3% cost-
244 effective with a willingness-to-pay threshold of ¥5,000,000/QALY at a 5.9-year time horizon.
245 (Figure 5) This result of this probabilistic sensitivity analysis means that PFO closure may be
246 cost-effective, but there is still roughly a 50% chance of its not being cost-effective.

247

248 **Figure 2. One-way sensitivity analysis of PFO closure VS medical therapy.**

249 The impact of parameter variation using a willingness-to-pay threshold of ¥5,000,000/QALY.

250 The hatched bars and black bars show the upper (high estimate) and lower values of the
251 parameter, respectively. Bars are aligned in order of impact from largest to smallest.

252 Abbreviations. PFO, patent foramen ovale; mRS, modified Rankin Scale; DOAC, novel
253 direct oral anticoagulants.

254

255 **Figure 3. One-way sensitivity analysis: The stable state utility score difference between** 256 **PFO closure and medical therapy.**

257 The stable state utility score difference between PFO closure and medical therapy, which is
258 the largest impact of parameter variation, is shown with ICER. The dashed line represents a
259 willingness-to-pay (WTP) threshold of ¥5,000,000/QALY and a utility score difference of
260 0.051 at that WTP threshold.

261 Abbreviations. WTP, willingness-to-pay; ICER, incremental cost-effectiveness ratio.

262

263 **Figure 4. One-way sensitivity analysis: Time horizon closure vs. medical therapy.**

264 Time horizon closure vs. medical therapy, which is the second largest impact of parameter

265 variation, is shown with ICER.

266 Abbreviations. ICER, incremental cost-effectiveness ratio.

267

268 **Figure 5. Cost-effectiveness acceptability curves.**

269 Willingness-to-pay (JP¥) is shown with percent cost-effectiveness. The dashed line is a

270 willingness-to-pay threshold (WTP) of ¥5,000,000/QALY and the percent cost effectiveness

271 is 50.3% at a WTP of ¥5,000,000/QALY.

272 Abbreviations. WTP, Willingness-to-pay.

273

274

275 Discussion

276 We evaluated the cost-effectiveness in Japan of PFO closure compared to medical
277 therapy after cryptogenic stroke. The analysis revealed that PFO closure is cost-effective in
278 the base case model, resulting in an ICER of ¥3,318,152 per QALY gained. Previous cost-
279 effectiveness analyses outside Japan also revealed that PFO closure is cost-effective
280 compared with medical therapy for cryptogenic stroke patients (11–16). A cost-effectiveness
281 study in the U.S. (11) showed that PFO closure achieved an ICER of \$21,049 at five years. In
282 a U.K. study (15), ICER was reportedly £20,951 at four years. Both results are consistent
283 with the Japanese situation. However, one-way sensitivity analysis showed that the stable
284 state utility score difference between PFO closure and medical therapy had the largest impact
285 on ICER. In other words, a stable state utility score difference below 0.051 rendered a result
286 that was not cost-effective. This was the most important finding of this study because we
287 assumed a base case utility score. Probabilistic sensitivity analysis also supports the result
288 that PFO closure was only 50.3% cost-effective with a willingness-to-pay threshold of
289 ¥5,000,000/QALY at a 5.9-year time horizon.

290 Assumptions of previous cost-effectiveness studies were based on expert opinions and
291 some published literature, which indicated that PFO closure not only reduces recurrent stroke,
292 but also patient anxiety about recurrent stroke. Study authors further indicated that PFO
293 closure also reduces PFO-related migraine so that such reduction may improve the stable
294 utility score, but we cannot be certain whether the utility score difference between PFO
295 closure and medical therapy exceeds 0.051 without a reliable utility score for patients who
296 have backgrounds similar to those in the RESPECT study. In addition, Japanese utility score
297 evidence is important because of the difference in life expectancy and medical care systems
298 in other countries. Hence, the Japanese stable utility score after PFO closure and medical
299 therapy among patients with cryptogenic stroke and PFO aged ≤ 60 years needs to be

300 determined through further studies. With new utility score evidence, Japanese criteria for
301 PFO closure should be changed by releasing the quality indicator score to show that patient
302 quality of life improves.

303 The goal of the basic act on stroke and cardiovascular disease countermeasures of
304 2018 is to promote healthy life expectancy. Our results may promote a cost-effective, healthy
305 life expectancy by reducing recurrent ischemic strokes, which remain the leading cause of
306 long-term disability. However, most reports on utility scores of stroke patients are from
307 Europe and the United States, and very few studies with cases exist in Japan. When
308 evaluating utility scores, it is necessary to use a reliable, validated measurement scale, but
309 there are few such scales at present. Especially for new procedures or treatments, such as
310 PFO closure, there is no evidence that shows the exact utility score after releasing RCTs all
311 over the world. Without reliable utility scores, cost-effectiveness studies will always lack
312 core information and can only offer hypotheses regarding economic impact.

313 In April 2019, the Ministry of Health Labour and Welfare (MHLW) of Japan
314 introduced a cost-effectiveness evaluation system. The aim of the system is to utilize results
315 of cost-effectiveness evaluations that will not be used for reimbursement decisions, but for
316 post-listing price adjustments (28). Thus, utility score research should be performed using
317 national grants for accurate evaluation of cost-effectiveness studies.

318 With an accurate utility score, PFO closure become a new component of a
319 cardiovascular disease prevention strategy for the Japanese population. Our cost-effectiveness
320 analysis of PFO closure supports this conclusion and can serve as a reference to consider
321 whether political resources of the basic act on stroke and cardiovascular disease
322 countermeasures should be allocated.

323

324 **Conclusion**

325 From a healthcare payer perspective, PFO closure may be cost-effective compared
326 with medical therapy in Japanese patients ≤ 60 years with cryptogenic strokes that are
327 probably attributable to a PFO.

328

329 **Author contributions**

330 **Conceptualization:** Yoko Shijoh, Shota Saito, Zhehao Dai, Sachiko Ohde.

331 **Data curation:** Yoko Shijoh, Shota Saito, Zhehao Dai, Sachiko Ohde.

332 **Formal analysis:** Yoko Shijoh, Shota Saito, Zhehao Dai, Sachiko Ohde.

333 **Funding acquisition:** N/A

334 **Investigation:** Yoko Shijoh, Shota Saito, Zhehao Dai, Sachiko Ohde.

335 **Methodology:** Yoko Shijoh, Shota Saito, Zhehao Dai, Sachiko Ohde.

336 **Project administration:** Yoko Shijoh.

337 **Resources:** N/A

338 **Software:** N/A

339 **Supervision:** Sachiko Ohde.

340 **Validation:** Yoko Shijoh, Shota Saito.

341 **Visualization:** Yoko Shijoh, Shota Saito.

342 **Writing – original draft:** Yoko Shijoh.

343 **Writing – review & editing:** Yoko Shijoh, Shota Saito, Zhehao Dai, Sachiko Ohde.

344

345 **Acknowledgements**

346 We wish to thank the timely help given by Dr. Ataru Igarashi, Associate Professor,

347 Unit of Public Health and Preventive Medicine, School of Medicine, Yokohama City

348 University, Yokohama, Japan, for useful discussions in analyzing data.

349

350

References

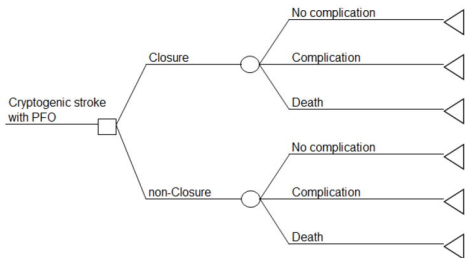
- 351 1. Homma S, Sacco RL. Patent foramen ovale and stroke. *Circulation*.
352 2005;112(7):1063–72.
- 353 2. Calvert PA, Rana BS, Kydd AC, Shapiro LM. Patent foramen ovale: Anatomy,
354 outcomes, and closure. *Nat Rev Cardiol*. 2011;8(3):148–60.
- 355 3. Sastry S, Riding G, Morris J, Taberner D, Cherry N, Heagerty A, et al. Young Adult
356 Myocardial Infarction and Ischemic Stroke. The Role of Paradoxical Embolism and
357 Thrombophilia (The YAMIS Study). *J Am Coll Cardiol*. 2006;48(4):686–91.
- 358 4. Japan Stroke Society, Japanese Circulation Society and JCITS. Guidance of patent
359 foramen ovale closure for cryptogenic ischemic stroke (in Japanese) [Internet]. 2019
360 [cited 2021 Aug 2]. Available from:
361 https://www.jsts.gr.jp/img/tebiki_seninsei_noukousoku.pdf
- 362 5. Saver JL, Carroll JD, Thaler DE, Smalling RW, MacDonald LA, Marks DS, et al.
363 Long-Term Outcomes of Patent Foramen Ovale Closure or Medical Therapy after
364 Stroke. *N Engl J Med*. 2017;377(11):1022–32.
- 365 6. Søndergaard L, Kasner SE, Rhodes JF, Andersen G, Iversen HK, Nielsen-Kudsk JE, et
366 al. Patent Foramen Ovale Closure or Antiplatelet Therapy for Cryptogenic Stroke. *N*
367 *Engl J Med*. 2017;377(11):1033–42.
- 368 7. Mas J-L, Derumeaux G, Guillon B, Massardier E, Hosseini H, Mechtouff L, et al.
369 Patent Foramen Ovale Closure or Anticoagulation vs. Antiplatelets after Stroke. *N*
370 *Engl J Med*. 2017;377(11):1011–21.
- 371 8. Ando T, Holmes AA, Pahuja M, Javed A, Briasoulis A, Telila T, et al. Meta-Analysis
372 Comparing Patent Foramen Ovale Closure Versus Medical Therapy to Prevent
373 Recurrent Cryptogenic Stroke. *Am J Cardiol* [Internet]. 2018;121(5):649–55.
374 Available from: <https://doi.org/10.1016/j.amjcard.2017.11.037>

- 375 9. Vaduganathan M, Qamar A, Gupta A, Bajaj N, Golwala HB, Pandey A, et al. Patent
376 Foramen Ovale Closure for Secondary Prevention of Cryptogenic Stroke: Updated
377 Meta-Analysis of Randomized Clinical Trials. *Am J Med* [Internet]. 2018;131(5):575–
378 7. Available from: <https://doi.org/10.1016/j.amjmed.2017.11.027>
- 379 10. Mojadidi MK, Elgendy AY, Elgendy IY, Mahmoud AN, Elbadawi A, Eshtehardi P, et
380 al. Transcatheter Patent Foramen Ovale Closure After Cryptogenic Stroke: An
381 Updated Meta-Analysis of Randomized Trials. *JACC Cardiovasc Interv*.
382 2017;10(21):2228–30.
- 383 11. Volpi JJ, Ridge JR, Nakum M, Rhodes JF, Søndergaard L, Kasner SE. Cost-
384 effectiveness of percutaneous closure of a patent foramen ovale compared with
385 medical management in patients with a cryptogenic stroke: from the US payer
386 perspective. *J Med Econ* [Internet]. 2019;22(9):883–90. Available from:
387 <https://doi.org/10.1080/13696998.2019.1611587>
- 388 12. Leppert MH, Poisson SN, Carroll JD, Thaler DE, Kim CH, Orjuela KD, et al. Cost-
389 effectiveness of patent foramen ovale closure versus medical therapy for secondary
390 stroke prevention. *Stroke*. 2018;49(6):1443–50.
- 391 13. Hildick-Smith D, Turner M, Shaw L, Nakum M, Hartaigh B, Evans RM, et al.
392 Evaluating the cost-effectiveness of percutaneous closure of a patent foramen ovale
393 versus medical management in patients with a cryptogenic stroke: from the UK payer
394 perspective. *J Med Econ* [Internet]. 2019;22(2):131–9. Available from:
395 <https://doi.org/10.1080/13696998.2018.1548355>
- 396 14. Pickett CA, Villines TC, Resar JR, Hulten EA. Cost effectiveness and clinical efficacy
397 of patent foramen ovale closure as compared to medical therapy in cryptogenic stroke
398 patients: A detailed cost analysis and meta-analysis of randomized controlled trials. *Int*
399 *J Cardiol* [Internet]. 2018;273:74–9. Available from:

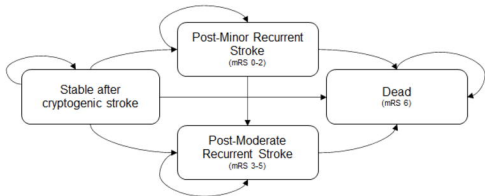
- 400 <https://doi.org/10.1016/j.ijcard.2018.07.099>
- 401 15. Tirschwell DL, Turner M, Thaler D, Choulerton J, Marks D, Carroll J, et al. Cost-
402 effectiveness of percutaneous patent foramen ovale closure as secondary stroke
403 prevention. *J Med Econ* [Internet]. 2018;21(7):656–65. Available from:
404 <https://doi.org/10.1080/13696998.2018.1456445>
- 405 16. Pickett CA, Villines TC, Ferguson MA, Hulten EA. Cost effectiveness of percutaneous
406 closure versus medical therapy for cryptogenic stroke in patients with a patent foramen
407 ovale. *Am J Cardiol* [Internet]. 2014;114(10):1584–9. Available from:
408 <http://dx.doi.org/10.1016/j.amjcard.2014.08.027>
- 409 17. Mirzada N, Ladenvall P, Hansson PO, Eriksson P, Taft C, Dellborg M. Quality of life
410 after percutaneous closure of patent foramen ovale in patients after cryptogenic stroke
411 compared to a normative sample. *Int J Cardiol* [Internet]. 2018;257:46–9. Available
412 from: <https://doi.org/10.1016/j.ijcard.2018.01.120>
- 413 18. Evola S, Kauroo BAW, Trovato RL, Alioto L, D’Amico G, Fonte G, et al. The
414 percutaneous closure of patent foramen ovale (PFO): Impact on the quality of life. *Int J*
415 *Cardiol* [Internet]. 2013;168(2):1622–3. Available from:
416 <http://dx.doi.org/10.1016/j.ijcard.2013.01.015>
- 417 19. Lelakowska M, Matusik PT, Podolec PS, Olszowska M, Nessler JM, Podolec N, et al.
418 Transcatheter closure of atrial septal communication: Impact on quality of life in mid-
419 term follow-up. *Adv Clin Exp Med*. 2019;28(8):1079–85.
- 420 20. Li L, Yiin GS, Geraghty OC, Schulz UG, Kuker W, Mehta Z, et al. Incidence,
421 outcome, risk factors, and long-term prognosis of cryptogenic transient ischaemic
422 attack and ischaemic stroke: A population-based study. *Lancet Neurol* [Internet].
423 2015;14(9):903–13. Available from: [http://dx.doi.org/10.1016/S1474-4422\(15\)00132-](http://dx.doi.org/10.1016/S1474-4422(15)00132-5)
424 5

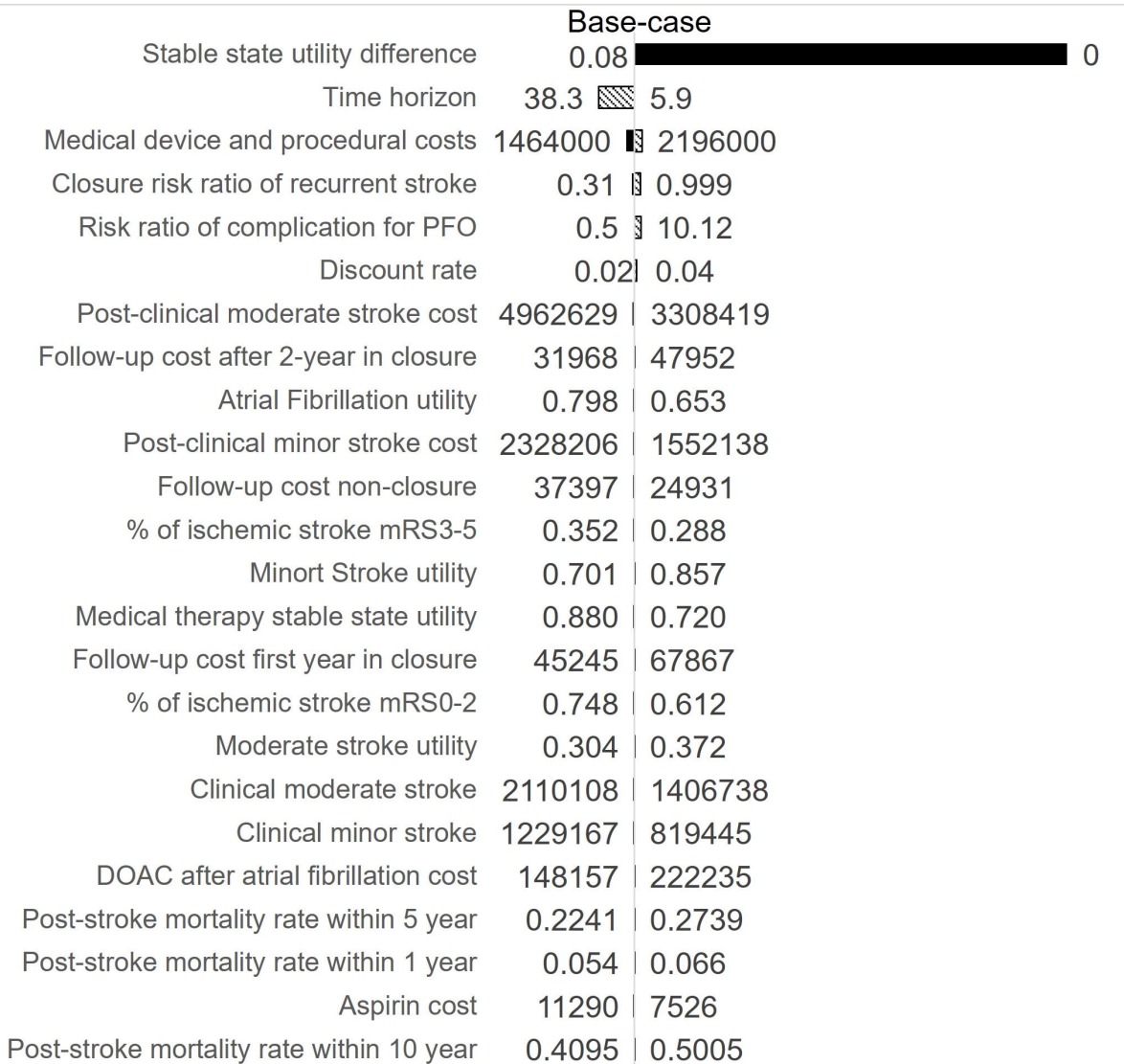
- 425 21. Grau AJ, Weimar C, Buggle F, Heinrich A, Goertler M, Neumaier S, et al. The
426 German Stroke Data Bank. *Stroke*. 2001;32(11):2559–66.
- 427 22. Reynolds MR, Zimetbaum P, Josephson ME, Ellis E, Danilov T, Cohen DJ. Cost-
428 effectiveness of radiofrequency catheter ablation compared with antiarrhythmic drug
429 therapy for paroxysmal atrial fibrillation. *Circ Arrhythmia Electrophysiol*.
430 2009;2(4):362–9.
- 431 23. Hattori N, Hirayama T, Katayama Y. Medical care for chronic-phase stroke in Japan.
432 *Neurol Med Chir (Tokyo)*. 2012;52(4):175–80.
- 433 24. Igaku-tsushinsha. Medical Treatment Fee Point April 2020. 2020.
- 434 25. Kamae I, Hashimoto Y, Koretsune Y, Tanahashi N, Murata T, Phatak H, et al. Cost-
435 effectiveness Analysis of Apixaban against Warfarin for Stroke Prevention in Patients
436 with Nonvalvular Atrial Fibrillation in Japan. *Clin Ther [Internet]*. 2015;37(12):2837–
437 51. Available from: <http://dx.doi.org/10.1016/j.clinthera.2015.10.007>
- 438 26. Ministry of Health, Labour and W. Life Tables [Internet]. 2018 [cited 2021 Aug 2].
439 Available from:
440 <https://www.mhlw.go.jp/toukei/saikin/hw/jinkou/geppo/nengai18/index.html>
- 441 27. WHO. WORLD HEALTH STATISTICS 2020 MONITORING HEALTH FOR THE
442 SDGs [Internet]. World Health Organization. 2020 [cited 2021 Aug 2]. p. 1–77.
443 Available from: <https://www.who.int/publications/i/item/9789240005105>
- 444 28. Ministry of Health Labour and Welfare. Cost-effectiveness evaluation system in Japan
445 [Internet]. 2019 [cited 2021 Aug 2]. Available from:
446 <https://www.mhlw.go.jp/content/12404000/000480976.pdf>
447
448

<Decision Tree>



<Markov Model>

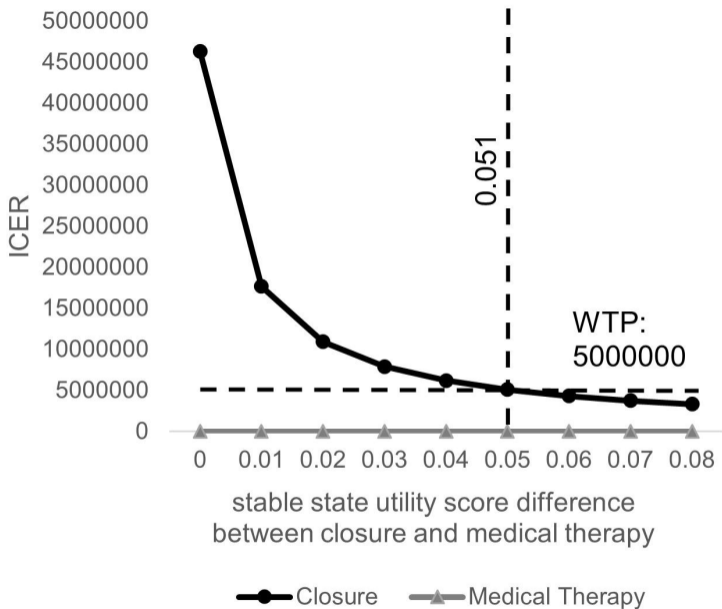


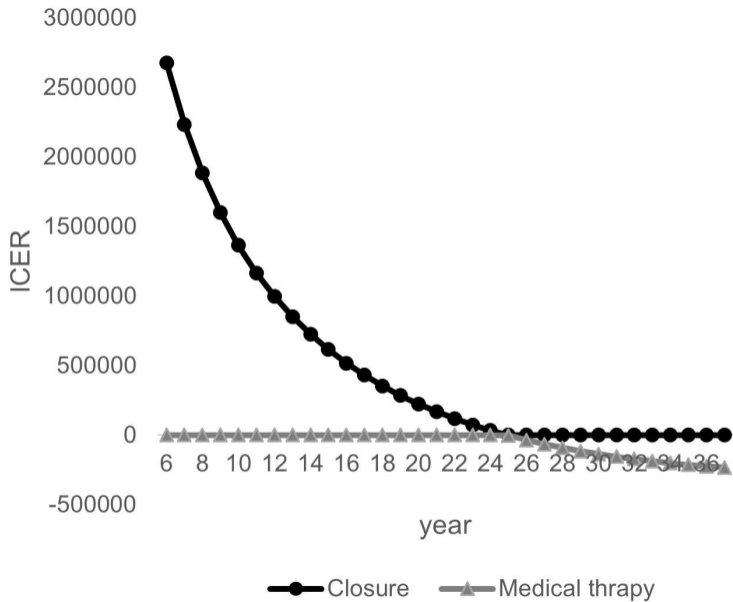


-10 10 30 50
Millions

Incremental cost-effectiveness ratio (JPY/QALY)

▨ Upper value ■ Lower value





Cost-effectiveness acceptability curve

