

1

## Title Page

2 **Construction and Validation of a Nomogram**  
3 **Based on the Log Odds of Positive Lymph**  
4 **Nodes to Predict the Prognosis of Lung**  
5 **Neuroendocrine Tumors**

6

7 **Running title:** LODDS in lung neuroendocrine tumors

8

9 **Suyu Wang<sup>1†</sup>, Juan Wei<sup>2†</sup>, Yibin Guo<sup>3†</sup>, Qiumeng Xu<sup>4†</sup>, Xin Lv<sup>2</sup>, Yue Yu<sup>1\*</sup>,**  
10 **Meiyun Liu<sup>2\*</sup>**

11 <sup>1</sup>Department of Cardiothoracic Surgery, Changzheng Hospital, Naval Medical  
12 University, Shanghai, People's Republic of China.

13 <sup>2</sup>Department of Anesthesiology, Shanghai Pulmonary Hospital, Tongji University  
14 School of Medicine, Shanghai, People's Republic of China.

15 <sup>3</sup>Department of Health Statistics, Naval Medical University, Shanghai, People's  
16 Republic of China.

17 <sup>4</sup>Department of Orthopaedics, Changzheng Hospital, Naval Medical University,  
18 Shanghai, People's Republic of China.

19

20 **\*Correspondence to:**

21 Meiyun Liu, MD. Department of Anesthesiology, Shanghai Pulmonary Hospital,  
22 Tongji University School of Medicine, Shanghai, People's Republic of China.  
23 Address: No.507 Zhengmin Road, Yangpu District, Shanghai, 200433, People's  
24 Republic of China. Tel: (86) 18916380529, Email: liumeiyun0@126.com.

25 Yue Yu, MD. Department of Cardiothoracic Surgery, Changzheng Hospital, Naval  
26 Medical University, Shanghai, People's Republic of China. Address: No.415  
27 Fengyang Road, Huangpu District, Shanghai, 200003, People's Republic of China.  
28 Tel: (86) 13601989808, Fax: 021-81885901, Email: 15021567170@153.com.

29

30 † **These authors have contributed equally to this work and share first authorship.**

31

## 32 **Abstract**

33 **Objectives:** This study aimed to investigate the prognostic value of Log odds of  
34 positive lymph nodes (LODDS) for predicting the long-term prognosis of patients  
35 with node-positive lung neuroendocrine tumors (LNETs).

36 **Materials and Methods:** We collected 506 eligible patients with resected N1/N2  
37 classification LNETs from the Surveillance, Epidemiology, and End Results (SEER)  
38 database between 2004 and 2015. First, we applied the Cox proportional-hazards  
39 regression model to evaluate the relationship between LODDS and study endpoints  
40 (cancer-specific survival [CSS] and overall survival [OS]) based on the entire cohort.  
41 Second, the study cohort was divided into derivation cohort (n=300) and external  
42 validation cohort (n=206) based on different geographic regions. Nomograms were

43 constructed and validated based on these two cohorts to predict the 1-, 3- and 5-year  
44 survival of patients with LNETs. The accuracy and clinical practicability of  
45 nomograms were tested and compared by Harrell's concordance index (C-index),  
46 integrated discrimination improvement (IDI), net reclassification improvement (NRI),  
47 calibration plots, and decision curve analyses.

48 **Results:** The Cox proportional-hazards model showed the high LODDS group ( $-0.33 \leq$   
49  $\text{LODDS} \leq 1.14$ ) had significantly higher mortality compared to those in the low  
50 LODDS group ( $-1.44 \leq \text{LODDS} < -0.33$ ) for both CSS and OS. In addition, besides  
51 LODDS, age at diagnosis, histotype, type of surgery, radiotherapy, and chemotherapy  
52 were shown as independent predictors in Cox regression analyses and included in the  
53 nomograms. The values of c-index, NRI, and IDI indicated that the established  
54 nomogram performed significantly better than the conventional eighth edition of the  
55 TNM staging system alone. The calibration plots for predictions of the 1-, 3-, and  
56 5-year OS were in excellent agreement. Decision curve analyses showed that the  
57 nomogram had value in terms of clinical application.

58 **Conclusions:** We created visualized nomograms for CSS and OS of LNET patients,  
59 facilitating clinicians to provide highly individualized risk assessment and therapy.

60 **Keywords:** lung neuroendocrine tumors, log odds of positive lymph nodes,  
61 predictor, survival, nomogram.

62

### 63 **Abbreviations:**

64 LNET: lung neuroendocrine tumor; TC: typical carcinoid; AC: atypical carcinoid;

65 LCNEC: large cell neuroendocrine carcinoma; SCLC: small cell lung carcinoma;  
66 NSCLC: non-small cell lung cancer; AJCC: American Joint Committee on Cancer;  
67 UICC: Union for International Cancer Control; TNM: tumor-node-metastasis; LN:  
68 lymph node; NPLN: number of positive lymph node; LODDS: log odds of positive  
69 lymph nodes; SEER: Surveillance, Epidemiology, and End Results; NDLN: number  
70 of dissected lymph node; CSS: lung cancer-specific survival; OS: overall survival; SD:  
71 standard deviation; IQR: interquartile range; HR: hazard ratio; CI: confidence interval;  
72 PRCDA: purchased/referred care delivery area; c-index: concordance index; IDI:  
73 integrated discrimination improvement; NRI: net reclassification improvement; DCA:  
74 decision curve analysis; LNR: lymph node ratio; IASLC: International Association for  
75 the Study of Lung Cancer.

76

77

78

79

80

81

82

83

84

85

86

## Main Text

87

### 88 **1. Introduction**

89 Lung neuroendocrine tumors (LNETs) originate from pulmonary neuroendocrine cells,  
90 accounting for approximately 25% of primary lung neoplasms [1]. Owing to the  
91 increased lung cancer screening, the annual incidence of LNET has substantially  
92 increased, rising from 0.0003% in 1973 to 0.0014% in 2004 in the United States [2-4].  
93 Currently, the 2015 World Health Organization classification has grouped LNETs into  
94 four histologic variants based on their histopathologic features: typical carcinoid (TC),  
95 atypical carcinoid (AC), large cell neuroendocrine carcinoma (LCNEC), and small cell  
96 lung carcinoma (SCLC) [5]. Due to the rarity and morphological heterogeneity of  
97 these tumors, there have been limited clinical data available regarding LNETs, thus  
98 making their diagnosis, staging, risk assessment, and treatment challenging [1].  
99 Although specific to non-small cell lung cancer (NSCLC), the international American  
100 Joint Committee on Cancer/Union for International Cancer Control (AJCC/UICC)  
101 tumor-node-metastasis (TNM) staging system has been applied to LNETs [6, 7].  
102 However, several studies have shown an overlapping survival of patients with LNETs,  
103 particularly in stages II and III [6-10]. Therefore, further investigation is warranted to  
104 optimize the staging system for LNETs.

105 Lymph node (LN) involvement is a significant prognostic factor for staging and  
106 risk stratification. A combination of the number of positive lymph nodes (NPLN), the  
107 number of negative lymph nodes, and the anatomic location of LN metastasis have  
108 been applied in the staging of many malignancies [11-15]. However, the latest version

109 of AJCC/UICC TNM classification of lung cancer did not take account of any  
110 number- or ratio-based LN staging system, which could affect the precision of  
111 prognosis evaluation [16, 17]. Log odds of positive lymph nodes (LODDS), defined  
112 as the logarithm of the ratio between NPLN and>NNLN, is currently being used as a  
113 novel prognostic indicator with a strong ability to identify patients with a  
114 homogeneous prognosis in many malignant tumors, including NSCLC [18-21].  
115 However, no specific study has focused on its prognostic significance in LNETs till  
116 now.

117 The present study aimed to determine whether LODDS could be utilized to predict  
118 the long-term prognosis of patients with node-positive (N1/N2 classification) LNET  
119 using the Surveillance, Epidemiology, and End Results (SEER) database. To facilitate  
120 clinical use, we also constructed a visualized and online nomogram incorporating  
121 LODDS for LNETs.

122

## 123 **2. Materials and methods**

### 124 *2.1 Study design, data source, and ethical statement*

125 We conducted a multi-center retrospective cohort study according to the parts of the  
126 methods described in our previous studies [20-22]. We use the Transparent Reporting  
127 of a multivariate prediction model for Individual Prediction or Diagnosis (TRIPOD)  
128 for reporting [23]. The data of this study were extracted from the SEER 18 registries  
129 research database, covering approximately 28% of the population of the United States  
130 [24]. Data were extracted using the SEER\*Stat version 8.3.5 software. The

131 requirement for informed consent was waived because the study utilized the  
132 anonymous data available in the database. In summary, this study complied with the  
133 Declaration of Helsinki [25].

134

## 135 ***2.2 Population selection***

136 Data on the patients with lung cancer were obtained from the SEER database.  
137 Inclusion criteria were as followed: (1) diagnosed from 2004 to 2015; (2) site recode  
138 “ICD-O-3/WHO 2008” restricted to “Lung and Bronchus”; and (3) pathologically  
139 confirmed as TC (ICD-O-3 code: 8240/3), AC (ICD-O-3 code: 8249/3) or LCNEC  
140 (ICD-O-3 code: 8013/3). The study period was set from 2004 to 2015, as the TMN  
141 classification and Collaborative Stage information was available in the database since  
142 2004. Besides, we reclassified the TNM stage according to the eighth edition of  
143 AJCC/UICC TNM classification because the TNM system had multiple versions in  
144 the SEER database and did not apply to all patients [26]. Furthermore, considering its  
145 strong invasion ability and unique pathological characteristics limiting the surgical  
146 options, SCLC was not included in the present study [27, 28]. Although LCNEC has  
147 been found to harbor subpopulations of tumors with SCLC, surgery should be offered  
148 to medically fit patients with both early and locally advanced LCNEC [29-31].  
149 Therefore, we enrolled patients with LCNEC in this study. Patients were excluded  
150 who (1) aged < 18 years; (2) had a diagnosis of any other cancer; (3) did not undergo  
151 radical surgery with systematic LN dissection; (4) had the diagnosis lacking  
152 pathological evidence; (5) were at pN0/pN3 disease; (6) had distant metastasis (M1);

153 (7) received preoperative radiotherapy; (8) survived less or equal to 30 days after  
154 surgery; (9) had missing data on race, laterality, tumor location, radiotherapy, TNM  
155 staging system, and survival outcomes.

156

### 157 ***2.3 Variable extraction, preparation, grouping, and calculation***

158 The baseline demographics data including age at diagnosis ( $\leq 62$  and  $>62$ ), sex (male  
159 and female), and race (white, black, and other) were extracted from the SEER  
160 database. Data on baseline tumor-related characteristics included primary site (upper  
161 lobe, middle lobe, lower lobe, and other), laterality (right and left), histotypes (TC,  
162 AC, and LCNEC), tumor differentiation (well/moderately differentiated, poorly  
163 differentiated /undifferentiated, and unknown), T classification (T1, T2, T3, and T4),  
164 and N classification (N1 and N2). In addition, treatment information including  
165 surgical intervention (sublobectomy, lobectomy, and pneumonectomy), radiotherapy  
166 (yes and no/unknown), chemotherapy (yes and no/unknown), NDLN, and NPLN was  
167 also extracted from the database. LODDS was calculated as:  
168 ***LODDS*** =  $\log \frac{NPLN+0.50}{NDLN-NPLN+0.5}$ . To avoid an infinite number, 0.50 was added to both the  
169 numerator and denominator. Lung cancer-specific survival (CSS) and overall survival  
170 (OS) were two of the study endpoints. The period from diagnosis to all-cause death  
171 was referred to as OS, while the time from diagnosis to LNET-related death was  
172 referred to as CSS. For censored data, the follow-up duration was computed as the  
173 number of months between diagnosis and death or the last follow-up (December 31,  
174 2016).



175

#### 176 ***2.4 Statistical analysis strategy***

177 Baseline characteristics of study cohort stratified by LODDS were compared by using  
178 Student *t* test, Mann-Whitney test, Pearson's  $\chi^2$  test, or Fisher's exact test as  
179 appropriate. Continuous variables were displayed with the mean (standard deviation  
180 [SD]) or the median (interquartile range [IQR]), while categorical variables were  
181 reported as count and percentages.

182 First, we analyzed LODDS as a continuous variable. A smooth curve was drawn to  
183 estimate the association between LODDS and its hazard ratios (HRs) using restricted  
184 cubic spline regression analysis according to the method of Chen et al [32]. Second,  
185 we took LODDS as a categorical variable. LODDS was dichotomized via the X-tile  
186 software [33]. Survival curves were calculated using the Kaplan-Meier method and  
187 compared using the log-rank test. To assess the connection between LODDS and each  
188 study outcome, a multivariable Cox proportional-hazards regression model was used,  
189 controlling for relevant confounders. These confounders were selected based on their  
190 associations with the study endpoints of interest or a change in effect estimate of over  
191 10%. The relatively low LODDS group was used as a reference group, and the results  
192 are presented as HRs with 95% confidence intervals (CIs). Third, a series of subgroup  
193 analyses were performed according to age at diagnosis, sex, primary site, laterality,  
194 histotypes, tumor differentiation, T classification, and N classification.

195 All statistical analyses were performed using R software (version.3.6.14.1.0; The R  
196 Project for Statistical Computing, TX, USA; <http://www.r-project.org>) and

197 EmpowerStats (version 2.0; <http://www.empowerstats.com>). Two-tailed  $P < 0.050$   
198 was deemed as statistical significance.

199

## 200 ***2.5 Construction and validation of nomograms***

201 Patients with purchased/referred care delivery areas (PRCDA) of East, Northern  
202 plains, and Alaska were regarded as the derivation cohort, while the external  
203 validation cohort includes patients with PRCDA of Pacific coast and Southwest.  
204 StepAIC algorithm was used in multivariable Cox regression analysis to select the  
205 predictors for the final models [34]. Using these identified prognostic factors, we  
206 constructed two nomograms for predicting 1-, 3-, and 5-year CSS and OS in LNET  
207 patients.

208 Several indexes and methods were used to assess the accuracy of our nomograms.  
209 First, Harrell's concordance index (c-index) was calculated to quantify the  
210 discrimination performance of the nomograms. Second, a calibration curve, which is a  
211 diagram presenting the association between predicted probabilities and actual survival  
212 rate at 1, 3, and 5 years, along with a bootstrapped sample of the study cohort, was  
213 used to assess the calibration. Third, a comparison between our nomogram and the  
214 conventional eighth edition of the TNM staging system was conducted by calculating  
215 integrated discrimination improvement (IDI) and net reclassification improvement  
216 (NRI) [35]. Z test was used to examine the difference. Fourth, the decision curve  
217 analysis (DCA) was performed to test the clinical usefulness of the nomograms and  
218 TNM classification. Finally, to facilitate researchers' and clinicians' usage of our

219 model, we created two user-friendly webserver for our nomograms.

220

### 221 **3. Results**

#### 222 ***3.1 Patients characteristics and cutoff value for LOODS***

223 The SEER database collected 11,870 patients diagnosed with LNETs from January

224 2004 to December 2015. After employing the inclusion and exclusion criteria, 506

225 patients remained in the final study cohort. The selection process were summarized in

226 ***Figure 1***. Based on the results calculated by the X-tile software, the optimal cutoff

227 value of LOODS was set as -0.33. Therefore, the study cohort was dichotomized into

228 the low LOODS group ( $-1.44 \leq \text{LOODS} < -0.33$ ;  $n=334$ ) and the high LOODS group

229 ( $-0.33 \leq \text{LOODS} \leq 1.14$ ;  $n=172$ ). Baseline demographic and clinicopathological features

230 of participants stratified by LOODS were listed in ***Table 1***. The median number of

231 NDLN was 12.00 (IQR: 8.00-17.00) in the low LOODS group and 5.00 (IQR:

232 3.00-9.00) in the high LOODS group, whereas the median number of NPLN was 1.00

233 (IQR: 1.00-2.00) in the low LOODS group and 2.00 (IQR: 1.00-4.00) in the high

234 LOODS group. Compared with the low LOODS group ( $-1.44 \leq \text{LOODS} < -0.33$ ), the

235 patients included in the high LOODS group ( $-0.33 \leq \text{LOODS} \leq 1.14$ ) were more likely

236 to be diagnosed in the N2 classification ( $P < 0.001$ ), have more positive lymph nodes

237 ( $P < 0.001$ ) and receive radiotherapy ( $P=0.045$ ). No difference was observed in age at

238 diagnosis, sex, race, laterality, tumor site, histotype, differentiation, T classification,

239 surgery, and chemotherapy between the two cohorts (all  $P$ -values  $> 0.050$ ).

240

### 241 **3.2 Restricted cubic spline analysis**

242 We performed a common Cox regression analysis using LODDS as a continuous  
243 variable and found the adjusted HRs of LODDS for CSS and OS were 2.21 (95% CI:  
244 1.52-3.20,  $P<0.001$ ) and 1.51 (95%CI: 1.10-2.06,  $P=0.010$ ). Second, two piece-wise  
245 Cox regression analyses were conducted and the inflection points were found (-0.27  
246 for CSS, -0.26 for OS, **Table S1**). For the  $\text{LODDS} < -0.27$ , every 1 increase in  
247 LODDS was associated with a 321% increase in CSS ( $P<0.001$ ), while for the  
248  $\text{LODDS} > -0.27$ , every 1 increase in LODDS was associated with a 24% increase in  
249 CSS ( $P=0.555$ ). For a  $\text{LODDS} < -0.26$ , every 1 increase in LODDS was associated  
250 with a 135% increase in OS ( $P<0.001$ ), while for a  $\text{LODDS} > -0.26$ , every 1 increase  
251 in LODDS was associated with a 4% decrease in OS ( $P=0.906$ ). As shown in the  
252 restricted cubic spline analyses (**Figure 2**), the HRs for LODDS as a continuous  
253 variable tends to show a saturation effect.

254

### 255 **3.3 Survival analysis**

256 The median follow-up time for the entire cohort was 42 months (IQR, 19-77 months).  
257 A total of 180 (35.57%) patients died from any cause, and 135 (26.68%) patients died  
258 from LNET-related death at the end of the study period. The cumulative 1-, 3-, and  
259 5-year CSS and OS rates for patients stratified by LODDS were summarized in **Tables**  
260 **S2**. The survival curves showed that patients with the higher values of LODDS ( $-0.33$   
261  $\leq \text{LODDS} \leq 1.14$ ) were associated with worse prognosis (log-rank test:  $P=0.001$  for  
262 CSS;  $P=0.005$  for OS, **Figures S1**). Based on the entire cohort, the univariable Cox

263 regression model suggested that age at diagnosis, race, site, histotype, differentiation,  
264 T classification, N classification, surgery, radiotherapy, chemotherapy, and LODDS  
265 were all significant variables for CSS in *Table S3*. The multivariable Cox regression  
266 analysis demonstrated that participants in the high LODDS group ( $-0.33 \leq \text{LODDS} \leq$   
267  $1.14$ ) was related to reducing survival compared to those in the low LODDS group  
268 ( $-1.44 \leq \text{LODDS} < -0.33$ ) (HR=2.06, 95% CI: 1.43-2.97,  $P < 0.001$ ) (*Table 2 and Table*  
269 *S3*). The multivariable Cox regression analysis for OS yielded similar results  
270 (HR=1.66, 95% CI: 1.22-2.26,  $P = 0.001$ , *Table 2 and Table S4*). To eliminate the  
271 potential bias caused by the LN fragments, we performed a sensitivity analysis by  
272 restricting the resected LN count to fewer than or equal to 20, and found that LODDS  
273 remained statistically significant (CSS: HR=2.16, 95% CI: 1.46-3.19,  $P < 0.001$ ; OS:  
274 HR=1.75, 95% CI: 1.25-2.43,  $P = 0.001$ ) (*Table 2 and Table S5-6*). Furthermore, the  
275 extent of LN management should be in accordance with the IASLC recommendations,  
276 which involves a minimum of 6 nodes/stations, therefore we excluded patients with  
277 the examined LN count to fewer than 6. The multivariable Cox regression analysis  
278 yielded similar results (CSS: HR=2.84, 95% CI: 1.78-4.50,  $P < 0.001$ ; OS: HR=2.37,  
279 95% CI: 1.59-3.54,  $P < 0.001$ ) (*Table 2 and Table S7-8*).

280

### 281 **3.4 Subgroup analysis**

282 For CSS, subgroup analyses showed the higher LODDS ( $-0.33 \leq \text{LODDS} \leq 1.14$ ) was  
283 also associated with deteriorative mortality in most strata (*Table S9*). Even among  
284 patients with the same N stage, LODDS still could distinguish and stratify patients

285 into different risk groups. (N1 stage subgroup: HR=1.99, 95% CI: 1.14-3.45,  $P=0.015$ ;  
286 N1 stage subgroup: HR=2.24, 95% CI: 1.27-3.96,  $P=0.006$ ). For OS, in the N1 stage  
287 subgroup, the HR remained the trend of increase despite the results were not  
288 statistically significant (HR=1.56, 95% CI: 0.98-2.49,  $P=0.060$ ).

289

### 290 ***3.5 Construction and validation of the nomogram***

291 Prognostic nomograms for CSS and OS were established including significant  
292 indicators selected by StepAIC algorithm in multivariable Cox regression analysis.  
293 For nomogram construction and validation, among the final study cohort including  
294 506 patients, 300 of them were assigned to the derivation cohort (PRCDA=East,  
295 Northern plains, and Alaska) and 206 of them were assigned to the validation cohort  
296 (PRCDA=Pacific coast, Southwest). The comparison of baseline characteristics  
297 between the derivation cohort and validation cohort was summarized in ***Table S10***.  
298 No difference was observed in most variables except sex. The nomogram of CSS  
299 showed that histotype contributed the most to the prognosis, followed by age at  
300 diagnosis, LODDS, surgery, and chemotherapy (***Fig 3*** and ***Table 3***). Similarly, the  
301 nomogram of OS showed that histotype contributed the most to the prognosis,  
302 followed by age at diagnosis, chemotherapy, LODDS, and radiotherapy (***Fig 3*** and  
303 ***Table 4***). The top point reference scale of the nomograms assigned a score for each  
304 category of these predictive variables. After adding up the total score and locating the  
305 sum on the total points reference scale, a straight line was drawn to the bottom  
306 survival probability scale to find the estimated 1-/3-/5- survival rate.

307 The nomogram was validated internally in the derivation cohort and externally in  
308 the validation cohort. C-indexes of CSS for derivation cohort and validation cohort  
309 were 0.845 (0.804-0.886), and 0.821 (0.771-0.871). C-indexes of OS for derivation  
310 cohort and validation cohort were 0.821 (0.783-0.858), and 0.811 (0.766-0.856).  
311 Additionally, the calibration plots (*Fig 4*) revealed that the points were close to the  
312 45-degree line, indicating a good similarity between the nomogram-predicted and  
313 actual survival states.

314

### 315 ***3.6 Comparison of the nomogram and the eighth edition TNM staging system***

316 The comparisons between the nomograms and the TNM staging system were also  
317 performed (*Table S11*). Analysis of accuracy showed that the NRI for the 1-, 3-, and  
318 5-year CSS were 0.721 (95% CI: 0.825-0.554,  $P<0.001$ ), 0.645 (95% CI: 0.743-0.414,  
319  $P<0.001$ ) and 0.627 (95% CI: 0.768-0.403,  $P<0.001$ ) in the validation cohorts,  
320 respectively. Similarly, in the validation set, the IDI for 1-, 3-, and 5-years CSS were  
321 0.249 (95% CI: 0.389-0.161,  $P<0.001$ ), 0.391 (95% CI: 0.519-0.243,  $P<0.001$ ), and  
322 0.42 (95% CI: 0.537-0.265,  $P<0.001$ ), respectively. Furthermore, the DCA curve was  
323 applied to determine the clinical applicability of the nomogram and TNM staging  
324 system. The DCA curves showed that our nomograms were better than the TNM  
325 staging system, as it added more net benefits compared with the TNM classification  
326 for almost all threshold probabilities based on the derivation cohort and validation  
327 cohort (*Fig S2 and S3*).

328

329 ***3.7 Development of webservers for convenient clinical use***

330 Two dynamic, visualized and publicly accessible online nomograms based on the  
331 multivariable Cox regression models were built (CSS:  
332 <https://drboidedwater.shinyapps.io/DynNom-CSS-lungneuroendocrinecarcinoma/>; OS:  
333 <https://drboidedwater.shinyapps.io/DynNom-OS-lungneuroendocrinecarcinoma/>) (**Fig**  
334 **S4**). The webservers may generate estimated survival probability and Kaplan-Meier  
335 curves by entering the covariates.

336

337 **4. Discussion**

338 LNETs constitute a unique clinical subgroup of primary pulmonary tumors. Due to  
339 their relatively low incidence, no specific staging system exists for LNETs. An exact  
340 and reasonable assessment of the lymph node status plays a crucial role in the  
341 staging and prognosis evaluation of patients with LNCTs. In this study, we found that  
342 LODDS was independently associated with long-term clinical outcomes among  
343 patients with resectable LNETs. These results were robust to restricted cubic spline  
344 analysis and a series of sensitivity analyses. Second, we constructed a visualized and  
345 publicly accessible online nomogram, incorporating LODDS and routinely available  
346 demographic, staging and treatment information, to predict the survival probability for  
347 individual LNET patients. To our knowledge, the present study is the first to explore  
348 the prognostic value of LODDS for LNET based on a multi-center cohort with a  
349 relatively large sample size.

350 The involvement of regional lymph nodes in malignancies has been considered as



351 one of the most important prognostic factors. The eighth edition of the AJCC/UICC  
352 staging system of NSCLC classified metastasis to ipsilateral peribronchial and/or hilar  
353 nodes and intrapulmonary nodes as N1 classification, and metastasis into ipsilateral  
354 mediastinal and/or subcarinal nodes into N2 classification, without taking into  
355 account numbers of examined and metastatic lymph nodes [36]. LODDS is a new LN  
356 ratio-based index and has been identified as an independent predictor in many  
357 malignancies such as rectal cancer [37], pancreatic cancer [38], gallbladder cancer  
358 [39], gastric cancer [40], and colon cancer [41]. Recently, several studies were  
359 attempting to explore the prognostic value of LODDS for NSCLC. In 2020, we did a  
360 research and found that the high value of LODDS  $> -0.37$  was independently  
361 associated with worse survival in patients with node-positive lung squamous cell  
362 carcinoma [20]. Dziejcz et al. [19] found that it is possible to discriminate NSCLC  
363 patients more effectively by using LODDS compared to conventional N classification.  
364 Deng et al. [18] found LODDS and lymph node ratio (LNR) staging schemes  
365 outperformed those of NPLN for predicting OS and CSS among patients with  
366 node-positive NSCLC. However, most previous studies only focused on NSCLC, and  
367 few reports have explored the prognostic value of LODDS in LNETs.

368 In the current study, either as a continuous or as a categorical variable, the high  
369 value of LODDS was associated with worse survival for N1/N2 stage patients with  
370 LNETs. However, LODDS must be used and calculated with caution, because the  
371 value of LODDS is influenced by the number of dissected LN. Therefore, a series of  
372 sensitivity analyses were performed. For LNETs, the extent of LN management

373 should conform to the International Association for the Study of Lung Cancer (IASLC)  
374 recommendations, which involves a minimum of 6 nodes/stations, 3 of which should  
375 be mediastinal including the subcarinal station [42]. Considering that the accurate  
376 value of LODDS was dependent on the adequate NDLN, we excluded patients with  
377 examined LN count less than 6 and found that LODDS could still serve as an  
378 independent predictor for LNETs. In addition, it is quite easy to damage the integrity  
379 of the LN during surgery, especially when the LNs are adhesive to each other or  
380 difficult to be separated from the dissected tissues [43]. To avoid the potential bias led  
381 by fragmented LNs, we excluded patients with examined LN count of more than 20,  
382 and the results did not change. Furthermore, in the subgroup stratified by  
383 different N stages (N1 and N2 stages), LODDS could still discriminate the high-risk  
384 population from the low-risk one. Additionally, to our surprise, N classification was  
385 excluded from our nomograms. The possible reason is that the anatomical definition  
386 of LN station is more complicated and dependent on surgery quality, which thus  
387 might potentially cause misclassification of the stage, and thus be replaced by  
388 LODDS [44, 45]. In summary, LODDS is the ratio-based LN staging system that  
389 combines NPLN and>NNLN, which might be superior to some number-based LN  
390 assessment methods. Furthermore, in LODDS, the numerator and denominator are  
391 both added with a value of 0.5, eliminating the singularities caused by null data,  
392 therefore LODDS might be used to estimate survival of node-negative patients, as  
393 opposed to LNR.

394 The LODDS was not the only prognostic factor included in our nomogram.

395 Similar to previous studies [46-48], age at diagnosis, histotype, surgery, radiotherapy,  
396 and chemotherapy were independent prognostic factors of CSS or OS. In this study,  
397 the nomogram showed that histotype contributed the most to the prognosis, which  
398 indicated tumor histotype is a crucial determinant of the clinical behavior of LNETs.  
399 Our nomogram indicated that LCNEC showed the worst prognosis followed by AC  
400 and TC. Growing evidence also suggests that high-grade LCNEC is biologically  
401 distinct from low-grade TC and intermediate-grade AC in view of clinical behavior,  
402 pathologic features, molecular alterations as well as possible precursor lesions [49].  
403 All-stage 5-year OS for LCNEC fluctuated between 13% and 57% [50]. Different  
404 from LCNEC, TC and AC are more commonly found in younger patients without  
405 smoking histories. AC is significantly more aggressive than TC, with a higher  
406 frequency of nodal and distant metastases, and 5-year survival of 60%. In this study,  
407 we did not include SCLC patients, because a unique feature of SCLC is that it is  
408 generally considered a nonsurgical disease [51].

409 The optimal type of surgical treatment for LNETs is controversial. The surgical  
410 approach depends on tumor size, location, and preoperative biopsy specimen  
411 assessment. Several studies reported that wedge resection may increase the risk of  
412 tumor recurrences, especially in node-positive TC or AC [52, 53]. Lobectomy is  
413 reported as superior to segmentectomy in terms of OS in some, but not all in  
414 pulmonary carcinoids [54-56]. Similar to these studies, our study showed that  
415 lobectomy was superior to sublobectomy and pneumonectomy in the nomogram for  
416 CSS. Furthermore, there is an absence of high-quality evidence to show whether or

417 not chemotherapy could provide clinical benefits for LNETs. Although our nomogram  
418 showed that chemotherapy might be associated with more favorable prognoses.  
419 However, the results need to be interpreted with caution. In the SEER database,  
420 patients without receiving chemotherapy and those with unknown information about  
421 adjuvant therapy were classified into one category, which might lead to potential bias.  
422 Until now, for pulmonary carcinoids, routine adjuvant therapy may only be  
423 considered in selected fit patients (AC, N2 stage) with a particularly high risk of  
424 relapse [57]. Besides, Iyoda et al. [58] suggested that platinum-based adjuvant  
425 chemotherapy after surgery could help patients with LCNEC prevent recurrence.

426 Because LNET is a heterogeneous disease, each LNET patient requires an  
427 individualized and timely risk assessment, which allows for more precise therapeutic  
428 strategies and medical resource allocation decisions. In this study, we developed and  
429 validated a nomogram to predict prognosis in patients with LNET. Our nomograms  
430 based on LODDS were more accurate and obtained more clinical net benefit than the  
431 conventional AJCC/UICC TNM staging system. In summary, the online nomograms,  
432 composed of several easily obtained predictors, could be a simpler way to engage  
433 clinicians in death risks, patient counseling, and decision-making. To put it another  
434 way, LNET patients with poorer clinical results estimated by nomograms may require  
435 more aggressive therapy. [28].

436 Several limitations of this study should be noted. First, the SEER database lacks  
437 some detailed data, such as smoking history, some promising molecular markers (e.g.  
438 Ki-67), imaging techniques used before surgery, histological and morphological data

439 (e.g. mitotic rate), type of resection (R0, R1, or R2), and use of systemic therapies.  
440 Therefore they could not be included as covariables in the multivariable Cox models.  
441 Second, information about postoperative comorbidities, and tumor recurrence is also  
442 not available in the database. Third, although we reclassified the TNM classification  
443 according to the eighth edition of AJCC/UICC TNM classification, the TNM staging  
444 system, which was derived from the SEER database's collaborative stage system, is a  
445 combination of clinical and pathologic stages. Because of the distinction between  
446 clinical and pathologic stages, more subgroup analysis is required when using a single  
447 clinical or pathologic staging system.

448

## 449 **5. Conclusions**

450 LODDS was found to be useful in predicting survival outcomes in LNET patients  
451 who underwent surgery. Online dynamic nomograms including LODDS to evaluate  
452 CSS and OS were constructed. The well-executed nomograms may aid clinicians in  
453 providing reasonable, customized therapeutic strategies for LNET patients.

454

## 455 **Funding support**

456 This study was funded by Development Fund for the Department of Anesthesiology  
457 of Shanghai Pulmonary Hospital. The funders have no role in the study design, data  
458 collection, data analysis and completion of the manuscripts.

459

## 460 **Conflict of interest disclosures**

461 There are no conflicts of interest with any of the authors.

462

## 463 **CRedit authorship contribution statement**

464 Suyu Wang and Yue Yu: Conceptualization, Methodology, Software, Investigation,

465 Writing-original draft, Writing-review & editing. Juan Wei: Software, Data curation,

466 Investigation, Writing-original draft. Yibin Guo and Qiumeng Xu: Visualization,

467 Investigation. Xin Lv: Software, Validation. Meiyun Liu: Funding acquisition,

468 Writing-review & editing.

469

## 470 **References**

471 [1] Hendifar AE, Marchevsky AM and Tuli R. Neuroendocrine Tumors of the Lung: Current  
472 Challenges and Advances in the Diagnosis and Management of Well-Differentiated Disease. *J*  
473 *Thorac Oncol* 2017; 12: 425-436.

474 [2] Dasari A, Shen C, Halperin D, Zhao B, Zhou S, Xu Y, Shih T and Yao JC. Trends in the Incidence,  
475 Prevalence, and Survival Outcomes in Patients With Neuroendocrine Tumors in the United  
476 States. *JAMA Oncol* 2017; 3: 1335-1342.

477 [3] Hallet J, Law CH, Cukier M, Saskin R, Liu N and Singh S. Exploring the rising incidence of  
478 neuroendocrine tumors: a population-based analysis of epidemiology, metastatic  
479 presentation, and outcomes. *Cancer* 2015; 121: 589-597.

480 [4] Naalsund A, Rostad H, Strøm EH, Lund MB and Strand TE. Carcinoid lung tumors--incidence,  
481 treatment and outcomes: a population-based study. *Eur J Cardiothorac Surg* 2011; 39:  
482 565-569.

483 [5] Travis WD, Brambilla E, Nicholson AG, Yatabe Y, Austin JHM, Beasley MB, Chirieac LR, Dacic S,  
484 Duhig E, Flieder DB, Geisinger K, Hirsch FR, Ishikawa Y, Kerr KM, Noguchi M, Pelosi G, Powell  
485 CA, Tsao MS and Wistuba I. The 2015 World Health Organization Classification of Lung  
486 Tumors: Impact of Genetic, Clinical and Radiologic Advances Since the 2004 Classification. *J*  
487 *Thorac Oncol* 2015; 10: 1243-1260.

488 [6] Yoon JY, Sigel K, Martin J, Jordan R, Beasley MB, Smith C, Kaufman A, Wisnivesky J and Kim  
489 MK. Evaluation of the Prognostic Significance of TNM Staging Guidelines in Lung Carcinoid  
490 Tumors. *J Thorac Oncol* 2019; 14: 184-192.

491 [7] Yeh YC and Chou TY. Pulmonary neuroendocrine tumors: study of 90 cases focusing on  
492 clinicopathological characteristics, immunophenotype, preoperative biopsy, and frozen  
493 section diagnoses. *J Surg Oncol* 2014; 109: 280-286.

494 [8] Robelin P, Hadoux J, Forestier J, Planchard D, Hervieu V, Berdelou A, Scoazec JY, Valette PJ,

- 495 Leboulleux S, Ducreux M, Lombard-Bohas C, Baudin E and Walter T. Characterization,  
496 Prognosis, and Treatment of Patients With Metastatic Lung Carcinoid Tumors. *J Thorac Oncol*  
497 2019; 14: 993-1002.
- 498 [9] Filosso PL, Oliaro A, Ruffini E, Bora G, Lyberis P, Asioli S, Delsedime L, Sandri A and Guerrera F.  
499 Outcome and prognostic factors in bronchial carcinoids: a single-center experience. *J Thorac*  
500 *Oncol* 2013; 8: 1282-1288.
- 501 [10] Aydin E, Yazici U, Gulgosteren M, Agackiran Y, Kaya S, Gulhan E, Tastepe I and Karaoglanoglu N.  
502 Long-term outcomes and prognostic factors of patients with surgically treated pulmonary  
503 carcinoid: our institutional experience with 104 patients. *Eur J Cardiothorac Surg* 2011; 39:  
504 549-554.
- 505 [11] Kodera Y, Yamamura Y, Shimizu Y, Torii A, Hirai T, Yasui K, Morimoto T, Kato T and Kito T. The  
506 number of metastatic lymph nodes: a promising prognostic determinant for gastric  
507 carcinoma in the latest edition of the TNM classification. *J Am Coll Surg* 1998; 187: 597-603.
- 508 [12] Sinn HP, Helmchen B and Wittekind CH. [TNM classification of breast cancer: changes and  
509 comments on the 7th edition]. *Pathologe* 2010; 31: 361-366.
- 510 [13] Gallegos-Hernandez JF, Hernandez-Hernandez DM, Flores-Diaz R, Sierra-Santiesteban I,  
511 Pichardo-Romero P, Arias-Ceballos H, Minauro-Munoz G and Alvarado-Cabrero I. The number  
512 of sentinel nodes identified as prognostic factor in oral epidermoid cancer. *Oral Oncol* 2005;  
513 41: 947-952.
- 514 [14] Yang L, Xiong Z, Xie Q, He W, Liu S, Kong P, Jiang C, Guo G and Xia L. Prognostic value of total  
515 number of lymph nodes retrieved differs between left-sided colon cancer and right-sided  
516 colon cancer in stage III patients with colon cancer. *BMC Cancer* 2018; 18: 558.
- 517 [15] Chu X and Yang ZF. Impact on survival of the number of lymph nodes resected in patients  
518 with lymph node-negative gastric cancer. *World J Surg Oncol* 2015; 13: 192.
- 519 [16] Tsim S, O'Dowd CA, Milroy R and Davidson S. Staging of non-small cell lung cancer (NSCLC): a  
520 review. *Respir Med* 2010; 104: 1767-1774.
- 521 [17] Lv P, Chen G and Zhang P. Log odds of positive lymph nodes are superior to other measures  
522 for evaluating the prognosis of non-small cell lung cancer. *Thorac Cancer* 2014; 5: 570-575.
- 523 [18] Deng W, Xu T, Wang Y, Xu Y, Yang P, Gomez D and Liao Z. Log odds of positive lymph nodes  
524 may predict survival benefit in patients with node-positive non-small cell lung cancer. *Lung*  
525 *Cancer* 2018; 122: 60-66.
- 526 [19] Dziejcz D, Piotr R, Langfort R and Orłowski T. Log odds of positive lymph nodes as a novel  
527 prognostic indicator in NSCLC staging. *Surg Oncol* 2017; 26: 80-85.
- 528 [20] Yu Y, Zhang P, Yao R, Wang J, Wang P, Xue X, Xiao J and Wang Z. Prognostic value of log odds  
529 of positive lymph nodes in node-positive lung squamous cell carcinoma patients after surgery:  
530 a SEER population-based study. *Transl Lung Cancer Res* 2020; 9: 1285-1301.
- 531 [21] Wang S, Yu Y, Xu W, Lv X, Zhang Y and Liu M. Dynamic nomograms combining N classification  
532 with ratio-based nodal classifications to predict long-term survival for patients with lung  
533 adenocarcinoma after surgery: a SEER population-based study. *BMC Cancer* 2021; 21: 653.
- 534 [22] Yu Y, Huang R, Wang P, Wang S, Ling X, Zhang P, Yu J, Wang J, Xiao J and Wang Z.  
535 Sublobectomy versus lobectomy for long-term survival outcomes of early-stage non-small cell  
536 lung cancer with a tumor size  $\leq 2$  cm accompanied by visceral pleural invasion: a SEER  
537 population-based study. *J Thorac Dis* 2020; 12: 592-604.

- 538 [23] Collins GS, Reitsma JB, Altman DG and Moons KG. Transparent reporting of a multivariable  
539 prediction model for individual prognosis or diagnosis (TRIPOD): the TRIPOD statement. *Bmj*  
540 2015; 350: g7594.
- 541 [24] Cronin KA, Ries LA and Edwards BK. The Surveillance, Epidemiology, and End Results (SEER)  
542 Program of the National Cancer Institute. *Cancer* 2014; 120 Suppl 23: 3755-3757.
- 543 [25] Goodyear MD, Krleza-Jeric K and Lemmens T. The Declaration of Helsinki. *Bmj* 2007; 335:  
544 624-625.
- 545 [26] Detterbeck FC. The eighth edition TNM stage classification for lung cancer: What does it  
546 mean on main street? *J Thorac Cardiovasc Surg* 2018; 155: 356-359.
- 547 [27] Jackson AS, Rosenthal A, Cattoni M, Bograd AJ, Farivar AS, Aye RW, Vallières E and Louie BE.  
548 Staging System for Neuroendocrine Tumors of the Lung Needs to Incorporate Histologic  
549 Grade. *Ann Thorac Surg* 2020; 109: 1009-1018.
- 550 [28] Yi C, Dai J, Song N, Wu C, Zhang L, Zhu Y, Jiang G, Zhang H and Zhang P. Improvement of  
551 pathological staging system for neuroendocrine tumors of the lung. *Ann Transl Med* 2021; 9:  
552 447.
- 553 [29] Iyoda A, Makino T, Koezuka S, Otsuka H and Hata Y. Treatment options for patients with large  
554 cell neuroendocrine carcinoma of the lung. *Gen Thorac Cardiovasc Surg* 2014; 62: 351-356.
- 555 [30] Iyoda A, Azuma Y and Sano A. Neuroendocrine tumors of the lung: clinicopathological and  
556 molecular features. *Surg Today* 2020; 50: 1578-1584.
- 557 [31] Raman V, Jawitz OK, Yang CJ, Voigt SL, Tong BC, D'Amico TA and Harpole DH. Outcomes for  
558 Surgery in Large Cell Lung Neuroendocrine Cancer. *J Thorac Oncol* 2019; 14: 2143-2151.
- 559 [32] Chen S, Honda T, Ohara T, Hata J, Hirakawa Y, Yoshida D, Shibata M, Sakata S, Oishi E, Furuta Y,  
560 Kitazono T and Ninomiya T. Serum homocysteine and risk of dementia in Japan. *J Neurol*  
561 *Neurosurg Psychiatry* 2020; 91: 540-546.
- 562 [33] Camp RL, Dolled-Filhart M and Rimm DL. X-tile: a new bio-informatics tool for biomarker  
563 assessment and outcome-based cut-point optimization. *Clin Cancer Res* 2004; 10: 7252-7259.
- 564 [34] Jungk C, Reinhardt A, Warta R, Capper D, Deimling AV, Herold-Mende C and Unterberg A.  
565 Extent of Resection, MGMT Promoter Methylation Status and Tumor Location Independently  
566 Predict Progression-Free Survival in Adult Sporadic Pilocytic Astrocytoma. *Cancers (Basel)*  
567 2019; 11:
- 568 [35] Vickers AJ and Elkin EB. Decision curve analysis: a novel method for evaluating prediction  
569 models. *Med Decis Making* 2006; 26: 565-574.
- 570 [36] Taylor MD, LaPar DJ, Thomas CJ, Persinger M, Stelow EB, Kozower BD, Lau CL and Jones DR.  
571 Lymph node ratio predicts recurrence and survival after R0 resection for non-small cell lung  
572 cancer. *Ann Thorac Surg* 2013; 96: 1163-1170.
- 573 [37] Huang B, Ni M, Chen C, Cai G and Cai S. LODDS is superior to lymph node ratio for the  
574 prognosis of node-positive rectal cancer patients treated with preoperative radiotherapy.  
575 *Tumori* 2017; 103: 87-92.
- 576 [38] Ramacciato G, Nigri G, Petrucciani N, Pinna AD, Ravaioli M, Jovine E, Minni F, Grazi GL,  
577 Chirletti P, Tisone G, Ferla F, Napoli N and Boggi U. Prognostic role of nodal ratio, LODDS, pN  
578 in patients with pancreatic cancer with venous involvement. *BMC Surg* 2017; 17: 109.
- 579 [39] Xiao Z, Shi Z, Hu L, Gao Y, Zhao J, Liu Y, Xu Q and Huang D. A new nomogram from the SEER  
580 database for predicting the prognosis of gallbladder cancer patients after surgery. *Ann Transl*  
581 *Med* 2019; 7: 738.



- 582 [40] Liu H, Deng J, Zhang R, Hao X, Jiao X and Liang H. The RML of lymph node metastasis was  
583 superior to the LODDS for evaluating the prognosis of gastric cancer. *Int J Surg* 2013; 11:  
584 419-424.
- 585 [41] Fortea-Sanchis C, Martínez-Ramos D and Escrig-Sos J. The lymph node status as a prognostic  
586 factor in colon cancer: comparative population study of classifications using the logarithm of  
587 the ratio between metastatic and nonmetastatic nodes (LODDS) versus the pN-TNM  
588 classification and ganglion ratio systems. *BMC Cancer* 2018; 18: 1208.
- 589 [42] Caplin ME, Baudin E, Ferolla P, Filosso P, Garcia-Yuste M, Lim E, Oberg K, Pelosi G, Perren A,  
590 Rossi RE and Travis WD. Pulmonary neuroendocrine (carcinoid) tumors: European  
591 Neuroendocrine Tumor Society expert consensus and recommendations for best practice for  
592 typical and atypical pulmonary carcinoids. *Ann Oncol* 2015; 26: 1604-1620.
- 593 [43] Dai J, Liu M, Yang Y, Li Q, Song N, Rocco G, Sihoe ADL, Gonzalez-Rivas D, Suen HC, He W, Duan  
594 L, Fan J, Zhao D, Wang H, Zhu Y, Chen C, Diasio RB, Jiang G, Yang P and Zhang P. Optimal  
595 Lymph Node Examination and Adjuvant Chemotherapy for Stage I Lung Cancer. *J Thorac  
596 Oncol* 2019; 14: 1277-1285.
- 597 [44] El-Sherief AH, Lau CT, Obuchowski NA, Mehta AC, Rice TW and Blackstone EH.  
598 Cross-Disciplinary Analysis of Lymph Node Classification in Lung Cancer on CT Scanning. *Chest*  
599 2017; 151: 776-785.
- 600 [45] Ramirez RA, Wang CG, Miller LE, Adair CA, Berry A, Yu X, O'Brien TF and Osarogiagbon RU.  
601 Incomplete intrapulmonary lymph node retrieval after routine pathologic examination of  
602 resected lung cancer. *J Clin Oncol* 2012; 30: 2823-2828.
- 603 [46] He Y, Zhao F, Han Q, Zhou Y and Zhao S. Prognostic nomogram for predicting long-term  
604 cancer-specific survival in patients with lung carcinoid tumors. *BMC Cancer* 2021; 21: 141.
- 605 [47] Dong S, Liang J, Zhai W and Yu Z. Development and Validation of an Individualized Nomogram  
606 for Predicting Overall Survival in Patients With Typical Lung Carcinoid Tumors. *Am J Clin Oncol*  
607 2020; 43: 607-614.
- 608 [48] Chen X, Pang Z, Wang Y, Bie F, Zeng Y, Wang G and Du J. The role of surgery for atypical  
609 bronchopulmonary carcinoid tumor: Development and validation of a model based on  
610 Surveillance, Epidemiology, and End Results (SEER) database. *Lung Cancer* 2020; 139: 94-102.
- 611 [49] Hiroshima K and Mino-Kenudson M. Update on large cell neuroendocrine carcinoma. *Transl  
612 Lung Cancer Res* 2017; 6: 530-539.
- 613 [50] Rossi G, Cavazza A, Marchioni A, Longo L, Migaldi M, Sartori G, Bigiani N, Schirosi L, Casali C,  
614 Morandi U, Facciolo N, Maiorana A, Bavieri M, Fabbri LM and Brambilla E. Role of  
615 chemotherapy and the receptor tyrosine kinases KIT, PDGFRalpha, PDGFRbeta, and Met in  
616 large-cell neuroendocrine carcinoma of the lung. *J Clin Oncol* 2005; 23: 8774-8785.
- 617 [51] Lim E, Goldstraw P, Nicholson AG, Travis WD, Jett JR, Ferolla P, Bomanji J, Rusch VW, Asamura  
618 H, Skogseid B, Baudin E, Caplin M, Kwekkeboom D, Brambilla E and Crowley J. Proceedings of  
619 the IASLC International Workshop on Advances in Pulmonary Neuroendocrine Tumors 2007. *J  
620 Thorac Oncol* 2008; 3: 1194-1201.
- 621 [52] García-Yuste M, Matilla JM, Cañizares MA, Molins L and Guijarro R. Surgical treatment of low  
622 and intermediate grade lung net. *J Thorac Dis* 2017; 9: S1435-s1441.
- 623 [53] García-Yuste M, Matilla JM, Cueto A, Paniagua JM, Ramos G, Cañizares MA and Muguruza I.  
624 Typical and atypical carcinoid tumours: analysis of the experience of the Spanish  
625 Multi-centric Study of Neuroendocrine Tumours of the Lung. *Eur J Cardiothorac Surg* 2007; 31:

- 626 192-197.
- 627 [54] Filosso PL, Rena O, Guerrera F, Moreno Casado P, Sagan D, Raveglia F, Brunelli A, Welter S,  
628 Gust L, Pompili C, Casadio C, Bora G, Alvarez A, Zaluska W, Baisi A, Roesel C and Thomas PA.  
629 Clinical management of atypical carcinoid and large-cell neuroendocrine carcinoma: a  
630 multicentre study on behalf of the European Association of Thoracic Surgeons (ESTS)  
631 Neuroendocrine Tumours of the Lung Working Group†. *Eur J Cardiothorac Surg* 2015; 48:  
632 55-64.
- 633 [55] Steuer CE, Behera M, Kim S, Chen Z, Saba NF, Pillai RN, Owonikoko TK, Khuri FR and  
634 Ramalingam SS. Atypical carcinoid tumor of the lung: a surveillance, epidemiology, and end  
635 results database analysis. *J Thorac Oncol* 2015; 10: 479-485.
- 636 [56] Marciello F, Mercier O, Ferolla P, Scoazec JY, Filosso PL, Chapelier A, Guggino G, Monaco R,  
637 Grimaldi F, Pizzolitto S, Guigay J, de Latour BR, Giuffrida D, Longchamp E, de Montpreville VT,  
638 Fadel E, Colao A, Planchard D, Papotti M, Faggiano A and Baudin E. Natural History of  
639 Localized and Locally Advanced Atypical Lung Carcinoids after Complete Resection: A Joined  
640 French-Italian Retrospective Multicenter Study. *Neuroendocrinology* 2018; 106: 264-273.
- 641 [57] Baudin E, Caplin M, Garcia-Carbonero R, Fazio N, Ferolla P, Filosso PL, Frilling A, de Herder  
642 WW, Hörsch D, Knigge U, Korse CM, Lim E, Lombard-Bohas C, Pavel M, Scoazec JY, Sundin A  
643 and Berruti A. Lung and thymic carcinoids: ESMO Clinical Practice Guidelines for diagnosis,  
644 treatment and follow-up(☆). *Ann Oncol* 2021; 32: 439-451.
- 645 [58] Iyoda A, Hiroshima K, Moriya Y, Takiguchi Y, Sekine Y, Shibuya K, Iizasa T, Kimura H, Nakatani Y  
646 and Fujisawa T. Prospective study of adjuvant chemotherapy for pulmonary large cell  
647 neuroendocrine carcinoma. *Ann Thorac Surg* 2006; 82: 1802-1807.
- 648

## Tables 1-4

**Table 1.** Baseline characteristics of the entire dataset stratified by LODDS

Characteristic	Total (n=506)	-1.44≤LODDS<-0.33 (n=334)	-0.33≤LODDS≤1.14 (n=172)	P value*
<b>Age at diagnosis (year)</b>				0.183
≤62	300 (59.29)	205 (61.38)	95 (55.23)	
>62	206 (40.71)	129 (38.62)	77 (44.77)	
<b>Sex</b>				0.979
Male	232 (45.85)	153 (45.81)	79 (45.93)	
Female	274 (54.15)	181 (54.19)	93 (54.07)	
<b>Race</b>				0.63
White	453 (89.53)	302 (90.42)	151 (87.79)	
Black	29 (5.73)	17 (5.09)	12 (6.98)	
Other	24 (4.74)	15 (4.49)	9 (5.23)	
<b>Laterality</b>				0.639
Right	281 (55.53)	183 (54.79)	98 (56.98)	
Left	225 (44.47)	151 (45.21)	74 (43.02)	
<b>Site</b>				0.767
Upper lobe	194 (38.34)	131 (39.22)	63 (36.63)	
Middle lobe	64 (12.65)	39 (11.68)	25 (14.53)	
Lower lobe	196 (38.74)	131 (39.22)	65 (37.79)	
Other	52 (10.28)	33 (9.88)	19 (11.05)	
<b>Histotype</b>				0.395
Large cell neuroendocrine carcinoma	129 (25.49)	82 (24.55)	47 (27.33)	

Carcinoid tumor	274 (54.15)	188 (56.29)	86 (50.00)	
Atypical carcinoid tumor	103 (20.36)	64 (19.16)	39 (22.67)	
<b>Differentiation</b>				0.710
Well/moderately differentiated	201 (39.72)	136 (40.72)	65 (37.79)	
Poorly differentiated /undifferentiated	97 (19.17)	65 (19.46)	32 (18.60)	
Unknown	208 (41.11)	133 (39.82)	75 (43.60)	
<b>T classification</b>				0.409
T1	209 (41.30)	131 (39.22)	78 (45.35)	
T2	190 (37.55)	134 (40.12)	56 (32.56)	
T3	74 (14.62)	48 (14.37)	26 (15.12)	
T4	33 (6.52)	21 (6.29)	12 (6.98)	
<b>N classification</b>				<0.001
N1	319 (63.04)	230 (68.86)	89 (51.74)	
N2	187 (36.96)	104 (31.14)	83 (48.26)	
<b>Surgery</b>				0.051
Sublobectomy	44 (8.70)	22 (6.59)	22 (12.79)	
Lobectomy	406 (80.24)	272 (81.44)	134 (77.91)	
Pneumonectomy	56 (11.07)	40 (11.98)	16 (9.30)	
<b>Radiotherapy</b>				0.045
No	439 (86.76)	297 (88.92)	142 (82.56)	
Yes	67 (13.24)	37 (11.08)	30 (17.44)	
<b>Chemotherapy</b>				0.051
No	374 (73.91)	256 (76.65)	118 (68.60)	
Yes	132 (26.09)	78 (23.35)	54 (31.40)	
<b>Number of dissected lymph nodes</b>	9.00 (6.00-14.75)	12.00 (8.00-17.00)	5.00 (3.00-9.00)	<0.001
<b>Number of positive lymph nodes</b>	2.00 (1.00-3.00)	1.00 (1.00-2.00)	2.00 (1.00-4.00)	<0.001

---

<b>LODDS as a continuous variable</b>	-0.49 (-0.79--0.22)	-0.70 (-0.88--0.52)	0.00 (-0.22-0.20)	<0.001
---------------------------------------	---------------------	---------------------	-------------------	--------

---

<sup>†</sup>Data are listed as median (IQR) or n (%). \**P* values for Mann-Whitney test or Chi square test by comparing the basic characteristics in the two categorical LODDS groups.

<sup>‡</sup>LODDS, log odds of positive lymph node.

**Table 2.** HRs for multivariable analysis

Cohort	CSS		OS	
	HR (95%CI)	<i>P</i> value	HR (95%CI)	<i>P</i> value
<b>Entire dataset</b>				
Univariable analysis	1.73 (1.23-2.43)	0.002	1.52 (1.13-2.04)	0.006
Multivariable analysis	2.06 (1.43-2.97)	<0.001	1.66 (1.22-2.26)	0.001
<b>Patients with NDLN<math>\leq</math>20</b>				
Univariable analysis	1.89 (1.32-2.72)	0.001	1.65 (1.20-2.26)	0.002
Multivariable analysis	2.16 (1.46-3.19)	<0.001	1.75 (1.25-2.43)	0.001
<b>Patients with NDLN<math>\geq</math>6</b>				
Univariable analysis	2.16 (1.42-3.28)	<0.001	1.97 (1.37-2.84)	<0.001
Multivariable analysis	2.84 (1.78-4.50)	<0.001	2.37 (1.59-3.54)	<0.001

<sup>†</sup>CSS, cancer-specific survival; OS, overall survival; HR, hazard ratio; CI, confidence interval; NDLN, number of dissected lymph node.

**Table 3.** Univariable and stepwise multivariable Cox proportional regression analysis for CSS of the derivation dataset

Characteristic	N (%)	Univariable analysis		Stepwise multivariable analysis	
		HR (95%CI)	P value	HR (95%CI)	P value
<b>Age at diagnosis (year)</b>					
≤62	172 (57.33)	1		1	
>62	128 (42.67)	2.92 (1.85-4.61)	<0.001	2.16 (1.33-3.52)	0.002
<b>Sex</b>					
Male	132 (44.00)	1			
Female	168 (56.00)	0.68 (0.44-1.06)	0.087		
<b>Race</b>					
White	281 (93.67)	1			
Black	15 (5.00)	1.03 (0.38-2.81)	0.958		
Other	4 (1.33)	0 (0.00-Inf)	0.995		
<b>Laterality</b>					
Right	161 (53.67)	1			
Left	139 (46.33)	0.85 (0.54-1.32)	0.467		
<b>Site</b>					
Upper lobe	124 (41.33)	1			
Middle lobe	34 (11.33)	0.25 (0.09-0.71)	0.009		
Lower lobe	113 (37.67)	0.59 (0.36-0.96)	0.033		
Other	29 (9.67)	0.41 (0.16-1.04)	0.061		
<b>Histotype</b>					

Large cell neuroendocrine carcinoma	86 (28.67)	1		1	
Carcinoid tumor	152 (50.67)	0.08 (0.04-0.14)	<0.001	0.06 (0.03-0.13)	<0.001
Atypical carcinoid tumor	62 (20.67)	0.19 (0.10-0.35)	<0.001	0.17 (0.09-0.33)	<0.001
<b>Differentiation</b>					
Well/moderately differentiated	120 (40.00)	1			
Poorly differentiated/undifferentiated	64 (21.33)	6.97 (3.87-12.52)	<0.001		
Unknown	116 (38.67)	1.52 (0.81-2.85)	0.195		
<b>T classification</b>					
T1	128 (42.67)	1			
T2	114 (38.00)	0.93 (0.56-1.54)	0.777		
T3	43 (14.33)	1.54 (0.82-2.88)	0.178		
T4	15 (5.00)	0.95 (0.34-2.68)	0.923		
<b>N classification</b>					
N1	193 (64.33)	1			
N2	107 (35.67)	1.74 (1.12-2.71)	0.014		
<b>Surgery</b>					
Sublobectomy	24 (8.00)	1		1	
Lobectomy	246 (82.00)	0.28 (0.15-0.52)	<0.001	0.67 (0.34-1.31)	0.242
Pneumonectomy	30 (10.00)	0.45 (0.20-1.00)	0.049	1.27 (0.54-2.96)	0.588
<b>Radiotherapy</b>					
No	259 (86.33)	1			
Yes	41 (13.67)	2.34 (1.40-3.89)	0.001		
<b>Chemotherapy</b>					
No	214 (71.33)	1		1	



Yes	86 (28.67)	2.63 (1.69-4.10)	<0.001	0.68 (0.4-1.15)	0.148
<b>LODDS as a categorical variable</b>					
-1.44≤LODDS<-0.33	197 (65.67)	1		1	
-0.33≤LODDS≤1.14	103 (34.33)	2.12 (1.36-3.29)	0.001	2.05 (1.28-3.29)	0.003

†CSS, cancer-specific survival; LODDS, log odds of positive lymph node; HR, hazard ratio; CI, confidence interval.

**Table 4.** Univariable and stepwise multivariable Cox proportional regression analysis for OS of the derivation dataset

Characteristic	N (%)	Univariable analysis		Stepwise multivariable analysis	
		HR (95%CI)	P value	HR (95%CI)	P value
<b>Age at diagnosis (year)</b>					
≤62	172 (57.33)	1		1	
>62	128 (42.67)	3.5 (2.36-5.20)	<0.001	2.65 (1.75-4.01)	<0.001
<b>Sex</b>					
Male	132 (44.00)	1			
Female	168 (56.00)	0.62 (0.43-0.91)	0.014		
<b>Race</b>					
White	281 (93.67)	1			
Black	15 (5.00)	1.11 (0.49-2.53)	0.801		
Other	4 (1.33)	0 (0.00-Inf)	0.994		
<b>Laterality</b>					
Right	161 (53.67)	1			
Left	139 (46.33)	0.87 (0.59-1.26)	0.453		
<b>Site</b>					
Upper lobe	124 (41.33)	1			
Middle lobe	34 (11.33)	0.41 (0.20-0.87)	0.020		
Lower lobe	113 (37.67)	0.74 (0.49-1.12)	0.149		
Other	29 (9.67)	0.69 (0.35-1.36)	0.284		
<b>Histotype</b>					

Large cell neuroendocrine carcinoma	86 (28.67)	1			
Carcinoid tumor	152 (50.67)	0.13 (0.08-0.20)	<0.001	0.09 (0.05-0.16)	<0.001
Atypical carcinoid tumor	62 (20.67)	0.23 (0.13-0.39)	<0.001	0.19 (0.11-0.34)	<0.001
<b>Differentiation</b>					
Well/moderately differentiated	120 (40.00)	1			
Poorly differentiated/undifferentiated	64 (21.33)	6.22 (3.70-10.46)	<0.001		
Unknown	116 (38.67)	1.98 (1.18-3.34)	0.010		
<b>T classification</b>					
T1	128 (42.67)	1			
T2	114 (38.00)	1.12 (0.74-1.70)	0.586		
T3	43 (14.33)	1.35 (0.76-2.40)	0.301		
T4	15 (5.00)	0.91 (0.36-2.31)	0.849		
<b>N classification</b>					
N1	193 (64.33)	1			
N2	107 (35.67)	1.76 (1.21-2.57)	0.003		
<b>Surgery</b>					
Sublobectomy	24 (8.00)	1			
Lobectomy	246 (82.00)	0.38 (0.21-0.67)	0.001		
Pneumonectomy	30 (10.00)	0.49 (0.23-1.03)	0.058		
<b>Radiotherapy</b>					
No	259 (86.33)	1		1	
Yes	41 (13.67)	1.98 (1.26-3.12)	0.003	1.57 (0.9-2.72)	0.110
<b>Chemotherapy</b>					
No	214 (71.33)	1		1	

Yes	86 (28.67)	1.86 (1.26-2.73)	0.002	0.44 (0.26-0.75)	0.003
<b>LODDS as a categorical variable</b>					
-1.44 ≤ LODDS < -0.33	197 (65.67)	1		1	
-0.33 ≤ LODDS ≤ 1.14	103 (34.33)	1.68 (1.15-2.45)	0.007	1.65 (1.12-2.42)	0.011

†LODDS, log odds of positive lymph node; OS, overall survival; HR, hazard ratio; CI, confidence interval.

## Tables S1-11

**Table S1. HR for LODDS as a continuous variable**

Model	CSS			OS		
	Piece-wise LODDS	HR (95%CI)	P value	Piece-wise LODDS	HR (95%CI)	P value
Cox regression model	-	2.21 (1.52-3.20)	<0.001	-	1.51 (1.10-2.06)	0.010
Two piece-wise Cox regression model	LODDS<-0.27	4.21 (1.95-9.07)	<0.001	LODDS<-0.26	2.35 (1.27-4.33)	0.006
	LODDS >-0.27	1.24 (0.60-2.55)	0.555	LODDS >-0.26	0.96 (0.51-1.82)	0.906

<sup>†</sup>HR for CSS were evaluated based on multivariable Cox proportional regression model adjusted by age, race, site, histotype, differentiation, T classification, N classification, surgery, radiotherapy and chemotherapy.

<sup>‡</sup>HR for OS were evaluated based on multivariable Cox proportional regression model adjusted by age, sex, site, histotype, differentiation, N classification, radiotherapy and chemotherapy.

<sup>§</sup>CSS, cancer-specific survival; LODDS, log odds of positive lymph node; OS, overall survival; HR, hazard ratio; CI, confidence interval.

**Table S2. 1-, 3-, and 5-year CSS and OS of different LODDS subgroups**

Cohort	-1.44≤LODDS<-0.33	-0.33≤LODDS≤1.14
1-year CSS (%)	93.83 (91.25-96.49)	87.52 (82.66-92.66)
3-year CSS (%)	83.92 (79.82-88.23)	70.57 (63.69-78.19)
5-year CSS (%)	76.83 (71.83-82.19)	62.09 (54.37-70.9)

1-year OS (%)	90.96 (87.93-94.1)	85.4 (80.28-90.86)
3-year OS (%)	78.7 (74.23-83.44)	66.22 (59.19-74.08)
5-year OS (%)	70.21 (64.94-75.91)	54.2 (46.46-63.23)

<sup>†</sup>CSS, cancer-specific survival; LODDS, log odds of positive lymph node; OS, overall survival.

**Table S3** Univariable and multivariable Cox proportional regression analysis for the influence of LODDS on CSS of the entire dataset

Characteristic	N (%)	Univariable analysis		Multivariable analysis	
		HR (95%CI)	P value	HR (95%CI)	P value
<b>Age at diagnosis (year)</b>					
≤62	300 (59.29)	1		1	
>62	206 (40.71)	2.81 (1.99-3.97)	<0.001	2.25 (1.54-3.30)	<0.001
<b>Sex</b>					
Male	232 (45.85)	1			
Female	274 (54.15)	0.80 (0.57-1.12)	0.200		
<b>Race</b>					
White	453 (89.53)	1		1	
Black	29 (5.73)	1.68 (0.91-3.12)	0.099	2.00 (1.02-3.92)	0.043
Other	24 (4.74)	0.98 (0.46-2.11)	0.964	0.70 (0.31-1.57)	0.389
<b>Laterality</b>					
Right	281 (55.53)	1			
Left	225 (44.47)	0.84 (0.60-1.18)	0.324		
<b>Site</b>					
Upper lobe	194 (38.34)	1		1	

Middle lobe	64 (12.65)	0.37 (0.19-0.75)	0.006	0.79 (0.37-1.67)	0.532
Lower lobe	196 (38.74)	0.70 (0.48-1.02)	0.062	0.89 (0.59-1.35)	0.594
Other	52 (10.28)	0.73 (0.40-1.33)	0.310	1.13 (0.54-2.35)	0.747
<b>Histotype</b>					
Large cell neuroendocrine carcinoma	129 (25.49)	1		1	
Carcinoid tumor	274 (54.15)	0.09 (0.06-0.14)	<0.001	0.07 (0.04-0.14)	<0.001
Atypical carcinoid tumor	103 (20.36)	0.27 (0.17-0.42)	<0.001	0.23 (0.13-0.42)	<0.001
<b>Differentiation</b>					
Grade I-II	201 (39.72)	1		1	
Poorly differentiated/undifferentiated	97 (19.17)	7.20 (4.52-11.45)	<0.001	1.52 (0.76-3.05)	0.235
Unknown	208 (41.11)	1.72 (1.07-2.76)	0.025	1.29 (0.77-2.18)	0.335
<b>T classification</b>					
T1	209 (41.30)	1		1	
T2	190 (37.55)	0.89 (0.60-1.32)	0.555	0.72 (0.48-1.09)	0.117
T3	74 (14.62)	1.66 (1.04-2.67)	0.035	0.89 (0.53-1.50)	0.673
T4	33 (6.52)	1.41 (0.74-2.70)	0.298	1.19 (0.57-2.50)	0.645
<b>N classification</b>					
N1	319 (63.04)	1		1	
N2	187 (36.96)	1.65 (1.18-2.32)	0.004	1.16 (0.79-1.70)	0.453
<b>Surgery</b>					
Sublobectomy	44 (8.70)	1		1	
Lobectomy	406 (80.24)	0.58 (0.34-0.98)	0.044	1.08 (0.60-1.93)	0.805
Pneumonectomy	56 (11.07)	1.04 (0.55-1.97)	0.894	2.01 (0.99-4.09)	0.054
<b>Radiotherapy</b>					

No	439 (86.76)	1		1	
Yes	67 (13.24)	2.05 (1.36-3.10)	0.001	1.05 (0.65-1.71)	0.847
<b>Chemotherapy</b>					
No	374 (73.91)	1		1	
Yes	132 (26.09)	2.38 (1.69-3.35)	<0.001	0.50 (0.31-0.81)	0.005
<b>LODDS as a categorical variable</b>					
-1.44≤LODDS<-0.33	334 (66.01)	1		1	
-0.33≤LODDS≤1.14	172 (33.99)	1.73 (1.23-2.43)	0.002	2.06 (1.43-2.97)	<0.001

<sup>†</sup>CSS, cancer-specific survival; LODDS, log odds of positive lymph node; HR, hazard ratio; CI, confidence interval.

**Table S4.** Univariable and multivariable Cox proportional regression analysis for the influence of LODDS on OS of the entire dataset

Characteristic	N (%)	Univariable analysis		Multivariable analysis	
		HR (95%CI)	P value	HR (95%CI)	P value
<b>Age at diagnosis (year)</b>					
≤62	300 (59.29)	1		1	
>62	206 (40.71)	3.46 (2.55-4.70)	<0.001	2.55 (1.84-3.52)	<0.0001
<b>Sex</b>					
Male	232 (45.85)	1		1	
Female	274 (54.15)	0.72 (0.54-0.96)	0.026	0.93 (0.69-1.25)	0.625
<b>Race</b>					
White	453 (89.53)	1			
Black	29 (5.73)	1.45 (0.83-2.56)	0.195		



Other	24 (4.74)	0.72 (0.34-1.53)	0.392		
<b>Laterality</b>					
Right	281 (55.53)	1			
Left	225 (44.47)	0.84 (0.62-1.13)	0.242		
<b>Site</b>					
Upper lobe	194 (38.34)	1		1	
Middle lobe	64 (12.65)	0.52 (0.30-0.91)	0.021	1.00 (0.55-1.83)	0.991
Lower lobe	196 (38.74)	0.86 (0.63-1.20)	0.378	1.02 (0.72-1.45)	0.900
Other	52 (10.28)	0.86 (0.52-1.44)	0.579	1.84 (1.05-3.22)	0.033
<b>Histotype</b>					
Large cell neuroendocrine carcinoma	129 (25.49)	1		1	
Carcinoid tumor	274 (54.15)	0.13 (0.09-0.18)	<0.001	0.11 (0.07-0.19)	<0.0001
Atypical carcinoid tumor	103 (20.36)	0.28 (0.18-0.41)	<0.001	0.27 (0.16-0.45)	<0.0001
<b>Differentiation</b>					
Well/moderately differentiated	201 (39.72)	1		1	
Poorly differentiated	97 (19.17)	6.61 (4.38-9.97)	<0.001	1.65 (0.91-2.97)	0.098
/undifferentiated					
Unknown	208 (41.11)	1.92 (1.28-2.88)	0.002	1.45 (0.94-2.23)	0.095
<b>T classification</b>					
T1	209 (41.30)	1			
T2	190 (37.55)	1.00 (0.72-1.40)	0.996		
T3	74 (14.62)	1.43 (0.92-2.21)	0.112		
T4	33 (6.52)	1.28 (0.71-2.32)	0.409		
<b>N classification</b>					
N1	319 (63.04)	1		1	

N2	187 (36.96)	1.71 (1.28-2.29)	<0.001	1.24 (0.90-1.71)	0.196
<b>Surgery</b>					
Sublobectomy	44 (8.70)	1			
Lobectomy	406 (80.24)	0.68 (0.42-1.09)	0.110		
Pneumonectomy	56 (11.07)	1.00 (0.56-1.80)	0.990		
<b>Radiotherapy</b>					
No	439 (86.76)	1		1	
Yes	67 (13.24)	1.84 (1.27-2.67)	0.001	1.17 (0.75-1.80)	0.491
<b>Chemotherapy</b>					
No	374 (73.91)	1		1	
Yes	132 (26.09)	1.99 (1.47-2.69)	<0.001	0.45 (0.30-0.69)	0.000
<b>LODDS as a categorical variable</b>					
-1.44≤LODDS<-0.33	334 (66.01)	1		1	
-0.33≤LODDS≤1.14	172 (33.99)	1.52 (1.13-2.04)	0.006	1.66 (1.22-2.26)	0.001

<sup>†</sup>OS, overall survival; LODDS, log odds of positive lymph node; HR, hazard ratio; CI, confidence interval.

**Table S5.** Univariable and multivariable Cox proportional regression analysis for the influence of LODDS on CSS of the patients with number of dissected lymph nodes $\leq$ 20

Characteristic	N (%)	Univariable analysis		Multivariable analysis	
		HR (95%CI)	P value	HR (95%CI)	P value
<b>Age at diagnosis (year)</b>					
≤62	269 (59.65)	1		1	
>62	182 (40.35)	2.77 (1.91-4.01)	<0.001	2.20 (1.47-3.31)	<0.001
<b>Sex</b>					
Male	203 (45.01)	1			
Female	248 (54.99)	0.78 (0.55-1.13)	0.190		
<b>Race</b>					
White	405 (89.80)	1		1	
Black	25 (5.54)	1.86 (0.97-3.56)	0.062	2.22 (1.09-4.52)	0.027
Other	21 (4.66)	1.02 (0.45-2.32)	0.970	0.67 (0.28-1.59)	0.367
<b>Laterality</b>					
Right	246 (54.55)	1			
Left	205 (45.45)	0.80 (0.56-1.16)	0.242		
<b>Site</b>					

Upper lobe	179 (39.69)	1		1	
Middle lobe	59 (13.08)	0.32 (0.15-0.70)	0.004	0.66 (0.28-1.57)	0.351
Lower lobe	179 (39.69)	0.67 (0.45-0.99)	0.043	0.97 (0.62-1.53)	0.912
Other	34 (7.54)	0.66 (0.31-1.37)	0.264	1.41 (0.60-3.31)	0.433
<b>Histotype</b>					
Large cell neuroendocrine carcinoma	113 (25.06)	1		1	
Carcinoid tumor	255 (56.54)	0.08 (0.05-0.13)	<0.001	0.07 (0.03-0.14)	<0.001
Atypical carcinoid tumor	83 (18.40)	0.21 (0.13-0.36)	<0.001	0.18 (0.09-0.37)	<0.001
<b>Differentiation</b>					
Well/moderately differentiated	178 (39.47)	1		1	
Poorly differentiated/undifferentiated	84 (18.63)	9.54 (5.65-16.13)	<0.001	1.76 (0.81-3.81)	0.154
Unknown	189 (41.91)	2.12 (1.24-3.64)	0.006	1.50 (0.82-2.73)	0.187
<b>T classification</b>					
T1	193 (42.79)	1		1	
T2	170 (37.69)	0.91 (0.60-1.39)	0.660	0.67 (0.43-1.04)	0.073
T3	62 (13.75)	1.63 (0.97-2.75)	0.066	0.78 (0.44-1.38)	0.387
T4	26 (5.76)	1.51 (0.74-3.08)	0.256	1.40 (0.64-3.08)	0.402
<b>N classification</b>					
N1	283 (62.75)	1		1	
N2	168 (37.25)	1.56 (1.09-2.25)	0.016	1.07 (0.71-1.62)	0.729
<b>Surgery</b>					
Sublobectomy	43 (9.53)	1		1	
Lobectomy	365 (80.93)	0.62 (0.36-1.07)	0.085	1.17 (0.64-2.13)	0.620
Pneumonectomy	43 (9.53)	0.84 (0.41-1.71)	0.626	1.66 (0.75-3.67)	0.207

<b>Radiotherapy</b>						
No	387 (85.81)	1			1	
Yes	64 (14.19)	2.24 (1.47-3.41)	<0.001		1.18 (0.71-1.94)	0.520
<b>Chemotherapy</b>						
No	336 (74.50)	1			1	
Yes	115 (25.50)	2.60 (1.80-3.75)	<0.001		0.46 (0.27-0.77)	0.004
<b>LODDS as a categorical variable</b>						
-1.44 ≤ LODDS < -0.33	286 (63.41)	1			1	
-0.33 ≤ LODDS ≤ 1.14	165 (36.59)	1.89 (1.32-2.72)	0.001		2.16 (1.46-3.19)	<0.001

<sup>†</sup>CSS, cancer-specific survival; LODDS, log odds of positive lymph node; HR, hazard ratio; CI, confidence interval.

**Table S6.** Univariable and multivariable Cox proportional regression analysis for the influence of LODDS on OS of the patients with number of dissected lymph nodes $\leq$ 20

Characteristic	N (%)	Univariable analysis		Multivariable analysis	
		HR (95%CI)	P value	HR (95%CI)	P value
<b>Age at diagnosis (year)</b>					
≤62	269 (59.65)	1		1	
>62	182 (40.35)	3.56 (2.56-4.96)	<0.001	2.48 (1.75-3.51)	<0.001
<b>Sex</b>					
Male	203 (45.01)	1		1	
Female	248 (54.99)	0.70 (0.51-0.96)	0.027	0.92 (0.66-1.28)	0.634
<b>Race</b>					
White	405 (89.80)	1			
Black	25 (5.54)	1.49 (0.81-2.76)	0.201		
Other	21 (4.66)	0.74 (0.33-1.68)	0.475		
<b>Laterality</b>					
Right	246 (54.55)	1			
Left	205 (45.45)	0.82 (0.60-1.13)	0.232		

<b>Site</b>						
Upper lobe	179 (39.69)	1		1		
Middle lobe	59 (13.08)	0.46 (0.25-0.84)	0.012	0.88 (0.45-1.72)		0.703
Lower lobe	179 (39.69)	0.84 (0.59-1.17)	0.301	1.07 (0.74-1.56)		0.704
Other	34 (7.54)	0.70 (0.36-1.35)	0.283	1.62 (0.80-3.31)		0.183
<b>Histotype</b>						
Large cell neuroendocrine carcinoma	113 (25.06)	1		1		
Carcinoid tumor	255 (56.54)	0.12 (0.08-0.17)	<0.001	0.11 (0.06-0.19)		<0.001
Atypical carcinoid tumor	83 (18.40)	0.23 (0.15-0.37)	<0.001	0.23 (0.12-0.41)		<0.001
<b>Differentiation</b>						
Well/moderately differentiated	178 (39.47)	1		1		
Poorly differentiated/undifferentiated	84 (18.63)	8.17 (5.17-12.91)	<0.001	1.82 (0.94-3.49)		0.074
Unknown	189 (41.91)	2.24 (1.42-3.53)	0.001	1.58 (0.97-2.58)		0.065
<b>T classification</b>						
T1	193 (42.79)	1				
T2	170 (37.69)	1.01 (0.71-1.45)	0.937			
T3	62 (13.75)	1.46 (0.90-2.35)	0.123			
T4	26 (5.76)	1.46 (0.77-2.76)	0.251			
<b>N classification</b>						
N1	283 (62.75)	1		1		
N2	168 (37.25)	1.71 (1.25-2.34)	0.001	1.16 (0.82-1.63)		0.413
<b>Surgery</b>						
Sublobectomy	43 (9.53)	1				
Lobectomy	365 (80.93)	0.70 (0.42-1.14)	0.151			

Pneumonectomy	43 (9.53)	0.81 (0.42-1.57)	0.537		
<b>Radiotherapy</b>					
No	387 (85.81)	1		1	
Yes	64 (14.19)	1.94 (1.33-2.84)	0.001	1.20 (0.76-1.89)	0.427
<b>Chemotherapy</b>					
No	336 (74.50)	1		1	
Yes	115 (25.50)	2.14 (1.55-2.96)	<0.001	0.42 (0.26-0.67)	<0.001
<b>LODDS as a categorical variable</b>					
-1.44≤LODDS<-0.33	286 (63.41)	1		1	
-0.33≤LODDS≤1.14	165 (36.59)	1.65 (1.20-2.26)	0.002	1.75 (1.25-2.43)	0.001

<sup>†</sup>OS, overall survival; LODDS, log odds of positive lymph node; HR, hazard ratio; CI, confidence interval.



**Table S7.** Univariable and multivariable Cox proportional regression analysis for the influence of LODDS on CSS of the patients with number of dissected lymph nodes $\geq$ 6

Characteristic	N (%)	Univariable analysis		Multivariable analysis	
		HR (95%CI)	P value	HR (95%CI)	P value
<b>Age at diagnosis (year)</b>					
≤62	231 (60.16)	1		1	
>62	153 (39.84)	3.00 (2.00-4.50)	<0.001	2.35 (1.50-3.67)	<0.001
<b>Sex</b>					
Male	170 (44.27)	1			
Female	214 (55.73)	0.85 (0.57-1.26)	0.409		
<b>Race</b>					
White	342 (89.06)	1		1	
Black	22 (5.73)	1.96 (0.98-3.90)	0.055	2.39 (1.13-5.07)	0.023
Other	20 (5.21)	1.33 (0.62-2.88)	0.468	1.09 (0.47-2.54)	0.833
<b>Laterality</b>					
Right	212 (55.21)	1			
Left	172 (44.79)	0.95 (0.64-1.42)	0.803		
<b>Site</b>					
Upper lobe	137 (35.68)	1		1	
Middle lobe	46 (11.98)	0.34 (0.14-0.79)	0.013	0.70 (0.27-1.79)	0.452
Lower lobe	152 (39.58)	0.65 (0.41-1.01)	0.056	0.97 (0.61-1.56)	0.901
Other	49 (12.76)	0.80 (0.43-1.48)	0.470	0.99 (0.44-2.21)	0.978

<b>Histotype</b>						
Large cell neuroendocrine carcinoma	97 (25.26)	1		1		
Carcinoid tumor	202 (52.60)	0.10 (0.06-0.17)	<0.001	0.09 (0.04-0.19)		<0.001
Atypical carcinoid tumor	85 (22.14)	0.27 (0.16-0.45)	<0.001	0.21 (0.10-0.43)		<0.001
<b>Differentiation</b>						
Well/moderately differentiated	153 (39.84)	1		1		
Poorly differentiated/undifferentiated	74 (19.27)	7.00 (4.02-12.18)	<0.001	1.66 (0.73-3.76)		0.224
Unknown	157 (40.89)	1.73 (0.99-3.04)	0.056	1.47 (0.78-2.75)		0.229
<b>T classification</b>						
T1	141 (36.72)	1		1		
T2	152 (39.58)	0.79 (0.49-1.28)	0.335	0.72 (0.43-1.20)		0.211
T3	62 (16.15)	1.59 (0.92-2.74)	0.098	1.17 (0.63-2.18)		0.619
T4	29 (7.55)	1.67 (0.85-3.28)	0.138	2.10 (0.89-4.95)		0.092
<b>N classification</b>						
N1	241 (62.76)	1		1		
N2	143 (37.24)	1.31 (0.88-1.96)	0.181	0.99 (0.63-1.54)		0.956
<b>Surgery</b>						
Sublobectomy	21 (5.47)	1		1		
Lobectomy	310 (80.73)	0.59 (0.27-1.28)	0.178	0.52 (0.23-1.18)		0.117
Pneumonectomy	53 (13.80)	1.14 (0.49-2.66)	0.768	0.99 (0.39-2.52)		0.989
<b>Radiotherapy</b>						
No	336 (87.50)	1		1		
Yes	48 (12.50)	1.91 (1.17-3.13)	0.010	0.78 (0.44-1.38)		0.393
<b>Chemotherapy</b>						

No	284 (73.96)	1		1	
Yes	100 (26.04)	2.46 (1.65-3.67)	<0.001	0.70 (0.41-1.22)	0.208
<b>LODDS as a categorical variable</b>					
-1.44≤LODDS<-0.33	300 (78.12)	1		1	
-0.33≤LODDS≤1.14	84 (21.88)	2.16 (1.42-3.28)	<0.001	2.84 (1.78-4.50)	<0.001

<sup>†</sup>CSS, cancer-specific survival; LODDS, log odds of positive lymph node; HR, hazard ratio; CI, confidence interval.

**Table S8.** Univariable and multivariable Cox proportional regression analysis for the influence of LODDS on OS of the patients with number of dissected lymph nodes $\geq$ 6

Characteristic	N (%)	Univariable analysis		Multivariable analysis	
		HR (95%CI)	P value	HR (95%CI)	P value
<b>Age at diagnosis (year)</b>					
≤62	231 (60.16)	1		1	
>62	153 (39.84)	3.70 (2.60-5.27)	<0.001	2.63 (1.80-3.83)	<0.001
<b>Sex</b>					
Male	170 (44.27)	1		1	
Female	214 (55.73)	0.69 (0.49-0.96)	0.028	0.86 (0.60-1.24)	0.423
<b>Race</b>					
White	342 (89.06)	1		1	
Black	22 (5.73)	1.67 (0.90-3.10)	0.104		
Other	20 (5.21)	0.93 (0.43-1.99)	0.844		
<b>Laterality</b>					
Right	212 (55.21)	1		1	
Left	172 (44.79)	0.88 (0.62-1.23)	0.449		
<b>Site</b>					
Upper lobe	137 (35.68)	1		1	
Middle lobe	46 (11.98)	0.58 (0.31-1.09)	0.089	1.23 (0.61-2.49)	0.563
Lower lobe	152 (39.58)	0.89 (0.61-1.31)	0.567	1.35 (0.90-2.02)	0.149
Other	49 (12.76)	0.96 (0.56-1.63)	0.870	2.22 (1.21-4.07)	0.010

<b>Histotype</b>						
Large cell neuroendocrine carcinoma	97 (25.26)	1		1		
Carcinoid tumor	202 (52.60)	0.14 (0.10-0.21)	<0.001	0.11 (0.06-0.21)		<0.001
Atypical carcinoid tumor	85 (22.14)	0.27 (0.17-0.43)	<0.001	0.22 (0.12-0.40)		<0.001
<b>Differentiation</b>						
Well/moderately differentiated	153 (39.84)	1		1		
Poorly differentiated	74 (19.27)	6.50 (4.01-10.54)	<0.001	1.78 (0.91-3.47)		0.091
/undifferentiated						
Unknown	157 (40.89)	1.99 (1.23-3.20)	0.005	1.61 (0.97-2.66)		0.066
<b>T classification</b>						
T1	141 (36.72)	1				
T2	152 (39.58)	0.91 (0.61-1.35)	0.639			
T3	62 (16.15)	1.31 (0.80-2.15)	0.283			
T4	29 (7.55)	1.44 (0.78-2.66)	0.241			
<b>N classification</b>						
N1	241 (62.76)	1		1		
N2	143 (37.24)	1.53 (1.09-2.14)	0.014	1.25 (0.86-1.81)		0.247
<b>Surgery</b>						
Sublobectomy	21 (5.47)	1				
Lobectomy	310 (80.73)	0.75 (0.37-1.55)	0.443			
Pneumonectomy	53 (13.80)	1.14 (0.52-2.52)	0.745			
<b>Radiotherapy</b>						
No	336 (87.50)	1		1		
Yes	48 (12.50)	1.61 (1.04-2.50)	0.034	0.88 (0.53-1.48)		0.639
<b>Chemotherapy</b>						

No	284 (73.96)	1		1	
Yes	100 (26.04)	1.95 (1.38-2.75)	<0.001	0.57 (0.35-0.91)	0.020
<b>LODDS as a categorical variable</b>					
-1.44≤LODDS<-0.33	300 (78.12)	1		1	
-0.33≤LODDS≤1.14	84 (21.88)	1.97 (1.37-2.84)	<0.001	2.37 (1.59-3.54)	<0.001

<sup>†</sup>OS, overall survival; LODDS, log odds of positive lymph node; HR, hazard ratio; CI, confidence interval.

**Table S9.** HRs for subgroups

Subgroups	N (%)	CSS		OS	
		HR (95%CI)	P value	HR (95%CI)	P value
<b>Age at diagnosis (year)</b>					
≤62	300 (59.29)	2.52 (1.42-4.47)	0.002	2.20 (1.34-3.63)	0.002
>62	206 (40.71)	1.63 (0.98-2.69)	0.058	1.21 (0.80-1.82)	0.369
<b>Sex</b>					
Male	232 (45.85)	3.96 (2.15-7.32)	<0.001	2.06 (1.29-3.27)	0.002
Female	274 (54.15)	1.53 (0.90-2.58)	0.116	1.43 (0.92-2.23)	0.110
<b>Laterality</b>					
Right	281 (55.53)	1.67 (1.04-2.67)	0.035	1.56 (1.04-2.35)	0.033
Left	225 (44.47)	2.88 (1.52-5.45)	0.001	2.00 (1.20-3.32)	0.008
<b>Site</b>					
Pulmonary lobe	454 (89.72)	2.10 (1.44-3.08)	<0.001	1.67 (1.21-2.31)	0.002
Other	52 (10.28)	4.65 (0.25-87.17)	0.304	1.45 (0.37-5.73)	0.594
<b>Histotype</b>					
Large cell neuroendocrine carcinoma	129 (25.49)	1.96 (1.19-3.24)	0.009	1.75 (1.12-2.74)	0.014
Carcinoid tumor	274 (54.15)	0.75 (0.32-1.73)	0.500	0.79 (0.43-1.43)	0.435
Atypical carcinoid tumor	103 (20.36)	2.67 (0.90-7.90)	0.076	2.40 (1.01-5.74)	0.048
<b>Differentiation</b>					
Well/moderately differentiated	201 (39.72)	0.70 (0.27-1.80)	0.455	0.79 (0.37-1.70)	0.551
Poorly differentiated	97 (19.17)	1.96 (1.06-3.61)	0.031	1.45 (0.85-2.48)	0.174

/undifferentiated					
Unknown	208 (41.11)	3.38 (1.70-6.70)	<0.001	2.31 (1.40-3.82)	0.001
<b>T classification</b>					
T1	209 (41.30)	2.10 (1.15-3.84)	0.016	1.65 (0.98-2.77)	0.058
T2	190 (37.55)	1.95 (1.00-3.80)	0.048	1.36 (0.81-2.28)	0.243
T3-4	107 (21.15)	1.75 (0.72-4.22)	0.217	1.28 (0.59-2.77)	0.530
<b>N classification</b>					
N1	319 (63.04)	1.99 (1.14-3.45)	0.015	1.56 (0.98-2.49)	0.060
N2	187 (36.96)	2.24 (1.27-3.96)	0.006	1.87 (1.20-2.93)	0.006
<b>Surgery</b>					
Sublobectomy	44 (8.70)	4.64 (0.37-57.53)	0.233	0.57 (0.17-1.92)	0.366
Lobectomy	406 (80.24)	2.53 (1.65-3.89)	<0.001	2.03 (1.41-2.92)	<0.001
Pneumonectomy	56 (11.07)	2.19 (0.46-10.51)	0.325	1.67 (0.51-5.53)	0.400

<sup>†</sup>HR for CSS were evaluated based on multivariable Cox proportional regression model adjusted by age, race, site, histotype, differentiation, T classification, N classification, surgery, radiotherapy and chemotherapy.

<sup>‡</sup>HR for OS were evaluated based on multivariable Cox proportional regression model adjusted by age, race, site, histotype, differentiation, N classification, radiotherapy and chemotherapy.

<sup>§</sup>CSS, cancer-specific survival; LODDS, log odds of positive lymph node; OS, overall survival; HR, hazard ratio; CI, confidence interval.



**Table S10.** Baseline characteristics of derivation dataset and external validation dataset

Characteristic	Total (n=506)	Derivation dataset (n=300)	External validation dataset (n=206)	P value*
<b>Age at diagnosis (year)</b>				0.280
≤62	300 (59.29)	172 (57.33)	128 (62.14)	
>62	206 (40.71)	128 (42.67)	78 (37.86)	
<b>Sex</b>				0.314
Male	232 (45.85)	132 (44.00)	100 (48.54)	
Female	274 (54.15)	168 (56.00)	106 (51.46)	
<b>Race</b>				<0.001
White	453 (89.53)	281 (93.67)	172 (83.50)	
Black	29 (5.73)	15 (5.00)	14 (6.80)	
Other	24 (4.74)	4 (1.33)	20 (9.71)	
<b>Laterality</b>				0.308
Right	281 (55.53)	161 (53.67)	120 (58.25)	
Left	225 (44.47)	139 (46.33)	86 (41.75)	
<b>Site</b>				0.360
Upper lobe	194 (38.34)	124 (41.33)	70 (33.98)	
Middle lobe	64 (12.65)	34 (11.33)	30 (14.56)	
Lower lobe	196 (38.74)	113 (37.67)	83 (40.29)	
Other	52 (10.28)	29 (9.67)	23 (11.17)	
<b>Histotype</b>				0.100
Large cell neuroendocrine carcinoma	129 (25.49)	86 (28.67)	43 (20.87)	
Carcinoid tumor	274 (54.15)	152 (50.67)	122 (59.22)	
Atypical carcinoid tumor	103 (20.36)	62 (20.67)	41 (19.90)	

<b>Differentiation</b>				0.237
Well/moderately differentiated	201 (39.72)	120 (40.00)	81 (39.32)	
Poorly differentiated	97 (19.17)	64 (21.33)	33 (16.02)	
/undifferentiated				
Unknown	208 (41.11)	116 (38.67)	92 (44.66)	
<b>T classification</b>				0.387
T1	209 (41.30)	128 (42.67)	81 (39.32)	
T2	190 (37.55)	114 (38.00)	76 (36.89)	
T3	74 (14.62)	43 (14.33)	31 (15.05)	
T4	33 (6.52)	15 (5.00)	18 (8.74)	
<b>N classification</b>				0.468
N1	319 (63.04)	193 (64.33)	126 (61.17)	
N2	187 (36.96)	107 (35.67)	80 (38.83)	
<b>Surgery</b>				0.483
Sublobectomy	44 (8.70)	24 (8.00)	20 (9.71)	
Lobectomy	406 (80.24)	246 (82.00)	160 (77.67)	
Pneumonectomy	56 (11.07)	30 (10.00)	26 (12.62)	
<b>Radiotherapy</b>				0.733
No	439 (86.76)	259 (86.33)	180 (87.38)	
Yes	67 (13.24)	41 (13.67)	26 (12.62)	
<b>Chemotherapy</b>				0.111
No	374 (73.91)	214 (71.33)	160 (77.67)	
Yes	132 (26.09)	86 (28.67)	46 (22.33)	
<b>Number of dissected lymph nodes</b>	9.00 (6.00-14.75)	9.00 (6.00-14.00)	(6.00-15.00)	0.299
<b>Number of positive lymph nodes</b>	2.00 (1.00-3.00)	1.00 (1.00-2.00)	(1.00-3.00)	0.350
<b>LODDS as a continuous variable</b>	-0.49 (-0.79--0.22)	-0.50 (-0.77--0.22)	-0.49 (-0.79--0.22)	0.916

<b>LODDS as a categorical variable</b>				0.845
-1.44≤LODDS<-0.33	334 (66.01)	197 (65.67)	137 (66.50)	
-0.33≤LODDS≤1.14	172 (33.99)	103 (34.33)	69 (33.50)	

<sup>†</sup>Data are listed as median (IQR) or n (%). \**P* values for Mann-Whitney test or Chi square test by comparing the basic characteristics in the derivation and external validation datasets.

<sup>‡</sup>LODDS, log odds of positive lymph node.

**Table S11.** The IDI and continuous-NRI comparing nomogram with AJCC 8th TNM staging system

Endpoint	IDI		Continuous-NRI	
	95%CI	<i>P</i> value	95%CI	<i>P</i> value
<b>Derivation dataset</b>				
1-year CSS	0.249 (0.389-0.161)	<0.001	0.721 (0.825-0.554)	<0.001
3-year CSS	0.391 (0.519-0.243)	<0.001	0.645 (0.743-0.414)	<0.001
5-year CSS	0.42 (0.537-0.265)	<0.001	0.627 (0.768-0.403)	<0.001
1-year OS	0.256 (0.368-0.166)	<0.001	0.649 (0.778-0.453)	<0.001
3-year OS	0.349 (0.46-0.208)	<0.001	0.492 (0.653-0.32)	<0.001
5-year OS	0.364 (0.457-0.237)	<0.001	0.523 (0.662-0.324)	<0.001
<b>External validation dataset</b>				
1-year CSS	0.165 (0.356-0.065)	<0.001	0.46 (0.683-0.178)	<0.001
3-year CSS	0.303 (0.427-0.171)	<0.001	0.539 (0.701-0.308)	<0.001
5-year CSS	0.321 (0.442-0.146)	<0.001	0.496 (0.688-0.283)	<0.001
1-year OS	0.121 (0.263-0.057)	<0.001	0.379 (0.647-0.162)	<0.001
3-year OS	0.257 (0.384-0.138)	<0.001	0.456 (0.653-0.23)	<0.001
5-year OS	0.274 (0.382-0.11)	<0.001	0.451 (0.611-0.24)	<0.001

<sup>†</sup>CSS, cancer-specific survival; IDI, integrated discrimination improvement; LODDS, log odds of positive lymph node; NRI, net reclassification improvement; OS, overall survival.

## Figure legends

**Figure 1.** Selection of study cohort from the SEER database. AC: atypical carcinoid; LCNEC: large cell neuroendocrine carcinoma; SCLC: small cell lung carcinoma; SEER: Surveillance, Epidemiology, and End Results; LN: lymph node; TNM: tumor-node-metastasis.

**Figure 2.** Restricted cubic spline fitting for the association between LODDS levels with the HRs of LODDS for CSS (A) and OS (B). LODDS: log odds of positive lymph nodes; CSS: lung cancer-specific survival; OS: overall survival; HR: hazard ratio; CI: confidence interval.

**Figure 3.** Nomograms to predict 1-, 3- and 5-year CSS (A) and OS (B) for patients with node-positive lung neuroendocrine carcinoma after surgery. CSS: lung cancer-specific survival; OS: overall survival; LODDS: log odds of positive lymph nodes.

**Figure 4.** Calibration plots of the nomograms to predict CSS and OS of the derivation dataset (A, B) and external validation dataset (C, D). CSS: lung cancer-specific survival; OS: overall survival.

**Figure S1.** Kaplan-Meier estimates of CSS (A) and OS (B) for entire dataset according to LODDS. CSS: lung cancer-specific survival; OS: overall survival; LODDS: log odds of positive lymph nodes.

**Figure S2.** Decision curve analysis of AJCC 8th TNM staging system and nomogram for 3-, and 5-year CSS (A, B), OS (C, D) prediction in the derivation dataset. CSS: lung cancer-specific survival; OS: overall survival; TNM: tumor-node-metastasis.

**Figure S3.** Decision curve analysis of AJCC 8th TNM staging system and nomogram for 3-, and 5-year CSS (A, B), OS (C, D) prediction in the external validation dataset. CSS: lung cancer-specific survival; OS: overall survival; TNM: tumor-node-metastasis.

**Figure S4.** Online nomograms to predict CSS (A) and OS (B) for patients with node-positive lung neuroendocrine carcinoma after surgery. CSS: lung cancer-specific survival; OS: overall survival; LODDS: log odds of positive lymph nodes.

**Fig 1.**

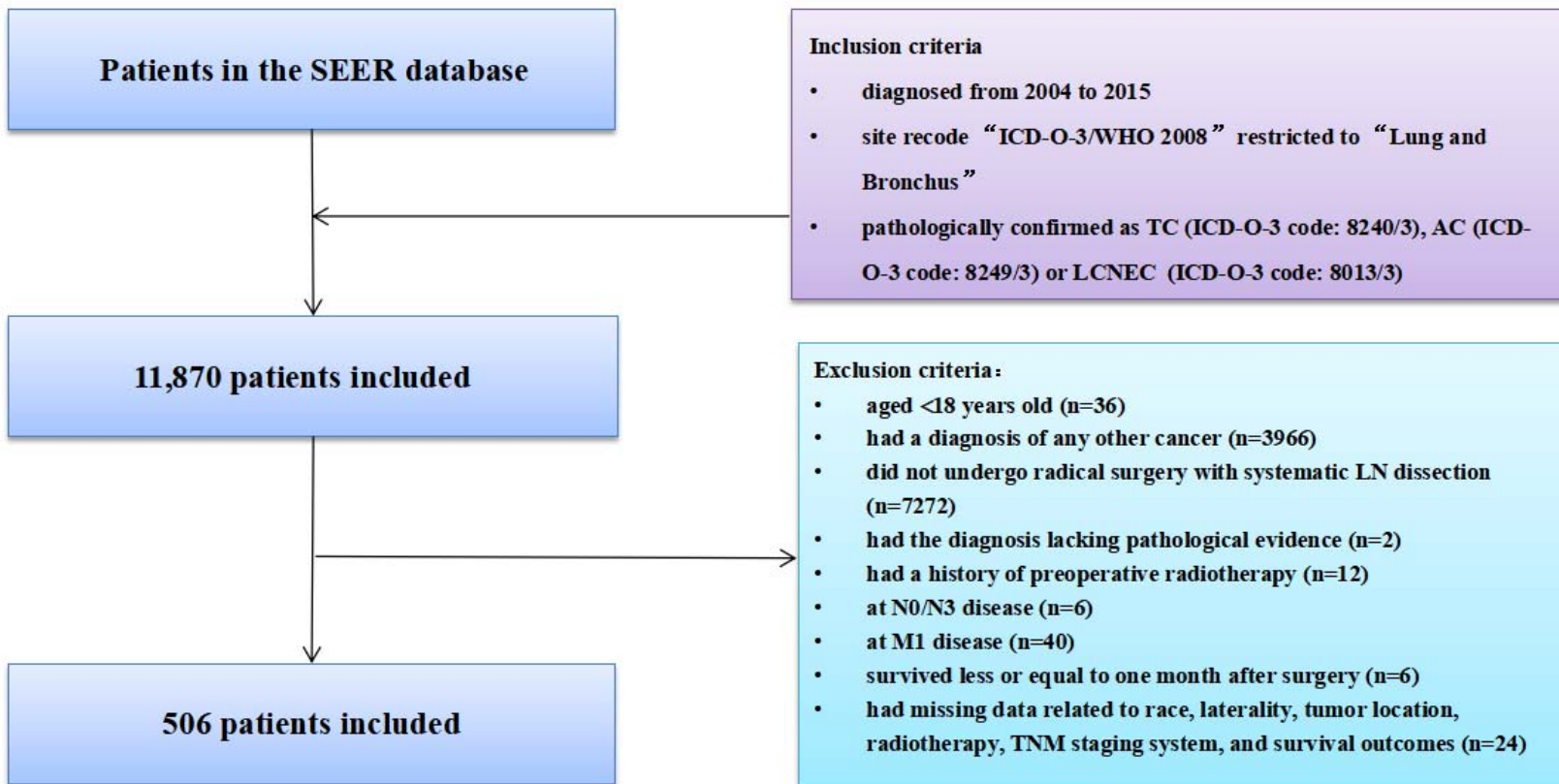
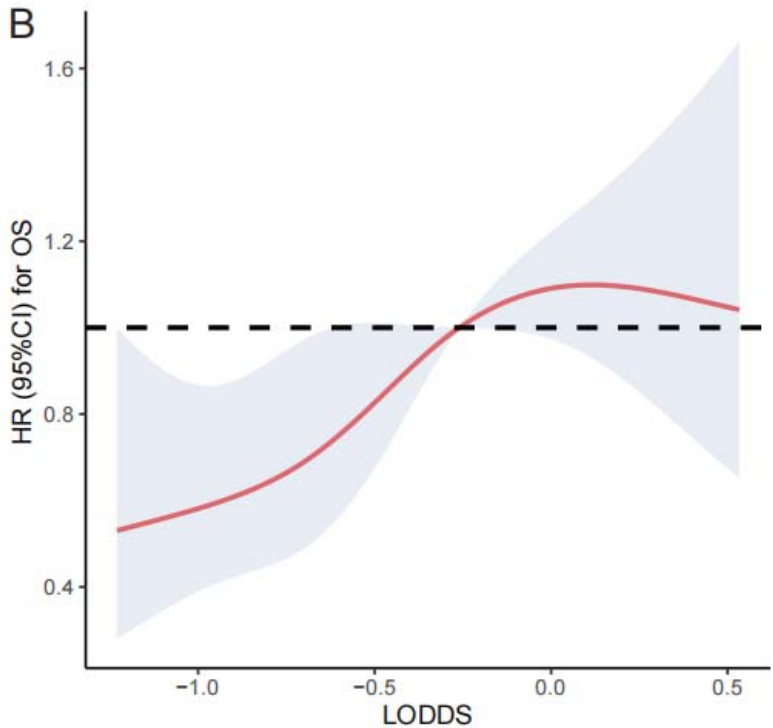
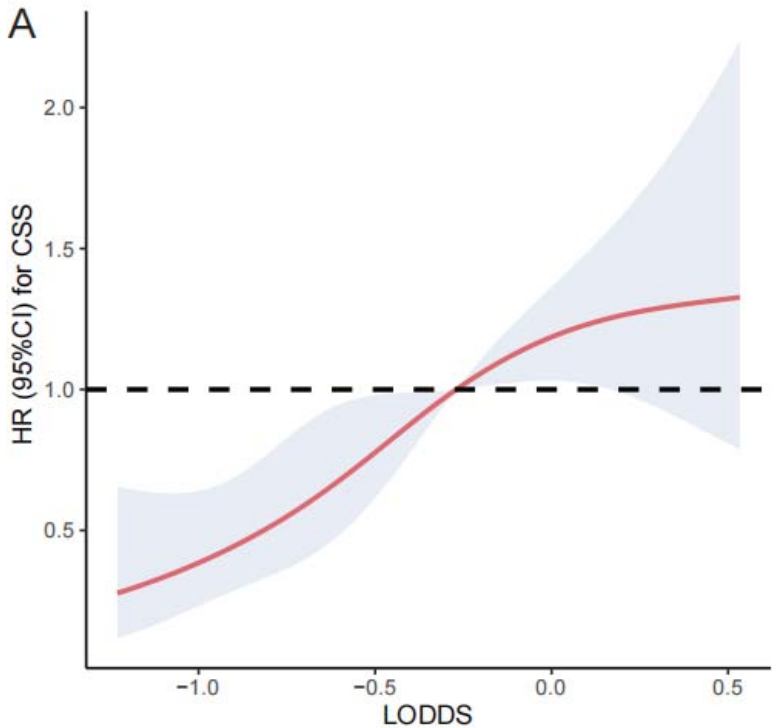
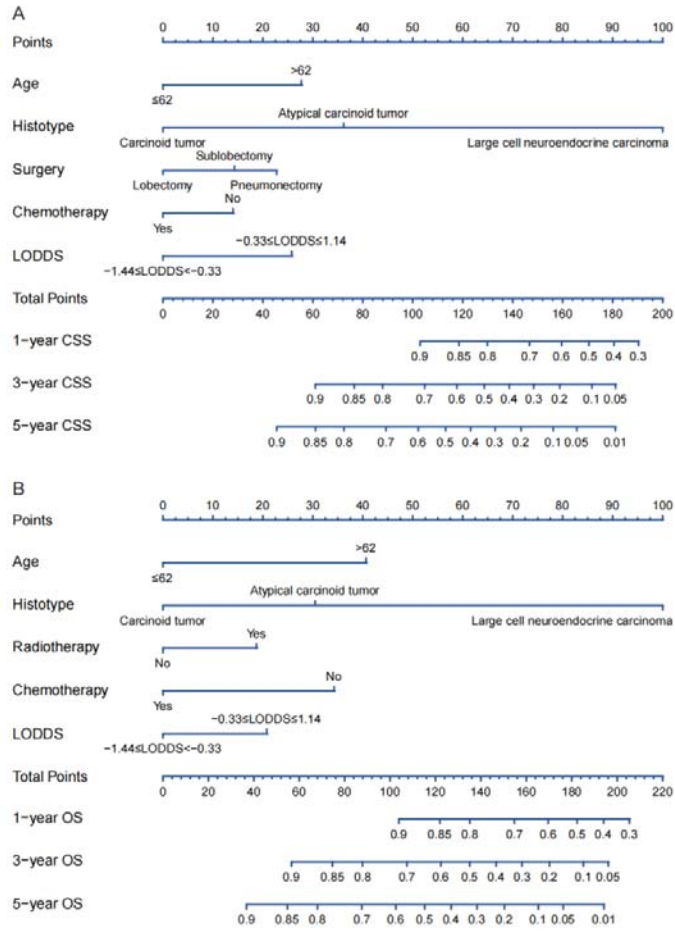


Fig 2

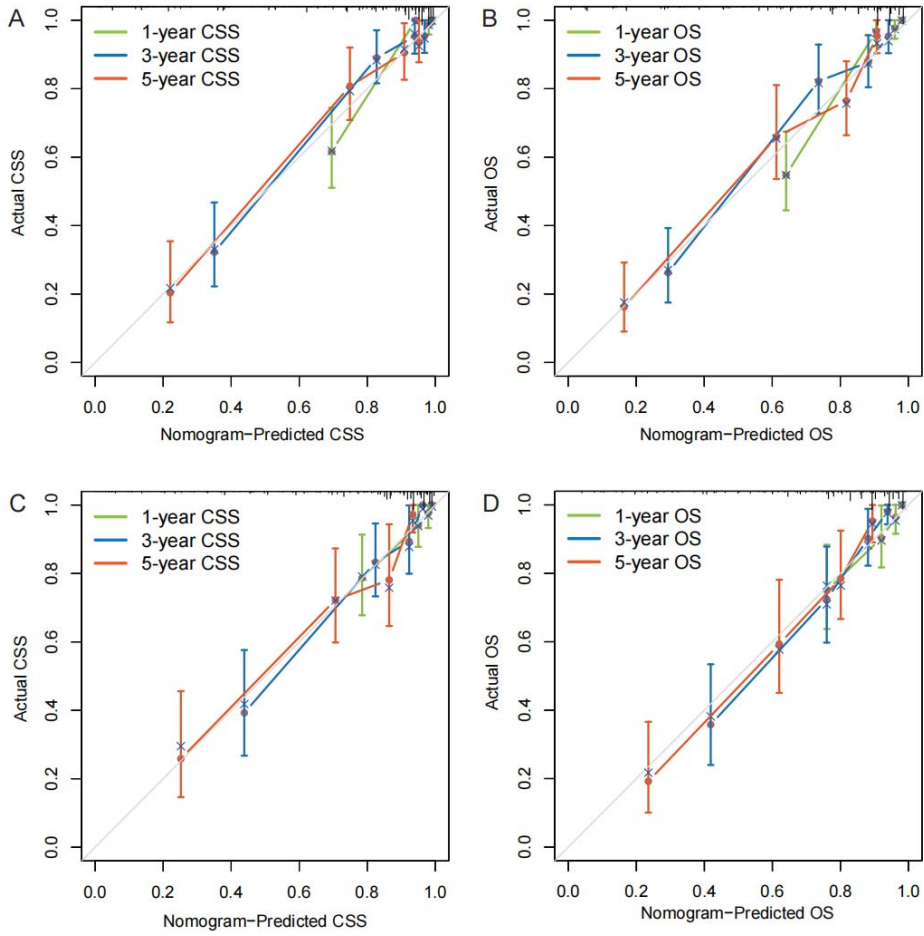




**Fig 3**



**Fig 4**



**Fig S1**

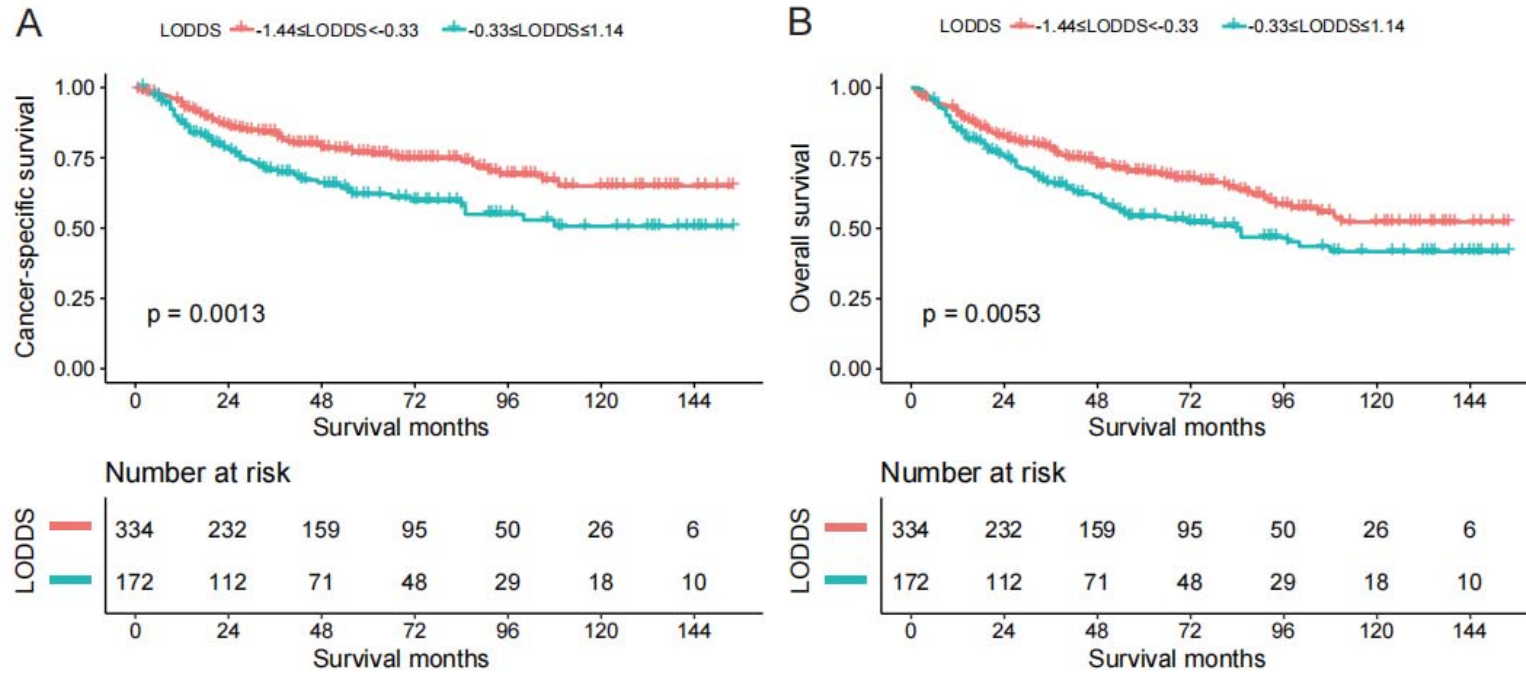
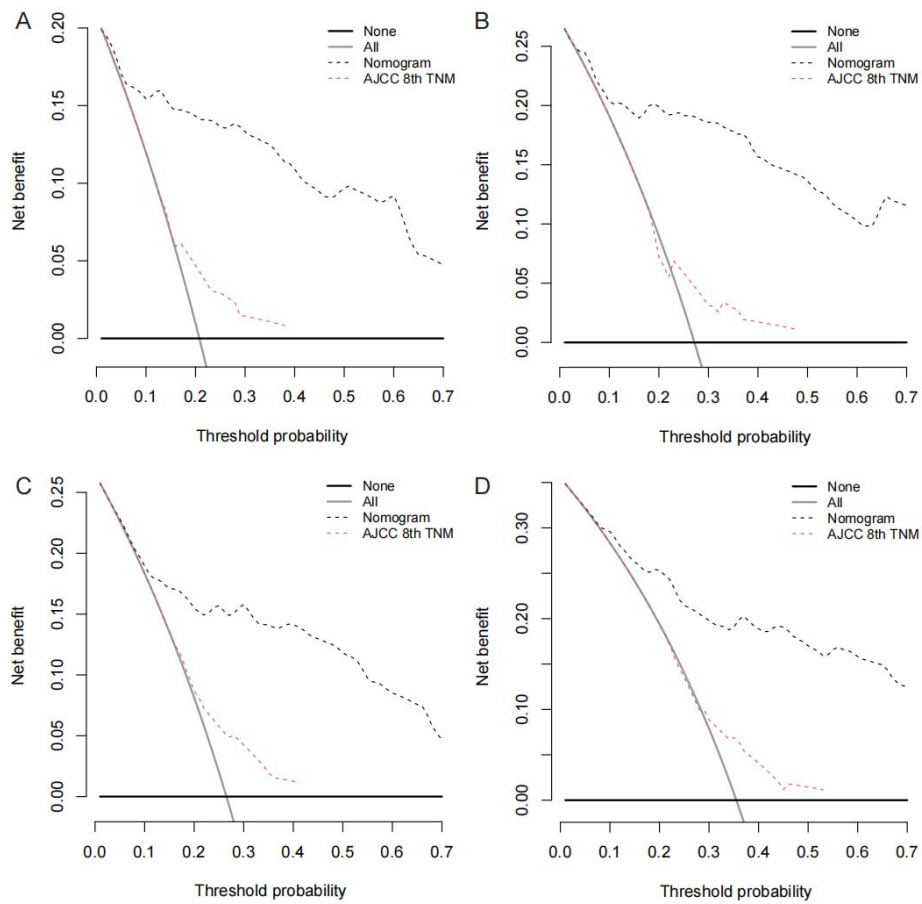


Fig S2



**Fig S3**

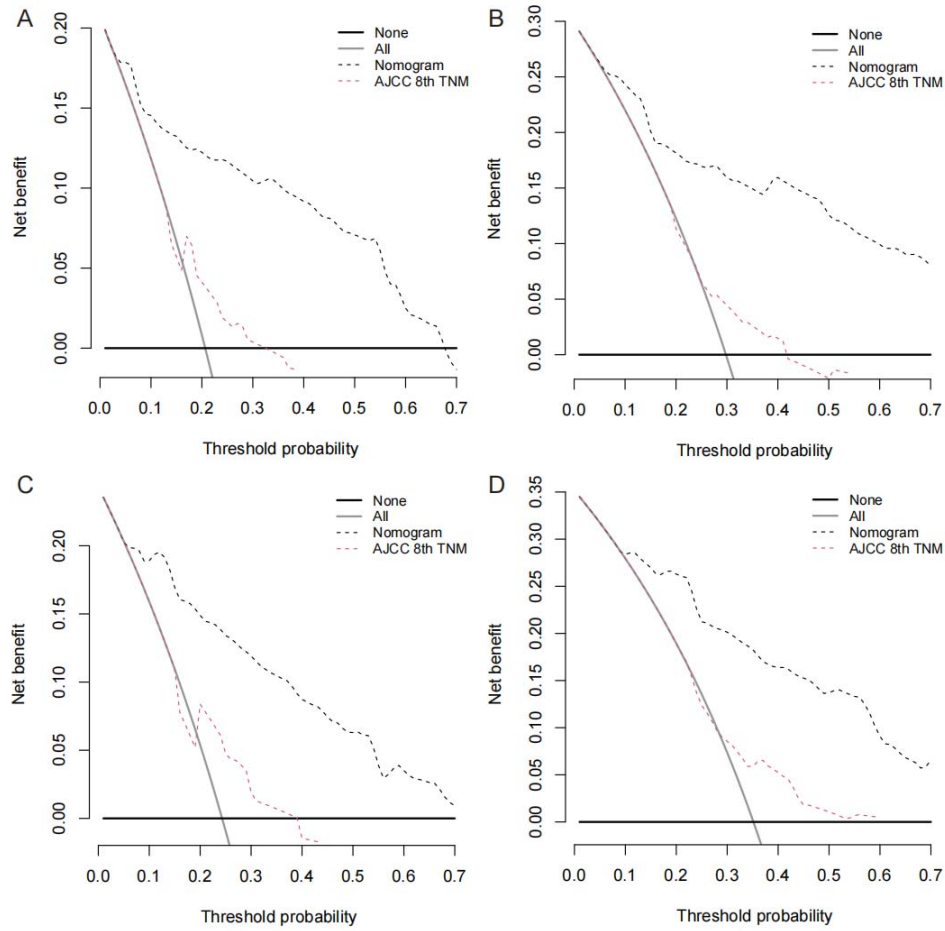


Fig S4

