

1 **Impact of Antibody Cocktail Therapy Combined with Casirivimab and**
2 **Imdevimab on Clinical Outcome for Covid-19 patients in A Real-Life Setting: A**
3 **Single Institute Analysis**

4
5 Yasutaka Kakinoki¹⁾, Kazuki Yamada¹⁾, Yoko Tanino¹⁾, Keiko Suzuki¹⁾, Takaya
6 Ichikawa¹⁾, Naoki Suzuki²⁾, Go Asari²⁾, Ai Nakamura¹⁾, Shin Kukita¹⁾, Akito Uehara¹⁾,
7 Seisuke Saito¹⁾, Shohei Kuroda¹⁾, Hidemitsu Sakagami¹⁾, Yuuki Nagashima¹⁾, Kae
8 Takahashi¹⁾, and Satoshi Suzuki¹⁾

9
10 1) Division of Internal Medicine, Asahikawa City Hospital, Asahikawa, Japan

11 2) Asahikawa City Health Center, Asahikawa, Japan

12
13 **Corresponding author:**

14 Yasutaka Kakinoki, MD, PhD.

15 Asahikawa City Hospital, 1-1-65, Kinseicho, Asahikawa, 070-8610, Japan

16 e-mail: y_kakinoki@ach.hokkaido.jp

17
18 **Shared co-first authorship:** Dr. Yasutaka Kakinoki and Dr. Kazuki Yamada
19 contributed equally to this article.

20
21 **Keywords:** Covid-19, SARS-CoV-2, cocktail, ronapreve, REGEN-COV

26 **ABSTRACT**

27 **Background.** Recent data from clinical trial suggest that antibody cocktail therapy, a
28 combination of the monoclonal antibodies casirivimab and imdevimab, has been shown
29 to rapidly reduce the viral load and markedly decrease the risk of hospitalization or
30 death among high-risk patients with coronavirus disease 2019 (Covid-19). However, it
31 remains unclear how effective in a real-life clinical setting the therapy is.

32 **Methods.** We retrospectively analyzed mild to moderate Covid-19 patients with one or
33 more high-risk factors for severe disease who consecutively underwent the antibody
34 cocktail therapy of the disease in our institute in June 2021 through early September
35 2021, compared to those with high-risk factors who were isolated in non-medical
36 facilities consecutively during the same period, thereby being not given the antibody
37 cocktail therapy there. The key outcome was the percentage of patients with Covid-19-
38 related deterioration which needed additional medical interventions, such as oxygen
39 support or other antiviral therapies.

40 **Results.** Data from 55 patients with initially receiving antibody cocktail therapy and 53
41 patients with isolation into non-medical facilities are analyzed. 22 (41.5 %) of 53 patients
42 with isolation facilities were finally hospitalized to receive medical interventions. On the
43 other hand, 13 (23.6 %) of 55 patients with antibody cocktail therapy in our hospital
44 subsequently underwent further medical interventions because of the progression. In
45 multivariate analysis with variables of age, BMI, and high-risk factors, the antibody
46 cocktail therapy significantly reduced 70 % in the need for further medical interventions
47 compared to the initial isolation in the non-medical facilities (odds ratio=0.30, 95%CI
48 [0.10-0.87], p=0.027). Furthermore, patients with 96% or above of SPO2 were
49 significantly more favorable for the therapy than those with 95% or below of SPO2.

50 **Conclusion.** The treatment of antibody cocktail was closely linked to reduction in the

51 need for further medical interventions. The result indicates that the antibody cocktail
52 therapy is associated with reducing the strain on hospitals, which is related to the
53 improvement of medical management for public health care in Covid-19 pandemic era.

54

55 **INTRODUCTION**

56 Coronavirus disease 2019 (Covid-19), caused by severe acute respiratory syndrome
57 coronavirus 2 (SARS-CoV-2), was first detected in December 2019 and was declared a
58 global pandemic in March 2020 [1-3]. In Japan, as of September 22, approximately 1.68
59 million people have been infected and 17 thousand are dead, and about 55% people of
60 the population are fully vaccinated [4]. Although those records regarding infected figures
61 appear to be less than in Western countries, the several issues in hospitals are
62 challenging because of less enough hospital beds availability and shortages of hospital
63 staffs, mostly nurses. To resolve these issues, Japan's Ministry of Health, Labour and
64 Welfare (MHLW) has approved the antibody cocktail of casirivimab and imdevimab,
65 brand name of Ronapreve™ (provided from Roche globally, and from CHUGAI
66 Pharmaceutical in Japan), for the treatment of mild to moderate Covid-19 patients with
67 high-risk factors via intravenous infusion, which was granted a Special Approval
68 Pathway under article 14-3 of the Pharmaceuticals and Medical Devices Act on July 19
69 in 2021 [5]. The approval of the MHLW has based on results from the global phase 3
70 REGN-COV2067 trial [6] in high-risk non-hospitalized Covid-19 patients, which showed
71 that the cocktail therapy reduced hospitalization or any-caused death by 70% and Covid-
72 19-related symptom duration by 4 days as well as a phase 1 clinical study with safety,
73 tolerability and pharmacokinetics in Japanese people [7]. In addition, the ability of the
74 cocktail to retain activity against emerging variants including delta variant has been
75 demonstrated in vitro study [8-10]. However, these results have been coming up from

76 randomized clinical trials and experimental studies, and therefore what is happening in
77 a daily clinical practice on the cocktail therapy remains to be seen. Here, we describe
78 clinical benefits of Ronapreve coming from a real-life clinical practice in our institute.

79

80 **METHODS**

81 **PATIENTS**

82 Eligible patients were 20 years of age or older, with a confirmed SARS-CoV-2 infection
83 by real-time reverse transcription PCR (RT-PCR) test, a Covid-19-related fever (\geq
84 37.5°C) in mild to moderate condition, and presence of risk factors meeting the criteria
85 for severe Covid-19 [6] during June 2021 through early September 2021. Local public
86 health center made allocation decisions based on factors such as severity and urgency to
87 deliver patients to hospitals or non-medical facilities for isolation. The use of patient's
88 clinical information was approved by the Research Ethics Committee of Asahikawa City
89 Hospital which oversaw the study conduct and documentation, and the data available
90 from non-medical facilities were authorized to be provided with fully anonymous
91 condition by the chief officer of the local public health center. This study was conducted
92 in accordance with the principles of the Declaration of Helsinki.

93 **MEDICAL INTERVENTION**

94 Patients assigned to our institute were firstly reviewed to be applicable for the use of
95 ronapreve according to the criteria [6]. Ronapreve was given at equal doses of 600mg of
96 casirivimab and imdevimab combined in a 100ml normal saline solution through
97 intravenous infusion over 30 minutes, if applicable (ronapreve group). Afterward, if
98 necessary, patients can receive additional further therapy such as oxygen support,
99 steroids, or antiviral drugs. Patients assigned to non-medical facilities were under
100 watch-and-wait situation to see if they progress to the point they need hospitalization

101 (watchful observation group). When patients possibly progress or got progressed, they
102 were immediately transferred to hospitals to receive some treatments for Covid-19.

103 **KEY and OTHER OUTCOMES**

104 Key outcomes were designated to the difference between ronapreve and watchful
105 observation groups in terms of the necessity of additional further treatment such as
106 oxygen support or antiviral drugs. In ronapreve group, the addition of further treatment
107 after ronapreve administration indicated the failure of the cocktail therapy as a
108 definition. In watchful observation group, the transfer of patients to hospitals to receive
109 some therapies indicated that patients were under intractable or deteriorating
110 conditions. Other outcomes were designated in ronapreve group to investigate the
111 duration of fever and adverse events after ronapreve administration.

112 **STATISTICAL ANALYSIS**

113 Logistic regression models for multivariate analysis were applied to evaluate the
114 proposed significant factors in terms of the efficacy of ronapreve, using age, BMI, high-
115 risk factors, and Percutaneous oxygen saturation (SPO2) as explanatory variables.
116 Receiver Operating Characteristic (ROC) curves were used to determine the cut-off value
117 for SPO2. All p-values were two sided and P-values of 0.05 or less were considered
118 statistically significant. All statistical analyses were performed with EZR version 1.50
119 (Saitama Medical Center, Jichi Medical University, Saitama, Japan), which is a
120 graphical user interface for R (The R Foundation for Statistical Computing, Vienna,
121 Austria). More precisely, it is a modified version of R commander designed to add
122 statistical functions frequently used in biostatistics [11].

123

124 **RESULTS**

125 **PATIENT'S CHARACTERISTICS**

126 Patients were collected consecutively during the period from June 2021 through early
127 September 2021, when the delta variants were widely spreading in our community. As
128 a result, 55 patients were given Ronapreve first in our institute (ronapreve group) and
129 53 patients were initially assigned to non-medical isolation facilities to see the situations
130 watchfully (watchful observation group) (Table 1).

131 In ronapreve group, the median age was 51 years, 69.1% were male, and median BMI
132 score was 27.5. In proportion of the number patients have in high-risk factors, 30.9%
133 possessed 1 factor, 32.7% 2 factors, and 36.4% 3 or more factors. SPO2 tests revealed
134 67.3% of patients to be 96% or above and 43.6% of patients have pneumonia detected by
135 CT scan, X-ray imaging, or stethoscopic findings. In contrast, in watchful observation
136 group, although distributions of age and gender were similar, proportion of high-risk
137 factors and BMI scores regarding disease progression were significantly lower ($p < 0.001$
138 and $p = 0.01$, respectively), compared to ronapreve group. Details of the high-risk factors
139 patients have in both groups together are provided in the Supporting Information (Table
140 S1).

141 **CLINICAL EFFICACY**

142 **Key outcomes**

143 In ronapreve group, 23.6% (13/55) of patients eventually needed further medical
144 interventions after ronapreve administration, such as oxygen support or antiviral drugs
145 (Figure 1). However, no deterioration was found beyond 5 days after ronapreve
146 administration, meaning the remaining 76.4% (42/55) of patients in this group fully
147 recovered from Covid-19 (Figure 1A). On the other hand, Patients in watchful
148 observation group showed that those who got progressive were increasingly transferred
149 to hospitals until 12 days after the disease onset, finally mounting up to 41.5% (22/53) of
150 patients (Figure 1B). In multivariate analysis with age, BMI, and high-risk factors as

151 explanatory variables, ronapreve significantly reduced the need for additional
152 treatments by 70% compared to watchful observation group patients (odds ratio=0.301,
153 95%CI [0.104-0.869], p=0.026) (Figure 2). Furthermore, in ronapreve group, patients
154 with 96% or above of SPO₂, the cutoff value was established by ROC curves, showed 97%
155 reduction significantly on the additional treatment compared to patients with 95% or
156 below of SPO₂ (odds ratio=0.03, 95%CI [0.01-0.22], p<0.001) (Figure 3).

157 **Other outcomes**

158 Ronapreve was started at a median time of 3 days from the onset (range; 0 – 7 days)
159 (Figure S1). Ronapreve treatment was associated with quick relief from Covid-19-
160 related fever. Out of 27 in-patients, 14 patients (51.9%) were reduced from fever until
161 the next day, and all 27 patients has achieved afebrile state until 4 days from the
162 administration, though this result came from limited numbers of 27 in-patients because
163 of missing data from other 28 out-patients (Figure 4). In regard to vaccinated patients
164 enrolled, in 3 with one shot and in 5 with 2 shots, one and 4 patients showed to be related
165 to the fever-down, respectively (Table S2). In aspect of adverse events, one patient
166 showed infusion reaction of mild swelling of eyelids and urticaria of upper arms during
167 the drip of ronapreve, resulting in stopping on the way, and 2 patients showed skin
168 eruption around 2-3 hours after the administration (Table S3).

169

170 **DISCUSSION**

171 Ronapreve (also known as REGEN-COV in clinical trials) is a cocktail made up of two
172 noncompeting neutralizing human IgG1 monoclonal antibodies, casirivimab and
173 imdevimab, that target the receptor-binding domain of the SARS-CoV-2 spike protein,
174 thereby preventing viral entry into human cells through the angiotensin-converting
175 enzyme 2 (ACE2) receptor [8,12]. This cocktail therapy retains neutralization potency

176 against circulating SARS-CoV-2 variants of concern, including B.1.1.7 (or alpha), B.1.351
177 (or beta), B.1.617.2 (or delta) and so forth in vitro and in vivo [8-10].

178 In a real-life practice setting, we described that the administration of ronapreve
179 predicted 70% reduction in turning into additional treatment, as compared with watchful
180 observation in isolation facilities where patients are under watch-and-wait situation to
181 see if they progress to the point they need hospitalization to receive treatments (Figure
182 2). Moreover, we showed 97% reduction of additional treatments in those patients who
183 were given under conditions of 96% or above of SPO₂, compared to those with 95% or
184 below (Figure 3). This result may be associated with suppression of SARS-CoV-2 itself
185 by ronapreve before a surge of inflammation in lungs. In addition, ronapreve was related
186 to substantially speed up recovery from Covid-19-related fever at a median time of just
187 1 day from the administration (Figure 4), which probably represents an additional
188 benefit for Covid-19 patients. It is worth noting that patients in ronapreve group were
189 under the worse conditions than those in watchful observation group in terms of risk
190 factors for the disease progression.

191 Our data in a real-life setting suggest that ronapreve has the potential to prevent mild
192 to moderate Covid-19 patients with high-risk factors from receiving additional
193 treatments, such as supplemental oxygen, dexamethasone, or antiviral therapies
194 because of disease progression, which should be exclusively manipulated in hospital in
195 Japan. This result indicates that ronapreve is associated with reducing the burden of the
196 need to take care of Covid-19 patients in hospital beds, which is related to retaining
197 public health care resources to be normal.

198 Overall, our findings described above are well consistent with data from previous clinical
199 trials regarding ronapreve. The phase 1/2 trial data showed that REGEN-COV for Covid-
200 19 patients lowered viral load, reduced the need for medical attention, and was highly

201 suggestive of a reduced risk for hospitalization [13]. The phase 3 clinical trial confirmed
202 that early treatment with REGEN-COV in outpatients with high-risk factors for severe
203 Covid-19 dramatically reduced the risk of hospitalization or all-cause death by 70.4%
204 and the symptom duration by 4 days at equal doses of 600mg of casirivimab and
205 imdevimab [6]. In addition, the phase 3 trial for the prevention of Covid-19 in household
206 contacts of infected individuals showed that subcutaneous administration of REGEN-
207 COV reduced the risk of symptomatic Covid-19 infections by 81.4% [14]. These findings
208 suggest that REGEN-COV therapy in outpatients with Covid-19 has the potential to
209 improve patient outcomes and substantially reduce the health care burden by lowering
210 morbidity and mortality.

211 The important point for ronapreve treatment we mentioned above is that the efficacy for
212 patients is diminished under the condition of 95% or below of SPO2. Since low SPO2 or
213 pneumonia is probably associated with cytokine-storm-induced hyper-inflammation
214 caused by SARS-CoV-2, steroid such as dexamethasone will be more effective to suppress
215 the storm rather than ronapreve, because the antibody treatment probably affects the
216 virus itself.

217 In conclusion, ronapreve, also known as REGEN-COV, is thought to be closely linked to
218 reduction in the risk of hospitalization or the need for additional treatment, along with
219 a potential benefit of prompt recovery from Covid-19-related fever. Although our data
220 provided from a daily practice is small-sized and limited, the antibody cocktail therapy
221 in early phase of the disease suggests a promising way to minimize the serious impact
222 of Covid-19 on the public health care system.

223

224 **FINANCIAL DISCLOSURE:** I have no financial support or conflicts of interest.

225

226 **ACKNOWLEDGEMENT:** The authors thank all the participating physicians and co-
227 medical staffs for their care of patients with Covid-19.

228

229 **SUPPORTING INFORMATION:** Additional supporting information may be found
230 online in the Supporting Information section at the end of the article.

231

232

233

234

235

236

237

238

239

240

241

242

243

244

245

246

247

248

249

250 **REFERENCES**

- 251 1. Zhu N, Zhang D, Wang W, et al. A novel coronavirus from patients with pneumonia
252 in China, 2019. *N Engl J Med* 2020; 382: 727-733.
- 253 2. World Health Organization. WHO Director-General's opening remarks at the media
254 briefing on COVID-19 – 11 March 2020. 2020 ([https://www.who.int/director-](https://www.who.int/director-general/speeches/detail/who-director-general-s-opening-remarks-at-the-mrdia-briefing-on-covid-19---11-march-2020)
255 [general/speeches/detail/who-director-general-s-opening-remarks-at-the-mrdia-](https://www.who.int/director-general/speeches/detail/who-director-general-s-opening-remarks-at-the-mrdia-briefing-on-covid-19---11-march-2020)
256 [briefing-on-covid-19---11-march-2020](https://www.who.int/director-general/speeches/detail/who-director-general-s-opening-remarks-at-the-mrdia-briefing-on-covid-19---11-march-2020)).
- 257 3. Wu F, Zhao S, Yu B, et al. A new coronavirus associated with human respiratory
258 disease in China. *Nature* 2020; 579: 265-269.
- 259 4. Ministry of Health, Labour and Welfare. Current status of the novel coronavirus
260 infection and the response of the MHLW. 2020. Available at:
261 https://www.mhlw.go.jp/stf/newpage_12312.html. Accessed 22 September 2021.
- 262 5. Ministry of Health, Labour and Welfare. Approval for Ronapreve™ (casirivimab and
263 imdevimab) for the treatment of patients with mild to moderate Covid-19.
264 Available at: https://www.mhlw.go.jp/stf/newpage_19940.html. Accessed 20 July
265 2021.
- 266 6. Weinreich DM, Sivapalasingam S, Norton T, et al. REGEN-COV antibody cocktail
267 clinical outcomes study in Covid-19 outpatients. June 6, 2021
268 (<https://www.medrxiv.org/content/10.1101/2021.05.19.21257469v2>). preprint.
- 269 7. Regeneron's COVID-19 outpatient trial prospectively demonstrates that REGN-
270 COV2 antibody cocktail significantly reduced virus levels and need for further
271 medical attention. Regeneron, October 28, 2020
272 ([https://investor.regeneron.com/news-releases/news-release-details/regenerons-](https://investor.regeneron.com/news-releases/news-release-details/regenerons-covid-19-outpatient-trial-prospectively-demonstrates)
273 [covid-19-outpatient-trial-prospectively-demonstrates](https://investor.regeneron.com/news-releases/news-release-details/regenerons-covid-19-outpatient-trial-prospectively-demonstrates)).
- 274 8. Baum A, Fulton BO, Wloga E, et al. Antibody cocktail to SARS-CoV-2 spike protein

- 275 prevents rapid mutational escape seen with individual antibodies. *Science* 2020; 369:
276 1014-1018.
- 277 9. Copin R, Baum A, Wloga E, et al. The monoclonal antibody combination REGEN-
278 COV protects against SARS-CoV-2 mutational escape in preclinical and human
279 studies. *Cell* 2021 June 5 (Epub ahead of print).
- 280 10. Wang P, Nair MS, Liu L, et al. Antibody resistance of SARS-CoV-2 variants B.1.351
281 and B.1.1.7. *Nature* 2021; 593: 130-135.
- 282 11. Kanda Y. Investigation of the freely-available easy-to-use software "EZ R" (Easy R)
283 for medical statistics. *Bone Marrow Transplant*. 2013; 48, 452-458. advance online
284 publication 3 December 2012; doi: 10.1038/bmt.2012.244.
- 285 12. Hansen J, Baum A, Pascal KE, et al. Studies in humanized mice and convalescent
286 humans yield a SARS-CoV-2 antibody cocktail. *Science* 2020; 369: 1010-1014.
- 287 13. Weinreich DM, Sivapalasingam S, Norton T, et al. REGN-COV2, a neutralizing
288 antibody cocktail, in outpatients with Covid-19. *N Engl J Med* 2021; 384: 238-251.
- 289 14. O'Brien MP, Forleo-Neto E, Musser BJ, et al. Subcutaneous REGEN-COV antibody
290 combination to prevent Covid-19. *N Engl J Med* 2021 August 4 (Epub ahead of print).
291
292
293
294
295
296
297
298
299

300 **Legends for Tables and Figures**

301

302 **Table 1.**

303 Patients' Demographic and Epidemiological Characteristics.

304 Abbreviations: IQR, interquartile range; BMI, body mass index; SPO₂, Percutaneous
305 oxygen saturation.

306 #High-risk factors for severe Covid-19 include an age of more than 50 years, obesity (BMI
307 ≥ 30), cardiovascular disease (including hypertension), chronic lung disease (including
308 asthma), chronic metabolic disease (including diabetes), chronic kidney disease
309 (including receipt of dialysis), chronic liver disease, and immunocompromise.

310

311 **Figure 1.**

312 Time to additional treatment.

313 Event indicates that additional treatments are started.

314 A) shows time (day) to the next additional treatment after ronapreve administration
315 (date of the dripping indicates day 0). B) shows time (day) to be hospitalized to receive
316 medical interventions from disease onset.

317

318 **Figure 2.**

319 Multivariate analysis for the efficacy of ronapreve using variables of age, BMI, and high-
320 risk factors. Forest plots depict the comparison of the incidences between watchful
321 observation and ronapreve groups.

322

323 **Figure 3.**

324 Multivariate analysis for age ≥ 50 years, 1, or 2, or 3 or more high-risk factors, BMI ≥ 30 ,

325 and $SPO_2 \geq 96\%$ in ronapreve group. Forest plots depict the comparison of the incidences.

326

327 **Figure 4.**

328 Accumulation of patients with events from ronapreve administration (date of the

329 dripping indicates day 0).

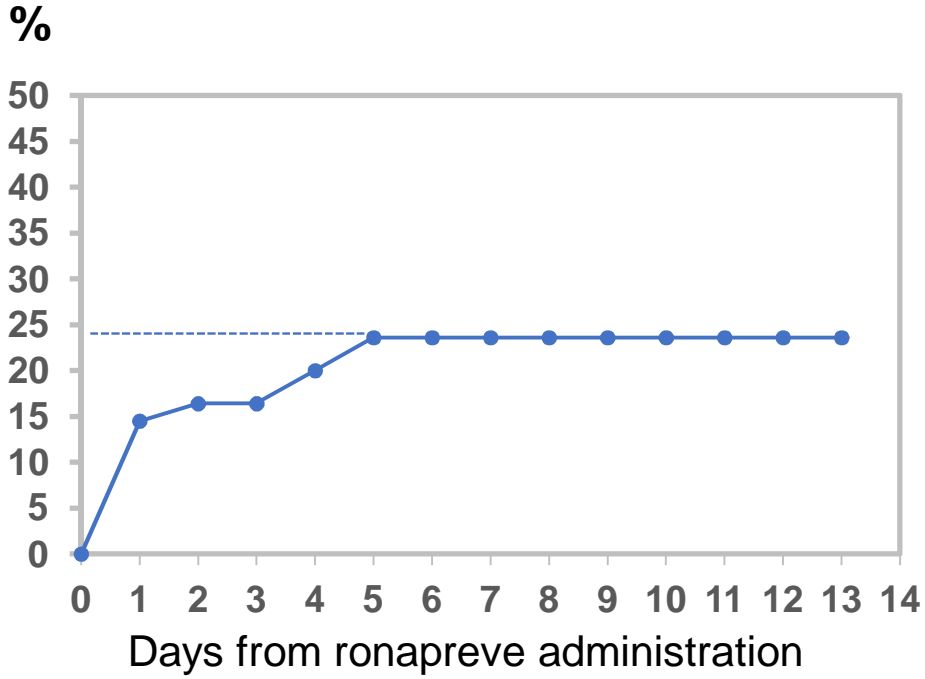
330 Event indicates that fever is down.

l.

Characteristics	Ronapreve (n= 55)	Watchful observation (n= 53)	p value
Median age (IQR), yr	51.0 (20.0, 94.0)	52.0 (20.0, 68.0)	0.939
Male sex, no. (%)	38 (69.1)	30 (56.6)	0.232
Median BMI (IQR)	27.5 (17.2, 47.5)	23.5 (14.7, 38.6)	0.011
Patients with high-risk factors, no. (%)			< 0.00
1 factor	17 (30.9)	41 (77.4)	
2 factors	18 (32.7)	6 (11.3)	
3 or more factors	20 (36.49)	6 (11.39)	
PO ₂ , no. (%)			0.169
≥96%	37 (67.3)	28 (52.8)	
≤95%	18 (32.7)	25 (47.2)	
Pneumonia, no. (%)			
yes	24 (43.6)	N.E	
no	31 (56.4)	N.E	

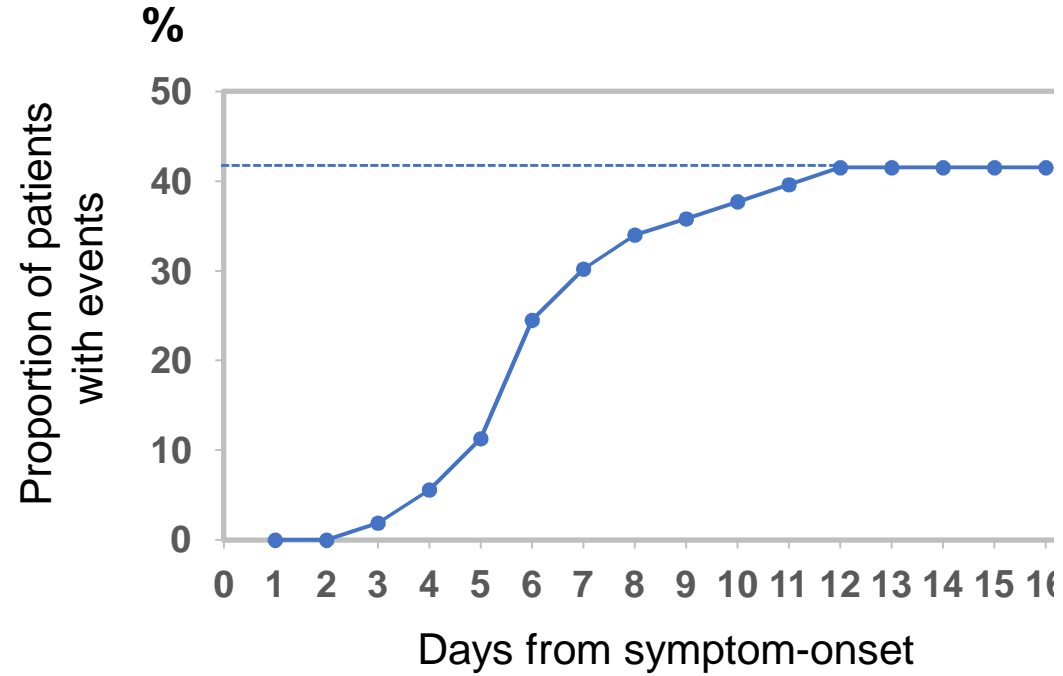
1.

A) Ronapreve Group



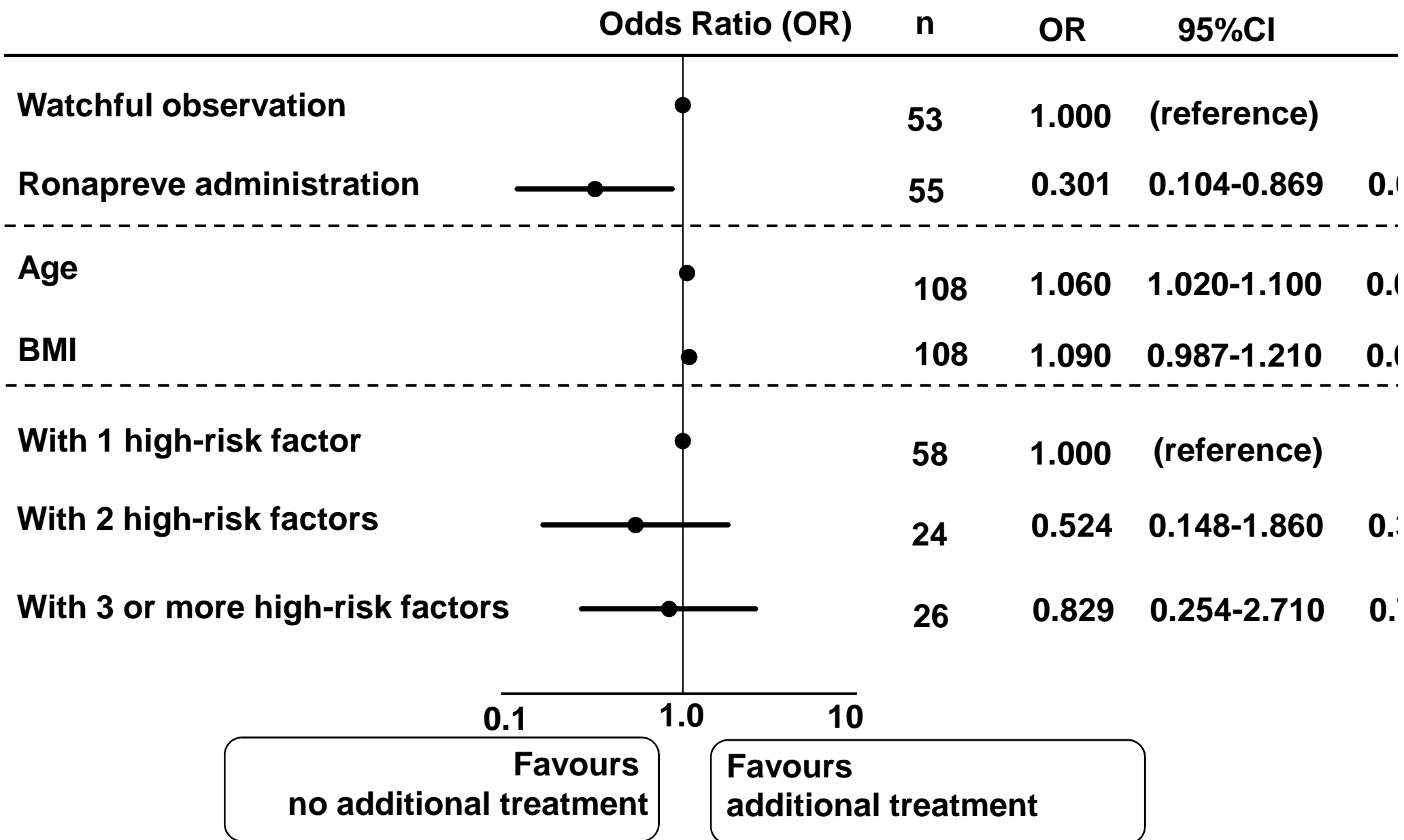
n: 55 47 46 46 44 42 42 42 42 42 42 42 42

B) Watchful observation Group



n: 53 53 53 52 50 49 40 37 35 34 33 32 31 31 31 31 3

2.



3.

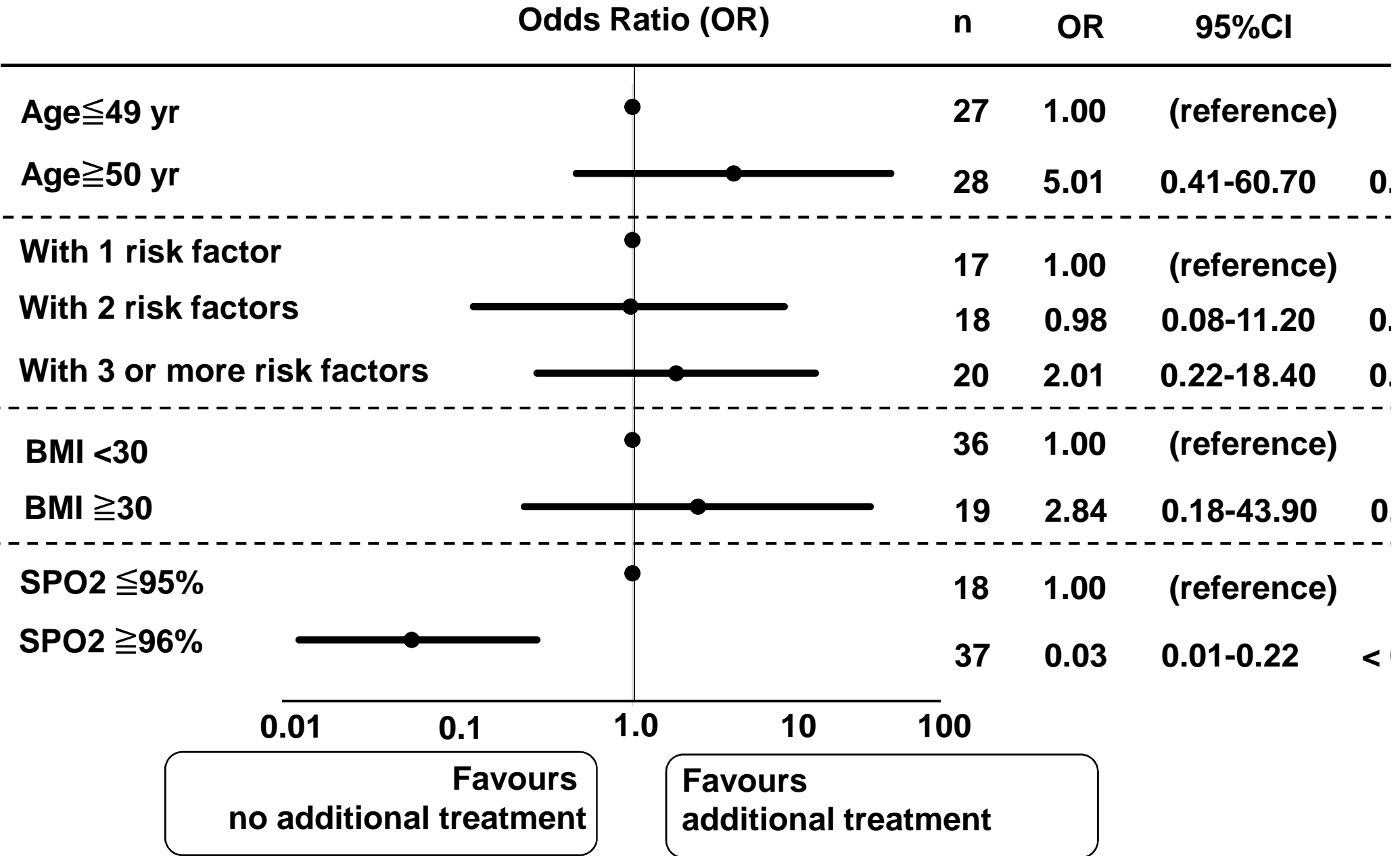
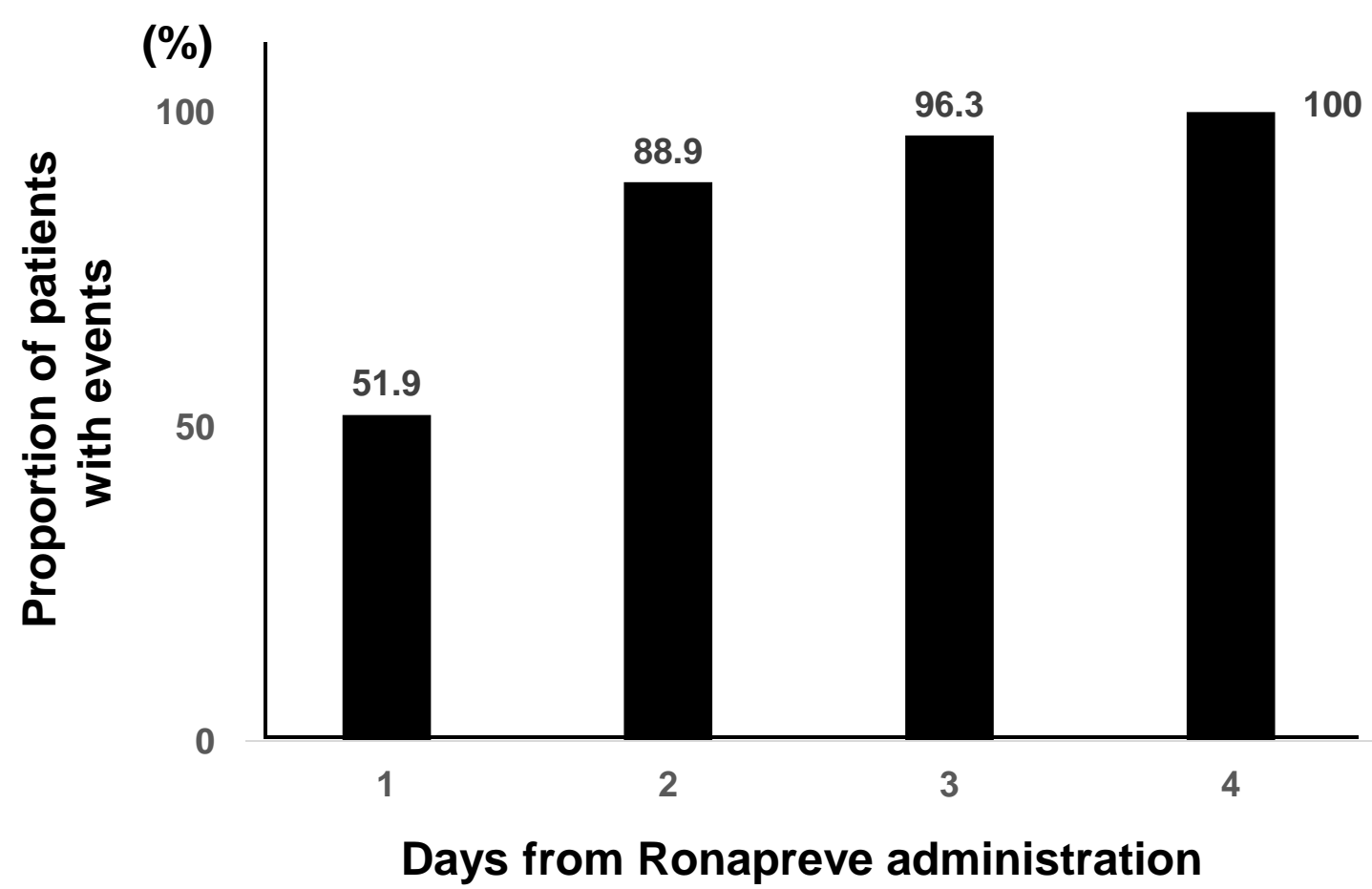


Figure 4.



Imputed no.(total 27) : 14

24

26

27