

CSF and PET biomarkers for noradrenergic dysfunction in neurodegenerative diseases: a systematic review and meta-analysis.

E. Lancini^{a, b}, L. Haag^{a, b}, F. Bartl^b, M. Rühling^b, NJ. Ashton^{c, g, e, f}, H. Zetterberg^{d, h, i, j, k}, E. Düzel^{a, b, l, m}, D. Hämmerer^{a, b, l, m, n*}, MJ. Betts^{a, b, m*}.

- a. German Center for Neurodegenerative Diseases (DZNE), Otto-von-Guericke University Magdeburg, Magdeburg, Germany.
- b. Institute of Cognitive Neurology and Dementia Research (IKND), Otto-von-Guericke University Magdeburg, Magdeburg, Germany.
- c. Institute of Psychiatry, Department of Old Age Psychiatry, King's College London, London, UK.
- d. Department of Psychiatry and Neurochemistry, the Sahlgrenska Academy at the University of Gothenburg, Mölndal, Sweden.
- e. Wallenberg Centre for Molecular and Translational Medicine, University of Gothenburg, Gothenburg, Sweden.
- f. NIHR Biomedical Research Centre for Mental Health & Biomedical Research Unit for Dementia at South London & Maudsley NHS Foundation, London, UK.
- g. Department of Psychiatry and Neurochemistry, Institute of Neuroscience & Physiology, the Sahlgrenska Academy at the University of Gothenburg, Mölndal, Sweden.
- h. Clinical Neurochemistry Laboratory, Sahlgrenska University Hospital, Mölndal, Sweden.
- i. Department of Neurodegenerative Disease, UCL Institute of Neurology, London, UK.
- j. UK Dementia Research Institute at UCL, London, UK.
- k. Hong Kong Center for Neurodegenerative Diseases, Hong Kong, China.
- l. Institute of Cognitive Neuroscience, University College London, London, UK.
- m. Center for Behavioral Brain Sciences, University of Magdeburg, Magdeburg, Germany.
- n. The Wellcome Trust Centre for Neuroimaging, University College London, London, UK.

Corresponding author:

Elisa Lancini

Institute of Cognitive Neurology and Dementia Research, Leipziger Str. 44, 39120 Magdeburg

elisa.lancini@dzne.de

*NOTE: This preprint reports new research that has not been certified by peer review and should not be used to guide clinical practice.
*These authors contributed equally

Abstract:

The noradrenergic system shows pathological modifications in aging and neurodegenerative diseases and is thought to be affected in the early stages of both Alzheimer and Parkinson's diseases. We conducted a meta-analysis of noradrenergic differences in Alzheimer's disease type dementia (ADD) and Parkinson's disease (PD) using CSF and PET biomarkers. CSF noradrenaline (NA) and 3-methoxy-4-hydroxyphenylglycol (MHPG) as well as NA transporter availability (PET MeNER) levels in controls, ADD and PD patients was summarized from 26 articles (1025 patients and 839 controls in total) using a random-effects model meta-analysis. Compared with controls, PD patients showed significant reductions in CSF NA and MHPG, and PET MeNER binding in the hypothalamus. In ADD, MHPG levels were increased compared with controls. Age correlated with CSF MHPG levels in ADD, but not in PD. Noradrenergic dysfunction in neurodegenerative diseases can be detected using CSF or PET measures and may be more pronounced in PD compared to ADD.

1. Introduction

Pathological alterations to the locus coeruleus (LC), a major source of noradrenaline in the brain, occur early in Alzheimer's disease (AD) and Parkinson's disease (PD) (1–3).

In AD, tau accumulation in the LC precedes volume loss, with a decrease of 30-55% of LC neurons from prodromal to severe dementia (2,4). The loss occurs predominantly in the rostro/middle portion of the LC (1,2,5), and correlates with decreased cognitive functions, postmortem neuropathology (4) and reduced NA levels in the cortex and hippocampus (6). Hyperactivation of remaining neurons might further accelerate tau propagation in the brain through LC projections (7,8) leading to β -amyloid deposits (9,10). In agreement with the hypothesized hyperactivation in early stages, NA increase might contribute to anxiety and depression (11), symptoms considered risk factors for developing AD (12).

In PD and synucleinopathies, α -synuclein containing Lewy bodies and neuronal cell loss in the LC (1,2) may affect NA synthesis (13) and precede degeneration to the substantia nigra (3,14,15). In support of this, a number of different clinical features related to noradrenergic dysfunction have been observed in PD (16) particularly non-motor symptoms (17) that may precede motor symptomatology and become more prevalent with disease progression (18). Moreover, anxiety and depression, symptoms that are hypothesized to be related to LC activation and NA release (11) and risk factors for AD (12), are also common non-motor symptoms in PD (18). A further shared characteristic is the change in morphology of LC cells following chronic exposure to tau and α -synuclein, in AD and PD respectively (8). The consequent loss of noradrenergic axons, terminals, NA and dopamine β -hydroxylase (DBH) activity in LC-efferent regions is supported by studies in animals and cell cultures (8).

Despite the uncertainty of healthy age-related cell loss in LC, there is clear post-mortem evidence of an age-related increase of tau in LC that may propagate along its axons, reaching first the transentorhinal regions and then in later stages, the neocortex (9,10). This process suggests a pivotal role of LC in both age-related brain degeneration (“seeding hypothesis”, Jucker & Walker, 2012) (19) and cognitive decline, because the presence of tau, more than β -amyloid plaques, in the neocortex correlates with cognitive impairment prior to death (20). The influence of the LC on other brain areas however might be exerted both directly via NA dysregulation, or indirectly via neuroinflammation (e.g., tau propagation) or additional LC-neuromodulators such as brain-derived neurotrophic factor (BDNF) and galanin (8). Age-related cognitive functions most affected in aging (21–24) and cognitive reserve (25–28) also depend in part on the noradrenergic system, thus maintaining the neural density of the LC-NA nuclei may prevent cognitive decline in aging (28,29). Furthermore, early clinical symptoms of neurodegenerative diseases may originate from noradrenergic dysfunction, such as sleep-wake cycle dysregulation, depression, anxiety, agitation (30–34), impaired attention and memory (8), suggesting that the integrity of the LC-NA system may be critical for tracking the progression from healthy to pathological aging (35). Taking into account all of the above, noradrenergic dysfunction occurs in healthy aging and is amongst the earliest signs of AD- and PD-like neuropathology.

To assess whether noradrenergic differences are related to pathology and disease severity in neurodegenerative disease, in this meta-analysis and systematic review we aimed to investigate the extent of noradrenergic dysfunction in AD-type dementia (ADD) and PD, using data obtained from cerebrospinal fluid (CSF) and positron-emission tomography (PET) measures of noradrenergic dysfunction.

2. Methods

2.1 Search Strategy and Selection Criteria

We searched PubMed for English relevant articles. Four authors (E.L, M.R, L.H, F.B) independently extracted the relevant information. The criteria for inclusion were: (i) the presence of CSF and PET noradrenergic biomarkers measures; (ii) clear sample composition; (iii) clear descriptive statistics of sample size and biomarker measures; (iv) clear description of methodology. In case of missing data, correspondent authors were contacted and if no additional information was provided, data points were extrapolated from the article's plots using the online software WebPlotDigitalizer Version 4.4 (36). Reviews and articles with previously published or unpublished data were excluded. The authors assessed the quality of the evidence with *robvis* online bias tool (Supplementary Figure 1) (37).

Throughout the paper we refer to the study participants using the umbrella terms ADD, that indicates both AD-type dementia patients with evidence of AD pathology and participants whose pathology was not confirmed, and PD, that includes both idiopathic PD and PD dementia patients.

A detailed flow diagram of the literature search and exclusion criteria is reported in Figure 1. A total of 26 studies reported a suitable comparison between healthy controls and ADD/PD and adequate data (mean and SD) for the calculation of the meta-analysis (CSF=23; PET=3), while an additional 23 studies were included in another exploratory analysis to investigate the association of noradrenergic levels in CSF with age and CSF measures of amyloid and tau pathology.

Only articles included in the meta-analysis are included in the qualitative synthesis in Table 1.

Studies in which the control groups were not age-matched to the ADD/PD groups were included to the extent that these studies were not outliers in the analysis and age dissimilarity was not a reported concern in the original articles.

No in vivo studies using PET MeNER in ADD were found.

This review was performed according to the Preferred Reporting Items for Systematic Reviews and Meta-analyses (PRISMA) guidelines (38). Further details on the review process can be found in the Supplementary Information.

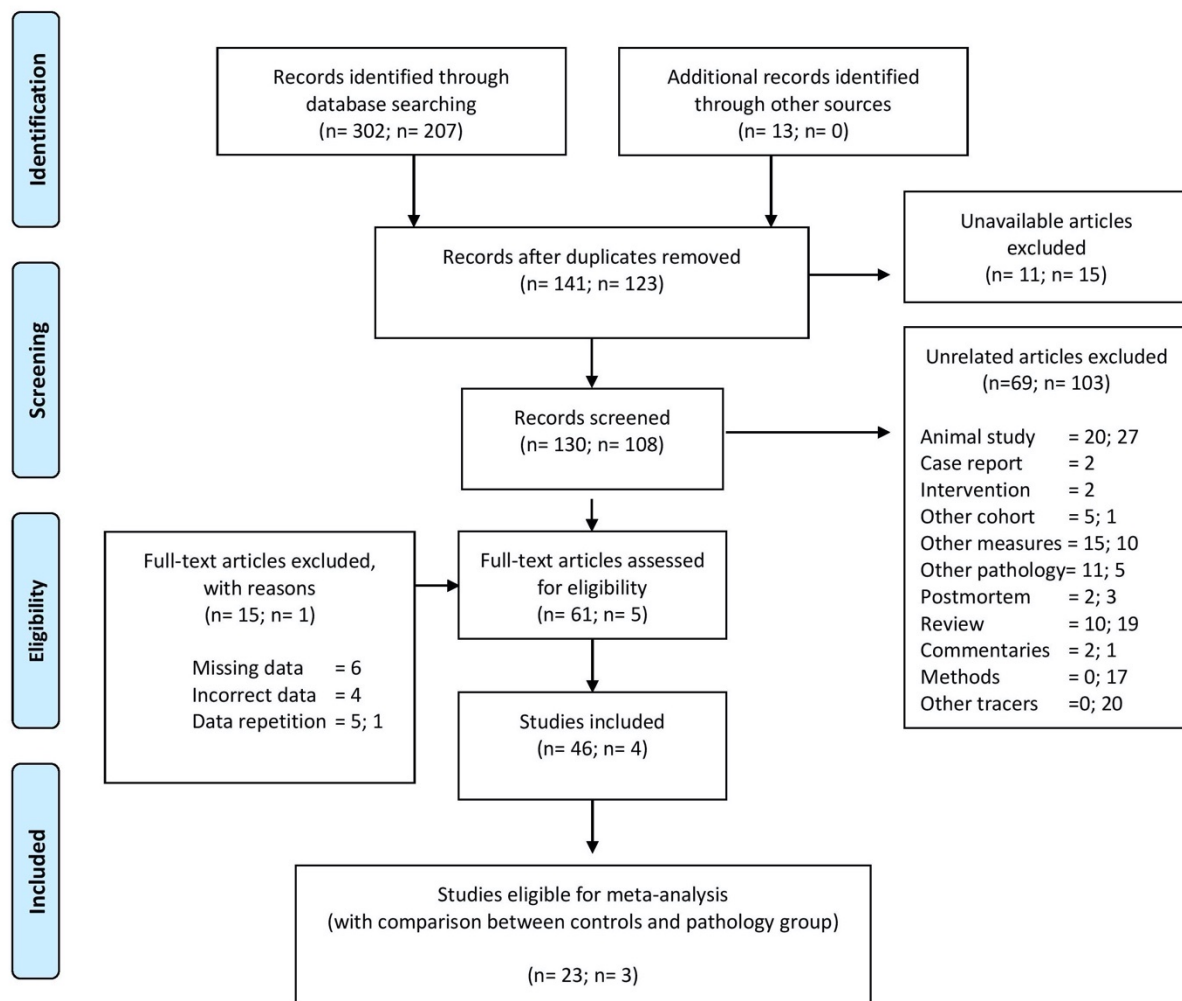


Figure 1. Flow diagram representing articles selection and inclusion process. PRISMA (Preferred Reporting Items for Systematic Reviews and Meta-Analyses). Figure adapted from Moher et al., 2009 (38).

2.2 Data transformations

Measures of NA and MHPG in the CSF and the density of NA transporters (NETs) in the brain were extracted for all studies included in the meta-analysis. To uniform data across papers, both CSF and PET data were first transformed to mean and standard deviation measures. When data was reported using the median and interquartile range but followed symmetrical distribution, the median was used as mean and the standard deviation calculated as interquartile range $(Q3-Q1)/1.35$. Second, additional transformations were applied for CSF and PET data separately. CSF NA and MHPG measures were converted to the standard unit of measure, i.e., picograms or nanograms per milliliter (pg/mL, ng/mL) respectively using GraphPad. For PET studies, data were kept in the unit of measure reported by most of the papers included, namely non-displaceable binding potential (BP-ND), and when measures were reported for left and right hemisphere separately (39), the mean and standard deviation of each bilateral region was reported (40). Finally, for studies that used the same control group to compare with different ADD and PD subgroups, the number of participants in the control group was split between the subgroups to reduce the unit-of-analysis error (41). This step was not necessary for PET data because no studies reported data from both ADD and PD.

2.3 Random-effect mixed-model meta-analysis assessing group differences in NA levels across studies

Statistical analyses were carried out using R software (version R i386 3.4.2) (42). Only articles reporting comparisons between either ADD or PD and a control group were included in the meta-analyses. For every article, independent Welch's t-test was conducted to assess mean differences between control and PD or ADD groups. Then, the standardized mean differences

(SMD) were calculated with Hedge's g correction for small samples (43). Finally, we performed a random-effect mixed-model meta-analysis using the *metagen* function from R package meta (44).

Five variables were used as explanatory variables for the meta-regression analyses: the volume of the CSF samples, the study sample size, the years post diagnosis, the laboratory analysis technique (high-performance liquid or gas chromatography, radio enzymatic methods or immuno essays) and clinical severity. Clinical severity in PD was assessed using Hoehn and Yahr (H&Y) scores in PD (mild= 1-2; moderate= 3; severe= 4-5) (45) since Unified Parkinson's Disease Rating Scale (UPDRS) scores were not always reported. Clinical severity in ADD was assessed using Mini-Mental-State-Examination (MMSE) scores, classified according to the Alzheimer's Association guideline (normal >24; mild= 21-24; moderate= 13-20; severe: <12) ("Medical Tests | Mental cognitive status tests | Alzheimer's Association," 2021).

The levels of CSF NA and CSF MHPG were investigated in both ADD (MHPG-AD; NA-AD) and PD (MHPG-PD; NA-PD), compared to controls. The levels of MeNER PET were measured only in PD compared to controls in the hypothalamus, locus coeruleus, median raphe, nucleus ruber and thalamus. The estimation of the average true effect (μ) was calculated with a 95% confidence interval and the between-study-variance using the tau-squared estimator (τ^2). To control for the small number of studies included per group, we applied the adjustment method proposed by Hartung-Knapp-Sidik-Jonkman (HKSJ). The causes of the remaining statistical heterogeneity were investigated by (i) identifying statistical outliers with the R function *find.outliers* and (ii) potential influential cases from, studies whose exclusion from the analysis lead to significant changes in the fitted model (44). Then, we investigated studies that exert a very high influence on overall results (ii) (42) (Supplementary Figure 2). The outliers and influential cases resulting from the three analyses were then removed from

subsequent analyses (Supplementary Table 1). Regarding CSF measures, a total of five studies (k=5) were identified as outliers and influential cases and subsequently removed from further analyses (NA-AD: k=2; NA-PD: k=2, MHPG-AD: k=3; MHPG-PD: k=1). The meta-analysis model was then re-calculated excluding the detected outliers and influential cases. In the PET studies, no outliers were identified and analysis of influential cases was not possible due to the small number of studies per brain region (k=2).

2.4 Random-effect mixed-model meta-regression

Meta-regressions were performed to assess the influence of the hypothesized explanatory variables. Using the *rma* function in *metafor* with continuous variables centered and standardized (z-scores), three regression analyses were conducted: a linear meta-regression model using clinical severity as a predictor of interest (model 1), in addition to two multiple meta-regressions models testing the interactions between the laboratory analysis technique, the volume of the CSF samples and the sample sizes (model 2), and finally taking sample size, clinical severity and years post diagnosis (model 3). The laboratory analysis technique entered the model as a between-study factor.

2.5 Correlation analysis of grouped data

Additional exploratory analyses were conducted on the grouped data (means and SD) to investigate the association of noradrenergic levels in CSF with (i) age and (ii) CSF measures of amyloid and tau pathology. Outliers were not excluded.

The data used to investigate the associations with age (i) did not satisfy the assumption of normality and homogeneity of variance, therefore, Spearman's rank correlation coefficient

was calculated to assess for associations between NA/MHPG levels and age, considering only articles in which the number of data points for age and CSF data were identical.

The investigation of the associations between CSF noradrenergic measures and AD pathology measures (ii) was conducted only for the ADD group and MHPG measure. In this group three articles reported both CSF MHPG levels and CSF p-tau levels whilst in the other groups MHPG CSF measures and CSF amyloid and tau measures were available only from two articles. All articles in ADD reported the same number of datapoints for CSF p-tau and CSF MHPG levels, indicating that the same number of participants were used for all measures thus Spearman's rank correlation coefficient was calculated for all correlational analyses. There was only 1 article available reporting NA measures and CSF amyloid and tau measures, therefore no correlation analyses were conducted for these groups.

The code for all analyses described in paragraphs 2.3-2.5 are available at <https://github.com/ElisaLancini/meta-analysis>.

Additional analyses and the respective figures can be found in the Supplementary Material, Supplementary Figure 3, Supplementary Figure 4 and Supplementary Table 2.

3. Results

3.1 Decreased CSF and PET noradrenergic levels in PD

In PD, significant reductions in CSF NA ($n=132$, $g=-0.26$, $p=0.01$) and MHPG ($n=257$, $g=-0.27$, $p=0.04$) (Figure 2), in addition to reduced PET MeNER binding in the hypothalamus ($n=29$, $g=-0.87$, $p<0.05$), was observed compared with control subjects ($n=114$ for NA, $n=184$ for MHPG and $n=22$ for PET respectively) (Figure 3). In the PET MeNER meta-analysis, no significant differences were observed in any other brain regions investigated (*locus coeruleus*: $n=22$, $g=$

-0.51, $p=0.10$; *median raphe*: $n= 22$, $g= -0.02$, $p=0.95$; *nucleus ruber*: $n= 22$, $g= -0.89$, $p=0.12$;
thalamus: $n= 22$, $g= -0.95$, $p=0.10$).

3.2 Increased CSF MHPG levels in ADD

In ADD, no significant difference in CSF NA levels ($n= 194$, $g= -0.06$, $p= 0.78$) was found, however a significant increase in CSF MHPG ($n= 208$, $g= 0.20$, $p= 0.04$) was observed compared to controls ($n= 150$ for NA, $n= 162$ for MHPG respectively). No in vivo studies using PET MeNER in Alzheimer patients were found, therefore no meta-analysis was conducted for this group.

3.3 Age is a predictor of CSF MHPG levels in ADD

In ADD, age significantly predicted CSF MHPG levels ($n= 337$, $rs(15)= 0.73$, $p= 0.01$), however, no significant association between NA levels and age was found ($n=226$, $rs(10)= 0.40$, $p= 0.19$). In PD, no significant association between MHPG ($n=331$, $rs(12)= 0.29$, $p= 0.31$) or NA($n= 49$, $rs(2)= 0.80$, $p= 0.33$) was observed. In the control group, no significant association between CSF NA ($n= 49$, $rs(22)= 0.16$, $p= 0.50$) or MHPG levels ($n= 331$, $rs(19)= -0.05$, $p= 0.82$) and age was observed.

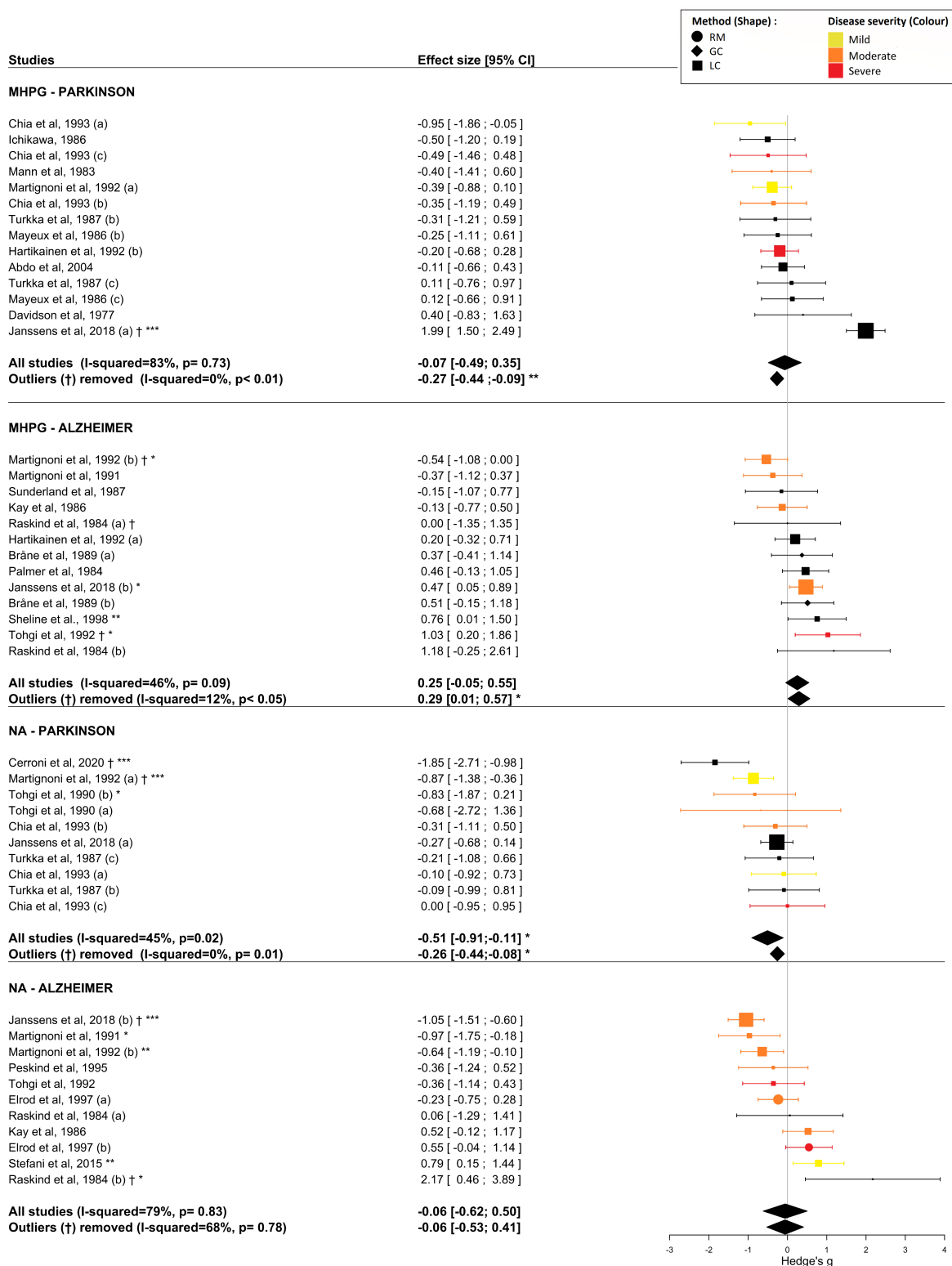


Figure 2. Meta-analysis results of NA and MHPG levels in CSF. The forest plot shows the effect sizes between ADD and PD compared to controls. The averaged effect size and 95% CI is indicated by the black diamonds. The size of the symbols indicates the pooled number of participants in each study. Significance levels are indicated by asterisks (*p<0.05, ** p<0.01, ***p<0.001). The significance of a single study refers to the result of the Welch's t-test between the averages of the two groups analyzed. Studies excluded as outliers are indicated

with the symbol †. The studies were characterized on the basis of the analytical method used to evaluate the noradrenergic levels of CSF, coded through the different shapes of the data points, and severity, coded through the different colors of the data points. Clinical severity was based on H&Y scores for Parkinson's disease group (mild= 1-2; moderate= 3; severe= 4-5) and MMSE scores for Alzheimer' dementia group (normal >24; mild= 21-24; moderate= 13-20; severe: <12). CSF: cerebrospinal fluid; GC: gas chromatography; LC: liquid chromatography; MHPG: 3-methoxy-4-hydroxyphenylglycol; NA: noradrenaline; RM: radioenzymatic methods.

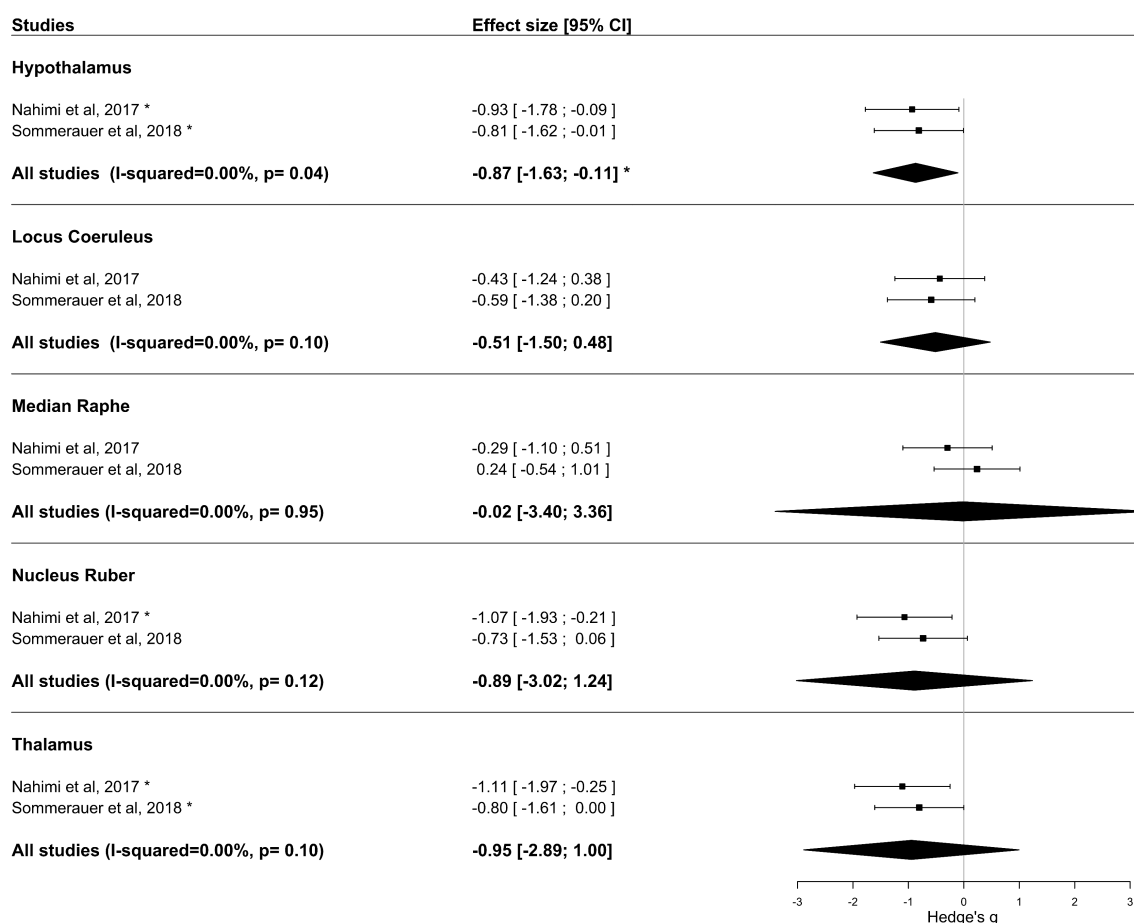


Figure 3. Meta-analysis results of PET MeNER binding in PD and control groups. The forest plot shows the effect sizes of the disease group compared to controls. The averaged effect size and 95% CI is indicated by the black diamonds. The application of the HKSJ method results in more conservative CI, that might exceed the variance of the single studies when the number of included studies is small and when standard errors vary considerably between them. The size of the symbols indicates the pooled number of participants in each study. Significance levels are indicated by asterisks (*p<0.05, ** p<0.01, ***p<0.001). The significance of a single study refers to the result of the Welch's t-test between the averages of the two groups analyzed. MeNER: (S,S)-11C-2-(a-(2-methoxyphenoxy)benzyl)morpholine; PET: positron emission tomography.

3.4 P-tau181 does not correlate with CSF MHPG levels in AD

Spearman's rank correlation coefficient showed no significant association between p-tau181 and MHPG levels (n= 130, $r_s(1) = -0.05$, $p = 1$) in AD.

Only two studies assessed the associations between MHPG levels and amyloid- β 42 and t-tau in AD, and two more studies assessed the association between MHPG levels and t-tau in PD. The results of the correlations were not significant in any of the groups.

3.5 CSF sample volume, sample size, years post diagnosis and clinical severity do not predict noradrenergic levels in any of the investigated groups

The influence of hypothesized explanatory variables, namely the volume of CSF samples, the sample size, the number of years post-diagnosis and clinical severity, and possible interactions among them, were assessed by three meta-regression models.

In the first model (model 1), severity was included as a single predictor. This linear meta-regression model was not significant in any investigated group (MHPG-ADD n pooled= 403, $R^2=0.00$, $F(1,8)=2.75$, $p = 0.14$), NA-ADD (n pooled= 344, $R^2=0.00$, $F(1,7)=0.44$, $p = 0.53$), MHPG-PD (n pooled= 441, $R^2=0.00$, $F(1,11)=1.65$, $p = 0.22$), NA-PD (n pooled=246, $R^2=0.00$, $F(1,6)=0.08$, $p = 0.78$)).

In the second model (model 2), the possible effects and interactions between the laboratory analysis technique, the volume of the CSF samples and the sample size were assessed. The resulting multiple linear regression model was not significant in any investigated group (MHPG-ADD (n pooled= 403, $R^2=0.00$, $F(6,3)=1.33$, $p=0.44$), NA-ADD (n pooled= 344, $R^2=0.00$, $F(6,2)=0.09$, $p = 0.99$), MHPG-PD (n pooled= 441, $R^2=0.00$, $F(5,7)=0.81$, $p = 0.58$), NA-PD(n pooled= 246, $R^2=0.00$, $F(3,4)=2.00$, $p = 0.25$)).

The third model (model 3) explored the possible effects and interactions of the study sample size, clinical severity and number of years post diagnosis on noradrenergic levels in CSF (NA and MHPG). The resulting multiple linear regression model was not significant in any investigated group (MHPG-ADD (n pooled= 403, $R^2=0.00$, $F(5,4)=5.56$, $p=0.51$), NA-ADD (n pooled= 344, $R^2=0.00$, $F(7,1)=0.37$, $p=0.85$), MHPG-PD (n pooled= 441, $R^2=0.00$, $F(7,5)=0.36$, $p=0.89$), NA-PD (n pooled= 246, $R^2=0.00$, $F(3,4)=0.07$, $p=0.97$)).

4. Discussion

Our meta-analysis and review set out to identify the extent to which CSF and PET can be used to characterise alterations to the noradrenergic system in ADD and PD independent of healthy aging.

Effect sizes of the studies included in the meta-analyses were pooled and the influence of possible explanatory variables were investigated using a meta-regression analysis. Moreover, exploratory correlation analyses were conducted on grouped data (means and standard deviations) to investigate the association between CSF NA/MHPG measures with age and CSF amyloid and tau pathology.

The results from the pooled effect sizes showed that in ADD, MHPG but not NA levels were significantly increased compared to controls, and that age is a significant predictor of MHPG levels. However, in PD, we observed a significant decrease in CSF NA, MHPG and in PET NA transport binding in the hypothalamus compared to healthy controls.

4.1 Hypothesized increased metabolic activity to preserve noradrenergic levels in AD

We observed no significant difference in NA and increased levels of MHPG in the CSF data of ADD participants compared to healthy controls. We will discuss them in the light of other studies that have measured NA and MHPG directly in the brain, using microdialysis or brain tissue, to provide a more comprehensive frame in which to hypothesise the relationships between these measurements and the possible mechanisms underlying these differences.

In studies assessing noradrenergic levels post mortem, NA has been shown to be decreased in ADD whilst MHPG levels were higher or not significantly different compared to controls (32). However, evidence from animal studies suggest that extracellular levels may differ from levels observed in tissue (46,47) and that the efficiency of compensatory mechanisms depends on the extent of the lesion of the LC (48).

In contrast, Hughes and Stanford reported higher NA extracellular levels in LC-lesioned animals compared to sham controls (49). This evidence suggests a possible difference between tissue and extracellular NA levels (50), whereby extracellular levels (assessed using microdialysis) are maintained following the depletion of noradrenergic neurons. Thus, it is currently unclear how noradrenergic differences in CSF relate to the integrity of the LC particularly in humans.

However, the result of the study by Abercrombie and Zigmond (1989) suggests that following partial degeneration of noradrenergic terminals, the remaining terminals are still able to maintain extracellular NA concentrations at a normal level, whereas this ability might be lost at a more advanced stage of neurodegeneration (48).

Antemortem brain biopsy in AD patients showed that endogenous release of NA in the frontal cortex did not vary from controls. In the temporal cortex of the same subjects, a decrease in NA and NA uptake was observed (51) but the ration between MHPG/NA was elevated. The combination of no significant difference in NA release in the frontal cortex, and increased MHPG/NA ratio in the temporal cortex may indicate a potential biological compensatory mechanism to preserve extracellular NA levels. This could corroborate the lack of significant difference in CSF NA levels and increased MHPG levels observed in our meta-analysis for ADD patients. In the same study, MHPG levels were found not to be altered which would not be in support of this idea, however it has been suggested that the NA turnover might increase with disease progression, as Raskind and colleagues found CSF MHPG levels of severe AD patients to be significantly elevated compared to controls (52). Therefore, NA and MHPG levels likely change during disease progression. However it should be noted that other studies have reported no significant difference, decreased or increased CSF measures of NA in ADD compared to age-matched controls (53–58) and increased MHPG levels in AD have not been consistently found in the literature (REFs). Moreover, increased MHPG levels in AD have also been shown to be associated with cognitive deficits (59,60), therefore hyperactivation of the remaining neurons in response to the loss of NA neurons might elicit cognitive deterioration due to excessive NA levels which would not be in support of a compensatory mechanism (for a review see Gannon & Wang, 2019).

With respect to MHPG levels in ADD, the results across postmortem studies are heterogeneous, finding either decreased MHPG levels in hippocampus and cortical regions (61), or increased levels in caudate, hippocampus and cortex (62) and frontal regions (63), as compared to controls. In ante-mortem neocortical tissue, no significant difference in MHPG levels in ADD compared to controls has been found (51). However, in the current meta-

analysis we found increased CSF MHPG levels in ADD compared to healthy controls. This result corroborates previous findings in CSF, despite the discrepancy with autopsy or ante-mortem studies. A possible explanation for this discrepancy is that NA postsynaptic receptors might become hyperactivated in an attempt to compensate for decreased NA release from terminals, thus leading to enhanced metabolism and increased MHPG levels (58,64). Moreover, our results showed that CSF MHPG levels were positively associated with age as reported in other studies (59,65). This age-related increase might reflect central increased turnover or impaired uptake, or alternatively increased metabolic activity of peripheral noradrenergic neurons, as the blood-CSF barrier does not prevent MHPG diffusion between compartments (66,67).

4.2 Tau and amyloid pathology measures might be necessary to identify a relationship between CSF NA/MHPG and cognitive symptoms

No associations between noradrenergic levels in ADD with clinical severity or the other hypothesized explanatory variables were found. The relation between CSF noradrenergic measures in ADD and severity remains unclear: in the study from Raskind, increased MHPG levels were found to be significant only in advanced stages of ADD (52) while in another study the increase did not correlate with the severity of ADD (58). Oishi and colleagues reported a negative correlation between CSF MHPG and MMSE across ADD and controls together, while Sheline and colleagues reported a negative correlation between MHPG and cognitive function, indicated by Sum of boxes and Blessed Information-Memory-Concentration (IMC), that did not achieve significance when the control group was removed from the analysis (53,64). CSF NA levels were reported to correlate with the severity of ADD measured with the MMSE (53,60). Reduced cognitive capacity in the presence of higher levels of NA and MHPG

is in disagreement with the theories on increased noradrenergic levels as a compensatory mechanism of surviving neurons. However, it is important to consider that the relationship between noradrenergic indicators in the CSF and cognitive symptoms may not be clearly found in the absence of pathological markers.

A recent study from Jacobs and colleagues in participants with subjective cognitive decline, mild cognitive impairment and AD found that the presence of both p-tau and amyloid mediates the relationship between CSF MHPG and memory scores (59).

Another hypothesis suggests that in prodromal stages of AD, the presence of tau “pretangles” in the LC may lead to neuronal hyperactivity that is associated with the first signs of cognitive impairments. With increasing tau accumulation, cognitive decline worsens and hyperactivation promotes further propagation of tau, exacerbating cognitive decline (8). It can be hypothesized that the detrimental effects of NA might also be observed in normal aging in individuals with high tau burden since alterations in levels of NA are likely detrimental to cognition (50). Studies using CSF measures of NA/MHPG combined with measures of tau pathology might help to elucidate this relationship: an elevation of MHPG levels in the early stages might occur as result of tau accumulation induced hyperactivation of noradrenergic neurons, associated with a decrease in cognitive abilities and then at more advanced stages followed by tau-related degeneration. Further investigation of noradrenergic indices during disease progression might also be useful for intervention studies assessing the potential of noradrenergic treatments, as increasing NA with uptake blockade or receptor agonist drugs in early stages might not lead to the desired therapeutic effects.

Moreover, in AD mice models, it has been shown that noradrenergic receptors are dysregulated in AD, and that their activation also elicits deteriorating effects on cognition (50). Therefore, when discussing CSF noradrenergic levels and cognitive decline, it is necessary to

consider the interplay between hyperactivation, receptor dysregulation and influence of amyloid and tau pathologies.

4.3 Significant differences between PD and controls are observed in both CSF and PET measures

In PD, the findings of a general decrease in noradrenergic measures are consistent with the previous literature. As with AD, post-mortem studies report pathology in the LC at one of the earliest stages of PD. Neuropathological findings also indicate that substantia nigra pars compacta (SNc) degeneration is accompanied by Lewy body burden and associated loss of noradrenergic neurons in the LC (68) and that LC neuronal loss may occur earlier and in greater magnitude than that of the SNc (69). However, as in AD, the patterns of disease progression in PD are heterogeneous (70,71), and often deviate from the classical staging proposed by Braak (14).

We found overall reduced PET MeNER binding in the hypothalamus in PD compared with controls. A marked reduction in NET levels in the LC, median raphe, nucleus ruber and thalamus was also observed compared to healthy controls, however these effects were not statistically significant. These results were not expected, as we anticipated that the LC and raphe would be significantly affected due to the pathophysiology of PD. However it should be noted that the included studies assessed only the median portion of the raphe. Moreover, in the study from Sommerauer (39) a significant reduction in PD patients with rapid eye movement sleep behaviour disorder (RBD) was observed in these brain regions. However, for a better comparison with the Nahimi study, we only included the PD RBD- group, in which a MeNER binding difference was not significant. The study confirms the hypothesis that the noradrenergic system is more severely affected in patients with RBD (72).

Decreased CSF NA and MHPG levels in PD compared to their control groups are consistent with the increased prevalence of noradrenergic-related symptoms that occurs with ensuing disease progression. Noradrenergic deficits are implicated in the occurrence of the non-motor symptoms in PD (17) such as cognitive impairment, sleep disorders, autonomic dysfunction, that may precede motor symptomatology and become more prevalent with disease progression (18).

In PD, CSF NA and MHPG levels do not seem to correlate with disease severity assessed using H&Y scores (73) or clinical evaluation (74). In line with the literature, the present meta-analysis revealed that H&Y scores did not explain variation in CSF NA and MHPG effect sizes between PD and control groups. It should be noted however, that the lack of association reported could be due to the use of the H&Y questionnaire: the UPDRS and more recent MDS-UPDRS would be preferred as a more sensitive measure to assess motor and non-motor symptoms. CSF MHPG levels alone are associated in other studies with the severity of autonomic dysfunction measured with the ANTS Disability Scale (74) and to be inversely correlated with performance on the digit span test (75).

4.4 More studies are required to determine the relationship between brain pathology and CSF NA/MHPG biomarkers

In additional exploratory analyses, we investigated the relationship between CSF NA/MHPG levels and pathology biomarkers, namely amyloid, t-tau and p-tau in both ADD and PD. This analysis was possible in the ADD group, however only three studies reported both p-tau181 and MHPG levels. The relation between p-tau181 and MHPG across these three studies was not significant. Amyloid and t-tau were only specified in two studies, therefore the analysis was not reported. Whilst the relationship between p-tau181 and MHPG was not significant in

our sample, one of these studies did find that higher CSF MHPG is positively associated with p-tau, independent of amyloid (23). In the same study, MHPG was shown to be associated with memory deficits via both tau and inflammation-mediated amyloid pathology, and with neuropsychiatric symptoms through a direct pathway partially mediated by tau (23). The close relation between the NA-system and AD-related pathology has been confirmed in an animal study showing the direct etiological role of NA in AD pathology (76). The authors recreated the AD-related increase in α 2A-adrenergic receptors activity in two independent AD mouse models and found that nanomolar concentrations of amyloid- β oligomers bind to alpha2A-adrenergic receptors leading to hyperphosphorylation of tau and increased response sensitivity of alpha2A receptors to amyloid-beta oligomers. Thus, NA could be involved in mediating the toxic effects of amyloid- β (77). Tau pathology has also been suggested to be facilitated by alterations to the LC-NA system as demonstrated in rodents (7). Moreover, whilst no significant relationship between NA/MHPG and tau was observed in our analyses, MHPG more than NA may be related to p-tau as animal studies have shown that NA O-methylation in MHPG is necessary for tau spreading (78).

The lack of significance in the relationship between CSF NA biomarkers and brain pathology in our study may be attributed to the small number of studies and study heterogeneity available to us to conduct a meta-analysis but we must also consider that results obtained from animal studies may not translate to humans, and that causal associations between AD pathology and NA dysfunction remain to be determined. Larger longitudinal studies with CSF and PET measurements are needed to shed more light on this potential relationship.

5. Study Limitations

5.1 Duplicate data

Studies using identical databases were removed when duplicate samples were reported, however the origin of samples from 41 studies was not reported so additional duplicate data cannot be fully excluded.

5.2 Limited data availability

Only studies whose mean and standard deviation was provided or was calculable from other descriptive measures were included in the study, and not all studies reported data in this format required to calculate effect sizes.

Furthermore, data from the variables amyloid, tau, disease severity, number of years post-diagnosis, CSF volume, may be under- or overestimated because the number of subjects with CSF NA/MHPG data did not all report information on whether these additional covariables were investigated.

Additionally in the PD group, disease severity was typically reported using the H&Y scale, however the UPDRS or MDS-UPDRS would have been more desirable measures to define motor and non-motor symptom severity.

5.3 CSF sampling and analytical method

The volume of CSF for each measure was not always specified thus it was not possible to control for possible biases in the gradient of concentration. The volume of CSF taken can influence the concentration of biomarkers, for two reasons. First, small CSF samples will reflect the composition of the lumbar dural sac, while larger samples may also represent the rostral spinal or ventricular CSF. In addition, different molecules have a characteristic rostrocaudal concentration gradient (79). However, this may only be relevant for NA

measures since previous studies showed that MHPG levels in lumbar CSF did not differ from ventricular CSF (52,80) and across fractions (81).

Although we tried to account for differences in collection and analytical techniques, there may be further differences within the same CSF analysis method, due to between and within-lab biases.

5.4 Pathology sample characterization

Among the ADD studies included in the meta-analysis, CSF amyloid and tau biomarkers, or confirmation of AD pathology post mortem was performed in only 15% of the studies included in the analyses presented while the majority used symptom-based scales or cognitive tests to assess disease severity. Moreover, the duration of the disease was calculated either as years post diagnosis or in some cases years from first visible symptoms reported by family members.

5.5 Control sample characterization

Among the included studies reporting NA levels in AD, control subjects in four studies were reported to have other comorbidities (55,56,58,82). Moreover, despite neurological and psychiatric problems being ruled out, other diseases for which controls were hospitalized might have influenced noradrenergic levels. The stress (83) caused by hospitalisation may have also influenced the results reported in our meta-analysis.

Moreover, despite the control group not reporting the presence of other pathologies, CSF NA levels increase with age (84) and the first pathological changes of AD emerge decades before the appearance of cognitive symptoms (85), thus the presence of preclinical AD in the control groups cannot be excluded.

5.6 Blood-brain and blood-CSF permeability of NA/MHPG

In contrast to NA, MHPG rapidly diffuses through the blood-brain (66), and blood-CSF barriers (67). Thus CSF MHPG levels might not directly correlate with central noradrenergic metabolism (66). In this respect, we should be prudent about indicating it as a pure index of CNS levels and interpreting results as such.

5.7 Medications

When data was reported separately based on the medication status of the participants, we included these participants in separate subgroups. However, sometimes this was not possible because the data were reported for the entire sample without confirming their medication status.

The majority of the studies reported no difference among medicated vs unmedicated participants.

6. Conclusion

In this review and meta-analysis, we provided an overview and quantification of noradrenergic differences in aging, ADD and PD, measured in CSF and PET. Our meta-analysis revealed a general decrease in noradrenergic levels in PD, measured as noradrenergic CSF levels and PET NA transporters availability in the hypothalamus. In ADD, an increase in CSF MHPG levels was observed which was found to be significantly predicted by age. Furthermore, explanatory and potential confounding variables were also assessed in the small subgroup of studies that reported them, and found not to influence NA/MHPG group comparisons across studies. In this regard, the discussion on possible biases of previous

measurement procedures will be a valuable aid for the development of an optimized protocol for sampling and analysis of CSF measures of noradrenergic dysfunction.

This meta-analysis contributes to a better understanding of the noradrenergic system in aging, ADD and PD and demonstrates CSF measures of noradrenergic function may be differentially affected in ADD and PD. However, further studies using longitudinal CSF and PET measures in both pathology assessed AD and PD patients are required to elucidate the relationship between noradrenergic dysfunction and the progression of AD and PD. Accurate knowledge of the pathological differences of the noradrenergic system, detectable by CSF and PET, would be beneficial in a clinical setting. The characterisation of pathology-specific trajectories would contribute to the future development of a biomarker-based diagnostic model for neurodegenerative diseases and the possibility to monitor the status of the noradrenergic system might aid in early detection of pathological decline and be useful for determining the efficacy of NA drugs in clinical trials.

To support our conclusion, further studies should investigate pathologically and cognitively characterised, medication-free patients and healthy, pathology-free, age-matched control groups with PET and CSF measurements, using an optimised and shared protocol for CSF sampling.

7. Funding

E.L. and L.H. are supported by the Deutsche Forschungsgemeinschaft (DFG, German Research Foundation) – 362321501/RTG 2413 SynAGE.

M.B. is supported by the Deutsche Forschungsgemeinschaft (DFG, German Research Foundation) – Project-ID 425899996 – SFB 1436 and CBBS NeuroNetzwerk 17.

D.H. has received the following grants and contracts: Brenda Milner Award (2021), SFB 1436 Project A08 The noradrenergic system's contribution to neural resource in aging (2020), CBBS 'Neuronetwork' 'Stimulation of the LC-NE system as a personalized therapeutic intervention'(2019), Europäischer Fonds für regionale Entwicklung (EFRE) (2019), as PI of one subproject and coordinator of 4 subprojects of 'Neuronetwork', CBBS Events grant: 'Meeting for the development of new in-vivo methods for the noradrenergic system' (2019), Europäischer Fonds für regionale Entwicklung (EFRE) (2019) and ARUK SRF2018B-004.

H.Z. is a Wallenberg Scholar supported by grants from the Swedish Research Council (#2018-02532), the European Research Council (#681712), Swedish State Support for Clinical Research (#ALFGBG-720931), the Alzheimer Drug Discovery Foundation (ADDF), USA (#201809-2016862), the AD Strategic Fund and the Alzheimer's Association (#ADSF-21-831376-C, #ADSF-21-831381-C and #ADSF-21-831377-C), the Olav Thon Foundation, the Erling-Persson Family Foundation, Stiftelsen för Gamla Tjänarinnor, Hjärnfonden, Sweden (#FO2019-0228), the European Union's Horizon 2020 research and innovation programme under the Marie Skłodowska-Curie grant agreement No 860197 (MIRIADE), and the UK Dementia Research Institute at UCL.

E.D. has received financial support for his institution by Deutsche Forschungsgemeinschaft (DFG, German Research Foundation) – Project-ID 425899996 – SFB 1436, Human Brain Project, SGA3, Deutsche Forschungsgemeinschaft (DFG, German Research Foundation) – SFB 1315.

None of the authors received financial support for the specific purpose of writing this manuscript.

8. Conflict of interest

H.Z. has served at scientific advisory boards and/or as a consultant for Alector, Eisai, Denali, Roche Diagnostics, Wave, Samumed, Siemens Healthineers, Pinteon Therapeutics, Nervgen, AZTherapies, CogRx and Red Abbey Labs, from which he received payments, has given lectures in symposia sponsored by Cellectricon, Fujirebio, Alzecure and Biogen, and is a co-founder of Brain Biomarker Solutions in Gothenburg AB (BBS), which is a part of the GU Ventures Incubator Program (outside submitted work), position for which he receives financial support, and is chair of the Alzheimer's Association Global Biomarker Standardization Consortium and the Alzheimer's Association Biofluid-Based Biomarker Professional Interest Area, free of charge.

E.D. has received payments for his role and work as consultant for Roche, Biogen, RoxHealth and expert testimony for UCL Consultancy, served at scientific advisory boards for EdoN Initiative and Ebsen Alzheimers Center (no payment) and for Roche (personal financial support), and is a co-founder of the digital health start-up Neotiv.

E.L., L.H., F.B., M.R., N.J.A. and M.B. have nothing to disclose.

9. Acknowledgements

We thank Calida Pereira for the assistance with R scripting, particularly with those needed to generate the figures, Valentin Baumann for providing useful suggestions on the meta-regression models and Eleonora Cuboni for helping with the conversion of CSF data.

10. References

1. German DC, Manaye KF, White CL, Woodward DJ, McIntire DD, Smith WK, et al. Disease-specific patterns of locus coeruleus cell loss. *Ann Neurol*. 1992 Nov;32(5):667–76.
2. Theofilas P, Ehrenberg AJ, Dunlop S, Di Lorenzo Alho AT, Nguy A, Leite REP, et al. Locus coeruleus volume and cell population changes during Alzheimer’s disease progression: A stereological study in human postmortem brains with potential implication for early-stage biomarker discovery. *Alzheimers Dement*. 2017 Mar;13(3):236–46.
3. Zarow C, Lyness SA, Mortimer JA, Chui HC. Neuronal Loss Is Greater in the Locus Coeruleus Than Nucleus Basalis and Substantia Nigra in Alzheimer and Parkinson Diseases. *Arch Neurol*. 2003 Mar 1;60(3):337.
4. Kelly SC, He B, Perez SE, Ginsberg SD, Mufson EJ, Counts SE. Locus coeruleus cellular and molecular pathology during the progression of Alzheimer’s disease. *Acta Neuropathol Commun*. 2017 Dec;5(1):8.
5. Betts MJ, Cardenas-Blanco A, Kanowski M, Spottke A, Teipel SJ, Kilimann I, et al. Locus coeruleus MRI contrast is reduced in Alzheimer’s disease dementia and correlates with CSF A β levels. *Alzheimers Dement Diagn Assess Dis Monit*. 2019 Dec;11(1):281–5.
6. Lyness S. Neuron loss in key cholinergic and aminergic nuclei in Alzheimer disease: a meta-analysis. *Neurobiol Aging*. 2003 Feb;24(1):1–23.
7. Chalermphanupap T, Schroeder JP, Rorabaugh JM, Liles LC, Lah JJ, Levey AI, et al. Locus Coeruleus Ablation Exacerbates Cognitive Deficits, Neuropathology, and Lethality in P301S Tau Transgenic Mice. *J Neurosci*. 2018 Jan 3;38(1):74–92.
8. Weinshenker D. Long Road to Ruin: Noradrenergic Dysfunction in Neurodegenerative Disease. *Trends Neurosci*. 2018 Apr;41(4):211–23.
9. Braak H, Thal DR, Ghebremedhin E, Tredici KD. Stages of the Pathologic Process in Alzheimer Disease: Age Categories From 1 to 100 Years. *J Neuropathol Exp Neurol*. 2011;70(11):10.
10. Braak H, Del Tredici K. The preclinical phase of the pathological process underlying sporadic Alzheimer’s disease. *Brain*. 2015 Oct;138(10):2814–33.
11. Bremner D, Krystal JH, Southwick M, Charney DS. Noradrenergic mechanisms in stress and anxiety: I. preclinical studies. 1996;11.
12. Steenland K, Karnes C, Seals R, Carnevale C, Hermida A, Levey A. Late-Life Depression as a Risk Factor for Mild Cognitive Impairment or Alzheimer’s Disease in 30 US Alzheimer’s Disease Centers. *J Alzheimers Dis*. 2012 Jul 31;31(2):265–75.

13. Tabrez S, R. Jabir N, Shakil S, H. Greig N, Alam Q, M. Abuzenadah A, et al. A Synopsis on the Role of Tyrosine Hydroxylase in Parkinson's Disease. *CNS Neurol Disord - Drug Targets*. 2012 May 1;11(4):395–409.
14. Braak H, Tredici KD, Rüb U, de Vos RAI, Jansen Steur ENH, Braak E. Staging of brain pathology related to sporadic Parkinson's disease. *Neurobiol Aging*. 2003 Mar;24(2):197–211.
15. Seidel K, Mahlke J, Siswanto S, Krüger R, Heinsen H, Auburger G, et al. The Brainstem Pathologies of Parkinson's Disease and Dementia with Lewy Bodies: The Brainstem in iPD and DLB. *Brain Pathol*. 2015 Mar;25(2):121–35.
16. Halliday GM, Holton JL, Revesz T, Dickson DW. Neuropathology underlying clinical variability in patients with synucleinopathies. *Acta Neuropathol (Berl)*. 2011 Aug;122(2):187–204.
17. Chaudhuri KR, Schapira AH. Non-motor symptoms of Parkinson's disease: dopaminergic pathophysiology and treatment. *Lancet Neurol*. 2009 May;8(5):464–74.
18. Schapira AHV, Chaudhuri KR, Jenner P. Non-motor features of Parkinson disease. *Nat Rev Neurosci*. 2017 Jul;18(7):435–50.
19. Jucker M, Walker LC. Pathogenic Protein Seeding in Alzheimer's Disease and Other Neurodegenerative Disorders. 2012;15.
20. Nelson PT, Alafuzoff I, Bigio EH, Bouras C, Braak H, Cairns NJ, et al. Correlation of Alzheimer Disease Neuropathologic Changes With Cognitive Status: A Review of the Literature. *J Neuropathol Exp Neurol*. 2012;71(5):20.
21. Dahl MJ, Mather M, Düzel S, Bodammer NC, Lindenberger U, Kühn S, et al. Rostral locus coeruleus integrity is associated with better memory performance in older adults. *Nat Hum Behav*. 2019 Nov;3(11):1203–14.
22. Hämmerer D, Callaghan MF, Hopkins A, Kosciessa J, Betts M, Cardenas-Blanco A, et al. Locus coeruleus integrity in old age is selectively related to memories linked with salient negative events. *Proc Natl Acad Sci*. 2018 Feb 27;115(9):2228–33.
23. Jacobs HIL, Riphagen JM, Ramakers IHGB, Verhey FRJ. Alzheimer's disease pathology: pathways between central norepinephrine activity, memory, and neuropsychiatric symptoms. *Mol Psychiatry* [Internet]. 2019 May 28 [cited 2020 May 10]; Available from: <http://www.nature.com/articles/s41380-019-0437-x>
24. Liu KY, Acosta-Cabronero J, Cardenas-Blanco A, Loane C, Berry AJ, Betts MJ, et al. In vivo visualization of age-related differences in the locus coeruleus. *Neurobiol Aging*. 2019 Feb;74:101–11.
25. Clewett DV, Lee T-H, Greening S, Ponzio A, Margalit E, Mather M. Neuromelanin marks the spot: identifying a locus coeruleus biomarker of cognitive reserve in healthy aging. *Neurobiol Aging*. 2016 Jan;37:117–26.

26. Mather M, Harley CW. The Locus Coeruleus: Essential for Maintaining Cognitive Function and the Aging Brain. *Trends Cogn Sci*. 2016 Mar;20(3):214–26.
27. Robertson IH. A noradrenergic theory of cognitive reserve: implications for Alzheimer’s disease. *Neurobiol Aging*. 2013 Jan;34(1):298–308.
28. Wilson RS, Nag S, Boyle PA, Hizek LP, Yu L, Buchman AS, et al. Neural reserve, neuronal density in the locus ceruleus, and cognitive decline. *Neurology*. 2013 Mar 26;80(13):1202–8.
29. Wilson RS, Boyle PA, Yu L, Barnes LL, Schneider JA, Bennett DA. Life-span cognitive activity, neuropathologic burden, and cognitive aging. *Neurology*. 2013 Jul 23;81(4):314–21.
30. Benarroch EE. Locus coeruleus. *Cell Tissue Res*. 2018 Jul;373(1):221–32.
31. Ehrenberg AJ, Suemoto CK, França Resende E de P, Petersen C, Leite REP, Rodriguez RD, et al. Neuropathologic Correlates of Psychiatric Symptoms in Alzheimer’s Disease. *J Alzheimers Dis*. 2018 Oct 16;66(1):115–26.
32. Herrmann N. The Role of Norepinephrine in the Behavioral and Psychological Symptoms of Dementia. *J Neuropsychiatry*. 2004 Aug 1;16(3):261–76.
33. Lanctôt KL, Amatniek J, Ancoli-Israel S, Arnold SE, Ballard C, Cohen-Mansfield J, et al. Neuropsychiatric signs and symptoms of Alzheimer’s disease: New treatment paradigms. *Alzheimers Dement Transl Res Clin Interv*. 2017 Sep;3(3):440–9.
34. Theofilas P, Dunlop S, Heinsen H, Grinberg LT. Turning on the Light Within: Subcortical Nuclei of the Isodentritic Core and their Role in Alzheimer’s Disease Pathogenesis. *J Alzheimers Dis*. 2015 May 7;46(1):17–34.
35. Marien MR, Colpaert FC, Rosenquist AC. Noradrenergic mechanisms in neurodegenerative diseases: a theory. *Brain Res Rev*. 2004 Apr;45(1):38–78.
36. Ankit Rohatgi. WebPlotDigitizer [Internet]. 2020. Available from: <https://automeris.io/WebPlotDigitizer>
37. McGuinness LA, Higgins JPT. Risk-of-bias VISualization (robvis): An R package and Shiny web app for visualizing risk-of-bias assessments. *Res Synth Methods* [Internet]. 2020 Apr 26 [cited 2020 May 21];n/a(n/a). Available from: <https://doi.org/10.1002/jrsm.1411>
38. Moher D, Liberati A, Tetzlaff J, Altman DG. Preferred reporting items for systematic reviews and meta-analyses: the PRISMA statement. *Res METHODS*. 2009;8.
39. Sommerauer M, Hansen AK, Parbo P, Fedorova TD, Knudsen K, Frederiksen Y, et al. Decreased noradrenaline transporter density in the motor cortex of Parkinson’s disease patients: Cortical Noradrenaline Transporter. *Mov Disord*. 2018 Jul;33(6):1006–10.
40. Higgins J, Li T, Deeks J, editors. Chapter 6: Choosing effect measures and computing estimates of effect. In: *Cochrane Handbook for Systematic Reviews of Interventions*

- version 62 (updated February 2021) [Internet]. Cochrane; 2021. Available from: www.training.cochrane.org/handbook
41. Rücker G, Cates CJ, Schwarzer G. Methods for including information from multi-arm trials in pairwise meta-analysis: Multi-arm trials in pairwise meta-analysis. *Res Synth Methods*. 2017 Dec;8(4):392–403.
 42. R Core Team. R: A language and environment for statistical computing [Internet]. Vienna, Austria: R Foundation for Statistical Computing; 2017. Available from: <https://www.R-project.org/>
 43. Lakens D. Calculating and reporting effect sizes to facilitate cumulative science: a practical primer for t-tests and ANOVAs. *Front Psychol* [Internet]. 2013 [cited 2020 Jun 4];4. Available from: <http://journal.frontiersin.org/article/10.3389/fpsyg.2013.00863/abstract>
 44. Viechtbauer W. Conducting Meta-Analyses in R with the **metafor** Package. *J Stat Softw* [Internet]. 2010 [cited 2021 Mar 15];36(3). Available from: <http://www.jstatsoft.org/v36/i03/>
 45. Chia L-G, Cheng L-J, Chuo L-J, Cheng F-C, Cu J-S. Studies of dementia, depression, electrophysiology and cerebrospinal fluid monoamine metabolites in patients with Parkinson's disease. *J Neurol Sci*. 1995 Nov;133(1–2):73–8.
 46. Kask A, Harro J, Tuomainen P, Rågo L, Männistö PT. Overflow of noradrenaline and dopamine in frontal cortex after [N-(2-chloroethyl)-N-ethyl-2-bromobenzylamine] (DSP-4) treatment: in vivo microdialysis study in anaesthetized rats: *Naunyn Schmiedebergs Arch Pharmacol*. 1997 Jan 27;355(2):267–72.
 47. Ventura R, Cabib S, Alcaro A, Orsini C, Puglisi-Allegra S. Norepinephrine in the Prefrontal Cortex Is Critical for Amphetamine-Induced Reward and Mesoaccumbens Dopamine Release. *J Neurosci*. 2003 Mar 1;23(5):1879–85.
 48. Abercrombie E, Zigmond M. Partial injury to central noradrenergic neurons: reduction of tissue norepinephrine content is greater than reduction of extracellular norepinephrine measured by microdialysis. *J Neurosci*. 1989 Nov 1;9(11):4062–7.
 49. Hughes ZA, Stanford SC. A partial noradrenergic lesion induced by DSP-4 increases extracellular noradrenaline concentration in rat frontal cortex: a microdialysis study in vivo. 1988;5.
 50. Gannon M, Wang Q. Complex noradrenergic dysfunction in Alzheimer's disease: Low norepinephrine input is not always to blame. *Brain Res*. 2019 Jan;1702:12–6.
 51. Palmer AM, Francis PT, Bowen DM, Benton JS, Neary D, Mann DMA, et al. Catecholaminergic neurones assessed ante-mortem in Alzheimer's disease. *Brain Res*. 1987 Jun;414(2):365–75.

52. Raskind MA. Norepinephrine and MHPG Levels in CSF and Plasma in Alzheimer's Disease. *Arch Gen Psychiatry*. 1984 Apr 1;41(4):343.
53. Elrod. Effects of Alzheimer's disease severity on cerebrospinal fluid norepinephrine concentration. *Am J Psychiatry*. 1997 Jan;154(1):25–30.
54. Janssens J, Vermeiren Y, Franssen E, Aerts T, Van Dam D, Engelborghs S, et al. Cerebrospinal fluid and serum MHPG improve Alzheimer's disease versus dementia with Lewy bodies differential diagnosis. *Alzheimers Dement Diagn Assess Dis Monit*. 2018;10:172–81.
55. Martignoni E, Bono G, Blandini F, Sinforiani E, Merlo P, Nappi G. Monoamines and related metabolite levels in the cerebrospinal fluid of patients with dementia of Alzheimer type. Influence of treatment with L-deprenyl. *J Neural Transm - Park Dis Dement Sect*. 1991 Mar;3(1):15–25.
56. Martignoni E, Blandini F, Petraglia F, Pacchetti C, Bono G, Nappi G. Cerebrospinal fluid norepinephrine, 3-methoxy-4-hydroxyphenylglycol and neuropeptide Y levels in Parkinson's disease, multiple system atrophy and dementia of the Alzheimer type. *J Neural Transm - Park Dis Dement Sect*. 1992 Sep;4(3):191–205.
57. Peskind ER. Effects of Alzheimer's Disease and Normal Aging on Cerebrospinal Fluid Norepinephrine Responses to Yohimbine and Clonidine. *Arch Gen Psychiatry*. 1995 Sep 1;52(9):774.
58. Tohgi H, Ueno M, Abe T, Takahashi S, Nozaki Y. Concentration of monoamines and their metabolites in the cerebrospinal fluid from patients with senile dementia of the Alzheimer type and vascular dementia of the Binswanger type. *J Neural Transm - Park Dis Dement Sect*. 1992 Mar;4(1):69–77.
59. Jacobs HIL, Riphagen JM, Ramakers IHGB, Verhey FRJ. Alzheimer's disease pathology: pathways between central norepinephrine activity, memory, and neuropsychiatric symptoms. *Mol Psychiatry*. 2021 Mar;26(3):897–906.
60. Oishi M, Mochizuki Y, Yoshihashi H, Takasu T, Nakano E. Laboratory Examinations Correlated With Severity of Dementia. 1996;
61. Cross AJ, Crow TJ, Johnson JA, Joseph MH, Perry EK, Perry RH, et al. Monoamine metabolism in senile dementia of Alzheimer type. *J Neurol Sci*. 1983 Aug;60(3):383–92.
62. Gottfries C-G, Adolfsson R, Aquilonius S-M, Carlsson A, Eckernas S-A, Nordberg A, et al. Biochemical changes in Dementia disorders of Alzheimer type (AD/SDAT). *Neurobiol Aging*. 1983 Dec;4(4):261–71.
63. Palmer AM, Wilcock GK, Esiri MM, Francis PT, Bowen DM. Monoaminergic innervation of the frontal and temporal lobes in Alzheimer's disease. *Brain Res*. 1987 Jan;401(2):231–8.

64. Sheline YI, Miller K, Bardgett ME, Csernansky JG. Higher Cerebrospinal Fluid MHPG in Subjects With Dementia of the Alzheimer Type: Relationship With Cognitive Dysfunction. *Am J Geriatr Psychiatry*. 1998 Mar;6(2):155–61.
65. Hartikainen P, Reinikainen KJ, Soininen H, Sirviö J, Soikkeli R, Riekkinen PJ. Neurochemical markers in the cerebrospinal fluid of patients with Alzheimer's disease, Parkinson's disease and amyotrophic lateral sclerosis and normal controls. *J Neural Transm - Park Dis Dement Sect*. 1992 Mar;4(1):53–68.
66. Kessler JA, Fenstermacher JD, Patlak CS. 3-Methoxy-4-hydroxyphenylethyleneglycol (MHPG) transport from the spinal cord during spinal subarachnoid perfusion. *Brain Res*. 1976 Jan;102(1):131–41.
67. Kopin I, Gordon E, Jimerson D, Polinsky R. Relation between plasma and cerebrospinal fluid levels of 3-methoxy-4-hydroxyphenylglycol. *Science*. 1983 Jan 7;219(4580):73–5.
68. Braak H, Alafuzoff I, Arzberger T, Kretschmar H, Del Tredici K. Staging of Alzheimer disease-associated neurofibrillary pathology using paraffin sections and immunocytochemistry. *Acta Neuropathol (Berl)*. 2006 Oct;112(4):389–404.
69. Rommelfanger KS, Weinshenker D. Norepinephrine: The redheaded stepchild of Parkinson's disease. *Biochem Pharmacol*. 2007 Jul;74(2):177–90.
70. Burke RE, Dauer WT, Vonsattel JPG. A critical evaluation of the Braak staging scheme for Parkinson's disease. *Ann Neurol*. 2008 Nov;64(5):485–91.
71. Rietdijk CD, Perez-Pardo P, Garssen J, van Wezel RJA, Kraneveld AD. Exploring Braak's Hypothesis of Parkinson's Disease. *Front Neurol* [Internet]. 2017 Feb 13 [cited 2021 Jun 23];8. Available from: <http://journal.frontiersin.org/article/10.3389/fneur.2017.00037/full>
72. Nahimi A, Kinnerup MB, Sommerauer M, Gjedde A, Borghammer P. Molecular Imaging of the Noradrenergic System in Idiopathic Parkinson's Disease. In: *International Review of Neurobiology* [Internet]. Elsevier; 2018 [cited 2020 Mar 24]. p. 251–74. Available from: <https://linkinghub.elsevier.com/retrieve/pii/S0074774218300576>
73. Chia L-G, Cheng F-C, Kuo J-S. Monoamines and their metabolites in plasma and lumbar cerebrospinal fluid of Chinese patients with Parkinson's disease. 1993;
74. Turkka JT, Juujärvi KK, Myllylä VV. Correlation of Autonomic Dysfunction to CSF Concentrations of Noradrenaline and 3-Methoxy-4-Hydroxyphenylglycol in Parkinson's Disease. *Eur Neurol*. 1987;26(1):29–34.
75. Mann DMA. The locus coeruleus and its possible role in ageing and degenerative disease of the human central nervous system. *Mech Ageing Dev*. 1983 Sep;23(1):73–94.
76. Wang Q. Amyloid β redirects norepinephrine signaling to activate the pathogenic GSK3 β /tau cascade: Interventions targeting the noradrenergic system in Alzheimer's and

- neurodegenerative disease. *Alzheimers Dement* [Internet]. 2020 Dec [cited 2021 Jun 23];16(S6). Available from: <https://onlinelibrary.wiley.com/doi/10.1002/alz.044769>
77. Matchett BJ, Grinberg LT, Theofilas P, Murray ME. The mechanistic link between selective vulnerability of the locus coeruleus and neurodegeneration in Alzheimer's disease. *Acta Neuropathol (Berl)* [Internet]. 2021 Jan 11 [cited 2021 Mar 15]; Available from: <http://link.springer.com/10.1007/s00401-020-02248-1>
 78. Koppel J, Jimenez H, Adrien L, H. Chang E, Malhotra AK, Davies P. Increased tau phosphorylation follows impeded dopamine clearance in a P301L and novel P301L/COMT-deleted (DM) tau mouse model. *J Neurochem*. 2019 Jan;148(1):127–35.
 79. Teunissen CE, Petzold A, Bennett JL, Berven FS, Brundin L, Comabella M, et al. A consensus protocol for the standardization of cerebrospinal fluid collection and biobanking. *Neurology*. 2009 Dec 1;73(22):1914–22.
 80. Blennow K, Wallin A, Gottfries CG. Concentration gradients for monoamine metabolites in lumbar cerebrospinal fluid. 1993;11.
 81. Janssens J, Atmosoerodjo SD, Vermeiren Y, Absalom AR, den Daas I, De Deyn PP. Sampling issues of cerebrospinal fluid and plasma monoamines: Investigation of the circadian rhythm and rostrocaudal concentration gradient. *Neurochem Int*. 2019 Sep;128:154–62.
 82. Stefani A, Olivola E, Liguori C, Hainsworth AH, Saviozzi V, Angileri G, et al. Catecholamine-Based Treatment in AD Patients: Expectations and Delusions. *Front Aging Neurosci* [Internet]. 2015 May 4 [cited 2020 May 10];7. Available from: <http://journal.frontiersin.org/Article/10.3389/fnagi.2015.00067/abstract>
 83. Glavin GB. Stress and brain noradrenaline: A review. *Neurosci Biobehav Rev*. 1985;9(2):233–43.
 84. Wang LY, Murphy RR, Hanscom B, Li G, Millard SP, Petrie EC, et al. Cerebrospinal fluid norepinephrine and cognition in subjects across the adult age span. *Neurobiol Aging*. 2013 Oct;34(10):2287–92.
 85. Beason-Held LL, Goh JO, An Y, Kraut MA, O'Brien RJ, Ferrucci L, et al. Changes in Brain Function Occur Years before the Onset of Cognitive Impairment. *J Neurosci*. 2013 Nov 13;33(46):18008–14.
 86. Davidson DL, Yates CM, Mawdsley C, Pullar IA, Wilson H. CSF studies on the relationship between dopamine and 5-hydroxytryptamine in Parkinsonism and other movement disorders. *J Neurol Neurosurg Psychiatry*. 1977 Dec 1;40(12):1136–41.
 87. Palmer AM, Sims NR, Bowen DM, Neary D, Palo J, Wikstrom J, et al. Monoamine metabolite concentrations in lumbar cerebrospinal fluid of patients with histologically verified Alzheimer's dementia. *J Neurol Neurosurg Psychiatry*. 1984 May 1;47(5):481–4.

88. Mayeux. Clinical and biochemical features of depression in Parkinson's disease. *Am J Psychiatry*. 1986 Jun;143(6):756–9.
89. Ichikawa N. Study on monoamine metabolite contents of cerebrospinal fluid in patients with neurodegenerative diseases. *Tohoku J Exp Med*. 1986 Dec;150(4):435–46.
90. Kay AD, Milstien S, Kaufman S, Creasey H, Haxby JV, Cutler NR, et al. Cerebrospinal Fluid Bioppterin Is Decreased in Alzheimer's Disease. *Arch Neurol*. 1986 Oct 1;43(10):996–9.
91. Sunderland T, Tariot PN, Cohen RM, Newhouse PA, Mellow AM, Mueller EA, et al. Dose-dependent effects of deprenyl on CSF monoamine metabolites in patients with Alzheimer's disease. *Psychopharmacology (Berl)*. 1987;91(3):293–6.
92. Bråne G, Gottfries CG, Blennow K, Karlsson I, Lekman A, Parnetti L, et al. Monoamine metabolites in cerebrospinal fluid and behavioral ratings in patients with early and late onset of Alzheimer dementia. *Alzheimer Dis Assoc Disord*. 1989 Fall;3(3):148–56.
93. Tohgi H, Abe T, Takahashi S, Takahashi J, Ueno M, Nozaki Y. Effect of a synthetic norepinephrine precursor, l-threo-3,4-dihydroxyphenylserine on the total norepinephrine concentration in the cerebrospinal fluid of parkinsonian patients. *Neurosci Lett*. 1990 Aug;116(1–2):194–7.
94. Abdo WF, De Jong D, Hendriks JCM, Horstink MWIM, Kremer BPH, Bloem BR, et al. Cerebrospinal fluid analysis differentiates multiple system atrophy from Parkinson's disease. *Mov Disord*. 2004 May;19(5):571–9.
95. Cerroni R, Liguori C, Stefani A, Conti M, Garasto E, Pierantozzi M, et al. Increased Noradrenaline as an Additional Cerebrospinal Fluid Biomarker in PSP-Like Parkinsonism. *Front Aging Neurosci*. 2020 Jun 16;12:126.
96. Sommerauer M, Fedorova TD, Hansen AK, Knudsen K, Otto M, Jeppesen J, et al. Evaluation of the noradrenergic system in Parkinson's disease: an 11C-MeNER PET and neuromelanin MRI study. *Brain*. 2018 Feb 1;141(2):496–504.

Table 1. Summary of CSF (n=23) and PET (n=3) studies included in the meta-analysis. AD: Alzheimer’s dementia; CDR: clinical dementia rating; CSF: cerebrospinal fluid; CT: computed tomography; DSM: Diagnostic and Statistical Manual of Mental Disorders; ECD: electrochemical detection; EMG: electromyography; GBS: Gottfires-Brane-Stephen scale; GC: gas chromatography; GDetS: global deterioration scale; GLC: gas liquid chromatography; HC: healthy controls; HDS: Hasegawa’s dementia scale; H&Y: Hoehn and Yahr scale; HPLC: high-performance liquid chromatography; MeNER: (S,S)-11C-2-(a-(2-methoxyphenoxy)benzyl)morpholine; MDS: Movement Disorder Society; MMSE: Mini-Mental State Examination; MHPG: 3-methoxy-4-hydroxyphenylglycol; MRI: magnetic resonance imaging; MS: Mass spectrometry; MSQ: Mental Status Questionnaire; NA: noradrenaline; NINCDS-ADRDA: National institute of Neurological and Communicative Disorders and Stroke-Alzheimer’s Disease and Related disorders Association; n.s: not specified; PD: Parkinson’s disease; RBD: Rapid eye movement sleep Behavior Disorder ; RM: radioenzymatic methods; RP: reversed-phase; SPECT: single-photon emission computed tomography.

Reference	Controls			Clinical group						Method	Findings	Considerations / Limitations
	Measure	n	Age M	n	age	Clinical Group	Severity Based on	Treatment	Pathology assessment			
(86)	MHPG	5	61	56	62	PD	Clinical Evaluation	Withdrawal. Fifteen patients maintained on anticholinergic drugs.	n.s	GLC	<p>CSF levels: Not significantly higher MHPG levels.</p> <p>Medication: No difference between patients receiving anticholinergics in the PD group. No effects of L-dopa.</p> <p>Severity There was no correlation.</p>	Controls with migraine, tension headache, diabetic neuropathy, ocular myopathy, or lumbar disc disease
(75)	MHPG	8	54	17	61	PD	New York University scale, H&Y scale, MSQ, Guild Memory scale	Untreated + withdrawal	n.s	GC	<p>CSF levels: No differences in MHPG levels.</p>	Controls were being investigated for low back pain and headache, but no neurological cause was found.

(87)	MHPG	25	60	21*	n.s. for this subg roup	AD	n.s.	Withdrawal	Histologically confirmed	HPLC	<p>CSF levels: Unchanged.</p> <p>Gender: No differences.</p> <p>Age: No correlation.</p> <p>Medication: No differences in MHPG levels due to phenothiazines and/or butyrophenones medications.</p>	*Considered only drug free patients
(52)	MHPG NA	6	67	7 9	61 68	AD moder ate AD advanc ed	GDetS	Untreated Untreated+ withdrawal	DSM III. 11 patients were found on postmortem verification to have had AD.	MHPG: GC/MS NA: RM	<p>CSF levels: Higher NA levels and unchanged MHPG levels in moderate AD patients compared to HC; Significantly higher NA and MHPG levels in advanced AD compared to HC. Advanced AD patients showed significantly higher levels of both analytes compared to moderate AD.</p> <p>Severity: Increased CSF MHPG for AD patients with the most severe dementia.</p>	
(88)	MHPG	15	age- matc hed	21 28	n.s for subg roup s	PD (depre ssed) PD (not depres sed)	Columbia University Parkinson's Disease rating scale.	Withdrawal, but some patients kept assuming anticholinergics	DMS III	HPLC amperomet ric detection	<p>CSF levels: No significant differences.</p>	Controls have various neuromuscular disorders but no depression or movement disorder.

(89)	MHPG	30	45	11	59	PD *	n.s.	Untreated	n.s.	HPLC	<p>No differences in monoamines levels between Parkinsonism and Parkinson's patients.</p> <p>CSF levels: No significant differences.</p> <p>Gender: No significant differences between males and females in controls.</p> <p>Age: No significant correlation with age in controls.</p>	*Distinction between Parkinsonism and Parkinson, no details about criteria.
(90)	MHPG NA	14	65	30	67	AD	n.s.	Withdrawal	DSM-II	HPLC	<p>CSF levels: No significant differences.</p>	
(91)	MHPG	7	62	13	58	DAT	CDR	Withdrawal	DSM III	HPLC-ECD	<p>CSF levels: Not significantly lower MHPG levels.</p> <p>Age: modest trend for baseline MHPG to decrease with increasing age in this small patient sample.</p> <p>Medication: Modest but significant correlation between pretreatment evaluation of severity and the change from baseline in MHPG following 40 mg/day of deprenyl.</p> <p>Severity: there was a trend for MHPG to increase with increasing severity while 5-HIAA and HVA showed opposite trends.</p>	

(74)	MHPG NA	14	60	15 19	n.s for sub group s	PD	n.s.	Treated Untreated	ANS Disability Scale	HPLC-ECD RP-HPLC- ECD	<p>CSF levels: No significant differences.</p> <p>Medication: No effects.</p> <p>Severity: No correlation between CSF NA values and the severity of autonomic failure. CSF MHPG levels varied significantly according to the severity of autonomic dysfunction. The duration of the disease had no influence on CSF NA or MHPG levels.</p>	
(92)	MHPG	26	65	13 28	65 79	AD SDAT	GBS; MMSE	Withdrawal	DSM III	GC/MS	<p>CSF levels: Higher MHPG levels in SDAT compared to controls.</p> <p>Severity Correlation with restless legs in AD.</p>	Controls and AD are significantly younger than SDAT
(93)	NA	31	61	5 1	60 75	PD	H&Y	Treated Untreated	H&Y	HPLC-ECD	<p>CSF levels: No significant differences.</p> <p>Medication: No significant differences.</p>	Controls minor neurological problems
(55)	MHPG NA	14	67	14	71	DAT	GDetS	Untreated	NINCDS-ADRDA	RP-HPLC ion pairing	<p>CSF levels: Lower MHPG and significantly lower NA levels in DAT compared to HC.</p> <p>Severity: -NA levels significantly inversely correlated with duration of illness.</p>	Controls complaints of possible peripheral or spinal cord origin, or for functional disorders and underwent lumbar puncture for diagnostic purposes. None of them had evidence of focal neurological signs or disc lesion, and any psychiatric disease was ruled out.

											-NA shows a trend toward a positive correlation with MMS.	
(65)	MHPG NA	34 49	33 72 35 64	AD PD	PD: H&Y	Withdrawal	AD: NINCDS-ADRDA; Hachinski's Ischemic Score; CDR; Webster's scale PD: H&Y	HPLC-ECD	CSF levels: No differences. Age: Positive correlation of CSF MHPG levels with age in AD patients.			
(56)	MHPG NA	36 61	29 59 22 64	PD DAT	H&Y; CURS	Untreated	NINCDS-ADRDA	RP-HPLC ion pairing	CSF levels: Significantly lower NA levels in both PD and DAT compared to HC. Age: No significant correlation in PD.	Controls complaints of possible peripheral or spinal cord origin, or for functional disorders and underwent lumbar puncture for diagnostic purposes. None of them had evidence of focal neurological signs or disc lesion, and any psychiatric disease was ruled out.		
(58)	MHPG NA	15 69	11 71	AD/SD AT	HDS	Withdrawal	DSM-III-R; Hachinski's Ischemic Score; NINCDS-ADRDA; CT; MRI	HPLC-ECD	CSF levels: Significant increase of CSF MHPG in AD/SDAT compared with the controls. Severity: NA concentrations had a significantly negative correlation with intellectual ability.	Controls with tension headache		
(73)	MHPG NA	25 62 26 62	15 n.s for subg roup s	PD mild PD moder ate	H&Y	Untreated + Withdrawal	H&Y	RP-HPLC- ECD	CSF levels: No significant differences. Severity: No relation with MHPG or NA	HC with lower back pain; sciatica; benign prostate hypertrophy; In the MHPG group there are 8 severe patients, but in the NA group there are 9 severe patients.		

						PD severe						
(57)	NA	10	71	10	70	AD mild	MMSE	Untreated + Withdrawal	n.s.	Single isotope radioenzymatic method	<p>CSF levels: Not significant differences.</p> <p>Age: Higher NA concentrations in normal older adults and in AD compared to young subjects.</p>	
(53)	NA	42	68	49 25	69 69	AD mild AD advanced	MMSE	Withdrawal	NINCDS-ADRDA; DSM IV	Single isotope radioenzymatic method	<p>CSF levels: Higher NA levels in advanced AD compared to all other groups; Lower NA in mild AD compared to HC.</p> <p>Age: Advanced age per se affected CSF NA concentration.</p> <p>Gender: There were no effects of gender on CSF norepinephrine level within subject groups.</p>	Exception: occasional nonprescription analgesics or laxatives.
(64)	MHPG	10	75	28	73	DAT	CDR; Blessed Scale; Sum of boxes	n.s.	ADRC diagnostic criteria; Postmortem validation	HPLC-ECD	<p>CSF levels: Elevated MHPG levels in DAT vs HC.</p> <p>Severity Overall sample MHPG levels inversely correlate with cognitive functions. Within the DAT sample the correlation was not significant.</p>	
(94)	MHPG	23	55	35	53	PD	H&Y	Withdrawal	Brain MRI or CT-scan;	HPLC	<p>CSF levels: Not significantly lower MHPG levels.</p>	10 patients with parkin gene mutation.

									Anal sphincter EMG; ancillary investigations; beta-CIT; SPECT; UK Parkinson's Disease Society Brain Bank criteria.			
(82)	NA	16	n.s age- matc hed	26	70	AD mild to moder ate	Years	n.s.	n.s.	HPLC	CSF levels: Significantly higher NA levels in AD compared to HC.	Controls have other neurological diseases (mostly radiculopathies)
(54)	MHPG NA	43	73.8	53 52	76.6 75.5	DBL/P DD AD	n.s.	Treated	NINCDS/ ADRDA; DSM IV; Brain autopsy	RP-HPLC- ECD	Besides the classic CSF biomarker CSF and serum NA and its metabolite MHPG were among the most predictive markers: significant increase of diagnostic accuracy between DLB/Parkinson's disease dementia and AD. CSF levels: Higher MHPG compared to controls, but not significant; Significantly lower NA levels in AD compared to HC Medication: CSF and serum NA levels were significantly higher in patients free of anti-Parkinson's medication.	Controls with low back pain, peripheral nervous system disorders, and subjective complaints. The possible presence of non-AD dementia types, which might also display disturbances in monoamine content, in the 'control' group.

(95)	NA	16	62	14	67	PD	H&Y	Withdrawal	UK Brain Bank Criteria; beta- CIT; striatal SPECT scanning; excellent motor responses to LD.	HPLC-ECD	CSF levels: CSF NA levels were significantly lower in PD vs HC.	
Reference	Controls			PD or AD dementia group						Reference and UoM	Finding	Considerations
	Tracer	n	Age M	n	age	Clinical stage	Severity Based on	Treatment	Pathology assessment			
(72)	MeNER	10	65.7	15	64.8	PD mild	H&Y	Overnight withdrawal	n.s.	Caudate and Occipital cortex (BPnd)	PD patients had lower values in all regions compared to controls, in all brain regions. This difference was not significant. The caudate exhibited the lowest VT estimate of all examined brain region	
(96)	MeNER	12	67.3	14	65.4	PD withou t RBD (RBD-), mild	H&Y	Withdrawal	MDS	Occipital cortex (DVRs)	-PD RBD+ showed lower significant levels compared to controls in <ul style="list-style-type: none"> • Thalamus; • Hypothalamus; • Raphe nucleus; And decreased MRI neuromelanin signal. -PD RBD- showed lower significant levels compared to controls in <ul style="list-style-type: none"> • Thalamus; • Hypothalamus; • Raphe nucleus; • LC; 	RBD

											<ul style="list-style-type: none"> • DR; • MR; <p>-And reduced levels compared to RBD+ in</p> <ul style="list-style-type: none"> • Thalamus; • Hypothalamus; • LC; • DR; • MR; <p>-Reduced MeNER binding in PD with RBD correlated with EEG slowing, cognitive performances and hypotension.</p>	
(39)	MeNER	12	67.3	30	66.6	PD	H&Y	Withdrawal	MDS	Thalamus/Caudate	<p>-Lower binding in the primary motor cortex and primary sensory cortex in PD vs HC.</p> <p>-Patients with higher H&Y stages have more pronounced 11C-MeNER binding reductions.</p>	

