

1 Unraveling diagnostic co-morbidity makeup of each HF category as 2 characteristically derived by ECG- and ECHO-findings

3
4 Azfar Zaman, MD, Prof¹; Marta Afonso Nogueira, MD²; Erzsebet Szabo, MD³, Aniko Berta-Szabo,
5 MD³; Giuseppe Biondi Zoccai, MD, MStat, Prof⁴; Niall Campbell, MD, PhD, FRCP⁵; Georgios
6 Koulaouzidis, MD⁶; Dionissios Tsipas, MD⁷; and Istvan Kecskes, PhD⁸.

7
8 ¹ Newcastle upon Tyne Hospitals NHS Trust, Freeman Hospital, Newcastle University, Newcastle, UK

9 ² Consultant Cardiologist Heart Failure and Cardiomyopathies, Department of Cardiology, Cascais
10 Hospital, Lusíadas Saúde—UnitedHealth Group, Lisbon, Portugal

11 ³ Department of Internal Care, Senta Hospital, Senta, Serbia

12 ⁴ Cardiology at Sapienza University of Rome, Sapienza University, Latina, Italy

13 ⁵ Department of Cardiology, Manchester University NHS Foundation Trust, Manchester, UK

14 ⁶ Department of Cardiology, Pomeranian Medical University, Szczecin, Poland,

15 ⁷ Department of Cardiology, Specialty cardiologist At ASL Teramo, Teramo, Italy

16 ⁸ Dir. Cardiology Research and Scientific Advancements, UVA Research., Subotica, Serbia,

17 Corresponding Author: istvan.kecskes@uvaresearch.com, +381642636882

18

19 **Keywords:** Echocardiography; Electrocardiogram; Heart Failure; Primary Care; Bio-signal;
20 Cardio-HART™

21 Abstract

22 **Background:** Echocardiography (ECHO) is not widely available in primary care, the key
23 structural (chamber enlargements) and functional abnormality are not easily available
24 precluding the ability to diagnose HF other than through mainly symptomatic means. The
25 opportunity for earlier detection of HF is lost.

26 **Methods:** Using a unique database, the etiology of HF is explored by prevalence analysis to
27 unravel the diagnostic makeup of each HF category. Various relationships and patterns of
28 comorbidities have been extracted between the Electrocardiogram (ECG) and ECHO parameters
29 that contribute to HF, those relationships are then confirmed and categorized by a Principal
30 Component Analysis (PCA). Finally, it was summarized what type of non-invasive ECG-like
31 device should be used in primary care to better diagnose HF.

32 **Results:** The sensitivity of abnormal ECHO reaches 92% over the abnormal ECG of 81% in the
33 detection of HF. The first five PCA are discovered, which cover 49% of all the variance. Left atrial
34 enlargement is the most representative finding in the overall comorbidity rate, which coincides
35 with the probability direction of HF (3rd as input, 1st as finding in the coefficients), and reaches
36 the highest (250%) prevalence increase in function of decreasing LVEF.

37 **Conclusions:** The core structural and functional abnormalities diagnosed by ECHO with the ECG
38 interpretation provide sufficient information to diagnose “consider HF” in primary care.
39 This paper overview of a novel bio-signal-based system supported by Artificial Intelligence, able
40 to replicate Echo-findings, predict HF and indicates its phenotype, suitable for use in Primary
41 Care.

42 **1 Introduction**

43 Heart Failure (HF) is a heterogeneous syndrome with various etiologic and pathophysiologic
44 factors that define the three main categories, primarily supported by Echocardiogram (ECHO)
45 to determine Left Ventricle Ejection Fraction (LVEF) and to a lesser degree by Electrocardiogram
46 (ECG) as found in guidance and research articles.^{1,2,3,4,5,6,7,8,9} Failure to understand these
47 abnormalities can undermine detection leading to a failure or delay of diagnosis, and
48 misdirected treatment.

49
50 According to recent European Society of Cardiology (ESC) diagnostic guidelines,¹ the
51 categorization of HF relies primarily on LVEF: 1) reduced, HFrEF (LVEF $\leq 40\%$); 2) mildly-reduced,
52 HFmrEF (LVEF between 41% to 49%); and 3) preserved, HFpEF (LVEF of $\geq 50\%$). However, LVEF
53 as a measure of HF is limited, as LVEF alone it does not explain the underlying disease
54 characteristics and conditions, for example, LVEF estimates global function but does not
55 indicate Left Ventricular (LV) volume or stroke volume (SV).^{4,10} Also, LVEF is not sufficiently
56 sensitive for subtle LV systolic dysfunction (LVSD) caused by regional Wall Motion Abnormality
57 (WMA) present in HFpEF, better detected by mitral annular systolic excursion or systolic
58 velocities or LV global longitudinal strain (GLS).^{10,11,12}

59
60 Rather, LVEF has to be obtained with an assessment of LVSD and Dilated Cardiomyopathy
61 (DCM) supported by many other structural and functional abnormality and pathophysiological
62 characteristics, such as Left Atrial Enlargement (LAE), Ventricular Hypertrophy (LVH), and
63 Diastolic Dysfunction (DD).^{1,2,3,4,13} In addition, the phenotype of functional abnormalities is
64 strongly connected to Atrial Fibrillation (AFib),^{7,8,9,14} coronary artery disease (CAD), WMA, Aortic
65 Stenosis (AS), and other valve diseases, e.g., Mitral Regurgitation (MR),¹⁵ as well as Pulmonary
66 Hypertension (PH).^{16,17} The measurement of these findings including LVEF are primarily
67 obtained from Echocardiography.

68
69 Not surprisingly, guidelines^{1,3,4} make little reference for use of ECG which has the low
70 diagnostic capability for HF, primarily due to its poor sensitivity for heart structural
71 abnormalities,^{18,19} especially for left atrial enlargement,^{20,21} and poor sensitivity or specificity
72 for heart functional abnormalities.^{22,23,24,25} Alone, ECG's inherent diagnostic limitations for atrial
73 and ventricular enlargements make it unsuitable for the detection of HF in primary care
74 settings.

75
76 Lacking a suitable device able to detect structural and functional abnormalities required to
77 confirm HF and its categories that are also indicated for use in Primary Care. The current
78 understanding and prediction of HF at the Primary Care level is typically limited to more
79 protracted symptomatic-based assessments leading to a clinical prognosis. Any opportunity for
80 the earlier detection of HF is lost.

81
82 The objective of this study is to discover what type of diseases/abnormalities should be
83 detected from bio-signals to support HF diagnosis in Primary Care without ECHO. This study

84 investigate the key abnormalities that enable HF classification. First, we explore the etiology of
85 each HF phenotype, then investigate various relationships or comorbidities between the ECG
86 and ECHO parameters that contribute to HF; and finally, confirm those relationships via a
87 Principal Component analysis (PCA), similarly to in.²⁷ Understanding these findings together,
88 determines more precisely the underlying physiological nature of abnormal functions, not just
89 the symptoms of HF, for each phenotype, and associate them to novel bio-signals.

90
91 These key abnormalities appear to be addressed by a Breakthrough technology through the use
92 of novel bio-signals and AI that emulates echocardiography findings²⁶.

93

94 **2 Analysis along HF categories**

95 **2.1 Background of HF categories**

96 2.1.1 HFpEF

97 HFpEF is widely recognized as a heterogeneous disorder, therefore the diagnosis relies on
98 objective evidence of multiple structural and functional abnormalities in conjunction with
99 LVEF \geq 50%: LVH, LAE, DD (elevated LV filling pressure), and elevated B-type natriuretic peptide
100 (BNP)¹. Based on consensus recommendation from the Heart Failure Association (HFA) the
101 initial HFpEF diagnosis relies on HF symptoms, standard ECG, standard ECHO, and a Natriuretic
102 Peptides test that together comprises the *HFA-PEFF* algorithm⁴.

103
104 LAE has been associated with abnormal DD,²⁸ since DD contributes to left atrial remodeling²⁹.
105 In the past, it was labeled “diastolic HF”, a suboptimal term given diastolic HF is not present in
106 all HFpEF⁵. Several complementary pathophysiologic mechanisms exist in HFpEF, including
107 longitudinal LV systolic dysfunction (despite a normal LVEF), PH, abnormal ventricular-arterial
108 coupling, abnormal exercise-induced vasodilation, extracardiac volume overload, and
109 chronotropic incompetence.^{5,30,16,17} A PH relationship is confirmed by the *H₂FPEF* score study,
110 where the pulmonary artery systolic pressure >35mmHg was selected as one of the score
111 elements.⁹ CAD, valve diseases, and PH are considered as primary comorbidities of
112 HF,^{16,31,32,17,15,33,34} and the etiology of HFpEF relies on these abnormalities in the case of non-DD
113 type HF.

114
115 HFpEF in a broader sense can be divided into various types, such as Coronary artery disease-
116 HFpEF, Right heart failure-predominant HFpEF, Valvular HFpEF or AFib-predominant HFpEF
117 (fully defined in⁵). This wider definition of HFpEF is advantageous in primary care, since early
118 detection of HF is as important as identifying the specific type of HF. However, the advanced
119 diagnosis of HFpEF should be differentiated from the alternative causes of dyspnea such as
120 HFrEF, valve disease, primary PH, or pericardial effusion⁴.

122 2.1.2 HFmrEF

123 HFmrEF is a recently separated HF class, thus fewer research results are available in the
124 literature. Patients with HFmrEF have a different clinical profile, but one more similar to
125 patients with HFpEF than with HFrEF³⁵; primarily mild LVSD, but with features of DD. The
126 diagnostic criteria for HFmrEF include relevant structural heart disease, such as LVH or LAE, or
127 DD beside symptoms and the mildly reduced EF (LVEF of 40-49%).¹ HFmrEF is associated with
128 different characteristics and a more favorable prognosis than HFrEF,³⁶ has less comorbidity – as
129 discovered by our analysis. HFmrEF patients who transitioned to HFrEF were more likely to have
130 LAE including AFib and more comorbidities.³⁷

131

132 2.1.3 HFrEF

133 HFrEF is a complex clinical condition characterized by structural and/or functional impairment
134 of the left ventricle, resulting in a decrease in heart pump function (LVEF \leq 40%)³⁴.

135

136 HFrEF is most commonly associated with DCM or CAD,³¹ LVSD and moderate AS commonly
137 occur together; patients with moderate AS and concomitant LVSD are at high risk for clinical
138 events including all-cause death, hospitalization for HF, and aortic valve replacement.³² Non-
139 ECG detectable abnormalities such as severe valve regurgitations, including MR,¹⁵ AR,³³ TR³⁴
140 increase the mortality of HF patients.

141

142 ECG in HFrEF patients is almost always abnormal, and most patients typically have a minimum
143 of two but more typically three ECG abnormalities, with ECG LVH criteria being the most
144 common abnormality.³⁸ AFib and HF often occur together, and their combination is associated
145 with increased morbidity and mortality compared with each disorder alone.³⁹

146

147 2.1.4 ALVSD

148 Although not an HF phenotype, mild Asymptomatic LVSD (ALVSD) is a predictor of adverse
149 events mainly in subjects with combined DD.⁴⁰ Patients with ALVSD (“Stage B” according to
150 ACC/AHA of HF, NYHA CLASS I) have approximately half the mortality rate (5% annualized) of
151 those with overt symptoms of HF, but their risk of death is 5 to 8 times higher than a normal
152 age-matched population.^{41,42} Patients with ALVD are at high risk for developing HF, therefore,
153 they should be considered potential HF patients.

154

155 In the Cardio-Phoenix database, the definitions of HF categories incorporate both LVSD and
156 ALVSD.

157 2.2 Cardio-Phoenix database

158 The prevalence of HF and associated ECG and ECHO findings in primary care can be estimated
159 from the Cardio-Phoenix database, because the collected medical data was specifically from a
160 patient population at risk of Cardiovascular Disease (CVD) including HF. Patients are adults with
161 an average age of 62.5, of which 51% are females, and have a minimum of three cardiovascular
162 risks or an existing cardiac condition.

163

164 In accordance with the guidance,³ risks for HF (any type) include hypertension, cardiovascular
165 disease, diabetes *mellitus*, obesity, known exposure to cardiotoxins, and family history of
166 cardiomyopathy (see Stage A at-risk for HF in³). These risks were examined according to the
167 criteria of patients entered into the database.

168

169 Databases consists of medical data from four clinical studies, completed at five European
170 clinical centers, between 2011 and 2019. The database contains the bio-signals including ECG
171 and ECHO images, measurements, and findings for each patient. The echocardiographic
172 assessment was typically performed immediately or soon after bio-signal recording, but not

173 more than a few days. There are some 24000 records with ~30sec length signals. The ground
174 truth of ECHO-findings (detailed in supplementary material) was established by cardiologist
175 consensus and confirmed with ECHO measurements. The ECG measurements and findings are
176 generated by state-of-the-art ECG algorithms based on a 12-lead ECG signal and confirmed by a
177 minimum of one, but up to four, cardiologists.

178

179 In the Cardio-Phoenix database, the HF categories are defined based on the above-mentioned
180 wider HF definitions, using all the available anamnesis/symptoms and clinical diagnoses
181 supported by ECG- and ECHO-findings:

- 182 • HFpEF: symptomatic HF with LVEF>50% and DD or LAE or LVH presence, extended with
183 symptomatic AF, symptomatic PH, symptomatic AS or MS, symptomatic CAD or WMA.
184 This definition of HFpEF is consistent with the *TOPCAT*, *RELAX*, and *ARIC* studies.⁴³
- 185 • HFmrEF: symptomatic HF with 40%<LVEF<50% extended with mild ALVSD confirmed
186 with risk factors, HF scores, and co-morbidities of WMA or LAE, or LVH.
- 187 • HFrfEF: symptomatic HF with LVEF<40% extended with ALVSD confirmed with risk
188 factors, HF scores, and co-morbidities.

189

190 The overall database consists of 72.3% absent HF, 19.3% HFpEF, 5.9% HFmrEF and 2.5% HFrfEF.
191 The 72.3% absent category includes normal patients and patients with non-HF CVD – typically
192 with a “mild” CVD condition. The overall HF patient is 27.7% in the database, and approximately
193 half of the HF patient has HFpEF type (HFpEF 69%, HFmrEF 21%, and HFrfEF 10%) similar to
194 other studies.^{6,43}

195

196 This categorization was the basis of the data analysis presented in Table 1 and sections (3, 4,
197 and 5).

198

199 **2.3 Study Limitation**

200 The right side of the heart is less represented by the included ECHO-parameters and by ECG-
201 parameters even less, as such their place in the statistical results is limited.

202

203 Nonetheless, right-side heart failure and its structural, functional abnormalities and related
204 pulmonary disease co-morbidities (Chronic obstructive pulmonary disease COPD) has attracted
205 growing attention in the last few years. Right-heart side study through a bio-signal approach
206 shows strong potential.

207

208 **3 Prevalence statistics along four HF categories**

209 **3.1 Method**

210 This work has been carried out in accordance with the Code of Ethics of the World Medical
211 Association for experiments involving human subjects. Data used in the research were
212 collection in a prior clinical study, already published with the Declaration of Helsinki state.⁴⁹
213 To analyze prevalence along four HF categories a statistical analysis was performed on patient
214 groupings into a) All – all the patient records, b) Absent HF records, c) HFpEF records, d)
215 HFmrEF records and e) HFrEF records.
216

217 **3.2 Results**

218 Table 1 lists all the relevant information, measurements, and findings in the examined patient
219 population.
220

221 3.2.1 Highest prevalence

222 The listed measurements and findings show most of the abnormal mean values for the HFrEF
223 category. Interestingly, the exceptions help us to better understand the HFpEF and HFmrEF
224 categories:

- 225 • HFpEF shows the highest or significantly high value of Systolic Blood Pressure **BP** (it
226 confirms other research, which shows HFpEF is prevalent in hypertensive
227 populations⁵¹.), Interventricular Septal Diameter (IVSd), Relative Wall Thickness (RWT%),
228 Aortic Valve Peak Velocity (AoV Vmax), AR Grade and Jet Area, Right Ventricular Systolic
229 Pressure (RVSP), PQ and QT intervals, in addition, LVH, DDIM, AS, MS, AFib and
230 Prolonged QT from findings. In addition, HFpEF shows the highest average age.
- 231 • HFmrEF shows the highest value of Diastolic BP, lowest T-wave axis, highest prevalence
232 of Premature Atrial Contraction (PAC). In addition, significantly high prevalence of
233 WMA, ST-T deviation, Myocardial Infarction (MI), and MS, which are closer to HFrEF
234 values compared to HFpEF.
- 235 • Because of high variability and comorbidity rate, the HFrEF has the worst mean values
236 and highest standard deviation for all the parameters, except for the parameters above
237 mentioned. The distribution of several parameters confirms an earlier study result.³⁷
238

239 3.2.2 Characteristics of HFmrEF as a middle category

240 Until recently, the abnormalities that typically occur in HFmrEF compared to HFpEF and HFrEF
241 have not been as comprehensively investigated.
242 The presented analysis reveals that HFpEF do not so much differ from HFmrEF in prevalence
243 and disease severity as by disease type. HFpEF mostly includes DD, LVH, and mild/moderate
244 valve disease patients, whereas HFmrEF trends towards patients with ischemic problems:

245 WMA, MI, and ST-T deviation. Our analysis provides some relationships as presented in these
246 statistics:

- 247 • LVH is represented within HFpEF and HFrEF but unexpectedly is a less typical indicator
248 of HFmrEF
- 249 • DCM prevalence significantly increases in cases of HFmrEF from HFpEF and becomes
250 frequent in HFrEF
- 251 • WMA is an important source of mildly reduced systolic function, with 8 times higher
252 prevalence compared to patients with HFpEF. The additional prevalence increase is
253 small compared to HFrEF.
- 254 • MI is typical in HFpEF, but even more so in patients with HFmrEF, where the prevalence
255 is almost as high as in HFrEF, confirming a previous study.³⁷
- 256 • PAC is more typical in HFmrEF and Premature Ventricular Contraction (PVC) for HFrEF.
257

258 3.2.3 Typical abnormalities of three category

259 HFpEF group of patients are typically older, having hypertension, and obesity, where the typical
260 structural abnormality is the LVH, the typical function abnormality is the DD, the typical
261 hemodynamical problem is any aortic/mitral valve disease or PH, and the typical
262 electrophysiological problem is AFib.

263 HFmrEF group of patients have similar comorbidities as HFpEF, but different types of problems:
264 their typical structural abnormality is mild DCM, and the typical functional abnormality is WMA
265 with either MI or ST-T deviation. The typical electrophysiological problems are AFib and PAC.
266 Aortic valve disease is less typical compared to HFpEF, but Mitral/Tricuspid/Pulmonic are
267 similar.

268 HFrEF group of patients have the highest levels of comorbidity and severity: the typical
269 structural abnormalities are the DCM, left and right atrial and ventricular enlargement, the
270 typical functional abnormality is LVSD, and the typical hemodynamical problem is
271 Mitral/Tricuspid regurgitation and PH, and most common ECG abnormalities shows higher
272 prevalence including the ECG LVH and ECG RVH criteria. The exception are sinus bradycardia,
273 PAC, and prolonged QT.

274 Right-side heart abnormalities (RAE, RVE, RVH) show a significant increase in HFrEF categories.
275 The overall comorbidity ratio shows an increasing trend with the decreasing of systolic function
276 and exacerbation of HF. However, RV dysfunction is highly prevalent in HFpEF as well,⁴⁴
277 moreover the recent COVID-19-related literature is increasingly referring to right side
278 dysfunction with HFpEF.^{45,46}
279

280 3.2.4 The summary of HF co-morbidities prevalence

281 Table 2 shows the HF categories and typical co-morbidities in a summary analysis. The list of
282 typical abnormalities or co-morbidities is listed using both the guideline and statistical analysis
283 based on the presented data.
284

285 3.2.5 ECG versus ECHO summary

286 To more clearly understand the differences between ECG and ECHO in predicting HF, we
287 compare the Summary ECG with the Summary ECHO. In the database, both the ECG and ECHO
288 interpretations are extended with a summary finding, listed in Table 1:

- 289 • ECG summary classifies the ECG as normal, borderline or abnormal
- 290 • ECHO summary classifies the ECHO as Normal, Mild or Abnormal: both moderate or
291 Severe, and where Mild means a minimum of one Mild finding, Abnormal means a
292 minimum of one Moderate/Severe finding

293 The best estimation reveals the limitation of ECG for HF: the ECG summary (Abnormal ECG)
294 covers only 72.4% of HFpEF, 78.8% of HFmrEF, and 92.8% of HFrEF (average 81%), whereas the
295 ECHO summary (Abnormal ECHO) has higher percentages, 81.3% for HFpEF, 93.4% for HFmrEF
296 and 100.0% for HFrEF (average 92%), shown in Table 1. In other words, ECHO is far more
297 sensitive and less inconclusive for diagnosing HF compared to ECG.

298

299

300 **4 Prevalence trend comorbidity statistics**

301 This statistical analysis shows how the co-morbidity is continuously increasing in the function of
302 deterioration in LV systolic function: transitions are demonstrated between the three HF
303 categories. Etiology and comorbidity analysis helps to understand the phenotype of HF and
304 confirms the diagnosis.⁴³
305

306 **4.1 Method**

307 In the presented analysis, consistent with the guidelines,¹ LVEF is used as an independent
308 variable to estimate the prevalence of ECG and ECHO abnormalities. LVEF is the key continual
309 measurement that separates the three categories of HF, which is split into 9 sub-categories
310 with center values here, see in Fig. 1. Patients were grouped along these sub-categories and the
311 prevalence of ECHO and ECG findings were calculated.

312 **4.2 Results**

313 The results are plotted in Fig. 1 together with the average value of some principal ECHO and
314 ECG measurements:

- 315 • Graph A) shows a deteriorating trend of all the key ECG- and ECHO-measurements as a
316 function of LVEF. Left Atrial Volume Index (LAVI) from ECHO and Heart Rate Variability
317 (HRV) from ECG has the largest relative change, however HRV having maximum at
318 LVEF=42%. Obesity, measured by average BMI, shows a slight increasing trend, and the
319 percentage of Female patients drastically decreases with decreasing LVEF. This confirms
320 that the HFpEF patient is biased to females, and the HFrEF patient biased to males. It is
321 widely accepted that heart disease progresses with age, and the cardiac comorbidity
322 statistics confirm both the disease progression and the increased comorbidity factor
323 with increasing age.
- 324 • Graph B) shows constant increasing prevalence of almost all ECHO-findings, except:
325 Impaired Relaxation (DDIM) having maximum around LVEF=57%; Aortic Stenosis (AS)
326 and Mitral Stenosis (MS) having maximum around LVEF=42%. This confirms DDIM and
327 aortic-mitral stenosis patients belong mostly to the HFpEF and HFmrEF categories.
- 328 • Graph C) shows constant increasing prevalence of almost all ECG-findings, except: S.
329 Bradycardia has maximum around LVEF=57%; Sinus Tachycardia has minimum at
330 LVEF=52%, ST-T deviation maximum around LVEF=42%; Rightward Axis having minimum
331 at LVEF=57% and maximum at LVEF=42%. This confirms that typically, the HF patient has
332 LVH with leftward axis, the Rightward Axis decreasing, but the typical right-side disease
333 patients belong to HFrEF, that is why it is increasing again at the LVEF<45% groups.
- 334 • Graph D) shows the prevalence of each of the discussed HF categories, primarily
335 separated based on LVEF. The maximum prevalence of HFpEF is around LVEF=52%,
336 below 50% HFmrEF replaces the HFpEF classification and below 40% HFrEF replaces the
337 HFmrEF classification.

339 **5 PCA comorbidity statistics**

340 **5.1 Method**

341 A Principal Component Analysis (PCA) was completed to reveal and unravel patterns of
342 comorbidities, i.e. group of comorbidities associated with each other.⁴⁷ PCA is a data reduction
343 method that transforms the original set of variables into a smaller set of Principal Components
344 (PCs), which are linear combinations of the original variables. PCs retain as much of the
345 variability in the data set as possible, with the first component retaining the greatest amount of
346 the variation present and the other components progressively retaining a decreasing amount of
347 variation.⁴⁸

348
349 In this PCA the largest variance is discovered in the data of the most important ECG, ECHO and
350 patient body size measurements, which helps us to understand the interactions or co-
351 morbidities of common cardiovascular diseases. Data was extended with two HFpEF scores: the
352 *HFA-PEFF* score⁴ and the *H₂FPEF* score⁹ in order to enable the determination whether the HF
353 coincides with the direction of overall comorbidity rate.

354
355 Table 4 in supplementary material lists the 42 parameters included in PCA and the associated
356 CVD.

357

358 **5.2 Results**

359 Fig. 3 shows the scatter plot of HF categories in function of *PCA1* and *PCA2*: the left graph A.)
360 shows the four HF categories, where the centers are marked with black squares and numbers;
361 the right graph B) shows the body size categories according to CHART Body Size Index (CBSI),
362 where the $CBSI < 2.2$ represent the smaller body size, $2.2 < CBSI < 2.4$ represent the middle body
363 size, and $CBSI > 2.4$ represent the bigger body size (for more details about why CBSI is used
364 instead of BSI can be seen in supplementary material). *PCA1* parameter is a good indication for
365 HF with significant difference between Absent HF and HFpEF, and between HFpEF and HFrEF.
366 There is no significant difference in *PCA1* between the two mild HF categories, HFpEF and
367 HFmrEF.

368

369 The second component *PCA2* represents the body size, which has not a pathological direction
370 as *PCA1*. *PCA2* is at an independent perpendicular direction to *PCA1*, which carries the second
371 biggest variance of data.

372

373 The scatter plot of the three heart rate (HR) categories - separated by average HR parameters -
374 in function *PCA1* and *PCA3*, shown in graph C), and the Heart Rate Variability (HRV) categories -
375 separated by standard deviation of RR intervals (RRstd) parameters in function of *PCA1* and
376 *PCA4* (graph D.). The *PCA1* seems independent from HR but dependent from HRV. *PCA3*
377 represents the HR value, and *PCA4* the HRV values. The scatter plot of four HF categories in

378 function *PCA1* and *PCA5* shown in graph E). *PCA5* shows a DD related pathological direction,
379 therefore is slightly higher separator between HFpEF and HFmrEF.

380 For more details about the presented PCs see Fig. 4 in supp. material, which shows the PCA
381 coefficients of the first five components.

382

383 5.2.1 Principal Components

384 Each of the PCs point in a specific direction, determined or represented by input parameters
385 identified in Fig. 2. The presented first five PCA are considered the most important dimensions
386 in the 42-dimension space. These first five PCA's cover half of all the variance provided by the
387 42 dimensions: 18.2%, 11%, 9%, 5.6% and 4.8%, with the summary 49%.

388

389 Most of the common heart diseases have strong comorbidity, since all take part in the *PCA1*: HF
390 and LVSD, atrial and ventricular enlargements, PH, MR, TR and LVH. The different natures of
391 HFpEF and HFmrEF were not involved by the presented principal components. However, the
392 LVEF can separate these two categories, see in graph F) in Fig 2., which shows the three types of
393 HF in 2D space of *PCA1* and LVEF parameter.

394

395 The big role of *PCA1* can be observed in graph F), where *PCA1* distinguishes HFpEF from HF
396 absent patients, which is not distinguishable by LVEF. LVEF can only distinguish HFmrEF and
397 HFrEF from patients with LVEF>50%. Medical information incorporated in *PCA1* is required to
398 make differential diagnosis of HFpEF.

399

400 The *PCA2*, 3 and 4 can be considered as independent components from *PCA1* and from each-
401 other. These fulfill the supplementary directions: *PCA2* - body size, *PCA3* - HR and *PCA4* -
402 arrhythmias.

403

404 The *PCA2* result confirms the important need of data normalization (for ECHO and ECG
405 measurements) by body size or, at the very least, by gender. However, body size is best
406 represented by BSA or CBSI because it relates more to the individual compared to the binary
407 gender.

408

409 The *PCA5* is a supplementary diagnostic component for HF that helps to distinguish categories
410 of DD and categories of HF. Compared to *PCA1*, *PCA5* shows higher distance between HFpEF
411 and HFmrEF, as it represents the co-morbidity aspect of DD that is characteristic of HFpEF,
412 despite the fact that in nearly half of the cases DD is absent⁵.

413

414 5.2.2 ECG and ECHO factors of *PCA1*

415 The covariance pattern of ECG- and ECHO-measurements representing cardiac function was
416 investigated by the PCA. The first principal component (*PCA1*) is interpreted as the overall
417 comorbidity degree. The PCA established that the *PCA1* is representative of **structural**
418 **abnormalities**: the atrial and ventricular enlargements. The direction of this component is

419 mostly suitable to the HF severity categories: the HFpEF diagnostic scores are the most
420 important participants in *PCA1*. This confirms the importance of ECHO over ECG in HF
421 diagnoses, since these scores rely mainly on key ECHO-measurements: E/e', LVMI, LAVI and
422 RVSP.

423
424 The LAE defined by LAVI is the most representative ECHO-finding in the overall comorbidity
425 rate, which coincides with the probability direction of HF. However, no single ECHO-
426 measurement is suitable to identify all HF patients, hence the reason for the use of HF score
427 approaches, where a set of relevant ECHO-findings are aggregated in order to account for the
428 varying nature of HF. For example, ECG algorithms predicting LVEF<35%, like ^{24,25}, target only
429 HFrEF category, as such they are inherently insensitive for the larger group of HF patients found
430 in primary care (HFmrEF and HFpEF).

431
432 In *PCA1*, the second group of coefficients are related to the **functional abnormalities**.
433 Astonishingly, LVEF is the 14th input parameter according to the coefficient's values, having
434 similar impact as age, arrhythmia, prolonged PR, RVSP and Mitral/Tricuspid regurgitation. This
435 means LVEF, age, arrhythmia, PR interval and valve diseases are less representative of the
436 overall comorbidity compared to aggregated diagnostic scores and chamber enlargements.

437

438 **6 Discussion**

439 **6.1 A novel Diagnosis, “Consider HF” for primary care**

440 Unlike ECG, bio-signal derived ECHO-findings processed through a purpose designed AI system,
441 can predict the structural and functional abnormalities and measurements, consistent with
442 table 2 above, essential to the detection accuracy for HF,⁴⁹ including low LVEF.

443
444 The real importance of bio-signal derived ECHO-findings lies in its simplicity as it makes
445 detection of HF more immediate on patient presentation to Primary Care, precluding the use of
446 purely symptomatic based clinical diagnosis that delays access to treatment. This means that on
447 initial patient presentation to Primary Care, clinicians will be able to recognize HF, including
448 classifying its severity and category, especially when symptoms remain inconclusive,
449 confounding or ambiguous.

450

451 Cardio-HART™ system uses novel bio-signals analyzed by Artificial Intelligence, can predict 14 of
452 the most prevalent and important ECHO-findings²⁶ to support the novel diagnostic indications
453 called “Consider HF”¹. CHART is intended to: **“detect potential abnormalities of a structural
454 and functional nature related to a specific HF phenotype, independently from the current
455 patient symptoms.”** Where patient symptoms can be inconclusive, confounding and or
456 ambiguous, Cardio-HART provides Echo finding based indications of cardiac abnormalities,
457 including LVEF, consistent with this research such that a HF diagnosis should be considered.

458

459 The primary criteria of “consider HF” follows the LVEF categories as per the latest guideline¹,
460 while the secondary criteria confirm LVEF with the co-morbidities explored in this research and
461 their risk factors including asymptomatic patients (ALVSD). Table 3 lists the supporting ECG and
462 ECHO-findings provided by CHART to aid the “consider HF” determination.

463

464 **6.2 Verification by HFA algorithm**

465 The accuracy of the “consider HF” categorization of HF is verified using the likelihood-based
466 adaptations of HFA algorithm. The HF score-based algorithm relies mainly on echocardiographic
467 measurements, and it is necessary because no single measurement is sufficiently decisive, but
468 the HF probability can be well represented by aggregating the individual measurements^{4,9}.

469

¹ © 2021 CardioPhoenix Inc., “consider HF” is also a trademark of Cardio-Phoenix Inc.

470 Fig. 3 shows the three “consider HF” categories plus the “Absent HF” category in function of
471 LVEF (vertical axis) and the two likelihood-based scores (horizontal axis): A) the *H2FPEF* Score;
472 B) the *HFA-PEFF* Score. Both HF score adaptations are calculated using sigmoid probability
473 function instead of strict binary threshold in order to ensure higher resolution and to better
474 resolve borderline cases.

475
476 The two scores have similar results: The HFmrEF and HFrEF categories are primarily confirmed
477 by LVEF, but the two HF scores also show non-normal ranges, similarly for HFpEF categories.
478 The score results demonstrate the need of a second and independent component from LVEF,
479 which can separate the HFpEF from the Absent HF category. This HFpEF component can be
480 represented either by of the mentioned scores, but only in cases where ECHO is available, or, in
481 cases where ECHO is not available, by the bio-signal predicted ECG/ECHO structural and
482 functional parameters, as produced by CHART.

483

484 **6.3 Conclusions**

485 The prevalence-based comorbidity analysis shows that the discussed ECHO-findings are strong
486 indicators for HF and its category. More precisely, for HF, ECHO shows **enlarged heart** with
487 decreased myocardial contractility and general **abnormal heart functioning**.

488

489 Key set of ECHO-findings are sufficiently representative of HF when taken together as opposed
490 to a single measurement, like LVEF. The two HF score techniques discussed in this study (*HFA-*
491 *PEFF*⁴, and *H2FPEF*⁹) confirms this approach, as they rely on Echo-finding indicators for the
492 critical components of their score, precisely to avoid reliance on LVEF. The use of LVEF only
493 would lead to a limited HF prediction capability focusing only on the HFrEF category, ignoring
494 HFpEF altogether and much of HFmrEF, resulting in a high incidence of false negative.

495

496 As Echocardiography is not widely or easily available in primary care, the key **structural**
497 (chamber enlargements) and **functional** abnormalities related measurements are not available
498 precluding the ability to diagnose HF other than through mainly symptomatic means. The
499 standard ECG findings do not provide acceptable diagnostic power for HF, less so for its
500 categorization.

501

502 As more patients with HF are expected to be living longer than ever before, healthcare
503 priorities will increasingly shift to managing HF co-morbidities⁵⁰. A bio-signal based system,
504 indicated for use in Primary Care, can address the lack of a suitable device. In such a bio-signal
505 based approach the classifying of a set of ECHO-findings by AI is recommended, conformant
506 with the 2021 guidelines set by the ESC for diagnosing of HF. In primary care the use of novel
507 bio-signals of a physiological nature such as those found in Cardio-HART™ can provide a better
508 understanding of the structural and functional abnormalities and thereby increase HF detection
509 accuracy for all 3 types of HF, even in asymptomatic patients.

510

511 Further research is warranted to investigate in more detail the relationship between HF
512 categories and right-side HF through the window of bio-signals, risk factors, detectable
513 abnormalities, COPD and other co-morbidities and symptoms.

514 **7 Source of funding**

515 The collection of the data used in this paper was previously collected in prior clinical studies
516 funded in part by UVA Research Inc., no other funding was involved.

517 **7.1 Authors Contributions**

518 “G.B.Z. designed the analysis; E.SZ. and A.B.SZ. collected the data; G.K. validated the data; N.C.
519 and D.T. contributed analysis tools; I.K. performed the analysis; A.Z. and M.A.N. wrote the
520 paper.”

521 **7.2 Conflict of interests**

522 The following relationship to industry disclosed:

- 523 • Giuseppe Biondi Zoccai: consulted for Cardionovum, CrannMed, InnovHeart, Meditrial,
524 Opsens Medical, and Replycare.
- 525 • Istvan Kecskes: Director in UVA research corp., and works in project at Cardio-Phoenix
526 Inc.

527

528

529 8 References

- 530 [1] **McDonagh, T. A., Metra, M., Adamo, M., et al.** "2021 ESC Guidelines for the diagnosis
531 and treatment of acute and chronic heart failure: Developed by the Task Force for the
532 diagnosis and treatment of acute and chronic heart failure of the European Society of
533 Cardiology (ESC) With the special contribution of the Heart Failure Association (HFA) of
534 the ESC." *European heart journal* 42.36 (2021): 3599-3726.
- 535 [2] **Andronic, Anca Andreea, Sorina Mihaila, and Mircea Cinteza.** "Heart failure with mid-
536 range ejection fraction—a new category of heart failure or still a gray
537 zone." *Maedica* 11.4 (2016): 320.
- 538 [3] **Bozkurt, B., Coats, A. J., Tsutsui, H., et al.** "Universal Definition and Classification of
539 Heart Failure: A Report of the Heart Failure Society of America, Heart Failure Association
540 of the European Society of Cardiology, Japanese Heart Failure Society and Writing
541 Committee of the Universal Definition of Heart Failure." *Journal of cardiac*
542 *failure* (2021).
- 543 [4] **Pieske, B., Tschöpe, C., De Boer, R. A., et al.** "How to diagnose heart failure with
544 preserved ejection fraction: the HFA–PEFF diagnostic algorithm: a consensus
545 recommendation from the Heart Failure Association (HFA) of the European Society of
546 Cardiology (ESC)." *European heart journal* 40.40 (2019): 3297-3317.
- 547 [5] **Afsin Oktay, A., and Sanjiv J Shah.** "Diagnosis and management of heart failure with
548 preserved ejection fraction: 10 key lessons." *Current cardiology reviews* 11.1 (2015): 42-
549 52.
- 550 [6] **Lam, C. S., Donal, E., Kraigher-Krainer, E., et al..** Epidemiology and clinical course of
551 heart failure with preserved ejection fraction. *Eur J Heart Fail* 2011; 13: 18-28.
- 552 [7] **Gazewood, John D., and Patrick L. Turner.** "Heart failure with preserved ejection
553 fraction: diagnosis and management." *American family physician* 96.9 (2017): 582-588.
- 554 [8] **Simmonds, S. J., Cuijpers, I., Heymans, S., et al.** "Cellular and molecular differences
555 between HFpEF and HFrEF: a step ahead in an improved pathological
556 understanding." *Cells* 9.1 (2020): 242.
- 557 [9] **Reddy, Y. N., Carter, R. E., Obokata, M., et al.** "A simple, evidence-based approach to
558 help guide diagnosis of heart failure with preserved ejection fraction." *Circulation* 138.9
559 (2018): 861-870.
- 560 [10] **Kraigher-Krainer, E., Shah, A. M., Gupta, D. K., et al.** "Impaired systolic function
561 by strain imaging in heart failure with preserved ejection fraction." *Journal of the*
562 *American College of Cardiology* 63.5 (2014): 447-456.
- 563 [11] **Bshiebish, Hasanain Ali Hameed, Ali Hussein Al-Musawi, and Safaa Ali Khudeir.**
564 "Role of global longitudinal strain in assessment of left ventricular systolic function in
565 patients with heart failure with preserved ejection fraction." *Journal of the Saudi Heart*
566 *Association* 31.2 (2019): 100-105.
- 567 [12] **Sahlen, Anders, and Reidar Winter.** "How should we measure global and
568 regional left ventricular systolic function?." *Journal of echocardiography* 9.2 (2011): 41-
569 50.

- 570 [13] **Velagaleti, R. S., Gona, P., Pencina, M. J., et al.** "Left ventricular hypertrophy
571 patterns and incidence of heart failure with preserved versus reduced ejection fraction."
572 *The American journal of cardiology* 113.1 (2014): 117-122.
- 573 [14] **Lee, D.S.; Gona, P.; Vasan, R.S.; Larson, M.G.; Benjamin, E.J.; Wang, T.J.; Tu,
574 J.V.; Levy, D.** Relation of disease pathogenesis and risk factors to heart failure with
575 preserved or reduced ejection fraction: Insights from the framingham heart study of the
576 national heart, lung, and blood institute. *Circulation* 2009, 119, 3070–3077.
- 577 [15] **Lüscher, Thomas F.** "Heart failure subgroups: HFrEF, HFmrEF, and HFpEF with or
578 without mitral regurgitation." *European Heart Journal* 39.1 (2018): 1-4.
- 579 [16] **Hussain, N., Charalampopoulos, A., Ramjug, et al.** "Pulmonary hypertension in
580 patients with heart failure and preserved ejection fraction: differential diagnosis and
581 management." *Pulmonary circulation* 6.1 (2016): 3-14.
- 582 [17] **Kjaergaard, J., Akkan, D., Iversen, K. K., et al.** "Prognostic importance of
583 pulmonary hypertension in patients with heart failure." *The American journal of
584 cardiology* 99.8 (2007): 1146-1150.
- 585 [18] **Schröder, J., Nuding, S., Müller-Werdan, U., Werdan, K., Kluttig, A., Russ, M., ...
586 & Medenwald, D.** (2015). Performance of Sokolow-Lyon index in detection of
587 echocardiographically diagnosed left ventricular hypertrophy in a normal Eastern
588 German population-results of the CARLA study. *BMC cardiovascular disorders*, 15(1), 1-
589 7.
- 590 [19] **Burgos, P. F. M., Luna, B., Costa, F. D. A., Bombig, M. T. N., Souza, D. D., Bianco,
591 H. T., ... & Póvoa, R.** (2016). Electrocardiogram performance in the diagnosis of left
592 ventricular hypertrophy in hypertensive patients with left bundle branch block. *Arquivos
593 brasileiros de cardiologia*, 108, 47-52.
- 594 [20] **Erdei T, Rodrigues J, McIntyre B, et al.** 8 Diagnostic performance of ECG
595 detection of left atrial enlargement in patients with arterial hypertension relative to the
596 cardiac magnetic resonance gold-standard: Impact of obesity. *Heart* 2016;102:A6-A7.
- 597 [21] **Tsao, C. W., Josephson, M. E., Hauser, T. H., O'Halloran, T. D., Agarwal, A.,
598 Manning, W. J., & Yeon, S. B.** (2008). Accuracy of electrocardiographic criteria for atrial
599 enlargement: validation with cardiovascular magnetic resonance. *Journal of
600 Cardiovascular Magnetic Resonance*, 10(1), 1-7.
- 601 [22] **Kelly, James, & Kelleher, Kevin** (2000). The electrocardiogram in heart failure.
602 *Age and ageing*, 29(3), 203-206.
- 603 [23] **Cincin, A., Ozben, B., & Erdogan, O.** (2012). Diagnostic utility of specific
604 electrocardiographical parameters in predicting left ventricular function. *Experimental &
605 Clinical Cardiology*, 17(4), 210.
- 606 [24] **Attia, Z. I., Kapa, S., Lopez-Jimenez, F., et al.** "Screening for cardiac contractile
607 dysfunction using an artificial intelligence-enabled electrocardiogram." *Nature medicine*
608 25.1 (2019): 70-74.
- 609 [25] **Alhamaydeh, M., Gregg, R., Ahmad, A., et al.** "Identifying the most important
610 ECG predictors of reduced ejection fraction in patients with suspected acute coronary
611 syndrome." *Journal of electrocardiology* 61 (2020): 81-85.
- 612 [26] **Cardio-HART™ - a Breakthrough Cardiac-Telemedicine™ device, now CE-Marked.**
613 (2021). Retrieved 20 December 2021, from

- 614 [https://www.cardiophoenix.com/news/cardio-hart-a-breakthrough-cardiac-](https://www.cardiophoenix.com/news/cardio-hart-a-breakthrough-cardiac-telemedicine-device-now-ce-marked)
615 [telemedicine-device-now-ce-marked](https://www.cardiophoenix.com/news/cardio-hart-a-breakthrough-cardiac-telemedicine-device-now-ce-marked)
- 616 [27] **Shah, S. J., Katz, D. H., & Deo, R. C.** (2014). Phenotypic spectrum of heart failure
617 with preserved ejection fraction. *Heart failure clinics*, 10(3), 407-418.
- 618 [28] **Movahed, Mohammad Reza, and Yuji Saito.** "Obesity is associated with left
619 atrial enlargement, E/A reversal and left ventricular hypertrophy." *Experimental &*
620 *Clinical Cardiology* 13.2 (2008): 89.
- 621 [29] **Aouar, L. M. M. E., Meyerfreud, D., Magalhães, P., et al.** "Relationship between
622 left atrial volume and diastolic dysfunction in 500 Brazilian patients." *Arquivos*
623 *brasileiros de cardiologia* 101.1 (2013): 52.
- 624 [30] **Prasad A, Hastings JL, Shibata S,** et al. Characterization of static and dynamic left
625 ventricular diastolic function in patients with heart failure with a preserved ejection
626 fraction. *Circ Heart Fail* 2010; 3: 617-26.
- 627 [31] **McCrohon, J. A., Moon, J. C. C., Prasad, S. K., et al.** "Differentiation of heart
628 failure related to dilated cardiomyopathy and coronary artery disease using gadolinium-
629 enhanced cardiovascular magnetic resonance." *Circulation* 108.1 (2003): 54-59.
- 630 [32] **van Gils, L., Clavel, M. A., Vollema, E. M., et al.** "Prognostic implications of
631 moderate aortic stenosis in patients with left ventricular systolic dysfunction." *Journal of*
632 *the American College of Cardiology* 69.19 (2017): 2383-2392.
- 633 [33] **Chaliki, H. P., Mohty, D., Avierinos, J. F., et al.** "Outcomes after aortic valve
634 replacement in patients with severe aortic regurgitation and markedly reduced left
635 ventricular function." *Circulation* 106.21 (2002): 2687-2693.
- 636 [34] **Mutlak, D., Lessick, J., Khalil, S., Yalonetsky, et al.** "Tricuspid regurgitation in
637 acute heart failure: is there any incremental risk?." *European Heart Journal-*
638 *Cardiovascular Imaging* 19.9 (2018): 993-1001.
- 639 [35] **Delepaul, B., Robin, G., Delmas, et al.** "Who are patients classified within the
640 new terminology of heart failure from the 2016 ESC guidelines?." *ESC heart failure* 4.2
641 (2017): 99-104.
- 642 [36] **Carson, P., Johnson, G., Fletcher, R., et al.** "Mild systolic dysfunction in heart
643 failure (left ventricular ejection fraction > 35%): baseline characteristics, prognosis and
644 response to therapy in the Vasodilator in Heart Failure Trials (V-HeFT)." *Journal of the*
645 *American College of Cardiology* 27.3 (1996): 642-649.
- 646 [37] **Webb, J., Draper, J., Fovargue, L., et al.** "Is heart failure with mid range ejection
647 fraction (HFmrEF) a distinct clinical entity or an overlap group?." *IJC heart & vasculature*
648 21 (2018): 1-6.
- 649 [38] **Karaye, Kamilu M., and Mahmoud U. Sani.** "Electrocardiographic abnormalities
650 in patients with heart failure." *Cardiovascular journal of Africa* 19.1 (2008): 22.
- 651 [39] **Anter, Elad, Mariell Jessup, and David J. Callans.** "Atrial fibrillation and heart
652 failure: treatment considerations for a dual epidemic." *Circulation* 119.18 (2009): 2516-
653 2525.
- 654 [40] **Gori, M., Redfield, M. M., Calabrese, A., et al.** "Is mild asymptomatic left
655 ventricular systolic dysfunction always predictive of adverse events in high-risk
656 populations? Insights from the DAVID-Berg study." *European journal of heart failure*
657 20.11 (2018): 1540-1548.

- 658 [41] **Heart Failure Society of America.** "Section 5: Management of Asymptomatic
659 Patients With Reduced Left Ventricular Ejection Fraction." *Journal of cardiac failure* 12.1
660 (2006): e26-e28.
- 661 [42] **Wang, T. J., Evans, J. C., Benjamin, E. J., et al.** "Natural history of asymptomatic
662 left ventricular systolic dysfunction in the community." *Circulation* 108.8 (2003): 977-
663 982.
- 664 [43] **Parcha, V., Malla, G., Kalra, R., et al.** "Diagnostic And Prognostic Implications of
665 Heart Failure With Preserved Ejection Fraction Scoring Systems." *Journal of Cardiac*
666 *Failure* 26.10 (2020): S38.
- 667 [44] **Gorter, T. M., van Veldhuisen, D. J., Bauersachs, J., et al.** "Right heart
668 dysfunction and failure in heart failure with preserved ejection fraction: mechanisms
669 and management. Position statement on behalf of the Heart Failure Association of the
670 European Society of Cardiology." *European journal of heart failure* 20.1 (2018): 16-37.
- 671 [45] **Lan, Yonghao, Wei Liu, and Yujie Zhou.** "Right Ventricular Damage in COVID-19:
672 Association Between Myocardial Injury and COVID-19." *Frontiers in Cardiovascular*
673 *Medicine* 8 (2021): 82.
- 674 [46] **Mehra, Mandeep R., and Frank Ruschitzka.** "COVID-19 illness and heart failure:
675 a missing link?." *JACC Heart Fail.* 2020 Jun;8(6):512-514.
- 676 [47] **Gorter, T. M., van Veldhuisen, D. J., Bauersachs, J., et al.** "Patterns of co-
677 occurring comorbidities in people living with HIV." *Open forum infectious diseases.* Vol.
678 5. No. 11. US: Oxford University Press, 2018.
- 679 [48] **Jolliffe I.** Principal Component Analysis. New York: Wiley Online Library; 2002.
- 680 [49] **Calcagno, S., Biondi Zoccai, G., Stankovic, et al.** (2021) Novel Tech throws knock-
681 out punch to ECG improving GP referral decisions to cardiology. *Open heart*, 9(1),
682 e001852.
- 683 [50] **Groenewegen, A., Rutten, F. H., Mosterd, A., et al.** "Epidemiology of heart
684 failure." *European journal of heart failure* 22.8 (2020): 1342-1356.
- 685 [51] **Saba, P. S., Cameli, M., Casalnuovo, G., Ciccone, M. M., et al.** Ventricular-
686 vascular coupling in hypertension: methodological considerations and clinical
687 implications. *Journal of cardiovascular medicine*, 15(11), (2014): 773-787.

688

689 **9 Figure legends**

690 **Figure 1 – Comorbidity analysis in function of LVEF categories (in descending order): A) Average measurements:**
691 **ECHO, ECG, BMI, Female, Age, B) ECHO-finding prevalence, C) ECG-finding prevalence, D) HF categories**
692 **prevalence** (Abbreviations: AR, Aortic Regurgitation; AS, Aortic Stenosis; BMI, body mass index; DCM, Dilated
693 Cardiomyopathy; DDIM, Impaired Relaxation of Diastolic Dysfunction; ECG, Electrocardiogram; ECHO,
694 Echocardiogram; HF, Heart Failure; HFmrEF, Heart Failure with mildly reduced LVEF; HFpEF, Heart Failure with
695 preserved LVEF; HFrEF, Heart Failure with reduced LVEF; HRV, Heart Rate Variability; LAE, Left Atrial Enlargement;
696 LAVI, Left Atrial Volume Index; LVEF%, Left Ventricular Ejection Fraction (Teichholz); LVH, Left Ventricular
697 Hypertrophy; LVIDd, End-diastolic Left Ventricular Diameter; LVMI, Left Ventricular Mass Index; LVSD, Left
698 Ventricular Systolic Dysfunction; MR, Mitral Regurgitation; MS, Mitral Stenosis; MV E/A, E/A Wave Velocity; PH,
699 Pulmonary Hypertension; QTc, Corrected QT interval; RAE, Right Atrial Enlargement; RVE, Right Ventricular
700 Enlargement; RVH, Right Ventricular Hypertrophy; RVSP, Right Ventricular Systolic Pressure; TR, Tricuspid
701 Regurgitation; WMA, Wall Motion Abnormality)

702 **Figure 2 – 2D scatter plot of (A) HF categories in function of PCA1 and PCA2, (B) body size categories in**
703 **function of PCA1 and PCA2, (C) HR categories in function PCA3 and PCA1, (D) HRV categories in function of**
704 **PCA4 and PCA1, (E) HF categories in function of PCA5 and PCA1, (F) Four HF categories in function of LVEF**
705 **and PCA1** (Abbreviations: BSI, body size index; CBSI – CHART body size index (similar to body surface area); HF,
706 Heart Failure; HFmrEF, Heart Failure with mildly reduced LVEF; HFpEF, Heart Failure with preserved LVEF;
707 HFrEF, Heart Failure with reduced LVEF; HR, Heart Rate; HRV, Heart Rate Variability; LVEF, Left Ventricular
708 Ejection Fraction (Teichholz); PCA1, First Principal Component; PCA2, Second Principal Component; PCA3,
709 Third Principal Component; PCA4, Fourth Principal Component; PCA5, Fifth Principal Component; RRstd,
710 Standard Deviation of RR intervals)

711 **Figure 3 – Scatter plot of HF categories in function LVEF (vertical) and HF scores (horizontal)** (Abbreviations:
712 HFmrEF, Heart Failure with mildly reduced LVEF; HFpEF, Heart Failure with preserved LVEF; HFrEF, Heart Failure
713 with reduced LVEF; LVEF, Left Ventricular Ejection Fraction (Teichholz))

714

1
2
3
4

Table 1 – Distribution statistics of ECHO and ECG interpretation in Cardio Phoenix Database along the four HF category – In each row, the worst or most abnormal (typically the maximum, but in some cases the minimum) values are highlighted with bold text, similarly, the highest standard deviation is also highlighted, which denotes the highest variability.

Group	HF category		All		Absent HF		HFpEF		HFmrEF		HFrEF	
	Field	Unit	M	STD	M	STD	M	STD	M	STD	M	STD
General and Body Size	Age	year	62.6	13.8	59.7	13.8	72.0	9.4	67.9	10.3	67.2	12.1
	Female	%	50.8	0.5	53.8	0.5	48.0	0.5	35.5	0.5	20.0	0.4
	BMI	kg/m ²	27.9	5.2	27.6	5.2	28.5	5.3	28.8	5.2	29.2	6.6
	BSA	m ²	1.9	0.2	1.9	0.2	1.9	0.2	1.9	0.2	2.0	0.3
	Height	cm	167.5	9.1	167.7	9.2	166.2	8.7	167.7	8.7	169.4	9.9
	Weight	kg	78.3	16.7	77.7	16.4	79.1	16.8	81.3	16.6	84.3	21.7
	Systolic BP	mmHg	127.8	13.3	127.4	13.2	129.6	13.7	128.2	13.2	125.2	14.3
	Diastolic BP	mmHg	78.6	9.9	78.8	9.6	77.8	9.7	78.9	12.9	77.4	11.6
ECG measurements	HR	bpm	70.0	13.6	68.4	11.8	73.7	16.8	76.3	17.7	77.8	15.8
	RR std	ms	59.2	61.8	46.3	44.9	96.2	85.0	85.6	76.0	117.1	94.0
	LF/HF (0.15Hz)	ms	1.6	0.9	1.8	0.9	1.3	0.8	1.2	0.8	1.1	0.6
	QRS axis	deg	25.1	39.8	28.8	36.2	16.8	45.9	11.3	45.5	4.6	54.1
	PQ interval	ms	181.8	37.7	175.2	28.6	201.7	51.1	195.7	52.4	204.7	52.7
	P interval	ms	117.5	18.4	118.2	14.5	115.4	26.3	114.2	26.3	118.0	29.1
	P terminal force	mVms	3.0	2.7	3.1	2.5	2.4	2.8	2.8	3.2	3.1	3.9
	QT interval	ms	408.6	37.5	407.8	34.4	412.2	44.7	406.6	46.0	411.4	44.3
	QTc (Framingham)	ms+	425.1	26.0	422.1	23.3	433.0	30.1	432.3	31.1	440.7	33.9
	QRS interval	ms	92.3	21.1	89.2	17.8	98.8	24.9	102.5	25.5	115.4	32.6
	VAT (Rwave peak time)	ms	43.1	11.4	41.4	9.4	46.6	14.3	49.2	13.3	53.9	17.8
	Taxis	deg	33.2	49.5	35.9	39.7	27.1	65.3	20.0	74.0	27.8	86.7
	Rsum (V1:V6)	uV	4282	2138	4387	2091	4093	2248	3997	2165	3187	2204
	Lvh Score	score	166	201	128	159	256	242	320	293	353	264
	ECHO measurements	IVSd	mm	10.2	1.8	10.0	1.6	11.2	2.0	10.4	1.9	10.0
LVIDd		mm	51.6	6.8	50.0	5.4	53.6	6.7	58.7	8.4	65.1	9.8
LVIDs		mm	33.8	6.8	31.9	4.7	35.3	5.8	44.4	6.4	53.1	8.7
LVEF (Teichholz)		%	63.3	8.7	65.5	6.5	62.5	6.8	47.6	2.4	37.5	4.6
RWT		%	34.4	6.7	34.7	6.3	35.5	7.3	31.4	7.3	27.2	8.4
LVmass		g	187.8	62.0	172.7	49.3	221.7	66.5	240.9	79.4	270.0	86.6
LVMI (LVmass/BSA)		g/m ²	98.8	30.8	91.0	23.5	117.0	34.1	124.9	41.1	138.0	45.8
LAV		mL	36.6	20.8	29.9	11.1	51.9	25.0	58.4	33.7	74.5	31.4
LAVI (LAV / BSA)		mL/m ²	19.3	11.1	15.8	5.6	27.4	13.2	30.7	19.4	38.5	18.5
RAV		mL	40.1	25.0	34.0	14.2	54.5	35.3	58.1	39.7	78.5	40.2
RAVI (RAV / BSA)		mL/m ²	21.1	13.1	17.9	7.2	28.8	18.6	30.5	21.6	40.4	21.6
AVpV		m/s	1.4	0.5	1.3	0.4	1.7	0.8	1.5	0.8	1.4	0.6
AVpGrad		mmHg	8.9	9.4	7.4	5.6	14.3	15.6	11.4	14.4	9.0	10.2
ARgrade		grade	0.4	0.8	0.2	0.6	0.7	1.0	0.5	0.9	0.9	1.1
ARjet Area		cm ²	0.6	1.8	0.4	1.3	1.3	2.7	0.9	1.9	1.4	2.7
MVGE mean		mmHg	2.0	1.4	1.8	1.1	2.5	1.9	2.5	1.7	2.6	1.7
MV E Vmax		m/s	0.8	0.3	0.8	0.2	0.9	0.3	0.9	0.3	0.9	0.3
MV A Vmax		m/s	0.8	0.3	0.8	0.2	0.8	0.4	0.7	0.4	0.6	0.4
MV E/A			1.1	0.4	1.0	0.4	1.1	0.6	1.2	0.5	1.5	0.8
MRgrade		grade	1.4	1.1	1.1	1.0	2.0	1.0	2.1	1.2	2.5	1.1
MRjet/LAA		%	13.5	15.1	10.6	12.7	20.0	16.7	23.5	21.5	28.1	18.5
TRgrade		grade	1.2	1.0	0.9	0.9	1.8	1.1	1.6	1.2	2.0	1.2
TRjet/RAA		%	12.5	16.1	9.5	13.8	21.1	19.2	18.6	17.9	24.1	18.0
RVSP (mPAP)		mmHg	18.9	11.8	16.3	8.3	26.5	15.8	24.8	16.6	29.5	18.1
PEEF (maximum)		mm	0.3	1.7	0.2	1.5	0.5	2.2	0.3	1.6	0.8	2.3
RVOTend-distal		mm	30.4	16.2	28.2	13.4	35.3	19.8	38.3	21.9	43.4	25.6
RVOTprox		mm	26.8	5.8	25.9	5.5	29.0	5.4	29.2	6.2	30.4	7.2
RVDd M-mode		mm	29.2	5.1	28.3	4.7	31.3	5.2	32.0	5.9	33.6	6.8
RVDs M-mode		mm	14.3	4.9	13.5	4.2	16.3	5.6	16.6	6.6	17.9	7.7

	RAD (A4C)	mm	38.4	7.5	36.7	6.1	42.6	8.4	43.0	9.6	48.4	9.8
	RADI (RAD / BSA)	mm/m ²	20.4	4.2	19.5	3.4	22.6	5.0	22.5	5.7	24.9	6.0
	WM-score	score	0.3	0.7	0.2	0.5	0.5	1.1	0.7	1.0	0.9	1.3
HF Score	H ₂ FPEF Score	score	2.43	1.39	1.93	0.82	3.94	1.63	3.49	1.67	3.93	1.73
	HFA-PEFF score	score	1.62	0.89	1.26	0.54	2.61	0.84	2.55	0.92	3.16	0.95
ECHO-Finding	LVH		14.0%		7.8%		34.6%		22.9%		33.6%	
	DCM		9.9%		3.7%		15.2%		44.3%		76.0%	
	RVE		4.6%		2.2%		8.9%		12.5%		25.3%	
	LAE		8.8%		0.5%		29.7%		30.6%		54.3%	
	RAE		6.5%		1.2%		17.7%		24.2%		42.8%	
	WMA		4.5%		0.6%		4.5%		38.3%		44.1%	
	LVSD		2.6%		0.0%		0.0%		0.9%		100.0%	
	DD Impaired Relaxation		22.7%		20.2%		35.1%		19.6%		15.8%	
	DD Pseudo-normal		3.5%		2.0%		6.5%		9.2%		11.5%	
	DD Restrictive Filling		2.9%		1.1%		7.1%		6.9%		15.8%	
	AS		5.7%		1.8%		20.1%		10.5%		7.9%	
	MS		2.8%		1.1%		8.4%		7.9%		4.6%	
	AR		7.0%		4.2%		15.4%		10.5%		24.0%	
	MR		12.7%		6.6%		27.3%		31.2%		48.4%	
	TR		9.9%		4.6%		24.1%		22.0%		36.8%	
	PH		3.7%		0.3%		12.5%		12.7%		21.1%	
		Abnormal ECHO		35.1%		17.7%		81.3%		93.1%		100.0%
ECG-Finding	S. Bradycardia		3.2%		3.5%		2.9%		1.7%		1.6%	
	S. Tachycardia		1.3%		1.3%		1.2%		1.9%		2.6%	
	AFib		8.2%		0.0%		33.6%		23.9%		33.6%	
	PVC		15.3%		10.4%		26.5%		30.6%		45.7%	
	PAC		14.8%		12.9%		19.8%		21.2%		20.4%	
	Prolonged PR		3.2%		3.0%		3.6%		3.3%		6.3%	
	Prolonged QT		0.8%		0.6%		1.8%		1.7%		0.0%	
	BBB		7.7%		5.5%		13.1%		13.8%		21.1%	
	ST-T deviation		17.9%		10.4%		34.9%		45.5%		53.0%	
	Ischemic ST-T		25.2%		17.5%		43.6%		50.8%		64.5%	
	MI criteria		15.7%		11.8%		24.3%		28.1%		39.5%	
	LVH criteria		9.1%		5.1%		18.6%		23.9%		27.0%	
	RVH criteria		0.4%		0.1%		1.1%		1.0%		1.6%	
	Leftward Axis		9.6%		6.6%		16.5%		19.1%		29.3%	
	Rightward Axis		1.7%		1.4%		2.3%		2.0%		4.3%	
	Abnormal ECG		40.9%		28.6%		72.4%		78.8%		92.8%	
	Borderline ECG		25.0%		28.4%		16.4%		16.3%		5.3%	

5 (Abbreviations: AFib, Atrial Fibrillation; AR, Aortic Regurgitation; ARgrade, Grade of Aortic Regurgitation; ARjet Area, Aortic Regurgitation Jet
6 Area; AS, Aortic Stenosis; AVpGrad, Aortic Valve Pressure; AVpV, Aortic Valve Peak Velocity; BBB, Bundle Branch Block; BMI, body mass
7 index; BSA, body surface area; DCM, Dilated Cardiomyopathy; DD, Diastolic Dysfunction; ECG, Electrocardiogram; ECHO, Echocardiogram;
8 HF, Heart Failure HFmrEF, Heart Failure with mildly reduced LVEF; HFpEF, Heart Failure with preserved LVEF; HFrEF, Heart Failure with
9 reduced LVEF; HR, heart rate; IVSd, End-diastolic Interventricular Septum Thickness; LAE, Left Atrial Enlargement; LAV, Left Atrial Volume;
10 LAVI, Left Atrial Volume Index; LF/HF (0.15Hz), Low per high frequency parts of RR int. spectrum; LVEF, Left Ventricular Ejection Fraction
11 (Teichholz); LVH, Left Ventricular Hypertrophy; LVIdD, End-diastolic Left Ventricular Diameter; LVIDs, Endsystolic Left Ventricular Diameter;
12 LVmass, Left Ventricular Mass; LVMI, Left Ventricular Mass Index; LVSD, Left Ventricular Systolic Dysfunction; M – Mean value; MI,
13 Myocardial Infarction; MR, Mitral Regurgitation; MRgrade, Grade of Mitral regurgitation; MRjet/LAA, Mitral Regurgitation Jet Ratio in Left
14 Atrium; MS, Mitral Stenosis; MV A Vmax, Mitral Inflow A Wave Velocity; MV E Vmax, Mitral Inflow E Wave Velocity; MV E/A, E/A Wave
15 Velocity; MVGE mean, Mitral Valve Pressure E wave; PAC, Premature Atrial Complex; PEEF, Pericardial Effusion Maximum Diameter; PH,
16 Pulmonary Hypertension; PVC, Premature Ventricular Complex; RAD, Transversal Diameter of the Right Atrium; RADI, Right Atrial Diameter
17 Index; RAE, Right Atrial Enlargement; RAV, Right Atrial Volume; RAVI, Right Atrial Volume Index; RR std, Standard Deviation of RR intervals;
18 Rsum (V1-V6), Summary of R amplitude V1-V6; RVIdD, End-diastolic Right Ventricular Diameter; RVDs, Endsystolic Right Ventricular
19 Diameter; RVE, Right Ventricular Enlargement; RVH, Right Ventricular Hypertrophy; RVOTend-distal, Right Ventricular Outflow Tract Distal;
20 RVOTprox, Right Ventricular Outflow Tract Proximal; RVSP, Right Ventricular Systolic Pressure; RWT, Relative Wall Thickness; STD -
21 standard deviation; Taxis, T wave axis; TR, Tricuspid Regurgitation; TRgrade, Grade of Tricuspid Regurgitation; TRjet/RAA, Tricuspid
22 Regurgitation Jet Ratio in Right Atrium; WMA, Wall Motion Abnormality; WM-score, Wall Motion Score)

Table 2 – HF category and related ECHO and ECG-based co-morbidities and abnormalities

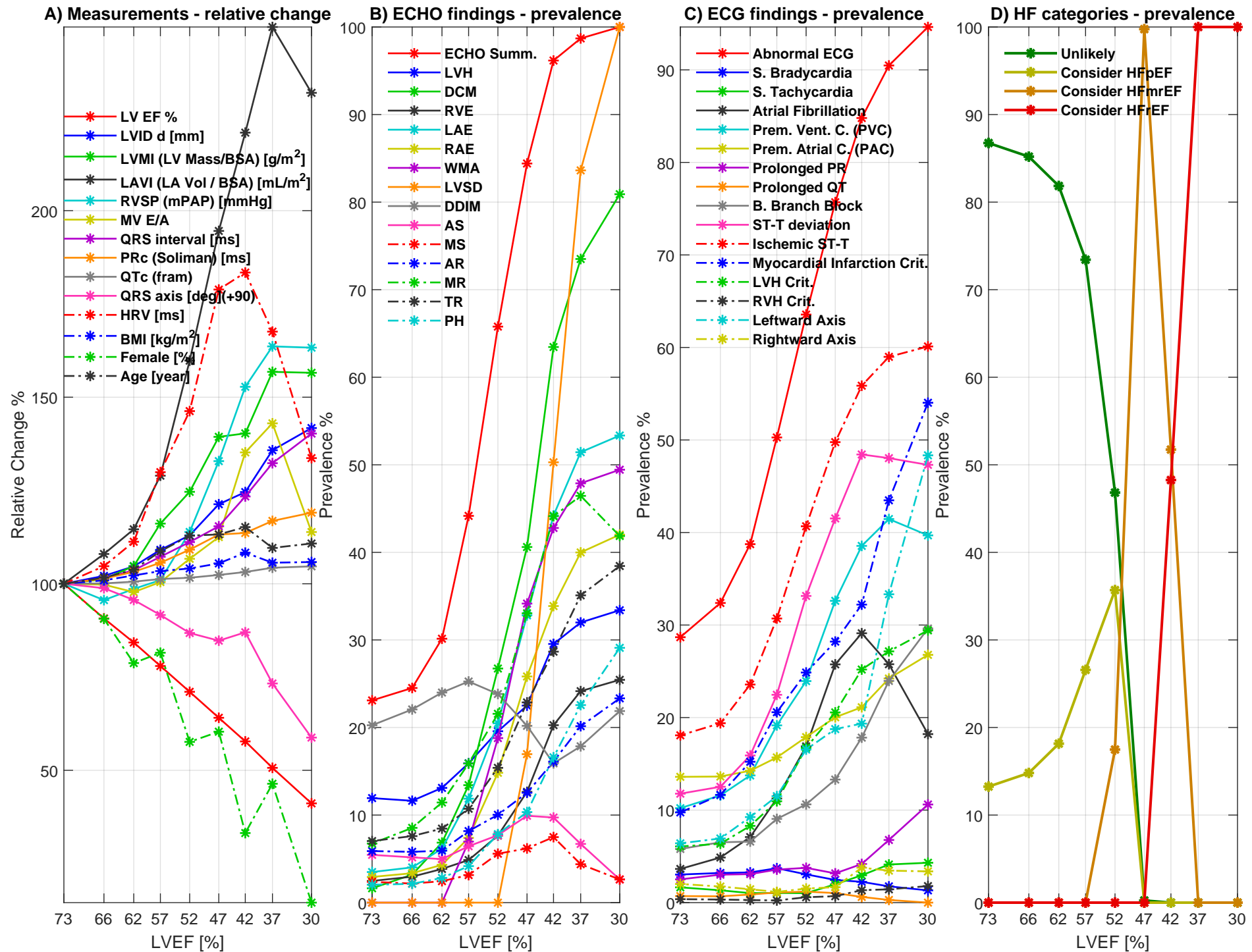
HF category	Primary criteria according to ESC Guideline, 2021 [1]			Secondary criteria according to statistical analysis	
	Symptoms ± Signs criteria	LVEF criteria	Structural / Functional criteria	wider definition in database - applied for categorization	Typical co-morbidities ("+" denotes the disease plus the previous ones)
Absent	No		-	-	Non-significant or mild abnormalities
HFpEF	Yes	≥50%	LVH and/or LAE and/or DD	symptomatic AFib symptomatic PH symptomatic AS or MS symptomatic CAD or WMA	Regional WMA Valve diseases (AS, AR) PH
					Arrhythmia (AFib) Ischemic ST-T Leftward Axis
HFmrEF	Yes	41-49%	Global Mild LVSD	mild ALVSD with LVEF<50%, but confirmed with risk factors, HF scores and co-morbidities of WMA or LAE or LVH	+ Mild Dilated LV + Global WMA + More severe ischemia (CAD)
HFrfEF	Yes	≤40%	Global LVSD	ALVSD with LVEF<40%, but confirmed with risk factors, HF scores and co-morbidities	+ Dilated LV (DCM) + More severe valve diseases + Right Heart Enlargement
<i>Color Legend:</i>					
Primarily ECHO finding					
Primarily ECG finding					
Mixed ECG/ECHO finding					

(Abbreviations: AFib, Atrial Fibrillation; ALVSD, Asymptomatic LVSD; AR, Aortic Regurgitation; AS, Aortic Stenosis; CAD, Coronary Artery Disease; DCM, Dilated Cardiomyopathy; DD, Diastolic Dysfunction; ECG, Electrocardiogram; ECHO, Echocardiogram; HF, Heart Failure; HFmrEF, Heart Failure with mildly reduced LVEF; HFpEF, Heart Failure with preserved LVEF; HFrfEF, Heart Failure with reduced LVEF; LAE, Left Atrial Enlargement; LVEF, Left Ventricular Ejection Fraction; LVH, Left Ventricular Hypertrophy; LVSD, Left Ventricular Systolic Dysfunction; MS, Mitral Stenosis; PH, Pulmonary Hypertension; WMA, Wall Motion Abnormality)

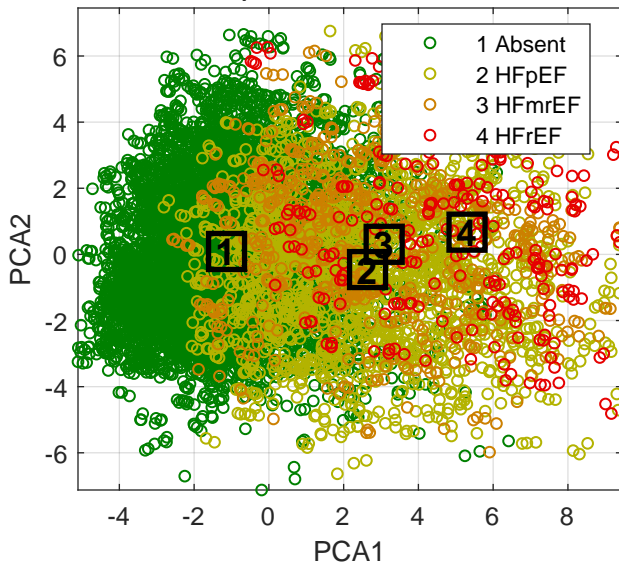
Table 3 – Supporting “Consider HF” categories by CHART

Reference categories of HF - specifically for indication in primary care	Primary criteria	Secondary criteria	CHART findings
“Consider HFpEF”	symptomatic HF with LVEF>50%, and DD or LAE or LVH	symptomatic AFib symptomatic PH symptomatic AS or MS symptomatic CAD or WMA	AFib by ECG PH by AI AS, MS by AI Ischemic ST-T by ECG, WMA by AI
“Consider HFmrEF”	symptomatic HF with LVEF<50%	mild ALVSD with LVEF<50%, but confirmed with risk factors, HF scores and co-morbidities of WMA or LAE or LVH	mild LVSD by AI WMA by AI, LAE by AI LVH by AI
“Consider HFrEF”	symptomatic HF with LVEF<40%	ALVSD with LVEF<40%, but confirmed with risk factors, HF scores and co-morbidities	moderate LVSD by AI DCM by AI and all other ECG (BBB, ST-T) and AI-findings (RAE, RVE, MR, TR, AR)

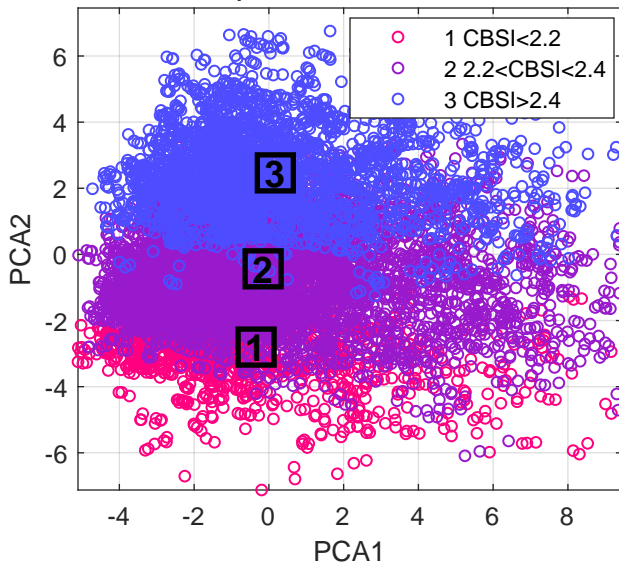
(Abbreviations: AFib, Atrial Fibrillation; AI, Artificial Intelligence, ALVSD, Asymptomatic LVSD; AR, Aortic Regurgitation; AS, Aortic Stenosis; BBB, Bundle Branch Block; CAD, Coronary Artery Disease; DCM, Dilated Cardiomyopathy; DD, Diastolic Dysfunction; ECG, Electrocardiogram; HF, Heart Failure; HFmrEF, Heart Failure with mildly reduced LVEF; HFpEF, Heart Failure with preserved LVEF; HFrEF, Heart Failure with reduced LVEF; LAE, Left Atrial Enlargement; LVEF, Left Ventricular Ejection Fraction; LVH, Left Ventricular Hypertrophy; LVSD, Left Ventricular Systolic Dysfunction; MR, Mitral Regurgitation; MS, Mitral Stenosis; PH, Pulmonary Hypertension; RAE, Right Atrial Enlargement; RVE, Right Ventricular Enlargement; TR, Tricuspid Regurgitation; WMA, Wall Motion Abnormality)



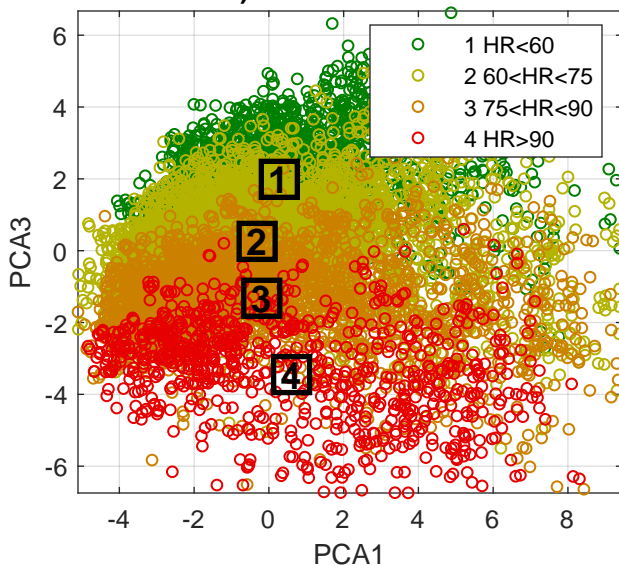
A) PCA2/PCA1 - HF



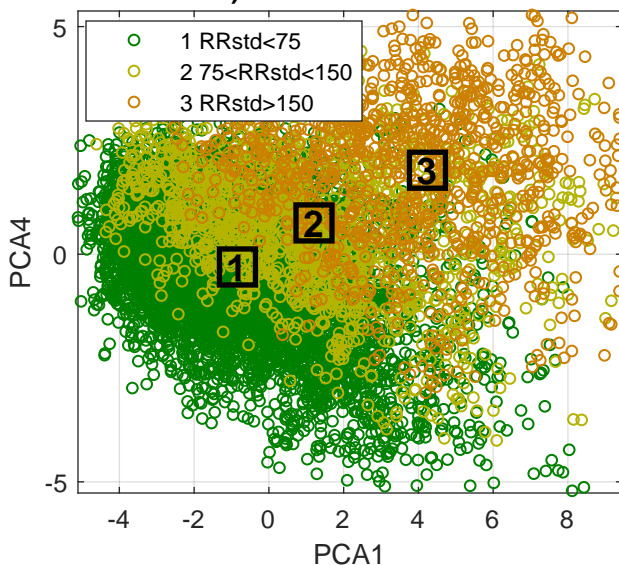
B) PCA2/PCA1 - BSI



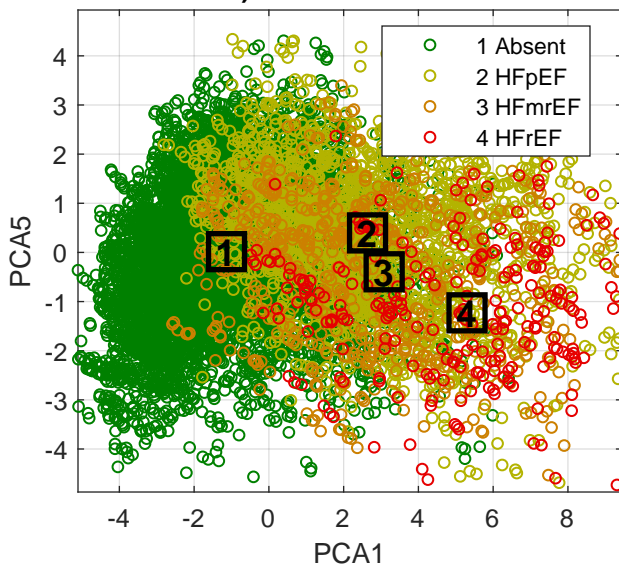
C) PCA3/PCA1 - HR



D) PCA4/PCA1 - HRV



E) PCA5/PCA1 - HF



F) LVEF/PCA1 - HF

