

Running title: Dioxins and Type 2 Diabetes

1 Sex-specific associations between type 2 diabetes incidence and exposure to dioxin and
2 dioxin-like pollutants: a meta-analysis

3

4

5 Noa Gang¹, Kyle Van Allen¹, Paul J. Villeneuve², Heather MacDonald³ and Jennifer E. Bruin^{1*}

6

7 ¹Department of Biology & Institute of Biochemistry, Carleton University, Ottawa, ON, Canada

8 ²School of Mathematics and Statistics, Carleton University, Ottawa, ON, Canada

9 ³Health and Biosciences Librarian, MacOdrum Library, Carleton University, Ottawa, ON,
10 Canada

11

12 * Address correspondence to:

13 Dr. Jennifer Bruin

14 1125 Colonel By Drive

15 Ottawa, ON K1S 5B6

16 T: 613-520-2600 x3656

17 jenny.bruin@carleton.ca

18

19

20 **Manuscript word count: 3,896**

21 **Number of tables: 2**

22 **Number of figures: 6**

23

Sex-specific links between pollutants and diabetes

24 **Abstract**

25 The relationship between persistent organic pollutants (POPs), including dioxins and dioxin-like
26 polychlorinated biphenyls (DL-PCBs), and diabetes incidence in adults has been extensively
27 studied. However, significant variability exists in the reported associations both between and
28 within studies. Emerging data from rodent studies suggest that dioxin exposure disrupts glucose
29 homeostasis in a sex-specific manner. Thus, we performed a meta-analysis of relevant
30 epidemiological studies to investigate whether there are sex-specific associations between dioxin
31 or DL-PCB exposure and type 2 diabetes incidence. Articles were organized into the following
32 subcategories: data stratified by sex (16%), unstratified data (56%), and data from only 1 sex (16%
33 male, 12% female). We also considered whether exposure occurred either abruptly at high levels
34 through a contamination event (“disaster exposure”) or chronically at background levels (“non-
35 disaster exposure”). Only 8 studies compared associations between dioxin/DL-PCB exposure and
36 diabetes risk in males versus females within the same population. When all sex-stratified or single
37 sex studies were considered in the meta-analysis, the summary odds ratio (OR) for increased
38 diabetes risk was similar between females and males (1.78 and 1.95, respectively) when comparing
39 exposed to reference populations, suggesting that this relationship is not sex-specific. However,
40 when we considered disaster-exposed populations separately, the association differed substantially
41 between sexes, with females showing a much higher OR than males (2.86 and 1.59, respectively).
42 Moreover, the association between dioxin/DL-PCB exposure and diabetes was stronger for
43 females than males in disaster-exposed populations. In contrast, both sexes had significantly
44 increased ORs in non-disaster exposure populations and the OR for females was lower than males
45 (1.40 and 2.02, respectively). Our review emphasizes the importance of considering sex
46 differences, as well as the mode of pollutant exposure, when exploring the relationship between
47 pollutant exposure and diabetes in epidemiological studies.

48

49 **Keywords:** Persistent organic pollutants (POPs), type 2 diabetes (T2D), dioxins, dioxin-like
50 polychlorinated biphenyls (DL-PCBs), sex differences, meta-analysis

51

52

53 **1. Introduction**

54 Diabetes incidence is increasing worldwide at a rate that cannot be explained solely by genetic
55 predisposition or lifestyle (Franks and McCarthy 2016; Butalia et al. 2016; Knip et al. 2005),
56 prompting investigations into potential alternative sources of diabetes risk. There is emerging
57 evidence pointing to an association between environmental pollutant exposure and type 2 diabetes
58 (T2D) in humans (Carpenter 2008; Hectors et al. 2011; Ngwa et al. 2015; Taylor, David 2001).
59 Persistent organic pollutants (POPs) are man-made toxins, released into the environment through
60 industrial, electrical, and agricultural sources (Hens and Hens 2017; Wikoff, Fitzgerald, and
61 Birnbaum 2012). POPs are typically lipophilic, resistant to degradation, and highly mobile, thus
62 leading to ubiquitous global dispersion and bioaccumulation (Fisher 1999). Pollutant exposure can
63 occur abruptly at high levels, as in a disaster event such as an industrial accident or food
64 contamination, but more frequently occurs at chronic low levels (Marinković et al. 2010). Human
65 exposure to POPs is typically through consumption of fish, meat, eggs, and dairy (Srogi 2008;

Sex-specific links between pollutants and diabetes

66 Schechter et al. 2006). Despite global efforts to restrict POP production, use continues in some
67 countries (Jaacks et al. 2019; Azandjeme et al. 2014) and biomonitoring studies continue to detect
68 POPs in bodily fluids of the general population in North America (Haines et al. 2017; Haines and
69 Murray 2012).

70

71 **1.2 Emerging links between POPs and T2D pathogenesis**

72 T2D is characterized by insufficient insulin production by pancreatic beta cells in the face of
73 peripheral insulin resistance, which results in chronic hyperglycemia (Kahn 2003; Weir and
74 Bonner-Weir 2004; Porte and Kahn E 2001; Chen et al. 2017; Kahn et al. 2009). This disease
75 manifests slowly and early symptoms of metabolic dysfunction, such as impaired glucose tolerance
76 or hyperinsulinemia, can last for years (Porte and Kahn E 2001; Weir and Bonner-Weir 2004;
77 Chen et al. 2017). Clinical diagnoses of diabetes is internationally defined as glycated haemoglobin
78 (HbA1c) $\geq 6.5\%$, fasting plasma glucose ≥ 7.0 mmol/L, or 2-hour plasma glucose during an oral
79 glucose tolerance test (OGTT) of ≥ 11.1 mmol/L (Gillett 2009). Environmental factors that
80 adversely impact beta cell health and/or peripheral insulin sensitivity could augment underlying
81 vulnerabilities and promote the development of T2D.

82 Within the last decade numerous publications have reported positive associations between
83 exposure to POPs and T2D incidence (A. Al-Othman et al. 2014; A. A. Al-Othman, Abd-
84 Alrahman, and Al-Daghri 2015; Aminov, Haase, and Carpenter 2016; Aminov et al. 2016;
85 Arrebola et al. 2013; Cappelletti et al. 2016; Eslami et al. 2016; Everett and Matheson 2010;
86 Everett and Thompson 2012; Gasull et al. 2012; Han et al. 2020; Huang et al. 2015; D. H. Lee et
87 al. 2010; 2011; Lind et al. 2014; Mannetje et al. 2018; Marushka et al. 2017; Patel, Bhattacharya,
88 and Butte 2010; Rahman et al. 2019; Rylander et al. 2015; Singh and Chan 2017; Son et al. 2010;
89 Starling et al. 2014; Suarez-Lopez et al. 2015; Tanaka et al. 2011; Tornevi et al. 2019; Ukropec et
90 al. 2010; Wolf et al. 2019; Wu et al. 2013; Zong et al. 2016). However, the strength of associations
91 between POPs and diabetes incidence varies considerably (D.-H. Lee et al. 2014; Hectors et al.
92 2011; Ngwa et al. 2015; C. Yang et al. 2017). There are numerous potential explanations for
93 variability in the epidemiology literature, such as the type of POPs studied, exposure duration,
94 level of exposure, method of contaminant analysis, underlying health and genetics of the exposed
95 populations, ongoing medical treatments, how diabetes incidence is determined, and the range of
96 covariates considered. In this meta-analysis, we narrowed down the scope of literature on
97 environmental contaminants by focusing on studies that measured dioxins and dioxin-like (DL)
98 POPs.

99

100 **1.3 Dioxins and dioxin-like pollutants**

101 Various chemicals are classified as POPs, including polychlorinated dibenzo-*p*-dioxins and
102 dibenzofurans (PCDD/Fs), polychlorinated biphenyls (PCBs), organochlorine pesticides (OCPs),
103 poly fluorinated alkyl substances (PFAS), and polybrominated diphenyl ethers (PBDEs). Dioxins
104 and DL-PCBs are structurally similar polycyclic, halogenated aromatic chemicals (**Figure 1**) that
105 share a common mechanism of action via binding to the intracellular aryl hydrocarbon receptor
106 (AhR).

Sex-specific links between pollutants and diabetes

107 The dioxin family consists of oxygen-linked chlorinated benzene rings that vary in position
108 and number of halogens (**Figure 1A**). The toxicity of different dioxin compounds is related to their
109 pattern of halogenation. For example, TCDD (2,3,7,8-tetrachlorodibenzo-*p*-dioxin; **Figure 1A**) is
110 the most toxic and stable dioxin, with a half-life of 7-11 years in humans (D.-H. Lee et al. 2014;
111 Schecter et al. 2006; Srogi 2008). During much of the 1900's TCDD was produced as a
112 contaminant from industrial processing, but was eventually recognized as a health hazard to
113 industrial workers (Calvert et al. 1999; Cappelletti et al. 2016; Kyle Steenland et al. 1999; Vena et
114 al. 1998) and local communities (Huang et al. 2015; Karnes, Winquist, and Steenland 2014; Chang
115 et al. 2010; Ukropec et al. 2010; MacNeil et al. 2009; Karouna-Renier et al. 2007; Cranmer et al.
116 2000). Widespread distribution of TCDD occurred during the Vietnam war when Agent Orange,
117 a defoliate contaminated with TCDD, was used by the US military as part of a chemical warfare
118 program known as Operation Ranch Hand (Henriksen, Gary et al. 1997; Kim et al. 2003;
119 Longnecker and Michalek 2000; Michalek and Pavuk 2008; K. Steenland et al. 2001).
120 Furthermore, in 1976 an industrial disaster in Seveso, Italy released tonnes of nearly pure TCDD
121 gas into the local regions. Other dioxins commonly considered within the literature and included
122 in our review are 1,2,3,6,7,8-Hexachlorodibenzo-*p*-dioxin (HxCDD), 1,2,3,4,6,7,8-
123 Heptachlorodibenzo-*p*-dioxin (HpCDD), and 1,2,3,4,6,7,8,9-Octachlorodibenzo-*p*-dioxin
124 (OCDD) (**Figure 1A**). However, TCDD has been more widely studied for sub-lethal exposure
125 effects compared to other dioxins, as it was involved in more disaster and occupational exposure
126 events (Birnbaum and Couture 1988; Couture, Elwell, and Birnbaum 1988; Rozman 1999;
127 Schwetz et al. 1973; Viluksela et al. 1997; 1998).

128 The PCB family includes 209 separate congeners, 12 of which are considered DL-PCBs
129 (US Environmental Protection Agency 2003) (**Figure 1B**). PCBs are exceptionally stable, heat
130 resistant and non-flammable, and were intentionally manufactured between the 1920's to 70's for
131 electrical components, hydraulic fluids, lubricants, and industrial insulating or heat-exchange
132 fluids (White and Birnbaum 2009; Wikoff, Fitzgerald, and Birnbaum 2012). Disaster exposure to
133 DL-PCBs occurred in Michigan, US in 1973 when animal feed accidentally contaminated with PCBs
134 was distributed to farms (Vasiliu et al. 2006). Additionally, between 1978 to 1979, rice-bran oil
135 contaminated with PCBs and PCDFs poisoned thousands of inhabitants of Yucheng, Taiwan with
136 "oil disease" (S. L. Wang et al. 2008). These incidents of disaster exposure to DL-PCBs, albeit far
137 from isolated events, are the most widely studied when considering pathologies related to
138 metabolic diseases (Hens and Hens 2017; Taylor, David 2001).

139

140 **1.4 Evidence for a causal link between dioxin exposure and diabetes**

141 Dioxins and DL-PCBs act as ligands for AhR, leading to upregulation of target genes such as
142 cytochrome P450 (*Cyp*)*1a1*. Our lab showed that TCDD-exposed mice have persistent CYP1A1
143 upregulation in pancreatic islets, where insulin-secreting beta cells reside, a sign that TCDD
144 reaches the endocrine pancreas *in vivo* (Ibrahim et al. 2020). A single high-dose injection of TCDD
145 in mice caused hypoinsulinemia *in vivo* for up to 6 weeks and reduced glucose-stimulated insulin
146 secretion in islets *ex vivo* (Hoyeck et al. 2020; Ibrahim et al. 2020). Furthermore, direct TCDD
147 exposure *in vitro* caused *CYP1A1* upregulation and suppressed glucose-induced insulin secretion
148 in both mouse and human islets (Ibrahim et al. 2020; Kurita et al. 2009). These data suggest that
149 TCDD may be driving metabolic dysfunction, at least in part, via direct effects on pancreatic islets.

Sex-specific links between pollutants and diabetes

150 There is also emerging evidence that female rodents are more susceptible to the
151 diabetogenic effects of dioxins compared with male rodents (Matteo et al. 2020; Hoyeck et al.
152 2020; Naville et al. 2013). For example, while a single high-dose injection of TCDD at 8 weeks
153 of age caused persistent hypoinsulinemia in both male and female mice *in vivo*, only male mice
154 had increased insulin sensitivity and altered islet cell composition, and only female mice developed
155 transient hyperglycemia following TCDD exposure (Hoyeck et al. 2020). Consistent with the
156 single high-dose model, repeated low-dose TCDD exposure for 12 weeks starting at 6-8 weeks of
157 age both exacerbated and accelerated the onset of high fat diet (HFD)-induced glucose intolerance
158 in female but not male mice (Matteo et al. 2020). Naville et al. (2013) also observed exacerbated
159 HFD-induced glucose intolerance in female, but not male mice, exposed chronically from 5-10
160 weeks of age to a low-dose mixture of pollutants that included TCDD.

161 Considering the sex differences reported in mouse models, we hypothesized that there may
162 also be sex-specific associations between dioxin/DL pollutant exposure and T2D incidence in
163 humans. To explore this question, we performed a meta-analysis of epidemiological studies that
164 assessed exposure to either dioxins or DL-PCBs and incidence of T2D or metabolic syndrome.
165 We also considered the mode of pollutant exposure, where a disaster event (e.g. Seveso) reflects
166 abrupt, high-dose exposure versus a non-disaster chronic exposure scenario, ranging from low-
167 dose background levels (e.g. general population) to higher-dose exposure (e.g. occupational
168 settings). Importantly, abrupt exposure via disaster can lead to a prolonged period of high
169 concentration pollutant exposure due to the long half-life of dioxins and DL pollutants (Fisher,
170 1999).

171

172 **2. Methods**

173 **2.1 Literature search strategy**

174 We conducted a literature search for studies examining POPs, dioxins, or benzofurans and diabetes
175 in humans via PubMed on May 17, 2021. MeSH terms, substance registry numbers, and keywords
176 were used. The search terms can be found in **Supplementary Table 1**. Review articles were
177 excluded unless original data were presented. A filter for human studies was applied for studies
178 published before 2020. A simple secondary search was conducted in Google Scholar to supplement
179 the PubMed search.

180 Records were screened by two independent reviewers using the following inclusion criteria: the
181 population included human adults exposed to dioxins, DL-PCBs, or benzofurans, and an outcome
182 of T2D, hyperglycemia, prediabetes, metabolic syndrome, or glucose intolerance.

183

184 **2.2 Data extraction**

185 Data extracted from each study included: authors, publication year, cohort location, type of study
186 (e.g. cohort, cross-sectional, case-control), sample size, type of exposure (disaster or non-disaster),
187 specific pollutant(s) measured, diabetes assessment method, outcome determined, considerations
188 made for sex-specific associations (whether data was stratified by sex, unstratified by sex, or only
189 considered 1 sex), analysis strategy (e.g. covariates), and measures of association (see **Table 1** for

Sex-specific links between pollutants and diabetes

190 key details and **Supplementary Table 2** for additional information on each study). Study quality
191 was determined by 2 independent assessors. All studies included in the meta-analysis were
192 assessed for publication bias via funnel plot (**Supplementary Figures 1-3**). Primary summary
193 measures were usually stated as risk ratio (RR) or odds ratio (OR), however incidence rate ratio
194 (IRR), and incidence density ratio (IDR) association measures were also included.

195

196 **2.3 Meta-analysis strategy**

197 All forest plots included in the meta-analysis were accompanied with I^2 -statistics to explore
198 for heterogeneity (Borenstein et al. 2009). All analyses were performed using a random-effects
199 model with OR/RR/IDR summary measures and 95% confidence intervals (CIs). We first
200 performed grouped analysis combining both sexes in all stratified and non-stratified studies. Then,
201 sex-specific associations between T2D incidence and contaminant exposure were evaluated using
202 sub-group analysis via forest plot for male and female populations separately. Lastly, to accurately
203 assess sex-specific susceptibility to T2D within a population, we modeled the difference in the
204 measures of association [Female (OR)] – [Male (OR)] in each sex-stratified study to generate a
205 summary risk difference (RD). Standard errors were calculated based on the 95% CIs from each
206 study.

207 We also further investigated heterogeneity in the measures of association across mode of
208 exposure (non-disaster versus disaster), type of pollutant, and geographical location (continent).
209 “Non-disaster exposure” was defined to include long-term background low-level exposure typical
210 of the general population (for example through consumption of high fat animal products), chronic
211 “moderate-level” residential exposure in a contaminated region, or long-term high-level
212 occupational exposure (typically military or industrial). “Disaster-exposure” was defined as
213 abrupt, high-level exposure from sudden release of pollutant(s), as through industrial accident or
214 food contamination.

215 We examined the contribution of publication bias and small study size within the available
216 literature with funnel plots and Egger’s tests (Borenstein et al. 2009) (**Supplementary Figures 1-**
217 **3**). All analyses were performed using the STATA(SE) 16 statistical software (StataCorp.
218 2019. *Stata Statistical Software: Release 16*. College Station, TX: StataCorp LLC)

219

220 **3. Results**

221 **3.1 Summary of articles**

222 Our literature search identified 863 articles, of which 81 met our inclusion criteria (**Figure 2**).
223 Studies were excluded based on the following criteria: (1) studies that did not examine POPs (528
224 articles); (2) studies that did not examine dioxins or DL POPs (64 articles); (3) studies that did not
225 examine T2D or related metabolic outcomes (105 articles); (4) animal studies or early life exposure
226 studies (37 articles); (5) duplicate studies (48 articles). The age range of study populations in the
227 81 included studies was >20-59 years (**Supplementary Table 2**).

Sex-specific links between pollutants and diabetes

228 Of the 81 articles that initially met our inclusion criteria, the majority (56%, 45 articles)
229 examined sex-unstratified data (i.e. combined male and female) and only 13 studies stratified data
230 by sex (**Figure 2**). There were also 13 studies with data from males only and 10 studies with data
231 from females only (**Figure 2A**). We proceeded to perform our meta-analysis on the 18 articles that
232 either stratified data by sex or reported data from 1 sex and also reported risk association values
233 (Bertazzi et al. 2001; Han et al. 2020; Huang et al. 2015; 2017; Silverstone et al. 2012; Turyk et
234 al. 2009; Vasiliu et al. 2006; Wang et al. 2008; Cappelletti et al. 2016; Kang et al. 2006; Kim et
235 al. 2003; Michalek and Pavuk 2008; Persky et al. 2012; K. Steenland et al. 2001; Yamamoto et al.
236 2015; Berg et al. 2021; Rylander et al. 2015; Zong et al. 2018). Studies were excluded from meta-
237 analysis if they (1) presented data that was not stratified by sex (45 articles); (2) did not report
238 measures of association (i.e., OR/RR/IDR) (10 articles); (3) repeated measures within an already
239 studied population (of these, only the most recent study was included) (6 articles); (4) did not
240 determine exposure by serum pollutant concentrations (1 article); and (5) did not use an
241 appropriate reference group (1 article) (**Figure 2A**). All studies reported clinical or self-reported
242 T2D or metabolic syndrome diagnosis; most studies of the latter category medically verified self-
243 reported cases. Publication bias using funnel plots and Egger's test was found to be significant for
244 all studies ($p = 0.049$) (**Supplementary Figure 1**). However, this significance was driven by the
245 female only data ($p = 0.025$) (**Supplementary Figure 2**). Male only data showed no publication
246 bias (**Supplementary Figure 3**).

247 The final 18 studies were subsequently categorized by mode of chemical exposure.
248 Interestingly, of the studies conducted on disaster-exposed populations, 57% were stratified by
249 sex, 29% contained female-only data, 14% were unstratified and none examined male-only data
250 (**Figure 2B**). In contrast, for studies examining non-disaster exposure to dioxin or DL-PCBs, the
251 majority reported sex-unstratified data (59%), followed by male-only data as the second most
252 predominant (18%), and sex-stratified or female-only data composing only 12% and 11% of
253 studies, respectively (**Figure 2B**). Of the 18 articles included in our meta-analysis, 15 articles were
254 non-disaster exposure (7 male-only, 5 stratified, 3 female-only) and 3 articles were disaster
255 exposure, all of which reported sex-stratified data (**Figure 2**).

256

257 **3.2 Both sexes show a significant association between pollutant exposure and T2D**

258 When examining pooled data from all 18 studies, we found that both sexes showed a significant
259 association between pollutant exposure and T2D (**Figure 3, Table 2**). Males showed a 1.95x
260 increased summary risk between exposed and reference populations (95% CI = 1.56-2.43) and
261 females showed a 1.78x increased risk (95% CI = 1.37-2.31) relative to control populations
262 (**Figure 3**). Interestingly, variance due to heterogeneity was significant between the sexes ($I^2 =$
263 51.9% , $p = 0.001$), indicating that additional variables contribute to determining this association.
264 There was also no significant difference between the sexes when we examined the calculated RD
265 within studies that reported sex-stratified data (RD = 1.18, 95% CI = 0.75-1.87) (**Figure 4**).

266 We next looked for sex differences when studies were further subcategorized by population
267 location or type of pollutant (**Table 2**). There were no clear sex differences within either of these
268 subcategories, with the exception of DL-PCBs, which showed a significant association with T2D
269 in females (OR = 1.89, 95% CI = 1.16-3.09; 4 studies), but not males (OR = 1.45, 95% CI = 0.63-
270 3.38; 3 studies) (**Table 2**). However, most of these subcategories had too few studies to rule out
271 potential sex differences.

Sex-specific links between pollutants and diabetes

272 3.3 Sex differences when considering mode of exposure

273 Our meta-analysis revealed clear sex-specific associations when we categorized studies by mode
274 of exposure (i.e., disaster versus non-disaster). Males exposed to pollutants via non-disaster
275 showed a significant 2.02x increased risk for T2D incidence relative to control populations (95%
276 CI = 1.58-2.59), compared to a non-significant 1.59x increased risk when exposed via disaster
277 (95% CI = 0.95-2.66) (**Figure 5A, Table 2**). Females show the opposite trend, with a modest 1.40x
278 increased risk associated with non-disaster exposure (95% CI = 1.17-1.68) compared to a
279 pronounced 2.86x increased risk associated with disaster exposure (95% CI = 1.70-4.84) (**Figure**
280 **5B, Table 2**). Therefore, in disaster exposure conditions, the increased risk for T2D is primarily
281 driven by a significant increase in the OR for females but not males.

282 To further investigate these sex differences, we performed a meta-analysis on only sex-
283 stratified studies using the calculated differences in association measures between the sexes within
284 the same population (**Figure 6**). As expected, there was no difference in the risk difference
285 between the sexes when considering non-disaster exposure studies (OR = 0.93, 95% CI = 0.57-
286 1.52). Interestingly, there was a 1.95x increase in risk difference between the sexes when only
287 disaster-exposure studies were analyzed (95% CI = 0.99-3.84) (**Figure 6**).

288

289 4. Discussion

290 A total of 18 articles were included in this meta-analysis to investigate whether there are sex-
291 specific associations between dioxin or DL-PCB exposure and T2D incidence in adult populations.
292 When we considered all studies together, there were no sex differences in this association, but sex
293 differences emerged when data was further stratified by mode of exposure. We found that the
294 strength of association between exposure to dioxin/DL-PCBs via disaster and incident diabetes
295 was stronger in females than males. Importantly, this sex difference was consistent when we
296 calculated the summary OR for females versus males as well as the risk difference within matched
297 populations. To our knowledge, mode of exposure has not previously been considered when
298 examining sex differences in epidemiology literature on pollutant exposure.

299 Our review of the epidemiological literature revealed important gaps that limited our meta-analysis
300 of sex-specific associations between pollutant exposure and diabetes. Sex-stratified studies
301 accounted for only 16% of the literature examining links between diabetes and dioxin or DL-PCB
302 exposure. Furthermore, most studies (56%) in the general population did not stratify data by sex,
303 which limited our analysis of non-disaster exposure. Additional research in sex-stratified
304 populations is essential to confirm the sex differences revealed by our meta-analysis in disaster-
305 exposed populations and to elucidate potential sex differences in the general population. Female
306 only data showed publication bias, whereas male only data did not, which strengthens our assertion
307 that sex-differences need to be considered in future epidemiological studies in the general
308 population. It would also be of interest to understand if the pollutant burden differs between sexes
309 following disaster-exposure, as this could contribute to the sex differences found in our meta-
310 analyses. A more comprehensive meta-analysis that also considers other POPs, such as
311 organochlorine pesticides or perfluorinated chemicals, could facilitate a more complete picture of
312 the literature and identify potential sex-specific associations. In addition, carefully controlled
313 studies in model systems can provide valuable insight into potential mechanistic links, different

Sex-specific links between pollutants and diabetes

314 modes of pollutant exposure (e.g. chronic low-dose versus single high-dose), and sex-specific
315 diabetes pathogenesis.

316 Despite limitations in sex-stratified epidemiological literature, we noted parallels between
317 the human and rodent data that strengthen our hypothesis that females may be more prone to
318 dioxin/DL pollutant-induced diabetes than males. For example, in human populations with
319 disaster-exposure to dioxins/DL-PCBs, females had a higher risk for T2D than males. The rodent
320 study that best models a disaster exposure scenario is a single, high-dose TCDD exposure protocol,
321 in which TCDD-exposed female but not male mice developed transient hyperglycemia compared
322 to vehicle-exposed controls (Hoyeck et al. 2020). To mimic the background-level exposure that
323 humans experience in non-disaster settings, a repeated low-dose chemical exposure protocol in
324 rodents is often used. Our lab reported that low-dose TCDD exposure for 12 weeks did not disrupt
325 glucose homeostasis in male or female mice fed a chow diet (Matteo et al. 2020). However, TCDD
326 accelerated the onset of high fat diet-induced hyperglycemia in female mice but not male mice
327 (Matteo et al. 2020). The epidemiology data in non-disaster cohorts showed a consistent increased
328 risk of diabetes incidence in both males and females but these studies do not consider BMI or diet
329 composition, which may be important covariates contributing to sex-specific associations. Another
330 consideration is that low-dose TCDD exposure for 12 weeks in mice is far from the life-long
331 exposure experienced by humans. So while male mice did not develop hyperglycemia in this
332 timeframe, longer-term studies are certainly warranted given the clear epidemiological association
333 between background level TCDD exposure and increased diabetes incidence in males.

334 One potential mechanism for the effects of dioxin/DL-PCB exposure on glucose
335 homeostasis is AhR activation in metabolic tissues, including pancreatic islets (Ibrahim et al.
336 2020). Interestingly, AhR upregulates CYP enzyme isoforms in a sex-specific manner (Kwekel et
337 al. 2010; L. Yang and Li 2012) and several studies have reported higher levels of CYP enzymes,
338 including CYP1A1, CYP1A2, CYP1B1 in females compared to males in mice, pigs, and humans
339 (Skaanild and Friis 1999; Finnström et al. 2002; Lu et al. 2013). In addition, Roh et al. (2015)
340 reported that in humans, females had significantly higher AhR ligand activity (including both
341 exogenous and endogenous ligands) than males. There was also a significant association between
342 increased serum AhR ligand activity and T2D (Roh et al. 2015). The AhR pathway is involved in
343 multiple essential cellular functions, including xenobiotic metabolism, cell cycle, inflammation,
344 circadian rhythm, adhesion and migration, cellular plasticity, and estrogen receptor signaling
345 (Larigot et al. 2018; Nebert 2017; Quintana and Sherr 2013; Bock 2018; Kung, Murphy, and White
346 2009; Anderson et al. 2013; Lu et al. 2013; Swedenborg and Pongratz 2010). Exploring potential
347 mechanisms underlying sex differences in AhR activation and CYP enzyme expression are beyond
348 the scope of this article, but deserve further study.

349 Age of exposure is an important covariate that we could not control for in our meta-
350 analysis, but we limited our inclusion criteria to studies on adult populations to minimize
351 variability. Childhood exposure to dioxins and DL-PCBs is associated with myriad complications
352 that can present at birth (Tawara et al. 2009; Nghiem et al. 2019) and childhood (Nguyen et al.
353 2018; Nishijo et al. 2012; Tai et al. 2016; Tran et al. 2016; Pham et al. 2020; Z. Wang et al. 2019;
354 Ames et al. 2019), and subsequently impact adult health. There are also interesting sex-specific
355 effects reported in these populations (Nishijo et al. 2012; Nguyen et al. 2018; Tai et al. 2016; Pham
356 et al. 2020; Z. Wang et al. 2019; Ames et al. 2019), further emphasizing the need for sex-stratified
357 data in the epidemiology literature. However, the current study was intentionally designed to focus
358 on the association between adult exposure and adult presentation of T2D.

Sex-specific links between pollutants and diabetes

359 In summary, this review compared articles that examined associations between T2D
360 incidence and pollutant exposure from either a disaster or non-disaster setting, which included high
361 occupational background exposure and low ubiquitous background exposure. Females showed
362 statistically significant associations between dioxin/DL-PCB exposure and increased diabetes risk
363 under disaster conditions, whereas males did not. More epidemiological studies with sex-stratified
364 data are needed to confirm this observation and further investigate potential sex differences within
365 the general population. Collectively, this work will help to inform legislation and policy-makers
366 on taking measures towards pollutant control.

367

368 **Acknowledgements**

369 We thank Myriam Hoyeck and Erin Mulvihill for thoughtful discussions of the literature and
370 assistance with literature searches and article classification. We thank Kayleigh Rick for her
371 assistance with the literature search. We thank Geronimo Matteo for his assistance in article
372 preparation. This research was supported by a Canadian Institutes of Health Research (CIHR)
373 Project Grant (#PJT-2018-159590).

374

375 **Conflict of Interest Statement**

376 *The authors declare they have no actual or potential competing financial interests.*

377

378

379 **References**

380 Al-Othman, Abdulaziz A., Sherif H. Abd-Alrahman, and Nasser M. Al-Daghri. 2015. "DDT and
381 Its Metabolites Are Linked to Increased Risk of Type 2 Diabetes among Saudi Adults: A
382 Cross-Sectional Study." *Environmental Science and Pollution Research* 22 (1): 379–86.
383 <https://doi.org/10.1007/s11356-014-3371-0>.

384 Al-Othman, Abdulaziz, Sobhy Yakout, Sherif H. Abd-Alrahman, and Nasser M. Al-Daghri.
385 2014. "Strong Associations between the Pesticide Hexachlorocyclohexane and Type 2
386 Diabetes in Saudi Adults." *International Journal of Environmental Research and Public
387 Health* 11 (9): 8984–95. <https://doi.org/10.3390/ijerph110908984>.

388 Ames, Jennifer, Marcella Warner, Claudia Siracusa, Stefano Signorini, Paolo Brambilla, Paolo
389 Mocarelli, and Brenda Eskenazi. 2019. "Prenatal Dioxin Exposure and Neuropsychological
390 Functioning in the Seveso Second Generation Health Study." *International Journal of
391 Hygiene and Environmental Health* 222 (3): 425–33.
392 <https://doi.org/10.1016/j.ijheh.2018.12.009>.

393 Aminov, Zafar, Richard Haase, and David O. Carpenter. 2016. "Diabetes in Native Americans:
394 Elevated Risk as a Result of Exposure to Polychlorinated Biphenyls (PCBs)." *Reviews on
395 Environmental Health* 31 (1): 115–19. <https://doi.org/10.1515/reveh-2015-0054>.

396 Aminov, Zafar, Richard Haase, Robert Rej, Maria J. Schymura, Azara Santiago-Rivera, Gayle

Sex-specific links between pollutants and diabetes

- 397 Morse, Anthony de Caprio, and David O. Carpenter. 2016. “Diabetes Prevalence in
398 Relation to Serum Concentrations of Polychlorinated Biphenyl (PCB) Congener Groups and
399 Three Chlorinated Pesticides in a Native American Population.” *Environmental Health*
400 *Perspectives* 124 (9): 1376–83. <https://doi.org/10.1289/ehp.1509902>.
- 401 Anderson, George, Timothy V. Beischlag, Manlio Vinciguerra, and Gianluigi Mazzocchi. 2013.
402 “The Circadian Clock Circuitry and the AHR Signaling Pathway in Physiology and
403 Pathology.” *Biochemical Pharmacology* 85 (10): 1405–16.
404 <https://doi.org/10.1016/j.bcp.2013.02.022>.
- 405 Arrebola, Juan P., José Pumarega, Magda Gasull, Mariana F. Fernandez, Piedad Martin-Olmedo,
406 José M. Molina-Molina, María Fernández-Rodríguez, Miquel Porta, and Nicolás Olea.
407 2013. “Adipose Tissue Concentrations of Persistent Organic Pollutants and Prevalence of
408 Type 2 Diabetes in Adults from Southern Spain.” *Environmental Research* 122: 31–37.
409 <https://doi.org/10.1016/j.envres.2012.12.001>.
- 410 Azandjeme, Colette S., Hélène Delisle, Benjamin Fayomi, Pierre Ayotte, Francois Djrolo,
411 Dismand Houinato, and Michèle Bouchard. 2014. “High Serum Organochlorine Pesticide
412 Concentrations in Diabetics of a Cotton Producing Area of the Benin Republic (West
413 Africa).” *Environment International* 69: 1–8. <https://doi.org/10.1016/j.envint.2014.04.002>.
- 414 Berg, Vivian, Dolley Charles, Ingvar A. Bergdahl, Therese H. Nøst, Torkjel M. Sandanger,
415 Andreas Tornevi, Sandra Huber, Ole Martin Fuskevåg, and Charlotta Rylander. 2021. “Pre-
416 and Post-Diagnostic Blood Profiles of Chlorinated Persistent Organic Pollutants and
417 Metabolic Markers in Type 2 Diabetes Mellitus Cases and Controls; a Pilot Study.”
418 *Environmental Research* 195 (February). <https://doi.org/10.1016/j.envres.2021.110846>.
- 419 Bertazzi, Pier Alberto, Dario Consonni, Silvia Bachetti, Maurizia Rubagotti, Andrea Baccarelli,
420 Carlo Zocchetti, and Angela C. Pesatori. 2001. “Health Effects of Dioxin Exposure: A 20-
421 Year Mortality Study.” *American Journal of Epidemiology* 153 (11): 1031–44.
422 <https://doi.org/10.1093/aje/153.11.1031>.
- 423 Birnbaum, L.S., and L.A. Couture. 1988. “Disposition of Octachlorodibenzo-p-Dioxin (OCDD)
424 in Male Rats.” *Toxicology and Applied Pharmacology* 93 (1): 22–30.
425 [https://doi.org/10.1016/0041-008X\(88\)90022-1](https://doi.org/10.1016/0041-008X(88)90022-1).
- 426 Bock, Karl Walter. 2018. “From TCDD-Mediated Toxicity to Searches of Physiologic AHR
427 Functions.” *Biochemical Pharmacology* 155 (June): 419–24.
428 <https://doi.org/10.1016/j.bcp.2018.07.032>.
- 429 Borenstein, Michael, Larry V. Hedges, Julian P.T. Higgins, and Hannah R. Rothstein. 2009.
430 *Introduction to Meta-Analysis*. 1st ed. John Wiley & Sons Ltd.
- 431 Butalia, Sonia, Gilaad G. Kaplan, Bushra Khokhar, and Doreen M. Rabi. 2016. “Environmental
432 Risk Factors and Type 1 Diabetes: Past, Present, and Future.” *Canadian Journal of*
433 *Diabetes* 40 (6): 586–93. <https://doi.org/10.1016/j.jcjd.2016.05.002>.
- 434 Calvert, Geoffrey M., Marie Haring Sweeney, James Deddens, and David K. Wall. 1999.
435 “Evaluation of Diabetes Mellitus, Serum Glucose, and Thyroid Function among United
436 States Workers Exposed to 2,3,7,8-Tetrachlorodibenzo-p-Dioxin.” *Occupational and*
437 *Environmental Medicine* 56 (4): 270–76. <https://doi.org/10.1136/oem.56.4.270>.

Sex-specific links between pollutants and diabetes

- 438 Cappelletti, Roberto, Marcello Ceppi, Justina Claudatus, and Valerio Gennaro. 2016. “Health
439 Status of Male Steel Workers at an Electric Arc Furnace (EAF) in Trentino, Italy.” *Journal*
440 *of Occupational Medicine and Toxicology* 11 (1): 1–10. [https://doi.org/10.1186/s12995-](https://doi.org/10.1186/s12995-016-0095-8)
441 016-0095-8.
- 442 Carpenter, David O. 2008. “Environmental Contaminants as Risk Factors for Developing
443 Diabetes.” *Reviews on Environmental Health* 23 (1): 59–74.
444 <https://doi.org/10.1515/REVEH.2008.23.1.59>.
- 445 Chang, Jung Wei, Hsiu Ling Chen, Huey Jen Su, Po Chi Liao, How Ran Guo, and Ching Chang
446 Lee. 2010. “Dioxin Exposure and Insulin Resistance in Taiwanese Living near a Highly
447 Contaminated Area.” *Epidemiology* 21 (1): 56–61.
448 <https://doi.org/10.1097/EDE.0b013e3181c2fc6e>.
- 449 Chen, Chunguang, Christian M. Cohrs, Julia Stertmann, Robert Bozsak, and Stephan Speier.
450 2017. “Human Beta Cell Mass and Function in Diabetes: Recent Advances in Knowledge
451 and Technologies to Understand Disease Pathogenesis.” *Molecular Metabolism* 6 (9): 943–
452 57. <https://doi.org/10.1016/j.molmet.2017.06.019>.
- 453 Couture, L.A., M.R. Elwell, and L.S. Birnbaum. 1988. “Dioxin-like Effects Observed in Male
454 Rats Following Exposure to Octachlorodibenzo-p-Dioxin (OCDD) during a 13-Week
455 Study.” *Toxicology and Applied Pharmacology* 93 (1): 31–46. [https://doi.org/10.1016/0041-](https://doi.org/10.1016/0041-008X(88)90023-3)
456 008X(88)90023-3.
- 457 Cranmer, Morris, Shirley Louie, Richard H Kennedy, Philip A Kern, and Vivian A Fonseca.
458 2000. “With Hyperinsulinemia and Insulin Resistance” 436: 431–36.
- 459 Eslami, Bita, Kazem Naddafi, Noushin Rastkari, Batool Hossein Rashidi, Abolghasem
460 Djazayeri, and Hossein Malekafzali. 2016. “Association between Serum Concentrations of
461 Persistent Organic Pollutants and Gestational Diabetes Mellitus in Primiparous Women.”
462 *Environmental Research* 151: 706–12. <https://doi.org/10.1016/j.envres.2016.09.002>.
- 463 Everett, Charles J., and Eric M. Matheson. 2010. “Biomarkers of Pesticide Exposure and
464 Diabetes in the 1999-2004 National Health and Nutrition Examination Survey.”
465 *Environment International* 36 (4): 398–401. <https://doi.org/10.1016/j.envint.2010.02.010>.
- 466 Everett, Charles J., and Olivia M. Thompson. 2012. “Associations of Dioxins, Furans and
467 Dioxin-like PCBs with Diabetes and Pre-Diabetes: Is the Toxic Equivalency Approach
468 Useful?” *Environmental Research* 118: 107–11.
469 <https://doi.org/10.1016/j.envres.2012.06.012>.
- 470 Finnström, N., B. Ask, M. L. Dahl, M. Gadd, and A. Rane. 2002. “Intra-Individual Variation and
471 Sex Differences in Gene Expression of Cytochromes P450 in Circulating Leukocytes.”
472 *Pharmacogenomics Journal* 2 (2): 111–16. <https://doi.org/10.1038/sj.tpj.6500086>.
- 473 Fisher, B.E. 1999. “Most Unwanted: Persistent Organic Pollutants.” *Environmental Health*
474 *Perspectives* 107 (1): A18–23.
- 475 Franks, Paul W., and Mark I. McCarthy. 2016. “Exposing the Exposures Responsible for Type 2
476 Diabetes and Obesity.” *Science* 354 (6308): 69–73. <https://doi.org/10.1126/science.aaf5094>.
- 477 Gasull, Magda, José Pumarega, María Téllez-Plaza, Conxa Castell, Ricard Tresserras, Duk Hee

Sex-specific links between pollutants and diabetes

- 478 Lee, and Miquel Porta. 2012. “Blood Concentrations of Persistent Organic Pollutants and
479 Prediabetes and Diabetes in the General Population of Catalonia.” *Environmental Science
480 and Technology* 46 (14): 7799–7810. <https://doi.org/10.1021/es300712g>.
- 481 Gillett, Melissa J. 2009. “International Expert Committee Report on the Role of the A1C Assay
482 in the Diagnosis of Diabetes.” *Diabetes Care* 32 (7): 1327–34.
- 483 Haines, Douglas A., Cheryl Khoury, Gurusankar Saravanabhavan, Kate Werry, Mike Walker,
484 and Morie Malowany. 2017. “Human Biomonitoring Reference Values Derived for
485 Persistent Organic Pollutants in Blood Plasma from the Canadian Health Measures Survey
486 2007–2011.” *International Journal of Hygiene and Environmental Health* 220 (4): 744–56.
487 <https://doi.org/10.1016/j.ijheh.2017.03.004>.
- 488 Haines, Douglas A., and Janine Murray. 2012. “Human Biomonitoring of Environmental
489 Chemicals—Early Results of the 2007–2009 Canadian Health Measures Survey for Males and
490 Females.” *International Journal of Hygiene and Environmental Health* 215 (2): 133–37.
491 <https://doi.org/10.1016/j.ijheh.2011.09.008>.
- 492 Han, Xu, Lingling Meng, Yingming Li, An Li, Mary E. Turyk, Ruiqiang Yang, Pu Wang, et al.
493 2020. “Associations between the Exposure to Persistent Organic Pollutants and Type 2
494 Diabetes in East China: A Case-Control Study.” *Chemosphere* 241.
495 <https://doi.org/10.1016/j.chemosphere.2019.125030>.
- 496 Hectors, T. L.M., C. Vanparys, K. Van Der Ven, G. A. Martens, P. G. Jorens, L. F. Van Gaal, A.
497 Covaci, W. De Coen, and R. Blust. 2011. “Environmental Pollutants and Type 2 Diabetes:
498 A Review of Mechanisms That Can Disrupt Beta Cell Function.” *Diabetologia* 54 (6):
499 1273–90. <https://doi.org/10.1007/s00125-011-2109-5>.
- 500 Henriksen, Gary, L., Norma S. Ketchum, Joel E. Michalek, and A. Swaby, James. 1997. “Serum
501 Dioxin and Diabetes Mellitus in Veterans of Operation Ranch Hand.” *Annals of
502 Epidemiology* 8 (3): 252–58. [https://doi.org/10.1016/S1047-2797\(00\)00218-0](https://doi.org/10.1016/S1047-2797(00)00218-0).
- 503 Hens, Bart, and Luc Hens. 2017. “Persistent Threats by Persistent Pollutants: Chemical Nature,
504 Concerns and Future Policy Regarding PCBs—What Are We Heading For?” *Toxics* 6 (1):
505 1–21. <https://doi.org/10.3390/toxics6010001>.
- 506 Hoyeck, Myriam P., Hannah Blair, Muna Ibrahim, Shivani Solanki, Mariam Elsaywy, Arina
507 Prakash, Kayleigh R.C. Rick, Geronimo Matteo, Shannon O’Dwyer, and Jennifer E. Bruin.
508 2020. “Long-Term Metabolic Consequences of Acute Dioxin Exposure Differ between
509 Male and Female Mice.” *Scientific Reports* 10 (1): 1–10. [https://doi.org/10.1038/s41598-
510 020-57973-0](https://doi.org/10.1038/s41598-020-57973-0).
- 511 Huang, Chien Yuan, Ching Chang Lee, Jung Wei Chang, Ya Yun Cheng, Yau Chang Kuo, How
512 Ran Guo, and Chen Long Wu. 2017. “Association Between Dioxin and Metabolic
513 Syndrome by Age and Sex in an Endemic Area of Exposure in Taiwan.” *Epidemiology
514 (Cambridge, Mass.)* 28 (October): S82–88.
515 <https://doi.org/10.1097/EDE.0000000000000697>.
- 516 Huang, Chien Yuan, Cheng Long Wu, Yi Ching Yang, Jung Wei Chang, Yau Chang Kuo, Ya
517 Yun Cheng, Jin Shang Wu, Ching Chang Lee, and How Ran Guo. 2015. “Association
518 between Dioxin and Diabetes Mellitus in an Endemic Area of Exposure in Taiwan a

Sex-specific links between pollutants and diabetes

- 519 Population-Based Study.” *Medicine (United States)* 94 (42): e1730.
520 <https://doi.org/10.1097/MD.0000000000001730>.
- 521 Ibrahim, Muna, Erin M. MacFarlane, Geronimo Matteo, Myriam P. Hoyeck, Kayleigh R.C.
522 Rick, Salar Farokhi, Catherine M. Copley, Shannon O’Dwyer, and Jennifer E. Bruin. 2020.
523 “Functional Cytochrome P450 1A Enzymes Are Induced in Mouse and Human Islets
524 Following Pollutant Exposure.” *Diabetologia* 63 (1): 162–78.
525 <https://doi.org/10.1007/s00125-019-05035-0>.
- 526 Jaacks, Lindsay M., Sudesh Yadav, Parinya Panuwet, Sushil Kumar, Girish H. Rajacharya,
527 Cierra Johnson, Ishita Rawal, et al. 2019. “Metabolite of the Pesticide DDT and Incident
528 Type 2 Diabetes in Urban India.” *Environment International* 133 (May): 105089.
529 <https://doi.org/10.1016/j.envint.2019.105089>.
- 530 Kahn, S. E. 2003. “The Relative Contributions of Insulin Resistance and Beta-Cell Dysfunction
531 to the Pathophysiology of Type 2 Diabetes.” *Diabetologia* 46 (1): 3–19.
532 <https://doi.org/10.1007/s00125-002-1009-0>.
- 533 Kahn, S. E., S. Zraika, K. M. Utzschneider, and R. L. Hull. 2009. “The Beta Cell Lesion in Type
534 2 Diabetes: There Has to Be a Primary Functional Abnormality.” *Diabetologia* 52 (6):
535 1003–12. <https://doi.org/10.1007/s00125-009-1321-z>.
- 536 Kang, Han K., Nancy A. Dalager, Larry L. Needham, Donald G. Patterson, Peter S.J. Lees,
537 Katherine Yates, and Genevieve M. Matanoski. 2006. “Health Status of Army Chemical
538 Corps Vietnam Veterans Who Sprayed Defoliant in Vietnam.” *American Journal of*
539 *Industrial Medicine* 49 (11): 875–84. <https://doi.org/10.1002/ajim.20385>.
- 540 Karnes, Conny, Andrea Winqvist, and Kyle Steenland. 2014. “Incidence of Type II Diabetes in a
541 Cohort with Substantial Exposure to Perfluorooctanoic Acid.” *Environmental Research*
542 128: 78–83. <https://doi.org/10.1016/j.envres.2013.11.003>.
- 543 Karouna-Renier, Natalie K., K. Ranga Rao, John J. Lanza, Deeya A. Davis, and Patricia A.
544 Wilson. 2007. “Serum Profiles of PCDDs and PCDFs, in Individuals near the Escambia
545 Wood Treating Company Superfund Site in Pensacola, FL.” *Chemosphere* 69 (8): 1312–19.
546 <https://doi.org/10.1016/j.chemosphere.2007.05.028>.
- 547 Kim, Joung Soon, Hyun Sul Lim, Sung Il Cho, Hae Kwan Cheong, and Min Kyung Lim. 2003.
548 “Impact of Agent Orange Exposure among Korean Vietnam Veterans.” *Industrial Health* 41
549 (3): 149–57. <https://doi.org/10.2486/indhealth.41.149>.
- 550 Knip, Mikael, Riitta Veijola, Suvi M. Virtanen, Heikki Hyoty, Outi Vaarala, and Hans K.
551 Akerblom. 2005. “Environmental Triggers and Determinants of Type 1 Diabetes.” *Diabetes*
552 54 (2): S125–36. <https://doi.org/10.1093/annonc/mdr334>.
- 553 Kung, Tiffany, K. A. Murphy, and L. A. White. 2009. “The Aryl Hydrocarbon Receptor (AhR)
554 Pathway as a Regulatory Pathway for Cell Adhesion and Matrix Metabolism.” *Biochemical*
555 *Pharmacology* 77 (4): 536–46. <https://doi.org/10.1016/j.bcp.2008.09.031>.
- 556 Kurita, Hisaka, Wataru Yoshioka, Noriko Nishimura, Naoto Kubota, Takashi Kadowaki, and
557 Chiharu Tohyama. 2009. “Aryl Hydrocarbon Receptor-Mediated Effects of 2,3,7,8-
558 Tetrachlorodibenzo-p- Dioxin on Glucose-Stimulated Insulin Secretion in Mice.” *Journal of*

Sex-specific links between pollutants and diabetes

- 559 *Applied Toxicology* 29 (8): 689–94. <https://doi.org/10.1002/jat.1459>.
- 560 Kwekel, Joshua C., Varsha G. Desai, Carrie L. Moland, William S. Branham, and James C.
561 Fuscoe. 2010. “Age and Sex Dependent Changes in Liver Gene Expression during the Life
562 Cycle of the Rat.” *BMC Genomics* 11 (1). <https://doi.org/10.1186/1471-2164-11-675>.
- 563 Larigot, Lucie, Ludmila Juricek, Julien Dairou, and Xavier Coumoul. 2018. “AhR Signaling
564 Pathways and Regulatory Functions.” *Biochimie Open* 7: 1–9.
565 <https://doi.org/10.1016/j.biopen.2018.05.001>.
- 566 Lee, Duk-Hee, Miquel Porta, David R. Jacobs Jr., and Laura N. Vandenberg. 2014. “Chlorinated
567 Persistent Organic Pollutants, Obesity, and Type 2 Diabetes.” *Endocrine Reviews* 35 (4):
568 557–601.
- 569 Lee, Duk Hee, P. Monica Lind, David R. Jacobs, Samira Salihovic, Bert Van Bavel, and Lars
570 Lind. 2011. “Polychlorinated Biphenyls and Organochlorine Pesticides in Plasma Predict
571 Development of Type 2 Diabetes in the Elderly: The Prospective Investigation of the
572 Vasculature in Uppsala Seniors (PIVUS) Study.” *Diabetes Care* 34 (8): 1778–84.
573 <https://doi.org/10.2337/dc10-2116>.
- 574 Lee, Duk Hee, Michael W. Steffes, Andreas Sjödin, Richard S. Jones, Larry L. Needham, and
575 David R. Jacobs. 2010. “Low Dose of Some Persistent Organic Pollutants Predicts Type 2
576 Diabetes: A Nested Case-Control Study.” *Environmental Health Perspectives* 118 (9):
577 1235–42. <https://doi.org/10.1289/ehp.0901480>.
- 578 Lind, Lars, Björn Zethelius, Samira Salihovic, Bert Van Bavel, and P. Monica Lind. 2014.
579 “Circulating Levels of Perfluoroalkyl Substances and Prevalent Diabetes in the Elderly.”
580 *Diabetologia* 57 (3): 473–79. <https://doi.org/10.1007/s00125-013-3126-3>.
- 581 Longnecker, Matthew P., and Joel E. Michalek. 2000. “Serum Dioxin Level in Relation to
582 Diabetes Mellitus among Air Force Veterans with Background Levels of Exposure.”
583 *Epidemiology* 11 (1): 44–48. <https://doi.org/10.1097/00001648-200001000-00010>.
- 584 Lu, Yuan Fu, Tao Jin, Yasha Xu, Dan Zhang, Qin Wu, Yu Kun Jennifer Zhang, and Jie Liu.
585 2013. “Sex Differences in the Circadian Variation of Cytochrome P450 Genes and
586 Corresponding Nuclear Receptors in Mouse Liver.” *Chronobiology International* 30 (9):
587 1135–43. <https://doi.org/10.3109/07420528.2013.805762>.
- 588 MacNeil, Jessica, N. Kyle Steenland, Anoop Shankar, and Alan Ducatman. 2009. “A Cross-
589 Sectional Analysis of Type II Diabetes in a Community with Exposure to Perfluorooctanoic
590 Acid (PFOA).” *Environmental Research* 109 (8): 997–1003.
591 <https://doi.org/10.1016/j.envres.2009.08.002>.
- 592 Mannetje, Andrea, Amanda Eng, Chris Walls, Evan Dryson, Jeroen Douwes, Pier Bertazzi,
593 Simon Ryder-Lewis, et al. 2018. “Morbidity in New Zealand Pesticide Producers Exposed
594 to 2,3,7,8-Tetrachlorodibenzo-p-Dioxin (TCDD).” *Environment International* 110 (October
595 2017): 22–31. <https://doi.org/10.1016/j.envint.2017.09.018>.
- 596 Marinković, Natalija, Daria Pašalić, Goran Ferenčak, Branka Gršković, and Ana Stavljenić
597 Rukavina. 2010. “Dioxins and Human Toxicity.” *Arhiv Za Higijenu Rada i Toksikologiju*
598 61 (4): 445–53. <https://doi.org/10.2478/10004-1254-61-2010-2024>.

Sex-specific links between pollutants and diabetes

- 599 Marushka, Lesya, Malek Batal, William David, Harold Schwartz, Amy Ing, Karen Fediuk,
600 Donald Sharp, Andrew Black, Constantine Tikhonov, and Hing Man Chan. 2017.
601 “Association between Fish Consumption, Dietary Omega-3 Fatty Acids and Persistent
602 Organic Pollutants Intake, and Type 2 Diabetes in 18 First Nations in Ontario, Canada.”
603 *Environmental Research* 156 (April): 725–37. <https://doi.org/10.1016/j.envres.2017.04.034>.
- 604 Matteo, Geronimo, Myriam P Hoyeck, Hannah L Blair, Julia Zebarth, Kayleigh R C Rick,
605 Andrew Williams, Rémi Gagné, Julie K Buick, Carole Yauk, and Jennifer E Bruin. 2020.
606 “Chronic Low-Dose Exposure Accelerates High Fat Diet-Induced Hyperglycemia in
607 Female Mice.” *BioRxiv Preprint*.
- 608 Michalek, Joel E., and Marian Pavuk. 2008. “Diabetes and Cancer in Veterans of Operation
609 Ranch Hand after Adjustment for Calendar Period, Days of Spraying, and Time Spent in
610 Southeast Asia.” *Journal of Occupational and Environmental Medicine* 50 (3): 330–40.
611 <https://doi.org/10.1097/JOM.0b013e31815f889b>.
- 612 Naville, Danielle, Claudie Pinteur, Nathalie Vega, Yoan Menade, Michèle Vigier, Alexandre Le
613 Bourdais, Emmanuel Labaronne, et al. 2013. “Low-Dose Food Contaminants Trigger Sex-
614 Specific, Hepatic Metabolic Changes in the Progeny of Obese Mice.” *FASEB Journal* 27
615 (9): 3860–70. <https://doi.org/10.1096/fj.13-231670>.
- 616 Nebert, Daniel W. 2017. “Aryl Hydrocarbon Receptor (AHR): ‘Pioneer Member’ of the Basic-
617 Helix/Loop/Helix per-Arnt-Sim (BHLH/PAS) Family of ‘Sensors’ of Foreign and
618 Endogenous Signals.” *Progress in Lipid Research* 67 (June 2016): 38–57.
619 <https://doi.org/10.1016/j.plipres.2017.06.001>.
- 620 Nghiem, Giang Thi Thuy, Muneko Nishijo, Thao Ngoc Pham, Mika Ito, Tai The Pham, Anh Hai
621 Tran, Hiroshi Nishimaru, Yoshikazu Nishino, and Hisao Nishijo. 2019. “Adverse Effects of
622 Maternal Dioxin Exposure on Fetal Brain Development before Birth Assessed by Neonatal
623 Electroencephalography (EEG) Leading to Poor Neurodevelopment; a 2-Year Follow-up
624 Study.” *Science of the Total Environment* 667: 718–29.
625 <https://doi.org/10.1016/j.scitotenv.2019.02.395>.
- 626 Nguyen, Anh Thi Nguyet, Muneko Nishijo, Tai The Pham, Nghi Ngoc Tran, Anh Hai Tran,
627 Luong Van Hoang, Hitomi Boda, Yuko Morikawa, Yoshikazu Nishino, and Hisao Nishijo.
628 2018. “Sex-Specific Effects of Perinatal Dioxin Exposure on Eating Behavior in 3-Year-Old
629 Vietnamese Children.” *BMC Pediatrics* 18 (1): 1–9. <https://doi.org/10.1186/s12887-018-1171-2>.
- 631 Ngwa, Elvis Ndonwi, Andre Pascal Kengne, Barbara Tiedeu-Atogho, Edith Pascale Mofo-Mato,
632 and Eugene Sobngwi. 2015. “Persistent Organic Pollutants as Risk Factors for Type 2
633 Diabetes.” *Diabetology and Metabolic Syndrome* 7 (1). <https://doi.org/10.1186/s13098-015-0031-6>.
- 635 Nishijo, Muneko, Pham The Tai, Hideaki Nakagawa, Shoko Maruzeni, Nguyen Thi Nguyet Anh,
636 Hoang van Luong, Tran Hai Anh, et al. 2012. “Impact of Perinatal Dioxin Exposure on
637 Infant Growth: A Cross-Sectional and Longitudinal Studies in Dioxin-Contaminated Areas
638 in Vietnam.” *PLoS ONE* 7 (7). <https://doi.org/10.1371/journal.pone.0040273>.
- 639 Patel, Chirag J., Jayanta Bhattacharya, and Atul J. Butte. 2010. “An Environment-Wide

Sex-specific links between pollutants and diabetes

- 640 Association Study (EWAS) on Type 2 Diabetes Mellitus.” *PLoS ONE* 5 (5).
641 <https://doi.org/10.1371/journal.pone.0010746>.
- 642 Persky, Victoria, Julie Piorkowski, Mary Turyk, Sally Freels, Robert Chatterton, John Dimos, H.
643 Leon Bradlow, et al. 2012. “Polychlorinated Biphenyl Exposure, Diabetes and Endogenous
644 Hormones: A Cross-Sectional Study in Men Previously Employed at a Capacitor
645 Manufacturing Plant.” *Environmental Health: A Global Access Science Source* 11 (1): 1–
646 11. <https://doi.org/10.1186/1476-069X-11-57>.
- 647 Pham, Thao Ngoc, Muneko Nishijo, Tai The Pham, Hoa Thi Vu, Nghi Ngoc Tran, Anh Hai
648 Tran, Quyet Do, Tomoya Takiguchi, Yoshikazu Nishino, and Hisao Nishijo. 2020. “Dioxin
649 Exposure and Sexual Dimorphism of Gaze Behavior in Prepubertal Vietnamese Children
650 Living in Da Nang, a Hot Spot for Dioxin Contamination.” *Science of the Total
651 Environment* 749: 141083. <https://doi.org/10.1016/j.scitotenv.2020.141083>.
- 652 Porte, Daniel, and Steven E. Kahn E. 2001. “ β -Cell Dysfunction and Failure in Type 2 Diabetes:
653 Potential Mechanisms.” *Diabetes* 50 (SUPPL. 1): 9–12.
654 <https://doi.org/10.2337/diabetes.50.2007.s160>.
- 655 Quintana, Francisco J., and David H. Sherr. 2013. “Aryl Hydrocarbon Receptor Control of
656 Adaptive Immunity.” *Pharmacological Reviews* 65 (4): 1148–61.
657 <https://doi.org/10.1124/pr.113.007823>.
- 658 Rahman, Mohammad L., Cuilin Zhang, Melissa M. Smarr, Sunmi Lee, Masato Honda,
659 Kurunthachalam Kannan, Fasil Tekola-Ayele, and Germaine M. Buck Louis. 2019.
660 “Persistent Organic Pollutants and Gestational Diabetes: A Multi-Center Prospective Cohort
661 Study of Healthy US Women.” *Environment International* 124 (November 2018): 249–58.
662 <https://doi.org/10.1016/j.envint.2019.01.027>.
- 663 Roh, Eun, Soo Heon Kwak, Hye Seung Jung, Young Min Cho, Youngmi Kim Pak, Kyong Soo
664 Park, Seong Yeon Kim, and Hong Kyu Lee. 2015. “Serum Aryl Hydrocarbon Receptor
665 Ligand Activity Is Associated with Insulin Resistance and Resulting Type 2 Diabetes.” *Acta
666 Diabetologica* 52 (3): 489–95. <https://doi.org/10.1007/s00592-014-0674-z>.
- 667 Rozman, Karl K. 1999. “(HpCDD), after Oral Administration , Obeys Haber ’ s Rule of
668 Inhalation Toxicology” 109: 102–9.
- 669 Rylander, Charlotta, Torkjel Manning Sandanger, Therese Haugdahl Nøst, Knut Breivik, and
670 Eiliv Lund. 2015. “Combining Plasma Measurements and Mechanistic Modeling to Explore
671 the Effect of POPs on Type 2 Diabetes Mellitus in Norwegian Women.” *Environmental
672 Research* 142: 365–73. <https://doi.org/10.1016/j.envres.2015.07.002>.
- 673 Schecter, Arnold, Linda Birnbaum, John J. Ryan, and John D. Constable. 2006. “Dioxins: An
674 Overview.” *Environmental Research* 101 (3): 419–28.
675 <https://doi.org/10.1016/j.envres.2005.12.003>.
- 676 Schwetz, B.A., J.M Norris, G.L. Sparschu, V.K. Rowe, P.J. Gehring, J.L. Emerson, and C.G.
677 Gerbig. 1973. “Toxicology of Chlorinated Dibenzo-p-Dioxins.” *Environmental Health
678 Perspectives* 5: 87–99.
- 679 Silverstone, Allen E., Paula F. Rosenbaum, Ruth S. Weinstock, Scott M. Bartell, Herman R.

Sex-specific links between pollutants and diabetes

- 680 Foushee, Christie Shelton, and Marian Pavuk. 2012. "Polychlorinated Biphenyl (PCB)
681 Exposure and Diabetes: Results from the Anniston Community Health Survey."
682 *Environmental Health Perspectives* 120 (5): 727–32. <https://doi.org/10.1289/ehp.1104247>.
- 683 Singh, Kavita, and Hing Man Chan. 2017. "Persistent Organic Pollutants and Diabetes among
684 Inuit in the Canadian Arctic." *Environment International* 101: 183–89.
685 <https://doi.org/10.1016/j.envint.2017.02.002>.
- 686 Skaanild, Mette T., and Christian Friis. 1999. "Cytochrome P450 Sex Differences in Minipigs
687 and Conventional Pigs." *Pharmacology and Toxicology* 85 (6): 174–80.
688 <https://doi.org/10.1111/j.1600-0773.1999.tb00088.x>.
- 689 Son, H. K., S. A. Kim, J. H. Kang, Y. S. Chang, S. K. Park, S. K. Lee, D. R. Jacobs, and D. H.
690 Lee. 2010. "Strong Associations between Low-Dose Organochlorine Pesticides and Type 2
691 Diabetes in Korea." *Environment International* 36 (5): 410–14.
692 <https://doi.org/10.1016/j.envint.2010.02.012>.
- 693 Srogi, Krystyna. 2008. "Levels and Congener Distributions of PCDDs, PCDFs and Dioxin-like
694 PCBs in Environmental and Human Samples: A Review." *Environmental Chemistry Letters*
695 6 (1): 1–28. <https://doi.org/10.1007/s10311-007-0105-2>.
- 696 Starling, Anne P., M. Umbach, David, F. Kamel, Stuart Long, and Dale P Sandler. 2014.
697 "Pesticide Use and Incident Diabetes among Wives of Farmers in the Agricultural Health
698 Study." *Occupational and Environmental Medicine* 71 (9): 629–35.
699 <https://doi.org/10.1038/jid.2014.371>.
- 700 Steenland, K., G. Calvert, N. Ketchum, and J. Michalek. 2001. "Dioxin and Diabetes Mellitus:
701 An Analysis of the Combined NIOSH and Ranch Hand Data." *Occupational and*
702 *Environmental Medicine* 58 (10): 641–48. <https://doi.org/10.1136/oem.58.10.641>.
- 703 Steenland, Kyle, Laurie Piacitelli, James Deddens, Marilyn Fingerhut, and Lih Ing Chang. 1999.
704 "Cancer, Heart Disease, and Diabetes in Workers Exposed to 2,3,7,8- Tetrachlorodibenzop-
705 Dioxin." *Journal of the National Cancer Institute* 91 (9): 779–86.
706 <https://doi.org/10.1093/jnci/91.9.779>.
- 707 Suarez-Lopez, Jose R., Duk Hee Lee, Miquel Porta, Michael W. Steffes, and David R. Jacobs.
708 2015. "Persistent Organic Pollutants in Young Adults and Changes in Glucose Related
709 Metabolism over a 23-Year Follow-Up." *Environmental Research* 137: 485–94.
710 <https://doi.org/10.1016/j.envres.2014.11.001>.
- 711 Swedenborg, Elin, and Ingemar Pongratz. 2010. "AhR and ARNT Modulate ER Signaling."
712 *Toxicology* 268 (3): 132–38. <https://doi.org/10.1016/j.tox.2009.09.007>.
- 713 Tai, Pham The, Muneko Nishijo, Tran Ngoc Nghi, Hideaki Nakagawa, Hoang Van Luong, Tran
714 Hai Anh, and Hisao Nishijo. 2016. "Effects of Perinatal Dioxin Exposure on Development
715 of Children during the First 3 Years of Life." *Journal of Pediatrics* 175: 159-166.e2.
716 <https://doi.org/10.1016/j.jpeds.2016.04.064>.
- 717 Tanaka, Takahisa, Akemi Morita, Masayuki Kato, Tetsuya Hirai, Tetsuya Mizoue, Yasuo
718 Terauchi, Shaw Watanabe, and Mitsuhiro Noda. 2011. "Congener-Specific Polychlorinated
719 Biphenyls and the Prevalence of Diabetes in the Saku Control Obesity Program (SCOP)."

Sex-specific links between pollutants and diabetes

- 720 *Endocrine Journal* 58 (7): 589–96. <https://doi.org/10.1507/endocrj.K10E-361>.
- 721 Tawara, Kenji, Muneko Nishijo, Ryumon Honda, Shoko Maruzeni, Toshio Seto, Teruhiko Kido,
722 Shigeru Saito, and Hideaki Nakagawa. 2009. “Effects of Maternal Dioxin Exposure on
723 Newborn Size at Birth among Japanese Mother-Infant Pairs.” *Environmental Health and*
724 *Preventive Medicine* 14 (2): 88–95. <https://doi.org/10.1007/s12199-008-0061-x>.
- 725 Taylor, David, A. 2001. “From Animal Feed to People Food.” *Environmental Health*
726 *Perspectives* 109 (3): 132–33.
- 727 Tornevi, Andreas, Johan Sommar, Panu Rantakokko, Agneta Åkesson, Carolina Donat-Vargas,
728 Hannu Kiviranta, Olov Rolandsson, Lars Rylander, Maria Wennberg, and Ingvar A.
729 Bergdahl. 2019. “Chlorinated Persistent Organic Pollutants and Type 2 Diabetes - A
730 Population-Based Study with Pre- and Post- Diagnostic Plasma Samples.” *Environmental*
731 *Research* 174 (April): 35–45. <https://doi.org/10.1016/j.envres.2019.04.017>.
- 732 Tran, Nghi Ngoc, Tai The Pham, Kyoko Ozawa, Muneko Nishijo, Anh Thi Nguyet Nguyen,
733 Tuong Quy Tran, Luong Van Hoang, et al. 2016. “Impacts of Perinatal Dioxin Exposure on
734 Motor Coordination and Higher Cognitive Development in Vietnamese Preschool Children:
735 A Five-Year Follow-Up.” *PLoS ONE* 11 (1): 1–15.
736 <https://doi.org/10.1371/journal.pone.0147655>.
- 737 Turyk, Mary, Henry A. Anderson, Lynda Knobeloch, Pamela Imm, and Victoria W. Persky.
738 2009. “Prevalence of Diabetes and Body Burdens of Polychlorinated Biphenyls,
739 Polybrominated Diphenyl Ethers, and p,P'-Diphenyldichloroethene in Great Lakes Sport
740 Fish Consumers.” *Chemosphere* 75 (5): 674–79.
741 <https://doi.org/10.1016/j.chemosphere.2008.12.035>.
- 742 Ukropec, J., Z. Radikova, M. Huckova, J. Koska, A. Kocan, E. Sebkova, B. Drobna, et al. 2010.
743 “High Prevalence of Prediabetes and Diabetes in a Population Exposed to High Levels of an
744 Organochlorine Cocktail.” *Diabetologia* 53 (5): 899–906. [https://doi.org/10.1007/s00125-](https://doi.org/10.1007/s00125-010-1683-2)
745 [010-1683-2](https://doi.org/10.1007/s00125-010-1683-2).
- 746 US Environmental Protection Agency. 2003. “Polychlorinated Biphenyl Congeners.” 2003.
- 747 Vasiliu, Oana, Lorraine Cameron, Joseph Gardiner, Peter DeGuire, and Wilfried Karmaus. 2006.
748 “Polybrominated Biphenyls, Polychlorinated Biphenyls, Body Weight, and Incidence of
749 Adult-Onset Diabetes Mellitus.” *Epidemiology* 17 (4): 352–59.
750 <https://doi.org/10.1097/01.ede.0000220553.84350.c5>.
- 751 Vena, John, Paolo Boffetta, Heiko Becher, Trevor Benn, H. Bas Bueno-de-Mesquita, David
752 Coggon, Didier Colin, et al. 1998. “Exposure to Dioxin and Nonneoplastic Mortality in the
753 Expanded IARC International Cohort Study of Phenoxy Herbicide and Chlorophenol
754 Production Workers and Sprayers.” *Environmental Health Perspectives* 106 (SUPPL. 2):
755 645–53. <https://doi.org/10.1289/ehp.98106645>.
- 756 Viluksela, Matti, Bernhard U. Stahl, Linda S. Birnbaum, and Karl K. Rozman. 1998.
757 “Subchronic/Chronic Toxicity of a Mixture of Four Chlorinated Dibenzo-p- Dioxins in
758 Rats: II. Biochemical Effects.” *Toxicology and Applied Pharmacology* 151 (1): 70–78.
759 <https://doi.org/10.1006/taap.1998.8412>.

Sex-specific links between pollutants and diabetes

- 760 Viluksela, Matti, Bernhard U Stahl, Linda S Birnbaum, Karl-werner Schramm, Antonius
761 Kettrup, and Karl K Rozman. 1997. “-Dioxin (HpCDD) in Rats” 216 (146): 207–16.
- 762 Wang, Shu Li, Pei Chien Tsai, Chiu Yueh Yang, and Yueliang Leon Guo. 2008. “Increased Risk
763 of Diabetes and Polychlorinated Biphenyls and Dioxins A 24-Year Follow-up Study of the
764 Yucheng Cohort.” *Diabetes Care* 31 (8): 1574–79. <https://doi.org/10.2337/dc07-2449>.
- 765 Wang, Zheng, Jin Guo Hang, Hao Feng, Li Li Shi, Jing Jian Dong, Bin Shen, Ting Luo, et al.
766 2019. “Effects of Perinatal Dioxin Exposure on Development of Children: A 3-Year
767 Follow-up Study of China Cohort.” *Environmental Science and Pollution Research* 26 (20):
768 20780–86. <https://doi.org/10.1007/s11356-019-05362-0>.
- 769 Weir, Gordon C., and Susan Bonner-Weir. 2004. “Five of Stages of Evolving β -Cell Dysfunction
770 during Progression to Diabetes.” *Diabetes* 53 (SUPPL. 3).
771 https://doi.org/10.2337/diabetes.53.suppl_3.S16.
- 772 White, Sally S., and Linda S. Birnbaum. 2009. “An Overview of the Effects of Dioxins and
773 Dioxin-like Compounds on Vertebrates, as Documented in Human and Ecological
774 Epidemiology.” *Journal of Environmental Science and Health - Part C Environmental
775 Carcinogenesis and Ecotoxicology Reviews* 27 (4): 197–211.
776 <https://doi.org/10.1080/10590500903310047>.
- 777 Wikoff, Daniele, Lauren Fitzgerald, and Linda Birnbaum. 2012. “Persistant Organic Pollutants:
778 An Overview.” In *Dioxins and Health: Including Other Persistant Organic Polluatants and
779 Endocrine Disruptors*, 1–25.
- 780 Wolf, Kathrin, Brenda W.C. Bongaerts, Alexandra Schneider, Cornelia Huth, Christa Meisinger,
781 Annette Peters, Andrea Schneider, et al. 2019. “Persistent Organic Pollutants and the
782 Incidence of Type 2 Diabetes in the CARLA and KORA Cohort Studies.” *Environment
783 International* 129 (May): 221–28. <https://doi.org/10.1016/j.envint.2019.05.030>.
- 784 Wu, Hongyu, Kimberly A. Bertrand, Anna L. Choi, Frank B. Hu, Francine Laden, Philippe
785 Grandjean, and Qi Sun. 2013. “Persistent Organic Pollutants and Type 2 Diabetes: A
786 Prospective Analysis in the Nurses’ Health Study and Meta-Analysis.” *Environmental
787 Health Perspectives* 121 (2): 153–61. <https://doi.org/10.1289/ehp.1205248>.
- 788 YAMAMOTO, Kenya, Mitsuhiro KUDO, Heihachiro ARITO, Yasutaka OGAWA, and Tsutomu
789 TAKATA. 2015. “A Cross-Sectional Analysis of Dioxins and Health Effects in Municipal
790 and Private Waste Incinerator Workers in Japan.” *Industrial Health* 57 (12): 433.
- 791 Yang, Chunxue, Alice Pik Shan Kong, Zongwei Cai, and Arthur C.K. Chung. 2017. “Persistant
792 Organic Pollutants as Risk Factors for Obesity and Diabetes.” *Current Diabetes Reports* 17
793 (132): 1–11.
- 794 Yang, Lun, and Yan Li. 2012. “Sex Differences in the Expression of Drug-Metabolizing and
795 Transporter Genes in Human Liver.” *Journal of Drug Metabolism & Toxicology* 3 (3): 1–
796 20. <https://doi.org/10.4172/2157-7609.1000119>.
- 797 Zong, Geng, Philippe Grandjean, Xiaobin Wang, and Qi Sun. 2016. “Lactation History, Serum
798 Concentrations of Persistent Organic Pollutants, and Maternal Risk of Diabetes.”
799 *Environmental Research* 150: 282–88. <https://doi.org/10.1016/j.envres.2016.06.023>.

Sex-specific links between pollutants and diabetes

800 Zong, Geng, Damaskini Valvi, Brent Coull, Thomas Goen, Frank B. Hu, Philippe Grandjean,
801 and Qi Sun. 2018. “Persistent Organic Pollutants and Risk of Type 2 Diabetes: A
802 Prospective Investigation Among Middle-Aged Women in Nurses’ Health Study II.”
803 *Environment International* 114: 334–42.
804 <https://doi.org/10.1016/j.envint.2017.12.010>.Persistent.

805

806

807

808

809

810

811

812

813

814

815

816

817

818

819

820

821

822

823

824

825

Sex-specific links between pollutants and diabetes

826 **Table 1.** Summary of 18 articles investigating the association between dioxins and/or DL-PCBs
827 and diabetes incidence included in the meta-analysis.

	Reference	Study Participants	Outcome	Pollutant	Mode of exposure	Measure of Association (OR, RR, IDR, IRR)
Sex-stratified studies (8 articles)	Bertazzi et al. 2001	Males (n=22,607) Females (n= 22,762)	T2D	TCDD	Disaster (plant explosion)	RR (95% CI) = 0.6 (0.1-4.1) males RR (95% CI) = 2.2 (1.0-4.6) females
	Han et al. 2020	Males (n=151) Females (n=165)	T2D	PCB-118	Non-disaster (low background)	OR (95% CI) = 4.62 (1.52-14.06) males OR (95% CI) = 3.08 (0.92-10.35) females
	Huang et al. 2015	n=2,898 (total participants)	T2D	PCDD/Fs	Non-disaster (high background)	OR (95% CI) = 3.3 (2.0-5.5) males OR (95% CI) = 2.3 (1.2-4.4) females
	Huang et al. 2017	Males (n=1,453) Females (n=1,305)	Metabolic Syndrome	PCDD/Fs	Non-disaster (high background)	OR (95% CI) = 1.59 (1.22-2.08) males OR (95% CI) = 1.16 (0.8-1.68) females
	Silverstone et al. 2012	Males (n=153) Females (n=427)	T2D	DL-PCBs	Non-disaster (high background)	OR (95% CI) = 0.71 (0.36-1.39) males OR (95% CI) = 1.51 (1.02-2.24) females
	Turyk et al. 2009	Males (n=279) Females (n=192)	T2D	PCB-118	Non-disaster (low background)	IRR (95% CI) = 1.40 (0.50-4.20) males IRR (95% CI) = 1.10 (0.20-5.30) females
	Vasiliu et al. 2006	Males (n=688) Females (n=696)	T2D	Total PCBs	Disaster (contaminated animal feed)	IDR (95% CI) = 1.74 (0.91-3.34) males IDR (95% CI) = 2.33 (1.25-4.34) females
	Wang et al. 2008	Males (n=307) Females (n=441)	T2D	Mixed DL-PCBs	Disaster (contaminated rice-oil bran)	OR (95% CI) = 1.7 (0.7-4.3) males OR (95% CI) = 4.6 (1.9-11.4) females
Male-only studies (7 articles)	Cappelletti et al. 2016	n=363	T2D	PCDD/Fs	Non-disaster (high background)	RR (95% CI) = 2.39 (1.67-3.41)
	Kang et al. 2006	n=2,927	T2D	TCDD	Non-disaster (high background)	OR (95% CI) = 1.49 (1.10-2.02)
	Kim et al. 2003	n=1,378	T2D	TCDD	Non-disaster (high background)	OR (95% CI) = 2.69 (1.09-6.67)
	Michalek and Pavuk 2008	n=2,469	T2D	TCDD	Non-disaster (high background)	RR (95% CI) = 1.58 (1.12-2.24)
	Persky et al. 2012	n=63	T2D	DL-PCBs	Non-disaster (high background)	OR (95% CI) = 2.7 (1.3-5.8)
	Steenland et al. 2001	n=2,759	T2D	TCDD	Non-disaster (high background)	OR (95% CI) = 3.21 (1.81-5.72)
	Yamamoto et al. 2015	n=678	T2D	PCDD/Fs	Non-disaster (high background)	OR (95% CI) = 4.98 (1.17-21.17)
Female-only studies (3 articles)	Berg et al. 2021	n=88	T2D	DL-PCBs	Non-disaster (low background)	OR (95% CI) = 2.24 (1.0-5.0)
	Rylander et al. 2015	n=212	T2D	PCB-118	Non-disaster (low background)	OR (95% CI) = 1.55 (0.41-5.86)
	Zong et al. 2018	n= 1,586	T2D	DL-PCBs	Non-disaster (low background)	OR (95% CI) = 1.36 (1.01-1.84)

828

829

Sex-specific links between pollutants and diabetes

830 **Table 2.** “Male Only” and “Female Only” subgroup analyses of associations between dioxin/DL
 831 chemical exposure and T2D outcome. **Note:** “n” = number of entries included in each analysis out
 832 of all studies.

		Heterogeneity			Summary Estimates	
		n	I ²	p-value	OR	95% CI
Males	Type of Pollutant					
	Overall	15	51.3%	0.008	1.95	1.56 - 2.43
	TCDD	5	48.6%	0.100	1.84	1.31 - 2.58
	PCDD/Fs	4	66.8%	0.029	2.35	1.57 - 3.52
	Total PCBs	1	n/a	n/a	1.74	0.91 - 3.33
	DL-PCBs	3	71.4%	0.030	1.45	0.63 - 3.38
	PCB-118	2	56.7%	0.128	2.51	0.78 - 8.10
	Mode of Exposure					
	Overall	15	53.3%	0.008	1.95	1.56 - 2.43
	Disaster	3	0%	0.562	1.59	0.95 - 2.66
	Non-disaster	12	61.4%	0.003	2.02	1.58 - 2.59
	Continent					
	Overall	15	53.3%	0.008	1.95	1.56 - 2.43
	Asia	6	53.8%	0.055	2.49	1.62 - 3.81
Europe	2	51.3%	0.152	1.64	0.49 - 5.48	
North America	7	55.1%	0.037	1.67	1.22 - 2.27	
Females	Type of Pollutant					
	Overall	11	47.7%	0.039	1.78	1.37 - 2.31
	TCDD	1	n/a	n/a	2.20	1.03 - 4.72
	PCDD/Fs	2	68.9%	0.073	1.55	0.80 - 3.00
	Total PCBs	1	n/a	n/a	2.33	1.25 - 4.34
	DL-PCBs	4	73.4%	0.010	1.89	1.16 - 3.09
	PCB-118	3	0.0%	0.569	1.91	0.87 - 4.20
	Mode of Exposure					
	Overall	11	47.7%	0.039	1.78	1.37 - 2.31
	Disaster	3	32.7%	0.226	2.86	1.70 - 4.84
	Non-disaster	8	3.1%	0.406	1.40	1.17 - 1.68
	Continent					
	Overall	11	47.7%	0.039	1.78	1.37 - 2.31
	Asia	4	76.3%	0.005	2.38	1.15 - 4.92
Europe	3	0.0%	0.887	2.10	1.26 - 3.51	
North America	4	16.9%	0.307	1.44	1.12 - 1.84	

833

834

835

836

Sex-specific links between pollutants and diabetes

837 **Figure Legends**

838 **Figure 1.** Chemical structure of **(A)** dioxins and **(B)** dioxin-like (DL) PCBs commonly
839 considered in epidemiological studies.

840

841 **Figure 2.** **(A)** Summary of inclusion and exclusion criteria for articles analysed in this meta-
842 analysis, and **(B)** the proportion of studies that were sex-stratified, sex-unstratified, or considered
843 male-only or female-only populations.

844

845 **Figure 3.** Forest plot of all studies included in meta-analysis, separated by sex. Summary effect
846 measures are significant for both males and females.

847

848 **Figure 4.** Forest plot of risk difference for pollutant exposure and diabetes incidence between
849 males and females from the same study population (only sex-stratified studies included).
850 Summary measures were generated from the difference in summary effect measures between the
851 sexes (Females - Males).

852

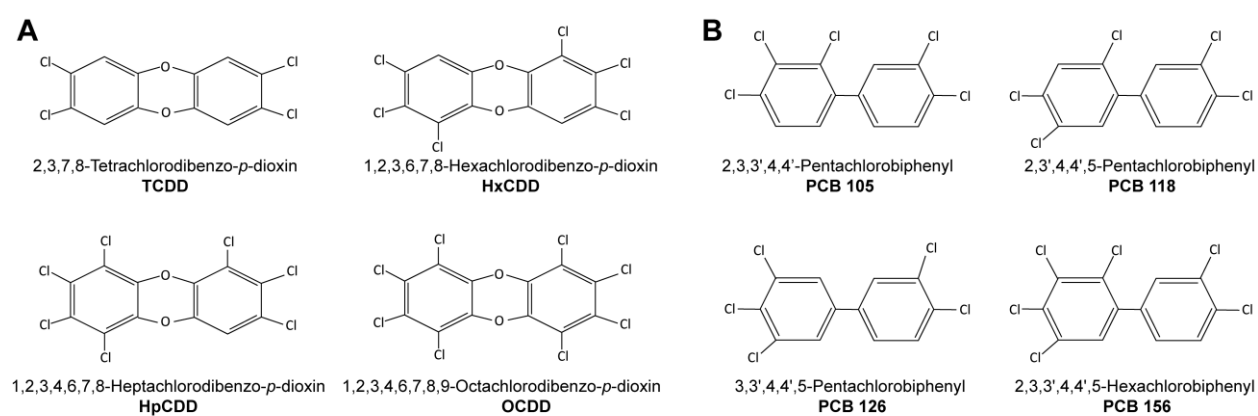
853 **Figure 5.** Forest plot of association between pollutant exposure and diabetes incidence with
854 separate analysis for disaster and non-disaster exposure in **(A)** males and **(B)** females.

855

856 **Figure 6.** Forest plot of risk difference for disaster versus non-disaster pollutant exposure and
857 diabetes incidence between males and females from the same study population (only sex-
858 stratified studies included). Summary measures were generated from the difference in summary
859 effect measures between the sexes (Females - Males) and stratified by mode of exposure.

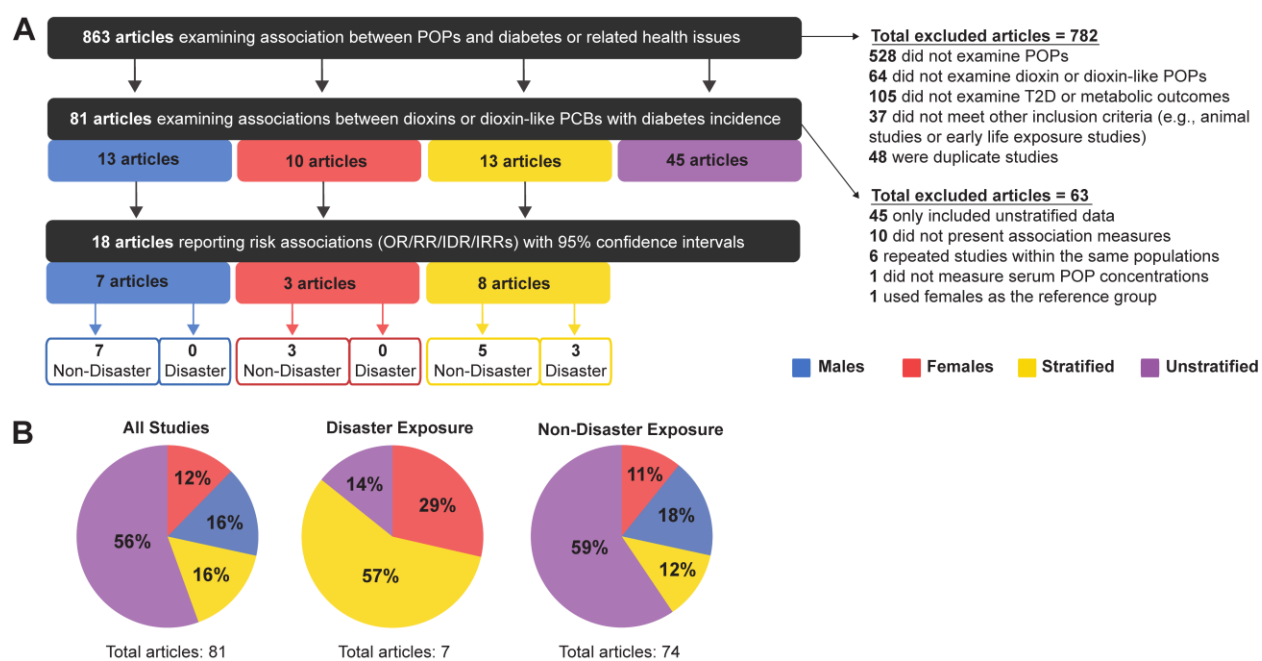
Running title: Dioxins and Type 2 Diabetes

Figure 1



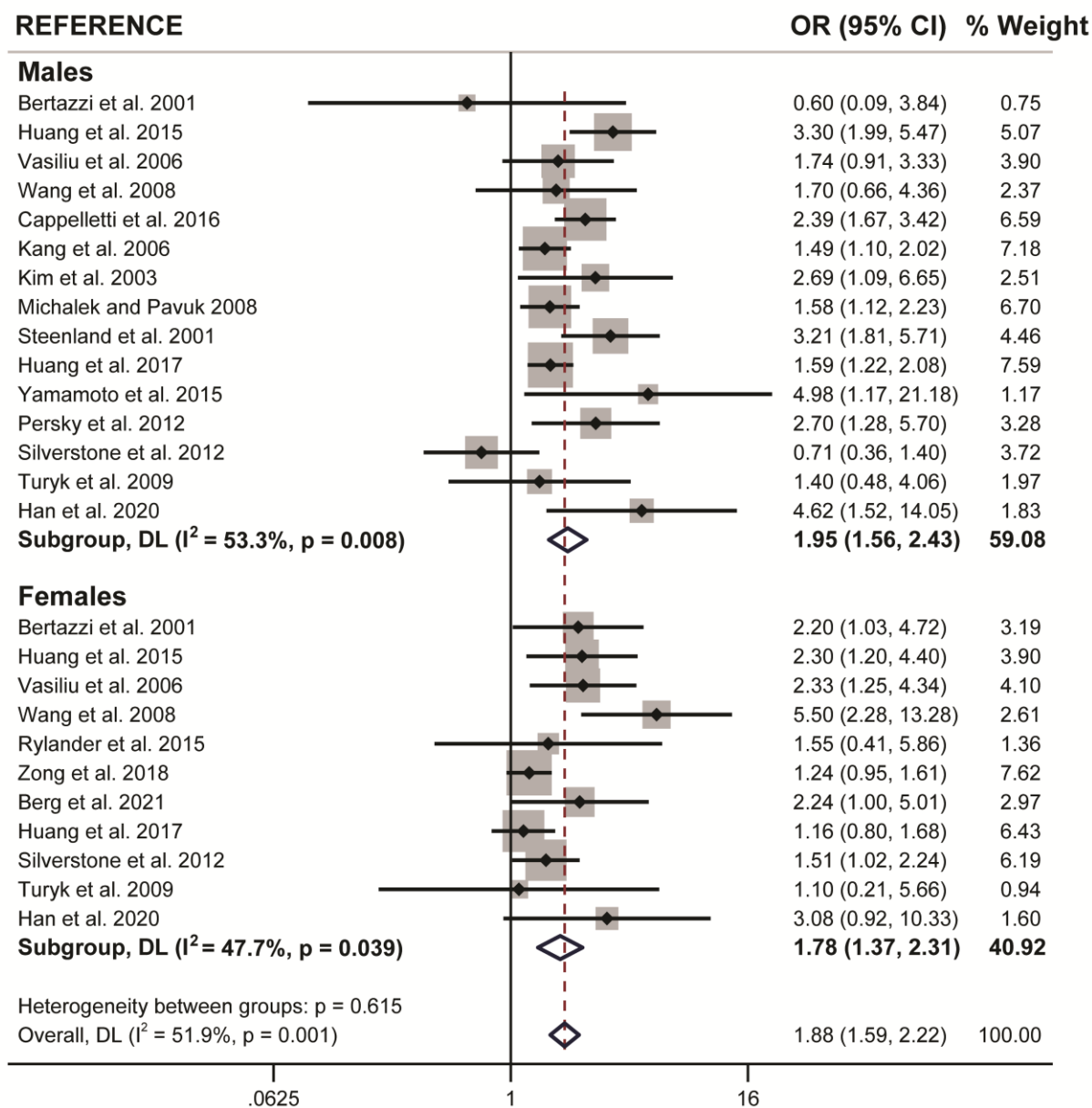
Sex-specific links between pollutants and diabetes

Figure 2



Sex-specific links between pollutants and diabetes

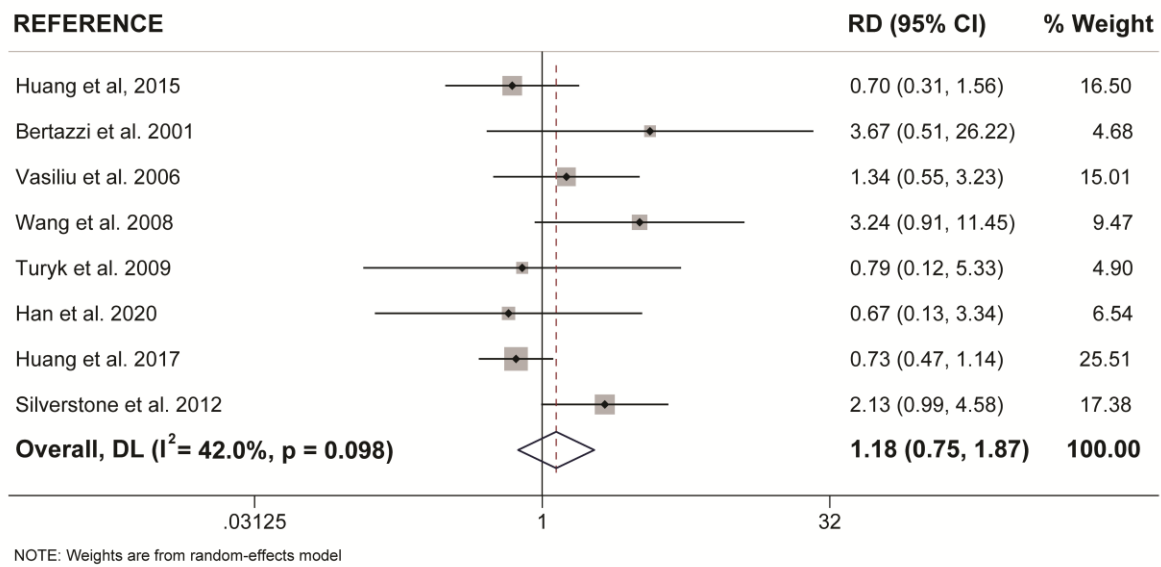
Figure 3



NOTE: Weights and between-subgroup heterogeneity test are from random-effects model

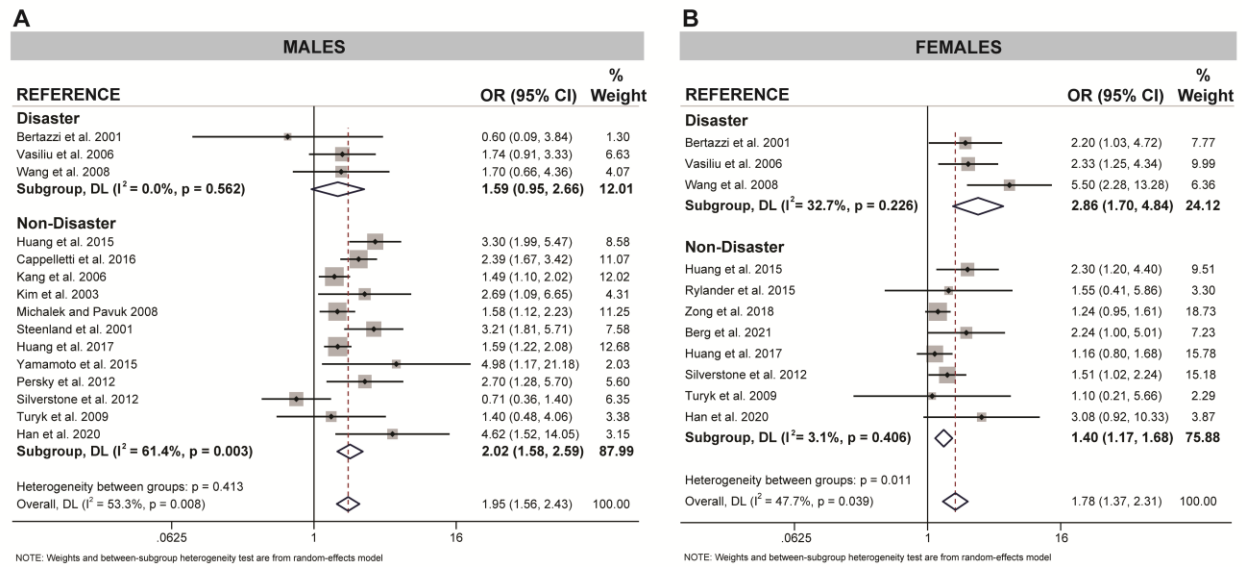
Sex-specific links between pollutants and diabetes

Figure 4



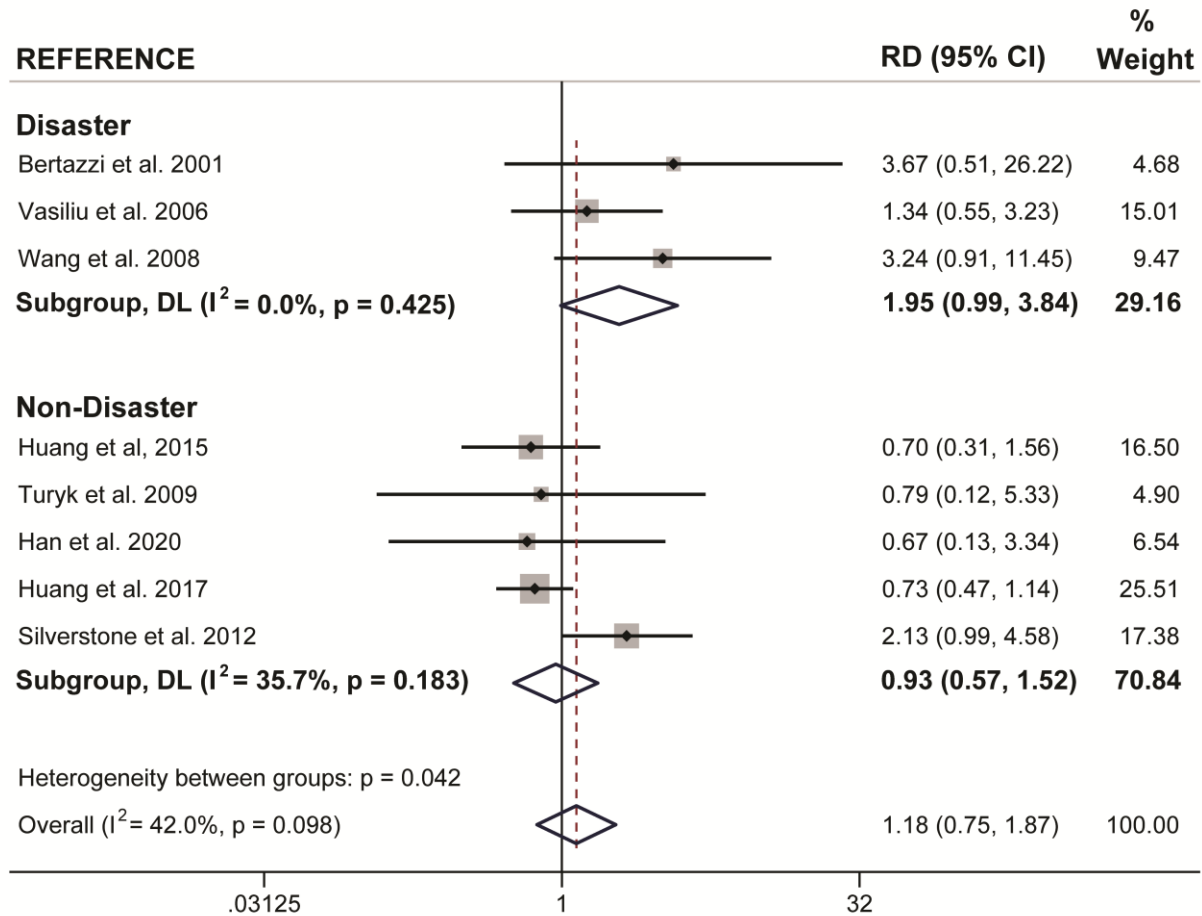
Sex-specific links between pollutants and diabetes

Figure 5



Sex-specific links between pollutants and diabetes

Figure 6



NOTE: Weights are from random-effects model