

19 **ABSTRACT**

20 Understanding the genetic underpinnings of disabling hearing loss, which affects ~466
21 million people worldwide, can provide avenues for new therapeutic target development. We
22 performed a genome-wide association meta-analysis of hearing loss with 125,749 cases and
23 469,497 controls across five cohorts, including UK Biobank, Geisinger DiscovEHR, the Malmö
24 Diet and Cancer Study, Mount Sinai’s BioMe Personalized Medicine Cohort, and FinnGen. We
25 identified 53 loci affecting hearing loss risk, 18 of which are novel, including coding variants in
26 *COL9A3* and *TMPRSS3*. Through exome-sequencing of 108,415 cases and 329,581 controls from
27 the same cohorts, we identified an association with rare predicted loss-of-function variants in a
28 gene that has been uncharacterized in hearing loss, *KLHDC7B* (odds ratio [OR] = 2.14, $P = 5.2 \times$
29 10^{-30}), and with coding variants in two genes previously implicated in animal models of hearing
30 loss (*SYNJ2*, OR = 1.31, $P = 1.3 \times 10^{-14}$; *FSCN2*, OR = 1.24, $P = 4.1 \times 10^{-15}$). We also observed
31 single-variant and gene-burden associations with 11 genes known to cause Mendelian forms of
32 hearing loss, including an increased risk in heterozygous carriers of mutations in the autosomal
33 recessive hearing loss genes *GJB2* (Gly12fs; OR = 1.21, $P = 4.2 \times 10^{-11}$) and *SLC26A5* (gene
34 burden; OR = 1.96, $P = 2.8 \times 10^{-17}$). Our results show that Mendelian hearing loss genes contribute
35 to the burden of hearing loss in the adult population, and suggest a shared etiology between
36 common and rare forms of hearing loss. This work illustrates the potential of large-scale exome
37 sequencing to elucidate the genetic architecture of common traits in which risk is modulated by
38 both common and rare variation.

39

40 INTRODUCTION

41 The loss of hearing can have a debilitating impact on quality of life, requiring major
42 adjustments to day-to-day activities. Significant comorbidities are also associated with hearing
43 loss including social isolation, depression, cognitive impairment, and dementia, which further
44 deteriorate quality of life¹. Disabling hearing loss is common, with ~466 million people affected
45 worldwide (World Health Organization: <https://www.who.int/health-topics/hearing-loss>). While
46 existing technologies – such as hearing aids and cochlear implants – can ameliorate hearing loss,
47 their use is limited by barriers to access, including cost, health policies and regulations, and social
48 stigma associated with device use². Furthermore, while these assistive devices typically provide
49 some benefit, they do not address the chief complaint associated with acquired hearing loss: lack
50 of hearing clarity, particularly in social and work environments ([https://www.hearingloss.org/hlaa-](https://www.hearingloss.org/hlaa-pfdd/)
51 [pfdd/](https://www.hearingloss.org/hlaa-pfdd/)). The Lancet Commission on dementia prevention, intervention and care has identified
52 untreated hearing loss in middle age as the top modifiable risk factor for dementia, but it is
53 estimated that 67-86% of adults who may benefit from hearing aids do not use them^{1,3}. These
54 challenges, combined with a lack of therapeutics to stop or slow hearing loss progression, have
55 contributed to its status as a growing global health issue. Novel therapies based on genetic
56 evidence, therefore, will be crucial in addressing this unmet need.

57 Hearing loss affects individuals of all ages, but its prevalence increases with age.
58 Approximately 1-2/1,000 babies are born with hearing loss³. Mutations in over 150 genes
59 (hereditaryhearingloss.com) account for over 50% of the cases. While autosomal recessive hearing
60 loss is generally pre-lingual and non-progressive, autosomal dominant forms are mostly post-
61 lingual (including adult onset) and progressive. The prevalence of hearing loss increases to
62 2.8/1,000 in primary school-age children and 3.5/1,000 in adolescents^{3,4}. The National Institute on

63 Deafness and other Communication Diseases calculates that by the age of 45 ~2% of individuals
64 have a disabling hearing loss, and this number increases to 50% in individuals over the age of 75.
65 This increase in prevalence with age reflects a combination of late-onset hearing loss mutations,
66 the cumulative effects of environmental factors such as exposure to noise and ototoxic drugs and,
67 in aging individuals, the degenerative effects of age on the cochlea. These genetic and
68 environmental insults primarily damage the structures of the inner ear, resulting in sensorineural
69 hearing loss^{5,6}.

70 Heritability estimates for age-related hearing loss range as high as 36 and 70%⁷⁻¹¹
71 suggesting that genetics, along with environmental factors, play a significant role in determining
72 an individual's risk for developing hearing loss. Genome-wide association studies (GWAS) of
73 hearing loss in adults have identified 58 loci associated with the trait in Europeans¹²⁻¹⁶. While these
74 studies have established a common variant contribution to adult hearing loss, the rare and low-
75 frequency variant contribution remains largely uncharacterized, as the few studies exploring low-
76 frequency variation have been underpowered¹⁷.

77 With the availability of large-scale phenotype data on hearing loss from the UK Biobank
78 (UKB), coupled with the Regeneron Genetics Center's (RGC) capacity to perform population-
79 scale exome sequencing, we now have the opportunity to explore the contribution of rare and low-
80 frequency variation to hearing loss in a large adult population. Here, we report findings from
81 genome- and exome-wide association analyses across UKB and four additional cohorts, for a total
82 of 125,749 cases and 469,497 controls. Our analyses have identified 18 novel susceptibility loci
83 and rare variants implicating both known and novel genes in the etiology of hearing loss in adults.

84

85 **RESULTS**

86 To study common variants, we performed association meta-analyses using genotyping and
87 imputation across five cohorts: Geisinger DiscovEHR study (GHS), the Malmö Diet and Cancer
88 study from Malmö, Sweden (MALMO), Mount Sinai's BioMe Personalized Medicine Cohort
89 from Mount Sinai Health System, New York (SINAI), UK Biobank (UKB) and an additional study
90 from Finland, FinnGen, for a total of 125,749 cases and 469,497 controls. To study rare and ultra-
91 rare variants, we also generated exome sequence data and performed combined GWAS and
92 exome-wide association study (ExWAS) on a subset of 108,415 cases and 329,581 controls across
93 GHS, MALMO, SINAI, and UKB. Phenotypes were derived from ICD-10 diagnosis codes in
94 GHS, MALMO, SINAI and FinnGen, and combined self-report and ICD-10 codes in UKB (see
95 Methods and Supplementary Table 1 for details). Our genome-wide association analyses included
96 15,881,489 variants with frequency $> 0.1\%$ that were genotyped or imputed with $r^2 > 0.3$ in at
97 least one study, and 2,923,124 coding or essential splice site variants with minor allele count at
98 least five from exome sequencing (111,588 of which overlapped with the imputed).

99

100 **Novel common variant associations**

101 We identified 53 independent loci harboring genome-wide significant ($P < 5 \times 10^{-8}$)
102 common ($MAF \geq 1\%$) variants associated with hearing loss (Figure 1A, Supplementary Table 2,
103 Supplementary Figure 1), 35 of which are shared with the previously reported 58 hearing loss-
104 associated loci. We observed a genomic control $\lambda_{GC} = 1.36$ but an LD score regression
105 intercept 1.054 (standard error 0.008), indicating that inflation was largely due to polygenic signal
106 for the hearing loss phenotype.

107 Among the lead variants at the 18 novel loci (Figure 1A, Table 1, Supplementary Figure
108 2) is rs117887149 that maps close to *GJB2* (Supplementary Figure 2H), which is a predominant

109 cause of congenital hearing loss. While majority of the lead variants in the novel loci lay in
110 intergenic or downstream/upstream regions of genes, at four loci they were within the introns of
111 the following genes: *GRM5*, coding for a metabotropic glutamate receptor subunit involved in
112 synaptic neurotransmission; *KCTD10*, a member of the potassium channel tetramerization domain
113 family that is implicated in cardiac development^{18,19}; *LMO7*, which codes for a protein in the
114 cuticular plate of hair cells in the ear, causing abnormal inner hair cell stereocilia and late-onset
115 hearing loss when deleted in mice²⁰; and *MAP7D2*, an axonal cargo transport protein
116 predominantly expressed in the brain²¹.

117 Top variants at two other novel loci were missense changes and thus also implicate specific
118 genes: in *COL9A3* (Arg103Trp; MAF = 0.066) and *TMPRSS3* (Ala90Thr; MAF = 0.055).
119 Mutations in *COL9A3*, which is highly expressed in the ear, have been implicated in the autosomal
120 recessive Stickler syndrome, in which hearing loss is prominent²², and tentatively in non-
121 syndromic hearing loss^{23,24}. High-throughput mouse knockout characterization from the
122 International Mouse Phenotyping Consortium (IMPC) indicates that *Col9a3*-null mice also have
123 hearing loss²⁵. *TMPRSS3* is a type II membrane serine protease that localizes to the endoplasmic
124 reticulum and plasma membranes, and is expressed in hair cells and supporting cells in the organ
125 of Corti, the spiral ganglion, and the stria vascularis in the ear²⁶⁻²⁸. Mutations in *TMPRSS3* cause
126 congenital and childhood-onset autosomal recessive hearing loss²⁹.

127 The number of associated variants at the 50 autosomal loci ranged from eight to 1,326. In
128 order to assess the presence of multiple independent causal variants at each locus, we ran
129 conditional analyses using GCTA-COJO³⁰, which indicated the presence of secondary association
130 signals (joint $P < 10^{-5}$) at eight loci (Supplementary Table 3). We also ran FINEMAP Bayesian
131 causal variant inference³¹ to prioritize associated variants as credibly causal at thirty loci that were

132 genome-wide significant in RGC data (excluding FinnGen). The COJO and FINEMAP methods
133 disagreed on the presence of single vs. multiple association signals within five loci, three of which
134 showed subthreshold ($10^{-5} < P < 10^{-4}$) secondary associations in COJO. FINEMAP prioritized ten
135 or fewer variants in top causal variant 95% credible sets for the top causal variant at eleven loci,
136 including single putatively causal variants at four loci (Supplementary Table 3): missense variants
137 in *CDH23* (Ala371Thr; rs143282422) and *KLHDC7B* (Val504Met; rs36062310), and intronic
138 variants in *CTBP2* (rs10901863) and *PAFAH1B1* (rs12938775).

139

140 **Colocalization with GTEx eQTLs identifies candidate genes driving GWAS signals.**

141 To identify genes for which expression regulation might drive the observed association
142 signals, we tested for colocalization of our hearing loss-associated loci with expression quantitative
143 trait loci (eQTL) data for 48 tissues from the Genotype-Tissue Expression (GTEx) project (see
144 URLs) using coloc²³². Across all GTEx eQTL tissues tested, we identified 19 genes mapping to
145 15 loci with evidence (posterior probability of colocalization, PPH4 ≥ 0.5) for colocalization
146 between the hearing loss association and an eQTL signal, in at least one tissue (Supplementary
147 Table 4). Only two of the 15 loci with GWAS-eQTL overlap had multiple eQTL signals for more
148 than one gene (*NUCKS1* and *RAB29* in locus 1-4; *ACADVL*, *DLG4*, *CTDNEP1* and *CLDN7* in
149 locus 17-2) making it difficult to prioritize causal genes at these loci based on eQTL data. Since
150 GTEx did not include tissues from the ear, we used single-cell RNA sequencing data that were
151 generated in-house from mouse cochleae to check the expression of the 19 genes in the ear
152 (Supplementary Table 5). Thirteen of the 19 genes showed evidence of expression across 26 inner-
153 ear cell-types and, of these, 12 were expressed in the hair cells. While the majority of genes showed
154 broad expression across the 26 cell types, we noted a subset that were specific to only a few,

155 including *CRIP3* in inner and outer hair cells, and *TCF19* in neurons and immune cells
156 (Supplementary Tables 4 & 5).

157

158 **Rare-variant association analysis implicates known and novel hearing loss genes.**

159 We identified significant ($P < 5 \times 10^{-8}$) rare variant (MAF < 1%) associations in 25 genes,
160 15 of which had nonsynonymous variant or gene burden associations (Figure 1B, Table 2,
161 Supplementary Tables 6 & 7). Five of the 15 genes also had significant common variant
162 associations within 1 Mb (*KLHDC7B*, *SYNJ2*, *GJB2*, *EYA4*, and *CDH23*). After conditioning on
163 independent common variants at each locus (Supplementary Tables 6, 7 & 8), the rare variant and
164 gene burdens remained associated with hearing loss (maximum conditional $P \leq 3 \times 10^{-5}$) except
165 for the *CDH23* Asn1103Ser association (conditional $P = 0.79$). Of note, the lead common variant
166 in *CDH23* is also a missense (Ala371Thr) variant (MAF = 1.1%) and is pinpointed by FINEMAP
167 as the only causal variant at that locus with high confidence. Overall, our conditional analyses
168 suggest that rare variant association signals are usually independent of nearby common variant
169 associations.

170

171 *Associations with Mendelian hearing loss genes*

172 Of the 14 genes with independent, rare nonsynonymous and/or burden associations, three
173 are novel in humans (described below) and 11 were previously identified as causes of Mendelian
174 forms of hearing loss. The Mendelian gene associations include associations with two genes (*GJB2*
175 and *SLC26A5*) that cause recessive hearing loss, burden associations in seven genes (*MYO6*,
176 *COCH*, *TECTA*, *SIX1*, *CEACAM16*, *POU4F3*, and *EYA4*) and single-variant associations in two
177 genes (*TBC1D24* and *COL11A2*) that cause autosomal dominant hearing loss (reviewed in Shearer

178 et. al., 1999³³). In *MYO6* and *COCH*, we also observed genome-wide significant single-variant
179 associations of large effect size (*MYO6* His246Arg, OR=30.7; *COCH* Cys542Phe, OR=81.4;
180 Supplementary Table 6). Both variants have previously been characterized as pathogenic in
181 family-based genetic analyses^{34,35}. Only a minority of variants included in burden tests have been
182 classified as pathogenic by ClinVar (Supplementary Table 9) suggesting that our analysis has
183 detected additional novel, risk-associated variants with variable penetrance in Mendelian hearing
184 loss genes. We also identified single-variant associations in two genes that cause autosomal
185 dominant hearing loss: *TBC1D24* Asn307Ser was recently implicated as pathogenic in two
186 unrelated families³⁶, and *COL11A2* Phe80Ser, which has not yet been classified as pathogenic but
187 is predicted deleterious, lies in a domain (Laminin G-like/NC4) that harbors other mutations
188 causing non-syndromic hearing loss³⁷.

189 We performed our analysis under an additive model, which assumes risk effects in
190 heterozygous carriers as well as homozygotes; therefore, it is not surprising to see that the majority
191 of Mendelian genes (9/11) identified can cause hearing loss in heterozygote carriers. However, we
192 also detect associations in two genes that have previously been implicated in recessive hearing
193 loss: *GJB2* Gly12fs (OR = 1.21; $P = 4 \times 10^{-11}$), and *SLC26A5* Leu46Pro (OR = 1.3; $P = 3 \times 10^{-14}$)
194 as well as the burden of *SLC26A5* predicted loss-of-function (pLOF) and strict deleterious
195 missense variants (excluding Leu46Pro) (OR = 1.96; $P = 3 \times 10^{-17}$) (Figure 2). We also observed
196 a suggestive association with *GJB2* Leu90Pro (OR = 1.51, $P = 4.4 \times 10^{-5}$), another known
197 pathogenic variant in recessive hearing loss. The associations persisted after excluding
198 homozygous carriers and compound heterozygous carriers of rare, coding variants in these genes
199 (Supplementary Table 10), suggesting a previously unappreciated increase in risk for hearing loss
200 in heterozygous carriers of loss-of-function *GJB2*, and missense and pLOF *SLC26A5* variants.

201
202 *Novel rare-variant associations with hearing loss genes in humans: KLHDC7B, FSCN2, and*
203 *SYNJ2*

204 The most significant rare coding association in our analysis was the aggregate of 68 pLOF
205 variants (43 frameshift, 23 stop-gain and 2 stop-loss, (Supplementary Table 9)) in *KLHDC7B*
206 (Kelch-like domain containing 7B), with an approximately two-fold increase in risk for hearing
207 loss (OR = 2.14, $P = 5 \times 10^{-30}$). The main contributors to the gene burden were two frameshift
208 variants, Gly302fs and Lys181fs, that are predicted to truncate the protein near the start of the
209 Kelch domains. These variants were also significantly associated in single-variant tests (Figure 3).
210 The association with pLOF variants remained significant after repeating the pLOF burden test
211 conditioning on Gly302fs and Lys181fs ($P = 8 \times 10^{-8}$; Supplementary Table 7). In addition, we
212 observed a common (MAF = 4%) missense variant (Val504Met) within the last Kelch domain of
213 *KLHDC7B* associated with increased risk for hearing loss (OR = 1.14, $P = 4 \times 10^{-26}$). This variant
214 was also prioritized as the sole causal variant at this locus by FINEMAP (Supplementary Table 3).

215 We also identified rare coding associations in fascin actin-bundling protein 2 (*FSCN2*) and
216 synaptotagmin 2 (*SYNJ2*) with increased risk for hearing loss (Figure 4). In *FSCN2*, an actin cross-
217 linking protein³⁸⁻⁴⁰, an aggregate of pLOF and deleterious missense variants was associated with
218 hearing loss, with majority of the carriers in the burden having the His138Tyr variant.
219 Conditioning on His138Tyr attenuated the significance of the burden test ($P = 3 \times 10^{-6}$ after
220 conditioning on His138Tyr; Supplementary Table 7) but did not eliminate the signal, suggesting
221 that other variants in *FSCN2* may increase the risk for hearing loss. Mice homozygous for loss-of-
222 function mutations in *Fscn2* present progressive hearing loss starting at 3 weeks and near deafness
223 by 24 weeks due to degeneration of the outer hair cells in the cochlea⁴⁰. In *SYNJ2*, we identified

224 an association with a missense (Thr656Met) variant that lies in the catalytic domain of this inositol
225 polyphosphate 5-phosphatase⁴¹. Mice harboring homozygous mutations in *Synj2* that are predicted
226 to reduce protein levels or the 5-phosphatase catalytic activity show progressive high-frequency
227 hearing loss and a degeneration of hair cells that is most profound in the outer hair cells^{42,43}.

228

229 **GWAS/ExWAS supports a highly polygenic architecture of adult hearing loss.**

230 Given that this is the largest study to date of adult hearing loss, as well as the presence of
231 Mendelian hearing loss genes among our common and rare-variant associations, we sought to
232 explore the distribution of effect sizes across allele frequencies (Figure 5). Hearing loss-associated
233 variants span the frequency spectrum and, while we observe a few rare variants of large effect (e.g.
234 *COCH* Cys542Phe and *MYO6* His246Arg), we do not observe any common variants of large
235 effect. We further estimated phenotypic variance explained by the genetic data, or heritability h^2_{Tot} ,
236 using LD score regression (LDSC) partitioning into functional categories and stratifying by minor
237 allele frequency^{44,45}. We estimated a total heritability (h^2_{Tot}) of 0.089, with contributions from
238 common variation (h^2_{CV} , $MAF > 0.05$) and low-frequency variation (h^2_{LFV} , $0.001 < MAF \leq 0.05$)
239 of 0.074 and 0.015, respectively (Supplementary Figure 3, Supplementary Table 11). These results
240 indicate that, while the bulk of SNP heritability is derived from common variation, low-frequency
241 variation contributes 16.8% of total SNP heritability.

242 **DISCUSSION**

243 We performed combined GWAS and ExWAS using exome sequencing data and identified
244 53 independent associations, of which 18 were novel. Novel associations included a missense lead
245 variant in *TMPRSS3*, a known cause of Mendelian hearing loss, adding to the tally of Mendelian
246 deafness genes (*EYA4*, *CDH23*, *TRIOBP*) showing common coding-variant associations with
247 hearing loss in adult humans. We also identified coding variant/gene burden associations with 15
248 genes through exome sequencing. We estimated that low-frequency variation contributes a non-
249 negligible portion (16.8%) of SNP heritability for adult hearing loss, consistent with a highly
250 polygenic genetic architecture with rare, low-frequency and common genetic variation for adult
251 hearing loss, and where variants of large effect would be subject to purifying selection.

252 Notably, the majority of genes implicated by rare-variant and burden associations are
253 already known to cause Mendelian forms of hearing loss; however, the odds ratios for these
254 associations are wide-ranging. At the lower end of the effect spectrum are single-variant
255 associations in *GJB2* and *SLC26A5*, with ORs close to typical for low-frequency GWAS findings
256 (1.2-1.3), followed by *COL11A2* (2.2-7) and, at the highest end of the distribution, *COCH* and
257 *MYO6* (31-81). *COCH* Cys542Phe and *MYO6* His246Arg are known pathogenic variants, and
258 consistent with this, we see almost all carriers presenting hearing loss. The two control carriers for
259 each variant (Supplementary Table 6) could be explained by imperfect ascertainment of the
260 phenotype or, as these mutations cause late-onset and progressive hearing loss, could also reflect
261 a difference in expressivity. While some dilution of the effect sizes may be expected when working
262 with self-reported as opposed to objective measures of hearing loss, the broad range in ORs that
263 we observe suggests that for several of these Mendelian hearing loss genes we are identifying
264 carriers with incompletely penetrant, risk-increasing variants. These results are consistent with the

265 hypothesis that there is a continuum between Mendelian and common forms of hearing loss with
266 the same genes harboring mutations ‘causal’ for the former, and risk-increasing for the latter.
267 Furthermore, compared to epidemiological risk factors for common hearing loss, including noise
268 exposure (OR~1.5-3⁴⁶), odds ratios of low-frequency and rare genetic factors may be large enough
269 to provide mechanistic insights and to have implications for precision medicine.

270 Ultimately, to understand the biology of hearing loss and develop testable hypotheses from
271 our association results, we need to identify the genes driving the observed associations at each
272 locus. For common variants, we note the high resolution of FINEMAP to prioritize causal variants
273 in several loci, including pinpointing single variants in four genes, three of which are related to
274 hearing loss (*CDH23*), hearing function (*CTBP2*), or have significant rare variant associations with
275 hearing loss (*KLHDC7B*). While FINEMAP helps prioritize variants, the gene that is impacted by
276 those variants is not necessarily obvious, so we looked for colocalization with GTEx eQTL data
277 and identified 19 genes whose expression may influence hearing loss risk (Supplementary Table
278 4). Analysis of single-cell expression data from mouse ears showed that 13 of the 19 genes are
279 expressed in the ear. Of note, among these are *LMO7*, also a novel association from our analysis,
280 and *SPTBN1* (BetaII-spectrin). Both genes code for components of the cuticular plate in the hair
281 cells of the ear and knockout mice for either gene develop hearing loss^{20,47}. *LMO7* colocalizes with
282 eQTLs for the gene in GTEx skeletal muscle and *SPTBN1* in thyroid tissue, such that decreased
283 expression of these genes is correlated with increased risk for hearing loss in humans.

284 One of the most compelling ways in which human genetics can establish a role for a gene
285 in disease is when a diverse set of rare nonsynonymous or loss-of-function variants in the same
286 gene show consistent association with disease. Coding variant and gene burden associations that
287 we identified included associations with known pathogenic (e.g. in *MYO6* and *COCH*) and novel

288 variants (*COL11A2* Phe80Ser), in genes that can cause autosomal dominant Mendelian hearing
289 loss. We also identified variants and genes that cause recessive hearing loss (*GJB2* Gly12fs and
290 *SLC26A5* pLOF+strict deleterious missense mutations), associated with increased risk (OR~1.2-
291 1.3) for hearing loss in heterozygous carriers. Missense mutations in *GJB2* can cause dominant,
292 syndromic hearing loss⁴⁸ but loss-of-function mutations, including Gly12fs, cause recessive non-
293 syndromic hearing loss⁴⁹⁻⁵¹. Consistent with our findings, studies have detected hearing deficiency
294 at high frequencies and a possibly more prominent effect in female adult heterozygous carriers of
295 Gly12fs⁵¹⁻⁵³. Mutations in *SLC26A5* cause recessive hearing loss in humans⁵⁴ and mice
296 homozygous for *Slc26a5* null mutations develop hearing loss as early as 5-7 weeks of age⁵⁵.
297 *Slc26a5* heterozygous null mice have a hearing deficiency that is intermediate between the controls
298 and knockouts. While we cannot rule out the possibility of compound heterozygosity with
299 variation in regulatory/promoter regions in heterozygous carriers, our results offer the possibility
300 that heterozygous carriers of loss-of-function variants in *GJB2* and *SLC26A5* may also have
301 increased risk for adult-onset hearing loss.

302 Three of the 15 coding and burden associations were in genes that have not previously been
303 implicated in Mendelian hearing loss in humans: *KLHDC7B*, *FSCN2*, and *SYNJ2*. In *KLHDC7B*,
304 we confirmed a previously reported association of the common Val504Met variant with increased
305 risk for hearing loss⁵⁶, and in addition identified associations of increased risk with rare pLOF
306 variants. While the biological effect of the missense is difficult to interpret, the association of
307 putative LOFs with increased risk for hearing loss suggests that loss of *KLHDC7B* function is
308 deleterious for hearing function. Based on the smaller effect of Val504Met (OR = 1.14) compared
309 to the pLOF burden (OR=2.14), we would hypothesize that this more common missense (MAF =
310 4%) is a hypomorph. *KLHDC7B* (Kelch-like domain containing 7B) is a relatively understudied

311 gene; it has been characterized as a 594-amino-acid protein containing a Kelch domain that is
312 hypermethylated and upregulated in breast cancer cell lines and may influence cell proliferation in
313 MCF-7 cells lines^{57,58}. In the mouse ear, RNAseq expression profiling⁵⁹ and our real-time PCR data
314 (Supplementary Figure 4) show *Klhdc7B* expression in the cochlea with enrichment in the outer
315 hair cells⁶⁰. Consistent with the hypothesis from our genetic findings that loss of KLHDC7B
316 function increases risk for hearing loss, initial characterization of *Klhdc7B* null mice by IMPC
317 showed that homozygous carriers have hearing loss^{40,42,43}. Mouse models of the two other novel
318 human hearing loss gene candidates from our analysis, *Fscn2* and *Synj2*, also develop hearing loss.
319 To the best of our knowledge, this report is the first to show that coding variants in *FSCN2* and
320 *SYNJ2* can also increase the risk for hearing loss in humans. Based on our association results, it
321 would also be interesting to test heterozygous null *Klhdc7b*, *Fscn2*, and *Synj2* animals for
322 increased susceptibility to hearing loss with age or environmental insults such as noise-exposure.

323 We recognize that our study has several limitations. Our phenotype includes (in UKB) self-
324 reported hearing loss among adults, which is likely to be a heterogeneous mix of early-onset, late-
325 onset, age-related, as well as hearing loss due to environmental insults. In general, greater
326 phenotype precision, including environmental exposure measures, should help future genetic
327 analyses of adult hearing loss. We note that our colocalization analyses utilized GTEx eQTL data
328 across tissues not including ear expression data. Given the high degree of sharing of genetic
329 regulation of expression across tissues^{61,62}, the results are likely to point to the causal genes in many
330 instances. eQTL data for ear cell types should help with the interpretation of genetic analyses of
331 adult hearing loss.

332 In summary, this work contributes to connecting the two ends of the genetic architecture
333 of hearing loss in three main ways: 1) by detecting a common signal in genes known to cause

334 hearing loss in Mendelian fashion; 2) by identifying three novel genes causing hearing loss in
335 humans; and 3) by detecting an additive signal (i.e. increased risk in heterozygous carriers) in
336 genes known to cause autosomal recessive hearing loss. This last finding also connects young- and
337 adult-onset hearing loss in a single phenotypic spectrum with complex genetic underpinnings,
338 including contributions from rare and common variation.

339 **METHODS**

340 **Participating cohorts and phenotype data**

341 We performed meta-analysis for hearing loss on a total of 125,749 cases and 469,495
342 controls of European ancestry from the following cohorts: United Kingdom Biobank (UKB)⁶³, the
343 MyCode Community Health Initiative cohort from Geisinger Health System (GHS)⁶⁴, the Mount
344 Sinai Biome cohort (SINAI) (see URLs), the Malmö Diet and Cancer study (MALMO)⁶⁵, and
345 FinnGen R3 (URLs). Hearing loss case-control status in GHS, MALMO and SINAI was defined
346 using ICD-10 code diagnoses from the EHR. Cases were individuals with ICD10 H90.3-H90.8,
347 H91.1or H91.9 diagnoses. Controls were individuals who did not meet the case criteria and did
348 not have a diagnosis for ICD-10 Q16 (congenital malformations of ear causing hearing
349 impairment) or ICD-10 H93.1 (tinnitus). In UKB the phenotype was defined using ICD-10 codes
350 as above or by self-reported hearing loss or complete deafness on the touchscreen questionnaire
351 (Field IDs: 2247 and 2257). Controls in UKB were individuals who did not have an ICD-10
352 diagnosis for hearing loss or tinnitus and did not self-report hearing loss, deafness or tinnitus (Field
353 IDs: 4803 and non-cancer illness code 1597). The FinnGen analysis used was
354 `finngen_r3_H8_CONSENHEARINGLOSS`, conductive or sensorineural hearing loss defined by
355 ICD10 codes H90[.0-8], versus controls excluding other ear disorders (H91-H95). Further details
356 are given in the Supplementary Note.

357

358 **Genetic data and association analyses**

359 High-coverage whole-exome sequencing was performed at the Regeneron Genetics Center
360 as previously described^{66,67}. For SINAI and MALMO, DNA from participants was genotyped on
361 the Global Screening Array (GSA), and for GHS genotyping was done on either the Illumina
362 OmniExpress Exome (OMNI) or GSA array; the datasets (stratified by array for GHS) were

363 imputed to the TOPMed (GHS) or HRC (MALMO and SINAI) reference panels using the
364 University of Michigan Imputation Server or the TOPMed Imputation Server (URLs). Additional
365 details are given in the Supplementary Note. We tested for association with hearing loss genetic
366 variants or their gene burdens using REGENIE v1.0.43⁶⁸. Analyses were adjusted for age, age2,
367 sex, an age-by-sex interaction term, experimental batch-related covariates, and genetic principal
368 components. Cohort-specific statistical analysis details are provided in the Supplementary Note.
369 Results across cohorts were pooled using inverse-variance weighted meta-analysis.

370

371 **Fine mapping and follow-on genetic analyses.**

372 We defined genome-wide significant loci in our analysis by linkage disequilibrium ($r^2 >$
373 0.1) with lead variants. We defined previously associated loci by their index variants reported in
374 previous hearing loss GWAS^{12–16,56,69–73}, and excluded 1 Mb regions surrounding them in the
375 identification of novel loci in our analysis. LD score (LDSC) regression⁷⁵ was used to assess
376 inflation (LDSC intercept) accounting for polygenic signal. Power calculations determined
377 genotype relative risks (GRRs) providing 80 and 50 percent power given specified risk allele
378 frequencies (RAFs, from 10^{-6} to 1) and the numbers of cases and controls in our meta-analysis.
379 Fine mapping analyses included forward stepwise conditional analyses carried out in every locus
380 with GCTA-COJO using a UK Biobank subsample LD reference panel, with independent
381 associations determined using a joint P-value threshold of 1×10^{-5} and r^2 cutoff of 0.9, and
382 FINEMAP³¹ Bayesian causal variant inference, using LD from available individual level data.

383 For genes whose cis regions overlapped genome-wide significant hearing loss loci, coloc²³²
384 was used to assess evidence for colocalization between our hearing loss GWAS and GTEx (release
385 v8) cis-eQTL data derived from 48 tissues (URLs), using GWAS and eQTL summary statistics
386 for all common ($MAF \geq 0.01$) variants within each gene's cis-region. Genes with posterior

387 probability of colocalization $H4 \geq 0.5$ were determined as having evidence for colocalization, and
388 were visually inspected in eQTL+GWAS regional association plots (Supplementary Figure 5).

389 Conditional analyses were performed for each cohort using REGENIE's Firth-corrected
390 logistic regression and the resulting summary statistics were meta-analyzed as described above.
391 Rare variant association analyses conditional on the common variant signal were carried out for
392 four loci with both common ($MAF \geq 0.01$) and single rare variant ($MAF < 0.01$) genome-wide
393 significant signals, by including as covariates the dosages of variants identified in fine mapping
394 analyses. Burden analyses conditional on rare variants were carried out for five genes with
395 significant single rare variant and burden associations.

396 Assessment of heterozygous effects used association analyses excluding homozygotes as
397 well as individuals carrying pairs of exome sequenced variants ($MAF < 2\%$ and $MAC > 1$) that
398 were called as compound heterozygous mutations (CHMs) or potential CMHs (i.e. unknown
399 phase). CHMs were called by SHAPEIT4 phasing of merged genotype and exome data with
400 scaffolds based on inferred close relatives^{76,77}.

401 Heritability derived from variants partitioned into seven functional categories (coding-
402 synonymous, coding-nonsynonymous, 5-prime-UTR, 3-prime-UTR, splice site, intronic,
403 intergenic) with each category further stratified into a low frequency ($0.001 < MAF \leq 0.05$) and
404 common ($MAF > 0.05$) minor allele frequency bin as in stratified LD score regression was
405 estimated using LD score regression (LDSC) of hearing loss association statistics on LD scores.
406 LD scores were generated from a reference panel of $N = 10,000$ random UK Biobank European-
407 ancestry samples' merged imputed and exome data.

408

409 **Single-Cell RNA Sequencing and Analysis**

410 All protocols were approved by the Institutional Animal Care and Use Committee in
411 accordance with the Regeneron's Institutional Animal Care and Use Committee (IACUC).
412 Cochlea and utricles from C57BL/6 mice at post-natal day 7 were micro-dissected and dissociated.
413 Suspensions of 200 cells / uL were subjected to Chromium Single Cell (10xGenomics) library
414 preparation and were sequenced on Illumina NextSeq 500. Cell Ranger Single-Cell Software Suite
415 (10X Genomics, v2.0.0) was used to perform sample de-multiplexing, alignment to MM10
416 Genome assembly with UCSC gene models, filtering, and UMI counting. PCA, UMAP and
417 clustering analyses used Seurat V3.2 (URLs)⁷⁸. Cluster marker genes as well as canonical cell type-
418 specific genes were used to manually label the cell type for each cluster.

419

420 **URLs**

421 International Mouse Phenotyping Consortium: <https://www.mousephenotype.org/>.

422 gEAR portal: <https://umgear.org/>

423 GTEEx: <https://www.gtexportal.org/home/>

424 [referred to in METHODS]

425 Mount Sinai BioMe: <https://icahn.mssm.edu/research/ipm/programs/biome-biobank/pioneering>

426 FinnGen: <https://www.finngen.fi/>

427 University of Michigan Imputation Server: <https://imputationserver.sph.umich.edu/index.html>

428 TOPMed Imputation Server: <https://imputation.biodatacatalyst.nhlbi.nih.gov/>

429 MakeScaffold: <https://github.com/odelaneau/makeScaffold>

430 SHAPEIT4: <https://github.com/odelaneau/shapeit4>

431 GTEEx v8 eQTL data: <https://www.gtexportal.org/>

432 Seurat V3.2: <https://github.com/satijalab/seurat>

433

434 **ACKNOWLEDGEMENTS**

435 The authors would like to thank everyone who made this work possible. In particular: the UK
436 Biobank team, their funders, the dedicated professionals from the member institutions who
437 contributed to and supported this work, and most especially the UK Biobank participants, without
438 whom this research would not be possible. The exome sequencing was funded by the UK Biobank
439 Exome Sequencing Consortium (i.e., Bristol Myers Squibb, Regeneron, Biogen, Takeda, Abbvie,
440 Alnylam, AstraZeneca and Pfizer). This research has been conducted using the UK Biobank
441 Resource under application number 2604. We also want to acknowledge the participants and
442 investigators of the FinnGen study. We thank the MyCode Community Health Initiative
443 participants for taking part in the DiscovEHR collaboration.

444 **Author contributions:** All authors contributed to critical review of the manuscript for important
445 intellectual content, and final approval of submission of the manuscript for publication.

446 Conceptualization: KP, EAS, MD, BZ, AB, GC

447 Data curation: MNC

448 Analysis: KP, LD, LG, MAF, AHA, JS, AP, AM, SC, EAS

449 Single-cell sequencing data generation and analysis: SM, YB, JS

450 Mouse experiments: AK

451 Project administration: EC, MJ

452 Datasets: OM

453 Supervision: MAF, GA, EAS, SB, BZ, GC, AB

454 Writing – original draft: KP, LD, EAS, GC

455 **Competing interests:**

456 Regeneron authors receive salary from and own options and/or stock of the company. Decibel

457 authors receive salary and may own options and/or stock of the company.

458

459 **Data availability statement**

460

461 All whole-exome sequencing, genotyping chip, and imputed sequence for UKB described in this
462 report are publicly available to registered researchers via the UK Biobank data access protocol.

463 Additional information about registration for access to the data is available at

464 <http://www.ukbiobank.ac.uk/register-apply/>. Further information about the whole exome sequence

465 is available at http://www.ukbiobank.ac.uk/wp-content/uploads/2019/03/Access_064-UK-

466 [Biobank-50k-Exome-Release-FAQ-v3.pdf](#) Detailed information about the chip and imputed

467 sequence is available at: <http://www.ukbiobank.ac.uk/wp-content/uploads/2018/03/UKB->

468 [Genotyping-and-Imputation-Data-Release-FAQ-v3-2-1.pdf](#). Geisinger DiscovEHR, Malmo Diet

469 and Cancer study and Mt. Sinai Biome exome sequencing and genotyping data can be made

470 available to qualified, academic, non-commercial researchers upon request via a Data Transfer

471 Agreement with the respective institutions. Summary statistics for FinnGen r3 can be downloaded

472 from https://www.finnngen.fi/en/access_results.

FIGURES AND TABLES

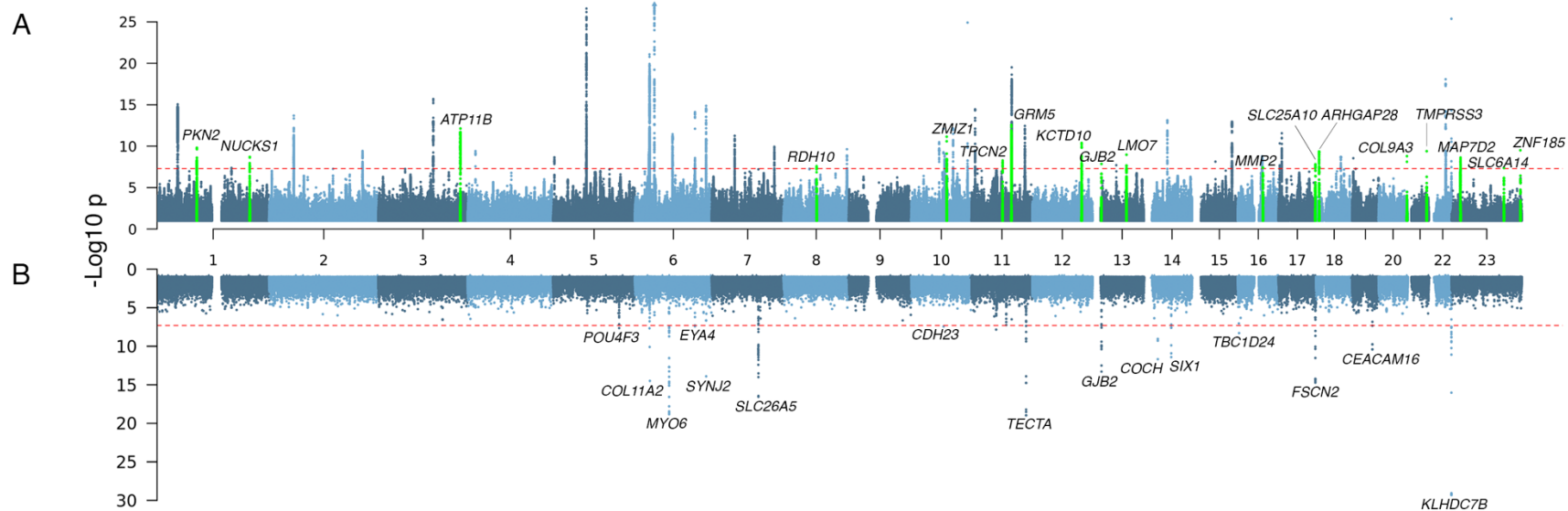


Figure 1: Common (MAF ≥ 0.01) variant (A), and rare (MAF < 0.01) coding single-variant and gene burden (B) associations with hearing loss. The gene labels refer to the nearest gene and colored in green are loci that have not previously been associated with hearing loss in the common variant results (A).

Table 1. Lead variants at the 18 novel loci associated with hearing loss. The alternate allele frequency (AAF) refers to the allele listed second in the ‘Position’ column. The direction of the effect in each single study (in the order: MALMO, UKB, GHS, SINAI, FinnGen) in the meta-analysis is given in the ‘Direction’ column where ‘+’ indicates increased risk, ‘-’ indicates decreased risk, and ‘?’ indicates that the variant was not present or tested. The nSNPs column indicates the number of genome-wide significant SNPs within each locus.

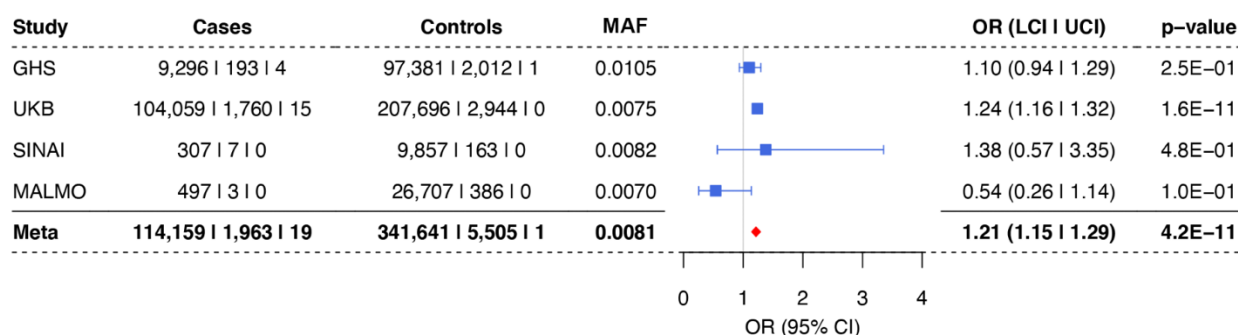
Position	rsID	OR (LCI, UCI)	p-value	AAF	nSNPs	Nearest Gene	Direction
11:88585758:A:G	rs61901971	0.952 (0.940, 0.965)	2.716E-13	0.1695	744	<i>GRM5</i>	?-?-
10:78760556:T:C	rs11596052	0.959 (0.947, 0.970)	7.137E-12	0.2162	94	<i>ZMIZ1</i>	+----
12:109460927:A:G	rs1558804	1.033 (1.023, 1.044)	4.11E-11	0.4468	620	<i>KCTD10</i>	-++++
1:88282464:G:A	rs475788	1.036 (1.024, 1.047)	1.556E-10	0.7145	462	<i>PKN2</i>	-++++
23:152898837:T:C	rs186256023	1.082 (1.056, 1.109)	3.144E-10	0.0315	16	<i>ZNF185</i>	+++?
21:42388983:C:T	rs45598239	1.070 (1.048, 1.093)	4.053E-10	0.0549	18	<i>TMPRSS3</i>	+++++
18:6678716:T:A	rs8090563	1.031 (1.021, 1.042)	4.285E-10	0.4901	210	<i>ARHGAP28</i>	+++++
13:75783745:C:G	rs1570556	1.031 (1.021, 1.041)	1.072E-09	0.4275	318	<i>LMO7</i>	+++++
20:62819980:C:T	rs61734651	1.062 (1.041, 1.083)	1.6E-09	0.0654	57	<i>COL9A3</i>	+++++
1:205751355:G:A	rs823116	0.971 (0.961, 0.980)	1.986E-09	0.5493	209	<i>NUCKS1</i>	+----
23:20054286:C:T	rs7055595	1.033 (1.022, 1.044)	2.44E-09	0.2007	488	<i>MAP7D2</i>	++++?
11:69208057:T:C	rs7926098	1.030 (1.020, 1.041)	5.43E-09	0.6182	204	<i>TPCN2</i>	-+++
3:182336158:A:G	rs55853808	1.040 (1.026, 1.054)	1.066E-08	0.1573	25	<i>ATP11B</i>	++-++
13:20186225:A:T	rs117887149	1.114 (1.073, 1.156)	1.401E-08	0.0178	10	<i>GJB2</i>	+++-
17:81711135:C:T	rs62077192	1.140 (1.089, 1.193)	1.553E-08	0.0117	92	<i>SLC25A10</i>	+++-
8:73332501:T:C	rs4738323	1.035 (1.023, 1.048)	2.591E-08	0.1972	42	<i>RDH10</i>	-++++
16:55456852:T:A	rs17300627	0.967 (0.955, 0.978)	3.883E-08	0.2034	105	<i>MMP2</i>	+----
23:116435671:G:A	rs3788766	1.025 (1.016, 1.034)	4.351E-08	0.6386	66	<i>SLC6A14</i>	+++?

Table 2: Nonsynonymous rare (minor allele frequency, MAF < 0.01) variants and gene burdens associated ($P < 5 \times 10^{-8}$) with hearing loss in meta-analysis. Rows in bold indicate novel human hearing loss associations. The direction of the effect in each single study (in the order: MALMO, UKB, GHS, SINAI, FinnGen) in the meta-analysis is given in the ‘Direction’ column where ‘+’ indicates increased risk, ‘-’ indicates decreased risk and ‘?’ indicates that the variant was not present or tested.

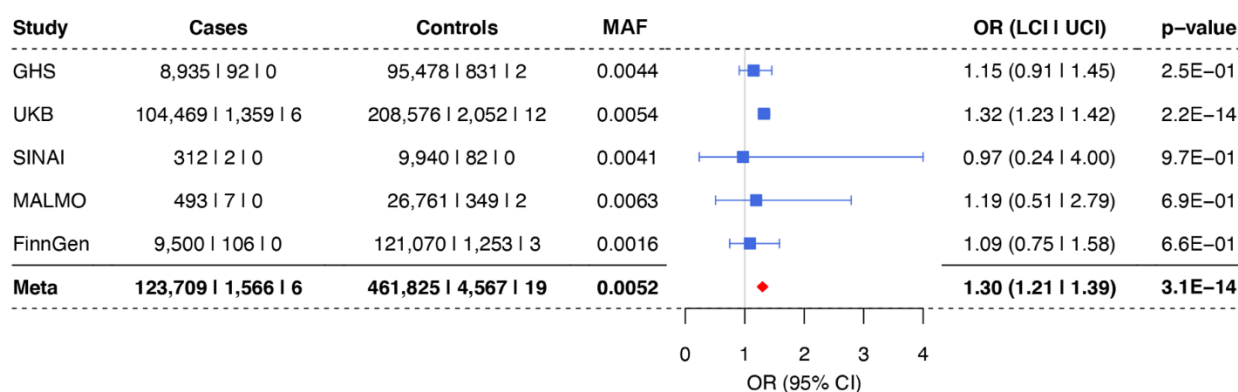
Gene	Top Burden/SNV	OR (LCI, UCI)	p-value	Direction
<i>KLHDC7B</i>	pLOF only (MAF \leq 0.01)	2.145 (1.881, 2.446)	5.22E-30	-+++?
<i>TECTA</i>	pLOF + strict deleterious missense (MAF \leq 0.01)	1.358 (1.271, 1.451)	1.10E-19	++++?
<i>MYO6</i>	pLOF + strict deleterious missense (MAF \leq 0.0001)	1.565 (1.420, 1.725)	1.51E-19	+++??
<i>FSCN2</i>	pLOF + all missense (MAF \leq 0.01)	1.144 (1.107, 1.183)	1.90E-15	+++?
<i>COL11A2</i>	6:33189182:A:G; Phe80Ser	6.926 (4.280, 11.208)	3.24E-15	?+???
<i>SYNJ2</i>	6:158071628:C:T; Thr656Met	1.306 (1.221, 1.398)	1.25E-14	+++++
<i>SLC26A5</i>	pLOF and strict deleterious missense (MAF \leq 0.0001)	1.956 (1.674, 2.284)	2.75E-17	-++??
<i>COCH</i>	pLOF + strict deleterious missense (MAF \leq 0.0001)	1.719 (1.449, 2.039)	5.22E-10	-++??
<i>SIX1</i>	pLOF + strict deleterious missense (MAF \leq 0.00001)	4.252 (2.825, 6.400)	3.95E-12	?+???
<i>CEACAM16</i>	pLOF + deleterious missense (MAF \leq 0.01)	1.187 (1.128, 1.249)	4.01E-11	-++?
<i>GJB2</i>	13:20189546:AC:A; Gly12fs	1.214 (1.146, 1.286)	4.23E-11	-+++?
<i>TBC1D24</i>	16:2497068:A:G; Asn307Ser	4.140 (2.571, 6.668)	5.10E-09	?+???

<i>POU4F3</i>	pLOF + all missense (MAF \leq 0.00001)	1.923 (1.529, 2.418)	2.31E-08	?++??
<i>CDH23</i>	10:71712737:A:G; Asn1103Ser	1.204 (1.127, 1.287)	3.70E-08	++++?
<i>EYA4</i>	pLOF only (MAF \leq 0.001)	3.077 (2.061, 4.595)	3.87E-08	+++??

A. *GJB2* (Gly12fs)



B. *SLC26A5* (Leu46Pro)



C. *SLC26A5* aggregate of pLOF and strict deleterious missense

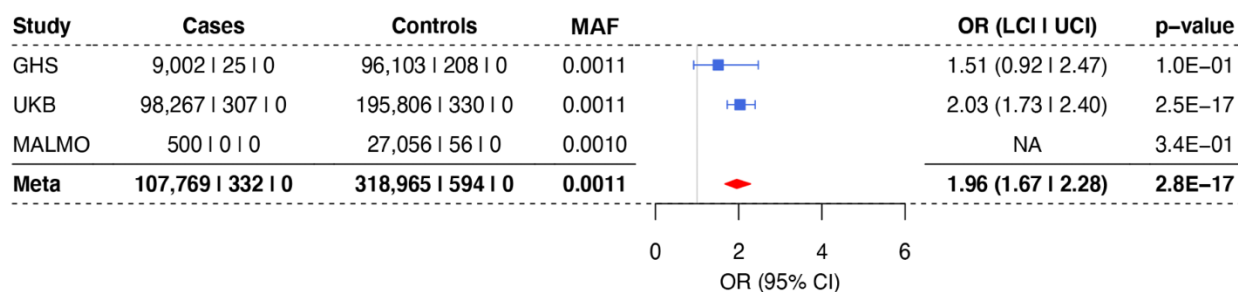
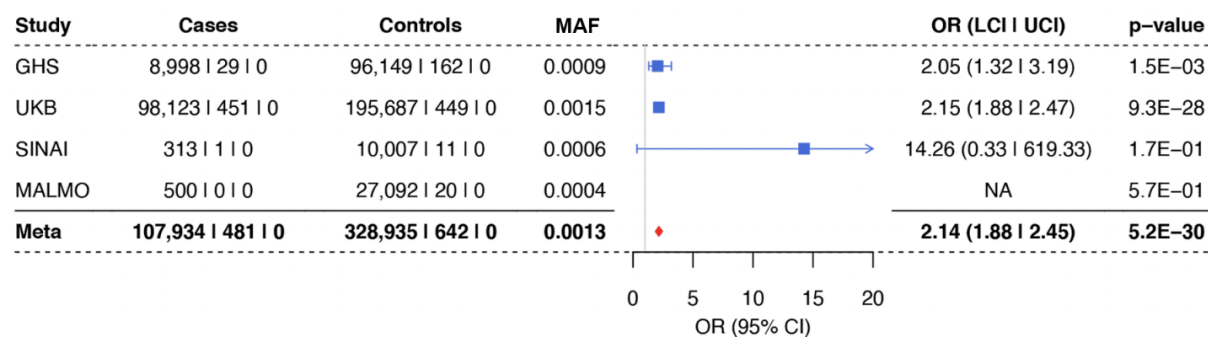
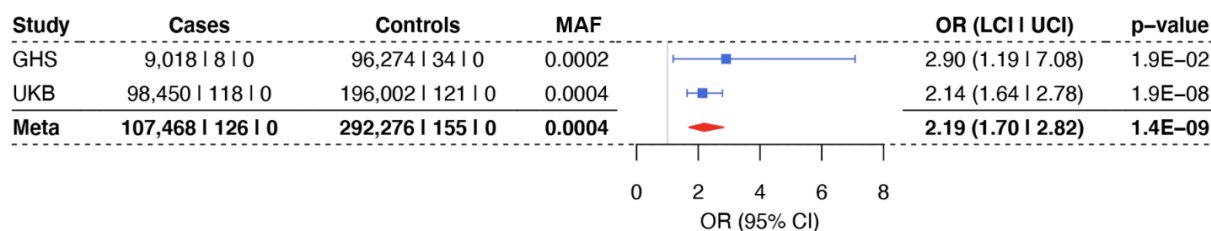


Figure 2: Association of *GJB2* Gly12fs (A), *SLC26A5* Leu46Pro (B) and *SLC26A5* pLOF and strict deleterious missense, MAF \leq 0.0001 (C) with hearing loss.

A. *KLHDC7B* aggregate of predicted loss-of-function variants (MAF \leq 0.01)



B. *KLHDC7B* (Lys181fs)



C. *KLHDC7B* (Gly302fs)

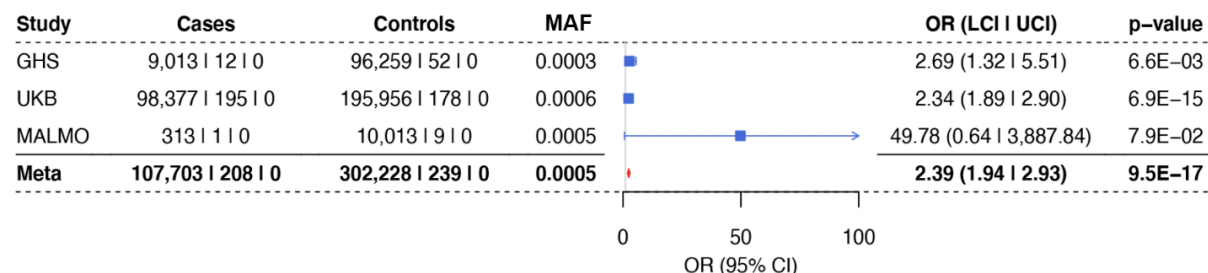
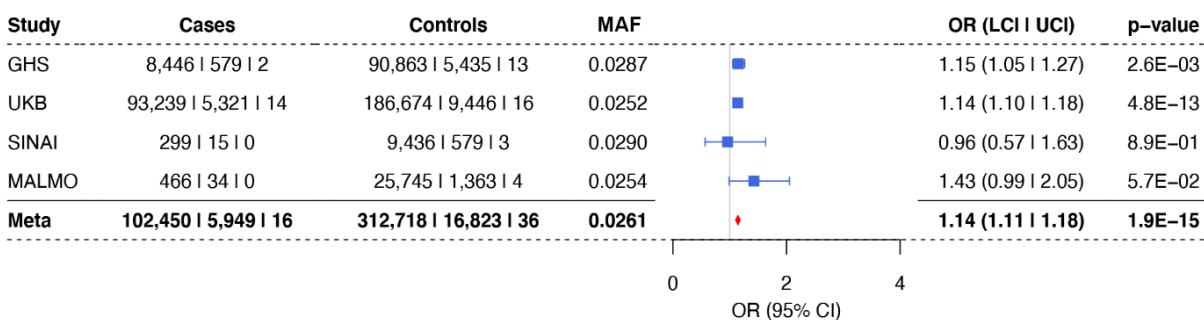
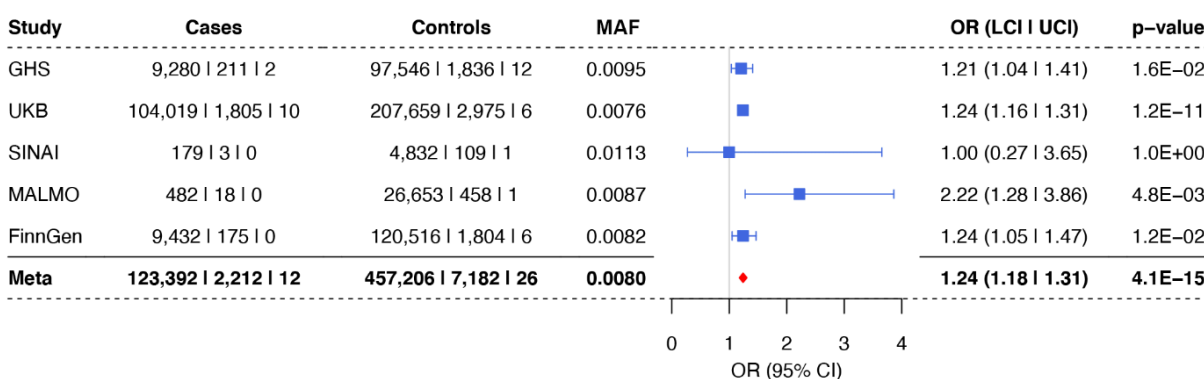


Figure 3: Association of rare variants in *KLHDC7B* with increased risk for hearing loss in meta-analysis. A. Association of an aggregate of predicted loss of function variants (MAF \leq 0.01) in *KLHDC7B* with risk for hearing loss. **B and C.** Two variants were the predominant contributors to the *KLHDC7B* loss-of-function gene burden aggregate, Lys181fs (B) and Gly302fs (C).

A. *FSCN2* aggregate of pLOF and missense (MAF ≤ 0.01)



B. *FSCN2* (*His138Tyr*)



C. *SYNJ2* (*Thr656Met*)

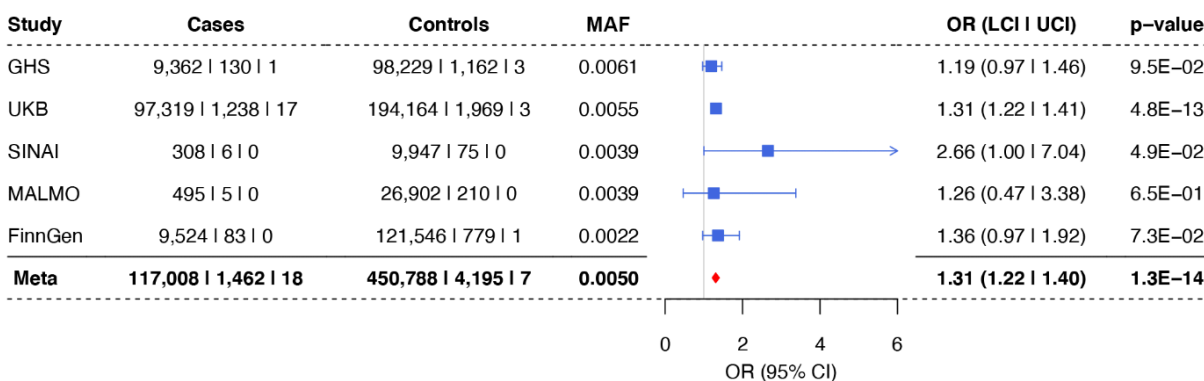


Figure 4 Association of human hearing loss with genes previously implicated in hearing loss in mice. A. pLOF and missense (MAF ≤ 0.01) burden association in *FSCN2*. **B.** The His138Tyr variant is the major contributor to the burden. **C.** *SYNJ2* (Thr656Met) association with increased risk for hearing loss.

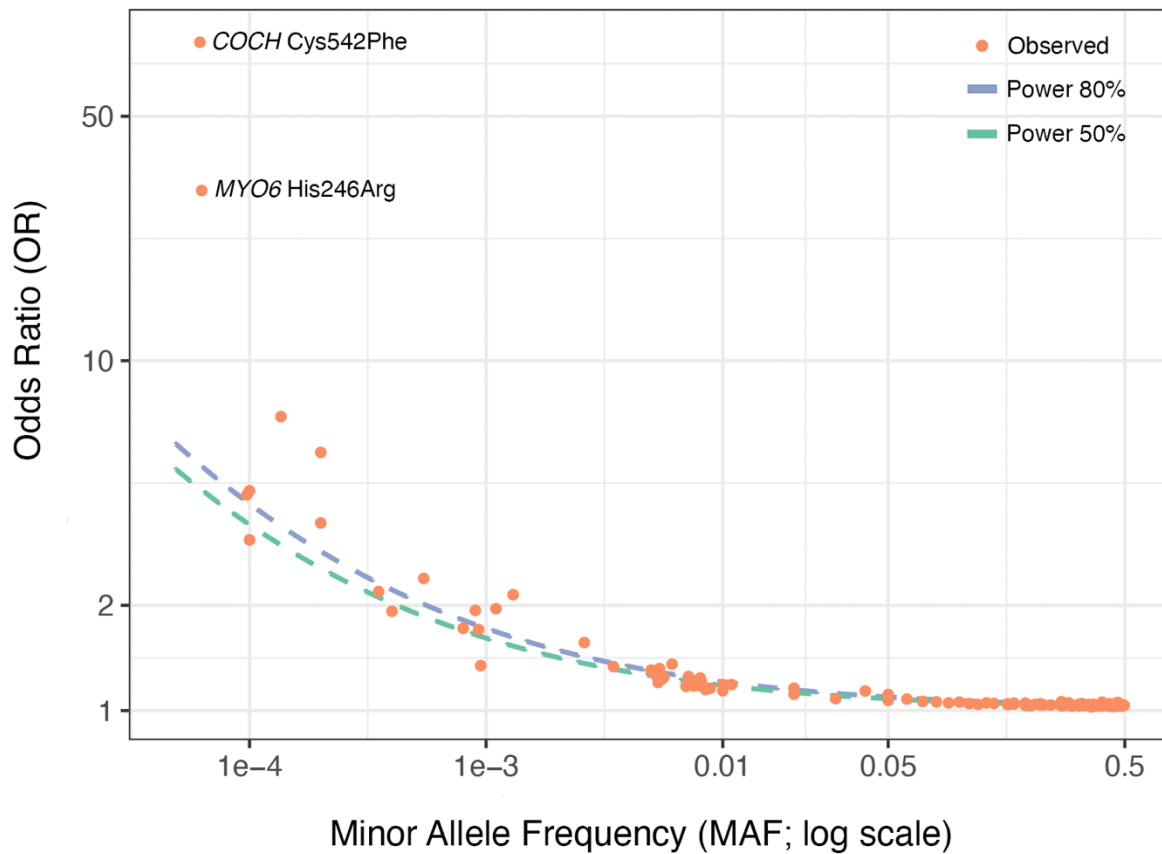


Figure 5: Effect size and allele frequency for variants associated with adult hearing loss. Plotted are odds ratio estimates (on log scale) and minor allele frequencies of genome-wide significant variants and gene burdens (Supplementary Tables 2, 6 & 7). 50% and 80% power curves for the present study are plotted as dotted lines. Notably, almost all points (particularly low-frequency and common variants, $MAF > 0.0005$) lie very close to the dotted power curves.

REFERENCES

1. Cunningham, L. L. & Tucci, D. L. Hearing Loss in Adults. *N. Engl. J. Med.* **377**, 2465–2473 (2017).
2. National Academies of Sciences, Engineering, and Medicine, Health and Medicine Division, Board on Health Sciences Policy & Committee on Accessible and Affordable Hearing Health Care for Adults. *Hearing Health Care for Adults: Priorities for Improving Access and Affordability*. (National Academies Press, 2016).
3. Livingston, G. *et al.* Dementia prevention, intervention, and care: 2020 report of the Lancet Commission. *Lancet* **396**, 413–446 (2020).
4. Morton, C. C. & Nance, W. E. Newborn hearing screening--a silent revolution. *N. Engl. J. Med.* **354**, 2151–2164 (2006).
5. Korver, A. M. H. *et al.* Congenital hearing loss. *Nat Rev Dis Primers* **3**, 16094 (2017).
6. Liberman, M. C. Noise-induced and age-related hearing loss: new perspectives and potential therapies. *F1000Res.* **6**, 927 (2017).
7. Wu, P.-Z., O'Malley, J. T., de Gruttola, V. & Liberman, M. C. Age-related hearing loss is dominated by damage to inner ear sensory cells, not the cellular battery that powers them. *J. Neurosci.* **40**, 6357–6366 (2020).
8. Karlsson, K. K., Harris, J. R. & Svartengren, M. Description and primary results from an audiometric study of male twins. *Ear Hear.* **18**, 114–120 (1997).
9. Christensen, K., Frederiksen, H. & Hoffman, H. J. Genetic and environmental influences on self-reported reduced hearing in the old and oldest old. *J. Am. Geriatr. Soc.* **49**, 1512–1517 (2001).
10. Kvestad, E., Czajkowski, N., Krog, N. H., Engdahl, B. & Tambs, K. Heritability of hearing loss. *Epidemiology* **23**, 328–331 (2012).

11. Hendrickx, J.-J. *et al.* Familial aggregation of pure tone hearing thresholds in an aging European population. *Otol. Neurotol.* **34**, 838–844 (2013).
12. Viljanen, A. *et al.* Genetic and environmental influences on hearing in older women. *J. Gerontol. A Biol. Sci. Med. Sci.* **62**, 447–452 (2007).
13. Friedman, R. A. *et al.* GRM7 variants confer susceptibility to age-related hearing impairment. *Hum. Mol. Genet.* **18**, 785–796 (2009).
14. Hoffmann, T. J. *et al.* A Large Genome-Wide Association Study of Age-Related Hearing Impairment Using Electronic Health Records. *PLoS Genet.* **12**, e1006371 (2016).
15. Nagtegaal, A. P. *et al.* Genome-wide association meta-analysis identifies five novel loci for age-related hearing impairment. *Sci. Rep.* **9**, 15192 (2019).
16. Fransen, E. *et al.* Genome-wide association analysis demonstrates the highly polygenic character of age-related hearing impairment. *Eur. J. Hum. Genet.* **23**, 110–115 (2015).
17. Van Laer, L. *et al.* A genome-wide association study for age-related hearing impairment in the Saami. *Eur. J. Hum. Genet.* **18**, 685–693 (2010).
18. Lewis, M. A. *et al.* Whole exome sequencing in adult-onset hearing loss reveals a high load of predicted pathogenic variants in known deafness-associated genes and identifies new candidate genes. *BMC Med. Genomics* **11**, 77 (2018).
19. Tong, X. *et al.* Kctd10 regulates heart morphogenesis by repressing the transcriptional activity of Tbx5a in zebrafish. *Nat. Commun.* **5**, 3153 (2014).
20. Ren, K. *et al.* KCTD10 is involved in the cardiovascular system and Notch signaling during early embryonic development. *PLoS One* **9**, e112275 (2014).
21. Du, T.-T. *et al.* LMO7 deficiency reveals the significance of the cuticular plate for hearing function. *Nat. Commun.* **10**, 1117 (2019).

22. Pan, X. *et al.* MAP7D2 Localizes to the Proximal Axon and Locally Promotes Kinesin-1-Mediated Cargo Transport into the Axon. *Cell Rep.* **26**, 1988-1999.e6 (2019).
23. Hanson-Kahn, A. *et al.* Autosomal recessive Stickler syndrome resulting from a COL9A3 mutation. *Am. J. Med. Genet. A* **176**, 2887–2891 (2018).
24. Asamura, K., Abe, S., Fukuoka, H., Nakamura, Y. & Usami, S.-I. Mutation analysis of COL9A3, a gene highly expressed in the cochlea, in hearing loss patients. *Auris Nasus Larynx* **32**, 113–117 (2005).
25. Wonkam, A., Manyisa, N., Bope, C. D., Dandara, C. & Chimusa, E. R. Whole Exome Sequencing Reveals Pathogenic Variants in MYO3A, MYO15A and COL9A3, and Differential Frequencies in Ancestral Alleles in Hearing Impairment Genes Among Individuals from Cameroon. *Hum. Mol. Genet.* (2020) doi:10.1093/hmg/ddaa225.
26. Dickinson, M. E. *et al.* High-throughput discovery of novel developmental phenotypes. *Nature* **537**, 508–514 (2016).
27. Guipponi, M. *et al.* An integrated genetic and functional analysis of the role of type II transmembrane serine proteases (TMPRSSs) in hearing loss. *Hum. Mutat.* **29**, 130–141 (2008).
28. Fasquelle, L. *et al.* Tmprss3, a transmembrane serine protease deficient in human DFNB8/10 deafness, is critical for cochlear hair cell survival at the onset of hearing. *J. Biol. Chem.* **286**, 17383–17397 (2011).
29. Tang, P.-C. *et al.* Defective Tmprss3-associated hair cell degeneration in inner ear organoids. *Stem Cell Reports* **13**, 147–162 (2019).

30. Scott, H. S. *et al.* Insertion of beta-satellite repeats identifies a transmembrane protease causing both congenital and childhood onset autosomal recessive deafness. *Nat. Genet.* **27**, 59–63 (2001).
31. Yang, J. *et al.* Conditional and joint multiple-SNP analysis of GWAS summary statistics identifies additional variants influencing complex traits. *Nat. Genet.* **44**, 369–75, S1-3 (2012).
32. Benner, C. *et al.* FINEMAP: efficient variable selection using summary data from genome-wide association studies. *Bioinformatics* **32**, 1493–1501 (2016).
33. Dobbyn, A. *et al.* Landscape of Conditional eQTL in Dorsolateral Prefrontal Cortex and Co-localization with Schizophrenia GWAS. *Am. J. Hum. Genet.* **102**, 1169–1184 (2018).
34. Shearer, A. E., Hildebrand, M. S. & Smith, R. J. H. Hereditary Hearing Loss and Deafness Overview. in *GeneReviews®* (eds. Adam, M. P. *et al.*) (University of Washington, Seattle, 1999).
35. Mohiddin, S. A. *et al.* Novel association of hypertrophic cardiomyopathy, sensorineural deafness, and a mutation in unconventional myosin VI (MYO6). *J. Med. Genet.* **41**, 309–314 (2004).
36. Street, V. A. *et al.* A novel DFNA9 mutation in the vWFA2 domain of COCH alters a conserved cysteine residue and intrachain disulfide bond formation resulting in progressive hearing loss and site-specific vestibular and central oculomotor dysfunction. *Am. J. Med. Genet. A* **139A**, 86–95 (2005).
37. Parzefall, T. *et al.* A Novel Variant in the TBC1D24 Lipid-Binding Pocket Causes Autosomal Dominant Hearing Loss: Evidence for a Genotype-Phenotype Correlation. *Front. Cell. Neurosci.* **14**, 585669 (2020).

38. Chakchouk, I. *et al.* Novel mutations confirm that COL11A2 is responsible for autosomal recessive non-syndromic hearing loss DFNB53. *Mol. Genet. Genomics* **290**, 1327–1334 (2015).
39. Hashimoto, Y., Kim, D. J. & Adams, J. C. The roles of fascin in health and disease. *J. Pathol.* **224**, 289–300 (2011).
40. Perrin, B. J. *et al.* β -Actin and fascin-2 cooperate to maintain stereocilia length. *J. Neurosci.* **33**, 8114–8121 (2013).
41. Liu, X. *et al.* Null Mutation of the Fascin2 Gene by TALEN Leading to Progressive Hearing Loss and Retinal Degeneration in C57BL/6J Mice. *G3* **8**, 3221–3230 (2018).
42. Rusk, N. *et al.* Synaptojanin 2 functions at an early step of clathrin-mediated endocytosis. *Curr. Biol.* **13**, 659–663 (2003).
43. Manji, S. S. M. *et al.* A mutation in synaptojanin 2 causes progressive hearing loss in the ENU-mutagenised mouse strain Mozart. *PLoS One* **6**, e17607 (2011).
44. Martelletti, E. *et al.* Synaptojanin2 mutation causes progressive high-frequency hearing loss in mice. *Front. Cell. Neurosci.* **14**, 561857 (2020).
45. Finucane, H. K. *et al.* Partitioning heritability by functional annotation using genome-wide association summary statistics. *Nat. Genet.* **47**, 1228–1235 (2015).
46. Gazal, S. *et al.* Functional architecture of low-frequency variants highlights strength of negative selection across coding and non-coding annotations. *Nat. Genet.* **50**, 1600–1607 (2018).
47. Gong, R. *et al.* Hearing loss prevalence and risk factors among older adults in China. *Int. J. Audiol.* **57**, 354–359 (2018).

48. Liu, Y. *et al.* Critical role of spectrin in hearing development and deafness. *Sci Adv* **5**, eaav7803 (2019).
49. Lee, J. R. & White, T. W. Connexin-26 mutations in deafness and skin disease. *Expert Rev. Mol. Med.* **11**, e35 (2009).
50. Kelsell, D. P. *et al.* Connexin 26 mutations in hereditary non-syndromic sensorineural deafness. *Nature* **387**, 80–83 (1997).
51. Kelley, P. M. *et al.* Novel mutations in the connexin 26 gene (GJB2) that cause autosomal recessive (DFNB1) hearing loss. *Am. J. Hum. Genet.* **62**, 792–799 (1998).
52. Rabionet, R. *et al.* Molecular basis of childhood deafness resulting from mutations in the GJB2 (connexin 26) gene. *Hum. Genet.* **106**, 40–44 (2000).
53. Engel-Yeger, B. *et al.* The effects of a connexin 26 mutation--35delG--on oto-acoustic emissions and brainstem evoked potentials: homozygotes and carriers. *Hear. Res.* **163**, 93–100 (2002).
54. Groh, D. *et al.* Hearing function in heterozygous carriers of a pathogenic GJB2 gene mutation. *Physiol. Res.* **62**, 323–330 (2013).
55. Mutai, H. *et al.* Diverse spectrum of rare deafness genes underlies early-childhood hearing loss in Japanese patients: a cross-sectional, multi-center next-generation sequencing study. *Orphanet J. Rare Dis.* **8**, 172 (2013).
56. Liberman, M. C. *et al.* Prestin is required for electromotility of the outer hair cell and for the cochlear amplifier. *Nature* **419**, 300–304 (2002).
57. Wells, H. R. R. *et al.* GWAS Identifies 44 Independent Associated Genomic Loci for Self-Reported Adult Hearing Difficulty in UK Biobank. *Am. J. Hum. Genet.* **105**, 788–802 (2019).

58. Jeong, G. *et al.* A Kelch domain-containing KLHDC7B and a long non-coding RNA ST8SIA6-AS1 act oppositely on breast cancer cell proliferation via the interferon signaling pathway. *Sci. Rep.* **8**, 12922 (2018).
59. Martín-Pardillos, A. & Cajal, S. R. Y. Characterization of Kelch domain-containing protein 7B in breast tumours and breast cancer cell lines. *Oncol. Lett.* **18**, 2853–2860 (2019).
60. Rudnicki, A. *et al.* Next-generation sequencing of small RNAs from inner ear sensory epithelium identifies microRNAs and defines regulatory pathways. *BMC Genomics* **15**, 484 (2014).
61. Liu, H. *et al.* Cell-specific transcriptome analysis shows that adult pillar and Deiters' cells express genes encoding machinery for specializations of cochlear hair cells. *Front. Mol. Neurosci.* **11**, 356 (2018).
62. GTEx Consortium *et al.* Genetic effects on gene expression across human tissues. *Nature* **550**, 204–213 (2017).
63. Urbut, S. M., Wang, G., Carbonetto, P. & Stephens, M. Flexible statistical methods for estimating and testing effects in genomic studies with multiple conditions. *Nat. Genet.* **51**, 187–195 (2019).
64. Sudlow, C. *et al.* UK biobank: an open access resource for identifying the causes of a wide range of complex diseases of middle and old age. *PLoS Med.* **12**, e1001779 (2015).
65. Carey, D. J. *et al.* The Geisinger MyCode community health initiative: an electronic health record–linked biobank for precision medicine research. *Genet. Med.* **18**, 906–913 (2016).
66. Berglund, G., Elmstahl, S., Janzon, L. & Larsson, S. A. The Malmo Diet and Cancer Study. Design and feasibility. *J. Intern. Med.* **233**, 45–51 (1993).

67. Dewey, F. E. *et al.* Distribution and clinical impact of functional variants in 50,726 whole-exome sequences from the DiscovEHR study. *Science* **354**, aaf6814 (2016).
68. Van Hout, C. V. *et al.* Exome sequencing and characterization of 49,960 individuals in the UK Biobank. *Nature* **586**, 749–756 (2020).
69. Mbatchou, J. *et al.* Computationally efficient whole-genome regression for quantitative and binary traits. *Nat. Genet.* (2021) doi:10.1038/s41588-021-00870-7.
70. Girotto, G. *et al.* Hearing function and thresholds: a genome-wide association study in European isolated populations identifies new loci and pathways. *J. Med. Genet.* **48**, 369–374 (2011).
71. Nolan, L. S. *et al.* Estrogen-related receptor gamma and hearing function: evidence of a role in humans and mice. *Neurobiol. Aging* **34**, 2077.e1–9 (2013).
72. Wolber, L. E. *et al.* Salt-inducible kinase 3, SIK3, is a new gene associated with hearing. *Hum. Mol. Genet.* **23**, 6407–6418 (2014).
73. Vuckovic, D. *et al.* Genome-wide association analysis on normal hearing function identifies PCDH20 and SLC28A3 as candidates for hearing function and loss. *Hum. Mol. Genet.* **24**, 5655–5664 (2015).
74. Kalra, G. *et al.* Biological insights from multi-omic analysis of 31 genomic risk loci for adult hearing difficulty. *PLoS Genet.* e1009025 (2019) doi:10.1371/journal.pgen.1009025.
75. Bulik-Sullivan, B. K. *et al.* LD Score regression distinguishes confounding from polygenicity in genome-wide association studies. *Nat. Genet.* **47**, 291–295 (2015).
76. Staples, J. *et al.* PRIMUS: rapid reconstruction of pedigrees from genome-wide estimates of identity by descent. *Am. J. Hum. Genet.* **95**, 553–564 (2014).

77. Delaneau, O., Zagury, J.-F., Robinson, M. R., Marchini, J. L. & Dermitzakis, E. T. Accurate, scalable and integrative haplotype estimation. *Nat. Commun.* **10**, 5436 (2019).
78. Butler, A., Hoffman, P., Smibert, P., Papalexi, E. & Satija, R. Integrating single-cell transcriptomic data across different conditions, technologies, and species. *Nat. Biotechnol.* **36**, 411–420 (2018).