

## **CD19 B cell repopulation after ocrelizumab, alemtuzumab and cladribine: Implications for SARS-CoV-2 vaccinations in multiple sclerosis**

David Baker<sup>1,\*</sup>, Amy MacDougall<sup>2</sup>, Angray S. Kang<sup>1,3</sup>, Klaus Schmierer<sup>1,5</sup>, Gavin Giovannoni<sup>1,5</sup>, Ruth Dobson<sup>4,5,\*</sup>

<sup>1</sup>The Blizzard Institute, Barts and The London School of Medicine & Dentistry, Queen Mary University of London, London, United Kingdom

<sup>2</sup>Medical Statistics, London School of Hygiene and Tropical Medicine, London, United Kingdom

<sup>3</sup>Centre for Oral Immunobiology and Regenerative Medicine, Dental Institute, Barts and the London School of Medicine and Dentistry, Queen Mary University of London, London, UK.

<sup>4</sup>Preventive Neurology Unit, Wolfson Institute of Population Health, Barts and The London School of Medicine & Dentistry Queen Mary University of London, , London, United Kingdom

<sup>5</sup>Clinical Board Medicine (Neuroscience), The Royal London Hospital, Barts Health NHS Trust, London, United Kingdom

\*Correspondence: [ruth.dobson@qmul.ac.uk](mailto:ruth.dobson@qmul.ac.uk)/[david.baker@qmul.ac.uk](mailto:david.baker@qmul.ac.uk)

### **Abstract**

**Background:** CD20 depletion is a highly-effective treatment for relapsing multiple sclerosis that maintains B cells at low levels through six monthly dosing of 600mg ocrelizumab. This dosing schedule is associated with inhibition of seroconversion following SARS-CoV-2 vaccination, in contrast to the high levels of seroconversion following treatment with alemtuzumab and cladribine tablets. A number of emerging reports suggest that repopulation of 1-3% B cells facilitates seroconversion after CD20-depletion. The frequency of this occurring following repeated ocrelizumab treatment, after other DMT, and after treatment cessation is largely unknown.

**Methods:** Relapse data, lymphocyte and CD19 B cell numbers were extracted from phase II ocrelizumab extension study (NCT00676715) data supplied by the manufacturer via the Vivli Inc, trial data-request portal. Repopulation data of oral cladribine from the phase III CLARITY study (NCT00213135) was supplied by the European Medicines Agency; and the alemtuzumab phase III CARE-MS I (NCT00530348) and CARE-MS II (NCT00548405) trial data were supplied by the manufacturer via the [clinicalstudydatarequest.com](http://clinicalstudydatarequest.com) portal.

**Results:** Only 3-5% of people with MS exhibit 1% B cells at 6 months after the last infusion following 3-4 cycles of ocrelizumab, compared to 50-55% at 9 months, and 85-90% at 12 months. During this time relapses occurred at consistent disease breakthrough rates compared to people during standard therapy. In contrast most people (90-100%) exhibited more than 1% B cells during treatment with either cladribine or alemtuzumab.

**Conclusions.** Few people repopulate peripheral B cells with standard ocrelizumab dosing, however an extending the dosing interval by 3-6 months may allow many more people to potentially seroconvert in the relative absence of excess relapse-activity. Most people demonstrate B cell repletion within 3 months of the last treatment of alemtuzumab and cladribine. This may help protect against severe COVID-19.

**NOTE: This preprint reports new research that has not been certified by peer review and should not be used to guide clinical practice.**

## Background

Therapeutic B cell targeting antibodies such as ocrelizumab and rituximab are used as a maintenance treatment for the control of multiple sclerosis (MS). Their efficacy may relate to either the direct long-term depletion of memory B cells and development of regulatory B cells within the regenerating CD19 population [Baker et al. 2020a] or indirectly through the blockade of T cell activity [Jelic et al. 2018]. Six-monthly dosing schedules, as used in MS, maintain continuous CD20+ B cell suppression in the periphery.

Given the blunted antibody response to other vaccines [Baker et al. 2020b] it is not surprising that CD20-depleting antibodies, notably rituximab and ocrelizumab, repeatedly and consistently appear to induce poor seroconversion following natural infection with SARS-CoV-2 [Louapre et al. 2021; Sormani et al. 2021a]. Furthermore, seroconversion in CD20-depleted, COVID-19 vaccinated individuals is universally poor [Achiron et al. 2021; Sormani et al. 2021b; Tallantyre et al. 2021]. In contrast many people treated with cladribine tablets and alemtuzumab after therapy show seroconversion following COVID-19 vaccination poor [Achiron et al. 2021; Sormani et al. 2021b; Tallantyre et al. 2021].

Whilst protection from MS may result from depletion of memory B cells [Baker et al. 2017a], seroconversion has been attributed to immature/naïve B cell repletion and occurs following the development of 1-3% B cell repopulation [Madelon et al. 2021; Mrak et al. 2021; Stefanski et al. 2021; Disanto et al. 2021]. However, the frequency of people achieving 1% B cell repletion at specific time intervals following ocrelizumab dosing is unknown. We hypothesised that it may require an extended-dose interval to achieve 1% peripheral B cell repopulation in at least 50%, given the median time of 60-72 weeks for B cells to recover to the lower limit of normal (80 cells/ $\mu$ l) following ocrelizumab infusion [Baker et al. 2020a].

## Methods

**Clinical Trials:** Anonymised ocrelizumab and alemtuzumab data was provided by the trial sponsors following an independent panel review at [clinicaltrialsdatarequest.com](https://clinicaltrialsdatarequest.com) of the data analysis plans. Anonymized cladribine trial data was supplied by the European Medicines Agency, drug regulators. This analysis was not subject to further ethical review. However, the original trial protocols for data collection were reviewed and approved by the local review boards or ethics committees at each study centre for the ocrelizumab phase II trial [NCT00676715. 79 Centres], the phase III cladribine tablet study [NCT00213135. 155 centres] and the alemtuzumab [NCT00530348. 101 medical centres and NCT00548405. 194 Medical centres], phase III trials [Kappos et al. 2011, Giovannoni et al. 2010, Cohen et al. 2012, Coles et al. 2012]. The studies were performed in accordance with the International Conference on Harmonisation Guidelines for Good Clinical Practice and the principles of the Declaration of Helsinki. All patients provided written informed consent [Kappos et al. 2011, Giovannoni et al. 2010, Cohen et al. 2012, Coles et al. 2012].

**Data Access.** Access to the Roche/Genentech phase II ocrelizumab extension trial in (NCT00676715) was requested (#5984) and supplied under contract by the Vivli, Inc managed

portal. Data from people with relapsing MS who had received three or four 6-monthly cycles of 600mg ocrelizumab prior to an 18 month drug-free observation period were used. Lymphocyte and CD19+ numbers were collected during the 18 month drug-free follow up period [Baker et al. 2020a]. Trial data were interrogated using R software. A mixed effects logistic regression was fitted with a binary marker for CD19 count above 1% of total lymphocyte count as outcome. Repeated measures for each individual were included from last treatment to 18 months post-treatment. Included as covariates were: baseline body mass Index (BMI); time in years; quadratic term for time; arm of trial.

Lymphocyte numbers and CD19 peripheral counts information from the phase III (CLARITY) clinical trial of oral cladribine was supplied by the European Medicines Agency following a Freedom of Information request [Baker et al. 2017b]. Data relating to the 3.5mg/kg licenced dose was extracted. In addition, access to the Sanofi/Genzyme phase III alemtuzumab trials (NCT00530348/NCT00548405) trials [Baker et al. 2017c] was requested (#11529) and supplied under contract by the clinicalstudydatarequest.com portal. Lymphocyte and CD19 peripheral blood CD19 B cell data related to the licenced 12mg dose was extracted from the CARE-MS trials, using SAS software.

## Results

3-5% of people had repopulated to 1-3% B cell count by the end of the standard dose interval of 6 months [Table 1]. At 9 months following treatment cessation there was 50-55% B cell repopulation, and at 12 months 85-90% B cells had repopulated to at least 1% B cells [Table 1, Figure 1]. This suggests that an extended-dosing interval may facilitate greater but not total seroconversion. During the treatment-free observation period between week 96 to week 108 there were 9 relapses (3 cycles) and 4 relapses) in people who received 4 cycles of treatment, which was comparable to 9/99 people relapsing (3 cycles) and 6/49 (4 cycles) during week 72-96 period on-standard treatment schedule (Table 1, Supplementary Figure 1 & 2). There was again evidence that baseline BMI was associated with CD19 re-population. For each increase in BMI of 5 units, the odds of having CD19 count above 1% of total lymphocyte count increased by 2.50 (95% confidence interval: 1.45-5.20;  $p=0.003$ ) as suggested previously [Hauser et al. 2019; Signoriello et al. 2020].

In contrast to the persistent B cell depletion following ocrelizumab treatment (Table 1), the majority of people treated with either cladribine tablets (Table 2) or alemtuzumab (Table 3) maintained 1% B cell levels and also developed at least 10-20 CD19 B cells/ $\mu$ l in contrast to levels detected after ocrelizumab (Table 1-3). B cell depletion was most marked about after the second set of treatments during the cladribine treatment cycle (Table 2). Depletion was evident within the first month of alemtuzumab treatment followed by rapid repopulation (Table 3)

## Discussion

During the COVID-19 pandemic ocrelizumab infusions were delayed by 1-3 months, with no major rebound in disease activity, suggesting the safety of an extended interval dosing scheme [Maarouf et al. 2020; Rolfes et al. 2021; van Lierop et al. 2021]. The importance of mounting a sterilising

response relates not only to clinical severity of infection [Khoury et al. 2021], but also that immunosuppressed individuals may harbour prolonged SARS-CoV-2 infection allowing serial mutations to develop, impacting on infectivity and immune escape [Corey et al. 2021].

Given the importance of neutralizing antibody responses [Khoury et al. 2021], and the finding that protective antibody titres subside over time, COVID-19 breakthrough can and will occur. This is already seen in vaccinated, healthy individuals [Shrotri et al. 2021]. As CD20-treated individuals produce lower titre antibody responses than untreated controls [Achiron et al. 2021; Sormani et al. 2021b; Tallantyre et al. 2021], they are potentially in particular need of effective booster (third cycle) vaccinations. Whilst these may increase seroconversion in some immunocompromised people, it is possible that CD20 depletion will inhibit this response [Connolly et al. 2021; Greenberger et al. 2021]. A solution may be to provide a high-titre antibody response through monoclonal antibody cocktails or use of convalescent sera in high risk individuals [Hurt & Wheatley 2021]. However, maximising the change of an effective response to vaccination in immunosuppressed people is a priority. It is evident that CD19 B cells recover rapidly following cladribine and alemtuzumab (Baker et al. 2017b, Baker et al. 2017c) and this is consistent with a robust COVID-vaccine response in most people if vaccination is undertaken once immune reconstitution occurs [Achiron et al. 2021; Sormani et al. 2021b; Tallantyre et al. 2021]. However based on the B cell repopulation kinetics and poor vaccine response, we argue that delaying treatment for a short period to facilitate the most-effective booster programme possible is likely to be a justifiable risk. However, unless studies are conducted it may be too late to inform on and optimize the next stage of vaccination process/COVID-19 control in immunosuppressed people.

**Funding.** This study received no funding

**Acknowledgments:** This publication is in part based on research using data from data contributors Roche and Sanofi that has been made available through Vivli, Inc and Clinicalstudydatarequest.com. Clinicalstudydatarequest.com and Vivli have not contributed to or approved, and are not in any way responsible for, the contents of this publication. Data analysis, interpretation and conclusions made are independent from Roche, Sanofi and Merck.

**Conflicts of Interest:** DB, KS, GG, RB, have received compensation for consultancy/educational activity from Roche/Genentech, Merck, and/or Sanofi/Genzyme who manufacture COVID-19 and MS drugs discussed in this study. These were not involved in the content or the decision to publish. AM, AK have nothing relevant to declare. Although considered irrelevant DB, KS, GG, RB have received compensation for consultancy/educational activity from all companies manufacturing licenced disease modifying agents in the MS space.

**Data Availability:** Data is available via the Vivli.Inc and Clinicalstudydatarequest.com portals which are provided under agreement with the trial sponsors.

## References

- Achiron A, Mandel M, Dreyer-Alster S, Harari G, Magalashvili D, et al. Humoral immune response to COVID-19 mRNA vaccine in patients with multiple sclerosis treated with high-efficacy disease-modifying therapies. *Ther Adv Neurol Disord*. 2021;14:17562864211012835.
- Baker D, Marta M, Pryce G, Giovannoni G, Schmierer K. Memory B Cells are Major Targets for Effective Immunotherapy in Relapsing Multiple Sclerosis. *EBioMedicine*. 2017a; 16:41-50.
- Baker D, Herrod SS, Alvarez-Gonzalez C, Zalewski L, Albor C, et al. Both cladribine and alemtuzumab may effect MS via B-cell depletion. *Neurol Neuroimmunol Neuroinflamm*. 2017b;4:e360.
- Baker D, Herrod SS, Alvarez-Gonzalez C, Giovannoni G, Schmierer K. Interpreting Lymphocyte Reconstitution Data From the Pivotal Phase 3 Trials of Alemtuzumab. *JAMA Neurol*. 2017c;74:961-969.
- Baker D, Pryce G, James LK, Marta M, Schmierer K. The ocrelizumab phase II extension trial suggests the potential to improve the risk: Benefit balance in multiple sclerosis. *Mult Scler Relat Disord*. 2020a;44a:102279.
- Baker D, Roberts CAK, Pryce G, Kang AS, Marta M, Reyes S, Schmierer K, Giovannoni G, Amor S. COVID-19 vaccine-readiness for anti-CD20-depleting therapy in autoimmune diseases. *Clin Exp Immunol*. 2020b; 202:149-161.
- Cohen JA, Coles AJ, Arnold DL, Confavreux C, Fox EJ et al. Alemtuzumab versus interferon beta 1a as first-line treatment for patients with relapsing-remitting multiple sclerosis: a randomised controlled phase 3 trial. *Lancet*. 2012; 380:1819-1828
- Coles AJ, Twyman CL, Arnold DL, Cohen JA, Confavreux C, et al. Alemtuzumab for patients with relapsing multiple sclerosis after disease-modifying therapy: a randomised controlled phase 3 trial. *Lancet*. 2012; 380:1829-1839
- Connolly CM, Teles M, Frey S, Boyarsky BJ, Alejo JL, et al. Booster-dose SARS-CoV-2 vaccination in patients with autoimmune disease: a case series. *Ann Rheum Dis*. 2021 Sep 7:annrheumdis-2021-221206. doi: 10.1136/annrheumdis-2021-221206
- Disanto G, Sacco R, Bernasconi E, Martinetti G, Keller F, et al. Association of disease-modifying treatment and anti-CD20 infusion timing with humoral response to SARS-CoV-2 vaccines in patients with multiple sclerosis. *JAMA Neurol*. 2021. doi: 10.1001/jamaneurol.2021.3609.
- Greenberger LM, Saltzman LA, Senefeld JW, Johnson PW, DeGennaro LJ et al. Anti-spike antibody response to SARS-CoV-2 booster vaccination in patients with B cell-derived hematologic malignancies *Cancer cell* 2021 DOI: <https://doi.org/10.1016/j.ccell.2021.09.001>
- Hurt AC, Wheatley AK. Neutralizing antibody therapeutics for COVID-19. *Viruses*. 2021 7;13:628

Jelcic I, Al Nimer F, Wang J, Lentsch V, Planas R, et al. Memory B Cells Activate Brain-Homing, Autoreactive CD4+ T Cells in Multiple Sclerosis. *Cell*. 2018; 175:85-100.e23.

Kappos L, Li D, Calabresi PA, O'Connor P, Bar-Or A, Barkhof F, Yin M, Leppert D, Glanzman R, Tinbergen J, Hauser SL. Ocrelizumab in relapsing-remitting multiple sclerosis: a phase 2, randomised, placebo-controlled, multicentre trial. *Lancet*. 2011; 378:1779-1787.

Giovannoni G, Comi G, Cook S, Rammohan K, Rieckmann P, et al. CLARITY Study Group. A placebo-controlled trial of oral cladribine for relapsing multiple sclerosis. *N Engl J Med*. 2010; 362:416-26.

Kemp SA, Collier DA, Datir RP, Ferreira IATM, Gayed S, et al. SARS-CoV-2 evolution during treatment of chronic infection. *Nature*. 2021; 592:277-282.

Kletzl H, Gibiansky E, Petry C, Mercier F, Guenther A, Wang Q, Model F, Kappos L, Hauser S. Pharmacokinetics, Pharmacodynamics and Exposure-Response Analyses of Ocrelizumab in Patients With Multiple Sclerosis (N4.001). *Neurology* 2019; 92 (Suppl 15) N4.001

Khoury DS, Cromer D, Reynaldi A, Schlub TE, Wheatley AK, et al. Neutralizing antibody levels are highly predictive of immune protection from symptomatic SARS-CoV-2 infection. *Nat Med*. 2021;27:1205-1211

Louapre C, Collongues N, Stankoff B, Giannesini C, Papeix C et al. Clinical characteristics and outcomes in patients with coronavirus disease 2019 and multiple sclerosis. *JAMA Neurol*. 2020;77:1079-1088.

Maarouf A, Rico A, Boutiere C, Perriguet M, Demortiere S et al. Extending rituximab dosing intervals in patients with MS during the COVID-19 pandemic and beyond? *Neurol Neuroimmunol Neuroinflamm*. 2020; 7:e825.

Madelon N, Lauper K, Breville G, Royo IS, Goldstein R, et al. Patients treated with anti-CD20 therapy can mount robust T cell responses to mRNA-based COVID-19 vaccines. *MedRxiv* 2021 doi: <https://doi.org/10.1101/2021.07.21.21260928>

Mrak D, Tobudic S, Koblichke M, Graninger M, Radner H et al. SARS-CoV-2 vaccination in rituximab-treated patients: B cells promote humoral immune responses in the presence of T-cell-mediated immunity. *Ann Rheum Dis*. 2021 Jul 20;annrheumdis-2021-220781. doi: 10.1136/annrheumdis-2021-220781.

Rolfes L, Pawlitzki M, Pfeuffer S, Nelke C, Lux A et al. Ocrelizumab extended interval dosing in multiple sclerosis in times of COVID-19. *Neurol Neuroimmunol Neuroinflamm*. 2021;8:e1035.

Shrotri M, Navaratnam AMD, Nguyen V, Byrne T, Geismar C et al. Spike-antibody waning after second dose of BNT162b2 or ChAdOx1. *Lancet*. 2021; 398:385-387

Signoriello E, Bonavita S, Di Pietro A, Abbadessa G, Rossi F, et al. BMI influences CD20 kinetics in multiple sclerosis patients treated with ocrelizumab. *Mult Scler Relat Disord*. 2020;43:102186

Sormani MP, Schiavetti I, Landi D, Carmisciano L, De Rossi N et al. SARS-CoV-2 serology after COVID-19 in multiple sclerosis: An international cohort study. *Mult Scler*. 2021a; Jul 30:13524585211035318.

Sormani MP, Inglese M, Schiavetti I, Carmisciano L, Laroni A, et al. Effect of SARS-CoV-2 mRNA vaccination in MS patients treated with disease modifying therapies. SSRN 2021b <http://dx.doi.org/10.2139/ssrn.3886420>

Stefanski AL, Rincon-Arevalo H, Schrezenmeier E, Karberg K, Szelinski F, et al. B cell numbers predict humoral and cellular response upon SARS-CoV-2 vaccination among patients treated with rituximab. *MedRxiv* 2021. doi: <https://doi.org/10.1101/2021.07.19.21260803>

Tallantyre EC, Vickaryous N, Anderson V, Asardag AN, Baker D, et al. COVID-19 vaccine response in people with multiple sclerosis *MedRXiv* 2021. <https://doi.org/10.1101/2021.07.31.21261326>

van Lierop ZY, Toorop AA, van Ballegoij WJ, Olde Dubbelink TB, Strijbis EM, et al. Personalized B-cell tailored dosing of ocrelizumab in patients with multiple sclerosis during the COVID-19 pandemic. *Mult Scler*. 2021 Jul 9:13524585211028833.

**Table 1.** CD19 B cell repletion and Relapse rates after repeated ocrelizumab infusions

Treatment	Time from Treatment Onset	Number of CD19+ cells of total lymphocytes/total			
		1% B cells	2% B cells	3% B cells	
Ocrelizumab 3 cycles	6 months	4/81 ( 5%)	3/81 ( 4%)	2/81 ( 2%)	
	9 months	43/80 (54%)	30/80 (38%)	22/80 (28%)	
	12 months	76/84 (90%)	68/84 (81%)	57/84 (68%)	
	15 months	44/48 (92%)	41/48 (85%)	35/48 (73%)	
	18 months	29/31 (93%)	25/31 (81%)	22/31 (71%)	
Ocrelizumab 4 cycles	6 months	1/39 ( 3%)	1/39 ( 3%)	1/39 ( 3%)	
	9 months	20/40 (50%)	11/40 (28%)	8/40 (20%)	
	12 months	35/41 (85%)	25/41 (61%)	19/41 (46%)	
	15 months	26/28 (93%)	20/28 (71%)	14/28 (50%)	
	18 months	26/28 (93%)	22/28 (79%)	20/28 (71%)	
Treatment	Time from Treatment	Number of PwMS with the indicated number of CD19+ B cells			
		>5 cells/μl	>10cells/μl	>20 cells/μl	>30 cells/μl
Ocrelizumab 3 cycles	0 months	25/92 (27%)	13/92 (14%)	8/92 (9%)	8/92 (9%)
	6 months	20/84 (24%)	6/84 (7%)	4/84 (5%)	4/84 (5%)
	9 months	64/83 (77%)	51/83 (61%)	41/83 (49%)	30/83 (36%)
	12 months	81/84 (96%)	76/84 (90%)	75/84 (89%)	70/84 (83%)
	15 months	47/49 (96%)	46/49 (94%)	46/49 (94%)	42/49 (85%)
	18 months	36/37 (97%)	34/37 (92%)	31/37 (84%)	30/37 (81%)
Ocrelizumab 4 cycles	0 months	13/46 (28%)	5/46 (11%)	0/46 (0%)	0/46 (0%)
	6 months	7/39 (18%)	1/39 (3%)	1/39 (3%)	1/39 (3%)
	9 months	34/43 (79%)	24/43 (56%)	19/43 (44%)	13/43 (30%)
	12 months	39/41 (95%)	38/41 (93%)	31/41 (76%)	24/41 (59%)
	15 months	29/29 (100%)	28/29 (97%)	25/29 (86%)	22/29 (76%)
	18 months	28/28 (100%)	28/28 (100%)	26/28 (93%)	24/28 (86%)
Treatment	Time from Last Infusion	No.Relapse/Total	Relapse rate/yr.		
Ocrelizumab 3 cycles	0-6 months	9/99	0.18		
	6-9 months	4/85	0.19		
	9-12 months	5/72	0.28		
	12-15 months	3/77	0.16		
	15-18 months	0/80	0.00		
Ocrelizumab 4 cycles	0-6 months	6/49	0.24		
	6-9 months	3/43	0.28		
	9-12 months	1/33	0.12		
	12-15 months	1/38	0.11		
	15-18 months	5/42	0.48		

Individuals received 600mg ocrelizumab Q24W for 3 or 4 cycles followed an 18 month treatment-free period. The data was extracted from the phase II ocrelizumab extension study[Baker et al. 2020a] supplied, via the [www.vivli.org](http://www.vivli.org) portal, using R software. The last ocrelizumab infusion occurred around 72 weeks. Data capture was scheduled for weeks 96, 108 120 and 144. The results represent the approximate time from the last infusion (months) and report the frequency of people reaching 1%, 2% or 3% CD19 of total lymphocyte count or the absolute number of cells/μl following either 4 infusion cycles (0-72 weeks) of ocrelizumab or 3 ocrelizumab infusion cycles (24-72 weeks) after either placebo or beta interferon (0-24 weeks). At 24 weeks after last infusion 4/123 pwMS had over 40cells/μl. Relapses were ascribed to approximate times following the last infusion and the unadjusted, annualized relapse rate were calculated. PwMS people with multiple sclerosis.



**Table 2.** CD19 B cell depletion following administration of cladribine tablets

Treatment	Time from Treatment Onset	Number of % CD19 B cells of total lymphocytes/total			
		1% B cells	2% B cells	3% B cells	
Cladribine cycle1	0 weeks	82/82 (100%)	82/82 (100%)	81/82 (99%)	
	5 weeks	75/76 (99%)	73/76 (96%)	61/76 (80%)	
	9 weeks	65/72 (90%)	42/72 (58%)	26/72 (36%)	
	13 weeks	70/72 (97%)	62/72 (86%)	47/72 (51%)	
	16 weeks	76/77 (99%)	70/77 (91%)	60/77 (78%)	
	24 weeks	77/77 (100%)	75/77 (97%)	70/77 (91%)	
	48 weeks	82/82 (100%)	82/82 (100%)	82/82 (100%)	
Treatment	Time from Treatment	Number of PwMS with indicated number of CD19+ B cells			
		>5 cells $\mu$ l	>10cells/ $\mu$ l	>20 cells/ $\mu$ l	>30 cells/ $\mu$ l
Cladribine cycle 1	0 weeks	81/81 (100%)	81/81 (100%)	81/81 (100%)	81/81 (100%)
	5 weeks	76/76 (100%)	73/76 (96%)	63/76 (83%)	60/76 (79%)
	9 weeks	68/72 (94%)	51/72 (71%)	31/72 (43%)	21/72 (29%)
	13 weeks	74/76 (97%)	71/76 (93%)	59/76 (78%)	42/76 (55%)
	16 weeks	77/77 (100%)	74/77 (96%)	66/77 (86%)	59/77 (77%)
	24 weeks	78/78 (100%)	77/78 (99%)	74/78 (95%)	66/78 (84%)
	48 weeks	82/82 (100%)	82/82 (100%)	82/82 (100%)	82/82 (100%)

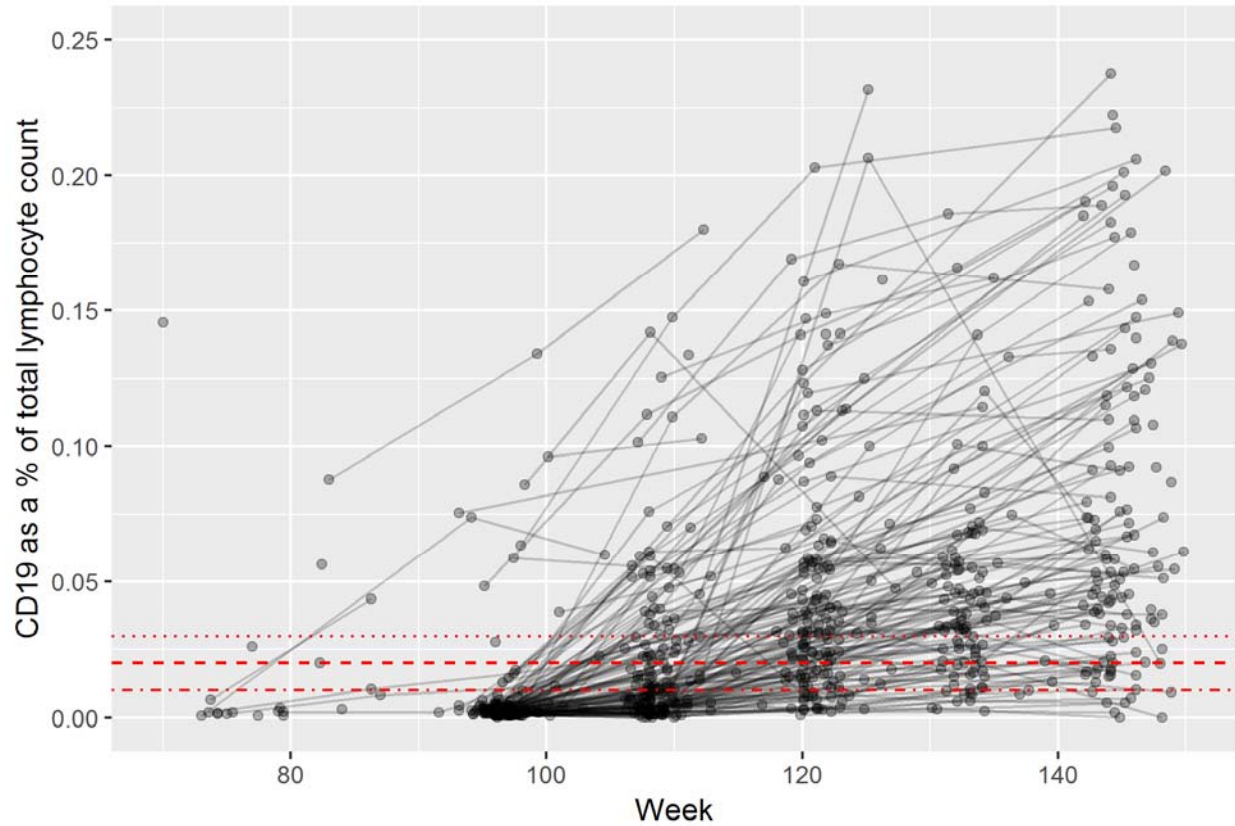
Individuals received 1.75mg/kg cladribine tablets over 1 week and this was repeated one month later. The information was extracted from the phase III trial data supplied by the European Medicines Agency [Baker et al. 2017a]. The second cycle of cladribine was not adjusted to lymphopenia as occurs in the licenced dosing schedule and is therefore not shown. The results represent the approximate time from the onset of treatment and report the frequency of people reaching 1%, 2% or 3% CD19 of total lymphocyte count or the number of cases with absolute number of peripheral blood CD19+ B cells above the cell count. The data was calculated from B cell numbers reported as cells/ $\mu$ l and lymphocyte data reported to cells  $\times 10^9$ /l to two decimal places. PwMS people with multiple sclerosis

**Table 3.** CD19 B cell repletion following alemtuzumab infusion

Treatment	Time from last infusion	Number of % CD19 B cells of total lymphocytes/total analysed		
		1% B cells	2% B cells	3% B cells
Alemtuzumab cycle 1	0 months	362/362 (100%)	362/362 (100%)	362/362 (100%)
	1 month	365/365 (100%)	214/365 (59%)	156/365 (43%)
	3 months	368/368 (100%)	368/368 (100%)	368/368 (100%)
	6 months	372/372 (100%)	372/372 (100%)	372/372 (100%)
	12 months	370/370 (100%)	370/370 (100%)	370/370 (100%)
Alemtuzumab cycle 2	0 months	418/418 (100%)	418/418 (100%)	418/418 (100%)
	1 months	367/367 (100%)	292/367 (80%)	234/367 (64%)
	3 months	367/367 (100%)	366/367 (100%)	366/367 (100%)
	6 months	374/374 (100%)	374/374 (100%)	374/374 (100%)
	12months	411/411 (100%)	411/411 (100%)	411/411 (100%)
Treatment	Time from last infusion	Number of PwMS with indicated number of CD19+ B cells		
		≥10 cells/μl	≥20 cells/μl	≥30 cells/μl
Alemtuzumab cycle 1	0 months	Insufficient data to calculate	362/362 (100%)	362/362 (100%)
	1 month		365/365 (100%)	23/365 (6%)
	3 months		368/368(100%)	368/368 (100%)
	6 months		372/372 (100%)	372/373 (100%)
Alemtuzumab Cycle 2	1 months		367/367 (100%)	71/267 (19%)
	3 months		367/367 (100%)	360/367 (98%)
	6 months		374/374 (100%)	372/374 (99%)

Individuals received 60mg alemtuzumab (cycle 1) and 36mg alemtuzumab (cycle 2) twelve months later. The information was extracted from the phase III CARS-MS (treatment naïve) and the CARE-MS 2 (prior beta interferon treatment) trial data [Baker et al. 2017c], supplied by the manufacturer via the [clinicalstudydatarequest.com](http://clinicalstudydatarequest.com) portal. The results represent the approximate time from the onset of treatment and report the frequency of people reaching 1%, 2% or 3% CD19 of total lymphocyte count or the number of cases with an absolute number of peripheral blood CD19+ B cells above the cell number shown. These were reported to two decimal places reported as a percentage of lymphocytes or absolute number as cells x10<sup>9</sup>/l. The minimum number of cells reported was therefore 20 cells/μl. The percentage lymphocytes was reported to no decimal places. PwMS people with multiple sclerosis

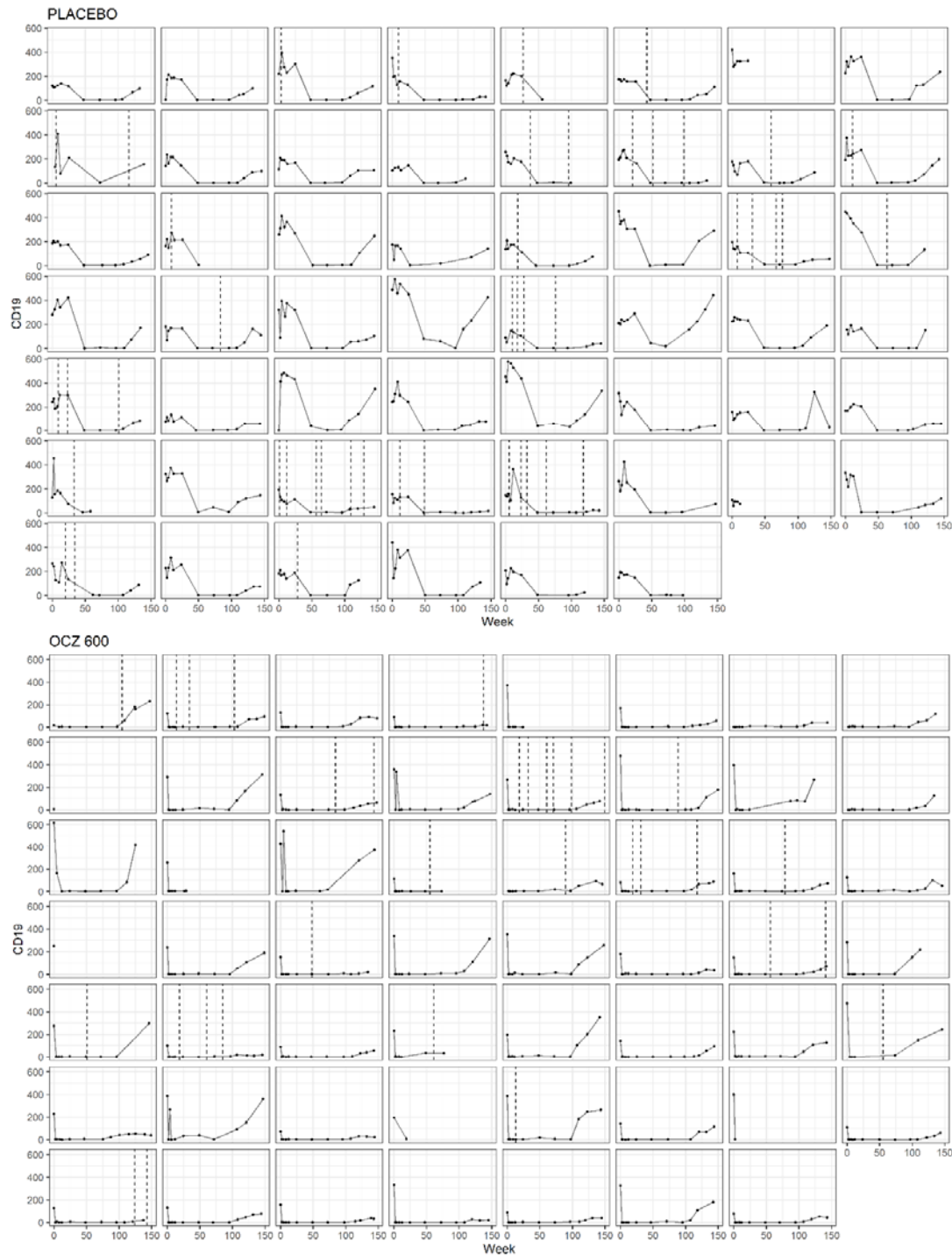
**Figure 1.** Individual blood levels of B cells following ocrelizumab treatment



People with relapsing MS were treated with 600mg ocrelizumab from week 0-72 or 24-72. The data was extracted from the phase II ocrelizumab extension study [Baker et al. 2020a] supplied via the Vivli Inc. using R software. The results represent the percentage CD19 count compared to total lymphocyte count repopulation over time. The 1% (dash dot), 2% (dash) and 3% (dot) CD19 B cell levels are indicated.

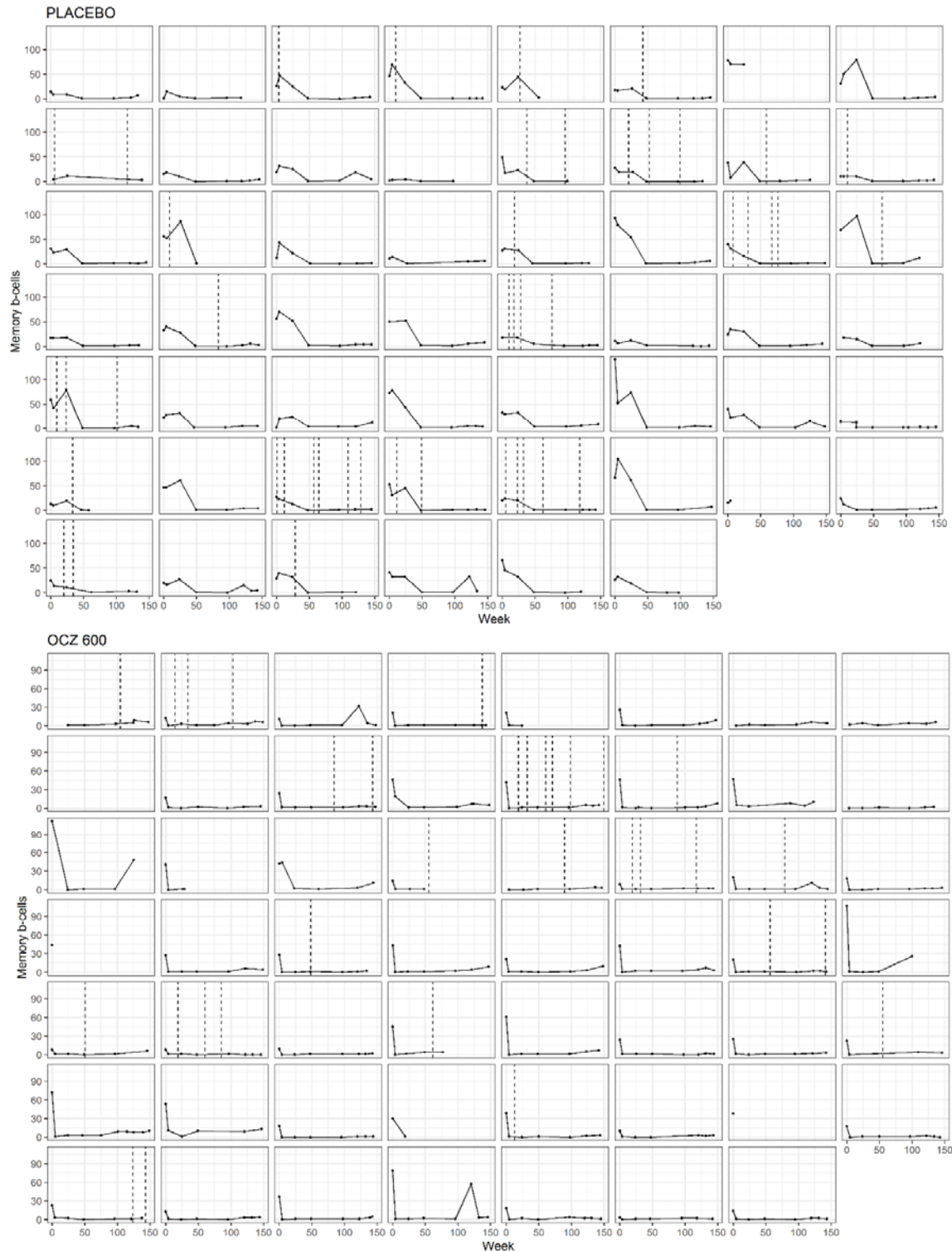
## SUPPLEMENTARY DATA

**Figure 1S.** Individual peripheral blood CD19 levels and relapse activity



People with relapsing MS were treated with either placebo or 600mg ocrelizumab (OCZ) from week 0 and all received 6 monthly 600mg ocrelizumab from week 24-72. People were followed to week 144. The data was extracted from the phase II ocrelizumab extension study supplied via the [www.vivli.org](http://www.vivli.org) portal using R software. The results represent the absolute CD19+ peripheral blood cell counts (circle, cells/ $\mu$ l) and relapse disease activity (dashed line). Relapses were not associated with changes in peripheral blood B cell levels.

**Figure 2S.** Individual peripheral blood memory B cell and relapse activity



People with relapsing MS were treated with either placebo or 600mg ocrelizumab (OCZ) from week 0 and all received 6 monthly 600mg ocrelizumab from week 24-72. People were followed to week 144. The data was extracted from the phase II ocrelizumab extension study [Baker et al. 202a] supplied via the [www.vivli.org](http://www.vivli.org) portal using R software. The results represent the absolute CD19+, CD27+ peripheral blood memory B cell counts (circle, cells/ $\mu$ l) and relapse disease activity (dashed line).