

1 **A preliminary study to evaluate white matter structural correlates of delayed visuospatial**  
2 **memory and one-week motor skill retention in nondemented older adults**

3  
4 Jennapher Lingo VanGilder, M.S.<sup>1</sup>; Maurizio Bergamino, Ph.D.<sup>2</sup>; Andrew Hooyman, Ph.D.<sup>1</sup>;  
5 Megan Fitzhugh, Ph.D.<sup>3</sup>; Corianne Rogalsky, Ph.D.<sup>4</sup>; Jill C. Stewart, Ph.D.<sup>5</sup>; Scott C. Beeman,  
6 Ph.D.<sup>1</sup>; Sydney Y. Schaefer, Ph.D.<sup>1,6</sup>

7  
8 <sup>1</sup>School of Biological and Health Systems Engineering, Arizona State University; <sup>2</sup>Barrow  
9 Neuroimaging Innovation Center, Barrow Neurological Institute, Phoenix, AZ; <sup>3</sup>Mark and Mary  
10 Stevens Neuroimaging and Informatics Institute, Keck School of Medicine, University of  
11 Southern California; <sup>4</sup>College of Health Solutions, Arizona State University; <sup>5</sup>Department of  
12 Exercise Science, University of South Carolina; <sup>6</sup>Department of Physical Therapy and Athletic  
13 Training, University of Utah

14  
15  
16  
17  
18 **Abstract**

19  
20 Skill retention is important for motor rehabilitation outcomes. Recent work has demonstrated  
21 that delayed visuospatial memory performance may predict motor skill retention in older and  
22 neuropathological populations. White matter integrity between parietal and frontal cortices may  
23 explain variance in upper-extremity motor learning tasks and visuospatial processes. We  
24 performed a whole-brain analysis to determine the white matter correlates of delayed  
25 visuospatial memory and one-week motor skill retention in nondemented older adults. We  
26 hypothesized that better frontoparietal tract integrity would be positively related to better  
27 behavioral performance. Nineteen participants (age>58) completed diffusion-weighted imaging,  
28 then a clinical test of delayed visuospatial memory and 50 training trials of an upper-extremity  
29 motor task; participants were retested on the motor task one week later. Principal component  
30 analysis was used to create a composite score for each participant's behavioral data, i.e. shared  
31 variance between delayed visuospatial memory and motor skill retention, which was then entered  
32 into a voxel-based regression analysis. Behavioral results demonstrated that participants learned  
33 and retained their skill level after a week of no practice, and their delayed visuospatial memory  
34 score was positively related to the extent of skill retention. Consistent with previous work,  
35 neuroimaging results indicated that regions within bilateral anterior thalamic radiations,  
36 corticospinal tracts, and superior longitudinal fasciculi were related to better delayed visuospatial  
37 memory and skill retention. Results of this study suggest that the simple act of testing for  
38 specific cognitive impairments prior to therapy may identify older adults who will receive little  
39 to no benefit from the motor rehabilitation regimen, and that these neural regions may be  
40 potential targets for therapeutic intervention.

## 41 **Introduction**

42 Repetitive practice of functional movement patterns during motor rehabilitation are  
43 known to drive learning (or relearning) of novel motor skills, but the learning process is highly  
44 variable between individuals, such that responsiveness to task-specific training is often patient-  
45 specific. A number of neuroimaging and neurophysiological methods have been proposed to  
46 better predict a patient's responsiveness to a given type or dose of motor therapy. However, these  
47 methods are often time- and resource-intensive, and yield results that are not readily interpretable  
48 by clinicians. In light of this, standardized visuospatial tests may offer a more feasible solution.  
49 Visuospatial function has been linked to upper-extremity motor improvement (i.e., learning) in  
50 older adults (1,2) and individuals with stroke pathology (3). Although these prior studies used  
51 experimenter-derived (i.e., unstandardized) measures of visuospatial function, a recent study  
52 demonstrated that the Rey-Osterrieth Complex Figure Delayed Recall (a clinical test of delayed  
53 visuospatial memory) predicted upper-extremity skill learning in older adults and individuals  
54 with stroke pathology (4), suggesting a clinical paper-and-pencil test could aid in predicting  
55 motor rehabilitation responsiveness.

56 Because cognitive and motor functions have historically been evaluated and studied  
57 separately, the neural mechanism of this behavioral relationship is currently unclear. It is  
58 plausible that visuospatial tests have predictive value because they probe the health of critical  
59 neural structures for motor skill learning. Classic neuropsychological studies have long  
60 supported the role of parietal cortex in visuospatial function (5–8) and more recent neuroimaging  
61 studies have shown that the structural integrity of white matter tracts between parietal and frontal  
62 cortices is related to motor skill learning (9–12). Specifically, the superior longitudinal fasciculus  
63 (SLF) has been implicated in both visuospatial processes (13,14) and skill learning (10),

64 suggesting it may be a candidate neural pathway for explaining our earlier behavioral findings  
65 and for predicting motor skill learning in older adults.

66 Further evidence of this mechanism is provided in a recent preliminary study that  
67 evaluated within-session practice effects in a small cohort of individuals with stroke pathology.  
68 The structural characteristics of the SLF (e.g., fractional anisotropy, FA) were positively  
69 correlated with the amount of skill acquired after a brief practice session on a novel upper-  
70 extremity motor task (15). However, delayed visuospatial memory assessment and skill retention  
71 (i.e., the long-term retainment of acquired motor skill performance through repeated practice  
72 (16)) were not measured, which prevented us from fully resolving the white matter correlates of  
73 this behavioral relationship with this previous study. A retention period (otherwise known as  
74 consolidation) is important to consider when applying motor learning principles to motor  
75 rehabilitation (17). Moreover, the previous study used a region-of-interest (ROI) approach,  
76 which effectively limits analyses to a specific neural structure. But since motor learning  
77 processes involve a vast neural network including frontal, parietal, and subcortical structures  
78 (11,18,19), it is possible this approach did not reveal other critical pathways for skill learning.

79 Thus, the purpose of this exploratory whole-brain analysis was to determine whether  
80 white matter microstructure was associated with one-week motor skill retention and delayed  
81 visuospatial memory test scores in nondemented older adults. By moving beyond a specific  
82 neurologic condition (e.g., stroke), findings from this study will more broadly generalize across  
83 geriatric populations who may be undergoing motor rehabilitation for a variety of reasons (e.g.,  
84 hip/knee replacement, Parkinson's disease). Since an estimated 30-45% of physical therapy  
85 caseloads in the United States are adults over age 65 (20), it is critical to consider broad  
86 biological mechanisms of motor rehabilitation that are independent of diagnosis. Based on

87 previous findings, we hypothesized that better frontoparietal tract diffusion metrics (e.g., FA and  
88 radial diffusivity), including those of the SLF specifically, would positively correlate with both  
89 motor skill retention and delayed visuospatial memory test scores.

## 90 **Methods**

91 Informed consent was obtained before participation and all experimental procedures were  
92 approved by the university's Institutional Review Board. Nineteen community-dwelling adults  
93 (age (mean±standard deviation) = 68.4±6.8 years, 13 females) were included in this  
94 neuroimaging analysis, which was a sub-study of a larger observational experiment in which  
95 participants completed a battery of clinical visuospatial tests and 50 weekly training trials of a  
96 motor task using their nondominant (left) hand for three consecutive weeks and returned one  
97 month later to retest their skill level (21). One-week skill retention was not reported in the  
98 previous study, which instead focused on longer-term retention (one-month); the Wechsler Adult  
99 Intelligence Scale-Fourth Edition (22) was administered and established cutoff scores were used  
100 to screen all participants for nondemented status. The present study includes a subset of those  
101 participants who also completed diffusion-weighted neuroimaging (n=19) prior to behavioral  
102 testing.

103 All participants were right-handed, as determined by a modified Edinburgh Inventory  
104 (23). The nondominant hand was evaluated using grip dynamometry (i.e., maximal grip  
105 strength), Purdue Grooved Pegboard (i.e., dexterity) (24), and Semmes monofilaments (25) tests  
106 to characterize sensory function, respectively. Participants also completed the Short-Form  
107 Geriatric Depression Scale (26) and Katz Activities of Daily Living questionnaire (27) to  
108 measure for depressive symptoms and ability to independently complete motor tasks at home,  
109 respectively. Participants used their dominant hand to complete the Rey-Osterrieth Complex

110 Figure Test (28), a standardized complex figure drawing test that measures visuoconstruction  
111 (Figure Copy) and delayed visuospatial memory (Delayed Recall). Participants were first asked  
112 to draw a replicate of a complex image as precisely as possible; once finished, all visual stimuli  
113 were removed from the testing area. Thirty minutes later, participants were asked to redraw the  
114 figure from memory (Fig. 1A). A single rater scored each test using established testing  
115 guidelines to reduce interrater variability; higher scores indicate better delayed visuospatial  
116 memory.

117  
118

119 *Motor skill retention*

120 As described previously (21), the functional motor task used for training and retention  
121 simulated the reaching and dexterity movements required to feed oneself with a utensil (Fig. 1B)  
122 yet has also been validated against a more commonly used motor learning paradigm (29).  
123 Briefly, the experimental apparatus is comprised of four plastic cups adhered to a board; three of  
124 the cups are ‘target’ cups that are located radially around a center ‘home’ cup that is aligned with  
125 the participant’s midline. The participant must use a standard plastic spoon with their  
126 nondominant hand to acquire two beans at a time from the ‘home’ cup and transport them to one  
127 of the target cups. The participants are instructed to transport the beans first to the target cup  
128 located ipsilateral to the participant’s nondominant hand. They then scoop two more beans from  
129 the ‘home’ cup and transport them to the middle target cup, then another two beans to the  
130 contralateral cup. The home cup contains 30 beans, resulting in 15 total reaches (5 target cycles)  
131 per trial. Trial time is the measure of performance, which is the elapsed time from when the  
132 participant picks up the spoon until the last of the beans are deposited into the last target cup.

133 Participants completed 50 training trials (i.e., a total of 750 reaches) and trial times were  
134 averaged across five trials to comprise a ‘block’ (thus, participants completed 10 blocks of five  
135 trials each across the training session). One-week skill retention was measured as the difference  
136 in performance between the last training block and a retest block that was completed one week  
137 later.

138

### 139 *Neuroimaging acquisition*

140 Participants underwent diffusion magnetic resonance imaging at the Keller Center for  
141 Imaging Innovation at Barrow Neurological Institute, Phoenix, Arizona. A 3-Tesla Philips  
142 Ingenia MRI (Philips, Healthcare) was used to acquire data using single-shell diffusion weighted  
143 acquisitions with the following parameters: 32 diffusion-encoding directions (b-value: 2500  
144 s/mm<sup>2</sup>. TR/TE: 7065/119 ms; flip-angle = 90°; matrix: 92 × 90; voxel size: 3.0 mm × 3.0 mm;  
145 slice thickness: 3.0 mm; number of averages = 1) and one B0 image at the beginning of the  
146 acquisition. All MR images were screened for neuropathology by a licensed neuroradiologist  
147 prior analysis.

148

### 149 *Neuroimaging preprocessing*

150 DICOM images were converted to NIFTI using dcm2niix and were preprocessed using  
151 MRtrix 3.0 (30) and FSL 6.0.0 (FMRIB, Oxford, UK). The raw diffusion-weighted images were  
152 denoised (dwdenoise) and Gibbs ringing artifacts were removed (mrdegibbs). A whole brain  
153 mask was created to extract brain from non-brain tissues (dwi2mask). Data were then corrected  
154 for motion and eddy currents by eddy (FSL). To account for the rotational component of  
155 registration, the b-vector files were compensated after motion correction and prior to calculating

156 the b matrices. B1-field inhomogeneity was corrected for (dwibiascorrect), and all images were  
157 upsampled to 1.25 mm (mrgrid) to improve coregistration with the MNI-ICBM152 template  
158 from the Montreal Neurological Institute (MNI). For each acquisition, a diffusion tensor model  
159 was fit at each voxel to calculate fractional anisotropy (FA) and radial diffusivity (RD) maps  
160 (dtifit, <https://fsl.fmrib.ox.ac.uk/fsl/fslwiki>).

161 Using the B0 images from all subjects (n = 19), a group template was created using  
162 buildtemplateparallel.sh included in the advanced normalization tools (ANTs,  
163 <http://stnava.github.io/ANTs/>). Maps were then nonlinearly coregistered to this template using  
164 WarpImageMultiTransform (ANTs) and were spatially smoothed (FSL) using a Gaussian kernel  
165 (sigma, 2 mm). The group template was transformed from template space to MNI space using  
166 antsResistrationSyN.sh (ANTs).

167

### 168 *Statistical analysis*

169 JMP Pro 15.0 (SAS) was used to process participant behavioral data. To reduce the  
170 dimensionality of our statistical model and address collinearity among model predictors (i.e.,  
171 mitigate the effect of reduced statistical significance due to collinearity between skill retention  
172 and visuospatial test scores), principal component analysis (PC) was used to create a ‘composite  
173 score’ that represented the shared variance of skill retention and Delayed Recall score for each  
174 participant. Since our previous work has shown a relationship between these two variables  
175 (4,21), the PC analysis allowed for consideration of only the shared variance between them as an  
176 independent variable. Only PCs with an eigenvalue greater than one were carried forward in  
177 subsequent analyses.

178 Using MATLAB 2020 (MathWorks, Inc.), significant PCs and age (a covariate of  
179 noninterest) were entered into a general linear model that was applied at each voxel for each  
180 diffusion map and an FDR-correction was applied to account for multiple statistical tests.  
181 Clusters were defined as at least 100 contiguous voxels where the FDR corrected p-value was <  
182 0.01; clusters were transformed from template space to MNI using antsApplyTransforms (ANTs)  
183 and the Johns Hopkins University JHU atlas (31,32) was used to identify the neuroanatomical  
184 location of each cluster.

## 185 **Results**

186 Participant characteristics, motor and sensory data are presented in Table 1. Overall,  
187 participants demonstrated normal tactile sensation, grip strength, and dexterity performance  
188 consistent with that of established normative values (25,33,34).

189 Motor training data are presented in Figure 2A; we observed a significant difference  
190 between the baseline and final training blocks ( $p=0.0087$ , 95% CI [-9.68, -0.99]) and no  
191 difference between the final training and retest blocks ( $p=0.1823$ , 95% CI [-1.48, 7.45]),  
192 indicating that overall participants learned the motor task across the training trials and retained  
193 the skill over a period of one week without practice. Figure 2B demonstrates that Delayed Recall  
194 and motor skill retention scores were positively correlated ( $R^2=0.35$ ;  $p=0.0079$ , 95% CI [0.18,  
195 0.82]). These values are reported to simply confirm that participants did indeed learn the motor  
196 task (as indicated by one-week retention) and that the amount of motor skill retention was  
197 positively related to Delayed Recall scores.

198 Only one principal component emerged from the PC analysis with an eigenvalue > 1,  
199 which accounted for 79.49% of the variance among one-week skill retention and Delayed Recall  
200 scores; factor analysis results showed that both variables equally loaded onto the PC at 0.79



201 (where values closer to 1 indicate that each variable's variance is wholly explained by the PC).  
202 Figure S1 illustrates that the PC was positively correlated with one-week skill retention and  
203 Delayed Recall scores, illustrating that the PC did indeed quantitatively represent the shared  
204 variance of both participant motor skill retention and Delayed Recall scores.

205 Results of the voxel-based analysis are provided in Table 2. For FA, positive correlations  
206 were found in bilateral anterior thalamic radiations (ATR), corticospinal tracts (CST; in  
207 brainstem), and the right superior longitudinal fasciculus (SLF); a negative cluster was observed  
208 in the left hemisphere that comprised atlas regions of the SLF, ATR, and (superior) CST (Fig.  
209 3A). For RD, a positive cluster was observed in this same region and negative clusters were  
210 found in the right ATR, bilateral CST (in brainstem), and left SLF (Figure 3B). Overall, these  
211 results indicate that the integrity of regions within the SLF, ATR, and CST were positively  
212 related to one-week skill retention and delayed visuospatial memory; the anatomical overlap  
213 between the negative and positive FA and RD clusters, respectively, may be due to well-known  
214 model limitations (35–37) and is discussed further.

## 215 **Discussion**

216 This study aimed to extend our previous work that reported the SLF was related to  
217 within-session practice effects in a small sample of individuals with stroke pathology (15). Here,  
218 we used whole-brain analyses to determine the white matter correlates of the behavioral  
219 relationship between one-week motor skill retention and delayed visuospatial memory test scores  
220 in nondemented older adults. Results indicated that regions within the bilateral CST, SLF, and  
221 ATR were associated with one-week motor skill retention and delayed visuospatial memory  
222 performance independently of age and support that clinical visuospatial testing may prognose  
223 motor training responsiveness and the integrity of specific white matter tracts.

224 A possible explanation for the observed behavioral relationship between Delayed Recall  
225 scores and one-week motor skill retention is that visuospatial memory and motor learning engage  
226 overlapping neural pathways. Our results are consistent with reports from neuroanatomical and  
227 neurophysiological studies implicating the CST (38–40) and SLF (10,15,41) in motor learning  
228 behaviors, and the SLF (42–46) and anterior thalamic nuclei (47–52) in visuospatial processing  
229 and memory. In line with this, a recent study collected resting state functional MRI from older  
230 adults to test functional connectivity of neural networks associated with Rey-Osterrieth Complex  
231 Figure Test performance; notably, the authors reported significant connections between both  
232 motor-parietal and motor-hippocampal regions (53). Moreover, the ATR is thought to relay  
233 motor signals via the thalamocortical pathway and has been linked to spatial memory in  
234 nonhuman primates (54,55), further implicating the role of motor networks in visuospatial  
235 memory.

236 In our previous study (15), results indicated diffusion metrics of the SLF were related to  
237 the amount of upper-extremity motor skill acquired within a training session, whereas those of  
238 the CST did not. Results of the present study suggest that fractional anisotropy and radial  
239 diffusivity of the CST, SLF, and ATR were related to one-week skill retention on this same  
240 motor task. A potential reason for our different results could be due to the methodological  
241 approaches applied to analyze the neuroimaging data and phase of motor skill learning (i.e.  
242 acquisition versus retention). Regan et al. (2020) conducted a ROI-based approach that targeted  
243 the diffusion metrics of the SLF, whereas the whole-brain approach used here applied the general  
244 linear model at each voxel containing white matter. In addition, separate phases of motor skill  
245 learning engage distinct neural networks (56,57), thus, it is plausible that the difference in  
246 timescales at which motor behavior was measured explains the discrepancy between the

247 significant white matter regions reported. Regan et al. (2020) evaluated within-session practice  
248 effects, which was measured by calculating the change score between baseline and final  
249 performances; therefore, this metric included baseline performance and skill acquisition (in  
250 contrast to skill *retention*). Similarly, Borich and colleagues examined the white matter correlates  
251 of motor learning on a 2-D visuomotor pursuit task by measuring the difference in performance  
252 between baseline and a delayed retention trials; they collected diffusion-weighted images from a  
253 small group of individuals with stroke pathology after participants completed five separate  
254 training sessions. Using whole-brain analyses, their group reported that regions within the  
255 posterior limb of the internal capsule were related to better skill retention (58). Again, the  
256 purpose of the present study was to identify the structural white matter correlates of one-week  
257 motor skill retention and delayed visuospatial memory, thus, our neuroimaging results reflect this  
258 behavioral relationship rather than that of motor behavior alone.

259         One limitation of this study regards the diffusion-weighted image acquisition protocol.  
260 Recent work has shown that free-water correction improves the accuracy and sensitivity of white  
261 matter analyses (59,60) by fitting a bi-tensor model to each voxel to account for partial volume  
262 effects (i.e., voxels that contain brain tissue and free-water such as cerebrospinal fluid); however,  
263 it is advised to apply this technique to single-shell diffusion-weighted images that were acquired  
264 with b-values less than  $1000 \text{ s/mm}^2$  (61). Our data were acquired with b-value =  $2500 \text{ s/mm}^2$ ,  
265 therefore we were unable to apply free-water correction due to our imaging acquisition.  
266 Moreover, positive and negative correlations among a single region of interest emerged from our  
267 whole-brain analyses; for example, results indicated several significant clusters present along the  
268 CST: a negative correlation in the left superior part of the tract and positive correlation in the  
269 brainstem. We observed anatomical overlap between negative and positive FA and RD clusters,

270 respectively, in this region and interpret this finding was likely due to partial volume effects (i.e.,  
271 crossing fibers as significant clusters in the SLF and ATR were also observed in this region); this  
272 interpretation is consistent with other work (10). It is prudent to mention that results may also be  
273 susceptible to artifact due to image smoothing and/or normalization registration during the  
274 preprocessing methodology; to address this potential limitation, we visually inspected all images  
275 to ensure satisfactory coregistrations. While this study design allowed us to test if pre-existing  
276 neuroanatomical measures of white matter tracts were associated with one-week skill retention  
277 and Delayed Recall test scores, a future study that involves pre- and post-training neuroimaging  
278 will allow us to test the robustness of these findings (i.e., Will we observe microstructural  
279 changes in these same tracts?).

280         Results of this study have several potential clinical implications. First, visuospatial  
281 testing may be a more feasible biomarker of motor therapy responsiveness than measures derived  
282 from neuroimaging or neurophysiological data (e.g., presence of a motor-evoked potential). For  
283 example, while previous studies have shown that whole-brain volume metrics (e.g., T1 scanning,  
284 etc.) may predict motor therapy outcomes (62), a visuospatial test is quick and easy to administer  
285 during the duration of a typical clinical visit, making it a more feasible alternative in terms of  
286 predicting motor rehabilitation responsiveness. Second, we have previously observed the  
287 behavioral relationship between cognitive testing and upper-extremity skill retention across  
288 patient populations (4,63), suggesting this relationship is not disease-specific and is broadly  
289 generalizable across geriatric populations. Given the prevalence of cognitive impairment even in  
290 community-dwelling older adults (64–66), it is plausible that older adults seeking physical  
291 therapy for a variety of reasons could have subtle underlying visuospatial impairments that may  
292 impede their responsiveness to therapy, regardless of the etiology (i.e., white matter

293 hyperintensities (67), stroke, etc.). Third, our results open new avenues of research as we have  
294 begun to explore motor learning paradigms to better understand AD progression (68,69).  
295 Research has shown that accelerated decline in visuospatial function may be an early biomarker  
296 of prodromal AD (70–72). Given that ATR degeneration is associated with AD progression  
297 (73,74) and that the complex figure copy/recall tests may predict AD onset (up to 20 years before  
298 clinical AD) (75), results from this study suggest that an assessment of motor learning could help  
299 better identify disease progression in asymptomatic stages (69,76).

300

### 301 *Conclusions*

302 In summary, nondemented older adults learned an upper-extremity motor task and  
303 retained the skill one week later. The amount of skill retained was related to performance on a  
304 clinical test of delayed visuospatial memory; this behavioral relationship was related to the  
305 integrity of bilateral corticospinal tracts, anterior thalamic radiations, and the superior  
306 longitudinal fasciculi, consistent with previous work. Clinical visuospatial memory testing may  
307 provide prognostic insight for one’s potential to benefit from a given dose and type of motor  
308 rehabilitation as well as a target for therapeutic intervention.

309

### 310 *Funding*

311 This work was supported in part by the National Institute on Aging at the National  
312 Institutes of Health (K01AG047926 and R03AG056822 to SYS, and F31AG062057 to JLV),  
313 including the study design, data collection, analysis, and interpretation, and manuscript  
314 preparation. The content is solely the responsibility of the authors and does not necessarily  
315 represent the official views of the National Institutes of Health.

316

317 **References**

- 318 1. Bo J, Seidler RD. Visuospatial working memory capacity predicts the organization of  
319 acquired explicit motor sequences. *J Neurophysiol.* 2009;101(6):3116.
- 320 2. Langan J, Seidler RD. Age differences in spatial working memory contributions to  
321 visuomotor adaptation and transfer. *Behav Brain Res [Internet].* 2011/07/20. 2011 Nov  
322 20;225(1):160–8. Available from: <https://www.ncbi.nlm.nih.gov/pubmed/21784106>
- 323 3. Toglia J, Fitzgerald KA, O’Dell MW, Mastrogiovanni AR, Lin CD. The Mini-Mental  
324 State Examination and Montreal Cognitive Assessment in persons with Mild Subacute  
325 Stroke: Relationship to functional outcome. *Arch Phys Med Rehabil.* 2011;92(5):792–8.
- 326 4. Lingo VanGilder J, Hooyman A, Bosch PR, Schaefer SY. Generalizing the predictive  
327 relationship between 1-month motor skill retention and Rey-Osterrieth Delayed Recall  
328 scores from nondemented older adults to individuals with chronic stroke: a short report. *J*  
329 *Neuroeng Rehabil.* 2021 Jun;18(1):94.
- 330 5. Mishkin M, Ungerleider LG, Macko KA. Object vision and spatial vision: Two cortical  
331 pathways. *Trends Neurosci.* 1983;6(C):414–7.
- 332 6. Newcombe F, Ratcliff G, Damasio H. Dissociable visual and spatial impairments  
333 following right posterior cerebral lesions: Clinical, neuropsychological and anatomical  
334 evidence. *Neuropsychologia [Internet].* 1987;25(1, Part 2):149–61. Available from:  
335 <http://www.sciencedirect.com/science/article/pii/0028393287901278>
- 336 7. Owen AM, Sahakian BJ, Semple J, Polkey CE, Robbins TW. Visuo-spatial short-term  
337 recognition memory and learning after temporal lobe excisions, frontal lobe excisions or  
338 amygdalo-hippocampectomy in man. *Neuropsychologia [Internet].* 1995;33(1):1–24.  
339 Available from: <http://www.sciencedirect.com/science/article/pii/002839329400098A>

- 340 8. Ungerleider LG, Haxby J V. ‘What’ and ‘where’ in the human brain. *Curr Opin Neurobiol*  
341 [Internet]. 1994;4(2):157–65. Available from:  
342 <http://www.sciencedirect.com/science/article/pii/0959438894900663>
- 343 9. Tomassini V, Jbabdi S, Kincses ZT, Bosnell R, Douaud G, Pozzilli C, et al. Structural and  
344 functional bases for individual differences in motor learning. *Hum Brain Mapp.*  
345 2011;32(3):494–508.
- 346 10. Steele CJ, Scholz J, Douaud G, Johansen-Berg H, Penhune VB. Structural correlates of  
347 skilled performance on a motor sequence task. *Front Hum Neurosci* [Internet].  
348 2012;6(October):1–9. Available from:  
349 <http://journal.frontiersin.org/article/10.3389/fnhum.2012.00289/abstract>
- 350 11. Taubert M, Draganski B, Anwander A, Muller K, Horstmann A, Villringer A, et al.  
351 Dynamic properties of human brain structure: Learning-related changes in cortical areas  
352 and associated fiber connections. *J Neurosci* [Internet]. 2010;30(35):11670–7. Available  
353 from: <http://www.jneurosci.org/cgi/doi/10.1523/JNEUROSCI.2567-10.2010>
- 354 12. Sampaio-Baptista C, Scholz J, Jenkinson M, Thomas AG, Filippini N, Smit G, et al. Gray  
355 matter volume is associated with rate of subsequent skill learning after a long term  
356 training intervention. *Neuroimage.* 2014;96:158–66.
- 357 13. McGrath J, Johnson K, O’Hanlon E, Garavan H, Gallagher L, Leemans A. White matter  
358 and visuospatial processing in autism: a constrained spherical deconvolution tractography  
359 study. *Autism Res.* 2013 Oct;6(5):307–19.
- 360 14. Chechlacz M, Gillebert C, Vangkilde S, Petersen A, W Humphreys G. Structural  
361 Variability within Frontoparietal Networks and Individual Differences in Attentional  
362 Functions: An Approach Using the Theory of Visual Attention. Vol. 35, *Journal of*

- 363 Neuroscience. 2015. 10647–10658 p.
- 364 15. Regan E, Fridriksson J, Schaefer SY, Rorden C, Bonilha L, Lingo VanGilder J, et al.  
365 Neural correlates of within-session practice effects in mild motor impairment after stroke:  
366 a preliminary investigation. *Exp brain Res*. 2021 Jan;239(1):151–60.
- 367 16. Schmidt R, Lee T, Winstein C, Wulf G, Zelaznik H. *Motor control and learning: A*  
368 *behavioral emphasis*, 6th Edition (online access included). Vol. 2018, ProtoView.  
369 Beaverton: Ringgold Inc; 2018. p. 1–552.
- 370 17. Bastian AJ. Understanding sensorimotor adaptation and learning for rehabilitation. *Curr*  
371 *Opin Neurol*. 2008;21(6):628–33.
- 372 18. Seidler RD. Neural correlates of motor learning, transfer of learning, and learning to learn.  
373 *Exerc Sport Sci Rev*. 2010 Jan;38(1):3–9.
- 374 19. Ghilardi M, Ghez C, Dhawan V, Moeller J, Mentis M, Nakamura T, et al. Patterns of  
375 regional brain activation associated with different forms of motor learning. *Brain Res*.  
376 2000 Jul;871(1):127–45.
- 377 20. Bell A. 9 Physical Therapist Tips to Help You Age Well [Internet]. American Physical  
378 Therapy Association. 2015 [cited 2018 Mar 22]. Available from:  
379 [https://www.moveforwardpt.com/Resources/Detail/9-physical-therapist-tips-to-help-you-](https://www.moveforwardpt.com/Resources/Detail/9-physical-therapist-tips-to-help-you-age-well)  
380 [agewell](https://www.moveforwardpt.com/Resources/Detail/9-physical-therapist-tips-to-help-you-age-well)
- 381 21. Lingo VanGilder J, Lohse KR, Duff K, Wang P, Schaefer SY. Evidence for associations  
382 between Rey-Osterrieth Complex Figure test and motor skill learning in older adults.  
383 *Acta Psychol (Amst)*. 2021 Mar;214:103261.
- 384 22. Wechsler D. *Manual for the Wechsler Adult Intelligence Scale*. Manual for the Wechsler  
385 *Adult Intelligence Scale*. Oxford, England: Psychological Corp.; 1955. vi, 110–vi, 110.



- 386 23. Oldfield RC. The assessment and analysis of handedness: The Edinburgh inventory.  
387 *Neuropsychologia*. 1971;9(1):97–113.
- 388 24. Merker B, Podell K. Grooved Pegboard Test. In: Kreutzer JS, DeLuca J, Caplan B,  
389 editors. *Encyclopedia of Clinical Neuropsychology* [Internet]. New York, NY: Springer  
390 New York; 2011. p. 1176–8. Available from: [https://doi.org/10.1007/978-0-387-79948-](https://doi.org/10.1007/978-0-387-79948-3_187)  
391 [3\\_187](https://doi.org/10.1007/978-0-387-79948-3_187)
- 392 25. Bell-Krotoski JA, Fess EE, Figarola JH, Hiltz D. Threshold detection and Semmes-  
393 Weinstein monofilaments. *J Hand Ther*. 1995;8(2):155–62.
- 394 26. Yesavage JA, Sheikh JI. 9/Geriatric Depression Scale (GDS). *Clin Gerontol* [Internet].  
395 1986 Nov 18;5(1–2):165–73. Available from: [https://doi.org/10.1300/J018v05n01\\_09](https://doi.org/10.1300/J018v05n01_09)
- 396 27. Katz S, Downs TD, Cash HR, Grotz RC. Progress in development of the Index of ADL1.  
397 *Gerontologist*. 1970 Mar 1;10(1\_Part\_1):20–30.
- 398 28. Osterrieth PA. Le test de copie d'une figure complexe [in French]. *Arch Psychol*  
399 (Geneve). 1944;30(30):206–356.
- 400 29. Schaefer SY, Hengge CR. Testing the concurrent validity of a naturalistic upper extremity  
401 reaching task. *Exp Brain Res*. 2016;234(1):229–40.
- 402 30. Tournier J-D, Smith R, Raffelt D, Tabbara R, Dhollander T, Pietsch M, et al. MRtrix3: A  
403 fast, flexible and open software framework for medical image processing and  
404 visualisation. *Neuroimage*. 2019 Nov;202:116137.
- 405 31. Wakana S, Caprihan A, Panzenboeck MM, Fallon JH, Perry M, Gollub RL, et al.  
406 Reproducibility of quantitative tractography methods applied to cerebral white matter.  
407 *Neuroimage* [Internet]. 2007/03/20. 2007 Jul 1;36(3):630–44. Available from:  
408 <https://pubmed.ncbi.nlm.nih.gov/17481925>

- 409 32. Hua K, Zhang J, Wakana S, Jiang H, Li X, Reich DS, et al. Tract probability maps in  
410 stereotaxic spaces: analyses of white matter anatomy and tract-specific quantification.  
411 Neuroimage [Internet]. 2007/08/15. 2008 Jan 1;39(1):336–47. Available from:  
412 <https://pubmed.ncbi.nlm.nih.gov/17931890>
- 413 33. Mathiowetz V, Kashman N, Volland G, Weber K, Dowe M, Rogers S. Grip and pinch  
414 strength: Normative data for adults. Arch Phys Med Rehabil. 1985 Feb;66(2):69–74.
- 415 34. Earhart GM, Cavanaugh JT, Ellis T, Ford MP, Foreman KB, Dibble L. The 9-hole PEG  
416 test of upper extremity function: Average values, test-retest reliability, and factors  
417 contributing to performance in people with Parkinson disease. J Neurol Phys Ther. 2011  
418 Dec;35(4):157–63.
- 419 35. Hirsch JG, Bock M, Essig M, Schad LR. Comparison of diffusion anisotropy  
420 measurements in combination with the flair-technique. Magn Reson Imaging. 1999  
421 Jun;17(5):705–16.
- 422 36. Alexander AL, Hasan KM, Lazar M, Tsuruda JS, Parker DL. Analysis of partial volume  
423 effects in diffusion-tensor MRI. Magn Reson Med. 2001 May;45(5):770–80.
- 424 37. Jones DK, Cercignani M. Twenty-five pitfalls in the analysis of diffusion MRI data. NMR  
425 Biomed [Internet]. 2010 Aug 1;23(7):803–20. Available from:  
426 <https://doi.org/10.1002/nbm.1543>
- 427 38. Christiansen L, Larsen MN, Madsen MJ, Grey MJ, Nielsen JB, Lundbye-Jensen J. Long-  
428 term motor skill training with individually adjusted progressive difficulty enhances  
429 learning and promotes corticospinal plasticity. Sci Rep [Internet]. 2020;10(1):15588.  
430 Available from: <https://doi.org/10.1038/s41598-020-72139-8>
- 431 39. Song S, Sharma N, Buch ER, Cohen LG. White Matter Microstructural Correlates of

- 432 Superior Long-term Skill Gained Implicitly under Randomized Practice. *Cereb Cortex*  
433 [Internet]. 2011 Sep 12;22(7):1671–7. Available from:  
434 <https://doi.org/10.1093/cercor/bhr247>
- 435 40. Bleyenheuft Y, Dricot L, Ebner-Karestinis D, Paradis J, Saussez G, Renders A, et al.  
436 Motor Skill Training May Restore Impaired Corticospinal Tract Fibers in Children With  
437 Cerebral Palsy. *Neurorehabil Neural Repair* [Internet]. 2020 May 14;34(6):533–46.  
438 Available from: <https://doi.org/10.1177/1545968320918841>
- 439 41. Budisavljevic S, Dell’Acqua F, Zanatto D, Begliomini C, Miotto D, Motta R, et al.  
440 Asymmetry and Structure of the Fronto-Parietal Networks Underlie Visuomotor  
441 Processing in Humans. *Cereb Cortex*. 2017;27(2):1532–44.
- 442 42. Shinoura N, Suzuki Y, Yamada R, Tabei Y, Saito K, Yagi K. Damage to the right superior  
443 longitudinal fasciculus in the inferior parietal lobe plays a role in spatial neglect.  
444 *Neuropsychologia* [Internet]. 2009;47(12):2600–3. Available from:  
445 <http://www.sciencedirect.com/science/article/pii/S0028393209002206>
- 446 43. Multani N, Goswami R, Khodadadi M, Ebraheem A, Davis KD, Tator CH, et al. The  
447 association between white-matter tract abnormalities, and neuropsychiatric and cognitive  
448 symptoms in retired professional football players with multiple concussions. *J Neurol*.  
449 2016;263(7):1332–41.
- 450 44. Chechlacz M, Gillebert CR, Vangkilde SA, Petersen A, Humphreys GW. Structural  
451 Variability within Frontoparietal Networks and Individual Differences in Attentional  
452 Functions: An Approach Using the Theory of Visual Attention. *J Neurosci* [Internet].  
453 2015 Jul 29;35(30):10647 LP – 10658. Available from:  
454 <http://www.jneurosci.org/content/35/30/10647.abstract>

- 455 45. Hoeft F, Barnea-Goraly N, Haas BW, Golarai G, Ng D, Mills D, et al. More is not always  
456 better: Increased fractional anisotropy of superior longitudinal fasciculus associated with  
457 poor visuospatial abilities in Williams Syndrome. *J Neurosci* [Internet].  
458 2007;27(44):11960–5. Available from:  
459 <http://www.jneurosci.org/cgi/doi/10.1523/JNEUROSCI.3591-07.2007>
- 460 46. Mayer K, Vuong Q. TBSS and probabilistic tractography reveal white matter connections  
461 for attention to object features. *Brain Struct Funct*. 2014;219(6):2159–71.
- 462 47. O’Mara S. The anterior thalamus provides a subcortical circuit supporting memory and  
463 spatial navigation [Internet]. Vol. 7, *Frontiers in Systems Neuroscience* . 2013. p. 45.  
464 Available from: <https://www.frontiersin.org/article/10.3389/fnsys.2013.00045>
- 465 48. Sutherland RJ, Hoising JM. Posterior cingulate cortex and spatial memory: A  
466 microlimnology analysis. *Neurobiology of cingulate cortex and limbic thalamus: A*  
467 *comprehensive handbook*. Cambridge, MA, US: Birkhäuser; 1993. p. 461–77.
- 468 49. Winter SS, Clark BJ, Taube JS. Spatial navigation. Disruption of the head direction cell  
469 network impairs the parahippocampal grid cell signal. *Science*. 2015 Feb;347(6224):870–  
470 4.
- 471 50. Taube JS. Head direction cells recorded in the anterior thalamic nuclei of freely moving  
472 rats. *J Neurosci*. 1995 Jan;15(1 Pt 1):70–86.
- 473 51. Aggleton JP, Nelson AJD. Why do lesions in the rodent anterior thalamic nuclei cause  
474 such severe spatial deficits? *Neurosci Biobehav Rev* [Internet]. 2014/09/06. 2015  
475 Jul;54:131–44. Available from: <https://pubmed.ncbi.nlm.nih.gov/25195980>
- 476 52. Peyrache A, Lacroix MM, Petersen PC, Buzsáki G. Internally organized mechanisms of  
477 the head direction sense. *Nat Neurosci*. 2015 Apr;18(4):569–75.

- 478 53. Suri S, Topiwala A, Filippini N, Zsoldos E, Mahmood A, Sexton CE, et al. Distinct  
479 resting-state functional connections associated with episodic and visuospatial memory in  
480 older adults. *Neuroimage*. 2017 Oct;159:122–30.
- 481 54. Parker A, Gaffan D. The effect of anterior thalamic and cingulate cortex lesions on object-  
482 in-place memory in monkeys. *Neuropsychologia* [Internet]. 1997;35(8):1093–102.  
483 Available from: <https://www.sciencedirect.com/science/article/pii/S0028393297000420>
- 484 55. Spets DS, Slotnick SD. Thalamic Functional Connectivity during Spatial Long-Term  
485 Memory and the Role of Sex. *Brain Sci*. 2020 Nov;10(12).
- 486 56. Doyon J, Benali H. Reorganization and plasticity in the adult brain during learning of  
487 motor skills. *Curr Opin Neurobiol*. 2005;15(2):161–7.
- 488 57. K.R. L, K. W, L.A. B, N.J. H. Motor skill acquisition across short and long time scales: A  
489 meta-analysis of neuroimaging data. *Neuropsychologia* [Internet]. 2014;59:130–41.  
490 Available from: <https://www.sciencedirect.com/science/article/pii/S0028393214001493>
- 491 58. Borich MR, Brown KE, Boyd LA. Motor skill learning is associated with diffusion  
492 characteristics of white matter in individuals with chronic stroke. *J Neurol Phys Ther*.  
493 2014 Jul;38(3):151–60.
- 494 59. Bergamino M, Walsh RR, Stokes AM. Free-water diffusion tensor imaging improves the  
495 accuracy and sensitivity of white matter analysis in Alzheimer’s disease. *Sci Rep*  
496 [Internet]. 2021;11(1):6990. Available from: <https://doi.org/10.1038/s41598-021-86505-7>
- 497 60. Bergamino M, Pasternak O, Farmer M, Shenton ME, Hamilton JP. Applying a free-water  
498 correction to diffusion imaging data uncovers stress-related neural pathology in  
499 depression. *NeuroImage Clin*. 2016;10:336–42.
- 500 61. Pasternak O, Shenton ME, Westin C-F. Estimation of extracellular volume from

- 501 regularized multi-shell diffusion MRI. *Med Image Comput Comput Assist Interv*  
502 [Internet]. 2012;15(Pt 2):305–12. Available from:  
503 <https://pubmed.ncbi.nlm.nih.gov/23286062>
- 504 62. Wang P, Jia X, Zhang M, Cao Y, Zhao Z, Shan Y, et al. Correlation of Longitudinal Gray  
505 Matter Volume Changes and Motor Recovery in Patients After Pontine Infarction  
506 [Internet]. Vol. 9, *Frontiers in Neurology* . 2018. p. 312. Available from:  
507 <https://www.frontiersin.org/article/10.3389/fneur.2018.00312>
- 508 63. VanGilder JL, Lopez-Lennon C, Paul SS, Dibble LE, Duff K, Schaefer SY. Global  
509 cognition is related to upper-extremity motor skill retention in individuals with mild-to-  
510 moderate Parkinson disease. *medRxiv* [Internet]. 2021 Jan 1;2021.04.26.21256143.  
511 Available from:  
512 <http://medrxiv.org/content/early/2021/04/29/2021.04.26.21256143.abstract>
- 513 64. Burke Quinlan E, Dodakian L, See J, McKenzie A, Le V, Wojnowicz M, et al. Neural  
514 function, injury, and stroke subtype predict treatment gains after stroke. *Ann Neurol*. 2015  
515 Jan;77(1):132–45.
- 516 65. Quinlan EB, Dodakian L, See J, McKenzie A, Stewart JC, Cramer SC. Biomarkers of  
517 Rehabilitation Therapy Vary according to Stroke Severity. *Neural Plast*. 2018;2018:8  
518 pages.
- 519 66. Tozlu C, Edwards D, Boes A, Labar D, Tsagaris KZ, Silverstein J, et al. Machine  
520 Learning Methods Predict Individual Upper-Limb Motor Impairment Following Therapy  
521 in Chronic Stroke. *Neurorehabil Neural Repair* [Internet]. 2020 Mar 20;34(5):428–39.  
522 Available from: <https://doi.org/10.1177/1545968320909796>
- 523 67. Fleischman DA, Yang J, Arfanakis K, Arvanitakis Z, Leurgans SE, Turner AD, et al.

- 524 Physical activity, motor function, and white matter hyperintensity burden in healthy older  
525 adults. Vol. 84, *Neurology*. 2015. p. 1294–300.
- 526 68. Schaefer SY, Duff K, Hooyman A, Hoffman JM. Improving prediction of amyloid  
527 deposition in Mild Cognitive Impairment with a timed motor task. medRxiv [Internet].  
528 2021 Jan 1;2021.06.16.21259056. Available from:  
529 <http://medrxiv.org/content/early/2021/06/24/2021.06.16.21259056.abstract>
- 530 69. Schaefer SY, Malek-Ahmadi M, Hooyman A, King JB, Duff K. Association between  
531 motor task acquisition and hippocampal atrophy across cognitively unimpaired, amnesic  
532 Mild Cognitive Impairment, and Alzheimer’s disease individuals. medRxiv [Internet].  
533 2021 Jan 1;2021.05.31.21258061. Available from:  
534 <http://medrxiv.org/content/early/2021/06/03/2021.05.31.21258061.abstract>
- 535 70. Johnson DK, Storandt M, Morris JC, Galvin JE. Longitudinal Study of the Transition  
536 From Healthy Aging to Alzheimer Disease Transition From Healthy Aging to Alzheimer  
537 Disease. *Arch Neurol* [Internet]. 2009 Oct 1;66(10):1254–9. Available from:  
538 <https://dx.doi.org/10.1001/archneurol.2009.158>
- 539 71. Mitolo M, Gardini S, Fasano F, Crisi G, Pelosi A, Pazzaglia F, et al. Visuospatial memory  
540 and neuroimaging correlates in mild cognitive impairment. *J Alzheimer’s Dis*.  
541 2013;35(1):75–90.
- 542 72. Rizzo M, Anderson SW, Dawson J, Myers R, Ball K. Visual attention impairments in  
543 Alzheimer’s disease. *Neurology*. 2000 May;54(10):1954–9.
- 544 73. Zhu Q-Y, Bi S-W, Yao X-T, Ni Z-Y, Li Y, Chen B-Y, et al. Disruption of thalamic  
545 connectivity in Alzheimer’s disease: a diffusion tensor imaging study. *Metab Brain Dis*  
546 [Internet]. 2015;30(5):1295–308. Available from: <https://doi.org/10.1007/s11011-015->

- 547 9708-7
- 548 74. Torso M, Serra L, Giulietti G, Spanò B, Tuzzi E, Koch G, et al. Strategic Lesions in the  
549 Anterior Thalamic Radiation and Apathy in Early Alzheimer’s Disease. PLoS One  
550 [Internet]. 2015 May 1;10(5):e0124998. Available from:  
551 <https://doi.org/10.1371/journal.pone.0124998>
- 552 75. Caselli RJ, Langlais BT, Dueck AC, Chen Y, Su Y, Locke DEC, et al.  
553 Neuropsychological decline up to 20 years before incident mild cognitive impairment.  
554 *Alzheimers Dement*. 2020 Mar;16(3):512–23.
- 555 76. Schaefer SY, Hooyman A, Duff K. Using a Timed Motor Task to Predict One-Year  
556 Functional Decline in Amnestic Mild Cognitive Impairment. Vol. 77, *Journal of*  
557 *Alzheimer’s disease*: JAD. 2020. p. 53–8.
- 558



559 Table 1. Participant characteristics.  
560

	Mean $\pm$ SD	Median	Range
Age (years)	68.4 $\pm$ 6.8	66	58-87
Education (years)	17.1 $\pm$ 1.9	18	14-20
Tactile sensation	3.4 $\pm$ 0.5	3.6	2.8-4.3
Grip strength (kg)	24.9 $\pm$ 9.4	23.3	10.7-40
Grooved Pegboard (s)	97.1 $\pm$ 38.7	84.5	65.9-206.5
Activities of Daily Living	6 $\pm$ 0	6	6-6
Geriatric Depression Scale	0.86 $\pm$ 2.10	0	0-8.2
Rey Delayed Recall	15.20 $\pm$ 5.67	16	2-25

561  
562 *Note.* N=19; 6 males and 13 females. A subset of participants completed the Geriatric Depression  
563 Scale (n=15; male=5); scores were averaged across all visits.

Table 2. Whole-brain fractional anisotropy and radial diffusivity results.

JHU (tractography)	POSITIVE			NEGATIVE		
	Fractional anisotropy					
	% volume	t-value	COG (mm)	% volume	t-value	COG (mm)
ATR (L)	0.12	3.894	-0.52 -34.4 -44.5	0.13	4.122	-23.4 -27.2 42.3
ATR (R)	0.15	3.926	1.6 -35.0 -45.6	-	-	-
CST (L)	0.40	4.060	-1.9 -35.6 -48.0	0.67	3.507	-23.3 -28.1 43.3
CST (R)	0.60	4.271	2.3 -35.1 -47.5	-	-	-
SLF (L)	-	-	-	0.13	3.225	-28.5 -28.1 38.8
SLF (R)	0.32	3.236	48.5 -4.6 18.0	-	-	-
SLF (temporal, L)	-	-	-	0.11	2.935	-31.6 -28.9 34.3
Radial diffusivity						
	% volume	t-value	COG (mm)	% volume	t-value	COG (mm)
ATR (L)	0.09	3.847	-23.0 -27.7 44.2	-	-	-
ATR (R)	-	-	-	0.68	2.829	15.0 12.8 0.4
CST (L)	0.72	3.332	-23.1 -28.3 45.9	0.16	3.130	-1.8 -36.7 -50.5
CST (R)	-	-	-	0.22	3.723	2.8 -37.6 -52.7
SLF (L)	0.11	3.222	-27.6 -28.1 42.0	0.37	3.036	-40.5 -8.9 38.2
SLF (R)	-	-	-	-	-	-
SLF (temporal, L)	-	-	-	0.44	3.062	-42.8 -10.2 37.4

*Note.* Center of gravity coordinates (X, Y, Z) are in MNI space. ‘% volume’ is the percentage of voxels from each atlas region of interest that overlap with each cluster.

L = left.

R = right.

ATR = anterior thalamic radiation.

CST = corticospinal tract.

SLF = superior longitudinal fasciculus.

COG = center of gravity.

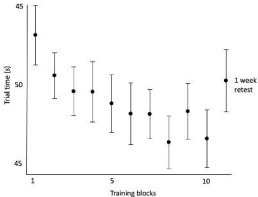
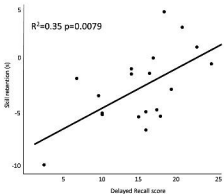
## Figure captions

**Figure 1.** A. Participants completed the Rey-Osterrieth Complex Figure Delayed Recall test (measures delayed visuospatial memory). An example drawing from one of the participants is shown. B. Participants used their nondominant hand to perform the motor task that mimicked the upper extremity movements required to feed oneself. This image is adapted from the “Dexterity and Reaching Motor Tasks” by MRL Laboratory that is licensed under CC BY 2.0.

**Figure 2.** A. Participants completed 50 training trials of the reaching task and were retested one week later to determine skill retention. Trials were consolidated into blocks of five trials each. Mean motor performance (trial time in seconds) is plotted on the y-axis, where lower values indicate better performance; vertical error bars show standard deviation. B. Skill retention was measured as the last block of the training session subtracted by the retest block (one week later). Participants’ skill retention is on the y-axis and Delayed Recall scores are on the x-axis; the figure illustrates that skill retention and Delayed Recall scores are positively correlated, where higher Delayed Recall scores predict better skill retention.

**Figure 3.** Whole-brain A) fractional anisotropy and B) radial diffusivity results are shown. In Panel A, the first row illustrates the large positive cluster in the right SLF (orange), the second row illustrates the negative cluster in the left CST/ATR/SLF, and the third row illustrates the positive cluster in bilateral CST in the brainstem. In Panel B, the first row shows the negative cluster in the left SLF, the second row shows the positive cluster in the ATR/CST, and the third row illustrates the negative cluster in the bilateral CST in the brainstem. The last row shows the negative cluster in the right ATR.

S1 Figure. Principal component values (y-axis) for each participant was highly correlated with their one-week skill retention and Delayed Recall scores (x-axes), demonstrating that it was indeed a good representation of the shared variance of both behaviors.

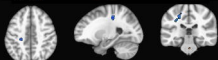
**A****B**

**A**

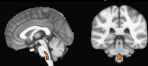
z-90      x-139      y-96



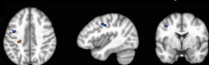
z-115      x-66      y-119



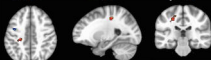
x-92      y-127

**B**

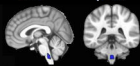
z-111      x-51      y-99



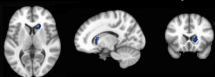
z-117      x-66      y-120



x-92      y-130



z-77      x-107      y-72

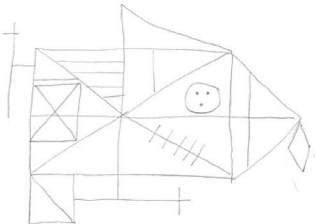


t = 4.3



t = -4.1

L/R

**A****B**

