

1 **A new multi-species Protein A-ELISA assay for plague diagnosis in humans and**
2 **other mammal hosts**

3

4 Matheus Filgueira Bezerra^{1§}, Camila Cavalcanti Xavier^{1§}, Alzira Maria Paiva de
5 Almeida^{1&} and Christian Robson de Souza Reis^{1&*}

6 ¹Departamento de Microbiologia – Instituto Aggeu Magalhães; Fiocruz-PE. Recife, PE,
7 Brazil;

8 [§]These authors contributed equally to this work

9 [&]These authors contributed equally to this work

10

11 **Running title:** Protein A-ELISA method for multi-species plague diagnosis

12

13

14

15 * Corresponding author: Christian R S Reis;

16 Av. Professor Moraes Rego, s/n, Recife/PE 50740-465, Brazil. Tel: +55-81-21012677.

17 Email: christian.reis@fiocruz.br

18

19 **Paper type:** Full length article

20 **Text word count:** 2819

21 **Abstract text count:** 200

22 **Number of figures:** 3

23 **Number of tables:** 2

24 **Number of references:** 27

25 **Number of Supplemental data:** 4

NOTE: This preprint reports new research that has not been certified by peer review and should not be used to guide clinical practice.

26 **Abstract**

27 **Background.** The Hemagglutination assay (HA) is widely used in plague diagnosis,
28 however, it has a subjective interpretation and demands high amounts of antigen and other
29 immunobiological supplies. Conventional IgG-ELISA is limited by the need of specific
30 conjugates for multiple plague hosts.

31 **Methods.** Thus, we developed an ELISA Protein A-peroxidase method to detect anti-F1
32 antibodies across several species, including humans. To determine the cut-off and
33 performance rates, HA results from 288 samples (81 rabbits, 64 humans, 66 rodents and
34 77 dogs) were used as reference.

35 **Results.** Optimal conditions were found with 250ng/well of F1 and 1:500 serum dilution.
36 Protein A-ELISA showed high repeatability and reproducibility. The positive/negative
37 OD ratios were higher in Protein A-ELISA and there was no significant cross-reaction
38 with other pathogenic yersiniae. The overall sensitivity/specificity, area under the curve
39 and Kappa rates for Protein A-ELISA were 93.9/98.9%; 0.993 and 0.938, respectively.
40 Similar results were observed in each species separately. There was a strong agreement
41 between Protein A and IgG assays ($\kappa=0.973$) in independent analysis (n=487).

42 **Conclusions.** Altogether, the Protein A-ELISA showed high performance when
43 compared both to HA and IgG-ELISA, with a polyvalent single protocol that requires
44 reduced amounts of antigen and can be employed to any plague hosts.

45 **Keywords: ELISA, protein A, plague, diagnosis.**

46

47

48

49

50

51 INTRODUCTION

52 Plague is a flea-transmitted disease caused by the gram-negative bacterium
53 *Yersinia pestis* and was responsible for at least three pandemics in the past [1]. Although
54 nowadays plague can be treated with antibiotics, there is a lack of vaccines able to provide
55 long-term immunity and this disease still threaten individuals living in remote places,
56 close to wildlife hosts but distant from specialized healthcare services [2]. Human cases
57 and deaths are recorded annually in several countries across Africa, Asia and the
58 Americas [3]. Despite the declining incidence worldwide, the interest in plague is
59 constant because of its potential to establish new epidemics and application as a biological
60 weapon [2,4].

61 Although the rodents are the main plague reservoir, practically any mammal can
62 be infected by *Y. pestis* and may take part in the dynamics of the infection [5]. An
63 interesting feature of plague is that, under certain conditions, the disease is able to remain
64 quiescent in the natural foci for decades and eventually reemerge among the wild fauna
65 and spillover to human populations [6,7,8]. Due to this unique feature, it is of utmost
66 importance to perform continuous monitoring of plague areas. In this regard, serological
67 methods are an important surveillance tool, as it identifies not only animals with the active
68 form of the disease, but also those previously exposed [9]. Most serological tests for
69 plague are based on the detection of antibodies against the F1 capsular antigen, which is
70 exclusive to *Y. pestis*, and highly immunogenic for humans and other mammals [10,11].

71 Given its polyvalence for sera from all taxonomic family groups,
72 hemagglutination (HA) has been widely used for plague serological diagnosis for several
73 decades. However, some commonly observed problems in HA, such as interpretations
74 bias, cross-reaction with other infections, high consumption of F1 antigen and use of
75 perishable biological supplies, led many laboratories to migrate to IgG ELISA tests [12-

76 16]. On the other hand, conventional ELISA requires a specific anti-IgG conjugate and
77 different optimization for each mammal species. Thus, there is a need of new diagnostic
78 methods that can improve the diagnosis and epidemiological surveillance of human and
79 animal plague across the globe [2,4,17].

80 Alternatively to immunoglobulin (anti-IgG) conjugates, the *Staphylococcus*
81 *aureus* protein A has been proposed for diagnosis of other multi-host diseases due to its
82 universal affinity for immunoglobulins from various species of domestic and wild
83 mammals [18-20]. To tackle this gap, we proposed a Protein A-based indirect ELISA
84 method, able to detect anti-F1 antibodies from humans and other plague hosts within a
85 single protocol.

86

87 **METHODS**

88 **F1 production**

89 The F1 antigen was extracted from the A1122 *Y. pestis* strain, according to the
90 protocol described by Chu [10], in a Biosafety level 3 facility. The purified product was
91 then mixed with 2× Laemmli buffer (1:1) containing 5% β-mercaptoethanol, heated at
92 100 °C for five minutes and loaded onto a 20% polyacrylamide gel (Figure 1A). The F1
93 antigen was quantified using the NanoDrop One^C Microvolume UV-Vis
94 Spectrophotometer (Thermo-Fischer, USA).

95

96 **Human and animal samples.**

97 Initially, 288 sera (81 control rabbits, 64 humans, 66 wild rodents and 77 domestic
98 dogs; total positives/negatives = 98/190) with well-characterized results for HA were
99 used for cut-off determination and Protein A-ELISA validation. Next, 265 additional
100 samples with unknown HA results nor used in cut-off determination were included to

101 evaluate the agreement between the Protein A and IgG methods in ELISA. All sera were
102 kindly provided by the Brazilian Plague Reference Service (SRP) and originated from the
103 routine surveillance of the Brazilian plague areas including human cases, several rodent
104 species and domestic carnivores (stray dogs) that prey on rodents [21,22].

105

106 **Rabbit immunization**

107 Sera from rabbits immunized with formol-killed *Y. pestis* and other pathogenic
108 *Yersinia* strains (whole-cells immunization) or with the purified F1 antigen, produced as
109 previously described [23] for positive control in routine diagnosis and were kindly
110 provided by the SRP. From the 37 positive control sera, 14 were from rabbits exposed to
111 the reference EV76 or A1122 *Y. pestis* strains in independent experiments, 18 were from
112 rabbits exposed to diverse Brazilian *Y. pestis* strains from the Fiocruz-CYP
113 (<http://cyp.fiocruz.br>) bacterial cultures collection and five were from rabbits exposed to
114 the purified F1 antigen (three native F1 and two recombinant F1, expressed in *E. coli*)
115 [23]. Additionally, to evaluate whether the ELISA test would present cross-reaction with
116 other *Yersinia*e, five rabbits immunized with distinct isolates of *Yersinia*
117 *pseudotuberculosis* and two with *Yersinia enterocolitica* were included. The other 37
118 negative control rabbit sera were obtained from animals from the IAM facilities that did
119 not underwent any experimental intervention.

120

121 **Ethics Statement**

122 The production of immune sera for positive controls in rabbits is routinely
123 produced following the local Animal Ethics Committees (CEUA/IAM) guidelines and
124 supplies the laboratorial diagnosis of plague by the National Plague Reference Service
125 (SRP-IAM). Sera from rodents, dogs and humans were obtained during the routine

126 operations of the Brazilian plague surveillance program over the years and maintained in
127 the serum samples collection of the Instituto Aggeu Magalhães.

128

129 **Protein A-ELISA and IgG-ELISA.**

130 The ELISA tests were adapted from previously established protocols [10,13].
131 Briefly, 96-well plates (Techno Plastic Products, Switzerland) were incubated overnight
132 with 250 ng of F1 diluted in 100 µl of a 0,05 M, pH 9,6 carbonate-bicarbonate buffer per
133 well. Next, the plates were washed twice with 500 µl of PBS per well (PW 40 Microplate
134 Washer, Bio-Rad, USA) and blocked with 100 µl of a 10% solution of low-fat milk in
135 PBS for one hour. After a double wash with 500 µl of PBS-T (Tween 20, 0.05%), 100 µl
136 of serum samples diluted (1:500) in a 10% milk/PBS-T solution were incubated in the
137 plate at room temperature for one hour and washed twice with 500 µl of PBS-T. A 100
138 µl of Protein A–Peroxidase from *Staphylococcus aureus*/horseradish (Sigma-Aldrich,
139 USA) or goat anti-human, rabbit or dog-peroxidase (Kirkegaard & Perry Laboratories,
140 USA) diluted in 10% milk/PBS-T solution (1:10.000 and 1:2.500, respectively) were
141 added and incubated at room temperature for one hour and washed twice with 500 µl of
142 PBS-T. Finally, 150 µl of 2 mg/mL OPD (o-phenylenediamine dihydrochloride; Sigma–
143 Aldrich) and 1:10³ H₂O₂ diluted in citrate-phosphate buffer (pH=5.0) was incubated in
144 each well for 30 minutes at room temperature in a dark environment. The reaction was
145 stopped by the addition of 100 µl 2.5 M sulfuric acid (H₂SO₄) per well and plates were
146 read at the optical density of 490nm (iMark™ Microplate Absorbance Reader, Bio-Rad,
147 USA).

148 All samples were measured in triplicates and the background (blank) optical
149 density (OD) from each plate was subtracted from the average sample OD. Distinct
150 concentrations of F1 antigen, peroxidase conjugates and sera dilution were tested to

151 determine optimal conditions. The cut-offs were determined according to the best
152 specificity/sensitivity (Youden's index) from the ROC curve. A distinct cut-off was
153 calculated for each peroxidase conjugate. Since the rodent samples included rather
154 heterogeneous range of wild species [21], we could not test them for IgG-ELISA.

155

156 **Hemagglutination assay (HA)**

157 The hemagglutination (HA) assay was performed as described previously [10]. In
158 short, the F1 antigen was immobilized onto sheep red blood cells (SRBC) previously
159 fixed with glutaraldehyde and tannic acid. Next, the F1-coated SRBC (25 μ L/well) were
160 incubated with the test serum serially diluted in eight wells starting from 1/4 in HA
161 (0.85% saline + normal rabbit serum) buffer. The specificity of HA was accessed by the
162 hemagglutination inhibition (HI). The test is considered positive when the HA endpoint
163 is depressed by three or more HI dilutions (titers $> 1/16$ are considered positive).

164

165 **Statistical Analysis**

166 The HA test, which is routinely used in the SRP, was used as the gold standard to
167 calculate Protein-A ELISA and IgG ELISA performance rates. Sensitivity, specificity,
168 accuracy and confidence intervals were calculated using the <https://www.medcalc.org>
169 platform. Receiver Operating Characteristic (ROC) curves, area under the curve (AUC),
170 scatterplots and correlations were calculated with the GraphPad Prism version 5 software.
171 Pearson test was used to measure the correlation between ODs from distinct tests and
172 Mann-Whitney test was used to compare OD means. The intra and inter-assay variability
173 was measured using the coefficient of variation (CV) from one serum from a rabbit
174 immunized with the A1122 *Y. pestis* strain and one negative rabbit serum. Samples were
175 tested in eight replicates within runs and across six experiments in non-consecutive days.

176 The Kappa test was initially applied to determine the agreement rate between the
177 ELISA and HA tests (n=288) and then, between Protein A-ELISA and IgG-ELISA
178 (n=487). The index was calculated using the Quickcalc Graphpad tool
179 (<https://www.graphpad.com/quickcalcs/kappa2>). Statistical tests were applied with a
180 95% confidence interval.

181

182

183

184 **RESULTS**

185 **Standardization of Protein A-ELISA and IgG-ELISA**

186 The optimal conditions were determined for Protein A-ELISA by evaluating
187 separately distinct amount of F1 antigen per well and serum dilutions. There was no
188 significant difference between the ODs by using the amounts of 250, 375 and 500 ng per
189 well (Figure 1B). Thus, we decided to establish the lowest amount (250 ng per well) for
190 the subsequent experiments. By testing three serum dilutions (1: 250; 1: 500 and 1: 1000),
191 the 1:500 dilution showed high ODs for positive samples and low background for
192 negative samples (Figure 1C). For optimization of the three IgG-ELISA tests, we
193 maintained the amount of F1 antigen (250 ng/well) and sera dilution (1:500) previously
194 established for Protein A-ELISA and tested four dilutions for IgG conjugate (1:1250;
195 1:2500; 1:5000 and 1:10000). We found the best positive/negative ratios at the 1:2.500
196 dilutions for all IgG conjugates (Supplementary Figure 1).

197

198 **Comparing ODs, cut-offs and cross-reaction between Protein A and IgG ELISAs**

199 Whilst a single cut-off was established for Protein A-ELISA considering the best
200 Youden's index possible across all tested species, individual cut-offs were established for

201 IgG anti-rabbit, anti-human and anti-dog ELISAs (Table 1 and Figure 3 A-B). We
202 observed low background signals in negative samples for Protein A, anti-rabbit and anti-
203 human IgG conjugates, but a rather marked background in anti-dog IgG conjugate,
204 resulting in a narrower window of opportunity for cut-off.

205 Overall, the average ODs from positive samples were significantly higher than the
206 ODs from negative samples both in protein A and in IgG tests (Mann-Whitney test $p <$
207 10^{-3}). The ratios between the OD means from positive and negative samples were
208 considerably higher for the protein A conjugate (all samples = 28.7; rabbit = 81.1; human
209 = 34.2; rodent = 51.7 and dog = 12.8), when compared to anti-rabbit (22.4), anti-human
210 (11.8) and anti-dog (4.9) IgG conjugates. OD ratios and averages are shown in Table 1
211 and Supplementary Table 1, respectively.

212 We observed a good degree of correlation between ODs from Protein A and IgG-
213 ELISA methods (Figure 2A). The mean ODs across six assay runs in different days were
214 1,392 ($\pm 0,069$) for the positive rabbit serum (A1122) and 0,046 ($\pm 0,005$) for the negative
215 control, with a coefficient of variation (CV) of 4.9% and 10.8%, respectively. The
216 repeatability, determined by eight intra-assay replicates, showed a CV of 0.5% for the
217 positive anti-*Y. pestis* A1122 serum and 4.6% for the negative serum. Moreover, the intra-
218 assay analysis of the triplicates from all samples tested for Protein A-ELISA revealed that
219 93% of the samples had a CV lower than 15% (Figure 2B). Of interest, only 2% of the
220 samples had an CV above 30% and those were negative samples with ODs close to the
221 lower detection limit, where small numeric variations imply in high CVs (Supplementary
222 Figure 2).

223 To evaluate whether these ELISA methods would present cross-reaction with
224 other pathogenic yersiniae, sera from seven rabbits previously immunized with *Y.*
225 *pseudotuberculosis* (five) or *Y. enterocolitica* (two) strains were tested. Although the

226 average ODs from these sera were slightly higher than other negative samples (protein A:
227 0.076 *versus* 0.014 and IgG: 0.133 *versus* 0.031), only one from the seven tested samples
228 (*Y. enterocolitica*) presented a false-positive result for Protein A-ELISA (Figure 3 A-B).

229

230 **Performance of Protein A-ELISA and IgG-ELISA**

231 Taking into consideration the HA results for 98 positive and 190 negative
232 reference samples, the analysis of protein A and IgG ELISAs performance rates revealed
233 high sensitivity, specificity and accuracy rates for both methods (Table 1). The Protein
234 A-ELISA test had two false-positives (one rabbit and one dog) and six false negatives
235 (four rodents, one rabbit and one dog), with an overall sensitivity of 93.9% and specificity
236 of 98.9%. On the other hand, the IgG-ELISA test had six false-positives (three humans,
237 two dogs and one rabbit), with a sensitivity of 97.4% and specificity of 100% for rabbits,
238 93% and 100% for humans and finally, 90% and 100% for dogs. Confirming these
239 findings, the ROC curves from both protein A and IgG methods showed high area under
240 the curve (AUC) rates. Whereas the overall and species-specific AUCs from protein A-
241 ELISA tests remained above 0.990, AUCs from IgG-ELISA ranged from 0.930 to 0.982
242 (Figure 3 C-D, Supplementary Figure 3).

243 The Kappa test was initially applied to measure the degree of reliability between
244 the ELISA tests and the HA (n=288 for protein A and n=222 for IgG). Excellent
245 agreement rates were observed in samples from all species (Table 1). Next, we included
246 new 265 independent samples with unknown HA results (and not used in cut-offs
247 calculation) and calculated the kappa index to measure the agreement between Protein A
248 and IgG ELISAs (Table 2). From the 487 samples, 84 were positive in both tests, 398
249 were negative in both tests, eight were positive for protein A but negative for IgG and
250 five were positive for IgG but negative for protein A. Kappa coefficient for all species

251 was 0.905 (0.854-0.956), for rabbits: 0.925 (0.842-1.000), for humans: 0.914 (0.818-
252 1.000) and for dogs: 0.850 (0.741-0.959). The p-values were < 0.05 in all tests.

253

254 **DISCUSSION**

255 The gold standard for plague diagnosis is the identification and isolation of the *Y.*
256 *pestis* in bacteriological cultures from the clinical specimen. However, as proper
257 diagnosis is often not feasible due to the acute progression of the disease and geographic
258 isolation of cases, patients frequently receive treatment without laboratory results [2-4].
259 Therefore, serological testing is of most importance for plague diagnosis and surveillance
260 activities, as it can detect not only active infections in humans and other hosts, but also
261 retrospectively identify individuals exposed to the bacteria [9,10]. In this scenario,
262 serological surveillance must consider a wide variety of mammals to be tested, such as
263 rodents and other small mammals, domestic (dogs and cats) and wild carnivores that prey
264 on rodents [5,12,21,22,24].

265 Here, we describe a Protein A-based approach designed to overcome some
266 limitations faced by routine laboratories when using other serological methods, such as
267 HA (subjective interpretation, high consumption of antigen, perishable reagents) and
268 conventional ELISA (requires specific IgG-peroxidase conjugate, cut-off calculation and
269 positive controls for each species). While the protocol here established requires 750 ng
270 of F1 antigen per tested sample (using triplicates), HA spends 20,000 ng of F1 per tested
271 sample (considering the standard eight dilutions according to Chu [10], resulting in the
272 use of approximately twenty-seven times more antigen per sample. This difference can
273 be particularly relevant for plague diagnosis given the complexity and costs of producing
274 and purifying F1 from extensive *Y. pestis* culturing in biosafety level 3 (BSL3)
275 laboratories [23].

276 Throughout a broad range of host species hereby tested, the Protein A-ELISA
277 method showed high sensitivity, specificity and reproducibility rates even with a single
278 cut-off value for all species. Corroborating these findings, the analysis of the ROC curve
279 showed AUCs above 0.990 in all groups tested in protein A-ELISA, while AUCs from
280 IgG-ELISA ranged from 0.930 to 0.982. The Cohen's Kappa test revealed high agreement
281 rates for this protocol when compared to HA (n=288) and IgG-ELISA (n=487). Since
282 human cases of plague have not been reported in Brazil since 2005, we were not able to
283 estimate positive/negative predictive values [25].

284 Remarkably, we observed a good correlation between ODs from Protein A and
285 anti-IgG, with higher positive/negative OD ratios in the Protein A-ELISA test, which
286 allows a safer window of opportunity for cut-off determination between positive and
287 negative samples. Of note, little cross-reaction was observed in sera from rabbits
288 immunized with other pathogenic yersiniae. Interestingly, whilst negative samples
289 showed low background signals in Protein A, anti-rabbit and anti-humans IgG conjugates,
290 a rather marked background in anti-dog IgG conjugate was observed. This could be
291 associated to the non-specific agglutination routinely observed in sera from dogs in
292 diagnosis by HA.

293 Although remaining detectable in humans for several years after infection,
294 antibodies against *Y. pestis* can only be detected from the fifth day of infection by HA
295 and from the eighth day by IgG-ELISA [15,26,27]. Previous studies demonstrate that in
296 addition to its universal affinity for immunoglobulins (IgG) from almost all mammals,
297 protein A can also bind to IgA and IgM and possibly, detect infections in earlier stages of
298 infections, before serum conversion to IgG [19]. However, this hypothesis is yet to be
299 tested in the context of serodiagnosis of plague.

- 325 4. Stenseth NC, Atshabar BB, Begon M, et al. Plague: past, present and future. PLoS
326 Medicine 2008; 5:9-13.
- 327 5. Mahmoudi A, Krytufek B, Sludsky A, et al. Plague reservoir species throughout
328 the world. Int Zool 2020; 0:1-14.
- 329 6. Gage KL. Factors Affecting the Spread and Maintenance of Plague. Advances in
330 *Yersinia* Research Springer 2012; 954:79-94.
- 331 7. Jones SD, Atshabar B, Schmid BV, Zuk M, Amramina A, Stenseth NC. Living
332 with plague: Lessons from the Soviet Union's antiplague system. PNAS 2019;
333 116:9155-163.
- 334 8. Mead PS. Plague in Madagascar - A Tragic Opportunity for Improving Public.
335 Health. N Engl J Med 2018; 378:106-8.
- 336
- 337 9. Denis DT, Gage KL, Gratz N, Poland JD, Tikhomirov E. Plague manual:
338 Epidemiology, Distribution, Surveillance and Control. WHO 1999. Available at:
339 [https://www.who.int/csr/resources/publications/plague/whocdscsredc992a.pdf?u](https://www.who.int/csr/resources/publications/plague/whocdscsredc992a.pdf?ua=1)
340 [a=1](https://www.who.int/csr/resources/publications/plague/whocdscsredc992a.pdf?ua=1). Accessed 25 February 2021.
- 341 10. Chu M. Laboratory Manual of Plague Diagnostic Tests. Centers for Disease
342 Control and Prevention, World Health Organization 2000.
- 343 11. Demeure CE, Dussurget O, Guillem MF, Le Guern AS, Savin C, Pizarro-Cerdá J.
344 *Yersinia pestis* and plague: an updated view on evolution, virulence determinants,
345 immune subversion, vaccination, and diagnostics. Gen Imm 2019; 20:357-70.
- 346 12. Esamaeili S, Azadmanesh K, Naddaf SR, Rajerison M, Carniel E, Mostafavi E.
347 Serologic survey of plague in animals, Western Iran. Emerg Infect Dis 2013;
348 19:1549-51.

- 349 13. Almeida AMP, Ferreira LCS. Evaluation of three serological tests for the
350 detection of human plague in northeast Brazil. Mem Inst Oswaldo Cruz 1992;
351 87:87-92
- 352 14. Rajerison M, Darteville S, Ralafiarisoa LA, et al. Development and Evaluation of
353 Two Simple, Rapid Immunochromatographic Tests for the Detection of *Yersinia*
354 *pestis* Antibodies in Humans and Reservoirs. PLoS Negl Trop Dis 2009; 3:e421.
- 355 15. Rasoamanana B, Leroy F, Boisier P, Rasolomaharo M, Buchy F, Carniel E,
356 Chanteau S. Field evaluation of an immunoglobulin G anti-F1 enzyme-linked
357 immunosorbent assay for serodiagnosis of human plague in Madagascar. Clin
358 Diagn Lab Immunol 1997; 4:587-91.
- 359 16. Shepherd AJ, Leman PA, Hummitzsch DE, Swanepoel R. A comparison of
360 serological techniques for plague surveillance. Trans R Soc Trop Med Hyg 1984;
361 78:771-73.
- 362 17. Baril L, Vallès X, Stenseth NC, et al. Can we make human plague history? A call
363 to action. BMJ Global Health 2019; 4:e001984.
- 364 18. Goudswaard J, Vander Donk JA, Noordzij A, Van Dam RH, Vaerman JP. Protein
365 A reactivity of various mammalian immunoglobulins. Scand J Immunol 1978;
366 8:21-8.
- 367 19. Kelly PJ, Tagwira M, Matthewman L, Mason PR, Wright EP. Reactions of sera
368 from laboratory, domestic and wild animals in Africa with protein A and a
369 recombinant chimeric protein AG. Comp Immunol Microbiol Infect Dis 1993;
370 16:299 -305.
- 371 20. Surolia A, Pain D, Khan MI. Protein A: nature's universal anti-antibody. TIBS
372 1982; 74-6.

- 373 21. Costa ECV, Sobreira M, Leal NC, Almeida AMP. Rodents and other small
374 mammal reservoirs in plague foci in northeastern Brazil. *Journal of Infection in*
375 *Developing Countries* 2017; 11:426-30.
- 376 22. Sousa LLF, Alencar CH, Almeida AMP, Cavalcanti LPG. Seroprevalence and
377 spatial distribution dynamics of *Yersinia pestis* antibodies in dogs and cats from
378 plague foci in the State of Ceará, Northeastern Brazil. *Revista da Sociedade*
379 *Brasileira de Medicina Tropical* 2017; 50:769-76.
- 380 23. Tavares DHC, Bezerra MF, Magalhães F et al. A new recombinant F1 antigen as
381 a cost and time-effective tool for plague diagnosis. *J Microbiol Meth* 2020;
382 172:105903.
- 383 24. Bevins SN, Baroch JA, Nolte DL, Zhang M, Hongxuan HE. *Yersinia pestis*:
384 examining wildlife plague surveillance in China and the USA. *Integrative*
385 *Zoology* 2012; 7:99-109.
- 386 25. Almeida AMP, Sobreira M, Leal NC, Tavares C. Does the Plague Still Threaten
387 Us? *Rev Soc Bras Med Trop* 2020; 53:e20190136.
- 388 26. Andrianaivoarimanana V, Iharisoa AL, Rahalison L, et al. Short- and long-term
389 humoral immune response against *Yersinia pestis* in plague patients, Madagascar.
390 *BMC Infectious Diseases* 2020; 20:822.
- 391 27. Butler T and Hudson BW. The serological response to *Yersinia pestis* infection.
392 *Bull World Health Organ* 1977; 55:39-42.

393

394

395

396

397

398

399

400

401

402

403

404

405

406

407

408 **FIGURES LEGENDS**

409 **Figure 1. Standardization of Protein A-ELISA.** F1 antigen purified from the A1122 *Y.*
410 *pestis* strain in culture (A). Three concentrations of F1 antigen (250 ng, 375 ng and 500
411 ng) were tested. The assay was optimized at the concentration of 250 ng of F1 antigen per
412 well (B). Graph with the optical densities from titrated sera in different species (C).

413

414 **Figure 2. Linearity and precision of Protein A-ELISA.** Good correlation
415 (Pearson=0.97) was observed between the Protein A and IgG ELISA tests using control
416 rabbit sera (n = 81). Dashed lines represent the 95% confidence interval and the white
417 datapoint, an outlier samples excluded from correlation analysis (A). From the total 553
418 samples tested for Protein A-ELISA, 88% had a coefficient of variation (CV) of the
419 triplicates lower than 10% and 93% of the samples had a CV lower than 15%. The line
420 shows the cumulative percentage of samples within the respective CV level and the bars
421 show the absolute amounts of samples in each interval of CV value (B).

422

423 **Figure 3. Validation of the diagnosis of plague by Protein A-ELISA and IgG-ELISA**
424 **in HA-tested sera.** Comparison between ODs from positive and negative sera for Protein
425 A-ELISA. The cut-off in Protein A-ELISA was 0.130 for all species **(A)**. For IgG-ELISA,
426 the cut-offs were 0.258 (rabbits), 0.320 (humans) and 0.573 (dogs). All sera were
427 previously tested for hemagglutination **(B)**. Area under the curve (AUC) for protein A
428 **(C)** and IgG **(D)** conjugates. AUC values close to 1.0 indicate good test performance.

429

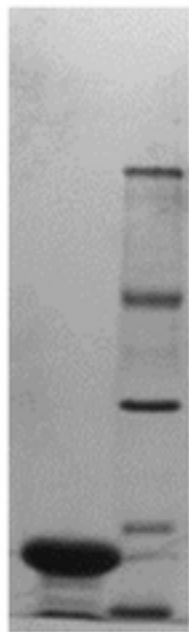
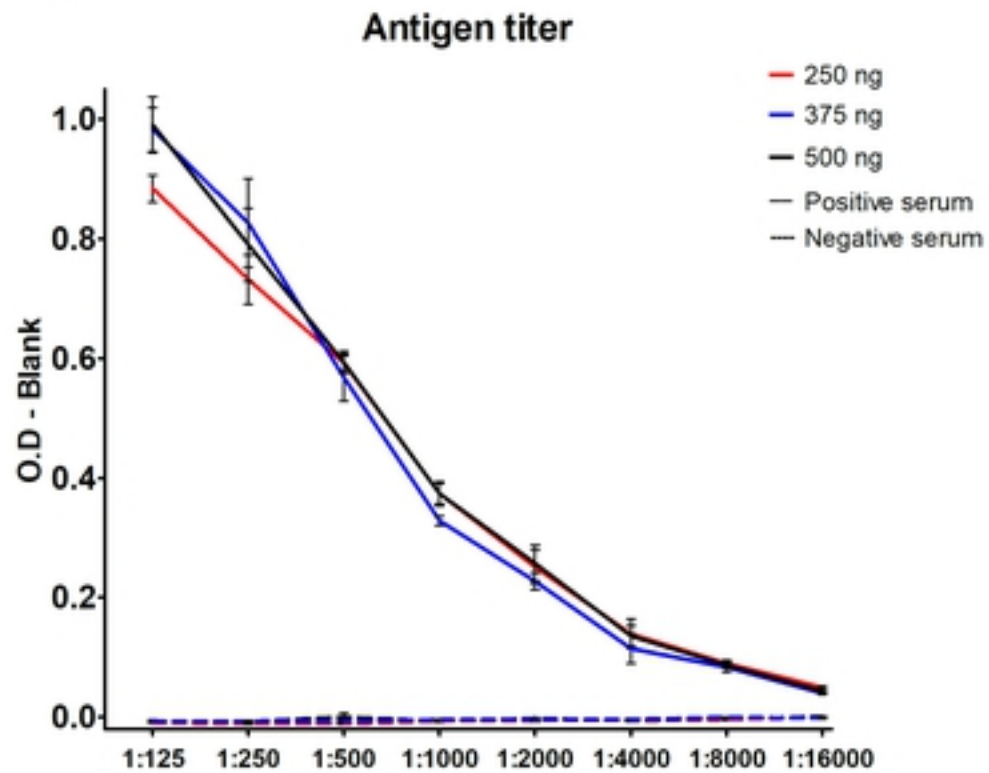
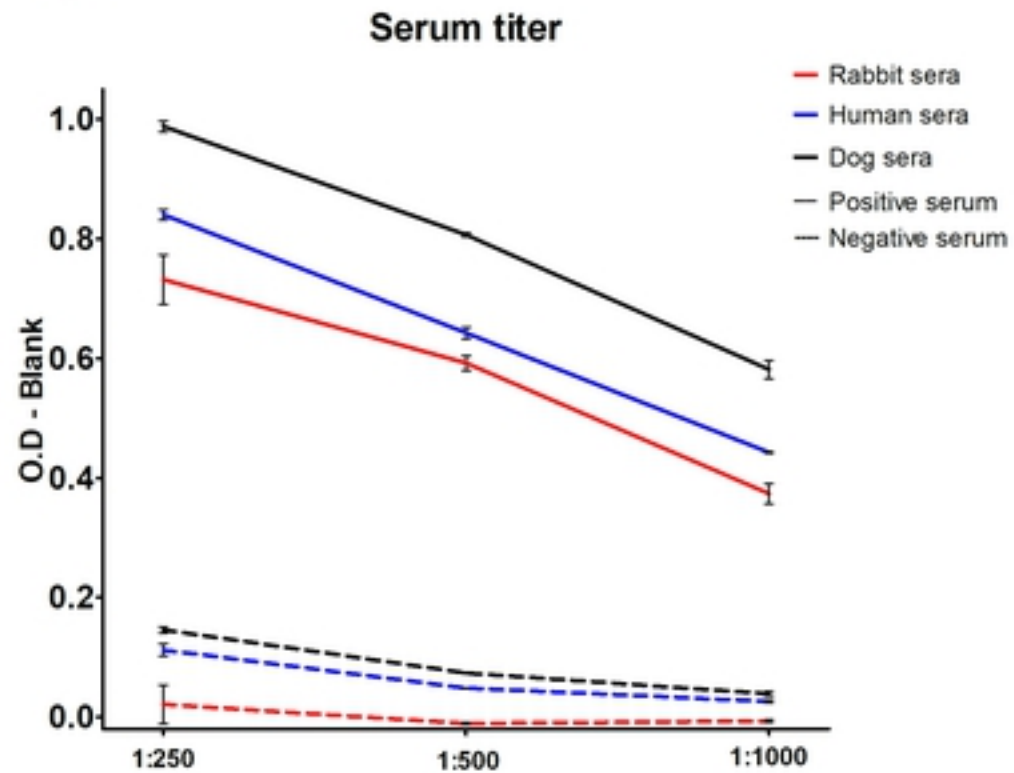
430 **Supplementary Figure 1. Standardization of IgG-ELISA.** Four distinct titers were
431 tested for each anti-IgG conjugates in triplicate for one positive and one negative serum
432 from each species. Antigen concentration and sample titer were the same from the
433 previously established in the Protein A-ELISA assay.

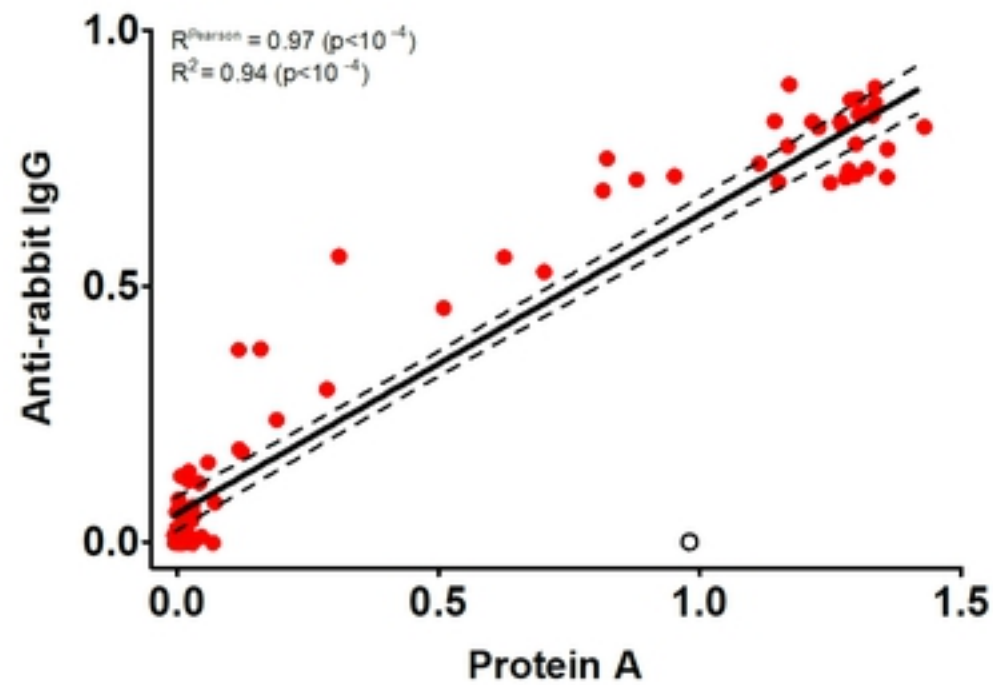
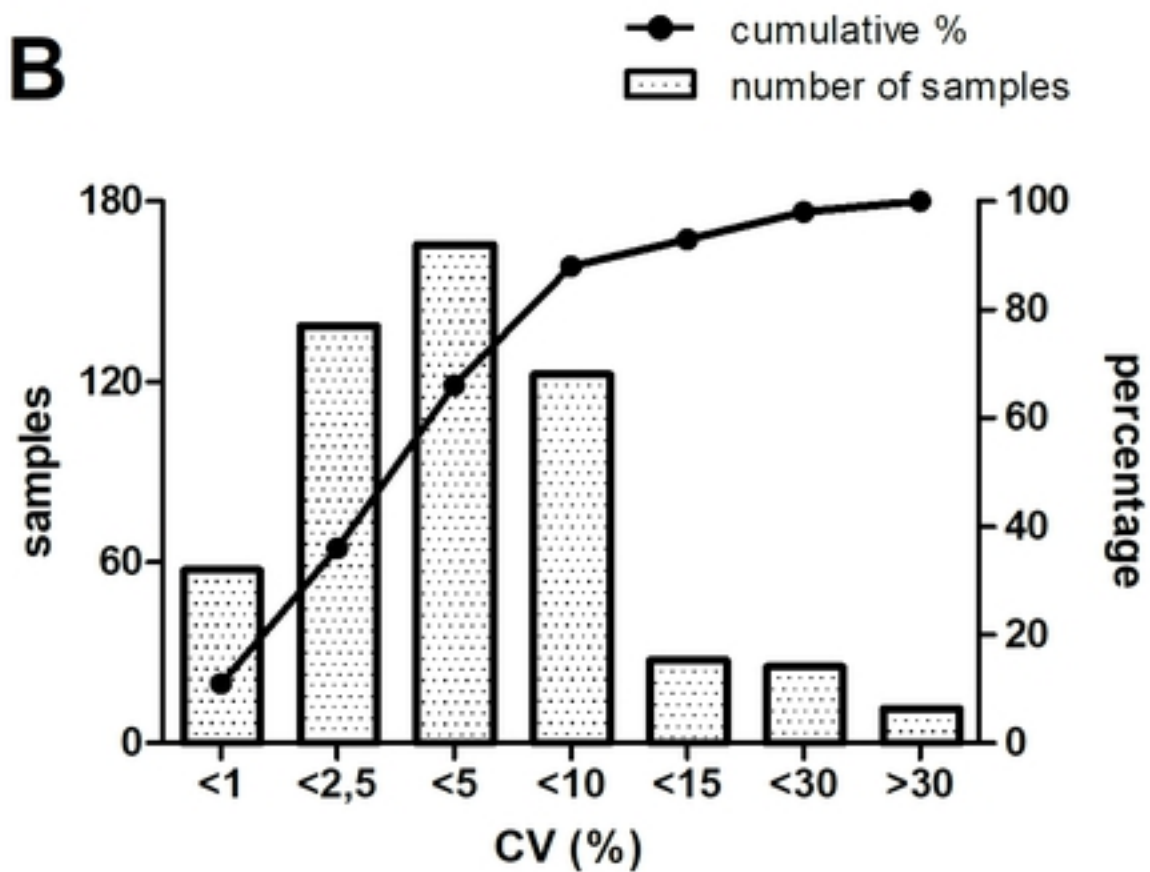
434

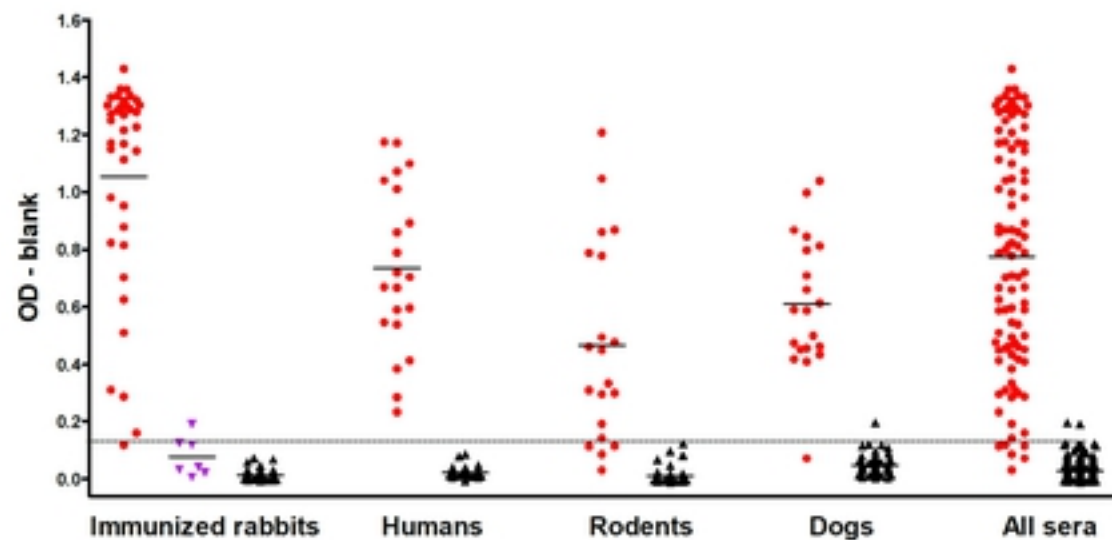
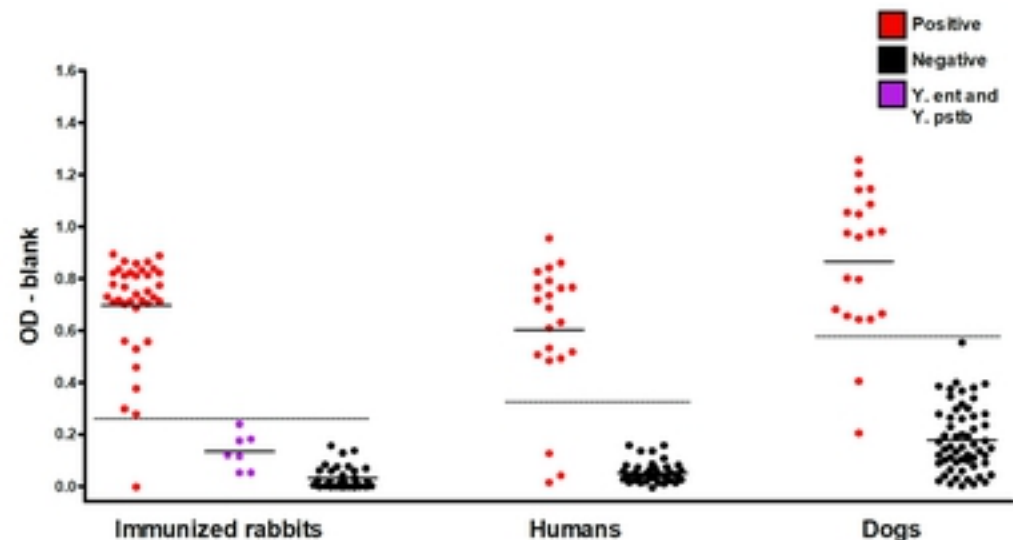
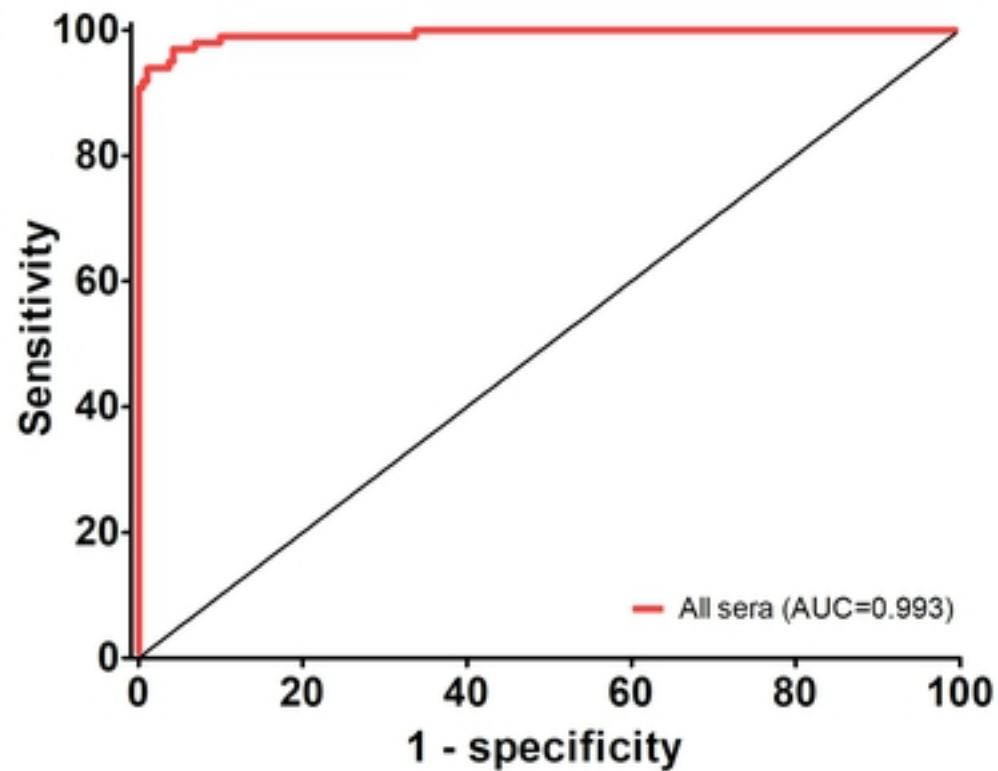
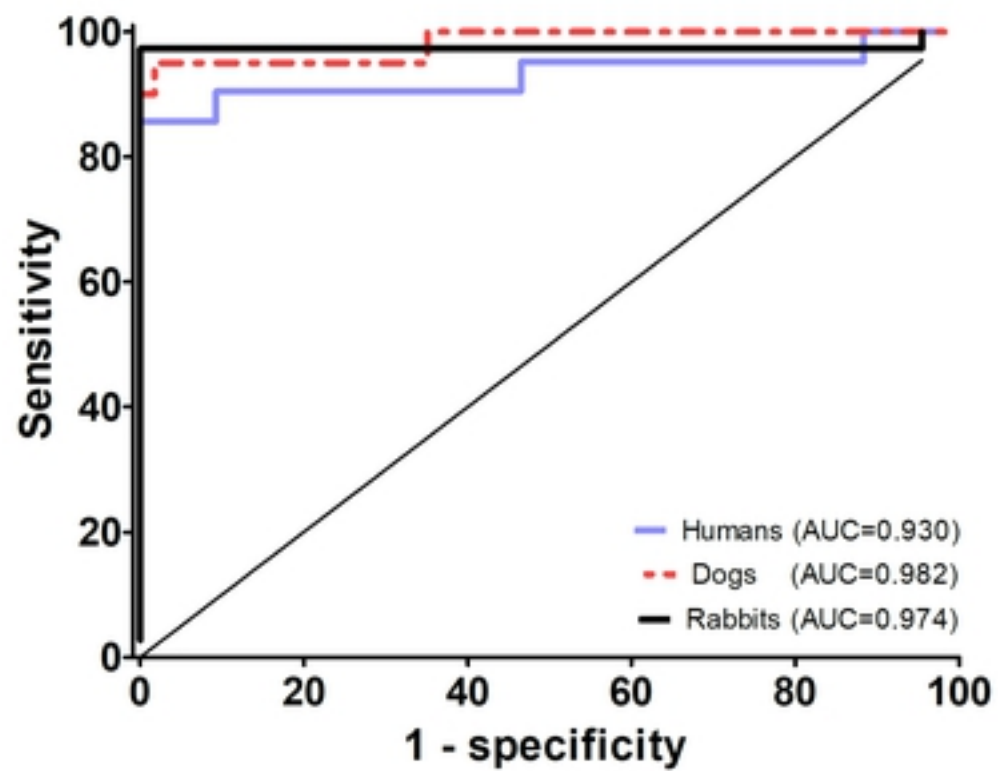
435 **Supplementary Figure 2. Coefficient of variation in Protein A-ELISA according to**
436 **the average OD.** The majority of the samples tested for Protein A-ELISA (n=553) had
437 triplicates with low CVs. Higher variation was found in negative samples, with the ODs
438 close to the lower detection limit, where small numeric variations implies in high CVs.

439

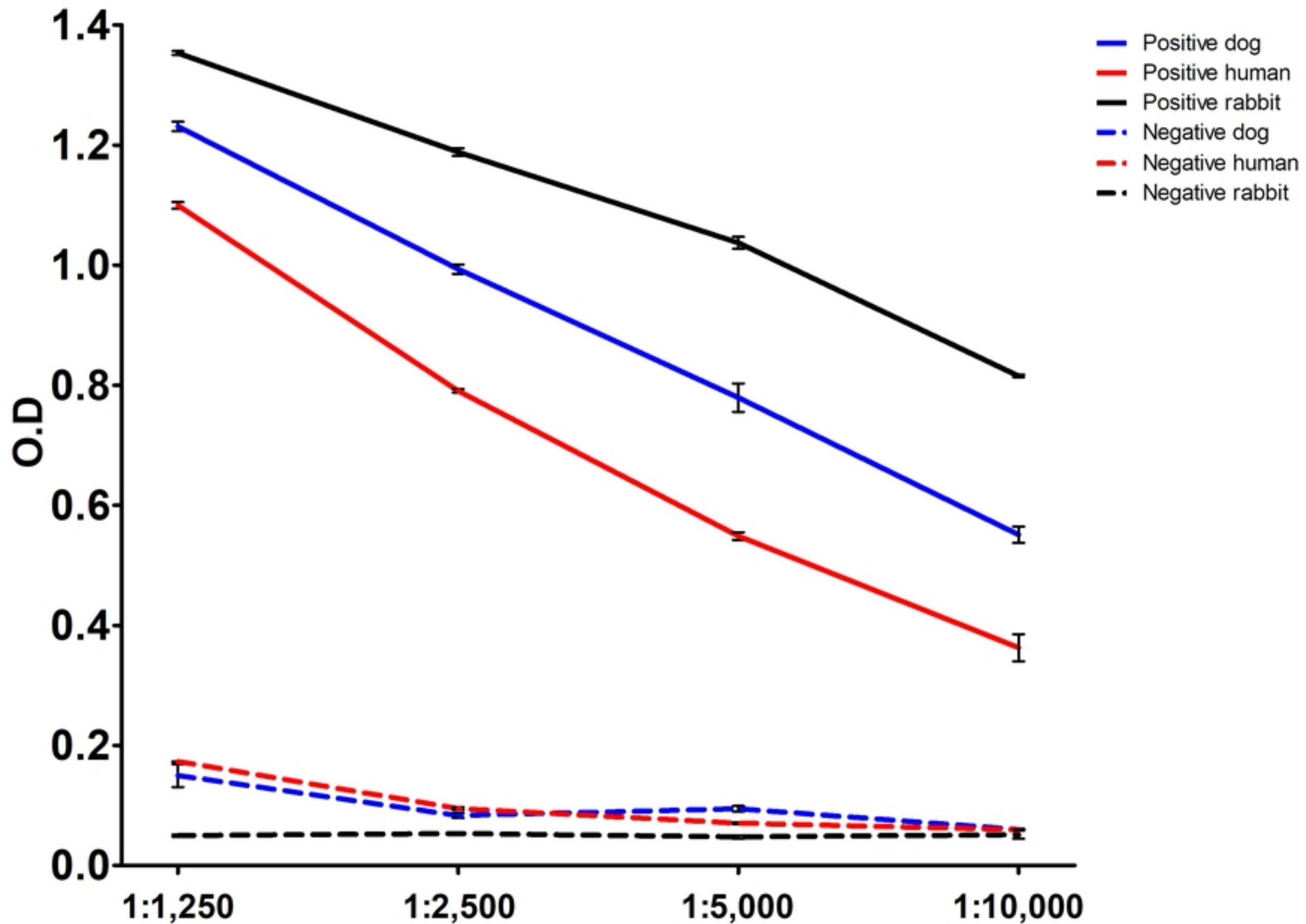
440 **Supplementary Figure 3. ROC curves for Protein A-ELISA.** Stratified ROC curves
441 and area under the curve (AUC) for protein A-ELISA according to each evaluated
442 species.

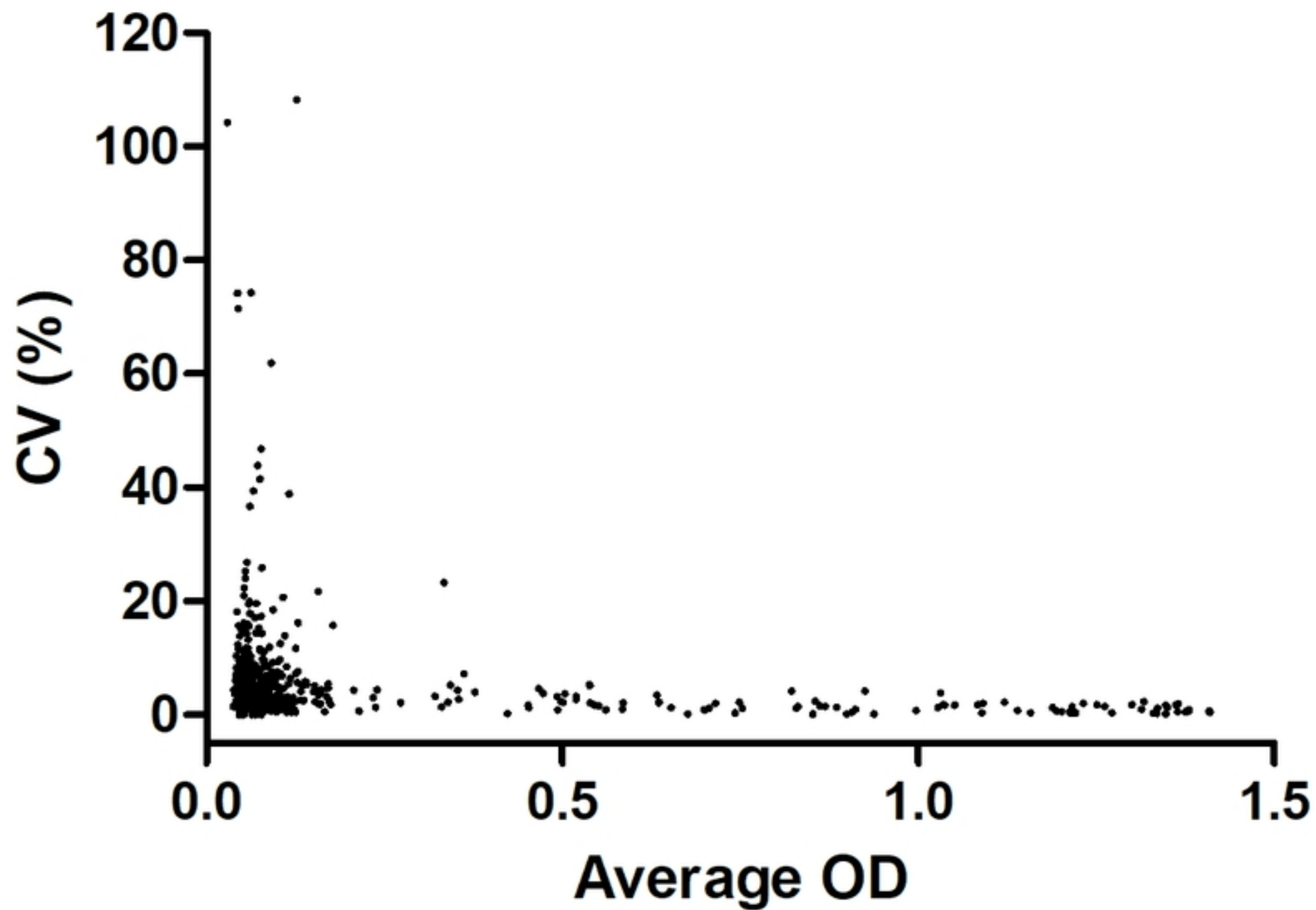
A**B****C**

A**B**

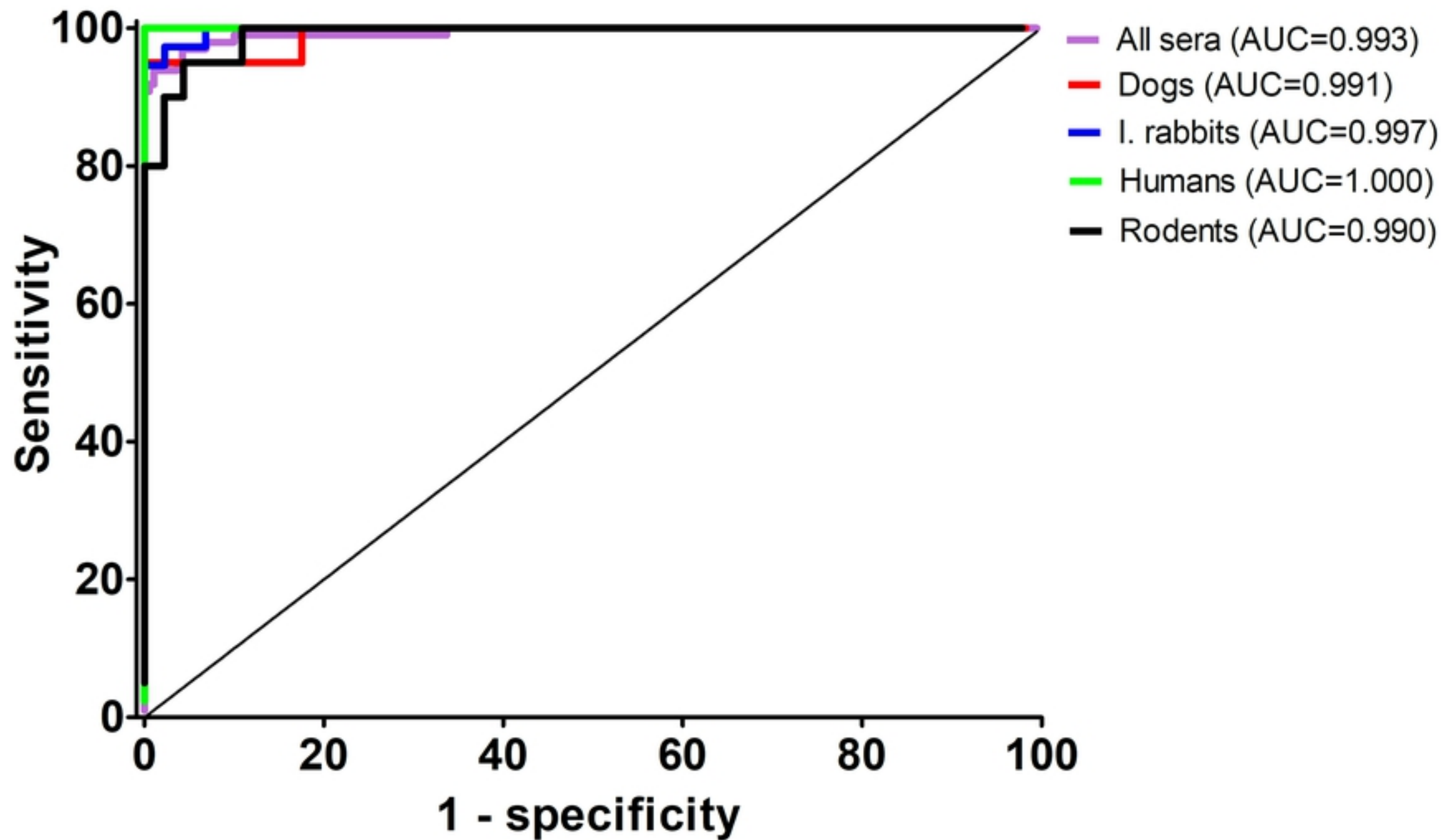
A Protein A-ELISA**B** IgG-ELISA**C** Protein A-ELISA**D** IgG-ELISA

Conjugate titer (IgG)





Supplementary Figure



Supplementary Figure