

# **Mortality in Rural Coastal Kenya measured using the Kilifi Health and Demographic Surveillance System: A 16-year descriptive analysis**

## **AUTHORS AND AFFILIATIONS:**

Mark Otiende<sup>1\*</sup>, Evasius Bauni<sup>1</sup>, Amek Nyaguara<sup>1</sup>, David Amadi<sup>1</sup>, Christopher Nyundo<sup>1</sup>, Emmanuel Tsory<sup>1</sup>, David Walumbe<sup>1</sup>, Michael Kinuthia<sup>1</sup>, Norbert Kihuha<sup>1</sup>, Michael Kahindi<sup>1</sup>, Gideon Nyutu<sup>1</sup>, Jennifer Moisi<sup>1</sup>, Amare Deribew<sup>1</sup>, Ambrose Agweyu<sup>1</sup>, Kevin Marsh<sup>3</sup>, Benjamin Tsofa<sup>1</sup>, Philip Bejon<sup>1,3</sup>, Christian Bottomley<sup>2</sup>, Thomas N. Williams<sup>1</sup>, J. Anthony G. Scott<sup>1,2</sup>

1. KEMRI-Wellcome Trust Research Programme, Kilifi, Kenya
2. Department of Infectious Disease Epidemiology, London School of Hygiene & Tropical Medicine, London, UK
3. Nuffield Department of Clinical Medicine, University of Oxford, Oxford, UK

\* Corresponding Author

## Word Count

Abstract	256
Text	3552

## ABSTRACT

**Background** The Kilifi Health and Demographic Surveillance System (KHDSS) was established in 2000 to define the incidence and prevalence of local diseases and evaluate the impact of community-based interventions. KHDSS morbidity data have been reported comprehensively but mortality has not been described. This analysis describes mortality in the KHDSS over 16 years.

**Methods** We calculated mortality rates from 2003-2018 in four intervals of equal duration and assessed differences in mortality across these intervals by age and sex. We calculated the period survival function and median survival using the Kaplan-Meier method and mean life expectancies using abridged life tables. We estimated trend and seasonality by decomposing a time series of monthly mortality rates. We used choropleth maps and random effects Poisson regression to investigate geographical heterogeneity.

**Results** Mortality declined by 36% overall between 2003-2018 and by 59% in children aged <5 years. Most of the decline occurred between 2003 and 2006. Among adults, the greatest decline (49%) was observed in those aged 15-54 years. Life expectancy at birth increased by 12 years. Females outlived males by 6 years. Seasonality was only evident in the 1-4 year age group in the first four years. Geographical variation in mortality was +/-10% of the median value and did not change over time.

**Conclusions** Between 2003-2018 mortality among children and young adults has improved substantially. The steep decline in 2003-2006 followed by a much slower reduction thereafter suggests improvements in health and wellbeing have plateaued

in the last 12 years. However, there is substantial inequality in mortality experience by geographical location.

### **Keywords**

Child mortality, adult mortality, all-cause mortality, demography, demographic surveillance system, mortality trends, Kenya

## **BACKGROUND**

A majority of Low- and Middle-Income Countries (LMICs), especially in sub-Saharan Africa (sSA), lack comprehensive Civil Registration and Vital Statistics Systems (CRVS) necessary for monitoring mortality (1, 2). Tracking the progress in child and adult survival, therefore, relies on alternative data sources such as Demographic and Health Surveys (DHS), National Population Censuses, and Health and Demographic Surveillance Systems (HDSSs). HDSSs are designed to monitor a small sub-population of a nation in a defined geographical area and are a commonly used resource for health and demographic research in LMICs.

The Kilifi Health and Demographic Surveillance System (KHDSS) was established in 2000 by the KEMRI-Wellcome Trust Research Programme (KWTRP) to monitor mortality and morbidity caused by common diseases and to provide a sampling frame for epidemiological studies (3). The surveillance area was selected to capture at least 80% of patients admitted to the Kilifi County Hospital and over the subsequent two decades, the platform has been used to describe morbidity in children and adults. This includes incidence of malaria (4), pneumonia (5), lower respiratory tract infections (6), rotavirus (7), malnutrition (8, 9), sickle cell disease (10), epilepsy (11) as well as the burden of mental health problems (12), pregnancy-related disorders and chronic diseases that contribute substantially to overall mortality (13, 14). The KHDSS has also been used to evaluate the impact of new community-based interventions such as vaccines and bed net use (5, 15-19).

Morbidity data have been reported comprehensively in Kilifi but mortality in this population has not been systematically described. In this paper, we describe

mortality in children and adults over a 16-year period and analyse deaths by age, sex, season, geographical location, and temporal trend.

## **METHODS**

### **Data source and setting**

The KHDSS surveillance area, which is located in Kilifi County, within the former Coast Province, is divided into 15 government administrative regions called locations, comprising a total of 891 km<sup>2</sup> (Figure S1). An initial census and mapping of the surveillance area was conducted in 2000 and was found to contain 189,148 residents in 20,978 households. Subsequently, the population has been continuously monitored for births, pregnancies, deaths, and migration events in re-enumeration rounds occurring approximately every 4 months, and the mapping was updated in 2017. At the end of 2018, there were 299,471 residents living in 41,536 households. From 2008, deaths registered in the KHDSS have also been investigated for the cause of death by Verbal Autopsy (VA) which has been reported separately (20). Kilifi County Hospital (KCH) is located at the geographical centre of the KHDSS area and, during the study period, it was the only government facility offering inpatient care for the KHDSS population. A small number of private hospitals and lower-level facilities have a few in-patient beds.

The concept of the KHDSS is based on the INDEPTH (International Network for the Demographic Evaluation of Populations and Their Health) data model (21, 22). Demographic and health data are collected at 4 points of contact: at re-enumeration when community interviewers make household visits to update the population register; at the inpatient wards of KCH where medical staff record patient history, clinical examination and outcome (death or discharge); at the maternity ward of KCH

where staff record births and perinatal deaths; and in 34 vaccination clinics distributed across the surveillance area which collected data on childhood vaccination between 2008-2018. The eligibility for inclusion, the variables routinely measured, the structure of the KHDSS databases and the population structure have all been described previously (3)

Initially, data collection during household visits was paper-based but switched to electronic data collection using tablets in 2016. The tablets are loaded daily with the most recent copy of the residents' database and, after data collection, they are returned to the research unit where a two-way synchronization with the master database is performed. All other data collection points are linked in real-time to the master database that has been specified using MySQL.

At re-enumeration rounds, information on all household members is sought from a single informant, usually a member of the household. If all household members are unavailable during the visit, information is obtained from neighbouring households. All field staff are debriefed on the quality of data collected after each enumeration cycle and re-trained where needed. The data collection applications are programmed with skip patterns and consistency checks to ensure mandatory information is collected. Additionally, within the database, there are built-in checks for missing or duplicated data.

To explore the accuracy of age data at the first census and among all new in-migrants, we calculated Whipple's Index (23). Whipple's index measures the tendency for individuals to inaccurately report their age in rounded numbers, usually ending in 0 and 5, resulting in age heaping.

## **Statistical analysis**

The analysis period, from 1 Jan 2003 to 31 Dec 2018, was stratified into 4 non-overlapping periods each lasting 4 years. We excluded 2000-2002 because of changes in the re-enumeration protocols designed to increase the ascertainment of deaths in neonates during these years. We used survival analysis and routine demographic life table methods to calculate mortality rates and life expectancy and examined seasonality, short and long-term trends over the 16 years.

### *Age-sex mortality profile*

The mortality rate is calculated as the number of deaths divided by person years of observation (PYO). Entry to risk begins at the latest of birth, in-migration or study start date. Exit from risk is at the earliest of study end-date, out-migration or death. If an out-migration is followed by an in-migration, the period between the out-migration and in-migration is excluded from the risk period to avoid survivor bias. The total PYO was computed for different age groups, sex, and locations.

For children aged less than five years, we have also calculated conventional mortality ratios where the number of deaths within a specific age group in a given time period are divided by the number of live births occurring during the same time period. Mortality ratios are commonly used in settings where risk time cannot be quantified. They can be confounded by varying birth rates as the deaths in the numerator are not always drawn from the denominator population.

### *Survival and life-expectancy*

We used two methods to estimate life expectancy; the period life table method which calculates the *mean* life expectancy at birth and the Kaplan-Meier (KM) survival

method which calculates the *median* age at death. The main difference between the methods is in the age intervals used; the life table method computes survival probabilities within pre-define age intervals e.g. 5-year intervals whereas the KM method computes survival probabilities whenever there is a death in the cohort making the KM intervals smaller and of variable length (24).

For purposes of comparison with other analyses, we also generated abridged life tables using data structured according to analytic methods developed by the Multi-centre Analysis of the Dynamics of Internal Migration and Health (MADIMAH) which was a working group within INDEPTH. In the MADIMAH method (25, 26), the definition of risk time considers the time between out-migration and a subsequent in-migration. If the difference is less than 180 days, this time is included in the risk period which increases the person-years of observation resulting in lower estimates of mortality rates.

### *Seasonality and trend*

We first assessed seasonality and long-term temporal trends for each age group by graphically reviewing a time series of monthly mortality rates. We then estimated trend and seasonality based on an STL (**S**easonal and **T**rend using **L**OESS) decomposition and identified months with the highest and lowest mortality rates from the seasonal component (27).

### *Geographical heterogeneity in survival and mortality over time*

We produced choropleth maps for overall and age-specific mortality rates in the four 4-year periods to investigate the geographical variation of mortality in the administrative locations over time. For overall mortality, we accounted for temporal



differences in the population age-sex structure by direct standardization against the 2011 KHDSS age-sex structure. All the maps were created at the administrative location level.

We used the quantile method to create 5 mortality rate classes for map reading. This method places equal numbers of data units (death rates) in each class resulting in classes centred on the median death rate. For each age group, the quintiles are derived from the entire mortality rate range between 2003-2018 and the resulting classification is applied across each of the 4-year-period maps for that age group. The quantile method, though simple, has been shown to be the optimal classification method for displaying geographically varying data in series in a map reading experiment [24].

To assess geographical variation in mortality, for each period, we fitted a multi-level Poisson regression model adjusting for sex and age in which location was included as a random effect and used the variance of the random effect to quantify heterogeneity. We tested for between-location variation within each period using the likelihood ratio test and also tested for temporal variation in mortality rates between the 2003-06 period and each of the subsequent periods using a z-test. We also calculated the median age at death for each of the 15 administrative locations in the 4-year periods and assessed variation in life expectancy by location and time.

All analyses were conducted using STATA/IC version 15.1 (StataCorp College Station, Texas, USA) and R version 4.1.0 (28).

## RESULTS

### Age-sex profile

The cohort consisted of 699,841 individuals of whom 125,587 (18%) were followed from birth. In total, we observed 22,207 deaths in 3,897,529 person-years. More than 95% of the information on residence and vital status was collected from respondents living in the same household. Females contributed 53% of the total PYO and 48% of deaths (Table 1). There was no indication of age heaping or misspecification of sex (Table S1).

Mortality was highest in the first time period (2003-2006) compared to the other time periods for all ages except adults aged >54 years (Figure S2a). The mortality rate in children aged <5 years declined by 44% between the periods 2003-2006 and 2007-2010, from 13.1 to 7.4 deaths per 1000 PYO, and continued to decline more slowly reaching 5.4 in 2015-2018; we observed a similar pattern in all the finer age-strata of children aged <5 years (Table 2). Mortality ratios, per 1000 live births, for children aged <5 years, are presented in Table S2. Over the whole 16-year period mortality rates were lowest in children aged 5-14 years (Figure S2b). In this age group, mortality declined from 1.4/1000 PYO in 2003-2006 to 0.8/1000 PYO in 2007-2010 (Table 2) and varied little thereafter. In adults, the steepest period-to-period decline (35%) was seen in the age group 15-54 years between the periods 2003-06 and 2007-10. Mortality changed very little over time for those aged  $\geq 75$  years. Overall, mortality was higher in males than females at all ages with differences being greater in adulthood than in childhood.

## **Survival**

Median survival increased from 65 in 2003 to 77 in 2018. Females had higher survival throughout the study period and died, on average, 6 years later than males (Figure 1). The survival functions for males and females are similar until approximately 40 years of age after which females experience better survival (Figure 2 A-D). The improvement in survival over time was also greater in females than males (Figure 2 E-F).

Mean life expectancy, estimated using the abridged life table method, is 4-8 years lower than Kaplan-Meier median survival estimates (Table S3). Tables S4a to S4h show the sex-specific abridged life tables for each of the 4-year periods. The life expectancy estimates calculated using the MADIMAH technique differ little from those estimated using the standard technique (Tables S5a to S5h).

## **Seasonality and trend**

Figure 3a shows the age-specific mortality rates by calendar month for each of the analysis periods. A seasonal pattern appears only in children aged 1-4 years in the first period. Table S6 shows the estimated high and low mortality months. The months with the highest mortality for neonates, children aged 29-365 days and those aged 1-4 years were February, June, and July respectively. For adults aged 15-74 and  $\geq 75$  years, high mortality months were June and August, respectively.

Figure 3b shows the trend in monthly mortality in three broad age groups. For children under five years, there was a steep decline in mortality from 2003 to 2008 followed by a gentle decline in the subsequent years. Within the same period, there was a similar pattern of decline in mortality rates in the older age groups. Figures

S3a to S3g show the 16-year mortality trends in finer age strata for both children and adults.

### **Geographical heterogeneity in survival and mortality**

The largest span in median survival between locations was 7 years (highest in Gede, lowest in Junju and Tezo) in the period 2003-06 (Table S7). The span between highest and lowest location was reduced by 1 year in each of the subsequent 4-year study periods. Gains in life expectancy varied by location with one location (Sokoke) gaining 10 years after the first period and another location (Matsangoni) remaining unchanged. Changes in life expectancy between the periods 2003-06 and 2007-10 were greater in magnitude in comparison to any other two periods.

Figure 4 shows the geographical distribution of the age-standardized mortality rates for each population in the 15 locations over time. Overall mortality declined in all the locations but for those aged  $\geq 55$  years the decline was slow in some locations. (Figure S4a & S4b). Table 3 summarises the geographical variation in mortality. After accounting for age and sex, variation was greatest in the period 2003-06 with 95% of the location-specific rates lying within 16% of the median rate in this period. In the periods 2007-10 and 2011-14, we observed a decrease in variation with 95% of the location-specific rates lying within 9% of the median rate in both periods followed by an increase in 2015-18 at 14%. Between-location variation was significant in the 2003-06 and 2015-18 periods. There were no significant differences in geographical variation in mortality between 2003-06 and any of the subsequent periods. The output from the random effects Poisson regression model is summarized in Table S8.

## DISCUSSION

In the Kilifi Health and Demographic Surveillance System, overall mortality rates declined steeply in the first four years of the study period in all age-sex groups, except in older adults, and then declined much more slowly in the subsequent 12 years. Neonatal and under-five mortality rates declined by 48% and 59%, respectively, between the first period and the last. The mortality reduction observed between the first and subsequent 4-year time periods was greatest among those aged 1-4 years. Median survival was greater in women, by 6 years compared to men, and increased in both sexes by approximately 12 years during the study period. Seasonal effects on mortality were only evident in children aged 1-4 years and only in the first four-year period. Finally, location-specific mortality varied from the median value by +/- 10%, which represents an important inequality. There was no evidence that this variation has improved over time.

In LMICs, adult mortality has been characterized by higher rates in females between 15-34 years because of deaths related to childbirth and possibly an earlier age of infection by HIV (29, 30). We observed this phenomenon in the first four years of the study period, but it was later reversed with men being at a greater risk of dying (Figure S5). This pattern is consistent with mortality sex ratios before and after the rapid initiation of HIV care and antiretroviral therapy in LMICs between 2003-2018 with evidence showing that women have benefitted more from the expansion of HIV treatment programs than men (31, 32). In Kilifi, the prevalence of HIV infection among women attending ante-natal at KCH ranged between 3.8%-4.4% between 2005-2009 and 2.0%-3.7% between 2010-2016 with a clear decline from 2010 (5). The phenomenon of women living longer than men is a common observation across populations (33-38) and may be related, in part, to the cardioprotective effect of

oestrogen. Following menopause, oestrogen levels decline, and women become susceptible to cardiovascular disease (39). In Kilifi between 2007-12, the incidence of admission to hospital with circulatory system diseases among adults >35 years old was higher in men than women (13) and the mortality fraction due to cardiovascular disease among those aged  $\geq 65$  years was marginally higher in men compared to women (20)

Sub-national variation in child mortality, which is driven in part by inequitable distribution of health services and interventions, is a common observation across SSA (40-44). In Kilifi, the magnitude of the overall variation can be understood as meaning that one location (5% of all locations) experienced a mortality rate that lies beyond  $\pm 10\%$  of the average mortality rate. The magnitude of variation did not change significantly over time, which suggests sustained inequitable distribution in public health services and access to health care if we consider geographical variation in mortality as the measure of equity.

The decline in child mortality in Kilifi is consistent with independent observations over an extended period (Table S9). DHS data from Coast Province, which included Kilifi County, showed a reduction in child deaths (<5 years), per 1000 live births, from 116 to 57 between 1993-2013. Where the two studies overlap in time (2004-2013), the DHS mortality ratios are higher than the KHDSS estimates; for example, the infant mortality ratios (IMR) are 31 in KHDSS and 44 in the Coastal DHS whilst the under-5 mortality ratios (U5MR) are 46 and 57, respectively. The IMR estimated from the national census in 2009 was 42 per 1000 live births in Kilifi County for the 12 months preceding the census; the equivalent figure from KHDSS in 2008 was 25. For the U5MR the national census and KHDSS estimates were 57 and 38, respectively, per

1000 live births. Both the DHS and census rely on cross-sectional surveys and recall methods for death ascertainment whereas the KHDSS measures mortality directly from a cohort. Paradoxically, the methods that are dependent on potentially unreliable recall provide higher estimates of the number of deaths. The differences between the two methods are more likely to be driven by different definitions of their target populations. DHS and census methods capture all residents observed at one point in time within the geographical locale; some of these may not meet the residence requirement of the HDSS cohort. These requirements include that they are, or intend to be, resident in this household for at least 3 months. Furthermore, the DHS covers the whole of Coast Province, which has 4 counties in addition to Kilifi and, even within Kilifi, the KHDSS is a sub-population (approximately 40%) of the county. The overall numbers of child mortality from the HDSS, DHS and Census datasets may be different but the trends are consistent with each other and are also consistent with an analysis of multiple disparate datasets that shows a decline in child mortality beginning as far back as 1965 (40).

This descriptive analysis lays out the baseline trends in mortality in Kilifi over time. Several additional data sources may help to explore the underlying causes of these trends and geographic patterns. Within KHDSS there are data on the changing morbidity experience of residents from hospital records over the same period; for example, the incidence of admission to hospital with malaria declined sharply between 2003-2006 (45). Similar declines in LMICs have largely been attributed to reductions in malaria transmission following a high coverage of control measures (46). The declining trend in malaria admissions in Kilifi is similar to the all-cause child mortality trend we have observed. Previous studies have reported a substantial indirect contribution of malaria to all-cause child mortality (47-49). A study in this

population found that malaria infection strongly predisposes individuals to bacteremia, a major cause of childhood death, and could account for at least 50% of all bacteremia cases in children (50). The geographical heterogeneity in mortality (Figure 4) appears similar to the geographical heterogeneity in malaria (51), as has been observed with national heterogeneity in malaria and mortality (52). In Kilifi, we observed a significant reduction in childhood morbidity after the introduction of *Haemophilus influenzae* type b conjugate vaccine in 2001 (53), 10-valent pneumococcal conjugate vaccine in 2011 (5, 15) and rotavirus vaccine in 2014 (16) but their effects on mortality have not yet been established. Finally, verbal autopsy data are also available to explore changes in causes of death over time (20). The integration of these sources of data is beyond the scope of the present analysis.

Between 2003 and 2018, Kenya has experienced average GDP growth of 5.24% per annum and a population growth of 2.63% per annum (54). The area of KHDSS is typical of much of sub-Saharan Africa, being largely rural with a central town of approximately 43,000 residents (14% of the KHDSS). The detailed surveillance reported here over 16 years in KHDSS illustrates a clear improvement in mortality rates at all ages below 75 years but the pace of improvement has declined markedly over time and the geographical distribution of mortality rates is not homogeneous. These findings highlight opportunities for intervention and improvement across a wide range of health, social and economic domains.

### **Data Availability**

Data that support the findings of this study are available from the KEMRI Institutional Data Access/Ethics Committee, for researchers who meet the criteria for access to confidential data. Details of the criteria can be found in the KEMRI-Wellcome [data](#)



[sharing guidelines](#). Access to data is provided via the KEMRI-Wellcome Data Governance Committee: [Data\\_Governance\\_Committee@kemriwellcome.org](mailto:Data_Governance_Committee@kemriwellcome.org).

## **Abbreviations**

**LMICs:** Low- and Middle-Income Countries

**sSA:** sub-Saharan Africa

**CRVS:** Civil Registration and Vital Statistics Systems

**DHS:** Demographic and Health Surveys

**HDSSs:** Health and Demographic Surveillance Systems

**KWTRP:** KEMRI-Wellcome Trust Research Programme

**KHDSS:** Kilifi Health and Demographic Surveillance System

**KCH:** Kilifi County Hospital

**INDEPTH:** International Network for the Demographic Evaluation of Populations and Their Health

**MySQL:** Structured query language

**PYO:** Person years of observation

**KM:** Kaplan-Meier

**MADIMAH:** Multi-centre Analysis of the Dynamics of Internal Migration and Health

**STL:** Seasonal and Trend using LOESS

**HIV:** Human immunodeficiency virus

**IMR:** Infant mortality rate

**U5MR:** Under-five mortality rate

**GDP:** Gross domestic product

## **Funding**

This research was funded in whole by the Wellcome Trust OXF-COR03-2430. JAGS is funded by a fellowship from the Wellcome Trust [214320]

## **Contributions**

Conceptualization: JAGS, KM, TNW and EB. Data collection and preparation: MO, EB, AN, DA, CN, ET, DW, MW, NK, MK, GN. Analysis: MO, CB, JAGS

Interpretation: MO, JAGS, CB, AN, AD, JM, AG, BT, PB, KM, JM, EB, TNW. Drafting the manuscript: MO, JAGS, CB, PB. Resources and funding acquisition: PB, JAGS, TNW, KM, BT, AN. All authors critically reviewed the article and approved the final version for submission.

### **Competing interests**

All authors declare no competing interests

### **Acknowledgements**

We gratefully thank the residents of Kilifi who have participated in the surveillance activities of the KHDSS. We acknowledge the tremendous work of the census field staff and data supervisors who collect and process this information and the Community Liaison Group who run the community engagement programmes. We would particularly like to acknowledge the important contributions of Victoria Nyaga, John Ojal and Hellen Gatakaa (former HDSS statisticians). This article is published with the permission of the Director of the Kenya Medical Research Institute.

**Table 1:** Distribution of births, deaths, and person-years by sub-period

	2003-06		2007-10		2011-14		2015-18		Total	
	N	%	N	%	N	%	N	%	N	%
<b>Live births</b>	30572		31912		32994		30109		125587	
<b>PYOs</b>										
Males	397150	47.0	441785	46.8	485654	47.1	508679	47.2	1833268	47.0
Females	448295	53.0	501306	53.2	546412	52.9	568248	52.8	2064261	53.0
0-4 y	15814 7	18.7	17110 8	18.1	17740 1	17.1	16868 3	15.7	675339 3	17.3
5-14 y	26337 0	31.2	29631 1	31.1	32339 8	31.3	33539 2	31.4	121847 1	31.1
15-54 y	36567 3	43.3	40711 5	43.3	45232 5	43.4	47975 0	44.5	170486 3	43.3
55-74 y	49807	5.9	57529	6.1	66533	6.4	77251	7.2	251120	6.4
≥75 y	8449	1.0	11029	1.2	12408	1.2	15851	1.5	47737	1.2
<b>Deaths</b>										
Males	3232	50.2	2675	51.0	2783	52.7	2763	52.7	11453	51.6
Females	3204	49.8	2574	49.0	2500	47.3	2476	47.3	10754	48.4
<b>U5 deaths</b>										
0-28 d	765	36.8	488	38.7	437	38.6	393	43.1	2083	38.7
29-365 d	548	26.4	366	29.0	323	28.5	245	26.9	1482	27.5
1-4 y	763	36.8	407	32.3	372	32.9	273	30.0	1815	33.7
<b>5-14 years deaths</b>										
5-14 y	370		248		281		275		1174	
<b>≥15 years deaths</b>										
15-54 y	2089	52.4	1517	40.6	1462	37.8	1403	34.6	6471	41.3
55-74 y	1254	31.4	1342	35.9	1496	38.7	1450	35.8	5542	35.4
≥75 y	647	16.2	881	23.6	912	23.6	1200	29.6	3640	23.3

**Table 2: Mortality rates per 1000 PYO by age stratum and time period**

<b>Age</b>	<b>2003-06</b>	<b>2007-10</b>	<b>2011-14</b>	<b>2015-18</b>
<b>0-28 days</b>				
Total	330.6	200.8	174.7	172.6
Female	283.0	172.7	173.3	141.6
Male	377.2	228.5	176.1	202.8
<b>29-365 days</b>				
Total	18.7	11.9	10.1	8.2
Female	19.1	11.5	9.0	8.3
Male	18.4	12.2	11.2	8.0
<b>&lt;1 year</b>				
Total	41.6	25.7	22.1	19.8
Female	38.4	23.3	20.9	17.8
Male	44.8	28.0	23.3	21.8
<b>1-4 years</b>				
Total	6.0	3.0	2.6	2.0
Female	5.9	2.7	2.5	1.7
Male	6.2	3.2	2.7	2.3
<b>0-4 years</b>				
Total	13.1	7.4	6.4	5.4
Female	12.4	6.7	6.0	4.7
Male	13.9	8.1	6.7	6.0
<b>5-14 years</b>				
Total	1.4	0.8	0.9	0.8
Female	1.2	0.7	0.8	0.7
Male	1.6	0.9	1.0	1.0
<b>15-54 years</b>				
Total	5.7	3.7	3.2	2.9
Female	5.6	3.6	3.0	2.7
Male	5.8	3.9	3.6	3.2
<b>55-74 years</b>				
Total	25.2	23.3	22.5	18.8
Female	21.1	19.3	17.5	13.6
Male	30.8	28.9	29.8	26.8
<b>≥75 years</b>				
Total	76.6	79.9	73.5	75.7
Female	69.5	70.4	58.0	63.0
Male	84.3	91.4	94.5	96.2

**Table 3** Variation of location-specific  $\log_e$  mortality rates (per 1000 PYO) adjusted by age and sex.

Period	SD of log rates <sup>a</sup>	95% normal approximation <sup>b</sup>	P-value (LR test of between-location variation) <sup>c</sup>	Differences between SDs <sup>d</sup>	P-value (z-test for equality of SD) <sup>e</sup>
2003-06	0.0778	1.16	<0.001		
2007-10	0.0444	1.09	0.072	0.033	0.267
2011-14	0.0433	1.09	0.067	0.034	0.246
2015-18	0.0670	1.14	0.002	0.011	0.715
2003-18	0.0498	1.10	<0.001		

Brief description of the analysis: SD of log rates are derived from a random effect Poisson regression model with administrative location included as the random effect. Geographical variation is quantified via SD of log rates, which is the square root of the variance of the random effect.

<sup>a</sup> Standard deviation - geographical (based on 15 administrative locations) variation in mortality rates. Calculated as the square root of the variance of the random effect.

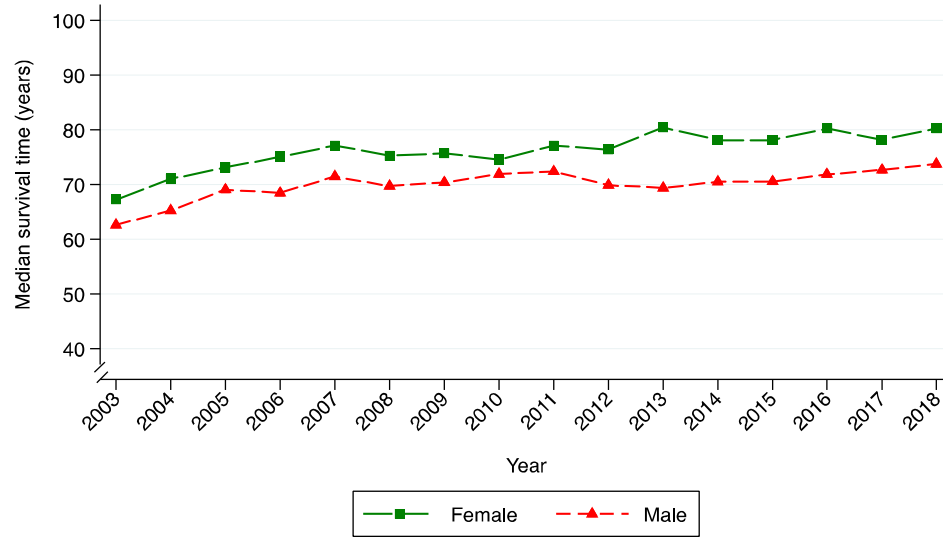
<sup>b</sup> Approximation of the interval, about the overall median rate, that contains 95% of location-specific rates. Based on the normal distribution assumption that 95% of observations fall within 1.96 standard deviations of the median. Calculated as  $\exp(\text{SD of log rates} * 1.96)$ . An example of the interpretation; in the period 2003-06, 95% of location-specific rates were within 16% of the median rate

<sup>c</sup> Likelihood ratio test comparing the fitted random effects model with that of a conventional Poisson model that does not include the random effect. Null hypothesis: no between-location variation in mortality rates

<sup>d</sup> Difference in SD between 2003-06 and subsequent periods

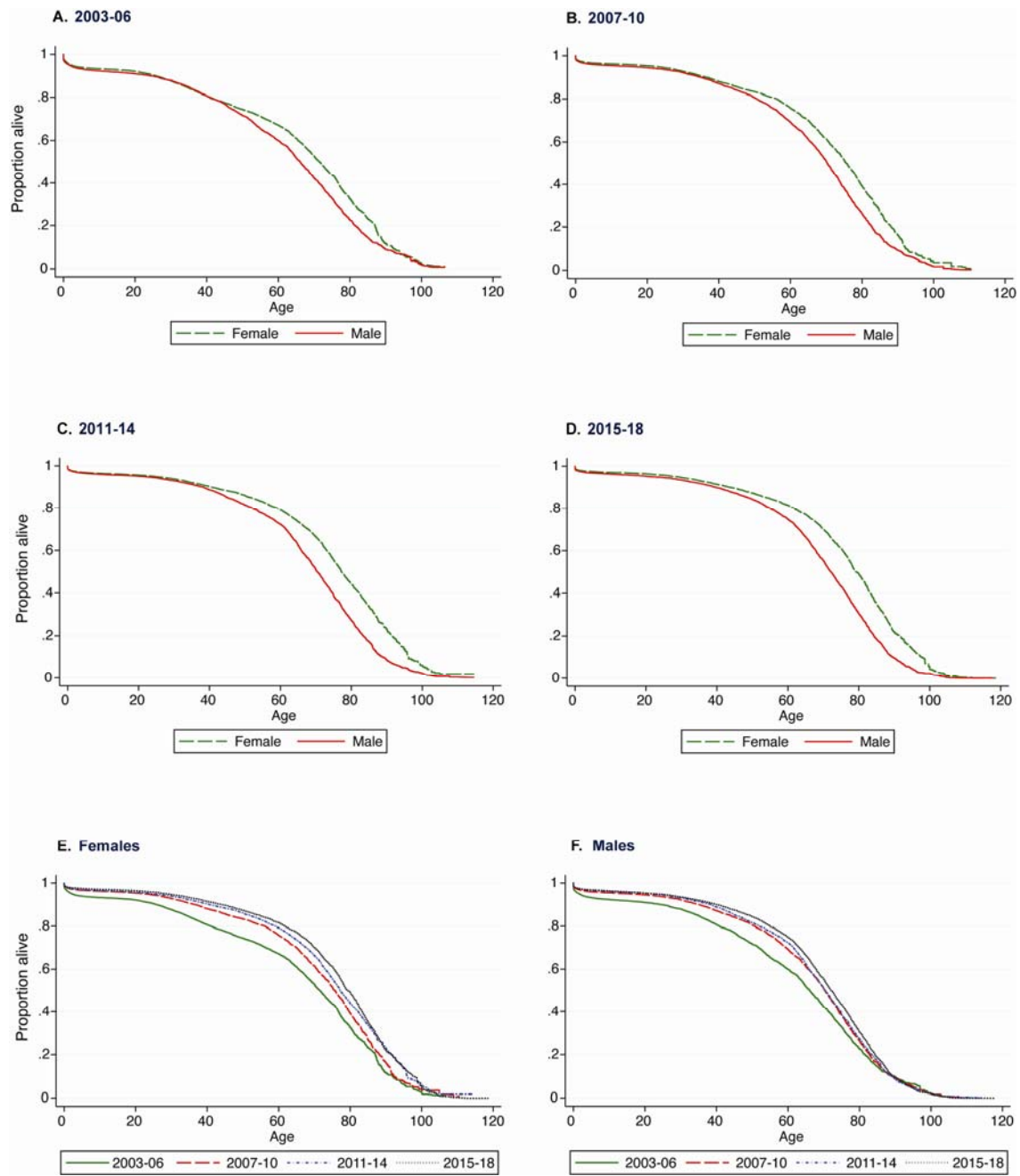
<sup>e</sup> P-value from test of equality of SDs between 2003-06 and subsequent periods

Figure 1. Median age at death based on the Kaplan-Meier method



It is made available under a [CC-BY-NC 4.0 International license](https://creativecommons.org/licenses/by-nc/4.0/) .

Figure 2. Kaplan-Meier Survival Curves for the KHDSS population by time period and sex



It is made available under a [CC-BY-NC 4.0 International license](https://creativecommons.org/licenses/by-nc/4.0/).

**Figure 3a. Seasonal mortality rates (by calendar month) by age group and time period**

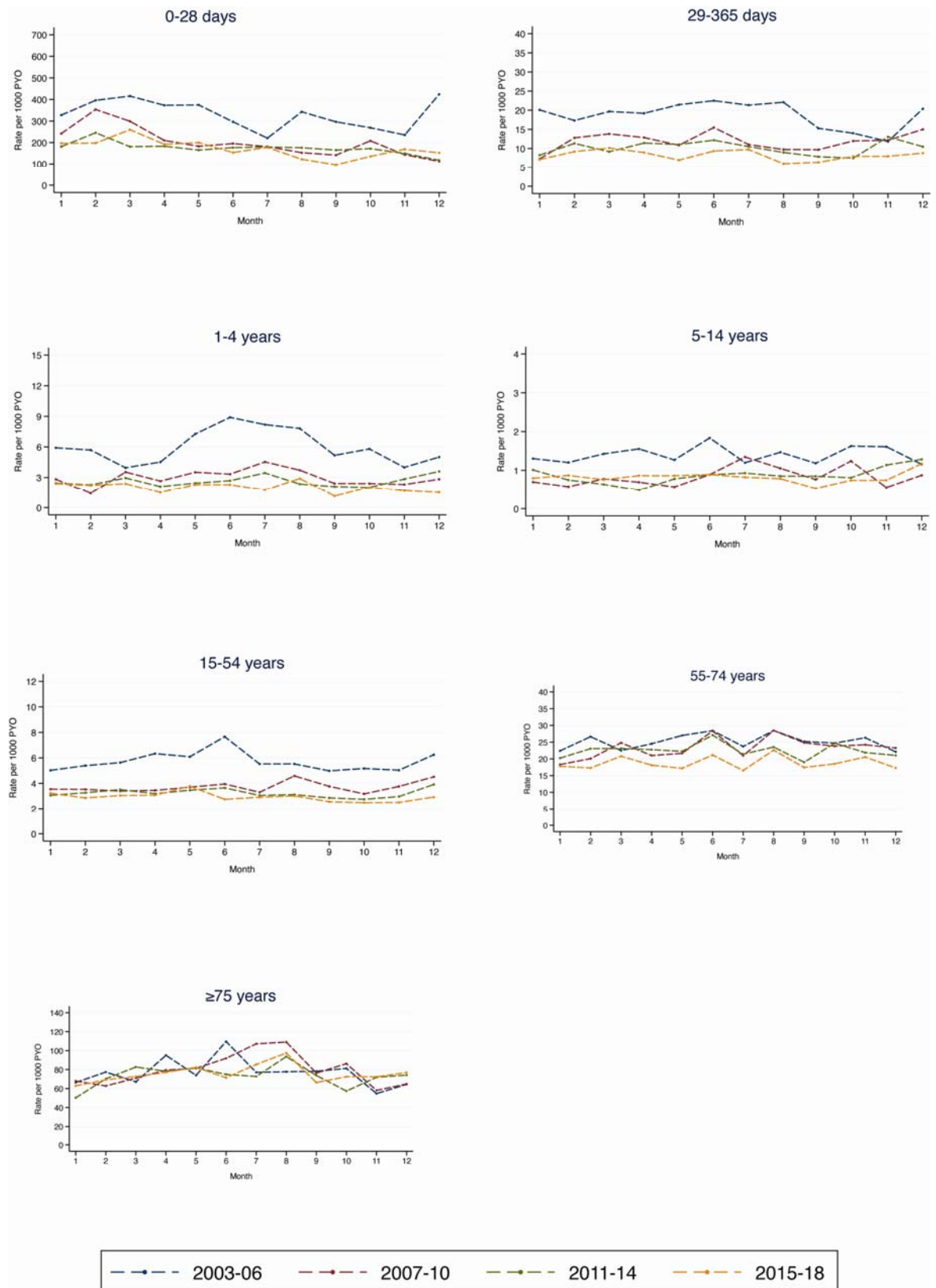




Figure 3b. Monthly mortality rates by age over the entire 16-year period

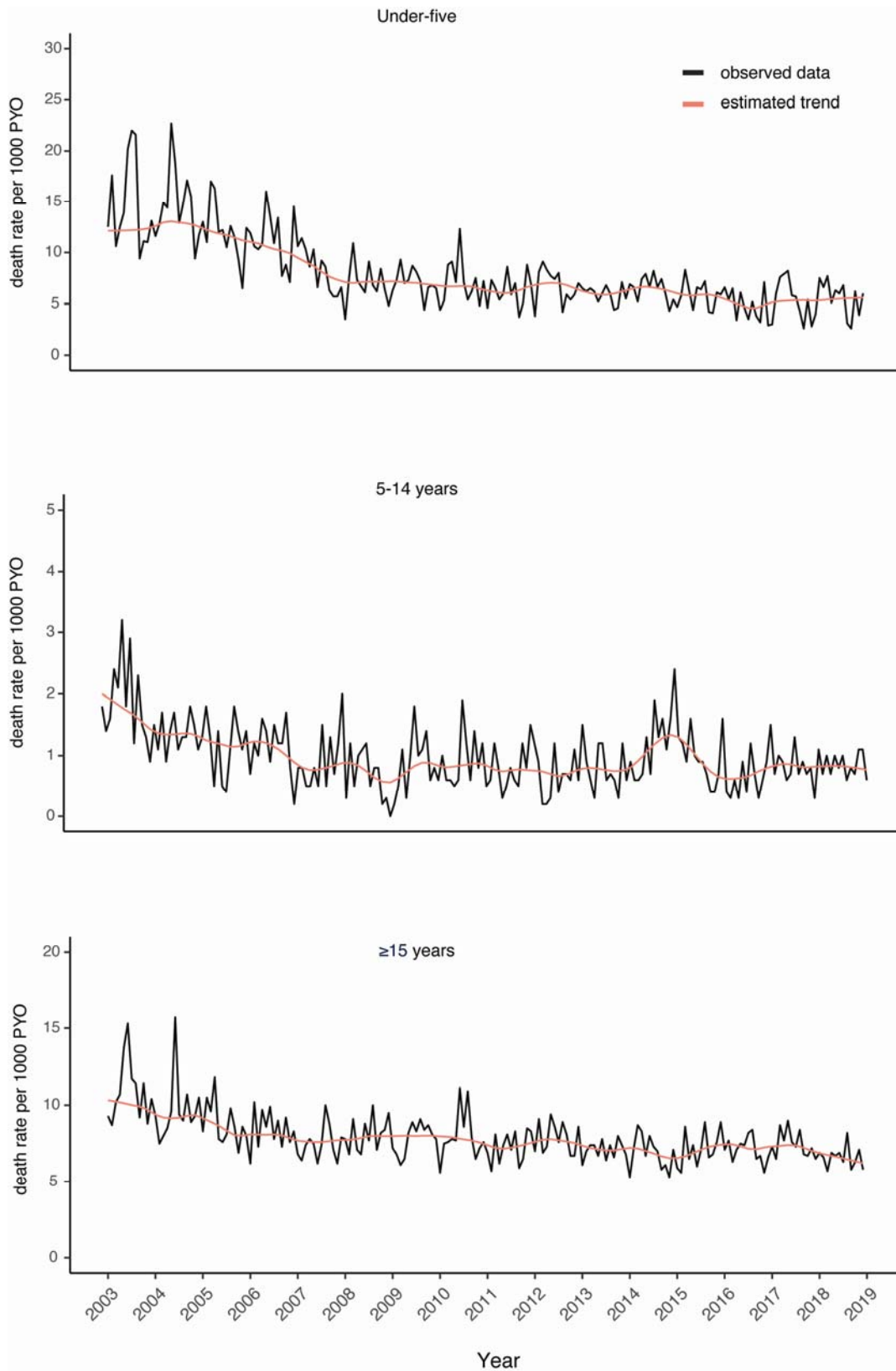
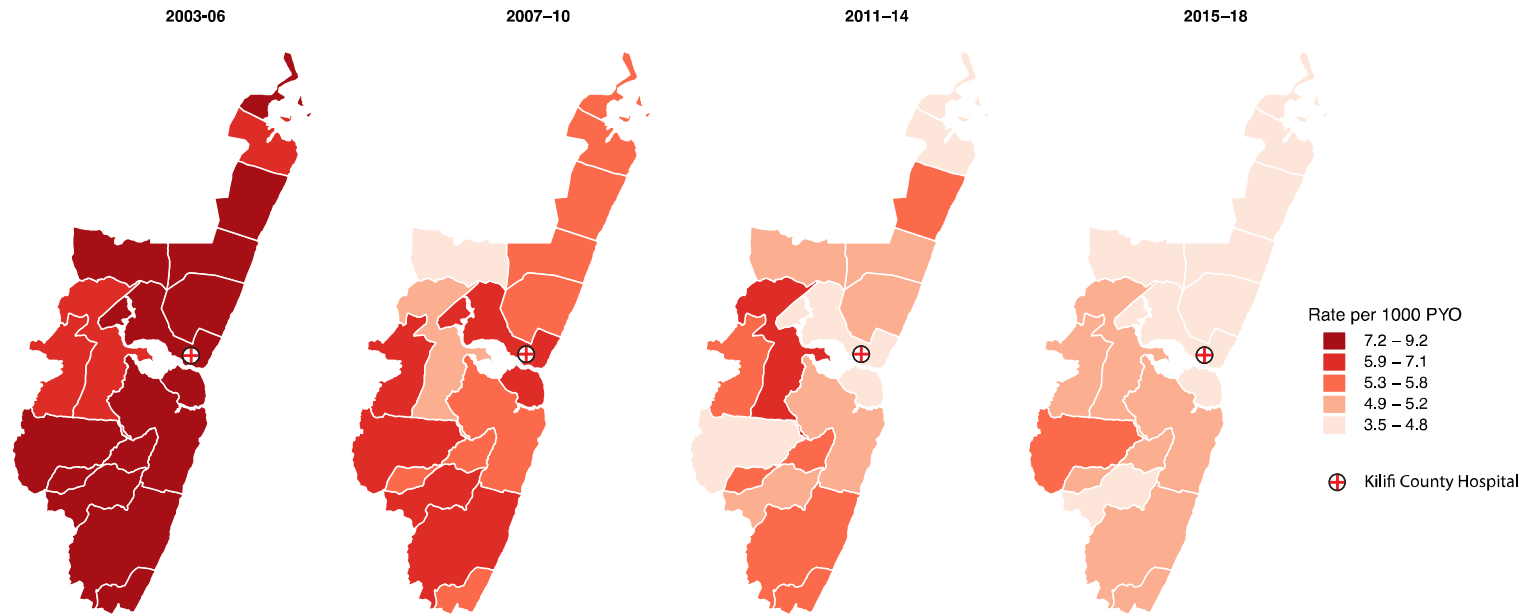


Figure 4. Age-standardised mortality rates by location and time period.  
Mortality rates were standardised to the KHDSS population structure in 2011



## **References**

1. Africa ECf. Report on the Status of civil registration and vital statistics in Africa. ECA, Addis Ababa. 2017.
2. Sankoh O, Dickson KE, Faniran S, Lahai JI, Forna F, Liyosi E, et al. Births and deaths must be registered in Africa. *Lancet Glob Health*. 2020;8(1):e33-e4.
3. Scott JA, Bauni E, Moisi JC, Ojal J, Gatakaa H, Nyundo C, et al. Profile: The Kilifi Health and Demographic Surveillance System (KHDSS). *International journal of epidemiology*. 2012;41(3):650-7.
4. Njuguna P, Maitland K, Nyaguara A, Mwangi D, Mogeni P, Mturi N, et al. Observational study: 27 years of severe malaria surveillance in Kilifi, Kenya. *BMC Medicine: BMC Medicine*; 2019. p. 1-9.
5. Hammitt LL, Etyang AO, Morpeth SC, Ojal J, Mutuku A, Mturi N, et al. Effect of ten-valent pneumococcal conjugate vaccine on invasive pneumococcal disease and nasopharyngeal carriage in Kenya: a longitudinal surveillance study. *Lancet*. 2019.
6. Nokes DJ, Okiro EA, Ngama M, White LJ, Ochola R, Scott PD, et al. Respiratory syncytial virus epidemiology in a birth cohort from Kilifi District, Kenya: Infection during the first year of life. *Journal of Infectious Diseases*2004. p. 1828-32.
7. Nokes DJ, Abwao J, Pamba A, Peenze I, Dewar J, Maghenda JK, et al. Incidence and clinical characteristics of group A rotavirus infections among children admitted to hospital in Kilifi, Kenya. *PLoS medicine*2008. p. 1154-62.
8. Berkley J, Mwangi I, Griffiths K, Ahmed I, Mithwani S, English M, et al. Assessment of Severe Malnutrition Among Hospitalized Children in Rural Kenya. *Jama*2005. p. 591.
9. Wambui KM, Musenge E. A space-time analysis of recurrent malnutrition-related hospitalisations in Kilifi, Kenya for children under-5 years. *BMC Nutr*. 2019;5:32.
10. Uyoga S, Macharia AW, Mochamah G, Ndila CM, Nyutu G, Makale J, et al. The epidemiology of sickle cell disease in children recruited in infancy in Kilifi, Kenya: a prospective cohort study. *The Lancet Global Health: The Author(s)*. Published by Elsevier Ltd. This is an Open Access article under the CC BY 4.0 license; 2019. p. e1458-e66.
11. Kind CJ, Newton CRJC, Kariuki SM, Abubakar A, Ibinda F, Gona J, et al. Prevalence, risk factors, and neurobehavioral comorbidities of epilepsy in Kenyan children. *Epilepsia Open*2017. p. 388-99.
12. Kariuki SM, Abubakar A, Kombe M, Kazungu M, Odhiambo R, Stein A, et al. Burden, risk factors, and comorbidities of behavioural and emotional problems in Kenyan children: a population-based study. *Lancet Psychiatry*. 2017;4(2):136-45.
13. Etyang AO, Munge K, Bunyasi EW, Matata L, Ndila C, Kapesa S, et al. Burden of disease in adults admitted to hospital in a rural region of coastal Kenya: an analysis of data from linked clinical and demographic surveillance systems. *Lancet Glob Health*. 2014;2(4):e216-24.
14. Etyang AO, Scott JAG. Medical causes of admissions to hospital among adults in Africa: A systematic review and 2003. *Global Health Action*2013. p. 1-14.
15. Silaba M, Ooko M, Bottomley C, Sande J, Benamore R, Park K, et al. Effect of 10-valent pneumococcal conjugate vaccine on the incidence of radiologically-confirmed pneumonia and clinically-defined pneumonia in Kenyan children: an interrupted time-series analysis. *Lancet Glob Health*. 2019;7(3):e337-e46.
16. Otieno GP, Bottomley C, Khagayi S, Adetifa I, Ngama M, Omoro R, et al. Impact of the Introduction of Rotavirus Vaccine on Hospital Admissions for Diarrhea Among Children in Kenya: A Controlled Interrupted Time-Series Analysis. *Clinical infectious diseases : an official publication of the Infectious Diseases Society of America*2020. p. 2306-13.

17. Kamau A, Mwangangi JM, Rono MK, Mogeni P, Omedo I, Midega J, et al. Variation in the effectiveness of insecticide treated nets against malaria and outdoor biting by vectors in Kilifi, Kenya. *Wellcome Open Res.* 2017;2:22.
18. Hammitt LL, Crane RJ, Karani A, Mutuku A, Morpeth SC, Burbidge P, et al. Effect of *Haemophilus influenzae* type b vaccination without a booster dose on invasive *H influenzae* type b disease, nasopharyngeal carriage, and population immunity in Kilifi, Kenya: a 15-year regional surveillance study. *Lancet Glob Health.* 2016;4(3):e185-94.
19. Kamau A, Nyaga V, Bauni E, Tsofa B, Noor AM, Bejon P, et al. Trends in bednet ownership and usage, and the effect of bednets on malaria hospitalization in the Kilifi Health and Demographic Surveillance System (KHDSS): 2008-2015. *BMC Infect Dis.* 2017;17(1):720.
20. Ndila C, Bauni E, Mochamah G, Nyirongo V, Makazi A, Kosgei P, et al. Causes of death among persons of all ages within the Kilifi Health and Demographic Surveillance System, Kenya, determined from verbal autopsies interpreted using the InterVA-4 model. *Glob Health Action.* 2014;7:25593.
21. Network I. INDEPTH Resource Kit for Demographic Surveillance Systems (Beta Version 0.9). 2008.
22. Network I. *Population and Health in Developing Countries.* 2001.
23. Sara Randall EC. The quality of demographic data on older Africans. *DEMOGRAPHIC RESEARCH.* 2016;34:143-74.
24. Tolley HD, Barnes JM, Freeman MD. *Survival Analysis. Forensic Epidemiology: Principles and Practice: Elsevier Inc.;* 2016. p. 261-84.
25. Bocquier P, Ginsburg C, Herbst K, Sankoh O, Collinson MA. A training manual for event history data management using Health and Demographic Surveillance System data. *BMC Res Notes.* 2017;10(1):224.
26. Bocquier P, Ginsburg C, Collinson MA. A training manual for event history analysis using longitudinal data. *BMC Research Notes: BioMed Central;* 2019. p. 1-5.
27. Hyndman R, Athanasopoulos G. Chapter 6.7 Seasonal and Trend decomposition using Loess | *Forecasting: Principles and Practice.*
28. Team RC. *R: A Language and Environment for Statistical Computing.* 2021.
29. Kharsany AB, Karim QA. HIV Infection and AIDS in Sub-Saharan Africa: Current Status, Challenges and Opportunities. *Open AIDS J.* 2016;10:34-48.
30. UNAIDS. *The Gap Report.* 2014.
31. Gargano JW, Laserson K, Muttai H, Odhiambo F, Orimba V, Adamu-Zeh M, et al. The adult population impact of HIV care and antiretroviral therapy in a resource poor setting, 2003-2008. *AIDS.* 2012;26(12):1545-54.
32. Reniers G, Slaymaker E, Nakiyingi-Miiró J, Nyamukapa C, Crampin AC, Herbst K, et al. Mortality trends in the era of antiretroviral therapy: evidence from the Network for Analysing Longitudinal Population based HIV/AIDS data on Africa (ALPHA). *AIDS.* 2014;28 Suppl 4:S533-42.
33. Margo Wilson MD. Competitiveness, risk taking, and violence: the young male syndrome. *Ethology and Sociobiology.* 1985;6(1):59-73.
34. Austad SN. Chapter 23 - Sex Differences in Longevity and Aging. In: Masoro EJ, Austad SN, editors. *Handbook of the Biology of Aging (Seventh Edition).* San Diego: Academic Press; 2011. p. 479-95.
35. Marianne J. Legato MDFACP. *Why Men Die First: How to Lengthen Your Lifespan:* St. Martin's Publishing Group; 2008.
36. Shmerling RH. *Havard Health Blog: Havard Health Publishing.* 2020. [cited 2021 27 July 2021]. Available from: <https://www.health.harvard.edu/blog/why-men-often-die-earlier-than-women-201602199137>.

37. Robson D. Why do women live longer than men? BBC: BBC; 2015 [Available from: <https://www.bbc.com/future/article/20151001-why-women-live-longer-than-men>].
38. Assari S. If men are favored in our society, why do they die younger than women? *The Conversation: The Conversation*; 2017 [Available from: <https://theconversation.com/if-men-are-favored-in-our-society-why-do-they-die-younger-than-women-71527>].
39. Colafella KMM, Denton KM. Sex-specific differences in hypertension and associated cardiovascular disease. *Nat Rev Nephrol*. 2018;14(3):185-201.
40. Macharia PM, Giorgi E, Thurairara PN, Joseph NK, Sartorius B, Snow RW, et al. Sub national variation and inequalities in under-five mortality in Kenya since 1965. *BMC public health*. 2019;19(1):146.
41. Quentin W, Abosede O, Aka J, Akweongo P, Dinard K, Ezech A, et al. Inequalities in child mortality in ten major African cities. *BMC Med*. 2014;12:95.
42. Kazembe L, Clarke A, Kandala NB. Childhood mortality in sub-Saharan Africa: cross-sectional insight into small-scale geographical inequalities from Census data. *BMJ Open*. 2012;2(5).
43. Burke M, Heft-Neal S, Bendavid E. Sources of variation in under-5 mortality across sub-Saharan Africa: a spatial analysis. *Lancet Glob Health*. 2016;4(12):e936-e45.
44. Joseph NK, Macharia PM, Ouma PO, Mumo J, Jalang'o R, Wagacha PW, et al. Spatial access inequities and childhood immunisation uptake in Kenya. *BMC public health*. 2020;20(1):1407.
45. O'Meara WP, Bejon P, Mwangi TW, Okiro EA, Peshu N, Snow RW, et al. Effect of a fall in malaria transmission on morbidity and mortality in Kilifi, Kenya. *The Lancet* 2008. p. 1555-62.
46. Kleinschmidt I, Schwabe C, Benavente L, Torrez M, Ridl FC, Segura JL, et al. Marked increase in child survival after four years of intensive malaria control. *Am J Trop Med Hyg*. 2009;80(6):882-8.
47. Snow RW, Korenromp EL, Gouws E. Pediatric mortality in Africa: plasmodium falciparum malaria as a cause or risk? *Am J Trop Med Hyg*. 2004;71(2 Suppl):16-24.
48. Rowe AK, Rowe SY, Snow RW, Korenromp EL, Schellenberg JR, Stein C, et al. The burden of malaria mortality among African children in the year 2000. *International journal of epidemiology*. 2006;35(3):691-704.
49. Ross A, Maire N, Molineaux L, Smith T. An epidemiologic model of severe morbidity and mortality caused by Plasmodium falciparum. *Am J Trop Med Hyg*. 2006;75(2 Suppl):63-73.
50. Scott JA, Berkley JA, Mwangi I, Ochola L, Uyoga S, Macharia A, et al. Relation between falciparum malaria and bacteraemia in Kenyan children: a population-based, case-control study and a longitudinal study. *Lancet*. 2011;378(9799):1316-23.
51. Mogeni P, Williams TN, Fegan G, Nyundo C, Bauni E, Mwai K, et al. Age, Spatial, and Temporal Variations in Hospital Admissions with Malaria in Kilifi County, Kenya: A 25-Year Longitudinal Observational Study. *PLoS medicine*. 2016;13(6):e1002047.
52. Macharia PM, Giorgi E, Noor AM, Waqo E, Kiptui R, Okiro EA, et al. Spatio-temporal analysis of Plasmodium falciparum prevalence to understand the past and chart the future of malaria control in Kenya. *Malar J*. 2018;17(1):340.
53. Cowgill KD, Ndiritu M, Nyiro J, Slack MP, Chiphatsi S, Ismail A, et al. Effectiveness of Haemophilus influenzae type b Conjugate vaccine introduction into routine childhood immunization in Kenya. *JAMA*. 2006;296(6):671-8.
54. World Bank national accounts data aONA. GDP growth (annual %): World Bank; 2021 [Available from: <https://data.worldbank.org/indicator/NY.GDP.MKTP.KD.ZG?end=2020&locations=KE&start=2003&view=chart>].

