

1 **SARS-CoV-2 wastewater surveillance in Germany: long-term PCR**  
2 **monitoring, suitability of primer/probe combinations and biomarker stability**

3 Johannes Ho<sup>1</sup>, Claudia Stange<sup>1</sup>, Rabea Suhrborg<sup>1</sup>, Christian Wurzbacher<sup>2</sup>, Jörg E. Drewes<sup>2</sup>,  
4 Andreas Tiehm<sup>1\*</sup>

5 <sup>1</sup> TZW: DVGW-Technologiezentrum Wasser, Department of Water Microbiology, Karlsruher  
6 Straße 84, 76139 Karlsruhe, Germany

7 <sup>2</sup> Technical University of Munich, Chair of Urban Water Systems Engineering, Am  
8 Coulombwall 3, 85748 Garching, Germany

9 \* Corresponding author

10 **Keywords**

11 wastewater-based epidemiology; biomarker stability; target genes; digital droplet PCR;  
12 coronavirus

13

14 **Abstract**

15 In recent months, wastewater-based epidemiology (WBE) has been shown to be an important  
16 tool for early detection of SARS-CoV-2 circulation in the population. In this study, a detection  
17 methodology for SARS-CoV-2 RNA (wild-type and variants of concern) in wastewater was  
18 developed based on the detection of different target genes (E and ORF1ab) by PEG precipitation  
19 and digital droplet PCR. This methodology was used to determine the SARS-CoV-2  
20 concentration and the proportion of N501Y mutation in raw sewage of the wastewater treatment  
21 plant of the city of Karlsruhe in southwestern Germany over a period of 1 year (June 2020 to  
22 July 2021). Comparison of SARS-CoV-2 concentrations with reported COVID-19 cases in the

**NOTE: This preprint reports new research that has not been certified by peer review and should not be used to guide clinical practice.**

23 catchment area showed a significant correlation. Viral RNA titre trends appeared more than 12  
24 days earlier than clinical data, demonstrating the potential of wastewater-based epidemiology as  
25 an early warning system. Parallel PCR analysis using seven primer and probe systems revealed  
26 similar gene copy numbers with E, ORF, RdRP2 and NSP9 assays. RdPP1 and NSP3 generally  
27 resulted in lower copy numbers, and in particular for N1 there was low correlation with the other  
28 assays due to outliers. The occurrence of the N501Y mutation in the wastewater of Karlsruhe  
29 was consistent with the occurrence of the alpha-variant (B.1.1.7) in the corresponding individual  
30 clinical tests. In batch experiments SARS-CoV-2 RNA was stable for several days under  
31 anaerobic conditions, but the copy numbers decreased rapidly in the presence of dissolved  
32 oxygen. Overall, this study shows that wastewater-based epidemiology is a sensitive and robust  
33 approach to detect trends in the spread of SARS-CoV-2 at an early stage, contributing to  
34 successful pandemic management.

## 35 **1. Introduction**

36 In the current pandemic situation, wastewater-based epidemiology (WBE) is considered an  
37 important tool to estimate SARS-CoV-2 prevalence, genetic diversity and geographical  
38 distribution (European Commission, 2021; Kitajima et al., 2020). Sewage systems provide a  
39 feasible approach to survey faecal viruses across an entire region (Hart and Halden, 2020; Hill et  
40 al., 2021), even if asymptomatic courses of infection occur (Qi et al., 2018) and at low frequency  
41 of clinical diagnostic testing (Lodder and de Roda Husman, 2020). Therefore, wastewater  
42 surveillance can provide an alternative method to detect the spread of infections in different  
43 areas - especially for regions with limited diagnostic capacity and without a functioning  
44 reporting system, such as developing countries (Hart and Halden, 2020; Kitajima et al., 2020). In  
45 addition, wastewater surveillance can help detect variations in circulating strains, allowing  
46 comparisons among regions and an assessment of the evolution of the viral genome over time  
47 (Bisseux et al., 2018). Moreover, wastewater-based surveillance can serve as an early warning

48 system (Chavarria-Miró et al., 2021; Hill et al., 2021; Kitajima et al., 2020). In light of the  
49 current pandemic, this approach could determine whether new SARS-CoV-2 infections have  
50 occurred in a community or whether the number of infected people decreases after measures in  
51 the affected population have been taken (e.g., lockdown or social distancing). Recent studies  
52 have shown the overall benefit of WBE for SARS-CoV-2 monitoring (Agrawal et al., 2021a;  
53 Medema et al., 2020; Rossmann et al., 2021b; Rossmann et al., 2021a; Westhaus et al., 2021).

54 For WBE purposes, SARS-CoV-2 is detected in wastewater using PCR-based methods. Multiple  
55 sets of PCR primers and probes have been published, targeting different locations of the genome  
56 such as the S, N and E gene (Cervantes-Avilés et al., 2021; Kitajima et al., 2020). However,  
57 there is a lack of data with respect to the reliability of primers/probes and genes at different  
58 positions of the genome, thus hampering the quantitative comparison of results.

59 Recently, predominantly RT-qPCR methods have been published. However, as an alternative to  
60 quantitative real-time PCR, digital droplet PCR (ddPCR) can be used for wastewater monitoring  
61 (Cervantes-Avilés et al., 2021), which is a quantitative PCR method allowing an absolute  
62 quantification of DNA or RNA. By using ddPCR, a higher sensitivity can be achieved compared  
63 to qPCR since PCR inhibitors and the competition of background DNA and target molecules  
64 play a negligible role (Rački et al., 2014).

65 The genome of the SARS-CoV-2 virus is subject to a high mutation rate. Mutations are  
66 distributed across the genome and either have no effect on the phenotype (silent mutation) or can  
67 lead to altered infectivity and pathogenicity (Mercatelli and Giorgi, 2020). At the end of 2020  
68 and the beginning of 2021, variants (B.1.1.7 [alpha], B.1.351 [beta] and P.1 [gamma]) with  
69 increased transmission and clinical importance appeared (Sandoval Torrientes et al., 2021).  
70 These SARS-CoV-2 variants were classified as variants of concern (VoC). All three VoCs have  
71 the mutation A23063T, also named N501Y, in common, which is involved in the receptor-  
72 binding mechanism and may have clinical impacts (Makowski et al., 2021). For the single base

73 mutation, a primer/probe set that allows the specific detection of the mutation has been described  
74 (Heijnen et al., 2021; Korukluoglu et al., 2021). The detection of mutations of SARS-CoV-2 in  
75 wastewater additionally reveals a more detailed view of the infection process and the local  
76 spread of virus strains.

77 The SARS-CoV-2 RNA is excreted with the faeces of infected patients (Bogler et al., 2020).  
78 This viral RNA reaches the wastewater treatment plant (WWTP) via the sewer system, where  
79 composite samples for wastewater monitoring are usually taken from the influent. However,  
80 relatively little is known about the stability of SARS-CoV-2 RNA in sewer systems (Hart and  
81 Halden, 2020). In general, stability is strongly influenced by various environmental factors such  
82 as temperature, pH, biological activity or solid content (Foladori et al., 2020). In laboratory  
83 experiments, significantly higher reductions were determined at higher temperatures (Ahmed et  
84 al., 2020; Gundy et al., 2009). Coronaviruses are enveloped viruses, and an intact envelope is  
85 important for virus pathogenicity (Mandala et al., 2020). Overall, there are indications that  
86 enveloped viruses are less resistant to environmental conditions and inactivation compared to  
87 non-enveloped viruses such as adeno- or noroviruses (Gundy et al., 2009; Ye et al., 2016). The  
88 virus envelope is highly sensitive to chemical and physical conditions (e.g., pH, lipid solvents,  
89 disinfectants) (Mohan et al., 2021; Scheller et al., 2020). In contrast, the capsid protein is  
90 probably less subjected to lipid solvents, temperature and pH changes, although so far, little  
91 information is available on its stability.

92 In this context, the aims of this study were (i) to establish a robust wastewater monitoring  
93 procedure including the evaluation of different target genes and the use of digital droplet PCR,  
94 (ii) to apply the WBE approach in southern Germany, (iii) to determine the distribution of  
95 SARS-CoV-2 variants and (iv) to investigate the stability of its genome in wastewater samples.

## 96 **2. Material and Methods**

### 97 **2.1 Study sites, sample collection and storage**

98 Long-term monitoring was performed between June 2020 and July 2021 at the WWTP of the  
99 city of Karlsruhe. Karlsruhe is the second-largest city of the German federal state Baden-  
100 Württemberg and located in southwestern Germany. The WWTP of Karlsruhe has a capacity of  
101 850,000 population equivalents and treats the sewage of about 370,000 people.

102 We collected 24-h-composite samples (from 0 to 12 pm) twice a week using a flow-proportional  
103 autosampler. The collected samples were homogenised using the dispersing and homogenizing  
104 tool MiniBatch D-9 (MICCRA GmbH) and transported to the laboratory at 4°C. Upon arrival,  
105 the samples were concentrated and analysed according to the method described below. In total,  
106 89 samples were taken in the study area as duplicates. Wastewater samples from other sites in  
107 southern Germany (Leonberg, Baden-Wuerttemberg and Berchtesgadener Land, Bavaria) were  
108 also used for the evaluation of different target genes (802 samples in total).

## 109 **2.2 Sample processing**

### 110 **2.2.1 Concentration**

111 For sample concentration, a volume of 45 mL of wastewater sample was centrifuged (30 min;  
112 5,000 g) to settle larger particles. The supernatant was then concentrated using PEG/NaCl  
113 precipitation as described by Wu et al. (2020), with slight modifications. Briefly, 10% (w/v)  
114 PEG 8000 (Carl Roth) and 2.25% NaCl (w/v) (Carl Roth) were added to the sample and mixed.  
115 The mixture was agitated on a shaking incubator at 120 rpm for 2 h on ice, and subsequently,  
116 samples were centrifuged at 20,000 g for 2 h at 4°C. The supernatant was discarded, and the  
117 pellet was resuspended in 600 µL PCR-grade water (ThermoFisher Scientific). For all samples  
118 two independent replicates were analysed.

### 119 **2.2.2 Nucleic acid extraction**

120 Nucleic acids were extracted directly after concentration using the innuPrep Virus DNA/RNA  
121 Kit – IPC16 (Analytik Jena GmbH) as described by the manufacturer (protocol for isolation from

122 600  $\mu$ L cell-free body fluid). Extracted nucleic acids were eluted in a final volume of 100  $\mu$ L and  
123 analysed immediately or stored at  $-80^{\circ}\text{C}$ .

### 124 **2.2.3 PCR detection**

125 The SARS-CoV-2-specific sequences were quantified using one-step RT-ddPCR. For the PCR  
126 analyses, seven primers/probe sets were compared (Table 1). All wastewater samples were  
127 analysed using two duplex PCR assays with the primers and probe sets 1–4. Additional  
128 investigations of selected samples for the evaluation of alternative primers and probes (set 5-7)  
129 and the detection of the N501Y mutation and wildtype (sets 8 and 9) were carried out. All  
130 primers and probes were obtained from ThermoFisher Scientific.

131

132 **Table 1:** Primers and probes used for ddPCR analysis

N o.	Designation of primer/probe system in the text	Primer ID	Target-gene	Sequence (5'-3')	Reference
1	N1	2019-nCoV_N1-F	N	GACCCCAAATCAGCGAAAT	US Center for Disease Control and Prevention, 2020
		2019-nCoV_N1-R		TCTGGTTACTGCCAGTTGAATCTG	
		2019-nCoV_N1-P		FAM-ACCCCGCATTACGTTTGGTGACC-QYS	
2	E	E_Sarbeco_F1	E	ACAGGTACGTTAATAGTTAATAGCGT	Corman et al., 2020
		E_Sarbeco_R2		ATATTGCAGCAGTACGCACACA	
		E_Sarbeco_P1		FAM-ACACTAGCCATCCTTACTGCGCTTCG-QYS	
3	ORF	HKU-ORF1b-nsp14F	ORF1b	TGGGGYTTTACRGGTAACCT	Chu et al., 2020
		HKU-ORF1b-nsp14R		AACRCGCTTAACAAAGCACTC	
		HKU-ORF1b-nsp141P		VIC-TAGTTGTGATGCWATCATGACTAG-QYS	
4	RdRP1	RdRP_SARSr-F2	ORF1ab (RdRP)	GTGARATGGTCATGTGTGGCGG	Corman et al., 2020
		RdRP_SARSr-R1		CARATGTTAAASACACTATTAGCATA	
		RdRP_SARSr-P2		VIC-CAGGTGGAACCTCATCAGGAGATGC-QYS	
5	RdRP2	Modified RdRP-F	ORF1ab (RdRP)	AAATGGTCATGTGTGGCGGT	Muenchhoff et al., 2020
		Modified RdRP-R		GTAAAAACACTATTAGCATAAGCAGTTGT	
		RdRP_SARSr-P2		VIC-CAGGTGGAACCTCATCAGGAGATGC-QYS	
6	NSP3	nCoV_IP2-12669F	ORF1ab	ATGAGCTTAGTCCTGTTG	Corman et al., 2020
		nCoV_IP2-12759R		CTCCCTTTGTTGTGTTGT	
		nCoV_IP2-12696bP		FAM-AGATGTCTTGTGCTGCCGGTA-QYS	
7	NSP9	Lu_orf1ab_F	ORF1ab	AGAAGATTGGTTAGATGATAGT	Lu et al., 2020
		Lu_orf1ab_R		TTCCATCTCTAATTGAGGTTGAACC	
		Lu_orf1ab_P		VIC-TCCTCACTGCCGTCTTGTGACCA-QYS	
8	-	501_wildtype_F	S (N501 wildtype)	CATATGGTTTCCAACCCACTA	Korukluoglu et al., 2021
		501_R		GGTGCATGTAGAAGTTCAAAGAAAGT	
		501_P		FAM-TGGTGTGGTTACCAACCATACAGAG-QYS	
9	-	501Y_F	S (N501Y mutation)	CATATGGTTTCCAACCCACTT	Korukluoglu et al., 2021
		501_R		GGTGCATGTAGAAGTTCAAAGAAAGT	
		501_P		FAM-TGGTGTGGTTACCAACCATACAGAG-QYS	

133

134 The ddPCR was performed on the QX200 Droplet Digital PCR System (BioRad) using the One-  
135 step RT-ddPCR Advanced Kit for Probes (BioRad). Reactions were set up in a final volume of  
136 20  $\mu$ L, following the manufacturer's instructions, using 3  $\mu$ L of nucleic acid extract. The  
137 reaction mixture consisted of One-step RT-ddPCR Supermix (BioRad), 20 units/ $\mu$ L reverse  
138 transcriptase (BioRad), 15 mM DTT (BioRad), 900 nM primer (forward and reverse), 250 nM  
139 probe and RNase-free water. The mixture was combined with 70  $\mu$ L droplet generation oil in the  
140 Droplet Generator (BioRad), and the resulting droplets were transferred to a 96-well plate for  
141 PCR cycling. Cycling conditions were as follows: 60 min reverse transcription at 42°C (1 cycle),  
142 10 min enzyme activation at 95°C (1 cycle), 30 s denaturation at 95°C/1 min annealing/extension  
143 cycle at 55°C (40 cycles), 10 min enzyme deactivation at 98°C (1 cycle) and a hold step at 4°C  
144 until reading on the QX100 droplet reader (BioRad). Data analysis was performed with the

145 QuantaSoft software (BioRad). No-template control and a positive control (synthetic RNA,  
146 4BLqSARS-CoV-2 RNA, 4base lab AG) were included in each ddPCR assay. QuantaSoft and  
147 QuantaSoft Analysis Pro (BioRad) were used to manually threshold and export the data.  
148 Concentrations per reaction were converted to copies per mL of wastewater.

149 Previous reports showed an actual detection limit of 3 copies per reaction for the ddPCR (Alteri  
150 et al., 2020). In this case, the detection limit also represents the limit of quantification. Based on  
151 the initial volume of wastewater and the volume of RNA extract used in the PCR reaction, a  
152 detection limit of 2.5 gene copies per mL of wastewater was calculated.

### 153 **2.3 COVID-19 cases in the model area**

154 Epidemiological data on COVID-19 cases in the studied area were retrieved from the daily  
155 report on COVID-19 infections in the city and districts of Karlsruhe  
156 (<https://corona.karlsruhe.de/aktuelle-fallzahlen>), which is based on official data of the Federal  
157 Robert Koch Institute in charge of public health surveillance. In addition, the Association of  
158 Accredited Laboratories in Medicine (ALM e.V.) submit the number of variant-specific PCR  
159 examinations for Baden-Württemberg on a weekly basis; reports containing this data are  
160 published regularly by the State Health Office of Baden-Württemberg.

### 161 **2.4 Statistical analysis**

162 Basic mathematical calculations (mean, median, sliding average) were performed in Microsoft  
163 Excel (14.0.7212.5). More complex statistics were calculated in Python (3.7.6) with the SciPy  
164 library (1.6.2) according to Virtanen et al. (2020). Bonferroni-correction was applied to all p  
165 values by multiplication with the number of samples (n).

### 166 **2.5 Biomarker stability tests**



167 Batch experiments were established in 1-L glass bottles using untreated wastewater from the  
168 WWTP of Karlsruhe. The 24-hr composite sample of the previous day (4 L) was transported to  
169 the laboratory and directly used for the experiment. Overall, six test bottles containing 600 mL of  
170 wastewater were set up. Three bottles with wastewater were purged with ambient air using  
171 aquarium pumps, and the other three bottles were purged with nitrogen gas for ten minutes and  
172 then sealed immediately. The bottles were incubated at room temperature. Samples were taken to  
173 determine dissolved oxygen (DO) and pH using a WTW meter (36020 IDS) with optical sensor  
174 (FDO 925) and pH electrode (SenTrix) from Xylem Analytics. After each sampling the  
175 wastewater was purged again with ambient air or nitrogen for five minutes. The PCR samples  
176 (40 ml) were processed using the Vac-Man Laboratory Vacuum Manifold (Promega) and the  
177 Maxwell<sup>®</sup> RSC Enviro Wastewater TNA Kit (Promega).

### 178 **3. Results and discussion**

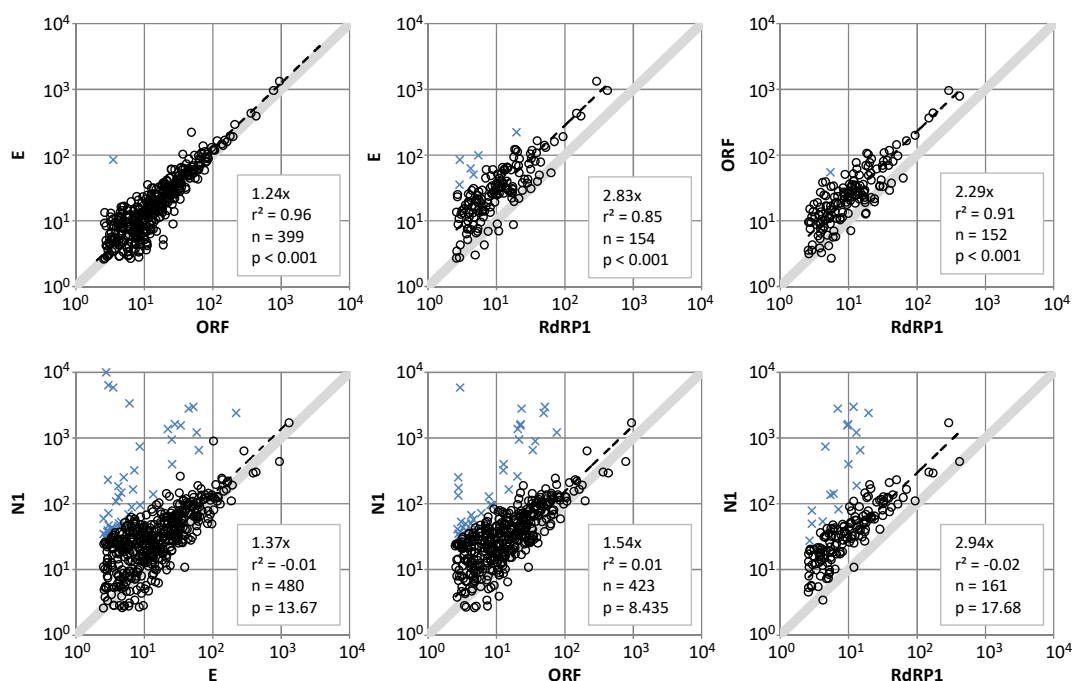
#### 179 **3.1 Suitability of four different primer and probe systems**

180 The ddPCR data for a total of 802 field samples, including results for four primer and probe sets  
181 targeting N, E, ORF and RdRP genes (2019-nCoV-N1, E\_Sarbeco, HKU-ORF1b-nsp14,  
182 RdRP\_SARS; hereinafter referred to as N1, E, ORF and RdRP1), were compared (Fig. 1). The  
183 standard deviation of independent replicates was 26%. Using N1, 94% of the samples showed  
184 higher values than the detection limit. For other primer and probe combinations the proportion of  
185 samples showing values higher than the detection limit were considerably lower (62% for E,  
186 54% for ORF and 20% for RdRP1). A similar trend was observed for gene copy numbers, with  
187 highest values for N1 and lowest one for RdRP1. Median values were 27.5, 11.8, 11.5 and 8.5  
188 gene copies per mL for N1, E, ORF and RdRP1, respectively.

189 In particular for N1, we observed several outliers. In some cases, the N1 values were more than 2  
190  $\log_{10}$  levels higher than the values obtained by the other assays. Linear regression between the

191 data (Fig. 1) did show low correlation coefficients or no significance ( $p > 0.05$ ) for all  
192 combinations with the N1 primer/probe set. The E and ORF correlated well, with ORF giving  
193 slightly lower values as compared to E (slope = 1.24 at  $R^2 = 0.96$ ,  $p < 0.001$  and  $n = 399$ ). Both E  
194 and ORF gave higher slope values of 2.83 and 2.29 compared to RdRP1, indicating a noticeable  
195 difference. To exclude internal errors for the N1 assay, these extreme values were confirmed by  
196 additional replicates.

197 The copy numbers of the four tested assays differed showing the following order: N1 > E  $\approx$  ORF  
198 > RdRP1. It was hypothesised that the differences in the gene copy numbers may be due to a  
199 non-optimal primer design or the localisation and stability of the target genes on the SARS-CoV-  
200 2 genome. The second hypothesis was supported by the preliminary observation that the gene  
201 copy numbers decreased towards the 5' end indicating a preferential degradation of the SARS-  
202 CoV-2 genome from the 5' end. This hypothesis was tested with additional primers on the same  
203 sample set (see Section 3.3).



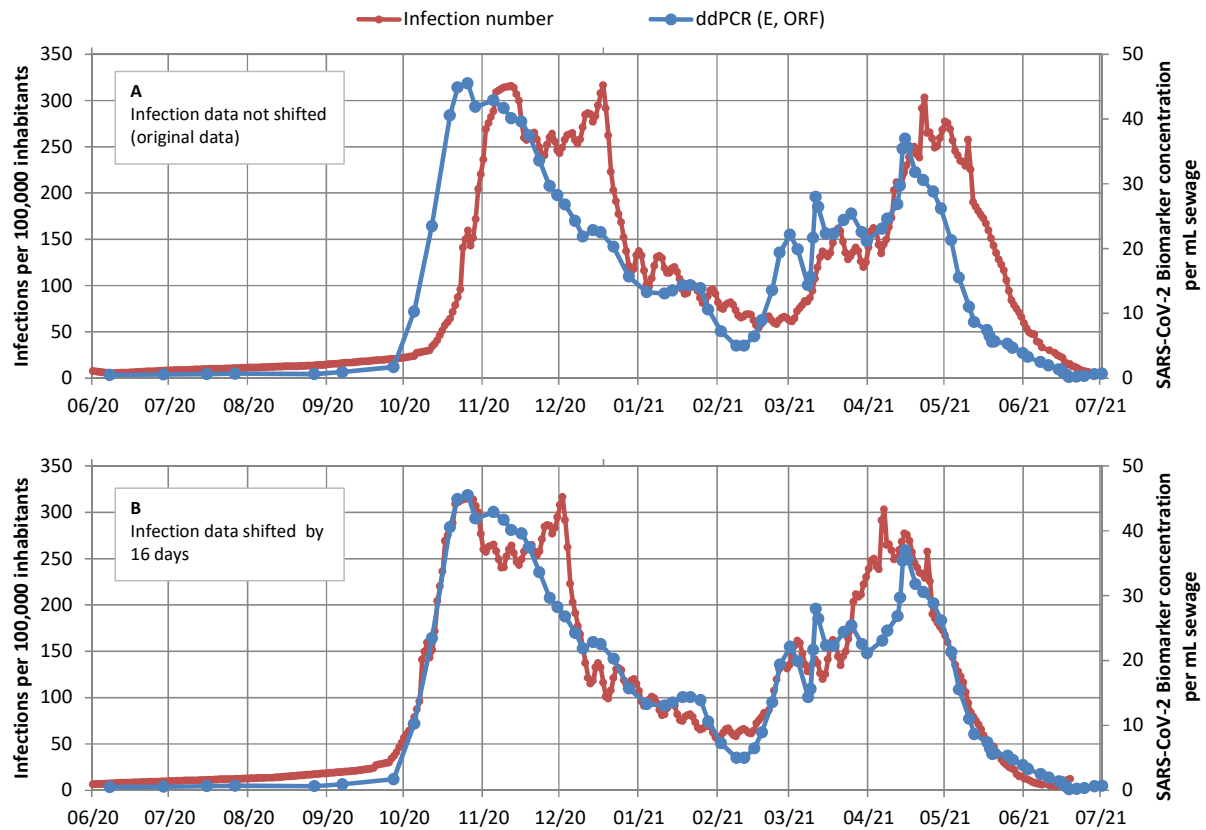
204

205 **Fig. 1.** Linear regression of four different primer/probe systems for the analysis of 802 samples. Charts show gene copies per mL  
206 wastewater. Values with  $\geq$  tenfold deviation are shown as X. Trend lines were generated using all values.

207 For the same primers, differences between gene copy numbers or Ct values have also been  
208 reported previously. For example, Vogels et al. (2020) observed similar Ct values for N1, E and  
209 ORF but higher Ct values for RdRP1 in clinical samples. Similar findings with N1, E and RdRP1  
210 have been reported by Muenchhoff et al. (2020) for stool samples and for E and RdRP1 in  
211 wastewater samples (Bertrand et al., 2021). Higher copy numbers (corresponding to lower Ct  
212 values) for the N1 primers in wastewater have been reported by Gerrity et al. (2021) in  
213 comparison to N2, E and ORF, by Pérez-Cataluña et al. (2021) in comparison to N2 and E, by  
214 Randazzo et al. (2020) for N2 and N3 as well as by Fernandez-Cassi et al. (2021) and Peccia et  
215 al. (2020) for N2. Due to low values using RdRP1 and the high outliers using N1, WBE data  
216 reporting in our study was performed using only E and ORF. Similar decisions have been made  
217 by Gonzalez et al. (2020) and Westhaus et al. (2021); both studies excluded N1 for wastewater  
218 monitoring. Considering the observed effects, initial comparison of detection methods and the  
219 parallel detection of at least two SARS-CoV-2-specific genes is recommended to assure reliable  
220 WBE.

### 221 **3.2 Results of the WBE for the city of Karlsruhe**

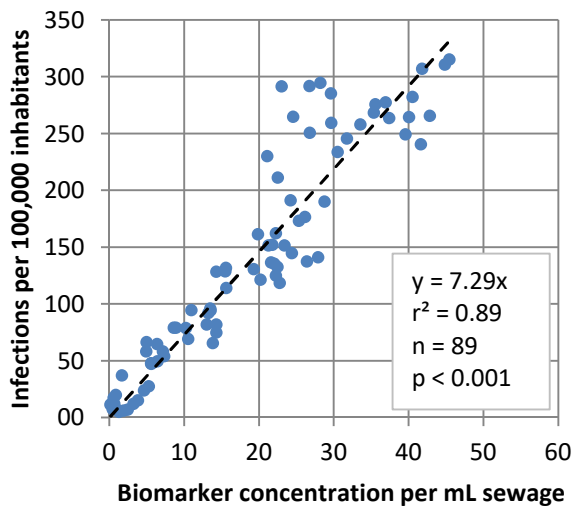
222 For the investigated WWTP, 89 samples were taken during the 1-year survey from June 2020 to  
223 July 2021; this period included both the second and third waves of COVID-19 infections in  
224 Germany. For each sample, two independent replicates were analysed using E and ORF assays.  
225 An average SARS-CoV-2 RNA concentration was calculated from the results of the two  
226 replicates and the gene copy numbers for E and ORF. Figure 2 displays infection numbers and  
227 SARS-CoV-2 RNA concentrations (sliding average of three) over time. Both data curves show a  
228 similar but time-delayed trend (Fig. 2, A). By shifting the individual diagnostic testing data set  
229 forward, the correlation coefficient increased to a maximum of 0.89 ( $p < 0.001$ ) at 16 days (Fig.  
230 3 and Fig. S1 and S2 in Supplementary Information). With this time shift, case numbers and  
231 ddPCR data matched at increasing and decreasing phases of the 2<sup>nd</sup> and 3<sup>rd</sup> waves.



232

233 **Fig. 2.** (A) Results of wastewater monitoring and infection numbers and (B) time-shifted infection numbers and biomarker

234 concentrations for the study area.



235

236 **Fig. 3.** Correlation of infection numbers and ddPCR values with a time shift of 16 days.

237 The observed time gain of 16 days for WBE in our study is higher than the values reported in

238 previous studies. Time shifts in WBE of 2–4 days (Hillary et al., 2021; Nemudryi et al., 2020),

239 6–8 days (Peccia et al., 2020), 7 days (Medema et al., 2020), 8 days (Hamouda et al., 2021;

240 Wurtzer et al., 2020), 11 days (Róka et al., 2021) and 10–14 days (Agrawal et al., 2021a) have  
241 been reported. In some studies, no correlation could be found due to PCR noise or low case  
242 numbers (D'Aoust et al., 2021; Westhaus et al., 2021).

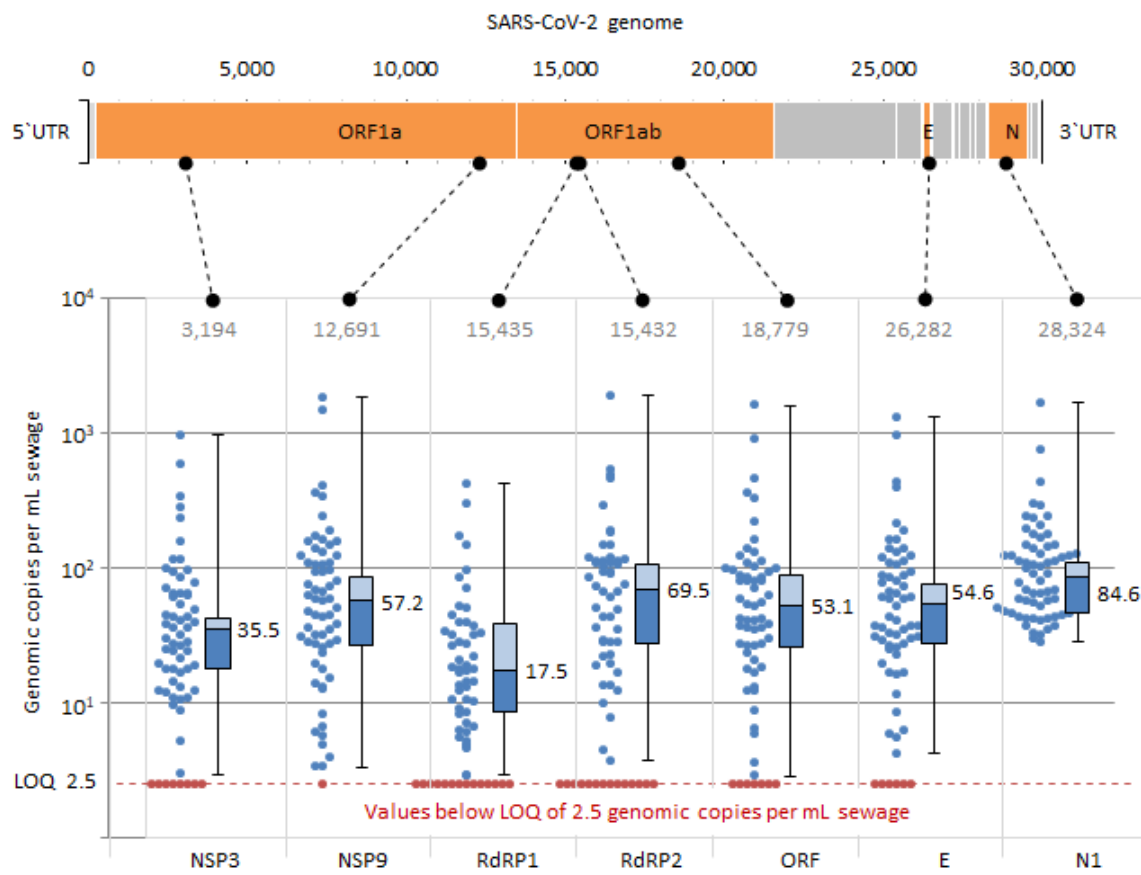
243 These varying findings can be explained with the high number of variables in diagnostic  
244 individual testing: availability of rapid antigen tests, the speed of clinical tests (availability,  
245 workload of labs, testing strategy), positive testing rate and the speed of reporting. These factors  
246 might change throughout time and differ among SARS-CoV-2 waves (e.g., lockdowns or applied  
247 testing strategies). Wastewater monitoring has the advantage that the data for the catchment area  
248 can be available with a single measurement within 48 hours. In summary, good correlation of  
249 case numbers and SARS-CoV-2 gene copy numbers could be achieved with the detection of the  
250 E and ORF genes. The shapes of the E and ORF curves reflect the observed development of  
251 COVID-19 cases.

252 Based on the correlation and a methodological detection limit of 2.5 genomic copies per mL  
253 sewage by ddPCR, the theoretical limit of detection for the wastewater monitoring is approx. 20  
254 infections per 100,000 inhabitants. The results of another German study indicated that RT-qPCR  
255 can detect 50 acute infected persons per 100,000 inhabitants in dry-weather periods (Westhaus et  
256 al., 2021). In our study one genomic copy per mL is equivalent to 7 active cases per 100,000  
257 inhabitants. However, the case/gene copy number factor is hard to compare with literature, as  
258 parameters often differ (e.g., cumulative cases (Medema et al., 2020) or gene copies per day  
259 (Agrawal et al., 2021a)). Furthermore, these values are highly specific for a sewer system and  
260 depend on numerous boundary conditions, such as characteristics of the sewer system.  
261 Therefore, SARS-CoV-2 copy number/number of infections factors cannot be transferred  
262 directly to other catchment areas.

### 263 **3.3 Extended evaluation of primer and probe systems**

264 The results for the primers/probes N1, E, ORF and RdRP1 exhibited the highest gene copy  
265 numbers for N1 and the lowest one for RdRP1. Based on these results, it could be hypothesised  
266 that the SARS-CoV-2 genome degradation might preferably start from the 5' end. In general,  
267 viral RNA can be degraded enzymatically via endonucleases, 3'-to-5' exonucleases and 5'-to-3'  
268 exonucleases (Houseley and Tollervey, 2009). However, viruses have developed specific  
269 mechanisms to counteract this degradation. These include various 5' end modifications, as well  
270 as processes of mimicking cellular RNAs via 'cap snatching' or even direct blocking of receptor  
271 proteins, thus preventing recognition (Dickson and Wilusz, 2011; Markiewicz et al., 2021 ). The  
272 genome of coronaviruses has a 5'-terminal cap structure and a poly(A) sequence at the 3'-end  
273 (Kim et al., 2020). To our knowledge, information about the specific enzymatic degradation  
274 processes of SARS-CoV-2 RNA in wastewater is not available yet.

275 To test the hypothesis of the preferential 5' end degradation, two additional genes located more  
276 closely to the 5' end, namely NSP3 and NSP9, and an alternative primer for the RdRP gene  
277 (hereinafter referred to as RdRP2) were investigated with a set of 64 samples (Fig. 4). For this  
278 set, samples with high, medium and low copy numbers were selected. High N1 outliers were  
279 excluded.



280

281 **Fig. 4.** The ddPCR results of 64 samples with seven different primer and probe sets. Dots represent single values. Bars represent  
 282 25 and 75%-intervals, numbers represent the medians. SARS-CoV-2 gene and primer positions according to the reference  
 283 genome NC\_045512.2 (Wu et al., 2020).

284 Generally, the observed median gene copy numbers differed between 17.5 (RdRP1) and 84.6  
 285 copies per mL (N1). The medians followed the order N1, RdRP2, NSP9, E, ORF, NSP3, RdRP1.  
 286 The E, ORF, RdRP1, RdRP2, NSP3 and NSP9 primer/probe sets showed a good correlation with  
 287 coefficients up to 1.00 ( $p < 0.05$ ) (Fig. S3 in Supplementary Information). All correlation  
 288 coefficients with the N1 assay were generally lower and ranged from -0.24 (RdRP2) to 0.74  
 289 (ORF). Comparing the slopes of the linear regression, nearly all significant correlations, except  
 290 those with RdRP1, ranged from 0.5x to 2.0x ( $n = 46-58$ ,  $p < 0.05$ ). Generally, RdRP1 provided  
 291 considerably lower values than the other genes (0.23x-0.46x,  $n = 50-47$ ,  $p < 0.05$ ).

292 Based on this analysis, we can conclude the following: (i) due to the outliers observed with N1  
293 and the low gene copy numbers using RdRP1 and NSP3, these primer/probe sets are not  
294 recommended for wastewater surveillance, (ii) E, ORF, RdRP2 and NSP9 worked well for  
295 monitoring using ddPCR and provided comparable gene copy numbers (average of deviations:  
296 14%) and (iii) the hypothesis of the 5'-directed degradation of the SARS-CoV-2 genome was  
297 rejected.

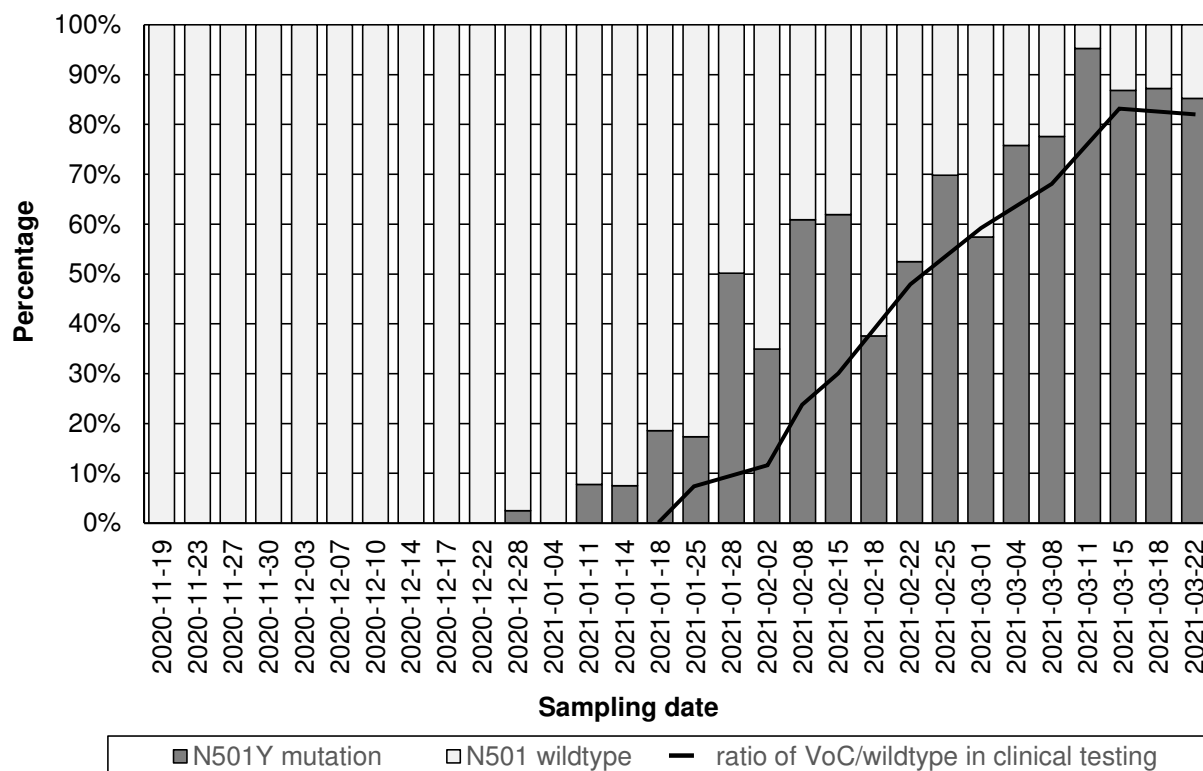
298 The effect of deviating between the different PCR-assays might be explained with variations in  
299 PCR efficiency and secondary structures of target regions in the viruses. Primers and probes did  
300 not show any mismatches in comparison with the corresponding target sequences (e.g., SARS-  
301 CoV-2 reference sequence NC\_045512.2), except for the RdRP1 reverse primer with a single  
302 nucleotide mismatch in the middle. This mismatch could lead to lower copy numbers (Vogels et  
303 al., 2020); however, single mismatches not in close 3' proximity are not that critical (Lefever et  
304 al., 2013).

305 Overall, we strongly recommend the application of different primers and probes. Such an  
306 approach will assure reliable and robust results and prevent underestimation of results due to  
307 newly occurring primer binding site mutations. Additionally, multiple targets will ensure  
308 comparability with earlier results in the case a primer has to be exchanged. A good example for  
309 this is the N3 forward primer published by the CDC, with a mutated nucleotide position in about  
310 4% of observed sequences (Vogels et al., 2020).

### 311 **3.4 Spread of VoC in the model area**

312 We also quantified VoC of sewage samples in the sewershed of the city of Karlsruhe. The  
313 proportion of N501Y to wildtype sequences was compared with publicly available data from the  
314 diagnostic tests of infected persons. The proportion of the N501Y mutation in wastewater  
315 follows the same course as the trend seen for infected persons (Fig. 5).





316

317 **Fig. 5.** Concentration of N501Y mutation divided by the total gene copy numbers of the S-gene (ratio of wildtype and N501Y  
318 mutation) in wastewater, and ratios of variants of concern (VoC) in new COVID-19 patients in Baden-Württemberg by variant-  
319 specific PCR according to the Association of Accredited Laboratories in Medicine (ALM e.V).

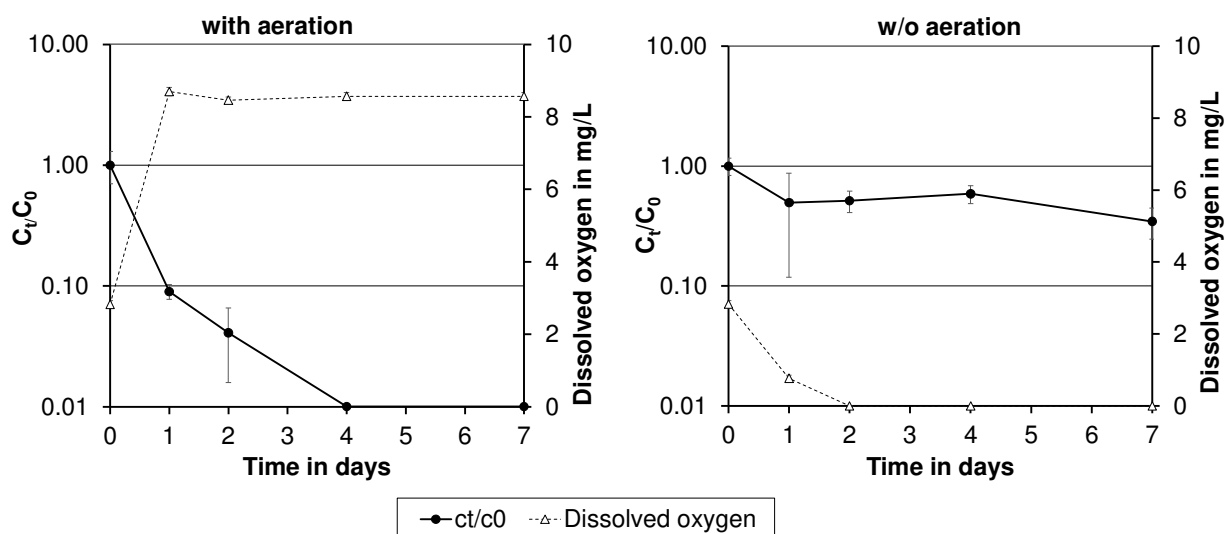
320 The earliest detection of N501Y was made in the wastewater sample of December 28, 2020. The  
321 proportion of N501Y gradually increased to 97% on March 11, 2021, and then settled at around  
322 86%. In December 2020, the state of Baden-Württemberg reported the detection of the alpha  
323 variant (B.1.1.7) for the first time, corresponding to the first detection of N501Y in wastewater  
324 from Karlsruhe. After the first detections of variants containing the N501Y mutation, the  
325 increase followed a trend that is comparable with the increase of N501Y-containing variants in  
326 patients in Baden-Wuerttemberg.

327 Analogous to a Dutch study (Heijnen et al., 2021), the results of this study show the applicability  
328 of RT-ddPCR to detect the spread of relevant mutations of SARS-CoV-2 in the population.  
329 Effluent monitoring of mutations by RT-ddPCR is a rapid and efficient method to detect the  
330 occurrence of VoC on a community level and could also be used as an early warning system for

331 SARS-CoV-2 variants. In some studies, next-generation sequencing (NGS) techniques from the  
332 clinical sector have also been used to detect SARS-CoV-2 mutations (Agrawal et al., 2021b;  
333 Crits-Christoph et al., 2021; Izquierdo-Lara et al., 2021). However, these techniques require deep  
334 sequencing and extensive knowledge on bioinformatics-supported interpretation of the results to  
335 determine the presence of mutations associated with VoC (Heijnen et al., 2021). Furthermore,  
336 NGS results are less quantitative than RT-ddPCR results and usually cannot be generated in a  
337 timely manner. This temporal aspect is of particular relevance with regard to an early warning  
338 function of wastewater monitoring. The advantage of NGS is the generation of comprehensive  
339 information on the existing spectrum of mutations in a sample. Overall, RT-ddPCR and NGS are  
340 complementary methods that provide important information on the distribution of N501Y and  
341 other relevant mutations at the community level through the analysis of RNA extracts from  
342 wastewater samples.

### 343 3.5 Oxygen-dependent decay of SARS-CoV-2 RNA

344 Depending on flow velocity, temperature, dissolved organic carbon, and other boundary  
345 conditions, the DO concentration in the wastewater of the sewer system can vary. For this  
346 reason, the decay of SARS-CoV-2 RNA was investigated under aerobic and anaerobic  
347 conditions.



349 **Fig. 6.** Decay of SARS-CoV-2 biomarkers (as means of ORF, E, RdRP2 and NSP3 copy numbers) and oxygen concentration  
350 over time in wastewater samples purged with air (left) or nitrogen (right). Error bars represent standard deviations for the three  
351 independent test bottles (n = 3).

352 At the beginning of the experiment, DO contents of 2.8 mg/L and SARS-CoV-2 RNA  
353 concentrations between 95 and 112 gene copies per mL were determined (Fig. 6). In the bottles  
354 aerated with atmospheric oxygen, the DO increased up to 8.5 mg/L while the concentration of  
355 SARS-CoV-2 RNA decreased by 1 log<sub>10</sub> level within 24 h. After 4 days the copy numbers were  
356 below the detection limit. In the nitrogen treated bottle, the DO concentration decreased below  
357 0.1 mg/L and viral RNA decreased by about 0.3 log<sub>10</sub> levels (52%) within one day.  
358 Subsequently, the concentrations of SARS-CoV-2 biomarkers remained stable. The different  
359 target sequences (ORF, E and RdRP2, NSP3) provided comparable gene copy numbers  
360 (maximum standard deviation: 26.9 gene copies per mL; Fig. S4). Overall, the results indicate  
361 that the DO concentration can affect the fate of SARS-CoV-2 RNA in wastewater. In addition,  
362 the batch experiments demonstrated similar degradation rates of four genes localised at different  
363 positions throughout the SARS-CoV-2 genome, and thus also did not indicate any directional  
364 degradation of the genome (Section 3.3).

365 The virus stability studies published so far have mostly used other human or animal pathogenic  
366 coronaviruses, showing an influence of temperature, pH and matrix on the decay of  
367 coronaviruses in several water types (Foladori et al., 2020). At room temperature, coronaviruses  
368 suspended in tap water, primary WWTP effluent or untreated and autoclaved wastewater showed  
369 > 99.9% reduction within 2–5 days (Ahmed et al., 2020; Gundy et al., 2009). In contrast, animal  
370 coronaviruses such as transmissible gastroenteritis virus (TGEV) and mouse hepatitis virus  
371 (MHV) showed a higher persistence in pasteurised settled sewage at room temperature  
372 (Casanova et al., 2009); times for a 99% reduction were 7 days for MHV and 9 days for TGEV  
373 (Casanova et al., 2009). However, oxygen concentration has not been measured in these studies.

374 It has been known for a long time that the oxygen concentration can be an important factor  
375 influencing virus survival. Scheuerman et al. (1991) have studied the effects of temperature and  
376 DO on the persistence of enteric viruses in sludge (polio 1, coxsackie B3 and echo 1, and  
377 rotavirus SA-11) under laboratory conditions. The inactivation rates under aerobic conditions  
378 were significantly higher than those under anaerobic conditions ( $-0.77 \log_{10}/\text{day}$  vs  $-$   
379  $0.33 \log_{10}/\text{day}$ ) (Scheuerman et al., 1991). Also in groundwater studies, the presence of oxygen  
380 accelerated enteric viruses decay (Gordon and Toze, 2003; Sidhu and Toze, 2012).

#### 381 **4. Conclusions**

382 Within this study, a robust method for the detection of SARS-CoV-2 RNA in wastewater was  
383 established. This detection methodology is based on PEG precipitation followed by automated  
384 nucleic acid extraction and the detection of different target genes by RT-ddPCR. The following  
385 findings were obtained:

- 386 - Comparison of ddPCR results for seven different primer and probe assays showed that E,  
387 ORF, RdRP2 and NSP9 were suitable for wastewater monitoring and yielded similar  
388 results. The N1, RdRP1 and NSP3 assays clearly deviated from the average of the other  
389 primer and probe combinations. Based on these results and the high mutation potential of  
390 coronaviruses, we recommend the parallel detection of at least two, preferably three or  
391 more, target sequences to increase the robustness of the method.
- 392 - Comparison of the wastewater monitoring results for the city of Karlsruhe with reported  
393 COVID-19-infection numbers confirmed the potential of WBE for the early detection of  
394 trends in the incidence of infection within a catchment area.
- 395 - With PCR-based wastewater monitoring also the spread of VoCs in a catchment area can  
396 be monitored, making it a fast and cost-effective alternative to NGS-based approaches.

397 - SARS-CoV-2 RNA in wastewater showed low decay under anaerobic conditions, and  
398 fast decay under aerobic conditions. These findings are relevant for a better  
399 understanding of biomarker stability in sewer systems, and storage of wastewater  
400 samples.

401 The data obtained from the wastewater monitoring were made available to the Covid-19 Task  
402 Force of the city of Karlsruhe and used as an additional tool for pandemic management.

### 403 **Conflicts of Interest**

404 The authors declare that they have no known competing financial interests or personal  
405 relationships that could have appeared to influence the work reported in this paper.

### 406 **Acknowledgements**

407 This study was financially supported by the German Federal Ministry of Education and Research  
408 as part of the funding program Sustainable Water Management (NaWaM-RiSKWa) (Biomarker,  
409 grant number 02WRS1557). We thank the City Civil Engineering Office of the city of Karlsruhe  
410 (Tiefbauamt der Stadt Karlsruhe), especially Martin Kissel, Albrecht Dörr, Dr. Gaby Morlock  
411 und Stephen Kemper. We also thank Dr. Marion Woermann und Carmen Kraffert for their  
412 assistance with wastewater monitoring and experimental work.

## 413 References

- 414 Agrawal, S., Orschler, L., Lackner, S., 2021a. Long-term monitoring of SARS-CoV-2 RNA in  
415 wastewater of the Frankfurt metropolitan area in Southern Germany. *Sci. Rep.* 11 (1), 5372,  
416 <https://doi.org/10.1038/s41598-021-84914-2>.
- 417 Agrawal, S., Orschler, L., Lackner, S., 2021b. Metatranscriptomic analysis reveals SARS-CoV-2  
418 mutations in wastewater of the Frankfurt metropolitan area in southern Germany. *Microbiol.*  
419 *Resour. Announc.* 10 (15), e00280-21, <https://doi.org/10.1128/MRA.00280-21>.
- 420 Ahmed, W., Bertsch, P.M., Bibby, K., Haramoto, E., Hewitt, J., Huygens, F., Gyawali, P.,  
421 Korajkic, A., Riddell, S., Sherchan, S.P., Simpson, S.L., Sirikanchana, K., Symonds, E.M.,  
422 Verhagen, R., Vasani, S.S., Kitajima, M., Bivins, A., 2020. Decay of SARS-CoV-2 and  
423 surrogate murine hepatitis virus RNA in untreated wastewater to inform application in  
424 wastewater-based epidemiology. *Environ. Res.* 191, 110092,  
425 <https://doi.org/10.1016/j.envres.2020.110092>.
- 426 Alteri, C., Cento, V., Antonello, M., Colagrossi, L., Merli, M., Ughi, N., Renica, S., Matarazzo,  
427 E., Di Ruscio, F., Tartaglione, L., Colombo, J., Grimaldi, C., Carta, S., Nava, A., Costabile,  
428 V., Baiguera, C., Campisi, D., Fanti, D., Vismara, C., Fumagalli, R., Scaglione, F., Epis,  
429 O.M., Puoti, M., Perno, C.F., 2020. Detection and quantification of SARS-CoV-2 by droplet  
430 digital PCR in real-time PCR negative nasopharyngeal swabs from suspected COVID-19  
431 patients. *PLoS One* 15 (9), e0236311, <https://doi.org/10.1371/journal.pone.0236311>.
- 432 Bertrand, I., Challant, J., Jeulin, H., Hartard, C., Mathieu, L., Lopez, S., Schvoerer, E., Courtois,  
433 S., Gantzer, C., 2021. Epidemiological surveillance of SARS-CoV-2 by genome  
434 quantification in wastewater applied to a city in the northeast of France: Comparison of  
435 ultrafiltration- and protein precipitation-based methods. *Int. J. Hyg. Environ. Health* 233,  
436 113692, <https://doi.org/10.1016/j.ijheh.2021.113692>.
- 437 Bisseux, M., Colombet, J., Mirand, A., Roque-Afonso, A.-M., Abravanel, F., Izopet, J.,  
438 Archimbaud, C., Peigue-Lafeuille, H., Debros, D., Bailly, J.-L., Henquell, C., 2018.  
439 Monitoring human enteric viruses in wastewater and relevance to infections encountered in  
440 the clinical setting: a one-year experiment in central France, 2014 to 2015: A one-year  
441 experiment in central France, 2014 to 2015. *Euro Surveill.* 23 (7), 17–237,  
442 <https://doi.org/10.2807/1560-7917.ES.2018.23.7.17-00237>.
- 443 Bogler, A., Packman, A., Furman, A., Gross, A., Kushmaro, A., Ronen, A., Dagot, C., Hill, C.,  
444 Vaizel-Ohayon, D., Morgenroth, E., Bertuzzo, E., Wells, G., Kiperwas, H.R., Horn, H.,  
445 Negev, I., Zucker, I., Bar-Or, I., Moran-Gilad, J., Balcazar, J.L., Bibby, K., Elimelech, M.,  
446 Weisbrod, N., Nir, O., Sued, O., Gillor, O., Alvarez, P.J., Crameri, S., Arnon, S., Walker, S.,  
447 Yaron, S., Nguyen, T.H., Berchenko, Y., Hu, Y., Ronen, Z., Bar-Zeev, E., 2020. Rethinking  
448 wastewater risks and monitoring in light of the COVID-19 pandemic. *Nat. Sustain.* 3 (12),  
449 981–990, <https://doi.org/10.1038/s41893-020-00605-2>.
- 450 Casanova, L., Rutala, W.A., Weber, D.J., Sobsey, M.D., 2009. Survival of surrogate  
451 coronaviruses in water. *Water Res.* 43 (7), 1893–1898,  
452 <https://doi.org/10.1016/j.watres.2009.02.002>.
- 453 Cervantes-Avilés, P., Moreno-Andrade, I., Carrillo-Reyes, J., 2021. Approaches applied to detect  
454 SARS-CoV-2 in wastewater and perspectives post-COVID-19. *J. Water Process. Eng.* 40 (7),  
455 101947, <https://doi.org/10.1016/j.jwpe.2021.101947>.

- 456 Chavarria-Miró, G., Anfruns-Estrada, E., Guix, S., Paraira, M., Galofré, B., Sánchez, G., Pintó,  
457 R.M., Bosch, A., 2021. Sentinel surveillance of SARS-CoV-2 in wastewater anticipates the  
458 occurrence of COVID-19 cases. medRxiv, <https://doi.org/10.1101/2020.06.13.20129627>.
- 459 Chu, D.K.W., Pan, Y., Cheng, S.M.S., Hui, K.P.Y., Krishnan, P., Liu, Y., Ng, D.Y.M., Wan,  
460 C.K.C., Yang, P., Wang, Q., Peiris, M., Poon, L.L.M., 2020. Molecular diagnosis of a novel  
461 coronavirus (2019-nCoV) causing an outbreak of pneumonia. Clin. Chem. 66 (4), 549–555,  
462 <https://doi.org/10.1093/clinchem/hvaa029>.
- 463 Corman, V.M., Landt, O., Kaiser, M., Molenkamp, R., Meijer, A., Chu, D.K., Bleicker, T.,  
464 Brünink, S., Schneider, J., Schmidt, M.L., Mulders, D.G., Haagmans, B.L., van der Veer, B.,  
465 van den Brink, S., Wijsman, L., Goderski, G., Romette, J.-L., Ellis, J., Zambon, M., Peiris,  
466 M., Goossens, H., Reusken, C., Koopmans, M.P., Drosten, C., 2020. Detection of 2019 novel  
467 coronavirus (2019-nCoV) by real-time RT-PCR. Euro Surveill. 25 (3), 2000045,  
468 <https://doi.org/10.2807/1560-7917.ES.2020.25.3.2000045>.
- 469 Crits-Christoph, A., Kantor, R.S., Olm, M.R., Whitney, O.N., Al-Shayeb, B., Lou, Y.C.,  
470 Flamholz, A., Kennedy, L.C., Greenwald, H., Hinkle, A., Hetzel, J., Spitzer, S., Koble, J.,  
471 Tan, A., Hyde, F., Schroth, G., Kuersten, S., Banfield, J.F., Nelson, K.L., 2021. Genome  
472 sequencing of sewage detects regionally prevalent SARS-CoV-2 variants. mBio 12 (1),  
473 e02703-20, <https://doi.org/10.1128/mBio.02703-20>.
- 474 D’Aoust, P.M., Mercier, E., Montpetit, D., Jia, J.-J., Alexandrov, I., Neault, N., Baig, A.T.,  
475 Mayne, J., Zhang, X., Alain, T., Langlois, M.-A., Servos, M.R., MacKenzie, M., Figeys, D.,  
476 MacKenzie, A.E., Graber, T.E., Delatolla, R., 2021. Quantitative analysis of SARS-CoV-2  
477 RNA from wastewater solids in communities with low COVID-19 incidence and prevalence.  
478 Water Res. 188, 116560, <https://doi.org/10.1016/j.watres.2020.116560>.
- 479 Dickson, A.M., Wilusz, J., 2011. Strategies for viral RNA stability: live long and prosper. Trends  
480 Genet. 27 (7), 286–293, <https://doi.org/10.1016/j.tig.2011.04.003>.
- 481 European Commission, 2021. Commission Recommendation of 17.3.2021 on a common  
482 approach to establish a systematic surveillance of SARS-CoV-2 and its variants in  
483 wastewaters in the EU.  
484 [https://ec.europa.eu/environment/pdf/water/recommendation\\_covid19\\_monitoring\\_wastewaters.pdf](https://ec.europa.eu/environment/pdf/water/recommendation_covid19_monitoring_wastewaters.pdf).
- 485
- 486 Fernandez-Cassi, X., Scheidegger, A., Bänziger, C., Cariti, F., Tuñas Corzon, A.,  
487 Ganesanandamoorthy, P., Lemaitre, J.C., Ort, C., Julian, T.R., Kohn, T., 2021. Wastewater  
488 monitoring outperforms case numbers as a tool to track COVID-19 incidence dynamics when  
489 test positivity rates are high. Water Res. 200, 117252,  
490 <https://doi.org/10.1016/j.watres.2021.117252>.
- 491 Foladori, P., Cutrupi, F., Segata, N., Manara, S., Pinto, F., Malpei, F., Bruni, L., La Rosa, G.,  
492 2020. SARS-CoV-2 from faeces to wastewater treatment: what do we know?: A review. Sci.  
493 Total. Environ. 743, 140444, <https://doi.org/10.1016/j.scitotenv.2020.140444>.
- 494 Gerrity, D., Papp, K., Stoker, M., Sims, A., Frehner, W., 2021. Early-pandemic wastewater  
495 surveillance of SARS-CoV-2 in Southern Nevada: Methodology, occurrence, and  
496 incidence/prevalence considerations. Water Res. X 10, 100086,  
497 <https://doi.org/10.1016/j.wroa.2020.100086>.
- 498 Gonzalez, R., Curtis, K., Bivins, A., Bibby, K., Weir, M.H., Yetka, K., Thompson, H., Keeling,  
499 D., Mitchell, J., Gonzalez, D., 2020. COVID-19 surveillance in Southeastern Virginia using  
500 wastewater-based epidemiology. Water Res. 186, 116296,  
501 <https://doi.org/10.1016/j.watres.2020.116296>.

- 502 Gordon, C., Toze, S., 2003. Influence of groundwater characteristics on the survival of enteric  
503 viruses. *J. Appl. Microbiol.* 95 (3), 536–544, [https://doi.org/10.1046/j.1365-](https://doi.org/10.1046/j.1365-2672.2003.02010.x)  
504 [2672.2003.02010.x](https://doi.org/10.1046/j.1365-2672.2003.02010.x).
- 505 Gundy, P.M., Gerba, C.P., Pepper, I.L., 2009. Survival of coronaviruses in water and  
506 wastewater. *Food Environ. Virol.* 1 (1), 10, <https://doi.org/10.1007/s12560-008-9001-6>.
- 507 Hamouda, M., Mustafa, F., Maraqa, M., Rizvi, T., Aly Hassan, A., 2021. Wastewater  
508 surveillance for SARS-CoV-2: Lessons learnt from recent studies to define future  
509 applications. *Sci. Total. Environ.* 759, 143493,  
510 <https://doi.org/10.1016/j.scitotenv.2020.143493>.
- 511 Hart, O.E., Halden, R.U., 2020. Computational analysis of SARS-CoV-2/COVID-19  
512 surveillance by wastewater-based epidemiology locally and globally: Feasibility, economy,  
513 opportunities and challenges. *Sci. Total. Environ.* 730, 138875,  
514 <https://doi.org/10.1016/j.scitotenv.2020.138875>.
- 515 Heijnen, L., Elsinga, G., Graaf, M. de, Molenkamp, R., Koopmans, M.P.G., Medema, G., 2021.  
516 Droplet digital RT-PCR to detect SARS-CoV-2 variants of concern in wastewater. medRxiv,  
517 <https://doi.org/10.1101/2021.03.25.21254324>.
- 518 Hill, K., Zamyadi, A., Deere, D., Vanrolleghem, P.A., Crosbie, N.D., 2021. SARS-CoV-2  
519 known and unknowns, implications for the water sector and wastewater-based epidemiology  
520 to support national responses worldwide: Early review of global experiences with the  
521 COVID-19 pandemic. *Water Qual. Res. J.* 56 (2), 57–67,  
522 <https://doi.org/10.2166/wqrj.2020.100>.
- 523 Hillary, L.S., Farkas, K., Maher, K.H., Lucaci, A., Thorpe, J., Distaso, M.A., Gaze, W.H.,  
524 Paterson, S., Burke, T., Connor, T.R., McDonald, J.E., Malham, S.K., Jones, D.L., 2021.  
525 Monitoring SARS-CoV-2 in municipal wastewater to evaluate the success of lockdown  
526 measures for controlling COVID-19 in the UK. *Water Res.* 200, 117214,  
527 <https://doi.org/10.1016/j.watres.2021.117214>.
- 528 Houseley, J., Tollervey, D., 2009. The many pathways of RNA degradation. *Cell* 136 (4), 763–  
529 776, <https://doi.org/10.1016/j.cell.2009.01.019>.
- 530 Izquierdo-Lara, R., Elsinga, G., Heijnen, L., Munnink, B.B.O., Schapendonk, C.M.E.,  
531 Nieuwenhuijse, D., Kon, M., Lu, L., Aarestrup, F.M., Lycett, S., Medema, G., Koopmans,  
532 M.P.G., Graaf, M. de, 2021. Monitoring SARS-CoV-2 circulation and diversity through  
533 community wastewater Sequencing, the Netherlands and Belgium. *Emerg. Infect. Dis.* 27 (5),  
534 1405–1415, <https://doi.org/10.3201/eid2705.204410>.
- 535 Kim, D., Lee, J.-Y., Yang, J.-S., Kim, J.W., Kim, V.N., Chang, H., 2020. The architecture of  
536 SARS-CoV-2 transcriptome. *Cell* 181 (4), 914-921.e10,  
537 <https://doi.org/10.1016/j.cell.2020.04.011>.
- 538 Kitajima, M., Ahmed, W., Bibby, K., Carducci, A., Gerba, C.P., Hamilton, K.A., Haramoto, E.,  
539 Rose, J.B., 2020. SARS-CoV-2 in wastewater: State of the knowledge and research needs.  
540 *Sci. Total. Environ.* 739, 139076, <https://doi.org/10.1016/j.scitotenv.2020.139076>.
- 541 Korukluoglu, G., Kolukirik, M., Bayrakdar, F., Ozgumus, G.G., Altas, A.B., Cosgun, Y., Ketre  
542 Kolukirik, C.Z., 2021. 40 minutes RT-qPCR assay for screening spike N501Y and HV69-  
543 70del mutations. bioRxiv, <https://doi.org/10.1101/2021.01.26.428302>.
- 544 Lefever, S., Pattyn, F., Hellemans, J., Vandesompele, J., 2013. Single-nucleotide polymorphisms  
545 and other mismatches reduce performance of quantitative PCR assays. *Clin. Chem.* 59 (10),  
546 1470–1480, <https://doi.org/10.1373/clinchem.2013.203653>.



- 547 Lodder, W., de Roda Husman, A.M., 2020. SARS-CoV-2 in wastewater: Potential health risk,  
548 but also data source. *Lancet Gastroenterol. Hepatol.* 5 (6), 533–534,  
549 [https://doi.org/10.1016/S2468-1253\(20\)30087-X](https://doi.org/10.1016/S2468-1253(20)30087-X).
- 550 Lu, R., Zhao, X., Li, J., Niu, P., Yang, B., Wu, H., Wang, W., Song, H., Huang, B., Zhu, N., Bi,  
551 Y., Ma, X., Zhan, F., Wang, L., Hu, T., Zhou, H., Hu, Z., Zhou, W., Zhao, L., Chen, J.,  
552 Meng, Y., Wang, J., Lin, Y., Yuan, J., Xie, Z., Ma, J., Liu, W.J., Wang, D., Xu, W., Holmes,  
553 E.C., Gao, G.F., Wu, G., Chen, W., Shi, W., Tan, W., 2020. Genomic characterisation and  
554 epidemiology of 2019 novel coronavirus: Implications for virus origins and receptor binding.  
555 *Lancet* 395 (10224), 565–574, [https://doi.org/10.1016/S0140-6736\(20\)30251-8](https://doi.org/10.1016/S0140-6736(20)30251-8).
- 556 Makowski, L., Olson-Sidford, W., W-Weisel, J., 2021. Biological and clinical consequences of  
557 integrin binding via a rogue RGD motif in the SARS CoV-2 spike protein. *Viruses* 13 (2),  
558 146, <https://doi.org/10.3390/v13020146>.
- 559 Mandala, V.S., McKay, M.J., Shcherbakov, A.A., Dregni, A.J., Kolocouris, A., Hong, M., 2020.  
560 Structure and drug binding of the SARS-CoV-2 envelope protein transmembrane domain in  
561 lipid bilayers. *Nat. Struct. Mol. Biol.* 27 (12), 1202–1208, [https://doi.org/10.1038/s41594-](https://doi.org/10.1038/s41594-020-00536-8)  
562 [020-00536-8](https://doi.org/10.1038/s41594-020-00536-8).
- 563 Markiewicz, L., Drazkowska, K., Sikorski, P.J., 2021. Tricks and threats of RNA viruses -  
564 towards understanding the fate of viral RNA. *RNA Biol* 18 (5), 669–687,  
565 <https://doi.org/10.1080/15476286.2021.1875680>.
- 566 Medema, G., Heijnen, L., Elsinga, G., Italiaander, R., Brouwer, A., 2020. Presence of SARS-  
567 coronavirus-2 RNA in sewage and correlation with reported COVID-19 prevalence in the  
568 early stage of the epidemic in the Netherlands. *Environ. Sci. Technol. Lett.* 7 (7), 511–516,  
569 <https://doi.org/10.1021/acs.estlett.0c00357>.
- 570 Mercatelli, D., Giorgi, F.M., 2020. Geographic and genomic distribution of SARS-CoV-2  
571 mutations. *Front Microbiol.* 11, 1800, <https://doi.org/10.3389/fmicb.2020.01800>.
- 572 Mohan, S.V., Hemalatha, M., Kopperi, H., Ranjith, I., Kumar, A.K., 2021. SARS-CoV-2 in  
573 environmental perspective: Occurrence, persistence, surveillance, inactivation and challenges  
574 Occurrence, persistence, surveillance, inactivation and challenges. *Chem. Eng. J.* 405,  
575 126893, <https://doi.org/10.1016/j.cej.2020.126893>.
- 576 Muenchhoff, M., Mairhofer, H., Nitschko, H., Grzimek-Koschewa, N., Hoffmann, D., Berger,  
577 A., Rabenau, H., Widera, M., Ackermann, N., Konrad, R., Zange, S., Graf, A., Krebs, S.,  
578 Blum, H., Sing, A., Liebl, B., Wölfel, R., Ciesek, S., Drosten, C., Protzer, U., Boehm, S.,  
579 Keppler, O.T., 2020. Multicentre comparison of quantitative PCR-based assays to detect  
580 SARS-CoV-2, Germany, March 2020. *Euro Surveill.* 25 (24), 2001057,  
581 <https://doi.org/10.2807/1560-7917.ES.2020.25.24.2001057>.
- 582 Nemudryi, A., Nemudraia, A., Wiegand, T., Surya, K., Buyukyork, M., Cicha, C.,  
583 Vanderwood, K.K., Wilkinson, R., Wiedenheft, B., 2020. Temporal detection and  
584 phylogenetic assessment of SARS-CoV-2 in municipal wastewater. *Cell. Rep. Med.* 1 (6),  
585 100098, <https://doi.org/10.1016/j.xcrm.2020.100098>.
- 586 Peccia, J., Zulli, A., Brackney, D.E., Grubaugh, N.D., Kaplan, E.H., Casanovas-Massana, A.,  
587 Ko, A.I., Malik, A.A., Wang, D., Wang, M., Warren, J.L., Weinberger, D.M., Arnold, W.,  
588 Omer, S.B., 2020. Measurement of SARS-CoV-2 RNA in wastewater tracks community  
589 infection dynamics. *Nat. Biotechnol.* 38 (10), 1164–1167, [https://doi.org/10.1038/s41587-](https://doi.org/10.1038/s41587-020-0684-z)  
590 [020-0684-z](https://doi.org/10.1038/s41587-020-0684-z).
- 591 Pérez-Cataluña, A., Cuevas-Ferrando, E., Randazzo, W., Falcó, I., Allende, A., Sánchez, G.,  
592 2021. Comparing analytical methods to detect SARS-CoV-2 in wastewater. *Sci. Total.*  
593 *Environ.* 758, 143870, <https://doi.org/10.1016/j.scitotenv.2020.143870>.

- 594 Qi, R., Huang, Y.-T., Liu, J.-W., Sun, Y., Sun, X.-F., Han, H.-J., Qin, X.-R., Zhao, M., Wang,  
595 L.-J., Li, W., Li, J.-H., Chen, C., Yu, X.-J., 2018. Global prevalence of asymptomatic  
596 norovirus infection: A meta-analysis. *EClinicalMedicine* 2-3, 50–58,  
597 <https://doi.org/10.1016/j.eclinm.2018.09.001>.
- 598 Rački, N., Morisset, D., Gutierrez-Aguirre, I., Ravnikar, M., 2014. One-step RT-droplet digital  
599 PCR: A breakthrough in the quantification of waterborne RNA viruses. *Anal. Bioanal. Chem.*  
600 406 (3), 661–667, <https://doi.org/10.1007/s00216-013-7476-y>.
- 601 Randazzo, W., Truchado, P., Cuevas-Ferrando, E., Simón, P., Allende, A., Sánchez, G., 2020.  
602 SARS-CoV-2 RNA in wastewater anticipated COVID-19 occurrence in a low prevalence  
603 area. *Water Res.* 181, 115942, <https://doi.org/10.1016/j.watres.2020.115942>.
- 604 Róka, E., Khayer, B., Kis, Z., Kovács, L.B., Schuler, E., Magyar, N., Málnási, T., Oravecz, O.,  
605 Pályi, B., Pándics, T., Vargha, M., 2021. Ahead of the second wave: Early warning for  
606 COVID-19 by wastewater surveillance in Hungary. *Sci. Total. Environ.* 786, 147398,  
607 <https://doi.org/10.1016/j.scitotenv.2021.147398>.
- 608 Rossmann, K., Clasen, R., Münch, M., Wurzbacher, C., Tiehm, A., Drewes, J.E., 2021a. SARS-  
609 CoV-2 Krisenmanagement mit Hilfe eines Abwasserfrühwarnsystems am Beispiel  
610 Berchtesgadener Land SARS-CoV-2. Crises Management using Wastewater Surveillance in  
611 the County Berchtesgadener Land, Germany. *Deutsches Ärzteblatt* 118, 479–480,  
612 <https://doi.org/10.3238/arztebl.m2021.0261>.
- 613 Rossmann, K., Großmann, G., Frangoulidis, D., Clasen, R., Münch, M., Hasenknopf, M.,  
614 Wurzbacher, C., Tiehm, A., Stange, C., Ho, J., Woermann, M., Drewes, J.E., 2021b.  
615 Innovatives SARS-CoV-2-Krisenmanagement im öffentlichen Gesundheitswesen: Corona-  
616 Dashboard und Abwasserfrühwarnsystem am Beispiel Berchtesgadener Land. *Innovative*  
617 *SARS-CoV-2-2 crises management in the public health sector corona dashboard and*  
618 *wastewater surveillance in the county Berchtesgadener Land, Germany.*  
619 *Bundesgesundheitsblatt* (in press).
- 620 Sandoval Torrientes, M., Castelló Abietar, C., Boga Riveiro, J., Álvarez-Argüelles, M.E., Rojo-  
621 Alba, S., Abreu Salinas, F., Costales González, I., Pérez Martínez, Z., Martín Rodríguez, G.,  
622 Gómez de Oña, J., Coto García, E., Melón García, S., 2021. A novel single nucleotide  
623 polymorphism assay for the detection of N501Y SARS-CoV-2 variants. *J. Virol. Methods*  
624 294, 114143, <https://doi.org/10.1016/j.jviromet.2021.114143>.
- 625 Scheller, C., Krebs, F., Minkner, R., Astner, I., Gil-Moles, M., Wätzig, H., 2020.  
626 Physicochemical properties of SARS-CoV-2 for drug targeting, virus inactivation and  
627 attenuation, vaccine formulation and quality control. *Electrophoresis* 41 (13-14), 1137–1151,  
628 <https://doi.org/10.1002/elps.202000121>.
- 629 Scheuerman, P., Farrah, S., Bitton, G., 1991. Laboratory studies of virus survival during aerobic  
630 and anaerobic digestion of sewage sludge. *Water Res.* 25 (3), 241–245,  
631 [https://doi.org/10.1016/0043-1354\(91\)90002-8](https://doi.org/10.1016/0043-1354(91)90002-8).
- 632 Sidhu, J.P.S., Toze, S., 2012. Assessment of pathogen survival potential during managed aquifer  
633 recharge with diffusion chambers. *J. Appl. Microbiol.* 113 (3), 693–700,  
634 <https://doi.org/10.1111/j.1365-2672.2012.05360.x>.
- 635 US Center for Disease Control and Prevention, 2020. 2019-novel coronavirus (2019-nCoV) real-  
636 time rRT-PCR panel primers and probes (accessed 20.05.2021).  
637 <https://www.cdc.gov/coronavirus/2019-ncov/downloads/rt-pcr-panel-primer-probes.pdf>.
- 638 Virtanen, P., Gommers, R., Oliphant, T.E., Haberland, M., Reddy, T., Cournapeau, D., Burovski,  
639 E., Peterson, P., Weckesser, W., Bright, J., van der Walt, Stéfan J, Brett, M., Wilson, J.,  
640 Millman, K.J., Mayorov, N., Nelson, A.R.J., Jones, E., Kern, R., Larson, E., Carey, C.J.,

- 641 Polat, İ., Feng, Y., Moore, E.W., VanderPlas, J., Laxalde, D., Perktold, J., Cimrman, R.,  
642 Henriksen, I., Quintero, E.A., Harris, C.R., Archibald, A.M., Ribeiro, A.H., Pedregosa, F.,  
643 van Mulbregt, P., 2020. SciPy 1.0: Fundamental algorithms for scientific computing in  
644 Python. *Nat. Methods* 17 (3), 261–272, <https://doi.org/10.1038/s41592-019-0686-2>.
- 645 Vogels, C.B.F., Brito, A.F., Wyllie, A.L., Fauver, J.R., Ott, I.M., Kalinich, C.C., Petrone, M.E.,  
646 Casanovas-Massana, A., Catherine Muenker, M., Moore, A.J., Klein, J., Lu, P., Lu-Culligan,  
647 A., Jiang, X., Kim, D.J., Kudo, E., Mao, T., Moriyama, M., Oh, J.E., Park, A., Silva, J., Song,  
648 E., Takahashi, T., Taura, M., Tokuyama, M., Venkataraman, A., Weizman, O.-E., Wong, P.,  
649 Yang, Y., Cheemarla, N.R., White, E.B., Lapidus, S., Earnest, R., Geng, B., Vijayakumar, P.,  
650 Odio, C., Fournier, J., Bermejo, S., Farhadian, S., Dela Cruz, C.S., Iwasaki, A., Ko, A.I.,  
651 Landry, M.L., Foxman, E.F., Grubaugh, N.D., 2020. Analytical sensitivity and efficiency  
652 comparisons of SARS-CoV-2 RT-qPCR primer-probe sets. *Nat. Microbiol.* 5 (10), 1299–  
653 1305, <https://doi.org/10.1038/s41564-020-0761-6>.
- 654 Westhaus, S., Weber, F.-A., Schiwy, S., Linnemann, V., Brinkmann, M., Widera, M., Greve, C.,  
655 Janke, A., Hollert, H., Wintgens, T., Ciesek, S., 2021. Detection of SARS-CoV-2 in raw and  
656 treated wastewater in Germany: Suitability for COVID-19 surveillance and potential  
657 transmission risks. *Sci. Total. Environ.* 751, 141750,  
658 <https://doi.org/10.1016/j.scitotenv.2020.141750>.
- 659 Wu, F., Zhao, S., Yu, B., Chen, Y.-M., Wang, W., Song, Z.-G., Hu, Y., Tao, Z.-W., Tian, J.-H.,  
660 Pei, Y.-Y., Yuan, M.-L., Zhang, Y.-L., Dai, F.-H., Liu, Y., Wang, Q.-M., Zheng, J.-J., Xu, L.,  
661 Holmes, E.C., Zhang, Y.-Z., 2020. A new coronavirus associated with human respiratory  
662 disease in China. *Nature* 579 (7798), 265–269, <https://doi.org/10.1038/s41586-020-2008-3>.
- 663 Wurtzer, S., Marechal, V., Mouchel, J.M., Maday, Y., Teyssou, R., Richard, E., Almayrac, J.L.,  
664 Moulin, L., 2020. Evaluation of lockdown impact on SARS-CoV-2 dynamics through viral  
665 genome quantification in Paris wastewaters. Cold Spring Harbor Laboratory,  
666 <https://doi.org/10.1101/2020.04.12.20062679>.
- 667 Ye, Y., Ellenberg, R.M., Graham, K.E., Wigginton, K.R., 2016. Survivability, partitioning, and  
668 recovery of enveloped viruses in untreated municipal wastewater. *Environ. Sci. Technol.* 50  
669 (10), 5077–5085, <https://doi.org/10.1021/acs.est.6b00876>.

