

1 ***Anopheles* salivary antigens as serological biomarkers of**
2 **vector exposure and malaria transmission: A systematic**
3 **review with multilevel modelling**

4 Ellen A Kearney^{1,2}, Paul A Agius^{1,2,3}, Victor Chaumeau^{4,5}, Julia C Cutts^{1,6}, Julie A Simpson², Freya JJ
5 Fowkes^{1,2,3*}

6 ¹ The McFarlane Burnet Institute of Medical Research and Public Health, Melbourne, Victoria,
7 Australia

8 ² Centre for Epidemiology and Biostatistics, Melbourne School of Population and Global Health, The
9 University of Melbourne, Melbourne, Victoria, Australia

10 ³ Department of Epidemiology and Preventive Medicine, Monash University, Melbourne, Victoria,
11 Australia

12 ⁴ Shoklo Malaria Research Unit, Mahidol-Oxford Tropical Medicine Research Unit, Faculty of Tropical
13 Medicine, Mahidol University, Mae Sot, Thailand

14 ⁵ Centre for Tropical Medicine and Global Health, Nuffield Department of Medicine, University of
15 Oxford, Oxford, United Kingdom

16 ⁶ Department of Medicine at the Doherty Institute, The University of Melbourne, Melbourne, Victoria,
17 Australia

18 * Corresponding author:

19 Email: freya.fowkes@burnet.edu.au (FJIF)

20 Abstract

21 **Background:** Entomological surveillance for malaria is inherently resource-intensive and produces
22 crude population-level measures of vector exposure which are insensitive in low-transmission settings.
23 Antibodies against *Anopheles* salivary proteins measured at the individual-level may serve as proxy
24 biomarkers for vector exposure and malaria transmission, but their relationship is yet to be quantified.

25 **Methods:** A systematic review of studies measuring antibodies against *Anopheles* salivary antigens
26 (PROSPERO: CRD42020185449). Multilevel modelling estimated associations between
27 seroprevalence with *Anopheles* human biting rate (HBR) and malaria transmission measures.

28 **Results:** From 3981 studies identified in literature searches, 42 studies across 16 countries were
29 included contributing 393 meta-observations of anti-*Anopheles* salivary antibodies determined in
30 42,764 samples. A positive non-linear association between HBR and seroprevalence was found; overall
31 a 50% increase in HBR was associated with a 13% increase in odds of seropositivity (OR: 1.13, 95%CI:
32 1.06-1.20, $p < 0.001$). The association between HBR and *Anopheles* salivary antibodies was strongest
33 with concordant, rather than discordant *Anopheles* species. Seroprevalence was also significantly
34 positively associated with established epidemiological measures of malaria transmission: entomological
35 inoculation rate, *Plasmodium* spp. prevalence, and malarial endemicity class.

36 **Conclusions:** *Anopheles* salivary antibody biomarkers can serve as a proxy measure for HBR and
37 malaria transmission, and could monitor vectorial capacity and malaria receptivity of a population to
38 sustain malaria transmission. Validation of *Anopheles* species-specific biomarkers are important given
39 the global heterogeneity in the distribution of *Anopheles* species. Salivary biomarkers have the potential
40 to transform surveillance by replacing impractical, inaccurate entomological investigations, especially
41 in areas progressing towards malaria elimination.

42 **Funding:** Australian National Health and Medical Research Council, Wellcome Trust.

43

44 Introduction

45 Sensitive and accurate tools to measure and monitor changes in malaria transmission are essential to
46 track progress towards malaria control and elimination goals. Currently, the gold standard measurement
47 of malaria transmission intensity is the entomological inoculation rate (EIR), a population-measure
48 defined as the number of infective *Anopheles* mosquito bites a person receives per unit of time. EIR is
49 calculated as the human biting rate (HBR; measured at the population-level by entomological vector-
50 sampling methodologies (gold standard: human landing catch)) multiplied by the sporozoite index
51 (proportion of captured *Anopheles* with sporozoites present in their salivary glands). However,
52 estimation of EIR and HBR via entomological investigations are inherently labour and resource
53 intensive, requiring trained collectors, specialised laboratories and skilled entomologists. Furthermore,
54 these approaches provide a crude population-level measure of total vector exposure at a particular time
55 and location, precluding investigation of heterogeneity and natural transmission dynamics of individual-
56 level vector-human interactions [1]. For example, indoor human landing catches provide poor estimates
57 of outdoor biting and thus total vector exposure [2]. The sensitivity of EIR is further compromised in
58 low transmission settings where the number of *Plasmodium*-infected specimens detected is low and
59 often zero.

60 Evaluation of the human antibody response to *Anopheles* spp. salivary proteins has the potential to be
61 a logistically practical approach to estimate levels of exposure to vector bites at an individual-level.
62 Several *Anopheles* salivary proteins have been shown to be immunogenic in individuals naturally
63 exposed to the bites of *Anopheles* vectors and have been investigated as serological biomarkers to
64 measure *Anopheles* exposure [3-11], malaria transmission [12-14] and as an outcome for vector control
65 intervention studies [4-6, 14, 15]. However, a major short-coming of the literature is that studies are
66 largely descriptive and do not quantify the association between entomological and malariometric
67 measures and anti-*Anopheles* salivary antibody responses. We undertook a systematic review with
68 multilevel modelling, to quantify the association between HBR, EIR, and other markers of malaria
69 transmission, with anti-*Anopheles* salivary antibody responses and to understand how these associations

70 vary according to transmission setting and dominant *Anopheles* vectors. This knowledge is pertinent to
71 advance the use of salivary antibody biomarkers as a vector and malaria transmission sero-surveillance
72 tool.

73 **Methodology**

74 **Search strategy and selection criteria**

75 We performed a systematic review with multilevel modelling according to the MOOSE and PRISMA
76 guidelines [16, 17] (Reporting Standards Document). Five databases were searched for published
77 studies investigating antibodies to *Anopheles* salivary antigens as a biomarker for mosquito exposure
78 or malaria transmission published before 30th of June 2020. The protocol (Supplementary File 1) was
79 registered with PROSPERO (CRD42020185449).

80 The primary criteria for inclusion in this systematic review was the reporting of estimates of
81 seroprevalence or total levels of Immunoglobulin (Ig) in human sera against *Anopheles* salivary
82 antigens. We considered for inclusion: cross-sectional, cohort, intervention and case-control studies of
83 individuals or populations living in all geographies with natural exposure to *Anopheles* mosquitoes.
84 Studies that were solely performed in participants not representative of the wider naturally exposed
85 population (*i.e.* mosquito allergic patients, soldiers, returned travellers) were excluded.

86 **Measures**

87 **Outcomes**

88 The primary outcome of our systematic review was antibodies (seroprevalence or levels, including all
89 Ig isotypes and subclasses) against any *Anopheles* salivary antigens (full-length recombinant proteins,
90 peptides and crude salivary extract). As measurement of antibody levels does not produce a common
91 metric between studies only values of seroprevalence could be included in multilevel modelling
92 analyses. Therefore, to maximise data, authors of studies that reported only antibody levels were
93 contacted and asked to classify their participants as ‘responders’ or ‘non-responders’ according to

94 seropositivity (antibody level relative to unexposed sera). Studies that provided antibody levels or
95 categorised seropositivity based upon arbitrary cut offs are included in narrative terms only.

96 **Exposures**

97 The primary exposures of interest were the entomological metrics HBR (average number of bites
98 received per person per night) and EIR (infectious bites received per person per year). Secondary
99 exposures included study-reported prevalence of *Plasmodium* spp. infection (confirmed by either
100 microscopy, rapid diagnostic test, or polymerase chain reaction (PCR)) and seroprevalence of
101 antimalarial antibodies against pre-erythrocytic and blood-stage *Plasmodium* spp. antigens. Where
102 exposure estimates were not provided, we attempted to source data from other publications by the
103 authors, or using the site geolocation and year to obtain estimates of EIR from the Pangaea dataset [18],
104 *P. falciparum* rates in 2-10 year olds (*PfPR*₂₋₁₀) and dominant vector species (DVS) from the Malaria
105 Atlas Project (MAP) [19]. Malarial endemicity classes were derived by applying established endemicity
106 cut-offs to *PfPR*₂₋₁₀ estimates [20]. For the purposes of the modelling analyses we defined DVS as where
107 *An. gambiae sensu lato (s.l.)* was the only DVS, where *An. gambiae s.l.*, was present with additional
108 DVS, or where *An. gambiae s.l.* was absent. Studies of salivary antigens where exposure variables could
109 not be sourced and data could not be extracted were excluded.

110 **Statistical analysis**

111 Where seroprevalence estimates of antibodies against the same salivary antigen and exposure of interest
112 were reported in more than one study, generalised multilevel (mixed-effects, logistic) modelling was
113 used to quantify associations between the exposures of interest and salivary antibody seroprevalence
114 measurements [21]. Random intercepts for study and country were included to account for nested
115 dependencies induced from multiple meta-observations (level one) from the same study (level two) and
116 multiple studies from the same country (level three). Additionally, a random slope for the entomological
117 and malariometric exposure parameters was included to model study-specific heterogeneity in the effect
118 of the exposure of interest (HBR/EIR/malaria prevalence/antimalarial antibody seroprevalence). The
119 associations between the various exposures and the different salivary antigens were analysed separately,

120 however estimates of IgG seroprevalence against the recombinant full-length protein (gSG6) and
121 synthetic peptide (gSG6-P1, the one peptide determined in all studies utilising peptides) form of the
122 gSG6 antigen were analysed together.

123 Potential effect modification of the associations between exposures and anti-*Anopheles* salivary
124 antibody responses were explored. In analyses quantifying the associations between HBR, as well as
125 EIR, and seropositivity, we included an interaction term with DVS and for vector collection method
126 (human landing catch or other indirect measures *e.g.* light traps, spray catches, etc.). For the association
127 between *Plasmodium* spp. prevalence and seropositivity, interaction terms with malaria detection
128 methodology (light microscopy or PCR) and malarial species (*P. falciparum* only, or *P. falciparum* and
129 *P. vivax*) were estimated.

130 The natural log of the exposure measures (HBR, EIR, malaria prevalence and antimalarial antibody
131 seroprevalence) were estimated in modelling to account for their non-linear associations with
132 seroprevalence. Intraclass correlation coefficients (ICCs) were estimated for country- and study-
133 specific heterogeneity using estimated model variance components. All statistical analyses were
134 performed using STATA v15.1.

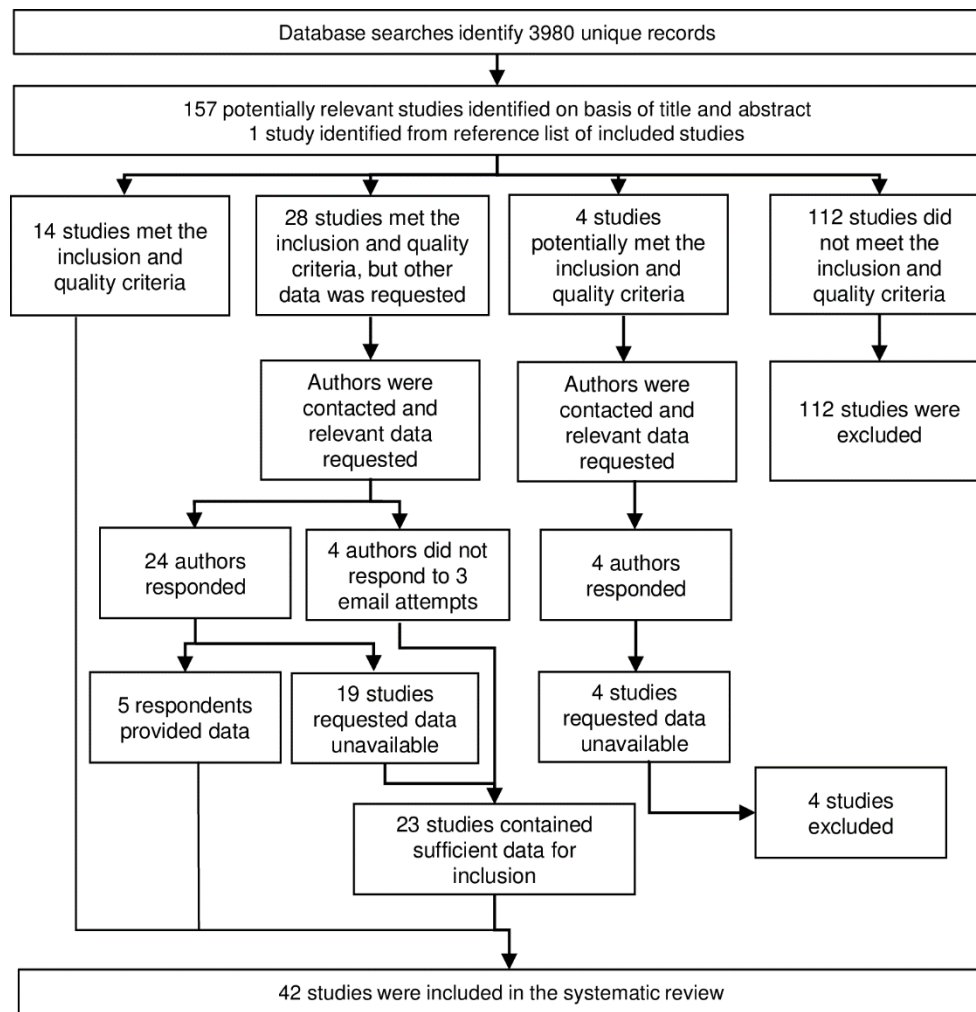
135 **Risk of bias in individual studies**

136 Risk of bias was assessed by one reviewer using the Risk of Bias in Prevalence Studies tool [22]. The
137 risk of bias pertains to the reported seroprevalence estimates of anti-*Anopheles* salivary antibodies
138 included in the multilevel modelling.

139 **Results**

140 Literature searches identified 158 potentially relevant studies, of which 42 studies were included in the
141 systematic review (Figure 1) and are described in Table 1. Briefly, studies were performed in 16
142 countries mostly in hypo or mesoendemic areas of Africa where *An. gambiae s.l.* is a dominant vector
143 (n=32), with a minority performed in South America (n=4), Asia (n=4), and the Pacific (n=2) where
144 *An. gambiae s.l.* is not found. In total, our review included 393 meta-observations of anti-*Anopheles*

145 salivary antibodies determined from antibody measurements in a total of 42,764 sera samples. The
146 salivary antigen most commonly assessed was *An. gambiae* Salivary Gland 6 (gSG6), as a full-length
147 protein (n=8) and synthetic peptide (*An. gambiae* Salivary Gland 6 Peptide 1; gSG6-P1; n=24).
148 Additional salivary antigens assessed included *An. gambiae* gSG6-P2 (n=3), recombinant cE5 (n=2),
149 g-5'nuc (n=1), and recombinant *An. funestus* fSG6 (n=2) and f-5'nuc (n=1). Seven studies measured
150 antibodies to whole salivary gland extracts from *An. gambiae* (n=4), *An. darlingi* (n=2), *An. albimanus*
151 (n=1), and *An. dirus* (n=1), while one study assessed antibodies against synthetic peptides of *An.*
152 *albimanus* (Table 1). All studies investigated total IgG and only five determined an additional isotype
153 or subclass [7, 23-26]. The paucity of studies investigating these latter-mentioned antibody types and
154 *Anopheles* salivary biomarkers precluded extensive multilevel analyses; instead, we present their
155 associations in narrative terms in Supplementary File 5. Analyses reported below focus on quantifying
156 the relationships between HBR, EIR and markers of malaria transmission with total IgG to *An. gambiae*
157 gSG6. The distributions of exposure estimates were: HBR (median: 3.1 bites per person per night, IQR:
158 0.9-12.1; range: 0-121.4), EIR (median: 7.3 infectious bites received per person per year, IQR: 0-36.4;
159 range: 0-585.6), and *Plasmodium* spp. prevalence (median: 9.1%; IQR: 4-22%; range: 0-94.6%).
160



161

162 **Figure 1. Flow diagram of study identification.** Excluded studies are detailed in Figure 1 –

163 Supplement 1.

Table 1: Key descriptive information from included studies

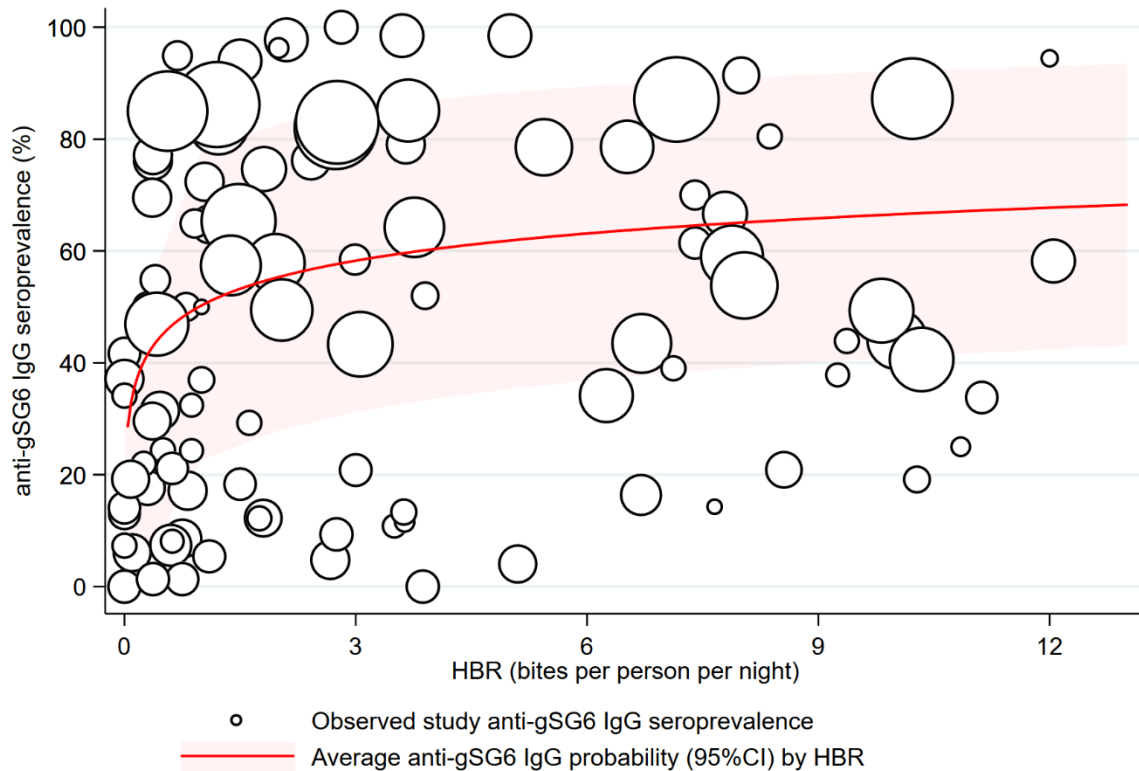
Study year	Country	Malarial endemicity class	Dominant malaria vector species	Study design	No. participants (samples)	Meta-N	Vector and malarionetric variables	Salivary antibody outcomes (Seroprevalence[%];[L]levels)
Africa								
Brosseau 2012 [27]	Angola	Hypoendemic; Mesoendemic	<i>An. funestus</i>	Cross-sectional [‡]	(1584)	6	<i>Plas</i> ^{+LM} ; <i>Pf</i> PR	gSGE IgG [L]
Drame 2010 [5]	Angola	Hypoendemic	<i>An. gambiae s.l.</i>	Cohort	105 (1470)	12	HBR; <i>Plas</i> ^{+LM} ; <i>Pf</i> PR	gSG6-P1 IgG [%;L]
Drame 2010 [6]	Angola	Hypoendemic	<i>An. gambiae s.l.</i>	Cohort	109 (1279)	12	HBR; <i>Plas</i> ^{+LM} ; <i>Pf</i> PR	gSGE IgG [L]
Marie 2015 [28]	Angola	Hypoendemic	<i>An. gambiae s.l.</i>	Cohort	71 (852)	12	HBR; <i>Pf</i> PR	gcE5 IgG [L]
Drame 2015 [7]	Benin	Hyperendemic	<i>An. gambiae s.l.</i> ; <i>An. funestus</i>	Cohort [‡]	133 (532)	4	HBR; <i>Pf</i> PR	gSG6-P1 IgG & IgM [%;L]
Rizzo 2011 [9]	Burkina Faso	Hyperendemic*	<i>An. gambiae s.l.</i>	Repeated cross-sectional	(2066)	14	HBR; EIR; <i>Plas</i> ^{+LM§}	gSG6 IgG [%;L]
Rizzo 2011 [8]	Burkina Faso	Hyperendemic*	<i>An. gambiae s.l.</i>	Repeated cross-sectional	335 (335)	3	HBR	fSG6 IgG [%;L]
Rizzo 2014 [24]	Burkina Faso	Hyperendemic*	<i>An. gambiae s.l.</i>	Repeated cross-sectional	(359)	3	HBR	gcE5 IgG [%;L]; IgG1 & IgG4 [L]
Rizzo 2014 [25]	Burkina Faso	Hyperendemic*	<i>An. gambiae s.l.</i>	Repeated cross-sectional	270 (270)	6	HBR	gSG6 IgG1 & IgG4 [L]
Soma 2018 [29]	Burkina Faso	Mesoendemic	<i>An. gambiae s.l.</i>	Cross-sectional	1728 (273)	6	HBR; EIR; <i>Plas</i> ^{+LM} ; <i>Pf</i> PR	gSG6-P1 IgG [%;L]
Koffi 2015 [30]	Cote d'Ivoire	Hypoendemic; Mesoendemic	<i>An. gambiae s.l.</i> ; <i>An. funestus</i> [†]	Cross-sectional	94 (94)	3	<i>Plas</i> ^{+LM} ; <i>Pf</i> -IgG; <i>Pf</i> PR	gSG6-P1 IgG [%;L]
Koffi 2017 [31]	Cote d'Ivoire	Hypoendemic	<i>An. gambiae s.l.</i> ; <i>An. funestus</i> [†]	Repeated cross-sectional	234 (234)	5	<i>Pf</i> -IgG; <i>Pf</i> PR	gSG6-P1 IgG [%;L]
Traoré 2018 [32]	Cote d'Ivoire	Hypoendemic	<i>An. gambiae s.l.</i> ; <i>An. funestus</i> [†]	Repeated cross-sectional [‡]	89 (178)	4	HBR; <i>Plas</i> ^{+LM} ; <i>Pf</i> PR	gSG6-P1 IgG [L]
Traoré 2019 [33]	Cote d'Ivoire	Hypoendemic	<i>An. gambiae s.l.</i> ; <i>An. funestus</i> [†]	Repeated cross-sectional [‡]	(442)	6	HBR; <i>Plas</i> ^{+LM} ; <i>Pf</i> PR	gSG6-P1 IgG [%;L]

Sadia-Kacou 2019 [34]	Cote d'Ivoire	Mesoendemic	<i>An. gambiae s.l.</i>	Repeated cross-sectional [‡]	775 (775)	8	<i>PfPR</i>	<i>gSG6-P1 IgG [L]</i>
Badu 2015 [35]	Ghana	Mesoendemic	<i>An. gambiae s.l.</i> ; <i>An. funestus</i> [†]	Repeated cross-sectional [‡]	295 (885)	3	<i>Plas</i> ^{LM} ; <i>Pf-IgG</i> ; <i>PfPR</i>	<i>gSG6-P1 IgG [%;L]</i>
Badu 2012 [3]	Kenya	Hypoendemic; Mesoendemic	<i>An. gambiae s.l.</i>	Repeated cross-sectional	(1366)	5	EIR; <i>Plas</i> ^{LM} §; <i>PfPR</i>	<i>gSG6-P1 IgG [%;L]</i>
Sagna 2013[36]	Senegal	Hypoendemic; Mesoendemic	<i>An. gambiae s.l.</i>	Cohort [‡]	265 (1325)	25	HBR; <i>Plas</i> ^{LM} §; <i>PfPR</i>	<i>gSG6-P1 IgG [%;L]</i>
Drame 2012 [11]	Senegal	Hypoendemic	<i>An. gambiae s.l.</i>	Cross-sectional	1010 (1010)	16	HBR; <i>PfPR</i>	<i>gSG6-P1 IgG [%;L]</i>
Poinsignon 2010 [37]	Senegal	Hypoendemic	<i>An. funestus</i>	Cohort [‡]	87 (261)	3	HBR; <i>Plas</i> ^{LM} §; <i>PfPR</i>	<i>gSG6-P1 IgG [L]</i>
Sarr 2012 [38]	Senegal	Hypoendemic; Mesoendemic	<i>An. gambiae s.l.</i> ; <i>An. funestus</i> [†]	Repeated cross-sectional [‡]	(401)	4	HBR; <i>Plas</i> ^{LM} §; <i>Pf-IgG</i> ; <i>PfPR</i>	<i>gSG6-P1 IgG [%;L]</i>
Lawaly 2012 [23]	Senegal	Mesoendemic	<i>An. gambiae s.l.</i> ; <i>An. funestus</i> [†]	Cohort	387 (711)	4	HBR; <i>Plas</i> ^{LM} §; <i>PfPR</i>	<i>gSGE IgG, IgG4 & IgE [L]</i>
Ali 2012 [39]	Senegal	Hypoendemic;* Mesoendemic;* Hyperendemic*	<i>An. gambiae s.l.</i> ; <i>An. funestus</i> ; <i>An. pharoensis</i>	Cross-sectional	(134)	3	HBR; EIR	<i>gSG6 IgG [%;L]</i> ; <i>fSG6 IgG [%;L]</i> ; <i>f5'nuc IgG [%;L]</i> ; <i>g5'nuc IgG [%;L]</i>
Ambrosino 2010 [40]	Senegal	Hypoendemic;* Mesoendemic;* Hyperendemic*	<i>An. gambiae s.l.</i> ; <i>An. funestus</i> ; <i>An. pharoensis</i>	Cross-sectional	(123)	3	EIR; <i>Pf-IgG</i>	<i>gSG6-P1 IgG [%]</i> ; <i>gSG6-P2 IgG [%]</i>
Perraut 2017 [41]	Senegal	Hypoendemic; Mesoendemic	<i>An. gambiae s.l.</i> ; <i>An. funestus</i>	Repeated cross-sectional	(798)	4	EIR; <i>Plas</i> ^{LM} ; <i>Plas</i> ^{PCR} ; <i>Pf-IgG</i> ; <i>PfPR</i>	<i>gSG6-P1 IgG [%]</i>
Poinsignon 2008 [42]	Senegal	Mesoendemic	<i>An. gambiae s.l.</i>	Cross-sectional [‡]	241 (241)	3	HBR; <i>PfPR</i>	<i>gSG6-P1 IgG [L]</i> ; <i>gSG6-P2 IgG [L]</i>
Poinsignon 2009 [43]	Senegal	Mesoendemic	<i>An. gambiae s.l.</i>	Repeated cross-sectional [‡]	61 (122)	2	HBR; <i>Plas</i> ^{LM} §; <i>PfPR</i>	<i>gSG6-P1 IgG [L]</i>
Remoue 2006 [44]	Senegal	Mesoendemic	<i>An. gambiae s.l.</i>	Cross-sectional [‡]	448 (448)	4	HBR; <i>Plas</i> ^{LM} §; <i>PfPR</i>	<i>gSGE IgG [%;L]</i>
Sagna 2019 [45]	Senegal	Hypoendemic	<i>An. gambiae s.l.</i>	Cross-sectional [‡]	809 (809)	4	<i>PfPR</i>	<i>gSG6-P1 IgG [L]</i>

Stone 2012 [10]	Tanzania	Mesoendemic; Hyperendemic	<i>An. gambiae s.l.</i>	Cross-sectional [‡]	636 (636)	16	HBR; <i>Pf</i> -IgG; <i>Pf</i> PR	gSG6 IgG [%;L]
Yman 2016 [46]	Tanzania	Mesoendemic; Holoendemic*	<i>An. gambiae s.l.</i> ; <i>An. funestus</i>	Repeated cross-sectional [‡]	668 (668)	16	<i>Pf</i> -IgG; <i>Pf</i> PR	gSG6 IgG [%]
Proietti 2013 [47]	Uganda	Mesoendemic	<i>An. gambiae s.l.</i> ; <i>An. funestus</i> [†]	Repeated cross-sectional	509 (509)	3	<i>Pf</i> -IgG; <i>Pf</i> PR	gSG6 IgG [%]
Americas								
Andrade 2009 [48]	Brazil	Eliminating; Hypoendemic	<i>An. darlingi</i>	Cross-sectional	204 (204)	3	<i>Plas</i> ^{+LM¶} ; <i>Plas</i> ^{+PCR¶} ; <i>Pf</i> PR	dSGE IgG [L]
Londono-Renteria 2015 [12]	Colombia		<i>An. albimanus</i>	Cross-sectional	42 (42)	2	<i>Plas</i> ^{+PCR¶}	gSG6-P1 IgG [L]
Londono-Renteria 2020 [49]	Colombia	Eliminating	<i>An. albimanus</i>	Cross-sectional	337 (337)	2	<i>Plas</i> ^{+PCR} ; <i>Pf</i> PR	aPEROX-P1, P2 & P3 IgG [L]; aTRANS-P1 & P2 IgG [L]
Montiel 2020 [50]	Colombia	Eliminating	<i>An. albimanus</i>	Case-control	113 (113)	2	<i>Plas</i> ^{+LM} ; <i>Plas</i> ^{+PCR¶} ; <i>Pf</i> PR	gSG6-P1 IgG [L]; dSGE IgG [L]; aSTECLA SGE IgG [L]; aCartagena SGE IgG [L]
Asia								
Kerkhof 2016 [51]	Cambodia	Hypoendemic	<i>An. dirus</i>	Cross-sectional		113	<i>Plas</i> ^{+PCR} ; <i>Pf</i> -IgG; <i>Pv</i> -IgG; <i>Pf</i> PR	gSG6-P1 IgG [%;L]; gSG6-P2 IgG [%;L]
Charlwood 2017 [52]	Cambodia	Eliminating	<i>An. dirus</i>	Repeated cross-sectional	454 (1180)	6	HBR; <i>Pf</i> -IgG; <i>Pf</i> PR	gSG6 IgG [L]
Ya-Umphun 2017 [13]	Myanmar	Eliminating	<i>An. minimus</i> ; <i>An. maculatus</i>	Repeated cross-sectional	2602 (9425)	28	HBR; EIR; <i>Plas</i> ^{+PCR} ; <i>Pf</i> -IgG; <i>Pf</i> PR	gSG6-P1 IgG [%;L]
Waitayakul 2006 [26]	Thailand		<i>An. dirus</i>	Case-control	139 (139)	3	<i>Plas</i> ^{+LM}	dirSGE IgG & IgM [L]
Pacific								
Pollard 2019 [53]	Solomon Islands	Eliminating; Hypoendemic	<i>An. farauti</i>	Repeated cross-sectional	686 (791)	9	HBR; EIR; <i>Pf</i> PR	gSG6-P1 IgG [%;L]
Idris 2017 [15]	Vanuatu	Eliminating; Hypoendemic; Mesoendemic	<i>An. farauti</i>	Repeated cross-sectional	905 (905)	3	<i>Plas</i> ^{+LM} ; <i>Pf</i> -IgG; <i>Pv</i> -IgG; <i>Pf</i> PR	gSG6 IgG [%;L]

165 Data are given as: study, year of publication, country, malarial endemicity class, malarial dominant vector species (DVS), study design (§ indicate that study was performed solely in children),
166 number of participants and number of samples, number of salivary antibody outcome observations taken from study (Meta-N), entomological and malariometric indices and salivary antibody
167 outcomes assessed. Endemicity is derived from *P. falciparum* prevalence rate in 2-10 year olds (*PfPR*₂₋₁₀) from Malaria Atlas Project (MAP) using site geolocations and year of study, using
168 established cut offs reported in Bhatt *et al.* [20]. If *PfPR*₂₋₁₀ data were not available (*e.g.* surveys prior to 2000; or unable to determine study site geolocation and year), endemicity class is given
169 as stated in the study (indicated by *). DVS is as stated in the study or extracted from MAP (indicated by †). Of note, *An. gambiae sensu lato (s.l.)* includes both *An. gambiae sensu stricto* and *An.*
170 *arabiensis*. Entomological and malariometric indices include human biting rate (HBR), entomological inoculation rate (EIR), prevalence estimates of *Plasmodium* spp. (*Plas+*): detected by light
171 microscopy (LM) or polymerase chain reaction (PCR), with § indicating prevalence of *P. falciparum* only and ¶ indicating prevalence of *P. vivax* only (no footnote indicates *P. falciparum* and *P.*
172 *vivax* co-endemic), as well as *PfPR*₂₋₁₀ extracted from MAP [54]. Salivary antibody outcomes are indicated as either seroprevalence [%] or levels [L], or both [%;L], with || indicating that studies
173 reported results stratified by malarial infection status. Salivary antigens include recombinant full-length proteins, synthetic peptides and whole salivary gland extracts (SGE). Italicised prefix of
174 salivary antigen indicates species: *An. gambiae* (*g*), *An. funestus* (*f*), *An. darlingi* (*d*), *An. albimanus* (*a*), *An. dirus* (*dir*).

175 Generalised multilevel modelling of 132 meta-observations from 12 studies estimated a positive
176 association between *Anopheles* spp.-HBR and seroprevalence of IgG to *An. gambiae* gSG6 salivary
177 antigen [5, 7, 8, 10, 11, 13, 29, 33, 36, 38, 39, 53]. The magnitude of the association was such that a
178 50% relative increase in HBR was associated with a 13% increase (OR: 1.13; 95%CI: 1.06-1.20,
179 $p<0.001$) in the odds of anti-gSG6 IgG seropositivity (Figure 2 and Figure 2 – Supplement 1). As the
180 association between gSG6 IgG and HBR (log transformed) is non-linear, relative change in gSG6 IgG
181 will vary across HBR levels. To quantify this, we estimated odds ratios for different incremental per
182 cent increases in HBR, shown in Figure 3A. Heterogeneity in the effect of HBR on gSG6 across studies
183 was observed (likelihood ratio $\chi^2(1) = 109.25, p<0.001$); the 95% reference range of study-specific
184 effects for a 50% relative increase in HBR ranged from a 7% reduction to a 37% increase in odds (OR:
185 0.93-1.37). There was no evidence ($p=0.443$) that the association between HBR and gSG6 IgG varied
186 according to vector collection method (human landing catch or other indirect methods). However, the
187 magnitude of the association between *An. gambiae* gSG6 IgG seropositivity and HBR was greatest
188 where *An. gambiae s.l.* was the only dominant vector ($p<0.001$); a 50% relative increase in HBR was
189 associated with a 20% increase (OR: 1.20; 95%CI: 1.11-1.31; $p<0.001$) in the odds of gSG6 IgG
190 seropositivity, compared to an 8% (OR: 1.08; 95%CI: 0.99-1.18; $p=0.079$) and 3% (OR: 1.03; 95%CI:
191 1.02-1.05; $p<0.001$) increase in odds of gSG6 IgG seropositivity where other DVS were present in
192 addition to *An. gambiae s.l.* and where *An. gambiae s.l.* was absent, respectively (Figure 4; Figure 4 –
193 Supplement 1). In order to quantify the relationship between gSG6 IgG seroprevalence and HBR, for
194 given HBR values we estimated gSG6 IgG seroprevalence by producing model-based predicted
195 probabilities overall and by DVS (Figure 4). Where *An. gambiae s.l.* is the only DVS, predicted
196 seroprevalence of *An. gambiae* gSG6 ranged from 8% (95%CI: 0-22%) to 86% (95%CI: 67-100%) for
197 an HBR of 0.01 to 100 bites per person per night respectively.



198

199 **Figure 2. Association between anti-gSG6 IgG seroprevalence and human biting rate (HBR).**

200 Figure shows the observed anti-gSG6 IgG (either recombinant or peptide form) seroprevalence (%) and

201 HBR for each meta-observation, as well as the predicted average anti-gSG6 IgG seroprevalence

202 (predicted probability for the average study and country) with 95% confidence intervals (95%CI).

203 Circles are proportional to the size of the sample for each meta-observation. Association estimated using

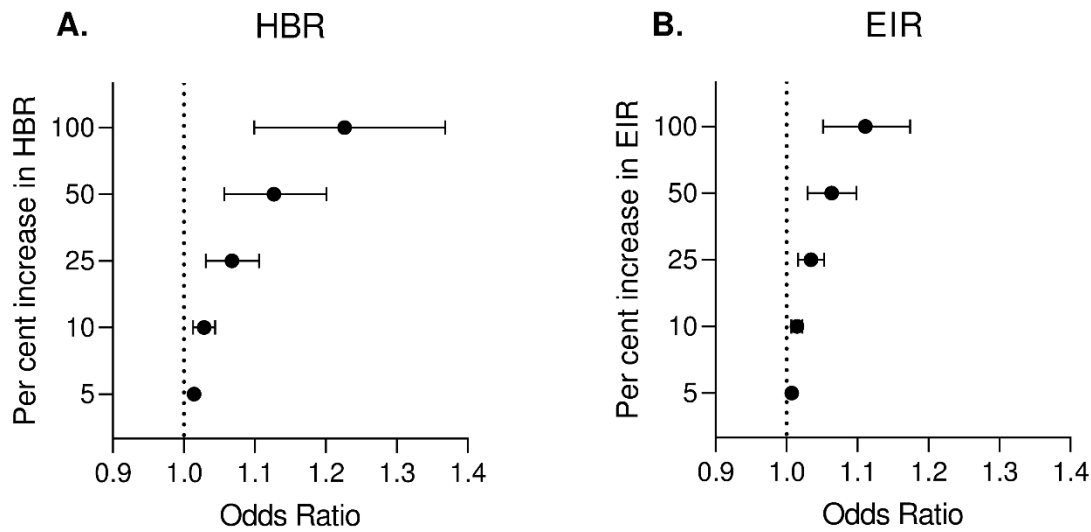
204 generalised multilevel mixed-effects modelling to account for the hierarchical nature of the data, using

205 an anti-gSG6 IgG meta-observation, nested within study nested in country (model output shown in

206 Figure 2 – Supplement 1; $p < 0.001$). Note: to aid visualisation the graph is truncated to show 75% of

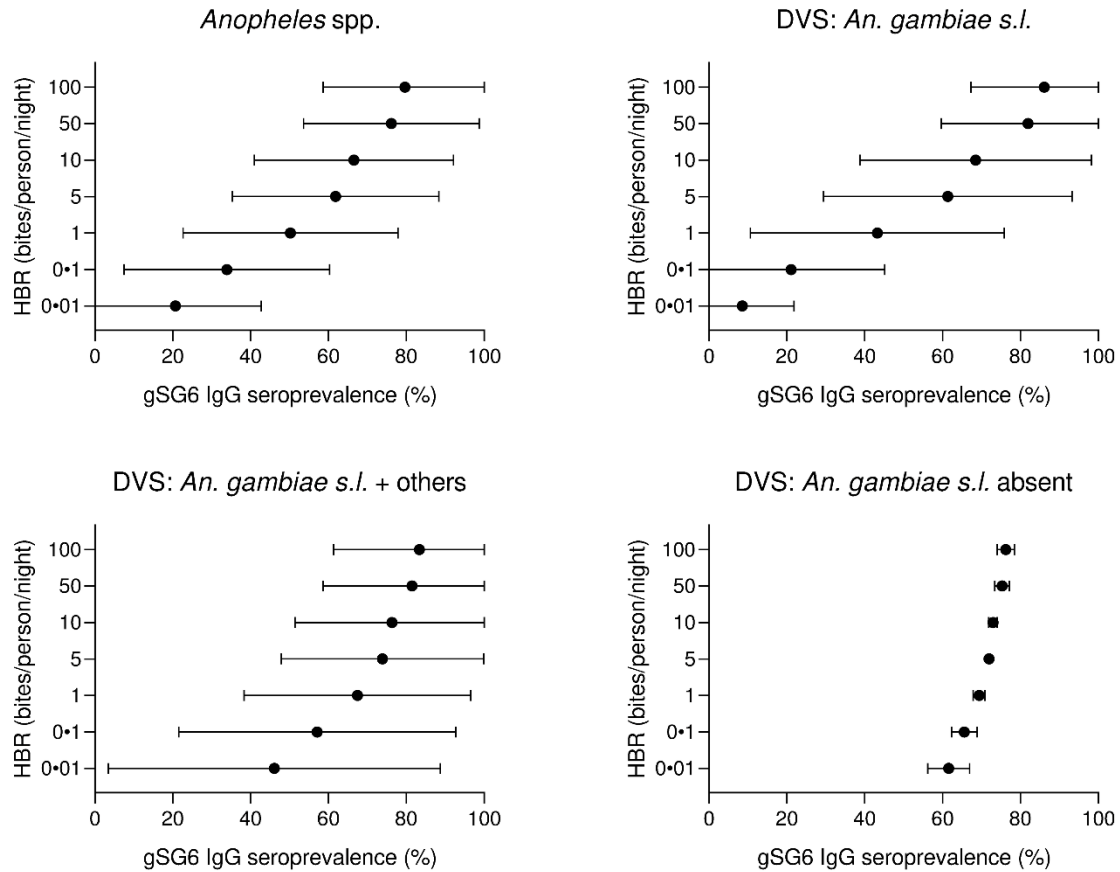
207 HBR data (*i.e.* 75th percentile 12.2 bites per person per night) but HBR estimates up to 121.4 were

208 observed and analysed.



209

210 **Figure 3. Estimated change in odds of anti-gSG6 IgG seropositivity for given per cent increases**
211 **in A) HBR (bites/person/night) and B) EIR (infective bites/person/year).** Forest plots show
212 estimated odds ratios (ORs) with 95% confidence intervals for given per cent increases in HBR or EIR,
213 estimated using generalised multilevel mixed-effects modelling of the association between anti-gSG6
214 IgG seropositivity and log HBR or EIR, with random-effects for country-specific and study-specific
215 heterogeneity in gSG6 IgG seroprevalence and study-specific heterogeneity in effect of HBR or EIR
216 (see Figure 2 – Supplement 1 and Figure 3 – Supplement 1 for model output).



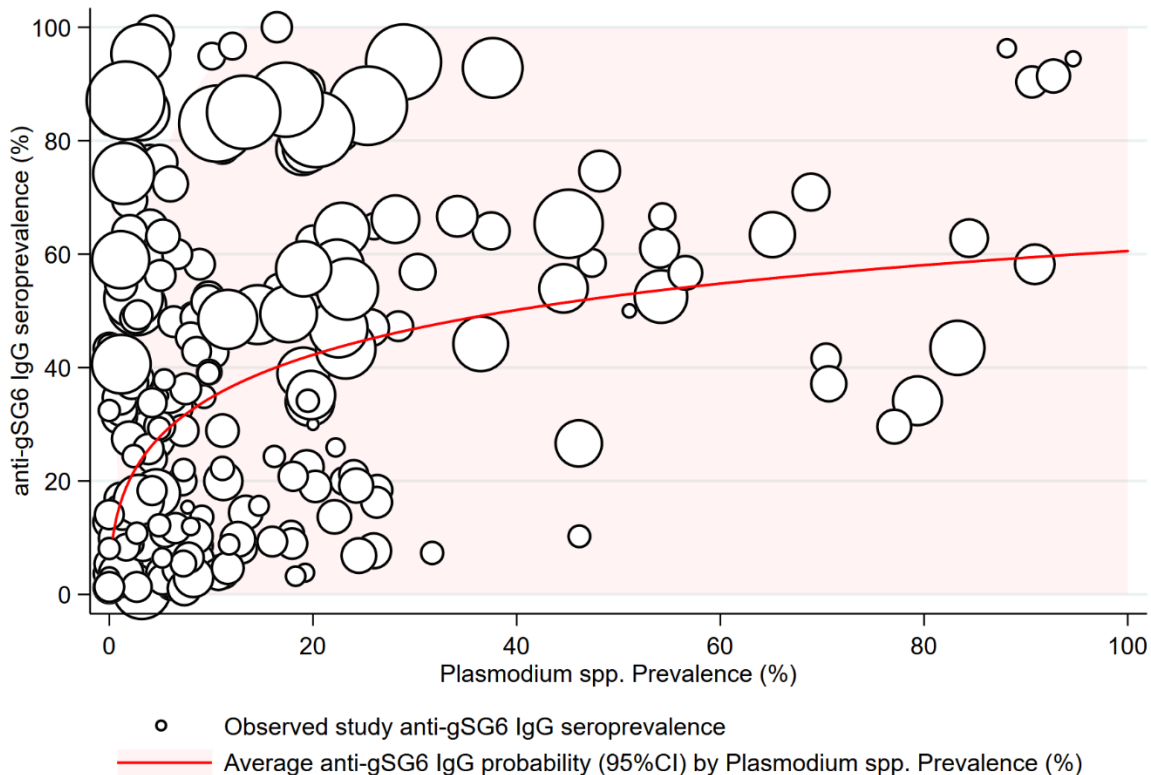
217

218 **Figure 4. Forest plots of predicted anti-gSG6 IgG seroprevalence (%) and *Anopheles* species-**
 219 **specific human biting rate (HBR).** Panels show the predicted average anti-gSG6 IgG seroprevalence
 220 (predicted probability for the average study and country) with 95% confidence intervals for given HBR,
 221 for all *Anopheles* spp. (using model output from Figure 2 – Supplement 1) and for specific-dominant
 222 vector species (DVS): where *An. gambiae s.l.* is the only DVS, where other DVS were present in
 223 addition to *An. gambiae s.l.* and where *An. gambiae s.l.* was absent (using model output from Figure 4
 224 – Supplement 1).

225 A positive association was also found between seroprevalence of anti-gSG6 IgG antibodies and EIR in
226 analysis of 38 observations from eight studies (Figure 3B, Figure 3 – Supplement 1) [3, 9, 13, 29, 39-
227 41, 53]. For a 50% increase in EIR, the odds of anti-gSG6 IgG seropositivity increased by 6% (OR:
228 1.06; 95%CI: 1.03-1.10; $p < 0.001$), with heterogeneity in the study-specific effects (95% reference
229 range: 1.00-1.13; likelihood ratio $\chi^2(1) = 15.02$, $p < 0.001$). There was no evidence of effect modification
230 by either vector collection method ($p = 0.095$) or DVS ($p = 0.800$) on the association between
231 seroprevalence of anti-gSG6 IgG and EIR.

232 Similar positive associations were also found between anti-gSG6 IgG levels, HBR and EIR in 11 studies
233 [7-11, 29, 36, 37, 39, 42, 52] and three studies [9, 13, 39] respectively but seven studies showed no
234 association between HBR and levels of IgG to gSG6 [5, 13, 32, 33, 38, 43, 53].

235 The association between anti-gSG6 IgG seroprevalence and population-level prevalence of
236 *Plasmodium* spp. infection was investigated. Generalised multilevel modelling of 212 meta-
237 observations from 14 studies [3, 5, 9, 13, 15, 29, 30, 33, 35, 36, 38, 41, 47, 51] showed that for a 10%
238 relative increase in the prevalence of *Plasmodium* spp. infection the odds of gSG6 IgG seropositivity
239 increased by 4%, although the confidence intervals were wide (OR: 1.04; 95%CI: 0.98-1.11; $p = 0.148$)
240 (Figure 5 and Figure 5 – Supplement 1). In the association between gSG6 IgG seropositivity and
241 *Plasmodium* spp. infection, there was no evidence for a moderating effect of *Plasmodium* spp. detection
242 method (light microscopy, or PCR, $p = 0.968$) or species (*P. falciparum* and *P. vivax*, or *P. falciparum*,
243 $p = 0.586$) potentially because all studies that reported *P. vivax* were co-prevalent with *P. falciparum*.



244

245 **Figure 5. The association between anti-gSG6 IgG seroprevalence (%) and *Plasmodium* spp.**
246 **prevalence (%).** Figure shows the observed anti-gSG6 IgG (either recombinant or peptide form)
247 seroprevalence (%) and prevalence of any *Plasmodium* spp. infection (%) for each meta-observation,
248 as well as the predicted average anti-gSG6 IgG seroprevalence (predicted probability for average study)
249 with 95% confidence intervals (95% CI). Circles are proportional to the size of the sample for each meta-
250 observation. Association estimated using generalised multilevel mixed-effects modelling to account for
251 the hierarchical nature of the data, using an anti-gSG6 IgG meta-observation, nested within study. See
252 Figure 5 – Supplement 1 for model output.

253

254 Additionally, 14 studies reported estimates of anti-gSG6 IgG levels and the prevalence of *Plasmodium*
255 spp. infections. The median anti-gSG6 IgG antibody levels increased with increasing *Plasmodium* spp.
256 prevalence in six of these studies [5, 13, 15, 37, 38, 51], or in *Plasmodium* spp. infected compared to
257 non-infected individuals [12, 50], but showed no association in eight studies [9, 29, 30, 32, 33, 35, 36,

258 43]. Furthermore, we also investigated associations with serological measures of malaria exposure and
 259 found that for a 10% relative increase in pre-erythrocytic and blood-stage stage antigen seroprevalence
 260 there was an 11% (OR: 1.11; 95%CI: 1.02-1.21%, $p=0.013$) and 5-27% (OR range: 1.05-1.27; p range:
 261 <0.001 to 0.523) increase in the odds of anti-gSG6 IgG seropositivity, respectively (Supplementary File
 262 3).

263 To give epidemiological context we estimated anti-gSG6 seroprevalence by producing model-based
 264 predicted probabilities by malarial endemicity class. Multilevel modelling on 297 meta-observations
 265 from 22 studies shows that the estimated anti-gSG6 IgG seroprevalence is higher for the higher
 266 endemicity classes (eliminating malaria: 20% (95%CI: 8-31%); hypoendemic: 34% (95%CI: 19-49%);
 267 mesoendemic: 52% (95%CI: 35-68%); hyperendemic settings: 47% (95%CI: 27-64%); holoendemic:
 268 78% (95%CI: 67-90%); $p<0.001$; Table 2). In addition, using Bayes Best-Linear-Unbiased Predictions
 269 (BLUPs) we estimated country-specific gSG6 IgG seroprevalence from an intercept only multilevel
 270 model fitted to 301 meta-observations from 22 studies. It showed that IgG seroprevalence to *An.*
 271 *gambiae* gSG6 was lowest in countries in the Pacific Region where *An. gambiae* is absent (Vanuatu
 272 (31%) and Solomon Islands (32%)) and highest in countries where *An. gambiae* is a DVS (Benin (72%)
 273 and Burkina Faso (65%); Supplementary File 4).

274

275 **Table 2: Association between gSG6 IgG seroprevalence (%) and malarial endemicity ($PfPR_{2-10}$).**

Malaria Endemicity Class ^a	OR	95%CI	p -value	Predicted gSG6 IgG seroprevalence (%)	95%CI
<i>Eliminating malaria</i> ($PfPR <1\%$)	Ref.			20.0	8.3, 31.7
<i>Hypoendemic</i> ($PfPR 1-10\%$)	2.04	1.43, 2.90	<0.001	33.7	18.9, 48.5
<i>Mesoendemic</i> ($PfPR 10-50\%$)	4.19	2.80, 6.08	<0.001	51.5	34.6, 67.7
<i>Hyperendemic</i> ($PfPR 50-75\%$)	3.36	1.98, 5.71	<0.001	46.5	27.4, 63.8
<i>Holoendemic</i> ($PfPR >75\%$)	14.4	9.72, 21.36	<0.001	78.2	66.8, 89.7

276 Table shows the odds ratio (OR), 95% confidence interval (95%CI), p -value, as well as the predicted gSG6 IgG seroprevalence
 277 and associated 95%CI^b for associations between endemicity class (derived from *P. falciparum* parasite rates in 2-10 year olds
 278 ($PfPR_{2-10}$)) and anti-gSG6 IgG seropositivity.

279 ^a Generalised multilevel modelling estimating the association between anti-gSG6 IgG seropositivity and endemicity class with
 280 random-effects for study-specific heterogeneity in gSG6 IgG. Model fitted to $n=297$ meta-observations. Endemicity class
 281 membership is derived from $PfPR_{2-10}$ from MAP, using cut-offs taken from Bhatt *et al.* [20], or where MAP data were
 282 unavailable, endemicity was included as indicated in the study.

283 ^b Predicted gSG6 IgG seroprevalence (predicted probability in the average study) is estimated from generalised multilevel
 284 modelling

285 Assessments of internal and external study validity revealed there was a moderate risk of selection bias
286 (Supplementary File 2) due to the study-specific inclusion criteria of populations at higher risk of
287 malaria which contributed gSG6 seroprevalence estimates.

288 Discussion

289 This systematic review and multilevel modelling analysis provides the first quantification of a positive
290 non-linear association between seroprevalence of *An. gambiae* gSG6 IgG antibodies and HBR and
291 demonstrated that its magnitude varied with respect to the DVS present in the area. Importantly, this
292 review identified a paucity of studies conducted outside of Africa, as well as investigating salivary
293 antigens representing different *Anopheles* spp. and antigenic targets. gSG6 antibodies were positively
294 associated with the prevalence of *Plasmodium* spp. infection as well as established epidemiological
295 measures of malaria transmission: malaria endemicity class and EIR. Overall, our results demonstrate
296 that antibody seroprevalence specific for *Anopheles* spp. salivary antigens has the potential to be an
297 effective measure of vector exposure and malaria transmission at the population- and, potentially,
298 individual-level.

299 *An. gambiae* gSG6 IgG seropositivity increased with increasing HBR, although these increases had
300 diminishing impact on *An. gambiae* gSG6 IgG seropositivity at higher levels of HBR. We also observed
301 that the association was strongest in areas where *An. gambiae s.l.* was the only DVS (that is concordant
302 *An. gambiae* species-specific HBR with *An. gambiae* gSG6 antibodies). Associations, albeit weaker,
303 were also observed between discordant species-specific HBR and gSG6, most likely because the *An.*
304 *gambiae* *SG6* gene shares moderate sequence identity with vector species that are dominant in other
305 regions (Africa: 80% *An. funestus*; Asia: 79% *An. stephensi* and *An. maculatus*; 54% *An. dirus*; Pacific:
306 52.5% *An. farauti*), and is absent from the DVS of the Americas (*An. albimanus* and *An. darlingi*) [55].
307 The generalisability of *An. gambiae* gSG6 IgG as a biomarker of exposure to other *Anopheles* spp. may
308 therefore be limited. However, our review also identified a paucity of studies investigating additional
309 salivary antigenic targets and *Anopheles* species not present in Africa. The identification of novel
310 salivary antigens that are species-specific will be valuable in quantifying exposure to the other

311 *Anopheles* vectors that share limited identity with *An. gambiae* SG6 (such as *An. farauti* and *An. dirus*),
312 as well as *Anopheles* spp. which lack SG6 (as done for *An. albimanus* and *An. darlingi* [49, 56]). An
313 *Anopheles* species-specific serological platform could advance vector surveillance by more accurately
314 capturing exposure to DVS in the South American and Asia Pacific regions which exhibit diverse biting
315 behaviours and vector competence (DVS typically bite outdoors during the night and day respectively
316 [19, 57-61]), as well as the increasing threat of urban malaria from *An. stephensi* in Africa [62, 63].

317 Importantly, this review demonstrated that the prevalence of *Anopheles* salivary antibodies increased
318 with increasing prevalence of *Plasmodium* spp. infection as well as established epidemiological
319 measures of malaria transmission: malaria endemicity class and EIR. Anti-salivary antibodies, such as
320 SG6 IgG, therefore, have the potential to serve as a proxy measure for vectorial capacity and malaria
321 receptivity of a population to sustain malaria transmission. Their application could be particularly
322 relevant in pre-elimination areas, or non-endemic areas under threat of imported malaria, where
323 *Anopheles* salivary antibodies are more readily detectable than parasites; salivary antibodies were
324 predicted to be prevalent (20%) in areas defined as eliminating malaria (<1% PfPR₂₋₁₀). Furthermore, if
325 SG6 IgG seroprevalence can be effectively combined with a measurement of the sporozoite index,
326 salivary antibodies as a marker of HBR could help overcome sensitivity limitations of EIR in low
327 transmission areas. Additional measures could include estimates of malaria prevalence or serological
328 biomarkers that are species- or life stage-specific (e.g. *Plasmodium* spp. pre-erythrocytic antigens as
329 biomarkers for recent parasite inoculation). Indeed, positive associations between antibodies specific
330 for *Plasmodium* spp. pre-erythrocytic and blood-stage antigens with gSG6 were demonstrated in
331 analyses of data from diverse malaria endemic areas. Serological tools combining salivary antigens with
332 antigens specific for the different *Plasmodium* spp. would be particularly beneficial in the Asia Pacific,
333 a region of relatively low malaria transmission with goals of elimination, but the highest burden of *P.*
334 *vivax* malaria where blood-stage infection can be caused by relapses from dormant liver stages. In these
335 areas, parasite prevalence may therefore overestimate ongoing malaria transmission, making vector
336 surveillance tools essential to informing elimination strategies in the Asia Pacific and other regions
337 where *P. vivax* is endemic.

338 The gold standard entomological measures HBR and EIR provide crude population-level estimates of
339 vector and malaria exposure that are specific in space and time and preclude investigation of individual-
340 level heterogeneity and natural transmission dynamics. Our study demonstrated that salivary
341 biomarkers measured at the individual-level, such as gSG6 IgG, can be used to quantify total vector
342 exposure at the population-level, without requiring laborious entomological experiments. However,
343 validating an individual-level serological measure, which demonstrates considerable individual-level
344 variation, against the imperfect population-level gold standards of HBR and EIR is challenging and
345 reflected in the variation in study-specific estimates in the association between gSG6 IgG and HBR in
346 modelling analyses. However, the accuracy of salivary antibodies to measure individual-level exposure
347 to *Anopheles* bites is yet to be validated; literature searches identified no studies investigating this
348 association at the individual-level. Without detailed measurements of individual-level vector exposure,
349 or a detailed knowledge of the half-life of *Anopheles* salivary antibodies post biting event, the true
350 accuracy of salivary antibodies, such as SG6 IgG, to measure individual-level HBR remains unknown.
351 This knowledge is particularly pertinent where *Anopheles* salivary biomarkers might be applied to
352 assess the effectiveness of a vector control intervention or used to measure temporal changes in malaria
353 transmission; particularly in areas or populations where there is considerable heterogeneity in
354 individual-level risk of *Anopheles* exposure (*e.g.* unmeasured outdoor biting due to occupational
355 exposure for forest workers [64]).

356 The broad nature of our inclusion and quality criteria was a key strength of our systematic review, which
357 aimed to provide a comprehensive analysis of all *Anopheles* salivary biomarkers and determine their
358 associations with entomological and malariometric measures of transmission. However, this review has
359 two main limitations. First, despite the inclusive nature, assessment of the external validity of the review
360 revealed a moderate risk of bias; some studies exhibited a high risk of selection bias as they were
361 performed in specific high-risk populations not representative of the overall population (*i.e.* children
362 only). This is accounted for to some degree by specification of a random effect (*i.e.* intercept) for study,
363 which accounts for unmeasured study-specific factors that may introduce study-specific measurement
364 error to measurement of the outcome. Second, with respect to internal validity, there may be potential

365 selection bias introduced by the exclusion of studies reporting zero HBR (seven observations from three
366 studies [9, 36, 53]), EIR (22 observations from three studies [9, 13, 29]) and malaria prevalence (15
367 observations from three studies [15, 36, 51]) estimates, given we modelled the log of these factors.
368 However, adding a small constant (*e.g.* 0.001) to a zero value to permit modelling of a log estimate can
369 also introduce considerable bias (*i.e.* seemingly small differences between values become very large on
370 the log scale). In light of this, we also chose to provide estimates of association and gSG6 IgG
371 seroprevalence according to widely accepted, discrete, endemicity classes (which permitted inclusion
372 of all studies) and according to a selected range of epidemiologically relevant hypothetical HBR's (no
373 widely accepted HBR classification exists in the literature) to provide epidemiological context.

374 **Conclusions**

375 In order to advance progress towards malaria elimination the World Health Organisation has called for
376 innovative tools and improved approaches to enhance vector surveillance and monitoring and
377 evaluation of interventions [65]. Our systematic review has provided strong evidence that *Anopheles*
378 salivary antibodies are serological biomarkers of vector and malaria exposure, by quantifying their
379 strong positive association with *Anopheles*-HBR and established epidemiological measures of malaria
380 transmission. These salivary biomarkers have the potential to replace crude population-level
381 entomological experiments with a precise and scalable tool that measures *Anopheles* vector exposure at
382 the individual-level. This approach could be expanded into a sero-surveillance tool to assess the
383 effectiveness of vector control interventions, define heterogeneity in malaria transmission and inform
384 efficient resource-allocation, that would ultimately accelerate progress towards elimination.

385 **Contributors**

386 All authors developed the protocol and the analytical plan. EAK performed literature searches, screened
387 studies and extracted data with input from FJIF. EAK and PAA analysed the data. All authors
388 interpreted the data. EAK and FJIF drafted the report. All authors read and critically revised the draft
389 report, and approved the final report. All authors agreed to be accountable for all aspects of the work.

390 **Declaration of interests**

391 We declare no competing interests.

392 **Acknowledgements**

393 We wish to thank the authors of the original studies for responding to requests for further
394 information/data for inclusion in the systematic review.

395 This work was supported by the National Health and Medical Research Council of Australia (Australian
396 Centre for Research Excellence in Malaria Elimination (ACREME) to FJIF and JAS (1134989); Career
397 Development Fellowship to FJIF (1166753) and investigator award to JAS (1196068); and its
398 Independent Research Institute Infrastructure Support Scheme), the Australian Commonwealth
399 Government (Australian Government Research Training Program Scholarship awarded to EK) and a
400 Victorian State Government Operational Infrastructure Support Program received by the Burnet
401 Institute. This research was funded in part by the Wellcome Trust (220211). For the purpose of Open
402 Access, the authors have applied a CC BY public copyright licence to any Author Accepted Manuscript
403 version arising from this submission. The funders had no role in the study design, data collection or
404 analysis, decision to publish, or preparation of the manuscript.

405 References

- 406 1. Monroe A, Moore S, Okumu F, Kiware S, Lobo NF, Koenker H, Sherrard-Smith E, Gimnig J, Killeen
407 GF. Methods and indicators for measuring patterns of human exposure to malaria vectors. *Malar J.*
408 2020;19(1):207. doi: 10.1186/s12936-020-03271-z.
- 409 2. Mathenge EM, Misiani GO, Oulo DO, Irungu LW, Ndegwa PN, Smith TA, Killeen GF, Knols BGJ.
410 Comparative performance of the Mbita trap, CDC light trap and the human landing catch in the sampling of
411 *Anopheles arabiensis*, *An. funestus* and *culicine* species in a rice irrigation in western Kenya. *Malar J.* 2005;4:
412 doi: 10.1186/1475-2875-4-7. PubMed PMID: 15667666.
- 413 3. Badu K, Siangla J, Larbi J, Lawson BW, Afrane Y, Ong'echa J, Remoue F, Zhou G, Githeko AK, Yan
414 G. Variation in exposure to *Anopheles gambiae* salivary gland peptide (gSG6-P1) across different malaria
415 transmission settings in the western Kenya highlands. *Malar J.* 2012;11:318. doi: 10.1186/1475-2875-11-318.
- 416 4. Drame PM, Diallo A, Poinsignon A, Boussari O, Dos Santos S, Machault V, Lalou R, Cornélie S,
417 LeHesran JY, Remoue F. Evaluation of the effectiveness of malaria vector control measures in urban settings of
418 Dakar by a specific *Anopheles* salivary biomarker. *PLoS One.* 2013;8(6):e66354. doi:
419 10.1371/journal.pone.0066354.
- 420 5. Drame PM, Poinsignon A, Besnard P, Cornélie S, Le Mire J, Toto JC, Foumane V, Dos-Santos MA,
421 Sembène M, Fortes F, Simondon F, Carnevale P, Remoue F. Human antibody responses to the *Anopheles* salivary
422 gSG6-P1 peptide: a novel tool for evaluating the efficacy of ITNs in malaria vector control. *PLoS One.*
423 2010;5(12):e15596. doi: 10.1371/journal.pone.0015596.
- 424 6. Drame PM, Poinsignon A, Besnard P, Le Mire J, Dos-Santos MA, Sow CS, Cornélie S, Foumane V,
425 Toto JC, Sembène M, Boulanger D, Simondon F, Fortes F, Carnevale P, Remoue F. Human antibody response to
426 *Anopheles gambiae* saliva: an immuno-epidemiological biomarker to evaluate the efficacy of insecticide-treated
427 nets in malaria vector control. *Am J Trop Med Hyg.* 2010;83(1):115-21. doi: 10.4269/ajtmh.2010.09-0684.
- 428 7. Drame PM, Poinsignon A, Dechavanne C, Cottrell G, Farce M, Ladekpo R, Massougboji A, Cornélie
429 S, Courtin D, Migot-Nabias F, Garcia A, Remoué F. Specific antibodies to *Anopheles* gSG6-P1 salivary peptide
430 to assess early childhood exposure to malaria vector bites. *Malar J.* 2015;14:285. doi: 10.1186/s12936-015-0800-
431 6.
- 432 8. Rizzo C, Ronca R, Fiorentino G, Mangano VD, Sirima SB, Nèbiè I, Petrarca V, Modiano D, Arcà B.
433 Wide cross-reactivity between *Anopheles gambiae* and *Anopheles funestus* SG6 salivary proteins supports
434 exploitation of gSG6 as a marker of human exposure to major malaria vectors in tropical Africa. *Malar J.*
435 2011;10:206. doi: 10.1186/1475-2875-10-206.
- 436 9. Rizzo C, Ronca R, Fiorentino G, Verra F, Mangano V, Poinsignon A, Sirima SB, Nèbiè I, Lombardo F,
437 Remoue F, Coluzzi M, Petrarca V, Modiano D, Arcà B. Humoral response to the *Anopheles gambiae* salivary
438 protein gSG6: a serological indicator of exposure to Afrotropical malaria vectors. *PLoS One.* 2011;6(3):e17980.
439 doi: 10.1371/journal.pone.0017980.
- 440 10. Stone W, Bousema T, Jones S, Gesase S, Hashim R, Gosling R, Carneiro I, Chandramohan D, Theander
441 T, Ronca R, Modiano D, Arcà B, Drakeley C. IgG responses to *Anopheles gambiae* salivary antigen gSG6 detect
442 variation in exposure to malaria vectors and disease risk. *PLoS One.* 2012;7(6):e40170. doi:
443 10.1371/journal.pone.0040170.
- 444 11. Drame PM, Machault V, Diallo A, Cornélie S, Poinsignon A, Lalou R, Sembène M, Dos Santos S, Rogier
445 C, Pagès F, Le Hesran JY, Remoué F. IgG responses to the gSG6-P1 salivary peptide for evaluating human
446 exposure to *Anopheles* bites in urban areas of Dakar region, Sénégal. *Malar J.* 2012;11:72. doi: 10.1186/1475-
447 2875-11-72.
- 448 12. Londono-Renteria B, Drame PM, Weitzel T, Rosas R, Gripping C, Cardenas JC, Alvares M, Wesson
449 DM, Poinsignon A, Remoue F, Colpitts TM. *An. gambiae* gSG6-P1 evaluation as a proxy for human-vector
450 contact in the Americas: a pilot study. *Parasit Vectors.* 2015;8:533. doi: 10.1186/s13071-015-1160-3.
- 451 13. Ya-Umphap P, Cerqueira D, Parker DM, Cottrell G, Poinsignon A, Remoue F, Brengues C,
452 Chareonviriyaphap T, Nosten F, Corbel V. Use of an *Anopheles* salivary biomarker to assess malaria transmission
453 risk along the Thailand-Myanmar Border. *J Infect Dis.* 2017;215(3):396-404. doi: 10.1093/infdis/jiw543.
- 454 14. Noukpo MH, Damien GB, Elanga-N'Dille E, Sagna AB, Drame PM, Chaffa E, Boussari O, Corbel V,
455 Akogbéto M, Remoue F. Operational assessment of long-lasting insecticidal nets by using an *Anopheles* salivary
456 biomarker of human-vector contact. *Am J Trop Med Hyg.* 2016;95(6):1376-82. doi: 10.4269/ajtmh.15-0541.
- 457 15. Idris ZM, Chan CW, Mohammed M, Kalkoa M, Taleo G, Junker K, Arcà B, Drakeley C, Kaneko A.
458 Serological measures to assess the efficacy of malaria control programme on Ambae Island, Vanuatu. *Parasit*
459 *Vectors.* 2017;10(1):204. doi: 10.1186/s13071-017-2139-z.

- 460 16. Moher D, Liberati A, Tetzlaff J, Altman DG, The PG. Preferred Reporting Items for Systematic Reviews
461 and Meta-Analyses: The PRISMA Statement. PLoS Med. 2009;6(7):e1000097. doi:
462 10.1371/journal.pmed.1000097.
- 463 17. Stroup DF, Berlin JA, Morton SC, Olkin I, Williamson GD, Rennie D, Moher D, Becker BJ, Sipe TA,
464 Thacker SB. Meta-analysis of observational studies in epidemiology: a proposal for reporting. Meta-analysis Of
465 Observational Studies in Epidemiology (MOOSE) group. JAMA. 2000;283(15):2008-12. Epub 2000/05/02. doi:
466 10.1001/jama.283.15.2008. PubMed PMID: 10789670.
- 467 18. Yamba EI, Tompkins AM, Fink AH, Ermert V, Djouda A, Amekudzi LK, Briët OJT. Monthly
468 entomological inoculation rates for studying malaria transmission seasonality in Africa. PANGAEA; 2018.
- 469 19. The Malaria Atlas Project [Internet]. 2017. Available from: <https://malariaatlas.org/>.
- 470 20. Bhatt S, Weiss DJ, Cameron E, Bisanzio D, Mappin B, Dalrymple U, Battle K, Moyes CL, Henry A,
471 Eckhoff PA, Wenger EA, Briët O, Penny MA, Smith TA, Bennett A, Yukich J, Eisele TP, Griffin JT, Fergus CA,
472 Lynch M, Lindgren F, Cohen JM, Murray CLJ, Smith DL, Hay SI, Cibulskis RE, Gething PW. The effect of
473 malaria control on *Plasmodium falciparum* in Africa between 2000 and 2015. Nature. 2015;526(7572):207-11.
474 Epub 2015/09/16. doi: 10.1038/nature15535. PubMed PMID: 26375008.
- 475 21. Song P, Rudan D, Zhu Y, Fowkes FJI, Rahimi K, Fowkes FGR, Rudan I. Global, regional, and national
476 prevalence and risk factors for peripheral artery disease in 2015: an updated systematic review and analysis.
477 Lancet Glob Health. 2019;7(8):e1020-e30. doi: 10.1016/S2214-109X(19)30255-4.
- 478 22. Hoy D, Brooks P, Woolf A, Blyth F, March L, Bain C, Baker P, Smith E, Buchbinder R. Assessing risk
479 of bias in prevalence studies: modification of an existing tool and evidence of interrater agreement. J Clin
480 Epidemiol. 2012;65(9):934-9. doi: 10.1016/j.jclinepi.2011.11.014.
- 481 23. Lawaly R, Konate L, Marrama L, Dia I, Diallo D, Sarr FD, Schneider BS, Casademont I, Diallo M, Brey
482 PT, Sakuntabhai A, Mecheri S, Paul R. Impact of mosquito bites on asexual parasite density and gametocyte
483 prevalence in asymptomatic chronic *Plasmodium falciparum* infections and correlation with IgE and IgG titers.
484 Infect Immun. 2012;80(6):2240-6. doi: 10.1128/iai.06414-11. PubMed PMID: WOS:000304387700031.
- 485 24. Rizzo C, Lombardo F, Ronca R, Mangano V, Sirima SB, Nèbiè I, Fiorentino G, Modiano D, Arcà B.
486 Differential antibody response to the *Anopheles gambiae* gSG6 and cE5 salivary proteins in individuals naturally
487 exposed to bites of malaria vectors. Parasit Vectors. 2014;7:549. doi: 10.1186/s13071-014-0549-8.
- 488 25. Rizzo C, Ronca R, Lombardo F, Mangano V, Sirima SB, Nèbiè I, Fiorentino G, Troye-Blomberg M,
489 Modiano D, Arcà B. IgG1 and IgG4 antibody responses to the *Anopheles gambiae* salivary protein gSG6 in the
490 sympatric ethnic groups Mossi and Fulani in a malaria hyperendemic area of Burkina Faso. PLoS One.
491 2014;9(4):e96130. doi: 10.1371/journal.pone.0096130.
- 492 26. Waitayakul A, Somsri S, Sattabongkot J, Looareesuwan S, Cui L, Udomsangpetch R. Natural human
493 humoral response to salivary gland proteins of *Anopheles* mosquitoes in Thailand. Acta Trop. 2006;98(1):66-73.
494 doi: 10.1016/j.actatropica.2006.02.004.
- 495 27. Brosseau L, Drame PM, Besnard P, Toto JC, Foumane V, Le Mire J, Mouchet F, Remoue F, Allan R,
496 Fortes F, Carnevale P, Manguin S. Human antibody response to *Anopheles* saliva for comparing the efficacy of
497 three malaria vector control methods in Balombo, Angola. PLoS One. 2012;7(9):e44189. doi:
498 10.1371/journal.pone.0044189.
- 499 28. Marie A, Ronca R, Poinsignon A, Lombardo F, Drame PM, Cornélie S, Besnard P, Le Mire J, Fiorentino
500 G, Fortes F, Carnevale P, Remoue F, Arcà B. The *Anopheles gambiae* cE5 salivary protein: a sensitive biomarker
501 to evaluate the efficacy of insecticide-treated nets in malaria vector control. Microbes Infect. 2015;17(6):409-16.
502 doi: 10.1016/j.micinf.2015.01.002.
- 503 29. Soma DD, Kassié D, Sanou S, Karama FB, Ouari A, Mamai W, Ouédraogo GA, Salem G, Dabiré RK,
504 Fournet F. Uneven malaria transmission in geographically distinct districts of Bobo-Dioulasso, Burkina Faso.
505 Parasit Vectors. 2018;11(1):296. doi: 10.1186/s13071-018-2857-x.
- 506 30. Koffi D, Touré AO, Varela ML, Vigan-Womas I, Béourou S, Brou S, Ehouman MF, Gnamien L, Richard
507 V, Djaman JA, Perraut R. Analysis of antibody profiles in symptomatic malaria in three sentinel sites of Ivory
508 Coast by using multiplex, fluorescent, magnetic, bead-based serological assay (MAGPIX™). Malar J.
509 2015;14:509. doi: 10.1186/s12936-015-1043-2.
- 510 31. Koffi D, Varela ML, Loucoubar C, Beourou S, Vigan-Womas I, Touré A, Djaman JA, Touré AO, Perraut
511 R. Longitudinal analysis of antibody responses in symptomatic malaria cases do not mirror parasite transmission
512 in peri-urban area of Cote d'Ivoire between 2010 and 2013. PLoS One. 2017;12(2):e0172899. doi:
513 10.1371/journal.pone.0172899.
- 514 32. Traoré DF, Sagna AB, Adja AM, Zoh DD, Lingué KN, Coulibaly I, N'Cho Tchiekoi B, Assi SB,
515 Poinsignon A, Dagnogo M, Remoue F. Evaluation of malaria urban risk using an immuno-epidemiological
516 biomarker of human exposure to *Anopheles* bites. Am J Trop Med Hyg. 2018;98(5):1353-9. doi:
517 10.4269/ajtmh.17-0231.
- 518 33. Traoré DF, Sagna AB, Adja AM, Zoh DD, Adou KA, Lingué KN, Coulibaly I, Tchiekoi NB, Assi SB,
519 Poinsignon A, Dagnogo M, Remoue F. Exploring the heterogeneity of human exposure to malaria vectors in an

- 520 urban setting, Bouaké, Côte d'Ivoire, using an immuno-epidemiological biomarker. *Malar J.* 2019;18(1):68. doi:
521 10.1186/s12936-019-2696-z.
- 522 34. Sadiya-Kacou CAM, Yobo CM, Adja MA, Sagna AB, Ndille EE, Poincignon A, Tano Y, Koudou BG,
523 Remoue F. Use of *Anopheles* salivary biomarker to assess seasonal variation of human exposure to *Anopheles*
524 bites in children living near rubber and oil palm cultivations in Côte d'Ivoire. *Parasite Epidemiol Control.*
525 2019;5:e00102. doi: 10.1016/j.parepi.2019.e00102.
- 526 35. Badu K, Gyan B, Appawu M, Mensah D, Dodoo D, Yan G, Drakeley C, Zhou G, Owusu-Dabo E, Koram
527 KA. Serological evidence of vector and parasite exposure in Southern Ghana: the dynamics of malaria
528 transmission intensity. *Parasit Vectors.* 2015;8:251. doi: 10.1186/s13071-015-0861-y.
- 529 36. Sagna AB, Sarr JB, Gaayeb L, Drame PM, Ndiath MO, Senghor S, Sow CS, Poincignon A, Seck M,
530 Hermann E, Schacht A-M, Faye N, Sokhna C, Remoue F, Riveau G. gSG6-P1 salivary biomarker discriminates
531 micro-geographical heterogeneity of human exposure to *Anopheles* bites in low and seasonal malaria areas. *Parasit*
532 *Vectors.* 2013;6(1):68. doi: 10.1186/1756-3305-6-68.
- 533 37. Poincignon A, Samb B, Doucoure S, Drame PM, Sarr JB, Sow C, Cornélie S, Maiga S, Thiam C, Rogerie
534 F, Guindo S, Hermann E, Simondon F, Dia I, Riveau G, Konate L, Remoue F. First attempt to validate the gSG6-
535 P1 salivary peptide as an immuno-epidemiological tool for evaluating human exposure to *Anopheles funestus*
536 bites. *Trop Med Int Health.* 2010;15(10):1198-203. doi: 10.1111/j.1365-3156.2010.02611.x.
- 537 38. Sarr JB, Samb B, Sagna AB, Fortin S, Doucoure S, Sow C, Senghor S, Gaayeb L, Guindo S, Schacht
538 AM, Rogerie F, Hermann E, Dia I, Konate L, Riveau G, Remoue F. Differential acquisition of human antibody
539 responses to *Plasmodium falciparum* according to intensity of exposure to *Anopheles* bites. *Trans R Soc Trop*
540 *Med Hyg.* 2012;106(8):460-7. doi: 10.1016/j.trstmh.2012.05.006.
- 541 39. Ali ZM, Bakli M, Fontaine A, Bakkali N, Vu Hai V, Audebert S, Boublik Y, Pagès F, Remoué F, Rogier
542 C, Fraissier C, Almeras L. Assessment of *Anopheles* salivary antigens as individual exposure biomarkers to
543 species-specific malaria vector bites. *Malar J.* 2012;11:439. doi: 10.1186/1475-2875-11-439.
- 544 40. Ambrosino E, Dumoulin C, Orlandi-Pradines E, Remoue F, Toure-Baldé A, Tall A, Sarr JB, Poincignon
545 A, Sokhna C, Puget K, Trape JF, Pascual A, Druilhe P, Fusai T, Rogier C. A multiplex assay for the simultaneous
546 detection of antibodies against 15 *Plasmodium falciparum* and *Anopheles gambiae* saliva antigens. *Malar J.*
547 2010;9:317. doi: 10.1186/1475-2875-9-317.
- 548 41. Perraut R, Varela ML, Loucoubar C, Niass O, Sidibé A, Tall A, Trape JF, Wotodjo AN, Mbengue B,
549 Sokhna C, Vigan-Womas I, Touré A, Richard V, Mercereau-Puijalon O. Serological signatures of declining
550 exposure following intensification of integrated malaria control in two rural Senegalese communities. *PLoS One.*
551 2017;12(6):e0179146. doi: 10.1371/journal.pone.0179146.
- 552 42. Poincignon A, Cornélie S, Mestres-Simon M, Lanfrancotti A, Rossignol M, Boulanger D, Cisse B,
553 Sokhna C, Arcà B, Simondon F, Remoue F. Novel peptide marker corresponding to salivary protein gSG6
554 potentially identifies exposure to *Anopheles* bites. *PLoS One.* 2008;3(6):e2472. doi:
555 10.1371/journal.pone.0002472.
- 556 43. Poincignon A, Cornélie S, Ba F, Boulanger D, Sow C, Rossignol M, Sokhna C, Cisse B, Simondon F,
557 Remoue F. Human IgG response to a salivary peptide, gSG6-PI, as a new immuno-epidemiological tool for
558 evaluating low-level exposure to *Anopheles* bites. *Malar J.* 2009;8. doi: 10.1186/1475-2875-8-198. PubMed
559 PMID: WOS:000269875000001.
- 560 44. Remoue F, Cisse B, Ba F, Sokhna C, Herve JP, Boulanger D, Simondon F. Evaluation of the antibody
561 response to *Anopheles* salivary antigens as a potential marker of risk of malaria. *Trans R Soc Trop Med Hyg.*
562 2006;100(4):363-70. doi: 10.1016/j.trstmh.2005.06.032.
- 563 45. Sagna AB, Kassié D, Couvray A, Adja AM, Hermann E, Riveau G, Salem G, Fournet F, Remoue F.
564 Spatial assessment of contact between humans and *Anopheles* and *Aedes* mosquitoes in a medium-sized African
565 urban setting, using salivary antibody-based biomarkers. *J Infect Dis.* 2019;220(7):1199-208. doi:
566 10.1093/infdis/jiz289.
- 567 46. Yman V, White MT, Rono J, Arca B, Osier FH, Troye-Blomberg M, Bostrom S, Ronca R, Rooth I,
568 Farnert A. Antibody acquisition models: A new tool for serological surveillance of malaria transmission intensity.
569 *Sci Rep.* 2016;6. doi: 10.1038/srep19472. PubMed PMID: WOS:000369380100001.
- 570 47. Proietti C, Verra F, Bretscher MT, Stone W, Kanoi BN, Balikagala B, Egwang TG, Corran P, Ronca R,
571 Arcà B, Riley EM, Crisanti A, Drakeley C, Bousema T. Influence of infection on malaria-specific antibody
572 dynamics in a cohort exposed to intense malaria transmission in northern Uganda. *Parasite Immunol.* 2013;35(5-
573 6):164-73. doi: 10.1111/pim.12031.
- 574 48. Andrade BB, Rocha BC, Reis-Filho A, Camargo LM, Tadei WP, Moreira LA, Barral A, Barral-Netto
575 M. Anti-*Anopheles darlingi* saliva antibodies as marker of *Plasmodium vivax* infection and clinical immunity in
576 the Brazilian Amazon. *Malar J.* 2009;8:121. doi: 10.1186/1475-2875-8-121.
- 577 49. Londono-Renteria B, Drame PM, Montiel J, Vasquez AM, Tobón-Castaño A, Taylor M, Vizcaino L,
578 Lenhart AAE. Identification and pilot evaluation of salivary peptides from *Anopheles albimanus* as biomarkers
579 for bite exposure and malaria infection in Colombia. *Int J Mol Sci.* 2020;21(3). doi: 10.3390/ijms21030691.

- 580 50. Montiel J, Carbal LF, Tobón-Castaño A, Vásquez GM, Fisher ML, Londono-Rentería B. IgG antibody
581 response against *Anopheles* salivary gland proteins in asymptomatic *Plasmodium* infections in Narino, Colombia.
582 Malar J. 2020;19(1):42. doi: 10.1186/s12936-020-3128-9.
- 583 51. Kerkhof K, Sluydts V, Willen L, Kim S, Canier L, Heng S, Tsuboi T, Sochantha T, Sovannaroth S,
584 Ménard D, Coosemans M, Durnez L. Serological markers to measure recent changes in malaria at population
585 level in Cambodia. Malar J. 2016;15(1):1-18. doi: 10.1186/s12936-016-1576-z.
- 586 52. Charlwood JD, Hall T, Nenhep S, Rippon E, Branca-Lopes A, Steen K, Arca B, Drakeley C. Spatial
587 repellents and malaria transmission in an endemic area of Cambodia with high mosquito net usage. MalariaWorld
588 J. 2017;8(11).
- 589 53. Pollard EJM, Patterson C, Russell TL, Apairamo A, Oscar J, Arcà B, Drakeley C, Burkot TR. Human
590 exposure to *Anopheles farauti* bites in the Solomon Islands is not associated with IgG antibody response to the
591 gSG6 salivary protein of *Anopheles gambiae*. Malar J. 2019;18(1):334. doi: 10.1186/s12936-019-2975-8.
- 592 54. *Plasmodium falciparum* Paratsite Rate 2-10 year olds [Internet]. MAP. 2020. Available from:
593 <https://malariaatlas.org/>.
- 594 55. Arcà B, Lombardo F, Struchiner CJ, Ribeiro JM. Anopheline salivary protein genes and gene families:
595 an evolutionary overview after the whole genome sequence of sixteen *Anopheles* species. BMC Genomics.
596 2017;18(1):153. doi: 10.1186/s12864-017-3579-8.
- 597 56. Londono-Rentería B, Montiel J, Calvo E, Tobón-Castaño A, Valdivia HO, Escobedo-Vargas K, Romero
598 L, Bosantes M, Fisher ML, Conway MJ, Vásquez GM, Lenhart AE. Antibody responses against *Anopheles*
599 *darlingi* immunogenic peptides in *Plasmodium* infected humans. Front Cell Infect Microbiol. 2020;10(455). doi:
600 10.3389/fcimb.2020.00455.
- 601 57. Trung HD, Bortel WV, Sochantha T, Keokenchanh K, Briët OJ, Coosemans M. Behavioural
602 heterogeneity of *Anopheles* species in ecologically different localities in Southeast Asia: a challenge for vector
603 control. Trop Med Int Health. 2005;10(3):251-62.
- 604 58. Sinka ME, Bangs MJ, Manguin S, Rubio-Palis Y, Chareonviriyaphap T, Coetzee M, Mbogo CM,
605 Hemingway J, Patil AP, Temperley WH. A global map of dominant malaria vectors. Parasit Vectors.
606 2012;5(1):69.
- 607 59. Sinka ME, Rubio-Palis Y, Manguin S, Patil AP, Temperley WH, Gething PW, Van Boeckel T, Kabaria
608 CW, Harbach RE, Hay SI. The dominant *Anopheles* vectors of human malaria in the Americas: occurrence data,
609 distribution maps and bionomic précis. Parasit Vectors. 2010;3(1):72. doi: 10.1186/1756-3305-3-72.
- 610 60. Herrera S, Ochoa-Orozco SA, González IJ, Peinado L, Quiñones ML, Arévalo-Herrera M. Prospects for
611 malaria elimination in Mesoamerica and Hispaniola. PLoS Negl Trop Dis. 2015;9(5):e0003700. Epub 2015/05/15.
612 doi: 10.1371/journal.pntd.0003700. PubMed PMID: 25973753; PubMed Central PMCID: PMC4431857.
- 613 61. Chaumeau V, Fustec B, Nay Hsel S, Montazeau C, Naw Nyo S, Metaane S, Sawasdichai S,
614 Kittiphanakun P, Phatharakokordbun P, Kwansomboon N, Andolina C, Cerqueira D, Chareonviriyaphap T,
615 Nosten FH, Corbel V. Entomological determinants of malaria transmission in Kayin state, Eastern Myanmar: A
616 24-month longitudinal study in four villages. Wellcome Open Res. 2018;3:109. Epub 2019/06/27. doi:
617 10.12688/wellcomeopenres.14761.4. PubMed PMID: 31206035; PubMed Central PMCID: PMC6544137.
- 618 62. Takken W, Lindsay S. Increased threat of urban malaria from *Anopheles stephensi* mosquitoes, Africa.
619 Emerg Infect Dis. 2019;25(7):1431-3. Epub 2019/07/17. doi: 10.3201/eid2507.190301. PubMed PMID:
620 31063455.
- 621 63. Sinka ME, Pironon S, Massey NC, Longbottom J, Hemingway J, Moyes CL, Willis KJ. A new malaria
622 vector in Africa: Predicting the expansion range of *Anopheles stephensi* and identifying the urban populations at
623 risk. Proc Natl Acad Sci USA. 2020;117(40):24900. doi: 10.1073/pnas.2003976117.
- 624 64. Sandfort M, Vantaux A, Kim S, Obadia T, Peppey A, Gardais S, Khim N, Lek D, White M, Robinson LJ,
625 Witkowski B, Mueller I. Forest malaria in Cambodia: the occupational and spatial clustering of *Plasmodium vivax*
626 and *Plasmodium falciparum* infection risk in a cross-sectional survey in Mondulkiri province, Cambodia. Malar
627 J. 2020;19(1):413. doi: 10.1186/s12936-020-03482-4.
- 628 65. World Health Organization. Global vector control response 2017–2030. Geneva: WHO, 2017.

629 **Supplementary Files**

630	Supplementary File 1. Supplementary Methodology.	30
631	Supplementary File 2. Risk of Bias assessment.....	35
632	Figure 1 - Supplement 1. Reasons for study exclusion.....	37
633	Figure 2 – Supplement 1: Association between gSG6 IgG seropositivity and human biting rate.....	38
634	Figure 3 – Supplement 1: Association between gSG6 IgG seropositivity and entomological inoculation	
635	rate	39
636	Figure 4 – Supplement 1: Association between gSG6 IgG seropositivity and Human Biting Rate	
637	(HBR), moderated by dominant vector species	40
638	Figure 5 – Supplement 1. Association between gSG6 IgG seropositivity and malaria prevalence....	41
639	Supplementary File 3. Association between gSG6 IgG seropositivity and antimalarial antibody	
640	seroprevalence.....	42
641	Antibodies against <i>P. falciparum</i> pre-erythrocytic stage antigens.....	42
642	Antibodies against <i>P. falciparum</i> blood stage antigens	42
643	Antibodies against <i>P. vivax</i> antigens.....	43
644	Supplementary File 4. Country and study-specific predicted probability of gSG6 IgG seropositivity.	
645	45
646	Supplementary File 5. Association between alternative salivary biomarkers and exposures of interest.	
647	48
648	Human biting rate.....	48
649	Entomological inoculation rate	48
650	Malaria prevalence	49
651	Antimalarial antibody seroprevalence.....	49
652	Supplementary References	52

653 **Supplementary File 1. Supplementary Methodology.**

654 *Search strategy*

655 We performed a systematic review with multilevel modelling of the published literature according to the Meta-
656 analysis of Observational Studies in Epidemiology (MOOSE) guidelines [1] and the Preferred Reporting Items
657 for Systematic Reviews and Meta-Analyses (PRISMA) specifications [2]. The protocol was registered with
658 PROSPERO (CRD42020185449).

659 The electronic databases PubMed, Scopus, Web of Science, African Index Medicus, and the Latin American and
660 Caribbean Health Sciences Literature (LILACS) were searched for studies published before June 30, 2020
661 investigating *Anopheles* salivary antigens as a biomarker for mosquito exposure or malaria transmission. Search
662 terms were as follows: *Anophel** AND saliva* AND (antibod* OR sero* OR antigen OR marker* OR biomarker*
663 OR gSG6* OR gSG* OR SG* OR cE5). The reference lists of included studies were screened for additional
664 studies, and Google Scholar was used to identify additional works by key authors. No formal attempt was made
665 to identify unpublished population studies as it would have required significant description of the design, methods
666 and analysis used in these studies, and a review of ethical issues.

667 *Selection criteria*

668 The primary criteria for inclusion in this systematic review was the reporting of estimates of seroprevalence or
669 total levels of Immunoglobulin (Ig) antibodies (including all isotypes and subclasses) in human sera against
670 recombinant or synthetic peptide *Anopheles* salivary antigens. We considered for inclusion: cross-sectional
671 studies, cohort studies, intervention studies and case-control studies of individuals or populations (including sub-
672 populations) living in all geographies with natural exposure to *Anopheles* mosquitoes. Studies that were solely
673 performed in participants not representative of the wider population (i.e. mosquito allergic patients, soldiers,
674 returned travellers) were excluded. The minimum quality criteria for inclusion in this review were: antibody
675 detection performed using enzyme-linked immunosorbent assay (ELISA), multiplex or Luminex assays.

676 The exposure variables of interest included entomological and malariometric parameters, including: (i) human
677 biting rate (HBR), defined as the number of bites received per person per unit of time; (ii) entomological
678 inoculation rate (EIR), defined as the number of infectious bites per person per unit of time, calculated as the HBR
679 multiplied by the sporozoite index; (iii) estimates of malaria prevalence; (iv) population-level seroprevalence
680 estimates against *Plasmodium* spp. malarial antigens. To ensure HBR estimates were given for the same unit of
681 time (bites per person per night), biting rates given per week were divided by 7, and biting rates given per month

682 we multiplied by 12 and divided by 365. Similar approaches were employed to ensure consistent units for EIR
683 (infectious bites per person per year). *Plasmodium* spp. infections had to be confirmed by either microscopy, rapid
684 diagnostic test (RDT) or molecular methods (polymerase chain reaction (PCR)). *Plasmodium* spp. diagnosis was
685 included for all *Plasmodium* spp. combined and the species-level if provided. Where exposure estimates were not
686 provided, we attempted to source data from other publications by the authors, or using the site geolocation and
687 year to obtain estimates of EIR from the Pangaea dataset [3]. *P. falciparum* rates in 2-10 year olds (globally,
688 2000–2017) and dominant vector species (DVS) from the Malaria Atlas Project (MAP) [4]. Studies of salivary
689 antigens where exposure variables could not be sourced and data that could not be extracted were excluded.

690 *Selection of studies*

691 One author performed database searches and screened reference lists to identify possible studies. One author
692 screened studies against inclusion criteria, with discussion and input from a second reviewer.

693 *Approaches to include all available studies*

694 The authors of any studies that did not contain relevant information on the study design, populations, eligibility
695 criteria, or key study data, were contacted and relevant data requested. Authors were contacted via an initial email
696 detailing the precise nature of the systematic review and the data required. If the authors did not reply to three
697 email requests, or were unable to provide relevant data, the studies were deemed to insufficiently meet
698 inclusion/quality criteria and were excluded. As measurement of antibody levels does not produce a common
699 metric between studies, authors were asked to classify their participants as ‘responders’ or ‘no-responders’
700 according to seropositivity (antibody level relative to unexposed sera) within each study, to allow comparisons of
701 seroprevalence between studies [5-7]. Studies that were only able to provide antibody levels or categorised
702 seropositivity based upon arbitrary cut offs were excluded from multilevel modelling analyses and included in
703 narrative terms. Where the salivary antibody response and exposure variable were measured in the same
704 population and reported in multiple publications, the study with the largest sample size was included, otherwise
705 the earliest study was included.

706 *Data extraction*

707 Data were extracted using a data collection form by one reviewer. Any data that was provided at the sub-
708 population level was extracted at the lowest level i.e. if a study was performed across multiple sites, and an
709 estimate for both salivary antibody seroprevalence/levels and the outcome of interest is given for each site, it was
710 included the site level, rather than an aggregated level.

711 *Measures*

712 *Outcomes*

713 The primary outcome of interest of our systematic review was the reported antibody response (both seroprevalence
714 and levels of all Ig subclasses and isotypes) to *Anopheles* salivary antigens. Multilevel modelling analyses were
715 performed where the seroprevalence of antibodies against the same antigen and the exposure of interest were
716 reported in more than one study.

717 *Exposures*

718 The primary exposures of interest included in the multilevel modelling analyses were the HBR and EIR, a measure
719 of the average number of bites received per person per night and infectious bites received per person per year,
720 respectively. Secondary exposures assessed include the prevalence of any *Plasmodium* spp. infection (including
721 *P. falciparum* only, *P. vivax* only, or untyped infections). Additional secondary exposures include the *P.*
722 *falciparum* infection rate in 2-10 year olds extracted from MAP, as well as the seroprevalence of antimalarial
723 antibodies against pre-erythrocytic and blood-stage antigens.

724 Clinical and methodological heterogeneity were explored using prespecified variables to minimize spurious
725 findings. Variables considered for inclusion were study design (cohort, cross-sectional, repeated cross-sectional),
726 DVS, study participants (adults only, children only, adults and children), preparation of salivary antigen
727 (recombinant full-length protein, synthetic peptide), malaria detection methodology (light microscopy, RDT,
728 PCR), and entomological vector collection methodology (human landing catch, light traps, and spray catches).

729 *Statistical analysis*

730 Where there were sufficient data to pool estimates of the same exposure and outcome measures, generalised linear
731 mixed modelling (GLMM) was used to undertake analyses quantifying associations between the exposures of
732 interest and salivary antibody seroprevalence measurements. Models were generalised through use of the logit
733 link function and binomial distribution (statistical notation for HBR model shown below as equation one).
734 Seroprevalence was modelled in binomial form as the number of individuals seropositive to the total sample size.
735 A three-level random effects model with a nested framework was used to account for dependency in the data, with
736 random intercepts for country (level-3) and study (level-2) and level-1 units representing multiple observations
737 per study induced by the study design (*i.e.* multiple time points, sites, age categories). Additionally, random slopes
738 for entomological and malariometric exposure parameters were included to permit the effect of the exposure of
739 interest (HBR/EIR/malaria prevalence/etc.) to vary across studies. Model structure was determined empirically

740 through likelihood ratio tests ($p < 0.05$), with the exception of country at the 3rd level which was included in HBR
741 and EIR analyses to estimate country-specific seroprevalence estimates of anti-salivary antibodies. The
742 associations between the various exposures and the different salivary antigens were analysed separately, however
743 estimates of IgG seroprevalence against the recombinant full-length protein (gSG6) and synthetic peptide (gSG6-
744 P1, the one peptide determined in all studies utilising peptides) form of the gSG6 antigen were analysed together,
745 with a fixed term for antigen construct considered for inclusion in the model. Of note, gSG6 peptide 2 (gSG6-P2)
746 was excluded from being analysed with gSG6 and gSG6-P1 estimates, as the two studies that reported anti-gSG6-
747 P2 IgG seroprevalence also reported the seroprevalence of anti-gSG6-P1 IgG, and only one could be included.
748 Potential effect modification of the associations between the exposures of interest and the anti-*Anopheles* salivary
749 antibody responses was explored was undertaken by estimating interaction terms for DVS (*An. gambiae sensu*
750 *lato* (*s.l.*) only, *An. gambiae s.l.* and other DVS, or *An. gambiae s.l.* absent) and for vector collection method
751 (human landing catch or other indirect measures *e.g.* light traps, spray catches, etc.). For the association between
752 *Plasmodium* spp. prevalence and gSG6 IgG seropositivity interaction terms for malaria detection methodology
753 (light microscopy or PCR), and malarial species type (*P. falciparum* only, or *P. falciparum* and *P. vivax*) were
754 estimated. Other variables considered for inclusion in adjusted models were study design, participant, salivary
755 antigen construct; however, these variables showed no association with anti-gSG6 IgG and were thus excluded.
756 The natural log of HBR, EIR, malaria prevalence and antimalarial antibody seroprevalence were modelled to
757 account for the non-linear functional form of the association between each measure and the log odds of anti-gSG6
758 IgG seroprevalence - supported empirically by superior model fit as indicated by Akaike's information criterion
759 (AIC) and Bayesian information criterion (BIC) fit indices. To aid interpretation, odds ratios are presented
760 according to relative per cent increase in the exposures, such that odds ratios reflect relative changes in anti-gSG6
761 IgG seropositivity for 50% increases HBR and EIR, and 10% increases in malaria prevalence and antimalarial
762 seroprevalence. Additional per cent changes in HBR and EIR are also presented.
763 Empirical Bayes best linear unbiased predictions (BLUPs) were used to estimate the probability of gSG6 IgG
764 seropositivity in the average study and country, which is equivalent to an estimated gSG6 IgG seroprevalence. In
765 order to maximise the number of included studies in our modelling, we predicted anti-gSG6 seroprevalence
766 according to endemicity class, derived by applying established endemicity cut-offs to $PfPR_{2-10}$ estimates [8]
767 extracted from MAP using site year and geolocation (if MAP data unavailable endemicity as stated in study).
768 Intraclass correlation coefficients (ICCs) and 95% reference ranges were estimated for country-, study- and slope-
769 specific heterogeneity (where appropriate) using estimated model variance components.

770 *Statistical notation for the generalised linear mixed model used to estimate the association between*
771 *Anopheles gambiae gSG6 IgG seropositivity and human biting rate (HBR).*

772 The model can be formally written as:

$$773 \text{logit}\{\Pr(y_{ij} = 1) \mid x_{ij}, \zeta_{1j}, \zeta_{2i}, \zeta_{3j} \log(HBR)_{ij}\} = \beta_1 + \beta_2 \log(HBR)_{ij} + \zeta_{1j} + \zeta_{2i} + \zeta_{3i} \log(HBR)_{ij}, \quad (1)$$

774 where

$$775 \zeta_{1j} \sim N(0, \psi_1), \zeta_{2i} \sim N(0, \psi_2) \text{ and } \zeta_{3j} \log(HBR)_{ij} \sim N(0, \psi_3), \quad (2)$$

776

777 Where x_{ij} is the vector of model covariates, β_1 is the model constant and represents the log odds (probability) of
778 gSG6 IgG seropositivity for a log HBR of zero, β_2 the fixed effect for log HBR for country j and study i , ζ_{1j} the
779 random-effect (i.e. intercept) for between-country heterogeneity in probability of gSG6 IgG seropositivity, ζ_{2i} ,
780 the random-effect (i.e. intercept) for between-study heterogeneity in probability of gSG6 IgG seropositivity, and
781 ζ_{3i} the random-effect (i.e. coefficient) for between-study heterogeneity in the effect of log HBR.

782

783 *Risk of bias in individual studies*

784 For cross-sectional, cohort or intervention studies, selection bias was assessed by reviewing the studies' inclusion
785 and exclusion criteria. Any case-control studies, or studies that presented salivary antibody data stratified by
786 malaria infection status were included in narrative terms only. Risk of bias was assessed by one reviewer using
787 the Risk of Bias in Prevalence Studies tool [9]. The risk of bias pertains to the reported seroprevalence estimates
788 of anti-*Anopheles* salivary antibodies included in the multilevel modelling.

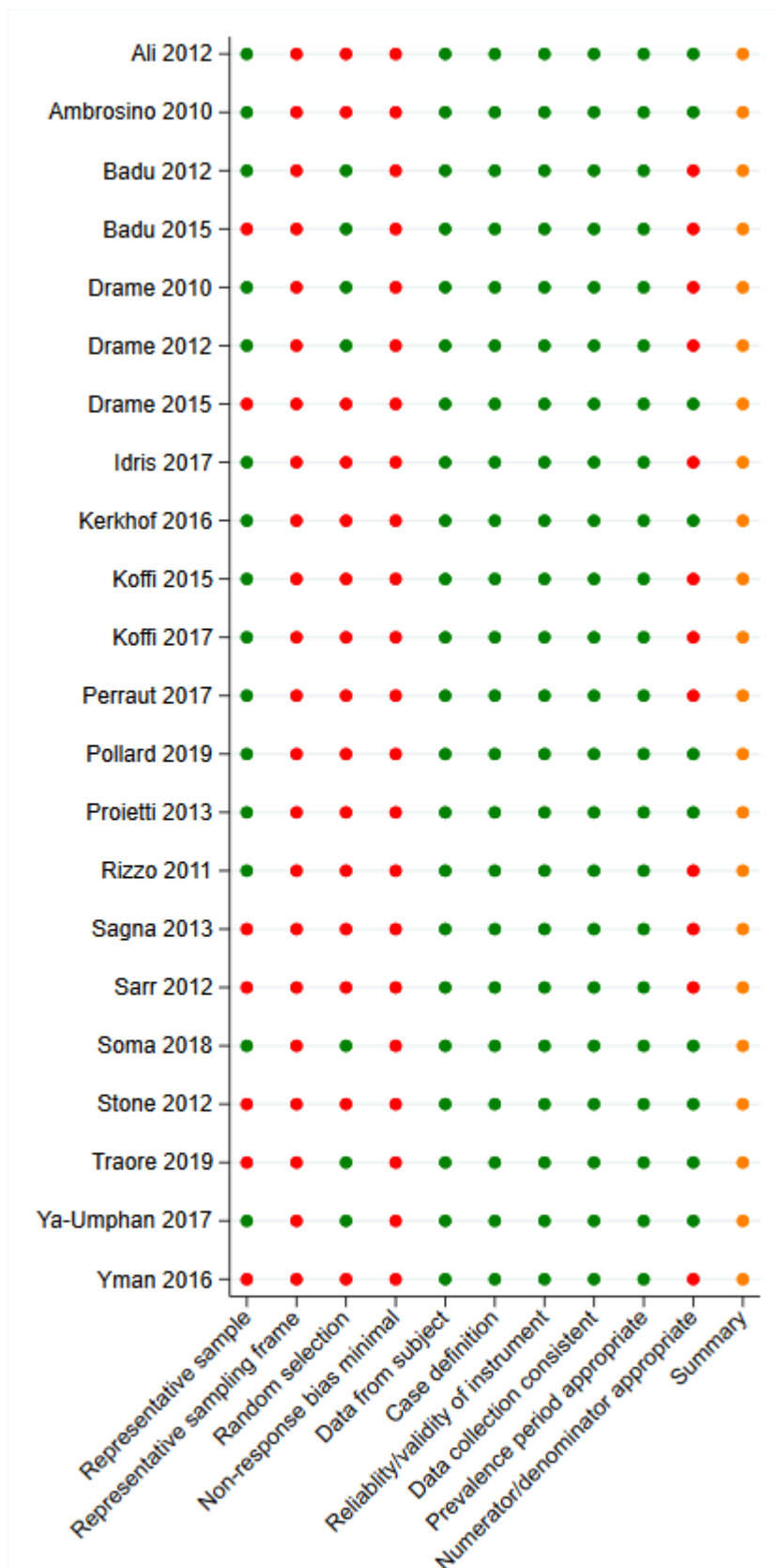
789 **Supplementary File 2. Risk of Bias assessment.**

790 Risk of bias was assessed for each study by one independent reviewer using the *Risk of Bias in Prevalence Studies*
791 tool [9]. This tool comprises 10 items and a summary assessment to assess the external validity (selection and
792 non-response bias) and internal validity (measurement bias) of the study's prevalence estimates. The risk of bias
793 pertains to the reported seroprevalence estimates of anti-*Anopheles* salivary antibodies included in the multilevel
794 modelling.

795 With regard to external validity, seven of the studies included in the review were performed in specific populations
796 (*i.e.* children only) that were not representative of the national population and were deemed to be at high risk of
797 selection bias. Only 7 studies included some form of random sampling, and frequently insufficient detail was
798 provided on the sampling frame; as such most studies were included as high risk of selection bias. Furthermore,
799 no studies reported participant response-rate, and as such were indicated as high risk of nonresponse bias.

800 In terms of internal validity, all studies had an acceptable case definition, with the same mode of data collection,
801 a valid instrument and an acceptable prevalence period, so were all deemed to be of low risk. However, 12 studies
802 did not include a denominator, instead only reporting the study sample size and prevalence estimate, and were
803 included as high risk.

804 Overall, due to the specific nature of some of the sample populations for which these prevalence estimates are
805 given (*i.e.* children only) and as participant non-response rate is not given, we conclude that there is a moderate
806 risk of study bias. According to the *Risk of Bias in Prevalence Studies* tool [9], this implies that future research is
807 likely to have an impact on our confidence in the prevalence estimates.



808

809 **Figure S1: Risk of Bias assessment.** Red – high risk, orange – moderate risk, green – low risk.

810 **Figure 1 - Supplement 1. Reasons for study exclusion.**

811

812 **Table S1: Reasons for study exclusion**

Studies	Reason	References
30	Does not measure anti-salivary antibody responses in individuals/populations	[10-39]
28	Review article	[40-67]
20	<i>Anopheles</i> salivary antigens not assessed	[68-87]
10	Wrong antibody detection methodologies	[88-97]
7	Grey literature	[98-104]
6	Not performed in humans	[105-110]
4	Data already captured by our review from another publication	[111-114]
3	Unable to determine appropriate exposure estimate	[115-117]
3	Not in population with natural exposure	[118-120]
1	Hypothesis study	[121]
1	Pooled sera	[122]
1	Does not provide estimate of seroprevalence/total levels of antibodies against salivary proteins	[123]
1	Study population not representative: Mosquito allergic patients	[124]
1	Study population not representative: Soldiers with transient exposure	[125]

813

814 **Figure 2 – Supplement 1: Association between gSG6 IgG seropositivity and human biting rate**

815

816 **Table S1: Unadjusted association between gSG6 IgG seropositivity and log Human Biting Rate (HBR).**

<i>Variable</i>	<i>Log Odds Ratio (SE)</i>	<i>95% CI</i>	<i>p-value</i>	<i>RE</i>
Fixed part				
log HBR	0.29 (0.08)	0.14, 0.45	<0.001	
Random part				
ψ_1^c				1.29
ψ_2				1.55
ψ_3				0.06
ρ_1^d				0.21
ρ_2^e				0.47
ℓ				-1489.9
Model fit indices				
AIC				2989.9
BIC				3004.2

817 Human biting rate (HBR) association: log odds ratio and standard error (SE), 95% confidence interval (95% CI),
 818 p-value, random-effect components (RE): variances (ψ), conditional intraclass correlation coefficient (ρ)^a and
 819 model log likelihood (ℓ) from generalised multilevel modelling.^b This analysis is based upon n=132 meta-
 820 observations.

821 ^a $\rho = \frac{\psi_k + \dots + \psi_{nk}}{\psi_k + \dots + \psi_{nk} + \pi^2/3}$, where ψ_k through ψ_{nk} are random-effect variance estimates pertaining to each of the
 822 respective variance components (see table notes ^{c-e}) from the generalised multilevel modelling for a specific ICC
 823 estimate.

824 ^b Generalised multilevel modelling estimating the association between log transformed HBR and anti-gSG6 IgG
 825 seropositivity with random-effects for country-specific and study-specific heterogeneity in gSG6 IgG
 826 seroprevalence and study-specific heterogeneity in effect of HBR.

827 ^c ψ_1 , ψ_2 and ψ_3 represent variances of the random-effects for country, study and effect of HBR respectively.

828 ^d ρ_1 represents conditional ICC for meta-observations from the same country but different study.

829 ^e ρ_2 represents conditional ICC for meta-observations from the same country and study with the median HBR

830 **Figure 3 – Supplement 1: Association between gSG6 IgG seropositivity and entomological**
 831 **inoculation rate**

832

833 **Table S1: Unadjusted association between gSG6 IgG seropositivity log Entomological Inoculation Rate**
 834 **(EIR).**

<i>Variable</i>	<i>Log Odds Ratio (SE)</i>	<i>95% CI</i>	<i>p-value</i>	<i>RE</i>
Fixed part				
log EIR	0.15 (0.04)	0.07, 0.23	<0.001	
Random part				
ψ_1^c				1.02
ψ_2				2.15
ψ_3				0.01
ρ_1^d				0.16
ρ_2^e				0.49
ℓ				-530.7
Model fit indices				
AIC				1071.3
BIC				1079.5

835 Entomological inoculation rate (EIR) association: log odds ratio and standard error (SE), 95% confidence interval
 836 (95% CI), p-value, random-effect components (RE): variances (ψ), conditional intraclass correlation coefficient
 837 (ρ)^a and model log likelihood (ℓ) from generalised multilevel modelling.^b This analysis is based upon n=38 meta-
 838 observations.

839 ^a $\rho = \frac{\psi_k + \dots + \psi_{nk}}{\psi_k + \dots + \psi_{nk} + \pi^2/3}$, where ψ_k through ψ_{nk} are random-effect variance estimates pertaining to each of the
 840 respective variance components (see table notes ^{c-e}) from the generalised multilevel modelling for a specific ICC
 841 estimate.

842 ^b Generalised multilevel modelling estimating the association between log transformed EIR and anti-gSG6 IgG
 843 seropositivity with random-effects for country-specific and study-specific heterogeneity in gSG6 IgG
 844 seroprevalence and study-specific heterogeneity in effect of EIR.

845 ^c ψ_1 , ψ_2 and ψ_3 represent variances of the random-effects for country, study and effect of EIR respectively.

846 ^d ρ_1 represents the conditional ICC for meta-observations from the same country but different study.

847 ^e ρ_2 represents the conditional ICC for meta-observations from the same country and study with the median EIR

848 **Figure 4 – Supplement 1: Association between gSG6 IgG seropositivity and Human Biting Rate**
 849 **(HBR), moderated by dominant vector species**

850

851 **Table S1: Association between gSG6 IgG seropositivity and log Human Biting Rate (HBR), moderated by**
 852 **dominant vector species**

<i>Variable</i>	<i>Log Odds Ratio (SE)</i>	<i>95% CI</i>	<i>p-value</i>	<i>RE</i>
Fixed part				
log HBR	0.46 (0.11)	0.25, 0.66	<0.001	
DVS			<0.001*	
<i>An. gambiae s.l.</i> only	Ref.			
<i>An. gambiae s.l.</i> & other DVS	1.00 (0.18)	0.65, 1.25	<0.001	
Non- <i>An. gambiae s.l.</i>	1.09 (0.68)	-0.24, 2.42	0.109	
log HBR by DVS			<0.001*	
<i>An. gambiae s.l.</i> only	Ref.			
<i>An. gambiae s.l.</i> & other DVS	-0.26 (0.08)	-0.41, -0.11	0.001	
Non- <i>An. gambiae s.l.</i>	-0.38 (0.11)	-0.59, -0.17	<0.001	
Random part				
ψ_1^c				0.96
ψ_2				2.32
ψ_3				0.08
ρ_1^d				0.14
ρ_2^e				0.51
ℓ				-1488.8
Model fit indices				
AIC				2995.53
BIC				3021.48

853 Human biting rate (HBR) X dominant vector species (DVS) association: log odds ratio and standard error (SE),
 854 95% confidence interval (95%CI), p-value, random-effect components (RE): variances (ψ), conditional intraclass
 855 correlation coefficient (ρ)^a and model log likelihood (ℓ) from generalised multilevel modelling.^b *indicates p-
 856 value from joint Wald test for polytomous variables. This analysis is based upon n=132 meta-observations.

857 ^a $\rho = \frac{\psi_k + \dots + \psi_{nk}}{\psi_k + \dots + \psi_{nk} + \pi^2/3}$, where ψ_k through ψ_{nk} are random-effect variance estimates pertaining to each of the
 858 respective variance components (see table notes ^{c-e}) from the generalised multilevel modelling for a specific ICC
 859 estimate.

860 ^b Generalised multilevel modelling estimating the association between log transformed HBR and anti-gSG6 IgG
 861 seropositivity including an interaction term between DVS and log HBR with random-effects for country-specific
 862 and study-specific heterogeneity in gSG6 IgG seroprevalence and study-specific heterogeneity in effect of HBR.

863 ^c ψ_1 , ψ_2 and ψ_3 represent variances of the random-effects for country, study and effect of HBR respectively.

864 ^d ρ_1 represents the conditional ICC for meta-observations from the same country but different study.

865 ^e ρ_2 represents the conditional ICC for meta-observations from the same country and study with the median HBR

866 **Figure 5 – Supplement 1. Association between gSG6 IgG seropositivity and malaria prevalence**

867

868 **Table S1: Unadjusted association between gSG6 IgG seropositivity and log *Plasmodium* spp. prevalence.**

<i>Variable</i>	<i>Log Odds Ratio (SE)</i>	<i>95% CI</i>	<i>p-value</i>	<i>RE</i>
Fixed part				
log <i>Plasmodium</i> spp. prevalence	0.46 (0.32)	-0.16, 1.08	0.148	
Random part				
ψ_1^c				17.21
ψ_2				1.25
ρ_1^d				0.85
ℓ				-2597.2
Model fit indices				
AIC				5202.47
BIC				5215.90

869 Any *Plasmodium* species infections (including prevalence estimates of *P. falciparum* only, *P. vivax* only, both *P.*
870 *falciparum* and *P. vivax* and un-typed infections): log odds ratio and standard error (SE), 95% confidence interval
871 (95%CI), p-value, random-effect components (RE): variances (ψ), conditional intraclass correlation coefficient
872 (ρ)^a and model log likelihood (ℓ) from generalised multilevel modelling.^b This analysis is based upon n=212
873 meta-observations.

874 ^a $\rho = \frac{\psi_k + \dots + \psi_{nk}}{\psi_k + \dots + \psi_{nk} + \pi^2/3}$, where ψ_k through ψ_{nk} are random-effect variance estimates pertaining to each of the
875 respective variance components (see table notes ^{c-d}) from the generalised multilevel modelling for a specific ICC
876 estimate.

877 ^b Generalised multilevel modelling estimating the association between the log prevalence of any *Plasmodium* spp.
878 infection and anti-gSG6 IgG seropositivity with random-effects for study-specific heterogeneity in gSG6 IgG
879 seroprevalence and study-specific heterogeneity in effect of *Plasmodium* spp. prevalence.

880 ^c ψ_1 and ψ_2 represent variances of the random-effects for study and effect of *Plasmodium* spp. prevalence
881 respectively.

882 ^d ρ_1 represents the conditional ICC for meta-observations from the same study and with the median *Plasmodium*
883 spp. prevalence.

884 **Supplementary File 3. Association between gSG6 IgG seropositivity and antimalarial antibody**
885 **seroprevalence**

886 **Antibodies against *P. falciparum* pre-erythrocytic stage antigens**

887 The pooled analysis of 159 meta-observations from eight studies showed that a 10% relative increase in PfCSP
888 IgG seropositivity was associated with a 11% (OR: 1.11; 95%CI: 1.02-1.21%, $p=0.013$) increase in odds of anti-
889 gSG6 IgG seropositivity [126-133]. Furthermore we observed that gSG6 IgG levels increased with increasing
890 PfCSP IgG seroprevalence in four studies [127-129, 133], with another study contributing only a single estimate
891 [132].

892 **Antibodies against *P. falciparum* blood stage antigens**

893 Furthermore, we observed a 10% relative increase PfAMA1 IgG seroprevalence was associated with a 13% (OR:
894 1.13; 95%CI: 1.12-1.15%; $p<0.001$) increase in odds of gSG6 IgG seropositivity, based upon 62 meta-
895 observations from eight studies [128-135]. A similar association was observed for PfMSP1₁₉ IgG, with 10%
896 relative increase in seroprevalence associated with 13% (OR: 1.13; 95%CI: 1.03-1.25%; $p=0.014$) increase in
897 odds of gSG6 IgG seropositivity. This association was derived from 163 meta-observations from ten studies [127-
898 130, 132-136]. Analysis of 47 meta-observations from three studies indicated that a 10% relative increase in
899 PfMSP2 IgG seroprevalence was associated with a 5% (OR: 1.05; 95%CI: 1.03-1.07%; $p<0.001$) increase in odds
900 of gSG6 IgG seropositivity [130, 133, 135]. While 17 meta-observations from two studies showed a 10% relative
901 increase in PfMSP3 IgG seroprevalence was associated with a 14% (OR: 1.14; 95%CI: 1.13-1.16%; $p<0.001$)
902 increase in odds of gSG6 IgG seropositivity [132, 135].

903 The pooled analysis of 128 meta-observations from five studies showed that a 10% relative increase in PfGLURP
904 IgG seroprevalence was associated with a 17% (OR: 1.17; 95%CI: 1.14-1.19%; $p<0.001$) increase in odds of
905 gSG6 IgG seropositivity [126-130]. And 18 meta-observations from five studies indicated that 10% relative
906 increase in *P. falciparum* schizont extract IgG seropositivity was associated with a 27% (OR: 1.27; 95%CI: 0.61-
907 2.65%; $p=0.523$) increase in odds of gSG6 IgG seropositivity [128-130, 134, 137].

908 We observed that increasing seroprevalence of IgG antibodies against PfAMA1 saw increased levels of anti-gSG6
909 IgG in three studies [128, 129, 134], but no association in another [133]. The levels of gSG6 IgG increased with
910 increasing PfMSP1₁₉ IgG seroprevalence in three studies [128, 134, 136], but showed no association in three other
911 studies [127, 129, 133]. No association between gSG6 IgG levels and MSP2 IgG seroprevalence was observed in
912 one study [133]. PfGLURP IgG seroprevalence and gSG6 IgG antibody levels were reported in three studies,

913 with one study reporting increased levels [128] , one study reporting no association [127], and one study reporting
914 decreased levels of anti-gSG6 IgG with increasing anti-PfGLURP seroprevalence [129]. One study showed
915 increasing gSG6 IgG levels with increasing *P. falciparum* schizont extract IgG, while three other studies showed
916 no association [128, 129, 137]. Of note, one study provided a single seroprevalence estimate of antibodies against
917 PfAMA1, PfMSP1₁₉ and PfMSP3 so no relationships can be drawn [132].

918 **Antibodies against *P. vivax* antigens**

919 In pooled analyses of 115 meta-observations from two studies [127, 134], we observed that 10% relative increase
920 in the seroprevalence of PvAMA1 was associated with a 20% (OR: 1.20; 95%CI: 1.19-1.22%; $p<0.001$) increase
921 in the odds of anti-gSG6 IgG seropositivity. Furthermore, in 103 meta-observations from two studies [127, 134],
922 10% relative increase in PvMSP1₁₉ IgG seroprevalence was associated with a 13% (OR: 1.13; 95%CI: 1.12-
923 1.13%; $p<0.001$) increase in the odds of anti-gSG6 IgG seropositivity. However, neither study showed an
924 association between the levels of gSG6 IgG and the seroprevalence of PvAMA1 and PvMSP1₁₉ IgG [127, 134].

925 **Table S1: Associations between anti-gSG6 IgG seropositivity and log of antimalarial antibody seroprevalence.**

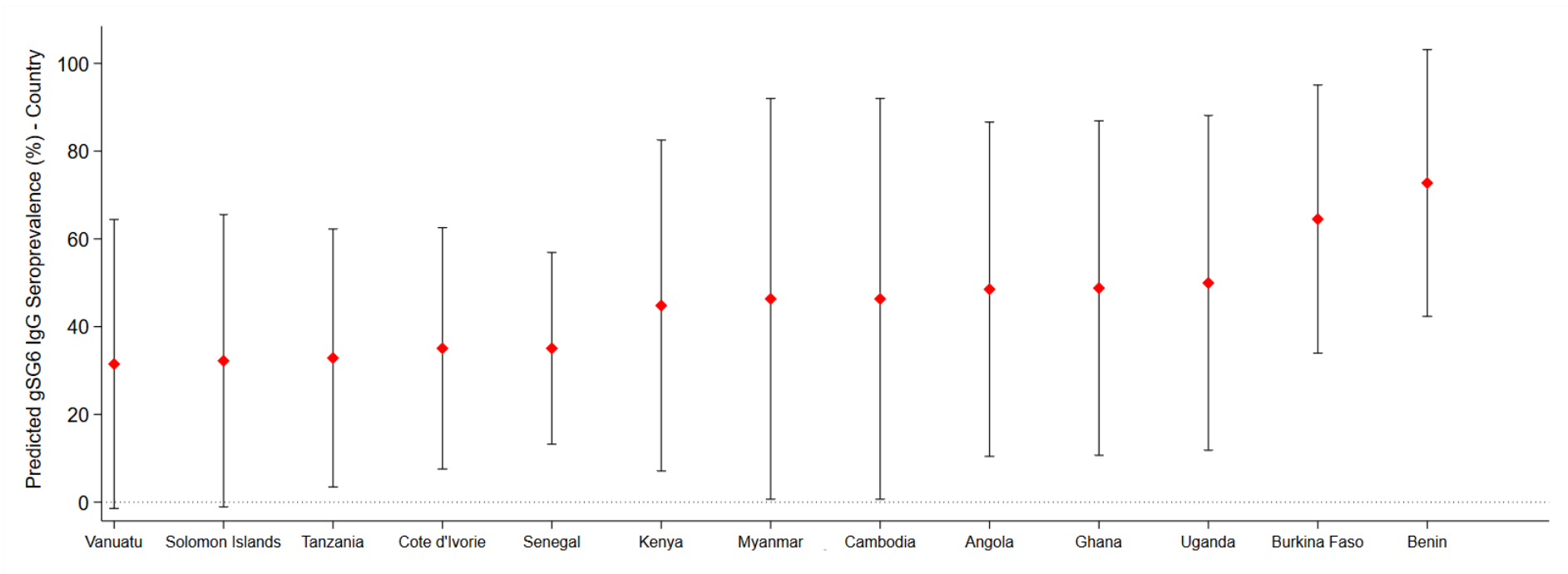
<i>Exposure</i>	<i>Log Odds Ratio (SE)</i>	<i>95%CI</i>	<i>p- value</i>	<i>Meta-N</i>	<i>Studies</i>	<i>References</i>
Pre-erythrocytic antigens						
log PfCSP IgG Seroprevalence (%)	1.13 (0.45)	0.24, 2.01	0.013	159	8	[126-133]
Blood stage antigens						
log PfAMA1 IgG Seroprevalence (%) ^a	1.30 (0.07)	1.17, 1.44	<0.001	62	8	[128-135]
log PfMSP1 ₁₉ IgG Seroprevalence (%)	1.31 (0.53)	0.27, 2.36	0.014	163	10	[127-130, 132-136]
log PfMSP2 IgG Seroprevalence (%)	0.50 (0.11)	0.27, 0.72	<0.001	47	3	[130, 133, 135]
log PfMSP3 IgG Seroprevalence (%) ^a	1.41 (0.09)	1.24, 1.58	<0.001	17	2	[132, 135]
log PfGLURP IgG Seroprevalence (%)	1.61 (0.12)	1.37, 1.85	<0.001	128	5	[126-130]
log PfSchizont Extract IgG Seroprevalence (%)	2.51 (3.93)	-5.20, 10.22	0.523	18	5	[128-130, 134, 137]
log PvAMA1 IgG Seroprevalence (%)	1.95 (0.08)	1.79, 2.11	<0.001	115	2	[127, 134]
log PvMSP1 ₁₉ IgG Seroprevalence (%)	1.25 (0.04)	1.17, 1.32	<0.001	103	2	[127, 134]

926 Effects for each exposure represent separate generalised multilevel modelling analyses estimating the association between the log of the seroprevalence of antimalarial
 927 antibodies and the seroprevalence of anti-gSG6 IgG, with the inclusion of a random intercept for study-specific heterogeneity and a random coefficient to allow the effect of
 928 the antimalarial antigen to vary across studies. Table shows log odds ratio and standard error (SE), 95% confidence interval (95%CI) and p-value, number of meta-observations
 929 (Meta-N) and studies, with associated references. Random effects not shown.

930 ^a Studies did not include a random coefficient (*i.e.* slope); as empirical support was not shown.

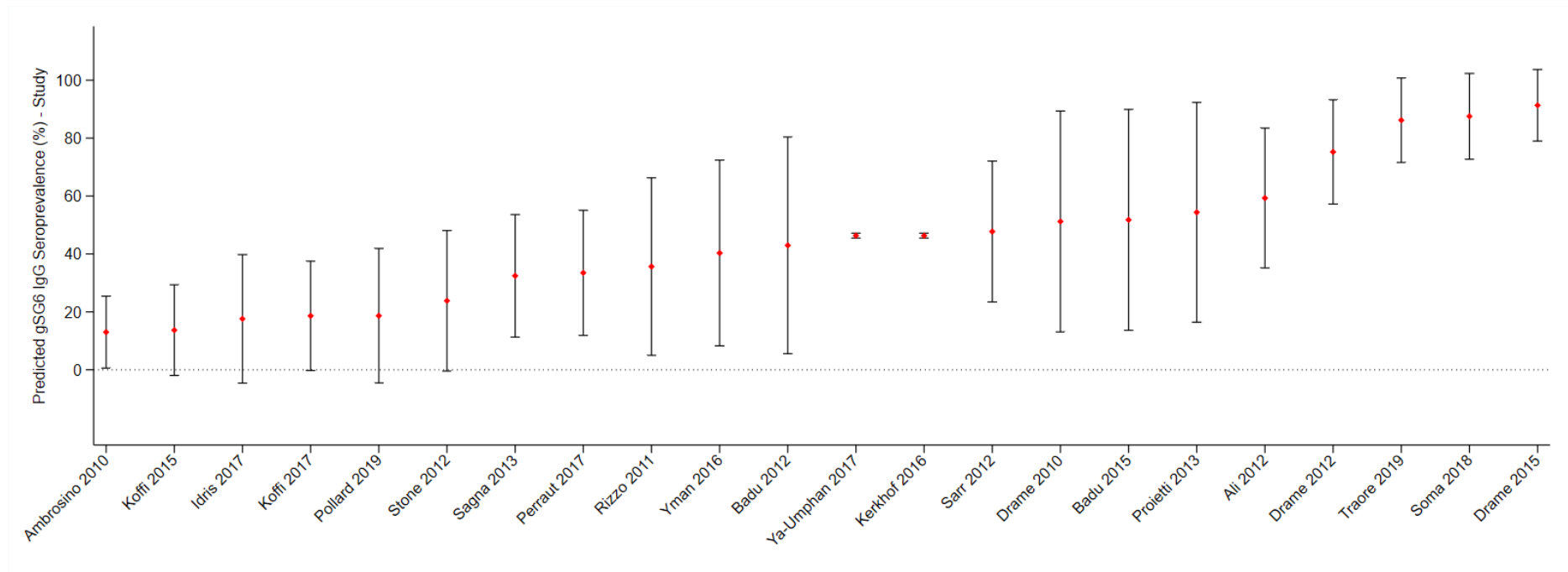
931 **Supplementary File 4. Country and study-specific predicted probability of gSG6 IgG**
932 **seropositivity.**

933 In order to obtain estimates of gSG6 IgG seroprevalence for each country and study, an intercept only three-level
934 random effects logistic regression was fitted to 301 meta-observations from 22 studies. The predicted probability
935 of gSG6 IgG seropositivity was calculated at the country-level (Figure S1), indicating that the seroprevalence was
936 lowest in the Pacific Region (Vanuatu (31%) and Solomon Islands (32%)) and highest in Benin (72%) and Burkina
937 Faso (65%). Furthermore, the predicted probability of gSG6 IgG seropositivity was calculated at the study-level
938 (Figure S2) indicating that the seroprevalence was lowest in Ambrosino *et al.* [126] (13%) and highest in Drame *et*
939 *al.* [138] (91%).



940

941 **Figure S1: Predicted gSG6 IgG seroprevalence by country.** Predicted probabilities of gSG6 IgG seropositivity including country-specific random effects with 95%
 942 confidence intervals. Estimated from intercept-only three-level random-effects logistic regression to account for the hierarchical nature of the data, with an anti-gSG6 IgG meta-
 943 observation nested within study nested within country. Based upon 301 meta-observations from 22 studies.



944

945 **Figure S2: Predicted gSG6 IgG seroprevalence by study.** Predicted probabilities of gSG6 IgG seropositivity including study-specific random effects with 95% confidence
 946 intervals. Estimated from intercept-only three-level random-effects logistic regression to account for the hierarchical nature of the data, with an anti-gSG6 IgG meta-observation
 947 nested within study nested within country. Based upon 301 meta-observations from 22 studies.

948 **Supplementary File 5. Association between alternative salivary biomarkers and exposures of**
949 **interest.**

950 Our systematic review identified a paucity of studies that assessed the relationship between our exposures of
951 interest and most alternate *Anopheles* salivary biomarkers (that is non-*An. gambiae* gSG6 IgG), thus preventing
952 the estimation of a pooled association. The exceptions being that we observed that a 50% relative increase in HBR
953 was associated with a 7% increase (OR: 1.07; 95%CI: 1.01-1.13%; $p=0.017$) in odds of anti-*An. funestus* fSG6
954 IgG seropositivity (six meta-observations from two studies [139, 140]; Table 1), as well as a 42% (OR: 1.42;
955 95%CI: 1.39-1.46%; $p<0.001$) and 21% (OR: 1.21; 95%CI: 1.19-1.23%; $p<0.001$) increase in odds of anti-gSG6-
956 P2 IgG seropositivity associated with 10% relative increase in seroprevalence of PfCSP and PfGLURP IgG,
957 respectively (115 and 116 meta-observations from two studies respectively [126, 127], Table 2-3). The
958 associations between exposures of interest and the additional salivary biomarkers are further discussed in narrative
959 terms in below.

960 **Human biting rate**

961 In addition to the increased odds of *An. funestus* fSG6 seropositivity with increasing HBR, the majority of studies
962 reported a positive association between HBR and the seroprevalence and levels of anti-gSG6-P1 IgM [138], the
963 levels of gSG6-P2 IgG [141], the seroprevalence and levels of anti-cE5 IgG [142], the levels of anti-fSG6 IgG
964 [139, 140], the seroprevalence and levels of anti-f5'nuc IgG [139] and the median levels of anti-*An. gambiae*
965 salivary gland extracts (SGE) SGE IgG and IgG4 [143-145]. One study reported similar median levels of anti-
966 gSG6 IgG1 across populations and time points, whilst reporting that anti-gSG6 IgG4 titre increased with
967 increasing HBR in one of the populations, but not in the other [146]. Similarly, there was no consistent association
968 between HBR and the levels of anti-cE5 IgG [147], levels of anti-*An. gambiae* SGE IgE [145] and the
969 seroprevalence and levels of anti-g5'nuc IgG [139].

970 **Entomological inoculation rate**

971 Ali *et al.* [139] reported higher seroprevalence and levels anti-fSG6 IgG and anti-f5'nuc IgG with increasing EIR,
972 while anti-g5'nuc IgG seroprevalence and levels were not associated with EIR. An additional study reported
973 gSG6-P2 IgG seroprevalence estimates of 0% for three sites, irrespective of EIR [126].

974 **Malaria prevalence**

975 Two studies showed that increased *Plasmodium* spp. prevalence was associated with higher median levels of anti-
976 *An. gambiae* SGE IgG [143, 148], while another study showed different anti-*An. gambiae* SGE IgG levels for
977 very similar prevalence of malaria and slightly lower levels of anti-*An. gambiae* SGE IgE and IgG4 for the time
978 point with greater malaria prevalence [145]. Kerkhof *et al.* [127] showed increasing levels of anti-gSG6-P2 IgG
979 for higher prevalence of any *Plasmodium* spp. infection, while Londono-Renteria *et al.* [149] showed lower levels
980 of IgG antibodies against TRANS-P1, TRANS-P2, PEROX-P1, PEROX-P2 and PEROX-P3 in the site with
981 higher PCR confirmed malaria prevalence. Additionally, several case-controlled studies, and two cross-sectional
982 study, reported median antibody levels stratified by malaria infection status. These studies show higher levels of
983 anti-*An. darlingi* SGE IgG [150], anti-*An. gambiae* SGE IgG [144], anti-*An. dirus* SGE IgG and IgM [151], and
984 IgG antibodies against SGEs of two Colombian strains of *An. albimanus* in *Plasmodium* spp. infected individuals,
985 compared to non-infected [152]. While Montiel *et al.* [152] observed no association between anti-*An. darlingi*
986 SGE IgG levels and infection status.

987 **Antimalarial antibody seroprevalence**

988 Our multilevel modelling indicated that there were 42% (OR: 1.42; 95%CI: 1.39-1.46%; $p < 0.001$) and 21% (OR:
989 1.21; 95%CI: 1.19-1.23%; $p < 0.001$) increase in odds of anti-gSG6-P2 IgG seropositivity associated with a 10%
990 relative increase in the seroprevalence of PfCSP and PfGLURP IgG, respectively [126, 127]. However, we
991 observed weak positive associations between the levels of IgG antibodies against gSG6-P2 peptide and the
992 seroprevalence of IgG antibodies against PfMSP1₁₉, PfGLURP and PvMSP1₁₉, but no association with PfCSP or
993 PvAMA1 [127].

994 **Table S1: Association between fSG6 IgG seropositivity and human biting rate**

Variable	Log Odds Ratio (SE)	95% CI	p-value	RE
Fixed part				
log HBR	0.17 (0.07)	0.03, 0.31	0.017	
Random part				
ψ_1^c				0.47
ρ_1^d				0.13

995 Association between human biting rate (HBR) and fSG6 IgG: log odds ratio and standard error (SE), 95%
 996 confidence interval (95%CI), p-value, random-effect components (RE): variances (ψ), conditional intraclass
 997 correlation coefficient (ρ)^a and model log likelihood (ℓ) from generalised multilevel modelling.^b This analysis is
 998 based upon n=6 meta-observations.

999 $a \rho = \frac{\psi_k + \dots + \psi_{nk}}{\psi_k + \dots + \psi_{nk} + \pi^2/3}$, where ψ_k through ψ_{nk} are random-effect variance estimates pertaining to each of the
 1000 respective variance components (see table notes ^{c-d}) from the mixed-effect generalised (logit) linear mixed models
 1001 for a specific ICC estimate.

1002 ^b Generalised multilevel modelling estimating the association between anti-*An. funestus* fSG6 IgG seropositivity
 1003 and log transformed HBR with random-effects for study-specific heterogeneity in fSG6 IgG seropositivity.

1004 ^c ψ_1 represents variance of the random-effect for study.

1005 ^d ρ_1 represents conditional ICC for meta-observations from the same study.

1006
 1007
 1008
 1009
 1010

1011 **Table S2: Association between gSG6-P2 IgG seropositivity and log PfCSP IgG seroprevalence**

Variable	Log Odds Ratio (SE)	95% CI	p-value	RE
Fixed part				
log PfCSP IgG Seroprevalence	3.70 (0.12)	3.45, 3.94	<0.001	
Random part				
ψ_1^c				25.2
ρ_1^d				0.88

1012 Association between log PfCSP seroprevalence and gSG6-P2 IgG: log odds ratio and standard error (SE), 95%
 1013 confidence interval (95%CI), p-value, random-effect variances (ψ), conditional intraclass correlation coefficient
 1014 (ρ)^a and model log likelihood (ℓ) from generalised multilevel modelling.^b This analysis is based upon n=115
 1015 meta-observations.

1016 $a \rho = \frac{\psi_k + \dots + \psi_{nk}}{\psi_k + \dots + \psi_{nk} + \pi^2/3}$, where ψ_k through ψ_{nk} are random-effect (RE) variance estimates pertaining to each of the
 1017 respective variance components (see table notes ^{c-d}) from the mixed-effect generalised (logit) linear mixed models
 1018 for a specific ICC estimate.

1019 ^b Generalised multilevel modelling estimating the association between log PfCSP seroprevalence and anti-gSG6-
 1020 P2 IgG seropositivity with random-effects for study-specific heterogeneity in gSG6-P2 IgG seropositivity.

1021 ^c ψ_1 represents variance of the random-effect for study.

1022 ^d ρ_1 represents conditional ICC for meta-observations from the same study.

1023
 1024

1025 **Table S3: Association between gSG6-P2 IgG seropositivity and log PfGLURP IgG seroprevalence**

<i>Variable</i>	<i>Log Odds Ratio (SE)</i>	<i>95% CI</i>	<i>p-value</i>	<i>RE</i>
<i>Fixed part</i>				
log PfGLURP IgG Seroprevalence	2.01 (0.09)	1.85, 2.18	<0.001	
<i>Random part</i>				
ψ_1^c				24.3
ρ_1^d				0.88

1026 Association between log PfGLURP seroprevalence and gSG6-P2 IgG: log odds ratio and standard error (SE),
 1027 95% confidence interval (95%CI), p-value, random-effect variances (ψ), conditional intraclass correlation
 1028 coefficient (ρ)^a and model log likelihood (ℓ) from generalised multilevel modelling.^b This analysis is based upon
 1029 n=116 meta-observations.

1030 ^a $\rho = \frac{\psi_k + \dots + \psi_{nk}}{\psi_k + \dots + \psi_{nk} + \pi^2/3}$, where ψ_k through ψ_{nk} are random-effect (RE) variance estimates pertaining to each of the
 1031 respective variance components (see table notes ^{c-d}) from the mixed-effect generalised (logit) linear mixed models
 1032 for a specific ICC estimate.

1033 ^b Generalised multilevel modelling estimating the association between log PfGLURP seroprevalence and anti-
 1034 gSG6-P2 IgG seropositivity with random-effects for study-specific heterogeneity in gSG6-P2 IgG seropositivity.

1035 ^c ψ_1 represents variance of the random-effect for study.

1036 ^d ρ_1 represents conditional ICC for meta-observations from the same study.

1037 Supplementary References

- 1038 1. Stroup DF, Berlin JA, Morton SC, Olkin I, Williamson GD, Rennie D, Moher D, Becker BJ, Sipe TA,
1039 Thacker SB. Meta-analysis of observational studies in epidemiology: a proposal for reporting. Meta-analysis Of
1040 Observational Studies in Epidemiology (MOOSE) group. JAMA. 2000;283(15):2008-12. Epub 2000/05/02. doi:
1041 10.1001/jama.283.15.2008. PubMed PMID: 10789670.
- 1042 2. Moher D, Liberati A, Tetzlaff J, Altman DG, The PG. Preferred Reporting Items for Systematic Reviews
1043 and Meta-Analyses: The PRISMA Statement. PLoS Med. 2009;6(7):e1000097. doi:
1044 10.1371/journal.pmed.1000097.
- 1045 3. Yamba EI, Tompkins AM, Fink AH, Ermert V, Djouda A, Amekudzi LK, Briët OJT. Monthly
1046 entomological inoculation rates for studying malaria transmission seasonality in Africa. PANGAEA; 2018.
- 1047 4. The Malaria Atlas Project [Internet]. 2017. Available from: <https://malariaatlas.org/>.
- 1048 5. Cutts JC, Agius PA, Zaw L, Powell R, Moore K, Draper B, Simpson JA, Fowkes FJL. Pregnancy-specific
1049 malarial immunity and risk of malaria in pregnancy and adverse birth outcomes: a systematic review. BMC Med.
1050 2020;18(1):14. Epub 2020/01/17. doi: 10.1186/s12916-019-1467-6. PubMed PMID: 31941488; PubMed Central
1051 PMCID: PMC6964062.
- 1052 6. Cutts JC, Powell R, Agius PA, Beeson JG, Simpson JA, Fowkes FJ. Immunological markers of
1053 *Plasmodium vivax* exposure and immunity: a systematic review and meta-analysis. BMC Med. 2014;12:150. Epub
1054 2014/09/10. doi: 10.1186/s12916-014-0150-1. PubMed PMID: 25199532; PubMed Central PMCID:
1055 PMC4172944.
- 1056 7. Fowkes FJL, Richards JS, Simpson JA, Beeson JG. The relationship between anti-merozoite antibodies
1057 and incidence of *Plasmodium falciparum* malaria: A systematic review and meta-analysis. PLoS Med.
1058 2010;7(1):e1000218-e. doi: 10.1371/journal.pmed.1000218. PubMed PMID: 20098724.
- 1059 8. Bhatt S, Weiss DJ, Cameron E, Bisanzio D, Mappin B, Dalrymple U, Battle K, Moyes CL, Henry A,
1060 Eckhoff PA, Wenger EA, Briët O, Penny MA, Smith TA, Bennett A, Yukich J, Eisele TP, Griffin JT, Fergus CA,
1061 Lynch M, Lindgren F, Cohen JM, Murray CLJ, Smith DL, Hay SI, Cibulskis RE, Gething PW. The effect of
1062 malaria control on *Plasmodium falciparum* in Africa between 2000 and 2015. Nature. 2015;526(7572):207-11.
1063 Epub 2015/09/16. doi: 10.1038/nature15535. PubMed PMID: 26375008.
- 1064 9. Hoy D, Brooks P, Woolf A, Blyth F, March L, Bain C, Baker P, Smith E, Buchbinder R. Assessing risk
1065 of bias in prevalence studies: modification of an existing tool and evidence of interrater agreement. J Clin
1066 Epidemiol. 2012;65(9):934-9. doi: 10.1016/j.jclinepi.2011.11.014.
- 1067 10. Alvarenga PH, Francischetti IMB, Calvo E, Sa-Nunes A, Ribeiro JMC, Andersen JF. The Function and
1068 Three-Dimensional Structure of a Thromboxane A(2)/Cysteinyl Leukotriene-Binding Protein from the Saliva of
1069 a Mosquito Vector of the Malaria Parasite. PLoS Biol. 2010;8(11). doi: 10.1371/journal.pbio.1000547. PubMed
1070 PMID: WOS:000284762300019.
- 1071 11. Arcà B, Lombardo F, Struchiner CJ, Ribeiro JM. Anopheline salivary protein genes and gene families:
1072 an evolutionary overview after the whole genome sequence of sixteen *Anopheles* species. BMC Genomics.
1073 2017;18(1):153. doi: 10.1186/s12864-017-3579-8.
- 1074 12. Arcà B, Lombardo F, Valenzuela JG, Francischetti IMB, Marinotti O, Coluzzi M, Ribeiro JMC. An
1075 updated catalogue of salivary gland transcripts in the adult female mosquito, *Anopheles gambiae*. J Exp Biol.
1076 2005;208(20):3971-86. doi: 10.1242/jeb.01849.
- 1077 13. Calvo E, Dao A, Pham VM, Ribeiro JM. An insight into the sialome of *Anopheles funestus* reveals an
1078 emerging pattern in anopheline salivary protein families. Insect Biochem Mol Biol. 2007;37(2):164-75. doi:
1079 10.1016/j.ibmb.2006.11.005.
- 1080 14. Calvo E, Mans BJ, Andersen JF, Ribeiro JMC. Function and evolution of a mosquito salivary protein
1081 family. J Biol Chem. 2006;281(4):1935-42. doi: 10.1074/jbc.M510359200.
- 1082 15. Choumet V, Carmi-Leroy A, Laurent C, Lenormand P, Rousselle JC, Namane A, Roth C, Brey PT. The
1083 salivary glands and saliva of *Anopheles gambiae* as an essential step in the *Plasmodium* life cycle: A global
1084 proteomic study. Proteomics. 2007;7(18):3384-94. doi: 10.1002/pmic.200700334.
- 1085 16. Das S, Radtke A, Choi Y, Mendes AM, Valenzuela JG, Dimopoulos G. Transcriptomic and functional
1086 analysis of the *Anopheles gambiae* salivary gland in relation to blood feeding. BMC Genomics. 2010;11(1). doi:
1087 10.1186/1471-2164-11-566.
- 1088 17. Di Gaetano S, Del Gatto A, Pirone L, Comegna D, Zaccaro L, Saviano M, Arca B, Capasso D, Pedone
1089 E. A selective alpha(v)beta(5) integrin antagonist hidden into the anophelin family protein cE5 from the malaria
1090 vector *Anopheles gambiae*. Peptide Science. 2018;110(5). doi: 10.1002/pep2.24054. PubMed PMID:
1091 WOS:000450664700016.

- 1092 18. Dixit R, Sharma A, Mourya DT, Kamaraju R, Patole MS, Shouche YS. Salivary gland transcriptome
1093 analysis during Plasmodium infection in malaria vector *Anopheles stephensi*. *Int J Infect Dis*. 2009;13(5):636-46.
1094 doi: 10.1016/j.ijid.2008.07.027.
- 1095 19. Francischetti IM, Ma D, Andersen JF, Ribeiro JM. Evidence for a lectin specific for sulfated glycans in
1096 the salivary gland of the malaria vector, *Anopheles gambiae*. *PLoS One*. 2014;9(9):e107295. doi:
1097 10.1371/journal.pone.0107295.
- 1098 20. Francischetti IM, Valenzuela JG, Pham VM, Garfield MK, Ribeiro JM. Toward a catalog for the
1099 transcripts and proteins (sialome) from the salivary gland of the malaria vector *Anopheles gambiae*. *J Exp Biol*.
1100 2002;205(Pt 16):2429-51.
- 1101 21. Ghosh AK, Devenport M, Jethwaney D, Kalume DE, Pandey A, Anderson VE, Sultan AA, Kumar N,
1102 Jacobs-Lorena M. Malaria parasite invasion of the mosquito salivary gland requires interaction between the
1103 Plasmodium TRAP and the *Anopheles saglin* proteins. *PLoS Pathog*. 2009;5(1):e1000265. doi:
1104 10.1371/journal.ppat.1000265.
- 1105 22. Isaacs AT, Mawejje HD, Tomlinson S, Rigden DJ, Donnelly MJ. Genome-wide transcriptional analyses
1106 in *Anopheles* mosquitoes reveal an unexpected association between salivary gland gene expression and insecticide
1107 resistance. *BMC Genomics*. 2018;19(1). doi: 10.1186/s12864-018-4605-1.
- 1108 23. Jariyapan N, Baimai V, Poovorawan Y, Roytrakul S, Saeung A, Thongsahuan S, Suwannamit S, Otsuka
1109 Y, Choochote W. Analysis of female salivary gland proteins of the *Anopheles barbirostris* complex (Diptera:
1110 Culicidae) in Thailand. *Parasitol Res*. 2010;107(3):509-16. doi: 10.1007/s00436-010-1883-1.
- 1111 24. Jariyapan N, Choochote W, Jitpakdi A, Harnnoi T, Siriyasatein P, Wilkinson MC, Bates PA. A glycine-
1112 and glutamate-rich protein is female salivary gland-specific and abundant in the malaria vector *Anopheles dirus*
1113 B (Diptera: Culicidae). *J Med Entomol*. 2006;43(5):867-74. doi: 10.1603/0022-
1114 2585(2006)43[867:AGAGPI]2.0.CO;2.
- 1115 25. Jariyapan N, Roytrakul S, Paemanee A, Junkum A, Saeung A, Thongsahuan S, Sor-suwan S,
1116 Phattanawiboon B, Poovorawan Y, Choochote W. Proteomic analysis of salivary glands of female *Anopheles*
1117 *barbirostris* species A2 (Diptera: Culicidae) by two-dimensional gel electrophoresis and mass spectrometry.
1118 *Parasitol Res*. 2012;111(3):1239-49. doi: 10.1007/s00436-012-2958-y.
- 1119 26. Kamiya T, Greischar MA, Mideo N. Epidemiological consequences of immune sensitisation by pre-
1120 exposure to vector saliva. *PLoS Negl Trop Dis*. 2017;11(10). doi: 10.1371/journal.pntd.0005956.
- 1121 27. Khaireh BA, Briolant S, Pascual A, Mokrane M, MacHault V, Travaille C, Khaireh MA, Farah IH, Ali
1122 HM, Abdi AIA, Ayeh SN, Darar HY, Ollivier L, Weiss MK, Bogreau H, Rogier C, Pradines B. *Plasmodium vivax*
1123 and *Plasmodium falciparum* infections in the Republic of Djibouti: Evaluation of their prevalence and potential
1124 determinants. *Malar J*. 2012;11. doi: 10.1186/1475-2875-11-395.
- 1125 28. Korochkina S, Barreau C, Pradel G, Jeffery E, Li J, Natarajan R, Shabanowitz J, Hunt D, Frevert U,
1126 Vernick KD. A mosquito-specific protein family includes candidate receptors for malaria sporozoite invasion of
1127 salivary glands. *Cell Microbiol*. 2006;8(1):163-75. doi: 10.1111/j.1462-5822.2005.00611.x.
- 1128 29. Lombardo F, Ronca R, Rizzo C, Mestres-Simòn M, Lanfrancotti A, Currà C, Fiorentino G, Bourguin
1129 C, Ribeiro JM, Petrarca V, Ponzi M, Coluzzi M, Arcà B. The *Anopheles gambiae* salivary protein gSG6: an
1130 anopheline-specific protein with a blood-feeding role. *Insect Biochem Mol Biol*. 2009;39(7):457-66. doi:
1131 10.1016/j.ibmb.2009.04.006.
- 1132 30. Pandey RK, Bhatt TK, Prajapati VK. Novel Immunoinformatics Approaches to Design Multi-epitope
1133 Subunit Vaccine for Malaria by Investigating *Anopheles* Salivary Protein. *Sci Rep*. 2018;8(1):1125. doi:
1134 10.1038/s41598-018-19456-1.
- 1135 31. Pedro PM, Sallum MAM. Spatial expansion and population structure of the neotropical malaria vector,
1136 *Anopheles darlingi* (Diptera: Culicidae). *Biol J Linn Soc*. 2009;97(4):854-66. doi: 10.1111/j.1095-
1137 8312.2009.01226.x.
- 1138 32. Phattanawiboon B, Jariyapan N, Mano C, Roytrakul S, Paemanee A, Sor-Suwan S, Sriwichai P, Saeung
1139 A, Bates PA. Salivary Gland Proteome during Adult Development and after Blood Feeding of Female *Anopheles*
1140 *dissidens* Mosquitoes (Diptera: Culicidae). *PLoS One*. 11(9):e0163810. doi: 10.1371/journal.pone.0163810.
- 1141 33. Pirone L, Ripoll-Rozada J, Leone M, Ronca R, Lombardo F, Fiorentino G, Andersen JF, Pereira PJB,
1142 Arcà B, Pedone E. Functional analyses yield detailed insight into the mechanism of thrombin inhibition by the
1143 antihemostatic salivary protein cE5 from *Anopheles gambiae*. *J Biol Chem*. 2017;292(30):12632-42. doi:
1144 10.1074/jbc.M117.788042. PubMed PMID: PDB/3U69PDB/4E05PDB/5NHU.
- 1145 34. Rawal R, Vijay S, Kadian K, Singh J, Pande V, Sharma A. Towards a Proteomic Catalogue and
1146 Differential Annotation of Salivary Gland Proteins in Blood Fed Malaria Vector *Anopheles culicifacies* by Mass
1147 Spectrometry. *PLoS One*. 2016;11(9):e0161870. doi: 10.1371/journal.pone.0161870.

- 1148 35. Ronca R, Kotsyfakis M, Lombardo F, Rizzo C, Currà C, Ponzi M, Fiorentino G, Ribeiro JM, Arcà B.
1149 The *Anopheles gambiae* cE5, a tight- and fast-binding thrombin inhibitor with post-transcriptionally regulated
1150 salivary-restricted expression. *Insect Biochem Mol Biol.* 2012;42(9):610-20. doi: 10.1016/j.ibmb.2012.04.008.
1151 36. Sarr JB, Remoue F, Samb B, Dia I, Guindo S, Sow C, Maïga S, Tine S, Thiam C, Schacht AM, Simondon
1152 F, Konate L, Riveau G. Evaluation of antibody response to *Plasmodium falciparum* in children according to
1153 exposure of *Anopheles gambiae* s.l or *Anopheles funestus* vectors. *Malar J.* 2007;6. doi: 10.1186/1475-2875-6-
1154 117.
1155 37. Scarpassa VM, Debat HJ, Alencar RB, Saraiva JF, Calvo E, Arcà B, Ribeiro JMC. An insight into the
1156 sialotranscriptome and virome of Amazonian anophelines. *BMC Genomics.* 2019;20(1):166. doi:
1157 10.1186/s12864-019-5545-0.
1158 38. Wells MB, Andrew DJ. Salivary gland cellular architecture in the Asian malaria vector mosquito
1159 *Anopheles stephensi*. *Parasit Vectors.* 2015;8:617-
1160 39. Zocevic A, Carmi-Leroy A, Sautereau J, d'Alayer J, Lenormand P, Rousselle JC, Namane A, Choumet
1161 V. New markers in *Anopheles gambiae* salivary glands after *Plasmodium berghei* infection. *Vector Borne*
1162 *Zoonotic Dis.* 2013;13(2):119-27. doi: 10.1089/vbz.2012.0964.
1163 40. The mal ERARCPoTfME, malERA: An updated research agenda for diagnostics, drugs, vaccines, and
1164 vector control in malaria elimination and eradication. *PLoS Med.* 2017;14(11). doi:
1165 10.1371/journal.pmed.1002455.
1166 41. The mal ERARCPoBS, Enabling T. malERA: An updated research agenda for basic science and enabling
1167 technologies in malaria elimination and eradication. *PLoS Med.* 2017;14(11). doi:
1168 10.1371/journal.pmed.1002451.
1169 42. The mal ERARCPoCtR, Measuring T. malERA: An updated research agenda for characterising the
1170 reservoir and measuring transmission in malaria elimination and eradication. *PLoS Med.* 2017;14(11). doi:
1171 10.1371/journal.pmed.1002452.
1172 43. Andrade BB, Barral-Netto M. Biomarkers for susceptibility to infection and disease severity in human
1173 malaria. *Mem Inst Oswaldo Cruz.* 2011;106:70-8. doi: 10.1590/s0074-02762011000900009. PubMed PMID:
1174 WOS:000294440600009.
1175 44. Andrade BB, Teixeira CR, Barral A, Barral-Netto M. Haematophagous arthropod saliva and host defense
1176 system: A tale of tear and blood. *An Acad Bras Cienc.* 2005;77(4):665-93. doi: 10.1590/S0001-
1177 37652005000400008.
1178 45. Billingsley PF, Baird J, Mitchell JA, Drakeley C. Immune interactions between mosquitoes and their
1179 hosts. *Parasite Immunol.* 2006;28(4):143-53. doi: 10.1111/j.1365-3024.2006.00805.x. PubMed PMID:
1180 WOS:000236064500004.
1181 46. Cantillo JF, Fernández-Caldas E, Puerta L. Immunological aspects of the immune response induced by
1182 mosquito allergens. *Int Arch Allergy Immunol.* 2014;165(4):271-82. doi: 10.1159/000371349.
1183 47. Coutinho-Abreu IV, Guimaraes-Costa AB, Valenzuela JG. Impact of insect salivary proteins in blood
1184 feeding, host immunity, disease, and in the development of biomarkers for vector exposure. *Curr Opin Insect.*
1185 2015;10:98-103. doi: 10.1016/j.cois.2015.04.014. PubMed PMID: WOS:000369017500015.
1186 48. Domingos A, Pinheiro-Silva R, Couto J, do Rosário V, de la Fuente J. The *Anopheles gambiae*
1187 transcriptome – a turning point for malaria control. *Insect Mol Biol.* 2017;26(2):140-51. doi: 10.1111/imb.12289.
1188 49. Doucoure S, Cornelie S, Drame PM, Marie A, Ndille EE, Mathieu-Daudé F, Mouchet F, Poinsignon A,
1189 Remoue F. Biomarkers of vector bites: Arthropod immunogenic salivary proteins in vector-borne diseases control.
1190 In: Preedy VR, Patel VB, editors. *General Methods in Biomarker Research and their Applications.* 2-22015. p.
1191 1177-205.
1192 50. Doucoure S, Drame PM. Salivary Biomarkers in the Control of Mosquito-Borne Diseases. *Insects.*
1193 2015;6(4):961-76. doi: 10.3390/insects6040961.
1194 51. Drame PM, Poinsignon A, Marie A, Noukpo H, Doucoure S, Cornelie S, Remoue F, Manguin S. New
1195 Salivary Biomarkers of Human Exposure to Malaria Vector Bites. In: Manguin S, editor. *Anopheles mosquitoes:
1196 New insights into malaria vectors*2013. p. 755-95.
1197 52. Fontaine A, Diouf I, Bakkali N, Missé D, Pagès F, Fusai T, Rogier C, Almeras L. Implication of
1198 haematophagous arthropod salivary proteins in host-vector interactions. *Parasit Vectors.* 2011;4(1). doi:
1199 10.1186/1756-3305-4-187.
1200 53. Foy BD, Killeen GF, Magalhaes T, Beier JC. Immunological targeting of critical insect antigens. *Am*
1201 *Entomol.* 2002;48(3):150-62. doi: 10.1093/ae/48.3.150.
1202 54. Gillespie RD, Mbow ML, Titus RG. The immunomodulatory factors of bloodfeeding arthropod saliva.
1203 *Parasite Immunol.* 2000;22(7):319-31. doi: 10.1046/j.1365-3024.2000.00309.x.

- 1204 55. Hopp CS, Sinnis P. The innate and adaptive response to mosquito saliva and Plasmodium sporozoites in
1205 the skin. *Ann N Y Acad Sci.* 2015;1342:37-43. doi: 10.1111/nyas.12661. PubMed PMID:
1206 WOS:000353102900005.
- 1207 56. Hugo RLE, Birrell GW. Proteomics of Anopheles Vectors of Malaria. *Trends Parasitol.*
1208 2018;34(11):961-81. doi: 10.1016/j.pt.2018.08.009.
- 1209 57. Leitner WW, Denis ACS, Wali T. Immunological consequences of arthropod vector-derived salivary
1210 factors. *Eur J Immunol.* 2011;41(12):3396-400. doi: 10.1002/eji.201190075.
- 1211 58. Lombardo F, Lanfrancotti A, Mestres-Simón M, Rizzo C, Coluzzi M, Arcà B. At the interface between
1212 parasite and host: The salivary glands of the African malaria vector *Anopheles gambiae*. *Parassitologia.*
1213 2006;48(4):573-80.
- 1214 59. Mathema VB, Na-Bangchang K. A brief review on biomarkers and proteomic approach for malaria
1215 research. *Asian Pac J Trop Med.* 2015;8(4):253-62. doi: 10.1016/S1995-7645(14)60327-8.
- 1216 60. Peng Z, Estelle F, Simons R. Mosquito allergy and mosquito salivary allergens. *Protein Peptide Lett.*
1217 2007;14(10):975-81. doi: 10.2174/092986607782541088. PubMed PMID: WOS:000253577700007.
- 1218 61. Ribeiro JMC, Francischetti IMB. Role of Arthropod Saliva in Blood Feeding: Sialome and Post-Sialome
1219 Perspectives. *Annu Rev Entomol.* 2003;48:73-88. doi: 10.1146/annurev.ento.48.060402.102812.
- 1220 62. Sagna A, Poinignon A, Remoue F, Wikel SK, Aksoy S, Dimopoulos G. Epidemiological Applications
1221 of Assessing Mosquito Exposure in a Malaria-Endemic Area. In: Wikel SK, Dimopoulos G, Aksoy S, editors.
1222 *Arthropod Vector: Controller of Disease Transmission, Volume 2: Vector Saliva-Host Pathogen Interactions*2017.
1223 p. 209-29.
- 1224 63. Sá-Nunes A, De Oliveira CJF. Sialogenins and immunomodulators derived from blood feeding parasites.
1225 In: Kini R, Clemetson K, Markland F, McLane M, Morita T, editors. *Toxins and Hemostasis*2011. p. 131-52.
- 1226 64. Miot HA, Lima HC. Allergy to Hematophagous Arthropods Bites. *Current Dermatology Reports.*
1227 2014;3(1):6-12.
- 1228 65. Peng Z, Simons FER. Mosquito allergy: immune mechanisms and recombinant salivary allergens. *Int*
1229 *Arch Allergy Appl Immunol.* 2004;133(2):198-209.
- 1230 66. Pinggen M, Schmid MA, Harris E, McKimmie CS. Mosquito biting modulates skin response to virus
1231 infection. *Trends Parasitol.* 2017;33(8):645-57.
- 1232 67. Sinden RE, Blagborough AM, Churcher T, Ramakrishnan C, Biswas S, Delves MJ. The design and
1233 interpretation of laboratory assays measuring mosquito transmission of Plasmodium. *Trends Parasitol.*
1234 2012;28(11):457-65.
- 1235 68. Abonuusum A, Owusu-Daako K, Tannich E, May J, Garms R, Kruppa T. Malaria transmission in two
1236 rural communities in the forest zone of Ghana. *Parasitol Res.* 2011;108(6):1465-71. doi: 10.1007/s00436-010-
1237 2195-1.
- 1238 69. Badu K, Afrane YA, Larbi J, Stewart VA, Waitumbi J, Angov E, Ong'echa JM, Perkins DJ, Zhou G,
1239 Githeko A, Yan G. Marked variation in MSP-1 19antibody responses to malaria in western Kenyan highlands.
1240 *BMC Infect Dis.* 2012;12. doi: 10.1186/1471-2334-12-50.
- 1241 70. Chaccour CJ, Kobylinski KC, Bassat Q, Bousema T, Drakeley C, Alonso P, Foy BD. Ivermectin to
1242 reduce malaria transmission: A research agenda for a promising new tool for elimination. *Malar J.* 2013;12(1).
1243 doi: 10.1186/1475-2875-12-153.
- 1244 71. Coulibaly D, Travassos MA, Tolo Y, Laurens MB, Kone AK, Traore K, Sissoko M, Niangaly A, Diarra
1245 I, Daou M, Guindo B, Rebaudet S, Kouriba B, Dessay N, Piarroux R, Plowe CV, Doumbo OK, Thera MA, Gaudart
1246 J. Spatio-temporal dynamics of asymptomatic malaria: Bridging the gap between annual Malaria resurgences in
1247 a Sahelian environment. *Am J Trop Med Hyg.* 2017;97(6):1761-9. doi: 10.4269/ajtmh.17-0074.
- 1248 72. Dhawan R, Kumar M, Mohanty AK, Dey G, Advani J, Prasad TSK, Kumar A. Mosquito-borne diseases
1249 and omics: Salivary gland proteome of the female aedes aegypti mosquito. *OMICS: J Integrative Biol.*
1250 2017;21(1):45-54. doi: 10.1089/omi.2016.0160.
- 1251 73. Fontaine A, Pascual A, Diouf I, Bakkali N, Bourdon S, Fusai T, Rogier C, Almeras L. Mosquito salivary
1252 gland protein preservation in the field for immunological and biochemical analysis. *Parasit Vectors.* 2011;4:33.
1253 doi: 10.1186/1756-3305-4-33.
- 1254 74. Fontaine A, Pascual A, Orlandi-Pradines E, Diouf I, Remoue F, Pages F, Fusai T, Rogier C, Almeras L.
1255 Relationship between Exposure to Vector Bites and Antibody Responses to Mosquito Salivary Gland Extracts.
1256 *PLoS One.* 2011;6(12). doi: 10.1371/journal.pone.0029107. PubMed PMID: WOS:000298369100156.
- 1257 75. Jeon SH, Park JW, Lee BH. Characterization of human IgE and mouse IgG1 responses to allergens in
1258 three mosquito species by immunoblotting and ELISA. *Int Arch Allergy Immunol.* 2001;126(3):206-12. doi:
1259 10.1159/000049515.

- 1260 76. Kelly-Hope LA, McKenzie FE. The multiplicity of malaria transmission: A review of entomological
1261 inoculation rate measurements and methods across sub-Saharan Africa. *Malar J.* 2009;8(1). doi: 10.1186/1475-
1262 2875-8-19.
- 1263 77. Kusi KA, Bosomprah S, Dodoo D, Kyei-Baafour E, Dickson EK, Mensah D, Angov E, Dutta S, Sedegah
1264 M, Koram KA. Anti-sporozoite antibodies as alternative markers for malaria transmission intensity estimation.
1265 *Malar J.* 2014;13(1). doi: 10.1186/1475-2875-13-103.
- 1266 78. Li B, Calvo E, Marinotti O, James AA, Paskewitz SM. Characterization of the c-type lysozyme gene
1267 family in *Anopheles gambiae*. *Gene.* 2005;360(2):131-9. doi: 10.1016/j.gene.2005.07.001.
- 1268 79. Londono-Renteria B, Patel JC, Vaughn M, Funkhauser S, Ponnusamy L, Grippin C, Jameson SB,
1269 Apperson C, Mores CN, Wesson DM, Colpitts TM, Meshnick SR. Long-lasting permethrin-impregnated clothing
1270 protects against mosquito bites in outdoor workers. *Am J Trop Med Hyg.* 2015;93(4):869-74. doi:
1271 10.4269/ajtmh.15-0130.
- 1272 80. Mwanziva C, Manjurano A, Mbugi E, Mweya C, Mkali H, Kivuyo MP, Sanga A, Ndaró A, Chambo W,
1273 Mkwizu A, Kitau J, Kavishe R, Dolmans W, Chilongola J, Mosha FW. Defining malaria burden from morbidity
1274 and mortality records, self treatment practices and serological data in Magugu, Babati district, northern Tanzania.
1275 *Tanzan J Health Res.* 2011;13(2). doi: 10.4314/thrb.v13i2.62980.
- 1276 81. Sarr J, Orlandi-Pradines E, Fortin S, Sow C, Cornélie S, Rogerie F, Guindo S, Konate L, Fusa T, Riveau
1277 G, Rogier C, Remoue F. Assessment of exposure to *Plasmodium falciparum* transmission in a low endemicity
1278 area by using multiplex fluorescent microsphere-based serological assays. *Parasit Vectors.* 2011;4(1). doi:
1279 10.1186/1756-3305-4-212.
- 1280 82. Satoguina J, Walther B, Drakeley C, Nwakanma D, Oriero EC, Correa S, Corran P, Conway DJ, Walther
1281 M. Comparison of surveillance methods applied to a situation of low malaria prevalence at rural sites in the
1282 Gambia and Guinea Bissau. *Malar J.* 2009;8(1). doi: 10.1186/1475-2875-8-274.
- 1283 83. Smithuis FM, Kyaw MK, Phe UO, Van Der Broek I, Katterman N, Rogers C, Almeida P, Kager PA,
1284 Stepniewska K, Lubell Y, Simpson JA, White NJ. Entomological determinants of insecticide-treated bed net
1285 effectiveness in Western Myanmar. *Malar J.* 2013;12(1). doi: 10.1186/1475-2875-12-364.
- 1286 84. Ubillos I, Campo JJ, Jiménez A, Dobaño C. Development of a high-throughput flexible quantitative
1287 suspension array assay for IgG against multiple *Plasmodium falciparum* antigens. *Malar J.* 2018;17(1). doi:
1288 10.1186/s12936-018-2365-7.
- 1289 85. van den Hoogen LL, Présumé J, Romilus I, Mondélus G, Elismé T, Sepúlveda N, Stresman G, Druetz T,
1290 Ashton RA, Joseph V, Eisele TP, Hamre KES, Chang MA, Lemoine JF, Tetteh KKA, Boncy J, Existe A, Drakeley
1291 C, Rogier E. Quality control of multiplex antibody detection in samples from large-scale surveys: the example of
1292 malaria in Haiti. *Sci Rep.* 2020;10(1). doi: 10.1038/s41598-020-57876-0.
- 1293 86. Varela ML, Koffi D, White M, Niang M, Mbengue B, Diene Sarr F, Touré AO, Perraut R. Practical
1294 example of multiple antibody screening for evaluation of malaria control strategies. *Malar J.* 2020;19(1). doi:
1295 10.1186/s12936-020-03186-9.
- 1296 87. Wanjala CL, Kweka EJ. Impact of highland topography changes on exposure to malaria vectors and
1297 immunity in Western Kenya. *Front Public Health.* 2016;4(OCT). doi: 10.3389/FPUBH.2016.00227.
- 1298 88. Armiyanti Y, Arifianto RP, Riana EN, Senjarini K, Widodo W, Fitri LE, Sardjono TW. Identification of
1299 antigenic proteins from salivary glands of female *Anopheles maculatus* by proteomic analysis. *Asian Pac J Trop*
1300 *Biomed.* 2016;6(11):924-30. doi: 10.1016/j.apjtb.2016.08.012.
- 1301 89. Brummer-Korvenkontio H, Palosuo T, François G, Reunala T. Characterization of *Aedes communis*,
1302 *Aedes aegypti* and *Anopheles stephensi* mosquito saliva antigens by immunoblotting. *Int Arch Allergy Immunol.*
1303 1997;112(2):169-74. doi: 10.1159/000237450.
- 1304 90. Cornélie S, Remoue F, Doucoure S, Ndiaye T, Sauvage FX, Boulanger D, Simondon F. An insight into
1305 immunogenic salivary proteins of *Anopheles gambiae* in African children. *Malar J.* 2007;6:75. doi: 10.1186/1475-
1306 2875-6-75.
- 1307 91. Fontaine A, Fusaï T, Briolant S, Buffet S, Villard C, Baudelet E, Pophillat M, Granjeaud S, Rogier C,
1308 Almeras L. *Anopheles* salivary gland proteomes from major malaria vectors. *BMC Genomics.* 2012;13:614. doi:
1309 10.1186/1471-2164-13-614.
- 1310 92. Marie A, Holzmüller P, Tchioffo MT, Rossignol M, Demette E, Seveno M, Corbel V, Awono-Ambéné
1311 P, Morlais I, Remoue F, Cornélie S. *Anopheles gambiae* salivary protein expression modulated by wild
1312 *Plasmodium falciparum* infection: highlighting of new antigenic peptides as candidates of *An. gambiae* bites.
1313 *Parasit Vectors.* 2014;7:599. doi: 10.1186/s13071-014-0599-y.
- 1314 93. Owhashi M, Harada M, Suguri S, Omae H, Ishii A. Identification of an eosinophil chemotactic factor
1315 from anopheline mosquitoes as a chitinase family protein. *Parasitol Res.* 2008;102(3):357-63. doi:
1316 10.1007/s00436-007-0769-3.

- 1317 94. Penneys NS, Nayar JK, Bernstein H, Knight JW, Leonardi C. Mosquito Salivary Gland Antigens
1318 Identified by Circulating Human Antibodies. Arch Dermatol. 1989;125(2):219-22. doi:
1319 10.1001/archderm.1989.01670140071012.
- 1320 95. Sor-suwan S, Jariyapan N, Roytrakul S, Paemane A, Phume A, Phattanawiboon B, Intakhan N,
1321 Chanmol W, Bates PA, Saeung A, Choochote W. Identification of salivary gland proteins depleted after blood
1322 feeding in the malaria vector *Anopheles campestris*-like mosquitoes (Diptera: Culicidae). PLoS One.
1323 2014;9(3):e90809. doi: 10.1371/journal.pone.0090809.
- 1324 96. Sor-Suwan S, Jariyapan N, Roytrakul S, Paemane A, Saeung A, Thongsahuan S, Phattanawiboon B,
1325 Bates PA, Poovorawan Y, Choochote W. Salivary gland proteome of the human malaria vector, *Anopheles*
1326 *campestris*-like (Diptera: Culicidae). Parasitol Res. 2013;112(3):1065-75. doi: 10.1007/s00436-012-3233-y.
- 1327 97. Peng ZK, Li HB, Simons FER. Immunoblot analysis of salivary allergens in 10 mosquito species with
1328 worldwide distribution and the human IgE responses as these allergens. J Allergy Clin Immunol. 1998;101(4):498-
1329 505. doi: 10.1016/s0091-6749(98)70357-4. PubMed PMID: WOS:000073113500012.
- 1330 98. Cornelie S, Senglat M, Doucoure S, Demette E, Remoue F. Characterization of immunogenic proteins
1331 in *Anopheles gambiae* salivary glands and their potential use as a marker of exposure to malaria. Am J Trop Med
1332 Hyg. 2008;79(6):320-. PubMed PMID: WOS:000261644601456.
- 1333 99. Drame PM, Poinsignon A, Besnard P, Cornelie S, Foumane V, Sow CS, Le Mire J, Fortes F, Boulanger
1334 D, Carnevale P, Simondon F, Remoue F. Human antibody response to *Anopheles gambiae* saliva: A new immuno-
1335 epidemiological marker to evaluate the effectiveness of insecticides treated nets (ITNs)? Am J Trop Med Hyg.
1336 2008;79(6):358-. PubMed PMID: WOS:000261644601582.
- 1337 100. Drame PM, Poinsignon A, Besnard P, Cornelie S, Le Mire J, Fortes F, Toto JC, Sembene M, Simondon
1338 F, Carnevale P, Remoue F. Human antibody response to *Anopheles* salivary gSG6-P1 peptide: New immuno-
1339 epidemiological tool for evaluating the efficacy of insecticides treated nets (ITNs) in malaria vector control. Am
1340 J Trop Med Hyg. 2010;83(5):260-. PubMed PMID: WOS:000295819701240.
- 1341 101. Poinsignon A, Cornelie S, Mestres-Simon M, Lanfrancotti A, Rossignol M, Boulanger D, Cisse B,
1342 Sokhna C, Arca B, Simondon F, Remoue F. Human IgG response to *Anopheles gambiae* salivary proteins as an
1343 immuno-epidemiological marker of exposure to malaria vector bites. Am J Trop Med Hyg. 2008;79(6):218-
1344 PubMed PMID: WOS:000261644601102.
- 1345 102. Poinsignon A, Drame PM, Marie A, Noukpo H, Cornelie S, Remoue F. Development of a biomarker of
1346 exposure to *Anopheles* bites based on human antibody response to salivary proteins: From concept to application
1347 in the field. Pathog Glob Health. 2013;107(8):455-. PubMed PMID: WOS:000335056200147.
- 1348 103. Poinsignon A, Drame PM, Samb B, Cornelie S, Sow C, Dia I, Riveau G, Konate L, Sokhna C, Remoue
1349 FJ. Development of a new biomarker of exposure to *Anopheles* bites based on human antibody responses to
1350 salivary proteins: From the concept to the applications. Am J Trop Med Hyg. 2010;83(5):184-. PubMed PMID:
1351 WOS:000295819700617.
- 1352 104. Sagna AB, Kassie D, Couvray A, Hermann E, Riveau G, Salem G, Fournet F, Remoue F. Spatial risk of
1353 urban exposure to *Anopheles* and *Aedes* mosquito bites in africa using salivary antibody-based biomarkers. Am J
1354 Trop Med Hyg. 2018;99(4):47-. PubMed PMID: WOS:000461386602150.
- 1355 105. Dragovic SM, Agunbiade TA, Freudzon M, Yang J, Hastings AK, Schleicher TR, Zhou X, Craft S,
1356 Chuang YM, Gonzalez F, Li Y, Hrebikova G, Tripathi A, Mlambo G, Almeras L, Ploss A, Dimopoulos G, Fikrig
1357 E. Immunization with AgTRIO, a Protein in *Anopheles* Saliva, Contributes to Protection against Plasmodium
1358 Infection in Mice. Cell Host Microbe. 2018;23(4):523-35.e5. doi: 10.1016/j.chom.2018.03.008.
- 1359 106. King JG, Vernicks KD, Hillyer JF. Members of the salivary gland surface protein (SGS) family are major
1360 immunogenic components of mosquito saliva. J Biol Chem. 2011;286(47):40824-34. doi:
1361 10.1074/jbc.M111.280552.
- 1362 107. Vogt MB, Lahon A, Arya RP, Kneubehl AR, Spencer Clinton JL, Paust S, Rico-Hesse R. Mosquito
1363 saliva alone has profound effects on the human immune system. PLoS Negl Trop Dis. 2018;12(5). doi:
1364 10.1371/journal.pntd.0006439.
- 1365 108. Wang J, Zhang Y, Zhao YO, Li MW, Zhang L, Dragovic S, Abraham NM, Fikrig E. *Anopheles gambiae*
1366 circumsporozoite protein-binding protein facilitates plasmodium infection of mosquito salivary glands. J Infect
1367 Dis. 2013;208(7):1161-9. doi: 10.1093/infdis/jit284.
- 1368 109. Almeida AP, Billingsley PF. Induced immunity against the mosquito *Anopheles stephensi*: reactivity
1369 characteristics of immune sera. Med Vet Entomol. 1999;13(1):53-64. doi: 10.1046/j.1365-2915.1999.00143.x.
- 1370 110. Boulanger D, Doucoure S, Grout L, Ngom A, Rogerie F, Cornelie S, Sokhna C, Mouchet F, Riveau G,
1371 Simondon F, Remoue FJ. Immunoglobulin G antibody profiles against *Anopheles* salivary proteins in domestic
1372 animals in Senegal. J Med Entomol. 2011;48(3):691-3. doi: 10.1603/me10183.
- 1373 111. Kerkhof K, Canier L, Kim S, Heng S, Sochantha T, Sovannaroth S, Vigan-Womas I, Coosemans M,
1374 Sluydts V, Ménard D, Durnez L. Implementation and application of a multiplex assay to detect malaria-specific

- 1375 antibodies: a promising tool for assessing malaria transmission in Southeast Asian pre-elimination areas. *Malar J.*
1376 2015;14:338. doi: 10.1186/s12936-015-0868-z.
- 1377 112. Sagna AB, Gaayeb L, Sarr JB, Senghor S, Poinsignon A, Boutouaba-Combe S, Schacht AM, Hermann
1378 E, Faye N, Remoue F, Riveau G. Plasmodium falciparum infection during dry season: IgG responses to Anopheles
1379 gambiae salivary gSG6-P1 peptide as sensitive biomarker for malaria risk in Northern Senegal. *Malar J.*
1380 2013;12:301. doi: 10.1186/1475-2875-12-301.
- 1381 113. Ya-Umphang P, Cerqueira D, Cottrell G, Parker DM, Fowkes FJI, Nosten F, Corbel V. *Anopheles* salivary
1382 biomarker as a proxy for estimating *Plasmodium falciparum* malaria exposure on the Thailand-Myanmar Border.
1383 *Am J Trop Med Hyg.* 2018;99(2):350-6.
- 1384 114. Aka KG, Traoré DF, Sagna AB, Zoh DD, Assi SB, Tchiekoi BN, Adja AM, Remoue F, Poinsignon A.
1385 Pattern of antibody responses to Plasmodium falciparum antigens in individuals differentially exposed to
1386 Anopheles bites. *Malar J.* 2020;19(1):83. doi: 10.1186/s12936-020-03160-5.
- 1387 115. Drame PM, Diallo A, Poinsignon A, Boussari O, Dos Santos S, Machault V, Lalou R, Cornélie S,
1388 LeHesran JY, Remoue F. Evaluation of the effectiveness of malaria vector control measures in urban settings of
1389 Dakar by a specific *Anopheles* salivary biomarker. *PLoS One.* 2013;8(6):e66354. doi:
1390 10.1371/journal.pone.0066354.
- 1391 116. Londono-Renteria BL, Eisele TP, Keating J, James MA, Wesson DM. Antibody response against
1392 *Anopheles albimanus* (Diptera: Culicidae) salivary protein as a measure of mosquito bite exposure in Haiti. *J Med*
1393 *Entomol.* 2010;47(6):1156-63. doi: 10.1603/me09240.
- 1394 117. Noukpo MH, Damien GB, Elanga-N'Dille E, Sagna AB, Drame PM, Chaffa E, Boussari O, Corbel V,
1395 Akogbéto M, Remoue F. Operational assessment of long-lasting insecticidal nets by using an *Anopheles* salivary
1396 biomarker of human-vector contact. *Am J Trop Med Hyg.* 2016;95(6):1376-82. doi: 10.4269/ajtmh.15-0541.
- 1397 118. Manning JE, Oliveira F, Coutinho-Abreu IV, Herbert S, Meneses C, Kamhawi S, Baus HA, Han A,
1398 Czajkowski L, Rosas LA, Cervantes-Medina A, Athota R, Reed S, Mateja A, Hunsberger S, James E,
1399 Pleguezuelos O, Stoloff G, Valenzuela JG, Memoli MJ. Safety and immunogenicity of a mosquito saliva peptide-
1400 based vaccine: a randomised, placebo-controlled, double-blind, phase 1 trial. *Lancet.* 2020;395(10242):1998-
1401 2007. doi: 10.1016/S0140-6736(20)31048-5. PubMed PMID: ClinicalTrials.gov/NCT03055000.
- 1402 119. Mendes-Sousa AF, Vale VF, Queiroz DC, Pereira-Filho AA, da Silva NCS, Koerich LB, Moreira LA,
1403 Pereira MH, Sant'Anna MR, Araújo RN, Andersen J, Valenzuela JG, Gontijo NF. Inhibition of the complement
1404 system by saliva of *Anopheles* (*Nyssorhynchus*) *aquasalis*. *Insect Biochem Mol Biol.* 2018;92:12-20. doi:
1405 10.1016/j.ibmb.2017.11.004.
- 1406 120. Peng Z, Beckett AN, Engler RJ, Hoffman DR, Ott NL, Simons FE. Immune responses to mosquito saliva
1407 in 14 individuals with acute systemic allergic reactions to mosquito bites. *J Allergy Clin Immunol.*
1408 2004;114(5):1189-94. doi: 10.1016/j.jaci.2004.08.014.
- 1409 121. Londono-Renteria B, Cardenas JC, Troupin A, Colpitts TM. Natural mosquito-pathogen hybrid IgG4
1410 antibodies in vector-borne diseases: A hypothesis. *Front Immunol.* 2016;7(SEP). doi:
1411 10.3389/fimmu.2016.00380.
- 1412 122. Owhashi M, Harada M, Suguri S, Ohmae H, Ishii A. The role of saliva of *Anopheles stephensi* in
1413 inflammatory response: identification of a high molecular weight neutrophil chemotactic factor. *Parasitol Res.*
1414 2001;87(5):376-82. doi: 10.1007/s004360000355.
- 1415 123. Armiyanti Y, Nuryady MM, Arifianto RP, Nurmariana E, Senjarini K, Fitri LE, Sardjono TW. Detection
1416 of immunogenic proteins from *Anopheles sundaicus* salivary glands. *Revista da Sociedade Brasileira de Medicina*
1417 *Tropical.* 2015;48(4):410-6. doi: 10.1590/0037-8682-0185-2015.
- 1418 124. Opasawatchai A, Yolwong W, Thuncharoen W, Inrueangsri N, Itsaradisaikul S, Sasisakulporn C,
1419 Jotikasthira W, Matangkasombut O, Reamtong O, Manuyakorn W, Songnuan W, Matangkasombut P. Novel
1420 salivary gland allergens from tropical mosquito species and IgE reactivity in allergic patients. *World Allergy*
1421 *Organ J.* 2020;13(2). doi: 10.1016/j.waojou.2020.100099.
- 1422 125. Orlandi-Pradines E, Almeras L, Denis de Senneville L, Barbe S, Remoué F, Villard C, Cornélie S,
1423 Penhoat K, Pascual A, Bourgouin C, Fontenille D, Bonnet J, Corre-Catelin N, Reiter P, Pagés F, Laffite D,
1424 Boulanger D, Simondon F, Pradines B, Fusai T, Rogier C. Antibody response against saliva antigens of *Anopheles*
1425 *gambiae* and *Aedes aegypti* in travellers in tropical Africa. *Microbes Infect.* 2007;9(12-13):1454-62. doi:
1426 10.1016/j.micinf.2007.07.012.
- 1427 126. Ambrosino E, Dumoulin C, Orlandi-Pradines E, Remoue F, Toure-Baldé A, Tall A, Sarr JB, Poinsignon
1428 A, Sokhna C, Puget K, Trape JF, Pascual A, Druilhe P, Fusai T, Rogier C. A multiplex assay for the simultaneous
1429 detection of antibodies against 15 *Plasmodium falciparum* and *Anopheles gambiae* saliva antigens. *Malar J.*
1430 2010;9:317. doi: 10.1186/1475-2875-9-317.

- 1431 127. Kerkhof K, Sluydts V, Willen L, Kim S, Canier L, Heng S, Tsuboi T, Sochantha T, Sovannaroth S,
1432 Ménard D, Coosemans M, Durnez L. Serological markers to measure recent changes in malaria at population
1433 level in Cambodia. *Malar J.* 2016;15(1):1-18. doi: 10.1186/s12936-016-1576-z.
- 1434 128. Koffi D, Touré AO, Varela ML, Vigan-Womas I, Béourou S, Brou S, Ehouman MF, Gnamien L, Richard
1435 V, Djaman JA, Perraut R. Analysis of antibody profiles in symptomatic malaria in three sentinel sites of Ivory
1436 Coast by using multiplex, fluorescent, magnetic, bead-based serological assay (MAGPIX™). *Malar J.*
1437 2015;14:509. doi: 10.1186/s12936-015-1043-2.
- 1438 129. Koffi D, Varela ML, Loucoubar C, Beourou S, Vigan-Womas I, Touré A, Djaman JA, Touré AO, Perraut
1439 R. Longitudinal analysis of antibody responses in symptomatic malaria cases do not mirror parasite transmission
1440 in peri-urban area of Cote d'Ivoire between 2010 and 2013. *PLoS One.* 2017;12(2):e0172899. doi:
1441 10.1371/journal.pone.0172899.
- 1442 130. Perraut R, Varela ML, Loucoubar C, Niass O, Sidibé A, Tall A, Trape JF, Wotodjo AN, Mbengue B,
1443 Sokhna C, Vigan-Womas I, Touré A, Richard V, Mercereau-Puijalon O. Serological signatures of declining
1444 exposure following intensification of integrated malaria control in two rural Senegalese communities. *PLoS One.*
1445 2017;12(6):e0179146. doi: 10.1371/journal.pone.0179146.
- 1446 131. Proietti C, Verra F, Bretscher MT, Stone W, Kanoi BN, Balikagala B, Egwang TG, Corran P, Ronca R,
1447 Arcà B, Riley EM, Crisanti A, Drakeley C, Bousema T. Influence of infection on malaria-specific antibody
1448 dynamics in a cohort exposed to intense malaria transmission in northern Uganda. *Parasite Immunol.* 2013;35(5-
1449 6):164-73. doi: 10.1111/pim.12031.
- 1450 132. Stone W, Bousema T, Jones S, Gesase S, Hashim R, Gosling R, Carneiro I, Chandramohan D, Theander
1451 T, Ronca R, Modiano D, Arcà B, Drakeley C. IgG responses to *Anopheles gambiae* salivary antigen gSG6 detect
1452 variation in exposure to malaria vectors and disease risk. *PLoS One.* 2012;7(6):e40170. doi:
1453 10.1371/journal.pone.0040170.
- 1454 133. Ya-Umphap P, Cerqueira D, Parker DM, Cottrell G, Poinsignon A, Remoue F, Brengues C,
1455 Chareonviriyaphap T, Nosten F, Corbel V. Use of an *Anopheles* salivary biomarker to assess malaria transmission
1456 risk along the Thailand-Myanmar Border. *J Infect Dis.* 2017;215(3):396-404. doi: 10.1093/infdis/jiw543.
- 1457 134. Idris ZM, Chan CW, Mohammed M, Kalkoa M, Taleo G, Junker K, Arcà B, Drakeley C, Kaneko A.
1458 Serological measures to assess the efficacy of malaria control programme on Ambae Island, Vanuatu. *Parasit*
1459 *Vectors.* 2017;10(1):204. doi: 10.1186/s13071-017-2139-z.
- 1460 135. Yman V, White MT, Rono J, Arca B, Osier FH, Troye-Blomberg M, Bostrom S, Ronca R, Rooth I,
1461 Farnert A. Antibody acquisition models: A new tool for serological surveillance of malaria transmission intensity.
1462 *Sci Rep.* 2016;6. doi: 10.1038/srep19472. PubMed PMID: WOS:000369380100001.
- 1463 136. Badu K, Gyan B, Appawu M, Mensah D, Dodoo D, Yan G, Drakeley C, Zhou G, Owusu-Dabo E, Koram
1464 KA. Serological evidence of vector and parasite exposure in Southern Ghana: the dynamics of malaria
1465 transmission intensity. *Parasit Vectors.* 2015;8:251. doi: 10.1186/s13071-015-0861-y.
- 1466 137. Sarr JB, Samb B, Sagna AB, Fortin S, Doucoure S, Sow C, Senghor S, Gaayeb L, Guindo S, Schacht
1467 AM, Rogerie F, Hermann E, Dia I, Konate L, Riveau G, Remoue F. Differential acquisition of human antibody
1468 responses to *Plasmodium falciparum* according to intensity of exposure to *Anopheles* bites. *Trans R Soc Trop*
1469 *Med Hyg.* 2012;106(8):460-7. doi: 10.1016/j.trstmh.2012.05.006.
- 1470 138. Drame PM, Poinsignon A, Dechavanne C, Cottrell G, Farce M, Ladekpo R, Massougbodji A, Cornélie
1471 S, Courtin D, Migot-Nabias F, Garcia A, Remoué F. Specific antibodies to *Anopheles* gSG6-P1 salivary peptide
1472 to assess early childhood exposure to malaria vector bites. *Malar J.* 2015;14:285. doi: 10.1186/s12936-015-0800-
1473 6.
- 1474 139. Ali ZM, Bakli M, Fontaine A, Bakkali N, Vu Hai V, Audebert S, Boublik Y, Pagès F, Remoué F, Rogier
1475 C, Fraissier C, Almeras L. Assessment of *Anopheles* salivary antigens as individual exposure biomarkers to
1476 species-specific malaria vector bites. *Malar J.* 2012;11:439. doi: 10.1186/1475-2875-11-439.
- 1477 140. Rizzo C, Ronca R, Fiorentino G, Mangano VD, Sirima SB, Nèbiè I, Petrarca V, Modiano D, Arcà B.
1478 Wide cross-reactivity between *Anopheles gambiae* and *Anopheles funestus* SG6 salivary proteins supports
1479 exploitation of gSG6 as a marker of human exposure to major malaria vectors in tropical Africa. *Malar J.*
1480 2011;10:206. doi: 10.1186/1475-2875-10-206.
- 1481 141. Poinsignon A, Cornélie S, Mestres-Simon M, Lanfrancotti A, Rossignol M, Boulanger D, Cisse B,
1482 Sokhna C, Arcà B, Simondon F, Remoue F. Novel peptide marker corresponding to salivary protein gSG6
1483 potentially identifies exposure to *Anopheles* bites. *PLoS One.* 2008;3(6):e2472. doi:
1484 10.1371/journal.pone.0002472.
- 1485 142. Rizzo C, Lombardo F, Ronca R, Mangano V, Sirima SB, Nèbiè I, Fiorentino G, Modiano D, Arcà B.
1486 Differential antibody response to the *Anopheles gambiae* gSG6 and cE5 salivary proteins in individuals naturally
1487 exposed to bites of malaria vectors. *Parasit Vectors.* 2014;7:549. doi: 10.1186/s13071-014-0549-8.

- 1488 143. Drame PM, Poinsignon A, Besnard P, Le Mire J, Dos-Santos MA, Sow CS, Cornelie S, Foumane V,
1489 Toto JC, Sembene M, Boulanger D, Simondon F, Fortes F, Carnevale P, Remoue F. Human antibody response to
1490 *Anopheles gambiae* saliva: an immuno-epidemiological biomarker to evaluate the efficacy of insecticide-treated
1491 nets in malaria vector control. *Am J Trop Med Hyg.* 2010;83(1):115-21. doi: 10.4269/ajtmh.2010.09-0684.
1492 144. Remoue F, Cisse B, Ba F, Sokhna C, Herve JP, Boulanger D, Simondon F. Evaluation of the antibody
1493 response to *Anopheles* salivary antigens as a potential marker of risk of malaria. *Trans R Soc Trop Med Hyg.*
1494 2006;100(4):363-70. doi: 10.1016/j.trstmh.2005.06.032.
1495 145. Lawaly R, Konate L, Marrama L, Dia I, Diallo D, Sarr FD, Schneider BS, Casademont I, Diallo M, Brey
1496 PT, Sakuntabhai A, Mecheri S, Paul R. Impact of mosquito bites on asexual parasite density and gametocyte
1497 prevalence in asymptomatic chronic *Plasmodium falciparum* infections and correlation with IgE and IgG titers.
1498 *Infect Immun.* 2012;80(6):2240-6. doi: 10.1128/iai.06414-11. PubMed PMID: WOS:000304387700031.
1499 146. Rizzo C, Ronca R, Lombardo F, Mangano V, Sirima SB, Nèbiè I, Fiorentino G, Troye-Blomberg M,
1500 Modiano D, Arcà B. IgG1 and IgG4 antibody responses to the *Anopheles gambiae* salivary protein gSG6 in the
1501 sympatric ethnic groups Mossi and Fulani in a malaria hyperendemic area of Burkina Faso. *PLoS One.*
1502 2014;9(4):e96130. doi: 10.1371/journal.pone.0096130.
1503 147. Marie A, Ronca R, Poinsignon A, Lombardo F, Drame PM, Cornelie S, Besnard P, Le Mire J, Fiorentino
1504 G, Fortes F, Carnevale P, Remoue F, Arcà B. The *Anopheles gambiae* cE5 salivary protein: a sensitive biomarker
1505 to evaluate the efficacy of insecticide-treated nets in malaria vector control. *Microbes Infect.* 2015;17(6):409-16.
1506 doi: 10.1016/j.micinf.2015.01.002.
1507 148. Brosseau L, Drame PM, Besnard P, Toto JC, Foumane V, Le Mire J, Mouchet F, Remoue F, Allan R,
1508 Fortes F, Carnevale P, Manguin S. Human antibody response to *Anopheles* saliva for comparing the efficacy of
1509 three malaria vector control methods in Balombo, Angola. *PLoS One.* 2012;7(9):e44189. doi:
1510 10.1371/journal.pone.0044189.
1511 149. Londono-Renteria B, Drame PM, Montiel J, Vasquez AM, Tobón-Castaño A, Taylor M, Vizcaino L,
1512 Lenhart AAE. Identification and pilot evaluation of salivary peptides from *Anopheles albimanus* as biomarkers
1513 for bite exposure and malaria infection in Colombia. *Int J Mol Sci.* 2020;21(3). doi: 10.3390/ijms21030691.
1514 150. Andrade BB, Rocha BC, Reis-Filho A, Camargo LM, Tadei WP, Moreira LA, Barral A, Barral-Netto
1515 M. Anti-*Anopheles darlingi* saliva antibodies as marker of *Plasmodium vivax* infection and clinical immunity in
1516 the Brazilian Amazon. *Malar J.* 2009;8:121. doi: 10.1186/1475-2875-8-121.
1517 151. Waitayakul A, Somsri S, Sattabongkot J, Looareesuwan S, Cui L, Udomsangpetch R. Natural human
1518 humoral response to salivary gland proteins of *Anopheles* mosquitoes in Thailand. *Acta Trop.* 2006;98(1):66-73.
1519 doi: 10.1016/j.actatropica.2006.02.004.
1520 152. Montiel J, Carbal LF, Tobón-Castaño A, Vásquez GM, Fisher ML, Londono-Rentería B. IgG antibody
1521 response against *Anopheles* salivary gland proteins in asymptomatic *Plasmodium* infections in Narino, Colombia.
1522 *Malar J.* 2020;19(1):42. doi: 10.1186/s12936-020-3128-9.