

Inflammation and nitro-oxidative stress in current suicidal attempts and current suicidal ideation: a systematic review and meta-analysis.

Running title: immune activation in current suicidal behaviors

Asara Vasupanrajit, M.Sc.^a; Ketsupar Jirakran, M.Sc.^{a,b}; Chavit Tunvirachaisakul, M.D., Ph.D.^{a,c}; Marco Solmi, M.D., Ph.D.^{f,g,h}, Michael Maes, M.D., Ph.D.^{a, c, d, e}

^a Department of Psychiatry, Faculty of Medicine, Chulalongkorn University, Bangkok, Thailand.

^b Maximizing Thai Children's Developmental Potential Research Unit, Department of Pediatrics, Faculty of Medicine, Chulalongkorn University, Bangkok, Thailand.

^c Cognitive Impairment and Dementia Research Unit, Department of Psychiatry, Faculty of Medicine, Chulalongkorn University, Bangkok, Thailand.

^d IMPACT Strategies Research Center, Deakin University, Geelong, Australia.

^e Department of Psychiatry, Medical University of Plovdiv, Plovdiv, Bulgaria.

^f University of Ottawa, Psychiatry Department, Ottawa, Ontario, Canada

^g The Ottawa Hospital, University of Ottawa, Ottawa, Ontario, Canada

^h Ottawa Hospital Research Institute (OHRI), Clinical Epidemiology Program, University of Ottawa, Ottawa, Ontario, Canada

Corresponding author:

Prof. Dr. Michael Maes, M.D., Ph.D.

Department of Psychiatry, Faculty of Medicine, Chulalongkorn University,

Bangkok, 10330

Thailand

Email: Dr.michaelmaes@hotmail.com; asara.vasu@gmail.com

Abstract

A meta-analysis showed a significant association between activated immune-inflammatory and nitro-oxidative (IO&NS) pathways and suicide attempts (SA). There is no data on whether suicidal ideation (SI) is accompanied by activated IO&NS pathways and whether there are differences between SA and SI. The current study searched PubMed, Google Scholar, and Web of Science, for articles published from inception until May 10, 2021, and systematically reviewed and meta-analyzed the association between recent SA/SI (< 3 months) and IO&NS biomarkers. We included studies which compared psychiatric patients with and without SA and SI and controls (either healthy controls or patients without SA or SI) and used meta-analysis (random-effect model with restricted maximum-likelihood) to delineate effect sizes with 95% confidence intervals (CI). Our search included 59 studies comprising 4,034 SA/SI cases and 12,377 controls. Patients with SA/SI showed activated IO&NS pathways (SMD: 0.299; CI: 0.200; 0.397) when compared to controls. The immune profiles were more strongly associated with SA than with SI, particularly when compared to healthy controls, as evidenced by activated IO&NS (SMD: 0.796; CI: 0.503; 1.089), immune (SMD: 1.409; CI: 0.637; 1.462), inflammatory (SMD: 1.200; CI: 0.584; 1.816), and neurotoxic (SMD: 0.904; CI: 0.431; 1.378) pathways. The effects sizes of the IO&NS, immune and inflammatory profiles were significantly greater in SA than in SI. In conclusion: increased neurotoxicity due to inflammation and nitro-oxidative stress and lowered neuroprotection explains at least in part why psychiatric patients show increased SA and SI. The IO&NS pathways are more pronounced in recent SA than in SI.

Keywords: suicide, neuro-immune, inflammation, oxidative and nitrosative stress, depression, mood disorders, schizophrenia, psychiatry

Introduction

Non-fatal suicide behaviors (SB) are self-injurious behaviors, which may be classified according to their severity into suicidal ideation (SI) and suicide attempts (SA)¹. A study across 17 countries shows that SI has a greater lifetime prevalence than SA, namely 9.2% and 2.7%, respectively², indicating that not all individuals with SI will attempt suicide. Many different risk factors may lead to SB^{3, 4} but psychiatric disorders are the major risk factors^{5, 6}. Individuals with major depressive disorder (MDD) show an almost eight-fold increased risk of suicide, whilst bipolar disorder (BD) and schizophrenia (SCZ) show a six-fold increased risk as compared with individuals without these psychiatric disorders⁶.

There is now evidence that activation of immune-inflammatory and nitro-oxidative (IO&NS) pathways is involved in the pathophysiology of major psychiatric disorders, including MDD, BD, and SCZ⁷⁻¹⁰. These disorders are characterized by a simultaneous activation of the immune-inflammatory response system (IRS) and the compensatory immune-regulatory system (CIRS), which may down-regulate the IRS. **Electronic Supplementary File (ESF) 1 Table 1** shows the IRS-CIRS pathways, and their features involved in those major psychiatric disorders.¹¹⁻¹³. IRS activation is accompanied by the induction of nitro-oxidative (O&NS) pathways with increased production of reactive oxygen (ROS) and nitrogen species (RNS) especially when the antioxidant defenses are reduced⁷. The consequent redox disbalance may cause increased damage to lipids, proteins, DNA, and mitochondria⁷. Moreover, many IO&NS markers have neurotoxic effects, including interleukin (IL)-2, IL-6, tumor necrosis factor-alpha (TNF- α), interferon-gamma (IFN- γ), some chemokines (i.e., CCL-2, CCL-5), C-reactive protein (CRP), quinolinic acid (QA), picolinic acid (PA), malondialdehyde (MDA), and nitric oxide metabolites (NOx)^{13, 14}. Increased neurotoxicity may cause dysfunctions in gray and white matter plasticity,

which in turn are associated with affective disorders and SCZ¹³⁻¹⁵. In contrast, antioxidants, including albumin, vitamin-D, and high-density lipoprotein (HDL), and neurotrophic substances, including brain-derived neurotrophic factor (BDNF)¹⁶, may have neuroprotective effects thereby protecting the central nervous system (CNS) against the neurotoxic effects of the IRS⁷.

Since the 1990s, there were also studies implicating IO&NS pathways in the pathophysiology of SB^{17, 18}. Since then, a rising number of studies have examined the relationship between SB (either SA or SI) and IO&NS biomarkers, including IL-1 β , IL-6, TNF- α , IFN- γ , chemokines such as IL-8, and the neutrophil-to-lymphocyte ratio; CIRS markers including IL-4, IL-10, and soluble IL-2 receptor (sIL-2R); acute phase response (APR) productions such as CRP and albumin; O&NS markers (i.e., MDA, NOx); and antioxidants or neurotrophic factors including albumin, BDNF, omega-3 polyunsaturated fatty acids (PUFAs), HDL-cholesterol, total antioxidant capacity (TAC), and vitamin D₃^{19,23,24}. The increase in IL-6 in cerebrospinal fluid (CSF), blood, and postmortem brain is one of the most consistently reported abnormalities in SB, while other pro-inflammatory cytokines showed more controversial results^{20, 21}. It is noteworthy that the cytokine imbalance in SB may present with activation of the tryptophan catabolite (TRYCAT) pathway leading to lowered levels of tryptophan (TRP) and increased levels of TRYCATs including QA, PA, and kynurenine (KYN)^{4, 22, 23}. Meta-analyses, which examined associations with cytokines other than IL-6, frequently reported controversial findings. For example, Black and Miller²⁴ discovered significantly higher IL-1 β blood levels, whereas Ducasse et al.²⁵ found a medium effect size with lower IL-2 and IL-4 plasma but higher TGF- β plasma levels. CRP (positively)^{26, 27} and BDNF (negatively)²⁸ were significantly associated with SB, while SB was associated with BDNF in plasma²⁸ but not in serum^{28, 29}.

Importantly, most previous meta-analyses on IO&NS blood biomarkers and suicide examined SA and SI patients lumped together into one SB group without considering possible differences between these groups²⁴⁻²⁶. Hence, the current study aimed to systematically review and meta-analyze the association between IO&NS blood biomarkers and recent SB and to delineate differences among SA and SI. The examination of solitary IO&NS biomarkers is less relevant because these compounds take part in highly connected networks and subnetworks. In this regard, Maes et al.^{9, 15} showed that the combination of several IO&NS biomarkers into weighted composite scores may improve our understanding of the pathways involved in affective disorders, schizophrenia and SB. Therefore, we here examine whether SA and/or SI are associated with composite scores reflecting IO&NS (the primary analyses) and its subdomains namely IRS, inflammation, neurotoxicity, and neuroprotection (the secondary analyses) as described in ESF1 Table 1. In addition, we also examine solitary biomarkers such as CRP (part of the inflammation profile) and BDNF (part of neuroprotection profile). Based on previous knowledge, we hypothesized that a) in patients with SA and SI, IO&NS, and IRS, inflammation, neurotoxicity, and CRP are increased, while neuroprotection and BDNF are reduced when compared with controls; and b) that aberrations in these functional profiles are more pronounced in SA than in SI.

Materials and methods

Our methodological approach was based on the guidelines of the Preferred Reporting Items for Systematic Reviews and Meta-Analyses (PRISMA) 2020³⁰, the Cochrane Handbook for Systematic Reviews and Interventions³¹, and the Meta-Analyses of Observational Studies in Epidemiology (MOOSE)³². We followed an a priori protocol which is available upon request

from the last author. The draft or process of this study did not directly or indirectly involve public or patient representatives.

Scope of systematic review

This study classified SB into 2 groups, namely SA and SI¹. We combined different biomarkers into composites according to their well-established functions (ESF 1 Table 1). This study began by selecting articles published in peer-reviewed journals and then searched further records in the studies' reference lists and grey literature. We included English case-control studies or cohort studies when these included a control group and compared SB (SA+ or SI+ within 3 months before the study) with controls, including non-SB patients (SA- or SI-) and/or healthy controls (HC), alone and together. As such, we also examined differences in effect sizes between SA+ *versus* SA- and SI+ *versus* SI- within patients with psychiatric disorders. Moreover, we also examined possible differences in effect sizes between SA and SI. We examined IO&NS biomarkers in blood, serum, and plasma but not CSF, urine, platelets, or stimulated whole blood in articles that included patients and controls of all sexes, all ages, and ethnicities.

We approached the authors of eligible studies which did not publish mean and standard deviation (SD) or standard error (SE) data and requested for means, SD, and the number of cases and controls. We calculated mean and SD values when the authors did not answer to our request, using formulae provided by Wan et al.³³ for studies reporting median with either interquartile range (IQR) or minimum/maximum values. We excluded studies that reported on animal models, translational and genetic research, and studies that did not include controls. Any reasons for the exclusion of research were recorded.

Literature search and data extraction

A systematic review of studies was performed utilizing electronic databases including PUBMED/MEDLINE, Google Scholar, and Web of Science from inception to 10th May 2021. The search used the major terms of IO&NS biomarkers and suicide (**ESF 1 Table 2**), include “inflamm*” OR immun*”, “cytokine”, “chemokine”, “IL-6”, “IL-1”, “interleukin”, “C-Reactive Protein”, “CRP”, “tumor necrosis factor”, “TNF”, “interferon”, “IFN”, “Transforming growth factor”, “TGF”, “Tryptophan”, “Oxidative stress”, “Antioxidants”, “Zinc”, “Vitamin”, “Albumin”, “Nitric oxide”, “Lipid hydroperoxides”, “Omega 3”, “Coenzyme Q10”, “DHA”, “suicid*”. We manually searched the reference lists of the included studies along with prior meta-analysis studies.

The first author (AV) screened the eligibility manuscripts depending on the titles and abstracts, then obtained the full text of the potentially eligible studies and extracted the relevant data into a predefined Excel spread sheet. The second author (KJ) independently checked the extracted data once the first author (AV) completed all information. In case of disagreement, the last author (MM) was consulted. We used a methodological quality and red-point score checklist, namely the immune cofounder’s scale (ICS), adapted from Andrés-Rodríguez et al.³⁴ and Vasupanrajit et al.¹⁹, which was slightly modified by the last author (**ESF 1 Table 3**).

Statistical Analysis

This study performed statistical analysis using the Comprehensive meta-analysis (CMA) V3 software. The precise methods were described previously.¹⁸ The primary outcome was the pooled standardized mean difference (SMD) of the IO&NS profiles. The secondary outcomes

were pooled SMD of the IO&NS subdomains, namely IRS, inflammation, CRP, neurotoxicity, antioxidant/neuroprotective (ANTIOXPRO), and BDNF, which were examined to determine whether components of the IO&NS are more significant to recent SA and SI. Hence, in the present MA, we employed synthetic scores which reflect outcome profiles and compared these scores between SA and SI and controls. For studies that reported more than one IO&NS biomarker, a synthetic score was calculated by computing the mean of the outcomes and assuming dependence. We used a random effect model with restricted maximum-likelihood because there are differences in study design, measuring time, and participants' characteristics across studies. The random-effects subgroup meta-analysis were performed, comparing patient subgroups (either SA+ or SI+) *versus* controls. This study computed the SMD values with 95% confidence intervals (CI) and used an alpha level of 0.05 indicating statistically significant results (two sided tests). The Cochran Q test and the I^2 metric were computed, but Tau (τ) and τ^2 was used to evaluate heterogeneity^{35, 36}. If τ^2 was imprecise, we evaluated possible sources of heterogeneity across studies when at least ten studies presented data of the same profile, using either subgroup meta-analysis (with a minimum of three studies per subgroup) or random-effects meta-regression analyses (with minimum of ten studies).

The leave-one-out method was used to conduct sensitivity analyses to examine the robustness of the pooled combined meta-analysis effects and between-study heterogeneity. To assess small study effects, including publication bias, we employed the classic fail-safe N method, Kendall tau with continuity correction (using one-tailed p-values), and Egger's regression intercept (using one-tailed p-values). We also employing funnel plots, which display study precision on the y-axis and the SDM on the x-axis, to detect small study effects or systemic heterogeneity by simultaneously presenting the observed studies and the imputed missing values.

Results

Search results

Our search strategy identified 2451 reports. Of those, 64 articles^{17, 18, 20, 37-97} were assessed in our systematic review after removing duplicated citations and using the selection criteria. We removed 5 articles^{50, 63, 71, 75, 88} from the meta-analysis for reasons shown in the ESF 1 Table 5. Consequently, 59 articles^{17, 18, 20, 37-49, 51-62, 64-70, 72-74, 76-87, 89-97} were considered in the meta-analysis (**Figure 1**).

ESF 1 Table 4 shows the characteristics of the included studies. Fifty-two articles were case control studies, and four articles were cohort studies, two were retrospective, and one was a longitudinal study. Thirty-three studies assayed the biomarkers in serum, 18 in plasma, 4 in blood, and 4 reported mixed mediums. Of these, only 35 studies samples reported the specific time for blood sampling. All of the study participants ages range from 12 to 89 years old. We included participants from all continents except Australasia, namely 1 study from Belgium, Croatia, Egypt, Iran, Ireland, Japan, Netherland, and Tunisia; 2 studies from Canada, France, India, Italy, Mexico, Poland, and Taiwan; 3 studies from Brazil and Iraq; 4 studies from Sweden; 6 studies from China and Turkey; 7 studies from USA; and 8 studies from South Korea. The median quality scores were 5.7 (min = 1.6, max = 9.7), whereas the median red point score was 17.5 (min = 9.0, max = 25.0).

The meta-analysis included 16.411 participants samples, namely 4.034 cases (either SA+ or SI+) and 12.377 controls. We used subgroups within the study as unit of analysis to compare 2.511 SA+ cases *versus* 7.784 SA- and healthy controls combined, and 1.523 SI+ *versus* 4.593 SI- and healthy controls combined (**Table 1**).

We found that 42.05% of the SA patients in the 59 studies belonged to a mixed group of psychiatric disorders (MIX), whereas 34.41% suffered from MDD, 19.59% of affective disorders, and 1% showed other psychiatric disorders including schizophrenia and adjustment disorders (OTHER). We found that 23.7% of the SI+ cases suffered from MDD and 23.57% from affective disorders, whilst 23.05% and 9.26% of the cases were allocated to the MIX or OTHER class. Most SA+ cases were included based on the attempted suicidal act (67.98%) and the others were included based on a semi-structured interview (32.02%), whereas most of SI+ cases were assessed by a self-report questionnaire (63.23%) and the remaining using a semi-structured interview (36.76%).

Qualitative synthesis

Table 1 shows the distribution of the SMD and confidence intervals of the outcome profiles. Inspecting the confidence intervals showed that most included studies favored SB and that only 1 or 2 studies reporting on IO&NS, IRS, inflammation, neurotoxicity, and ANTIOXPRO showed confidence intervals which were entirely located on the negative side of zero. All studies on CRP and BDNF favored SB and no studies showed a CI, which was entirely on the negative side of zero. Furthermore, there were two studies, not included in the CMA (ESF 1 Table 5), which reported no significant findings on plasma cytokines⁶³, chemokines⁶³, and TRP⁸⁸, whereas the other three studies revealed inconsistent results on plasma CRP^{50, 63, 75}. Regarding the SB subtypes SA and SI, we found that most studies favor SA and that no CI was entirely located on the negative side of zero (except the ANTIOXPRO profile), whereas in the SI studies 1 or 2 confidence intervals were entirely located on the negative side of zero. In addition,

there were no significant findings on the plasma TRP/amino acid ratio⁷¹ in studies which were not included in the CMA (ESF 1 Table 5) and which compared SA+ cases with SA- controls.

Meta-analysis of the primary outcome: IO&NS profile

Table 2 and **Figure 2** show that there is a significant difference in the overall pooled effect size (0.299) when comparing IO&NS in SB with controls. We used subgroup analysis within study as the unit of analysis and found that the comparison of SA+ *versus* controls yielded a SMD of 0.387, and SI+ *versus* controls a SMD of 0.167. Using subgroups as the unit of analysis, we observed that the comparison of SA+ with SA- resulted in an SMD of 0.255, but the comparison of SA+ *versus* HC resulted in a large, pooled effect size (0.796). The comparison of SI+ *versus* SI- yielded a significantly but small effect size (n=21; SMD: 0.156; 95%CI: 0.016; 0.296), whereas the SMD was not significantly different when comparing SI+ with HC. **ESF 2 Figure 1** showed the differences in the effect sizes of the comparisons of SA+ vs controls (SMD=0.387) and SI+ *versus* controls (0.167) which was significant ($\chi^2=5.14$, df=1, p=0.023), indicating that SA+ is more strongly associated with IO&NS than SI+. The results of these meta-analyses were unaltered by sensitivity analysis employing the leave-one-out method (and any of the meta-analyses described below). Consequently, we performed a sensitivity analysis on the high-quality studies (quality score ≥ 7.0 ; redpoint score ≤ 18.0) and compared those with lower quality studies (quality score ≤ 4.0 ; redpoint score > 18.0). **ESF 2 Figure 2** shows the meta-analysis performed on the 13 high-quality studies^{44, 46, 52, 53, 55, 64, 66, 69, 70, 72, 84, 91, 93} (SMD: 0.407; 95%CI: 0.203; 0.611; $\tau^2=0.092$) and 5 low-quality studies^{39, 73, 79, 89, 92} (SMD: 0.129; 95%CI: 0.014; 0.0.243; $\tau^2=0.005$) when comparing SB to controls. This difference between high- and low-quality studies was significant ($\chi^2=5.444$, df=1, p=0.020).

Meta-analyses of the secondary outcomes

IRS profile

Table 2 reports a moderate, pooled effect size of 0.460 in overall SB cases. Subgroup analysis showed that the comparison of SA+ *versus* controls yielded a significantly effect size of 0.590, whereas SI+ *versus* controls yielded a lower effect size of 0.231. When using subgroups as the unit of analysis, we found that the comparison of SA+ *versus* SA- yielded a SMD of 0.384, whereas SA+ *versus* HC yielded a large, pooled effect size of 1.049. There was no significant difference between SI+ and SI- or HC groups. The difference in the effect sizes of the comparisons of SA+ vs controls (SMD=0.590) and SI+ *versus* controls (0.231) was significant ($\chi^2=6.54$, $df=1$, $p=0.011$).

Inflammatory profile

We found that the inflammation score is higher in SB cases than in controls with a moderate effect size of 0.459. Subgroup analysis showed that the comparison of SA+ *versus* controls yielded a SMD of 0.623, whereas the comparison of SI+ *versus* controls yielded a SMD of 0.239 (**Figure 3**). When using the subgroups as the unit of analysis, we found that the comparison of SA+ *versus* SA- yielded a SMD of 0.414, whereas SA+ *versus* HC yielded a large, pooled effect size of 1.200. There was no significant difference between SI+ and SI- or HC groups. The difference in the effect sizes of the comparisons of SA+ vs controls (SMD=0.623) and SI+ *versus* controls (SMD=0.239) was significant ($\chi^2=5.048$, $df=1$, $p=0.025$).

CRP

When comparing CRP in SB with controls, we found a pooled effect size of 0.573 (table 2). Subgroup analysis showed that the comparison of SA+ *versus* controls yielded a significant pooled effect size of 0.689, whereas SI+ *versus* controls yielded a significant effect size of 0.429. When using subgroups as the unit of analysis, we found that the comparison of SA+ *versus* SA- yielded a SMD of 0.499, whereas SA+ *versus* HC yielded a large, pooled effect size of 1.311. The comparison of SI+ *versus* SI- yielded a significantly moderate effect size (n=4; SMD: 0.460; 95%CI: 0.098; 0.822). The comparison of SI+ *versus* HC showed only two studies and therefore we did not perform CMA. The difference in the effect sizes of the comparisons of SA+ vs controls and SI+ *versus* controls was not significant ($\chi^2=1.58$, df=1, p=0.208).

Neurotoxicity profiles

Table 2 also shows that the neurotoxicity levels are significantly increased in SB as compared with controls with an overall pooled effect size of 0.403. Subgroup analysis (with the subgroup as the unit of analysis) showed that the comparison of SA+ *versus* controls yielded a significant pooled effect size of 0.524, whereas SI+ *versus* controls yielded a lower effect size of 0.243. We found that the comparison of SA+ *versus* SA- yielded a SMD of 0.403, whereas SA+ *versus* HC yielded a large, pooled effect size of 0.904. There was no significant difference between SI+ and SI- or HC groups. The difference in the effect sizes of the comparisons of SA+ vs controls and SI+ *versus* controls was not significant ($\chi^2=3.61$, df=1, p=0.057).

ANTIOXPRO profiles

We found significant associations between ANTIOXPRO scores in SB cases with a small, pooled effect size of 0.179. The comparison of SA+ *versus* controls yielded a low but

significant effect size of 0.199, whereas there were no significant differences when comparing SI+ and controls. When using the subgroups as the unit of analysis, we found that the comparison of SA+ *versus* SA- yielded a SMD of 0.137, whereas SA+ *versus* HC yielded a SMD of 0.476. The difference in the effect sizes of the comparisons of SA+ vs controls and SI+ *versus* controls was not significant ($\chi^2=0.22$, $df=1$, $p=0.636$).

BDNF

Table 2 shows that SB is accompanied by the lowered BDNF levels with a SMD of 0.479. The comparison of SA+ *versus* controls yielded a SMD of 0.417, and SI+ *versus* controls yielded a SMD of 0.665. When using the subgroups as the unit of analysis, we found that the comparison of SA+ *versus* SA- yielded a SMD of 0.256, whereas SA+ *versus* HC yielded a large, pooled effect size of 0.962. The comparison of SI+ *versus* SI- yielded a significantly moderate effect size ($n=3$; SMD: 0.587; 95%CI: 0.324; 0.851). We are unable to perform the analyses of SI+ *versus* HC due to the small number of studies ($n=2$). The difference in the effect sizes of the comparisons of SA+ vs controls and SI+ *versus* controls was not significant ($\chi^2=1.44$, $df=1$, $p=0.230$).

Other subgroup analyses and meta-regression analyses

ESF 2 Table 1 shows the association among IO&NS profiles and SB remained significant in patients with MDD and MIX, whereas in patients belonging to the affective and OTHER groups they were not significant. In addition, these inter-class differences were significant ($\chi^2=8.563$; $df=3$; $p=0.036$). The IO&NS markers showed a significant association with SB in inpatients but not in outpatients. The comparisons of in- and outpatients in SB *versus*

controls ($\chi^2 = 8.147$; $df=1$; $p=0.004$) and SA *versus* controls ($\chi^2 = 5.770$; $df=1$; $p=0.016$) were significantly different. There were no significant differences in effect sizes obtained in studies using serum, plasma, and blood ($\chi^2 = 4.677$; $df=2$; $p=0.096$). There are significant associations between IO&NS markers and SB in patients who are diagnosed based on the suicidal act or an interview, but not when the SB was assessed through self-report, and this difference was significant ($\chi^2 = 8.479$; $df=2$; $p=0.014$). In SA, the IO&NS effect size was significantly larger in studies which diagnosed SB by registering the act as compared with studies which used an interview ($\chi^2 = 7.102$; $df=1$; $p=0.008$). In SI, there was no significant difference between interview and self-report ($\chi^2 = 0.015$; $df=1$; $p=0.902$). Meta-regression revealed no effects of latitude, quality scores, and redpoint scores.

Publication bias

ESF 2 Table 2 shows the impact of publication bias on the studies under the random-effect model. There is some degree of publication bias for IO&NS, IRS, inflammation, CRP, neurotoxicity, and ANTIOXPRO studies with 6, 5, 3, 2, 4, and 4 missing studies samples on the right side of the funnel plot, respectively, and correction yielded an increase in the overall adjusted point estimate. There was no impact of publication bias on the BDNF studies.

Discussion

The first major finding of this systematic review and meta-analysis is that SB (namely SA and SI) is accompanied by significantly increased levels of the primary outcome variable, the IO&NS profile, albeit with a small effect size. In addition, also the IRS, inflammation (including CRP), neurotoxicity, ANTIOXPRO (including BDNF) profiles were significantly associated

with SB, with small to moderate effect sizes. Our meta-analysis thus confirms that the pathophysiology of SB is related to activated IO&NS pathways^{4, 22, 98} with elevated CRP²⁶ and reduced BDNF levels.²⁸ Most importantly, our results show that suicidal behaviors are associated with an inflammatory response which is mainly driven by M1 macrophage-derived cytokines^{11, 99} including IL-1 β , IL-6, and TNF- α , which induce the production of acute phase proteins such as CRP and downregulate albumin, and by Th-1 cells with increased production of IFN- γ ¹¹. These products of activated macrophages and T cells exert neurotoxic effects thereby affecting white and gray matter plasticity¹¹. Furthermore, both M1 and Th-1 cytokines may stimulate indoleamine 2,3-dioxygenase (IDO), lowering plasma TRP and inhibiting 5-HT synthesis, as well as increasing the production of neurotoxic TRYCATs such as KYN and QA, which may result in N-Methyl-D-Aspartic acid (NMDA)-induced neurotoxicity^{8, 99}. Furthermore, increased indicants of nitro-oxidative stress with increased lipid peroxidation and lowered antioxidant levels, further contribute to increased neurotoxicity and reduced neuroprotection.⁷ Chronically elevated IO&NS pathways cause breakdown of the blood brain barrier (BBB), which allows neurotoxic molecules to enter the brain thereby contributing to the neurotoxic effects. Previously, it was shown that activated IO&NS pathways are associated with major depressive and bipolar disorder, staging of affective disorders, neurodegenerative processes, and schizophrenia.^{11, 99, 100}

We should stress that the present meta-analysis study used composite scores reflecting IO&NS profiles.^{11, 12, 101} Previously, we have discussed the many advantages of using composite scores instead of solitary markers in case-control studies^{11, 12, 101} and in meta-analysis as well.¹⁸ For example, if a study reports on two inflammatory markers (e.g. CRP and albumin), one of which is significantly associated with SA but the other is not, using only one biomarker in a meta-analysis may result in incorrect conclusions about “inflammation”¹⁹. Therefore, performing

meta-analyses on one biomarker only may not allow generalizing the findings because the results may be quite different after including all biomarkers of the same profile. Moreover, the selection of only one biomarker per study may induce more biological between-study variance because different confounding variables may differently affect the biomarkers of the same profile.¹⁹ For example, selecting CRP as an index of inflammation is prone to bias because CRP is affected by many confounding variables including early lifetime trauma, sex, age and especially body mass index^{19, 102, 103}. In our study, the different biomarker scores were not only averaged in one and the same study but also averaged over all studies. As such, our meta-analyses used more robust synthetic indices of IO&NS and its subdomains based on all available data and, therefore, these data allow to generalize the findings to the functional profiles specified in our study.

The second major finding of this study is that the effects sizes of the IO&NS, IRS, inflammation, CRP, and neurotoxicity scores were higher in SA than in SI, and that the effect sizes of IO&NS, IRS and inflammation were significantly greater in SA than in SI. These findings may indicate that IRS and inflammatory processes are more tightly associated with SA than with SI. This may point towards differences in the severity with SA being more severe than SI¹. On the other hand, the effects sizes of the comparisons between SA and SI were not significant when considering CRP, neurotoxicity, ANTIOXPRO and BDNF. Therefore, the results of the current meta-analysis do not confirm the results of Gibbs et al.⁵⁷ who reported significant differences in serum hs-CRP levels between SA and SI. All in all, these results show that the higher IO&NS and IRS profiles in SA *versus* SI should be attributed to smaller but cumulative effects of inflammation, neurotoxicity, and lowered neuroprotection in SA.

The study showed some statistical heterogeneity as assessed using the tau (τ) statistic, which represents a precise measurement of heterogeneity and which is insensitive to the number

of patients or studies in the meta-analysis.^{35, 36} On the other hand, Q-values and the I^2 metric do not reflect the degree of heterogeneity, although frequently employed as such.¹⁸ Nevertheless, the current meta-analysis was able to detect five possible sources of statistical heterogeneity. Firstly, differences in outpatient *versus* inpatient status with higher effect sizes in the latter. This may be explained by effects of severity of illness which is higher in inpatients than outpatients¹⁰⁴, and the higher frequency of SA in inpatients¹⁰⁴. The second source of heterogeneity concerns the assessment of SB with a greater effect size when the diagnosis of SA was based on the suicidal act rather than on an interview. These results show that the assessment of SB based on interview and self-report may largely underestimate the actual effect sizes and, therefore, are inaccurate assessment methods. Future research on SB should recruit patients with SA based on the registered suicidal act.

Thirdly, the quality of the included papers contributed to heterogeneity as evidenced by higher pooled effect sizes of IO&NS in high-quality studies than low-quality studies. The fourth source of statistical heterogeneity is due to the choice of controls, namely patients without SB *versus* healthy controls. As such, we found that that the pooled effect sizes of the IO&NS, IRS, inflammation (including), CRP, and neurotoxicity profiles were larger when comparing SB with healthy controls as reference group (between 0.796 and 1.311), whereas lower effect sizes were obtained when comparing patients with and without SB (between 0.3 to 0.5). The comparisons with normal controls show that activated IO&NS pathways are strongly associated with SA in patients with psychiatric disorders, and the comparisons obtained with patients without SB show that SB is accompanied by aberrations in IO&NS pathways above and beyond the increased levels in psychiatric patients. Therefore, it is safe to conclude that activated IO&NS, IRS, inflammatory and neurotoxic pathways and lowered neuroprotection are strongly associated not

only with the major psychiatric disorders^{11, 101} but also with the SB which are associated with those disorders.

Fifthly, inspection of the forest plots shows that the heterogeneity is increased by a number of heterogeneity-influencing studies which favor SA. Previously, we performed sensitivity analyses on the included studies after deselecting a few heterogeneity-influencing studies and found that the prediction intervals no longer overlapped with the zero SMD but fell completely on the right side of zero. Indeed, a few small n studies that favor SA and show a very large effect size may bias SMD whereby the heterogeneity may increase in a random effect model and the latter may be more biased than when using a fixed effect model¹⁹. It should be added that there is probably nothing wrong with these heterogeneity-influencing studies, they only show a large SMD.

Several limitations should be considered when discussing our findings. Firstly, there are very few studies which assayed IL-4^{56, 72} and TGF- β 1⁷⁸ and therefore these important Th-2 and T regulatory (Treg) cytokines could not be included in the CMA. Secondly, key biomarkers of other profiles were also missing. For example, haptoglobin, transferrin, and zinc were missing as inflammatory biomarkers (and its parent profiles). Vitamin E, coenzyme Q10, glutathione, catalase, MPO and xanthine oxidase were missing as O&NS biomarkers. In fact, we were even unable to compute a CIRS profile, although most important to evaluate the homeostatic processes in the immune system.¹¹ As a result, future research should concentrate on the missing biomarkers, such as Treg cytokines like IL-10 and TGF- β 1, as well as Th-2 cytokines like IL-4, IL-5 and IL-13 (see also ESF 1 Table 1; column “what is missing in SB research”). Thirdly, this study did not include other potential variables regarding severity of SB, including lifetime SB¹⁹,

staging of the major psychiatric disorders¹³, and stressful live events, including early lifetime trauma⁴. Further studies should also include those covariates.

In conclusion, this is the first meta-analysis to explore IO&NS pathways in SA *versus* SI. Recent SB (within 3 months) is accompanied by aberrations in IO&NS profiles, which are more strongly associated with SA than SI. Increased neurotoxicity due to inflammation and nitro-oxidative stress may explain why psychiatric patients are at higher risk of SA and SI than healthy controls. As such, we have delineated new drug targets to treat SB, namely the IO&NS subdomains.

Declaration of Competing Interests

The authors declare that they have no known competing financial interests or personal relationships that could have appeared to influence the work reported in this paper. MS received honoraria and has been a consultant for Angelini, Lundbeck.

Ethical approval and consent to participate

Not applicable.

Consent for publication

Not applicable.

Availability of data and materials

The dataset (CMA file) generated during and/or analyzed during the current study will be available from MM upon reasonable request and once the dataset has been fully exploited by the authors.

Funding

The study was funded by the 90TH Anniversary of Chulalongkorn University Scholarship (Grant Batch#47 No. 3/2020).

Author's contributions

All authors contributed to the writing up of the paper. The work was designed by MM and AV. Data were collected by AV and KJ. Statistical analyses were performed by MM and AV. All authors revised and approved the final draft.

Acknowledgements

Not applicable.

Compliance with Ethical Standards/Disclosure of potential conflicts of interest

The authors have no conflicts of interest to declare that are relevant to the content of this article.

Research involving Human Participants and/or Animals

Not applicable.

Informed consent

Not applicable.

References

1. Posner K, Oquendo MA, Gould M, Stanley B, Davies M. Columbia Classification Algorithm of Suicide Assessment (C-CASA): classification of suicidal events in the FDA's pediatric suicidal risk analysis of antidepressants. *The American journal of psychiatry* 2007; **164**(7): 1035-1043.
2. Nock MK, Borges G, Bromet EJ, Alonso J, Angermeyer M, Beautrais A *et al.* Cross-national prevalence and risk factors for suicidal ideation, plans and attempts. *The British journal of psychiatry : the journal of mental science* 2008; **192**(2): 98-105.
3. Franklin JC, Ribeiro JD, Fox KR, Bentley KH, Kleiman EM, Huang X *et al.* Risk factors for suicidal thoughts and behaviors: A meta-analysis of 50 years of research. *Psychol Bull* 2017; **143**(2): 187-232.
4. Capuzzi E, Caldiroli A, Capellazzi M, Tagliabue I, Buoli M, Clerici M. Biomarkers of suicidal behaviors: A comprehensive critical review. *Adv Clin Chem* 2020; **96**: 179-216.
5. Bachmann S. Epidemiology of Suicide and the Psychiatric Perspective. *International journal of environmental research and public health* 2018; **15**(7): 1425.
6. Moitra M, Santomauro D, Degenhardt L, Collins PY, Whiteford H, Vos T *et al.* Estimating the risk of suicide associated with mental disorders: A systematic review and meta-regression analysis. *J Psychiatr Res* 2021; **137**: 242-249.
7. Maes M, Galecki P, Chang YS, Berk M. A review on the oxidative and nitrosative stress (O&NS) pathways in major depression and their possible contribution to the (neuro)degenerative processes in that illness. *Prog Neuropsychopharmacol Biol Psychiatry* 2011; **35**(3): 676-692.
8. Martin-Subero M, Anderson G, Kanchanatawan B, Berk M, Maes M. Comorbidity between depression and inflammatory bowel disease explained by immune-inflammatory, oxidative, and nitrosative stress; tryptophan catabolite; and gut-brain pathways. *CNS Spectr* 2016; **21**(2): 184-198.
9. Maes M, Sirivichayakul S, Matsumoto AK, Michelin AP, de Oliveira Semeão L, de Lima Pedrão JV *et al.* Lowered Antioxidant Defenses and Increased Oxidative Toxicity Are Hallmarks of Deficit

- Schizophrenia: a Nomothetic Network Psychiatry Approach. *Mol Neurobiol* 2020; **57**(11): 4578-4597.
10. Solmi M, Suresh Sharma M, Osimo EF, Fornaro M, Bortolato B, Croatto G *et al.* Peripheral levels of C-reactive protein, tumor necrosis factor- α , interleukin-6, and interleukin-1 β across the mood spectrum in bipolar disorder: A meta-analysis of mean differences and variability. *Brain Behav Immun* 2021.
 11. Maes M, Carvalho AF. The Compensatory Immune-Regulatory Reflex System (CIRS) in Depression and Bipolar Disorder. *Mol Neurobiol* 2018; **55**(12): 8885-8903.
 12. Roomruangwong C, Noto C, Kanchanatawan B, Anderson G, Kubera M, Carvalho AF *et al.* The Role of Aberrations in the Immune-Inflammatory Response System (IRS) and the Compensatory Immune-Regulatory Reflex System (CIRS) in Different Phenotypes of Schizophrenia: the IRS-CIRS Theory of Schizophrenia. *Mol Neurobiol* 2020; **57**(2): 778-797.
 13. Maes M, Moraes JB, Bonifacio KL, Barbosa DS, Vargas HO, Michelin AP *et al.* Towards a new model and classification of mood disorders based on risk resilience, neuro-affective toxicity, staging, and phenome features using the nomothetic network psychiatry approach. *Metabolic brain disease* 2021; **36**(3): 509-521.
 14. Maes M, Plaimas K, Suratane A, Noto C, Kanchanatawan B. The Protein-Protein Interaction Network of First Episode Psychosis and Schizophrenia Reveals Possible Trigger Factors and New Drug Targets among Intracellular Signal Transduction Pathways and Neurotoxicity Processes. *Preprints* 2021; **2021070596**.
 15. Maes M, Landucci Bonifacio K, Morelli NR, Vargas HO, Barbosa DS, Carvalho AF *et al.* Major Differences in Neurooxidative and Neuronitrosative Stress Pathways Between Major Depressive Disorder and Types I and II Bipolar Disorder. *Molecular Neurobiology* 2019; **56**(1): 141-156.
 16. Valvassori SS, Arent CO, Steckert AV, Varella RB, Jornada LK, Tonin PT *et al.* Intracerebral Administration of BDNF Protects Rat Brain Against Oxidative Stress Induced by Ouabain in an Animal Model of Mania. *Mol Neurobiol* 2015; **52**(1): 353-362.
 17. Maes M, Vandewoude M, Schotte C, Martin M, Blockx P, Scharpe S *et al.* Hypothalamic-pituitary-adrenal and -thyroid axis dysfunctions and decrements in the availability of L-tryptophan as biological markers of suicidal ideation in major depressed females. *Acta Psychiatr Scand* 1989; **80**(1): 13-17.
 18. Nässberger L, Träskman-Bendz L. Increased soluble interleukin-2 receptor concentrations in suicide attempters. *Acta Psychiatr Scand* 1993; **88**(1): 48-52.

19. Vasupanrajit A, Jirakran K, Tunvirachaisakul C, Maes M. Suicide attempts are associated with activated immune-inflammatory, nitro-oxidative, and neurotoxic pathways: A systematic review and meta-analysis. *Journal of Affective Disorders* 2021; **295**: 80-92.
20. Ganança L, Oquendo MA, Tyrka AR, Cisneros-Trujillo S, Mann JJ, Sublette ME. The role of cytokines in the pathophysiology of suicidal behavior. *Psychoneuroendocrinology* 2016; **63**: 296-310.
21. Serafini G, Parisi VM, Aguglia A, Amerio A, Sampogna G, Fiorillo A *et al.* A Specific Inflammatory Profile Underlying Suicide Risk? Systematic Review of the Main Literature Findings. *Int J Environ Res Public Health* 2020; **17**(7).
22. Brundin L, Erhardt S, Bryleva EY, Achtyes ED, Postolache TT. The role of inflammation in suicidal behaviour. 2015; **132**(3): 192-203.
23. Courtet P, Giner L, Seneque M, Guillaume S, Olie E, Ducasse D. Neuroinflammation in suicide: Toward a comprehensive model. *World J Biol Psychiatry* 2016; **17**(8): 564-586.
24. Black C, Miller BJ. Meta-Analysis of Cytokines and Chemokines in Suicidality: Distinguishing Suicidal Versus Nonsuicidal Patients. *Biol Psychiatry* 2015; **78**(1): 28-37.
25. Ducasse D, Olié E, Guillaume S, Artéro S, Courtet P. A meta-analysis of cytokines in suicidal behavior. *Brain Behav Immun* 2015; **46**: 203-211.
26. Chen X, Pu J, Liu Y, Tian L, Chen Y, Gui S *et al.* Increased C-reactive protein concentrations were associated with suicidal behavior in patients with depressive disorders: a meta-analysis. *Psychiatry Research* 2020; **292**: 113320.
27. Miola A, Dal Porto V, Tadmor T, Croatto G, Scocco P, Manchia M *et al.* Increased C-reactive protein concentration and suicidal behavior in people with psychiatric disorders: A systematic review and meta-analysis. *Acta psychiatrica Scandinavica* 2021.
28. Salas-Magaña M, Tovilla-Zárate CA, González-Castro TB, Juárez-Rojop IE, López-Narváez ML, Rodríguez-Pérez JM *et al.* Decrease in brain-derived neurotrophic factor at plasma level but not in serum concentrations in suicide behavior: A systematic review and meta-analysis. *Brain Behav* 2017; **7**(6): e00706.
29. Eisen RB, Perera S, Banfield L, Anglin R, Minuzzi L, Samaan Z. Association between BDNF levels and suicidal behaviour: a systematic review and meta-analysis. *Syst Rev* 2015; **4**: 187.

30. Page MJ, McKenzie JE, Bossuyt PM, Boutron I, Hoffmann TC, Mulrow CD *et al.* The PRISMA 2020 statement: an updated guideline for reporting systematic reviews. *BMJ* 2021; **372**: n71.
31. Higgins JPT, Thomas J, Chandler J, Cumpston M, Li T, Page MJ *et al.* *Cochrane Handbook for Systematic Reviews of Interventions*. Chichester (UK): John Wiley & Sons, 2019.
32. Stroup DF, Berlin JA, Morton SC, Olkin I, Williamson GD, Rennie D *et al.* Meta-analysis of observational studies in epidemiology: a proposal for reporting. 2000; **283**(15): 2008-2012.
33. Wan X, Wang W, Liu J, Tong T. Estimating the sample mean and standard deviation from the sample size, median, range and/or interquartile range. *BMC Medical Research Methodology* 2014; **14**(1): 135.
34. Andrés-Rodríguez L, Borràs X, Feliu-Soler A, Pérez-Aranda A, Angarita-Osorio N, Moreno-Peral P *et al.* Peripheral immune aberrations in fibromyalgia: A systematic review, meta-analysis and meta-regression. *Brain, Behavior, and Immunity* 2020; **87**: 881-889.
35. Borenstein M, Higgins JP, Hedges LV, Rothstein HR. Basics of meta-analysis: I(2) is not an absolute measure of heterogeneity. *Res Synth Methods* 2017; **8**(1): 5-18.
36. Rücker G, Schwarzer G, Carpenter JR, Schumacher M. Undue reliance on I(2) in assessing heterogeneity may mislead. *BMC Med Res Methodol* 2008; **8**: 79.
37. Aguglia A, Solano P, Giacomini G, Caprino M, Conigliaro C, Romano M *et al.* The Association Between Dyslipidemia and Lethality of Suicide Attempts: A Case-Control Study. 2019; **10**(70).
38. Ai M, Wang J, Chen J, Wang W, Xu X, Gan Y *et al.* Plasma brain-derived neurotrophic factor (BDNF) concentration and the BDNF Val66Met polymorphism in suicide: a prospective study in patients with depressive disorder. *Pharmacogenomics Pers Med* 2019; **12**: 97-106.
39. Ainiyet B, Rybakowski JK. Suicidal behaviour and lipid levels in unipolar and bipolar depression. *Acta Neuropsychiatr* 2014; **26**(5): 315-320.
40. Al-Amarei HM, Rasheed SMH, Eidan A. C-reactive Protein and its Relationship with Lipid Profile in Suicidal and Non Suicidal Adults with Major Depression. *Indian Journal of Public Health Research & Development* 2019; **10**(7): 569.
41. Almeida-Montes LG, Valles-Sanchez V, Moreno-Aguilar J, Chavez-Balderas RA, García-Marín JA, Cortés Sotres JF *et al.* Relation of serum cholesterol, lipid, serotonin and tryptophan levels to severity of depression and to suicide attempts. *J Psychiatry Neurosci* 2000; **25**(4): 371-377.

42. Atik D, Cander B, Doğan S, Bulut B, Yazıcı R, Taşlıdere B. Relationship between suicidal patients and vitamin D: A prospective case-control study. *Journal of Surgery and Medicine* 2020; **4**(9): 766-770.
43. Baek JH, Kang ES, Fava M, Mischoulon D, Nierenberg AA, Yu BH *et al.* Serum lipids, recent suicide attempt and recent suicide status in patients with major depressive disorder. *Prog Neuropsychopharmacol Biol Psychiatry* 2014; **51**: 113-118.
44. Bradley KA, Case JA, Khan O, Ricart T, Hanna A, Alonso CM *et al.* The role of the kynurenine pathway in suicidality in adolescent major depressive disorder. *Psychiatry Res* 2015; **227**(2-3): 206-212.
45. Brundin L, Sellgren CM, Lim CK, Grit J, Pålsson E, Landén M *et al.* An enzyme in the kynurenine pathway that governs vulnerability to suicidal behavior by regulating excitotoxicity and neuroinflammation. *Transl Psychiatry* 2016; **6**(8): e865.
46. Chang CC, Tzeng NS, Kao YC, Yeh CB, Chang HA. The relationships of current suicidal ideation with inflammatory markers and heart rate variability in unmedicated patients with major depressive disorder. *Psychiatry Res* 2017; **258**: 449-456.
47. Choi KW, Jang EH, Kim AY, Kim H, Park MJ, Byun S *et al.* Predictive inflammatory biomarkers for change in suicidal ideation in major depressive disorder and panic disorder: A 12-week follow-up study. *J Psychiatr Res* 2021; **133**: 73-81.
48. De Berardis D, Serroni N, Marini S, Rapini G, Carano A, Valchera A *et al.* Alexithymia, suicidal ideation, and serum lipid levels among drug-naïve outpatients with obsessive-compulsive disorder. *Braz J Psychiatry* 2014; **36**(2): 125-130.
49. Deveci A, Aydemir O, Taskin O, Taneli F, Esen-Danaci A. Serum BDNF levels in suicide attempters related to psychosocial stressors: a comparative study with depression. *Neuropsychobiology* 2007; **56**(2-3): 93-97.
50. Dickerson F, Adamos M, Katsafanas E, Khushalani S, Origoni A, Savage C *et al.* The association between immune markers and recent suicide attempts in patients with serious mental illness: A pilot study. *Psychiatry Res* 2017; **255**: 8-12.
51. Dolsen MR, Prather AA, Lamers F, Penninx B. Suicidal ideation and suicide attempts: associations with sleep duration, insomnia, and inflammation. *Psychol Med* 2020: 1-10.
52. Eidan A, Al-Harmoosh R, Al-Amarei H. Estimation of IL-6, INF γ , and Lipid Profile in Suicidal and Nonsuicidal Adults with Major Depressive Disorder. *J Interferon Cytokine Res* 2019; **39**(3): 181-189.

53. Ekinci O, Ekinci A. The connections among suicidal behavior, lipid profile and low-grade inflammation in patients with major depressive disorder: a specific relationship with the neutrophil-to-lymphocyte ratio. *Nord J Psychiatry* 2017; **71**(8): 574-580.
54. Eisen RB, Perera S, Bawor M, Dennis BB, El-Sheikh W, DeJesus J *et al.* Exploring the Association between Serum BDNF and Attempted Suicide. *Scientific Reports* 2016; **6**(1): 25229.
55. Fang X, Chen Y, Wang Y, Zhang C. Identification of risk factors for suicidal ideation in patients with schizophrenia. *Psychiatry Res* 2019; **271**: 195-199.
56. Gabbay V, Klein RG, Guttman LE, Babb JS, Alonso CM, Nishawala M *et al.* A preliminary study of cytokines in suicidal and nonsuicidal adolescents with major depression. *J Child Adolesc Psychopharmacol* 2009; **19**(4): 423-430.
57. Gibbs HM, Davis L, Han X, Clothier J, Eads LA, Cáceda R. Association between C-reactive protein and suicidal behavior in an adult inpatient population. *J Psychiatr Res* 2016; **79**: 28-33.
58. da Graça Cantarelli M, Nardin P, Buffon A, Eidt MC, Antônio Godoy L, Fernandes BS *et al.* Serum triglycerides, but not cholesterol or leptin, are decreased in suicide attempters with mood disorders. *J Affect Disord* 2015; **172**: 403-409.
59. Grassi-Oliveira R, Brieztke E, Teixeira A, Pezzi JC, Zanini M, Lopes RP *et al.* Peripheral chemokine levels in women with recurrent major depression with suicidal ideation. *Braz J Psychiatry* 2012; **34**(1): 71-75.
60. Grudet C, Malm J, Westrin A, Brundin L. Suicidal patients are deficient in vitamin D, associated with a pro-inflammatory status in the blood. *Psychoneuroendocrinology* 2014; **50**: 210-219.
61. Gundogdu Meydaneri G, Meydaneri S. Can Neutrophil Lymphocyte Ratio Predict the Likelihood of Suicide in Patients with Major Depression? *Cureus* 2018; **10**(4): e2510.
62. Janelidze S, Suchankova P, Ekman A, Erhardt S, Sellgren C, Samuelsson M *et al.* Low IL-8 is associated with anxiety in suicidal patients: genetic variation and decreased protein levels. *Acta Psychiatr Scand* 2015; **131**(4): 269-278.
63. Jha MK, Cai L, Minhajuddin A, Fatt CC, Furman JL, Gadad BS *et al.* Dysfunctional adaptive immune response in adolescents and young adults with suicide behavior. *Psychoneuroendocrinology* 2020; **111**: 104487.

64. Khan MS, Wu GWY, Reus VI, Hough CM, Lindqvist D, Westrin Å *et al.* Low serum brain-derived neurotrophic factor is associated with suicidal ideation in major depressive disorder. *Psychiatry Res* 2019; **273**: 108-113.
65. Kim JM, Stewart R, Kang HJ, Jeong BO, Kim SY, Bae KY *et al.* Longitudinal associations between serum cholesterol levels and suicidal ideation in an older Korean population. *J Affect Disord* 2014; **152-154**: 517-521.
66. Kim YK, Paik JW, Lee SW, Yoon D, Han C, Lee BH. Increased plasma nitric oxide level associated with suicide attempt in depressive patients. *Prog Neuropsychopharmacol Biol Psychiatry* 2006; **30**(6): 1091-1096.
67. Kim YK, Lee HP, Won SD, Park EY, Lee HY, Lee BH *et al.* Low plasma BDNF is associated with suicidal behavior in major depression. *Prog Neuropsychopharmacol Biol Psychiatry* 2007; **31**(1): 78-85.
68. Kurosawa K, Terao T, Kanehisa M, Shiotsuki I, Ishii N, Takenaka R *et al.* Naturally absorbed polyunsaturated fatty acids, lithium, and suicide-related behaviors: A case-controlled study. *J Affect Disord* 2018; **241**: 200-205.
69. Lee BH, Lee SW, Yoon D, Lee HJ, Yang JC, Shim SH *et al.* Increased plasma nitric oxide metabolites in suicide attempters. *Neuropsychobiology* 2006; **53**(3): 127-132.
70. Lee BH, Kim H, Park SH, Kim YK. Decreased plasma BDNF level in depressive patients. *J Affect Disord* 2007; **101**(1-3): 239-244.
71. Lauterbach E, Brunner J, Hawellek B, Lewitzka U, Ising M, Bondy B *et al.* Platelet 5-HT_{2A} receptor binding and tryptophan availability in depression are not associated with recent history of suicide attempts but with personality traits characteristic for suicidal behavior. *Journal of Affective Disorders* 2006; **91**(1): 57-62.
72. Liu MN, Tsai SJ, Yeh HL, Wu CC, Lin CP. MCP-2/CCL8 Level Associated With Suicidal Ideation in Elderly Men With Major Depression. *Arch Suicide Res* 2020; **24**(3): 467-476.
73. Loas G, Dalleau E, Lecointe H, Yon V. Relationships between anhedonia, alexithymia, impulsivity, suicidal ideation, recent suicide attempt, C-reactive protein and serum lipid levels among 122 inpatients with mood or anxious disorders. *Psychiatry Res* 2016; **246**: 296-302.
74. Ma YJ, Zhou YJ, Wang DF, Li Y, Wang DM, Liu TQ *et al.* Association of Lipid Profile and Suicide Attempts in a Large Sample of First Episode Drug-Naive Patients With Major Depressive Disorder. *Front Psychiatry* 2020; **11**(953).

75. Melhem NM, Munroe S, Marsland A, Gray K, Brent D, Porta G *et al*. Blunted HPA axis activity prior to suicide attempt and increased inflammation in attempters. *Psychoneuroendocrinology* 2017; **77**: 284-294.
76. Mensi R, Messaoud A, Mhallah A, Azizi I, Salah WH, Douki W *et al*. The association between altered lipid profile and suicide attempt among Tunisian patients with schizophrenia. *Ann Gen Psychiatry* 2016; **15**: 36.
77. Mohamed AE, El-Latif RRA, Youssef AM, Ibrahim AS. C-reactive protein and clinical subtypes of major depressive disorder at Zagazig University Hospitals. *Middle East Current Psychiatry* 2020; **27**(1): 35.
78. O'Donovan A, Rush G, Hoatam G, Hughes BM, McCrohan A, Kelleher C *et al*. Suicidal ideation is associated with elevated inflammation in patients with major depressive disorder. *Depress Anxiety* 2013; **30**(4): 307-314.
79. Oh KY, Van Dam NT, Doucette JT, Murrough JW. Effects of chronic physical disease and systemic inflammation on suicide risk in patients with depression: a hospital-based case-control study. *Psychol Med* 2020; **50**(1): 29-37.
80. Oshnokhah M, Bagheri M, Ghaneialvar H, Haghani K, Khorshidi A, Shahbazi A *et al*. Oxidant-Antioxidant Status in Suicide Behavior in Kurdish Ethnicity. *Basic and Clinical Neuroscience* 2020: 0-0.
81. Ozer OA, Kutaniş R, Agargun MY, Beşiroğlu L, Bal AC, Selvi Y *et al*. Serum lipid levels, suicidality, and panic disorder. *Compr Psychiatry* 2004; **45**(2): 95-98.
82. Park YM, Lee BH, Lee SH. The association between serum lipid levels, suicide ideation, and central serotonergic activity in patients with major depressive disorder. *J Affect Disord* 2014; **159**: 62-65.
83. Pasyk S, Sanger N, Kapczinski F, Samaan Z. Evaluation of BDNF as a Biomarker for Impulsivity in a Psychiatric Population. *Diagnostics (Basel)* 2020; **10**(6).
84. Peng R, Dai W, Li Y. Low serum free thyroxine level is correlated with lipid profile in depressive patients with suicide attempt. *Psychiatry Res* 2018; **266**: 111-115.
85. Pinheiro RT, Pinheiro KA, da Cunha Coelho FM, de Ávila Quevedo L, Gazal M, da Silva RA *et al*. Brain-derived neurotrophic factor levels in women with postpartum affective disorder and suicidality. *Neurochem Res* 2012; **37**(10): 2229-2234.

86. Priya PK, Rajappa M, Kattimani S, Mohanraj PS, Revathy G. Association of neurotrophins, inflammation and stress with suicide risk in young adults. *Clin Chim Acta* 2016; **457**: 41-45.
87. Rasheed SMH, Eidan AJ, Al-dujaili AH, Abada LH, Al-Charrakh AH. Different cytokines and Lipid Profile in Suicidal and Non Suicidal Adults with Major depression. *J Annals of Tropical Medicine Health* 2019; **22**: 135-141.
88. Roggenbach J, Müller-Oerlinghausen B, Franke L, Uebelhack R, Blank S, Ahrens B. Peripheral serotonergic markers in acutely suicidal patients. 1. Comparison of serotonergic platelet measures between suicidal individuals, nonsuicidal patients with major depression and healthy subjects. *Journal of Neural Transmission* 2007; **114**(4): 479-487.
89. Roy A, Roy M. No relationship between serum cholesterol and suicidal ideation and depression in African-American diabetics. *Arch Suicide Res* 2006; **10**(1): 11-14.
90. Ruljancic N, Mihanovic M, Cepelak I, Bakliza A, Curkovic KD. Platelet serotonin and magnesium concentrations in suicidal and non-suicidal depressed patients. *Magnes Res* 2013; **26**(1): 9-17.
91. Segoviano-Mendoza M, Cárdenas-de la Cruz M, Salas-Pacheco J, Vázquez-Alaniz F, La Llave-León O, Castellanos-Juárez F *et al.* Hypocholesterolemia is an independent risk factor for depression disorder and suicide attempt in Northern Mexican population. *BMC Psychiatry* 2018; **18**(1): 7.
92. Si YJ, Guo QW, Chen X, Yang M, Lin J, Fang DZ. Increased TG/HDL-C in female G allele carriers of rs1061622 at gene of tumour necrosis factor receptor 2 with suicidal ideation. *Eur J Clin Invest* 2020; **50**(11): e13322.
93. Sowa-Kućma M, Styczeń K, Siwek M, Misztak P, Nowak RJ, Dudek D *et al.* Are there differences in lipid peroxidation and immune biomarkers between major depression and bipolar disorder: Effects of melancholia, atypical depression, severity of illness, episode number, suicidal ideation and prior suicide attempts. *Progress in Neuro-Psychopharmacology and Biological Psychiatry* 2018; **81**: 372-383.
94. Su M, Li E, Tang C, Zhao Y, Liu R, Gao K. Comparison of blood lipid profile/thyroid function markers between unipolar and bipolar depressed patients and in depressed patients with anhedonia or suicidal thoughts. *Mol Med* 2019; **25**(1): 51.
95. Velasco Á, Rodríguez-Revuelta J, Olié E, Abad I, Fernández-Peláez A, Cazals A *et al.* Neutrophil-to-lymphocyte ratio: A potential new peripheral biomarker of suicidal behavior. *Eur Psychiatry* 2020; **63**(1): e14-e14.

96. Verma S, Trivedi JK, Singh H, Dalal PK, Asthana OP, Srivastava JS *et al*. Serum lipid profile in suicide attempters. *Indian J Psychiatry* 1999; **41**(4): 300-306.
97. Yagci I, Avci S. Biochemical predictors in presentations to the emergency department after a suicide attempt. *Bratisl Lek Listy* 2021; **122**(3): 224-229.
98. Sudol K, Mann JJ. Biomarkers of Suicide Attempt Behavior: Towards a Biological Model of Risk. *Curr Psychiatry Rep* 2017; **19**(6): 31.
99. Leonard B, Maes M. Mechanistic explanations how cell-mediated immune activation, inflammation and oxidative and nitrosative stress pathways and their sequels and concomitants play a role in the pathophysiology of unipolar depression. *Neurosci Biobehav Rev* 2012; **36**(2): 764-785.
100. Morris G, Fernandes BS, Puri BK, Walker AJ, Carvalho AF, Berk M. Leaky brain in neurological and psychiatric disorders: Drivers and consequences. *Aust N Z J Psychiatry* 2018; **52**(10): 924-948.
101. Maes M, Moraes JB, Bonifacio KL, Barbosa DS, Vargas HO, Michelin AP *et al*. Towards a new model and classification of mood disorders based on risk resilience, neuro-affective toxicity, staging, and phenome features using the nomothetic network psychiatry approach. *Metab Brain Dis* 2021; **36**(3): 509-521.
102. Baumeister D, Akhtar R, Ciufolini S, Pariante CM, Mondelli V. Childhood trauma and adulthood inflammation: a meta-analysis of peripheral C-reactive protein, interleukin-6 and tumour necrosis factor- α . *Molecular Psychiatry* 2016; **21**(5): 642-649.
103. Qin T, Liu W, Yin M, Shu C, Yan M, Zhang J *et al*. Body mass index moderates the relationship between C-reactive protein and depressive symptoms: evidence from the China Health and Retirement Longitudinal Study. *Scientific Reports* 2017; **7**(1): 39940.
104. Hjorthøj CR, Madsen T, Agerbo E, Nordentoft M. Risk of suicide according to level of psychiatric treatment: a nationwide nested case-control study. *Soc Psychiatry Psychiatr Epidemiol* 2014; **49**(9): 1357-1365.

Figure 1. PRISMA 2020 diagram

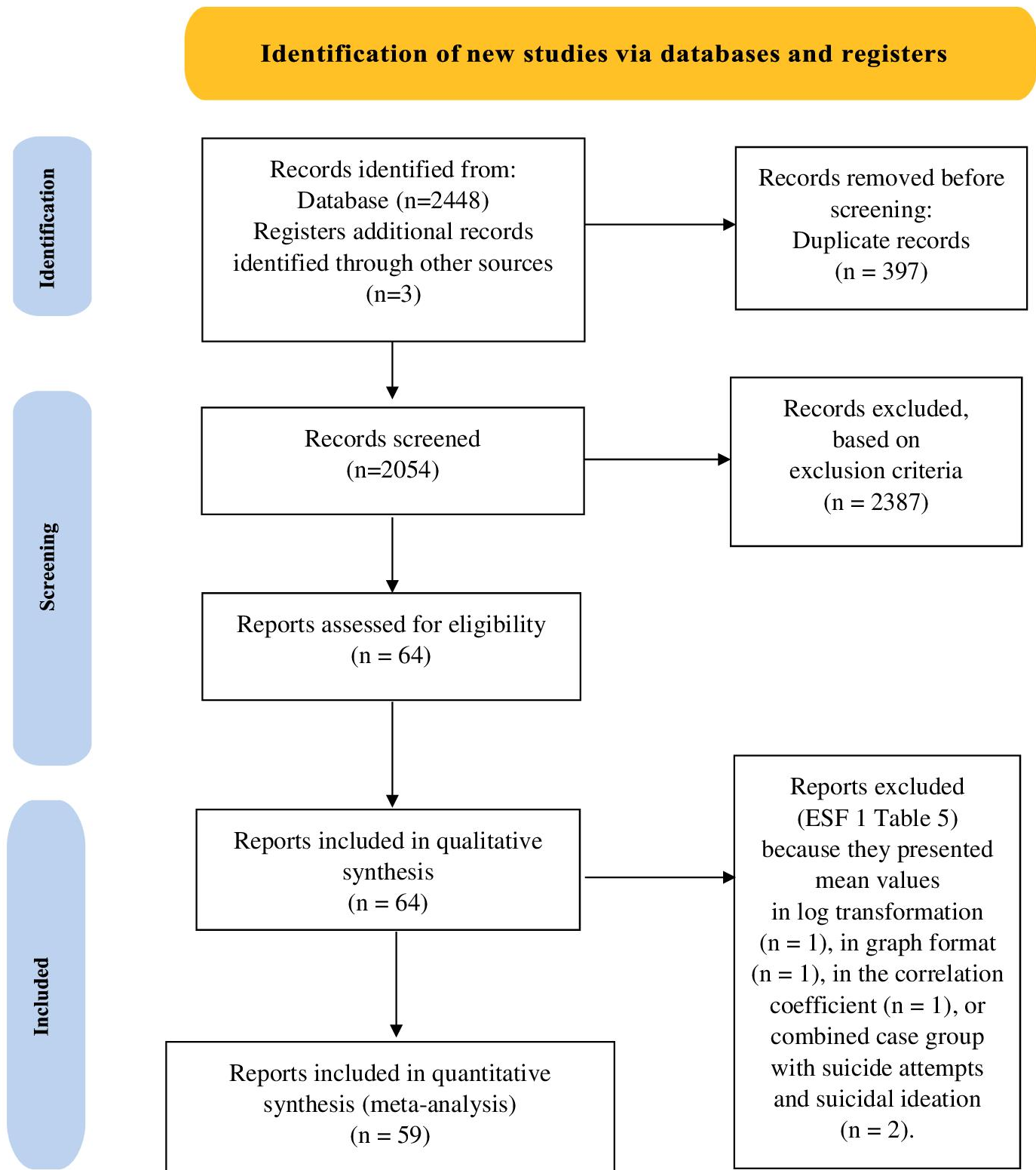


Table 1. Number of cases with suicidal attempts (SA+), suicidal ideation (SI+) and controls in the different meta-analyses and side of standardized mean difference (SMD) and the 95% confidence intervals with respect to zero SMD.

Outcome profiles	n studies	Side of 95% confidence intervals				Case numbers	Control numbers	Total number of participants
		SMD < 0	Overlap 0 and SMD < 0	Overlap 0 and SMD > 0	SMD > 0			
Overall								
IO&NS	59	2	11	25	21	4034	12377	16411
IRS	33	1	2	14	16	2394	7739	10133
Inflammation	25	1	1	11	12	1762	4803	6564
CRP	15	0	1	4	10	1399	3955	5354
Neurotoxicity	29	1	3	11	13	1870	4620	6489
ANTIOXPRO	40	2	12	16	10	2985	9401	12386
BDNF	10	0	1	4	5	489	780	1269
SA+								
IO&NS	37	0	7	14	16	2511	7784	10295
IRS	23	0	1	9	13	1732	5483	7215
Inflammation	16	0	1	6	9	1117	2576	3693
CRP	10	0	1	2	7	914	1925	2839
Neurotoxicity	19	0	2	7	10	1209	2361	3570
ANTIOXPRO	26	1	8	10	7	1976	6953	8929
BDNF	7	0	1	3	3	363	481	844
SI+								
IO&NS	24	2	5	12	5	1523	4593	6116
IRS	11	1	1	6	3	662	2256	2918
Inflammation	9	1	0	6	3	645	2227	2872
CRP	6	0	0	3	3	485	2030	2515
Neurotoxicity	11	1	1	6	3	661	2259	2919
ANTIOXPRO	16	1	6	6	3	1010	2448	3458
BDNF	3	0	0	1	2	126	300	426

IO&NS: immune-inflammatory and oxidative and nitrosative stress

IRS: immune-inflammatory response system

ANTIOXPRO: protection via antioxidants and neurotrophic products.

CRP: C-reactive protein

BDNF: Brain-derived neurotrophic factor

Table 2. Results of meta-analysis performed on different outcome variables (immune and oxidative and nitrosative stress profiles, IO&NS, and subdomains)

Outcome feature sets	n studies	Groups, subgroups	SMD	95% CI	z	p	Q	df	p	I ² (%)	τ ²	T
IO&NS	59	Overall	0.299	0.200; 0.397	5.933	<0.001	276.474	58	<0.001	79.022	0.100	0.316
	37	SA+ vs. Controls	0.387	0.256; 0.519	5.771	<0.001	176.200	36	<0.001	79.569	0.114	0.337
	21	SA+ vs. HC	0.796	0.503; 1.089	5.322	<0.001	152.636	20	<0.001	86.897	0.393	0.627
	29	SA+ vs. SA-	0.255	0.140; 0.370	4.344	<0.001	90.748	28	<0.001	69.145	0.056	0.238
	24	SI+ vs. Controls	0.167	0.030; 0.304	2.396	0.017	83.446	23	<0.001	72.437	0.071	0.267
IRS	33	Overall	0.460	0.314; 0.605	6.186	<0.001	174.008	32	<0.001	81.610	0.128	0.358
	23	SA+ vs. Controls	0.590	0.400; 0.779	6.101	<0.001	133.065	22	<0.001	83.467	0.158	0.398
	14	SA+ vs. HC	1.049	0.637; 1.462	4.983	<0.001	118.960	13	<0.001	89.072	0.534	0.731
	17	SA+ vs. SA-	0.384	0.229; 0.538	4.855	<0.001	56.249	16	<0.001	71.555	0.064	0.254
	11	SI+ vs. Controls	0.231	0.033; 0.430	2.281	0.023	28.265	10	0.002	64.621	0.063	0.251
Inflammation	25	Overall	0.459	0.284; 0.633	5.142	<0.001	147.659	24	<0.001	83.746	0.146	0.382
	16	SA+ vs. Controls	0.623	0.388; 0.858	5.199	<0.001	95.325	15	<0.001	84.264	0.173	0.415
	9	SA+ vs. HC	1.200	0.584; 1.816	3.820	<0.001	90.393	8	<0.001	91.150	0.791	0.889
	13	SA+ vs. SA-	0.414	0.223; 0.605	4.250	<0.001	47.029	12	<0.001	74.484	0.080	0.282
	10	SI+ vs. Controls	0.239	0.000; 0.478	1.962	0.050	36.317	9	<0.001	75.218	0.099	0.315
CRP	15	Overall	0.573	0.366; 0.780	5.433	<0.001	99.036	14	<0.001	85.864	0.128	0.358
	10	SA+ vs. Controls	0.689	0.386; 0.991	4.463	<0.001	78.523	9	<0.001	88.538	0.194	0.440
	4	SA+ vs. HC	1.311	0.446; 2.177	2.969	0.003	32.712	3	<0.001	90.829	0.704	0.839
	8	SA+ vs. SA-	0.499	0.234; 0.764	3.696	<0.001	43.082	7	<0.001	83.752	0.110	0.331
	6	SI+ vs. Controls	0.429	0.161; 0.697	3.138	0.002	18.524	5	0.002	73.009	0.075	0.274
Neurotoxicity	29	Overall	0.403	0.253; 0.553	5.262	<0.001	133.901	28	<0.001	79.089	0.116	0.340
	19	SA+ vs. Controls	0.524	0.320; 0.727	5.048	<0.001	94.676	18	<0.001	80.988	0.147	0.383
	12	SA+ vs. HC	0.904	0.431; 1.378	3.745	<0.001	106.480	11	<0.001	89.669	0.607	0.779

	14	SA+ vs. SA-	0.403	0.218; 0.588	4.278	<0.001	49.022	13	<0.001	73.481	0.079	0.282
	11	SI+ vs. Controls	0.243	0.036; 0.449	2.299	0.021	30.692	10	0.001	67.418	0.072	0.268
ANTIOXPRO	40	Overall	0.179	0.063; 0.294	3.031	0.002	196.268	39	<0.001	80.129	0.095	0.308
	26	SA+ vs. Controls	0.199	0.058; 0.341	2.761	0.006	119.840	25	<0.001	79.139	0.091	0.302
	13	SA+ vs. HC	0.476	0.083; 0.869	2.372	0.018	118.374	12	<0.001	89.863	0.461	0.679
	22	SA+ vs. SA-	0.137	0.021; 0.253	2.322	0.020	58.340	21	<0.001	64.004	0.039	1.197
	16	SI+ vs. Controls	0.141	-0.056; 0.338	1.401	0.161	73.159	15	<0.001	79.497	0.113	0.336
BDNF	10	Overall	0.479	0.224; 0.735	3.681	<0.001	34.811	9	<0.001	74.146	0.118	0.344
	7	SA+ vs. Controls	0.417	0.102; 0.733	2.590	0.010	25.883	6	<0.001	76.819	0.131	0.362
	4	SA+ vs. HC	0.962	0.708; 1.217	7.416	<0.001	2.628	3	0.453	0.000	0.000	0.000
	6	SA+ vs. SA-	0.256	-0.026; 0.538	1.779	0.075	14.800	5	0.011	66.217	0.076	0.275
	3	SI+ vs. Controls	0.665	0.413; 0.917	5.169	<0.001	2.039	2	0.361	1.934	0.001	0.032

SMD: standardized mean difference, 95% CI: 95% confidence intervals

IO&NS: immune-inflammatory and oxidative and nitrosative stress

IRS: immune-inflammatory response system

ANTIOXPRO: protection via antioxidants and neurotrophic products.

CRP: C-reactive protein

BDNF: Brain-derived neurotrophic factor

We used the study as well as the prespecified subgroups as the units of analysis. Thus, patients with suicide behaviors (SB) were first (overall) compared with controls. Second, we performed subgroup analyses comparing the pooled effect size of IO&NS, IRS, inflammation, CRP, neurotoxicity, ANTIOXPRO and BDNF profiles in a) SA+ versus SA- patients or healthy controls); and b) SI+ versus SI- patients or healthy controls.

IO&NS profile in suicide behaviors

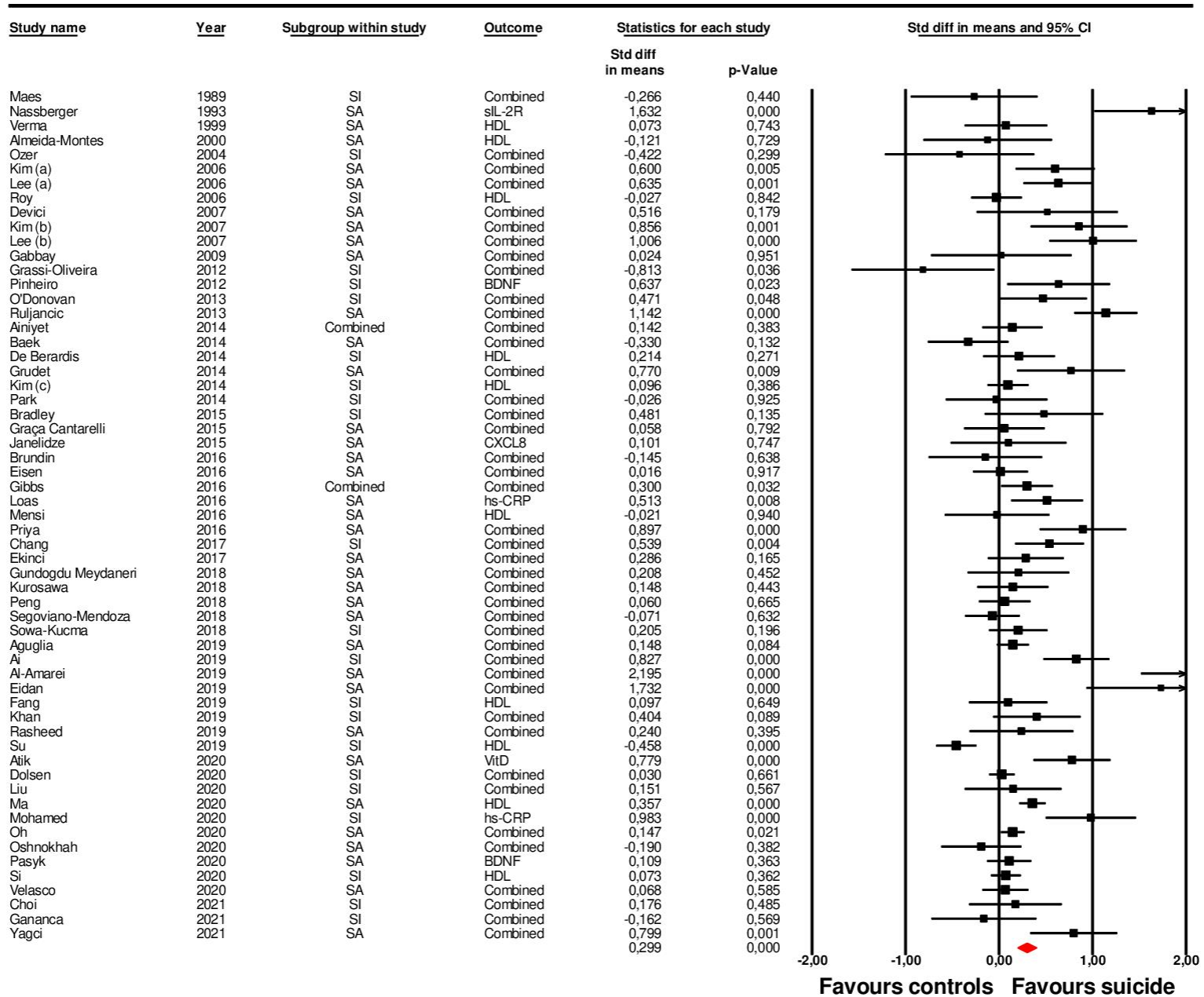


Figure 2. Forest plot with results of meta-analysis performed on 59 studies reporting immune-inflammatory and oxidative & nitrosative stress (IO&NS) biomarkers.

Inflammation in SA/SI

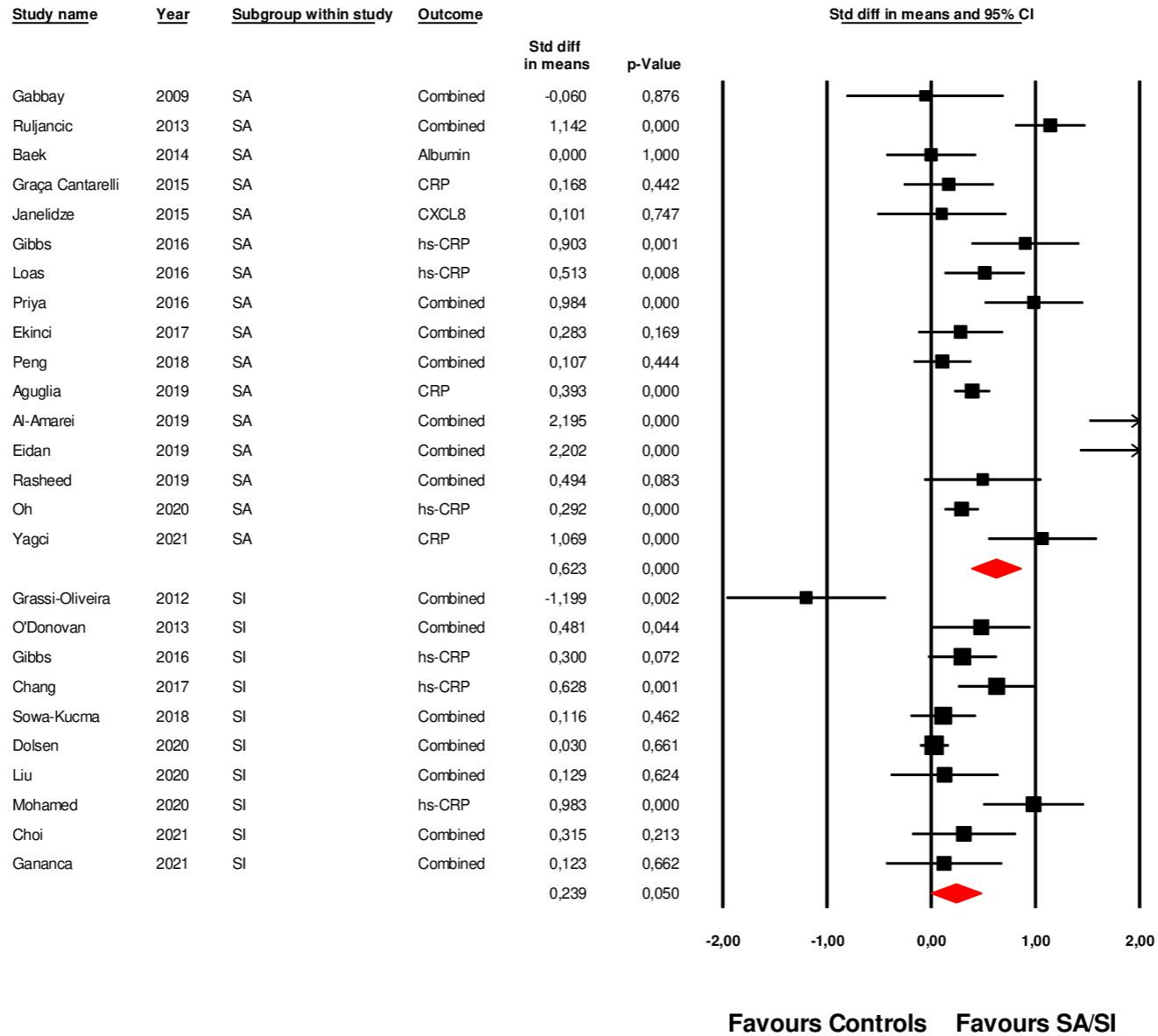


Figure 3. Forest plot with results of meta-analysis (subgroup analysis) performed on 26 studies reporting inflammation profile.