

1 **Low linoleic acid foods with added DHA given to Malawian children with severe acute**
2 **malnutrition improves cognition: a randomized, triple blinded, controlled clinical trial**

3
4 Kevin Stephenson^{1*}, Meghan Callaghan-Gillespie^{2*}, Kenneth Maleta³, Minyanga Nkhoma³,
5 Matthews George³, Hui Gyu Park⁴, Reginald Lee², Iona Humpheries-Cuff⁵, R J Scott Lacombe⁴,
6 Donna R Wegner², Richard L Canfield⁶, J Thomas Brenna^{4#}, Mark J Manary^{2,3,7#}

7
8 ¹Department of Medicine, Washington University, St. Louis, MO, ²Department of Pediatrics,
9 Washington University, St. Louis, MO, ³Department of Public Health, School of Public Health &
10 Family Medicine, Kamuzu University of Health Sciences, Blantyre, ⁴Department of Pediatrics,
11 University of Texas at Austin, Austin, Texas, ⁵Project Peanut Butter, Lunzu, Malawi ⁶Division
12 of Nutritional Sciences, Cornell University, Ithaca, NY. ⁷United States Department of
13 Agriculture/Agricultural Research Service Children's Nutrition Research Center, Houston, TX.

14 * considered as first authors # considered as senior authors

15
16 **Authors last names:** Stephenson, Callaghan-Gillespie, Maleta, Nkhoma, George, Park, Lee,
17 Humphries-Cuff, LaCombe, Wegner, Canfield, Brenna, Manary

18 **Disclaimers:** KS, MCG, KM, MN, MG, HGP, RL, IHC, DRW, JTB, RLC, RJSL, RC, MJM
19 have no conflict of interest to declare. MJM is an associate editor of AJCN.

20 **Sources of support:** Funding was generously provided by Unorthodox Philanthropy and Open
21 Philanthropy. Wiley Companies supported the work with a donation of ingredients for one of the
22 study foods.

23 **Corresponding author:** Mark Manary; Department of Pediatrics, Washington University, St.
24 Louis, manarymj@wustl.edu; 314 454-2178.

25 **Data Share Statement:** Data described in the manuscript, code book, and analytic code will be
26 made available upon request pending application to the corresponding author and approval.

27 **Running title:** Low LA foods with DHA improve cognition in SAM

28 **Abbreviations used:** ALA, α -linolenic acid; DHA, docosahexaenoic acid; DHA-HO-RUTF,
29 high oleic acid RUTF with added DHA; EPA, eicosapentaenoic acid; HAZ, height-for-age z-
30 score; HO-RUTF, high oleic acid RUTF; LA, linoleic acid; MDAT, Malawi Developmental
31 Assessment Tool; MUAC, mid-upper arm circumference; PSA, problems solving assessment;
32 PUFA, polyunsaturated fatty acid; RUTF, ready-to-use therapeutic food; SAM, severe acute
33 malnutrition; S-RUTF, standard RUTF; WHZ, weight-for-height z-score

34 **Trial registry:** NCT03094247, clinicaltrials.gov

35

36 **Abstract**

37 **Background:** There is concern that the PUFA composition of ready-to-use therapeutic food
38 (RUTF) for treatment of severe acute malnutrition (SAM) is suboptimal for neurocognitive
39 recovery.

40 **Objective:** We tested the hypothesis that RUTF made with reduced amounts of linoleic acid,
41 achieved using high oleic (HO) peanuts, with or without added DHA, improves cognition when
42 compared to standard RUTF (S-RUTF).

43 **Methods:** A triple-blind, randomized, controlled clinical feeding trial was conducted among
44 children with uncomplicated SAM in Malawi with 3 types of RUTF; DHA-HO-RUTF, HO-
45 RUTF and S-RUTF. The primary outcomes, measured in a subset of subjects, were the Malawi
46 Developmental Assessment Tool (MDAT) global and 4 domain (gross motor, fine motor,
47 language and social) z-scores and a modified Willatts problem solving assessment (PSA)
48 intention score for 3 standardized problems, measured 6 months and immediately after
49 completing RUTF therapy, respectively. Plasma fatty acid content, anthropometry and eye
50 tracking were secondary outcomes. Comparisons were made between the novel PUFA RUTFs
51 and S-RUTF.

52 **Results:** Among the 2565 SAM children enrolled, global MDAT z-score was -0.69 ± 1.19 and -
53 0.88 ± 1.27 for children receiving DHA-HO-RUTF and S-RUTF, respectively (difference 0.19,
54 95% CI 0.01 to 0.38). The gross motor and social domains had higher z-scores among children
55 receiving either DHA-HO-RUTF than S-RUTF. The PSA problem 3 scores did not differ by
56 dietary group (Odds ratio 0.92, 95% CI 0.67 to 1.26 for DHA-HO-RUTF). After 4 weeks of
57 treatment, plasma phospholipid EPA and α -linolenic acid were greater in children consuming

58 DHA-HO-RUTF or HO-RUTF when compared to S-RUTF (for all 4 comparisons P values <
59 0.001), but only plasma DHA was greater in DHA-HO-RUTF than S-RUTF ($P < 0.001$).

60 **Conclusions:** Treatment of uncomplicated SAM with DHA-HO-RUTF resulted in an improved
61 MDAT score, conferring a cognitive benefit six months after completing diet therapy. This
62 treatment should be explored in operational settings.

63

64 **Keywords:** severe acute malnutrition, ready-to-use therapeutic food, PUFA, cognition, MDAT,
65 DHA

66 **Introduction**

67 Severe acute malnutrition (SAM) is a global insult to the young child's developing mind and
68 body. Therapeutic foods for SAM were largely designed to provide the nutrients known to affect
69 recovery of anthropometry and muscle mass (1). Vegetable oil rich, peanut-based ready-to-use
70 therapeutic food (RUTF) is the standard of care for most SAM because it can be used safely at
71 home in the context of utmost poverty (2). It has been assumed that the brain and other viscera
72 would receive what is needed for recovery from standard RUTF (S-RUTF).

73 Dietary omega-3 PUFAs are essential to normal brain development and function. Brain
74 accretion of the key neural structural component, omega-3 DHA, accelerates in the third
75 trimester of gestation and continues until age 18 yr (3,4). Tissue DHA is derived from either
76 preformed dietary DHA or a precursor, typically plant-derived α -linolenic acid (ALA). ALA is
77 less efficient in supplying brain DHA than dietary DHA (5). Omega-6 linoleic acid (LA) is
78 metabolized by the same desaturases (*FADS2*, *FADS1*) and elongases (*ELOVL2*, *ELOVL5*) as
79 omega-3 PUFA, and uses the same pathways to incorporate into membranes (6,7). LA intake
80 required to eliminate overt clinical abnormalities and support growth in infants is about 2% of
81 energy or about 1% of fatty acids from diets deriving half their energy from fat (8). RUTF and
82 breastmilk are examples of such diets. Suppression of omega-3 PUFA tissue accretion by excess
83 dietary LA is an impactful clinical phenomenon (9). High LA dietary vegetable oils create a
84 metabolic demand for all omega-3 PUFA, thus requiring higher dietary DHA intake to produce
85 similar tissue DHA levels (10).

86 The development of peaceful and just citizens requires a high-level mental functioning to
87 support executive problem solving and the affect regulation needed for resilient responses.
88 Perinatal brain development depends on a balanced supply of brain specific nutrients.

89 Overwhelming amounts of LA in vegetable oils suppress trace amounts of ALA when the brain
90 is rapidly accreting DHA. This inhibits neurobehavioral development at the levels of gene
91 expression, hormonal balance, affect, and adaptive responses to environmental cues (11).
92 Omega-3 deficient diets cause poor impulse control leading to potentiated stress response,
93 increased depression and aggression, and poorer cognitive performance (12-14). Evidence-based
94 guidelines include EPA and DHA supplements as a treatment for attention deficit hyperactivity
95 disorder, autism spectrum disorder, and major depressive disorder (15,16).

96 The potential effects of excess LA and limited ALA in RUTF on cognition have not been
97 measured. Our previous study showed that RUTF with excess LA caused a 25% reduction in
98 circulating DHA in 4 weeks (17). This clinical trial tested the hypothesis that RUTF made with
99 reduced amounts of LA, achieved by using high oleic (HO) peanuts and palm oil (HO-RUTF)
100 with or without added DHA (DHA-HO-RUTF), confers lasting cognition improvement when
101 compared to S-RUTF. Cognition was measured by the Malawi Developmental Assessment Tool
102 (MDAT), a standardized, validated battery of exercises, and a modified Willatts problem solving
103 assessment (PSA) intention score.

104
105
106

105 **Methods**

107 **Study design**

108 This triple-blind, randomized controlled clinical trial compared cognition in children
109 treated for uncomplicated SAM receiving one of 3 RUTFs; HO-RUTF, DHA-HO-RUTF, or S-
110 RUTF. The primary outcomes were the MDAT global z-score and PSA intention scores.
111 Secondary outcomes included MDAT domain z-scores, recovery rates, anthropometric growth
112 rates, Saccadic response time, visual paired comparison, novelty preference score, mean fixation

113 during familiarization, and adverse events. Detailed descriptions of the study methods are
114 provided in the study protocol available as supplementary material.

115 All sample size calculations were performed using G*Power (3.1.9.7) with two-tailed
116 testing at a significance level of 0.05 and power of 0.80 (18). A total of 300 children per group
117 were required to detect a difference in MDAT global z-score of 0.25, assuming a SD of 1.1 (19-
118 21). The difference of 0.25 z-scores was chosen based on prior nutrition-based effect sizes on
119 developmental scores as well as MDAT-specific changes seen in association with an illness (0.14
120 - 0.19) (22,23). Assuming a 25% loss to follow-up, 400 participants per group were designated
121 for testing. For the PSA, we assumed 20% of participants would not complete testing; thus, a
122 total of 300 children per group were needed to detect a standardized effect size of 0.25. This
123 effect size was chosen based on previous studies of healthy infants under controlled conditions,
124 where standardized effects sizes ranged from 0.4-0.5 (24,25). Given the extended age range
125 relative to prior trials, the proximity of participants to SAM, and testing environs, we chose a
126 smaller effect size for sample size calculations.

127 The trial sample size was determined based on the key secondary outcome, recovery. A
128 total of 900 participants per group was required to detect an improvement in recovery of 4%
129 assuming an expected recovery rate of 89% and default rate of 5%, both of which were
130 determined based on prior operational experience in Malawi (26,27).

131 Participants were randomized individually in a 1:1:1 ratio into the three intervention
132 groups. Computer-generated block randomization lists were created in blocks of 54 using six
133 colors, two of which corresponded to each food. Participants were assigned to their food group
134 when they drew an opaque envelope containing one of the colored cards.

135 Study foods were dispensed in identical packets with a colored sticker. The three study
136 foods underwent extensive testing to minimize differences in appearance and taste. Excepting
137 one remote member of the study team, all research personnel, including nurses, investigators,
138 and laboratory personnel, were blinded to the color code. This unblinded individual did not
139 evaluate any of the study subjects, nor did she analyze the primary outcomes. The trial is
140 registered at clinicaltrials.gov as NCT03094247.

141

142 **Subjects and setting**

143 The trial was conducted at 28 clinics in rural Southern Malawi between October 2017 and
144 December 2020. Most families in the study farm for subsistence, with corn as the staple crop.
145 Breastfeeding is ubiquitous throughout the first year of life. Homes are built from mud with
146 thatch or corrugated metal sheet roofing. Plumbing and electricity are exceedingly rare, and
147 water is obtained from boreholes, wells, or rivers.

148 Children aged 6-59 mo were eligible for enrollment if they had uncomplicated SAM,
149 which was defined as a mid-upper arm circumference (MUAC) < 11.5 cm, and/or weight-for-
150 height z-score < -3, and/or bilateral pitting edema, with an adequate appetite as determined by a
151 30g test feeding. Exclusion criteria included participation in a feeding program in the prior 1
152 month, presence of developmental delay, chronic debilitating medical condition, peanut allergy,
153 or a hearing or vision problem.

154 The trial was approved by the Human Studies Committee of Washington University and
155 the College of Medicine Research and Ethics Committee of the University of Malawi. Nurses
156 fluent in Chichewa explained the trial to each child's caregiver and obtained verbal and written
157 consent.

158

159 **Participation**

160 Upon enrollment, baseline demographic, socioeconomic, and health data were collected.
161 Weight, length, and MUAC were measured. Caregivers received counseling, a two-week supply
162 of RUTF, and a seven-day course of amoxicillin. Healthy twins of subjects were given an
163 allotment of RUTF as well. Follow-up visits were scheduled at 2-week intervals, at which time
164 anthropometric measurements were repeated and caregivers were asked about adherence and
165 symptoms. Children were fed until reaching a clinical outcome or for a maximum of six bi-
166 weekly follow-up visits. The anthropometry methods and definitions of the clinical outcomes are
167 described in the study protocol.

168 Beginning in February 2018, all participants under two years of age were assessed with a
169 PSA within four weeks of their clinical outcome. Beginning in March 2018, all participants
170 under 30 mo of age were asked to return to clinic 5 to 7 mo later for testing with the MDAT and
171 Tobii X2-60 eye tracker eye-tracking testing.

172 Children that either missed fortnightly assessments during therapeutic feeding or
173 neurocognitive testing were sought on two extra occasions by health surveillance assistants and
174 asked to return for the scheduled treatment or testing.

175

176 **Study foods**

177 All three RUTF formulations were produced by Project Peanut Butter in Lunzu, Malawi,
178 meeting all international quality and nutrient specifications. DHA-HO-RUTF and HO-RUTF
179 were formulated to reduce LA and increase the omega-3 PUFA content (**Table 1**,
180 **Supplementary Tables 1-2**, protocol section 6.5). Reductions in LA were achieved by using

181 high oleic peanuts. Increases in omega-3 PUFA were achieved by the addition of perilla oil.
182 DHA was enhanced in one of the RUTFs by the addition of encapsulated fish oil. The
183 formulation was demonstrated to be acceptable in a pilot trial (17).

184

185 **Neurocognitive testing**

186 MDAT has been validated within the study context (28). We performed MDAT
187 assessments between five and seven months after a SAM outcome was reached to assess the
188 effect of the RUTFs on neurodevelopment. No intervention was performed between the SAM
189 outcome and the MDAT testing. MDAT contains 136 items across four domains, three of which
190 are assessed by direct observation of the child (gross motor, fine motor, and language), while the
191 fourth (social) is assessed via caregiver interview. These domain scores are then combined into a
192 global score and compared to normal population reference values to provide age-adjusted z-
193 scores (28). In line with prior protocols, failure of any six consecutive items resulted in failure of
194 that domain and skipping to the subsequent domain (19). Global z-score outliers were defined
195 after evaluation of the score distribution, and values < -5 were excluded.

196 A modified version of the Willatts PSA was performed within four weeks of the outcome
197 from treatment of SAM (24). This time point was chosen to detect the immediate effect of the
198 intervention RUTFs. The assessment was modified to accommodate testing a wider age range
199 than those used in prior studies and so contained three problems of increasing complexity (25).
200 The goal of the assessment was to judge intentionality in means-end task completion. All
201 assessments were video recorded for subsequent coding.

202 Each problem contained a barrier between the child and the goal, a toy of her or his
203 choosing. In problem 1, the toy was placed on a cloth and distanced from the child such that the

204 cloth had to be pulled by the child to reach the toy. In problem 2, the toy was covered with an
205 opaque cloth such that the child had to remove the cover to obtain the toy. Problem 3 was an
206 amalgam of problems 1 and 2, wherein the toy was placed on a cloth and under a cover, such that
207 the child had to pull the apparatus toward them and uncover the toy to obtain it.

208 Videos were coded using Behavioral Observation Research Interactive Software (29).
209 Coders were trained to achieve $>.90$ agreement by kappa statistic for intention scores on a
210 random sample of 20 test videos before coding for the trial. High reliability was maintained
211 throughout the coding period by double-coding $>50\%$ of videos followed by a joint resolution of
212 discrepancies. In a modification of the procedure of Willatts et al problem solving behaviors,
213 problems were coded for two primary components, each on a scale of 0-2 and each assessing an
214 aspect of intentionality: attentional orienting to each problem subgoal and the execution of
215 behaviors on each subgoal. Problems 1 and 2 were scored 0-4, while problem 3 had two subgoals
216 (moving cloth and removing the cover) and thus was scored 0-8. “No score” was a possible
217 outcome for all problems, and reasons for this result were recorded.

218 Two eye-tracking tests were performed as secondary cognitive outcomes: a visual paired
219 comparison task, and the infant orienting with attention task. Identical procedures to those
220 previously described were used (20). The visual paired task consisted of 4 trials of African faces.
221 The infant orienting task measured saccadic reaction time in a standardized manner. The testing
222 sequence for paired comparison task and orienting attention task was randomized.

223 All neurocognitive assessors underwent extensive training and were required to pass
224 periodic evaluations before administering the tests and throughout the trial. Please see the study
225 protocol for further details.

226

227 **Plasma sampling and analysis**

228 The purpose of blood sampling was to characterize the concentrations of fatty acids in the study
229 groups, thus only a subset of children were sampled. Blood collection and analysis followed best
230 practices (30). After receiving 4 weeks of RUTF, blood was collected by venipuncture and
231 placed in an ethylenediaminetetraacetic acid tube. Plasma was then separated from red cells and
232 held at -20°C until transferred to the laboratories of JT Brenna at the Dell Pediatric Research
233 Institute in Austin, TX. Plasma phospholipids were chosen as the preferred lipid pool because
234 they respond in a matter of weeks to changes in the diet compared to months for red blood cells,
235 but are stable to fatty acids from recent meals which are largely triacylglycerols. Red blood cells
236 PUFA also degrade at -20°C by peroxidation catalyzed by iron release from ruptured cells (30).

237 For analyses, plasma phospholipids were isolated using an automated three-phase liquid-
238 liquid extraction method (31). Samples were then transmethylated to generate fatty acid methyl
239 esters according to our routine methods (32). These fatty acid derivatives were detected and
240 quantified by gas chromatography (GC)-flame ionization detection and structure confirmed by a
241 specialized GC tandem mass spectrometry method. Quantitative standards of 25 fatty acid
242 methyl esters were then used to quantify the amounts of each detected. Results are reported as a
243 weight percentage of total fatty acid identified. These methods are carefully detailed in the study
244 protocol.

245

246 **Statistical analysis**

247 Analysis were performed by a blinded investigator using a modified intention to treat
248 methodology wherein children who were discovered not to meet enrollment criteria were
249 excluded from analysis. Baseline characteristics were summarized as means \pm SD, medians

250 (IQR), or percentages. Anthropometric indices were calculated with WHO Anthro version 3.1
251 (WHO). Rates of weight, MUAC, and length gain were calculated over the entire period of
252 feeding.

253 Outcomes from the DHA-HO-RUTF and HO-RUTF groups were compared to S-RUTF.
254 Continuous outcomes were compared using Student's *t*-test. Categorical outcomes were
255 compared using the chi-square test. PSA scores were analyzed using ordinal logistic regression
256 with age as a covariate. An interaction term between intervention group and age was offered into
257 the model but was not significant for any problem and thus was not included in the final model.
258 The proportional odds assumption was assessed graphically and deemed not violated by
259 producing a series of binary logistic regressions at cut-points for all outcome values > 2.
260 Significance testing was restricted to pairwise comparisons of the two primary outcomes and key
261 secondary outcomes, namely the domain MDAT z-scores and recovery rates. In all other cases,
262 differences with unadjusted 95% CIs were calculated and reported. Analysis was completed
263 using R version 4.0.1 (R Foundation for Statistical Computing) and SPSS version 27 (SPSS Inc.)
264 (33).

265

266 **Results**

267 Of the 2758 children with SAM identified between October 2017 and December 2020, 2565
268 children were included in the study (**Figure 1**). In 2020, there were three stock-outs of RUTFs
269 due to ingredient importation restrictions related to the COVID-19 pandemic. This precluded
270 randomization as it was designed, and so subjects were randomized among the available RUTFs.
271 This is described in the study protocol available as supplementary material. Baseline

272 characteristics were similar among the three groups, both in the entire study sample and within
273 the MDAT and problem solving assessment subgroups (**Table 2, Supplementary Tables 3-4**).

274 Children receiving DHA-HO-RUTF had higher MDAT global, gross motor, and social z-
275 scores than those receiving S-RUTF, while children receiving HO-RUTF had higher social z-
276 scores than those receiving S-RUTF at about 6 months post SAM outcome (**Table 3,**
277 **Supplementary Table 3**). Probability density distributions for global and domain MDAT z-
278 scores for each group are shown in **Figure 2**, while means are shown in **Supplementary Figure**
279 **1**. When stratified by age, the probability density distributions of global MDAT z-score show
280 that children <12 mo at the time of SAM resemble healthy children, while children >18 mo at the
281 time of SAM display scores approximately-2 z-scores worse. (**Supplementary Figure 2**).

282 HO-RUTF or DHA-HO-RUTF did not lead to superior PSA scores compared to S-RUTF
283 (**Table 3, Figure 3**). Inability to participate in problem 3 adequately to obtain a score occurred
284 more often than anticipated, and resulted in an underpowered analysis for PSA. Predicted
285 probabilities from the ordinal logistic regression model showed that intention scores were
286 strongly influenced by age and varied most in problem 3 (**Supplementary Figure 3**).

287 Neither intervention RUTF led to superior eye-tracking results, anthropometric recovery,
288 rates of gain in weight, length, or MUAC compared to S-RUTF (**Table 3**). Potential adverse
289 events, including reports of fever, diarrhea, food intolerance, and poor appetite, were not higher
290 in the intervention groups compared to S-RUTF, nor were default rates different between groups
291 (**Table 3**).

292 Summary statistics for enrollment characteristics and analysis of primary and key
293 secondary outcomes were repeated after excluding those children enrolled during each of the
294 three stock-out periods (271 children excluded, **Supplementary Tables 5-6**). The groups

295 remained balanced at baseline and the point estimates were similar for all primary and secondary
296 outcomes. Exploratory analysis of MDAT results by key subgroups is shown in **Supplementary**
297 **Figure 4**. Linear and ordinal logistic regression models assessed the effects of DHA and HO in
298 RUTF on MDAT global z-score and PSA intentions scores, respectively, is shown in
299 **Supplementary Table 7**.

300 Six key plasma PUFA concentrations were selected to describe the biochemical changes
301 induced by HO-RUTF and DHA-HO-RUTF (**Figure 4**). LA and ALA are the primary dietary
302 omega-6 and omega-3 fatty acids respectively, EPA and DHA are bioactive omega-3 fatty acids
303 that affect mood and cognition, and arachidonic acid and docosapentaenoic acid are bioactive
304 omega-6 fatty acids. Consumption of HO-RUTF and DHA-HO-RUTF resulted in greater
305 amounts of plasma ALA, as well as more EPA, while DHA was increased only in the DHA-HO-
306 RUTF group. S-RUTF resulted in more LA than DHA-HO-RUTF, as well as greater amounts of
307 the bioactive omega-6 fatty acids. The full plasma fatty acid concentrations from SAM children
308 fed different RUTFs can be found in **Supplementary Table 8**.

309

310 **Discussion**

311 This trial found that SAM children who consumed DHA-HO-RUTF achieved superior global
312 MDAT scores than children who consumed S-RUTF. DHA-HO-RUTF caused a positive shift in
313 the distribution of MDAT scores measured about 6 months after a SAM outcome with no
314 intervening experimental treatment. However, PSA scores were similar in all dietary groups. The
315 expected improvements in plasma fatty acid content were observed; children receiving DHA-
316 HO-RUTF had greater concentrations of DHA. Anthropometric recovery was similar; 72% for

317 DHA-HO-RUTF and 75% for S-RUTF. No adverse effects or negative preferences against
318 DHA-HO-RUTF were observed in this large trial.

319 This trial demonstrated a clear discrepancy between anthropometric recovery and
320 cognitive recovery in SAM. Children fed S-RUTF show inferior cognitive performance when
321 compared with population norms, an insult of 0.9 MDAT z-scores. This deleterious effect is
322 observed in all domains of the MDAT, except for the social domain. The magnitude of the insult
323 suggests that a frameshift in thinking and approach may be warranted with respect to SAM
324 treatment and recovery. The focus on cognitive recovery must rise to equal importance as
325 anthropometric recovery to enable the child to thrive. The distribution of MDAT scores in
326 children < 1 year of age mirrors a healthy population (Supplementary Figure 2) and offers hope
327 that improvements in treatment may avert lifelong disabilities. The increase seen in MDAT by
328 the inclusion of less LA and more DHA in RUTF is encouraging and actionable. Differences
329 seen *between* dietary groups were not dramatic (Supplemental Figure 1) when compared to the
330 SAM insult. Our results report a functional benefit that extends the importance of our previous
331 biochemical results, indicating that children recovering from SAM require a source of DHA to
332 restore cognition (17,34).

333 The MDAT was developed in a rural Malawian setting, is fully validated, reliable, and
334 predictive of later intellectual performance. This is why MDAT was chosen as a primary
335 outcome, and why Malawi was chosen as the study location. MDAT has revealed cognitive
336 deficits in acutely malnourished populations in Malawi and Burkina Faso. In a previous study,
337 MDAT domain scores were reported in 150 Malawian SAM children upon discharge from the
338 hospital (21). All 4 domain scores were remarkably lower among hospitalized SAM children
339 than in our population; differences of -1.7 z-scores seen in gross motor, -1.0 z-scores in fine

340 motor, -0.7 in language, and -3.0 z-scores seen in social. The MUAC of these hospitalized
341 children was 11.5 cm, similar to that in our population, although the clinical status due to
342 infectious complications was likely worse. These findings lead us to speculate that significant
343 improvements in MDAT occur after discharge, especially in the gross motor and social domains,
344 and that maximizing this “cognitive recovery” should be a primary goal in malnutrition programs

345 The PSA scores did not differ between food groups. PSA problem 3 has been used to
346 demonstrate cognitive differences among healthy infants aged 9-12 mo receiving DHA enriched
347 infant formulas (25). In this study, half of the healthy infants achieved a perfect score on the PSA
348 on all 3 attempts. This is in contrast to our results, wherein only 15% of children achieved a
349 perfect score on any attempt. This suggests the presence of a substantial cognitive deficit at the
350 time of anthropometric recovery. Our PSA was conducted using this very same problem and
351 protocol, and with a sample size increased three-fold, as previously reported, so it is unlikely the
352 failure to detect differences is the result of methodological flaws. Rather, PSA problem 3 was
353 beyond the intellectual capacity of most children tested. Subsequent use of PSA in SAM should
354 explore its timing relative to anthropometry and the potential utility of repeated testing.

355 Two previous, smaller studies in SAM children were done using blood measures of fatty
356 acid content (18,35). Our findings are consonant with these; increases in DHA were only seen
357 when fish oil was added to the diet, and reduction in dietary LA resulted in greater EPA content.

358 The food formulations of HO-RUTF and DHA-HO-RUTF were achieved by Project
359 Peanut Butter by ingredient changes, without alterations in the mixing or packaging processes.
360 HO peanuts can be purchased in the major peanut production markets worldwide. DHA is now
361 encapsulated and available from the same ingredient producers as the micronutrient premix.
362 Encapsulation is very durable and obscures the taste of the fish oil exceedingly well, in addition

363 to limiting oxidative degradation. Non-genetically modified, high oleic vegetable oils are
364 available at a cost of about 10% more than traditional vegetable oils. They were developed for
365 purposes of increasing the shelf-life of the oil and have been shown to have a reduced risk of
366 heart disease in adults.

367 Our study has multiple limitations. The study population did not habitually consume fish,
368 and the positive effect of DHA-HO-RUTF in a fish consuming population might differ.
369 However, most children recovering from SAM worldwide consume little else but RUTF, and
370 RUTF should meet the needs of such children. Our study population developed SAM largely
371 because of food insecurity. Children in whom chronic illness or excessive inflammation
372 precipitated SAM might not realize similar cognitive benefits of DHA-HO-RUTF. The use of
373 different cognitive assessments at single time points limited the ability to interpret the dynamic
374 nature of cognitive recovery. Food stock-outs resulted in imbalanced randomization, potentially
375 introducing bias. Re-analysis of the sample enrolled outside of these stock-outs did not show
376 evidence of bias.

377 We estimate that during treatment, SAM children were consuming about 240g RUTF/d.
378 For the DHA-HO-RUTF group, DHA intake averaged 173 mg/d or about 0.24% w/w DHA. The
379 global breastmilk DHA reference level is 0.32% w/w.(35) Fat constitutes half the energy in
380 breastmilk and RUTF. The DHA content of DHA-HO-RUTF and breastmilk was similar.
381 Importantly, the effective intervention was to supply RUTF with DHA and with limited LA
382 when recovery food was supplying calories and protein needed to restart a normal or even
383 accelerated trajectory of neurocognitive development. The brain substitutes omega-6
384 docosapentaenoic acid (DPA6) for DHA when dietary LA is surfeit and omega-3 is limiting.

385 DPA does not support neurocognitive function similarly to DHA, thus our results may point to
386 slow replacement of DHA for DPA in the months after recovery (11).

387 LA antagonism of omega-3 PUFAs is understood from a molecular and genetic basis (36-
388 38). Large dietary amounts of LA and little ALA given to pregnant animals results in offspring
389 with increased aggression and impulsivity, reduced executive function, and impaired visual
390 function (39). Confusion over the interrelationship of dietary LA and ALA has led to futile
391 attempts to increase circulating/tissue DHA by increasing dietary ALA without reducing LA.
392 While the dietary omega-6 to omega-3 *ratio*, usually cast as [LA]/[ALA], is widely quoted as a
393 parameter defining omega-3 tissue accretion, it is the excess of omega-6 over omega-3, i.e. [LA]-
394 [ALA], that controls DHA availability (40,41). Clinical studies show that additional ALA does
395 not increase circulating or breastmilk DHA (42). Moreover, no amount of supplementary omega-
396 3 EPA increases DHA. To increase DHA, two dietary interventions are well established:
397 lowering dietary LA and increasing dietary DHA.

398 This study is the first to provide direct evidence that reduction in LA and addition of
399 DHA in RUTF enhances cognition in SAM children. This finding is consonant with a body of
400 scientific evidence that extends over many decades, methodologies, and species. Perhaps the
401 most compelling evidence is found in the composition of breast milk. The need to enhance
402 cognitive recovery in SAM is substantial, even crucial, as this insult affects tens of millions of
403 children worldwide annually. At present, about 85M children worldwide will develop SAM in
404 the first 5 years of their life, a number roughly equal to the estimate of all other causes of
405 childhood developmental delay. Changing the composition of RUTF to reduce the insult of SAM
406 is safe, feasible, and effective. Further research is needed to optimize the amount and duration of
407 DHA supplementation, but in the meantime, there is a clear course of action to help SAM

408 children worldwide: require that RUTF have reduced amounts of LA and include preformed
409 DHA.

410

411 **Acknowledgment**

412 MJM is an associate editor at AJCN. The other authors have no conflict of interest to declare.

413 JTB, MCG, KM, DRW, RC, and MJM designed the research; RC and KM designed the

414 neurocognitive testing and scoring; MN, MG, RL, IHC, KM, and MCG conducted the clinical

415 research, assessed the children's cognition, and collected the samples; JTB, HGP, and RJSL

416 conducted the basic laboratory work, KS, MCG, JTB, RJSL, RC, and MJM analyzed and

417 interpreted the data; KS and MCG created the figures and graphically analyzed the data; MCG,

418 KS, and MJM wrote the first draft of the manuscript with input from JTB; MJM has primary

419 responsibility for final content. All authors read and approved the final manuscript. The trial was

420 registered at NCT03094247.

421

422 We are grateful to the Wiley Companies for the generous gift of AlaskOmega® omega-3

423 concentrate derived from Alaskan Pollock (*Gadus chalcogrammus*).

424

References

1. Chase RP, Kerac M, Grant A, Manary M, Briend A, Opondo C, Bailey J. Acute malnutrition recovery energy requirements based on mid-upper arm circumference : secondary analysis of feeding program data from 5 countries, combined protocol for acute malnutrition study (ComPAS) stage 1. PLoS ONE 2020;15: e0230452.
2. World Health Organization, the World Food Programme, the United Nations System Standing Committee on Nutrition and the United Nations Children’s Fund . Community-based management of severe acute malnutrition. 2007 accessed July 2021
<https://www.who.int/publications/i/item/9789280641479>
3. Martinez M. Tissue levels of polyunsaturated fatty acids during early human development. J Pediatr 1992;120(4 Pt 2):S129-38.
4. Carver JD, Benford VJ, Han B, Cantor AB. The relationship between age and the fatty acid composition of cerebral cortex and erythrocytes in human subjects. Brain Res Bull 2001;56(2):79-85. doi: 10.1016/s0361-9230(01)00551-2 [published Online First: 2001/11/13]
5. Lacombe RJS , Chouinard-Watkins R, Bazinet RP. Brain docosahexaenoic acid uptake and metabolism. Mol Aspects Med 2018;64:109-34.
6. Lattka E, Illig, Koletzko B, Heinrich J. Genetic variants of the FADS1 FADS2 gene cluster as related to fatty acid metabolism. Curr Opin Lipdol 2010;21:64-9.
7. Zhang JY, Kothapalli K, Brenna JT. Desaturase and elongase-limiting endogenous long-chain polunsaturated fatty acid biosynthesis. Curr Opin Clin Nutr Metabol Care 2016;19:103-10.

8.. Holman RT, Caster WO, Wiese HF. The Essential Fatty Acid Requirement of Infants and the Assessment of Their Dietary Intake of Linoleate by Serum Fatty Acid Analysis. *Am J Clin Nutr* 1964;14:70-5. doi: 10.1093/ajcn/14.2.70 [published Online First: 1964/02/01]

9. Holman RT. The slow discovery of the importance of omega 3 essential fatty acids in human health. *J Nutr* 1998;128(2 Suppl):427S-33S.

10. Hibbeln JR, Nieminen LR, Blasbalg TL, Riggs JA, Lands WEM. Healthy intakes of n-3 and n-6 fatty acids: estimations considering worldwide diversity. *Am J Clin Nutr* 2006;83(6 Suppl):1483S-93S. doi: 10.1093/ajcn/83.6.1483S [published Online First: 2006/07/18]

11. Brenna JT. Animal studies of the functional consequences of suboptimal polyunsaturated fatty acid status during pregnancy, lactation and early post-natal life. *Matern Child Nutr* 2011;7 Suppl 2:59-79. doi: 10.1111/j.1740-8709.2011.00301.x

12. Mathieu G, Denis S, Laviolle M, Vancassel S. Synergistic effects of stress and omega-3 fatty acid deprivation on emotional response and brain lipid composition in adult rats. *Prostaglandins Leukot Essent Fatty Acids* 2008;78(6):391-401. doi: 10.1016/j.plefa.2008.05.003 [published Online First: 2008/06/27]

13. DeMar JC, Jr., Ma K, Bell JM, Igarashi M, Greenstein D, Rapoport SI.. One generation of n-3 polyunsaturated fatty acid deprivation increases depression and aggression test scores in rats. *J Lipid Res* 2006;47(1):172-80. doi: 10.1194/jlr.M500362-JLR200 [published Online First: 2005/10/08]

14. Hafandi A, Begg DP, Premaratna SD, Sinclair AJ, Jois M, Weisinger RS.. Dietary repletion with omega3 fatty acid or with COX inhibition reverses cognitive effects in F3 omega3 fatty-acid-deficient mice. *Comp Med* 2014;64(2):106-9. [published Online First: 2014/03/29]

15. Chang JP, Su KP. Nutritional Neuroscience as Mainstream of Psychiatry: The Evidence-Based Treatment Guidelines for Using Omega-3 Fatty Acids as a New Treatment for Psychiatric Disorders in Children and Adolescents. *Clin Psychopharmacol Neurosci* 2020;18(4):469-83. doi: 10.9758/cpn.2020.18.4.469 [published Online First: 2020/10/31]
16. Hallahan B, Ryan T, Hibbeln JR, Murray IT, Glynn S, Ramsden CE, SanGiovanni JP, et al. Efficacy of omega-3 highly unsaturated fatty acids in the treatment of depression. *Br J Psychiatry* 2016;209(3):192-201. doi: 10.1192/bjp.bp.114.160242 [published Online First: 2016/04/23]
17. Hsieh JC, Liu L, Zeilani M, Ickes S, Trehan I, Maleta K, Craig C, et al. High-Oleic Ready-to-Use Therapeutic Food Maintains Docosahexaenoic Acid Status in Severe Malnutrition. *J Pediatr Gastroenterol Nutr* 2015;61(1):138-43. doi: 10.1097/MPG.0000000000000741
18. Faul F, Erdfelder E, Buchner A, Lang AG. Statistical power analyses using G*Power 3.1: tests for correlation and regression analyses. *Behav Res Methods* 2009;41(4):1149-60. doi: 10.3758/BRM.41.4.1149 [published Online First: 2009/11/10]
19. Olsen MF, Iuel-Brockdorff AS, Yaméogo CW, Chicon B, Fabiansen C, Filteau D, Phelan K, et al. Impact of food supplements on early child development in children with moderate acute malnutrition: A randomised 2 x 2 x 3 factorial trial in Burkina Faso. *PLoS Med* 2020;17(12):e1003442. doi: 10.1371/journal.pmed.1003442 [published Online First: 2020/12/23]
20. Prado EL, Maleta K, Caswell BL, George M, Oakes LM, DeBolt MC, Bragg MG, et al. Early Child Development Outcomes of a Randomized Trial Providing 1 Egg Per Day to Children Age 6 to 15 Months in Malawi. *The Journal of Nutrition* 2020;150(7):1933-42. doi: 10.1093/jn/nxaa088

21. van den Heuvel M, Voskuijl W, Chidzalo K, Kerac M, Reijneveld SA, Bandsma R, Gladstone M.. Developmental and behavioural problems in children with severe acute malnutrition in Malawi: A cross-sectional study. *J Glob Health* 2017;7(2):020416. doi: 10.7189/jogh.07.020416
22. Larson LM, Yousafzai AK. A meta-analysis of nutrition interventions on mental development of children under two in low and middle income countries. *Maternal & Child Nutrition* 2017;13(1):e12229. doi: 10.1111/mcn.12229
23. Olsen MF, Iuel-Brockdorff AS, Yaméogo CW, Chicon B, Fabiansen C, Filteau D, Phelan K et al. Early development in children with moderate acute malnutrition: A cross-sectional study in Burkina Faso. *Matern Child Nutr* 2020;16(2):e12928. doi: 10.1111/mcn.12928 [published Online First: 2019/12/11]
24. Willatts P, Forsyth JS, DiModugno MK, Varma S, Colvin M. Influence of long-chain polyunsaturated fatty acids on infant cognitive function. *Lipids* 1998;33(10):973-80. doi: 10.1007/s11745-998-0294-7
25. Drover J, Hoffman DR, Castañeda YS, Morale SE, Birch EE. Three Randomized Controlled Trials of Early Long-Chain Polyunsaturated Fatty Acid Supplementation on Means-End Problem Solving in 9-Month-Olds. *Child Development* 2009;80(5):1376-84. doi: 10.1111/j.1467-8624.2009.01339.x
26. Trehan I, Goldbach HS, Lagrone LN, Meuli GJ, Wang RJ, Maleta KM, Manary MJ. Antibiotics as Part of the Management of Severe Acute Malnutrition. *New England Journal of Medicine* 2013;368(5):425-35. doi: 10.1056/nejmoa1202851

27. Linneman Z, Matilsky D, Ndekha M, Manary MJ, Maleta K, Manary MJ. A large-scale operational study of home-based therapy with ready-to-use therapeutic food in childhood malnutrition in Malawi. *Maternal & Child Nutrition* 2007;3(3):206-15. doi: 10.1111/j.1740-8709.2007.00095.x
28. Gladstone M, Lancaster GA, Umar E, Nyirenda M, Kayira E, van den Broek N, Smyth RL. The Malawi Developmental Assessment Tool (MDAT): the creation, validation, and reliability of a tool to assess child development in rural African settings. *PLoS Med* 2010;7(5):e1000273. doi: 10.1371/journal.pmed.1000273 [published Online First: 2010/05/25]
29. Friard O, Gamba M. BORIS: a free, versatile open-source event-logging software for video/audio coding and live observations. *Methods in Ecology and Evolution* 2016;7(11):1325-30. doi: <https://doi.org/10.1111/2041-210X.12584>
30. Brenna JT, Plourde M, Stark KD, et al. Best practices for the design, laboratory analysis, and reporting of trials involving fatty acids. *Am J Clin Nutr* 2018;108(2):211-27. doi: 10.1093/ajcn/nqy089 [published Online First: 2018/06/23]
31. A robotic system for high throughput isolation of phospholipids from non-polar lipids. The 67th ASMS Annual Conference on Mass Spectrometry and Allied Topics; 2019; Atlanta, Georgia.
32. Zhou Y, Nijland M, Miller M, et al. The influence of maternal early to mid-gestation nutrient restriction on long chain polyunsaturated fatty acids in fetal sheep. *Lipids* 2008;43(6):525-31. doi: 10.1007/s11745-008-3186-1 [published Online First: 2008/05/16]
33. R: A language and environment for statistical computing. R Foundation for Statistical Computing, Vienna, Austria. [program], 2017.

34. Jones KD, Ali R, Khasira MA, Odera D, West AL, Koster G, Akomo P, et al. Ready-to-use therapeutic food with elevated n-3 polyunsaturated fatty acid content, with or without fish oil, to treat severe acute malnutrition: a randomized controlled trial. *BMC Med.* 2015;13(1):93. doi: 10.1186/s12916-015-0315-6.
35. Brenna JT, Varamini B, Jensen RG, et al. Docosahexaenoic and arachidonic acid concentrations in human breast milk worldwide. *Am J Clin Nutr* 2007;85(6):1457-64.
36. Kothapalli KSD, Park HG, Brenna JT. Polyunsaturated fatty acid biosynthesis pathway and genetics. implications for interindividual variability in prothrombotic, inflammatory conditions such as COVID-19(., bigstar, bigstar bigstar). *Prostaglandins Leukot Essent Fatty Acids* 2020;162:102183. doi: 10.1016/j.plefa.2020.102183 [published Online First: 2020/10/11]
37. Koletzko B, Reischl E, Tanjung C, et al. FADS1 and FADS2 Polymorphisms Modulate Fatty Acid Metabolism and Dietary Impact on Health. *Annual review of nutrition* 2019;39:21-44. doi: 10.1146/annurev-nutr-082018-124250 [published Online First: 2019/08/23]
38. Reynolds LM, Howard TD, Ruczinski I, et al. Tissue-specific impact of FADS cluster variants on FADS1 and FADS2 gene expression. *PLoS One* 2018;13(3):e0194610. doi: 10.1371/journal.pone.0194610 [published Online First: 2018/03/29]
39. Anderson GJ, Neuringer M, Lin DS, et al. Can prenatal N-3 fatty acid deficiency be completely reversed after birth? Effects on retinal and brain biochemistry and visual function in rhesus monkeys. *Pediatr Res* 2005;58(5):865-72. doi: 10.1203/01.pdr.0000182188.31596.5a [published Online First: 2005/11/01]

40. Gibson RA, Neumann MA, Lien EL, et al. Docosaehaenoic acid synthesis from alpha-linolenic acid is inhibited by diets high in polyunsaturated fatty acids. *Prostaglandins Leukot Essent Fatty Acids* 2013;88(1):139-46. doi: 10.1016/j.plefa.2012.04.003

41. Brenna JT, Salem N, Jr., Sinclair AJ, et al. alpha-Linolenic acid supplementation and conversion to n-3 long-chain polyunsaturated fatty acids in humans. *Prostaglandins Leukot Essent Fatty Acids* 2009;80(2-3):85-91. doi: S0952-3278(09)00016-7 [pii]
10.1016/j.plefa.2009.01.004 [published Online First: 2009/03/10]

42. Francois CA, Connor SL, Bolewicz LC, et al. Supplementing lactating women with flaxseed oil does not increase docosaehaenoic acid in their milk. *Am J Clin Nutr* 2003;77(1):226-33. doi: 10.1093/ajcn/77.1.226 [published Online First: 2002/12/25]

Table 1. Composition of study ready-to-use therapeutic foods¹

	DHA-HO-RUTF	HO-RUTF	S-RUTF
Ingredient			
Milk powder, non-fat, dry, g	22.0	22.0	27.3
Milk, sweet whey powder, g	6.1	6.1	0.0
Palm oil, g	14.0	14.0	16.0
Canola oil, g	0.0	0.0	5.1
Sugar, g	24.5	26.0	23.0
High oleic peanuts, g	25.0	25.0	0.0
Standard, high omega6 peanuts, g	0.0	0.0	23.7
Perilla oil, g	3.0	3.0	0.0
Hydrogenated vegetable oil [†] , g	1.0	1.0	2.0
Micronutrient powder, g	2.9	2.9	2.9
DHA, g	1.5	0.0	0.0
Macronutrient			
Energy, kcal	532.0	531.0	541.0
Protein, g	15.2	15.2	15.7
Protein, dairy, g	8.9	8.9	9.8
Lipids, g	30.2	29.5	32.7
Omega-6 polyunsaturated fatty acids, g	2.2	2.1	5.8
Omega-3 polyunsaturated fatty acids, g	1.5	1.4	0.5
DHA, mg	72.0	0.0	0.0
EPA, mg	14.0	0.0	0.0

¹Content expressed in per 100g. DHA, docosahexaenoic acid; DHA-HO-RUTF, docosahexaenoic acid added to RUTF made with high oleic acid peanuts; EPA, eicosapentaenoic acid; HO-RUTF, RUTF made with high oleic acid peanuts; RUTF, ready-to-use therapeutic food; S-RUTF, standard RUTF.

[†]This was a proprietary commercial product, Trancendim 180 (Caravan Foods)

Table 2. Baseline characteristics of Malawian children receiving study foods¹

	DHA-HO-RUTF (N = 809)	HO-RUTF (N = 860)	S-RUTF (N = 896)
Female sex, no. (%)	452 (55.9)	469 (54.5)	527 (58.8)
Age, mo., median (IQR)	12.1 (7.9 - 20.4)	12.2 (7.8 - 21.2)	12.7 (8.1 - 21.5)
Edematous, no. (%)	274 (33.9)	302 (35.1)	293 (32.7)
Mid-upper-arm circumference, cm	11.6 ± 1.2	11.6 ± 1.2	11.6 ± 1.1
MUAC < 11.5 cm, no. (%)	534 (66)	545 (63.4)	600 (67)
Weight-for-height z-score	-1.9 ± 1.2	-1.9 ± 1.2	-2.0 ± 1.2
WHZ ≤ -3, no. (%)	167 (20.6)	181 (21.0)	186 (20.8)
Height-for-age z-score	-3.3 ± 1.5	-3.3 ± 1.4	-3.2 ± 1.4
HAZ ≤ -2, no./total no. (%)	667/808 (82.5)	726/858 (84.6)	746/896 (83.3)
Fever in past 2 weeks, no./total no. (%)	461/805 (57.3)	518/857 (60.4)	554/893 (62.0)
Diarrhea in past 2 weeks, no./total no. (%)	446/805 (55.4)	474/858 (55.2)	484/891 (54.3)
Child breastfed, no./total no. (%)	520/808 (64.4)	565/858 (65.9)	575/893 (64.4)
HIV-seropositive, no./total no. tested (%)	19/265 (7.2)	25/301 (8.3)	23/311 (7.4)
Mother alive, no./total no. (%)	783/807 (97)	827/860 (96.2)	876/895 (97.9)
Number of siblings, median (IQR)	2 (0-3)	2 (1-3)	2 (0-3)
Thatch roof, no./total no. (%)	607/803 (75.6)	659/859 (76.7)	689/890 (77.4)
Radio in home, no./total no. (%)	178/807 (22.1)	196/854 (23.0)	168/893 (18.8)
Clean water source, no./total no. (%)	761/807 (94.3)	795/857 (92.8)	834/895 (93.2)

¹Plus-minus values are means ± SD. ART, antiretroviral therapy; DHA-HO-RUTF, docosahexaenoic acid added to ready-to-use therapeutic food made with high-oleic acid peanuts; HAZ, height-for-age z-score; HIV, human immunodeficiency virus; HO-RUTF, RUTF with high oleic acid peanuts; IQR, interquartile range; MUAC, mid-upper arm circumference; WHZ, weight-for-height z-score.

Table 3. Outcomes and adverse events, according to intervention group¹

	DHA-HO-RUTF		HO-RUTF		S-RUTF		DHA-HO-RUTF vs. S-RUTF	HO-RUTF vs. S-RUTF
	N		N		N		Comparison†	Comparison†
Cognitive Outcomes								
Malawi Developmental Assessment Tool Z-scores								
Global	332	-0.69 ± 1.19	312	-0.80 ± 1.25	342	-0.88 ± 1.27	0.19 (0.01 to 0.38) ^a	0.08 (-0.11 to -.27)
Gross motor domain	331	-1.08 ± 1.66	312	-1.34 ± 1.67	342	-1.37 ± 1.78	0.29 (0.03 to 0.55) ^b	0.02 (-0.24 to 0.29)
Fine motor domain	323	-1.81 ± 1.71	306	-1.83 ± 1.80	337	-1.91 ± 1.83	0.14 (-0.17 to 0.37)	0.07 (-0.21 to 0.35)
Language domain	331	-0.73 ± 1.35	312	-0.93 ± 1.51	342	-0.90 ± 1.41	0.17 (-0.04 to 0.38)	-0.03 (-0.25 to 0.19)
Social domain	332	0.40 ± 1.01	311	0.49 ± 1.00	342	0.24 ± 1.04	0.16 (0.00 to 0.31) ^c	0.24 (0.09 to 0.40) ^d
Problem Solving Assessment Intention Scores								
Problem 1, no. (%) with perfect score	298	90 (30)	281	88 (31)	292	90(31)	0.99 (0.66 to 1.19) ‡	0.89 (0.74 to 1.31) ‡
Problem 2, no. (%) with perfect score	293	169 (58)	283	151 (53)	294	168 (57)	0.97 (0.71 to 1.33) ‡	0.88 (0.64 to 1.21) ‡
Problem 3, no. (%) with perfect score	236	50 (21)	241	54 (22)	238	51 (21)	0.92 (0.67 to 1.26) ‡	1.01 (0.74 to 1.38) ‡
Eye-tracking								
Infant Oriented with Attention response time, ms	217	430 ± 106	223	431 ± 106	254	418 ± 96	12 (-10 to 34)	13 (-9 to 36)
Visual paired comparison novelty preference score	239	0.60 ± 0.1	238	0.58 ± 0.1	290	0.59 ± 0.1	0.01 (-0.01 to 0.03)	-0.01 (-0.03 to 0.01)
Mean fixation duration, ms	248	330 ± 152	244	358 ± 154	297	343 ± 162	-13 (-45 to 19)	15 (-17 to 47)
Programmatic Outcomes								
Recovered, no. (%)	809	583 (72.1)	860	638 (74.2)	896	672 (75.0)	-2.9 (-7.1 to 1.3)	-0.8 (-4.9 to 3.3)
Remained malnourished, no. (%)	809	164 (20.3)	860	162 (18.8)	896	172 (19.2)	1.1 (-2.7 to 4.9)	-0.4 (-4.1 to 3.3)
Improved to moderate acute malnutrition, no. (%)	809	119 (14.7)	860	114 (13.3)	896	117 (13.1)	1.6 (-1.7 to 4.9)	0.2 (-3.0 to 3.4)
Remained severely malnourished, no. (%)	809	45 (5.6)	860	48 (5.6)	896	55 (6.1)	1.1 (-2.7 to 1.7)	-0.5 (-2.7 to 1.7)
Died, no. (%)	809	19 (2.3)	860	16 (1.9)	896	13 (1.5)	0.8 (-0.5 to 2.1)	0.4 (-0.8 to 1.6)
Defaulted, no. (%)	809	43 (5.3)	860	44 (5.1)	896	39 (4.4)	0.9 (-1.1 to 2.9)	0.7 (-0.13 to 2.7)
Anthropometric Outcomes								
Rate of weight gain, g/kg/day	786	3.7 ± 4.0	836	3.8 ± 3.8	875	4.1 ± 3.6	-0.3 (-0.7 to 0.0)	-0.3 (-0.6 to 0.1)
Rate of mid-upper arm circumference gain, mm/day	786	0.27 ± 0.27	836	0.26 ± 0.26	875	0.29 ± 0.27	-0.02 (-0.04 to 0.01)	-0.03 (-0.05 to 0.00)
Rate of length gain, mm/day	786	0.37 ± 0.36	836	0.36 ± 0.39	872	0.35 ± 0.33	0.02 (-0.01 to 0.06)	0.01 (-0.02 to 0.05)
Adverse events, first 2 weeks of intervention								
Fever, no. (%)	785	209 (27)	836	217 (26)	875	269 (31)	-4.0 (-8.4 to 0.4)	-5.0 (-9.3 to -0.7)
Diarrhea, no. (%)	784	242 (31)	834	247 (30)	874	292 (33)	-2.0 (-6.5 to 2.5)	-3.0 (-7.4 to 1.4)
Eating, no. (%)	784	773 (99)	836	819 (98)	873	858 (98)	1.0 (-0.2 to 2.2)	0.0 (-1.3 to 1.3)

¹ Plus-minus values are means ± SD. Significance testing was performed for primary outcomes only. Malawi Developmental Assessment Tool and modified Willatts Problem Solving Assessment. Pairwise comparisons for continuous variables were performed with Student's t-test. Comparisons below P = 0.05 threshold are indicated with superscript letters with values shown in this legend. DHA-HO-RUTF, docosahexaenoic acid added to ready-to-use therapeutic food made with high-oleic acid peanuts; HO-RUTF, high-oleic acid ready-to-use therapeutic food; S-RUTF, standard ready-to-use therapeutic food.

† All values are differences with 95% confidence intervals unless otherwise noted.

‡ This value is the odds ratio with 95% confidence interval.

^a P = 0.044

^b P = 0.031

^c P = 0.047

^d P = 0.002

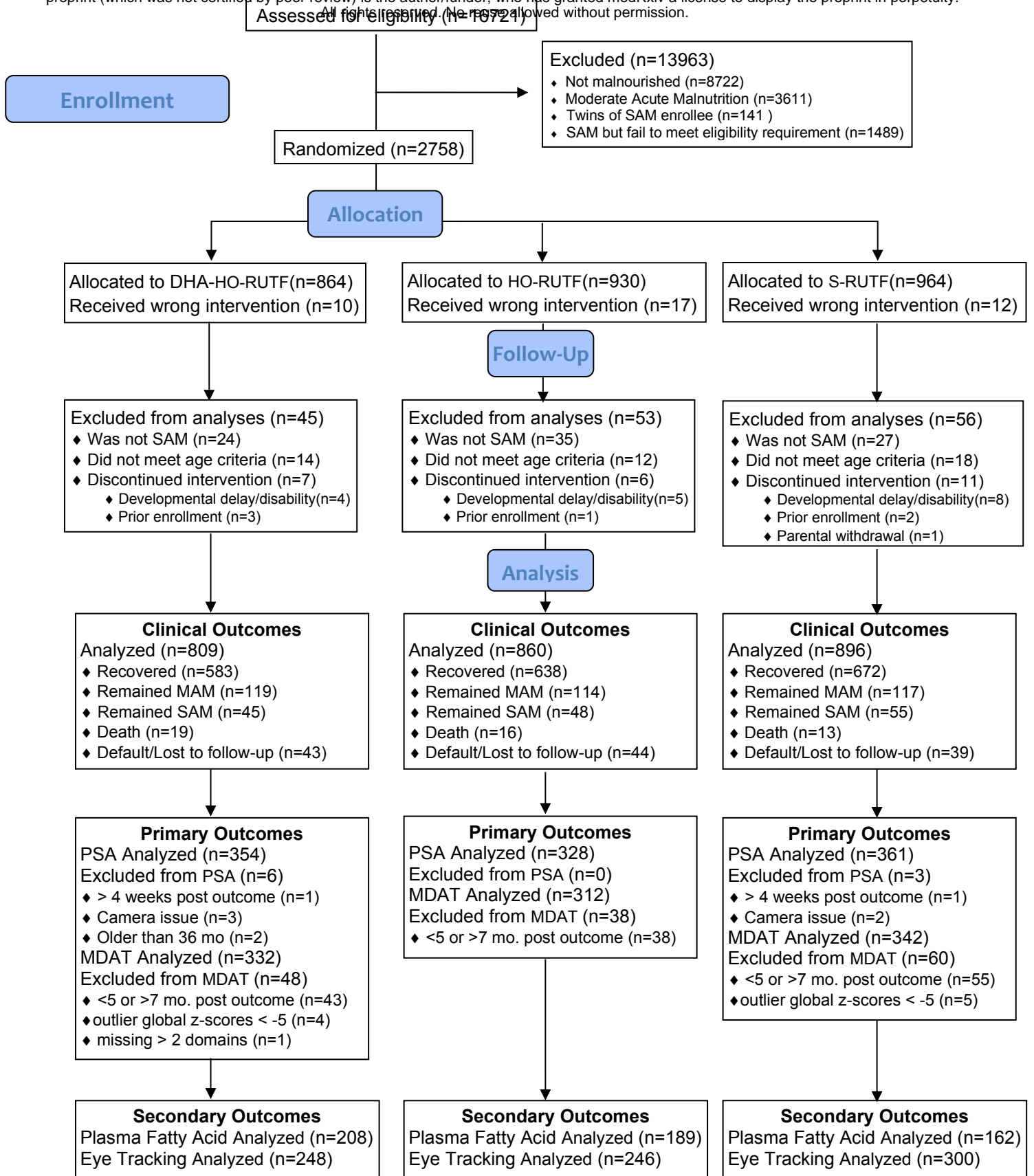
Figure legends

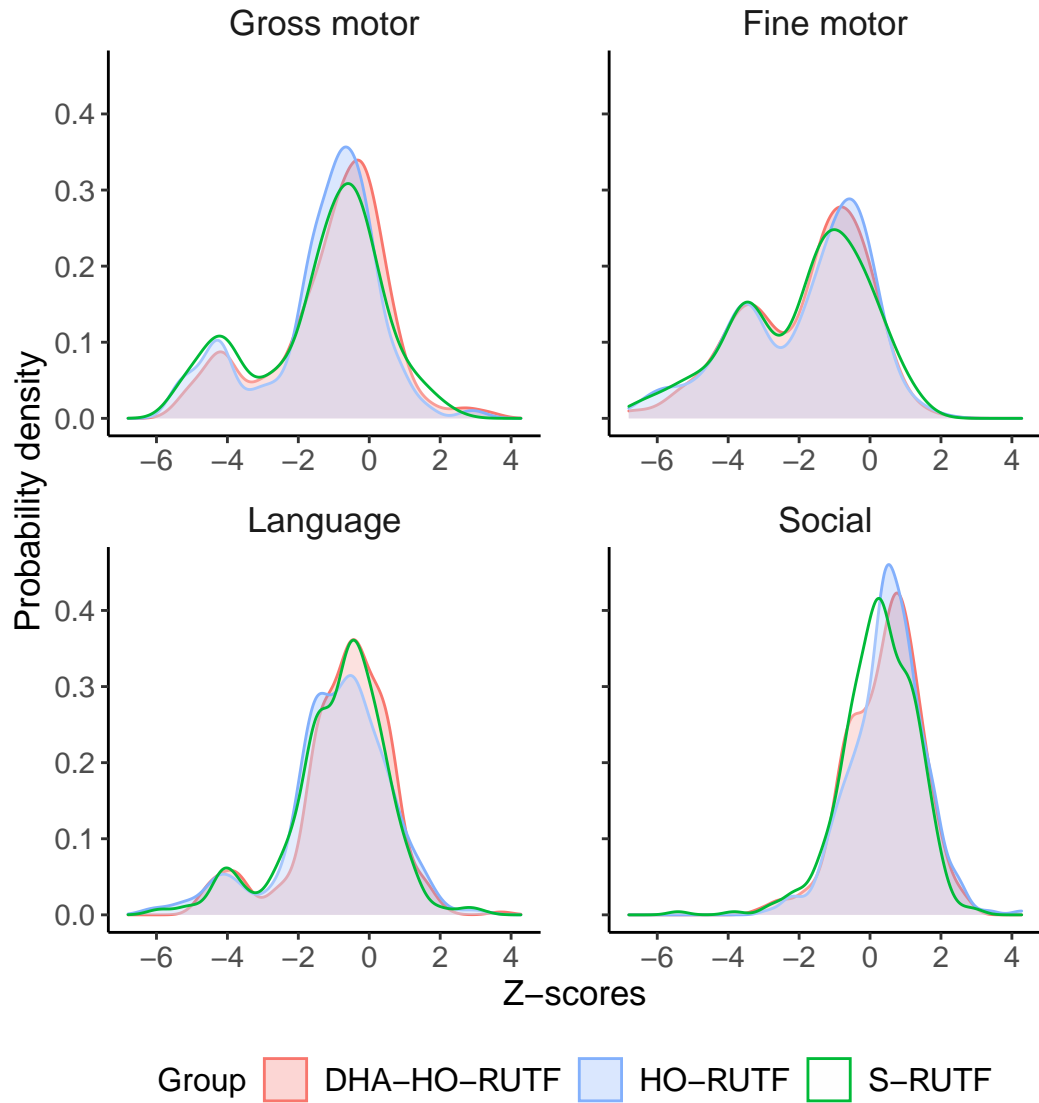
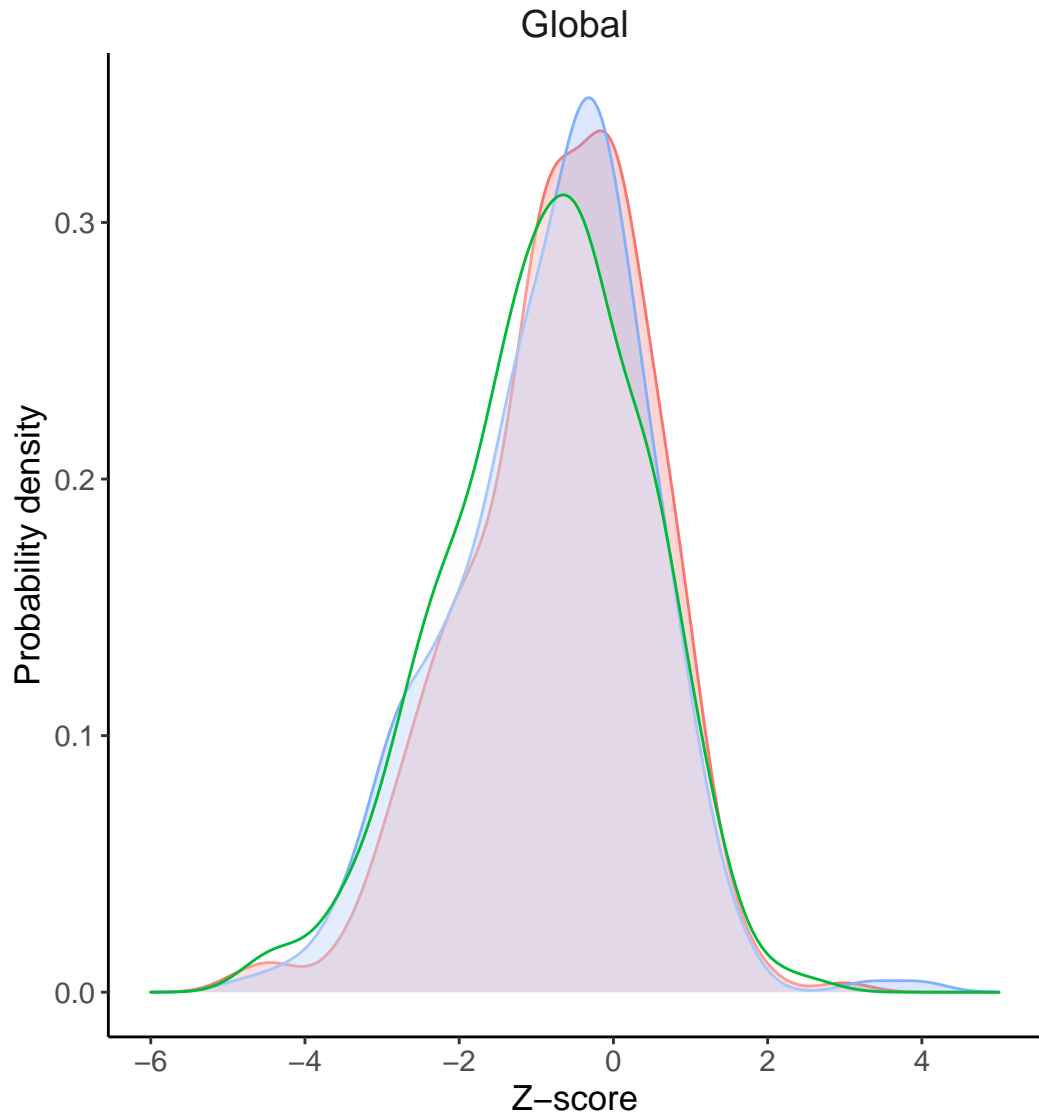
Figure 1. CONSORT diagram of study participation.

Figure 2. Probability density plots of Malawi Developmental Assessment Tool global and domain z-scores of children receiving RUTF made with high oleic acid peanuts with added docosahexaenoic acid (DHA-HO-RUTF), RUTF made with oleic acid peanuts but without added DHA (HO-RUTF), or standard RUTF (S-RUTF). Probability densities were constructed using kernel density estimation. Global $n_{DHA-HO-RUTF} = 332$, $n_{HO-RUTF} = 312$, $n_{S-RUTF} = 342$. Gross motor domain $n_{DHA-HO-RUTF} = 331$, $n_{HO-RUTF} = 312$, $n_{S-RUTF} = 342$. Fine motor $n_{DHA-HO-RUTF} = 323$, $n_{HO-RUTF} = 306$, $n_{S-RUTF} = 337$. Language $n_{DHA-HO-RUTF} = 331$, $n_{HO-RUTF} = 312$, $n_{S-RUTF} = 342$, $n_{DHA-HO-RUTF} = 332$, $n_{HO-RUTF} = 311$, $n_{S-RUTF} = 342$.

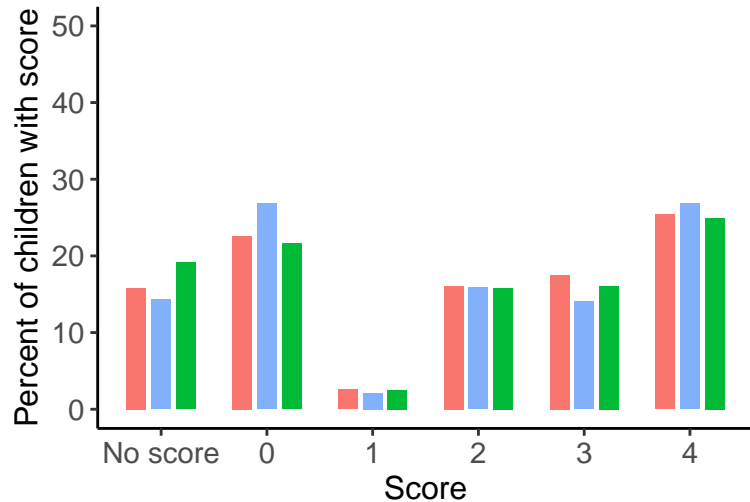
Figure 3. Problem solving assessment intention scores of children receiving RUTF made with high oleic acid peanuts with added docosahexaenoic acid (DHA-HO-RUTF), RUTF made with oleic acid peanuts but without added DHA (HO-RUTF), or standard RUTF (S-RUTF). Percentages of children in each intervention group with each score are shown. Overall, children in each study food had similar intention scores in all three problems; the differences between food groups were not significant. The lowest and highest scores possible in each problem were the most common results among children with scores. Children with “No Score” were unable to engage in the task.

Figure 4. Box and whisker plot of plasma fatty acid content of 6 selected fatty acids in severely malnourished children receiving RUTF made with high oleic acid peanuts with added DHA (DHA-HO-RUTF), RUTF made with high oleic acid peanuts (HO-RUTF), or standard RUTF (S-RUTF). The boxes represent the interquartile range of the distribution with a heavy midline median value. The whiskers extend to 1.5 times the IQR, values outside of these designations are plotted as points. The statistical comparisons were made using a Wilcoxon Rank Sum test, the numbers of samples in each group were DHA-HO-RUTF=208 HO-RUTF=189 S-RUTF=162.

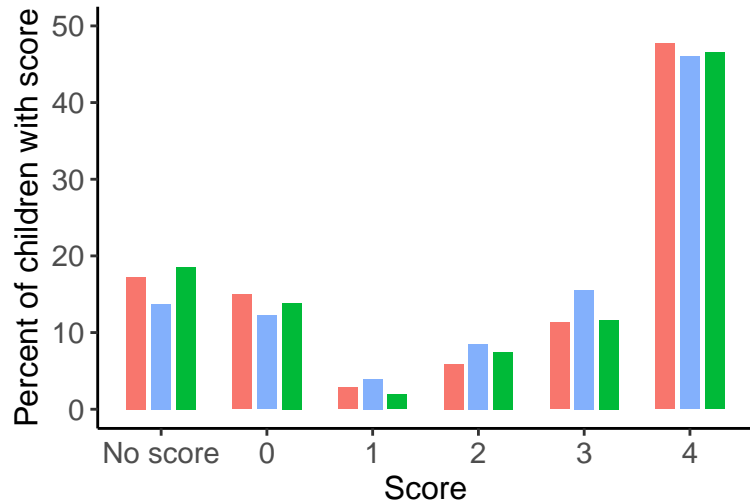




A



B



C

