

Epidemiological, clinical Characteristics and mortality of patients Infected with SARS-CoV-2 Admitted of Kinshasa University Hospital, Democratic Republic of the Congo from March 24, 2020 to January 30, 2021: Two waves, two faces?

Madone Mandina¹, Jean-Robert Makulo¹, Roger Wumba¹, Ben Bepouka¹, Jerome Odio¹, Aliocha Nkodila², Murielle Longokolo¹, Nadine Mayasi¹, Donatien Mangala¹, Guyguy Kamwiziku¹, Auguy Luzayadio Longo¹, Guillaume Mpia¹, Yamin Kokusa¹, Hervé Keke³, Marcel Mbula¹, Hippolyte Situakibanza¹, Ernest Sumaili¹, Jean-Marie Kayembe^{1,3}

1. Kinshasa University Hospital, Faculty of Medicine, University of Kinshasa, DRC
2. Unit of Vaccinology, World Health Organization, Kinshasa, Democratic Republic of the Congo
3. Technical Secretariat of the Multisectoral Committee for the Response to Covid-19, DRC

Corresponding author

Ben Bepouka, Kinshasa University Hospital, Faculty of Medicine, University of Kinshasa, DRC mail. ben.bepouka@unikin.ac.cd

Abstract

Background

The objective of our retrospective study was to establish a comparison between the first and the second waves of demographic and clinical characteristics as well as mortality and its determinants.

Methods

A total of 411 COVID-19 patients were enrolled in Kinshasa University Hospital and categorized into two groups according to the pandemic pattern, demographics, and disease severity. The clinical characteristics were compared according to the two waves. To describe survival from the first day of hospitalization until death, we used Kaplan Meier's method. We used the Log Rank test to compare the survival curves between the two waves. The Cox regression was used to identify independent predictors of mortality.

Results

During the study period, 411 patients with confirmed COVID-19 were admitted to the hospital. The average age of patients in the 2nd wave was higher than in the first wave (52.4 ± 17.5 vs 58.1 ± 15.7 , $p=0.026$). The mean saturation was lower in the first wave than in the second. The death rate of patients in the first wave was higher than in the second wave ($p=0.009$). Survival was reduced in the first wave compared to the second wave. In the first wave, age over 60 years, respiratory distress, low oxygen saturation ($\leq 89\%$) and severe stage of COVID-19 emerged as factors associated with death, while in the second wave it was mainly respiratory distress, low oxygen saturation ($\leq 89\%$) and severe stage. The predictors of mortality present in both the first and second waves were respiratory distress and severe COVID-19 stage.

Conclusion

Mortality decreased in the second wave. Age no longer emerged as a factor in mortality in the second wave. Health system strengthening and outreach to those at high risk of mortality should continue to maintain and improve gains.

Keywords

SARS-COV-2, Democratic Republic of Congo, 2 waves

Introduction

Beginning in December 2019 in China, the coronavirus disease 2019 (COVID-19) caused by the severe acute respiratory syndrome coronavirus 2 (SARS-CoV-2) has spread rapidly around the world and was declared a pandemic on 11 March 2020 ¹. By the end of January 2021, there had been 103 500 950 confirmed cases worldwide, including 2 240 771 deaths, with a lethality rate of 2.2% ². Africa was largely spared by the pandemic initially, unlike the countries of the West. However, since December, the Covid-19 seems to have hit harder in a hitherto relatively untouched Africa. Indeed, the number of infected people and the number of deaths has increased since the beginning of December 2020. At the end of January, there were now officially a total of 3.3 million infected people on the continent, 700,000 more than three weeks ago, according to data from Johns Hopkins University. However, the number of infections and mortality is still much lower than in Europe or the United States ^{2,3}.

The Democratic Republic of Congo (DRC) recorded its first confirmed case on March 10, 2020, and, undoubtedly, by a simple coincidence, the day after the declaration of this first case, the disease was officially declared a "pandemic" by the WHO ¹. Following the first declared cases, a state of health emergency was declared on 24 March 2020, with the closure of national and international borders, schools and universities, churches, markets, etc. ⁴. For obvious reasons of economic constraints linked to poor countries, total containment as applied in the West could not be recommended ⁵. Did these early measures protect the country from a more serious pandemic? At the end of January 2021, there were 23 043 confirmed cases in the DRC, including 18 206 cases (78.2%) in the city province of Kinshasa, the epicenter of the disease, with a total of 674 deaths, a lethality of 2.9% ⁶. However, a significant drop in Covid-19 cases has begun to be observed across the country since July 2020. Several Covid-19 treatment centers (COTC) in the capital have even had to close their doors due to a lack of confirmed cases. This situation justified the lifting of the state of health emergency with a phased resumption of activities ⁷. In November 2020, an upward trend in cases was observed in the following months, confirming a second wave of the pandemic linked to Covid-19, similar to that observed in Europe ⁸.

Among the COTCs in the city province of Kinshasa, the COTC of the Kinshasa University Hospital opened in March 2020, which, in the meantime, has seen its technical facilities improve considerably with better prepared staff. The question is recurrent, and rather legitimate: what is the difference between these two waves? As the context and the strategies implemented at the country and COTC levels are not the same, comparing the two waves could yield interesting information. The objective of our retrospective study is to establish a comparison between the first and the second waves of demographic and clinical characteristics as well as mortality and its determinants.

Methods

Study design and period: We studied a series corresponding to all cases of Covid-19 hospitalized in a treatment center in the city of Kinshasa, the epicenter of Covid-19 in the Democratic Republic of Congo between March 24, 2020 and January 31, 2021. All patients admitted up to June 30 were considered to be in the first wave and all those admitted on or after July 1 were in the second wave. Every wave lasted three and a half months.

The study was conducted in a large covid-19 treatment center (COTC) located at Kinshasa University Hospital, a hospital attached to the country's largest university, the University of

Kinshasa (UNIKIN). The COVID-19 center has a capacity of 50 beds with a permanent staff specialized in Intensive Care and Infectious Diseases, and has a medical biology laboratory capable of diagnosis by RT-PCR. The COVID-19 center can also provide emergency hemodialysis, interventional endoscopies, and chemotherapy to COVID-19 cancer patients.

Study population: the study population included all patients hospitalized at the COTC during the study period. The criteria for hospitalization of patients were: to have a positive Covid-19 test with a moderate to severe or critical form evaluated according to World Health Organization (WHO) interim guideline ⁹, a very suggestive clinical context with a pathological CT scan in the case of a negative test. All cases of benign Covid-19 were treated at home.

Inclusion criteria: this study included all patients with a covid-19 confirmed by a positive test. The cases with a negative covid-19 test were not included.

Information related to demographic data, clinical characteristics, treatment and outcomes of patients was collected retrospectively.

Operational definitions

Any patient with clinical indications and/or visual signs on chest CT that are suggestive of Covid-19 is a suspected case of Covid-19.
 Any symptomatic patient with RT-PCR and/or IgM or IgG positive is a confirmed case.

TABLE 1. The WHO clinical classification of the Covid-19 (9)

Mild case	Moderate	Severe	Critically severe
Mild clinical manifestations, no imaging performed	Fever, dyspnea, Appearance of pneumonia on Xray or CT	Meet any of the following: Respiratory distress, RR ≥ 30/min Oxygen saturation ≤ 93% PaO2/FiO2 ≤ 300 mmHg	Respiratory failure requiring enhanced respiratory support, which may be combined with shock or other organ dysfunction, patients need intensive care monitoring and treatment

The criteria for hospital discharge: were defined by the absence of fever for at least 3 days, clinical remission of symptoms and/or a negative RT-PCR test on the 12th day of hospitalization (10).

Statistical analysis: statistical analysis was performed with SPSS Statistics Software (version 21; IBM, New York, USA).

Data is given as numbers and percentages or means and standard deviations. Statistical comparisons between two groups were made using the χ^2 test (categorical variables) or the student's t test. Kaplan Meier's method described survival from the first day of hospitalization until death (complete data) to the end of the study (censored data). We used the Log Rank test to compare the survival curves between the two waves. The Cox regression was used to identify independent predictors of mortality. Statistical significance was set at $p < 0.05$.

Ethical considerations: The study was approved by the University of Kinshasa School of Public Health's Ethics Committee (ESP/CE/179/2020). The data was collected anonymously and confidentially. The privacy and personality of the patients were safeguarded. Because of the retrospective nature of the study and the minimal risk posed by it, obtaining informed consent was not considered necessary.

Results

General characteristics of the study population

During the study period, 411 patients with confirmed COVID-19 were admitted to the hospital. The number of patients admitted was 215 in the first wave and 196 in the second wave. The average age of patients in the 2nd wave was higher than in the first wave (52.4 ± 17.5 vs 58.1 ± 15.7 , $p=0.026$). The age group over 60 years was the most common among patients and was more prevalent in the second wave than in the first. Most patients come directly from the house. The number of patients coming from home in the first wave was higher than in the second wave. Heart disease was more common in the first wave than in the second.

Patients in the first wave differed from those in the second wave in that they had a higher frequency of headaches, fever, coughs, and throat pain. The average saturation was lower in the first wave than in the second. Patients with very low oxygen saturation ($<50\%$) were more frequently encountered in the first wave. Signs of respiratory distress were more common in the first wave than in the second.

Corticosteroids, anticoagulants, and antibiotics were prescribed more in the second wave than in the first. Patients with anemia and high urea levels were more frequently encountered in the first wave (Table 1).

Table 1. General characteristics of 411 patients admitted to the COVID-19 treatment center of the Kinshasa University Hospital between March 24, 2020 and January 31, 2021

Variables	All N=411	wave 1 n=215	wave 2 n=196	p
Sex				0,334
Male	280(68,1)	149(69,3)	131(66,8)	
Female	131(31,9)	66(30,7)	65(33,2)	
Age	55,1±16,9	52,4±17,5	58,1±15,7	0,026
<40 years	77(18,7)	47(21,9)	30(15,3)	
40-59 years	144(35,0)	82(38,1)	62(31,6)	
≥60 years	190(46,2)	86(40,0)	104(53,1)	
Admission procedure				<0,001
First admission	219(53,3)	136(63,3)	83(42,3)	
Reference	192(46,7)	79(36,7)	113(57,7)	
Comorbidities				0,175
No	182(44,3)	90(41,9)	92(46,9)	
Yes	229(55,7)	125(58,1)	104(53,1)	
Hypertension	147(35,8)	75(34,9)	72(36,7)	0,387
Diabetes mellitus	79(19,2)	40(18,6)	39(19,9)	0,418
Asthma	9(2,2)	5(2,3)	4(2,0)	0,557
Cardiovascular diseases	12(2,9)	10(4,7)	2(1,0)	0,026
Tuberculosis	6(1,5)	3(1,4)	3(1,5)	0,613
Pregnant women	4(1,0)	4(1,9)	0(0,0)	
Obesity	2(0,5)	2(0,9)	0(0,0)	
Reason for admission				
Headache	41(10,0)	26(12,1)	15(7,7)	0,043
Coma	18(4,4)	8(3,7)	10(5,1)	0,329
Fever	200(48,7)	118(54,9)	82(41,8)	0,005
Vomiting	16(3,9)	11(5,1)	5(2,6)	0,138
Diarrhea	13(3,2)	6(2,8)	7(3,6)	0,432
Abdominal pain	8(1,9)	6(2,8)	2(1,0)	0,175
Anorexia	12(2,9)	5(2,3)	7(3,6)	0,324
Chest pain	15(3,6)	8(3,7)	7(3,6)	0,574
Curvature	17(4,1)	9(4,2)	8(4,1)	0,578
Nausea	7(1,7)	4(1,9)	3(1,5)	0,551
Asthenia	75(18,2)	34(15,8)	41(20,9)	0,113
Cough	196(47,7)	121(56,3)	75(38,3)	<0,001
Throat pain	40(9,7)	31(14,4)	9(4,6)	<0,001
Anosmia	4(1,0)	1(0,5)	3(1,5)	0,278
Dyspnea	41(10,0)	1(0,5)	2(1,0)	0,465
Respiratory distress				
Oxygen saturation on room air (%)	84,4±13,8	83,2±15,2	85,6±12,0	<0,001
SaO2 category				0,014
90-95	78(19,0)	52(24,2)	45(23,0)	
80-89	117(28,5)	32(14,9)	46(23,5)	
70-79	57(13,9)	62(28,8)	55(28,1)	
60-69	32(7,8)	32(14,9)	25(12,8)	
50-59	16(3,9)	13(6,0)	19(9,7)	
<50	14(3,4)	12(5,6)	4(2,0)	
Sign of respiratory distress	103(25,1)	82(38,1)	21(10,7)	<0,001
Illness stage				0,153
Mild	93(22,6)	50(23,3)	43(21,9)	
Moderate	84(20,4)	36(16,7)	48(24,5)	
Severe	234(56,9)	129(60,0)	105(53,6)	
Dialysis	17(4,1)	12(5,6)	5(2,6)	0,097
Corticosteroid therapy	186(45,3)	34(15,8)	152(77,6)	<0,001

anticoagulant	206(50,1)	52(24,2)	154(78,6)	<0,001
Oxygénothérapie	240(58,4)	132(61,4)	108(55,1)	0,117
CPAP	4(1,0)	3(1,4)	1(0,5)	0,347
Intubation	9(2,2)	5(2,3)	4(2,0)	0,557
Ventilation invasive	6(1,5)	3(1,4)	3(1,5)	0,613
ATB	172(41,8)	44(20,5)	128(65,3)	<0,001

CPAP : continuous positive airway pressure ATB: antibiotherapy

Table 2. Biologic characteristics of 411 patients admitted to the COVID-19 treatment center of the Kinshasa University Hospital between March 24, 2020 and January 31, 2021

Variables	n	Total	Wave 1	Wave 2	p
Glycémie (mg/dl)	157	164,8±50,1	157,1±84,6	171,9±94,9	0,304
Potassium (mmol/l)	116	4,0±0,9	4,01±0,94	4,0±0,95	0,894
Leucocytes (/mm ³)	115	12379,5±940,6	12182,2±727,1	12531,3±108,2	0,845
Hb (g/dl)	119	181,3±4,1	11,5±2,9	12,9±3,2	0,016
PH	80	7,7±2,8	8,0±3,8	7,4±0,14	0,358
Pco2 (mmHg)	79	39,8±10,9	40,7±9,7	38,9±12,2	0,479
Po2 (mmHg)	411	11,5±2,6	10,8±2,5	12,3±2,7	0,563
HCO3 (mmol/l)	77	23,5±7,8	23,8±6,9	23,12±8,8	0,740
Platelet (/mm ³)	59	220799,7±163,2	228530,4±17471,5	212802,5±125313,8	0,715
Lymphocytes (%)	58	20,6±6,4	22,8±9,3	18,1±12,1	0,278
Monocytes (%)	44	6,2±2,2	6,8±2,3	5,7±2,2	0,408
Neutrophiles (%)	57	71,9±17,2	71,3±19,9	72,7±13,5	0,760
Urea (mg/dl)	92	62,4±6,6	91,9±7,3	31,7±4,2	< 0,001
Creatinin (mg/dl)	117	3,9±0,5	4,5±1,8	3,2±1,7	0,142
D-dimères(µg/l)	12	873,4±18,7	398,5±76,2	2298,1±32,9	0,109
CRP (mg/l)	62	95,7±8,2	91,7±28,5	100,7±24,0	0,671
ALAT(UI/l)	64	61,2±7,3	55,9±9,4	64,2±6,3	0,667
ASAT(UI/l)	66	92,3 ±10,4	84,5±11,3	96,7±10,0	0,652

Hb: hemoglobin CRP: C-reactive protein ALAT: alanin aminotransferase ASAT: aspartate aminotransferase

Vital outcome of patients by wave

Death of patients in the first wave was higher than patients in the second wave (p=0.009) (Figure 1).

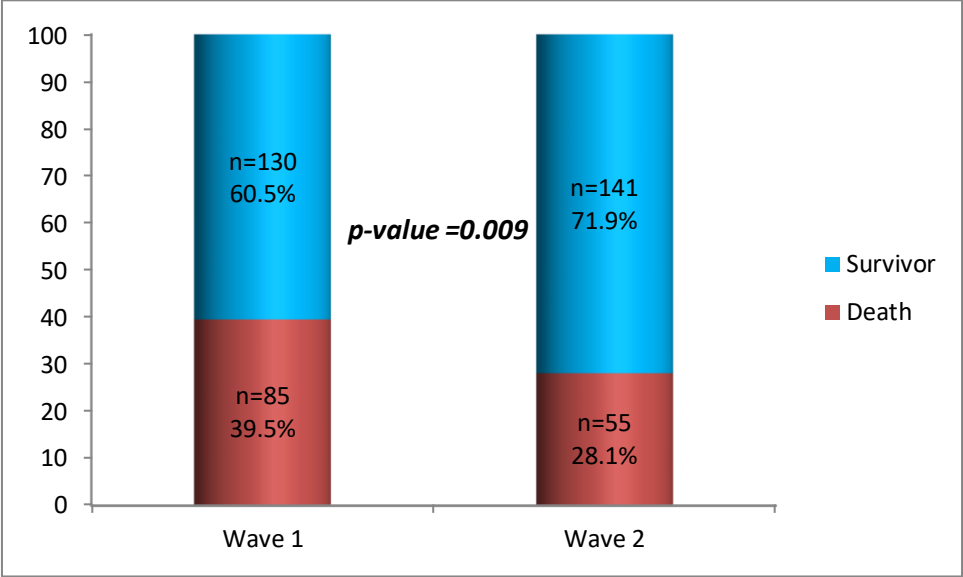


Figure 1. Vital outcome of patients by wave

Survival of COVID-19 patients

Overall survival of both waves

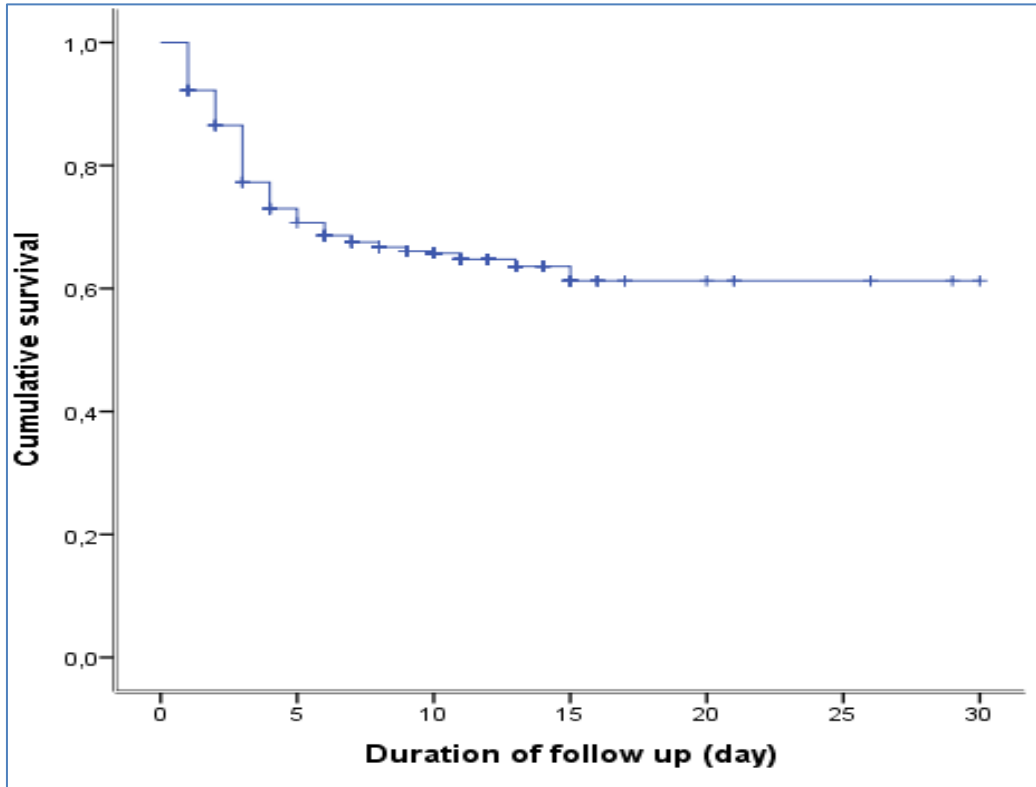


Figure 2. Overall survival of both waves

Day 0=100%
Day 1=92,2%
Day 3=77,6%
Day 5=71,3%
Day 10=66,9%
Day 20=65,9%

Median overall survival is 9 (8-10) in living 10 (8-11), deceased 3 (1-4)

Survival according to wave

Survival was reduced in the first wave compared to the second wave. At 15 days of follow-up, about 40% of the patients in the first wave had died, while in the second wave it was about 30% (figure 3).

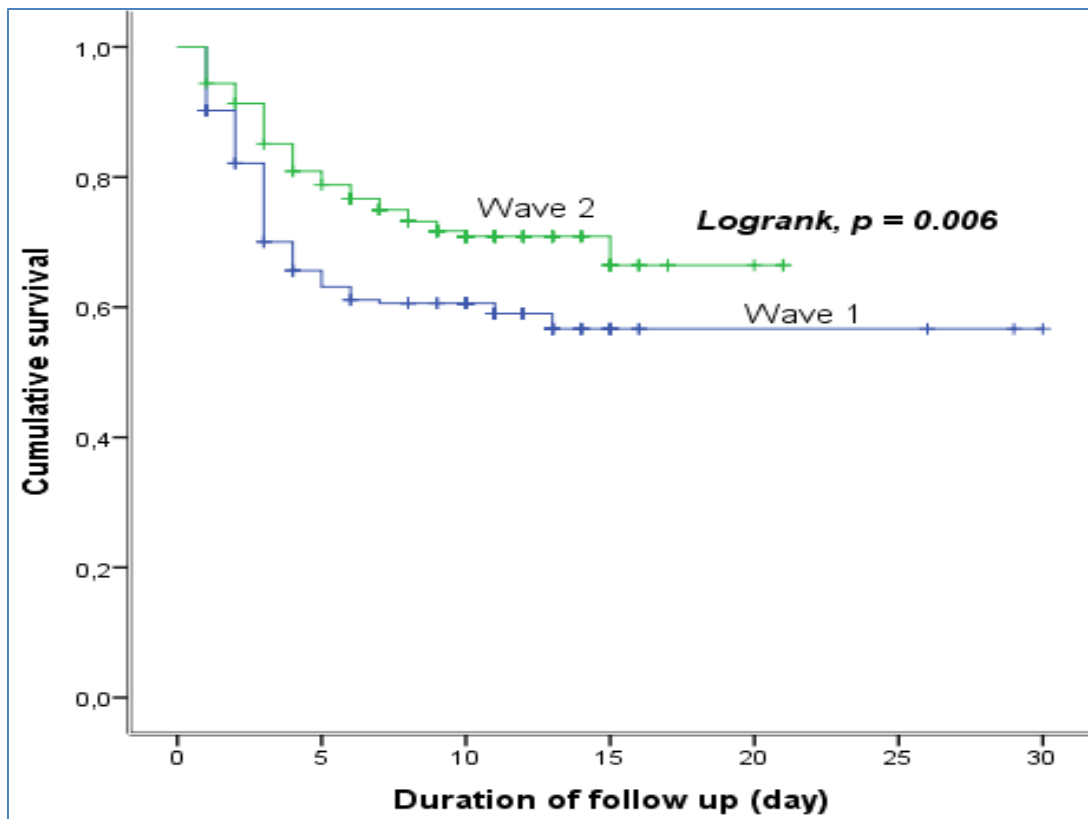


Figure 3. Survival according to waves

Independent Predictors of Mortality in COVID-19 Patients

The predictors of mortality in all patients were age greater than or equal to 60 years, presence of coma, low oxygen saturation ($\leq 89\%$), and severe stage of COVID-19. In the first wave, age over 60 years, respiratory distress, low oxygen saturation ($\leq 89\%$) and severe COVID-19 stage emerged as factors associated with death, whereas in the second wave it was mainly respiratory distress, desaturation ($\leq 89\%$) and severe stage. The predictors of mortality present in both the first and second waves were respiratory distress and severe COVID-19 stage (table 2).

Table 2. Independent predictors of mortality in COVID-19 patients admitted to the COVID-19 treatment center of the Kinshasa University Hospital between March 24, 2020 and January 31, 2021

Variables	All		Wave 1		Wave 2	
	HRa (IC95%)	p	HRa (IC95%)	p	HRa (IC95%)	p
Age						
<40 years	1		1		1	
40-59 years	0,96(0,54-1,72)	0,902	1,25(0,63-2,51)	0,525	0,95(0,31-2,91)	0,932
≥60 years	1,89(1,21-2,74)	0,016	2,02(1,06-3,87)	0,034	1,33(0,47-3,75)	0,592
Admission procedure						
First admission	1		1		1	
Reference	0,97(0,68-1,38)	0,865	1,19(0,65-2,17)	0,579	1,66(0,85-3,21)	0,135
Comorbidities						
No	1		1		1	
Yes	1,00(0,69-1,44)	0,998	1,03(0,56-1,91)	0,915	1,07(0,57-2,01)	0,839
Respiratory distress						
No	1		1		1	
Yes	1,12(0,57-1,65)	0,572	2,50(1,17-5,33)	0,018	2,89(1,39-4,20)	0,005
Coma						
No	1		1		1	
Yes	1,99(1,03-3,84)	0,040	1,96(0,78-4,91)	0,150	2,50(1,91-6,88)	0,016
Oxygen saturation						
>95 %	1		1		1	
90-95 %	1,27(0,06-1,42)	0,124	2,63(0,86-8,05)	0,090	1,14(0,9-1,41)	0,919
80-89 %	1,53(1,03-4,76)	0,033	2,03(1,04-3,09)	<0,001	1,25(0,63-2,48)	0,884
70-79 %	2,91(1,52-5,56)	0,022	2,45(1,72-5,38)	<0,001	1,32(0,42-2,47)	0,781
60-69 %	3,89(1,92-7,85)	0,008	2,88(1,30-9,58)	<0,001	1,37(0,44-3,09)	0,419
50-59 %	4,52(2,17-9,40)	<0,001	3,9(2,05-9,99)	<0,001	1,42(0,50-3,48)	0,358
<50 %	8,50(3,89-18,56)	<0,001	4,6(2,96-13,17)	<0,001	1,66(0,15-8,31)	0,275
Severity of the disease						
Mild	1		1		1	
Moderate	3,16(0,76-5,07)	0,113	14,13(3,38-59,17)	<0,001	1,83(0,42-6,66)	0,905
Severe	4,42(1,87-8,55)	0,004	24,30(7,44-79,42)	<0,001	12,08(1,30-22,56)	0,029

Discussion

Compared to the 2 waves of COVID-19 in the present study, the average age was higher in the second wave, while comorbidities including heart disease and clinical signs (fever, headache, cough, sore throat, respiratory distress) were more common in the first wave. The essential therapeutic approaches in COVID-19, including corticosteroid therapy and anticoagulation, were used more in the second wave. The mortality rate was higher in the first wave. The factors predicting mortality that emerged in both waves were respiratory distress and severe stage of COVID-19.

In contrast to what has been reported elsewhere; in the present study, patients were older in the second wave. Elsewhere, patients admitted in the second wave were younger. There were fewer deaths in the second wave, in agreement with the results reported by previous research in several countries¹¹⁻¹³. The present study did not find differences in the frequency of concomitant diseases between the two waves, results similar to those of other studies¹⁴. Although in our study, heart disease was more frequent in the first wave, this was probably due to the awareness of patients with comorbidities to respecting in a particular way the barrier measures. The clinical signs most encountered in the first wave: fever, headache, cough, throat pain, respiratory distress. There were more severe cases in the first wave than in the second. Changes in social policy due to COVID-19, such as changes in the admission criteria for patients with mild symptoms, strongly influence the characteristics of patients who are admitted to our

treatment center. In the first wave, all mild cases were admitted, while in the second wave, mild cases were admitted only if they had comorbidities, taking into account the criteria for frailty.

Treatment approaches were strengthened in the second wave. Most patients in the second wave were on corticosteroids and anticoagulants. We noted that early in the coronavirus pandemic, deaths due to COVID-19 were partly attributed to blood clot formation that led to more serious thrombotic events such as pulmonary failure, heart attack, and stroke. These were quite common in patients with severe cases of COVID-19. The paper published in the British Medical Journal shows that patients who receive preventive doses of anticoagulants within the first 24 hours of hospitalization for COVID-19 have a 30% lower mortality rate than patients who do not receive this drug. A study by Zhang et al. showed higher mortality in COVID-19 patients with thromboembolism¹⁵. Another study by Tang et al. found significantly higher d-dimer levels at admission in the non-survivor group, indicating a worse prognosis in patients with new-onset coronavirus pneumonia with coagulopathy¹⁶. A meta-analysis by Malas et al. reported an overall arterial thromboembolism (ATE) rate of 2%, a venous thromboembolism rate of 21%, a venous thrombosis rate of 20%, and a pulmonary embolism rate of 13% in those infected with SARS-CoV-2. They also reported that the odds of mortality were significantly increased by thromboembolism (up to 74%). In contrast, a study by Hippensteel et al. found no significant difference in mortality among critically ill patients, although they did find a higher prevalence of venous thromboembolism in critically ill patients with COVID-19¹⁷. Corticosteroids were used more in the second wave than in the first. The first published randomized trial is a preliminary analysis of the ongoing RECOVERY trial in the UK. This is a randomized, controlled, open-label trial that randomized hospitalized patients with clinically suspected or laboratory-confirmed SARS-CoV-2 infection between usual care without corticosteroids and usual care with dexamethasone. Dexamethasone was administered orally or intravenously at a dose of 6 mg/day for up to 10 days, or until hospital discharge. Patients requiring invasive mechanical ventilation (IMV) and receiving dexamethasone had a reduced death rate than those receiving standard treatment alone (29.3% vs. 41.4%, rate ratio ¼ 0.64; CI95%: 0.51-0.81), as well as in those receiving supplemental oxygen without IMV (23.3% vs. 26.2%, rate ratio ¼ 0.82, CI 95%: 0.72-0.94)¹⁸. Based on these convincing results, the same dosage of dexamethasone was routinely used in our patients with severe COVID-19 in the second wave, which may also be a factor for improved management and low mortality in our treatment center.

The mortality rate was higher in the first wave than in the second. We propose the following hypotheses that may contribute to the lower-case fatalities in the second wave. First, the decrease in case fatalities in the second wave compared to the first wave could be a harvesting effect. In other words, a large number of elderly people and people with comorbidities (the vulnerable groups) probably died in the first wave, especially in countries with high infection rates. Second, testing capacity, improved case management, and health system strengthening were better reinforced in the second wave. Third, in several countries, the age structure of those infected may have changed between the first and second waves for many reasons. For example, the social movement in many countries might involve more young and healthy individuals, but in our country, this was not necessarily found because we had a higher average age in the second wave than in the first¹⁹. This improvement in the outcome of admitted patients could be related to the fact that the health care system in our country, as in many others, has become better

prepared. We have more experience and better treatments. We do more diagnostic tests, which allows us to detect serious cases at an early stage and treat them more effectively. and receive more effective treatments. In this regard, in the second wave, patients were treated more frequently with dexamethasone, as suggested by the RECOVERY study. In addition, the number of health care providers was higher in the second wave compared to the first wave ²⁰.

The predictors of mortality in both waves were respiratory distress and severe COVID-19 stage. In the first wave of over 60 years, respiratory distress, desaturation (<89%) and severe COVID-19 stage emerged as factors associated with death, while in the second wave it was mainly respiratory distress, desaturation (<89%) and severe stage. Age is no longer associated with mortality as clinicians have drawn particular attention to the elderly as previous studies in the first wave of DRC had already emphasized age as a mortality factor ²¹⁻²³. Severe stage and desaturation still remain a great challenge in the management of COVID-19, especially when the patient consults late. As we observed, patients in the first wave came late, some with saturation below 50% in greater numbers than in the second wave.

Limitations

Our study has some limitations. First, because of the retrospective study design, not all laboratory tests were performed on patients, including d-dimer, IL-6, troponin, lactate dehydrogenase, and serum ferritin. Therefore, their role may be underestimated in predicting in-hospital death. Second, missing data, especially in laboratory parameters, could lead to bias in the final analysis.

Conclusion

The mean age was higher in the second wave. The essential therapeutic approaches in COVID-19, including corticosteroid therapy and anticoagulation, were more used in the second wave. Mortality was higher in the first wave. The factors predicting mortality that emerged in both waves were respiratory distress and severe stage of COVID-19, whereas age no longer emerged as a factor in mortality in the second wave. Health system improvement and education of those at high risk of mortality should be pursued to continue to reduce the mortality of patients hospitalized with COVID-19.

Conflict of interests

The authors declare that there is no conflict of interest

Data availability:

Datasets used and analyzed during the current study are available from the corresponding author on request.

Funding

This study received no funding

Author contributions

Conceptualization: Madone Mandina and JR Makulo.

Methodology: Madone Mandina, JR Makulo, Ben Bepouka and Ossam Odio

Validation: Madone Mandina, JR Makulo, Ben Bepouka and Ossam Odio

Writing – Original Draft: Madone Mandina, Jean-Robert Makulo, Roger Wumba, Ben Bepouka, Jerome Odio, Aliocha Nkodila, Murielle Longokolo, Nadine Mayasi, Donatien Mangala, Guyguy Kamwiziku, Auguy Luzayadio Longo, Guillaume Mpia, Yamin Kokusa, Hervé Keke, Marcel Mbula, Hippolyte Situakibanza, Ernest Sumaili, Jean-Marie Kayembe

Références

1. WHO Director-General's opening remarks at the media briefing on COVID-19: 11 March 2020. Published March 11, 2020. Accessed March 30, 2020. <https://www.who.int/dg/speeches/detail/who-director-general-s-opening-remarks-at-the-media-briefing-on-covid-19---11-march-2020>
2. COVID-19 Dashboard by the Center for Systems Science and Engineering (CSSE) at Johns Hopkins University (JHU). <https://www.arcgis.com/apps/opsdashboard/index.html#/bda7594740fd40299423467b48e9ecf6>
3. Yves Bourdillon. Covid : l'Afrique reste moins touchée malgré une circulation accrue du virus. <https://www.lesechos.fr/monde/afrique-moyen-orient/covid-lafrique-reste-moins-touchee-malgre-une-circulation-accrue-du-virus-1282760>
4. Ordonnance n° 20/014 du 24 mars 2020 portant proclamation de l'état d'urgence sanitaire pour faire face à l'épidémie de COVID-19. <http://www.leganet.cd/Legislation/JO/2020/Ordonnance%2024.03.2020.html>
5. Alexander B, Damian W, Kalipso C et al. Lockdown is not egalitarian: the costs fall on the global poor. *The lancet* 2020; 396:21-22.
6. Secrétariat technique de la riposte contre la Covid-19. Situation Épidémiologique en RDC. <http://www.cmr-covid19.cd/>
7. Félix Tshisekedi, discours à la nation du 21 juillet 2020, RTNC. <https://www.financialafrik.com/2020/07/22/rdc-fin-de-letat-durgence-sanitaire-le-21-juillet>
8. Cacciapaglia G, Cot C, Sannino F. Second wave COVID-19 pandemics in Europe: a temporal playbook. *Sci Rep* 2020 ; 23;10(1):15514.
9. World Health Organization. Clinical management of severe acute respiratory infection (SARI) when COVID-19 disease is suspected interim guidance, 13 March 2020. World Health Organization.
10. République Démocratique du Congo. Guide de prise en charge de l'épidémie à coronavirus COVID-19. République Démocratique du Congo. 2020.

11. Fan G, Yang Z, Lin Q, Zhao S, Yang L, He D. Decreased case fatality rate of COVID-19 in the second wave: a study in 53 countries or regions. *Transbound Emerg Dis.* 2020; <https://doi.org/10.1111/tbed.13819> Epub ahead of print. PMID: 3289250
12. Saito S, Asai Y, Matsunaga N, Hayakawa K, Terada M, Ohtsu H, et al. First and second COVID-19 waves in Japan: A comparison of disease severity and characteristics: Comparison of the two COVID19 waves in Japan. *J Infect* 2020; S0163-4453(20)30693-9. <https://doi.org/10.1016/j.jinf.2020.10.033> PMID: 33152376
13. Iftimie S, Lo´pez-Azcona AF, Vallverdu´ I, Hern´andez-Flix S, de Febrer G, Parra S, et al. (2021) First and second waves of coronavirus disease-19: A comparative study in hospitalized patients in Reus, Spain. *PLoS ONE* 16(3): e0248029. <https://doi.org/10.1371/journal.pone.0248029>
14. Iftimie S, Lo´pez-Azcona AF, Vicente-Miralles M, Descarrega-Reina R, Hern´andez-Aguilera A, Riu F, et al. Risk factors associated with mortality in hospitalized patients with SARS-CoV-2 infection. A prospective, longitudinal, unicenter study in Reus, Spain. *PLoS One* 2020; 15: e0234452. <https://doi.org/10.1371/journal.pone.0234452> PMID: 32881860
15. Zhang L, Feng X, Zhang D, et al. Deep vein thrombosis in hospitalized patients with COVID-19 in Wuhan, China: prevalence, risk factors, and outcome. *Circulation* 2020;142:11428. [doi:10.1161/CIRCULATIONAHA.120.046702](https://doi.org/10.1161/CIRCULATIONAHA.120.046702) pmid:<http://www.ncbi.nlm.nih.gov/pubmed/32421381> [CrossRefPubMedGoogle Scholar](#)
16. Tang N, Bai H, Chen X, et al. Anticoagulant treatment is associated with decreased mortality in severe coronavirus disease 2019 patients with coagulopathy. *J Thromb Haemost* 2020;18:10949. [doi:10.1111/jth.14817](https://doi.org/10.1111/jth.14817) pmid:<http://www.ncbi.nlm.nih.gov/pubmed/3222011> [CrossRefPubMedGoogle Scholar](#)
17. Hippensteel JA, Burnham EL, Jolley SE Prevalence of venous thromboembolism in critically ill patients with COVID-19. *Br J Haematol* 2020;190:e134–7. [doi:10.1111/bjh.16908](https://doi.org/10.1111/bjh.16908) pmid:<http://www.ncbi.nlm.nih.gov/pubmed/32484907> [PubMedGoogle Scholar](#)
18. Meagan J, Stephy G, Margarita T, Yi Kee P. A Review of the Evidence for Corticosteroids in COVID-19. *Journal of Pharmacy Practice* <https://doi.org/10.1177/0897190021998502>
19. Fan G, Yang Z, Lin Q, Zhao S, Yang L, He D. Decreased Case Fatality Rate of COVID-19 in the Second Wave: A study in 53 countries or regions. *Transbound Emerg Dis* 2021;68:213–215. <https://doi.org/10.1111/tbed.13819>
20. RECOVERY Collaborative Group. Horby P, Lim WS, Emberson JR, Mafham M, Bell JL, et al. Dexamethasone in hospitalized patients with Covid-19—preliminary report. *N Engl J Med* 2020; July 17 <https://doi.org/10.1056/NEJMoa2021436> [Epub ahead of print]. PMID: 32678530
21. Bepouka B, Mandina M, Makulo JR, Longokolo M, Odiao O, Mayasi N, et al. Predictors of mortality in COVID-19 patients at Kinshasa University Hospital, Democratic Republic of the Congo from March to June 2020. *Pan Afr Med J* 2020;37: 105. doi:10.11604/pamj.2020.37.105.25279.

22. Nachega JB, Ishoso DK, Otokoye JO et al. Clinical Characteristics and Outcomes of Patients Hospitalized for COVID-19 in Africa: Early Insights from the Democratic Republic of the Congo. *Am. J. Trop. Med. Hyg.*, 00(0), 2020, pp. 1–10 doi:10.4269/ajtmh.20-1240
23. MatangilaJR, Nyembu RK, Telo GM, Ngoy CD, Sakobo TM, Massolo JM, et al. (2020) Clinical characteristics of COVID-19 patients hospitalized at Clinique Ngaliema, a public hospital in Kinshasa, in the Democratic Republic of Congo: A retrospective cohort study. *PLoS ONE* 15(12):e0244272.<https://doi.org/10.1371/journal.pone.0244272>