

## A Learning Health System Randomized Trial of Monoclonal Antibodies for Covid-19

Erin K. McCreary PharmD<sup>1</sup>, J. Ryan Bariola MD<sup>1</sup>, Tami Minnier MS<sup>2</sup>, Richard J. Wadas MD<sup>3</sup>, Judith A. Shovel BSN<sup>2</sup>, Debbie Albin BS<sup>4</sup>, Oscar C. Marroquin MD<sup>5</sup>, Kevin E. Kip PhD<sup>5</sup>, Kevin Collins MBA<sup>5</sup>, Mark Schmidhofer MD<sup>6</sup>, Mary Kay Wisniewski, MA<sup>2</sup>, David A Nace MD<sup>7</sup>, Colleen Sullivan MHA<sup>8,11</sup>, Meredith Axe BS<sup>3</sup>, Russell Meyer MBA<sup>3</sup>, Alexandra Weissman MD<sup>3</sup>, William Garrard PhD<sup>5</sup>, Octavia M. Peck-Palmer PhD<sup>9</sup>, Alan Wells MD DMS<sup>c</sup><sup>9</sup>, Robert D. Bart MD<sup>10,13</sup>, Anne Yang MD<sup>14</sup>, Lindsay Berry PhD<sup>15</sup>, Scott Berry PhD<sup>15</sup>, Amy Crawford PhD<sup>15</sup>, Anna McGlothlin, PhD<sup>15</sup>, Tina Khadem PharmD<sup>11</sup>, Kelsey Linstrum MS<sup>8,11</sup>, Stephanie K. Montgomery MS<sup>8,11</sup>, Daniel Ricketts MT<sup>8</sup>, Jason N. Kennedy MS<sup>8,13</sup>, Caroline J. Pidro BS<sup>8</sup>, Ghady Haidar MD<sup>1</sup>, Graham M. Snyder MD<sup>1</sup>, Bryan J. McVerry, MD<sup>12</sup>, Derek C. Angus MD, MPH<sup>8,11,13</sup>, Paula L. Kip PhD<sup>2</sup>, Christopher W. Seymour MD, MSc<sup>8,11,13</sup>, David T. Huang MD, MPH<sup>3,8,13\*</sup>

### AFFILIATIONS

1. Division of Infectious Diseases, Department of Medicine, University of Pittsburgh School of Medicine, Pittsburgh, PA, USA
2. Wolff Center, UPMC, Pittsburgh, PA, USA
3. Department of Emergency Medicine, University of Pittsburgh School of Medicine, Pittsburgh, PA, USA
4. Supply Chain Management/HC Pharmacy, UPMC, Pittsburgh, PA, USA
5. Clinical Analytics, University of Pittsburgh Medical Center, Pittsburgh, PA, USA
6. Division of Cardiology, Department of Medicine, University of Pittsburgh School of Medicine, Pittsburgh, PA, USA
7. Division of Geriatric Medicine, Department of Medicine, University of Pittsburgh School of Medicine, Pittsburgh, PA, USA
8. Clinical Research Investigation and Systems Modeling of Acute Illness (CRISMA) Center, Department of Critical Care Medicine, University of Pittsburgh School of Medicine, Pittsburgh, PA, US
9. Department of Pathology, University of Pittsburgh School of Medicine, Pittsburgh, PA, USA
10. Health Services Division, UPMC, Pittsburgh, PA, USA

11. Health System Office of Healthcare Innovation, UPMC, Pittsburgh, PA, USA
12. Division of Pulmonary, Allergy, and Critical Care Medicine, Department of Medicine, University of Pittsburgh School of Medicine, Pittsburgh, PA, USA
13. Department of Critical Care Medicine, University of Pittsburgh School of Medicine, Pittsburgh, PA, USA
14. Department of Medicine, University of Pittsburgh School of Medicine, Pittsburgh, PA, USA
15. Berry Consultants, Austin, TX, USA

**\*CORRESPONDENCE**

David T. Huang, MD, MPH

Professor, Critical Care Medicine, Emergency Medicine, Clinical and Translational Science

UPMC and University of Pittsburgh

606B Scaife Hall

Pittsburgh, PA 15213

[huangdt@upmc.edu](mailto:huangdt@upmc.edu)

## 2 ABSTRACT

3 **Background:** Neutralizing monoclonal antibodies (mAb) targeting SARS-CoV-2 decrease  
4 hospitalization and death in patients with mild to moderate Covid-19. Yet, their clinical use is  
5 limited, and comparative effectiveness is unknown.

6  
7 **Methods:** We present the first results of an ongoing, learning health system adaptive platform  
8 trial to expand mAb treatment to all eligible patients and evaluate the comparative effectiveness  
9 of available mAbs. The trial launched March 10, 2021. Results are reported as of June 25, 2021  
10 due to the U.S. federal decision to pause distribution of bamlanivimab-etesevimab; patient  
11 follow-up concluded on July 23, 2021. Patients referred for mAb who met Emergency Use  
12 Authorization criteria were provided a random mAb allocation of bamlanivimab, bamlanivimab-  
13 etesevimab, or casirivimab-imdevimab with a therapeutic interchange policy. The primary  
14 outcome was hospital-free days (days alive and free of hospital) within 28 days, where patients  
15 who died were assigned -1 day. The primary analysis was a Bayesian cumulative logistic model  
16 of all patients treated at an infusion center or emergency department, adjusting for treatment  
17 location, age, sex, and time. Inferiority was defined as a 99% posterior probability of an odds  
18 ratio  $< 1$ . Equivalence was defined as a 95% posterior probability that the odds ratio is within a  
19 given bound.

20  
21 **Results:** Prior to trial launch, 3.1% (502) of 16,345 patients who were potentially eligible by an  
22 automated electronic health record (EHR) screen received mAb. During the trial period, 23.2%  
23 (1,201) of 5,173 EHR-screen eligible patients were treated, a 7.5-fold increase. After including  
24 additional referred patients from outside the health system, a total of 1,935 study patients

25 received mAb therapy (128 bamlanivimab, 885 bamlanivimab-etesevimab, 922 casirivimab-  
26 imdevimab). Mean age ranged from 55 to 57 years, half were female (range, 53% to 54%), and  
27 17% were Black (range, 12% to 19%). Median hospital-free days were 28 (IQR, 28 to 28) for  
28 each mAb group. Hospitalization varied between groups (bamlanivimab, 12.5%; bamlanivimab-  
29 etesevimab, 14.7%, casirivimab-imdevimab, 14.3%). Relative to casirivimab-imdevimab, the  
30 median adjusted odds ratios were 0.58 (95% credible interval (CI), 0.30 to 1.16) and 0.94 (95%  
31 CI, 0.72 to 1.24) for the bamlanivimab and bamlanivimab-etesevimab groups, respectively.  
32 These odds ratios yielded 91% and 94% probabilities of inferiority of bamlanivimab versus  
33 bamlanivimab-etesevimab and casirivimab-imdevimab respectively, and an 86% probability of  
34 equivalence between bamlanivimab-etesevimab and casirivimab-imdevimab, at the prespecified  
35 odds ratio bound of 0.25. Twenty-one infusion-related adverse events occurred in 0% (0/128),  
36 1.4% (12/885), and 1.0% (9/922) of patients treated with bamlanivimab, bamlanivimab-  
37 etesevimab, and casirivimab-imdevimab, respectively.

38  
39 **Conclusion:** In non-hospitalized patients with mild to moderate Covid-19, bamlanivimab,  
40 compared to bamlanivimab-etesevimab and casirivimab-imdevimab, resulted in 91% and 94%  
41 probabilities of inferiority with regards to odds of improvement in hospital-free days within 28  
42 days. There was an 86% probability of equivalence between bamlanivimab-etesevimab and  
43 casirivimab-imdevimab at an odds ratio bound of 0.25. However, the trial was unblinded early  
44 due to federal distribution decisions, and no mAb met prespecified criteria for statistical  
45 inferiority or equivalence. (ClinicalTrials.gov, NCT04790786).

46 **INTRODUCTION**

47 Neutralizing monoclonal antibodies (mAb) targeting SARS-CoV-2 were granted U.S. Food and  
48 Drug Administration (FDA) Emergency Use Authorization (EUA) for treatment of mild to  
49 moderate Covid-19, and significantly decrease hospitalization and death in this patient  
50 population.<sup>1-9</sup> However, clinical use is limited due to lack of access, logistical challenges of  
51 administration, and incomplete clinician and patient awareness.<sup>10</sup> The comparative effectiveness  
52 of one mAb versus another is also unknown.<sup>11</sup>

53  
54 In February 2021, UPMC partnered with the U.S. Federal Covid-19 Response Team to expand  
55 clinical use to all EUA-eligible patients and evaluate the comparative effectiveness of the  
56 available mAbs using a learning health system approach. This approach embeds knowledge  
57 generation into daily practice to seek continuous improvement in care.<sup>12,13</sup> For all mAb-eligible  
58 patients treated at UPMC, we set two objectives, (i.) to equitably treat as broad of a proportion of  
59 mAb-eligible patients as possible, and (ii.) to compare effectiveness between mAbs overall and  
60 over time as SARS-CoV-2 variants emerged. This report presents the first results of the  
61 OPTIMISE-C19 (Optimizing Treatment and Impact of Monoclonal antIbodieS through  
62 Evaluation for Covid-19) trial.<sup>14</sup>

63

64

## 65 **METHODS**

### 66 **Expansion of Monoclonal Antibody Access**

67 UPMC is an integrated network predominantly serving Western and Central Pennsylvania. Prior  
68 to U.S. federal partnership, UPMC developed a mAb treatment infrastructure in response to the  
69 bamlanivimab EUA issued November 9, 2020.<sup>7</sup> The first patient was treated at a one of 18  
70 outpatient infusion centers within this infrastructure on December 9, 2020.<sup>15,16</sup> After U.S. federal  
71 partnership, mAb infusion capacity was expanded to all emergency departments (ED, n = 31),  
72 infusion center staffing and hours were increased, and a multifaceted outreach campaign to  
73 patients and clinicians was launched. UPMC partnered with government public health bodies,  
74 community outreach leaders, and neighboring health systems to increase awareness and referrals,  
75 and a home infusion company to provide treatment for homebound patients (Chartwell  
76 Pennsylvania, Oakdale, PA).

77

78 The UPMC Pharmacy and Therapeutics Committee developed a therapeutic interchange policy  
79 on November 21, 2020 in response to the issuance of an EUA for casirivimab-imdevimab.<sup>9</sup> The  
80 policy considered all available mAb equivalent; a patient could receive any mAb based on local  
81 inventory. The policy was updated to include bamlanivimab-etesevimab on February 9, 2021 and  
82 to remove bamlanivimab on March 31, 2021 due to U.S. federal decisions.<sup>8,17</sup> All pharmacies  
83 supplying all infusion sites had equal opportunity to order any available mAb from a central  
84 supply facility. All mAb were ordered by prescribers as a generic referral order and provided as  
85 per FDA EUA guidance (**Supplement**). Prescribers were required to provide and review all mAb  
86 EUA Fact Sheets with the patient at time of referral and explain the patient could receive any of  
87 the EUA-governed mAb.<sup>7-9</sup>

88

## 89 **Trial Design and Oversight**

90 OPTIMISE-C19 is an open-label, pragmatic, comparative effectiveness, platform trial with  
91 response-adaptive randomization. The three mAb (bamlanivimab, bamlanivimab-etesevimab,  
92 and casirivimab-imdevimab) evaluated in this report were supplied by the U.S. federal  
93 government. The trial was approved by the UPMC Quality Improvement Committee and  
94 launched March 10, 2021 (Project ID 3280). The University of Pittsburgh Institutional Review  
95 Board considered provision of mAb therapy quality improvement and only the additional data  
96 collection and analyses represented research (STUDY21020179).

97

98 A custom application built into the electronic health record (EHR) linked local inventory to  
99 patient encounters and provided a random mAb allocation at the time of referral, within the  
100 therapeutic interchange policy.<sup>18</sup> Allocation was initially assigned equally to available mAb.  
101 Patients provided verbal consent to receive mAb therapy as part of routine care. The prescriber  
102 and/or patient could request a specific mAb if desired.

103

## 104 **Patients**

105 A centralized monoclonal antibody operations team confirmed patient eligibility upon referral.  
106 Patients were eligible for mAb if they met EUA criteria, which included patients with a positive  
107 SARS-CoV-2 polymerase chain reaction or antigen test, mild to moderate symptoms for 10 days  
108 or less, and risk factor(s) for progression to severe Covid-19. The EUA criteria excluded patients  
109 who required supplemental oxygen above baseline requirements, weighed < 40 kg, were < 12

110 years of age, or were hospitalized for Covid-19 (**Supplement**). Patients were screened in the ED  
111 or outpatient infusion centers.

112

### 113 **Outcomes**

114 To evaluate clinical mAb use expansion, we screened for potential eligibility based on EHR  
115 identification of all outpatients with a positive SARS-CoV-2 polymerase chain reaction or  
116 antigen test performed within the health system and an EUA-defined risk factor for progression  
117 to severe disease. Race was derived from registration system data using fixed categories  
118 consistent with the Centers for Medicare & Medicaid Services EHR meaningful use dataset and  
119 the AMA Manual of Style.<sup>19,20</sup> Pre-specified categories included non-Hispanic Black, non-  
120 Hispanic White, and Other. Individuals were considered Other due to small sample sizes for  
121 Hispanic, American Indian, and other races and ethnicities. Geographic distribution of mAb  
122 treatment was illustrated using zip code of patient residence.<sup>21,22</sup>

123

124 To evaluate comparative effectiveness, the primary outcome was hospital-free days up to day 28  
125 after mAb treatment. This outcome is an ordinal endpoint with death up to day 28 as the worst  
126 outcome (labeled -1), then the length of time alive and free of hospital, such that the best  
127 outcome would be 28 hospital-free days. If a patient had intervening days free of hospital and  
128 was then re-hospitalized, the patient was given credit for the intervening days as free of the  
129 hospital. Secondary outcomes included mortality at 28 days. We evaluated rates of  
130 hospitalization by infusion location, and incidence of adverse events (**Supplement**). We assessed  
131 SARS-CoV-2 variant prevalence in our Pennsylvania catchment over time using Global  
132 Initiative on Sharing All Influenza Data (GISAID) data.<sup>23</sup>



133

## 134 **Data Collection**

135 OPTIMISE-C19 was embedded in the EHR to access routine patient care data and was  
136 augmented by manual review and data collection. We ascertained the primary outcome of  
137 hospital-free days by linking inpatient (Cerner, Kansas City, Missouri) and outpatient (Epic,  
138 Madison, Wisconsin) EHRs, as shown in prior work.<sup>18</sup> We conducted patient-directed phone  
139 calls at day 28 to ascertain health care encounters outside our health system, and Social Security  
140 Administration Death Master File queries for vital status.<sup>24</sup> We collected adverse events in i.) a  
141 secure, electronic file sharing application completed by infusion center nurses on the day of mAb  
142 treatment, and ii.) an internal patient safety reporting system for adverse reactions completed by  
143 nursing and physician staff in infusion centers and EDs. Adverse event severity was adjudicated  
144 blinded to mAb type.

145

## 146 **Statistical Analysis**

147 To determine the epidemiology and equitability of mAb infusions in our region, we measured the  
148 proportion of EHR-screen eligible patients treated with any mAb stratified by demographics,  
149 geography, and prior to or after trial launch. Treatment “prior to the trial” was from December 9,  
150 2020 until March 9, 2021, and “during the trial” from March 10 to June 25, 2021.

151

152 To analyze comparative effectiveness, the trial statistical analysis plan was written by blinded  
153 investigators prior to data lock and analysis (**Supplement**) and applied to patients treated with  
154 mAb from March 10, 2021 to June 25, 2021. The platform is designed to continuously evaluate  
155 multiple mAb, with randomization continuing until pre-determined statistical thresholds are met.

156 The trial launched with equal allocation randomization and planned interim analyses for adaptive  
157 randomization where mAb performing better would be given higher randomization probabilities.  
158 The mAb arm at the first adaptive analysis with the largest sample size was specified as the  
159 referent arm, as there was no non-mAb control and all patients received active treatment. All  
160 mAb were compared to each other. The methods and results are reported in accordance with the  
161 CONSORT Pragmatic Extension checklist (**Supplement**).<sup>25</sup> An unblinded statistical analysis  
162 committee conducted interim and final analyses with R version 4.0.5 using the RStan package  
163 version 2.21.0 (R Foundation, Vienna, Austria) and reported results to the UPMC Chief Medical  
164 Officer who functioned in a data and safety monitor role for the study.

165

166 The primary analysis population was the “as-infused” population which consisted of patients  
167 randomly allocated mAb and subsequently treated. As all trial arms included mAb, there was no  
168 anticipated relationship between lack of infusion and the assigned arm. Baseline patient  
169 characteristics of those infused were compared to those allocated but not infused using mean  
170 (SD) or median (IQR) for continuous variables, and proportions for categorical variables.

171

172 The primary analysis model was a Bayesian cumulative logistic model that adjusted for  
173 treatment location (infusion center or ED), age (<30, 30-39, 40-49, 50-59, 60-69, 70-79, and  $\geq 80$   
174 years), sex, and time (2-week epochs). The comparison between individual mAbs were based on  
175 the relative odds ratio between a given two arms for the ordinal primary outcome. An odds ratio  
176 for an arm to a comparator greater than 1 implies improved outcomes on the ordinal scale. A  
177 sliding scale of equivalence was set according to odds ratio bounds of 0.25, 0.20, 0.15, 0.10, and  
178 0.05. Equivalence between two arms was defined as a 95% posterior probability that the odds

179 ratio is within a given odds ratio bound. Inferiority of one arm compared to another was defined  
180 as a 99% posterior probability of an odds ratio less than 1.

181

182 To determine potential differential treatment effects of mAbs by Covid-19 variant type, patients  
183 were categorized into four time epochs relative to variant prevalence in 2021 (March 10 – 31;  
184 April 1 – April 30; May 1 – 31; June 1 – 25). Treatment effects were measured from the primary  
185 model over time with hierarchical prior distributions.

186

### 187 **Decision to publish interim results**

188 The U.S. Department of Health and Human Services halted distribution of bamlanivimab alone  
189 on March 25, 2021, and of bamlanivimab-etesevimab on June 25, 2021, due to concern of lack of  
190 efficacy against certain SARS-CoV-2 variants that were predominant in the U.S. at those  
191 times.<sup>26,27</sup> As further treatment with these mAbs was not possible, we unblinded and analyzed  
192 patients allocated through June 25, 2021, with follow up completed by July 23, 2021.

193

## 194 **RESULTS**

### 195 **Expansion of monoclonal antibody treatment**

196 Prior to the trial, 16,345 patients were EHR-screen eligible. Of these, 502 patients overall (3.1%)  
197 were treated with mAb, of whom the proportion of Black (2.6%) and White (3.1%) treated  
198 patients were similar. After trial launch, 1,201 of 5,173 EHR-screen eligible patients (23.2%)  
199 were treated. The proportion of eligible White patients receiving mAb increased from 3.1 to  
200 21.6% and eligible Black patients receiving mAb increased from 2.6 to 29.9% during the trial.  
201 Broad geographic expansion was evident across the catchment (**Figure 1**).

202

### 203 **Trial patients**

204 Between March 10 and June 25, 2021, 5,173 outpatients with a positive SARS-CoV-2 test within  
205 UPMC were EHR-screen eligible, of whom 1,382 were referred and underwent random mAb  
206 allocation. 1,084 EUA-eligible patients with a positive SARS-CoV-2 test from outside of UPMC  
207 were also referred, yielding a total of 2,466 patients who were assigned a random mAb  
208 allocation. Of these, 1,935 (78%) were infused and comprised the primary analysis cohort  
209 (bamlanivimab [n = 128], bamlanivimab-etesevimab [n = 885], casirivimab-imdevimab [n =  
210 922], **Figure 2**). Of the 531 patients assigned a random mAb allocation and excluded from the  
211 primary analysis, most (n = 300, 56%) were not infused due to becoming clinically ineligible at  
212 time of infusion scheduling (n = 154, 29%) or patient declining treatment (n = 146, 27%).  
213 Eighty-eight patients (17%) received mAb at a location without available EHR data or while  
214 hospitalized for non-Covid-19 reasons. No patient or provider requested a specific mAb different  
215 than randomized assignment.

216

217 Baseline characteristics were similar across groups (**Table 1**). The mean age for the three groups  
218 was 55 - 57 years, half were female (range, 53% - 54%), 18% were Black (range 12% - 19%),  
219 and the most common risk factors were advanced age, high body mass index, and hypertension.  
220 Of the 241 patients for whom vaccine status was known, 57 (24%) reported being unvaccinated,  
221 120 (49%) partly vaccinated, and 64 (27%) fully vaccinated. Mean duration of symptom onset to  
222 referral was 5 (2.1) days.

223

224

225 **Primary outcome**

226 The median hospital-free days were 28 (IQR, 28-28) for each mAb group (**Table 2, Figure 3**).  
227 Relative to the casirivimab-imdevimab group, the posterior median adjusted odds ratios from the  
228 primary model were 0.58 (95% credible interval, 0.30 to 1.16) and 0.94 (95% credible interval,  
229 0.72 to 1.24) for the bamlanivimab and bamlanivimab-etesevimab groups, respectively. The  
230 probabilities of inferiority for bamlanivimab versus bamlanivimab-etesevimab and casirivimab-  
231 imdevimab were 91% and 94% respectively. The probability of equivalence between  
232 bamlanivimab-etesevimab and casirivimab-imdevimab with a bound of 0.25 for the odds ratio  
233 was 86%. No comparison met prespecified criteria for statistical inferiority or equivalence.

234

235 **Secondary outcomes**

236 The 28-day mortality rates were 0.8% (1/128), 0.8% (7/885), and 0.7% (6/922) and  
237 hospitalization rates were 12.5% (16/128), 14.7% (130/885), and 14.3% (132/922), in the  
238 bamlanivimab, bamlanivimab-etesevimab, and casirivimab-imdevimab groups, respectively  
239 (**Table 2**). For patients receiving mAb in an outpatient infusion center, rates of hospitalization  
240 after treatment were 7.8% (bamlanivimab), 6.5% (bamlanivimab-etesevimab), and 6.9%  
241 (casirivimab-imdevimab). For patients receiving mAb in an ED, rates of hospitalization after  
242 treatment were 32% (bamlanivimab), 23.7% (bamlanivimab-etesevimab), and 21.7%  
243 (casirivimab-imdevimab).

244

245 **Adverse events**

246 Twenty-one infusion-related adverse events occurred in 0% (0/128), 1.4% (12/885), and 1.0%  
247 (9/922) of patients treated with bamlanivimab, bamlanivimab-etesevimab, and casirivimab-

248 imdevimab, respectively. Five events (0 bamlanivimab, 1 bamlanivimab-etesevimab, 4  
249 casirivimab-imdevimab) were adjudicated as serious (**Supplement**).

250

### 251 **Differences in treatment over time**

252 During the trial the Alpha SARS-CoV-2 variant was the dominant variant of concern, while the  
253 Delta variant became more prevalent in the final time epoch (**Supplement**). We found no  
254 relative difference in mAb treatment effects over time and no comparisons reached a pre-  
255 specified statistical threshold (**Supplement**).

256

### 257 **DISCUSSION**

258 In a learning healthcare system trial of mAb for Covid-19, treatment of EHR-screen eligible  
259 patients increased 7.5-fold, particularly among historically and geographically underserved  
260 populations. We found a 91% and 94% probability of inferiority of bamlanivimab respectively to  
261 bamlanivimab-etesevimab and casirivimab-imdevimab, and an 86% probability of equivalence  
262 between bamlanivimab-etesevimab and casirivimab-imdevimab at the first pre-specified bound,  
263 with regard to the odds of improvement in hospital-free days by 28 days. However, the  
264 bamlanivimab and bamlanivimab-etesevimab arms were stopped early, and the identified  
265 probabilities did not meet prespecified statistical triggers for trial conclusions of inferiority or  
266 equivalence.

267

268 OPTIMISE-C19 is designed to continuously compare all available mAb for Covid-19 and can  
269 stop mAb arms based on internal statistical triggers or external factors, such as U.S. federal  
270 decisions limiting mAb availability or re-introduction of mAb into distribution networks. Had

271 federal decisions not prompted unblinding, the internal action would have been to generate  
272 updated randomization proportions and continue enrollment. The trial is currently evaluating  
273 casirivimab-imdevimab and sotrovimab.<sup>28,29</sup>

274  
275 Systematic inequities have exacerbated racial health disparities throughout the Covid-19  
276 pandemic, and a focused effort on equitable, expanded access to life-saving treatments is crucial  
277 for population health.<sup>30</sup> This trial was able to increase access using a multifaceted approach: 1)  
278 infrastructure with infusion locations in all geographic regions, 2) comprehensive, electronic  
279 screening of all patients within the system with a positive SARS-CoV-2 followed by direct-to-  
280 patient outreach phone calls, 3) paper referral form for patients without access to an in-system  
281 provider, 4) community leader and existing outreach network collaboration for patient  
282 engagement, 5) phone line for patients and community members to call and speak with a  
283 healthcare professional, 6) providing infusions at home for patients without transportation.

284  
285 The finding of potential inferiority of bamlanivimab is similar to mechanistic studies that suggest  
286 a waning efficacy of bamlanivimab in the face of certain SARS-CoV-2 variants. It supports the  
287 FDA decision to revoke the bamlanivimab EUA.<sup>26</sup> A recent observational study reached a  
288 different conclusion and found similar effectiveness between bamlanivimab and casirivimab-  
289 imdevimab.<sup>31</sup> However, this study analyzed patients treated between November 2020 and  
290 February 2021, prior to widespread emergence of variants and U.S. federal decisions to halt  
291 bamlanivimab distribution.

292

293 SARS-CoV-2 variant epidemiology changes rapidly and this report addresses a period when the  
294 Alpha variant was dominant, and the Delta variant was not widespread. Notably, the U.S. federal  
295 government reinstated circulation of bamlanivimab-etesevimab on August 27, 2021 in areas  
296 where variant resistance to this mAb is  $\leq 5\%$ , based on *in vitro* data of activity against the Delta  
297 variant, and lack of activity against the Beta, Gamma, Delta plus, and B.1.621 variants.<sup>31,32</sup> The  
298 similar effectiveness of bamlanivimab-etesevimab and casirivimab-imdevimab in the current  
299 trial supports this decision. Also aligning with these data is a recent observational study of 165  
300 patients that found no difference in hospitalization or death between bamlanivimab-etesevimab  
301 and casirivimab-imdevimab in patients infected with Alpha, but worse outcomes with  
302 bamlanivimab-etesevimab in patients infected with Gamma.<sup>33</sup>

303  
304 The strengths of this report include capture of nearly all patients infused with mAb from 49 sites  
305 across a large geographic region, enhancing the generalizability of the results. In addition, an  
306 advantage of the Bayesian design is that any data, including data following unplanned cessation  
307 in enrollment into a trial arm, can be analyzed and quantified as posterior probabilities, which is  
308 potentially more useful and is more quantitative than a frequentist conclusion of failure to reject  
309 a null hypothesis possibly because of lack of power.<sup>34</sup> Third, the trial was embedded into usual  
310 care which enhanced patient and provider engagement.<sup>12</sup> The trial also has limitations. First, the  
311 results are presented before any prespecified internal trigger was reached. Nonetheless, to our  
312 knowledge, this trial represents the largest randomized comparative effectiveness data of mAb  
313 for Covid-19. Second, the absence of patient-level variant data limited ability to directly assess  
314 comparative effectiveness relative to variant strains. Alpha was also the dominant variant during  
315 the majority of the trial. Using regional data as a surrogate for variant data in the Pennsylvania



316 population over time, we found no difference in treatment effect over time. Third, we primarily  
317 relied on UPMC EHR data to capture death and hospitalization, and patients may have accessed  
318 care outside our health system after mAb treatment. We conducted direct-to patient calls and  
319 national death registry queries to address this concern. Fourth, the EHR eligibility screen  
320 identified most, but not all EUA risk factors, and could not identify if a patient was symptomatic.

321

### 322 **Conclusion**

323 In non-hospitalized patients with mild to moderate Covid-19, bamlanivimab, compared to  
324 bamlanivimab-etesevimab and casirivimab-imdevimab, resulted in 91% and 94% probabilities of  
325 inferiority with regards to odds of improvement in hospital-free days within 28 days. There was  
326 an 86% probability of equivalence between bamlanivimab-etesevimab and casirivimab-  
327 imdevimab at an odds ratio bound of 0.25. However, the trial was unblinded early to these mAb  
328 due to federal distribution decisions, and no mAb met prespecified criteria for statistical  
329 inferiority or equivalence.

330

331 **Acknowledgements:** The authors thank the clinical staff of the UPMC monoclonal antibody  
332 infusion centers as well as the support and administrative staff behind this effort, including but  
333 not limited to: Michelle Adam, Jodi Ayers, Ashley Beyerl, Trudy Bloomquist, Mikaela Bortot,  
334 Jonya Brooks, Sherry Casali, Jeana Colella, Jennifer Dueweke, Jesse Duff, Janice Dunsavage,  
335 Jessica Fesz, Kathleen Flinn, Daniel Gessel, Amy Helmuth, Erik Hernandez, Larry Hruska,  
336 Allison Hydzik, Le Ann Kaltenbaugh, LuAnn King, Jim Krosse, Sheila Kruman, Amy Lukanski,  
337 Hilary Maskiewicz, Debra Masser, Katelyn Mayak, Rebecca Medva, Theresa Murillo, Melanie  
338 Pierce, Teressa Polcha, Kevin Pruznak, Debra Rogers, Rozalyn Russell, Sarah Sakaluk, Heather  
339 Schaeffer, Robert Shulik, Libby Shumaker, Susan Spencer, Betsy Tedesco, Ken Trimmer,  
340 Jennifer Zabala, and their entire teams. Donald M. Yealy, MD provided data and safety  
341 monitoring for the trial.

342

343 **Funding Statement:** This work received no external funding. The U.S. federal government  
344 provided the monoclonal antibody treatments reported in this manuscript.

345

346 **Conflict of Interest Disclosure:** None of the authors received any payments or influence from a  
347 third-party source for the work presented.

348 **REFERENCES**

- 349 1. Jiang S, Hillyer C, Du L. Neutralizing antibodies against SARS-CoV-2 and other human  
350 coronaviruses. *Trends Immunol.* 2020 May;41(5):355-359. doi:10.1016/j.it.2020.03.007.
- 351 2. Bariola JR, McCreary EK, Wadas RJ, et al. Impact of bamlanivimab monoclonal antibody  
352 treatment on hospitalization and mortality among non-hospitalized adults with severe acute  
353 respiratory syndrome coronavirus 2 infection. *Open Forum Infect Dis.* 2021 May  
354 17;8(7):ofab254. doi: 10.1093/ofid/ofab254.
- 355 3. Chen P, Nirula A, Heller B, et al. SARS-CoV-2 neutralizing antibody LY-CoV555 in  
356 outpatients with Covid-19. *N Engl J Med.* 2021 Jan 21;384(3):229-237. doi:  
357 10.1056/NEJMoa2029849.
- 358 4. Dougan M, Nirula A, Azizad M, et al. Bamlanivimab plus etesevimab in mild or moderate  
359 Covid-19. *N Engl J Med.* 2021 Jul. doi:10.1056/nejmoa2102685.
- 360 5. Weinreich D, Sivapalasingam S, Norton T, et al. REGEN-COV antibody cocktail clinical  
361 outcomes study in COVID-19 outpatients. *medRxiv.* 2021 June 6. doi:  
362 10.1101/2021.05.19.21257469.
- 363 6. U.S. Food and Drug Administration News Release. Coronavirus (COVID-19) update: FDA  
364 authorizes monoclonal antibody for treatment of COVID-19. 2020 November 9. Available at:  
365 <https://bit.ly/2HesBBs>. Accessed July 20, 2021.
- 366 7. U.S. Food and Drug Administration. Fact sheet for health care providers emergency use  
367 authorization (EUA) of bamlanivimab. Available at:  
368 <https://www.fda.gov/media/143603/download>. Accessed July 20, 2021.

- 369 8. U.S. Food and Drug Administration. Fact sheet for health care providers emergency use  
370 authorization (EUA) of bamlanivimab and etesevimab. Available at:  
371 <https://www.fda.gov/media/145802/download>. Accessed July 20, 2021.
- 372 9. U.S. Food and Drug Administration. Fact sheet for health care providers emergency use  
373 authorization (EUA) of REGEN-COV™. Available at:  
374 <https://www.regeneron.com/downloads/treatment-covid19-eua-fact-sheet-for-hcp.pdf>.  
375 Accessed July 20, 2021.
- 376 10. Bernstein L, McGinley L. Monoclonal antibodies are free and effective against covid-19, but  
377 few people are getting them. The Washington Post. Published 20 Aug 2021. Accessed 28  
378 Aug 2021. Available from: [https://www.washingtonpost.com/health/covid-monoclonal-  
379 abbot/2021/08/19/a39a0b5e-0029-11ec-a664-4f6de3e17ff0\\_story.html](https://www.washingtonpost.com/health/covid-monoclonal-abbott/2021/08/19/a39a0b5e-0029-11ec-a664-4f6de3e17ff0_story.html)
- 380 11. National Academies of Sciences, Engineering, and Medicine News Release. Strategies to  
381 allocate scarce COVID-19 monoclonal antibody treatments to eligible patients examined in  
382 new rapid response to government. 2021 January 29. Available at:  
383 [https://www.nationalacademies.org/news/2021/01/strategies-to-allocate-scarce-Covid-19-  
384 monoclonal-antibody-treatments-to-eligible-patients-examined-in-new-rapid-response-to-  
385 government](https://www.nationalacademies.org/news/2021/01/strategies-to-allocate-scarce-Covid-19-monoclonal-antibody-treatments-to-eligible-patients-examined-in-new-rapid-response-to-government). Accessed July 20, 2021.
- 386 12. Angus DC. Optimizing the Trade-off Between Learning and Doing in a Pandemic. JAMA  
387 2020;323(19):1895-1896. DOI: 10.1001/jama.2020.4984.
- 388 13. Institute of Medicine (US) Roundtable on Evidence-Based Medicine. The Learning  
389 Healthcare System: Workshop Summary. Olsen L, Aisner D, McGinnis JM, editors.  
390 Washington (DC): National Academies Press (US); 2007. doi: 10.17226/11903.

- 391 14. Huang DT, McCreary EK, Bariola JR, et al. The UPMC OPTIMISE-C19 (OPTimizing  
392 Treatment and Impact of Monoclonal antIbodieS through Evaluation for COVID-19) trial: a  
393 structured summary of a study protocol for an open-label, pragmatic, comparative  
394 effectiveness platform trial with response-adaptive randomization. *Trials*. 2021 May  
395 25;22(1):363. doi: 10.1186/s13063-021-05316-3.
- 396 15. Angus D. Fusing randomized trials with big data: the key to self-learning health care  
397 systems? *JAMA* 2015;314:767-8. doi: 10.1001/jama.2015.7762.
- 398 16. Bariola JR, McCreary EK, Khadem T, et al. Establishing a distribution network for COVID-  
399 19 monoclonal antibody therapy across a large health system during a global pandemic. *Open*  
400 *Forum Infect Dis*. 2021 Mar 26;8(7):ofab151. doi: 10.1093/ofid/ofab151.
- 401 17. U.S. Department of Health & Human Services Public Health Emergency. Coronavirus  
402 (COVID-19) Update: FDA revokes emergency use authorization for monoclonal antibody  
403 bamlanivimab. 2021 April 16. Available at: [https://www.fda.gov/news-events/press-](https://www.fda.gov/news-events/press-announcements/coronavirus-Covid-19-update-fda-revokes-emergency-use-authorization-monoclonal-antibody-bamlanivimab)  
404 [announcements/coronavirus-Covid-19-update-fda-revokes-emergency-use-authorization-](https://www.fda.gov/news-events/press-announcements/coronavirus-Covid-19-update-fda-revokes-emergency-use-authorization-monoclonal-antibody-bamlanivimab)  
405 [monoclonal-antibody-bamlanivimab](https://www.fda.gov/news-events/press-announcements/coronavirus-Covid-19-update-fda-revokes-emergency-use-authorization-monoclonal-antibody-bamlanivimab). Accessed on July 20, 2021.
- 406 18. Reitz KM, Seymour CW, Vates J, et al. Strategies to Promote ResiliencY (SPRY): a  
407 randomised embedded multifactorial adaptative platform (REMAP) clinical trial protocol to  
408 study interventions to improve recovery after surgery in high-risk patients. *BMJ Open*. 2020  
409 Sep 29;10(9):e037690. doi: 10.1136/bmjopen-2020-037690.
- 410 19. Centers for Medicare and Medicaid Services. Meaningful use data; public use files – CMS.  
411 Available at: [www.cms.gov](http://www.cms.gov). Accessed September 3, 2021.

- 412 20. Christainsen SL, Cintron MY, Desai A, et al. *American Medical Association Manual of Style,*  
413 *11<sup>th</sup> edition, a guide for authors and editors.* Oxford University Press 2020. Available at:  
414 [www.amamanualofstyle.com](http://www.amamanualofstyle.com). Accessed September 3, 2021.
- 415 21. Kind AJH, Buckingham W. Making neighborhood disadvantage metrics accessible: the  
416 neighborhood atlas. *N Engl J Med.* 2018. 378: 2456-2458. doi: 10.1056/NEJMp1802313.
- 417 22. University of Wisconsin School of Medicine Public Health. 2015 Area Deprivation Index  
418 v2.0. Downloaded from <https://www.neighborhoodatlas.medicine.wisc.edu/> August 1, 2021.
- 419 23. Global Initiative on Sharing Avian Influenza Data. Tracking of variants. Available at  
420 <https://www.gisaid.org/>. Accessed on July 20, 2021.
- 421 24. Social Security Administration. Social Security Master File of Social Security Number  
422 Holders and Applications: Death Information. Available at:  
423 [https://www.ssa.gov/dataexchange/request\\_dmf.html](https://www.ssa.gov/dataexchange/request_dmf.html). Accessed August 1, 2021.
- 424 25. Zwarenstein M, Treweek S, Gagnier JJ, et al. Improving the reporting of pragmatic trials: an  
425 extension of the CONSORT statement. *BMJ.* 2008 Nov 11;337:a2390. doi:  
426 10.1136/bmj.a2390.
- 427 26. U.S. Department of Health & Human Services Public Health Emergency. Coronavirus  
428 (COVID-19) Update: FDA revokes emergency use authorization for monoclonal antibody  
429 bamlanivimab. 2021 April 16. Available at: [https://www.fda.gov/news-events/press-](https://www.fda.gov/news-events/press-announcements/coronavirus-Covid-19-update-fda-revokes-emergency-use-authorization-monoclonal-antibody-bamlanivimab)  
430 [announcements/coronavirus-Covid-19-update-fda-revokes-emergency-use-authorization-](https://www.fda.gov/news-events/press-announcements/coronavirus-Covid-19-update-fda-revokes-emergency-use-authorization-monoclonal-antibody-bamlanivimab)  
431 [monoclonal-antibody-bamlanivimab](https://www.fda.gov/news-events/press-announcements/coronavirus-Covid-19-update-fda-revokes-emergency-use-authorization-monoclonal-antibody-bamlanivimab). Accessed on July 20, 2021.
- 432 27. U.S. Department of Health & Human Services Public Health Emergency. Pause in the  
433 distribution of bamlanivimab/etesevimab. 2021 June 25. Available at:  
434 <https://www.phe.gov/emergency/events/COVID19/investigation-MCM/BamlanivimAb->

- 435 etesevimAb/Pages/bamlanivimAb-etesevimAb-distribution-pause.aspx. Accessed on July 20,  
436 2021.
- 437 28. U.S. Department of Health & Human Services. Federal response to COVID-19: monoclonal  
438 antibody update. 2021 July 30. Available at:  
439 [https://www.phe.gov/emergency/events/COVID19/investigation-MCM/Documents/USG-](https://www.phe.gov/emergency/events/COVID19/investigation-MCM/Documents/USG-COVID19-Tx-Playbook.pdf)  
440 [COVID19-Tx-Playbook.pdf](https://www.phe.gov/emergency/events/COVID19/investigation-MCM/Documents/USG-COVID19-Tx-Playbook.pdf). Accessed August 1, 2021.
- 441 29. Food and Drug Administration. Fact sheet for healthcare providers: emergency use  
442 authorization (EUA) of sotrovimab. 2021. Available  
443 at: <https://www.fda.gov/media/149534/download>. Accessed on July 20, 2021.
- 444 30. Ganesh R, Philpot LM, Bierle DM, et al. Real-world clinical outcomes of bamlanivimab and  
445 casirivimab-imdevimab among high-risk patients with mild to moderate coronavirus disease  
446 2019. *J Infect Dis*. 2021 Jul 19;jiab377. doi: 10.1093/infdis/jiab377.
- 447 31. Falcone M, Tiseo G, Valoriani B, et al. Efficacy of Bamlanivimab/Etesevimab and  
448 Casirivimab/Imdevimab in Preventing Progression to Severe COVID-19 and Role of  
449 Variants of Concern [published online ahead of print, 2021 Aug 25]. *Infect Dis Ther*. 2021;1-  
450 10. doi:10.1007/s40121-021-00525-4
- 451 32. Connor BA, Couto-Rodriguez M, Barrows JE, et al. Monoclonal antibody therapy in a  
452 vaccine breakthrough SARS-CoV-2 hospitalized Delta (B.1.617.2) variant case. *Int J Infect*  
453 *Dis*. 2021 Jul 13;110:232-234. doi: 10.1016/j.ijid.2021.07.029.
- 454 33. Planas D, Veyer D, Baidaliuk A. Reduced sensitivity of infectious SARS-CoV-2 variant  
455 B.1.617.2 to monoclonal antibodies and sera from convalescent and vaccinated individuals.  
456 *bioRxiv*. 2021 May 27. doi: 10.1101/2021.05.26.445838.

- 457 34. Quintana M, Viele K, Lewis RJ. Bayesian Analysis: Using Prior Information to Interpret the  
458 Results of Clinical Trials. *JAMA*. 2017;318(16):1605–1606. doi:10.1001/jama.2017.15574  
459



460 **TABLES**

461

462

463 **Table 1. Demographic and Clinical Characteristics of the Patients at Baseline and**

464

465

**Comparison by Monoclonal Antibody Group.**

<b>Characteristic</b>	<b>Bamlanivimab (n = 128)</b>	<b>Bamlanivimab – etesevimab (n = 885)</b>	<b>Casirivimab -imdevimab (n = 922)</b>	<b>Entire Cohort (n = 1,935)</b>
Age, mean (SD)	57 (17)	56 (16)	55 (16)	56 (16)
Female sex, n (%)	69 (54%)	470 (53%)	502 (54%)	1,041 (54%)
Race, n (%) ‡				
White	104 (81%)	693 (78%)	701 (76%)	1,498 (77%)
Black	15 (12%)	148 (17%)	173 (19%)	336 (17%)
Other	1 (0.8%)	23 (2.6%)	27 (2.9%)	51 (2.6%)
Unknown	8 (6.3%)	21 (2.4%)	21 (2.3%)	50 (2.6%)
Vaccine status				
Fully vaccinated	2 (1.6%)	43 (4.9%)	19 (2.1%)	64 (3.3%)
Partially vaccinated	26 (20%)	39 (4.4%)	55 (6.0%)	120 (6.2%)
Unvaccinated	0 (0%)	27 (3.1%)	30 (3.3%)	57 (2.9%)
Unknown	100 (78%)	776 (88%)	818 (89%)	1,694 (88%)
Body mass index, mean (SD)	35.6 (9.1)	34.5 (8.4)	35.1 (8.4)	34.8 (8.4)
Days from randomization to infusion, mean (SD)	0.6 (0.9)	0.4 (0.7)	0.4 (0.8)	0.4 (0.8)
Days from symptoms to randomization, mean (SD)	5.0 (2.0)	5.4 (2.0)	4.9 (2.0)	5.0 (2.1)
Days from symptoms to infusion, mean (SD)	6.3 (1.8)	6.0 (1.9)	6.2 (2.0)	6.1 (1.9)
Location				
Infusion center	103 (81%)	463 (52%)	462 (50%)	1,028 (53%)
Emergency department	25 (20%)	422 (48%)	460 (50%)	907 (47%)
Qualifying EUA criteria				
March 10, 2021 – May 23, 2021	128 (100%)	753 (85%)	783 (85%)	1,664 (86%)
Age ≥ 65 years	39 (31%)	223 (30%)	236 (30%)	498 (30%)
Body mass index ≥ 35	33 (47%)	238 (47%)	257 (49%)	528 (48%)
Chronic kidney disease	4 (4.0%)	43 (7.7%)	51 (8.8%)	98 (7.9%)
Diabetes	24 (24%)	154 (28%)	154 (27%)	332 (27%)
Immunosuppressive disease or treatment §	26 (26%)	158 (28%)	155 (27%)	339 (27%)
Sickle cell disease	0 (0%)	0 (0%)	0 (0%)	0 (0%)
Age ≥ 55 years and				
Cardiovascular disease	29 (26%)	112 (17%)	117 (17%)	258 (18%)
Hypertension	43 (39%)	224 (35%)	223 (33%)	490 (34%)
Respiratory condition	29 (26%)	124 (19%)	119 (18%)	272 (19%)
Age 12-17 years with qualifying criterion	1 (0.8%)	13 (1.7%)	6 (0.8%)	20 (1.2%)
May 24, 2021 – June 25, 2021 ¶	0 (0%)	132 (15%)	139 (15%)	271 (14%)
Age ≥ 65 years	-	30 (23%)	37 (27%)	67 (25%)
Body mass index >25	-	88 (89%)	90 (90%)	178 (89%)
Chronic kidney disease	-	7 (6.6%)	7 (6.5%)	14 (6.5%)
Diabetes	-	29 (27%)	25 (23%)	54 (25%)
Down syndrome	-	0 (0%)	0 (0%)	0 (0%)
Current or former smoker	-	25 (31%)	32 (37%)	57 (34%)
Current or history of substance abuse	-	0 (0%)	2 (2.3%)	2 (1.2%)
Immunosuppressive disease or treatment	-	29 (27%)	27 (25%)	56 (26%)
Sickle cell disease	-	0 (0%)	0 (0%)	0 (0%)
Cardiovascular disease	-	24 (23%)	14 (13%)	38 (18%)
Hypertension	-	61 (58%)	52 (48%)	113 (53%)
Respiratory condition	-	42 (40%)	40 (37%)	82 (38%)

	Age 12-17 years with qualifying criterion	-	1 (0.8%)	2 (1.4%)	3 (1.1%)
466	*	SD, standard deviation; EUA, emergency use authorization.			
467	†	Percentages shown correspond to those patients within each time period. Race was			
468		reported by the patients.			
469	‡	Race was reported by the patients.			
470	§	Immunosuppressive disease or treatment was defined as a history of HIV, cancer,			
471		transplant (solid organ, stem cell, bone marrow), chemotherapy treatment, lupus,			
472		rheumatoid arthritis, or liver disease.			
473	¶	EUA criteria were expanded May 14, 2021, and operationalized at UPMC May 24, 2021.			
474					
475					
476					
477					
478					

479 **Table 2. Primary Outcomes and Analysis.**

<b>Outcome/analysis</b>	<b>Bamlanivimab (n = 128)</b>	<b>Bamlanivimab -etesevimab (n = 885)</b>	<b>Casirivimab -imdevimab (n = 922)</b>
Primary outcome, hospital-free days, median (IQR)	28 (28-28)	28 (28-28)	28 (28-28)
Patients with 28 hospital-free days, n (%)	112 (87.5%)	755 (85.3%)	790 (85.7%)
Subcomponents of hospital-free days			
Deaths, n (%)	1 (0.8%)	7 (0.8%)	6 (0.7%)
Hospital length of stay among hospitalized patients, median days (IQR)	4 (2-10)	4 (3-7)	3 (2-6)
Hospitalized, n (%)	16 (12.5%)	130 (14.7%)	132 (14.3%)
After mAb infusion in emergency department	8 of 25 (32.0%)	100 of 422 (23.7%)	100 of 460 (21.7%)
After mAb infusion in infusion center	8 of 103 (7.8%)	30 of 463 (6.5%)	32 of 462 (6.9%)
Primary analysis of the primary outcome			
Adjusted odds ratio			
Mean (SD)	0.62 (0.22)	0.95 (0.13)	1 [Reference]
Median (95% credible interval)	0.58 (0.30 to 1.16)	0.94 (0.72 to 1.24)	1 [Reference]
Probability of inferiority to bamlanivimab-etesevimab, %	91%	-	34%
Probability of inferiority to casirivimab-imdevimab, %	94%	66%	-
Probability of equivalence between bamlanivimab-etesevimab and casirivimab-imdevimab within an odds ratio bound of, %			
0.25	-	-	86%
0.20	-	-	77%
0.15	-	-	64%
0.10	-	-	47%
0.05	-	-	25%

480 \* IQR, interquartile range; mAb, monoclonal antibodies; SD, standard deviation.

481 **FIGURE LEGENDS**

482 **Figure 1. Epidemiology of Monoclonal Antibody Infusions.**

483 Panel A shows the number of mAb-infused patients among the EHR screen eligible. Panel B  
484 shows the proportion of mAb-infused patients among EHR screen eligible by White or Black  
485 race. Hispanic ethnicity, Other, and Unknown race are not shown due to small sample sizes.  
486 Panel C shows the number of mAb infusions per 1,000 cases prior to March 10, 2021. Panel D  
487 shows the number of mAb infusions per 1,000 cases after March 10, 2021. Zip codes with <10  
488 Covid-19 cases or those outside of Pennsylvania are not shown.

489  
490 *Interpretive example:* Prior to the trial (*panel A*), mAb infusion was low. In panel B, the  
491 proportion of White and Black race infused among EHR-screen eligible patients increased. In the  
492 UPMC catchment in Pennsylvania, mAb infusions also increased in amount (darker, *panel C, D*)  
493 and in geographic distribution (more zip code areas colored) during OPTIMISE-C19.

494  
495 **Figure 2. CONSORT Diagram.**

496  
497 Due to pharmacy logistics, 5 patients who received bamlanivimab-etesevimab had been  
498 randomly assigned to casirivimab-imdevimab, and 7 patients who received casirivimab-  
499 imdevimab had been randomly assigned to bamlanivimab-etesevimab. All infused patients who  
500 received bamlanivimab monotherapy had been randomly assigned to bamlanivimab  
501 monotherapy. The FDA mAb policies changed over time, resulting in varying mAb availability  
502 and EUA eligibility criteria over time (**Supplement**).

503  
504  
505  
506  
507  
508

509 **Figure 3. Hospital-Free Days to Day 28.**

510

511 Primary outcome is displayed as horizontally stacked proportions by monoclonal antibody type.

512 Red represents worse values and blue represents better values. The median adjusted odds ratio

513 from the primary analysis, using a Bayesian cumulative logistic model, were 0.58 (95% credible

514 interval, 0.30 to 1.16) and 0.94 (95% credible interval, 0.72 to 1.24) for the bamlanivimab and

515 bamlanivimab-etesevimab groups compared with the casirivimab-imdevimab group. These odds

516 ratios yielded 91% and 94% probabilities of inferiority of bamlanivimab versus bamlanivimab-

517 etesevimab and casirivimab-imdevimab respectively, and an 86% probability of equivalence

518 between bamlanivimab-etesevimab and casirivimab-imdevimab at an odds ratio bound of 0.25.

519

520

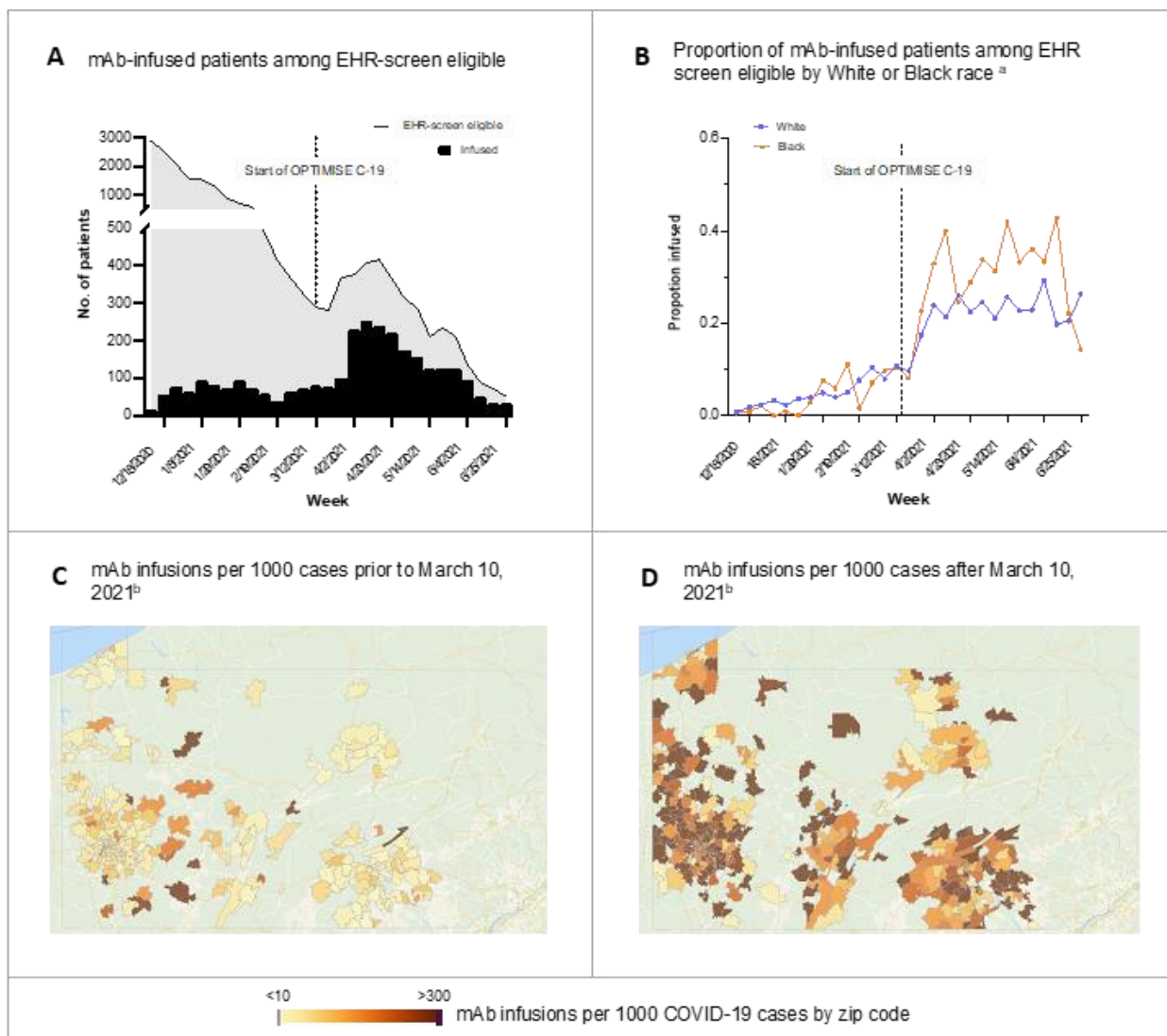
521

522

523

524

525



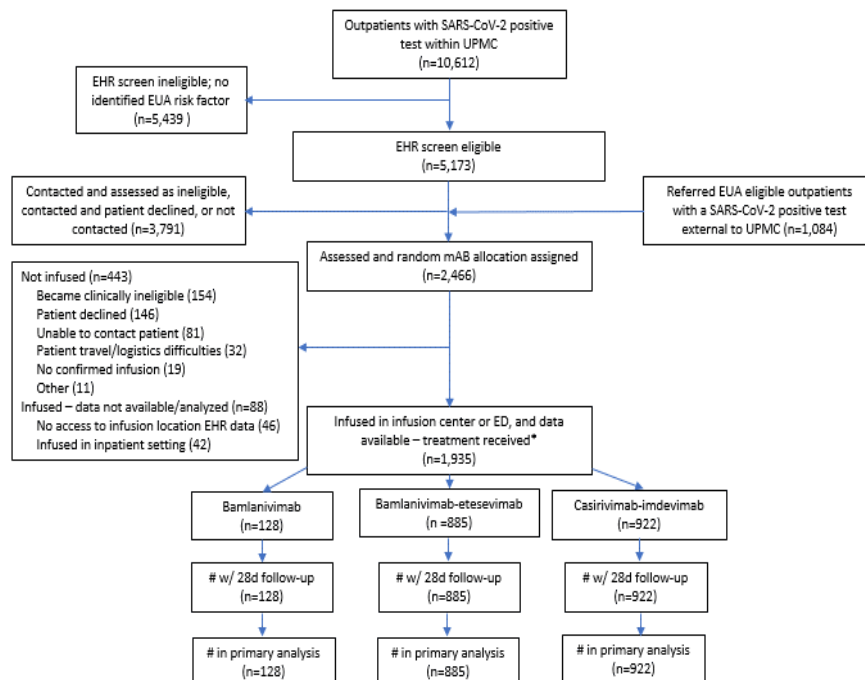
526

527 **Figure 1. Epidemiology of Monoclonal Antibody Infusions.**

528

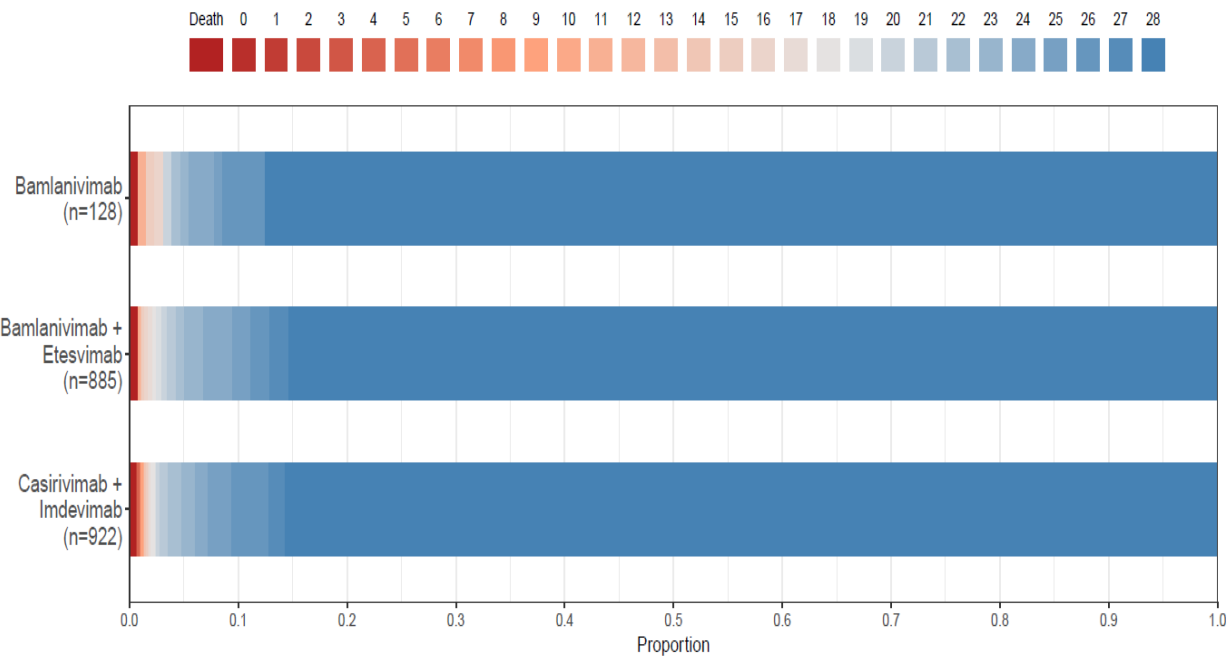
529

530



531  
 532 **Figure 2. CONSORT Diagram.**  
 533  
 534  
 535

536  
537



538  
539  
540  
541

**Figure 3. Hospital-Free Days to Day 28.**



542

## Supplementary Appendix

543

544

545 This appendix has been provided by the authors to give readers additional information about their

546 work.

547

548 Supplement to: **A learning health system randomized trial of monoclonal antibodies for**

549 **Covid-19**

550

551

552	<b>Table of Contents</b>	
553		
554		
555	<b>Section 1 – Supplementary Methods</b>	3
556	Trial Design	
557	Analytical Methods	
558		
559	<b>Section 2 – Supplementary Tables</b>	7
560	Table S1. Department of Health and Human Services – Food and Drug Administration’s	
561	Emergency Use Authorizations and UPMC Monoclonal Antibody Policy Changes Over Time	
562	Table S2. Adverse Events in Patients Receiving Monoclonal Antibody Treatment	
563		
564	<b>Section 3 – Supplementary Figures</b>	11
565	Figure S1. Treatment Heterogeneity Across Variant Date Prevalence Epochs	
566	Figure S2. SARS-CoV-2 Variants of Concern Proportion in Pennsylvania During the Study	
567	Figure S3. Monoclonal Antibody Referral Order in EPIC	
568	Figure S4. Monoclonal Antibody Referral Order in Cerner	
569		
570		
571		
572		
573		

574 **Section 1 – Supplementary Methods**

575

576 Trial Design: Several problems may be encountered when generating robust clinical  
577 evidence, including barriers to conducting clinical trials, the generalisability of data from  
578 populations that are too broad or too narrow, the issue of equipoise especially when  
579 comparing different types of existing care, and the delay in translating results into clinical  
580 practice. A Randomized Embedded Multifactorial Adaptive Platform (REMAP) provides a  
581 strategy to address many of these problems by gaining economies of scale from a common  
582 platform, which allows for broad enrollment but retaining the ability to examine for  
583 heterogeneity of treatment effects between defined subgroups. A REMAP focuses  
584 predominantly on the evaluation of treatment options for the disease of interest that are  
585 variations within the spectrum of standard care (although testing of novel or experimental  
586 therapies is not precluded) and does so by embedding the trial within routine healthcare  
587 delivery. In this regard, the REMAP seeks to replace random variation in treatment with  
588 randomized variation in treatment allowing causal inference to be generated about the  
589 comparative effectiveness of different existing treatment options. The use of response  
590 adaptive randomization (RAR), which allows the allocation ratios to change over time based  
591 on accruing outcomes data, maximises the chance of good outcomes for trial participants. The  
592 embedding of such a platform within the day-to-day activities facilitates the translation of  
593 outcomes to clinical practice as a “self-learning” system. As such, it also functions as an  
594 embedded and automated continuous quality-improvement program. A final advantage of a  
595 REMAP for optimizing monoclonal antibody treatment outcomes is the ability to rapidly  
596 adapt to generate evidence if as new interventions emerge, avoiding the inevitable delays  
597 associated with conventional trials.

598 A REMAP applies novel and innovative trial adaptive design and statistical methods to  
599 evaluate a range of treatment options as efficiently as possible. The broad objective of a  
600 REMAP is, over time, to determine and continuously update the optimal set of treatments for  
601 the disease of interest. The set of treatments that may be tested within a REMAP comprise the  
602 set of all treatments that are used currently or may be developed in the future and used or  
603 considered for use in patients. The design maximizes the efficiency with which available  
604 sample size is applied to evaluate treatment options as rapidly as possible. A REMAP has the  
605 capacity to identify differential treatment effects in defined sub-groups (termed strata),  
606 address multiple questions simultaneously, and can evaluate interactions among selected  
607 treatment options. Throughout the platform, patients who are enrolled in the trial are treated as  
608 effectively as possible.

609 A conventional RCT (i.e., a non-platform trial) makes a wide range of assumptions at the time  
610 of design. These assumptions include the plausible size of the treatment effect, the incidence  
611 of the primary outcome, the planned sample size, the (typically, small number of) treatments  
612 to be tested, and that treatment effects are not influenced by concomitant treatment options.

613 These assumptions are held constant until the trial completes recruitment and data are  
614 analyzed. Participants who are enrolled in a conventional RCT are not able to benefit from  
615 knowledge accrued by the trial because no results are made available until the trial completes.

616 A REMAP uses five approaches to minimise the impact of assumptions on trial efficiency and  
617 maximises the benefit of participation for individuals who are enrolled in the trial.

618 These design features are:

- 619 • frequent adaptive analyses using Bayesian statistical methods
- 620 • response adaptive randomization

- 621 • evaluation of differential treatment effects in pre-specified sub-groups (strata)
- 622 • evaluation of specified intervention-intervention interactions
- 623 • testing of multiple interventions in parallel and, subsequently, in series

624 This creates a ‘perpetual trial’ with no pre-defined sample size, the objective of which is to  
625 define and continuously update best treatment over the lifetime of the REMAP. The design  
626 aspects, including the risk of type I and type II errors, are optimized prior to the  
627 commencement of the trial by the conduct of extensive pre-trial Monte Carlo simulations,  
628 modification of the trial design, and re-simulation in an iterative manner. The methods  
629 related to the application of the design features and the statistical analysis of this trial are  
630 outlined in the methods section of the protocol. A separate **Protocol Appendix** contains  
631 detailed versions of the protocol with relevant protocol amendments and the statistical  
632 analysis plan.

633

634 Analytical Methods: Within the REMAP, two or more interventions are evaluated, and  
635 sequential Bayesian statistical analyses are used over time to incorporate new trial outcome  
636 information to determine if an intervention is superior, if one or more interventions are  
637 inferior, or if two or more interventions are equivalent, in comparison to all other  
638 interventions with respect to the primary endpoint. Every participant will be assigned an  
639 intervention. Inference in this REMAP is determined by analyses using pre-specified  
640 statistical models that incorporate time periods, age, and disease severity to adjust for  
641 heterogeneity of enrolled participants that might influence risk of death. These models  
642 incorporate variables that represent each intervention assigned to participants. The efficacy of  
643 each intervention is modeled as possibly varying in the different stratum in the REMAP.

644 Whenever a model hits a predefined threshold for any of superiority, inferiority, or  
645 equivalence for an intervention with respect to the primary endpoint, this is termed a  
646 statistical trigger. At any given adaptive analysis, a statistical trigger may be reached for all  
647 participants or for one or more strata, further described in the statistical analysis plan  
648 **(Protocol Appendix, page 26).**

649

650 **Section 2 – Supplementary Tables**

651

652 **Table S1. Department of Health and Human Services – Food and Drug Administration**

653 **mAb Emergency Use Authorizations and UPMC Policy Changes Over Time.**

Date	Change	Explanation
9-Nov-2021	<b>HHS/FDA provides mAb EUAs and treatment for COVID-19 eligibility criteria</b>	<p>Eligibility Criteria - High risk is defined as patients who meet at least one of the following criteria:</p> <ul style="list-style-type: none"> <li>• Have a body mass index (BMI) <math>\geq 35</math></li> <li>• Have chronic kidney disease</li> <li>• Have diabetes</li> <li>• Have immunosuppressive disease</li> <li>• Are currently receiving immunosuppressive treatment</li> <li>• Are <math>\geq 65</math> years of age</li> <li>• Are <math>\geq 55</math> years of age AND have               <ul style="list-style-type: none"> <li>o cardiovascular disease, OR</li> <li>o hypertension, OR</li> <li>o chronic obstructive pulmonary disease/other chronic respiratory disease.</li> </ul> </li> <li>• Are 12 – 17 years of age AND have               <ul style="list-style-type: none"> <li>o BMI <math>\geq 85</math>th percentile for their age and gender based on CDC growth charts, OR</li> <li>o sickle cell disease, OR</li> <li>o congenital or acquired heart disease, OR</li> <li>o neurodevelopmental disorders, for example, cerebral palsy, OR</li> <li>o a medical-related technological dependence, for example, tracheostomy, gastrostomy, or positive pressure ventilation (not related to COVID-19), OR</li> <li>o asthma, reactive airway or other chronic respiratory disease that requires daily medication for control.</li> </ul> </li> </ul> <p>EUAs for</p> <ul style="list-style-type: none"> <li>• bamlanivimab</li> <li>• bamlanivimab-etesevimab (available 9-February-2021)</li> <li>• casirivimab-imdevimab</li> </ul>
10-Mar-2021	UPMC – Opened study enrollment	Go-live date for trial with bamlanivimab and casirivimab-imdevimab only and following COVID-19 Treatment Guidelines.
16-Mar-2021	UPMC - Incorporation of bamlanivimab-etesevimab into random allocation	Start incorporating bamlanivimab-etesevimab into most sites. There was a 1-week delay to use etesevimab at six sites due to low initial supply.

23-Mar-2021	UPMC - mAb treatment expanded to Emergency Departments	Based on published data from our health system demonstrating significant decrease in hospitalizations and deaths with bamlanivimab (Bariola OFID 2021), the decision was made to invest resources in Emergency Department expansion to increase access to mAb treatment.
<b>25-Mar-2021</b>	<b>HHS/FDA EUA for distribution of bamlanivimab alone was halted</b>	A memorandum on the Fact Sheet for bamlanivimab alone – Update was issued on 3/17/21. Pseudovirus neutralization data for SARS-CoV-2 variant substitutions with bamlanivimab alone was unsuccessful.
31-Mar-2021	UPMC – stopped bamlanivimab alone	Emerging data about lack of efficacy with SARS-COV-2 variants resulted in System COVID-19 Pharmacy & Therapeutics Committee’s decision to remove bamlanivimab alone from formulary. All sites put on view to use bamlanivimab only with etesevimab.
<b>16-Apr-2021</b>	<b>HHS/FDA EUA for bamlanivimab was revoked</b>	EUA revoked due to lack of efficacy with SARS-COV-2 variants.
25-Apr-2021	UPMC - Protocol Amendment 1 to remove use of bamlanivimab alone	Updated trial protocol to reflect clinical practice of not using bamlanivimab alone.
26-Apr-2021	UPMC – expanded study enrollment to observation status patients	Established process for treating observation status patients at UPMC hospitals.
6-May-2021	UPMC - Interim Analysis	Data supported it was safe to proceed.
<b>14-May-21</b>	<b>HHS/FDA EUA expands eligibility criteria</b>	<p>Eligibility Criteria - The following medical conditions or other factors may place adults and pediatric patients (age 12-17 years and weighing at least 40 kg) at higher risk for progression to severe COVID-19:</p> <ul style="list-style-type: none"> <li>• Older age (for example age <math>\geq 65</math> years of age)</li> <li>• Obesity or being overweight (for example, adults with BMI <math>&gt;25</math> kg/m<sup>2</sup> or if age 12-17, have BMI <math>\geq 85</math>th percentile for their age and gender based on CDC growth charts</li> <li>• Pregnancy</li> <li>• Chronic kidney disease</li> <li>• Diabetes</li> <li>• Immunosuppressive disease or immunosuppressive treatment</li> <li>• Cardiovascular disease (including congenital heart disease) or hypertension</li> <li>• Chronic lung diseases (for example, chronic obstructive pulmonary disease, asthma [moderate-to-severe], interstitial lung</li> </ul>



		disease, cystic fibrosis, and pulmonary hypertension) • Sickle cell disease • Neurodevelopmental disorders (for example, cerebral palsy) or other conditions that confer medical complexity (for example, genetic or metabolic syndromes and severe congenital anomalies) • Having a medical-related technological dependence (e.g., tracheostomy, gastrostomy, or positive pressure ventilation [not related to COVID-19]) Sotrovimab is a new mAb treatment.
26-May-21	<b>HHS/FDA provides an EUA for sotrovimab</b>	
3-June-2021	<b>HHS/FDA EUA revised to decrease dose for casirivimab-imdevimab</b>	Casirivimab 600mg and imdevimab 600 mg
15-June-2021	UPMC - decreased dose for casirivimab-imdevimab	Casirivimab-imdevimab dose decreased from 2400mg to 1200mg.
25-June-2021	<b>HHS/FDA EUA for distribution of bamlanivimab-etesevimab was paused</b>	FDA recommends not to use bamlanivimab-etesevimab together.
25-June-2021	UPMC - stopped bamlanivimab-etesevimab	UPMC pulls from shelves.
25-June-2021	UPMC - Protocol Amendment 2: remove bamlanivimab-etesevimab add sotrovimab update EUA expanded eligibility criteria	Updated trial protocol to reflect clinical practice of not using bamlanivimab-etesevimab, add use of sotrovimab, and expanded eligibility criteria.

654 \* mAb, monoclonal antibodies; HHS/FDA, Department of Health and Human

655

656 Services/Food and Drug Administration; EUA, emergency use authorization.

657

658

659

660

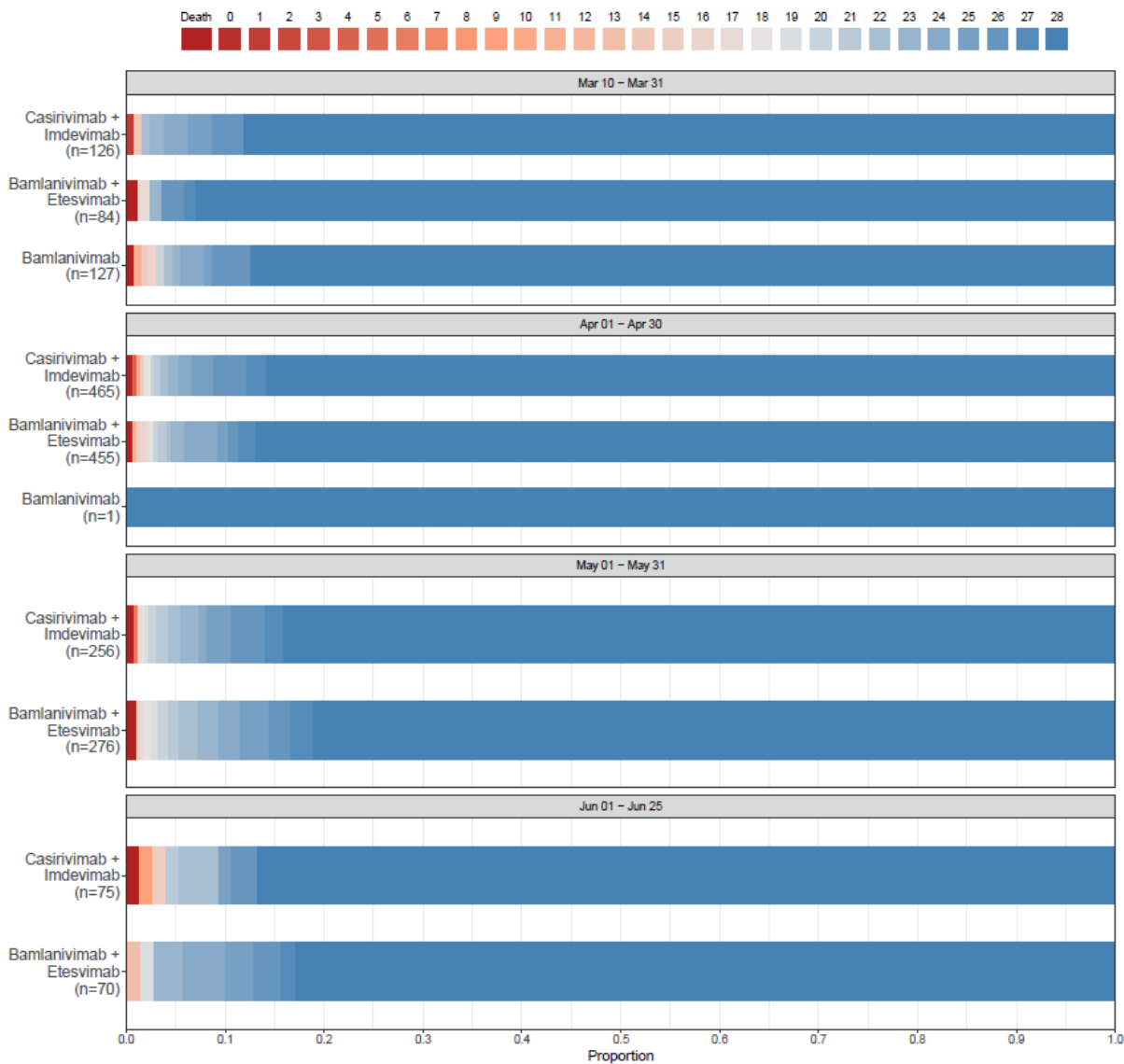
661 **Table S2. Adverse Events in Patients Receiving Monoclonal Antibody Treatment.**

Patient ID	mAb Received	Mild Reaction	Severe Reaction	Reaction Description
1	Bamlanivimab + Etesevimab	Y		Hypoglycemic, hypotension: infusion stopped treated with diphenhydramine and fluid, patient discharged stable to home.
2	Bamlanivimab + Etesevimab	Y		Patient developed tightness in head/sinus area, and tightness in chest. Infusion not finished. Discharged home.
3	Bamlanivimab + Etesevimab	Y		Patient reported chest tightness, became lightheaded and dizzy. Infusion not finished. Discharged home.
4	Bamlanivimab + Etesevimab	Y		Patient developed hypotension; responded to 500mL LR, discharged home normotensive.
5	Bamlanivimab + Etesevimab	Y		Headache, responded to acetaminophen.
6	Bamlanivimab + Etesevimab	Y		Flushed, chest pain. Stopped infusion.
7	Bamlanivimab + Etesevimab	Y		Low back pain, radiating. Decreased infusion rate in half. Patient stated pain alleviated and denied any complaints
8	Bamlanivimab + Etesevimab	Y		Patient reported nausea, hot flash, severe lower back pain 1 minute into infusion.
9	Bamlanivimab + Etesevimab		Y	Patient stated flushed/throat "closing". Stopped infusion. Sent to ED for evaluation.
10	Bamlanivimab + Etesevimab	Y		Flushing and shortness of breath.
11	Bamlanivimab + Etesevimab	Y		Mild itchiness and redness at infusion site.
12	Bamlanivimab + Etesevimab	Y		Became itchy, developed hives, received diphenhydramine.
13	Casirivimab + Imdevimab	Y		Headache.
14	Casirivimab + Imdevimab		Y	Sudden onset nausea, vomiting, and weakness after 1 hour observation period; checked into ED and admitted post infusion
15	Casirivimab + Imdevimab	Y		Patient developed dizziness and chills which resolved prior to discharge.
16	Casirivimab + Imdevimab	Y		Right before discharge patient mentioned dizziness and lower blood pressure. Discharged to home.
17	Casirivimab + Imdevimab		Y	Hypertension and headache post-infusion, transferred to ED.
18	Casirivimab + Imdevimab		Y	Patient became hot, red face, reported chest pain 9/10. Oxygen saturation went from 95 to 85 to 73. Sent to ED.
19	Casirivimab + Imdevimab	Y		Chills, flushing, chest tightness, headache. Infusion stopped.
20	Casirivimab + Imdevimab		Y	Chest pain, shortness of breath, and back pain 2 minutes into infusion. Paramedics called.
21	Casirivimab + Imdevimab	Y		Shortness of breath, chest tightness 3 minutes into infusion. Medication stopped and symptoms resolved.

662  
663  
664  
665  
666

667 Section 4 – Supplementary Figures

668



669

670

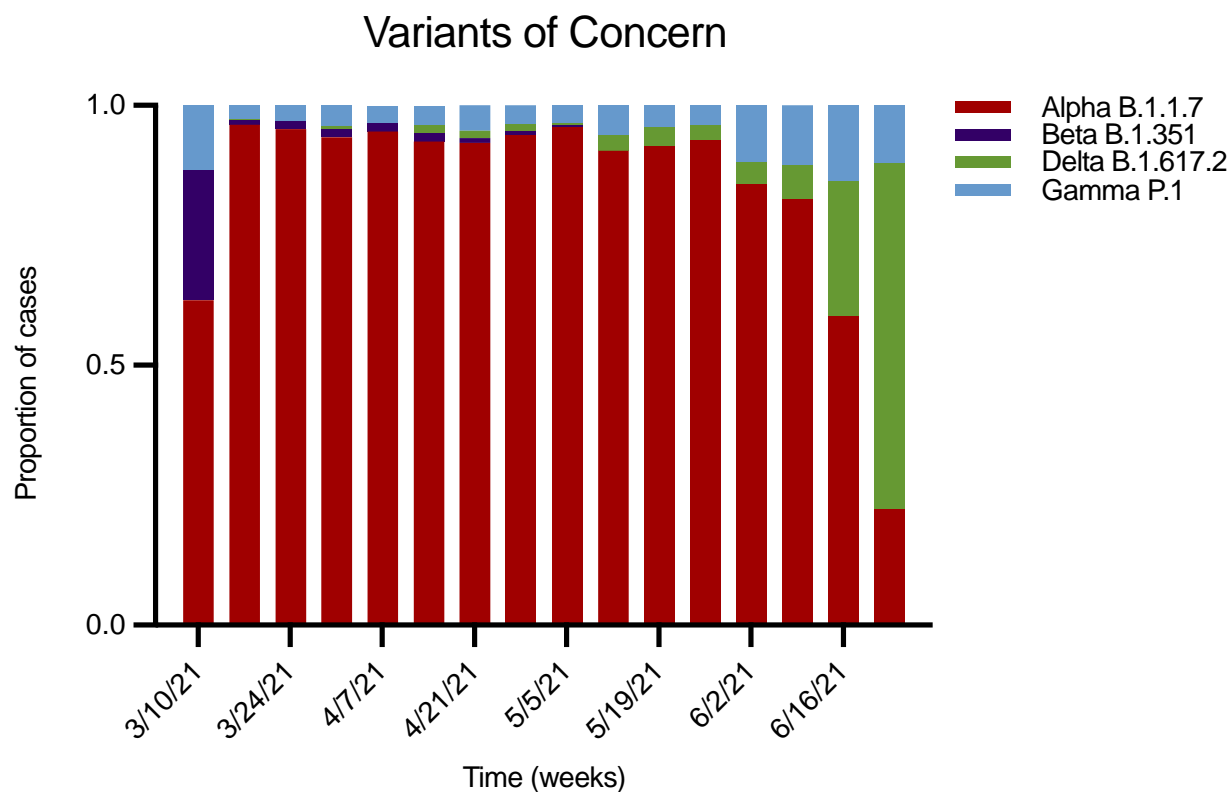
**Figure S1. Treatment Heterogeneity Across Variant Date Prevalence Epochs.**

671

672

673

674



675

676

677 **Figure S2. SARS-CoV-2 Variants of Concern Proportion in Pennsylvania During the Study**

678

CONSULT / REFERRAL TO COVID MONOCLONAL ANTIBODY MEDICATION

 Accept  Cancel

**1** Eligibility Criteria (select all that apply):

Age >= 65 years  
  BMI >= 25 (adults)  
  BMI >= 85 percentile (age 12-17)  
  Pregnancy

Chronic kidney disease  
  Cardiovascular disease  
  Hypertension  
  Diabetes

Down syndrome  
  Dementia  
  Liver disease  
  Current or former smoker

Current or history of substance abuse

Immunosuppressive disease or immunosuppressive treatment

History of stroke or cerebrovascular disease  
  Chronic lung disease  
  Sickle cell disease

Neurodevelopmental disorders or other conditions that confer medical complexity

Having a medical-related technological dependence (e.g., tracheostomy, gastrostomy)

None - PATIENT NOT ELIGIBLE

**1** Date of Symptom Onset (Fever, Cough, Sore throat, Malaise, Headache, Muscle pain, GI symptoms, or SOB w/ exertion):

**1** Date of positive COVID-19 Test (see comments for last test recorded in Epic):

**1** Is the patient pregnant or breastfeeding?

**1** Does patient have a new or increasing oxygen requirement?

**1** Vaccine status:

**1** Preferred Infusion Center:

Pittsburgh (South Side)

Altoona (age 12 & up)

Chautauqua

Cole

East

Hamot

Jameson

Passavant - Cranberry (Saturday only)

Passavant - McCandless (age 12 & up)

Pinnacle - Carlisle

Pinnacle - Hanover

Pinnacle - Harrisburg (age 12 & up)

Pinnacle - Lititz

Pinnacle - York

Somerset (age 12 & up)

Susquehanna - Wellsboro

Susquehanna - Williamsport (age 12 & up)

WPIC (Behavioral Health only)

Second Choice Infusion Center:

Pittsburgh (South Side)

Altoona (age 12 & up)

Chautauqua

Cole

East

Hamot

Jameson

Passavant - Cranberry (Saturday only)

Passavant - McCandless (age 12 & up)

Pinnacle - Carlisle

Pinnacle - Hanover

Pinnacle - Harrisburg (age 12 & up)

Pinnacle - Lititz

Pinnacle - York

Somerset (age 12 & up)

Susquehanna - Wellsboro

Susquehanna - Williamsport (age 12 & up)

679

680

681 **Figure S3. Monoclonal Antibody Referral Order in EPIC.**

682

Details for **Consult/Referral to COVID Monoclonal Antibody Medication** Send To: HP3F0899.home (HP ENVY 6000 series) (from MELBA72989H2) in session 68

Details Order Comments

\*Order Date: 05/18/2021 \*Does this patient have a new...  Yes  No \*Patient Call Back Number: [Yellow field]

\*Reviewed FDA fact sheet; pa... [Yellow field] BMI: [Text field] \*Eligibility Criteria: [Yellow field]

\*Date of Symptom Onset (Fev... \*\*/\*\*/\*\*\*\* [Date field] \*Positive COVID-19 Test?: [Yellow field] \*Currently Pregnant or Breast...  Yes  No

\*Vaccine Status: [Yellow field] \*Preferred Infusion Center: [Yellow field] Second Choice Infusion Center: [Text field]

\*Diagnosis: 

- Fully vaccinated
- Partly vaccinated
- Unvaccinated
- Unknown

 Special Instructions: [Text field] \*Dispense Quantity Unit: ea [Dropdown]

683 **Figure S4. Monoclonal Antibody Referral Order in Cerner.**

684

685

686

687

688

## Protocol Appendix

689

690 This trial protocol has been provided by the authors to give readers additional information about  
691 their work.

692

Protocol for: **A learning health system randomized trial of monoclonal antibodies for Covid-19**

693 **Protocol and Statistical Analysis Plan**

694

695 This appendix contains the following items:

696 1. The original protocol document, final protocol document, and summary of changes.

697 2. The statistical analysis plan.

698

699 Relevant protocol documents included in this supplement are:

700

701 • OPTIMISE-C19 Protocol

702 Original Version 1.0, February 24, 2021.....2

703 Final Version 1.2, June 30, 2021.....13

704 Summary of Changes .....25

705 -Amendment 1, Protocol Version 1.1, April 25, 2021

706 -Amendment 2, Protocol Version 1.2, June 30, 2021

707

708 • Statistical Analysis Plan

709 Overall Analysis Plan .....26

710

711 • References .....31

712



713  
714  
715  
716  
717  
718

## ORIGINAL VERSION 1.0, February 24, 2021

A pragmatic evaluation of monoclonal antibody treatments in participants with COVID-19 illness (ClinicalTrials.gov, NCT04790786)

### Summary

#### Background

- FDA Emergency Use Authorizations (EUA) exist for multiple monoclonal antibodies (mAB) to treat COVID-19; the EUAs stipulate eligibility criteria, patient-physician communication, and clinical monitoring.<sup>1</sup>
- UPMC provides mABs as routine care; physicians order a mAB infusion and pharmacies assign whichever mAB is available under a therapeutic interchange approach. If scarcity exists, a lottery system is used.
- Physicians review with patients the EUA Fact Sheet for each mAB and explain they could be assigned any of the EUA-governed mABs.<sup>2-4</sup>

#### Approach

- Structure the therapeutic interchange policy and lottery system using a UPMC pharmacy embedded assignment system that allows a comparative effectiveness evaluation of the multiple mABs.<sup>5</sup>
- Collect data from clinically performed UPMC processes and EUA requirements for routine care.

#### Treatments

#### Inclusion

#### Criteria

- Monoclonal antibodies (mAB) for COVID-19
- These criteria are as per the FDA EUAs for COVID-19 mABs as of February 24, 2021.<sup>1</sup>
- Adult and pediatric patients (12 years of age and older weighing at least 40 kg) with a positive SARS-CoV-2 antigen or PCR test and within 10 days of symptom onset, and high risk of disease progression
  - High risk is defined as patients who meet at least one of the following criteria:
    - Body Mass Index (BMI)  $\geq 35$
    - Have Chronic Kidney Disease
    - Have diabetes
    - Have immunosuppressive disease
    - Are currently receiving immunosuppressive treatment
    - Are  $\geq 65$  years of age
    - Are  $\geq 55$  years of age AND have:
      - cardiovascular disease, OR
      - hypertension, OR
      - chronic obstructive pulmonary disease/other chronic respiratory disease
    - Are 12-17 years of age AND have:
      - BMI  $\geq 85$ th percentile for their age and gender based on CDC growth charts, OR

○ sickle cell disease, OR  
○ congenital or acquired heart disease, OR  
○ neurodevelopmental disorders (e.g., cerebral palsy),  
OR  
○ a medical-related technological dependence, for example, tracheostomy or gastrostomy), OR  
○ asthma, reactive airway, or other respiratory disease that requires daily medication for control.

Exclusion Criteria      These criteria are as per the FDA EUAs for COVID-19 mABs as of February 24, 2021.<sup>1</sup>

- Are hospitalized for the treatment of COVID-19
- Require oxygen therapy for the treatment of COVID-19
- Require an increase in baseline oxygen flow rate due to COVID-19 in those on chronic oxygen therapy due to underlying non-COVID-19 related comorbidity
- Have a known hypersensitivity to any antibody ingredient

Primary evaluation metric      Total hospital free days at 28 days

719  
720  
721

722	Table of Contents	
723	1. ABBREVIATIONS	..... 52
724	2. BACKGROUND and RATIONALE	..... 52
725	2.1. BACKGROUND.....	52
726	2.2. RATIONALE.....	53
727	3. OBJECTIVES AND METRICS	..... 54
728	3.1. OBJECTIVES .....	54
729	3.2. METRICS.....	54
730	4. DESIGN	..... 55
731	4.1. POPULATION.....	55
732	4.1.1. INCLUSION CRITERIA.....	55
733	4.1.2. EXCLUSION CRITERIA .....	56
734	5. EVALUATED TREATMENTS	..... 56
735	5.1. BAMLANIVIMAB .....	56
736	5.2. BAMLANIVIMAB and ETESVIMAB .....	57
737	5.3. CASIRIVIMAB and IMDEVIMAB .....	57
738	5.4. CONCOMITANT THERAPY .....	57
739	6. CONDUCT	..... 57
740	6.1. DATA COLLECTION.....	57
741	6.2. BIOSPECIMENS .....	58
742	6.3. ANTIBODY ADMINISTRATION .....	58
743	6.4. mAB assignment .....	59
744	7. STATISTICAL CONSIDERATIONS	..... 59
745	7.1. STRATA .....	59
746	7.2. NUMBER of PARTICIPANTS .....	60
747	7.3. STATISTICAL ANALYSIS.....	60
748	8. ETHICAL CONSIDERATIONS	..... 60
749	8.1. DATA MONITORING .....	60
750	8.2. CONSENT .....	60
751	8.3. ADVERSE EVENTS and SERIOUS ADVERSE EVENTS.....	60
752	8.3.1. SAFETY and RISK MITIGATION.....	61
753	8.3.2. MANAGEMENT of INFUSION REACTIONS .....	61
754	9. EXHIBITS	..... 61
755		
756		
757		
758		
759		
760		

761  
762  
763

764 **1. ABBREVIATIONS**

765

AE	Adverse Events
B	bamlanivimab
B + E	bamlanivimab and etesevimab
BMI	Body Mass Index
C + I	casirivimab + imdevimab
CDC	Centers for Disease Control and Prevention
COPD	Chronic Obstructive Pulmonary Disease
COVID-19	Coronavirus disease 2019
CVD	Cardiovascular Disease
EUA	Emergency Use Authorization
FDA	Food and Drug Administration
HHS	Health and Human Services
HFD	Hospital Free Days
HTN	Hypertension
kDa	Kilodaltons
IgG1	Immunoglobulin G1
KG	Kilograms
mAB	Monoclonal Antibodies
PCR	Polymerase Chain Reaction
SAEs	Serious Adverse Events
SARS-CoV-2	Severe Acute Respiratory Syndrome Coronavirus 2
UATRC	UPMC Antibody Treatment and Evaluation Center

766

767 **2. BACKGROUND and RATIONALE**

768

769 **3. BACKGROUND**

770

771 While COVID-19 vaccination will reduce COVID-19-related morbidity and mortality, the learned  
772 immune response may vary between individuals. This means interventions such as monoclonal  
773 antibodies (mAB) will still be needed to prevent progression of COVID-19 illness. Monoclonal  
774 antibodies seek to mimic or enhance the natural immune system response against a pathogen and  
775 are often used in the care of patients with cancer or infection.

776 For viral infections, mABs are created by exposing a white blood cell to a particular viral protein,  
777 which is then cloned to mass produce antibodies to target that virus. For SARS-CoV-2, the virus  
778 that causes COVID-19, IgG1 mABs target the spike protein of SARS-CoV-2 and block viral  
779 attachment and entry into cells.

780 The SARS-CoV-2 mABs bamlanivimab and etesevimab, and the REGN-COV2 combination  
781 (casirivimab + imdevimab) reduce nasopharyngeal viral burden plus clinical outcomes including  
782 future emergency department visits and hospitalizations (Weinreich 33332778 NEJM, Gottlieb  
783 33475701). Each received FDA Emergency Use Authorization (EUA) for use in selected  
784 populations (**Exhibit**). Additional trials of pre-exposure prophylaxis (NCT04497987) and other  
785 applications are underway, and additional mABs are in development.

786 The trials demonstrated the greatest impact of the REGN-COV2 dual therapy among patients who  
787 lacked neutralizing antibodies against SARS-CoV-2 at baseline and in those with high  
788 nasopharyngeal viral loads. Additionally, few patients in the bamlanivimab/etesevimab trial  
789 developed treatment-emergent SARS-CoV-2 resistance. This latter phenomenon may further  
790 enhance the need for therapies given the recent emergence of SARS-CoV-2 variants that may  
791 escape vaccination. However, the relative effectiveness of each mAB compared to the other is  
792 unknown, as is their effectiveness for emerging virus variants.

793 This Appendix to the UPMC Pilot Core (PittPro 20040210) describes the approach of the UPMC  
794 Antibody Treatment and Evaluation Center. We will conduct a pragmatic evaluation of  
795 monoclonal antibody treatments in participants with COVID-19 illness, starting with the patient  
796 population approved under the current FDA mAB EAUs.

797

#### 798 4. RATIONALE

799

800 As of February 2021, there are over 60,000 new cases of COVID-19 diagnosed daily in the US  
801 [https://covid.cdc.gov/covid-data-tracker/#trends\\_dailytrendscases](https://covid.cdc.gov/covid-data-tracker/#trends_dailytrendscases), with over 7000 daily COVID-  
802 19 related hospital admissions Microsoft Power BI ([powerbigov.us](http://powerbigov.us)). Although case volumes are  
803 currently declining, COVID-19 remains a significant public health threat.

804 Despite the EUAs, the clinical use of mABs is low due in part to lack of patient access,  
805 complexities in drug allocation, and lack of knowledge among providers are contributing factors.

806 Further, the comparative effectiveness of different mABs is unknown and not yet directly studied.

807 The National Academies of Sciences, Engineering, and Medicine recently called for expanded

808 access and clinical use of mABs, noting it is “critical to collect data and evaluate whether they are  
809 working as predicted”.

810 This evaluation seeks to expand access to mABs at UPMC and determine their relative effects  
811 versus each other, starting with those governed by EUAs.

812

## 813 5. OBJECTIVES AND METRICS

814

### 815 6. OBJECTIVES

816

817 The primary objective is to evaluate the clinical and biological effect of multiple monoclonal  
818 antibodies (mABs) in patients with COVID-19.

819 The primary hypothesis is clinical and biological effect will vary between mABs, by SARS-CoV-  
820 2 variants, and patient characteristics.

### 821 7. METRICS

822

823 The primary evaluation metric is total hospital free days (HFD) at 28 days after mAB receipt  
824 calculated as 28 minus the number of days during the index stay minus the number of days  
825 readmitted during the 28 days after treatment. Death within 28 days is recorded as -1 HFD.

826 Secondary evaluation metrics include:

827 • All-cause and all-location mortality at 28 and 90 days

828 • Emergency department visits at 28 days

829 • Organ-support free days at day 28

830 • Where feasible:

831 • SARS-CoV-2 nasopharyngeal and plasma viral loads among participants from baseline and  
832 longitudinally through day 28

833 • SARS-CoV-2 antibody titers, antibody neutralization, and other immune responses at  
834 baseline and longitudinally through day 28

835 • Detection of SARS-CoV-2 variants through next-generation sequencing at baseline and  
836 longitudinally through day 28

837 • Determining the duration of SAR-CoV-2 infectivity and non-culture surrogates for SARS-  
838 CoV-2 infectivity among patients with persistent nasopharyngeal swab viral shedding

839 **8. DESIGN**

840  
841 We will conduct a pragmatic evaluation of participants with COVID-19 illness under existing  
842 UPMC processes for the clinical care of COVID-19 positive patients, including EUA requirements  
843 for mAB administration. A patient who presents to a UPMC facility and tests positive for COVID-  
844 19 will, as per current common care, be offered monoclonal antibodies. Data that are already  
845 collected according to UPMC procedures and EUA requirements are used for analysis.

846

847 **9. POPULATION**

848  
849 We will evaluate patients that present to UPMC Emergency Departments, urgent care sites,  
850 infusions centers and other facilities that can or do provide mABs for COVID-19. As of February  
851 24, 2021, there are 3 EUAs, with common inclusion and exclusion criteria, and we will evaluate  
852 patients that meet these criteria. As other antibodies become available, we will modify this  
853 evaluation submission.

854 **10. INCLUSION CRITERIA**

855

856 As per the current EUA criteria, the following patients are included:

- 857
- Adult ( $\geq 18$  years old)
  - 858 • Children  $\geq 12$  years old weighing at least 40 kg
  - 859 • With a positive SARS-CoV-2 antigen or PCR test and within 10 days of symptom onset
  - 860 • High risk of disease progression

861 High risk is defined as patients who meet at least one of the following criteria:

- 862
- A Body Mass Index (BMI)  $\geq 35$
  - 863 • Have chronic kidney disease
  - 864 • Have diabetes
  - 865 • Have immunosuppressive disease
  - 866 • Are currently receiving immunosuppressive treatment
  - 867 • Are  $\geq 65$  years old
  - 868 • Are  $\geq 55$  years of age AND have:
    - 869 ○ cardiovascular disease, OR
    - 870 ○ hypertension, OR

- 871 ○ chronic obstructive pulmonary disease/other chronic respiratory disease
- 872
- 873 • Are 12-17 years of age AND have:
- 874 ○ BMI  $\geq$  85<sup>th</sup> percentile for their age and gender based on CDC growth charts, OR
- 875 ○ sickle cell disease, OR
- 876 ○ congenital or acquired heart disease, OR
- 877 ○ neurodevelopmental disorders (e.g., cerebral palsy), OR
- 878 ○ a medical-related technological dependence, for example, tracheostomy or
- 879 gastrostomy), OR
- 880 ○ asthma, reactive airway, or other respiratory disease that requires daily medication
- 881 for control

## 882 11. EXCLUSION CRITERIA

883

884 As per the current EUA criteria, the following are excluded:

- 885 • Are hospitalized for the treatment of COVID-19
- 886 • Require oxygen therapy for the treatment of COVID-19
- 887 • Require an increase in baseline oxygen flow rate due to COVID-19 in those on chronic
- 888 oxygen therapy due to underlying non-COVID-19 related comorbidity
- 889 • Have a known hypersensitivity to any antibody ingredient

## 890 12. EVALUATED TREATMENTS

891

892 Patients will receive COVID-19 mABs governed by FDA EUAs, when their treating physician

893 orders a mAB and they meet EUA criteria. Currently and under our examination, the treating

894 physician do not choose a specific mAB product.

895 As of February 24, 2021, there are three such mABs as listed below.

## 896 13. BAMLANIVIMAB

897

898 Bamlanivimab is a human immunoglobulin G-1 (IgG1 variant) monoclonal antibody consisting of

899 2 identical light chain polypeptides composed of 214 amino acids each and 2 identical heavy chain

900 polypeptides composed of 455 amino acids produced by a Chinese Hamster Ovary (CHO) cell line

901 and molecular weight of 146 kDa.



902  
903  
904

905 **14. BAMLANIVIMAB and ETESVIMAB**

906  
907 Bamlanivimab is a human immunoglobulin G-1 (IgG1 variant) monoclonal antibody consisting of  
908 2 identical light chain polypeptides composed of 214 amino acids each and 2 identical heavy chain  
909 polypeptides composed of 455 amino acids produced by a Chinese Hamster Ovary (CHO) cell line  
910 and molecular weight of 146 kDa.

911 Etesevimab is a human IgG1 variant monoclonal antibody (mAb) consisting of 2 identical light  
912 chain polypeptides composed of 216 amino acids each and 2 identical heavy chain polypeptides  
913 composed of 449 amino acids produced by a Chinese Hamster Ovary (CHO) cell line and  
914 molecular weight of 145 kDa.

915

916 **15. CASIRIVIMAB and IMDEVIMAB**

917  
918 Casirivimab, a human immunoglobulin G-1 (IgG1) monoclonal antibody (mAb), is covalent  
919 eterotetramer consisting of 2 heavy chains and 2 light chains produced by recombinant DNA  
920 technology in Chinese hamster ovary (CHO) cell suspension culture and has an approximate  
921 molecular weight of 145.23 kDa.

922 Imdevimab, a human IgG1 mAb, is a covalent heterotetramer consisting of 2 heavy chains and 2  
923 light chains produced by recombinant DNA technology in Chinese hamster ovary (CHO) cell  
924 suspension culture and has an approximate molecular weight of 144.14 kDa.

925

926 **16. CONCOMITANT THERAPY**

927 All care and concomitant therapy are as per the treating providers.

928

929 **17. CONDUCT**

930

931 **18. DATA COLLECTION**

932

933 The EUAs require that healthcare facilities and providers report therapeutic information and  
934 utilization data through HHS Protect, Teletracking, or National Healthcare Safety Network as  
935 directed by the US Department of Health and Human Services.

936 We will collect data including baseline demographics and underlying conditions, results of SARS-  
937 COV-2 PCR or antibody testing, and initial care including mAB infusion completion. We will  
938 collect post-randomization healthcare encounters, including hospitalization, emergency  
939 department visits, ICU care, and other measures of healthcare utilization. We will use an electronic  
940 health record data collection process to augment existing UPMC data collection processes as  
941 necessary.

942 All data will be handled and secured as per University of Pittsburgh and UPMC data guidelines.

943 There will be no research activities involving direct interaction with subjects performed as part of  
944 this evaluation.

945 In addition to the primary and secondary outcome data referenced in this submission, data collected  
946 will include the below areas. All data will be abstracted directly from the electronic health record  
947 and handled anonymously.

- 948 • Which mAB was administered, including date, time, and infusion completion as well as  
949 the location of the infusion
- 950 • Demographics (including age, sex, race, body weight, vaccination status)
- 951 • Healthcare encounters, including hospital and ICU admission status if applicable
- 952 • Medication usage and doses
- 953 • Hospital and ICU admission status, if applicable
- 954 • Administration of medications related to COVID-19, if applicable
- 955 • Remnant blood availability
- 956 • Laboratory and microbiology data, including COVID-19 testing done for clinical purposes

## 957 19. BIOSPECIMENS

958  
959 Where feasible, we will collect discarded remnant blood samples and nasal/oropharyngeal swab  
960 samples to quantify the viral load and host response to the virus. As noted under data collection,  
961 we will record laboratory and microbiology data performed for clinical purposes.

## 962 963 20. ANTIBODY ADMINISTRATION

964  
965 Antibodies will be administered as per the EUAs and UPMC Pharmacy and Therapeutics policies.  
966 Providers will explain mAB risks and benefits and provide the EUA Fact Sheets for Patients,

967 Parents and Caregivers  
968 as per EUA requirements.

969 21. mAB assignment

970  
971 The COVID-19 mABs are currently routinely used at UPMC. Once any order for mAB infusion  
972 is approved by the UPMC system oversight group, the pharmacy provides whichever EUA-  
973 governed mAB is available under a therapeutic interchange approach. Ordering physicians review  
974 with the patient the EUA Fact Sheet for each mAB and explain that the patient could receive any  
975 of the mABs governed by FDA EUAs.

976 If demand for mAB exceeds supply, UPMC has a lottery system to allot who receives the therapy  
977 once requested by a physician.

978 Our current proposal is a UPMC system quality improvement initiative, embracing and extending  
979 the current lottery system and therapeutic interchange policy for EUA-governed mABs for  
980 COVID-19 as follows:

981 1. The Physician orders mAB.

982 a. If scarcity present and lottery system allow provision, proceed.

983 2. The Pharmacy fills order with one of the EUA-governed COVID-19 mABs using an embedded  
984 assignment system akin to current mAb provision. This system will allow a comparative  
985 effectiveness evaluation of the multiple mABs by effectively ensuring random allocation.

986 3. The Physician can agree to the assigned mAB or can request a specific mAB.

987 It is the treating physician's choice to accept the assigned mAB or not, and therefore patient  
988 consent for the mAB assignment is not required. Patients will be told which mAB they are  
989 receiving, along with an EUA Fact Sheet, as per EUA requirements.

990

991

## 992 **22. STATISTICAL CONSIDERATIONS**

993

994 23. STRATA

995

996 Predefined strata will include patients discharged home after infusion, patients admitted to hospital  
997 after infusion, prior vaccination, and if known, presence of virus variants of concern at baseline  
998 and presence of neutralizing antibodies to SARS-CoV-2 at baseline.

999 24. NUMBER of PARTICIPANTS

1000

1001 Sample size is determined by case volume throughout the course of the pandemic.

1002 25. STATISTICAL ANALYSIS

1003

1004 The primary evaluation metric is the number of days free from hospitalization to day 28. We will  
1005 finalize a statistical analysis plan which will consider mAB assignment, heterogeneity of treatment  
1006 effect by patient characteristics and virus variants, and interaction with other treatments. Due to  
1007 uncertainty in sample size, we will use a Bayesian adaptive design to ensure ability to provide  
1008 statistical inference despite variable sample size.

1009 26. ETHICAL CONSIDERATIONS

1010

1011 27. DATA MONITORING

1012

1013 Evaluation center leadership will regularly monitor monthly reports on enrollment, patient  
1014 characteristics, and outcomes.

1015 28. CONSENT

1016 As per EUA requirements, physicians will discuss the risks and benefits of mABs and patients will  
1017 consent to receive a mAB as part of usual care, should they desire mAB treatment. As per UPMC  
1018 policy, the ordering physician reviews with patients the EUA Fact Sheet for each mAB and explain  
1019 that the patient could receive any of the mABs governed by FDA EUAs.

1020 29. ADVERSE EVENTS and SERIOUS ADVERSE EVENTS

1021

1022 The EUAs require providers and/or their designees report all medication errors and serious adverse  
1023 events potentially related to the antibodies within seven calendar days from the onset of the event.  
1024 Serious adverse events are defined as death, life-threatening event, inpatient hospitalization or  
1025 prolongation of existing hospitalization, substantial disruption of ability to conduct normal life  
1026 functions, a congenital anomaly/birth defect, or an intervention to prevent death, a life-threatening  
1027 event, hospitalization, disability, or congenital anomaly.

1028 The EUAs require adverse event reports be submitted to FDA MedWatch via one of multiple  
1029 methods. Copies of all FDA MedWatch forms are also to be sent to the antibody manufacturer.

1030 Thus, there already exist reporting requirements for UPMC associated with mAB prescription. We  
1031 will track and record these reported data and adverse events by mAB assignment.

1032 30. SAFETY and RISK MITIGATION

1033  
1034 The EUAs stipulate warnings including hypersensitivity, clinical worsening, and side effects. As  
1035 per EUA requirements, warnings will be communicated by providers to patients, adverse events  
1036 will be reported as above, and post-infusion clinical monitoring will be done. Administration of  
1037 mABs for patients with COVID-19 is routine care at UPMC, and their administration is not a  
1038 research procedure.

1039 31. MANAGEMENT of INFUSION REACTIONS

1040 As per the EUAs, all participants should be monitored closely, as there is a risk of infusion reaction  
1041 and hypersensitivity (including anaphylaxis) with any biological agent. Symptoms and signs that  
1042 may occur as part of an infusion reaction include, but are not limited to fever, chills, nausea,  
1043 headache, bronchospasm, hypotension, angioedema, throat irritation, rash including urticaria,  
1044 pruritus, myalgia, and dizziness.

1045 **32. EXHIBITS**

1046  
1047 EUA fact sheets for health care providers  
1048 <https://www.fda.gov/media/143603/download>  
1049 <https://www.fda.gov/media/143892/download>  
1050 <https://www.fda.gov/media/145802/download>

1051  
1052  
1053  
1054  
1055  
1056  
1057

1058  
1059  
1060  
1061  
1062  
1063  
1064  
1065

**FINAL VERSION 1.3, June 30, 2021**

**UPMC OPTIMISE-C19 (Optimizing Treatment and Impact of Monoclonal antibodies through Evaluation for COVID-19)**

A pragmatic evaluation of monoclonal antibody treatments in participants with COVID-19 illness (ClinicalTrials.gov, NCT04790786)

Summary	
Background	<ul style="list-style-type: none"> <li>• FDA Emergency Use Authorization (EUA) exists for multiple monoclonal antibodies (mAB) to treat COVID-19; the EUAs stipulate eligibility criteria, patient-physician communication, and clinical monitoring.<sup>1</sup></li> <li>• UPMC provides mABs as routine care; physicians order a mAB infusion and pharmacies assign whichever mAB is available under a therapeutic interchange approach. If scarcity exists, a lottery system is used.</li> <li>• Physicians review with patients the EUA Fact Sheet for each mAB and explain they could be assigned any of the EUA-governed mABs.<sup>2-3</sup></li> </ul>
Approach	<ul style="list-style-type: none"> <li>• Structure the therapeutic interchange policy and lottery system using a UPMC pharmacy embedded assignment system that allows a comparative effectiveness evaluation of the multiple mABs.<sup>5</sup></li> <li>• Collect data from clinically performed UPMC processes and EUA requirements for routine care.</li> </ul>
Treatments	<ul style="list-style-type: none"> <li>• Monoclonal antibodies (mAB) for COVID-19</li> </ul>
Inclusion Criteria	<p>These criteria are as per the FDA EUAs for COVID-19 mABs as of June 2021.<sup>6</sup></p> <ul style="list-style-type: none"> <li>• Adult (<math>\geq 18</math> years old)</li> <li>• Children <math>\geq 12</math> years old weighing at least 40 kg</li> <li>• With a positive SARS-CoV-2 antigen or PCR test and within 10 days of symptom onset</li> <li>• High risk of disease progression</li> </ul> <p>High risk is defined as patients who meet at least one of the following criteria:</p> <ul style="list-style-type: none"> <li>• Are <math>\geq 65</math> years old</li> <li>• A Body Mass Index (BMI)<math>&gt;25</math>, or if age 12-17, BMI <math>\geq 85^{\text{th}}</math> percentile</li> <li>• Pregnancy</li> <li>• Have chronic kidney disease</li> <li>• Have diabetes</li> <li>• Have immunosuppressive disease</li> </ul>

	<ul style="list-style-type: none"> <li>• Are currently receiving immunosuppressive treatment</li> <li>• Cardiovascular disease (including congenital heart disease) or hypertension</li> <li>• Chronic lung disease</li> <li>• sickle cell disease</li> <li>• neurodevelopmental disorders (e.g., cerebral palsy) or other conditions that confer medical complexity (e.g., genetic, or metabolic syndromes and severe congenital anomalies)</li> <li>• a medical-related technological dependence, for example, tracheostomy or gastrostomy)</li> </ul> <p>The EUAs note that other medical conditions or factors (for example, race or ethnicity) may also place individual patients at high risk for progression and authorization of mAB treatment under the EUA is not limited to the medical conditions or factors listed above.</p>
Exclusion Criteria	<p>These criteria are as per the FDA EUAs for COVID-19 mABs as of April 2021.<sup>6</sup></p> <ul style="list-style-type: none"> <li>• Are hospitalized for the treatment of COVID-19</li> <li>• Require oxygen therapy for the treatment of COVID-19</li> <li>• Require an increase in baseline oxygen flow rate due to COVID-19 in those on chronic oxygen therapy due to underlying non-COVID-19 related comorbidity</li> <li>• Have a known hypersensitivity to any antibody ingredient</li> </ul>
Primary evaluation metric	Total hospital free days at 28 days

1066  
1067

1068	Table of Contents	
1069	1. ABBREVIATIONS .....	65
1070	2. BACKGROUND and RATIONALE .....	65
1071	2.1. BACKGROUND.....	65
1072	2.2. RATIONALE.....	66
1073	3. OBJECTIVES AND METRICS.....	67
1074	3.1. OBJECTIVES .....	67
1075	3.2. METRICS.....	67
1076	4. DESIGN.....	68
1077	4.1. POPULATION.....	68
1078	4.1.1. INCLUSION CRITERIA	68
1079	4.1.2. EXCLUSION CRITERIA	69
1080	5. EVALUATED TREATMENTS.....	69
1081	5.1. CASIRIVIMAB and IMDEVIMAB .....	70
1082	5.2. SOTROVIMAB .....	70
1083	5.3. CONCOMITANT THERAPY.....	70
1084	6. CONDUCT.....	70
1085	6.1. DATA COLLECTION.....	70
1086	6.2. BIOSPECIMENS.....	71
1087	6.3. ANTIBODY ADMINISTRATION .....	71
1088	6.4. mAB assignment .....	71
1089	7. STATISTICAL CONSIDERATIONS .....	72
1090	7.1. STRATA .....	72
1091	7.2. NUMBER of PARTICIPANTS .....	72
1092	7.3. STATISTICAL ANALYSIS.....	72
1093	8. ETHICAL CONSIDERATIONS .....	73
1094	8.1. DATA MONITORING .....	73
1095	8.2. CONSENT .....	73
1096	8.3. ADVERSE EVENTS and SERIOUS ADVERSE EVENTS.....	73
1097	8.3.1. SAFETY and RISK MITIGATION	74
1098	8.3.2. MANAGEMENT of INFUSION REACTIONS	74
1099	9. EXHIBITS.....	74
1100		



1101

1102 **1. ABBREVIATIONS**

1103

AE	Adverse Events
BMI	Body Mass Index
C + I	casirivimab + imdevimab
CDC	Centers for Disease Control and Prevention
COPD	Chronic Obstructive Pulmonary Disease
COVID-19	Coronavirus disease 2019
CVD	Cardiovascular Disease
EUA	Emergency Use Authorization
FDA	Food and Drug Administration
HHS	Health and Human Services
HFD	Hospital Free Days
HTN	Hypertension
kDa	Kilodaltons
IgG1	Immunoglobulin G1
KG	Kilograms
OPTIMISE-C19	<b>OP</b> timizing <b>T</b> reatment and <b>I</b> mpact of <b>MO</b> noclonal ant <b>I</b> bodie <b>S</b> through <b>E</b> valuation
mAB	Monoclonal Antibodies
PCR	Polymerase Chain Reaction
SAEs	Serious Adverse Events
SARS-CoV-2	Severe Acute Respiratory Syndrome Coronavirus 2
UATRC	UPMC Antibody Treatment and Evaluation Center
Vir-7831	sotrovimab

1104

1105 **2. BACKGROUND and RATIONALE**

1106

1107 **3. BACKGROUND**

1108

1109 While COVID-19 vaccination will reduce COVID-19-related morbidity and mortality, the learned  
1110 immune response may vary between individuals. This means interventions such as monoclonal  
1111 antibodies (mAB) will still be needed to prevent progression of COVID-19 illness. Monoclonal  
1112 antibodies seek to mimic or enhance the natural immune system response against a pathogen and  
1113 are often used in the care of patients with cancer or infection.

1114 For viral infections, mABs are created by exposing a white blood cell to a particular viral protein,  
1115 which is then cloned to mass produce antibodies to target that virus. For SARS-CoV-2, the virus  
1116 that causes COVID-19, IgG1 mABs target the spike protein of SARS-CoV-2 and block viral  
1117 attachment and entry into cells.

1118 The SARS-CoV-2 mABs bamlanivimab and etesevimab, and the REGN-COV2 combination  
1119 (casirivimab + imdevimab) reduce nasopharyngeal viral burden plus clinical outcomes including  
1120 future emergency department visits and hospitalizations (Weinreich 33332778 NEJM, Gottlieb  
1121 33475701). Each received FDA Emergency Use Authorization (EUA) for use in selected  
1122 populations (**Exhibit**); in April 2021 FDA revoked the EUA for bamlanivimab monotherapy, and  
1123 in June 2021 FDA recommended bamlanivimab and etesevimab not be used. Additional trials of  
1124 pre-exposure prophylaxis (NCT04497987) and other applications are underway, and additional  
1125 mABs are in development.

1126 In May 2021, it was announced that sotrovimab demonstrated clinical efficacy (85%) in reducing  
1127 hospitalizations for more than 24 hours or death in those that received sotrovimab as compared to  
1128 placebo (NCT04545060). Subsequently, it received EUA approval in select populations.  
1129 Additional trials are underway.

1130 The trials demonstrated the greatest impact of the REGN-COV2 dual therapy among patients who  
1131 lacked neutralizing antibodies against SARS-CoV-2 at baseline and in those with high  
1132 nasopharyngeal viral loads. Additionally, few patients in the bamlanivimab/etesevimab trial  
1133 developed treatment-emergent SARS-CoV-2 resistance. This latter phenomenon may further  
1134 enhance the need for therapies given the recent emergence of SARS-CoV-2 variants that may  
1135 escape vaccination. However, the relative effectiveness of each mAB compared to the other is  
1136 unknown, as is their effectiveness for emerging virus variants.

1137 This Appendix to the UPMC Pilot Core (PittPro 20040210) describes the approach of the UPMC  
1138 OPTIMISE-C19 evaluation. We will conduct a pragmatic evaluation of monoclonal antibody  
1139 treatments in participants with COVID-19 illness, starting with the patient population approved  
1140 under the current FDA mAB EUAs.

1141

#### 1142 4. RATIONALE

1143

1144 As of June 2021, there are over 10,000 new cases of COVID-19 diagnosed daily in the US  
1145 [https://covid.cdc.gov/covid-data-tracker/#trends\\_dailytrendscases](https://covid.cdc.gov/covid-data-tracker/#trends_dailytrendscases), with over 1500 daily COVID-

1146 19 related hospital admissions [Microsoft Power BI \(powerbigov.us\)](https://powerbigov.us). Although case volumes are  
1147 currently declining, COVID-19 remains a significant public health threat.

1148 Despite the EUAs, the clinical use of mABs is low due in part to lack of patient access,  
1149 complexities in drug allocation, and lack of knowledge among providers are contributing factors.

1150 Further, the comparative effectiveness of different mABs is unknown and not yet directly studied.

1151 The National Academies of Sciences, Engineering, and Medicine recently called for expanded  
1152 access and clinical use of mABs, noting it is “critical to collect data and evaluate whether they are  
1153 working as predicted”.

1154 This evaluation seeks to expand access to mABs at UPMC and determine their relative effects  
1155 versus each other, starting with those governed by EUAs.

1156

## 1157 5. OBJECTIVES AND METRICS

1158

### 1159 6. OBJECTIVES

1160

1161 The primary objective is to evaluate the clinical and biological effect of multiple monoclonal  
1162 antibodies (mABs) in patients with COVID-19.

1163 The primary hypothesis is clinical and biological effect will vary between mABs, by SARS-CoV-  
1164 2 variants, and patient characteristics.

### 1165 7. METRICS

1166

1167 The primary evaluation metric is total hospital free days (HFD) at 28 days after mAB receipt  
1168 calculated as 28 minus the number of days during the index stay minus the number of days  
1169 readmitted during the 28 days after treatment. Death within 28 days is recorded as -1 HFD.

1170 Secondary evaluation metrics include:

1171 • All-cause and all-location mortality at 28 and 90 days

1172 • Emergency department visits at 28 days

1173 • Organ-support free days at day 28

1174 • Where feasible:

1175 • SARS-CoV-2 nasopharyngeal and plasma viral loads among participants from baseline and  
1176 longitudinally through day 28

- 1177       • SARS-CoV-2 antibody titers, antibody neutralization, and other immune responses at  
1178       baseline and longitudinally through day 28
- 1179       • Detection of SARS-CoV-2 variants through next-generation sequencing at baseline and  
1180       longitudinally through day 28
- 1181       • Determining the duration of SAR-CoV-2 infectivity and non-culture surrogates for SARS-  
1182       CoV-2 infectivity among patients with persistent nasopharyngeal swab viral shedding

1183

## 1184   **8.     DESIGN**

1185  
1186   We will conduct a pragmatic evaluation of participants with COVID-19 illness under existing  
1187   UPMC processes for the clinical care of COVID-19 positive patients, including EUA requirements  
1188   for mAB administration. A patient who presents to a UPMC facility and tests positive for COVID-  
1189   19 will, as per current common care, be offered monoclonal antibodies. Data that are already  
1190   collected according to UPMC procedures and EUA requirements are used for analysis.

1191

## 1192   **9.     POPULATION**

1193  
1194   We will evaluate patients that present to UPMC Emergency Departments, urgent care sites,  
1195   infusions centers and other facilities that can or do provide mABs for COVID-19. As of June 30,  
1196   2021, there are 2 EUAs for COVID-19 mABs, with common inclusion and exclusion criteria, and  
1197   we will evaluate patients that meet these criteria. As FDA antibody decisions change (E.g., FDA  
1198   revokes or grants EUAs, or changes eligibility criteria), eligibility criteria will change.

## 1199   **10.    INCLUSION CRITERIA**

1200

1201   As per the current EUA criteria (June 2021), the following patients are included:

- 1202       • Adult ( $\geq$  18 years old)
- 1203       • Children  $\geq$  12 years old weighing at least 40 kg
- 1204       • With a positive SARS-CoV-2 antigen or PCR test and within 10 days of symptom onset
- 1205       • High risk of disease progression

1206   High risk is defined as patients who meet at least one of the following criteria:

- 1207       • Are  $\geq$  65 years old

- 1208 • A Body Mass Index (BMI)>25, or if age 12-17, BMI  $\geq$  85<sup>th</sup> percentile
- 1209 • Pregnancy
- 1210 • Have chronic kidney disease
- 1211 • Have diabetes
- 1212 • Have immunosuppressive disease
- 1213 • Are currently receiving immunosuppressive treatment
- 1214 • Cardiovascular disease (including congenital heart disease) or hypertension
- 1215 • Chronic lung disease
- 1216 • sickle cell disease
- 1217 • neurodevelopmental disorders (e.g., cerebral palsy) or other conditions that confer medical
- 1218 complexity (e.g., genetic, or metabolic syndromes and severe congenital anomalies)
- 1219 • a medical-related technological dependence, for example, tracheostomy or gastrostomy)

1220 The EUAs note that other medical conditions or factors (for example, race or ethnicity) may also  
1221 place individual patients at high risk for progression and authorization of mAB treatment under  
1222 the EUA is not limited to the medical conditions or factors listed above.

#### 1223 11. EXCLUSION CRITERIA

1224  
1225 As per the current EUA criteria (June 2021), the following are excluded:

- 1226 • Are hospitalized for the treatment of COVID-19
- 1227 • Require oxygen therapy for the treatment of COVID-19
- 1228 • Require an increase in baseline oxygen flow rate due to COVID-19 in those on chronic
- 1229 oxygen therapy due to underlying non-COVID-19 related comorbidity
- 1230 • Have a known hypersensitivity to any antibody ingredient

#### 1231 12. EVALUATED TREATMENTS

1232  
1233 We will evaluate mABs governed by FDA EUAs. Patients will receive COVID-19 mABs  
1234 governed by FDA EUAs, when their treating physician orders a mAB and they meet EUA criteria.  
1235 As FDA antibody decisions change (E.g., FDA revokes or grants EUAs, provides full approval, or  
1236 changes eligibility criteria), available evaluated treatments will change. In April 2021, FDA  
1237 revoked the EUA for bamlanivimab monotherapy and in June 2021 FDA recommended  
1238 bamlanivimab and etesevimab not be used.

1239 As of June 30, 2021, the EUA-approved mABs are as listed below.

1240 13. CASIRIVIMAB and IMDEVIMAB

1241  
1242 Casirivimab, a human immunoglobulin G-1 (IgG1) monoclonal antibody (mAb), is covalent  
1243 eterotetramer consisting of 2 heavy chains and 2 light chains produced by recombinant DNA  
1244 technology in Chinese hamster ovary (CHO) cell suspension culture and has an approximate  
1245 molecular weight of 145.23 kDa.

1246 Imdevimab, a human IgG1 mAb, is a covalent heterotetramer consisting of 2 heavy chains and 2  
1247 light chains produced by recombinant DNA technology in Chinese hamster ovary (CHO) cell  
1248 suspension culture and has an approximate molecular weight of 144.14 kDa.

1249 14. SOTROVIMAB

1250  
1251 Vir 7831 (sotrovimab) is a recombinant human IgG1k monoclonal antibody that binds to a  
1252 conserved epitope on the spike protein receptor binding domain of SARS-CoV-2. Sotrovimab does  
1253 not compete with human ACE2 receptor binding.

1254  
1255 15. CONCOMITANT THERAPY

1256 All care and concomitant therapy are as per the treating providers.

1257

1258 **16. CONDUCT**

1259  
1260 17. DATA COLLECTION

1261  
1262 The EUAs require that healthcare facilities and providers report therapeutic information and  
1263 utilization data through HHS Protect, Teletracking, or National Healthcare Safety Network as  
1264 directed by the US Department of Health and Human Services.

1265 We will collect data including baseline demographics and underlying conditions, results of SARS-  
1266 COV-2 PCR or antibody testing, and initial care including mAB infusion completion. We will  
1267 collect post-randomization healthcare encounters, including hospitalization, emergency  
1268 department visits, ICU care, and other measures of healthcare utilization. We will use an electronic  
1269 health record data collection process to augment existing UPMC data collection processes as  
1270 necessary.

1271 All data will be handled and secured as per University of Pittsburgh and UPMC data guidelines.

1272 There will be no research activities involving direct interaction with subjects performed as part of  
1273 this evaluation.

1274 In addition to the primary and secondary outcome data referenced in this submission, data collected  
1275 will include the below areas. All data will be abstracted directly from the electronic health record  
1276 and handled anonymously.

- 1277 • mAB was administered, including date, time, and infusion completion as well as the  
1278 location of the infusion
- 1279 • Demographics (including age, sex, race, body weight, vaccination status)
- 1280 • Healthcare encounters, including hospital and ICU admission status if applicable
- 1281 • Medication usage and doses
- 1282 • Hospital and ICU admission status, if applicable
- 1283 • Administration of medications related to COVID-19, if applicable
- 1284 • Remnant blood availability
- 1285 • Laboratory and microbiology data, including COVID-19 testing done for clinical purposes

## 1286 18. BIOSPECIMENS

1287  
1288 Where feasible, we will collect discarded remnant blood samples and nasal/oropharyngeal swab  
1289 samples to quantify the viral load and host response to the virus. As noted under data collection,  
1290 we will record laboratory and microbiology data performed for clinical purposes.

1291

## 1292 19. ANTIBODY ADMINISTRATION

1293  
1294 Antibodies will be administered as per the EUAs, UPMC Pharmacy and Therapeutics policies and  
1295 the respective Pharmacy Manuals (as generated by the pharmaceutical companies), if applicable.  
1296 Providers will explain mAB risks and benefits and provide the EUA Fact Sheets for Patients,  
1297 Parents and Caregivers  
1298 as per EUA requirements.

## 1299 20. mAB assignment

1300  
1301 The COVID-19 mABs are currently routinely used at UPMC. Once any order for mAB infusion  
1302 is approved by the UPMC system oversight group, the pharmacy provides whichever EUA-  
1303 governed mAB is available under a therapeutic interchange approach. Ordering physicians review

1304 with the patient the EUA Fact Sheet for each mAB and explain that the patient could receive any  
1305 of the mABs governed by FDA EUAs.

1306 If demand for mAB exceeds supply, UPMC has a lottery system to allot who receives the therapy  
1307 once requested by a physician.

1308 Our current proposal is a UPMC system quality improvement initiative, embracing and extending  
1309 the current lottery system and therapeutic interchange policy for EUA-governed mABs for  
1310 COVID-19 as follows:

1311 1. The Physician orders mAB.

1312 a. If scarcity present and lottery system allow provision, proceed.

1313 2. The Pharmacy fills order with one of the EUA-governed COVID-19 mABs using an embedded  
1314 assignment system akin to current mAb provision. This system will allow a comparative  
1315 effectiveness evaluation of the multiple mABs by effectively ensuring random allocation.

1316 3. The Physician can agree to the assigned mAB or can request a specific mAB.

1317 It is the treating physician's choice to accept the assigned mAB or not, and therefore patient  
1318 consent for the mAB assignment is not required. Patients will be told which mAB they are  
1319 receiving, along with an EUA Fact Sheet, as per EUA requirements.

1320

1321

1322

## 1323 **21. STATISTICAL CONSIDERATIONS**

1324

### 1325 **22. STRATA**

1326

1327 Predefined strata will include patients discharged home after infusion, patients admitted to hospital  
1328 after infusion, prior vaccination, and if known, presence of virus variants of concern at baseline  
1329 and presence of neutralizing antibodies to SARS-CoV-2 at baseline.

### 1330 **23. NUMBER of PARTICIPANTS**

1331

1332 Sample size is determined by case volume throughout the course of the pandemic.

### 1333 **24. STATISTICAL ANALYSIS**

1334



1335 The primary evaluation metric is the number of days free from hospitalization to day 28. We will  
1336 finalize a statistical analysis plan which will consider mAB assignment, heterogeneity of  
1337 treatment effect by patient characteristics and virus variants, and interaction with other  
1338 treatments. Due to uncertainty in sample size, we will use a Bayesian adaptive design to ensure  
1339 ability to provide statistical inference despite variable sample size.

## 1340 **25. ETHICAL CONSIDERATIONS**

1341

## 1342 **26. DATA MONITORING**

1343

1344 UPMC clinical leadership will regularly monitor monthly reports on enrollment, patient  
1345 characteristics, and outcomes. Leadership will also receive regular interim analyses from the  
1346 adaptive statistical model to inform UPMC clinical policy.

## 1347 **27. CONSENT**

1348 As per EUA requirements, physicians will discuss the risks and benefits of mABs and patients will  
1349 consent to receive a mAB as part of usual care, should they desire mAB treatment. As per UPMC  
1350 policy, the ordering physician reviews with patients the EUA Fact Sheet for each mAB and explain  
1351 that the patient could receive any of the mABs governed by FDA EUAs.

## 1352 **28. ADVERSE EVENTS and SERIOUS ADVERSE EVENTS**

1353

1354 The EUAs require providers and/or their designees report all medication errors and serious adverse  
1355 events potentially related to the antibodies within seven calendar days from the onset of the event.  
1356 Serious adverse events are defined as death, life-threatening event, inpatient hospitalization or  
1357 prolongation of existing hospitalization, substantial disruption of ability to conduct normal life  
1358 functions, a congenital anomaly/birth defect, or an intervention to prevent death, a life-threatening  
1359 event, hospitalization, disability, or congenital anomaly.

1360 The EUAs require adverse event reports be submitted to FDA MedWatch via one of multiple  
1361 methods. Copies of all FDA MedWatch forms are also to be sent to the antibody manufacturer.

1362 Thus, there already exist reporting requirements for UPMC associated with mAB prescription. We  
1363 will track and record these reported data and adverse events by mAB assignment.

1364 29. SAFETY and RISK MITIGATION

1365  
1366 The EUAs stipulate warnings including hypersensitivity, clinical worsening, and side effects. As  
1367 per EUA requirements, warnings will be communicated by providers to patients, adverse events  
1368 will be reported as above, and post-infusion clinical monitoring will be done. Administration of  
1369 mABs for patients with COVID-19 is routine care at UPMC, and their administration is not a  
1370 research procedure.

1371 30. MANAGEMENT of INFUSION REACTIONS

1372 As per the EUAs, all participants should be monitored closely, as there is a risk of infusion reaction  
1373 and hypersensitivity (including anaphylaxis) with any biological agent. Symptoms and signs that  
1374 may occur as part of an infusion reaction include, but are not limited to fever, chills, nausea,  
1375 headache, bronchospasm, hypotension, angioedema, throat irritation, rash including urticaria,  
1376 pruritus, myalgia, and dizziness.

1377 **31. EXHIBITS**

1378  
1379 EUA fact sheets for health care providers

1380  
1381 <https://www.fda.gov/media/149534/download> (sotrovimab)  
1382 <https://www.regeneron.com/downloads/treatment-covid19-eua-fact-sheet-for-hcp.pdf>  
1383 [\(casirivimab and imdevimab\)](#)

1384  
1385  
1386  
1387  
1388  
1389  
1390  
1391  
1392  
1393

1394  
1395  
1396  
1397  
1398

## SUMMARY OF CHANGES

OPTIMISE-C19 - Summary of Changes for Amendment 1 on April 25, 2021:

Page #	Protocol Section	Reason for Change
1	Protocol Title Page	Title Changed to reflect new abbreviation being used for study
2-3	Summary table	Summary table updated to reflect protocol changes
10	4.1	Clarification added to section 4.1 to reflect changing landscape of FDA EUA authorization and revocation
12	5	Clarification added to section 5 to reflect changing landscape of FDA EUA authorization and revocation
12	5.1	Removed Section 5.1 Bamlanivimab due to EUA being revoked by the FDA
17	8.1	Updated to provide more detail on the monitoring of data by UPMC clinical leadership
18	9	EUA for Bamlanivimab removed

1399  
1400  
1401  
1402

Page #	Protocol Section	Reason for Change
NA	NA	Minor administrative changes throughout the document to reflect Amendment #2 documentation
2-3	Summary table	Summary table updated to reflect protocol changes
7	2.1.	Information regarding new monoclonal antibody
7	2.1.	Information added regarding the revocation of EUA approved of bamlanivimab and etesvimab
8	2.2.	Information added to reflect current COVID trends
10-11	4.1.1.	Updated Inclusion Criteria as per EUA requirements
12	5	Information added regarding the revocation of EUA approved of Bamlanivimab
12	5.1.	Removal of section 5.1. – bamlanivimab and etesvimab
12-13	5.2.	Addition of newly approved monoclonal antibody –
15	6.3.	Information added to reflect UPMC will utilize a pharmacy manual if provided by the drug
19	9.0.	Exhibits added and removed to reflect current EUA approved monoclonal antibodies

1403  
1404  
1405  
1406  
1407  
1408  
1409

OPTIMISE-C19 - Summary of Changes for Amendment 2 on June 30, 2021:

1410 **STATISTICAL ANALYSIS PLAN**  
1411

1412 **1. Introduction**

1413 This document describes the detail of the analysis read-out from July 26, 2021. This document is  
1414 an appendix to the Statistical Analysis Plan for the “UPMC Antibody Treatment and Evaluation  
1415 Center” with the details for this analysis read-out.

- 1416
- 1417 • We will analyze and report three treatment arms (below) as the first two have been  
1418 administratively closed to enrollment due to FDA decisions.
  - 1419
  - 1420 • Unblinded data from this and prior interim analyses can be shared with investigators after  
1421 the last randomized allocations (June 25) to the two mAB treatment arms closed by FDA.  
1422
  - 1423 • This unblinding is appropriate as future analyses of patients randomized to the third arm  
1424 (C+I) will not be compared to the first two arms, there are no “control” arms as all  
1425 patients receive mAB treatment, and future comparisons will be of C+I vs newer mABs.  
1426
  - 1427 • Enrollment continues in the currently available treatment arms (C+I and S). “S” refers to  
1428 sotrovimab, produced by GSK and Vir.

1429 **2. Treatment Arms**

1430 There are three treatment arms that will be included in this analysis. The treatment arms are  
1431 1. B (Bamlanivimab)  
1432 2. B+E (Bamlaniviman/Etesevimab combination)  
1433 3. C+I (casirivimab/imdevimab combination)

1434 **3. Primary Endpoint**

1435 The primary endpoint for this read-out is hospital-free days.

1436 **4. Primary Analysis Population**

1437 The primary analysis population for this read-out is the “As-Infused” population. This analysis  
1438 will include each patient randomized from March 10, 2021 until June 25, 2021. The date of the  
1439 data set snapshot is on July 26, 2021.

1440 **5. Primary Analysis Model**

1441 The primary analysis model is as described in the trial SAP.

1442

1443 The primary analysis for the primary endpoint is a cumulative proportional odds model. Let the  
1444 probability of an outcome of less than or equal to  $y$  be  $\pi_y = Pr(Y \leq y)$ . Let  $a$  be the indicator of  
1445 treatment arm ( $a=1, \dots, k$ ). The model adjusts for the following baseline variables:

- 1446 1. ED or infusion center (0=infusion center, 1=ED)  
1447 2. Age (with categories of <30, 30-39, 40-49, 50-59, 60-69, 70-79, and ≥80; 60-69 will be  
1448 used as the referent)  
1449 3. Sex (sex at birth, male is the referent)  
1450 4. Covid variant is not modeled in this primary analysis  
1451 5. Time (two-week epochs of time are used for adjustments; the most current 4-week period  
1452 is the referent)

1453  
1454 The primary analysis model is based on a cumulative logistic regression, where  $\pi_y = \Pr(Y \leq y)$ ,  
1455 where  
1456

1457 
$$\log\left(\frac{\pi_y}{1-\pi_y}\right) = \alpha_y - \theta_a \delta_{[a]} - \sum_{v=1}^4 \beta_{vj} \delta_{vj} - \lambda_{[time]}; y = -1, 0, 1, 2, \dots, 27.$$

1458  
1459 The additive covariate effects across all treatment arms for each patient are modeled through the  
1460  $\beta$  parameters. The  $\delta$  parameters are indicator functions for the treatment arm and covariate  
1461 values for the baseline covariates. The efficacy of the treatment arms is modeled with the  $\theta$   
1462 parameters. The ordinal effect parameters ( $\alpha_y$ ) are modeled with a Dirichlet distribution with  
1463 equal weight on each outcome and a sum of 1.

1464  
1465 The baseline covariate effects are modeled with independent weak prior distributions:  
1466

1467 
$$\beta_{vj} \sim N(0, 10^2), v = 1, \dots, 4; j = 1, \dots, n_v.$$

1468  
1469 The appropriate coefficients will be set to 0 within each covariate for identifiability (the goal will  
1470 be the largest category set to 0).

1471  
1472 The effects of time are adjusted within the model using two-week epochs and a smoothing model  
1473 over time. The modeling of the time effects is set up with the most current period (2 epochs  
1474 combined being the most recent month are set to 0):

1475  
1476 
$$\lambda_1 \equiv \lambda_2 \equiv 0$$

1477  
1478 
$$\lambda_2 - \lambda_1 \sim N(0, 0.15^2)$$

1479  
1480 
$$\lambda_T - 2\lambda_{T-1} + \lambda_{T-2} \sim N(0, \tau_\lambda^2); T \geq 3$$

1481  
1482 
$$\tau_\lambda^2 \sim IG(0.25, 0.00562)$$

1483  
1484 The prior distributions for the mAB treatment effects are weak:  
1485

1486 
$$\theta_a \sim N(0, 10), a = 1, 2, 3.$$

1487 **6. The treatment arms with the largest sample size should be selected as the referent**  
1488 **arm (label a=1) for treatment effects and assigned a treatment effect of  $\theta_1 = 0$ .**

1489 **7. Model Convergence**

1490 Given the complexity of the model, conventions may be taken by the analysis team if there are  
1491 convergence issues or model stability issues. For example, there may be outcome categories in  
1492 the 30 possible primary outcome values (e.g., k number of hospital-free days, patient death) that  
1493 do not occur. If this happens at analysis, the cells will be combined to achieve model  
1494 convergence. For example, if the 4 hospital-free day outcome value does not occur it will be  
1495 combined with 3, and so on, until every cell has occurred. Additional model stability conventions  
1496 will be taken to preserve the model stability.

## 1497 **8. Missing and Partial Data**

1498 If there are missing covariates for a patient in the as-infused patient population, the following  
1499 conventions will be used.

- 1500 1. If the treatment arm is missing the patient will be ignored.
- 1501 2. If a baseline covariate is missing the referent value for that covariate will be used

1502  
1503 For all model analyses, only patients who have achieved 28-days of follow-up from the date of  
1504 the index infusion will be used in the analysis. No use or imputation of patient data for patients  
1505 with less than 28 days will be conducted.

1506  
1507 Given the HER-based data summaries there will be no missing outcome data. If there is deemed  
1508 to be a corrupted outcome that patient will be ignored. Some patients may have 28  
1509 hospitalization-free days that at subsequent analyses are found to have out of system  
1510 hospitalizations. The data will be updated at future analyses.

## 1511 **9. Trial Inferences**

1512  
1513 For the primary analysis, there is no “control” treatment and so all inferences are made  
1514 comparing the individual treatment arms to each other. The main quantity of interest will be the  
1515 relative odds ratio between any two treatments arms

$$1516 \quad 1517 \quad OR_{ij} = \exp(\theta_i) / \exp(\theta_j).$$

1518  
1519 The posterior probability that the odds ratio for arm  $i$  compared to arm  $j$  is greater than 1  
1520 (signifying that treatment  $i$  is superior to treatment  $j$ ) is used as a comparison between arms.  
1521 Additionally, the posterior mean and 95% confidence interval between arms will be used to  
1522 summarize relative treatment effects.

1523  
1524 **Arm Inferiority:** If one of the arms has a 99% chance of being inferior to any of the other  
1525 available arms then the inferior arm will be declared inferior and may be removed from the trial.  
1526 There may be conditions of the pandemic (variation frequency, new variations) or drug supply  
1527 concerns that an arm is retained.

1528  
1529 **Equivalence:** Any two arms in the trial may reach a declaration of equivalence. It is anticipated  
1530 that no actions would take when equivalence is reached but a declaration and public disclosure  
1531 may be made. There is a sliding scale of equivalence with different levels of equivalence bounds.

1532 A declaration of equivalence will be tied to the equivalence level. Equivalence with a bound of  $d$   
 1533 is declared if the posterior probability of the odds ratio is with  $d$  is at least 95%:

1534

$$1535 \Pr\left(\frac{1}{1+\delta} \leq OR_{ij} \leq 1+\delta\right) \geq 0.95$$

1536

1537 The following levels are pre-defined:

- 1538 1. The first level of equivalence occurs when there is 95% posterior probability that the  
 1539 odds-ratio is within a bound of  $d=0.25$
- 1540 2. The second level of equivalence occurs when there is a 95% posterior probability that the  
 1541 odds-ratio is within a bound of  $d=0.20$
- 1542 3. The third level of equivalence occurs when there is a 95% posterior probability that the  
 1543 odds-ratio is within a bound of  $d=0.15$
- 1544 4. The fourth level of equivalence occurs when there is a 95% posterior probability that the  
 1545 odds-ratio is within a bound of  $d=0.10$
- 1546 5. The fifth level of equivalence occurs when there is a 95% posterior probability that the  
 1547 odds-ratio is within a bound of  $d=0.05$

1548

1549 **Combination Futility:** For comparing B+E to B the combination (B+E) will be compared to the  
 1550 individual component arm (B). If there is more than a 95% probability that the effect of the  
 1551 combination B+E is no better than a 20% improvement in the odds ratio compared to B, then the  
 1552 combination will be declared *not clinically relevantly superior (combination futile)* to N.

1553

## 1554 10. Modeling Treatment Heterogeneity Across Variant Date Prevalence Epochs

1555

1556 For this read out, the following time epochs will be modeled with different treatment effects  
 1557 using the Treatment Heterogeneity analysis model.

1558

1559 The treatment effect,  $\theta_a$ , will be modeled separately within each epoch,  $s = 1, \dots, S$ , as  
 1560  $\theta_{a1}, \theta_{a2}, \dots, \theta_{aS}$ , with hierarchical prior distribution:

1561

$$1562 \theta_{as} \sim N(\mu_a, \tau_a^2), a = 1, \dots, 3; s = 1, \dots, S.$$

1563

$$1564 \mu_a \sim N(0, 10^2); \tau_a^2 \sim IG(0.25, 0.1).$$

1565 The following time epochs are specified:

1566

- 1567 1. March 10 - March 31
- 1568 2. April 1 – April 30
- 1569 3. May 1 – May 31
- 1570 4. June 1 – June 25

1571

1572 Specific Analyses

1573

#	Status	Population	Endpoint	Other
---	--------	------------	----------	-------

<b>1</b>	Primary	As-Infused to B, B+I, or C+I on or before June 25, 2021	HFD	
<b>2</b>	Variant Secondary	As-Infused to B, B+I, or C+I on or before June 25, 2021	HFD	Differential efficacy by time epoch specified

1574  
1575  
1576  
1577

The primary analysis

The following posterior probabilities will be reported

Quantity of Interest	Posterior Probability
B+E superior to B	
B+E combination futile to B	
C+I superior to B	
C+I superior to B+E	

1578  
1579  
1580  
1581  
1582  
1583  
1584  
1585

Statistical Triggers Met for Equivalence with delta ranges of equivalence.

The following will be reported:

Odds-Ratio Parameter	Mean	SD	Median	95% Credible Interval
Age < 30				
Age 30 – 39				
Age 40 – 49				
Age 50 – 59				
Age 60 – 69	1			
Age 70 – 79				
Age 80+				
Female				
Time Bucket 1				
...				
Time Bucket k-1				
Referent Arm	1			
Arm #2				
Arm #3				
Arm #2/Arm #3				

1586  
1587  
1588  
1589

Graphical summaries

1. Stacked bar plots and cumulative distributions of HFDs by treatment arm
2. Stacked bar plots and cumulative distributions of HFDs by time epochs



1590 3. Stacked bar plots and cumulative distributions of HFDs by sex  
1591

1592 1. The Variant Secondary analysis

1593

1594

The following posterior probabilities will be reported for each time epoch

Quantity of Interest	Posterior Probability
B+E superior to B	
B+E combination futile to B	
C+I superior to B	
C+I superior to B+E	

1595

1596

1597 Statistical Triggers Met for Equivalence with delta ranges of equivalence

1598

1599

The following will be reported:

Odds-Ratio Parameter	Mean	SD	Median	95% Credible Interval
Age < 30				
Age 30 – 39				
Age 40 – 49				
Age 50 – 59				
Age 60 – 69	1			
Age 70 – 79				
Age 80+				
Female				
Time Bucket 1				
...				
Time Bucket k-1				
Referent Arm	1			
For each time-epoch				
Arm #2				
Arm #3				
Arm #2/Arm #3				

1600

1601 Graphical summaries

1602

4. Stacked bar plots and cumulative distributions of HFDs by treatment arm by time epoch

1603

1604 **References**

1605

35. U.S. Food and Drug Administration News Release. Coronavirus (COVID-19) update: FDA authorizes monoclonal antibody for treatment of COVID-19. 2020 November 9. Available at: <https://bit.ly/2HesBBs>. Accessed July 20, 2021.

36. U.S. Food and Drug Administration. Fact sheet for health care providers emergency use authorization (EUA) of bamlanivimab. Available at: <https://www.fda.gov/media/143603/download>. Accessed July 20, 2021.

37. U.S. Food and Drug Administration. Fact sheet for health care providers emergency use authorization (EUA) of bamlanivimab and etesevimab. Available at: <https://www.fda.gov/media/145802/download>. Accessed July 20, 2021.

38. U.S. Food and Drug Administration. Fact sheet for health care providers emergency use authorization (EUA) of REGEN-COV™. Available at: <https://www.regeneron.com/downloads/treatment-covid19-eua-fact-sheet-for-hcp.pdf>. Accessed July 20, 2021.

1606

39. Angus D. Fusing Randomized trials with big data: the key to self-learning health care systems? *JAMA* 2015;314:767-8.

1607

40. U.S. Department of Health & Human Services. Monoclonal Antibodies: Updates from the Federal COVID Response. 2021 June 15. Available at [https://leadingage.org/sites/default/files/ASPR\\_%20AHCA\\_AMDA\\_LeadingAge%20Monoclonal%20Webinar\\_20210615.pdf](https://leadingage.org/sites/default/files/ASPR_%20AHCA_AMDA_LeadingAge%20Monoclonal%20Webinar_20210615.pdf). Accessed July 20, 2021.

1608

1609

1610

1611

## Standard CONSORT with Pragmatic Trials Checklist

Section	Item	Standard CONSORT Description	Pragmatic Trials Extension	Page
Title and abstract	1	How participants were allocated to interventions (e.g., “random allocation,” “randomized,” or “randomly assigned”)		1-4
<b>Introduction</b>				
Background	2	Scientific background and explanation of rationale	Describe the health or health service problem that the intervention is intended to address and other interventions that may commonly be aimed at this problem	5
<b>Methods</b>				
Participants	3	Eligibility criteria for participants; settings and locations where the data were collected	Eligibility criteria should be explicitly framed to show the degree to which they include typical participants and/or, where applicable, typical providers (e.g., nurses), institutions (e.g., hospitals), communities (or localities e.g., towns) and settings of care (e.g., different healthcare financing systems)	7-8
Interventions	4	Precise details of the interventions intended for each group and how and when they were actually administered	Describe extra resources added to (or resources removed from) usual settings in order to implement intervention. Indicate if efforts were made to standardize the intervention or if the intervention and its delivery were allowed to vary between participants, practitioners, or study sites  Describe the comparator in similar detail to the intervention	—
Objectives	5	Specific objectives and hypotheses		5
Outcomes	6	Clearly defined primary and secondary outcome measures and, when applicable, any methods used to enhance the quality of measurements (e.g., multiple observations, training of assessors)	Explain why the chosen outcomes and, when relevant, the length of follow-up is considered important to those who will use the results of the trial	8
Sample size	7	How sample size was determined; explanation of any interim analyses and stopping rules when applicable	If calculated using the smallest difference considered important by the target decision maker	—

Section	Item	Standard CONSORT Description	Pragmatic Trials Extension	Page
			audience (the minimally important difference) then report where this difference was obtained	
Randomization— sequence generation	8	Method used to generate the random allocation sequence, including details of any restriction (e.g., blocking, stratification)		—
Randomization— allocation concealment	9	Method used to implement the random allocation sequence (e.g., numbered containers or central telephone), clarifying whether the sequence was concealed until interventions were assigned		6
Randomization— implementation	10	Who generated the allocation sequence, who enrolled participants, and who assigned participants to their groups		—
Blinding (masking)	11	Whether participants, those administering the interventions, and those assessing the outcomes were blinded to group assignment	If blinding was not done, or was not possible, explain why	9
Statistical methods	12	Statistical methods used to compare groups for primary outcomes; methods for additional analyses, such as subgroup analyses and adjusted analyses		9-11
<b>Results</b>				
Participant flow	13	Flow of participants through each stage (a diagram is strongly recommended)—specifically, for each group, report the numbers of participants randomly assigned, receiving intended treatment, completing the study protocol, and analyzed for the primary outcome; describe deviations from planned study protocol, together with reasons	The number of participants or units approached to take part in the trial, the number which were eligible, and reasons for non-participation should be reported	12
Recruitment	14	Dates defining the periods of recruitment and follow-up		—
Baseline data	15	Baseline demographic and clinical characteristics of each group		12
Numbers analyzed	16	Number of participants (denominator) in each group included in each analysis and whether analysis was by “intention-to-treat”; state the results in absolute numbers when feasible (e.g., 10/20, not 50%)		11
Outcomes and estimation	17	For each primary and secondary outcome, a summary of results for each		13

Section	Item	Standard CONSORT Description	Pragmatic Trials Extension	Page
Ancillary analyses	18	group and the estimated effect size and its precision (e.g., 95% CI) Address multiplicity by reporting any other analyses performed, including subgroup analyses and adjusted analyses, indicating which are prespecified and which are exploratory		13
Adverse events	19	All-important adverse events or side effects in each intervention group		13
<b>Discussion</b>				
Interpretation	20	Interpretation of the results, considering study hypotheses, sources of potential bias or imprecision, and the dangers associated with multiplicity of analyses and outcomes		14-16
Generalizability	21	Generalizability (external validity) of the trial findings	Describe key aspects of the setting which determined the trial results. Discuss possible differences in other settings where clinical traditions, health service organization, staffing, or resources may vary from those of the trial	16
Overall evidence	22	General interpretation of the results in the context of current evidence		17

1612  
1613  
1614