

1 The early impact of vaccination against SARS-CoV-2 in Region Stockholm, Sweden

2

3 Catherine Isitt^{1,2*}, Daniel Sjöholm^{3*}, Maria-Pia Hergens^{2,4}, Fredrik Granath³, Pontus

4 Naucér^{1,2}

5

6 1. Department of Infectious Diseases, Karolinska University Hospital, Stockholm,
7 Sweden

8 2. Department of Medicine Solna, Division of Infectious Diseases, Karolinska Institutet,
9 Sweden

10 3. Department of Medicine Solna, Clinical Epidemiology Unit, Karolinska Institutet,
11 Karolinska University Hospital, Sweden

12 4. Department of Communicable Disease Control and Prevention, Stockholm County
13 Council, Stockholm, Sweden

14

15 * Catherine Isitt and Daniel Sjöholm contributed equally to this manuscript

16

17 Contact information: Corresponding author Pontus Naucér pontus.naucer@sl.se,

18 Alternative contact Catherine Isitt catherine.isitt@sl.se

19

20 Key words: COVID-19, vaccines, SARS-CoV2, cohort study, Long-term-care-facilities

21

22 Abstract

23 Vaccination against SARS-CoV-2 started in Region Stockholm, Sweden in December 2020
24 with those in long-term care facilities or receiving home care vaccinated first followed by those
25 aged over 80 years. In this population-based, retrospective cohort study, we performed a
26 Poisson regression to model the expected incidence of infections and deaths which we
27 compared to the observed incidence and compared this to an unvaccinated control group of

28 **NOTE: This preprint reports new research that has not been certified by peer review and should not be used to guide clinical practice.**
those aged 18-79 years. The aim of this study was to measure the early impact of the

29 vaccination programme in Region Stockholm.

30

31 Infections and deaths reduced substantially amongst the first two groups targeted for SARS-
32 CoV-2 vaccination with an estimated total 3112 infections prevented, and 854 deaths
33 prevented in these two groups from 4 weeks after the introduction of vaccination through to
34 2nd May 2021.

35

36 **Introduction**

37 The Swedish COVID-19 vaccination programme prioritises those most at risk of severe
38 disease from SARS-CoV-2 infection first with the aim of protecting those most vulnerable and
39 safeguarding the healthcare system. The programme is divided into four phases: 1) adults
40 living in long-term care facilities (LTCF), adults receiving home care and their household
41 contacts, and healthcare staff working with this population, 2) adults over the age of 65 years
42 as well as adults of any age who receive dialysis or are transplant recipients, with the oldest
43 invited for vaccination first, 3) adults with other risk factors, 4) adults without risk factors over
44 18 years of age[1]. In Stockholm, vaccination of Phase 1 began on 27th December and
45 vaccination of Phase 2 started on 8th March 2021 with adults ≥ 80 years invited for vaccination
46 first[2]. Adults ≥ 75 years were invited starting on 29th March 2021[2, 3].

47

48 To assess the early impact of the vaccination programme in Stockholm, we performed a
49 population-based, retrospective cohort study to investigate the incidence of PCR-confirmed
50 SARS-CoV-2 as well as deaths within 30 days of a PCR-confirmed SARS-CoV-2 diagnosis,
51 in the cohorts targeted for vaccination compared to a control group not targeted for
52 vaccination.

53

54 **Methods**

55 **Study population**

56 The Stockholm COVID-19 cohort study collects data from all residents living in Region

57 Stockholm from 2015 onwards. We extracted data from the VAL database which collates
58 information from more than ten other healthcare related databases in Region Stockholm and
59 which has been previously described[4]. Age, and coding for resident in LTCF and home care
60 were used to define the two groups first targeted for vaccination, those in LTCF/home care
61 and those aged ≥ 80 years, plus a third group, those aged 18-79 years who were used as a
62 composite unvaccinated control. Linkage to SmiNet, the Public Health Agency of Sweden
63 notifiable infection reporting tool, was performed using unique personal identification numbers
64 that each resident in Sweden has, to extract data on SARS-CoV-2 PCR-positive cases.

65

66 The study was approved by the Swedish Ethical Review Authority.

67

68 **Statistics**

69 Analyses were restricted to 31st August 2020 to 2nd May 2021 in order to encompass the
70 second and third waves of COVID-19 in Stockholm. Data from the first wave were not used
71 given the lack of widely available testing at the start of the pandemic. Three mutually exclusive
72 groups were defined, those in LTCF or receiving home care, those aged 80+ years and a
73 composite control of those aged 18-79 years. The time point set for post-vaccination was 4
74 weeks after the start of vaccination, to account for the fact that the protective effect of a single
75 dose of vaccine is not immediate and that not all individuals in the group will be vaccinated in
76 the first week. The pre-vaccination incidence rate ratio (IRR) between the three groups were
77 estimated by Poisson regression based on the weekly incidences of cases (and deaths). Due
78 to over dispersion the confidence intervals for the estimated IRRs were adjusted by a standard
79 error inflation factor. The pre-vaccination IRRs (in relation to the composite control group)
80 were used to prognosticate the post-vaccination incidence of infections (and deaths) in
81 absence of vaccination, by multiplying the pre-vaccination IRRs with the observed post-
82 vaccination incidence in the composite control group, using the confidence intervals of the
83 pre-vaccination IRR to show uncertainty in the resulting estimate. Differences between the

84 prognosticated and observed number of events were used to estimate the number of
85 infections and deaths that may have been prevented up to 2nd May 2021 due to the vaccination
86 programme. Aggregated data on vaccine coverage was grouped by age and residence in
87 LTCF (home care status was not available).

88

89 Data was analysed using R version 4.1.0.

90

91

92 **Results**

93 A total 58,174 people (median age 80 years, IQR 71-87 years) were LTCF residents or
94 receiving home care. In the 80+ group there were 62,306 people (median age 83 years, IQR
95 81-86 years) whilst in the group aged 18-79 there were 1,748,647 people (median age 44
96 years, IQR 32-58 years). The proportion of men was lower in both the LTCF/home care group
97 and the 80+ group than in the control group 18–79 year-olds (0.40, 0.43, 0.50 respectively)
98 (Table 1).

99

100 **Table 1** Demographic data for Region Stockholm taken at end of study period 2021-05-02
101 divided by group

102

	LTCF resident/home care	80+	18-79
Total number of persons (N)	58,174	62,306	1,748,647
Median age years (IQR)	80 (71-87)	83 (81-86)	44 (32-58)
Sex (Proportion)			
Male	0.40	0.43	0.50
Female	0.60	0.57	0.50

103

104 **Infections**

105 The highest number of infections (182,695) were in the control group (18–79 year-olds) (Table
106 2). More infections were recorded in the LTCF/home care group (6769 total; 5232 pre-
107 vaccination, 1537 post-vaccination) than in the 80+ group (2464 total; 2276 pre-vaccination,

108 186 post-vaccination). The IRR for SARS-CoV-2 infection in the LTCF/home care group was
 109 1.70 (95%CI 1.54-1.88) pre-vaccination and 0.59 (0.49-0.71) post-vaccination compared to
 110 the composite control, higher than for the 80+ group which were 0.38 (0.33-0.44) pre-
 111 vaccination and 0.17 (0.09-0.27) post-vaccination (Table 2, Figure 1A). Weekly observed
 112 versus expected incidences of infection per 100,000 days at risk are presented in Figure 1A.
 113 The estimated number of infections prevented by vaccination was 2873 (2441-3337) for the
 114 LTCF/home care group and 239 (178-306) for the 80+ group (Table 2).

115

116

117

118 **Table 2** Summary of SARS-CoV2 infections between 2020-08-31 and 2021-05-02 in Region
 119 Stockholm

	LTCF resident/home care (n=58,174)	80+ (n= 62,306)	18-79 (n=1,748,647)
Total infections during study period (N)*	6769	2462	182, 695
Infections after vaccination	1537	186	N/A
Sum expected infections after vaccination	4410 (3978-4874)	425 (364-492)	N/A
Sum observed infection after vaccination	1537	186	N/A
Estimated prevented infections (95% CI)	2873 (2441-3337)	239 (178-306)	N/A
Infection incidence rate ratio pre-vaccination (95% CI)	1.70 (1.54-1.88)	0.38 (0.33-0.44)	Reference
Infection incidence rate ratio post-vaccination (95% CI)	0.59 (0.49-0.71)	0.17 (0.09-0.27)	Reference

120 *Summary infections between 2020-08-31 and 2021-05-02

121

122

123 **Mortality**

124 More deaths within 30 days of a positive SARS-CoV2 PCR test were recorded in the
 125 LTCF/home care groups than in the 80+ group during the study period (1218 vs 244) (Table

126 3). In both groups the majority of deaths occurred prior to the start of vaccination; in the
 127 LTCF/home care group there were 978 pre-vaccination and 240 post-vaccination whereas in
 128 the 80+ group there were 224 pre-vaccination and 20 post-vaccination. 348 deaths were
 129 recorded in the 18-79 group. The IRR for death within 30 days of a positive SARS-CoV2 PCR
 130 test decreased from 179 (95%CI 146-221) pre-vaccination to 45 (35-59) post-vaccination for
 131 the LTCF/home care group and from 20 (16-26) pre-vaccination to 9 (5-18) post-vaccination
 132 for the 80+ group, compared to the composite control (Figure 1B). The estimated number of
 133 deaths prevented after vaccination was 808 (95%CI 615-1053) for the LTCF/home care group
 134 and 46 (32-64) for the 80+ group (Table 3, Figure 1B). Weekly observed versus expected
 135 incidence for deaths are presented in Figure 1B.

136

137 **Table 3** Summary of deaths within 30 days of a positive SARS-CoV2 PCR test between
 138 2020-08-31 and 2021-05-02 in Region Stockholm

	LTCF resident/homecare (n=58,174)	80+ (n= 62,306)	18-79 (n=1,748,647)
Total deaths during study period (N)	1218	244	348
Deaths after vaccination	240	20	N/A
Death incidence rate ratio pre-vaccination (95% CI)	179 (146-221)	20 (16-26)	Reference
Death incidence rate ratio post-vaccination (95% CI)	45 (35-59)	9 (5-18)	Reference
Sum expected deaths after vaccination (95% CI)	1048 (855-1293)	66 (52-84)	N/A
Sum observed deaths	240	20	N/A
Estimated prevented deaths (95% CI)	808 (615-1053)	46 (32-64)	N/A

139

140

141 Vaccine coverage and choice of vaccines in Stockholm

142 Figures 1C and 1D show the vaccine coverage with doses 1 and 2 stratified by LTCF, age

143 80+ and ages 18-79. In both the LTCF and 80+ group, at least 80% of the group had received
 144 a first dose by 4 weeks after the start of vaccination of the group. The vaccine coverage data
 145 was based on LTCF and age, since data for those receiving home care was not available by
 146 vaccine status.

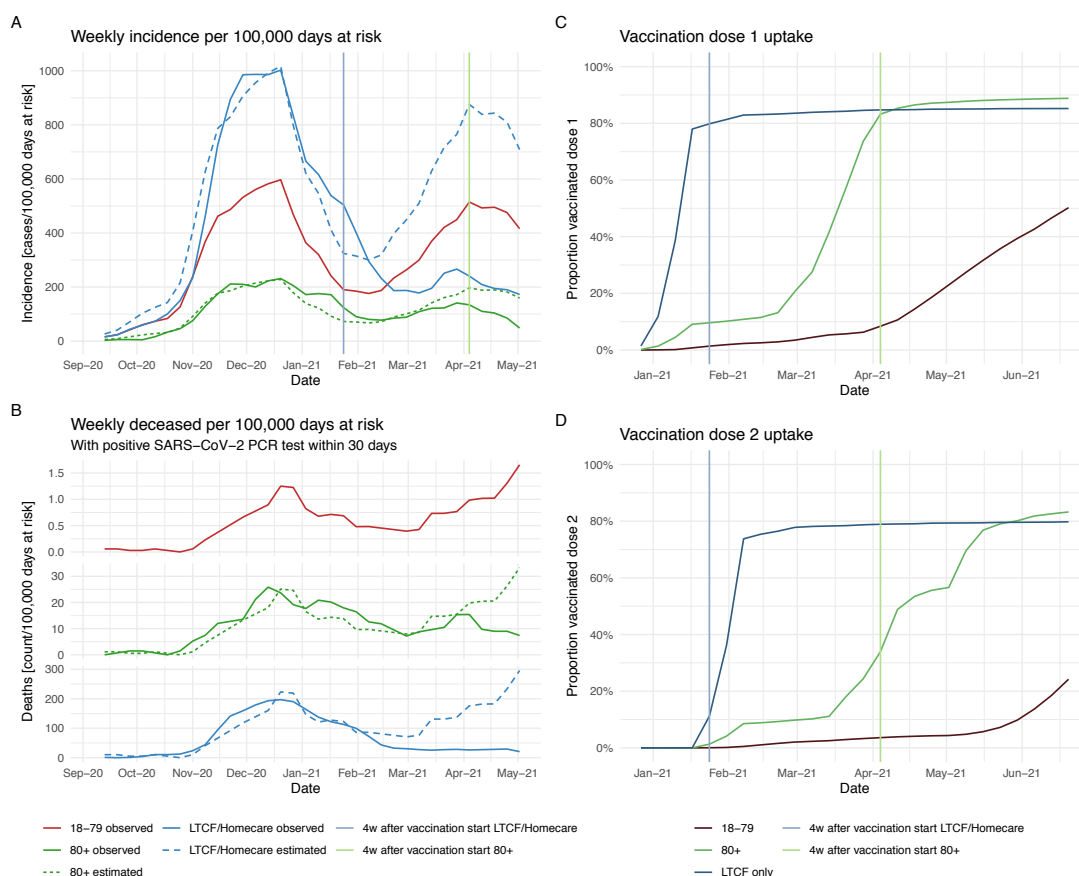
147

148 **Figure 1. A.** Weekly incidence of SARS-CoV-2 infection per 100,000 days at risk by group
 149 observed and estimated in the absence of vaccination (LTCF/home care, 80+, 18-79) **B.**

150 Weekly deceased per 100,000 days at risk by group observed and estimated in the absence
 151 of vaccination (LTCF/home care, 80+, 18-79) **C.** Vaccine coverage with dose 1 by group

152 (LTCF only, 80+, 18-79), **D.** Vaccine coverage with dose 2 by group (LTCF only, 80+, 18-79)

153



154

At risk plots: 2 week rolling average, population censored upon a positive test or 31d after a positive test, respectively.

155

156

157 **Discussion**

158 Our data suggests that vaccination of the LTCF/home care and 80+ groups succeeded in
159 preventing a third wave in these groups of the same magnitude as the control group. Since
160 the start of the vaccination programme there has been no national lock-down or increase in
161 restrictions to visiting friends and relative in LTCF and as such the effect of prevention of
162 infections and deaths is likely to be due to vaccination rather than to new social distancing
163 measures alone[5]. The IRR for infections and deaths was much lower in the 80+ group
164 compared to the LTCF/home care group even prior to vaccination, which is likely to be an
165 effect of the Swedish recommendations, that is, that those over 70 years take extra
166 precautions to avoid social contact with others outside their own household[6]. Those
167 receiving home care who have regular visits by healthcare professionals and those living in
168 LTCF have not been able to isolate to the same extent and have been much more vulnerable
169 to the spread of infection[7].

170
171 A combination of EU approved vaccines has been used since the start of the programme.
172 Use of the Pfizer-BioNTech mRNA vaccine started on 27th December 2020 followed by the
173 Moderna mRNA vaccine after it received EMA approval on 6th January 2021[8]. Astra-
174 Zeneca's COVID-19 vaccine received EMA approval on 29th January 2021[8] although
175 vaccination of those over 65 years with Astra-Zeneca's vaccine only started on 4th March due
176 to initial concerns about effectiveness in older adults[9]. Vaccination with Astra-Zeneca's
177 vaccine was paused between 16th and 25th March whilst reports of links with a rare blood
178 clotting disorder were investigated[3]. Since 25th March, vaccination with Astra-Zenecas
179 vaccine has been resumed amongst those over 65[3, 10, 11]. It is likely therefore that the
180 majority of those vaccinated in the LTCF/home care and 80+ groups received mRNA vaccines.

181
182 The effect observed is a combination of protection from a single dose and two doses. High
183 vaccine coverage by 4 weeks post-vaccination was achieved in both of the first groups
184 targeted for vaccination. Timing of the second dose of vaccinations has varied in Stockholm

185 based on which vaccine is given and time point during the vaccination programme. Currently
186 the mRNA vaccines are given with a 3-7 week dosing interval and Astra-Zeneca's vaccine
187 with a 6-12 week interval[12].

188

189 This study was limited to programmatic effect in that we were unable to link individual level
190 vaccine data as has recently been done in Israel[13] however little has yet been published on
191 the impact of programmes using heterologous vaccines such as this one which is one of the
192 studies strengths. A recent internal report from Public Health England estimates 10,400
193 deaths have been prevented in England in the first 4 months of their COVID-19 vaccination
194 programme using non-individual level data[14]. The advantage of before and after studies is
195 that they take into account both the direct and indirect effects of vaccination.

196

197 An additional limitation in our study is that vaccine coverage data was based on LTCF and
198 age, since data for those receiving home care was not available whereas incidence of
199 infections and deaths were calculated for the combined group (LTCF/home care). Some of
200 the reduction observed in the LTCF/home care group is likely due to indirect effects of
201 vaccination of healthcare workers. Reductions in observed vs. expected infections in the 80+
202 group started before vaccination indicating that the assumptions about symmetrical infection
203 incidence ratio during the second and third wave might not be fully accurate. The overall trend,
204 however, following initiation of vaccination is highly encouraging.

205

206 In conclusion, the programmatic early effects of vaccination in two of the most vulnerable
207 groups are both reduced SARS-CoV-2 infections and deaths.

208

209

210

211

212

213 **Authorship**

214

215 All authors have seen and approved the manuscript and contributed significantly to the work.

216 PN devised the study, CI wrote the manuscript and contributed to the analysis, DS

217 performed the main analysis, FG assisted with statistical analyses and MPH analysed and

218 provided the vaccination data.

219

220 **References**

221

222 [1] Folkhälsomyndigheten, Nationell plan för vaccination mot covid-19 (delrapportering
223 3) 2021.

224 [https://www.folkhalsomyndigheten.se/contentassets/43a1e203f7344a399367b816e2](https://www.folkhalsomyndigheten.se/contentassets/43a1e203f7344a399367b816e2c7144c/nationell-plan-vaccination-covid-19-delrapport-3.pdf)
225 [c7144c/nationell-plan-vaccination-covid-19-delrapport-3.pdf](https://www.folkhalsomyndigheten.se/contentassets/43a1e203f7344a399367b816e2c7144c/nationell-plan-vaccination-covid-19-delrapport-3.pdf). (Accessed 4th July 2021).

226 [2] R. Stockholm, 17 juni: Dagsläge covid-19, 2021.

227 [https://www.sll.se/verksamhet/halsa-och-varld/nyheter-lagesrapporter-covid-](https://www.sll.se/verksamhet/halsa-och-varld/nyheter-lagesrapporter-covid-19/2021/06/17-juni-dagslage-covid-19/)
228 [19/2021/06/17-juni-dagslage-covid-19/](https://www.sll.se/verksamhet/halsa-och-varld/nyheter-lagesrapporter-covid-19/2021/06/17-juni-dagslage-covid-19/). (Accessed 19th June 2021).

229 [3] Folkhälsomyndigheten, Information om vaccination med Astra Zenecas vaccin till
230 personer som är 65 år och äldre, 2021.

231 [https://www.folkhalsomyndigheten.se/smittskydd-beredskap/utbrott/aktuella-](https://www.folkhalsomyndigheten.se/smittskydd-beredskap/utbrott/aktuella-utbrott/covid-19/vaccination-mot-covid-19/om-vaccinerna-mot-covid-19/information-om-fortsatt-vaccination-av-astra-zenecas-vaccin-till-personer-som-ar-65-ar-och-aldre/)
232 [utbrott/covid-19/vaccination-mot-covid-19/om-vaccinerna-mot-covid-](https://www.folkhalsomyndigheten.se/smittskydd-beredskap/utbrott/aktuella-utbrott/covid-19/vaccination-mot-covid-19/om-vaccinerna-mot-covid-19/information-om-fortsatt-vaccination-av-astra-zenecas-vaccin-till-personer-som-ar-65-ar-och-aldre/)
233 [19/information-om-fortsatt-vaccination-av-astra-zenecas-vaccin-till-personer-som-ar-](https://www.folkhalsomyndigheten.se/smittskydd-beredskap/utbrott/aktuella-utbrott/covid-19/vaccination-mot-covid-19/om-vaccinerna-mot-covid-19/information-om-fortsatt-vaccination-av-astra-zenecas-vaccin-till-personer-som-ar-65-ar-och-aldre/)
234 [65-ar-och-aldre/](https://www.folkhalsomyndigheten.se/smittskydd-beredskap/utbrott/aktuella-utbrott/covid-19/vaccination-mot-covid-19/om-vaccinerna-mot-covid-19/information-om-fortsatt-vaccination-av-astra-zenecas-vaccin-till-personer-som-ar-65-ar-och-aldre/). (Accessed 4th June 2021).

235 [4] T. Forslund, A.C. Carlsson, G. Ljunggren, J. Arnlov, C. Wachtler, Fam Pract 38(2)
236 (2021) 132-140.

237 [5] Folkhälsomyndigheten, Tillfälliga lokala besöksförbud på äldreboenden upphör,
238 2021. [https://www.folkhalsomyndigheten.se/smittskydd-beredskap/utbrott/aktuella-](https://www.folkhalsomyndigheten.se/smittskydd-beredskap/utbrott/aktuella-utbrott/covid-19/information-till-varden/personal-inom-aldreomsorg/lokala-besoksforbud-pa-aldreboenden/)
239 [utbrott/covid-19/information-till-varden/personal-inom-aldreomsorg/lokala-](https://www.folkhalsomyndigheten.se/smittskydd-beredskap/utbrott/aktuella-utbrott/covid-19/information-till-varden/personal-inom-aldreomsorg/lokala-besoksforbud-pa-aldreboenden/)
240 [besoksforbud-pa-aldreboenden/](https://www.folkhalsomyndigheten.se/smittskydd-beredskap/utbrott/aktuella-utbrott/covid-19/information-till-varden/personal-inom-aldreomsorg/lokala-besoksforbud-pa-aldreboenden/). (Accessed 1st July 2021).

241 [6] Folkhälsomyndigheten, Folkhälsomyndighetens föreskrifter och allmänna råd om
242 allas ansvar att förhindra smitta av covid-19 m.m., 2020.

243 [https://www.folkhalsomyndigheten.se/contentassets/a1350246356042fb9ff3c515129](https://www.folkhalsomyndigheten.se/contentassets/a1350246356042fb9ff3c515129e8baf/hslf-fs-2020-12-allmanna-rad-om-allas-ansvar-covid-19-tf.pdf)
244 [e8baf/hslf-fs-2020-12-allmanna-rad-om-allas-ansvar-covid-19-tf.pdf](https://www.folkhalsomyndigheten.se/contentassets/a1350246356042fb9ff3c515129e8baf/hslf-fs-2020-12-allmanna-rad-om-allas-ansvar-covid-19-tf.pdf). (Accessed 4th
245 July 2021).

246 [7] S. Baral, R. Chandler, R.G. Prieto, S. Gupta, S. Mishra, M. Kulldorff, Ann Epidemiol 54
247 (2021) 21-26.

248 [8] Läke medelsverket, Coronavaccin, vaccin mot coronaviruset (covid-19), 2021.
249 <https://www.lakemedelsverket.se/sv/coronavirus/coronavaccin>. (Accessed 4th July
250 2021).

251 [9] Folkhälsomyndigheten, Samtliga godkända vacciner mot covid-19 skyddar mot
252 sjukdom, 2021. [https://www.folkhalsomyndigheten.se/nyheter-och-](https://www.folkhalsomyndigheten.se/nyheter-och-press/nyhetsarkiv/2021/februari/samtliga-godkanda-vacciner-mot-covid-19-skyddar-mot-sjukdom/)
253 [press/nyhetsarkiv/2021/februari/samtliga-godkanda-vacciner-mot-covid-19-skyddar-](https://www.folkhalsomyndigheten.se/nyheter-och-press/nyhetsarkiv/2021/februari/samtliga-godkanda-vacciner-mot-covid-19-skyddar-mot-sjukdom/)
254 [mot-sjukdom/](https://www.folkhalsomyndigheten.se/nyheter-och-press/nyhetsarkiv/2021/februari/samtliga-godkanda-vacciner-mot-covid-19-skyddar-mot-sjukdom/). (Accessed 4th July 2021).

- 255 [10] Folkhälsomyndigheten, Om vaccinerna mot covid-19, 2021.
256 <https://www.folkhalsomyndigheten.se/smittskydd-beredskap/utbrott/aktuella-utbrott/covid-19/vaccination-mot-covid-19/om-vaccinerna-mot-covid-19/om-vaccinerna/>. (Accessed 4th June 2021).
257
258
259 [11] Folkhälsomyndigheten, Rekommendation om åldersgräns på 65 år för AstraZenecas vaccin kvarstår, 2021. <https://www.folkhalsomyndigheten.se/nyheter-och-press/nyhetsarkiv/2021/april/rekommendation-om-aldersgrans-pa-65-ar-for-astrazenecas-vaccin-kvarstar/>. (Accessed 4th June 2021).
260
261
262
263 [12] Folkhälsomyndigheten, Om vaccinerna mot covid-19, 2021.
264 <https://www.folkhalsomyndigheten.se/smittskydd-beredskap/utbrott/aktuella-utbrott/covid-19/vaccination-mot-covid-19/om-vaccinerna-mot-covid-19/om-vaccinerna/>. (Accessed 4th July 2021).
265
266
267 [13] E.J. Haas, F.J. Angulo, J.M. McLaughlin, E. Anis, S.R. Singer, F. Khan, N. Brooks, M. Smaja, G. Mircus, K. Pan, J. Southern, D.L. Swerdlow, L. Jodar, Y. Levy, S. Alroy-Preis, Lancet 397(10287) (2021) 1819-1829.
268
269
270 [14] J.S. Nick Andrews, Sharif Ismael, Laura Coughlan, Hester Allen, Mary Ramsay, Jamie Lopez Bernal, Impact of COVID-19 vaccines on mortality in England: December 2020 to March 2021, 2021.
271
272
273 https://assets.publishing.service.gov.uk/government/uploads/system/uploads/attachment_data/file/977249/PHE_COVID-19_vaccine_impact_on_mortality_March.pdf.
274
275 (Accessed 4th July 2021).
276

277

278

279

280

281

282

283

284