

Title: The missing microbes: *Bifidobacterium* and *Faecalibacterium* depletion and loss of microbiome diversity as potential susceptibility markers for SARS-CoV-2 infection and severity

TARGET JOURNAL: *Clinical Gastroenterology and Hepatology*

	JOURNAL LIMITS*	CURRENT MANUSCRIPT*
ABSTRACT WORD COUNT:	260 words	248
TOTAL WORD COUNT:	4,000 words	3068 (without title page, abstract, or references)
NUMBER OF REFERENCES:	50	42
NUMBER OF TABLES AND FIGURES:	No limit	2 tables/5 figures

Short title: Microbiome changes associated with SARS-CoV-2 infection and severity

Authors: Sabine Hazan,¹ Neil Stollman,² Huseyin Bozkurt,³ Sonya Dave,⁴ Andreas J.

Papoutsis,¹ Jordan Daniels,¹ Sibasish Dolai,⁵ Bradley D. Barrows,¹ Eamonn MM Quigley,⁶

Thomas J. Borody⁵

Affiliations: ¹ProgenaBiome, Ventura, CA, USA; ²Division of Gastroenterology, Alta Bates

Summit Medical Center, Oakland CA; ³ Istanbul Maltepe University Medicine Faculty, Clinic

of Gastroenterology, Istanbul, Turkey; ⁴Microbiome Research Inc., Ventura, CA, USA; ⁵

Centre for Digestive Diseases, Five Dock, NSW, Australia; ⁶Lynda K and David M Underwood

Center for Digestive Disorders, Houston Methodist Hospital, Houston, TX, USA.

Corresponding Author:

Sabine Hazan

ProgenaBiome

1845 Knoll Drive, Ventura, CA 93003, USA.

Tel: +1 800-380-0221

Email: drhazan@progenabiome.com

Financial Information: No funding was received for this manuscript. Several authors were compensated or salaried by ProgenaBiome.

Abstract: (248/260 words)

Objective: To compare gut microbiome diversity and composition in SARS-CoV-2 polymerase chain reaction (PCR)-confirmed positive patients whose symptoms ranged from asymptomatic to severe versus PCR-negative exposed controls.

Design: Using a cross-sectional study design, we used shotgun next-generation sequencing (NGS) to evaluate microbiome composition and diversity in both patients with SARS-CoV-2

PCR-confirmed infections presenting to Ventura Clinical Trials for care from March 2020 through January 2021 and SARS-CoV-2 PCR-negative exposed controls. Patients were classified as being asymptomatic or having mild, moderate, or severe symptoms based on NIH criteria.¹ Exposed controls were individuals with prolonged or repeated close contact with patients with SARS-CoV-2 infection or their samples, e.g. household members of patients or frontline healthcare workers. Microbiome diversity and composition were compared between patients and exposed controls and across patient subgroups at all taxonomic levels.

Results: There were 52 patients and 20 controls. Compared with controls, patients had significantly less bacterial diversity, a lower abundance of *Bifidobacterium* and *Faecalibacterium* as well as some other bacteria, and a higher abundance of *Bacteroides* at the genus level. Additionally, there was an inverse association between disease severity and both bacterial diversity and *Bifidobacterium* and *Faecalibacterium* abundance.

Conclusion: We hypothesize that low bacterial diversity and depletion of *Bifidobacterium* and *Faecalibacterium* genera either before or after infection led to reduced pro-immune function, thereby allowing SARS-CoV-2 infection to become symptomatic. This particular dysbiosis pattern may be a susceptibility marker for severe symptoms from SARS-CoV-2 infection and may be amenable to pre-, intra-, or post infection intervention.

What is already known about this subject?	The gut microbiome is intrinsically related to host immune response (e.g., inflammation, TH1 vs. TH2) and susceptibility to infection.
What are the new findings?	Patients with SARS-CoV-2 infections possess significantly less bacterial diversity, lower abundance of <i>Bifidobacterium</i> and <i>Faecalibacterium</i> , and increased abundance of <i>Bacteroides</i> at the genus level compared with SARS-CoV-2 exposed controls. There are inverse associations between disease severity and the Shannon and Simpson diversity indices and also with <i>Bifidobacterium</i> and <i>Faecalibacterium</i> abundance. There is also a direct association between severity and <i>Bacteroides</i> abundance.
How might it impact on clinical practice in the foreseeable future?	Boosting of <i>Bifidobacterium</i> or <i>Faecalibacterium</i> through supplementation or fecal transplantation might hasten recovery for patients with acute severe disease or protracted infection (i.e., “long-haulers”). If low relative abundance of <i>Bifidobacterium</i> preceded infection, boosting levels might reduce susceptibility or minimize symptom severity. Alternatively, if the reduction follows infection, then refloweralization of the gut microbiome may reduce long-term effects of SARS-CoV-2 infection. We recognize that confirmatory investigation is warranted.

1. Introduction

Of all the bacteria colonizing the gastrointestinal tract, the *Bifidobacterium* genus within the Actinobacteria phylum is one of the most recognized and studied. They colonize the human gastrointestinal tract soon after birth, their relative abundance is inversely associated with both age and weight² and species within this genus represent the active ingredient in many probiotics. Theorized benefits of these Gram positive bacteria include enhanced ATP production, immune modulation,³ mucosal barrier integrity, restriction of bacterial adherence to and invasion of the intestinal epithelium, and modulation of central nervous system activity.^{4,5}

In vitro studies suggest that *Bifidobacterium* have immune-modulatory properties^{6,7-10} and may serve as a marker of high overall immune competence.¹¹ Many bifidobacteria have demonstrable anti-inflammatory properties: *B. animalis*, *longum*, and *bifidum* decrease the function of the “master switch”³ pro-inflammatory tumor necrosis factor- (TNF-) α , increase the anti-inflammatory cytokine interleukin- (IL-10), and promote TH1 while inhibiting TH2 immune response.¹¹ In a mouse model of inflammatory bowel disease, *B. bifidum* and *animalis* reduced pro-inflammatory cytokines and restored intestinal barrier integrity.¹¹

Relevant to diseases affecting the lungs, such as SARS-CoV-2 infection, there is immunologic coordination between the gut and lungs – the gut-lung axis.¹²⁻¹⁴

In the gut microbiota of SARS-CoV-2 infected patients, researchers have observed that increased abundance of the genera *Streptococcus*, *Rothia*, *Veilonella*, and *Actinomyces* was

associated with inflammation,¹⁵ increased abundance of *Collinsella aerofaciens*, *Collinsella tanakaei*, *Streptococcus infantis*, and *Morganella morganii* were associated with fecal samples with high SARS-CoV-2 infectivity,¹⁶ and increased Lachnospriaceae and Enterobacterioaceae abundance was associated with both increased need for artificial ventilation and mortality.¹⁶ Species mentioned as being potentially protective include *Parabacteroides merdae*, *Bacteroides stercoris*, *Alistipes onderdonkii*, *Lachnospiracea bacterium*¹⁶ and *Faecalibacterium prausnitzii*.^{16,17} At least two reports have described a decreased abundance of *Bifidobacterium bifidum* associated with SARS-CoV-2 infection and severity.^{17,18}

The scientific community and lay public are increasingly interested in the therapeutic potential of probiotics. *Bifidobacteria* spp. have shown potential to address a number of clinically important entities ranging from inflammatory bowel disease (IBD)¹⁹ to infection caused by *Clostridioides difficile*.¹⁹⁻²² Studies have shown that treatment with specific strains of *Bifidobacteria* helps restore colonic integrity *in vivo*²³ and reduce both *Clostridioides difficile* counts and toxin levels *in vitro*.²¹ There are also *in vivo* data suggesting that *Bifidobacterium longum* administered intranasally prior to exposure to influenza reduces mortality in mice.⁷

A number of studies have suggested that a healthy gut microbiome might be associated with decreased SARS-CoV-2 related mortality²⁴ and that probiotics should be considered for

prophylaxis²⁵ or treatment of SARS-CoV-2 infections²⁵ or as adjuvants to either therapy or vaccination.²⁶ Others have suggested that probiotics might reduce the incidence of secondary infections resulting from bacterial translocation.²⁷

As of May 2021, nearly 8000 studies had been registered worldwide to find therapies or vaccines for SARS-CoV-2 infection. Besides our current study, only two of these were focused on the effect of SARS-CoV-2 on the microbiome (clinicaltrials.gov: NCT04443075 and NCT04486482). In this study, we evaluate the relationships between gut microbiome diversity and composition compared to clinical outcome in cross-sectional groups of SARS-CoV-2 PCR-confirmed positive patients (ranging from asymptomatic to severely symptomatic) versus SARS-CoV-2 PCR-confirmed negative controls. This study is unique in that it compares SARS-CoV-2 positive patients versus SARS-CoV-2 exposed (i.e., either non-quarantined household members or frontline healthcare workers) persons who remained PCR-negative and asymptomatic (“controls”). The controls had similar viral exposures, but appeared to be protected against infection. Our comparison of the microbiome in patient vs. control subjects suggests that at least some protection may reside in the microbiome.

2. Methods:

2.1. Study Design and Patients

Patients diagnosed with SARS-CoV-2 infection who sought remote care from Ventura Clinical Trials in 2020 and 2021 were recruited to the study following expression of interest or physician referral. Patients eligible for enrolment were aged ≥ 18 years of age with RT-PCR-confirmed SARS-CoV-2 infection within one week of screening. Controls eligible for enrollment were PCR-negative for SARS-CoV-2, remained antibody negative for 3 to 6 months, and asymptomatic for 6 to 12 months. SARS-CoV-2 negative controls had to meet the following additional criteria: they either shared a household with at least one symptomatic SARS-CoV-2-positive family member (e.g., sibling, parent, or child) or were a healthcare worker who had been repeatedly exposed to symptomatic SARS-CoV-2-positive patients or numerous SARS-CoV-2 samples. Additionally, all exposed controls were ones that, despite exposure to SARS-CoV-2, chose not to quarantine or take prophylaxis for SARS-CoV-2 infection and none had yet been vaccinated. Of importance, patients with, or family members or staff exposed to SARS-CoV-2 did not wear PPE in the presence of their family or in doctor's offices. Healthcare workers and staff did not wear full PPE (i.e., did not wear masks) because of their scarcity during this global pandemic. Patients undergoing treatment with total parenteral nutrition, or those with a history of significant gastrointestinal surgery (e.g. bariatric surgery, total colectomy with ileorectal anastomosis, proctocolectomy, postoperative stoma, ostomy, or ileoanal pouch) were excluded.

The study was conducted in accordance with ethical principles of the Declaration of Helsinki, the International Council for Harmonisation (ICH) Harmonised Tripartite Guideline for Good Clinical Practice (GCP), and was approved by the “Ethical and Independent Review Services” (<https://www.eandireview.com/>) Independent Review Board (IRB). All patients provided written informed consent to participate in the study and the study is registered as [clinicaltrials.gov NCT04031469](https://clinicaltrials.gov/ct2/show/study/NCT04031469).

2.2. Assessments

A self-administered questionnaire solicited information on symptom severity, past medical history, current medication and probiotic use, and exposure to recreational drugs or animals. Patients with SARS-CoV-2 infection were further classified as being either asymptomatic carriers or having mild, moderate, or severe symptoms as per National Institute of Health, Clinical Spectrum of SARS-CoV-2 Infection criteria.^{1,28} PCR-confirmed SARS-CoV-2 positive household members of SARS-CoV-2 infected patients who lacked symptoms were categorized as asymptomatic carriers. Patients and controls were classified as underweight, normal weight, overweight, obese, or severely obese based on body mass index criteria of the Center for Disease Control and Prevention.²⁹

2.3. Stool Sample Collection and Processing

Patients and controls within the same household collected stool samples within a week of the index case being positive. They were instructed to collect 1 mL of fresh stool and place it directly in a Zymo Research DNA/RNA Shield fecal collection tube. Following fecal collection, each individual sample DNA was extracted and purified with the Qiagen PowerFecal Pro DNA extraction kit. The isolated DNA was then quantitated utilizing the Quantus Fluorometer with the QuantFluor ONE dsDNA kit. After DNA quantification, the DNA was normalized, and libraries were prepared using shotgun methodology with Illumina's Nextera Flex kit. Per our lab shotgun metagenomic processes, samples underwent tagmentation, amplification, indexing, and purification. After completing the NextSeq run, these raw data were streamed in real-time to Illumina's BaseSpace cloud for conversion to FASTQ files. The FASTQ data were compared to evaluate microbiome diversity in patients with PCR-confirmed SARS-CoV-2 infections and SARS-CoV-2 PCR-negative exposed controls. We compared microbiome differences between the SARS-CoV-2 patients and SARS-CoV-2-negative exposed controls at all taxonomic levels.

2.4. Data Analysis

We assessed differences in relative abundance across taxa between the gut microbiome of SARS-CoV-2 infected patients and exposed controls and calculated Shannon and Simpson index with One Codex's bioinformatics analysis pipeline using Jupyter notebook in Python. To evaluate the statistical significance of any variability noted between patients and exposed

controls, t-test, ANOVA, and chi-square tests statistics were conducted using R version 3.6.1 (2019-07-05), GraphPad vs. 8, and SigmaPlot 12.0. P-values <0.05 were considered significant.

3. **Results**

3.1. **Patient Characteristics**

Demographic and clinical characteristics of patients (n = 52) and exposed controls (n = 20) are presented in **Table 1**. Half (50%) of patients and 35% of exposed controls were male. The median (SEM) age of patients was 53 ± 2.5 years and of exposed controls was 48 ± 3.6 years. A total of 88.5% of patients were non-Hispanic White; 9.6%, Hispanic; 1.9%, Native American and 85.0% of exposed controls were non-Hispanic White; 10.0%, Hispanic; 5.0%, Black. Of patients, 57.7% had severe disease, 23.1% had moderate disease and 11.5% had mild disease; the remaining 7.7% were asymptomatic. 78.9% of patients and 60.0% of exposed controls had underlying comorbidities considered risk factors for increased morbidity and mortality by the CDC.² The mean \pm SEM BMI of the 52 patients for whom data were available was 27.9 ± 0.94 compared with 25.1 ± 0.96 for the 20 exposed controls. There was no statistical difference ($p > 0.05$) in gender, age, racial demographics, or presence of underlying comorbidity.

Of the exposed controls, 16 were family members of various SARS-CoV-2 positive patients, 2 were healthcare workers with extensive, non-protected, exposure to subjects, and 2 were laboratory personnel exposed to thousands of SARS-CoV-2 samples (healthcare workers and laboratory personnel did not wear full PPE (i.e., did not wear a face mask) due its scarcity; see methods). During the timeframe of the study, none of the patients or controls were on SARS-CoV-2 prophylaxis or treatment, and none had yet been vaccinated.

3.2. Gut Microbiome Diversity and Composition

Alpha diversity in patients categorized as severely affected based on NIH criteria and SARS-CoV-2 negative controls are shown in **Figure 1**, with a significant decrease in Shannon Index ($P=0.026$) and Simpson Index ($P=0.043$) in relation to SARS-CoV-2 positivity, suggesting that the gut microbiome of SARS-CoV-2 infected patients was less diverse than that of exposed controls.

Microbiome analysis revealed significant differences between the SARS-CoV-2 patients and controls. **Table 2** lists the bacteria that differed in abundance in relation to SARS-CoV-2 positivity (center column) and SARS-CoV-2 infection severity (right column) for all patients and controls. Patients with PCR-confirmed SARS-CoV-2 infection showed a significantly decreased abundance of *Bifidobacterium*, *Clostridium*, *Faecalibacterium*, *Faecalibacterium prausnitzii*, *Ruminococcus*, and *Subdoligranulum* and significantly increased abundance of

Bacteroides (**Figure 2**, **Table 2** middle column). **Table 2** right column shows that bacterial abundance was associated with symptom severity. A one-way ANOVA analysis revealed a significant association between increased disease severity and decreased abundance of *Bifidobacterium*, *Faecalibacterium*, *Faecalibacterium prausnitzii*, *Ruminococcus*, and *Subdoligranulum* and increased abundance of *Bacteroides* and *Dorea*. **Figure 2** summarizes **Table 2**, with green boxes depicting significant associations between changes in bacterial abundance and either SARS-CoV-2 positivity or SARS-CoV-2 infection severity.

Figure 3 shows the relative abundance of *Bifidobacterium* for each subject, grouped by SARS-CoV-2 infection severity. Analyzed via one-way ANOVA with Dunnett's *post-hoc* test (comparing all SARS-CoV-2 infection severities including asymptomatic to controls), there was a significant ($P=0.0002$) association between severity and *Bifidobacterium* relative abundance, particularly for severe ($P<0.0001$) and moderate ($P=0.0031$) severity infections.

Figure 4 shows the top 18 most common families and genera for patients stratified by disease severity and exposed controls. This diagram presents relatively raw data of the abundance of various families and genera. In column B, for SARS-CoV-2 positive patients' (top) microbiome, the reduced diversity compared to controls (bottom) can be subjectively observed.

4. Discussion

4.1. Immune function and health could be enhanced by bacterial abundance

Interactions between the host and gut microbiota are complex, numerous, and bidirectional.

Gut microbiota regulate the development and function of the innate and adaptive immune systems,³⁰ potentially allowing them to protect against both infections and infection severity.

The primary findings of our study are that SARS-CoV-2 positivity and infection severity are associated with decreased levels of bacterial diversity and decreased levels of the protective *Bifidobacterium* and *Faecalibacterium* genera. Uniquely, our study compared SARS-CoV-2 exposed SARS-CoV-2 negative persons (i.e., controls) with symptomatic and asymptomatic SARS-CoV-2 positive patients. Thus, we controlled for SARS-CoV-2 exposure..

Bacterial diversity is known to inversely relate to presence of various common disorders.³¹

Our study had similar findings: higher diversity, as exemplified by the Shannon and Simpson indices, correlated ($p < 0.05$) with reduced SARS-CoV-2 infection severity.

The genus *Bifidobacterium* has important immune functions,¹¹ is a major component of the microbiome, and is frequently used in probiotics.³² Bifidobacteria are Gram positive non-motile anaerobic rod-shaped bacteria. They protect against intestinal epithelial cell damage and this protection is independent of their effects on tumor necrosis factor alpha (TNF- α) production. The exopolysaccharide coat which is a feature of some *Bifidobacterium* has been

shown to play a significant role in this protective effect.³³ Bifidobacteria also reduce cell damage by inhibiting TNF- α and macrophages, and they increase Treg responses.³⁴ These immune functions of *Bifidobacterium* could be critical in relation to its SARS-CoV-2 infection-prevention effects.

Evidence has accumulated to support a beneficial effect from supplementation with *Bifidobacterium* in a number of disease states.³⁹ The number of commensal bifidobacteria have been shown to decrease with age,³⁹ a major SARS-CoV-2 infection risk factor. In our study, a significant relationship between disease severity and relative abundance of *Bifidobacterium* was observed; patients with a more severe course of viral infection decreased abundance of *Bifidobacterium*. However, it should be noted that there are no definitive studies concerning what constitutes a normal baseline abundance of *Bifidobacterium* in a “healthy” individual.

The abundance of *Faecalibacterium* genus and *Faecalibacterium prausnitzii* species were also inversely related to SARS-CoV-2 positivity and SARS-CoV-2 infection severity in this analysis. Age and diabetes are risk factors for SARS-CoV-2 infection, and *Faecalibacterium prausnitzii* levels decline markedly in elder and diabetic populations.³⁵ In fact, *Faecalibacterium* levels have been considered an indirect “indicator” of overall human health.³⁶ The “Western” diet (consumption of more meat, animal fat, sugar, processed foods, and low fiber) reduces levels of *F. prausnitzii*, while high-fiber (e.g. Mediterranean diet of

vegetables and fruits) and low meat intake enhances the abundance of *F.*

prausnitzii.³⁷ Preliminary studies showed that reduced ingestion of a Mediterranean diet within the same country is associated with increased SARS-CoV-2 related death rates.³⁸ In short, we show that *F. prausnitzii* levels negatively correlated to SARS-CoV-2 infection severity and prior studies show that reduced *F. prausnitzii* is associated with SARS-CoV-2 infection vulnerabilities such as age, diabetes, obesity, and possibly diet.

In addition to the negative correlations between relative abundance of *Bifidobacterium* and *Faecalibacterium* (especially *F. prausnitzii*) with both infection positivity and disease severity, we observed changes in the abundance of other characterized bacterial genera. SARS-CoV-2 positivity was associated with decreased abundance of *Clostridium*, *Ruminococcus*, and *Subdoligranulum* and increased abundance of *Bacteroides*. SARS-CoV-2 infection severity was associated with increased abundance of *Bacteroides* and *Dorea*. The implications of these changes remain unclear.

4.2. Innate immunity could be enhanced by increased bacterial level

The pathological impact of SARS-CoV-2 infection includes both direct effects from viral invasion and complex immunological responses including, in its most severe form, the ‘cytokine storm.’ The cytokine storm is the result of a sudden increase in circulating levels of pro-inflammatory cytokines produced by activated macrophages, mast cells, endothelial cells, and epithelial cells during innate immune responses, which appear to be modulated by

the abundance of *Bifidobacteria* and *Faecalibacteria* and bacterial diversity.^{5,30,36} Steroid treatment has situational success in SARS-CoV-2 infection, which is based on suppressing this over activation of the innate immune system, as reviewed by Tang et al.⁴⁰

Zhao et al. reported that elevated serum levels of pro-inflammatory cytokines such as IL-16 and IL-17 predict poor prognoses in patients with SARS-CoV-2 infection.⁴¹ Also, Tao et al. showed that changes in gut microbiota composition might contribute to SARS-CoV-2-induced production of inflammatory cytokines in the intestine, which may contribute to the onset of a cytokine storm.²⁸ Both authors report significantly reduced gut microbiota diversity, as well as increased opportunistic pathogens in SARS-CoV-2 patients. Interestingly, the bloom of opportunistic pathogens positively correlated with the number of Th17 cells. In another article, Bozkurt et al. reported that IL-6 and IL-17 promote viral persistence by immune interactions through cellular autophagy via the inositol-requiring enzyme 1 pathway.²⁶ They also cited that some species of *Bifidobacterium* are likely to prevent the replication of coronaviruses by reducing endoplasmic reticulum stress induced through the inositol requiring enzyme 1 pathway. Alterations in gut microbiota and reduced *Bifidobacterium* levels have been previously reported in the gastrointestinal tract of patients with IBD.²⁹ IL-17 also plays an important role in IBD. Furthermore, the direct endoscopic delivery of *Bifidobacterium* has been shown to be effective in promoting symptom resolution and mucosal healing—an effect likely to be associated with the anti-Th17 effect of

Bifidobacterium. The findings reported in the current study support the role of commensal *Bifidobacterium* in the severity of viral infection, suggesting the importance of microbiota in viral pathogenesis and their potential therapeutic implications. **Figure 5** demonstrates how bifidobacteria might quell a heightened immune response by dampening the effect of the master switch TNF- α .

5. Conclusions

Given our cross-sectional study design, it is not possible to determine whether the differences in *Bifidobacterium* levels observed between patients and exposed controls preceded or followed infection. If the differences preceded SARS-CoV-2 infection and are a marker of susceptibility, then boosting *Bifidobacterium* levels might be expected to decrease the risk or severity of SARS-CoV-2 infection. If these changes followed SARS-CoV-2 infection, then adjunctive reflowerization of the gut microbiome and boosting of *Bifidobacterium* through supplementation or fecal transplantation could speed recovery and reduce organ damage. Reflowerization may be particularly helpful for SARS-CoV-2 infection “long haulers,” patients hospitalized with ‘severe’ disease (including children with SARS-CoV-2-related multisystem inflammatory syndrome) and those with persistent symptoms. Future studies of individuals with baseline pre-pandemic microbiome data would be highly valuable. However, acquiring baseline pre-infection microbiome data is not at present inexpensive. Developing outbreaks within tightly closed communities such as nursing homes might be a good setting

in which to assess susceptibility: fecal samples could be collected during the outbreak and run *post hoc* on “cases” and “controls.”

SARS-CoV-2 infection presentation variability appears to show some correlation with colon microbiome bacterial composition and overall diversity. The same changes we observe due to SARS-CoV-2 infection, namely reduced *Bifidobacterium* and/or *Faecalibacterium* abundance, are likely associated with SARS-CoV-2 infection risk factors including old age, obesity, and diabetes.^{24,35,37,42} Thus, colon microbiome diversity and relative abundance of *Faecalibacterium* and *Bifidobacterium* may be markers that could be used to predict SARS-CoV-2 infection severity. Moreover, this suggests that evaluating an individual’s gut microbiome could provide important information for SARS-CoV-2 treatment or prevention.

In summary, in this study, we present findings from SARS-CoV-2-exposed subjects that include both those who remained healthy as well as those who became ill at various levels of severity. Reduced bacterial diversity and reduced levels of various bacteria are significantly related to both SARS-CoV-2 positivity and SARS-CoV-2 infection severity. These findings suggest that *Bifidobacterium* and other probiotic supplementation or reflowerization via fecal transplantation might provide a therapeutic benefit, particularly for patients hospitalized with severe disease. The data also suggest that individual colon microbiome evaluation may predict vulnerability to the development of severe SARS-CoV-2 infection. Lastly, our data suggest a new imperative: going forward, colon microbiome patterns should

be controlled for in studies intended to identify preventive (e.g., vaccines), prophylactic, or therapeutic measures for SARS-CoV-2 infections.

References

1. Clinical Spectrum of SARS-CoV-2 Infection. 2021;
<https://www.covid19treatmentguidelines.nih.gov/overview/clinical-spectrum/>. Accessed August 14, 2021, 2021.
2. De Vuyst L, Moens F, Selak M, Riviere A, Leroy F. Summer Meeting 2013: growth and physiology of bifidobacteria. *J Appl Microbiol*. 2014;116(3):477-491.
3. Parameswaran N, Patial S. Tumor necrosis factor-alpha signaling in macrophages. *Crit Rev Eukaryot Gene Expr*. 2010;20(2):87-103.
4. Marras L, Caputo M, Bisicchia S, et al. The Role of Bifidobacteria in Predictive and Preventive Medicine: A Focus on Eczema and Hypercholesterolemia. *Microorganisms*. 2021;9(4).
5. Stavropoulou E, Bezirtzoglou E. Probiotics in medicine: A long debate. *Front Immunol*. 2020;11:2192-2192.
6. Martins AKS, Martins FS, Gomes DA, et al. Evaluation of in vitro antagonism and of in vivo immune modulation and protection against pathogenic experimental challenge of two probiotic strains of *Bifidobacterium animalis* var. *lactis*. *Arch Microbiol*. 2010;192(12):995-1003.
7. Groeger D, Schiavi E, Grant R, et al. Intranasal *Bifidobacterium longum* protects against viral-induced lung inflammation and injury in a murine model of lethal influenza infection. *EBioMedicine*. 2020;60:102981.

8. Konieczna P, Akdis CA, Quigley EM, Shanahan F, O'Mahony L. Portrait of an immunoregulatory Bifidobacterium. *Gut Microbes*. 2012;3(3):261-266.
9. Konieczna P, Ferstl R, Ziegler M, et al. Immunomodulation by Bifidobacterium infantis 35624 in the murine lamina propria requires retinoic acid-dependent and independent mechanisms. *PLoS One*. 2013;8(5):e62617.
10. Schiavi E, Plattner S, Rodriguez-Perez N, et al. Exopolysaccharide from Bifidobacterium longum subsp. longum 35624 modulates murine allergic airway responses. *Benef Microbes*. 2018;9(5):761-773.
11. Ruiz L, Delgado S, Ruas-Madiedo P, Sánchez B, Margolles A. Bifidobacteria and their molecular communication with the immune system. *Front Microbiol*. 2017;8:2345-2345.
12. Ahlawat S, Asha, Sharma KK. Immunological co-ordination between gut and lungs in SARS-CoV-2 infection. *Virus Res*. 2020;286:198103-198103.
13. Follmer C. Viral infection-induced gut dysbiosis, neuroinflammation, and α -synuclein aggregation: Updates and perspectives on COVID-19 and neurodegenerative disorders. *ACS chemical neuroscience*. 2020;11(24):4012-4016.
14. Marsland BJ, Trompette A, Gollwitzer ES. The Gut-Lung Axis in Respiratory Disease. *Ann Am Thorac Soc*. 2015;12 Suppl 2:S150-156.
15. Gu S, Chen Y, Wu Z, et al. Alterations of the Gut Microbiota in Patients With Coronavirus Disease 2019 or H1N1 Influenza. *Clin Infect Dis*. 2020;71(10):2669-2678.

16. Zuo T, Liu Q, Zhang F, et al. Depicting SARS-CoV-2 faecal viral activity in association with gut microbiota composition in patients with COVID-19. *Gut*. 2021;70(2):276-284.
17. Yeoh YK, Zuo T, Lui GC, et al. Gut microbiota composition reflects disease severity and dysfunctional immune responses in patients with COVID-19. *Gut*. 2021;70(4):698-706.
18. Xu K, Cai H, Shen Y, et al. Management of COVID-19: the Zhejiang experience. *Zhejiang Da Xue Xue Bao Yi Xue Ban*. 2020;49(2):147-157.
19. Din AU, Hassan A, Zhu Y, et al. Inhibitory effect of Bifidobacterium bifidum ATCC 29521 on colitis and its mechanism. *J Nutr Biochem*. 2020;79:108353.
20. Nitzan O, Elias M, Peretz A, Saliba W. Role of antibiotics for treatment of inflammatory bowel disease. *World J Gastroenterol*. 2016;22(3):1078-1087.
21. Valdes-Varela L, Hernandez-Barranco AM, Ruas-Madiedo P, Gueimonde M. Effect of Bifidobacterium upon Clostridium difficile Growth and Toxicity When Co-cultured in Different Prebiotic Substrates. *Front Microbiol*. 2016;7:738.
22. Wei Y, Yang F, Wu Q, et al. Protective effects of Bifidobacterial strains against toxigenic Clostridium difficile. *Front Microbiol*. 2018;9:888-888.
23. Philippe D, Heupel E, Blum-Sperisen S, Riedel CU. Treatment with Bifidobacterium bifidum 17 partially protects mice from Th1-driven inflammation in a chemically induced model of colitis. *Int J Food Microbiol*. 2011;149(1):45-49.

24. Janda L, Mihalcin M, Stastna M. Is a healthy microbiome responsible for lower mortality in COVID-19? *Biologia (Bratisl)*. 2020;1-11.
25. Tiwari SK, Dicks LMT, Popov IV, et al. Probiotics at War Against Viruses: What Is Missing From the Picture? *Front Microbiol*. 2020;11:1877.
26. Bozkurt HS, Quigley EM. The probiotic Bifidobacterium in the management of Coronavirus: A theoretical basis. *Int J Immunopathol Pharmacol*. 2020;34:2058738420961304.
27. Jin X, Lian JS, Hu JH, et al. Epidemiological, clinical and virological characteristics of 74 cases of coronavirus-infected disease 2019 (COVID-19) with gastrointestinal symptoms. *Gut*. 2020;69(6):1002-1009.
28. Tao W, Zhang G, Wang X, et al. Analysis of the intestinal microbiota in COVID-19 patients and its correlation with the inflammatory factor IL-18. *Med Microecol*. 2020;5:100023.
29. Kostic AD, Xavier RJ, Gevers D. The microbiome in inflammatory bowel disease: current status and the future ahead. *Gastroenterology*. 2014;146(6):1489-1499.
30. Negi S, Das DK, Pahari S, Nadeem S, Agrewala JN. Potential role of gut microbiota in induction and regulation of innate immune memory. *Front Immunol*. 2019;10(2441).
31. Lloyd-Price J, Abu-Ali G, Huttenhower C. The healthy human microbiome. *Genome Med*. 2016;8(1):51.

32. Ghouri YA, Richards DM, Rahimi EF, Krill JT, Jelinek KA, DuPont AW. Systematic review of randomized controlled trials of probiotics, prebiotics, and synbiotics in inflammatory bowel disease. *Clin Exp Gastroenterol*. 2014;7:473-487.
33. Fanning S, Hall LJ, Cronin M, et al. Bifidobacterial surface-exopolysaccharide facilitates commensal-host interaction through immune modulation and pathogen protection. *Proc Natl Acad Sci U S A*. 2012;109(6):2108-2113.
34. Hughes KR, Harnisch LC, Alcon-Giner C, et al. Bifidobacterium breve reduces apoptotic epithelial cell shedding in an exopolysaccharide and MyD88-dependent manner. *Open Biol*. 2017;7(1).
35. Biagi E, Nylund L, Candela M, et al. Through ageing, and beyond: gut microbiota and inflammatory status in seniors and centenarians. *PLoS One*. 2010;5(5):e10667.
36. Ferreira-Halder CV, Faria AVS, Andrade SS. Action and function of Faecalibacterium prausnitzii in health and disease. *Best Pract Res Clin Gastroenterol*. 2017;31(6):643-648.
37. Ganesan K, Chung SK, Vanamala J, Xu B. Causal Relationship between Diet-Induced Gut Microbiota Changes and Diabetes: A Novel Strategy to Transplant Faecalibacterium prausnitzii in Preventing Diabetes. *Int J Mol Sci*. 2018;19(12).
38. Greene MW, Roberts AP, Fruge AD. Negative Association Between Mediterranean Diet Adherence and COVID-19 Cases and Related Deaths in Spain and 23 OECD Countries: An Ecological Study. *Front Nutr*. 2021;8:591964.

39. Arboleya S, Watkins C, Stanton C, Ross RP. Gut Bifidobacteria populations in human health and aging. *Front Microbiol.* 2016;7(1204).
40. Tang L, Yin Z, Hu Y, Mei H. Controlling Cytokine Storm Is Vital in COVID-19. *Front Immunol.* 2020;11:570993.
41. Zhao M. Cytokine storm and immunomodulatory therapy in COVID-19: Role of chloroquine and anti-IL-6 monoclonal antibodies. *Int J Antimicrob Agents.* 2020;55(6):105982.
42. Arboleya S, Watkins C, Stanton C, Ross RP. Gut Bifidobacteria Populations in Human Health and Aging. *Front Microbiol.* 2016;7:1204.

DECLARATIONS

Acknowledgments

The authors thank all clinicians for their involvement and contribution to the study. The authors thank Kate Hendricks, MD, MPH&TM for many helpful editorial suggestions. Finally, the authors thank Sydney M Finegold, MD for mentorship that sparked the interest in the microbiome to many scientists, including authors of this paper.

Medical writing assistance was provided by Jordana Campbell, BSc, CMPP and Sonya Dave, PhD and was funded by ProgenaBiome.

Funding

No funding was received for this study. Several authors were compensated by ProgenaBiome.

Conflicts of Interest/Competing Interests

SH and TJB have corporate affiliation to ProgenaBiome and Topelia therapeutics. AJP and BDB have corporate affiliations to Progenabiome. SD has corporate affiliation to McKesson Speciality Health and North End Advisory. SH and TJB have patents relevant to manuscript.

Authorship

All named authors meet the International Committee of Medical Journal Editors (ICMJE) criteria for authorship for this article, take responsibility for the integrity of the work as a whole, and have given their approval for this version to be published.

Authors' Contributions

All authors participated in the drafting, critical revision, and approval of the final version of the manuscript. SH led study design and conducted the bioinformatic analysis. SD conducted the statistical analysis. SH was primarily responsible for interpretation of the study results, with contributions from all authors.

Ethics Approval

Consent to Participate

All subjects provided written informed consent.

Figure Legends

Figure 1 Alpha diversity of SARS-CoV-2 positive patients with severe symptoms (n=30) vs. exposed controls (n=20). A. Shannon index (P=0.026) B. Simpson index (P=0.043)

Figure 2 Diagram of taxa, comparing the gut microbiome of SARS-CoV-2 positive patients and SARS-CoV-2 negative exposed controls. Green background indicates a significant association between abundance for either SARS-CoV-2 positivity or SARS-CoV-2 infection severity.

Figure 3 Relative abundance of *Bifidobacteria* in SARS-CoV-2 positive patients compared to SARS-CoV-2 negative exposed controls, grouped by disease severity.

Figure 4 Relative abundance of the top 18 most common **A.** families and **B.** genera. The top group represents the SARS-CoV-2 positive samples, stratified by severity. The bottom group represents the exposed control samples.

Figure 5 Potential mechanism for cytokine storm and immune hyper-response in SARS-CoV-2 positive patients. In individuals infected with SARS-CoV-2, the macrophages become

activated; these in turn activate T-cells, additional macrophages, and neutrophils—all of which release cytokines, including the “master switch” TNF- α . *Bifidobacteria*, when present in sufficient numbers, can bind to TNF- α and prevent the subsequent cytokine storm. Therefore, patients with a bifidobacterial dysbiosis characterized by low levels of *Bifidobacteria* lack this line of defense which may lead to a cytokine storm.

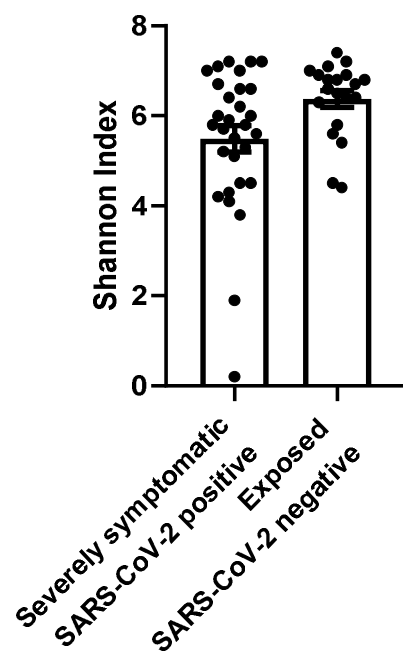
Figures

Figure 1 Alpha diversity of SARS-CoV-2 positive patients with severe symptoms (n=30) vs.

SARS-CoV-2 negative exposed controls (n=20). **A.** Shannon index (P=0.026) **B.** Simpson index

(P=0.043)

A.



B.

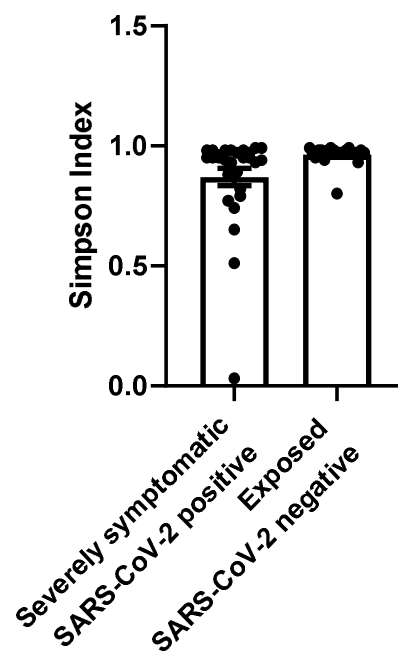


Figure 2 Diagram of taxa, comparing the gut microbiome of SARS-CoV-2 positive patients and SARS-CoV-2 negative exposed controls.

Green background indicates a significant association between abundance for either SARS-CoV-2 positivity or SARS-CoV-2 infection severity.

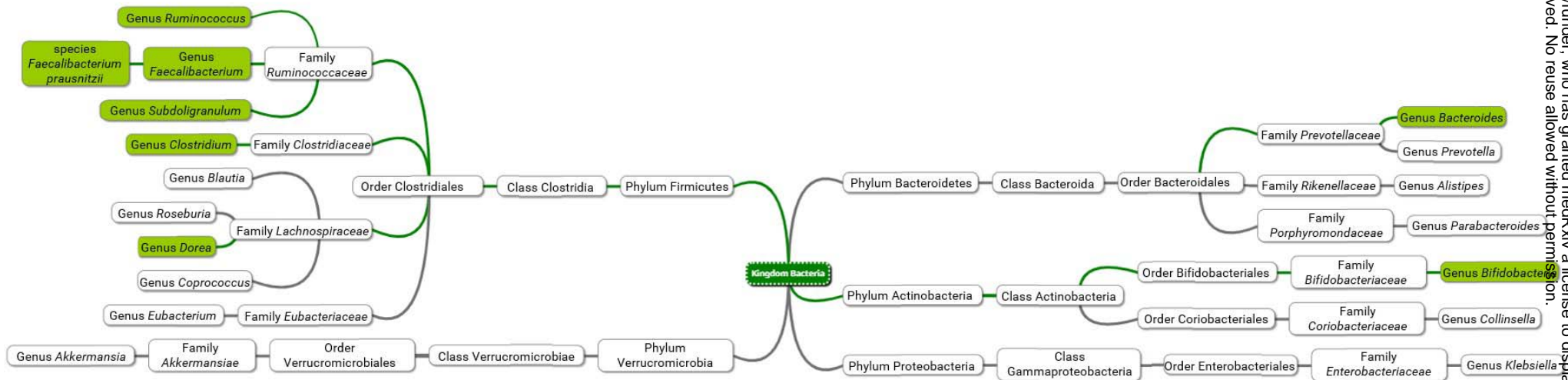


Figure 3 Relative abundance of *Bifidobacteria* in SARS-CoV-2 positive patients compared to SARS-CoV-2 negative exposed controls, grouped by disease severity.

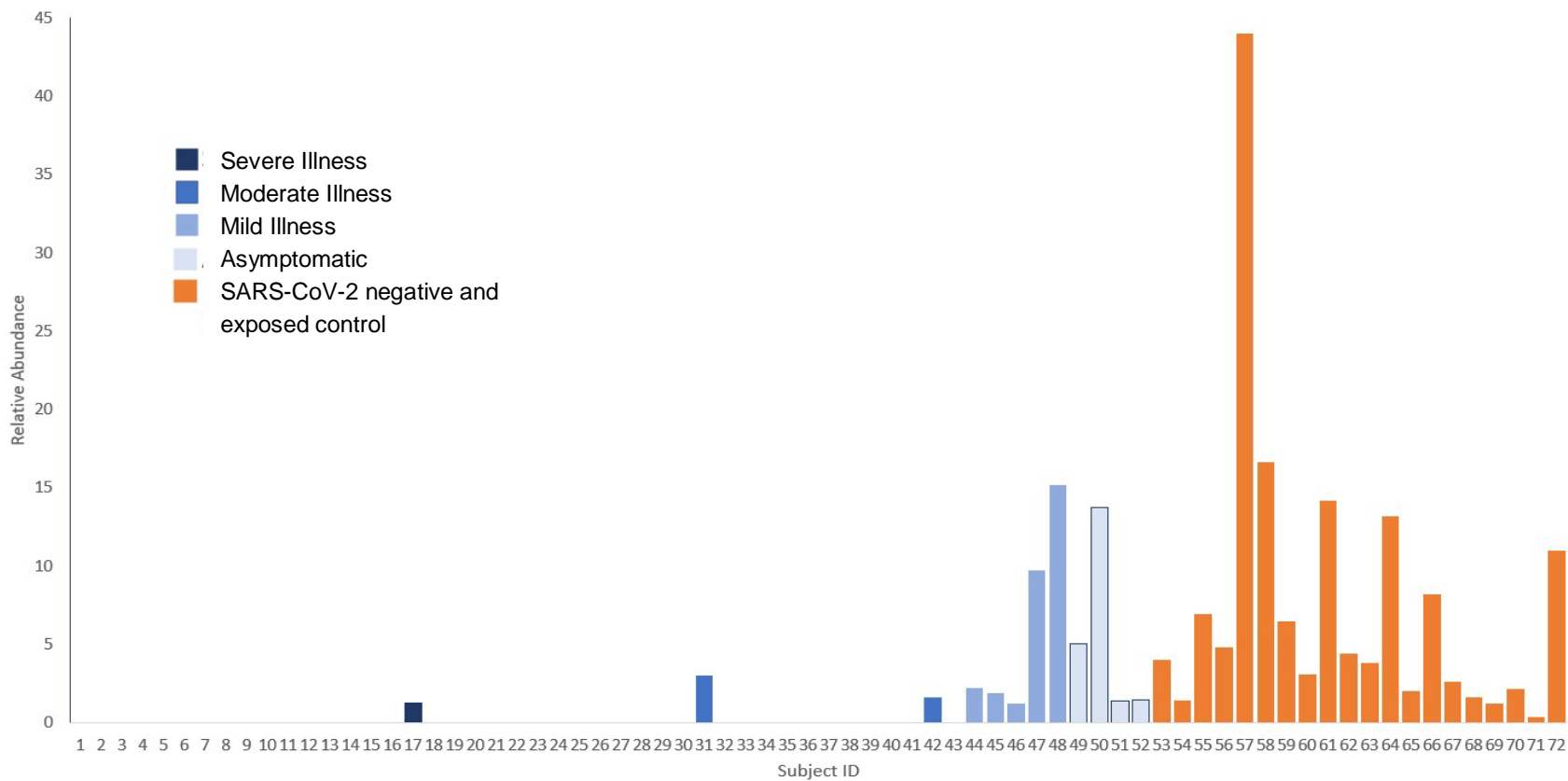


Figure 4 Relative abundance of the top 18 most common **A.** families and **B.** genera. The top group represents the SARS-CoV-2 positive samples, stratified by severity. The bottom group represents the exposed control samples.

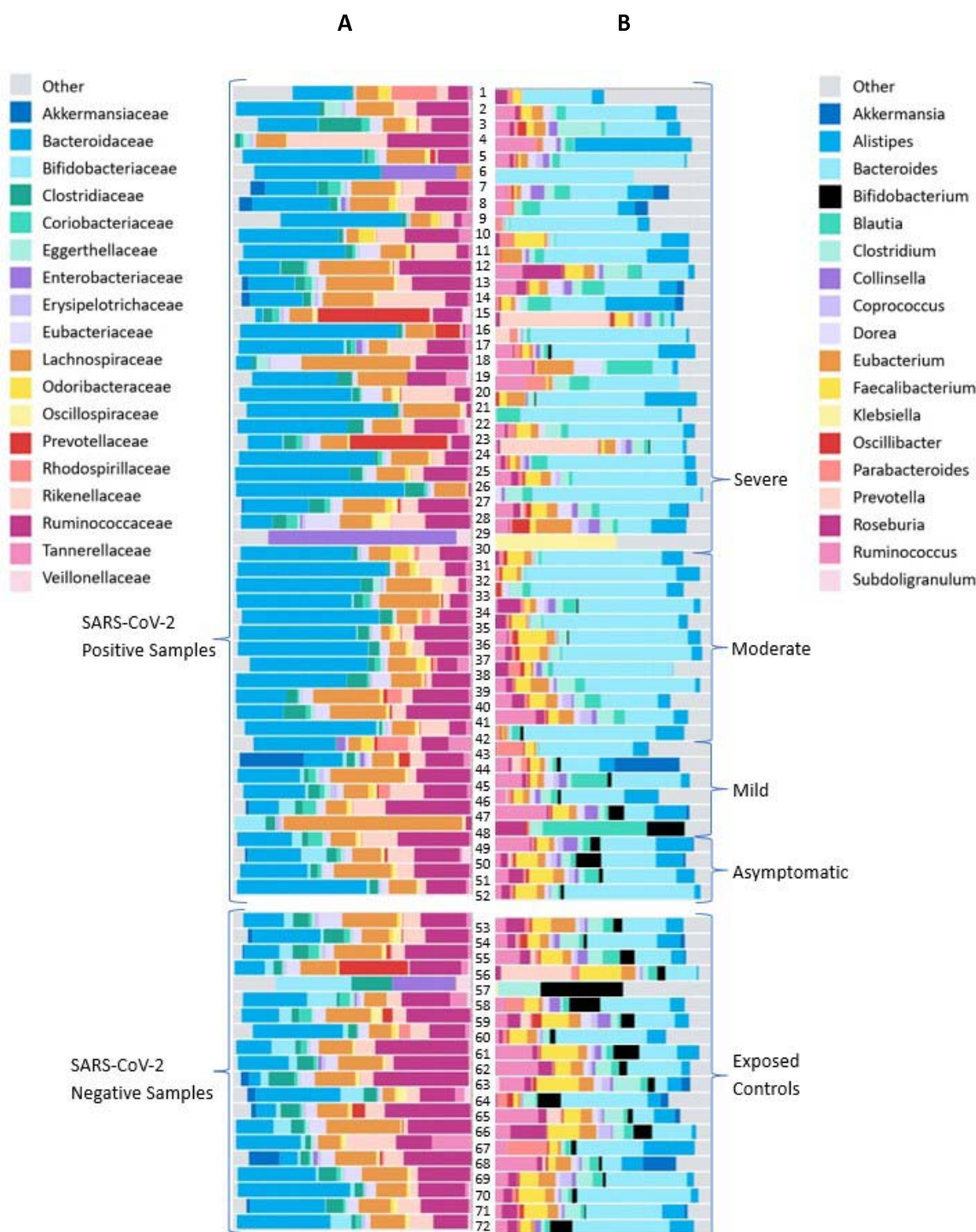
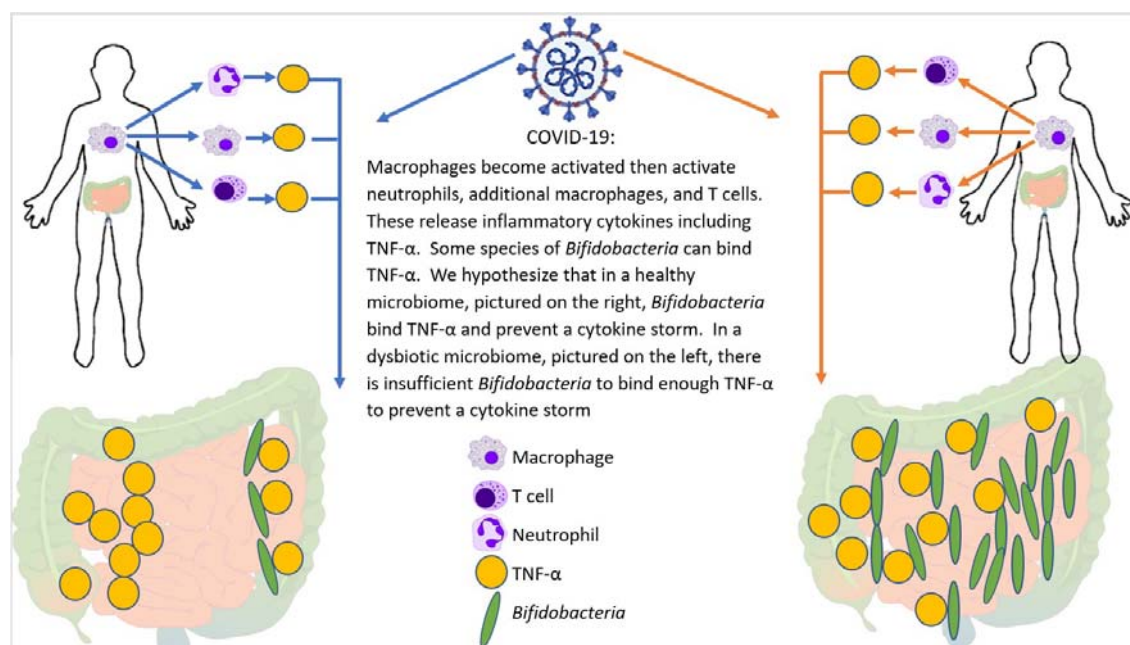


Figure 5 Potential mechanism for cytokine storm and immune hyper-response in SARS-CoV-2 positive patients. In individuals infected with SARS-CoV-2, the macrophages become activated; these in turn activate T-cells, additional macrophages, and neutrophils—all of which release cytokines, including the “master switch” TNF- α . *Bifidobacteria*, when present in sufficient numbers, can bind to TNF- α and prevent the subsequent cytokine storm. Therefore, patients with a bifidobacterial dysbiosis characterized by low levels of *Bifidobacteria* lack this line of defense which may lead to a cytokine storm.



Tables

Table 1. Demographic and baseline clinical characteristics of SARS-CoV-2-positive patients and SARS-CoV-2-negative exposed controls

Ranges: 1-5, 6-10, 11-15, 16-20, 21-25

No	Age	Sex	Ethnicity [†]	Risk Factors	BMI*	PCR Result	Category
1	21-25	F	NHW	none	24.8	positive	severe
2	71-75	M	H	none	18.4	positive	severe
3	86-90	M	NHW	Alzheimer's	21.1	positive	severe
4	16-20	F	NHW	none	22.0	positive	severe
5	31-35	M	NHW	overweight	26.9	positive	severe
6	31-35	M	NHW	obesity	30.7	positive	severe
7	41-45	F	NHW	overweight	25.8	positive	severe
8	66-70	F	NHW	overweight	25.8	positive	severe
9	56-60	M	NHW	overweight	27.3	positive	severe
10	41-45	F	NHW	overweight	27.8	positive	severe
11	51-55	M	NHW	obesity	30.7	positive	severe
12	36-40	M	NHW	hypertension	23.8	positive	mild
13	56-60	M	NHW	none	22.7	positive	severe
14	66-70	F	NHW	hypertension	22.9	positive	severe

15	55-60	M	NHW	obesity, HIV	37.2	positive	severe
16	66-70	F	NHW	hypertension, diabetes mellitus, obesity, cerebral aneurysm	48.5	positive	severe
17	66-70	M	NHW	hypertension, obesity, pulmonary embolus	33.2	positive	severe
18	46-50	F	NHW	overweight	27.4	positive	severe
19	56-60	M	NHW	hypertension, overweight	26.2	positive	severe
20	61-65	F	NHW	hypertension, overweight	28.1	positive	severe
21	56-60	F	NHW	hypertension	NA	positive	severe
22	51-55	F	NHW	none	24.5	positive	severe
23	36-40	M	NHW	obesity	30.7	positive	severe
24	6-10	M	NHW	none	14.5	positive	severe
25	51-55	M	NHW	none	24.1	positive	severe
26	51-55	F	NHW	hypertension, overweight	25.0	positive	severe
27	61-65	F	NHW	none	23.8	positive	severe
28	71-75	F	NHW	none	19.5	positive	severe

29	61-65	M	NHW	obesity, hypertension	31.5	positive	severe
30	16-20	M	NHW	Crohn's	15.1	positive	severe
31	21-25	F	NHW	obesity	30.9	positive	moderate
32	21-25	F	NHW	obesity, asthma	30.6	positive	moderate
33	21-25	F	NHW	asthma	NA	positive	moderate
34	36-40	F	H	hypertension, overweight	25.4	positive	moderate
35	31-35	M	H	none	18.4	positive	moderate
36	61-65	F	H	overweight	NA	positive	moderate
37	61-65	M	NHW	COPD	NA	positive	moderate
38	71-75	M	NHW	hypertension, severe obesity	48.5	positive	moderate
39	66-70	M	NHW	obesity	33.1	positive	moderate
40	66-70	M	NHW	obesity	30.7	positive	moderate
41	56-60	F	NHW	obesity	32.0	positive	moderate
42	66-70	F	NHW	hypertension	20.9	positive	moderate
43	16-20	M	NHW	none	23.5	positive	mild
44	36-40	F	NHW	none	18.6	positive	mild
45	31-35	F	NHW	overweight	28.5	positive	mild

46	51-55	M	NHW	overweight	29.0	positive	mild
47	36-40	F	--	obesity	31.3	positive	mild
48	41-45	F	NHW	hypertension	23.0	positive	mild
49	21-25	M	NHW	overweight	25.8	positive	asymptomatic
50	46-50	F	H	none	20.4	positive	asymptomatic
51	66-70	M	NHW	overweight	28.5	positive	asymptomatic
52	51-55	M	NHW	obesity, diabetes	35.3	positive	asymptomatic
53	66-70	F	NHW	overweight, + relative	26.6	negative	exposed
54	56-60	F	H	obesity, relative	+ 30.0	negative	exposed
55	51-55	F	NHW	hypertension, prediabetes, + relatives	25.0	negative	exposed
56	61-65	M	NHW	overweight, relative	+ 26.4	negative	exposed
57	26-30	M	NHW	overweight, + relative	26.4	negative	exposed
58	21-25	F	NHW	overweight,	26.4	negative	exposed

+ relative

59	61-65	F	NHW	none, + boyfriend	(kissed)	17.4	negative	exposed
-----------	-------	---	-----	----------------------	----------	------	----------	---------

60	51-55	F	NHW	none,		19.9	negative	exposed
-----------	-------	---	-----	-------	--	------	----------	---------

+ relatives

61	16-20	F	NHW	none, relative	+	21.2	negative	exposed
-----------	-------	---	-----	-------------------	---	------	----------	---------

62	26-30	M	--	none,	+	19.5	negative	exposed
-----------	-------	---	----	-------	---	------	----------	---------

patients

63	56-60	F	--	none, patient samples	+	25.5	negative	exposed
-----------	-------	---	----	--------------------------	---	------	----------	---------

64	51-55	F	--	none,	+	24.0	negative	exposed
-----------	-------	---	----	-------	---	------	----------	---------

workers,
patients,
patient samples

65	31-35	M	NHW	none, relative	+	23.7	negative	exposed
-----------	-------	---	-----	-------------------	---	------	----------	---------

66	31-35	M	NHW	none,	+	21.7	negative	exposed
-----------	-------	---	-----	-------	---	------	----------	---------

roommate

67	61-65	F	H	prediabetic, overweight,		26.0	negative	exposed
-----------	-------	---	---	-----------------------------	--	------	----------	---------

				+ physician,	+			
				relative				
68	41-45	F	--	overweight,	26.6	negative	exposed	
				+ patient samples				
69	41-45	F	--	obesity,	+ 35.1	negative	exposed	
				patients				
70	41-45	M	--	overweight,	+ 27.2	negative	exposed	
				patients,	+			
				patient samples				
71	51-55	M	--	overweight,	27.1	negative	exposed	
				+ patients				
72	11-15	F	NHW	overweight,	+ 27.1	negative	exposed	
				relative				

*BMI, body mass index; + NHW = non-Hispanic White, H = Hispanic, B=Black, NA = Native American; Note: some ethnicities removed to maintain confidentiality.

Table 2. Associations of and SARS-CoV-2 positivity (center column) and SARS-CoV-2 infection severity (right column) with bacterial abundance for all bacteria (left column) tested. Values indicate p-values determined by either one-way ANOVA (center column, analyzing all SARS-CoV-2 positive severities) or unpaired t-test (right column). Values of $p < 0.05$ (bold) indicate an association. The direction of the arrows indicates whether the bacteria are decreased or increased with SARS-CoV-2 positivity or SARS-CoV-2 infection severity.

Genus (+/- Species)	Association of SARS-CoV-2 positivity and bacterial abundance based on t-tests		Association of SARS-CoV-2 infection severity and bacterial abundance based on one-way ANOVA	
	P-value	direction	P-value	direction
<i>Akkermansia</i>	0.6933		0.0790	
<i>Alistpies</i>	0.5922		0.7860	
<i>Bacteroides</i>	0.0023	↑	0.0380	↑
<i>Bifidobacterium</i>	0.0001	↓	0.0010	↓
<i>Blautia</i>	0.2859		0.0800	
<i>Clostridium</i>	0.0326	↓	0.8420	
<i>Collinsella</i>	0.9551		0.8080	
<i>Coprococcus</i>	0.0607		0.2340	
<i>Dorea</i>	0.3731		0.0380	↑
<i>Eubacterium</i>	0.1825		0.7580	
<i>Faecalibacterium</i>	0.0001	↓	0.0100	↓
<i>Faecalibacterium prausnitzii</i>	0.0060	↓	0.0070	↓
<i>Klebsiella</i>	0.6280		0.8780	
<i>Oscillobacter</i>	0.6365		0.8830	
<i>Parabacteroides</i>	0.4734		0.4070	
<i>Prevotella</i>	0.9510		0.6770	
<i>Roseburia</i>	0.1557		0.4030	

<i>Ruminococcus</i>	0.0415	↓	0.0900
<i>Subdoligranulum</i>	0.0058	↓	0.8970