

## MANUSCRIPT

### **Strengthening public COVID-19 response with private facilities in Kisumu, Kenya**

Shannen van Duijn<sup>1</sup>, Hellen C. Barsosio<sup>2</sup>, Mevis Omollo<sup>2</sup>, Emmanuel Milimo<sup>3</sup>, Isdorah Akoth<sup>2</sup>, Robert Aroka<sup>3</sup>, Teresa de Sanctis<sup>1</sup>, Alloys K'Oloo<sup>2</sup>, Micah J. June<sup>2</sup>, Nathalie Houben<sup>3</sup>, Charlotte Wilming<sup>1</sup>, Kephas Otieno<sup>2</sup>, Simon Kariuki<sup>2</sup>, Simon Onsongo<sup>4</sup>, Albert Odhiambo<sup>5</sup>, Tobias F. Rinke de Wit<sup>1</sup>

#### **Author affiliations**

1. PharmAccess Foundation Amsterdam Office, the Netherlands
2. Kenya Medical Research Institute (KEMRI), Center for Global Health Research (CGHR), Kisumu, Kenya
3. PharmAccess Foundation Kenya Office, Kisumu, Kenya
4. Aga Khan Hospital, Kisumu
5. County Government of Kisumu, Kisumu, Kenya

#### **Corresponding Author**

All correspondence related to this manuscript can be directed towards Shannen van Duijn, M.Sc. PharmAccess Foundation, Paasheuvelweg 25, 1105BP, Amsterdam.

[shannenvanduijn@gmail.com](mailto:shannenvanduijn@gmail.com)

+31614558109

**Wordcount manuscript (Introduction - Conclusion): 4751**

## Abstract

**INTRODUCTION:** SARS-CoV-2 testing is one of the options to combat COVID-19 in Kenya. In the first COVID-19 year there was limited tapping of the private sector's potential to scale up testing in Kenya. In April 2020, we initiated a unique public-private partnership (PPP) project in Kisumu County connecting the private sector to centralized testing supported by the ministry of health (MoH), 'COVID-Dx', to accelerate the local response to COVID-19. We aimed to demonstrate this PPP's performance as a replicable model for effective public-private collaboration in responding to the COVID-19 pandemic in similar settings.

**METHODS:** KEMRI, Department of Health Kisumu County, PharmAccess Foundation, and local faith-based and private healthcare facilities collaborated in COVID-Dx. COVID-Dx was implemented from June 01, 2020, to March 31, 2021, in Kisumu County, Kenya. Trained laboratory technologists in participating healthcare facilities collected nasopharyngeal and oropharyngeal samples from patients meeting the MoH COVID-19 case definition. Samples were tested at the central laboratory in KEMRI via SARS-CoV-2 RT-PCR. Healthcare workers in participating facilities collected data using the digitized MoH COVID-19 Case Identification Form. We shared aggregated results from these data via (semi-) live dashboard to all relevant stakeholders. We did descriptive statistical analyses using Stata 16 to inform project processes.

**RESULTS:** Nine facilities participated in the project. A total of 4,324 PCR tests for SARS-CoV-2 were done, with 425 positives. We noted differences in positivity rates between the facilities. Healthcare workers were the largest group tested in the project, 1009, representing 43% of the Kisumu healthcare workforce.

**CONCLUSION:** COVID-Dx can serve as a PPP model for scale-up testing and epidemic preparedness, especially in LMICs. Digitizing the MoH case report form improved reporting efficiency, demonstrating that digital is the way forward. The COVID-Dx PPP has led to another collaboration with Kisumu County aimed towards extending the COVID-Dx model to other counties.

## KEYWORDS

Public-private partnership, COVID-19, Digital tool, Epidemic Preparedness, Kenya

## Introduction

Kenya confirmed the first COVID-19 case was on March 13, 2020. As of August 30, 2021, 235,298 confirmed cases with 4,720 fatalities had been reported<sup>1</sup>. By mid-March 2021, Kenya recorded the beginning of its third wave with a notable steep increase in daily COVID-19 cases and deaths<sup>2,3</sup>. This third wave led to stringent measures, particularly in Nairobi, Kajiado, Machakos, Kiambu and Nakuru counties<sup>4</sup>. On March 4 2021, Kenya received the first batch of COVAX COVID-19 AstraZeneca vaccines, prioritizing vaccination of its high-risk population, including frontline healthcare workers, adults above 58 years, teachers, police officers and persons with pre-existing conditions<sup>5</sup>. However, the first weeks of roll-out were met with considerable vaccine hesitancy amongst this target group<sup>6</sup>. Kenya aims to vaccinate 30% (15 Million) of its total population of 49,070,876 by the end of June 2023<sup>7</sup>. This vaccination target falls below the 65-70% required to achieve “vaccine-induced herd immunity”<sup>8</sup>; achieving vaccine-induced herd immunity in Kenya could take years instead months.

In the absence of vaccine-induced herd immunity, the options to combat COVID-19 in Kenya are infection prevention measures, testing for COVID-19, and isolating those who are SARS-CoV-2 infected. Kenyan public health prevention measures included lockdowns, curfews, social distancing, personal hygiene, and protective clothing, particularly at healthcare facilities. At the start of the pandemic, diagnostic testing for SARS-CoV-2 was led by the ministry of health (MoH) at the national and county levels through centralized PCR testing in dedicated high-throughput laboratories in Kenya, with KEMRI playing a central role supporting the MoH. However, centralized testing in Kenya faced multiple challenges, including lack of funding, stockouts of reagents and testing kits, PCR equipment breakdowns, logistical issues such as untimely reporting of results to patients. At the time, internationally recognized rapid diagnostic tests (RDTs) for SARS-CoV-2 were unavailable; RDTs were later included in the MoH COVID-19 testing guidelines ten months into the pandemic, on December 2020, when the first Kenyan interim guide for RDTs was launched<sup>9</sup>. MoH supported COVID-19 testing was limited to designated public hospitals with limited tapping of the private sector's potential to contribute to scaling up COVID-19 testing<sup>10</sup>.

The private sector (for-profit, not-for-profit, and faith-based organizations) is a significant player in health service delivery in sub-Saharan Africa<sup>11</sup>. The private healthcare sector can add substantial capacity to the public health infrastructure, which often faces challenges in terms of quality of care, drug stockouts, health worker shortages, industrial action, and lack of diagnostic equipment<sup>12</sup>. Public-private partnerships (PPP) can play an essential role in LMICs health system development<sup>9</sup>, particularly during outbreaks and epidemics, where a coordinated, rapidly scalable approach is required (epidemic preparedness). The challenge is to combine private and public efforts in healthcare delivery in a mutually supportive and collaborative manner. Achieving a supportive PPP is complex. There are many examples of (inter)national responses where private healthcare sector initiatives were crowded out by parallel public sector efforts<sup>13</sup>. Crowding out implies that private investments in healthcare are replaced instead of supplemented by public funds, and the total amount of funds in the healthcare system remains unchanged.

The Dutch NGO PharmAccess has gained extensive experience supporting innovative PPP models for healthcare ‘crowding in’ private funding. Notable PPP models include the first risk equalization fund for HIV in Africa<sup>14</sup>, the first Medical Credit Fund for Africa that provides loans to private-sector health entrepreneurs through public-private funding<sup>15</sup> and digital technologies provided through the M-TIBA platform to support Kisumu County’s universal health coverage (UHC)<sup>16</sup>. Due to PharmAccess’ experience with timely and generous donor contributions and necessary regulatory support by the local Department of Health, a unique joint PPP named “COVID-Dx” was started in early May 2020 in Kisumu County, Kenya, to enhance its capacity for COVID-19 sample collection and testing, data collection and timely reporting. ‘COVID-Dx’ connected private- and faith-based healthcare facilities in Kisumu County to MoH COVID-19 testing in KEMRI central laboratories to accelerate testing COVID-19, improve reporting efficiency to decision-making by both healthcare workers and policymakers. COVID-Dx partnership included Kisumu Department of Health, KEMRI, PharmAccess Foundation and local public and private healthcare facilities.

We chose Kisumu County, located in the western part of Kenya, because of its unique track record as a county pioneering UHC using the M-TIBA digital platform<sup>16</sup>. The experience and ease of use of digital technologies in Kisumu via M-TIBA platforms placed the county in a distinctive position

to address dynamic situations such as the COVID-19 epidemic. Kisumu reported the first two COVID-19 cases on May 27, 2020. As of August 25, 2021, Kisumu reported 8,897 cases and 285 deaths out of a total of 48,006 PCR tests and 15,409 Antigen tests done<sup>17</sup>. This paper describes the experience and progressive learning with the COVID-Dx PPP model.

## Methodology

### Context

After a preparation phase, COVID-Dx officially started June 1, 2020, and ended March 31, 2021, in Kisumu, Kenya. The number of healthcare facilities participating in COVID-Dx, and thus the collection of COVID-19 samples, increased from 1 to 9 by February 2021. The nine healthcare facilities are labelled as A-I throughout this manuscript to ensure anonymity. Table 1. provides an overview of the key characteristics of these healthcare facilities. Each participating facility had trained staff who collected nasopharyngeal and oropharyngeal swabs samples from patients who fulfilled the COVID-19 case definition per the Kenyan Ministry of Health COVID-19 testing protocol. The main eligibility criteria to be tested for COVID-19 were: 1) people presenting with signs and symptoms of COVID-19 and 2) all risk groups as defined in the MoH guidelines: healthcare workers, contacts of confirmed COVID-19 cases, travellers from high-risk areas<sup>18</sup>. Participation of patients was completely voluntary.

**Table 1: Overview of key characteristics participating COVID-Dx facilities**

Facility	Kenyan Healthcare category	Patients/day	Beds	SafeCare level <sup>1</sup>	Staff	Setting
A	Level 3 Health Centre	40	0	3	12	Urban
B	Level 4 Hospital	100	100	2	80	Urban
C	Level 4 Hospital	100	60	3	60	Rural
D	Level 5 Hospital	180	86	NA	200	Urban
E	Level 4 Hospital	70	62	3	50	Urban
F	Level 5 Hospital	50	50	NA	80	Urban
G	Level 5 Hospital	300	180	NA	400	Urban
H	Level 5 Hospital	100	70	5	400	Urban
I	Level 5 Hospital	1000	550	NA	600	Urban

### Laboratory methods used for SARS-CoV-2 PCR and RDT

Patient samples were collected and transported to the KEMRI central laboratory for SARS-CoV-2 RT-PCR testing within 24 hours of sample collection; results were reported to patients usually within 24–48-hours. KEMRI central laboratory trained staff carried out the PCR test procedures according to standard manufacturer prescribed testing protocols.

Between December 28, 2020, and March 31, 2021, an additional prospective diagnostic evaluation study was done, evaluating the NowCheck SARS-CoV-2 antigen test kit (Ag-RDT) versus the gold standard RT-PCR. The results of this sub-study are reported in another paper<sup>19</sup>. The antigen testing procedure was carried out according to the manufacturer's specifications. The results were provided to patients within 15-30 minutes of testing.

---

<sup>1</sup> The SafeCare level represents the level of quality within a facility. One of the aims of SafeCare is to provide innovative health care standards. Based on an algorithm incorporating both the overall score and weighted criteria, five SafeCare levels of improvement can be allocated to facilities (with level 5 as the highest). Before facilities can move to a next SafeCare level, certain high-risk criteria need to be in place first<sup>28</sup>.

## **CCIF-Tool**

The CCIF-Tool digitized the official Kenyan COVID Case Identification Form (CCIF) used by MoH to screen and report all COVID-19 cases. In addition to collecting all essential clinical information, the CCIF-Tool enabled full tracking and tracing of samples and data: sample collection, courier receipt, transport, lab receipt, channeling into various KEMRI laboratories, result creation, result verification, reporting. The CCIF-Tool app data was stored in a dedicated database (CommCare), a robust mobile data collection and service delivery platform supported with application building services. CommCare is hosted in a highly secured ISO27001 environment and is also HIPAA and GDPR compliant. KEMRI provided oversight of scientific accuracy and quality of data.

## **PowerBI dashboard**

We shared aggregated results from the CommCare data via a PowerBI dashboard for information and decision-making by policymakers and relevant stakeholders. PowerBI is a collection of software services, apps and connectors that visualize interactive insights of data sources, which can be shared. The dashboard presented an overview of the characteristics of patients tested, positive patients, participating facilities, and maps with the patients per place of residence. Annex 1. is a screenshot of the dashboard. The dashboard was made available through password-protected restricted access on Smartphones for predetermined stakeholders.

## **Data analyses**

We conducted data analyses for operational purposes to inform project processes, monitor the progress of the project and generate data to inform policymakers and COVID-Dx partners. We did descriptive statistical analyses using Stata 16, tested relationships between categorical variables using a chi-square test, and used an independent sample t-test to explore relationships between categorical and continuous variables. We considered a p-value of  $<0.05$  to be statistically significant during the analyses.

## **Ethical clearance**

Ethical clearance for this project was obtained from Jaramogi Oginga Odinga Teaching & Referral Hospital (JOOTRH) on June 16, 2020, with approval number IERC/JOOTRH/230/2020. KEMRI also provided ethical clearance on September 30, 2020, with approval number KEMRI/RES/7/3/1. Research License was obtained from the National Commission for Science, Technology, and Innovation (NACOSTI) on July 6, 2020 (NACOSTI/P/20/5616).

### **Patient and Public Involvement**

Study participants or the public were not actively involved in the design, conduct, reporting, or dissemination plans of the research.

## **Results**

### **Context - Building the PPP model**

In Table 2, we present the roles of all four partners detailing each partner's responsibilities with collaboration occurring in many aspects. Choices regarding task division were based on the partners' different levels of authority, each partner's capabilities, such as time, knowledge about regulatory or laboratory processes, and staff available. Experience gained with projects set up in the past also informed roles. Generally, the DoH was responsible for approving selected participating facilities, providing guidelines regarding the case definition, contact tracing, and epidemic control guidelines. PharmAccess provided kickstart funding, managed the day-to-day operations of the project, psychosocial counselling, procurement, contact with facilities, and managed the data dashboard of the project. KEMRI provided supportive supervision, conducting social research and was responsible for the laboratory component. Healthcare facilities executed the sample taking, entered data into the CCIF-tool, assisted with contact tracing of COVID-19 patients, and disseminated the test results to patients.



**Table 2: Roles of public and private partners in COVID-Dx project**

<b>Partners</b>	<b>KEMRI</b>	<b>Department of Health</b>	<b>PharmAccess Foundation</b>	<b>Healthcare providers</b>
<b>PPP tasks</b>				
<b>Management and monitoring</b>				
General management of the project			X	
Supported private facilities with day-to-day challenges	X		X	
COVID Case management		X		
Monitoring Implementation of COVID case management guidelines		X		
<b>Preparation</b>				
Processing the ethical clearance of the project	X			
Contracting healthcare providers			X	
Setting up the COVID data collection tools and dashboards			X	
Getting a SafeCare(4COVID) assessment				X
<b>Supplies and resources</b>				
Procuring PPEs and tablets for providers			X	
Sample Courier, Logistics for sample transport (e.g., VTMs, motorbikes) and storage and distribution of Ag. RDT	X			
<b>Trainings</b>				
Laboratory practice and patient management training		X		
Training Hospital staff for COVID-19 Sample taking	X			
CCIF tool training for healthcare providers	X			X
<b>Sample taking, testing and support</b>				

Triaging and fast tracking of patient who need COVID testing			<b>X</b>
COVID Sample collection			<b>X</b>
Running PCR tests on the COVID samples	<b>X</b>		
Contact tracing support to the field teams		<b>X</b>	
COVID counselling support to the testing teams		<b>X</b>	
<b>Reporting of results</b>			
Data capture for the patients receiving a COVID test	<b>X</b>		<b>X</b>
Information dissemination through SITREPs		<b>X</b>	
Data reporting to providers		<b>X</b>	
Receiving the results and disseminating them to the patients			<b>X</b>
Processing COVID PCR results and disseminating to stakeholders	<b>X</b>		
Data cleaning and preliminary analyses of CCIF data	<b>X</b>	<b>X</b>	
Dashboard updates with CCIF data		<b>X</b>	
<b>Studies</b>			
Antigen RDT evaluation	<b>X</b>		
Conducting the Feasibility and acceptability studies	<b>X</b>		
Scientific publication on study		<b>X</b>	

## **Context - Important events**

Annex 2 presents a Gantt Chart, outlining our key experiences during the implementation of COVID-Dx. The Gantt Chart shows we started project preparations before Kisumu County reported the first COVID-19 case on May 27, 2020. Although risky, starting early proved beneficial, because we were ready when the first COVID-19 cases emerged.

At the time, sample collection and central testing via MoH-linked KEMRI laboratories was restricted to designated public hospitals. MoH supported the public hospitals collecting samples and central laboratories testing for COVID-19 with providing Personal Protection Equipment (PPE), sample collection materials, sample transportation materials such as viral transport medium (VTMs), cooler boxes, and sample testing materials such as reagents. For private facilities to access public sector COVID-19 testing through the KEMRI central laboratories, we initially presumed COVID-Dx had to be positioned as a research project to access testing. This implied lengthy protocol writing and ethical clearance procedures. Later was clarified any private facility that intended to provide COVID-19 testing through MoH supported central laboratories were required to do so via the MoH COVID-19 public sector response at the county level. This meant selected private healthcare facilities needed the DoH approval as sample collection sites supporting Kisumu County to scale up COVID-19 testing.

We contracted selected private providers approved by the DoH in different phases. These private providers supported DoH to scale up COVID-19 testing as part of the COVID-Dx project and became known COVID-19 sample collection sites freely accessible to the public. The project initially started with the kick-off in facility A at the end of June 2020; soon after, facility B and C began the project. During the project, we contracted more facilities: facility D and E in August, facility F in September, facility G and H in December 2020 and facility I in February 2021. In the first months of implementation, to prepare laboratory and clinical staff in these selected private healthcare facilities to support COVID-19 sample collection, we conducted multiple trainings with the assistance of trainers of trainers (ToTs) from the DoH. Later, we also organized refresher trainings to help reinforce best practices.

Several procurement rounds of PPEs occurred during the project (May, August, October, December 2020). At project initiation, we developed the dashboard to share the live operational results of the project. The dashboard was continuously improved and extended throughout the project. In November 2020, the first (external) stakeholders got access to the dashboard.

Some months into the project, several healthcare facilities noticed fewer patients coming in to get tested. COVID-19 stigma turned out to be associated with hesitancy in testing and avoidance of healthcare facilities. Additionally, Kisumu County DoH mandated contact tracing. However, as the positive cases increased, it became increasingly challenging for the facilities to keep up with the contact tracing activities. COVID-Dx assisted with contact tracing through facility-based counsellors who also played a crucial role in addressing COVID-19 stigma. The project also brought on board a psychosocial counsellor to lead training and support supervision of facility-based counsellors. Most facility-based counsellors were HIV counsellors, with previous training in pre-and post-test counselling. The counsellors remained active throughout the project and were a great help to the facilities, the outreach team, and patients in contact tracing, encouraging contacts to test, reporting results to participants as part of post-test counselling and addressing patient fears around COVID-19 stigma.

At times the DoH or KEMRI requested some private facilities to stop testing or the MoH restricted testing of samples. For instance, around October 2020, KEMRI and DoH temporarily paused sample collection from one of the COVID-Dx facilities when samples spilt during transportation from the healthcare facility to the KEMRI laboratory creating a health and safety hazard. This incident triggered an audit and mandatory refresher training of the affected site. In addition, the MoH updated guidelines for targeted testing, where only those who met the case definition and had symptoms were eligible for testing; this continued for several months, restricting testing to fewer patients. We disseminated the results of the project several times during and after to the project team and locally with key stakeholders, using the live dashboard and PowerPoint presentations.

## **Data insights**

### **COVID-19 positivity rate**

In the nine participating facilities, the COVID-Dx project supported a total of 4,324 PCR tests for SARS-CoV-2, of which 425 tested positive (194/2,138 female and 231/2,186 male). There was no significant association between sex and test result,  $X^2(1, N=4,324) = 2.6, P = 0.11$ .

The overall COVID-19 positivity rate during the project was 9.8%. Figure 1 presents the weekly positivity rate based on PCR tests during project implementation. As shown, there were no COVID-19 cases found during the first months of the project (June 2020 and July 2020). We noted a peak in COVID-19 cases in December 2020, which mirrored the Kenyan ‘second wave’, with a positivity rate of 23.1% at its highest point.

### **Clinical presentation**

Patient reported symptoms were captured using the CCIF-Tool. The most frequently reported symptoms from COVID-19 positive patients in order of frequency included cough, headache, general weakness, and history of fever/chills. Figure 2a. presents an overview of the top 10 most common symptoms reported for all cases and COVID positive cases. Of note, 22.8% of all positively tested patients were asymptomatic. 21.9% of positive cases reported pre-existing conditions during sample collection, with cardiovascular disease as the most common; 9.9% of all positive cases had cardiovascular diseases (n=42 times), and 5.6% (n=24) had diabetes.

Figure 2b. presents the percentage of asymptomatic cases which tested positive per age group. This figure demonstrates a significant inverse correlation between age and COVID-19 positivity ( $X^2(6, N=432) = 27.4, P = 0.00$ ).

### **COVID-19 case-finding**

The Gantt Chart (Annex 2) illustrates when each facility joined the COVID-Dx project. Facility A and D identified the first COVID-19 case within August 2020, facility B, C, E, F identified their first cases in September 2020. Facilities G and H, which started in December 2020, identified their first cases in December 2020 and January 2021. In February 2021, facility I started and identified the first COVID-19 case within the same month.

Table 3. provides an overview of COVID-19 case finding per participating facility. Positivity rates of facilities varied between 31.9% (facility H) and 3.8% (facility B). Figure 3. shows the percentage of positive cases per facility over time. In this graph, we show that in November 2020, there was an overall low point in positivity rate for all facilities. In February and March 2021, the positivity rate rose to its highest point.

**Table 3.** Performance of COVID-19 case finding per healthcare facility, PCR data from June 2020 – March 2021.

<b>Facilities</b>	<b>Positive cases</b>	<b>Total tested</b>	<b>Positivity rate</b>
<b>A</b>	17	348	4.9%
<b>B</b>	11	286	3.8%
<b>C</b>	52	1023	5.1%
<b>D</b>	130	598	21.7%
<b>E</b>	7	41	17.1%
<b>F</b>	25	224	11.2%
<b>G</b>	93	948	9.8%
<b>H</b>	53	166	31.9%
<b>I</b>	37	662	5.6%

Figure 4. shows the number of tests performed per age group during the project for all participating facilities. The average age of negative patients was 36.4 years, and the average age of positive patients was significantly higher at 40.2 years (two-sample t-test ( $M= 36.8$ ,  $SD = 15.4$ ), 95% CI [36.3, 37.3],  $t = -4.8$ ,  $P = 0.00$ ).

### **Healthcare workers**

The most-reported occupation of tested patients were healthcare workers (23.3%/n=1,009, representing 43% of the Kisumu healthcare workforce), being self-employed (12.5%/n=539) or being students (11.0%/n=476). We noted a positivity rate of 7.6% (n=77) among healthcare workers, which was slightly but significantly lower than the overall (9.8%) positivity rate ( $X^2(1,$

$N=4324$ ) =7.5,  $P = 0.01$ ). Moreover, 36% of tested healthcare workers who tested positive were asymptomatic.

## Discussion

This study aimed to demonstrate the performance of a replicable model for an effective PPP in responding to the COVID-19 pandemic in a sub-Saharan African setting. Typically, COVID-19 responses in Africa are addressed through ‘vertical’ programs rolled out mainly through the public sector. This was done for HIV in the past, leading to parallel healthcare delivery and financing infrastructure in Africa and other LMICs, that is crucially dependent on international funding mechanisms through institutions like the GFATM and PEPFAR. Today, in the universal healthcare coverage (UHC) era, PharmAccess believes we should explore ways to ‘horizontalize’ vertical, disease-specific funds into primary healthcare delivery. This paper presents such a model: integrating private healthcare facilities into the public COVID-19 response. In Kenya, almost half of healthcare is delivered through private healthcare facilities. Therefore, at the onset of COVID-19, with then-unknown consequences, we opted for an immediate doubling of the healthcare capacity to deliver COVID-19 services by creating a PPP model. This was informed by our experience with HIV service delivery starting in the private sector in Africa and expanding to the public sector<sup>20</sup>.

### **Main PPP challenges, mitigations and lessons learnt during COVID-Dx**

We had several challenges building the PPP. First, providing private healthcare facilities with access to public COVID-19 testing facilities through formalities at the national level proved lengthy (6 months). We mitigated this by opting for parallel expedited clearance at the County level (1 month). Our general recommendation is Ethical Review processes should be fast-tracked during outbreaks as COVID-19.

PPE supply for the healthcare facilities was another operational challenge. The essential PPE supplies were not readily available in Kenya when the project started. Eventually, we managed to procure some supplies to get started by paying approximately double the price of PPEs. The alternative of waiting a few months into the project for prices to fall was not tenable at the time,

given the urgency to respond to the pandemic, and would have resulted in significant delays. Throughout the project, the supply chain of PPEs was restored, and prices went down.

COVID-19 related stigma was an unexpected challenge. Some private facilities were afraid of being labelled COVID-19 testing sites. This fear was partially the result of (lockdown) measures implemented by government authorities early in the pandemic. When a public facility had staff who tested positive for COVID-19, they closed the facility. Additionally, the facilities hesitated to join COVID-Dx because they were afraid patients would avoid visiting the facility out of fear of being infected, which would also reduce the number of patients with chronic conditions. To mitigate these fears, we got a letter from the Kisumu County government in which they reassured the private facilities they would not be closed even if any of their patients tested positive for COVID-19. We also tried to convince facilities that their role in this pandemic was crucial. When the first facilities eventually joined, it created confidence for the other private facilities also to join.

A lesson learnt was that COVID-19 stigma remained an issue throughout the project. Therefore, the project recruited a Psychosocial Counsellor who brought on board additional counsellors from the public and private sectors. These counsellors were trained HIV counsellors who adapted their training in HIV testing and addressing stigma to assist with pre- and post- test counselling for COVID-19 in their specific facilities. Counsellors underwent a training from the County's Mental Health and Psychosocial Support department. This intervention helped reducing fear, stigma, depression and other mental health related cases among the patients and health care workers.

During COVID-Dx, decisions by public entities sometimes had consequences for the set research protocols and processes in the project. For instance, the MoH revised the national guidelines on COVID-19 testing throughout the project, and some sample taking sites closed unilaterally without consulting the other partners. The project team tried to manage all parties and adhere to the national guidelines. Additionally, we tried to inform the highest decision-makers in Kisumu County to have some made decisions reviewed. The COVID-19 politics in the county remained a challenge throughout the project.

Lastly, the project team had to manage relationships between all stakeholders continuously during COVID-Dx, to avoid miscommunications. This was done by organizing frequent update meetings to discuss challenges, solutions and align reporting structures where we deemed fit.



## Data insights

### *Operational positivity rate*

We found an overall operational positivity rate of 9.8%, which reflected the operational developments of the project over time, but not the positive cases in Kisumu at any specific moment. The number of weekly tests done during COVID-Dx fluctuated due to operational issues, political decisions, or social challenges. Nevertheless, the positivity rate graph served as guidance for the project team to track such developments. The lowest positivity rate (0%) was at the beginning of the project (June/July 2020), since few positive cases were reported in Kisumu at that time<sup>21</sup>. The highest rate was in December 2020 (23.1%). We speculate this might be due to Kisumu being in the middle of a second wave, which was more severe than the first wave<sup>22,23</sup>. Simultaneously, limited samples were taken due interruptions in sample-taking in some facilities.

### *Characteristics patients*

Our data showed that most facilities took samples of patients aged 25-34 years old. The average age of positive patients (40.2 years) was significantly higher than negative tested patients (36.4 years). The data also showed older positive adults (34 and above) reported considerably more symptoms than younger patients. These two observations are in line with other COVID-19 epidemiological data in Kenya<sup>24</sup>. Additionally, studies in other countries (e.g., the United States and Japan), have also found COVID-19 incidence was highest among older adults, especially early in the pandemic<sup>25,26</sup>.

### *Case finding*

The overall operational positivity rates varied extensively between the facilities. One explanation for the high overall positivity rate (31.9%) of Facility H could be that Facility H joined COVID-Dx in December 2020, when Kisumu was in the middle of the second wave. Therefore, compared to facilities that joined the project in the first few months, there were more COVID-19 patients. Facility I also showed interesting dynamics, as its first tests were performed in February of 2021, which was also in the period of more COVID-19 cases in the county, yet the positivity rate remained relatively low at 5.6%. Possibly because the testing volumes were high; 662 tests were done in two months. Facility E and F terminated the project in November 2020. COVID-19 politics within the county and ethical concerns in one of the facilities which did not align with the MoH code of ethics, were reasons to stop collaboration with these facilities. Looking at the positivity

rates of all facilities over time, November 2020 had the lowest positivity rate. A temporary suspension in testing at some facilities, due to lack of PCR reagents and supplies at the central laboratories, could explain this low positivity rate. We noted rising positivity rates in March 2021 which mirrored the start of the third COVID-19 wave in Kisumu County.

### *Healthcare workers*

We considered healthcare workers a priority in the project, they were the largest group of tested cases in COVID-Dx (n=1,009, representing 43% of the Kisumu healthcare workforce). We tested healthcare workers involved in sample taking or who would be in close contact with potentially COVID-19 patients to detect possible cases among healthcare workers ahead of time. This was crucial, as a large proportion of patients carrying the virus were asymptomatic, hence there was a higher risk of close transmission to and among healthcare workers. Healthcare workers were also part of the case definition defined by the MoH to be eligible for COVID-19 testing.

### **Limitations of the study**

There were also some data limitations during this project. Developing the CommCare app was a continuous process, with constant improvements to adapt to the needs of the healthcare facilities, needs in sample tracking and transportation, and reporting needs from the laboratories. These changes sometimes affected how we presented the data in the final database. After extensive data cleaning, which was done manually regularly, the database issues were resolved in time for the final data analyses. Moreover, we tested patients according to the MoH national testing guidelines, meaning we were only allowed to test certain risk groups and symptomatic patients. Selective testing per MoH national guidelines was necessary in the absence of sufficient PCR tests available. However, the disadvantage of this was that the prevalence data we collected are not representative of the epidemiological situation in Kisumu County but somewhat biased toward positivity.

### **Scalability of our project**

While first focusing on building a good model for a PPP and assist with COVID-19 testing, we explored other opportunities to scale up testing. Early in the project, we found that large scale PCR testing had several limitations, such as high costs, requirement of trained staff, sophisticated equipment, and good logistics, which is often challenging in resource-poor settings. One of the

constraints during COVID-Dx was the reporting of COVID-19 test results. We experienced delays, sometimes leading up to several weeks. From a patient's perspective, delayed results are highly frustrating due to the anxiety of waiting for a test and the impact on decision-making at the household level, such as whether to isolate from other family members. From an epidemiological perspective, delays in results reporting could also lead to an increased risk of transmission, as patients might unknowingly spread the virus while awaiting their results. Furthermore, we experienced regular stockouts of COVID-19 PCR test kits and KEMRI-CGHR was overloaded with samples from elsewhere, serving 36 other counties at one point when PCR machines from other central laboratories broke down.

The above challenges led to a new development within the project, antigen testing. Rapid diagnostics tests (RDTs) for COVID-19 antigens can contribute to increased capacity for testing and scale up. The costs of RDTs are lower, results can be available within 20 minutes, no equipment is necessary, and less training is required. Therefore, we believed it could potentially be applied at point-of-care in facilities and within communities. A sub-study within COVID-Dx was implemented to validate RDTs and compare them to PCR tests. The results of this sub-study are published in a different paper<sup>19</sup>. RDTs could benefit the community more in testing for COVID-19 and contact tracing. Several studies already indicated that RDTs can be performed by community healthcare workers with proper training and supervision, as relatively few errors are made<sup>27</sup>. Furthermore, a device or an app reading the RDT test results could be an excellent opportunity to scale up the use of RDTs, which we also explored as a potential next step.

Trust gained through COVID-Dx during the first part of the pandemic, led to a closer working relationship with Kisumu County to fight the next epidemic: the delta variant of the coronavirus, which was spreading fast in sub-Saharan Africa<sup>3</sup>. In May 2021, Kisumu County health officials invested in the CommCare app, established during COVID-Dx. The dashboard is accessible to county policymakers and decision-makers, showing COVID-19 hotspots, positive cases, and the number of vaccinated patients. As of August 2021, 29 public and private facilities are connected. We responded adequately to this third wave through the previously established partnership, a great example of epidemic preparedness.

## Conclusion

In conclusion, COVID-Dx has shown that setting up a PPP at the start of a global pandemic - COVID-19 – is challenging, but PPPs are essential for epidemic preparedness. This model is replicable and can serve as an example of PPPs for epidemic preparedness in similar settings in LMICs. Looking at the future of combatting epidemics, especially in LMICs, digital is the way going forward. Our efforts have led to developing a digital app with a corresponding dashboard, aggregating all the operational information in one place for decision-making. Hotspots can be identified in real-time, and outreach teams can be activated to target specific populations based on general characteristics. Moreover, it is transparent, enables data-driven decision-making, and provides insight into how to prioritize funding streams. This experience demonstrated that health systems need markedly improved efficiency and flexibility to respond to challenges that reoccur over time, such as epidemics. Going digital allows for this efficiency and flexibility in responsive health systems.

## Abbreviations

**CCIF:** COVID Case Identification Form - **COVAX:** COVID-19 Global Vaccine Access - **COVID-19:** coronavirus disease of 2019 - **DoH:** Department of Health - **GDPR:** General Data Protection Regulation - **GFATM:** The Global Fund to Fight AIDS, Tuberculosis and Malaria - **HIPAA:** Health Insurance Portability and Accountability Act of 1996 - **KEMRI:** Kenya Medical Research Institute – **MoH:** Ministry of Health - **NGO:** non-governmental organization - **PCR:** polymerase chain reaction - **PEPFAR:** President's Emergency Plan for AIDS Relief - **PPE:** personal protective equipment - **PPP:** public-private partnership - **RDT:** rapid diagnostic test – **ToT:** trainers of trainers - **UHC:** universal health coverage - **VTM:** viral transport medium

## Acknowledgements

The authors would like to express gratitude to all clinicians, nurses, lab technicians, motorbike riders, data entry personnel and all other personnel who were active in the field during this study. We would also like to thank the Kisumu Department of Health for its permission and cooperation

to execute this project. Dimagi Company is duly recognized for providing its CommCare data entry tools pro bono. Lastly, we would like to thank our funders: Achmea Foundation, Pfizer Foundation, and the Netherlands Ministry of Foreign Affairs.

### **Contributorship statement**

TRW designed the project and the research study, and additionally scientifically supervised the project. NH assisted with the design and implementation of the study and managed the operations in Kenya of this project. SK and AO oversaw research activities and were involved at decision-making level. HB contributed to the project design and implementation and managed KEMRI's role. EM was responsible for onsite day-to-day operations during the project and managed relationships between all partners. MO assisted in the field and was responsible for the social sciences, with assistance from IO. RA managed our psychosocial support on the ground. AK regularly visited facilities for data management and managed the database. TS developed and updated the dashboard. MJ supported with clinical supervision. KO managed the laboratory aspects of this study. SO contributed research, such as the RDT evaluation. CW managed relations with our donors and reported back results to them. SD conducted data analyses, wrote the manuscript, and submitted this manuscript.

### **Funding statement**

This project was financially supported by Achmea Foundation, Pfizer Foundation, and the Netherlands Ministry of Foreign Affairs. Grant/Award numbers for all funders: N/A. The funders did not have any role in study design, data collection, analysis, interpretation, summarizing the data or decision to submit the manuscript for publication.

### **Ethics approval**

Ethical clearance for this project was obtained from Jaramogi Oginga Odinga Teaching & Referral Hospital (JOOTRH) on June 16, 2020, with approval number IERC/JOOTRH/230/2020. KEMRI also provided ethical clearance on September 30, 2020, with approval number KEMRI

KEMRI/SERU/CGHR/05-05/4038. Research License was obtained from the National Commission for Science, Technology, and Innovation (NACOSTI) on July 6, 2020 (NACOSTI/P/20/5616). The roll-out of this project was in complete coordination with the Kisumu Department of Health. Sample collection in patients in this project was voluntary.

### **Availability of data and materials**

Due to the privacy of patient data, datasets associated with this project are not publicly available. Anonymized and aggregated data are available from the authors upon request.

### **Competing interests**

The authors have declared no competing interests.

### **References**

1. MoH. COVID-19 Update 30th August 2021. 2021. <https://www.health.go.ke/> (accessed August 30 2021).
2. Shi Q, Dong X-P. Rapid Global Spread of the SARS-CoV-2 Delta (B. 1.617. 2) Variant: Spatiotemporal Variation and Public Health Impact. 2021.
3. WHO. Rife COVID-19 variants fuel Africa's surging wave. 2021. <https://www.afro.who.int/news/rife-covid-19-variants-fuel-africas-surging-wave> (accessed August 5 2021).
4. President. The Fifteenth [15th] Presidential Address on the Coronavirus Pandemic 2021. <https://www.president.go.ke/2021/03/26/the-fifteenth-15th-presidential-address-on-the-coronavirus-pandemic/> (accessed April 7 2021).
5. WHO. Kenya receives COVID-19 vaccines and launches landmark national campaign. 2021. <https://www.afro.who.int/news/kenya-receives-covid-19-vaccines-and-launches-landmark-national-campaign> (accessed March 17 2021).

6. Orangi S, Pinchoff J, Mwanga D, et al. Assessing the level and determinants of COVID-19 Vaccine Confidence in Kenya. *medRxiv* 2021: 2021.06.11.21258775.
7. Muleshe S. COVID-19 Vaccine Deployment-Overview & Rollout Plan. Planning & Coordination Covid-19 Vaccines Deployment and Vaccination Taskforce. ; 2021.
8. Randolph HE, Barreiro LB. Herd Immunity: Understanding COVID-19. *Immunity* 2020; **52**(5): 737-41.
9. Kenya M. COVID-19 Antigen Rapid Diagnostic Testing Interim Guide KENYA: Kenya Ministry of Health 2020.
10. WHO. Maintaining essential health services: operational guidance for the COVID-19 context. June 2020: World Health Organization 2020.
11. WHO. State of Health Financing in the African Region: World Health Organization. Regional Office for Africa, 2013.
12. Basu S, Andrews J, Kishore S, Panjabi R, Stuckler D. Comparative performance of private and public healthcare systems in low- and middle-income countries: a systematic review. *PLoS Med* 2012; **9**(6): e1001244.
13. Schellekens O, Lindner ME, Lange JMA, van der Graaf J. A new paradigm for increased access to healthcare in Africa. : PharmAccess Foundation, 2007.
14. Schellekens OP, de Beer I, Lindner ME, van Vugt M, Schellekens P, Rinke de Wit TF. Innovation in Namibia: preserving private health insurance and HIV/AIDS treatment. *Health Aff (Millwood)* 2009; **28**(6): 1799-806.
15. Convergence. Case study: Medical Credit Fund (MCF), 2019.
16. PharmAccess. County Government of Kisumu signs a new partnership to establish a scheme for those who cannot afford health insurance. 2020.  
<https://www.pharmaccess.org/update/county-government-of-kisumu-signs-a-new-partnership-to-establish-a-scheme-for-those-who-cannot-afford-health-insurance/>  
(accessed April 7 2021).
17. DoH. COVID Response Situation Report 057. Kisumu County: Department of Health & Sanitation, 2021.
18. Kenya M. Interim Guidelines on Management of COVID-19 in Kenya Ministry of Health Kenya 2020.

19. Onsongo S, Otieno K, Duijn Sv, et al. Field performance of NowCheck rapid antigen test for SARS-CoV-2 in Kisumu County, western Kenya. *Manuscript in progress* 2021.
20. Van der Borgh S, Rinke de Wit TF, Janssens V, Schim van der Loeff MF, Rijckborst H, Lange JMA. HAART for the HIV-infected employees of large companies in Africa. *The Lancet* 2006; **368**(9534): 547-50.
21. MOH K. COVID-19 Outbreak in Kenya Daily Situation Report - 128: Ministry of Health Kenya 2020.
22. Edward-Ekpu U. Scientists are worried a second wave of Covid-19 infections is starting in Kenya and South Africa. 2020. <https://qz.com/africa/1942066/scientists-worry-second-wave-of-covid-19-in-kenya-south-africa/> (accessed August 5 2021).
23. Salyer SJ, Maeda J, Sembuche S, et al. The first and second waves of the COVID-19 pandemic in Africa: a cross-sectional study. *The Lancet* 2021; **397**(10281): 1265-75.
24. Ombajo LA, Mutono N, Sudi P, et al. EPIDEMIOLOGICAL AND CLINICAL CHARACTERISTICS OF COVID-19 PATIENTS IN KENYA. *medRxiv* 2020: 2020.11.09.20228106.
25. Arima Y, Kanou K, Arashiro T, et al. Epidemiology of Coronavirus Disease 2019 in Japan: Descriptive Findings and Lessons Learned through Surveillance during the First Three Waves. *Jma j* 2021; **4**(3): 198-206.
26. Boehmer TK, DeVies J, Caruso E, et al. Changing Age Distribution of the COVID-19 Pandemic - United States, May-August 2020. *MMWR Morb Mortal Wkly Rep* 2020; **69**(39): 1404-9.
27. Laktabai J, Platt A, Menya D, et al. A mobile health technology platform for quality assurance and quality improvement of malaria diagnosis by community health workers. *PLoS One* 2018; **13**(2): e0191968.
28. Johnson MC, Schellekens O, Stewart J, van Ostenberg P, de Wit TR, Spieker N. SafeCare: An Innovative Approach for Improving Quality Through Standards, Benchmarking, and Improvement in Low- and Middle- Income Countries. *Jt Comm J Qual Patient Saf* 2016; **42**(8): 350-71.



## Figure legend

**Figure 1.** PCR positivity rate over time in COVID-Dx project; data collected from June 2020 - March 2021.

The COVID-19 positivity rate shown in this figure, was calculated by dividing the total number of positive tests by the total number of (positive + negative) tests, for each week of the project.

**Figure 2. A:** Overview of most common symptoms reported during COVID-Dx project roll-out (all cases versus COVID-19 cases).

The symptoms in this graph are the reported symptoms by patients during their visit to the facility. The symptoms at the top of the graph are the most reported symptoms (e.g. cough, sore throat, headache). The diagram shows the number of times a symptom was reported throughout the entire project, by all cases and by positive cases only. Patients were able to report multiple symptoms. When patients did not report symptoms, they fell into the category 'asymptomatic'.

**B:** Percentage asymptomatic COVID-19 patients per age group, data from June 2020 – March 2021.

This percentage of asymptomatic COVID-19 patients was calculated by dividing the total number of positive COVID-19 patients, who did not report any symptoms by the total number of positive COVID-19 patients. In this diagram, a distinction is made per age group.

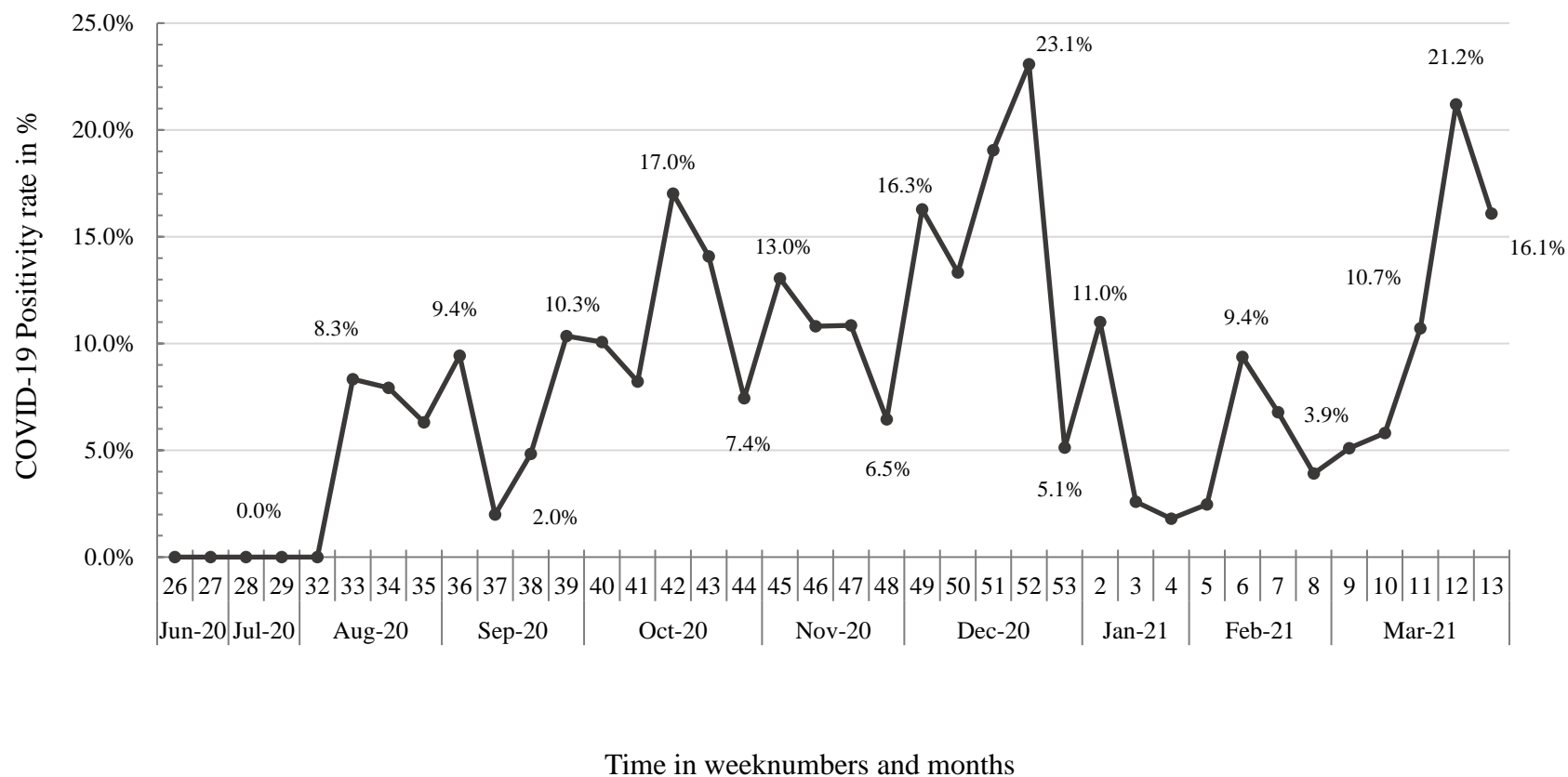
**Figure 3.** Percentage of COVID-19 cases per facility per month; data collected from June 2020 – March 2021.

This graph shows for each facility that participated with COVID-Dx, how the positivity rate developed over time, and how that differs per facility. The COVID-19 positivity rate shown in this figure, was calculated by dividing the total number of positive tests by the total number of (positive + negative) tests, for each month of the project.

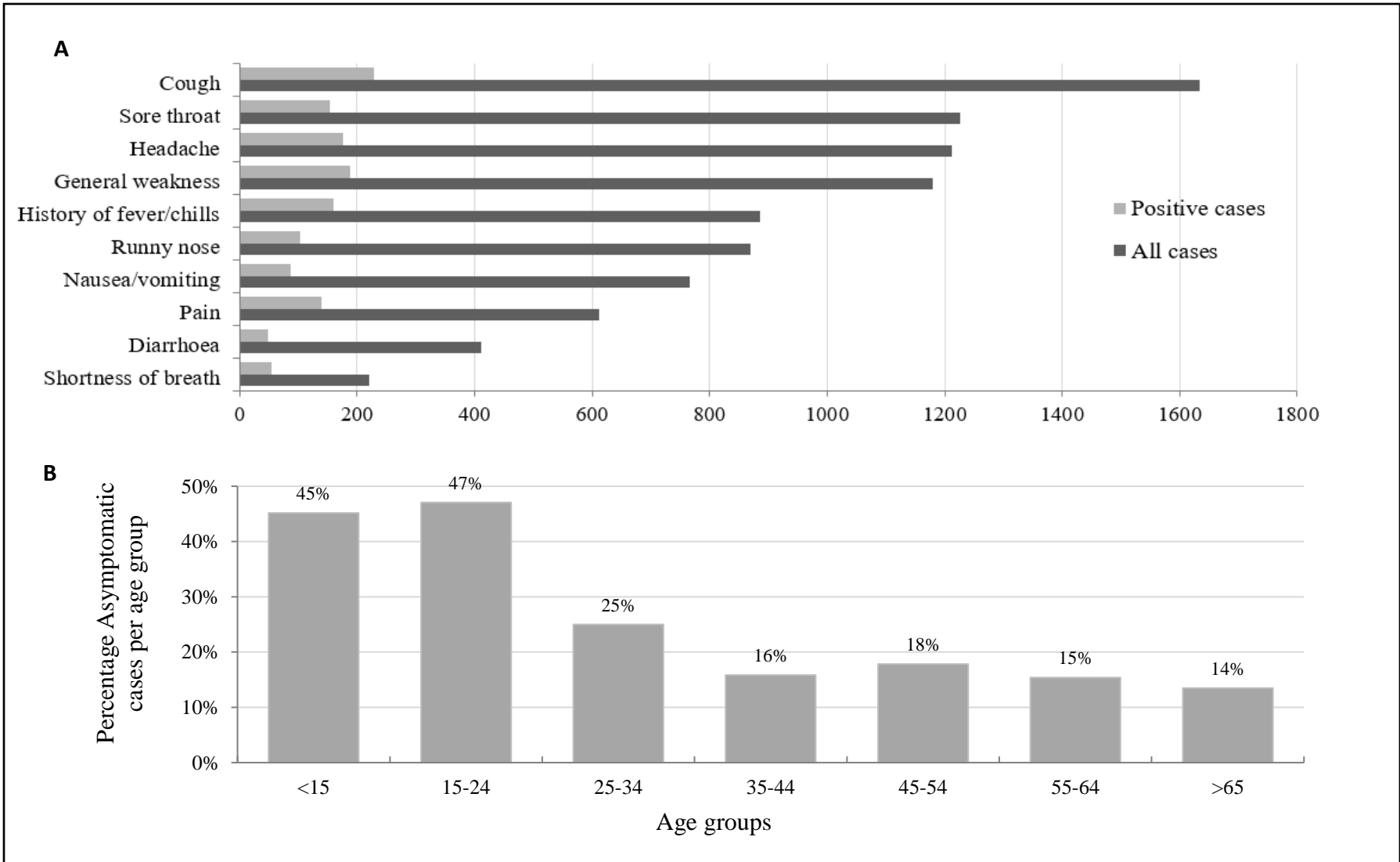
**Figure 4.** Number of SARS-CoV-2 tests done per age group per facility; data collected from June 2020 – March 2021

This graph shows for each facility the number to total tests done during the project, per age group.

## Figures

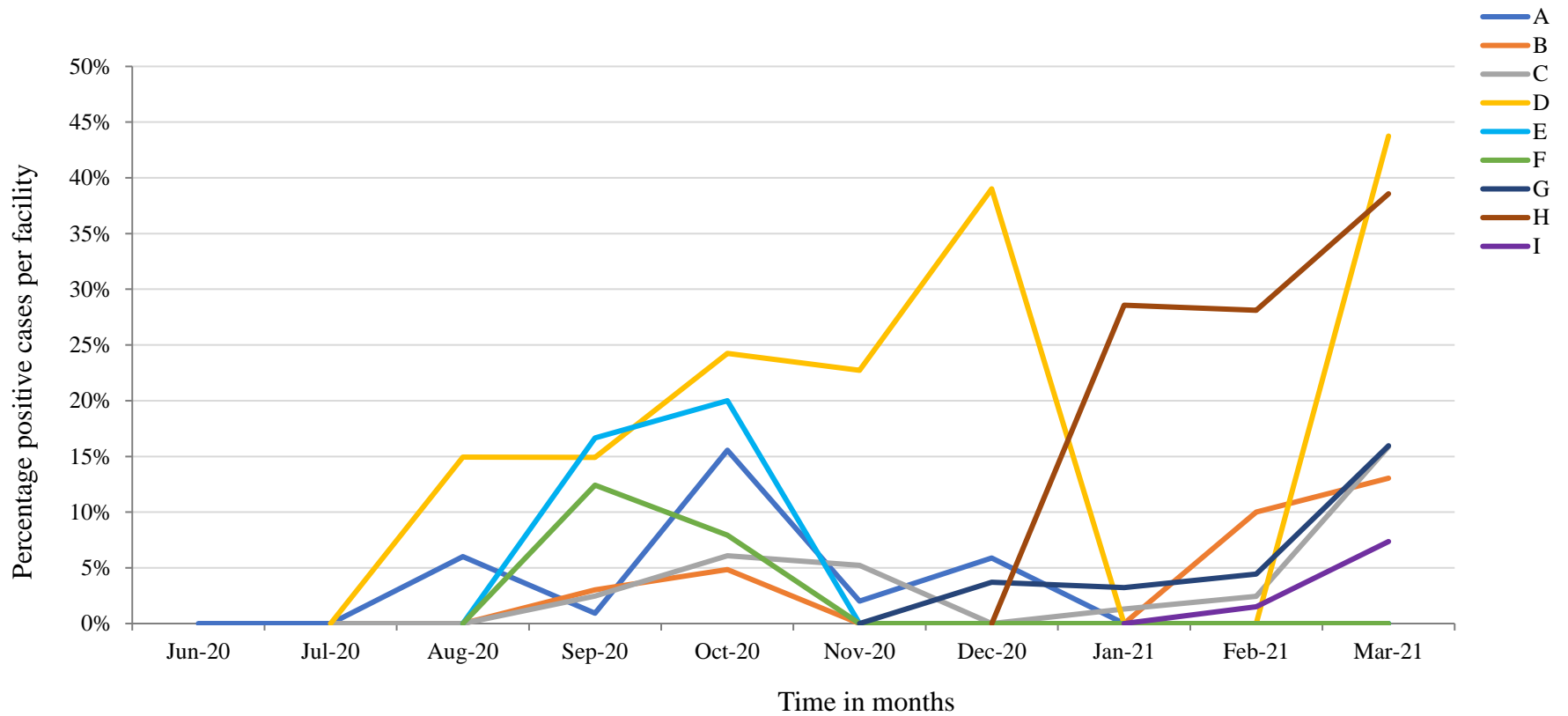


**Figure 1.** PCR positivity rate over time in COVID-Dx project; data collected from June 2020 - March 2021.

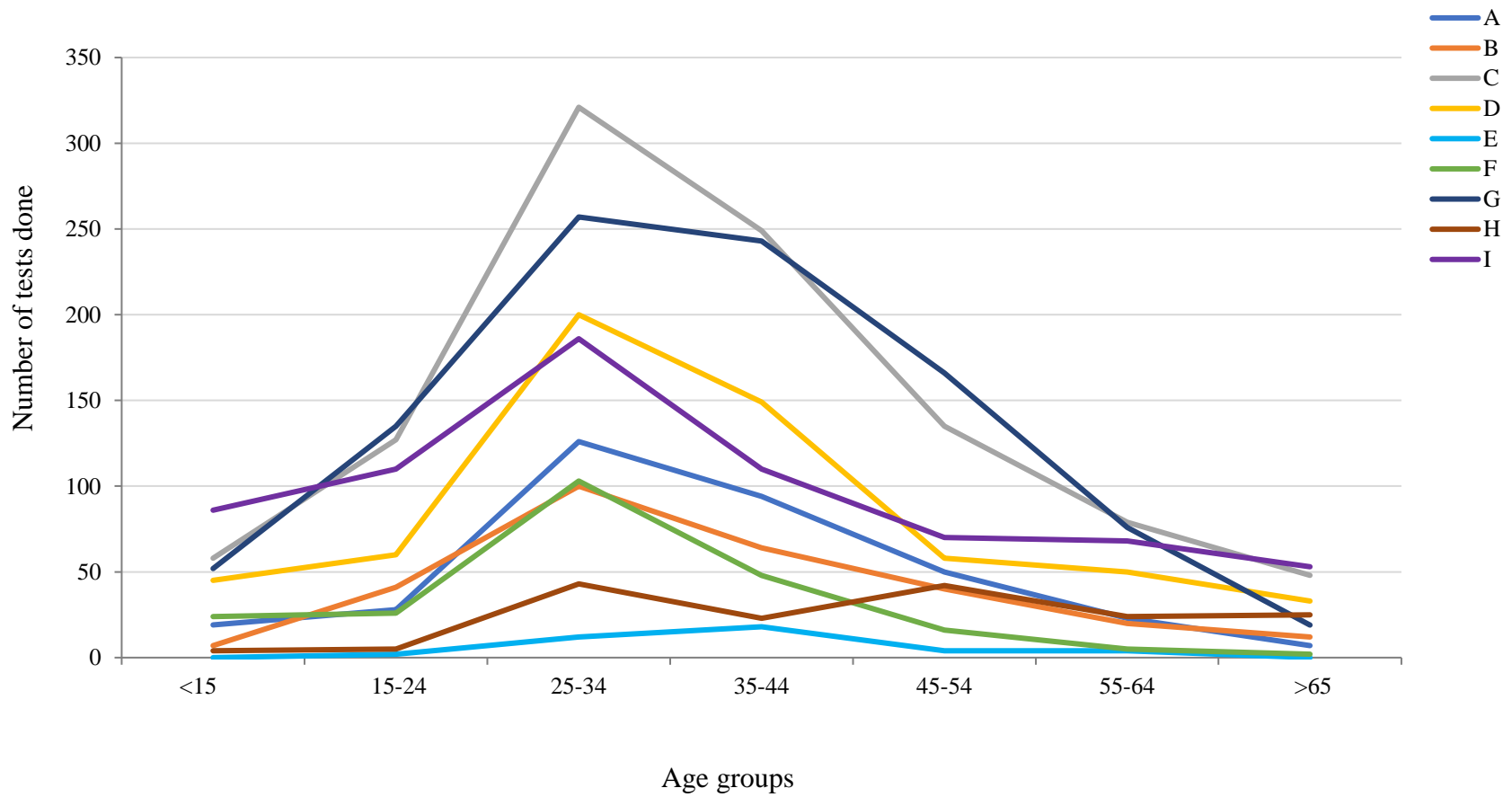


**Figure 2a.** Overview of most common symptoms reported during COVID-Dx project roll-out (all cases versus COVID-19 cases).

**Figure 2b.** Percentage asymptomatic COVID-19 patients per age group, data from June 2020 – March 2021



**Figure 3.** Percentage of COVID-19 cases per facility per month; data collected from June 2020 – March 2021



**Figure 4.** Number of SARS-CoV-2 tests done per age group per facility; data collected from June 2020 – March 2021

