

1 Analysis of daily reproduction rates of COVID-19 2 using Current Health Expenditure as Gross Domestic 3 Product percentage (CHE/GDP) across countries

4
5 Kayode Oshinubi ¹, Mustapha Rachdi ¹ and Jacques Demongeot ^{21*}

6 ¹ Laboratory AGEIS EA 7407, Team Tools for e-Gnosis Medical & Labcom CNRS/UGA/OrangeLabs
7 Telecom4Health, Faculty of Medicine, University Grenoble Alpes (UGA), 38700 La Tronche, France;
8 Kayode.Oshinubi@univ-grenoble-alpes.fr, Mustapha.Rachdi@univ-grenoble-alpes.fr,
9 Jacques.Demongeot@univ-grenoble-alpes.fr

10 * Correspondence: Jacques.Demongeot@univ-grenoble-alpes.fr

11 Received: date; Accepted: date; Published: date

12 **Abstract:** (1) Background: Impact and severity of coronavirus pandemic on health infrastructure
13 vary across countries. We examine the role percentage health expenditure plays in various countries
14 in terms of their preparedness and see how countries improved their public health policy in the first
15 and second wave of the coronavirus pandemic; (2) Methods: We considered the infectious period
16 during the first and second wave of 195 countries with their Current Health Expenditure as Gross
17 Domestic Product percentage (CHE/GDP). Exponential model was used to calculate the slope of the
18 regression line while the ARIMA model was used to calculate the initial autocorrelation slope and
19 also to forecast new cases for both waves. The relationship between epidemiologic and CHE/GDP
20 data was used for processing ordinary least square multivariate modeling and classifying countries
21 into different groups using PC analysis, K-means and Hierarchical clustering; (3) Results: Results
22 show that some countries with high CHE/GDP improved their public health strategy against virus
23 during the second wave of the pandemic; and (4) Conclusions: Results revealed that countries who
24 spend more on health infrastructure improved in the tackling of the pandemic in the second wave
25 as they were worst hit in the first wave. This research will help countries to decide on how to
26 increase their CHE/GDP in order to tackle properly other pandemic waves of the present Covid-19
27 outbreak and future diseases that may occur. We are also opening up a debate on the crucial role
28 socio-economic determinants play during the exponential phase of the pandemic modelling.

29 **Keywords:** exponential model; COVID-19; ARIMA; Current Health Expenditure as Gross Domestic
30 Product percentage
31

32 1. Introduction

33 So far, most countries have experienced at least two peaks of the Covid-19 pandemic and it is
34 necessary to look at both waves and then derive the best conclusion on the efficacy of outlook during
35 these both waves. Health officials, scientists and those involved in the modelling of the pandemic
36 have made a lot of suggestions from the day the first case has been recorded in Wuhan, China. The
37 Current Health Expenditure as Gross Domestic Product percentage (CHE/GDP) is key to different
38 countries' preparedness to respond for curtailing the pandemic even though it is general belief that
39 no one was prepared during the first wave of the pandemic as most developed nations were worst
40 hit and the death toll increased exponentially.

NOTE: This preprint reports new research that has not been certified by peer review and should not be used to guide clinical practice.

41 Our goal is to correlate the maximum basic reproduction number R_0 of both waves with the
42 CHE/GDP. In order to holistically approach this subject, we used many diverse regression tools and
43 also developed some clustering strategies across all countries considered. The results are key in order
44 to protect lives and improve health infrastructure in the future even though we know that the
45 pandemic is still evolving in different countries.

46 2. Materials and Methods

47 2.1. Materials

48 2.1.1. Variables

49 The variables used for this research are seven in total. The maximum basic reproduction number R_0
50 for first and second waves is chosen during the exponential phase of all countries considered. The
51 exponential and autocorrelation slopes are calculated using 100 days from the start of a wave
52 depending on the date a particular country recorded their first case between February and August
53 2020 while also 100 days was used to calculate for the second wave between October 15 2020 to
54 January 22 2021 for all countries considered. The opposite of initial autocorrelation slope was
55 averaged on six days. CHE/GDP was collated from World Bank data [1]. The deterministic R_0 was
56 drafted from previous research [2] and it was calculated as the Malthusian growth parameter during
57 the exponential phase of both waves across countries. The daily new cases were drafted from
58 Worldometers® [3] and Renkulab® [4] databases.

59 2.2. Methods

60 2.2.1. Exponential and ARIMA model

61 The exponential model is given as $y = ae^{bx}$, where y is the daily number of new cases, x is the number
62 of days, b is the slope and a is a constant, and the log format can be written as $\log y = \log a + bx$.

63 ARIMA modelling has been introduced by N. Wiener for prediction and forecasting [5]. Its
64 parametric approach assumes that the underlying stationary stochastic process of the COVID-19
65 new daily cases $N(t)$ can be described by a small number of parameters using the autoregressive
66 ARIMA model $N(t) = \sum_{i=1,s} a(i) N(i) + W(t)$, where W is a random residue whose variance is to
67 minimize. The autocorrelation analysis is done by calculating the correlation $A(k)$ between the
68 $N(t)$'s and the $N(t-k)$'s (t belonging to a moving time window) by using the formula

$$69 \quad A(k) = \frac{E[N(t)-E(N(t))][E[N(t-k)-E(N(t-k))]]}{\sigma(N(t))\sigma(N(t-k))} \quad (1)$$

70 where E denotes the expectation and σ the standard deviation. The autocorrelation function A allows
71 examining the serial dependence of the $N(t)$'s. We used ARIMA form of (6, 1, 0), which we think is
72 the best for the modelling.

73 2.2.2. Clustering methodology

74 Clustering is a branch of machine learning which is called 'unsupervised learning' and is frequently
75 utilized to classify biomedical data. We used three classical clustering methods, K-means, PCA
76 (Principal Component Analysis) and Hierarchical clustering [6]. K-means clustering chooses a priori
77 the number of clusters and starts out with random centroids while Hierarchical clustering starts with
78 every point in dataset as a cluster, then finds the two closest points and combines them into clusters,
79 the process being repeated until appears a big giant cluster and it then creates a dendrogram.

80 Principal component analysis (PCA) also helps to cluster data points and it is also one of dimension
81 reduction techniques because each variable has a different dimension. It allows us to summarize and

82 visualize the information in a data set described by multiple inter-correlated variables. PCA is used
83 to extract the important information from variables in the dataset and to express this information as
84 a set of few new variables called principal components (PC's).

85 2.2.3. Linear and Polynomial Regression

86 Linear regression models use some historic data (100 days infectivity period in our case) of
87 independent and dependent variables (CHE/GDP) and consider a linear relationship between both
88 while polynomial regression models use a similar approach but the dependent variable is modeled
89 as a degree n ($n \geq 2$) polynomial in x .

90 2.2.4. Multivariate Ordinary least square method

91 Multivariate least square method allows us to test much more complex relations between variables.
92 It can be represented as follows:

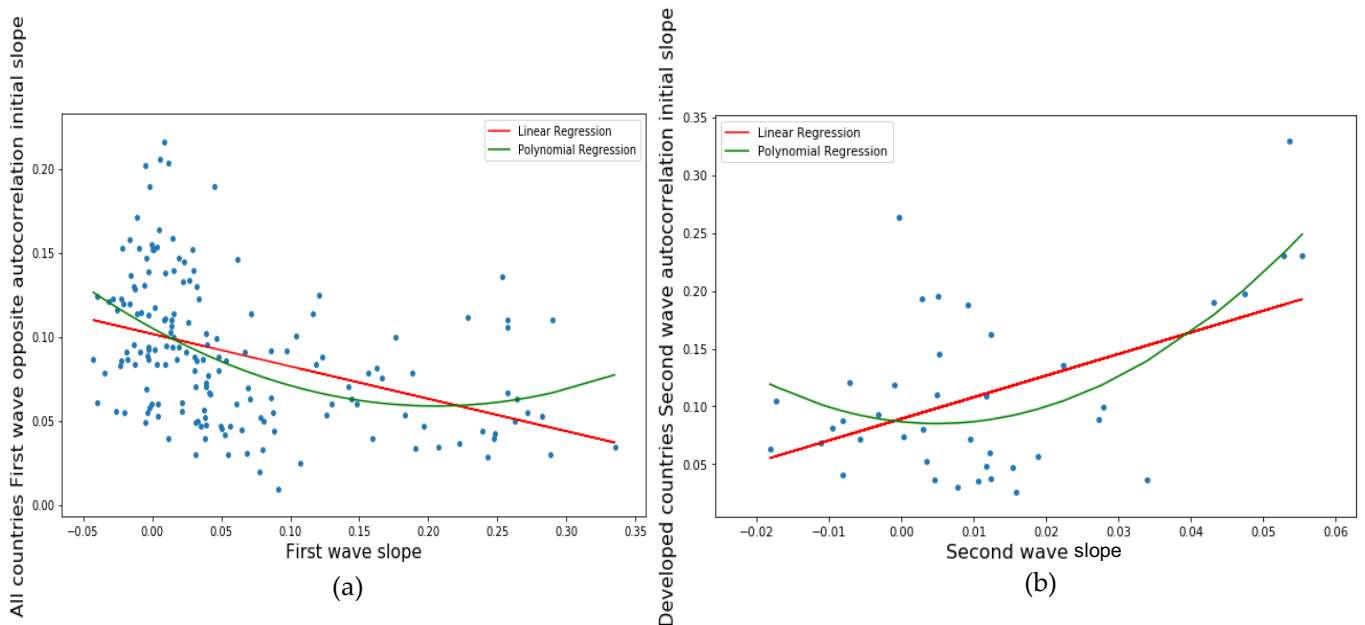
$$93 \quad \mathbf{y} = \beta_1 \mathbf{x}_1 + \beta_2 \mathbf{x}_2 + \dots + \epsilon, \quad (2)$$

94 where β_1, β_2, \dots are coefficients or weights, ϵ is the residual noise, y is the dependent variable
95 and $\mathbf{x}_1, \mathbf{x}_2, \dots$ are the independent variables.

96 3. Results

97 3.1. Autocorrelation Slope

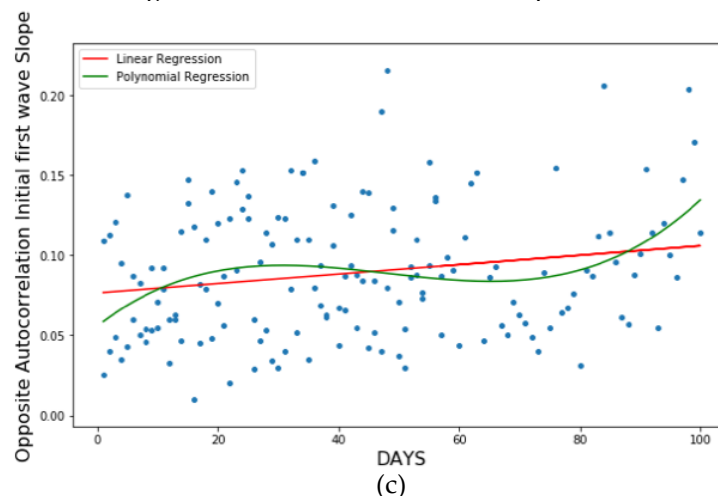
98 3.1.1. Parabolic and cubic regression



LinregressResult slope = -0.193, intercept=0.102, rvalue=-0.394,
pvalue = 1.026e-07, stderr = 0.03467,
R-squared for order Two Polynomial Regression = 0.19,
RMSE for Linear Regression = 0.0385,
RMSE for Polynomial Regression = 0.046

LinregressResult slope=1.867, intercept=0.089, rvalue=0.487,
pvalue = 0.00145, stderr = 0.54339,
R-squared for order Two Polynomial Regression = 0.37,
RMSE for Linear Regression = 0.063,
RMSE for Polynomial Regression = 0.094

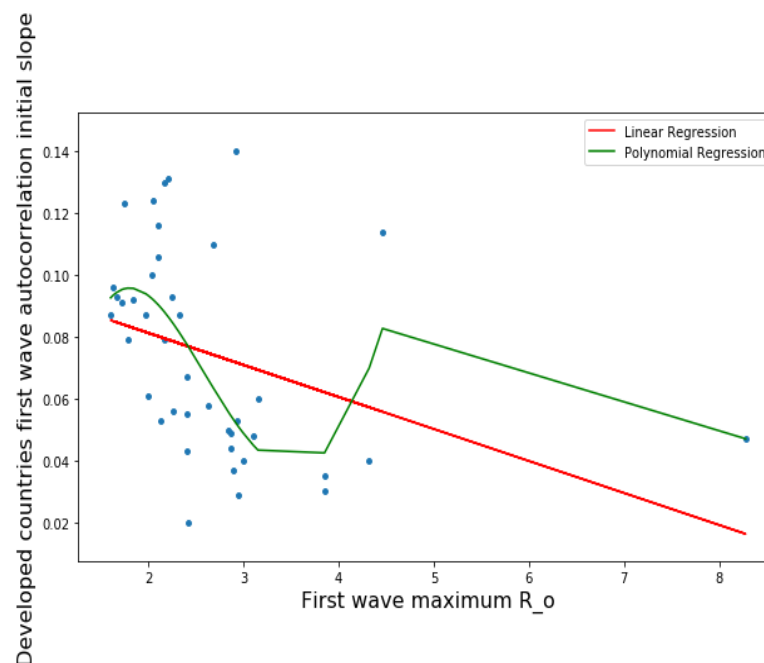
Meaning of abbreviations: LinregressResult slope = slope of the linear regression, intercept = ordinate at origin of the regression curve, rvalue = correlation coefficient, pvalue = p-value of the nullity test of correlation coefficient, stderr = standard error of the regression, RMSE = root of mean square error.



99 LinregressResult slope=0.000295, intercept=0.0765, rvalue=0.195469, pvalue=0.01415, stderr=0.000119,
100 R-squared Linear Regression=0.038, R-squared for order Three Polynomial Regression=0.1,
101 RMSE for Linear Regression = 0.04, RMSE for Polynomial Regression = 0.0414825

102 **Figure 1.** Linear (in red) and parabolic or cubic (in green) regression plots of the opposite of the initial
103 autocorrelation slope vs (a) first wave exponential regression slope for all countries, (b) second wave
104 exponential regression slope for developed countries and (c) days from the start of the first wave observed
105 in China for all countries.

106 3.1.2. *Quartic regression*



115
116
117 LinregressResult slope = 0.01034, intercept=0.1019, rvalue=-0.3578, pvalue=0.02163, stderr=0.00433,
118 RMSE for Linear Regression = 0.0303, RMSE for Polynomial Regression = 0.0349, R-squared for order
119 Four Polynomial Regression = 0.33
120

121 **Figure 2.** Linear (in red) and quartic (in green) regression plots of the opposite of the initial autocorrelation
122 slope of the first wave vs first wave maximum R_0 for developed countries.

123 3.1.3. Sextic regression

124

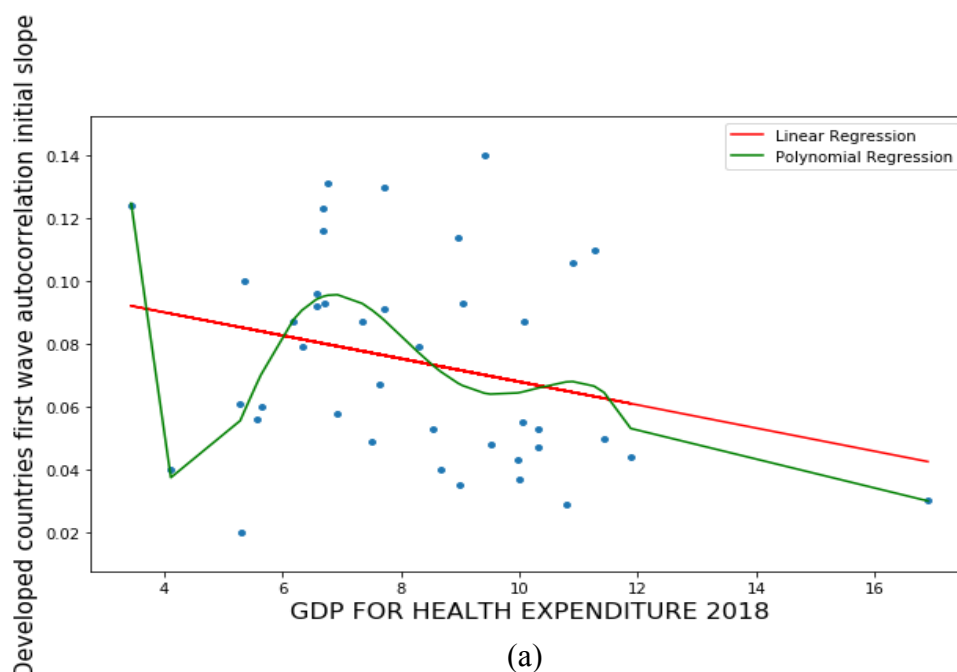
125

126

127

128

129

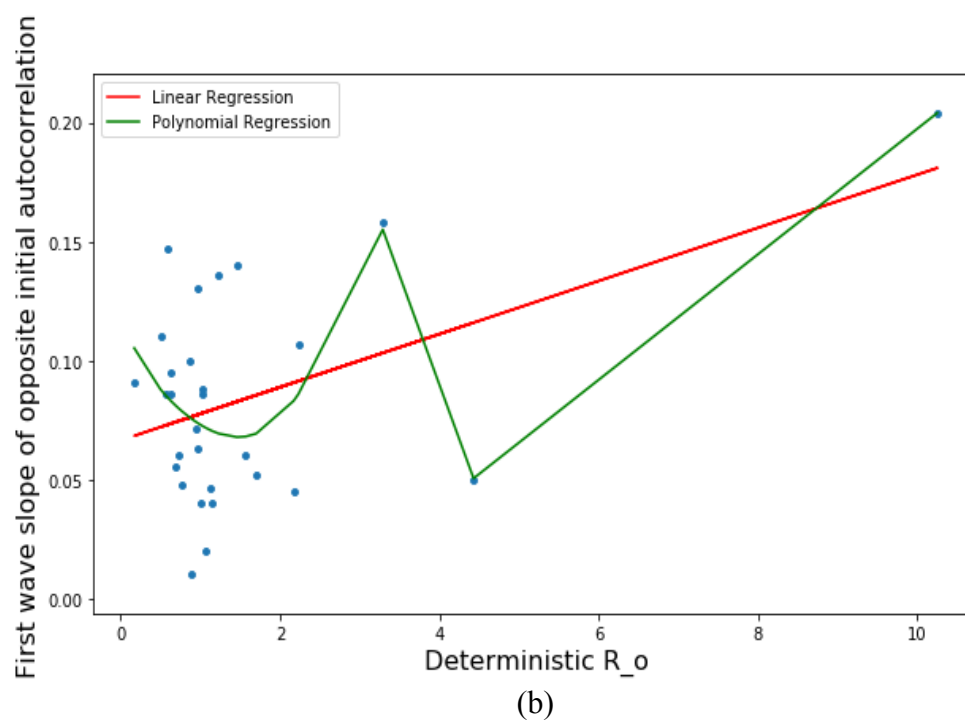


LinregressResult slope = -0.003689, intercept=0.10483, rvalue=0.28266, pvalue=0.07335, stderr=0.002005,
RMSE for Linear Regression = 0.03111914, RMSE for Polynomial Regression = 0.03337, R-squared for order Six
Polynomial Regression = 0

130

131

132



133

134

135

136

LinregressResult slope = 0.01117, intercept=0.0664, rvalue=0.47219, pvalue=0.0097, stderr=0.004,
RMSE for Linear Regression = 0.0387, RMSE for Polynomial Regression = 0.04399, R-squared for order Six
Polynomial Regression = 0.4

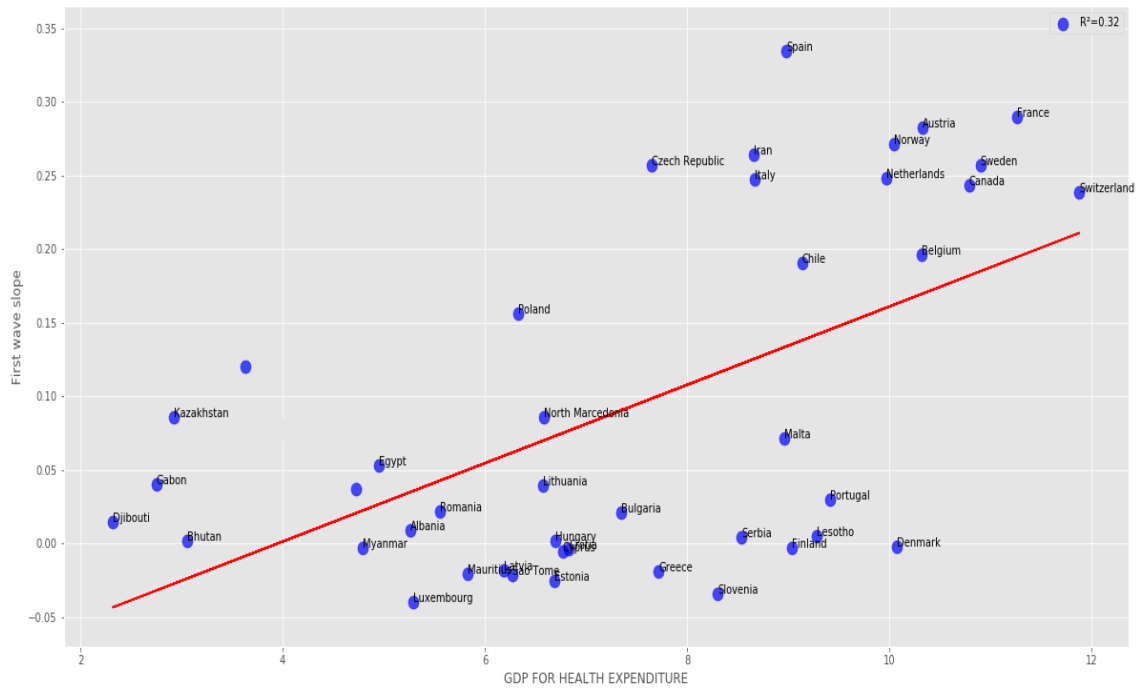
137

138

Figure 3. Linear (in red) and sextic (in green) regression plots of first wave opposite of initial autocorrelation slope vs (a) CHE/GDP and (b) maximum R_0 for developed countries.

139 3.2. Exponential model slope

140 3.2.1. Developed and Developing countries



141

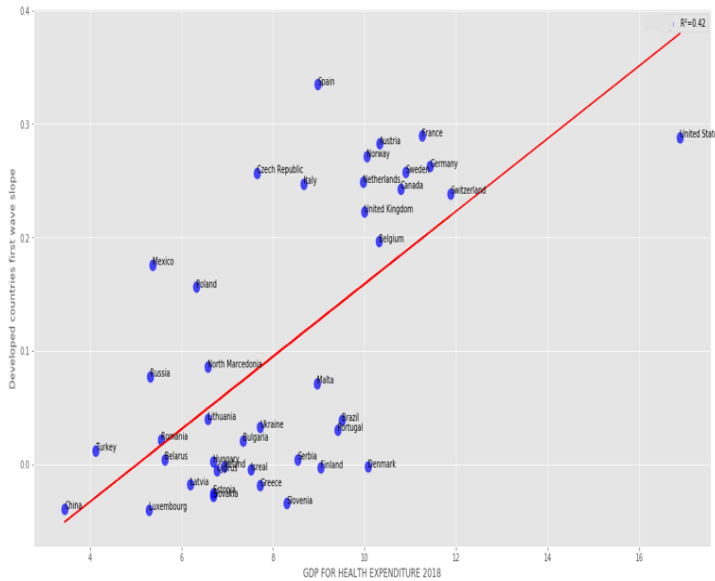
142 LinregressResult slope=0.026632, intercept=-0.1052912, rvalue=0.5661, pvalue=7.60225983 e-05,

143 stderr=0.00605655, R-squared = 0.320470, RMSE for Linear Regression = 0.09583572276448946

144 **Figure 4.** Regression plot of first wave exponential regression slope vs CHE/GDP for developed and

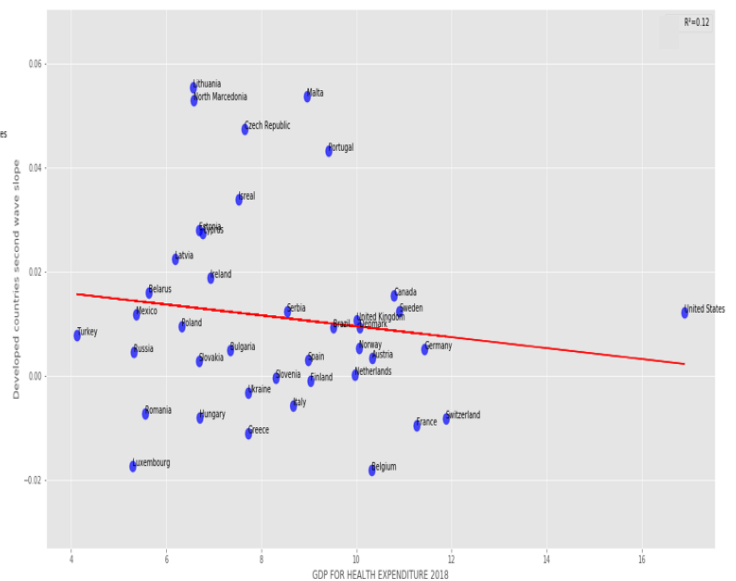
145 developing countries.

146 3.2.2. Developed countries



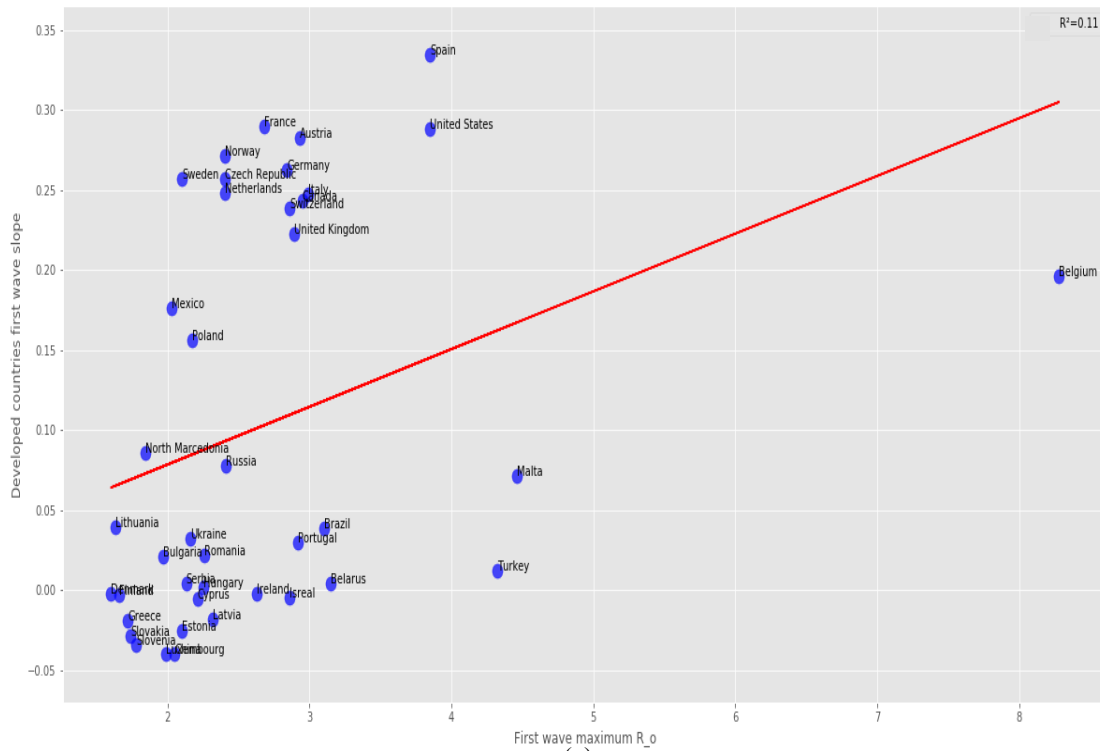
(a)

LinregressResult slope=0.0320468, intercept=-0.16158,
rvalue=0.6481, pvalue=4.62098 13e-06,
stderr=0.00603, R-squared = 0.42,
RMSE for Linear Regression = 0.09359760581

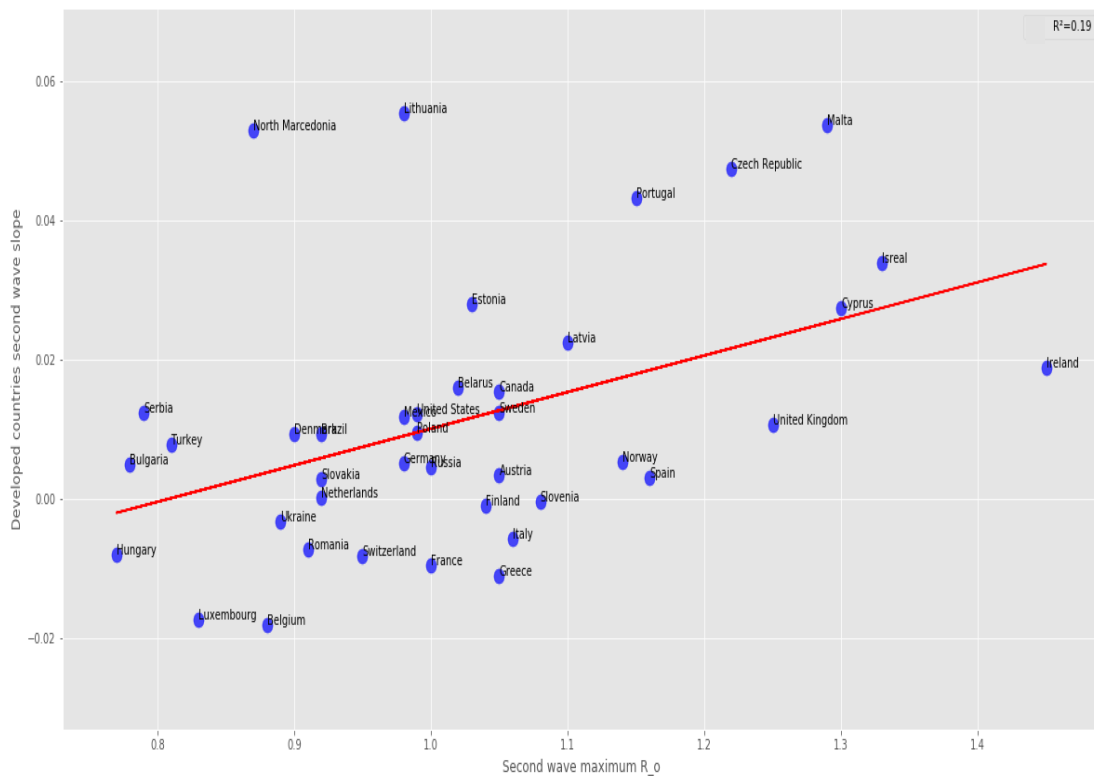


(b)

LinregressResult slope=-0.0010489, intercept=0.01994,
rvalue=0.1340845, pvalue=0.4094462,
stderr=0.001258, R-squared = 0.018,
RMSE for Linear Regression = 0.018583749



(c)
LinregressResult slope = 0.03612, intercept=0.0062, rvalue=0.3299, pvalue=0.0352, stderr=0.0165,
R-squared = 0.109, RMSE for Linear Regression = 0.116



(d)
LinregressResult slope = 0.05223, intercept=-0.0421, rvalue=0.434366, pvalue=0.0051, stderr=0.01757,
R-squared = 0.18867, RMSE for Linear Regression = 0.01689

Figure 5. Regression plots for developed countries of (a) first and (b) second wave exponential regression slope versus CHR/GDP, (c) first and (d) second wave maximum R_0 of the new cases curve.

149 3.2.3. All countries

150

151

152

153

154

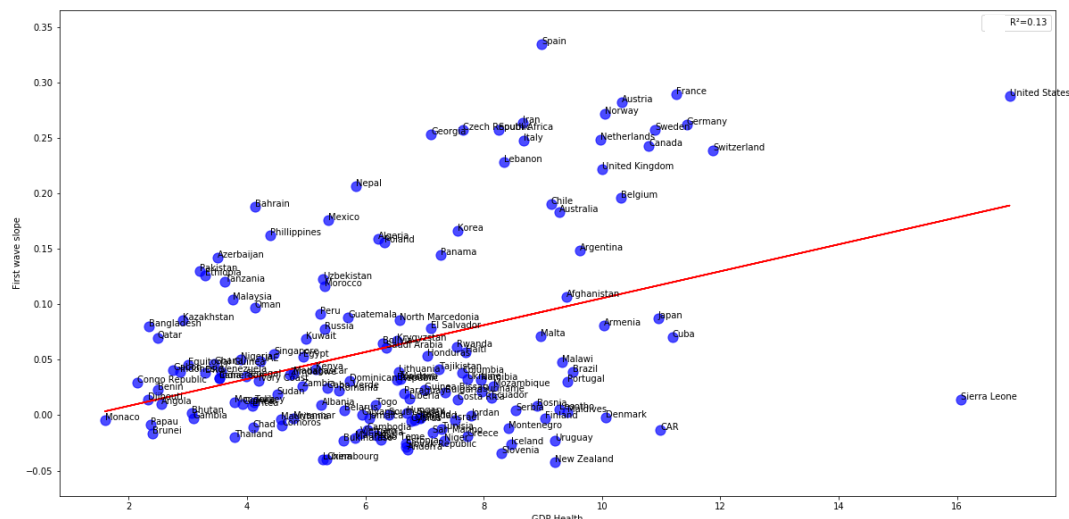
155

156

157

158

159



160 LinregressResult slope = 0.01214439, intercept=-0.0159087, rvalue=0.3655, pvalue=2.70856913 e-06,
161 stderr=0.00249223, R-squared = 0.13359, RMSE for Linear Regression = 0.0819603345

162 **Figure 6.** Regression plot of first wave exponential regression slope vs CHE/GDP for all countries.

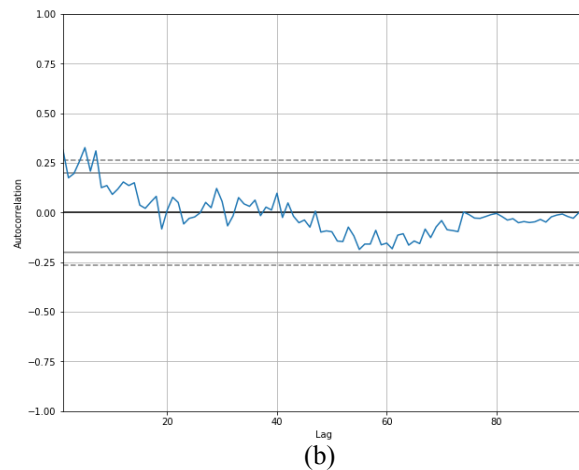
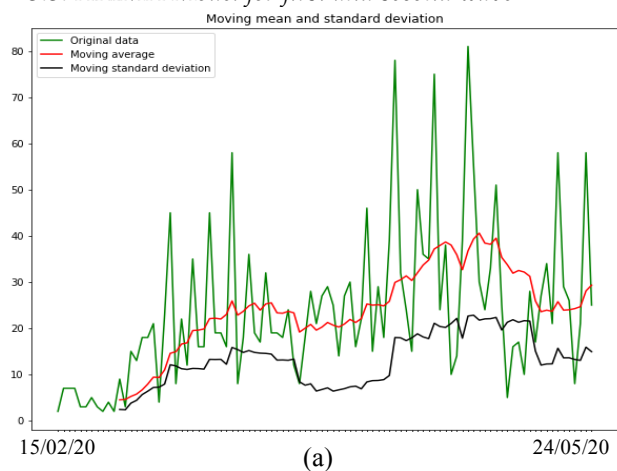
163 3.3. ARIMA Model for first and second wave

164

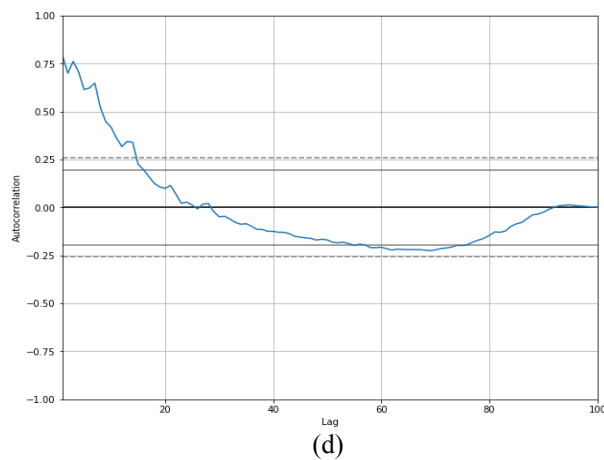
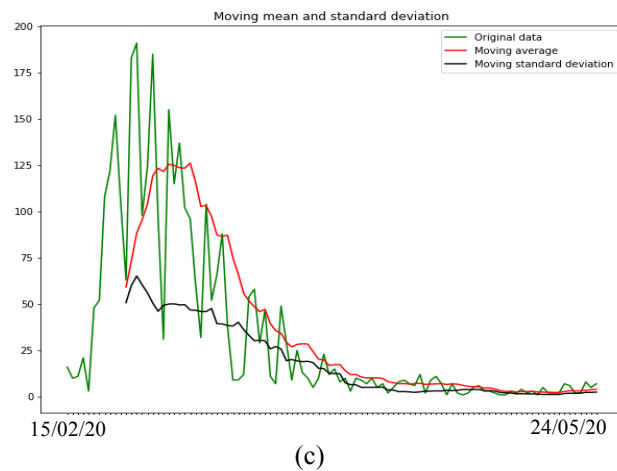
165

166

167



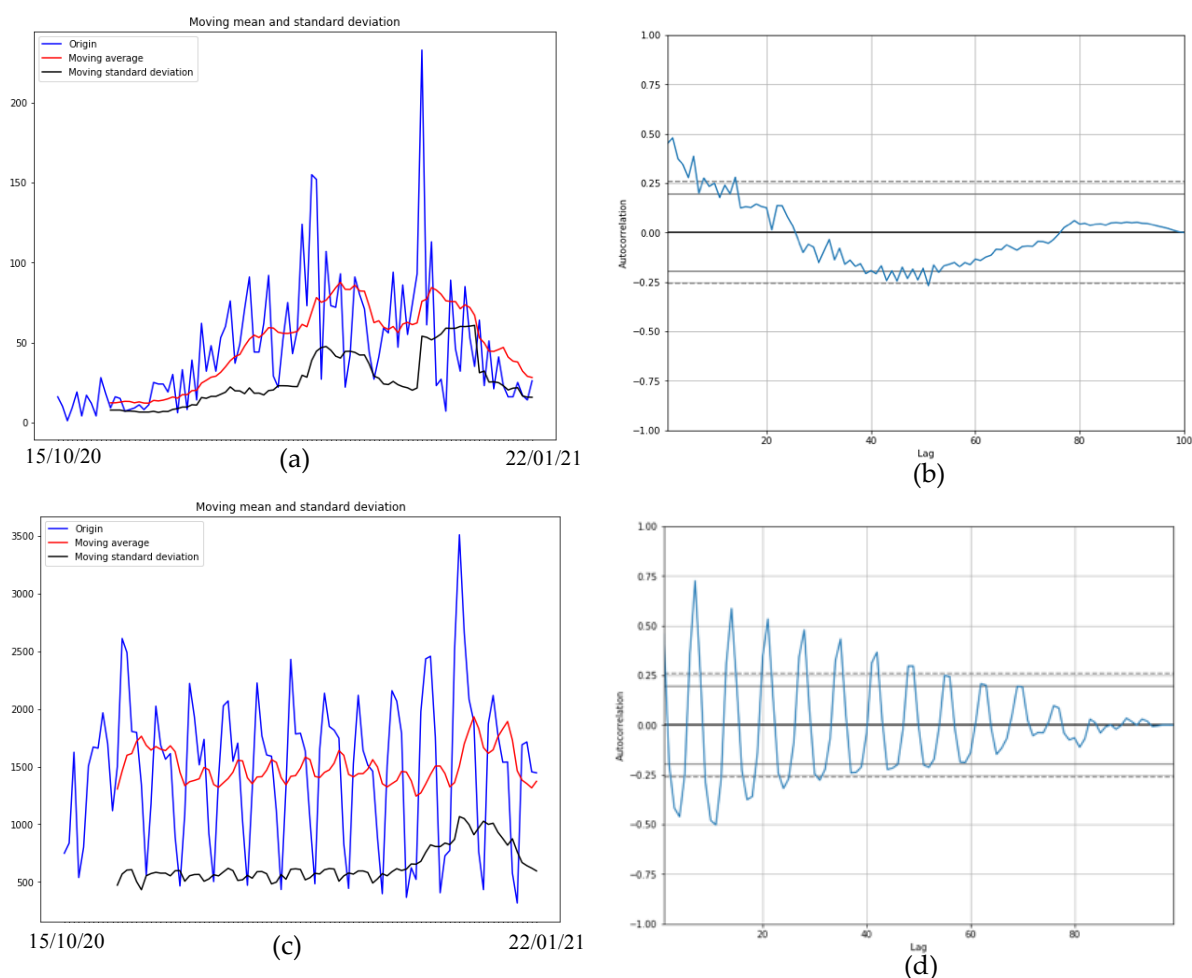
168



169 **Figure 7.** (a) First wave moving average and standard deviation of new cases (left) and (b) autocorrelation
170 curve for Mali (right). (c) First wave moving average and standard deviation of new cases (left) and (d)
171 autocorrelation curve for Luxembourg (right).

172 3.3.2. Second wave ARIMA Model from October 15 2020 to January 22 2021

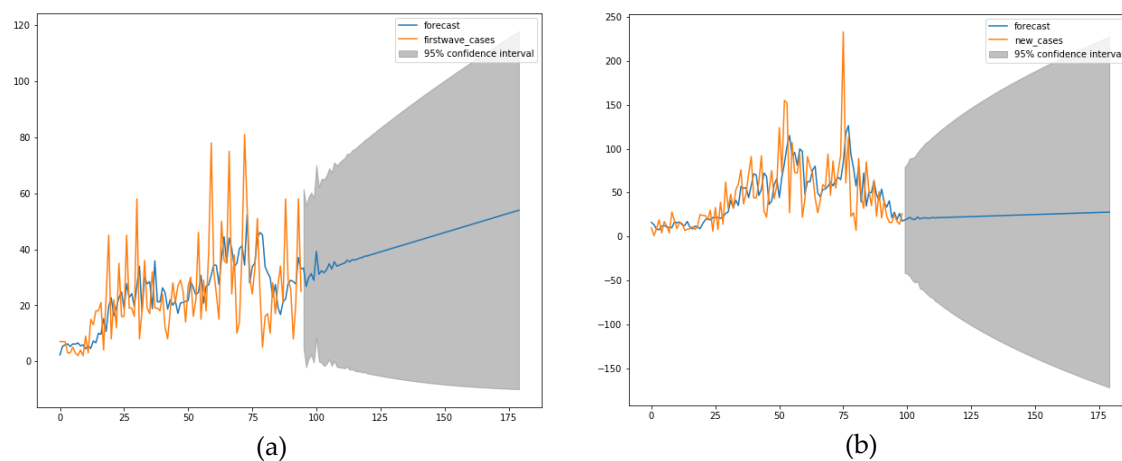
173
174
175
176
177

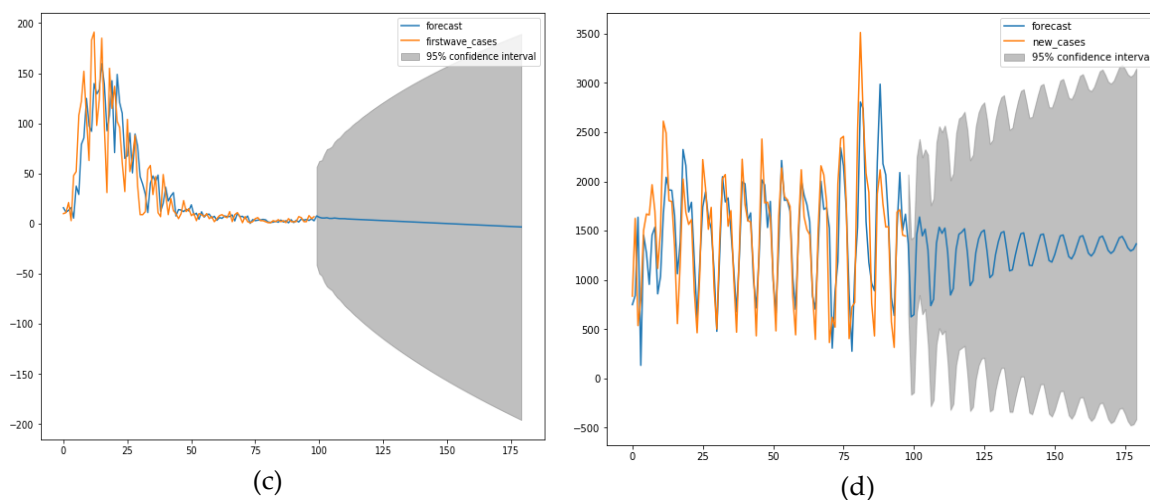


178 **Figure 8.** (a) Second wave moving average and standard deviation of new cases (left) and (b) autocorrelation
179 curve for Mali (right). (c) Second wave moving average and standard deviation of new cases (left) and (d)
180 autocorrelation curve for Slovenia (right).

181 3.3.3. ARIMA Model forecast for first and second wave

182



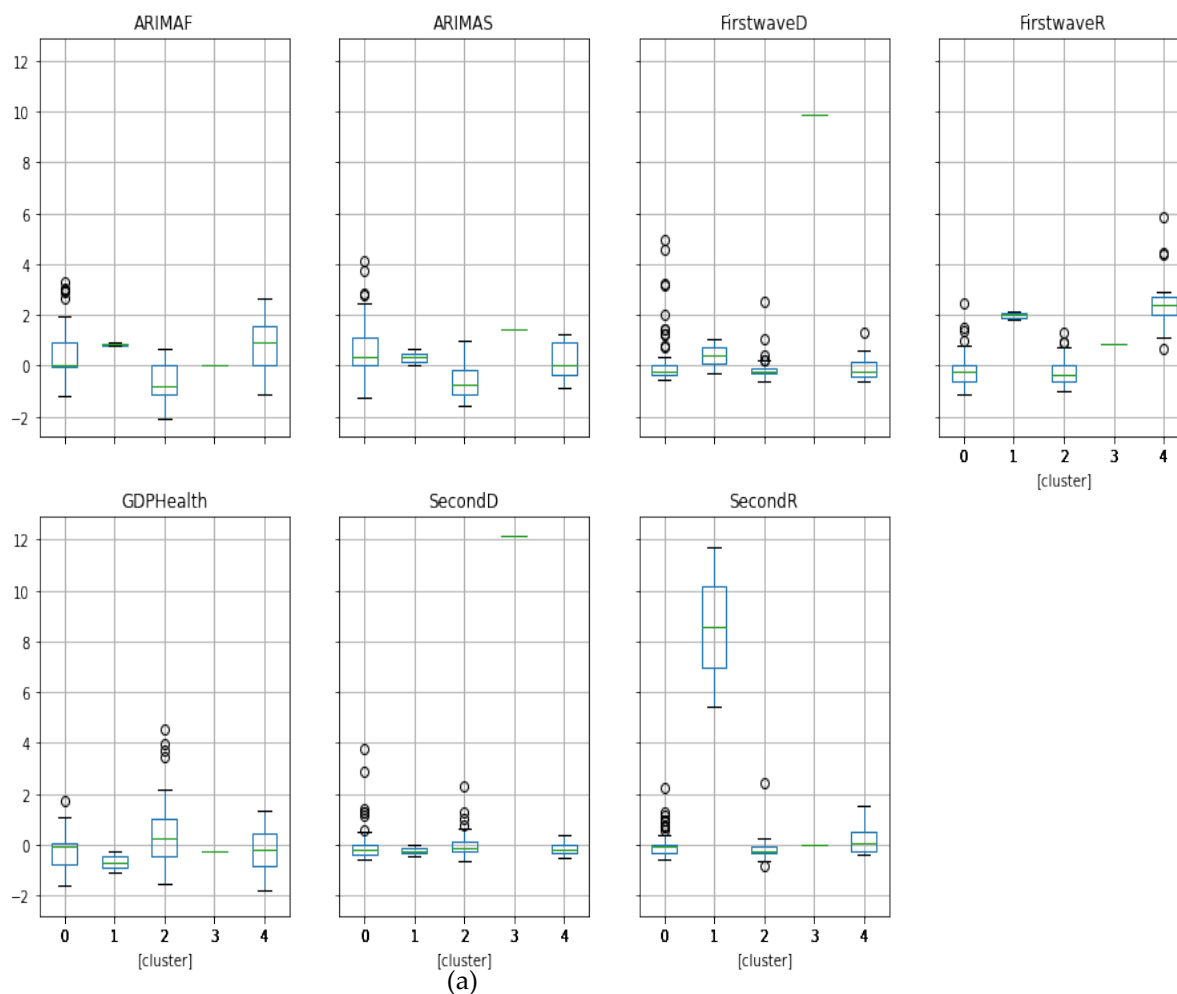


183 **Figure 9.** (a) First and (b) second wave forecast for Mali. (c) First wave forecast for Luxembourg. (d)
184 Second wave forecast for Slovenia.

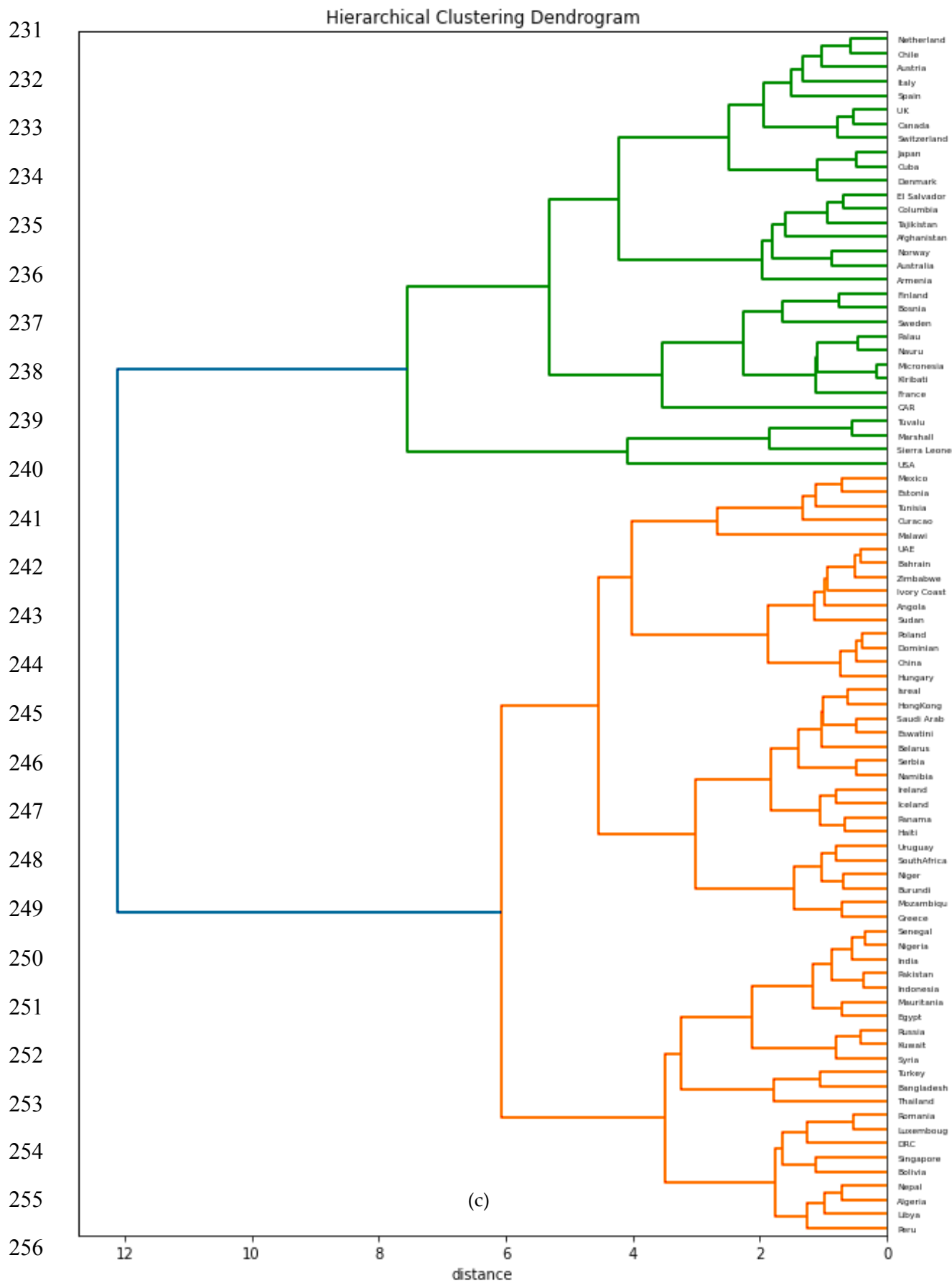
185 3.4. Clustering of variables.

186 3.4.1. Hierarchical clustering

Boxplot grouped by cluster



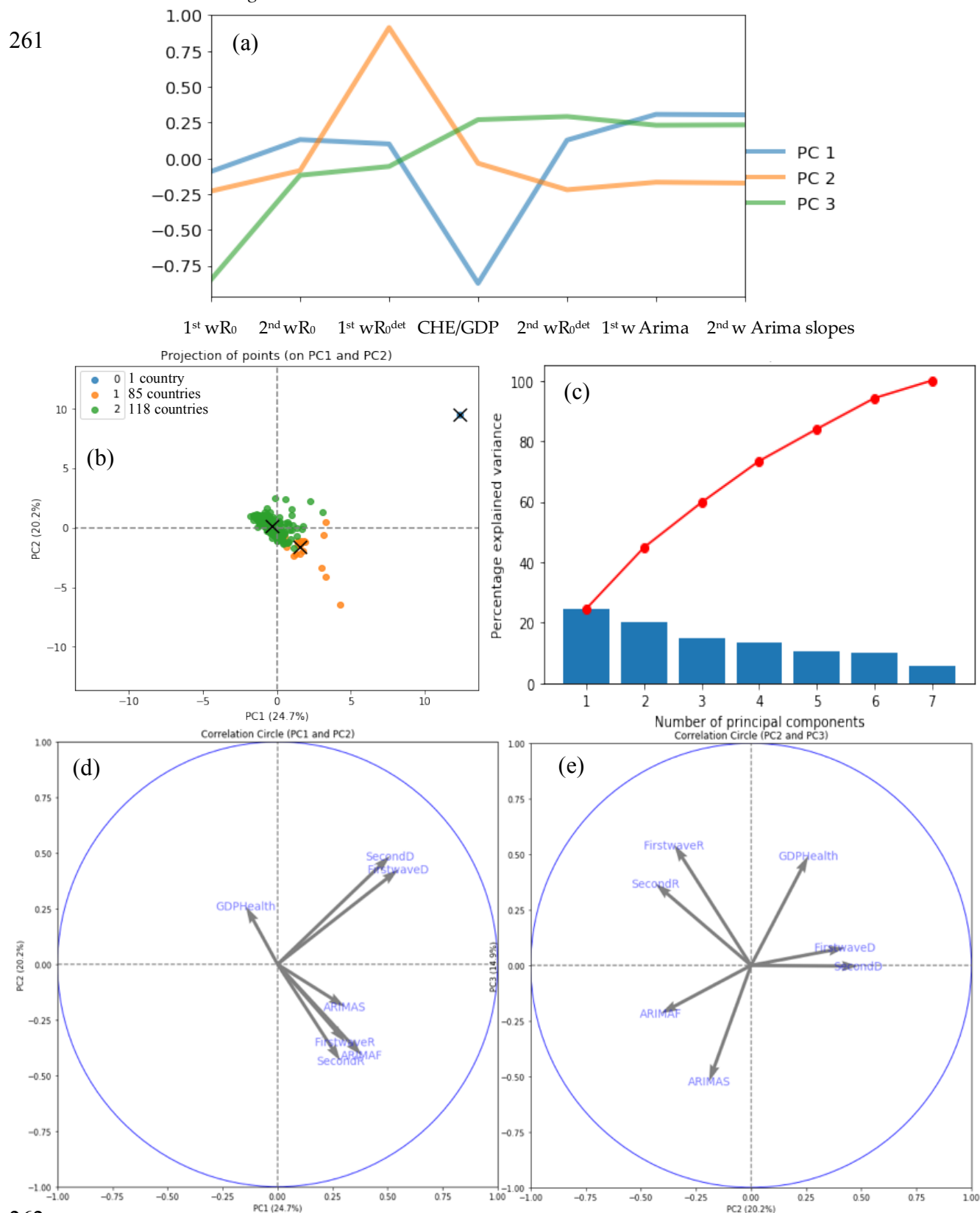
202



257 Figure 10. (a) Boxplots of the clusters corresponding to the hierarchical clustering. Visualizations of (b)
258 more “developing” (in red with some notable exceptions like Czech and Germany) and (c) more
259 “developed” (in green and partially in orange) countries parts of the hierarchy tree.

260 3.4.2. PCA Clustering

261

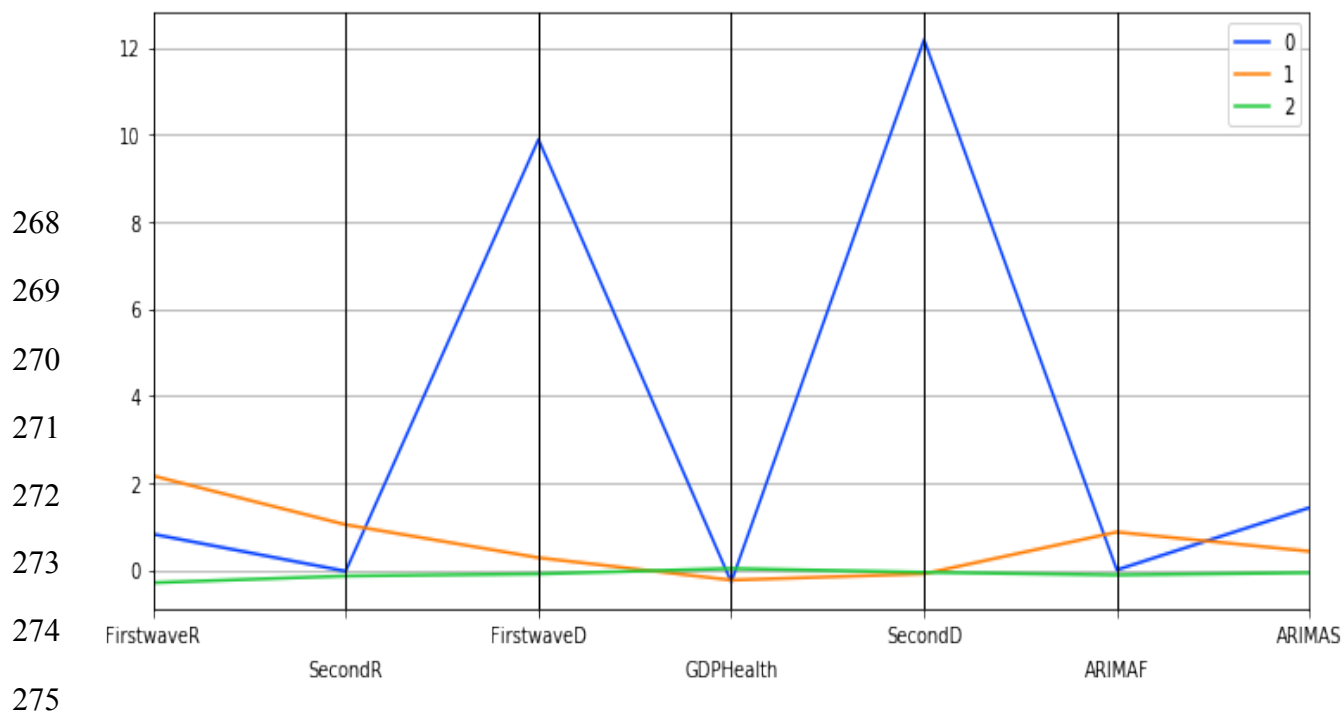


262
263
264
265
266

Figure 11. (a) Principal Components (PC) plot from the Principal Component Analysis (PCA) on the initial variables: first and second waves maximum R₀, 1st wR₀ and 2nd wR₀, deterministic R₀, 1st wR₀^{det} and 2nd wR₀^{det}, Arima slopes, 1st w Arima, 2nd w Arima slopes, and CHE/GDP. (b) Projection of the points corresponding to 204 countries of the PCA's plot on the first PC plane with more developed countries in green and more developing in orange. (c) Explained variance plot. (d&e) Correlation circles for the two first PC planes.

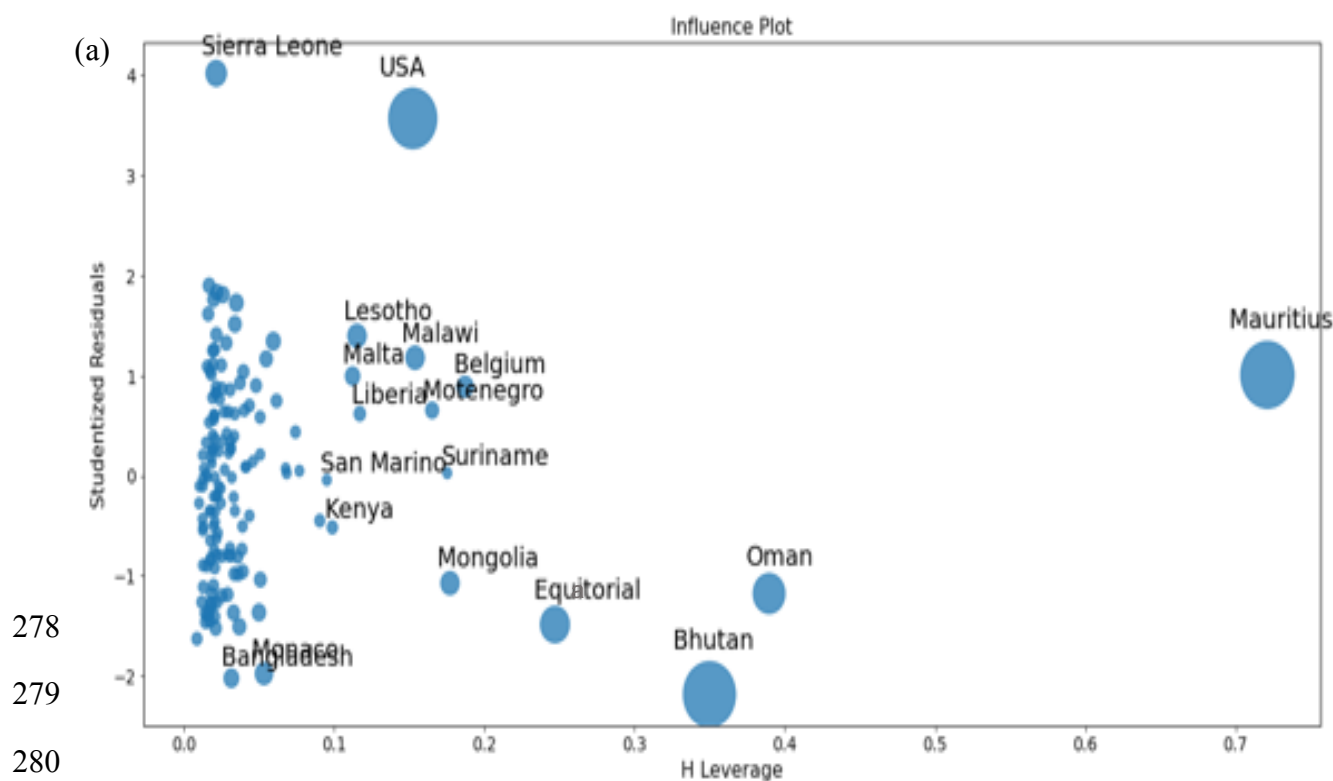
267 3.4.3. K-means clustering

Parallel Coordinates plot for the Centroids



276 **Figure 12.** Parallel coordinates for cluster centroids.

277 3.4. Ordinary least square method. The multivariate case.



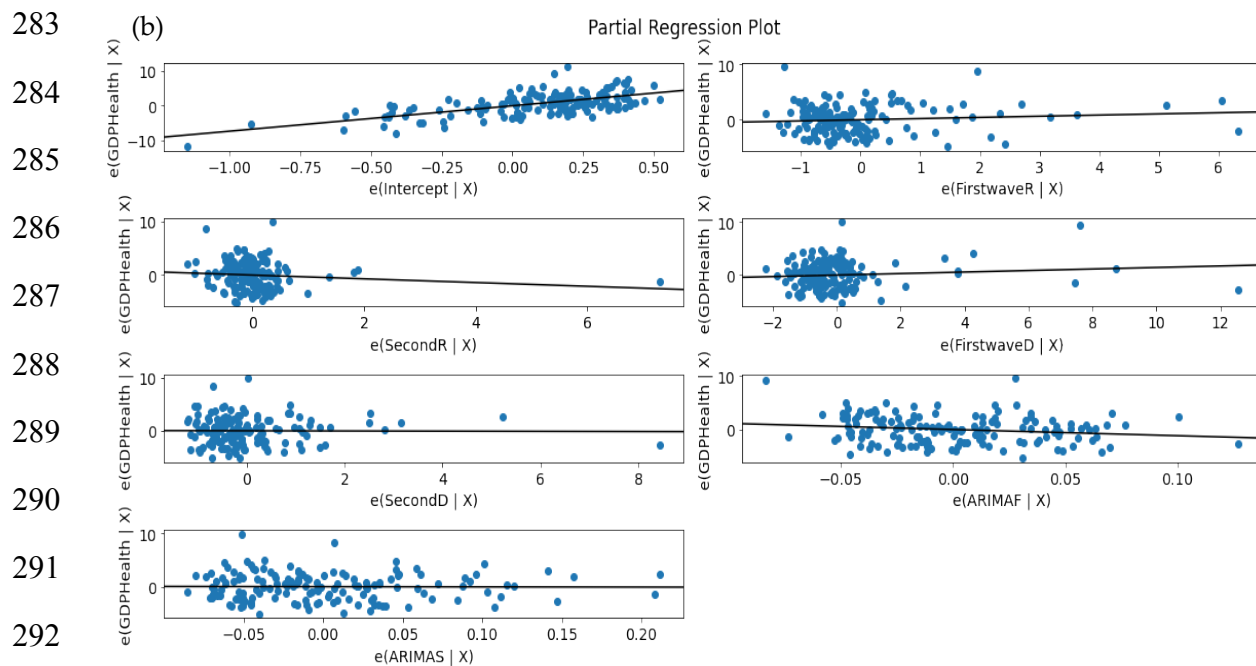
278

279

280

281

282



293 **Figure 13.** (a) Leverage vs normalized squared residuals plot. (b) Residuals regression plots for initial variables.

294 **4. Discussion**

295 There are a lot of differences between the first and second wave results concerning the exponential
 296 regression slope and the autocorrelation initial slope: while some countries have higher figures for
 297 the first wave, others have lower figures for the second wave and vice versa. This was also evident
 298 for the regression plot where some countries have negative correlation values for the first wave of
 299 some growth parameters with the CHE/GDP and positive for the second wave, and vice versa for
 300 other countries. These phenomena prove that the way the pandemic spread in the second wave is
 301 different from what was experienced in the first wave. In the principal component analysis, we
 302 discovered that first wave deterministic R_0 and CHE/GDP health had high weights in first and second
 303 Principal Components (PC1 and PC2), which are dominant components in the PC analysis.

304 More precisely, on Figure 1a,b first and second waves of the Covid-19 pandemic are compared using
 305 linear and parabolic or cubic regression, showing a significant positive (resp. negative) correlation
 306 between the opposite of the initial autocorrelation slope and exponential regression slope of the first
 307 (resp. second) wave for developed (resp. all) countries. This opposition between the two waves could
 308 result from the application of a more severe lockdown in developed countries during the second
 309 wave. On Figure 1c, the opposite of the initial autocorrelation slope decreases significantly if the start
 310 of the first wave in a country is late with respect to the start of the Covid-19 outbreak in China due
 311 probably to the progressive implementation of mitigation measures in that country taking into
 312 account the experience of the countries starting first wave before. On Figure 2, the opposite of the
 313 initial autocorrelation slope is significantly negatively correlated with the maximum R_0 observed at
 314 the inflection point of the new cases curve, confirming that long contagiousness periods give high
 315 exponential increases of the new cases. On Figure 3, for the first wave the opposite of the initial
 316 autocorrelation slope is positively (resp. negatively) correlated with the CHE/GDP (resp. maximum
 317 R_0) for developed countries, which could correspond to the efficiency of the mitigation measures
 318 decided in these countries, which is confirmed on Figure 4, where the first wave exponential
 319 regression slope is positively correlated with the CHE/GDP in a mix of developed and developing
 320 countries. The Figure 5a shows the same type of effect of public health policies in developed countries
 321 for the first wave, where CHE/GDP increases with the first wave exponential regression slope, but
 322 this result is inverted on Figure 5b for the second wave perhaps due to a rationalization of the care
 323 activity between the first two waves. Figures 5c&d show a similar behavior of the two waves
 324 concerning the positive correlation between the exponential regression slope and the maximum R_0 ,

325 which makes sense, as these quantities are both related to the initial exponential growth of an
326 epidemic wave. For the first wave of all countries, Figure 6 shows the same positive correlation as
327 Figure 5a between the exponential regression slope and CHE/GDP.

328 Figure 7 compares two countries, one from sahelian Africa, Mali and one from western Europe,
329 Luxembourg during the first wave of Covid-19 outbreak during the spring 2020: Mali shows a quasi-
330 endemic behavior with a weakly varying autocorrelation function and Luxembourg a frank epidemic
331 wave with a classic shape. For the second wave in fall 2020, Mali presents an attenuated epidemic
332 shape (due probably to specific geoclimatic conditions in western Africa [7]) and a country from
333 central Europe, Slovenia, shows at this period an endemic behavior with an oscillatory occurrence of
334 new cases. Figure 9 proposes a forecasting based on ARIMA decomposition for the first and second
335 waves in Mali with a better approximation for the epidemic second wave than for the quasi-endemic
336 first wave. It is the same for Luxembourg with an inversion of the phases order, an epidemic wave
337 followed by an endemic state well predicted. On the contrary for Slovenia, the endemic state with
338 oscillations is badly predicted.

339 Clustering of all countries is then studied on Figures 10 to 12. Figure 10a shows the boxplot of the 7
340 initial variables used in hierarchical clustering: the first and second wave opposite of the initial
341 autocorrelation slope (respectively ARIMAF and ARIMAS), exponential regression slope and
342 maximum R_0 (respectively FirstwaveD, SecondD, FirstwaveR, SecondR), and the CHE/GDP. The
343 boxplots contain 5 clusters represented in Figure 10b&c corresponding to more “developing” (in red
344 with some notable exceptions like Czech and Germany) and (c) more “developed” (in green and
345 partially in orange) countries parts of the hierarchy tree, with a small “exotic” cluster for Tanzania
346 and Mauritius. Figures 11a-e shows the results of the Principal Component Analysis (PCA), with (a)
347 the 3 principal components declined on the initial variables calculated for all countries (first and
348 second waves maximum R_0 's denoted $1^{st} wR_0$ and $2^{nd} wR_0$, deterministic R_0 's denoted $1^{st} wR_0^{det}$ and 2^{nd}
349 wR_0^{det} , Arima slopes denoted $1^{st} wArima$, $2^{nd} wArima$ slopes, and the Current Health Expenditure as
350 Gross Domestic Product percentage denoted CHE/GDP), (b) the projection of the points
351 corresponding to countries of the PCA's plot on the first PC plane, (c) the explained variance plot and
352 (d&e) the correlation circles for the first three Principal Components with projection of the initial
353 variables as vectors (having 195 components corresponding to the 195 countries of the Table 1 in
354 Appendix 1) on the corresponding principal planes. In Figure 11a, the main initial variable in the
355 linear combination of the first (resp. the second) principal component is the first wave deterministic
356 R_0^{det} (resp. the CHE/GDP) and these two initial variables R_0^{det} and CHE/GDP are anticorrelated as we
357 have already noticed when commenting before on the Figure 3 (a country devoting a large share of
358 its GDP to health expenditure reduces the occurrence of new cases). Figure 11b gives the projection
359 of 204 countries on the first PC plane and distinguishes 2 main clusters of respectively 118 and 85
360 countries (plus a singleton representing Botswana), with more developed countries in green and
361 more developing in orange. Figure 11c shows that 60% of the variance is explained by the 3 first PCs,
362 and Figures 11d&e present the correlation circles with projection of the initial variables as vectors on
363 the corresponding two principal planes (PC1, PC2) and (PC2, PC3), showing like in Figure 11a the
364 preeminence of the opposite vectors, the first wave deterministic R_0 and the CHE/GDP. Figure 12
365 shows also for the first k-means cluster the importance of the first wave deterministic R_0 .

366 The last Figures 13a,b correspond to the ordinary multivariate least square method. Figure 13a shows
367 the eccentric position of developed countries like Belgium and USA and developing countries like
368 Equatorial Guinea and Suriname as outliers not fitting the data bulk, and Figure 13b the concentration
369 of the initial variable CHE/GDP with the first and second waves deterministic R_0^{det} , in agreement
370 with the fact that they are the most dominant initial variables in PCA and k-means clustering.

371 5. Conclusions

372 We have shown in this article that there exist correlations between the growth parameters directly
373 linked to the occurrence of new cases of Covid-19 and socio-economic variables, in particular the
374 Current Health Expenditure as Gross Domestic Product percentage (CHE/GDP) anticorrelated with

375 the basic reproduction time R_0 , which shows the effectiveness of public health mitigation measures,
 376 even if they involve significant medico-economic costs. Larger perspectives are offered by combining
 377 other studies on geoclimatic and demographic factors of severity of the Covid-19 outbreak [7-13] with
 378 the present socio-economic determinants, in order to get the most comprehensive and accurate
 379 picture of non-biological exogenous influences on the expanding Covid-19 pandemic.

380 Appendix A

381 **Table 1.** Parameters for first and second waves for 195 countries.

382

All countries										
	First wave					Second wave				
No	Country Name	R_0	D- R_0	Exponential Slope	Auto-correlation slope	R_0	D- R_0	Exponential Slope	Auto-correlation slope	GDP Health 2018
1	AFGHANISTAN	1.78	0.65	0.1070	-0.025	0.79	0.04	0.0017	-0.097	9.40
2	ALGERIA	2.19	1.25	0.1594	-0.040	0.86	0.91	0.0316	-0.100	6.22
3	ARUBA	-	5.46	-	-	-	1.10	0.0172	-0.112	-
4	ANDORRA	-	1.36	-0.0313	-0.121	-	0.12	-0.0067	-0.155	6.71
5	ANGOLA	2.06	0.63	0.0100	-0.095	1.13	1.70	-0.0135	-0.057	2.55
6	ANTIGUA	4.23	1.92	-	-	3.30	2.13	0.0051	-0.177	5.23
7	ALBANIA	1.61	0.96	0.0091	-0.138	0.99	0.66	0.0058	-0.085	5.26
8	ARGENTINA	2.06	0.73	0.1485	-0.060	1.19	0.36	0.0427	-0.240	9.62
9	ARMENIA	1.51	4.43	0.0809	-0.050	0.80	0.86	0.0570	-0.090	10.03
10	AUSTRALIA	2.45	2.79	0.1832	-0.054	1.11	1.50	0.0037	-0.136	9.28
11	AUSTRIA	2.93	1.17	0.2825	-0.053	1.05	2.08	0.0034	-0.053	10.33
12	AZERBAIJAN	2.11	1.16	0.1422	-0.071	0.63	0.37	0.0676	-0.130	3.51
13	BAHAMAS	6.33	0.57	-	-	1.48	1.22	-0.0250	-0.077	6.25
14	BAHRAIN	1.81	1.10	0.1884	-0.079	1.24	1.14	0.0012	-0.053	4.13
15	BANGLADESH	3.67	1.04	0.0799	-0.033	0.92	0.99	-0.0086	-0.046	2.34
16	BARBADOS	4.63	1.86	-	-	1.99	1.14	0.0378	-0.109	6.56
17	BELARUS	3.15	1.57	0.0043	-0.060	1.02	1.07	0.0159	-0.026	5.64
18	BELGIUM	8.28	0.43	0.1963	-0.047	0.88	2.23	-0.0182	-0.063	10.32
19	BELIZE	3.74	0.99	-	-	1.34	0.51	-0.0004	-0.140	5.69
20	BENIN	2.16	0.85	0.0226	-0.133	1.55	0.85	0.0020	-0.125	2.49
21	BHUTAN	2.10	15.00	0.0021	-0.118	2.49	1.08	0.0126	-0.099	3.06
22	BOLIVIA	1.46	2.17	0.0647	-0.045	1.45	1.61	0.0152	-0.087	6.30
23	BOSNIA	1.70	0.09	0.0088	-0.110	0.97	1.56	-0.0118	-0.106	8.90
24	BOTSWANA	3.76	28.47	-	-	1.43	28.43	0.0030	-0.186	5.85
25	BRAZIL	3.10	0.77	0.0389	-0.048	0.92	0.46	0.0092	-0.188	9.51
26	BRUNEI	5.00	1.08	-0.0165	-0.120	3.66	1.00	-	-	2.41
27	BULGARIA	1.97	5.06	0.0178	-0.087	0.78	0.75	0.0049	-0.110	7.35

28	BURKINA FASO	2.44	1.08	-0.0227	-0.123	1.18	0.94	0.0360	-0.058	5.63
29	BURUNDI	2.80	1.33	-	-	1.69	2.18	0.0226	-0.063	7.74
30	CABO VERDE	1.54	0.82	0.0247	-0.091	1.71	0.19	-0.0064	-0.110	5.36
31	CAMBODIA	5.55	0.34	-0.0129	-0.129	3.12	0.27	0.0010	-0.158	6.03
32	CAMEROON	2.56	2.17	0.0338	-0.123	1.64	2.48	0.0085	-0.207	-
33	CANADA	2.95	1.10	0.2432	-0.029	1.05	0.44	0.0153	-0.047	10.79
34	CAR	2.45	1.66	-0.0130	-0.096	4.99	0.33	-	-	10.99
35	CHAD	2.43	1.19	-0.0108	-0.114	1.44	0.77	0.0222	-0.050	4.10
36	CHILE	2.42	1.00	0.1906	-0.034	1.16	1.64	0.0586	-0.090	9.14
37	CHINA	2.05	1.10	-0.0602	-0.088	1.07	0.87	0.0137	-0.068	5.35
38	COLUMBIA	1.86	1.00	0.0384	-0.040	0.99	1.47	0.0061	-0.126	7.64
39	COMOROS	1.93	3.75	-0.0094	-0.153	1.58	1.65	0.0397	-0.076	4.59
40	CONGO DEM	1.48	0.03	0.0384	-0.052	1.10	0.88	0.0252	-0.089	3.30
41	CONGO REP	2.39	0.92	0.0294	-0.152	1.43	0.39	0.0064	-0.118	2.14
42	COSTA RICA	1.51	0.50	0.0142	-0.110	1.08	1.26	-0.0022	-0.209	7.56
43	COTE D'VOIRE	1.47	1.18	0.0309	-0.080	1.35	2.09	0.0253	-0.078	4.19
44	CROTIA	3.95	0.75	-0.0042	-0.069	0.72	0.57	-0.0115	-0.106	6.83
45	CUBA	2.23	0.48	0.0706	-0.063	1.30	0.78	0.0517	-0.040	11.19
46	CURACAO	-	0.50	-	-	-	4.19	-0.0060	-0.074	-
47	CYPRUS	2.21	0.69	-0.0056	-0.131	1.30	0.45	0.0273	-0.089	6.77
48	CZECH	2.40	0.16	0.2570	-0.067	1.22	0.88	0.0474	-0.197	7.65
49	DENMARK	1.60	0.80	-0.0024	-0.087	0.90	0.64	0.0092	-0.048	10.07
50	DJIBOUTI	2.73	0.17	0.0144	-0.094	1.47	0.36	-0.0045	-0.169	2.32
51	DOMINICAN	2.09	1.02	0.0309	-0.088	1.10	1.57	0.0151	-0.081	5.73
52	DOMINICA	-	7.75	-	-	-	0.67	-	-	6.59
53	ECUADOR	2.22	1.46	0.0157	-0.140	1.18	1.14	-0.0045	-0.175	8.14
54	EGYPT	1.69	0.84	0.0527	-0.042	1.33	0.51	0.0243	-0.023	4.95
55	EL SALVADOR	1.58	1.70	0.0783	-0.052	1.29	0.66	0.0535	-0.113	7.11
56	EQUATORIAL G.	10.0	0.38	0.0454	-0.190	2.41	1.48	0.0142	-0.177	3.00
57	ERITREA	2.57	1.18	0.0083	-0.216	0.74	0.80	0.0222	-0.146	4.09
58	ESTONIA	2.10	0.87	-0.0254	-0.116	1.03	3.04	0.0279	-0.099	6.69
59	ESWATINI	2.08	0.94	0.0317	-0.071	1.34	0.71	0.0412	-0.034	6.54
60	ETHIOPIA	2.42	0.80	0.1259	-0.054	1.11	1.24	-0.0041	-0.136	3.30
61	FIJI	-	2.00	-	-	-	0.50	-	-	3.42
62	FINLAND	1.66	1.14	-0.0030	-0.093	1.04	2.41	-0.0010	-0.119	9.04
63	FRANCE	2.68	1.17	0.2898	-0.110	1.00	2.17	-0.0096	-0.081	11.26
64	GABON	1.83	0.97	0.0404	-0.077	1.44	0.19	0.0187	-0.143	2.75

65	GAMBIA	3.21	0.83	-0.0026	-0.094	2.29	0.37	0.0145	-0.099	3.09
66	GEORGIA	2.19	1.23	0.2536	-0.136	0.76	0.79	0.0293	-0.057	7.11
67	GERMANY	2.84	0.73	0.2624	-0.050	0.98	0.79	0.0050	-0.195	11.43
68	GHANA	1.85	1.48	0.0463	-0.099	1.09	0.62	0.0118	-0.117	3.45
69	GREECE	1.72	0.71	-0.0189	-0.091	1.05	0.71	-0.0111	-0.069	7.72
70	GRENADA	5.78	14.00	-	-	1.08	0.10	0.0106	-0.167	4.46
71	GUADELOUPE	-	1.35	-0.0131	-0.130	-	1.35	-0.0084	-0.137	-
72	GUATEMALA	1.67	0.25	0.0880	-0.044	1.08	0.27	0.1109	-0.197	5.71
73	GUIANA FRENCH	-	0.88	0.0391	-0.102	-	0.43	0.0238	-0.124	-
74	GUINEA	1.50	0.46	0.0097	-0.111	1.36	1.68	-0.0108	-0.126	3.93
75	GUINEA BISSAU	3.56	1.14	0.0230	-0.145	4.66	4.20	-	-	7.00
76	GUYANA	2.49	2.38	0.0005	-0.152	1.54	4.23	-0.0021	-0.163	5.94
77	HAITI	2.32	0.60	0.0565	-0.047	1.66	0.61	0.0217	-0.082	7.69
78	HONDURAS	1.96	0.57	0.0532	-0.086	1.59	1.64	0.0016	-0.141	7.05
79	HONGKONG	-	0.04	-0.0003	-0.060	-	0.24	0.0285	-0.041	-
80	HUNGARY	2.25	0.90	0.0018	-0.093	0.77	1.93	-0.0081	-0.088	6.70
81	ICELAND	2.89	2.28	-0.0261	-0.056	1.86	0.66	-0.0174	-0.079	8.47
82	INDIA	2.43	0.98	0.0331	-0.050	0.91	0.96	-0.0151	-0.048	3.54
83	INDONESIA	2.04	0.95	0.0391	-0.071	1.07	0.99	0.0127	-0.051	2.87
84	IRAN	3.61	1.04	0.2641	-0.063	1.00	0.90	0.0438	-0.140	8.66
85	IRAQ	1.81	0.77	0.1184	-0.084	0.96	0.96	0.0410	-0.150	-
86	IRELAND	2.63	2.16	-0.0021	-0.058	1.45	1.12	0.0188	-0.057	6.93
87	ISRAEL	2.86	0.21	-0.0047	-0.049	1.33	1.16	0.0339	-0.037	7.52
88	ITALY	2.99	1.04	0.2475	-0.040	1.06	3.69	-0.0057	-0.072	8.67
89	JAMAICA	2.43	0.43	-0.0031	-0.089	1.22	2.47	0.0034	-0.174	6.06
90	JAPAN	1.91	1.02	0.0872	-0.055	1.21	1.16	0.0260	-0.052	10.95
91	JORDAN	2.16	2.53	-0.0006	-0.155	0.93	0.93	-0.0138	-0.053	7.79
92	KAZAKHSTAN	2.85	0.60	0.0856	-0.064	1.05	2.06	0.0933	-0.210	2.92
93	KENYA	1.57	1.14	0.0413	-0.067	1.26	1.18	-0.0237	-0.310	5.17
94	KOREA REP.	6.06	1.00	0.1664	-0.076	0.90	1.04	0.0585	-0.090	7.56
95	KOSOVO	1.90	1.02	-	-	0.82	0.99	-	-	-
96	KUWAIT	2.25	0.88	0.0687	-0.031	1.27	1.10	-0.0094	-0.038	5.00
97	KYRGYZSTAN	2.27	0.17	0.0671	-0.091	0.86	1.05	0.0271	-0.200	6.53
98	LAO PDR	-	0.50	-	-	-	0.15	-	-	2.25
99	LATVIA	2.32	0.74	-0.0179	-0.087	1.10	0.50	0.0224	-0.136	6.19
100	LEBANON	1.91	1.03	0.2286	-0.112	1.27	0.90	0.0757	-0.180	8.35
101	LESOTHO	1.99	7.08	0.0053	-0.206	1.36	1.42	0.0398	-0.087	9.28

102	LIBERIA	1.76	0.31	0.0151	-0.114	3.08	4.56	0.0046	-0.159	6.74
103	LIBYA	3.12	0.96	0.0493	-0.047	1.09	0.79	-0.0059	-0.099	-
104	LITHUANIA	1.63	0.83	0.0394	-0.096	0.98	2.49	0.0554	-0.230	6.57
105	LUXEMBOURG	1.99	0.24	-0.0401	-0.061	0.83	1.48	-0.0174	-0.105	5.29
106	MACAO	-	0.29	-0.0019	-0.190	-	-	-	-	-
107	MADAGASCAR	2.48	0.94	0.0377	-0.057	1.54	0.75	0.0060	-0.211	4.79
108	MALAWI	3.55	1.12	0.0478	-0.088	1.66	6.46	0.0583	-0.087	9.33
109	MALAYSIA	2.86	1.25	0.1042	-0.101	1.15	1.30	0.0794	-0.260	3.76
110	MALDIVES	1.96	0.83	0.0031	-0.154	1.41	1.05	0.0007	-0.116	9.41
111	MALI	1.61	0.64	0.0158	-0.100	0.97	7.78	0.0148	-0.115	-
112	MALTA	4.46	1.06	0.0712	-0.114	1.29	0.99	0.0536	-0.330	8.96
113	MAURITANIA	1.66	1.76	-0.0033	-0.055	0.82	1.14	0.0362	-0.037	4.58
114	MAURITIUS	5.40	4.49	-0.0209	-0.120	9.32	0.35	-0.0032	-0.143	5.83
115	MAYOTTE	-	5.46	0.0129	-0.103	-	1.05	0.0065	-0.154	-
116	MEXICO	2.03	0.86	0.1759	-0.100	0.98	2.53	0.0117	-0.109	5.37
117	MOLDOVA	2.03	1.03	0.0324	-0.086	0.83	0.36	-0.0037	-0.127	6.60
118	MONACO	5.48	3.15	-0.0044	-0.147	1.66	0.54	0.0134	-0.136	1.60
119	MONGOLIA	3.12	10.25	0.0116	-0.204	1.98	0.68	0.0195	-0.127	3.79
120	MONTENEGRO	8.16	1.37	-0.0114	-0.171	1.07	0.66	0.0040	-0.085	8.42
121	MOROCCO	2.05	0.90	0.1161	-0.114	0.84	0.95	-0.0159	-0.065	5.31
122	MOZAMBIQUE	2.14	0.72	0.0260	-0.109	1.59	0.70	0.0152	-0.068	8.17
123	MYANMAR	2.70	1.12	-0.0028	-0.113	0.83	1.15	-0.0137	-0.050	4.79
124	NAMIBIA	2.10	0.68	0.0315	-0.049	1.03	1.22	0.0315	-0.039	7.95
125	NEPAL	2.28	0.74	0.2070	-0.035	0.91	0.78	-0.0264	-0.065	5.84
126	NETHERLAND	2.40	1.19	0.2485	-0.043	0.92	1.04	0.0002	-0.074	9.97
127	NEW CALEDONIA	-	5.00	-	-	-	1.00	-	-	-
128	NEW ZEALAND	5.63	0.74	-0.0426	-0.087	1.89	0.72	0.0140	-0.099	9.21
129	NICARAGUA	5.76	0.97	-	-	1.39	1.02	-	-	8.56
130	NIGER	2.58	0.63	-0.0231	-0.083	0.96	2.21	0.0390	-0.048	7.33
131	NIGERIA	1.91	1.13	0.0502	-0.046	1.06	1.02	0.0333	-0.047	3.89
132	MACEDONIA	1.84	0.74	0.0858	-0.092	0.87	0.74	0.0528	-0.230	6.58
133	NORWAY	2.40	0.77	0.2716	-0.055	1.14	2.13	0.0052	-0.145	10.05
134	OMAN	1.73	3.70	0.0972	-0.092	1.13	9.80	0.0936	-0.130	4.13
135	PAKISTAN	1.90	1.22	0.1301	-0.060	1.02	1.19	0.0113	-0.047	3.20
136	PALESTINE	-	0.96	-0.0053	-0.202	-	1.06	0.0063	-0.050	-
137	PANAMA	2.08	0.96	0.1443	-0.063	1.13	0.79	0.1195	-0.070	7.27
138	PAPAU NEW G.	1.95	0.49	-0.0081	-0.115	2.45	0.88	-	-	2.37

139	PARAGUAY	2.22	0.59	0.0196	-0.147	0.97	1.20	0.0032	-0.168	6.65
140	PERU	2.35	0.89	0.0915	-0.010	1.26	0.53	-0.0077	-0.111	5.24
141	PHILLIPPINES	2.29	1.15	0.1627	-0.082	0.91	1.54	0.1772	-0.174	4.40
142	POLAND	2.17	0.92	0.1562	-0.079	0.99	1.31	0.0094	-0.072	6.33
143	POLYNESIA	-	0.66	-	-	-	0.21	-	-0.075	-
144	PORTUGAL	2.92	1.56	0.0301	-0.140	1.15	3.89	0.0431	-0.190	9.41
145	QATAR	2.61	0.80	0.0694	-0.070	1.16	1.03	-0.0019	-0.094	2.49
146	ROMANIA	2.26	0.88	0.0218	-0.056	0.91	0.95	-0.0072	-0.121	5.56
147	RUSSIA	2.41	1.07	0.0775	-0.020	1.00	0.87	0.0046	-0.037	5.32
148	RWANDA	2.03	1.80	0.0615	-0.146	1.26	0.14	0.0382	-0.064	7.54
149	SAO TOME	3.09	1.44	-0.0218	-0.153	3.33	2.67	0.0162	-0.127	6.27
150	SAN MARINO	5.88	5.10	-0.0157	-0.137	1.14	0.26	-0.0028	-0.154	7.14
151	SAUDI ARABIA	2.31	0.90	0.0607	-0.060	0.90	0.98	-0.0138	-0.029	6.36
152	SENEGAL	2.02	0.72	0.0351	-0.047	1.24	1.59	0.0387	-0.047	3.98
153	SERBIA	2.13	1.62	0.0042	-0.053	0.79	0.82	0.0123	-0.038	8.54
154	SEYCHELLES	2.68	0.48	-	-	1.94	0.54	0.0313	-0.134	5.11
155	SIERRA LEONE	1.50	2.23	0.0143	-0.107	1.52	1.37	0.0291	-0.063	16.06
156	SINGAPORE	2.06	1.33	0.0551	-0.030	1.52	2.83	0.0641	-0.080	4.46
157	SLOVAK	1.74	0.99	-0.0286	-0.123	0.92	0.74	0.0028	-0.193	6.69
158	SLOVENIA	1.78	0.75	-0.0345	-0.079	1.08	0.64	-0.0004	-0.263	8.30
159	SOLOMON ISL.	-	-	-	-	-	0.29	-	-	4.47
160	SOMALIA	1.95	1.18	-0.0085	-0.091	2.55	1.49	-	-	-
161	SOUTH AFRICA	2.54	0.87	0.257	-0.110	1.15	1.72	0.0303	-0.039	8.25
162	SOUTH SUDAN	2.99	0.58	0.0007	-0.152	1.59	0.51	0.0095	-0.133	6.40
163	SPAIN	3.85	0.38	0.3350	-0.035	1.16	0.79	0.0029	-0.080	8.98
164	SRI LANKA	4.14	2.13	0.0144	-0.159	1.04	1.07	0.1347	-0.160	3.76
165	ST KITTS NEVIS	-	2.00	-	-	-	1.00	-	-	5.31
166	ST LUCIA	1.34	1.13	-	-	2.86	0.69	0.0157	-0.082	4.40
167	ST VINCENT	5.86	0.04	-	-	2.17	2.00	0.0407	-0.080	4.47
168	SUDAN	1.97	0.36	0.0193	-0.094	0.24	1.63	0.0407	-0.039	4.51
169	SURINAME	1.41	10.34	0.0214	-0.061	1.27	1.21	0.0379	-0.042	7.97
170	SWEDEN	2.10	0.56	0.2572	-0.106	1.05	0.28	0.0123	-0.162	10.90
171	SWITZERLAND	2.86	1.21	0.2388	-0.044	0.95	0.18	-0.0082	-0.041	11.88
172	SYRIA	2.80	1.43	0.0311	-0.030	1.06	0.66	0.0086	-0.041	-
173	TAIWAN	3.42	1.88	0.0036	-0.084	1.84	1.49	0.0053	-0.123	-
174	TAJKISTAN	1.68	1.02	0.0418	-0.066	0.54	1.89	-0.0016	-0.131	7.24
175	TANZANIA	5.00	0.91	0.1205	-0.125	18.4	-	-	-	3.63

176	THAILAND	3.42	0.69	-0.0201	-0.055	1.63	2.71	0.0496	-0.100	3.79
177	TIMOR LESTE	-	5.00	-	-	-	1.33	-	-	4.33
178	TOGO	2.09	0.08	0.0093	-0.084	1.41	1.14	0.0083	-0.112	6.17
179	TRINIDAD	5.35	0.32	-0.0025	-0.139	1.30	0.55	-0.0102	-0.113	6.93
180	TUNISIA	2.64	1.53	-0.0122	-0.084	1.15	2.77	0.0053	-0.117	7.29
181	TURKEY	4.32	1.15	0.0120	-0.040	0.81	2.21	0.0078	-0.030	4.12
182	UAE	2.33	0.97	0.0484	-0.080	1.22	1.15	0.0085	-0.055	4.23
183	UGANDA	2.18	0.95	-	-	0.88	0.64	0.0047	-0.154	6.53
184	UKRAINE	2.16	0.96	0.0325	-0.130	0.89	0.30	-0.0032	-0.093	7.72
185	UK	2.89	0.76	0.2223	-0.037	1.25	1.03	0.0106	-0.035	10.00
186	USA	3.85	8.42	0.2882	-0.030	0.99	0.49	0.0121	-0.060	16.89
187	URUGUAY	2.76	0.63	-0.0228	-0.086	1.15	1.03	0.0389	-0.039	9.20
188	UZBEKISTAN	1.82	0.95	0.1231	-0.088	0.71	0.90	0.0238	-0.170	5.29
189	VENEZUELA	2.57	1.54	0.0389	-0.073	0.94	0.82	0.0002	-0.134	3.56
190	VIETNAM	3.59	3.29	-0.0166	-0.158	1.94	1.43	-0.0040	-0.158	5.92
191	VIRGIN ISLANDS	-	0.51	-	-	-	0.33	-	-	-
192	WEST GAZA	3.73	1.00	-	-	0.87	0.98	-	-	-
193	YEMEN	1.57	0.70	0.0049	-0.164	2.84	1.50	0.0006	-0.150	-
194	ZAMBIA	2.80	0.75	0.0265	-0.134	1.73	1.12	0.0372	-0.046	4.93
195	ZIMBABWE	1.98	1.44	0.0367	-0.087	1.40	1.62	0.0438	-0.045	4.73

383 **Appendix B**

384 **Abbreviations**

385 ARIMAF - Opposite autocorrelation slope for first wave

386 ARIMAS - Opposite autocorrelation slope for second wave

387 SecondR - Maximum R_0 for second wave from [3]

388 SecondD - Deterministic R_0 for second wave from [2]

389 FirstwaveR - Maximum R_0 for first wave from [3]

390 FirstwaveD - Deterministic R_0 for second wave from [2]

391 CHE/GDP - Current Health Expenditure as Gross Domestic Product percentage [1]

392 **Author Contributions:**

393 All authors contributed equally in the development and read the final version of the paper.

394 **Funding:**

395 No specific funding has been received for the research.

396 **Acknowledgments:**

397 The authors wish to acknowledge the Petroleum Technology Development Fund (PTDF) Nigeria
398 doctoral fellowship in collaboration with Campus France Africa Unit.

399 **Conflicts of Interest:**

400 The authors declare no conflict of interest.

401 **References**

- 402 1. Worldbank. Available online: <https://data.worldbank.org/indicator/SH.XPD.CHEX.GD.ZS>
403 (accessed on line on 12th February 2021) **2021**.
- 404 2. Demongeot, J.; Oshinubi, K.; Seligmann, H.; Thuderoz, F. Estimation of Daily Reproduction
405 Rates in COVID-19 Outbreak. *MedRxiv* **2021**, doi.org/ 10.1101/2020.12.30.20249010.
- 406 3. Worldometers. Available online: <https://www.worldometers.info/coronavirus/> (accessed on 12th
407 February 2021) **2021**.
- 408 4. Renkulab. Available online: [https://renkulab.shinyapps.io/COVID-19-Epidemic-Forecasting/
409 _w_e213563a/?tab=ecdc_pred&country=France](https://renkulab.shinyapps.io/COVID-19-Epidemic-Forecasting/_w_e213563a/?tab=ecdc_pred&country=France) (accessed on 22nd February 2021) **2021**.
- 410 5. Wiener, N. Extrapolation, Interpolation, and Smoothing of Stationary Time Series; *The MIT*
411 *Press: Cambridge (Mass.)* **1949**.
- 412 6. Pedregosa, F.; Varoquaux, G.; Gramfort, A.; Michel, V.; Thirion, B.; Grisel, O.; Blondel, M.;
413 Prettenhofer, P.; Weiss, R.; Dubourg, V.; Vanderplas, J.; Passos, A.; Cournapeau, D.; Brucher, M.;
414 Perrot, M.; E. Duchesnay, E.. Scikit-learn: Machine Learning in Python. *Journal of Machine*
415 *Learning Research* **2011**, *12*, 2825-2830.
- 416 7. Demongeot, J.; Flet-Berliac, Y.; Seligmann, H. Temperature decreases spread parameters of the
417 new covid-19 cases dynamics. *Biology (Basel)* **2020**, *9*, 94.
- 418 8. Seligmann, H.; Iggui, S.; Rachdi, M.; Vuillerme, N.; Demongeot, J. Inverted covariate effects for
419 mutated 2nd vs 1st wave Covid-19: high temperature spread biased for young. *Biology (Basel)*
420 **2020**, *9*, 226.
- 421 9. Demongeot, J.; Griette, Q.; Magal, P. Computations of the transmission rates in SI epidemic
422 model applied to COVID-19 data in mainland China. *Royal Society Open Science* **2020**, *7*, 201878.
- 423 10. Soubeyrand, S.; Demongeot, J.; Roques, L. Towards unified and real-time analyses of outbreaks
424 at country-level during pandemics. *One Health* **2020**, *11*, 100187.
- 425 11. Seligmann, H.; Vuillerme, N.; Demongeot, J. **Unpredictable, Counter-Intuitive Geoclimatic and**
426 **Demographic Correlations of COVID-19 Spread Rates**. *Biology (Basel)* **2021**, *10*, 623.
- 427 12. Gaudart, J.; Landier, J.; Huiart, L.; Legendre, E.; Lehot, L.; Bendiane, M.K.; Chiche, L.; PetitJean,
428 A.; Mosnier, E.; Kirakoya-Samadoulougou, F.; Demongeot, J.; Piarroux, R.; Rebaudet, S. Factors
429 associated with spatial heterogeneity of Covid-19 in France: a nationwide ecological study. *The*
430 *Lancet Public Health* **2021**, *6*, e222-e231.
- 431 13. Griette, Q.; Demongeot, J.; Magal, P. A robust phenomenological approach to investigate
432 COVID-19 data for France. *Math. Appl. Sci. Eng.* **2021**, *2*, doi.org/10.5206/mase/14031.
- 433