

1     **Temporal Trends in Racial and Ethnic Disparities in Multimorbidity Prevalence in the**  
2    **United States, 1999–2018**

3  
4     César Caraballo,<sup>1,2</sup> Shiwani Mahajan,<sup>1,3</sup> Daisy Massey,<sup>1</sup> Yuan Lu,<sup>1,2</sup> Chima D. Ndumele,<sup>4</sup>  
5                                   Elizabeth E. Drye,<sup>1,5</sup> Jeph Herrin,<sup>2</sup> Harlan M. Krumholz<sup>1,2,4</sup>

6  
7   Affiliations:

8   <sup>1</sup> Center for Outcomes Research and Evaluation, Yale New Haven Hospital, New Haven,  
9   Connecticut, United States of America

10   <sup>2</sup> Section of Cardiovascular Medicine, Department of Internal Medicine, Yale School of  
11   Medicine, New Haven, Connecticut, United States of America

12   <sup>3</sup> Department of Internal Medicine, Yale School of Medicine, New Haven, Connecticut, United  
13   States of America

14   <sup>4</sup> Department of Health Policy and Management, Yale School of Public Health, New Haven,  
15   Connecticut, United States of America

16   <sup>5</sup> Department of Pediatrics, Yale School of Medicine, New Haven, Connecticut, United States of  
17   America

18

19   **Corresponding author:**

20   Harlan M. Krumholz, MD, SM

21   195 Church Street, Fifth Floor, New Haven, CT 06510

22   203-497-1246; harlan.krumholz@yale.edu

23 **ABSTRACT**

24 **Background:** Disparities in multimorbidity prevalence indicate health inequalities. This study  
25 sought to determine if gaps in multimorbidity prevalence by race and ethnicity are decreasing  
26 over time.

27 **Methods and findings:** Serial cross-sectional analysis of the National Health Interview Survey  
28 from years 1999 to 2018. The study included individuals  $\geq 18$  years old, categorized by self-  
29 reported race, ethnicity, age, and income. The main outcomes were temporal trends in  
30 multimorbidity prevalence based on the self-reported presence of  $\geq 2$  of 9 chronic conditions. The  
31 study sample included 596,355 individuals (4.7% Asian, 11.8% Black, 13.8% Latino/Hispanic,  
32 and 69.7% White). In 1999, the estimated prevalence of multimorbidity was 5.9% among Asian,  
33 17.4% among Black, 10.7% among Latino/Hispanic, and 13.5% among White individuals.  
34 Prevalence increased for all racial/ethnic groups during the study period ( $P < 0.005$  for each), with  
35 no significant change in the differences between them. In 2018, when compared with White  
36 people, multimorbidity was more prevalent among Black individuals (+2.5 percent points [95%  
37 CI: +0.5, +4.6]) and less prevalent among Asian and Latino individuals (-6.6 points [-8.8, -4.4]  
38 and -2.1 points [-4.0, -0.2], respectively). The estimated prevalence of reporting at least 1, 2, 3,  
39 or 4 conditions all increased with age across all groups, with Black individuals having the  
40 greatest prevalence in each age category. Among those aged  $\geq 30$  years, Black people had  
41 multimorbidity rates equivalent to those of Latino/Hispanic and White people aged 5 years older,  
42 and Asian people aged 10 years older. Notably, the prevalence of multimorbidity diverged  
43 between Black people and White people among those aged 30 years, reached its maximum  
44 difference of 10.1 percentage points (95% CI: 8.2, 12.1) among those aged 60, and converged to  
45 reach similar rates among those aged  $\geq 80$ .

46 **Conclusions:** From 1999 to 2018, a period of increasing multimorbidity prevalence for all the  
47 groups studied, there has not been any significant progress in eliminating disparities between  
48 Black and White people. The disparity began among young adults. Public health interventions  
49 that prevent the onset of chronic conditions in early life may be needed to eliminate these  
50 disparities.

## 51 INTRODUCTION

52 In 2010, the US Department of Health and Human Services published a public health  
53 framework for managing patients with multimorbidity, defined as the presence of 2 or more  
54 concurrent chronic conditions in an individual, highlighting the importance of identifying and  
55 addressing disparities in its prevalence.[1, 2] Despite this report, differences in the prevalence of  
56 multimorbidity remain understudied. Recent studies indicate that multimorbidity is more  
57 prevalent among Black people compared with White people and that its overall prevalence is  
58 increasing in the US.[3-5] Given the lack of a comprehensive investigation of trends in  
59 multimorbidity over the past 2 decades, especially by race and ethnicity, it is unknown if the US  
60 has made progress in narrowing the gaps. The examination of trends in multimorbidity has  
61 implications about accountability for what the health system in the US has achieved in  
62 population health and health equity over the past 20 years, and what it will face in the future.

63 Accordingly, we describe the 20-year trends in the prevalence of multimorbidity by race  
64 and ethnicity, estimating the annual differences between groups. We also evaluate whether the  
65 effect of race and ethnicity on multimorbidity prevalence varied by age, describing the age  
66 groups among which these differences begin and are the highest. Finally, considering that  
67 income is one of the most critical determinants of health, we stratified the main analyses by  
68 income level, which can provide insight into the role of income inequality in the disparities  
69 studied.

70

## 71 METHODS

### 72 Data Source

73 We used data from the annual National Health Insurance Survey (NHIS) from 1999 to  
74 2018. The NHIS is a cross-sectional representative survey of the non-institutionalized population  
75 in the US that describes the health conditions, health insurance coverage and utilization, and  
76 health behaviors of recipients. The NHIS uses a complex multistage area probability design that  
77 accounts for non-response and allows for nationally representative estimates, including for  
78 underrepresented groups.[6] We obtained the data from the Integrated Public Use Microdata  
79 Series Health Surveys (<https://nhis.ipums.org/>).[7] The Institutional Review Board at Yale  
80 University exempted the study from review. Author César Caraballo had full access to the data  
81 and takes responsibility for the accuracy of the analysis. The code used in the analysis is publicly  
82 available at <http://doi.org/10.3886/E151983V1>.

83

#### 84 **Study Population**

85 We included individuals  $\geq 18$  years old from years 1999 to 2018 of the Sample Adult  
86 Core file, which contains responses from an in-depth questionnaire administered to a randomly  
87 selected adult from each family. We excluded responses with missing information about chronic  
88 conditions. Due to small numbers, we also excluded those who did not identify as non-Hispanic  
89 Asian, non-Hispanic Black/African American, Latino/Hispanic, or non-Hispanic White (details  
90 in Results section). The mean conditional and final response rate of the Sample Adult Core  
91 survey during the study period was 81% and 64.8%, respectively.

92

#### 93 **Demographic Variables**

94 Race was determined by the participants' self-reported primary race selection.  
95 Latino/Hispanic ethnicity was defined as answering "Yes" to the question, "Do you consider

96 yourself Latino/Hispanic?" Participants were divided into 4 mutually exclusive subgroups: non-  
97 Hispanic Asian (Asian), non-Hispanic Black/African American (Black), Latino/Hispanic, and  
98 non-Hispanic White (White).

99 Respondent characteristics included in the analyses were self-reported age, sex,  
100 geographic region (Northeast, North Central/Midwest, South, West), and income. Age was also  
101 categorized by 5-year groups for stratification and reporting. Consistent with prior NHIS studies,  
102 family income was categorized according to its relative percentage of the federal poverty level  
103 from the US Census Bureau[8] into middle/high income ( $\geq 200\%$  of the federal poverty level)  
104 and low income ( $< 200\%$ ). [9-11] Other sociodemographic and clinical variables were used to  
105 describe the characteristics of the population.

106

## 107 **Chronic Conditions**

108 We included 9 chronic conditions that the US Centers for Disease Control and Prevention  
109 consistently included in the NHIS across the entire study period. These conditions were among  
110 those listed by the US Department of Health and Human Services Office of the Assistant  
111 Secretary of Health conceptual framework for studying multiple chronic conditions. We  
112 identified individuals with these conditions if they had ever been told by a health care  
113 professional that they had diabetes, hypertension, asthma, stroke, cancer, chronic obstructive  
114 pulmonary disease (emphysema or chronic bronchitis), or heart disease (coronary artery disease,  
115 myocardial infarction, angina, or other heart conditions), or had been told in the past 12 months  
116 that they had weak/failing kidneys or any liver condition. Participants were then classified as  
117 having 0, 1, 2, 3, or  $\geq 4$  chronic conditions. We defined multimorbidity as the presence of  $\geq 2$  of  
118 the 9 chronic conditions.[1, 12-14]

## 119 **Statistical Analysis**

120 We summarized the general characteristics of respondents by racial/ethnic group. Then,  
121 we estimated the annual multimorbidity prevalence for each group using multivariable logistic  
122 regression models adjusting for age, sex, and region (details in Supporting Information  
123 Methods). To assess the trends in the prevalence of each of the 9 conditions, we used the same  
124 approach as for multimorbidity overall.

125 We subtracted the annual prevalence among White individuals from that year's  
126 prevalence among Asian, Black, and Latino/Hispanic individuals, also constructing SE for the  
127 differences, to quantify the racial and ethnic gap. Using these prevalences and gaps, we  
128 estimated trends over the study period by fitting weighted linear regression models (details in  
129 Supporting Information Methods). We also used a z-test to estimate the absolute difference  
130 between 1999 and 2018 in the multimorbidity prevalence within each race and ethnic group, and  
131 the differences between groups.

132 Then, we estimated the adjusted annual mean number of chronic conditions by race and  
133 ethnicity using linear regressions. We also used ordered logistic regression models to estimate  
134 the proportion of individuals with 0, 1, 2, 3, or  $\geq 4$  chronic conditions over the years. In these  
135 models (linear and ordered logit), the number of conditions was the dependent variable and age,  
136 sex, region, and an indicator for each year were the independent variables, obtaining the  
137 estimates for each race/ethnicity group separately.

138 To assess if the association between race and ethnicity and multimorbidity differs by  
139 income, we replicated the main analysis by income group. Due to high rates of missing income  
140 information from non-response, the publicly available NHIS data included multiply imputed  
141 income variables for respondents who did not report income. Thus, we followed the

142 recommendations from the National Center for Health Statistics for multiply imputed data  
143 analysis (details in Supporting Information Methods).[15]

144 To evaluate if the association between race and ethnicity and multimorbidity differs by  
145 age, we used a logistic regression model with multimorbidity as the dependent variable, region,  
146 sex, age and race/ethnicity as independent variables, and an interaction term between age and  
147 race and ethnicity. We reported the interaction term odds ratio (OR) for each race and ethnicity  
148 group. We replicated this using an ordered logit model and the number of chronic conditions as  
149 the dependent variable, and age group, region, and sex as the independent variables to estimate  
150 the percentage with 0, 1, 2, 3, and  $\geq 4$  conditions in each age group by race and ethnicity. We  
151 reported the findings from these analyses based on the approach of Barnett et al.[16]

152 Lastly, we performed a sensitivity analysis including arthritis in the list of conditions  
153 using data from 2002 to 2018, the period in which the condition was available and ascertained  
154 consistently. The purpose of this sensitivity analysis was to compare our multimorbidity  
155 prevalence estimates with those obtained from NHIS studies that included arthritis in their  
156 calculation.[17-19]

157 For all analyses, a 2-sided P-value  $< 0.05$  was used to determine statistical significance.  
158 All analyses were performed using Stata SE version 17.0 (StataCorp, College Station, TX). All  
159 results are reported with 95% CIs. All analyses incorporated strata and weights to produce  
160 nationally representative estimates using the Stata `-svy-` command for structured survey data. All  
161 person-weights were pooled and divided by the number of years studied, following guidance  
162 from the NHIS.[20]

163

## 164 **RESULTS**



165 **Population characteristics**

166 Of a total of 603,140 adults interviewed, we excluded 112 with missing race and ethnicity  
167 information and 119 with missing chronic conditions information. Due to small representation,  
168 we also excluded 6673 with ethnicity other than Latino/Hispanic who also did not select a  
169 primary race (n=2114) or who selected primary race as Alaskan Native or American Indian  
170 (n=4355) or Other (n=204) (S1 Fig). The final study sample comprised 596,236 adults with an  
171 estimated mean age of 46.2 [SE, 0.07] years of which 51.8% [95% CI: 51.7, 52.0] were women.  
172 Of these, 4.7% (95% CI: 4.6%, 4.8%) identified as Asian, 11.8% (95% CI: 11.5%, 12.1%) as  
173 Black, 13.8% (95% CI: 13.5%, 14.2%) as Latino/Hispanic, and 69.7% (95% CI: 69.3%, 70.2%)  
174 as White. The overall estimated prevalence of multimorbidity was 19.9% (95% CI: 19.7%,  
175 20.1%), increasing from 15.2% (95% CI: 14.8%, 15.7%) in 1999 to 22.7% (95% CI: 22.1%,  
176 23.4%) in 2018. The general characteristics of the study population are shown in Table 1, S1  
177 Table, and S2 Fig. The overall unadjusted distribution of number of chronic conditions by race  
178 and ethnicity is shown in S3 Fig, and the annual adjusted prevalence of each of the conditions by  
179 race and ethnicity is shown in S4 Fig.

**Table 1. General Characteristics of the Study Population by Race and Ethnicity.**

	Asian			Black			Latino/Hispanic			White		
	1999–2000	2008–2009	2017–2018	1999–2000	2008–2009	2017–2018	1999–2000	2008–2009	2017–2018	1999–2000	2008–2009	2017–2018
Sample size, n [Total=596,236]	n=1597	n=2828	n=2640	n=8758	n=7804	n=5881	n=10,305	n=8838	n=6422	n=41,872	n=29,553	n=36,401
Age in years	39 (28–55)	41 (30–55)	43 (32–57)	40 (29–52)	42 (29–55)	43 (30–58)	37 (27–49)	37 (28–50)	39 (28–53)	44 (33–59)	47 (33–61)	50 (34–64)
Age category												
18–39 years	52.4 (49.2, 55.6)	45.9 (43.4, 48.5)	41.9 (39.3, 44.6)	49.8 (48.3, 51.3)	45.1 (43.4, 46.8)	43.7 (41.8, 45.6)	56.9 (55.4, 58.3)	54.6 (53.0, 56.1)	50.1 (48.4, 51.9)	39.5 (38.9, 40.2)	34.9 (34.0, 35.8)	33.3 (32.6, 34.1)
40–64 years	38.2 (35.1, 41.4)	40.8 (38.2, 43.5)	42.5 (40.2, 44.9)	38.5 (37.1, 39.8)	42.9 (41.4, 44.4)	41.1 (39.3, 42.9)	34.1 (33.0, 35.3)	37.1 (35.7, 38.5)	39.1 (37.6, 40.6)	42.2 (41.5, 42.8)	45.8 (45.0, 46.5)	42.3 (41.6, 43.0)
≥65 years	9.4 (7.8, 11.4)	13.3 (11.8, 14.9)	15.5 (13.9, 17.4)	11.8 (11.0, 12.6)	12.0 (11.2, 12.9)	15.3 (14.2, 16.3)	9.0 (8.1, 10.0)	8.4 (7.7, 9.1)	10.8 (9.9, 11.8)	18.3 (17.8, 18.8)	19.3 (18.7, 20.0)	24.4 (23.7, 25.1)
Women	51.4 (48.1, 54.6)	52.6 (50.3, 54.9)	53.3 (51.1, 55.6)	55.6 (54.1, 57.0)	55.4 (53.9, 56.9)	54.5 (52.8, 56.3)	50.6 (49.4, 51.8)	48.6 (47.2, 50.0)	50.3 (48.7, 51.9)	51.9 (51.3, 52.4)	51.6 (51.0, 52.3)	51.4 (50.7, 52.0)
US Citizenship [n=594,859]	57.9 (54.3, 61.4)	69.6 (66.8, 72.2)	70.5 (67.9, 73.1)	95.4 (94.7, 96.0)	95.0 (94.2, 95.6)	94.9 (93.8, 95.9)	62.6 (60.5, 64.7)	62.2 (60.2, 64.1)	72.3 (70.6, 74.0)	98.4 (98.2, 98.5)	98.5 (98.3, 98.7)	98.5 (98.3, 98.7)
Education level [n=591,667]												
Less than high school	11.4 (9.4, 13.7)	9.2 (7.9, 10.7)	7.9 (6.6, 9.5)	24.4 (23.1, 25.8)	17.7 (16.4, 19.1)	14.2 (12.9, 15.7)	44.7 (43.0, 46.3)	38.5 (37.0, 40.1)	27.8 (26.0, 29.7)	13.4 (12.9, 13.9)	10.5 (10.0, 11.1)	7.4 (6.9, 7.9)
High school diploma /GED	18.1 (16.1, 20.2)	16.3 (14.4, 18.3)	15.3 (13.5, 17.4)	31.5 (30.2, 32.8)	30.6 (29.2, 32.1)	28.9 (27.3, 30.5)	24.3 (23.3, 25.4)	26.6 (25.2, 28.0)	26.7 (25.1, 28.3)	31.7 (31.0, 32.4)	28.2 (27.5, 28.9)	23.6 (22.9, 24.4)
Some college	24.2 (21.7, 26.9)	24.4 (22.2, 26.7)	20.8 (18.8, 22.9)	29.7 (28.3, 31.0)	34.0 (32.5, 35.5)	32.9 (31.2, 34.7)	21.7 (20.5, 23.0)	22.6 (21.4, 23.8)	28.1 (26.5, 29.7)	29.5 (29.0, 30.0)	31.5 (30.9, 32.2)	31.4 (30.6, 32.1)
≥Bachelor’s degree	46.4 (43.3, 49.5)	50.1 (46.8, 53.5)	56.0 (52.9, 59.0)	14.5 (13.4, 15.7)	17.7 (16.5, 18.9)	24.1 (22.2, 26.0)	9.4 (8.5, 10.3)	12.4 (11.4, 13.4)	17.5 (16.0, 19.0)	25.4 (24.7, 26.1)	29.8 (28.9, 30.7)	37.6 (36.5, 38.7)
Income <200% of Federal Poverty Limit <sup>a</sup>	28.0 (23.9, 32.5)	27.1 (23.9, 30.5)	26.2 (22.9, 29.9)	45.6 (43.3, 47.8)	45.0 (42.7, 47.2)	44.4 (41.4, 47.4)	51.0 (49.0, 53.1)	50.3 (48.1, 52.5)	46.7 (44.1, 49.3)	23.0 (22.2, 23.8)	23.9 (22.8, 25.1)	21.3 (20.3, 22.3)
Uninsured at the time of interview [n=594,011]	17.4 (15.2, 19.8)	13.9 (12.2, 15.8)	6.3 (5.3, 7.6)	20.3 (19.2, 21.4)	20.8 (19.6, 22.0)	12.1 (10.8, 13.5)	36.3 (34.5, 38.1)	38.9 (37.0, 40.8)	24.0 (22.2, 26.0)	11.0 (10.6, 11.4)	12.3 (11.8, 12.9)	6.5 (6.2, 6.9)
US region of residence <sup>b</sup>												
Northeast	21.2 (18.7, 24.0)	18.8 (16.4, 21.5)	20.8 (16.9, 25.4)	18.0 (16.7, 19.4)	16.4 (14.8, 18.2)	16.0 (13.5, 18.8)	15.7 (14.5, 17.1)	13.4 (11.7, 15.2)	13.5 (11.2, 16.2)	20.2 (19.5, 21.0)	18.3 (17.3, 19.3)	19.2 (17.5, 21.1)

	Asian			Black			Latino/Hispanic			White		
	1999–2000	2008–2009	2017–2018	1999–2000	2008–2009	2017–2018	1999–2000	2008–2009	2017–2018	1999–2000	2008–2009	2017–2018
Midwest	14.7 (11.9, 18.0)	15.0 (12.7, 17.7)	11.8 (9.5, 14.6)	18.8 (17.2, 20.5)	19.3 (17.3, 21.5)	15.2 (13.0, 17.8)	7.9 (6.9, 9.1)	9.5 (8.1, 11.2)	9.4 (7.6, 11.6)	29.4 (28.5, 30.3)	28.6 (27.2, 30.0)	27.4 (25.7, 29.3)
South	18.9 (16.4, 21.8)	19.3 (17.2, 21.7)	25.5 (21.6, 30.0)	55.7 (53.4, 57.9)	56.1 (53.5, 58.7)	60.5 (56.7, 64.3)	35.4 (33.2, 37.8)	35.4 (33.4, 37.4)	37.1 (32.5, 42.0)	33.9 (33.0, 34.8)	33.8 (32.3, 35.4)	33.0 (30.9, 35.2)
West	45.2 (41.2, 49.2)	46.8 (43.6, 50.1)	41.8 (36.7, 47.1)	7.6 (6.7, 8.5)	8.1 (7.3, 9.1)	8.3 (6.9, 9.9)	40.9 (38.6, 43.3)	41.7 (39.4, 44.1)	40.0 (35.3, 44.8)	16.5 (15.8, 17.2)	19.3 (18.3, 20.4)	20.4 (18.3, 22.7)
<b>Married or living with partner</b> [n=593,807]	64.4 (61.3, 67.3)	64.1 (61.2, 66.8)	65.0 (62.5, 67.5)	37.4 (35.9, 38.9)	35.2 (33.6, 36.8)	32.6 (31.0, 34.3)	58.5 (57.4, 59.6)	54.4 (52.8, 56.0)	49.3 (47.6, 50.9)	61.6 (60.8, 62.3)	57.9 (56.9, 58.8)	56.4 (55.6, 57.1)
<b>Employment status</b> [n=595,478]												
With a job/Working	66.1 (63.4, 68.6)	65.1 (62.6, 67.5)	67.2 (64.9, 69.3)	64.1 (62.6, 65.5)	60.7 (59.2, 62.3)	61.1 (59.0, 63.1)	66.3 (65.0, 67.5)	64.2 (62.9, 65.5)	66.5 (64.7, 68.3)	65.7 (65.0, 66.4)	62.5 (61.6, 63.4)	62.1 (61.3, 63.0)
Not in labor force	31.8 (29.2, 34.5)	30.4 (28.0, 32.8)	30.0 (27.8, 32.3)	32.0 (30.6, 33.5)	31.3 (29.9, 32.8)	32.4 (30.5, 34.4)	31.2 (30.0, 32.4)	28.9 (27.8, 30.1)	29.9 (28.0, 31.8)	32.9 (32.3, 33.6)	33.4 (32.5, 34.3)	35.4 (34.6, 36.2)
Unemployed	2.2 (1.5, 3.1)	4.6 (3.7, 5.6)	2.8 (2.1, 3.8)	3.9 (3.4, 4.6)	7.9 (7.2, 8.8)	6.5 (5.7, 7.4)	2.5 (2.2, 2.9)	6.9 (6.2, 7.7)	3.6 (3.0, 4.3)	1.4 (1.3, 1.5)	4.1 (3.8, 4.4)	2.5 (2.3, 2.7)
<b>Chronic conditions</b>												
Asthma	5.5 (4.4, 6.9)	9.1 (7.8, 10.6)	8.4 (7.2, 9.9)	9.0 (8.2, 9.9)	13.9 (12.9, 13.8)	15.1 (14.0, 16.2)	7.1 (6.5, 7.7)	10.0 (9.2, 10.8)	11.6 (10.5, 12.8)	9.2 (8.9, 9.5)	13.3 (12.9, 13.8)	13.9 (13.5, 14.3)
Cancer	1.7 (1.1, 2.7)	3.0 (2.4, 3.7)	4.3 (3.4, 5.3)	2.9 (2.5, 3.4)	3.8 (3.4, 4.4)	4.8 (4.3, 5.4)	2.2 (1.9, 2.5)	2.7 (2.3, 3.2)	3.4 (2.9, 3.8)	7.8 (7.5, 8.1)	10.2 (9.8, 10.6)	12.3 (11.9, 12.8)
COPD	1.6 (1.1, 2.4)	1.8 (1.3, 2.6)	2.0 (1.4, 2.7)	4.3 (3.8, 4.7)	4.5 (4.0, 5.1)	4.4 (3.7, 5.1)	2.9 (2.5, 3.4)	2.8 (2.4, 3.4)	2.8 (2.4, 3.3)	6.2 (5.9, 6.5)	6.5 (6.2, 6.9)	5.3 (5.0, 5.6)
Diabetes	3.9 (3.0, 5.1)	7.4 (6.2, 8.8)	8.9 (7.7, 10.3)	8.2 (7.5, 8.9)	11.3 (10.4, 12.2)	11.7 (10.8, 12.7)	6.3 (5.8, 6.9)	8.7 (8.0, 9.6)	10.5 (9.6, 11.4)	5.2 (5.0, 5.4)	8.2 (7.9, 8.6)	9.1 (8.7, 9.4)
Heart disease	4.6 (3.6, 5.9)	4.9 (4.0, 6.2)	6.6 (5.6, 7.7)	8.9 (8.2, 9.7)	9.9 (9.1, 10.8)	9.8 (9.0, 10.7)	6.0 (5.4, 6.6)	6.1 (5.5, 6.7)	6.4 (5.7, 7.2)	12.1 (11.7, 12.4)	13.8 (13.2, 14.3)	14.0 (13.6, 14.5)
Hypertension	14.9 (12.9, 17.2)	22.3 (20.2, 24.6)	24.2 (22.2, 26.3)	28.8 (27.6, 30.1)	35.4 (34.0, 36.9)	37.6 (35.9, 39.3)	15.3 (14.4, 16.2)	20.0 (18.9, 21.1)	22.3 (21.0, 23.8)	23.0 (22.5, 23.4)	30.4 (29.7, 31.1)	32.7 (31.9, 33.4)
Kidney disease	0.8 (0.5, 1.5)	1.1 (0.8, 1.7)	1.8 (1.2, 2.6)	2.0 (1.7, 2.5)	2.2 (1.7, 2.7)	2.6 (2.2, 3.1)	1.6 (1.3, 1.9)	1.8 (1.6, 2.1)	2.0 (1.6, 2.5)	1.3 (1.2, 1.5)	1.8 (1.6, 2.0)	2.3 (2.1, 2.5)
Liver disease	1.1 (0.5, 2.3)	1.3 (0.9, 2.0)	1.7 (1.2, 2.4)	1.0 (0.8, 1.3)	1.0 (0.7, 1.3)	1.2 (0.9, 1.5)	1.0 (0.8, 1.2)	1.8 (1.5, 2.1)	2.4 (2.0, 2.9)	1.0 (0.9, 1.1)	1.5 (1.3, 1.7)	1.8 (1.6, 2.0)
Stroke	0.8 (0.6, 1.2)	1.2 (0.8, 1.7)	1.9 (1.4, 2.5)	2.8 (2.4, 3.2)	3.3 (2.8, 3.8)	4.0 (3.5, 4.6)	1.1 (0.9, 1.4)	1.6 (1.3, 1.9)	2.1 (1.7, 2.6)	2.2 (2.1, 2.3)	3.0 (2.8, 3.2)	3.3 (3.1, 3.6)
<b>Current smoker</b>	14.9 (12.9, 17.2)	11.0 (9.5, 12.7)	7.2 (6.0, 8.5)	23.8 (22.6, 25.1)	21.3 (20.0, 22.7)	14.7 (13.5, 16.1)	18.3 (17.4, 19.3)	15.2 (14.1, 16.2)	9.8 (9.0, 10.8)	24.2 (23.7, 24.8)	22.1 (21.4, 22.8)	15.1 (14.6, 15.7)

	Asian			Black			Latino/Hispanic			White		
	1999–2000	2008–2009	2017–2018	1999–2000	2008–2009	2017–2018	1999–2000	2008–2009	2017–2018	1999–2000	2008–2009	2017–2018
<b>Flu vaccine in past 12 months</b>	26.1 (23.3, 29.2)	33.4 (31.2, 35.7)	48.2 (45.6, 50.7)	20.6 (19.7, 21.5)	26.3 (25.0, 27.7)	35.2 (33.4, 37.1)	18.6 (17.5, 19.6)	22.1 (20.9, 23.2)	34.9 (33.3, 36.5)	30.7 (30.0, 31.3)	36.9 (36.2, 37.6)	47.1 (46.4, 47.9)
<b>Obese (BMI ≥30 kg/m<sup>2</sup>)</b>	6.1 (4.9, 7.7)	8.7 (7.1, 10.5)	12.0 (10.5, 13.6)	29.1 (28.0, 30.2)	37.1 (35.8, 38.4)	39.4 (37.8, 41.1)	23.0 (21.9, 24.1)	31.2 (29.9, 32.4)	34.0 (32.5, 35.6)	20.2 (19.7, 20.6)	26.1 (25.4, 26.8)	30.3 (29.6, 31.0)

Data are presented as % (95% CI) for categorical variables and median (P25–P75) for continuous variables. All percentages are unadjusted and weighted.

<sup>a</sup> Annual family income was categorized relative to the respective year’s Federal Poverty Level from the US Census Bureau into middle/high income (≥200%) and low income (<200%). The weighted proportion of individuals with annual income <200% of the Federal Poverty Limit was estimated using multiple imputation.

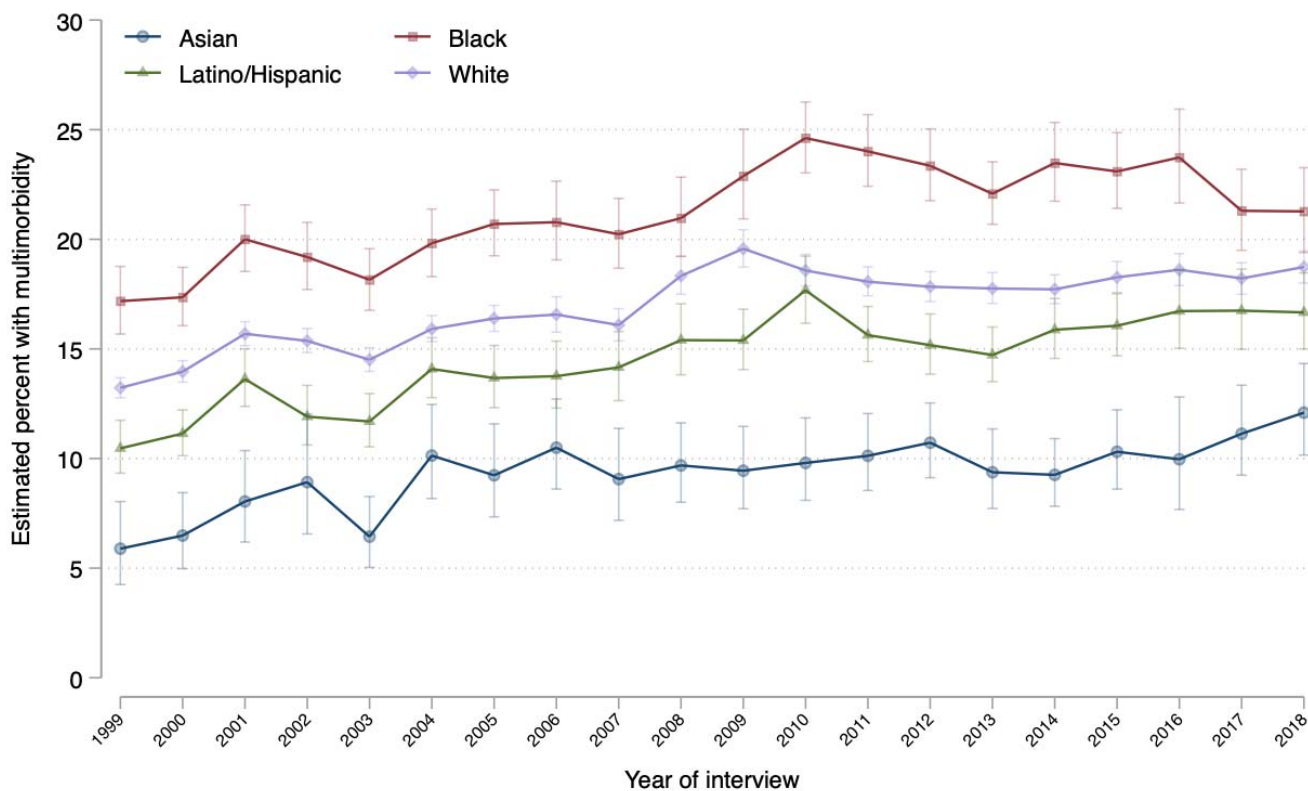
<sup>b</sup> Based on the US Census Bureau recognized region where the housing unit of the survey participant was located.

Abbreviations: BMI, body mass index; CI, confidence interval; COPD, chronic obstructive pulmonary disease; GED, general equivalency diploma.

## 180 **Temporal Multimorbidity Trends, 1999 to 2018**

181 In 1999, the estimated age-, sex-, and region-adjusted prevalence of multimorbidity was  
182 5.9% (95% CI: 4.3, 8.0) among Asian people, 17.2% (95% CI: 17.7, 18.8) among Black people,  
183 10.5% (95% CI: 9.3, 11.7) among Latino/Hispanic people, and 13.2% (95% CI: 12.8, 13.7)  
184 among White people (Fig 1). Between 1999 and 2018, the adjusted multimorbidity prevalence  
185 increased significantly within each race and ethnicity group (P=0.001 for Black people and  
186 P<0.001 for Asian, Latino/Hispanic, and White people). There were no significant changes in the  
187 difference between groups (Table 2). In 2018, when compared with the adjusted multimorbidity  
188 prevalence among White people (18.7% [95% CI: 18.0, 19.5]), the adjusted multimorbidity  
189 prevalence among Black people was estimated to be 2.5 percentage points higher (95% CI: 0.5,  
190 4.6; P=0.02), whereas it was lower among Asian and Latino/Hispanic people by 6.6 points (95%  
191 CI: -8.8, -4.4; P<0.001) and 2.1 points (95% CI: -4.0, -0.2; P=0.03), respectively. Throughout the  
192 study period, the adjusted prevalence of multimorbidity was persistently higher among people  
193 with low income than among those with middle/high income, and in 2018 the difference between  
194 Black and White people was not significant when stratified by income (Table 2 and S4 Fig).

195 **Fig 1. Trends in Adjusted Multimorbidity Prevalence by Race and Ethnicity, 1999–2018.**



196

197 Legend: Data source is the National Health Interview Survey from 1999 to 2018.

198 Multimorbidity was defined as the presence of 2 or more of the following conditions:

199 asthma, cancer, chronic obstructive pulmonary disease, diabetes, heart disease,

200 hypertension, stroke, liver disease, and “weak or failing kidneys.” Annual prevalence for

201 each race and ethnicity was obtained using logistic regression models adjusted by age,

202 sex, and US region. The 95% confidence intervals are represented in brackets.

**Table 2. Change in the Adjusted Multimorbidity Prevalence from 1999 to 2018, by Race and Ethnicity.**

	<b>Asian</b> Percentage points (95% CI), p value	<b>Black</b> Percentage points (95% CI), p value	<b>Latino/Hispanic</b> Percentage points (95% CI), p value	<b>White</b> Percentage points (95% CI), p value
<b>Annualized rate of change in prevalence</b>				
Overall	+0.23 (+0.14, +0.31), <0.001	+0.31 (+0.20, +0.43), <0.001	+0.31 (+0.23, +0.40), <0.001	+0.28 (+0.21, +0.34), <0.001
Low income	+0.31 (+0.15, +0.46), 0.001	+0.38 (+0.23, +0.52), <0.001	+0.36 (+0.27, +0.45), <0.001	+0.45 (+0.34, +0.56), <0.001
Middle/high income	+0.18 (+0.10, +0.27), 0.001	+0.24 (+0.12, +0.36), 0.001	+0.27 (+0.16, +0.38), <0.001	+0.22 (+0.16, +0.27), <0.001
<b>Absolute change in prevalence from 1999 to 2018</b>				
Overall	+6.19 (+3.39, +9.00), <0.001	+4.09 (+1.62, +6.55), 0.001	+6.19 (+4.08, +8.30), <0.001	+5.50 (+4.64, +6.36), <0.001
Low income	+8.17 (+1.59, +14.8), 0.02	+5.65 (+1.66, +9.64), 0.005	+7.99 (+4.76, +11.22), <0.001	+8.57 (+6.45, +10.70), <0.001
Middle/high income	+5.68 (+2.46, +8.90), <0.001	+3.33 (+0.25, +6.40), 0.03	+4.88 (+1.99, +7.77), <0.001	+4.70 (+3.80, +5.60), <0.001
<b>Difference with White in 1999</b>				
Overall	-7.32 (-9.27, -5.38), <0.001	+3.95 (+2.34, +5.56), <0.001	-2.76 (-4.03, -1.49), <0.001	–
Low income	-11.06 (-15.60, -6.52),	+2.94 (+0.20, +5.68),	-6.67 (-8.76, -4.58),	–

	<b>Asian</b>	<b>Black</b>	<b>Latino/Hispanic</b>	<b>White</b>
	Percentage points (95% CI), p value	Percentage points (95% CI), p value	Percentage points (95% CI), p value	Percentage points (95% CI), p value
	<0.001	0.04	<0.001	
Middle/high income	-6.34 (-8.70, -3.97), <0.001	+1.89 (-0.29, +4.06), 0.09	-2.64 (-4.39, -0.89), 0.003	–
<b>Difference with White in 2018</b>				
Overall	-6.63 (-8.83, -4.43), <0.001	+2.54 (+0.48, +4.59), 0.02	-2.07 (-3.96, -0.18), 0.03	–
Low income	-11.46 (-16.68, -6.23), <0.001	+0.02 (-3.58, +3.62), 0.99	-7.25 (-10.50, -4.00), <0.001	–
Middle/high income	-5.35 (-7.72, -2.98), <0.001	+0.51 (-1.85, +2.87), 0.67	-2.46 (-4.92, +0.01), 0.05	–
<b>Absolute change in difference with White from 1999 to 2018</b>				
Overall	+0.69 (-2.24, +3.63), 0.65	-1.41 (-4.03, +1.20), 0.29	+0.69 (-1.59, +2.97), 0.55	–
Low income	-0.40 (-7.32, +6.52), 0.91	-2.92 (-7.44, +1.60), 0.21	-0.58 (-4.44, +3.29), 0.77	–
Middle/high income	+0.98 (-2.36, +4.33), 0.57	-1.37 (-4.58, +1.83), 0.40	+0.18 (-2.84, +3.21), 0.91	–

Data source is the National Health Interview Survey from 1999 to 2018. For change in multimorbidity prevalence and change in difference: a positive sign (+) means the prevalence of multimorbidity, or its difference with White people, increased; a negative sign (-) means it decreased. The estimated multimorbidity prevalence was adjusted by age, sex, and region.

Abbreviations: CI, confidence interval

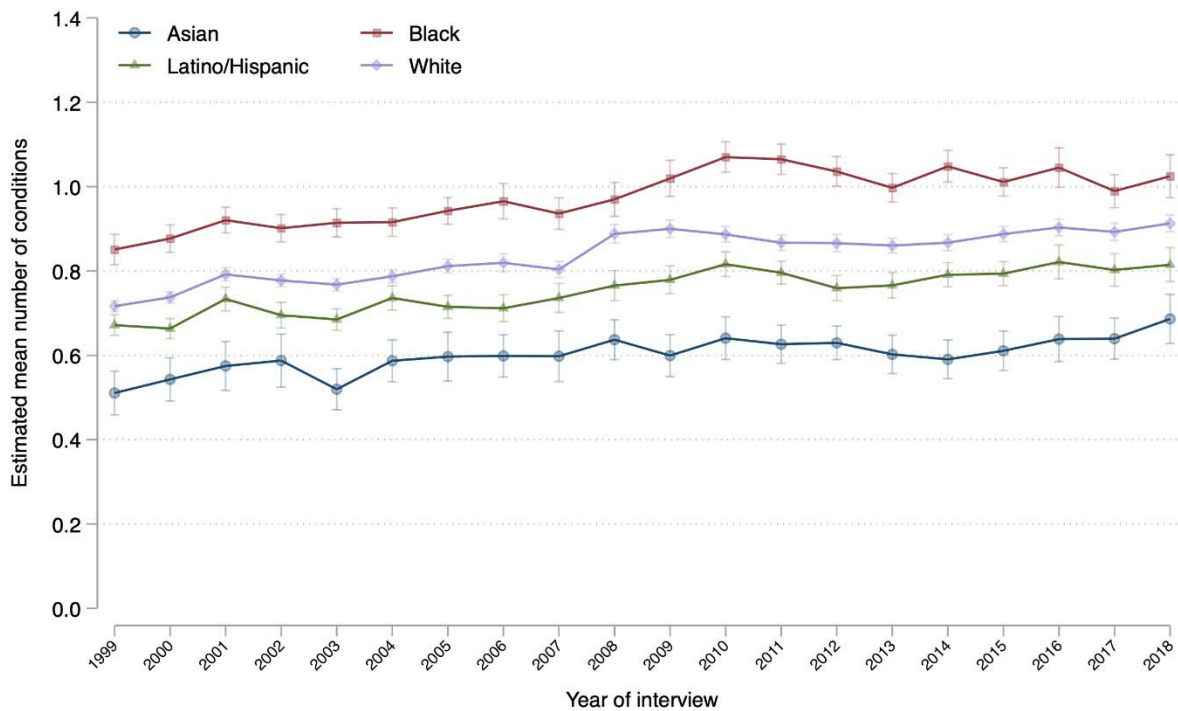


203 The estimated mean number of chronic conditions were the highest among Black  
204 individuals throughout the study period (Fig 2A). Similarly, Black individuals had the greatest  
205 prevalence of at least 1, 2, 3, or 4 conditions over the study period (Fig 2B).

206

207 **Fig 2. Trends in Estimated Mean Number of Chronic Conditions (A) and Ordered Number**  
208 **of Chronic Conditions (B) by Race and Ethnicity, 1999–2018.**

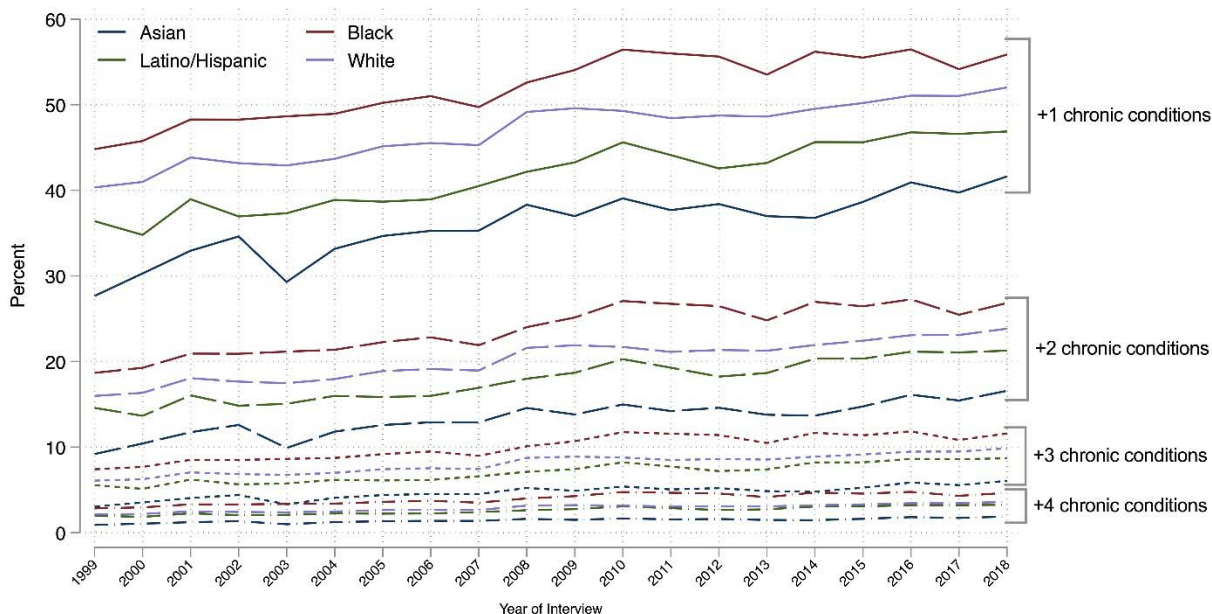
209 A)



210

211

212 **B)**



213  
214 Legend: Data source is the National Health Interview Survey from 1999 to 2018. The  
215 mean number of chronic conditions was estimated using linear regression. The ordered  
216 number of chronic conditions was estimated using ordered logistic regression. All  
217 estimates were adjusted by age, sex, and US region. The 95% confidence intervals are  
218 represented in brackets in Panel A. For visualization purposes, no symbols or brackets are  
219 shown in panel B. Details in Methods section.

220  
221 **Association Between Multimorbidity and Age**

222 The estimated prevalence of reporting at least 1, 2, 3, or 4 conditions all increased with  
223 age across all groups, with Black people having the greatest prevalence in each age category (S5  
224 Fig). Among those aged  $\geq 30$  years, Black people had rates of multimorbidity equivalent to those  
225 of Latino/Hispanic and White people aged 5 years older, and to those of Asian people aged 10  
226 years older (Fig 3A). Notably, the adjusted prevalence of multimorbidity ( $\geq 2$  concurrent

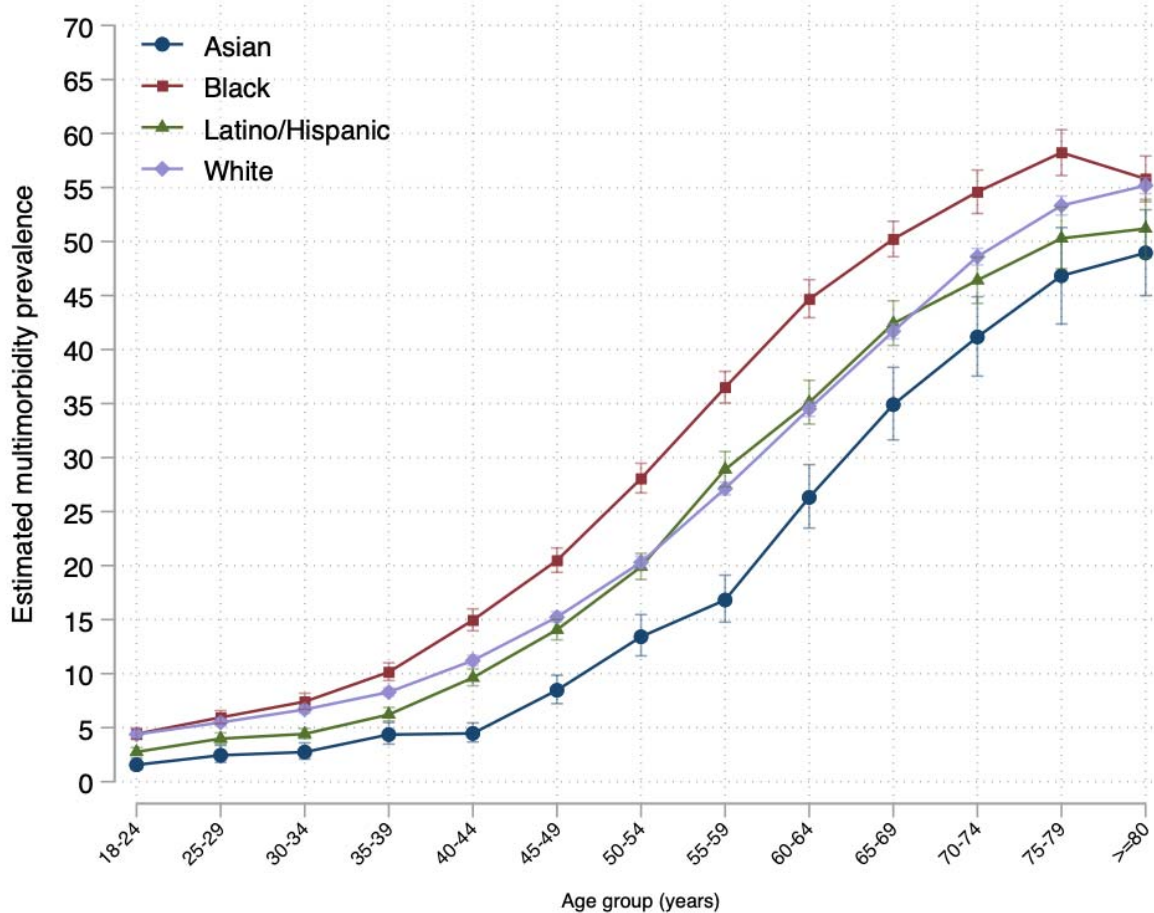
227 conditions) diverged between Black people and White people among those aged 30–34 years,  
228 reached its maximum difference of 10.1 percentage points (95% CI: 8.2, 12.1) among those aged  
229 60–64, and converged to reach similar rates among those aged  $\geq 80$  (Fig 3B).

230

231 **Fig 3. Adjusted Multimorbidity Prevalence by Age and Race and Ethnicity (A), and**

232 **Prevalence Differences by Age and Race and Ethnicity (B).**

233 A)

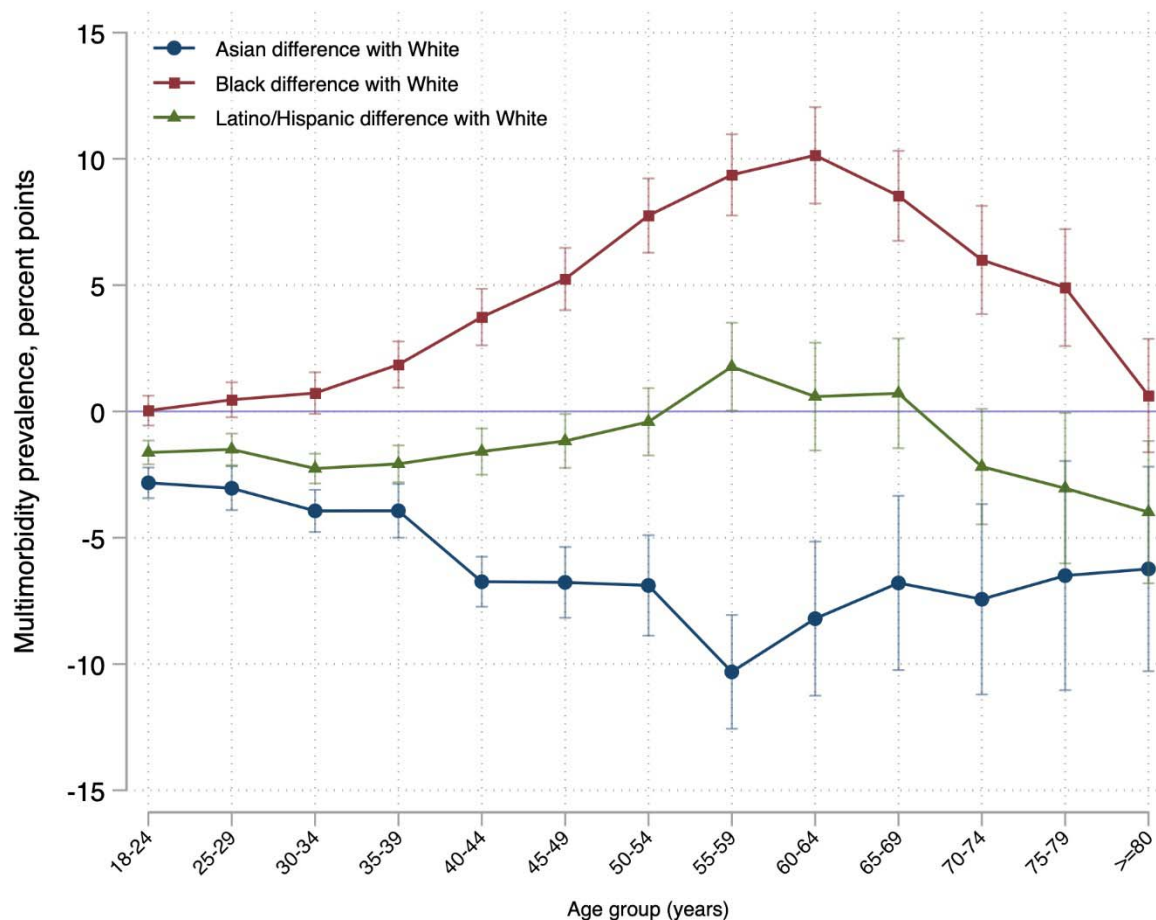


234

235

236

B)



237

238 Legend: Data source is the National Health Interview Survey from 1999 to 2018.

239 Panel A shows the sex- and region-adjusted prevalence of multimorbidity by age  
240 for each race and ethnicity group. Panel B shows the difference in such a prevalence

241 between Asian, Black, and Latino/Hispanic people with White people of the same

242 age group (e.g., prevalence of multimorbidity among Black people aged 50–54

243 years - prevalence of multimorbidity among White people aged 50–54 years). The

244 95% confidence intervals are represented in brackets.

245

246           There were significant racial and ethnic differences in the association between age and  
247 prevalence of multimorbidity. Asian, Black, and Latino/Hispanic people had a greater increase in  
248 the prevalence of multimorbidity with age compared with White people (multimorbidity\*decade  
249 of age interaction term OR 1.17 [95% CI: 1.13, 1.20] for Asian, OR 1.04 [95% CI: 1.02, 1.06]  
250 for Black, and OR 1.10 [95% CI: 1.08, 1.12] for Latino/Hispanic;  $P < 0.001$  for each). Within  
251 each racial and ethnic group, people with low income were associated with a higher prevalence  
252 of multimorbidity compared with people in the same age group who had middle/high income (S6  
253 Fig).

254

### 255 **Sensitivity Analysis**

256           Results from our sensitivity analysis, including arthritis in the chronic conditions count  
257 (in the years it was available), were mostly consistent with our main results, with some notable  
258 differences (S8-11 Figs). Prevalence of multimorbidity, as expected, was higher. From 2002 to  
259 2018, the estimated prevalence of multimorbidity was 27.2% (95% CI: 27.0%, 27.5%). In this  
260 sensitivity analysis, the difference in the prevalence of multimorbidity between Black and White  
261 people decreased significantly from 2002 to 2018 and was not significant in 2018 (S8 Fig).

262

### 263 **DISCUSSION**

264           From 1999 to 2018, there were increasing rates of multimorbidity and a static racial gap  
265 in which Black people persistently had the highest prevalence and Asian people had the lowest.  
266 Moreover, multimorbidity prevalence was higher among Black people compared with Asian,  
267 Latino/Hispanic, and White people of the same age range, with differences emerging among  
268 those 30–34 years old and peaking among those 60–64 years old. Overall, and within people of

269 the same racial and ethnic group, those with low income experienced a higher burden of  
270 multimorbidity. This 20-year period, which corresponded with significant health care  
271 investments and dramatic increases in per capita health care costs,[21, 22] fails to demonstrate  
272 meaningful progress in reducing multimorbidity or racial and ethnic disparities in its prevalence.

273         Studies have reported racial/ethnic disparities but, to the best of our knowledge, this is the  
274 first to analyze whether there was improvement during a recent period notable for increased  
275 national attention on reducing health disparities. Our findings expand the literature in several  
276 ways. First, we found no improvement in the race/ethnicity gap in multimorbidity. The  
277 increasing prevalence of multimorbidity occurred almost in parallel across each of the racial and  
278 ethnic groups. These findings reveal a lack of progress in narrowing racial/ethnic disparities in  
279 health over a 20-year period, in which Black individuals persistently had the highest  
280 multimorbidity prevalence despite major nationwide policies aimed to address health  
281 disparities.[23-26] Notably, multimorbidity was consistently less prevalent among Asian  
282 individuals, even when stratified by household income level. Although unclear, such a lower  
283 chronic conditions burden may be due to generally more favorable socioeconomic conditions  
284 among Asian individuals, including higher educational level, that may facilitate resources to  
285 maintain healthy habits and a healthy life.[27] Nonetheless, this finding may also represent an  
286 underestimation of the true multimorbidity prevalence among Asian people due to barriers to  
287 health care access and utilization that may prevent the detection of chronic conditions.[28]  
288 Studies designed to better understand this pattern are needed.

289         Second, we found that the racial and ethnic gap was concentrated among non-elderly  
290 adults (<65 years old), emerging among those aged 30–34 years, and peaking among those 60–  
291 64 years old. It is unclear if such age-related divergence in multimorbidity prevalence may be

292 due to a cumulative effect of an earlier life concentration of risk factors that Black people are  
293 more likely to be exposed to, such as environmental stressors, smoking, and barriers to health  
294 care.[11, 29, 30] The convergence among the elderly, on the other hand, may be explained by a  
295 combination of a ceiling effect in chronic conditions and differences in risk of death associated  
296 with earlier multimorbidity among Black people.[31]

297 Third, we found that stratification by income level attenuated the disparities. This  
298 observation underscores the role of income inequality in the perpetuation of racial and ethnic  
299 disparities in health.[32] This finding is especially important given the disproportionately large  
300 percentage of Black people in the low-income stratum[33] group that during the study period  
301 also reported the highest prevalence of poor or fair health.[11] Further studies are required to  
302 better understand the association between income (or other sociodemographic characteristics  
303 such as education and occupation) and multimorbidity, and how such associations may have  
304 changed over the years.

305 There are some differences between our findings and the results from other studies that  
306 have measured multimorbidity using data from the NHIS. First, the overall unadjusted weighted  
307 prevalence of multimorbidity in our study (19.9%) was lower than the estimates from others.[17-  
308 19] This discrepancy is likely due to the inclusion of arthritis in their calculation of  
309 multimorbidity, which was inconsistently available across the 20 years of this study. In an  
310 exploratory estimation of multimorbidity using data from 2002 to 2018 including arthritis, the  
311 overall estimates were consistent with those from previous reports and did not affect the overall  
312 findings. Second, our annual estimates of multimorbidity were adjusted for age, sex, and region,  
313 which can provide greater insight into disparities by race and ethnicity. Of particular importance  
314 is the higher mean age among White individuals when compared with Black individuals which,

315 considering the strong association between age and multimorbidity, if left unaccounted for would  
316 underestimate the gap between the two groups.

317         This study has important implications. First, it shows that the public health challenge of  
318 multimorbidity is increasing among the 4 largest race and ethnicity groups in the US,  
319 underscoring the growing need for preventive measures nationwide. People with multimorbidity  
320 experience challenges not only related to their individual conditions but also related to the  
321 complexity and costs of managing multiple conditions simultaneously. Multimorbidity is  
322 associated with worse health status,[34] faster functional decline,[35] lower quality of life,[34,  
323 36] higher mortality,[37] higher rates of unmet medical needs,[38] and higher health care  
324 costs,[39, 40] and this study shows that the burden has been persistently higher among Black  
325 people.

326         Although preventing the development of multimorbidity should be a public health  
327 priority, these findings suggest that complementary and targeted strategies are needed for Black  
328 people. The observed persistent gap in multimorbidity over the study period may be associated  
329 with the persistent disparity in access to preventive health care services that Black people  
330 experience. In 2018, and despite modest improvements since 1999, Black people were more  
331 likely to lack health insurance coverage, to lack a usual source of health care, and to report  
332 unmet medical needs due to cost compared with White people.[11] Also, stressors derived from  
333 race-based discrimination are associated with higher burden of chronic diseases and  
334 multimorbidity.[41, 42] Thus, our findings should be interpreted in the context of vast literature  
335 that identifies systemic racism as a fundamental determinant of health inequalities through the  
336 reinforcement of an artificial racial and ethnic hierarchy that puts Black people at a disadvantage  
337 in obtaining access to goods and opportunities necessary for a healthy life. Public health



338 strategies should account for this in the distribution of resources and efforts to prevent the  
339 development of chronic conditions over a lifetime. Particularly, the emergence of the disparities  
340 among young adults suggests that such strategies must aim for the prevention of the onset of  
341 chronic conditions early in life.

342 Our study has several limitations. First, the cross-sectional design prevents us from  
343 measuring and comparing the incidence of multimorbidity across the lifetime of an individual by  
344 racial and ethnic groups. Furthermore, when analyzing the differences with age, the study design  
345 may be introducing survivor bias as age group increases, which may underestimate the overall  
346 impact of multimorbidity on health disparities. Second, based on the US Department of Health  
347 and Human Services conceptual framework for studying multiple chronic conditions, we used a  
348 limited number of chronic conditions based on their availability in the NHIS dataset, but lacked  
349 information on the severity, complexity, duration, and status of such conditions. Also  
350 importantly, none of these were mental health conditions. Third, our multimorbidity measure  
351 may be an underestimation because the study relied on self-reported conditions that may go  
352 underreported due to barriers to access to care—for its diagnosis—and low health literacy. If  
353 any, such underreporting more likely affects Black and Latino/Hispanic people because of their  
354 higher barriers to health care. Finally, we focused on large racial and ethnic group categories and  
355 were underpowered to examine a wider set of racial and ethnic groups.

356

## 357 **Conclusions**

358 From 1999 to 2018, multimorbidity in the US increased and Black people persistently  
359 had the highest prevalence of multimorbidity, with racial gaps that did not change. When  
360 analyzed by age, this gap emerged among young adults and peaked among those aged 60–64

361 years. Public health interventions that prevent the onset of chronic conditions in early life may be  
362 needed to eliminate these disparities.

363 **ACKNOWLEDGMENTS:** N/A

364 **SOURCE OF FUNDING:** The study was self-funded.

365 **COMPETING INTERESTS DISCLOSURE:** All authors have completed the ICMJE uniform  
366 disclosure form at [www.icmje.org/coi\\_disclosure.pdf](http://www.icmje.org/coi_disclosure.pdf) and declare: In the past three years,

367 **Harlan Krumholz** received expenses and/or personal fees from UnitedHealth, IBM Watson

368 Health, Element Science, Aetna, Facebook, the Siegfried and Jensen Law Firm, Arnold and

369 Porter Law Firm, Martin/Baughman Law Firm, F-Prime, and the National Center for

370 Cardiovascular Diseases in Beijing. He is a co-founder of Refactor Health and HugoHealth, and

371 had grants and/or contracts from the Centers for Medicare & Medicaid Services, Johnson &

372 Johnson, Foundation for a Smoke-Free World, State of Connecticut Department of Public

373 Health, Agency for Healthcare Research and Quality, American Heart Association, and the

374 National Institutes of Health. **Yuan Lu** is supported by the National Heart, Lung, and Blood

375 Institute (K12HL138037) and the Yale Center for Implementation Science. **Jeph Herrin** has had

376 grants and/or contracts from the Centers for Medicare & Medicaid Services, the National

377 Institutes of Health, Mayo Clinic, Yale University, and Mercy Health. **Chima Ndumele** has had

378 grants from the National Institutes of Health, Robert Wood Johnson Foundation, and the

379 Commonwealth Fund. Other authors declare no competing interests.

380 **AUTHORS CONTRIBUTIONS:** HK conceived the study and supervised the manuscript

381 preparation and data interpretation. CC and SM obtained the data. CC performed the literature

382 review and analysis, and wrote the first draft of the manuscript. JH supervised and verified the

383 statistical methods. CC, DM, SM, YL, NC, ED, JH, and HK interpreted the results. SM, DM,

384 YL, NC, ED, JH, and HK critically reviewed the manuscript, and made significant intellectual

385 contributions to the study. The corresponding author attests that all listed authors meet  
386 authorship criteria and that no others meeting the criteria have been omitted.

387 **REFERENCES**

- 388 1. US Department of Health Human Services. Multiple chronic conditions—a strategic  
389 framework: optimum health and quality of life for individuals with multiple chronic conditions.  
390 Washington, DC: US Department of Health and Human Services. 2010;2.
- 391 2. Goodman RA, Posner SF, Huang ES, Parekh AK, Koh HK. Defining and measuring  
392 chronic conditions: imperatives for research, policy, program, and practice. *Prev Chronic Dis*.  
393 2013;10:E66. Epub 2013/04/27. doi: 10.5888/pcd10.120239. PubMed PMID: 23618546;  
394 PubMed Central PMCID: PMCPMC3652713.
- 395 3. King DE, Xiang J, Pilkerton CS. Multimorbidity Trends in United States Adults, 1988-  
396 2014. *J Am Board Fam Med*. 2018;31(4):503-13. Epub 2018/07/11. doi:  
397 10.3122/jabfm.2018.04.180008. PubMed PMID: 29986975; PubMed Central PMCID:  
398 PMCPMC6368177.
- 399 4. Johnson-Lawrence V, Zajacova A, Sneed R. Education, race/ethnicity, and  
400 multimorbidity among adults aged 30-64 in the National Health Interview Survey. *SSM Popul*  
401 *Health*. 2017;3:366-72. Epub 2018/01/20. doi: 10.1016/j.ssmph.2017.03.007. PubMed PMID:  
402 29349230; PubMed Central PMCID: PMCPMC5769041.
- 403 5. Rocca WA, Boyd CM, Grossardt BR, Bobo WV, Finney Rutten LJ, Roger VL, et al.  
404 Prevalence of multimorbidity in a geographically defined American population: patterns by age,  
405 sex, and race/ethnicity. *Mayo Clin Proc*. 2014;89(10):1336-49. Epub 2014/09/16. doi:  
406 10.1016/j.mayocp.2014.07.010. PubMed PMID: 25220409; PubMed Central PMCID:  
407 PMCPMC4186914.

- 408 6. Centers for Disease Control & Prevention (CDC). About the National Health Interview  
409 Survey: National Center for Health Statistics; [cited 2021 November 26]. Available from:  
410 [https://www.cdc.gov/nchs/nhis/about\\_nhis.htm](https://www.cdc.gov/nchs/nhis/about_nhis.htm).
- 411 7. Blewett LA, Rivera Drew JA, King ML, and Williams KCW. IPUMS health surveys:  
412 National Health Interview Survey, version 6.4 [dataset]. Minneapolis, MN: IPUMS, 2019. [cited  
413 2021 November 26]. Available from: <https://doi.org/10.18128/D070.V6.4>.
- 414 8. United States Census Bureau. People in families by family structure, age, and sex,  
415 iterated by income-to-poverty ratio and race [cited 2021 November 26]. Available from:  
416 [https://www.census.gov/data/tables/time-series/demo/income-poverty/cps-pov/pov-](https://www.census.gov/data/tables/time-series/demo/income-poverty/cps-pov/pov-02.html#par_textimage_30)  
417 [02.html#par\\_textimage\\_30](https://www.census.gov/data/tables/time-series/demo/income-poverty/cps-pov/pov-02.html#par_textimage_30).
- 418 9. Caraballo C, Valero-Elizondo J, Khera R, Mahajan S, Grandhi GR, Virani SS, et al.  
419 Burden and consequences of financial hardship from medical bills among nonelderly adults with  
420 diabetes mellitus in the United States. *Circ Cardiovasc Qual Outcomes*. 2020;13(2):e006139.  
421 Epub 2020/02/19. doi: 10.1161/circoutcomes.119.006139. PubMed PMID: 32069093.
- 422 10. Dubay LC, Lebrun LA. Health, behavior, and health care disparities: disentangling the  
423 effects of income and race in the United States. *Int J Health Serv*. 2012;42(4):607-25. Epub  
424 2013/02/02. doi: 10.2190/HS.42.4.c. PubMed PMID: 23367796.
- 425 11. Mahajan S, Caraballo C, Lu Y, Valero-Elizondo J, Massey D, Annapureddy AR, et al.  
426 Trends in differences in health status and health care access and affordability by race and  
427 ethnicity in the United States, 1999-2018. *JAMA*. 2021;326(7):637-48. Epub 2021/08/18. doi:  
428 10.1001/jama.2021.9907. PubMed PMID: 34402830.
- 429 12. Drye EE, Altaf FK, Lipska KJ, Spatz ES, Montague JA, Bao H, et al. Defining multiple  
430 chronic conditions for quality measurement. *Med Care*. 2018;56(2):193-201.

- 431 13. National Quality Forum. Multiple chronic conditions measurement framework.  
432 2012 [cited 2021 November 20]. Available from:  
433 [https://www.qualityforum.org/Publications/2012/05/MCC\\_Measurement\\_Framework\\_Final\\_Rep  
434 ort.aspx](https://www.qualityforum.org/Publications/2012/05/MCC_Measurement_Framework_Final_Report.aspx).
- 435 14. Boyd CM, Fortin M. Future of multimorbidity research: how should understanding of  
436 multimorbidity inform health system design? *Public Health Reviews*. 2010;32(2):451-74.
- 437 15. Division of Health Interview Statistics National Center for Health Statistics. Multiple  
438 imputation of family income and personal earnings in the National Health Interview Survey:  
439 methods and examples. August 2019 <https://nhis.ipums.org/nhis/resources/tecdoc18.pdf> [cited  
440 2021 November 16]. Available from: <https://nhis.ipums.org/nhis/resources/tecdoc18.pdf>.
- 441 16. Barnett K, Mercer SW, Norbury M, Watt G, Wyke S, Guthrie B. Epidemiology of  
442 multimorbidity and implications for health care, research, and medical education: a cross-  
443 sectional study. *The Lancet*. 2012;380(9836):37-43.
- 444 17. Boersma P, Black LI, Ward BW. Prevalence of multiple chronic conditions among US  
445 adults, 2018. *Prev Chronic Dis*. 2020;17:E106. Epub 2020/09/19. doi: 10.5888/pcd17.200130.  
446 PubMed PMID: 32945769; PubMed Central PMCID: PMC7553211.
- 447 18. Ward BW, Schiller JS, Goodman RA. Peer reviewed: multiple chronic conditions among  
448 US adults: a 2012 update. *Preventing Chronic Disease*. 2014;11.
- 449 19. Ward BW, Schiller JS. Prevalence of multiple chronic conditions among US adults:  
450 estimates from the National Health Interview Survey, 2010. *Prev Chronic Dis*. 2013;10:E65.  
451 Epub 2013/04/27. doi: 10.5888/pcd10.120203. PubMed PMID: 23618545; PubMed Central  
452 PMCID: PMC3652717.

- 453 20. Centers for Disease Control and Prevention. National Health Interview Survey, 1997-  
454 2018. Survey description document. [cited 2021 November 30]. Available from:  
455 <https://www.cdc.gov/nchs/nhis/1997-2018.htm>.
- 456 21. Centers for Medicare & Medicaid Services. National Health Expenditure Data,  
457 Historical. December 2019. [cited 2021 November 17] Available from:  
458 <https://www.cms.gov/Research-Statistics-Data-and-Systems/Statistics-Trends-and-Reports/NationalHealthExpendData/NationalHealthAccountsHistorical>.
- 460 22. Kamal R, McDermott D, Cox C. Peterson Center on Healthcare-Kaiser Family  
461 Foundation Health System Tracker. How has U.S. spending on healthcare changed over time?  
462 December 2019 [cited 2021 November 26]. Available from:  
463 <https://www.healthsystemtracker.org/chart-collection/u-s-spending-healthcare-changed-time/>.
- 464 23. United States Department of Health and Human Services. Task Force on Black and  
465 Minority Health. Report of the Secretary's Task Force on Black and Minority Health. 1985.  
466 [cited 2021 November 26]. Available from: <http://resource.nlm.nih.gov/8602912>.
- 467 24. U.S. Department of Health and Human Services. About the Office of Minority Health  
468 <https://www.minorityhealth.hhs.gov/omh/browse.aspx?lvl=1&lvlid=1> [cited 2021 November  
469 16]. Available from: <https://www.minorityhealth.hhs.gov/omh/browse.aspx?lvl=1&lvlid=1>.
- 470 25. Koh HK, Graham G, Glied SA. Reducing racial and ethnic disparities: the action plan  
471 from the Department of Health and Human Services. *Health Aff (Millwood)*. 2011;30(10):1822-  
472 9. Epub 2011/10/07. doi: 10.1377/hlthaff.2011.0673. PubMed PMID: 21976322.
- 473 26. U.S. Department of Health and Human Services. Healthy People. Foundation health  
474 measures archive: disparities [cited 2021 November 16]. Available from:  
475 <https://www.healthypeople.gov/2020/about/foundation-health-measures/Disparities>.



- 476 27. Zhang Y, Misra R, Sambamoorthi U. Prevalence of multimorbidity among Asian Indian,  
477 Chinese, and Non-Hispanic White adults in the United States. *International Journal of*  
478 *Environmental Research and Public Health*. 2020;17(9):3336. PubMed PMID:  
479 doi:10.3390/ijerph17093336.
- 480 28. Lee S, Martinez G, Ma GX, Hsu CE, Robinson ES, Bawa J, et al. Barriers to health care  
481 access in 13 Asian American communities. *Am J Health Behavior*. 2010;34(1):21-30.
- 482 29. Bailey ZD, Krieger N, Agénor M, Graves J, Linos N, Bassett MT. Structural racism and  
483 health inequities in the USA: evidence and interventions. *The Lancet*. 2017;389(10077):1453-63.
- 484 30. Bailey ZD, Feldman JM, Bassett MT. How structural racism works — racist policies as a  
485 root cause of U.S. racial health inequities. *N Engl J Med*. 2020;384(8):768-73. doi:  
486 10.1056/NEJMms2025396.
- 487 31. Quiñones AR, Newsom JT, Elman MR, Markwardt S, Nagel CL, Dorr DA, et al. Racial  
488 and ethnic differences in multimorbidity changes over time. *Med Care*. 2021;59(5):402-9. Epub  
489 2021/04/07. doi: 10.1097/mlr.0000000000001527. PubMed PMID: 33821829; PubMed Central  
490 PMCID: PMC8024615.
- 491 32. Bor J, Cohen GH, Galea S. Population health in an era of rising income inequality: USA,  
492 1980-2015. *The Lancet*. 2017;389(10077):1475-90. doi: 10.1016/S0140-6736(17)30571-8.
- 493 33. Bhutta N, Chang AC, Dettling LJ, Hsu JW. Disparities in wealth by race and ethnicity in  
494 the 2019 Survey of Consumer Finances. *FEDS Notes*. Washington: Board of Governors of the  
495 Federal Reserve System, September 28, 2020. [cited 2021 November 16]. Available from:  
496 [https://www.federalreserve.gov/econres/notes/feds-notes/disparities-in-wealth-by-race-and-](https://www.federalreserve.gov/econres/notes/feds-notes/disparities-in-wealth-by-race-and-ethnicity-in-the-2019-survey-of-consumer-finances-20200928.htm)  
497 [ethnicity-in-the-2019-survey-of-consumer-finances-20200928.htm](https://www.federalreserve.gov/econres/notes/feds-notes/disparities-in-wealth-by-race-and-ethnicity-in-the-2019-survey-of-consumer-finances-20200928.htm).

- 498 34. Arokiasamy P, Uttamacharya U, Jain K, Biritwum RB, Yawson AE, Wu F, et al. The  
499 impact of multimorbidity on adult physical and mental health in low- and middle-income  
500 countries: what does the Study on Global Ageing and Adult Health (SAGE) reveal? *BMC Med.*  
501 2015;13:178. Epub 2015/08/05. doi: 10.1186/s12916-015-0402-8. PubMed PMID: 26239481;  
502 PubMed Central PMCID: PMC4524360.
- 503 35. Ryan A, Wallace E, O'Hara P, Smith SM. Multimorbidity and functional decline in  
504 community-dwelling adults: a systematic review. *Health Qual Life Outcomes.* 2015;13:168.  
505 Epub 2015/10/16. doi: 10.1186/s12955-015-0355-9. PubMed PMID: 26467295; PubMed Central  
506 PMCID: PMC4606907.
- 507 36. Kanesarajah J, Waller M, Whitty JA, Mishra GD. Multimorbidity and quality of life at  
508 mid-life: A systematic review of general population studies. *Maturitas.* 2018;109:53-62. Epub  
509 2018/02/18. doi: 10.1016/j.maturitas.2017.12.004. PubMed PMID: 29452782.
- 510 37. Nunes BP, Flores TR, Mielke GI, Thumé E, Facchini LA. Multimorbidity and mortality  
511 in older adults: A systematic review and meta-analysis. *Arch Gerontol Geriatr.* 2016;67:130-8.  
512 Epub 2016/08/09. doi: 10.1016/j.archger.2016.07.008. PubMed PMID: 27500661.
- 513 38. Johnson PJ, Mentzer KM, Jou J, Upchurch DM. Unmet healthcare needs among midlife  
514 adults with mental distress and multiple chronic conditions. *Aging Ment Health.* 2021:1-9. Epub  
515 2021/04/02. doi: 10.1080/13607863.2021.1904830. PubMed PMID: 33792432.
- 516 39. Lee JT, Hamid F, Pati S, Atun R, Millett C. Impact of noncommunicable disease  
517 multimorbidity on healthcare utilisation and out-of-pocket expenditures in middle-income  
518 countries: cross sectional analysis. *PLoS One.* 2015;10(7):e0127199. Epub 2015/07/15. doi:  
519 10.1371/journal.pone.0127199. PubMed PMID: 26154083; PubMed Central PMCID:  
520 PMC4496037.

- 521 40. Wang L, Si L, Cocker F, Palmer AJ, Sanderson K. A systematic review of cost-of-illness  
522 studies of multimorbidity. *Appl Health Econ Health Policy*. 2018;16(1):15-29. Epub 2017/09/01.  
523 doi: 10.1007/s40258-017-0346-6. PubMed PMID: 28856585.
- 524 41. Mays VM, Cochran SD, Barnes NW. Race, Race-based discrimination, and health  
525 outcomes among African Americans. *Ann Rev Psychol*. 2007;58(1):201-25. doi:  
526 10.1146/annurev.psych.57.102904.190212. PubMed PMID: 16953796.
- 527 42. Oh H, Glass J, Narita Z, Koyanagi A, Sinha S, Jacob L. Discrimination and  
528 multimorbidity among black Americans: Findings from the National Survey of American Life. *J*  
529 *Racial Ethnic Health Disparities*. 2021;8(1):210-9. doi: 10.1007/s40615-020-00773-z.
- 530

531	<b>SUPPORTING INFORMATION</b>
532	<b>Supporting Information Methods: Statistical Analysis.</b>
533	<b>S1 Table. Study Population Characteristics.</b>
534	<b>S1 Fig. Study Population Flowchart.</b>
535	<b>S2 Fig. Unadjusted Age Distribution by Race and Ethnicity.</b>
536	<b>S3 Fig. Unadjusted Distribution of Number of Chronic Conditions by Race and Ethnicity</b>
537	<b>S4 Fig. Trends in Adjusted Prevalence of Individual Conditions by Race and Ethnicity,</b>
538	<b>1999-2018.</b>
539	<b>S5 Fig. Trends in Adjusted Multimorbidity Prevalence by Race, Ethnicity, and Income (A)</b>
540	<b>and by Income Alone (B), 1999-2018.</b>
541	<b>S6 Fig. Number of Chronic Conditions by Age Among Asian, Black, Latino/Hispanic, and</b>
542	<b>White People.</b>
543	<b>S7 Fig. Adjusted Multimorbidity Prevalence by Age, Race, Ethnicity, and Income (A), and</b>
544	<b>by Age and Income (B).</b>
545	<b>S8 Fig. Sensitivity Analysis Including Arthritis: Trends in Adjusted Multimorbidity</b>
546	<b>Prevalence by Race and Ethnicity, 2002-2018.</b>
547	<b>S9 Fig. Sensitivity Analysis Including Arthritis: Number of Chronic Conditions by Age</b>
548	<b>Among Asian, Black, Latino/Hispanic, and White People.</b>
549	<b>S10 Fig. Sensitivity Analysis Including Arthritis: Adjusted Multimorbidity Prevalence by</b>
550	<b>Age, Race, and Ethnicity (A), and Prevalence Differences by Age, Race, and</b>
551	<b>Ethnicity (B).</b>
552	<b>S11 Fig. Sensitivity Analysis: Trends in Adjusted Prevalence of Arthritis by Race and</b>
553	<b>Ethnicity, 2002-2018.</b>