

1 **How soon should patients be eligible for differentiated service delivery models for antiretroviral**
2 **treatment? Evidence from Zambia**

3 **Short title: Outcomes of early DSD enrolment**

4 Lise Jamieson^{1,2}, Sydney Rosen^{1,3}, Bevis Phiri⁴, Anna Grimsrud⁵, Muya Mwansa⁶, Hilda Shakwelele⁴,
5 Prudence Haimbe⁴, Mpande M Mwenechanya⁷, Priscilla Lumano-Mulenga⁶, Innocent Chimboma⁶,
6 Brooke E Nichols^{1,2,3*}

7
8 ¹Health Economics and Epidemiology Research Office (HE²RO), Department of Internal Medicine, Faculty of
9 Health Sciences, University of the Witwatersrand, Johannesburg, South Africa

10 ²Department of Medical Microbiology, Amsterdam University Medical Centre, Amsterdam, the Netherlands

11 ³Department of Global Health, Boston University School of Public Health, Boston, MA, USA

12 ⁴Clinton Health Access Initiative, Lusaka, Zambia

13 ⁵International AIDS Society, Cape Town, South Africa

14 ⁶Ministry of Health, Lusaka, Zambia

15 ⁷The Centre for Infectious Disease Research in Zambia, Lusaka, Zambia

16

17

18 *Corresponding author: Brooke Nichols (brooken@bu.edu); Department of Global Health, Boston

19 University School of Public Health, 801 Massachusetts Avenue, Boston, MA, USA. Tel: +1 857-544-

20 7250

21

22 E-mail addresses of authors:

23 LJ: ljamieson@heroza.org

24 SR: sbrosen@bu.edu

25 BP: bphiri@clintonhealthaccess.org

26 AG: anna.grimsrud@iasociety.org

27 MM: muya.mwansa@gmail.com

28 HS: hshakwelele@clintonhealthaccess.org

29 PH: phaimbe@clintonhealthaccess.org

30 MMM: Mpande.Mwenechanya@cidrz.org

31 PLM: priscillalloyd2@icloud.com

32 [IC: innocent.Chiboma@moh.gov.zm](mailto:innocent.Chiboma@moh.gov.zm)

33 BEN: brooken@bu.edu

34

35 **Keywords:** differentiated service delivery (DSD) models, HIV, antiretroviral treatment, retention in
36 care, DSD guidelines

37

38 **Word count:**

39 Abstract: 266/350

40 Main text: 2,763/3,500

41 **Abstract**

42 **Introduction:** Attrition from HIV treatment is high during patients' first 6 months after antiretroviral
43 therapy (ART) initiation and patients with less than 6 months on ART are systematically excluded
44 from most differentiated service delivery (DSD) models, which are intended to reduce attrition.
45 Despite eligibility criteria requiring greater than 6 months on ART, some patients enroll earlier. Using
46 routinely-collected medical record data in Zambia, we compared loss to follow-up (LTFU) among
47 patients enrolling in DSD models early (<6 months on ART) to LTFU among those who enrolled
48 according to guidelines (≥ 6 months on ART) in order to assess whether the ART experience eligibility
49 criterion is necessary.

50

51 **Methods:** We extracted data from electronic medical records for adults (≥ 15 years) who initiated
52 ART between 01/01/2019 and 31/12/2019 and evaluated LTFU, defined as >90 days late for last
53 scheduled medication pickup, at 18 months for "early enrollers" (DSD enrolment after <6 months on
54 ART) and "established enrollers" (DSD enrolment after ≥ 6 months on ART). We used a log-binomial
55 model to compare LTFU risk between groups, adjusting for age, sex, urban/rural status, ART refill
56 interval and DSD model.

57

58 **Results:** For 6,340 early enrollers and 25,857 established enrollers there were no important
59 differences between the groups in sex (61% female), age (median 37 years), or setting (65% urban).
60 ART refill intervals were longer for established vs early enrollers (72% vs 55% were given 4–6-
61 month refills). LTFU at 18 months was 3% (192/6,340) for early enrollers and 5% (24,646/25,857) for
62 established enrollers. Early enrollers were 41% less likely to be LTFU than established patients
63 (adjusted risk ratio [95% confidence interval] 0.59 [0.50-0.68]).

64

65 **Conclusions:** Patients enrolled in DSD models in Zambia with < 6 months on ART were more likely
66 to be retained in care than patients referred after they were established on ART. A limitation of the
67 analysis is that early enrollers may have been selected for DSD participation due to providers' and
68 patients' expectations about future retention. Offering DSD model entry to at least some ART patients
69 <6 months after ART initiation may help address high attrition during the early treatment period.
70

71 **Introduction**

72 A critical step toward achieving universal coverage of antiretroviral therapy (ART) for HIV is to
73 support lifelong patient retention in ART programmes. Data from sub-Saharan Africa (SSA), where
74 some 70% of the world’s ART patients reside, continue to indicate insufficient retention on ART [1],
75 with about a fifth of all patients lost to care five years after treatment initiation [2]. A patient’s first six
76 months after initiation are a high risk period for attrition: a Zambian study showed rates of loss to
77 follow-up to be four-fold higher in the first six months of ART treatment compared to the period
78 between six months and 3.5 years thereafter [3].

79

80 Since 2016, the World Health Organization (WHO) has recommended differentiated service delivery
81 (DSD) for HIV treatment [4]. DSD models such as facility-based individual “fast track” medication
82 pickup and community-based ART refills can increase access and remove barriers to care by adjusting
83 the cadre of provider, location of service delivery, frequency of interactions with the healthcare
84 system, and/or types of services offered to support long-term retention of people established on HIV
85 treatment [5]. A recent systematic review reporting on outcomes of patients in DSD models in SSA
86 found that retention in care of those in DSD models was generally within 5% of that for conventional
87 care [6]. In Zambia, several DSD models have shown to have similar rates of retention as
88 conventional care 12 months after DSD model entry [7,8]. The INTERVAL trial, a cluster-
89 randomized, non-inferiority trial conducted in Malawi and Zambia, found that 6-month ART
90 dispensing was non-inferior in terms of 12-month retention, compared to standard of care [8]. DSD
91 models have consistently been found to save substantial time and money for patients themselves, and
92 satisfaction with the models among both providers and patients has been high [8–10].

93

94 A major limitation of DSD models to date has been eligibility criteria that limit model enrollment to
95 patients on the standard first-line ART regimen who are “stable” or “established on treatment,”
96 defined as having been on ART for at least 6 or 12 months and having documented viral suppression
97 [8,11–13]. Until April 2021, the WHO’s definition of “established” included at least 12 months of
98 ART experience; new guidelines require at least 6 months on ART for DSD model eligibility [14].

99 Patients who are newly initiated on ART are thus systematically excluded from stable-patient-specific
100 DSD models and from the benefits they offer. In the previously cited INTERVAL trial in Malawi and
101 Zambia, 10% of all patients were excluded due to having initiated ART less than 6 months prior[15].
102 For patients not eligible for DSD models, guidelines typically require frequent visits to the healthcare
103 facility and medication dispensing intervals of no more than 3 months [16]. In Zambia, all care is
104 differentiated and dependent on the needs of the patient [11], but currently there is no evidence on the
105 outcomes of patients with <6 months ART experience who enroll into DSD models that are typically
106 reserved for stable patients.

107

108 Despite existing guidelines limiting DSD eligibility based on time on ART, in practice patients who
109 do not meet guideline-recommended criteria are sometimes enrolled in DSD models for stable
110 patients, due to provider decision, error or patient request. To begin to understand how such patients
111 who are referred early to DSD models fare when participating in DSD models designed for those
112 established on treatment, we analyzed routinely collected medical record data from Zambia to
113 compare rates of retention among patients enrolled into DSD models earlier than guidelines
114 recommend with retention among those who met all eligibility criteria.

115

116 **Methods**

117 *Study population and outcomes*

118 Data were retrospectively extracted in October 2021 from SmartCare, Zambia's national electronic
119 medical record system [17]. We extracted data for patients, aged 15 years or older, reported to have
120 initiated ART between January 2019 and December 2020 at any of 692 health facilities across all 10
121 provinces. Zambian policy guidelines for this period required patients to be stable on ART before they
122 are considered for DSD enrolment, with stability defined in the 2018 consolidated ART guidelines
123 [11,12] as on ART for at least six months.

124

125 We defined patients who enrolled into a DSD model with <6 months of ART as “early enrollers”,
126 while a comparison group of patients who enrolled into a DSD model with ≥ 6 months of ART as
127 “established enrollers”. Patients on second-line ART (defined as those dispensed protease inhibitors
128 such as lopinavir, atazanavir or ritonavir) were excluded from this analysis, as they are already known
129 to be at high risk of attrition [18,19]. For both early and established enrollers, we assessed loss to
130 follow-up (LTFU) at 18 months post-ART initiation, with LTFU defined as patients who were
131 reported as “lost to follow-up” or “inactive” in the SmartCare database between 15 and 21 months
132 after ART initiation date. “Inactive” was defined as having missed a scheduled visit by more than 30
133 days. Rates of LTFU were calculated for early and established enrollers and stratified by DSD model
134 type and ART dispensing duration. DSD models, which had multiple names in the SmartCare
135 database, were grouped into the following categories: 1) adherence groups (community adherence
136 groups, rural/urban adherence groups); 2) extended clinic hours (DSD models designed for clinic
137 access before/after hours or weekends, including scholar models); 3) fast-track (procedures to
138 accelerate dispensing at clinics); 4) home ART delivery; 5) multi-month dispensing (MMD); and 6)
139 community pick-up point (central dispensing units, community retail pharmacies, community ART
140 distribution points, health posts, mobile ART distribution models) (Table 1).

141

142 **Table 1. Differentiated service delivery (DSD) models for HIV treatment in use in Zambia**
 143 **during the study period**

Category	Model(s) in category	Description
Adherence groups	Community adherence groups	Patient groups, consisting of ± 6 members, meeting at an agreed time every 1-3 months. The groups are managed by the patients themselves, and usually meet outside of the health facility. Members collect ART at clinical appointments for other members in a rotating fashion [7].
	Rural and urban adherence groups/clubs	Patient groups, consisting of 20-30 members, meeting at an agreed time every 2-3 months. Groups are often facilitated by the same health care worker or facility-based volunteer, also providing pre-packaged ART [7].
Community pick-up point	Central dispensing units	A centralized model for ART distribution, where medication is packed at a centrally located hub and distributed to patients at multiple approved pick-up points. Clinic visits occur every 6 months at the health facility [11].
	Community ART distribution points, community retail pharmacies, health posts	ART refills are provided to patients outside of health facilities, e.g. schools, churches, community centres, community retail pharmacies and health posts [11].
	Mobile ART distribution models	A clinical outreach team linked to a facility does 3-monthly clinical assessments at community distribution points. This model is usually used for hard-to-reach areas [11].
Extended clinic hours	Before/after-hours models, weekend models, scholar models	These models allow patients to have a clinical visit and collect their ART outside the conventional operation times at the facility (early mornings, evenings and over weekends). These are beneficial to patients with competing priorities (e.g. school or employment).
Fast-track	Fast-track	A model that typically involves a separate, shorter queue to dispense ART to stable patients, allowing for a quick patient visit when a clinical visit is not required [20]
Home ART delivery	Home ART delivery	Trained community health workers (CHWs) linked to facilities conduct home visits to deliver ART, conduct health screening, monitor adherence, and refer patients as required [7].
Multi-month dispensing	Multi-month dispensing	Facility-based model in which the primary goal is to dispense medications for more than one month (usually 6 months). Dispensing is typically done during a clinical facility-based visit.

144

145 *Statistical analysis*

146 We described the demographics of our study population using descriptive statistics. We compared
147 loss to follow-up risk between early enrollers and established enrollers and Wilson's score interval
148 was used to calculate 95% confidence intervals around proportions. We used a log-binomial
149 regression to calculate risk ratios for loss to follow-up, adjusting for age, sex, urban/rural status, DSD
150 model type and ART dispensing duration. We also conducted an age-stratified analysis and a sub-
151 analysis restricted to facilities with a higher proportion of early enrollers, with results shown in the
152 Supplementary Appendix.

153

154 *Ethics*

155 This study protocol was approved by ERES Converge IRB (Zambia), protocol number 2019-Sep-030,
156 the Human Research Ethics Committee (Medical) of the University of Witwatersrand, protocol
157 number M190453, and the Boston University IRB H-38823 for the use of data with a waiver of
158 consent.

159

160 **Results**

161 *Study populations*

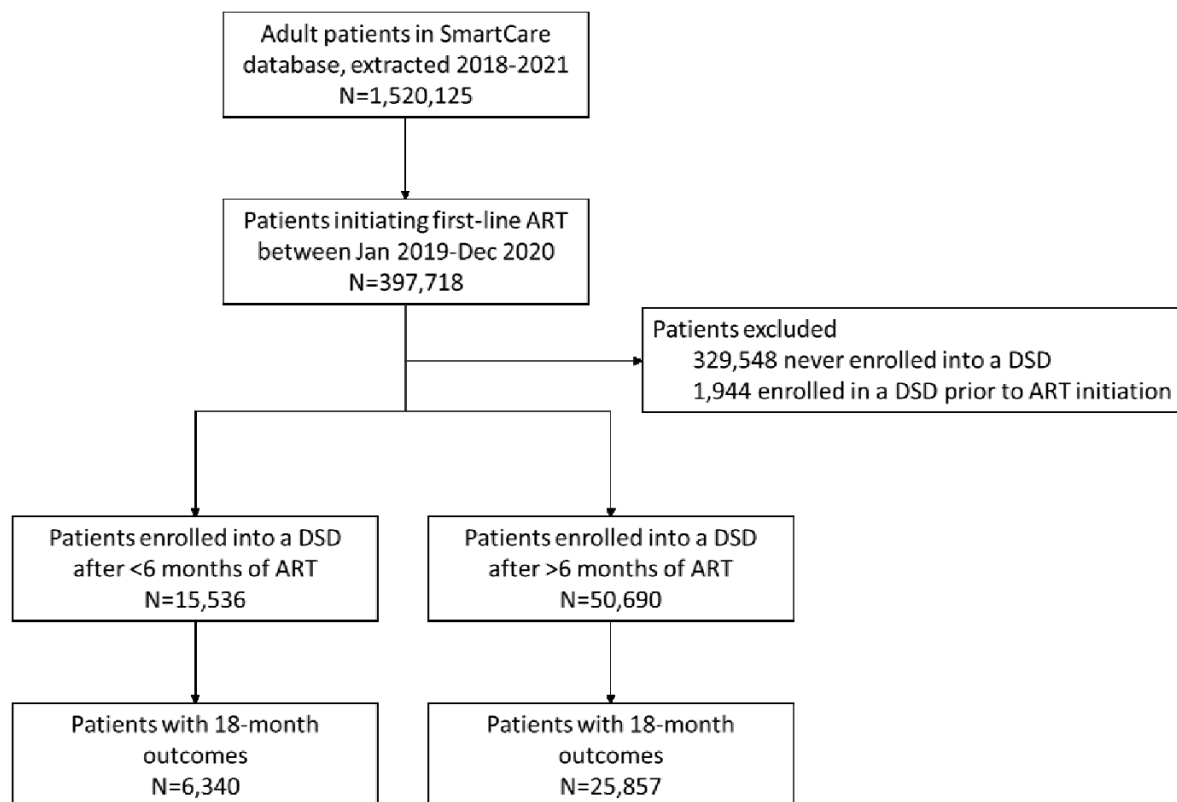
162 The full SmartCare data set included 1,520,125 unique patients on ART over 2018-2021, of which
163 32,197 patients had enrolled into a DSD model after ART initiation and had an 18-month outcome
164 reported within the 15-to-21-month window (Figure 1). Of these, 6,340 patients were reported to have
165 been enrolled in DSD models <6 months after ART initiation during the study period (early enrollers).
166 The remaining 25,857 patients comprised the comparison group of established enrollers. For early
167 enrollers, median time enrolled in a DSD model at the time of outcome evaluation was 14.7 months
168 (IQR 13.0-16.5); majority (81%, n=20,856) of established enrollers were on DSD models at outcome
169 evaluation at a median of 5.8 months (interquartile range (IQR) 2.9-8.9) (Table 2). Early enrollers and
170 established enrollers were similar with respect to age, sex and urban/rural location. Across both

171 groups, the median age was 37 years (IQR 29 – 44), a majority (61%, 19,580/32,197) were female

172 and most patients resided in urban settings (64%, n=20,618).

173

174 **Figure 1: Flow diagram depicting study population**



175

176

177 **Table 2. Demographics of patients enrolled in differentiated service delivery models**

Variable		Early enrollers of DSD models (N=6,340)	Established enrollers of DSD models (N=25,857)
Age in years, median (IQR)		36 (29-44)	37 (29-44)
Age group	15-24	727 (11%)	2,589 (10%)
	25-34	2,069 (33%)	8,346 (32%)
	35-49	2,658 (42%)	11,424 (44%)
	50+	885 (14%)	3,487 (13%)
Sex	Female	3,914 (62%)	15,666 (61%)
	Male	2,426 (38%)	10,191 (39%)
Location	Rural	2,501 (39%)	9,078 (35%)
	Urban	3,839 (61%)	16,779 (65%)
Year of ART initiation	2019	2,897 (46%)	17,346 (67%)
	2020	3,443 (54%)	8,511 (33%)
DSD type	Adherence groups	149 (2%)	508 (2%)
	Community pickup points	671 (11%)	1,461 (6%)
	Extended clinic hours	85 (1%)	97 (<1%)
	Fast-track	979 (15%)	6,266 (24%)
	Home ART delivery	355 (6%)	973 (4%)
	Multi-month dispensing	4,101 (65%)	16,552 (64%)
ART months dispensed	<2 months	636 (10%)	1,476 (6%)
	3 months	2,197 (35%)	5,688 (22%)
	4-6 months	3,507 (55%)	18,679 (72%)
Outcome Year	2020	2,863 (45%)	17,283 (67%)
	2021	3,477 (55%)	8,574 (33%)
Months on ART at outcome, median (IQR)		17.9 (16.4-19.5)	18.4 (16.7-19.8)
On DSD at outcome	Yes	6,340 (100%)	20,856 (81%)
	No	0 (0%)	5,001 (19%)
Months on DSD at outcome, median (IQR)		14.7 (13.0-16.5)	5.8 (2.9-8.9)
Patient outcomes by 18 months after ART initiation	On treatment	6,133 (97%)	24,646 (95%)
	Died	11 (<1%)	31 (<1%)
	Lost to follow-up	192 (3%)	1,169 (5%)
	Stopped ART	4 (<1%)	10 (<1%)
	Stopped DSD	0 (0%)	1 (<1%)

178

179 Most patients were enrolled in either multi-month dispensing DSD models (65% [n=4,101] of early
180 enrollers and 64% [n=16,552] of established enrollers) or fast-track (15% [n=979] of early enrollers
181 and 24% [n=6,266] of established enrollers) (Table 1). Amongst early enrollers, around half (55%,
182 n=3,477) were dispensed 4-6 months of ART at their most recent ART pickup, 35% (n=2,197) were
183 dispensed 3 months of ART, and 10% (n=636) were dispensed <2 months of ART. Established
184 enrollers had slightly longer dispensing intervals with 72% (n=18,679) dispensed 4-6 months of ART,

185 22% (n=5,688) dispensed 3 months of ART, and 6% (n=1,476) dispensed <2 months of ART (Table
186 1).

187

188 *Outcomes*

189 Early enrollers had a slightly lower rate of loss to follow-up (3.0% [95% confidence interval (CI)
190 2.6%-3.5%]) compared to the established enrollers (4.5% [4.3%-4.8%]) (Table 3). Early enrollers
191 experienced similar or lower loss to follow-up rates than established enrollers across nearly all
192 differentiated models of care. The exception was extended clinic hours: early enrollers enrolled in the
193 extended clinic hours model had a similar rate of loss to follow-up than established enrollers (10.6%;
194 [5.7%-18.9%] vs. 8.2% [4.2%-15.4%], respectively). Across both early and established enrollers,
195 longer dispensing periods were associated with lower rates of loss to follow-up, which increased from
196 2.5%-3.8% for 4-6-month dispensing to 3.5%-5.3% for 3-month dispensing to 4.1%-10.6% for <2-
197 month dispensing (Table 3). Early enrollers with <2 months dispensing had a lower rate of loss to
198 follow-up than did established enrollers (4.1%; [2.8%-5.9%] vs. 10.6% [9.1%-12.2%]).

199

200 **Table 3. Proportion of patients lost to follow-up at 18 months after ART initiation, stratified by**
201 **differentiated service delivery (DSD) model and ART months dispensed** (*95% confidence interval*
202 *in round brackets, sample numbers in square brackets*)

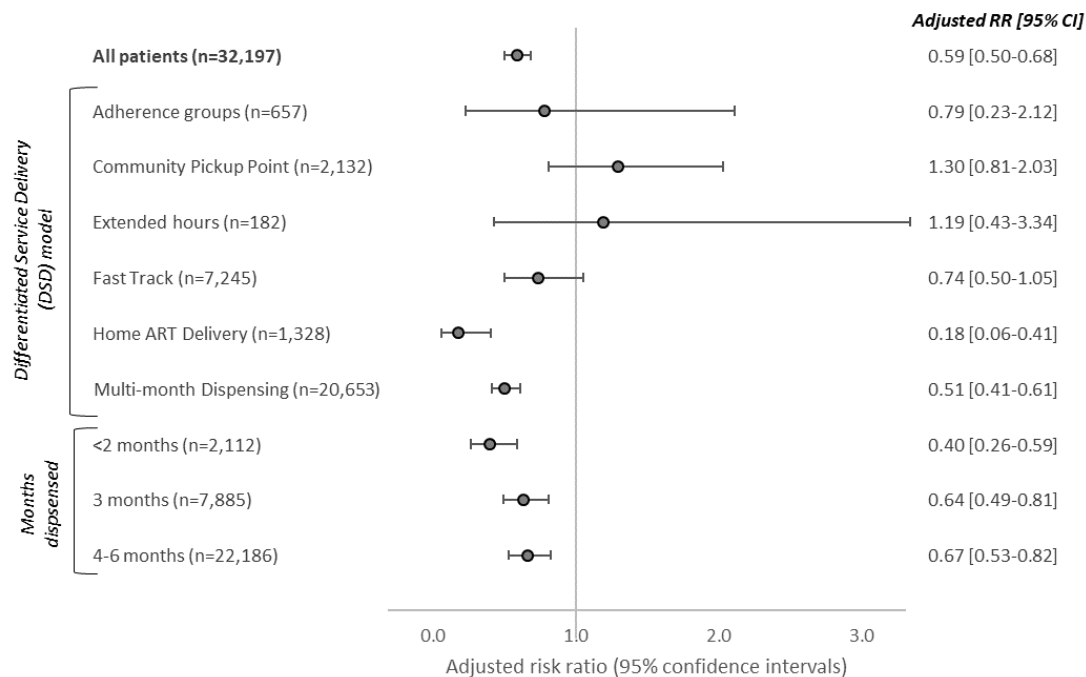
	Early enrollers	Established enrollers
Overall	3.0% (2.6% - 3.5%) [192/6,340]	4.5% (4.3% - 4.8%) [1,169/25,857]
By DSD model		
Adherence groups	2.7% (1% - 6.7%) [4/149]	3.1% (1.9% - 5.1%) [16/508]
Community pickup points	4.5% (3.1% - 6.3%) [30/671]	3.3% (2.5% - 4.3%) [48/1,461]
Extended clinic hours	10.6% (5.7% - 18.9%) [9/85]	8.2% (4.2% - 15.4%) [8/97]
Fast track	3.4% (2.4% - 4.7%) [33/979]	3.6% (3.2% - 4.1%) [227/6,266]
Home ART delivery	1.4% (0.6% - 3.3%) [5/355]	6.3% (4.9% - 8%) [61/973]
Multi-month dispensing	2.7% (2.3% - 3.2%) [111/4,101]	4.9% (4.6% - 5.2%) [809/16,552]
By months ART dispensed		

	Early enrollers	Established enrollers
<i><2 months</i>	4.1% (2.8% - 5.9%) [26/636]	10.6% (9.1% - 12.2%) [156/1,476]
<i>3 months</i>	3.5% (2.8% - 4.4%) [77/2,197]	5.3% (4.8% - 5.9%) [303/5,688]
<i>4-6 months</i>	2.5% (2.1% - 3.1%) [89/3,507]	3.8% (3.5% - 4.1%) [709/18,679]

203

204 In an analysis adjusting for age, sex, location, and ART dispensing duration or DSD model type
205 (where applicable),, early enrollers in all DSD model types and dispensing durations were 41% less
206 likely to be lost to follow-up than established enrollers (adjusted risk ratio (aRR) 0.59 [0.50-0.68])
207 (Figure 2). The reduced adjusted risk of being lost to follow-up were similar for patients in adherence
208 groups (aRR 0.79 [0.23-2.12]), multi-month dispensing (aRR 0.51 [0.41-0.61]), home ART delivery
209 (aRR 0.18 [0.06-0.41]) and fast track models (aRR 0.74 [0.50-1.05]). Early enrollers had a statistically
210 insignificant increased risk of being lost to follow-up in the community pick-up point (aRR 1.30
211 [0.81-2.03]) and extended clinic hours models (aRR 1.19 [0.43-3.34]) compared to the established
212 enrollers.
213

214 **Figure 2. Relative risk of loss to follow-up at 18 months post-ART initiation for early enrollers**
 215 **of differentiated service delivery (DSD) models** (reference group: established enrollers of DSD models
 216 with >6 months of ART at DSD entry; analysis adjusted for age, sex, urban/rural status and number of months
 217 dispensed (for DSD stratified analysis) and DSD model (for months dispensed stratified analysis))



218

219

220 An age-stratified analysis produced similar results to the main analysis, with early enrollers in each
 221 age group being less likely to be lost to follow-up than established enrollers in the same age group.
 222 However, the effect of earlier enrollment in DSD on reduced loss to follow-up appeared less
 223 pronounced in patients on 4-6 months' ART dispensing for those aged 25 to 49 years (Appendix
 224 Figure S1). In facilities where a larger proportion of all DSD patients enrolled in DSD models early,
 225 the trend towards early enrollers performing better persisted with respect to loss to follow-up
 226 compared to outcomes for established enrollers (Appendix Figure S2).

227

228 Discussion

229 In nearly all of sub-Saharan Africa, DSD model eligibility criteria require that patients be on ART for
 230 a minimum of six months (and in some countries a minimum of 12 months) prior to DSD model

231 enrollment [21]. We present novel data from Zambia highlighting good outcomes when newly
232 initiated ART patients (those with less than 6 months' ART experience) are referred early to DSD
233 models. Those referred early to DSD appear to have good outcomes across different DSD models and
234 age categories.

235

236 Our data begin to fill in a gap in the evidence base on the validity of time on treatment as an eligibility
237 criterion for DSD models. Because few if any countries permit DSD model enrollment for new
238 initiators, little evidence on their experience in DSD models has been available until now. To date,
239 most reports on DSD outcomes have been limited to people who have spent a significant amount of
240 time on ART prior to DSD model enrollment. In the previously mentioned INTERVAL trial, for
241 example, participants had been on ART for a median of roughly five years at DSD model entry, while
242 patients in a trial of multi-month dispensing in adherence clubs in South Africa had a median duration
243 on ART of 7.3 years at baseline [22].

244

245 While ART patients in Zambia have historically been lost to follow-up at high rates in the first few
246 months after ART initiation [3], in our DSD patient population this was less likely to be the case. Our
247 results provide evidence to support the recent revision of WHO guidelines that reduce time on ART
248 from 12 to six months on treatment as part the definition of “established” on ART [14]. These
249 findings offer reassurance and evidence to countries that have expanded eligibility as they scale up
250 DSD models [21,23], particularly to support uninterrupted access to HIV treatment during the
251 COVID-19 pandemic, that earlier referral to DSD is possible without compromising patient care.
252 Even if many, or most, of the patients in our “early enrollment” sample were selected deliberately
253 because they were considered at low loss to follow-up risk, our results demonstrate that early
254 eligibility for DSD models should be considered for at least some patients before they reach six
255 months on ART.

256

257 Loss to follow up at 18 months after ART initiation for early and established enrollers averaged 1-
258 11% for all six categories of DSD models studied. We did not observe any programmatically

259 important differences by model or ART experience prior to model enrollment. Where a
260 programmatically important difference did arise, in contrast, was in dispensing intervals. Regardless
261 of how long a patient had been on ART at DSD model enrollment, patients who received ≤ 2 months
262 of medications at a time were more likely to be lost to follow up than patients who received either 3
263 months or 4-6 months of medications. This likely reflects providers' assessments of patients' ability to
264 remain on treatment and/or clinical condition. Those regarded as being at higher risk of attrition are
265 asked to come to the clinic for medication refills more often, so that they can be monitored and
266 supported more closely. Ironically, difficulty in accessing the clinic may be the very reason that some
267 patients are at high risk of attrition. For these patients, insisting on shorter refill durations may simply
268 exacerbate whatever challenges they face.

269

270 There were several limitations to our analysis. First, as noted above, we assume that patients with < 6
271 months on ART in our sample were not offered DSD model enrollment at random. If providers made
272 accurate clinical decisions about individual patients' risks of attrition, patients in our "early
273 enrollment" cohorts could over-represent patients thought to have low attrition risk. To achieve the
274 results we found, providers would have had to make these decisions correctly at multiple sites across
275 the entire country. If this is the case, our data suggest that the healthcare workers responsible for
276 enrolling patients into DSD models can successfully identify those who will do well with early
277 enrollment. At the same time, if the early enrollers in our data set do comprise patients at lower risk of
278 loss to follow-up, then our results likely underestimate the true rate of loss to follow-up that would
279 occur if early DSD enrollment were to be broadly available, without the benefit of provider selection.

280

281 A second limitation is that our data set included only patients reported in the electronic medical record
282 system to have enrolled in a DSD model. It is possible that some patients not in DSD models may be
283 recorded as enrolled, and some who were enrolled may have been missed. Third, bias could occur if
284 facilities with better-than-average retention in care were also more likely to allow early DSD model
285 enrollment. In this case, our results may reflect differences in facility quality, as well as enrollment
286 timing. An analysis restricted to facilities with $> 20\%$ early DSD enrolment showed an even lower risk

287 of loss to follow-up among patients enrolled early into DSD models, however, compared to patients
288 with >6 months of ART at DSD entry.

289

290 Despite these limitations, our analysis demonstrates that patients on ART for less than six months
291 who are enrolled in existing DSD models can be successfully retained in care and may even fare
292 better than those left in conventional care and only initiate DSD models greater than six months after
293 ART initiation. It is likely that not all patients are ready for less intensive DSD models in their first
294 half-year or year on treatment, but some clearly are. Since DSD models have been shown to be
295 beneficial to patients and in some cases to providers, offering enrollment to newly-initiating ART
296 patients may improve ART programs in general. Future research should look more closely at which
297 patients can be enrolled early and which models of care serve these patients best.

298

299 **Conclusions**

300 Current policy for DSD model eligibility criteria in Zambia, as in other countries, have required a
301 minimum of 12 months of ART before a patient is considered for DSD enrolment, and more recently,
302 a minimum of six months of ART. In order to change guidelines to allow DSD enrolment sooner after
303 ART initiation (i.e., 6 months or less), large-scale observational evidence, implementation research or
304 trial data demonstrating good patient outcomes among those who enrol in DSD models < six months'
305 post ART initiation would be required. This analysis therefore provides a critical first step towards the
306 reassessment of the delayed DSD enrolment policies, and signals that further research needs to be
307 conducted in other SSA countries to evaluate patient outcomes for early DSD model enrolment.

308

309

310 **Competing interests**

311 We declare no competing interests.

312 **Authors' contributions**

313 LJ, BN, SR and AG conceptualized the study. BP, HS, PH, MM, PLM, IC curated data for the study.

314 BP, HS, PH, MMM provided supervision of the study. LJ led data analysis and drafted the paper

315 along with BN, SR and AG. All authors contributed to data interpretation and critically reviewed a

316 revised draft of the manuscript. All authors have read and approved the final manuscript.

317 **Acknowledgements**

318 *Funding:* Funding for the study was provided by the Bill & Melinda Gates Foundation through

319 OPP1192640 to Boston University. The funder had no role in study design, data collection and

320 analysis, decision to publish or preparation of the manuscript.

321 *Data sharing:* The data is owned by the Zambian Ministry of Health and the use of it was approved

322 by the Human Research Ethics Committee (University of Witwatersrand, Johannesburg, South Africa)

323 and ERES Converge IRB (Zambia). All relevant data is included in the paper and supplementary

324 tables. The full data are available upon approval from Zambian Ministry of Health and appropriate

325 ethics committees.

326

327 **References**

- 328 1. UNAIDS AIDSinfo: People living with HIV receiving ART [Internet]. 2020 [cited 2021 Jun
329 15]. Available from: <https://aidsinfo.unaids.org/>
- 330 2. Haas AD, Zaniewski E, Anderegg N, Ford N, Fox MP, Vinikoor M, et al. Retention and
331 mortality on antiretroviral therapy in sub-Saharan Africa: collaborative analyses of HIV
332 treatment programmes. *J Intern AIDS Soc*. 2018 Feb;21(2):e25084.
- 333 3. Schöni-Affolter F, Keiser O, Mwangi A, Stringer J, Ledergerber B, Mulenga L, et al.
334 Estimating Loss to Follow-Up in HIV-Infected Patients on Antiretroviral Therapy: The Effect of
335 the Competing Risk of Death in Zambia and Switzerland. Myer L, editor. *PLoS ONE*. 2011 Dec
336 19;6(12):e27919.
- 337 4. World Health Organization. Guidelines on HIV self-testing and partner notification, supplement
338 to consolidated guidelines on HIV testing services [Internet]. 2016 [cited 2020 Nov 18].
339 Available from: <https://www.who.int/hiv/pub/vct/hiv-self-testing-guidelines/en/>
- 340 5. Duncombe C, Rosenblum S, Hellmann N, Holmes C, Wilkinson L, Biot M, et al. Reframing
341 HIV care: putting people at the centre of antiretroviral delivery. *Trop Med Int Health*. 2015
342 Apr;20(4):430–47.
- 343 6. Long L, Kuchukhidze S, Pascoe S, Nichols BE, Fox MP, Cele R, et al. Retention in care and
344 viral suppression in differentiated service delivery models for HIV treatment delivery in
345 sub-Saharan Africa: a rapid systematic review. *J Intern AIDS Soc* [Internet]. 2020 Nov [cited
346 2021 May 14];23(11). Available from: <https://onlinelibrary.wiley.com/doi/10.1002/jia2.25640>
- 347 7. Nichols BE, Cele R, Jamieson L, Long LC, Siwale Z, Banda P, et al. Community-based delivery
348 of HIV treatment in Zambia: costs and outcomes. *AIDS*. 2021 Feb 2;35(2):299–306.
- 349 8. Hoffman RM, Moyo C, Balakasi KT, Siwale Z, Hubbard J, Bardon A, et al. Multimonth
350 dispensing of up to 6 months of antiretroviral therapy in Malawi and Zambia (INTERVAL): a
351 cluster-randomised, non-blinded, non-inferiority trial. *The Lancet Global Health*. 2021
352 May;9(5):e628–38.
- 353 9. Nichols BE, Cele R, Lekodeba N, Tukei B, Ngorima Mabhena N, Tiam A, et al. Economic
354 evaluation of differentiated service delivery models for HIV treatment in Lesotho: costs to
355 providers and patients. *J Intern AIDS Soc* [Internet]. 2021 Apr [cited 2021 Jun 1];24(4).
356 Available from: <https://onlinelibrary.wiley.com/doi/10.1002/jia2.25692>
- 357 10. Guthrie T, Muheki C, Greener R, Kanoowe S, Lagony S, Miot J, et al. Costs and outcomes of
358 differentiated ART service delivery in Uganda: summary of findings. [Internet]. 2020. Available
359 from: [https://sites.bu.edu/ambit/files/2021/02/Uganda-EQUIP-Brief-ART-DSDM-cost-
360 outcomes-FINAL-2020.08.24.pdf](https://sites.bu.edu/ambit/files/2021/02/Uganda-EQUIP-Brief-ART-DSDM-cost-outcomes-FINAL-2020.08.24.pdf)
- 361 11. Ministry of Health. Zambia Differentiated Service Delivery Framework. 2018.
- 362 12. Republic of Zambia. Ministry of Health. Zambia Consolidated Guidelines for Treatment and
363 Prevention of HIV Infection. 2018.
- 364 13. Republic of Zambia. Ministry of Health. Zambia Consolidated Guidelines for Treatment and
365 Prevention of HIV Infection. 2020.

- 366 14. World Health Organization. Updated recommendations on service delivery for the treatment and
367 care of people living with HIV. [Internet]. 2021 Apr. Available from:
368 <https://apps.who.int/iris/rest/bitstreams/1344311/retrieve>
- 369 15. Hoffman RM, Balakasi K, Bardon AR, Siwale Z, Hubbard J, Kakwesa G, et al. Eligibility for
370 differentiated models of HIV treatment service delivery: an estimate from Malawi and Zambia.
371 *AIDS*. 2020 Mar 1;34(3):475–9.
- 372 16. Rosen S, Grimsrud A, Ehrenkranz P, Katz I. Models of service delivery for optimizing a
373 patient’s first six months on antiretroviral therapy for HIV: an applied research agenda. *Gates*
374 *Open Res*. 2020;4:116.
- 375 17. Gumede-Moyo S, Todd J, Bond V, Mee P, Filteau S. A qualitative inquiry into implementing an
376 electronic health record system (SmartCare) for prevention of mother-to-child transmission data
377 in Zambia: a retrospective study. *BMJ Open*. 2019 Sep;9(9):e030428.
- 378 18. Wandeler G, Keiser O, Mulenga L, Hoffmann CJ, Wood R, Chaweza T, et al. Tenofovir in
379 Second-Line ART in Zambia and South Africa: Collaborative Analysis of Cohort Studies.
380 *JAIDS Journal of Acquired Immune Deficiency Syndromes*. 2012 Sep 1;61(1):41–8.
- 381 19. Kebede HK, Mwanri L, Ward P, Gesesew HA. Predictors of lost to follow up from antiretroviral
382 therapy among adults in sub-Saharan Africa: a systematic review and meta-analysis. *Infect Dis*
383 *Poverty*. 2021 Dec;10(1):33.
- 384 20. Huber A, Pascoe S, Nichols B, Long L, Kuchukhidze S, Phiri B, et al. Differentiated Service
385 Delivery Models for HIV Treatment in Malawi, South Africa, and Zambia: A Landscape
386 Analysis. *Glob Health Sci Pract*. 2021 May 10;ghsp;GHSP-D-20-00532v1.
- 387 21. Time on ART before eligibility for DSD for HIV treatment. Differentiated Service Delivery.
388 [Internet]. International AIDS Society (IAS); 2020. Available from:
389 [https://differentiatedservicedelivery.org/Portals/0/adam/Content/jcdkIT8RzEqirRdlckAjbQ/File/](https://differentiatedservicedelivery.org/Portals/0/adam/Content/jcdkIT8RzEqirRdlckAjbQ/File/1-Time%20to%20DSD%20Eligibility%20D5.pdf)
390 [1-Time%20to%20DSD%20Eligibility%20D5.pdf](https://differentiatedservicedelivery.org/Portals/0/adam/Content/jcdkIT8RzEqirRdlckAjbQ/File/1-Time%20to%20DSD%20Eligibility%20D5.pdf)
- 391 22. Cassidy T, Grimsrud A, Keene C, Lebelo K, Hayes H, Orrell C, et al. Twenty-four-month
392 outcomes from a cluster-randomized controlled trial of extending antiretroviral therapy refills in
393 ART adherence clubs. *J Int AIDS Soc*. 2020 Dec;23(12):e25649.
- 394 23. Grimsrud A, Wilkinson L. Acceleration of differentiated service delivery for HIV treatment in
395 sub-Saharan Africa during COVID-19. *J Int AIDS Soc* [Internet]. 2021 Jun [cited 2021 Jul
396 12];24(6). Available from: <https://onlinelibrary.wiley.com/doi/10.1002/jia2.25704>
- 397