

1 **How soon should patients be eligible for differentiated service delivery models for antiretroviral**
2 **treatment? Evidence from Zambia**

3

4 Lise Jamieson^{1,2}, Sydney Rosen^{1,3}, Bevis Phiri⁴, Anna Grimsrud⁵, Muya Mwansa⁶, Hilda Shakwelele⁴,
5 Prudence Haimbe⁴, Mpande M Mwenechanya⁷, Priscilla Lumano Mulenga⁶, Brooke E Nichols^{1,2,3*}

6

7 ¹Health Economics and Epidemiology Research Office (HE²RO), Department of Internal Medicine, Faculty of
8 Health Sciences, University of the Witwatersrand, Johannesburg, South Africa

9 ²Department of Medical Microbiology, Amsterdam University Medical Centre, Amsterdam, the Netherlands

10 ³Department of Global Health, Boston University School of Public Health, Boston, MA, USA

11 ⁴Clinton Health Access Initiative, Lusaka, Zambia

12 ⁵International AIDS Society, Cape Town, South Africa

13 ⁶Ministry of Health, Lusaka, Zambia

14 ⁷The Centre for Infectious Disease Research in Zambia, Lusaka, Zambia

15

16

17 *Corresponding author: Brooke Nichols (brooken@bu.edu)

18

19 **Word count: 2,556**

20 Abstract

21 Word count: 321

22

23 **Background:** Most differentiated service delivery (DSD) models for HIV treatment, which are
24 intended to improve ART programme outcomes, require that a patient have spent ≥ 6 or ≥ 12 months
25 on antiretroviral treatment (ART) for eligibility. Attrition from ART programmes, however, is
26 highest among those newly initiated and thus ineligible for DSD models. Because some patients are
27 enrolled “early,” prior to 6 or 12 months on ART, we were able to evaluate loss to follow-up among
28 patients in Zambia enrolled in DSD models after differing intervals on ART.

29 **Methods:** Data were extracted from electronic medical records of patients (≥ 15 years) enrolled in
30 DSD models from October 2019-March 2020. We compared 12-month loss to follow-up (LTFU),
31 defined as “lost to follow-up,” “inactive,” or “stopped ART” at 9-15 months after DSD enrolment,
32 among patients enrolled in six DSD models after < 6 months, 6-12 months, and ≥ 12 months on ART,
33 with those enrolled with < 6 or < 12 months on ART termed “early enrollers and those enrolled with
34 ≥ 12 months termed “established.” We adjusted for age, sex, urban/rural status, and duration of ART
35 dispensing.

36 **Results:** Of 88,556 patients enrolled in a DSD model, 4% ($n=3,143$) and 8% ($n=6,714$) had initiated
37 ART < 6 months or 6-12 months before DSD entry, respectively. Early enrollers were less likely to be
38 LTFU at 12 months than established patients (adjusted risk ratio (aRR) [95% confidence interval] for
39 < 6 months on ART 0.72 [0.62-0.83]; aRR 0.74 [0.67-0.82] for 6-12 months on ART) for almost all DSD
40 models and dispensing durations. A limitation of the analysis is that early enrollers may have been
41 selected for DSD participation due to providers’ expectations about future retention.

42 **Conclusions:** Patients enrolled in DSD models in Zambia after less than a year on ART were more
43 likely to be retained in care 12 months later than were patients established on ART at DSD
44 enrollment. Offering enrollment to at least some newly-initiating ART patients may improve ART
45 programme outcomes.

46 Introduction

47

48 A critical step toward achieving universal coverage of antiretroviral therapy (ART) for HIV is to support
49 lifelong patient retention in ART programmes. Data from sub-Saharan Africa (SSA), where some 70%
50 of the world's ART patients reside, continue to indicate insufficient retention on ART (1), with about a
51 fifth of all patients lost to care by 5 years after treatment initiation (2). A patient's first six months and
52 first year after initiation are the highest risk period: a Zambian study showed rates of loss to follow-
53 up to be four-fold higher in the first six months of ART treatment compared to the period between 6
54 months and 3.5 years thereafter (3).

55

56 Since 2016, the World Health Organization (WHO) has recommended differentiated service delivery
57 (DSD) for HIV treatment (4). DSD models increase access and remove barriers to care by adjusting the
58 cadre of provider, location of service delivery, frequency of interactions with the healthcare system,
59 and/or types of services offered to support long-term retention of people established on HIV
60 treatment (5). A recent systematic review reporting on outcomes of patients in DSD models in SSA
61 found that retention in care of those in DSD models was generally within 5% of that for conventional
62 care (6). In Zambia, several DSD models have shown to have similar rates of retention as conventional
63 care 12 months after DSD model entry (7,8). The INTERVAL trial, a cluster-randomized, non-inferiority
64 trial conducted in Malawi and Zambia, found that 6-month ART dispensing was non-inferior in terms
65 of 12-month retention, compared to standard of care (8). DSD models have consistently been found
66 to save substantial time and money for patients themselves, and satisfaction with the models among
67 both providers and patients has been high (8–10).

68

69 A major limitation of DSD models to date has been eligibility criteria that limit model enrollment to
70 patients on the standard first-line ART regimen who are “stable” or “established on treatment,”
71 defined as having been on ART for at least 6 or 12 months and having demonstrated viral suppression
72 (8,11–13). Until April 2021, the WHO's definition of “established” included at least 12 months of ART
73 experience; new guidelines require at least 6 months on ART for DSD model eligibility (14). Patients
74 who are newly initiated on ART are thus systematically excluded from DSD models and from the
75 benefits they offer. In the previously cited INTERVAL trial in Malawi and Zambia, 10% of all patients
76 were excluded due to having initiated ART less than 6 months prior(15). For patients not eligible for
77 DSD models, guidelines typically require frequent visits to the healthcare facility and medication
78 dispensing intervals of no more than 3 months (16).

79

80 Despite existing guidelines limiting DSD eligibility based on time on ART, in practice patients who do
81 not meet guideline-recommended criteria are often enrolled in DSD models, due to provider decision
82 or error or patient request. To begin to understand how such patients fare when participating in DSD
83 models for those established on treatment, we analyzed routinely collected medical record data from
84 Zambia to compare rates of retention among patients enrolled into DSD models earlier than prevailing
85 guidelines allowed with retention among those who met all eligibility criteria.

86

87 Methods

88

89 *Study population and outcomes*

90

91 Data were retrospectively extracted in March 2021 from SmartCare, Zambia's national electronic
92 medical record system (17). We extracted data for all adults (aged 15 years or older) reported to have

93 enrolled in a DSD model between October 2019 and March 2020 at any of 563 health facilities across
94 all 10 provinces. Zambian policy guidelines for this period required patients to be stable on ART before
95 they are considered for DSD enrolment, with stability defined in the 2018 DSD framework guidelines
96 (11,12) as on ART for at least 12 months.

97

98 We categorized patients into three groups defined by how long they had been on ART at the time of
99 DSD model entry: (1) 12 months or longer; (2) 6-12 months; and (3) <6 months. We refer to the first
100 group (≥ 12 months) as “established enrollers” and the two latter groups as “early enrollers”. Patients
101 on second-line ART (defined as those dispensed protease inhibitors such as lopinavir or atazanavir)
102 were excluded from this analysis, as they are already known to be at high risk of attrition (18,19).

103

104 Outcomes of patients were assessed as of 31 December 2020. Our primary outcome was loss to follow-
105 up at 12 months after DSD enrollment, defined as a patient being reported as “lost to follow-up,”
106 “inactive,” or “stopped ART” in the Smartcare database between 9 and 15 months after DSD
107 enrollment. (“Inactive” is defined as having missed a scheduled visit by more than 30 days.) Rates of
108 loss to follow-up were calculated by time on ART at DSD entry and stratified by DSD model type and
109 medication dispensing duration. DSD models, which bore multiple names in the SmartCare database,
110 were grouped into categories as follows: 1) adherence groups (community adherence groups,
111 rural/urban adherence groups); 2) extended clinic hours (DSD models designed for clinic access
112 before/after hours or weekends, including scholar models); 3) fast-track (procedures to accelerate
113 dispensing at clinics); 4) home ART delivery; 5) multi-month dispensing (MMD); and 6) community
114 pick-up point (central dispensing units, community retail pharmacies, community ART distribution
115 points, health posts, mobile ART distribution models) (Table 1).

116

117 **Table 1. Differentiated service delivery (DSD) models for HIV treatment in use in Zambia during**
118 **the study period**

Category	Model(s) in category	Description
Adherence groups	Community adherence groups	Patient groups, consisting of ± 6 members, meeting at an agreed time every 1-3 months. The groups are managed by the patients themselves, and usually meet outside of the health facility. Members collect ART at clinical appointments for other members in a rotating fashion (7).
	Rural and urban adherence groups/clubs	Patient groups, consisting of 20-30 members, meeting at an agreed time every 2-3 months. Groups are often facilitated by the same health care worker or facility-based volunteer, also providing pre-packaged ART (7).
Extended clinic hours	Before/after-hours models, weekend models, scholar models	These models allow patients to have a clinical visit and collect their ART outside the conventional operation times at the facility (early mornings, evenings and over weekends). These are beneficial to patients with competing priorities (e.g. school or employment).
Fast-track	Fast-track	A model that typically involves a separate, shorter queue to dispense ART to stable patients, allowing for a quick patient visit when a clinical visit is not required (20)
Home ART delivery	Home ART delivery	Trained community health workers (CHWs) linked to facilities conduct home visits to deliver ART, conduct health screening, monitor adherence, and refer patients as required (7).
Multi-month dispensing	Multi-month dispensing	Facility-based model in which the primary goal is to dispense medications for more than one month (usually 6 months). Dispensing is typically done during a clinical facility-based visit.
Community pick-up point	Central dispensing units	A centralized model for ART distribution, where medication is packed at a centrally located hub and distributed to patients at multiple approved pick-up points. Clinic visits occur every 6 months at the health facility (11).
	Community ART distribution points,	ART refills are provided to patients outside of health facilities, e.g. schools, churches, community centres, community retail pharmacies and health posts (11).

Category	Model(s) in category	Description
	community retail pharmacies, health posts	
	Mobile ART distribution models	A clinical outreach team linked to a facility does 3-monthly clinical assessments at community distribution points. This model is usually used for hard-to-reach areas (11).

119

120 *Statistical analysis*

121

122 We described the demographics of our study population using basic descriptive statistics. We
123 compared risk of loss to follow-up among early enrollers to LTFU among established enrollers.
124 Wilson’s score interval is used to calculate 95% confidence intervals around proportions. We used a
125 log-binomial regression to calculate risk ratios for loss to follow-up, adjusting for age, sex, urban/rural
126 status and where applicable, DSD model type and dispensing duration.

127

128 *Ethics*

129

130 This study protocol was approved by ERES Converge IRB (Zambia), protocol number 2019-Sep-030,
131 the Human Research Ethics Committee (Medical) of the University of Witwatersrand, protocol number
132 M190453, and the Boston University IRB, protocol number H-38823.

133

134 **Results**

135

136 *Model enrollment*

137

138 Of the 88,556 adults reported in SmartCare to have been enrolled in DSD models during the study
139 period who were on first line ART and had no known viral failure, 89% (n=78,699) had been on ART
140 for 12 months or more at the time of DSD model entry, 8% (n=6,714) had been on ART for 6-12 months
141 at DSD entry, and 4% (n=3,143) had been on ART for <6 months at DSD entry (Table 2). More patients
142 who enrolled in DSD models after <6 months (43%, n=1,333) or 6-12 months (38%, n=2,549) on ART
143 were under 35 years of age than those enrolled after >12 months (19%, n=15,567). There were no
144 other important differences by group (Appendix Figure S1).

145

146 Most patients in the cohort were enrolled in the multi-month dispensing (49%, n=43,257) or fast-track
147 (38%, n=34,071) models, with small proportions in the other models: 7% (n=5,989) in community pick-
148 up points, 5% (n=4,185) in adherence groups, 1% (n=519) in extended clinic hour models, and 1%
149 (n=535) in home ART delivery models (Table 2). Established enrollers were more likely to participate
150 in the fast track model, while early enrollers were more likely be offered multi-month dispensing.

151

152 **Table 2. Demographics of patients enrolled in differentiated service delivery models**

Characteristic		Total (N=88,556)	≥12 months (N=78,699)	6-12 months (N=6,714)	<6 months (N=3,143)
Sex	Female	64% (56,863)	65% (50,830)	61% (4,082)	62% (1,951)
	Male	36% (31,693)	35% (27,869)	39% (2,632)	38% (1,192)
Age group (years)	15-24	4% (3,601)	3% (2,695)	9% (572)	11% (334)
	25-34	18% (15,848)	16% (12,872)	29% (1,977)	32% (999)
	35-49	52% (45,642)	52% (41,254)	46% (3,056)	42% (1,332)
	50+	26% (23,465)	28% (21,878)	17% (1,109)	15% (478)
Urban/rural	Rural	22% (19,496)	21% (16,862)	26% (1,747)	28% (887)
	Urban	78% (69,058)	79% (61,835)	74% (4,967)	72% (2,256)
	Adherence groups	5% (4,185)	5% (3,974)	2% (147)	2% (64)

Characteristic		Total (N=88,556)	≥12 months (N=78,699)	6-12 months (N=6,714)	<6 months (N=3,143)
Differentiated service delivery model	Extended clinic hours	1% (519)	1% (417)	1% (58)	1% (44)
	Fast-track	38% (34,071)	41% (31,895)	23% (1,576)	19% (600)
	Home ART delivery	1% (535)	1% (396)	1% (70)	2% (69)
	Multi-month dispensing	49% (43,257)	47% (36,800)	66% (4,442)	64% (2,015)
	Community pick-up point	7% (5,989)	7% (5,217)	6% (421)	11% (351)
Outcome at 12 months after DSD entry	Died	<1% (207)	<1% (181)	<1% (11)	<1% (15)
	Lost to follow-up	7% (5,965)	7% (5,375)	6% (402)	6% (188)
	Retained in care	93% (82,384)	93% (73,143)	94% (6,301)	94% (2,940)

153

154 *Outcomes*

155

156 Patients who were newly initiated onto ART at DSD entry had a slightly lower rate of loss to follow-up
157 (<6 months on ART: 6.0% [95% confidence interval (CI) 5.4%-6.6%]; and 6-12 months on ART: 6.0%
158 [5.2%-6.9%]) than did those who were on ART >12 months at DSD entry (6.8% [6.7%-7.0%]) (Table 3).
159

160

161 Early enrollers experienced similar or lower loss to follow-up rates than established enrollers across
162 nearly all models of care (Table 3). The exception was fast-track: patients on ART for <6 months
163 enrolled in fast-track had a higher rate of loss to follow-up than those on ART >12 months (8.0%;
164 [6.1%-10.4%] vs. 5.0% [4.8%-5.2%], respectively). Across all groups, longer dispensing periods were
165 associated with lower rates of loss to follow-up, ranging between 5.0%-6.0% (4-6 month), 6.0%-8.0%
166 (3 months) and 12.0%-16.0% (<2 months) (Table 3).

167

167 **Table 3. Proportion of patients lost to follow-up within 12 months after enrollment into a**

168 **differentiated service delivery (DSD) model, by time on ART at DSD entry (95% confidence interval**
169 **in round brackets, sample numbers in square brackets)**

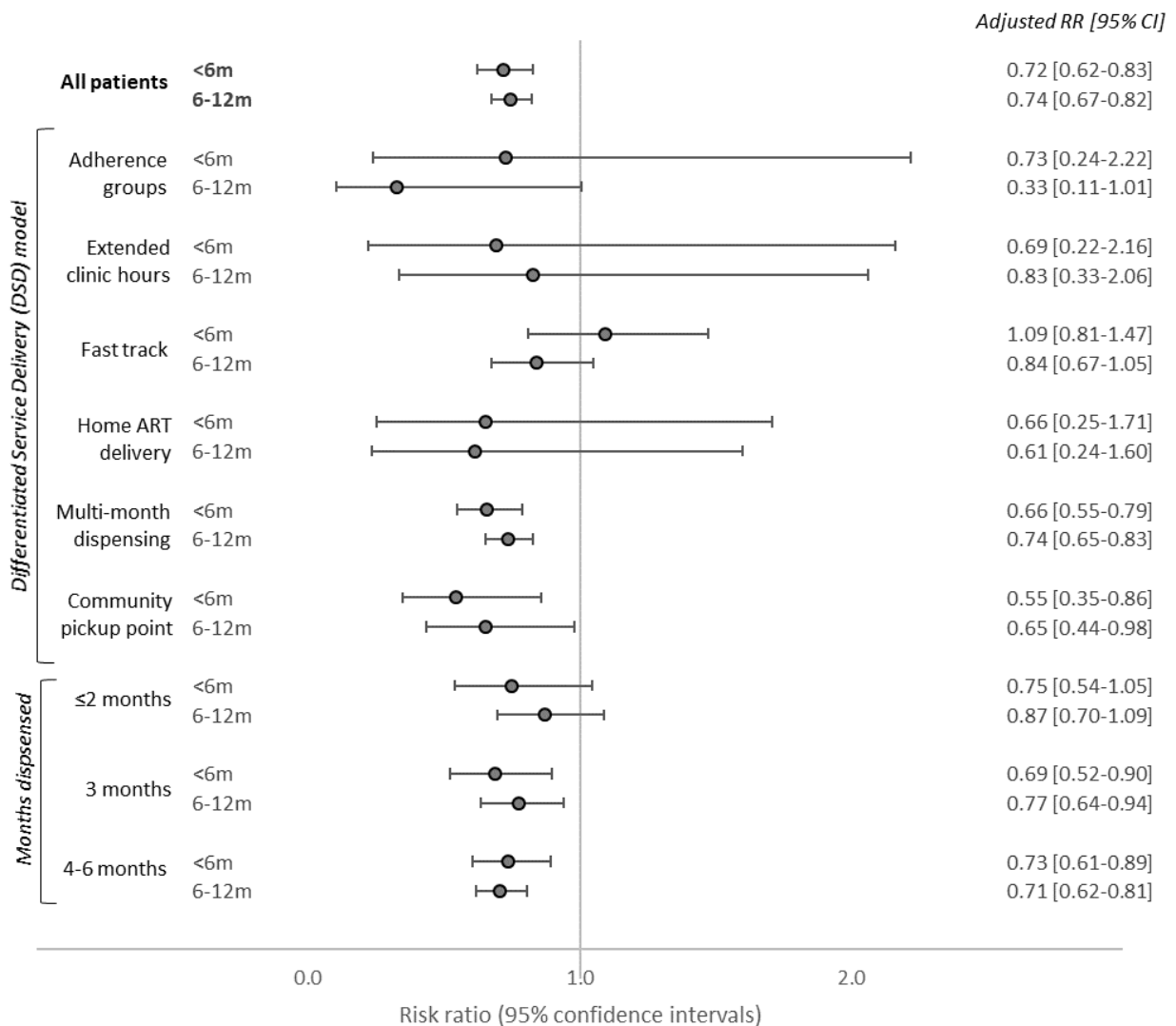
	>12 months on ART	6-12 months on ART	<6 months on ART
Overall	6.8% (6.7%-7.0%) [5,375/78,699]	6.0% (5.4%-6.6%) [402/6,714]	6.0% (5.2%-6.9%) [188/3,143]
By DSD model			
Adherence groups	6.0% (5.3%-6.8%) [238/3,974]	2.0% (0.7%-5.8%) [3/147]	5.0% (1.8%-13.3%) [3/64]
Extended clinic hours	8.6% (6.3%-11.7%) [36/417]	8.6% (3.7%-18.6%) [5/58]	6.8% (2.3%-18.2%) [3/44]
Fast-track	5.0% (4.8%-5.2%) [1,595/31,895]	5.0% (4.0%-6.2%) [79/1,576]	8.0% (6.1%-10.4%) [48/600]
Home ART delivery	9.3% (6.8%-12.6%) [37/396]	7.1% (3.1%-15.6%) [5/70]	7.2% (3.1%-15.8%) [5/69]
Multi-month dispensing	8.0% (7.7%-8.3%) [2,944/36,800]	6.0% (5.3%-6.7%) [267/4,442]	6.0% (5.0%-7.1%) [121/2,015]
Community pick-up point	8.0% (7.3%-8.8%) [417/5,217]	6.0% (4.1%-8.7%) [25/421]	5.0% (3.2%-7.8%) [18/351]
By months ART dispensed			
<2 months	16.0% (14.9%-17.2%) [610/3,812]	14.0% (11.4%-17.1%) [78/556]	12.0% (8.7%-16.4%) [33/273]
3 months	8.0% (7.5%-8.5%) [949/11,863]	7.0% (5.8%-8.4%) [110/1,566]	6.0% (4.6%-7.7%) [54/904]
4-6 months	6.0% (5.8%-6.2%) [3,781/63,018]	5.0% (4.4%-5.7%) [230/4,592]	5.0% (4.1%-6.1%) [98/1,966]

170

171 In the adjusted analysis, early enrollers in all DSD model types and dispensing durations, except for
172 fast-track, were 26-28% less likely to be lost to follow-up than established enrollers (adjusted risk ratio
173 (aRR) 0.72 [0.63-0.82] for <6 months on ART and 0.74 [0.67-0.82] for 6-12 months on ART) (Figure 1).

174 Fast-track patients with <6 months of ART at DSD entry had slightly higher adjusted risk of loss to
 175 follow-up than did established patients (aRR 1.09 [0.81-1.47]) (Figure 1). We also conducted an age-
 176 stratified analysis (Appendix Figure S2) and a sub-analysis restricted to facilities with a higher
 177 proportion of DSD patients enrolled with <6 months ART (Appendix Figure S3). The age-stratified
 178 analysis had similar results as the main analysis, with those in each age group enrolled into DSD after
 179 being newly initiated on ART being less likely to be lost to follow-up than those on ART >12 months at
 180 DSD enrolment in the same age group. The effect appears less pronounced in older age groups,
 181 however (Appendix Figure S2). The sub-analysis found that in facilities where a larger proportion of all
 182 DSD patients enrolled in DSD models early, with <12 months on ART, the early enrollers still performed
 183 better with respect to loss to follow-up than did established enrollers (Appendix Figure S3).
 184

185 **Figure 1. Relative risk of loss to follow-up within 12 months of DSD enrollment for patients who**
 186 **enrolled into DSD models after <6 and 6-12 months of ART** (reference group: patients on ART for >12
 187 months at DSD entry; analysis adjusted for age, sex, urban/rural status and number of months dispensed (for
 188 DSD stratified analysis) and DSD model (for months dispensed stratified analysis))



189
 190
 191
 192
 193

194 Discussion

195

196 Throughout sub-Saharan Africa, DSD model eligibility criteria require that patients be on ART for a
197 minimum of 6 months (and in some countries a minimum of 12 months) prior to DSD model
198 enrollment. We present novel data from Zambia highlighting good outcomes for newly initiated ART
199 patients (those with less than 6 or less than 12 months' ART experience) in DSD models.

200

201 Our data begin to fill in a gap in the evidence base on DSD models. Because few if any countries permit
202 DSD model enrollment for new initiators, little evidence on their experience in DSD models has been
203 available until now. To date, most reports on DSD outcomes have been limited to people who have
204 spent a significant amount of time on ART prior to DSD model enrollment. In the previously mentioned
205 INTERVAL trial, for example, participants had been on ART for a median of roughly 5 years at DSD
206 model entry, while patients in a trial of multi-month dispensing in adherence clubs in South Africa had
207 a median duration on ART of 7.3 years at baseline (21).

208

209 While ART patients in Zambia have historically dropped out of treatment at high rates in the first few
210 months after ART initiation (3), in our DSD patient population this was less likely to be the case. Our
211 results justify the recent revision of WHO guidelines reducing the definition of "established" to include
212 at least 6 months on ART, rather than at least 12 months (14). These findings should provide
213 reassurance and evidence to countries that have expanded eligibility as they scale up DSD models
214 (22,23), particularly as a result of the COVID-19 pandemic, that earlier referral to DSD is possible
215 without compromising patient care. Even if many (or most) of the patients in our "early enrollment"
216 sample were selected deliberately because they were considered at low loss to follow-up risk, our
217 results also demonstrate that early eligibility for DSD models should be considered for at least some
218 patients before they reach 6 months on ART.

219

220 Loss to follow up during the 12-month observation period (12 months after DSD model entry) for all
221 three groups of patients (<6 months, 6-12 months, and >12 months) averaged 5-8% for all six
222 categories of DSD models studied. We did not observe any programmatically important differences by
223 model or ART experience prior to model enrollment. Where a programmatically important difference
224 did arise, in contrast, was in dispensing intervals. Regardless of how long a patient had been on ART
225 at DSD model enrollment, patients who received ≤ 2 months of medications at a time were
226 substantially more likely to be lost to follow up by the end of the 12-month period than patients who
227 received either 3 months or 4-6 months of medications. This likely reflects providers' assessments of
228 patients' ability to remain on treatment. Those regarded as being at higher risk of attrition are asked
229 to come to the clinic for medication refills more often, so that they can be monitored and supported
230 more closely. Ironically, difficulty in accessing the clinic may be the very reason that some patients are
231 at high risk of attrition. For these patients, insisting on shorter refill durations may simply exacerbate
232 whatever challenges they face.

233

234 There were several limitations to our analysis. First, as noted above, we assume that patients with < 6
235 months on ART in our sample were not offered DSD model enrollment at random. If providers made
236 accurate guesses about individual patients' risks of attrition, patients in our "early enrollment" cohorts
237 could over-represent patients thought to have low attrition risk. To achieve the results we found,
238 providers would have had to make these accurate guesses correctly at multiple sites across the entire
239 country. If this is the case, our data suggest that the healthcare workers responsible for enrolling
240 patients into DSD models can successfully identify those who will do well with early enrollment. At the
241 same time, if the early enrollers in our data set do comprise patients at lower risk of LTFU, then our

242 results likely underestimate the true rate of LTFU that would occur if early DSD enrollment were to be
243 broadly available, without the benefit of provider selection. Potentially offsetting this effect, however,
244 is the survivor bias reflected in our cohort of patients who enrolled in DSD models ≥ 12 months after
245 ART initiation. Since we found that those enrolled ≥ 12 months' post ART initiation had a substantially
246 *higher* rate of LTFU than those enrolled < 12 months, we believe that the protective effect of early DSD
247 enrollment is likely to be a true effect and probably not fully offset by the potential provider selection
248 bias discussed above.

249
250 A second limitation is that our data set included only patients reported in the electronic medical record
251 system to have enrolled in a DSD model. It is possible that some patients not in DSD models may be
252 recorded as enrolled, and some who were enrolled may have been missed. Third, we could not
253 compare outcomes for newly initiated ART patients in conventional, facility-based care to those on
254 DSD models within the same facilities. A potential concern of bias would be that if facilities with better-
255 than-average retention in care were also more likely to allow early DSD model enrollment, our results
256 may reflect differences in facility quality, as well as enrollment timing. An analysis restricted to
257 facilities with $> 10\%$ early DSD enrolment showed an even lower risk of loss to follow-up within patients
258 enrolled early into DSD models, however, compared to patients with > 12 months of ART at DSD entry.

259
260 Despite these limitations, our analysis demonstrates that patients on ART for less than 6 months who
261 are enrolled in existing DSD models can be successfully retained in care and may even fare better than
262 those left in conventional care. It is likely that not all patients are ready for less intensive DSD models
263 in their first half-year or year on treatment, but some clearly are. Since DSD models have been shown
264 to be beneficial to patients and in some cases to providers, offering enrollment to newly-initiating ART
265 patients may improve ART programs in general. Future research should look more closely at which
266 patients can be enrolled early and which models of care serve these patients best.

267

268 **References**

- 269
- 270 1. UNAIDS AIDSinfo: People living with HIV receiving ART [Internet]. 2020 [cited 2021 Jun 15].
271 Available from: <https://aidsinfo.unaids.org/>
- 272 2. Haas AD, Zaniewski E, Anderegg N, Ford N, Fox MP, Vinikoor M, et al. Retention and mortality on
273 antiretroviral therapy in sub-Saharan Africa: collaborative analyses of HIV treatment
274 programmes. *J Intern AIDS Soc*. 2018 Feb;21(2):e25084.
- 275 3. Schöni-Affolter F, Keiser O, Mwango A, Stringer J, Ledergerber B, Mulenga L, et al. Estimating
276 Loss to Follow-Up in HIV-Infected Patients on Antiretroviral Therapy: The Effect of the
277 Competing Risk of Death in Zambia and Switzerland. Myer L, editor. *PLoS ONE*. 2011 Dec
278 19;6(12):e27919.
- 279 4. World Health Organization. Guidelines on HIV self-testing and partner notification, supplement
280 to consolidated guidelines on HIV testing services [Internet]. 2016 [cited 2020 Nov 18]. Available
281 from: <https://www.who.int/hiv/pub/vct/hiv-self-testing-guidelines/en/>
- 282 5. Duncombe C, Rosenblum S, Hellmann N, Holmes C, Wilkinson L, Biot M, et al. Reframing HIV
283 care: putting people at the centre of antiretroviral delivery. *Trop Med Int Health*. 2015
284 Apr;20(4):430–47.
- 285 6. Long L, Kuchukhidze S, Pascoe S, Nichols BE, Fox MP, Cele R, et al. Retention in care and viral
286 suppression in differentiated service delivery models for HIV treatment delivery in sub-Saharan
287 Africa: a rapid systematic review. *J Intern AIDS Soc* [Internet]. 2020 Nov [cited 2021 May
288 14];23(11). Available from: <https://onlinelibrary.wiley.com/doi/10.1002/jia2.25640>
- 289 7. Nichols BE, Cele R, Jamieson L, Long LC, Siwale Z, Banda P, et al. Community-based delivery of
290 HIV treatment in Zambia: costs and outcomes. *AIDS*. 2021 Feb 2;35(2):299–306.
- 291 8. Hoffman RM, Moyo C, Balakasi KT, Siwale Z, Hubbard J, Bardon A, et al. Multimonth dispensing
292 of up to 6 months of antiretroviral therapy in Malawi and Zambia (INTERVAL): a cluster-
293 randomised, non-blinded, non-inferiority trial. *The Lancet Global Health*. 2021 May;9(5):e628–
294 38.
- 295 9. Nichols BE, Cele R, Lekodeba N, Tukei B, Ngorima-Mabhena N, Tiam A, et al. Economic
296 evaluation of differentiated service delivery models for HIV treatment in Lesotho: costs to
297 providers and patients. *J Intern AIDS Soc* [Internet]. 2021 Apr [cited 2021 Jun 1];24(4). Available
298 from: <https://onlinelibrary.wiley.com/doi/10.1002/jia2.25692>
- 299 10. Guthrie T, Muheki C, Greener R, Kanoowe S, Lagony S, Miot J, et al. Costs and outcomes of
300 differentiated ART service delivery in Uganda: summary of findings. [Internet]. 2020. Available
301 from: [https://sites.bu.edu/ambit/files/2021/02/Uganda-EQUIP-Brief-ART-DSDM-cost-outcomes-](https://sites.bu.edu/ambit/files/2021/02/Uganda-EQUIP-Brief-ART-DSDM-cost-outcomes-FINAL-2020.08.24.pdf)
302 [FINAL-2020.08.24.pdf](https://sites.bu.edu/ambit/files/2021/02/Uganda-EQUIP-Brief-ART-DSDM-cost-outcomes-FINAL-2020.08.24.pdf)
- 303 11. Ministry of Health. Zambia Differentiated Service Delivery Framework. 2018.
- 304 12. Republic of Zambia. Ministry of Health. Zambia Consolidated Guidelines for Treatment and
305 Prevention of HIV Infection. 2018.
- 306 13. Republic of Zambia. Ministry of Health. Zambia Consolidated Guidelines for Treatment and
307 Prevention of HIV Infection. 2020.

- 308 14. World Health Organization. Updated recommendations on service delivery for the treatment
309 and care of people living with HIV. [Internet]. 2021 Apr. Available from:
310 <https://apps.who.int/iris/rest/bitstreams/1344311/retrieve>
- 311 15. Hoffman RM, Balakasi K, Bardon AR, Siwale Z, Hubbard J, Kakwesa G, et al. Eligibility for
312 differentiated models of HIV treatment service delivery: an estimate from Malawi and Zambia.
313 AIDS. 2020 Mar 1;34(3):475–9.
- 314 16. Rosen S, Grimsrud A, Ehrenkranz P, Katz I. Models of service delivery for optimizing a patient’s
315 first six months on antiretroviral therapy for HIV: an applied research agenda. Gates Open Res.
316 2020;4:116.
- 317 17. Gumede-Moyo S, Todd J, Bond V, Mee P, Filteau S. A qualitative inquiry into implementing an
318 electronic health record system (SmartCare) for prevention of mother-to-child transmission data
319 in Zambia: a retrospective study. BMJ Open. 2019 Sep;9(9):e030428.
- 320 18. Wandeler G, Keiser O, Mulenga L, Hoffmann CJ, Wood R, Chaweza T, et al. Tenofovir in Second-
321 Line ART in Zambia and South Africa: Collaborative Analysis of Cohort Studies. JAIDS Journal of
322 Acquired Immune Deficiency Syndromes. 2012 Sep 1;61(1):41–8.
- 323 19. Kebede HK, Mwanri L, Ward P, Gesesew HA. Predictors of lost to follow up from antiretroviral
324 therapy among adults in sub-Saharan Africa: a systematic review and meta-analysis. Infect Dis
325 Poverty. 2021 Dec;10(1):33.
- 326 20. Huber A, Pascoe S, Nichols B, Long L, Kuchukhidze S, Phiri B, et al. Differentiated Service Delivery
327 Models for HIV Treatment in Malawi, South Africa, and Zambia: A Landscape Analysis. Glob
328 Health Sci Pract. 2021 May 10;ghsp;GHSP-D-20-00532v1.
- 329 21. Cassidy T, Grimsrud A, Keene C, Lebelo K, Hayes H, Orrell C, et al. Twenty-four-month outcomes
330 from a cluster-randomized controlled trial of extending antiretroviral therapy refills in ART
331 adherence clubs. J Int AIDS Soc. 2020 Dec;23(12):e25649.
- 332 22. Grimsrud A, Wilkinson L. Acceleration of differentiated service delivery for HIV treatment in sub-
333 Saharan Africa during COVID-19. J Int AIDS Soc [Internet]. 2021 Jun [cited 2021 Jul 12];24(6).
334 Available from: <https://onlinelibrary.wiley.com/doi/10.1002/jia2.25704>
- 335 23. Time on ART before eligibility for DSD for HIV treatment. Differentiated Service Delivery.
336 [Internet]. 2020. Available from:
337 [https://differentiatedservicedelivery.org/Portals/0/adam/Content/jcdklt8RzEqirRdlckAjbQ/File/
338 1-Time%20to%20DSD%20Eligibility%20D5.pdf](https://differentiatedservicedelivery.org/Portals/0/adam/Content/jcdklt8RzEqirRdlckAjbQ/File/1-Time%20to%20DSD%20Eligibility%20D5.pdf)

339
340