

Community-Based Accompaniment for Adolescents Transitioning to Adult HIV Care in Urban Peru: a Pilot Study

Valentina Vargas,^{1*} Milagros Wong,^{2*} Carly A. Rodriguez,³ Hugo Sanchez,⁴ Jerome Galea,^{3,5,6} Alicia Ramos,² Liz Senador,² Lenka Kolevic,^{7,8} Eduardo Matos,^{8,9} Eduardo Sanchez,^{8,10} Renato A. Errea,^{2,3} Karen Ramos,² Catherine Beckhorn,² Andrew Lindeborg,³ Carlos Benites,⁸ Leonid Lecca,^{2,3} Sonya Shin,¹¹ Molly F. Franke^{3§}

¹Department of Global Health and Population, Harvard T.H. Chan School of Public Health, Boston, MA, USA

²Socios En Salud Sucursal Peru, Lima, Peru

³Department of Global Health and Social Medicine, Harvard Medical School, Boston, MA, USA

⁴Epicentro, Lima, Peru

⁵School of Social Work, University of South Florida, Florida, USA

⁶College of Public Health, University of South Florida, USA

⁷Servicio de Infectología, Instituto Nacional del Salud del Niño, Lima, Peru

⁸Programa de ITS, VIH/SIDA y hepatitis, Ministerio de Salud, Lima, Peru

⁹Servicio de Infectología, Hospital Nacional Arzobispo Loayza, Lima, Peru

¹⁰Servicio de Enfermedades Infecciosas y Tropicales, Hospital Nacional Hipólito Unanue, Lima, Peru

¹¹Division of Global Health Equity, Brigham and Women's Hospital, Boston, MA, USA

§ Corresponding author:

Molly F. Franke

641 Huntington Avenue

Boston, MA 02118, United States of America

+1 (617) 432-5224

molly_franke@hms.harvard.edu

*These authors have contributed equally to the work.

E-mail addresses of authors:

VV: vvargas@hsph.harvard.edu

MW: mwong_ses@pih.org

CR: carly_rodriguez@hms.harvard.edu

HS: hsanchez@epicentro.org.pe

JG: jeromegalea@usf.edu

AR: aramos_ses@pih.org

LA: lsenador_ses@pih.org

LK: lkolevic@insn.gob.pe

EM: ematos88@hotmail.com

ES: esanchez2018@hotmail.com

RE: rerrea_ses@pih.org

CB: catherine.beckhorn@duke.edu

AL: andrew_lindeborg@hms.harvard.edu

CB: cbenites@minsa.gob.pe

LL: llecca_ses@pih.org

SS: sshin@bwh.harvard.edu

Keywords: adolescents, social support, adherence, differentiated care, HIV care continuum, key and vulnerable populations

Abstract: 345/350

Main text: 3580/3500

1 **Abstract**

2 Introduction: Adolescents living with HIV (ALWH) face an elevated risk of poor health outcomes when
3 transitioning into adult-oriented care; however, evidence-based interventions to support ALWH during this
4 high-risk period are lacking, especially in Latin America. We conducted a pilot study of a community-based
5 intervention designed to improve outcomes among ALWH transitioning to adult HIV care in Lima, Peru.

6
7 Methods: From October 2019 to January 2020, we enrolled adolescents transitioning to adult HIV care,
8 either due to a recent diagnosis or having aged out of their pediatric clinic. ALWH previously lost from
9 care during the transition process were also invited to participate. The nine-month intervention consisted of
10 (1) logistical, adherence and social support delivered by entry-level health workers who accompanied
11 adolescents during their transition to adult HIV care and (2) group sessions to improve health-related
12 knowledge, skills and social support. We assessed intervention feasibility and effectiveness in improving
13 medication adherence, psycho-social outcomes, and transition readiness after 6, 9, and 12 months.

14
15 Results: We enrolled 30 ALWH, ages 15-21 years; 11 were recently diagnosed and 19 had been living with
16 HIV since infancy or early childhood. Participants included ten men who have sex with men, four young
17 pregnant women and six adolescents who were previously lost during the transition to adult HIV care.
18 Intervention participation was high with 90% of ALWH attending at least one in-person social support
19 session and all attending at least one live online session. No ALWH withdrew from the intervention, study,
20 or antiretroviral therapy. In transition readiness, we observed within-person improvements related to
21 personal health (+1.9 points, $p<0.001$), healthcare usage (+2.4 points, $p<0.001$), knowledge (+3.3 points,
22 $p=0.001$), and behavior (+3 points, $p=0.003$) at the end of the intervention, relative to baseline. We also
23 observed strong evidence of improvements in medication adherence, social support, self-efficacy, and
24 perceived stress, which were generally sustained three months after intervention cessation.

25

26 Conclusion: We identified a community-based intervention that is feasible and potentially effective for
27 bridging the transition to adult HIV care among a diverse group of ALWH in Peru. A larger-scale
28 effectiveness evaluation, including biological endpoints, is warranted.

29

30 **Introduction**

31 Expanded access to antiretroviral therapy (ART) has led to major improvements in the survival of children
32 who acquire HIV early in life. This means that providers and programs are faced with the challenge of
33 caring for a group of patients living with HIV that is also dealing with the many developmental, emotional
34 and behavioral issues of adolescence. These include the desire for peer acceptance, vulnerability to mental
35 health and substance use disorders, and the potential consequences of early sexual debut (e.g., pregnancy,
36 HIV transmission, other sexually-transmitted infections) [1–6]. An increased risk of early life adversity
37 and trauma among adolescents living with HIV (ALWH) may make them especially susceptible to mental
38 health morbidity [7,8]. And, ALWH may lack the life skills, coping strategies and support needed to
39 effectively manage common HIV-related challenges, such as diagnosis disclosure, HIV-related stigma and
40 social isolation, neurocognitive delays, and navigating romantic relationships [1–3,8–11]. In spite of their
41 unique needs, ALWH have rarely been targeted for intervention studies to improve health outcomes [12–
42 14]. The absence of tailored interventions for adolescents may in part explain their disproportionately high
43 rates of attrition to care relative to other age groups [15].

44

45 The transition from pediatric to adult care is an exceptionally precarious time in adolescent HIV care,
46 marked by reduced clinic attendance, retention in care, HIV viral load suppression and CD4 cell counts
47 [16,17]. This transition, which often occurs in late adolescence, can be accompanied by logistical and
48 emotional challenges, as adolescents find themselves newly independent with different medical providers
49 in an unfamiliar and often less supportive environment [18,19]. Although several reviews suggest good
50 transition outcomes may be achieved with individualized transition plans that address the multifaceted
51 needs of adolescence [8,19–22], there are few rigorous studies testing promising interventions [23,24] and
52 a notable lack of evidence on which interventions might be most effective in supporting ALWH through
53 this period.

54

55 Alongside an urgent need to identify effective transition intervention models is a growing recognition of
56 the need for interventions that are tailored to local context and to specific subgroups. A recent review on
57 care transition studies for ALWH identified an absence of studies from Latin America and the Caribbean,
58 where the experiences of ALWH likely differ from those in high-income or high prevalence settings [24].
59 There is also a stark need for transition studies among adolescents with behaviorally-acquired HIV[8],
60 including young men who have sex with men (MSM) and transgender women (TGW), as their transition
61 experiences may differ from those of perinatally-infected adolescents [25]. As a first step toward addressing
62 these research gaps, we conducted a pilot study to examine whether an intervention for ALWH, rooted in
63 community-based support, could be a feasible approach for bridging the transition to adult HIV care among
64 a diverse group of adolescents in an urban Latin American setting.

65

66 **Methods**

67 **Study setting**

68 In Peru, there are an estimated 87,000 people living with HIV, with the highest concentration in the capital,
69 Lima [26,27]. While perinatal infection constitutes the majority of HIV infections in younger adolescents,
70 most new infections in Peru occur among MSM and TGW, reflecting Peru's concentrated epidemic [28].
71 Pregnancy during adolescence is common with 17% of 20- to 24-year-old women giving birth before age
72 18 [29]. ART is available free-of-charge and is largely centralized with most patients receiving treatment
73 through public sector hospitals.

74

75 For adolescents that acquired HIV in early childhood HIV, the transition from a pediatric to an adult HIV
76 clinic often occurs at age 18, though it may occur as young as 15 for adolescents transitioning within the
77 same health facility. Older, newly-diagnosed adolescents may transition directly into adult HIV care,
78 bypassing the pediatric clinic. If an adolescent in pediatric care becomes pregnant, she immediately
79 transitions to an adult HIV clinic, regardless of age. The existing standard of care for adolescents

80 transitioning to adult care includes a public health insurance referral and a series of consults with a nurse,
81 infectious disease specialist, psychologist, and social worker prior to transition. The patient is given a report
82 from each provider team, which the ALWH is responsible for bringing to their first adult clinic visit.

83

84 **Participants**

85 We enrolled ALWH aged 15 to 21 years who were on or eligible for ART, enrolled in HIV care at a
86 participating public sector clinic, and scheduled to transition to adult HIV care, either due to a recent HIV
87 diagnosis or because they had aged out of their pediatric clinic. ALWH who were lost from adult HIV care
88 at the time of transition but interested in re-engaging in treatment were also eligible to participate.
89 Adolescents were excluded if they lived outside of metropolitan Lima. Enrollment took place from October
90 2019 to January 2020 at three public sector hospitals (one pediatric facility, and two facilities with distinct
91 on-site pediatric and adult clinics). Ministry of Health (MoH) clinical collaborators consecutively referred
92 eligible participants to study staff. A Youth Advisory Board (YAB), comprising a diverse group of young
93 people living with HIV provided feedback on all aspects of the study. Adolescents who had previously
94 withdrawn from care were referred by their clinicians or YAB members and contacted by study staff.

95

96 **Study Intervention**

97 The intervention was nicknamed “PASEO” (meaning ‘crossing’ or ‘passage’ in Spanish) after its core
98 elements: peer engagement, accompaniment, support and education. In short, PASEO aimed to provide in-
99 person accompaniment to ALWH throughout the transition process through the provision of individualized
100 support, including adherence support, to address barriers to care and treatment (e.g., transport costs,
101 inaccessibility of services, lack of social support) by providing medical, material, and social support
102 delivered by compensated entry-level or lay health workers who liaise with formal health services (Figure
103 1).[30]



104

105 **Figure 1. Key components of the PASEO intervention**

106

107 PASEO also aimed to foster health-related skills, knowledge, and psychosocial well-being needed to thrive
108 in the adult clinic and more broadly. Intervention activities were delivered in two phases, an intensive phase
109 and a taper phase (Figure 2). The intensive phase began just prior to transition (defined as the last date of
110 care at the pediatric clinic or, for adolescents initiating treatment directly in an adult clinic, the ART
111 initiation date) and ended after six months. A three-month taper phase, during which the intensity of study
112 activities was reduced, followed the intensive phase. Below we describe each intervention component in
113 detail (Figure 1), as well as adaptations made to accommodate stay-at-home orders invoked on March 15,
114 2020, due to the SARS-CoV-2 pandemic. Participants had received between 1.4 and 5.3 months of in-
115 person intervention (median: 3.1 [IQR: 2.2, 4.2]) when in-person activities were suspended and were
116 provided phone credit to enable participation in virtual programming.

Intervention activities	Months										
	0	1	2	3	4	5	6	7	8	9	10-12
	Pre-transition	Post-transition									Follow-up
	Intensive Phase							Taper phase		No intervention	
Social worker assessment ^a	X										
Depression screening and referral ^a	X										
Health insurance navigation, clinic accompaniment ^{a,b}	X	X									
In-person check-in with health promoter, once monthly ^a → <i>virtual, weekly</i> ^c	X	X	X	X	X	X	X	X		X	
Clinic transportation stipend, as needed		X	X	X	X	X	X	X			
Establish plan for taper phase						X	X				
Social support groups, twice monthly → <i>replaced with virtual social activities</i>		X	X	X	X	X	X	X	X	X	
Health education and skill-building sessions, monthly → <i>virtual, 1-3 times weekly</i>		X	X	X	X	X	X	X	X	X	
DOT, if indicated											
DOT daily → <i>virtual</i>		X	X	X	X	X	X				
DOT twice weekly → <i>virtual</i>								X	X		
DOT weekly → <i>virtual</i>										X	

Figure 2. Overview of PASEO intervention implementation. DOT, Directly Observed Treatment

- Occurred more frequently, as needed
- Accompaniment to clinic visits typically occurred through months two or three, with longer durations for those previously lost from care, experienced adverse reactions or side effects of treatment, or had concomitant health issues. Clinic visit accompaniment occurred for shorter durations if the adolescent received this support from a caregiver or family member.
- Italicized text represents modifications made in response to the SARS-CoV-2 pandemic

119 *Health system navigation and clinic accompaniment.* To facilitate the transition to care in the adult clinic,
120 trained health promoters (entry-level health workers with a technical degree) employed by the
121 nongovernmental organization Socios En Salud (SES) accompanied adolescents to their first appointments;
122 facilitated enrollment in public health insurance and completion of other administrative requisites (e.g.,
123 obtaining a foreign identification card for migrants; transferring to a different health facility); helped
124 troubleshoot new logistical and/or social challenges (e.g., housing instability); and served as a liaison
125 between the patient and pediatric and adult clinical providers. Clinic visit transportation was provided based
126 on economic need, as determined by the study social worker. All but one participant had attended at least
127 one accompanied in-person clinic visit at the time SARS-CoV-2 stay-at-home orders were invoked. The
128 exception was an individual who was scheduled to re-initiate care in mid-March 2020. While hospital
129 guidelines precluded in-person accompaniment for this participant, intervention staff coordinated with HIV
130 program staff to ensure that adolescent would be seen in the clinic. Study staff coordinated private telehealth
131 appointments for adolescents requiring clinical consultation during stay-at-home orders.

132
133 *Routine check-in visits.* Health promoters visited the participant's home or another mutually-agreed upon
134 location at least monthly, to review ART adherence, identify barriers to care and adherence, remind patients
135 of upcoming medical encounters, screen and follow-up for clinical and social problems and offer social
136 support. The frequency of check-ins was individualized and commensurate with the level of support needed.
137 Visits tended to occur more frequently for participants lacking family support, re-initiating ART or with a
138 history of unstable adherence.

139
140 *Directly Observed Treatment (DOT).* Home-based DOT was offered to adolescents with early childhood
141 infection identified as at risk of non-adherence (based on pediatric health provider assessment or a
142 detectable viral load at one of two previous measurements). ALWH newly initiating ART chose whether
143 they wished to receive DOT. Eligible ALWH who opted into DOT were assigned to a MoH community
144 health worker (CHW) from the same neighborhood to observe ART ingestion daily, ensure treatment was

145 taken as prescribed and offer social support. Following invocation of stay-at-home orders, DOT was
146 conducted virtually by SES health promoters via telephone, video or SMS, depending on participant
147 preference. Some participants elected to participate in group video DOT, creating an additional opportunity
148 to build social support.

149
150 *Social support groups, health education sessions and skill-building workshops.* Social support groups took
151 place twice monthly (10 adolescents per group). The two-hour sessions were facilitated by a Peruvian study
152 psychologist and one peer youth living with HIV. Based on timing of enrollment, between two and five in-
153 person sessions were offered to each adolescent prior to stay-at-home orders. Conducting these sessions
154 online was largely unsuccessful: many adolescents felt they lacked privacy at home to discuss personal
155 topics [31], and others could not use video due to unstable internet. To build and sustain social
156 connectedness, staff implemented online social activities including an HIV-related meme competition, a
157 TikTok video competition, and a virtual talent show.

158
159 Health education sessions and skill-building workshops were conducted on topics such as HIV, substance
160 use, sexual health, self-esteem, nutrition, and gender and sexual identity. In-person sessions took place at
161 least once monthly (coinciding with social support group sessions), while virtual sessions took place one to
162 three times weekly (total of 41). For virtual sessions, participants could join live, allowing interaction with
163 the speaker and other participants via chat, or view a recording.

164
165 *Mental health screening, referral and support.* Participants were evaluated for depressive symptoms using
166 the Patient Health Questionnaire-9 (PHQ-9), a tool previously validated in Spanish [32], and widely used
167 in Peru [33]. Adolescents screening positive for mild or greater depressive symptoms ($\text{PHQ-9} \geq 10$) or with
168 suicidal ideation were evaluated by a SES' mental health program and offered Psychological First Aid [34]
169 and referrals as needed. Participants with severe depressive symptoms ($\text{PHQ-9} \geq 20$) or suicidal ideation

170 were offered linkage to free, specialized mental health services provided by the Peruvian Ministry of Health
171 and delivered at nearby community mental health centers [35].

172

173 **Data Collection**

174 Data collection took place from October 2019 to January 2021 and included indicators of intervention
175 feasibility and effectiveness, and social, clinical, and demographic factors that could challenge transition.

176

177 Feasibility indicators aligned with selected dimensions of acceptability and demand [36]. Acceptability
178 focuses on the extent to which a program is judged as suitable or attractive. We assessed acceptability
179 through study refusal rates (i.e., the proportion of potentially eligible individuals for the study who chose
180 not to participate) and intervention retention rates (i.e., the proportion of individuals who were retained in
181 the study). The demand domain describes the extent to which a new intervention is likely to be used. We
182 assessed demand through intervention retention rates and group attendance for study activities. Group
183 attendance was assessed by the proportion of individuals who attended activities, the number who attended
184 at least one session, the median number of groups attended by participants who attended at least one session,
185 median number of participants per session, and the number of engagements (i.e., typed comments) during
186 virtual sessions.

187

188 Preliminary evidence of effectiveness is an impact indicator examining whether a new intervention shows
189 promise of success with the intended population. We generated preliminary evidence of effectiveness by
190 calculating within-person changes in self-reported adherence, perceived social and instrumental support,
191 self-efficacy and stress, and transition readiness at 6, 9, and 12-months, relative to baseline. Follow-up
192 measurements corresponded to the end of the intensive phase, the end of the taper phase, and three months
193 after intervention, respectively.

194

195 *Baseline clinical data*, including CD4 cell count and viral load, were recorded from clinical charts. Follow-
196 up measurements were rarely available due to testing disruptions resulting from the SARS-CoV-2
197 pandemic.

198
199 *Instruments.* Participants self-administered surveys in Spanish on a tablet device. We assessed self-reported
200 adherence during the prior 30-day period with three questions: “How many days did you miss at least one
201 dose of any of your ART medications?”; “How often did you take your ART medications correctly?” (5-
202 point scale with 5 representing “always” and 1 representing “never”); “How well would you say you took
203 your HIV medications, as directed by your doctor?” (6-point scale with 6 representing “excellent” and 1
204 representing “very bad”). We assessed perceived instrumental support, emotional support, perceived stress,
205 and self-efficacy using the Spanish fixed-form version of the NIH Toolbox Emotion Battery (version 2.0)
206 for ages 18-85. All have a 5-point ordinal scale ranging from “never” to “always”, with higher scores
207 indicating higher levels [37,38]. We evaluated transition readiness with two scales. “Am I On TRAC?” [39]
208 consists of knowledge and behavior indices, which we adapted to the local context (see Appendix). The
209 knowledge scale assesses the respondent’s health condition and general medical self-care. The behavior
210 scale measures the frequency with which respondents engage in individual health-related behaviors related
211 to the developmental model of transition. We also used the Got Transition? checklist (version 2.0), which
212 assesses personal health knowledge and use of medical services [40]. The questionnaire has a 3-point scale
213 ranging from “not my responsibility” to “yes, I know this.” For both measures, we report the summed score
214 of responses for each subscale; higher scores indicate greater knowledge, engagement or use.

215

216 **Statistical Analysis**

217 Feasibility indicators were reported as descriptive statistics. To examine changes in outcomes during the
218 different phases of intervention implementation, we calculated within-person change from baseline to each
219 of the three follow-up points and tested whether this quantity differed from zero, using paired t-tests or
220 Wilcoxon signed rank tests, as appropriate. For the NIH toolbox measurements, we report raw scores

221 instead of the t-values validated in a U.S. population. To understand whether potential effectiveness differed
222 among subgroups, we stratified analyses by early childhood versus recent diagnosis and whether the
223 adolescent had been lost from care or had a history of chronic non-adherence. Data were analyzed using
224 SAS version 9.4 (Cary, NC).

225

226 **Compliance of Ethical Standards**

227 The authors declare no conflicts of interest. Ethical approval was granted in Peru by the Institutional
228 Research Ethics Committees of the Instituto Nacional de Salud del Niño, Hospital Nacional Arzobispo
229 Loayza, and Hospital Nacional Hipólito Unanue. In addition, ethical approval was granted by the
230 Institutional Review Board (IRB) of the Harvard Faculty of Medicine at Harvard Medical School in the
231 USA. Written informed consent was obtained from adolescents 18 years of age and over or from guardian(s)
232 of adolescents <18 years. Participants <18 years provided informed assent. Three adolescents <18 years
233 without a guardian provided assent and were granted a waiver of consent.

234

235 **Results**

236 We enrolled 30 ALWH (ten per hospital), with a median age of 19 years [interquartile range (IQR): 18-20].
237 The cohort included 19 (63%) ALWH who acquired HIV in early childhood, 13 (43%) ALWH who
238 identified as female (including one transgender women), 10 (33%) men who reported having sex with other
239 men, five (17%) Venezuelan nationals, and four young pregnant women (13%) (Table 1). Six (20%) had
240 been lost from care at the time of enrollment (Table 1).

241

242

243

244

245

246

247 **Table 1. Baseline characteristics of adolescent participants transitioning to adult HIV care, Lima,**
 248 **Peru (N=30)^a**

Characteristics	All participants N=30 (%) ^a	Early childhood infection N=19	Recent infection N=11
Age, in years, median [25 th , 75 th]	19 [18-20]	19 [18-20]	19 [18-20]
Female assigned at birth	12 (40)	11 (58)	1 (9)
Female gender identity	13 (43)	11 (58)	2 (18)
Identifies as MSM	10 (33)	1 (5)	9 (82)
Pregnant	4 (13)	3 (16)	1 (9)
CD4 count cells/mm ³ median [IQR]	544 [349-615]	553 [381-608]	535 [331-608]
Days from CD4 test to enrollment median [IQR]	130 [51-272]	235 [127-322]	55 [36-63]
Suppressed viral load	10 (33)	9 (47)	1 (9)
Days from viral load test to enrollment median [IQR]	71 [45-161]	144 [54-235]	55 [54-52]
Lost from care at the time of enrollment	6 (20)	6 (20)	0 (0)
Venezuelan nationality	5 (17)	1 (5)	4 (36)
At least one living parent	19 (63)	8 (42)	11 (100)
At least one traumatic life event ^b	21 (70)	11 (58)	10 (91)
Experienced sexual abuse (rape, attempted rape, or any type of forced or threatened sexual act) ^b	12 (40)	5 (26)	7 (64)
Urban hassles index median [IQR] (range 0-96) ^c	20 [13-27]	19 [11-27]	21 [17-27]
Unstable housing	4 (13)	4 (21)	0 (0)
Depression (mild to severe, N=28)	16 (57)	10 (56)	6 (60)

249 ^aUnless otherwise noted

250 ^bLifetime traumatic events were measured with the Life Events Checklist for DSM-5 (LEC-5) [41,42].

251 ^cWe assessed exposure to daily stressors using an adapted version of the 17-item Urban Hassles Index [42,43], a tool
 252 designed to measure stressors affecting adolescents living in urban environments.

253

254 *Feasibility indicators*

255 Of 36 adolescents referred for participation, six refused to participate (16.7%). Four were adolescents who
 256 had previously withdrawn from HIV care and did not wish to reengage. Two opted out because of
 257 scheduling conflicts with study activities. Once enrolled, no participant withdrew from the intervention,
 258 study, or ART. Of the 30 adolescents, all but three (90%) attended at least one in-person social support

259 session (median among those participating in ≥ 1 session=2 [IQR: 2, 3] sessions). The median number of
260 participants per in-person session was 7 [IQR: 6, 10]. There were 44 virtual sessions offered, and 28
261 adolescents (93%) participated in at least one of these sessions (median number of sessions attended by
262 those who participated=34.5, [IQR:16.5- 39.8]. The median number of participants per virtual session was
263 20 [IQR:18-21] and the median number of engagements during online sessions was 46 [IQR: 38, 59].

264

265 *Preliminary evidence of effectiveness*

266 Changes in adherence scores, psychosocial scale scores, and transition readiness are shown in Table 2,
267 Figure 3, Figure 4, Figure 5, and Appendices I-III. In transition readiness, we observed within-person
268 improvements related to personal health (+1.9 points, $p<0.001$), healthcare usage (+2.4 points, $p<0.001$),
269 knowledge (+3.3 points, $p=0.001$), and behavior (+3 points, $p=0.003$) at the end of the intervention, relative
270 to baseline (Table 2). Results for adherence psychosocial constructs followed a pattern of modest
271 improvements in each scale between baseline and six-months, which increased further by nine-months and
272 were generally sustained at twelve months (Table 2). Although sample sizes were small for subgroup
273 analyses, we observed evidence of improvements in transition readiness across all subgroups as well as
274 improvements in adherence among adolescents living with HIV since early childhood, improvements in
275 psychosocial indicators among adolescents with newly acquired HIV, and improvements in both metrics
276 among adolescents with a history of non-adherence (Appendices I-III).

277 **Table 2. Within-person changes in key outcomes among PASEO intervention participants (N=30)**

Outcome (range of possible values)	Score median [IQR] ^a				Within- person change from baseline median [IQR] ^a			P-value, within- person change ^a		
	Baseline	6 mos.	9 mos.	12 mos.	6 mos.	9 mos.	12 mos.	6 mos.	9 mos.	12 mos.
Self-reported adherence to ART										
Doses missed last 30 days, (0-30) ^{b,c}	2 [0, 13]	0.5 [0, 2]	1 [0, 3]	0.5 [0, 2]	0 [-11, 0]	-1 [-11, 0]	-1 [-12, 0]	0.03 ^d	0.03 ^d	0.01 ^d
How often did you take your ART medications correctly, last 30 days? (1-5) ^{c,e}	4 [2, 5]	5 [4, 5]	4 [4, 5]	5 [4, 5]	1 [0, 2]	0 [0, 2]	1 [0, 2]	0.01 ^d	0.01 ^d	0.02 ^f
How do you consider that you took your ART medications, as directed by your doctor, last 30 days? (1-6) ^{c,e}	4 [3, 4]	5 [4, 6]	4 [3, 5]	5 [4, 5]	1 [0, 2] ^c	0 [-1, 2.]	1 [0, 2]	0.001 ^d	0.09 ^f	0.02 ^f
Psychosocial outcomes										
Emotional support (7-33) ^e	20 [13, 29]	22 [17, 31]	24.8 [16, 31]	25.8 [18.7, 32.7]	1[-2, 5]	1 [-2, 5]	2 [-1, 10]	0.21 ^f	0.10 ^d	0.03 ^f
Instrumental support (8-40) ^e	24 [16, 31]	26 [19, 31]	30 [21, 36] ^g	27.5 [24, 34]	0 [-3, 4.3]	2.6 [-1, 6] ^g	2 [0, 8]	0.67 ^d	0.07 ^{d,g}	0.004 ^d
Self-efficacy (10-40) ^e	23 [19, 28]	25.5 [20, 30]	27 [21, 33] ^g	24.7 [21, 31]	1 [-4, 5]	3 [-2, 6] ^g	1.5 [-2, 8]	0.57 ^d	0.03 ^{f,g}	0.06 ^f
Perceived stress (10-40) ^b	19 [17, 23]	19.2 [18, 22]	18 [15, 20]	18 [17, 20]	-0.5 [-3, 3]	-1.5 [-4, 2]	-1 [-5, 2]	0.59 ^f	0.09 ^d	0.04 ^f
Transition readiness^h										
Got transition, my health (0-18) ^e	13.8 [12, 16]	--	16 [15, 18]	--	--	1.9 [0, 4]	--	--	<0.001 ^f	--
Got transition, health care usage (0-28) ^e	21 [18, 23.7]	--	24.1 [22, 27]	--	--	2.4 [1, 6]	--	--	<0.001 ^f	--
Am I ON TRAC, knowledge (12-60) ^e	48 [38.7, 52]	--	50.5 [47, 55]	--	--	3.3 [1, 8]	--	--	0.001 ^d	--
Am I ON TRAC, behavior (9-45) ^e	28 [24, 31]	--	32 [27, 35]	--	--	3 [0, 6]	--	--	0.003 ^f	--

278 ^a6, 9, and 12 months after enrollment correspond to the end of the intensive phase, the end of the taper phase, and three months after the intervention, respectively

279 ^bLower=favorable

280 ^cN=27 for baseline measurement and all within-person change comparisons. Three participants on ART for less than 7 days at the time of baseline data collection were excluded.

282 ^dWilcoxon signed rank

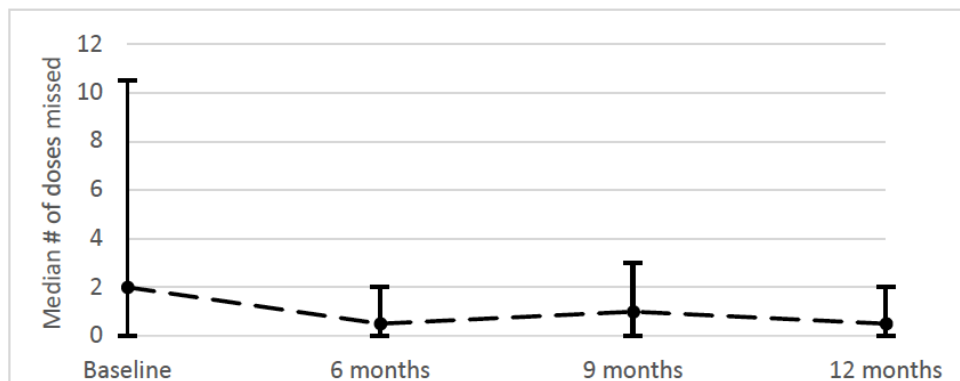
283 ^eHigher=favorable

284 ^f Paired T-test

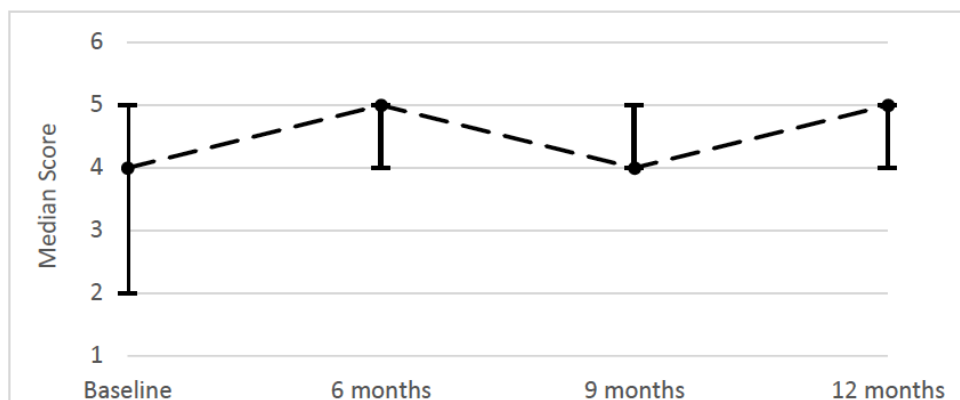
285 ^gN=29

286 ^hTransition readiness was assessed at baseline and 9 months

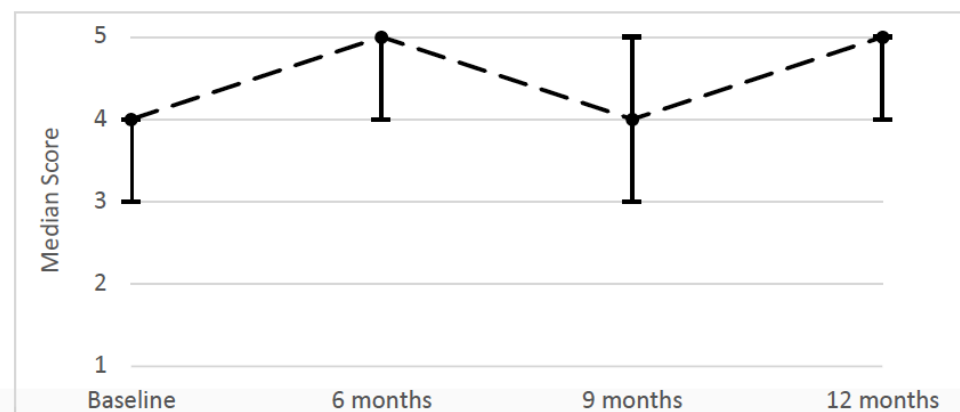
Self-reported doses missed



How well did you take your medications, as directed by your doctor?



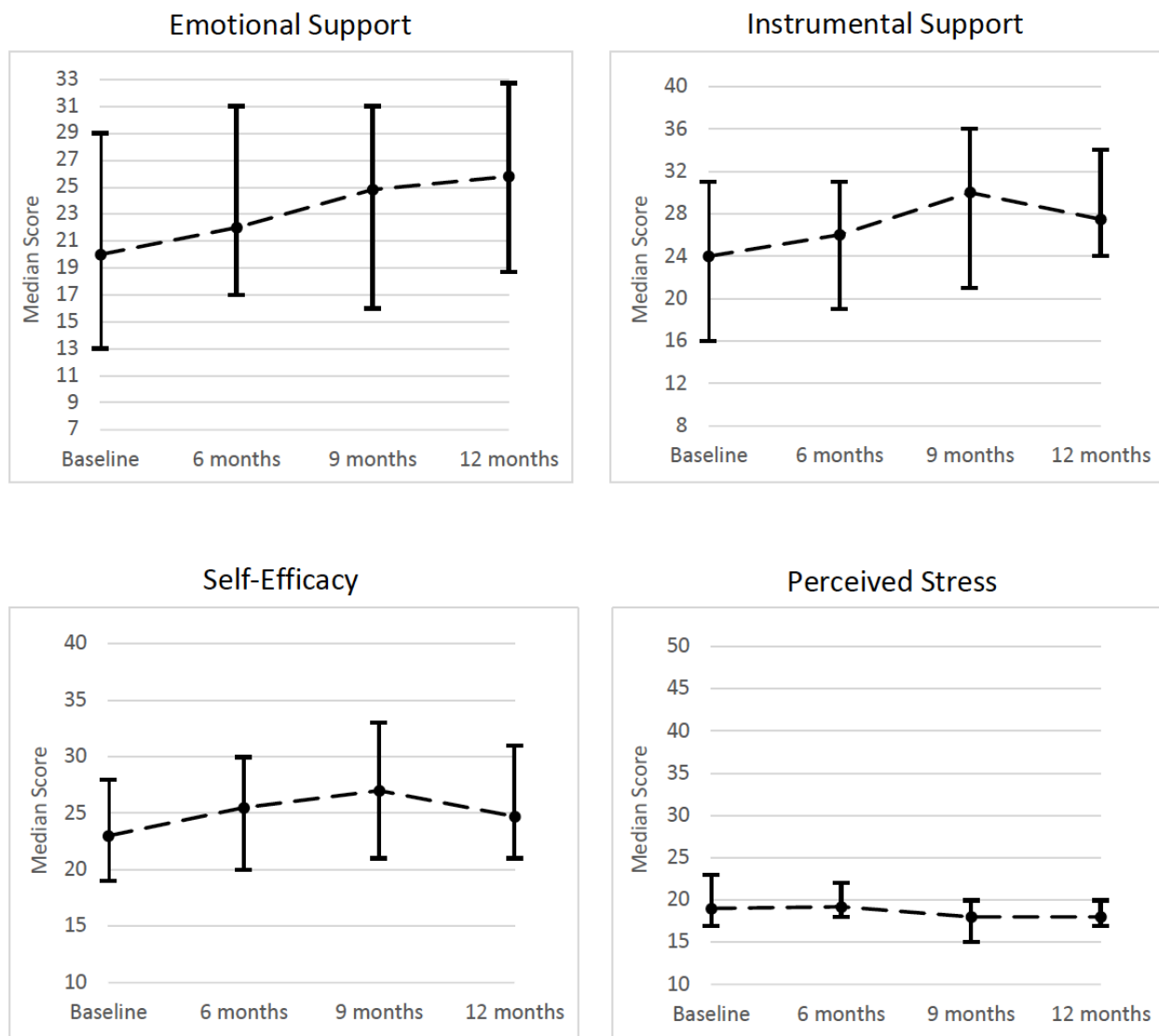
How often did you take your HIV medications correctly?



287

288 **Figure 3. Treatment adherence in the last 30 days among adolescents living with HIV in Lima, Peru.**

289 Circles indicate the mean; error bars indicate the interquartile range



290

291 **Figure 4. Psychosocial outcome scores among adolescents living with HIV in Lima, Peru.** Circles

292 indicate the mean; error bars indicate the interquartile range

293

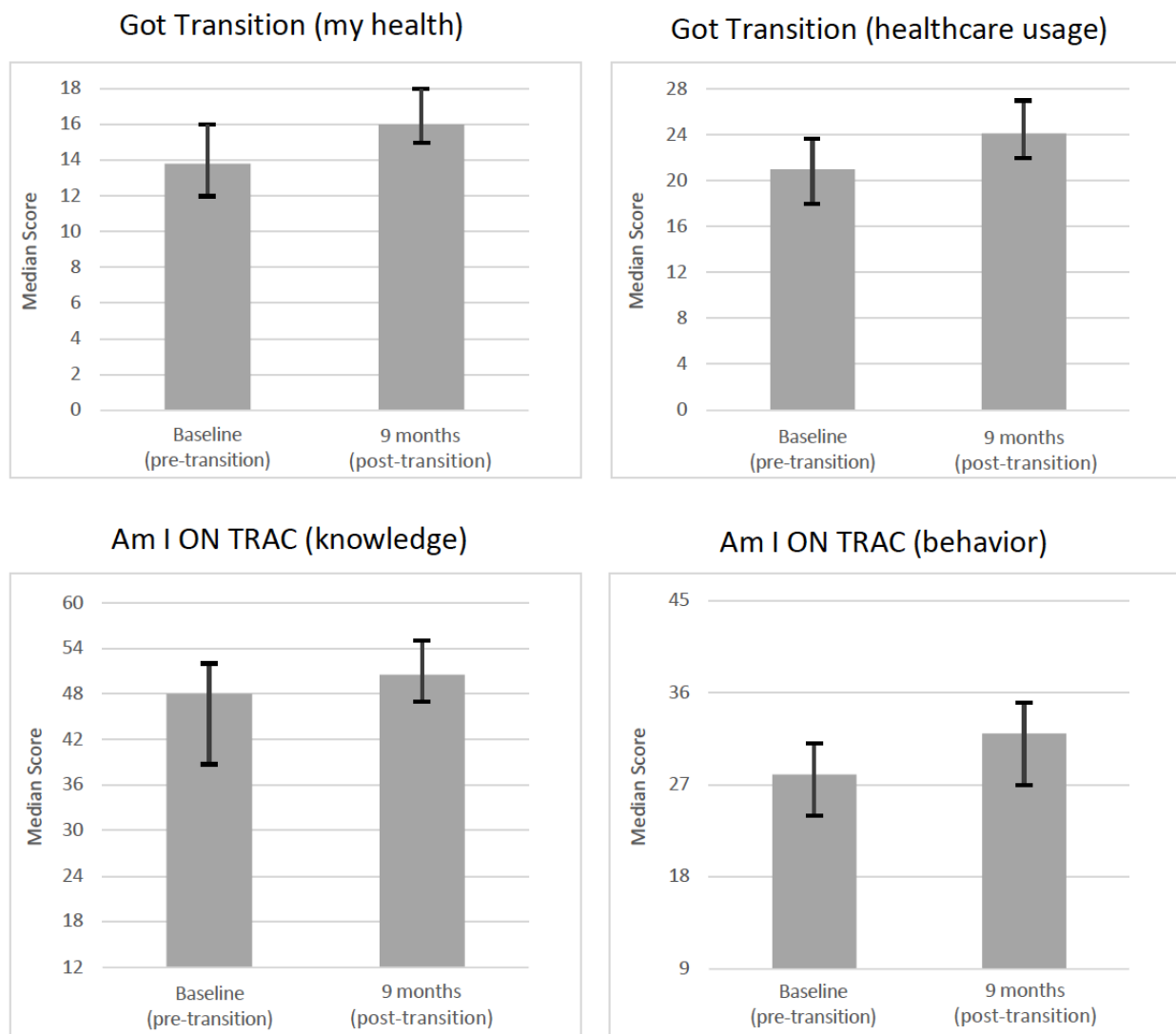
294

295

296

297

298



299
300 **Figure 5. Changes in transition readiness among adolescents living with HIV in Lima, Peru.** The error
301 bars indicate the interquartile range

302

303 **Discussion**

304 We provide quantitative evidence supporting the feasibility and effectiveness of a community-based
305 intervention designed to improve health outcomes for ALWH in Lima, Peru. The adolescents in this cohort
306 were diverse in terms of their medical needs and clinical circumstances, which included depression, housing
307 instability, poverty, lack of familial support, pregnancy and living in a foreign country. A key strength of
308 the intervention was its comprehensive nature (i.e., it was designed to address a broad spectrum of unmet
309 social and health needs) and individualized design (i.e., it sought to respond to each adolescent's needs,
310 tailoring the intensity of support offered to each participant). Research has highlighted the limited efficacy
311 of a "one size fits all" approach for community-based interventions [8,44,45], in part because subgroups at
312 highest risk may need extra support [46,47]. In this intervention, entry-level health workers filled gaps in
313 care, provided linkages, liaised with providers, and literally accompanied adolescents as they transitioned
314 to adult care.

315

316 We found the PASEO intervention to be highly feasible based on metrics of acceptability and demand.
317 There was a low refusal rate for enrollment, no participants were lost to follow up, and adolescents
318 demonstrated high-attendance and engagement in group sessions. The potential effectiveness of PASEO is
319 supported by within-person improvements in adherence, psychosocial indicators, and transition readiness;
320 this improvement was often sustained three months after the intervention's intensive phase. Importantly,
321 these improvements appear to hold up across subgroups of adolescents characterized by timing of diagnosis
322 (early childhood infection versus recent diagnosis) and among those with a history of non-adherence. This
323 suggests that the lay health workers were effective at individualizing support to adequately meet the needs
324 of each adolescent. Importantly, these data also corroborate that PASEO aligns with World Health
325 Organization criteria for adolescent-friendly care in that it was acceptable (adolescents were willing to
326 engage), equitable (all adolescents could access it), appropriate (offering the right menu of services) and

327 effective (resulting in a positive contribution to health) [48]. To further increase equity, adaptations may be
328 needed to ensure it is acceptable and effective for transgender women, as we only enrolled one in this study.

329
330 A number of intervention studies addressing the transition period are underway in low-or-middle-income
331 and high-burden settings [49,50]. While these studies will contribute importantly to knowledge on
332 evidence-based practices, there is a notable lack of intervention studies addressing the transition to adult
333 care in South America. This disparity reflects a broader knowledge gap related to effective interventions
334 for ALWH in the Latin American and Caribbean contexts more generally. One recent systematic review
335 of interventions for ALWH found only six studies that discussed linkage to care, none of which were from
336 Latin America [51]; another, focused on psycho-social support interventions, identified six studies, but
337 found none outside the U.S. or Africa. An intervention that was effective in improving continuity of care
338 and psychosocial health outcomes among ALWH in South America would therefore contribute to filling
339 an important research and implementation gap. And, the fact that the six adolescents who had been lost
340 from care at enrollment remained engaged in ART at the end of the study, suggests that the PASEO
341 intervention also may be an effective strategy for re-engaging ALWH who are lost from care.

342
343 This pilot study was underway when the SARS-CoV-2 pandemic emerged, during which stay-at-home
344 orders were intermittently instated. These circumstances required us to adapt the intervention to a virtual
345 format; however, improvements in key metrics suggests that the pillars of the intervention (accompaniment,
346 social support, skills-building) were preserved under this hybrid model. The lack of a control group
347 precludes definitively concluding that the intervention caused these improvements; however, baseline
348 measurements preceded SARS-CoV-2, while follow-up measurements occurred in the first six months of
349 the pandemic; therefore, the expected underlying time trend in these outcomes would be downward and
350 would likely have attenuated any PASEO-related improvements [31]. While unplanned, the intervention
351 adaptations could be considered a strength: the flexibility and high participation rates despite the pandemic
352 suggest that the feasibility metrics are even more notable. And, successful adaptations open the possibility

353 for flexible delivery across a variety of in-person parameters. The pandemic also resulted in temporary
354 suspension of CD4 cell count and viral load testing, which prevented us assessing biologic endpoints.

355

356 **Conclusions**

357 In conclusion, the PASEO intervention was feasible and demonstrated promise for improving myriad self-
358 reported health outcomes in a diverse cohort of ALWH. Future studies should include a large-scale impact
359 evaluation including biological outcomes and assessment of long-term effectiveness beyond the life of the
360 intervention.

361 **Competing interests**

362 The authors declare no competing interests.

363

364 **Authors' contributions**

365 Conceived of the study: MF

366 Developed the study intervention: MW, SS, HS, LL, MF, JG

367 Designed the study: MF, MW, JG, SS

368 Oversaw enrollment and recruitment: MW, LK, EM, ES

369 Implemented the intervention: MW, HS, LS, AR, RE, KR

370 Data collection and management: LS, AR, RE, MW, CR, AL, VV, CB

371 Analyzed data: VV, CR, AL

372 Interpreted data: all authors

373 Wrote first draft of the manuscript: VV, MF

374 Critically reviewed and approve the final version of the manuscript: all authors

375

376 **Acknowledgements**

377 We acknowledge and thank the adolescents who participated in the study; personnel at Hospital Nacional

378 Hipólito Unanue, Hospital Nacional Arzobispo Loayza, and the Instituto Nacional de Salud del Niño and

379 the Peru National HIV Program. We are indebted to the Socios En Salud Youth Advisory Board for their

380 feedback and contributions.

381 Funding: This research was entirely supported by the National Institute of Allergy and Infectious Diseases

382 of the National Institutes of Health under award number R21AI143365.

383

384 Disclaimer: The content is solely the responsibility of the authors and does not necessarily represent the
385 official views of the National Institutes of Health.

386 **Additional files**

387 Additional file 1: Appendix

388 Information on file format. Analyses of effectiveness outcomes, stratified by early childhood versus recent
389 diagnosis and whether the adolescent had been lost from care or had a history of chronic non-adherence.

390

391

392 **List of abbreviations**

393 ALWH: adolescents living with HIV, ART: antiretroviral therapy, CBA: community-based
394 accompaniment, CHWs: community health workers, DOT: directly observed treatment, HIV: human
395 immunodeficiency virus, MSM: men who have sex with men, PLWH: people living with HIV, SES: Socios
396 En Salud, SMS: short message service, TGW: transgender women, YAB: youth advisory board

397

References

1. Folayan M, Odetoynbo M, Brown B, Harrison A. Addressing the socio-development needs of adolescents living with HIV/AIDS in Nigeria: a call for action. *Afr J Reprod Health*. 2014 Sep;18(3):93–101.
2. Fielden SJ, Sheekter L, Chapman GE, Alimenti A, Forbes JC, Sheps S, et al. Growing up: Perspectives of children, families and service providers regarding the needs of older children with perinatally-acquired HIV. *AIDS Care - Psychol Socio-Medical Asp AIDS/HIV*. 2006 Nov;18(8):1050–3.
3. Souza E, Santos N, Valentini S, Silva G, Falbo A. Long-term follow-up outcomes of perinatally HIV-infected adolescents: Infection control but school failure. *J Trop Pediatr*. 2010 Dec;56(6):421–6.
4. Koenig LJ, Nesheim S, Abramowitz S. Adolescents with perinatally acquired HIV: Emerging behavioral and health needs for long-term survivors. *Curr Opin Obstet Gynecol*. 2011 Oct;23(5):321–7.
5. Steinberg L. Commentary: A Behavioral Scientist Looks at the Science of Adolescent Brain Development. *Brain Cogn*. 2010;72(1):160.
6. Blakemore SJ. Adolescence and mental health. *Lancet*. 2019 May;393(10185):2030–1.
7. Too EK, Abubakar A, Nasambu C, Koot HM, Cuijpers P, Newton CR, et al. Prevalence and factors associated with common mental disorders in young people living with HIV in sub-Saharan Africa: a systematic review. *J Int AIDS Soc*. 2021 Jun;24(S2):e25705.
8. Tepper V, Zaner S, Ryscavage P. HIV healthcare transition outcomes among youth in North America and Europe: A review. Vol. 20, *Journal of the International AIDS Society*. 2017. p.

21490.

9. Nichols SL, Bethel J, Garvie PA, Patton DE, Thornton S, Kapogiannis BG, et al. Neurocognitive functioning in antiretroviral therapy-naïve youth with behaviorally acquired human immunodeficiency virus. *J Adolesc Heal*. 2013 Dec;53(6):763–71.
10. World Health Organization. A qualitative review of psychosocial support interventions for young people living with HIV. Geneva; 2009.
11. Pearlstein SL, Mellins CA, Dolezal C, Elkington KS, Santamaria EK, Leu CS, et al. Youth in transition: Life skills among perinatally HIV-infected and HIV-exposed adolescents. *J Pediatr Psychol*. 2014;39(3):294–305.
12. Kidia K, Machando D, Bere T, Macpherson K, Nyamayaro P, Potter L, et al. “I was thinking too much”: experiences of HIV-positive adults with common mental disorders and poor adherence to antiretroviral therapy in Zimbabwe. *Trop Med Int Health*. 2015 Jul;20(7):903–13.
13. Casale M, Carlqvist A, Cluver L. Recent Interventions to Improve Retention in HIV Care and Adherence to Antiretroviral Treatment among Adolescents and Youth: A Systematic Review. *AIDS Patient Care STDS*. 2019 Jun;33(6):237–52.
14. Murray KR, Dulli LS, Ridgeway K, Dal Santo L, De Mora DD, Olsen P, et al. Improving retention in HIV care among adolescents and adults in low- and middle-income countries: A systematic review of the literature. Sued O, editor. *PLoS One*. 2017 Sep;12(9):e0184879.
15. Auld AF, Agolory SG, Shiraishi RW, Wabwire-Mangen F, Kwesigabo G, Mulenga M, et al. Antiretroviral therapy enrollment characteristics and outcomes among HIV-infected adolescents and young adults compared with older adults--seven African countries, 2004-2013. *MMWR Morb Mortal Wkly Rep*. 2014 Nov;63(47):1097–103.

16. Kakkar F, Van der Linden D, Valois S, Maurice F, Onnorouille M, Lapointe N, et al. Health outcomes and the transition experience of HIV-infected adolescents after transfer to adult care in Québec, Canada. *BMC Pediatr*. 2016 Dec;16(1):109.
17. Weijnsfeld AM, Smit C, Cohen S, Wit FWNM, Mutschelknauss M, Van Der Knaap LC, et al. Virological and Social Outcomes of HIV-Infected Adolescents and Young Adults in the Netherlands before and after Transition to Adult Care. *Clin Infect Dis*. 2016 Oct;63(8):1105–12.
18. Hussen SA, Chakraborty R, Knezevic A, Camacho-Gonzalez A, Huang E, Stephenson R, et al. Transitioning young adults from paediatric to adult care and the HIV care continuum in Atlanta, Georgia, USA: A retrospective cohort study. *A. J Int AIDS Soc*. 2017;20(1):21848.
19. Straub DM, Tanner AE. Health-care transition from adolescent to adult services for young people with HIV. *Lancet Child Adolesc Heal*. 2018;2(3):214–22.
20. Machado DM, Succi RC, Turato ER. Transitioning adolescents living with HIV/AIDS to adult-oriented health care: An emerging challenge. *J Pediatr (Rio J)*. 2010 Dec;86(6):465–72.
21. Cervia JS. Easing the Transition of HIV-Infected Adolescents to Adult Care. *AIDS Patient Care STDS*. 2013 Dec;27(12):692–6.
22. Judd A, Sohn AH, Collins IJ. Interventions to improve treatment, retention and survival outcomes for adolescents with perinatal HIV-1 transitioning to adult care: moving on up. *Curr Opin HIV AIDS*. 2016;11(5):477–86.
23. Hawkins A, Evangeli M, Sturgeon K, Le Prevost M, Judd A. Episodic medication adherence in adolescents and young adults with perinatally acquired HIV: a within-participants approach. *AIDS Care*. 2016;28(sup1):68–75.
24. Bailey H, Cruz MLS, Songtaweessin WN, Puthanakit T. Adolescents with HIV and transition to

- adult care in the Caribbean, Central America and South America, Eastern Europe and Asia and Pacific regions. *J Int AIDS Soc.* 2017 Apr;20(0):21475.
25. Lam PK, Fidler S, Foster C. A review of transition experiences in perinatally and behaviourally acquired HIV-1 infection; same, same but different? *J Int AIDS Soc.* 2017 Apr;20(Suppl 3):21506.
 26. UNAIDS. Peru Country Fact Sheet [Internet]. 2019 [cited 2020 Dec 17]. Available from: <https://www.unaids.org/en/regionscountries/countries/peru>
 27. Ministerio de Salud Direccion General de Salud de las Personas. Peru: Informe nacional sobre los progresos realizados en la aplicacion del UNGASS. 2010.
 28. Chow JY, Konda KA, Borquez A, Caballero P, Silva-Santisteban A, Klausner JD, et al. Peru's HIV care continuum among men who have sex with men and transgender women: opportunities to optimize treatment and prevention. *Int J STD AIDS.* 2016 Oct;27(12):1039–48.
 29. UNICEF. Atlas of adolescents and HIV in Latin America and the Caribbean. New York; 2015.
 30. Mukherjee JS, Barry D, Weatherford RD, Desai IK, Farmer PE. Community-Based ART Programs: Sustaining Adherence and Follow-up. *Curr HIV/AIDS Rep.* 2016;13(6):359–66.
 31. Errea RA, Wong M, Senador L, Ramos A, Ramos K, Galea JT, et al. Impact of SARS-COV-2 pandemic on adolescents living with HIV in Lima, Peru. *Rev Peru Med Exp Salud Publica.* 2021;38(1):153–8.
 32. Arrieta J, Aguerrebere M, Raviola G, Flores H, Elliott P, Espinosa A, et al. Validity and Utility of the Patient Health Questionnaire (PHQ)-2 and PHQ-9 for Screening and Diagnosis of Depression in Rural Chiapas, Mexico: A Cross-Sectional Study: PHQ-9 Validity for Depression Diagnosis. *J Clin Psychol.* 2017;73(9):1076–90.
 33. Calderón M, Gálvez-Buccollini JA, Cueva G, Ordoñez C, Bromley C, Fiestas F. Validation of the

- Peruvian version of the PHQ-9 for diagnosing depression. *Rev Peru Med Exp Salud Publica*. 2012;29(4):578–9.
34. World Health Organization. *Psychological First Aid: Guide for Field Workers*. War Trauma Foundation and World Vision International, editor. Geneva: World Health Organization; 2011.
 35. Galea JT, Contreras C, Wong M, Ramos K, Vargas V, Sanchez H, et al. A non-specialist depression care pathway for adolescents living with HIV and transitioning into adult care in Peru: a nested, proof of concept pilot study. *Glob Ment Heal*. 2021;8:e17–e17.
 36. Bowen DJ, Kreuter M, Spring B, Cofta-Woerpel L, Linnan L, Weiner D, et al. How we design feasibility studies. *Am J Prev Med*. 2009 May;36(5):452–7.
 37. Salsman JM, Butt Z, Pilkonis PA, Cyranowski JM, Zill N, Hendrie HC, et al. Emotion assessment using the NIH Toolbox. *Neurology*. 2013;80(11 Suppl 3):S76–86.
 38. Babakhanyan I, McKenna BS, Casaletto KB, Nowinski CJ, Heaton RK. National Institutes of Health Toolbox Emotion Battery for English- and Spanish-speaking adults: normative data and factor-based summary scores. *Patient Relat Outcome Meas*. 2018;9:115–27.
 39. Moynihan M, Saewyc E, Whitehouse S, Paone M, McPherson G. Assessing readiness for transition from paediatric to adult health care: Revision and psychometric evaluation of the Am I ON TRAC for Adult Care questionnaire. *J Adv Nurs*. Moynihan M. 2015;71(6):1324–35.
 40. McManus M, White P, Prior M, McAllister J, Cooley C, Forlenza E, et al. *Six Core Elements of Health Care Transition 2.0: Transitioning to an Adult Approach to Health Care Without Changing Providers for use by Family Medicine and Med-Peds Providers*. 2014.
 41. Gray MJ, Litz BT, Hsu JL, Lombardo TW. Psychometric Properties of the Life Events Checklist. *Assessment*. 2004;11(4):330–41.

42. Hannan J, Youngblut JM, Brooten D, Bazzani D, Romero NR, Chavez B, et al. Psychometric Properties of Newly Translated Spanish Life Events Inventory and Daily Hassles Scale. *J Nurs Meas.* 2015;23(2):315–25.
43. Miller DB, Townsend A. Urban Hassles as Chronic Stressors and Adolescent Mental Health: The Urban Hassles Index. *Br Treat Cris Interv.* 2005;5(1):85–94.
44. Roux E Le, Gottot S, Aupiais C, Girard T, Teixeira M, Alberti C. Professional’s perspectives on care management of young people with perinatally acquired HIV during transition: A Qualitative study in adult care setting. Simeoni U, editor. *PLoS One.* 2017 Jan;12(1):e0169782.
45. Wiener LS, Kohrt BA, Battles HB, Pao M. The HIV experience: Youth identified barriers for transitioning from pediatric to adult care. *J Pediatr Psychol.* 2011 Mar;36(2):141–54.
46. Dahourou DL, Gautier-Lafaye C, Teasdale CA, Renner L, Yotebieng M, Desmonde S, et al. Transition from paediatric to adult care of adolescents living with HIV in sub-Saharan Africa: Challenges, youth-friendly models, and outcomes. *J Int AIDS Soc.* 2017 Apr;20(Suppl 3):21528.
47. Ritchwood TD, Malo V, Jones C, Metzger IW, Atujuna M, Marcus R, et al. Healthcare retention and clinical outcomes among adolescents living with HIV after transition from pediatric to adult care: a systematic review. *BMC Public Health.* 2020;20(1):1195.
48. World Health Organization. Making health services adolescent friendly: Developing national quality standards for adolescent-friendly health services. Geneva; 2012.
49. Sam-Agudu NA, Pharr JR, Bruno T, Cross CL, Cornelius LJ, Okonkwo P, et al. Adolescent Coordinated Transition (ACT) to improve health outcomes among young people living with HIV in Nigeria: study protocol for a randomized controlled trial. *Trials.* 2017;18(1):595.
50. Njuguna IN, Beima-Sofie K, Mburu CW, Mugo C, Neary J, Itindi J, et al. Adolescent transition to

adult care for HIV-infected adolescents in Kenya (ATTACH): study protocol for a hybrid effectiveness-implementation cluster randomised trial. *BMJ Open*. 2020;10(12):e039972–e039972.

51. Macpherson P, Munthali C, Ferguson J, Armstrong A, Kranzer K, Ferrand RA, et al. Service delivery interventions to improve adolescents' linkage, retention and adherence to antiretroviral therapy and HIV care. *Trop Med Int Heal*. 2015/04/17. 2015;20(8):1015–32.