
1 **The efficacy and safety of bamlanivimab**
2 **treatment against COVID-19: A**
3 **meta-analysis**

4 Huai-rong Xiang ^a, Bei He ^a, Yun Li ^a, Xuan Cheng ^a, Qi-zhi Zhang ^a,
5 Wen-xing Peng ^{a,b} *

6 ^a Department of Pharmacy, the Second Xiangya Hospital, Central South
7 University, Changsha, Hunan 410011, China

8 ^b Institute of Clinical Pharmacy, Central South University, Changsha, Hunan
9 410011, China

10

11 ***Corresponding author:**

12 Phone: 0086-0731-88836044; Fax: 0086-0731-88836044

13 Email address: pwx.csu@csu.edu.cn

14 Full postal address: Department of Pharmacy, the Second Xiangya Hospital,
15 Central South University, #139, Middle Renmin Road, Changsha, Hunan 410011,
16 P.R. China

17

18 **The full text words : 4378**

19 **Key points**

20 **Question:** Can bamlanivimab treat COVID-19 patients? What are the factors
21 that have great impact on the treatment outcome?

22 **Findings:** In this meta-analysis that retrieved 3 RCTs and 7 cohort studies and
23 included 14461 adults, Bmlanivimab may help outpatients to prevent hospitalization
24 or emergency department visit (RR 0.41 95%CI 0.29 to 0.58), reduce ICU admission
25 (RR 0.47 95%CI 0.23 to 0.92) and mortality (RR 0.32 95%CI 0.13 to 0.77) from the
26 disease.

27 **Meaning:** In COVID-19 pandemic, the use of bamlanivimab may be warranted.
28 Combinations of two or more monoclonal antibody increase the effect.

29

30 **ABSTRACT**

31 Background: Bamlanivimab is routinely used in the treatment of coronavirus
32 disease 2019 (COVID-19) in worldwide. We performed a meta-analysis to
33 investigate the efficacy and safety of bamlanivimab treatment in patients with
34 COVID-19.

35

36 Methods: We searched articles from Web of Science, PubMed, Embase, the
37 Cochrane Library and MedRxiv between 30 January 2020 and August 5, 2021. We
38 selected randomized clinical trials (RCTs) and observational studies with a control
39 group to assess the efficiency of bamlanivimab in treating patients with COVID-19.

40

41 Results: Our meta-analysis retrieved 3 RCTs and 7 cohort studies including
42 14461 patients. Bmlanivimab may help outpatients to prevent hospitalization or
43 emergency department visit (RR 0.41 95%CI 0.29 to 0.58), reduce ICU admission
44 (RR 0.47 95%CI 0.23 to 0.92) and mortality (RR 0.32 95%CI 0.13 to 0.77) from the
45 disease. The combination of bamlanivimab and etesevimab may had a greater
46 potential for positive treatment outcome.

47

48 Conclusion: Bamlanivimab has demonstrated clinical efficacy on mild or
49 moderate ill patients with COVID-19 to prevent hospitalization, reduce severity and
50 mortality from the disease. Combinations of two or more monoclonal antibody
51 increase the effect. Well-designed clinical trials to identify the clinical and
52 biochemical characteristics in COVID-19 patients' population that could benefit
53 from bamlanivimab are warranted in the future.

54 Key words: bamlanivimab; COVID-19; Immunotherapy

55 INTRODUCTION

56 The Coronavirus disease 2019 (COVID-19) has become a major public hazard
57 caused by severe acute respiratory syndrome coronavirus 2 (SARS-CoV-2). By
58 August 2021, more than 203 million people have been reported to be infected with
59 COVID-19, and 4 million people have died of it. Although the advent of vaccines
60 has played a great role in epidemic prevention and control. In developing countries,
61 the availability of vaccines has been slow^[1]. Several of these COVID-19 therapeutic
62 candidates are currently being studied in preclinical and clinical research stages
63 around the world. Antibody based on viral spike protein (S protein) appears to be the
64 main target of antibody development candidates^[2].

65 Bamlanivimab, also known as LY-CoV555, is a IgG monoclonal antibody
66 which mediate its effects by means of binding with the receptor-binding domain of
67 SARS-CoV-2 to viral neutralization, complement activation and antibody-dependent
68 cellular cytotoxicity^[3, 4]. In November 2020, the Food and Drug Administration
69 (FDA) authorized an emergency use authorization (EUA) for bamlanivimab, for
70 treatment of mild to moderate COVID-19 in non-admitted patients at high risk for
71 severe disease^[5]. The benefits or harms of such monoclonal antibodies is limited.
72 Thus, this meta-analysis, aims to summaries efficacy of bamlanivimab use in
73 COVID-19 based on available evidence and find out the potential association
74 between treatment with bamlanivimab and outcomes of COVID-19.

75 METHOD

76 This meta-analysis was described by the Preferred Reporting Items for
77 Systematic Review and Meta-Analyses (PRISMA-P) statement^[6]. and the guidelines
78 of the Meta-analysis of Observational Studies in Epidemiology^[7]. The protocol for

79 this study has been registered in the International Prospective Register of Systematic
80 Reviews (PROSPERO, CRD42021272789).

81 **Search strategy and study selection**

82 Two experience researchers (Bei He and Xuan Cheng) based on The Peer
83 Review of Electronic Search Strategies checklist^[8] searched Web of Science,
84 PubMed, Embase, the Cochrane Library, MedRxiv for clinical trials and
85 observational studies. A combination of search terminologies (“Coronavirus Disease
86 2019” OR “COVID-19” OR “SARS-Cov-2” OR “2019-nCoV Diseases” OR
87 “COVID 19 Virus Infection”) AND (“LY-CoV555” OR “bamlanivimab”). Search
88 was down on August 5, 2021 which was imposed restriction on the date between 1.1
89 2020 to 8.5 2021. No restriction on the geographical location or language of the
90 studies. To be eligible for inclusion, studies must divide patients into treatment
91 group using bamlanivimab and control group with no bamlanivimab. We also
92 required that the studies reported data on any of the pre-determined outcomes. The
93 studies aimed at preventing the occurrence of COVID-19 were excluded.

94 **Data extraction**

95 Two reviewers (Huai-rong Xiang, Yun Li) independently screened the titles and
96 abstracts of the studies to retrieve articles and extracted data based on the inclusion
97 and exclusion criteria. Any discrepancies will be resolved through discussion (with a
98 third author, if necessary).

99 Each included article was thoroughly reviewed, the following data and
100 information were extracted:

101 (1) The first author’s name, publication date, country and study type.

102 (2) Patients’ information

103 (2) Treatment plan (including dosage, timing of using bamlanivimab).

104 (3) Outcome indicators.
105 Data was extracted and entered to a pre-defined and piloted Microsoft excel
106 database.

107 **Quality assessment**

108 Two reviewers (Qi-zhi Zhang and Huai-rong Xiang) independently evaluated
109 the quality of these literature. In case of any disagreement, the third reviewer (Yun
110 Li) consulted for reconciling any difference of opinion. The version 2 Cochrane Risk
111 of bias Assessment tool^[9] was used to evaluate the methodological quality of the
112 RCTs over five domains of selection, performance, blinding, completeness, and
113 reporting. For each domain, risk of bias judgements is 'high', 'unclear' or 'low'. The
114 Newcastle-Ottawa Scale (NOS)^[10] was to evaluate the quality of the cohort studies
115 which comprises three parts of patient selection, comparability, and research results.
116 The total score is 9 which was divided into three categories: (a) high risk (1-3); (b)
117 some concerns (4-6); (c) low risk (7-9).

118 **Outcomes and subgroup analyses**

119 Primary outcomes were subsequent hospitalization or emergency department
120 (ED) visit, all-cause mortality. Secondary outcomes were admission to intensive care
121 unit admissions. We conducted a priori determined subgroup analyses to explore the
122 source of heterogeneity among observational studies. We performed stratified
123 analyses by (1) the dose of bamlanivimab (700mg, 2800mg, 7000mg and
124 combination) (2) 14 days or 28 days outcomes.

125 **Statistical Analysis**

126 All statistical analysis was conducted by Stata 16 (StataCorp, College Station,
127 SE) software. Statistical heterogeneity was evaluated by the I-squared (I^2) test. A

128 fixed-effect model was selected if $I^2 < 40\%$. When I^2 value $> 40\%$, heterogeneity
129 was considered significant, and the random-effect model was applied. We used
130 relative risk (RR) for dichotomous data with 95% confidence interval (CI).
131 Publication bias was detected using Egger's test.

132 **Certainty of evidence**

133 The certainty of evidence was rated using the Grading of Recommendations,
134 Assessment, Development and Evaluations (GRADE) approach.

135 **RESULTS**

136 **Search results and study characteristics**

137 As shown in Figure. 1, the total search process yielded 460 records. Following
138 removing duplicates publications 243 studies were remained. After screening of
139 titles and abstracts we excluded 156 studies as these include reviews, commentaries,
140 mechanism researches, and irrelevant to COVID-19. After comprehensively
141 screening 77 full texts and assessment of risk of bias, only 10 eligible studies were
142 included, 3 RCTs^[11-13] and 7 observational studies^[14-20]. We considered
143 observational studies with an NOS score ≥ 6 with high quality. (Figure 1) All studies
144 included were conducted in America. Assessment of bias for the 9 observational
145 studies revealed a moderate risk of bias as assessed against various quality
146 parameters. (Supplementary table 1). 3 RCTs were classified as low risk because
147 they have been clinically registered in USA National Institutes of Health Register
148 (ClinicalTrials.gov) and had registration numbers. (Supplementary table 2). Two
149 RCTs^[11, 12] shared one registration numbers (NCT04427501), but the patients were
150 enrolled at totally different time. One RCT^[11] has four bamlanivimab arm for the

151 dose. Owing to the different dosage and limited studies, we conducted a subgroup
152 analysis based on the infusion time at 700 mg bamlanivimab.

153 **Outcome of bamlanivimab for COVID-19**

154 Hospitalization or ED visit

155 Eleven trials (n = 14152 participants) reported on hospitalization or emergency
156 department visit. The use of bamlanivimab compared to placebo could reduce the
157 risk of hospitalizations or emergency department visit (RR 0.41, 95% CI 0.29 to
158 0.58; $I^2 = 77.3\%$, $P = 0.000$) with low certainty of evidence. (Figure 2) Sensitivity
159 analysis after deleting the study successively revealed the same high heterogeneity.

160 Mortality

161 Nine trials (n = 13298 participants) reported on mortality. The use of
162 bamlanivimab compared to placebo could reduce the risk of mortality (RR 0.32, 95%
163 CI 0.13 to 0.77; $I^2 = 47.5\%$, $P = 0.064$ low certain of evidence). (Figure 3) We
164 conducted a sensitivity analysis to investigate the source of the heterogeneity. The
165 study conducted by Lundgren et al. included hospitalized patients and the
166 heterogeneity may be caused by different degrees of severity of the disease in the
167 participant. After excluding that study, the heterogeneity decreased significantly ($I^2 =$
168 9.4%), and the results showed that the bamlanivimab could significantly decrease
169 the rate of mortality. (RR 0.2 95%CI 0.10 to 0.40)

170 ICU admission

171 Only two trials (n = 5073 participants) reported on mortality. The use of
172 bamlanivimab compared to placebo could reduce the risk of ICU admission (RR
173 0.47, 95% CI 0.23 to 0.92; $I^2 = 0.0\%$, $P = 0.672$ low certainty of evidence). (Figure 4)
174 We did not perform sensitivity analysis.

175 Safety

176 In this meta-analysis, 3 RCTs^[11-13] reported adverse effects. The pooled result
177 from three trials (n = 1873 participants) found bamlanivimab increased the risk of
178 serious adverse events but no statistic difference. (RR 1.33 95% CI 0.84 to 2.10; $I^2 =$
179 0%, P = 0.783 high certainty of evidence) (Figure 5) We did not perform sensitivity
180 analysis about this result.

181 Subgroup Analysis

182 Subgroup analysis based on dose

183 Subgroup analysis showed that the 700mg single bamlanivimab and 2800mg
184 bamlanivimab plus 2800mg etesevimab could reduce the risk of hospitalizations or
185 ED visit compared with the control group. And the combination of two antibodies
186 could reduce more risk than 700mg single antibody (RR:0.29 VS 0.59). Due to only
187 one study in the 2800mg single dose and 7000mg dose, there are no statistic
188 difference between treatment and control group. (Figure 6)

189 In the part of mortality, there was no significant difference among 7000mg
190 treatment group and control group. Both 700mg and 2800mg bamlanivimab plus
191 2800mg etesevimab could decrease the mortality (700mg: RR 0.33 95%CI 0.18 to
192 0.58; $I^2 = 0%$, P=0.799. 2800mg bamlanivimab plus 2800mg etesevimab: RR 0.05
193 95%CI 0.00 to 0.81) (Figure 7)

194 Risk of publication bias

195 Assessment of publication bias using Egger's test showed that there was
196 significant potential publication bias among the included trials hospitalization or ED
197 visit (p=0.001) and mortality (p=0.006). (Supplementary Figure 1)

198 **DISCUSSION**

199 This is the first meta-analysis included 3 RCTs and 9 observational studies
200 investigating the effect of bamlanivimab with or without etesevimab on clinical
201 outcomes. Despite our inclusion criteria that did not specify the severity of the
202 disease, all the studies were conducted with non-hospitalized patients except the
203 RCT by Lundgren 2020 et al^[13]. This study provided better evidence for COVID-19
204 treatment decisions through systematically reviewed, summarized evidence. And our
205 meta-analyses suggested that bamlanivimab may help outpatients to prevent
206 hospitalization, reduce severity and mortality from the disease. What's more, the
207 combination of bamlanivimab and etesevimab could play a bigger role in the
208 outcomes. Last but also important, early treatment is more effective. There is
209 slightly trend on increasing serious adverse events. The certainty of the evidence of
210 the all-cause hospitalization or ED visit and mortality was low. All observational
211 studies adjust the age confounders, but patients in exposed group had higher risk
212 factor for severe COVID-19 than nonexposed group. And there still was a trend
213 toward a lower risk of hospitalization in bamlanivimab treated patients. Most studies'
214 patients we included were at mild or moderate severity COVID-19. Only one
215 RCT^[13] , included hospitalized patients whose infusion time was within 12 days of
216 symptom onset, which announced that no clinical benefit of bamlanivimab
217 administration in patients with already present symptoms of COVID-19. Another
218 study^[21] showed the contrary results which only treated to hospitalization. But early
219 intervention of this study is rather comparable to the recently outpatient studies.

220 It has been proposed that bamlanivimab has ability to neutralize the spike
221 protein of SARS-CoV-2 and consequently block attachment to the human
222 angiotensin-converting enzyme 2 (ACE-2) receptor and deny host cell entry. The
223 FDA announced that bamlanivimab has a definite therapeutic effect on COVID-19.
224 However, Lilly, the company that makes bamlanivimab suggested that it would be

225 unlikely to help patients who admitted to hospital with COVID-19. What's more,
226 potential drawbacks of monoclonal antibodies have also become clear, such as
227 immune escape by selection of viral mutations^[22]. For instance, E484K-carrying
228 SARS-CoV-2 variants could resistant to bamlanivimab which emergence and
229 expansion of had been at least partially underestimated^[23] And bamlanivimab lost its
230 ability to bind to the spike protein and no longer neutralized the Delta variant^[24, 25].
231 Combinations of two or more monoclonal antibodies or polyclonal antisera may
232 therefore increase the barrier sufficiently to prevent escape of the immune system as
233 known from other viral infections^[26].

234 There are some limitations on our meta-analysis. First, groups in some studies
235 were unlikely considered to be comparable on each variable used in the adjustment
236 such as immunosuppression and comorbidity. Second, the small number of
237 participants in some RCTs may increase the likelihood of type II statistical error.
238 Larger scale RCTs are required to confirm the findings. Third, the primary focus of
239 this meta-analyses was cohort studies. Theoretically, observational studies would
240 overestimate the treatment effect of the interventions^[27]. Fourth, the data were too
241 limited to perform more meaningful outcome or subgroup analyses. Fifth, the results
242 of egger's test mean there were high risk of selective reporting or of publication
243 bias.

244 **Conclusion**

245 Our study showed that bamlanivimab has might be beneficial for mild or
246 moderate ill patients with COVID-19. Combinations of two or more monoclonal
247 antibody increase the effect. Well-designed clinical trials to identify the clinical and
248 biochemical characteristics in COVID-19 patients' population that could benefit
249 from bamlanivimab are warranted in the future.

250 **Authors' Contributions**

251 Wen-xing Peng, and Huai-rong Xiang designed this study; Xuan Cheng and Bei
252 He ran the searched strategy; Huai-rong Xiang and Yun Li selected articles and
253 extracted data; Qi-zhi Zhang and Yun Li evaluate the quality of the literature.
254 Huai-rong Xiang wrote the manuscript, Xuan Cheng, Yun Li, Bei He and Qi-zhi
255 Zhang edited. All listed authors reviewed and approved the final manuscript.

256 **Competing interests**

257 The authors declared there are no competing interests.

258 **Data availability statement**

259 All data relevant to the study are included in the article or uploaded as
260 supplementary information. The data are available by accessing the published
261 studies listed in table 1.

262 **Acknowledgments**

263 None

264 **Reference**

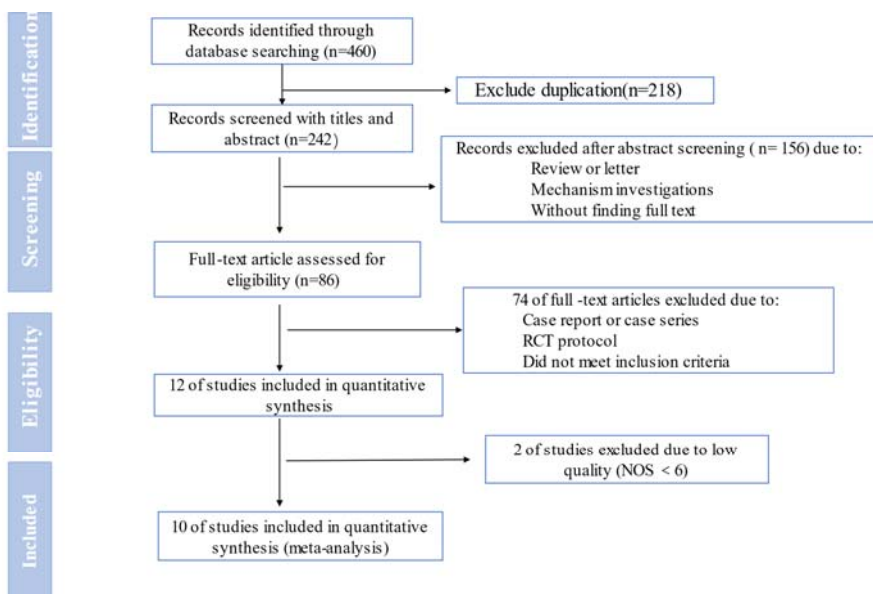
265 [1] Tyagi K, A Ghosh, D Nair, et al. Breakthrough COVID19 infections after
266 vaccinations in healthcare and other workers in a chronic care medical facility in
267 New Delhi, India. Diabetes Metab Syndr. 2021;15(3):1007-1008.

268 [2] Baral PK, J Yin, MNG James. Treatment and prevention strategies for the
269 COVID 19 pandemic: A review of immunotherapeutic approaches for neutralizing
270 SARS-CoV-2. Int J Biol Macromol. 2021;186:490-500.

-
- 271 [3] Casadevall A, E Dadachova, LA Pirofski. Passive antibody therapy for
272 infectious diseases. #N/A. 2004;2(9):695-703.
- 273 [4] Dale AP, MJ Hudson, T Cullen, et al. Administration of Bamlanivimab to
274 Skilled Nursing Facility Residents During a COVID-19 Outbreak, January-February
275 2021, Arizona. J Am Med Dir Assoc. 2021;22(7):1357-1358.
- 276 [5] COVID-19 news release: FDA authorizes monoclonal antibody for
277 treatment of COVID-19. US Food and Drug Administration website. . Available
278 from:
279 <https://www.fda.gov/news-events/press-announcements/coronavirus-covid-19-updat>
280 [e-fda-authorizes-monoclonal-antibody-treatment-covid-19](https://www.fda.gov/news-events/press-announcements/coronavirus-covid-19-updat).
- 281 [6] Moher D, A Liberati, J Tetzlaff, et al. Preferred Reporting Items for
282 Systematic Reviews and Meta-Analyses: The PRISMA Statement. PLoS Med.
283 2009;6(7):e1000097.
- 284 [7] Stroup DF, JA Berlin, SC Morton, et al. Meta-analysis of observational
285 studies in epidemiology: a proposal for reporting. Meta-analysis Of Observational
286 Studies in Epidemiology (MOOSE) group. JAMA. 2000;283(15):2008-2012.
- 287 [8] McGowan J, M Sampson, DM Salzwedel, et al. PRESS Peer Review of
288 Electronic Search Strategies: 2015 Guideline Statement. J Clin Epidemiol.
289 2016;75:40-46.
- 290 [9] Higgins JP, DG Altman, PC Gotzsche, et al. The Cochrane Collaboration's
291 tool for assessing risk of bias in randomised trials. BMJ. 2011;343:d5928.
- 292 [10] Stang A. Critical evaluation of the Newcastle-Ottawa scale for the
293 assessment of the quality of nonrandomized studies in meta-analyses. Eur J
294 Epidemiol. 2010;25(9):603-605.
- 295 [11] Gottlieb RL, A Nirula, P Chen, et al. Effect of Bamlanivimab as
296 Monotherapy or in Combination With Etesevimab on Viral Load in Patients With
297 Mild to Moderate COVID-19: a Randomized Clinical Trial. JAMA.
298 2021;325(7):632-644.

-
- 299 [12] Dougan M, A Nirula, M Azizad, et al. Bamlanivimab plus Etesevimab
300 in Mild or Moderate Covid-19. *New Engl J Med*. 2021.
- 301 [13] Lundgren JD, B Grund, CE Barkauskas, et al. A neutralizing
302 monoclonal antibody for hospitalized patients with Covid-19. *New Engl J Med*.
303 2021;384(10):905-914.
- 304 [14] Rainwater-Lovett K, JT Redd, MA Stewart, et al. Real-world Effect of
305 Monoclonal Antibody Treatment in COVID-19 Patients in a Diverse Population in
306 the United States. *Open Forum Infect Dis*. 2021;8(8):ofab398.
- 307 [15] Ganesh R, CF Pawlowski, JC O'Horo, et al. Intravenous bamlanivimab
308 use associates with reduced hospitalization in high-risk patients with mild to
309 moderate COVID-19. *J Clin Invest*. 2021.
- 310 [16] Kumar RN, EL Wu, V Stosor, et al. Real-World Experience of
311 Bamlanivimab for COVID-19: A Case-Control Study. *Clinical infectious diseases* :
312 an official publication of the Infectious Diseases Society of America. 2021.
- 313 [17] Iqbal L, TJ Terlau, A Hernandez, et al. Efficacy of Bamlanivimab in
314 Reducing Hospitalization and Mortality Rates in COVID-19 Patients in a Rural
315 Community. *Cureus*. 2021;13(7).
- 316 [18] Destache CJ, SJ Aurit, D Schmidt, et al. Bamlanivimab Use in
317 Mild-to-Moderate COVID-19 Disease: A Matched Cohort Design. *Pharmacotherapy*.
318 2021.
- 319 [19] Bariola JR, EK McCreary, RJ Wadas, et al. Impact of Bamlanivimab
320 Monoclonal Antibody Treatment on Hospitalization and Mortality among
321 Nonhospitalized Adults with Severe Acute Respiratory Syndrome Coronavirus 2
322 Infection. *#N/A*. 2021;8(7).
- 323 [20] Webb BJ, W Buckel, T Vento, et al. Real-world Effectiveness and
324 Tolerability of Monoclonal Antibody Therapy for Ambulatory Patients With Early
325 COVID-19. *Open Forum Infect Dis*. 2021;8(7):ofab331.

-
- 326 [21] Koehler J, B Ritzer, S Weidlich, et al. Use of monoclonal antibody
327 therapy for nosocomial SARS-CoV-2 infection in patients at high risk for severe
328 COVID-19: experience from a tertiary-care hospital in Germany. *Infection*.
329 2021;1-6.
- 330 [22] Schoofs T, F Klein, M Braunschweig, et al. HIV-1 therapy with
331 monoclonal antibody 3BNC117 elicits host immune responses against HIV-1.
332 *Science*. 2016;352(6288):997-1001.
- 333 [23] Tuccori M, I Convertino, S Ferraro, et al. An overview of the
334 preclinical discovery and development of bamlanivimab for the treatment of novel
335 coronavirus infection (COVID-19): reasons for limited clinical use and lessons for
336 the future. *Expert Opin Drug Discov*. 2021;1-12.
- 337 [24] Planas D, D Veyer, A Baidaliuk, et al. Reduced sensitivity of
338 SARS-CoV-2 variant Delta to antibody neutralization. *Nature*.
339 2021;596(7871):276-280.
- 340 [25] Connor BA, M Couto-Rodriguez, JE Barrows, et al. Monoclonal
341 Antibody Therapy in a Vaccine Breakthrough SARS-CoV-2 Hospitalized Delta
342 (B.1.617.2) Variant Case. *Int J Infect Dis*. 2021.
- 343 [26] Margolis DM, RA Koup, G Ferrari. HIV antibodies for treatment of
344 HIV infection. *Immunol Rev*. 2017;275(1):313-323.
- 345 [27] Vandenbroucke JP. Why do the results of randomised and observational
346 studies differ? *Bmj*. 2011;343:d7020.
- 347



348

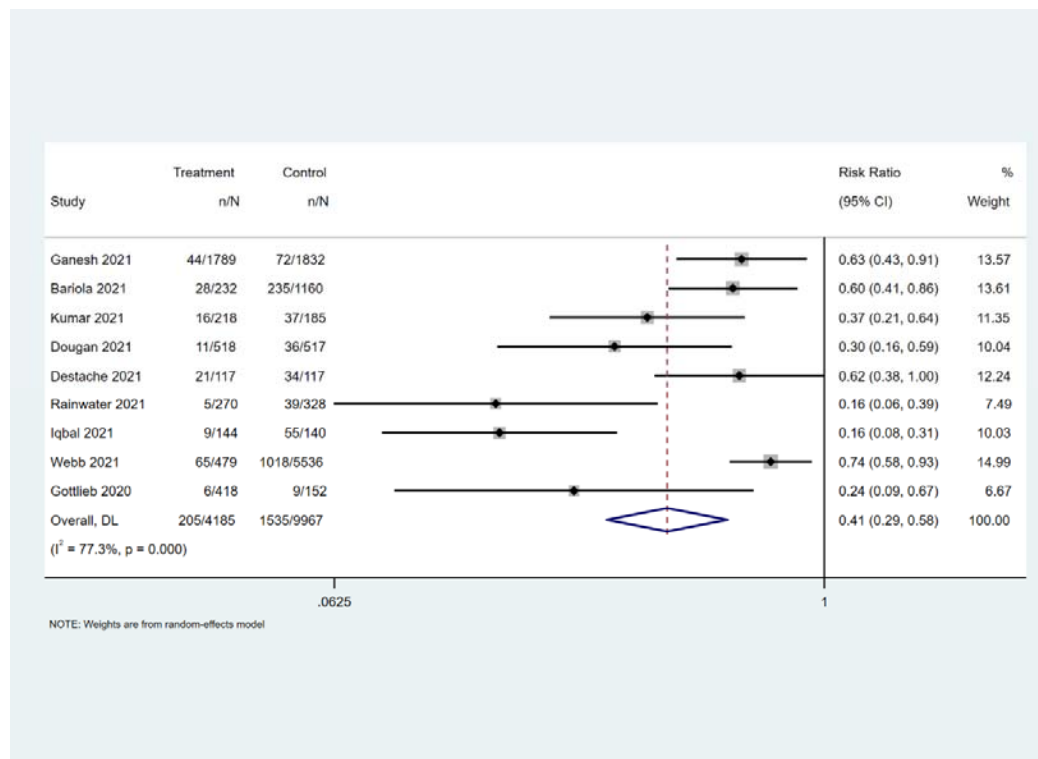
349

Figure 1: Preferred Reporting Items for Systematic Review and Meta- analysis (PRISMA) flow

350

diagram for the systematic review and meta- analysis.

351



352

353

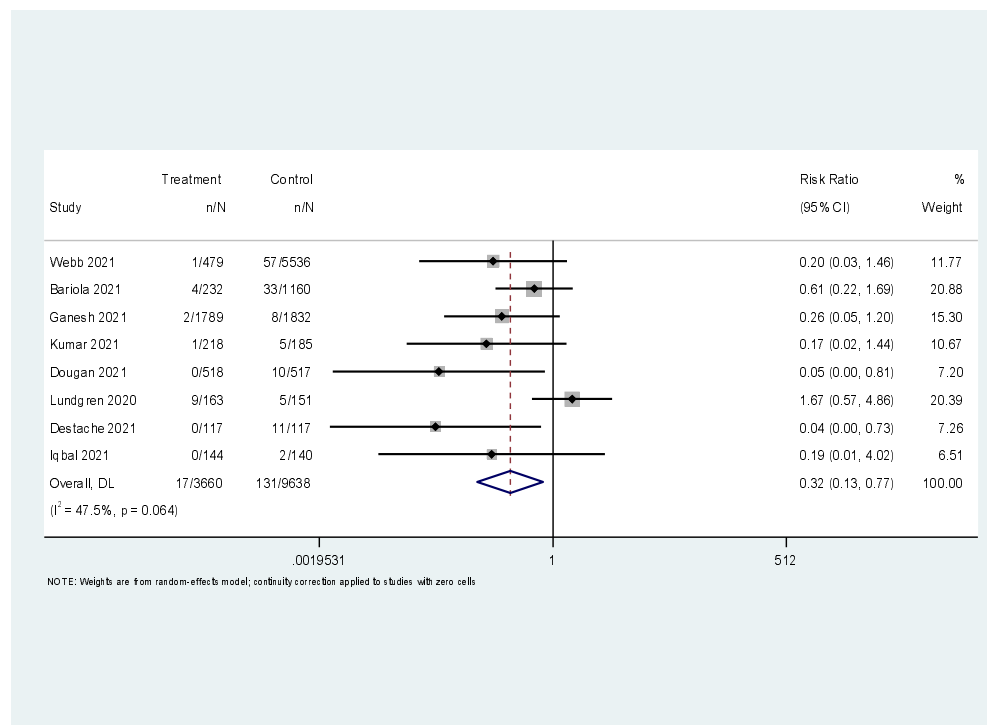
Figure 2: Forest plot of pooled hospitalization or ED visit rate across all included studies.

354

Weights are from random-effects analysis. Note: CI = Confidence Interval, ED = Emergency

355

Department



356

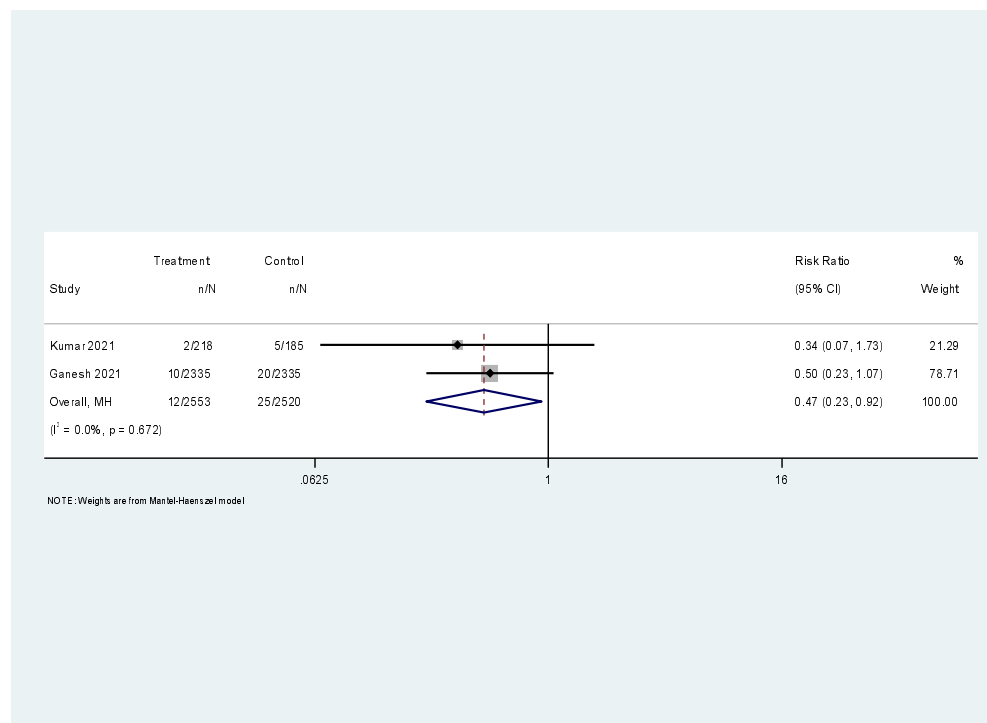
357

Figure 3: Forest plot of pooled mortality rate across all included studies. Weights are from

358

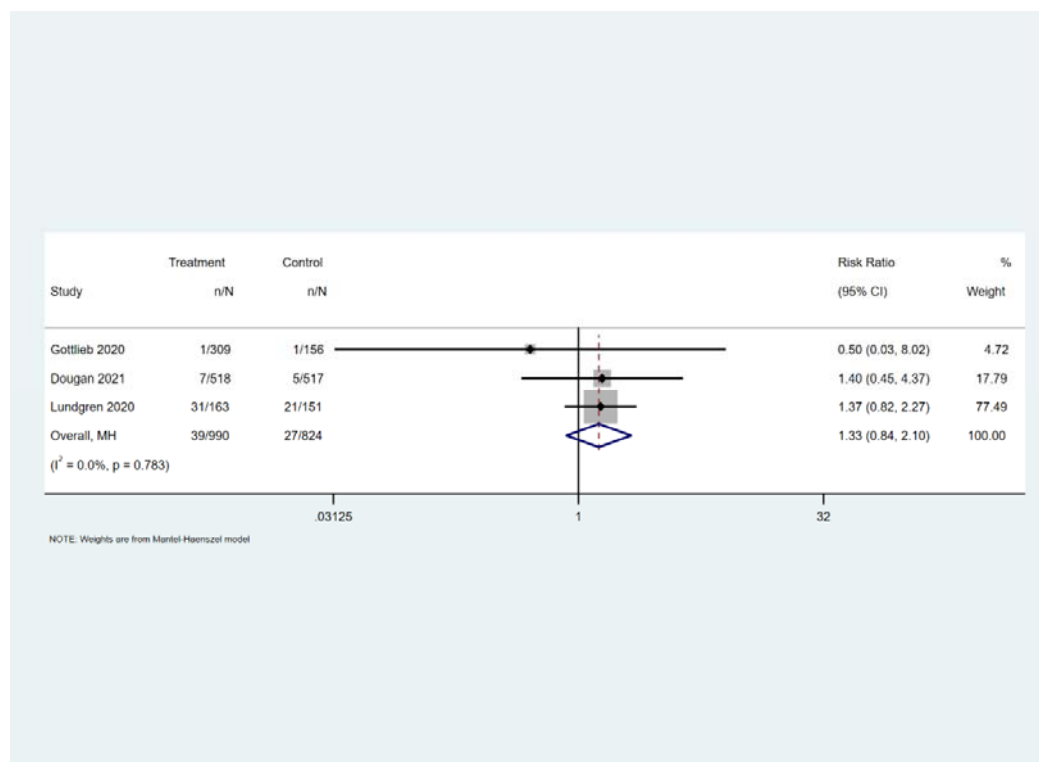
random-effects analysis. Note: CI = Confidence Interval.

359



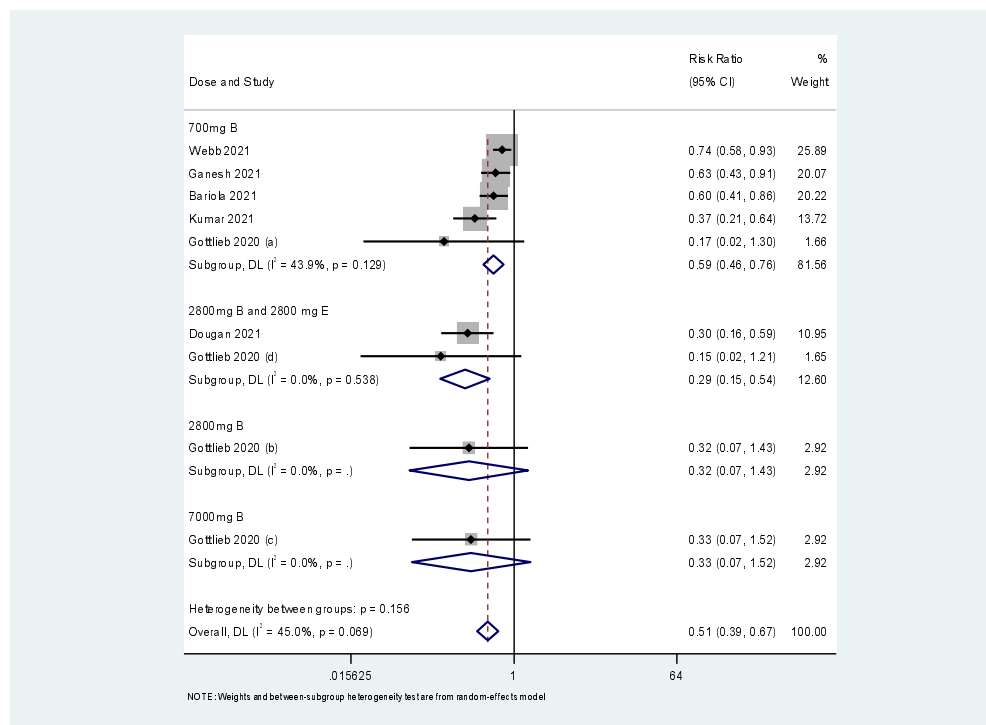
360

361 Figure 4: Forest plot of pooled ICU admission rate across all included studies. Weights are from
362 random-effects analysis. Note: CI = Confidence Interval.



363
364 Figure 5: Forest plot of pooled serious adverse events rate across all included studies. Weights
365 are from Fixed-effects analysis. Note: CI = Confidence Interval.

366



367

368

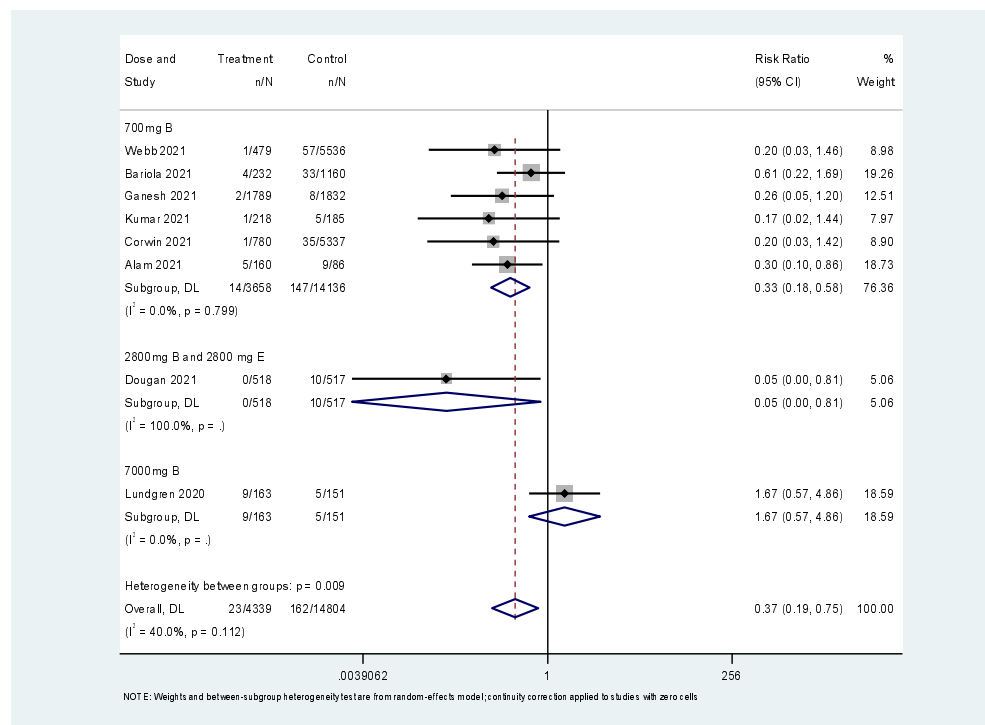
369

370

371

372

Figure 6: Forest plot for subgroup analysis of hospitalization or ED visit rate by type of dose. Weights are from random-effects analysis. Note: CI = Confidence Interval. 2800mg B and 2800 E = 2800mg bamlanivimab plus 2800mg etesevimab



373

374

375

376

377

378

379

380

381

382

383

Figure 7: Forest plot for subgroup analysis of mortality rate by type of dose. Weights are from random-effects analysis. Note: CI = Confidence Interval. 2800mg B and 2800 E = 2800mg bamlanivimab plus 2800mg etesevimab

Table 1 Characteristics of the studies included in the meta-analysis

Frist author, year	Type of study	country	Mean age IQR or SD (treatment group)	Enrolled patients	Timing of using bamlanivimab	Dose	Outcome
Dougan 2021	RCT	USA	53.8±16.8	aged 12 years or older with mild or moderate symptoms; with at least one risk factor for severe Covid-19	Positive SARS-CoV-2 test ≤3 days before infusion	a combination of 2800 mg of bamlanivimab and 2800 mg of etesevimab or placebo	<ol style="list-style-type: none"> the overall clinical status of the patients, defined as Covid-19–related hospitalization (acute care for ≥24 hours) or death from any cause by day 29. change from baseline to day 7 in the SARS-CoV-2 viral load. the time to sustained patient-reported resolution of symptoms.
Gottlieb 2020	RCT	USA	44 (30-60)	aged 18 years or older, tested positive for SARS-CoV-2 infection, had 1 or more mild to moderate symptoms.	Positive SARS-CoV-2 test ≤3 days before infusion	placebo, 700,2800,7000 mg of bamlanivimab, and a combination treatment with 2800 mg of bamlanivimab and 2800 mg of etesevimab.	<ol style="list-style-type: none"> The change in log viral load from baseline to day 11. time to symptom improvement; time to symptom resolution; and the proportion of patients showing symptom improvement or resolution at days 7, 11, 15, and 22) focused on clinical outcomes (the proportion of patients with a COVID-19–related hospitalization, emergency department visit, or death) at day 29.
Lundgren 2020	RCT	Denmark	63 (50–72)	adult hospitalized patients who had documented SARS-CoV-2	within 12 days of symptom onset	7000mg of bamlanivimab	<ol style="list-style-type: none"> the time to a sustained recovery, which was defined as hospital discharge to home and

				infection and a duration of symptoms attributable to Covid-19 of 12 days or less.			<ol style="list-style-type: none"> remaining at home for at least 14 days death from any cause.
Bariola 2021	observational study	USA	67 .3 (13.0)	<p>diagnosed mild to moderate COVID-19 (with a positive polymerase chain reaction or antigen test for SARS-CoV-2 virus); body mass at least 40 kg; age ≥ 65 years; or a medical condition conferring high risk of COVID-19 progression to severe disease and/or hospitalization</p>	within 10 days of symptom onset	700mg of bamlanivimab	<ol style="list-style-type: none"> a composite of hospitalization or all-cause mortality during the follow-up windows. hospitalization or 28-day ED visit without hospitalization.
Destache 2021	Cohort study	USA	72 (65-80)	<p>one of the following risk factors: age greater or equal to 65 years, BMI greater than or equal to 35, chronic kidney disease, diabetes, immunosuppressive disease, immunosuppressive treatment, age greater than or equal to 55 years and cardiovascular disease, age greater than or equal to 55 years and hypertension, age greater than or equal to 55 years and chronic respiratory pulmonary disease or other chronic respiratory diseases, or</p>	NA	NA	Subsequent hospitalization or an ED visit

				age less than 55 years with sickle cell disease, congenital or acquired heart disease, neurodevelopment disorders, medical related technological device dependence, asthma, or reactive airway disease. Patients identified in this report were then searched to determine if they received BAM treatment as part of their COVID-19 infection treatment.			
Ganesh 2021	Cohort study	USA	63 (52,72)	age ≥ 65 years, body mass index (BMI) ≥ 35 , diabetes, chronic kidney disease, immunosuppressive medication use, or an immunocompromising condition. Patients 55 years and older qualified if they had hypertension, cardiovascular disease, or chronic lung disease. Mild or moderate	within 10 days of symptom onset	700mg of bamlanivimab	<ol style="list-style-type: none"> 1. All-cause hospitalization 2. Intensive care unit admissions 3. Survival 4. Adverse Events
Kumar 2021	Case-control study	USA	66 (57–74)	Prescribing clinicians attested in the bamlanivimab referral order that the patient (1) was not hospitalized at time of order placement, (2) had no acute need for oxygen therapy or, for	<10 days from initial symptom onset, and <5 days from first positive SARS-CoV-2 test.	single infusion of 700 mg	<ol style="list-style-type: none"> 1. The primary outcome was hospitalization within 30 days from initial positive SARS-CoV-2 PCR. Demographics, comorbidities, and presentation characteristics were compared between cases and controls.

				those patients on oxygen at baseline, no increase in oxygen requirement, (3) was age 18 years or older, (4) had positive SARS-CoV-2 testing, (5) and whether the patient weighed ≥ 40 kg.			2. Secondary outcomes included: intensive care unit (ICU) admission, mechanical ventilation requirement, mortality, and duration of hospitalization within 30 days from first positive SARS-CoV-2 test.
Rainwater 2021	Cohort study	USA	63.9 (15.9)	tested positive for SARS-CoV-2 via an antigen or polymerase chain reaction-based test. Patients with positive viral test results recorded in the electronic health record between July 1st and December 20th	with symptom onset within no more than 10 days.	NA	1. medical visit was defined as the first instance of COVID-19-related E.D. visit or hospitalization after positive SARS-CoV-2 viral test result. 2. Adverse Events
Webb 2021	Cohort study	USA	65 (13)	Patients were ineligible to receive MAb therapy for the following conditions: 1) hospitalized due to COVID-19, 2) new, COVID-related hypoxemia (defined as peripheral oxygen saturation $< 90\%$ at rest or new supplemental oxygen requirement, or for those with chronic hypoxia, a new change in baseline saturation or oxygen demand, 3) pregnant, or 4) known hypersensitivity to other monoclonal drugs. Eligibility criteria for pediatric patients differed from adults and	with symptom onset within no more than 7 days.	700mg of bamlanivimab	The primary outcome was emergency department visit or hospitalization within 14 days of positive test.

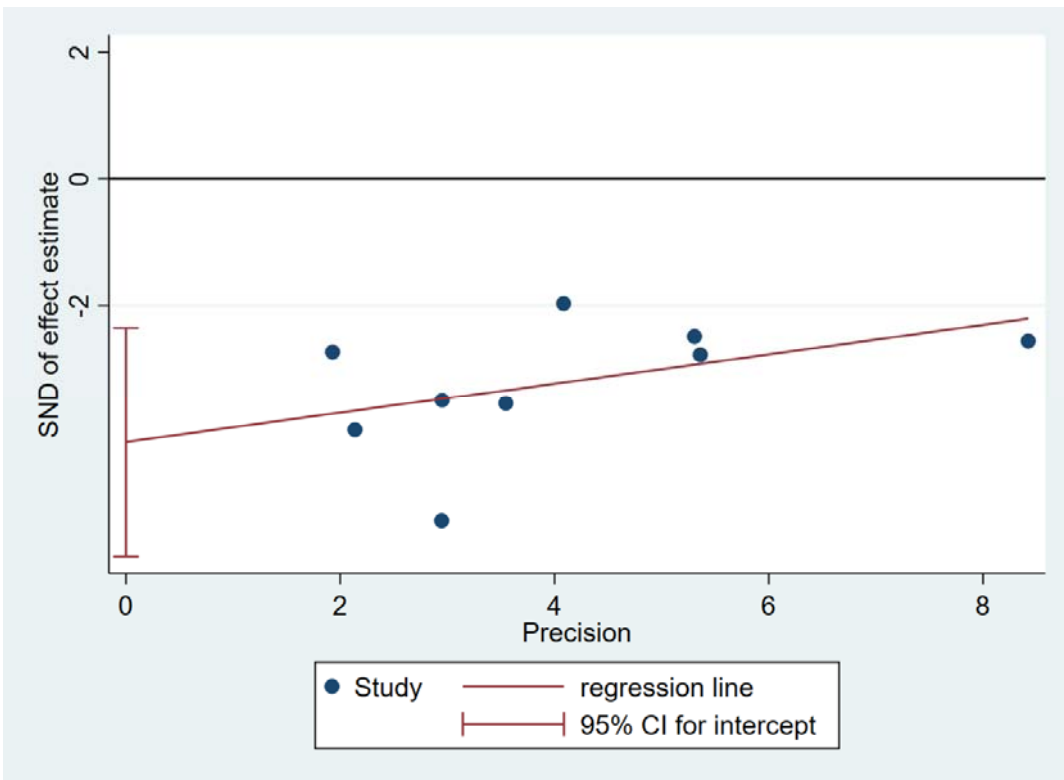
			patients <18 years of age are not included in this study.			
--	--	--	---	--	--	--

Table 2. Outcome summary

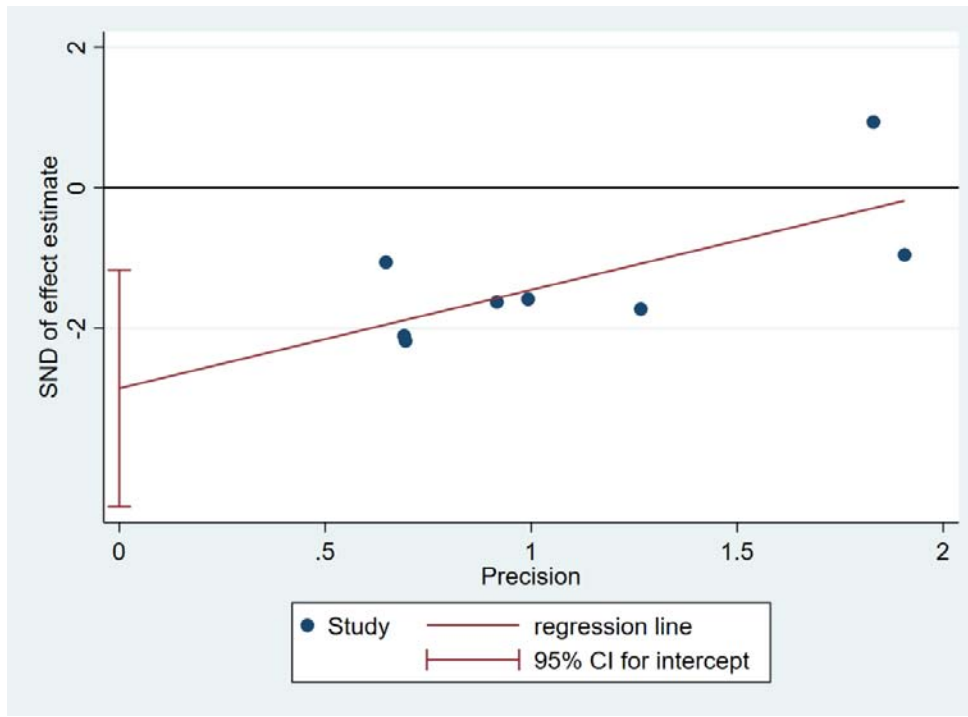
Outcome	Study(n)	RR	95% CI
Hospitalization or ED visit	9	0.41	(0.29, 0.58)
Mortality	8	0.32	(0.13, 0.77)
ICU admission	2	0.47	(0.23, 0.92)
Safety	3	1.33	(0.84, 2.10)

Subgroup	Study (n)	RR	95% CI
<i>Dose</i>	Hospitalization or ED visit		
	Mortality		
700mg B	5	0.59	(0.46, 0.76)

	6	0.33	(0.18, 0.58)
2800mg B	1	0.32	(0.07, 1.43)
	0	NA	NA
7000mg B	1	0.33	(0.07, 1.52)
	1	1.67	(0.57, 4.86)
2800mg B+2800mgE	2	0.29	(0.15, 0.54)
	1	0.05	(0.00, 0.81)



(a)



(b)

Figure 1: Risk of publication bias. (a)hospitalization or ED visit; (b)mortality

Table 1. Risk of bias summary: the review authors' judgments about each risk-of-bias item for each included cohort study.

Study	Patients' selection	Comparability between groups	Outcome or exposure factors assessment	NOS score	Risk of bias
Bariola 2021	3	2	2	7	L
Destache 2021	4	2	2	8	L
Iqbal 2021	3	2	3	8	L
Ganesh 2021	3	2	3	7	L
Kumar 2021	3	1	2	6	M
Rainwater 2021	3	1	2	6	M
Webb 2021	3	2	1	6	M

NOS: New-Castle Ottawa scale; The summary risk of bias was determined as low (NOS scores \geq 7), moderate ($4\leq$ NOS scores \leq 6), and high (NOS scores \leq 3).

L: low risk; M: moderate risk; H: high risk

Table 2: Risk of bias summary: the review authors' judgments about each risk-of-bias item for each included randomized control trial.

Study	Random sequence generation	Allocation concealment	Blinding of participants and personnel	Blinding of outcome assessment	Incomplete outcome data	Selective reporting	Other bias
Gottlieb et al (2021)	L	L	L	U	L	L	L
Lundgren et al(2021)	L	L	L	L	L	L	L
Dougan et al (2021)	L	U	L	U	L	L	L

L: low risk; U: unclear risk; H: high risk

Table 3: GRADE summary of findings on use of intravenous immunoglobulin in COVID-19

Outcomes	Illustrative comparative risks* (95% CI)		Relative effect (95% CI)	No of Participants (studies)	Quality of the evidence (GRADE)	Comments
	Assumed risk	Corresponding risk				
	Control	Hospitalization or ED visit				
Hospitalization OR ED visit Follow-up: 14-30 days	Study population		RR 0.41 (0.3 to 0.56)	15201 (9 studies)	⊕⊕⊕⊕ low ^{1,2,3,4}	
	194 per 1000 (58 to 108)	79 per 1000 (58 to 108)				
	Moderate					
	200 per 1000 (60 to 112)	82 per 1000 (60 to 112)				
Death rate Follow-up: 14-30 days	Study population		RR 0.31 (0.12 to 0.77)	14347 (8 studies)	⊕⊕⊕⊕ low ^{1,2,3}	
	13 per 1000 (2 to 10)	4 per 1000 (2 to 10)				
	Moderate					
	23 per 1000 (3 to 18)	7 per 1000 (3 to 18)				
ICU admission Follow-up: 30	Study population		RR 0.47 (0.23 to 0.92)	5073 (2 studies)	⊕⊕⊕⊕ low	
	10 per 1000 (2 to 9)	5 per 1000 (2 to 9)				
	Low					

	0 per 1000	0 per 1000 (0 to 0)			
	Moderate				
	18 per 1000	8 per 1000 (4 to 17)			
Serious adverse effects	Study population		RR 1.33	1814	⊕⊕⊕⊕
Follow-up: 30 days	33 per 1000	44 per 1000 (28 to 69)	(0.84 to 2.1)	(3 studies)	high
	Moderate				
	10 per 1000	13 per 1000 (8 to 21)			

*The basis for the **assumed risk** (e.g. the median control group risk across studies) is provided in footnotes. The **corresponding risk** (and its 95% confidence interval) is based on the assumed risk in the comparison group and the **relative effect** of the intervention (and its 95% CI).

CI: Confidence interval; **RR:** Risk ratio;

GRADE Working Group grades of evidence

High quality: Further research is very unlikely to change our confidence in the estimate of effect.

Moderate quality: Further research is likely to have an important impact on our confidence in the estimate of effect and may change the estimate.

Low quality: Further research is very likely to have an important impact on our confidence in the estimate of effect and is likely to change the estimate.

Very low quality: We are very uncertain about the estimate.

¹

² Significant potential publication bias

³ RR < 0.5

⁴ Dose depend gradient
